

MATCH SPONSORED BY



JB Developments



OUR TOWN

OFFICIAL MATCHDAY PROGRAMME 2020-21
ISSUE #20 | LUTON TOWN V COVENTRY CITY
16.03.21 | KO: 7:00PM



HOME:

JB Developments

WHITE:

STAR
PLATFORMS

NAVY:

ryebridge

BACK OF SHIRT:

utilita

bartercard

KIT PARTNER

umbro

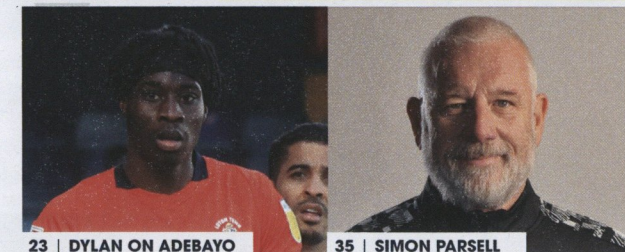


1885 2020

CONTENTS



11 | JORDAN CLARK



23 | DYLAN ON ADEBAYO

35 | SIMON PARSELL

- 5 NATHAN JONES**
The boss looks ahead to this tonight's game
- 6 STEPHEN BROWNE**
Tonight's boardroom notes come from the Hatters director
- 9 THE PRESS BOX**
BBC Three Counties Radio's Simon Oxley writes
- 17 WELCOME SKY BLUES**
All you need to know about today's visitors from Coventry
- 44 MATCH ACTION**
A look back at Saturday's unfortunate home defeat to Swansea
- 48 FIXTURES & RESULTS 2020-21**
All the stats you need from the Town's matches this season

LUTON TOWN FOOTBALL CLUB 2020 LTD

Kenilworth Road Stadium, 1 Maple Road East,
Luton, Bedfordshire LU4 8AW
Switchboard: 01582 411622 | Tickets: 01582 416976
info@lutontown.co.uk

CLUB OFFICIALS

Chairman: David Wilkinson
Chief Executive Officer: Gary Sweet
Directors: Paul Ballantyne, Stephen Browne
Bob Curson, Mike Herrick, Rob Stringer
Shareholders: Kailesh Karavadra,
Luton Town Supporters Trust
Operations Director: Paul Watson
Finance Director: Tom Schofield
HR Director: Jemma Osborne
Commercial Director: Chris Bell
Honorary Vice President: John Buttle
Vice Presidents: Richard Banks, Cliff Bassett,
Gary Chamberlain, Doug Knight,
Ian Gazeley, Emma Banks, Ben Banks,
Ian Montone, Nick Owen
First Team Manager: Nathan Jones
Assistant Manager: Mick Harford
First Team Coaches: Paul Hart & Chris Cohen
Head of Goalkeeping: Kevin Dearden
Performance Analyst: Peter Booker
Analyst: Dan Bond
Head of Scouting Operations: Phil Chapple
Head of Recruitment Analysis: Jay Socik
Head of Medical: Simon Parsell
Physiotherapist: Chris Phillips
Therapist/Kit Man: Darren Cook
Head of Sports Science: James Redden
Academy & Development Manager: Andy Awford
Head of Academy Coaching & Professional Player
Development: Adrian Forbes
Professional Development Phase Lead Coach: Dan Walder
Academy Administrator: Emily Howes
Club Secretary: Chris Clark
Safety Officer: Andrew Bracken
Site & Facilities Manager: Peter Kemp
Head Groundsman: Richard Bird
Marketing & Communications Manager: Ed Smith
Press & Media Manager: Stuart Hammonds
Head of Retail Operations: Siobhan Kos-Hodge
Ticket Office Manager: Mike Hooker
Catering & Hospitality Manager:
Cristhiano Andrade Da Silva
Supporter Liaison Officer: John Miller
Junior Supporter Liaison Officer: James Whitehead
Club Doctor: Dr Paul Deeley
Club Chiropractor: David Leu
Head of Community Trust: Kevin Thoburn

OFFICIAL MATCHDAY PROGRAMME

Made in Luton. Printed by Bartham Press.
Edited by Stuart Hammonds
(stuart.hammonds@lutontown.co.uk).
Design by Ed Smith
Photography by Gareth Owen.

Thanks to contributors: Roger Wash, Ed Smith, Bradley Dixon,
Dan Briard, Simon Pitts, Simon Oxley, Andy Awford, Kevin
Thoburn, Simon Parsell, Ryan Payne and Dylan Bhundia.

Additional pictures: Rex Features, Prime Media Images,
Peter Simmons and Liam Smith.

The views in this programme are those of the
contributors and not necessarily those of the
editor and/or Luton Town.

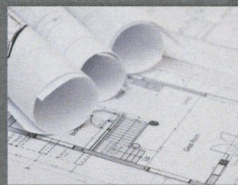


TRAIN LIKE A PRO

ENGINEERED FOR PERFORMANCE

exclusively available at umbro.co.uk

JB PROVIDE BUILDING EXCELLENCE AT EXCEPTIONAL VALUE



JB Developments Luton Ltd specialise in **extensions, home renovations, patios, driveway enhancements** and **all aspects of development**. We pride ourselves on **professionalism** and **quality**. Ensuring all clients, whether **local home improvements** or **commercial developments**, receive the same **care** and **quality finish**.

Call **01525 868250** or visit online
www.jbdevelopmentsltd.com



JB Developments
MAIN CLUB PARTNER

JB Developments Luton Ltd are the proud home kit sponsor of Luton Town Football Club throughout 2020/21 season.

THE MANAGER

Sponsored by:
Thompsons Accountants and Country Properties
(Hitchin) 01462 452951



NATHAN JONES

Good evening and welcome back virtually to Kenilworth Road for our second home game in quick succession.

Tonight we entertain a Coventry City side who followed us up as League One champions last year, and whose supporters will be buoyed by their long-awaited return to their home city this summer.

We welcome Mark Robins, his staff, their team and officials who have made the short journey down the M1, and we hope to be visiting the Ricoh Arena - where we enjoyed a couple of good battles in front of the usual couple of thousand travelling Hatters in Leagues One and Two - for a Championship fixture next season.

Both clubs still have work to do over the next seven-and-a-half weeks to make that a reality, but we are very much looking up the table to see where some positive results will take us this week as we head into the international break.

We follow tonight's match with a trip to Preston on Saturday and we would like to be in the top half of the table by the end of that one, a position we don't believe would be unwarranted.

On Saturday, for the second time this

season, we controlled the majority of a game against a Swansea side who are looking a good bet to be back in the Premier League next year.

As was the case down at the Liberty though, we conceded very early and then had refereeing decisions go against us, as well as spurning some good openings.

The Championship is a ruthless division, and as we saw at Norwich the week before, the top sides take their opportunities when they come along and we have to learn from that as we evolve at this level.

We congratulate Simon Sluga, Joe Morrell and Tom Lockyer on their international call-ups, although Tom's involvement with Wales is obviously dependent on his fitness having missed the past month with the ankle injury he picked up against Cardiff. At the time of writing, the Republic of Ireland squad hadn't been announced but I would expect James Collins to be included, so we wish all of our players successful and safe international trips.

The break gives the rest of the squad a chance to recharge the batteries for what will be a hectic final five weeks of the season, with nine games to play from Good Friday at Derby.

We are determined to make progress on what was achieved last season, and if we can have anything like the success we had in the nine matches after restart last year, we'll be in a good place to welcome back what will hopefully be a full house at Kenilworth Road for the start of 2021-22.

In the meantime, please continue to stick to the rules, stay safe and well and get behind the team as best you can from home. COYH!



STEPHEN BROWNE

Good evening to Hatters everywhere as we welcome Coventry City to Kenilworth Road.

It is good to see Mark Robins and his team again and to be playing our game in the Championship rather than a lower league. It is also good for the Sky Blues that their fans were given the fantastic news last week that they will be returning to Coventry and the Ricoh Arena from the start of next season.

City Chief Executive Dave Boddy broke the news and instantly fans were buzzing that they have a deal for at least the next ten years. We congratulate all the staff who have made this possible and send our best wishes for their fresh start.

We play Coventry after our narrow loss to Premier League hopefuls Swansea City on Saturday. A game we dominated in every way and came away from wondering how we didn't even get a point. Yet again we had to contend with a referee who was not up to standard and ignored a handball that many other teams in the League would have got a penalty from. It's not the first time we have seen this - two balls on the pitch at one time; an opposition manager getting a penalty overturned...to name just two crazy decisions.

It seems that because officials think we are 'punching above our weight' then it doesn't matter that they fail to give us what we deserve. Too often this season the officials have needed to up their game - after all they are professionals. And to increase the madness of officiating, I know of no other profession that if you make a complaint about them you get fined! It does rather smell, doesn't it?

It seems that because we do not spend large sums on transfers, pundits and officials think we are a minnow. In fact, I've never seen a pundit actually explain to the audiences they are meant to be informing that it's not us that are cheating by spending money we do not have or fiddling accounts in an effort to stay within the rules. Behind the scenes we know, and many of you know, the finances of the Championship are a joke and in a parlous state.

What would happen if you levelled the playing field? What would happen if clubs could only spend the money they have? What would happen if all clubs paid their tax on time and in full? Well, it looks like we will never know because the vested interests in our National Game have no intention of being honourable custodians....instead they will look after themselves, their mates, and their pockets at the expense of the beautiful game.

The power of the Premier League has interfered in the proposed financial management of the Championship and the Football League. The PFA, an organisation that themselves are under a serious financial investigation, want salaries to continue to escalate unabated no matter the consequences for the game. The FA are toothless. And instead of the PFA or PL helping lower league football with the £billions they both have at their disposal, they will only loan money that has to be paid back - the classic case of kicking the can down the road yet again.

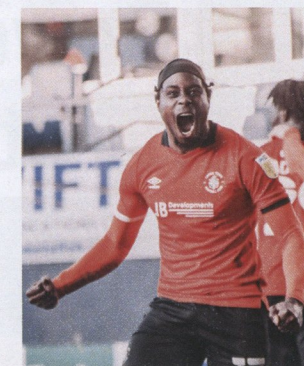
Far from being minnows, we are getting better and more effective every season. Compared to last season we have more points, we've conceded less goals, we are better in and out of possession, we are better tactically and mentally, our recruitment is a step change....however you look at it virtually all our metrics are better season after season.

If you looked at our squad based on 'value for money' as opposed to money alone, then I would argue we have the best squad in this league and everyone from player to supporter should be extremely proud of that.

Last season we worked incredibly hard to keep our place in this league. We felt to do the same this season would be a lot harder and yet we look like we'll be

on for a solid mid-table position, and a team that's hard to beat. Who knows next season? Bang in more goals from the opportunities we create, don't lose those points we know were ours, and where will it take us?

As supporters, we always want more. Leicester fans want more, Sheffield United fans want more, Leeds fans want more. Of course we want more, but we will do it whilst living within our means, paying all our taxes on time, helping our local community, rejecting betting monies, and without any fiddling of accounts or dodgy deals. Are we promotion challengers? Not this year, no - admittedly we haven't 'done a Barnsley' with their billionaire owners, but neither have we 'done' a Derby County, or Sheffield Wednesday or Birmingham City. Look at our recent trajectory though and who knows what will come?



Minnows? I like the fact people underestimate us, and I'm proud of the fact we manage our business and our football the correct and fair way fully supported by you - the people who really matter to our Club. Together we are doing things our way, the honest way, the Luton Town way.

And let's not forget, these achievements by Nathan and his team have all been done at the same time as we are bringing

forward the plans and the build for our new home. As I write these notes our final plans have been put forward that take into account the way the world has changed over the past year. Once they are published you will see things like less retail and more logistics space; a slightly different design to layouts and the River Lea; more opportunity for residential and affordable homes.

To turn this all around after the tumultuous year we have just had is a credit to Mike Moran and his management of our build partners. In such uncertain times they have all done a fantastic job in ensuring we see the minimum changes to both the initial intentions from over ten years ago, and the timescales.

However, the bottom line is the same end result - a stadium we will all be proud of, that has future-proofing built in, and will be up there with the best facilities in this country and Europe. It will change our town....it will change our Club.

So, as we enter the final quarter of the season let's again take a few minutes to remember where we have come from and how we have done it. On 12 March 2013 - just eight years ago - we lost 1-2 at home to Hyde (and I mean no disrespect to Hyde who deserved that win). Today we are one of a handful of clubs that are true and honest and playing in the one of the World's biggest leagues.

We wish you were here to sing out your hearts, and if all goes well there are only a very few games left that will see the Kenny empty. So sing from wherever you are watching and listening....we will hear you!

Come on You Hatters! Loud and Proud!

Stephen



30% OFF!
Quote
LTFC20-21

**Do you work
at height?**

- Friendly, professional advice at the end of the phone
- More cost effective than scaffolding and aluminium towers
- Safe and easy to use
- Next day delivery available
- Local company offering national coverage

01582 297050

info@starplatforms.co.uk

H I R E • S A L E S • T R A I N I N G



STARPLATFORMS



starplatforms.co.uk



THE PRESS BOX

BBC Three Counties Radio commentator **SIMON OXLEY** on tonight's game

Matches against Coventry always bring back memories for me of November 1988 at Highfield Road and my first Luton Town reporting assignment. I was standing in for a colleague on the Herald, and the Hatters lost one-nil to a goal from future LTFC defender Graham Rodger.

It was always a great atmosphere there, and there may be some Sky Blues fans wishing they had never left. But thankfully they will return to the city and the Ricoh Arena next season.

It should be a stadium that works with easy access from the motorway and other facilities on site which generate non matchday income. I hope they can make it seem like a joint venture with owners Wasps. The last time I was there, the only recognition of the football club was the statue of Jimmy Hill (right).

Trips to watch home games at Northampton and Birmingham can't have been much fun for the Coventry faithful and it would be nice to be back at the Ricoh in the Championship next season - with supporters from both sides.

They have a relegation battle ahead, but Luton have almost certainly avoided that,

with that magnificent game and a half against Sheffield Wednesday and Nottingham Forest. What a comeback that was against Wednesday - possibly as good as I have seen given the first half display.

We should not underestimate the scale of what has been achieved so far, especially with no supporters here to make such a difference as you always do.

Aside from that I would not relish a return to League One, which looks even more difficult to get back out of. Looking at the current table, let's say Hull, Peterborough and Sunderland go up. That still leaves Ipswich, Portsmouth and Charlton, with maybe Birmingham and Sheffield Wednesday to come down.



Promotion from the Championship is hard to call. Obviously Norwich, but then one from Swansea, Brentford and Watford. Swansea were fortunate to leave here with all three points on Saturday. I wasn't sure about Watford but that was a good win at Cardiff which could see them really push on. I'm certainly looking forward to April's meeting here.

Finally I'm pleased to report that 3CR should resume travel to away games at Easter.

To the NHS, Key Workers
and our amazing Luton Charities

Thank You

From  ryebridge Construction



Words: Ryan Payne

HATTER CHATTER



Last week Jordan Clark became the latest Town player to meet a group of long-standing fans on Zoom for the Community Trust's Tackling Loneliness Project. The Hatter Chatter group got the opportunity to ask Jordan anything they liked, from Nathan Jones to how he got his nickname...

Since making the move to Kenilworth Road in the summer, Clark has been deployed in many different positions. Playing across the pitch is something that has been normal for Clark this season, with the 27-year-old being asked what was his favoured position.

"I quite enjoyed playing right-back against Nottingham Forest. I was a bit worried when I played there to be honest, because that's the first time I've started a game there in the Championship," he says. "The first 10 minutes, I'm not gonna lie, was the first time I've been nervous for a long time. After that, we started to get the ball and started getting forward and I tried and helped create as many chances we can."

"I quite enjoyed the defensive part and keeping a clean sheet on my first time playing there was great. Obviously, it sets the platform for the attacking players

when we can keep a clean sheet and keep it solid at the back. We let them do the business and try to get the result for us. It was only 1-0, but it was a good performance and although we rode our luck at times, I thought we were solid throughout. It was a great three points.

"It's wherever he [Nathan Jones] feels he wants me to play to be honest. I don't mind if I'm playing left of a three or right wing back, left wing back, right back, anywhere. He wants me to play to our plan. I'll give it 100% for the for the team. That's the most important thing."

Boss Jones has shown this season that he isn't afraid to play Clark in a number of different positions, also highlighting central midfield as a potential position for him in the future. But what does Clark think of the possibility of playing there?

"It's somewhere I've not really played in my career," he says. "I have been be more of a winger type player, but if he feels I can play there, I'd love to play there. If I'm in the team, I'll play anywhere on the pitch, but if he feels like I can do that, and he's got the confidence in me, then why not?"





**ENERGY
HIGH5**
utilita

5 SIMPLE WAYS TO SAVE **£163!**

**ON YOUR ENERGY
BILLS EVERY YEAR**

www.utilita.co.uk/energyhigh5

#EnergyHigh5

Official Partner
of Luton Town FC



utilita
life with power

UTILITA.CO.UK/FOOTBALL



(Continued from page 11)

During his career, the 27-year-old has played for a number of clubs. Prior to his summer move to Luton, Clark also spent time at Barnsley, Shrewsbury and Accrington Stanley. Playing for those clubs, he faced Luton as an opposing player a number of times, with one supporter asking him about his impression of the club before his move.

"Coming as an opposition player, it was always one of the hardest places to play, especially when the crowds are in," said Jordan. "Coming in, everyone - the chairman, Paul Watson and a whole lot of the guys upstairs - they just can't do enough for you. It's a pleasure to go in every day and go train every day because everyone wants you to improve as a player.

"And whether it's a physio asking if they can do enough for you, making sure you're fit and healthy to train. The sport scientists getting whatever food you want, getting that right for you so you can recover and prepare for another game. Obviously, the coaching is all to help yourself and the team take the three points on a Saturday on a Tuesday night.

Everyone's just brilliant, and it's just a great club to be at." The player is also known by a nickname, something that has followed him from club to club. Clicker, as he is referred to, is something that the fans wanted to know the origins of.

"The few lads have been asking me that as well, I don't even know myself!" Clark says. "It's just one of the things that stuck with me. I think it was my youth team coach at Barnsley started calling me that for some reason. And then I ended up leaving and signing for Shrewsbury, there was an old coach from Barnsley there and he started calling me it.

"Then from there, I went to Accrington and it followed me there. It's ended up following me to Luton as well. I don't really know how I got it to be honest, I couldn't tell you why it started. But it's just one of those things, everyone seems to start calling me it, but I don't mind. It is what it is!"

Making the move from Accrington to Luton would be a difficult adjustment for most to make, but Clark and his girlfriend had to make the move during a global pandemic. Something that the fans wanted to know was the adjustments they both had to make moving from the North to the South.

"Yeah, it's a tough one really because this is the furthest South we've ever been," he says. "I'm not really a big fan of the big bright lights of the city, we like the quiet countryside. I'm sure one day my girlfriend will still drag me into London, but it's hard to say at the minute because I've not experienced the town or the city and anything around here because it's been tough in the last year.

bartercard

**BE A PREFERRED SUPPLIER
WITH BARTERCARD!**

**SUPPLY
LUTON**



**BARTERCARD.CO.UK
0800 840 6333**



(Continued from page 13)

"Walking is probably the most thing we've done since we moved down. We found walks around Bedfordshire. There's quite a lot of nice walks. We do enjoy stuff like that. We like to get out for a couple hours, when we can, especially on the weekend, Sunday mornings.

"Hopefully, when you can get back to a bit of normality, it'd be nice to eat out again with friends and family, and go to the cinema. Even a bit of shopping every now and again. Just the little things, but things like seeing your friends and family are highest on the agenda, which is what has been really tough for everyone this past year."

Clark was also asked about the manager, and what he is like to play under, also mentioning Chris Cohen and other members of the backroom staff.

"Nathan Jones is amazing," Clark says. "He's so meticulous, he just wants

perfection all the time, which is great. He just wants to improve everyone all the time and he wants to improve the club, he wants to improve the players on every day or day to day basis.

"As a player, that's what you want. You want to be pushed to the maximum, you want to be striving to be better every day, even if it's just one per cent every day, you want to get there. That's why he's such a good manager. He takes all the sessions and it's just great to work on this, to be honest.

"Nathan and Chris work a lot together. And they'll discuss with all the other coaches, Mick and Paul, and all the analysts and the sports scientists. They all obviously speak to each other every day and work out all the specific training sessions we're going to do.

"Chris and the gaffer will work on stuff leading up to a game. Chris is the same as the gaffer. He wants to improve everyone and he wants to improve himself as a coach because he's a young coach, but just pushing everyone every day to improve which is great.

"We've got lads like myself who have come from lower league. We're all we're all hungry and we are striving to get better and better every day. It's a great environment to go into every day."



from
LONDON
£10
RETURN

**GET THERE
BY COACH**

greenline.co.uk



COVENTRY CITY

FACT FILE



NICKNAME: The Sky Blues

STADIUM: St Andrew's (Groundsharing at Birmingham City)

CAPACITY: 29,409

LEAGUE POSITION 19-20: 1st in League One

MANAGER: Mark Robins

MILES FROM LUTON: 87 miles

LAST MEETING: St Andrew's, 08/12/20, Championship, 0-0

RECORD APPEARANCE HOLDER: Steve Ogrizovic, 601, 1984-2000

RECORD GOALSCORER: Clarrie Bourton, 182 from 1931-37



THE MANAGER

MARK ROBINS

As a player, Mark Robins enjoyed a long and successful career, playing for the likes of Manchester United, Leicester City, and Rotherham, before settling into a career in management.

His first managerial role was with the Millers, before leaving for Barnsley in September 2009. Robins spent three years in charge at Oakwell, and was appointed manager of Coventry for the first time in 2012.

The 51-year-old's spell with the Sky Blues didn't last long, as he left for Huddersfield. After his time with the Terriers, he also managed Scunthorpe, before returning as Coventry manager in March 2017 - where he guided the side to the League One title in 2019/20.

COVENTRY CITY

ON THE RADAR

GOALKEEPER



BEN WILSON

Goalkeeper Ben Wilson began his career at Sunderland, but failed to break into the Black Cats' first-team, and spent time out on loan at Harrogate, Chesterfield, and Gateshead.

After his release by Sunderland, the 28-year-old had short stints at Cambridge and Accrington Stanley, eventually signing for Cardiff. During his time in South Wales, he made three league appearances, spending most of his time out on loan.

Wilson then spent a season with Bradford, before joining Coventry in the summer of 2019. After initially playing back-up to Marko Marosi, Wilson has come into the team in recent months.

DEFENDER



DOMINIC HYAM

Scottish defender Dominic Hyam began his career at Reading, joining the club as a 12-year-old.

During his time at the Madejski, he had numerous loan spells. Hyam was loaned out to Hemel Hempstead, Basingstoke, Dagenham & Redbridge, and Aldershot.

After failing to break into the first-team at Reading, Hyam joined Coventry on a free transfer in May 2017. Joining the Sky Blues when they were a League 2 club in 2017/18, Hyam has been part of the side that has won promotion into League One, as well as the League One title in 2019/20.

Internationally, Hyam has five caps for Scotland's Under-21s.

MIDFIELD



MATTY JAMES

A product of the Manchester United academy, Matty James was a regular for the side's Under-18s and Reserve sides, but couldn't break into the first-team at Old Trafford.

After two separate loan spells to Preston, James left for Leicester in 2012. A regular starter in the Championship for the Foxes, injuries meant the midfielder missed the entire 2015/16 campaign where Leicester won the Premier League.

With injuries impacting his playing time at the King Power, the 29-year-old had two loan spells at Barnsley. In January 2021, he made another loan move, as he joined Coventry on loan for the rest of the 2020/21 season.

STRIKER



TYLER WALKER

Son of former England defender Des Walker, Tyler Walker started his career at Nottingham Forest, making his professional debut in March 2015.

During his time with Forest, he made 40 league appearances, and spent a number of seasons out on loan. The 24-year-old had loan spells at Burton Albion, Stevenage, Port Vale, and Bolton. However, it was the later loan spells at Mansfield and Lincoln where Walker started scoring consistently.

Walker left Nottingham Forest in the summer of 2020, joining Coventry. He made his debut for the Sky Blues against MK Dons in the EFL Cup, scoring in a 1-0 win.



KEEP AN EYE ON...

MAXIME BIAMOU

Born in Creteil, France, Maxime Biamou started his footballing career in the French lower leagues. He had spells at both Villemomble Sports and Moulins Yzeure Foot, before making a move to England.

Biamou signed for non-league side Sutton United in the summer of 2016. He spent a season with Sutton, scoring 10 times in 39 league appearances. The 30-year-old attracted interest from the Football League, and signed for Coventry in June 2017.

Joining the club while they were in League 2, Biamou has been part of the Sky Blues' rise from the fourth tier into England's second tier.

Words: Ryan Payne



CLASSIC CLASH

23.12.06 | LUTON TOWN 3 COVENTRY CITY 1
CHAMPIONSHIP

CLUB HISTORIAN ROGER WASH DELVES INTO HIS ARCHIVES...

After a high spot of fifth in the table towards the end of October, following a 5-1 home win over Leeds, the Town slipped alarmingly suffering seven straight defeats.

The slide was arrested with a surprise 3-0 home win over promotion chasing Preston, but defeat at Sunderland and a dire 0-0 home draw with Southend meant that the Town entered the Christmas period just outside the relegation positions.

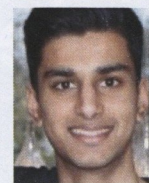
The Hatters were under the cosh in the first half in

their next game, at home to Coventry, but a series of superb saves from on loan goalkeeper Dean Kiely kept the Sky Blues at bay while at the other end Ahmet Brkovic gave the Town an undeserved lead in stoppage time.

In the second period an unfortunate own goal from Brkovic levelled the scores before two goals in two minutes from Rowan Vine and Dean Morgan gave the scoreline an unrealistic look, especially as Kiely continued to perform heroics until the final whistle.

Pictured is Rowan Vine bursting through to score the Town's second goal.

DEFY EXPECTATIONS AT THE UNIVERSITY OF BEDFORDSHIRE



THE PRESS BOX

Hatters fan and Our Town contributor DYLAN BHUNDIA's view...

"I was a centre-back when I played under Mark Pembridge," said Hatters new signing Elijah Adebayo speaking on the Luton Town Supporters Trust Podcast.

Mark Pembridge, of course, being the former Luton Town winger from the early 1990s, current Fulham U23 coach and previously the Fulham U16 coach where he worked with a then young centre-back in Adebayo.

Eight years, five loans and two permanent moves later, Adebayo finds himself leading the line for the Hatters in the Championship and despite having never previously played higher than League Two, the former Walsall frontman has seamlessly adapted to life two divisions up, putting in a string of impressive performances since joining the club.

But how does one go about transitioning into a completely different position midway through a career in an elite academy?

"Defending wasn't really for me", Adebayo candidly admits. "I played [as a striker] from the U9s to U13s [before making the switch to centre-back]". It was as late as when Adebayo stepped up

to play for Fulham's U18's team under former Southampton manager Steve Wigley that he was "pulled in before the season started" and told that the coaches wanted him to transition back into a striker after impressing in training.

It would prove to be a pivotal turning point in Adebayo's blossoming career. In his second season of development football for Fulham, Adebayo bagged 14 goals before Christmas, including two goals for Fulham U21s against Portsmouth and Crawley Town in the EFL Trophy.

After dominating at development level, it was time for Adebayo to gain crucial minutes at first team level, moving to Slough Town in the seventh tier of English football. It was here that Adebayo bagged a hat-trick on his first-team debut in a 4-1 FA Trophy win over Bognor Regis, the team that he joined on a one-month loan later in the season.

After impressing in his two brief loan spells in Non-League football, the following January he was rewarded with a one-year contract extension at Fulham and got his first taste of League football, heading out on-loan to League Two Cheltenham and then Swindon Town the following year. However, he struggled to make an impact at either club, with his loan at Swindon Town being cut short in January.

Whilst struggling to make an impact on the pitch, Adebayo views these experiences as crucial to his development:

"It's very difficult to go from Under-23s to men's football. It's completely different. Three points mean everything; people's lives and people's jobs are on the line...it took me six months to finally get my head around it. I had to knuckle down and pull my finger out, get myself ready to play



REACH YOUR RECYCLING GOALS WITH CAWLEYS

When it comes to your organisation's environmental credentials, you need to be on the ball.

Whatever your business's size or waste requirement, we can help:

- ▶ Plastic recycling
- ▶ Paper and card recycling
- ▶ Glass recycling
- ▶ Wood recycling
- ▶ Food and coffee waste
- ▶ General waste
- ▶ Hazardous waste management
- ▶ Skip hire (business and domestic)



Call **0845 260 2000**

Email **info@cawleys.co.uk**

Visit **Cawleys.co.uk**



(Continued from page 23)

at a higher level, that means working hard on and off the pitch."

After being released by Fulham, Adebayo needed somewhere to finally settle after spending time on-loan at five different clubs in three years, and he was to find a home at Walsall who took a chance on a young player that had struggled to make an impact but had the potential to thrive in league football.

"He's got all the tools...[he's] got the attributes to be a top-class player," said then Walsall manager Darrel Clarke after signing Adebayo. "He was at Fulham a long time and has had quite a few loan moves...the fact he's now our player means he can settle."

It was by no means the kind of seamless transition that Hatters fans have seen him take in his stride since signing in January, but this was a raw young talent finding his way in league football, settling in and adjusting to the demands and pressures of a first-team environment.

Patience is a commodity that is far too

scarce in professional football. Players are written off after a few games, managers sacked after a run of bad results. But patience can be one of most crucial aspects of a player's development when they have talent that is simmering beneath the surface, waiting to explode and show its true worth.

The centrality of showing patience could not be clearer in Adebayo's case, as he established himself as one of the most exciting young strikers in the EFL, scoring ten goals in 25 appearances for Walsall before the end of January. It was a long way off from the player who had struggled in loan spells at Cheltenham and Swindon just two years before.

As Hatters fans have found out in recent weeks, and as former Walsall Clarke said, Adebayo has "all the tools". Whilst his six-foot-four frame makes him an obvious aerial target, his running in behind to stretch the play and impressive technical ability to drop deep and link up the play has resulted in scoring twice and assisting once in just four starts and three substitute appearances since joining the Hatters on deadline day.

Just like the former Fulham youth player found a home at Walsall to catapult his career in an upwards trajectory, he'll find a home here at Luton Town.

Adebayo's progression through the leagues is one of steep learning curves and showing strength through adversity, and he's currently reaping the rewards for the maturity and determination he's shown in pushing through difficult times. He might just prove to be one of Luton's shrewdest acquisitions yet.





THE CAMERA NEVER LIES



An unusual photo taken of a photographer taking a photo of the Hatters team who line up before a clash at Coventry in 1936.

A quirk of the fixture list pitted the top two sides in the division (only one team was promoted from Division Three (South) in those days) against each other home and away as the season drew to a close.

The teams had drawn 1-1 at Kenilworth Road on April 25th in front of a then record Kenilworth Road crowd of 23,559 before two days later a record Highfield Road attendance of 42,809 witnessed a 0-0 stalemate.

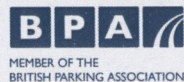
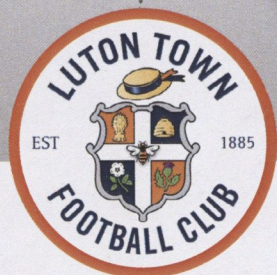
ROGER WASH

RCP Parking Ltd

Power Court Luton LU1 3JJ

Proud supporters of

Luton Town Football Club



KIT SPONSORS 20/21



To find out more information about kit sponsorships, contact our commercial team on 01582 411622

JAMES SHEA

01 H: Available
A: SAM Beast Consulting Ltd
G: Martin Devereau - Manx Hatter

SONNY BRADLEY

05 H: Available
A: Bobbers Travel Club
T: Available

DANNY HYLTON

09 H: The Banks Family
A: Available
T: SAM Beast Consulting Ltd

GEORGE MONCUR

14 H: Tradeline Recruitment Ltd
A: Available
T: Available

JORDAN CLARK

18 H: Chris & Alex Browne
A: Tommy Lennon
T: Available

BRENDAN GALLOWAY

23 H: Available
A: Available
T: Available

SAM NOMBE

27 H: Available
A: Available
T: Available

NATHAN JONES

H: Thompsons Chartered Accountants Bedford
A: Country Properties

MARTIN CRANIE

02 H: Available
A: Available
T: Available

MATTY PEARSON

06 H: ABS Thermal Insulations
A: Available
T: Available

ELLIOT LEE

10 H: Julian & Anne Hyde
A: Available
T: Available

TOM LOCKYER

15 H: Ian, Linda & Joe
A: Marston Vale Properties
T: Available

JAMES COLLINS

19 H: Tim Fordham
A: Thomas Walker
T: Available

KAL NAISMITH

24 H: WHOSH
A: Available
T: Available

JOE MORRELL

28 H: J Block & Luton Awaydays
A: Available
T: Available

MICK HARFORD

H: Carnoisur Leasing
A: Carnoisur Leasing

DAN POTTS

03 H: Doug Knight, Kelly Knight, Mad Hatter, Maddie Knight
A: Available
T: Available

HARRY CORNICK

07 H: The Banks Family
A: Kelly Knight
T: Scandinavian Hatters

ANDREW SHINNIE

11 H: Peter & Linda Little
A: Tommy Lennon
T: Available

GLEN REA

16 H: Kelchner Brewery
A: LFC Fool
T: NLAF

HARRY ISTD

21 H: Craig Steeples
A: Available
T: Available
G: Available

KAZENGA LUALUA

25 H: Holly Valentine
A: WHOSH
T: Available

ELIJAH ADEBAYO

29 H: WHOSH
A: Available
T: Available

PAUL HART

H: Doug Knight
A: Available

RYAN TUNNICLIFFE

04 H: Available
A: Available
T: Available

LUKE BERRY

08 H: WHOSH
A: Available
T: Available

SIMON SLUGA

12 H: NLAF
A: Curly, Matt & Jeffrey Guide Dog
G: Joe Mentiply & John Wheeler

PELLY-RUDDOCK MPANZU

17 H: Dean Kemp
A: WHOSH
T: SAM Beast Consulting Ltd

KIERNAN DEWSBURY-HALL

22 H: Available
A: SAM Beast Consulting Ltd
T: Available

JAMES BREE

26 H: DLA Driving School
A: SAM Beast Consulting Ltd
T: Available

TOM INCE

39 H: CHARLIE AND BEN LEE
A: Available
T: Available

SIMON PARSELL

H: Bobbers Travel Club
A: Available

KIT SPONSORS 20/21

To find out more information about kit sponsorships, contact our commercial team on 01582 411622

DEVELOPMENT PLAYERS

KEY: H: HOME | A: AWAY

DION PEREIRA



H: Available
A: Available
T: Available

TIERNAN PARKER



H: Available
A: Bobbers Travel Club
T: Available

AVAN JONES



H: Available
A: Available
T: Available

SAM BECKWITH



H: David Boswell
A: Frank & Diane Woodward
T: Available

JAKE PECK



H: Available
A: Available
T: Available

COREY PANTER



H: Available
A: Available
T: Available

JOSH NEUFVILLE



H: Jackie Neufville
A: Lynn, Ben & Rhannon
T: Available

TQ ADDY



H: Available
A: Available
T: Available

JACK CHAMBERS



H: Available
A: Available
T: Available



YOUTH TEAM

KEY: H: HOME | A: AWAY

JOSH ALLEN



H: Available
A: Available

EDDIE CORBIT



H: Available
A: Available

JACOB COWLER



H: Available
A: Available

AIDAN FRANCIS



H: Available
A: Available

JOSEPH HALSEY



H: Available
A: Available

JAMESON HORLICK



H: Available
A: Available
G: SGW Goalkeeping

TRA LUCAS



H: Les Miller - Miller & Company
A: Available

ED MCJANNET



H: Gill, Julie, Neil & Yvonne
A: Available

MATTHEW MOLONEY



H: Blakeney Estates
A: Available

TYRELLE NEWTON



H: Available
A: Available

CALLUM NICOLSON



H: Available
A: Available

CASEY PETTIT



H: Gill, Julie, Neil & Yvonne
A: TV Sport Blogs

BEN STEVENS



H: Available
A: Available

JOSHUA SWAN



H: Available
A: Available

ADAM WEDD



H: JB Associates
A: The Wedds

COREE WILSON



H: Liz Evans
A: Available



ACADEMY UPDATE

A insight into the academy and our bright young prospects with ANDY AWFORD

U9s-15s

The Schoolboys have now been back in with us for a few training sessions, since returning to training on March 8th and I have to say it's like they've never been away. Their enthusiasm, energy and raw excitement really has been brilliant to see.

A huge well done to all the staff for the way in which they have been welcomed back and for continuing to create a safe environment for them to play and train in at The Brache.

We've planned a couple more weeks of pure training and then we restart their fixtures with games on March 29th v Chelsea, followed by a busy Easter programme of training and fixtures versus Coventry City, Arsenal and our own Development Centres.

U21s

No game this week for the U21s following last week's narrow 2-1 down at Portsmouth, where Coree Wilson (pictured right) was on the scoresheet.

A rare free week will give the staff the opportunity to have an intense training week and prep the squad up for the following week's home game, in which we entertain Gillingham at our close friends Hitchin Town.

U18s

A very good performance saw the youth team beat Millwall 5-0 on Saturday at The Brache. Goals from Wilson (2), Lynch, Stevens and an own goal did the damage. Next up we entertain Northampton Town at The Brache on Saturday.

U16s

The U16s traveled to Colchester on Saturday and came away with a very comfortable 4-0 victory. We controlled the game from start to finish and were well worthy of the score line. Some strong individual performances again showed the strength in depth that this group have displayed all season - well done again boys.

Enjoy tonight's game - COYH!

Andy





EXECUTIVE BOX HOLDERS

| | | | | | | |
|---|---|---|--|---|---|---|
| 2: Subash Karawadra SUBASH KARAWADRA | 3: UKLand.com UKLAND Developing land for the future of the UK | 4: Diverse Contractors Diverse BUILDING & RENOVATION | 5: Gibbs and Dandy Ltd gibbs & dandy all your building needs | 6: GP Quorenton Ltd GP QUORENTON LTD | 7: Shelley Sandzer & Tiro Partners S tP SHELLEY SANDZER & TIRO PARTNERS | 8: Melvyn Westwood melvyn westwood ROOM-KEEPING & ACCOUNTS |
| 9: Pictons Solicitors Pictons SOLUTIONS LLP | 10: Crannall & Thermal Economics CRANNALL Thermal Economics | 11: Crosso Luton Ltd Crosso Luton Ltd Business Travel Services | 12: JB Developments JB Developments | 13: Bartham Group bartham group media • design • print | 14: TJ Aldridge Builders A | 15: Taylor French Developments Ltd tf TAYLOR FRENCH |
| 16: Prestige Design Prestige Designs & Marketing Ltd | 17: Hardall International Ltd Hardall Waste Disposal Systems | 18: CME Heating Ltd CME Heating Ltd | 19: Markyate Precision Machining Co Ltd MPM MARKYATE PRECISION MACHINING CO. LTD. | 20: Indigo Residential indigo residential | 21: Simon Litchfield & Jensen Ltd SIMON LITCHFIELD JENSEN → SIMON LITCHFIELD & JENSEN LTD | |
| 22: Dot Group International DOT group international | 23: M&S Water Services M&S WATER SERVICES COMMERCIAL & RESIDENTIAL WATER SERVICES LTD | 24: Riley Accounting Solutions Riley ACCOUNTING SOLUTIONS | 25: Edmundson Electrical EDMUNDSON ELECTRICAL | 26: Editquest Electrical Editquest ELECTRICAL est. 1985 | 27: SKF UK Ltd SKF | |

GET WITH THE PROGRAMME

ORDER YOUR PRINTED VERSION OF OUR MATCHDAY PROGRAMMES FOR JUST £5 - DELIVERED TO YOUR DOOR - AT:

WWW.HATTERSWORLD.CO.UK

OR PURCHASE TO READ ONLINE FOR JUST £2 VIA:

ISSUU.COM/LUTONTOWNFC

OUR TOWN

OFFICIAL MATCHDAY PROGRAMME 2020-21
ISSUE #5 | LUTON TOWN V NOTTINGHAM FOREST
28.10.20 | KO: 7:45PM

TOTTENHAM HOTSPUR

FOOTBALL AND ATHLETIC COMPANY LIMITED

MEMBERS OF THE
FOOTBALL LEAGUE



WINNERS OF THE
F.A. CUP 1900-1, 1920-1

Telephone: TOTTENHAM No. 1020

Telegrams: SPURS, LOWER TOTTENHAM

Secretary
R. S. JARVIS.

748 HIGH ROAD

TOTTENHAM, N.17

20th March 1959.

P. Coley, Esq.,
Secretary,
Luton Town F.C.,
70-72, Kenilworth Road,
LUTON,
Beds.

Dear Mr. Coley,

F.A. CHALLENGE CUP COMPETITION SEMI-FINAL TIE NORWICH CITY v. LUTON TOWN

We now have pleasure in appending below the statement of tickets forwarded to you in connection with the above match played at White Hart Lane on Saturday 14th March. Accordingly, we shall be pleased to receive your cheque value £5,176. 7. -d. in early course.

ALLOCATION OF TICKETS TO LUTON TOWN

| | | | | | |
|--------|---|--------|---|-----------------------|----------|
| 17,350 | @ | 2/6d. | = | £2,168. 15. -d. | ✓ |
| 1,250 | @ | 6/-d. | = | 375. -. -d. | ✓ |
| 1,384 | @ | 10/6d. | = | 726. 12. -d. | ✓ |
| 1,195 | @ | 21/-d. | = | 1,254. 15. -d. | ✓ |
| 521 | @ | 25/-d. | = | 651. 5. -d. | ✓ |
| | | | | £5,176. 7. -d. | ✓ |



Yours sincerely,

By club historian Roger Wash

The latest addition to the Hatters' Heritage website includes complete seasons for 1971-72, 1972-73, 1974-75, 1977-78 and 1978-79. Match reports for every game, match action photos and complete programmes are included - have a look on www.hattersheritage.co.uk

In turn, we aim to run a series through the season showcasing artefacts and memorabilia in our collection reflecting the club's rich history. Today we feature a letter from Tottenham asking for payment for the 21,700 tickets allocated to the Town for the FA Cup semi-final clash against Norwich at White Hart Lane in 1959. If Norwich were allocated a similar number there must have been a lot of scrabbling around for the 'spare' 20,000 tickets as the attendance was 65,000!

Luton to London
by train from £11.10*
Net yourself a saving



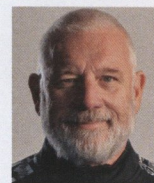
Book direct and avoid paying a
booking fee at thameslinkrailway.com

Proudly supporting Luton Town Football Club

ThamesLink /
WE'RE WITH YOU

*Fare stated is based on our Weekend Super Off Peak
Day Return ticket from Luton to London Thameslink

THE TREATMENT ROOM



TRICK OR TREATMENT

A light-hearted look at Luton life with Head of Medical SIMON PARSELL

Ten games to go after tonight. One minute we are wondering if the season will start, finish etc and bang it's nearly over. Then planning will start for a return in August for what could be a normal season, whatever normal will be. But so far, so good.

I have to start with club Guru Glen Rea, who during the Covid Testing announced we need Negative Tests and Positive Vibes. Wise words. If only some of his other decisions were as wise. For example his choice of an electric car...which he has to park away from the house and made him late for training as it ran out of charge! But no shock he received a fine. I wonder if Apple make an electric car, will it have windows?

Injury wise we are in a good place. Tom Lockyer has returned to the group and will now work on his fitness. Sonny is making progress, but still remains gym based. We hope that with the international break on the horizon it will give us extra-time to get him back into action.

Pottery will miss tonight's game following his collision on Saturday. In such instances we have to implement set procedures to protect the player. This

includes his removal on a stretcher with head blocks, etc. He is then assessed by the Doctor but because he leaves the stadium unaided it does not mean he is ready to continue sporting activities. Some may feel that these protocols are an over reaction, but we must stay safe. Concussion is a complicated issue with football possibly lagging behind other sports when it comes to dealing with it. Once the Doctor has cleared him, he will be back. Interestingly we ask the question 'What day is it?' It's probably unfair, as in recent times not many of us know what day it is.

Haircuts remain a talking point. This time we feature Groundsman Richard Bird, whose hair growth has earned him the nickname Marv, following his resemblance to the character from Home Alone.



Matty Pearson has enjoyed his temporary promotion to captain and Chief Fine Collector. He enjoyed the captain's role so much that when he came off against Swansea he was very reluctant to hand the armband over and had to be instructed by the fourth official to give it to Breezy. Mind you, he looked shocked at receiving it and got rid of it quickly!

Happy Birthday to my old mate Kev Dearden. No information regarding his age but I can confirm he has now fallen into the five groups eligible for the vaccine.

Enjoy the game. COYH!

LUTON TOWN COMMUNITY TRUST

Trust teams up with British Heart Foundation 100k Challenge

This month our staff are supporting the The British Heart Foundation with a brand-new initiative to get Luton more active as we move into the Spring with a Hatters 100k.

The British Heart Foundation (BHF) are celebrating their 60th anniversary this year and want to encourage as many people as possible to walk, jog, run or cycle 100 kilometres this month and at the same time raise funds for their charitable work.

The BHF work across across the spectrum of heart and circulatory diseases and work to prevent these conditions from developing and for those with existing conditions to have better, longer lives.

Their main aims include:

- Better survival and recovery from heart disease that kill at least 12 young people every week.
- Every child born with a heart condition to lead a long and healthy life - Congenital heart disease is the most common birth defect.
- Thousands more people to survive a heart attack - 7 out of 10 people now survive a heart attack but the target is 9 out of 10. However, today, just 1 in 10 people survive an out-of-hospital cardiac arrest. The aim is to triple the number of people surviving a cardiac arrest by dramatically increasing access to life saving defibrillators and see a huge uptake in CPR training, so that survival rates are more than tripled.

Right now, the damage caused by heart disease is permanent and often life-changing. The BHF want to find new ways to repair the damage, so that millions of people don't lose their quality of life to heart failure and better prevention and better ways to identify people at risk and help them avoid disease is key.



Millions of people are at risk of heart and circulatory diseases without knowing it. The BHF want everyone to know how to reduce their risk of heart and circulatory diseases.

High blood pressure, cholesterol and body mass index (BMI) are major risk factors for heart and circulatory diseases - their aim is for the millions of people at risk to be able to take control of their health.

All of Community Trust staff are taking part in the 100K challenge, why don't you join us too? Download the Strava app to your device and head to www.strava.com/clubs/Hatters100k to sign up.

Don't worry if you've missed the start, you can either catch up or manually input your data for the month of March.

If you'd rather support with a donation to The British Heart Foundation you can do so www.justgiving.com/hatters100k.

Luton Town FC Youth Development: Matty Pearson

Despite being without football for over-four months now, our recruited boys within our Youth Development system have been keeping incredibly busy during this second lockdown. With our launch of 'Hatters at Home' on Twitter, a daily challenge which contains four different levels, our boys have been working hard

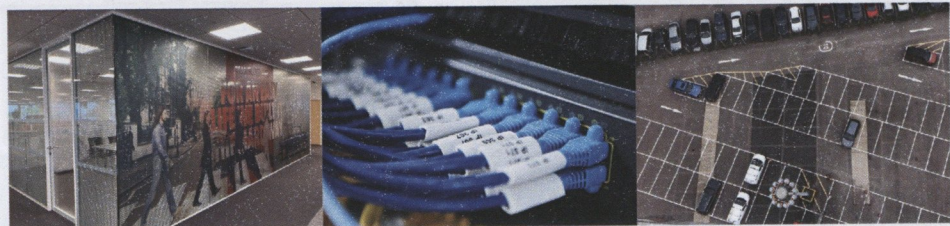
each day to attempt to complete the challenges set. We have been amazed at how positive the response has been, with an amazing 400+ videos now shared with us since we first launched 'Hatters at Home' just seven weeks ago.

Last week we hosted Zoom calls for our U13 - U16 Youth Development boys, it was fantastic to engage with the players again and give them some positive news regarding the scheduled return to training. We were incredibly lucky to have defender, Matty Pearson (*pictured above*) join us on the first night of our Zoom calls with the U16's. Matty gave a fantastic insight into his career to date, from joining Blackburn's academy as an 9-year-old boy to being a Championship player. He has faced many challenges along the way, having to drop down to non-league, whilst having to balance his football career with a full-time job fitting garage doors!

Matty spoke in detail to our U16s about the importance of hard work in football and gave plenty of encouragement for our boys to keep striving for the very best level they can over the next few years as their journey is far from over. Our U16s had the opportunity to ask Matty some of their own questions at the end of the call; we had questions from "What's the highest and lowest points of your career to date?" to "What is the hardest attribute to defend against? Pace or Strength?" to "Who is the best player you have ever faced?". Matty gave some brilliant responses and gave our boys lots of motivation to finish the season strongly.



Proud to be supporting
the Hatters in the Championship



FPM Facility Services provide planned and reactive maintenance to both the private and public sector across the South East of England.

- Building Maintenance • Office Fit Out and Refurbishment • Flooring
- Electrical Contractors and Engineers • Site Pathway and Parking Maintenance
- Air Conditioning and Plumbing • Roofing Repairs

Talk to one of our team on 01582 484020

Email: service@f-p-m.co.uk Web: www.f-p-m.co.uk

JUNIOR HATTERS



Can you guess what players we've covered up with Harry's face?



**A VERY HAPPY 1ST
BIRTHDAY TO JUNIOR
HATTER JACK!**



COVENTRY CITY TINYSTATS

Formed: 1883
Stadium: St Andrew's
Capacity: 29,409
Last season: 1st (L1)
Head to head with Luton:
Luton wins - 25
Draws - 16
Coventry wins - 41
Manager: Mark Robins

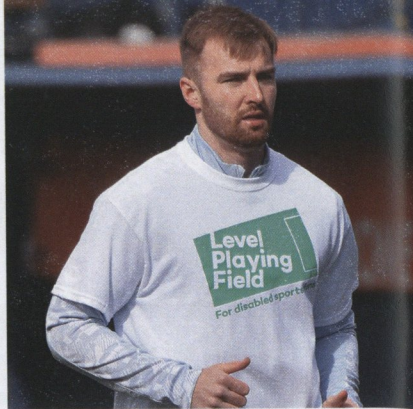




LUTON 0 SWANSEA 1

SATURDAY 13TH MARCH 2021 | KENILWORTH ROAD
SWANS SCORER: HOURIHANE 3'
ATTENDANCE: BEHIND CLOSED DOORS

TO READ THE FULL MATCH REPORT, VISIT OUR WEBSITE:
www.lutontown.co.uk



| LUTON TOWN | SWANSEA CITY |
|------------------------|----------------------|
| SLUGA | WOODMAN |
| BREE | NAUGHTON |
| PEARSON ▲ 83' | BENNETT |
| NAISMITH | LATIBEAUDIERE |
| POTTS ▲ 45+2' | ROBERTS |
| CLARK | SMITH |
| TUNNICLIFFE | GRIMES |
| DEWSBURY-HALL | MANNING |
| MPANZU | HOURIHANE ○ 3' ▲ 65' |
| CORNICK ▲ 70' | DHANDA ▲ 65' |
| ADEBAYO | AYEW |
| SUBSTITUTES ▲ ▲ | |
| SHEA | FULTON ▲ 79' |
| CRANIE ▲ 45+2' | LOWE ▲ 79' |
| BERRY | ROUTLEDGE |
| REA | WHITTAKER |
| COLLINS ▲ 70' | HAMER |
| LUALUA ▲ 83' | BIDWELL |
| NOMBE | FREEMAN |
| MORRELL | COOPER |
| INCE | CABANGO |



Manager Nathan Jones felt key decisions went against his side during the narrow defeat to Swansea City at Kenilworth Road.

"The reason we have ended up with nothing is two reasons. One, some people don't make the right decisions and then we have missed chances that we should be scoring, that they wouldn't be missing, neither would your Norwich's and Brentford's - people like that.

"That is the learning curve for us because we have had more of the play, more crosses, more possession, more shots, more entries into their final third and I'm really proud of the performance.

"To take Swansea on, who are second in the league, with aspirations of being a Premier League side. Got no qualms

about the performance, they are a good side, but we've been as dominant as we could have been against a good side and I'm really pleased with that. It is just so hurtful that we haven't picked up something from the game, and there are a number of factors for that."

The gaffer was particularly displeased with the decision not to award a penalty for the foul on Elijah Adebayo, saying: "There is no potential, he has chested it away from him, he has wiped him out after the ball had gone, it is a clear penalty."

| | LT | SC |
|--------------------------|------------|------------|
| POSSESSION: | 57% | 43% |
| SHOTS ON TARGET: | 5 | 2 |
| SHOTS OFF TARGET: | 7 | 6 |
| CORNERS: | 7 | 4 |
| FOULS: | 10 | 11 |



SUPPORT YOUR CLUB, WHEREVER YOU MAY BE

*Live Streaming – Match Commentary
Behind the Scenes Exclusive Content*

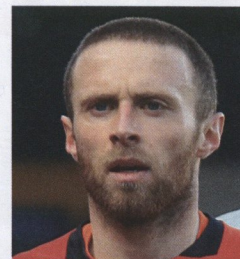
VIDEO & AUDIO PACKAGES AVAILABLE

f theEFL t EFL @EFL

www.efl.com/ifuollow



Words: Dan Briard



JORDAN CLARK

Jordan Clark is looking forward to a 'massive game' this evening as the Hatters aim to turn performances into results following Saturday's loss against Swansea City.

Clark and his team-mates fell behind in the third minute to a Conor Hourihane goal but were forcing the issue for the rest of the match, searching for a way back into the game which in the end, proved elusive.

But against a side with Premier League aspirations, the 27-year-old believes that he and the team should take the positives from the performance.

"We played really well but if you don't score goals, you don't win games. I think it has been a factor this season to be honest, as far as performance goes, we were fantastic, just that final third quality we were missing today.

"We have to believe in ourselves a bit more because we are a good side," Clicker continued. "They are second in the league and we played them off the pitch really. One thing that has let us down this season is scoring goals, the most important thing in football."

But fortunately in the Championship, there is no time to dwell as the Hatters

are straight back to action tonight against Coventry City.

"We always say that we don't want to look behind us, we want to be looking forward, trying to catch the teams above us as much as we can. Obviously you need to do that by winning games so it was disappointing, but we have two big games now.

"We're looking forward to a massive game on Tuesday night, hopefully we can get two wins which would be massive.

"Every game in this league is a tough game so we will just go into it with confidence because like I said, we have played well today, didn't get what we deserved but we will be full of confidence Tuesday night, raring to go."

It remains to be seen what position Clark may occupy, after all he was used in yet another previously unfamiliar position at the weekend!

"I seem to get further and further back now, I know the Gaffer mentioned about me playing in goal, but I think I could do a job there as well! Like I said in my interview the other week, wherever he wants me to play, I'll play and give it my all for the team – that's the main thing."





FIXTURES 2020-21

| DATE | TIME | H/A | OPPOSITION | SCORE | ATT | AWAY | POS | PENALTY (F) | PENALTY (A) | OWN GOALS | SENT OFF | OPP. SENT OFF | SHEA | CRANIE | POITS | TUNNICLIFFE | BRADLEY | PEARSON | CORNICK | BERRY | HYLTON | LEE | SHAWNE |
|-----------|---------|-----|--------------------------|-------|-------|------|-----|-------------|-------------|-----------|----------|---------------|------|--------|-------|-------------|---------|---------|---------|-------|--------|-----|--------|
| SEPTEMBER | | | | | | | | | | | | | | | | | | | | | | | |
| Sat 5 | 3.00pm | H | Norwich (Carabao Cup R1) | W 3-1 | BCD | BCD | - | 1 | - | - | - | - | | | | | | | a | | * | b | * |
| Sat 12 | 3.00pm | A | Barnsley | W 1-0 | BCD | BCD | 6 | - | - | - | - | - | * | | | * | | | b | y | c | a | |
| Tue 15 | 6.00pm | A | Reading (Carabao Cup R2) | W 1-0 | BCD | BCD | - | - | - | - | - | - | | c | | | y | | | | a | | |
| Sat 19 | 3.00pm | H | Derby County | W 2-1 | BCD | BCD | 2 | - | - | - | - | - | * | | | | | | b | 1 | * | c | |
| Tue 22 | 8.15pm | A | Man Utd (Carabao Cup R3) | L 0-3 | BCD | BCD | - | - | 1 | - | - | - | * | * | | | | * | b | | y | a | |
| Sat 26 | 12.30pm | A | Watford | L 0-1 | BCD | BCD | 7 | - | - | - | - | - | * | | | c | | y | | | b | a | |
| OCTOBER | | | | | | | | | | | | | | | | | | | | | | | |
| Sat 3 | 3.00pm | H | Wycombe Wanderers | W 2-0 | BCD | BCD | 5 | - | - | - | - | - | * | | | * | | | y | b | | c | b1 |
| Sat 17 | 3.00pm | H | Stoke City | L 0-2 | BCD | BCD | 6 | - | - | - | - | - | * | b | | * | | | | c | y | a | |
| Tue 20 | 7.45pm | A | Millwall | L 0-2 | BCD | BCD | 10 | - | - | 1 | - | - | * | y | | | | c | | a | b | b | |
| Sat 24 | 3.00pm | A | Sheffield Wednesday | W 1-0 | BCD | BCD | 9 | - | - | - | 1 | * | y | y | | b | | | | * | | a | |
| Wed 28 | 7.45pm | H | Nottingham Forest | D 1-1 | BCD | BCD | 9 | - | - | 1 | - | 1 | * | y | | * | | | | * | | a | |
| Sat 31 | 3.00pm | H | Brentford | L 0-3 | BCD | BCD | 13 | - | - | - | - | - | * | | | | | a | | b | y | * | |
| NOVEMBER | | | | | | | | | | | | | | | | | | | | | | | |
| Wed 4 | 7.45pm | A | Rotherham United | W 1-0 | BCD | BCD | 9 | - | - | - | - | - | * | | | | | | b | y | | * | |
| Sat 7 | 3.00pm | A | Huddersfield Town | D 1-1 | BCD | BCD | 10 | - | - | - | - | - | * | y | | c | y | | b | c | * | * | |
| Sat 21 | 3.00pm | H | Blackburn Rovers | D 1-1 | BCD | BCD | 10 | - | - | - | - | - | * | e | | e | | | b | 1d | | a | |
| Tue 24 | 7.00pm | H | Birmingham City | D 1-1 | BCD | BCD | 9 | - | 1 | - | - | - | * | * | | | | 1 | | | | c | |
| Sat 28 | 3.00pm | A | Cardiff City | L 0-4 | BCD | BCD | 12 | - | - | - | - | - | * | * | | d | | | c | b | | a | |
| DECEMBER | | | | | | | | | | | | | | | | | | | | | | | |
| Wed 2 | 7.45pm | H | Norwich City | W 3-1 | 1,000 | N/A | 11 | 1 | 1 | - | - | - | y | a | c | * | | | 1 | * | | | |
| Sat 5 | 3.00pm | A | Swansea City | L 0-2 | BCD | BCD | 12 | - | - | - | 1 | - | | | | * | | r | a | c | | b | |
| Tue 8 | 7.45pm | A | Coventry City | D 0-0 | BCD | BCD | 13 | - | - | - | - | - | | | y | * | | | b | ya | | * | |
| Sat 12 | 3.00pm | H | Preston North End | W 3-0 | 2,000 | N/A | 11 | - | - | - | - | - | * | | d | | | | b | c | | | |
| Wed 16 | 7.00pm | A | Middlesbrough | L 0-1 | BCD | BCD | 13 | 1* | - | - | - | 1 | * | | | a | | | c | b | d | | |
| Sat 19 | 3.00pm | H | AFC Bournemouth | D 0-0 | BCD | BCD | 14 | - | - | - | - | - | | | c | * | | | c | a | | a | |
| Sat 26 | 3.00pm | A | Reading | L 1-2 | BCD | BCD | 15 | - | - | - | - | - | | ya | e | * | | | * | e | c | | |
| Tue 29 | 7.45pm | H | Bristol City | W 2-1 | BCD | BCD | 13 | - | - | 1 | - | - | | | b | ya | | | c | | * | * | |
| JANUARY | | | | | | | | | | | | | | | | | | | | | | | |
| Sat 9 | 12.00pm | H | Reading (FAC R3) | W 1-0 | BCD | BCD | - | - | - | - | - | - | | | | | | | * | b | y | b | |
| Tue 12 | 7.00pm | H | QPR | L 0-2 | BCD | BCD | 14 | - | - | - | - | * | | | a | * | | | | b | c | | |
| Sat 16 | 3.00pm | A | AFC Bournemouth | W 1-0 | BCD | BCD | 12 | - | - | - | - | 1 | * | | | | | | | | | | |
| Wed 20 | 7.00pm | A | Brentford | L 0-1 | BCD | BCD | 13 | - | - | - | 1 | 1 | * | | | d | a | y | * | | a | e | |
| Sun 24 | 12.00pm | A | Chelsea (FAC R4) | L 1-3 | BCD | BCD | - | - | - | - | - | - | | | | a | c | | | b | c | * | * |
| Sat 30 | 3.00pm | A | Blackburn Rovers | L 0-1 | BCD | BCD | 13 | - | - | - | - | * | * | b | | | | | b | | * | a | |
| FEBRUARY | | | | | | | | | | | | | | | | | | | | | | | |
| Sat 6 | 3.00pm | H | Huddersfield Town | D 1-1 | BCD | BCD | 15 | - | - | - | - | 1 | * | * | | | | | | b | a | * | |
| Sat 13 | 3.00pm | A | Birmingham City | W 1-0 | BCD | BCD | 14 | - | - | - | - | * | * | | 1y | * | | | | | * | * | |
| Tue 16 | 8.15pm | H | Cardiff City | L 0-2 | BCD | BCD | 15 | - | - | - | - | * | * | a | | | | | b | d | b | c | |
| Sat 20 | 3.00pm | A | Stoke City | L 0-3 | BCD | BCD | 16 | - | - | - | - | * | yc | | | a | | | | e | c | * | |
| Tue 23 | 7.45pm | H | Millwall | D 1-1 | BCD | BCD | 17 | - | - | - | - | * | | | | yc | | | | | * | * | |
| Sat 27 | 3.00pm | H | Sheffield Wednesday | W 3-2 | BCD | BCD | 14 | - | - | - | - | * | * | a | | 1 | | | | c | * | * | |
| MARCH | | | | | | | | | | | | | | | | | | | | | | | |
| Tue 2 | 7.45pm | A | Nottingham Forest | W 1-0 | BCD | BCD | 13 | - | - | - | - | - | * | * | | 1 | | | | b | * | * | |
| Sat 6 | 3.00pm | A | Norwich City | L 0-3 | BCD | BCD | 14 | - | - | - | - | * | | | | | | | | b | a | * | |
| Sat 13 | 12.15pm | H | Swansea City | L 0-1 | BCD | BCD | 16 | - | - | - | - | * | * | a | a | | | | c | b | * | * | |
| Tue 16 | 7.00pm | H | Coventry City | | | | | | | | | | | | | | | | | | | | |
| Sat 20 | 3.00pm | A | Preston North End | | | | | | | | | | | | | | | | | | | | |
| APRIL | | | | | | | | | | | | | | | | | | | | | | | |
| Fri 2 | 3.00pm | A | Derby County | | | | | | | | | | | | | | | | | | | | |
| Mon 5 | 3.00pm | H | Barnsley | | | | | | | | | | | | | | | | | | | | |
| Sat 10 | 3.00pm | A | Wycombe Wanderers | | | | | | | | | | | | | | | | | | | | |
| Sat 17 | 3.00pm | H | Watford | | | | | | | | | | | | | | | | | | | | |
| Wed 21 | 7.45pm | H | Reading | | | | | | | | | | | | | | | | | | | | |
| Sat 24 | 3.00pm | A | Bristol City | | | | | | | | | | | | | | | | | | | | |
| MAY | | | | | | | | | | | | | | | | | | | | | | | |
| Sat 1 | 3.00pm | H | Middlesbrough | | | | | | | | | | | | | | | | | | | | |
| Tue 4 | 7.00pm | H | Rotherham United | | | | | | | | | | | | | | | | | | | | |
| Sat 8 | 3.00pm | A | QPR | | | | | | | | | | | | | | | | | | | | |

KEY: Starting XI Substitute • Unused sub **y**: yellow card **r**: red card **p**: penalty scorer *****: penalty missed

[CLICK HERE TO SEE THE TOWN'S FIXTURES & RESULTS ONLINE](#)

| SUGA | MONCUR | LOCKYER | REA | MPANZU | CLARK | COLLINS | KIOSO | ISTED | DEWESBURY-HALL | GALLOWAY | NORTON-DAVIES | NAISMITH | LUALUA | BREE | NOMBE | MORRELL | ADEBAYO | PEREIRA | BECKWITH | OSHO | INCE | SUB TIMES | | | | | SENT OFF | | GOAL TIMES | | |
|------|--------|---------|-----|--------|-------|---------|-------|-------|----------------|----------|---------------|----------|--------|------|-------|---------|---------|---------|----------|------|------|-----------|----|----|----|----|----------|----|-------------|----------------|----------|
| 12 | 14 | 15 | 16 | 17 | 18 | 19 | 20 | 21 | 22 | 23 | 24 | 24 | 25 | 26 | 27 | 28 | 29 | 30 | 33 | 38 | 39 | a | b | c | d | e | L# | O# | | | |
| | * | | y | | a | 3p | | * | | | | | a | * | | | | | | | | 72 | 85 | - | - | - | - | | 79,81,83,95 | | |
| | * | | | y | * | 1yc | | | | | | | a | b | | | | | | | | 62 | 81 | 91 | - | - | - | | 71 | | |
| * | | c | * | | 1 | * | b | | | | | | ay | b | | | | | | | | 72 | 85 | 93 | - | - | - | | 24 | | |
| | b | | a | y | c1 | | | | | | y | | * | a | | | | | | | | 46 | 83 | 83 | - | - | - | | 34,52,87 | | |
| * | a | | * | * | b | * | y | | | | | | | | | | | | | | | 76 | 76 | * | - | - | - | | 44,88,92 | | |
| | * | * | | | a | b | * | | | | y | | c | | | | | | | | | 58 | 71 | 78 | - | - | - | | 35 | | |
| | * | | | 1 | a | c | * | | | | | | a | | | | | | | | | 73 | 80 | 88 | - | - | - | | 59,89 | | |
| | c | * | | y | b | | | | | | | | * | | | a | | | | | | 66 | 67 | 75 | - | - | - | | 46,55 | | |
| | c | * | | | | | | | * | | | | | | | | | | | | | 60 | 69 | 87 | - | - | - | | 45+4,79 | | |
| * | | | | 1 | * | | | | | | | | a | | * | b | | | | | | 69 | 92 | - | - | - | 71 | | 74 | | |
| | c | b | 1y | y | b | | | | c | | | | a | | * | | | | | | | 77 | 77 | 84 | - | - | 44 | | 22,84 | | |
| | | | | | c | c | | | | | b | | a | | * | | | | | | | 37 | 46 | 74 | - | - | - | | 20,29,76 | | |
| | c | c | | a | | 1 | | | | | | | b | * | * | a | | | | | | 46 | 64 | 89 | - | - | - | | 70 | | |
| | 1a | | y | | y | | | | | | * | | by | a | | | | | | | | 60 | 73 | 77 | - | - | - | | 21 | | |
| | c | * | | d | * | a | | | | | | | c | b | * | | | | | | | 59 | 59 | 76 | 77 | 95 | - | | 69,72 | | |
| | a | * | y | b | | | | | | | | | * | * | * | * | | | | | | 61 | 70 | - | - | - | - | | 23,37 | | |
| | * | e | | a | * | | | | e | | | | | a | b | d | | | | | | 41 | 41 | 60 | 71 | 71 | - | - | | 4,9,58,82 | |
| | 1b | | | | | 1p | | * | c | * | | | * | a | * | b | | | | | | 46 | 70 | 94 | - | - | - | | 15,19,22,47 | | |
| | b | y | | | | | | * | a | * | | | c | * | * | * | | * | | | | 61 | 62 | 82 | - | - | 70 | | 2,89 | | |
| * | * | | | | | | | * | a | * | | | * | | b | * | | | * | | | 71 | 85 | - | - | - | - | | - | | |
| | a | | | d | b | 3e | | * | c | | a | | * | | e | * | | | | | | 74 | 75 | 80 | 80 | 83 | - | - | | 20,29,66 | |
| | c | ye | d | e | * | | | * | a | | b | | | | * | * | | | | | | 62 | 62 | 75 | 86 | 86 | - | 66 | | 52 | |
| * | * | | | y | * | b | | | y | * | | | | | b | * | | | | | | 71 | 89 | 91 | - | - | - | - | | - | |
| * | b | c | d | | | | | * | a | | b | | d1y | * | | | | | | | | 46 | 46 | 46 | 65 | 77 | - | - | | 9,41,90 | |
| | * | | 1 | b | c | | | * | 1 | * | | | a | * | * | | | | | | | 64 | 64 | 84 | - | - | - | - | | 17,61,68 | |
| | 1 | * | * | * | a | | | * | | | c | c | | d | a | d | | | | | | 58 | 74 | 74 | 81 | - | - | - | | 30 | |
| | d | | | b | * | c | * | | | | * | | d | * | a | | | | | | | 77 | 83 | 83 | 83 | - | - | - | | 39,89 | |
| | * | a | | | b | d | | | 1 | | | | a | * | c | * | * | | | | | 34 | 77 | 87 | 87 | - | - | - | | 67 | |
| | b | r | * | | b | c | | | e | | | | d | c | * | * | | | | | | 64 | 64 | 65 | 76 | 89 | 95 | 95 | | 14 | |
| | e | | a | 1y | b | | | | | | | | e | d | d | * | | | | | | 46 | 60 | 61 | 61 | 75 | - | - | | 11,17,30,74 | |
| | * | | yc | d | a | | | | | | | | d | * | | c | * | | | | | 64 | 72 | 88 | 88 | - | - | - | | 85 | |
| | * | | a | | c | 1 | | | y | | | | c | | * | * | | | | | | b | 72 | 83 | 87 | - | - | - | | 93 | |
| | | | | | a | | | | | | | | a | * | | * | | | | | | * | 70 | - | - | - | - | - | | 31 | |
| | a | | | | * | e | | | | | | | d | | * | | e | | | | | c | 30 | 46 | 64 | 64 | 73 | - | - | | 53,57 |
| | d | | y | a | ye | | | | | | | | * | * | b | | b | e | | | | 68 | 68 | 83 | 83 | 83 | - | - | | 20,63,78 | |
| y | * | | a | b | d | | | | e | | | | e | d | d | * | a | 1d | | | | b | 64 | 75 | 83 | 84 | 84 | - | - | | 55,95 |
| | * | | ay | b | * | | | | | | | | 1 | * | * | | b | 1 | | | | c | 46 | 46 | 46 | - | - | - | | 6,42, 90,58,86 | |
| | * | | | | a | | | | | | | | y | | b | * | a | | | | | * | 81 | 85 | - | - | - | - | | 64 | |
| | c | | | c | a | d | | | e | | | | | e | * | * | d | | | | | b | 46 | 61 | 61 | 61 | 78 | - | - | | 12,43,73 |
| | * | | | | b | | | | | | | | c | | * | * | | | | | | * | 45 | 70 | 83 | - | - | - | - | | 3 |

KEY:  : Out on loan |  : Left club | **Team name colour:** Carabao Cup Match | **Team name colour:** FA Cup Match

UP NEXT



FORMED: 1880

NICKNAME: THE LILYWHITES

LAST SEASON: 9TH IN THE CHAMPIONSHIP

TWITTER: @PNEFC

COLOURS: WHITE SHIRT, DARK BLUE SHORTS

GROUND: DEEPPDALE

MANAGER: ALEX NEIL

WHO?

The Lilywhites are currently in their sixth consecutive season competing in the Championship after gaining promotion from League One in 2014. Preston have two FA Cup wins to their name, albeit with both coming before World War Two in 1889 and 1938, whilst they also won the First Division in consecutive years in 1889 and 1890.

GROUND?

Preston North End play their home fixtures at Deepdale, a stadium that is widely recognised as being the oldest continuously used football stadium in the world after hosting the Lilywhites since 1878. The stadium has a capacity of 23,404, with an average home attendance of 13,579 being posted last season.

HAVEN'T WE MET BEFORE?

The two sides last met in early December as a James Collins hat-trick earned Luton a fully deserved victory in front of 2,000 Hatters fans. In Luton's first game after the Championship restart in June, a late goal from Callum McManaman at Kenilworth Road gave the Town a crucial point towards survival, after the pre-Christmas trip to Deepdale had ended in a 2-1 defeat with Paul Gallagher and Jayden Stockley goals enough to see off Collins' first-half penalty for the Town.

KNOWING ME, KNOWING YOU

Former Hatter Keith Keane joined then League One Preston in 2012 having made 234 appearances for Luton across four divisions in a nine year spell at the club, whilst Hatters legend Kevin Nicholls enjoyed a one season spell at Deepdale before moving back to Luton in 2008.

Words: Dylan Bhundia

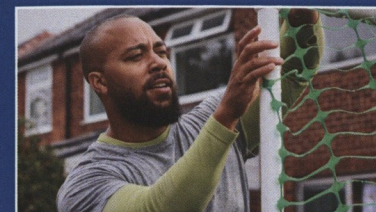
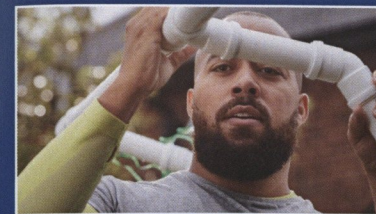
LUTON TOWN PLAYER STATISTICS

| LUTON TOWN FOOTBALL CLUB | 2020-21 SEASON | | | | | | | | | | CAREER | |
|-----------------------------|----------------|------|------|---|------|-----|------|------|------|---|--------|-----|
| | LEAGUE | | | | | CUP | | | | | TOTAL | |
| | APPS | G | APPS | G | APPS | G | APPS | G | APPS | G | APPS | G |
| Eliah Adeniyi | 4 | (3) | 2 | 0 | (0) | 0 | 4 | (3) | 2 | 0 | 7 | 2 |
| Luke Berry | 20 | (6) | 2 | 1 | (7) | 0 | 21 | (8) | 2 | 3 | 117 | 14 |
| Sonny Bradley | 29 | (0) | 0 | 4 | (0) | 0 | 33 | (0) | 0 | 3 | 0 | 123 |
| James Bree | 6 | (8) | 0 | 3 | (0) | 0 | 9 | (8) | 0 | 0 | 59 | 0 |
| Jordan Clark | 15 | (11) | 1 | 3 | (2) | 2 | 16 | (13) | 3 | 1 | 31 | 3 |
| James Collins | 26 | (5) | 7 | 1 | (1) | 3 | 27 | (6) | 10 | 3 | 0 | 172 |
| Harry Cornick | 23 | (7) | 0 | 2 | (1) | 0 | 25 | (8) | 0 | 1 | 0 | 159 |
| Martin Cranie | 19 | (3) | 0 | 1 | (1) | 0 | 20 | (4) | 0 | 6 | 0 | 49 |
| Kieran Dewsberry-Hall | 26 | (2) | 2 | 1 | (0) | 0 | 27 | (2) | 2 | 2 | 0 | 29 |
| Brendan Gallwey | 0 | (0) | 0 | 1 | (0) | 0 | 1 | (0) | 0 | 0 | 0 | 6 |
| Danny Hylton | 6 | (10) | 0 | 3 | (0) | 0 | 9 | (10) | 0 | 5 | 0 | 148 |
| Tom Ince | 3 | (2) | 0 | 0 | (0) | 0 | 3 | (2) | 0 | 0 | 0 | 5 |
| Peter Kloo | 0 | (0) | 0 | 1 | (1) | 0 | 1 | (1) | 0 | 1 | 0 | 3 |
| Elliot Lee | 8 | (4) | 1 | 2 | (2) | 0 | 10 | (6) | 1 | 0 | 0 | 123 |
| Tom Lockyer | 18 | (2) | 0 | 3 | (0) | 0 | 21 | (2) | 0 | 0 | 0 | 23 |
| Kazenga Lualaba | 2 | (14) | 1 | 2 | (3) | 0 | 4 | (17) | 1 | 3 | 0 | 80 |
| George Moncur | 9 | (8) | 2 | 3 | (1) | 1 | 12 | (9) | 3 | 0 | 0 | 55 |
| Joe Morrell | 5 | (5) | 0 | 1 | (0) | 0 | 6 | (5) | 0 | 0 | 0 | 11 |
| Pelly-Ruddock Mpanzu | 28 | (5) | 2 | 2 | (0) | 0 | 30 | (5) | 2 | 4 | 0 | 287 |
| Karl Nnamah | 6 | (5) | 1 | 1 | (0) | 0 | 7 | (5) | 1 | 1 | 0 | 12 |
| Sam Ntombe | 0 | (6) | 0 | 1 | (0) | 0 | 1 | (6) | 0 | 0 | 0 | 7 |
| Rhys Norrington-Davies | 16 | (2) | 0 | 3 | (1) | 0 | 19 | (3) | 0 | 2 | 0 | 22 |
| Gabriel Ocho | 0 | (0) | 0 | 1 | (0) | 0 | 1 | (0) | 0 | 2 | 0 | 1 |
| Matty Pearson | 27 | (2) | 2 | 1 | (0) | 0 | 28 | (2) | 2 | 2 | 1 | 125 |
| Dan Potts | 19 | (2) | 1 | 1 | (1) | 0 | 20 | (3) | 1 | 2 | 0 | 173 |
| Glen Res | 26 | (3) | 2 | 2 | (0) | 0 | 28 | (3) | 2 | 9 | 0 | 183 |
| James Shea | 7 | (0) | 0 | 3 | (0) | 0 | 10 | (0) | 0 | 1 | 0 | 85 |
| Andrew Shinnie | 0 | (0) | 0 | 2 | (0) | 0 | 2 | (0) | 0 | 0 | 0 | 106 |
| Simon Sluga | 28 | (0) | 0 | 2 | (0) | 0 | 30 | (0) | 0 | 0 | 0 | 64 |
| Ryan Tunnicliffe | 9 | (7) | 2 | 4 | (0) | 0 | 13 | (7) | 2 | 1 | 0 | 60 |

2020-21 CHAMPIONSHIP TABLE

Table standings correct as of 12th March 2021.

| # | Team | Pt | W | D | L | F | A | GD | Pts |
|----|-----------------------|----|----|----|----|----|----|-----|-----|
| 1 | Nottingham City | 36 | 24 | 7 | 5 | 53 | 26 | 27 | 79 |
| 2 | Watford | 36 | 20 | 9 | 7 | 48 | 25 | 23 | 69 |
| 3 | Swansea City | 35 | 29 | 9 | 6 | 45 | 25 | 20 | 69 |
| 4 | Brentford | 35 | 19 | 9 | 7 | 62 | 36 | 26 | 66 |
| 5 | Reading | 36 | 18 | 7 | 11 | 50 | 38 | 12 | 61 |
| 6 | Barnsley | 36 | 18 | 7 | 11 | 45 | 39 | 6 | 61 |
| 7 | Bournemouth | 36 | 15 | 11 | 10 | 52 | 37 | 15 | 56 |
| 8 | Cardiff City | 36 | 15 | 9 | 12 | 54 | 37 | 17 | 54 |
| 9 | Middlesbrough | 36 | 15 | 8 | 13 | 44 | 38 | 6 | 53 |
| 10 | Millwall | 36 | 11 | 16 | 9 | 35 | 33 | 2 | 49 |
| 11 | Stoke City | 36 | 12 | 12 | 12 | 41 | 42 | -1 | 48 |
| 12 | Bristol City | 36 | 15 | 3 | 18 | 39 | 48 | -9 | 48 |
| 13 | Queens Park Rangers | 35 | 12 | 10 | 13 | 35 | 40 | -5 | 46 |
| 14 | Blackburn Rovers | 36 | 12 | 8 | 16 | 49 | 41 | 8 | 44 |
| 15 | Preston North End | 36 | 13 | 5 | 18 | 39 | 46 | -7 | 44 |
| 16 | Luton Town | 35 | 12 | 8 | 15 | 28 | 41 | -13 | 44 |
| 17 | Nottingham Forest | 36 | 10 | 11 | 15 | 29 | 35 | -6 | 41 |
| 18 | Huddersfield Town | 36 | 11 | 8 | 17 | 40 | 51 | -11 | 41 |
| 19 | Derby County | 36 | 10 | 9 | 17 | 25 | 39 | -14 | 39 |
| 20 | Coventry City | 35 | 9 | 11 | 15 | 32 | 46 | -14 | 38 |
| 21 | Birmingham City | 36 | 8 | 11 | 17 | 26 | 46 | -20 | 35 |
| 22 | Rotherham United | 32 | 9 | 5 | 18 | 35 | 43 | -8 | 32 |
| 23 | Sheffield Wednesday * | 35 | 9 | 7 | 19 | 25 | 45 | -20 | 28 |
| 24 | Wycombe Wanderers | 36 | 6 | 8 | 22 | 24 | 58 | -34 | 26 |



SCREWFIX

HELPING FAMILIES ENJOY FOOTBALL AT HOME

The 'homemade waste pipe goal'. Waste pipes, push-fit knuckle bends and some barrier fencing. It doesn't seem like much, but sometimes it's all you need to transform your garden into a proper footy pitch.





NATHAN JONES

| | |
|-----------------------|----|
| JAMES SHEA | 01 |
| MARTIN CRANIE | 02 |
| DAN POTTS | 03 |
| RYAN TUNNICLIFFE | 04 |
| SONNY BRADLEY | 05 |
| MATTY PEARSON | 06 |
| HARRY CORNICK | 07 |
| LUKE BERRY | 08 |
| DANNY HYLTON | 09 |
| SIMON SLUGA | 12 |
| GEORGE MONCUR | 14 |
| GLEN REA | 16 |
| PELLEY-RUDDOCK MPANZU | 17 |
| JORDAN CLARK | 18 |
| JAMES COLLINS | 19 |
| KIERNAN DEWSBURY-HALL | 22 |
| KAL NAISMITH | 24 |
| KAZENGA LUALUA | 25 |
| JAMES BREE | 26 |
| SAM NOMBE | 27 |
| JOE MORRELL | 28 |
| ELIJAH ADEBAYO | 29 |
| DION PEREIRA | 30 |
| AVAN JONES | 32 |
| SAM BECKWITH | 33 |
| JAKE PECK | 34 |
| COREY PANTER | 35 |
| TOM INCE | 39 |

MARK ROBINS

| | |
|-----------------|----|
| MARKO MAROSI | 01 |
| LEO OSTIGARD | 02 |
| MICHAEL ROSE | 04 |
| KYLE MCFADZEAN | 05 |
| LIAM KELLY | 06 |
| JODI JONES | 07 |
| JAMIE ALLEN | 08 |
| MAXIME BIAMOU | 09 |
| WESLEY JOBELLO | 10 |
| CALLUM O'HARE | 11 |
| VIKTOR GYOKERES | 12 |
| BEN WILSON | 13 |
| BEN SHEAF | 14 |
| DOMINIC HYAM | 15 |
| JOSH PASK | 16 |
| TYLER WALKER | 19 |
| AMADOU BAKAYOKO | 20 |
| SAM MCCALLUM | 21 |
| JOSH REID | 22 |
| FANKATY DABO | 23 |
| MATT GODDEN | 24 |
| MATTY JAMES | 25 |
| JORDAN SHIPLEY | 26 |
| JORDON THOMPSON | 27 |
| JOSH ECCLES | 28 |
| JULIEN DACOSTA | 29 |
| FABIO TAVERES | 30 |
| GUSTAVO HAMER | 38 |

MATCH OFFICIALS

REFEREE - STEPHEN MARTIN | ASSISTANT REFEREE 1 - ADAM CRYSELL
ASSISTANT REFEREE 2 - MATTHEW JONES | FOURTH OFFICIAL - ROBERT WHITTON