



# MONTY SEYMOUR

1914-2017



**LUTON TOWN**

SATURDAY 21ST JANUARY 2017  
KICK-OFF 3PM | £3

#WYCVLTN



# BEECHDEAN

## Farmhouse Dairy Ice Cream

Made from fresh Jersey milk and rich double cream



Our ice cream is as *British* as it gets. Made fresh on the family farm, we use milk from our Jersey cows and rich double cream, as well as some of the finest ingredients Britain has to offer.

Come and visit our *fantastic* shop in North Dean

- We have a wide variety of delicious flavours in many different sizes
- Ranging from small individual 130ml pots, to large 5 litre scooping tubs

1 LITRE TUBS  
£3.20  
ANY FLAVOUR

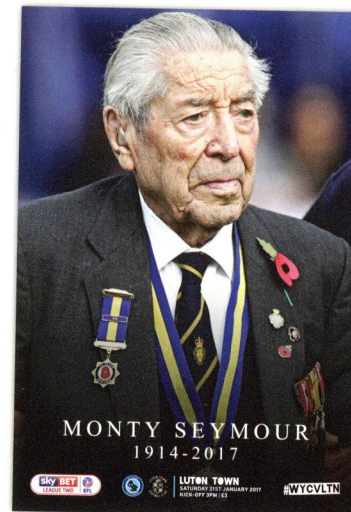
BOX OF 12  
£9.60  
130ml  
ANY FLAVOUR

@BeechdeanGroup Beechdean-Group beechdean

Beechdean Dairies, Old House Farm, North Dean, High Wycombe, Bucks HP14 4NL  
01494 563980 | www.beechdean.co.uk | Open 9am to 5pm, Monday to Friday

Made fresh on the farm, no artificial colourings or additives used. Suitable for vegetarians. Gluten free

# WHAT'S INSIDE?



## FAREWELL, MONTY

WE PAY SPECIAL TRIBUTE TO PRESIDENT MONTY SEYMOUR, WHO PASSED AWAY LAST WEEK AGED 102

ON FRIDAY THE CLUB LEARNED THE SAD NEWS THAT PRESIDENT MONTY SEYMOUR HAD PASSED AWAY AT THE AGE OF 102. MONTY HAD BEEN PRESIDENT OF THE CLUB FOR 50 YEARS - A FEAT THAT WAS RECOGNISED IN THE SUMMER WITH THE RENAMING OF SCORES BAR, NOW KNOWN RATHER SIMPLY AND POIGNANTLY AS 'MONTY'S'.

TODAY WE PAY OUR RESPECTS TO A MAN WHO PLAYED SUCH A SPECIAL PART IN THIS CLUB'S PROUD HISTORY, AND WELCOME BACK FORMER PLAYERS SPANNING A NUMBER OF DIFFERENT ERAS - ALL UNDER MONTY'S PRESIDENCY - FOR A MINUTE'S SILENCE BEFORE KICK-OFF AS WE REMEMBER THE ONE AND ONLY MONTY SEYMOUR.



- 05 THE GAFFER  
Gareth Ainsworth looks ahead to a vital clash
- 10 ONE WEEK TO GO!  
Ticket and travel details for the cup clash
- 21 DOM'S DELIGHT  
Dominic Gape is thrilled to be a Chairboy
- 31 HALL OF FAME  
Steve Wilson inducts another legend
- 44 MAGIC MOMENTS  
Adrian Wood recalls Tony Adams' arrival at the club
- 46 SET NEWS  
The latest from the Sports & Education Trust

**WYCOMBE WANDERERS FOOTBALL CLUB**  
Adams Park, Hillbottom Road  
High Wycombe, Bucks, HP12 4HJ  
TEL 01494 472100  
WEBSITE www.wfc.co.uk  
EMAIL wwwfc@wwwfc.co.uk  
TICKET OFFICE 01494 441118  
Members of The Football Association, The Football League and The Berks & Bucks Football Association.

**VICE PRESIDENT** Ivor Beeks MBE JP  
**CHAIRMAN** Andrew Howard  
**CHAIRMAN OF WYCOMBE WANDERERS TRUST** Trevor Stroud  
**CHAIRMAN OF SPORTS & EDUCATION TRUST** Steve Edgar

**CHAIRMAN OF OWWSA** John Derben  
**CLUB DIRECTORS** Ivor Beeks MBE JP, Mark Burrell, David Cook, Andrew Howard, Trevor Stroud  
**TRUST DIRECTORS** John Bignell, Mark Burrell, Alan Cecil, David Cook, John Derben OBE, Dale Jenkins, Nigel Kingston, Lawrie Read, David Robertson, David Smith, Trevor Stroud  
**CLUB SECRETARY** Kelly Francis  
**LIFE MEMBERS** Lesley Cox, Gerald Cox, Brian Lee, Graham Peart, John Reardon, Derek Vere, Alan Hutchinson

**MANAGER** Gareth Ainsworth  
**ASSISTANT MANAGER** Richard Dobson  
**FIRST-TEAM COACH** Barry Richardson

**SPORTS & EDUCATION TRUST MANAGER** Paul Foley  
**HEAD OF COMMERCIAL** Damian Irvine  
**HEAD OF MEDIA & MARKETING** Matt Cecil  
**FINANCE MANAGER** Dawn Evans  
**STADIUM MANAGER** Gordon Reilly  
**CHAIRMAN OF EX-PLAYERS ASSOCIATION** Alan Hutchinson

**PHOTOS:** PRIME Media Images and David Cornwell  
**DESIGNED AND PRODUCED BY**  
**O PUBLISHING AND MEDIA LTD**  
Goat Mill Road, Dowlands, Merthyr, Tydfil, CF48 3TD





LESS  
MISSED OUT  
MORE  
IN THE MONEY

sky BET

**£5 FREE BET** £  
**EVERY WEEK**

WHEN YOU BET £25

NEW & EXISTING CUSTOMERS

**BETTING, BETTER**



WHEN THE **FUN** STOPS **STOP**

gambleaware.co.uk

18+

18+ only. Eligibility restrictions and further Ts&Cs apply. Log in and opt in to Sky Bet Club and you have until midnight each Sunday to place £25 of qualifying bets to earn your weekly £5 FREE Bet. Odds must be Evens (2.00) or greater and Cashed Out bets are excluded. £5 FREE Bets will be credited by 7pm on Monday and will be valid until midnight the following Sunday to use on any sport.

THE GAFFER

# GARETH AINSWORTH.



GOOD AFTERNOON AND WELCOME TO OUR GAME AGAINST LUTON TOWN IN LEAGUE 2 HERE TODAY.

Luton were one of the early pace-setters in the division this season and, although we currently sit above them in the league table, I fully expect the Hatters to be in and around the automatic promotion places come the end of the season.

They're a huge club with good resources and a very capable manager in charge. Nathan (Jones) and myself had some great battles as players on the pitch, and now we both proudly take the helm at our respective clubs hoping for successes in management. I welcome Nathan, his staff and players, all the directors and especially all you Luton fans who have made the short trip here today to create what should be a great atmosphere.

Last Saturday's visit from Yeovil was always going to be a tough one, but with the form my players are currently showing, people know they will be in for a game at Adams Park - no longer is this a place where easy points are gained! Teams are coming quite defensively here and that's exactly what we came up against. Two penalties were the main talking points that day, both in the first half. 1-1 at the break and then we began to dominate, 18 efforts at the visitors' goal, but if I'm honest we never really got in behind them like in recent weeks and we settled for a draw which kept our unbeaten run going and it could be a valuable point come May.

Football is always the number one subject at any club; the tension, the games winning, happiness, losing,



despair but always optimistic for the next challenge! But here at Wycombe we try to stay grounded, consistent, and keep things in perspective. Sometimes you have to work on this and sometimes it happens naturally.

Learning that Monty Seymour - our hugely proud and respected 102 year old club president - had passed away in the days leading up to the Yeovil match was definitely a moment to step back and reflect. He was such a great guy, Wycombe through and through, passionate about the British Legion and always up for a joke. Monty was a one-off,

and those who knew him realise just how honoured we were to have known such a man. I ask you all: please join me in showing your respects to Monty Seymour with a minute's silence before kick-off.

We will always aim to make you proud on and off the pitch; give all you've got today!

Let's get this place rocking.

## STAFF SPONSORS

**GARETH AINSWORTH** - LAWRIE READ (HOME) AND LISA BOWKER (AWAY AND TRAINING)

**RICHARD DOBSON** - OWWSA (AWAY)

**BARRY RICHARDSON** - PEAK (GLOVES)

ALL OTHERS ARE AVAILABLE TO SPONSOR - CALL 01494 455766

WWW.WYCOMBEWANDERERS.CO.UK @WWFCOFFICIAL f /WWFCOFFICIAL WWFCOFFICIAL



One month's electricity **FREE!**  
**WHAT A SAVE!**



simply lower energy bills

When it's cold on the terraces, stay warm at home by paying less than you're being charged by the Big 6 energy suppliers. Make the simple switch to Solarplicity, one of the UK's leading renewable energy providers – and if you register before January 31, you'll receive one month's free electricity.\* Result!

Text **'FREEMONTH'** and your club name to **82228** to register and find out more.\*\*

[www.solarplicity.com](http://www.solarplicity.com)



\*Offer open until January 31, 2017. One month's free electricity is calculated as an 8% discount to the average of the standard variable tariffs of the UK's six largest electricity suppliers for your region, which are in force on the first day of the month in which you become a customer. \*\*Texts charged at standard rate.

# INSIDE THE CAMP MATT BLOOMFIELD.



GOOD AFTERNOON AND WELCOME BACK FOR OUR SECOND HOME GAME IN A WEEK.

**W**e added another good point to our total last week against Yeovil. They caused us plenty of problems down in the West Country earlier in the season so we knew that we were in for a tough game. They started well and after going a goal behind, Paris did great to win a penalty of our own that JJ calmly slotted away.

Coming at the end of a busy and exciting week I'm not surprised that we were just ever so slightly below our recent energy levels. The lads had put a lot into the game up at Blackpool to reach the quarter finals, together with the travelling and the excitement of the FA Cup draw. We still created some chances and how Dom's 25-yard pile driver didn't go in against Yeovil, I don't know. It was like time stood still as I waited for the net to bulge.

The organisation and preparations for Tottenham are well under way. The lads have all put in their ticket requests for their families to share the day with them. Ticket sales for our supporters to be there with us have kept the ticket office staff busy all week and it promises to be a fantastic day out for everyone.

These are the games that make memories for everyone who witnesses it. I hope everyone remembers this one just as fondly as people recall the two games against Aston Villa in the FA Cup and to Stamford Bridge in the League Cup.

I can't believe that the Chelsea games in the League Cup were 10 years ago. What an amazing night that was at Adams Park. The noise from Jermaine Easter's equaliser nearly took the roof off the terrace.



Blooms in action at Stamford Bridge a decade ago

Unfortunately I won't be out on the pitch with the lads next week so I will have to settle for a supporting role. It's incredibly frustrating not being able to take part in a game of this magnitude but injuries are part and parcel of the game and I'll use it as motivation to get fit as quickly as possible.

The rehab work is going really well with Cian and I'm feeling stronger everyday. A massive thanks to the staff at the Chiltern MS Centre for being so kind and hospitable to us when we visit. I have been nearly every day for the past two weeks and they are all lovely to us.

It was with great sadness that I

learned of Monty Seymour's death last Friday. Monty had been club president for 50 years and was a wonderful man. His passion and dedication to our club was incredible and it was always a pleasure to see him over the years whenever he was at games.

I would like to welcome Monty's family here today and I will be spending some time with them in our chairman's box. I hope that they realise how highly he was thought of by everyone connected with the club. An amazing man.

Enjoy the game,

**BLOOMS**



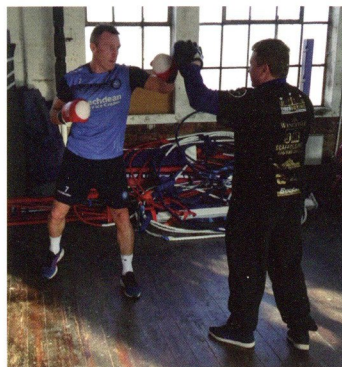


# BLUES NEWS

## BOXING CLEVER

Wanderers enjoyed a training session with a difference on Tuesday morning, taking part in a series of boxing exercises at the High Wycombe Amateur Boxing Club.

Hosted by John Macinnes, who works with local boxing star Ben Smith, the squad were put through their paces at the centre in Leigh Street, helping to build strength ahead of a busy schedule on the pitch.



## 500 CLUB NEARS TARGET



Contributions to the 500 Club have soared to over £65,000 – less than £10,000 shy of the target set when the initiative was launched in September.

Every penny goes to the playing budget to help Gareth Ainsworth keep the squad as strong as possible – visit [500wanderers.co.uk](http://500wanderers.co.uk) to sign up today, or visit the Trust table in the Caledonian Suite.

## EXETER AND COLCHESTER GAMES REARRANGED

The Chairboys' continued progress in two cup competitions has forced the rearrangement of two League 2 fixtures.

Gareth Ainsworth's men will head to Exeter City on Tuesday 31st January (k.o. 7.45pm) and Colchester United on Tuesday 7th February (k.o. 7.45pm).

Meanwhile, the final games of the League 2 season will all kick off at 5.30pm on Saturday 6th May, including the game against Cambridge United at Adams Park.

This is to enable Sky Sports to produce a live broadcast of one game from the division and ensure that all games kick off at the same time, in line with EFL rules.

## WWISC

We are running a coach to Spurs in the F.A. Cup next week. Please book by calling Colin on **01494 536 270** but ONLY do so if and when you have purchased a ticket for the game itself. Times and prices will be published on our website and Twitter feed. We will not be running a coach to Mansfield on Tuesday night.

Our fanzine 'The Wanderer' is out on 4th February prior to the Portsmouth game. If you would like to contribute anything, please e-mail [jonnyking1985@gmail.com](mailto:jonnyking1985@gmail.com) no later than Sunday 22nd January.

Our website address is [www.wwisc.com](http://www.wwisc.com) and we can be found on Twitter [@WWISC199](https://twitter.com/WWISC199)



## FANS COUNCIL – GET INVOLVED!

Following the formation of a Fans Council last season, Mark Bowring (Head of the Fans Council) met with club chairman Andrew Howard and Trust chairman Trevor Stroud recently to formulate a solid structure moving forward. It was agreed that it would be beneficial to make the Council more open and easily accessible to everyone, and that an official panel should be constructed to represent the Council.

It was concluded that the panel should consist of five members – a head, and one fan from each of the following; Family Stand, Terrace, Frank Adams and Beechdean Stand. The panel of five will host open monthly meetings in which all supporters are encouraged to attend. What we would like to achieve from this is a platform where supporters can meet on a regular basis to discuss all aspects of the club from a fans perspective, what people would like to see, share ideas, and so on. Following the meeting the five Council members

will meet with the Club/Board/Trust to put all of the views, questions and idea across. Minutes will be taken, and the Council will then report back to the fans. Similar to the Trust, the five panel members will be voted on/off on in an annual AGM to ensure that the supporters get to choose who represents them.

The Fans Council are now seeking four new members to join Mark on the panel. Applicants will need to be in a position to give up some time, particularly on match days. This will involve spending time in the control tower, bars, kiosks etc. to get a good understanding of the club behind the scenes so that they are better placed to answer questions during the meetings. As per the above, in order to represent every section of the ground we are seeking one person from each of the Family Stand, Terrace, Frank Adams, & Beechdean Stands.

If you are interested in joining this exciting supporter led initiative please email us via [fanscouncil@wycombewandererstrust.com](mailto:fanscouncil@wycombewandererstrust.com).



Please include your full name, contact number, where you usually sit/stand, and how you feel you can bring a positive contribution to the meetings. In addition, we are also seeking a volunteer(s) to take notes and produce the minutes from each meeting. The meetings will take place on the last Thursday of every month and will be held in Monty's from 7.30pm, the first one being Thursday 23rd of February. We hope as many of you as possible will attend, and look forward to seeing you there.

## LEAGUE TWO REVIEW

By Sam Avery

Craig Hignett has left his role as Hartlepool United manager by mutual consent following their 1-0 defeat to Crawley Town last weekend. The 47-year-old was appointed in February of last year. Hartlepool currently sit in 19th and just four points away from the bottom two.

Jordan Bowery has joined Crewe Alexandra on loan for the rest of the season from Leyton Orient. Bowery was signed by Orient in the summer following his release from Oxford United at the end of last season.

Barnet have made a deal with Eastleigh which has seen the signing of Luke Coulson from the non-league side while Sam Muggleton has gone the other way. Coulson has six goals for Eastleigh this season prior to his transfer into the EFL.



Hartlepool have struggled for form





# ONE WEEK TO GO!

## All you need to know ahead of next week's trip to Spurs

### TICKETS

There is a maximum allocation of 4,035 tickets for Wycombe Wanderers fans at this game.

At the time of going to print on Wednesday evening, approximately 1,000 tickets had been snapped up by season ticket holders purchasing one each. Half-season ticket holders and 500 Club members had the opportunity to purchase one ticket each on Thursday and Friday.

**Phase three of ticket sales kick in on Monday morning as follows:**

**Phase 3 - From Monday 23rd, 10am onwards**

Season ticket holders, half-season ticket holders, 500 Club members plus Share Scheme investors (new and existing) may purchase two tickets each. This enables those wishing to bring a guest to be seated together. Supporters who have already purchased in phases 1 & 2 will not be eligible to purchase again in Phase 3.

**Phase 4 - From Wednesday 25th, 10am onwards until sell-out**

General sale (limited to four per person)

Prices are as follows.

**Full Season Ticket Holders**

Adults: **£20.00**

Seniors (65+): **£10.00**

Juniors (U18): **£5.00**

**All Other Supporters**

Adults: **£25.00**

Seniors (65+): **£10.00**

Juniors (U18): **£5.00**

The ticket office opening hours for this period are as follows.

- 10am to 3pm for over-the-counter sales at Adams Park, and 10am to 5pm over the phones (**01494 441118**).

- The phone line will remain open until 7pm on Monday 23rd January.

Fans booking over the phone have the option to have their tickets posted to them (if ordered before Wednesday 25th January), or they can collect from Adams Park (10am-5pm) the day after purchase. Details of collections on the day of the game at White Hart Lane will be confirmed in due course on the website.

Season ticket holders are asked to ensure you have either your season ticket card with you, or at least the customer number to hand, to speed up the process.

Wanderers have created a designated 'singing block' (Block 38) with 494 tickets in the lower tier - please request this block at the point of purchase if you wish to sit here.

Disabled supporters will be able to purchase tickets directly from the Wycombe Wanderers ticket office in line with the above priority structure.

### COACH TRAVEL

Supporters can now book their places on the OWWSA coaches to White Hart Lane. The Official Wycombe Wanderers Supporters Association (OWWSA) run coaches to every away game, and is fully staffed by volunteers.

**Prices for OWWSA members**

Adults: **£14**

Seniors (60+): **£13**

Juniors (18 and under): **£12**

**Price for non-OWWSA members**

All non-members: £18 (no refund is game is cancelled)

Coaches will depart Adams Park at 11.30am. Please arrive in good time to ensure you can park and find the right coach.

**How to book**

Coach bookings begin at 10am on Wednesday 18th January.

Members should call Graham on **07876 267301**.

Non-members should call Lynden on **07857 680524**.

Supporters must pay at the time of booking and can do so by credit/debit card over the phone.

Cash purchases can be made in person at Adams Park in the Caledonian Suite entrance before the match against Luton Town on Saturday 21st January, and after the match in the main club reception.

### BID FOR MATCH-WORN SHIRTS!

Wanderers will walk out at White Hart Lane in a special commemorative shirt... and you can bid to become the proud owner of the shirt worn by your favourite player!

The shirt includes wording around the club crest to mark the occasion, and kit suppliers O'Neills produced replicas for fans to buy online with delivery guaranteed on all UK orders placed by Friday (yesterday).

The auction to bid for match-worn shirts is open now - simply email your bid (starting at £150, multiples of £10 only) to [media@wwfc.com](mailto:media@wwfc.com).

A list of current bids is available on the website; the auction closes at 5pm on Monday 30th January.



## TOTTENHAM HOTSPUR VS WYCOMBE WANDERERS

SATURDAY 28TH JANUARY 2017, 3PM  
WHITE HART LANE  
EMIRATES FA CUP FOURTH ROUND



### AWAY GUIDE

By Adrian Wood

Postcode: N17 0AP

### RECOMMENDED ROAD DIRECTIONS

Take the M40 towards London, joining the northbound (clockwise) M25 at Junction 1A. Carry on the M25 to Junction 25 and take the A10 towards Enfield. Continue on the A10 through Enfield and at the roundabout with the Northern Circular (A406), turn left onto the A406 (Sterling Way). Turn right into Fore Road (the A1010) which becomes the High Road and you will come to the ground on your left. Mileage on this route is approximately 50.

The alternative, shorter, route is to use the M40 and A40 towards Central London, picking up the North Circular at Hanger Lane. Take the exit towards A1010 Tottenham / Edmonton, then as above. Mileage is approximately 37.

### RECOMMENDED AREA FOR CAR PARKING

On street parking is virtually non-existent around the stadium on match days as a Controlled Parking Zone is in operation. This means that only local residents who have a parking permit and blue badge holders can park legally. The perimeter of the zone is up to a mile from the ground and this has led to some private car parks near to the stadium charging up to £15. If you do park around the area, make sure that you take notice of the advisory parking notices.

### USING THE TRAIN?

There are several options:

White Hart Lane Railway Station is the nearest to the stadium (four minutes' walk). It is served by trains from Liverpool Street. The London Overground service departs from platform 3 and journey time is 22 minutes. There are four trains an hour. The station also has regular services that connect to the Victoria Line at Tottenham Hale.



The nearest Underground station is Seven Sisters on the Victoria Line. The station is in Zone 3. The ground is about a twenty minute walk away, but there are plenty of buses running up Tottenham High Road to the ground.

Meanwhile Northumberland Park mainline station is eight minutes' walk from the stadium, with regular services that connect to the Victoria line tube service at Tottenham Hale station.

### FACILITIES FOR AWAY FANS

There is a dedicated queuing procedure outside the stadium for visiting supporters. Fans will be directed by staff to the relevant queue; access is also clearly noted by tall banners for the relevant tier of the stadium. Entrance to these blocks can be found on Park Lane. The turnstiles nearest to the junction of the High Road and the Megastore will be in use for away fans. Only small bags can be brought in to the stadium.

If you have a ticket for the upper tier you have quite a climb but are rewarded with a great view of the action. Leg room is ample. The facilities in this modern stand are

above average. THFC are happy to accommodate static flags where room allows and subject to search at the discretion of the Safety Officer. Turnstiles open approximately two hours before kick-off and visitors have access to refreshment bars serving hot and cold food and drinks. This includes Carlsberg, Somersby Cider, Tetley Bitter and a guest ale (subject to availability) at £4.50 along with pies/hotdogs at £3.50 both pre match and at half-time.

### FACILITIES AROUND THE GROUND

The Haringey Irish Centre on Pretoria Road, N17 8DX is an away fan friendly and happy to serve visiting supporters. This is opposite White Hart Lane station. Another option is the Elmhurst Arms 131 Lordship Lane, N17 6XE. This is a mock Tudor style pub about a ten minute walk away from the ground. If you are travelling by train from Liverpool Street, there is a handy Wetherspoons pub at the station. Finally if you walk up Tottenham High Road from Seven Sisters station, you will pass restaurants and street vendors selling "colourful exotic food from all corners of the world".





# FAREWELL, MONTY

**WE PAY SPECIAL TRIBUTE TO PRESIDENT MONTY SEYMOUR, WHO PASSED AWAY LAST WEEK AGED 102**

ON FRIDAY THE CLUB LEARNED THE SAD NEWS THAT PRESIDENT MONTY SEYMOUR HAS PASSED AWAY AT THE AGE OF 102. MONTY HAD BEEN PRESIDENT OF THE CLUB FOR 50 YEARS – A FEAT THAT WAS RECOGNISED IN THE SUMMER WITH THE RENAMING OF SCORES BAR, NOW KNOWN RATHER SIMPLY AND POIGNANTLY AS ‘MONTY’S’.

TODAY WE PAY OUR RESPECTS TO A MAN WHO PLAYED SUCH A SPECIAL PART IN THIS CLUB’S PROUD HISTORY, AND WELCOME BACK FORMER PLAYERS SPANNING A NUMBER OF DIFFERENT ERAS – ALL UNDER MONTY’S PRESIDENCY – FOR A MINUTE’S SILENCE BEFORE KICK-OFF AS WE REMEMBER THE ONE AND ONLY MONTY SEYMOUR.

## MONTY SEYMOUR – A LIFE REMEMBERED

*Like so many local groups, Wycombe Wanderers Ex-Players Association are among those grieving at the death of Monty Seymour. But like so many, they are also celebrating a long life well lived as WWEPA Vice-Chairman John D Taylor explains.*

When asked nearly a year ago to revamp the old Scores Bar at Adams Park into Monty’s, it was something the Ex-Players Association readily agreed. It wasn’t a chore. It was an honour. How better to organise a permanent reminder to celebrate the man whose official association with the club goes back to the 1950s and to Wycombe’s hey-day as the top amateur club in the south.

Inside, we decided to trace great moments in the club’s history – from its formation in 1884, through the FA Amateur Cup Finals of 1931 and 1957, the eight Isthmian League title wins, FA Trophy glory at Wembley under Martin O’Neill, the transformation into a successful professional side and eventual elevation to the Football League in 1993. Monty Seymour played a significant role in most of these milestone moments.

Typically, Monty’s timing was great. He lived long enough to see the bar named in his honour officially opened in the summer. There were stories aplenty retold that day about a century of service and fun from his birth in 1914 in humble surroundings on a farm near Marlow to life as a successful pharmacist in High Wycombe.

Having served in Burma, the Second World War hero played a major role in setting up the Wycombe Royal British Legion Club where he was also President for over 50 years. Made an honorary Burgess of the town in 2002, the highest honour the Mayor can hand out, Monty also played a major role with the Wycombe Guarantors, the Rotary Club and the Charter Trustees over the years as well as heading the club’s annual Poppy Appeal.

But we at WWEPA remember him best as a football man. Always a fan, he became the Wanderers’ President in 1966 – only the tenth since 1898 – and celebrated 50 years in that role in 2016. Whatever the occasion, Monty was there.

He loved the big occasions at Wembley – from the 1957 Amateur Cup Final onwards. He revelled in the successful Brian Lee and Martin O’Neill eras. And he loved the more recent revival under Gareth Ainsworth. Anyone who visited Loakes Park and then Adams Park would always inquire: “Where’s Monty?”

The same question was asked – eventually – when the Blues played their most famous FA Cup third round replay at Middlesbrough. He missed the players’ coach for the return home and only caught up with the team at Doncaster after commandeering a police car. “I hadn’t finished my drink in the boardroom,” he explained.

Later in life, Monty used his deafness to his own advantage. His stock reply to any question he couldn’t understand was: “Make mine a brandy and soda.....”

Having seen Monty around the town when I was a Wycombe RGS pupil in the 1950s, my first proper



encounter was when a junior sports reporter at the Bucks Free Press. Knowing I was writing about colleagues I had actually been playing alongside, his sound advice was: “Be honest lad and you’ll be alright.” He was right.

For decades on, no matter where I moved on to work, I was always ‘the lad’ in his company. I will treasure those moments. My only regret is that I didn’t take some days to sit down and record on tape his memories of Wycombe Wanderers and the town he loved so much. No one had as much knowledge of either topic.

I had my chance in the tunnel at Wembley in 1991 as the Wanderers won their first FA Trophy Final. With Martin O’Neill waiting to be interviewed for the club’s own video, I asked Monty for a quick vox-pop about his thoughts on the day. “Well, in 1931 when I saw Wycombe win the Amateur Cup,” he began.... “Sorry Monty, I haven’t got time for that,” I interjected. What a shame. A happier, more recent memory is when Monty, six months after celebrating his 100th birthday, shamed all the youngsters by dancing the night away at the WWEPA annual dinner.

That’s how I’ll remember Monty, with a twinkle in his eye and twinkling feet to match.

*- John D Taylor, vice-chairman of the Wycombe Wanderers Association*



## HONOURED BY QUEEN

At his 100th birthday in 2014, Monty Seymour was given a special party at Adams Park attended by his 12 great-grandchildren, eight grandchildren and three children – the highlight being a message from the Queen.

Former Wanderers chairman Ivor Beeks gave him a club shirt with the No 100 printed on the back and described him as *"An incredible person with an appetite for all the good things in life."* Ex-Wycombe manager and chairman Brian Lee described Monty as *"A gentleman, and a very generous gentleman."*

## LIVED THE DREAM

Wycombe legend Monty Seymour was "living in a dream" as the town turned out to celebrate his century.

It was standing room only at Adams Park as hundreds of people packed into the Vere Suite in May 2014 to mark the 100th birthday of the man who was President of both the High Wycombe branch of the Royal British Legion and Wycombe Wanderers FC.

The Second World War hero was greeted with a rousing chorus of Happy Birthday and a round of applause as he entered the room, before being handed his card from the Queen. People who knew Mr Seymour from all walks of life – from the Royal British Legion, Wycombe Wanderers, the Wycombe Guarantors, Rotary Club and the Charter Trustees – queued up to pay their tributes to the centenarian and tell stories about him.

Lesley Clarke, on behalf of the Wycombe Charter Trustees, said: "What a remarkable achievement and what a remarkable man. He's a model constituent who's passionate about the town where he lives."

Apart from his official party at Adams Park, another 100th birthday celebration was held for Monty Seymour when he returned to his old grammar school in West Street, Marlow. He was transported through the gates of Borlase on a horse and cart – a homage to his childhood mode of transport.

Monty described how 'happy' his time was at Borlase's which had 200 pupils at the time. He said: "I came here too early – there weren't any girls in those days." He recalled how a baker came daily to deliver the pupils doughnuts and buns and of his love of sports such as shooting and boxing.

"I'm absolutely amazed how many people are here. It's been such a wonderful day and we are grateful to everybody."



## MONTY OUR PRESIDENT

By Ivor Beeks, director and former chairman of Wycombe Wanderers

Many years ago, on a golf course in the Algarve in Portugal, Monty Seymour and Brian Lee asked me to join them for a round, as the Wanderers were on tour at the time. By the time we reached the 19th hole, Monty had invited me to become involved with the football club, and the rest is history.

I have been fortunate enough to tour many European countries with Monty and the Wanderers, and to understand what a remarkable man he was. Monty was one of the most respected men I have met in my lifetime – a story teller, a practical joker, and hugely passionate about the club.

Monty was our president for over 50 years, from 1966, the year of the famous World Cup win. It is almost impossible for anyone to repeat that achievement, representing the club wherever he went.

I used to share a room with Monty on the occasional end of season tour, and he was always looking to play jokes and get up to his usual antics. "The bath is full for you, nice and hot" he would say, only me to find it full of cold water. A pair of scissors were always handy in his pocket, ready to cut the bottom off your tie whenever he fancied.

There are so many stories to tell, and even at the age of 90 he was still coming to Portugal with seven of us to play golf. On one occasion his ball bounced three times across the lake and onto the fairway; he just turned to me and said "well I guess that's my Barnes Wallis shot."

My memories will live forever of a fantastic friend and a great ambassador for our town. Thank you, on behalf of all of us at Wycombe Wanderers, for being Monty our President.

- Ivor Beeks MBE JP

## A SPECIAL MAN

By Gareth Ainsworth, manager of Wycombe Wanderers

It was always such a pleasure to spend time in Monty's company and it gives me such pride to be manager of the club where he has been president for 50 years, playing such a big part in creating this amazing club which means so much to so many.

When I first came to the club, he was very quick to introduce himself to me and he was always behind the boys.

I've been lucky enough to be able to visit him at the nursing home in the past few months, and he always had that same unmistakable smile and warmth about him. He always wanted to know about the boys and the football.

He was such a special man and the legacy that he leaves at Wycombe Wanderers is something that can never – and will never – be forgotten."

- Gareth Ainsworth, Manager of WWFC

## IT WAS A PLEASURE

The death of Monty Seymour at 102 brought to an end the wonderful life of a man dedicated to High Wycombe who was well known in the town for his skills as a chemist when owner of Hughes in the High Street.

My first ever meeting with Monty came when I was a six-year-old lad when my Mother introduced me to him and his wife Betty whilst shopping in a grocer's shop close to High Wycombe Cricket Ground in the late 1940's. He patted me on the head and said "Who is this then?". It proved to be a really valuable introduction as we were to meet on so many occasions and events over the next 60 years.



He was a man full of remarkable stories connected to the town, Borlase Grammar School in Marlow, the Second World War, Wycombe Wanderers FC and Royal British Legion. In 1966 he became President of Wycombe Wanderers, a dedicated supporter both on match days or whenever he was needed to help. Always there. Always popular. And when he began to suffer with a loss of hearing, he could always use it to his advantage. Laughter was a key part of being with Monty when he was holding court.

When we moved to Daws Hill Lane in the late 70's he came round looking for a contribution to the annual Poppy Appeal and was delighted to see us. "Anything I can do to help you settle in, let me know."

During that time our paths crossed when, as Chairman of Borlase Parents' Association, a difficult decision had to be made to allow girls into the school. As Monty was a former pupil I decided to seek his advice and discuss the decision we had made to allow girls in. He was terrific in rounding up some of his schoolmates to help push and back our decision, which in the long term proved to be a good one.

During my time at Wycombe Wanderers it was a delight to talk with him after a game in the Boardroom. He always had an opinion about the players and especially the referee. He thoroughly enjoyed talking to the manager and offering his revue.

The 100th birthday celebration held by the club was just spectacular. So many people turned up to celebrate with him and support his life of achievements. He will be forever held in esteem and gratitude by everyone who knew him.

God Bless You Monty. It was an absolute pleasure to have known you!!

- Alan Hutchinson, Chairman, Wycombe Wanderers Ex-Players Association





## TRIBUTES

I've known Monty for a number of years and certainly during my time as chairman he was always the star attraction in the boardroom whenever he attended matches at Adams Park. He always had a story to tell and could entertain people for hours with his sense of humour.

He represents so much that is great about Wycombe Wanderers Football Club, and its proud history through the years. This is a sad day as we mourn his death, but soon we will be able to celebrate the incredible life that he led, and all that he did for his beloved football club and the local community."

*- Andrew Howard, Chairman of WWFC*

To me, Monty typified everything Wycombe Wanderers is about. He was a true gentleman, and it is an absolute honour to have known him.

I will never forget his opening line: "I'm stone deaf, but if you're asking, it's a brandy and soda".

*- Trevor Stroud, Chairman of Wycombe Wanderers Trust*

On behalf of the players of Wycombe Wanderers Football Club, we would like to express our most sincere condolences to Monty's friends and family, and everyone who knew him well.

The squad were saddened to hear news of his death on Friday morning and hold the utmost respect for everything he has done for the club we are proud to represent.

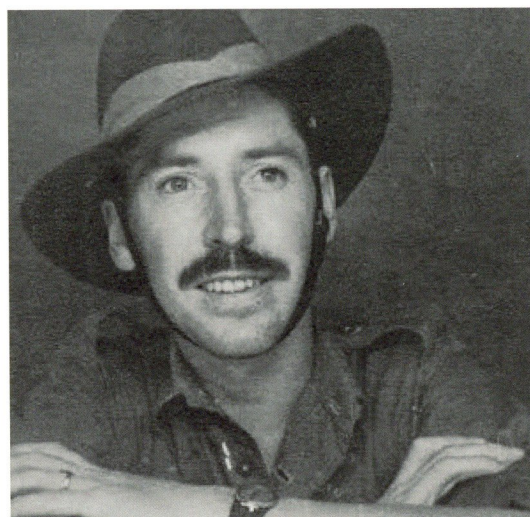
*- Matt Bloomfield and Paul Hayes, club and team captain*

Monty was the best person I have met in football. A unique and wonderful character who has done so much for WWFC, and it has been a privilege to know him and talk with him.

*- Mark Burrell, Director of WWFC*

A lovely man who, despite advancing years and hearing difficulties, always took such an interest in Wycombe Wanderers and he was a pleasure to talk to. His name lives on at the ground and we will honour him for years to come.

*- Alan Cecil, Director of Wycombe Wanderers Trust*



Monty had the ability to talk to anyone about anything. Even at over 100 he still had a joy of life. My only regret is not getting him to record his memories on tape about the club and the town he loved so much. His memories of football and Wycombe were unrivalled.

*- John D Taylor, WWEPA Vice-Chairman*

A privilege to have known Monty for over 50 years. A true gentleman and encourager. The naming of Monty's Bar and the display which covers all the years of his long life is a fitting tribute to him.

*- John Bignell, WWEPA member & Director of Wycombe Wanderers Trust*



My first encounter with Monty Seymour was not directly to do with Wycombe Wanderers. My brother and I were playing football one afternoon and as often happened, the ball found its way to a nearby garden. We went round with my dad to retrieve the ball and it just so happened that the house belonged to Monty himself.

Being a young lad of eleven, I had no idea who he was then, but my dad pointed out he was not only President of my much beloved Wycombe Wanderers but had also been a friend of my Grandpa when he was alive. The two men had both been local businessmen and were involved in Rotary Club and had the common connection of our local football team.

Not only do I remember Monty being a talkative and friendly gentleman as he took us through to the garden to retrieve said football, but he even presented my brother and I with chocolate bars as we said our thank yous and left. I doubt it was my mention of my love for WWFC that resulted in such a warm gesture, more that he was just a kind and generous person.

As with many fans, I often saw Monty at games and in the town following that. The day after a cup defeat around fifteen years ago, our paths crossed once more in the town and, seeing my Wycombe shirt, he quipped 'You should be wearing black after yesterday!' He was also present at the launch of the 'Chairboys 125 Exhibit' at Wycombe museum in 2013 and when Trust chairman Trevor Stroud gave his address to the crowd he referred to Monty and his age - then a remarkable 98. Gareth Ainsworth was stood just behind me whispered under to the person next to him '98!' It was not so much his age that was so impressive but the fact that he remained so active at the same time.

He was a big link to the past of the club we love so much but he was also invested in our present and future - I felt a great sense of pride when I looked at an anthem jacket this season that contains the names of all the investors in the Trust's share scheme and I saw my name directly below his. Monty's passing has come at a time when the club feels on the up with league form looking good, a quarter-final in one competition and a big cup match at White Hart Lane on the horizon in another. But a bright future can only come from a strong past, and ours was built by characters like Monty Seymour who helped make Wycombe Wanderers what it was, what it is and what it will be in the future.

*- Phil Slatter, committee member of WWISC*



# origin

DOORS AND WINDOWS

**THE WORLD'S LEADING**  
specialist manufacturer of aluminium  
Bi-folding Doors and Windows

**SPACE AGE  
AEROGEL TECHNOLOGY**  
for a thermally efficient home

**A LOCAL  
FAMILY BUSINESS**  
successful around the world

High Wycombe  
 **DESIGNED AND  
MANUFACTURED**

**INDUSTRY LEADING**  
20 year guarantee



**PROUD LOCAL SPONSORS**  
of Wycombe Wanderers

0808 168 5816 | [info@origin-global.com](mailto:info@origin-global.com) | [origin-global.com](http://origin-global.com)



## ME AND MY WYCOMBE **RICH JUDGES**



### WHERE DO YOU SIT/STAND?

I used to sit in the Family Stand when I was a season ticket holder, now I sit in the Beechdean Stand when I can attend games.

### WHO DO YOU COME TO GAMES WITH?

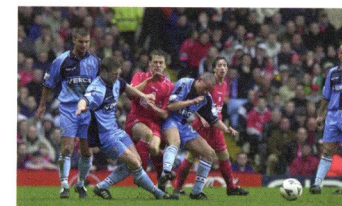
My dad - he introduced me to the Blues at an early age back in the Vauxhall Conference days. I watched my first games back when Sir Martin's team were storming up the divisions and breaking into the Football League - nothing seemed impossible.

### HOW LONG HAVE YOU BEEN A SUPPORTER?

It's 26 years this year - it hasn't all been plain sailing being a Chairboys supporter, but I couldn't ever imagine supporting anyone else and I wouldn't swap that time for the world.

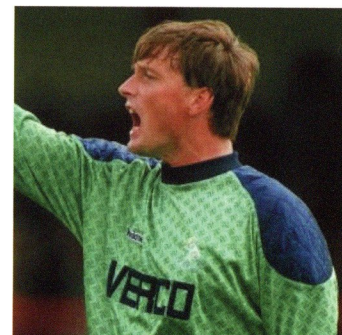
### WHAT MADE YOU FIRST START COMING TO MATCHES?

My dad was a season ticket-holder; he is deeply passionate about the Blues and followed them all over the country since he was a young man.



### WHO'S THE BEST PLAYER YOU'VE SEEN DURING YOUR TIME AS A FAN?

I saw Michael Owen against us in the FA Cup semi-final in 2001; he was a dazzlingly fast player with a lethal shot who was in the prime of his playing career.



### WHO'S BEEN YOUR FAVOURITE PLAYER TO WEAR THE QUARTERS AND WHY?

How do you choose? I have seen many great players; Mr Carroll ranks highly, Steve Guppy, Keith Scott come close too, but however the one that wins it by a nose is Paul Hyde. Looking back, he was such a top keeper - there were games when he seemed like a colossus in goal, letting nothing past him. We were lucky to have him.

### WHAT WAS YOUR FIRST MATCH AS A FAN?

I can't remember exactly, but I believe it was the 2-1 win at home to Gateshead back in August 1991.

### WHAT HAS BEEN YOUR FAVOURITE MOMENT SUPPORTING THE CLUB?

Honestly, there's been too many to mention them all. However, sitting in the stands of the old Wembley watching Wycombe vs Preston North End in May 1994 was a special day. The day which culminated in promotion was topped off by a beautifully worked Dave Carroll goal.

### TELL US A FUNNY STORY FROM YOUR TIME SUPPORTING THE CLUB?

In a time before the safety-focused culture we live in today, I was watching the Blues in my first season as a supporter, away at another non-league club. I was happily tucking into my customary interval burger, when I found myself astounded at half-time when the whistle blew and the fans at the two ends of the grounds swapped ends, walking down the side of the pitch - so they could get a better view of their team when they swapped halves. In a world filled with fan segregation and strong policing it is a reminder of the club's past.

### WHAT DOES THE CLUB MEAN TO YOU?

It's an important part of my life; honestly I'd feel lost without it. I feel very lucky to still have a club - I believe there has been a vast improvement in the nearly five years since the Trust took over and under Gareth there will be more great days ahead.

### DESCRIBE WYCOMBE WANDERERS IN THREE WORDS:

"Silly Little Dream" - three words spoken by Sir Martin about his high ambition for us.

[WWW.WYCOMBEWANDERERS.CO.UK](http://WWW.WYCOMBEWANDERERS.CO.UK) [@WWFCOFFICIAL](https://twitter.com/WWFCOFFICIAL) [f / WWFCOFFICIAL](https://www.facebook.com/WWFCOFFICIAL) [/WWFCOFFICIAL](https://www.instagram.com/WWFCOFFICIAL)



# 600 ARTIFICIAL GRASS PITCHES

Since 2000, the Football Foundation has invested in £1.3 billion of grassroots sports projects and has developed more than 600 artificial grass pitches, 1,000 changing pavilions and 3,000 natural grass pitches.

Find out more at:  
[footballfoundation.org.uk](http://footballfoundation.org.uk)



FUNDING PARTNERS



**Football  
Foundation**

[www.footballfoundation.org.uk](http://www.footballfoundation.org.uk)  
[@FootballFoundtn](https://twitter.com/FootballFoundtn)  
[Youtube.com/Footballfdn](https://www.youtube.com/Footballfdn)  
[flickr.com/footballfoundation](https://www.flickr.com/footballfoundation)  
[linkedin.com/football-foundation](https://www.linkedin.com/company/football-foundation)  
[instagram.com/footballfoundation](https://www.instagram.com/footballfoundation)

Charity No: 1079309 Company No: 3876305

The Football Foundation is the UK's largest sports' charity. Funded by the Premier League, The Football Association and the Government, via Sport England.

PLAYER INTERVIEW

## DOM'S DELIGHT.



WANDERERS' NUMBER 25 WAS THRILLED TO MAKE HIS LOAN MOVE PERMANENT, WRITES GUY LAMBERT

@DomGape

After a run of strong performances, Dominic Gape has signed a permanent deal that sees him as a Wycombe player for the next two and a half years.

The new Chairboys midfielder moved to Adams Park in September on a loan deal to bolster Gareth Ainsworth's squad, but has now made that move permanent.

"I was delighted to finally get things over the line," he said. "The move has been in the pipeline for a little while, and now I can focus on playing and moving forward as a Wycombe player."

"The move was a no brainer for me. Gareth said he wanted me to sign permanently, and it was something I definitely wanted to do. It was all just about agreeing and getting things sorted. Thankfully we have done that and I am delighted to be here."

Speaking after the home draw with Yeovil, Dom felt that his new team maybe lacked the quality needed in the final third to take all three points, but has high hopes for the rest of the season.

"We just lacked that final ball into the box that we have been doing really well over the last few weeks. A point isn't the end of the world but I think we definitely could have taken home three if we were just that little bit more clinical".

Dom almost scored the first goal of the match seventeen minutes in after releasing a blistering shot that hammered against the bar.

"I couldn't believe it when it came back into play," he said afterwards. "But these things

happen. I'll just have to work that bit harder and make sure it goes in next time!"

The 21-year-old's move to Wycombe comes at a pivotal time in the season with a busy fixture list coming up. With high profile games against Luton and Portsmouth in the league, along with a Checkatrade Trophy quarter-final and an FA Cup trip to White Hart Lane on the horizon, Dom's abilities and experience will boost the squad in more ways than one. But he knows the team must not get carried away with the Spurs game still in the distance.

"We have got to concentrate on the league first and foremost. That is our bread and butter and where we want to drive on and succeed. We need to be fully focused on the tough Luton game next and put the Tottenham game to the back of our minds. We can enjoy that one when it comes about."

Gape made his Wycombe debut against Luton at Kenilworth Road back in the 4-1 defeat in September, after just two days at the club, and he is hungry for revenge at when the Hatters come to Adams Park.

"They are a very good side, one of the better teams in the league. They love to play football and I think it will be a big test for us, but it is also a huge chance for us to show everyone how far we have come since we last played them."

**Dom was speaking to Chairboys PlayerHD; subscribe today via [wwfc.com](http://wwfc.com) for extended match highlights, live audio commentary and regular interviews.**



# WHENEVER. WHEREVER.

Just try to keep calm...



Listen to every game live on PlayerHD from £4.49 a month.

Visit [efl.com/playerhd](http://efl.com/playerhd)



Player



## TRUST MATTERS.

[www.wycombewandererstrust.com](http://www.wycombewandererstrust.com) [f /wwtrust](https://www.facebook.com/wwtrust)



### MARK BURRELL TALKS THROUGH HIS ROLE ON THE BOARD OF WYCOMBE WANDERERS TRUST

I've been a Trust Board Director for two years, and then joined the football club board in June 2015, working on a purely voluntary basis to create a sustainable football club and group, and build a legacy.

Each director's role is based on their skills and experience; mine is bringing business transformation and corporate / strategic finance expertise as the Group Finance Director across the finances of all three companies - the Trust, WWFC and Frank Adams Legacy Ltd. I chair the Group Finance Committee where we grapple with the detail of the group finances and how to make funds work for the best of all, and ensuring we do not have to pay unnecessary tax.

Work outside of WWFC is running a business/IT transformation management consultancy - <http://www.transformationdelivery.com> - where we successfully design, guide and deliver transformational business change helping clients understand how they should respond to complex challenges and work with them to ensure that their business and IT change is delivered successfully. You'll have seen the signage at Adams Park and logo on the back of the players' white change strip.

My finance update at the Trust AGM and Finance Forum showed that we have good reason for optimism with the strongest results and finances since the Trust took control. Some highlights are: we have made real progress both financially and with our systems and processes; we have made significant reductions in debts in the group (including from the well-publicised receipt of the Jordan Ibe monies); we have formalised and



extended all outstanding external debt arrangements; and we have agreed repayment plans with all parties as we continue to meet our financial promises.

Our records and processes are at levels of clarity and consistency not seen before, as I work with Dawn Evans (the club's Finance Manager) and Martyn Broughton (the independent Group Treasurer), and with our auditors, Haines Watts, who have provided outstanding service and support through the year.

This all builds towards creating a sustainable football club for future generations and, financially, we know where we are and what we need each season for various scenarios.

We have finance plans in place that, like our competitors, rely on "football fortune" to work, through cup runs, player sales or sell-on fees. We work to ensure this continues, without guarantees, so we need to look at the best model for the ownership and funding of our football club and group. Trimming our budget or expanding it with inward investment, which would mean selling part or a controlling interest in our Club - as a Trust Board we are investigating routes open to us.

2017 is very exciting for us all both on and off the pitch and we work for the best results we can deliver, constantly and rigorously looking at how best to "balance the books" as a Trust-owned club ensuring we continue to develop, commercially and financially.



# MATCH REPORT.

SATURDAY 14<sup>TH</sup> JANUARY 2017  
Adams Park | Sky Bet League Two



**WYCOMBE**

Jacobson (pen 26)



**YEOVIL**

Dawson (pen 20)

## THE TEAMS

**Wycombe:** Blackman, Jombati, Stewart (De Havilland 66), Pierre, Jacobson, O'Nien, Gape, Wood (Thompson 81), Cowan-Hall, Akinfenwa, Weston (Hayes 74)

**Unused subs:** Bean, Richardson, Muller, Freeman

**Yeovil:** Krysiak, Shephard, Lacey, Smith, Dickson, Dolan, Butcher, Dawson, Whitfield (Goodship 87), Sowunmi (Eaves 82), Zoko (Mugabi 90)

**Unused subs:** James, Maddison, Lea, Bassett

## MATCH STATS



1	GOALS	1
56%	POSSESSION	44%
18	SHOTS	7
7	SHOTS ON TARGET	2
5	CORNERS	2
11	FOULS	11



Wanderers were forced to settle for a point last weekend – the first draw at Adams Park since August – as Joe Jacobson netted a first-half penalty to cancel out Kevin Dawson's earlier spot-kick.

Francois Zoko threatened early on for the visitors before Luke O'Nien headed wide and Dominic Gape struck the bar with a stunning effort as the Blues looked to extend their fantastic run of form with another three points.

But a foul on Zoko by Sido Jombati gave Dawson the opportunity to break the deadlock, only for Jacobson to level matters six minutes later when Alex Lacey brought down Paris Cowan-Hall in the area.

O'Nien twice forced saves from Yeovil keeper Artur Krysiak, before Jamal Blackman was called upon to deny Ben Whitfield who later fired over the bar when well placed. Adebayo Akinfenwa flicked a header into the arms of Krysiak and Cowan-Hall miscued a chance presented to him by Gape's superb through-ball, with the Chairboys looking the more likely to grab a winner.

Glovers boss Darren Way brought on an extra defender to ensure they would leave with a point on a day where the Wanderers weren't quite able to recreate their heroics of recent weeks.

## PLAYER TWEETS



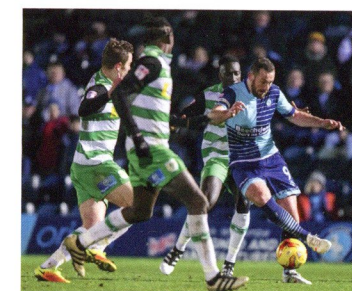
**Will De Havilland (@willdehav):**  
Disappointing not to go on and win it but on a positive it keeps our unbeaten run going!



**Joe Jacobson (@joe\_jacobson):**  
Not the result we wanted but the unbeaten run continues. Massive game coming up next week. See you all there.



**Anthony Stewart (@A\_Stewart\_5):**  
Thanks for all the messages. I'm as good as I can be after a heavy fall! Gutted we never took all three points but I guess we can't win them all.



"HARD WORK AND TOGETHERNESS IS THE SECRET OF THIS UNBEATEN RUN. I AM REALLY HAPPY WITH THE WAY THINGS ARE GOING. I THOUGHT IN THE FIRST HALF THE CHANCES WERE THERE AND WE HAD A COUPLE IN THE SECOND HALF THROUGH LUKE O'NIEN AND BAYO (AKINFENWA) BUT WE JUST DIDN'T GET THE RUB OF THE GREEN WITH OUR CHANCES. IT HAS BEEN A LONG WEEK AND THERE WERE PROBABLY SOME TIRED LEGS OUT THERE AS WELL AS TIRED MINDS. THEY WILL BE RIGHT BACK ON IT NEXT SATURDAY AND WE SHUT YEOVIL OUT FANTASTICALLY WELL."

**GARETH AINSWORTH**





# SETTING THE SCENE.

## A look ahead to the next 90 minutes



It's 5th vs 6th, it's Bucks vs Beds, it's Hylton vs Pierre... and it's one nasty record that the Chairboys are looking to end today.

Eleven times they've attempted to defeat the Hatters at Adams Park, and eleven times they've been unable to do so. But if any Wycombe side from recent eras are equipped to banish such a trend, then it's this generation of stars led by Gareth Ainsworth.

After all, Luton themselves will be looking to end a sequence – the one which has seen Wycombe remain unbeaten in every competitive match since early November, and every league game for three months. Last weekend's performance against Yeovil may not have quite reached the high standards set by the Blues during that sensational run but the resilience to keep the unbeaten run going amidst a busy schedule and a small collection of injuries shows a lot about the character in the squad.

Luton were tipped as title candidates when they romped to a 4-1 win over the Chairboys in the reverse fixture in September, but while they've remained in the top seven ever since, they've gradually slipped away from the leading pack, currently 14 points off top but only six behind the automatic promotion places with a game in hand.

In a bid to strengthen their chances of reaching the third tier, they've splashed out on two of League 2's biggest stars of the past couple of years, bringing Northampton's Lawson D'Ath and Barnet's Luke Gambin into the club to bolster an already impressive array of talent. Boss Nathan Jones has assembled a blend of youth and experience to make them one of the division's strongest forces on their day, and they'll hope to be back to their best now after a confidence-boosting win at Crewe which came at the end of a run of three losses in four.

As for Wycombe, a week of cup dreams must wait as they put all their efforts into attempting to rack up a sixth home win in seven, and put a little distance between themselves and the chasing pack.



WYCOMBE WANDERERS vs LUTON TOWN

SATURDAY 21ST JANUARY 2017  
ADAMS PARK, KICK-OFF 3PM



Wycombe won 2-0 at Kenilworth Road on Boxing Day 2015

## HEAD-TO-HEAD

Given their outstanding record at Adams Park, it's no surprise that the Hatters hold the overall advantage, winning 10 of the 22 encounters in league and cup.

Wycombe's four wins have all come at Kenilworth Road, while there's only been one draw in the past six meetings.

## CONNECTIONS

Jake Gray in the Hatters' ranks developed through the now-closed youth system at Wycombe, while Michael Harriman spent a year on loan with Luton prior to his move to Adams Park.

Other players to have represented both clubs include Ben Roberts, Gary Doherty, Alfie Mawson, Will Antwi, Michael Harriman, Anthony Grant, Matt Spring, Darren Currie, Scott Rendell, Sam Parkin, Paul Read, Lee Angol, Matthew Barnes-Homer, Andre Boucaud, Dean Morgan and Danny Spiller.

## AROUND THE DIVISION

Leaders Doncaster will be expected to continue their superb form at home to Crewe, who are still finding their feet following the departure of long-serving boss David Artell.

Plymouth will hope to have recovered from their midweek FA Cup exploits to face a Cheltenham Town side with Wanderers keeper Scott Brown in goal, while Carlisle have hope to recapture their early season momentum with three points at Accrington.

Portsmouth make the short trip to Crawley while two of the division's in-form sides – Exeter and Colchester – go head-to-head in Devon.

Bottom club Newport need points fast and travel to inconsistent Barnet, and Kevin Nolan will look for his first win as Notts County boss when they meet Grimsby.

## TODAY'S FIXTURES ALL 3PM

	ACCRINGTON VS CARLISLE	
	BARNET VS NEWPORT	
	BLACKPOOL VS YEOVIL	
	CAMBRIDGE VS MANSFIELD	
	CHELTEHAM VS PLYMOUTH	
	CRAWLEY VS PORTSMOUTH	
	DONCASTER VS CREWE	
	EXETER VS COLCHESTER	
	GRIMSBY VS NOTTS COUNTY	
	HARTLEPOOL VS STEVENAGE	
	LEYTON ORIENT VS MORECAMBE	

## SKY BET LEAGUE TWO 2016/17

POS	TEAM	P	W	D	L	F	A	GD	PTS
1	Doncaster	26	17	4	5	52	33	+19	55
2	Plymouth	25	16	3	6	41	27	+14	51
3	Carlisle Utd	26	12	11	3	47	36	+11	47
4	Portsmouth	26	13	6	7	40	26	+14	45
5	Wycombe	25	12	6	7	33	27	+6	42
6	Luton Town	25	11	8	6	36	23	+13	41
7	Colchester	26	11	7	8	41	31	+10	40
8	Cambridge Utd	25	11	6	8	35	26	+9	39
9	Barnet	26	10	9	7	37	37	0	39
10	Exeter	25	11	3	11	36	27	+9	36
11	Grimsby	26	10	6	10	33	31	+2	36
12	Blackpool	25	9	8	8	36	25	+11	35
13	Crawley	25	10	5	10	31	38	-7	35
14	Mansfield	26	8	10	8	26	29	-3	34
15	Stevenage	26	10	3	13	40	44	-4	33
16	Yeovil Town	25	8	7	10	26	29	-3	31
17	Morecambe	25	9	4	12	32	43	-11	31
18	Crewe	26	6	10	10	25	36	-11	28
19	Hartlepool	26	6	9	11	33	44	-11	27
20	Leyton Orient	26	7	4	15	28	39	-11	25
21	Accrington	25	6	7	12	23	34	-11	25
22	Cheltenham	25	5	9	11	27	37	-10	24
23	Notts County	26	6	5	15	28	48	-20	23
24	Newport	25	4	6	15	29	45	-16	18



0

LUTON  
TOWNWYCOMBE  
WANDERERS

1

Tuesday 21 April 2009 | Football League Two, Kenilworth Road | Attendance: 6,553

# THOSE WERE THE DAYS

Tom Bowers steps back in time to a previous meeting between these sides

## THE MATCH

The 2008/09 season had been an impressive one for Wanderers, who hit the ground running with an 18-game unbeaten start to the season which lasted until the first week in December. The New Year brought about mixed form for the Chairboys, but with three games remaining, sat third in the table in a five-team battle for the three automatic promotion spots.

With The Hatters taking an unprecedented 30-point deduction for going into administration, their relegation fate had been decided a long while ago. The midweek clash at Kenilworth Road represented a vital game in hand for Wanderers, with the original game meant to be played on the same weekend that Luton defeated Scunthorpe 3-2 to win the then-named Johnstone's Paint Trophy.

With the pressure completely off their opponents, the game represented a trickier proposition than it looked but Wanderers seemed to take it in their stride. Thanks to a resolute performance from the Chairboys



defence, in particular left back Craig Woodman, the Hatters were rarely given a sniff. Meanwhile at the other end, strikers John Akinde and Stuart Beavon should have scored when well placed.

However, the pressure eventually tolled, and it was to be Akinde that made the breakthrough. The powerful forward comprehensively outmuscled experienced defender Sol Davis before cutting inside to find the bottom corner in front of the Wanderers' fans. It was Akinde's

seventh goal in nine games since joining on loan from Bristol City, sending the fans into delirium.

A smart late save from Jamie Young had the butterflies fluttering, but Wanderers held on to seal a vital three points and elevate themselves to second in the table. Leaders Brentford, themselves having a game in hand on the same night, fell to defeat against Dagenham & Redbridge which meant the Chairboys were in shooting distance of the League Two title.



## WHAT HAPPENED NEXT?

Wanderers travelled to Port Vale on the Saturday with a three-point buffer to outside the automatic promotion spots, knowing a win would seal their place in League One with third and fourth placed sides Exeter and Bury playing each other. However, it wasn't to be as Lee Sawyer salvaged a late 1-1 draw while Exeter and Bury drew, meaning it would go down to the final day.

The final-day decider proved to be one of the most stressful occasions to ever support the club, despite only needing a point against a Notts County team that had lost four of their last five games. A double from John Thompson, either side of a David McCracken equaliser, condemned Wanderers to defeat as they waited anxiously on Bury's result. The Shakers converted a penalty early in injury time, meaning one more goal would relegate the Chairboys to the play-off sports. However, a poorly-timed pitch invasion from Shakers' fans meant the referee cut the game short, meaning Wanderers' fans were able to take to the playing surface in much more joyous fashion.

As mentioned, Luton's relegation fate was long sealed after that 30-point deduction. However, they were to at least end the season with silverware, winning 3-2 in the Johnstone's Paint Trophy final at Wembley. The Hatters' time in non-league would amass to five seasons, before a return to the Football League in 2014.

## WHERE ARE THEY NOW?

The most successful member of the Wanderers' starting line-up that day is undoubtedly Matt Phillips, who after making his professional debut for the Chairboys, is now a Premier League regular with West Bromwich Albion. John Akinde is still terrorising League Two defences, now with Barnet. John Mousinho has experienced back-to-back promotions with Burton Albion and plays in the Championship while goalkeeper Jamie Young has taken a more unconventional route, now playing in Australia's A-League with Brisbane Roar via spells in English non-league.

The majority of the Hatters' team still plays today, with striker Chris Martin the stand-out with Fulham, on-loan from Derby County. Ian Henderson has been a huge player with Rochdale since joining in 2013, scoring over 50 goals for Dale, where he is joined by Keith Keane, who is on-loan at Spotland from Cambridge United.

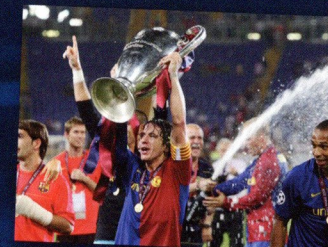
## AROUND THE CLUB

On-the-pitch matters were well and truly occupied with the promotion chase, with the draw against Port Vale at the end of April leaving Wanderers on the cusp of promotion. Unfortunately, most of the run-in was played without influential defender Leon Johnson, who picked up an injury at the end of March following a home draw with Barnet.

## THE WORLD OF SPORT

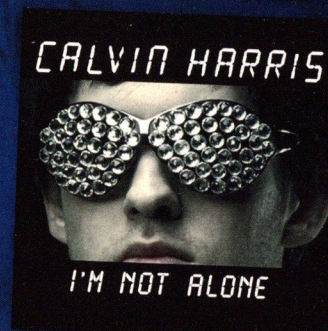
Three of the four competing Champions League semi-finalists were from England, with Arsenal and Manchester United locking horns, while Chelsea played Barcelona. United and Barcelona would prevail, setting up a Rome final which the Catalan side won 2-0.

British driver Jenson Button was well on his way to his first Formula One world title, with a win in Bahrain making it three victories out of the first four races.



## TOP OF THE POPS

Calvin Harris was enjoying life at the top of the UK Singles Chart, with catchy dance hit 'I'm Not Alone' enjoying its second week at the summit. Meanwhile Lady Gaga enjoyed instant success with her debut album 'The Fame' which was in the third of four weeks at the top, eventually going 4x Platinum.



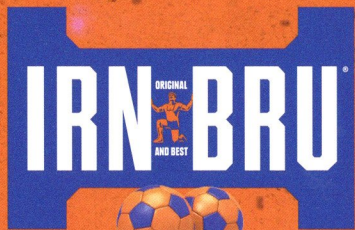
## IN THE NEWS

Alistair Darling, the Chancellor of the Exchequer delivered the government's budget to the House of Commons. It includes the introduction of a 50% tax rate for those earning in excess of £150,000. Three cases of human Swine Flu were confirmed in England, while Italy was struck with a 6.3 magnitude earthquake near L'Aquila.



# BALLS TO THE BOXING DAY SALES

IT'S FOOTBALL TIME!



THE FOOTBALL SPONSOR  
WITH BALLS



Follow @IrnBruFootball for your chance to win EFL tickets

## HALL OF FAME



STEVE WILSON NOMINATES  
THE CANDIDATES TO BE  
INDUCTED INTO THE WYCOMBE  
WANDERERS HALL OF FAME...



## #14: SID CANN

THE ORIGINAL BOSS

**T**he summer of 1951 saw a revolutionary change at Wycombe, with the decision to give one-man control of the team rather than selection by committee. However, that first incumbent of the WWFC's manager's role – Jimmy McCormick – had not worked out as planned. Luckily the second choice – Sid Cann – went on to spend almost a decade in charge and raised the club's profile nationally.

Cann, who had played for Manchester City in the 1933 FA Cup Final, had previously worked as trainer and then manager at Southampton in England's second tier. He also had a strong background as a coach with the FA and came highly recommended. He was hired on a three-year contract – guaranteeing a period of stability and time for the new manager to truly put his own stamp on the Wycombe side.

Over those following years several Chairboys greats were brought in by Cann, such as Dennis Syrett, Jackie Tomlin, Paul Bates and Len Worley, as he assembled a side capable of dominating the amateur game. Third and fourth place finishes in 1953-54 and 1954-55 put the Chairboys on the map as a serious contender, while the run to the FA Amateur Cup semi-finals in 1955 was only ended by Bishop Auckland.

The following term Wycombe ended their 29-year wait for the Isthmian League title – with the championship-winning victory coming over Dulwich Hamlet in April 1956, the same team against whom Cann had begun his reign.

In 1956-57, Wycombe retained the title and Cann also masterminded the run all the way to Wembley and the FA Amateur Cup Final. An amateur double was within grasp but those old foes Bishop

Auckland were waiting in the Final and thwarted hopes of a trophy to go with the title.

There was still time for one last notable achievement as the 1959-60 Cann side reached the FA Cup Second Round for the first time in the club's history, but the dawn of a new decade saw the gradual decline of his great side and at the end of the 1960-61 campaign he departed to take a job back in the Football League coaching at Norwich City.

His dalliances with amateur football were not over though and in 1962 he took up the manager's position at Sutton United, where he remained in charge for the next 11 years – taking the U's to two FA Amateur Cup Finals at Wembley, although by losing both he gained an unwanted treble of runners-up medals in the competition. He did, however, guide them to the 1966-67 Isthmian League crown and a memorable FA Cup Fourth Round encounter with Leeds United.

**Finest Moment:** The appearance in the FA Amateur Cup Final put the club firmly into the national consciousness as one of the leading amateur sides. With 90,000 inside Wembley and the second half of the game shown live on BBC TV, described by legendary commentator of Kenneth Wolstenholme, the name Wycombe Wanderers was known across the households of the nation during the Cann era.

**What they said about Cann:** "He was different to previous manager Jimmy McCormick; he was very methodical but we all ended up staying together at the club for about ten years, none of us thought of leaving." - Striker Dennis Atkins speaks of the spirit instilled in the squad who won two Isthmian league titles and reached the 1957 FA Amateur Cup Final under Cann.



23

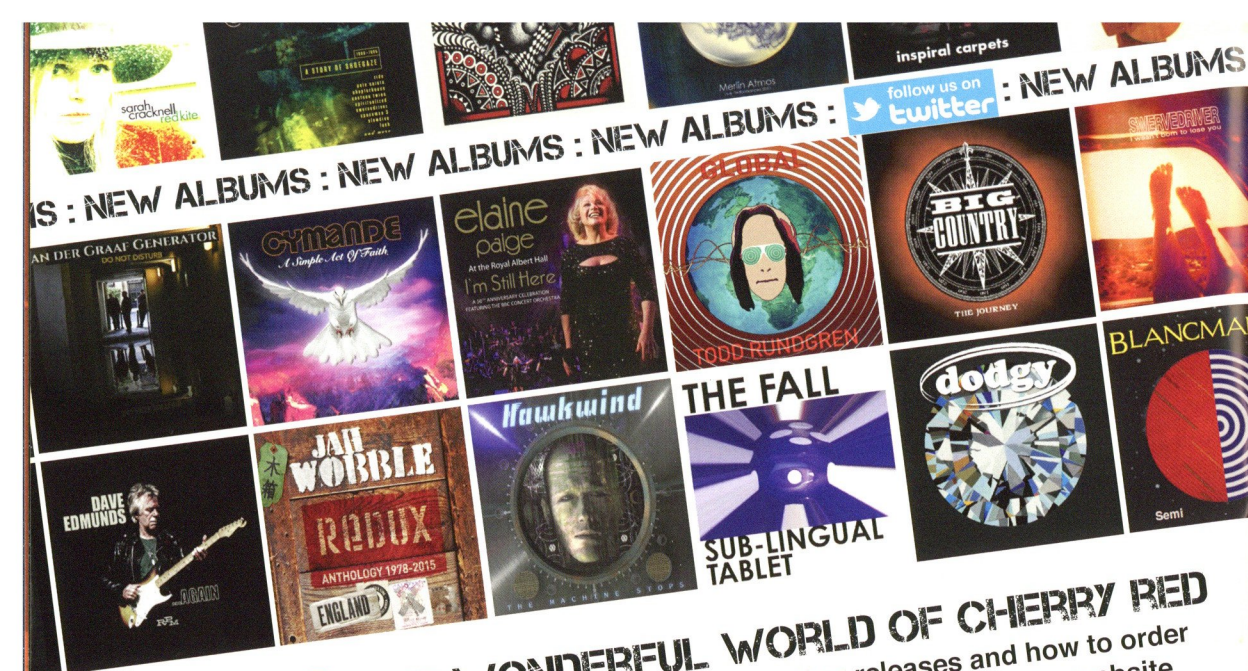


WILL

DE HAUVILLAND







**THE WONDERFUL WORLD OF CHERRY RED**  
For more details on these and other releases and how to order  
call our mailorder hotline 020 8996 3120 or visit the website  
[www.cherryred.co.uk](http://www.cherryred.co.uk)

**CHERRY RED RECORDS**

**M.F.F. MAGAZINE**  
This is Cherry Red Records' colour news mag.  
To subscribe please e mail:  
[infonet@cherryred.co.uk](mailto:infonet@cherryred.co.uk)  
Keep up to date with everything at Cherry Red. Subscribe now!



**FOOTBALL CDs**  
Over 50 club and country  
compilations!  
From Arsenal to Wolves  
and beyond!

**CHERRY RED.TV**  
[www.cherryred.tv](http://www.cherryred.tv)  
Unique in depth interviews.



**CLASSIC REISSUES : CLASSIC R**

Find us on **f**

# TODAY'S VISITORS LUTON TOWN



**NAME:**  
LUTON TOWN

**NICKNAME:**  
THE HATTERS

**FOUNDED:**  
1885

**GROUND:**  
KENILWORTH ROAD

**TWITTER:**  
@LUTON TOWN

## PUNDIT'S VIEW

Luton's push for promotion has been strengthened with the recent captures of creative midfielders Lawson D'Ath and Luke Gambin, and boss Nathan Jones will hope to find a settled side now having successfully made five changes from their FA Cup defeat to Accrington for last weekend's win at Crewe. That victory means he may keep faith with 10 of the 11 who started at Gresty Road, but left-back and set-piece specialist Alan Sheehan is suspended, which means Jack Senior is likely to come into the side having been brought on from the bench last weekend.

In goal is Christian Walton, a promising young keeper on a season-long loan from Brighton, and he's protected by two experienced centre-halves in Scott Cuthbert and Johnny Mullins. With Senior at left-back, it's likely there'll be another youngster on the other side of defence in James Justin, whose impressive performances have kept Stephen O'Donnell out of the side.

Town hope to plug the gap left by star midfielder Cameron McGeehan's long-term injury by deploying Jake Gray in a central midfield role, and he got off to a fine start with a goal in that win at Crewe. Alongside him is newcomer Lawson D'Ath,

who won the League 2 title last year, while on the flanks are two youngsters who earned rave reviews in the Hatters' 4-1 win over Wycombe in September.

Pelly Ruddock Mpanzu and Jordan Cook are two pacy, skilful players who love to run at defenders and create chances for the prolific frontline of Danny Hylton and Jack Marriott, who've netted 23 goals between them so far. It's a classic 'big man, little man' partnership, with Hylton known to take an aggressive approach in the target man role while Marriott is a poacher-type finisher.

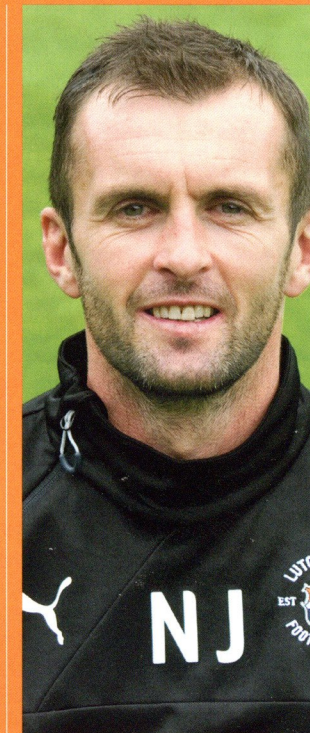
Glen Rea was suspended for the win at Crewe so could return if Jones opts to deploy a holding midfielder in the side, while Olly Lee could do a similar job having been named on the bench last week.

Other subs at Crewe were long-serving midfielder Jonathan Smith - who scored here two seasons ago - plus experienced forward Craig Mackail-Smith and livewire striker Isaac Vassell.

## IN CHARGE: NATHAN JONES

Welshman Jones was appointed as John Still's successor in January 2016.

A former coach and assistant manager at Brighton, Charlton and



Yeovil, he was a player at Kenilworth Road in 1995 but left without making an appearance. Jones spent a year in Spain before returning to the UK and playing for Southend, Brighton and Yeovil, where he went onto make over 500 appearances.

He began his coaching qualifications while with Yeovil and achieved his UEFA Pro-Licence in 2014.

He's presided over 56 games as Luton boss, winning just over half - 29 in all competitions - and was nominated for the League Manager of the Month prize for August.



Lawson D'Ath in action at Crewe



# MEET THE VISITORS.

By Guy Lambert

MEET THE VISITORS



**CHRISTIAN WALTON**

01

**Position:** Goalkeeper

**Age:** 21

**Former clubs:** Brighton & Hove Albion, Bury, Plymouth.

**Anything else?** Kept a clean sheet on his England U21 debut in a 5-0 win over Bosnia & Herzegovina in October 2016.



**STEPHEN O'DONNELL**

02

**Position:** Defender

**Age:** 24

**Former clubs:** Partick Thistle

**Anything else?** Whilst at Partick Thistle, O'Donnell was named in the 2012-13 PFA Scotland First Division Team of the Year.



**JONATHAN SMITH**

04

**Position:** Midfielder

**Age:** 30

**Former clubs:** Morecambe, Forest Green Rovers, York, Swindon plus loans.

**Anything else?** The longest serving senior member of the squad, Smith was voted the Hatters' player of the Year by his team-mates for the 2014-15 campaign.



**JOHNNY MULLINS**

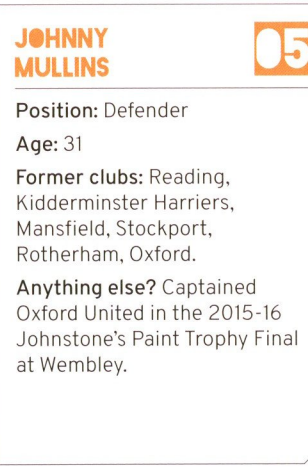
05

**Position:** Defender

**Age:** 31

**Former clubs:** Reading, Kidderminster Harriers, Mansfield, Stockport, Rotherham, Oxford.

**Anything else?** Captained Oxford United in the 2015-16 Johnstone's Paint Trophy Final at Wembley.



**SCOTT CUTHBERT**

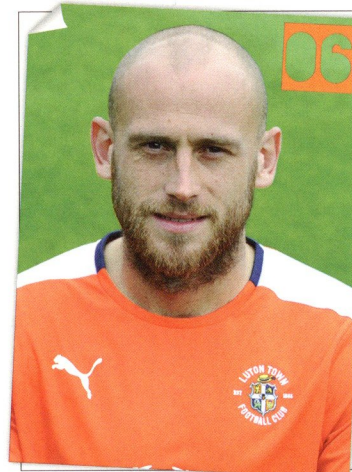
06

**Position:** Defender

**Age:** 29

**Former clubs:** Celtic, Livingston, St Mirren, Swindon, Leyton Orient.

**Anything else?** The commanding centre half has been club captain since January 2016.



**JAKE GRAY**

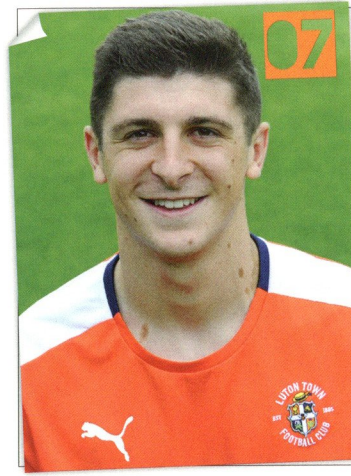
07

**Position:** Midfielder

**Age:** 21

**Former clubs:** Cheltenham, Crystal Palace, Hartlepool.

**Anything else?** A product of Wycombe Wanderers' youth system, Gray moved to Crystal Palace in 2012.



**DANNY HYLTON**

09

**Position:** Striker

**Age:** 27

**Former clubs:** Aldershot, Rotherham, Oxford plus loans.

**Anything else?** Currently the club's top scorer this season with 14 goals in all competitions.



**JORDAN COOK**

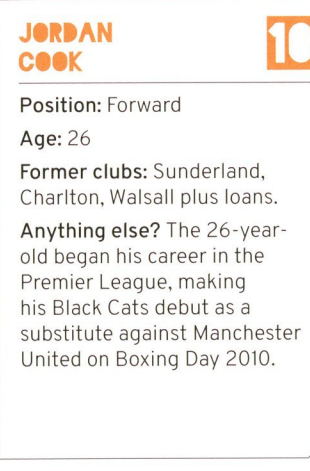
10

**Position:** Forward

**Age:** 26

**Former clubs:** Sunderland, Charlton, Walsall plus loans.

**Anything else?** The 26-year-old began his career in the Premier League, making his Black Cats debut as a substitute against Manchester United on Boxing Day 2010.



**CRAIG MACKAIL-SMITH**

12

**Position:** Striker

**Age:** 32

**Former clubs:** Dag & Red, Peterborough, Brighton.

**Anything else?** Scored 99 goals in 212 games for Peterborough, gaining promotion with them twice.



**JACK MARRIOTT**

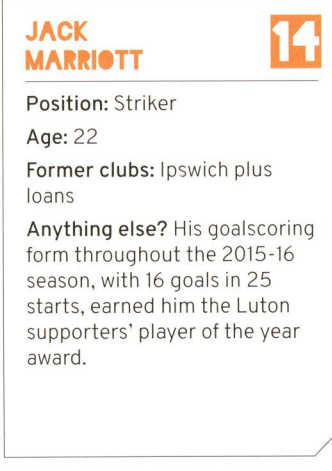
14

**Position:** Striker

**Age:** 22

**Former clubs:** Ipswich plus loans

**Anything else?** His goalscoring form throughout the 2015-16 season, with 16 goals in 25 starts, earned him the Luton supporters' player of the year award.



**GLEN REA**

16

**Position:** Defender

**Age:** 22

**Former clubs:** Brighton & Hove Albion, Southend.

**Anything else?** Rea has made 10 appearances for the Republic of Ireland U21's, scoring one goal.

**PELLY RUDDOCK MPANZU**

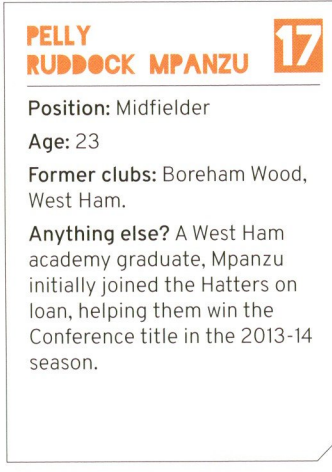
17

**Position:** Midfielder

**Age:** 23

**Former clubs:** Boreham Wood, West Ham.

**Anything else?** A West Ham academy graduate, Mpanzu initially joined the Hatters on loan, helping them win the Conference title in the 2013-14 season.





# Wickes

Let's do it right

## The best home WIN ever?

— Win a —  
**£35,000**  
deposit

To find out how you or someone you know could  
win the Wickes First Time Buyers Fund worth £35,000  
visit [www.wickes.co.uk/competitions](http://www.wickes.co.uk/competitions)

18+. UK Only. Enter between 16/01/2017 & 05/02/2017.  
Non-home owners only. No purchase necessary. Full T&C's at  
<http://www.wickes.co.uk/competitions/first-time-buyers-fund/terms-conditions>



MEET THE VISITORS



**OLLY  
LEE**

**19**

**Position:** Midfielder

**Age:** 25

**Former clubs:** West Ham, Barnet, Birmingham plus loans

**Anything else?** Lee played under former Hatters boss John Still at Dag & Red, and then made the same move Kenilworth Road in 2015.

**ISAAC  
VASSELL**

**20**

**Position:** Striker

**Age:** 23

**Former clubs:** Plymouth, Truro plus loans.

**Anything else?** Vassell is a cousin of former England international Darius Vassell, and combined life working on a building site with playing part-time for Truro City following his release by Plymouth in 2014.

**JACK  
SENIOR**

**21**

**Position:** Defender

**Age:** 20

**Former clubs:** Huddersfield

**Anything else?** Senior's EFL debut came last week in the win at Crewe, the day after his 20th birthday.

**LUKE  
GAMBIN**

**22**

**Position:** Winger

**Age:** 23

**Former clubs:** Barnet plus loans.

**Anything else?** Gambin signed this week and has made six international appearances for Malta, most notably in a World Cup qualifying group that contains England and Scotland.

**JOSH  
MCQUOID**

**23**

**Position:** Striker

**Age:** 27

**Former clubs:** Bournemouth, Millwall plus loans.

**Anything else?** McQuoid has worked his way up through the international ranks, making five international appearances for Northern Ireland.

**LAWSON  
D'ATH**

**24**

**Position:** Midfielder

**Age:** 24

**Former clubs:** Reading, Northampton plus loans.

**Anything else?** Acquired by Luton during this current transfer window, D'Ath played alongside Hatters boss Nathan Jones at Yeovil in 2012 and won the League 2 title with Northampton last season.

**CRAIG  
KING**

**31**

**Position:** Goalkeeper

**Age:** 19

**Former clubs:** Bishops Cleeve, Met Police.

**Anything else?** King has made four starting appearances for Luton, most notably keeping a clean sheet in the Hatters' 2-0 victory over West Bromwich U23's in the EFL Trophy.

**JAMES  
JUSTIN**

**36**

**Position:** Defender/Midfielder

**Age:** 18

**Former clubs:** None

**Anything else?** First joined the Hatters in 2005 and won the Aarau Masters as an Under-11, beating Bayern Munich in the final. Made a man of the match winning performance for the senior team in the EFL Trophy victory over Aston Villa.

[WWW.WYCOMBEWANDERERS.CO.UK](http://WWW.WYCOMBEWANDERERS.CO.UK) @WWFCOFFICIAL /WWFCOFFICIAL /WWFCOFFICIAL

39



Panache Fire Services Ltd

www.panachefire.co.uk

Panache Fire Services Ltd

www.panachefire.co.uk

Tel: 01494 474787

# CONTACT US FOR A FREE FIRE COMPLIANCE CONSULTATION

e: sales@panachefire.co.uk  
t: 01494 474 787

## PROTECTION

FIRE EXTINGUISHERS  
EMERGENCY LIGHTING  
SMOKE ALARMS  
FIRE SUPPRESSION AND DESIGN

## PASSIVE FIRE PROTECTION

FIRE DOORS INSTALLATION & MAINTENANCE  
COMPARTMENTATION & FIRE STOPPING

## PREVENTION

STAFF & FIRE WARDEN TRAINING  
FIRE RISK ASSESSMENTS

Panache Fire Services Ltd

Total Protection



panachefire.co.uk



Panache Fire Services



@PanacheFires



panachefireservices



Qualifying Fire Door Professionals

Panache Fire Services Ltd, Unit 2, Wycombe Ind. Mall, West End Street, High Wycombe, Bucks, HP11 2QY

THE OPPOSITION



# PHOTO RECALL

We re-visit six previous meetings with the Hatters



Ray Wilkins made his only Chairboys appearance in a 1-0 defeat to Luton in 1996



Russell Perrett celebrates his goal in Luton's 3-1 victory in 2003



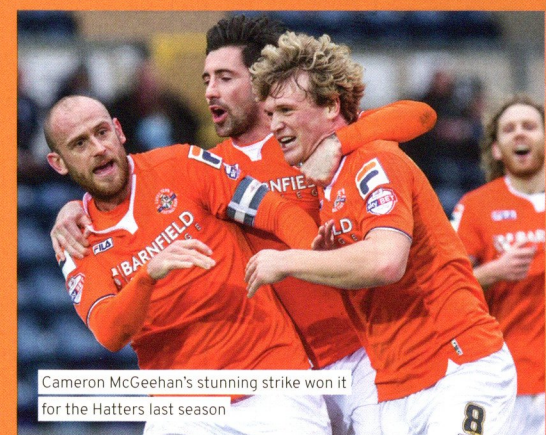
Tommy Doherty gets feisty in a 0-0 draw at a rain-drenched Adams Park in 2008



Paris Cowan-Hall opened the scoring in the Boxing Day draw in 2014



Alfie Mawson's stunning goal at Kenilworth Road saw him rise to fame

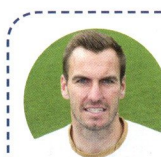


Cameron McGeehan's stunning strike won it for the Hatters last season

WWW.WYCOMBEWANDERERS.CO.UK @WWFCOFFICIAL /WWFCOFFICIAL WWFCOFFICIAL



# YOUR CHAIRBOYS.



**1. SCOTT BROWN**

31-year-old keeper who joined the club this summer, having spent nine years previously with Cheltenham Town. Out on loan at Cheltenham Town.

HOME KIT: AVAILABLE  
AWAY KIT: AVAILABLE  
TRAINING KIT: AVAILABLE  
GLOVES: PEAK

2016/17	TOTAL	2016/17	TOTAL
APPS	GLS	APPS	GLS
4	1	4	1



**2. SIDO JOMBATI**

Portuguese defender who has been a cult hero at Adams Park with some flamboyant displays in his two years with the club, scoring some exquisite free-kicks.

HOME KIT: Peter & Nick Lerner  
AWAY KIT: Travis & Aidan Booth  
TRAINING KIT: AVAILABLE  
SOCKS & BOOTS: AVAILABLE

2016/17	TOTAL	2016/17	TOTAL
APPS	GLS	APPS	GLS
20	2	97	4



**3. JOE JACOBSON**

Welsh left-back who has a keen eye for scoring from long-range, and has previously played for Cardiff, Bristol Rovers and Shrewsbury. Scored his first goal of the season against Yeovil in January.

HOME KIT: Piledesigns  
AWAY KIT: Jenny Darby  
TRAINING KIT: Liam O'Rourke  
SOCKS & BOOTS: Karen Harris-Kenny

2016/17	TOTAL	2016/17	TOTAL
APPS	GLS	APPS	GLS
25	1	114	6



**15. DAYLE SOUTHWELL**

Highly-rated striker who arrived from Boston in the summer, having scored 54 goals in two seasons in the National League North. Currently sidelined through injury.

HOME KIT: AVAILABLE  
AWAY KIT: Arran White  
TRAINING KIT: AVAILABLE  
SOCKS & BOOTS: Finn Sutton

2016/17	TOTAL	2016/17	TOTAL
APPS	GLS	APPS	GLS
10	1	10	1



**16. MICHAEL HARRIMAN**

Right-sided player Harriman signed a permanent deal in January after impressing during two loan spells from QPR, and finished last year as joint top scorer. Sidelined by injury.

HOME KIT: AJW Ltd  
AWAY KIT: AVAILABLE  
TRAINING KIT: AVAILABLE  
SOCKS & BOOTS: AVAILABLE

2016/17	TOTAL	2016/17	TOTAL
APPS	GLS	APPS	GLS
28	0	97	8



**17. LUKE NIEN**

Energetic midfielder who scored five goals in his first full season in professional football, having signed from Watford last year.

HOME KIT: WW Trust Directors  
AWAY KIT: Arran White  
TRAINING KIT: Emily Isaac  
SOCKS & BOOTS: Callum Burchett

2016/17	TOTAL	2016/17	TOTAL
APPS	GLS	APPS	GLS
17	1	57	6



**4. STEPHEN MCGINN**

Scottish midfielder with an excellent range of passing and has spent much of his career at a higher level with Watford and Dundee. Scored in the Checkrade Trophy against Coventry.

HOME KIT: HAP Architects  
AWAY KIT: AVAILABLE  
TRAINING KIT: AVAILABLE  
SOCKS & BOOTS: AVAILABLE

2016/17	TOTAL	2016/17	TOTAL
APPS	GLS	APPS	GLS
10	1	40	2



**5. ANTHONY STEWART**

Classy centre-back who came through the club's youth system and returned in 2015, forming a superb defensive partnership with Aaron Pierre. Scored at Blackpool in the Checkrade Trophy.

HOME KIT: Risborough Fish  
AWAY KIT: Karen Adams  
TRAINING KIT: AVAILABLE  
SOCKS & BOOTS: AVAILABLE

2016/17	TOTAL	2016/17	TOTAL
APPS	GLS	APPS	GLS
32	3	128	9



**6. AARON PIERRE**

Colossal defender whose strength is virtually unrivalled at this level and poses a constant attacking threat from set pieces. Nominated for League 2 Player of the Month for November.

HOME KIT: The Rose Family  
AWAY KIT: Kathy Locke  
TRAINING KIT: AVAILABLE  
SOCKS & BOOTS: Ben Law

2016/17	TOTAL	2016/17	TOTAL
APPS	GLS	APPS	GLS
32	2	133	10



**18. DANNY ROWE**

Versatile player who can play in defence or midfield, having signed a permanent deal from Rotherham United last year following loan spells. On loan at Barrow.

HOME KIT: Fred & Ange Mullin  
AWAY KIT: David & Joan Boyd  
TRAINING KIT: AVAILABLE  
SOCKS & BOOTS: AVAILABLE

2016/17	TOTAL	2016/17	TOTAL
APPS	GLS	APPS	GLS
15	1	53	2



**19. MYLES WESTON**

Pacy winger who arrived in the summer after leaving Southend, having also played for Charlton, Brentford, Notts County and Gillingham. Scored the late equaliser at Plymouth.

HOME KIT: Christine Barry  
AWAY KIT: AVAILABLE  
TRAINING KIT: AVAILABLE  
SOCKS & BOOTS: AVAILABLE

2016/17	TOTAL	2016/17	TOTAL
APPS	GLS	APPS	GLS
11	1	11	1



**20. ADEBAYO AKINFENWA**

World-famous striker Akinfenwa is known as the 'Beast' due to his immense physical strength, and signed in the summer from AFC Wimbledon. Scored the FA Cup third round winner against Stourbridge.

HOME KIT: Tina Davis  
AWAY KIT: talkhealthpartnership.com  
TRAINING KIT: Jordan Wiles & Lauren Shoebridge  
SOCKS & BOOTS: The Riley Family

2016/17	TOTAL	2016/17	TOTAL
APPS	GLS	APPS	GLS
29	7	29	7



**7. GARRY THOMPSON**

Experienced forward who reached the League Cup Final with Bradford and has won promotion with Morecambe, Scunthorpe and Bradford earlier in his career.

HOME KIT: transformationdelivery.com  
AWAY KIT: Jordan Wiles and Lauren Shoebridge  
TRAINING KIT: Rena Frontalski  
SOCKS & BOOTS: AVAILABLE

2016/17	TOTAL	2016/17	TOTAL
APPS	GLS	APPS	GLS
31	3	80	11



**8. MARCUS BEAN**

Tough-tackling midfielder who arrived from Colchester in January 2015 having previously represented QPR, Brentford and Swansea. Still awaiting his first goal!

HOME KIT: WWISC  
AWAY KIT: In memory of Wendy Holt  
TRAINING KIT: AVAILABLE  
SOCKS & BOOTS: AVAILABLE

2016/17	TOTAL	2016/17	TOTAL
APPS	GLS	APPS	GLS
14	0	66	0



**9. PAUL HAYES**

Team captain Hayes is in his second spell with the club after a successful loan period in 2012, and was top scorer in 2014/15.

HOME KIT: Mayor Broking  
AWAY KIT: Lisa Bowker  
TRAINING KIT: Reta Stone  
SOCKS & BOOTS: AVAILABLE

2016/17	TOTAL	2016/17	TOTAL
APPS	GLS	APPS	GLS
24	5	116	31



**21. MAX MULLER**

German defender who extended his contract until June 2018 after returning to full fitness, having signed in the summer.

HOME KIT: John Clegg  
AWAY KIT: BMI The Chiltern & Shelburne Hospitals  
TRAINING KIT: AVAILABLE  
SOCKS & BOOTS: AVAILABLE

2016/17	TOTAL	2016/17	TOTAL
APPS	GLS	APPS	GLS
2	0	2	0



**22. NICK FREEMAN**

Exciting attacker who signed a permanent contract after a successful trial period in the summer, having excelled in non-league with Histon. Recently spent time on loan at Wealdstone.

HOME KIT: Alan, Ray, Phil and James  
AWAY KIT: AVAILABLE  
TRAINING KIT: AVAILABLE  
SOCKS & BOOTS: AVAILABLE

2016/17	TOTAL	2016/17	TOTAL
APPS	GLS	APPS	GLS
11	1	11	1



**23. WILL DE HAVILLAND**

Commanding centre-back who has previously been with Millwall and Sheffield Wednesday. Made his debut in the EFL Cup against Bristol City.

HOME KIT: Oliver & Ben Jewsbury  
AWAY KIT: David Hill Wealth Management  
TRAINING KIT: AVAILABLE  
SOCKS & BOOTS: AVAILABLE

2016/17	TOTAL	2016/17	TOTAL
APPS	GLS	APPS	GLS
8	0	8	0



**10. MATT BLOOMFIELD**

The Chairboys' longest-serving player, Bloomfield is club captain has four goals already this season, all away from home. Currently sidelined by injury.

HOME KIT: Reuben & Sarah Cox  
AWAY KIT: Derrick, Janil & Clare Woodward, & Rachael Windsor  
TRAINING KIT: Anthony Stone  
SOCKS & BOOTS: AVAILABLE

2016/17	TOTAL	2016/17	TOTAL
APPS	GLS	APPS	GLS
28	4	423	33



**11. SAM WOOD**

Popular midfielder Wood is one of the club's longest-serving players, having signed in 2012, and is a regular provider of assists from the wing. Scored against Newport and Stourbridge in January.

HOME KIT: Trevor & Jackie Cox  
AWAY KIT: Derrick, Janil & Clare Woodward, & Rachael Windsor  
TRAINING KIT: Louise Stone  
SOCKS & BOOTS: Jamie Hipwell

2016/17	TOTAL	2016/17	TOTAL
APPS	GLS	APPS	GLS
26	3	198	16



**12. PARIS COWAN-HALL**

Creative attacker who rejoined the club on loan from Millwall until January, after having two superb spells with the Blues previously. Netted the winner against Newport.

HOME KIT: Anonymous  
AWAY KIT: Christine Barry  
TRAINING KIT: Elaine & Claire Marshall  
SOCKS & BOOTS: AVAILABLE

2016/17	TOTAL	2016/17	TOTAL
APPS	GLS	APPS	GLS
22	3	80	15



**24. SCOTT KASHKET**

Exciting winger who signed on deadline day after leaving Leyton Orient and was the Sky Bet League 2 Player of the Month for December.

HOME KIT: The Abbis Family  
AWAY KIT: 500 Club  
TRAINING KIT: AVAILABLE  
SOCKS & BOOTS: Max and Zoe Dawson

2016/17	TOTAL	2016/17	TOTAL
APPS	GLS	APPS	GLS
16	13	16	13



**25. DOMINIC GAPE**

Diminutive midfielder who returned on a permanent deal in January after impressing on loan from Southampton.

HOME KIT: AVAILABLE  
AWAY KIT: AVAILABLE  
TRAINING KIT: AVAILABLE  
SOCKS & BOOTS: AVAILABLE

2016/17	TOTAL	2016/17	TOTAL
APPS	GLS	APPS	GLS
22	1	22	1



**27. JAMAL BLACKMAN**

Young goalkeeper who signed on loan from Chelsea and made his debut in the 1-1 draw with Accrington. Saved two vital penalties in the Checkrade Trophy win at Blackpool.

HOME KIT: Elaine & Claire Marshall  
AWAY KIT: Volunteer  
TRAINING KIT: Graham and Sarah Wolstencroft  
GLOVES: PEAK

2016/17	TOTAL	2016/17	TOTAL
APPS	GLS	APPS	GLS
28	11	28	11



## MAGIC MOMENTS

ADRIAN WOOD SELECTS ONE  
MEMORABLE GAME FROM EACH  
SEASON AT ADAMS PARK

# NUMBER 14

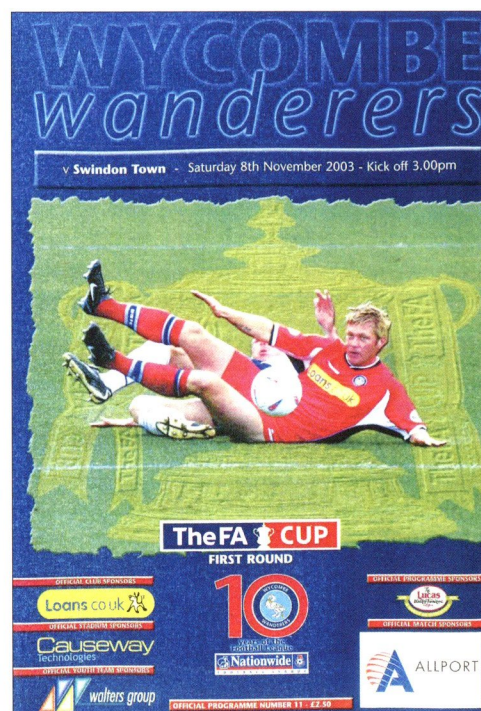
VS SWINDON TOWN  
FA CUP 1ST ROUND, NOVEMBER 8TH 2003

The previous season had ended badly. Without a win in the final eight games, Sanchez's side had limped home in 18th place, just four points above the relegation zone. The new campaign started with fans unhappy that the ground was now called "The Causeway Stadium" and the mood deteriorated further with poor form on the pitch.

After a 2-5 home defeat in mid-September against Oldham, Sanchez cupped his ear towards the Valley End in response to booing and then shrugged his shoulders. Aston Villa then won 5-0 at The Causeway Stadium in the Carling Cup after which the manager commented "We've got a lot of work to do but this club won't be relegated under me, I can tell you that." On September 30th after a defeat at Tranmere that left the club in 22nd place with just six points from eleven fixtures, it was announced that the club and Sanchez had "parted company".

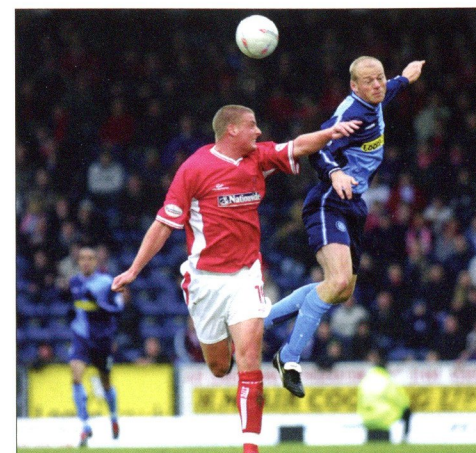
John Gorman was appointed temporary boss and the 1-2 home defeat against Barnsley made it 13 league games without a win with the side now rock bottom in Division Two. Early November saw former Arsenal hero Tony Adams confirmed as the new Wanderers boss with John Gorman retained to assist him. Club directors described this partnership as "The Dream Team". Gorman picked the side for the FA Cup game against Swindon but all media attention was focused on the arrival of Adams – captain of Arsenal, captain of England, 66 caps and a leader on the field.

Adams penned in the matchday programme: "I will be judged ultimately on the results I deliver and not on any past reputation. I would not have



*taken the job at this great club unless I genuinely believed it was right for me. I will be cutting my management teeth at Wycombe but I will be doing so with a deep understanding of the game. Thank you for the opportunity. I will not let you down."*

The moment of course needed a victory and this came in no uncertain fashion as Wycombe saw



off their Division 2 rivals 4-1. The game itself was rather scrappy but the winning start for "The Dream Team" was all that was important. Early chances for Wycombe came and went with Darren Currie, Dannie Bulman and Keith Ryan all failing to hit the target. Swindon started slowly but almost went ahead when Brian Howard's shot hit the post. The crucial breakthrough came in the final minute of the first half when defender **Andy Thomson** headed home Currie's right side corner.

With Adams now vacating his place in the directors box to be on the bench alongside Gorman, Wycombe again controlled most of the proceedings. Goal number two came from a superb **Darren Currie** free-kick that flew past the bemused Rhys Evans in the Swindon goal. Swindon though were given a lifeline when Michael Simpson fouled former Wanderer Sam Parkin in the box and **Andy Gurney** converted the penalty. Swindon pushed forward but were undone six minutes from time when **Currie** converted from close range after Evans had spilled Bulman's shot. Four minutes later **Jermaine McSparran** capped the day for Wycombe when he seized onto Charlie Mapes' through ball and smashed his shot past Evans. The match day attendance was 4,438 including 1,127 in the away end.



For the record the Wycombe line-up was as follows: **F Talia, D Senda, A Thomson, R Johnson, C Vinnicombe, S Roberts (S Brown), M Simpson, D Bulman, D Currie, K Ryan (C Mapes) and J McSparran**

Regrettably however all hope of a sustained revival were quickly dashed. Gorman soon departed – "The Dream Team" was over. The next win didn't arrive until December 20th – by that time the club had exited the FA Cup at the hands of Mansfield Town. 2004 started promisingly with the on-loan Luke Moore scoring a hat-trick in the 4-1 win over Grimsby. The team though then went 13 games without a victory. The truly woeful season ended with the club bottom, five points adrift of nearest rivals Notts County. It was Wycombe's first relegation as a Football League outfit and ended ten consecutive years in the third flight of domestic football

## FEATURED PLAYER



### DARREN CURRIE

Currie's first strike against Swindon showed just how good he was from dead ball situations and there was always expectation whenever he lined up to take a free kick in range of the opponents' goal. He generally featured wide on the right. Moving from Barnet in July 2001 for a reported £200k fee he teamed up again with his former team mate at Underhill, Sean Devine. He featured in all the league fixtures in 2001/02 and although registering only six goals he had numerous assists. He was often used from the bench in 2002/03 but was a regular again in 2003/04, netting nine goals. He moved on in May 2004 as part of the club's wage cutting exercise. His full playing record for Wycombe was 143 appearances with 19 goals.





# SPORTS & EDUCATION TRUST NEWS.



EDUCATING, MOTIVATING & INSPIRING THROUGH THE POWER OF SPORT

www.wwset.co.uk @ww\_set /wwfset

**Good afternoon everybody and a big welcome to both the WWFC fans and also the travelling Luton supporters!**

In today's programme notes we would like to take this opportunity to introduce everybody to another full-time member of the ever growing WWSET team, Sam Parker, who began with the charity last week in the role of Community Health Manager.

As many of you will be aware, our organization seeks to assist the local community in four primary areas; those of Sports Participation, Social Inclusion, Education and Health.

Following the publishing of our first annual report recently (which I hope you've all read but if not it can be found on our website!) it became clear that our activity offerings related to health were not at comparable levels when looking at the other areas of our work. Therefore, the decision was taken by the management team and Board of Trustees to try and rectify this shortfall, and as such the Community Health Manager's role was created.

With well over 20 people applying for the role it was a tough task to shortlist four candidates for interview but eventually this was achieved, and following the process Sam was offered the post.

As a graduate of Bournemouth University where Sam studied a degree in Sports Development and Coaching Sciences, coupled with her employment experience in both County Sports Partnerships and National Governing Bodies for Sport (working in roles such as



Sports Development Officer for 'Get Berkshire Active' as well as time employed by a local authority in the role of Project Officer for an initiative called 'Active Together'), it was unanimously felt that Sam had all the skills to be successful in post. It should also be noted that it was clear during the recruitment process that Sam has a passion for assisting people in improving their personal health and wellbeing which we feel will serve her well moving forward.

**Head of WWSET Paul Foley had the following to say about Sam's appointment:**

*"I'm delighted to welcome Sam to WWSET and am looking forward to working with her over the coming months and years. Sam was the standout candidate during the recruitment process and I feel she has all the necessary attributes to be a real asset not just to our team, but to the community of High Wycombe as a whole."*

*"I'm also really excited to see how Sam shapes her role against the brief she has been given, which is to maximise WWSET's physical and mental health related offerings and to develop, manage and deliver numerous new activities and partnerships all of which will aim to improve health levels within the local community."*

**Having now been in post a week here's Sam's thoughts on her new role:**

*"I'm really pleased to be working for WWSET; they are a great team, already do a lot of brilliant work within the community, and I can't wait to put my ideas into practice!"*

*With so many do's and don'ts out there regarding health issues, it can be daunting for people to know what to do for the best, but I hope to create projects that are fun and informative, and help the people of Wycombe to take that first step to a healthier lifestyle."*

I'm sure you will all join us in welcoming Sam into the club and make sure you say hello if you see her around!

Today we would also like to give everybody a quick update on the recent Kinder +Sport Girls Cup Regional Finals tournament that took place at Reading FC, and where WWSET were represented by our local tournament champions Chesham Grammar School.

On a freezing cold morning last week the Chesham team did amazingly well up against teams representing the hosts plus Cheltenham Town, Coventry City, MK Dons, Portsmouth FC, Northampton Town and Oxford United. Having reached the semi-finals the girls were eventually eliminated after extra time by the eventual winners Reading who will now go on to play the Grand Final at Wembley before the Checkatrade Trophy Final on April 2nd 2017.

A massive well done to all the Chesham Grammar players who did such a fine job representing Wycombe Wanderers and fingers crossed they can go one step further next year and be rewarded with the opportunity to play on the hallowed turf of our national stadium!

Finally, today we welcome Burford School for our guard of honour. They'll be welcoming the teams onto the pitch at 2.55pm with a flag parade before taking their seats for the big match. Enjoy your day with us, and finally...

**C'MON THE CHAIRBOYS!**





# CHILD'S TOYS

The Way Toy Shops Used To Be

Established in 1878, Child's toys is one of the oldest toy shops in England!

Come and visit us in Hazlemere, High Wycombe  
Monday - Saturday 9.00-17.30



36 Park Parade,  
Hazlemere,  
HP15 7AA,  
01494 711425



## THE HAMPDEN ARMS Bar & Restaurant

Real Ales  
Extensive Wine List

Good Food  
A la carte, set & snack menus, Sunday Roasts  
and blackboard specials

Beautiful Rural Setting  
Large secure beer garden, car park and on  
circular pub walk route

Great Hampden, Buckinghamshire HP16 9RQ

t: 01494 488255

e: louise.lucas@outlook.com

www.thehampdenarms.co.uk

**x1 FREE DRINK PER CUSTOMER, PER VISIT ON PROOF  
OF WYCOMBE WANDERERS FC TICKET OR MEMBERSHIP**

Pub open 7 days a week.  
Food served every day for lunch and dinner

# MEET THE MASCOTS!

The Mascot Experience is available  
all season and all details can be  
found on [www.wwset.co.uk](http://www.wwset.co.uk) or email  
[community@wwfc.com](mailto:community@wwfc.com) for more  
information!

## A MASSIVE HELLO AND WELCOME TO OUR WYCOMBE WANDERERS MASCOTS TODAY!

### XANDER SCOBLE

Age: 6

School: St Johns,  
Lacey Green

Hobbies: Football,  
karate, tennis, swimming and  
dressing very smartly

Who do you play for? Risborough  
Rangers

Favourite TV show: Peter Rabbit

What do you want to be when you  
grow up? Professional footballer or  
tennis player

Favourite player: Matt Bloomfield

Anything else? I have an eight-  
year-old brother called Ollie and  
I enjoy going down very high zip  
wires over quarries.



### MALAKAI WILLIS-SMITH

Age: 6

School:  
Highworth

Hobbies: Playing  
football, watching wrestling,  
swimming and tai-jitsu

Who do you play for? Wycombe  
Wanderers after-school club

Favourite TV show: Tom and Jerry

What do you want to be when you  
grow up? WWE wrestler

Favourite player: Adebayo  
Akinfenwa



### FINTAN MURPHY

Age: 10

School: St  
Michael's RC  
Primary School

Hobbies: Football and any kind of  
sport

Who do you play for? Flackwell  
Heath Minors

Favourite TV show: Anything  
sporty

Favourite players: Apart from  
Woody, J.J. Hayesy, Blooms, Beast,  
Beanie, Stewart, Pierre, Harriman,  
Cowan-Hall, Thompson... I think  
that's most of them! And Kashket is  
a true diamond!

Anything else? I'm a season ticket  
holder and love going to as many  
games as I can.



### MILO MACKENZIE BAKER

Age: 9

School: Juniper  
Hill School

Hobbies: Football, golf and drama

Who do you play for? Flackwell  
Heath Minors U10s

Favourite TV show: Henry Danger

What do you want to be when you  
grow up? Famous actor

Favourite players: Joe Jacobson  
and Jamal Blackman

Anything else? My grandad and  
uncle are season ticket holders at  
WWFC and never miss a game.



### JOSHUA HODGKINSON

Age: 6

School: Holmer  
Green First School

Hobbies: Football,  
swimming and judo

Favourite TV show: Deadly 60

What do you want to be when you  
grow up? Scientist

Favourite players: The Beast and  
Aaron Pierre

Anything else? I just gained by  
Grade 5 panda cub white and blue  
belt in judo



### CHLOE HODGKINSON

Age: 3

School: Manor  
Farm Day Nursery

Hobbies: Swimming,  
gymnastics

Favourite TV show: Topsy & Tim

What do you want to be when you  
grow up? Nurse

Favourite player: Joe Jacobson



MACKING

[www.mackKing.co.uk](http://www.mackKing.co.uk)

Great priced used Apple Macs WITH WARRANTIES

Proud supporters of  
Wycombe Wanderers FC


Laptops



iMacs

iPads



The Chairboys, Sponsored by  SportingAds





# Full Time



Proud partner of

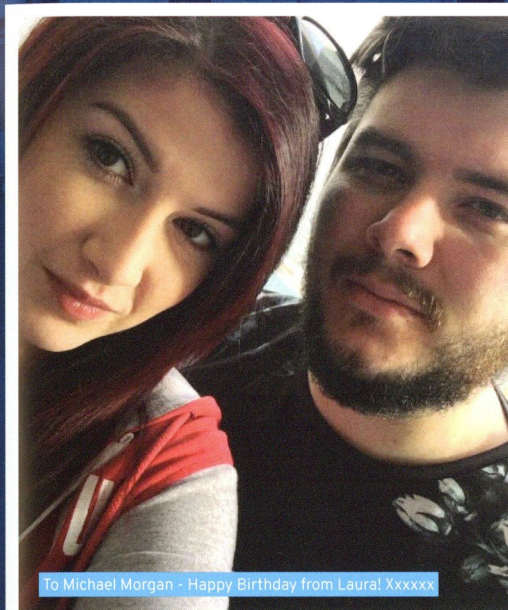


\*IRI data MAT 26.03.16

## FANZONE!



Want to see your message in the programme? Email it with a photo to [media@wwfc.com](mailto:media@wwfc.com)



To Michael Morgan - Happy Birthday from Laura! Xxxxxx



Happy Birthday Nathan Rose - 10 today! Hope you and Harrison enjoy the match. Love from Mum, Dad and Joe xx



Happy 13th birthday Ryan Drake. Lots of love from Mum, Dad, Lauren, Daniel and Ben



Happy birthday to Trevor Stroud for Friday - then bring on the Spurs! Love from everyone at the club and Trust





# BODGER'S CORNER!

ONE WEEK TIL SPURS! BUT FIRST, TIME TO FOCUS ON THE BIG GAME HERE TODAY. LET'S KEEP THE UNBEATEN RUN GOING... COME ON YOU BLUES!

## ANAGRAM.

Which player's name is all jumbled up?

A	S	V	O	F	N	Q	S	M	R	J	P
V	I	C	T	O	R	Y	U	F	R	S	O
N	P	G	H	S	L	S	X	Y	G	A	R
I	K	C	L	L	S	V	O	Q	H	K	N
M	Y	A	I	G	J	C	T	P	B	V	L
J	O	H	Q	I	M	S	A	X	N	Z	A
G	C	Y	R	N	A	L	V	R	F	U	G
N	H	Y	U	V	V	N	E	I	F	O	T
E	D	Q	P	S	S	T	T	U	L	Y	I
V	A	X	W	F	N	P	O	H	Q	Q	T
V	W	E	W	I	C	H	E	E	R	S	U
Y	D	H	W	W	G	F	I	V	J	X	G

## IS IT BAD MOJO

## WORD SEARCH.

Can you find the following words in the puzzle?

WINTER  
CHILLY  
SCARF  
GOALS  
CHEERS  
VICTORY



## FACE IN THE CROWD.

Is this you in the crowd at our last home game? Bring this programme along to reception at the next home game and you'll receive a free programme from that match!

## SPOT THE BALL.



## #BODGER SELFIE

This week my chosen photo is one of birthday boy Daniel Connor and his friends, who enjoyed VIP hospitality and a lap of honour last week! Send in your best pics using the hashtag #BodgerSelfie!







## TAKE YOUR LIFE OFF PAUSE.

### Go private and press play with BMI Healthcare.

Why not join the 850,000 plus patients that use their PMI every year at BMI Healthcare? If you have private medical insurance you should use it. Here are just a few of the reasons why:



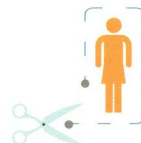
#### Fast access

You may be seen as quickly as within 24 hours



#### Waiting times

Short waiting times for diagnosis and treatment



#### Personalised treatment plan

Treatment plans and enhanced recovery



#### Consultant delivered care

Rest assured you are in safe hands



#### Offering you convenience

Appointment times to suit you



#### Put your mind at rest

We help to get you better sooner

To find out how we can help or to book a consultation please call

BMI The Chiltern Hospital - 01494 890 890  
BMI The Shelburne Hospital - 01494 888 700  
BMI The Paddocks Clinic - 01844 276 000  
[www.bmihealthcare.co.uk](http://www.bmihealthcare.co.uk)

Working with



Official Club Partner

Serious about health.  
Passionate about care.

**BMI** The Chiltern & Shelburne Hospitals



## COMMERCIAL CORNER.

[www.wycombewanderers.co.uk/commercial](http://www.wycombewanderers.co.uk/commercial) @wwfc\_business

BY DAMIAN IRVINE, HEAD OF COMMERCIAL ACTIVITIES

As we already find ourselves well into the start of the New Year, I wanted to take this opportunity to bring to your attention our new club lottery. Our new UNITY lottery is based online and works on a direct debit system. For just a pound per week you will be in the draw for thousands of pounds' worth of cash prize draws. We soft-launched the new lottery before Christmas, gauging feedback from supporters, and will be promoting this more and more over the coming weeks.

Those who have played Cashline over the years and have contributed so much to the club are urged to please speak to your collector and transfer over to the new system. If you have not played our club lottery before, please do sign up as the contribution to the Blues Development Fund annually is invaluable to the club.

Whilst we all enjoy tradition and the comfort of systems we are familiar with, the cash collecting

method of the Cashline is no longer fit for purpose in the modern era. It is hugely labour dependent and requires significant administrative support each Thursday and Friday from our small office accounts team. There are also modern standards of cash handling and duty of care over our collectors that are not able to be overseen on the Cashline system of collecting and at the end of the day it has become cost prohibitive also.

Your generosity and support of the club dictates that costs must be kept to a minimum and by joining up or transferring to the new Unity Lottery you are guaranteed 50p of your pound comes directly to the Blues Fund as profit. This is a large increase in percentage return from the Cashline system. If you have any questions or queries please get in touch at [commercial@wwfc.com](mailto:commercial@wwfc.com) - there are forms to sign up in the club shop and reception, or you can go directly to the webpage at [www.unitylottery.co.uk/wycombe-wanderers-fc](http://www.unitylottery.co.uk/wycombe-wanderers-fc).



## TODAY'S BOX HOLDERS

Welcome to...

Tim Day and guests

Annodata

Panache Fire Services

Ex-Players Association

Ascot Finishers

Bob Cartwright and guests

Guests of the manager

Grant & Stone

Jubilee Greenwood

Nick Ball and guests

Roman Property Services

Beechdean hosting the family of Monty Seymour

Beeks

Verco Office Furniture

Don Woodward and guests

Turf Tonics

Allsorts

Origin Global

BMI Healthcare

Haines Watts

## THANKS TO THE CHILTERN MS CENTRE

Last weekend we were delighted to be joined by representatives of the Chilterns MS Centre, who were our match sponsor for the game against Yeovil. You'll have read plenty about the MS Centre, based in Wendover, which houses the hyperbaric oxygen chamber used by many of our players so far this season to help accelerate their recovery from injury.

We've developed a really strong partnership with the Centre and were proud to help facilitate a collection for them last weekend, raising hundreds of pounds to enable them to continue the fantastic work they do.

As part of their privileges of sponsoring the game - as well as enjoying the comfort of an executive box - they were able to select and present the Man of the Match award.

Their choice was Dominic Gape, who received his bubbly in the Honours Lounge after the game.



Operated by Places for People Leisure Limited  
in partnership with Wycombe District Council



**"Learning new tricks."**

**Big Activities for Little People!**

[www.wycombeleisurecentre.org](http://www.wycombeleisurecentre.org)



**Wycombe Leisure Centre**  
01494 688 100

- ✓ Fencing
- ✓ Pre School Gymnastics
- ✓ Badminton
- ✓ Squash
- ✓ Trampolining
- ✓ FUNdamental Gymnastics
- ✓ Volleyball
- ✓ Bounce and Play

**We've got something for everyone!**

1348626

**MSECARTECH**  
LIMITED

**SERVICING • MOT'S • DIAGNOSTICS  
REPAIRS • AIRCON • SALES**

**QUOTE PROMO CODE: WWMOT1  
FOR A £20 MOT OR 10%  
DISCOUNT ON ALL OTHER WORKS!  
(Terms & Conditions Apply)**

**t. 01494 291730 m. 07810 000256**  
**w. [www.mse-cartech.co.uk](http://www.mse-cartech.co.uk)**  
**e. [info@mse-cartech.co.uk](mailto:info@mse-cartech.co.uk)**

**MSE Cartech Limited**  
**Unit 22, Binders Industrial Estate,**  
**Cryers Hill Road, Cryers Hill,**  
**High Wycombe, Bucks, HP15 6LJ**



# FIXTURES & RESULTS

## FIXTURES & RESULTS

Key: Goalscorer 1 Cautioned 2 Sent Off 3 First substitution 4 Second substitution 5 Third substitution  
Home games highlighted in bold



DATE	K/O	H/A	OPPONENT	RES	ATT	AWAY ATT	REF	STARTING XI	SUBSTITUTES
<b>AUGUST 2016</b>									
SAT 6	15:00	A	CRAWLEY TOWN	L 1-0	2,471	762	Kinsey	Brown ■ Harriman ■ Jacobson ■ Stewart ■ Pierre ■	Bean ■ O'Nien ■ Wood ■ Weston ■ Thompson ■ Southwell ■
TUE 9	19:45	H	BRISTOL CITY (EFL CUP)	L 0-1	1,842	466	Collins	Dawson ■ Jombati ■ Jacobson ■ Stewart ■ De Havilland ■	McGinn ■ Harriman ■ Bloomfield ■ McGinn ■ Wood ■ Akinfenwa ■ Southwell ■
SAT 13	15:00	H	GRIMSBY	W 2-1	3,686	697	Davies	Dawson ■ Jombati ■ Jacobson ■ Stewart ■ Pierre ■	Harriman ■ Bloomfield ■ McGinn ■ Wood ■ Akinfenwa ■ Southwell ■
TUE 16	19:45	H	ACCRINGTON STANLEY	D 1-1	2,747	51	Malone	Blackman ■ Jombati ■ Jacobson ■ Stewart ■ Pierre ■	Harriman ■ Bloomfield ■ McGinn ■ Wood ■ Akinfenwa ■ Southwell ■
SAT 20	15:00	A	BLACKPOOL	D 0-0	3,144	451	Yates	Blackman ■ Jombati ■ Jacobson ■ Stewart ■ Pierre ■	Harriman ■ Bloomfield ■ McGinn ■ Wood ■ Akinfenwa ■ Southwell ■
SAT 27	15:00	H	COLCHESTER	L 0-2	3,439	503	Brooks	Blackman ■ Harriman ■ Jombati ■ Stewart ■ Pierre ■	Thompson ■ Rowe ■ Bean ■ Wood ■ Akinfenwa ■ Southwell ■
TUE 30	19:45	A	NORTHAMPTON (EFL TROPHY GS1)	W 0-3	1,408	74	Tierney	Blackman ■ Harriman ■ Jombati ■ Stewart ■ De Havilland ■	Bloomfield ■ Rowe ■ McGinn ■ Freeman ■ Hayes ■ Southwell ■
<b>SEPTEMBER 2016</b>									
SAT 3	15:00	A	LUTON	L 4-1	8,097	530	Scott	Blackman ■ Harriman ■ Jombati ■ Stewart ■ De Havilland ■	Bloomfield ■ Rowe ■ McGinn ■ Freeman ■ Hayes ■ Southwell ■
SAT 10	15:00	A	PORTSMOUTH	L 4-2	16,262	489	Robinson	Blackman ■ Harriman ■ Jombati ■ Stewart ■ Pierre ■	Bloomfield ■ Rowe ■ McGinn ■ Thompson ■ Hayes ■ Southwell ■
SAT 17	15:00	H	STEVENAGE	W 1-0	3,181	292	Horwood	Blackman ■ Harriman ■ Jombati ■ Stewart ■ Pierre ■	Bloomfield ■ Gape ■ Wood ■ Thompson ■ Hayes ■ Akinfenwa ■
SAT 24	15:00	A	CARLISLE	L 1-0	4,354	116	Stockbridge	Blackman ■ Harriman ■ Jombati ■ Stewart ■ Pierre ■	Bloomfield ■ Gape ■ Wood ■ Thompson ■ Hayes ■ Akinfenwa ■
TUE 27	19:45	H	CREWE	W 5-1	2,572	192	Busby	Blackman ■ Harriman ■ Jacobson ■ Stewart ■ Pierre ■	Rowe ■ Gape ■ Wood ■ Thompson ■ Hayes ■ Cowan-Hall ■
<b>OCTOBER 2016</b>									
SAT 1	15:00	H	EXETER	W 1-0	3,297	270	Kinsey	Blackman ■ Harriman ■ Jacobson ■ Stewart ■ Pierre ■	Rowe ■ Gape ■ Wood ■ Thompson ■ Hayes ■ Cowan-Hall ■
TUE 4	19:45	H	WEST HAM (EFL TROPHY GS2)	W 3-0	1,060	160	Deadman	Blackman ■ Harriman ■ Jombati ■ De Havilland ■ Pierre ■	Rowe ■ McGinn ■ Wood ■ Freeman ■ Akinfenwa ■ Kashket ■
SAT 8	15:00	A	YEOVIL	L 1-0	3,187	319	Probert	Blackman ■ Harriman ■ Jombati ■ Stewart ■ Pierre ■	Rowe ■ Gape ■ Wood ■ Thompson ■ Hayes ■ Cowan-Hall ■
SAT 15	15:00	A	MANSFIELD	D 1-1	2,898	252	Huxtable	Blackman ■ Harriman ■ Jacobson ■ Stewart ■ Pierre ■	Rowe ■ Gape ■ Bloomfield ■ Akinfenwa ■ Hayes ■ Cowan-Hall ■
SAT 22	15:00	H	BARNET	L 0-2	3,596	250	Horwood	Blackman ■ Harriman ■ Jacobson ■ Stewart ■ Pierre ■	Rowe ■ Gape ■ Freeman ■ Thompson ■ Akinfenwa ■ Cowan-Hall ■
SAT 29	15:00	A	DONCASTER	D 2-2	5,287	326	Probert	Blackman ■ Harriman ■ Jacobson ■ De Havilland ■ Pierre ■	Rowe ■ Gape ■ O'Nien ■ Bloomfield ■ Hayes ■ Cowan-Hall ■
<b>NOVEMBER 2016</b>									
SAT 5	15:00	A	PORTSMOUTH (FA CUP R1)	W 1-2	8,130		Ward	Blackman ■ Harriman ■ Jacobson ■ Stewart ■ Pierre ■	Gape ■ O'Nien ■ Bloomfield ■ Akinfenwa ■ Hayes ■ Cowan-Hall ■
WED 9	19:45	H	COVENTRY (EFL TROPHY GS3)	L 2-4	912	257	Breakspear	Brown ■ Jombati ■ Harriman ■ Stewart ■ Pierre ■	Thompson ■ Bean ■ McGinn ■ Weston ■ Freeman ■ Kashket ■
SAT 12	15:00	H	MORECAMBE	W 2-0	3,019	70	Handley	Blackman ■ Harriman ■ Jacobson ■ Stewart ■ Pierre ■	Gape ■ O'Nien ■ Bloomfield ■ Akinfenwa ■ Hayes ■ Cowan-Hall ■
SAT 19	15:00	A	CAMBRIDGE UTD	W 1-0	4,139	437	Kettle	Blackman ■ Harriman ■ Jacobson ■ Stewart ■ Pierre ■	Gape ■ O'Nien ■ Bloomfield ■ Thompson ■ Hayes ■ Cowan-Hall ■
TUE 22	19:45	A	NEWPORT COUNTY	W 0-1	2,010	127	Busby	Blackman ■ Jombati ■ Jacobson ■ Stewart ■ Pierre ■	Bean ■ O'Nien ■ Bloomfield ■ Thompson ■ Hayes ■ Cowan-Hall ■
SAT 26	15:00	H	HARTLEPOOL	W 2-0	3,288	130	Adcock	Blackman ■ Harriman ■ Jacobson ■ Stewart ■ Pierre ■	Gape ■ O'Nien ■ Bloomfield ■ Akinfenwa ■ Hayes ■ Kashket ■
<b>DECEMBER 2016</b>									
SAT 3	15:00	A	CHESTERFIELD (FAC R2)	W 0-5	3,685	483	M Salisbury	Blackman ■ Harriman ■ Jacobson ■ Stewart ■ Pierre ■	Gape ■ O'Nien ■ Bloomfield ■ Akinfenwa ■ Hayes ■ Kashket ■
WED 7	19:45	A	MILLWALL (EFL TROPHY R2)	W 1-3	1,619	88	Whitstone	Blackman ■ Harriman ■ Jombati ■ De Havilland ■ Muller ■	Rowe ■ Bean ■ McGinn ■ Thompson ■ Hayes ■ Wood ■
SAT 10	15:00	A	NOTTS COUNTY	W 0-2	3,680	396	Ilderton	Blackman ■ Harriman ■ Jacobson ■ Stewart ■ Pierre ■	Gape ■ O'Nien ■ Bloomfield ■ Akinfenwa ■ Hayes ■ Kashket ■
SAT 17	15:00	H	LEYTON ORIENT	W 1-0	4,517	458	Lewis	Blackman ■ Harriman ■ Jacobson ■ Stewart ■ Pierre ■	Gape ■ O'Nien ■ Bloomfield ■ Thompson ■ Cowan-Hall ■ Kashket ■
MON 26	15:00	A	PLYMOUTH	D 3-3	12,210	284	G Salisbury	Blackman ■ Harriman ■ Jacobson ■ Stewart ■ Pierre ■	Gape ■ O'Nien ■ Bloomfield ■ Akinfenwa ■ Cowan-Hall ■ Kashket ■
FRI 30	19:45	A	CHELTHAM	W 0-1	3,761	871	Johnson	Brown ■ Jombati ■ Jacobson ■ Stewart ■ Pierre ■	Gape ■ O'Nien ■ Bloomfield ■ Akinfenwa ■ Cowan-Hall ■ Kashket ■
<b>JANUARY 2017</b>									
MON 2	15:00	H	NEWPORT COUNTY	W 2-1	4,288	220	Collins	Brown ■ Jombati ■ Jacobson ■ Stewart ■ Pierre ■	Gape ■ O'Nien ■ Wood ■ Thompson ■ Hayes ■ Weston ■
SAT 7	15:00	H	STOURBRIDGE (FAC R3)	W 2-1	6,312	2,000	England	Blackman ■ Jombati ■ Jacobson ■ Stewart ■ Pierre ■	Gape ■ O'Nien ■ Bloomfield ■ Akinfenwa ■ Cowan-Hall ■ Kashket ■
TUE 10	19:00	A	BLACKPOOL (EFL TROPHY R3)	D 1-1*	766	53	Ilderton	Blackman ■ Stewart ■ Jacobson ■ De Havilland ■ Muller ■	Bean ■ O'Nien ■ Wood ■ Thompson ■ Hayes ■ Weston ■
SAT 14	15:00	H	YEOVIL	D 1-1	3,493	239	Jones	Blackman ■ Jombati ■ Jacobson ■ Stewart ■ Pierre ■	Gape ■ O'Nien ■ Wood ■ Akinfenwa ■ Cowan-Hall ■ Weston ■
SAT 21	15:00	H	LUTON						
TUE 24	19:45	A	MANSFIELD (EFL TROPHY QF)						
SAT 28	15:00	A	TOTTENHAM HOTSPUR (FAC R4)						
TUE 31	19:45	A	EXETER						
<b>FEBRUARY 2017</b>									
SAT 4	15:00	H	PORTSMOUTH						
TUE 7	19:45	A	COLCHESTER						
SAT 11	15:00	A	STEVENAGE						
TUE 14	19:45	A	CREWE						
SAT 18	15:00	H	CARLISLE						
SAT 25	15:00	H	CRAWLEY TOWN						
TUE 28	19:45	A	ACCRINGTON STANLEY						
<b>MARCH 2017</b>									
SAT 4	15:00	A	GRIMSBY						
SAT 11	15:00	H	BLACKPOOL						
TUE 14	19:45	H	PLYMOUTH						
SAT 18	15:00	A	HARTLEPOOL						
SAT 25	15:00	H	NOTTS COUNTY						
<b>APRIL 2017</b>									
SAT 1	15:00	A	LEYTON ORIENT						
SAT 8	15:00	H	CHELTHAM						
FRI 14	15:00	H	MANSFIELD						
MON 17	15:00	A	BARNET						
SAT 22	15:00	H	DONCASTER						
SAT 29	15:00	A	MORECAMBE						
<b>MAY 2017</b>									
SAT 6	17:30	H	CAMBRIDGE UTD						

\*Wycombe win 4-5 on penalties

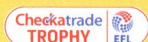


BY ADRIAN WOOD



## ON THE ROAD.

AWAY TRAVELLER'S  
ESSENTIAL GUIDE TO:



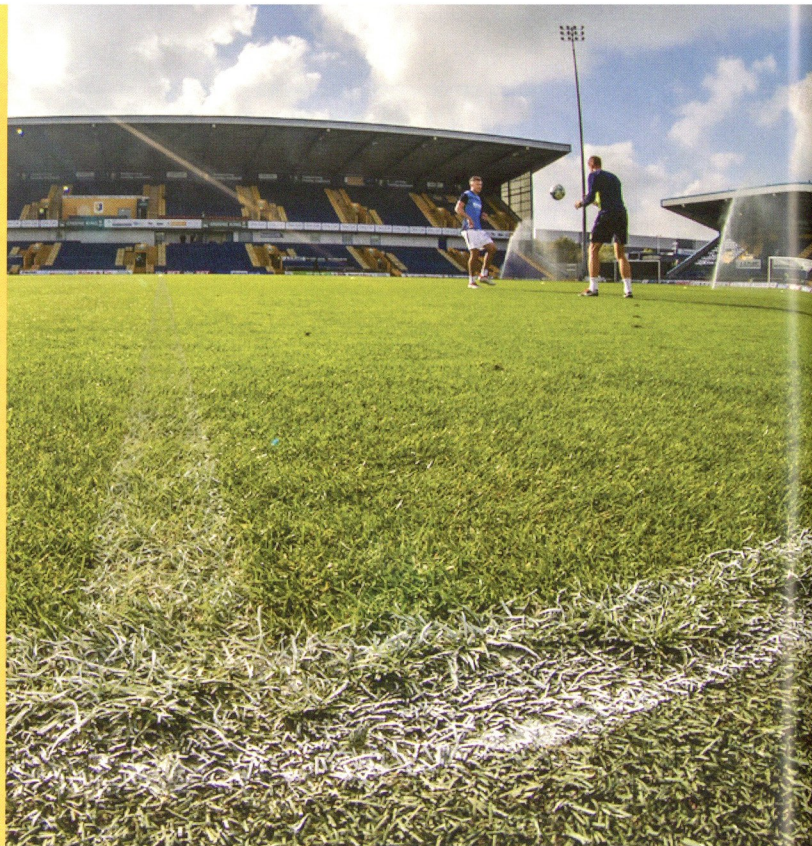
### MANSFIELD TOWN

DATE: Tuesday 24.01.17, kick-off  
7.45pm

VENUE: One Call Stadium

LOCATION: Quarry Lane, Mansfield,  
Nottinghamshire

POSTCODE: NG18 5DA



### RECOMMENDED ROAD DIRECTIONS

Take the normal route to the northbound M1 (M40 to Junction 10, then A43 towards Northampton). Carry on the M1 to Junction 28 and then take the A38 (Sutton Road) towards Mansfield. After passing the Kings Mill Hospital on your left and then the Nell Gwyn pub on your right, turn right at the traffic lights into Sheepbridge Lane. After passing under a railway bridge (height restriction 10' 9") you will reach a set of traffic lights where you turn left into Quarry Lane. You will reach the stadium along on the left.

**Mileage from High Wycombe = 141**

### RECOMMENDED AREA FOR CAR PARKING

For car parking there is a small car park at the ground available on a first come first served basis costing £5 a car. Note that the retail park adjacent to the North Stand (away end) does NOT allow match day parking. Some street parking is available.

### TRAVELLING BY COACH?

At the time of writing it is highly unlikely that OWWSA will be running

a coach for this fixture. Please however check in the Caledonian Suite today or ring Rena 01494 520179 or Graham 07876 267301.

### USING THE TRAIN?

This is not really an option for this fixture as the last London bound train departs Mansfield at 19:49. For anyone using the train to get there, the best route is by using East Midlands trains from London St Pancras International changing at Nottingham. Quickest journey time is around 2½ hours. One Call Stadium is visible from Mansfield Rail Station. Leave the station via the footbridge adjacent to Platform 2. Walk past Burger King, through the retail park, and you will arrive at the North Stand (away end). The walk will take less than ten minutes.

### FACILITIES FOR AWAY FANS

Away fans are housed in the North Stand behind one goal. As you would expect from a relatively new stand the views of the playing action and facilities are pretty good. Ground capacity is 10,000 (all seated). The ground telephone number is 01623 482 482 and the club email address is info@mansfieldtown.net. Please

note that the fixture is "All Ticket" for away fans who must purchase tickets in advance from their own club's ticket office. No tickets can be bought on the day for away supporters. Tickets are priced at £10 for adults and £5 for concessions (ages 60+ and 17 and under).

### FACILITIES AROUND THE GROUND

There is a bar at the ground called the Sandy Pate (underneath the Ian Greaves Stand), which welcomes away fans and is free to enter. This does get busy on match days. Coming recommended is 'The Sir John Cockle' pub on the A38 going into Mansfield from the M1. I have read that 'The Talbot' on the Nottingham Road (A60) near the Sainsburys Supermarket is mainly for home fans. Another option is the Midland Hotel, on Station Road. This is near the Railway Station and about a ten minute walk away from the stadium. Visiting fans are welcomed. There is also a Wetherspoons outlet called the Court House, situated in Market Place, which is listed in the CAMRA Good Beer Guide.



BY ADRIAN WOOD



## ON THE ROAD.

AWAY TRAVELLER'S  
ESSENTIAL GUIDE TO:



### EXETER CITY

DATE: Tuesday 31.01.17, kick off  
7.45pm

VENUE: St James Park

LOCATION: Stadium Way, Exeter

POSTCODE: EX4 6PX

### RECOMMENDED ROAD DIRECTIONS

Take the A404 south, leading to the A404(M) and continue to the westbound M4. Leave the M4 at J20 and take the M5 (s/p The South West). Leave the M5 at Junction 29 then turn right onto the A3015. At Moor Lane roundabout take the 2nd exit onto the A3015. After 0.46 miles, take the 2nd exit at the roundabout onto Honiton Road, the B3183. Follow "City Centre" signs and go past the Royal Devon and Exeter Hospital. At the roundabout take the 4th exit onto Western Way, the B3212. At the next roundabout take the 2nd exit onto Old Tiverton Road. St James Park and Stadium Way are located on the left.

**Mileage from High Wycombe = 179**

### RECOMMENDED AREA FOR CAR PARKING

Note that there is no on-site parking for supporters at St James Park on match days. There is street parking, but this will be quite a way from the ground as there is a local residents parking scheme in operation.

### TRAVELLING BY COACH?

OWWSA will be running a coach that

will leave Adams Park at 2pm. Travel prices are £23 for adults, £22 for seniors, and £21 for juniors. The price for non-members is £27 (no refund if game is cancelled). The preferred way to book is by calling into the Vere Suite today. Members will be able to pay at the Vere Suite, on the coach or by telephone. Non members are required to pay before travelling, so this means either by telephone or in the Vere Suite. If you wish to book by phone (Rena 01494 520179, Graham 07876 267301) or by e-mail (bookings@owwsa.co.uk) you need to do so by Sunday January 29th at 5pm.

### USING THE TRAIN?

Please note that as this fixture is now an evening kick off, return by train is not possible on the day, the last London bound train departing Exeter St David's at 20:52 hours. For anyone travelling down by rail, there is a regular direct service from Paddington with fastest journey time a little over two hours. The nearest railway station to the ground is actually St James Park. The London trains arrive at St David's from where you can catch a local train to St James Park.

### FACILITIES FOR AWAY FANS

The stadium capacity is 8,830 (3,800 seated). Visiting fans are mostly accommodated in the St James' Road terrace at one end of the ground. This has no cover and is open to the elements. Fans are situated quite low down and close to the pitch. Some seats are available in the Grandstand. This is covered but does have some supporting pillars that may affect your view.

### FACILITIES AROUND THE GROUND

There is a Social Club at the ground, which usually allows in away supporters. A popular choice with away fans is the nearby 'St Anne's Well' on Well Street. This has local ales, well cooked food, and Sky Sports. There is plenty of choice if you walk into the city centre. Coming recommended are the 'Duke of York' and the 'Amber Rooms' in Sidwell Street, and also 'The Victoria' on Victoria Road. Another option is the "Bowling Green" PH, on Blackboy Road about a quarter of a mile from the ground. This is a friendly establishment popular with both home and away fans.



## TICKET NEWS.



### BOOK ONLINE

Visit [tickets.wwfc.com](http://tickets.wwfc.com) to buy your tickets online



### BY PHONE

Call **01494 441118** during office hours (9am to 5.15pm on weekdays, or from 10am on home matchdays).



### IN PERSON

Pop into the shop during office hours, or head to Ticket Office 1 on matchday.



### BOOK IN ADVANCE

Benefit from a £2 discount on all home league games when you book before 5pm on the day before the game.

	ORIGIN FAMILY STAND	BEECHDEAN STAND	TERRACE	FRANK ADAMS STAND
ADULT	£17	£22	£15	£22
SENIOR	£15	£19	£13	£19
YA	£13	£17	£11	£17
JUNIOR	£7	£13	£7	£13
UNDER 7	FREE	£13	N/A	£13

## UPCOMING FIXTURES



### MANSFIELD TOWN

24.01.17, 7.45pm

One Call Stadium

Checktrade Trophy Quarter-Final

This game is all-ticket for away fans.

Prices are **£10** for adults and **£5** for concessions (ages 60+ and 17 and under).

Tickets are now on sale and must be purchased in advance in accordance with Mansfield's safety certificate. No tickets will be available on arrival.

Call **01494 441118**, visit the shop at Adams Park, or go online to book.



### EXETER CITY

31.01.17, 7.45pm

St James' Park

Sky Bet League 2

Wanderers' allocation for this fixture is not yet known, but tickets will go on sale early this week at the following prices.

#### Advance Seating

Adults: **£22**

Seniors (Over 63s)/Students with valid NUS card: **£20**

U18s: **£9.50**

#### Advance Standing

Adults: **£16**

Seniors (Over 63s)/Students with valid NUS card: **£12**

U18s: **£4.50**

#### Matchday Seating

Adults: **£23**

Seniors (Over 63s)/Students with valid NUS card: **£21**

U18s: **£10**

#### Matchday Standing

Adults: **£17**

Seniors (Over 63s)/Students with valid NUS card: **£13**

U18s: **£5**



See [wwfc.com](http://wwfc.com) for on-sale dates.

[WWW.WYCOMBEWANDERERS.CO.UK](http://WWW.WYCOMBEWANDERERS.CO.UK) @WWFCOFFICIAL /WWFCOFFICIAL

# GREAT JUST GOT GREATER



## CASH OUT BOOST

GET A CHANCE OF CASH BONUSES WHEN YOU CASH OUT YOUR BET

## BETTING, BETTER

WHEN THE **FUN** STOPS **STOP**

[gambleaware.co.uk](http://gambleaware.co.uk)

18+

Offer applies to new Sky Betting and Gaming customers only. T&Cs apply. Visit [skybet.com](http://skybet.com) for more information.





## WYCOMBE WANDERERS

**MANAGER:** GARETH AINSWORTH

(GK) SCOTT BROWN	1	■
SIDO JOMBATI	2	■
JOE JACOBSON	3	■
STEPHEN MCGINN	4	■
ANTHONY STEWART	5	■
AARON PIERRE	6	■
GARRY THOMPSON	7	■
MARCUS BEAN	8	■
PAUL HAYES	9	■
MATT BLOOMFIELD	10	■
SAM WOOD	11	■
PARIS COWAN-HALL	12	■
(GK) BARRY RICHARDSON	13	■
DAYLE SOUTHWELL	15	■
MICHAEL HARRIMAN	16	■
LUKE O'NIEN	17	■
DANNY ROWE	18	■
MYLES WESTON	19	■
ADEBAYO AKINFENWA	20	■
MAX MÜLLER	21	■
NICK FREEMAN	22	■
WILL DE HAVILLAND	23	■
SCOTT KASHKET	24	■
DOMINIC GAPE	25	■
(GK) JAMAL BLACKMAN	27	■
GARETH AINSWORTH	43	■

## OFFICIALS

**REFEREE:** MARK HEYWOOD

**ASSISTANTS:** STEVEN PLANE AND LOUIS MARKS

**FOURTH OFFICIAL:** DAVE BUSHELL



## LUTON TOWN

**MANAGER:** NATHAN JONES

■ 1	CHRISTIAN WALTON (GK)
■ 2	STEPHEN O'DONNELL
■ 3	DAN POTTS
■ 4	JONATHAN SMITH
■ 5	JOHNNY MULLINS
■ 6	SCOTT CUTHBERT
■ 7	JAKE GRAY
■ 8	CAMERON MCGEEHAN
■ 9	DANNY HYLTON
■ 10	JORDAN COOK
■ 11	DANNY GREEN
■ 12	CRAIG MACKAIL-SMITH
■ 14	JACK MARRIOTT
■ 16	GLEN REA
■ 17	PELLY-RUDDOCK MPANZU
■ 18	ZANE BANTON
■ 19	OLLY LEE
■ 20	ISAAC VASELL
■ 21	JACK SENIOR
■ 22	LUKE GAMBIN
■ 23	JOSH MCQUOID
■ 24	LAWSON D'ATH
■ 27	TYREEQ BAKINSON
■ 31	CRAIG KING (GK)
■ 36	JAMES JUSTIN
■ 37	FRANKIE MUSONDA
■ 39	AKIN FAMEWO
■ 42	LIAM GOOCH (GK)
■ 44	ALAN SHEEHAN

## NEXT UP

**PORTSMOUTH**

SKY BET LEAGUE TWO

SATURDAY 4TH FEBRUARY K.O. 3PM

## STAY IN TOUCH

[WWW.WYCOMBEWANDERERS.CO.UK](http://WWW.WYCOMBEWANDERERS.CO.UK)

[@WWFCOFFICIAL](https://twitter.com/WWFCOFFICIAL) [f / WWFCOFFICIAL](https://facebook.com/WWFCOFFICIAL) [ig / WWFCOFFICIAL](https://instagram.com/WWFCOFFICIAL)

**Beechdean**  
Dairy Ice Cream

**Panache Fire Services Ltd**  
TOTAL PROTECTION

**O'Neill's**

**origin**  
DOORS AND WINDOWS

**BH** The Chiltern & Shelburne Hospitals

**mscentre**  
chilterns  
mscentre