

COUNTY

OFFICIAL MATCHDAY PROGRAMME

PRICE £3.50



LUTONTOWN

Saturday 28th November 2015

Sky Bet League 2

Kick Off 3:00pm



Mr. Tom



HENRY HOWARD
FINANCE
GROUP

Mr. Tom

NUTS ABOUT THE COUNTY

VISIT:

WWW.NUTSABOUTTHECOUNTY.CO.UK

 @NUTSABOUTTHECOUNTY

 @NUTSABOUTCOUNTY

FOR COMPETITIONS AND UPDATES



NEWPORT COUNTY AFC
Rodney Parade, Newport NP19 0UU

Office 01633 670 690
Shop 01633 674 959
E-mail
office@newport-county.co.uk

Office Hours
Mon - Fri 9.00am - 5.00pm
Matchday (Midweek) 9.00am - 7.45pm
Matchday (Weekend) 11.00am - 3.00pm

Web
www.newport-county.co.uk
Twitter
[@newportcounty](https://twitter.com/newportcounty)
Facebook
[/newportcountyafc](https://www.facebook.com/newportcountyafc)

Interim Chairman
Tony Pring
Club Board
Jon Bowkett, Gavin Foxall,
Shaun Johnson
Chief Executive
Jason Turner
Commercial Manager
James Watts
Head of Media & Communications
James Hayhoe
Club Secretary
Lewis Richards
Honorary President
David Hando
Safeguarding Manager
Gavin Foxall
Child Protection Officer
Lisa Savage
Manager
John Sheridan
Physiotherapist
Garry Aldridge
Club Doctors
Kartik Hariharan, Huw Pullen
Team Assistant
Bobby Morris
Academy Manager
Grant Kalahar
Head of Coaching
Danny Elliott
Academy Coaches
Byron Anthony
12-16 Academy Administration
Darren Broadribb
Community Development Officer
Norman Parselle

Matchday Announcer
Tim Thraves
Photography
Julian Davies (JLD Photographic)
Video
Glyn Neale, Steve Horton
Exiles Player Commentary
Tim Thraves, Charlie Brown
Club Shop Katrin Hacker
Programme Shop
Duncan Jardine, Neil Evans
Club Chaplain
Reverend Keith Beardmore
Programme Design
Kevin Barnes (helloimkev.co.uk)
Programme Contributors
Lindsay Brown, David Butcher,
Alan Coombs, Colin Everett, James
Hayhoe, Duncan Jardine, Dan
Parker, Robert Pearce, Tony Pring,
Jake Rosemeyer, Chris Shingler,
James Stevens, Phil Tanner,
Richard Taylor, Ade Williams

Contents

Saturday 28th November 2015 • Luton Town



05 JOHN SHERIDAN

The manager provides an update following recent matches

07 CLUB NEWS

All the latest news from around Rodney Parade

08 COMMUNITY

Community update with Norman Parselle

10 COMMERCIAL NEWS

Commercial update, and welcoming today's sponsors

13 BUSINESS CLUB

Business Club update with Alan Coombs

15 TICKET NEWS

All the latest ticketing news for home and away games

16 PHOTOS: ACCRINGTON

Photos from our 2-2 draw at the Wham Stadium recently

20 TOMMY O'SULLIVAN

James Hayhoe talks to the second O'Sullivan family member to play for County

24 JOHN WILLIAMS

Look Back in Amber profiles our former chairman John Williams, still heavily involved with the club

30 ACADEMY

Academy update with Grant Kalahar and Darren Broadribb

37 AARON COLLINS

Get to know a bit about our young striker

39 SUPPORTERS TRUST

Update from the Supporters Trust

41 TODAY'S THE DAY

Phil Tanner recalls a league win on our way to the Conference South title six years ago

43 A GAME OF TWO HALVES

Colin Everett discusses the FA Cup

44 KIDZ KORNER

All the usual games and updates with your favourite K9, Spytty the Dog

52 LUTON TOWN

Looking at today's opponents, with history, player profiles and all the latest news

71 FACE IN THE CROWD

Take a look to see if you were spotted this week, prizes on offer for those who were!

73 EXILED EXILES

Mike Burns chats to Rob Fudge

74 PHOTOS: BRACKLEY

Match action from our 4-1 FA Cup replay win over Brackley

78 TAKE TWO

James Stevens provides an update on the latest fortunes of Sky Bet League 2 teams

82 EX-EXILES

Dan Parker looks at the fortunes of Scottish ex-Exiles

85 ON THE ROAD

Previewing next weekend's trip to Barnet

91 STATS

League Table, Appearances and Fixtures & Results

94 UP NEXT

We preview the visit of AFC Wimbledon to Rodney Parade in three weeks' time



Situated in over seven and a half acres of gardens, the privately owned Welsh Hotel in Cwmbran is an ideal setting for any occasion.

Famous Award Winning Carvery
The Colonial Club Health and Leisure now with 2 Yonka Spa Treatments Rooms
Licenced for Weddings from 20 to 200 guests.

Christmas Parties now taking bookings - This year's theme : 70's Glamrock.

Call 01633 871199 or visit www.bw-parkwayhotel.co.uk

PROUD SPONSOR OF NEWPORT COUNTY AFC

Best Western Plus Parkway Hotel & Spa
Cwmbran Drive, Cwmbran, Newport, Gwent NP44 3UW



JOHN SHERIDAN

Good afternoon and welcome to Rodney Parade for our Sky Bet League Two fixture against Luton Town.

Looking back on Tuesday night and I thought that getting a draw at the Kassam Stadium was a very good point gained, and the overall performance was very pleasing. I thought we believed in ourselves a little bit more and in patches during the first-half I thought we played very well, with a terrific strike from Lenny to take the lead just before half-time.

I changed my formation before the game on Tuesday, to try and cause Oxford a few problems and I thought it worked well in the first-half, with Medy and Alex Rodman on hand to help the full-backs out.

Losing Scot to injury during the second-half was big blow for us, as he is a great organiser at the back. He is a calm player to have in the ranks and he uses the ball well. The collision with the Oxford player made him fall awkwardly on his rib, so hopefully it isn't anything too serious.

At this moment in time we are scoring a lot of spectacular goals, but I wouldn't mind us scoring a few more in and around the box!

Overall, on Tuesday night I was proud of the way we battled and the lads worked their socks off to try and get something out of the game.

I have said it before, but any team can beat anyone in this league. Consistency is the key in this division. I expect the teams around us to pick up form and results, meaning they will be in the mix towards the later stages of the season. With that in mind, it is important we know the importance of picking up points from each game.

Looking at today's game and it will be a good chance to test ourselves against a good Luton outfit. John Still is a very knowledgeable manager and he has got his team going steady in the early stages of the season.

We are picking up points and getting results and that's all down to the players working hard and understanding the systems that we are trying to play and blending into the way I approach things. With the unbeaten run now stretching to eight games, you can see the confidence and belief in the squad growing.

Enjoy the game,
John Sheridan

“ ”

I thought that getting a draw at the Kassam Stadium was a very good point gained



At Melin Homes we:

- Provide quality homes to rent
- Offer a low-cost home ownership scheme
- Build communities
- Work in partnership with local businesses

To find out more

T: 08453 101102 or 01495 745910

E: enquiries@melinhomes.co.uk

W: www.melinhomes.co.uk



Club News

Date confirmed for FA Cup tie



The Exiles will travel to the Hive Stadium on Saturday 5th December, for a 3pm kick-off.

Barnet, who beat League One outfit Blackpool in the first-round, currently lie in 17th place in Sky Bet League Two.

On the prospect of facing Barnet in the Emirates FA Cup second-round, manager, John Sheridan, said **"Barnet will be a tough game, but we will go there**

expecting to win".

"Obviously there is a financial benefit of progressing as far as we can in the competition, but we want to get ourselves into the hat for the third round, with the attraction of a potential clash with one of the big teams".

Ticket Details can be found in the Ticket news section.

Fan engagement - Survey

Please have a look and complete as your feedback is important to us, the link can be found on the new look Supporters Trust website.

We aim to undertake a number of these throughout the season and will share the results with you, as well as what action we will take as a result of the feedback.

Exiles Player HD Subscription

The perfect Christmas present for any County fan!

Subscription to the Exiles Player HD is just £4.49 a month and gives you unique and exclusive access to content you won't find anywhere else.

Watch full and extended interviews from both the management and players, as well as live audio match commentary from all games.

Follow the link on the Club's website for more information.

Happy Birthday

Happy 40th Birthday to County supporter Craig Shipley.

We hope that Craig enjoys his birthday and that he will have two reasons to celebrate come 5pm!

County Lottery

Drawn - 19th November 2015

£500 - 2756 - L.CHEADLE-NEWPORT
£100 - 429 - V.THOMAS-NEWPORT
£50 - 163 - C. ANDREWS - NEWPORT
£50 - 54 - J.WATTS - NEWPORT

Next Draw for £500/ £100 / £50 / £50 - Thursday 26th November 2015

Subscription Draw

£50 - 443 - Duncan Jardine - Blackwood
£20 - 201 - Barbara - Tredegar

Carol Service

The annual Newport County AFC Carol service will be held on Thursday 10th December at 7pm at St John's Church in Maindee.

There will be readings by players, directors, management and supporters.

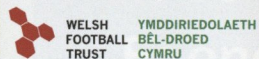
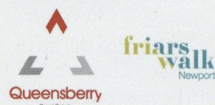
City of Newport Male Choir and Eveswell School choir will also be in attendance.

The service will be led by the Club Chaplain Rev. Keith Beardmore.

County in the Community

Community update from Community Development Officer, **Norman Parselle**

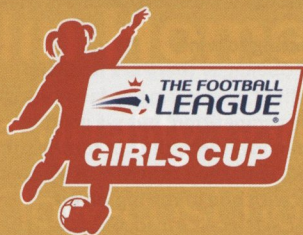
COMMUNITY
PARTNERS
2015/16



Ball Boys & Guard of Honour

We would like to give a warm welcome to the community club of the day Undy Juniors. Big thanks for your continued support and we hope you all enjoy the day. They will be carrying out the Guard of Honour and Ball boy duties today and also meeting some of the 1st team players. I hope you witness a cracking match today and bring us some luck!

Football League Girls Cup



Newport County AFC
Sponsored by Melin Homes

On Wednesday 18th November we held the Newport County AFC Football League Girls Cup 2015/16 under 13's (High Schools). The day was extremely well organised by Liam Jenkins, Ieuan Baldwin & Jake Keating who are currently studying the Foundation Community Football Coaching & Development Degree at the University of South Wales. The lads are attached to Newport County AFC and planned the whole day as part of a module leading to their degree. We had a total of 12 High Schools and 13 teams from Gwent take part in this year's tournament they were Caldicot, St Joseph's, Caerleon, St

Julian's, Newport High, Llanwern, St Albans, Cwmbran High, Croesyceiliog, Abersychan, West Monmouth and Ysgol Gyfun Gwynllyw. In the 3 years running the competition this has been the most successful with over 100 girls taking part.



Above: Lenell John-Lewis (Newport County AFC) and Alan Hughes (Melin Homes) pose for a photo with Newport High School Winners of the Newport County AFC Girls Cup 2015/16

We would like to say a big thank you to Melin Homes who have sponsored the Cup for 3 years. Also thanks to Newport Live, Torfaen Sports Development and Monmouth Sports development whose promotion of the competition has been greatly appreciated.

Below: all Primary School teams who attended the Girls Primary School competition

Newport Velodrome 3G on Wednesday October 7th was the venue for the Newport County AFC Primary School Girls Cup. On the day we had 12 Primary School girl football teams take part. The competition was excellently organised by Dan Harvey and assisted on the day by our College Programme Scholars. The standard of



football played was excellent and all the girls played the matches in Great Spirit. The Scholars refereed the matches very well and managed to keep the play flowing. The participating Schools where St Andrews, Ringland, St Joseph's, Marshfield, Coed Eva, George Street and Cwmffrwdor. The Semi-finals were contested between Coed Eva v Marshfield and St Joseph's v Ringland. The final was a very even match which eventually went to the dreaded penalty shootout between St Joseph's v Coed Eva. The final penalty was a beautifully executed one in the bottom right hand corner and it was all smiles for Coed Eva School Cwmbran and commiserations for the second year in succession to St Joseph's who suffered the same fate last year losing on penalties.

Below: Newport County AFC, Girls Primary School Cup Winners 2015/16, Coed Eva Primary School



Half Time Presentation & Lap of Honour

The Sponsors of our Girls Cups Melin Homes and Mono Metals will present our Girls Cup winners Newport High School and Coed Eva Primary with their Cups at Half Time. The youngsters will then carry out a lap of honour, so please give them a warm round of applause for their efforts.

Walking Football - 50+

We have changed the sessions of Walking Football to Monday nights from 6pm til 7pm at Llanwern High School Sports Hall. The cost of a session is £3 per player and it is hoped that in the future we will arrange friendly matches (no such thing as a friendly if Allen Wood is playing) against other Football League clubs. It would be lovely to see a few more faces there we currently have 7/8 players each week, but a couple more would be wonderful. If you have any questions please contact Norman

community@newport-county.co.uk or ring 07468 723636.

Below: Newport County AFC Walking Football players



Soccer Tots at Rodney Parade & Llanwern High School

We are currently delivering 2 Soccer tot sessions per week. The Monday session takes place at Rodney Parade 5pm til 6pm for 3 & 4 year olds & 6pm til 7pm for 5 & 6 year olds. The Friday sessions will take place at Llanwern High School from 4pm til 5pm for 3 & 4 year olds & 5pm til 6pm for 5 & 6 year olds. The cost is £3 per session you can turn up and pay on the day or book online at www.officialsoccerschools.co.uk/newportcounty

Newport County AFC Community Football Hubs

Mike Pratt our Club Community Coach is responsible for Leading on the Welsh Football Trust Regional Investment Plan. Mike's role includes the delivery of football sessions under three headings Schools, Football Hub, and Inclusion. Mike will aim to deliver high quality coaching sessions and liaise with Schools & Local Authority Sport Departments, to maintain first class working relationships. A lot of his working week will be evening work where he will be coaching up to 3 separate sessions in newly created Community Football Hubs. The Hub sessions will take place in the following areas Newport, Torfaen, Blaenau Gwent, Caerphilly and Monmouth (see below for timings).

Please see below Gwent Football Hub sessions £1 a session pay as you play.

CITC HUBS PLAN - 2015/16
UPDATED 24.08.15

LOCAL AUTHORITY	VENUE	LOCATION	TIME	MON	TUE'S	WED	THU	FRI
			START	5th Oct	8th Oct	TBC	TBC	11th Sept
Newport	Newport Centre	Sports Hall	4.30-5.30	Girls 7-11 yrs				
	Newport Centre	Sports Hall	5.30-6.30	Girls 12-16 yrs				
	Various sites	TBC	7.00-8.00	Community SSOs				
Torfaen	Cwmbran Stadium	Sports Hall	4.00-5.00		Girls 7-11 yrs			
	Cwmbran Stadium	Sports Hall	5.00-6.00		Girls 12-16 yrs			
*Note: Timings clash	Cwmbran Stadium	Outdoor Futsal	4.45-5.45		Boys 12-16 yrs			
Monmouthshire	Monmouth LC	Sports Hall	3.15-4.15			Girls 12-16 yrs		
	Monmouth LC	Sports Hall	4.15-5.00			Girls 7-11 yrs		
	Monmouth LC	ATP	5.30-6.30			Boys 12-16 yrs		
Caerphilly	Crosskeys College	Sports Hall	4.00-5.00				Girls 7-11 yrs	
	Crosskeys College	Sports Hall	5.00-6.00				Girls 12-16 yrs	
	Crosskeys College	Sports Hall	6.00-7.00				Boys 12-16 yrs	
Blaenau Gwent	Treddegar SC	Sports Hall	4.00-5.00					Girls 7-11 yrs
	Treddegar SC	Sports Hall	5.00-6.00					Girls 12-16 yrs
	Treddegar SC	Sports Hall	6.00-7.00					Boys 8-11 yrs

Player Sponsorship

Email james.watts@newport-county.co.uk

 Rhys Taylor Home Jude Security Away Available Third The Programme Shop	 Andrew Hughes Home Ryan Elston Newport Ford Away Available Third The Programme Shop	 Tommy O'Sullivan Home The Programme Shop Away The Programme Shop Third The Programme Shop	 Jazzi Bamum-Bobb Home The Programme Shop Away The Programme Shop Third The Programme Shop	 Lenell John-Lewis Home Alan Bates Away Chris Shingler Third The Programme Shop	 Joe Day Home Domenico Velluci Away Dylan Kirke Third The Programme Shop	 Mark Byrne Home New Clad Away Colin Everett Third The Programme Shop	 Medy Elito Home Alan and Lewis Ashton Farr Away New Clad Third The Programme Shop
 Yan Klukowski Home Chantalle Church Away County Choir Third The Programme Shop	 Nathan Ralph Home Gavin Foxall Away Available Third The Programme Shop	 Scott Boden Home Ryan and Lewis Greenhaf Away Logan & Charlie Heffernan Third The Programme Shop	 Seth Nana Twumasi Home Ken & Jayne Away Matt Coles Third The Programme Shop	 Danny Holmes Home Paul Reeves Away Megan Jones & Lottie Raymond Third The Programme Shop	 Tom Owen-Evans Home Colin Everett Away Gareth Rowlands Third The Programme Shop	 Aaron Collins Home Newport County DSA Away Gareth Rowlands Third The Programme Shop	 Scott Barrow Home Bethan Jones & Annie Raymond Away Cathy Pengelly Third The Programme Shop
 Dafydd Jones Home Available Away Available Third The Programme Shop	 Matt Taylor Home Available Away Available Third The Programme Shop	 Kieran Parselle Home Mike Everett Away The Pill Parselle's Third The Programme Shop	 Corey Shephard Home Available Away Available Third The Programme Shop	 Lewis Bamford Home Available Away Available Third The Programme Shop	 Alex Rodman Home Colin Everett Away Riverside Tavern Third The Programme Shop	 Matt Partridge Home Ken and Jayne Away Available Third The Programme Shop	 Scot Bennett Home The Programme Shop Away Available Third The Programme Shop
 John Sheridan Home Newport County AFC Supporters Club Away Newport County AFC Supporters Club Third The Programme Shop	 Warren Feeney Home Newport County AFC Supporters Club Away Newport County AFC Supporters Club Third The Programme Shop	 Michael Flynn Home Alan Bates Away Available Third The Programme Shop					

Business Club

with Alan Coombs

Company Profile



In today's programme we feature Jude Security, which is owned by Newport County AFC director Tony Pring. Jude Security, which has been trading since 1983, is an approved burglar alarm installation company.

Tony, and his father John Pring, are lifelong County supporters and founder members of the Business Club. John in fact has supported the County since 1946 and has helped the club from time to time, including looking after the programme shop many years ago. Therefore, we thought it would be interesting to interview him about his experiences watching Newport County.



How did you and Jude Security become involved with Newport County?

Both Tony and I have always watched Newport County, so when Tony acquired Jude Security he was already a supporter. In fact, Tony has been going to watch the County since he was in pushchair. My wife, Ann, and I have always supported the County – at one time even running the club from our house when the gates were locked. This was when the club were in serious financial difficulties just prior to the final winding up order.

Why did you both join the Business Club?

We thought it was a good concept and would help raise money for Newport County AFC. We were one of the first to join the BC, which is certainly thriving.

Watching from the BC box amongst friends has certainly enhanced the match day experience.

Do you remember your first County match?

I certainly do. It was against Nottingham Forest in 1946/47 and the programme in those days was very different. It was a flimsy two-page leaflet that cost two old pence.

What are your favourite memories of watching Newport County

One of the highlights has to be our first trip to Jena in the Cup Winners' cup in 1981. Jena, which was in the German Democratic Republic in those days, was a drab and dreary town nothing like the lovely place I visited for our friendly in 2013. Another memorable match was our 4-2 win at Walsall in 1980 and of course, there is the play off final at Wembley!

What was the most enjoyable season you can remember?

Our promotion season back in 1980 springs to mind when we were promoted to Division 3 and won the Welsh Cup by beating Shrewsbury. So different from the dark days when the club would regularly have to go cap in hand to the league to avoid relegation to non league football.

Who were the best managers of Newport County in your view?

Len Ashurst was the manager during the promotion and Welsh Cup-winning season and for our European Cup Winners' cup matches. He was very successful. So was Billy Lucas but for different reasons. Billy managed to keep the club going through many difficult times.

What are your thoughts on all that's happened this season?

Well it certainly got off to a bad start but things are now improving under our new manager. John Sheridan has the team playing well and scoring goals too. With this on field success, along with the takeover by the Supporters Trust, our fortunes are now looking up

Business Club coach to Notts County on 12th December

There are still some seats available; adults £15, Concessions £12.50, children £10.

Please contact John Williams (07976403498) or Joe Ford (07811 325380)

Members 2015/16

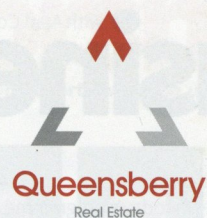


www.newportmazda.com

friars
walk
Newport

Open
12th
November

A Development by



LOOK WHO'S COMING



DEBENHAMS	next	TOPSHOP	schuh	H&M	NEW LOOK
RIVER ISLAND	Nando's	PIERRE LE BISTROT	las IGUANAS	GOURMET BURGER KITCHEN	FRIDAYS
cineworld	PREZZO	CHICUITO	LOUNGERS	JD	Frankie & Benny's
Krispy Kreme	OCCASIONS	YANKEE CANDLE	PANDORA	12.11.15	

Newport's new retail and leisure destination. **Be part of it.**

friarswalknewport.co.uk

Ticket News

UPCOMING AWAY MATCHES



Barnet

The Hive Stadium | FA Cup Round 2
Saturday 5th December 2015

Ticket prices for the fixture are as follows:

Adult	£15
Concessions (Over 64 and U19)	£10
Under 14s	£2

Our ticket office is open 10am-3pm Monday to Friday and on home Saturdays, with extended opening hours until 7pm on the day prior to home fixtures.

We also open for one hour after a home fixture for future match purchases. Tickets can be bought over the phone, by calling 01633 674963. Tickets for the fixture can also be purchased online.

UPCOMING HOME MATCHES



AFC Wimbledon Plymouth

Saturday 19th December 2015
SkyBet League 2



Plymouth

Monday 28th December 2015
SkyBet League 2



Hartlepool Utd

Saturday 2nd January 2016
SkyBet League 2

Print at home tickets

Tickets ordered online can be printed off at home! Cut out time queuing to collect ordered tickets and select the print at home option when purchasing tickets online. Tickets can be printed instantly and will be recognised by ticket scanners on the gate at Rodney Parade.

Ticket Prices League 2

	Senior Adult	Young Citizen	U16**	U12**	U6**
FAMILY BLOCK A					
Pre Order	£17	£13	£13	FREE OF	
On The Day	£19	£15	£15	CHARGE	

PREMIER AMBER SEATS

Bisley Stand block D / E Rows J-F, Hazell Stand block B Rows A-H

Pre Order	£22	£18	£18	£12	£10	n/a
On The Day	£24	£20	£20	£12	£10	n/a

HAZELL / BISLEY STAND

Pre Order	£19	£15	£15	£9	£7	FOC
On The Day	£21	£17	£17	£9	£7	FOC

HAZELL TERRACE

Pre Order	£17	£13	£13	£7	£6	FOC
On The Day	£19	£15	£15	£7	£6	FOC

NORTH TERRACE

Pre Order	£15	£11	£11	£6	£5	FOC
On The Day	£17	£13	£13	£6	£5	FOC

* **Young Adult** Anyone under 22 on 1st August 2015.

** **Under 16, 12 or 6** on 1st August 2015

Opening Hours

Weekdays	10.00am - 3.00pm
Matchdays (Sat)	10.00am - 3.00pm
Open after the match until 5:30pm	
Matchdays (Week)	9.00am - 7.45pm

Contact Us

Telephone 01633 674963

Buy Online

Visit our online ticket store to buy all your 2015/16 home tickets from the comfort of your own home

www.newportcountytickets.co.uk

macron[®]store
| Neath

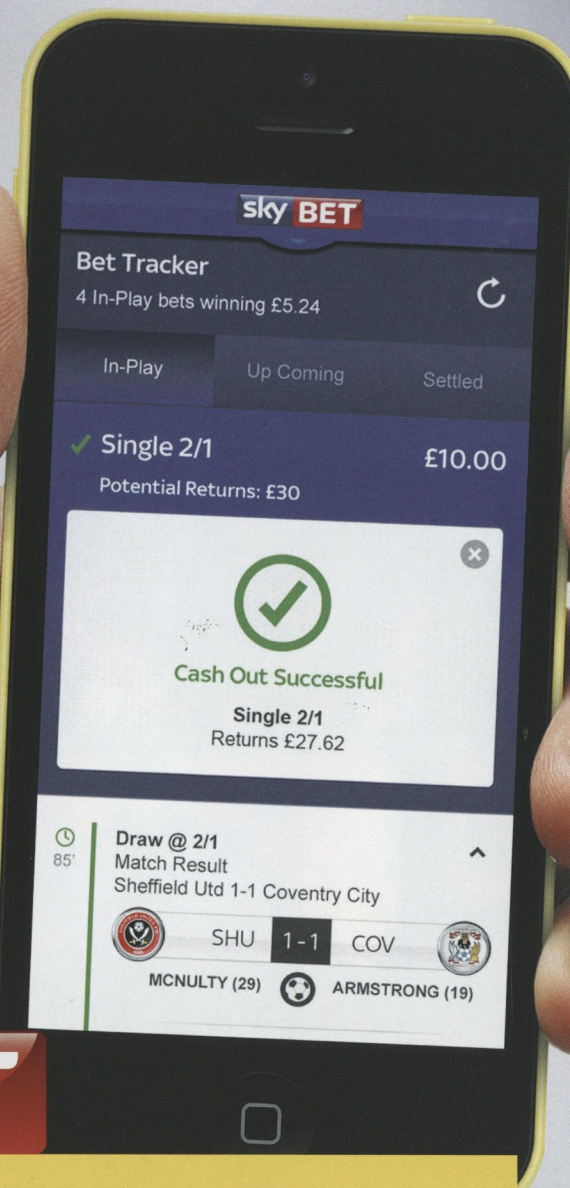


TEAM WEAR SPECIALISTS - PROUD KIT SUPPLIERS FOR
NEWPORT COUNTY FOOTBALL CLUB



VISIT OUR WEBSITE
WWW.MACRONSTORENEATH.CO.UK
CONTACT US
01792 321364

WE'RE
MAKING
BETTING
LESS
MISSED OUT
MORE
CASHED OUT



sky BET

CASH OUT

BET STATUS, MATCH STATS
AND CASH OUT - ALL IN
ONE PLACE

ARE YOU IN?
skybet.com



TOMMY O'SULLIVAN

After a short break away with the Wales U21 squad, Tommy is now back and ready to amplify the experience he can gain during his loan spell at Rodney Parade.

The FAW Young Player of the Year discusses his progression through the academy set up with neighbours Cardiff City, and how he hopes that this spell of prolonged first-team football can benefit his development as player and help him fulfil his full potential...

01792 321364

“ ”

I remember being surprised when they asked me to sign the paperwork and it was really pleasing.

Being a local lad, do you remember how your involvement with Cardiff City began?

I think I first went on trial when I was about nine. I didn't end up signing on my first trial and it wasn't until I was about twelve that I ended up eventually signing for Cardiff.

I played for Mountain Ash Town and Treharris when I was younger, so I played in loads of teams across the place growing up.

Did you support Cardiff growing up? Not really, I supported Manchester United. Cardiff were obviously the local team, so I did go and watch them a couple of times.

You progressed through the age categories at Cardiff, before signing your first professional deal. An achievement that not many youngsters in the game accomplish? Yeah I was quite happy and I was only seventeen at the time. I was still very young and it was the best thing that could have happened for me really at the time.

Can you remember how you were informed that Cardiff would be offering you a professional contract? I was in the Academy one day, after just finishing training. They rang my Dad for him to come in and at the time I didn't know what it was about. I remember being surprised when they asked me to sign the paperwork and it was really pleasing.



Was being offered a professional contract something that you were expecting? I was doing really well at the time and I was playing above my age level, so in that sense I would say I was expecting to be offered a professional contract, but it was still a good feeling when it happened.

You made your first team debut for Cardiff back in 2012. A moment you will always remember? I remember the coaching staff telling me that I was going to travel to the

game, as we didn't have a U21 squad at the time. It was really early in the game, perhaps in the first ten or fifteen minutes that Stephan McPhail went down injured and I was called on to replace him. I certainly didn't expect to play as much as I did, but I was over the moon to make my debut.

Your first loan spell saw your joining forces with a coach that you were familiar with from the Wales setup? Yeah I knew Robert Page through my involvement with Wales and he was then manager of Port Vale. Knowing him obviously gave me a head start and I think that League One is a bit more physical again from League Two. I enjoyed the experience, I played a couple of games and ideally I would have liked to play more, but Port Vale were fighting relegation at the time, which was a bit of a struggle.

Did you notice a big difference from academy football to League football? Yeah, it's very much a man's game when you get to League One. It is a lot more physical and you are fighting for three points on a Saturday, which is completely different to just focusing on the performance like you do in academy football.

Touching on your involvement with Wales. Picking up the accolade of FAW Young Player of the Year must have felt like some achievement? I think that winning the award is my proudest moment to date in football. When you look at the players who have won that award previously, it made me feel really proud about myself and hopefully I can progress and fulfil that potential.

With Wales securing their place at France next summer, a whole host of names have been mentioned, regarding who will make the squad for the Euro 2016 competition. Do you feel that a senior international cap is just around the corner? You never know in football. As long as I continue to play well and keep progressing at my club, whether it is here now at Newport or with Cardiff when I go back. I don't know what's going to happen six months or even a year down the line, but all I want to do is to keep improving to get better and better.

Just a final question regarding Wales. What have your highlights been of representing your country? Probably just scoring goals. I am almost on ten goals for Wales now, which not many people get a chance to say. So that will have to go down as my biggest achievement while representing Wales.

Moving onto Newport County now, and when you discovered that the Exiles were interested in bringing you in on loan, was it an easy decision to join a team that unfortunately hadn't enjoyed the start to the season that they would have hoped for? It was a bit of a risk. Sometimes it is a risk to drop down to the bottom of the table,

because you obviously want to win games and you aren't sure if that is going to happen. Coming here I can still live at home which makes it easier and I am playing week-in-week-out which helps massively, so it seems like the best thing for me at the minute and I am really enjoying my time here.

Your brother played for Newport. Did he have any advice for you when you joined? I think he was a bit disappointed that I didn't join Newport towards the end of last season, because when I went to Port Vale I think he was speaking to someone at Newport about the possibility of me joining here, which could have been ideal for me at the time. He is happy that I have come now and he watches occasionally and checks the results every week. He was at the Portsmouth game and was also in the crowd last Saturday.

Were you aware at the time you agreed to join Newport that Jazzi would be joining you? Not really, I was sleeping at the time! I woke up and I had ten missed calls on my mobile, from both Jazzi and people at Cardiff. It was a bit manic at the time!

Do you think that having Jazzi here at the same time has enhanced the experience for you? Yeah it made the whole process of settling in much easier. When you have someone alongside you that you know well, you feel much more comfortable in and around the lads. I think now we are both happy and really pleased with the support from both the coaches and players here.

What were your first thoughts about League Two? My spell with Port Vale last season probably made the transition a bit easier. I managed to settle into the environment there quite easy, so once you do it once you can easily do it again. Looking at League Two and I don't think that there is too much between all the teams, so results are much more about who performs the best on a Saturday.

Your first professional goal against Bristol Rovers wasn't a bad way to get off the mark. What's your recollection from the build up to that goal? I remember the ball coming across from the far left side and Zak just touched it onto me. I was looking to play Jazzi in down the right on the overlap, but then thought I should just hit this and it flew into the top corner. It was a very narrow angle, but as soon as it left my boot I knew it was going in.

Lastly, you have experienced an extended period of first-team football here during your time at Newport. When you eventually return to Cardiff, do you feel ready to be challenging for a first-team place there? I am not sure what will happen when I go back. All I want to focus on is playing as much as I can while I am here and that decision will happen when I am back with Cardiff, so I will wait and see what they say. For now, I am just enjoying my time here and looking to make the most of the opportunity.

“ ”

It seems like the best thing for me at the minute and I am really enjoying my time here



Look Back in Amber

A change of pace in this edition, as our 'Look Back in Amber' columnist **Chris Shingler** chats to our former chairman **John Williams**, still heavily involved with the club ...



Successful local businessman John is a lifelong supporter of the Exiles [nee Ironsides], and one who bravely stepped up to the plate when his beloved club needed him most; something that was of little surprise to the many supporters and people around the club that know him and his character. Speaking to him, his passion for Newport County shines through like a veritable beacon, and despite his success in the business world, a more down-to-earth character you couldn't wish to meet; a die-hard supporter who I've seen at countless away games on the terraces

with the lads, or enjoying a sing-song with the lads on the Tavern coach.

So can you tell me about your early life, where you hail from and went to school, and your working life before setting up your own company? ... "Yes I'm born and bred in Newport, lived on the Balmoral Road with my mum and dad, moved to Rogerstone for about five years, then back to Newport where I've lived ever since. I attended Eveswell School before being part of the final intake of the Newport Technical College in Clarence Place, but when that shut we were sent to Stow Hill. My first job was

in the circulation department of the 'South Wales Argus,' where I stayed for three years; then I had other jobs including 'Stewart & Lloyds' and 'Moles' before leaving to start up my own business [Mid Glamorgan Packaging Ltd] in 1981."

What were your earliest Newport County memories; did your father take you or did you sneak over to Somerton Park with your mates? ... "I can recall my first game in 1952, it was against Southend United and I'm pretty sure it was in January just after Christmas [It was, 17/01/52 and County won 3-0 with Birch, Beattie and Moore scoring] and like most boys, I was taken to Somerton Park by my dad. Percy Bullock who my dad knew was a leading light in the 'Supporters' Club' which I joined when I was seven. Then I got the job of selling cushions at the top of the stairs on the Grandstand. We would sit in the enclosure by the turnstile and all the crowd around us were all good boys."

Thinking of the old County pre-1989, who have been your favourite players over the years, along with other people you remember like chairmen or directors? ... "Oh many, many, from as far back as John McSeveney, the winger Granville Smith, Pat Terry who was a tremendous passer of the ball, Les Riggs who was the first player I ever saw take a long throw-in, Polly Rowlands of course, Keith Tennant who I've played golf with, Harry Harris, Ollie Burton, Rocky Hudson and Len Weare the goalkeeper, I can remember his first game! Alf Sherwood was probably the best footballer, he was a little past his best by the time he played for us but what a brilliant player; a great reader of the game. It's pretty sad to say, but I would even go over to watch our reserves play in the Welsh League [I had to tell John it wasn't that sad, I used to do exactly the same back in the 1970s!]. I remember watching the centre-forward Sam Prangley who was the captain, and you would always get a fair old crowd of about 400 watching."

"However my top three has to be Keith Oakes, Nigel Vaughan and Steve Lowndes, the latter two especially because they were local boys who came through the youth system. Jeff Thomas too I would toy with getting in there, he's a



good mate now; and another local lad was Len Hill who was a superb all-round sportsman. Len was a professional cricketer too for Glamorgan and the best amateur golfer I have ever seen. We always said if Len plays well then we play well. As for chairmen well we knew Syd Jenkins as a family from living over in Balmoral Road, and Cyril Rogers, and then of course there were the Ashurst years under Richard and Joe Ford; Joe now helps me with the running of 'The county Business Club' and is a lovely guy."

"Archie Menzies too was a real character, he would come and stand with us and spend the ninety minutes trying to glean information from us supporters, he wanted to know how we felt about things which I thought was great; he'd smoke a whole packet

of fags during the game! He was a chain smoker, he'd be lighting one up before he'd outed the last one! He was a really passionate County supporter though, Billy Lucas too, I swear the club kept him as manager for two reasons; one he had so many contacts and if we had to fight for re-election, like clubs like us and Hartlepool usually did, those contacts were invaluable. Secondly the board would always tell Billy ... 'Find us a player we can sell to keep us going' ... which he always did, and it all helped to pay, say the wages over the summer. We had decent crowds at times, 8,000 was a minimum and they could get up to 11,000; I'd say we have 1,600 'die-hards' now who will be there whatever, it makes you wonder do people want football?!"

So what matches do you recall



with particular fondness John? ... "Burnley away in the FA Cup of 1963/64, going up to Spurs also in the cup in 1958/59, Ken Hollyman was injured and put out on the wing and he banged one home from almost on the half-way line! Also the cup games at home when we beat Sheffield Wednesday in 1963/64 and West Ham in 1978/79. Also of course the two Jena matches"

What were your feelings when the old club died in 1989? ... "It all went downhill of course and it was very sad, I was devastated. I attended a meeting at Paddys Bar, people were promising to put money in but it never happened; but when you see we went under for a paltry £180,000 and today you see clubs like Bolton Wanderers in debt for £172.9m, well that's farcical. I attended the final auction which is something I never want to do

again, it was all very sad; but I was over the moon when David Hando called the meeting at Lysaghts to form the new club, we were off to Moreton-in-Marsh, Gloucester, and then of course back to Spytty. Do you know we have a wonderful history." [I put it to John our history is probably more colourful in the last 25 years than some clubs have in 100.]

How did you come to be involved at board level, and who were your fellow directors? ... "I was approached by Alan Williams who was on the board at the time, he came to me and Mike Rice saying the club were in terrible trouble and wondered if we could put together a takeover consortium. Rob Wixey and Mike Howard were involved too, there was another guy called Malcom Temple from up country but he had to pull out; we lost the vote initially, I think that meeting was at Lysaghts too,

so David Hando, who I've crossed swords with over the years but is a great friend, retained control. Alan was knocked off the board due to his involvement with us, but when we did finally get in we were a week away from being wound up by the Inland Revenue. That first week was the most traumatic of my life, we owed money to the Council and others and we thought it was around £69,000, but it was more like £200,000! I spent a few days at the Civic with Alf Rooke who looked after the County for the Council, and he said to me ... 'John why are you pouring money into a black hole? ... but my answer was ... 'I'm just a stepping stone' ... like many before me and after me, to ensure the football club survives."

And you gave at least one player in Derek Brazil a job outside football when he played for us; ... "Yes Derek was with us for two years as a driver, he's such a nice person and the sort of guy that if you buy a table at a dinner you would invite, as he never stops talking!"

So what games stand out during your time at the helm as chairman? ... "The one that springs to mind is Burgess Hill beating us in the FA Cup sadly, if we had a decent draw in the next round it could have made us a lot of money that we really needed. I remember on the final whistle David Hando turned to me and said ... 'I'm so sorry John' ... as he knew how important the match was. I met Tim Harris in the car park after the game to discuss it and he just said ... 'John, what can I say? ... He knew as well. Tim would ask about his budget and wonder if it was going to be a bottom of the league one, a mid-table one or one where we could challenge, but in the main we had to play it safe and go down the middle. There was also a match at Spytty where Darren Robison was sent off and it was the worst tackle I have ever seen! Dean Clarke had just been tackled by this guy and the ball fell as a 50:50, but Robbo almost took the guys knee off! It was flapping, he was taken to the 'Gwent' and the opposition players waited for him in the 'Man Of Gwent' pub until he had been treated, they actually sent us a bottle of whisky down later to thank us for our hospitality!"

"Another funny story was on the way back from Bilston where we had two players hospitalised but taken to different hospitals; Dave Hunt broke his jaw and Mike Rice spent two hours trying to locate them after the game to take them home, I think the other player was Danny Hunt. Anyhow, Dave's in the back of the car with his jaw wired up, his lips all swollen, he was right mess, and Mike asks him ... 'Do you fancy stopping to get a burger?!' You cant really print his reply, but that was typical of Mike."

You were also chairman I believe when the club added 'County' back into its name, a move that was much welcomed; ... "Yes, it was a real personal thing for me, Newport AFC was not the club I'd first supported so at the first board meeting I'd brought it up, there was some opposition on the board, but we decided to let the fans decide so we put it to the vote. It was very close but 'Newport County AFC' was chosen and I think everyone was happy with that. I approached the council about using the town badge, so we used that on our letterheads and blazers and it was kept for five or six years, but the badge was very expensive to reproduce so a new badge was introduced. We did consider using 'Newport City' but someone had already registered that name. [John did agree with me that I wasn't too sure about shouting ... "Come on City!"]

Then after you stepped down as club chairman you were elected chairman of the 'Supporters' Trust; ... "Yes I felt being a businessman and had run the club that I could support the Trust and saw back then that this was the future, clubs being owned by supporters. Les Scadding was a one-off but it was never going to last, but he did brilliantly getting us back into the league and got some exposure, limelight, and a TV show out of it, so he did OK out of football too. The Trust now is in good hands with people like John Bowkett, Gavin Foxall and Simon Sadler, and once the elections are completed hopefully it will be a nice mix of supporters and business people, which is what you need but owned by the fans."

And you're now head of the successful 'Business Club' too; ... "Yes



I started it three years ago on my own and co-oped Alan Coombes and later Joe Ford to help me. We started with eight companies and we are now up to sixteen, and hope next year to get over 20. The first year we we raised £13,000 for the club, second season £16,000, and hopefully £20,000 this; it's money the club never had before and our box is now getting more and more full. It's a great way to network and people are doing business with each other, and after the games we go out for a drink. This is certainly a benefit of playing at Rodney Parade, we could never have offered this at Spytty. It has also trigged the '100 Club' which is aimed at the normal fan rather than business community, and I think it's a fantastic idea. I'd like to see more of the boxes being used on a matchday, perhaps offer fans a season ticket in there, I mean we were all strangers really in the Business Club, so I think supporters could be offered the same chance to make new friendships and also to able to personalise the boxes with photos on the wall etc. I hope it's something James Watts can look at next season."

So what were your feelings on that day when we beat Wrexham at Wembley? ... "Oh dear, oh dear! Not sure I can put it into words; firstly I was probably more emotional 12 months previous at the FA Trophy Final as I never thought I'd see Newport County play at Wembley. I'm not ashamed to say when the players lined up and Welsh national anthem was played before the game I cried. But to be back a year later, well,

I was invited into the Queens Lounge and Royal Box too. When we scored that first goal, and then to see Justin lift that trophy and his and Les' faces, knowing they had taken us back into the Football League. They were very close and I think as soon as Justin knew Les was going to go, it made up his mind to leave also. Also seeing Tim Harris' face, he was a big part in it all too."

What do you make of recent events at Rodney Parade John? ... "I'm so pleased we are back to being a fans-owned club, it won't all be plain sailing of course but I'm very excited about our future. It was the right decision to sack Terry Butcher too, whatever he says they by and large were his players and he had ten games to get them playing for him and he never did so. John Sheridan has proved they are not all bad players. I would be devastated if we went down but I don't think that will happen now, thankfully. I think John will strengthen us even more in January, he knows the league and the sort of player that's needed; he's done well so far and I've been very impressed by him."

And finally a message for your fellow fans? ... "It's a very simple one; I think it was very important that all the different supporter groups that have been formed over the past five years or so have finally come together now, instead of bickering with each other, to get behind and support the club as one, long may it continue!"

Newport County Academy 12-16s
Building for the Future



'Building for the Future'

Newport County AFC Academy 12-16s age categories are introducing a scheme that will allow supporters of the 12-16s age groups to purchase 'bricks or blocks' in the match day programme.

Prices

Individual bricks can be purchased for £25 per unit. Small businesses can purchase a block = four bricks for £100. Larger blocks are also available, with blocks = eight bricks costing £200 and a block = twelve bricks will cost £300 etc.

As the name 'Building for the Future' suggests, the scheme is looking to gain support to nurture the young talent at the club, while providing people with the unique experience of getting their name or company in the match day programme.

Anyone interested in purchasing a brick or block should contact darren.broadribb@newport-county.co.uk

SHEWRING ACCOUNTANCY LTD

Personnel, Business & Corporation Tax,
 Payroll, VAT, Accounts & Bookkeeping
 Tel: 07779 912537

RED STORM

Fashion Agency

J J Properties

New Build Extensions
 07817 253526

S.A.W Electrical Ltd

Electrical Contractors
 Email: swarman@saw-electrical.co.uk
 Mobile: 075 08 413582
 Office: 02920 023225

Alonzi Fish and Chips
 Caerleon Road

Hello I'm Kev

Abundance of Petals
 01633 215869

Mr & Mrs Kalahar

Mr & Mrs Kalahar

The Farmhouse Bakery

EASTMAN

CHEMICALS
 Newport

JIM OLIVER BUTCHERS

Chepstow Road
 01633 262625

Martin Davies Chemist
 01633 244757

Marc Organ
 Coal Merchants



The youth team have been in great form recently keeping four clean sheets in a row, winning 5 games in a row and accumulating their best points total since re-joining the Football League Youth Alliance.

In the youth team's most recent game we played against Premier League club AFC Bournemouth at their academy training ground and came away with a memorable 4-3 win, where we showed great character and self belief. We started the game very quickly pressing high and unsettling the hosts and stretching them with some quick combination play, Kyron Tolland opened the scoring after 2 minutes when he nutmegged the Bournemouth goal keeper after some fast approach play. The lads missed a few opportunities to double the lead with Connah Hughes causing trouble in the

air and Corey Shephard playing some clever passes including a truly world class through ball to send a team mate through 1v1. Bournemouth got a life line through a headed goal from a cross, and then settled and scored a second goal shortly before half time to take in a 2-1 lead.

Dafydd Jones was introduced from the bench for the second half and made an immediate impact scoring an equalising goal in the 48th minute, this set the tone of the second half with County dominating after repeatedly winning the ball back very quickly and high up the pitch. Dafydd Jones scored again near the hour mark before completing his hat trick with a long range free kick to put the lads 4-2 up. Harry Waterhouse took one for the team just under 10 minutes from time making a brave block to prevent a shot and as a result was rendered unconscious and unable to carry on, with County having used 3

Academy U18's
 with Grant Kalahar



Player Profile

Connah Hughes

Hughes is tall, powerful striker that is able to occupy an entire back 4 on his own. He has a good touch and uses his body well to be a target for the team and is sharp around the box. Where a lot of forwards want to drop deep between units Connah stays high up the pitch and is a real threat and presence, he works very hard and is a very good finisher.

Player he plays like

Alan Shearer

substitutes by that time the final stages of the game were seen out with ten men under a lot of pressure which saw Bournemouth get back to within 1 goal but the lads doubled their efforts to hang on and almost grab a fifth with a late counter attack.

In our previous match we played Yeovil Town at Huish Park which was a very competitive game and the boys showed great improvements receiving and using the ball under pressure and across the team decision making was excellent. In the end it was our use of the ball under pressure and excellent decisions in possession, out of possession and in both transitions (+/-) that made the difference as we came away with a 3-0 win (Rhys Kavanagh, Cedrick Matondo and Lewis Bamford with the goals) and crucially a great performance where several indications of the development of the players were evident.

It was also good to spend some time with our counterparts at Yeovil discussing the ways we both innovate to support the development of our players in programs that are very new to the football league and cannot compete financially with very big neighbouring clubs from the top tiers of football in the country (ours being Swansea City, Cardiff City and Bristol City). Our innovation and hard work to continually improve our player development program has received some welcome attention recently with other academies and experts in the profession of player development taking the time to get in touch with us and ask about how we have been able to deliver such a comprehensive and

modern program.

One of the most important factors of player development is understanding how to push a player to the edge of their comfort zone to support technical, tactical, physical and psycho-social growth but without exposing them to situations that would see them over-stretch and lose motivation. This season we have carefully planned how to work in this crucial zone of development for each player in several situations and in our discussions with the people who have shown an interest in our work the following highlights have gained special interest:

Practise design with constraints to challenge individual development plans (IDP) alongside the strategic learning outcomes of the week/6 week block.

20 minute 'chunks' of learning. Conditioning a player's role in and out possession to change systems and effect the whole team.

We are looking forward to playing our 1st home game this season in the FA Youth Cup, the boys did well in a tight ground and bobbly pitch to get through the last round so playing in larger stadium in front of our own fans against Southend United will provide a different learning experience. The Professional Development Phase staff made the long trip to the southeast of England to watch Southend recently and they will provide difficult opposition but with the way our lads are developing they will relish taking them on at Rodney Parade under the lights.

Getting the opportunity to

play teams from different games programs is an important part of our player development plan, so the Southend game will augment these additional games that aim to push players out of a comfort zone by exposing them to different styles and types of players, our additional games program will see us play games against Reading and Swansea City before Christmas and we are planning to expose the lads to matches against continental opposition over the next 12 months as well.

Another method we will be using to push our players on technically, tactically, physically, socially and psychologically is utilising the loan system to provide certain players with opportunities to compete with senior players for a place in a team and to learn how to effectively influence senior matches; we will be making loan arrangements in January 2016 and look forward to seeing how the lads respond to the challenge. By loaning out U18 players we will also be able to free up spaces in our match day squads for our U16 prospects to step up and experience the U18 games program to develop and to push for a scholarship this summer, so far Rhys Davies (goal keeper), Liam Warman (winger) and Michael Cook (striker) have made U18 match day squads and players like Jay Williams (right back), Joe Hunt (left back) and Josh Williams (central midfield) are really pushing to be involved.

Academy U18 Fixtures 2015/16

Date	Opponents	KO / Result	Scorer(s)
AUGUST			
Sat 8	Cheltenham	0-2	-
Sat 22	Portsmouth	1-6	Kavanagh
Tue 25	Oxford Utd	4-3	Kavanagh, og, Jones, Tolland
Sat 29	Plymouth	1-2	Tolland
SEPTEMBER			
Tue 1	Cheltenham (FLYA Cup R1)	0-3	-
Sat 5	Bristol Rovers	2-2	Kavanagh (2)
Sat 12	Yeovil	1-0	Bamford
Sat 19	Exeter	0-5	-
OCTOBER			
Sat 10	Swindon	1-3	Mpadi
Fri 16	Plymouth	1-2	Tolland
Sat 24	Bristol Rovers	1-0	Evans
NOVEMBER			
Tue 3	Sholing (FA Youth Cup)	0-0	(Won 4-2 on penalties)
Sun 8	Cardiff Met (FAW Youth Cup)	1-0	Jones
Sat 14	Yeovil	3-0	Kavanagh, Matondo, Bamford
Sat 21	AFC Bournemouth	4-3	Jones (3), Tolland
Wed 25	Southend Utd (FA Youth Cup)	1-2	Hughes (AET)
Sun 29	Port Talbot Town (FAW Youth Cup)		
DECEMBER			
Sat 5	Swindon	11:00	
Sat 12	AFC Bournemouth	11:30	
Sun 27	Cheltenham	11:00	
JANUARY			
Sat 9	Oxford Utd	11:00	
Sat 23	Portsmouth	15:00	
TBC	Exeter City	TBC	

Home games on dark background
Away games on light background
Cup games in pink font

Academy 12-16's

with Darren Broadribb



Saturday 21st November

County Academy U12s 3-1 Mike Fowler SS

Goals Iestyn Davies, Josh Webb, Josh Pope ~ With no fixture in the Junior Premier League, our U12s entertained Mike Fowler SS at Llanwrn High School 3G. With three of the U12s moving up to the U13s age group, it gave the coaches the opportunity to involve Harvey Redding and Ellis Quarterley from the U11s DC. Both boys gave a good account of themselves with Harvey impressing in midfield and Ellis showing potential in attack. The game was competitive with both sides creating chances. County scored first. A clearance from the opposition defense fell to the advancing Iestyn Davies who volleyed the ball over the keeper and into the net. Mike Fowler SS equalised though shortly after to make it 1-1. County then regained the lead with a great volley from Josh Webb, driving onto a fine cross played into the box by Matthew Swann. County trialist Josh Pope scored a great goal in the latter stages of the game, side footing a ball past the keeper, in what was a very composed finish. The game finished 3-1. A well worth development fixture for both sides.

After performing well over the past 4 weeks, Josh Pope will be signing for the Academy this week.

Evo Bath 3-3 County Academy U13s

Goals Isaac Donnelly, Mervyn Bennett, Eliah Carpenter

County started the much brighter, moving the ball quickly and creating problems for the Evo defense. Isaac Donnelly was instrumental in most attacks as County created numerous chances, but it was Evo who went ahead when then striker finished well from outside the box.

The 2nd period was a complete contrast from the 1st, Evo were quick out of the blocks and scored again via a neat finish at the front post. Evo now in control began to move the ball with more intensity. Another two chances for the home side shortly followed, but the hosts were denied both times by Joseph Needham in the County goal.

The 3rd period was full of chances for both teams with Evo extending their lead but credit to County they struck straight back, a good move down the left allowed Donnelly to finish well after a goal mouth scramble.

County came back strongly in the last period, an intercepted back pass allowed Mervyn Bennett to run through unchallenged and he scored well to make it 3-2. County

continued to push and equalized through Eliah Carpenter who scored a stunning lob volley to make the final score 3-3.

MOM award went to Eliah carpenter



(pictured, left) for playing with intelligence and great work ethic

Academy U14s 1-3 Bristol Rovers Central

Goals Joe Laver

With no Junior Premier League fixture our U14s played Bristol Rovers Central from Birmingham. Both teams played some fantastic football and the game was very competitive.

Rovers took the lead early on but County soon equalised. After some great play down the left Logan Bowkett provided the assist to Joe Laver, who finished the move with an excellent strike.

The second half saw both teams create chances but it was Rovers who struck twice to win the game 3-1. But on a more positive note two of our U13 players played up, Isaac Wigley and Jamie Woodiwiss both gave encouraging performances.

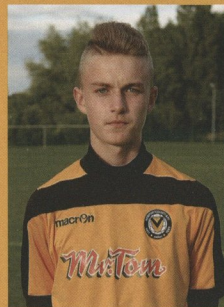
MOM award goes to Callum Foley (pictured, below) for an excellent defensive performance.

Bridgewater 0-10 Academy U15s

Goals Lathern Millër (2), Tom Atkinson (2), Tom Hillman, Rivel Madenborough, Jake Clark, Sean Kelly, Sam Swann, Harri Shelley

County travelled down to Bridgewater and came away with a 10-0 win. Bridgewater battled through out but were unable to compete against an excellent County team.

County lead



8-0 at half time through Lathern Miller (2), Tom Atkinson (2), Tom Hillman, Rivel Madenborough, Jake Clark and Sean Kelly. Sam Swann and Harry Shelley completed a miserable day for Bridgewater in the second half.

MOM award went to Ally Dare for an excellent all round performance

Bournemouth 3-0 Academy U16s

Development Centre

Our Development Centre is where the staff of our Newport County Youth system comes together. I run the centre alongside U18s staff Byron Anthony and Mykee Jenkins, Academy 12-16s coaches Steve Badman and Dan Benham and County in the Community Staff Dave Lewis who runs the Futsal programme at Llanwrn High School, Dan Harvey and Dan Williams. We also have other UEFA trained coaches from all across South Wales

The development has come a long way over the past 2 years ago, since then the numbers of children attending and coaches has doubled and continues to evolve into a professional run set up.

My original philosophy was to include as many local lads as possible regardless of ability, to come along for training and feel part of the County, but for the first time this year we made the bold move to trial in each age group U7s - U11s and to hand pick the boys we felt were more developed and had potential of making into our Academy one day.

It wasn't a decision we took lightly but felt it was time to run it how a Category 3 club would, as this is where we hope to be in the near future. Another reason was highlighted during preseason this year, when we turned down games against the likes of Birmingham and Swansea City because we would not have

been able to compete with mixed ability.

We train once a week on a Friday evening at Llanwrn High School and our main aim is to create a friendly professional environment where the boys can come and develop without feeling under pressure. We want them to enjoy their experience with us as they learn and also develop their social skills.

Running alongside training we have regular games against other centres such as Cardiff, Swansea, North Somerset, Yate, South Gloucester and Southampton in Bath. The boys get really excited on games night and it's great to see them play with such enthusiasm and freedom.

The next step for the centre will be to run it in line with the FA EPPP as the Foundation Phase. Although we already provide the boys with excellent training and games, the move will enable us to put together a more structured coaching programme where we will set targets for our performance and the boy's development.

Other News

Last week the Newport County supporters group 'The Smile Council' presented us with a £1000 cheque to help towards our running costs. Yet again for the fourth year running our friends the Smile Council pledged to help raise funds for the 12-16s academy and we really appreciate their support.

We also had some other great news that we have agreed on a 2-year sponsorship deal with Red Storm Fashion Agency worth £10000 which is fantastic news for the Academy.

12-16s 'Building for the Future wall'

We would like to thank Shewring Accountancy who is the latest business to join our family of supporters donating £500.

Pictured above:
County Academy U16s

Back Row (left - right):

Jock Coles, Ben Jones, Sam Broadribb, Lewis Collins, Mack Sadler, Rhys Davies, Max Manson, Iwan Shenton, Iolo Jones, Mike Cook, Ben Coles

Front Row (left - right):

Tom Randall, Jay Williams, James Driscoll, Joe Hunt, Josh Williams, Owen Taylor, Evan Press, Liam Warman, Jordan Seymour, Harrison Pash-Davies

CHECK YOUR ELIGIBILITY WITH QUICKCHECK

QuickCheck shows whether you could be accepted for one of our cards before you apply.

- ✓ Find out which card you could be accepted for
- ✓ Won't impact your credit score
- ✓ Just 3 easy steps



Try QuickCheck now at

CAPITALONE.CO.UK/QUICKCHECK



SOUTH WALES Argus



EVERY **FREE KICK**
EVERY **CORNER**
EVERY **GOAL**
EVERY **PASS**
EVERY **SHOT**
EVERY **DAY**

southwalesargus.co.uk
[@argusoncounty](https://twitter.com/argusoncounty)

OFFICIAL PARTNER
2015 - 2016 SEASON



County Q&A

Tom Owen-Evans

ABOUT YOU

First Club *Bristol City*

Club Supported as a Child *Arsenal*

Best Ground Played at *Molineux*

Footballing Hero *Cristiano Ronaldo*

Best Opponent *Rudy Gestede*

Best Team Mate *Medy Elito*

Favourite Holiday Destination *Magaluf*

Music *Hip Hop, grime and house*

If I Wasn't a Footballer, I'd be...

a DJ!

TEAM MATES

Comedian *Scott Boden*

Best Dressed *Rhys Taylor*

Worst Dressed *Joe Day*

Worst Singer *Aaron Collins*

Worst Taste in Music *Myself!*






Unit 16, John Baker Close
Llantarnam Industrial Estate
Cwmbran, NP44 3AX



The Wheel Specialist
ALLOY WHEEL REFINISHMENT
 & CUSTOMISATION

Get an Instant Quote
01633 873 172
thewheelspecialist.co.uk



You can now spread the cost
 of your wheel refurbishment
 over 4 easy payments.

✓ **No Interest**

✓ **No Fees**

Terms & Conditions Apply
www.paymentassist.co.uk



CAYZERS MENSWEAR

Since 1905

Sponsor Newport County

116-120 Chepstow Road

Maindee Newport



Supporters Trust

ncfctrust.org • @ncfctrust

It continues to be a busy time for the trust on a number of fronts.

At the time of writing, preparation is in full swing for our first open meeting since taking ownership of the club. The meeting is part of our transparency commitment and we hope to share as much information as we can. As a fan owned club this is at the heart of our ethos. That said, we need to ensure that we are able to strike the right balance in what can be a tricky area. There will be elements that we are unable to share due to other factors – legislative for instance – but where we can share we will do so.

This meeting will focus on our 90-day plan, the financial position as part of our Football league submission, and the previous management team.

This is probably one of the busiest weeks we have encountered since taking control of the club with a Trust Meeting, away trip to Oxford, Youth match, Board meeting, City of Newport business presentation, our first open meeting and of course today's game against Luton. Whilst at times it may appear not a lot is going on that could not be further from the truth, and we have no doubt this will become clear at the Open Meeting.

Over the coming weeks we will begin to outline the process for the democratic elections that we have committed to hold. In addition, we will begin to outline the associated timetable. The elections will follow an incremental approach to ensure we maintain stability within the club. This is critical. One of the key elements is to ensure the relationship that has been created with club officials and football management team is maintained, the incremental approach should help achieve this. Look out for updates in our weekly newsletters.

We have recently launched the first of our fan engagement surveys. We are keen to hear the views of fans so please take the time to complete this. We will share the output with you and more importantly, take action and implement where the view is to do so.

Our Rewards and Benefits scheme is well underway. We are pleased with the initial take up but as always, we need more fans to join. This scheme is a key part of making the club sustainable. We are working hard behind the scenes with local businesses



to agree discounts for our members. Please visit the Trust website for more details.

We have been contacted by a number of clubs looking to start their journey moving towards supporter ownership. It is interesting in that while each one of them are at a different stage there is a common theme in that there is a "burning platform" for the change mostly around finances. Our message is clear to all of them, this model is certainly the future and we are happy to help where we can.

Looking to the future we recently met with the Chief Executive of Newport Borough Council. We discussed a number of issues and will continue to stay in close contact. It was interesting to hear that there are a number of studies that suggest a successful city always has a number of elements – one of those is a football team. With the City moving at pace on its emerging journey, the club are keen to be part of that success and that view is shared by the Chief Executive. We were warmed by the conversation and agreed to follow up in the New Year.

Finally, a thank you to all the volunteers who make the club work behind the scenes. Without them the club would struggle to function.

Your Club
Your Trust

KILSBY & WILLIAMS

Proud to be official Accountants to Newport County AFC



Chartered Accountants

Our services are designed to provide everything to grow your business, ensure tax efficiency and protect your wealth. Our core services are tailored exactly to your needs.

- Accountancy
- Audits and Due Diligence
- Taxation
- Grants and Corporate Finance
- Expert Witness, Company Valuations and Forensic Accounting
- Payroll
- Company Secretarial
- Business Growth

Our Team

The delivery of our bespoke client service is headed by partners and managers of the highest ability. Our team offers you a high level of technical ability, commercial sense and many years of experience.



Visit our website at www.kilsbywilliams.com to receive our free smartphone tax app giving lots of free tax advice!



Contact us for an initial free meeting

Tel: 01633 810081 • Fax: 01633 810077 • Web: www.kilsbywilliams.com
Kilsby & Williams, Cedar House, Hazell Drive, Newport, NP10 8FY



Follow us on Twitter

Today's the Day

with Phil Tanner

We're going to town a bit this season on the amazing 2009-10 campaign in Conference South. And why not when we set six divisional records which still stand? Our first programme of the season recalled the August visit of Lewes, who came away with a 2-2 draw in a game we almost won at the death after equalising twice. The return was played six years ago today, by which point the clubs were looking at very different seasons.

We went into it eight points clear at the top and Lewes, who'd been in survival mode for more than a year - they crashed out of Conference Premier in 2008-09 an amazing 27 points from safety - were next to bottom. They were, however, unbeaten since September.

One thing I miss about non-league is the idiosyncracies of the grounds. And without getting too groundhopperish, The Dripping Pan is unique. It's built into the side of a hill with a decent modern stand along the touchline on the downhill side. An open terrace at one end - presumably a requirement for their 15 minutes of fame in Conference Premier - wasn't being used and at the other end was a striking covered terrace with a roof made up of five canopies, more like a cricket ground or racecourse. Along the other side there's a steep grass bank (out of bounds, of course), topped with a tarred pathway which provides a superb view.

On to the actual game. Dean Holdsworth made a surprise choice in preferring Paul Cochlin to Alton Thelwell, who was on the bench. The reason became clear after the game when it was disclosed that the classy former Spurs defender, on non-contract terms, had accepted an offer from Kettering Town. It didn't work out. We went from strength to strength while his injuries meant Thelwell was finished at

Kettering nine games later.

Argus reporter Andrew Penman singled out Scott Rogers as our star man. The former Bath midfielder cleared one off our line after three minutes, with Glyn Thompson beaten. Scott then put us in front against a spirited home team on 24 minutes, steering in a low cross from Craig Reid.

Holdsworth had picked both Reid and Dave Gilroy up front and they were involved in a heated incident just before the break. Lewes sub Ryan Timms had only been on for nine minutes when he hauled down Gilroy in the box and was sent off. Gilroy and Reid got into a row over who would take the penalty and skipper Gary Warren had to intervene. Reid's effort was turned round the post and Gilroy smashed the ball against an advertising board in disgust. For what it's worth, my money would have been on Gilroy - it was already Reid's second penalty miss of the season - but Holdsworth clarified that Craig was the designated taker.

The 10-man hosts started the second half strongly but we nailed them on 56 minutes when Kerry Morgan beat the excellent Rikki Banks - the best keeper I saw in Conference South - from the edge of the box. I watched the second period from the vantage point of the pathway above the grass bank and had a great view of our third goal with seven minutes left. Gilroy (head injury) and Ashan Holgate had been forced off and such was our embarrassment of riches that we could replace them with Sam Foley and Charlie Henry. With the rain now sheeting down, Sam picked out Charlie with a long pass right into his stride and he stroked it inches inside the post with the outside of his boot.

Three-nil arguably flattered us but the spirit Lewes showed stood them in good stead and they did stay up that year, although they were to finish next to bottom in 2010-11.

2009

Lewes County **0 3**

Line-up:

Glyn Thompson
Paul Bignot
Jamie Collins (Alton Thelwell 70)
Wayne Turk
Gary Warren
Paul Cochlin
Ashan Holgate (Charlie Henry 77)
Scott Rogers
Craig Reid
Dave Gilroy (Sam Foley 66)
Kerry Morgan

Subs not used:

Josh Hartrick
Keiron Blackburn

Attendance

521

SOLICITORS
IN THE HEART
OF NEWPORT

Proud to be official



solicitors

Always putting our clients FIRST with

Easy to understand advice

No jargon

Teams of legal specialists

Transparent fees

No win, no fee options

Local – Award winning

A firm trusted by your club

We can help you with:

- Buying and selling property
- Employment law
- Civil litigation and claims
- Family and matrimonial
- Medical negligence
- Personal injury
- Wills, probate and trust
- Professional negligence
- Criminal law
- Landlords and tenants
- Sports law

We can also help with a range of business law.

Special offers are available for Newport County Trust Members (quote ref NCHE)

FREE initial chat for all
Newport County fans

01633 244 233

www.hardingevas.com



A Game of Two Halves

Everyone likes an underdog - as the saying goes. This is so true in sport where 'David and Goliath' confrontations attract the headlines for a fleeting moment with the victorious David enjoying an extended moment of fame until they eventually capitulate. This is never truer than with the FA Cup; in the first, second, third and fourth rounds a few non-league clubs fly the flag for the underdog, then a few lower division league clubs carry it on until one of the big Premiership clubs eventually restore the balance of power with a cup lifting victory in the Final.

Newport County AFC in our 25 years of non-league status as a revived club were normally pitched as the 'underdog'. Our FA Cup contests with Blackpool and more recently Swansea City are memorable examples where we were glorified and patronised by the press, in equal measure, for being 'plucky' and for showing a 'never say die' spirit. So it felt odd over the past couple of weeks to be seen to be the large impressive warrior bearing down on the weakling challenger that was Brackley Town from the National League North. Role reversal is something we have difficulty adjusting too after all of those years in exile from the Football League.

This is why we are still 'star struck' when clubs such as today's visitors Luton are in town. With their pedigree of past success and the memories we hold of the David Pleat era, we still see them as 'big' and a challenger to be reckoned with; this, despite the fact that the Hatters themselves have tasted non-league football in recent times and have been with us in this division for several seasons as peers. The same could be said of our hosts last Tuesday, Oxford United, another club who have always been bigger than us in league status, crowd appeal and media profile, and another 'middling' league club which had a spell in the top flight, and cup success, at their zenith.

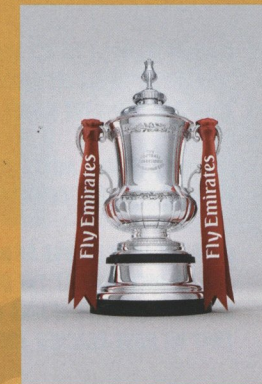
Portsmouth, whom we relish playing for the long established reason of their being close rivals in our finest moments of league football in our first incarnation as a club, and coming hosts Notts County

also fall into this bracket of revered clubs whom we can't wait to beat to prove our own worth.

I was reminded on our recent visit to Accrington Stanley of the power of determination amongst small clubs - not just to survive but to better themselves and prosper. The welcome sign at the entrance to the Crown Ground 'This Is Stanley - The Club That Wouldn't Die' says it all. The older ones amongst us fondly remember the public health information film from the old Milk Marketing Board with the feisty young Liverpool school boy remarking 'Accrington Stanley - who are they?' when encouraged to think about fulfilling a career in the game. Oddly, although being a piece of warm patronisation about an underdog at the time, the promotion did more to market Stanley at the time than anything the club could do for itself. All these years on and Stanley sit proudly in a promotion spot as we approach the half way point of the season, playing an attractive and expansive style of football, with a small and very local fan base and a tight playing budget. Stanley personify the underdog image and spirit.

Back to the FA Cup and the flag-flyers eagerly await their second round ties with the lure of the third round and the entry of the Premiership and Championship clubs. Salford City will open proceedings with a home tie with Hartlepool United on the Friday evening and enjoy the television fees for being screened live as well as the moment. On the Saturday Northwich Victoria take on Northampton, Stourbridge host Eastleigh guaranteeing a non-league team appearance in the round to follow, and Stanley visit Fratton Park and should not be overawed given that they are more than holding their own with Pompey in the league rankings.

On the Sunday Chesham United visit Valley Parade to take on Bradford City, themselves the heroes of last year's competition with that famous win at Stamford Bridge. Whitehawk are at Dagenham and Redbridge and old friends Forest Green at Oxford. Altrincham at Colchester and Welling United hosting Carlisle United make up the ties of the underdog. County, at Barnet, are no longer classed as an underdog.



Colin Everett
talks about the
FA Cup

SPYTTY THE DOG'S

KIDZ KORNER

GOOD AFTERNOON TO ALL MY YOUNG FRIENDS AND A VERY GOOD AFTERNOON TO ALL MY FRIENDS FROM LUTON. I HOPE YOU ENJOY YOUR DAY AND HAVE A SAFE JOURNEY BACK.

I'M WRITING THESE NOTES BEFORE THE GAME AT OXFORD AND I HOPE WE HAVE KEPT THE UNBEATEN RUN GOING.

OVER THE NEXT COUPLE OF WEEKS WE HAVE AN IMPORTANT CUP GAME AND WE WILL PLAY AT THE OLDEST FOOTBALL GROUND. IF WE BEAT BARNET NEXT WEEK IT WILL BE THE FIRST TIME SINCE REFORMATION THAT WE HAVE REACHED THE THIRD ROUND.

I'VE GOT A BUSY PERIOD COMING UP AS I'M BACK OUT WITH THE COMMUNITY BOYS IN FRIARS WALK ON DECEMBER 6TH FOR ANOTHER PENALTY SHOOT OUT.

I WILL ALSO BE WITH FATHER CHRISTMAS AT THE SUPPORTERS CLUB CHRISTMAS PARTY ON 13TH DECEMBER. (SEE PAGE FOR DETAILS)

DON'T FORGET TO COME AND SEE ME FOR A SWEET AT HALF TIME AND PLEASE SEND ALL PICTURES AND BIRTHDAY WISHES TO PROGRAMME@NEWPORT-COUNTY.CO.UK

ENJOY THE GAME

SPYTTY



MASCOTS

HERE I AM WITH THE MASCOTS FROM OUR LAST TWO HOMES GAMES. SONNY LEWIS, JACOB MURDOCH & TAYLOR JUSTIN CHARD (BRACKLEY), ADAM HENDERSON, RYAN BEDDOES, BEN & HARRY TOVEY (YEOVIL). I HOPE THEY ALL ENJOYED THEIR DAYS OUT!



SPYTTY'S QUIZ

CAN YOU ANSWER THESE LUTON-RELATED QUESTIONS

1. WHERE DO LUTON TOWN PLAY THEIR HOME GAMES?
2. WHAT IS LUTON TOWN'S NICKNAME?
3. WHAT IS THE NAME OF LUTON'S MASCOT?
4. WHAT YEAR DID LUTON PLAY THEIR HOME GAMES ON A PLASTIC PITCH?
5. WHAT YEAR WERE LUTON RELEGATED FROM THE FOOTBALL LEAGUE?



SPOT THE BALL

CAN YOU TELL WHERE THE BALL IS IN OUR PICTURE?



NEWPORT COUNTY SUPPORTERS CLUB CHILDRENS CHRISTMAS PARTY
SUNDAY 13TH DECEMBER 2015 2-5PM
YMCA MENDALGIEF ROAD
FOR CHILDREN UP TO 12 YEARS OLD.



MEET FATHER CHRISTMAS AND RECEIVE A PRESENT. BUFFET AND PARTY GAMES
COST £5.00 PER TICKET. PLEASE PHONE BOB AND SUSAN HERRIN ON 01633 274440

Answers: SpyTTY's Quiz Kenilworth Road, The Hatters, Happy Harry, 1985, 2009, Spot The Ball D

Newport County AFC Savings Account

Enjoy a competitive rate of interest on your savings whilst also financially benefiting Newport County AFC, with an Affinity Instant Account from Monmouthshire Building Society.



To find out more, pick up a leaflet today or simply visit any of our branches or call us on

01633 844 330

More information available at
www.monbs.com/newportcounty

Please refer to the product leaflet for full terms and conditions.


monmouthshire
building society
www.monbs.com

You must maintain the appropriate minimum balance in your account at all times. If your balance drops below the minimum, the account must be closed. The interest rate is variable. Withdrawals are subject to branch and agency limits. Full terms and conditions are available on request. Monmouthshire Building Society is authorised by the Prudential Regulation Authority and regulated by the Financial Conduct Authority and the Prudential Regulation Authority. Registration Number: 206052.

Head Office: Monmouthshire House, John Frost Square, Newport, South Wales, NP20 1PX. Telephone: 01633 844444 Fax: 01633 844445

BG Accountancy Services Ltd

Tax Rebate Specialists

Accountancy
Taxation
Payroll
Bookkeeping
VAT

Tel: 07976 358093
barrie@bgaccountants.co.uk

 **Stagecoach** in South Wales

greener smarter travel...

just go X24...

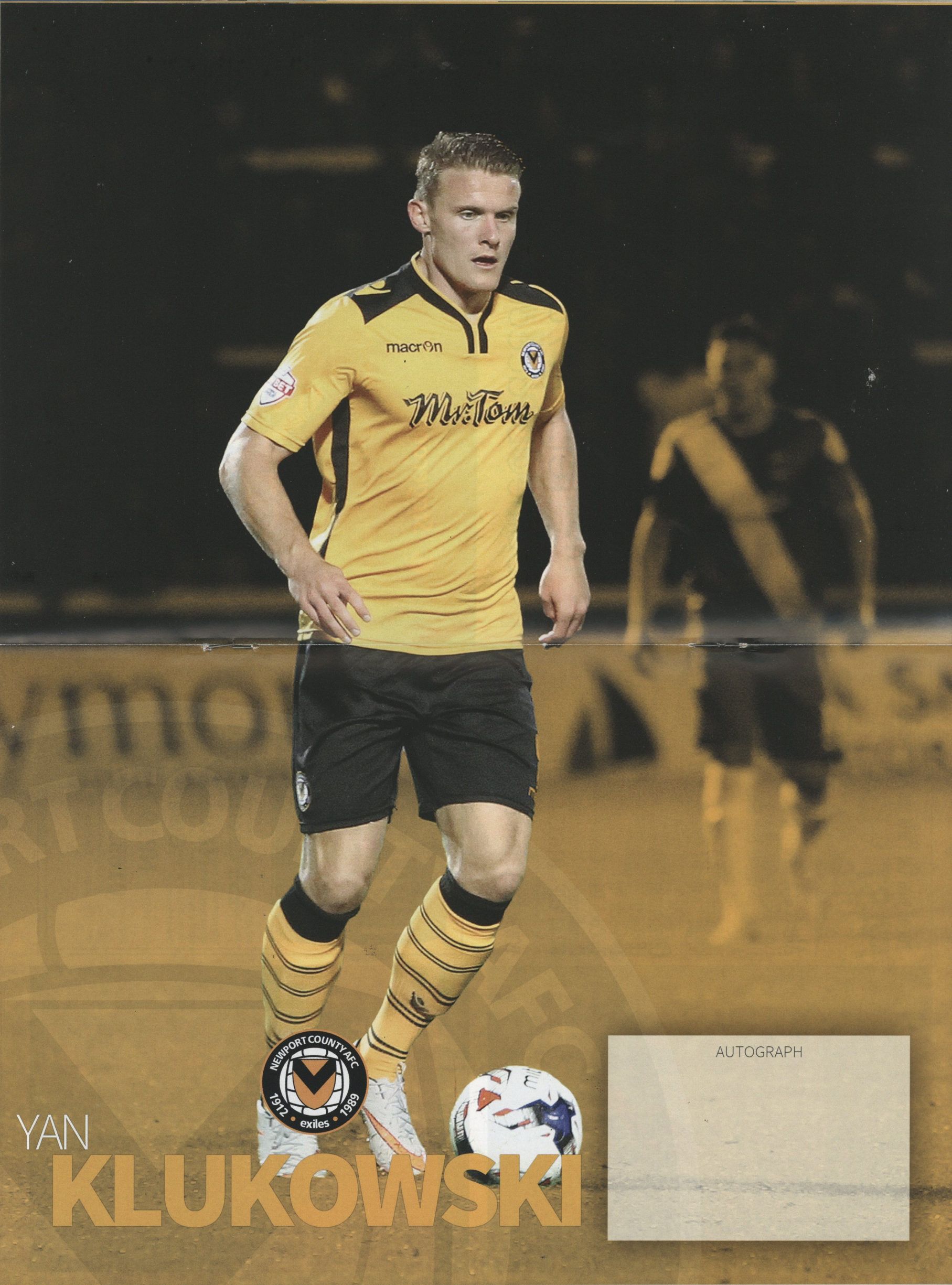
Newport Pontypool Varteg Hill
Cwmbran Abersychan Blaenavon

website: www.stagecoachbus.com/southwales

ticket sales: www.buymymegarider.com

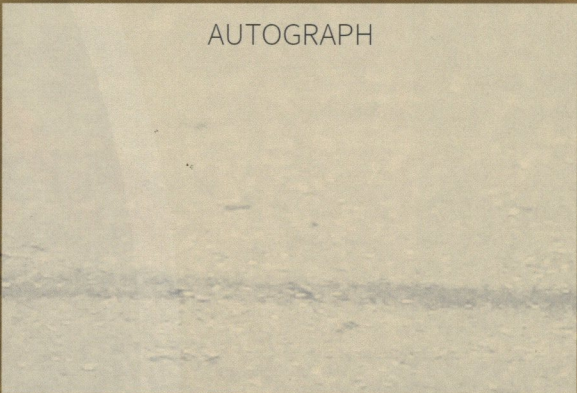
Newport
to Blaenavon
via Cwmbran
& Pontypool
up to every
10 minutes





YAN
KLUKOWSKI

AUTOGRAPH



"Once upon a time there
were ordinary nurseries.....
...then there was..."

Seren Fach PRIVATE DAY NURSERY



School Close,
Caerleon Rd,
Ponhir,
Newport,
South Wales
NP18 1GA

01633 431300
serenfach.com



Seren Fach

For all your Car Parts and Accessories Trust **FAST PARTS**

Abercarn Branch.
Unit 17 Darren Drive
Prince of Wales Ind. Est.
Abercarn
Newport
NP11 5AR 01495 245777



Cwmbran Branch.
Unit 10
Ty Coch Way
Ty Coch Dist. Centre
Cwmbran
NP44 7HF 01633 643910



www.fastpartswales.co.uk



Cwrt Henllys RESTAURANT & BAR

VENUE HIRE
ACCOMODATION
EVENTS



Henllys Village Road, Henllys
Cwmbran, Gwent NP44 6HX

01633 484697 bookings@cwrtthenllysrestaurant.co.uk
www.cwrtthenllysrestaurant.co.uk

BEST BLINDS

BEST Prices BEST Quality BEST Service

HUGE SAVINGS ON

Verticals Rollers
Venetians Wood Venetians
Romans Pleated

Replace Your Old Slats For A
Fraction Of The Cost

From £1.75 Per Slat

FREE Weights and Chain
FREE Quotes and Fitting

www.bestblindswales.com

Show this leaflet
for an extra



5% OFF



Unit 1, Taverner Trading Est, Caerleon, Newport NP18 1BU

Telephone: 01633 431117

Freephone: 0808 155 1243

PAUL FLYNN MP - SERVING NEWPORT

Time to Talk?

Telephone Surgeries
An additional service for constituents

To discuss any parliamentary issues or problems phone

01633 262348

I will call you back at your convenience

Other contacts:
www.paulflynnmp.co.uk
paulflynnmp@talk21.com
House of Commons, London,
SW1A 0AA



Design by
Phoenix TCB C



**155 Caerleon Rd,
Newport,
Gwent
NP19 7FW
01633 252060**

John Griffiths AM

WORKING HARD
for
NEWPORT EAST

John holds regular advice surgeries
throughout Newport East.

If you need advice or have any
concerns affecting you, your family
or your neighbourhood, please
phone, e-mail or write to make an
appointment:

Tel: 01633 222302

E-mail: john.griffiths@wales.gov.uk

Write: 7th Floor, Clarence House,
Clarence Place, Newport, NP19 7AA



Proud to support
Newport County
AFC



WELCOME

Luton Town

with **Richard Taylor**
and **Phil Tanner**



Hot Gossip

What the press are saying...

Teddy's Tribute

Stevenage manager Teddy Sheringham seemed to be casting an envious eye across to Kenilworth Road as Hatters played out a 0-0 draw at the Lamex Stadium last week. 'They are paying a lot of money over there and they have got a lot of good players so their expectancy levels are very high. I am sure the pressure was on but manager John Still knows, and I know, a few wins and that pressure relieves.' The former England striking legend is nevertheless full of respect for his Town counterpart Still, telling 'The Hertfordshire Mercury', 'He has found that secret formula of getting results and moving on and getting that consistency in his players. We had a lunch at the start of the season; we have mutual friends. It was nice to sit there and chat to a manager who has been there and done it. He is a very experienced manager. That is why he is still in the job. He is very good. His team play the way they do and they don't change what they do. But they are very efficient in what they do.'

Cricket Connection

Luton have invited Graeme Swann to a League Two encounter at Kenilworth Road, after the former Northamptonshire and England spinner suggested that the entertainment on offer might be in question! Swann, 36, part of BBC's Test Match Special team for England's recent tour of the United Arab Emirates to play Pakistan, was less than impressed with the tempo of the game during a partnership between Alastair Cook and the now-discarded Ian Bell, remarking, 'This pitch is proving to be as lifeless as an away game at Luton Town.'

The comparison did not receive a favourable response from the Hatters faithful, some of whom took to social media to remind Swann of the struggles of his own favourites, Newcastle United! Talking of cricket, England captain Cook was spotted at Kenilworth Road as a guest of Hatters fan and then England colleague Monty Panesar during Luton's 2013-14 Conference Premier championship campaign. The spin bowler has probably not asked the skipper back since, as Luton suffered a rare defeat, 1-0 at the hands of Woking.

Chance for revenge

Veteran striker Paul Benson believes that Town's strength in depth can help them continue their good form as games being to come thick and fast as the festive period approaches. Hatters have won three of their last four games in all competitions prior to Carlisle's marathon midweek trek to Kenilworth Road four days ago, with 36-year-old Benson telling the club website. 'You have to have a big squad if you are going to do well in this division. There are loads of games, especially at Christmas time, when they come thick and fast. You want to have a good pool of players to call upon when you need them. We have a strong bench now and anyone that comes in should do themselves justice. I don't really think you are weakening the team, whoever you put in.'

Unfortunately for Benson, someone had to be 'put in' for him at Carlisle, following his 87th minute dismissal at Stevenage last week.



AT A GLANCE Luton Town

Formed
1885

Ground
Kenilworth Road

Capacity
10,226

Home Colours
Orange & Navy Blue

Change Colours
White & Orange

Third Colours
Orange & Navy Blue Stripes

Best League Position
7th Div 1, 1986-87

Best in FA Cup
Runners Up, 1959

Best in League Cup
Winners, 1988

Best in Football League Trophy
Winners, 2009

The quest for a home victory in League Two goes on for County, with **LUTON TOWN** the latest club hoping to extend our winless sequence. Big-spending Town have more reason than most to avoid defeat here, as John Still's promotion chasers were the last team to leave Rodney Parade with the proverbial tail between legs, losing to a first half Aaron O'Connor strike on 18 March. This term, 'The Hatters' have recovered from a poor start and are currently on the coat tails of the play-off chasing pack. County v Luton encounters are rarely dull affairs, so an exciting afternoon could lie ahead

Get Your Kit On

Luton are probably as close as we get in the Football League to a club without traditional colours. For much of their history, they sported simple white shirts and black shorts, although they started life in the fetching pink and navy blue halved number pictured, a kit they wore as a change strip five years ago to mark their 125th anniversary. In 1889, Luton's committee opted for 'dark cardinal', though three years later 'The Luton News' reported that 'the shirts



now used are more of a claret than a red'. Towards the end of the century, 'The Bedford Advertiser' commented 'the new black and white striped shirts gave a business like appearance', while there were further experiments with various combinations of blue and white, before white and black was adopted in the 1920s. In 1974, to celebrate promotion to the First Division, Hatters opted for a new look orange and navy kit, but by the 1980s, the club were wearing white and blue. After returning to white and black in 2000, the board opted for another change nine years later as they dropped into the Conference, switching to orange once more in the hope of a 'brighter' future. At the start of last term, Luton supporters voted to retain orange and navy blue as club colours but ... watch this space for more developments in the kaleidoscopic world of Luton Town!

Pictures courtesy of 'www.historickits.co.uk'



Fan Fayre

What the fans are saying...

If you prefer your views forthright, Luton Town message boards are probably the place for you! The main such outlet, 'Luton Outlaws', is hardly a place for the faint-hearted, though in fairness, it does state that the message board is for adults. 'Luton Town Fans - Forum' and 'Vital Luton Forum' have less traffic and are milder in tone, while 'PDW' may wind up a few opposition supporters with his - admittedly tongue-in-cheek - match reports. A quick search of Twitter and Facebook also reveals a wealth of Hatters gossip, so below we take a brief look at how the various 'outlets' view the Luton/County connection.

'Oddly I can't remember Cardiff or Swansea complaining about the English Premier League ... and let's be honest who would ever care what anyone from Newport thought about anything?' The Football League rebrand attracts 'Mahatma Gander's' attention on 'Luton Outlaws'.

'As usual we're expecting a large Hatters support to invade Wales.' 'VitalFootballAdmin' anticipating a significantly larger away following than on Hatters' previous two evening 'adventures' to Rodney Parade.

'Another win in white. We have won 66% of our matches in white (P6 W4 D1 L1) and only 33% in orange (P15 W5 D3 L7) #bringbackwhite'. '@LutonTownFans' tweeting on Luton's success rate in orange as opposed to white. Unfortunately, they will be in white this afternoon.

'It's not often the phrase "Cheats don't prosper" comes true in life, but it did today, as Newport a team who are everything bad about lower division English Football, were sent packing. How they escaped without a booking against them is mind boggling.' 'PDW' offers his views on our 3-0 League Two defeat at Kenilworth Road 11 months ago.

'On a golden evening, where the depilated terrace houses shone majestically in the setting sun, nice evening for the drunks and drug addicts to have a stroll around Gwent's Utopia. Having visited Portsmouth and Newport in the last few days, my eyes have gazed over in the horror of them.' 'PDW' again, on 'hattersnews' after our 1-0 victory here in March, proving that spelling is not his strongpoint, as he longs for the tranquillity and majestic beauty of ... Luton.

'Newport on that Tuesday last season, dreadful night.' 'EdFromBeds' reflects on his 'worst away trip' on 'Luton Outlaws'.

'Daggers and Barnet, let's not get carried away. Stevenage to follow, all bottom clubs. Newport to come, another bottom club.' 'realist world' considers opponents' respective league positions on 'Luton Outlaws', when looking back on Luton's recent form.



Luton and the World

Luton Airport

Luton is immortalised in the famous 1970s Campari advert starring Lorraine Chase in which she was asked, 'Were you truly wafted here from paradise?' to which she replied: 'Nah, Luton Airport.' These days, London Luton is the capital's fourth airport and a base for EasyJet and Ryanair; it is also the UK's fifth largest passenger airport, with 10.5 million passengers using its facilities in 2014.

Famous Fans

Mention of famous fans of Luton Town will inevitably draw anyone of a certain age to the late great comedian Eric Morecambe. Other notable Hatters include the executive director of markets for the Bank of England, Chris Salmon, ex IBO world light welterweight boxing champion Billy Schwer, 46, out of favour England spin bowler Monty Panesar, 33, and current chairman, the former breakfast television presenter and host of 'Sporting Triangles', Nick Owen, 68.

Luton Carnival

Luton Carnival is Europe's largest one-day carnival. Held during the Whitsun bank holiday in May, and funded by the Borough

Council, it is the UK's second largest carnival after the two-day Notting Hill event.

Wha' no 't'?

Lutonians are often parodied in popular culture for dropping the 't' in many words, 'Luton' being one of them. The origins of the trait date back to the 18th century, when the town was the centre of the hat making industry. The story goes that hat workers manufacturing straw boaters routinely put straw in their mouths and deliberately avoided pronouncing their t's in order to avoid spitting out the piece of straw!

Luton by numbers

30 miles north west of London and 14 miles west of Stevenage, Luton is the 311th biggest district of England by land area. With a population of 210,962, it is the 27th most heavily populated English district. Eighty one per cent of the population class themselves as British, 47% say they are Christians and 24% are Muslims. A local representative of 'Churches Together' praised Luton's work in bringing different ethnic groups together, commenting, 'the reality of life in the town is that of a healthy interaction between people of different faiths'.



Lorraine Chase



Eric Morecambe



6 of the Best

Luton Town 1885-2015

1885

A Town Hall meeting passes a resolution to create a 'Luton Town Football Club'. As a result, local clubs Luton Wanderers and Excelsior FC pool resources, though the merger needs careful handling, as the 'upmarket' Wanderers and works club Excelsior are traditional rivals and demand equal representation. Excelsior's Town Meadow ground is home for the new club, though former Wanderers' supporters complain at its location close to the railway station, as they are engulfed with smoke from the frequent trains or have their straw hats blown from their heads in an unfavourable wind! Wanderers also insist that the new pink and navy blue strip includes navy caps.

1959 (Below)

Town reach their first – and, so far, only – FA Cup Final, four years after winning promotion to Division 1. After going two down to Nottingham Forest within the opening half hour, Luton come back strongly and have a man advantage as goal scorer Roy Dwight – uncle of Reg (aka Elton John!) – is stretchered off with a broken leg in this pre-substitute era. Dave Pacey pulls a goal back midway through the second period, but in a game refereed by Jack Clough, it is perhaps inevitable that the side later managed by the legendary Brian would hold on.



1920

Luton, along with County and the rest of the Southern League First Division, join the newly created Football League Division 3. For Hatters, it marks a return to an organisation they left at the turn of the century due to prohibitive travel costs, but the club are now stronger on and off the field. The following year, three Luton players star in an England v Ireland international, with 30-year-old forward Ernie Simms earning his sole England cap, and Louis Bookman and Allan Mathieson wearing emerald green.



Love to Hate?

Luton Town and Watford have enjoyed a 'keen' rivalry since their respective formations in the late 19th century. Watford fan David Harrison, writing in 'When Saturday Comes' comments, 'It is not exactly The Old Firm, but believe me, it all gets pretty agitated around these parts'. The clubs met competitively for the first time in the 1898–99 FA Cup, playing each other regularly in the Southern League and Football Leagues until 1937, when Luton's promotion separated them in league competition until 1963–64. The animosity intensified during the late 1960s and the 1970s, reaching a peak during the 1980s, with both teams competing in the top-flight. These days, 'Hornets' fans rarely cease to remind their Hatters counterparts of the difference in league status and attendances between the two clubs, though Luton still boast a significantly better record in the 'M1 Derby', with 53 victories to Watford's 36, including a best-ever 5–0 victory at Kenilworth Road in January 1926.



Last 10



Luton celebrate promotion in 2014

Seasons

Season	League	Position	Avg Att.	Matches
2005-06	Championship	10	9139	06 Oct; Gillingham (A) 1-2
2006-07	Championship	23 ▼	8580	JPT Round 2
2007-08	League One	24 ▼	6493	10 Oct; York City (H) 1-1
2008-09	League Two	24 ▼	6019	17 Oct; Crawley (A) 1-2
2009-10	Conference Premier	2	6947	20 Oct; Leyton Orient (H) 1-1
2010-11	Conference Premier	3	6241	24 Oct; Plymouth (H) 1-2
2011-12	Conference Premier	5	6111	01 Nov; Dag & Red (A) 2-0
2012-13	Conference Premier	7	5882	07 Nov; Crawley (A) 2-1
2013-14	Conference Premier	1 ▲	7387	FA Cup Round 1
2014-15	League Two	8	7901	14 Nov; Barnet (H) 2-0
				21 Nov; Stevenage (A) 0-0
				24 Nov; Carlisle (H) 3-4

1988 (Right)

Ray Harford's Luton are back at Wembley for the League Cup Final, and this time there is a happy ending, as Hatters score twice in the last eight minutes to defeat favourites Arsenal 3-2. Hero of the day is Cwmbran-born goalkeeper Andy Dibble, who sparks the late revival by saving Nigel Winterburn's 80th minute penalty. Seven days later, Dibble celebrates his victory by watching Panteg, managed by father Alan, in Welsh League action. Luton develop a taste for the twin towers, also reaching Wembley in the Full Members Cup Final and the Mercantile Credit Centenary Tournament.



2014 (Above)

After missing out in the play-offs for three of the past four years, joy at last for this afternoon's visitors, who charge to the Conference Premier title to end their five seasons in the wilderness. It ends a miserable spell for the club, who fell from the second tier of English football to the fifth in successive seasons from 2007, amidst a series of financial crises.

1983

It's the David Pleat dance! In one of the iconic football moments of the 1980s, Luton's 38-year-old manager 'waltzes' across Manchester City's Maine Road pitch in celebration as a late winner from veteran Yugoslav international Raddy Antic preserves Hatters' top-flight status, following their promotion a year earlier.



Proud Sponsors of Newport County AFC



Pinnacle Telecom is Newport County AFC's official Telecoms Partner, and we're here to offer an easier, more cost effective and productive way to manage all your business communication needs:

- ✓ we install **telephone systems** from the leading providers such as Mitel and Toshiba
- ✓ we help you to reduce your **company mobile phone costs**, offering the latest handsets through our own network
- ✓ we help you to save money through **cheaper line rental and call rates**
- ✓ we offer **ultra high-speed internet access packages** tailored specifically to the needs of business customers

Pinnacle Telecom would love the opportunity to review your current business telephony requirements to ensure you have the very best solution and most competitive rates.

For a chance to **win a 'match day hospitality experience' for 4 people** simply email us with your business contact details to: info@pinnacle-telecom.co.uk and we will enter you into our monthly draw.



Contact us on **029 2036 5200** to find out more. Or take a look at:
www.pinnacle-telecom.co.uk

Fairway House, Links Business Park, St Mellons, Cardiff, CF3 0LT

2015-16 STAT PACK



NEWPORT COUNTY

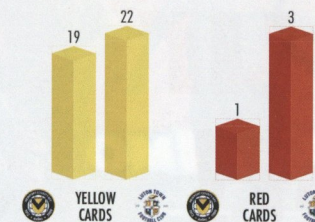
V

LUTON TOWN



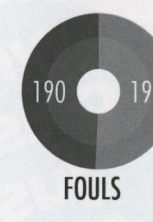
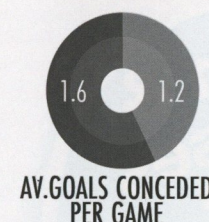
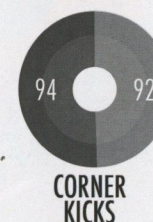
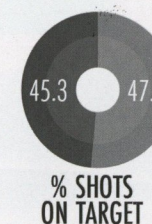
MATCH FACTS

Newport are unbeaten in four at home against Luton, winning three and drawing one.

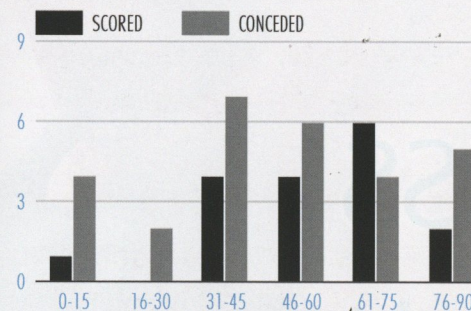


MATCH FACTS

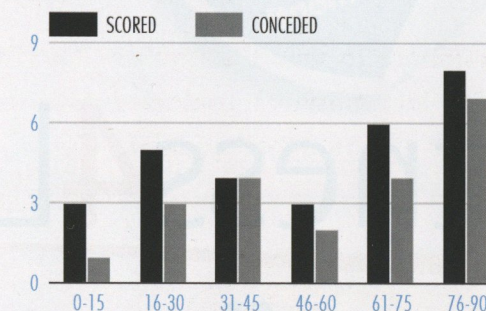
The Hatters have kept only one clean sheet in their last 11 trips to Rodney Parade in the Football League.



GOAL TIMES



GOAL TIMES



*Data doesn't include games played on Nov 24



Stretch yourself not your budget!



gym & classes just **£15.99** per month

Fitness4Less

fitness4less.co.uk

136 - 140 Corporation Rd Newport Gwent NP19 0BH



Connections



There are no shortage of players to have represented County and Luton over the years, with the likes of LAURIE SHEFFIELD, MARK OVENDALE and the effervescent CHARLIE HENRY just a few to spring to mind. However, but for a quartet of ex-Hatters, it is doubtful that we would be playing a Football League fixture this afternoon!

Many argue that some players 'find their club'. The aforementioned Charlie Henry has struggled to find his County form since leaving here for Kenilworth Road five years ago, while Craig Reid - still not 30 until next month - plies his trade in the Isthmian League Premier Division with Brentwood Town after being tipped for great things during his memorable few seasons here in the Dean Holdsworth era. Step forward ROBBIE WILLMOTT, not exactly a favourite at Luton or Cambridge United following his departures from those clubs, but still held in affection by many at Rodney Parade for his part in our return to the Football League. If moments define players, then Robbie's is surely his injury time winner at Hereford in March 2013 and subsequent shirtless celebration with the Amber Army in the away end at Edgar Street. Interestingly, a quick glance at his Twitter page still reveals an affection for all things County, while he was recently denied a quick return to League Two when a loan move to Crawley Town from Ebbsfleet United was blocked due to red tape governing the temporary transfers of players at National League South level.

Then there is DANNY CROW who, if we are honest, probably stayed at County a year too long, but whose contribution to our Conference Premier promotion

season should not be underestimated. His hat trick at Barrow and performances in the run-in to the season were particularly impressive, and he is another to speak fondly of his time in South Wales since taking up his new role at Lowestoft Town. AARON O'CONNOR was never short of a word or two either, particularly on social media, but with 29 goals in 82 Newport appearances, his actions speak as loudly as his words! He was the subject of merciless 'banter' on his trips to Kenilworth Road, having scored just five times in 34 games for Town, but typically gave as good as he got and, inevitably, scored our winner in the 1-0 victory over Luton here in March.

The last of the ex-Luton quartet to have paved the way for our return to the Football League is RYAN CHARLES who, on the face of it, was a peripheral figure at best who looked somewhat short of a 'fifth division' player. He was sent off for a two-footed tackle in the first half of his County debut, a 2-0 defeat at his former Kenilworth Road home in January 2012. The wide player managed three goals in 23 appearances for County, one fewer than in the same number of games for Town, but his 'moment' came in our 2012 Boxing Day 2-1 victory at Forest Green Rovers with a 74th minute wonder winner described by manager Justin Edinburgh as 'a top drawer finish'. Enfield-born Charles has had a nomadic career since leaving Rodney Parade five weeks after that Forest Green game, with spells at Hemel Hempstead Town, Bath City, Merthyr Town, Chesham United and Bishop's Cleeve. These days, he is a full-time football consultant with Elite Management Agency, though tweeted last month, 'can't wait to get back playing properly, just need to find a club'.

Matches

This afternoon's visitors were the first English club to visit Newport in a Southern League second division encounter in January 1913. The 'quagmire' of a pitch at Somerton Park, described by one visiting reporter as 'nothing short of a cinder tip and a refuse tip', was not quite up to its Kenilworth Road counterpart, and a sodden Luton returned to Bedfordshire on the receiving end of a 5-1 score line. Their last two visits to these parts have also ended in defeats, though with Rodney Parade more akin to a bowling green these days, Hatters are likely to have few problems with the playing surface, and will be keen to extend their advantage in the Town v County series.

The complete record of County v Luton clashes is:

Season	Com.	Home	Away
1912-13	SL2	5-1	5-0
1913-14	SL2	2-0 (10000)	0-1 (8000)
1919-20	SL1	0-0 (6414)	0-4 (8000)
1920-21	D3	2-0 (5000)	2-2 (9000)
1921-22	D3S	2-2 (8000)	0-4 (10000)
1922-23	D3S	0-3 (5000)	0-1 (8500)
1923-24	D3S	1-0 (9000)	0-2 (5000)
1924-25	D3S	1-1 (7000)	2-2 (7000)
1925-26	D3S	2-1 (4498)	2-4 (6816)
1926-27	D3S	3-2 (6821)	1-4 (5240)
1927-28	D3S	7-2 (3995)	1-1 (5192)
1928-29	D3S	1-2 (4177)	1-5 (8782)
1929-30	D3S	0-0 (3879)	2-4 (8825)
1930-31	D3S	3-1 (2868)	1-3 (8097)
1932-33	D3S	3-2 (2344)	2-2 (6504)
1933-34	D3S	1-2 (5524)	1-1 (10072)
1934-35	D3S	2-4 (4052)	1-4 (8759)
1935-36	D3S	0-2 (6356)	0-7 (10085)
1936-37	D3S	2-1 (7654)	0-5 (14469)
1945-46	FLS	4-0 (6553)	0-1 (9000)
1946-47	D2	1-3 (11480)	3-6 (7814)
1965-66	D4	3-1 (2173)	1-2 (4899)
1966-67	D4	2-0 (3451)	1-3 (5377)
1967-68	D4	1-1 (4635)	1-1 (10992)
2010-11	Co.P	1-1 (2834)	1-1 (6945)
2011-12	Co.P	0-1 (1511)	0-2 (6108)
2012-13	Co.P	5-2 (2247)	2-2 (5125)
2014-15	L2	1-0 (2536)	0-3 (8383)
	FAC1		2-4 (3656)

R&B Engineering (Cwmbran) Ltd

R&B Engineering Ltd would like to wish
Newport County AFC every success in
our second season back in the football league



Tel: 01633 854714 Fax: 05603 432475

The Crosskeys Pub

is an established traditional pub
in Newport Town Centre



All live sports shown on
3 big screens

3 pool tabs, dart board

Live entertainment and karaoke every Friday,
Saturday and Sunday

Open 'til 3am Friday and Saturday
and 1am Sunday

9 Market Street, Newport
Tel: 01633 264373



Telephone: 01495 750338
Email: info@changinggearz.co.uk

CLARK CONTRACTORS LTD

Plastering
Screeding
Dry Lining
Lime Plastering
MF Stud



Tel: 01633 673489
Mob: 07733 354030
info@clarkcontractors.co.uk
www.clarkcontractors.co.uk

Rosemary Butler AM

Assembly Member for Newport West



I hold regular information & advice sessions across
Newport West.

Sending good luck and
best wishes to Newport
County, its management,
players and fans!

Contact me on: 01633 222523

Rosemary.Butler@assembly.wales



M G & M V TAYLER

Family Business Est. 1934



The General Store
for all your Local Goods

20-21 Church Road,
Newport

Telephone 01633 662679

eazy glaze

Conservatories • Double and triple glazed windows • Doors

01633 855485

0781 401 7439

www.eazyglaze.com



Newport County AFC
Subscription Draw



Join the
subscription
draw
today!

£83,600

Raised for the club to date!

£57,200

Returned to Members in prizes!

£50 and £20 Prizes
at each Home Game

ALL FOR £2 A MONTH

Contact David Hando - 07802 487042

Our match highlights have a new home for season 2015/16...



Every goal. Every Saturday.
Football League Tonight.

9pm on Channel 5



Meet the Team

1 GOALKEEPER

Mark Tyler

Pictured, top

Now in his seventh season at Kenilworth Road, with more than 250 appearances under his belt. He was a key member of the Luton side which returned to the Football League and was regarded by many as the best keeper in what was then the Conference. Now 39, Mark began his career at Peterborough and topped 400 appearances for them.

2 DEFENCE

Stephen O'Donnell

Summer arrival from Partick Thistle in the Scottish Premier, where he made 121 appearances and earned a reputation as a marauding right-back with an eye for goal. Started his career as a youngster at Celtic and has been capped by Scotland U21s.

2 DEFENCE

Dan Potts

Another summer arrival, from West Ham. The left back made five appearances in the Premier League and spent time on loan at Colchester and Portsmouth. Capped by England up to U20 level and also played at U20 for the USA, qualifying through his father Steve who was also a West Ham defender.

4 MIDFIELD

Jonathan Smith

Pictured, 2nd bottom

A firm favourite since his arrival from York City in 2011, having begun his career at Morecambe and won League Two with Swindon, as well as playing 107 games for Forest Green. He fought back from a broken leg sustained on Boxing Day 2013 and has now topped 100 appearances for the Hatters. Named players' Player of the Year last season and signed a new three-year contract in the summer.

6 DEFENCE

Scott Cuthbert

Pictured, bottom

Can play either centrally or at right back. Signed for the Hatters in the summer after two years at Leyton Orient, who he helped reach the League One play-off final in 2013-14, having earlier done the same with Swindon. Like Stephen O'Donnell, he came through the youth ranks at Celtic. Has been captaining the side since Steve McNulty's move to Tranmere. Capped by Scotland at U21 and at B level.



7 MIDFIELD

Alex Lawless

Rhondda-born and spotted by Fulham while with Ton Pentre, and then played for Torquay, Forest Green and York before arriving at Kenilworth Road in 2010. Has the knack of scoring spectacular goals from distance. Alex had the disappointment of losing in three successive play-off finals (twice with Luton) before he helped the Hatters to the Conference title in 2013-14. Capped by Wales at U19 and U21 and also for the semi-pro side.

8 MIDFIELD

Cameron McGeehan

Finally lured to Kenilworth Road on a permanent contract this summer having previously had two spells on loan from Norwich City. The central midfielder played a key role in the Conference title campaign before returning last season. He came through the ranks at Chelsea and also spent time on loan from Norwich to Cambridge United. Capped by Northern Ireland up to U21 level.

9 FORWARD

Paul Benson

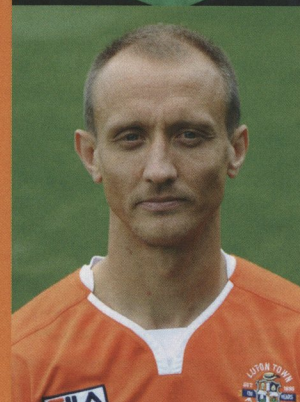
Pictured, 2nd top

Hugely experienced forward signed originally on a season-long loan in 2013-14 from Swindon. His 18 goals helped the Town lift the Conference title before a broken leg disrupted his first permanent season with the Hatters last term. Paul was spotted in his mid-twenties by John Still playing in the Essex Olympian League in 2005 and has also helped Dagenham (under Still) and Swindon to promotion.

10 MIDFIELD

Ryan Hall

Signed at the end of the January transfer window this year, but injury and illness have curtailed his progress. He joined Town following his release from Rotherham and previously excelled in League Two for Southend, scoring 19 from the wing across two seasons. Among other clubs he has also played for Bromley, Leeds and MK Dons.



11 MIDFIELD

Danny Green

Pictured, top

Signed by the Hatters this summer from MK Dons, linking up once more with manager John Still. The Hatters boss plucked him from Bishop's Stortford while at Dagenham, and the right winger went on to help the Daggers win the League Two play-offs. After 27 goals for the Essex side he moved to Charlton with whom he won promotion from League One.

12 DEFENCE

Scott Griffiths

Pictured, 2nd bottom

Left back who was a member of the Conference title team and another player unearthed from relative obscurity by Still, who took him to Dagenham from Aveley. He was a Conference winner at Dagenham before moving to Peterborough, and helped Chesterfield win League Two while on loan there. Also played on loan for Crawley, Rotherham and Plymouth.

14 FORWARD

Jack Marriott

Signed this summer from Ipswich, where he came through the academy. Played only twice for Ipswich in the League but gained experience out on loan over the past three seasons, including three spells at Woking in the Conference.

15 MIDFIELD

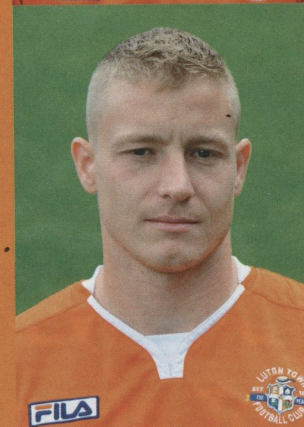
Paddy McCourt

Northern Ireland international who came through the ranks at Rochdale. He then played in Ireland for Shamrock Rovers and Derry City before coming to prominence at Celtic, with a reputation for solo goals. After winning the SPL twice he left Scotland for Barnsley in 2013, briefly turned out for Brighton last season and ended the campaign on loan at Notts County.

16 GOALKEEPER

Elliot Justham

Understudy to Mark Tyler who grasped his opportunity following injury to Tyler - last season, making his League debut in February and keeping his place for the rest of the term. An ever-present on the bench in the Conference title campaign, he is yet another find from non-league and joined Town from East Thurrock.



17 MIDFIELD

Pelly Ruddock Mpanzu

Pictured, 2nd top

West Ham academy graduate who was a hit in the Conference title-winning campaign, signing permanently in January 2014 after a loan, but then had an injury-hit 2014-15. Sees his best role as a box-to-box player but versatile enough to play in central defence or on the wing.

18 DEFENCE

Magnus Okuonghae

Centreback who has been on loan to Hartlepool United to regain fitness after an Achilles injury. Previous clubs include Rushden, Crawley, Dagenham and Colchester, where he made 196 League appearances.

19 MIDFIELD

Ollie Lee

Joined on an initial short-term deal in August having been on loan at Plymouth from Birmingham City last season. Started on the books of West Ham and played under John Still when on loan at Dagenham, moving from the Hammers to Barnet before joining Birmingham. Son of former Newcastle and England midfielder Rob Lee.

20 DEFENCE

Sean Long

Republic of Ireland U21 fullback signed on an initial month's loan from Reading in October, since extended until January. He joined the Royals from Irish club Cherry Orchard and has played once for their first team.

21 MIDFIELD

Luke Guttridge

Pictured, bottom

Hugely experienced and influential with more than 500 senior appearances and three promotions under his belt. After spells with Cambridge, Southend, Colchester, Leyton Orient, Aldershot and Northampton he joined Town in 2013 and his 13 goals were vital in the Conference title campaign. Scored a scorcher when Luton put us out of the FA Cup last season.

22 FORWARD

Craig Mackail-Smith

Another John Still find, Craig came to prominence at Dagenham before a move to Peterborough. He scored 99 in 212 games for Posh, winning two promotions, before a big-money move to Brighton in 2011. He scored 10 in his debut season at the Amex and 11 in the next before two injury-hit campaigns curbed his game time and he

was reunited with Still this summer. Seven caps for England C and seven full caps for Scotland.

23 FORWARD

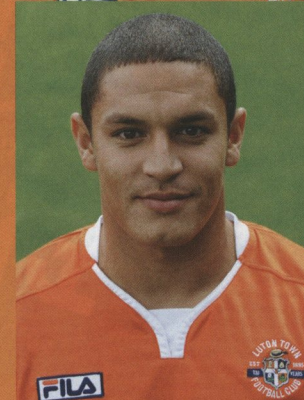
Josh McQuoid

Arrived at Kenilworth Road this summer after three years with Bournemouth, his second spell there punctuated by time at Millwall. During his time at the New Den he was capped by Northern Ireland. Spent last season out on loan with Peterborough and Coventry.

24 DEFENCE

Curtley Williams

Former Ipswich scholar whose primary position is right back, signed from Lowestoft Town ahead of last season. Spent time in Spain at the Glenn Hoddle Academy before spells in non-league. Transfer-listed in the summer and as of the time of writing, yet to feature this season.



25 DEFENCE

Mark O'Brien

Pictured, top

Republic of Ireland U19 cap who came through the youth ranks at Derby to make 32 appearances, only to have his progress restricted by injury. Spent all last season on loan at Motherwell before joining Town when he was freed by the Rams.

26 MIDFIELD

Nathan Doyle

Pictured, 2nd top

Supporters' Player of the Year last season. Signed in September last year following his release from Bradford City and immediately took the key role of screening the back four. Began his career at Derby and went on to feature for Barnsley, Hull and Bradford City, winning promotion with the latter two.

30 DEFENCE

Luke Wilkinson

In his second season with Town and yet another who played for John Still at Dagenham. Began his career at Portsmouth and was loaned by Dagenham to Boreham Wood (twice) and Dartford.



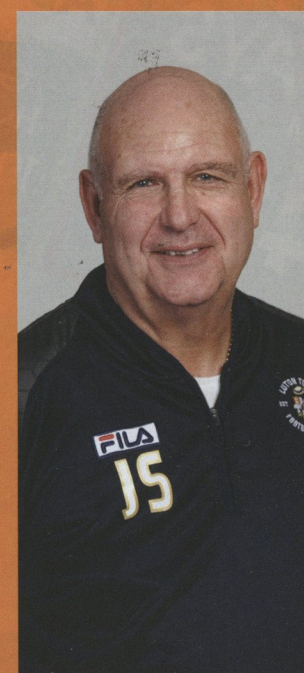
Meet the Staff

MANAGER

John Still

Pictured

Joined the Hatters in March 2013 after 10 years at Dagenham & Redbridge, who he steered to the Conference title as well as promotion to League One via the play-offs. In his first season at Kenilworth Road the Hatters won the Conference title with 101 points. It was the third time he had won the division. John's playing career consisted of a single game for Leyton Orient after which he played briefly outside the League before injury prompted an early move into coaching. His first managerial job was at Leytonstone, who then merged with Ilford. Next stop was Dartford, followed by a brief spell back at the merged club, before he guided Maidstone United into the League in 1989. Preferring to stay part-time, he next managed Redbridge Forest - the product of a merger between Leytonstone & Ilford and Walthamstow Avenue - which then became Dagenham & Redbridge when the original Daggers joined the party. John stepped up



to the League in 1994 for an unsuccessful stint managing Peterborough, and then worked at Barnet as both manager and director of football. He returned to Dagenham in 2004 and had unprecedented success as the club punched far above its weight and rose from the Conference to League One.

ASSISTANT MANAGER

Terry Harris

John Still's right-hand man who had been with Dagenham & Redbridge since 1999. As a player he starred for the old Dagenham FC - scoring the winner at Wembley in the 1980 FA Trophy final - and he has also coached at Dartford, Enfield and St Albans City.

FIRST TEAM COACH

Hakan Hayrettin

Managed Grays Athletic to the Ryman League Division One South title in 2013 with 102 points before joining Luton that July. Playing career included helping both Barnet and Wycombe Wanderers win promotion to the Football League.

10% OFF
with this advert

CRUISES
FROM
£89

SPORTS TOURS
FROM
£149

ASK US ABOUT...

DISNEYLAND PARIS
FROM
£199

COACH HOLIDAYS
FROM
£49

GROUP HOLIDAYS FOR 10 OR MORE PEOPLE
SHOWS, EVENTS & ATTRACTIONS

2015-16 STAT PACK

LEAGUE TWO TOP FIVES

GOALS

1	SIMPSON	13
2	CORR	9
3	WINDASS	9
4	IBEHRE	8
5	RICHARDS	8

ASSISTS

1	DEVITT	10
2	NICKY ADAMS	10
3	COX	7
4	AKINDE	6
5	FRANCOMB	6

SHOTS ON TARGET

1	CAREY	30
2	ROOFE	29
3	SIMPSON	23
4	CORR	21
5	MCCONVILLE	19

MINUTES PER GOAL

1	IBEHRE	105
2	MARRIOTT	110
3	MULLIN	112
4	SIMPSON	119
5	CORR	120

% OF GOALS INVOLVED IN

1	AKINDE	48
2	SIMPSON	43
3	KEE	41
4	TAYLOR	41
5	CAREY	39

MINUTES PER CHANCE CREATED

1	DEVITT	105
2	NICKY ADAMS	147
3	COX	151
4	SUMMERFIELD	198
5	KEE	203

FOULS

1	GREEN	48
2	HARROLD	37
3	AKINFENWA	36
4	HYLTON	34
5	AKINDE	33

MINUTES PER GOAL CONCEDED

1	JORONEN	47
2	SAM BEASANT	48
3	GILLESPIE	51
4	KRYSIAK	52
5	O'BRIEN	52

LEAGUE TWO SPOTLIGHT

Reuben Reid has netted four goals in his last four league appearances against Dagenham and Redbridge.

LEAGUE TWO SPOTLIGHT

Adam McGurk has found the net in three of his last five league games against Wycombe.

* Data doesn't include games played on Nov 24



@FootballFoundtn

flickr.com/footballfoundation

Youtube.com/Footballfdn

linkedin.com/football-foundation

www.footballfoundation.org.uk

ABC

Taxis Newport

664488

Fully Licenced by Newport City Council

Leisuretime Leisuretimeuk Leisuretime.co.uk

The Riverside Tavern

C.E.S.C.N.C Machining
01633 871616

100 CLUB

OSTEOMYLOGY Back Care
Kay Saunders (07932 054926)

Chelle Harris	Byron Harris	Patrick Mulcahy	Chloe Noble	Tony Cook	Neil Evans	Jake Williams	Wayne Morgan	Leighton Williams	Geoff Howells	Steve Howells	Les Howells
Rob Wixey	Stav	Helen Watkins	Callum Evans	Uncle Albert	Claire Greengrass	Freddie Foxall	The Money SHot	Emie Foxall	Lois Foxall	Gavin Foxall	Baby Foxall
Tegan & Preston	Paul Majewski	Anthony Watkins	Lewi Evans	Mike Silverthorne	Peter Dominy	Stu Dominy	The Money SHot	Mark Price	Phil Gibson	John Sharpe	Ashleigh Lloyd
Barrie White	Harry Watts	Denise Taylor	Duncan Jardine	Donna Linton	Mark Erskine	Ruby & Lily Gwatkin	Robbie Leonard	Jon Sanderson	Scratchy	Scratchy	Mark Bebbington
Joey Jones	David Hando	Kevin Morris	Bobby Morris	Michael Payne	Richard Coombs	Tommy Coombs	Sam Donovan	Vince Thomas	Mo Pike	Simone Pike	Thacker
Mark Williams	Mike Tebby	Jamie Roberts	Ethan Lowe	Ryan Greenhaf	Olivia Allcock	Alan Coombs	Rhys Davies	Slater	Cerys Devlin	Toggy & Family	Jonny Vaughan
William Fellows	Colin Tebby	Steve Hill	The Preece Family	Lewis Greenhaf	Lucy Watkins	Reegan Malpas	Ben Davies	Phil Burgess	Annemarie Rogers	Danny Chapman	Gareth Rowlands
Alan Coombs Appreciation Society	Alan Coombs	Sara Hill	Gary, Josh & Chloe	Mel Thacker	Ava Charlton	Away Days Dev	Away Days Bev	Carl Phillips	Andrew Rogers	Gareth Morse	Lisa Savage
Rev. Graham Moore	Stephen Moore	John Moore	George Moore	Courtney Campbell	Brogan Charlton	Patsy Shipley	Long Haired Chris	Louie Gould	Ella Gould	Colin Everett	Moggy Davies
Tony Jermyn	Mike Everett	Jacob, Mark & Phil	John Pring	Phil Nicholas	Fab 208	Craig Shipley	Ronald Shipley	Alfa Staff	David Strawbridge	Paul Ivermee	Brian Davies

The Ivy Bush

Newport County
Programme Shop

Sytner

TOVEY BROS
FUNERAL DIRECTORS
9/11 Cardiff Road, Newport, NP20 2EH
Tel: 01633 871616
Website: www.toveybros.co.uk

Bailey's Bodega

MACEY SPORTS
www.maceysports.co.uk

mazda
www.newportmazda.com

Unbelievable offers at our unbelievable showroom.



£1,000

TOWARDS
YOUR FINANCE
DEPOSIT†

**FREE
INSURANCE***



**New Polo S
1.0 60PS
From £11,100.**

**+ Up to 3 years*
servicing
for £199***

£750

TOWARDS
YOUR FINANCE
DEPOSIT†

**PLUS
£750**

OFF THE OTR
PRICE**



**Golf S 1.2 TSI
From £16,975.**

Sinclair Volkswagen are proud to sponsor Newport County.

Sinclair Volkswagen (Newport)

Corporation Road, Newport, NP19 0HE. Telephone: 01633 270727.
www.sinclair.volkswagen.co.uk



Das Auto.

*£199 servicing is available to customers who purchase their car with Solutions Personal Contract Plan. Covers routine servicing for 3 years or 30,000 miles (whichever comes soonest). All cars must be set to a time and distance service regime. Additional work, including wear and tear, is not included. †Deposit contributions are available to customers who purchase their car with Solutions Personal Contract Plan. ^One year's free insurance is available from Volkswagen Insurance on qualifying new Polo models for drivers over 21 (or over 25 for Polo GT and Polo GTI models). Free insurance offer excludes Northern Ireland. Other eligibility criteria apply. Go to insurewithvolkswagen.co.uk/polo for full terms and conditions. Volkswagen Motor Insurance is sold, underwritten and administered by Allianz Insurance plc. Offers available on orders before September 30th, 2014. **This offer applies to vehicles ordered by private retail customers from July 14th until September 30th 2014. Only available at Sinclair Volkswagen Newport. For more information on this great offer and to arrange a test drive contact Sinclair Volkswagen Newport. This offer applies while stocks last and can be varied or withdrawn at any time. Certain vehicles excluded - ask for full details. Standard EU Test figures for comparative purposes and may not reflect real driving results. Official fuel consumption figures for the Volkswagen model range in mpg (litres/100km): urban 23.7 (11.9) - 74.3 (3.8); extra urban 35.8 (7.9) - 94.2 (3.0); combined 31.0 (9.1) - 88.3 (3.2). Combined CO₂ emissions 239 - 85g/km. Official fuel consumption figures for the e-up! in mpg: n/a.

Face in the Crowd

This is your opportunity to win great County match day prizes! Just look out to see if you've been captured at a match by one of our photographers.

Prizes must be collected in person, with the winning programme in your possession



1st Prize

**£20
Cash**

Sponsored by Newport County
Supporters Club

Ring Bob Herrin **01633 274440** or
Jeff Challingsworth **01633
270609**



Runner Up

**Free
Ticket**

Stand or Terrace ticket for Wimbledon
game 19th December 2015

Collect from Newport County AFC
ticket office

Smile for our photographer, it could be you next time...

BLACK FRIDAY

MASSIVE SAVINGS

WEEKEND SALE

27th – 29th NOVEMBER

OVER 500 CARS
ACROSS THE
WESSEX GROUP
WILL BE
AT COST
PRICE

**COST
PRICE
WEEKEND
SALE**

**wessex
GARAGES**

THE INTELLIGENT CHOICE

Newport Retail Park
Newport
NP19 4QR
01633 745004

wessexgarages.com

Exiled Exiles

with Mike Burns

Hi, can you tell me your name and where you currently live please. Include some background information eg family and interests if possible.

Name Rob Fudge, age 65 and live in Frome, Somerset where I was born and brought up. Married Jen, a Newport girl, 42 years ago in Newport. 2 children (both Welsh!) both now married. My son was born on the day we played West Ham in the FA cup - but luckily the birth and kick-off times didn't clash!

Took early retirement after 40 years with the Inland Revenue (or whatever they call it now) in 2006. Main interests include Newport County (of course!) and Family Tree research.

What is your connection to the County and how long have you been an exile?

Lived and worked in South Wales from 1970 to 1985 and started watching County in the mid 70s. Carried on supporting and travelling back over the bridge after moving back to Somerset in 1985 right up until the old club folded. When the club reformed I started watching again after the move to Spytty, initially watching half a dozen or so home games a season, increasing to most home games by the Conference South days. Season ticket holder in the 70s and 80s and again for the past 7 years.

What was the first County game you saw and when did you see your last?

First match home to Bournemouth at Somerton Park on 17 January 1976. We won 3-1 with goals from John Parsons and Andy White plus an own goal. Bournemouth had some guy called Harry Redknapp in their team! Most recently was at the excellent away performance against Bristol Rovers and then the Northampton home match. This was written before the Brackley replay which I will be going to and I hope to see all remaining home matches this season, plus the "local" for me away match at Yeovil.

As an exile, what is your typical match day routine?

Drive over to Newport via the Bristol ring road to pick up my mate, and fellow

season ticket holder, Keith Morgan en-route. We then adjourn to the Snelling bar for a drink (more than one for the non-driver!) and a snack - usually the excellent chicken curry. Also have a chat with fellow fans who congregate in the same area of the clubhouse every match.

For away matches or the odd home match I can't attend I tune in to commentary on Exiles Player - trying to avoid any live updates from elsewhere, otherwise the slight time delay on the commentary feed means goals are sometimes reported elsewhere first!

How do you keep up to date with news about the club and when do you plan to see the County again?

Message Board, Twitter, Club Website, Trust website and the Argus website amongst others. Hopefully will get to every home match this season

What are your thoughts on this season?

Like many I feel the priority this season is retaining the all important Football League status and, despite the start, feel John Sheridan since his arrival has boosted the squad with some excellent loan signings and has clearly got them playing with more confidence. Also the style of football on display is much more pleasing on the eye than much of what we witnessed last season

What is the best and worst thing about being a County exile?

Despite not being Welsh and living most of my life outside of Wales it is great to still have that strong feeling that County is "my" club and always will be and nothing can change that. I suppose, aside from the travel, the worst is only being there on match days and not being around for other functions, meetings etc connected to the club.

Is there anything else that you would like to tell us that hasn't been asked?

Very pleased that the trust takeover was successful and hopefully we will now see all aspects of the club being run on a professional basis for the foreseeable future.

Thank you.



Meet Rob Fudge, aged 65 from Frome in Somerset

ARE YOU AN EXILE? GET INVOLVED

This is your chance to step forward and tell the world what it means to be an exiled Newport County supporter. Email programme@newport-county.co.uk if you'd like to be featured

County 4
John-Lewis 1, Klukowski 17, Rodman 63, Hawtin 71 (OG)
Brackley 1
Hawtin 39

Attendance: 1,511
Rodney Parade, Newport

County Day, Barnum-Bobb (Hughes), Bennett, Partridge, Holmes, Elito, Klukowski (Owen-Evans), Rodman, Byrne, John-Lewis (Collins), Boden
Brackley Hornby, Hawtin, Graham, Mills, McDonald, Odhiambo, Clarke, Walker, Batchelor (Winters), Akitunde (Moyo), Diggin (Smith)



Match Reaction

Tweet us your reaction to [@NewportCounty](#) and we'll print the best here

@football5 Congrats to [@NewportCounty](#), through to the 2nd Round of the FA Cup, & shoutout to [@MrAndrewHughes](#) who returned today after a long injury

@AmberDSA Good result from [@NewportCounty](#) tonight and great to see [@MrAndrewHughes](#) back in first team action

@Gareths0 Great to see [@MrAndrewHughes](#) returning to the field for [@NewportCounty](#) after 10 months out True warrior spirit to return from a nasty injury

@ArgusKevinWard Solid, professional performance from [@NewportCounty](#) tonight. First home win since last March. Huge game on Saturday up next.

@Odin_Maca [@NewportCounty](#) Massive result, we know we can start winning games now! [#SupportThePort](#)

@NEWA69 Well done [@NewportCounty](#) making into the 2nd round of FA Cup and first home win since March. [#SupportThePort](#)

@meatnewport Well done [@NewportCounty](#) A great night. A much needed home win, undefeated in 6 games and marching into the 2nd round [#FACup](#) [#SupportThePort](#)

@BrackleyTownFC Full time Newport County 4 Brackley Town 1 - good luck [@NewportCounty](#) in the next round!

DAVID SPEAR COMMERCIALS



**OPEN
7 DAYS A WEEK**

Monday – Friday
8.30am – 6pm
Saturday 9am – 5pm
Sunday 10am – 4pm

SALES

We have an extensive range of new and used Commercial vehicles with over 200 on site ready to drive away.

Call our Sales Team on:
01495 309098

SERVICE

Our purpose built workshops can accommodate all Commercial vehicles for repairs, service or MOT's. Our fault finding diagnostics system and experienced technicians ensures quick and efficient service.

ACCESSORIES

Roof Racks, Ply Lining, Shelving, Towbars and Sign Writing. Whatever you need adding to your vehicle we can help.

DIRECTIONS: Follow the A465 (Heads of The Valleys), West from Abergavenny (A40), East from Merthyr Tydfil (A470). Look for Crown Business Park near Tredegar.

Tel: 01495 309098
www.david-spear.com

Crown Business Park, Tredegar, Gwent NP22 4EF

Mista Ifsta

MISTA IFSTA PRESENTS

NP CLUB
Hop



FOLLOW US
ON FACEBOOK

MISTAIFSTAPRESENTS

FOR THE LATEST
OFFERS & EVENTS

**NP CLUB
Hop**

**WALES' BIGGEST & BEST
MULTIVENUE CLUBNIGHTS**

1 WRISTBAND / UPTO 5 VENUES

UNLIMITED CLUB ACCESS TO
NEWPORT'S AWARD WINNING VENUES
EVERY WEDNESDAY, FRIDAY AND SATURDAY



WAREHOUSE



La Bamba

N121
COMING SOON

FACEBOOK.COM/MISTAIFSTAPRESENTS

MANAGEMENT RESERVES ALL RIGHTS



Ryan Harley (right) scored two as Exeter beat leaders Plymouth

Take Two



SkyBet League
2 round-up with
James Stevens.

Last Saturday saw a shock result as Exeter City stunned local rivals Plymouth Argyle in the Devon derby. Argyle, who still hold top spot in League Two, fell behind to the Grecians after Ryan Harley converted from the spot. And City soon doubled their lead when Harley found the net nine minutes later. The Pilgrims responded in the second half when Oscar Threlkeld scored, yet Paul Tisdale's men stayed resilient to secure their first win in four. Despite the loss Plymouth remain two points clear of Oxford in second position prior to Tuesday's results.

Today's visitors Luton Town were also in derby action as they took on Stevenage. The two sides who are only fifteen miles away from each other met at Stevenage's Broadhall Way. Despite Paul Benson's late red card neither side could find the net

leading to a goalless draw, in what was a truly physical match. Stevenage, who haven't been getting the results they've been expecting, take on Morecambe this afternoon.

Oxford United's Kemar Roofe scored the decisive goal which saw the U's claim victory over strugglers Dagenham & Redbridge. His late free kick, which he claimed in an interview after the match he wasn't sure he wanted to take, proved enough to keep promotion chasing Oxford in the title race. The match also saw Newcastle United scout Graham Carr making his second appearance at an Oxford game, keeping an eye on midfielder Roofe. Carr who last season recommended Northampton Town starlet Ivan Toney to the Magpies will be wondering whether the former West Brom trainee can make the next step up to a Premier League side.



Along with Roofe, scouts from the likes of Hull City, Cardiff and West Brom are monitoring York City youngster Ben Godfrey. The seventeen year-old midfielder has made eleven first team appearances scoring once. With York City facing an uncertain future in the Football League and the youngster rejecting a professional contract from the Minstermen, Godfrey could be a sought after prospect in the January transfer window.

Despite an impressive win on the road in Notts County, Northampton Town boss Chris Wilder is pleading for financial support for his side. He describes the club as being "torn apart" by owner David Cardoza and is calling for the owner to sell the Cobblers. Yet with tensions rising Cardoza claims he will write off around six million pounds worth of debt that the club owes him to help find an investor for the club. On the pitch the side are performing excellent

as they press on for promotion, this afternoon they host Yeovil Town.

Accrington Stanley continued their impressive run of form, when John Coleman's men travelled to Cambridge last weekend. Despite going down twice they came over a tricky Cambridge United side and recorded their ninth league win. The match was Shaun Derry's first in charge at the Abbey Stadium, since taking over when Richard Money was sacked. He hosts Notts County hoping for his first home win, whilst Accrington face York.

Saturday also saw Portsmouth fans' highlight of the season, the short 348 mile journey to Carlisle. An early penalty put the Cumbrians ahead, before two goals in two minutes switched the scoreline in Pompey's favour. Danny Grainger popped up again to seal a draw in the very last minute of the match, leaving Portsmouth without a win in five. They slumped to over eight points away

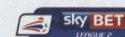
from Argyle prior to Tuesday's match. They return on the road as they travel to Wycombe. Carlisle however host Mark Yates' Crawley Town.

It wasn't long ago that we were expecting Crawley Town to struggle in a relegation battle, but an incredible turn of form has lifted the West Sussex side into the top half of the table. Wins against Bristol Rovers, York, Hartlepool and Leyton Orient proved enough to improve form at the Broadfield Stadium. With three wins from four prior to Tuesday, the Red Devils look to have put relegation worries out of sight.

Jackie McNamara's York City suffered their fourth successive defeat at the hands of Leyton Orient last weekend. In a thrilling five goal game, York challenged the O's but the clinical finishing of the League's top scorer Jay Simpson was too much to handle for City. His two goals added to his tally which stood at thirteen after the win.

James Stevens

Results Grid



	Accrington Stanley	AFC Wimbledon	Barnet	Bristol Rovers	Cambridge Utd	Carlisle Utd	Crawley Town	Dag & Red	Exeter City	Hartlepool	Leyton Orient	Luton Town	Mansfield Town	Morecambe	Newport County	Northampton Town	Notts County	Oxford United	Plymouth Argyle	Portsmouth	Stevenage	Wycombe Wanderers	Yeovil Town	York City
Accrington Stanley		3-4	27 Feb	30 Jan	2 Apr	26 Dec	13 Feb	3-1	4-2	TBC	25 Mar	1-1	1-0	16 Apr	2-2	1-1	9 Jan	1-3	12 Mar	16 Jan	7 May	12 Dec	2-1	23 Apr
AFC Wimbledon	5 Mar		2-0	26 Dec	1-2	9 Jan	16 Apr	0-1	2-1	2-0	23 Feb	13 Jan	16 Jan	2-5	7 May	1-1	2-1	27 Feb	0-2	28 Mar	12 Dec	1-1	30 Jan	19 Mar
Barnet	1-2	20 Feb		9 Jan	0-0	16 Jan	19 Dec	3-1	2-0	5 Apr	28 Mar	28 Nov	0-0	26 Dec	2-0	19 Mar	19 Mar	1 Mar	30 Jan	3-2	0-2	30 Apr	3-1	
Bristol Rovers	0-1	6 Feb	3-1		25 Mar	2-0	2 Apr	7 May	23 Apr	1 Mar	28 Dec	2 Jan	12 Feb	1-4	0-1	0-0	0-1	23 Jan	1-2	1-2	10 Oct	16 Dec	12 Dec	
Cambridge Utd	2-3	2 Jan	28 Dec	1-2		16 Apr	0-3	6 Feb	5 Mar	23 Jan	1-1	1-3	19 Dec	19 Apr	3-0	2-1	28 Mar	28 Apr	1-3	1-0	1 Mar	19 Feb	20 Feb	
Carlisle Utd	6 Feb	1-1	3-2	28 Mar	4-4		28 Nov	2-1	1-0	28 Dec	1 Mar	19 Apr	9 Apr	2-3	0-1	5 Mar	19 Dec	30 Apr	2 Jan	2-2	20 Feb	19 Mar	3-2	23 Jan
Crawley Town	0-3	1-2	7 May	2-1	9 Jan	23 Dec	12 Dec	28 Mar	19 Mar	3-2	2-1	30 Mar	5 Mar	1 Mar	1-2	16 Jan	9 Apr	20 Feb	0-0	26 Dec	0-0	0-1	1-0	
Dag & Red	19 Mar	19 Apr	13 Feb	19 Dec	26 Dec	30 Jan	30 Apr		1-2	0-1	1-3	0-2	3-4	28 Mar	0-0	16 Jan	1-1	0-1	28 Nov	9 Apr	1-1	9 Jan	27 Feb	5 Mar
Exeter City	23 Jan	28 Dec	25 Mar	28 Nov	1-0	12 Mar	2-2	2 Jan		1-0	4-0	19 Dec	19 Apr	30 Apr	20 Feb	1-1	6 Feb	2 Apr	1 Mar	3-3	0-2	3-2	0-0	
Hartlepool	19 Apr	25 Mar	1-1	0-3	0-0	2-3	1-2	12 Mar	30 Jan		3-1	1-4	2 Apr	2-0	1-0	27 Feb	26 Dec	28 Nov	28 Dec	30 Jan	9 Jan	16 Feb	16 Apr	
Leyton Orient	0-1	28 Nov	2-0	2-0	30 Jan	1-2	27 Feb	16 Jan	28 Mar		5 Mar	30 Apr	19 Mar	9 Jan	13 Feb	3-1	2-2	19 Apr	26 Dec	3-0	1-1	19 Dec	3-2	
Luton Town	9 Apr	2-0	2-0	0-1	16 Jan	3-4	12 Mar	25 Mar	7 Feb	1-1		1-0	1 Mar	23 Apr	12 Jan	2-2	1-2	1-2	2 Apr	2 Dec	9 Jan	1-1		
Mansfield Town	2 Jan	1-1	23 Apr	1-2	7 May	1-1	4-0	20 Feb	0-2	3-1	12 Dec	23 Jan	6 Feb	3-0		2-4	4-1	13 Feb	1-1	0-0	19 Mar	0-2	5 Mar	28 Dec
Morecambe	1-0	12 Mar	2 Apr	3-4	2-4	27 Feb	3-1	14 Nov	12 Dec	9 Apr	0-1	1-3	26 Dec	28 Mar	2-4	4-1	13 Feb	13 Mar	9 Jan	23 Apr	0-1	16 Jan	7 May	
Newport County	28 Mar	19 Dec	6 Feb	9 Apr	13 Feb	9 Apr	1-1	23 Jan	28 Nov	27 Feb	1-2		2-2	30 Apr	19 Apr	2-2	0-1	2-2	5 Mar		0-0	0-3		
Northampton Town	28 Dec	1 Mar	2 Jan	9 Apr	12 Mar	3-2	19 Apr	1-2	3-0	2-1	1-1	30 Apr	1-0	23 Mar	25 Mar		2 Apr	1-0	0-2	19 Dec	2-1	20 Feb	28 Nov	6 Feb
Notts County	1-1	23 Jan	4-2	5 Mar	7 Apr	4-1	1 Mar	19 Dec	6 Feb	20 Feb	3-2	0-2	28 Dec	12 Mar	1-2		2 Jan	0-2	2-1	9 Mar	28 Mar	2-0	1-0	
Oxford United	20 Feb	1-0	2-3	16 Jan	1-0	12 Dec	1-1	2 Apr	26 Dec	23 Apr	12 Mar	16 Jan	9 Jan	0-0	1-1	30 Jan	3-1		1-0	1-1	25 Mar	7 May	2-0	1 Mar
Plymouth Argyle	1-0	9 Apr	2-1	1-1	12 Dec	4-1	2-1	23 Apr	1-2	7 May	1-1	19 Mar	13 Feb	2-0	1-0	9 Jan	27 Feb	5 Mar		1-2	16 Jan	30 Jan	26 Dec	28 Mar
Portsmouth	0-0	0-0	3-1	13 Feb	27 Feb	2 Jan	2 Jan	3-0	1-2	12 Dec	6 Feb	28 Dec	0-0	3-3	12 Mar	7 May	25 Mar	23 Apr	16 Apr		1-1	23 Apr	0-0	6-0
Stevenage	19 Dec	30 Apr	23 Apr	19 Feb	13 Feb	0-1	6 Feb	28 Dec	27 Feb	2 Jan	0-0	0-2	28 Nov	16 Apr	19 Mar	0-2	1-5	2-1	5 Mar		2-1	28 Mar	2-2	
Wycombe Wanderers	30 Apr	2 Apr	16 Feb	27 Feb	1-0	1-1	28 Dec	1-1	13 Feb	2-1	23 Jan	6 Feb	25 Mar	2 Jan	0-2	2-3	14 Nov	19 Dec	1-2	28 Nov	12 Mar		19 Apr	3-0
Yeovil Town	1 Mar	1-1	12 Dec	0-1	2-3	25 Mar	2-2	9 Apr	1-2	7 May	3-2	0-1	2-4	2 Apr	23 Mar	12 Dec	28 Dec	6 Feb	20 Feb	2-2	0-1	2 Jan		
York City	28 Nov	1-3	12 Apr	30 Apr	2-2	2-2	25 Mar	2-2	9 Jan	1-2	2 Apr	27 Feb	1-2	19 Dec	16 Jan	26 Dec	13 Feb	1-2	1-2	19 Apr	30 Jan	9 Apr	1-0	

NOEL FITZPATRICK LTD

CIVIL ENGINEERING & PLANT HIRE CONTRACTORS



CIVIL ENGINEERING DEMOLITION & EXCAVATION

- 360° Tracked Excavators 1 Ton - 35 Ton
- 360° Tracked Zero Tail Swing Excavators 1 Ton - 20 Ton
- 360° Wheeled Excavators 8 Ton - 20 Ton
- JCBs & Mini Diggers
- Telescopic Forklifts

CPA

Modern
Fleet



- Concrete Breakers & Pulverisers
- Pile Crackers & Augers
- Hydraulic Grabs & Grapples
- Tipper Lorries
- Low Loader Service

Fully Skilled
Operators

OVER 35 YEARS OF QUALITY & RELIABILITY

Tel: (01633) 290077

Fax: (01633) 277222 Visit our website at: www.noelfitzpatrick.ltd.uk

Langland Way,
Reevesland Industrial Estate,
Newport, South Wales NP19 4PT

STANDARD SIGNS

01633 256406

sales@standardsigns.co.uk

TRAFFIC & COMMERCIAL SPECIALISTS



- EXTERNAL SIGNS
- BANNERS
- LEAFLETS
- SHOP FRONTS
- T-SHIRT PRINTING
- STICKERS
- CORPORATE BRANDING
- LEAFLET DISPENSERS
- DISPLAY STANDS
- WINDOW GRAPHICS
- VEHICLE SIGNAGE
- INTERNAL SIGNS

colour centre
decorating supplies

One of the UK's leading
distributors of Decorative and
Specialist Paints, Wall-coverings
and much more



- Leading Brands
- Friendly Helpful Staff
- Thousands of Colours
- Expert Technical Advice
- Free Local Delivery Service

Established for over 50 years, we at Colour Centre know a thing or two about home decoration. That's why we stock the very best Paints, Wallpapers and Decorating Sundries available anywhere. Visit our fabulous wallpaper showroom with hundreds of pattern books and see our inspiring room settings.



HAMILTON ZOFFANY Sanderson Little Greene



**Exclusive Offer
for
Newport County Fans**

**Present this voucher or your season
ticket in store and receive these
fantastic offers**

At Least

20% Off

**A huge selection of
Wallpapers**

Spend **£40** or
more in store and
receive **£5** worth of
FREE Paint
Brushes

Terms & conditions apply. One offer per customer per visit.
Only while stocks last. Subject to availability.



Old Church, Portland Street, Newport NP20 2DP. T: 01633 212481
www.thecolourcentre.co.uk



ExExiles

With St Andrew's Day coming up, **Dan Parker** takes a look back at a selection of former County players from Scotland, as well as a few other ex-Exiles with Caledonian connections.

Craig McAllister

Position **Striker** Seasons **1**

Poor old Craig McAllister – nothing would go his way in an amber jersey. The Glaswegian centre-forward had been hailed as a 'massive addition' to the County squad by then-manger Anthony Hudson, but he failed to make an impact after signing for County in the summer of 2011: no goals in 26 Newport appearances tells a story in itself. It could have been that he just wasn't up to scratch – there was certainly more chance of Finding Nemo than there was of McAllister finding the back of the net – or that he just didn't get the service from a team that was playing without any confidence.

After leaving County, McAllister enjoyed a few decent campaigns as player-coach with Hampshire side Eastleigh, and featured in the club's push for league football last year, culminating in a Conference play-off semi-final defeat to Grimsby Town.

Released by Eastleigh in the summer,

Craig is now with National League South outfit Sutton United. On signing for the south London outfit, McAllister was quick to dismiss rumours that he was over the hill. In an interview with the Sutton Guardian he said "People are saying some of our signings are past-it, but you need experience in this league. I think I've got another two or three seasons in me. I came into full-time professional football late, so I have fewer miles on the clock. Football is the only career I've ever had, so I'm desperate to carry on for as long as possible. I know the other players are still hungry to win things, because they are winners and want to win again."

Sutton are currently defying expectations in the National League South, and at the time of writing lie 5th in the table. Meanwhile at McAllister's old club Eastleigh, fellow ex-Exile Chris Todd has taken on Craig's former player-assistant coach role.



Steven Lennon

Position **Striker** Seasons **1**

Tricky Ayrshire wide man Lennon showed glimpses of quality for County in the latter half of the 2010-11 season, but his spell in British football proved to be short-lived. After apparently rejecting an offer to rejoin County for the 2011-12 season, the former Rangers midfielder jetsetted off to Icelandic side Fram Reykjavik. After two successful seasons with Fram, he took a one year detour to Norwegian outfit Sadnes Ulf before crossing the cold North Sea for a second time, and returning to Iceland with Fimleikafélag Hafnarfjörður (FH).

Lennon is still enjoying life in Hafnarfjörður – a small port town six miles away from the Icelandic capital Reykjavik – and told Scottish tabloid the Daily Record that Iceland helped him escape a 'drinking culture' in Scottish football which had stunted his early career progress: "When I was a young player at Rangers, we'd play an Under 20s game against the Celtic boys on a Tuesday. We'd then go out at night drinking together and end up in a casino. On Wednesday and Thursday I'd train and be in the first team squad on a Saturday. I'd then be back out on the Saturday night again. Over here, that just doesn't happen...there's not much going on during the week. The big nights are Friday and Saturday, but our games are on a Sunday, so I don't even get a chance. I know now, if I was 16 again playing full-time at Rangers, I'd never do the things I did back then."



Stuart McManus

Position **Striker** Seasons **1**

Falkirk-born striker was loaned to County from Southampton back in 1985, but failed to make the grade at Somerton Park or with his parent club. With just two senior appearances at the Dell to his name, McManus was released by the Saints in the summer of 1986.

Southampton proved to be his last stop-off in the British Isles, and the remaining 25 years of his career were spent entirely in Scandinavia with a variety of clubs in Sweden (Örgryte, Sandvikens, Ljusne, Gefle) and Norway (Lillestrom, Moss). McManus finished his playing career – which was tarred by several ill-disciplined clashes with officials – with lower-league Swedish outfit Hagastroms, for whom he turned out as a goalkeeper in the 2010-11 season.

Since hanging up his boots, McManus has settled in Sweden with his family and indulged in the very Scottish passion of curling. In fact his daughters Jonna and Sara McManus have represented Sweden at curling, and Sara was part of the Swedish side which won the Curling Junior World Championships in Switzerland in 2010.

Other Scottish connections

Former County captain Garry Warren recently returned to first team action with Inverness Caledonian Thistle after three months out of the game with a broken leg. Inverness are struggling in the Scottish Premier League this term, but Warren has warned that the club have a lot to live up to after setting the bar extremely high last season by winning the Scottish cup and finishing third in the league. He told the Aberdeen Press and Journal: "We've lost a lot of key players, and people have to look at the size of Inverness. We are a small club that has been punching above its weight for the last few seasons. But that's no excuse for this season. We haven't started as well as we would have liked, but the main thing is the number of injuries we've had... having 10 players out – probably seven usual starters – is a massive part of the side and that is going to affect any side, even the best sides."

Warren is joined at Inverness by another ex-Exile, Miles Storey, who is on loan from Swindon Town. Storey has been the Caley Jags' star performer in an otherwise dreary start to the 2015-16 season, and is currently the Highland club's top scorer. In a recent interview with the Inverness Courier, Storey hinted strongly that he would like to make the move to Inverness a permanent one: "I'd like to stay beyond January. I've enjoyed starting games and done what I wanted to do with a loan spell, which is scoring goals. As long as everybody's happy then that's fine by me," he said. "I could stay here long-term. I'm enjoying the league and my time up here. There's a lot of coverage up here and it's nice to pick up a paper and read about the team. Perhaps in the lower leagues in England, you don't get that and it's only a 45-second slot on The Football League Show."

Meanwhile, our old manager Terry Butcher – formerly a player with Rangers and Clydebank, and manager at Motherwell, Partick Thistle, Inverness and Hibernian – has given strong indications that he is in no hurry to return to football. In an interview with the Ipswich Star in his native Suffolk, Butcher told a reporter that: "Some people get 18 months in a job, some don't even get 18 games. The frequency in which managers change puts you off in some respects as you are always at the mercy of a board, who are not always football people. You can't run football the same way you run your other businesses. Football is different, it has a unique atmosphere."



ABBEY
BUSINESS GROUP

Supplying print management
solutions, office interiors
and business furniture



- Multi-function photocopiers
- Digital printers
- Print management software
- Spatial planning
- Desking & seating
- Interior fit-out

Call **Tim Harris** for more information on **01633 415420**
or email **tim@abbeybusinessgroup.com**

Abbey Business Group, Newport Office, Merlin House,
1 Langstone Business Park, Priory Drive, NEWPORT NP18 2HJ.



eden project

www.abbeywales.co.uk



Ysgol Uwchradd
Llanwern
High School

**OPEN
EVENING**
THURSDAY
1ST OCTOBER
4-7pm

CELEBRATING OUTSTANDING ACADEMIC RESULTS



Official training and education
partners to Newport County
Football Club

WOW! BOOM POW!

JOIN

Happy pupils
Equipping children for life
Successful learning
State of the art school
Safe environment

APPLY NOW

**LLANWERN
HIGH SCHOOL
MOST IMPROVED
SCHOOL IN WALES**

POP IN

Llanwern High School
Hartridge Farm Road,
Newport, NP18 2YE

BOOK OUR

FANTASTIC FACILITIES

- 3G Pitch
- Dance Studio
- Large Sports Hall
- Fitness Suites
- Lecture Theatre
- Drama Studio
- Football & Rugby Pitches
- Jampod Room
- Conference Facilities
- School Hall

THE AWESOME EFFECT*



01633 411 116



llanwernhighschool.co.uk

* The Awesome Effect is the feeling we want every student who walks through our doors to feel and be inspired by.



ON THE ROAD Barnet

Saturday 5th December 2015 | 3:00pm
The Hive Stadium, London



Next Saturday County take a break from League Two, as we play Barnet in the FA Cup 2nd Round at The Hive, in what will be our first ever visit to the ground. Following a tricky first round match at Brackley, we comfortably defeated them in the replay and last Saturday's stalemate against Yeovil extended our unbeaten run to seven matches. Although this article had to be submitted before the Oxford match on Tuesday I believe the team have now have enough in them to stay above the relegation spots, and possibly defeat Barnet to reach the third round for the first time since January 1986, when we lost 2-0 to Sunderland at a bitter Roker Park.

Barnet will certainly be up for it

themselves, and after a poor start have stabilised things and up to last weekend they had only lost one of their last six, and that was actually to today's visitors. Although they are quite deep in the lower half of the table, they do have the luxury of a ten-point buffer over Yeovil, and provided they remain consistent I wouldn't expect The Bees to get dragged into a relegation battle.

The cup always does bring a little bit of excitement into the build up, particularly the 2nd Round as the potential rewards can be season changing, and this game at Barnet is certainly one to relish as we put our determined battle to save our Football League status on hold for a week. The Bees have one or two familiar names in their squad, and are of course their manager is something

of a character to say the least!

ONES TO WATCH Jamie Stephens played in goal for County on our return match into the Football League against Accrington, and although he had some nervous moments on crosses he was a competent shot stopper. However, following Lenny Pidgeley's return to the team, Stephens was out of favour for a very long time, which also included an injury. Jamie returned to the team last season after Joe Day's loan spell ended, and it was clear to see some improvements had been made to his game, and he could consider himself to be unlucky to have been released in the summer. I'm sure everyone at County is pleased to see Jamie staying in the pro ranks, and to be playing regularly for a League Two team is a great reward for his hard work.

Michael Gash has been a regular opponent of the County for many seasons. I'm not sure how many times he's actually played against us but after starting out at Cambridge City (2004-2006), he has played for many of our rivals in the seasons since; Cambridge United, Ebbsfleet, York, Rushden & Diamonds, Braintree and Kidderminster, and there was a very strong rumour that a substantial bid was made to Cambridge United in January 2013 by Newport County which was turned down by The U's. He has now played 400 career matches, and scored 115 times.

Leading the line for Barnet is likely to be big Londoner John Akinde, who has scored 36 goals from 61 appearances for The Bees.

He joined Barnet after an excellent and productive season with Alfreton, and in something of a nomadic career thus far he has struggled to regularly hit the net except for a brief, prolific loan spell at Wycombe six years ago. Still only 26, and he now seems to have settled into life at Barnet, and is a regular starter.

Aaron McLean was a highly sought after striker in the successful Grays Athletic team of ten years ago, and this brought him a transfer to Peterborough United where he continued his fine form. However since a switch to Hull City in 2011 McLean has found goals in short supply, and has scored just 19 times in his last 4½ seasons. Not a regular starter at Barnet, but will certainly need to be watched should he join the fray.

THE MANAGER Martin Allen is now in his fourth spell as manager of Barnet. He played in nearly 400 matches in his career mostly at QPR and West Ham, and his nickname of "Mad Dog" was apt, given his tenacious style. Interspersed amongst his stints as manager at Barnet have been numerous, and often short lived appointments - Brentford, MK Dons, Leicester, Cheltenham, Notts County and Gillingham, and his lively banter and enthusiasm has meant numerous media engagements over the years.

PREVIOUSLY County have never played at The Hive, but we did play our last but one match in the Conference at Underhill in February 1989, before being wound up shortly after. Barnet beat us that day by 4-1, with Ian Thompson scoring for us. That was an improvement on the result of our FA Cup Round 1 match of November 1970, as we were thrashed 6-1 with Roddy Jones getting on the scoresheet, although you wouldn't

even call it a consolation.

THE HIVE The stadium was originally planned to be the new home of Wealdstone a decade or so ago, but the investors in the site went bust and the project was put on hold for some time. Eventually, construction recommenced and Barnet moved in for the 2013/14 season.

Away supporters at The Hive are allocated a small covered terrace behind one goal, although some seats are available within the main West Stand. This structure is the dominating feature of the stadium, and the colour combinations of yellow, black and bright orange seats are quite dazzling to the eye. The home end terrace is pretty much identical to the away end, whilst to the left is an unusual stand, as the East Stand is tucked onto the back of an office block, and not all of the 750 seats here are covered.

In summary The Hive is an improvement on Underhill in terms of spectator comfort, however the 6 mile relocation into a different Borough remains controversial, and the chances of a return to their traditional home seem remote for the immediate future, especially since the only potential site has now been earmarked for Saracens RFC.

WHERE TO DRINK There is a bar at the ground that is accessible for visiting supporters. This is behind the main West Stand. Otherwise near the Canons Park underground station, is Moranos which is actually an Irish themed pub. This is just a ten minute walk through the park away. Two stops before Canons Park on the tube is Kingsbury, and there is a Wetherspoons (JJ Moons) and a couple of Irish bars all more or less outside the station. **Dave Butcher**

GETTING THERE

The Hive Stadium
Camrose Avenue
London
HA8 6AG



By Car (HA8 6AG)

- Leave Newport by joining the M4, heading in London direction.
- Exit M4 at Junction 4B, bearing left for M25 (Northbound). Exit M25 at Junction 21A, take the A405 exit M1 South.
- At the roundabout take the 3rd exit onto N. Orbital Road. Merge onto M1.
- Leave the M1 at Junction 4 and take the A41 towards Edgware.
- At the first roundabout take the 3rd exit onto the A410 towards Harrow and Stanmore.
- At the next small roundabout turn left at the Esso Garage/McDonalds towards Edgware.
- After passing through a set of traffic lights with the Masons Arms on one corner and then a Peugeot Garage on the left then at the next set of traffic lights turn right into Camrose Avenue.
- The entrance to the stadium is down this road on the right.
- There is a large car park at the stadium, with 350 spaces, costing £5 per car park.
- Otherwise street parking, although no parking is available on Camrose Avenue itself.

By Coach

Newport County Supporters Club

Adult	£20
Concessions	£18
Juniors	£17

Lysaghts	08.45
Castle Bingo, Usk Way	08.55
Royal Oak, Chepstow Rd	09.05

Contact Jeff Challingsworth
01633 270609 or 07925 878330
Bob Herrin 01633 274440
or book personally with Jeff in The Dodger after today's game.

The Smile Council

Stav 07899968672
Cully 07740963546
Togsy 07963014626
Details tbc, check weareexiles.net for updates

Crosskeys Travel

Brian Collins on 07803762578

Fare £20 and this coach leaves Queensway at 08.30

By Rail

There are engineering works planned on 5th December which will cause delays. To avoid bus transfers I would suggest the 08.09 (Newport) - 10.52 (Paddington) service, returning on the 19.57 (Paddington) - 22.29 (Newport) train. Advance returns are £68.

The ground can be reached by the Jubilee Line, accessed from Paddington by changing at Baker Street. Canons Park is 10 minutes walk from The Hive, and is the last but one stop on the service to Stanmore.



Martin Allen

NATIONWIDE



SERVICES

TEL: 0300 3031054



Membership Specials

Join Today

£500

12 Months
Full Membership

£250

18-28
Age Group

Limited Memberships Available

01633 412029

info@llanwerngolfclub.co.uk



llanwerngolfclub.co.uk

BMW

Sytner Newport



The Ultimate
Driving Machine



AN UNBEATABLE TEAM?

At Sytner Newport what we don't know about BMW isn't worth knowing. We're not just BMW specialists we're BMW enthusiasts. This means our team are not only trained to help you but want to help you. All of which means that when it comes to BMW you couldn't be in better hands - well at least we don't think so.

So for a winning performance time after time call or pop into Sytner Newport.

• BMW SALES • BMW SERVICE • BMW PARTS • BMW ACCESSORIES

Sytner Newport

Usk Way, The Old Town Dock, Newport NP20 2DS

Tel: 01633 241500

www.sytnernewportbmw.co.uk

Fuel economy figures for the BMW Range: Urban 13.8-62.4mpg (20.5-4.4l/100km). Extra Urban 26.2-83.1mpg (10.8-3.4l/100km). Combined 20.3-74.3mpg (13.9-3.8l/100km). CO2 emissions 325-99 g/km. Figures may vary depending on driving style and conditions.



Over 40yrs experience
All ranges to suit all budgets
Fully guaranteed by our own
fitting teams, our name says it all!
Finance Options Available*
subject to status*



Complete Kitchens & Beautiful Bathrooms

Call: 01633 860184

for a free no-obligation quote!

Visit our showroom:

Oldbury Hall, Oldbury Rd
Cwmbran NP44 3JU

www.ck-bb.co.uk



www.meatnewport.co.uk

NEW CINEMA OPENING NOVEMBER 2015

Want to be part of the Cineworld team?

Join us at the Newport Centre for our open day
on Saturday 5th September! 10am – 5pm

Find out more at:

cineworld.com

facebook.com/CineworldFriarsWalkNewport

@CineworldFriars

Apply online:

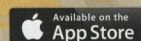
www.cineworld.co.uk/careers

between 5th and 14th September 2015



Order Takeaway super quick with the Nando's App

Nandos.co.uk/takeaway



Nando's Newport, Unit 21, Newport Retail Park, Sytty Road, Gwent, NP19 4QR

League Table

Tuesday 24th November 2015

Pos	Team	Pld	HOME					AWAY					GD	Pts	Recent Form													
			W	D	L	F	A	W	D	L	F	A																
1	Plymouth Argyle	19	6	2	2	16	9	6	1	2	13	6	+14	39	D	L	W	W	W	L	W	W	W	W	W	W	W	W
2	Oxford United	19	5	4	1	13	7	5	3	1	17	9	+14	37	D	W	W	W	L	W	D	W	W	W	W	W	W	W
3	Northampton Town	19	6	1	2	14	9	5	3	2	17	14	+8	37	W	W	W	D	W	W	L	W	W	D	W	W	W	D
4	Portsmouth	19	3	6	1	17	7	5	3	1	14	9	+15	33	W	D	D	L	D	D	W	W	D	L	W	W	W	D
5	Accrington Stanley	18	4	3	2	18	15	5	2	2	11	6	+8	32	W	D	W	W	L	L	W	L	W	W	W	W	W	W
6	Leyton Orient	19	5	2	2	17	9	3	4	3	14	17	+5	30	D	W	L	L	W	D	D	L	W	L	W	L	W	L
7	Carlisle United	19	4	3	2	18	16	4	3	3	17	19	0	30	W	D	L	W	D	L	W	L	W	W	W	W	W	W
8	Mansfield Town	19	3	4	3	14	10	5	1	3	11	7	+8	29	L	W	L	L	D	W	L	W	W	W	W	W	W	W
9	Wycombe Wanderers	17	3	2	3	11	10	5	3	1	11	4	+8	29	W	D	W	D	L	L	L	W	W	D	W	W	W	D
10	Exeter City	19	4	4	1	15	10	4	1	5	12	16	+1	29	W	W	D	L	D	W	L	D	D	W	W	W	W	W
11	AFC Wimbledon	19	4	2	4	13	14	3	4	2	12	11	0	27	L	D	D	W	W	W	L	L	W	D	W	W	W	D
12	Luton Town	19	3	3	4	14	13	4	2	3	18	12	+7	26	L	D	W	W	L	D	L	D	W	W	W	W	W	W
13	Bristol Rovers	18	2	1	6	8	12	6	1	2	15	10	+1	26	L	L	W	W	L	D	W	W	W	W	W	W	W	W
14	Notts County	18	6	1	3	18	13	1	3	4	8	14	-1	25	W	L	W	D	D	W	L	L	D	W	W	W	W	W
15	Crawley Town	19	4	2	4	10	12	3	2	4	14	17	-5	25	L	W	D	W	W	L	W	W	L	W	W	W	W	W
16	Morecambe	18	3	0	6	16	19	4	3	2	17	14	0	24	L	D	L	L	W	W	W	L	L	D	W	W	W	D
17	Cambridge United	19	3	1	5	12	16	3	4	3	15	14	-3	23	W	L	L	L	W	L	W	L	D	L	W	W	W	W
18	Barnet	19	5	2	2	14	8	1	1	8	11	24	-7	21	L	D	L	W	W	D	W	L	L	L	W	W	W	W
19	Hartlepool United	18	3	2	4	11	14	3	0	6	8	14	-9	20	L	W	L	L	D	W	L	L	L	L	W	W	W	W
20	Stevenage	19	3	2	4	9	14	1	5	4	14	19	-10	19	W	D	D	L	L	D	W	D	L	L	W	W	W	W
21	Newport County AFC	19	0	4	5	8	17	3	3	4	10	12	-11	16	D	D	D	D	W	W	L	L	D	L	L	L	L	L
22	Dagenham & Redbridge	18	0	3	6	7	15	2	3	4	11	17	-14	12	W	L	L	L	D	L	D	L	D	L	L	L	L	L
23	York City	19	1	3	5	12	17	1	3	6	9	20	-16	12	L	L	L	L	L	D	L	D	D	L	L	L	L	L
24	Yeovil Town	19	1	3	6	13	19	1	2	6	6	13	-13	11	L	D	D	L	L	L	L	D	D	L	D	L	L	L

Appearances

Tuesday 24th November 2015

No	Player	Debut	League		Cup		Season		Career		Cards	
			Apps (Sub)	Goals	Apps (Sub)	Goals	Apps (Sub)	Goals	Apps (Sub)	Goals	Yellow	Red
1	Rhys Taylor	01/09/2015 v Swindon (H) 1-1	0	0	1	0	1	0	1	0	0	0
2	Danny Holmes	08/08/2015 v Cambridge Utd (A) 0-3	10 (1)	0	2 (1)	0	12 (2)	0	12 (2)	0	1	1
3	Scott Barrow	08/08/2015 v Cambridge Utd (A) 0-3	18 (1)	2	3	0	21 (1)	2	21 (1)	2	4	0
4	Tommy O'Sullivan	17/10/2015 v Portsmouth (H) 0-1	5 (1)	1	2	0	7 (1)	1	7 (1)	1	1	0
6	Matt Taylor	26/09/2015 v Carlisle (A) 1-0	2 (1)	0	0	0	2 (1)	0	2 (1)	0	0	0
7	Medy Elito	08/08/2015 v Cambridge Utd (A) 0-3	15 (2)	0	3	0	18 (2)	0	18 (2)	0	2	0
8	Yan Klukowski	09/08/2014 v Wycombe (H) 0-2	9 (5)	1	2 (2)	1	11 (7)	2	38 (21)	8	1	0
9	Zak Ansah	22/08/2015 v Leyton Orient (H) 2-3	8 (3)	2	1 (1)	0	9 (4)	2	9 (4)	2	0	0
10	Lenell John-Lewis	08/08/2015 v Cambridge Utd (A) 0-3	16	3	3	2	19	5	19	5	1	0
11	Nathan Ralph	-	0	0	0	0	0	0	0	0	0	0
12	Janoi Donacien	26/09/2015 v Carlisle (A) 1-0	9	0	1	0	10	0	10	0	0	0
14	Seth Nana Twumasi	11/08/2015 v Wolves (A) 1-2	9 (1)	0	2	0	11 (1)	0	11 (1)	0	1	0
16	Andrew Hughes	10/12/2008 v Cwmbran Town (A) 4-1	2	0	0 (1)	0	2 (1)	0	121 (18)	4	0	0
18	Scot Bennett	10/10/2015 v Mansfield (A) 0-3	8	0	2	1	10	1	10	1	1	0
19	Scott Boden	08/08/2015 v Cambridge Utd (A) 0-3	9 (9)	4	3 (1)	1	12 (10)	5	12 (10)	5	2	0
20	Tom Owen-Evans	25/04/2015 v York City (A) 2-0	4 (6)	0	1 (2)	0	5 (8)	0	5 (9)	0	1	0
21	Matt Partridge	05/09/2015 v York City (H) 0-3	12	0	2	0	14	0	14	0	2	0
22	Kieran Parselle	11/08/2015 v Wolves (A) 1-2	6	0	2	0	8	0	8	0	0	0
23	Alex Rodman	08/08/2015 v Cambridge Utd (A) 0-3	4 (4)	0	3 (1)	1	7 (5)	1	7 (5)	1	1	0
24	Jazzi Barnum-Bobb	17/10/2015 v Portsmouth (H) 0-1	7	0	2	0	9	0	9	0	4	0
30	Joe Day	30/08/2014 v Portsmouth (A) 1-0	19	0	3	0	22	0	59	0	0	0
33	Mark Byrne	09/08/2014 v Wycombe (H) 0-2	19	1	4	0	23	1	64 (3)	5	2	0
39	Aaron Collins	23/09/2014 v Swindon Town (H) 1-2	7 (7)	1	0 (3)	1	7 (10)	2	7 (13)	2	1	0
42	Corey Shephard	-	0	0	0	0	0	0	0	0	0	0
47	Lewis Bamford	19/09/2015 v Dag & Red (A) 0-0	0 (1)	0	0	0	0 (1)	0	0 (1)	0	0	0
48	Dafydd Jones	11/08/2015 v Wolves (A) 1-2	0	0	0 (1)	0	0 (1)	0	0 (1)	0	0	0
49	Liam Angel	-	0	0	0	0	0	0	0	0	0	0
No Longer at Club												
+	Tyler Blackwood	26/09/2015 v Carlisle (A) 1-0	1 (2)	1	0	0	1 (2)	1	1 (2)	1	0	0
+	Josh Laurent	22/08/2015 v Leyton Orient (H) 2-3	0 (3)	0	1	0	1 (3)	0	1 (3)	0	0	0
+	Aaron Hayden	08/08/2015 v Cambridge Utd (A) 0-3	4 (1)	0	1	0	5 (1)	0	5 (1)	0	3	0
+	Regan Poole	20/09/2014 v Shrewsbury (A) 0-0	3 (1)	0	1	0	4 (1)	0	16 (1)	0	0	0
+	Kevin Feely	22/03/2014 v Torquay United (A) 1-0	3	0	0	0	3	0	31 (5)	1	1	0

Key

- Sub 1 ●
- Sub 2 ●
- Sub 3 ●

Goalscorer¹

- Yellow Card ■
- Red Card ■

HOME

AWAY

CUP



UP NEXT
AFC WIMBLEDON
 Saturday 19th December 2015 | 3:00pm

AFC Wimbledon are County's pre-Christmas guests on Saturday 19th December. The Dons' fourth consecutive season in League Two, season 2014/15 saw them achieve a respectable enough fifteenth place, but a very decent start to this season will raise their hopes of achieving a play-off place.

Since AFC Wimbledon rose from the ashes of Wimbledon F.C. in 2002, they have been remarkably successful, having been promoted five times in nine seasons and going from the ninth tier of English football to the fourth. The Dons also hold an impressive record of the longest unbeaten run of league matches in English senior football – 78 consecutive matches between February 2003 and December 2004. A feat to be proud of!

Last season, saw new boy Adebayo Akinfenwa, a free transfer from Gillingham, really proved his worth by netting fifteen goals in all competitions, sharing the clubs top scorer spot with Bournemouth loanee Matt Tubbs. Tubbs subsequently moved in the January 2015 transfer window to Portsmouth, but this season's form suggests that the Dons have found a good replacement for Tubbs in Lyle Taylor, a 25 year old Montserratian international striker. Taylor, who transferred in from Scunthorpe United for an undisclosed fee, has been sharing the goal scoring load this term with Akinfenwa and another Adebayo – Azeez,

also a free transfer in summer 2014 from Charlton Athletic and an England under 19 international. Dons' manager Neal Ardley is clearly very shrewd in the transfer market. This closed season saw Wimbledon as one of the least active clubs in the transfer window, with only six players in and seven out at all levels, but the policy seems to be working with their promising start to this season.

One move was however forced onto the Dons' boss this term and that was the loan transfer in October of Cardiff City reserve keeper Ben Wilson. Wimbledon's first choice keeper James Shea suffered an ankle injury, resulting in the one month loan for Wilson. Since October, he has been keeping Dons' young stand-in keeper Joe McDonnell out of the team and played in all games in their unbeaten run of five League Two games through the end of October to mid November. This has resulted in an extension to the loan until 3rd January and with Shea still a few weeks off full fitness, Wilson may well be between the sticks for the trip to Rodney Parade. Warm season's greetings are guaranteed for the Cardiff City man I'm sure!

After an impressive 4-1 win at home against the Dons last season, County will be looking to avenge the disappointing 2-0 reversal at the Kingsmeadow Stadium in February (see sidebar article).

Jake Rosemeyer



Saturday 7th February 2015
 Sky Bet League 2

AFC WIMBLEDON 2
COUNTY 0

Adebayo Akinfenwa's brace of goals ensured County began life without manager Justin Edinburgh with defeat at AFC Wimbledon.

Akinfenwa drilled home an early header, but failed to beat Joe Day with a penalty when Kevin Feely was sent off for bringing down George Francomb. But Akinfenwa made amends when he turned in Francomb's cross.

For County it was a fourth successive defeat in League Two, seriously damaging their play-off hopes.

Line-up Day, Yakubu, Jones, Feely, Jackson, Porter (Minshull 79'), Chapman (Klukowski 75'), Byrne, Sandell, O'Connor, Zebrowski (Storey 60')

Attendance 3,817

WE'RE MAKING FOOTBALL LEAGUE BETTING BETTER

sky BET

MORE MARKETS
 ON YOUR TEAM THAN ANY
 OTHER BOOKMAKER

ARE YOU IN?
skybet.com/FL72

18+ only. Terms and conditions apply. More Markets refers to Outright Markets, comparison made using Oddschecker. For more information visit skybet.com/FL72. **GAMBLE RESPONSIBLY. FOR MORE INFORMATION VISIT WWW.GAMBLEAWARE.CO.UK**

SQUADS

SATURDAY 28TH NOVEMBER 2015
SKY BET LEAGUE 2



NEWPORT COUNTY AFC

MANAGER **John Sheridan**
SHIRTS **Amber** SHORTS **Black**



LUTON TOWN

MANAGER **John Still**
SHIRTS **White** SHORTS **White**

- 2 DANNY **HOLMES**
- 3 SCOTT **BARROW**
- 4 TOMMY **O'SULLIVAN**
- 6 MATT **TAYLOR**
- 7 MEDY **ELITO**
- 8 YAN **KLUKOWSKI**
- 10 LENELL **JOHN-LEWIS**
- 11 NATHAN **RALPH**
- 12 JANOI **DONACIEN**
- 14 SETH **NANATWUMASI**
- 15 JOE **GREEN**
- 16 ANDREW **HUGHES**
- 18 SCOT **BENNETT**
- 19 SCOTT **BODEN**
- 20 TOM **OWEN-EVANS**
- 21 MATT **PARTRIDGE**
- 22 KIERAN **PARSELLE**
- 23 ALEX **RODMAN**
- 24 JAZZI **BARNUM-BOBB**
- 30 JOE **DAY**
- 33 MARK **BYRNE**
- 39 AARON **COLLINS**
- 42 COREY **SHEPHARD**
- 47 LEWIS **BAMFORD**
- 48 DAFYDD **JONES**
- 49 LIAM **ANGEL**

- 1 MARK **TYLER**
- 2 STEPHEN **O'DONNELL**
- 3 DAN **POTTS**
- 4 JONATHAN **SMITH**
- 6 SCOTT **CUTHBERT**
- 7 ALEX **LAWLESS**
- 8 CAMERON **M'GEEHAN**
- 9 PAUL **BENSON**
- 10 RYAN **HALL**
- 11 DANNY **GREEN**
- 12 SCOTT **GRIFFITHS**
- 14 JACK **MARRIOTT**
- 15 PADDY **M'COURT**
- 16 ELLIOT **JUSTHAM**
- 17 PELLY **RUDDOCK MPANZU**
- 18 MAGNUS **OKUONGHAE**
- 19 OLLY **LEE**
- 20 SEAN **LONG**
- 21 LUKE **GUTTRIDGE**
- 22 CRAIG **MACKAIL-SMITH**
- 23 JOSH **M'QUOID**
- 24 CURTLEY **WILLIAMS**
- 25 MARK **O'BRIEN**
- 26 NATHAN **DOYLE**
- 30 LUKE **WILKINSON**

OFFICIALS

DAVID **COOTE**
MARK **DERRIEN**
CRAIG **TAYLOR**
RICHARD **HULME**

FIXTURES

BARNET **v** MANSFIELD
CAMBRIDGE **v** NOTTS COUNTY
CARLISLE **v** CRAWLEY
DAG & RED **v** PLYMOUTH
EXETER **v** BRISTOL ROVERS
HARTLEPOOL **v** OXFORD UTD
LEYTON ORIENT **v** AFC WIMBLEDON
NORTHAMPTON **v** YEOVIL
STEVENAGE **v** MORECAMBE
WYCOMBE **v** PORTSMOUTH
YORK **v** ACCRINGTON

TABLE

	Pld	GD	Pts
1 Plymouth	19	+14	39
2 Oxford Utd	19	+14	37
3 Northampton	19	+8	37
4 Portsmouth	19	+15	33
5 Accrington	18	+8	32
6 Leyton Orient	19	+5	30
7 Carlisle	19	0	30
8 Mansfield	19	+8	29
9 Wycombe	17	+8	29
10 Exeter	19	+1	29
11 AFC Wimbledon	19	0	27
12 Luton	19	+7	26
13 Bristol Rovers	18	+1	26
14 Notts County	18	-1	25
15 Crawley	19	-5	25
16 Morecambe	18	0	24
17 Cambridge	19	-3	23
18 Barnet	19	-7	21
19 Hartlepool	18	-9	20
20 Stevenage	19	-10	19
21 County	19	-11	16
22 Dag & Red	18	-14	12
23 York	19	-16	12
24 Yeovil	19	-13	11

UP NEXT



AFC WIMBLEDON

SATURDAY 19TH DECEMBER 2015
SKY BET LEAGUE 2
KICK OFF 3:00PM

MATCH SPONSOR
BERENDSEN
MATCH BALL SPONSOR
MCGINLEY SUPPORT SERVICES

MATCH MASCOTS
**JAYDEN THOMAS
MAX MASTERTON
COLE SCOREY
LOGAN WILLIAMS**