

OFFICIAL
MATCHDAY
PROGRAMME
£3.00

sky BET LEAGUE 2



AFC WIMBLEDON

v LUTON TOWN

SATURDAY 21 FEBRUARY 2015 KICK-OFF 3.00 PM

MATCH SPONSOR

BALL SPONSOR

BALL SPONSOR

PROGRAMME SPONSOR

LEADSIDE
GROUNDWORKS LTD



quest

moorad choudhry



NOW OPEN UNTIL
MIDNIGHT
MONDAY TO SATURDAY

FREE

FREE PARKING

EVERY THURSDAY
FROM 6PM
AT CENTRE COURT
SHOPPING CENTRE



Over 65 Stores • 760 Spaces • Easy Access • Valeting Service



*For full details and T&Cs visit:
www.centrecourtshopping.co.uk

AFC WIMBLEDON v LUTON TOWN

SATURDAY 21 FEBRUARY 2015 KICK-OFF 3.00 PM



sky BET LEAGUE 2

The Cherry Red Records Stadium
Jack Goodchild Way, 422a Kingston Road
Kingston upon Thames, Surrey KT1 3PB

Email: info@afcwmbleton.co.uk
Tel: 020 8547 3528
Fax: 0808 280 0816

President: Dickie Guy
Life Vice-President: Mike Richardson
Vice-President: Iain McNay
Chief Executive: Erik Samuelson
Commercial Director: Ivor Heller
Operations Director and Club Secretary: David Charles
Director: Mick Buckley
Foundation Executive Director: Kay Skelton

Manager: Neal Ardley
Assistant Manager: Neil Cox
First-team Coach: Simon Bassey
Goalkeeping Coach: Ashley Bayes
Academy Manager: Jeremy Sauer
Academy Head of Coaching: Mark Robinson
Senior Professional Development Coach: Alan Reeves
Club Doctors: Mr Anup Sharma, Dr Bhavesh Kumar,
Dr Dinesh Sirisena
Physiotherapist: Stuart Douglas
Sports Therapist: Rhianon Luke
Sports Scientist: Jason Moriarty
Kitman: Robin Bedford
Ladies & Girls Section Chairman: Dennis Lowndes
Ladies First-team Manager: Chris Lyons

EDITORIAL TEAM

Managing Editor: David Charles
Editor: John Woodruff
Contributing Editors: Ray Armfield,
Stephen Crabtree, Chris Slavin
Photographs: Paul Willatts, John Potts, Trevor Williams,
Liam Smith/Dunstable Town, Zoe Linkson, AM Sports Photography
Proofreading: Sally Harlow, Nick Roberts
Advertising: advertising@afcwmbleton.co.uk
Editorial: editor@afcwmbleton.co.uk
Design: Andrew Sanders/Andy@tgdh.co.uk
Designer: Leigh Griffiths/leigh@tgdh.co.uk
Production: The Graphic Design House/tgdh.co.uk
Printed by: Bishops Printers/Bishops.co.uk

AFC Wimbledon is owned by Wimbledon Football Club
Supporters' Society Limited (The Dons Trust).

The names of all the Dons Trust Board members are on page 49.

All content © AFC Wimbledon Ltd 2015. No part to be
reproduced without permission. The views expressed by
individual contributors do not necessarily reflect the views of
AFC Wimbledon.

HONOURS

FA Cup winners 1988	London Senior Cup winners
FA Amateur Cup winners 1963	1931, 1934, 1962, 1975, 1977, 2014
Football League Division Four champions 1983	Surrey Senior Cup winners 1936, 1940, 1949, 1955, 2005
Conference National play-off winners 2011	Southern League Cup winners 1970, 1976
Conference South champions 2009	Premier Challenge Cup winners 2004
Isthmian League Premier Division play-off winners 2008	Supporters Direct Trust Cup winners 2002, 2005
Isthmian League champions 1931, 1932, 1935, 1936, 1959, 1962, 1963, 1964	South of the Thames Cup winners 1954, 1961, 1962, 1963
Isthmian League Division One champions 2005	London Charity Cup winners 1936, 1950, 1952
Southern League champions 1975, 1976, 1977	South Western Charity Cup winners 1931
Combined Counties League Premier Division champions 2004	Surrey Combination Cup winners 1929, 1931
Clapham League champions 1897, 1901	Surrey Charity Shield winners 1925, 1926, 1927, 1931, 1935
Herald League champions 1897	South London Charity Cup winners 1906, 1931
	Herald Cup winners 1901
	South Western Cup winners 1901



14 MATCH ACTION

The Dons see off Newport at home and secure a point away at Burton

20 THE BOYS FROM THE BACK ROOM

The recent successful fundraiser – a report in words and pictures

26 125 YEARS

Wimbledon join the high table – but they are not to everyone's taste

Front cover: Craig Tanner



afcwmbleton.co.uk | facebook.com/afcwmbleton | twitter.com/afcwmbleton

CHERRY
RED RECORDS

The Wonderful World of Cherry Red

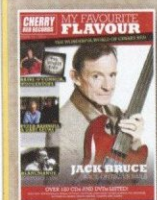
NEW ALBUMS FROM

MARC ALMOND - JOHN LEES' BARCLAY JAMES HARVEST - ANDY BELL - BLANCMANGE
THE BLOW MONKEYS - JACK BRUCE - CLAUDIA BRUCKEN - DODGY - THE DUALERS
DAVE EDMUNDS - THE FALL - GO KART MOZART - THE HOUSE OF LOVE - LUKE HAINES
INSPIRAL CARPETS - BETTYE LAVETTE - JOHN LODGE - PETE MOLINARI - TODD RUNDGREN
VAN DER GRAAF GENERATOR - JAH WOBBLE.....

AND CLASSIC REISSUES FROM ARTISTS AS DIVERSE AS

10CC - ACE - ADAM ANT - LAUREL ATKEN - BACHMAN TURNER OVERDRIVE - BAD MANNERS
THE BANGLES - BARCLAY JAMES HARVEST - BAY CITY ROLLERS - THE BEVIS FROND
ARTHUR BROWN - BUCKS FIZZ - JIM CAPALDI - CLIMAX BLUES BAND - JOE COCKER
ALICE COOPER - CYMANDE - DEAD KENNEDYS - RANDY EDELMAN - DAVID ESSEX - FELT
FIVE STAR - A FLOCK OF SEAGULLS - HAWKWIND - THE ICICLE WORKS - ISAAC HAYES
GREG LAKE - MEATLOAF - KYLIE MINOGUE - MOODY BLUES - ENNIO MORRICONE - MOTORHEAD
THE METEORS - BILL NELSON - BILLY OCEAN - THE OSMONDS - MICA PARIS - GRAHAM
PARKER - GENE PITNEY - POINTER SISTERS - POP WILL EAT ITSELF - SHALAMAR - SLOWDIVE
SOFT MACHINE - TANGERINE DREAM - THE THREE DEGREES - URIAH HEPP - RICK WAKEMAN
DIONNE WARWICK - KIM WILDE - PAUL YOUNG.....

Cherry Red is proud to be home to such labels as 7T's, Anagram, Artpop, Atomhenge, Badfish, Big Break, Cherry Pop, El, Esoteric, Grapefruit, Hear No Evil, Lemon, Morello, Now Sounds, Pressure Drop, Reactive, Righteous, RPM, SoulMusic, West Midlands Records
.....specialists in Punk, Metal, Soul, Progressive Rock, Psychedelic, Ska, Americana, Pop, Hip-Hop, '60s, '70s, '80s, '90s



My Favourite Flavour

The quarterly Cherry Red Magazine
The place to read about what's new
and exciting at Cherry Red: reviews,
tour dates, gossip, info and lots more!
To subscribe or join the mailing list
e mail infonet@cherryred.co.uk

359 Music

Alan McGee launches new record label 359
Music with Cherry Red.
"My vision for 359 Music is a launch pad for
new talent and some ignored older talent. There
really needs to be an outlet for new music artists
that have been shut out by the system."

www.359music.co.uk info@359music.co.uk



Football CDs

Over 50 club and
country compilations!
From Arsenal to Wolves
and beyond!

www.cherryred.tv

Unique in depth
interviews.



www.cherryred.co.uk

FOR MORE DETAILS ON THESE AND OTHER RELEASES AND HOW TO ORDER, CALL OUR MAILORDER HOTLINE 020 8996 3120
OR VISIT THE WEBSITE Cherry Red Records Ltd. Power Road Studios, 114 Power Road, London W4 5PY

FROM THE **BOARDROOM**

MONEY, MONEY, MONEY

IT'S A RICH MAN'S WORLD IN THE PREMIER LEAGUE. THE RECENT TV MEGA-DEAL MAKES IT EVEN MORE SO — AND TO THE FURTHER DETRIMENT OF CLUBS IN THE FOOTBALL LEAGUE, SAYS CHIEF EXECUTIVE **ERIK SAMUELSON**.

Good afternoon and welcome to the officials, players and fans of Luton Town, and in particular their managing director, Gary Sweet, a friend and former colleague on the Football Conference board who is always ready to offer good insights when I'm looking for advice.

My subject today is the recent Premier League TV deal, which I'm sure you will have read about. There has been a reported 70% increase to over £5 billion for domestic rights alone. What does this mean for us? First, some background.

Shortly after we were promoted to the Football League there was a major debate among clubs about so-called solidarity money paid by the Premier League to Football League clubs. In addition to money paid directly to clubs, the overall solidarity agreement also includes contributions to academies under the EPPP system and payments to support clubs' community activities, but today I'll concentrate on the direct payments.

When we joined the FL, the solidarity agreement was a three-year deal. As a result, the regular need to renegotiate a renewal put FL clubs in thrall to the PL, which was a major concern. Another concern was that the tenfold discrepancy between parachute payments to clubs relegated from the PL and the sums that "normal" Championship clubs are paid was distorting competitiveness. So the FL board was instructed to prepare a plan to make it possible for FL clubs to reject the next deal if the terms proved unacceptable.

To put it mildly, I was extremely

sceptical about the chances of this idea being successful. Because FL clubs are too tied to this regular flow of income, I was convinced that the chances of them acting together to change things were minimal, and that we'd therefore remain in a three-year cycle of anxiety, always susceptible to pressure from the PL should they choose to exert it.

The current agreement expires in 2016, and last year the FL board came up with a proposal to change the underlying nature of the deal. Under this, the PL would enter into

"THE DISCREPANCY IN INCOME BETWEEN PL AND FL CLUBS HAS JUST BECOME MASSIVELY BIGGER"

a contractual agreement to link solidarity payments to PL income, thereby removing the possibility of a threat of withdrawal of funds in future negotiations. Also, parachute payments would be reduced from four to three years so that, with three clubs relegated every season, the maximum number of clubs receiving parachute payments at any time would eventually reduce from 12 to nine. Given that major changes to FL rules require a majority of the 24 Championship clubs to vote in favour, this would be a

significant change.

There were other aspects to the proposal, but for me these were the critical features. In return, the FL had to agree to amend its Financial Fair Play regulations. Specifically, these changes mean that clubs receiving parachute payments can make losses several times greater than other Championship clubs without suffering any penalty.

This is a complex subject, but if you're still with me I'll now turn to how the new Premier League TV deal affects us. To be honest, I'm not certain whether the new deal ties solidarity money to all TV income (overseas TV rights are still to be sold) or just for domestic TV. However, one Championship club has said they expect to get more than £1 million extra each year as a result of the new deal. If they are right, and given that solidarity money is split 80:12:8 between Championship, League One and League Two clubs respectively, this would mean a further £100,000 each year for League Two clubs.

But for me, the real concern is that the discrepancy in income between PL and FL clubs has just become massively bigger. After all, if (as under the current rules) a relegated PL club receives ten times more cash than a continuing Championship club, then, adding 70% to each club's income means that the cash difference between the clubs increases massively. And so, despite the new deal, the distorting effect of PL money in general — and parachute money in particular — will increase. Is that a good thing for the FL? I don't think so. Is it going to change? I very much doubt it.

Enjoy the game! 

CLUB NEWS

PLAYER NEWS

As a result of his dismissal in the game against Burton Albion on 10 February, **Mark Phillips** has been suspended for three matches: last Saturday's game against Shrewsbury Town, today's game and the game next Tuesday against Cambridge United.

Joining the Dons on a month's loan from York City is experienced defender **Dave Winfield**, who made his debut against one of his former clubs, Shrewsbury Town, last Saturday. Dave has also played for Aldershot Town and Wycombe Wanderers, winning promotion to the Football League with Aldershot in 2008 and to League One with Wycombe in 2011.



NEW DONS FROM THE STATES

Dan, Jess and Josephine Mannella travelled all the way from Wyndmoor, Philadelphia, to watch our game against Newport County. They were impressed with the Dons after watching the Liverpool FA Cup tie on TV and wanted to see Bayo play in the flesh. Jess and Dan, who both coach football in the States, brought baby Josephine with them. "This was the first trip with our baby Josephine, so it will be a team we'll definitely support – and we'll try to attend a game every year," said Dan.

WATCH Ks FOR HALF-PRICE

If you can't make it to Hartlepool to watch the Dons next Saturday but would still like to watch some football that day, Kingstonian are offering Wimbledon fans half-price admission on production of their season ticket. Ks entertain Terry Brown and his Margate side in a Ryman League Premier Division fixture here at The Cherry Red Records Stadium, kick-off 3.00 pm. The reduced admission prices are: Adults £5, Concessions (over 60) £3, Students £2. Under-16s are admitted free of charge.

CHEAPER AWAY TICKETS

Tickets for the Dons' next two away games in League Two, at Cambridge United and Hartlepool United, are now available at a discount on the matchday prices and can be bought at the complimentary tickets window after today's game. For more details see page 58.

COLLECTION FOR PERSEID SCHOOL



We will be holding a bucket collection today to raise funds for Perseid School, in Morden. Collectors will be in and around the ground before the game and at half-time.

Perseid is a community special school for children and young people between the ages of 3 and 19 who have severe learning difficulties, including those with autism, and those with additional medical needs. Many pupils have additional physical and sensory disabilities. Pupils come to Perseid from all parts of the London Borough of Merton as well as some surrounding boroughs. By donating today you can help Perseid to provide life-enhancing benefits for these young people. Thank you for your support.

CUP EXIT AT FIRST HURDLE

Having been given a bye to the second round of the London Senior Cup, the Dons were knocked out by Corinthian-Casuals on Tuesday 10 February. The AFC Wimbledon team, consisting of Development Squad players plus Ross Worner and Jack Smith, were held to a goalless draw but lost on penalties.

GOLDEN GOALS

The first goal in the match against *Newport County* was scored by player number 10 on the team-sheet in the 11th minute, winning £100 for Satesh Tolat – two weeks after his brother Suresh won the top prize for the first goal scored against Accrington Stanley. The second goal was also scored by player 10, this time in the 72nd minute, winning £25 for Simon Hackney.

So far this season the sale of Golden Goal tickets has raised £7,985 for the Dons Trust Stadium Fund. In all, £166,481 has been raised since sales began in August 2002.

THE DONS DRAW

It was "lucky for some" when the winning numbers for this month's Dons Draw were drawn on Friday 13 February in the presence of Erik Samuelson (Chief



Executive), Neil Messenbird (Dons Draw Administrator) and Paul Moran (Operations Manager). The winners were:

- 1st prize of £1,000: ticket 3965, Michael Renwick
- 2nd prize of £500: ticket 3542, Peter Welch
- 3rd prize of £250: ticket 0343, B. Drysdale
- 4th prize of £150: ticket 0410, Julian Knowles
- 5th prize of £100: ticket 4285, Geoffrey Carton-Kelly
- 6th prize of £75: ticket 4053, Stephen Smith

Congratulations to all six prizewinners.

The next Dons Draw will take place on or around 15 March, and the results will be posted on the official website soon afterwards.

If you would like to enter the draw, or if you have already entered but would like to increase your chances of winning by taking a few more numbers, then why not do so now? The deadline for new entrants to the March 2015 draw is 8.00 pm next Saturday, 28 February.

For more information on the Draw and how to apply for tickets, see page 46 of this programme. If you wish to buy additional tickets, email donsdraw@thedonstrust.org

SKY BET LEAGUE 2 AWARDS FOR JANUARY

Striker Rory Donnelly, on loan at Tranmere Rovers from Swansea City, was named Sky Bet League 2 Player of the Month for January. His three goals in as many starts contributed to wins over Accrington Stanley and Exeter City and helped ease Rovers away from the relegation zone.

The Sky Bet League 2 Manager of the Month award went to Northampton Town's Chris Wilder. After a particularly poor run of results in the last three months of 2014, January saw 13 points collected from a possible 15, with a 12–2 goal differential.



VOLUNTEER LIAISON OFFICER

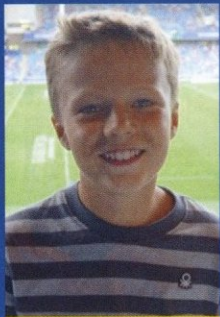
We are aiming to recruit a Volunteer Liaison Officer (VLO), a new role created to help the club's volunteers. The VLO will be responsible for setting up and maintaining a recognised and inclusive framework to ensure that all volunteers work comfortably within their role and feel valued. The role covers volunteering for both AFC Wimbledon and the Dons Trust.

Initially, the focus will be to introduce the Dons Volunteer Network (DVN) and raise its profile. Once it is established, the VLO is expected to maintain and further develop the DVN. Much of the framework has already been created by the Dons Trust People Group.

This is a volunteer position. The role is expected to be quite demanding at first, and the hours will be agreed once the role becomes established. The role will involve some working on match days.

If you would like to see the job description, please call the club office on 020 8547 3528 between 9.30 am and 5.00 pm Monday to Friday, or email info@afcwmbleton.co.uk

Applicants for this post should send their CV and a covering letter for the attention of the Operations Director at the club address (see the top of page 3), or email it to secretary@afcwmbleton.co.uk by next Friday, 27 February. AFC Wimbledon is an equal opportunities employer.



SAM WELLS

How old are you? I'm 10.

Where do you live? Hampton

Who is your favourite Wimbledon player?

Bayo Akinfenwa.

Who do you come to games with? My dad.

What was the best Wimbledon game you have seen? The play-off final against Luton Town.

Do you play for a football team, and in

what position? Yes, Windlesham United, on the right wing.

What do you enjoy doing in your spare time? Table tennis, judo, Top Gear and cheering on the Dons.

SAM WELLS

ALISON MOORE

How old are you? I'm 11 and my birthday is 28 September.

Where do you live? Aldershot

Who is your favourite Wimbledon player? Adebayo Akinfenwa.

Who do you come to games with? Mum, Dad, brother, godfather, Christine, Dave, Heather, Geoff, Buck, Kev, Sarah, Ruby and Edward.

What was the best Wimbledon game you have seen? The play-off final against Luton Town.

Do you play for a football team, and in what position? I play for Badshot Lea as a defender.

What do you enjoy doing in your spare time? Athletics and cricket.

BOBBY MOORE

How old are you? I'm 9 and my birthday is 8 October.

Where do you live? Aldershot.

Who is your favourite Wimbledon player? Ade Azeez.

Who do you come to games with? Mum, Dad, sister, godfather, Christine, Dave, Heather, Geoff, Buck, Kev, Sarah, Ruby and Edward.

What was the best Wimbledon game you have seen? The Fleetwood Town survival game.

Do you play for a football team, and in what position? I play for Badshot Lea as a midfielder.

What do you enjoy doing in your spare time? Practising football.



ALISON AND BOBBY MOORE

THE GOAL OF THE YEAR

Kevin Sainte-Luce's dramatic winner at Newport County last February has been selected by Neal Ardley as AFC Wimbledon's best goal of 2014. It was chosen from a shortlist after supporters nominated their favourite goals.

Kevin's strike will be entered in the Mitre Goal of the Year category at the Football League Awards. The top ten goals will shown on *Soccer AM* next month, and fans will be able to vote for goals to make up the final shortlist of five. The overall winner will be announced at the Football League Awards ceremony in April.

The top five goals selected by Dons fans can be viewed on YouTube (search for "AFC Wimbledon's goals of 2014"). "Kevin picked the ball up on the left side before dribbling past two or three players and lashing it into the roof of the net late on in the game," said Neal. "We put in a very good performance, but we fell behind to a goal out of nothing. Charlie Sheringham came on and equalised, and for Kevin to produce that bit of magic at such a vital time puts the goal at the top of the list."

STUART'S INJURY NOTES

This is a special fixture for me today because I have fond memories of my playing days at Luton Town. I always had a good rapport with the fans, and I'm so pleased that Luton are once again in the Football league.

On the injury front, **George Oakley** re-injured his hamstring in the Development Squad game against Portsmouth on Tuesday. This is a great blow to both George and the club, but he will no doubt return stronger and fitter. He will undergo an ultrasound scan today to determine the extent of the injury. Hopefully it isn't as bad as we first feared.

Andy Frampton is recovering well from his ankle injury and is now able to fully bear weight. He is currently completing balance and proprioception exercises and rehab, and maintaining his fitness by swimming and cycling.

After breaking his little toe four weeks ago, **Jake Goodman** has started running with Jason Moriarty. He no longer feels any pain or discomfort, which is good news, but he will need at least a week of functional cardiovascular and fitness work with Jason before being cleared to train.

SHORT MONTH, BIG GAMES

FOUR GAMES IN 15 DAYS AGAINST TOP-SIX SIDES HAS BEEN A BIG CHALLENGE, AND MANAGER **NEAL ARDLEY** IS PRETTY PLEASED WITH THE PERFORMANCES THAT YIELDED A WIN AND A DRAW FROM THE FIRST THREE OF THEM.

Welcome to the fans, directors and staff of Luton Town for this afternoon's game. John Still has done an amazing job since his arrival, and his experience and knowledge really are outstanding in producing teams that know how to win. It is a long time now since the second game of 2014/15, when managers were finding out about their squads and the capabilities they had for the season ahead. John was confident in his team back then, and the promotion push that Luton are now on is proving him right.

The games are coming thick and fast now, and everyone has something to play for, so this is a good time to be gaining some momentum. Our victory against Newport County got February's run of games off to a flyer and was thoroughly deserved. We started well and scored a goal straight from the training ground, but then Newport did what they are good at – they pinned us into our own half by taking every opportunity to put the ball in our final third and penalty box. We were happy to come in at the break 1-0 ahead, and we started the second half well before the key moment in the game: the sending-off. Obviously we all know that Bayo missed the resulting penalty, but his record is very good, and I believe that penalties should always be taken with confidence by a player who wants to




"SHREWSBURY'S GOALS CAME JUST AS WE WERE GETTING A FOOHOLD IN THE GAME"

take it. We wrapped the game up and could have added a third, but all in all it was a good start to the week.

That set us up nicely for the trip to Burton. Although we struggled for rhythm in the first half, we spotted something they were doing and at half-time we decided to change our shape to turn it to our advantage. The result was two one-on-one situations for Craig Tanner in the first 15 minutes of the second half that, if

he had made them count, would have put us in a position to win the game. As we all know, these moments are pivotal in any game and the sending-off of Mark Phillips really hindered our chances of pushing for a win. But credit to the squad, they dug in, and despite the territorial advantage Burton enjoyed, we created all the best chances of the match.

So to the third tough game in eight days: away to probably the best team in the league, particularly at home. We decided to be brave and not sit back, and after a tough opening period in which we lost James Shea, we really grew into the game and had several promising situations. Sometimes the opposition manager's demeanour tells you that you're doing well, and Micky Mellon was getting very irate with his team. Then came two more of those pivotal moments, minutes before and after half-time, that really killed the game for us. Shrewsbury's goals came just as we were getting a foothold in the game: as happened when we played Liverpool, when you are chasing the game as you tire against a good team, it becomes a hard task and they will get more chances.

We will need to use the depth of the squad over the coming weeks, as it will be difficult for the players to produce high-end performances every game with five games in two weeks. We believe we have a good enough squad to do this. 

THIS SEASON WE'RE SUPPORTING YOUR



So far we've given away thousands of footballs, let kids go to matches for £1 and put on the greatest kickabout of the season, starring two thousand footballs, Ian Wright and a helicopter. Find out what we're doing next.

GO TO CAPITALONE.CO.UK/LEGENDS



© A registered mark of Capital One (Europe) plc. Registered Office: Trent House, Station Street, Nottingham, NG2 3HX. Registered in England and Wales. Company Number: 3879023.

HOME OR AWAY



PROUD TO BE OFFICIAL KIT SUPPLIERS TO THE DONS!

www.wimbledonheritage.co.uk/shop

HI DONS FANS!

Welcome to today's match against Luton Town. This will be another tough game as Luton are having a great first season back in League Two. If we play as well as we have been playing at home, we will be able to get a result. So get behind the team, and hopefully we can continue our home form. Don't forget – if you have a photo of you and me taken today, please email it to me so I can show it off on this page. Come on you Dons!

HAYDON THE WOMBLE

HAYDON'S PUZZLE

In today's wordsearch puzzle we are stepping back in time – I've hidden the names of some of the players who played for AFC Wimbledon in the Combined Counties League. Can you find them all?

BASSEY
BOLGER
COOPER
DOBINSON
EVERARD
FAVATA
GIBSON
GRAY
OAKINS
SHEERIN
SIDWELL
SULLIVAN
WARD



HAYDON'S GALLERY

This photograph of me with Rosie and Teddy was taken at the Carlisle game back in January. Don't forget to send in photos of me and you at a game so they can go on this page too.



JUNIOR DONS' BIRTHDAYS

Happy birthday to all the Junior Dons who celebrate their birthday at the end of February or the beginning or March. I hope you have a great day.

Alexandra Samuelson	4
Marc Pittman	7
Joseph Whitworth	11
Aoife Doran	5
Oscar House	11
Oliver Allen	11

JOIN THE JUNIOR DONS!

If you would like to become a Junior Don (for Under-16s it's just £10) please email membership@thedonstrust.org. All Junior Dons receive a birthday card and a Christmas card signed by the players, and get their birthday mentioned on this page.

SPOT THE DIFFERENCE!

There are five differences between these two photos – can you find them all?



-
-
-
-
-

PLAYER PROFILE

JOE McDONNELL

What's your club nickname?
Macca.

Which other clubs have you played for?
Basingstoke.

What position do you play?
Goalkeeper.

Where were you born?
Basingstoke.

What was your favourite subject at school?
PE.

What car do you drive?
Peugeot.

Who is your footballing idol, and why?
Frank Lampard, because I'm a Chelsea supporter and I've watched him for years.

Whose results do you always look out for?
Chelsea's.

Which football boots do you wear?
Adidas Predators.

What pre-match meal do you normally have?
Pasta.

What made you want to play for AFC Wimbledon?
Great history and support.

Who's the best player you've ever played against?
Wilfred Zaha.

When did you first start playing football?
When I was 6.

What's been the best moment in your footballing career?
Winning the county cup.

What piece of advice were you given as a child that most influenced you?
Don't come off the pitch with any regrets.

Do you have a message for the Junior Dons?
Thanks for the support – keep it up!



sky BET LEAGUE 2

SATURDAY 7 FEBRUARY 2015
THE CHERRY RED RECORDS STADIUM
ATTENDANCE: 3,817



AFC WIMBLEDON

Akinfenwa 11, 72



NEWPORT COUNTY AFC

(1) 2

(0) 0

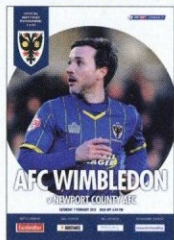


UNUSED SUBS

Wimbledon:
Moore, Beere, McDonnell, Tanner

Newport:
Jeffers, Flynn, Stephens, Poole

PROGRAMME



"IT WAS IMPORTANT TO WIN THIS HOME GAME WITH A TOUGH SCHEDULE AHEAD."

Neal Ardley

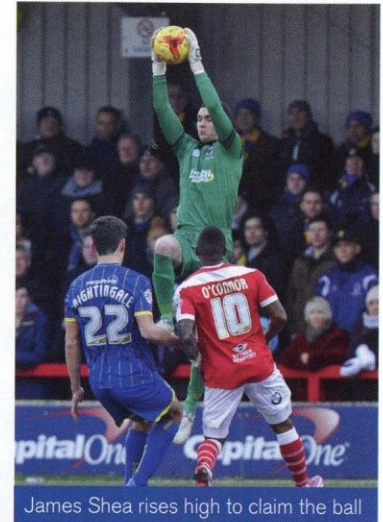


David Connolly is fouled by Adam Chapman



Bayo Akinfenwa wrong-foots Ismail Yakubu to score his second

Callum Kennedy gets to the ball before Aaron O'Connor



James Shea rises high to claim the ball

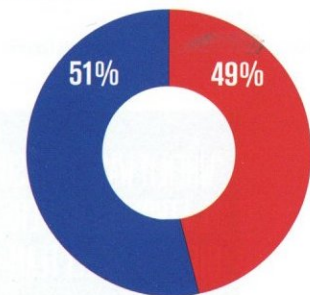


Akinfenwa just fails to connect with a cross

George Francomb clashes with Exiles captain Andy Sandell



STATS



POSSESSION

SHOTS ON TARGET	3	3
SHOTS OFF TARGET	4	5
OFFSIDE	3	1
CORNERS	1	3
FOULS CONCEDED	13	14
YELLOW CARDS	0	2
RED CARDS	0	1

sky BET LEAGUE 2

TUESDAY 10 FEBRUARY 2015

THE PIRELLI STADIUM

ATTENDANCE: 2,399



BURTON ALBION

(0) 0



AFC WIMBLEDON

(0) 0



UNUSED SUBS

Burton: Candsell-Sherriff, Shelton, Slade, Doyle, Shearer

Wimbledon: Beere, McDonnell, Sweeney, Connolly

PROGRAMME



"WHEN IT WAS 11 VERSUS 11, I THOUGHT WE WERE THE MORE LIKELY TEAM TO SCORE."

Neal Ardley



El Khayati prepares to block Barry Fuller



Mark Phillips halts a Burton attack



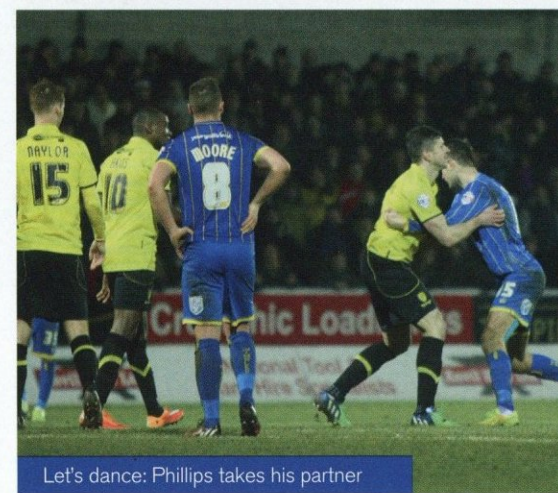
Sammy Moore and Dannie Bulman watch the ball



The defensive line

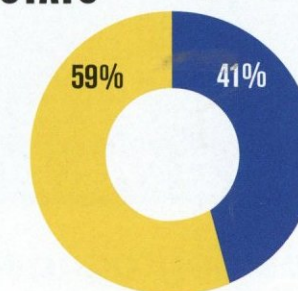


A Brewers' attack is repelled



Let's dance: Phillips takes his partner

STATS



POSSESSION

SHOTS ON TARGET	5	2
SHOTS OFF TARGET	11	2
OFFSIDE	2	9
CORNERS	8	0
FOULS CONCEDED	4	13
YELLOW CARDS	1	1
RED CARDS	0	1

LEADSIDE

GROUNDWORKS LTD

Leadsid Groundworks Ltd
New Marsh Farm
Horsley Road
Cobham
KT11 3JX



www.leadsidegroundworks.co.uk

Tel 01932 868 420

Fax 01932 866 395



Former Glory Days lead singer (1999-2011) with JNSPJRAL CARPETS

Tom Hingley

SOLO ACOUSTIC SHOW

+ SUPPORT

The
Cornerstones

doors 8pm - late

Saturday 14th March 2015

WWW.KINGSMEADOWLIVE.COM

£10 in advance or £13 on the door

Kingsmeadow
L I V E

CHERRY RED RECORDS STADIUM, JACK GOODCHILD WAY,
422A KINGSTON RD, KINGSTON UPON THAMES, SURREY, KT1 3PB
HOTLINE: 020 8247 9918 • EMAIL: INFO@KINGSMEADOWLIVE.COM



NORBITON



131



KT1 3PB

THE BOYS FROM THE BACK ROOM

IAN POLLOCK REPORTS ON THE HIGHLY SUCCESSFUL FUNDRAISING EVENT HELD EARLIER THIS MONTH, WHICH RAISED AROUND £3,000 FOR THE CLUB'S FUNDS.



Jason Moriarty, Simon Bassey, Ashley Bayes and Stuart Douglas

Would you believe it? When Bayo Akinfenwa joined the club last year he was not eating enough, or at the right times of day. That was just one of the insights shared with more than a hundred supporters at the club's recent fundraising dinner

here at The Cherry Red Records Stadium.

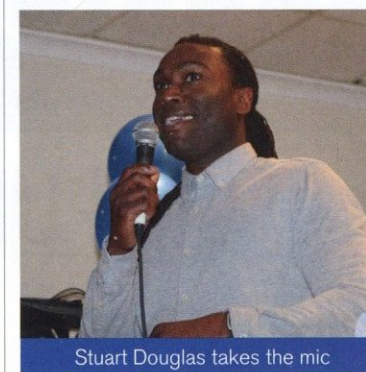
The star turns were fitness coach Jason Moriarty, physio Stuart Douglas, goalkeeping coach Ashley Bayes and first-team coach Simon Bassey – the Boys from the Back Room. Simon turned up even though he had fallen off a shed roof earlier

in the day and broken his arm! What shone through with all four was their enthusiasm for working at the club and how much they were enjoying it.

Jason described how we had been the first of Mr Akinfenwa's many clubs to notice that he had been eating meals at the wrong times of day to coincide properly



Bayzo addresses the room



Stuart Douglas takes the mic



Bassey waits his turn with guest Dave Anderson

with a professional footballer's training regime. Making the necessary simple but crucial adjustment had been vital to ensuring that the giant striker has the stamina to keep going through training sessions and games.

Simon described how much the training facilities had improved since 2002, and how much more purposeful the training had become under Neal Ardley. The manager leads about 95% of all training sessions himself. "Everything has a purpose," said Simon.

Ashley was full of praise for the skills and dedication of the current first-choice keeper James Shea, describing his potential as unlimited and suggesting he would still be

at Arsenal if only he were a few inches taller than his actual 6 feet 2 inches.

Stuart, the most eloquent of the speakers, described how his job was not just about getting injured players fit but keeping them fit in the first place. Collectively the first-team squad have been available for 97% of all games and training sessions, both this season and last.

As every Dons fan knows, there are certain opposition managers who form a rogue's gallery of pantomime villains, and both Ashley and Stuart have played under some of them. They both pointed out that the managers in question have some highly commendable qualities, such as the ability to organise an

effective team and motivate their players. But Ashley confirmed that one manager does indeed instruct a player in his team to fake an injury at about 20 to 25 minutes into the first half of each game, in order to break up the flow of the play and to give the manager the chance to revamp his team's tactics.

Stuart described an incident at one club where a group of the players became terrified one day when they realised they would be arriving late for training in their shared car. To avoid the manager's wrath and give themselves a plausible excuse, they stopped and broke a front headlight to fake an accident. Luckily for them, the ruse worked! 🦋



Jason Moriarty has Stuart spellbound



An attentive audience

MINITHON 3

2015



5KM FUN RUN



Sunday 19 April

WIMBLEDON PARK, SW18
(Revelstoke Road entrance)

**Race starts at 12.00, registration
and activities for kids from 11am**

**featuring
Haydon, Erik and the Boys from
the Back Room**



**In aid of AFC Wimbledon Foundation's
Community Healthy Living Project**



For details on how to enter, visit:

www.thedonstrust.org/2015/02/05/return-of-the-minithon

or email mark.davis@thedonstrust.org

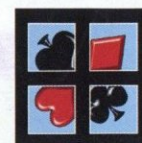
or phone 020 8547 3528

£10 entry fee (£5 for 6y-16y, no charge for 5y and under)

Supported by



FEATURE



THE AFC WIMBLEDON POKER CHAMPIONSHIP 2015



Saturday
7 February saw
the return of the
annual
AFC Wimbledon
Poker

Championship, in which 60
competitors battled it out
to be crowned champion.
Notable entrants included
first-team assistant
manager Neil Cox, who
finished in an impressive
fifth position overall. The
eight players who made
it to the final table each
received cash prizes as
well as AFC Wimbledon
goodies.

Our thanks go to Sam
Day and Pollards Hill Poker
Club, who once again
hosted the night superbly
well. Paul Jones was the
overall winner, with Stuart
Lovelock and David Pipkin
finishing second and third,
respectively. Thank you to
all who attended and made
it a fantastic and enjoyable
evening.



The final table



Overall winner Paul Jones (centre) with runner-up Stuart Lovelock (left)
and third-placed David Pipkin (right)

EST. 1969

PAUL STRANK ROOFING LTD

Raising the Roof - Lowering the Prices

Paul Strank Roofing Specialise in all aspects of Roofing, whatever the job may entail. From Leaky Gutters to complete Roof Renewals, we treat each job individually.

Providing over 45 Years of experience, craftsmanship and professionalism, Paul Strank Roofing has established itself as a trusted roofing contractor.

With competitive prices, free local delivery and specialist knowledge, our roofing and builders merchants provide unsurpassed customer service.

- Velux Roof Windows & Domes
- Whitesales Windows & Domes
- Milled Lead and Lead Sheets
- Celotex Insulation Boards
- Concrete & Clay Tiles
- RubberBond Roofing Systems
- Reclaimed Goods
- FSC Certified Timber
- Gutter & Rainwater Systems
- Elith Man Made Slates
- Spanish natural Slates
- Calor Gas Stockist
- Concrete Coping Stones
- Aggregates



ROOFING & BUILDING MATERIALS: 0208 944 6063
ROOFING & SCAFFOLD SERVICES: 0208 944 6010

Paul Strank Roofing Ltd - 22 Weir Road, Wimbledon, London, SW19 8UG
 Email: Roofing@paulstrankroofing.co.uk Twitter: @PaulStrankMBE

CHEMFLOW

CHEM FLOW
ENVIRONMENTAL LTD



SUPPORTING AFC WIMBLEDON



“ We would like to join all of the AFC Wimbledon Supporters in getting behind Neal and the team for the 2014-15 season and hopefully our support will make a difference on and off the pitch. ”

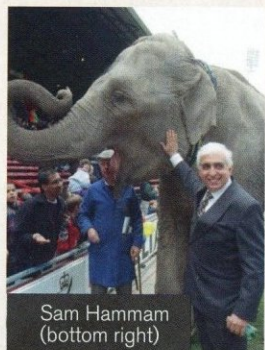
Colin Dipple
Director of Chemflow

www.chemflowuk.com



THE CRAZY GANG JOIN THE CULTURE CLUBS

OFF-FIELD GREATS: SAM HAMMAM

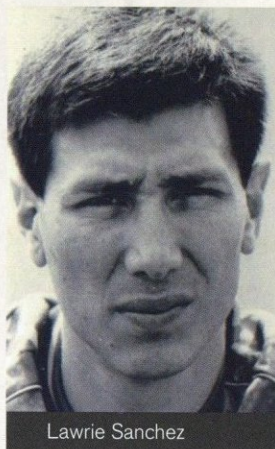


Sam Hammam (bottom right)

Love him or loathe him, there is no doubting his pivotal place in the Dons' history. In the late 1970s Sam Hammam was looking to invest in the game. Having been rejected at Chelsea, the Lebanese entrepreneur turned to Plough Lane, where a cash-strapped Ron Noades welcomed him with open arms. When the then Dons chairman decamped to Crystal Palace in 1981, it was Hammam who guaranteed the future of Wimbledon FC.

For the next two decades his passion, financial acumen and chutzpah helped lift the club to unprecedented heights. But his approach to the game ruffled establishment feathers. Writing obscenities on the dressing-room wall at West Ham, putting the entire first-team squad up for sale within hours of the FA Cup final victory, promising to kiss Dean Holdsworth's backside if he scored 20 goals in a season, and helping members of the team set fire to record signing John Hartson's clothes on his first day at the club – these were not the actions of a typical chairman.

More controversially, the self-styled "Sam the Man" arranged for ownership of Plough Lane to be transferred to a private company of which he himself was a director. He persuaded Merton Council to let him buy out the covenant imposed by Sydney Black requiring the land to be retained for sporting use, and eventually sold Wimbledon's historic home to supermarket giants Safeway, leaving the club stranded in SE25. More than 20 years later, that wrong is coming close to being righted.



Lawrie Sanchez

ON-FIELD GREATS: LAWRIE SANCHEZ

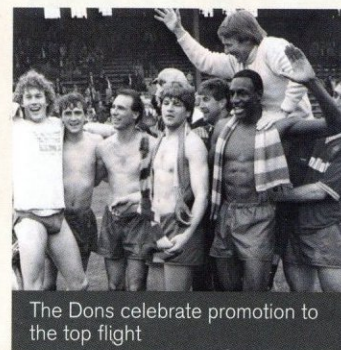
After making his Reading debut as a teenager against Wimbledon in autumn 1977, Lawrie Sanchez spent seven seasons with his hometown club before moving to Plough Lane. He was ever-present during the 1985/86 campaign, and his dogged displays helped the Dons to win many a midfield battle. As the season reached its climax "The Mexican" scored the vital goal at Huddersfield that secured Wimbledon's promotion to Division One.

The Dons were everyone's tip for relegation in 1987. But Sanchez and the rest of the team seemed to thrive on the critics' sneers and loved to thumb their noses at the so-called big boys. Doubles over both Chelsea and Manchester United helped the Dons to an unlikely sixth-place finish. But their Crazy Gang antics were widely deplored. New signing Vinnie Jones attracted the most censure, leaving Sanchez to practise the darker arts of the game in relative peace.

By now rated good enough to win caps for Northern Ireland, the midfield strongman's finest hour was to come at Wembley in May 1988. By scoring the only goal of the FA Cup final against Liverpool he wrote his name into football history, and by the time he left for Swindon Town in 1994 he had played nearly 300 games for the Dons. In recent years he has been a vocal supporter of AFC Wimbledon as they seek to prove themselves worthy of their illustrious predecessors.

WHEN THE DONS WON PROMOTION TO THE FIRST DIVISION IN 1986, THEY WERE NOT WELCOMED WITH OPEN ARMS. ON AND OFF THE PITCH, THE CONFRONTATIONAL "CRAZY GANG" APPROACH OF THE TEAM – SHARED AND ENCOURAGED BY CHAIRMAN SAM HAMMAM – MAY NOT HAVE WON HEARTS AND MINDS, BUT IT PRODUCED THE RESULTS THAT CARRIED THEM INTO THE TOP FLIGHT AND KEPT THEM THERE.

GREAT MATCHES: HUDDERSFIELD TOWN 0–1 WIMBLEDON FOOTBALL LEAGUE DIVISION TWO, 3 MAY 1986



The Dons celebrate promotion to the top flight

Less than a decade after Wimbledon emerged from Southern League obscurity, a lone Lawrie Sanchez goal at Leeds Road confirmed their place in Division One. The players left the field with boos ringing in their ears as they ran the gauntlet of hostile locals angry at their tactics: a foretaste of the opprobrium they were to attract in the top flight.

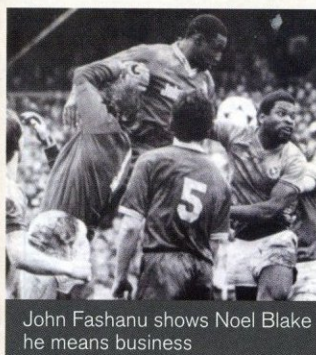
That July, FA Secretary Ted Croker outlined his vision of a Super League, with no promotion or relegation, and clearly no place for the Dons. He claimed that the club was "totally incapable of staging First Division football" and added that "to bring clubs like Manchester United and Tottenham to a ground like that is ridiculous".

What should have been a magical tale of the small man overcoming the odds through hard work and sweat turned into a morality tale about the soul of football. It seemed that there were only a small group of clubs playing in a particular way who

were welcome at the top table. Croker did not live to see his vision of the Premier League fulfilled; he would surely have been surprised to discover that humble Wimbledon were among its founder members.

DONS: Beasant, Gage, Winterburn, Galliers (Fishenden), Morris, Thorn, Hodges, Cork, Fashanu, Sanchez, Fairweather.

GREAT RIVALS: PORTSMOUTH

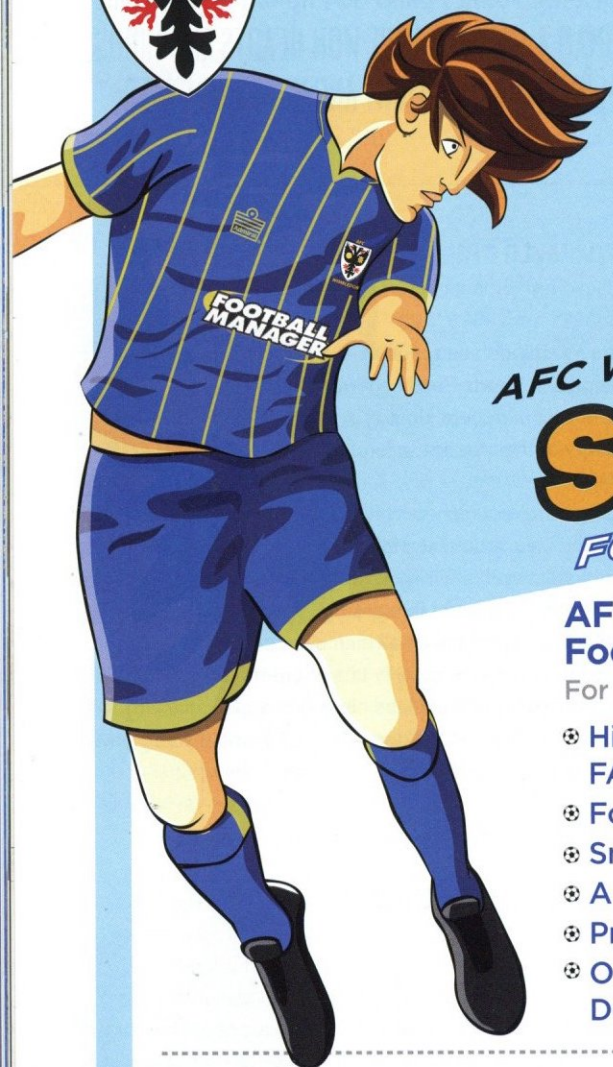


John Fashanu shows Noel Blake he means business

The battle for promotion to Division One in spring 1986 developed into a four-horse race involving Norwich, Charlton, Portsmouth and Wimbledon. Pompey had led the pack for much of the season, and after they had won 3–1 at Plough Lane on New Year's Day, their manager Alan Ball put his head around the Dons' dressing-room door to squeak, "Here endeth the lesson!" From then on, Dave Bassett barely needed to give a team talk to motivate his troops.

The Easter return was a brutal affair. New signing John Fashanu was subjected to a series of assaults – his recent display at Fratton Park for Millwall had enraged fans and players alike. As the Pompey defence concentrated on stopping the big striker, it left room for Mick Smith to equalise late on. As the season drew to a close Wimbledon continued to grab points while Pompey imploded and finished fourth, just outside the promotion places.

The Dons avenged Ball's sneers the following season when they brushed Pompey aside 4–0 in a one-sided FA Cup tie at Plough Lane, and Ball admitted that his team had been outclassed. Battle resumed when Portsmouth won promotion to the top flight themselves, but the south-coast side's stay among the elite did not last long, and the fierce rivalry between the two clubs was short-lived – until the Dons' recent return to the Football League.



FEBRUARY
AND MARCH
2015
SATURDAY
FOOTBALL CLUB
10.00 to 11.30 am

AFC WIMBLEDON FOUNDATION SPRING FOOTBALL PROGRAMME

AFC Wimbledon Community Football Programme

For boys and girls aged from 4 to 14

- High-quality coaching from FA qualified, CRB checked coaches
- Football skills coaching and fun games
- Small-sided games
- A safe and friendly environment
- Prizes and match tickets to be won!
- Opportunities to progress to our Development Centres

COURSE COST

COURSE COST

£6.00 PER SESSION
(arrive at 9.45 am)

COURSE DATES

SATURDAY 28 FEBRUARY
SATURDAY 7 MARCH
SATURDAY 14 MARCH
SATURDAY 21 MARCH
SATURDAY 28 MARCH



**AFCWIMBLEDON
FOUNDATION**

Course Venue

Wimbledon Park, Revelstoke Road,
Wimbledon, London, SW19 7HU



**AFCWIMBLEDON
FOUNDATION**

REGISTERED CHARITY NUMBER: 1154198



GET HEALTHY WITH THE MINITHON!

THE MONEY RAISED FROM THE FORTHCOMING MINITHON WILL BOOST THE HEALTH OF THE FANBASE.
AFC WIMBLEDON FOUNDATION OPERATIONS MANAGER **PAUL FOLEY** EXPLAINS.

It's been another busy week both in the Foundation office and, more importantly, down at Wimbledon Park. The weather this time of year is usually pretty miserable, but at the time of writing (Wednesday) it has been reasonable so far which allowed our holiday course to go ahead in dry conditions and with good numbers attending. If you're between 4 and 14 years old and didn't come and join in some footie fun during the February half-term week, then come along to the Saturday Football Club: we will be at Wimbledon Park every Saturday morning until the Easter school holidays. For details of these sessions see the opposite page – and don't hesitate to get in touch if you have any questions.

On another note, I'm sure you will have heard about the upcoming Minithon 3 fun run – there are details on pages 22 and 49 of this programme. Fingers crossed that a large number of you will choose to take part. This fun and inclusive 5km run/jog/walk/(or crawl!) event will take place on Sunday 19 April at Wimbledon Park, and besides raising valuable funds which will directly assist your club's development, it's also a great opportunity to get outdoors and take part in some exercise that will benefit your health.

For this reason, the AFC Wimbledon Foundation have partnered with the Dons Trust to help make the event a success. In case you were unaware, one of the Foundation's main priorities is concerned with improving the health of our local community. Take a look at these startling statistics, which paint a rather worrying picture of the nation's health:

- Despite guidelines stating that adults in the UK should be doing a minimum of two and a half hours of exercise a week, it is estimated that as few as 30% of people achieve this.

- Active people are up to 50% less likely to be at risk of major chronic disease such as coronary heart disease, strokes, diabetes and cancer.
- Only 24% of men and 29% of women regularly consume their recommended daily five portions of fresh fruit and vegetables – for children, these figures drop to 16% for boys and 20% for girls.
- Over 60% of adults in the UK are classed as being overweight or obese, and this figure is rising all the time.
- Health problems associated with being overweight or obese cost the NHS more than £5 billion every year.

We are keen to help our fans both to increase the amount of exercise they do and to assist them in making positive lifestyle choices by ensuring that they are aware of vital information related to health. Therefore, all the sponsorship money being raised by those competing in the Minithon 3 will be used by the Foundation to run a ten-week Healthy Living Programme that will combine fun physical exercise sessions with information and tips on leading a healthier lifestyle. The sessions will run every Monday evening (at a soon to be confirmed venue) from 4 May to 6 July inclusive. They will be completely free to take part in, will be led in an encouraging manner, and will take place in a relaxed environment. Hopefully these sessions sound interesting – and we hope that 4 May 2015 will mark the beginning of a new and healthier you!

For more details about Minithon 3 and the free Healthy Living Programme, please don't hesitate to get in touch with the AFC Wimbledon Foundation: details are below.

GET IN TOUCH WITH THE FOUNDATION:

Telephone: 020 8974 5712

Email: communityfootball@afcwimbledon.co.uk

Website: <http://afcwimbledonfoundation.com>

JANUARY FAN OF THE MONTH

LISA BOWKER

Wycombe Wanderers fan Lisa Bowker has been named the Sky Bet League 2 Fan of the Month for January.

Lisa's love for the Chairboys has seen her amass 171 consecutive Wycombe games in the Sky Bet Football League.

The last league game that Lisa missed was back in 2011 when Wycombe travelled to Torquay and played out a goalless draw on Friday April 22.

Not only is Lisa an avid follower of Wycombe she has also agreed to throw herself out of a plane in order to raise much-needed funds for the club.

Lisa said: "I have always wanted to do a sky dive and so I thought it would be a good way to raise some money for the club.

"I am proud and honoured that I have been nominated and won the Sky Bet Fan of the Month Award - it is a great feeling!"

Wycombe midfielder Matt Bloomfield said: "Lisa follows the team home and away, whatever the weather, and it means a lot to the players to have support like that in each game.

"Her efforts as one of a team of volunteers - and her fundraising activities - don't go unnoticed and it's great that she's been recognised as the Sky Bet League 2 Fan of the Month."

To Nominate a Mate you think deserves to be February's Sky Bet Fan of the Month visit - www.skybet.com/fan

If Lisa won the £250,000 Sky Bet Transfer Fund, she would buy Alfie Mawson on a full-time deal from Brentford

WIN £250,000 FOR YOUR CLUB
SUPPORT YOUR TEAM WITH US THIS SEASON

ARE YOU IN?
skybet.com/win

18+. T&Cs apply.



Lisa's scorecast prediction:

CARLISLE UTD1

WYCOMBE WANDERERS2

WITH PAUL HAYES
TO SCORE FIRST - 40/1*

*subject to change



REWIND

... LOOKING BACK AT EVENTS THIS WEEK 1, 5, 10 AND 20 YEARS AGO

1 YEAR



Michael Collins

The Dons look likely to get the point they deserve from a cagey encounter with Bury at The Cherry Red Records Stadium, but the Shakers live up to their nickname by inflicting a stoppage-time smash-and-grab to leave with a 1-0 win, thanks to a 94th-minute goal from Danny Mayor.

With Peter Sweeney and Andy Frampton both sidelined by injury, Neal Ardley dips into the loan market for reinforcements. Experienced central midfielder Michael Collins arrives from Scunthorpe United for the rest of the season, and former Spurs prospect Jake Nicholson signs a short-term deal after leaving Greenock Morton.

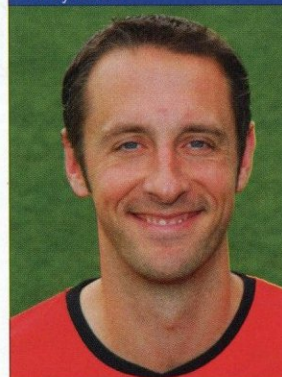
21 years after the Dons last wore the manufacturer's kit in the top flight, AFC Wimbledon announce that their 2014/15 playing strip will be supplied by Admiral, after an 18-month tendering process to replace Tempest Sports is finalised. Both parties have signed a five-year deal to run from 29 June.

On 20 February AFC Wimbledon secure their best result of the Blue Square Premier season to date with a fine 2-1 victory at Luton Town. 7,775 are inside Kenilworth Road to see Tom Craddock quickly cancel out Nathan Elder's opener, before Danny Kedwell deliciously curls home the winner from an acute angle.

After failing to regain his place since his injury last season, Andy Little joins Ryman Premier Leaguers Croydon Athletic after five years and 147 appearances between the sticks for the Dons. Also on the move are youngsters Jack Turner and Peter Rapson - loaned to Bedfont Green and Walton Casuals, respectively.

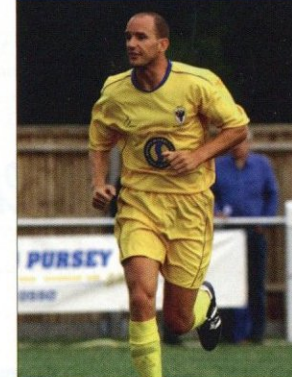
Winger Josh Parker scores twice for AFC Wimbledon reserves in their 3-1 Suburban League Premier Division win at Beaconsfield SYCOB on 16 February, but he returns to parent club QPR the following week after his loan period with the Dons expires. Ryan Jackson adds the visitors' third goal.

Andy Little



5 YEARS

10 YEARS



Mark Cooper

AFC Wimbledon crash out of the Bryco Cup in a real game of two halves against higher-division Slough Town. The Dons lead 2-0 at the break through an own goal and a Mark Cooper header, but the Rebels hit back with four second-half goals to go through 4-2.

"I've got no complaints about the result," says a peeved Dons manager Dave Anderson afterwards. "But I've got complaints about the way we conceded goals. We didn't make tackles, and you have to do that." Matters aren't helped by Cooper limping through the last 20 minutes - and the seven bookings.

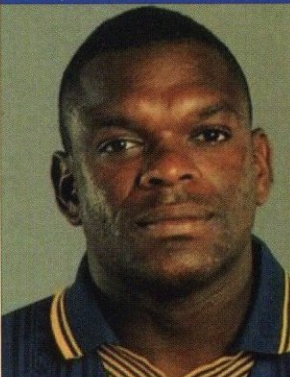
Two early goals give Cardiff City a 2-0 win over AFC Wimbledon Ladies in the FA Nationwide Women's Premier League, Southern Division. The referee rules that the ball was over the line before Keisha Ramos cleared the opener, but there are no doubts about the 20-yarder that doubles the Bluebirds' lead.

Wimbledon - minus captain Vinnie Jones, dropped after a 7-1 drubbing at Aston Villa the previous Saturday - grab a fine 1-1 draw against Liverpool at Anfield in the FA Cup Fifth Round. Andy Clarke shocks the Kop with the opener inside two minutes; Robbie Fowler equalises.

Three days later, eventual FA Carling Premiership champions Blackburn Rovers complete a double over Wimbledon with a 2-1 win at Ewood Park. Alan Shearer and Ian Atkins give the hosts an early lead, but Efan Ekoku pulls a goal back, and the Dons have Rovers on the back foot for the final hour of the game.

Three well-taken goals give Brian Sparrow's Wimbledon reserves a comfortable win over bottom-of-the-table Swindon Town on 22 February at a windswept Plough Lane. Stewart Castledine, Gerald Dobbs and trialist winger Tarkan Mustafa are all on target to keep the Dons safely in mid-table.

Andy Clarke



20 YEARS



The Nerdfighter Community

HELPING AFC Wimbledon GET IT WIMBLE-DONE!

fightworldsuck.org



AFC WIMBLEDON GROUND REGULATIONS

The safety and wellbeing of supporters entering The Cherry Red Records Stadium is of paramount importance to AFC Wimbledon. The ground regulations are posted up around the ground, and entering the stadium constitutes acceptance of the rules and regulations. The club management reserves the right for its stewards, club officials or the police to remove any person who does not comply with all the rules.

In particular, fans should not:

- bring into the ground items such as fireworks, flares and laser devices or any article that may be considered to be usable as a weapon and/or that might compromise public enjoyment/safety
- throw any object within the ground
- enter the playing area without lawful authority
- take part in any discriminatory behaviour or use obscene or abusive language
- persistently stand in seating areas
- obstruct gangways, access ways, exits and entrances
- attempt to enter or be in the ground while under the influence or in possession of drugs or intoxicating liquor.

The stadium is a no-smoking area, and that includes the use of electronic cigarettes.

If you have any concerns over a matter of safety you should immediately bring it to the attention of one of the stewards on duty.

Failure to comply with the regulations may result in being banned from the ground. If a fan is banned, that ban is indefinite until the fan has demonstrated that their behaviour has improved sufficiently for readmission to be agreed. Until that happens, the club will encourage other clubs to enforce the ban. Banned fans have the right to appeal against the ban and to appear before a disciplinary and complaints panel to make representations to be readmitted to the ground. If they fail to overturn the ban, they have the right to appeal to the Chief Executive.

GRACEMILLER sales • lettings • management

An experienced, local, family-owned agency offering honest, friendly service.

Grace Miller & Co are proud to be an **official sponsor of AFC Wimbledon**, a club for the whole family.



If we sell or let your property during this season, we will donate **£100 straight back to AFC Wimbledon.**



Lettings & Sales 020 8605 1300 • Block Management 020 8605 1200 • www.gracemiller.co.uk



AFC WIMBLEDON

Manager: Neal Ardley

Assistant Manager: Neil Cox

Coach: Simon Bassey

Physio: Stuart Douglas

Ross Worner	1			
Barry Fuller	2			
Jack Smith	3			
Dannie Bulman	4			
George Francomb	7			
Sammy Moore	8			
Adebayo Akinfenwa	10			
Sean Rigg	11			
Adebayo Azeez	14			
Callum Kennedy	17			
Jake Reeves	19			
James Shea	20			
Tom Beere	21			
George Oakley	23			
Ashley Bayes	24			
Chace Jacquot	25			
Joe McDonnell	26			
Craig Tanner	27			
George Pilbeam	28			
Ben Harrison	29			
David Fitzpatrick	30			
Ryan Sweeney	32			
Jake Goodman	33			
David Connolly	34			
Alfie Potter	35			
Dave Winfield	36			
Adedeji Oshilaja	40			

REFEREE: FREDERICK GRAHAM

ASSISTANTS: ALAN DALE AND NEIL DAVIES

4TH OFFICIAL: ADAM CRYSSELL



LUTON TOWN

Manager: John Still

Assistant Manager: Terry Harris

First-team Coach: Hakan Hayrettin

Physio: Simon Parsell

Mark Tyler	1			
Fraser Franks	2			
Danny Fitzsimons	3			
Jonathan Smith	4			
Alex Lacey	6			
Alex Lawless	7			
Andy Drury	8			
Paul Benson	9			
Alex Wall	10			
Jake Howells	11			
Scott Griffiths	12			
Mark Cullen	13			
Andy Parry	14			
Luke Rooney	15			
Elliot Justham	16			
Pelly Ruddock	17			
Ross Lafayette	18			
Ricky Miller	19			
Shaun Whalley	20			
Luke Guttridge	21			
Michael Harriman	22			
Matt Robinson	23			
Curtley Williams	24			
Jayden Stockley	25			
Nathan Doyle	26			
Ryan Hall	27			
Jim Stevenson	28			
Paul Connolly	29			
Nathan Oduwa	31			
Charlie Walker	35			
Cameron McGeehan	-			

OTHER

GAMES TODAY

BURY
v
HARTLEPOOL UNITEDCAMBRIDGE UNITED
v
PORTSMOUTHCARLISLE UNITED
v
WYCOMBE WANDERERSDAGENHAM & REDBRIDGE
v
BURTON ALBIONEXETER CITY
v
PLYMOUTH ARGYLENEWPORT COUNTY AFC
v
MORECAMBENORTHAMPTON TOWN
v
YORK CITYOXFORD UNITED
v
MANSFIELD TOWNSTEVENAGE
v
SOUTHEND UNITEDTRANMERE ROVERS
v
SHREWSBURY TOWN

NEXT HOME GAME

TUESDAY 3 MARCH 2015
KICK-OFF 7.45 PMAFC WIMBLEDON
v
SOUTHEND UNITED

LEAGUE TWO TABLE

Up to and including games played on 17 February

Home

Away

Fixture/Result (F-A)

Pos	Team	P	W	D	L	F	A	W	D	L	F	A	GD	Pts	Home	Away
1	Shrewsbury Town	31	13	3	0	32	6	5	4	6	13	14	25	61	2-2	0-2
2	Burton Albion	31	12	2	2	23	8	6	5	4	20	19	16	61	3-0	0-0
3	Wycombe Wanderers	31	7	5	4	19	15	8	6	1	23	10	17	56	18 Apr	0-2
4	Luton Town	31	10	4	2	24	9	5	6	4	13	15	13	55	21 Feb	1-0
5	Southend United	31	7	6	3	15	7	8	3	4	19	19	8	54	3 Mar	1-0
6	Newport County AFC	31	8	5	2	24	14	6	3	7	15	23	2	50	2-0	1-4
7	Plymouth Argyle	31	10	3	3	25	7	4	4	7	12	15	15	49	0-0	14 Apr
8	Bury	31	9	3	3	25	15	5	4	7	17	20	7	49	3-2	25 Apr
9	Stevenage	31	9	2	4	24	16	4	4	8	18	23	3	45	2-3	1-2
10	Exeter City	32	5	6	5	21	21	6	4	6	21	24	-3	43	4-1	14 Mar
11	Northampton Town	31	8	2	5	28	20	4	3	9	20	22	6	41	3 Apr	0-2
12	Morecambe	31	6	5	5	17	16	5	3	7	16	16	1	41	1-0	1-1
13	AFC Wimbledon	30	7	3	5	25	19	4	5	6	15	21	0	41	-	-
14	Accrington Stanley	30	7	2	5	20	20	5	1	10	19	30	-11	39	2-1	0-1
15	Cambridge United	30	6	2	6	23	13	4	5	7	21	25	6	37	1-2	24 Feb
16	Portsmouth	30	8	3	4	24	14	1	7	7	6	19	-3	37	21 Mar	2-0
17	Dagenham & Redbridge	31	5	2	8	16	19	5	5	6	19	22	-6	37	1-0	6 Apr
18	Mansfield Town	31	7	5	4	17	14	2	3	10	9	24	-12	35	0-1	17 Mar
19	Oxford United	31	4	5	6	18	19	4	5	7	15	21	-7	34	11 Apr	0-0
20	Carlisle United	31	6	2	7	22	25	4	1	11	16	28	-15	33	1-3	4-4
21	York City	31	2	8	6	12	17	4	6	5	19	20	-6	32	7 Mar	3-2
22	Tranmere Rovers	30	4	6	5	19	18	3	4	8	11	19	-7	31	2-2	28 Mar
23	Cheltenham Town	31	3	7	6	15	21	4	2	9	12	26	-20	30	2 May	1-1
24	Hartlepool United	31	4	4	8	15	25	2	2	11	9	28	-29	24	1-2	28 Feb

APPEARANCES AND GOALS

Player	Appearances			Goals			Player	Appearances			Goals		
	Lge	Cup	Total	Lge	Cup	Total		Lge	Cup	Total	Lge	Cup	Total
Adebayo AKINFENWA	27 (2)	5 (2)	32 (4)	11	2	13	Jake NICHOLSON	2	3	5			
Chris ARTHUR	- (1)	- (1)					Will NIGHTINGALE	3 (1)		3 (1)			
Adebayo AZEEZ	7 (20)	4 (3)	11 (23)	4	1	5	George OAKLEY	- (5)	- (1)	- (6)			
Adam BARRETT	23	7	30	1	1	2	Adedeji OSHILAJA	7		7			
Tom BEERE	1 (6)	2	3 (6)				Harry PELL	1 (8)	1 (2)	2 (10)			
Alan BENNETT	16	3 (1)	19 (1)				Mark PHILLIPS	1 (3)	2	3 (3)			
Dannie BULMAN	29	7 (1)	36 (1)				Alfie POTTER	1 (2)		1 (2)			
David CONNOLLY	2 (3)		2 (3)				Jake REEVES	7		7	1		1
David FITZPATRICK	- (1)		- (1)				Sean RIGG	27 (2)	7 (1)	34 (3)	4	2	6
Andy FRAMPTON	3 (1)	2	5 (1)		1	1	Kevin SAINTE-LUCE	1 (8)	1 (1)	2 (9)		1	1
George FRANCOMB	24 (4)	6 (1)	30 (5)	2	1	3	James SHEA	30	8	38			
Barry FULLER	30	8	38	1		1	Jack SMITH	10	5	15	1	1	2
Jake GOODMAN	6	2	8	1		1	Frankie SUTHERLAND	4 (3)	2 (2)	6 (5)	1		1
Ben HARRISON	4	- (2)	4 (2)				Craig TANNER	4		4			
Callum KENNEDY	16 (5)	3 (1)	19 (6)				Matt TUBBS	22	5 (3)	27 (3)	12	3	15
Sammy MOORE	21 (2)	5 (1)	26 (3)				Dave WINFIELD	1		1			

Appearances as a substitute in brackets

through every
stage of life.



Morrisons
SOLICITORS

committed to you, your family
and your business

www.morrlaw.com

@morrlaw

020 8971 1020

f in 8+

5th Floor, Sterling House, 6-10 St George's Road, Wimbledon SW19 4DP

#1 IN GROUP TRAVEL
HotelPlanner.com

Official Hotel Booking Partner of AFC Wimbledon

**SUPPORT YOUR TEAM
THROUGH TRAVEL!**

Book your travel for games through **HotelPlanner.com**
and **5%** goes to **AFC Wimbledon**

Get the Lowest Group Hotel Rates. Guaranteed!



SCAN
to Book
Travel



OR Visit:

www.HotelPlanner.com/AFCWimbledon

yourgolftravel
.com

Golf Holidays to over 3,500 destinations

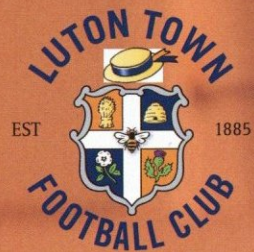


PROUD SUPPORTERS
OF AFC WIMBLEDON

CALL 0800 043 6644

visit yourgolftravel.com

MEET THE HATTERS



Formed: 1885

Home ground: Kenilworth Road

CLUB RECORDS

Highest attendance

30,069 v Blackpool
4 March 1959
FA Cup Sixth Round replay

Biggest win

15-0 v Great Yarmouth Town
21 November 1914
FA Cup First Round

Heaviest defeat

0-9 v Small Heath
12 November 1898
Football League Division Two

Most career appearances

Bob Morton, 562 (1948-64)

Most career goals

Gordon Turner, 276 (1949-64)

Most goals in a season

Joe Payne, 58 (1936/37)

Largest transfer fee received

£3 million, Curtis Davies
West Bromwich Albion (2005)

Largest transfer fee paid

£850,000, Lars Elstrup
Odense Boldklub (1989)

Fraser Franks >



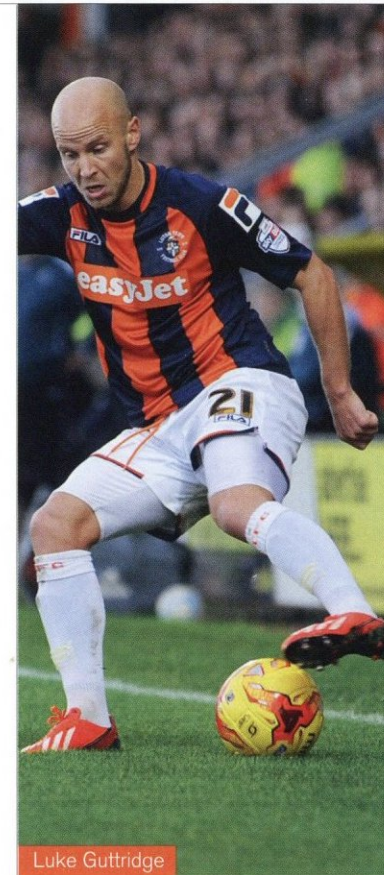
MATCH | PREVIEW

BACK WHERE THEY BELONG

THE HATTERS MADE A LONG-OVERDUE RETURN TO THE FOOTBALL LEAGUE THIS SEASON AFTER FIVE YEARS IN THE CONFERENCE — AND THEY ARE CURRENTLY WELL PLACED TO MAKE UP FOR LOST TIME.

Mansfield is never an easy place to go — as Luton Town know only too well after Tuesday night's 1-0 loss to a Stags side scrapping for their lives at the foot of the division. The defeat not only ended the Hatters' ten-match unbeaten record, but extended an unwanted sequence: they now haven't won at Field Mill in 13 attempts stretching back to 1932. The pancake day defeat tossed away the Hatters' game in hand, and with it the chance to move back into the automatic promotion places — at least for the time being. But the more philosophical supporters of the Bedfordshire club should be well pleased with how 2014/15 has panned out so far.

Any early doubts that Luton wouldn't adjust to the demands of League Two were blown away when they won four and drew two of their first seven away games. AFC Wimbledon possibly caught them cold at Kenilworth Road back in August when a sweet Matt Tubbs finish gave the Dons a smash-and-grab 1-0 win, but since then the Hatters have turned their home ground into something of a fortress, with ten victories and four draws in 16 games. But on the road, the story is a little different. Luton have won just once in their last eight away fixtures — 1-0 at Plymouth six weeks ago — so perhaps the message to Neal Ardley today is to



Luke Guttridge

keep a clean sheet, because in the six defeats Luton have suffered they failed to find the net on each occasion.

Eyebrows were raised when John Still moved into the hot seat at Kenilworth Road two years ago this month, but the wily 64-year-old has coped well with the pressure of returning the club to their rightful status as a Football League club. And there are few managers more adept at finding young rough diamonds —

often in non-league football — and polishing them up. Dwight Gayle, who eventually cost Crystal Palace a £4.5 million transfer fee, was spotted by Still plying his trade with Stansted in the Essex League, and Conference Golden Boot winner Andre Gray was snapped up by Brentford in the summer for £500,000. Mark Cullen could be the next cab off the John Still rank — his goalscoring this season reportedly kept his manager busy fending off enquiries in the January transfer window. After a barren spell, Cullen responded with three in two matches before Tuesday night, when the ups and downs of the game we all love were in evidence as he squandered the Hatters' only real chance, on 73 minutes. "The form he is in, we would have expected him to score — there you are, that's football," said Still afterwards.

Last Saturday AFC Wimbledon came up against the possible champions in Shrewsbury Town. The 2-0 defeat belied the effort put in by the Dons, who also coped with the early injury to goalkeeper James Shea, which gave Joe McDonnell an unexpected Football League debut. Before that, an excellent four points were obtained with a win over other promotion hopefuls Newport County and a resilient draw at then-leaders Burton Albion. Today's meeting has the makings of an intriguing contest. 

In 2009, after 485 appearances for Peterborough United, veteran **Mark Tyler** followed several Posh team-mates to Kenilworth Road where he has been a fixture between the sticks ever since. Manager John Still has plucked a number of recruits from non-league; back-up keeper **Elliot Justham** was previously with East Thurrock United.

Suspensions for captain Steve McNulty and Luke Wilkinson following recent red cards against York City and Carlisle United, respectively, have forced a reshuffle in central defence. Former AFC Wimbledon promotion winner **Fraser Franks** may be moved from right-back to line up alongside **Alex Lacey** in the middle, allowing QPR loanee **Michael Harriman** or the experienced **Paul Connolly** to slot in at right-back, with **Scott Griffiths** getting the nod ahead of **Danny Fitzsimons** at left-back; Griffiths played under Still at Dagenham & Redbridge between 2004 and 2010. The versatile **Jake Howells** is another who may come into contention for the No.3 role. **Curtley Williams** was spotted while playing for Lowestoft Town after leaving the Glenn Hoddle Academy in Spain. **Andy Parry** has returned from his loan at AFC Telford United and will want to be involved.

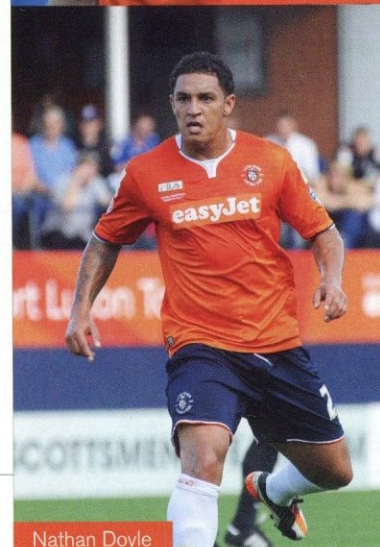
Still has a large squad at his disposal, and competition is fiercest for the four midfield slots. The attacking wing-play of **Andy Drury** is well known, though he can also operate centrally; orthodox wide men include **Luke Rooney** – returning from a recent hernia operation and keen to re-establish himself at this level after a spell with Maidstone United – and the speedy **Shaun Whalley**, who has played much of his career in his native North-West.



Jayden Stockley



Jonathan Smith



Nathan Doyle

Ryan Hall was added in the January transfer window, as was the exciting Spurs youth loanee **Nathan Oduwa**. At half-time in last Saturday's home win over Carlisle United, **Cameron McGeehan** was re-introduced to the Hatters faithful as the Norwich City starlet began a second spell with Luton following a brief but successful stint at Cambridge United. Together with **Pelly Ruddock**, who has also filled in at centre-back, they will be competing with the established **Jonathan Smith** and former Leicester City trainee **Matt Robinson** for a starting berth. The creative **Luke Guttridge** and **Alex Lawless** have recently returned from injury to add further options, but **Nathan Doyle** was sidelined after damaging a knee in the 2–2 draw with York City earlier this month. Young **Jim Stevenson** is another option.

Jayden Stockley sat on the AFC Bournemouth bench aged 15 in 2009, but only after Cherries boss Eddie Howe appealed to his school for him to miss a GCSE maths lesson to do so. The striker, who has featured on loan for seven different clubs, will be at Kenilworth Road for the rest of this season. In the absence of the experienced **Paul Benson** – now back in training after breaking a leg against Mansfield in November – **Mark Cullen** has been leading the line, and the ex-Hull City front man scored his 12th goal of the campaign against Carlisle United last weekend. Should Still decide to play with one up front, then **Alex Wall** may be unable to force his way into the squad, and summer signing **Ricky Miller**'s toe injury has hampered his chances in recent weeks. Also available are former non-league strikers **Ross Lafayette** and **Charlie Walker**.

THE GAFFER



JOHN STILL

Former clubs managed

Leytonstone & Ilford, Dartford, Maidstone United, Redbridge Forest, Dagenham & Redbridge, Peterborough United, Barnet

When a playing career was curtailed by a knee injury sustained during his one and only appearance for Leyton Orient's first team, Still quickly turned to coaching and began a long association with Dagenham & Redbridge – one of three clubs he later managed into the Football League. After nine years with the Daggers, where he became renowned for bringing through young and talented non-league players, many were surprised to see him switch to the pressures of the Luton Town job. But he guided the Hatters back to League Two as Conference champions in his first full season at Kenilworth Road.

JAKE HOWELLS

Position
Defender

Former clubs
None

Fans love to see "one of their own" rise through the youth ranks to become first-team regulars, and Howells has certainly achieved that in Hatters colours: still only 23, he is nearing 250 league games for Luton. His career began as a schoolboy with rivals Watford, and he switched to Kenilworth Road in 2007 as a 16-year-old, making his full first-team debut the following year. A versatile player comfortable anywhere on the left flank, he was voted Young Player of the Year for three successive seasons and remained with the Hatters during their five years in the Conference, winning both England C and Welsh Under-21 caps in the process.



THE FANS' FAVOURITE

THE ONE TO WATCH



ANDY DRURY

Position
Midfielder

Former clubs

Sittingbourne, Gravesend & Northfleet, Lewes, Stevenage, Ipswich Town, Crawley Town

Now back at Kenilworth Road for his second spell, Drury first flourished at Stevenage, but it was both goals in Luton's 2–2 FA Cup draw with Charlton in October 2010 that caught the eye of bigger clubs, and eventually Ipswich Town paid £150,000 for him the following January. An attacking midfielder who can also operate on the wing, he spent two years at Portman Road before moving to Crawley, where then-manager Steve Evans was a long-time admirer. Drury rejoined Luton for £100,000 last June after two previous bids had been rebuffed by the Red Devils.

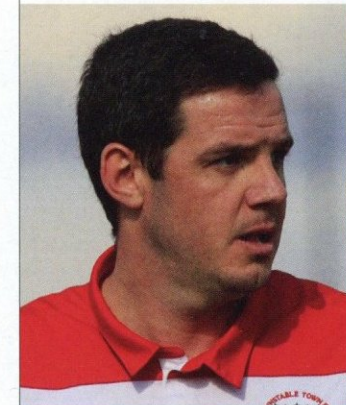
DEAN BRENNAN

Position
Midfielder

Other clubs

(include) Hitchin Town, Stevenage, Grays Athletic, Lewes, Hemel Hempstead Town, Halesowen Town

A much-travelled midfielder as a player, Irishman Brennan made a handful of appearances at Kenilworth Road between 2000 and 2002 after beginning his career with Sheffield Wednesday, where he was an unused sub the day that Paolo Di Canio pushed over referee Paul Alcock. He dropped into non-league football; Dave Anderson brought him to AFC Wimbledon in 2006, but he never really settled and moved on. He began coaching with Dunstable Town in 2011 and a year later was appointed player-manager of Hemel Hempstead Town, whom he has led from the Southern League into the Conference South.



THE HISTORICAL LINK

quest™

The Corporate Intelligence Company

Investigations

Strategy

Corporate & Sporting Integrity

Risk Mitigation

Technology

www.quest.co.uk

BOSTON - LONDON - DOHA

1 DUKE ST. LONDON. W1U 3EA

Tel: 020 7224 4004

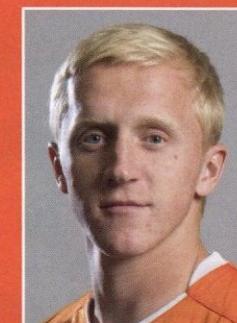
THE OPPOSITION | SQUAD

No.	Name	Position	Age	Previous clubs*
1	Mark Tyler	Goalkeeper	37	Peterborough United, <i>Billerica Town</i> , <i>Yeovil Town</i> , <i>Bury Basingstoke Town</i> , AFC Wimbledon, <i>Hayes & Yeading United</i> , Welling United
2	Fraser Franks	Defender	24	Queens Park Rangers, <i>Boreham Wood</i> , <i>Yeovil Town</i> , <i>Histon</i> , <i>Bishop's Cleeve</i>
3	Danny Fitzsimons	Defender	22	<i>Fleetwood Town</i> , <i>Bamber Bridge</i> , Forest Green Rovers, York City, Swindon Town
4	Jonathan Smith	Midfielder	28	<i>Cambridge City</i> , <i>Thurrock</i> , <i>Eastbourne Borough</i> , <i>Eastleigh</i>
6	Alex Lacey	Defender	21	Ton Pentre, Torquay United, Forest Green Rovers, York City
7	Alex Lawless	Midfielder	29	Sittingbourne, Gravesend & Northfleet, Lewes, Stevenage, Ipswich Town, Crawley Town
8	Andy Drury	Midfielder	31	White Ensign, Dagenham & Redbridge, Charlton Athletic, Swindon Town, <i>Portsmouth</i> , <i>Cheltenham Town</i>
9	Paul Benson	Forward	35	Maidenhead United, <i>Dartford</i> , <i>Bristol Rovers</i>
10	Alex Wall	Forward	24	None
11	Jake Howells	Defender	23	Aveley, Dagenham & Redbridge, Peterborough United, <i>Chesterfield</i> , <i>Crawley Town</i> , <i>Rotherham United</i> , <i>Plymouth Argyle</i>
12	Scott Griffiths	Defender	29	Hull City, <i>Bradford City</i> , <i>Bury</i> , <i>Stockport County</i>
13	Mark Cullen	Forward	22	Southport, <i>AFC Telford United</i>
14	Andy Parry	Defender	23	Gillingham, <i>Lewes</i> , <i>Eastbourne Borough</i> , Swindon Town, <i>Burton Albion</i> , <i>Rotherham United</i> , <i>Crawley Town</i> , Maidstone United
15	Luke Rooney	Midfielder	24	East Thurrock United
16	Elliot Justham	Goalkeeper	24	Boreham Wood
17	Pelly Ruddock	Midfielder	21	Chesham United, Barton Rovers, Aylesbury United, Wealdstone, Aylesbury, Burnham, Hemel Hempstead Town, Welling United, <i>Woking</i>
18	Ross Lafayette	Forward	29	Stamford, <i>Cottesmore Amateurs</i> , <i>Bourne Town</i> , <i>Rothwell Town</i> , Corby Town, Boston United, <i>Dover Athletic</i>
19	Ricky Miller	Forward	25	Chester City, Runcorn, Witton Albion, Accrington Stanley, Wrexham, Southport, Droylsden, Hyde, <i>AFC Telford United</i>
20	Shaun Whalley	Midfielder	27	Cambridge United, Southend United, Leyton Orient, Colchester United, Northampton Town, Aldershot Town
21	Luke Guttridge	Midfielder	32	<i>Queens Park Rangers</i> , <i>St Albans City</i> , <i>Wycombe Wanderers</i> , <i>Gillingham</i>
22	Michael Harriman	Defender	22	<i>Kidderminster Harriers</i>
23	Matt Robinson	Midfielder	20	Lowestoft Town
24	Curtley Williams	Defender	24	<i>AFC Bournemouth</i> , <i>Dorchester Town</i> , <i>Accrington Stanley</i> , <i>Woking</i> , <i>Leyton Orient</i> , Torquay United, <i>Cambridge United</i>
25	Jayden Stockley	Forward	21	Derby County, <i>Notts County</i> , <i>Bradford City</i> , Hull City, Barnsley, <i>Preston North End</i>
26	Nathan Doyle	Midfielder	28	Crystal Palace, <i>Lewes</i> , <i>Dagenham & Redbridge</i> , <i>Crawley Town</i> , Bromley, Southend United, Leeds United, <i>Sheffield United</i> , Milton Keynes, Rotherham United, <i>Notts County</i>
27	Ryan Hall	Midfielder	27	Histon, <i>Dartford</i>
28	Jim Stevenson	Midfielder	22	Plymouth Argyle, Derby County, <i>Sheffield United</i> , Leeds United, <i>Portsmouth</i> , <i>Preston North End</i> , Millwall, Crawley Town
29	Paul Connolly	Defender	29	
31	Nathan Oduwa	Forward	18	Tottenham Hotspur
35	Charlie Walker	Forward	24	Shoreham, Lancing, Whitehawk, Peacehaven & Telscombe
-	Cameron McGeehan	Midfielder	19	Norwich City , <i>Cambridge United</i>

* In most cases, clubs for which a player has made no first-team appearance are not listed. If a player has had several previous clubs, those for which he has made just one or two first-team appearances are sometimes omitted. Loan spells only are in italics. Loan players' parent clubs are in bold.

TOP SCORER

12 goals



Mark CULLEN

AWAY FORM

League unless stated

LOST

17 February 2015
Mansfield Town 0-1

DREW

7 February 2015
Oxford United 1-1

DREW

24 January 2015
Cheltenham Town 1-1

WON

17 January 2015
Plymouth Argyle 1-0

LOST

3 January 2015 (FAC)
Cambridge United 1-2

DREW

26 December 2014
Wycombe Wanderers 1-1



PREVIOUSLY...

HATTERS 0-1 DONS
(0-1) Tubbs 42

SATURDAY 16 AUGUST 2014
SKY BET LEAGUE 2
KENILWORTH ROAD
ATTENDANCE: 9,101

Luton's first League Two match at home since 2009 ended in disappointment as Matt Tubbs' goal earned AFC Wimbledon this win. The goal came in the 42nd minute when Adebayo Akinfenwa flicked on and Tubbs took a touch before rifling past Mark Tyler, on the run. Luke Guttridge had come closest for Hatters in the first half, but he was denied from close range by an excellent James Shea save.

Akinfenwa should have made it 2-0 soon after the break when he met George Francomb's delightful free-kick at full stretch, but he nodded wide. Guttridge sent a header wide for the Hatters at the back post, and Mark Cullen came within inches of an equaliser as his low shot from 20 yards shaved the woodwork. In the closing stages, despite efforts from Alex Wall and Luke Wilkinson, Luton never really looked like drawing level.

Neal Ardley was thrilled with the Dons' first win of the campaign against a team considered title favourites. "For 20 minutes it was what we'd expected. The moment we started getting it down and playing we got a bit more of the game. What a great goal – Tubbs's finish was different class. In the second half I thought we had enough chances to score four."

HEAD2HEAD

IN ALL COMPETITIONS



10
WINS

V



6
DRAWS

6
WINS

< Adam Barrett marshals Paul Benson in last August's win

THE OTHER VIEW

HATS OFF TO JOHN STILL

IT'S BEEN A LONG JOURNEY BACK TO THE FOOTBALL LEAGUE FOR TODAY'S VISITORS — AND LUTON FAN STEVE MOORE IS GRATEFUL TO ONE MAN FOR LEADING THEM OUT OF THE WILDERNESS.

Five and a half years ago we arrived at The Cherry Red Records Stadium for our first ever non-league "league" fixture (if that isn't a huge oxymoron). Very few Hatters fans were aware then of the challenge the club would face over the nine months that followed, and even fewer were expecting us to fail to jump back at the first attempt.

Back then, most of us would have been delighted to be told that we would be playing AFC Wimbledon in a Football League fixture by halfway through the decade. Following our own brush with Milton Keynes back in the early eighties, we would have been delighted for you. But the thought that it would be us and not yourselves that had only just been promoted would have been considered a nightmare for us at the time. However, we are here now, and in the running for promotion to League One. If anything, that's thanks to a manager for whom winning promotion from the Conference in his first season did not influence the decisions he made for this campaign. He came in at the start with the intention of building a squad that would grow together and become the best it can be over a period of time. The fact that it's all clicked so quickly has, I believe, been as stunning to John Still as to the supporters.

The other thing Still was able to do was turn the fans back to being a positive influence rather than the

negative one it had become. Sure, the results helped, but the interaction between him and the fans at the first flashpoint of the season proved crucial. In fact, the consequence of that is still on show at every home game, where various fans are invited to join in with the post-match huddle. It echoes the relationship maintained between the fans and the board – helped, of course, by the fact the board is made up of Luton fans who had previously been involved in setting up our supporters' trust

**"IT MAY BE DEFENSIVELY
THAT THE HATTERS
WILL STRUGGLE
THIS AFTERNOON"**

and helping to save the club from a previous owner back in 2003. The biggest sign of the strength of this relationship is that the club became the first in Britain to legally give the identity assets of the club to its supporters' trust.

We knew during last season that the Conference Premier is no longer what it was at the time our two clubs were in that division together – a time when, arguably, the best sides in the division could have more than held their own in League Two. Most of us

still felt, though, that if we achieved promotion we would be looking at the top end of the table rather than the bottom, even considering the loss of the goals of Andre Gray, because the organisation and defensive capability of the side could comfortably cope with the step up. If anything, it's not so much Gray's finishing that has been missed, but more his pace. There have been times this season where the team have drawn games through a lack of pace to unlock the opposition, something we hope to have corrected with the addition of Ryan Hall and Nathan Oduwa.

It may be defensively that the Hatters will struggle this afternoon. With both regular centre-halves suspended thanks to red cards, it may well fall to Pelly Ruddock to play at centre-half – something he did in the West Ham youth team, though at Luton he has been converted from a box-to-box midfielder into a right-winger.

All that considered, it's excellent to be challenging for promotion. However, having put ourselves in a position to go up automatically, a play-off place would be a major disappointment – especially when you consider our play-off history. Memories of Crewe, York and yourselves are haunting.

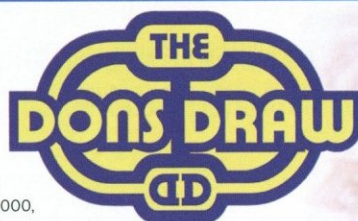
Steve Moore is a lifelong Hatter who has been a presenter of the live commentary shows of Luton games on Diverse FM since 2009.
@Steve_Moore1988



HELP THE CLUB AND WIN £1,000!



The Dons Draw is a monthly lottery that pays out over £2,000 to entrants.



There are six prizes each month, with values of £1,000, £500, £250, £150, £100 and £75. Win or lose, your stake in the draw goes to pay for and improve The Cherry Red Records Stadium.

Each lottery ticket costs £2 per month, and you can buy as many or as few as you like. Even a single ticket helps the Trust and gives you a chance of winning.

Scan this code to sign up for the Dons Draw



Signing up is easy, and can be done in two ways:

1. Go to www.thedonsdraw.co.uk and sign up online.

2. If you prefer to fill in a paper form, download one from the website or pick one up on a matchday from the Dons Trust gazebo.

Return the completed form to the gazebo or post it back to the club.

The Dons Draw is a lottery run by the Dons Trust and registered with, and authorised by, the Royal Borough of Kingston upon Thames. The draw takes place on or around the 15th of each month. Entrants must be aged 16 or over, and have a bank account. To minimise costs (and maximise the prizes and fundraising), money is collected from entrants monthly by direct debit.

www.thedonsdraw.co.uk



Save £45*
on your motor
insurance and
support your club.



A-Plan Insurance will donate £25 to AFC Wimbledon per new policy sold. Simply mention 'AFC Wimbledon' when calling or visiting the branch.

52 Wimbledon Hill Road, Wimbledon, SW19 7PA

Call 0208 944 4121 or visit www.aplan.co.uk/afcwimbledon

Car . Home . Van . Business & more!

*Most new client savings ranged from £20 - £300. Figure based on average saving made by new clients between February 2013 and July 2013. £25 donation applies to new policies only. Authorised and regulated by the Financial Conduct Authority.

YOUNG DONS IN SECOND SPOT ON MERIT

THE UNDER-18s HAVE MADE A GREAT START TO THE SECOND PHASE OF THEIR SEASON, WITH FOUR POINTS FROM THEIR FIRST TWO GAMES IN MERIT LEAGUE 2.

AFC WIMBLEDON

3-2

OXFORD UNITED

Agyei 3, 19, Hayden-Smith 85

(2-0)

Jeacock 48, Graham 76

SATURDAY 7 FEBRUARY 2015
FOOTBALL LEAGUE YOUTH ALLIANCE

Dan Agyei opened the scoring in just the 3rd minute when Tayshan Hayden-Smith found him 40 yards out and he burst through and finished clinically. And he soon doubled his tally: Callum Wilson, filling in effectively as a left centre-back, found him with an excellent through-ball, and the in-form striker made it 2-0.

The Dons lost cohesion after the break and conceded from a corner; Agyei then squandered three chances to seal a hat-trick. Billy Frost and Man of the Match Alfie Egan both showed plenty of creative flair, but with less than 15 minutes to go Oxford equalised. After a flowing move featuring Frost, Dan Ano and Egan, Hayden-Smith's fierce effort bounced in off the crossbar for the late winner.

AFC WIMBLEDON: Mannion, Batchelor, Bellikli, Roles, Wilson, Stripp (McKillop 75), Egan, Frost, Agyei (Bowers 75), Ano, Hayden-Smith.

CHELTHENHAM TOWN

0-0

AFC WIMBLEDON

(0-0)

FRIDAY 13 FEBRUARY 2015
FOOTBALL LEAGUE YOUTH ALLIANCE

Keeper Will Mannion had to deal with several crosses as Cheltenham started on the front foot. Man of the Match Egli Kaja nearly opened the scoring after a brilliant solo run, but his well-struck shot was saved by the Cheltenham keeper. The Dons upped the tempo, and Tayshan Hayden-Smith, Dan Agyei and Alfie Egan all came close to breaking the deadlock. After the break, Wimbledon took control. Neset Bellikli, playing left-back to aid his development, beat two men down the left and delivered a cross that just eluded Billy Frost. The Dons almost paid the price for overplaying when Mannion's hurried kick gave Cheltenham a golden chance that they spurned; he then made two fine saves to secure the draw.

AFC WIMBLEDON: Mannion, Batchelor, Bellikli, Sweeney, Harrison, Stripp, Egan, Frost (Abisogun 70), Agyei (Ano 52), Kaja, Hayden-Smith (McKillop 75).

FOOTBALL LEAGUE YOUTH ALLIANCE, MERIT LEAGUE 2

Up to and including games played on 14 February

Pos	Team	P	W	D	L	F	A	GD	Pts
1	Leyton Orient	2	2	0	0	7	3	4	6
2	AFC Wimbledon	2	1	1	0	3	2	1	4
3	Cheltenham Town	2	1	1	0	2	1	1	4
4	Oxford United	2	1	0	1	6	3	3	3
5	Bristol Rovers	1	1	0	0	3	0	3	3
6	Gillingham	2	1	0	1	3	4	-1	3
7	Northampton Town	2	1	0	1	2	3	-1	3
8	Dagenham & Redbridge	1	0	0	1	3	4	-1	0
9	Torquay United	2	0	0	2	1	5	-4	0
10	Cambridge United	2	0	0	2	0	5	-5	0
11	Newport County AFC	0	0	0	0	0	0	0	0

Along with the other teams that finished in the bottom six of the FLYA South East division, the Under-18s are playing the final three months of the season in Merit League 2, along with the teams that finished in the bottom five of the FLYA South West division.



RESULTS AND FIXTURES

Date	H/A	Opponents	Comp	W/L/D	Result
7 Feb	H	Oxford United	FLYA	W	3-2
13 Feb	A	Cheltenham Town	FLYA	D	0-0
21 Feb	H	Bristol Rovers	FLYA		
27 Feb	A	Newport County AFC	FLYA		
6 Mar	H	Torquay United	FLYA		
21 Mar	A	Cambridge United	FLYA		
28 Mar	H	Gillingham	FLYA		
4 Apr	A	Dagenham & Redbridge	FLYA		
11 Apr	H	Leyton Orient	FLYA		
18 Apr	A	Northampton Town	FLYA		

FLYA: Football League Youth Alliance, Merit League 2

BUILDING THE FOUNDATION OF FOOTBALL

Since 2000 the Football Foundation and its funders have invested in £1 billion worth of grassroots projects. This is providing quality playing surfaces and changing rooms for communities across the country – helping to increase participation and supporting player development.

Twitter @FootballFoundtn

YouTube.com/Footballfdn

Flickr.com/footballfoundation

LinkedIn.com/football-foundation

www.footballfoundation.org.uk

Football Foundation



Department for Culture Media & Sport

FUNDING PARTNERS



Charity No 1079309
Company No 3876305

THE DONS TRUST

FUNDRAISING UPDATE

DONS TRUST BOARD CHAIR **MATT BREACH** HAS NEWS ON RECENT AND PLANNED FUNDRAISING ACTIVITIES.

A number of recent events have raised significant funds for the club. The one with the highest profile was the extremely entertaining Boys from the Back Room evening, when over a hundred fans joined Ashley Bayes, Stuart Douglas, Jason Moriarty and Simon Bassey – not to mention a few other surprise guests – for an evening of food, drink and many stories from behind the scenes at AFC Wimbledon. A report and photos of this event are on pages 20 and 21 of this programme.

Other recent events have included a silent auction and matchday raffles for a selection of prizes, including a signed picture of Bayo Akinfenwa scoring the winning goal in our JPT cup tie in Buckinghamshire. The Dons Trust Board would like to thank all the volunteers who helped to organise and run these activities. We could not run these events without them, and every penny raised helps the club.

Next up this season are two events planned for mid-April to help raise money for the Dons Trust, the AFC Wimbledon Foundation and other local charities.

The first of these is the annual **Walk Further for Wimbledon** sponsored walk. For this year's walk, the eighth such event, our intrepid walkers will leave Wycombe Wanderers' ground on Thursday 16 April and will walk the 50-odd miles from there, largely along the Thames Path, to arrive at The Cherry

Red Records Stadium in time for the kick-off against Wycombe on Saturday 18 April.

Previous routes have covered much of the South-East. The very first incarnation followed a 45-mile route to Burgess Hill Town's Leylands Park ground, completed in just 30 hours. Since that first walk, routes have included large sections of the London Orbital Path (walking to Barnet FC and Gillingham FC), the Grand Union Canal (from St Albans FC) and the Thames (from the Thames Barrier to Kingsmeadow), although lessons learnt from the first year have led to more relaxed scheduling, allowing two-and-a-half days to cover the 50 or so miles walked each year.

Last year, Walk Further for Wimbledon went "on tour" – the walkers hiked from the City of Manchester Stadium (where we regained our place in the Football League), via Bury, to Accrington Stanley (where the Dons lost). The logistics of running the event in



Matt Breach (right) and Dave Chan arriving at Accrington last season, having walked from the City of Manchester Stadium

Lancashire proved difficult, but a great time was had by all walking through the scenic Irwell valley.

This year the walk will end at The Cherry Red Records Stadium, and hopefully will be led over the last couple of miles by Haydon the Womble. So far ten fans have signed up to do the walk, but there is plenty of room for others on the path, so if you are interested in joining us for one, two or all three days then please contact me at matthew.breach@thedonstrust.org

The second of the two April events is the AFC Wimbledon **Minithon and Family Fun Day** on Sunday 19 April. For more details, see page 22 of this programme.

THE DONS TRUST BOARD

Matthew Breach, Moorad Choudhry, Mark Davis, David Gowns, Nigel Higgs, Zoe Linkson, Jane Lonsdale, Sean McLaughlin and Kris Stewart



www.thedonstrust.org
twitter.com/TheDonsTrust
info@thedonstrust.org

THE FOOTBALL LEAGUE
AWARDS
2015
10TH ANNIVERSARY

Capital OneSM

SUPPORTER OF THE YEAR

Nominate your supporter of
the year at FLAwards.com

#FLAwards



THE ACADEMY
HOMEGROWN & HUNGRY

THE ROLE OF ACADEMY ASSISTANT COACH

ACADEMY ASSISTANT COACH **JAMES OLIVER-PEARCE** DESCRIBES HOW THE UNDER-18 SQUAD ARE SET TARGETS AND GIVEN INDIVIDUAL COACHING.

It's been a really exciting two years for me at the AFC Wimbledon Academy. I started as head coach for the Under-12s, and now I work full-time as the Under-18s' assistant coach.

When I first joined I worked alongside Academy Manager Jeremy Sauer in order to develop my knowledge of the club's footballing philosophy.

In my current role with the Under-18s I focus mainly on developing the individual players in relation to their long-term learning objectives. So while our head coach, Mark Robinson, is taking the main group to prepare them for upcoming fixtures, I take individuals out of the session for 20 minutes at a time for some real individual focused attention. We aim to run these short individual sessions every Tuesday and Thursday to work on players' learning objectives or give them position-specific advice. Neil Cox and Alan Reeves have both been more than willing to give expert advice to our Under-18 scholars on some vital points, especially for our defenders, and they regularly give individual coaching to the likes of Ryan Sweeney and Ben Harrison.

Every six weeks it is our job as coaches to review whether we are giving every individual the right target.



James Oliver-Pearce

These targets are known as Personal Development Targets (PDTs). Players who achieve a PDT can then proceed to the next level. Once a PDT has been agreed with a player, we do everything possible to give that player the information they need to achieve it. We expect the players to take ownership of their PDT, and we encourage them to do this by practising in their own time and watching matches or clips in order to learn from them.

In January, Jeremy Sauer asked me to run an internal continuing professional development evening for schoolboy assistant coaches to outline exactly how we would like to see them make the most of every

moment of every session. As the only full-time assistant at the Academy, I was able to understand in greater detail all that needs to happen and how we can have a massive effect on all individuals within our respective age groups. The key outcome of this exercise was the need to take ownership of the programme and recognise that all of us, whether we are assistants or head coaches, share the same common goal: we are trying to progress players so that they can become members of the AFC Wimbledon first-team squad. At the beginning of every week we would need to communicate with our head coach and other colleagues to discuss which players need to be taken out for individual sessions and whether others from different age groups have similar learning objectives. After every session, players are given a self-reflection form which they complete and hand back at the next session. This helps us to understand how much information they have taken from the session.

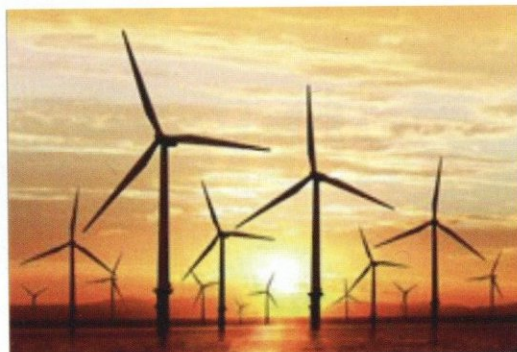
For all Academy news you can follow us on twitter [@AFCWAcademy](https://twitter.com/AFCWAcademy)

You can contact the AFC Wimbledon Academy on **020 8247 9911** or academy@afcwmbleton.ltd.uk



The Socially Responsible Investment Fund PCC plc

is proud to be club sponsor of AFC Wimbledon.



www.srifund.co.uk

For further information, please contact
enquiries@srifund.co.uk

THE FUTURE OF AFC WIMBLEDON LADIES

COACHES **LEN TRIBE** AND **JAMES MURTAGH** INTRODUCE THE GIRLS WHO MAKE UP THE AFC WIMBLEDON UNDER-12 YELLOWS.

New coach James has arrived to work alongside coach and manager Len. Our aims as coaches are, among other things, to continue to encourage and develop the girls' football throughout the season, while ensuring that they all continue to enjoy competitive games and training.

After finishing a very creditable third in their league in 2013/14, our Under-12 Yellows were really looking forward to the start of the new season and their challenge to step up to nine-a-side and playing with the offside rule. After a slow start to the league campaign in which they lost their opening three games, at the time of writing the Yellows have gone unbeaten in their last ten matches in the league, winning six and drawing four.

So, who are these future first-teamers?

THE SQUAD

Emily (goalkeeper) Excellent shot-stopper with safe handling and good distribution of the ball. Emily has made a number of vital saves that have kept the team in games or preserved a clean sheet. She has kept nine clean sheets this season already.

Emma (left-back/midfield) Probably the fastest left-back in the division, Emma reads the game really well and has good pitch awareness. In addition, her pace invariably means that if someone gets past her, they rarely get away from her.

Chloe (right-back) Her timing in the tackle is more often than not spot on. With her determination not to be beaten to the ball and her ever-improving ability to pass the ball forward, Chloe's season is going from strength to strength.

Naiara (left/right-back) With her all-round energy and quiet determination, she is rarely beaten to the tackle and never gives up. Naiara remains focused throughout the entire game, and her ability to pick a pass is improving every week.

Morgan (right/left-back) She transferred to the Yellows in November from the Blues. Morgan has an eye for a good

pass. Her striking of a dead ball has been a revelation and she continues to work her way into the team.

Mae (centre-half and captain) Is there a better centre-half passer of the ball in the division? If there is, we have yet to see her. Mae defends intelligently and is calm and composed on the ball. She will often set up counter-attacks with diagonal passes to the left or right.

Olivia T (right midfield) Quick with an accurate pass to a team-mate, Olivia is just as quick to beat an opponent, get down the line and get those crosses in. She has made a number of assists this season and has chipped in with a couple of goals.

Evie (left midfield) When Evie cuts in from the left, we all expect something good to happen. Skilful and with excellent control, she works hard throughout the game. She too has made a number of assists and has chipped in with a few vital goals.

Marie (centre midfield) Left foot, right foot. Marie always plays with her head up and looks for a pass. She is quick and strong in the tackle, and her work ethic, along with the rest of the team, is excellent. She has scored a number of goals this season from both outside and inside the penalty box.

Alice (centre midfield) Top scorer last season, Alice has slotted into her new midfield role really well – although she is so versatile that she has played in goal two or three times this season. She regularly looks for a pass, and it's no surprise that she retains her eye for a goal.

Olivia F (centre-forward/midfield) She has adapted well to whatever position she has played. Olivia's determination not to get pushed off the ball, together with her quick feet and skill, creates opportunities for both herself and her team-mates. It has also led to her scoring a number of great goals.

Carisse (centre-forward/midfield) Her ability to find a pass and her excellent close control continue into this season. Carisse is without doubt a team player and has scored some vital goals for us already this season.

The First Team and the Development Team play their home league games on Sundays at Archbishop Tenison's School Sports Ground, Arthur Road, Motspur Park, New Malden, KT3 6LX.

Website: www.pitchero.com/clubs/afcwimbledonladiesgirls/
Facebook: www.facebook.com/AFCWimbledonLadies
Twitter: @AFCWim_Ladies

TAKING CARE OF BUSINESS

IVOR HELLER INTRODUCES TODAY'S MATCHDAY SPONSORS

I would like to introduce today's match sponsors, Leadside Groundworks. Neil Gleeson of Leadside is a great friend of the club and has been a fantastic sponsor for a number of years. We would like to thank Leadside for their sponsorship today and also for agreeing to continue their sponsorship next season. We welcome Neil and his guests – we hope they enjoy our hospitality and that we can send them away with three points today. Enjoy the match.

MATCH SPONSOR

LEADSIDE
GROUNDWORKS LTD

Leadsid Groundworks have a fully qualified team of experts to carry out commercial and domestic works including groundworks, foundations, demolition, drainage, roadways and car parks, kerb laying,

soft and hard landscaping, formwork, tarmac and reinforced concrete. For more information please visit our website, www.leadsidegroundworks.co.uk, or call 01932 868420 for a free estimate.

We are delighted to be here as match sponsors today, and hope the team can get us a result. Come on you Dons!

BALL SPONSOR



UP is one of London's most connected communications agencies. We help companies of all shapes and sizes build awareness and manage their reputation through simple, smart and strategic communications. With a team led by former in-house PR professionals and national journalists, our connections can help you build, grow and protect your business while influencing customers, employees and the media. One of the guys who runs the business is a die-hard Wimbledon fan; the other is a die-hard Luton fan. The ladies who run the business are just here for the wine. Which makes this match rather interesting for Team UP. Game on!

BALL SPONSOR

quest

Quest provides investigative and security services to leading law firms, high-profile individuals, commercial organisations, regulators and financial institutions. Quest's Sports Group has extensive expertise in, and a thorough understanding of, the sports industry, having conducted many successful investigations and inquiries for a range of sport clients.

PROGRAMME SPONSOR

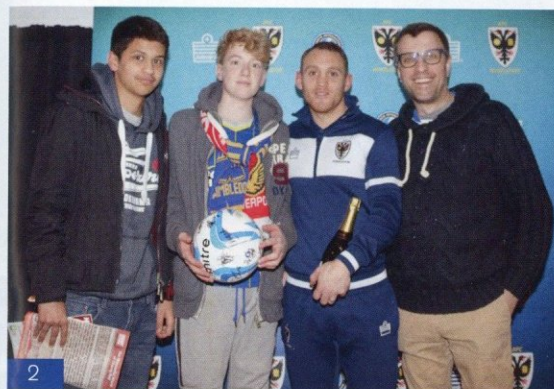
moorad choudhry

The programme sponsor for the eighth season running is Moorad Choudhry, an investment banker in the City of London and a Professor of Finance at Brunel University. Moorad was inspired by the original Crazy Gang and is a lifelong supporter of the Dons.



NEWPORT PRESENTATIONS

Man of the Match Barry Fuller with (1) match sponsors Farebrother and ball sponsors (2) Substance and (3) EQDerivatives.



COMMERCIAL BREAK

ANOTHER VINTAGE ALLDAYER

Hula Boogie, Kingsmeadow Live and Fujiyama Mama's Hot Rockin' Club are pleased to bring you another Rockin' Good Vintage Alldayer here at Kingsmeadow on Sunday 1 March.

Our DJs, Miss Aloha, Reverend Boogie and DJ Graham Slimboy Laws, will be playing rock & roll, rockabilly and rhythm & blues from noon in the music room. There will also be jive lessons in the music room with Miss Aloha from Hula Boogie. Our band for the day are the Keytones.

There will be a large vintage market with stalls selling ladies' and men's day wear, nightwear and underwear, vintage knick-knacks and knitted knacks, vintage jewellery and homeware, and much more.

Beauty parlour: Dress Me Up and Shoot Me will take your fifties-style photograph, Vanity Box will do your fifties-style hair and make-up, and Murrays Barber shop will re-quiff your quiff.

And there is a free-to-enter classic cars, motorbikes and scooter show.

All this for just £7! Classic car, bike and scooter riders get free entry, and passengers pay £5. Students with valid ID pay £5.

We recommend booking your tickets for this event as soon as possible, at www.kingsmeadowlive.com

A-PLAN PRIZE DRAW



AFC Wimbledon have teamed up with A-Plan Insurance once again to offer supporters a chance to win a fantastic prize. Dons fans have the opportunity to get the best quotes for their insurance, and to win two season tickets for the 2015/16 campaign at

the same time by entering a prize draw. For details, visit www.aplan.co.uk/afcwimbledon to access a designated AFC Wimbledon page.

A-Plan Insurance have also shown their support for the club by pledging to donate £30 to AFC Wimbledon for every new policy taken out by Dons fans.

If you would like more details about match sponsorship or matchday hospitality, then please get in contact with Sam Grayson on commercial@afcwimbledon.co.uk or call 020 8547 3336.

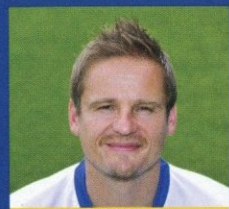
KIT SPONSORS 2014/15



TO BECOME A KIT SPONSOR

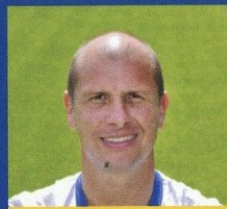
CALL SAM GRAYSON
ON 020 8547 3336

OR EMAIL
COMMERCIAL@AFCWIMBLEDON.CO.UK



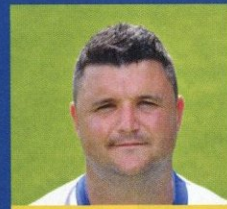
NEAL ARDLEY

HOME KIT
Leadside Groundworks
AWAY KIT
Vivash Hunt Solicitors
3RD KIT
Iain McNay
HOME SOCKS
The Skone family
AWAY SOCKS
Vinnie the guinea pig



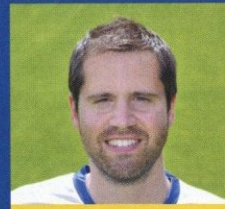
NEIL COX

HOME KIT
In memory of E.M. and D. Kay
AWAY KIT
Stuart Deacons
and Lorraine Clements
3RD KIT
Moorad Choudhry
HOME SOCKS
Anuk, Millie and Leela Teasdale
AWAY SOCKS
Anuk, Millie and Leela Teasdale



SIMON BASSEY

HOME KIT
Eileen
AWAY KIT
Paul Strank Roofing Ltd
3RD KIT
Graham Benbow
HOME SOCKS
In memory of Dr John Wheeler
AWAY SOCKS
Simon and Jill



ROBIN BEDFORD

HOME KIT
Colin Gales
AWAY KIT
Available
3RD KIT
Available
HOME SOCKS
Available
AWAY SOCKS
Available



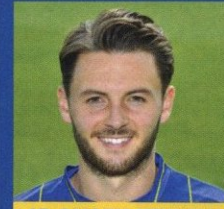
HAYDON THE WOMBLE

HOME KIT
Paul Strank Roofing Ltd
AWAY KIT
Peter and Michael Cork
HOME SOCKS
Libby and
Georgie Messenbird
AWAY SOCKS
Phoebe Mapple



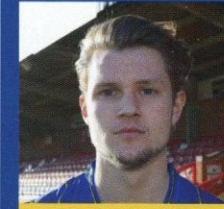
15. MARK PHILLIPS

HOME KIT
Sean Ashfield
AWAY KIT
Lee Walker
3RD KIT
The Balchins
HOME SOCKS
Ella Louise Farrow
AWAY SOCKS
Available



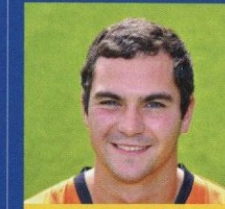
17. CALLUM KENNEDY

HOME KIT
Michael and Delia Briggs
AWAY KIT
Linda and Roger Dennis
3RD KIT
Available
HOME SOCKS
Chloe Sharpe
AWAY SOCKS
Gareth Hughes



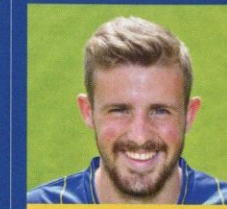
19. JAKE REEVES

HOME KIT
Janice and Graham Williams
AWAY KIT
Peter, Karen and Mark
3RD KIT
Hardback Dons
HOME SOCKS
John Woodruff
AWAY SOCKS
Steve Dowse



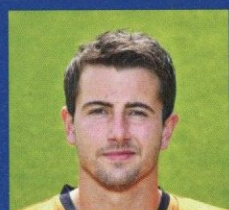
20. JAMES SHEA

HOME KIT
Lindsay Choudhry
AWAY KIT
Lindsay Choudhry
GLOVES
Jamie Whittington
SOCKS
In memory of Bob Turner



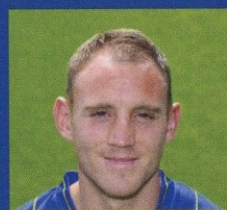
21. TOM BEERE

HOME KIT
The Harris family, Wimbledon
AWAY KIT
Available
3RD KIT
Available
HOME SOCKS
Rob Woodward
AWAY SOCKS
Available



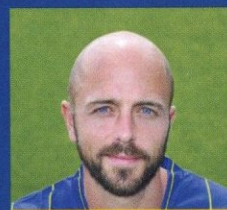
1. ROSS WORNER

HOME KIT
Dennis Beckett
AWAY KIT
Gordon Macey
GLOVES
William and
Michael Lonsdale
SOCKS
Malteser Dons



2. BARRY FULLER

HOME KIT
Darren Leach
AWAY KIT
Steve and Pam
3RD KIT
Nick Le Faye
HOME SOCKS
Rob and Luke: British Airways Dons
AWAY SOCKS
The Sleet family



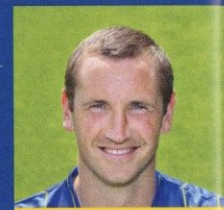
3. JACK SMITH

HOME KIT
Nigel and Paul -
Storileigh Wombles
AWAY KIT
The Grist family
3RD KIT
Robert and Liam Sollis
HOME SOCKS
www.afcdons.net
AWAY SOCKS
Miriam and Barrie Whittington



4. DANNIE BULMAN

HOME KIT
911 Womble
AWAY KIT
Handball Club
3RD KIT
PLC
HOME SOCKS
Neil Messenbird
AWAY SOCKS
www.wupgb.co.uk



5. ANDY FRAMPTON

HOME KIT
Clemency and Cyrus
AWAY KIT
Martin and Daniel Riordan
3RD KIT
Diana Harris
HOME SOCKS
Paul Merritt
AWAY SOCKS
Trevorwomble



22. WILL NIGHTINGALE

HOME KIT
PISA
AWAY KIT
PISA
3RD KIT
PISA
HOME SOCKS
Lozle, Luke, Rosco and Toddy
AWAY SOCKS
Anthony Yellop



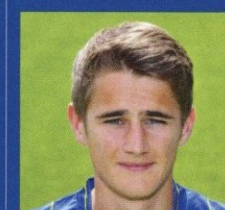
23. GEORGE OAKLEY

HOME KIT
Anuk, Millie and Leela Teasdale
AWAY KIT
Anuk, Millie and Leela Teasdale
3RD KIT
Anuk, Millie and Leela Teasdale
HOME SOCKS
Anuk, Millie and Leela Teasdale
AWAY SOCKS
Anuk, Millie and Leela Teasdale



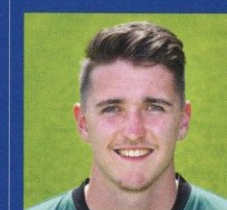
24. ASHLEY BAYES

HOME KIT
Spike Brits
AWAY KIT
AFCW Stewards
GLOVES
Spike Brits
SOCKS
Jill and the cats



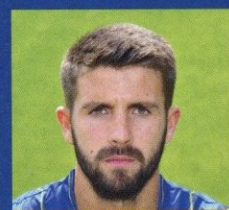
25. CHACE JACQUART

HOME KIT
In memory of Robin Reeves
AWAY KIT
Available
3RD KIT
Available
HOME SOCKS
Available
AWAY SOCKS
Available



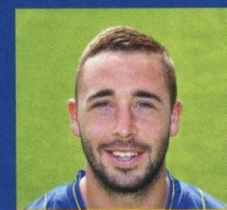
26. JOE McDONNELL

HOME KIT
CameraScan CCTV Ltd
AWAY KIT
CameraScan CCTV Ltd
GLOVES
CameraScan CCTV Ltd
SOCKS
CameraScan CCTV Ltd



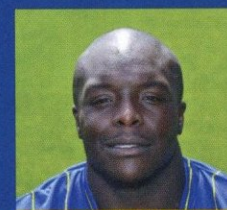
7. GEORGE FRANCOMB

HOME KIT
Andy Brassel,
Pete O'Brien, Julian
AWAY KIT
The Harris family, Kent
3RD KIT
Paul Moulton
HOME SOCKS
Mikey and Joey Gleeson
AWAY SOCKS
George, Molly and
Arthur Gleeson



8. SAMMY MOORE

HOME KIT
Weird and Wonderful World
AWAY KIT
Alan and Connie Parker
3RD KIT
US Dons
HOME SOCKS
Nurse Angela and Janet
AWAY SOCKS
Anthony Cornell



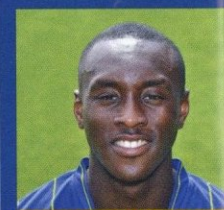
10. ADEBAYO AKINFENWA

HOME KIT
Alex, Max, Joe, Tom and Cairts
AWAY KIT
Simon Hood
3RD KIT
Jack and Kerry Yeomanson
HOME SOCKS
Luke, Amelie and Maya
AWAY SOCKS
Charlie, Peter and Milly



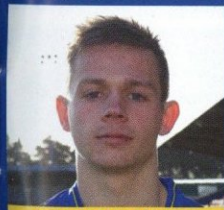
11. SEAN RIGG

HOME KIT
Friends and family of Natalie
AWAY KIT
Joe Blair
3RD KIT
Lady and Butler
HOME SOCKS
Kelly and Madison
AWAY SOCKS
Oooooooooooooo sweet sweet
Ness!



14. ADEBAYO AZEEZ

HOME KIT
Sharon Mathews
AWAY KIT
The SweDons
3RD KIT
Sue and Bill
HOME SOCKS
Tony and Rachael
AWAY SOCKS
Malteser Dons



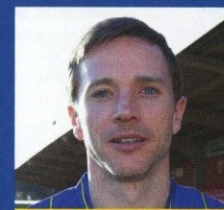
27. CRAIG TANNER

HOME KIT
Jordan Williams Team
AWAY KIT
Available
3RD KIT
The Draper family
HOME SOCKS
Rob Cornell
AWAY SOCKS
Sheila, Chelsea
and Mr Sniffles



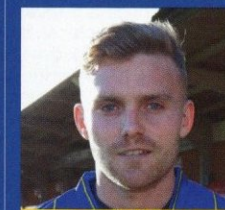
33. JAKE GOODMAN

HOME KIT
Joe and Roxy
AWAY KIT
In memory of Bernard Whaley
3RD KIT
Available
HOME SOCKS
James Edward Farrow
AWAY SOCKS
Julie, Jamie, Scott
and Sam Whittington



34. DAVID CONNOLLY

HOME KIT
Anuk, Millie and Leela Teasdale
AWAY KIT
Richard and Steve Lonsdale
3RD KIT
Jonathan Ling
HOME SOCKS
Paralimni Wombles
AWAY SOCKS
Millie and Lola Jezard



35. ALFIE POTTER

HOME KIT
Derek and Susan Goodhew
AWAY KIT
Nigel Smith
3RD KIT
Available
HOME SOCKS
Steve Hill
AWAY SOCKS
Available



40. ADEJEI OSHILAJA

HOME KIT
Colin Gales
AWAY KIT
Bernie, Neville, Tony and Phil
3RD KIT
Nick and Mike
HOME SOCKS
William Sharpe
AWAY SOCKS
Noddy

CAMBRIDGE UNITED AWAY

TUESDAY 24 FEBRUARY 2015 7.45 PM KICK-OFF

The R Costings Abbey Stadium, Newmarket Road, Cambridge, CB5 8LN
www.cambridge-united.co.uk • info@cambridge-united.co.uk • 01223 566500

sky BET LEAGUE 2

THE U's HOME FORM

7 Feb	Wycombe Wanderers	L 0-1
27 Jan	Dagenham & Redbridge	D 1-1
23 Jan	Manchester United (FAC)	D 0-0
17 Jan	Newport County AFC	W 4-0
3 Jan	Luton Town (FAC)	W 2-1
23 Dec	Southend United	L 0-1



TICKETS

This match is not all-ticket, and tickets will be available on the day of the game. However, AFC Wimbledon will now be selling tickets for this game in advance, at a discount on the matchday prices. Tickets can be bought from the online shop, at www.afcwimbledon.co.uk/tickets, or by visiting the club offices between 9.30 am and 5.00 pm. Tickets will also be on sale after today's game from the complimentary tickets window.

Dons fans will be accommodated in the all-seater South Stand.

Prices in advance

Adults £19; Seniors (over 65) and Under-20s £13; Under-16s £9; Under-5s free of charge. All these prices rise by £2 on the day of the game.

Disabled supporters

Standard matchday admission prices apply, and a carer is admitted free of charge. There are six wheelchair spaces for visiting fans at the front of the South Stand, with pull-down seats for carers. For further information or to make an advance booking, call Cambridge United on the number above.

For blind or visually impaired supporters, an audio commentary is available free of charge via earphones and a small receiver. This service must be pre-booked: contact 07929 589925 or nick.parker56@googlemail.com

CAR PARKING

There is no parking available for away fans at the ground. There is some street parking available in surrounding roads. Some off-road parking is available behind the ground. To reach this, continue past the ground entrance for another 400 yards and turn left at the traffic lights into Coldhams Lane. Continue for about 300 yards, crossing a small roundabout and over a railway bridge. The car park entrance is on the left, about 50 yards beyond the bridge.

COACH TRAVEL

The supporters' coach will leave from opposite South Wimbledon tube station at 3.15 pm and from The Cherry Red Records Stadium at 3.45 pm. The price is £13, and seats on the coach can be reserved at the ticket kiosk in Jack Goodchild Way today between 12.30 and 2.45 pm or, for 15 minutes after the match, at the complimentary tickets window. Alternatively, bookings can be made by contacting the club office on 020 8547 3528 during normal office hours.

Show your colours

The Dons will be wearing their white away kit kit.

For more information see Duncan Adams' Football Ground Guide: www.footballgroundguide.com/cambridge_united/

HARTLEPOOL UNITED AWAY

SATURDAY 28 FEBRUARY 2015 3.00 PM KICK-OFF

Victoria Park, Clarence Road, Hartlepool, TS24 8BZ
www.hartlepoolunited.co.uk • enquiries@hartlepoolunited.co.uk • 01429 272584

sky BET LEAGUE 2

POOLS' HOME FORM

14 Feb	Stevenage	L 1-3
10 Feb	Northampton Town	W 1-0
31 Jan	Plymouth Argyle	W 3-2
10 Jan	Cheltenham Town	W 2-0
28 Dec	Morecambe	L 0-2
20 Dec	Oxford United	D 1-1



TICKETS

This match is not all-ticket, and tickets will be available on the day of the game. However, AFC Wimbledon will be selling tickets for this game in advance and at a discount on the matchday prices. Tickets can be bought from the online shop, at www.afcwimbledon.co.uk/tickets, or by visiting the club offices between 9.30 am and 5.00 pm. Tickets will also be on sale after today's game from the complimentary tickets window.

Dons fans will be accommodated in the all-seater Smith and Graham Stand. Fans are warned that persistent standing in a seated area could result in disciplinary action being taken against those concerned.

Prices in advance

Adults £20; Seniors (over 60), Students and Under-19s £10. On the day of the game the adult price rises to £25 and all other categories to £13.

Disabled supporters

Standard matchday admission prices apply, and a carer can be admitted free of charge, although the disabled person should be in receipt of the higher rate of disability living allowance, for both wheelchair users and ambulant disabled. There are three wheelchair spaces situated behind Block A Row C of the away stand.

CAR PARKING

A limited number of spaces are available at the club car park

at a cost of £8 on a first come, first served basis. Parking is also available in the Millhouse car park, behind the Niramax Stand on Rium Terrace, off Raby Road; spaces there cost £3. Otherwise there is street parking some way away – a residents-only parking scheme is in operation on match days in streets near the ground.

COACH TRAVEL

At the time of going to press the club is unable to confirm whether it will run a supporters' coach for this game. The departure times would be 5.45 am from opposite South Wimbledon tube station and 6.00 am from The Cherry Red Records Stadium, and the price would be £25.

If you would make use of a coach, let us know by next Wednesday, 25 February, so we can decide whether it is feasible to run one. You should register your interest at the ticket kiosk in Jack Goodchild Way today between 12.30 and 2.45 pm or, for 15 minutes after the match, at the complimentary tickets window, by emailing info@afcwimbledon.co.uk or by contacting the club office on 020 8547 3528 during normal office hours.

Show your colours

The Dons will be wearing their yellow third kit.

For more information see Duncan Adams' Football Ground Guide: www.footballgroundguide.com/hartlepool_united/

SOUTHEND UNITED HOME

TUESDAY 3 MARCH 2015 7.45 PM KICK-OFF

sky BET LEAGUE 2

SHRIMPERS' AWAY FORM

7 Feb	Shrewsbury Town	D 1-1
24 Jan	Portsmouth	W 2-1
17 Jan	Oxford United	W 3-2
3 Jan	Northampton Town	D 1-1
26 Dec	Cambridge United	W 1-0
13 Dec	Wycombe Wanderers	L 1-4



TICKETS

This game is not all-ticket, and entry can be obtained on the day of the match. However, we advise fans to buy tickets in advance as some areas of the ground may sell out beforehand. Advance tickets can be purchased either online, via www.afcwimbledon.co.uk/tickets, or by visiting the club offices on weekdays between 9.30 am and 5.00 pm. Tickets will not be sold over the phone.

Prices

Chemflow Terrace
Adults £17; Concessions £11; Under-18s £4.
Your Golf Travel Terrace
Adults £16; Concessions £10; Under-18s £4.
Paul Strank Stand, Block M
Adults £20; Concessions £13; Under-18s £9.
Nongshim Stand
Adults £20; Concessions £13; Under-18s £9.

Concession prices apply to over-65s, full-time students and unemployed. Proof of age/status will need to be produced.



Andy Frampton joins the attack for an early Dons corner in this fixture last season

YORK CITY HOME

SATURDAY 7 MARCH 2015 3.00 PM KICK-OFF

sky BET LEAGUE 2

MINSTERMEN'S AWAY FORM

10 Feb	Luton Town	D 2-2
31 Jan	Southend United	L 0-1
10 Jan	Wycombe Wanderers	L 0-1
28 Dec	Carlisle United	W 3-0
20 Dec	Bury	D 2-2
29 Nov	Plymouth Argyle	D 1-1



TICKETS

This game is not all-ticket, and entry can be obtained on the day of the match. However, we advise fans to buy tickets in advance as some areas of the ground may sell out beforehand. Advance tickets can be purchased either online, via www.afcwimbledon.co.uk/tickets, or by visiting the club offices on weekdays between 9.30 am and 5.00 pm. Tickets will not be sold over the phone.

Prices

Chemflow Terrace
Adults £17; Concessions £11; Under-18s £4.
Your Golf Travel Terrace
Adults £16; Concessions £10; Under-18s £4.
Paul Strank Stand, Block M
Adults £20; Concessions £13; Under-18s £9.
Nongshim Stand
Adults £20; Concessions £13; Under-18s £9.

Concession prices apply to over-65s, full-time students and unemployed. Proof of age/status will need to be produced.



Darren Jones watches his header go wide against York last March

Invites **YOU** to become a **V.I.P. Apprentice**
Are you aged 16-24 and looking for training and employment opportunities?
* conditions apply

We have fantastic Apprenticeship opportunities in London and Surrey;

LATEST JOB OPPORTUNITIES - APPLY NOW!

BUSINESS AND ADMINISTRATION APPRENTICESHIPS

- ★ OFFICE ADMINISTRATOR - Barnet
- ★ OFFICE ADMINISTRATOR - Kensington
- ★ OFFICE ADMINISTRATOR - Wimbledon
- ★ SUPPORT COORDINATOR - New Malden

SALES APPRENTICESHIPS

- ★ SALES AND MARKETING TRAINEE - Mitcham
- ★ BUSINESS DEVELOPMENT TRAINEE - Guildford

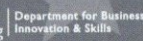
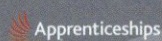
Capital Training Group also offer **FREE** training for all ages in English and maths.
Course dates are flexible contact our team for more information

For further information, please contact Terrone Francis:
tfrancis@capitaltraininggroup.co.uk or call **(0)20 8605 2828**

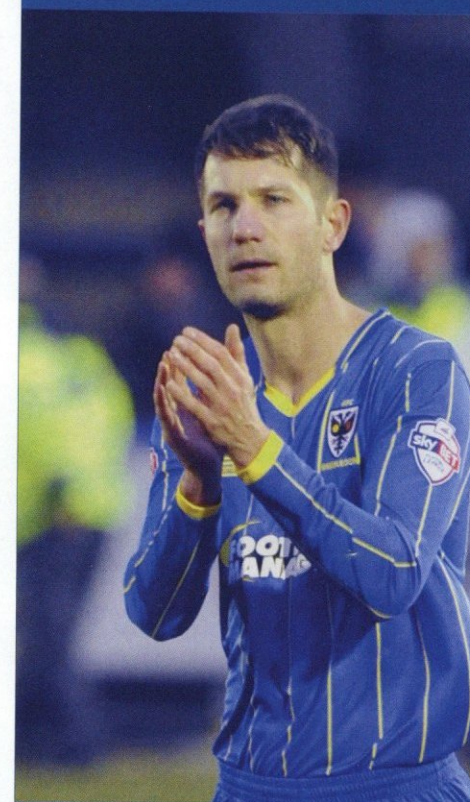


www.capitaltraininggroup.co.uk

+44 (0) 20 8605 2800 | training@capitaltraininggroup.co.uk



MARK PHILLIPS



WHAT DO YOU LIKE MOST ABOUT BEING A FOOTBALLER?
Winning matches.

WHAT'S YOUR FAVOURITE GROUND YOU'VE PLAYED AT?
Wembley.

CAREER HIGHLIGHT?
Winning League Two with Brentford.

THE TOUGHEST OPPONENT YOU'VE PLAYED AGAINST?
Tony Cottee.

WHAT WAS YOUR FIRST JOB?
Football YTS apprentice at Millwall.

WHO DO YOU ROOM WITH ON AWAY TRIPS?
Dannie Bulman.

IF YOU COULD PLAY ABROAD, WHERE WOULD IT BE?
Spain.

FAVOURITE WIMBLEDON KIT TO PLAY IN?
The blue one.

WHAT'S YOUR MAIN INTEREST AWAY FROM FOOTBALL?
Spending time with my three children.

IF YOU COULD PLAY ANOTHER SPORT PROFESSIONALLY, WHAT WOULD IT BE?
Golf.

JAKE WAS BORN ON 27 JANUARY 1982

ON THIS DAY:
The West Indies beat Australia 3-1 to win the Benson & Hedges World Series Cup.

IN THE CINEMA:
Gallipoli, The Great Muppet Caper

UK TOP 5 SINGLES:
1. "The Land Of Make Believe" – Bucks Fizz
2. "Computer Love/The Model" – Kraftwerk
3. "O Julie" – Shakin' Stevens
4. "Get Down On It" – Kool & the Gang
5. "Don't You Want Me" – The Human League

AND IF YOU WEREN'T A FOOTBALLER, WHAT WOULD YOU BE?
Something else sports-related.

DO YOU HAVE A PRE-MATCH RITUAL?
Always doing my pre-game prep in the same order.

WHAT ARE YOUR THREE MOST-USED PHONE APPS?
WhatsApp, Sky Sports Football, BBC News.

WHAT'S THE MOST UNUSUAL THING YOU'VE EATEN?
Kangaroo.

YOUR FAVOURITE TV SHOW?
Homeland.

THE LAST ALBUM YOU BOUGHT?
Ed Sheeran – X.

THE LAST FILM YOU SAW AT THE CINEMA?
American Sniper.

WHAT'S YOUR FAVOURITE FRUIT?
Mango.

IF YOU WERE A SUPERHERO, WHAT POWER WOULD YOU MOST LIKE TO HAVE?
To be able to fly.

WHAT ARE YOUR PLANS FOR AFTER FOOTBALL?
Start my own business.

CAPPAGH HOUSE, WATERSIDE WAY, WIMBLEDON, SW17 7AB

TEL: 020 8947 4000 FAX: 020 8944 9447

ENQUIRY@CAPPAGH.CO.UK

WWW.CAPPAGH.CO.UK



**“ Proud
sponsors
of AFC
Wimbledon ”**

UTILITIES CONTRACTORS | HIGHWAY MAINTENANCE
GROUNDWORK | RECYCLED AGGREGATES | CCTV SURVEYS
MUCKAWAY | READYMIX CONCRETE | DEMOLITION
CONCRETE CRUSHING | PLANT & SKIP HIRE

CAPPAGH



NONGSHIM



WIN

NONGSHIM
PREDICTION COMPETITION

1st Prize

£1000 cash

2nd Prize

A pair of AFC Wimbledon season tickets for 2015/6

3rd Prize

An AFC Wimbledon shirt signed by your
favourite (current) player

FanTasty Noodle League

Get registering NOW and then get your predictions in every week.

This competition is FREE to enter and open to anyone over the age of 16 as at August 30th 2014.

Registration is required. Please visit here to register: www.surveymonkey.com/s/nongshim

All details can be seen on our competition website, where there will be regular announcements, league tables for the season and monthly competitions, and much much more: <https://nongshimfootballscores.wordpress.com/>

Please follow us on Twitter for general banter @NongshimUK or
follow us on Facebook www.facebook.com/NongshimUK

KEY

STARTING XI	UNUSED SUB	BOOKING	SUB OFF
USED SUB	GOAL SCORED	SENT OFF	SUB ON

www.afcwimbledon.co.uk 65

Wembley connected by EE

HEART + SOUL

SEE ENGLAND'S NEXT EUROPEAN QUALIFIER

Friday 27 March 2015, 7.45pm

ENGLAND v LITHUANIA

TICKETS FROM £10 FOR KIDS AND
£20 FOR ADULTS IN THE FAMILY SECTION*

BUY NOW AT THEFA.COM/TICKETS

* Subject to availability



TOGETHER FOR ENGLAND



sky BET

WIN
£250,000
FOR YOUR
CLUB

SUPPORT AFC
WIMBLEDON WITH
US THIS SEASON

ARE YOU IN?
skybet.com/wimbledon

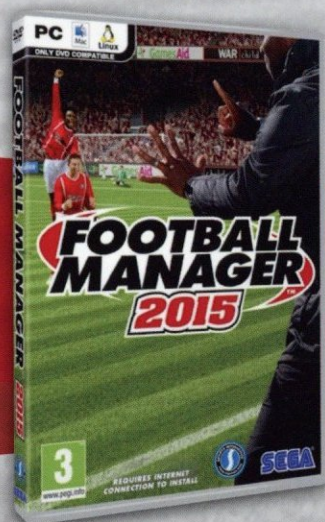


18+. Gambleaware.co.uk. Offer is available to new and existing online and mobile customers from 16/12/14 to 30/06/15. Prize draw and full promotional T&Cs apply at skybet.com/transferfund.

HOW WILL YOU MANAGE?

SPLASH THE CASH OR TRUST THE KIDS?
FRIEND OF THE BOARD OR FIGHT FOR MORE?
GO FOR BROKE OR PARK THE BUS?
KEEP YOUR COOL OR SHOW YOUR PASSION?

OUT NOW
ON PC, MAC & LINUX



/FOOTBALLMANAGER



@FOOTBALLMANAGER



WWW.FOOTBALLMANAGER.COM



www.sigames.com



www.sega.com

© Sports Interactive Limited 2014. Published by SEGA Publishing Europe Limited. Developed by Sports Interactive Limited. SEGA and the SEGA logo are either registered trade marks or trade marks of SEGA Corporation. Football Manager, the Football Manager logo, Sports Interactive and the Sports Interactive logo are either registered trade marks or trade marks of Sports Interactive Limited. All rights reserved. All other company names, brand names and logos are property of their respective owners.