



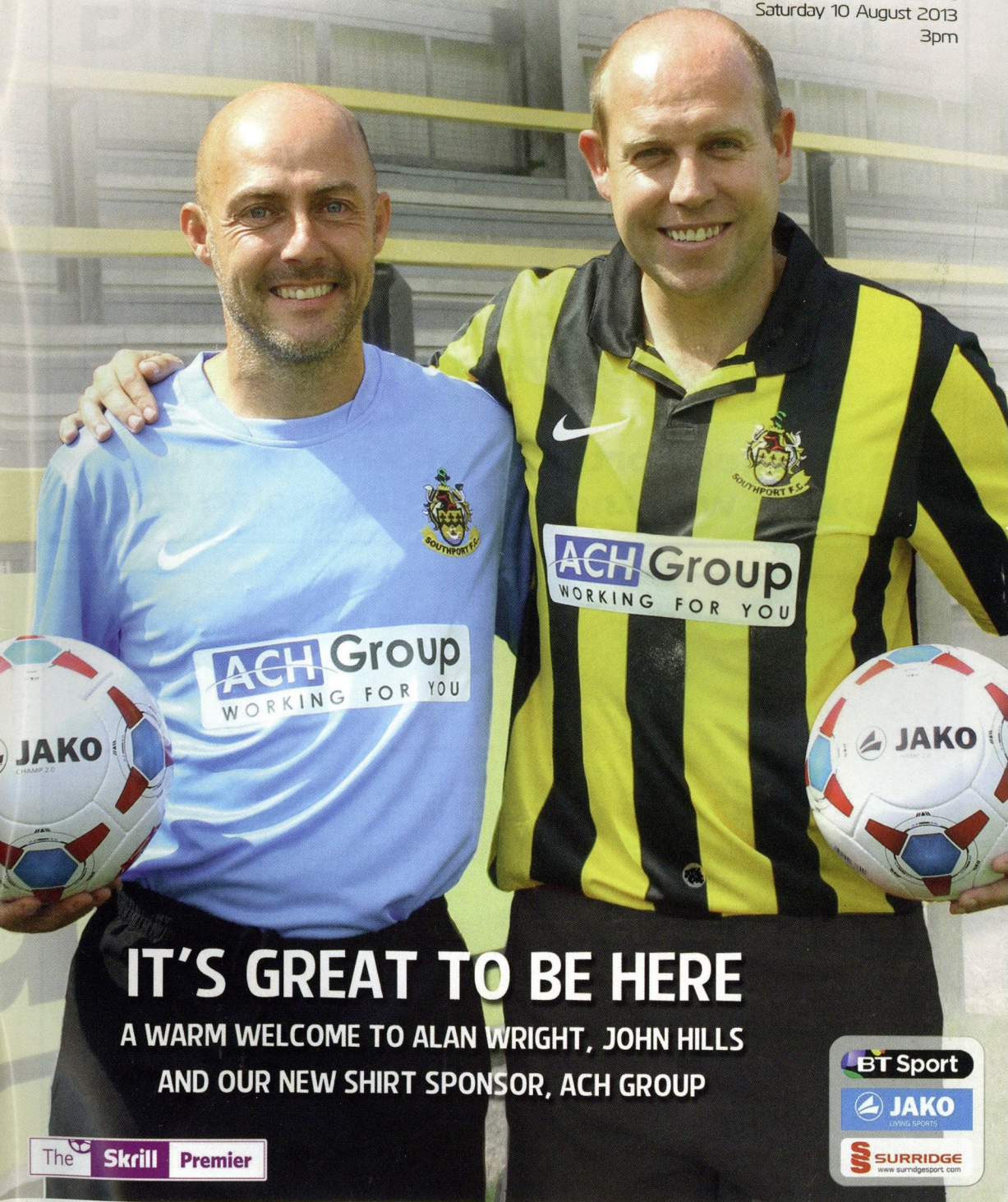
THE SANDGROUNDER MATCHDAY PROGRAMME

£2.50

ISSUE 1

SOUTHPORT FC

v LUTON TOWN
Saturday 10 August 2013
3pm



IT'S GREAT TO BE HERE

A WARM WELCOME TO ALAN WRIGHT, JOHN HILLS
AND OUR NEW SHIRT SPONSOR, ACH GROUP

The **Skrill** Premier



Palace
Main Sponsor

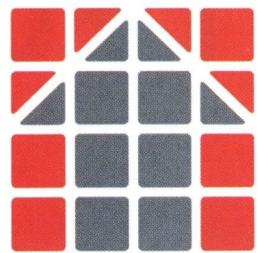
ACH Group
WORKING FOR YOU
Shirt Sponsor

PREMIER
WEALTH MANAGEMENT
Match Sponsor

ACH Group
WORKING FOR YOU
Ball Sponsor

Barron
Financial Solutions
Programme Sponsor

Merseyrail
Dave Pennington
Captain's Table



NORTHERN PACKAGING LIMITED

MANUFACTURERS OF QUALITY CORRUGATED PACKAGING

Selby Place, Stanley
Skelmersdale WN8 8EF
Telephone: 01695 731445



Email: info@northern-packaging.co.uk
Website: www.northern-packaging.co.uk

Palace

The professionals' choice

Proud to be the main sponsors
and we wish the Club every
success for the new season

Palace Chemicals Limited
Speke Hall Industrial Estate • Speke • Liverpool L24 4AB
Tel: 0151 486 6101 Fax: 0151 448 1982 Email: sales@palacechemicals.co.uk www.palacechemicals.co.uk

THE WRIGHT LINES



First of all, I would like to start off by thanking everyone at the Club for making me feel so welcome since my appointment into the Southport FC Hot Seat. It has been a whirlwind 87 days and time

has flown by but the settling in period has been made so much easier by the support I have received since I arrived at the Club. It has been great getting to know everyone and seeing how much people put in to the club has been a real eye opener.

I would like to welcome everyone back to The Merseyrail Community Stadium after the summer break and I trust you all had a good summer.

I couldn't have asked for a more difficult start with a visit from one of the hot favourites for the title. Welcome to John Still and his Luton team who are once again expected to be challenging for the title.

The pre-season schedule has been hectic and many players have come and gone as we have had a large number of trialists in and out of the door. The lads have done everything John and I could possibly have asked for in training and on the pitch in the friendlies. They have adapted to the way I want to play and I now feel we have a squad that is good enough to hold our own in the league and we are all ready for the off. We are all finding our feet and it will take time for everyone to adapt to the new way of playing but from what I have seen everyone wants to be a part of what I want for Southport Football Club and the lads couldn't have given me any more.

It's a mix of the new and the old as I have brought in ten new players with nine remaining from last season's squad. Even as I type these notes there could be more players coming in.

Thank you to everyone who came to the Meet The Manager session in The Grandstand Bar after last Saturday's game, it was great to see so many faces and it's something I will be looking to do during the season. I am also continuing with the post match podcasts with Jonathan after each game so if there is anything you want to know contact Jonathan and I am sure he will ask the questions.

Alan



SOUTHPORT FOOTBALL CLUB
The Merseyrail Community Stadium
Haig Avenue
Southport
Lancashire
PR8 6JZ

Tel 01704-533422

Fax 01704-533455

WEBSITE: www.southportfc.net

TWITTER @southport_fc

Chairman: Charlie Clapham MBE

Vice Chairman: Sam Shrouder

Directors: Haydn Preece, Steve Porter, Tim Medcroft, and Andy Pope.

Secretary: Ken Hilton, Assistant Secretary: Gordon Medcroft

Manager: Alan Wright

Assistant Manager: John Hills

Physio: Brett Harris

Club Chaplain: Revd P Martin Abrams

Kit: Wes Hall, Dave Barnes & Hamish Morton

Groundsman: Dave Massam

Commercial, Community & Press: Haydn Preece
contact commercial@southportfc.net 07976-555782

Programme Editor & Sales: Rob Urwin contact
programme@southportfc.net 077900-41514

Safety Officer: Michael Jackson

Programme Covers by Alan Jones

Club Shop Manageress: Julia Urwin

Club Shop Matchday: Michael Hopkins

Online Shop: Rob Urwin

Media Team: Nicola Hudson, Rob Urwin, Alan Jones, and Jonathan O'Byrne

Photography by Julia Urwin, Simon Marshall, Haydn Preece.

**This page is
sponsored by
Shamraat**

free bottle of wine Sunday-Thursday
providing you have the programme, or
mention Southport FC

Say hello to the latest Conference signing.

Skrill.

Skrill is the proud new sponsor of the Conference leagues.

We enable you to make online payments conveniently and securely without revealing your personal financial data, as well as sending and receiving money online instantly and cost-effectively.

Whenever you want to pay or play faster, Skrill is your first choice.



Skrill

Find out more about Skrill. www.skrill.com/football

SFC - IN THE COMMUNITY



IN ASSOCIATION
WITH

Champion
MEDIA GROUP

Starting this September, Primary School children can watch all Southport FC Football Conference League matches FREE of charge. For the first time in the club's long history, Southport FC have launched a young supporters club. It is called Yellow Bird Club and is especially for primary school boys and girls. Sponsored by Champion Newspapers the Yellow Bird Club is designed to encourage young supporters and to help create a family friendly atmosphere at the Merseyrail Community Stadium.

Haydn Preece, Community and Commercial Director explained that being a member of the Yellow Bird Club means boys and girls aged eleven and under are welcomed at the Merseyrail Community

Stadium as VIPs. Members are allowed to watch all the Football Conference League games FREE of charge providing there is one paying adult, members can also invite all their friends along too. "All the more the merrier," said Haydn, "Support the 'Port."

He went on to explain, "Yellow Birds receive a personal membership card that gets them into the game, it also qualifies members for a 5% discount off selected items in the club shop and for fans who

enjoy writing about football games there is a chance that they could see their match report published in the Champion".

Yellow Birds will be allowed to take part in organised friendly games during half time intervals at home games via your Primary School or local junior club. He hopes this will encourage boys and girls onto the pitch to show off their skills and enjoy lots of crowd support.

Another great reason to be a Yellow Bird is that Yellow Birds will be selected as Matchday Mascots

The Club are planning lots of competitions and exciting football moments for their Yellow Birds throughout the season so be sure you get your membership card which are available through schools or from the club direct.

The club is very proud of its work in developing Community Programmes which receive match funding from the Football Conference Community Trust backed by the Professional Players Association and The Premier League. The Yellow Bird Club is a great example of how Southport FC and Champion Newspapers make a great team. "By working together this way we can be even more active and supportive in the community" said Haydn.

LOOK OUT FOR THIS DROPPING THROUGH YOUR DOOR WITH YOUR COPY OF THE CHAMPION



**This page is sponsored
by Many Happy
Returns Travel**

SFC - COMMERCIAL CORNER

With our Commercial Director Haydn Preece



WELCOME TO JOHN STILL



Welcome to John Still, in my opinion the best ever non league manager. I have admired John for many years, about the same period of time I have known our Chairman Charlie Clapham! John had a brilliant squad at Maidstone. Steve Butler and Mark Gall are two of the best non league strikers I've ever seen. John's achievements at Dartford and of course Dagenham speak for themselves. Good luck to John on his new project to put

Luton Town back into the Football League and after today best wishes to both Shaun Whalley and Andy Parry. Both have got a tremendous mentor to take their careers forward. Thanks to Shaun for all his contributions here on and off the pitch.

Thank you to our wonderful band of close season volunteers who have been here most days to ensure the Merseyrail Community Stadium is well kept with fresh paint, clean seats, swept terraces and a general air of caring upkeep. In particular thank you to Brian Anderson, Alan Miles, the heroic duo of Dave Barnes and Hamish Morton, Michael Corcoran, Wes Hall Jack Bolton, Dave Pennington and Colin Aindow's Trust team of Jack Carr toilet painters. Plus our Pitch Perfect groundsmen team of Craig Massam, Dave Massam and Liam Simpson.

Commercially, thank you to all our advertisers and corporate sponsors who have renewed your loyalty is massively appreciated. Our fixture card posters are available in the club shop. Thank you to everyone who has distributed the fixture posters across the town. Please take them if you know of officers, shops, clubs, restaurants and public places you can place them.

Rob Urwin has been working to produce a revamped matchday programme which I am sure you will enjoy after the great praise and national recognition last season. Our media team is poised for action. So kick off is here. We are looking to extend the media team and do need a couple of cameraman to film our matches. Give me a call if you wish to join the team.

We run out today with our new shirt sponsors ACH emblazoned across our chests. Thank you to Andrew Odua for taking up such a significant sponsorship. Thank you to Enda Rylands for agreeing to renew the Ramada Plaza as our back of the shirt sponsors and BNI Formby Links Chapter as our shorts sponsors.

And finally thank you to everyone who is reading this programme. You are a true football supporter. We all embark on a long season. Lets all enjoy it and contribute in whatever way you can in a proactive way to support your club.

Haydn Preece

Commercial Director

ALAN WRIGHT WILL TAKE US FORWARD

Welcome back to the sparkling Merseyrail Community Stadium. The tremendous efforts over the summer by a whole range of volunteers ensures we have a well kept, smart stadium.

We embark on an exciting new voyage under Alan Wright and John Hills. A new era in the Skrill Premier for Southport FC. We are in a fantastic league, we are without the budget of some but we have tremendous financial stewardship aided by an ever growing range of loyal, committed sponsors. Plus other off the field initiatives. Our ambition is to compete in the top half of the table and aspire for a play off place. We believe we can compete, provide a product on the pitch and make the town proud in the next nine or so months. Every supporter has a key role to play, by being here, by marketing the club positively to those who haven't ventured here recently and by sticking together when the going gets tough as it will at times. Lets all have an ambition to be generating regular 2,000 gates by the end of the season!

Incredibly we kick off today against the club we closed last season with.

NEWS DESK



THANK YOU

Hi, my names Dave Foster we last played at Southport 39 yrs ago I was there then too, now disabled in a chair, just a quick thank you to your exemplary stewards and staff, a credit to Southport FC, friendly and helpful, have a good season Dave Foster, Chesterfield fan for 44 yrs.

CONGRATULATIONS

to Charlie Adams age 9 who was the winner of the 2012/13 Predictions League beating all adult competitors including his Dad, Tony and our programme editor Rob Urwin. Charlie was presented with his winnings by his favourite player, Chris Almond before the Chesterfield game.

Trust in Yellow will again be running coaches to Southport's away matches this campaign.

We are on the road three times during the opening month and Details of the Trust's coaches are



Hyde, Tuesday 13 August.

Departs Merseyrail Community Stadium at 5pm.

Price £11 members, £16 non-members, if paid in advance.



Nuneaton Town, Saturday 17 August.

Departs Merseyrail Community Stadium at 11am.

Price £19 members, £24 non-members, if paid in advance.



FC Halifax Town, Monday 26 August.

Departs Merseyrail Community Stadium at 12 noon.

Price £12 members, £17 non-members, if paid in advance

Under 16s can travel for a third of the advertised price if accompanied by an adult. Prices are based on a break-even basis and a discount will apply if there are more than 30 bookings on any of the trips. To book, call Alan Scarisbrick on 07980911693.

The Trust will also be running half-price travel to Tamworth on 7 September in the hope of taking two coaches to the game. Members can travel for a bargain £8 and non-members £10, both of which are 50% of normal rates.

To book any of the trips, call Alan Scarisbrick on 07980911693.

THE PRE SEASON KIT

The full story of our Pre-Season kit will be in the Gateshead programme but thank you to everyone who bought the kit which raised over £1000, final figure will be available soon, for MacMillan Cancer Support.



BNI SHORT SPONSOR
FORMBY LINKS
 Meets every Thursday for Breakfast Business
 Networking. To be a guest or join
 Telephone 07976 555782

JON AINDOW
 **LT PRINT GROUP**
 Alfred Road, Wallasey, Wirral
 CH44 7HY T: 0151 647 8006

DAVE ASHWORTH


 0845 058 7305

DAVID BLYTH

 07710-583348

ALASTAIR BONE

 01704-214903


JOHN BYRNE GREEN FROG CONSULTANCY



MARK H COWING
ARCHITECT ORMSKIRK

MIKE DIXON,
 RYDERS 215
 KNOWSLEY ROAD,
 BOOTLE
 0151-922-7585

BETTY DRUMMOND


STEVE GREEN
MARTLAND WASTE SOLUTIONS

THOMAS GREEN


DANIEL MORTON

 07976 133339

STEVE HANLON

 99-109 Eastbank Street Southport
 01704 547154

TERRY HERON
ROSEMARY BOOK KEEPING

ANTONY HOWE
CleanTouch
 we clean you gleam
 Tel: 01704 840230 | 07966 590702

SEAN KEATING
SK INSTALLATIONS

KEN KNEALE
GREEN DEALE MANAGER

STEVE LATHAM

 19 Mount Pleasant Waterloo
 0151 928 9280

GLEN LEWIS
AINTREE SCHOOL OF MUSIC

SEAN MARSDEN

 01704 514415 07901 538069


GREG MOOK


 01704-551144


PAUL NEALIS
PGN PAINTER AND DECORATOR

DARREN O'NEILL
COUNTY INSURANCE

CHRISTINE PENMAN
CORPORATE MOBILE AND CONNECTIONS

ADAM PENNINGTON

 01766 677 426
 www.atrpcreative.com
 adam@atrpcreative.com


JOHN PORTER


STEVE RAWING

 01766 677 426
 www.atrpcreative.com
 steve@atrpcreative.com

DUNCAN REID

 01704 330033

CRAIG RUTTER
PLUMBING

LYN SIDDLE

 01704-537733

BRIAN SPENCER
BASICS UK LTD



TOM BROWELL'S BIRO



The long hot summer has been a delight for all but this is the date we've all been longing for since the spring and one man who has been counting down the days the most is new 'Port boss Alan Wright as his eagerness to start the campaign was apparent when I met him at the end of pre season.

We began with how positive he is going into this curtain-raiser. "We've had some good games, Chesterfield and Fleetwood were pleasing and we're not a million miles away from where we want to be." I then said this opening day fixture couldn't have been better to start his Southport managerial career. "Luton will be a test, we know they're going to be up there, if not right up there at the end of the season so we're looking forward to it. It'll probably be frantic and frenetic. There's going to be a good crowd on I would have thought. They'll bring probably over 1,500 and we'll have the same so it'll be a great atmosphere - a good opener for us."

Tipster Alan Alger from The Non League Paper predicts Southport will be occupying one of the relegation places come the end of the season. I asked the 41 year old if being the underdog suited him as on the flip side being fancied hasn't given today's visitors much fortune of late. "Looking at the table last season Southport finished just outside the relegation zone so you can see why people may think that. We'll give everything we've got throughout the season and hopefully we'll come out on top. There will be big exceptions on Luton and other clubs that are spending big on their budgets. Everyone goes into each match wanting to win."



asked the new gaffer if he had a message he'd like to say to his newly inherited fans. "As when I played I like football played on the floor. Anyone who's been down to the pre season games will have seen that already. We're going to play football that's pleasing and attractive to the eye - it's going to be good to watch."

One story that has stuck with the 5'4" former Aston Villa defender is that he injured his knee when trying to reach the pedals of his new Ferrari. "I get asked about this once a week! It just found an old injury that I had so I couldn't drive it and ended up selling it. But I didn't buy it and it caused an injury it just found the old one." The Ferrari may have gone but Alan is back in the fast line becoming Southport's new man in charge and unlike those pedals he's determined to reach his high expectations.

IN A NEW FEATURE THIS SEASON TOM BROWELL WILL BE ASKING A MEMBER OF OUR SQUAD OR CLUB MEMBER AN A TO Z LIST OF QUESTIONS. THE FIRST TO BATTLE THE 26 QUESTIONS IS THE NEW MAN IN THE HOME DUGOUT, MANAGER ALAN WRIGHT.



A - Who do you ADMIRE?

Sir Steve Redgrave for winning five consecutive Olympic golds. It's just a testament to the man, the work load he has put in and the reward he's got out. Plus, to do it over 16 years is phenomenal.

B - Best BIRTHDAY you've had?

Not had too many memorable ones with it being during the season. We play Braintree away this time around so a win there would make it memorable!

C - CLASSROOM, what was your favourite subject?

I was good at maths.

D - DREAM, what's your biggest wish?

To become a successful manager - that was an easy one!

E - What ENTERTAINS you away from football?

I don't suppose you're ever away from it really but I just like to relax at home.

F - Favourite FILM?

Shawshank Redemption.

G - Best GOAL scored?

When I was with Villa we played Tottenham away. We were 2-0 down at half time and then we won 3-2 and scored three brilliant goals Dion Dublin scored an overhead kick, Carbone scored from 30 yards and I scored a half volley from about 25 yards.

H - Favourite HOLIDAY destination?

Barbados, I have been there a couple of times and I have enjoyed it every time I've gone.

I - What INSPIRES you?

Just to be successful. I have an inner drive that inspires me.

J - Long JOURNEYS - what do you like to do in the hotel on away trips?

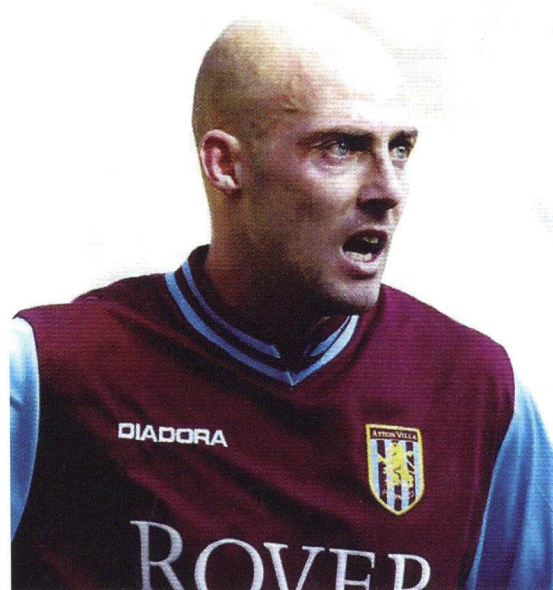
Try to get some sleep! I like to make sure everyone is alright and just relax.

K - KNOWLEDGE, if you went on Mastermind what would be your specialist subject?

Alan Wright!

L - What's been the LUCKIEST thing that's happened to you?

Becoming a professional footballer, I don't think it's just luck but the way I've managed to be as successful as I have been with my physical attributes there as been a bit of luck in there.



M - MEDALS, best achievements in football.

Played for England schoolboys to under 21's. Won the League Cup with Villa beating Leeds 3-0 and got a runners up medal in the FA Cup when Chelsea beat us when I was also with Villa.

N - NUTRITION, what do you like to eat?

I've always be fortunate, I could eat anything and now I've stopped training as much I try to watch what I eat but can still eat anything really.

O - OTHER JOB, what would you liked to have been if not a footballer?

With being good at maths I think an accountant - quite boring really!

P - PREDICTION, if Southport don't win the league who will?

I think Forest Green will be up there.

Q - QUIT, if you could get rid of a rule in football which one would it be? (Apart from the opponents not scoring!)

The stupid one at the minute where the linesman doesn't put the flag up for about ten minutes after they should do!

R - REST, how do you like to relax?

Just to enjoy my family.

S - SONGS, which bands or era do you like?

80's as that was my time growing up so anything from then.

T - TEAM-MATE, who's been your best mate in football?

I've had a good few friends. I'd probably say Michael Oaks who I was with at Villa. Speak to him more or less everyday.

U - UNBELIEVABLE JEFF! What's been the most bizarre thing you've seen on a football pitch?

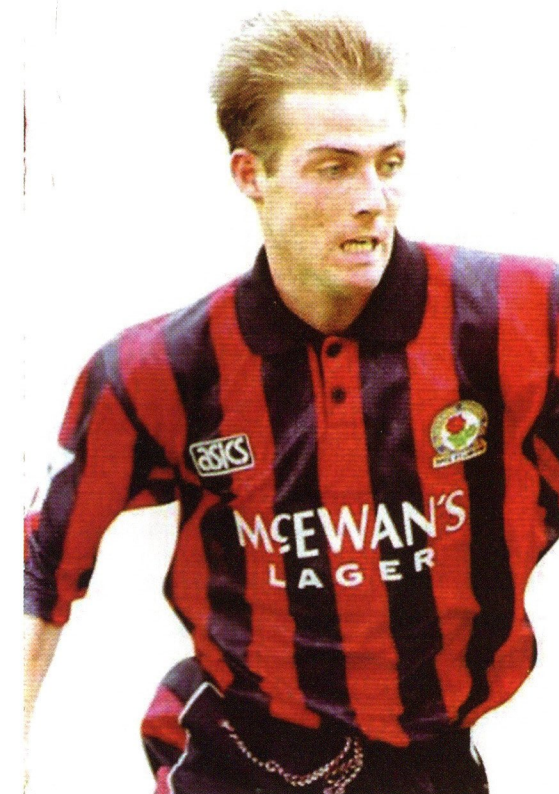
The funniest thing I've seen was when I was with Blackpool. John Deary went to take a corner and he fell over and kicked the corner flag, the ball moved about six inches so the other team came and took it away and John's on the ground and can't obviously touch the ball again after taking the corner!

V - VICTORY, best win in your career.

The League Cup Final win over Leeds.

W - WIFE or other half.

Married to Mandy and we have three daughters - 21, 20 and 18.



X - X-RAY, worse injury you've sustained.

I broke my cruciate, both my ACL and MCL so I was out for about 7 months while at Sheffield United.

Y - YOUTH, how old were you when you first kicked a ball?

Always had a ball at my feet for as long as I can remember. My mum, dad and my two sisters always played with me.

Z - ZZZZZ, night owl or early bird?

I go to bed quite late but I do get up early so I don't get enough sleep!



TODAY'S VISITORS

WELCOME TO LUTON TOWN

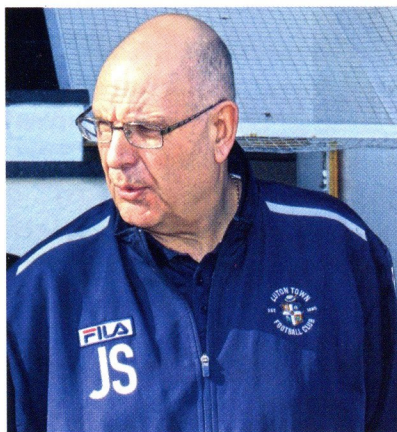
By Jason Mobbs and Leigh Edwards



Welcome back to the Merseyrail Community Stadium to our visitors from Bedfordshire, whose summer exile from the MCS has been as equally long as that of the home supporters. It is fitting that the side who were in town to end the Liam Watson era, are back to begin a new chapter with Alan Wright at the helm.

The opening day of the season heralds a renewed sense of optimism for the season ahead from both sides, though it is without doubt that Luton's ambitions this season surpass our own. Since dropping out of the Football League in 2009, Luton have been perennial favourites to regain their place in League Two. This annual expectancy has perhaps not done them any favours, and following a large turn over of managers and players alike the Hatters still reside in Non League's top flight. However there is a feeling than under the stewardship of the experienced John Still, this could finally be Luton's year. After a healthy number of new additions (including former Southport men Shaun Whalley and Andy Parry) Still has assembled a side he believes can finally deliver promotion to the Kenilworth Road faithful. I don't use the term 'faithful' lightly, despite a slump into the lowest division in the football hierarchy since 1920, crowds of around 6,000 still flock to Kenilworth Road.

THE GAFFER



The Hatters appointed John Still in January 2013 and he brings a wealth of experience to the club. Having overseen nearly a decade of success at Dagenham & Redbridge,

which saw the side rise from the Conference to League One, he aims for a repeat performance with his current charges at Luton.

Still has won the Conference on two occasions, with Maidstone and more recently Dagenham in the 2006/07 season. After running away with the title, Still guided Dagenham to just a place outside the play-offs in League Two. The following season the club managed to achieve a finish in the play-offs and after beating Rotherham at Wembley, were promoted into League One.

THE GROUND



Kenilworth Road is a unique stadium which harbours much character and feeling. In a time where many clubs have left their traditional home for a new purpose built arena which may have improved facilities, but has a large reduction in history and soul, Kenilworth Road is one of the last of its sadly dying breed. Built in a residential area you would hardly believe there is a football stadium tucked away in the narrow streets and terraced houses until it looms in front of you. Renowned for its frankly bizarre away entrance which involves you walking through someone's back yard to reach the away end, 'the Kenny' is a must visit for travelling fans throughout the league.

PREVIOUS ENCOUNTERS

Since Southport's promotion in 2010, we have faced Luton six times in league fixtures. It is our Visitors who have the upper hand; winning four and losing once with a draw thrown in too. The last meeting was of course on the final day of last season, where despite Sean Clancy's early opener Luton ran out 3-1 winners, the same scoreline with which they beat us at Kenilworth Road earlier in the season. Southport's only win came in 2010, when goals from Alan Moogan and Kevin Lee gave Port a 2-1 victory.

LINE UPS THE LAST TIME WE MET 27 APRIL 2013

Southport: Zac Hibbert, Aaron Chalmers, Chris Lever, James Smith, Liam Willis, Chris Almond (Chris Lynch 51), Godfrey Poku (Shaun Whalley 90), Alan Moogan (Karl Ledsham 89), Sean Clancy, Andy Owens, Steven James.
Subs not used: Jonathan Hedge, Andy Parry.

Luton Town: Mark Tyler, Jonathan Smith, Jake Goodman, Lathaniel Rowe-Turner (Simon Ainge 60), Scott Griffiths; Solomon Taiwo (Alex Wall 77), Matt Robinson, Andre Gray, Alex Lawless, Dave Martin (Jake Howells 60), John Shaw.
Subs not used: Dean Brill, Scott Rendell.

Attendance: 1,406

Referee: Wayne Barrett

Man of the match: Chris Almond

THE TOWN

Situated thirty miles outside the capital, Luton was famous for its hat making (hence the nickname 'the Hatters'). A large Vauxhall car production trade was prominent in the town too, with a plant being in use between 1905 and 2002. The town is also home to Luton airport, one of the busiest in the UK.

ONES TO WATCH

John Still's side have a number of influential players to keep an eye on today. Front man Andre Gray is a danger man with lightning pace and a calm finish. Southport fans need no introduction to what Shaun Whalley can do, as he terrorized the league's defences with Southport last season. Defender Ronnie Henry is the epitome of calm and collected defending, last year's skipper will no doubt be wanting to get off to a good start today.



Shaun 'In-Flight'



THOUGHTS FROM THE OPPOSITION BY LUTON FAN, TOM SKINNER.

Overcoming huge psychological pressure and hard work were key to Andy Murray lifting the curse of British tennis during the summer lull, and the Luton players must display both of these traits if we are to achieve our holy grail of a Football League return.

After finishing 13 points off the play-offs last year, fans are going to have to be patient this term as John Still's new-look side gels together. Already though, there are some encouraging signs. Our newly assembled back four each have Conference winners medals on the mantelpiece (Griffiths, McNulty, Charles, Henry), experience which should ensure we begin to shake off our habit of conceding cheap goals. The manager has a track record for spotting players with potential and developing them, and the new signings of Alex Wall, Mark Cullen and Jim Stevenson, alongside the established yet youthful Andre Gray and Jake Howells, mean we have a lot of hungry players who want to improve and move up the leagues, in the way that the likes of Brighton's Craig Mackail-Smith has done.

Sandgrounders' fans will be an authority on two of our new signings, as Shaun Whalley and Andrew Parry ironically return to their old stomping ground at the first opportunity. Whalley arrives with a Player of the Season award to his name and he sounds like the sort of wide player we need to stretch the packed midfields and defences that make this league so hideously frustrating. Parry is more of an unknown quantity and may have to wait a little longer for his chance to impress.

How will things go then? Well, the consistency Kidderminster and Grimsby showed last year makes them my title favourites, while Forest Green have splashed a bit of cash once again in assembling a rather striker-heavy squad. Cambridge and Gateshead are perhaps the only mid-table sides to have notably invested, so I'm expecting the sides promoted from Conference South and North to make a big impact on the division this year.

With over 4,300 season tickets sold at Kenilworth Road, our fans have a significant role as we move forward. Achieving the promotion we all crave may depend upon the level of supporters' trust that John Still is in the process of implementing his blueprint for non-league success. With Mr Still not being a man to rush his work, the promotion project may need a couple of years of love and care to bear fruit.
Where will we finish? = 6th position



JAKO
LIVING SPORTS

Official Match Ball Supplier



**EVERYTHING FOR YOUR TEAM.
EVERYTHING FOR YOU.
TOGETHER UNBEATABLE.**

FOR MORE INFORMATION PLEASE CONTACT: JAKO-UK • 3 PEAKS LANE • NEW WALTHAM • DN364QL GRIMSBY

WWW.JAKOSPORT.COM

[HTTP://EN.JAKO.EU](http://EN.JAKO.EU)



jakosport.com

TRANSFER NEWS:

**Say hello to the latest
Conference signing.**

Skrill.

Skrill is the proud new sponsor of the Conference leagues.

We enable you to make online payments conveniently and securely without revealing your personal financial data, as well as sending and receiving money online instantly and cost-effectively.

Whenever you want to pay or play faster, Skrill is your first choice.



Skrill

Find out more about Skrill. www.skrill.com/football

THE LUTON CLASS OF 1988 BY LEIGH EDWARDS



ANDY DIBBLE: Welsh international goalkeeper who joined Manchester City in July 1988, then Glasgow Rangers, Luton again, Stockport County and Wrexham. He has since been a goalkeeping coach.



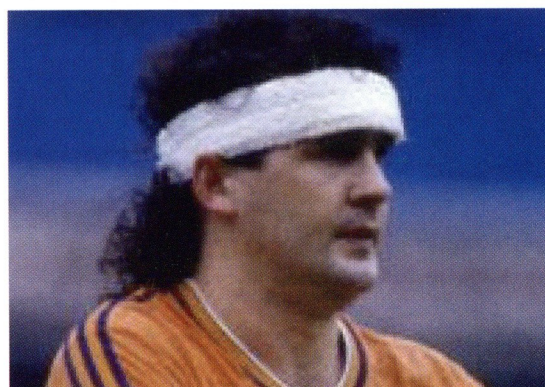
TIM BREACKER: England U-21 right-back who netted three goals in 210 League games before joining West Ham in October 1990, then played for QPR. He has since assisted Ian Holloway at various clubs.

ROB JOHNSON: Left-back who reunited with David Pleat at Leicester City in August 1989, then played for Barnet. He is now a physio with the English Institute of Sport and has a practice in Matlock.

RICKY HILL: England international midfielder who joined Le Havre in June 1989, then reunited with David Pleat at Leicester City. He held several coaching posts before a spell back at Luton as manager.



STEVE FOSTER: England international central defender who netted 11 goals in 163 League games, joining Oxford United in July 1989, then Brighton again. He now has an insurance business in Hove.



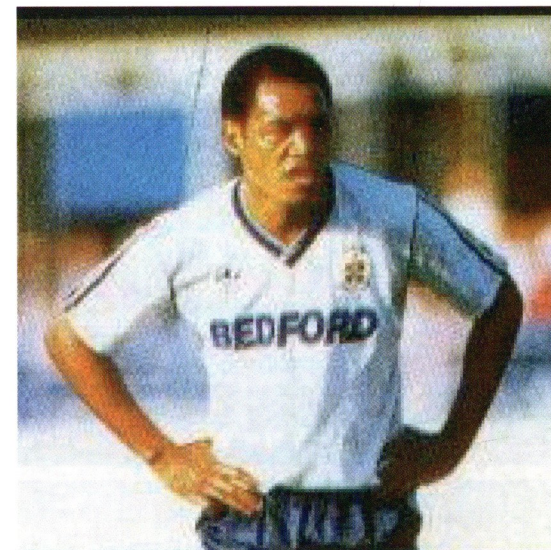
MAL DONAGHY: Northern Ireland international who joined Manchester United in October 1988, then played for Chelsea. Settling back in Northern Ireland, he has worked for the FAI in development roles.



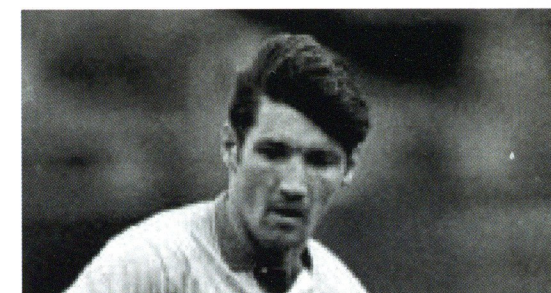
DANNY WILSON: Northern Ireland international who moved to Sheffield Wednesday in August 1990. He has managed Barnsley, Wednesday, Bristol City, MK Dons, Hartlepool, Swindon and Sheffield United.



BRIAN STEIN: England international striker who joined Annecy in June 1988, then played for Luton again and Barnet. He has since held coaching posts, including a spell assisting Mike Newell at Luton.



MICK HARFORD: England international striker who joined Derby in January 1990, then Luton again, Chelsea, Sunderland, Coventry and Wimbledon. Later Luton's manager, he is now coaching MK Dons.



DAVID PREECE: England B international who netted 21 goals in 336 League games, moving to Derby County in August 1995, then was player-coach at Cambridge United and Torquay. He died in July 2007.

KINGSLEY BLACK: Northern Ireland international winger who joined Nottingham Forest in September 1991, then appeared for Grimsby Town and Lincoln City. He currently owns tanning studios in Luton.



SOUTHPORT CARPET CENTRE SOUTHPORT FLOORING CENTRE

99-109 Eastbank Street, Southport, Merseyside PR8 1DG
Tel: 01704 547154 Fax: 01704 549300
Email: southportcarpets@hotmail.com

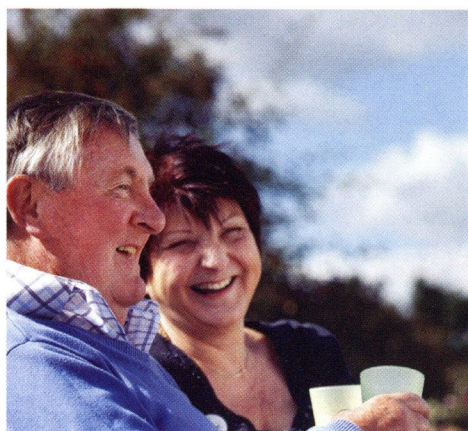
www.southportcarpets.com

www.arugisforlife.com

**Alzheimer's
Society**

Leading the
fight against
dementia

Is your life affected by dementia?



Alzheimer's Society in Sefton is here for you.

We provide a range of services in your area which include providing information and offering support.

If you would like to know more about our services, or have questions about dementia and how we might be able to support you, contact Alzheimer's Society local office in Sefton.

T: 01704 539967

E: southport@alzheimers.org.uk

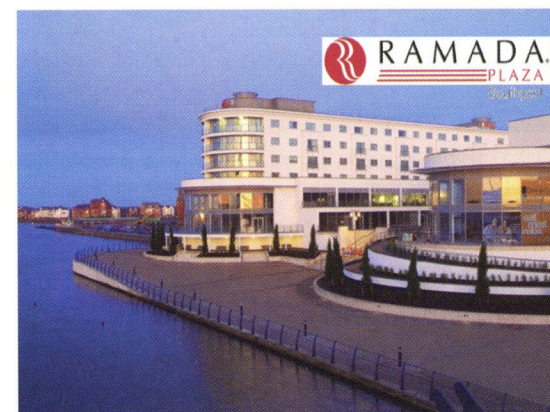
alzheimers.org.uk

Alzheimer's Society operates in England, Wales and Northern Ireland. Registered charity no. 296645

Valare
AUTHENTIC ITALIAN RESTAURANT

**Southport's Favourite
Italian Restaurant**

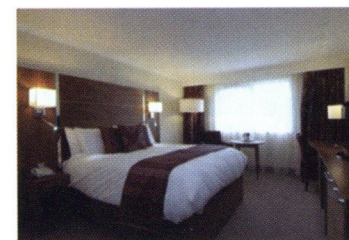
613 Lord Street, Southport PR9 0AN
Book now calling 01704546232 or 07796866936



- 4 Star Luxury Accommodation
- Superb Marine Brasserie
- Conferencing for up to 200 in our meeting rooms
- The Marine Suite for Parties and Events up to 200 guests
- The Marine Bar and Lounge with outside Terrace
- Super Rates @ www.ramadaplazasouthport.co.uk
- Call us on 01704 516220



**RAMADA
PLAZA**



SOUTHPORT 0 BLACKBURN ROVERS 2

Southport first half: Danny Hurst, Aaron Chalmers, James Smith, Matty Flynn, Liam Willis, Luke George, Jamie Milligan, Scott Brown, Paul Rutherford, Chris Almond, Danny Hattersley.

Southport second half: David Stevenson, Matty Challoner, Luke George (Josh Livesey 67), Matty Flynn (Steve Akrigg 67), David Fitzpatrick, Liam Kearney, Jamie Milligan (Wayne Curtis 67), Scott Brown (Matty Harris 78), Paul Rutherford (Charlie Joyce 67), Yamen Osawe, Ryan McGorigan (James Campbell 84)

No goals but plenty of promise with a mix of new signings and trialists on display.



Colin Hendry's shorts were the subject of much amusement!

MARINE 0 SOUTHPORT 1

Karl Ledsham

Southport first half: Danny Hurst, Matty Challoner, Matty Flynn, Luke George, David Fitzpatrick, Aaron Chalmers, Jamie Milligan, Scott Brown, Paul Rutherford, Yamen Osawe, Wayne Curtis.

Southport second half: Danny Hurst (Kalvin O'Hare), James Smith (Josh Livesey 63), Luke George, Liam Willis, Karl Ledsham, Jamie Milligan (Charlie Joyce 70), Scott Brown (Liam Kearney 70), Chris Almond, Yamen Osawe (Matty Harris 73), Danny Hattersley.

A late goal by Karl Ledsham secured a hard earned win at College Road. A lovely strike from 20 yards.

SOUTHPORT 2 CHESTERFIELD 1

Danny Hattersley pen, Chris Almond

Southport: Danny Hurst, Matty Challenor, Matty Flynn (Steve Akrigg 59), Luke George, David Fitzpatrick (Liam Willis 59), Aaron Chalmers, Jamie Milligan (Charlie Joyce 76), Paul Rutherford (Yamen Osawe 59), Scott Brown (Liam Kearney 68), Chris Almond (Matty Harris 84), Danny Hattersley.

Subs not used: David Stevenson, James Smith, Josh Sumner, Robin Fazelm Josh Livesey, Jamie Campbell, Phil Ojapah.

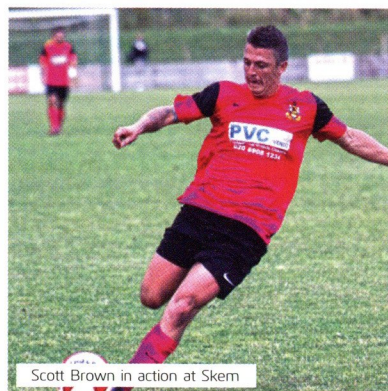
Easily the best pre-season performance capped off with a contender for goal of the season by Chris Almond. Only a tap in but the build up play was quite sensational.



CHESTERFIELD GOAL

SKELMERSDALE 2 SOUTHPORT 1

Own Goal



Scott Brown in action at Skelm

Southport: David Stevenson, Aaron Chalmers (Josh Livesey 74), James Smith (David Ojapah 70), Steve Akrigg, Liam Willis, Liam Kearney, Charlie Joyce, Micah Evans, Scott

Brown (Robin Fazel 64), Yamen Osawe (Phil Ojapah 74), Ryan McGorigan (Jamie Campbell 74).

Subs not used: Kelvin Hare, Matty Flynn, Paul Rutherford.

A much changed team. Late own goal and a dubious disallowed goal but another good work out as Alan assessed more trialists. The score was 2-1 despite some people reporting it as 2-2. The ball has to go in the net for it to be a goal not hit the side netting. The other clue is a kick off takes place!

RUNCORN LINNETS 2 SOUTHPORT 3

Chris Almond, Karl Ledsham & Yawen Osawe



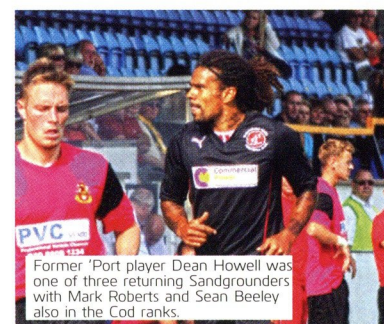
Joyce Karl Ledsham, Jamie Campbell, Scott Brown, Chris Almond, Danny Hattersley.

Southport second half: Kelvin Hare, Aaron Chalmers, Matty Challoner, Steve Akrigg, David Fitzpatrick, Josh Sumner Tom Minnock, Paul Rutherford, Liam Kearney (Max Thomas 80), Yemi Osawe, Steven Tames.

Another hard fought victory with lots of chopping and changing of the team. David Fitzpatrick signs up before kick off.

SOUTHPORT 1 FLEETWOOD TOWN 1

Jamie Milligan pen



(Jamie Campbell 88), Scott Brown (Karl Ledsham 74), Chris Almond (Yemi Osawe 74), Danny Hattersley (Steven Tames 21).

Southport first half: Kelvin Hare, Josh Livesey, James Smith, Matty Flynn, Liam Willis, Charlie

Subs not used: David Stevenson, Liam Willis, Charlie Joyce, Liam Kearney, Josh Sumner, Josh Livesey.

The Fleetwood fans seemed to enjoy Jamie Milligan scoring as much as the Southport contingent! Another solid showing against a strong Fleetwood team who are one of the favourites for promotion. They were a big bunch and despite concerns about our ability to handle the physical sides we coped very well.

BAMBER BRIDGE 0 SOUTHPORT 2

Liam Willis & Matty Harris

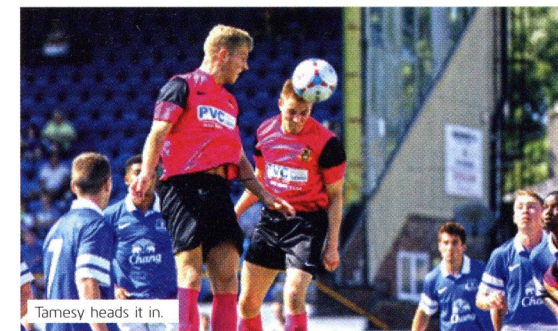
Southport first half: David Stevenson, Josh Livesey, Steve Akrigg, Matty Flynn, David Fitzpatrick, Karl Ledsham, Charlie Joyce, Paul Rutherford, Liam Kearney, Liam Willis, Matty Harris.

Southport second half: Kelvin Hare, Charlie Joyce (Aaron Chalmers 82), Steve Akrigg, James Smith, Liam Willis, Jamie Milligan, Josh Sumner, Curtis Thompson, Chris Almond, Matty Harris (Scott Brown 75), Steven Tames.

Comfortable 2-0 win in a low key game.

SOUTHPORT 3 EVERTON 3

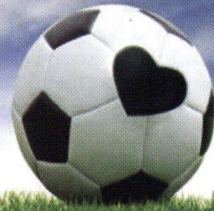
Steven Tames, Jamie Milligan pen and Yamen Osawe



Southport: Danny Hurst (David Stevenson 68), Aaron Chalmers (Charlie Joyce 75), James Smith (Steve Akrigg 46), Matty Flynn (Josh Livesey 85), David Fitzpatrick (Liam Willis 75), Jamie Milligan, Paul Rutherford (Matty Challoner 68), Scott Brown (Jamie Campbell 75), Karl Ledsham (Matty Harris 68), Yamen Osawe, Steven Tames (Curtis Thompson 75).

The final pre-season game and another impressive showing. Coming back from 2-0 down and it was only a late equaliser that thwarted a deserved victory.

Supporting
the grass roots



**Football
Foundation**



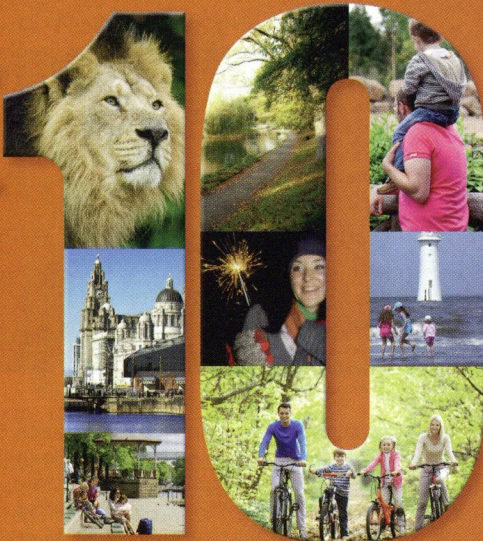
■ FUNDING PARTNERS ■

www.footballfoundation.org.uk

improving facilities • creating opportunities • building communities

Charity No 1079309 Company No 3876305

£



**Family
adventure,
for only a
tenner**

Why not take the family on a bit of an adventure,
with a great value Family Ticket from Merseyrail.

There's so much to see and do across our
network that you won't be able to fit it all into
just one day!

ALL ZONE FAMILY TICKET - £10.00

(2 Adults and 3 children for unlimited off peak travel
across the Merseyrail network).

Proud Sponsors of the Merseyrail Community Stadium

www.merseyrail.org

LANCASHIRE THE COUNTY PALATINE



Lancashire, the county Palatine, is the underlying original county.
It is a legally constituted and defined area, fixed by statute. Its
boundaries are unchanged for the last 850 years.

Lancashire County Council's area is a local government
creation, which, since 1974, only covers central parts of the
underlying county.

However, all of the map area in red
remains firmly in Lancashire, even
though local government is carried
out through a variety of different councils
including shire and metropolitan
districts and unitary authorities such as
Blackpool.

The Lancashire Football Association
covers the whole county. Our main
competition, The

Lancashire
Challenge Trophy,
is competed for
by around 28 clubs
including Barrow and
Southport. Southport

have won this
competition 8
times, the last
being 2009/10
when we were
also Conference
North champions.

In recent years
the final has been at
Bolton Wanderers Reebok
Stadium.



For further information: The Friends of Real
Lancashire **Website:** www.forl.co.uk

THESE PAGES ARE SPONSORED BY
COBRA FRAMES, LONDON STREET,
SOUTHPORT

Discounts for all Southport Supporters on
production of this programme

Southport FC 2013/14

Cobra Frames

Professional Picture Framers

89a London Road, Southport
01704 547791



Back Row L to R: Danny Hattersley, David Stevenson, Steve Akrigg, Danny Hurst, Matty Flynn

Middle Row L to R: Luke George, Bret Harris (Physio), Charlie Joyce, Steve Tames, Karl Ledsham, Chris Almond, Liam Willis, Wes Hall (Kit Man), Chris Lynch

Front Row L to R: Scott Brown, Matty Challoner, Aaron Chalmers, John Hills (Asst Manager), Jamie Milligan (Capt), Alan Wright (Manager), James Smith, David Fitzpatrick, Paul Rutherford



LLOYD & CO. FINANCIAL PLANNING

01704 443107

We offer fully Independent Chartered advice on products across the whole of the market, to both private and corporate clients

- Investments
- Options at Retirement
- Trusts & Trustee Investments
- Corporate Planning
- Business Protection
- Employee Benefits & Auto Enrolment
- Pensions
- Inheritance Tax
- Protection

Clear communication, no jargon, regular reviews personal to you, meeting your objectives for now and the future

Lloyd & Co. Financial Planning Ltd is authorised and regulated by the Financial Services Authority (FSA) No. 548625 and is a Limited Company Registered in England No. 07096647

INVESTMENT
RETIREMENT
PROTECTION
CORPORATE
TAXATION
TRUSTS



Chartered status is the gold standard in financial services and ensures that you are dealing with only the highest calibre of organisation.

We are wholly committed to bespoke planning built on long term relationships, working with you to achieve your objectives.

1st Floor Heritage House,
9b Houghton Street,
Southport. PR9 0TE
Email: info@lloydfp.co.uk
www.lloydfp.co.uk



Experience a new way to manage your wealth

At True Potential Wealth Management, our clients are better informed, confident and more empowered to reach their financial goals.

Through the use of our award-winning technology, we provide straightforward and transparent advice in a simple and convenient way.

As a Partner with True Potential Wealth Management, I can advise you on:

- Investments and Savings
- Retirement Planning
- Trust and Estate Planning

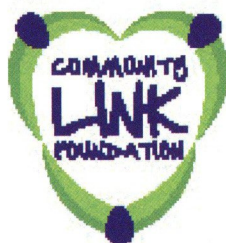
Contact me today to get started:
Sean McDevitt, Partner,
True Potential Wealth Management LLP
Tel: 01704 443006
E-mail: seanmcdevitt@tpllp.com



true potential
wealth management

www.tpllp.com

Authorised and regulated by the Financial Conduct Authority, FSR number 529810. Registered in England and Wales as a Limited Liability Partnership No OC356611.



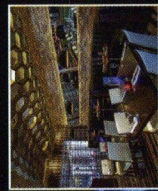
MAKING A POSITIVE DIFFERENCE

Providing support
that helps improve
and enhance the lives
of people
in our communities

Tel: 01704 531080
www.clfoundation.co.uk



FOUR NIGHTS OUT IN ONE



CASINO | LATE BAR | RESTAURANT | ENTERTAINMENT

For a night out with a difference and a celebration like no other make Genting Club Southport your first choice.

gentingclubsouthport.com

Genting Club Southport,
The Promenade, Southport,
Merseyside PR9 0DZ
tel: 01704 504 700



facebook.com/
GentingClubSouthport



@GentingClubSouthport



MOISTERS of Southport Ltd.



FUNERAL HOMES AT

25a Sefton Street,
Southport PR8 6SG
Tel: 501501

8 Station Road,
Ainsdale PR8 3HS
Tel: 575282

8 Marshside Road,
Churchtown PR9 8PF
Tel: 227430

24 Hour Service

Guaranteed Pre-Paid Pre-Arranged Funeral Plans

• Full Monumental Service Available • Wedding Limousine Hire •

PROUD TO SUPPORT SOUTHPORT FC



GOAL-LINE TECHNOLOGY FROM £25



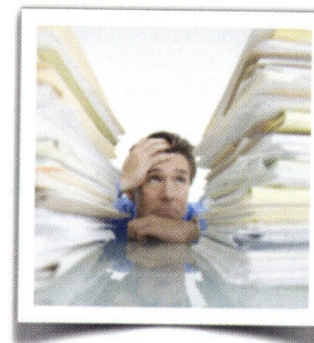
19 Eastbank St
SOUTHPORT
01704 501944

3 The Cloisters
Halsall Lane
FORMBY
01704 832311



SELF EMPLOYED?

Unpaid invoices causing cashflow problems?



Late payments and bad debts can have a devastating effect on your cashflow.

Using Matrix Legal Services is like having your own in-house credit controller. We use a professional approach to follow up your invoices while you concentrate on your business!

Call for a friendly informal chat without obligation:

0151 229 1071 (Liverpool Office)
01695 577667 (Ormskirk Office)

Advice from the comfort of your own home

We have access to a large selection of high street banks and building societies with the benefit of independent advice. We also advise on protecting you and your family financially should anything unfortunate happen.

Call us now for the ideal mortgage based on your financial requirements.



Barron
Financial Solutions

Freephone 0800 587 0140

Call in to Heritage House, 9b Houghton Street, Southport, PR9 0TE
or e-mail us at office@barronfs.co.uk
www.barronfs.co.uk

Your home may be repossessed if you do not keep up repayments on your mortgage.

We do not usually charge for administering your mortgage application as we receive a commission from the lender. Alternatively, you can opt to pay us 0.4% of the value of the loan and receive a refund of commission from the lender on completion.

♦ MORTGAGE ADVISERS ♦ PROTECTION ADVISERS

ALL THE FUN OF THE FAIR

by The Onion Bag



In his programme notes for the final game against Luton, Vice Chairman Sam Shrouder described 2012/13 as a roller coaster season. This was an appropriate metaphor for a season that contained so many highs and lows.

Roller coasters however tend to follow a set route. You may let out a few girly screams along the way, but when you see the finish line you can raise your arms above your head, and pretend you weren't scared and actually enjoyed the whole experience.

Last season was not just a roller coaster season; it was the whole fairground experience.

Last season was not just a roller coaster season; it was the whole fairground experience. At times it was a white knuckle ride, complete with a few bashes on the Dodgems, tip-toeing into the House of Horrors, feeling sick on the Waltzers, before finally enjoying a gentle ride on The Tunnel of Love as we all became friends again as league safety was assured.

I've deliberately used the word 'fairground' rather than 'funfair'. They were fun when we were young but something happens as you get older so that even the most gentle of rides leaves you feeling nauseous. As a kid I would regularly go to the fair with my brother. We only had enough money for a couple of rides and any remaining cash was spent on one of the stalls. Through observation we learnt that the management always put their newest recruit on the Hook a Duck stall. He would leave his note sheet on display so we were able to see which numbered duck related to which prize. Number 23 was a furry gong, 49

was a giant inflatable hammer etc. Any even number would win you a goldfish with a tumorous growth on its eye, in a polythene bag that would leak on the bus home.

But the problems didn't end there. We didn't have a goldfish bowl at home never mind a fish tank. The only suitable container was a glass fruit bowl that was unfortunately filled with a freshly made trifle. This had to be consumed immediately.

"Honest Mum, the cat ate it!"

"There was half a bottle of sherry in that trifle, it'll kill the cat!"

The fish was then placed on the sideboard where it tormented the caged budgie, Joey. Everyone had a budgie in those days and most were called Joey!

Later on in life when you have kids of your own, one of the things you want to do is take them to their first football match. But this comes at a cost, because you also have to take them and their hyperactive mates to the fair ground. But it's changed since you last went. The rides have names such as Armageddon, Oblivion and The Tunnel of Death. They come with 300ft drops and reach speeds of 200mph with a G-Force of 10. The kids just lap it up, they just want to go higher and faster... that is until it's time to drive them home...one tiny, little speed bump and the faux leatherette interior of your Austin Allegro is pebble-dashed with a toxic mixture of burger, candy floss and Slush Puppy!

And so another football season is about to begin. What thrills and spills lay before us? I'm at an age now where I don't need too much excitement, I'm happy with a gentle spin on the Tea-Cups...

..Who am I kidding...buckle yourselves in, keep your hands inside the carriage, anyone who has a heart condition, is of a nervous disposition or pregnant...

...here we go!



ALAN JONES PRESS CUTTINGS



When Luton Town last visited the Merseyrail Community Stadium, on the final day of the season in April, the football was almost incidental.

With a turbulent season for the visitors drawing to a close and Southport having guaranteed survival in the Skrill Premier earlier the same week, it was no surprise that the match became something of a non-event.

Four months on and if that was a phoney war, then today marks the start of a fierce battle which will be fought over the season ahead.

Two clubs who have different aims, different aspirations, but both hoping that this is the start of a bright new beginning.

Luton kick-off today looking to achieve this season what they have been trying since 2009: to end their exile from the Football League. The stakes are high and so too are expectations.

For Alan Wright and his new-look squad, it would be fair to say that no-one quite knows what to expect.

A summer of change has been followed by a pre-season of promise, but with so many differences, only time will tell how they are likely to fare.

As well as the new faces, there is seemingly a change of philosophy, with a squad consisting of smaller players who are more comfortable in possession and an emphasis on keeping the ball patiently.

If pre-season is anything to go by, the football will be fluid and the formation flexible.

The one thing we can be sure about is that whatever happens this season, Jamie Milligan, one of the many summer recruits and the newly-appointed captain, will have a big part to play. With his vast experience and excellent ability on the ball, the former Fleetwood Town midfielder will be the glue that keeps everything together.

Around him, there are the makings of an exciting young squad, with the versatile Luke George, left-back David Fitzpatrick and nifty Scott Brown all playing to a style which appears to suit them.

In football, time is a much talked-about but often under-used commodity. For the new regime to succeed, they must surely be given the patience and support needed to gradually put their ideas into practice.

Of the squad available for today's match, only eight were here at the end last season. The changes over the past three months have been significant and we will hopefully see the benefits of a lot of hard work as the season progresses.

In playing Luton, one of the favourites for promotion, this is the litmus test for a fledgling group of players. Along with Forest Green Rovers, Wrexham and Grimsby Town, today's visitors will no doubt feature in the end-of-season shake-up.

For Southport, the target is more modest. Having survived last season by four points and with only one game to spare, staying in the league will again be the first objective.

A positive result or a good performance today would set things up nicely for an interesting campaign ahead.

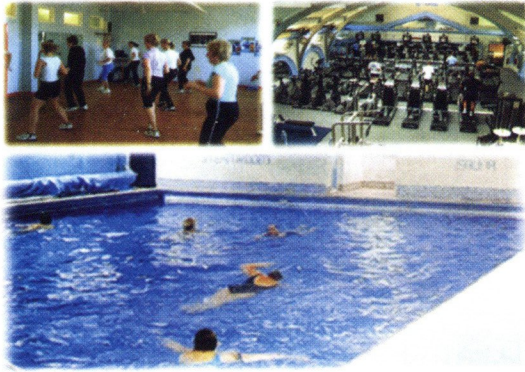
Below: Support on the terraces will be crucial during the coming season





WHERE MORE COSTS LESS

Fantastic All Year Round Offers



www.victorialeisure.co.uk

Central Promenade, Southport 01704 541220

3 Swimming Pools
(inc adult only pool)

Saunas

Steam Rooms

Large Gym

Ladies Only Gym

Squash Courts

Aerobics / Pilates

Yoga Classes

Exercise Classes

Hydro Whirlpool

Free Parking

Non-members welcome

Various Social Activities

TV & Sports Bar

NEW
FREE WEIGHTS
STUDIO & SEPARATE
PUNCH BAG ROOM

***call in to view
the facilities**

Ask about our
special
monthly offers
from £23

Call on our 25 years experience

Call Anthony's
Travel for reliable
and award winning,
low cost luxury
coach hire



Winner of UK Coach Awards

Coach Operator of the Year (medium fleets)

Winner of Route One Excellence Awards

Coach Operator of the Year (small fleets)



...plus two Drivers shortlisted for coach Driver of the Year!

Anthony's Travel
Luxury Coach & Minibus Hire

...Simply the Best

**01928
561460**

www.anthonys-travel.co.uk

8 Cormorant Drive, Picow Farm Road, Runcorn WA7 4UD

Email: enquiries@anthonys-travel.co.uk

Southport Visiter

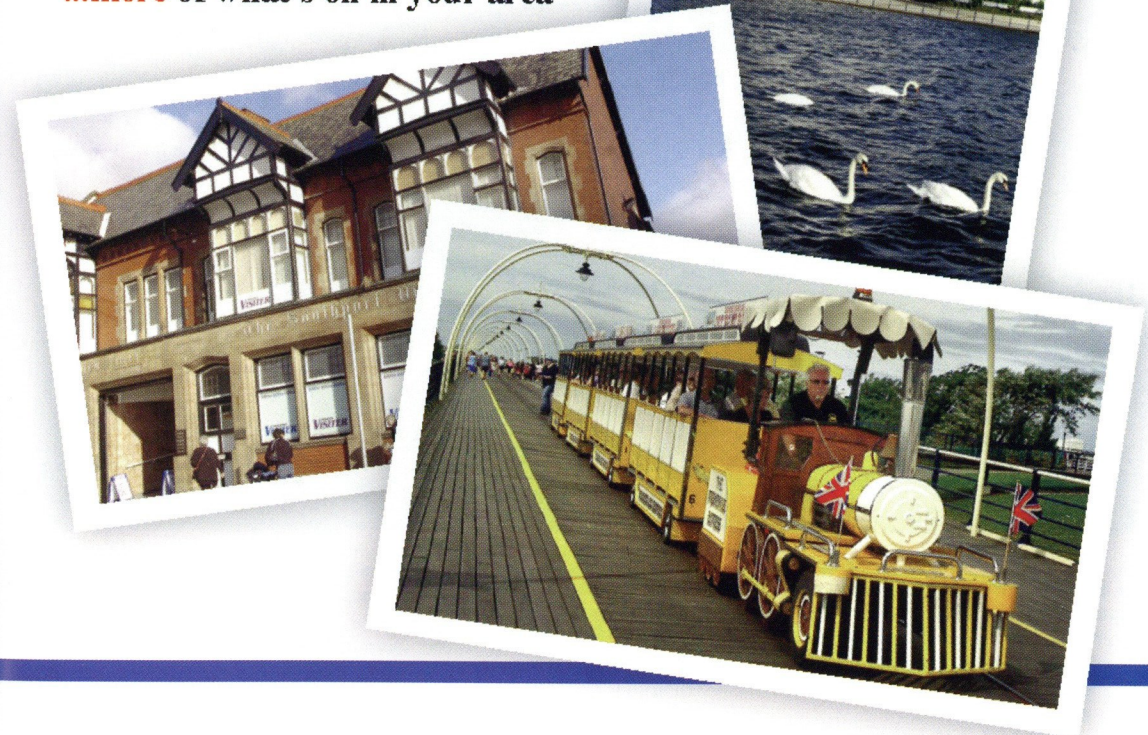
www.southportvisiter.co.uk

**Connecting you
with your
community...**

...more local news

...more local sport

...more of what's on in your area



**Pick up your Southport Visiter
OUT EVERY THURSDAY!**

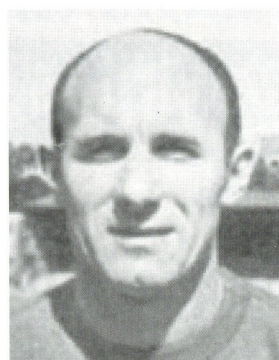
SEASON BY SEASON 1979-80

By Dave Gostelow & Rob Urwin

We started our look back at our life in Non League Football in the final programme of last season and will continue season by season throughout the 2013/14 season.

Having won 19 games in 1978/79 (we had only won 17 in all of the three previous seasons) the feeling was that maybe life in Non League wasn't going to be too bad and we may fight our way back. How wrong we were.

The decision not to move up to the newly formed Alliance meant that Southport were distancing themselves still further from any hopes of ever recovering their League place. The supporters reaction was not anticipated and there was widespread alienation of fans that took a long time to recover.



Amazingly, relegation was just averted and Southport finished in 19th place.

The home average attendance was just 291 and an all time low home league gate of 118 was recorded on April 1st for the game against Netherfield which ended in a 0-0 draw.

A record 0-8 away defeat at Matlock Town in the penultimate game came on the back of a 0-6 defeat at Burton as the season ended in



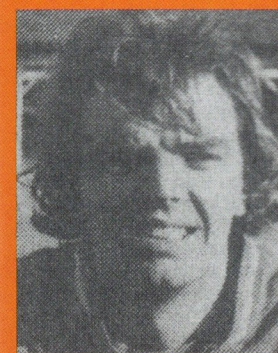
Only 8 wins were recorded, the lowest ever in a Non League season, just 30 goals were scored, also an all time low, and, with just 5 goals Steve Woodcock was the leading scorer. It was probably the most miserable season you could ever imagine with even the most loyal of fans deserting the club in droves.

Popular manager Harry McNally resigned in September 1979 with Acting Manager Jimmy Melia put in temporary charge and it took until January 1980 before Allen Hampson took over the reins.

turmoil. A 2-7 home defeat to Mossley earlier in the season had also created a record.

In total 37 players were used with goalkeeper Graham Cunneely picking up the Player Of The Year Trophy.

The cup competitions provided no respite exiting at the first hurdle in both the FA Cup 1-3 at home to Workington and 0-1 at Morecambe in the FA Trophy. The Workington game at least attracted the highest gate of the season of 567 albeit with a large contingent of Workington fans in attendance at least at the start of the game as several had



to be removed from the ground during the game after a pitch invasion.

The only positive to come out of the worst season ever was that the club was still alive which at various stages looked very unlikely as crisis after

crisis engulfed Haig Avenue Could things get any worse?

1979/80	P	W	D	L	F	A	PTS	H	Att	A	Att
Mossley	42	28	9	5	96	41	65	2-7	338	0-3	848
Witton Albion	42	28	8	6	89	30	64	1-4	363	1-0	967
Frickley Athletic	42	24	13	5	93	48	61	0-3	418	2-2	386
Burton Albion	42	25	6	11	83	42	56	0-1	163	0-6	509
Matlock Town	42	18	17	7	87	53	53	0-2	191	0-8	566
Buxton	42	21	9	12	61	48	51	0-1	229	1-1	611
Worksop Town	42	20	10	12	65	52	50	0-1	565	2-1	207
Macclesfield Town	42	18	11	13	67	53	47	0-0	337	0-1	488
Grantham	42	18	8	16	71	65	44	0-1	526	1-2	480
Marine	42	16	10	16	65	57	42	0-2	212	0-2	436
Goole Town	42	14	13	15	61	63	41	1-1	387	1-4	306
Lancaster City	42	13	13	16	74	77	39	0-0	167	1-1	342
Oswestry Town	42	12	14	16	44	60	38	3-0	251	0-1	310
Gainsborough	42	14	8	20	64	75	36	2-1	167	2-1	630
Runcorn	42	11	11	20	46	63	33	0-4	272	1-0	793
Gateshead	42	11	11	20	50	77	33	2-1	246	0-3	163
Morecambe	42	10	12	20	40	59	32	0-1	241	0-0	287
Netherfield	42	7	15	20	37	66	29	0-0	118	1-1	200
Southport	42	8	13	21	30	75	29	**	**	**	**
South Liverpool	42	7	14	21	51	84	28	2-0	381	1-1	257
Workington	42	8	12	22	50	85	28	1-1	298	0-4	434
Tamworth	42	8	9	25	26	77	25	1-1	243	1-1	233

Player Of The Season Managers

Graham Cunneely
Harry McNally

Leading Scorer

Steve Woodcock(5)

1979/80	Lge App	Lge Sub	Lge Gls	Cup App	Cup Sub	Cup Gls	Total App	Total Sub	Total Gls
Graham Cunneely	39			7			46	0	0
Cliff Woof	36		1	6	1	1	42	1	2
Steve Woodcock	30	1	5	6			36	1	5
John McInnes	29	3		6			35	3	0
Alan Wilson	27		1	5		1	32	0	2
Paul Birchall	24		2	5		1	29	0	3
Chris Duffey	23			2	1		25	1	0
Barry Knowles	22		1	7			29	0	1
Tommy Wheeldon	18	1	2	3			21	1	2
Nigel Halsall	18		3	4			22	0	3
Alan Francis	17	5	2	1	2		18	7	2
John Moogan	17	1	2	2	1		19	2	2
Keith Saunders	17			1			18	0	0
Terry Nolan	15	2	3	3			18	2	3
John Salter	15		1	3			18	0	1
Pat Duggan	14	5	1	3			17	5	1
Graham Barrow	14			2			16	0	0
Peter Doyle	12			2		1	14	0	1
Paul Williams	10	2		2			12	2	0
Brian Robinson	10			2			12	0	0
Peter Roberts	9		1	4			13	0	1
Ron Pickering	8			2			10	0	0
Steve Adams	6	1		1			7	1	0
Joe Turner	6		2	2			8	0	2
Steve McNally	5	1	2				5	1	2
John Gerrard	4	2					4	2	0
John Smith	4						4	0	0
Gary Stott	3			1			4	0	0
Mick Betts	2						2	0	0
Matthew Holmes	1	1					1	1	0
Phil King	1	1		1			2	1	0
John Beesley	1			3		1	4	0	1
Drew Brand	1			1			2	0	0
Mick Clarke	1				1		1	1	0
Vin Dobie	1						1	0	0
Jamie Leneghan	1						1	0	0
Dave Pearson	1						1	0	0
Chris Armstrong				1			1	0	0
own goals				1			0	0	1
TOTALS	462	26	30	88	6	5	550	32	35

Sheffield Insulations

Buildings need thermal and acoustic insulation and you need help from the Experts
So, here for your information, is

YOUR FIRST ELEVEN!



Whatever the job you need look no
further than our winning team -

no-one knows more about insulation than we do.

JUST CALL

0870 789 8765

FOR CONNECTION TO YOUR LOCAL STOCKIST

P&H Services (South Wales) Ltd

15 Stockwood View

Langstone

Newport

NP18 2NS

Mob: 07951 108853

Tel: 01633 411118

Fax: 01633 411118

mail to: pandhservices@btinternet.com

MBPM LTD

Insulation Contractors

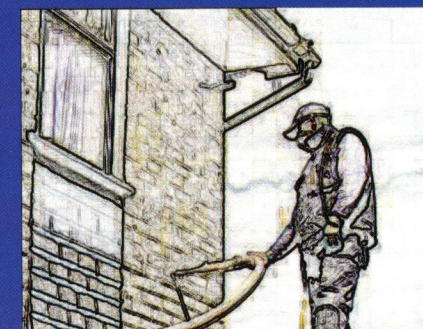
12 Water Lane

Stratford

London

E25 4NL

Tel: 07796 587843





SPONSOR A SANDGROUNDER

PLAYER	SHIRT	SHORTS	SOCKS	BOOTS	FULL KIT
	£75	£50	£20	£30	£150
Danny Hurst					
Dave Stephenson					
Paul Rutherford	MITSUBISHI ELECTRIC LIVING ENVIRONMENTAL SYSTEMS				
Alan Wright	STUART GORDON, SOUTHPORT, LANCASHIRE				
John Hills					
Steve Akrigg					
Chris Almond					
Aaron Chalmers					
Danny Hattersley					
Karl Ledsham					
Chris Lynch					
James Smith					
Steven Tames					
Liam Willis					
Jamie Milligan					
Luke George					
Scott Brown					
Matty Flynn					
Charlie Joyce					
David Fitzpatrick					
Matty Challoner					

PLAYER KIT SPONSORSHIP 2013-14

THIS SEASON WE ARE OFFERING THE OPPORTUNITY TO SPONSOR A PLAYER'S KIT FOR £150 OR YOU CAN SPONSOR THE SHIRT FOR £75, SHORTS £50, BOOTS £30 OR SOCKS FOR £20.

For this you will receive acknowledgement in each match programme and on our website on the sponsors page under your chosen player's photo, and this can be in your own name or if you prefer in your company's name or website address. If you sponsor the full kit you will receive a Southport shirt signed by the player at the end of the season.

Contact Commercial Director Haydn Preece on 07976 555782 or Programme Editor Rob Urwin on 077900-41514 or by e-mail to programme@southportfc.net

These sponsorships are very popular so please don't delay in getting your bid in for the player of your choice.



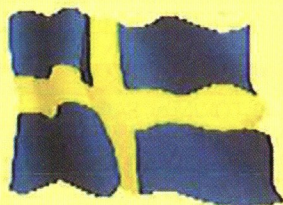
2013-14 FIXTURES

The **Skrill** Premier

Sat	10-Aug-13	H	LUTON TOWN
Tue	13-Aug-13	A	HYDE
Sat	17-Aug-13	A	NUNEATON TOWN
Sat	24-Aug-13	H	GATESHEAD
Mon	26-Aug-13	A	FC HALIFAX TOWN
Sat	31-Aug-13	H	ALDERSHOT TOWN
Sat	07-Sep-13	A	TAMWORTH
Sat	14-Sep-13	H	WELLING UNITED
Tue	17-Sep-13	A	LINCOLN CITY
Sat	21-Sep-13	A	BRAINTREE TOWN
Tue	24-Sep-13	H	ALFRETON TOWN
Sat	28-Sep-13	A	DARTFORD
Sat	05-Oct-13	H	WOKING
Tue	08-Oct-13	A	WREXHAM
Sat	12-Oct-13	H	KIDDERMINSTER HARRIERS
Sat	19-Oct-13	A	MACCLESFIELD TOWN
Sat	26-Oct-13		FA CUP 4Q
Sat	02-Nov-13	H	CAMBRIDGE UNITED
Sat	09-Nov-13	A	LUTON TOWN or FAC 1
Tue	12-Nov-13	H	LINCOLN CITY
Sat	16-Nov-13	H	HEREFORD UNITED
Sat	23-Nov-13	A	ALDERSHOT TOWN
Sat	30-Nov-13		FA TROPHY 1
Sat	07-Dec-13	H	WREXHAM or FAC 2
Sat	14-Dec-13	H	GRIMSBY TOWN or FAT 2
Sat	21-Dec-13	A	SALISBURY CITY
Thu	26-Dec-13	H	CHESTER
Sat	28-Dec-13	A	ALFRETON TOWN
Wed	01-Jan-14	A	CHESTER
Sat	04-Jan-14	H	NUNEATON TOWN or FAC 3
Sat	11-Jan-14	H	HYDE or FAT3
Sat	18-Jan-14	A	HEREFORD UNITED
Sat	25-Jan-14	A	BARNET
Sat	01-Feb-14	H	BRAINTREE TOWN
Sat	08-Feb-14	A	GRIMSBY TOWN
Sat	15-Feb-14	H	SALISBURY CITY
Sat	22-Feb-14	A	FOREST GREEN ROVERS
Sat	01-Mar-14	H	DARTFORD
Sat	08-Mar-14	A	WOKING
Sat	15-Mar-14	H	MACCLESFIELD TOWN
Sat	22-Mar-14	A	KIDDERMINSTER HARRIERS
Sat	29-Mar-14	H	FOREST GREEN ROVERS
Sat	05-Apr-14	A	CAMBRIDGE UNITED
Tue	08-Apr-14	H	BARNET
Sat	12-Apr-14	H	TAMWORTH
Sat	19-Apr-14	A	GATESHEAD
Mon	21-Apr-14	H	FC HALIFAX TOWN
Sat	26-Apr-14	A	WELLING UNITED

GO FOR IT SOUTHPORT
give it all you've got this season!

Wishing you every success



SSAB Swedish Steel Ltd

**The corrosion resistant cladding for
heating and ventilating installations**

A WINNER EVERY TIME!

SSAB Swedish Steel Ltd

Narrowboat Way, Hurst Business Park, Brierley Hill, West Midlands DY5 1UF

Telephone 01384 74660 • Fax 01384 77575

email: sales@dobel.co.uk

www.dobel.co.uk

**Western Thermal Limited
Insulation for Industry
and Building Construction**

**Thermal Insulation
Ventilation & Koolduct
Sheet Metal Fabrications**

**Leading the way
as a sponsor of
SOUTHPORT FOOTBALL CLUB**



Western Thermal Limited

Head Office:

Western Thermal Limited

Unit 14, Springfield Business Centre
Stroudwater Business Park, Stonehouse
Gloucestershire GL10 3SX

Tel: (01453) 791232 Fax (01453) 791305

E-mail: general@western-thermal.co.uk

Branch Offices:

Suites 6-10, Building 219, Epsom Square, Heathrow Airport, TW6 2BJ

Tel: (0208) 897 6469

Unit 1 Beza Court, Beza Road Industrial Estate, Hunslet, Leeds LS10 2BR

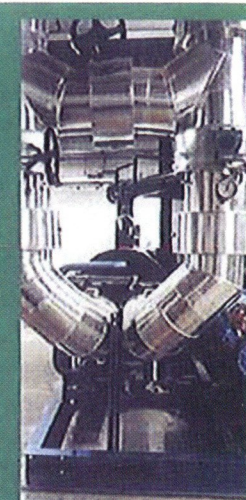
Tel: (0113) 2762996 Fax: (0113) 2701583


Unit 46, Honeyborough Industrial Estate, Neyland, Milford Haven,
Pembrokeshire, SA73 1SE

Tel: (01646) 600426

Western Thermal Limited

" We want to be your Partner not just a Contractor "



 **an ISO 9002 company**
certification number FS14557

SEASON PREVIEW



A new sponsor and a new name as the season starts in The Skril Premier League but who is going to win it, well, according to those who have entered our Prediction League, today's visitors are the red hot favourites, a position they will be accustomed to having started as favourites in each of the last three seasons. The Bookies view is slightly different as they have Forest Green Rovers as the favourites.

Southport can be backed at 250/1 in some places making The Sandgrounders one of the favourites for the drop. They say bookies are seldom wrong but I am sure everyone at The Merseyrail Community Stadium will be willing Alan and the lads on in a bid to prove them wrong this time around.

A possible surprise package? How about Cambridge finally getting it right this time around and Hereford are also being talked about as possibles, 33/1 could be tempting to some. It will be interesting to see how Chester fare, 14/1 looks too short to me. They romped home in the Conference North but have lost some key players and may not find it that easy.

Wrexham have also lost some big names and may not find it all to be plain sailing this time around.

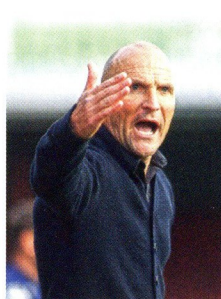
We shall all know come April 26th 2014, only a matter of 259 days away.

A lot of water will flow under the bridge between now and then. How many managers will lose their jobs? Who will be the leading scorer? Will we ever get a point at Kenilworth Road? Stay tuned.

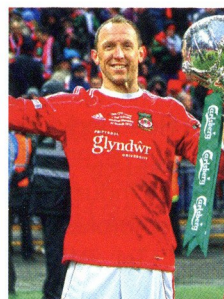
The Skril Premier

	Manager	Best Odds	Ave Att 2012/13	Terrace Entry	Miles	Pred League
Aldershot	Andy Scott	250/1	2272	£17.00	241	18
Alfreton Town	Nicky Law	200/1	747	£18.00	93	19
Barnet	Edgar Davids	16/1	2440	£16.00	208	5
Braintree Town	Alan Devonshire	125/1	671	£14.00	242	17
Cambridge United	Richard Money	12/1	2281	£15.00	200	7
Chester	Neil Young	14/1	2583	£14.00	42	8
Dartford	Tony Burman	125/1	1366	£15.00	243	16
Forest Green	Dave Hockaday	5/1	1179	£14.00	168	6
Gateshead	Anth Smith	66/1	502	£14.00	149	11
Grimsbury Town	Rob Scott	9/1	3813	£18.00	152	3
FC Halifax Town	Neil Aspin	40/1	1222	£17.00	68	15
Hereford Utd	Martin Foyle	33/1	1752	£12.00	137	9
Hyde	Scott McNiven	200/1	809	£14.00	54	24
Kidderminster	Steve Burr	8/1	2197	£14.00	119	4
Lincoln City	Gary Simpson	50/1	2181	£16.00	146	13
Luton Town	John Still	9/2	5882	£18.00	189	1
Macclesfield Town	John Askey	33/1	1670	£14.00	102	10
Nuneaton Town	Kevin Wilkin	250/1	1054	£12.00	126	23
Salisbury City	Mikey Harris	200/1	735	£14.00	218	22
Southport	Alan Wright	250/1	958	£13.50	0	12
Tamworth	Dale Belford	250/1	1018	£12.00	108	21
Welling United	Jamie Day	150/1	615	£15.00	251	20
Woking	Garry Hill	150/1	1601	£15.00	229	14
Wrexham	Andy Morrell	10/1	3520	£14.00	57	2
			1795	£355.50	3542	

WILL THE WINNING TITLE MANAGER BE ONE OF THESE THREE?



Kidderminster Harriers chief Steve Burr



Wrexham boss Andy Morrell



Forest Green Rovers Manager David Hockaday

THE PERFECT FOOTBALL GIFT.....



@SPORTSIGNINGS
Footy funnies, News & Competitions

WWW.SPORTSIGNINGS.COM

Market Leaders in Authentic Signed Everton FC Memorabilia. Website updated daily.

MR OHMS
(SOUTHPORT) LTD
ELECTRICAL WHOLESALE

From a light bulb to a lighting scheme!

Mr Ohms can supply it all



Mr Ohms - Sponsors of Southport F.C. Ball Boys and Girls

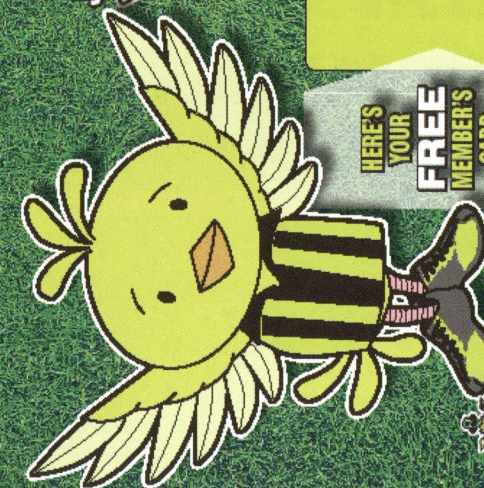
Southport - 01704 533688
Unit B, Kensington Industrial Park,
Hall St, Southport PR9 0SF
Ormskirk - 01695 586000
Unit 7a, Old Boundary Way, Ormskirk L39 2YW

e: mrohms@btinternet.com www.mrohms.co.uk

Southport FC
Junior Supporter's Club
YELLOW BIRD CLUB

CARD MISSING?
Contact Southport FC now
Hall Avenue, Southport PR9 6JZ
Phone: 01704 533422
www.southportfc.net

HERE'S YOUR FREE MEMBER'S CARD



Champion



ON THE ROAD by Richard Scott

Following today's game against Luton Town. The Sandgrounders hit the road with a trip to Greater Manchester to face Hyde FC and then a trip to the Midlands to face Nuneaton Town.

HYDE FC

Hyde are first up on the road for the Sandgrounders on Tuesday 13 with a 7:45pm kick off. The Tigers were a surprise package in the Conference Premier last season. Surviving quite comfortably in the end and pulled off impressive wins over Luton Town and Wrexham at Ewen Fields.



The Ground

Hyde play their home games at Ewen Fields. The ground can hold up 4,073 fans. Fans are generally free to walk around the ground but last season segregation was enforced for our visit. If segregation is in use then Southport fans will be housed in the Tinkers Passage End. The stand holds 1,200 fans and is behind one of the goals.

It is also situated next to the Scratting Shed, which hosts the more vocal of Hyde FC supporters.

Address

Walkers Lane Hyde Cheshire SK14 5B

Directions

Travelling to Hyde is fairly straight forward. If you are going by car then take the M60 to Junction 24 then take the M67 to Sheffield leaving at Junction 3. At the top of the slip road turn right towards the Town Centre. At the 2nd set of traffic lights turn left onto Mottram Road before going past the Morrison's turning right on to Lumm Road. At the T junction turn left onto Walkers Lane. Entrance is next to Hyde Leisure center. For coming on the train the nearest station is Newton for Hyde about a mile from the ground and you get the Glossop service.

Admission Prices

Admission to Ewen Fields are as follows- Terrace Adults £14, Over 60s £8, under 16 and students £8. Main Stand seats Adults £16 Over 60s £10, Under 16s £7 students £10.

On our last visit to Hyde

Southport's last visit to Ewen Fields was in August 2012 and The Sandgrounders came away with a 2-0 win thanks to goals from Chris Almond and the goal of the season winner from Steven Tames.

NUNEATON TOWN

After the visit to Hyde the Sandgrounders are on the road again as they make the trip to Nuneaton Town next Saturday August 17th for a 3pm kick off.



The Ground

Nuneaton Town play their home games at the Triton Shower Community Arena also affectionately known as Liberty Way. The ground can hold up 4,314 people in the ground. With 1,000 of these being in the Stuart Plumbing stand, which houses the away fans, while 50 seats in the main stand are available for away supporters.

Address

Liberty Way, Attleborough Fields Industrial Estate,

Nuneaton, Warwickshire CV11 6RR

Directions

Travelling to Nuneaton via car go on the M1 to Junction 21 then M69 to Coventry leaving at Junction 1. Take the A5 to Nuneaton going over two roundabouts. Once you have passed Aldi take a left at the next traffic lights onto the A4254 towards Coventry. Turn right at roundabout onto Townsend Drive before taking another second right which brings you to the ground.

Travelling by Train the closest station is Nuneaton which is 1.5 miles away

and serves trains from Birmingham New Street and Manchester Piccadilly.

Admission price

Admission to Liberty Way is £12 Adults and Concessions and £3 for under 16s.

On our last visit to Nuneaton

Our last trip to Nuneaton was in October 2012 and an own goal from Stephen O'Halloran gave the

www.galaxyfootball.co.uk

HUGE SAVINGS

- Training Equipment
- Training Kit
- Tracksuits
- Coaching Equipment
- Matchday Kits
- Embroidery & Print
- Footballs
- Sports Bags

NIKE PARK V GAME JERSEY

15 SHIRTS FROM ONLY £125 INC VAT



GALAXY FOOTBALL
matchday, training, kit & equipment .co.uk



TEL: 01772 601245



PROSTAR



mitre joma



samba



THANKS TO OUR SPONSORS



THANK YOU TO OUR SPONSORS FROM THE LAST GAME OF LAST SEASON v LUTON

As you can see from the grid on the facing page, our sponsorship packages are selling fast, don't delay in reserving your table for the game of your choice.

Photo's of all our matchday sponsors will appear on these pages throughout the season. If any copies are required please see our Programme Editor in the Club Shop and they can be sent out.

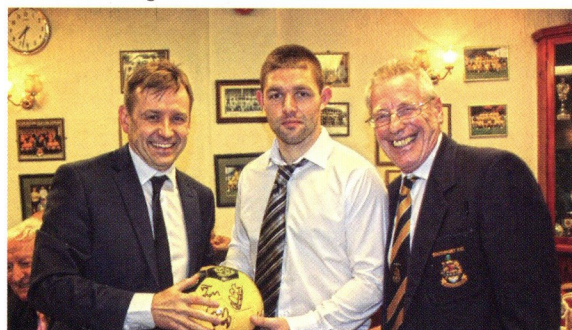
Thank you to all our sponsors for your continued support.



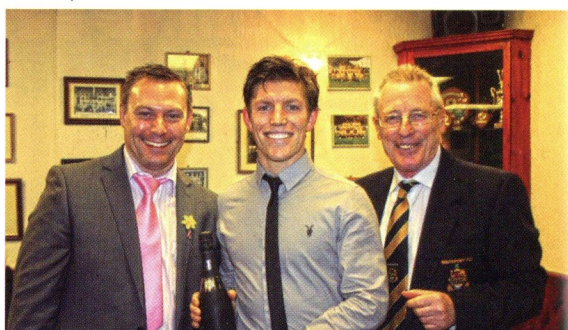
Dave Pennington



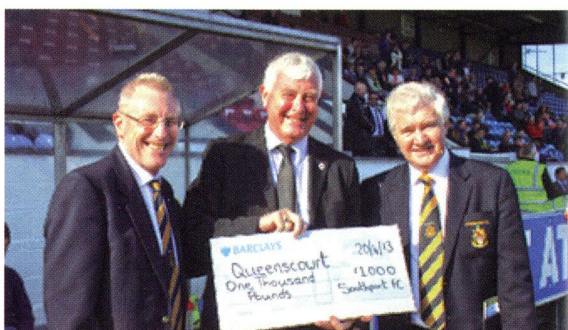
Sandy Tittershill



Dave Barron, Barron Financial Solutions



Dave Cooper of Tiffany's Of Formby



This page is sponsored by Grant Gibson Accountants
For financial peace of mind Call Clive Gibson or Campbell Grant on 01704 572622

MATCH SPONSORS



DATE	CLUB	MATCH SPONSOR	BALL SPONSOR	PROGRAMME SPONSOR	CAPTAINS TABLE SPONSOR
SAT. 10 AUG	LUTON TOWN	PREMIER WEALTH	ACH GROUP	BARRON FINANCIAL SOLUTIONS	MERSEYRAIL/ DAVE PENNINGTON
SAT. 24 AUG	GATESHEAD	PALACE CHEMICALS	PALACE CHEMICALS	PALACE CHEMICALS	PALACE CHEMICALS
SAT. 31 AUG	ALDERSHOT TOWN	KEITH MITCHELL	DAVE PENNINGTON/ TRUE POTENTIAL WEALTH	PREMIER WEALTH	RAMADA PLAZA
SAT. 14 SEP	WELLING UNITED	BFS FAMILY DAY	BFS FAMILY DAY	BFS FAMILY DAY	BFS FAMILY DAY
TUES. 24 SEP	ALFRETON TOWN	MERSEYRAIL	KARL PRICE	HEINEKEN/ DAVE PENNINGTON	BARRON FINANCIAL SOLUTIONS/ GENTING CASINO
SAT. 5 OCT	WOKING	GENTING CASINO SOUTHPORT VISITER	BARRON FINANCIAL SOLUTIONS/ PLAYER PROTECTION	MOORE & SMALLEY/KIRWANS	PLAYER PROTECTION
SAT. 12 OCT	KIDDERMINSTER HARRIERS	NORTHERN PACKAGING	HEINEKEN ROGER AINDOW	BARRON FINANCIAL SOLUTIONS & DEANNE MOTORS	MERSEYRAIL/ GENTING CASINO/ ROY MARSHALL
SAT. 2 NOV	CAMBRIDGE UNITED	KARL PRICE	ACH GROUP/ LLOYD & CO /DAVE PENNINGTON	ALAN & BEN TAYLOR/ DAVID ASHWORTH	BARRON FINANCIAL SOLUTIONS/ FARNBOROUGH ROAD SCHOOL
TUES. 12 NOV	LINCOLN CITY	JAGUAR HOUSE/ MERSEYRAIL	DSG/ BARRON FINANCIAL SOLUTIONS	DAVE PENNINGTON /LANSING LINDE	HEINEKEN
SAT. 16 NOV	HEREFORD UNITED	BARRON FINANCIAL SOLUTIONS/ RED INSURE	DAVE PENNINGTON/ GENTING CASINO	PLAYER PROTECTION	DAVE JELLEYMAN
SAT. 7 DEC	WREXHAM	BARRON FINANCIAL SOLUTIONS	MERSEYRAIL/ GEOFF WILLIAMS/KIRWANS	PREMIER WEALTH	DAVE PENNINGTON / TRUE POTENTIAL WEALTH
SAT. 14 DEC	GRIMSBY TOWN	CSB/VICE PRESIDENTS		DAVE PENNINGTON	BARRON FINANCIAL SOLUTIONS/ GENTING CASINO
THURS. 26 DEC	CHESTER	MERSEYRAIL/ SORENSEN FINANCIAL SERVICES	DAVE PENNINGTON	MOORE & SMALLEY	RAMADA PLAZA
SAT. 4 JAN	NUNEATON TOWN	BARRON FINANCIAL SOLUTIONS			
SAT. 11 JAN	HYDE	GENTING CASINO/ RAMADA PLAZA	BARRON FINANCIAL SOLUTIONS/KIRWANS	LLOYD & CO	DAVE PENNINGTON
SAT. 1 FEB	BRAINTREE TOWN	MERSEYRAIL		BARRON FINANCIAL SOLUTIONS/ GENTING CASINO	
SAT. 15 FEB	SALISBURY CITY	BARRON FINANCIAL SOLUTIONS	RAMADA PLAZA		
SAT. 1 MAR	DARTFORD	MERSEYRAIL		KIRWANS	BARRON FINANCIAL SOLUTIONS/ GENTING CASINO
SAT. 15 MAR	MACCLESFIELD TOWN	KARL PRICE / LANSING LINDE	LLOYD & CO/ PLAYERPROTECTION	ACH GROUP	ANTHONY'S TRAVEL
SAT. 29 MAR	FOREST GREEN ROVERS	BARRON FINANCIAL SOLUTIONS	NORTHERN PACKAGING/ GENTING CASINO	MOORE & SMALLEY	MOISTERS
TUES. 8 APR	BARNET	HATFIELDS/ DSG	MERSEYRAIL/ BARRON FINANCIAL SOLUTIONS	COUNTY INSURANCE	PLAYER PROTECTION
SAT. 12 APR	TAMWORTH	BARRON FINANCIAL SOLUTIONS	TRUE POTENTIAL WEALTH /VICTORIA LEISURE		
MON. 21 APR	FC HALIFAX TOWN	ACH GROUP	BARRON FINANCIAL SOLUTIONS/ LLOYD & CO	MERSEYRAIL/ GENTING CASINO	JULIAN & SANDY TITTERSHILL

LOCAL BUSINESS SUPPORTING THEIR LOCAL TEAM
MANY THANKS TO TODAY'S SPONSORS

LOOKING BACK

With David Frodsham



About three months ago a "little old team and a little old manager" achieved footballing success against the odds and were promoted from Division 1 to the Championship.

A team that we had played in very recent memory and, in season 2000/2001, beaten them home and away, now find themselves perhaps dreaming of just one more promotion to play in the Premiership against the very best. As you will have probably guessed that team is Yeovil Town. The quote in the first line above refers to the team and their manager Gary Johnson. A "little old Yeovil" flag was displayed by supporters at their games last season on the grounds of First Division clubs with far more resources than the Somerset club who had an average home attendance for the season of just 4071. It was Gary who came up with the complete quotation at the press conference in June when he agreed an extended contract and vowed to compete rather than just survive in the Championship.



After years of life in the Southern League Yeovil became a founder member of the Football Alliance in 1979 with ambitions of one day joining the Football League. However despite

some success there were failures and two relegations along the way until Season 2002/2003 when Gary Johnson's team were finally promoted as Champions of the Nationwide Conference. In 2005 they advanced again after winning Division 2.

Compare that with their life sixty years ago. In June 1953 they made an application to join the Football League in place of one of the teams at the foot of Division 3 South. In reality they stood little chance despite a record of some success in the FA Cup. A final position in the Southern League table of eighteenth counted against them and they received only two votes for their trouble and started the new season on August 22nd 1953 with an away game against Exeter City Reserves. What a contrast with August 10th 2013. This afternoon they entertain Birmingham City at Huish Park and in a fortnight their visitors will be Derby County.

In their final season in the Conference they defeated us twice although our home reverse on November 23rd 2002 was by a single goal in what was a top of the table clash. We had lost at Yeovil by six goals to nil on October 5th but despite that it is true to say that had we won both games we could have been top of the Conference table after our home game. This was the season we defeated Notts County here in the FA Cup but following that the team went into a decline and as Yeovil were crowned as Champions we were relegated to the Northern Premier League. Our games against Yeovil Town were over. There had been sixteen of them at Conference level. We

had competed by winning five and losing five with six drawn.

The Sandgrounder issue for the 2002 home game reminded readers that looking back at Yeovil's past was like delving into the annals of FA Cup Giant killing but that in the new Millennium the Somerset club were determined to be more than just a romantic FA Cup name and success in the Conference and thus promotion to the League were words on the lips of all Yeovil people. Past glories would not be forgotten but at the start of a new century it was all about glories yet to come. Exactly right as it has turned out.

David

ACH Group

WORKING FOR YOU

Accident Management Specialists



0800 118 2769 www.achgroup.co.uk

ACH CLAIMS

ACH MEDIA

ACH ACCESS LEGAL

ACH DOCS MULE

ACH MEDICAL



MATCH OFFICIALS

REFEREE: C. Kavanagh

ASSISTANT: B. Lamb

ASSISTANT: A. Moore

4th OFFICIAL: D. McNamara

Sponsored by

TODAY'S FIXTURES

Barnet v Chester

Dartford v Alfreton

Forest Green v Hyde

Grimsby v Aldershot

Hereford v Braintree

Kidderminster v Gateshead

Macclesfield v Nuneaton

Salisbury v Tamworth

Southport v Luton

Woking v Lincoln

Wrexham v Welling

NEXT AT HOME...

GATESHEAD

Saturday 24 August, 3pm

southportfc.net

@southport_fc

/SouthportFC

SOUTHPORT

Manager Alan WRIGHT

Danny HURST	1	○
James SMITH	2	○
Liam WILLIS	3	○
Steve AKRIGG	4	○
Matty FLYNN	5	○
Scott BROWN	6	○
Aaron CHALMERS	7	○
Jamie MILLIGAN	8	○
Steven TAMES	9	○
Karl LEDSHAM	10	○
Chris ALMOND	11	○
Matt CHALLONER	12	○
Paul RUTHERFORD	14	○
Danny HATTERSLEY	15	○
Charlie JOYCE	16	○
Chris LYNCH	17	○
Luke GEORGE	18	○
David STEVENSON	19	○
David FITZPATRICK	20	○

LUTON TOWN

Manager John STILL

○ 1	Mark TYLER
○ 3	Danny FITZSIMONS
○ 4	Jonathan SMITH
○ 5	Steve McNULTY
○ 6	Anthony CHARLES
○ 7	Alex LAWLESS
○ 8	Solomon TAIWO
○ 9	Jon SHAW
○ 10	Alex WALL
○ 11	Jake HOWELLS
○ 12	Scott GRIFFITHS
○ 13	Mark CULLEN
○ 14	Andy PARRY
○ 16	Elliot JUSTHAM
○ 17	JJ O'DONNELL
○ 18	Dave MARTIN
○ 21	Luke GUTTRIDGE
○ 22	Shaun WHALLEY
○ 23	Matt ROBINSON
○ 25	Ronnie HENRY
○ 27	Andre GRAY
○ 28	Jim STEVENSON
○ 30	Alex LACEY
○ 31	Jake WOOLLEY
○ 32	Brett LONGDEN
○ 33	Jerome JIBODU

