



Official Matchday Programme of Luton Town Football Club

TALK OF THE TOWN

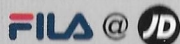
ISSUE 6 • £3



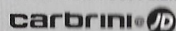
CLUB SPONSOR

easyJet

OFFICIAL KIT SUPPLIER



OFFICIAL KIT SUPPLIER



COMPETITION



LUTON TOWN v SOUTHPORT

SATURDAY 29TH SEPTEMBER 2012 • 3PM



**2012-13
AWAY KIT
AVAILABLE
INSTORE** **THE HATTERS**



Available at your local **JD** Arndale & Luton Airport

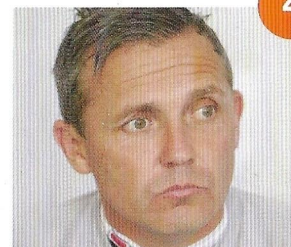
SHOP IT 24/7 ONLINE. INSTORE. MOBILE.

JDSPORTS.CO.UK



WELCOME

4



FROM THE BOSS

Paul Buckle's programme notes

6-7 BOARDROOM TALK

Gary Sweet looks ahead to today's game

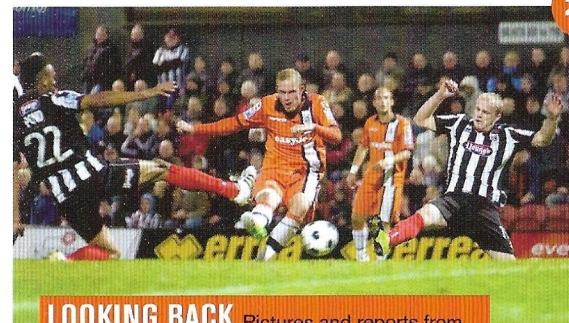
13 JUST THE TICKET

Home and away admission prices

18-23 WELCOME SOUTHPORT

We take a look at our visitors this afternoon

25



LOOKING BACK Pictures and reports from our games with Wrexham, Grimsby and Tamworth

36-41 HATTERS HISTORY

Three fantastic articles from club historian Roger Wash

64-65 THE SEASON AHEAD

Results, fixtures and statistics

LUTON TOWN FOOTBALL CLUB 2020 LTD

Kenilworth Road Stadium, 1 Maple Road,
Luton, Bedfordshire LU4 8AW

SWITCHBOARD: 01582 411822

TICKET OFFICE: 01582 416976

info@lutontown.co.uk www.lutontown.co.uk

CLUB OFFICIALS

CHAIRMAN: Nick Owen

MANAGING DIRECTOR: Gary Sweet

DIRECTORS: Paul Ballantyne, David Blakeman,
Bob Curson, David Wilkinson

TECHNICAL DIRECTOR: Lil Fuccillo

ASSOCIATE DIRECTORS:

Stephen Browne, Mike Herrick, Mick Pattinson

FINANCE DIRECTOR: Roger Bannister

HONORARY LIFE VICE PRESIDENT:

John Buttle

VICE PRESIDENTS: Richard Banks, Cliff

Bassett, Chris Green, Derek Ludlow, Jack

Sapsworth, Rob Stringer, Andrew Cook

FIRST TEAM MANAGER: Paul Buckle

ASSISTANT MANAGER: Alan Neilson

FIRST TEAM DEVELOPMENT COACH:

Carl Emberson

FIRST TEAM COACHES:

Dmitri Kharine, Paul Carden

PHYSIOTHERAPIST: Simon Parsell

TEAM MASSUER & KIT MAN:

Darren Cook

HEAD OF YOUTH: Wayne Turner

CLUB SECRETARY: Kevan Platt

PRESS OFFICER: Andrew Barringer

CLUB DOCTOR: Dr Paul Dealey

CLUB CHAPLAIN: Alan West

OFFICIAL MATCHDAY PROGRAMME

Editor: Andrew Barringer

Photography: Gareth Owen

Contributors: Andrew Barringer, Final Third

Sports Media, Roger Wash, Joe Flemons,

Tom Skinner, Mark Wood, Leigh Edwards

and Matt Aquino.

Design and print: Bartham Group

Additional artwork: Elliott Quince

The views in this programme are those
of the contributors and not necessarily
those of the editor and/or Luton Town.





PAUL

BUCKLE

Good afternoon and welcome back to Kenilworth Road for what promises to be another exciting fixture in the Blue Square Bet Premier.

Today we go in search of back-to-back victories following Tuesday night's excellent result at Tamworth where I thought the players were fantastic to battle from a goal down in atrocious conditions.

A week is a long time in football and it goes to show that there are no easy games in this unforgiving league. The performance at Grimsby was not great but we picked ourselves up, dusted ourselves down and the three points at the Lamb gives us even more reason to be confident today.

No easy games

The Tamworth match also proved there are no easy games in the Blue Square Bet Premier. At this stage of the season a lot of teams have lacked that consistency. We have been very up and down, just like a lot of teams, and it's that consistency that everyone is striving for.

The results so far in the league have already shown how competitive this division is. Consistency is winning games in succession or going on a long unbeaten run.

To get consistency you need a settled team and, for a variety of reasons so far this season, that is not something I have been able to do. I know that it will come as the season progresses and, obviously, I will be looking for the players to pick up from where they left off on Tuesday today against Southport.

Massive effort

We have had our fair share of chopping and changing which hasn't been helped but we have dealt with it and still been able to achieve excellent results. What it needs is a massive effort from everybody every week to ensure we are where we want to be

come the end of the season. At the minute we are ticking a lot of the boxes, but not all of them.

We are by no means the finished article but it's important to realise that when we win not to get too carried away. Conversely, we must not get despondent when we lose or have disappointments. Those happen in football – it's a fact of life. It's about how you react to the disappointment that matters most and I'm pleased to say the players have been magnificent in the face of adversity so far this season.

Focus

However, I know that giving teams a head-start in games and leaking goals from set pieces needs to be addressed and through hard work on the training field we will get there. But we must focus on the positives because there has been an awful lot of those so far this season.

As always I will send the team out there this afternoon to attack from the first whistle to play attractive, positive football. I believe in each and every one of my players to give 100 per cent and I am confident they will repay my faith I have shown in them.

Tremendous as always

Your support, tremendous as always, is key to our success, too. The past two away matches have seen vastly different results but one thing remained constant: your terrific backing of the team.

It is greatly appreciated by every one of us. Your passion and loyalty is unquestionable and I'd like to thank those supporters who made the long midweek trips to Grimsby and Tamworth.

Get behind us once more today and enjoy the game.

Paul

FROM THE BOARDROOM

WITH MANAGING DIRECTOR GARY SWEET



Welcome one and all to this afternoon's Blue Square Bet fixture with our friends from Haig Avenue. On behalf of the board I would like to extend a warm welcome to all visiting supporters who have made the journey from the north-west, along with the players, staff and officials.

A particular welcome to Liam Watson and Charlie Clapham, Southport's manager and chairman respectively; two people I have got to know through dealings with players and as a member of the Conference board, of which Charlie is Vice Chairman.

We share a valued relationship that has seen a healthy exchange of players over the last couple of years.

Today will also bring a welcome return to Godfrey Poku who, yet again, finds himself seduced by his favourite seaside town having found his move to Mansfield less than satisfactory. Ever popular with the Sandgrounders faithful, we wish Godfrey well for the future knowing he'll keep smiling whatever happens.

I'd also like to extend a welcome to the Luton Town fold to Simon Ainge, who signed on loan from Guiseley yesterday. Make yourself at home Simon!

Recent results and performances for us have been far from adequate especially with our fully focussed objective of gaining promotion this season. Our away fixture at Grimsby a week last night was particularly disappointing, not only because of the unflattering score-line but, it reminded me of the only time I have ever (I'm rather ashamed to admit) been so bitterly disenchanted I have left a ground shortly after half-time.

January 1996 – The Hatters' seasonal FA Cup adventure was halted at Blundell Park in shocking fashion having witnessed six goals put past Ian Feuer. It was only upon exit myself and two friends realised the driver was still inside leaving us to wander the streets of Cleethorpes on a bitter winters' day.

It is with this vividly bleak memory that I was able to massively sympathise with the 23 heroic supporters who had the coach journey from hell last week.

As if enduring an unbearably delayed Friday night journey north wasn't enough, for the delay to consequently result in their entrance to the ground as the second half began only to see us three goals down will be put down as an experience they'd rather forget.

I have great admiration for such loyalty, especially as almost every one of them turned up again at Tamworth and will do so next Saturday at Lincoln, which we hope they enjoy. May we thank you for your support and hope we can repay you by delivering more Tamworth type results than Grimsby?

As directors, we thrive on such committed and faithful support which drives us to deliver what we set out originally to achieve four and a half years ago – a professional football Club that is both ambitious and stable.

You can rest assured that we will do everything possible, without compromise, to regain our League status, but what about our plans for stability?

Given the current market conditions and, in particular, the challenges faced by local authorities, we have acknowledged that, along with a significant investment in projects which have a valuable impact on community cohesion, clubs like ours may have a duty to support the council with a consideration in lieu of rent.

Having recently made an offer to Luton Borough Council in relation to this we have also made it known that we have a strong desire to put the ownership of Kenilworth Road back into the hands of the Club, and have initiated discussions on that basis.

Additionally, whilst we cannot at this point rule out an eventual redevelopment of Kenilworth Road, the feasibility processes for an assessment of any relocation plans are now firmly afoot.

Considering the commercial delicacy of matters like this, I'm afraid to say, patience will be required before any such plans or results can be made public.

Realistically, given current market conditions, any such plans would take a number of years to reach fruition and these would also be dependent upon one location delivering a long term formula to support the Club's sustainability.

Meanwhile, we are also mindful of the fact that Kenilworth Road will require a little more than a lick of paint to allow the dear old girl to help us push onwards and upwards whilst we are still her tenants and whilst she still remains as an option for our future.

With this in mind, in addition to establishing a firm plan to carry out some necessary improvements when we regain our Football League status, we are also assessing plans to enable us to increase our capacity and to modernise a part, or parts, of the stadium.

Once established, the investment required to complete these projects would not be insignificant but it would allow our Club to take the next step or two more easily, and will also enable us to manage the transition to a new site with a greater degree of control.

I must stress that these plans do not mean that we are compromising funding for football. Nor does it mean we harbour desires to remain at Kenilworth Road for the next generation. Assuming, for example, we decided that relocation is our preferred option, our design brief now has been to safeguard any current improvements could be transferred to our new home or could be re-utilised as a tradable asset elsewhere.

As stadium design and manufacturing techniques have developed we are excited by the possibilities that can now be offered to us. It is now entirely feasible to redevelop parts of Kenilworth Road in such a way that it would not only increase capacity and improve current facilities but which could also be re-sited to be incorporated into any new development in the future. Truly, the best of both worlds allowing us to keep all our options open.

Because these ambitious statements of intent are by no means certain – given the productive assistance that will be required by stakeholders and authorities – we ask for your continued support and patience.

However, we hope by revealing such plans it serves as a reminder and reassurance of our motivation, as a board, to provide the faith in the future of our great Club that you all richly deserve.

Please keep positive, be loud and, above all, enjoy the game today!

COYH

Gary

HONOURS

Littlewoods Challenge Cup:
Winners 1988
Runners-up 1989

F.A.Cup:
Runners-up 1959
Semi-finalists 1959, 1985, 1988, 1994

Johnstone's Paint Trophy:
Winners 2009

Simod Cup: Runners-up 1988

Football League Division Two:
Champions 1981/82
Runners-up 1954/55, 1973/74

Football League Division Three (South):
Winners 1936/37
Runners-up 1935/36

Football League Division Three:
Runners-up 1969/70

League One: Champions 2004/05

Football League Division Four:
Champions 1967/68

Football League Division Three:
Runners-up 2001/02

Blue Square Premier:
Runners-up 2009/10

Southern League Division One:
Runners-up 1894/95, 1895/96

Southern League Division Two:
Runners-up 1913/14

United League: Champions 1897/98
Runners-up 1896/97, 1900/01

Southern Alliance: Runners-up 1913/14

Relax this summer...

...and let us do the hard work for you



Now open
on Saturdays
for family
enquiries*

Buying & selling your home • Will & estate planning
Employment issues • Business & company law
Divorce & family • Personal injury & clinical negligence


Pictons
 SOLICITORS | LLP

Call now on
0845
263 7505

f facebook.com/pictons

t twitter.com/pictons

w: www.pictons.co.uk

e: info@pictons.co.uk

Luton
 01582 870870

Hemel Hempstead
 01442 242441

Milton Keynes
 01908 663511

Tring
 01442 825566

*by appointment only, subject to availability, t&c's apply.

We've got your legal needs covered

RONNIE

HENRY

This afternoon we go into today's game with Southport buoyed by Tuesday night's gritty win at Tamworth.

The three hard-earned points in the wind and rain in the week meant we were able to put the defeat at Grimsby last Friday behind us. It goes without saying that it was a bitterly disappointing evening in front of the live television cameras where we were punished in ruthless fashion.

Prior to the poor performance at Grimsby, we earned a goalless draw at home to Wrexham. While it was frustrating we couldn't find a goal, it was heartening to keep a clean sheet as they have been hard to come by this season.

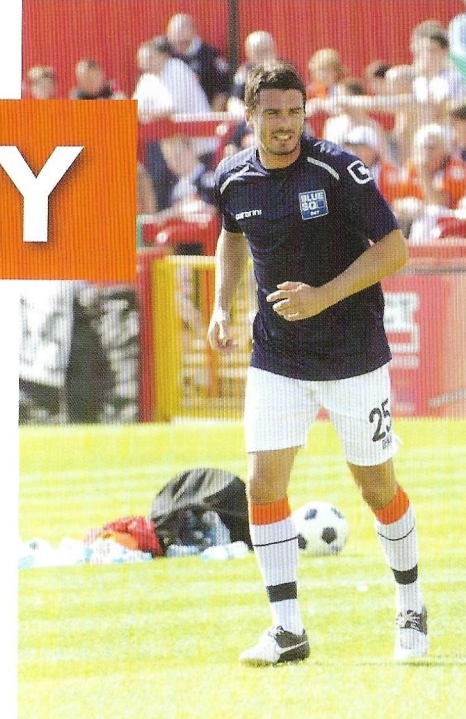
The point and clean sheet came a week after another indifferent showing at Alfreton and, with Wrexham expected to be up there challenging with us come the end of the season, it was pleasing to see that our confidence wasn't knocked by the previous week's result.

As I have touched upon, though, the Grimsby result was a huge disappointment. We didn't play too badly, we kept the ball well enough and had a few decent chances, but our defensive display let us down badly. As I have said in almost all my notes this season, we need to keep clean sheets if we're to be successful. We can play the best football in the world but if we can't keep clean sheets we are not going to achieve what we want this season.

It was the same story in the first half at Tamworth on Tuesday and only a terrific turnaround in the second 45 minutes spared our blushes of another defeat. To comeback, though, was a massive sign of the character and spirit that we have. It was a proper team performance with the lads coming off the bench doing the business when sent on by the manager.

There was a horrible sense of deja vu when Tamworth took the lead after we failed to deal with another high set-piece lofted into the box. I have lost count of the times I have mentioned our problems dealing with what should be a straightforward ball into our penalty area.

Again, time and hard work needs to be put in on the training ground to address this because we simply cannot let it continue.



We are continually shooting ourselves in the foot and making it hard for ourselves. You don't need me to tell you how important the first goal is in football yet we seem to want to give the opposition a head start.

On the flip side, however, you could argue that our belief and desire has seen us earn 10 points from losing positions. Two goals down against Gateshead to earn a draw and goals down against Hyde, Cambridge and Tamworth to secure wins.

It's great to see that we have a fighting spirit in our locker but for ours, yours and the management's sake it's better we get our noses in front in games early on – and we showed against Ebbsfleet and Macclesfield what can happen then.

It's fair to say it's been very up and down so far. One week we're on a high, the next a low.

Consistency is the key and I believe that will come. With hard work and belief it's only a matter of time.

We need you to believe in us, too. I know it's been a bit of rollercoaster so far, but please stick with us. You are our 12th man and, on behalf of all the lads, I'd like to thank all of you who travelled to Grimsby and Tamworth.

Enjoy the game and get behind us once more.

Ronnie is sponsored by Mark Francome and Key Holder Lettings & Management

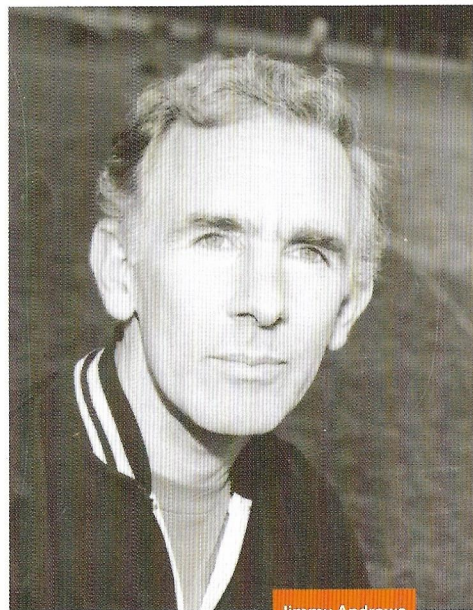
AROUND TOWN

THE LATEST NEWS AT KENILWORTH ROAD

REST IN PEACE JIMMY

Everyone at Kenilworth Road was saddened to learn of the death of former Hatters coach and assistant manager Jimmy Andrews at the age of 85.

Invergordon-born Jimmy started his football career at Dundee but moved to West Ham where he made a name for himself as a tricky winger after making his League debut in November 1951.



Jimmy Andrews

At Upton Park he was a part of a group that included Malcolm Allison and Noel Cantwell, who were all deep thinkers about the game and went on to carve out long careers in coaching and management once their playing days were over.

Jimmy went on to play for Leyton Orient and QPR, where he first met up with future Luton manager Alec Stock, before coaching at Chelsea, Millwall and Tottenham.

Soon after Stock arrived at Kenilworth Road in 1969, he called for Jimmy who, by chance, had just finished a coaching stint at Coventry – it also helped that he lived in Harpenden.

The Stock and Andrews combination presided over a Town team that won promotion from the old Division Three (now League 1) in 1970 and narrowly failed in a further promotion attempt 12 months later. As coach, Jimmy bought the best out of the likes of Malcolm Macdonald, Don Givens, Chris Nicholl and Luton legend John Moore.

Jimmy left Luton just before Stock in 1971 and eventually became manager of Cardiff for four years before taking up a scouting role at Southampton. Settling in Cowbridge, near Cardiff, Jimmy coached local teams and played a lot of golf.

Our condolences go out to his friends and family.

HOME DRAW FOR YOUNGSTERS

The Hatters' Under-18s' reward for beating AFC Kempston Rovers last week is a home tie against Peterborough Northern Star in the second qualifying round of the FA Youth Cup.

The tie will take place at Kenilworth Road on Wednesday 3rd October with a 7.30pm kick-off. Admission will be £3 for adults and £1 for under-16s. There will be no free admission for season tickets for this match, however.

SKIPPER SIMON SIGNS ON LOAN

The Town announced the loan signing of Guiseley captain Simon Ainge on Thursday afternoon.

The 24-year-old has also captained England C and arrives at Kenilworth Road for a month with a fine reputation as a commanding, goalscoring centre-half.

Yorkshireman Ainge is a product of Bradford City's youth system and went on to appear 11 times for the Bantams in League 2 – indeed he made his first start for the club against the Hatters in a 1-1 draw at Valley Parade in 2008.

However at the end of the 2008/09 campaign – during which he spent a successful loan spell with Cambridge United in the Blue Square Bet Premier – he was released



Simon Ainge

but moved to cross-city rivals Bradford Park Avenue. He wasn't with Avenue for long though, and he jumped at the chance to sign for Guiseley in February 2010. He originally started out at right-back for the Lions before establishing himself at centre-back as the side pushed for promotion to non-league's top flight.

His strength, aerial power and influential performances at the heart of the Guiseley back-line saw him handed the captaincy at the beginning of the 2010/11 campaign.

Since his arrival at Nethermoor Ainge has been an almost ever-present, and has come up with his fair share of important goals. He notched up nine goals from central defence last season as Guiseley finished runners-up in the Blue Square Bet North.

His displays have caught the attention of several Football League clubs and also the eye of England C boss Paul Fairclough, who called him to the Three Lions squad in the summer for their clash with Russia.

DUO LOANED OUT

Meanwhile Hatters duo Adam Watkins and Greg Taylor have joined clubs in the Blue Square Bet Premier on one-month loans.

Watkins, 21, has joined Kidderminster Harriers, while 22-year-old Taylor has agreed to a move to Tamworth.

Harriers host Macclesfield this afternoon whilst Tamworth travel to Woking.

REST IN PEACE STANLEY

It is with sadness that the club were informed of the death of life-long Town supporters Stanley Winterbone.

Stanley moved to Harpenden in the 1950s and became a regular supporter with a season ticket for many years until he moved away on retirement in the 1990s. He loved wingers like John Aston and David Moss and skilful players generally, with Gordon Turner possibly being his favourite.

Stanley passed his passion on to two sons and a daughter, too, and once he had moved away he eagerly awaited match reports from his sons, Adrian and Graham, who are both season ticket holders in the Enclosure block C, where he too once sat.

Stanley's wish was to see the club restored to its former glories. He is much missed already.

FA CUP DRAW

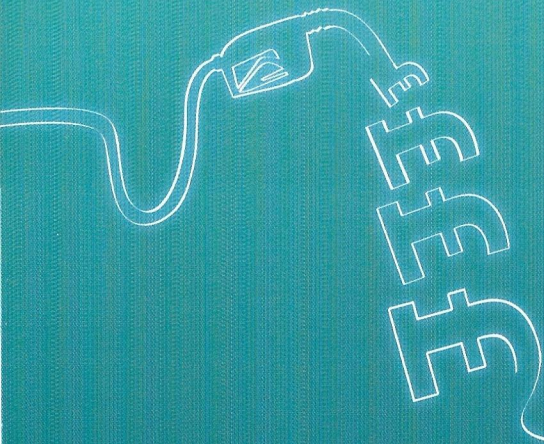
By the time we play our next home – against Braintree on 9th October – we will know our opposition in the fourth qualifying round of the FA Cup. The tie is due to be played on Saturday 29th October and the draw is due to take place on Monday 8th October, two days after the third qualifying round ties. Keep your eyes peeled on the official website and our social media pages for news of the draw and ticket information.

THANK YOU

It might not have been the best result but the club would like to thank those supporters who made the trip to Grimsby last Friday – even those who tried to get to the game but could not battle their way through the traffic in time to make it.

We were notified of the problems on the motorways and the issue the Bobbers Travel Club had in reaching Blundell Park in time for the 7.45pm start. Your efforts and backing were greatly appreciated – as it was again on Tamworth on another miserable night.

Here's hoping for a stress-free and rain-free trip to Lincoln City next Saturday in what will be a rare 3pm kick-off away from Kenilworth Road. You can find further details about our visit to Sincil Bank on pages 13 and 66.



Are you paying through the nozzle?

Try our online calculator and see how much you can save with the bus.

Visit arrivabus.co.uk/south-east

Great value tickets for bus travel in Luton



JUST THE TICKET FROM THE TICKET OFFICE



SEASON TICKETS AVAILABLE AT PRO-RATA PRICES

Adults (22-64) £266, Young Adults (17-21) and Seniors (65-75) £189, Golden Seniors (over 75s) £121, Youths (10-16) £29, Juniors (under 10s) £29.

HOME TICKET PRICES

Adults (22-64) £18, Young Adults (17-21) and Seniors (65-75) £13, Golden Seniors (over 75s) £10, Youths (10-16) £8, Juniors (under 10s) £5.



LINCOLN CITY v LUTON TOWN

BLUE SQUARE BET PREMIER

SATURDAY 6TH OCTOBER 2012, KICK-OFF 3PM

This game is pay on the day for Luton Town supporters but tickets can be purchased in advance from Lincoln by calling 01522 880011 between 10am and 4pm.

There is a £1 charge for a card payment.

Seating only. Prices: Adult £18 on the day, £16 in advance; concessions £13 on the day, £12 in advance; Under-18s £7 on the day, £6 in advance.



LUTON TOWN v BRAINTREE TOWN

BLUE SQUARE BET PREMIER

TUESDAY 9TH OCTOBER 2012, KICK-OFF 7.45PM

Tickets are now on sale at usual matchday prices



LUTON TOWN v NUNEATON TOWN

BLUE SQUARE BET PREMIER

SATURDAY 13TH OCTOBER 2012, KICK-OFF 3PM

Tickets are now on sale at usual matchday prices



FA CUP FOURTH QUALIFYING ROUND

SATURDAY 20TH OCTOBER 2012, KICK-OFF 3PM

Details of this tie will be made known once the draw is made on Monday 8th October.

COMMERCIAL BREAK

WITH DAVID HOSKINS

Welcome back again to Kenilworth Road for what's another big game for the Hatters.

We have the pleasure of welcoming today's match sponsor Heineken UK, match-ball sponsor Luton Taxis, commercial mascots Callum Lane and Oscar Kearney, and lucky junior diamond season ticket holder mascot Zak Tilley, to what promises to be an exciting game. Zak was chosen during a half-time draw at the Wrexham game, as our diamond season ticket holder mascot. Remember, entry into a matchday mascot draw at each home league game is one benefit of being a junior diamond member.

We are almost ready to announce the details for our annual Christmas event. This year we have a very special guest speaker lined up who will prove to be very popular and has a big story to tell. We are in the process of finalising all the details so I hope to be able to reveal all in our next programme.

Our next home match here at Kenilworth Road is on Tuesday 9th October against Braintree Town. If you would like to see that fixture as a match-ball sponsor or a matchday mascot and sample our fine array of hospitality then get in touch.

Enjoy the game.

MATCH SPONSOR



HEINEKEN UK

Heineken UK is an operating company of Heineken NV (Netherlands), the world's most international brewer.

They were formed in April 2008 when Heineken NV acquired the UK business of Scottish & Newcastle PLC and were integrated with Heineken's existing UK business.

Employing around 4,000 people, Heineken are a brewer and cider maker; a wholesaler and distributor of alcoholic drinks; and manage around 2,200 pubs through their S&N Pub Company business.

Whether you are a trade customer or a consumer, their unrivalled portfolio of brands include Foster's, Heineken, Strongbow, Kronenbourg 1664, John Smith's and Bulmers together with a full range of niche and speciality brands and are proud matchball sponsors of today's game.

MATCHBALL SPONSOR

LUTON TAXIS



Our taxis are friendlier than conventional chauffeur driven cars and mini cabs.

Why not try 'Taxi Share' –

a new initiative. Got friends and or colleagues? Why not share a cab?

Think about it... One route, five people five cars. Why not share a cab? One route, one taxi, five people travelling in safety and comfort?

FEATURED SERVICES:

- Our taxis give everyone freedom to travel.
- Purpose-built ramps for wheelchair accessibility.
- Ample headroom and leg room.
- Our taxis have access to 80% of local and national bus lanes, increasing our speed of service.

To call a Luton Taxi call 01582 735566.

COMMERCIAL MASCOTS

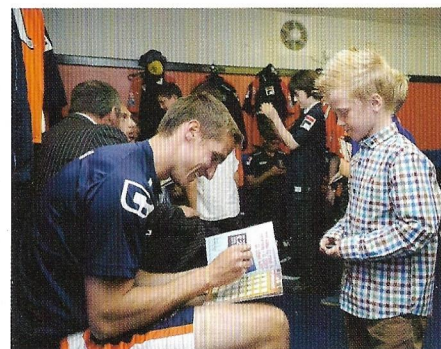


Today we have the pleasure of welcoming two commercial mascots to Kenilworth Road for this afternoon's game.

First up is six-year-old Callum Lane. Callum attends Maple Tree Lower School and enjoys playing football. His favourite player is Stuart Fleetwood.

Next is 10-year-old Oscar Kearney. Oscar attends Colenis Junior School and enjoys playing football, reading and boxing. His favourite player is Andre Gray.

We also have 10-year-old Zak Tilley. Zak attends Eagle House School and enjoys football and ice hockey. His favourite player is goalkeeper Dean Brill.



EXECUTIVE BOX HOLDERS

BOX 6:

G.P QUOREENTON

BOX 8

BILLINGTON &
LAWRENCE

BOX 9: M&S WATER
SERVICES



BOX 10:
F&S PIPEWORKS



BOX 11:
CES ELECTRICAL



BOX 13:
BARTHAM GROUP

bartham group
media • design • print

BOX 14:
T J ALDRIDGE



BOX 15: PICTONS SOLICITORS/
DOT GROUP INTERNATIONAL



BOX 16:
PRESTIGE DESIGN



BOX 17:
SHALLOWFORD UK



BOX 18:
CME HEATING



BOX 19: MARKYATE
PRECISION MACHINING

MARKYATE

BOX 20:
GILMARTINS



BOX 23: LONDON
ELECTRONICS



ROB & GREG HALL

BOX 25: MIDDLE
EAST CHEMICALS



BOX 26:



BOX 27:
SKF



#NONSENSEINFOOTBALL

"I'M GOING TO MAKE A
PREDICTION - IT COULD
GO EITHER WAY."

UP TO
£25
FREE BET*
SIGN UP TODAY

ENOUGH
SAID.
JUST
BET

1ST GOAL
SCORER
BETTING

Available for every
Blue Square Bet
Premier fixture

**BLUE
SQ**
BET

Sign up at
bluesq.com
web | mobile | tablet

T&Cs apply. *Sign up offer: New customers only. We'll match your first bet of at least £5 up to £25 in the form of a free bet token. Free bet stake not returned in winnings and expires after 30 days. Qualifying bet must be placed on a win, single or multiple bets at odds of evens or greater. Void bets do not qualify for free bet tokens. Over 18s only. Blue Square Bet encourages responsible gambling. gambleaware.co.uk

2012/13

KIT SPONSORS



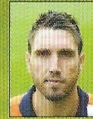
MARK TYLER
HOME: T J Fordham
AWAY: WHOSH
GLOVES: Joseph Watson



LATHANIEL ROWE-TURNER
HOME: Mortgages & Protection 4 U Ltd
AWAY: COYH



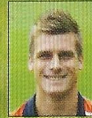
GREG TAYLOR
HOME: Jack Keenan
AWAY: Available



GARRY RICHARDS
HOME: Matthew Crossland
AWAY: Available



DEAN BECKWITH
HOME: Available
AWAY: Available



JANOS KOVACS
HOME: Mad Hatter
AWAY: Bobbers Travel



ALEX LAWLESS
HOME: Shallowford Consulting
AWAY: Gill, Julie & Yvonne



DANNY SPILLER
HOME: Ronnie Coles
AWAY: Available



JON SHAW
HOME: Jacqui Peacock
AWAY: Maddie Knight



SCOTT RENDELL
HOME: re-Mark-it
AWAY: Richard and Zak Tilley



JAKE HOWELLS
HOME: Neil Ehrenzweig
AWAY: Sports 262



ANDRE GRAY
HOME: Tom
AWAY: Tom



STUART FLEETWOOD
HOME: Richard Robinson
AWAY: Amit Jani



ADAM WATKINS
HOME: The Walsh Family from Marbella
AWAY: Kelly Knight



ALEX LACEY
HOME: Peter and Linda Little
AWAY: In Memory of Bill Lacey



JJ O'DONNELL
HOME: Mad Hatter
AWAY: Available



YASER KASIM
HOME: WHOSH
AWAY: Available



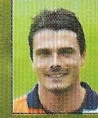
JAMES DANCE
HOME: Tommy Lennon
AWAY: WHOSH



LEWIS KIDD
HOME: Available
AWAY: Available
GLOVES: Available



MATT ROBINSON
HOME: Doug Knight
AWAY: Doug Knight



RONNIE HENRY
HOME: Conor Francombe
AWAY: Key Holder Lettings & Management



DAN WALKER
HOME: Peter & Linda Little
AWAY: Available



ALASAN ANN
HOME: Available
AWAY: Available



DEAN BRILL
HOME: Available
AWAY: Available
GLOVES: Available



JAKE WOOLLEY
HOME: Ian Gazeley
AWAY: Available



PAUL BUCKLE
HOME: LTS C
AWAY: Country Properties



ALAN NEILSON
HOME: Gleneden Plant Sales
AWAY: Ben Gray



CARL EMBERSON
HOME: Available
AWAY: Available



DMITRI KHARINE
HOME: Available
AWAY: Available



PAUL GARDEN
HOME: Available
AWAY: Available

To sponsor your favourite player email commercial@lutontown.co.uk

WELCOME SOUTHPORT



This afternoon's visitors have endured an indifferent start to this season's Blue Square Bet Premier campaign.

After starting the season with back-to-back draws against Grimsby and Alfreton, the Sandgrounders have struggled for consistency as they embark on their third season back in the Conference after they won promotion as champions in 2010 under current boss Liam Watson.

Watson enjoyed a successful career as a professional footballer before his career was cut short due to injury. During his brief spell, he graced Preston North End's Deepdale after signing from Warrington Town. At Preston he averaged a goal every three games but, after less than two years at the Lancashire outfit, returned to non-league football due to injury problems.

Watson is currently in his second spell in charge at Haig Avenue after his first spell lasted three years back in 2003 when he was just 33. After a short stay at Burscough, he returned in 2008 and led the Yellows back to the Conference.

Today's sides played out a fantastic 3-3 draw back in late January this year with a late Kevin Pilkington own goal giving Southport a share of the spoils in a game that also saw the Town come back from 2-0 down to be on the brink of three points.

This was, however, a slight taste of revenge for Watson's men who had visited Bedfordshire the previous August and left licking their wounds as they were well

beaten 5-1. Southport took an early lead before Adam Watkins equalised shortly before the interval. Town then came out in the second half strong and goals from Will Antwi, Amari Morgan-Smith, Robbie Willmott and Danny Crow completed the rout for the home side.

This was the second time Southport had visited Kenilworth Road in recent years with the only other previous visit again coming at a price. Town were still feeling the effects of the previous meeting that season when Southport ran out 2-1 winners at Haig Avenue but a repeat of that outcome was never a possibility as the Hatters dominated from the outset, finishing the fixture clear victors in a 6-1 thumping.

Familiar face

However, this will not be the only familiarity in the Southport ranks as former Hatter Godfrey Poku returns for his first visit to Kenilworth Road as an opposing player after his summer move to Mansfield Town.

Poku spent a period out on loan at Haig Avenue last season, whilst a Hatters player, before his Stags career was put on hold when he re-joined the Yellows again in a loan deal.

Southport will head into today's fixture full of optimism as they attempt to put a dent into the Hatters' promotion bid. Watson's men come into today's clash off the back of an imposing run of results which has seen them suffer only one defeat in their last five fixtures.

THE SANDGROUNDERS

AN AT-A-GLANCE GUIDE TO THE SOUTHPORT SQUAD

LIAM WATSON

The boss. In his second spell with the club, Liam has twice guided the Sandgrounders to the Blue Square Bet North title. He enjoyed his playing days as a striker with Preston and has also won the Northern Premier League with Burscough.

TONY MCMILLAN

Goalkeeper who arrived at Haig Avenue in the summer of 2008, following Liam Watson from Burscough.

JAMES SMITH

Strong, solid and experienced right-back who signed for Port last summer after three seasons at Altrincham. Came through the youth ranks at Liverpool and has also played for Stockport.

CHRIS LEVER

Consistent left-back now in his sixth season with the Sandgrounders having joined the club from Oldham. Also capable on the opposite flank.

STEVE AKRIGG

Promising centre-half who made the step up from the Northern League Premier Division with Skelmersdale to join Southport at the start of last season.

ANDY PARRY

Central midfielder who signed midway through last season's campaign following his release from then Premier League outfit Blackburn Rovers.

SIMON GRAND

Dependable centre-back who signed from Fleetwood in the summer of 2011. Has Football League experience under his belt too, having enjoyed spells with Carlisle, Rochdale and Aldershot.

SHAUN WHALLEY

Winger or striker in his second spell at Haig Avenue. Started his career as a scholar at Norwich and has also been on the books of Chester and Wrexham.

KARL LEDSHAM

Another ex-Skelmersdale man who signed for the Sandgrounders in November 2011. A central midfielder best known for his craft and drive in the middle of the park.

TONY GRAY

A sharp, clever striker who found the net against the Town last term - one of 24 goals for the Sandgrounders last season.

CHRIS ALMOND

Striker or winger who has forged a reputation for a direct and quick attacker. Another former Skelmersdale man, Almond has also played for Ashton Athletic.

RUSSELL BENJAMIN

Home-grown midfielder who featured 27 times last season after impressing out on loan at Colwyn Bay.

MATT NEMES

Australian-born goalkeeper who made a vital contribution in one of his three starts last season by saving a last-minute penalty at AFC Telford to ensure a 3-2 win.

LOUIS BARNES

Young left-back signed this summer from Marine. Had a trial at Manchester United in 2010.

AARON CHALMBERS

Promising, versatile midfielder signed this summer from North West Counties League side Stockport Sports.

ALAN MOOGAN

Midfielder who is also the Sandgrounders' first-team coach and community officer. A fine passer of the ball, he began his career as a youngster at Everton.

CHRIS LYNCH

Central defender who arrived this summer from Stalybridge Celtic. Former Burnley professional who was previously the Clarets' youth team captain.

STEVEN TAMES

Lively striker with a good touch who began to attract interest from Football League sides last season.

MICHAEL BAKARE

Pacy, direct, left-footed attacker signed this summer after impressive performances with Bishop Stortford and Chelmsford in recent seasons.

CHARLIE JOYCE

Teenage midfielder snapped up this summer following his release from Morecambe.

DARREN STEPHENSON

Jamaican-born teenage striker who signed permanently this summer after his release from Bradford. Scored twice in six appearances for the Sandgrounders last season whilst on-loan from the Bantams.

GODFREY POKU

Former Town and tough-tackling central midfielder currently on-loan from Mansfield. In his second temporary spell at Haig Avenue.



Established: 1881 (as Southport Central)
Nickname(s): The Sandgrounders, The Port
Stadium: Merseyrail Community Stadium
Capacity: 6,008 (Avg. attendance '11/12 - 1,209)
Manager: Liam Watson (4 years, 3 months)
Final league position '11/12: 7th BSBP

DID YOU KNOW?

- Southport had the fourth best away record in the BSBP last term.
- Watson's side won 13 games on their travels and amassed a laudable 44 points (12 more than the Hatters).

Southport were the Blue Square Bet Premier's surprise package last season emerging as Play-Off contenders and eventually finishing in seventh place with 76 points – 30 more than they amassed in the 2010/11 season. Even though manager Liam Watson has added some extra energy and pace to his ranks over the summer, the Sandgrounders are not expected to improve upon, or even match, their achievements of the last campaign. The bookmakers' odds suggest they are destined for a mid-table finish.

How have they started this season?

The Port are currently 14th in the Conference with 13 points after recording three wins, four draws and four defeats. Their recent form is rather mixed with the side experiencing two victories, two draws and two defeats in their last six games. The most significant of those results was the shock 3-0 defeat on home soil to AFC Telford and also the late win they earned over Gateshead. In fact, late goals have been a huge feature of Southport matches this season. Seven of the team's 11 matches have seen goals go in during the final 10 minutes. The Sandgrounders have scored five and conceded three in the final 10 minutes of matches and, as a result, have gained seven points in the late stages as well as losing another three points. It could be wise, then, to predict more late (and possibly significant) goals at Kenilworth Road this afternoon.

Last season's top scorer Tony Gray - who tallied 24 league goals - was sold to Blue Square Bet North club Chester on Monday, so Liam Watson now needs to decide which of his strikers can step up and fill the void. So far this season, Watson's team has not produced a stand-out goalscorer. Rather, five players have netted two goals each, but Sandgrounders fans are pinning their hopes on youngster Darren Stephenson to lead the club's scoring charts when he comes back from his loan spell. At home, the Port have struggled for goals – scoring only eight times in six games, but away from home they have managed eight goals in five matches. Much of this seems to be owed to their ability to hit teams on the break with pace down both flanks.



How will they play? Who are their key men?

Watson switched his side to a five-man defence after Southport appeared to be all too exposed at the back in central areas during the opening few fixtures of the 2012/13 campaign.

The versatile Andy Parry, who initially started his career at centre-back before being moved forward into midfield, will operate at right-back. 22-year-old Chris Lynch, who has received high praise for his excellent reading of the game, will play in the centre of defence along with usual right-back James Smith and the highly-experienced Simon Grand, who has played in the Football League for the likes of Rochdale, Carlisle and Grimsby. Chris Lever will line up at left-back and will be ready to step up for spot-kicks after scoring two penalties already this season. Watson's midfield consists of the combative duo of Alan Moogan and ex-Hatter Godfrey Poku. The Port are likely to bypass the midfield and favour a quick, direct, counter-attacking approach at Kenilworth Road. Shaun Whalley will pose the biggest threat to the Hatters' defence with his surging pace and direct runs. The explosive right-winger scored 11 goals last season and is equally adept at attacking from the left so may swap flanks with the quick and tricky Chris Almond throughout the game. Up front, Karl Ledsham – who is primarily a box-to-box midfielder – may again be deployed as a lone centre-forward.

THOUGHTS FROM THE OAK ROAD

TALK OF THE TOWN GETS THE INSIDE WORD FROM THE VISITORS' CAMP

WHAT'S YOUR NAME?

Rob Urwin

AGE?

54

HOW LONG HAVE YOU BEEN SUPPORTING YOUR CLUB?

40 years

HOW'S YOUR SEASON GONE SO FAR?

Up and down, as it did at the start of last season, but it's getting better as the weeks progress. We were unfortunate to lose at league leaders Newport County last Saturday to a 92nd-minute goal.

WHO'S YOUR PLAYER TO WATCH?

Shaun Whalley is the most attacking player, but we have Godfrey Poku back on loan and he is a real fans favourite who will be well known to most Luton fans. He has settled back in really well.

OUT OF THE TEAM'S YOU'VE SEEN SOUTHPORT PLAY SO FAR THIS SEASON, WHICH ONE HAS IMPRESSED YOU THE MOST?

Surprisingly enough it was Cambridge, who, since they beat us, have gone on a dreadful run. Newport had a very good second half last week but I don't think they will last the pace with a thin squad.

WHO DO YOU MOST WANT TO BEAT THIS SEASON?

With Fleetwood out of the way we don't have any real local rivals left, but wins against Stockport are always well received (I answer this before our game on Tuesday) as we were old Football League rivals back in the 70s.

HAVE YOU BEEN TO KENILWORTH ROAD BEFORE?

Yes, twice. The 6-0 and 5-1 hammerings we've received in the last couple of seasons tell their own story. Getting a goal at Kenilworth Road and being in the lead for a few minutes was real progress if you look at our previous scores - 0-2 in 1965/66, 0-0 in 1966/67, 0-0 in 1968/69 and 0-1 in 1969/70.

WHAT ARE YOUR MEMORIES FROM FACING LUTON IN THE PAST?

The 2-1 win at home in 2010/11 was a bit special in front of a big Luton following. It was a real highlight in a poor season.

WHAT DO YOU THINK OF YOUR MANAGER?

Liam Watson is the best manager in non-league football bar none. With the limited resources at his disposal, he works miracles and last season surpassed everyone's expectations. We are just amazed that he is still with us. Today is his 300th league game in charge over his two spells at the club and he has a first-class record.

WHAT'S YOUR CLUB'S FAVOURITE CHANT/SONG?

Da Doo Ron Ron! It's a long-standing club favourite that the fans adopted in the 60s and has stuck ever since. No football connection whatsoever but one of those songs that just goes with the club.

WHAT'S THE BEST SOUTHPORT MATCH YOU'VE WITNESSED SINCE YOU'VE BEEN SUPPORTING THEM?

The best occasion was the visit to Wembley for the FA Trophy Final in 1998, even though we lost. Clubs like Southport don't do Wembley, so this was an extra special occasion. The best match has probably got to be the FA Trophy semi-final second-leg at home to Slough. The atmosphere and occasion was out of this world.

WHO'S SOUTHPORT'S ALL-TIME HERO?

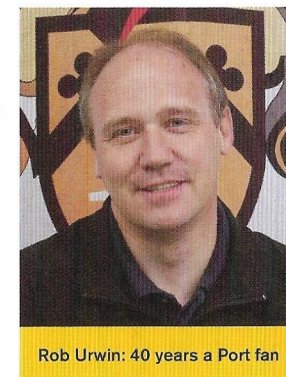
Eric Redrobe from our Football League days was a legend and most older fans' all-time favourite. We have had some good players pass through the club in our time en route to bigger things and are proud to see them progress.

WHAT ARE YOUR EXPECTATIONS FOR YOUR CLUB THIS SEASON?

After the amazing season last time around, we have to be realistic and not get the hopes too high. I think we will hold our own and finish mid-table.

WHAT'S THE SCORE GOING TO BE TODAY?

Heart says 1-1, head says 4-2!



Rob Urwin: 40 years a Port fan

CLASSIC CAMPAIGNS

FOOTBALL HISTORIAN LEIGH EDWARDS SELECTS 10 POST-WAR SOUTHPORT 'CLASSIC CAMPAIGNS'

1955/56

Southport finished in their highest position for 17 years in 1955/56. George Bromilow scored on his debut as they began with a 2-0 victory at Barrow and defensive changes sparked a 19-match unbeaten run that included a record seven consecutive away wins, taking Southport to the top of the Third Division (North) by the end of February. The run ended with a 2-1 defeat at Wrexham and Gordon Hunt's side finished in fifth position after losing three of their last four games. George Bromilow was the leading marksman with 22 League goals and he scored five times in the 6-1 FA Cup first round victory at home to Ashton United.

1965/66

Billy Bingham guided Southport to the FA Cup fifth round for only the second time in 1965/66. They beat Halifax Town, Stockport County, Ipswich Town and Cardiff City in the first-ever televised match at Haig Avenue before losing 2-0 at Hull City. The Sandgrounders hammered Lincoln City 5-1 and slammed four goals past Rochdale, Bradford City and Hartlepool in the Fourth Division but finished mid-table with a poor away record. Alan Spence was top scorer, while Alex Russell and Ron Smith were ever-present. Fred Molyneux and Arthur Peat missed just one match each. Jim Fryatt arrived from Bradford PA in March.

1966/67

Southport won promotion for the first time in 1966/67. Billy Bingham's side began with a 2-1 defeat at Port Vale but dropped just one point in their next six games. They recovered from three successive defeats to lose just once in 14 matches but the main stand at Haig Avenue was destroyed by fire in December. The Sandgrounders trounced leaders Stockport 4-0 in February shortly before George Andrews replaced Eric Redrobe in attack. Southport lost just two of their last 17 games, winning 2-1 at high-flying Tranmere and clinching promotion as Fourth Division runners-up with a 1-0 win at home to Southend in their final match.

1968/69

Southport finished in their highest-ever League position in 1968/69. Don McEvoy's side lost their opening four League games and a League Cup second round match against Newcastle United watched by 8,521 at Haig Avenue, but remained unbeaten at home for the rest of the season. They won 5-0 against Stockport and Shrewsbury and slammed four goals past Gillingham, Crewe and Plymouth, losing just two of their last 16 games to finish eighth in the Third Division. George Andrews was leading scorer with 19 goals, while other notable figures included Arthur Peat, Malcolm Russell, Tony Field, Amby Clarke and Eric Redrobe.

1972/73

Jimmy Meadows managed Southport to the Fourth Division title in 1972/73. The Sandgrounders dropped just one point in their opening six matches and bounced back from a 2-0 defeat at Doncaster to remain unbeaten in their next eight games. Alex Russell returned from Tranmere and Jim Fryatt scored four goals in Southport's 7-0 victory at Darlington in January. They clinched promotion with a 2-0 win at Crewe, then the championship with a 1-1 draw with Hartlepool in their final home match. Top scorer Andy Provan and Jim Fryatt netted 34 goals between them as Southport finished four points ahead of runners-up Hereford.

1990/91

Southport achieved the Northern Premier League Cup and Liverpool Senior Cup double in 1990/91. Brian Kettle's side beat Frickley Athletic, Horwich RMI, Witton Albion and Bangor City en route to the Northern Premier League Cup final, hammering Buxton 4-1 at Maine Road to win the trophy for the first time. The Sandgrounders added the Liverpool Senior Cup the following week, beating Marine 4-0 at Goodison Park, but failed to clinch the treble after losing 3-2 to Dover Athletic in the Premier Inter League Cup final. Steve Holden, Steve Whitehall and Jimmy Blackhurst scored 66 goals between them.

1992/93

Steve Haw scored 31 goals as Southport stormed to the Northern Premier League title in 1992/93. They started with a 2-1 defeat at home to Emley but gained eight straight wins, losing just one of their next 37 games, 1-0 at Leek Town in November. Southport scored 103 Northern Premier League goals, netting 13 in their two matches against Chorley and five against Matlock, Whitley Bay, Frickley, Goole, Droylsden and Fleetwood. They lost two of their last four games but finished six points ahead of runners-up Winsford. Skipper Kevin Mooney was ever-present 'Player of the Year' as they also won the Liverpool Senior Cup.

1997/98

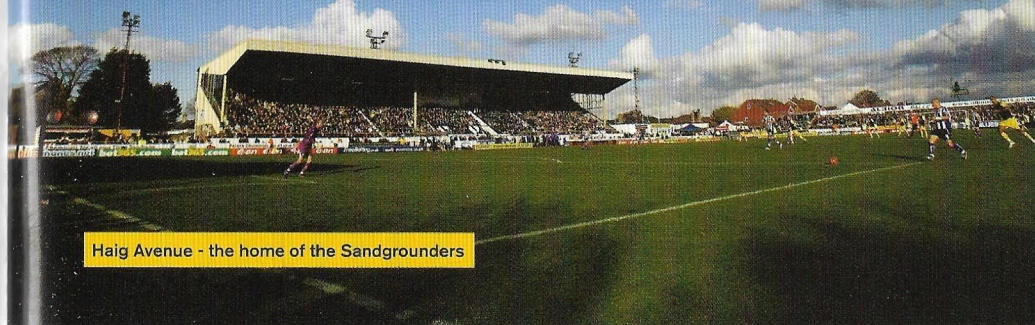
Player-manager Paul Futcher guided Southport to the FA Trophy final in 1997/98. The Sandgrounders defeated Winsford United, Yeading, Altrincham, Grantham Town and Slough Town to reach Wembley for the first time. They lost 1-0 to Cheltenham Town in the final watched by 26,837; Billy Stewart, Andy Farley, Tim Ryan, Ged Kiely, Phil Horner, Paul Futcher, Dave Thompson (Phil Bolland), Brian Butler, Brian Ross, David Gamble, Kevin Formby (Andy Whittaker). Southport finished a disappointing 16th in the Conference after starting with a 4-1 win over Hednesford but retained the ATS Challenge Trophy.

2004/05

Terry Fearn was leading marksman with 28 goals as Southport won the Conference North title in 2004/05. The Sandgrounders raced to the top of the table after losing just one of their opening nine games but then slipped to fifth position after three successive defeats before a run of one defeat in nine matches took them back to pole position by Boxing Day. Southport completed the double over title rivals Nuneaton Borough during the first half of the season and clinched the title with seven wins in their last eight games, finishing three points ahead of runners-up Nuneaton. They lost 3-1 to Hereford United in the FA Cup first round.

2009/10

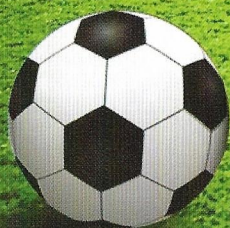
Liam Watson guided Southport to the Blue Square North title in 2009/10. The Sandgrounders emerged as early leaders after losing just one of their opening 21 games, 3-2 at Ilkeston. They won 5-0 at home to title rivals Fleetwood on Boxing Day but lost 4-0 in the return match on New Year's Day and were knocked off the top of the table. A run of just one defeat in 13 games took them back to pole position by early April and they clinched the title with a 3-0 victory at Eastwood Town on the last day, finishing one point ahead of Fleetwood. Steve Daley, Kieron Kilheaney, Matty McGinn and Chris Simm scored 62 goals between them.



Haig Avenue - the home of the Sandgrounders



Hartwell Dunstable Proud Supporters of Luton Town



- New and used car sales
- Service & MOT Facilities
- Parts and accessories

Plus £100 off any car on production of this advert and we'll donate an extra £50 to Luton Town.

 **Hartwell.co.uk**
Driving value since 1919

77-87 London Road, Dunstable LU6 3DT
Tel: 0844 324 1750



Search for Hartwell
Dunstable
on Facebook



Follow us
on Twitter
@HartwellDunstable

TOWN 0-0 WREXHAM



PROMOTION RIVALS DRAW A BLANK

Town boss Paul Buckle had no complaints as his side had to settle for a goalless draw with promotion rivals Wrexham at Kenilworth Road.

Both sides had chances to win but Buckle thought a point apiece was a fair reflection on a hard-fought 90 minutes of action.

"I think in the end it's an entertaining game and a fair result," he told Hatters Player afterwards. "We came up against a good side. The first goal would have been the important one, both teams would have known that, but it didn't come.

"We know where the points were lost, and where they were lost last week, so we've had a chat about that.

"But I thought there were some outstanding performances today; I thought our two centre halves stuck at it in the face of loads of aerial competition. Kovacs was on the front foot - he didn't let them turn and get at us.

"But there were chances at both ends, and Jon Shaw came back well today, despite not being able to even play a game during his ban, and there was a much-needed clean sheet too, so there were a lot of pluses in there for us today.

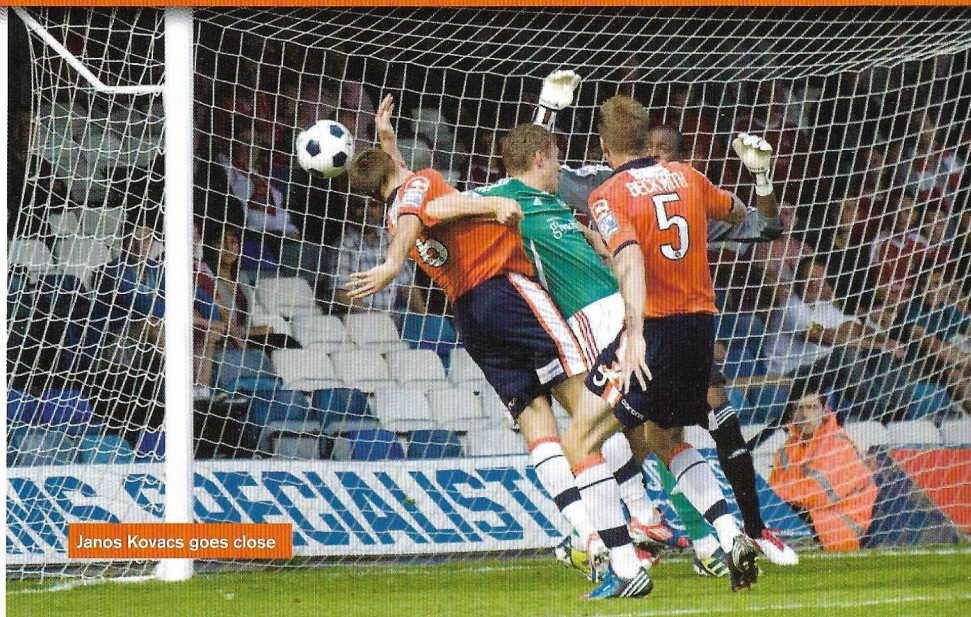
"We are desperate to get a regular starting XI, and we tried again today but then we had Jake Howells coming off early with concussion, so it's all hands to the pump in terms of players having to come on. But we're hoping to get a settled team and formation, because if you look at today's opponents, 19 points separated the two clubs just nine games ago and that's a big gap to bridge.

"The only thing we didn't do today was find the back of the net - both teams were guilty of some bad finishing, but there was some good defending from both teams today, and you can see from that that it's two clubs that don't want to be playing at this level and trying their damndest to get out. I think Wrexham will be happy with a point.

"It's still very early days, but we need to try and get a starting eleven out there on a regular basis, and then that consistency will come. Today's a big step for us against this Wrexham team who were a country mile ahead of us last season. We did ever so well to get past them over two games in the play-offs, but over 46 games we have to try hard to get somewhere near where they were last year, and we're building towards that."



TOWN 0 WREXHAM 0



Janos Kovacs goes close



Stuart Fleetwood takes a ride



Janos heads clear under pressure from Andy Bishop

POSSESSION	
50%	50%
CORNERS	
7	4
OFFSIDES	
3	4
SHOTS ON TARGET	
1	5
SHOTS OFF TARGET	
5	5
FOULS	
10	12
YELLOW CARDS	
0	1
RED CARDS	
0	0

TOWN:

Tyler
Beckwith
Kovacs
Henry
Howells
(sub Rowe-Turner 20)
Lawless
O'Donnell
Rendell
Gray
(sub Kasim 77)
Fleetwood
(sub Walker 59)
Shaw
Subs not used:
Essam
J. Robinson

WREXHAM:

Mayebi
S. Wright
Ashton
Riley
Cieslewicz
(sub Ormerod 81)
Harris
D. Wright
(sub Ogleby 81)
Keates
Hunt
Walker
Bishop
Subs not used:
Morrell
Little
Westwood

ATTENDANCE:

6,675 (319 Wrexham)



FPM Facility Services Ltd
FPM Maintenance

- Building Maintenance
- Office Fit out and Refurbishment
- Electrical Contractors and Engineers
- Air conditioning and Plumbing
- Flooring
- Site Pathway and Parking Maintenance
- Industrial Steelwork

FPM Facility Services Ltd are an Accredited NICEIC company
we are proud to provide continued service to
easyJet and Luton Town Fc 2020 LTD

easyJet.com
Flights • Hotels • Cars • Holidays



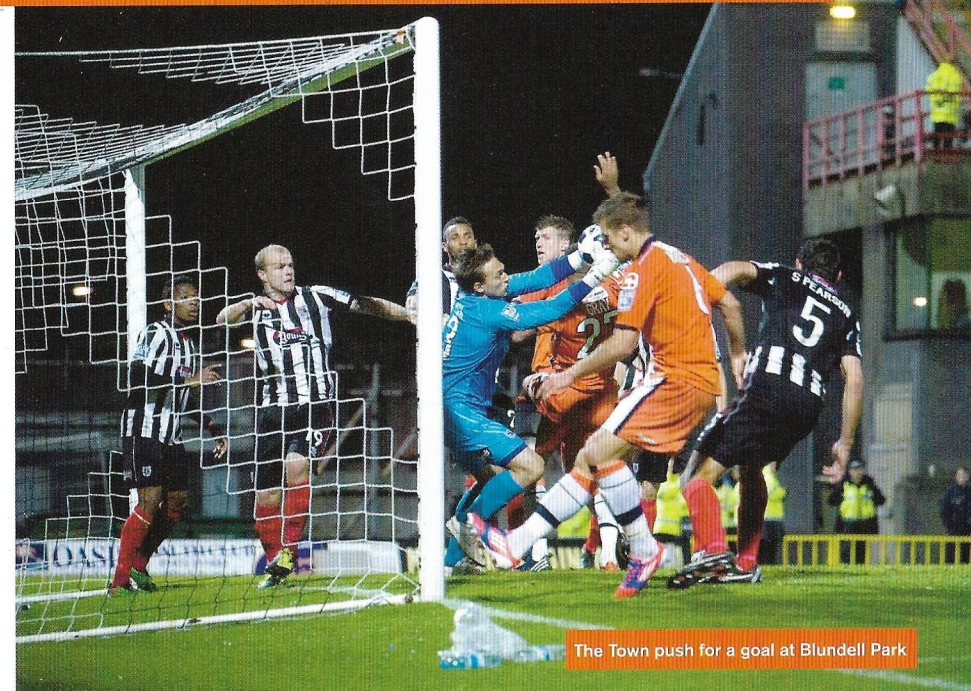
35-37 Hastings Street, Luton, Beds. LU1 5BE

Tel: 01582 484020 Fax: 01582 487614

Email: service@f-p-m.co.uk Web: www.f-p-m.co.uk



GRIMSBY 4-1 TOWN



The Town push for a goal at Blundell Park

HATTERS WELL BEATEN

The Town slumped to their third defeat of the season after being comprehensively beaten by Grimsby in front of the live television cameras.

On a ground where the Hatters have rarely enjoyed success, the hosts were three goals to the good at the break following strikes from Joe Colbeck, Andy Cook and Ross Hannah.

After searching for a way back into the game early in the second half, the hosts went 4-0 up on 70 minutes when Dean Beckwith headed into his own net.

Grimsby had chances to extend their lead before Scott Rendell, who had come closest in the first half for the Town, pulled a goal back for Paul Buckle's side 15 minutes from the end.

And the boss was understandably frustrated after seeing the Hatters defeated on the road for the second away fixture in succession.

"I'm obviously not happy but tonight it was very simple: our centre-halves could not deal with balls into the box," Buckle told Hatters Player afterwards.

"Grimsby scored their first goal from their first cross into the box and it carried on all night. We should be dealing with them but we are really struggling to.

"We were beaten today because our two centre-halves couldn't head the ball. Janos is a man mountain but he's got to be more aggressive and that's the second time I've taken him off at half-time now.

"We need to be a bit more honest but we deserved to be beaten. If we can't defend high balls into the box then we're going to struggle and it's my job, as manager, to sort it out, and to sort it out quickly.

"Tonight we created enough chances to win the game and we've had some really good opportunities. But we've been let down defensively, and when you concede three goals in the first half you're always under pressure.

"We should be coming to a place like Grimsby a keeping clean sheet. We managed it against Wrexham but couldn't today - and that has cost us."



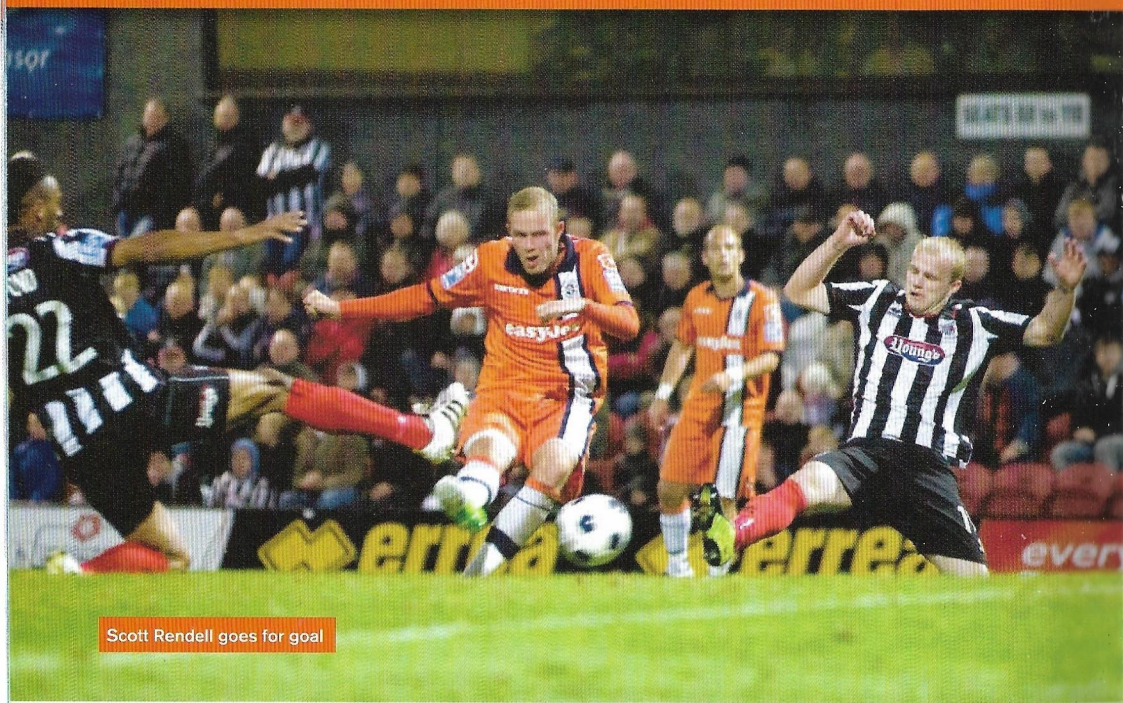
GRIMSBY 4

Colbeck 8, Cook 40, Hannah 43, Beckwith (og) 71

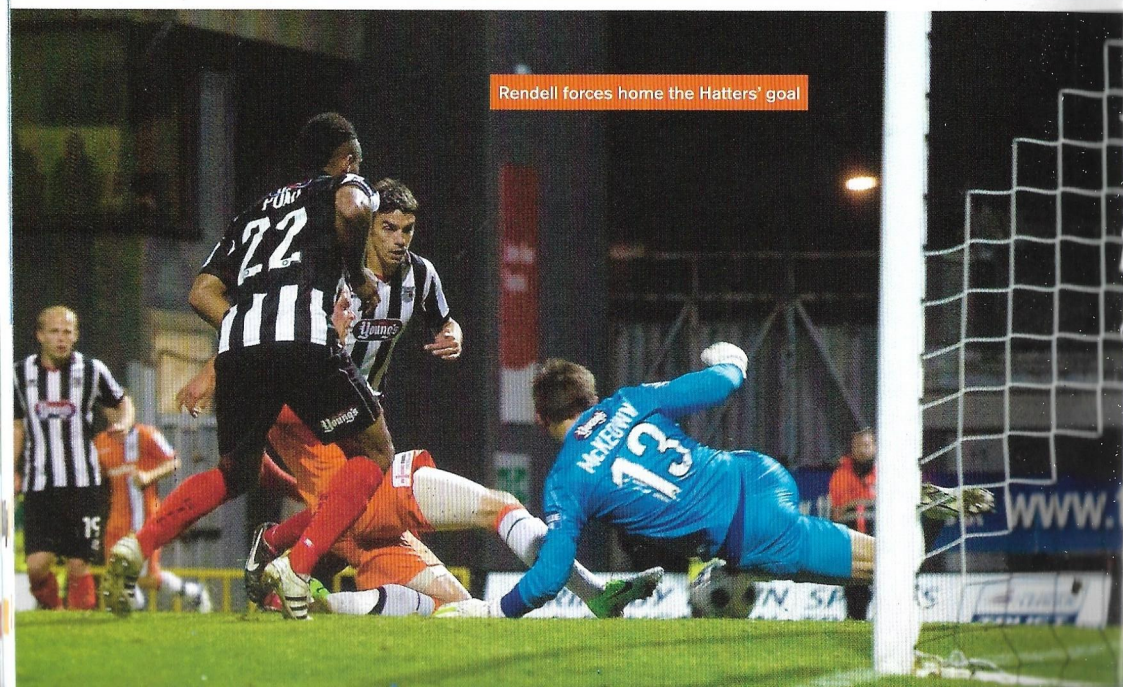


TOWN 1

Rendell 76



Scott Rendell goes for goal



Rendell forces home the Hatters' goal

Grimsby get to grips with Jon Shaw



POSSESSION

48% 52%

CORNERS

3 12

OFFSIDES

2 1

SHOTS ON TARGET

7 5

SHOTS OFF TARGET

6 11

FOULS

12 14

YELLOW CARDS

1 0

RED CARDS

0 0

GRIMSBY:

McKeown
Thomas
Niven
Pearson
Colbeck
Disley
Cook
Wood
Pond
Neilson
(sub Artus 73)
Hannah
(sub Southwell 81)
Subs not used:
Hatton
Miller
Elding

TOWN:

Tyler
Henry
(sub Kasim 57)
Beckwith
Kovacs
(sub Essam 46)
Howells
Lawless
O'Donnell
Rendell
Fleetwood
(sub J. Robinson 64)
Gray
Shaw

ATTENDANCE:

4,074
(125 Luton)



The Hatters Business Breakfast Club

Membership includes:

- Monthly breakfast meeting held at Luton Town Football Club
- The opportunity to generate new business
- Encourage other members to learn about your business
- Network with local and likeminded businesses and their guests
- Business referrals
- Support local businesses
- Only one member per business sector



The Hatters
Business Breakfast Club



For further information contact David Hoskins on 01582 411622 or email david.hoskins@lutontown.co.uk



Supporting the grass roots

Football Foundation



FUNDING PARTNERS

www.footballfoundation.org.uk

improving facilities • creating opportunities • building communities

Charity No 1079109 • Company No 1876185

TAMWORTH 1-2 TOWN

SUBS TO THE RESCUE

Town boss Paul Buckle had mixed reactions after seeing his side fight-back from a goal down to grind out a valuable three points at Tamworth.

Two goals in four second-half minutes from substitutes Yaser Kasim and Stuart Fleetwood cancelled out John Dempster's first-half header for the hosts.

The duo joined Jake Robinson in a treble change by the manager shortly before the hour mark and it was Kasim who struck first on 63 minutes when his left-footed shot found the bottom corner after his initial two shots were blocked by the Tamworth defence.

Then, on 66 minutes, Andre Gray ran onto Robinson's searching pass and cut the ball back for Fleetwood to hammer home his eighth of the season from 10 yards to complete the turnaround.

Again, the Town's Achilles heel at the back reared its ugly head with Dempster's effort coming from a set-piece, but the manager was pleased with the spirit showed by his players – and the travelling 390 supporters – that in the end saw the Hatters over the line in sodden conditions at the Lamb.

"We've had to really work hard for the three points and again we've not made life easy for ourselves," Buckle said afterwards. "It was a carbon copy of what's been our downfall of late and a free-header in our box for their goal put everybody under pressure and we must cut it out.

"We knew it wasn't going to be a beautiful game of football tonight, we knew it was going to be tough and that we had to fight and we chose a team and a system to deal with that. In open play I thought we did but the set-play put us under pressure. We know to get out of this league you've got to be tight at the back. We had plenty of height in the team tonight but haven't dealt with one high ball into the box – and that's got to change.

"But I've got to congratulate the fans and the players because they've stuck with it. Tamworth are not on a bad run – they were a point behind us in the table before tonight.

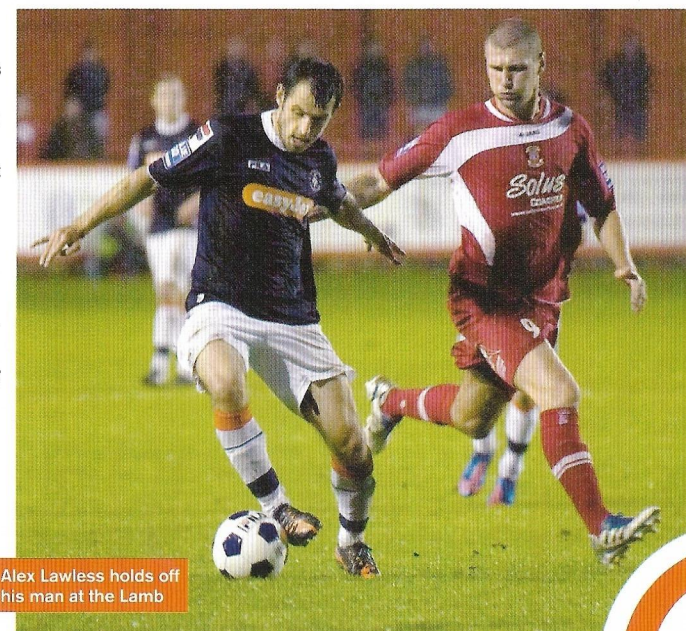
"We must be careful because we can't believe we're going to steamroller teams. We've dug in and the fans have stayed with us on a miserable night and the boys have come off the bench to get the goals. It was a real team effort."

The manager explained his decision to make two changes to the side that was thumped at Grimsby, dropping Janos Kovacs and Fleetwood to the bench.

"Janos has played a lot of games and he needed a rest," Buckle said. "I had a heart-to-heart with him and we agreed that it was the right decision.

"It was my intention to play to big men up front in Scott Rendell and Jon Shaw because we knew it would be a physical game. We went 4-4-2 and you can't play Stuart on the wing – it's not his position.

"We made the changes at a crucial time and I'm happy they've paid off. In the end we could have scored a few more."



Alex Lawless holds off his man at the Lamb

CENTRE SPOT



As the rain lashes down, striker Stuart Fleetwood keeps his eye on the ball as he hits the Town's winner at Tamworth



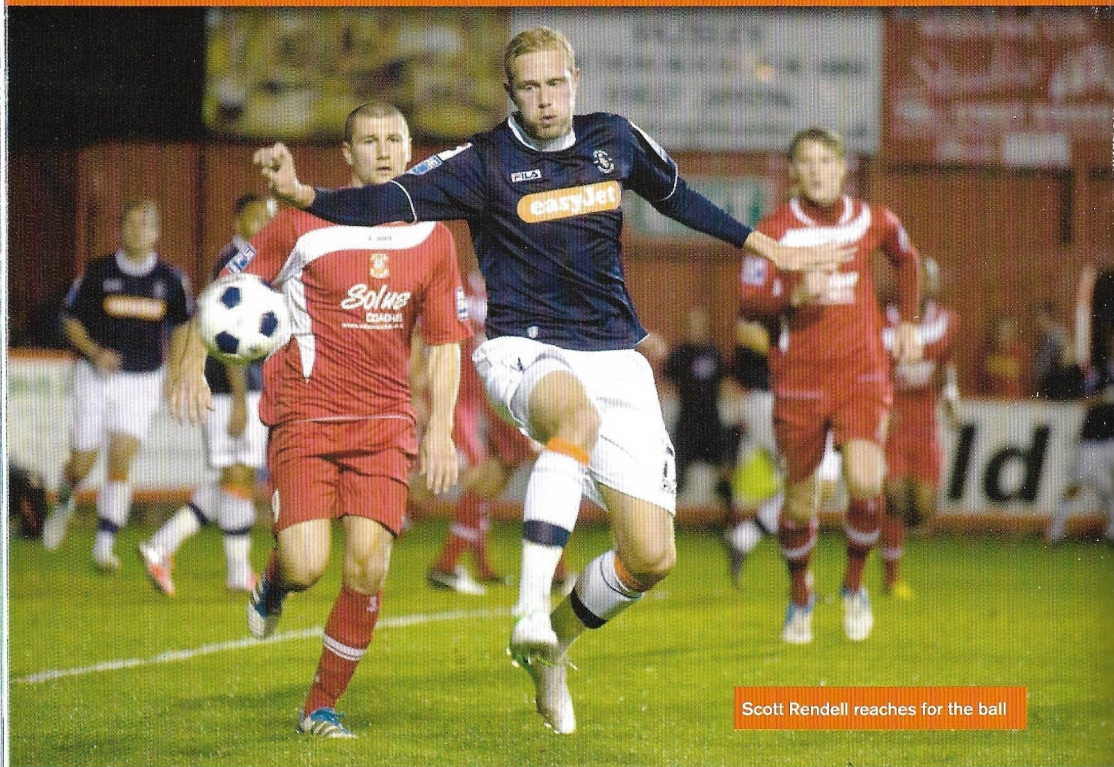
TAMWORTH

Dempster 23

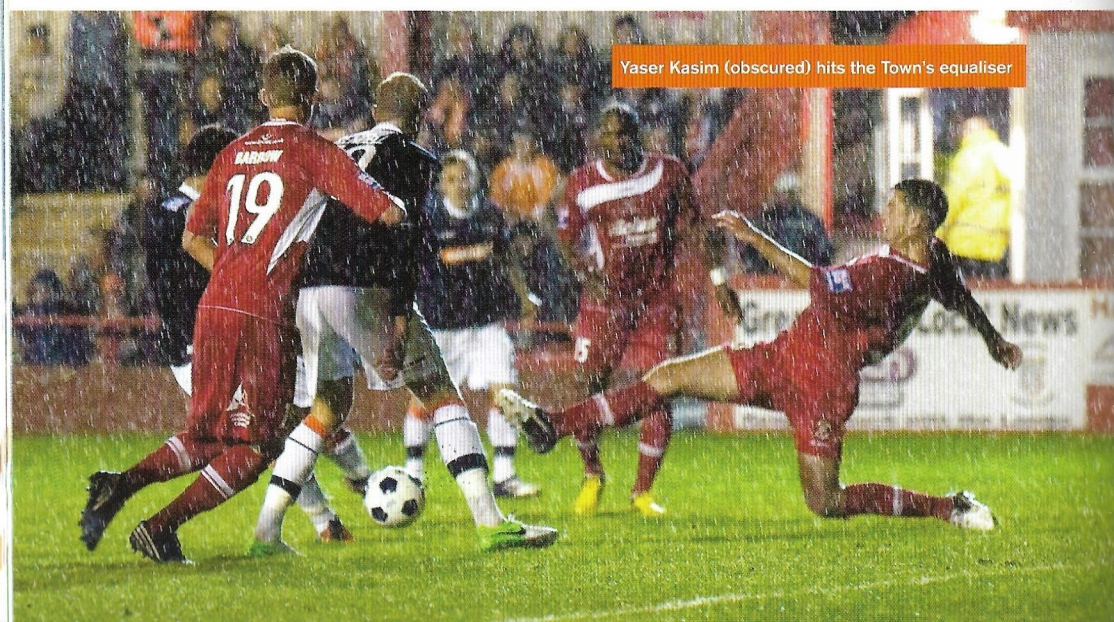


TOWN

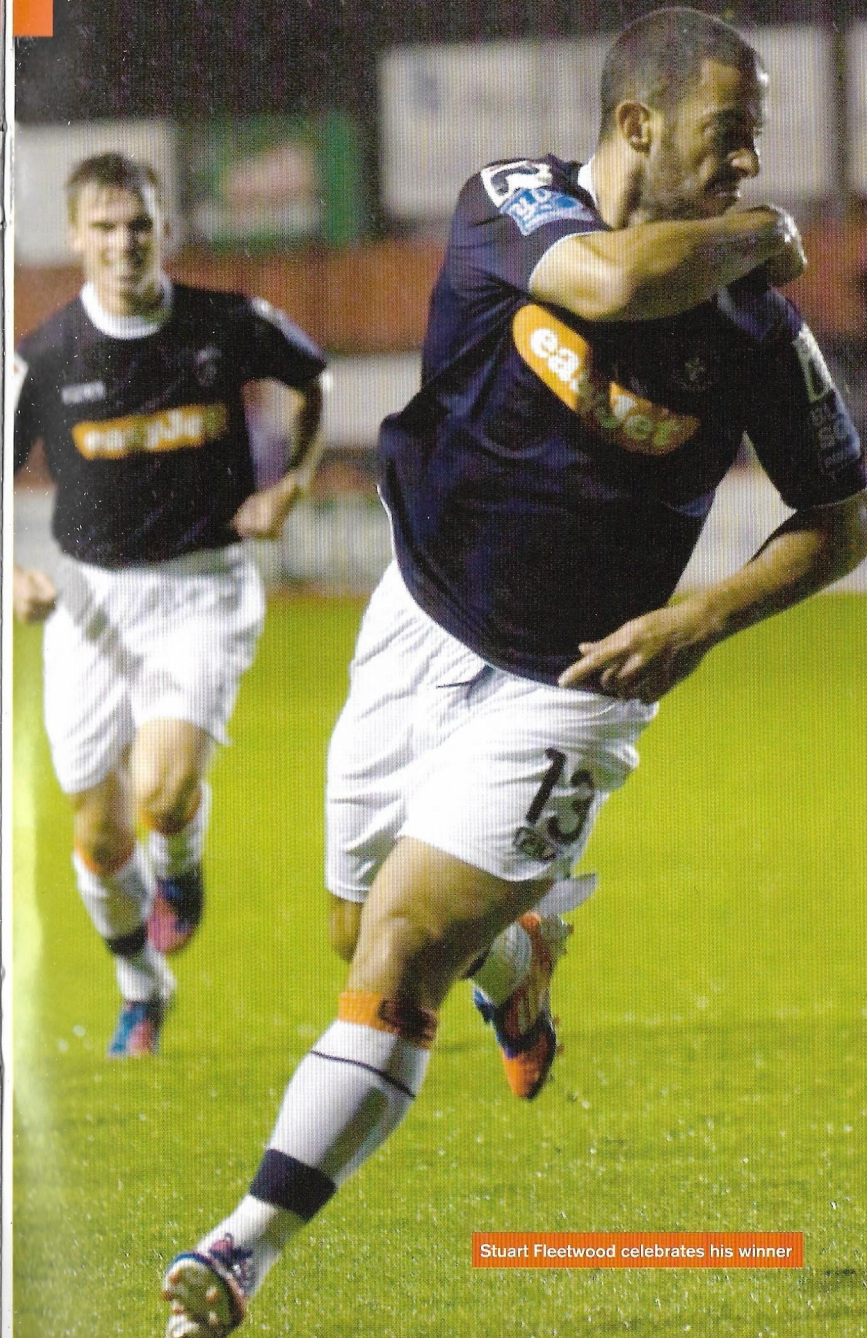
Kasim 63, Fleetwood 66



Scott Rendell reaches for the ball



Yaser Kasim (obscured) hits the Town's equaliser



Stuart Fleetwood celebrates his winner

POSSESSION

52% 48%

CORNERS

4 5

OFFSIDES

4 4

SHOTS ON TARGET

5 5

SHOTS OFF TARGET

3 4

FOULS

15 18

YELLOW CARDS

2 1

RED CARDS

0 0

TAMWORTH:

Breedon
Marshall
Courtney
Dempster
Baldock
Kerry
Till
Barrow
(sub Gudger 86)
Cunnington
Wright
Jeffers
(sub Collins 88)
Subs not used:
Wren
Ivey-Ward
Kelly

TOWN:

Tyler
Rowe-Turner
(sub J. Robinson 57)
Beckwith
Essam
Howells
Henry
(sub Kasim 58)
Lawless
O'Donnell
Shaw
(sub Fleetwood 58)
Rendell
Gray
Subs not used:
Kovacs
Walker

ATTENDANCE:

1,137 (390 Luton)

PICTURE THE PAST

CLUB HISTORIAN ROGER WASH DELVES
INTO HIS PHOTOGRAPHIC ARCHIVE



An unusual shot of Luton player manager Dally Duncan (right) advancing down the wing in front of the old Bobbers Stand.

The game in question, an FA Cup fourth round tie against Swansea in January 1947, saw both sides needing to change their strip as was common at the time where there was a colour clash. The Hatters played in red shirts while their opponents were in blue.

For the record, a crowd of 24,327 saw the Town win 2-0.

TOWN TREASURES

CLUB HISTORIAN ROGER WASH DELVES DEEP INTO HIS VAST COLLECTION OF HATTERS MEMORABILIA



Horace Pakes Finlayson, J. King, T.P. Dolman, H.W. Nelson, J.H. Coen, J.L. Mackey, T.S. Smith, T.S. Fellowes, W.J. Hancock, E. Dawes, A.G. Payne, J. Roberts, F. Stephenson, G.H.

LUTON TOWN'S PROMOTION TEAM

Menu

CANTALOUPE MELON
HORS D'OEUVRES VARIES

CLEAR TURTLE AU MADEIRA

SCOTCH SALMON MAYONNAISE

BRAISED SWEETBREADS
AND MUSHROOMS

SURREY CHICKEN CHAUDFROID
SALAD ST. JEAN

FRESH FRUIT SALAD AND CREAM
STRAWBERRY ICE

COFFEE

Toast List

THE KING

OUR GUESTS
*Proposed by E. HUGH WOODS, Esq.
(Vice-Chairman of Luton Town Football Club)*
*Response by S. F. ROUS, Esq.
(Secretary, Football Association)*
C. J. BARTLETT, Esq.
(Managing Director, Vauxhall Motors, Ltd.)

THE LUTON TOWN FOOTBALL CLUB
*Proposed by THE RE. HON. E. L. BURGIN, M.P., D.L.
(Minister of Transport)*
*Response by ALDERMAN C. JEVES, C.C.
(Chairman of Luton Town Football Club)*

THE FOOTBALL ASSOCIATION,
THE FOOTBALL LEAGUE
AND KINDRED ASSOCIATIONS
*Proposed by ALDERMAN H. ARNOLD, C.A., J.P.
(President of Luton Town Football Club)*
*Response by A. BROOK HIRST, Esq.
(Member of the Football Association Council)*
C. F. SUTCLIFFE, Esq.
(President, Football League)

THE PRESS
*Proposed by SIR THOMAS KEENS, D.L.
(Response by J. J. HUNT, Esq.
(Circulator of The Luton News))*

THE CHAIRMAN
*Proposed by A. J. DARNELL, Esq.
(Representative of the Football League, Third Division,
Southern Section)*
Response by ALDERMAN C. JEVES, C.C.

Artists

FRED YULE
*(of the B.B.C.)
Baritone*

HAYDN AND HIS
NOVELTY QUINTETTE

A. L. MATTHEWS, L.R.A.M.
Accompianist

Wine List

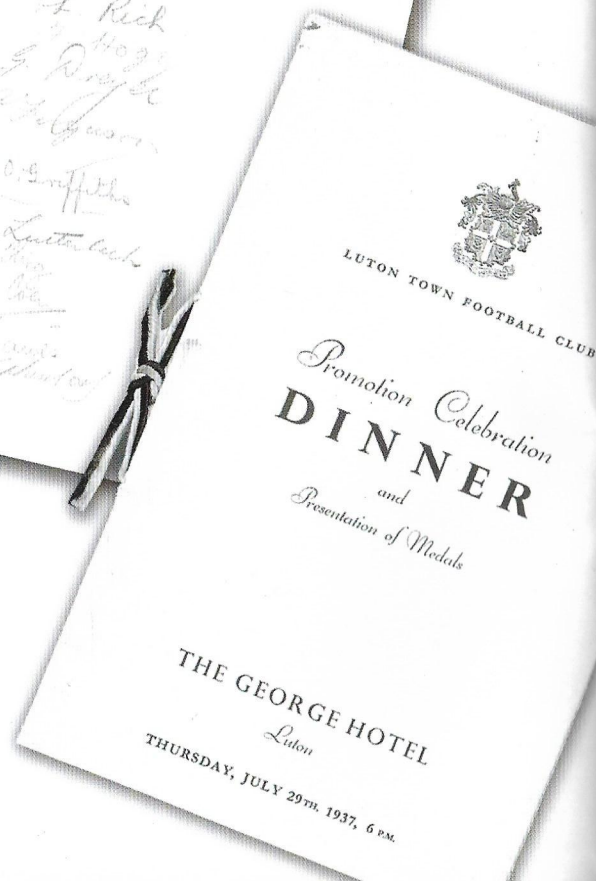
APERITIFS
POMMARD
SAUTERNES
LIEBFRAUMILCH

POR LARRAGA
BLUE RING CIGARETTES

The long gone George Hotel was the setting for the Town's Promotion Celebration Dinner in 1937.

The Hatters had won the championship of Division Three (South) the previous season and were about to venture into Division Two (now the Championship) for the first time since 1900.

Looking at the menu I feel sure that Braised Sweetbreads are not a preferred choice today and in the list of 'Artists' I would guess that 'Haydn and his Novelty Quintette' were not into hip-hop!



THE CAMERA NEVER LIES

CLUB HISTORIAN ROGER WASH DELVES
INTO HIS PHOTOGRAPHIC ARCHIVE

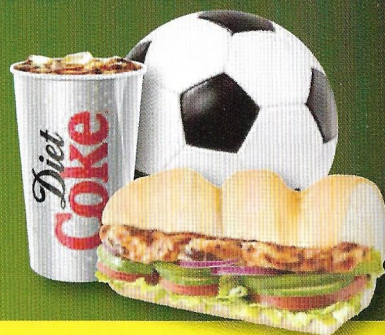


Hatters players Kerry Dixon, Ceri Hughes, Juergen Sommer, Dwight Marshall and Scott Oakes show off their new kit before the start of the 1994/95 campaign.
I could never understand why the goalkeeper's shirt never took off in the club shop!

We're making a team out of Subs!

SUBWAY® are creating a special fund to help schoolkids afford professional football training

Buy any selected Sub & a regular drink and we'll donate 10p to...



Luton Town Football Club

Choose from:

- Sweet Onion Chicken Teriyaki • SUBWAY MELT™ • Chicken & Bacon Ranch Melt
- Steak™ & Cheese • Veggie Patty • Chicken Temptation® • Chicken Pizziola



Support your local team at:

- Bridge Street
- 37 George Street
- New Bedford Road

Luton

SUBWAY
eat fresh.®

SUBWAY® Stores support local football

*Not valid for double meat, double cheese, extra bacon or any other extras. Exclusions may apply. Ask staff for details. *Formed Meat. *Shaved steak strips. Excludes bottled & canned drinks. Prices and participation may vary. Only available in the Anglia region. Management reserve the right to withdraw the offer at any time. All third party trademarks are the property of their respective owners. ©2012 Doctor's Associates Inc. SUBWAY® is a registered trademark of Doctor's Associates Inc.

ON THIS DAY

SEPTEMBER 29

THE RECORD

Town supporters reminiscing about this day in history will have reasonably happy memories. Well, the Hatters have won more than they have lost for starters. Nine wins, two draws and six defeats make up the 17 matches played on this date. In total, 56 goals have been scored, including 31 in the Town's favour. On average there are 3.29 goals scored in games involving the Town.

DUE A WIN

Of the six defeats, three of them have occurred in the last three times a game has taken place on this day. In fact, the Hatters haven't won in four games on this day and the last time they tasted success was a top-flight victory at Norwich City in 1990. That day, Danish international striker Lars Elstrup helped himself to a second-half hat-trick. The win pushed Jim Ryan's side up to sixth in what now is the Premier League.

Those three successive defeats, however, came in 2009, 2007 and 2001 when Stevenage, Huddersfield Town and Plymouth Argyle saw off the Town respectively. The 1-0 defeat to Boro was the Town's first loss at Kenilworth Road in the Blue Square Bet Premier and proved to be Mick Harford's last game in charge.

THE EARLY YEARS

In contrast to recent years, the Hatters won their first three matches played on this day in fixtures in Division 3 (South).

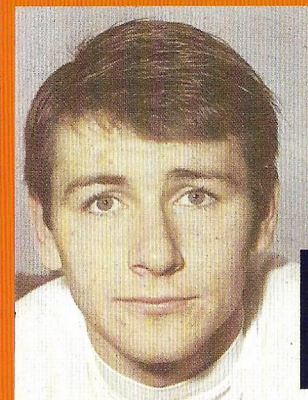
Portsmouth were seen off 4-1 at Kenilworth Road in 1923 - Andy Kerr netting a hat-trick - and Brentford were beaten at Griffin Park five years later. In 1930, the Town won again, this time triumphing over Exeter City 3-1 at Kenilworth Road.

HIT FOR SIX

In 1934, the Town were on the receiving end of a 6-2 defeat against Torquay at Plainmoor, the heaviest defeat on this day for the Hatters. While disappointing, the result had the right effect: the Town only lost once in their next 12 games.

TURNER TOPS

Regular readers of this page will be familiar with Gordon Turner's name and the Town's all-time top goalscorer was at it again in this day when he netted twice to earn a 2-2 draw against Leeds United in the top flight in 1956, before a crowd of 20,949 at Kenilworth Road.



A young Bruce Rioch: The talented Town man notched on this day in 1966

BACK DOWN AGAIN

The Luton Town rollercoaster had reached its lowest point come 1966. Ten years after earn a point against Leeds in the top division, the Hatters beat Rochdale in Division 4 3-1 at Kenilworth Road. Two goals from Tony Thear and one from Bruce Rioch saw off the Dale in front of 6,435.

ONWARDS AND UPWARDS

Two promotions later, the Town were back in the old Second Division in 1970 and a solitary goal from Mike Keen was enough to earn the Town a 1-0 victory at Loftus Road against Queens Park Rangers.

Then, two seasons later, a 3-0 defeat of Blackpool at Kenilworth Road was one of 19 victories achieved by the Town that ensured promotion back to the top flight. Two goals from Barry Butlin and one from Peter Anderson did the damage against the Tangerines.

HAD AN ACCIDENT?

why call your insurance company **01582 733222**

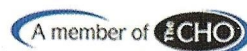
When you can CALL US TODAY ON...



We will process your claim and guarantee

- ✓ no win no fee
- ✓ 100% compensation
- ✓ protection of no claims bonus
- ✓ same day like for like replacement vehicle, if required
- ✓ to manage your claim and get you a quick settlement

so call us today it's simple, free and easy



CLAIMS SPECIALISTS®
YOUR FIRST CHOICE



Claims Specialists
167a Dunstable Road, Luton
Bedfordshire, LU1 1BW

01582 733222 :t

01582 733223 :f

0800 564 2284 :free

www.claimsspecialists.co.uk :w

Claims Specialists® is a trading style of The Claims Specialists (UK) Ltd who are regulated by the Ministry of Justice in respect of regulated claims management activities. Authorisation Number: CRM21604 and is recorded on the Ministry of Justice website

THE **NON-LEAGUE** PAPER

ESSENTIAL READING FOR FOLLOWERS OF THE NATIONAL GAME

THE NLP VIEW BY STEVEN CONEY



Another week, and another flurry of managerial departures in the Football League – so what is making the Non-League game more patient?

League 2 alone saw two bosses out of a job as AFC Wimbledon rather emotionally sacked Terry Brown and Wycombe Wanderers dismissed Gary Waddock just days later.

That now makes it five sackings in the Football League so far with many more bound to come.

Blackburn boss Steve Kean looks likely to leave the club after a will he, won't he debacle that has dragged on, much like the boos from Ewood Park, since the end of last season.

Fortunately that trend hasn't found its way down to Non-League.

At the NLP we thankfully do not have to report on too many sackings. But the question surely has to be, why?

The simple fact is that Non-League boardrooms are more patient than those higher up the divisions.

Money, money, money

People often complain, and rightly so, about the lack of money that trickles down from England's top tiers to the grass-roots game.

But in this instance, and many others, the money is one of the biggest problems.

Can a manager really be expected to work his magic over eight games? Most with experience would say no.

But as TV money increases and foreign owners enter the English game, expectation levels are sky-rocketing. People in football, especially those who own the chequebooks, want everything now. Instant success is almost a given but as the saying goes: "money isn't everything".

Owners and chairmen in Non-League understand that and managers on the whole are given more time to get things right which is one of the many reasons why young managers should aim to start their managerial careers in Non-League.

From the three Football Conference divisions, we've seen just one departure so far this season.

Ian Baird lost his job at big-spending Blue Square Bet South side Eastleigh after an indifferent start to the season.



Terry Brown: Axed at AFC Wimbledon

Baird had transformed his Spitfires squad with the money injected into the club and that, ultimately, led to his downfall.

If you look at the BSB Premier, you'll see Kidderminster Harriers propping up the rest of the table. With five draws and five defeats from their opening ten games, it hasn't been the start Steve Burr and Kiddy wanted, or hoped for.

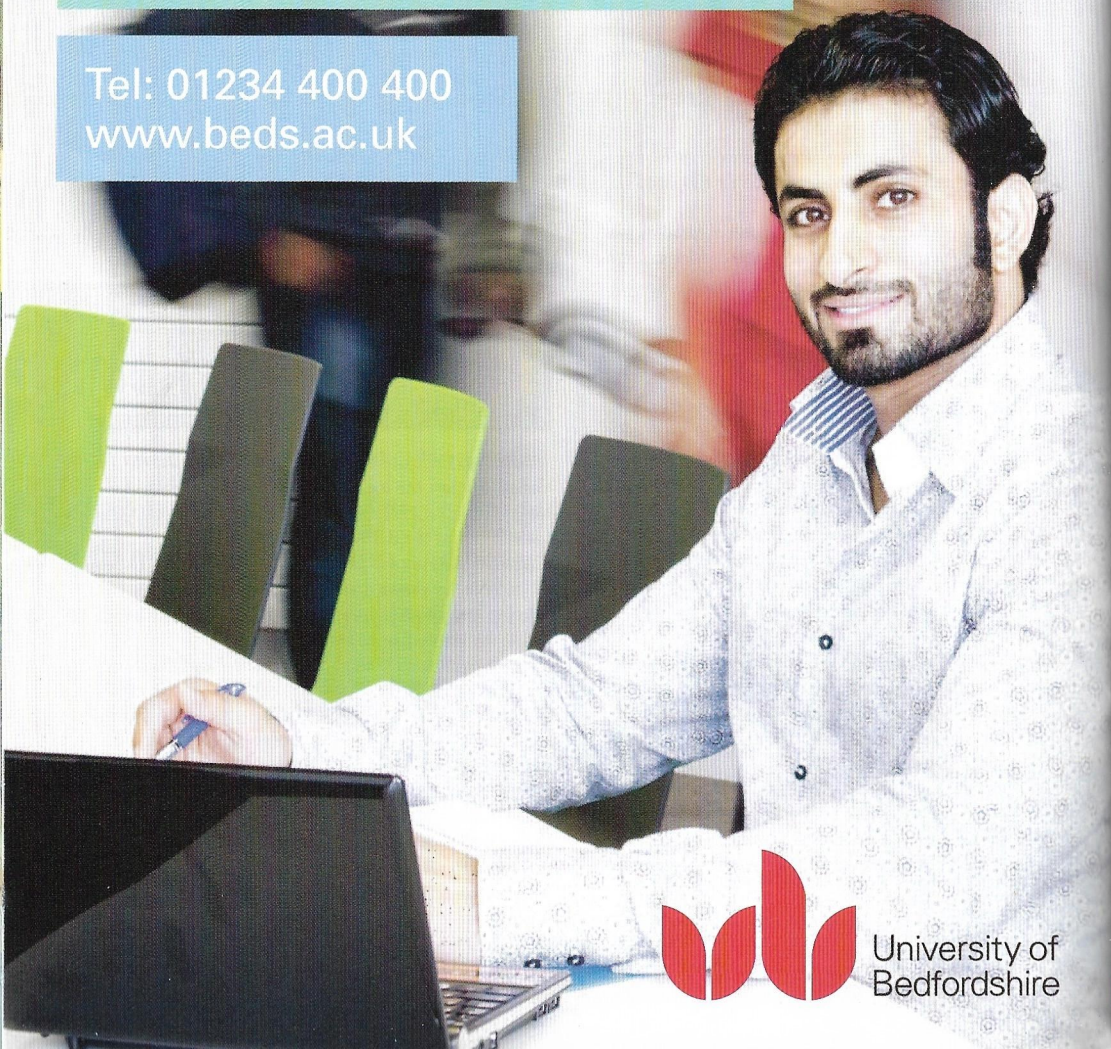
However, despite being tipped for the Play-Offs in pre-season, the Harriers board have stuck by their man as he searches for the answers. Everybody knows Burr is a top manager and one of the best in Non-League but sometimes things take a while to turn around.

If this were the Championship would he still have a job? I think we all know the answer to that one.

Common sense seems to have disappeared from the majority of the Football League but thankfully for us, Non-League on the whole still gets it right.

Get on in the world of work

Tel: 01234 400 400
www.beds.ac.uk



University of
Bedfordshire

REACTION

GREAT TO GET EIGHT - FLEETWOOD

Tuesday night saw the Hatters travel to Tamworth and, as the rain poured down in the Lamb Ground, it was not enough to dampen Town supporter's spirits.

After heading into the break a goal down, Town boss Paul Buckle made a triple change shortly before the hour mark and it was one of those substitutes who popped up with the equaliser. Yaser Kasim's first goal in Hatters colours was the starting point and when Stuart Fleetwood put Town in front three minutes after drawing level the comeback was complete.

It was the eighth time so far this season that Fleetwood had found the net and the former Hereford and Charlton front man was delighted to play his part in the Hatters' victory.

He said: "It was important that the game was going away from us so the gaffer has made a couple of substitutions and the boys that came on were ready like he asked us to be and we did the job and turned it round."

Praise

After a disappointing result away at Grimsby last Friday evening, the 26-year-old was quick to praise the character of his fellow teammates in order to turn around their fortunes.

"We showed great character to turn it around especially after a couple of bad results," Fleetwood added.

Despite starting from the bench, Fleetwood's influence on the game was key; he also set-up Kasim's leveller, which was the youngster's first senior goal, prior to his match-winner three minutes later.

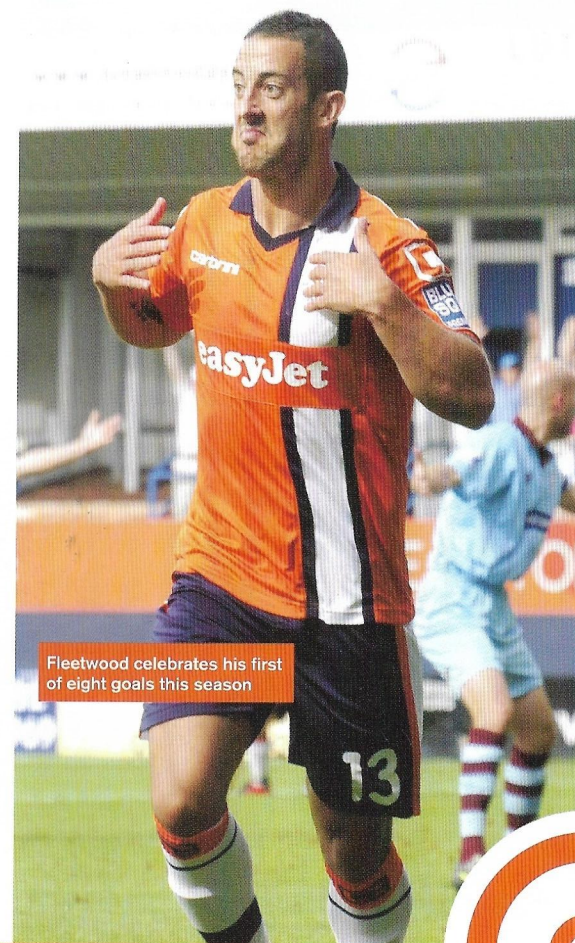
Winner

"I was ready when I came on and I did what I'm paid to do, I'm buzzing for Yaser after his first goal and then I've managed to nick the winner as well."

Fleetwood notched up 16 goals for the Hatters last season and with just over a month into this campaign he has already hit half of his tally for last season.

The striker, though, played down his goalscoring antics and reassured the scorer is irrelevant in the main aim which is to win promotion.

"It's always good to get off the mark, being in the right place at the right time and they've gone in for me," he said. "I'll keep plugging away but it doesn't matter who scores the goals as long as we get promoted, that's my only aim."



Fleetwood celebrates his first of eight goals this season

FROM THE PRESS BOX

WITH LUTON NEWS SPORTS EDITOR MARK WOOD

There's never a dull moment at Kenilworth Road and this season looks to be heading in the same direction.

It was a summer of massive change with a vast number of players coming in and going out of the club. The captures of Jon Shaw and skipper Ronnie Henry were among the most vaunted, while the signings of Danny Spiller and Garry Richards also promised much.

Manager Paul Buckle has been massively unlucky not to be able to call on the services of the latter two, while the first two are yet to live up to their star billing.

Others like Scott Rendell and Lathaniel Rowe-Turner have consistently performed well, while there is still plenty of time for our star signings to make their mark.

Plenty of players have come to the Hatters and shone immediately, others have failed to ever flourish in the Kenilworth Road pressure cooker. And then there are those who have taken their time – but have eventually risen and delivered.

My mind turns to the likes of David Bell and Lars Elstrup. Both promised much when they joined the club, but it took both some time for them to finally start delivering the good.

Midfielder Bell joined the Hatters from Rushden and Diamonds but found his progression blocked by the vast

amount of talent already on the books and it took some time for him to finally break into the first-team. Eventually he bloomed with some fantastic displays before finally sealing a £500,000 move to Norwich City.

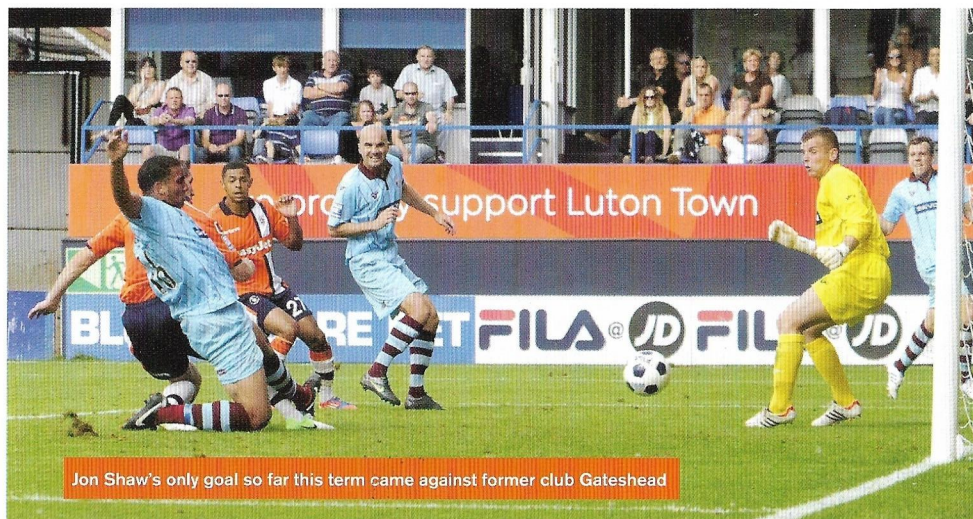
Elstrup remains the Hatters' most expensive signing ever, joining the club for £850,000 from Odense BK in August 1989. The Danish international took his time to settle, but his 18 goals helped to keep the Hatters in the top flight in 1990/91.

It is still early days for Henry and Shaw but, if they can realise their talent and deliver the goods like Elstrup and Bell, then promotion remains a very real possibility for the Hatters this term. And bear in mind, Buckle will be hoping that his injured players will recover and, if needed, the cavalry could yet ride to the rescue.

This season there is no consistent machine like Stevenage grinding out the results, there are no clubs awash with money like Crawley or Fleetwood.

This season the title is up for grabs, the top of the table is congested with ex-League teams and aspiring ones of the future, but there is nothing in it.

In Shaw's case, you don't score 35 goals in a season by fluke, while you don't secure two straight promotions by chance, which Ronnie Henry achieved. It's time to find some form, then let's see what happens.



Jon Shaw's only goal so far this term came against former club Gateshead

THE PRESS OFFICE PICTURE

WITH ANDREW BARRINGER

TRAVELLERS' TALES

So summer has well and truly waved so long as the cold and wet weather draws in. My way of measuring the on-set of Autumn is when the 'big coat' is needed in the press box and that has certainly been the case in the past two fixtures as the heavens opened at both Grimsby and Tamworth.

The fixture computer, allied with Premier Sports' TV's excellent coverage of the Blue Square Bet Premier, has meant we've only had one away game so far that has kicked off on a Saturday at 3pm.

Naturally, the scheduling has taken its toll and has meant a few early morning arrivals for staff, players and supporters in the opening two months of the campaign. Friday nights in particular have always tested the resolve of those travelling to far-flung destinations – usually way beyond Watford Gap services.

I managed to arrive at Blundell Park last Friday just in time to see the referee put his whistle to his mouth to get proceedings under way having battled through numerous traffic jams up the M1 and M18. But, as it

was later reported, at least I got there. The Bobbers Travel Club coach endured their own issues which meant some supporters had to arrive in taxis – turning up at half-time with the Town trailing 3-0 – whilst others simply didn't make it.

It's not the first and most probably won't be the last time we encounter problems on the road travelling around the country to watch the Hatters, and it got me thinking of the times down the years where I've worried about missing a game.

Last Friday's dash to Grimsby reminded me of last season's 1-1 draw at Stockport County where I

turned up at 8.15pm after a horrendous journey to find the Hatters a goal to the good thanks to Alex Lawless' fine early effort. It remains the only goal I've missed in four years covering the Town.

I said in co-commentary that evening that I would be happy to leave Edgeley Park without seeing a goal – and then Stockport duly snatched an injury-time equaliser. Football certainly tests your patience sometimes.

Then there was the time the Hatters' kicked-off their first campaign in the Blue Square Bet Premier at AFC Wimbledon in August 2009. The M25 was at its nightmarish worst but, luckily, having arrived at Kingsmeadow at five to three, the laptop was on and ready for action moments before kick-off to report on what turned out to be a 1-1 draw against the Wombles.

Up next on our travels is a trip to Lincoln. A 3pm Saturday start. Thank goodness.

WEBSITE UPDATE

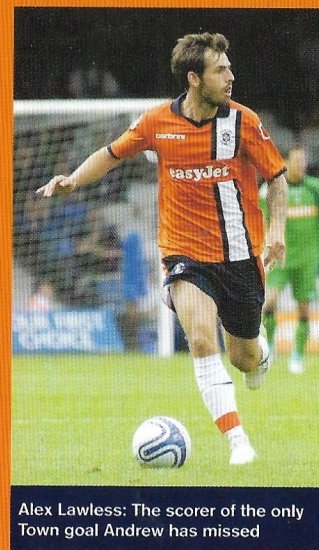
Hopefully, fingers crossed, if you check the official website out on your mobile phone right now, you'll be able to view it in its new mobile format.

I know the long, drawn-out process of launching the site suitable for mobile devices has been frustrating but now the Football League Interactive (FLI) have launched all the website and mobile versions we should be over the big issues.

Work is on-going between FLI and Sapient Nitro, the developers, and like all clubs we have already voiced our own (and supporters') feedback and we're looking forward to seeing the improvements.

Remember, if you've got a question about any aspect of our media output please get in touch on my email below. Here's to three points today.

COYH!



Alex Lawless: The scorer of the only Town goal Andrew has missed

Films at Luton Library Theatre



African Queen (PG)

Wednesday 5 September
2pm & 7.45pm
105 mins, 1951

Out of Africa (PG)

Friday 7 September
2pm
161 mins, 1985
(this film will have an interval)

Phantom of the Opera (12a)

Wednesday 19 September
2pm & 7.45pm
142 mins, 2004

Titanic (12a)

Friday 21 September
2pm
194 mins, 1997
(this film includes an interval)

Bel Ami (15)

Thursday 27 September
2pm & 7.45pm
102 mins, 2012

Some Like It Hot (U)

Wednesday 3 October
2pm & 7.45pm
120 mins, 1959

- ▶ £4 / £3 concessions / £2 Culture Card Members
- ▶ These films are suitable for people from adult day centres.
- ▶ Box Office: 01582 547474 / 878100

www.lutonlibrarytheatre.com

▶ Luton Library Theatre, Luton Central Library,
St George's Square, Luton LU1 2NG

Luton
Library
Theatre

Arts Libraries & Museums

Luton Culture

ACADEMY UPDATE

WITH GARETH ROSE

EDUCATION AT LUTON TOWN

The Luton Town Football Club Education programme commences with the Under-15 Academy players on a day release through to the Under-18 youth Team on a LFE football apprenticeship programme. Professionalism in the classroom is the norm and an expected part of the personal development of the young Luton Town players.

The youth team follow a stipulated programme set out by League Football Education and constitutes four areas to be completed over a two-year period. These being a Level 3 BTEC in Sport, a ASE Level 3 NVQ in sport, a Level 2 FA coaching Certificate and full-time football training.

The whole programme is very intensive and is designed to support and develop every Under-18 player. The programme will give career choices at the end of the scholarship programme, whether it be a career in football or away from it. Through this programme, we have had scholars gain football pro-contracts, gain employment in a variety of jobs, go to university and gain football scholarships to universities the USA. The one common factor of all the scholars – they have all completed the education, NVQ, coaching and football programme.

The scholars are supported with various teaching strategies that encourage completion of their work to achieve their highest academic level. The completion of work is expected and non completion of work is unacceptable. The scholars are set weekly targets throughout the season which we describe as stepping stones on their journey to achievement of the programme.

The education programme at Luton Town has been very successful at all levels for the last eight years. It is the teamwork and cooperation shown by all parties involved. The tutor, coaches and, more importantly, the scholars work as a team to ensure there is a successful outcome.

MY LIFE IN THE CLASS ROOM

BY ZAK STEPHENS, DEFENDER.

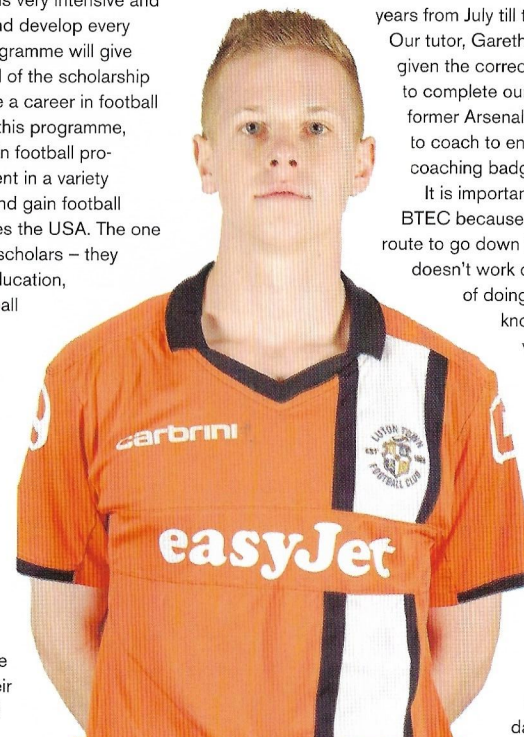
We are in at 8.30am, five days a week, to get an NVQ in achieving Excellence in Sport, BTEC Diploma in sport, and a level 2 coaching qualification.

This is to be done over a period of two years from July till the end of the season.

Our tutor, Gareth Rose, ensures we are given the correct knowledge we need to complete our courses. Paul Davis, former Arsenal player, shows us how to coach to ensure we pass our level 2 coaching badge.

It is important to complete this BTEC because it gives us another route to go down if, perhaps, football doesn't work out. I enjoy the challenge of doing college work as I know it will give me a variety of career choices at the end of the LFE programme.

It also teaches me that to become a professional footballer on the pitch I need to be a professional off the pitch in everything I do. I think it is a good way to start the day as it gives formality to the beginning of a long, hard training day and improves my knowledge.



Zak Stephens: Working towards NVQ and BTEC qualifications at Kenilworth Road

YOUTH FIXTURES

PUMA YOUTH ALLIANCE UNDER-18 SOUTH-EAST FIXTURES - SEASON 2012 - 2013

AUGUST

SAT 11 LEYTON ORIENT	A L O-2
SAT 18 DAGENHAM & REDBRIDGE	H L 2-3 Jibodu (pen), Smith
SAT 25 STEVENAGE	A W 3-2 McKenzie-Lowe, own goal, Amu

SEPTEMBER

SAT 01 PETERBOROUGH UNITED	A W 2-0 McKenzie-Lowe, own goal
WED 18 AFC KEMPSTON ROVERS	A W 4-0 McKenzie-Lowe 2, Amu 2
SAT 22 MILTON KEYNES DONS	A D 2-2 Amu, Smith (pen)
SAT 29 NORTHAMPTON TOWN	H 11.00AM

OCTOBER

WED 03 P'BORO NORTHERN STAR	H 7.30PM - FA YOUTH CUP
SAT 06 STEVENAGE	A 11.00AM - PUMA YA CUP 1
SAT 13 NORTHAMPTON TOWN	H 11.00AM - PUMA YA CUP 2
SAT 20	11.00AM - PUMA YA CUP 3
SAT 27 PETERBOROUGH UNITED	H 11.00AM - PUMA YA CUP 4

NOVEMBER

SAT 03 MILTON KEYNES DONS	H 11.00AM - PUMA YA CUP 5
SAT 24	IN SERVICE TRAINING

DECEMBER

SAT 01 PETERBOROUGH UNITED	H 11.00AM
SAT 08 NORTHAMPTON TOWN	A 11.00AM

JANUARY

SAT 10 MILTON KEYNES DONS	H 11.00AM
SAT 19	SOUTH CUP 2
SAT 26 LEYTON ORIENT	H 11.00AM

FEBRUARY

SAT 02 DAGENHAM & REDBRIDGE	A 11.00AM
SAT 09 STEVENAGE	H 11.00AM
SAT 16	SOUTH CUP 3
SAT 23 ALDERSHOT TOWN	A 11.00AM

MARCH

SAT 02 AFC WIMBLEDON	H 11.00AM
SAT 09 AFC WIMBLEDON	A 11.00AM
SAT 16 SOUTHEND UNITED	H 11.00AM
SAT 23 PORTSMOUTH	A 11.00AM

APRIL

SAT 06 GILLINGHAM	H 11.00AM
SAT 13 CRAWLEY TOWN	A 11.00AM

EXTRA TIME by Elliott Quince



Paul the psychic rock had successfully predicted England's fortunes since 1966

YOUTH LATEST

The Town Under-18s secured their passage to the second qualifying round of the FA Youth Cup with a routine win a 4-0 win over AFC Kempston on Tuesday night.

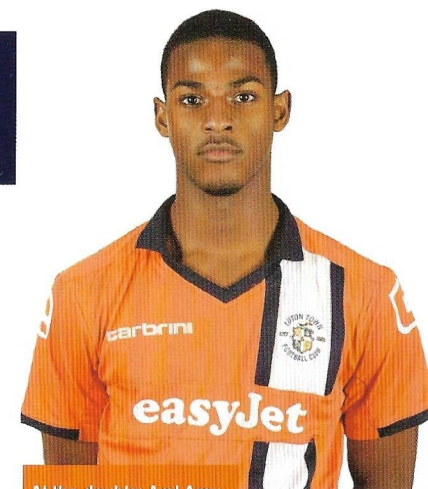
Two first-half braces from Jemale McKenzie-Lowe and Arel Amu put Paul Driver's side in command in the opening 45 minutes.

The Hatters youngsters dominated the second half and missed an opportunity to make it five when Jerome Jibodu missed a late penalty.

Driver said afterwards: "I am happy on one hand because it is a win away from home and we are safely through to the next round with no injuries incurred.

"Having said that, we were far from our best on the night in front of goal and we have to convert more than four of the 35 chances we created."

Victory means the Town will now host either Cogenhoe or Peterborough Northern Star at Kenilworth Road in the next qualifying round.



At the double: Arel Amu

Town: Carpenter, Stanley, Jibodu, Rees (sub Cobb 74), Longden, Chabata, Davis (sub Ngwala), Smith, McKenzie-Lowe, Banton (sub Haag 61), Amu. Subs not used: Barnes (GK), Galliford.

2012/13 YOUTH TEAM

KIT SPONSORS

 ZANE BANTON HOME: First Capital Connect AWAY: Available	 TINASH CHABATA HOME: Available AWAY: Available	 LEEROY MAGURAUSHE HOME: Available AWAY: Available	 AREL AMU HOME: DW Sports AWAY: Available
 JEMALE MCKENZIE-LOWE HOME: Available AWAY: Available	 IAN REES HOME: Available AWAY: Available	 CHARLIE SMITH HOME: Peter Mitchell AWAY: 2MB	 BEN MCFARLANE-BARNES HOME: Available AWAY: Available GLOVES: Available
 JOSH CARPENTER HOME: Mike Kneafsey, Valley View Care Home AWAY: Available GLOVES: Available	 JORDAN DAVIS HOME: Lucy Francome AWAY: Available	 JEROME JIBODU HOME: Doug Knight AWAY: Doug Knight	 NICK BURTENSHAW HOME: Available AWAY: Available
 JERRY NASH HOME: Moira Spain AWAY: Available	 ZAK STEPHENS HOME: Available AWAY: Available		 BRETT LONGDEN HOME: Mike Tearie AWAY: Available

Travel with First Capital Connect to

Luton or Gatwick Airport

Find out more about our great value fares and direct train services to Luton and Gatwick at firstcapitalconnect.co.uk/airports

Save
with
First
Capital
Connect

First Capital Connect

YOUTH REPORT

The Hatters' Under-18s made the short journey up the M1 to Milton Keynes for a first league clash between the two teams due to the Dons' re-categorisation with the onset of the FA's new Elite Performance Plan (EPPP).

In a typical game of two halves, MK Dons battled back from a 2-0 deficit at half time to grab two late goals to take a point and deny the Town a third straight league victory.

In a first half where they dominated the chances, the Hatters went ahead in the eighth minute when Arel Amu was first to the ball in the area, with the home keeper out of his goal, and his left-footed finish from a tight angle could not be stopped from crossing the line by the retreating defenders.

A second goal followed in the 26th minute when Jordan Davis broke through and was pulled down by the Dons keeper and Charlie Smith duly converted the penalty.

A number of excellent chances followed for the Hatters with Zane Banton and Jemale McKenzie-Lowe

each having good opportunities to grab a third goal that would have made a comeback from the Dons unlikely, but these were not taken and the lead at half time was only 2-0.

The second half was a much different affair with MK Dons dominant in terms of possession throughout despite not testing Ben Barnes in the Hatters goal too much.

It wasn't until the 81st minute that the home side got the goal that their endeavours warranted, with a midfield player making a run into the box unmarked to score and set up a tense finish.

Then, in the 89th minute, the equaliser came when Jerome Jibodu fouled his man and the resulting penalty levelled the score.

Town: Barnes, Longden, Jibodu, Rees, Burtenshaw, DeBattista, Davis (sub Chabata 60), Smith, McKenzie-Lowe, Banton (sub Cobb 46), Amu (sub Stanley 86). **Subs not used:** Carpenter, Haag.

YOUNG STARS



NAME: Chisom Amadi

AGE: 16

POSITION: Striker

TIME SPENT WITH LUTON TOWN / WHEN JOINED:

Four years – I joined as an Under-13.

WHAT PART OF YOUR GAME DO YOU CONSIDER THE BEST?

Shooting in one-versus-one situations.

WHAT PART OF YOUR GAME DO YOU WANT TO IMPROVE THIS SEASON?

I want to be able to score more goals.

WHAT'S THE BEST THING ABOUT PLAYING FOR LUTON TOWN?

Training every day and the supporters.

WHO ARE YOUR FOOTBALL IDOLS?

Jay Jay Okocha and Wayne Rooney.

WHO HAS HAD THE BIGGEST INFLUENCE ON YOUR CAREER SO FAR? My mum and dad.

WHAT DO YOU WANT TO ACHIEVE?

To become a professional footballer.

WHO ARE YOUR FAVOURITE ALL-TIME PLAYERS?

Jay Jay Okocha and Wayne Rooney.

HAVE YOU SET YOURSELF ANY TARGETS?

To score 15 goals.

To sponsor Chisom Amadi email commercial@lutontown.co.uk



Dinominites

The A – Z of Dinosaurs, an Exhibition

31 March – 4 November 2012

Take your children to the most exciting
exhibition ever held in Luton!

Admission Prices

£3.95 Adults

£2.95 Children and concessions

£12 Family ticket

Stockwood Discovery Centre

London Road

Luton LU1 4LX

Tel: 01582 548600

www.stockwooddiscoverycentre.com

Stockwood
Discovery
Centre

Tourwest

Arts Libraries & Museums

Luton Culture

LUTON LADIES

The Town Ladies came through a tough three games in a seven-day period unbeaten despite being hampered by absences through injury and unavailability.

A excellent tactical performance at Crystal Palace in the wide open spaces of the National Sports stadium brought a fine 4-0 victory, although it was a patient performance. The Town took an early lead after 10 minutes when Nicola Henman laid the ball off to Jessica McKay who directed her shot low into the bottom corner of the net. McKay then turned provider delivering a corner into the area which Anne Folan met with a powerful header which struck the post cannoning back into play.

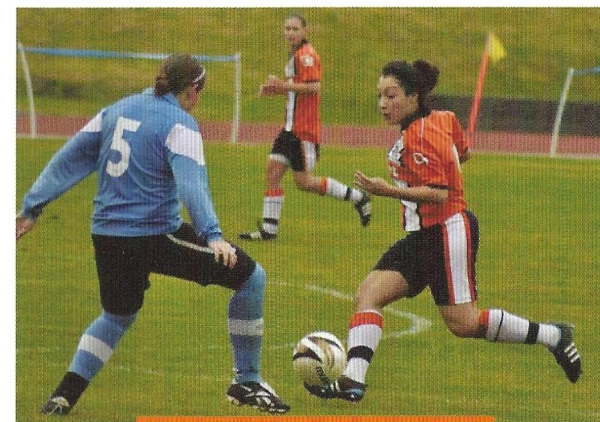
Luton had to wait until the second half for a second goal when Rachel Kosky slipped a neat pass into Rebecca Scott who clipped the ball over the diving goalkeeper to score. Kosky then turned scorer, latching onto a perfectly-weighted Henman pass to score off the inside of the post. The scoring was completed after a superb run and cross into the box by Michelle Byrne and Scott finished neatly from close range.

Vastly improved

The Hatters then visited Cambridge in midweek and, following travelling difficulties, fell behind in the opening exchanges. But the Town showed great character to steady the ship and a vastly improved second-half showing brought a fine equaliser from new signing Danielle Borelli, whose well directed strike found the roof of the net from the corner of the penalty area. The Town continued to surge forward in search of a winner but the Blues defence rode its luck and held firm for a 1-1 draw.

It was very much a repeat scenario at home to Brentwood a few days later with the Hatters dominating early on but conceding a preventable goal when an in-swinging corner was headed into the roof of her own net by a Town defender to give the visitors the lead.

Luton toiled away and an inspirational second-half performance was produced, with Town drawing level after an hour when Laura Day raced clear to score with her first touch neatly lifting the ball over the keeper to equalise. Borelli then finished well only to see her effort ruled out for offside and Amy Nash threaded her shot through a crowded area only to see the ball strike the post, with Brentwood somehow managing to scramble the rebound clear.



Nicola Henman pounces on the loose ball to score the Town's goal against MK Dons

A head injury to keeper Hollie Staples disrupted the flow of the comeback and, with no goalkeeper cover available, Folan donned the gloves to good effect, assisted by an outstanding last-ditch tackle from Byrne when the visitors looked odds on to score late on.

Manager Nikki Baker told Talk of the Town: "The obvious problem for the team at the moment is our inability to defend set pieces and to convert our pressure into goals.

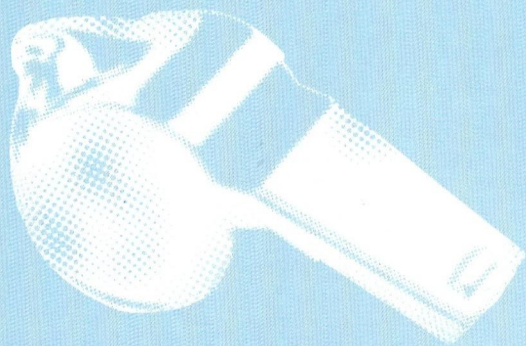
"We are doing all we can to improve both weaknesses and have been unbeaten in our last four games now in spite of having to make a number of personnel and positional changes to cover absences.

"Things are definitely looking up although we face a very stern test next game away to second-placed Norwich City."

For more information on the Ladies visit www.lutontownbelles.com

#NONSENSEINFOOTBALL

"AN INCH OR TWO
EITHER SIDE OF THE POST
AND THAT WOULD HAVE
BEEN A GOAL."



ENOUGH
SAID.
JUST
BET

GET STRAIGHT TO
THE BLUE SQUARE
BET ON YOUR
MOBILE OR TABLET



bluesq.com
web | mobile | tablet



Over 18s only. Blue Square Bet encourages responsible gambling. gambleaware.co.uk

LEAGUE

LOOK

JOE FLEMONS ROUNDS-UP THE LATEST IN THE BSBP

Newport County returned to the top of the Blue Square Bet Premier after securing maximum points in their two fixtures against Southport and AFC Telford this past week. Aaron O'Connor was again amongst the goals in both of the Exiles' triumphs, taking his tally for the season up to eight.

Forest Green are County's main threat, lying just a point behind, after they successfully negotiated victories over Hereford and Macclesfield, both by two goals to one away from home.

After Wrexham's point here at Kenilworth Road a fortnight ago, the Dragons have picked up another four points in their home matches against Dartford and Barrow. After Lee Noble snatched a point for travelling Dartford at the Racecourse ground last Saturday, Andy Morrell's Dragons were in a ruthless mood, bludgeoning Barrow 3-0 on Tuesday night.

Grimsby currently sit fourth in the table after they hit seven goals and conceded just the solitary strike in their two recent fixtures. After their Friday night three-pointer against the Hatters, they carried their fine form into their home clash with Gateshead. Ross Hannah sealed a comfortable 3-0 victory for the Mariners as they climbed into the Play-Off picture.

Dartford and Macclesfield are hot on the Hatters' heels, vying for that final Play-Off place, currently just one point behind, with Macclesfield having a game in hand after their clash with Mansfield fell victim to the torrential downpour in the north west in midweek.

Tamworth are also lying in wait, ready to pounce on any slip-ups after they picked up a favourable 1-0 home win against Lincoln City on Saturday, before lasting defeat to the Hatters on Tuesday night thanks to Stuart Fleetwood's eighth of the campaign.

The Lambs hold onto eighth spot on goal difference with a collection of teams sitting on 16 points so far this season, including Woking who are unbeaten in four. They picked up their third successive victory last Saturday against Gateshead before travelling to Ebbsfleet on Tuesday and leaving Kent with a point.

Hereford failed to capitalise on an impressive 4-2 win against Cambridge on Saturday by slumping to a



Justin Edinburg's Newport are back on top of the table

2-1 defeat to high-flyers Forest Green. Marlon Jackson scored twice and missed a penalty in their win against the U's taking his season's tally to three.

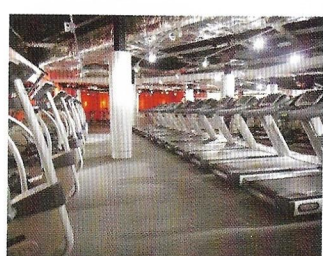
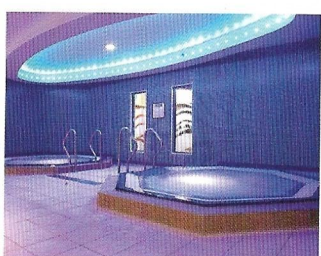
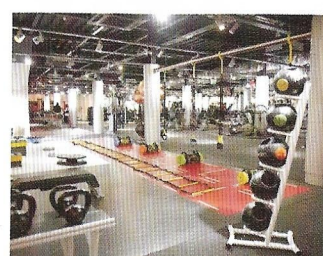
At the foot of the table, Hyde are left one game short of a full batch after their game, like Macclesfield's, succumbed to the weather and was postponed due to a waterlogged pitch. The disappointment was evident for the Hyde squad after they were looking to improve on their point gained at home to Nuneaton in the previous fixture.

Kidderminster lifted themselves off the bottom with four points picked up in as many days. After an away point at Alfreton, they travelled to Cambridge still in search of their first win of the season and thanks to Ryan Rowe's terrific second half hat-trick that milestone was finally passed.

TODAY'S FIXTURES

ALFRETON v BRAINTREE
BARROW v CAMBRIDGE
DARTFORD v HYDE
GATESHEAD v AFC TELFORD
KIDDERMINSTER v MACCLESFIELD
MANSFIELD v HEREFORD
NEWPORT v GRIMSBY
NUNEATON v WREXHAM
STOCKPORT v EBBSFLEET
WOKING v TAMWORTH

DWfitnessclubs.com

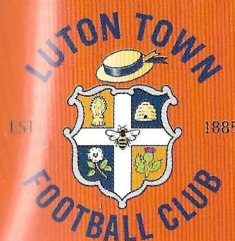


- Huge state of the art gym with the latest functional training area
- Superb swimming pool, relaxing steam room and spa pools
- Group Exercise Studios: Encouraging all ages and fitness levels to join in
- Extensive free weights area
- Personal programmes and advice
- High quality changing areas
- Members lounge with food and drinks served throughout the day
- Retail loyalty card offering members 10% discount in all DW stores**
- Free car park*
- Swimming lessons available
- 60+ locations nationwide
- Children welcome, please see website for childrens hours
- Massive sports store with massive savings on top brands*

To find your local fitness club visit us online

** Available on full priced products only. Not including replica, large equipment and garden games.

* Please note facilities may vary between clubs. Prices vary between clubs.



Luton Town FC OCTOBER HALF TERM

YEAR GROUPS

Available for

- Years 1 & 2
- Years 3 & 4
- Years 5 & 6

SIGN UP FOR

Full day of football skills training

- Warm-up and reaction games
- Technique training sessions
- Fun games to practice techniques
- Small sided matches and tournaments
- Medals for all participants

**2 FREE Tickets
per participant**

Barton, Bedford, Biggleswade, Caddington, Dunstable, Flitwick / Ampthill,
Harpenden, Linslade / Leighton Buzzard, Luton, Shefford / Henlow,
Woburn Sands

Telephone and Credit Card bookings

01582 583618 or 07725 172345

FIXTURES AND RESULTS

	DATE	TIME	H/A	OPPOSITION	SCORE	ATT	AWAY	POS	STARTING XI
August									
	Sat 11	15:00	H	Gateshead	D 2-2	6,743	76	11	Tyler Taylor** Rowe-Turner Henry Kovacs Kasim* Howells O'Donnell Rendell Gray***
	Tue 14	19:45	A	Kidderminster Harriers	W 2-0	2,275	542	4	Tyler Henry Taylor Rowe-Turner Kovacs Kasim Lawless O'Donnell Rendell Shaw**
TV	Fri 17	19:30	A	Hyde	W 2-1	1,141	477	3	Tyler Henry Taylor* Rowe-Turner Kovacs Kasim** Lawless O'Donnell 1 Rendell Shaw
	Sat 25	15:00	H	AFC Telford United	L 0-1	5,970	111	9	Tyler Lawless Howells Rowe-Turner Henry Kovacs Kasim* Watkins** O'Donnell Rendell Shaw
	Mon 27	15:00	A	Ebbw Vale United	W 3-1	2,018	1,246	5	Tyler Lawless Taylor Rowe-Turner Beckwith Howells O'Donnell** Rendell 1 Gray*
September									
	Sat 1	15:00	H	Macclesfield Town	W 4-1	5,803	111	3	Tyler Beckwith Kovacs*** Rowe-Turner* Lawless Taylor O'Donnell Howells 1 Rendell 1 Gray**
	Tue 4	19:45	H	Cambridge United	W 3-2	6,742	822	2	Tyler Rowe-Turner Taylor Beckwith 1 Kovacs* 1 Lawless O'Donnell Howells Rendell Gray 1
	Sat 8	15:00	A	Alfreton Town	L 0-3	1,392	768	5	Tyler Henry Taylor* Beckwith Kovacs** Lawless O'Donnell Howells Watkins*** J. Robinson
TV	Sat 15	15:00	H	Wrexham	D 0-0	6,675	319	5	Tyler Henry Howells* Beckwith Kovacs Lawless O'Donnell Rendell Fleetwood** Gray***
	Fri 21	19:45	A	Grimsby Town	L 1-4	4,074	125	6	Tyler Henry** Howells Rowe-Turner** Beckwith Essam Lawless O'Donnell Rendell 1 Fleetwood*** Gray
	Tue 25	19:45	A	Tamworth	W 2-1	1,137	390	5	Tyler Henry* Rowe-Turner** Beckwith Essam Lawless O'Donnell Howells Gray Rendell
	Sat 29	15:00	H	Southport					
October									
	Sat 6	15:00	A	Lincoln City					
	Tue 9	19:45	H	Braintree Town					
	Sat 13	15:00	H	Nuneaton Town					
	Sat 27	15:00	A	Forest Green Rovers					
November									
	Tue 6	19:45	A	Hereford United					
	Sat 10	15:00	H	Dartford					
TV	Thu 15	19:45	A	Mansfield Town					
December									
	Sat 1	15:00	H	Barrow					
	Tue 4	19:45	A	Newport County					
	Sat 8	15:00	H	Alfreton Town					
	Sat 22	15:00	A	AFC Telford United					
	Wed 26	15:00	H	Woking					
	Sat 29	15:00	H	Ebbw Vale United					
January									
	Tue 1	13:00	A	Woking					
	Sat 5	15:00	A	Macclesfield Town					
	Sat 12	15:00	H	Hyde					
	Sat 19	15:00	A	Nuneaton Town					
	Tue 22	19:45	H	Lincoln City					
	Sat 26	15:00	H	Stockport County					
February									
	Sat 2	15:00	A	Barrow					
	Sat 9	15:00	H	Forest Green Rovers					
	Tue 12	19:45	A	Dartford					
	Sat 16	15:00	H	Newport County					
	Sat 23	15:00	H	Mansfield Town					
	Tue 26	19:45	A	Braintree Town					
March									
	Sat 2	15:00	A	Stockport County					
	Sat 9	15:00	H	Hereford United					
	Sat 16	15:00	A	Wrexham					
	Sat 23	15:00	H	Tamworth					
	Sat 30	15:00	A	Cambridge United					
April									
	Mon 1	15:00	H	Kidderminster Harriers					
	Sat 6	15:00	A	Gateshead					
	Sat 13	15:00	H	Grimsby Town					
	Sat 20	15:00	A	Southport					



The Town players celebrate their Tuesday win at Tamworth

SUBS

Fleetwood 1	Brill	Beckwith	Lawless**	Watkins***	Shaw 1
Fleetwood* 2	Brill	Beckwith	Walker	Gray*	Robinson**
Fleetwood*** 1	Brill	Beckwith	Howells*	Gray**	Robinson***
Fleetwood	Brill	Beckwith	Taylor*	Gray**	Woolley
Fleetwood 2	Brill	Lacey	Watkins**	Kasim	
Fleetwood 1	Brill	Essam***	Watkins*	Woolley**	Walker
Fleetwood**	Brill	Essam*	Watkins	Woolley**	Kasim
Gray	Brill	Essam**	Kasim*	Fleetwood***	Rowe-Turner
Shaw	Rowe-Turner*	Essam	Kasim***	J. Robinson	Walker**
Shaw	Rowe-Turner	Essam*	Kasim**	J. Robinson***	Walker
Shaw***	Fleetwood*** 1	Kasim* 1	J. Robinson*	Kovacs	Walker

LEAGUE TABLE 2012/13

	P	W	D	L	F	A	GD	PTS
1 Newport County AFC	11	8	1	2	24	12	12	25
2 Forest Green Rovers	11	7	3	1	20	10	10	24
3 Wrexham	11	6	4	1	18	7	11	22
4 Grimsby Town	11	5	5	1	18	7	11	20
5 Luton Town	11	6	2	3	19	16	3	20
6 Dartford	11	6	1	4	20	13	7	19
7 Macclesfield Town	10	6	1	3	21	17	4	19
8 Tamworth	11	5	1	5	15	14	1	16
9 Woking	11	5	1	5	21	21	0	16
10 Mansfield Town	10	5	1	4	19	20	-1	16
11 Hereford United	11	5	1	5	20	23	-3	16
12 Gateshead	11	4	3	4	15	15	0	15
13 AFC Telford United	11	3	5	3	19	17	2	14
14 Southport	11	3	4	4	13	18	-5	13
15 Lincoln City	11	3	3	5	14	16	-2	12
16 Braintree Town	11	3	3	5	12	16	-4	12
17 Alfreton Town	10	3	3	4	14	19	-5	12
18 Stockport County	11	2	5	4	12	14	-2	11
19 Cambridge United	11	2	4	5	18	24	-6	10
20 Nuneaton	11	2	4	5	19	26	-7	10
21 Barrow	11	2	4	5	12	20	-8	10
22 Ebbw Vale United	11	2	3	6	18	26	-8	9
23 Kidderminster Harriers	11	1	5	5	10	14	-4	8
24 Hyde FC	10	1	3	6	13	19	-6	6

PLAYER STATS 2012/13

	LEAGUE		THIS SEASON CUP				TOTAL		DISC		CAREER TOTAL	
	APPS	GLS	APPS	GLS	APPS	GLS	Y	R	APPS	GLS		
Dean BECKWITH	7	0	1	0	0	7	0	1	2	0	18	2
Connor ESSAM	1	4	0	0	0	1	4	0	0	0	5	0
Stuart FLEETWOOD	9	2	8	0	0	9	2	8	1	0	58	24
Andre GRAY	8	3	2	0	0	8	3	2	2	0	23	9
Ronnie HENRY	8	0	0	0	0	8	0	0	0	1	8	0
Jake HOWELLS	9	1	1	0	0	9	1	0	0	0	193	16
Yasser KASIM	4	4	1	0	0	4	4	1	1	0	8	1
Janos KOVACS	8	0	1	0	0	8	0	1	2	0	69	6
Alex LAWLESS	10	1	0	0	0	10	1	0	2	0	87	7
JJ O'DONNELL	11	0	1	0	0	11	0	1	0	0	20	1
Scott RENDELL	10	0	3	0	0	10	0	3	1	0	10	3
Jake ROBINSON	1	2	0	0	0	1	2	0	0	0	3	0
Matt ROBINSON	0	2	0	0	0	0	2	0	0	0	2	0
Lathaniel ROWE-TURNER	8	1	0	0	0	8	1	0	0	0	9	0
Jon SHAW	7	1	1	0	0	7	1	1	1	0	8	1
Greg TAYLOR	7	1	0	0	0	7	1	0	1	0	31	0
Mark TYLER	11	0	0	0	0	11	0	0	0	0	149	0
Dan WALKER	0	1	0	0	0	0	1	0	0	0	21	1
Adam WATKINS	2	3	0	0	0	2	3	0	0	0	54	8
Jake WOOLLEY	0	3	0	0	0	0	3	0	0	0	8	0

LET'S GO

TO LINCOLN CITY



After today's fixture, the Town are on the road next Saturday when they make the trip to Sincil Bank, the home of Lincoln City, for another crucial Blue Square Bet Premier fixture.



LINCOLN CITY

Where? Lincoln, the county town and administrative hub of Lincolnshire of course. A lovely city and well worth a day trip even if there's no football on. The football club play their home games at the all-seated Sincil Bank stadium.

Shock, shock horror: The game will only be the Town's second Saturday 3pm kick-off of the season. The Hatters have already played away from home twice on a Tuesday, twice on a Friday and once on a Monday so far this term.

Great, how do I get there? With difficulty. There are various options open to intrepid travellers. A direct route up the A1 is 119 miles as the crow flies, whilst it's 121 miles if you travel up the M1, come off at the A46 junction towards Braunstone, Frith and Kirby Muxtoe before following the A46 easterly. Or, keeping it simple, let the sat nav be your guide. The postcode for Sincil Bank is LN5 8LD.

Train, plane or automobile. The Bobbers Travel Club will, as ever, be making the trip to Sincil Bank. It's £20 for adults and £17 for concessions and they'll be leaving the Maple Road car park at 10.30am. To book your place call 01234 856542. Meanwhile, if you want to take the train, Lincoln central is a 15-minute walk from the ground.

Tourist trail. If you like, you can forget the football. The earliest origins of Lincoln can be traced to the remains of the Iron Age (thanks Wikipedia). The castle and cathedral draw thousands of visitors each year whilst the university also has a fine reputation.

Oh do be quiet, I'm reading this programme because I'm interested in football. Sorry. The Imps – as they are known (why? Because there's an imp carving the cathedral – there's the link) – have played their games at Sincil Bank since 1895. In August this year the club renamed the stadium as the 12th Man Sincil Bank Stadium.

That's a bit of a mouthful. Where will I be sitting? Beside the pitch in the comforts of the newest stand in the ground, the Lincolnshire Co-operative Stand. Built in 1995, at cost of £1m, the stand affords a great of the action and the leg room is generous.

Serious moment. It's often over-looked that Bradford were playing Lincoln on the day of the Bradford Fire disaster in 1990. Two Lincoln fans lost their lives that day so it's certainly not the case at Sincil Bank where a stand is named in the memory of Bill Stacey and Jim West.

Famous visitors. There are not many grounds in the Conference that can say they've had the Queen, the Who and Westlife visit but it's true of Sincil Bank. Her Majesty paid a visit in 1958; a rock concert in 1966 saw the Who in town; whilst in 2006 Westlife pulled a crowd of 13,000.

Mad about Town. The Hatters will be looking to improve what is an already decent record at Sincil Bank. The Hatters may have lost on their first three visits to the Lincolnshire venue between 1887 and 1900 but since have only lost once in the next 14 trips. That defeat was particularly painful. An 8-1 thrashing in December 1966. What made it all the worse was that Lincoln were bottom of the old Fourth Division at the time and the Hatters were directly above them in the table. It's a story my dad never tires of telling me. Let's hope there's no repeat performance next weekend. Jinx.

NIKE SPORTSWEAR

The DUFFER of St. GEORGE Only at JD

BROOKHAVEN Only at JD

sonneti Only at JD

adidas

the autumn edit

Available at your local JD Arndale & Luton Airport

SHOP IT 24/7 ONLINE. INSTORE. MOBILE.



TODAY'S TEAMS



LUTON TOWN

Mark Tyler	1
Lathaniel Rowe-Turner	2
Greg Taylor	3
Garry Richards	4
Dean Beckwith	5
Janos Kovacs	6
Alex Lawless	7
Danny Spiller	8
Jon Shaw	9
Scott Rendell	10
Jake Howells	11
Stuart Fleetwood	13
Adam Watkins	15
Alex Lacey	16
JJ O'Donnell	17
Yaser Kasim	18
James Dance	19
Jake Robinson	22
Matt Robinson	23
Ronnie Henry	25
Andre Gray	27
Dan Walker	29
Dean Brill	33



SOUTHPORT

1 Tony McMillan
2 James Smith
3 Chris Lever
4 Steve Akrigg
5 Andrew Parry
6 Simon Grand
7 Shaun Whalley
8 Karl Ledsham
10 Tony Gray
11 Chris Almond
12 Russell Benjamin
13 Matt Nemes
14 Louis Barnes
15 Aaron Chalmers
16 Alan Moogan
17 Chris Lynch
18 Steven Tames
19 Michael Bakare
20 Charlie Joyce
21 Darren Stephenson
22 Godfrey Poku

MATCH OFFICIALS

REFEREE: B. Huxtable
 ASSISTANT: L. Wood
 ASSISTANT: M. Smith
 FOURTH OFFICIAL: A. Degnarain

HERE NEXT

BRAINTREE TOWN

BLUE SQUARE BET PREMIER

TUESDAY 9TH OCTOBER 2012

KICK-OFF 7.45PM

