



IMPACT
ARENA

BLUE SQUARE BET
PREMIER

FILA @ JD

THE GAFFER REVIEWS



THE LOWDOWN ON OUR VISITORS



POSTER



ANTON BROWN



Season 2012/2013
V Luton F.C.
8th September 2012
Kick off 3pm

the **Reds** Review

Alfreton Town FC OFFICIAL PROGRAMME £3



Matchday Sponsors

Irongategroup



office supplies • office interiors • print management

Matchball Sponsors

PREM-STYLE
Ltd

Picture Courtesy Of Dave Punglove

Alfreton Town Football Club Official Partners

ZYCOMM
The Radio Communications Company



**Alfreton Town
Council**

PREM-STYLE

IMPACT
MARKETING AND PUBLICITY

ZYCOMM

The Radio Communications Company

RELAX, YOU'VE
FOUND ZYCOMM...
THE FINAL PIECE OF THE JIGSAW

HYT

TWO WAY
RADIO



MICROWAVE
LINKS

KENWOOD



LET ZYCOMM SOLVE YOUR COMMUNICATION PROBLEMS...

OUR AIM IS TO PROVIDE COST EFFECTIVE, PRACTICAL COMMUNICATION SOLUTIONS

Zycomm can help you :

- ✓ Improve efficiency
- ✓ Comply with health and safety requirements - lone working, personal alarms & man down
- ✓ Reduce required man power
- ✓ Service and maintain your existing radio equipment
- ✓ Replace expensive leased lines with cost effective, reliable microwave links

SERVICE • SALES • HIRE • RENTAL

Zycomm Electronics Ltd Nottingham Road Ripley Derbyshire DE5 3AS

Telephone 01773 570123 Fax 01773 570155 zycomm.co.uk info@zycomm.co.uk



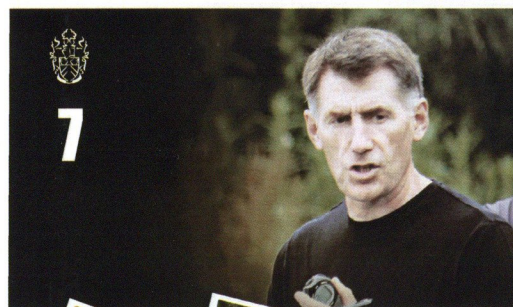
Contents

atfc 2012/13

9

BLUE SQUARE
PREMIER

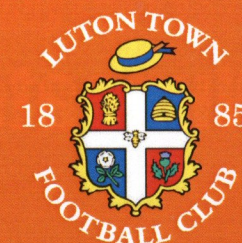
7



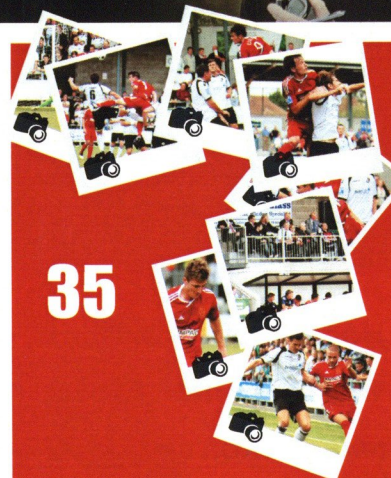
18



10



35



IMPACT
ARENA

BLUE SQUARE BET
PREMIER



the **RedsReview**

atfc 2012/13

Design: Image2print

Photography: Dave Pursglove, Phil Lucic, Bill Wheatcroft.

Print: Image2print

For all sponsorship and advertisement opportunities, contact [Lisa Towerzey](mailto:Lisa.Towerzey@healthcaremedia.co.uk)
on 0115 939 2090 Ex 107 or e-mail Lisa@healthcaremedia.co.uk.

Last time out	4
From the Manager	5
From the Chair / Treatment Room	7
Blue Square Blog	9
Our Visitors	10
Results Prediction League	13
Premier Points	14
Interview with Ben Tomlinson	16
Play & Staff Profiles	18
Poster of Anton Brown	20
Crossword	22
Sponsor the Pitch	23
Non League Article	24
Sponsor our goal	25
Sponsor a clean sheet	26
Kit Sponsors	27
Skipper	28
Commercially Speaking	29
Fixtures/goals & appearances	30
Blue Square Premier Division Table	31
Supporters Association	33
Action Replay	35
Match Sponsors	36

atfc³



Lasttimeout

IMPACT
ARENA
BLUE SQUARE BET
PREMIER

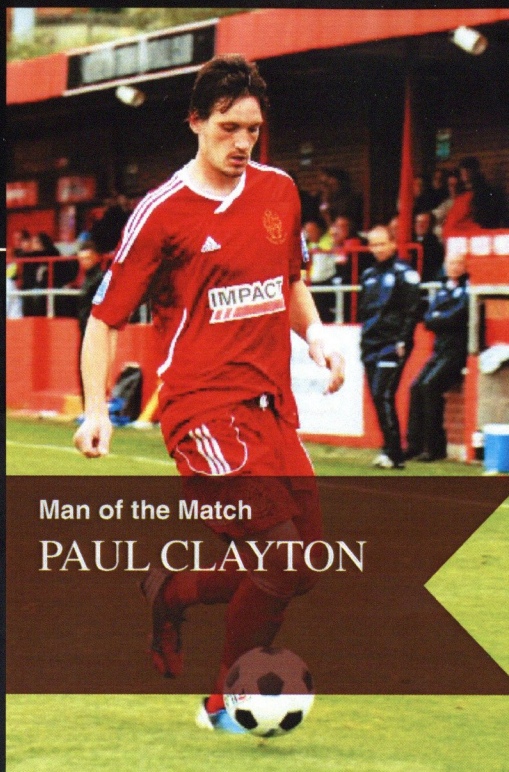
Alfreton Town 0 Nuneaton 3

Matchball & Matchday Sponsors

IMPACT

MARKETING AND PUBLICITY

If you were at the game and saw it differently, get in touch, and give us your points of view. Contact Lisa Towerzey on (0115) 939 2090 Ext 107 or e-mail lisa@healthcaremedia.co.uk



Man of the Match
PAUL CLAYTON



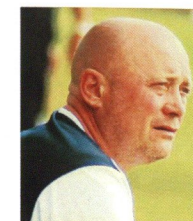
"Roy Hogarth of 'footyflyers', a good friend of Anton Brown, has Sponsored Anton's Away Kit for the current season and is seen here, with his Daughter Sheanne, being thanked by Anton for his generosity".

atfc⁴



fromthemanager

atfc 2012/13



"We need to start making better decisions"

Welcome to the Impact Arena for today's game versus Luton Town.

Our results of late have been poor to put it politely, to say I'm disappointed is putting it politely, as silly as it sounds I don't think we are far away but all too often we are imploding by making elementary errors and being punished by them.

As a team we have to work harder we are got at far too easily, front men have to work the opposition harder when we do not have the ball. The midfield has to work their midfield harder and at the back we cannot give what I consider to be Sunday goals away as we are at the minute and expect to stay in games, all round we have to be more solid than at present, its times like these that men have to be men, if you're a boy you have to become a man and quickly, and if you cannot then you need to be somewhere else as your no good to anyone.

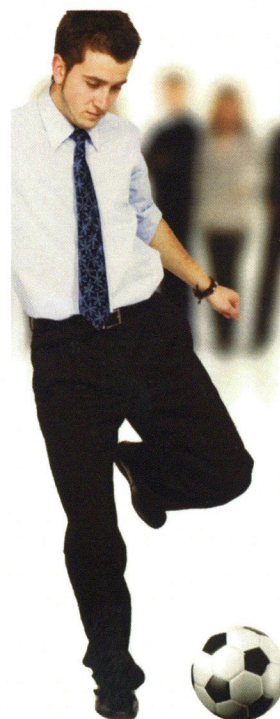
I came into the bar after the Nuneaton game and apologised to the remaining fans and to the Chairman for the performance.

I shouldn't have to be doing that as the performance and our own pride should not let us be in the position where we should feel the need to apologise, again at Dartford I feel for the fans who spend time and hard earned money to travel all that way to see us implode that's what it was, it wasn't that Dartford

were 5 goals better far from it our own errors gifted them the game they won't score 5 again this season, then to get on the bus and see the disappointment in the Chairman's face hurts, he who puts his hard earned cash into this club to pay us all he deserves better than he's getting at the moment but to be fair I believe he trusts me to get it right so there is certainly no panic from him just encouragement, this game is fine margins and at the minute we are wrong side of the line and we need to start making better decisions to be the other side of things, we will stick together and turn things around we are only 7 games into a long season

At Dartford last week I feel 6 of our players responded to watching the Nuneaton dvd it was the senior players the ones you want to be leaders that let the others down and that cannot happen. If we do not improve tenfold today we will be where we do not want to be believe me you cannot give players of our oppositions quality gifts or we will be sadly punished so let's hope we are back to our determined selves today

Enjoy the game
Nick



ABC ALFRETON BUSINESS CLUB

Building a better business community

Proud to support local business & our local team

- Monthly meetings for business owners in the community - see our website for details
- Great networking opportunity with like-minded businesses
- Increase your business profile
- All businesses welcome
- Free first meeting

www.alfretonbusinessclub.co.uk



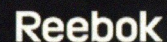
Contact alison on: info@alfretonbusinessclub.co.uk



PROUD SPONSORS OF THE FOOTBALL CONFERENCE

SHOP IT 24/7 ONLINE. INSTORE. MOBILE.

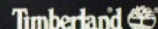
JDSPORTS.CO.UK



mckenzie.



BROOKHAVEN



OFFICIAL BALL SUPPLIER



OFFICIAL BENCHWEAR SUPPLIER



From TheChair

Good afternoon and welcome to the Impact Arena for today's Blue Square Premier League fixture against our visitors today Luton Town.

Please join me in making very welcome to our humble home, the Chairman of Luton, Nick Owen, his directors, club officials and guests.

"Support them and support them in numbers"

I recall confirming in my past programme notes for this fixture against our visitors last season, that Nick's parents actually met in Alfreton, whilst serving in the forces.

I know that he, in turn, holds the town in high esteem and we trust that his brief visit today does not alter that viewpoint.

With the season less than a month old, the same old 'football' quotes are being used to describe matters, as each team 'jockey' for points. You know the sort: 'I am over the moon', 'The performance disappointed me', 'They frustrated our strikers', 'twenty four hours in football is a long time', 'My team was defeated, but we are not losers', 'My heart raced at some of our passing', 'The pace of the game was exceptional', 'I am

delighted with our performance', 'That was a real test', 'When you analyse the statistics we out played them'. 'To win means everything', 'You have to admire their passion', 'To draw is a good point', 'We played like a team of strangers', 'To loose our keeper so early was a disaster', 'Football is a funny old game', 'That result was no surprise' 'We hurt them early on', 'I am loving it' and on and on they go.

A recycle of phrases that send the mind into rewind.

Now what if we just paraphrased those quotations and changed the tense slightly. We could end up with the following:

My team is my passion. If my team is defeated, it disappoints, surprises and hurts. It can disgust me.

If my team, however, draws it frustrates, tests and opens my mind to analysis.

But when my team wins, it inspires me.

I am over the moon, my heart races at a pace and I am delighted. Win, draw or loose, I will never loose that loving feeling for my team.

Part and parcel of supporting your team is to ride the roller coaster of the results. Enjoy the good, but do not despair at the bad.

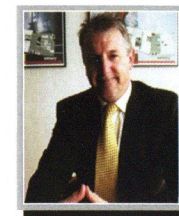
Support your team through the very lowest results you will get your reward when they return to winning ways. The team are certainly testing the supporters to the full at this time and all I can ask you to do is support them and support them in numbers. It is that support that helped to get us here and it will be that support which will keep us here.

Please help the club in its family values.

Please refrain from the chanting of foul and abusive language, offenders will be subject to club discipline.

If you enjoy your visit to the Impact Arena, please tell your friends, if you do not, please let me know.

Wayne Bradley
Chairman



TreatmentRoom

atfc2012/13



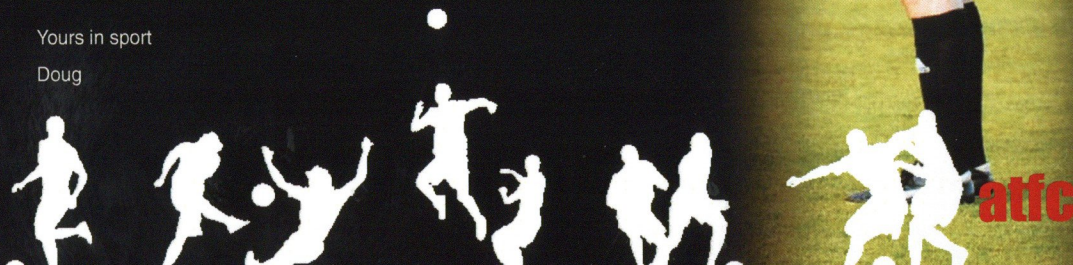
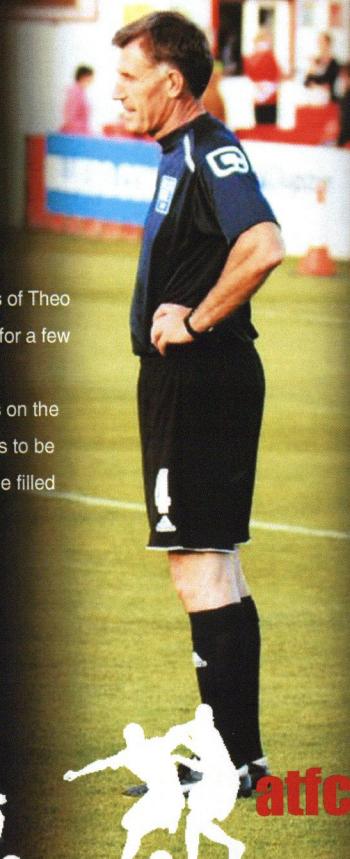
This week has been rather quiet in the treatment room with the only notable events of Theo Streete and Anthony Wilson both recovering from a virus which laid them both low for a few days.

We, just as every other club, are reacting to the new rule regarding tape that goes on the socks to hold shin guards in place. The rule requires that any tape on the sock has to be the same colour as the sock in order to prevent a clash of kit. Our order is yet to be filled due to the huge demand from clubs and the most popular colours being sold out.

Anyway, I digress, it's good to be injury free and I hope it continues.

Yours in sport

Doug



atfc 7

SAT 25 AUG WREXHAM v GRIMSBY TOWN 17:15
SAT 15 SEPT CAMBRIDGE UTD v AFC TELFORD 17:15
FRI 21 SEPT GRIMSBY TOWN v LUTON TOWN 19:45
FRI 28 SEPT FOREST GREEN v LINCOLN CITY 19:45
WED 10 OCT STOCKPORT CO. v WREXHAM 19:45
SAT 13 OCT GATESHEAD v CAMBRIDGE UTD 17:15

PREMIER SPORTS

SUBSCRIBE NOW

PREM-STYLE Ltd

"The Company You Can Trust"

- FASCIAS, SOFFITS, BARGEBOARDS
- CLADDING • GUTTERING
- DOORS • WINDOWS
- CANOPIES • DOOR SURROUNDS
- CONSERVATORIES
- COLUMNS • CAR CANOPIES

0115 8490148

To arrange a no obligation quotation & to see examples of the Prem-Style quality.

FULL REMOVAL OF ALL EXISTING SOFFITS AND FASCIAS

NO OVER-CLADDING

HIGH QUALITY CRAFTSMANSHIP

ALL WORK GUARANTEED

FREE QUOTATIONS

We have Nottinghamshire & Derbyshire Covered

We guarantee satisfaction, at a cost to please

* A full list of past customers will confirm the quality and value of our work - ask to see our customer comments.



BlueSquareBlog

atfc 2012/13

IMPACT
ARENA

BLUE SQUARE BET
PREMIER

Law Apologises To Reds Supporters

Alfreton Town manager Nicky Law has apologised to the club's supporters after his side slumped to a 5-1 defeat at Dartford on Saturday afternoon.

The Reds boss was looking for a positive response from his players after a 3-0 defeat to Nuneaton Town, but he was let down by an abysmal team performance.

Law was happy with the contribution of his midfielders, but was less than complimentary of his defenders and forwards.

Law told the club's official website: "We passed the ball as well as we have all season, but if you can't defend at centre-half and have nothing up front, then you are in trouble.

"The first goal was a mistake by the centre half, the second one was a mistake by a centre half and the third one was a free header which someone has not picked up.

"The fourth one, Paul Clayton has marked his man and then he has not got a clue where he is when he has headed it in. The fifth one was down to Darren Kempson again.

"I don't mean to be disrespectful to Sunday teams or Scouts, but you would not see goals like that in one of their games.

"I thought when Ashley Worsfold and Nathan Arnold came on that they were willing to work, willing to run. How many times did they get in and ask the question? And of course we got the goal and could have got a couple more.

"The front two have given us absolute zero today and we were suicidal at centre half.

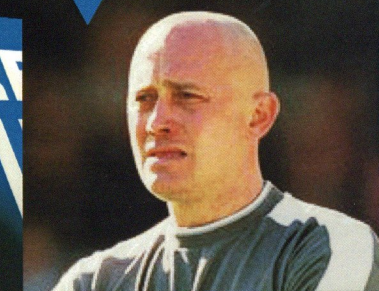
"If I am honest, I thought the rest of the team did well, played some good stuff and created some chances, but you can't defend like that."

And Law says he wants his players to shoulder some of the responsibility for their recent form, adding: "Apologies to the fans, but I can't keep apologising to them.

"They spent a lot of time and money getting here and for me, the players owe them an apology. What can I do? I can only apologise to them like I did last time.

"I take responsibility for the result, but at the end of the day anybody can look at that result and say that anyone off the pitch has done wrong, they haven't. And it's obvious with defending like that where the problem lies."

Nicky Law



atfc

GREEN & MAY

- ★ OPEN 7 DAYS A WEEK
- ★ LATE NIGHT OPENING UNTIL 8PM
- TUESDAY & FRIDAY
- ★ FAMILY RUN LOCAL BUSINESS
- ★ EXPERIENCED, LOCAL STAFF

INDEPENDENT ESTATE AGENTS

11 HIGH STEET, ALFRETON

01773 832888

www.greenandmay.co.uk

PROUD TO BE SUPPORTING ALFRETON TOWN



ourvisitors

atfc 2012/13

LUTON TOWN

Luton Town Football Club is based since 1905 at Kenilworth Road, Luton, Bedfordshire. Affiliated to the Bedfordshire County Football Association, it was founded in 1885. Its tortuous history includes several financial crises, numerous promotions and relegations, and some sporadic spells of sustained success. The club was perhaps most prominent between 1982 and 1992, when it was a member of English football's top division, then the First Division; the team won its first major honour, the Football League Cup, in 1988. During the 2012/13 season, the team is contesting English football's fifth tier, the Conference National.

The club was the first in southern England to turn professional, making payments to players as early as 1890 and turning fully professional a year later. It joined The Football League before the 1897-98 season, left in 1900 because of financial problems, and rejoined in 1920. After some decades of unexceptional performance, Luton reached the First Division in 1955-56, and contested a major final for the first time when playing Nottingham Forest in the 1959 FA Cup Final. The team was then relegated from the top division in 1959-60, and demoted twice more in the following five years, playing in the Fourth Division from the 1965-66 season. However, it was promoted back to the top level by 1974-75.

Luton Town's most recent successful period began in 1981-82, when the club won the Second Division, and thereby gained promotion to the First. Luton defeated Arsenal 3-2 in the 1988 Football League Cup Final, and remained in the First Division until relegation at the end of 1991/92. Between 2007 and 2009, financial difficulties caused the club to fall from the second tier of English football to the fifth in successive seasons. The last of these relegations came during the 2--8-09 season, when 30 points were docked from Luton's record for various financial irregularities. This ended the club's 89-year spell as a member of The Football League; it has been in the Conference National since the start of the 2009-10 season.



NUNEATON FC

Nickname:
The Hatters

Founded: 1885

Ground:
Kenilworth Road
Luton

Capacity 10,226

Chairman:
Nick Owen

Manager:
Paul Buckle



ONES TO WATCH

Mark Tyler (Goalkeeper)

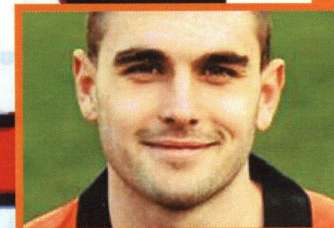
Hugely experienced goalkeeper who signed a two-year contract at Kenilworth Road in June 2009 to become Mick Harford's fifth signing of the summer following his release from Peterborough United.



Greg Taylor (Defender)

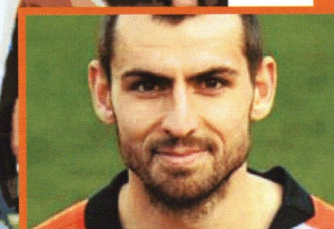
Left-back signed from Darlington in November 2011 who made his Town debut in the 1-1 draw at Cambridge United.

Started his career as a junior with Northampton before he signed for Kettering Town. He then joined Darlo, linking up with boss Mark Cooper at the Darlington Arena.



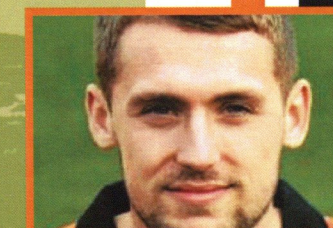
Alex Lawless (Midfielder)

Former Wales Under-21 midfielder who signed in November 2010 initially on-loan from York City before a permanent deal went through in January 2011.



Dan Walker (Striker)

Quick young forward capable of playing down the flanks who signed a one-year deal in July 2010 after impressing in pre-season in games for and against the Hatters.



As part of Alfreton Town Council's sponsorship the Council will be giving 10 tickets away to enable free of charge entry into the Impact Arena.

Today, Saturday the 8th of September, Alfreton Town Football Club are pleased to welcome 10 individuals from Alfreton Cricket Club.



**Somerlea
Park**



ALFRETON TOWN FOOTBALL CLUB ACADEMY AND SOMERLEA PARK COMMUNITY CENTRE, LEABROOKS IN PARTNERSHIP, PROMOTING FOOTBALL AND DISABILITY SPORTS

WORKING FOR YOUR COMMUNITY

REGISTERED CHARITY No. **1137063**

FOR ALL YOUR WEDDINGS, PARTIES, FUNCTIONS IN A LOVELY CENTRE
AND PARK SETTING

CONTACT 01773 528181

or Somerleacentre@aol.co.uk



resultspredictionleague

atfc2012/13

IMPACT
ARENA

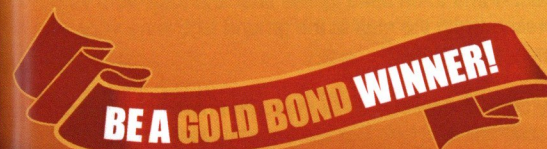
BLUE SQUARE BET
PREMIER

Table after 6 games:

	Res	Score	Total				
				Mike Cooke	1	0	5
Brandon Haslam	2	1	25	Paul Haslam	1	0	5
Tom McRoy	2	1	25	Ian McRoy	1	0	5
Adam Cooke	1	1	20	Kim (Teaboy)	1	0	5
Adam & Claudia McRoy	1	1	20	David Prime	1	0	5
Sarah Haslam	3	0	15	David L Prime	1	0	5
Luke McRoy	3	0	15	Doug Troth	1	0	5
Mick Pollicott	3	0	15	Alan Williams	1	0	5
Trev Coles	2	0	10	Curly Woolis	1	0	5
Stuart Maltby	2	0	10	Wayne Bradley	0	0	0
Dave Pryjdn	2	0	10	John Glasby	0	0	0
Roger Webster	2	0	10	Nigel Holmes	0	0	0
Henry Brooks	2	0	5	Bill Wheatcroft	0	0	0

5 points are gained for predicting the correct result, with 15 bonus points (i.e. total 20) awarded for getting the correct score. Blue Square Bet games only.

Where two people are tied on equal points, the person with the most correct scores is placed the highest. When total points and most correct scores are equal, the list is in alphabetical order.



Alfreton Town have been in partnership with the Gold Bond Lottery for the last 6 years.

This partnership gives you the chance to earn some big cash prizes whilst at the same time, helping your club by creating a valuable income source.

For only £1 per week you could have the opportunity to win weekly cash prizes of between £5 and £2000, by taking part you will also be entered into a yearly jackpot prize draw of £10,000!

WEEK 35 for Friday, Aug 31st, 2012

MM5106 Mr Tim Lomas, agent Supporters Association

CASH BONANZA

£2000

WINNER

WINNER

£500

AZ2678 Mr Ian Morris, agent Online Payer

WINNERS

£200

AZ3468 Mr C Ralph, agent Standing Orders

WINNERS

£100

Z.3113 Nigel Cooper, agent Online Payer

WINNERS

£50

FF5130 Mrs J Martin, agent Peter Martin
M.2682 Mr P Davies, agent Supporters Association
AA4369 D Yates, agent Mick Hughes
M.0531 Mrs Julie Bayman, agent Online Payer

WINNERS

£25

Y.1313 Mrs A Johnson, agent Jill Duckworth
PP3082 C Partridge, agent Mrs S Crew
WW6357 Mr T Day Online Payer
HH2945 Mr J G Watts, agent Supporters Association
K.5540 Mrs Gardener, agent David Knapman
PP2416 Mrs P Ingham, agent G Lund
PLUS 170 X £10 winners and 130 X £5 winners

PLUS 170 X £10 winners and 130 X £5 winners.

Have a go, support the club, and you could be the next big winner!

If you would like to have a chance at winning, then contact **Lisa Towerzey** on **(0115) 939 2090** Extension **107** for further details.
Or alternatively log onto the web site by typing in **www.goldbondlotto.com?ref=all** and registering yourself.

Remember You've gotta be in it to win it!!



PremierPoints

atfc 2012/13

IMPACT
ARENA

BLUE SQUARE BET
PREMIER

Last Sunday saw the annual presentation of cheque's by the Stan Brewster Memorial Committee to local charities. The committee have been going for 7 years now and have raised over £20,000 in that time. This year £3000 was reached, which is a fantastic sum of money raised by a very dedicated group of people. The fund was able to give £1000 each to 3 charities which do so much good work on behalf of local people.

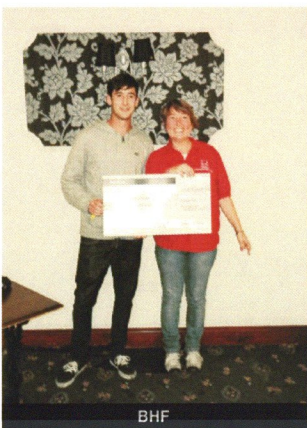


Ripley Hospital League of Friends

The Ripley Hospital League of Friends were first to collect their donation. This charity over the years have funded an X-Ray machine for £90,000 and the Butterley Ward which cost

£1.3M. They are continually raising funds to improve this local hospital which all in the District have access to. I remember having to visit Ripley hospital when I injured myself at work and was pleased that I was able to get seen to their rather than trek down to Derby or Chesterfield.

The British Heart Foundation (BHF) rely on donations and fund raising to carry on with their life saving work. All the money raised locally goes back in to their local area so the £1000 donated by the Stan Brewster Memorial Committee will go towards projects and research that help all in our area. Currently the BHF are carrying out research into mending Broken Hearts. This is not for some love lorn soul after a broken relationship but to find out if the heart can mend after being damaged. Currently if your heart muscle gets damaged it is never fully healed so this research is trying to find out if there is something that can be done to change that.



BHF

The final £1000 went to the Royal Derby Hospital Breast Unit, the money is to be split equally between the Breast Unit and the Breast Test Appeal. The money this charity raises is used to buy new equipment and provide extra's that are needed for health care and to improve the quality of life for local women who need to access the unit.



Royal Derby Hospital Breast Unit

Three very worthy charities indeed.

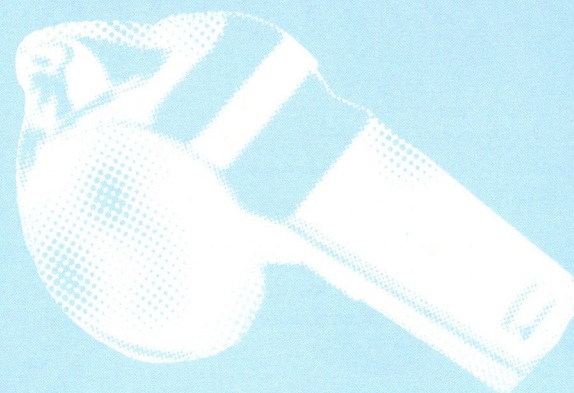
Tournament organiser Jayne Green gave special mention to Crib Bar, this year's winners, who turned out to support the presentation. Special thanks were also given to Amber Valley Borough Council who stepped in and allowed the Charles Hill Sports Ground at Loscoe to be used after there were problems at the Police Headquarters Ground. Alfreton Town FC were specially praised for allowing the Impact Arena to be used for the final and they were very impressed with the staff at the ground who were very friendly and helpful.

Very often in cases like this the tournament winners get the plaudits, and Crib Bar were worthy winners but it is the behind the scenes work that goes unnoticed. For example there's the organisation of the pitches and referee's, the tidying up after the game, contacting people and general running around to make sure everything goes to plan, and then some more running around if it doesn't. Raffle tickets to be sorted, sponsors to be approached, prizes to be begged and bought for. The work these people do in giving up their own time to make it happen is very often taken for granted so I would like to say well done to the Stan Brewster Memorial Tournament Committee for helping local people and doing so in such an enjoyable way for the people who come and watch. Tournament organiser Jayne Green is ably assisted by Sally who is the Secretary, Teresa, the Referee's Secretary, Anne who helps with Fundraising, Rob, Jackie, Glyn and John who it seems did anything that was required from tidying up the changing rooms after games to helping sell refreshments and raffle tickets. Well done to you all and to Sandra and the family for supporting this worthy cause in Stan's name, apologies for not knowing people's surnames and if anyone was missed from the info I have.

Bill Wheatcroft

#NONSENSEINFOOTBALL

"AN INCH OR TWO EITHER SIDE OF THE POST AND THAT WOULD HAVE BEEN A GOAL."



ENOUGH SAID. JUST BET



GET STRAIGHT TO THE BLUE SQUARE BET ON YOUR MOBILE OR TABLET

bluesq.com

web | mobile | tablet

BLUE
SQ.
BET

Over 18s only. Blue Square Bet encourages responsible gambling. gambleaware.co.uk



IMPACT
ARENA

BLUE SQUARE BET
PREMIER

interviewwith
atfc 2012/13

Today we take a look into the life of striker Ben Tomlinson who joined the Reds on a two-year deal from Blue Square Bet Premier Division rivals Macclesfield Town for an undisclosed fee just two days before the 2012/13 season.

He has quickly found his feet with the club and has already been on the scoresheet twice.

Ben is aged 22, stands 5'1" tall and was born in Rotherham. He now lives just down the road at Dinnington.

He lists his father Neil as the person who has had the biggest influence on his career. "He has done everything for me ever since I began playing football. He has taken me everywhere for training and games, bought me boots and loads of other stuff" explained Ben.

Ben describes his best moment in the game when he scored the fastest ever recorded Macclesfield Town goal. He netted after just 6.4 seconds in a 1-1 home draw against then League Two leaders Morecambe on September 13, 2011.

Unfortunately, his worst moment in the game was also experienced at Macclesfield when he broke his foot in a game at Crewe Alexandra in October 2011. It was an injury which put him out of the game for four months.

He arrived at Alfreton after falling out of favour with new Macclesfield boss Steve King in the summer after which Reds boss Nicky Law was quickly in to bring the former Worksop Town front runner to the Impact Arena.

Ben lists Hull City's KC Stadium as the best ground he has played on and Crewe Alexandra's Tom Powell as the best player he has faced in his career so far. He says he does not follow any other's club's fortunes but lists his all-time favourite player as French wizard Zinedine Zidane.

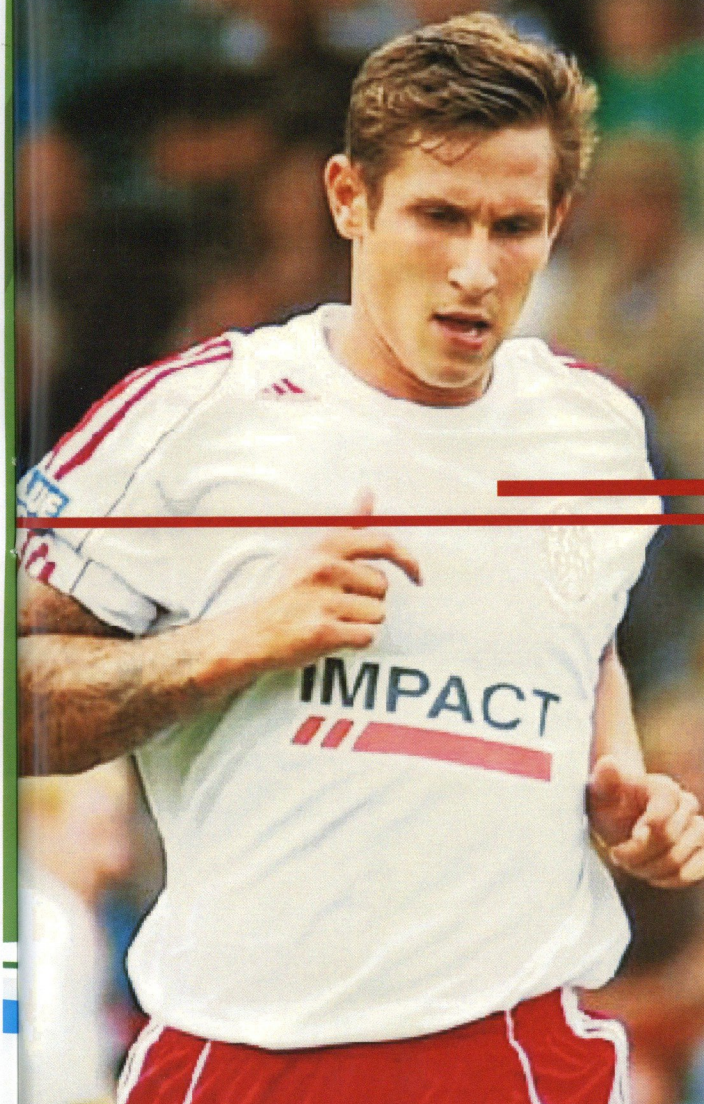
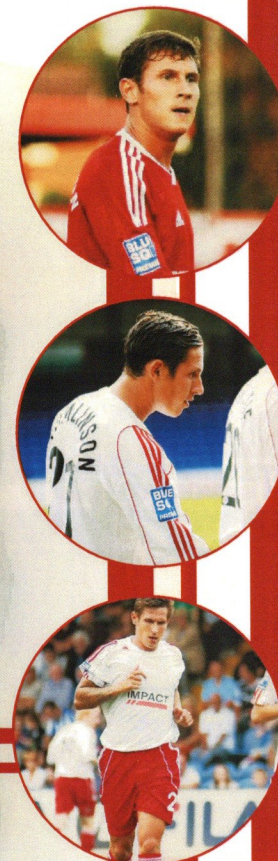
Ben says he has no pre-match superstitions and opts for beans on toast for his pre-match meal.



Shorts



Nickname:	'Tomo'
Favourite song:	You to me are everything by The Real Thing
Favourite holiday destination:	Magaluf
TV Soaps:	None
Chinese or Indian food:	Chinese, every day!
Favourite drink:	non-alcoholic Lucozade, alcoholic Desperado
Which daily newspaper:	Daily Star
Sweet or savoury food?	Sweet
Tea or coffee?	Coffee
Red or brown sauce?	Brown
Favourite colour:	Yellow
Favourite all time film?	Limitless

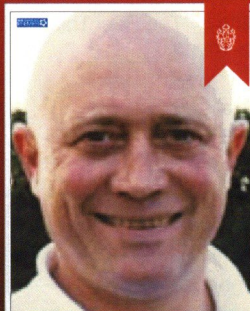


player&staff profiles

atfc 2012/13

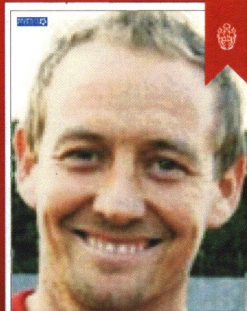
IMPACT
ARENA

BLUE SQUARE BET
PREMIER



NICK LAW

MANAGER



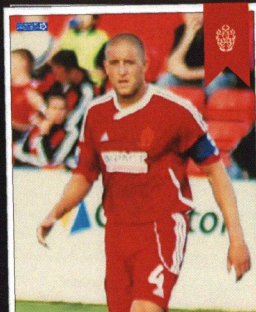
RUSS O'NEILL

ASSISTANT
MANAGER



PHIL BARNES

Joined 7/12
GOALKEEPER



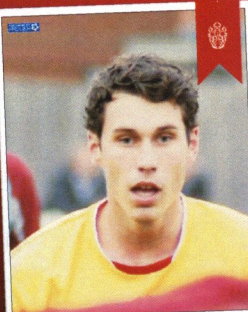
DARRAN KEMPSON
Joined 26/1/12
6/12/84 CENTRAL DEFENDER



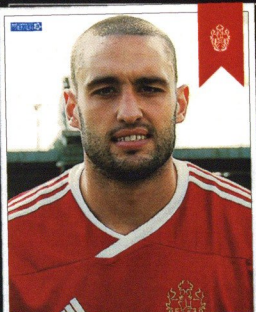
CONNOR FRANKLIN
Joined 26/8/10
1/9/87 DEFENDER



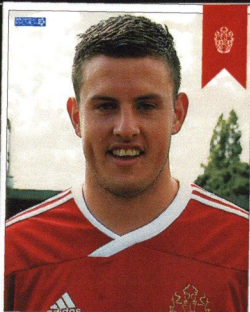
THEO STREET
Joined 2/11
23/11/87 CENTRAL DEFENDER



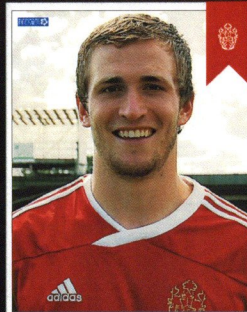
ALISTAIR TAYLOR
Joined 7/8/12
13/9/1991 MIDFIELD



MATT WILSON
Joined 9/08
10/3/87 CENTRAL DEFENDER/UTILITY



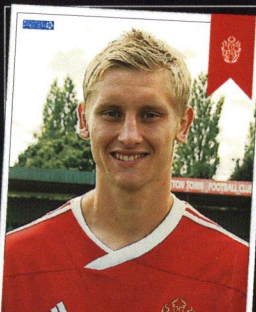
LEIGH FRANKS
Joined 8/11
7/3/91 CENTRAL DEFENDER



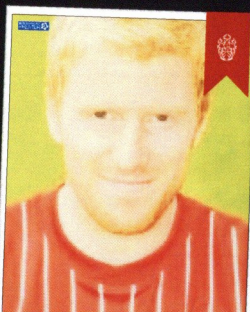
JOSH LAW
Joined 10/07
19/10/89 RIGHT-BACK



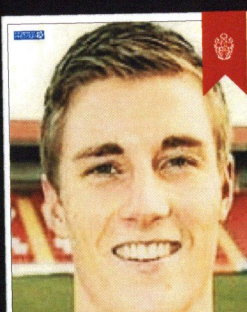
ADAM QUINN
Joined 24/11/11
2/6/82 CENTRAL DEFENDER



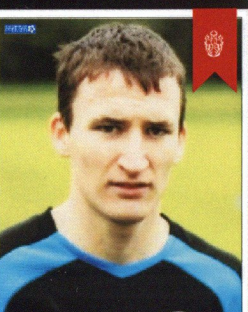
JAKE MOULTON
Joined 1/1/10
10/3/89 CENTRAL MIDFIELD



SIMON RUSSELL
Joined 7/12
MIDFIELD



DAN BRADLEY
Joined 7/12
MIDFIELD



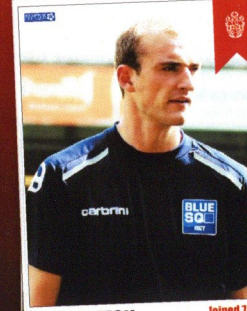
DANIEL MEADOWS
Joined 7/12
MIDFIELD

player&staff profiles

atfc 2012/13

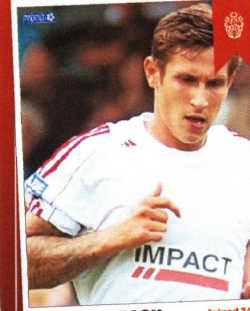
IMPACT
ARENA

BLUE SQUARE BET
PREMIER



TOM DENTON
24/7/1989

Joined 7/8/12
STRIKER



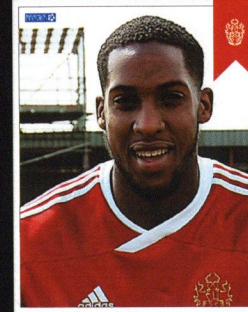
BEN TOMLINSON
24/7/1989

Joined 7/8/12
STRIKER



PAUL CLAYTON
31/8/84

Joined 12/08
STRIKER



ANTON BROWN
3/7/87

Joined 7/06
UTILITY



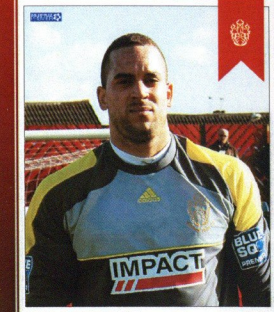
NATHAN ARNOLD
26/7/87

Joined 6/10
LEFTSIDE MIDFIELD / STRIKER



ANTHONY WILSON
25/8/87

Joined 25/5/10
STRIKER



JON STEWART

GOALSCORER





AntonBrown



WAGGON AND HORSES

BEER AND BURGER £3.99 ALL IN

100% BRITISH BEEF



CHOOSE BEEF, CHICKEN BREAST OR VEGETABLE BURGER V, WITH CHIPS AND INCLUDES A DRINK



9 King Street, Alfreton Tel: 01773 545890

drinkaware.co.uk

wetherspoon

ACROSS

- 1 Starting their new life in Scottish Div 3 (7)
- 7 On a season long loan at QPR from Man Utd (5)
- 8 Subject of some of KP's texts apparently (7)
- 9 Ed ____, member of gold winning 2012 team pursuit team (6)
- 11 The blue and black stripes of Milan (5)
- 13 __ MacLeod, manager of Scotland's ill fated 1978 World Cup adventure (4)
- 14 They beat Man Utd 1-0 in their opening game (7)
- 15 Boxing's Cassius ____ (4)
- 16 Argentine striker back at the Etihad from the golf course (5)
- 17 The ____ of Selhurst Park (6)
- 21 Much travelled manager who had caretaker spells at Southampton and Leicester (7)
- 22 The ____ of Worcestershire CCC (5)
- 23 Arsenal nickname (7)

DOWN

- 2 Beaten 1-0 by West Ham on the opening day (5,5)
- 3 Captained Gloucs and Durham before chairing England's Test Selection until 2008 (8)
- 4 Scottish Prem County (4)
- 5 Left back for Everton, Rangers, PSV and Man City (4)
- 6 England's most successful bowler in the 3rd Test vs South Africa (4)
- 9 The NFL's Indianapolis ____ (5)
- 10 League 1 side who play at their Community Stadium (10)
- 12 Beaten 2-1 by Blackpool in their second game of the season (5)
- 13 Man Utd player whose shirt name was spelt wrong at Goodison (8)
- 18 Former Rangers boss Paul Le ____ (4)
- 19 Under pressure for his place with Man Utd signing of Buttner? (4)
- 20 Has won Premier League, FA Cup, Champions League and Olympic Gold (4)

SPORTS X WORDS®



Sponsor the Pitch

atfc 2012/13

IMPACT ARENA

BLUE SQUARE BET PREMIER

For just £5 per square, you can help the club raise £600 to help with the purchase of equipment to help keep the pitch in its current excellent condition. Contact Lisa Towerzey on 0115 939 2090 Ex. 107. Lisa will be pleased to discuss your interest in sponsoring the Pitch.

ALMA STREET

In Memorium Graham Jones		Sponsored by Roger Webster				In Memorium Graham Jones	
Sale	Sponsored by Tom McRoy	Sponsored by K Sims	Sponsored by RBM	Sponsored by M Sims	Sale	Sale	Sponsored by Jackie Pryjdu
Sale		Sponsored by Wendy Webster				Sponsored by Archie	Sponsored by Max
Sale		Sponsored by Colin & Greta Thornton					Sale
Sale	Sale	Sponsored by John Glasby				Sale	Sale
Sale	Sponsored by Robert Brooks	Sponsored by Henry Brooks	Sponsored by Lindsey Brooks	Sponsored by Richard Walker	Sponsored by Peter Bamford	Sale	
Sale	Sponsored by Shane Maltby	Sponsored by Stuart Maltby	In Memorium Herbert & Connie Knight	Sponsored by Tony Pursglove	Sponsored by Kevin Miles	Sponsored by Warren Baines	Sale
Sale	Sponsored by Doug Troth	Sponsored by Malc Gabbittas		Sponsored by Kim Holmes Showbusiness	Sponsored by Dave Prime	Sale	
Sale	Sponsored by Elaine Troth	Sponsored by Pam Gabbittas	Sponsored by Chris Tacey			Sponsored by David Lewis Prime	Sale
Sale	Sponsored by Roy Curzon	Sponsored by Amanda Curzon	Sponsored by Callie Egan			Sponsored by Hannah Gregory	Sale
Sale	Sponsored by Lisa Hughes	Sponsored by Holly Hughes	Sponsored by Laura Hughes	Sponsored by Angela Halloran	Sponsored by Lawrence Lunn	Sponsored by Alan Williams	Sponsored by Steve Elliott
Sale						Sponsored by Nathasha Elliott	Sale
Sale	Sponsored by Jim Glassbrook		Sponsored by Kurt Dovey			Sponsored by Julie Sutcliffe	Sponsored by Shane Sutcliffe
Sale	Sponsored by David Cunningham					Sponsored by Peter Roughton	Sale
						Sponsored by Gary Thompson	Sponsored by John Lawrence
Sponsored by Kim Holmes Showbusiness							

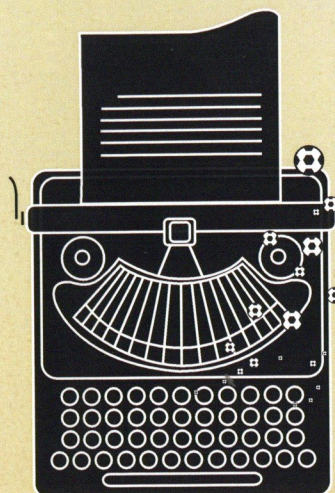
TOM MCROY

JOHN HARRISON

BENTLEY CLOSE

Please help the groundsman with your sponsorship, he needs your help!

atfc



THE NON-LEAGUE PAPER

ESSENTIAL READING FOR FOLLOWERS OF THE NATIONAL GAME

Buy it every Sunday from your local newsagent
Or Subscribe on at www.thenonleaguefootballpaper.com

SO, what exactly is in a start? If your team is sitting pretty near the top it probably means everything.

But those with a few defeats already under their belt can't stress enough the ten-game rule – no looking at that league table until the start of October!

Embracing the early few weeks of the Non-League season is easy after racing out of the starting blocks, not so if your side is propping up the rest.

But how much can we read into the fledgling tables as August has come to a close? Let's examine it.

Looking at the Blue Square Bet Premier this time last year and the answer is 'very little'.

Top this time last season were Wrexham with 13 points from a possible 15 with eventual run-away winners Fleetwood way down in eighth.

The early play-off pack consisted of York, they stayed the pace, but joining them were Gateshead, Kidderminster and Tamworth who clearly peaked too early!

The bottom four read Southport, who eventually went on to just miss out of the top five, and Alfreton, Bath City and Ebbsfleet. Only the Romans went down.

The Blue Square Bet North and South gave a few better clues to the months ahead.

Out in front in the North were Gary Lowe's Hyde – gold star for that –

but down in ninth were the side that ended up joining them in the Premier. Nuneaton took just seven points from the first five games but things were soon to get better.

The top three in the South at the end of August were familiar. Welling, Woking and Dartford would be the trio up there the whole way, with Garry Hill's Cards taking the title and the Darts joining them having beaten Welling in the promotion shoot-out.

None of the Evo-Stik NPL's three leaders stayed the pace. Chorley were overhauled by Chester, AFC Fylde got the better of Lancaster City in the NPL North while New Mills topped the lot heading in September in the NPL South. But it didn't last, they ended in ninth while very slow starters Grantham, way down in 17th, stormed to the title.

The Ryman's early standings were best ignored, even more so considering they were a week behind the other leagues. Hendon led the way in the Premier but champions Billericay ended August in 11th while play-off winners AFC Hornchurch were giving no sign of what was to come after three games brought two defeats.

In the North, champions-to-be Leiston were second with seven points

while in the South Whitehawk were already soaring and topped the table. That's the way it stayed.

Brackley were joint top of the Evo-Stik Southern Premier after five games, perhaps a good omen a year on for Jon Brady's side in the Blue Square Bet North?

The Central's early runners were the eventual promotion riders, Bedworth United and St Neots held the top two places and both went up, while in the South & West, winners champs Bideford had ten point on the board from 15 available but play-off winners Gosport won just once.

So what's in a start? Well that all depends on if your cup is half empty or half full, doesn't it!

By Sam Elliott



Sponsor Our Goals

									GEOFF 15p GREENWOOD	JEFF 30p CLARKE	JOHN 10p WALKER	IAN £1 MCROY	RACHEL 10p MCROY	NIGEL 10p FLINT	LAWRENCE 25p LUNN	
MALC 10p GABBITAS	PETER 50p HILL	MARK 25p THORPE	BRIAN 20p THORPE	GAVIN 10p ATKINSON	WARREN 10p BAINES	PETER 10p ROUGHTON	JON 20p HUGHES	CRAIG 50p BIRCH								
NIGEL 10p HOLMES	PAM 10p GABBITAS	GEOFF 20p LEECH	KEVIN 10p SALMON	PETER 25p BAMFORD	STEVE 10p HARDY	DICK 20p WEBSTER	ANGELA 25p HALLIDAY	RICHARD 25p WALKER								
									KARL 10p SIMS	TONY 20p PURSGLOVE	PHIL 20p HOWE	DERRICK 10p SMITH	ROY 10p CURZON	IAN 10p PRIEST	SHANE 25p MALTBY	TOM 50p MCROY
DAVE 20p SMITH	SCOTT 10p CHARLTON	STEVE 10p LEVERIDGE	STEVE 40p BUXTON	LEE 20p OLNEY	ALAN 20p WILLIAMS	IAN 10p DANBY	CARLY 10p CHARLTON									
GARY 20p SMITH	DAVE 10p WALLIS	DOUG 10p TROTH	NATHAN 20p SPRENGEL	JULIE 10p SUTCLIFFE	TERRY 50p BOOTH	DAVE 10p BRADLEY	DAVE 10p PRIME									
DAVE 10p NEVINS	DAVE 50p DOVEY	TONY 10p HENSON	JIM 20p GLASSBROOK	DAVE 20p CUNNINGHAM	KIM 20p HOLMES	GRETA 20p THORNTON	ROBERT 20p BROOKS									

See your name in every programme.
Support the Reds by sponsoring each goal scored

For further details, please contact **Alan Williams** on 07788 998495
or **Lisa Towerzey** on (0115) 939 2090 Extension 107



atfckitsponsors

atfc 2012/13

IMPACT ARENA

BLUE SQUARE BET PREMIER

Home Away Third

For details on becoming a kit sponsor, call **Lisa Towerzey** on **0115 939 2090 Ex107**

NICK LAW



Home Sale
Away Sale
Third Sale

RUSS O'NEILL



Home Sale
Away Sale
Third Sale

PHIL BARNES



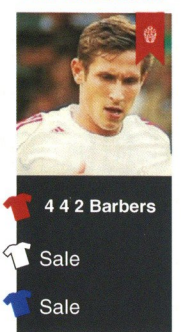
Home Sale
Away Sale
Third Sale

TOM DENTON



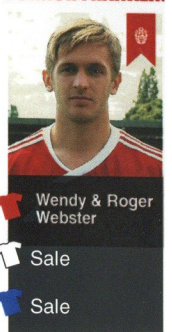
Home Sale
Away Sale
Third Sale

BEN TOMLINSON



Home 4 4 2 Barbers
Away Sale
Third Sale

CONNOR FRANKLIN



Home Wendy & Roger Webster
Away Sale
Third Sale

THEO STREET



Home Sale
Away Sale
Third Sale

JON STEWART



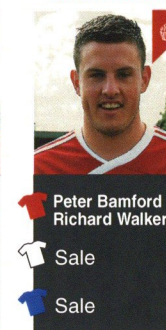
Home Sale
Away Sale
Third Sale

MATT WILSON



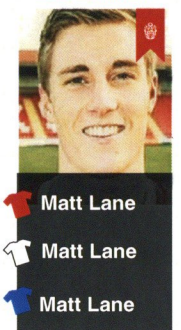
Home Sale
Away Sale
Third Sale

LEIGH FRANKS



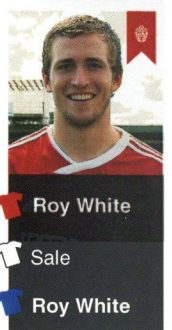
Home Peter Bamford & Richard Walker
Away Sale
Third Sale

DAN BRADLEY



Home Matt Lane
Away Matt Lane
Third Matt Lane

JOSH LAW



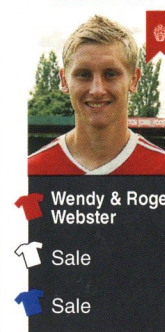
Home Roy White
Away Sale
Third Roy White

ADAM QUINN



Home Sale
Away Sale
Third Sale

JAKE MOULT



Home Wendy & Roger Webster
Away Sale
Third Sale

SIMON RUSSELL



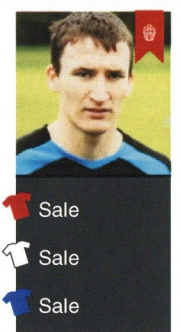
Home Sale
Away Sale
Third Sale

DARRAN KEMPSON



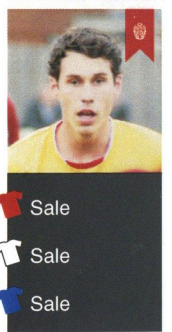
Home Viv & John Julie & Peter
Away Sale
Third Sale

DANIEL MEADOWS



Home Sale
Away Sale
Third Sale

ALISTAIR TAYLOR



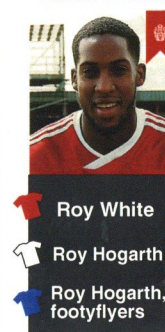
Home Sale
Away Sale
Third Sale

PAUL CLAYTON



Home Chris Winter
Away Sale
Third Sale

ANTON BROWN



Home Roy White
Away Roy Hogarth
Third Roy Hogarth, footyflyers

NATHAN ARNOLD

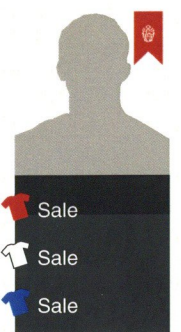


Home Stanley H Field
Away Sale
Third Sale

ANTHONY WILSON



Home Sale
Away Sale
Third Sale



Home Sale
Away Sale
Third Sale



Home Sale
Away Sale
Third Sale

50p GREENWOOD	30p CLARKE	10p WALKER	£1 MCROY	10p MCROY	10p FLINT	25p LUNN			
50p THORPE	20p THORPE	10p ATKINSON	10p BAINES	10p ROUGHTON	20p HUGHES	50p BIRCH	£1 CHADBOURN	50p HILL	
20p LEECH	10p SALMON	25p BAMFORD	10p HARDY	20p WEBSTER	25p HALLORAN	25p WALKER	£1 CHADBOURN	10p NEVINS	
20p PURSGLOVE	20p HOWE	10p SMITH	10p CURZON	20p PRIEST	25p MALTYBY	50p MCROY	50p STAMMAR	10p GABBITAS	
10p CHARLTON	10p LEVERIDGE	40p BUXTON	50p STAMMAR	20p WILLIAMS	10p DANBY	10p CHARLTON	20p BROOKS	10p GABBITAS	
10p WALLIS	10p TROTH	20p SPRENGEL	10p SUTCLIFFE	50p BOOTH	10p BRADLEY	10p PRIME	20p THORNTON	10p SIMS	
£1 DOVEY	10p HENSON	£1 GLASSBROOK	£1 CUNNINGHAM	20p HOLMES	20p SMITH	20p SMITH	10p HOLMES		

Every clean sheet earns more than points

For further details, please contact **Alan Williams** on **07788 998495**
or **Lisa Towerzey** on **(0115) 939 2090 Extension 107**



fromtheskipper

atfc 2012/13

"I feel an apology is in order to our fans"

Good afternoon ladies and gentlemen and welcome to this afternoon's fixture against Luton Town here at the Impact Arena.

A warm welcome goes to Paul Buckles Luton side. I hope you have a safe journey home after the game. I cannot comment on the Lincoln game due to programme production dates. Hopefully we got the result we wanted and need.

Results haven't been going our way of late and it has been very disappointing. I feel an apology is in order to our fans that made the trip down to Dartford, your support has been and is always exceptional and I hope you can stick with us through this tough time and get behind the lads. As I always say though we all need to stick together and keep working hard to turn things around... Things can change very quickly in football and hopefully sooner rather than later.

Kempo

ARE YOUR NASHERS LETTING THE SIDE DOWN?

Glendair

Dental Practice

- Talented dentists
- Fresher breath
- Stain-free teeth
- Dental implants
- Invisible braces

FREE
initial
visit

ALFRETON 01773 832 164 glendairdental.co.uk SOUTH NORMANTON 01773 860 816



Today's Sponsors

Matchday Sponsors

Irongategroup
office supplies • office interiors • print management

Matchball Sponsors

PREM-STYLE
LTD

Good Afternoon,

We have much pleasure in welcoming our valued Matchday Sponsors The Irongate Group led by the Managing Director, Adam Noble. Adam has been a great friend and supporter of 'The Reds' over the years and we appreciate the kindness he extends to us. We hope that he and his Guests have an enjoyable time in good company, watching good football and a 'Reds' win.

Club 100

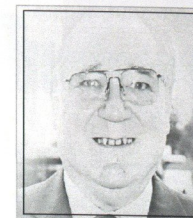
The first members signed in last week, but it is still early days in achieving full membership. Details are on the Noticeboards in and around the 'Reds Bar, in the Replica Kit Shop and in the Office. To join in the fun, please visit the Office and sign a registration form, when all will be explained to you and your questions answered. In joining this exclusive group you will be assisting the Club to maintain a more competitive team. We look forward to enrolling you.

50/50 Draw

Due to holidays your regular ticket sellers may not always be coming around the Arena. However, you may notice that other volunteers; both male and female are making the journey. They do not yet know who the regular purchasers are, but will learn in due

CommerciallySpeaking

atfc 2012/13



course. Please watch out for them and draw their attention to you. Sometimes you will find that they are near the Programme Sellers or that the sellers are doing a dual role if we are short of Staff, in which case please consider making your purchase there. Prize levels have been rising recently and if more people join in the bigger the prizes will get. For a small investment a win will go a long way to cover the cost of the day and possibly leave you with surplus funds in your pocket. Go on have a go!

My colleague John Glasby put our fund raising activities on the line recently when writing honestly about policing costs. Given how generous you all are in supporting the Club; please do not allow yourselves to become provoked in any way whilst at a game. Be tolerant and supportive and help us to direct the funds we raise in the right direction, for the sake of all our satisfaction. If you have any comment to make you know how to contact the Chairman in a fair and reasonable manner.

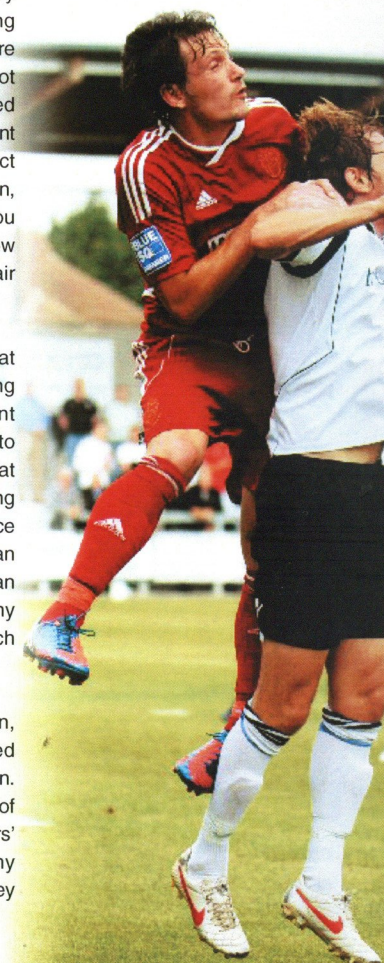
In speaking to my contemporaries at other clubs, it is obvious that getting sponsors is difficult in the current economic climate but we continue to search for them. It is important that they see a well behaved club striving to reach a higher level of performance and enthusiasm. Please do all you can to help show that Alfreton Town FC can rise to that challenge. It will make my job and that of my colleagues much easier.

If I digress to a personal reflection, please forgive me. In 1967 I joined Electrolux at their Head Office in Luton. Being a stranger to the town some of the office lads took me to 'The Hatters' Oak Road End and thus began my association with football, a long journey

via Refereeing and involvement with various leagues which has finally arrived here at the Impact Arena. In the crowd will be Luton Fan and friend of mine for over 40 years, one of that supportive group all those years ago.

I extend a warm welcome to Dave Henman and hope he finds our traditional football ground attractive. I look forward to dinner with him and his wife, Pat, later, I'll even pay the bill to celebrate a 'Reds' win!

Meantime, have a safe journey home and remember 'Commercial Matters', in all its forms.





fixtures/goals&appearances

atfc 2012/13

IMPACT
ARENA

BLUE SQUARE BET
PREMIER



Date Result Attendance Team Subs Goals

6th APR HOME v STOCKPORT COUNTY HOME AWAY 3448 0-1 PB, CF, TS, MW, LF, JL, AQ, JM, DK, SR, DB, DM, PC, AB, NA, AW, BT	11th AUG HOME v SOUTHPORT HOME 562 3-3 PB, CF, TS, MW, LF, JL, AQ, JM, DK, SR, DB, DM, PC, AB, NA, AW, BT	18th AUG HOME v HEREFORD UNITED HOME 690 0-3 PB, CF, AQ, LF, TS, JL, AB, DB, SR, PC, NA, AT, DM, AW	22nd DEC HOME v BARROW AFC HOME AWAY 798 1-3 PB, JL, CF, DK, DB, TS, AT, AB, SR, PC, BT, AQ, LF, AW	27th AUG HOME v NUNEATON TOWN HOME 680 0-3 PB, JL, CF, DK, DB, TS, AT, AB, SR, PC, BT, LF, AW
5th JAN HOME v DARTFORD HOME AWAY 1145 5-1 JS, JL, AQ, DK, AB, LF, AT, DM, DB, SR, PC, AW, CF, PB, DM	30th MAR HOME v LINCOLN CITY HOME AWAY	8th SEP HOME v LUTON TOWN HOME AWAY	20th APR HOME v FOREST GREEN ROVERS HOME AWAY	22nd SEP HOME v KIDDERMINSTER HARRIERS HOME AWAY
26th FEB HOME v HYDE HOME AWAY	29th SEP HOME v BRAINTREE TOWN HOME AWAY	16th FEB HOME v MACCLESFIELD TOWN HOME AWAY	9th OCT HOME v GRIMSBY TOWN HOME AWAY	12th MAR HOME v EBBSFLEET UNITED HOME AWAY
27th OCT HOME v AFC TELFORD UNITED HOME AWAY	16th MAR HOME v GATESHEAD HOME AWAY	9th NOV HOME v NEWPORT COUNTY AFC HOME AWAY	9th FEB HOME v WOKING HOME AWAY	1st DEC HOME v CAMBRIDGE UNITED HOME AWAY
4th DEC HOME v WREXHAM HOME AWAY	1st JAN HOME v MANSFIELD TOWN HOME AWAY	<p>SQUAD, JL Josh Law, CF Connor Franklin, TS Theo Streete, MW Matt Wilson, AB Anton Brown, J Mo Jake Moul, PC Paul Clayton, NA Nathan Arnold, LF Leigh Franks, AW Anthony Wilson, AQ Adam Quinn, LMo Louis Moul, DK Darran Kempson, ND Nicky Deverdics, DM Daniel Meadows, DA Daniel Meadows, DB Dan Bradley, SR Simon Russell, PB Phil Barnes.</p>		



bluesquarebetpremierdivision

atfc 2012/13

iPad 3G

Blue Square Bet Premier Division

Tuesday 4th Sept 2012

IMPACT
ARENA

BLUE SQUARE BET
PREMIER

	P	W	D	L	F	A	Pts
Forest Green Rovers...	7	5	2	0	15	6	17
Luton Town.....	7	5	1	1	16	8	16
Newport County.....	7	5	0	2	15	9	15
Macclesfield.....	7	5	0	2	15	11	15
Wrexham.....	7	4	2	1	9	4	14
Hereford United.....	7	4	1	2	13	10	13
Gateshead.....	7	3	3	1	12	8	12
Dartford.....	7	4	0	3	12	9	12
Mansfield Town.....	7	4	0	3	14	15	12
AFC Telford United.....	7	3	2	2	11	7	11
Braintree Town.....	7	3	2	2	11	10	11
Grimsby Town.....	7	2	4	1	10	9	10
Tamworth.....	7	3	1	3	10	9	10
Cambridge United.....	7	2	3	2	11	10	9
Nuneaton.....	7	2	2	3	12	13	8
Stockport County.....	7	2	2	3	10	11	8
Southport.....	7	2	2	3	8	13	8
Alfreton Town.....	7	2	1	4	9	17	7
Woking.....	7	2	0	4	9	16	6
Lincoln City.....	7	1	2	4	8	11	5
Ebbsfleet United.....	7	1	2	4	11	18	5
Barrow.....	7	0	4	3	5	11	4
Kidderminster Harriers..	7	0	2	5	4	10	2
Hyde FC.....	7	0	2	4	4	12	2



Safari

App Store

Mail

Photos

iPod

atfc

NEW YEAR, NEW LOOK

If you've been promising yourself a new look for 2012, take a free trial of the **new Clariti Monthly contact lenses**, now available from Stanley H Field!

And if you sign up to our monthly contact lens scheme, you will receive a **12 month supply of Clariti Monthly lenses for the price of 11!**

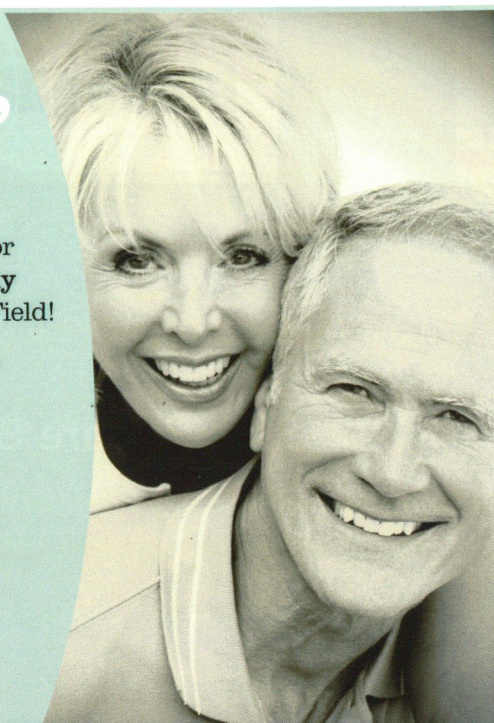
For your appointment call

01773 832091

Stanley H Field
optometrists

Offer available to patients trying Clariti Monthly lenses for the first time. Valid until 31 March 2012.

stanleyhfield.co.uk



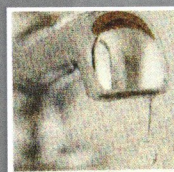
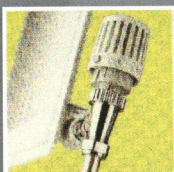
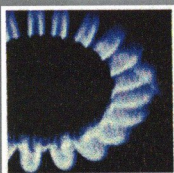
Amber Valley Plumbing & Heating

**BOILERS ~ COOKERS ~ FIRES
INSTALLATION SERVICE AND REPAIR
BATHROOM FITTING TAPS & LEAK
REPAIR**

GAS SAFE REGISTERED

- All plumbing work undertaken
- No job too small just ask!
- Local and Very reliable
- Very competitive prices

Call Lee Ablett on 01773 783503
South Normanton, Derbyshire DE55 3NH



supportersassociation NEWS & VIEWS

atfc 2012/13



Good afternoon and a warm welcome to one and all.

It has certainly been a difficult start to the new campaign with just four points gained from the opening half a dozen fixtures and one could be forgiven for having a feeling of deja vu following the opening volley's of last term, but clearly if everything else pans out like last term and the exciting conclusion to hostilities; then I guess no one will be complaining.

But it certainly has been trying times for the faithful and not just matters on the pitch.

We are at a level never experienced before in this town and we should all be proud of our achievements in getting this club to where it is today and we can all play our part in challenge ahead to keep the Red's playing at this, the highest table in non league football.

Much has been written about the various issues that have formed the challenges faced by the club in the lead up to the new season but we must not let anything over shadow the achievements of this great club in reaching it's current position.

"It is a challenging time for all concerned at the Impact Arena"

The shocking weather that has allegedly placed this summer? as the wettest since records began a hundred years ago, put paid to a potentially great fundraiser for the Supporters Association and the chance to re charge the coffers after two long haul away fixtures to Barrow and Dartford.

I talk of course of the eagerly anticipated Party in the Park which was due to take place last Sunday the 1st of September in Alfreton Park; an event that is massively attended year on year.

The Association were due to have numerous stands at the event including donated items of bric a brac for a table sale and a penalty shoot-out whilst not to mention the opportunity to raise the profile of both the club and the Association; but all was lost as the powers that be PITP were forced to cancel as the persistent downpours had left the ground saturated and unsafe for larger vehicles etc.

Opportunities lost then both on and off the field and whilst not yet needing the combined skills of Alistair Campbell and Malcolm Tucker to provide some positive spin, it is clear that it is a challenging time for all concerned at the Impact Arena.

But never let it be said that we shrink away from a challenge, history certainly proves otherwise, for we would not have risen to the heights that we now enjoy had we all taken the easy options when severe tests arose.

All assistance no matter how small helps this club move forward, so please join the Association, just £5 makes you a member for the year and gives you priority travel to away games, at fares frozen at last year's tariffs; and places you in a very merry band indeed; who get great pleasure from helping the club whilst having a good time with friends.

There are many ways to help the club, sign up for the numerous minor sponsorships that exist like the Goal and Clean Sheet mediums or purchase items from our excellent club shop, they currently have two new lapel badges on offer each priced at just three pounds each and with Christmas just around the corner make a great stocking filler.

Why not sign up to the new 100Club, which includes you in numerous money draws throughout the year for just over £11 a month. Worth thinking about, helps the club and could put cash in your pocket as well as swell the clubs coffers.

So, to paraphrase the late JFK, 'Ask not what your club can do for you, but what can you do for your club'.

Your support has never been more vital.

Get behind the boy's today.

Until the next time.

Regards

Ian McRoy.

ATFCSA Secretary.



atfc 33

New Bengal

Balti & Tandoori Restaurant

The True Taste of Eastern Cuisine



We Are Finalists In The Best Indian Restaurant Of The Year Competition 2012
Hosted By Derby Evening Telegraph

3 King Street, Alferton, Derbys, DE55 7AF
Opening Times Sun - Thus 6pm - 12 Midnight, Fri & Sat 6pm - 1am

Tel (01773) 832824/831620

View our menu: www.newbengalrestaurant.co.uk E.mail: newbengal85@yahoo.co.uk

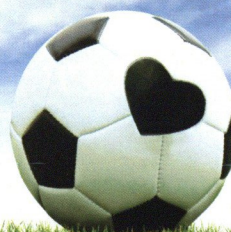
*** 1 PRICE**
FOR ALL
2 TAKE AWAYS
COLLECTED

*** 15%**
DISCOUNT
FOR SIT DOWN MEALS SUN - THURS WHEN
BOOKED MIN 2 HOURS IN ADVANCE

* Terms and Conditions Apply

Recommended By
The Good Food Guide,
Quality Food Online
and MasterChef

Supporting
the grass roots



Football Foundation



FUNDING PARTNERS

www.footballfoundation.org.uk

improving facilities • creating opportunities • building communities

Charity No 1079309 - Company No 3876305



actionreplay

atfc 2012/13



**Alfreton Town
Dartford FC**

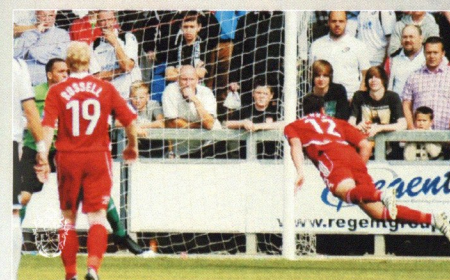
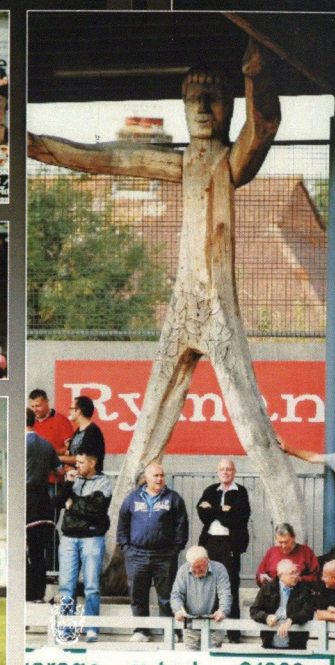
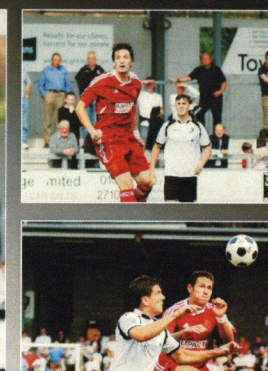
1st Sept - Dartford FC

IMPACT
ARENA

BLUE SQUARE BET
PREMIER



1
5



atfc ³⁵



matchsponsors

atc 2012/13

IMPACT
ARENA

BLUE SQUARE BET
PREMIER

BARNSELY



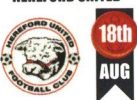
Matchday Sponsors



Matchball Sponsors



HEREFORD UNITED



Matchday Sponsors



Matchball Sponsors



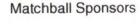
AFC TELFORD UNITED



Matchday Sponsors



Matchball Sponsors



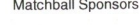
DARTFORD



Matchday Sponsors



Matchball Sponsors



GATESHEAD



Matchday Sponsors



Matchball Sponsors



LEEDS UNITED



Matchday Sponsors



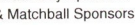
Matchball Sponsors



NUNEATON TOWN



Matchday Sponsors & Matchball Sponsors



Matchball Sponsors



NEWPORT COUNTY



Matchday Sponsors



Matchball Sponsors



NOTTS COUNTY



Matchday Sponsors



Matchball Sponsors



LUTON TOWN



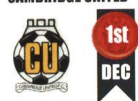
Matchday Sponsors



Matchball Sponsors



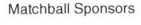
CAMBRIDGE UNITED



Matchday Sponsors



Matchball Sponsors



BURNLEY



Matchday Sponsors



Matchball Sponsors



KIDDERMINSTER HARRIERS



Matchday Sponsors



Matchball Sponsors



WREXHAM



Matchday Sponsors



Matchball Sponsors



MACCLESFIELD TOWN



Matchday Sponsors



Matchball Sponsors



FOREST GREEN ROVERS



Matchday Sponsors



Matchball Sponsors



CHESTERFIELD



Matchday Sponsors



Matchball Sponsors



BRAINTREE TOWN



Matchday Sponsors



Matchball Sponsors



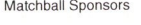
BARROW



Matchday Sponsors



Matchball Sponsors



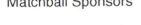
HYDE



Matchday Sponsors



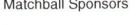
Matchball Sponsors



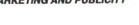
SOUTHPORT



Matchday Sponsors & Matchball Sponsors



Matchball Sponsors



GRIMSBY TOWN



Matchday Sponsors



Matchball Sponsors



MANSFIELD TOWN



Matchday Sponsors



Matchball Sponsors



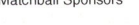
EBBSFLEET UNITED



Matchday Sponsors



Matchball Sponsors



STOCKPORT COUNTY



Matchday Sponsors



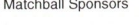
Matchball Sponsors



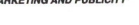
SOUTHPORT



Matchday Sponsors & Matchball Sponsors



Matchball Sponsors



GRIMSBY TOWN



Matchday Sponsors



Matchball Sponsors



MANSFIELD TOWN



Matchday Sponsors



Matchball Sponsors



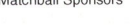
EBBSFLEET UNITED



Matchday Sponsors



Matchball Sponsors



STOCKPORT COUNTY



Matchday Sponsors



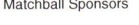
Matchball Sponsors



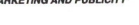
SOUTHPORT



Matchday Sponsors & Matchball Sponsors



Matchball Sponsors



GRIMSBY TOWN



Matchday Sponsors



Matchball Sponsors



MANSFIELD TOWN



Matchday Sponsors



Matchball Sponsors



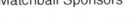
EBBSFLEET UNITED



Matchday Sponsors



Matchball Sponsors



STOCKPORT COUNTY



Matchday Sponsors



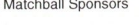
Matchball Sponsors



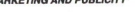
SOUTHPORT



Matchday Sponsors & Matchball Sponsors



Matchball Sponsors



GRIMSBY TOWN



Matchday Sponsors



Matchball Sponsors



MANSFIELD TOWN



Matchday Sponsors



Matchball Sponsors



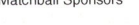
EBBSFLEET UNITED



Matchday Sponsors



Matchball Sponsors



STOCKPORT COUNTY



Matchday Sponsors



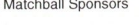
Matchball Sponsors



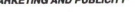
SOUTHPORT



Matchday Sponsors & Matchball Sponsors



Matchball Sponsors



GRIMSBY TOWN



Matchday Sponsors



Matchball Sponsors



MANSFIELD TOWN



Matchday Sponsors



Matchball Sponsors



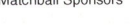
EBBSFLEET UNITED



Matchday Sponsors



Matchball Sponsors



STOCKPORT COUNTY



Matchday Sponsors



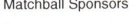
Matchball Sponsors



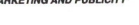
SOUTHPORT



Matchday Sponsors & Matchball Sponsors



Matchball Sponsors



GRIMSBY TOWN



Matchday Sponsors



Matchball Sponsors



MANSFIELD TOWN



Matchday Sponsors



Matchball Sponsors





Is this really how we should be spending our money ??

IMPACT
ARENA
BLUE SQUARE BET
PREMIER



In an effort to spread the workload more evenly within the club, the Chairman recently asked me to take responsibility for Health & Safety issues which obviously includes match day safety and policing. What an eye-opener!! How many Supporters are aware that our Stewarding & Policing bill for the 2012-13 (Conference matches only) season will be approximately £22,000 ?? To put this figure into perspective it is far higher than all the monies raised by our volunteers, members of the Supporters Association, 50/50 club and any other fund raising activities. It is money we cannot spend on improving facilities, improving the team or maintaining low admission prices. It is, in fact a drain on our resources.

Why is the figure so high ? You may well ask. It is solely due to the behaviour of supporters both home and away and the influence that they have on the people making decisions about the safety of spectators at forthcoming matches. In conjunction with the police we have to assess each match as to its potential for "trouble" because of crowd size, history of trouble between the clubs and police intelligence. The games are then graded from CS (Club Stewards only - non-segregated) through A, B, C to C-IR with the cost increasing accordingly. Thanks to our Safety Officer, Nigel Flint and his loyal band of volunteer stewards we are able to run our CS games at almost no cost and at the moment we have 9 of these planned for this season. All other games will be segregated – why many people have asked ? It allows us, with police permission, to down grade some of the matches and each down-grading step has the potential to save money. The approximate costs for each grading are as follows:

CS - £100 A- £250 B- £1500 C- £3000 C-IR - £5500

and it doesn't take a genius to work out that we do not need many C-IR matches (2 are planned for this season though !!). At least with the C-IR matches the potential gate may be large enough to help to mitigate the high costs involved. The more difficult decisions are for the matches in the B/C categories and a good example of this was the recent match against Nuneaton. This was ranked as a C – police and club intelligence indicated an away support of 250 which would normally have been an A rating – however because of some "history" between the 2 sets of supporters the police insisted on a C category.

In the event only 118 turned up, there was no trouble and we spent £3000, with hindsight unwisely. However, if we hadn't taken any precautions and there would have been any trouble then we may have been landed with a bill for £20-30,000 ?

Our supporters behaviour matters – both home and away. All incidents are reported back to the police at all grounds and this is all compiled in police intelligence reports which then influences our decisions. You may have noticed that we have 2 Badged Stewards now at all games on the entrance to the bars (additional cost) – why ? Because last season there was evidence of drug-taking, by our supporters, and in order to keep our bar-licence the police have insisted on more control – talk about shooting yourself in the foot !!

There has been constant criticism on the forum about increased admission charges. At the same time we are asked to improve the team, improve the facilities and to cover the cost of stewarding and policing. How is this to be done with a core home support of 5-600 ? Our gates only averaged 1000 last season because of away supporters from Mansfield, Grimsby, Luton and such like and the behaviour of some of our supporters, particularly at the Grimsby match has had a considerable influence on the planning for this season. The total number of spectators for all the league matches this season will be 25-30,000 which equates to £1 per head per game for each supporter to cover stewarding and policing costs alone. For those of you who come to every game please bear in mind that you are paying approximately £23 each per season for crowd control – wouldn't you rather that money be spent on the team or on facilities ? Help us to reduce those costs by your behaviour or the behaviour of others. Don't cause trouble with away supporters or constantly abuse match officials. If you want to report consistently bad behaviour but are afraid to do so, send an e-mail to safety@alfretontownfc.com where it will be treated in confidence.

We have to cover all these costs and pay our way – we don't want to be in the situation faced by Darlington or Kettering last season and I find it unacceptable that we are asked to spend more money in this area than our loyal fund-raisers can raise in a season through all their hard work is that not daft or what ??

ACROSS

1.RANGERS 7.FABIO 8.STRAUSS 9.CLANCY 11.INTER 13.ALLY 14.EVERTON 15.CLAY 16.TEVEZ 17.EAGLES 21.BASSETT 22.PEARS 23.GUNNERS

DOWN

2.ASTON VILLA 3.GRAVENY 4.ROSS 5.BALL 6.FINN 9.COLTS 10.COLCHESTER 12.LEEDS 13.ANDERSON 18.GUEN 19.EVRA 20.KANU

#NONSENSEINFOOTBALL

"I'M GOING TO MAKE A PREDICTION – IT COULD GO EITHER WAY."

UP TO
£25
FREE BET*
SIGN UP TODAY

ENOUGH
SAID.
JUST
BET

1ST GOAL
SCORER
BETTING

Available for every
Blue Square Bet
Premier fixture

**BLUE
SQ**
BET

Sign up at

bluesq.com

web | mobile | tablet

T&Cs apply. *Sign up offer: New customers only. We'll match your first bet of at least £5 up to £25 in the form of a free bet token. Free bet stake not returned in winnings and expires after 30 days. Qualifying bet must be placed on a win, single or multiple bets at odds of evens or greater. Void bets do not qualify for free bet tokens. Over 18s only. Blue Square Bet encourages responsible gambling. gambleaware.co.uk

Played	Sub	Scored
1	1	1
2	2	2
3	3	3
4	4	4
5	5	5
6	6	6
7	7	7
8	8	8
9	9	9
10	10	10
11	11	11
12	12	12
13	13	13
14	14	14
15	15	15
16	16	16
17	17	17
18	18	18
19	19	19
20	20	20
21	21	21
22	22	22
23	23	23
24	24	24
25	25	25
26	26	26
27	27	27
28	28	28
29	29	29
30	30	30
31	31	31
32	32	32
33	33	33
34	34	34
35	35	35
36	36	36
37	37	37
38	38	38
39	39	39
40	40	40
41	41	41
42	42	42
43	43	43
44	44	44
45	45	45
46	46	46
47	47	47
48	48	48
49	49	49
50	50	50
51	51	51
52	52	52
53	53	53
54	54	54
55	55	55
56	56	56
57	57	57
58	58	58
59	59	59
60	60	60
61	61	61
62	62	62
63	63	63
64	64	64
65	65	65
66	66	66
67	67	67
68	68	68
69	69	69
70	70	70
71	71	71
72	72	72
73	73	73
74	74	74
75	75	75
76	76	76
77	77	77
78	78	78
79	79	79
80	80	80
81	81	81
82	82	82
83	83	83
84	84	84
85	85	85
86	86	86
87	87	87
88	88	88
89	89	89
90	90	90
91	91	91
92	92	92
93	93	93
94	94	94
95	95	95
96	96	96
97	97	97
98	98	98
99	99	99
100	100	100

[illegible]

Phil Barnes (G/K)	1
Josh Law	2
Connor Franklin	3
Alistair Taylor	4
Adam Quinn	5
Darran Kempson	6
Anton Brown	7
Paul Clayton	9
Dan Bradley	10
Nathan Arnold	11
Leigh Franks	12
Daniel Meadows	14
Anthony Wilson	15
Theo Streete	17
Simon Russell	18
Ben Tomlinson	20
Jon Stewart	22
	23
	24
	25
	26
	27
	28
	29
	30
	31



Played	Sub	Scored
1	1	1
2	2	2
3	3	3
4	4	4
5	5	5
6	6	6
7	7	7
8	8	8
9	9	9
10	10	10
11	11	11
12	12	12
13	13	13
14	14	14
15	15	15
16	16	16
17	17	17
18	18	18
19	19	19
20	20	20
21	21	21
22	22	22
23	23	23
24	24	24
25	25	25
26	26	26
27	27	27
28	28	28
29	29	29
30	30	30
31	31	31
32	32	32
33	33	33
34	34	34
35	35	35
36	36	36
37	37	37
38	38	38
39	39	39
40	40	40
41	41	41
42	42	42
43	43	43
44	44	44
45	45	45
46	46	46
47	47	47
48	48	48
49	49	49
50	50	50
51	51	51
52	52	52
53	53	53
54	54	54
55	55	55
56	56	56
57	57	57
58	58	58
59	59	59
60	60	60
61	61	61
62	62	62
63	63	63
64	64	64
65	65	65
66	66	66
67	67	67
68	68	68
69	69	69
70	70	70
71	71	71
72	72	72
73	73	73
74	74	74
75	75	75
76	76	76
77	77	77
78	78	78
79	79	79
80	80	80
81	81	81
82	82	82
83	83	83
84	84	84
85	85	85
86	86	86
87	87	87
88	88	88
89	89	89
90	90	90
91	91	91
92	92	92
93	93	93
94	94	94
95	95	95
96	96	96
97	97	97
98	98	98
99	99	99
100	100	100

[illegible]

- 1 Mark Tyler – GOALKEEPER
- 2 Lathaniel Rowe-Turner
- 3 Greg Taylor
- 4 Garry Richards
- 5 Dean Beckwith
- 6 Janos Kovacs
- 7 Alex Lawless
- 8 Danny Spiller
- 9 Jon Shaw
- 10 Scott Rendell
- 11 Jake Howells
- 13 Stuart Fleetwood
- 15 Adam Watkins
- 16 Alex Lacey
- 17 JJ O'Donnell
- 18 Yaser Kasim
- 19 James Dance
- 25 Ronnie Henry - CAPTAIN
- 27 Andre Gray
- 28 Jake Woolley
- 29 Dan Walker
- 32 Alasan Ann
- 33 Dean Brill – GOALKEEPER



David McNamara (Red Flag) Ian Gittins (Yellow Flag) 4th Official - Joe Simpson