

BRAINTREE TOWN



MAIN CLUB SPONSORS



STADIUM SPONSORS



SHIRT SPONSORS



MATCH SPONSORS



BALL SPONSORS



LUTON TOWN

Saturday 7 April 2012
Official Programme £3

BLUE SQUARE BET
THE PREMIER



www.braintreeownfc.org.uk
CLUB IN ESSEX

QUEENSWAY PUBLISHING

We'll shoulder ...

04'05 **PLAY OFFS**
 05'06 **CHAMPIONS**
 06'07 **PLAY OFFS**
 07'08 **PLAY OFFS**
 08'09 **ALSO RAN!**
 09'10 **JUST MISSED**
 10'11 **CHAMPIONS**
 ... your burden!

BLUE SQUARE BET



www.braintree townfc.org.uk

02 THE PREMIER CLUB IN ESSEX

CONTENTS

- 04 The Gaffer - Alan Devonshire
- 07 From The Board Room
- 09 Kenny Davis - The Captain
- 11 Dave Ward & Milestones
- 13 March Awards
- 15 Out fought by Alfreton
- 17 Welcome to Luton Town
- 18 Meet the Luton players
- 21 Luton Town Progress Report
- 23 Max talks Red Oxide!
- 25 Freeze Frame - 1
- 26 The Poster - Jamie Guy
- 29 Freeze Frame - 2
- 31 On This Day - April 7
- 33 They Played For Both
- 35 Goals Galore
- 37 Fans Zone & GDF Progress
- 39 Iron Crowds over the years
- 41 Non League tables
- 43 Expectations & Cruelty
- 45 Next Up - its Ebbsfleet
- 47 Away Travel & shirt tugging!
- 48 BTFC 2011-2012
- 51 York City match arrangements
- 52 Teams, officials & games



BRAINTREE TOWN FOOTBALL CLUB LIMITED
 The Amlin Stadium,
 off Clockhouse Way,
 Braintree, Essex CM7 3RD
 Tel: 01376 330976 (Office/fax)
 01376 345617 (Clubhouse)
 www.braintree townfc.org.uk
 E-mail: braintreeTFC@aol.com

Life Member: T. Woodley
 Life Vice President: M. Doyle

Board of Directors
 Lee Harding (Chairman),
 Barry Shepherd (Vice Chairman),
 Kim Cowell (Finance),
 Vic Dixon (Stadium),
 Alan Stuckey (Sales & Marketing)
 & Terry Thorogood (Social)

General Purpose Committee
 Peter Tilbrook (Chairman), BTFC
 Supporters Club, Dave Green,
 Graham Hockley, Bobby Ritchie &
 Steve Townsend

Manager: Alan Devonshire
 Asst Manager: Keith Rowlands
 Therapist: Steve Gracie
 Club Secretary: Tom Woodley
 Match Secretary: Dave Green
 Sales & Marketing: Alan Stuckey
 Reserve Manager: Mark Sansom
 Steward: Christine Thorogood
 Groundsman: Graham Hockley
 Safety Officer: Steve Townsend
 Club Shop: Jerry Carter
 & Gordon Humphris
 Kit Manager: Dave Green

PRINCIPAL HONOURS

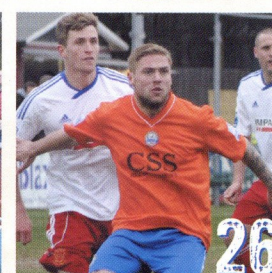
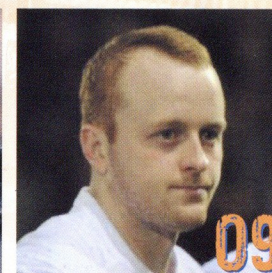
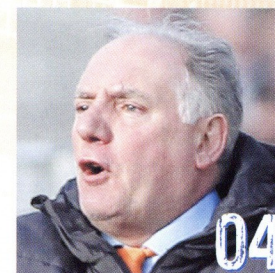
The Football Conference
 South Champions 2010/11
 South Play-Off Finalists 2006/07
 South Play-Offs 2007/08

The Isthmian Football League
 Champions 2005/06
 Premier Play-Offs 2004/05
 Division 1 Promoted 2000/01
 Division 2 Runners-up 1997/98
 Division 3 Runners-up 1996/97

Eastern Counties Football League
 Champions 1936/37,
 1983/84 & 1984/85
 Cup Winners 1987/88

Essex Football Association
 Senior Cup Winners 1995/96

The East Anglian Cup
 Winners 1946/47,
 1968/69 & 1995/96



BLUE SQUARE BET



www.braintree townfc.org.uk

THE PREMIER CLUB IN ESSEX 03

THE GAFFER

Welcome back for today's game against Luton Town. A warm welcome to everyone who has made the trip across from Bedfordshire.

I always enjoyed playing at Luton where the crowd were right there by the pitch creating a great atmosphere and I wish the Hatters the best of luck as they try and get back to those great days at the top level.

We come into the game on the back of a very disappointing result against Alfreton here last time.

We knew what to expect and knew it would be a tough game because I believe our visitors had won five out of six games before they came here.

They play a certain

way and you cannot knock them for it because it has pulled them well clear of the danger they were in at one stage at the foot of the table.

They had certainly done their homework on us and stuck very effectively to their gameplan.

We needed to deal with that and impose our own brand of football on the game but found that hard and were not quite at our best on the day.

As I have said many times, we have set high standards and need to keep doing the right things.

In the end we could have few arguments with the result and so we just take the positives out of it, work hard in training and start to prepare for the next game.

I am sure that

Luton will be saying the same thing, that what has happened earlier in the season is now gone and you move forwards, and that is what makes today's game such a huge one for both clubs.

Our visitors will be under new management and will still have one eye on the Play-Offs and what might happen if they can reach that stage.

But we know this is one of the biggest games of the season, there will be a decent crowd, and we will give it a real go today as we have done in every game this season.

It should make for a great spectacle for all the fans.

Come the final whistle today we will focus our attention on the trip to

Ebbsfleet on Monday.

That is another test for us and we will prepare correctly for it, just as we have done today.

Two games in quick succession is hard on the knees and ankles and with Ebbsfleet having played last night they will have a little more time to recover, but hopefully we can come into that game on the back of a great performance and a famous result.

The fans will play a huge part in today's game. Luton will bring great support but we have had superb backing all season and it will be a cracking atmosphere for what I am sure will be a very close fought ninety minutes.

Enjoy the game and get behind us,

Alan

WE WILL GIVE IT A REAL GO TODAY AS WE HAVE DONE IN EVERY GAME THIS SEASON



MORRISS PAINTER & DECORATOR

GREAT PAINTERS & DECORATORS

GREAT SUPPORTERS OF THE IRON

www.morrisspainterdecorator.com

01376 329589



The Performance Analysis Solution

Feedback leads to Improved Performance

www.event-feedback.co.uk

Planning an event or exhibition and want to know your visitors views quickly and accurately?

Our service provides you with customised paper-based feedback forms that can be tailored to review anything from presenters, products, services, venues to overall events in a questionnaire style.

We help you capture relevant feedback that records performance and encourages development. Delegate feedback can also be a great tool for measuring and proving the success of events to management or sponsors.

Please contact us for further information or a quote:

info@event-feedback.co.uk

BOARD ROOM

Good afternoon everyone and welcome to The Amlin Stadium for today's Blue Square Bet Premier match with our visitors - Luton Town. I hope all connected with the Kenilworth Road club enjoy their brief visit to North Essex.

With a larger than usual attendance expected for today's match, there has obviously been a fair bit of organisation going into the game and I'd like to thank Kevan and Mike at Luton for their help in selling tickets and to all at Essex Police, Essex County Council and Braintree District Council for helping us ensure today's game goes smoothly.

I am aware of a few negative comments about the parking arrangements for today's game, especially the restrictions imposed on surrounding roads, but this was in response to the problems we created for our neighbours on New Year's Day and we have tried our hardest to lessen any inconvenience on the adjacent residential areas.

With all the organisation that goes on in staging a game like today we sometimes over-look the significance of these sort of occasions.

Although, I'm sure, it will be just another game for our visitors, as they strive to get themselves back in the promotion play-off places, playing

former First Division clubs is something of a rarity for us here at Braintree and, perhaps, another marker for the progress we have enjoyed since 2003.

Relegated at the end of the 1991-92 season from the old Football League Division One, our visitors just missed out on being founder members of the FA Premier League and have since slipped through the divisions to join the ranks of non-League football following relegation in 2009.

That was, of course, the season when they had to endure the thirty point deduction from the Football League and yet still won the Football League Trophy - the knockout cup competition for teams in Leagues One and Two!

At the same time as Luton were struggling in the top flight of the game, Braintree were embarking on a journey from what is now the fifth tier of the non-League game - eight promotions below the FA Premier League!

The past twenty years have seen us progress from playing FA Vase football through both the Southern and Isthmian Leagues to secure promotion to, first, the Conference South in 2006 and, then, the Conference National in 2011.

So, if ever a game proves that the Football Association's pyramid structure works - it is today's match!

Today is not our first meeting having been beaten at Kenilworth Road in August, but I know that our lads will be looking to put in a good performance - more so after last Saturday's disappointing showing against Alfreton.

After today we have four more games to look forward to. We're at Ebbsfleet on Easter Monday, followed by a trip up to Manchester on Saturday when we visit Stockport County.

We then have our little say in the race for promotion and the play-offs with our game here in a fortnight against York City and then finish in three weeks time at championship-chasing Wrexham - which is a 1pm kick-off.

Looking ahead, Alan is already reviewing the squad we have, deciding who we are likely to offer terms to for next season and at potential additions to strengthen us over the summer.

While it is well known that, at this level, we do not have the highest playing budget, all who play for us know that they are with a stable club making gradual sustainable progress.

Having secured the 'A' grading to allow us to remain at this level, our attention now switches towards the next stage of our development and our relocation to the proposed new stadium at Springwood Drive.

The stadium will be designed to meet both

the entry and membership requirements of the Football League.

Who knows? We may never secure promotion to the League, but our new home will be designed to be ready for it and I look forward to working with Braintree District Council over the coming months to finalise the master plan of the site.

We are mindful of the problems many local clubs have encountered in relocating, especially if they have few assets to contribute towards the cost of the new build.

We here at Braintree have a proven record of taking a prudent approach and, as a result, we still own our existing stadium and the potential value of this site is something we would be able to contribute towards the new build costs.

As you can imagine, there is much negotiating to be done, but we do have the support of our local authority and appreciate that.

But, perhaps emphasising our cautious approach, I can reaffirm our promise that a general meeting of shareholders will be called before any decision is made to sell our existing site.

As ever, I'll do all I can to keep you informed in the months and years that lie ahead.

Enjoy the game and the rest of your holiday weekend.

Lee Harding, Chairman



CAPTAIN KEN

What a game we have on our hands this afternoon as we face a Luton side who have been in and around the promotion places not just all of this season but also for the two seasons before.

It is a game that I know the fans have been looking forward to ever since the fixtures came out, and what a fantastic way for us to test ourselves as a club.

It's not too long ago that Braintree Town were playing in the Ryman League while Luton Town were winning national cups at Wembley and it is a huge measure of how far we have come as a club and a side that we can come into this game on level terms.

There is no getting away from the fact it is a massive occasion but it is one we will come into in good spirits despite a defeat last weekend.

We have been on a decent run for a number of weeks now and were all disappointed to lose here to Alfreton last week.

We knew it was going to be hard because they were on a good run as well but we felt we could have competed far better on the day.

Alfreton came up from the Conference North at the same time as we came up from the South and there really wasn't much to choose between the teams. However we can't have too many complaints about the result on the day.

It was a new experience for me to be man-marked like I was. I thought he was going to pick my pocket he stayed so close.

It took one of their players out of the game at the same time but I think in the end it will be good experience and I will maybe learn from it and have that bit more experience if it happens again.

I suppose it is a compliment. Knowing how to stay close and get in the way was actually pretty useful when I went to Westfield shopping with the missus this week anyway.

I think we have played our own brand of football pretty successfully this season, whoever we have played

against and whatever formation or tactics they have tried.

We have a good squad here and there is a great team spirit and confidence. Next season we will look to build on that and keep moving forward.

First though we have the little matter of today's game and then a trip to Ebbsfleet on Monday.

No matter who we are playing against, whatever size the crowd is, or what is at stake for either club we will have the same approach.

We will prepare right, be mentally strong, be ready to give it everything we have, and hopefully that will be enough to get us the right results.

Get behind us,

Ken

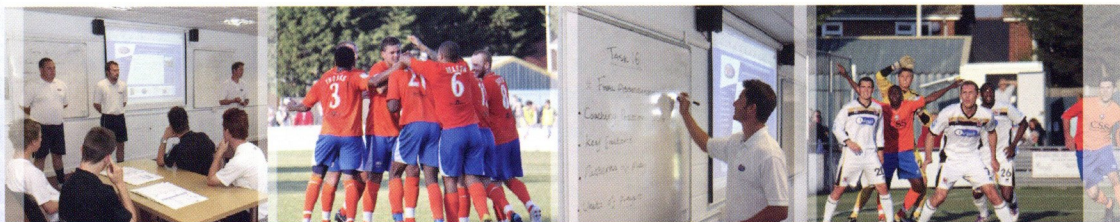
**WE HAVE A GOOD SQUAD HERE
AND THERE IS A GREAT TEAM
SPIRIT AND CONFIDENCE**



Braintree Town Football Academy

in partnership with 

BRAND NEW SCHEME FOR 2012 / 2013 SEASON



ACADEMY TRIALS 2012

TRIAL DATE 3: Tuesday 10th April TIME: 10.00am - 12.30pm

TRIAL DATE 4: Wednesday 6th June TIME: 10.00am - 12.30pm

VENUE: The Amlin Stadium, Clockhouse Way, Braintree, Essex CM7 3RD

To book your place at the trials please contact:

Alan Stuckey Academy Recruitment: ☎07800 886849 ✉btfcmarketing@btinternet.com

The Braintree Town Football Academy reflects an ethos which combines the provision of sporting excellence with a full-time education programme.

FOOTBALL

- Compete in the Conference Youth Alliance League
- Professional coaching by UEFA 'A' and 'B' Licence Coaches
- Emphasis on progressing Academy players into the Reserve and First Team squad

EDUCATION

- 2-year programme
- Level 2/3 BTEC, NVQ & Diploma's in Sport
- Coaching Qualifications



www.scl-online.co.uk

MILESTONE



THE long awaited home game against Luton Town today is certainly another milestone in the Iron's long and distinguished history.

Whoever would have thought only a few years ago that the Hatters, then in the top echelon of English football, would soon end up in the non-league world. As they say football's a funny old game!

On a personal note the arrival of Luton Town today at the Amlin Stadium brings back memories to when I was young professional at the club back in the mid Sixties.

The Hatters were in the old Second Division in those days and they had some illustrious players on their books, several in the twilight of their career such as goalkeeper Ron Baynham and wing half (as they called them in those days!) Dave Pacey.

Among the other youngsters of my ilk at Kenilworth Road at the time were Bruce Rioch and Alan Slough.

Bruce, of course went on to play in the top division and also play for Scotland, he was English himself but he qualified through his Scottish father.

Bruce later went on to manager Arsenal - he was the one who brought Dutchman Dennis Bergkamp to the Gunners - and later manager in Denmark.

Alan Slough went on to play for Fulham in their FA Cup final at Wembley against West Ham Utd before ending up at Peterborough.

There was one other notable arrival at the club when I was there and that was David Pleat who was signed from Nottingham Forest for the princely sum of £12,500, quite a bit of money in those days.

August it was not the first time I had been back having been there as a sports reporter several times.

But basically the ground has remained much the same as it was in my day, albeit smartened up with some corporate boxes I noticed.

At the back of the main stand there use to be a railway line running

of character and for supporters of both teams that play there you are on top of the pitch as it were which is always a great feeling.

The club has obviously had its hard times in recent years, being so badly run that they were effectively demoted to non-league football.

Hopefully at some stage in the future they can regain their Football



Ben Wright scores our goal at Kenilworth Road back in August

Pleat of course went into management later, returning to Kenilworth Road in the hot seat for a time, and is now what they call a media pundit.

Other senior players there at the time include little left winger Ray Whittaker who came from Arsenal and later of course played for Colchester United.

When the Iron played at Kenilworth Road in

to Dunstable but that's long gone and is now a relief road for the town.

Over the years there were several attempts to move the club to a new ground - even once it was mooted they might move to Milton Keynes!

Thankfully the club has remained in the town and although the actual Kenilworth Road ground is somewhat antiquated it has plenty

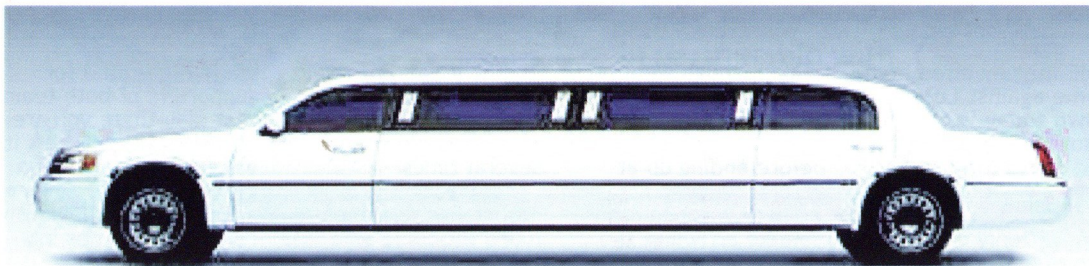
League status, just as the likes of Aldershot, Wimbledon, Oxford Utd and even our near neighbours Colchester Utd.

The Hatters still have a tremendous support base and that must help them get back up again - hopefully though not at the expense of the Iron today!

David Ward,
Essex Chronicle

Essex Limos

travel in style



Limos can be hired for any occasion such as weddings, theatre nights, kids parties, racedays and other sporting events.

- DVD player ● Television ● Kenwood CD sound system
- Privacy screen between client and chauffeur
- Dual air conditioning system ● Free bubbly with every booking
- Fully tinted windows to ensure privacy ● Mood lighting

Contact:

Chelmsford: 01245 462555 Braintree: 01376 341787
Mobile: 07714 333402 www.essexlimos.com
enquiries@essexlimos.com

www.bradlingsecurity.co



BRADLING SECURITY LIMITED

Integrated Security Systems

Unit 11a, Lakes Industrial Park
Lower Chapel Hill, Braintree, Essex, CM7 3RU
Tel: 01376 328100 Fax: 01376 324542
Email: enquiries@bradlingsecurity.com

MARCH AWARDS

MELLON RIPE FOR AWARD AS COD ARMY CLOSE IN ON TITLE
Fleetwood Town manager Micky Mellon (pictured) has been named the Blue Square Bet Premier 'manager of the month' for March. Mellon's side moved eight points clear in the title race as they took 19 points from a possible 21. They scored 18 goals in

they close in on a number of league records.

In the Blue Square Bet North the 'manager of the month' award for March goes to Guiseley AFC manager Steve Kittrick. Fixture congestion lead to Kittrick's side playing nine league games during the month as they try to overhaul long-term leaders Hyde. The period included

Basingstoke Town. Bristow was handed the manager's job at the Camrose following the departure of Frank Gray in late February. He became the division's youngest manager but remained undaunted as he took his side on a fantastic run which could still result in a play-off place. A four match winning run to end

Premier 'player of the month' for March. The former Liverpool youth team player moved into Fleetwood's midfield at the start of the month and has produced assured performances along with getting his name on the scoresheet in the 4-1 win at Bath City. Cavanagh has also popped up with a handful of important assists during the period in which his side have only conceded four goals as they close in on the title.

In the Blue Square Bet North the 'player of the month' for March is Josh Wilson from Vauxhall Motors. The striker hit seven goals as an ever-present in the side during the month including a hat-trick in the 4-2 win at Eastwood Town. At times partnering player-boss Carl Macauley, who narrowly missed out on the division's managerial award for the month. Motors find themselves in the final relegation spot but have closed in on the sides above them after their fantastic run which Wilson was a big part of. With a month left they could pull off a great escape!

The Blue Square Bet South 'player of the month' for March is Giuseppe Sole from Woking. As the Cards march on to the title striker Sole has been in fantastic form. Hitting nine goals in six starts for Garry Hill's team, with braces in games against Thurrock, Weston-super-Mare and Dorchester Town. Woking end the month eight points clear at the top of the table with just five games left.



the process, conceding just four. Four of their fixtures during the period were against teams in the top eight, dropping two points away at Mansfield Town in a 1-1 draw the only blip on an otherwise spotless record. They ended March with a 4-1 win Bath City which extended their unbeaten run in the division to 26 games as

a 1-0 win at the leaders as well as an impressive away win at fellow promotion chaser FC Halifax Town. Guiseley collected 20 points from a possible 27, with their only defeat coming away at Gloucester City.

The Blue Square Bet South 'manager of the month' for March goes to Jason Bristow from

the period puts them just four points off 5th place with a game in hand. The highlight of the month a 1-0 win away at fellow play-off hopefuls Chelmsford.

CAVANAGH MAKES IT A FLEETWOOD DOUBLE WITH PLAYER AWARD

Peter Cavanagh from Fleetwood Town has been named the Blue Square Bet

Keep your shirt on!

MILES SMITH

1

Miles  Smith
INSURANCE BROKERS

Miles Smith are proud to be this seasons Braintree Town shirt sponsors.

We are a Lloyd's broker, who provide insurance solutions for all UK business High Risk Industries including Professional Risks and High Net Worth. Specialising in Hazardous Haulage, Waste Management & Recycling, we offer the broadest cover at the most competitive prices.

For more information, please call us on **020 7283 0040**
info@milessmith.co.uk
or visit our website
www.milessmith.co.uk

Miles  Smith
INSURANCE BROKERS

A team you can rely on

OUTFOUGHT

see more action photos on pages 25 and 29

IRON OUT FOUGHT BY ALFRETON

Iron level after going behind - but lack cutting edge after the break

Braintree Town slipped a place to twelfth in the table following Saturday's disappointing 2-1 home defeat by visitors Alfreton Town.

So the ties between last season's two Conference divisional champions finish all square with a win and two goal each.

With the visitors resolutely sticking to their long-ball game, Iron found the opening exchanges difficult and fell behind when Adam Cunningham broke free from Dean Wells after 23 minutes and tucked the ball past Nathan McDonald from the edge of the box.

But eventually Iron's football produced results. After 33 minutes Billy Gibson levelled after fine work from Sean Marks and Jai Reason on the left saw the ball pulled back for him to shoot past Alfreton keeper Stewart.

But, with the wind behind the visitor's direct tactics kept Braintree on the back foot for most of the second half. It may not have been pretty to watch but Anton Brown's close range header saw them ahead again just after the hour.

Iron pushed players forward as the half wore on but saw the visitors pack their defence as they desperately fought to retain their slender advantage. Late on Matt Paine broke free of the Alfreton offside trap but saw his snapshot well saved by Stewart and the visitors held on to secure the points.

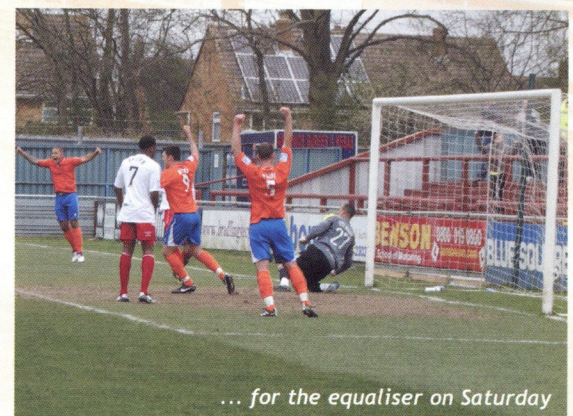
After the match Iron boss Alan Devonshire was frustrated: "I thought we'd made a lot of progress over the past couple of games, but we were poor today. We worked hard to get back into the game first half, but only looked likely to score again in the last ten. Keith and I have got a busy week ahead of us to get the lads right for the Luton game."



Billy Gibson lets fly from just inside the box ...



... and the ball zips past the keeper ...



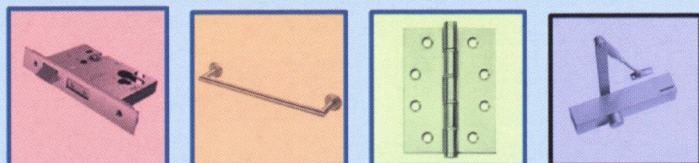
... for the equaliser on Saturday



Architectural Ironmongers

www.handleyoursecurity.co.uk

Hinges – Locks – Keys – Door Levers – Latches – Bathroom Accessories – Front Door Hardware

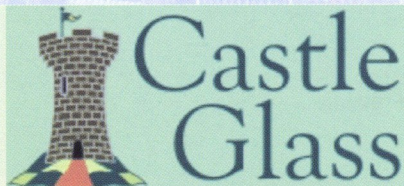


01376 557557

470 Avenue West, Great Notley, Essex, CM77 7AA



For BTFC Exclusive offers scan this QR code:



18 Broomhills, Braintree, Essex, CM7 2RG

01376 330069

enquiries@castle-glass.co.uk

Windows

Doors

Conservatories

Glazing Services

Great Customer Service; Great Workmanship; Great Quality; Great Prices



www.castle-glass.co.uk

Welcome to ... LUTONTOWN

After over 125 years as a club and 100 years at Kenilworth Road Luton Town remain one of the biggest clubs ever to play at this level.

Formed in 1885, Luton were the first club in southern England to turn professional, making payments to players as early as 1890 and turning fully professional a year later.

They reached the top division of English football in 1955-56, and reached a major final for the first time when playing Nottingham Forest in the 1959 FA Cup Final.

Relegated from the top division in 1959-60, the team was demoted twice more in the following five years, reaching the Fourth Division for the 1965-66 season, before being promoted back to the top level by 1974-75.

Luton Town's glory years really came in the 1980's when the club won the Second Division in 1981-2 and were promoted to the First Division.

Winning the League Cup in 1987-88 with a 3-2 win over Arsenal, Luton remained a First Division club until

relegation in 1991-92 signalled the end of major success.

Their history is littered with great names, from Director Eric Morecambe to Manager David Pleat and players such as Malcolm McDonald (initially signed as a full back) Ricky Hill, Brian Stein, Steve Foster, Paul Walsh and Mick Harford

Their League Cup win, a 3-2 victory over Arsenal, saw Brian Stein score the winner with the last kick of the match while victory in the 2009 Football League Trophy final evoked memories of the Wembley win even as the club left the Football League after battling so hard to overcome a points deduction.

The highest transfer fee received for a Luton Town player is the £3 million West Bromwich Albion paid for Curtis Davies on 31 August 2005.

The record for the most appearances is held by Bob Morton, who turned out for Luton 562 times in all competitions. Six players, Gordon Turner, Andy Rennie, Brian Stein, Ernie Simms, Herbert Moody and Steve Howard, have scored more than 100 goals for Luton.

Their most capped player is Mal Donaghy, who earned 58 Northern Ireland caps while at the club. The first player to score in an international match was Joe Payne, who scored twice in his only game for England against Finland on 20 May 1937.

Payne also holds the Football League record for the most goals in a game - he hit 10 past Bristol Rovers on 13 April 1936.

The club's largest wins have been a 15-0 victory over Great Yarmouth Town on 21 November 1914 in the FA Cup and a 12-0 win over Bristol Rovers in the League on 13 April 1936.



Luton Town 1919-20

There are iconic moments throughout their history. On the last day of the 1982-83 season, the club's first back in the top tier, they narrowly escaped relegation: playing Manchester City at Maine Road, Luton needed to win to stay up, and a late winner by Yugoslav Raddy Antić saved the team and prompted Pleat to dance across the pitch performing a "jig of joy"

Luton's highest home attendances are 30,069 against Blackpool in the FA Cup on 4 March 1959 and 27,911 against Wolverhampton Wanderers in the League on 5 November 1955.

Both records will almost certainly stand until the club relocates to a larger ground, as Kenilworth Road's present capacity is less than half of either of these figures.

ALL ABOUT ...

MARK TYLER - Hugely experienced goalkeeper who signed a two-year contract at Kenilworth Road in June 2009 to become Mick Harford's fifth signing of the summer following his release from Peterborough United. Mark made 483 appearances in 15 years at London Road and was rewarded for his loyalty with a testimonial against Liverpool in 2007. After falling down the pecking order at Posh he found first team opportunities hard to come by and in 2008/09 he was loaned out to League 2 Bury where he made 11 appearances for the Shakers. A former England Youth international, Tyler was handed the number one shirt by the Hatters boss who admitted he'd failed in an attempt to sign the stopper the previous summer. After a hugely successful two years between the sticks at Kenilworth Road, Mark signed a new contract in the summer of 2011.

LEWIS KIDD - Young goalkeeper who has yet to make a first team appearance. Signed professional forms in the summer of 2011 and has often appeared on the Town bench. Has spent a month on loan at Swindon Supermarine this term.

GEORGE PILKINGTON - Highly experienced defender who joined the club on a free transfer in August 2008. Having began his career as an Everton trainee, Pilkington joined Port Vale in June 2003, after a loan spell at Exeter City. Having started 223 league games for the Valiants, the highly-regarded defender has been named Player of the Year twice. Injury frustrated the centre-half in his first season at Kenilworth Road in 2008/09 but he still managed to pick-up a Johnstone's Paint Trophy winners' medal. Pilkington hit the headlines for his goalscoring exploits in the Town's first season in the Conference, twice scoring braces in early season victories over Mansfield and Crawley. His impeccable form on the pitch led to him winning a string of end-of-season awards and underlined his loyalty to the Hatters by signing a new contract at the end of the 2009/10 campaign.

DAN GLEESON - Tall and athletic defender, primarily a right-back, Gleeson signed for the Hatters in the summer of 2010 from his home town club Cambridge United. A product of the U's academy, Gleeson made his debut at 18 and soon became a regular at the Abbey Stadium making 61 league appearances before Notts County snapped up his signature in 2006. Gleeson only lasted a season at Meadow Lane, featuring 17 times before he was back at the Abbey, firstly on-loan before resigning permanently in 2007. Recognised as one of the best right-backs outside the Football League, Gleeson's performances have seen him rewarded with seven England C caps.

GREG TAYLOR - Left-back signed from Darlington in November 2011 who made his Town debut in the 1-1 draw at Cambridge United. Started his career as a junior with Northampton before he signed for Kettering Town. He then joined Darlo, linking up with boss Mark Cooper at the Darlington Arena.

ED ASAFU-ADJAYE - Capable of playing in any position across defence, Asafu-Adjaye has made significant progress through the Club's youth set-up. After a loan spell with non-league side Walton & Hersham, he made the breakthrough into the first team under former boss Mike Newell, when the Club was stretched to the limits through injury and suspension. Although the youngster was an unused sub for three matches, Youth Coach Marvin Johnson gave Ed a glowing reference to incoming boss Kevin Blackwell, who gave him a one-year contract. However with first team opportunities limited, Ed went on-loan to Salisbury City where he earned rave reviews and when Mick Harford arrived as Manager at Kenilworth Road one of the first things he did was recall the young defender. Making his full debut in March 2008 at Kenilworth Road against Crewe Alexandra he has gone from strength to strength and was part of the Town team that won the Johnstone's Paint Trophy at Wembley in 2009.

SHANE BLACKETT - Luton-born Shane became Mick Harford's sixth summer signing of 2009 after penning a two-year contract at Kenilworth Road. Equally adept at centre-back or at left-back, Shane began his career with Dunstable Town before a switch to Arlesey Town in 2003. His form with the United Counties side alerted the attentions of Dagenham & Redbridge who signed the 6ft 3in defender in May 2004. He made 83 appearances during his time at Victoria Road and helped the Daggers win the Conference title and earn promotion to the Football League in 2006/07. His reputation as a pacey defender alerted the attention of Peterborough who snapped him up with Dagenham team-mate Craig Mackail-Smith in January 2007. He went on to make 38 appearances during his time at London Road.

ALEX LACEY - Up-and-coming centre-half who made his first team debut as a 17-year-old in the FA Trophy first round tie against Welling, earning the man-of-the-match award for an excellent performance. Signed a professional contract to remain at Kenilworth Road until the end of the 2011/12 season.

DEAN BECKWITH - Centre-back who became the Hatters' second signing of the summer of 2011 following his release from Northampton Town. The 27-year-old, who signed a two-year deal at Kenilworth Road, was a key member of the Cobblers' squad in 2010/11 which reached the fourth round of the League Cup following wins over Brighton, Reading and Liverpool. The commanding 6ft 3in defender has experienced promotion from the Blue Square Bet Premier before having been part of the Hereford side that won the Play-Off final against Halifax Town in 2008. With almost 250 senior appearances to his name after starting his career as a junior at Gillingham, the centre-half enjoyed his best goalscoring season last season scoring three goals. The defender turned down offers from a number of League clubs but was delighted to agree terms to bolster the Hatters' defensive options.

CURTIS OSANO - Lightning quick attacking defender who signed a six-month contract at Kenilworth Road following his departure from Rushden & Diamonds in July 2011. Able to play anywhere along the backline, the strong Kenyan-born defender began his career at Reading as a youngster. He failed to make an appearance with the Royals but enjoyed loan spells at Aldershot, Woking and Rushden before making the move to Nene Park permanent in 2008, going on to make over 150 appearances for the Northamptonshire club.

ROBBIE WILLMOTT - Harlow-born winger who penned an 18-month contract with the Hatters in January 2011 after hitting 10 goals for Cambridge United. Capable of playing on either wing or behind the front two, Willmott came through the ranks at the Abbey Stadium and vowed the home faithful with his pace, dribbling, close control and eye for goal. His performances for the U's youth team saw him break into the senior squad, making his debut as a 17-year-old in September 2007. After signing his first professional contract two months later, the midfielder was mainly used as an impact substitute during 2007/08 but continued to impress: eight goals in his first season as a pro followed in 2008/09 while his level of performance and his assist tally soared last season as the U's finished in mid-table. But the youngster's talents during this campaign have really come to fore. Weighing in with 10 goals and eight assists from just 29 starts for Martin Ling's side, Willmott's turn of foot and delivery from set-pieces has also become a highly sought-after commodity.

JAKE HOWELLS - The young winger, who can also play at left-back or in central midfield, came through the ranks at Kenilworth Road and made his first team debut as a second half substitute in May 2008. He made his full debut in the Hatters colours away at Bradford City in October 2008. After making 36 appearances for the Hatters in the 2008/09 the England C international was rewarded for his efforts with a professional contract in May. In his first season as a pro, Howells made huge strides with impressive performances on the left-side of midfield, ending the 2009/10 campaign with six goals, including his first senior goal in the incredible 4-3 win over Cambridge in September 2009.

GODFREY POKU - Tenacious defensive midfielder who signed together with JJ O'Donnell from Blue Square South outfit St Albans City in January 2010 on an 18-month contract. A tough-tackling and no-nonsense midfielder, the Town beat off competition from several Football League clubs for his signature. He featured and impressed in the Hatters' reserves in 2009/10 and was an unused substitutes in the Blue Square Premier but made his debut as a substitute in the 1-0 win at Barrow in October 2010.

JJ O'DONNELL - Tricky winger who joined the Town with St Albans team-mate Godfrey Poku in January 2010. Also capable of playing at left back the youngster featured for the

LUTON TOWN

Hatters' reserve and youth teams during 2009/10. He made his first team debut as a substitute in the 4-2 FA Cup first round replay win over Corby Town and was handed a one-year contract extension in June 2011.

KEITH KEANE - Having made his debut as a 16-year-old in November 2003, Keith Keane went on to enjoy an extended run in the side from February onwards whilst Kevin Foley was out injured. Such was the contribution he made that the return of Foley didn't signal the end of his involvement at first-team level and he finished the season with 14 appearances under his belt, all this whilst still in the first year of his scholarship. Another product of the youth system who regularly appeared for the Republic of Ireland at schoolboy level. He joined the Hatters at the age of nine having been scouted in local football, and made a rapid progression through the club's centre of excellence and youth teams, demonstrating enough potential to convince Mike Newell to give him his first taste of senior action. Over the course of his career at Kenilworth Road Keane has proved to be one of the, if not the most, versatile players to pull on a Luton shirt. Capable of playing right the way across the back four or in midfield the only positions he's not featured for the Town (yet) are in goal and up-front. Out of contract at the end of the 2009/10 campaign the winner of the Hatters' Goal of the Season award delighted everyone at Kenilworth Road by penning a two-year deal to keep him at the club until 2012.

CHARLIE HENRY - Winger Henry signed from Blue Square Bet Premier rivals Newport County in November 2010, signing initially on-loan until January when the England C international will complete a permanent switch. Henry is no stranger to Kenilworth Road as he came through the youth ranks at the Club but was told he was too small to continue his scholarship and left when he was 15. Now 24, Henry came back to Bedfordshire with a bang back in August when hitting a superb goal in front of the Hatters faithful when Newport were the visitors earlier in the campaign. That strike was one of the Stevenage-born flyer has hit this term as the Exiles have adjusted to life in non-league's top flight with ease following their emphatic Championship winning season in the Blue Square South. Pivotal in that success, Henry netted nine times as Dean Holdsworth's side plundered over 93 goals last season to romp to the title. From South Wales via after spells with a host of non-league sides since leaving Kenilworth Road he's back when it all began and ready to help the Town back into the Football League.

ALEX LAWLESS - Former Wales Under-21 midfielder who signed in November 2010 initially on-loan from York City before a permanent deal went through in January 2011. A star of the Minstermen's campaign last season which saw them lose in the Promotion Final to Oxford United, Lawless featured prominently in all four of the meetings with the Hatters last term at the heart of midfield. He only joined

York at the start of last season, impressing then boss Martin Foyle enough to prise the 25-year-old away from Forest Green Rovers where performances in a variety of positions - in defence and across midfield - had also caught the eye of Football League scouts. It's not just the 150 games experience in the Conference that Lawless has with Forest Green and York that he has on his CV. A former Cardiff City scholar he took up non-league football in Wales before he was snapped up to earn his first professional contract with Premier League Fulham in 2003. Without featuring for the Cottagers it was off to South West to Torquay United for the young Lawless but after just a year and 16 appearances at Plainmoor he was on the move again, to Forest Green in 2006 and in his three seasons he helped the Gloucestershire consolidate in the Conference. Arriving at Bootham Crescent in the summer of 2009, local media announced him merely as a 'utility player' but that was far from the case, and alongside Neil Barrett he forged a formidable partnership in the centre of City's midfield, changing the Yorkshire club's relegation worries from one season to making them just one game away from promotion the next.

JAMES DANCE - Energetic, tricky winger who joined the Hatters from Crawley Town in July 2011. Able to play on either flank or as a central striker, Dance began his career as a trainee at Birmingham City but, after being released, he made his name in non-league circles in the West Midlands before catching the eye of Kettering Town in 2009. After a string of fine performances on the wing for the Poppies - including a man-of-the-match performance against the Town in August 2009 - he signed for Crawley in January 2011. However, after picking up a Blue Square Bet Premier winners' medal last term, Dance found himself out of the Red Devils' starting XI and, after the Hatters' bid was accepted by the League 2 club, the Colshill-born man was quick to agree a two-year deal.

ANDRÉ BOUCAUD - Midfielder who signed for the Town in the January 2012 transfer window from York City. Boucaud began his career in the QPR academy but following the loss of the Rangers' academy status in 2000 he signed for Reading in 2001, going onto a sign pro forms with the Royals a year later. The Enfield-born midfielder was loaned out to Peterborough at the end of the 2002/03 season and again at the start of the following campaign. The Royals released him at the end of the 2003/04 campaign and it was back to Peterborough for a third time, signing a two-year deal. In 2005, though he was out on loan once more, joining then Conference side Aldershot Town. His contract at London Road expired in 2006 where he made the short hop to sign for Kettering Town, then in the Conference North, but after one season with the Poppies he was on the move again, joining Wycombe Wanderers - then managed by current Norwich boss Paul Lambert - on a one-year

deal. It was back to Kettering the following season in 2008/09 which saw him make 40 appearances in a hugely successful campaign at Rockingham Road that saw the Poppies defeated in the FA Cup fourth round to Premier League Fulham. He signed a new contract in May 2010 but after being placed on the transfer list in a bid to keep the wage bill down at Kettering, his impressive performances were still catching the eye of visiting scouts, and in November 2010 he signed for York City, originally on-loan before making the move permanently in January 2011. His international career began in 2004 when, as a 19-year-old, he made his debut for Trinidad & Tobago in a 2-0 win over Iraq at West Bromwich Albion - one of six caps he's gained for the Soca Warriors. More recently he was capped up for the Trinidad squad in September 2011 for their World Cup 2014 qualifiers against Bermuda and Barbados.

ONE-2-WATCH
JANOS KOVACS - Hungarian defender who signed on-loan for his second spell at the club in September 2011. Formerly with Chesterfield and Lincoln, Kovacs first signed in January 2010 before signing for Hereford United in the summer of that year. Signed a 18-month contract in January 2012.

JOHN PAUL KISSOCK - Creative attacking midfielder John Paul signed a two-year contract for an undisclosed fee joining from Southport in August 2011. The former England Under-16 and Under-18 international began his career as a trainee at Premier League Everton. He was a regular in the Toffees' youth and reserve teams where he surpassed Wayne Rooney's record as the youngest ever player to feature for their second-string. In January 2008, he signed on loan for then Scottish Premier League Gretna, earning rave reviews before he returned to Goodison Park. With first team opportunities limited - despite being named as an unused substitute nine times in the Premier League - he was released at the end of the 2008/09 campaign before for he signed Hamilton

Academical. A short spell with Accies followed and, after attempting to find a new club, he dropped down to Cheshire county league level in a bid to resurrect his career. His performances for firstly Newton, and then Formby, alerted the attention of Southport manager Liam Watson who signed the Liverpoolian in December 2010, where he had an immediate effect for the Yellow. He scored his first goal for the club in a 5-1 win over Gateshead in January and his dynamic performances continued to catch the eye, none more so than in two appearances against the Hatters, especially in Port's 2-1 win at Haig Avenue in March. He started the 2011/12 campaign where he left off last season, scoring a fantastic free-kick in the Sandgrounders' 2-2 draw with Lincoln City on the opening day, then having a hand in the Southport goal at Kenilworth Road and set-up Tony Gray's goal in the Yellow's 3-1 defeat at Gateshead before his move to LU4 three days later.

CRAIG MCALLISTER - The frontman who signed on loan for the rest of the 2011/12 season from Newport County. The powerful 6ft 1in striker signed for Newport in the summer just months after helping Crawley Town win the Blue Square Bet Premier title last season where he scored 12 goals in 27 starts for Steve Evans' side. One of those goals proved particularly crucial when he fired a stoppage time winner against the Town for the Red Devils in a 2-1 victory at Kenilworth Road in October 2010. Although born in Glasgow, McAllister was raised on the South Coast of England and began his career with Eastleigh. In 2002 he signed for Basingstoke Town, scoring 53 times in 96 appearances at the Camrose which earned him a move to Stevenage Borough. However, with first team opportunities limited at Broadhall Way, he joined Woking in 2005 and went onto hit 23 goals in 83 games for the Cards. Stints at Grays, Oxford and Exeter followed - the latter coming in 2008. He made 38 appearances in two years at St James Park - notching seven goals in eight league starts for the Grecians. In 2010 he signed up for Crawley's Project Promotion' plan last season which he helped achieve - not only scoring a dozen goals for the Red Devils but also proving to be the perfect foil for prolific strike partner Matt Tubbs.

DANNY CROW - A nippy poacher of a striker, Crow joined the Hatters from Cambridge United in May 2010 following the expiry of his contract at the Abbey Stadium. The front man started his career as a trainee with Norwich City and made his senior bow in the Premier League for the Canaries in December 2004. A loan spell at Northampton followed towards the end of the 2004/05 season before he was released by Norwich and signed for Peterborough in the summer of 2005, notching 17 goals in his debut season at London Road. Following a short loan spell at Notts County, Crow was released by Posh and was snapped up by Cambridge in September 2008. The energetic forward's strike-rate of 22 goals in 43 league starts won him many admirers and



BLUE SQUARE BET



www.braintreeownfc.org.uk

THE PREMIER CLUB IN ESSEX

BLUE SQUARE BET



www.braintreeownfc.org.uk

THE PREMIER CLUB IN ESSEX

PROUD SPONSOR AND OFFICIAL BEER

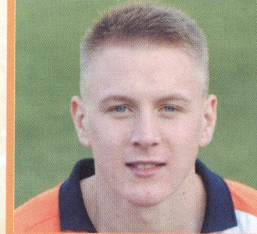


LUTON TOWN Progress Report

his 19 goals during 2009/10 saw him scoop the U's online Player of the Year award.

DAN WALKER - Quick young forward capable of playing down the flanks who signed a one-year deal in July 2010 after impressing in pre-season in games for and against the Hatters. Previously with Bedford Town, Walker has also played for Stony Stratford Town and Leighton Town. He made his first team debut for the Hatters as substitute in a 3-0 win over AFC Wimbledon in September 2010 before scoring his first senior goal against Forest Green a month later.

ONE-2-WATCH



ADAM WATKINS - Young midfielder, capable of playing in attack, who signed professional forms at Kenilworth Road in June 2010. A self-confessed Hatters fan, he made his first team bow in a 1-0 defeat at Southampton in the FA Cup third round in January 2010. He broke into the first team squad during 2010/11 campaign scoring twice on his full debut in the 4-0 FA Trophy win over Uxbridge. Watkins then scored his first league goal on his first league start in the 3-1 win over Braintree in August 2011.

AMARI MORGAN-SMITH - Striker or wide man who arrived at Kenilworth Road as a free agent following a two-year spell at Ilkeston Town. He put pen to paper on a two-year deal after two years with the Blue Square Bet North side in which he scored 34 goals in 77 starts. The fast and skilful frontman's impressive form for the Robins earned him a call-up to the England C squad at the end of last season, earning his first cap against the Republic of Ireland in May. Wolverhampton-born Morgan-Smith started his career as a trainee with Wolves. He then signed for Crewe and then Stockport where he made one Football League appearance before moving to Ilkeston. Before the 2009/10 season began the striker impressed in a trial for Championship side Derby County and has since gone on to score three goals in seven appearances for Ilkeston. Earlier this season his former boss Kevin Wilson hailed the striker, who scored 23 goals last season, as the "hottest property in non-league football". With huge interest in the forward, Town boss Richard Money was delighted to beat off competition from a number of Championship and League

One sides for Morgan-Smith's signature. And, hours after completing the paperwork, Morgan-Smith was thrust into action for his debut against Mansfield and scored in the 2-0 victory.

AARON O'CONNOR - Striker, who picked up a plethora of end-of-season awards at Nene Park, arrived at Kenilworth Road after signing a two-year contract following the expiry of his deal with Rushden & Diamonds. He scored 27 times in two seasons at Nene Park after arriving from Mansfield Town and went onto to be a huge favourite at the Northamptonshire club. Aaron started his career on YTS forms with Derby County before moving to Ilkeston Town. He then had spells at Scunthorpe United and Nuneaton Borough before returning to Ilkeston. He then joined Gresley Rovers where between 2004 and 2007 he scored 80 goals in 127 games which saw him pick up the Player's Player of the Year, Manager's Player of the Year and Supporter's Player of the Year awards two seasons in succession. O'Connor nearly signed for Rushden in 2006 when Paul Hart was in charge, however, after playing in pre-season friendlies, he returned to Gresley, later moving to Grays Athletic, where he played under Justin Edinburgh. Aaron went from Grays to Mansfield in 2008 where he scored eight times in 39 games at Field Mill prior to his switch to Rushden in the summer of 2009. Known for his strength and turn of pace the Nottingham-born front man can also play wide.

STUART FLEETWOOD - Prolific striker who signed for an undisclosed fee from Hereford United on deadline day in August 2011. The Gloucester-born frontman, who scored 28 goals the last time he played at Conference level whilst with Forest Green Rovers, signed a two-year deal at Kenilworth Road. He began his career as a trainee at Cardiff City, making the grade to feature eight times for the Bluebirds between 2003 and 2006. In January 2006, Fleetwood signed for Hereford for the first time scoring eight times before he signed for Forest Green in June 2007. And it was his spell with Rovers that saw people sit up and take notice after plundering 32 league and cup goals in a season that saw the Gloucestershire side earn their highest league placing. The Wales Under-21 international turned down a new contract at FGR to sign for then Championship Charlton in June 2008 but was loaned out to Cheltenham, Exeter and Brighton. Fleetwood returned to Edgar Street last summer and scored 18 goals as he helped the Bulls avoid the drop in League 2. After hitting the post on his debut against Stockport, Fleetwood scored on his full debut in the win over Darlington.

ANDRE GRAY - Lightning-quick forward signed from Blue Square Bet North Hinckley United on loan transfer deadline day in March 2012. The prolific striker had scored 39 goals in two seasons for the Knitters after being released from Shrewsbury Town in 2010. The Wolverhampton-born man made a goalscoring debut for the Town when scoring in the 1-1 draw with Grimsby Town. He has also spent time on-loan with AFC Telford United.

Luton Town Results 2011-12

Aug 16, 2011	Forest Green Rovers	H	1-1	6061
Aug 20, 2011	Southport	H	5-1	5681
Aug 23, 2011	Mansfield Town	A	1-1	2592
Aug 27, 2011	Braintree Town	H	3-1	5703
Aug 30, 2011	Hayes & Yeading United	A	2-2	1015
Sep 2, 2011	Stockport County	A	1-1	3389
Sep 10, 2011	Darlington	H	2-0	5952
Sep 13, 2011	AFC Telford United	A	2-0	2640
Sep 17, 2011	Lincoln City	H	1-0	6316
Sep 20, 2011	Bath City	A	1-1	1158
Sep 24, 2011	York City	A	0-3	3570
Sep 27, 2011	Cambridge United	H	0-1	6274
Oct 1, 2011	Barrow	H	5-1	5613
Oct 8, 2011	Kidderminster Harriers	A	2-1	3332
Oct 11, 2011	Ebbsfleet United	A	2-2	1651
Oct 15, 2011	Gateshead	H	5-1	6285
Oct 18, 2011	Wrexham	H	0-1	7270
Oct 21, 2011	Grimsby Town	A	1-0	3239
Oct 29, 2011	Hendon	H	5-1	2242
Nov 5, 2011	Fleetwood Town	H	1-2	6361
Nov 12, 2011	Northampton Town	H	1-0	4799
Nov 19, 2011	Cambridge United	A	1-1	4796
Nov 26, 2011	Newport County	A	1-0	1511
Nov 29, 2011	AFC Telford United	H	1-1	5399
Dec 3, 2011	Cheltenham Town	H	2-4	
Dec 6, 2011	Lincoln City	A	1-1	2049
Dec 10, 2011	Swindon Supermarine	H	2-0	
Dec 17, 2011	Tamworth	A	3-1	1467
Dec 26, 2011	Kettering Town	H	5-0	7164
Jan 1, 2012	Kettering Town	A	5-0	3247
Jan 7, 2012	Newport County	H	2-0	6108
Jan 10, 2012	Stockport County	H	1-0	5588
Jan 18, 2012	Hinckley United	A	0-0	
Jan 21, 2012	Southport	A	3-3	1665
Jan 23, 2012	Hinckley United	H	3-0	
Jan 25, 2012	Mansfield Town	H	0-0	5261
Jan 28, 2012	Alfreton Town	H	1-0	5658
Feb 7, 2012	Kidderminster Harriers	A	2-1	
Feb 18, 2012	Tamworth	H	3-0	5833
Feb 21, 2012	Barrow	A	0-1	925
Feb 25, 2012	Gateshead	H	2-0	
Mar 3, 2012	Bath City	H	2-0	5745
Mar 7, 2012	Wrexham	A	0-2	4206
Mar 10, 2012	York City	A	0-1	
Mar 13, 2012	Darlington	A	1-1	1382
Mar 17, 2012	York City	H	1-1	
Mar 20, 2012	Forest Green Rovers	A	0-3	975
Mar 24, 2012	Grimsby Town	H	1-1	6419
Mar 30, 2012	York City	H	1-2	5925
Apr 7, 2012	Braintree Town	A		
Apr 9, 2012	Hayes & Yeading United	H		
Apr 14, 2012	Alfreton Town	A		
Apr 17, 2012	Ebbsfleet United	H		
Apr 21, 2012	Kidderminster Harriers	H		
Apr 28, 2012	Fleetwood Town	A		
TBA	Gateshead	A		



£36



£36



£25



£40



£30



£20



£20



AVAILABLE ON MATCH DAYS
BY ARRANGEMENT FOR COLLECTION
OR DELIVERY.

EMAIL: jerry@andreas-carter.co.uk
www.andreascartersports.co.uk



ANDREAS
CARTER
SPORTS

REPLICA KITS

TRAINING GEAR

HOODIES

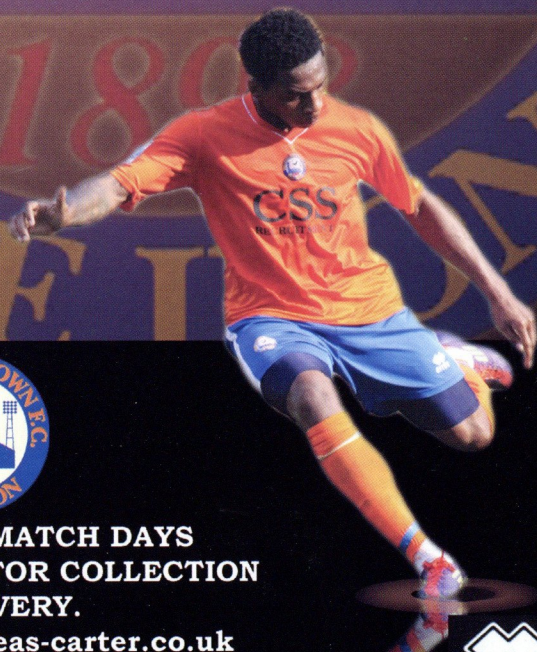
COATS

SWEATSHIRTS

SCARVES

HATS

AND MORE...



RED OXIDE!

Max is back with a light-hearted look at what's been going on around the Amlin-a-dome.

First of all, what's with all these yellow diagonal lines - they're everywhere! Now, when I was a lad (just after the war) we used to play the ol' don't step on the cracks game, but have you tried not stepping on these yellow things? Nigh on impossible. I've been hopping about like a good 'un - but I expect they'll be fine when they're dry!

I could accept the square things behind the Club End goal 'cos they were handy to put your plastic beer glass on during the pre-season games (*don't worry - Chrissie's not listening!*), but have you tried perching your half time cuppa on the new barriers? - the tea goes everywhere!

And don't get me started on the main stand. For Christ sake, we're a pub side! Why, oh why, we ever needed 550 seats

oxide paint that I can take - time to get the orange gloss out in the summer!

So is it all progress? I expect so. The Chairman keeps rabbling on about a Football League graded ground, but all I'm interested in is if we'll still be up here next season.

And you know what? - I can't see us going down with 57 points! In fact I think we just might be mathematically safe already. So the boy Devonshire's done great

down Wembley Way.

If truth be told, it's not been a bad baptism at non-League's top table. We're top half and I've seen a cracking 141 league goals - 70 screamers (for) and 71 lucky deflections (against)!

We've been to some exotic places and had plenty of folk look down their right royal noses at us, but it's been a laugh.

I don't know about you, but I've found that I've not missed Staines, Thurrock or Chelmsford and grown to love the M6 and A1.

But the arrogance of many clubs in this league is beyond my basic comprehension.

I'm the first to admit our Amlin Stadium is not as palatial as the land of a thousand escalators (*up at Darlington*) or that Rushden logo'd carpet haven (*that Kettering now rent*) but, then again, we haven't got their debts either!

As I said to one big-head earlier in the season: "we're in this league because we've won two championships in the last five years and have got an 'A' grading from The FA for our ground."

Looking down his nose at me he responded haughtily: "But I still can't believe we're playing the likes of ... Braintree!"

So I advised: "that's because you're no longer a Football League club mate."

I doubt we'll be exchanging Christmas cards!

Enjoy your Easter - Max!

I don't think we see enough escalators in non-League football!



It's all part of the culture shock of damn ground grading I suppose. But think of ol'Max - oh blessed reader.

For years I've leant on the old post a rail - giving the match officials the benefit of my, er ..., constructive criticism, but, alas, no longer. We're all perched behind these new barriers!

And they're round!

in the first place is beyond me anyway, but at least you could sit where you liked.

Now it's all Block C this, Row F that. Seat 22? - I don't know whether I'm coming or going - but that's another story.

And who's had the Quag. End roof away? It may be a cracking view at both ends now, but there's only so much of that red

and deserves another year - top by Christmas, champions by Easter - see what you can do Alan!

But, like all non League folk, I want more. Let's have a Cup run lads and how about Wembley in the Trophy?

Second season syndrome might mean we'll have to put up with promotion via the play-offs next year, but I don't mind a trip

one game community
www.kickitout.org

If you see, hear or are the victim of racial, homophobic or disability abuse call Kick It Out on 0800 169 9414

**Join together.
Unite against discrimination.**



**Supporting
the grass roots**



**Football
Foundation**



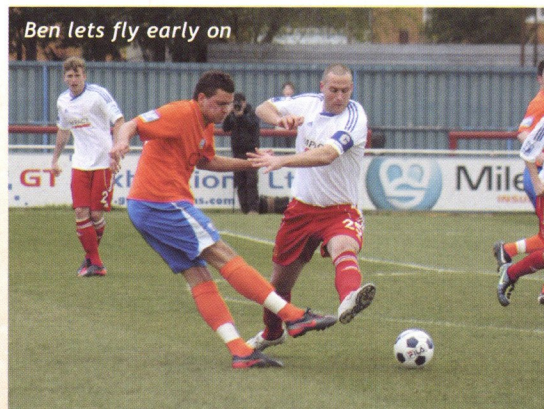
www.footballfoundation.org.uk

improving facilities • creating opportunities • building communities

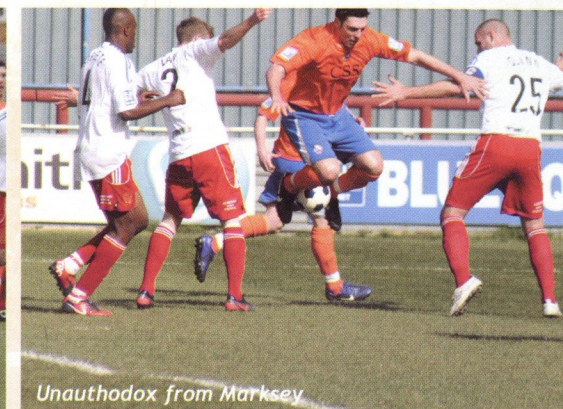
Charity No 1079307 • Company No 3876305

FREEZE FRAME

All the action from our match with Alfreton on Saturday



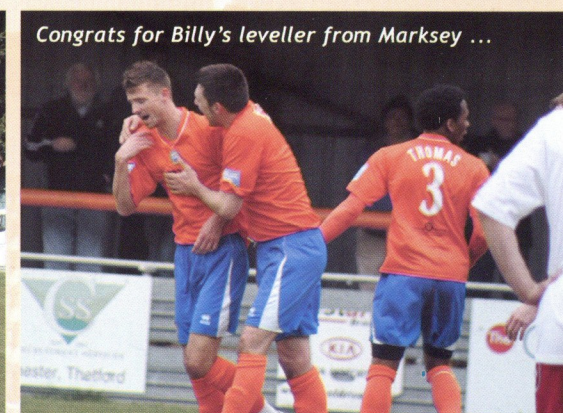
Ben lets fly early on



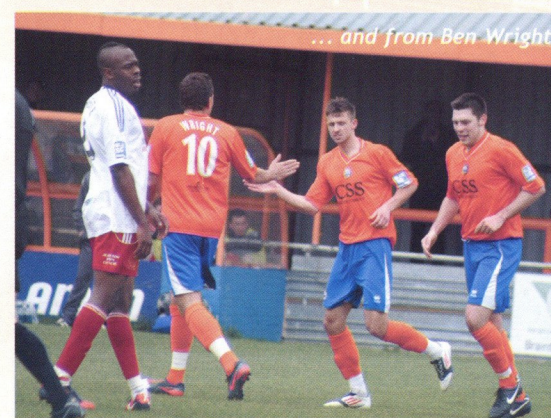
Unauthodox from Marksey



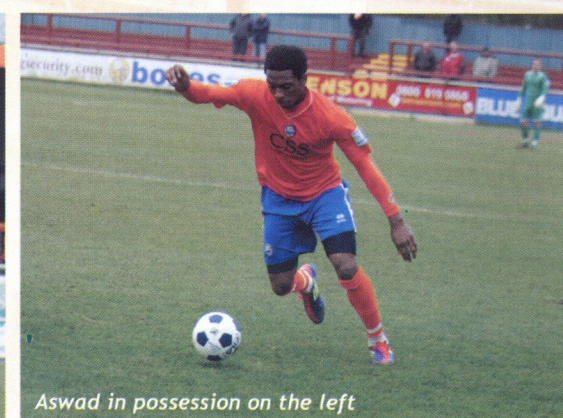
Deano gets the better of this aerial battle



Congrats for Billy's leveller from Marksey ...



... and from Ben Wright



Aswad in possession on the left

SQUADNUMBER

11

JAMIE
GUY



DANIEL ROBINSON & SONS

*Independent Family
Funeral Directors & Monumental Masons
Est 1892*

A personal, caring service from a family business

7 Manor Street Braintree Tel: (01376) 320582	Haslers Lane Great Dunmow Tel: (01371) 874518	52 Trinity Street Halstead Tel: (01787) 475533
--	---	--

Please visit our website www.drobinson.co.uk

Golden Charter
Funeral Plans

G. Collins & Sons Funeral Directors Ltd

An Independent Family Company

Established since 1893

Fifth Generation

Covering Braintree, Witham & All Surrounding Areas

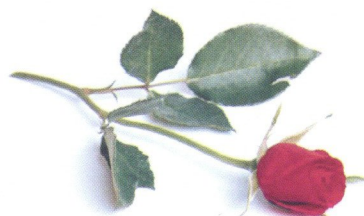
Directors: Brother & Sister Mr. James A. Collins & Mrs. Gemma L. Burdon

4 The Street

White Notley

CM8 1RH

01376 583385



10 Cressing Road

Braintree

CM7 3PP

01376 326818

Tel: 01376 583750 (24 Hour Service)



Email: enquiries@gcollinsandsons.net



28 THE PREMIER CLUB IN ESSEX



www.braintreeownfc.org.uk

FREEZE FRAME

All the action from our match with Alfreton on Saturday

Marksey breaks on the left



Adam launches the ball forward



Ben gets lots of attention in the corner



Billy in possession during the second half



Ken clears his lines



Jai takes on a couple

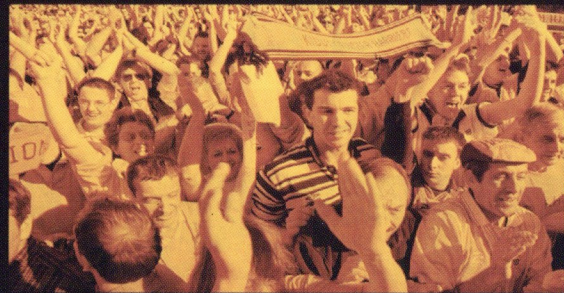


THE PREMIER CLUB IN ESSEX 29

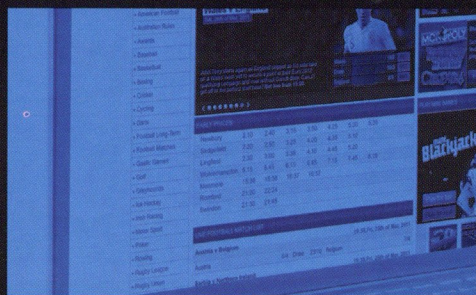


www.braintreeownfc.org.uk

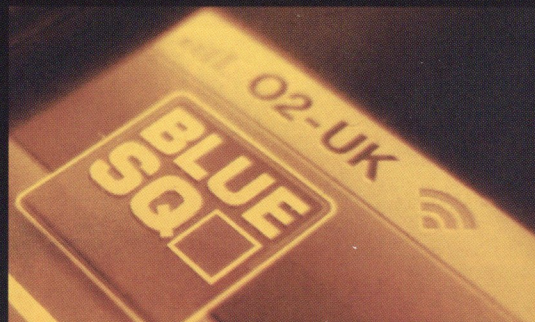
ODDS FOR EARNING MONEY FOR YOUR CLUB WHEN YOU BET WITH BLUE SQUARE: ODDS ON



ODDS FOR FINDING THE BEST RANGE OF NON- LEAGUE MARKETS ON BLUESQ.COM: ODDS ON



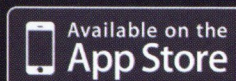
ODDS FOR ANOTHER GREAT SEASON OF NON-LEAGUE FOOTBALL: ODDS ON



Visit bluesq.com/fans to find out how your bets can make money for your club



bluesq.com
EVERYTHING IS PROBABLE



See website for full terms and conditions. Over 18's only. Blue Square encourages responsible gambling, gambleaware.co.uk.

APRIL 07

7th April 1923

Our first game on this day appears to have been in 1923, but it was worth the wait. We travelled by brake to Heybridge for an Essex & Suffolk Border League game and returned with a 7-3 win. Towney Horne scored twice, with Wisbey (2), Hawkins (2) and Eden completing the scoring. With two games to go that put us too far ahead of our rivals to be caught and we were crowned Western Division champions.

7th April 1934

We went to Hertfordshire for a meaningless end of season Spartan League game at Letchworth Town and lost 2-0. Letchworth's ground was taken over by the Herts F.A. in the 1990's and the club folded soon after. Today, a club by the name of Baldock Town Letchworth play there in the Herts County League.

7th April 1947

This day in 1947 we travelled to Epsom Town for a London League Premier Division match, coming away with a 5-3 win, Stan Rees scoring a hat trick with Fred Smart and an own goal making up the five goals. Our team lined up with George Folkard in goal (making his only appearance of the season), Don Barrett, Arthur Blackburn, Albert Wylds, Les Wicks, Frank Johnson, Stan Rees, Fred Smart, Jack Jones, Tommy Nice and Neville Tyrell. We had two players, Frank Johnson and Les Wicks, both playing in all 39 first team matches this season.

7th April 1958

We made the short trip to play Chelmsford City 'A' in the Essex & Suffolk Border League and winning 5-0, the goals being scored by John Mews (2), Ken Moyce, Bert Barlow and an own goal. We lined up with Roy Willsher in goal, Peter Taylor, Tony Dodd, Bryan Sutton, Ken

Hales, Tony Lee, Ken Moyce, Peter Tyrell, John Mews, Bert Barlow and Ray Strutt. John Mews was to finish the season as our top scorer with 18 goals, incidentally, John's father also played for Iron, George Mews was a regular in the side between 1928 and 1935.

7th April 1969

We were in Metropolitan League action this day in 1969, entertaining Bletchley at Cressing Road. It was a good result for us, winning 2-0 with goals from Edgar Rumney and Malcolm Gooday. Bletchley were to finish the league in third place with Iron two places below in fifth. Our line up for this match was Keith Swan in goal, Derek Edwards, Steve Lewis, Mike Stewart, Geoff

Bennett, Peter Hughes, Len Foyster, Edgar Rumney, Dave Coleman, Malcolm Gooday and Ian Vandermark.

7th April 1984

This day in 1984 we travelled up the A12 to meet Great Yarmouth Town in an Eastern Counties League match and coming back with a 2-1 win under our belts. Gus Jennings and Chris Guy scored our two goals. This was to be a momentous season in Iron history, winning our first league championship for many years. Our match winning line up was Tony Kelly in goal, Lenny Rayner, Steve James, John Bibby, Gary Nash, Gus Jennings, Nicky Lee, Russell Cotton, Chris Guy, Kevin Ketley and Adam Smith with Ivan Gooday coming on as sub. This was a

memorable day all round. The team bus left very early so that the players could have lunch in a hotel before strolling along the front. This left several extra hours drinking time for the Iron faithful who were on the bus, and who took advantage by going on a pub crawl. The support, standing right behind the goal instead of behind the barriers at what is still an athletics ground with a track, was loud and passionate, with each goal being met with exuberant dancing in the mud! We also had four players scoring over 20 goals this season, Chris Guy (40), Ivan Gooday (30), John Bibby (25) and Gus Jennings (21), those were the days!!

ALSO ON THIS DAY

In 1739 the notorious highwayman, Dick Turpin, was hanged in York for murdering an inn-keeper. In 1832 Joseph Thompson, a local farmer, came to Carlisle to sell his wife, both having agreed to part. A large crowd gathered as he offered her for 50 shillings. After an hour, the price was knocked down to 20 shillings, together with a Newfoundland dog. She was sold to a Henry Mears. In 1902 the Texas Oil Company, better known as Texaco, was formed. In 1951 only three horses out of the 36 starters finished in the Grand National, which was won by Nickel Coin.

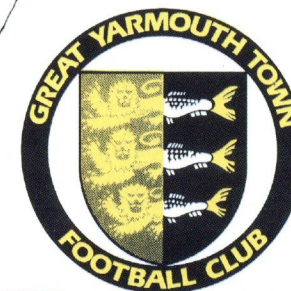
AND BORN ON THIS DAY WERE

English comic actor, Gorden Kaye, best known for playing Rene Artois in the TV comedy, 'Allo 'Allo!, was born in Huddersfield, West Yorkshire in 1941. British television news presenter, Martyn Lewis was born in Swansea in 1945. New Zealand born Australian actor, Russell Crowe was born in Wellington in 1964. British television presenter, Michaela Strachan was born in Ewell, Surrey in 1966.



Sponsors:
YARTOFT SUPPLY LTD
DEBENHAMS LTD
YARMOUTH & GORLESTON
ADVERTISER

SEASON
1983-84
Official Programme



Tax Planning

Audit & Accounts

Business Consultants

Are you with the right team?

To find out more contact:
John Gallant on 01371 877319 or
johngallant@bird-luckin.co.uk

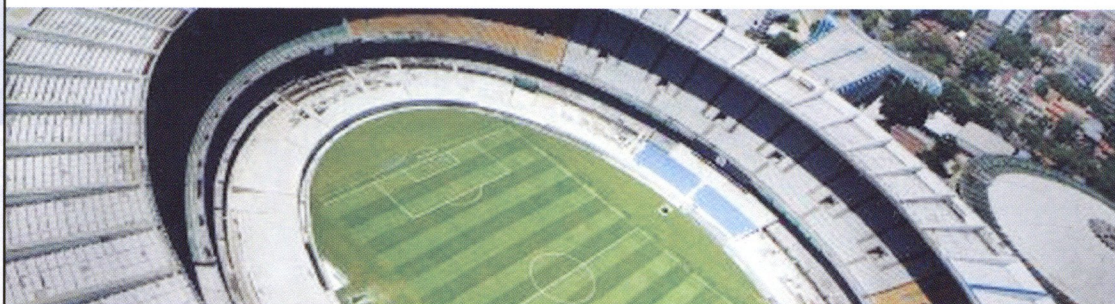


Janis Osborne - Bird Luckin Client Service Director

birdLuckin

Putting People First
www.bird-luckin.co.uk

New home?



For advice on property matters, including selling,
buying and renting homes or business premises
call Richard Harris on

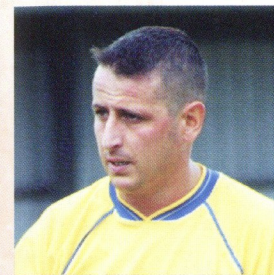
01376 320456

Holmes & Hills Solicitors
Bocking End (Braintree)
Tel: 01376 320456
Email: legaladvice@holmes-hills.co.uk
Also in Halstead www.holmes-hills.co.uk

Holmes & Hills

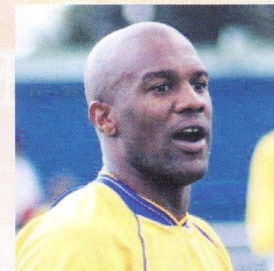
PLAYED 4 BOTH

The following players have all represented both Braintree and Luton Town.



▲ Carl Griffiths

The Football League veteran started 13 league games for Luton between 2001-03, grabbing an impressive 8 goals. He later spent the successful 2005-06 Ryman League Championship winning season at Braintree, scoring 15 goals from 29 starts.



▲ Gavin McGowan

After leaving Arsenal in 1997 Gavin moved to Kenilworth Road, appearing in 50 league games and coming on as a sub on 10 occasions prior to his departure in 2001. He pitched up at Braintree at the start of the 2004-05 season, wearing the No. 7 shirt in most of his 17 starts before Christmas,

scoring his only goal for us on his home debut against the now defunct Leyton.



▲ Dave Ward

Although never appearing in a Football League game for them, current Essex Chronicle Sports Editor Dave Ward was at Luton as a teenager, and later appeared against them for Wisbech Town in the F.A. Cup First Round. After appearing in a one-off cup tie for Iron at Newmarket in 1967-68, Dave joined our ranks permanently in 1971 and played until 1983, mostly at left back, clocking up 486 starts plus a further 15 appearances from the bench, and two goals.

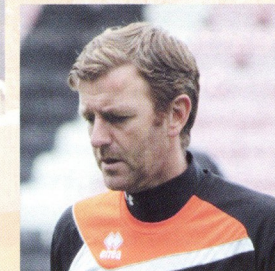
Paul Keys

Paul was another who spent time at Luton without making a first team appearance. He was there in 1981 and later spent a short time with us, between doing the rounds of numerous Ipswich area Eastern Counties League teams.

Ben Chenery

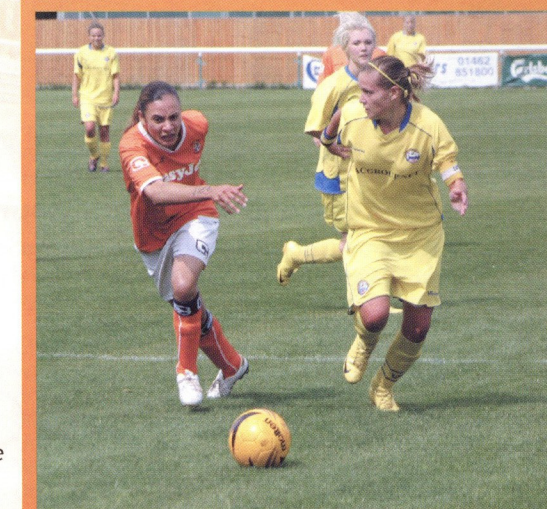
Ben's Luton career was brief, just two games in the 1995-96 season. He arrived at Braintree at the tail end of the 2007-08

season, playing six games and a further two plus friendlies at the start of the following season before leaving for Needham Market. He scored his only goal in an Iron shirt in the July 2008 1-0 friendly win at Great Yarmouth.



▲ Keith Rowland

Yet to be seen in a Braintree shirt (although the annual Staff v Supporters game is just around the corner!), our Assistant Manager played 12 league games, plus 2 as sub at Luton in 2001-02 while on loan from QPR.



Peter Holmes
Enjoyed a long career with The Hatters between 2000-07, starting 105 league games and scoring 7 goals. His Iron stint was a little briefer - appearing as a second half substitute in our 3-1 home defeat to Leyton Orient in the July friendly this season!

IRON v HATTERS LADIES MATCH

This season's Blue Square Bet Premier games with Luton are not the first meeting's between the two clubs.

Last season our respective ladies sides met in the South East Combination, the third tier of the women's game. In our first game of the season we were good value for a 2-2 draw at Luton (pictured below), in a game played at Biggleswade Town. Luton later came to Cressing Road and won here 3-1.

The Orange Tree, Cressing Road, Braintree, Essex CM7 3PH
Tel: 01376 344013



WHAT WILL YOU CHOOSE?

A wide range of vocational courses at your local college

To find out more about the subjects on offer and what studying with us is like come along to one of our Open Events. See our website for details, events held throughout the year.



(01376) 557020
www.braintree.ac.uk

The College at Braintree



BLUE SQUARE BET



www.braintreeownfc.org.uk

CLUB IN ESSEX

34

GOALS GALORE

WHAT price a goalscorer? Well, not even a million pounds if you are Fleetwood Town!

A lot like London Underground, strike rates seem to be at an all-time high with the quality of forwardmen bamboozling defenders throughout Non-League football sky high as they jostle for supremacy in the scoring charts.

The golden boot battle is sometimes more competitive than the title race itself, so here is the low-down on all the sharp shooters.

Jamie Vardy needs no introduction. Widely regarded as the best player to ever grace the Conference, his beauty at Bath City last weekend took his tally to 35 in all competitions.

Not only have his goals pushed the Cod Army to within sight of the Blue Square Bet Premier title but the tills will soon be ringing. Inexplicably both Southampton and Leicester City saw seven figure bids for the player rebuffed in January - but they will surely sell once promotion is rubber stamped. Let the bidding war begin!

Vardy won't be alone. Peterborough United - and Chelsea if you believe the rumour mill - are already watching Grimsby's Liam Hearn, while Jon Shaw the

Gateshead goal machine seems to score most weeks.

Both are five goals away from Vardy as it stands and like Wrexham in the title race they need to get their shooting boots back on to keep the name of Fleetwood Town off the trophy.

You may ask yourself how a player can hit the

would soon be decorated as the division's master. His 26 goals though pale into insignificance in comparison.

It's a one-horse race in the Blue Square Bet South as well. Tonbridge Angels fans so excited about the summer return of iconic Jon Main have another goal-getting hero, with

Wolfenden's partner-in-crime Michael Norton or Marine's Neil Harvey, who sit just one goal behind.

It's not so tight in the Southern Premier, with Bedford Town hotshot Drew Roberts sitting pretty on 30, with nearest rivals Jamie Towers of Barwell and Hitchin's John Frendo both grabbing 21.



Ben Wright scores our goal at Kenilworth Road back in August

back of the net 40 times in the league and their club still not be anywhere near the play-offs!

That's the conundrum faced by Altrincham manager Lee Sinnott and his side's supporters as Damian Reeves has blazed a trail in the Blue Square Bet North.

Penny for the thoughts of Hyde's Scott Spencer too. If it wasn't for Reeves' prowess, he

Frannie Collin making waves with 26 to his name.

There's a big race on in the Evo-Stik Northern Premier League with five players separated by just two goals.

Leading the way is Chorley's Steve Foster with 18 but just behind are Alex Steadman, of Mickleover, and FC United's Matthew Wolfenden with 17. Don't rule out

There's rarely more than one man in the Ryman League but this year Richard Jolly has company.

His 23 league goals for Wealdstone are in the eye-line of Concord's Tony Stokes, AFC Hornchurch ace Martin Tuohy and East Thurrock's Sam Higgins, who are all hitting form at just the right time.

at just the right time:
Sam Elliott
The Non-League Paper

BLUE SQUARE BET



THE PREMIER

www.braintreeownfc.org.uk

CLUB IN ESSEX

35

The Braintree Nursing Home

- Friendly family-run home
- 24 hour Nursing care and attention
- Qualified nursing staff
- Town centre location
- Peaceful garden & conservatory
- Visiting at all times
- Home cooking (incl. special diets)



All enquiries to: The Manager

11 Coggeshall Road, Braintree Essex CM7 9DB

Tel: 01376 345966 & 552391

Benson School of Motoring

YOUR LOCAL DRIVING SCHOOL

- Male & Female Instructors
- Driving Standards Agency Approved
- Manual & Automatic Tuition Cars
- Theory Test Training
- Pre 17 Off-Road Training
- 10 to 40 Hour Intensive Courses

Excellent
Pass
Rates!

Professional Instructors In Your Area

Call us FREE OF CHARGE:
0800 019 0800
enquiries@bensonschoolofmotoring.co.uk

First
2 hour
lesson
only **£25!**

STUDENT DISCOUNTS AVAILABLE

Become a
DRIVING INSTRUCTOR
See over for details

MOTORCYCLE TRAINING
Learn to ride with Benson professional
motorcycle instructors.
Call us FREE on 0800 019 0800 for details.

www.bensonschoolofmotoring.co.uk

BLUE SQUARE BET
PREMIER

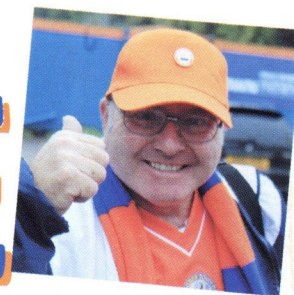
WHO WANTS IT MOST! -ALL 5 PLAY-OFF GAMES LIVE

10 APR	FLEETWOOD vs. WREXHAM	7.30PM
13 APR	FLEETWOOD vs. LINCOLN	7.30PM
20 APR	MANSFIELD vs. WREXHAM	7.30PM
28 APR	TEAMS TBA	1.00PM
02 MAY	SEMI FINAL 1 LEG 1	7.30PM
03 MAY	SEMI FINAL 2 LEG 1	7.30PM
07 MAY	SEMI FINAL 1 LEG 2	2.00PM
07 MAY	SEMI FINAL 2 LEG 2	4.30PM
20 MAY	PROMOTION FINAL	3.00PM

PREMIER SPORTS

SUBSCRIBE NOW
0871 663 9000
PREMIERSPORTS.TV
TERMS & CONDITIONS APPLY.

FAN ZONE



Good Afternoon, today we welcome Luton Town to the Amlin Stadium for another piece in Irons History, we hope the travelling fans enjoy their stay with us and have a safe journey home to Bedfordshire.

Happy Easter to you all and maybe not so happy after last weeks game here against Alfreton Town. A good first half with honours shared but the adage "game of two halves" certainly rang true as we didn't perform to our abilities in the second half and lost 2-1 to a good Alfreton side.

I wasn't too impressed with their manager having a pop at the pitch condition and the state of the stadium, as I recall from our trip to Derbyshire theirs isn't exactly the "Emirates" (other stadiums are available) either. A lot of hard work has gone into getting us Graded for the Football League and apart from some "cosmetics" it's a good place to come to.

We are expecting a bumper crowd and I hope that we have a better game today and maybe exact some degree of revenge for the 3-1 defeat suffered in August at Luton. Some money still to come in today and with only two home games on the fixture list I shall be making sure that all the cash is in the kitty ready to hand over to Steve Gracie at the end of the season. The GDF is still going regardless of the Grading allocation, there is still lots to do in the ground so please continue to drop your odd coins in the bucket and make use of the shop and Rumble.

All the best to Alan and the lads today. Enjoy the game, come on the Iron.

THE GDF
The Ground Development Fund(GDF) is an initiative run as an "independent" financial project to work along side the other financial commitments within the Club. A graphic "Fund Thermometer" is the right of the programme page showing the progress of the Fund. Thank you to all the contributors so far.

Donations from the 100 Club, Club shop, JW Rumble, Supporters Club and collection buckets contribute to the fund. Although the Ground Grading has been granted their is still work to be carried out and we will continue to raise funds till the end of the season. Lets keep raising the grand total. Thank you.

TOTAL RAISED TO DATE:
£11,530.00

JOHN WELFORD RUMBLE PRIZE FUND: £225

Reminder: Please ensure that forms are completed correctly, any form incorrect will be deemed spoilt and not entered, it is not a pools coupon. Please use H (Home), A (Away) or D (Draw) thank you. This season to help with the GDF a high percentage of match day receipts go to the GDF with £25 to the prize fund.

THE 100 CLUB
Personal and Commercial invitations to participate in this scheme are welcome with a minimum stake of £10 to fulfil a contribution of £100. Donations on top are gratefully accepted. All members of the Club are entered into a monthly draw, at present it's a meat hamper, were one lucky winner will get the prize and at the end of the season a large prize will be awarded.

The scheme is designed to raise funds for the Ground Development Fund (GDF). Anyone who would like more information or to enrol can do so at the Supporters Club Office at the SC Club Shop or see Les Clear who is running the 100 Club.

THE ANDY ARNOLD SPG
(In memory of a great fan)
SCHEME REACHES ITS 75 GOAL MARK

Bring your pledges Saturday - SOME STILL OUTSTANDING
The sponsorship comes to an end with the completion of the third phase, with eight games to go a fourth phase completion is unlikely and it is hoped that any donations could go to the GDF.

The scheme is designed to make money to pay for medical

equipment. Every goal is counted and matched by cash pledges which start at just 10p a goal. Please let me know today if you would like to join the roll of honour of participants, or indeed, quit the scheme (hope there are no takers on that part!!) or just to adjust the level of sponsorship. Pledges are collected every 25 goals scored. New sponsors have joined the scheme thank you for your continued participation.

GOALS IN THE THIRD PHASE: COMPLETED

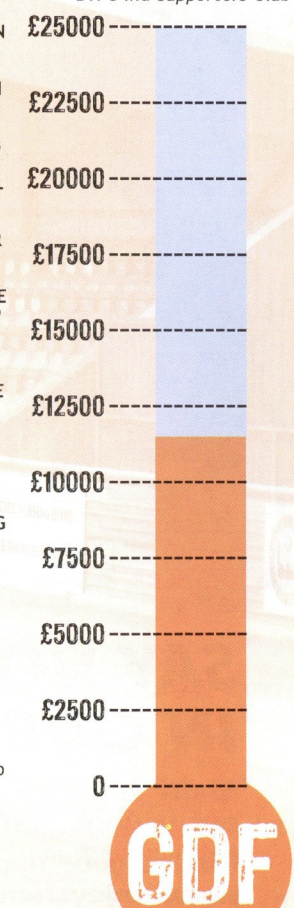
ROLL OF HONOUR
TERRY THOROGOOD BOBBIE RICHIE RICHARD JACKSON KEN FINLAY PETER TILBROOK GEORGE HITCHIN DOUG RICE MARTIN GREEN ALAN ROBSON ROB PRYKE DOLLY FINCH KIM COWELL MICHAEL DOYLE FRANCIS PELL VIC DIXON BOB ROBINSON RICKY NORFOLK TREVER BEAL MARTIN COXELL IRIS SMITH BARRY SHEPPARD LEON LESTER DENIS SCOTT KEVIN STROUD PHIL POULTER BOB SHAW RICHARD NOTT SIMON SCOTT GORDON HUMPHRIS ROY FRANCIS DIANE ACRES RICHARD FINCH PHILIP HEADY PAUL RIDSDALE PAUL ISBELL DAN MACKLIN ALAN STUCKEY TOM WOODLEY LEE HARDING JERRY CARTER DAVE CLARKE PAUL HEDGES ANDREW FREEMANTLE STEVE TOWNSEND HARRY BAKER-WALKER

SUPPORTERS CLUB SHOP
ALL SHOP PROFITS ARE GOING TO THE GDF
FOOTBALL MANAGER 2012 ON SALE - £5
NEW CAR STICKERS NOW IN - £1.50
NEW CLUB PENNANTS - £6
MORE SCARFS NOW IN STOCK - £5
NEW ORANGE MUGS - £4.50
NEW KEY RINGS - £1
NEW BADGES - £3
DVDs - Free Mail Order. End of Season DVDs are available to buy at £2.50, grab a piece of history.
Open from 1pm today.

SUPPORTERS CLUB NEWS
This seasons Badge and pens are now ready for registered

club members to collect. The Supporters Club continues to take registration for membership and renewals, new members are always welcome and receive a badge and pen. All renewals receive a complimentary pen, every member receives a membership card.
Come to the Office at the Club Shop for all Supporters Club business and enquiries. Any fund raising ideas are gratefully received as is your membership of the Supporters Club.

Gordon Humphris, Chairman, BTFC Ind Supporters Club





SAY NO TO BAD LANGUAGE IN OUR STADIUM

Show some respect for
our younger fans.

Pledge your support at:
www.enjoythematch.co.uk



IRON CROWDS

When we played Luton Town away earlier in the season, the local press reported that the 5,703 gate was the biggest that Iron had ever played in front of.

In fact, it only came in seventh in the all time records, and was over 10,000 less than the highest gate. It was however the biggest crowd to have seen us play in a league match.

In March 1938 we travelled to play Dulwich Hamlet at Champion Hill in the Second Round of the F.A. Amateur Cup (last 32). A massive crowd of 15,739 turned up to see the home side win 3-1.

The club records do not detail that many league attendances before World War II, although most cup attendances were published.

Because of this the largest home attendances that we know of are both 2,500. The first was at home to Hounslow Town in the Spartan League in March 1934 and the last was Ekco Sports in the London League in April 1946.

I wonder if we will be able to record our highest ever league attendance today.

There have been a number of larger attendances at cup and charity matches at Crossing Road.

A couple of years ago we managed to uncover a home attendance of 4,000 for an Essex Senior Cup tie against Barking in February 1936. This

equalled the previously known record home Iron attendance of 4,000 for a Charity match with Tottenham Hotspur at the end of the 1951-52 season.

So far it has proven difficult to establish this additional match in the record books as it is only the Tottenham figure that ever gets published.

If there is anything riding on our final day visit to Wrexham then it is possible that our second highest ever away attendance of 7,500 could be threatened on that day. Although 4,000 is a club home record, that figure has been exceeded four times here for matches involving other clubs.

Crossing Road officially opened in 1923 with an opening ceremony and Crittall Sports Day. The event drew 8,000 to East Braintree a figure that is very unlikely to ever be beaten!

A large attendance today and another good showing against promotion chasing York City will increase the

BRAINTREE TOWN F.C - ATTENDANCES OF 3,500 AND HIGHER UP TO 7 APRIL 2012

HOME GAMES				AWAY GAMES			
Att	Date	Opposition	Score Comp	Date	Opposition	Score Comp	
15739				5 Mar 1938	Dulwich Hamlet	1-3	F.A. Amateur Cup R2
7500				15 Oct 1938	Chelmsford City	3-4	F.A. Cup 2Q
6138				18 Oct 1930	Ipswich Town	3-2	F.A. Cup 2Q
6000+				5 Mar 1938	Romford	1-2	Essex Senior Cup Semi
							Final (at Chelmsford)
6000				21 Mar 1936	Ilford	1-3	Essex Senior Cup Semi
							Final (at Chelmsford)
6000				11 Feb 1939	Walthamstow Ave	1-5	Essex Senior Cup R4
5703				27 Aug 2011	Luton Town	1-3	Blue Square Bet Premier
5000				19 Oct 1946	Barking	0-3	F.A. Cup 2Q
5000				14 Apr 1948	Chelmsford C Res.	1-2	Eastern Counties League
5000				10 Apr 1954	King's Lynn	0-9	Eastern Counties League
4550				18 Feb 1928	Chelmsford	2-0	Essex Senior Cup Quarter Final
4000				12 Nov 1927	Ipswich Town	3-2	F.A. Amateur Cup 3Q
4000				10 Mar 1928	Ilford	1-5	Essex Senior Cup Semi
							Final (at Chelmsford)
4000				4 Feb 1933	Ilford	3-2	Essex Senior Cup 3Q
4000				4 Nov 1933	Barking	0-2	F.A. Amateur Cup 3Q
4000	8 Feb 1936	Barking	2-0	2 May 1936	Harwich & Parkstn	1-2	Eastern Counties League Cup
4000							Final (at Colchester)
4000	8 May 1952	Tottenham Hotspur	1-8				
3950	9 Jan 1937	Walthamstow Ave.	2-4	18 Mar 1933	Walthamstow Ave	1-3	Essex Senior Cup Semi
3800							Final (at Chelmsford)
3717				26 Dec 2011	Cambridge United	0-2	Blue Square Bet Premier
3688				3 Mar 2012	Grimsby Town	1-1	Blue Square Bet Premier
3500	8 Mar 1929	Chelmsford	2-3				
3500	2 Nov 1929	Cambridge Town	3-3				
3500				6 Oct 1945	Romford	1-7	F.A. Cup 2Q
3500				25 Sep 1954	Cambridge United	1-1	Eastern Counties League

The list shows all of the known attendances of 3,500 or over to date for Iron matches. It is interesting to note that before this season there hadn't been a single addition to the list since 1954, and now our league games at Luton, Cambridge United and Grimsby are all in there.

In both 1926 and 1928 crowds of 6,000 watched Essex Junior Cup Finals here and, in 1931, 5,500 saw the Essex Senior Cup Semi-Final between Chelmsford and Colchester Town at Crossing Road.

The 1927 Junior Cup Final here was seen by 4,550!

likelihood of us achieving our first average attendance of over 1,000 since the 1954-55 season.

That was our only season as a full time professional club, and although it ended in failure we averaged 1,288 over the course of the season.

JW

A winning approach



Amlin UK is a market leading insurance provider for UK commercial businesses.

Typical cover includes: Motor Fleet, Liability, Property/Commercial Combined, Property Owners, Package, Motor Trade, Cargo, Professional Indemnity, Financial Institutions, Personal lines and specialist schemes.

For more information please contact your local broker or Amlin UK on:

Tel: 01245 296427

Email: folley@amlin-insurance.co.uk

Web: www.amlin.co.uk

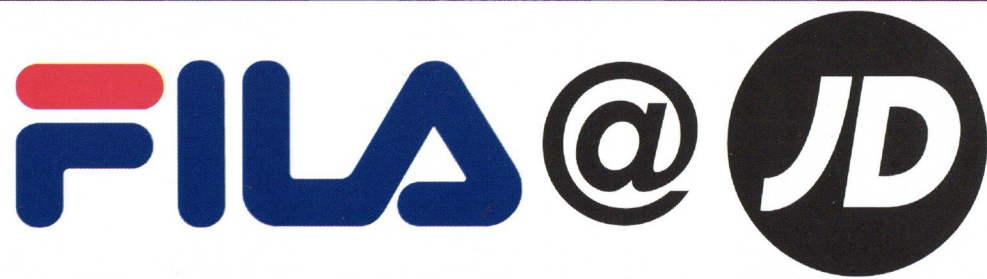
LATEST TABLES

Blue Square North										Evo-Stik Southern Central										Ryman One North									
	P	W	D	L	F	A	GD	Pts		P	W	D	L	F	A	GD	Pts		P	W	D	L	F	A	GD	Pts			
1	Hyde	37	23	8	6	78	33	45	77	1	St Neots Town	37	26	5	6	103	34	69	83	1	Leiston	37	26	7	4	88	34	54	85
2	Guiseley	37	22	9	6	76	43	33	75	2	Slough Town	37	24	8	5	66	31	35	80	2	Enfield Town	37	23	8	6	85	45	40	77
3	Nuneaton Town	37	19	10	8	64	38	26	67	3	Bedworth United	37	19	9	9	76	51	25	66	3	Needham Market	37	22	7	8	98	47	51	73
4	FC Halifax Town	37	18	10	9	71	52	19	64	4	Beaconsfield SYCOB	37	19	8	10	58	47	11	65	4	Grays Athletic (-3)	37	22	6	9	74	41	33	69
5	Gainsborough Trinity	37	20	4	13	63	52	11	64	5	Biggleswade Town	37	18	7	12	67	40	27	61	5	Tilbury	37	19	10	8	71	56	15	67
6	Stalybridge Celtic	37	17	11	9	75	56	19	62	6	Uxbridge	37	18	7	12	64	54	10	61	6	Harlow Town	37	19	8	10	63	41	22	65
7	Worcester City	37	17	9	11	59	51	8	60	7	Northwood	37	16	9	12	63	52	11	57	7	AFC Sudbury	37	18	9	10	58	49	9	63
8	Altrincham	37	16	9	12	78	60	18	57	8	Rugby Town	37	16	9	12	61	59	2	57	8	Redbridge	37	17	10	67	51	16	61	
9	Boston United	37	15	8	14	53	53	0	53	9	Barton Rovers	37	15	8	14	60	55	5	53	9	Brentwood Town	37	17	7	13	54	34	20	58
10	Droylsden	35	14	8	13	67	72	-5	50	10	Chalfont St Peter	37	14	11	12	61	61	0	53	10	Potters Bar Town	37	15	8	14	64	66	-2	53
11	Colwyn Bay	37	14	6	17	46	60	-14	48	11	Ashford Town (Mx)	37	13	11	13	51	52	-1	50	11	Thamesmead Town	37	15	7	15	58	60	-2	52
12	Solihull Moors	37	13	8	16	40	45	-5	47	12	AFC Hayes	37	12	14	11	51	53	-2	50	12	Romford	37	14	10	13	57	63	-6	52
13	Corby Town	37	13	7	17	57	59	-2	46	13	Bedfont Town	37	13	9	15	46	53	-7	48	13	Chatham Town	37	15	5	17	48	57	-9	50
14	Gloucester City	37	13	7	17	47	52	-5	46	14	Burnham	37	12	11	14	58	60	-2	47	14	Maldon & Tiptree	37	13	9	15	53	62	-9	48
15	Bishop's Stortford	37	13	7	17	60	71	-11	46	15	Chertsey Town	37	13	4	20	60	87	-27	43	15	Waltham Abbey	37	13	8	16	75	73	2	47
16	Hinckley United	37	12	8	17	67	77	-10	44	16	Leighton Town	37	11	9	17	48	63	-15	42	16	Heybridge Swifts	37	13	6	18	51	56	-5	45
17	Workington	37	12	7	18	48	56	-8	43	17	Woodford United	37	11	8	18	50	61	-11	41	17	Waltham Forest	37	11	7	19	53	79	-26	40
18	Histon	36	10	12	14	55	63	-8	42	18	Daventry Town	37	12	5	20	44	63	-19	41	18	Cheshunt	37	7	11	19	35	74	-39	32
19	Harrogate Town	36	12	6	18	48	65	-17	42	19	North Greenford United	37	10	10	17	46	59	-13	40	19	Soham Town Rangers	37	6	11	20	47	83	-36	29
20	Vauxhall Motors	37	11	8	18	55	68	-13	41	20	Aylesbury	37	10	7	20	44	74	-30	37	20	Ilford	37	6	6	25	41	78	-37	24
21	Blyth Spartans	37	6	12	19	44	73	-29	30	21	Fleet Town	37	8	7	22	38	71	-33	31	21	Great Wakering Rovers	37	4	10	23	34	83	-49	22
22	Eastwood Town	37	4	8	25	35	87	-52	20	22	Marlow	37	5	8	24	48	83	-35	23	22	Ware	37	4	6	27	32	74	-42	18

Blue Square South										Evo-Stik Southern Sth West										Ryman One South											
	P	W	D	L	F	A	GD	Pts		P	W	D	L	F	A	GD	Pts		P	W	D	L	F	A	GD	Pts					
1	Woking	37	26	6	5	80	35	45	84	1	Bideford	35	25	8	2	71	35	36	83	1	Dulwich Hamlet	36	24	8	4	67	22	45	80		
2	Dartford	37	24	7	6	83	36	47	79	2	Sholing	34	21	6	7	65	35	30	69	2	Bognor Regis Town	35	23	9	3	92	31	61	78		
3	Welling United	37	21	8	8	72	45	27	71	3	Gosport Borough	35	18	13	4	62	37	25	67	3	Whitehawk (-3)	35	24	6	5	69	26	43	75		
4	Sutton United	37	18	13	6	62	48	14	67	4	Hungerford Town	36	20	7	9	56	33	23	67	4	Folkestone Invicta	36	19	7	10	68	50	18	64		
5	Chelmsford City	37	17	11	9	61	37	24	62	5	Poole Town	35	20	6	9	68	36	32	66	5	Worthing	35	17	10	8	63	35	28	61		
6	Dover Athletic	37	15	13	9	55	42	13	58	6	North Leigh	35	18	5	12	77	56	21	59	6	Maidstone United	36	18	7	11	60	43	17	61		
7	Basingstoke Town	36	16	10	10	56	45	11	58	7	Paulton Rovers	35	16	8	11	50	31	19	56	7	Godalming Town	35	17	7	11	59	47	12	58		
8	Boreham Wood	37	15	9	13	55	51	4	54	8	Tiverton Town	34	15	10	9	49	35	14	55	8	Chipstead	35	16	8	11	57	41	16	56		
9	Tonbridge Angels	37	14	11	12	61	55	6	53	9	Thatcham Town	35	14	13	8	43	31	12	55	9	Hythe Town	35	15	7	13	56	57	-1	52		
10	Dorchester Town	37	15	7	15	53	56	-3	52	10	Cinderford Town	36	16	7	13	45	35	10	55	10	Merstham	36	15	6	15	56	64	-8	51		
11	Eastleigh	37	14	7	16	52	57	-5	49	11	Bishops Cleeve	35	13	11	11	33	37	-4	50	11	Ramsgate	36	15	6	15	56	64	-8	51		
12	Weston-super-Mare	37	14	5	18	54	66	-12	47	12	Yate Town	35	13	10	12	53	49	4	49	12	Corinthian-Casuals	35	10	12	13	45	54	-9	42		
13	Farnborough	37	13	6	18	47	68	-21	45	13	Halesowen Town	35	13	5	17	48	48	0	44	13	Eastbourne Town	35	10	12	13	44	54	-10	42		
14	Salisbury City	36	11	11	14	43	47	-4	44	14	Mangotsfield United	35	13	5	17	56	59	-3	44	14	Faversham Town	35	10	9	16	38	55	-17	39		
15	Truro City	37	12	7	18	57	71	-14	43	15	Didcot Town	35	10	8	17	33	60	-27	38	15	Walton & Hersham	35	10	7	18	40	48	-8	37		
16	Eastbourne Borough	37	11	9	17	51	59	-8	42	16	Bridgwater Town	35	10	4	21	39	69	-30	34	16	Whitstable Town	35	11	3	21	44	83	-39	36		
17	Bromley	37	9	12	16	47	61	-14	39	17	Taunton Town	35	8	8	19	43	73	-30	32	17	Crawley Down	35	10	4	21	55	71	-16	34		
18	Maidenhead United	37	10	8	19	40	64	-24	38	18	Clevedon Town	35	8	6	21	44	64	-20	30	18	Walton Casuals	35	9	6	20	43	66	-23	33		
19	Hampton & Richmond B	36	8	12	16	48	61	-13	36	19	Wimborne Town	35	6	10	19	43	69	-26	28	19	Sittingbourne	35	6	11	18	30	58	-28	29		
20	Staines Town	37	9	9	19	44	58	-14	36	20	Abingdon United	35	6	8	21	28	66	-38	26	20	Burgess Hill Town (-3)	35	7	6	22	37	79	-42	24		
21	Havant & Waterlooville	36	8	11	17	58	69	-11	35	21	Stourport Swifts	36	4	4	28	33	81	-48	16	21	Whyteleafe	35	4	9	22	28	59	-31	21		
22	Thurrock	37	4	10	23	31	79	-48	22																						

Evo-Stik Southern Premier										Ryman Premier										Evo Stik Northern Premier									
	P	W	D	L	F	A	GD	Pts		P	W	D	L	F	A	GD	Pts		P	W	D	L	F	A	GD	Pts			
1	Brackley Town	37	21	9	7	76	47	29	72	1	Billericay Town	37	23	10	4	77	31	46	79	1	Chester	37	27	6	4	90	26	64	87
2	Oxford City	36	20	8	8	60	37	23	68	2	AFC Hornchurch	37	24	3	10	63	30	33	75	2	Northwich Victoria (-3)	37	24	7	6	66	35	31	76
3	AFC Totton	37	19	9	9	67	36	31	66	3	Lowestoft Town	36	21	6	9	65	43	22	69	3	Bradford Park Avenue	37	23	5	9	72	42	30	74
4	Chesham United	37	19	9	9	66	44	22	66	4	Bury Town	37	19	8	10	72	49	23	65	4	Chorley	37	21	7	9	68	41	27	70
5	Cambridge City	37	19	7	11	67	48	19	64	5	Cray Wanderers	36	18	7	11	66	47	19	61	5	FC United of Manchester	37	20	8	9	76	44	32	68
6	Stourbridge	37	17	11	9	60	40	20	62	6	Hendon	37	17	9	11	50	39	11	60	6	Hednesford Town	37	19	8	10	61	44	17	65
7	Leamington	37	15	13	9	50	43	7	58	7	Lewes	37	17	9	11	45	42	3	30	7	Marine	38	19	7	12	55	42	13	64
8	St Albans City	37	16	9	12	65	63	2	57	8	Canvey Island	37	18	5	14	52	49	3	59	8	Nantwich Town	37	13	11	13	57	56	1	50
9	Barwell	37	14	9	14	63	56	7	51	9	Wealdstone	35	14	7	57	53	22	56	9	Rushall Olympic	36	14	8	14	42	45	-3	50	
10	Bedford Town	37	14	8	15	56	49	-3	50	10	Concord Rangers	36	16	8	12	63	49	14	56	10	North Ferriby United	37	14	7	16	49	66	-17	49
11	Chippenharn Town	37	13	9	15	48	46	-2	48	12	Kingstonian	37	16	7	14	50	52	-2	55	11	Stafford Rangers	37	12	11	14	54	53	1	47
12	Hitchin Town	37	12	13	12	49	48	-1	48	13	Metropolitan Police	36	16	6	14	55	39	16	54	12	Kendal Town	37	13	8	16	67	70	-3	47
13	Frome Town	36	11	13	12	40	43	-3	46	14	Margate	36	14	7	15	59	52	7	49	13	Matlock Town	37	11	13	13	46	45	1	46
14	Arlesey Town	37	12	10	15	40	44	-4	46	15	Carshalton Athletic	35	13	8	14	48	53	-5	47	14	Workshop Town	37	13	7	17	49	67	-18	46
15	Weymouth	37	12	8	17	50	64	-14	44	16	Wingate & Finchley	37	12	11	14	54	69	-8	47	15	Ashton United	37	12	7	18	51	59	-8	43
16	Bashley	37	10	16	10	49	68	-19	43	17	Harrow Borough	37	11	7	19	47	62	-15	40	16	Chaston	38	10	9	19	41	64	-23	39
17	Bandbury United	37	11	9	17	48	55	-7	42	18	Hastings United	37	11	7	19	35	54	-19	40	17	Stokesbridge Park Steel	37	9	11	17	50	63	-13	38
18	Redditch United	37	11	8	18	36	47	-11	41	19	Leatherhead	37	10	7	20	40	52	-12	37	18	Buxton	36	10	8	18	50	70	-20	38
19	Evesham United	37	11	6	20	43	63	-20	39	20	Tooting & Mitcham Utd	36	7	5	24	44	92	-48	26	19	Mickleover Sports (-3)	38	10	10	18	41	76	-15	37
20	Hemel Hempstead Town	37	8	14	15	39	57	-18	38	21	Aveley	37	10	2	22	38	75	-37	25	20	Whitby Town	37	9	10	18	47	73	-26	37
21	Swindon Supermarine	37	9	10	18	45	68	-33	37	R	Horsham	37	3	6	28	33	91	-58	15	21	Frickley Athletic	37	7	8	10	40	60	-20	34
22	Cirencester Town	37	6	9	22	35	66	-31	27											R	Burscough	36	4	6	26	42	93	-51	18

All tables up to and including Tuesday 3 April 2012



**BEST
OF THE
BEST**

JD - Best of the Best
JDSports.co.uk

**PROUD SPONSORS OF THE
FOOTBALL CONFERENCE**

EXPECTATIONS

Football can be the cruelest of games!

I was there last May as Luton Town took on AFC Wimbledon in the Blue Square Premier play-off final at the Etihad Stadium, home of Manchester City. I was strictly neutral but couldn't help be sucked into the sheer drama of a remarkable game of football.

Wimbledon, just nine years after coming into existence, were the underdogs while Luton had the bulk of the crowd and created a sea of orange, white and blue to my right as their fans almost willed their side home.

It was very even and both sides had chances to win in normal time before the agony of extra-time came along. I can still see the look of horror on the face of striker Jason Walker as his last gasp header for Luton hit the post and stayed out. Literally inches from a return to the Football League.

And then Bedfordshire hearts were broken as Danny Kedwell smashed the winning penalty home for the Wombles. What a moment, and all I heard from the journalists around me was 'it's a fairy story for Wimbledon.'

I couldn't help thinking they had missed the point. For every fairy story there is a nightmare. For every Fearnie Cotton there is a Fern Britton. For every celebrating Womble there was a Hatter left to clutch at straws and dream of next year.

And yet every year this division gets tougher and tougher. Fleetwood Town and their never ending resources have followed on from Stevenage Borough and Crawley Town in spending big and dreaming bigger. Wrexham have battled hard but will in

turned fairy tale ending this time around.

But the point of this article (*and yes, occasionally there is a point*) is that football is all about expectations. Luton Town have Great Expectations for every game and every season.

That places untold pressure on the players, board and management to succeed. If they lose today it will be the end of the world.

If Braintree lose it will hurt but the players and club will dust themselves down and be ready for Ebbsfleet on Monday.

It is how you deal with those expectations that defines every club. I think one team today has, if fans were brutally honest, exceeded what was expected this year but now have to live up to those dreams next season.

The other team has fallen short of what the fans expect but now have seven games left to turn things around and totally change the story of the season.

All of which makes this a game and an occasion to be savoured. Strap yourselves in everyone, this has the makings of a classic...

CW

AFC Wimbledon Manager Terry Brown with the Bob Lord Trophy for winning that tense Promotion Final and a place in the League



Which is this year? I think it's fair to say that this season has not gone how Luton Town were hoping. Or perhaps more importantly, expecting.

You see every single one of the away fans here today expects their side to be in the Play-Offs at least, preferably the very least.

all probability now face the same end of season Play-Off lottery as say Mansfield, 20 points behind, or possibly as Luton Town.

With games in hand the Hatters have as good a chance as anyone and could arrive with momentum, a new manager, and backed by their huge support. It could be a tables-

Nathan McDonald
is sponsored by
CHRIS REED

Ryan Peters
is sponsored by
WHITE HOUSE RESIDENTIAL HOME

Aswad Thomas
is sponsored by
DEV'S IRON ARMY

Adam Bailey-Dennis
is sponsored by
DEV'S IRON ARMY

Matt Paine
is sponsored by
PATMORE WATER SOFTENERS

Jai Reason
is sponsored by
CLADROOF SYSTEMS LTD

Nicky Symons
is sponsored by
DEV'S IRON ARMY

Kenny Davis
is sponsored by
4 WHAT IT'S WORTH!

Sean Marks
is sponsored by
RICK NORFOLK

Ben Wright
is sponsored by
R P MARTIN

Jamie Guy
is sponsored by
NELSON COURIERS

Billy Gibson
is sponsored by
BRAINTREE DISTRICT COUNCIL

Bobby Ritchie
is sponsored by
UNDER THE RADAR CLUB

Bradley Quinton
is sponsored by
500 CLUB

Pat O'Connor
is sponsored by
GREENE KING

Dave Stevens
is sponsored by
AVENUE HAIRDRESSERS 40 CHALLIS RD BRAINTREE

Ashley Jones
is sponsored by
BRAINTREE TOWN F C SUPPORTERS CLUB

Joel Appiah-Kubi
is sponsored by
WHITE HOUSE RESIDENTIAL HOME

Keith Rowlands
is sponsored by
BRAINTREE TOWN F C SUPPORTERS CLUB

Matt Pooley
is
AVAILABLE FOR SPONSORSHIP

Alan Devonshire
is sponsored by
GORDON HUMPHRIS

Dean Wells
is sponsored by
BRAINTREE TOWN F C SUPPORTERS CLUB

Aryantaj Tajbakhsh
is
AVAILABLE FOR SPONSORSHIP

Steve Gracie
is sponsored by
BRAINTREE TOWN F C SUPPORTERS CLUB

SPONSOR YOUR FAVOURITE IRON

If you've sponsored your favourite player and paid the extra £50 to have his shirt, signed at the end of the season, please speak with Kit Manager Dave Green today to make arrangements to reserve and collect your shirt at the end of the season.

NEXT UP



... for Iron is this coming Easter Monday, 9th April when we visit Ebbsfleet United for the return of that 3-2 defeat here back in August.

Travel details to Stonebridge Road are as follows:

Stonebridge Road,
Northfleet,
Kent DA11 9GN
T: 01474 533796 F: 01474 324754 E: info@eufc.co.uk
www.ebbsfleetunited.co.uk

GROUND DIRECTIONS: A2 to Ebbsfleet/Eurostar International Junction. Follow Brown signs to "The Fleet".

RAIL TRAVEL: Nearest station: Northfleet (0.5 miles) Ebbsfleet International (1 mile).

THEN WE'RE OFF TO STOCKPORT COUNTY

After we visit Kent our next Saturday away day is a week today, 14th April, when we visit Stockport County. We drew 2-2 here with County in January and travel details to Edgeley Park are as follows:

Edgeley Park, Hardcastle Road, Stockport, SK3 9DD
T: 0161 286 8903
F: 0161 429 7392
www.stockportcounty.com

GROUND DIRECTIONS: From The South (M6): Exit the M6 at Junction 19 (sign-posted 'Manchester Airport, Stockport A55, M56 East') and at the roundabout turn right onto the A556. At the Bowden roundabout after 4.2 miles, turn right (sign-posted 'Manchester M56') onto the M56 motorway. Exit the M56

motorway after 6.9 miles (sign-posted 'Stockport M60, Sheffield M67') onto the M60. Exit the M60 at Junction 1 ('sign-posted 'Stockport Town Centre and West'). At the roundabout turn right and continue through to the second set of lights and turn left (ignoring the sign directing you to Stockport County) and follow the road to the left, which is

Chestergate. At the traffic lights turn right up King Street, past the fire station on the right to the top of the hill, turn right at the roundabout signed Edgeley. Continue down Hardcastle street turning left after the bus stop signed Caroline Street. At the end of Caroline Street turn right where you will see the main car park on the left.

RAIL TRAVEL: Stockport Railway Station is situated approximately 0.5 miles from Stockport County FC. Walk down steps from platform and turn left (opposite direction to booking office). Walk up Station Road, cross the main road and continue up the hill towards the roundabout.

Take the A5464 onto Mercian Way and take the second left turning onto Caroline Street for the Stadium.

LAST LEAGUE MATCH HERE IS YORK CITY

Our last home match of the season is a fortnight today - Saturday, 21st April - when we entertain York City here at the Amlin Stadium and this

match will be segregated. Matchday arrangements for this match have now been agreed with Essex Police and details are on page 51 of today's programme.

1PM KICK-OFF AT WREXHAM ON FINAL DAY OF SEASON

Finally, another reminder that our last Blue Square Bet Premier fixture of the season at Wrexham, on Saturday 28th April, will now kick-off at 1pm.

BLUE SQUARE BET PREMIER TOP SCORERS

Vardy Fleetwood Town ..29
Hearn Grimsby.....27
Shaw Gateshead.....27
Green Mansfield.....26

Gray Southport21
Mangan Fleetwood Town19
Speight Wrexham19
Cook Barrow16
Klukowski Forest Green 16
Walker York16
Willock Ebbsfleet Utd ..16
Soares Grimsby15
Wright Braintree Town 15
Boyes Barrow14
Marks Braintree Town..13
Rose Fleetwood Town ..13

BLUE SQUARE BET PROMOTION ODDS

Fleetwood Town1/16
Wrexham7/4
Mansfield Town.....7/2
York City9/2
Luton Town5/1
Southport9/1
Kidderminster Harr ..12/1
Grimsby Town.....18/1
Gateshead28/1



The White House Residential Home

- Friendly family-run home
- Providing a high standard of skilful care and comfort for people who can no longer live in their own home
- 24 hour care and attention
- Traditional home cooking
- Town centre location
- Visiting at all times



All enquiries to: The Manager

11 Coggeshall Road, Braintree Essex CM7 9DB

Tel: 01376 326847

Benson School of Motoring

YOUR LOCAL DRIVING SCHOOL

Benson School of Motoring:

- Learner Driver Lessons
- Weekly Lessons
- Intensive Courses
- Theory Test Training
- Manual & Automatic Tuition Cars
- Excellent Pass Rates
- Driving Instructor Training



Male & Female
DRIVING INSTRUCTORS

Professional Instructors In Your Area

Telephone us
FREE OF CHARGE: **0800 019 0800**

Or you can send an email to: enquiries@bensonschoolofmotoring.co.uk

Want to Become A Driving Instructor?

Train with us to become a driving instructor with our DSA/Ordit Approved Trainers and have the opportunity to become part of our team of carefully selected driving instructors.



Benson have received consecutive Awards of Excellence and our instructors are Driving Standards Agency Approved, qualified and Licensed. Tuition cars are supplied and all normal running costs are met by the company.

Call us today for more information.

www.bensonschoolofmotoring.co.uk

WHO WANTS IT MOST! -ALL 5 PLAY-OFF GAMES LIVE

10 APR	FLEETWOOD vs. WREXHAM	7.30PM
13 APR	FLEETWOOD vs. LINCOLN	7.30PM
20 APR	MANSFIELD vs. WREXHAM	7.30PM
28 APR	TEAMS TBA	1.00PM

02 MAY	SEMI FINAL 1 LEG 1	7.30PM
03 MAY	SEMI FINAL 2 LEG 1	7.30PM
07 MAY	SEMI FINAL 1 LEG 2	2.00PM
07 MAY	SEMI FINAL 2 LEG 2	4.30PM
20 MAY	PROMOTION FINAL	3.00PM

PREMIER SPORTS

SUBSCRIBE NOW
0871 663 9000
PREMIERSPORTS.TV

TERMS & CONDITIONS APPLY.

AWAY TRAVEL

Good afternoon, and welcome to the travelling supporters from Luton Town FC.

I hope that they enjoy there stay with us and have a safe journey home.

The winning prize for the 50/50 draw which took place during last Saturday's match vs Alfreton Town FC (31 March) was £101.50.

Winning ticket was Blue no's 185 to 190 and the prize was collected by Alan

O'Brien - congratulations to our winner.

We are running coaches to the following matches: -

Ebbfleet Utd FC on Monday 9 April.

The 52-seater coach will leave BTFC ground at 12.45pm and return 30 minutes after the final whistle.

As writing these notes on the Monday before Easter, there are just five spaces

remaining.

Coach costs are £12.00 Adult - £10.00 Junior / Student & £8.00 Under 11's. A £5.00 deposit will be required when booking.

Stockport County FC on Saturday 14 April. Our coach intends to leave BTFC ground at 8.15am and will return 30 minutes after the final whistle.

Coach costs are £30.00 Adult - £25.00

Junior / Student & £20.00 Under 11's.

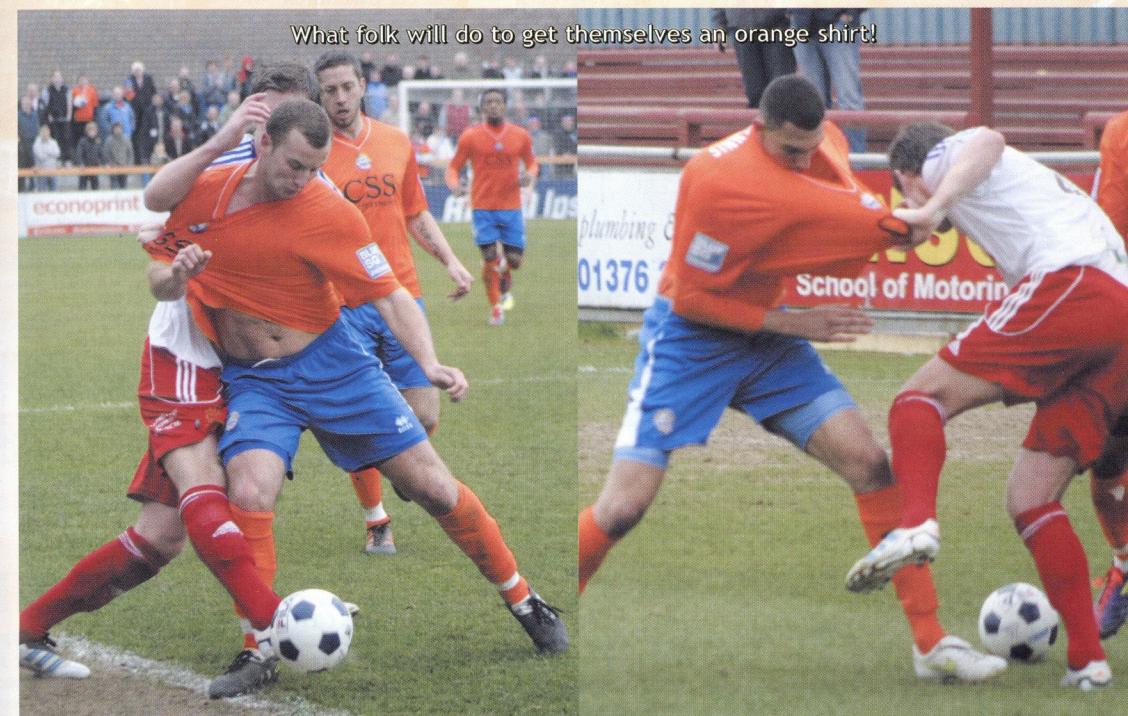
A £10.00 deposit will be required for this trip when booking.

If you are interested in joining us for either of these away trips please see me in the clubhouse bar after the final whistle or leave a message for me on the ironchatter website.

Regards,

Richard Jennings
Away Travel Club

What folk will do to get themselves an orange shirt!



BRAINTREE TOWN 11-12

PREMIER 2011-12

Before yesterday	P	W	D	L	F	A	W	D	L	F	AGDPts
1 Fleetwood Town.....	41	13	6	1	47	20	17	2	2	51	21 57 98
2 Wrexham	40	15	2	3	41	13	13	4	3	35	13 50 90
3 Mansfield	41	12	6	3	46	24	8	8	4	28	22 28 74
4 York	40	10	5	5	41	22	9	8	3	34	21 32 70
5 Southport.....	41	8	7	6	32	34	12	3	5	31	26 3 70
6 Luton	39	12	4	4	40	13	6	9	4	27	24 30 67
7 Kidderminster	41	8	7	5	35	26	11	3	7	36	29 16 67
8 Grimsby.....	41	11	4	6	49	27	7	6	7	26	30 18 64
9 Gateshead.....	40	8	7	4	33	26	10	3	8	28	30 5 64
10 Forest Green.....	41	9	5	7	32	24	7	8	5	27	18 17 61
11 Cambridge Utd	40	9	6	5	27	15	7	6	7	21	22 11 60
12 BRAINTREE TOWN	41	10	5	6	36	32	6	4	10	34	39 -1 57
13 Barrow	41	11	5	4	33	19	5	2	14	22	48-12 55
14 Ebbsfleet United	40	6	5	9	28	33	7	5	8	31	36-10 49
15 Alfreton Town	41	7	5	8	37	45	6	3	12	22	37-23 47
16 Tamworth.....	41	7	7	6	26	25	4	6	11	17	37-19 46
17 Lincoln City	41	7	6	8	27	23	4	3	13	19	34-11 42
18 Newport County.....	39	7	4	8	21	21	3	7	10	27	36 -9 41
19 AFC Telford	41	8	5	8	23	26	1	9	10	19	33-17 41
20 Stockport.....	41	6	6	8	28	27	3	8	10	20	43-22 41
21 Hayes & Yeading	41	5	4	11	24	36	5	3	13	29	45-28 37
22 Darlington	40	7	5	8	19	21	3	5	12	23	42-21 30
23 Kettering	41	5	4	12	24	43	3	4	13	13	42-48 29
24 Bath City	41	4	4	13	23	37	1	5	14	12	44-46 24

GATES 2011-12

	Minimum	Maximum	Average
Luton Town	5,261	7,270	6,031
Wrexham	2,849	5,812	3,833
Stockport County	2,366	5,957	3,550
Grimsby Town	2,254	6,672	3,305
York City	2,030	4,295	3,072
Mansfield Town	1,513	4,830	2,578
Cambridge United	1,651	4,796	2,431
Lincoln City	1,587	5,506	2,340
Darlington	1,382	6,413	2,312
AFC Telford United	1,601	4,591	2,186
Kidderminster Harriers	1,301	3,332	2,019
Fleetwood Town	1,221	3,106	1,906
Kettering Town	804	3,247	1,403
Newport County	1,011	1,675	1,346
Barrow	925	2,190	1,316
Southport.....	753	2,589	1,281
Tamworth	742	1,923	1,116
Forest Green Rovers	632	1,848	1,029
Alfreton Town	579	3,354	1,021
Ebbsfleet United	687	1,651	1,018
Gateshead	465	1,604	884
BRAINTREE TOWN	454	2,029	852
Bath City	512	1,158	824
Hayes & Yeading United	172	1,015	360

2011-12 Appearances
2011-12 Goals
Career Appearances
Career Goals

13 Aug	Darlington
16 Aug	GRIMSBY TOWN
20 Aug	MANSFIELD TOWN
23 Aug	Forest Green Rovers
27 Aug	Luton Town
29 Aug	EBBSFLEET UNITED
03 Sep	LINCOLN CITY
10 Sep	Alfreton Town
17 Sep	NEWPORT COUNTY
20 Sep	Hayes & Yeading United
24 Sep	Southport
27 Sep	TAMWORTH
01 Oct	FLEETWOOD TOWN
08 Oct	York City
11 Oct	Kettering Town
15 Oct	BATH CITY
18 Oct	Kidderminster Harriers
22 Oct	DARLINGTON
29 Oct	Newport County (FAC4Q)
05 Nov	Gateshead
19 Nov	FOREST GREEN ROVERS
26 Nov	WREXHAM
29 Nov	Tamworth
03 Dec	Mansfield Town
06 Dec	HAYES & YEADING UNITED
10 Dec	Gosport Brough (FAT1)
17 Dec	AFC TELFORD UNITED
26 Dec	Cambridge United
01 Jan	CAMBRIDGE UNITED
07 Jan	Bath City
14 Jan	Gateshead (FAT2)
17 Jan	GATESHEAD (FAT2Rep)
21 Jan	STOCKPORT COUNTY
24 Jan	Fleetwood Town
28 Jan	BARROW
04 Feb	Lincoln City
18 Feb	AFC Telford United
25 Feb	KETTERING TOWN
03 Mar	Grimsby Town
06 Mar	Newport County
10 Mar	GATESHEAD
17 Mar	KIDDERMINSTER HARRIERS
24 Mar	Barrow
27 Mar	SOUTHPORT
31 Mar	ALFRETON TOWN

BETTING ON THE MOVE JUST GOT **FASTER**



**Bet live throughout the season on
your iPhone or Android handset**

If you don't have a smart phone you can bet by calling our telebet service
on 0800 587 0400 or by visiting bluesq.com.



bluesq.com
EVERYTHING IS PROBABLE



Available on the
App Store



Tel: 0800 083 6064 or
text "BET" to 64555

Over 18's only. Blue Square encourages responsible gambling. gambleaware.co.uk

YORKMATCH

We have finalised the arrangements for our forthcoming Blue Square Bet Premier match here at the Amlin Stadium against York City a fortnight today on Saturday, 21st April.

With the agreement of Essex Police, this match will be not be all ticket, but full segregation will be in place.

There will be no increases to our usual admission charges for this match which will be as follows:

All seat tickets will be £16
Ground will be:
Adults £15, OAPs £10,
Under 16s £5 and Under 11s £3

Braintree Town fans will be allocated the Club End of the ground and entry via the turnstiles to the left (far) side of the Clubhouse (gates 1-4).

Visiting supporters will be allocated the Quag End of the ground and entry via the turnstiles to the right (far) side of the Main Stand (gates 7-8).

For those wishing to sit, visiting supporters will be allocated the 166 seats nearest the Quag End of the ground (with access via gates 7-8).

The remaining seats nearest the Club End of the ground will be allocated for Braintree supporters (with access via gates 1-4).

Following the advice received from Essex Police, the Club have decided to charge for entry into the car park - with a flat rate of £2 for all users.

Essex Police have also suggested that the car park be closed prior to kick-off to ensure that there is no congestion between pedestrian spectators and vehicles.

This early closing of the car park will be subject to an on-going review, but will dictate that no vehicles will be allowed entry into the car park after 2.30pm on Saturday, 21st April.

A fortnight today, the Clubhouse at the Amlin Stadium will only be accessed from inside the designated home section of the ground.

Those spectators wishing to use the segregated part of the ground reserved for Away supporters may wish to visit The Orange Tree public house some 300 yards from the ground on Cressing Road between the ground and Galley's Corner roundabout prior to entering the ground.

For further information, please contact the Club on 01376 345617 or speak with Chairman Lee Harding.



BRAINTREE TOWN

- ☐ 01 NATHAN MCDONALD (GK)
- ☐ 02 RYAN PETERS
- ☐ 03 ASWAD THOMAS
- ☐ 04 ADAM BAILEY-DENNIS
- ☐ 05 MATT PAINE
- ☐ 06 JAI REASON
- ☐ 07 NICKY SYMONS
- ☐ 08 KENNY DAVIS
- ☐ 09 SEAN MARKS
- ☐ 10 BEN WRIGHT
- ☐ 11 JAMIE GUY
- ☐ 15 BRADLEY QUINTON
- ☐ 16 PAT O'CONNOR
- ☐ 18 BILLY GIBSON
- ☐ 20 ARYANTAJ TAJBAKHSH
- ☐ 21 DAVE STEVENS
- ☐ 22 ASHLEY JONES (GK)
- ☐ 24 DEAN WELLS
- ☐ 25 MATT POOLEY
- ☐ 31 PETE HAXELL (GK)
- ☐ 32 SIBU MUWANGA
- ☐ 33 LEE CULLEN
- ☐ 34 LUKE CLARK
- ☐ 35 KANE DOBROWOLSKI
- ☐ 36 JOEL APPIAH-KUBI
- ☐ 37 LEWIS BENTLEY



Referee
Justin Amey
Assisted by
Mark Derrien
& Ian Parsons
Fourth official
Jonathan Pickford

FIXTURES

Saturday, 7 April 2012
Braintree Town v Luton
Darlington v Grimsby
Gateshead v Barrow
Hayes & Yeading v Cambridge Utd
Kettering v Mansfield
Newport County v AFC Telford
Southport v Kidderminster
Stockport v Lincoln City
York v Fleetwood Town

Monday, 9 April 2012
AFC Telford v Tamworth
Alfreton Town v York
Barrow v Southport
Bath City v Forest Green
Cambridge Utd v Kettering
Ebbsfleet United v Braintree Town
Grimsby v Gateshead
Kidderminster v Newport County
Lincoln City v Darlington
Luton v Hayes & Yeading
Mansfield v Stockport

Tuesday, 10 April 2012
Fleetwood Town v Wrexham

Friday, 13 April 2012
Fleetwood Town v Lincoln City

Saturday, 14 April 2012
Alfreton Town v Luton
Barrow v Cambridge Utd
Darlington v Bath City
Ebbsfleet United v AFC Telford
Gateshead v Forest Green
Hayes & Yeading v Mansfield
Kidderminster v Kettering
Stockport v Braintree Town
Tamworth v Southport
Wrexham v Grimsby
York v Newport County

Tuesday, 17 April 2012
Cambridge Utd v York
Luton v Ebbsfleet United
Newport County v Darlington

Saturday, 21 April 2012
AFC Telford v Grimsby
Bath City v Gateshead
Braintree Town v York
Cambridge Utd v Fleetwood Town
Forest Green v Darlington
Kettering v Barrow
Lincoln City v Hayes & Yeading
Luton v Kidderminster
Mansfield v Wrexham
Newport County v Alfreton Town
Southport v Ebbsfleet United
Stockport v Tamworth

Tuesday, 24 April 2012
Newport County v Wrexham

Saturday, 28 April 2012
Alfreton Town v Bath City
Barrow v Newport County
Darlington v Kettering
Ebbsfleet United v Lincoln City
Fleetwood Town v Luton
Gateshead v AFC Telford
Grimsby v Southport
Hayes & Yeading v Stockport
Kidderminster v Mansfield
Tamworth v Cambridge Utd
Wrexham v Braintree Town
York v Forest Green

LUTON TOWN

- ☐ 01 MARK TYLER
- ☐ 02 DAN GLEESON
- ☐ 03 GREG TAYLOR
- ☐ 04 KEITH KEANE
- ☐ 05 DEAN BECKWITH
- ☐ 06 GEORGE PILKINGTON
- ☐ 07 ALEX LAWLESS
- ☐ 08 AMARI MORGAN-SMITH
- ☐ 09 CRAIG MCALLISTER
- ☐ 10 DANNY CROW
- ☐ 11 ROBBIE WILLMOTT
- ☐ 12 SHANE BLACKETT
- ☐ 13 STUART FLEETWOOD
- ☐ 14 AARON O'CONNOR
- ☐ 15 JAKE HOWELLS
- ☐ 16 ED ASAFU-ADJAYE
- ☐ 17 ANDRE BOUCAUD
- ☐ 18 CURTIS OSANO
- ☐ 19 JAMES DANCE
- ☐ 20 JOHN PAUL KISSOCK
- ☐ 21 CHARLIE HENRY
- ☐ 22 PAUL CARDEN
- ☐ 24 ALEX LACEY
- ☐ 25 GODFREY POKU
- ☐ 26 JJ O'DONNELL
- ☐ 27 ANDRE GRAY
- ☐ 28 ADAM WATKINS
- ☐ 29 DAN WALKER
- ☐ 31 LEWIS KIDD
- ☐ 34 JANOS KOVACS
- ☐ 36 CHRISTIAN TAVERNIER

NEXT HERE

Saturday 21 April 2012

YORK CITY

Kick-off: 3.00pm

**BLUE SQUARE BET
PREMIER**

