

# THE LAMBS



MATCH SPONSOR

**EJOT®**

MATCHBALL SPONSOR



OFFICIAL MATCHDAY PROGRAMME OF TAMWORTH FOOTBALL CLUB 2011/12 - ISSUE 16 - PRICE £2.50

## TAMWORTH v LUTON TOWN

SATURDAY, 17TH DECEMBER 2011 • 3.00PM

BLUE SQUARE BET PREMIER DIVISION

League Sponsor



League Sponsor



Shirt Sponsor



Back of Shirt Sponsor



Shorts Sponsor





# AROUND THE LAMB

*A look at the latest news from in and around Tamworth Football Club*



## LEN GENDLE

A tribute to Club President Len Gendle can be found further in the programme. A minutes applause will be made to celebrate Len's life and one thing for sure he will be remembered for a very long time by everyone who has been associated with the club for the past thirty plus years and the officials of our opponents who always went that extra mile to look after Len one of the most popular club officials. Even the clubs who provided little hospitality always found an extra tot of whisky for Len. See Pages 4, 5 & 7 for a heart warming tribute to Len

## GILL BOLTON

Gill's recent funeral was so well attended that not everyone could get into Sutton Crematorium to pay their respects. There will be a plaque placed in the vicinity of gate 5 as a memorial for Gill.

Kath & Ray Jay would like to send their condolences to Gill's family. Ray runs our Matchday Turnstiles and was close to Gill. Kath and Ray shared many happy hours with Gill, for instance when they travelled to away games in the mini-bus, if Ray missed a turn at an island Gill's saying was Round and Round the Roundabout. She was great at her job, you never heard her complain and she loved her cup of Bovril. Thinking of you always, love Kath & Ray



## EVERTON



There will be no tickets sold today due to all areas of the club being used for the Luton game, they will be back on sale on Sunday at 11.00am until 1.00pm and all day Monday from 10.11am. The club offices will be closed all day Tuesday as it is the day of Len Gendle's funeral.

Any remaining tickets will go on sale on Wednesday and Thursday. Any then remaining will go on sale after the Christmas holiday

Goodison Park is an old Stadium and as a result there are a number of seats with an obstructive view. We find that around 10% of our allocation comes with an obstructive view therefore we have taken these out and will only sell them when all the other tickets have been sold. The obstructive view seats are priced a £1 cheaper than match prices.

If we do bring Everton back to the Lamb for a replay please note that it will be only one ticket per season ticket /vip book.

## FA CUP SCARVES

The club shop have on sale this afternoon souvenir Everton v Tamworth scarves so please pop in and have a look.

## LUKE BOTTOMER

Luke's loan with Rushall Olympic ends on Tuesday but he will be sitting on the side-lines till after Christmas as a result of being sent off at Burscough two weeks ago. He starts a three match ban today.

## LAMBS ON THE AIRWAVES

At our recent away game at Forest Green we were delighted that Radio WM were able to travel to the New Lawn and give us full match coverage. Unfortunately the result didn't go our way, but we'd like to say a big well done to our own Nigel Vaughan (right) for a very professional performance on the air alongside WM sports presenter Mike Taylor.



## FIXTURE AMENDMENTS

We have had three alterations to our forthcoming fixture list. First of all our Birmingham Senior Cup, at Bedworth United, which was postponed because of a waterlogged pitch last Tuesday has now been re-arranged for Tuesday 10th January 2012, kick off 7.45pm.

Our home game in the Blue Square Bet Premier Division against current league leaders, Wrexham, will now be played on Saturday 14th January 2012 with a 3.00pm kick off. This has been put back from the previous Tuesday evening but with a free Saturday, due to both clubs exit from the FA Trophy it makes sense to maximise the opportunity to get more supporters into the ground. Also the 10th is too close for both clubs, who on the previous Saturday will both be involved in the Third Round of the FA Cup.



The one remaining alteration is our away trip to second placed Fleetwood Town. We were due to go there on Saturday 7th January but the game has been cancelled because of our FA Cup commitments. The game has now been re-scheduled for Tuesday 31st January 2012, kick off 7.45pm.

## TAMWORTH IN THE COMMUNITY.

On Tuesday evening when the team were playing at Forest Green Rovers six representatives of the club attended a carol concert at Lichfield Cathedral. The service was called "Songs for a city" and was part of Lichfield Cathedral's way of saying "Thank-you" to all who contribute to the community of Lichfield. The club had been invited to this special service in recognition of the work that is done in the community through the soccer schools. It was both a pleasure and honour to attend the service and a very proud moment when the Dean mentioned Tamworth football club in his address.

## MERRY CHRISTMAS

With this being our final home game before Christmas on behalf of everyone at Tamworth Football Club I would like to wish you all a very Merry Christmas and look forward to seeing you all next year.

# THE LAW

## The thoughts of the Tamworth Manager

After what seems an age we return to The Lamb this afternoon for another huge, high-profile game as we welcome Gary Brabin and his Luton Town side for this Blue Square Bet Premier Division fixture. The Hatters arrive here this afternoon, on the fringe of the play-offs so they will be looking for maximum points to keep their challenge alive. From our point of view these are the type of games that we should be all looking forward too and I'm sure we shall be in for a cracking game played in front of huge crowd. I would like to welcome Gary and his playing staff to the Lamb and let's hope that the game lives up to all its pre-match billing.

It seems a while ago now that a goal from Danny Mills gave us a 1-0 victory at home against Braintree Town and a lot has certainly happened, triggered of course by our excellent victory at Gateshead in the second round of the FA Cup and then coupled with the third round draw which has given us a terrific tie away at Premiership Everton in January to look forward too. Whilst the Everton game is a just reward for the players efforts we have to put that on the back-burner for the time being and concentrate fully on each game in the Blue Square Bet Premier Division. This is our bread and butter after all and it is important that we begin to pick up league points and keep on the pack of the play off chasing clubs. We are six points behind today's visitors, with a game in hand, so our focus has to be on the league. It is my job to keep everyone focussed and feet firmly on the ground, and that is what I will be trying to do. We have worked hard all season to get us into a good position and you can rest assured that we will be doubling our efforts in order to try and improve even more as we move into the busy Christmas period and beyond.

I was disappointed with our performance at Forest Green Rovers when we slipped to a 3-1 defeat. On the night we just weren't good enough and if we are to harbour any hopes of a play off spot then we are going to have to do better than we did on that particular night.

Today, starts a run of three games in quick succession as we have the Christmas double-header against Alfreton Town to look forward too. Despite their league position there are no easy games in this league and if we are to get anything at all from the games then we shall certainly have to be on our mettle.

Our support this season has been terrific and we shall certainly need that to continue over the coming weeks and months. We have got ourselves into a relatively good position and with your support and backing then who knows what we can achieve. Luton will be backed by a large contingent of fans this afternoon so we will need you to be louder than ever.

All that remains for me to say is to enjoy the game and on behalf of myself, Management staff, and the Players, have a great Christmas.

MARCUS

**PASSION FOR STYLE**

45 BOLDMERE ROAD  
BOLDMERE  
SUTTON COLDFIELD  
B73 5UY

T: 0121 354 2214  
E: info@edge-menswear.co.uk  
W: www.edge-menswear.co.uk

EDGE MENSWEAR

**TAMWORTH FOOTBALL CLUB LTD**  
The Lamb, Kettlebrook,  
Tamworth, Staffs, B77 1AA  
www.thelambs.co.uk  
Telephone: 01827 65798  
Fax: 01827 62236



## CLUB HONOURS:

Conference North Winners 2008/09  
FA Cup 3rd Round 2005/06, 2006/07  
FA Trophy Finalists 2002/03  
Southern League Premier Division Winners 2002/03  
Southern League Premier Division Runners-Up 2001/02  
Southern League Midland Division Winners 1996/97  
FA Vase Winners 1988/89  
West Midlands League Winners 1963/63, 1965/66, 1971/72, 1985/86, 1987/88  
Birmingham Senior Cup Winners 1960/61, 1965/66, 1968/69  
Staffordshire Senior Cup Winners 1958/59, 1963/64, 1965/66, 2001/02  
Harry Godfrey Trophy Winners 1993/94, 1996/97

## CLUB OFFICIALS:

President Len Gendle  
Chairman Bob Andrews  
Vice-Chairman Steve Lathbury  
Directors Martin Newbold, John Holcroft  
Associate Director Malcolm Robinson  
Vice Presidents Dave Baxter, Derek Bond, Bob Cooper, Alan Davis, Dave Gould, Tony Reeves, Dave Seedhouse, Clive Tomlinson, Brian Whitehouse  
Football Secretary Rod Hadley  
07811 267304 / email: clubsec@thelambs.co.uk  
Commercial Manager Nick Lunn  
07795 841106 / email: commercial@thelambs.co.uk  
Company Secretary Brian Whitehouse  
Safety Officer Louise Shepherd  
Welfare Officer Julie Pegg

Manager Marcus Law  
Goalkeeping Coach Dale Belford  
1st Team Coach Paul O'Brien  
Kit Manager Buster Belford  
Club Sports Therapists Huseyin Torgut and Alan Cooke  
Club Doctors Dr Moosa and Dr G. Brown

## Matchday Press Officer

Dave Clayton - email: davetfc@hotmail.co.uk  
Assistant Matchday Secretary Arthur Frost  
Groundsman Mick Lea  
Club Photographers Dave Brown, Dave Tricklebank  
Stadium Announcer Nigel Vaughan and Mark Maybury  
Programme Editor Terry Brumpton  
Additional Contributors Teresa Whitehouse, Dave Clayton and Leigh Edwards  
Programme designed and printed by Excel Print Limited  
Unit 23 Empire Industrial Estate, Empire Close, Aldridge, Walsall, West Midlands WS9 8UQ  
Design Production: Steve Shingler



# A TRIBUTE TO... LEN GENDLE



Today, with a minute of applause prior to kick off, we will be celebrating the life of Club President Len Gendle who passed away in Burton Hospital on Friday (02 December) at the age of 92.

Len was born in 1919 and grew up in Millom, near Barrow. He served as an engineer in the Second World War and met beloved wife Edna while both were stationed near Evesham. The couple were married in 1944, and moved to Tamworth once their service had ended in 1945. Len then went to work for Bolebridge Garage and later moved to Pearsalls Garage on the Glascote Road, where he eventually took over as proprietor. The garage later became Gendle and Sons and such was the influence of the family name, a housing development near the site was named Gendle Court a few years ago. There is also a conference room named in his honour in a new hotel close to The Lamb.

When Len moved to Tamworth, he had family living near The Lamb Inn, and soon became a loyal follower of the town's football club. Almost 25 years later, when he had established his own business, Len was encouraged to become a member of the Lambs board by Arthur Beesley and Roly Gorton, local coal merchants.



Len (second left) with fundraisers and officials in the late 1970s

He was awarded a long service award in 1991 by the board of Directors and given the honorary title of Tamworth FC President in 1992, a role that he would regularly joke

should be given to someone younger, but it was always a request that no-one would accept!



There is no doubt that Len lived and breathed his local football club which son Dan confirmed: "Tamworth FC and football in general was a massive part of his life. He loved going to The Lamb and he was very passionate about the club. The FA Vase was a particular highlight. He got to walk out onto the pitch at Wembley, it was a very proud moment. It was also nice to see him meet the current manager, Marcus Law, just a week before he passed away. That was a lovely moment."

Ill health had meant that Len had not been able to visit The Lamb in recent months, but he received regular visits at his home from Tamworth FC officials, friends and families until his passing.

One person Len hadn't met however was Marcus Law so a visit was arranged and during the time that the newest

Lambs manager spent with Len they were able to share some tales of TFC and how Marcus would be going about his job at Tamworth, while Len reminisced about his role at the club over the years. They talked about the recent heritage night, and the history of the club of which Len is very much a part of. Len's wife Edna shared her husband's interest in football, explaining how she is a huge fan of David Beckham and what a great ambassador he is for football.



On the coach to Wembley in 1989



Edna and Len celebrated promotion together at their home

Marcus and Len then went on to share some stories about the past and their aspirations for the future before Len found some old programmes out and showed them to Marcus as they featured a much younger Dale Belford when he was first goalkeeper at The Lamb, along with some of the many photos of Len over his years at The Lamb.

It was a lovely afternoon and a pleasure to see the smile on Len's face as he met with Marcus and shared his love of all things associated with Tamworth FC. For Marcus it was an opportunity to meet with the man who will be fondly remembered as Mr TFC.

## A TRIBUTE TO – LEN GENDLE

Club company secretary Brian Whitehouse paid a warm tribute. "We were all obviously devastated to hear of Len's passing on Friday as we had seen him in hospital earlier in the week and he predicted a 2-1 win over Gateshead and a trip to Old Trafford! He got the result right and he wasn't far off with the cup draw, it was the North West! He was a true gentleman in every sense of the word. He got on with everybody, young and old and just enjoyed company. He had a lovely smile, which set people at ease. There are so many wonderful memories of Len and his hip flask, which he wasn't averse to sharing with us all on away days! Len just epitomised everything about the football club. He was a devoted family man and he saw Tamworth as a family club. He was everything that a club president should be. Just as you would only ever hear the very best about him from people involved at Tamworth, you would only hear lovely things about him from staff at other clubs we have come up against over the years."

And if we could go back to the full time whistle on Saturday 03 Dec and could listen again to the songs, and discussions and read the messages coming from Gateshead's International Stadium "That was for Len" was undoubtedly the one and only theme.

Bob Cooper, Len's close friend for many years echoed Brian's sentiments: "Everybody always had kind words to say about Len. I got to know him very well especially when travelling to away games together in the boardrooms up and down the country where everyone thought a lot of him. All at Tamworth FC will miss him a great deal."



With Bob and the Southern League Trophy in 2003

Len also contributed the foreword to the recently published book 'We are Tamworth From The Lamb' detailing the history of his beloved club. His love of The Lambs was evident in his words as he wrote: "Tamworth FC is not just about Association Football. It is impossible to recall all the names and faces of supporters, players and club officials that I have met and become close friends with over the years. The reach of the club extends well beyond





## Introducing

### Drayton Manor Hotel

150 Guest Rooms

- Family rooms
- Thomas & Friends rooms
- Deluxe rooms
- Executive rooms
- Presidential rooms

### Parklands Family Restaurant

- Great value Lunch & Dinner options
- Family Sunday Lunches
- Outside terrace area

### Parklands Brasserie

- A La Carte dining

### Carousel Bar

- Contemporary cocktail bar
- Outside lounge area

### Park View Suite

- Meetings
- Weddings

**Eat, Sleep, Meet, Celebrate**  
@ Drayton Manor Hotel

**GREAT FOODS. GREAT WINES. GREAT TIMES**



Call 01827 285 551 or  
Email [events@draytonmanorhotel.co.uk](mailto:events@draytonmanorhotel.co.uk)

[www.draytonmanorhotel.co.uk](http://www.draytonmanorhotel.co.uk)

## A TRIBUTE TO – LEN GENDLE

the perimeters of the pitch. I cannot think of another area of life that gives us the opportunity to meet so many people and create many lasting memories that will stay forever."

Many tributes to Len have flooded in to the club, been posted on-line on the [tamworthfans.co.uk](http://tamworthfans.co.uk) forum and also printed in the local press from far and wide and from current and former officials, players and fans alike.

Chairman Bob Andrews said "Len was simply a jolly fellow with football in his heart. He was a fantastic stalwart of the club and known and respected at football clubs all over the country because of his warmth and friendly nature. It has been a difficult fortnight for the club as we have lost Len and also Gill Bolton, who operated turnstile five at the club for many years. They were two very big personalities and we shall miss them both massively."

Representatives from TFC Supporters Club will be releasing 92 balloons and laying a wreath on the centre spot before kick off today in commemoration of 'Uncle Len'.

Anyone who wishes to join family and friends and fellow supporters in remembering and celebrating Len's life are welcome to attend his funeral which will take place at St Editha's Church on Tuesday, December 20, from noon and then from 2pm in the clubhouse at The Lamb. Club colours or shirts are welcomed at both venues.

Len helped kick off the  
75th anniversary  
celebrations in 2007-08





# COMMERCIAL MATTERS

with Nick Lunn



*Good afternoon everyone and welcome back to the Lamb Ground for this afternoon's Blue Square Bet Premier Division home fixture with Luton Town.*

## MATCH SPONSORS

We are delighted to welcome our match sponsor EJOT UK LTD. Thanks to Steve Wynn and his team for their support.

# EJOT®

### EJOT UK Ltd

EJOT is a solutions driven business, manufacturing the highest quality fastening products and providing unrivalled technical support. German owned, the Group operates out of 27 countries worldwide, sharing a genuinely vast knowledge pool relating to countless sectors.

EJOT fasteners are used extensively in the Building & Construction sector and in Industrial Engineering where they provide either one sided assembly or part-reduced solutions - achieving significant 'bottom line' savings on the assembly line. Cost reduction does not mean lowering of quality as EJOT's products mean significantly higher performance.

These properties provide the basis for a quality connection regardless of the application and EJOT's current product portfolio includes high quality fixings for thin sheet through to cast metals, alloys and thermo plastics. By reducing the inspection required and also the number of unnecessary parts needed, procurement and inventory management also becomes much easier.

The EJOT service ethos means pre-engineering, or tear down analysis can be freely undertaken from the initial consultation. Project management is led by experienced application engineers who are supported by the Group's unique and highly sophisticated development arm APPLITEC, with sister laboratories based in Germany and at the Group's UK base near Leeds.

**EJOT UK Limited,**  
Hurricane Close,  
Sherburn Enterprise Park,  
Sherburn-in-Elmet, Leeds  
LS25 6PB  
Call: 01977 68 70 40  
Fax: 01977 68 70 41  
www.ejot.co.uk

## MATCHBALL SPONSORS

Welcome to our Matchball Sponsor & VIP Club Member DUNELM INSURANCE BROKERS for today's game. Thank you to Craig Tracy for your support.

### DUNELM INSURANCE BROKERS

We are a Midlands based Insurance specialist equipped to deal with all of your Insurance needs.

We offer a personal service that caters specifically for the client. Check out [www.dunelminsurance.co.uk](http://www.dunelminsurance.co.uk)

You may notice that we do not operate an on-line quote facility and the reason for this is simple.

We believe that the only way to find out what you really want is by speaking to you. Just let us know exactly what you are looking for, what your budget is and we'll work hard to achieve the results you require. Through our National network of Insurance providers we can access all of the latest prices and offers because we are independent brokers, you can rest assured that the quotation you receive will be completely impartial and based on the best value rates.

**Dunelm Insurance Brokers, 31 Sandford Street, Lichfield, Staffordshire WS13 6QA**  
[craig@dunelminsurance.co.uk](mailto:craig@dunelminsurance.co.uk) - 01543 253552



## TRAINING KIT SPONSOR

We are please to announce that COMPUTER FRIENDLY have sponsored the first team training kit for the remainder of the season. Computer Friendly will also benefit from media attention when TV cameras will be present at training sessions in the build up to the FA Cup tie against Everton. Thank you to Paul Waterhouse for his continued support.

## SOLUS COACHES WILL DONATE £50

Solus coaches have kindly offered to donate £50 to the football club for every coach booking they receive for the trip to Everton.

To book your coach call Andy on 01827 51736

## PRESENTATION PICTURES v BRAINTREE TOWN

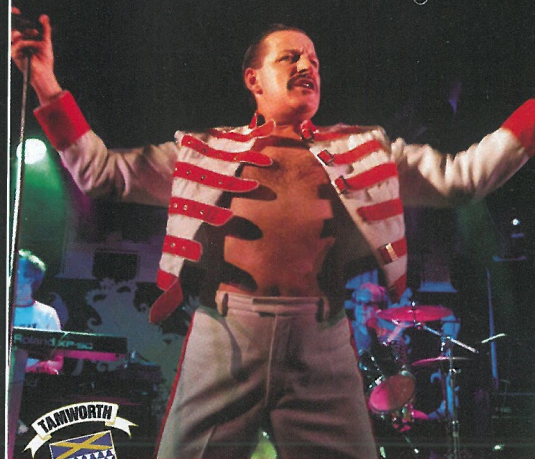


Tamworth Manager, Marcus Law, meets our Match and Match Ball Sponsor, following our home game with Braintree Town

Tamworth F.C. Christmas Party Night

## THE GREAT PRETENDER

*A Tribute to Freddie Mercury*



**TAMWORTH FC CLUBHOUSE**

**THURSDAY 22nd DECEMBER**

8.00pm - Late

Tickets On Sale Now £15.00 (Includes Food)



[www.footballfanuk.com](http://www.footballfanuk.com)



Selling Football Shirts from around the world. Official football replica shirts from Adidas, Nike, Puma, Umbro and many others.

Your Tamworth based Online Football Shirt website [online sales only]

**FREE DELIVERY** for Tamworth customers in postcodes B77, B78 and B79 [Just type in code TAM3PP at the checkout]

[www.footballfanuk.com](http://www.footballfanuk.com)

[sales@footballfanuk.com](mailto:sales@footballfanuk.com)



**CHESSGROVE**  
DAY SPA

**Fabulous spa facilities just 45 minutes from Tamworth**

**Why not give the ultimate gift of pampering and relaxation with our exclusive**

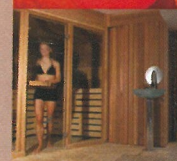
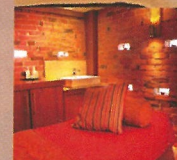
**Chessgrove Choice Spa Membership**

A flexible spa only membership  
Prices from £168

Also available gift vouchers for our luxurious spa packages.

**Call for more information on:**  
**01527 821900**

[www.chessgrove.co.uk](http://www.chessgrove.co.uk)



## B&B PHOTOGRAPHIC

**For All Your Photographic Needs**

**We are also now doing  
Digital Printing & Photo CD's**

**Why not give us a call on**

**07949 911072 or**

**07816 225457**

**Any Supporters Club Members  
that book us will get a Discount**





**POLESWORTH ASSIST**  
[www.polesworthassist.com](http://www.polesworthassist.com)

**We wish Tamworth Football Club all the best for the 2011/2012 season.**

**HAD AN ACCIDENT?**

**WE CAN HELP!**

**We will provide you a replacement vehicle and repair your car like new.  
Call us today for more details.**

**Specialists in Accident Management  
and Recovery Services for  
the Motor Industry**

Full range of hire services available including prestige and commercials

Polesworth Assist

T: 0845 557 0526 • F: 0845 868 7446 • M: 07973 332998

E: [claims@polesworthassist.com](mailto:claims@polesworthassist.com)

We will supply you a replacement vehicle within 24 hours. Contact us today.

**Proud supporters of Tamworth Football Club**



## **madewellproducts** LASER DIVISION

Laser Cutting ▶ Tube Bending ▶ Steel Fabrication ▶ CNC Brake Press ▶ Drilling  
Steel Rollers ▶ Gates & Railings ▶ Guillotining ▶ Spot, MIG & TIG Welding ▶ Lathe & Milling

### Laser Cutting

Madewell products Ltd provides a subcontract laser cutting and fabrication service to customers throughout the U.K. Since 1968 we have built up a very secure relationship with suppliers, this means that most materials can be sourced the next day for delivery to us reducing the lead times to our customers.

### Welding & Fabrication

Madewell Products Ltd has a dedicated production team to supply our customers with fabrication and welding Services of stainless steel, mild steel, aluminium and zintec components and fabrications. With over 40 years of experience. Our skilled fabricator welders are all coded to BSEN 287 standards. We have a vast array of fabrication machines **including power rollers, fly presses, drills, milling, blade/band sawing and autotap machines**

### Tube Bending

Madewell are pleased to introduce a new addition to the family. The Langbow Soco SB38x4A-3SV Mandrel Tube Bending Machine with push bend facility. The main points to promote are the machines repeatability, accuracy of parts and quality of bends using original Soco tooling. It produces tight bends down to 1.5 x D Centre line radius and automatic large radius bends utilizing the 3rd stack rollers and carriage push facility (capable of forming large radiuses). Quick and efficient operation.

### CNC Brake Press

Madewell Products Ltd is investing heavily in new technology, a 3 metre 220 tonne Hydraulic Press Brake that will dramatically increase our capacity for folding laser cut components; this will join our LVD, Promecan and Guilfil press brake on site.

Madewell Products Limited, SandyWay, Amington Industrial Estate, Tamworth, Staffordshire, B77 4DS  
**tel:** 01827 305960 **fax:** 01827 311296 **email:** [laser@madewellproducts.co.uk](mailto:laser@madewellproducts.co.uk)



visit us online

[www.madewellproducts.co.uk](http://www.madewellproducts.co.uk)



# GATESHEAD WHAT A DAY - WHAT A WEEKEND

## GATESHEAD 1 TAMWORTH 2

Two weeks ago a late, late Kyle Patterson goal earned us a fantastic 2-1 away win at Gateshead to take us through into the Third Round of the FA Cup, with Budweiser.

We capture just a small part of the day and also the following day when the SKY cameras arrived at The Lamb

- 1) Who cares about the dance, we have just taken the lead at Gateshead
- 2) Happy Fans. The Tamworth fans salute their heroes at the final whistle
- 3) The Scoreboard says it all
- 4) Marcus Law is a happy man at the final whistle as he thanks the fans

The following day, on Sunday afternoon, the SKY Cameras turned up at The Lamb as we waited for the Third Round draw

- 5) The Chairman is on SKY
- 6) It's the Manager's turn now watched by Jonathan Hedge and Chairman Bob Andrews
- 7) Its Everton away, the players have just heard the news - they are certainly pleased with that draw aren't they?
- 8) Its headlines on the Herald bill board

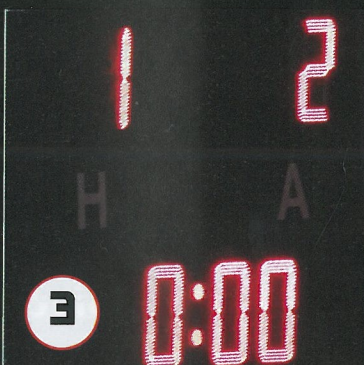
Pics courtesy of Dave Brown



1



2



3



4



5



8



7



6



# THE FA CUP

with BUDWEISER THIRD ROUND  
EVERTON versus TAMWORTH  
(The Toffees versus The Lambs)



Your guide to one of the biggest ever games in the history of Tamworth Football Club

**When** Saturday 7th January 2012  
**Where** Goodison Park, Goodison Road, Liverpool, L4 4EL  
**Kick-off** 3.00pm

### HOW TO GET THERE

#### From the North & the South

From the M6, exit at junction 26 onto the M58 and continue until the end. At the gyratory go left to join the M57 Junction 7. Exit the M57 at Junction 4 to turn right into East Lancashire Road (A580). Follow the road across Queen's Drive into Walton Lane. Goodison Road is less than a mile along on the right.

#### Alternative Route from the South

From the M6 exit at Junction 21a onto the M62 to Liverpool. Follow to the end of the motorway and turn right onto the A5058 Queen's Drive. After 4.5 miles, at the roundabout junction with the A59, turn left into County Road. Three quarters of a mile along County Road, turn left into Spellow Lane, and then left into Goodison Road. Goodison Park is on the right.

### Official Club Travel

Tamworth Supporters Club will be running official coaches to the big game. Coaches leave The Lamb at 11.00am and the cost will be £10.00. To book your seats please check the club's Official Website for details of how to book. Seats, though must be paid for in FULL when booking. Further details can also be found by calling either Eric Clayton on 07968 045 359 or Alan Satchwell on 07708 062 757

### Where can I purchase Match Tickets from

You will be able to purchase your Match Tickets directly from Tamworth Football Club

### Prices

Tickets are priced at £20.00 for Adults, £15.00 for Concessions (over 65's) and just £5.00 for Juniors (Under 15)

Opening Hours	Sunday 18 December	10.00am - 1.00pm
	Monday 19 December	2.00pm - 8.00pm
	Tuesday 20 December	CLOSED
	Wednesday 21 December	2.00pm - 8.00pm
	Thursday 22 December	10.00am - 2.00pm
	Friday 23 December	CLOSED
	Saturday 24 December	CLOSED
	Wednesday 28 December	Office re-opens

The Managers	David Moyes (Everton)	Marcus Law (Tamworth)
--------------	-----------------------	-----------------------

Current Form (Last 6 league games only)	EVERTON	TAMWORTH
	Arsenal	Forest Green Rovers
	STOKE CITY	BRAINTREE TOWN
	Bolton Wanderers	Darlington
	WOLVES	KETTERING TOWN
	Newcastle United	Kidderminster
	Manchester United	Southport
	0-1	1-1

One To Watch	Tim Cahill	Kyle Patterson
--------------	------------	----------------







Official Kit Suppliers to  
**Tamworth Football Club**



Unparalleled History And Tradition Since 1914



## Explore the Mediterranean – on your own luxury yacht

A yacht charter with True Blue gives you the freedom to explore the scenery and sights your way, creating your own unique adventure.

Whether you like to play golf, go shopping, do watersports or soak up the sun, it's the perfect way to celebrate a special occasion or just treat yourself to a well-earned trip:

- WEDDINGS AND HONEYMOONS
- BIRTHDAYS AND ANNIVERSARIES
- GOLFING TRIPS
- CORPORATE EVENTS

To make your booking contact  
**NICK WILKINSON** on:  
 +44 (0)7839 234007

Plan your perfect charter today:

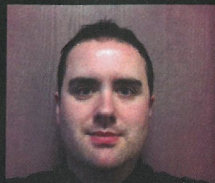
Call +44 [0]1624 623946 or visit our website at  
[www.truebluecharters.co.im](http://www.truebluecharters.co.im)

  
**TRUE BLUE CHARTERS**  
 MARINE EVENTS AND CHARTERS



# FROM THE... PRESS BOX

with Chris Philpotts of the Tamworth Herald



WELL no-one can say that covering the Lambs has been boring this season, can they?

It started with the appointment of a new manager looking to make his mark on the club.

And Marcus Law has certainly done that.

Early season success in the league has followed and now we are busily preparing for the biggest FA Cup tie in Tamworth's history.

It has been quite a treat reporting on Law's side for the Tamworth Herald this season.

For me, personally, I would say the last minute goals against Gateshead and Hinckley rank up there as the highest of the campaign so far, not forgetting a magnificent 4-0 win at home to Lincoln.

Law has done tremendously well to lead Tamworth into the position they find themselves in going into 2012.

For such a young manager, his confidence is something which has really stood out.

He hasn't, for example, been scared to change a winning side.

And commands the respect of his players. Those that haven't brought into the Lambs boss' philosophies and principles, regardless of their reputation, have quickly been shipped out.

He has built a squad that is young, vibrant, fit and hungry. And the players seem determined to achieve things under him.

Signings such as Paul Green and Kieron St Aimie have proved instant successes, while the likes of Francinco Francis are also showing they have a real future at the Lamb.

But away from all that, Law is shaping the club as a whole and that is crucial in the long term.

The Herald ran recently about the youth team players and getting them working in the local area and that was something which showed the manager has the welfare of the players as well as the results in mind.

But the question now, as we reach the halfway stage of the season, is where now for the team this season?

Obviously whatever happens on the day, the mouth-watering FA Cup clash at Everton game will be a high point this season.

But after that, what then. A play-off push? Mid-table security? What would rank as success for this side?

Don't get me wrong, a surge towards the play-offs would be fantastic and I am sure that someone as ambitious as Law still harbours thoughts of that.

But, realistically, a comfortable mid-table position would mark a great effort this year.

Personally, I would say, anything above the drama of the last day last season would do nicely as this stage.

As a reporter, you cannot beat the drama of last day of the season survival – the stories around that time of year almost write themselves.

But, I would swap that to see a boring end of season, the last ten matches where the Lambs have nothing to play for but pride as it were.

Mid-table security is not sexy, it never has been, but it would mark as a success for the club this season and it would enable Law to plan ahead, knowing where the Lambs would be playing the next season.

Tamworth as an established Conference side would also help attract players next year, the high-profile FA Cup will also help to do that.

If a mid-table finish is sealed this season, with a manager in place like Law, and a young team looking to impress, I can see nothing but good times ahead next year – and who knows maybe even a surprise cup upset along the way to.

**Don't forget to check out the Herald Sport again this week to see how you can win a signed Lambs shirt ahead of the big cup match and keep your eye out for a special supplement to mark Tamworth's upcoming trip to Goodison Park.**



# Think it. At your Choose it. B&Q Love it. Tamworth



kitchen displays



bathroom displays



tiling range



decorative range

*All the help you need;*

- 'How to' leaflets and FREE home and garden brochures
- All the tools and materials to help complete your project
- FREE kitchen, bathroom and bedroom design and planning
- Colour matching paint service
- Friendly in-store experts
- Reserve and Collect

*Great range, great value, great service*

**B&Q Tamworth, Cardinal Point Retail Park B78 3HL**  
OPENING HOURS Mon-Fri 7am-9pm, Sat 7am-8pm, Sun 10am-4pm

**PRICE PROMISE**

We won't be beaten on price! Where our local competitors price is cheaper even for just one day we will beat it by 10%\*

\*Excludes online purchases. Refund must be within 14 days of initial purchase. A 10 mile radius applies. Terms apply, ask in store for details.

**B&Q**

Let's do it together

diy.com/tamworth



# BETTING ON THE MOVE JUST GOT **FASTER**



**Bet live throughout the season on  
your iPhone or Android handset**

If you don't have a smart phone you can bet by calling our telebet service  
on **0800 587 0400** or by visiting **bluesq.com**.



**bluesq.com**  
**EVERYTHING IS PROBABLE**



Available on the  
**App Store**



Tel: **0800 083 6064** or  
text **"BET"** to **64555**

Over 18's only. Blue Square encourages responsible gambling. [gambleaware.co.uk](http://gambleaware.co.uk)

## Audits, Tax Returns, Business Plans **Need Some Advice?**

**Relax, our experts will guide  
you every step of the way.**

Cox Jerome is a firm of accountants and business advisors serving clients both locally and throughout the UK. We believe in giving face to face advice and taking a hands on approach. Furthermore, when you come to us, you'll talk to qualified professionals and benefit from our many years of experience.

- Audit/Accounts
- Management Accounts
- Corporate/Personal Tax
- Self Assessment Tax Returns
- Inheritance Tax Planning
- Face to Face Advice
- Business Plans

**Get straightforward financial and business advice:  
Call Cox Jerome today on 0800 33 77 33**



**Solutions for Business**

The Cox Jerome Business Services Group

**Cox Jerome** | Churchill House | 59 Lichfield Street | Walsall | West Midlands | WS4 2BX

tel: 01922 611567 | fax: 01922 724318 | email: [advice@coxjerome.co.uk](mailto:advice@coxjerome.co.uk) | [www.coxjerome.co.uk](http://www.coxjerome.co.uk)





## BLUE SQUARE BET PREMIER



Darlington have been placed under a transfer embargo by the Football Conference, BBC Tees has learned. The terms of the embargo mean the Quakers cannot sign or register personnel to the team. Chairman Raj

Singh and several players are currently in negotiations regarding wages, with some members of the squad claiming they have not been paid. Singh has been in talks with the Professional Footballers' Association to try to resolve the situation. "Our role is to try to ensure clubs are sustainable, that's why we have a number of financial practices in place," Football Conference general manager Dennis Strudwick told BBC Tees. "We wouldn't normally discuss a club's business, but it's in the public domain that some of the players haven't been paid all their wages. "So what we try to do is find out what is happening, why this is the case and hopefully facilitate payment in accordance with the players' contacts. "The bottom line is, we wouldn't wish a club to increase its wage bill when it's not affording the one it's currently got. "We're looking after the club, because we don't want it to shoot itself in the foot, and we're looking after the players because they have contracts, so we're looking for compliance with those contracts." The Conference are hopeful of coming to agreement between Darlington, the players and the PFA, although penalties could be imposed if this is not the case. "Ultimately we have a rule that a club must pay its football creditors, not doing that is a breach of the rule," Strudwick continued. "Players' wages are considered football creditors, so we will be looking at that rule, and possibly looking at charging the club for failing to pay its football creditors. "The board is empowered to make whatever decision it wishes, all decisions made throughout the process will be reasonable." Darlington won last season's FA Trophy, but are already out of that competition this season, lost in the first round of the FA Cup and lie 13th in the Blue Square Bet Premier.



Kettering Town boss Mark Stimson (pictured) hopes to retain the youth team players who debuted against Gateshead. Eight youth team players bolstered the squad that lost the FA Trophy match 3-2, but five of them are ineligible for the Blue Square Bet Premier. Stimson told BBC

Radio Northampton: "We're disappointed to be out of the Trophy but there's so many positives. Hopefully things improve off-field and fingers crossed [the youngsters] can stay around." Robbie Dance, Ollie Jones and Mark Pryor are the trio Stimson can call upon in the league, as well as the injured Jordan Cross, having been registered before the transfer embargo. Aiden Bradshaw, Victor Kemijika and Harry Beckley made their debuts at the Gateshead International Stadium, whilst fellow youth team players Samuel Hayes and James Burrows were on the bench. "We can't be too picky about who we can choose, but we've seen them out there and they're more than comfortable," said Stimson. "Our interplay up the top end was outstanding - and only one of them was aged over 20. It'd be nice to get them in as often as possible." Stimson revealed that some of the squad had been paid wages owed to them, and that others would receive their money by early January. And Moses Swaibu, who had been on non-contract terms with the Poppies, is the latest player to leave the club as they prepare for today's game with bottom-of-the-table Bath. "Unfortunately we haven't been able to keep the same 11," Stimson said. "There's been so many ups and downs. "We should've had a win in that [eight-match winless] run, but we just have to work hard and look forward to Saturday's game."



Plymouth Argyle's on-loan Stockport striker Nick Chadwick (pictured) says he would consider staying at the club if he was offered a longer deal. Chadwick, 29, who played for Argyle from 2005 to 2008, is on loan until January, and scored in his first match back as they beat Northampton. "You never know in football. Everything's got to be right for both parties," he told BBC Radio Devon. "If everything's right for both parties then I'm sure something would happen." Chadwick is confident that Argyle, who are bottom of League Two, are good enough to stay in the Football League. "Looking at the players we've got and seeing them in training it wasn't a surprise how well we played against Northampton. It was more of a surprise that the club's where it is and the team's in the position it is," he said. "It's about replicating those performances week in, week out. It's not about doing it one game and all getting carried away. "Since Chadwick left Home Park he has seen Argyle fall from the Championship to the brink of relegation from the Football League. The club almost went out of business earlier this year and were only saved when businessman James Brent took over and brought them out of administration. "It's unbelievable to think what's gone on here - the club that I left and the club that I've come back to," he said. "The club that I left was riding high in the play-off positions in the Championship and I've come back to a club where in the last 12 months they've struggled to pay wages. "I

was surprised and disappointed that it happened to this club but it's nice to come back and try and help put things right. "Hopefully the club's on an upward curve and I can be part of it."



Forest Green Rovers manager Dave Hockaday (pictured) says he is already prepared to offer some players contract extensions for next season. In the previous seasons, most of the squad have only been signed up on one-year deals but Hockaday is now hoping to secure them for longer periods. "This is the first group that I have been given a chance to build with," he told BBC Gloucestershire. "We're now offering one or two year extensions beyond this season." He added: "Hopefully we'll have a few positive announcements in a few weeks." Forest Green faced severe financial problems before Dale Vince took over the Nailsworth club and became majority shareholder in August 2010. Vince's arrival has stabilised the Blue Square Bet Premier outfit off the field and after battling relegation for the past two seasons, they are currently ninth in the table and just three points off the play-offs. "Because of tough finances previously we weren't able to build," added Hockaday. "We were scrambling from month to month, season to season. "You need to have players for more than a few months. You need to have them beyond a season to have the capability to plan ahead. "This is the first group I've had where I've got a great group of players, potentially. "Potentially means you haven't done it yet. We've had a good run but there's going to be blips along the way again. I hope that everyone can see that the performances are getting better, the belief is getting greater, and we're starting to take our chances."



Southport chairman Charlie Clapham (pictured) says the club are not going to make panic signings in January. Clapham insists boss Liam Watson will be loyal to those that have led them to fourth in the Blue Square Bet Premier. "The one thing we're in tandem on is that we're fourth in the table with the players we've got," Clapham told BBC Radio Merseyside. "We're not looking to bring players in to take them out of the team. That's not what the club's all about." Southport have turned their fortunes around since being reinstated after suffering relegation from the Blue Square Bet Premier last season. Clapham, who took control at Haig Avenue in 1983, believes he has the right manager to get the best out of the players at his disposal. "Liam is a sensible guy and he knows what our budget is," Clapham continued. "He's worked within that budget and he's got us to fourth in the table on that budget. "Of course we could do with more money, to invest in the club in many different ways. They only way that really changes is if we can get more people coming to Haig Avenue."

York City centre-back David McGurk says they are gunning for the Blue Square Bet Premier title this season. The Minstermen

are third in the but are six points behind league leaders Wrexham, who have a game in hand on Gary Mills's men. "We're drawing a few too many at the minute, but we're in the pack," McGurk told BBC Radio York.



"We're going for the title. The play-offs are the least we're expecting." The 29-year-old, a regular at the back since arriving at Bootham Crescent from Darlington in 2006, has only just forced his way back into the starting 11 after losing his place through suspension. But his return has coincided with City conceding just one goal in five matches, a record that McGurk is proud of. "You go into every game wanting to keep a clean sheet. That's three in a row," he added. "You look to concede less than the games you play and at the moment we are on course for that so hopefully we can keep it going. "I was disappointed to lose my place. It was my own fault. I got five yellows far too quickly and that's not like me. "It was frustrating watching the lads but I couldn't complain. We hadn't lost while I was out of the team and now I'm back, I need to make sure I keep my shirt." The Minstermen are now unbeaten in 12 league games but that run includes six draws and McGurk knows his side have to start turning some of those stalemates into victories if they are to challenge Wrexham and Fleetwood. "We can't go out and expect to win every game," he said. "We'll win a lot but there are times when you've just got to roll your sleeves up and say 'OK, we'll take a point. Let's get back to the next home game against Kidderminster and win the three points at home'."

## PREMIER SPORTS

### SIGN UP NOW FOR LIVE ACTION

03 NOV MANSFIELD V CAMBRIDGE

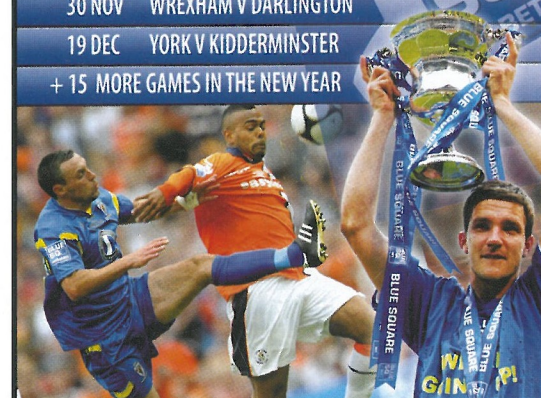
19 NOV FLEETWOOD V STOCKPORT

24 NOV KETTERING V GRIMSBY

30 NOV WREXHAM V DARLINGTON

19 DEC YORK V KIDDERMINSTER

+ 15 MORE GAMES IN THE NEW YEAR



Support the league by subscribing to Premier Sports. We are now showing 200 South American Football games per year  
SUBSCRIBE NOW: [www.premiersports.tv](http://www.premiersports.tv) OR CALL: 0871 663 9000

\*Terms & Conditions apply. Prices subject to change.





## POLESWORTH GARAGE LTD

Proud supporters of Tamworth Football Club  
*Your car dealer supporting your club*

**Phone Sales: 01827 895125 Service: 01827 302450**



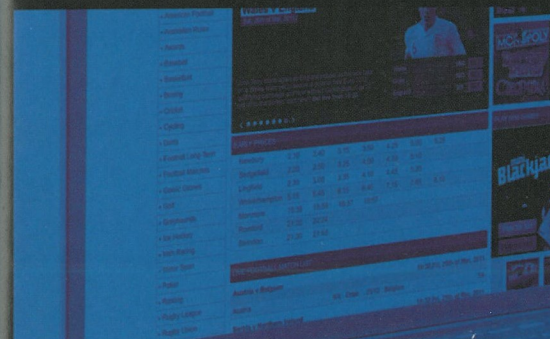
### Specialists in:

- All makes of new and used cars
- 4x4 and prestige cars supplied
- Suppliers of new Nissan cars and commercials including the Navara double cab pickup
- Servicing and MOTs of all makes and models
- Accident repairs
- Polesworth Motor Finance can provide funding for all your purchases
- Non fault accident claims
- Hire cars and vans from a Micra to a Range Rover



Grendon Road Polesworth Tamworth B78 1HA  
Phone: 01827 895125 Fax: 01827 893797 Email: [enquiries@polesworth-garage.com](mailto:enquiries@polesworth-garage.com)  
Service Phone: 01827 302450 Service Fax: 01827 67667  
[www.polesworth-garage.com](http://www.polesworth-garage.com)

**ODDS FOR EARNING  
MONEY FOR YOUR  
CLUB WHEN YOU BET  
WITH BLUE SQUARE:  
ODDS ON**



**ODDS FOR FINDING THE  
BEST RANGE OF NON-  
LEAGUE MARKETS ON  
BLUESQ.COM: ODDS ON**

**ODDS FOR ANOTHER  
GREAT SEASON  
OF NON-LEAGUE  
FOOTBALL: ODDS ON**



Visit [bluesq.com/fans](http://bluesq.com/fans) to find out how your bets can make money for your club



**bluesq.com**  
**EVERYTHING IS PROBABLE**



Available on the  
**App Store**

See website for full terms and conditions. Over 18's only. Blue Square encourages responsible gambling, [gambleaware.co.uk](http://gambleaware.co.uk).



## THE SQUADS, FIXTURES AND TABLES

BLUE SQUARE BET  
PREMIER



### BLUE SQUARE BET PREMIER LEAGUE TABLE AS AT 10/12/11

Pos.	Team	P	W	D	L	F	A	GD	Pts
1	Wrexham	23	15	5	3	39	15	24	50
2	Fleetwood Town	22	14	5	3	45	27	18	47
3	York City	24	12	8	4	49	22	27	44
4	Southport	24	13	5	6	38	36	2	44
5	Cambridge United	23	10	10	3	31	19	12	40
6	Gateshead FC	23	11	7	5	37	33	4	40
7	Luton Town	23	10	9	4	39	23	16	39
8	Kidderminster Harriers	23	11	6	6	44	34	10	39
9	Forest Green Rovers	24	9	10	5	38	23	15	37
10	Mansfield Town	23	9	10	4	36	26	10	37
11	Barrow	23	10	4	9	35	34	1	34
12	<b>TAMWORTH</b>	<b>22</b>	<b>9</b>	<b>6</b>	<b>7</b>	<b>27</b>	<b>26</b>	<b>1</b>	<b>33</b>
13	Darlington	24	9	6	9	25	28	-3	33
14	Braintree Town	24	9	4	11	41	44	-3	31
15	Grimsby Town	23	8	5	10	37	35	2	29
16	Ebbfleet United	25	6	10	9	33	37	-4	28
17	AFC Telford Utd	24	5	9	10	24	32	-8	24
18	Lincoln City FC	24	6	5	13	22	34	-12	23
19	Newport County	24	5	7	12	30	36	-6	22
20	Kettering Town	24	5	6	13	26	49	-23	21
21	Hayes & Yeading Utd	23	5	5	13	33	48	-15	20
22	Stockport County	24	3	10	11	26	42	-16	19
23	Alfreton Town	24	4	5	15	26	55	-29	17
24	Bath City	24	2	7	15	23	46	-23	13

### FORTHCOMING FIXTURES

Blue Square Bet Premier Division

TUESDAY 20 DECEMBER

Hayes & Yeading Utd v Fleetwood Town

TODAY

Braintree Town v AFC Telford United

MONDAY 26 DECEMBER (BOXING DAY)

Darlington v Cambridge United

AFC Telford United v Wrexham

Forest Green Rovers v Lincoln City

Gateshead v Darlington

Grimsby Town v Ebbfleet United

Lincoln City v Grimsby Town

Hayes & Yeading United v Barrow

Cambridge United v Braintree Town

Kettering Town v Bath City

Alfreton Town v Tamworth

Newport County v Fleetwood Town

Barrow v Stockport County

Southport v Mansfield Town

Ebbfleet United v Hayes & Yeading Utd

Stockport County v Alfreton Town

Fleetwood Town v Southport

Tamworth v Luton Town

Kidderminster Hrs v Forest Green Rovers

Wrexham v Gateshead

Luton Town v Kettering Town

MONDAY 19 DECEMBER

Mansfield Town v York City

York City v Kidderminster Harriers

Newport County v Bath City



### TAMWORTH

Manager: Marcus Law

Colours: Red & Black

Squad (from)

	played	sub	goals
1. JONATHAN HEDGE	✓	■	■
2. RICHARD TAIT	✓	■	■
3. SAMUEL HABERGHAM	✓	■	■
4. DUANE COURTNEY	✓	■	■
5. FRANCINO FRANCIS	✓	■	■
7. JAY SMITH	■	■	■
8. ASHLEY CAIN	■	■	■
9. DANNY MILLS	■	✓	✓
10. KIERON ST AIMIE	■	■	■
11. DANNY THOMAS	■	■	■
12. LIAM McDONALD	■	■	■
13. SAM ANDREW	■	■	■
14. KYLE PATTERSON	✓	■	■
16. PAUL GREEN	■	■	■
17. CONNOR GUDGER	■	■	■
19. SCOTT BARROW	■	■	■
20. CALLUM REYNOLDS	■	✓	■
21. JOE COLLISTER	■	■	■
22. NABIL SHARIFF	■	■	■
23. IYSEDEN CHRISTIE	■	■	■
24. PATRICK KANYUKA	■	■	■
25. WILL GROCOTT	■	■	■
26. RICO TAYLOR	■	■	■
27. TROY WALLEN	■	■	■
28. LUKE BOTTOMER	■	■	■
29. LEE WEEMES	■	■	■
30. DALE BELFORD	■	■	■
31. JAKE HEALY	■	■	■
32. IBRAHIM FARAH	■	■	■

Players on loan in yellow



### LUTON TOWN

Managers: Gary Brabin

Colours: White

Squad (from)

	played	sub	goals
1. MARK TYLER	■	■	■
2. DANIEL GLEESON	■	■	■
3. GREG TAYLOR	■	■	■
4. KEITH KEANE	■	■	■
5. DEAN BECKWITH	■	■	■
6. GEORGE PILKINGTON	■	■	■
7. ALEX LAWLESS	■	■	■
8. AMARI MORGAN-SMITH	■	■	■
9. MATTHEW BARNES-HOMER	■	■	■
10. DANNY CROW	■	■	■
11. ROBBIE WILLMOTT	■	■	■
12. SHANE BLACKETT	■	■	■
13. STUART FLEETWOOD	■	■	■
14. AARON O'CONNOR	■	■	■
15. JAKE HOWELLS	■	■	■
16. ED ASAFU-ADJAYE	■	■	■
17. WILL ANTWI	■	■	■
18. CURITS OSANO	■	■	■
19. JAMES DANCE	■	■	■
20. JOHN KISSOCK	■	■	■
21. CHARLIE HENRY	■	■	■
22. PAUL CARDEN	■	■	■
24. ALEX LACEY	■	■	■
26. JONATHAN O'DONNELL	■	■	■
27. JAMIE HAND	■	■	■
28. ADAM WATKINS	■	■	■
30. KEVIN PILKINGTON	■	■	■
31. LEWIS KIDD	■	■	■
39. JANOS KOVACS	■	■	■

## THE SQUADS, FIXTURES AND TABLES



### BLUE SQUARE BET NORTH LEAGUE TABLE AS AT 10/12/11

Pos.	Team	P	W	D	L	F	A	GD	Pts
1	Hyde FC	22	16	4	2	51	20	31	52
2	Stalybridge Celtic	20	14	4	2	49	23	26	46
3	Guiseley	19	11	5	3	40	20	20	38
4	Nuneaton Town	20	11	4	5	33	17	16	37
5	Gainsborough Trinity	20	12	1	7	36	30	6	37
6	FC Halifax Town	20	9	6	5	38	33	5	33
7	Corby Town FC	20	9	5	6	36	21	15	32
8	Worcester City	20	9	5	6	35	32	3	32
9	Altrincham	19	8	5	6	42	31	11	29
10	Droylsden	20	8	4	8	36	37	-1	28
11	Colwyn Bay	20	8	4	8	28	32	-4	28
12	Boston United	20	8	4	8	23	27	-4	28
13	Gloucester City	20	7	5	8	28	25	3	26
14	Harrogate Town	21	7	4	10	28	37	-9	25
15	Histon	20	6	5	9	30	36	-6	23
16	Solihull Moors	20	7	2	11	17	24	-7	23
17	Vauxhall Motors	20	5	4	11	30	38	-8	19
18	Hinckley United	18	5	3	10	26	41	-15	18
19	Workington	20	5	2	13	22	37	-15	17
20	Bishops Cleeve	19	4	4	11	28	43	-15	16
21	Eastwood Town	20	3	4	13	21	49	-28	13
22	Blyth Spartans AFC	20	2	6	12	23	47	-24	12

### BLUE SQUARE BET SOUTH LEAGUE TABLE AS AT 10/12/11

Pos.	Team	P	W	D	L	F	A	GD	Pts
1	Woking	21	16	4	1	51	17	34	52
2	Welling United	20	13	4	3	44	26	18	43
3	Dartford	19	11	4	4	40	24	16	37
4	Chelmsford City	19	9	8	2	36	17	19	35
5	Sutton United	18	10	4	4	34	20	14	34
6	Dover Athletic	20	8	7	5	31	22	9	31
7	Dorchester Town	23	9	4	10	29	33	-4	31
8	Basingstoke Town	18	8	6	4	32	22	10	30
9	Weston-Super-Mare	19	8	4	7	34	32	2	28
10	Boreham Wood	19	8	4	7	23	26	-3	28
11	Tonbridge Angels	21	8	4	9	35	40	-5	28
12	Eastleigh	20	8	3	9	27	33	-6	27
13	Truro City	19	8	2	9	33	35	-2	26
14	Eastbourne Borough	19	7	4	8	34	32	2	25
15	Salisbury City	18	6	4	8	26	29	-3	22
16	Havant & Waterlooville	19	5	6	8	32	32	0	21
17	Farnborough	20	5	5	10	28	47	-19	20
18	Bromley	20	5	4	11	28	43	-15	19
19	Maidenhead United	21	5	3	13	24	46	-22	18
20	Hampton & Richmond B.	19	4	4	11	23	33	-10	16
21	Staines Town	19	3	5	11	21	30	-9	14
22	Thurrock	19	3	3	13	19	45	-26	12

## NEXT MATCH AT THE LAMB

### ALFRETON TOWN

Blue Square Bet Premier Division – Sunday 1 January 2012 – kick off 3.00pm

This is a CATEGORY B game



## MATCH OFFICIALS

REFEREE **Mr R. Joyce**

1st ASSISTANT  
**Mr A. Pashley**

2nd ASSISTANT  
**Mr I. Watson**

4th OFFICIAL  
**Ms S. Garratt**



Authentic Italian Restaurant

# San Giovanni

Fine Italian dining in a stylish restaurant with a unique lakeside setting.



*Overall winner of the Shires Magazine Best Restaurant 2010  
for Warwickshire & Leicestershire.*



Mill Lane, Sheepy Parva, Warwickshire, CV9 3RL

Tel: 01827 881000

[www.sangiovanni.co.uk](http://www.sangiovanni.co.uk)

Restaurant open 7 days a week from 12 noon to 11pm

# briers

WASTE MANAGEMENT & METAL RECYCLING SOLUTIONS

Our group of companies can provide  
Total Waste Management Services to include:

**Wm. M. Briers & Son (Tamworth) Limited**

- Ferrous & Non Ferrous Scrap Metal Recycling
- Aluminium Can Buy Back Centre
- Waste Transfer Station
- Certified Product Destruction
- Waste to Energy

**Briers Skip Hire**

- Waste Container Services to Domestic & Trade

**The 'SORT' (Segregation of Recyclables, Tamworth)**

- Materials Recycling Facility
- Segregation of Recyclable Materials from Waste

**Recycling & Resource Management Limited**

- Total Hazardous Waste Solutions
- Pharmaceuticals
- Chemicals, Tankers, Drums and Packages
- Industrial Cleaning

# briers

**Wm. M. Briers & Son (Tamworth) Limited**

Anchor Sidings, Glascote Road, Tamworth, Staffs, B77 2AN.

Tel • 01827 62668 Fax • 01827 53721

Email • [enquiries@wmbriers.co.uk](mailto:enquiries@wmbriers.co.uk) [www.briers.co.uk](http://www.briers.co.uk)



# SUPPORTERS CLUB NEWS



Good Afternoon everyone and a big welcome to you all especially all those Luton Town fans who have travelled to the Lamb today to support your team.

As we all a few weeks ago we lost a valuable member of staff and supporter of the Club, Gill Bolton, and now with deep sadness we have lost a very big member of our Club in Len Gendle who was of course our Club President and I for one will certainly miss him.

On a Thursday night Len used to come down to the Club and have a drink with us and I always said to him, Hello Sir, and that's what I called him all the time even on matchdays. As most of you will know he was Mr Tamworth FC and I do hope that we can get behind the team and help win the game for Len today.

I am very disappointed to report that our Christmas Dinner/Dance has had to be called off because of a lack of response. I am very, very disappointed about that I can tell you. Our Christmas Raffle, which was going to be drawn at the Dance today, will now take place at the ground around 2.00pm and Manager, Marcus Law, will be making the draw.

**AWAY TRAVEL** Details of our away coach travel for the new few games are as follows. Our first trip coming up is on Boxing Day when we travel the short distance to ALFRETON TOWN. The coach will depart The Lamb at 1.00pm and the cost will be £10.00 for Adults and £5.00 for Concessions.

Then of course it's the big one and our trip to EVERTON which is on Saturday 7 January. For this epic Third Round FA Cup tie the coaches will leave for Goodison Park at 11.00am and the fare will be £10.00. To book your seats please check the club's Official Website for details of how to book. Seats, though, must be paid for in FULL when booking.

We then make the long trip South to Kent to take on EBBSFLEET UNITED on Tuesday 24th January 2012 and the coach will leave The Lamb at 3.30pm with fares £15.00 for Adults and £8.00 for Concessions.

Our final away game of January is on Saturday 28th when we go to Cambridge United for a 3.00pm kick off. The coach departs the Lamb at 11.30am and the costs will be £13.00 for Adults and £7.00 for Concessions.

For further details of all of our away trips then please call either Eric Clayton on 07968 045 359 or Alan Satchwell on 07708 062 757. On all trips, apart from the Everton game, a non-refundable deposit of £5.00 is required.

This week the spotlight falls on our Membership Secretary, Nigel Corbett, who is pictured.

Enjoy the Game and see you next time.

DB



**NIGEL CORBETT**  
Membership Secretary

## THE 2011-12 TFCSC COMMITTEE:

**Honorary President:** Andy 'Henry' Farrington – **Chair:** Dave Brown – **Vice Chair/Secretary:** Julie Pegg – **Treasurer:** Dave Clayton

**Membership Secretary:** Nigel Corbett – **Coach Co-Ordinator:** Eric Clayton – **Assistant Coach Co-Ordinator:** Alan Satchwell

**Team Members:** Tony Adcock, Richard Bott, Richard Bowker, Ian Grylls, Keith Pegg, Graeme Phipps, Mick Thompson, Alan Fitzpatrick

**Contact us:** e-mail: tfcsc@hotmail.co.uk – phone: Julie Pegg on 07877 527 803 any time during the day or Dave Brown on 07949 911 072 after 6pm week days or any time at weekends

# N H P

## £46.88p

### PRIZE FUND

To claim your prize or to become an agent and earn commission on every sale contact promoter Dave Brown on 07949 911072

After 6pm

No Winners

**Tamworth FC Supporters Club Present**

## NEW YEAR'S EVE at the Lamb

With entertainment from the

**Nigel Peters Roadshow**

Prize raffle, free buffet + lots more!!

## TICKETS NOW ON SALE

Adults £4

U16s £2

ASK AT THE SO TABLE OR BEHIND THE BAR

TICKETS MUST BE PAID FOR IN ADVANCE  
NO REFUND AVAILABLE UNLESS UNDER EXCEPTIONAL CIRCUMSTANCES

# HALF TIME TEASER

WITH TAMWORTH SUPPORTERS CLUB

## WIN A PAIR OF COACH TICKETS TO THE EVERTON GAME!

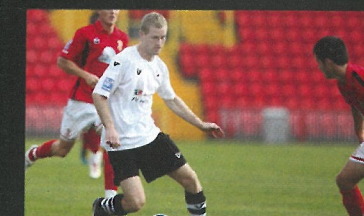
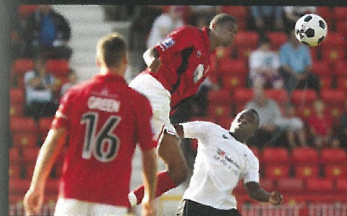
If you are a 2011-12 SC member you could win yourself a pair of official Supporters Coach tickets to our first ever FA Cup game against Premiership opposition next month.

Just answer the "Tamworth in the FA Cup" themed questions and the highlighted letters will spell out a famous footballing park.

To be in with a chance of winning, submit the prize word to Dave Brown, or e-mail tfcsc@hotmail.co.uk with your answer and contact details.

The closing date is midnight on Christmas Eve, so you have plenty of time to get your thinking caps on! The winner will be drawn at random from all correct entries and announced in the Alfreton programme and local media etc.

If you aren't an SC member why not just test your knowledge out and if you want to join up you may be lucky next time, and perhaps win another different but equally superb prize.



1: We went out of the cup to this side in the 1937-38 season.

2: They were our first FA Cup opponents after WWII but there was no sweet success as we lost 1-2 at home to ?? Athletic.

3: In 1951-52 Vin scored against the same opponents as Q2 in a 3-1 away win. What was his surname?

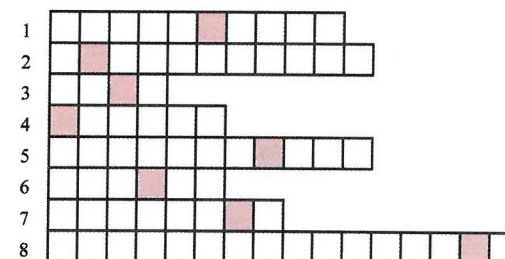
4: Smith scored against Gresley Rovers in 1962-63 in both the 1st Qualifying Round and the replay, but what was his first name?

5: At which stadium did we play Gillingham in the 1966-67 1st Round proper?

6: Against Torquay in 1969-70, what was the surname of, one of the goal scorers in the 2-1 win, Lambs Legend Graham?

7: Which local Borough did we play three times in 1970-71 eventually beating them at St. Andrews, the home of Birmingham City?

8: In the next round of the same season we went out 0-5 to the then mighty York City at their home ground which is named....



Prize Word

1 2 3 4 5 6 7 8  
[ ] [ ] [ ] [ ] [ ] [ ] [ ] [ ]



For all the latest news & views  
from **The Lamb** don't miss the

**Tamworth**  
**Herald**  
every Thursday



# ACE

## copying equipment ltd



*Specialists in photocopying...*

- Blk/white & colour
- Digital networked or stand alone
- Printers
- Fax machines
- Service & supplies
- Furniture
- Copying & plan printing/plotting service



FREE PARKING...  
9-10 UNION CLOSE  
KETTLEBROOK ROAD  
TAMWORTH  
B77 1BB

Tel: **01827 52958** or **01827 63374**

Supporting  
the grass roots



**Football Foundation**



FUNDING PARTNERS

[www.footballfoundation.org.uk](http://www.footballfoundation.org.uk)

improving facilities • creating opportunities • building communities

Charity No 1079209 Company No 3876305

## Tamworth FC Matchday Hospitality

TFC are proud to be able to offer a fantastic opportunity to soak up the pre match atmosphere and enjoy a delicious hospitality experience, for any occasion, all at a very competitive price

- Benefit from reserved parking
- Gain exclusive access to sponsors lounge
- Price includes Admission, and a seat in the main stand
- Receive a complimentary programme
- Enjoy a 3 course meal before the game, half time tea and coffee
- See the 'Man of the Match' presentation after the final whistle

**All for just £35 per person + VAT**

**Why not reserve your place for a forthcoming match today**

**Contact Nick Lunn on 07795 841106 or email [nick@thelambs.co.uk](mailto:nick@thelambs.co.uk) for more information**



# FACT FILE



## LUTON TOWN

Last Game at Home	v AFC Telford United	Drew	1-1	29.11.11
Last Away Game	v Lincoln City	Drew	1-1	06.12.11
Current League Position	7 th			
Last Game	v Lincoln City	Drew	1-1	06.12.11
Recent League Form	D D W D L W			
Top Goalscorer	Amari Morgan-Smith	9		
Last Defeat	v Fleetwood Town	Home	1-2	05.11.11
Highest Home Attendance	7270 v Wrexham			18.10.11
Lowest Home Attendance	5399 v AFC Telford United			29.11.11
Average Home Attendance	6083			
Best Win	5-1			
	v Southport (h) 20.08.11, v Barrow (h) 01.10.11, v Gateshead (h) 15.10.11			
Heaviest Defeat	0-3 v York City	Away		24.09.11

## MEET THE LUTON TOWN MANAGER GARY BRABIN



Originally brought to the club as Chief Scout at the time Richard Money was appointed manager in October 2009, Brabin was reassigned in the new role as assistant manager in the summer of 2010.

Following the departure of Richard Money in March 2011, Brabin took control of the Hatters until the end of the 2010/11 season.

After playing over 275 times in League football as a tough-tackling midfielder, Brabin moved into management firstly with Southport - guiding them to the Conference North Play-offs - before moving south to manage Cambridge United in 2008.

In his first - and eventually only - season at the Abbey Stadium he guided the U's to the Blue Square Premier Play-off final after finishing runners-up to champions Burton Albion, but lost to Torquay United at Wembley.

Despite that set-back Brabin was awarded the BSP Manager of the Year award before behind the scenes differences at the Abbey led to him leaving the club in July 2009 before arriving at Kenilworth Road.

## LUTON TOWN

## BRIEF HISTORY

**1885** - Luton Town Football Club was formed on 11 April 1885, the product of a merger of the two leading local teams, Luton Town Wanderers and Excelsior. The club moved to Dunstable Road from Dallow Lane club moved to Dunstable Road in 1897 and in 1981 became the first club to turn fully professional.

**1905** - After a brief spell in the Football League following a few years in the Southern League, Luton move to Kenilworth Road. Two years later, Bob Hawkes became Luton's first international player when he turned out for England.

**1916** - Despite being wounded during World War I, forward Ernie Simms nets 40 goals in a season in the London Combination.

**1920** - The club rejoin the Football League, progressing through the leagues in the next few years.

**1936** - Prolific striker Joe Payne scores 10 goals in a 12-0 victory over Bristol Rovers, which is still a Football League record.

**1956** - Dally Duncan is in charge for one of the greatest eras in Luton Town's history, with International players galore plying their trade at Kenilworth Road. They are promoted to the Football League for the first time.

**1959** - Luton lose 2-1 in the FA Cup Final to Nottingham Forest. Within six years though, they find themselves back in the fourth tier.

**1970** - Malcolm Macdonald, who would go on to play for England, helps Luton to promotion with a number of goals during his spell at the club. With Eric Morecambe on the board, good times return and by 1974, they're back in the top flight. Relegation swiftly follows, but the club are promoted again in 1982 under David Pleat.

**1983** - A final day win over Manchester City, The Hatters' goal arriving through Yugoslav Raddy Antic, secures survival and relegates City in the process. Pleat, in a brown suit, jigs across the pitch in joy, an iconic image which has been repeated several times.

**1985** - The club install an artificial surface but in the same year, their match with Millwall is marred by the first televised pitch invasion. Such horrific scenes caused the

then-chairman, Conservative MP David Evans, to ban visiting supporters to Kenilworth Road and introduce a scheme where home fans had to carry identity cards.

**1987** - Arguably the best period in the club's history. The highest ever league position is achieved (seventh in the top flight) and a year later, Luton beat favourites Arsenal to lift the League Cup. With 10 minutes left Luton were 2-1 down, but a penalty save from Andy Dibble is followed by goals from Danny Wilson and Brian Stein to win the Cup. A year later they're beaten in the Final by Brian Clough's Nottingham Forest.

**1992** - Luton's spell in the top flight ends as they're relegated to the second tier, now known as Division One. In the same season, the club ditch the artificial pitch.

**2002** - After dropping back through the Divisions, Joe Kinnear bucks the trend and leads the club to the Third Division title. Despite his success, he is sacked a year later and replaced by Mike Newell, following a phone vote. The club enter administration.

**2005** - Newell leads Luton back to the second tier (in the same season they lose 5-3 at home to Liverpool in the FA Cup after being 3-1 up) where they fight off financial problems and survive for two seasons, before he is replaced by Kevin Blackwell. In the same year, Luton sell Curtis Davies to West Brom for £3m - the club's record transfer fee received.

**2008** - The Hatters hold Liverpool to a 1-1 draw in the FA Cup 3rd round before losing the replay 5-0. They are deducted 10 points for entering administration and Blackwell departs to join Sheffield United before Luton are relegated for a second successive year. In the summer of 2008, they are deducted an astonishing 30 points for various financial irregularities. This penalty proves too much as they finish bottom of the table, but win the Football League Trophy along the way.

**2011** - For the second season running, Luton reach the play-offs, this time the final. Recently appointed manager Gary Brabin watches on as the Hatters are defeated on penalties in the final at the City of Manchester Stadium following a goalless 120 minutes vs AFC Wimbledon.







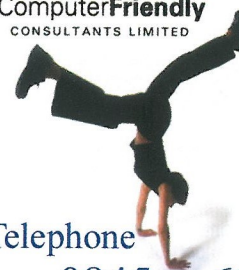
**PROUD SPONSORS OF THE  
FOOTBALL CONFERENCE**



JD - Best of the Best  
JDSports.CO.UK



Computer**Friendly**  
CONSULTANTS LIMITED



Telephone  
0845 6250195

The local company  
turning computer  
support on its head.

A Daily Health Check  
...for less than the price of a  
cup of coffee per day.

[www.CFCUK.co.uk](http://www.CFCUK.co.uk)

## IT Support that never sleeps!

### A Revolutionary Change in Computer Support

Proactive IT Support takes a different approach to computer support. Rather than just respond to problems after the fact, we use our state-of-the-art automated systems to check your systems proactively every 5 or 15 minutes. We'll nip problems in the bud before – not after – they disrupt your business.

### Does your computer support company:

Keep you safe from harm by **automatically checking your anti-virus systems** each and every day?

Keep you up & running by **automatically checking your event logs** first thing every morning?

Keep you in contact by **automatically checking your email systems** every morning?

Keep you running by **checking your Windows services, TCP ports & network connections** every few minutes?

Keep you safe by **checking for hacker attacks**?

Keep you safe by **automatically checking your backup every day**?

*And do they do all these things automatically – with an advanced Care System that doesn't get sick, distracted or go holiday?*

Proactive IT Support conducts dozens of checks on your systems every five or fifteen minutes. We can spot many problems before they occur. And we'll get instant alerts about others – usually before you know you have a problem – so we can fix them before you experience the pain of downtime.

**The Proactive IT Support Company**  
Turning IT Support on its Head

Call us on 0845 6250195 for a no-obligation discussion. Or visit [www.CFCUK.co.uk](http://www.CFCUK.co.uk) for more.



# IN OPPOSITION LUTON TOWN



## Luton Town Player Profiles...

### MARK TYLER

Hugely experienced goalkeeper who signed a two-year contract at Kenilworth Road in June 2009 to become Mick Harford's fifth signing of the summer following his release from Peterborough United. After a hugely successful two years between the sticks at Kenilworth Road, Mark signed a new contract in the summer of 2011.

### KEVIN PILKINGTON

Vastly experienced goalkeeper who joined the Hatters in May 2010 after his release from Notts County. Pilkington began his career with Manchester United playing six times in the Premier League under Sir Alex Ferguson.

### GEORGE PILKINGTON

Highly experienced defender who joined the club on a free transfer in August 2008. Having begun his career as an Everton trainee, Pilkington joined Port Vale in June 2003, after a loan spell at Exeter City. Having started 223 league games for the Valiants, the highly-regarded defender has been named Player of the Year twice. His impeccable form on the pitch led to him winning a string of end-of-season awards and underlined his loyalty to the Hatters by signing a new contract at the end of the 2009/10 campaign.

### DAN GLEESON

Tall and athletic defender, primarily a right-back, Gleeson signed for the Hatters in the summer of 2010 from his home town club Cambridge United. A product of the U's academy, Gleeson made his debut at 18 and soon became a regular at the Abbey Stadium making 61 league appearances before Notts County snapped up his signature in 2006. Recognised as one of the best right-backs outside the Football League, Gleeson's performances have seen him rewarded with seven England C caps.

### Greg Taylor

Left-back signed from Darlington in November 2011 who made his Town debut in the 1-1 draw at Cambridge United. Started his career as a junior with Northampton before he signed for Kettering Town. He then joined Darlo, linking up with boss Mark Cooper at the Darlington Arena.

### ED ASAFU-ADJAYE



Capable of playing in any position across defence, Asafu-Adjaye has made significant progress through the Club's youth set-up.

### SHANE BLACKETT

Luton-born Shane became Mick Harford's sixth summer signing of 2009 after penning a two-year contract at Kenilworth Road. Equally adept at centre-back or at left-back, Shane began his career with Dunstable Town before a switch to Arlesey Town in 2003.

### FREDDIE MURRAY

Left-footed versatile defender who joined the Hatters on a six-month loan deal from Blue Square Premier side Grays Athletic in August 2009 and the deal was made permanent in January 2010. Previously with Northampton Town, Stevenage Borough and Cambridge United the Irishman began his career as a trainee with Blackburn Rovers.

### ALEX LACEY

Up-and-coming centre-half who made his first team debut as a 17-year-old in the FA Trophy first round tie against Welling, earning the man-of-the-match award for an excellent performance. Signed a professional contract to remain at Kenilworth Road until the end of the 2011/12 season.

### DEAN BECKWITH

Centre-back Beckwith became the Hatters' second signing of the summer of 2011 following his release from League 2 side Northampton Town. The 27-year-old, who signed a two-year deal at Kenilworth Road, was a key member of the Cobblers' squad in 2010/11 which reached the fourth round of the League Cup following wins over Brighton, Reading and Liverpool.

The commanding 6ft 3in defender has experienced promotion from the Blue Square Bet Premier before having been part of the Hereford United side that won the Play-Off final against Halifax Town in 2008. With almost 250 senior appearances to his name after starting his career as a junior at Gillingham, the centre-half enjoyed his best goalscoring season last season scoring three goals. The defender turned down offers from a number of Football League clubs but was delighted to agree terms to bolster the Hatters' defensive options.

### CURTIS OSANO

Lightening quick attacking defender who signed a six-month contract at Kenilworth Road following his departure from Rushden & Diamonds in July 2011. Able to play anywhere along the backline, the strong Kenyan-born defender began his career at Reading as a youngster. He failed to make an appearance with the Royals but enjoyed loan spells at Aldershot, Woking and Rushden before making the move to Nene Park permanent in 2008, going onto make over 150 appearances for the Northamptonshire club.

### JANOS KOVACS

Hungarian defender who signed on-loan for his second spell at the club in September 2011. Formerly with Chesterfield and Lincoln, Kovacs first signed in January 2010 before signing for Hereford United in the summer of that year. Will Antwi.

### JAMIE HAND

Central midfielder who moved to Kenilworth Road on loan in September 2011 from Hayes & Yeading United. It was then Hayes & Yeading boss Gary Haylock who persuaded him to join United in August 2010 after his form for Woking in the Blue Square Bet South had caught the eye. Scoring on his debut in a victory at Grimsby Town, Hand settled in quickly to become a vital part of the United squad that avoid relegation last season. Hand began his career with Watford, making 61 appearances in five years at Vicarage Road having burst on the scene for the Hornets in the Premier League. His performances led to him picking up the Young Player of the Year award in 2002/03. After several loans spells Uxbridge-born Hand signed for Chester and then Lincoln City. He moved to

Ebbfleet United in 2008/09 before enjoying spells with Chelmsford, Hemel Hempstead and Woking before moving to Hayes.

### ROBBIE WILLMOTT

Harlow-born winger who penned an 18-month contract with the Hatters in January 2011 after hitting 10 goals for Cambridge United. Capable of playing on either wing or behind the front two, Willmott came through the ranks at the Abbey Stadium and wowed the home faithful with his pace, dribbling, close control and eye for goal.

### JAKE HOWELLS

The young winger, who can also play at left-back or in central midfield, came through the ranks at Kenilworth Road and made his first team debut as a second half substitute in May 2008. He made his full debut in the Hatters colours away at Bradford City in October 2008. After making 36 appearances for the Hatters in the 2008/09 the England C international was rewarded for his efforts with a professional contract in May.

### GODFREY POKU

Tenacious defensive midfielder who signed together with JJ O'Donnell from Blue Square South outfit St Albans City in January 2010 on an 18-month contract. A tough-tackling and no-nonsense midfielder, the Town beat off competition from several Football League clubs for his signature. He featured and impressed in the Hatters' reserves in 2009/10 and was an unused substitute in the Blue Square Premier but made his debut as a substitute in the 1-0 win at Barrow in October 2010.

### JJ O'DONNELL

Tricky winger who joined the Town with St Albans team-mate Godfrey Poku in January 2010. Also capable of playing at left back the youngster featured for the Hatters' reserve and youth teams during 2009/10. He made his first team debut as a substitute in the 4-2 FA Cup first round replay win over Corby Town and was handed a one-year contract extension in June 2011.

### KEITH KEANE

Having made his debut as a 16-year-old in November 2003, Keith Keane went on to enjoy an extended run in the side from February onwards whilst Kevin Foley was out injured. Such was the contribution he made that the return of Foley didn't signal the end of his involvement at first-team level and he finished the season with 14 appearances under his belt, all this whilst still in the first year of his scholarship. Capable of playing right the way across the back four or in midfield the only positions he's not featured for the Town (yet) are in goal and up-front.



### ADAM WATKINS

Young midfielder, capable of playing in attack, who signed professional forms at Kenilworth Road in June 2010. A self-confessed Hatters fan, he made his first team bow in a 1-0 defeat at Southampton in the FA Cup third round in January 2010. He broke into the first team squad during 2010/11 campaign scoring twice on his full debut in the 4-0 FA Trophy win over Uxbridge.

### ALEX LAWLESS

Former Wales Under-21 midfielder who signed in November 2010 initially on-loan from York City before a permanent deal went through in January 2011.

### JOHN PAUL KISSOCK

Creative attacking midfielder John Paul signed a two-year contract for an undisclosed fee joining from Southport in August 2011.

### Tommy Wright

Centre forward who signed a three-month deal in October 2011. Wright began his career as a youngster with Leicester City, earning call-ups to the England Under-19s and 20s sides.

### RYAN BRUNT

Highly-rated teenage striker who joined on work experience from Stoke City in November 2011. Started his career as a junior with Bristol City before moving to the Potteries. Made his debut in Town colours as a substitute against Cambridge United before hitting a hat-trick in his first match for the reserves.

### Matthew Barnes-Homer

Prolific striker who joined the Hatters initially on a month's loan from Kidderminster Harriers before agreeing a two-and-a-half year contract in 1st January 2010. The powerful forward followed up his 21 goals in all competitions during 2008/09 with nine goals in 20 league appearances in following season before finishing the Hatters' top goalscorer with 19 goals in all competition last season.

### DANNY CROW

A nippy poacher of a striker, Crow joined the Hatters from Cambridge United in May 2010 following the expiry of his contract at the Abbey Stadium. The energetic forward's strike-rate of 22 goals in 43 league starts won him many admirers and his 19 goals during 2009/10 saw him scoop the U's online Player of the Year award.

### DAN WALKER

Quick young forward capable of playing down the flanks who signed a one-year deal in July 2010 after impressing in pre-season in games for and against the Hatters.

### AMARI MORGAN-SMITH

Striker or wide man who arrived at Kenilworth Road as a free agent following a two-year spell at Ilkeston Town. He put pen to paper on a two-year deal after two years with the Blue Square Bet North side in which he scored 34 goals in 77 starts.

### AARON O'CONNOR

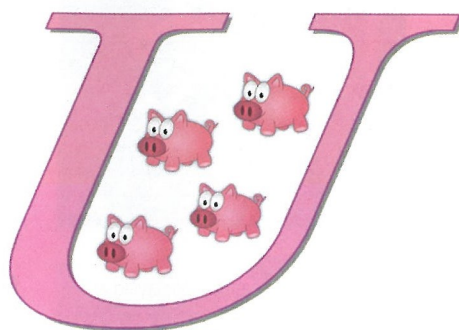
Striker, who picked up a plethora of end-of-season awards at Nene Park, arrived at Kenilworth Road after signing a two-year contract following the expiry of his deal with Rushden & Diamonds. He scored 27 times in two seasons at Nene Park after arriving from Mansfield Town and went onto be a huge favourite at the Northamptonshire club.

### Stuart Fleetwood

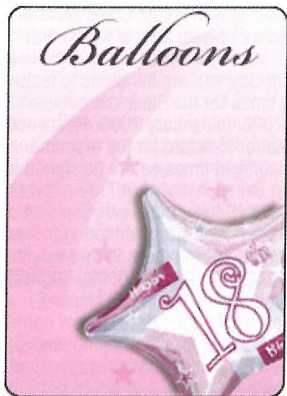
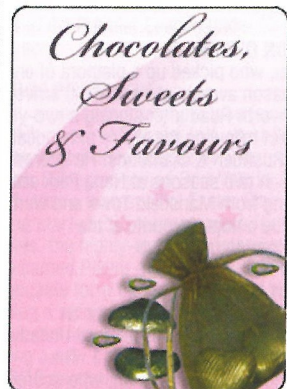
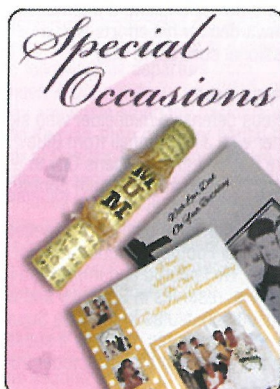
Prolific striker who signed for an undisclosed fee from Hereford United on deadline day in August 2011. The Gloucester-born frontman, who scored 28 goals the last time he played at Conference level whilst with Forest Green Rovers, signed a two-year deal at Kenilworth Road. He began his career as a trainee at Cardiff City, making the grade to feature eight times for the Bluebirds between 2003 and 2006. In January 2006, Fleetwood signed for Hereford for the first time scoring eight times before he signed for Forest Green in June 2007. And it was his spell with Rovers that saw people sit up and take notice after plundering 32 league and cup goals in a season that saw the Gloucestershire side earn their highest league placing. The Wales Under-21 international turned down a new contract at FGR to sign for then Championship Charlton in June 2008 but was loaned out Cheltenham, Exeter and Brighton. Fleetwood returned to Edgar Street last summer and scored 18 goals as he helped the Bulls avoid the drop in League 2. After hitting the post on his debut against Stockport, Fleetwood scored on his full debut in the win over Darlington.



# Personalised Items & Gifts



[www.pigs4u.co.uk](http://www.pigs4u.co.uk)



*Bespoke Wedding Favours*

*Personalised  
Chocolates & Sweets*

*Helium Balloons*

*Personalised Photo Gifts*

*Cards & Stationery  
For Special Occasions*

*Personalised Bottle Labels  
& Presentation Cases*

07971788473  
[Kelly@pigs4u.co.uk](mailto:Kelly@pigs4u.co.uk)

01827 897034  
[www.pigs4u.co.uk](http://www.pigs4u.co.uk)



## Need an Electrician?

**We can help!**



Electrical Services  
(Midlands) Ltd

From small domestic jobs to large commercial sites, if it's an extra socket at home or a full installation at your place of business, we'll get it done!

**Call us on:**

# 01827 311 113

**for a free, no obligation quote**

With over 20 years experience our electricians are fully qualified and highly skilled, working to current wiring regulations and carrying the latest test instruments giving you complete peace of mind.

**J F Electrical Services (Midlands) Ltd**

Holly, Hopwas Heights, Lichfield Rd,  
Tamworth Staffordshire B78 3AN  
Tel: 01827 311 113



• Domestic • Commercial • Security • Fire • Inspection & Testing

All work comes with full certification including building compliance certificates.



# NAMES AND GAMES

LEIGH EDWARDS looks at Luton Town's leading lights

## CLASSIC CAMPAIGN – 1987-88

Ray Harford plotted Luton Town's 1988 Littlewoods Cup final triumph. Danny Wilson replaced Peter Nicholas in midfield, while Micky Weir arrived from Hibernian and Mike Newell moved to Leicester. The Hatters won 5-2 at Oxford and Ian Allison was signed from Stoke in October, with Luton losing just twice in 12 matches including a 7-4 win the return match against Oxford, finishing ninth in the top-flight. They defeated Wigan 5-2, Coventry 3-1, Ipswich 1-0, Bradford City 2-0 and Oxford 3-1 in the Littlewoods Cup before beating Arsenal 3-2 in the final. Luton were also FA Cup semi-finalists and Simod Cup finalists..

## FAB FOUR

### BRUCE RIOCH

Influential midfielder Bruce Rioch was capped 24 times by Scotland after leaving Luton Town. Signing professional for Luton in September 1964, he starred in the 1967-68 Fourth Division title triumph and netted 46 goals in 149 League games prior to joining Aston Villa for £100,000 in July 1969. He was a key figure in their 1971-72 Third Division title success and moved to Derby County in February 1974, helping to win the League Championship in 1974-75. He played for Everton, Derby again and Torquay, since managing Middlesbrough, Millwall, Bolton Wanderers, Arsenal, Norwich City and Wigan Athletic.



Reuniting with David Pleat at Leicester City in August 1990 and later as a coach at Sheffield Wednesday and Spurs, he briefly rejoined Luton as manager.

### BRIAN STEIN

England international striker Brian Stein scored twice in Luton Town's 1988 Littlewoods Cup final triumph. Moving to Kenilworth Road from Edgware Town in October 1977, he was leading marksman in Luton's 1981-82 Second Division success and also starred as they were FA Cup semi-finalists in 1984-85 and 1987-88. He joined French side Caen in July 1988 and moved via Annecy back to Luton in July 1991. Voted 'Player of the Year' for the second time in 1991-92, he netted 130 goals in 427 League games overall for the Hatters before joining Barnet in August 1992. His



younger brother Mark also played for Luton.

### MALCOLM MACDONALD

Ace marksman Malcolm Macdonald was capped 14 times by England after leaving Luton Town. Initially with Tonbridge, he joined Fulham in August 1968 and moved to Kenilworth Road in July 1969. He was Luton's top scorer in two consecutive seasons including the 1969-70 promotion success and netted 49 goals in 88 League games before being sold to Newcastle United for £180,000 in May 1971. An FA Cup finalist in 1974, he joined Arsenal for £333,000 in August 1976 and was an FA Cup finalist again in 1978 before injury ended his career. He managed Fulham and Huddersfield Town and has since worked in the media.



### RICKY HILL

England international midfielder Ricky Hill was 'Player of the Year' when Luton Town won the Second Division title in 1981-82. Signing professional at Kenilworth Road in May 1976, he was 'Player of the Year' again in 1982-83 and starred as Luton were FA Cup semi-finalists in 1984-85. He featured in two consecutive Littlewoods Cup finals including the 1988 Wembley triumph and netted 54 goals in 436 League games before moving to Le Havre in July 1989.



## MANAGING TO SUCCEED – DAVID PLEAT

Articulate manager David Pleat guided Luton Town to the Second Division title in 1981-82. A former winger, he played for Nottingham Forest, Luton, Shrewsbury, Exeter and Peterborough before becoming Nuneaton's player-boss. He rejoined Luton as coach in July 1972 and became manager in January 1978, guiding the Hatters to the FA Cup semi-finals in 1984-85. Taking charge of Spurs in May 1986, he led them to the 1987 FA Cup final, then managed Leicester City before rejoining Luton in June 1991. He took the Hatters to the FA Cup semi-finals again in 1993-94, leaving in June 1995. Now working in the media.



# STATTO'S STATS

Stats upto and including Saturday 10th December, 2011



## TFC PLAYER STATS 2011-12

Squad No.	Name	League				Cup				TFC Career			
		p	+	n	g	p	+	n	g	p	+	n	g
	own goals				0				0				151
1	HEDGE, Jonathon	22	0	0	4	+	1	0	26	+	1	0	
2	TAIT, Richard	22	0	0	4		0	0	126	+	4	6	
3	HABERGHAM, Sam	16	0	0	4	+	1	0	20	+	1	0	
4	COURTNEY, Duane	4	+	4	0	3	+	1	0	25	+	5	0
5	FRANCIS F, Francino	19	+	2	1	6		0	1	25	+	2	2
7	SMITH, Jay	17	0	0	2		0	0	67	+	4	2	
8	CAIN, Ashley	16	+	1	0	3		0	0	19	+	1	0
9	MILLS, Danny	18	+	4	2	3		0	0	21	+	4	2
10	ST. AIMIE, Keiron	21	+	1	7	3		0	2	24	+	1	9
11	THOMAS, Danny	19	0	2	5		0	0	75		0	11	
12	McDONALD, Liam	13	+	6	1	4	+	1	0	17	+	7	1
13	ANDREW, Sam	0	+	1	0	0		0	0	0	+	1	0
14	PATTERSON, Kyle	17	+	1	2	6		0	3	23	+	1	5
16	GREEN, Paul	21	0	0	4		0	0	25		0	0	
17	GUDGER, Connor	0	0	0	0	+	1	0	0	+	1	0	
19	BARROW, Scott	10	+	5	0	4	+	1	0	61	+	8	2
20	REYNOLDS, Callum	1	+	2	0	0		0	0	1	+	2	0
21	COLLISTER, Joe	0	+	9	0	2	+	4	0	2	+	13	0
22	SHARIFF, Nabil	19	+	1	2	4	+	1	0	23	+	2	2
23	CHRISTIE, Ilysedon	20	+	2	9	5		0	1	56	+	3	18
24	KANYUKA, Patrick	10	+	1	0	4		0	0	14	+	1	0
25	GROCUTT, Will	0	0	0	1	0	0	0	1		0	0	
26	TAYLOR R, Rico	0	0	0	0	+	4	0	0	+	4	0	
27	WALLEN, Troy	0	0	0	0		0	0	0	+	4	0	
28	BOTTOMER, Luke	0	0	0	1		0	0	1		0	0	
29	WEEMES, Lee	0	0	0	1		0	0	1		0	0	
30	BELFORD, Dale	0	0	0	0		0	0	0		0	0	
31	HEALY, Jake	0	0	0	1	+	1	0	1	+	1	0	
32	FARAH, Ibrahim	3	0	0	1	+	1	0	4	+	1	0	
none	SHAW, Curtis	0	0	0	1		0	0	1		0	0	
none	SHEARER, Luke	0	0	0	1		0	0	1		0	0	
none	TAYLOR A, Andrew	0	0	0	0	+	1	0	0	+	1	0	
none	WHITE, Harrison	0	0	0	0	+	1	0	0	+	1	0	
none	WILCOCK, James	0	0	0	0	+	1	0	0	+	1	0	
x	BRADLEY, Daniel	17	+	2	1	3	+	1	0	65	+	3	5
x	FRANCIS L, Liam	0	+	2	0	0		0	0	0	+	2	0
x	VALENTIM, Evangelino	1	+	2	0	1		0	1	2	+	2	1

## STATTO HEAVEN

Attendances	Home	Away
Games	13	Games 15
Total	13012	Total 19567
Average	1001	Average 1304
League only	10	League only 12
Total	10307	Total 16155
Average	1031	Average 1346

## When they were scored

Total Goals	35	31
Own Goals	0	
Minutes	F	A
0-15	1	7
16-30	5	5
31-45	5	1
46-60	6	3
61-75	6	7
76-90	12	8
ET	0	0

## Where they were scored (at The Lamb)

	F	A
Meadow St End	9	2
Castle End	10	7

## M.J. SMITH Family Butcher

Pleased to meet you...  
...Meat to please you

English Beef, Pork, Lamb, Poultry  
Home cooked meats  
Home made pies & pastries  
Home made faggots  
Solid award winning sausage  
Free local deliveries

10/12 Bridge Street,  
Polesworth  
01827 894606

All stats correct at time of going to press and may have changed prior to kick off. All fixtures could be subject to change, please check local press / official club websites etc. for more details.

View more about The Lambs history at [www.tamworthcheritage.co.uk](http://www.tamworthcheritage.co.uk)







Cocktail & Tapas Bar

Located at the rear of  
the Plough Fazeley

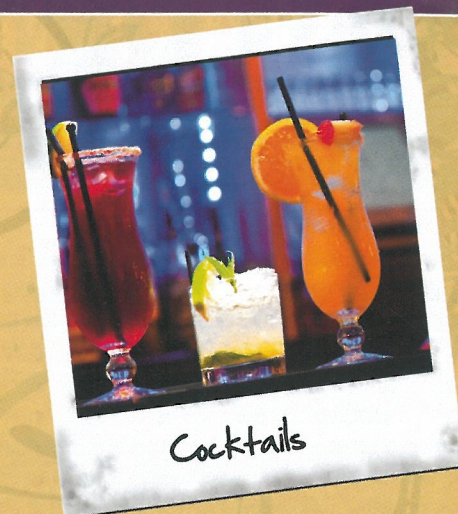
Now Open  
12pm till late

Tapas Menu

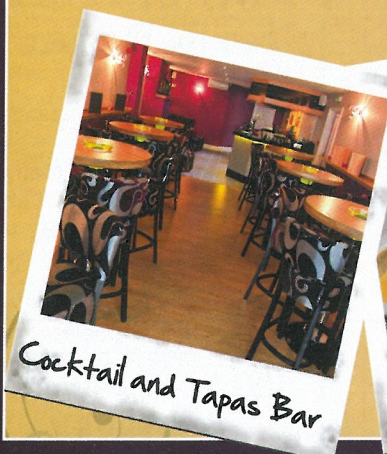
Served every day from 12pm till late

**FREE Tapas Bites!**

Served with cocktails and wine



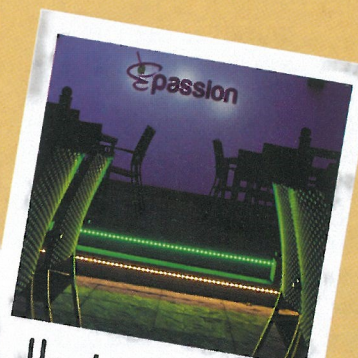
Cocktails



Cocktail and Tapas Bar



Chicken Skewers



Heated Terrace

The Plough

Atherstone Street | Fazeley | Staffordshire | B78 3RF

Tel 01827 289596 [www.ploughfazeley.co.uk](http://www.ploughfazeley.co.uk)



## PLAYER KIT SPONSORSHIP



**JONATHAN HEDGE**

HOME KIT:  
Computer Friendly  
AWAY KIT:  
Computer Friendly



**RICHARD TAIT**

HOME KIT:  
Pigs4U  
AWAY KIT:  
Pigs4U



**SAMUEL HABBERGHAM**

HOME KIT:  
Available  
AWAY KIT:  
Available



**DUANE COURTNEY**

HOME KIT:  
Solid Surface Sales -  
Alison Welland  
AWAY KIT:  
Solid Surface Sales -  
Alison Welland



**FRANCINO FRANCIS**

HOME KIT:  
Wedfab Ltd  
AWAY KIT:  
Wedfab Ltd



**LIAM FRANCIS**

HOME KIT:  
Nicole Sinclair  
AWAY KIT:  
Available



**JAY SMITH**

HOME KIT:  
RSM Tenon  
AWAY KIT:  
Available



**ASHLEY CAIN**

HOME KIT:  
Bradley Scott Windows  
AWAY KIT:  
Bradley Scott Windows



**DANNY MILLS**

HOME KIT:  
Available  
AWAY KIT:  
Available



**KIERON ST AIMIE**

HOME KIT:  
Available  
AWAY KIT:  
Available



**DANNY THOMAS**

HOME KIT:  
Sue Nerney  
AWAY KIT:  
Harry Corbett



**LIAM McDONALD**

HOME KIT:  
Brian Whitehouse  
AWAY KIT:  
Bob Cooper



**SAM ANDREW**

HOME KIT:  
Available  
AWAY KIT:  
Available



**KYLE PATTERSON**

HOME KIT:  
Speedy Fingers Secretarial -  
Julie Cotterill  
AWAY KIT:  
Available



**PATRICK KANYUKA**

HOME KIT:  
Available  
AWAY KIT:  
Available



**PAUL GREEN**

HOME KIT:  
RSM Tenon  
AWAY KIT:  
James Corbett



**CONNOR GUDGER**

HOME KIT:  
Available  
AWAY KIT:  
Available



**DANIEL BRADLEY**

HOME KIT:  
Solid Surface Sales -  
Stephen Welland  
AWAY KIT:  
Available



**SCOTT BARROW**

HOME KIT:  
Paul Robinson  
AWAY KIT:  
Sarah Robinson



**CALLUM REYNOLDS**

HOME KIT:  
Available  
AWAY KIT:  
Available



**JOE COLLISTER**

HOME KIT:  
Available  
AWAY KIT:  
Available



**NABIL SHARIFF**

HOME KIT:  
Snowdome  
AWAY KIT:  
Snowdome



**ISYEDEN CHRISTIE**

HOME KIT:  
Calf Heath Marina  
AWAY KIT:  
Sue Nerney



**RICO TAYLOR**

HOME KIT:  
Available  
AWAY KIT:  
Available



**DALE BELFORD**

HOME KIT:  
John Nerney  
AWAY KIT:  
John Nerney



**HUSEYIN TORGUT**

HOME KIT:  
GT Watson Podiatry  
AWAY KIT:  
GT Watson Podiatry



**PAUL O'BRIEN**

HOME KIT:  
Available  
AWAY KIT:  
Available



**MARCUS LAW**

HOME KIT:  
B&B Photography  
AWAY KIT:  
Edge Menswear



**BUSTER BELFORD**

HOME KIT:  
Available  
AWAY KIT:  
Available

*We'd like to thank fans and businesses  
alike for their continued support of The  
Lambs squad. If you would like to  
sponsor any of the remaining players  
please contact Nick Lunn -  
[commercial@thelambs.co.uk](mailto:commercial@thelambs.co.uk)*



2011-12

Date	Opponents	Venue	Comp.	Result	Att.	Pos.	Pts.
<b>AUGUST</b>							
Sat 13	Barrow	A	BSBP	1-1	1371	15	1
Tue 16	EBBSFLEET UNITED	H	BSBP	1-0	921	7	4
Sat 20	DARLINGTON	H	BSBP	1-0	933	4	7
Tue 23	Wrexham	A	BSBP	0-3	3353	8	7
Sat 27	Bath City	A	BSBP	2-0	656	5	10
Mon 29	AFC TELFORD UNITED	H	BSBP	2-2	1316	5	11
<b>SEPTEMBER</b>							
Sun 4	Hayes & Yeading United	A	BSBP	0-1	359	7	11
Sat 10	YORK CITY	H	BSBP	2-1	1012	4	14
Tue 13	BOLDMERE ST. MICHAELS	H	BSC	1-0	156	—	—
Sat 17	Kettering Town	A	BSBP	2-0	1955	6	17
Tue 20	FOREST GREEN ROVERS	H	BSBP	0-1	787	9	17
Sat 24	STOCKPORT COUNTY	H	BSBP	1-1	1381	10	18
Tue 27	Braintree Town	A	BSBP	1-3	840	10	18
<b>OCTOBER</b>							
Sat 1	Gateshead	A	BSBP	1-1	770	11	19
Sat 8	LINCOLN CITY	H	BSBP	4-0	1232	11	22
Sat 15	Newport County	A	BSBP	2-1	1310	10	25
Tue 18	HAYES & YEADING UNITED	H	BSBP	2-1	742	8	28
Sat 22	Southport	A	BSBP	1-1	1310	10	29
Sat 29	KINGS LYNN TOWN	H	FAC4Q	2-1	966	—	—
<b>NOVEMBER</b>							
Sat 5	Kidderminster Harriers	A	BSBP	0-2	1797	11	29
Sat 12	Hinckley United	A	FAC1	2-2	1906	—	—
Fri 18	KETTERING TOWN	H	BSBP	2-2	1197	11	30
Tue 22	HINCKLEY UNITED	A	FAC1R	1-0	1583	—	—
Sat 26	Darlington	A	BSBP	0-2	1752	13	30
Tue 29	BRAINTREE TOWN	H	BSBP	1-0	742	14	30
<b>DECEMBER</b>							
Sat 3	Gateshead	A	FAC2	2-1	1163	—	—
Tue 6	Forest Green Rovers	A	BSBP	1-3	732	12	33
Sat 10	Worksop Town	A	FAT1	0-1	343	—	—
Sat 17	LUTON TOWN	H	BSBP				
Mon 26	Alfreton Town	A	BSBP				
<b>JANUARY</b>							
Sun 1	ALFRETON TOWN	H	BSBP				
Sat 7	Everton	A	FAC3				
Tue 10	Bedworth United	A	BSC				
Sat 14	WREXHAM	H	BSBP				
Sat 21	BARROW	H	BSBP				
Tue 24	Ebbsfleet United	A	BSBP				
Sat 28	Cambridge United	A	BSBP				
Tue 31	Fleetwood Town	A	BSBP				
<b>FEBRUARY</b>							
Sat 4	GRIMSBY TOWN	H	BSBP				
Sat 11	KIDDERMINSTER HARRIERS	H	BSBP				
Sat 18	Luton Town	A	BSBP				
Tue 21	NEWPORT COUNTY	H	BSBP				
Sat 25	Mansfield Town	A	BSBP				
<b>MARCH</b>							
Sat 3	FLEETWOOD TOWN	H	BSBP				
Tue 6	York City	A	BSBP				
Sat 10	MANSFIELD TOWN	H	BSBP				
Sat 17	Grimsby Town	A	BSBP				
Sat 24	GATESHEAD	H	BSBP				
Sat 31	Lincoln City	A	BSBP				
<b>APRIL</b>							
Sat 7	BATH CITY	H	BSBP				
Mon 9	AFC Telford United	A	BSBP				
Sat 14	SOUTHPORT	H	BSBP				
Sat 21	Stockport County	A	BSBP				
Sat 28	CAMBRIDGE UNITED	H	BSBP				



NOW IN STOCK

KEY: FAC = FA Cup FAT = FA Trophy BSC = Birmingham FA Senior Cup  
 \* = score includes own goal • = sent off = Booked SUBSTITUTED PLAYERS are in colour

STARTING ELEVEN

SUBSTITUTES



McDonald	Patterson	Green	Barrow	Christie 1	Kanyuka	St.Airmie	Shariff	Bradley	L.Francis	Mills	—	—
Green	Bradley 1	Barrow	Patterson	Christie	Kanyuka	Mills	Shariff	St.Airmie	F.Francis	McDonald	—	—
McDonald	Patterson	Green	Bradley	Barrow	Shariff	Smith	St. Airmie	Thomas	Collister	Christie 1	—	—
Thomas	Patterson	Bradley	Barrow	Reynolds	Christie	Francis (L)	St. Airmie	McDonald	Collister	Shariff	—	—
Thomas 1	Patterson	Green	Bradley	Barrow	Christie	Cain	St. Airmie	McDonald	Reynolds	Shariff 1	—	—
St. Airmie 2	Thomas	McDonald	Green	Barrow	Shariff	Mills	Patterson	Bradley	Reynolds	Christie	—	—
Cain	St. Airmie	Thomas	Green	Bradley	Christie	Mills	Patterson	McDonald	Collister	Shariff	—	—
Mills	St. Airmie 1	Patterson	Green	Bradley	Shariff	Cain	Thomas	Valentim	Collister	Christie 1	—	—
Shaw	Cain	Weemes	Valentim 1	Patterson	McDonald	Healey	Shearer	Taylor	White	Wilcox	—	—
Mills	St. Airmie	Thomas 1	Green	Bradley	Shariff	Cain	McDonald	Valentim	Christie 1	Collister	—	—
Cain	Mills	St. Airmie	Thomas	Green	Bradley	McDonald	Valentim	Collister	Shariff	Christie	—	—
Cain	St. Airmie	Thomas	Green	Bradley	Shariff	Courtney	Mills	McDonald	Patterson	Christie 1	—	—
Thomas	McDonald 1	Patterson	Green	Bradley	Christie	Courtney	Cain	Mills	St. Airmie	Shariff	—	—
Cain	Mills	Green	Bradley	Shariff	Christie 1	St. Airmie	McDonald	Patterson	Barrow	Collister	—	—
ST. AIRMIE 2	McDonald	Green	Bradley	Shariff	CHRISTIE 1	Courtney	Mills	Andrews	Barrow	Kanyuka	—	—
ST. AIRMIE 1	McDonald	Green	Bradley	Shariff	CHRISTIE 1	Courtney	Smith	Mills	Barrow	Kanyuka	—	—
Cain	ST. AIMEE 1	Green	Barrow	Christie	Kanyuka	Courtney	Mills	Thomas	PATTERSON 1	Bradley	—	—
Smith	St. Aimee	Thomas	Green	CHRISTIE 1	Kanyuka	Cain	Mills	Patterson	Bradley	Collister	—	—
ST. AIMEE 1	Thomas	PATTERSON 1	Green	Bradley	Kanyuka	Francis	McDonald	Barrow	Collister	Shariff	Christie	Taylor
St. Aimee	Thomas	Patterson	Green	Vradley	Kanyuka	Tait	Mills	McDonald	Barrow	Shariff	—	—
Thomas	PATTERSON 1	Green	Barrow	CHRISTIE 1	Kanyuka	Habergham	Courtney	Mills	McDonald	Bradley	Collister	Shariff
McDonald	PATTERSON 1	Green	Bradley	Barrow	Shariff	Habergham	St. Airmie	Christie	Collister	Kanyuka	—	—
Thomas	McDonald	Patterson	Bradley	Shariff	Kanyuka	Barrow	Collister	Christie	Taylor	Healy	—	—
McDonald	Green	Bradley	Shariff	Christie	Kanyuka	Francis	Mills	Patterson	Barrow	Farah	—	—
MILLS 1	Thomas	Patterson	Green	Kanyuka	Farah	St. Airmie	McDonald	Barrow	Shariff	Christie	—	—
Mills	St. Airmie	Thomas	PATTERSON 1	Green	Kanyuka	Bradley	McDonald	Barrow	Shariff	Taylor	Collister	—
McDonald	Patterson	Green	Barrow	SHARIFF 1	Kanyuka	Courtney	Mills	Thomas	Christie	Farah	—	—
Thomas	Green	Barrow	Christie	Grocutt	Farah	Hedge	Patterson	Gudger	Shariff	Taylor	—	—

Action from last Saturday's FA Trophy 1-0 defeat away at Worksop Town





# ARE YOU GETTING THE BEST TAX AND BUSINESS ADVICE?

## ARE YOU SURE?

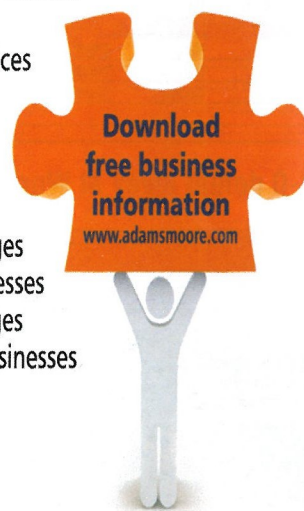
Our advice has saved our clients many thousands of pounds and made them stronger businesses. We advise our clients on everyday issues and help them to manage their long-term financial health.

PUT YOUR MIND AT EASE WITH  
A FREE NO OBLIGATION TAX AND  
ACCOUNTING HEALTH CHECK

CALL TESSA MOORE ON 01827 54944

For practical and affordable

- Business advice
- Accountancy services
- Tax planning
- Tax & VAT returns
- Payroll
- Book-keeping
- Fixed price packages for start-up businesses
- Fixed price packages for established businesses



### TOTAL SUPPORT FOR YOU AND YOUR BUSINESS

Adams Moore Limited, 38 - 39 Albert Road, Tamworth, Staffordshire B79 7JS  
Email: [accounts@adamsmoore.com](mailto:accounts@adamsmoore.com) Web: [www.adamsmoore.com](http://www.adamsmoore.com)

## VIP MEMBERS

SNOWDOME  
POLESWORTH GARAGE  
BRADLEY SCOTT WINDOWS  
NAUTIC STEELS LTD  
TOMKINSON TEAL & CO  
SAN GIOVANNI  
BILLY MOONSHINE LTD  
TAMWORTH HERALD (CIN)  
CLIVE TOMLINSON  
GEOFF CHADWICK  
ENVIRO STRIP UK LTD  
SOLID SURFACE SALES LTD  
UK ERECTING SERVICES  
MADEWELL PRODUCTS  
CHRIS SCOTT VEHICLE SALES  
PH FLEXIBLE PACKAGING  
AUTOQUIP MIDLANDS LTD  
COMPUTER FRIENDLY CONSULTANTS  
MIDLAND VEHICLE SOURCING  
SOUTH STAFFS COLLEGE  
JF ELECTRICAL  
PLOUGH & HARROW  
EES SOLUTIONS  
PHILLIP BARNES & CO  
BALDWIN'S ACCOUNTANTS  
BURCHELL EDWARDS  
PIGS 4 U  
MERCEDES TAMWORTH  
PRACTICAL CAR & VAN RENTAL  
GAS SERVICES TAMWORTH  
ZERO ONE DESIGN  
SOLUS COACHES  
POWELL STEERING  
INTERACTIVE MINDS TA BOYSSTUFF.CO.UK  
VOGUE DISPLAY LTD  
CENTRAL MAINTENANCE SOLUTIONS  
INSTARMAC  
WLC LOGISTICS  
HALSO PETROLEUM  
POOL HOUSE PROFESSIONAL ADVISERS  
TAMWORTH TRADER  
COMPANY NETWORKING  
AT COMMUNICATIONS  
TAMWORTH KARTING  
TWYXCROSS ZOO  
DRAYTON MANOR PARK HOTEL  
PICKERING SOLICITORS  
DUNELM INSURANCE BROKERS  
EDGE CLOTHING  
BOYSSTUFF.CO.UK  
COTTERRILL FENCING  
RECRUITMENT  
SECURITAS

The VIP Club is committed to helping take Tamworth FC forward.

Each of the companies and businesses have paid a minimum of £1000 + VAT and for every £1000 package the club provides the following:

- 2 Season Tickets
- 1 Advertising Site
- Entry to the Sponsors Lounge
- Priority Invitation to the Annual Presentation Evening
- Priority invitation to an exclusive end of season VIP members party

Exclusive use of the Sponsors Lounge for meetings or promotional events

Sponsorship is a legitimate business expense.

You can enjoy a great value corporate package whilst helping your local football club through your own business.

Limited places remain, so for more information contact Martin Newbold or (01827) 895125 or Nick Lunn on (01827) 65798.

We would like to thank all the VIP members for their support and look forward to hearing from prospective members.



## HALF SEASON TICKETS – The ideal Christmas present

If you are struggling to find the perfect Christmas present for the person who has everything, why not treat them to a half season ticket! Covering the last 12 home league games of the season.

The Lambs half season tickets can now be purchased by calling 01827 65798. All major credit cards welcome.

- You can choose a seat that will be guaranteed for the run in
- Seat reserved for the option to buy in the 2012/13 season
- Available now up to Thursday 22nd December (12 Noon)

**VALID FROM JANUARY 1ST (INCLUSIVE) FOR ALL 12 REMAINING HOME LEAGUE GAMES**

### Main Stand Seats

Adults- £148.00

Concessions - £95.00

Family Seat - 1 Adult/ 1 Child - £166.00

Family Seat - 1 Adult/ 2 Children - £176.00

Junior Lamb – £38.00

Mini Lamb - FREE

### Terraces

Adults £127.00

Concessions £74.00

Family Terrace - 1 Adult/ 1 Child - £135.00

Family Terrace - 1 Adult/ 2 Children –

£145.00

Junior Lamb - £22.00

Mini Lamb – FREE

### TAMWORTH FC – Ground Rules

All persons entering The Lamb on all match days are only admitted subject to the following rules and regulations of the Football Association.

The club reserves the right to eject from the ground and take further action against any person on the premises who is considered by the club to be in breach of any of the following

- Entering the ground by any other means than through the proper turnstiles or gates
- Entering the field of play before, during or after the game
- Using obscene or abusive language, persistent swearing, likely to cause offence
- Using terms of abuse, racial or otherwise, likely to offend
- Being drunk or under the influence of alcohol or drugs
- Making vulgar or obscene gestures
- Carrying any offensive objects or throwing any article onto the field of play
- Smoking in prohibited areas

The club reserves the right to refuse admission to, or eject from the ground, any person who refuses to be searched by a steward or the club or other agency.

- No bottles, cans, drinking glasses, poles or other such article / object are permitted and stewards / other agency will have the right to refuse entry if any such item / article considered to be a danger to others is not surrendered.
- No flags or banners are allowed to be draped over the pitch perimeter hoardings but may be hung from

rear fencing / walls where they do not cover advertising boards.

- The Football Club reserves the right to take photographs of the general public within the confines of the club's property in relation to club publicity or public safety.
- The consumption of alcohol is limited to the Social Club, sponsors lounge and boardroom.
- The climbing of floodlight pylons, fences, walls, stands, walls or any other such structure or building is not permitted.

If a match is postponed after spectators have been admitted to the ground but before the match has kicked off (or prior to admission by pre-paid ticket), any spectators or pre-paid ticket holders having entered the ground should be offered free admission to the re-arranged tie. If a match is abandoned at any time after kick off causing the tie to be re-arranged, spectators in attendance should be offered admission to the re-arranged tie for 50% of the admission price for the original tie.

These ground rules are supplementary to any statutory legislation as enforced by the police should they be deployed at the ground.

Disclaimer: The views contained within this publication are not necessarily those of Tamworth Football Club and / or it's employees or individual contributors.

Some information is obtained from external sources and may change once the programme has gone to press (e.g. travel directions or website addresses).



## Belgrave Sports & Social Club

WILNECOTE LANE, BELGRAVE, TAMWORTH

Supporters of Help for Heroes  
Live Entertainment Every Saturday Night

For More Info call:- 01827 289730

or visit our website

[www.belgraveclub.co.uk](http://www.belgraveclub.co.uk)

FOR MEMBER INFORMATION



# SANTA'S Winter Wonderland

Back  
for the  
**7th**  
Fantastic  
Year!

## The Real Snow Adventure For All The Family!

"A fabulously fun  
day out for all!"

THE SUN

Play in  
Real Snow

"Full of the  
wonders of  
Christmas...  
unmissable!"

NUNEATON NEWS

Meet Santa's  
Reindeer

Hitch a Ride  
on a Sledge

Visit Santa's  
Animal Village

"Others may  
try to copy  
but nobody  
can match the  
SnowDome"

BURTON MAIL

"An amazing  
Christmas  
show!"

THE SUN

All New  
Show for 2011

STARRING  
**Zippy  
& George**

  
**SnowDome**  
SNOW, ICE & LEISURE TAMWORTH

Book online NOW at [snowdome.co.uk](http://snowdome.co.uk)  
or call 08448 000011