

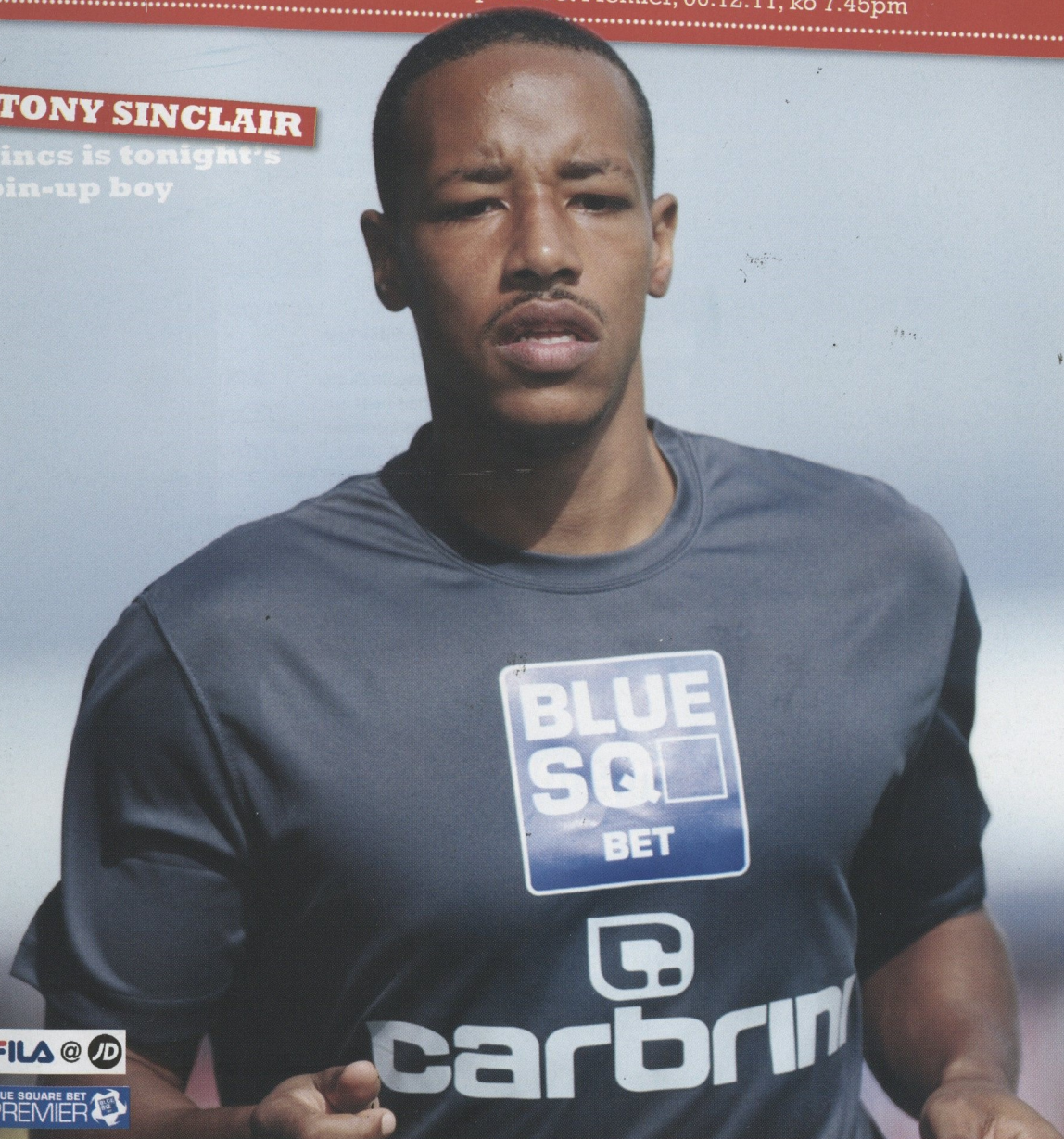
LINCOLN.YOURCITY.

# THE IMP

LINCOLN CITY V LUTON TOWN  
Blue Square Bet Premier, 06.12.11, ko 7.45pm

**TONY SINCLAIR**

Sinclair is tonight's  
pin-up boy



Official Matchday Magazine for Lincoln City Football Club 2011/12, Issue 12. Price £2.50

Home Shirt Sponsor



Away Shirt Sponsor



Back of Home Shirt Sponsor



Back of Away Shirt Sponsor



Shorts Sponsor



Match Sponsor



Programme Sponsor



2011/12 Charity Partner





# BETTING ON THE MOVE JUST GOT **FASTER**



**Bet live throughout the season on  
your iPhone or Android handset**

If you don't have a smart phone you can bet by calling our telebet service  
on **0800 587 0400** or by visiting **bluesq.com**.



**bluesq.com**  
**EVERYTHING IS PROBABLE**



Available on the  
**App Store**



Tel: **0800 083 6064** or  
text "BET" to **64555**

Over 18's only. Blue Square encourages responsible gambling. [gambleaware.co.uk](http://gambleaware.co.uk)



**Good evening everyone  
and a very warm  
welcome to tonight's  
visitors Luton Town FC  
and their officials and  
fans.**

Tonight's game sees the Imps meeting Luton Town for the second time this season. The high flying Hatters hosted the Imps back in September which saw them narrowly coming out the victors. The evenly-matched game also saw two dismissals, one from each team, and numerous missed chances for both sides so this evening's encounter promises to be another exciting affair.

Focusing on the present and not revisiting the past, the Club, as is the case at a lot of companies, is having to make cuts in order to move forward. Recent staff cuts have been very sad and I know have been made with heavy hearts as some of the staff have been stalwarts for the Club. Decisions in these circumstances are never easy or taken lightly and I wish the staff who have fallen victim to the cuts the Club's best wishes for the

future.

Looking forward now and with the appointment of David Holdsworth and the recent revamp of the team I, for one, have seen a remarkable change in the team's attitude on and off the pitch. With some of the players being sent out on loan and new players stepping in the team seems to have been revitalised.

I understand one of the players who has recently been loaned out, Danny Hone, has made his mark at Barrow and has been their 'man of the match' more than once and I am sure will continue to do so. Recent additions such as Richard Hinds, Conal Platt, etc have certainly bolstered up the team and now with the ever increasing fitness of Francis Laurent sees the team having possibilities in all areas of the pitch.

Unfortunately injuries are always a worry at this time of the year especially with the drops in temperature, etc, but having a larger than usual squad for the Imps it may not prove to be as catastrophic as in the past. It goes without saying that we now need more wins in order to move us away from the lower end of the table but I am confident that the results will start to go in our favour given the passion and commitment I have witnessed in the team and drive from the "gaffer".

This coming Saturday sees the Imps travel to The Red Lion Foods Stadium in their FA Carlsberg Trophy tie against Colwyn Bay and a good cup run would certainly be a moral booster for the fans and everyone associated with the Club.

Lastly, I would like to thank all the loyal fans who keep supporting the Imps through thick and thin with a tremendous away following. I am sure I speak also on behalf of the team.

Wishing you all a very "Merry Christmas" and let's hope for an early present tonight.

"Come on you Imps!"

Dean Watson  
Associate Director

**WELCOME**

**THE IMP 2011/12 - ISSUE 12**

- 5 David Holdsworth
- 6-7 Club News
- 8-9 Luton Town
- 11 Hatters Names & Games
- 13 Lottery Latest
- 14-15 IMPS 3 EBSFLEET 0**



- 16-17 York 2 Imps 0
- 18 City Six-Pack
- 19 Lincs Sports Partnership
- 20-21 LCFC SET
- 23-26 Tony Sinclair
- 27 Poacher's Page
- 29 Youth Team Update
- 31 Commercial Matters
- 33 Venue News
- 35 LCST
- 36 Red Imps Christmas Cracker!
- 37 One Hundred Years Ago
- 39 Today's Sponsors
- 40 Centre Of Excellence
- 41 Youth Team Sponsors
- 43 Kit Sponsors
- 44-45 Season Stats
- 46 Ticket Office
- 48 Today's Squads

**Editor:** John Vickers

**Contributors:** Leigh Edwards,  
Gary Parle, Matt Scrafton

**Photographs:** Andrew Vaughan,  
Graham Burrell, Chris Vaughan  
Photography, Lincolnshire Echo.

**Designed by:** Alchemy Creations  
Ltd. - Tel: 01438 748666 -  
[www.alchemycreations.co.uk](http://www.alchemycreations.co.uk)

**Printed by:** Queensway Publishing  
01440711920

*The views expressed in this  
magazine are not necessarily those  
of Lincoln City Football Club, its  
Board of Directors or the Editor. ©  
Copyright 2011.*

**HydraVision.tv**  
— AiO CHANNEL CLIENT —



# Timber Stair Manufacturers Ltd

One of the Country's premier staircase manufacturers is right on your doorstep.



Timber Stair Manufacturers Ltd, Saxilby Road, Skellingthorpe, Lincoln, LN6 5TZ.



tel 01522 703100 fax 01522 703010 info@tsmstair.co.uk www.tsmstairs.co.uk



**TSM - Supporting you all the way.**

## THE CLUB

# LINCOLN CITY FOOTBALL CLUB

SINCIL BANK STADIUM,  
LINCOLN. LN5 8LD

**TEL:** 01522 563786  
**FAX:** 01522 880020  
**E-MAIL:** LCFC@redimps.com  
**CLUB WEBSITE:** www.redimps.com  
**STADIUM WEBSITE:** www.sincilbank.com  
**LCFC SPORT & EDUCATION TRUST WEBSITE:** www.lcfcset.com  
**TICKET OFFICE:** 01522 563786  
**CLUB SHOP:** 01522 519321

**BAR & CATERING:** 01522 880052  
**LCFC SPORT & EDUCATION TRUST:** 01522 563792  
**PLAYER DEVELOPMENT CENTRES:** 01522 563798  
**BIRTHDAY LOTTO & IMPS COMMUNITY WEATHER GAME:** 01522 563785  
**SALES & MARKETING:** 01522 563791  
**MEDIA & PRESS ENQUIRIES:** 01522 563790

## CLUB DIRECTORY



**CHAIRMAN:** Mr R Dorrian  
**DIRECTORS:** Mr K Cooke, Lindum Group, Mr D Beck (LCST), Ms J Powell (Lincolnshire Co-operative), Mrs J Foster (LCST Gold Members), Mr R Bates, Mr D Parman, Mr D Featherstone  
**ASSOCIATE DIRECTORS:** Mr N Underwood, Mr P Bird, Mr T Cope, Mr C Jennison, Mr S Wright, Mr D Watson  
**COMPANY SECRETARY:** Ms J Powell

**PATRON:** Graham Taylor OBE  
**PRESIDENT:** Mr J Jennison  
**VICE PRESIDENT:** Mr D Leonard

**CLUB DOCTOR:** Dr Chris Batty MB ChB MSc (Sports Medicine)  
**CLUB CHAPLAIN:** Reverend Canon Andrew Vaughan

**MANAGER:** David Holdsworth  
**HEAD OF YOUTH:** Grant Brown  
**ASSISTANT HEAD OF YOUTH:** Andy McMillan  
**FIRST TEAM PHYSIOTHERAPIST:** Sam Rees  
**YOUTH TEAM THERAPIST:** Kevin Oxby  
**KIT MANAGER:** Matt Carmichael  
**FOOTBALL SECRETARY:** Fran Martin  
**YOUTH TEAM SECRETARY:** Trisha Dixon

**CHIEF EXECUTIVE OFFICER/HEAD OF SALES & MARKETING:** Steve Prescott  
**MEDIA MANAGER/PRESS OFFICER:** John Vickers  
**TICKET/OFFICE MANAGER:** Dawn Cussens  
**ACCOUNTS MANAGER:** Sarah Campbell  
**VENUE MANAGER:** Wayne Banks  
**LOTTERY MANAGER:** Lynda Nixon  
**STADIUM MANAGER/SAFETY OFFICER:** Darren Curtis  
**COMMERCIAL ADMINISTRATOR/CLUB SHOP MANAGER:** Jill Fox  
**HEAD GROUNDSMAN:** Phil Kime

# THE MANAGER David Holdsworth

**First and foremost I would like to offer a warm welcome to the chairman, the board and the management of Luton Town Football Club for tonight's Blue Square Bet Premier clash.**

Luton are having a fine season and I'm sure tonight's game will give us some huge pointers in the way we need to develop as a side and as a football club, given our current status. We want to achieve as much as possible during the remainder of the season and I'm sure tonight's test will give me an idea as to the type of levels the players need to achieve if we're to do that.

On Saturday we were in action at Spytty Park in Newport and the players gave a fantastic showing of commitment, desire and aptitude, which was in abundance.

Although we came back without any points I couldn't fault the boys for the effort, attitude and certainly the encouragement they showed. If this is repeated on a regular basis then the team will clearly move forward in league status. There were some excellent performances on a horrible pitch and I'm sure that those fans who went down to the game came back believing in the side who gave 100 per cent for their club.

Last week the training ground was very busy and certainly the players have worked extremely hard in their development and this is something that I'm keen for the Club to establish. We are linking up with the University of Lincoln in developing our sports science program off the pitch and this will give our players an idea of the type of bodies they have, the type of conditioning work they can benefit from and they need to achieve if they're to become as flexible, mobile and professional as possible. These are all ideas I've learnt off the

likes of Sam Allardyce and other managers I worked under during my career and I'm a big believer in the fact that players need to be in tip-top condition to achieve as much as possible, having been given the opportunity to work with our club.

On behalf of the Club I would like to thank our supporters for the generous way in which they received the minute's silence in memory of Gary Speed at the weekend. The Newport fans throughout the game chanted Gary's name and our fans were magnificent in the way that they observed this moment of reflection. You were a credit to the Football Club and I know that this has been acknowledged by Newport officials and supporters alike.

Gary was a man of high calibre and was a model professional. An honourable man, he will be sorely missed inside the world of football. I dealt with him as a manager and was grateful for the help and assistance he gave me. As a person he was what I'd describe as a 'proper person' because he was a gentleman and someone who you could share many thoughts with. Our sympathies and condolences go to his family.

Next week sees us go to a ground where I've certainly never been to before in Colwyn Bay. The FA Trophy means a lot to me and we will be fielding as strong a side as possible. Maybe one or two of our recently injured players will get a game and participate but we will most definitely be taking the competition seriously and hope to come back firmly in the hat for the next round.

This is obviously our last home league game prior to Boxing Day and once again I'd like to thank you all for your generous support and the kind letters I've received during my first month in charge of Lincoln City Football Club. Likewise the support from the staff, the Board and the Chairman has been greatly appreciated. We will do everything we can to be successful for the remainder of the season and hopefully give you loyal fans a festive period to be happy with. I hope you all remain safe and your families have a wonderful Christmas.

David Holdsworth

**FlowersbySuzanne.com | 01522 510688**

**@flowerslincoln | facebook.com/flowersbysuzanne**





# CLUB NEWS

All the latest news from around Sincil Bank

## CHRISTMAS / NEW YEAR OPENING HOURS

The opening hours for the Ticket Office and Club Shop over the Christmas and New Year period are as follows:-

DATE	TICKET OFFICE	CLUB SHOP
Fri 23 Dec	10.00am - 4.00pm	10.00am - 2.00pm
Sat 24 Dec	CLOSED	10.00am - 2.00pm
Sun 25 Dec	CLOSED	CLOSED
Mon 26 Dec	10.00am - 4.00pm	10.00am - 3.15pm
Tue 27 Dec	CLOSED	CLOSED
Wed 28 Dec	CLOSED	CLOSED
Thu 29 Dec	10.00am - 4.00pm	10.00am - 2.00pm
Fri 30 Dec	10.00am - 4.00pm	10.00am - 2.00pm
Sat 31 Dec	CLOSED	10.00am - 2.00pm
Sun 1 Jan	CLOSED	CLOSED
Mon 2 Jan	CLOSED	CLOSED
Tue 3 Jan	10.00am - 4.00pm	10.00am - 2.00pm

**NORMAL OPENING HOURS, AS DETAILED BELOW, THEREAFTER.**

**MONDAY-FRIDAY\*:** 10.00am-4.00pm

**SATURDAY (HOME GAME):** 10.00am-5.15pm

**\*MIDWEEK HOME GAME:** 10.00am-10.00pm

Early Bird match tickets for the Co-op Stand and Stacey West Stand can also be purchased from MSR Newsagents on the corner of High Street and St Mark Street in Lincoln. MSR Newsagents are open from 7.00am to 6.00pm Monday to Saturday and 10.00am to 4.00pm on Sundays.

Alternatively, you can book online at [www.redimps.com/tickets](http://www.redimps.com/tickets)

## SPALDING SUPPORTERS CLUB FUNDRAISING BONANZA

The Spalding Branch of the Lincoln City Supporters Club had its most successful fund raising event ever on Wednesday 30th November when £844 was raised in a general knowledge quiz held at the Pied Calf public house in Spalding.

"Considering our previous quiz nights have raised around £150 this was a staggering amount of money and a great night was had by all those present" said Branch secretary Matt Inglis.

Ten teams competed including a team of players from the Club comprising Jamie Taylor, Alan Power, Francis Laurent and Jean Francois Christophe. The eventual winners were the

team from the Lincoln City Supporters Trust led by former chairman Rob Bradley, who generously returned their cash prize. Runners up were a team captained by the Supporters' Club's youngest member, 15-year-old George Mitchie.

Newly elected Club Director, David Featherstone, a staunch member of the Supporters Club, acted as MC and also auctioned sports memorabilia, including items connected with David Beckham, Lionel Messi, Norwich City, Manchester United and the Ashes-winning England cricket team.

"We already sponsor some of the first team players this season and the latest fundraising will ensure we can do more in the future," a delighted Matt Inglis added.

## ALL-TICKET AT GRIMSBY

Supporters interested in attending the local derby at Grimsby Town on New Year's Day are advised that the match at Blundell Park has been made all-ticket for visiting fans.

We have been given an allocation of 1,099 tickets for the Osmond Stand and these are now on sale from the Sincil Bank Ticket Office.

Advance purchase are priced at £16 for adults, £10 for



### BATEMANS BUNDLE

Don't forget that as part of our partnership with Batemans Brewery, the Trust Suite will be offering a special food and drink offer every match day at Sincil Bank.

Supporters will be able to get an IMPressive hot dog and a pint of Batemans XB, Carlsberg or 16oz post mix drink for just £4!

The IMPressive hot dogs have been produced by Lincolnshire butchers Ward's Meats from Ruskington.

The Batemans Bundle will be on sale between 12 noon and 2.00pm for afternoon kick-offs and from 6.00pm until 7.00pm for evening matches.



Branton, Lincoln  
LN4 1PD  
T: 01522 793303  
F: 01522 790734  
[info@brantonhall.com](mailto:info@brantonhall.com)

For further information,  
please visit our website  
[www.brantonhall.com](http://www.brantonhall.com)



concessions (senior citizens 65+, students with ID and young adults 15-18 years) and £6 for under-14s.

Full details can be found on page 46.

## PLAYERS OF THE MONTH

The winners of the first two 'Player of the Month' accolades have been presented with their awards by members of the Thompson & Richardson Executive Lounge.



August's winner was defender Tony Sinclair who was presented with his trophy by Doreen Ashton whilst Jim Lamming was on hand to hand goalkeeper Joe Anyon with his trophy for September.



October's winner, meanwhile, was full-back John Nutter who will be presented with his award in due course whilst November's voting forms will be distributed this evening.

## FA CARLSBERG TROPHY FIRST ROUND

The Imps will travel to Colwyn Bay this coming Saturday in the first round proper of this season's FA Carlsberg Trophy. Kick-off is 3.00pm.

This will be our first time in the competition since the 1987/88 season, which saw Colin Murphy's troops reach the quarter-final stage, and ticket and travel information for the game at the Red Lion Foods Stadium at Llanellian Road can be found on page 46.

**FULL DRAW IS AS FOLLOWS:-**

Northwich Victoria v Fleetwood Town  
Colwyn Bay v Lincoln City  
Vauxhall Motors v Kidderminster Harriers

Stockport County v Stalybridge Celtic  
York City v Solihull Moors  
Barrow AFC v Harrogate Town  
Nuneaton Town v AFC Telford United  
Guiseley AFC v FC United Of Manchester

Wrexham v Hinckley United  
Droylsden v Mansfield Town  
Grimsby Town v Darlington  
Gateshead v Kettering Town  
Worksop Town v Tamworth  
North Ferriby United v Chester  
Alfreton Town v Southport  
Boston United v Hyde  
Salisbury City v Lowestoft Town  
Luton Town v Swindon Supermarine  
Didcot Town v Basingstoke Town  
Chelmsford City v Bath City  
Wealdstone v Uxbridge  
Truro City v Ebbsfleet United  
Hampton & Richmond Borough v Hayes & Yeading United  
Carshalton Athletic v Bishop's Cleeve

East Thurrock United v Welling United  
Staines Town v Maidenhead United  
Weymouth v Chippenham Town  
Boreham Wood v Cambridge United  
Brackley Town v Dartford  
AFC Hornchurch v Farnborough  
Newport County v Forest Green Rovers  
Gosport Borough v Braintree Town

## CHECK-IN AT SINCIL BANK!

You can now join the Official Sincil Bank Facebook page with latest news, pictures and videos from the stadium complex here at Sincil Bank.

If you are attending an event at the stadium then keep your eyes out for the cameras as from time to time we will be posting photos from events taking place and updating the Facebook page with the latest news from the venue. Next time you are down at Sincil Bank, don't forget to 'check in' on the official Sincil Bank Facebook page.

Along with the photos we have also posted our latest video on there featuring the new BANC, business and networking lounge, ideal for businesses men and women to relax in and catch up on phone calls, emails and paperwork between meetings, available throughout the working week. So join us now, check out the Official Sincil Bank Facebook page at [www.facebook.com/sincilbank](http://www.facebook.com/sincilbank) and start checking in!

## AND WE'RE ON TWITTER!

@SincilBankVenue - for venue news.

## LCFC BARS...

There is a no smoking policy in all bars around the stadium.

**SATURDAY fixtures (3.00pm ko)**

### TRUST SUITE

12.00pm - 3.00pm (general public)  
4.45pm - 6.00pm (general public)  
Hot filled rolls available from 12noon until 3pm

### RED IMPS BAR (Co-OP STAND)

(2.00pm - 4.00pm)

### 7 CORE ELECTRICAL LOUNGE

12.00pm - 5.30pm (Corporate Box holders)  
5.30pm-7.00pm (general public)

### T&R LOUNGE

12.00pm - 6.00pm (Executive Members only, last orders 5.45pm)  
Meals served (please book in advance)

### EVENING fixtures (7.45pm ko)

### TRUST SUITE

6.00pm - 11.00pm (general public)  
Hot filled rolls available from 6pm until 7.45pm

### RED IMPS BAR (Co-OP STAND)

6.45pm - 9.00pm

### 7 CORE ELECTRICAL LOUNGE

6.00pm - 9.30pm (Corporate Box holders)  
9.30pm - 11.00pm (general public)

### T&R LOUNGE

6.00pm - 11.00pm (Executive Members)  
Meals served (please book in advance)

Escape from it all! Book a room at Branton Hall!



**BRANTON HALL**  
HOTEL

Branton, Lincoln  
LN4 1PD  
T: 01522 793303  
F: 01522 790734  
[info@brantonhall.com](mailto:info@brantonhall.com)

For further information,  
please visit our website  
[www.brantonhall.com](http://www.brantonhall.com)





## IN OPPOSITION

### FACT FILE

**GROUND:** Kenilworth Road  
**CAPACITY:** 10,300  
**ADDRESS:** 1 Maple Road, Luton, LU4 8AW  
**TELEPHONE:** 01582 411622  
**TEAM NICKNAME:** The Hatters  
**YEAR GROUND OPENED:** 1905  
**HOME KIT COLOUR:** Orange & White

### LAST MATCH

## Luton Town 2 Cheltenham Town 4

FA Cup with Budweiser Round Two  
 Saturday 3 December 2011.

**ATTENDANCE:** 4,516

**LUTON:** K Pilkington, Gleeson, G Pilkington, Howells, Kovacs, Keane (Kissock 76), Lawless, Willmott, Watkins, Crow, O'Connor. Subs not used: Tyler, Beckwith, Hand, Dance, Fleetwood, Wright.

**CHELTEHAM:** Brown, Lowe, Bennett, Jombati, Pack, Low, Penn, Summerfield, Duffy, Spencer (Goulding 90+5), Mohamed (Smikle 85). Subs not used: Book, Hooman, Graham, Reid, Lewis.

### FAMILIAR FACE...



### JANOS KOVACS

The tall Hungarian defender was brought to Sincil Bank by former manager Peter Jackson at the beginning of the 2008/09 season, and went on to make 66 appearances for the Imps.

Lincoln were eventually forced to pay £17,500 for his services after the fee was settled with Chesterfield via a tribunal after the two clubs couldn't come to an agreement. Janos scored in his first appearance for the Imps, which was a 3-1 pre-season friendly win against Premier League side Aston Villa and became an instant hit with the Sincil Bank faithful, but was eventually placed on the transfer list in January 2010.

Later on in the month, he left the Club by mutual consent, and signed for today's visitors Luton Town. He's now back with the Hatters on loan from Hereford United.

# LUTON TOWN Football Club



### THE SQUAD IN BRIEF

#### 1 Mark TYLER

A former England youth international, Mark joined the Hatters in 2009 after a 15-year stint at Peterborough United. The experienced stopper is now in his third year at Kenilworth Road, and won the club's Player of the Year award last season.

#### 2 Dan GLEESON

A product of Cambridge United's academy, right-back Dan featured 61 times for the U's before joining Notts County in 2006. He only lasted a year at Meadow Lane, and returned to his hometown club in 2007. Capped seven times by England C, he joined the Hatters in the summer of 2010.

#### 3 Greg TAYLOR

Left-back Greg started his career as a junior with Northampton before signing for Kettering. He then teamed up with Mark Cooper at Darlington, before moving to Luton in November 2011, making his debut in the 1-1 draw against Cambridge United.

#### 4 Keith KEANE

Keith made his debut as a 16-year old under Mike Newell's stewardship in 2003. He's a versatile midfielder who is also capable of featuring in defence, and has regularly appeared for the Republic of Ireland at schoolboy level.

#### 5 Dean BECKWITH

Following his release from Northampton Town in the summer of 2011, centre-back Dean was snapped up by the Hatters. After helping the Cobblers reach the fourth round of the League Cup during the 2010-11 campaign, he also tasted success with Hereford United in 2008, winning the Blue Square Premier Play-Off final against Halifax Town.

#### 6 George PILKINGTON

Having begun his career as a trainee at Everton, George joined Port Vale in 2003 after a loan spell at Exeter City. Featuring 223 times for the Valiants, the defender then moved to Kenilworth Road on a free transfer in August 2008.

#### 7 Alex LAWLESS

Alex is a former Wales U21 midfielder who signed in November 2010, initially on loan from York City before a permanent deal went through in January 2011. He only joined the Minstermen at the start of the 2009/10 campaign, impressing Martin Foyle enough to prize the 25-year-old away from Forest Green Rovers.



DANNY CROW

#### 8 Amari MORGAN-SMITH

Amari started his career as a trainee at Wolverhampton Wanderers, before joining Ilkeston Town in 2008 after short stints at Crewe and Stockport. The striker or wide man arrived at Kenilworth Road as a free agent following a two-year spell at the New Manor Ground.

#### 10 Danny CROW

After starting out at Norwich City in 2004, Danny has enjoyed spells at Northampton, Peterborough and Notts County. He joined Luton from Cambridge United in May 2010 after scoring 22 goals in 43 league starts for the U's.

#### 11 Robbie WILLMOTT

Robbie made his debut for Cambridge United as a 17-year-old in September 2007. Capable of playing on either wing or behind the front two, he joined the Hatters in January 2011 after netting 10 times for the U's.

#### 12 Shane BLACKETT

Now in his third season at Kenilworth Road, Luton-born Shane is a pacy defender who is equally adept at centre-back or left-back. His impressive performances during Dagenham & Redbridge's promotion to the Football League in 2006/07 alerted the attention of Peterborough United, who snapped him up with Daggers team-mate Craig Mackail-Smith.

#### 13 Stuart FLEETWOOD

A prolific striker, Stuart signed for Luton on an undisclosed fee on deadline day in August 2011. He made his name after netting 28 times in 41 appearances for Forest Green Rovers, and consequently signed for then Championship outfit Charlton Athletic in June 2008, but was loaned out to Cheltenham, Exeter and Brighton.

#### 14 Aaron O'CONNOR

Aaron is a striker who arrived at Kenilworth Road following the expiry of his deal with Rushden & Diamonds. He scored 27 times in two seasons at Nene Park, while his former clubs include Mansfield Town, Scunthorpe United, Nuneaton Borough and Ilkeston Town.



#### 15 Jake HOWELLS

The young winger came through the ranks at Kenilworth Road and made his first team debut in May 2008. The England C international can also play at left-back or in central midfield.

#### 16 Ed ASAFU-ADJAYE

Capable of playing in any position across defence, Ed made his breakthrough into the first team under former boss Mike Newell. Making his full debut in March 2008, he was part of the Luton side that won the Johnstone's Paint Trophy in 2009.

#### 18 Curtis OSANO

Kenyan born Curtis is a quick defender who is capable of playing anywhere across the backline. He joined Luton in the summer following his departure from Rushden & Diamonds, after making 150 appearances for the Northamptonshire club.



#### 19 James DANCE

Able to play on either flank or as a central striker, James began his career as a trainee at Birmingham City. Despite picking up a Blue Square Premier winners' medal last term with Crawley Town, he found himself out of the Red Devils' starting XI and subsequently joined the Hatters in July 2011.

#### 20 John Paul KISSOCK

Creative midfielder John Paul signed for Town for an undisclosed fee from Southport in August 2011. The former England youth international began his career at Premier

League Everton, and scored a fantastic free-kick against the Imps on the opening day of the season for the Sandgrounders during the 2-2 draw.

#### 27 Jamie HAND

Jamie is a central midfielder who moved to Kenilworth Road on loan from Hayes & Yeading in September 2011. Jamie started his career with Watford, but has also played for Chester City, Ebsfleet and Woking. He also made 25 appearances for the Imps under Peter Jackson's tenure.

#### 28 Adam WATKINS

A self-confessed Hatters fan, Adam made his first team bow in a 1-0 defeat at Southampton in the FA Cup third round in January 2010. Adam is a midfielder capable of playing in attack.

#### 30 Kevin PILKINGTON

A vastly experienced goalkeeper, Kevin started his career with Manchester United, playing six times under Sir Alex Ferguson. After featuring for a number of clubs including Port Vale, Mansfield Town and Notts County, he moved to Kenilworth Road in May 2010 after his release at Meadow Lane.

#### 34 Janos KOVACS

Hungarian defender who signed on loan for his second spell at the club in September 2011. Formerly with Chesterfield and Lincoln, Janos first signed in January 2010 before signing for Hereford United in the summer of that year.

#### 39 Tommy WRIGHT

Tommy is an experienced striker who signed a three-month deal at Kenilworth Road in October 2011. He helped fellow Blue Square Premier outfit Darlington lift the FA Trophy last season, and has also represented the likes of Aberdeen, Barnsley and Brentford.

By Matt Scrafton



THE CAFFERS -  
Gary Brabin

Originally brought to the club as Chief Scout at the time Richard Money was appointed manager in October 2009, Gary was reassigned in the new role as assistant manager in the summer of 2010.

Following the departure of Money in March 2011, Gary took control of the Hatters until the end of the 2010/11 season.

Gary played over 275 times in League football as a tough-tackling midfielder, including a short stint at

Sincil Bank during the 1998/99 season on loan from Blackpool.

His first call of management came at Southport - guiding them to the

Premier play-off final after finishing runners-up to champions Burton Albion, but lost to Torquay United at Wembley.

**"His first call of management came at Southport - guiding them to the Conference North play-offs - before moving south to manage Cambridge United in 2008."**

Conference North play-offs - before moving south to manage Cambridge United in 2008.

In his first - and eventually only - season at the Abbey Stadium he guided the U's to the Blue Square

Despite that set-back Gary was awarded the BSP Manager of the Year award before behind the scenes differences at the Abbey led to him leaving the club in July 2009 before arriving at Kenilworth Road.





**PROUD SPONSORS OF THE  
FOOTBALL CONFERENCE**

**BEST  
OF THE  
BEST**

JD - Best of the Best.  
JDSPORTS.CO.UK

## MANAGING TO SUCCEED...

### DAVID PLEAT

Articulate manager David Pleat guided Luton Town to the Second Division title in 1981-82. A former winger, he played for Nottingham Forest, Luton, Shrewsbury, Exeter and Peterborough before becoming Nuneaton's player-boss. He rejoined Luton as coach in July 1972 and became manager in January 1978, guiding the Hatters to the FA Cup semi-finals in 1984-85. Taking charge of Spurs in May 1986, he led them to the 1987 FA Cup final, then managed Leicester City before rejoining Luton in June 1991. He took the Hatters to the FA Cup semi-finals again in 1993-94, leaving in June 1995. Now working in the media.



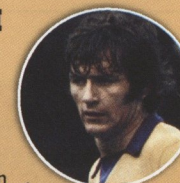
### FAB FOUR

#### RICKY HILL

England international midfielder Ricky Hill was 'Player of the Year' when Luton Town won the Second Division title in 1981-82. Signing professional at Kenilworth Road in May 1976, he was 'Player of the Year' again in 1982-83 and starred as Luton were FA Cup semi-finalists in 1984-85. He featured in two consecutive Littlewoods Cup finals including the 1988 Wembley triumph and netted 54 goals in 436 League games before moving to Le Havre in July 1989. Reuniting with David Pleat at Leicester City in August 1990 and later as a coach at Sheffield Wednesday and Spurs, he briefly rejoined Luton as manager.

#### BRUCE RIOCH

Influential midfielder Bruce Rioch was capped 24 times by Scotland after leaving Luton Town. Signing professional for Luton in September 1964, he starred in the 1967-68 Fourth Division title triumph and netted 46 goals in 149 League games prior to joining Aston Villa for £100,000 in July 1969. He was a key figure in their 1971-72 Third Division title success and moved to Derby County in February 1974, helping to win the League Championship in 1974-75. He played for Everton, Derby again and Torquay, since managing Middlesbrough, Millwall, Bolton Wanderers, Arsenal, Norwich City and Wigan Athletic.



#### MALCOLM MACDONALD

Ace marksman Malcolm Macdonald was capped 14 times by England after leaving Luton Town. Initially with Tonbridge, he joined Fulham in August 1968 and moved to Kenilworth Road in July 1969. He was Luton's top scorer in two consecutive seasons including the 1969-70 promotion success and netted 49 goals in 88 League games before being sold to Newcastle United for £180,000 in May 1971. An FA Cup finalist in 1974, he joined Arsenal for £333,000 in August 1976 and was an FA Cup finalist again in 1978 before injury ended his career. He managed Fulham and Huddersfield Town and has since worked in the media.

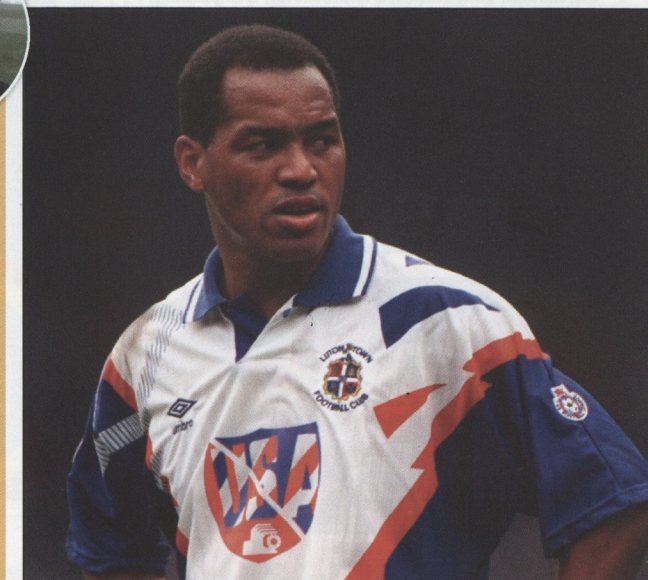
## NAMES & GAMES

by Leigh Edwards

## BRIAN STEIN

England international striker Brian Stein scored twice in Luton Town's 1988 Littlewoods Cup final triumph.

Moving to Kenilworth Road from Edgware Town in October 1977, he was leading marksman in Luton's 1981-82 Second Division success and also starred as they were FA Cup semi-finalists in 1984-85 and 1987-88.



He joined French side Caen in July 1988 and moved via Annecy back to Luton in July 1991. Voted 'Player of the Year' for the second time in 1991-92, he netted 130 goals in 427 League games overall for the Hatters before joining Barnet in August 1992. His younger brother Mark also played for Luton.

## CLASSIC CAMPAIGN 1987-88

Ex-Imp Ray Harford plotted Luton Town's 1988 Littlewoods Cup final triumph. Danny Wilson replaced Peter Nicholas in midfield, while Micky Weir arrived from Hibernian and Mike Newell moved to Leicester.

The Hatters won 5-2 at Oxford and Ian Allinson was signed from Stoke in October, with Luton losing just twice in 12 matches including a 7-4 win the return match against Oxford, finishing ninth in the top-flight. They defeated Wigan 5-2, Coventry 3-1, Ipswich 1-0, Bradford City 2-0 and Oxford 3-1 in the Littlewoods Cup before beating Arsenal 3-2 in the final. Luton were also FA Cup semi-finalists and Simod Cup finalists.

**"They defeated Wigan 5-2, Coventry 3-1, Ipswich 1-0, Bradford City 2-0 and Oxford 3-1 in the Littlewoods Cup before beating Arsenal 3-2 in the final."**



2 Lions Way  
Sleaford  
01529 303344

Newgate Lane  
Londonthorpe  
01476 574304

For all your Veterinary Needs

Separate dog, cat and isolation wards, digital x-ray, ultrasound, gold standard anaesthetic, free parking, air conditioning, nine Veterinary Surgeons, Dog and Cat Grooming, in house pet shop

www.kirkspets.co.uk  
3a Northgate  
Sleaford  
01529 302703

Quality Pet Shop selling accessories, gifts, food, treats, beds, coats etc with SQP qualified staff licensed to prescribe POM-VPS wormers and flea control.  
Dog Grooming and online shop

www.thepetcrem.co.uk  
01529 303344

Fully licensed Pet Crematorium for professional care from professional staff

Top Quality Care Respect for All  
Building Great Relationships



Official sponsors of Lincoln City Football Club



**SOS**  
Skip Hire & Haulage Ltd

**NEED A SKIP QUICK?**

**DOMESTIC 2yd TO  
COMMERCIAL 50yd SKIPS**

**NO JOB TOO BIG**

**Please ring for details and  
prices.**

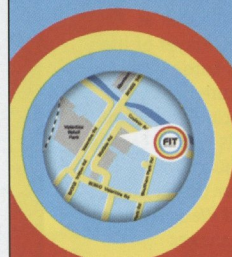
**01522 560397**

**07762423086 07912580831**

e-mail [soshaulage@btconnect.com](mailto:soshaulage@btconnect.com)



**THE £12 GYM**  
DON'T PAY MORE!



FitSpace Health Club  
Tritton Retail Park  
Lincoln. LN67AN

[www.fitspace.co.uk](http://www.fitspace.co.uk)

**MEL WARD MEATS**  
RUSKINGTON EST 1946

Lincolnshire's supreme catering butchers  
are proud to produce and supply  
Lincoln City's meats this season and  
are confident the Imps will play  
better football than England

If you need meat for any reason phone Wards  
and ask for Gordon, Ward not Banks

Tel: 01526 832349

16-20 Church Street Ruskington Lincs  
NG34 9BF

Fax: 01526 830973

[www.wards-meats.co.uk](http://www.wards-meats.co.uk)

Email: [info@wards-meats.co.uk](mailto:info@wards-meats.co.uk)

## 50/50 HALF TIME DRAW



Congratulations go to Brenda Lockwood from Lincoln (ticket number 40491) and Mr Straw of Market Rasen (ticket number 40387) on winning £150 and £55 respectively in the 50/50 draw at the Ebbsfleet game. Jamie Taylor and Josh O'Keefe were on hand to present them with their respective cash prizes.

50/50 tickets cost just £1 and sellers can be found around the Stadium before kick-off. The more tickets that are purchased, the bigger the prizes!



OFFICIAL CLUB LOTTERIES. (Registered with the Lincoln City Council GA05LOT/0017). Participants must be at least 18.  
LCFC supports responsible gambling. Contact [www.gamcare.org.uk](http://www.gamcare.org.uk) further information.

## LCFC LOTTERY

At the time of going to  
print the rollover jackpot  
stood at a whopping  
**£1,800 - just think of the  
Christmas you could have  
if you won that!**

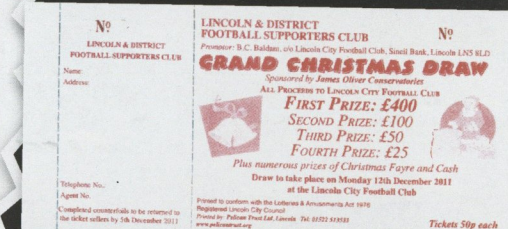
**Jackpot stands at £1,800**

But remember - you've got to be in it to win it -  
so if you're not a member of the Imps Birthday  
Lotto yet then sign up now!

Forms are available in the Club Office and if you  
want more details then log on to  
[www.redimps.com/lottery](http://www.redimps.com/lottery) where you'll find all you  
need to know.

**L&DFSC**  
**GRAND CHRISTMAS DRAW**

Every year we support the Lincoln & District  
Football Supporters Club with their Christmas  
Raffle and this year is no exception so we



wish everyone who has purchased a ticket  
the best of luck in next Monday's draw.  
The results of the draw will be available  
online at [www.redimps.com](http://www.redimps.com) as soon as  
possible so, as they say, watch this space.



## LINCOLN CITY 3

(Platt 37, Russell 75, Nutter 81)

## EBBSFLEET UNITED 0

Blue Square Bet Premier  
Saturday 26 November 2011  
Sincil Bank Stadium

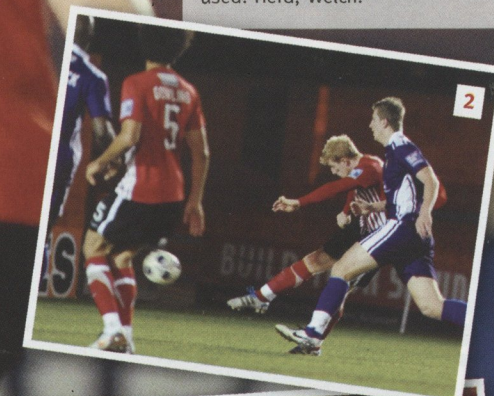
Attendance: 2,111 (91 visitors)

Referee: Stephen Martin

## THE TEAMS

**IMPS:** Farman, Sinclair, Hinds, Gowling, Nutter, Power, Thompson, Platt, Russell (Laurent 89), Sheridan (Medley 81), Perry. Subs not used: Nelson, Nicolau, Anyon.

**EBBSFLEET:** Edwards, Stone, Lorraine, Mambo, Howe, Marwa, Shakes (Enver-Marum 61), Barrett (Phipp 61), West, Willock (Simpemba 81), Pinney. Subs not used: Herd, Welch.



## IMP-ACTION

1 - CONAL PLATT CURLS HOME THE OPENING GOAL

2 - SIMON RUSSELL VOLLEYS HOME NUMBER TWO

3 - ALAN POWER US SENT SPRAWLING BY YADO MAMBO...

4 - ... AND JOHN NUTTER DRILLS IN TO COMPLETE THE SCORING



# YORK CITY 2 (Pilkington 4, McLaughlin 56) LINCOLN CITY 0

Blue Square Bet Premier  
Tuesday 29 November 2011  
Bootham Crescent  
Attendance: 3,155 (325 City)  
Referee: Darren Handley

## THE TEAMS

**IMPS:** Farman, Sinclair, Hinds, Gowling, Nutter, Power, Thompson, Platt, Russell (Laurent 65), Sheridan (Nicolau 81), Perry (Medley 51). Subs not used: Christophe, Anyon.

**YORK:** Ingham, Meredith, McGurk, Fyfield, Challinor, Reed, Kerr, Pilkington (Ashikodi 76), McLaughlin, Chambers (Oyebanjo 86), Blair. Subs not used: Smith, Parslow, Moke.



### IMP-ACTION

1 - SIMON RUSSELL GOES ON THE ATTACK

2 - CONAL PLATT PREPARES TO LET FLY

3 - TONY SINCLAIR IS PUT UNDER PRESSURE BY ASHLEY CHAMBERS

4 - SUBSTITUTE LUKE MEDLEY TAKES ON JAMES MEREDITH







LINCOLN.YOURCITY.

# City Six-Pack

**WE ARE PLEASED TO ANNOUNCE DETAILS OF A SPECIAL TICKET PROMOTION WHICH WILL GIVE SUPPORTERS THE OPPORTUNITY TO COME TO ANY SIX HOME BLUE SQUARE BET PREMIER GAMES AT A REDUCED RATE.**

The "City Six-Pack" will give supporters the chance to make significant savings on match day admission prices with the six tickets that are issued on purchase being valid for any of our remaining home Blue Square Bet Premier games this season. "City Six-Pack" tickets can be used for any stand, with the exception of the T&R Executive Lounge with prices being as follows:-

STAND	ADULT	CONCESSION	JUNIOR
Co-op	£85	£65	£30
Echo	£85	£65	£30
Stacey West	£75	£55	£30
Bridge McFarland	£75	£55	£30
NTR Mobile Family	£75	£55	£30

Concession - 60+ / Student (NUS proof) / Disabled (proof of DLA medium/high rate, Bridge McFarland Stand only) - Junior - Under 16  
For further information please contact the LCFC Ticket Office on 01522 563786.



LINCOLN.YOURCITY.

LINCOLNSHIRE SPORTS PARTNERSHIP 2011/12

# CHARITY PARTNER



Every week, Lincolnshire Sports Partnership will talk to Lincoln City fans about various projects across the county.

**This week, Hayley Cook talks about Championing Lincolnshire; an online magazine about the London 2012 Games in our county.**

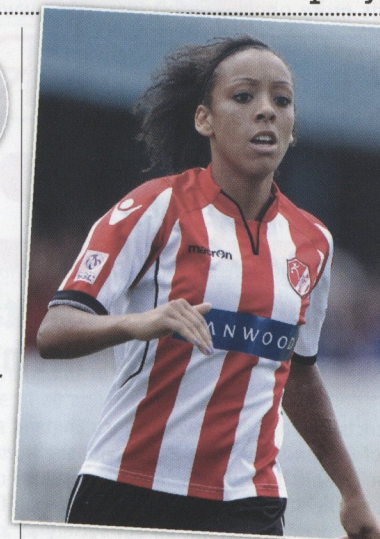


**This week, Lincolnshire Sports Partnership and students from the University of Lincoln launched their second issue of an online magazine about the London 2012 Games and the impact on our county.**

Championing Lincolnshire is a 28 page magazine and features updates on the Torch Relay, news about the Egyptian Paralympic Team training in Lincoln and lots of interviews with people across Lincolnshire.

This issue features:

- University of Lincoln student **LAURA DUNKERLEY** who is auditioning as a



dancer for the Opening Ceremony of the Olympic Games  
• Lincoln Ladies players Casey Stoney,

Jess Clark and Sophie Bradley who are hoping to represent Great Britain next year

- Football mad Gary Campbell who will be volunteering at Hampden Park during the Games next summer
- And lots more!

The magazine has been written and designed by ten journalism students from the Lincoln School of Journalism at the University of Lincoln with support from Lincolnshire Sports Partnership.

The magazine is completely free and can be viewed online at [www.championinglincolnshire.co.uk](http://www.championinglincolnshire.co.uk).



## QUEST FOR GOLD

Still looking for Christmas presents? Why not buy Quest for Gold for just a fiver?

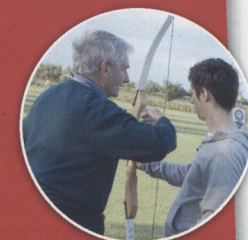
Our Quest for Gold programme is just £5, and allows people to try 33 sports for free!

So whether you're a grandparent struggling to buy something for your family, or think a colleague at work would like to try lots of different sports, why not sign them up as their Christmas present?

The process is really easy and people can try sports such as archery, handball and shooting, plus lots more.

For more information visit [www.lincolnshiresports.com/questforgold](http://www.lincolnshiresports.com/questforgold), or to purchase your voucher call Clare on 01522 585 580.

Merry Christmas everyone!!



**Find out more at [www.lincolnshiresports.com](http://www.lincolnshiresports.com)**



# LINCOLN CITY FC SPORT & EDUCATION TRUST



Good evening and welcome back from the Lincoln City FC Sport & Education Trust team.

Here's a snapshot of what we've been up to in your communities lately, and of course you can keep up to date with all our work and check out loads more photos on our website - [www.lcfcset.com](http://www.lcfcset.com)

## SUPPORT FOR PROJECT UNDERDOG

**Following the fatal shooting of Mark Duggan by Metropolitan Police officers earlier this year a peaceful march escalated into a full scale riot in Tottenham, North London.**

Thereafter several London boroughs and districts of cities and towns across England suffered widespread rioting, looting and arson. The unrest soon spread to other areas of England, including Bristol and the North West.

There have now been over 3,000 arrests - five people have died as a direct result of related violent acts, with an estimated £200 million worth of property damage. Although the streets are now back to normal, the scars are evident - and not just in bricks and mortar. The violence has not only left a dramatic imprint on our society as a whole, but has in turn ushered more long standing issues into the public gaze.

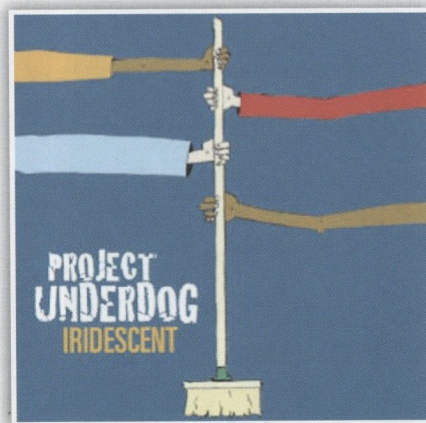
We may be the world's sixth largest economy, but our infrastructure is infested with drugs, street crime and a general discontent within the youth of today.

"PROJECT UNDERDOG" is the brainchild of 21 year old entrepreneur Jo Lloyd - a woman on a mission. "This is a hugely exciting project which stems from the recent riots and devastation that hit our city centres", she says ... "We are going all out to raise funds not only for those communities that are still recoiling in the wake of the unrest, but to all local communities who can then help keep children off the streets and give them a chance to make a life for themselves".

First stop is a charity record. This chart challenger with a difference sees unsigned artists on a brand new version of "Iridescent" by Linkin Park. The team scoured the UK to find young people who had been affected by the riots and the "Project Underdog" record was born. Group member Leni White had her flat in Ealing burned to the ground. "It was unbelievable...just like a scary movie", she says. "One minute I had a home - the next I was on the street". Along with the record - which could indeed prove to be a surprise Christmas number one, there is a "Project Underdog" road show and a nationwide assault on the media to raise awareness to the plight of so many.

Proceeds of sales of this record will be donated to local communities to help initiatives to keep young people off the streets and to get involved in sport, music and other activities. "We started this in direct response to the dreadful events earlier this year", says Jo Lloyd, "But it is now steamrolling into a much bigger idea. The fires may be out, the streets may be quiet, but there are many people up and down the UK who have still not recovered from the devastation of August 2011. Lives have been shaken in a massive way".

"IRIDESCENT" by Project Underdog is released by Inscreen Records/Universal from 27th November 2011.



# Inspiring lives in your community

[www.lcfcset.com](http://www.lcfcset.com)

## SHORT BREAKS MOVING FORWARD

The Short Breaks project, run by Lincoln City FC Sport & Education Trust staff, has received a fantastic reception after relocating its Lincoln session to The Showroom, on Triton Road.

These new facilities are part of the Myplace project which aims to deliver world class youth facilities across the nation through government funding.

Young people with special needs sometimes find it difficult to access sports and social clubs outside of school. Short Breaks aims to provide them with activities in an environment better suited to their needs. Sports provision is on offer to people with disabilities aged 5-18 every week during term-time. The club delivers a range of games including Boccia, New Age Kurling, Bowling and Tri-Golf, among others. All games are non-competitive, and people of all abilities are welcome. Socializing is emphasized in the games offered.

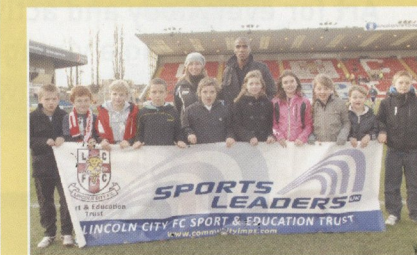
We have three sessions running at the moment. Two multi-sport clubs, one based in Lincoln, one roaming session, and a football session on the Sincil Bank 3G Pitch. The Lincoln session at The Showroom makes great use of the new facilities. We have unlimited use of two "Highway 66" mini bowling alleys, access to table tennis, seating areas for resting & spectating, and the Sports Cage. In the Sports Cage we can deliver a variety of games without disturbing people wanting to do something else. It is a self-contained area with markings on the floor and walls that can be used for rules in games or to divide games into smaller areas. Also on offer is our roaming session which is being held at the Meres Leisure Centre in Grantham, until the Christmas break. With full access to the table tennis centre, we are able to provide full-size New Age Kurling, Boccia and team-based games. In the New Year our roaming session will be moving to Gainsborough at Warren Wood Community School, bringing Short Breaks to another area that has shown prior interest.

Other areas Short Breaks is looking to move to include: Market Rasen, Spilsby, Horncastle and Louth. If these, or any other areas interest you, please contact us and we will arrange to visit a venue in your area. For more information visit our Short Breaks page in the Disability section or contact James Wonnacott on 01522 563792, or email [jwonnacott.redimps@hotmail.co.uk](mailto:jwonnacott.redimps@hotmail.co.uk)



## YOUNG SPORTS LEADERS

A group of pupils from Waddington Redwood Primary School, taking part in our Young Sports Leaders programme, were given the opportunity to come and see Lincoln City play against Ebbsfleet United, as part of their Sports Leaders course.



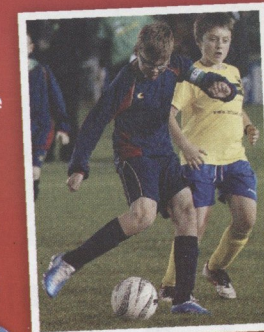
They had a fantastic time watching the game, and had their photo taken pitch side with Jean Francois Christophe. We look forward to seeing them all when we next visit.

For more information on our PPA, After Schools Clubs, or Sports Leaders sessions, please feel free to contact our Schools and Education Coordinator [damian.froggatt@redimps.com](mailto:damian.froggatt@redimps.com)

## DOMINO'S CUP TOURNAMENT: BISHOP KING VS. CHAD VARAH

Bishop King took on Chad Varah in the fifth match of the first round of the Domino's Half Time Tournament. Chad Varah took control of the game straight away, and several shots flew towards Bishop King's goal from Kane Green, Kian Keeley and Tyler Coy.

Kane Green then scored an extraordinary goal from long range to put Chad Varah 1-0 up. It only took a few minutes for Kane to score his second and put Chad Varah into the next round of the Tournament with a 2-0 win. Congratulations!





# 21-29 OCTOBER

## TUNE IN TO FREQUENCY

### WWW.FREQUENCY.ORG.UK

Frequency Festival kicks off this October in the heart of Lincoln City. Art for everybody and activities for all ages including a vintage Lincoln City Football match. (shown in the pub of course)

This is art like you've never seen before and it's completely free, so come and play!

[www.facebook.com/frequencyfestival](http://www.facebook.com/frequencyfestival)

[www.twitter.com/frequency\\_fest](http://www.twitter.com/frequency_fest)



Siemens Industrial Turbomachinery

The Major Player in Gas Turbines  
Teaming Up with Lincoln City Football Club

Answers for energy.

**SIEMENS**

## — INTRODUCING... — **TONY SINCLAIR**



### TONY SINCLAIR

**DOB** 05.03.85  
**BIRTHPLACE** Lewisham  
**CAREER** Gillingham (trainee)  
Beckenham Town  
Maidstone United  
Beckenham Town  
Fisher Athletic  
Welling United  
Woking  
Gillingham  
Lincoln City







LCFC 2011/12

**TONY SINCLAIR**



TONY SINCLAIR  
**FACTFILE**

**Nickname:**  
Sincs

**Football highlight:**  
Signing first pro contract last year

**Football lowlight:**  
Dislocating my knee cap a few years ago

**Favourite player:**  
Rio Ferdinand

**Funniest Moment In Football:**  
Mat Lawrence's speech last year

**Best player you've played with:**  
Paulo Di Canio in training when I was younger

**Best player you've played against:**  
Jermain Defoe

**Most embarrassing moment in your career:**  
Scoring own goals are always embarrassing!

**Favourite other club:**  
Arsenal

**Three people you'd like to have dinner with:**  
Bob Marley, President Obama and Lauren London (I have a crush on her!)

**Worst dressed teammate:**  
Danny Hone

**Favourite Music/Band:**  
Duchess (my missus' band!)

**Favourite food:**  
Anything cooked by my mum, sisters or missus

**Favourite drink:**  
Orange Lucozade

**Favourite movie:**  
Man On Fire

**Favourite actor:**  
Denzel Washington

**Favourite TV programme:**  
I like documentaries - all the Ross Kemp ones have been good - plus Top Gear

**Favourite holiday destination:**  
Would love to go to Jamaica as I've never been

**Hobbies outside of football:**  
Watching films

**Little known fact about yourself:**  
I'm a big mummy's boy!



**Pre-match superstitions:**  
**I like to come on to the pitch second to last**

# POACHER'S PAGE

**Special December night for our last home game before Christmas and we're lucky enough to have secured an early visit from Father Christmas in The NTR Mobiles Family Enclosure!**



Tonight you'll see Santa practicing for the big day chatting to all the good boys and girls and taking part in Christmas themed games, winning prizes and generating enough festive spirit to ensure lots of Lincoln City goals on the pitch.

Welcome to Luton Town FC today, our supporters in The NTR Mobiles Family Enclosure are all looking forward to taking back the three points we gave away early in the season and to watching a highly entertaining game between two of the best followed clubs in the league.

If you're still not a member of the Poachers Club, get your application form today from the NTR Mobiles Family Enclosure to ensure you receive discounted match day entry during 2012 as well as free entry in to our monthly prize draws.

**Poacher**

## COMING SOON: RETURN OF THE LOACH!

**The NTR Mobiles Family Enclosure is pleased to welcome back one of our greatest ever young Imps, Scott Loach.**

Parents will no doubt remember that Scott left our academy for Watford in 2006. He has since played for England at U21 level and been called up to the senior squad twice.

We're so thrilled to welcome him back to Sincil Bank to join in the festive celebrations.



## HALF TIME FUN

1. What is Luton Town FC's Home Ground called?
2. How far is it from Sincil Bank to Luton Town FC's stadium?
3. What is the Luton Town FC's official nickname?
4. What is the capacity of Luton Town FC' stadium?
5. Where did Luton Town FC finish in last season's Blue Square Bet Premier?

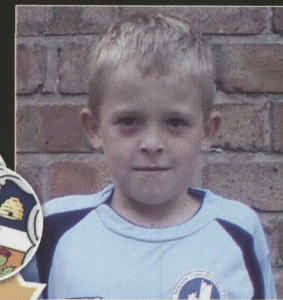


## TODAY'S MASCOTS

**NAME:** Max Cashmore  
**AGE:** 8  
**SCHOOL:** Reepham Junior  
**INTERESTS:** Lincoln City and football!  
**FAVOURITE IMPS:** Sam Smith & Josh Gowling  
**PREDICTION:** 2-1 (to Luton...)



**NAME:** Adam Hall  
**AGE:** 9  
**SCHOOL:** Holy Trinity Primary, Newark on Trent  
**INTERESTS:** Football (Newark Town Ugs), swimming, tennis and Nintendo games  
**FAVOURITE IMPS:** Alan Power & John Nutter  
**PREDICTION:** A score draw



**Your Local Business mobile experts... 0800 201 4000**



Choose to use the bus  
the greener way to travel...  
to the match  
to work  
to the pub  
to the shops  
to uni  
to visit the family

flexible tickets  
megarider £9.30 weekly ticket  
all over the City all week  
for more savings [buymymegarider.com](http://buymymegarider.com)  
modern low floor vehicles  
making life easier for everyone  
frequent buses every 10,15 or 20 mins  
on most routes in the City



fares correct August 2011

0871 200 22 33  
[www.stagecoachbus.com](http://www.stagecoachbus.com)



love your environment travel...  
**Stagecoach** in Lincolnshire

## Matchday Offers

Small Pizza £3.99

Medium Pizza £5.99

Large Pizza £7.99

Collection  
Only

T&C's: Pizza from menu or create your own up to 4 toppings. Stuffed Crust™, Double Decadence™ and Dominator™ bases charged as extra. Valid at Lincoln stores only. Please mention coupon when ordering.  
\*Also available on mid-week match nights 2 hours before and 1 hour after the game.

Lincoln Central  
(01522) 569988  
Open 11am - 11pm, 7 Days a Week.

Lincoln South  
(01522) 693366  
Open 11am - 11pm, 7 Days a Week.

Lincoln North  
(01522) 519933  
Open 11am - 11pm, 7 Days a Week.



It's what we do

Call [dominos.co.uk](http://dominos.co.uk) Pop in Tap the app

# YOUNG ONES

## BURTON ALBION U18S 1-2 LINCOLN CITY U18S

Midland Youth Cup Round 2

The Youth Team travelled to Burton Albion in the second round of the Midland Youth Cup without Karl Cunningham, Tom Thacker and Sam Downey who are all injured.

Both teams started brightly and had chances to open the scoring, but didn't take them. Lincoln were threatening down the right side with Dan Coupland feeding Reece Thompson with good balls down the side of Burton's defence.

Archie Massen was a constant threat with his pace and ability to go past defenders creating several chances as Lincoln increased the pressure.

The deadlock was broken midway through the half when good play down the right side involving Massen and Coupland released Jordan Thomas. His cross was met by Thompson whose initial effort was blocked but he reacted quickly to beat the 'keeper.

Thompson had another chance to extend the lead before the break. He dispossessed Burton's centre back on the right side, drove into the box and elected to shoot when he should have squared the ball to Thomas who would have had a simple tap in.

Lincoln started the second half as they had finished the first, on the attack, and it wasn't long before the second goal went in. An excellent run down the right by Massen fed Thomas who found Rob Taylor

on the edge of the box. He curled the ball into the top corner to make it 2-0.

More good work down the right from Massen almost led to another goal but then Burton hit back. A long clearance caused problems for the City back four and Burton's striker expertly lobbed Nick Draper from 25 yards.

Draper had to be replaced by Ollie Pannell after he had picked up an ankle injury in the first half. Pannell had to be alert on several occasions to stop Burton attacks with excellent start positions and reading of the game.

Aaron Rice replaced Conner Robinson, who had to come off injured, and almost scored with his first touch. Thomas was again the provider, feeding Rice on the left, he beat the 'keeper with his shot but it was cleared off the line by a recovering defender.

City won the game and await the winners of Hereford v Port Vale in the next round in a tie to be played at Sincil Bank.

**Team:** Draper (Pannell 55), Coupland, Rawdon, Cobb, Weaver, Green, Taylor, Massen, Thomas, Thompson, Robinson (Rice 76). Subs not used: Leggett, Everington.

## LINCOLN CITY U18S 1-3 NOTTS COUNTY U18S

Youth Alliance Cup Second Round

With a growing injury list Cunningham, Thacker and Downey were joined on the treatment table by Draper, Robinson and Taylor who had picked up knocks in the midweek game against Burton.

City never really got going, although several chances were created and squandered, and it was a below par performance.

County took the lead through a defensive mix up and extended their lead through a good finish.

City came out for the second half in a more determined mood and had a good chance to reduce the deficit but Thompson's effort was cleared off the line. Had that have gone in it may have been a different outcome. However, County extended their lead from a set play after poor defending.

The deficit was reduced minutes later when Aaron Rice slotted home from 12 yards. It was a welcome goal for Aaron in his first start for 10 weeks after recovering from a fractured metatarsal.

Under 16 players Matt Cotton and Robert Smith made their first appearances for the Youth Team and fitted in well and although City continued to press forward they could not score again.

**Team:** Pannell, Leggett, Rawdon, Cobb, Coupland, Green, Massen (Cotton 60), Everington (Smith 80), Thomas, Thompson, Rice. Subs not used: Weaver, Mathews, Bowler.

## FL YOUTH ALLIANCE NORTH EAST

DATE	H/A	OPPO	RES
Sat 6 Aug	A	Burton Albion	2-1
Fri 12 Aug	H	Notts County	3-0
Sat 20 Aug	A	York City	0-1
Sat 27 Aug	H	Hull City	2-3
Sat 3 Sep	A	Scunthorpe Utd	0-1
Thu 15 Sep	H*	Retford	8-0

		(FA Youth Cup 1Q)	
Sat 17 Sep	A	Bradford City	2-3
Sat 1 Oct	H	Darlington	0-1
Tue 4 Oct	A	Mansfield Town	4-0
		(Midland Youth Cup 1)	

Sat 8 Oct	A	Rotherham Utd	5-1
Mon 10 Oct	H*	Gresley	7-0
		(FA Youth Cup 2Q)	

Wed 19 Oct	A	Tamworth	0-2
		(FA Youth Cup 3Q)	

Sat 22 Oct	H	Chesterfield	1-1
Sat 29 Oct	A	Hartlepool Utd	4-2
Sat 15 Nov	H	Grimsby Town	3-2
Sat 19 Nov	A	Doncaster Rvrs	1-4
Wed 30 Nov	A	Burton Albion	2-1
		(Midland Youth Cup 2)	

Sat 3 Dec	H	Notts County	1-3
		(FA Youth Alliance 2)	

Sat 10 Dec	A	Darlington	12:00
Sat 17 Dec	H	Bradford City	11:00
Sat 14 Jan	H	Rotherham Utd	11:00
Sat 28 Jan	H	Hartlepool Utd	12:00
Sat 11 Feb	A	Chesterfield	11:00

Sat 25 Feb	H	Doncaster Rvrs	11:00
Sat 3 Mar	A	Grimsby Town	11:00
Sat 10 Mar	H	Burton Albion	11:00
Sat 17 Mar	A	Notts County	11:00
Sat 31 Mar	H	York City	12:00
Sat 14 Apr	A	Hull City	11:00
Sat 21 Apr	H	Scunthorpe Utd	11:00

Copyright © and Database Right 2011 The Football League. All rights reserved. Fixtures are subject to change. Compiled in association with Atos.

H\* - match to be played at Sincil Bank Stadium.

H^ - match to be played at Lincoln Moorlands Railway Sports Ground, Newark Road, Lincoln, LN6 8RT

All other home games are scheduled to be played at Robert Pattinson School, North Hykeham, LN6 9AF

## LEAGUE TABLE

	P	W	D	L	F	A	Gd	Pt
1	Hull City	11	9	1	1	34	13	+21 28
2	Darlington	12	8	1	3	22	12	+10 25
3	Doncaster Rov	12	7	2	3	28	15	+13 23
4	Chesterfield	13	6	4	3	24	21	+3 22
5	Hartlepool Utd	12	6	2	4	28	22	+6 20
6	York City	12	6	2	4	14	10	+4 20
7	<b>LINCOLN CITY</b>	12	5	1	6	23	20	+3 16
8	Scunthorpe Utd	12	5	1	6	10	14	-4 16
9	Burton Albion	12	4	3	5	23	24	-1 15
10	Grimsby Town	12	3	2	7	18	27	-9 11
11	Bradford City	12	3	2	7	16	25	-9 11
12	Rotherham Utd	12	3	1	8	18	31	-13 10
13	Notts County	12	2	0	10	15	39	-24 6

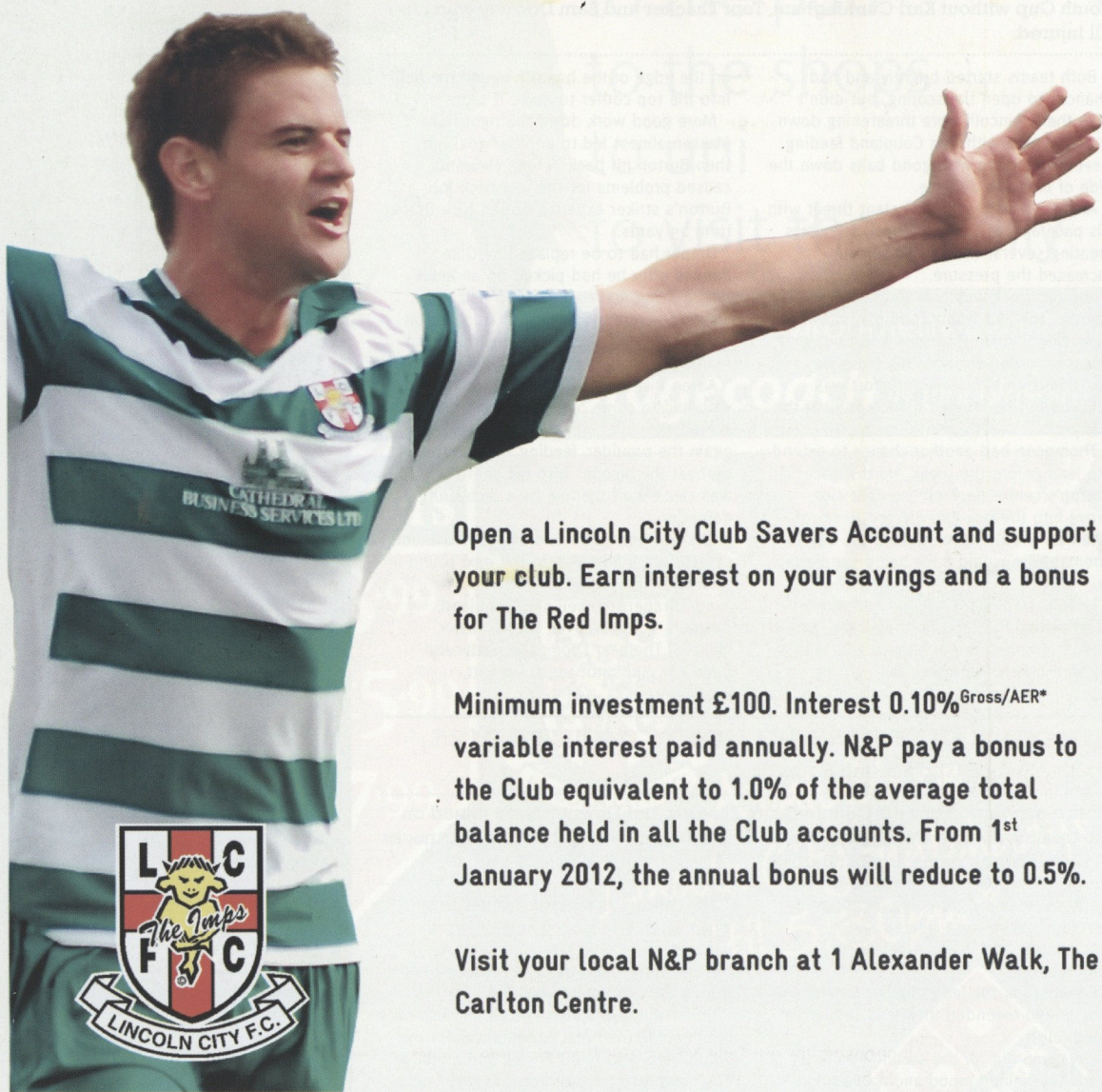


Join the Imps Savers  
Account online at  
[www.redimps.com](http://www.redimps.com)

**N&P**

NORWICH & PETERBOROUGH  
BUILDING SOCIETY

# RESULT!



Open a Lincoln City Club Savers Account and support your club. Earn interest on your savings and a bonus for The Red Imps.

Minimum investment £100. Interest 0.10%<sup>Gross/AER\*</sup> variable interest paid annually. N&P pay a bonus to the Club equivalent to 1.0% of the average total balance held in all the Club accounts. From 1<sup>st</sup> January 2012, the annual bonus will reduce to 0.5%.

Visit your local N&P branch at 1 Alexander Walk, The Carlton Centre.

**BE ON TOP OF MONEY**

\*AER means Annual Equivalent Rate and shows what the interest rate would be if interest was paid and added each year. Norwich & Peterborough Building Society and N&P are trading names of Yorkshire Building Society. Yorkshire Building Society is a member of the Building Societies Association and is authorised and regulated by the Financial Services Authority (FSA registration number 106085). Principal office of Yorkshire Building Society: Yorkshire House, Yorkshire Drive, Bradford BD5 8LJ.

**COMMERCIAL**

**IMPVEST**

## CHRISTMAS & NEW YEAR AT SINCIL BANK

Try something a little different for your works Christmas or New Year Party and take some matchday hospitality with the Imps.

We have packages to suit any size business that offer a choice of catering in the restaurant or with a buffet as well as seating in an Executive Box or outside in the Executive section of the Lincolnshire Echo Stand. Plus we can give your day an extra special festive theme to get you well and truly in the mood!

Prices start from as little as **£29.50** per person which includes your match ticket, matchday programme, car parking, pay bar facility, complimentary tea and coffee, plus your Christmas/New Year themed catering options.

For more information contact the commercial department on 07971122234 or email [commercial@redimps.com](mailto:commercial@redimps.com)

## SPECIAL OCCASION?

If you are celebrating a special occasion, then why not do it with some match day hospitality with an Executive Box or a pre-match meal in the Duncan & Toplis Restaurant. We have packages to suit your needs and will go the extra distance with player appearances and presentations to ensure you have a memorable day out at Sincil Bank.

## SPECIAL OFFERS

To join our email database, which will bring you all the latest opportunities as well as special offers and some bargain last minute deals, send us your name and company name (if applicable) to [commercial@redimps.com](mailto:commercial@redimps.com) and we will add you to our database so you receive the latest hospitality information and offers.

## IMPS DIRECT 12 MONTHS ADVERTISING FOR £199<sup>+vat</sup>

You can promote your business on our Lincoln shopping portal, Imps Direct, at just £199 + vat for 12 months of advertising. Your business listing comes with a whole host of other benefits making it a superb value for money option to promote your business to thousands of supporters who want to support the businesses that support the Imps.

For more information email [danny@impsdirect.co.uk](mailto:danny@impsdirect.co.uk) for more details 01522 696302.

Sponsors Snaps

## Imps v Ebbsfleet united



**Top right:** The captains and officials line up before the game with representatives from The Lincolnshire Echo.  
**Bottom right:** The Lincolnshire Echo were matchball sponsors for our Blue Square Bet Premier game against Ebbsfleet United and after the game director David Featherstone presented their representative John Pakey with a memento of the occasion.

**Left:** The Batemans Man of the Match was Richard Hinds and he was presented with his award by John Pakey, representing The Lincolnshire Echo.



**BATEMAN'S**  
INDEPENDENT  
GOOD HONEST ALES





**BATEMANS**  
GOOD HONEST ALES



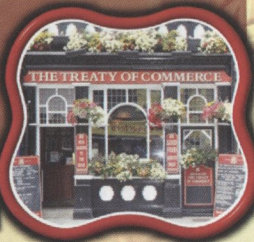
*SIX<sup>of the</sup> Best*

### TREATY OF COMMERCE

173 High Street, Lincoln

Now being run by new tenants serving a good selection of real ales and excellent home cooked food. Look out for the refurbishment planned for early September.

Tel No. 01522 262940



### DOG & BONE

10 John Street, Lincoln

Voted community pub of the year, the Dog & Bone offers regular activity from quiz nights to beer festivals. Here you will also find a beautiful beer garden a great place to enjoy a drink.

Tel No. 01522 522403



### VICTORIA

6 Union Road, Lincoln

A great cask ale house serving a wide selection of real ales and draught ciders, nestled under the stunning West Gate walls of Lincoln Castle.

Tel No. 01522 541000



### BUTCHER & BEAST

High Street, Heighington

Recently refurbished this terrific village pub offers cask ales, draught ciders and fine wines along with excellent food in traditional surroundings.

Tel No. 01522 790386



### PLOUGH

1 The Green, Nettleham

Excellent village pub offering a terrific range of cask ale and famous for it's Fish and Chips served every Friday.

Tel No. 01522 750275



### WHITE HART

14 High Street, Nettleham

With an extensive menu the White Hart has an excellent reputation for its food offer. An excellent place to celebrate those special occasions with friends and family.


Tel No. 01522 751976



*Bateman's Brewery are proud to supply LCFC  
with our Good Honest Ales*

Sticking  
Santa hats  
on everything  
doesn't make an  
IMPressive  
Christmas party

We believe there is more to a good Christmas party and have put together a fantastic value for money package for your works celebration this year at just £10 per head! Enjoy a two course meal, with Turkey and a dessert on the menu, you can then dance the night away with a disco all included in the price.

Not only this, but come 11pm we have teamed up with  to offer guestlist entry and special discounts for those that want to carry on the party in town!

Call the Christmas party hotline on 01522 563791 or 07951281338 for more details or to book your party in before the end of November!

Email: [christmas@redimps.com](mailto:christmas@redimps.com)

"There's More To Us Than Just Football" [www.sincilbank.com](http://www.sincilbank.com)



# Supporting the grass roots



## Football Foundation



FUNDING PARTNERS

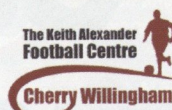
[www.footballfoundation.org.uk](http://www.footballfoundation.org.uk)

Improving facilities • creating opportunities • building communities

Charity No 1079309 • Company No 3676305

Looking for somewhere to have a kick about with your mates?

Manager or coach looking for somewhere to train?



The Keith Alexander Football Centre is a new state of the art 3rd Generation Synthetic Football Pitch (3G Pitch) and a new building with changing rooms, showers and a Learning Suite (conference room).

We cater for local community and local football teams/players.

Call now on 01522 751 040  
to book your slot for the 2011/12 season...

[www.thekeithalexanderfootballcentre.co.uk](http://www.thekeithalexanderfootballcentre.co.uk)



## L I N C O L N C I T Y SUPPORTERS TRUST

With the weather getting colder and the economic outlook getting even chillier you would think that there is little to feel optimistic about as you venture out on a Saturday afternoon or Tuesday evening to watch the Imps, however, the eternal optimist that lives in every football fan laughs in the face of such nonsense!

Stalwart Imp fans who rush to buy their season ticket every close season do so because they believe in our team, believe that this season is the one where things will be better and all that potential will be realised and a long run of victories is just around the corner – well certainly that's what I have felt for the last five seasons.

There is no doubt that the desperately poor start to the 2011/12 season rocked us all, challenging our optimism in the extreme – the result was a feeling of utter desperation and despondency that is up there, for many people, amongst the challenges facing the economy or the Eurozone; leaving us all fearing for a future even at conference level. However, the optimist has started to reassert itself – a new manager, a team with a new resolve and signs that results are starting to move in the right direction!

So, as we move towards Christmas we need to channel our irrepressible optimism and start pressing all our mates that lost their belief at the end of last season and decided that an afternoon at home with Sky Sports, or out shopping with the family was a respectable way to spend a Saturday afternoon – to all of them the time has come to start returning to the Bank.

The approach of the new management team, allied with the hard work of all at Sincil Bank AND our own eternal optimism is starting to regenerate a bit of a feel good factor, so let all of us diehards, standing here on a cold December night take that away with us and persuade even just one person to join us over the next few months to 'Come back to the Bank'; get the crowds up, get the noise up and help build momentum that will see us rise up the table.

I know that all of this is a hostage

to fortune and that there will be difficult matches ahead and dare I say it a few reverses, however, if the blind optimism of football fans sinks without trace then there really is no hope for the economy or the weather.

GEORGE LEE

## YOUNG SUPPORTERS EVENT

Lincoln City Supporters Trust hosted a Young Supporters Event on Saturday 26th November.

The event, organised by Trust Board members Mike Attwood and Duncan Bayes together with Community Development Worker Gemma McFaul, saw 15 young season ticket holders enjoy a question time with City players Josh Gowling and Josh O'Keefe.

The young supporters also took part in fun sports activities provided by Lincolnshire Sports Partnership, before being treated to a tour of Sincil Bank Stadium.

Also on hand to support the event were Neil Ferguson, Chris Ashton, David Beck and Kevin Clayton.

"It was a great success and all the youngsters enjoyed the activities with the majority rating it as excellent," said Mike Attwood.

"We want to encourage young supporters to become more involved in the Trust and this was a fantastic start. Many said the highlight of the day was speaking to players Josh O'Keefe and Josh Gowling.

"We are planning a further event in February and will circulate details in the new year."



LCST

## BRIDGE MCFARLAND SPONSORSHIP DEAL

Lincolnshire law firm Bridge McFarland is already one of the Imps' major sponsors and the firm has now agreed to sponsor the Lincoln City Supporters' Trust until 2014. As part of the new deal, members of the Supporters' Trust will be entitled to receive a 12.5% discount on legal services, including employment law, standard wills, lasting powers of attorney, conveyancing and family matters.

Bridge McFarland partner Richard Parnell said the firm was delighted to be strengthening its ties to the Club, its fans and members of the Supporters Trust.

"In the summer we agreed a three-year deal with Lincoln City to sponsor the South Park Stand - now the Bridge McFarland Stand - so we are very pleased to be able to extend this support to the fans through the Supporters' Trust," he said. Results on the pitch might not have been as good as the Club and fans would have hoped during the early part of the season but our priority is to offer long-term support to the Club and its supporters so that it can build for the future with confidence.

"With a new manager in place, these are exciting times for Lincoln City and we hope the Club will soon be back where it belongs in the Football League." Supporter Director David Beck said: "It has been a delight to work with Richard and his staff in setting up this deal. We are very grateful for the support Bridge McFarland have given both to the Club and now the Trust.

"The Trust has many legal responsibilities and this will be a great help. Of equal importance, Trust members can now receive a major benefit on what can sometimes be costly services."

Bridge McFarland has a long history of supporting local sport through sponsorships and has offices in Lincoln, Market Rasen, Louth, Skegness, Mablethorpe, Grimsby and Hull.

**Bridge McFarland**  
Solicitors



# THE RED IMPS

LINCOLN.YOURCITY.

# CHRISTMAS CRACKER!

Buy a Red Imps Christmas Cracker and you will be issued with three match tickets that you can use at any Lincoln City 2011/12 Blue Square Bet Premier home game.

This perfect Christmas gift, which is only available to purchase until December 23rd 2011, is available at the following prices:-

Stand	Adult	Concs	Junior
Co-op	£43	£33	£15
Echo	£43	£33	£15
Stacey West	£38	£28	£15
Bridge McFarland	£38	£28	£15
NTR Mobile Family	£38	£28	£15

Concession - 60+ / Student (NUS proof) / Disabled (proof of DLA medium/high rate, Bridge McFarland Stand only), Junior - Under 16

For further information please contact the LCFC Ticket Office on 01522 563786.

# ONE HUNDRED Years Ago...

Gary Parle takes a look back at City's 1911/12 Central League title-winning campaign.

## PLAYER PROFILE

### JOHN MANNING

One of the summer signings John Tom "Cracker" Manning filled the outside right position in all but one game during the season.

Born in Boston in 1886 he arrived at Sincil Bank after spells with local Boston sides Lindum, Swifts and Town before joining Hull City in April 1905. Nine goals in 54 games preceded a spell at Bradford Park Avenue (47 apps, 8 goals) and a season at non-League Rochdale before joining us in the summer of 1911.

Noted as "impervious to hard knocks, gets through by weight (he weighed 13st 1lb) where light men would be hustled off" he remained at Sincil Bank until 1919 making 90 Football League appearances (nine goals) as well as scoring 12 times in 106 games during the war.

After leaving City in August 1919 he went on to serve Rotherham County (5 apps) and Queen's Park Rangers (22 apps, 5 goals) before returning to Boston Town and ending his playing career.

He died in his home town in the early part of 1946.



January 27th 1912

Lincoln City 4

Glossop Reserves 0

For the first time in the season City went to the top of the table as they easily beat Glossop in a game where "they were not fully extended and had matters pretty much all their own way."

Walter Miller and Cracker Manning had already gone close before Andy Gardner hit a rising shot from 18 yards that hit the underside of the bar and rebounded well over the line. The goal was scored in the 25th minute.

Shortly afterwards Gardner again tried his luck from distance but

this time his shot was handled inside the area and a penalty awarded. Manning took the kick but put his shot wide of the goal.

The miss nearly proved costly just before half-time when Glossop wasted their best chance of the game as Berwick, with Tommy Fern out of his goal, shot "weakly and wide."

Within 60 seconds of the second half starting Billy Batty crashed the ball past Causer to make it 2-0 and five minutes later Manning made amends for his penalty miss by heading home a Horace Brindley centre to secure the points.

City continued to do pretty much as they liked with Causer saving superbly from

Miller and from a 40 yard effort by Gardner before the fourth goal came after 70 minutes.

Wattie Wilson stopped a Glossop attack and "dropped the ball in the centre to Miller who in a twinkling whipped it along the ground well wide of Causer to score"

Despite there still being 20 minutes to play and Lincoln continuing to attack there was no further scoring.

TEAM: Fern, Jackson, Wilson, Robson, Gardner, Wield, Manning, McCubbin, Miller, Batty, Brindley.

"City continued to do pretty much as they liked with Causer saving superbly from Miller and from a 40 yard effort by Gardner"

Immediately after the game the City players, with Barrell travelling as reserve, set off to the Oldham House Hydro in Matlock to prepare for the big FA Cup tie the following week when it was known they would face Wolves who had overcome Watford in their replay by 10-0!

Lincoln supporters were encouraged to purchase train tickets for the match priced at 4s 6d with the train leaving Lincoln at 9.40am and arriving in Wolverhampton at 2.30pm with the return leaving at 6.10pm and arriving back in Lincoln at 10.38pm.

In the event around 200 took up the offer and were present to witness one of the most controversial incidents in the entire history of the Club.

## CENTRAL LEAGUE FIXTURES 1911/12

DATE	OPPONENT	SCORE
09/09/1911	Blackpool res (A)	1-3
16/09/1911	Manchester U res (A)	2-2
23/09/1911	Bury res (A)	1-1
30/09/1911	Bury res (H)	3-2
14/10/1911	Liverpool res (A)	1-1
21/10/1911	Manchester C res (A)	4-0
28/10/1911	Oldham Ath res (A)	3-1
04/11/1911	Glossop res (A)	0-0
11/11/1911	Blackpool res (H)	6-2
16/12/1911	Bolton W res (H)	0-0
23/12/1911	Southport Central (H)	6-0
25/12/1911	Burslem Port Vale (H)	1-0
26/12/1911	Blackburn R res (A)	4-4
30/12/1911	Stockport C res (H)	8-0
01/01/1912	Everton res (A)	1-0
27/01/1912	Glossop res (H)	4-0



# high 7 aims

ACHIEVE YOUR GOAL

Commercial Strategies &  
Brand Development Specialists.

Tel: 01709 533144  
mark@highaims.co.uk

## Global Vision (CCTV) Ltd

"The total security solution..."

### Installation & Maintenance Specialists



CCTV  
Access Control  
Intercom  
Gate Manufacture & Automation  
Remote CCTV Monitoring

01522 531765

info@globalvisioncctv.co.uk



Unit O, Peregrine Mews, Dowding Road, Allenby Trading Estate, Lincoln, LN3 4PH

### TODAY'S MATCHBALL SPONSOR - GLOBAL VISION (CCTV) LTD

Global Vision (CCTV) Ltd is a security solutions provider based in Lincoln serving homes and businesses within the UK. Our services include installation & maintenance in the following areas, **CCTV**

Global Vision  
(CCTV) Ltd  
"The total security solution..."



CCTV systems can provide instant alerts when trouble occurs ensuring that crime against people, theft and vandalism are substantially reduced. And when an incident does occur, CCTV recordings can provide valuable evidence improving the likelihood of conviction.

#### Access Control & Intercom

Access control systems provide a range of technical solutions to a single problem; the need to allow free flow of authorised people whilst denying entry to unwanted guests.

Controlling who comes in through the front or back door is essential. However, this is only a small element of the full potential that access control systems offer.

#### Alarm

Our approach to intruder alarms and security alarm systems ensures that your system solution is user-friendly, simple, trouble free and effective at protecting your business, employees, visitors, information and assets.

#### Gate & Barrier Automation

Domestic and commercial gates are manufactured in our own workshop to your exact specifications. We deliver the design and the installation, providing the customer with a complete gate and barrier solution.

Global Vision (CCTV) Ltd offers total support and services to local and national businesses wishing to install or upgrade to today's leading edge security products.

From simple upgrades to the latest IP based technology we can recommend the most appropriate, cost effective and secure solution for you and your business.

### TODAY'S MATCHBALL SPONSOR - THE FRAME ROOM

The Frame Room is a new picture framing business which opened two years ago, on the Allenby Road

Industrial Estate, 13 Crofton Close, just round the corner from James Oliver Conservatories.

John Purdy along with Tim & Kate Waite were all made redundant in 2009 from Mitrecraft Wholesale and rather than be unemployed decided to open Framing Essentials which wholesales to the picture framing industry.

The FRAME ROOM is the retail side of the business. We are a bespoke picture framers with over 500 styles of mouldings to choose from. We offer contract framing for hotels, offices, shops, photographers and other small businesses whilst we also frame cross stitch, oil paintings, prints and we specialise in sporting memorabilia including football shirts. This year we were happy to frame for Lincoln City Football Club, framing their sponsorship shirts & shorts.

John Purdy has been a steward at Lincoln City for over 26 years and for over 12 years has run the Co-op Stand upper tier as senior steward.

The link with Lincoln City Football Club has taken a natural progression and we look forward to many years working with them.

The Frame Room has parking right outside the door and a lovely show room. We look forward to welcoming all Lincoln City fans to THE FRAME ROOM.

We wish Lincoln City Football Club every success in the future.

NEW to Lincoln...

THE FRAME ROOM



## COMMERCIAL CITY 11/12

### MATCHDAY SPONSORS...

16.08.11 KIDDERMINSTER HARRIERS

Match: Duncan & Toplis

19.08.11 WREXHAM

Match: Tokyo Lincoln

26.08.11 STOCKPORT COUNTY

Match: The Lincolnshire Echo

10.09.11 KETTERING TOWN

Match: Lincolnshire Sports Partnership

Matchball: Crusis Consultants

20.09.11 GATESHEAD

Match: Timber Stair Manufacturers

Matchball: Burgdens Group

Programme: Absolute Electrical

24.09.11 FOREST GREEN ROVERS

Programme: 7Core Electrical

01.10.11 BATH CITY

Match: Keith Alexander Football Centre

Matchball: Alan Gray

14.10.11 FLEETWOOD TOWN

Matchball: Visual Print

18.10.11 MANSFIELD TOWN

Matchball: Nicholsons Chartered Accountants

Programme: Lincolnshire Echo

05.11.11 BARROW

Matchball: Kirks Vets

26.11.11 EBBSFLEET UNITED

Match: SOS Skip Hire & Haulage

06.12.11 LUTON TOWN

Match: Global Vision

Matchball: Framing Essentials

Programme: High Aims

26.12.11 GRIMSBY TOWN

Match: Siemens

Programme: Drain Wise

07.01.12 YORK CITY

Match: Amber Fire Protection Ltd.

Matchball: Drain Wise

24.01.12 SOUTHPORT

04.02.12 CAMBRIDGE UNITED

Match: Timber Stair Manufacturers

14.02.12 BRAINTREE TOWN

25.02.12 AFC TELFORD UNITED

Match: Walkers Snack Foods

10.03.12 ALFRETON TOWN

24.03.12 NEWPORT COUNTY

Matchball: Double 'M' Snack Vans

Programme: Pub Solutions Ltd

31.03.12 TAMWORTH

09.04.12 DARLINGTON

Match: Siemens

Matchball: Timber Stair Manufacturers

21.04.12 HAYES & YEADING UNITED

Matchball: Burdens Group

Programme: Duncan & Toplis



# CENTRE OF EXCELLENCE

## CENTRE OF EXCELLENCE TEAM SPONSORS

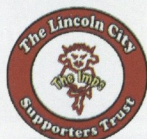
UNDER 9s

**EPS**  
ELECTRICAL & PROPERTY  
SERVICES LTD  
07860 462468

**3rd**  
eye  
security

UNDER 10s  
**AVAILABLE**

UNDER 11s



UNDER 12s  
**AVAILABLE**

UNDER 13s  
**GALAXY CABS**  
01777228000

UNDER 14s  
**AVAILABLE**

UNDER 15s  
**AVAILABLE**

UNDER 16s



To sponsor a Centre of Excellence team please contact the Youth Department via the Club Office.

The Football Association/Football League approved Centre of Excellence provides coaching for over 100 of the best local players from under 9 through to under 16.

Specialist goalkeeper coaching, guidance on diet, injury treatment and gym programmes are also provided.

Over 1,000 hours of coaching a season is provided by FA qualified part-time coaches and over the last few years more than three quarters of our Scholarship players (u17/18 Youth Team) have come from the Centre.



In addition the former captain of Liverpool reserves and current Hull City skipper Jack Hobbs, England international Scott Loach of Watford, Welsh U21 international Owein Warlow, Peterborough United's Republic of Ireland B international Lee Frecklington and several other players have come as a product of the Centre of Excellence.

## CENTRE OF EXCELLENCE FIXTURES 2011/12

The majority of home games for the Centre of Excellence are played at the Ravendale Drive facility in Lincoln. All spectators are more than welcome to attend matches with the remaining fixtures this season being as follows:-

DATE	OPPONENTS	U9	U10	U11	U12	U13	U14	U15	U16
29.01.12	Doncaster		H		H		H		H
12.02.12	Hartlepool			H	A	H	A	H	A
19.02.12	Boston	A	H	A	H	A	H	A	H
26.02.12	Hull	A	H	A	H	A	H	A	H
04.03.12	York			A	H	A	H	A	H
11.03.12	Notts Co	H	A	H	A	H	A	H	A
18.03.12	Scunthorpe	H	A	H	A	H	A	H	A
22.04.12	Burton	A	H	A	H	A	H	A	H
29.04.12	Chesterfield	H	A	H	A	H	A	H	A
06.05.12	Darlington			A	H	A	H	A	H
13.05.12	Doncaster	H	A	H	A	H	A	H	A
20.05.12	Grimsby	A	H	A	H	A	H	A	H



CENTRE OF EXCELLENCE SPONSORS



## YOUTH TEAM KIT SPONSORSHIP 11/12

Grant **BROWN**

Sally Howard



Andy **McMILLAN**

LCT Properties Ltd



Kevin **OXBY**

SEAS UK



Dan **COUPLAND**

**LINDUM**



Fraser **COBB**

**derry**  
BUILDING SERVICES  
Established Since 1794



Sam **DOWNEY**

Brauncewell  
Quarries



Karl **CUNNINGHAM**

RUSSELL  
CLARKE



Elliot **GREEN**



Tom **THACKER**

**Sleafordian**  
coaches

01529 303333



Nick **DRAPER**

Stuart Tindall



Oliver **PANNELL**

Stuart Tindall



Ryan **LEGGETT**

**LINDUM**



Conner **ROBINSON**



Jordan **THOMAS**

**DAIKIN**  
D1 APPROVED INSTALLER



Reece **THOMPSON**

**LINDUM**



Robert **TAYLOR**

RUSSELL  
CLARKE



William **RAWDON**

Lincolnshire Ceramic  
Tiling Ltd



Aaron **RICE**



Luke **WEAVER**

**LINDUM**



## YOUTH TEAM SPONSORSHIP OPPORTUNITIES

FOR SPONSORSHIP OPPORTUNITIES PLEASE  
CONTACT THE YOUTH  
DEPARTMENT VIA THE CLUB OFFICE



**HENDERSON**  
INSURANCE BROKERS

**YOUTH TEAM SHIRT SPONSORS**





# THE NEW LCFC 2011/12 HOME KIT OUT NOW



Call the Club Shop on: 01522 519321

## FIRST TEAM KIT SPONSORSHIP 11/12

David **HOLDSWORTH**

**FULL KIT:**  
James and Sonia Harbridge



Matt **CARMICHAEL**

**FULL KIT:**  
Galaxy Cabs, Retford,  
01777 228000



Sam **REES**



Joe **ANYON**

**HOME:** Available

**AWAY:** Matthew Biggs

**BOOTS:** Available



Josh **GOWLING**

**HOME:** Lincoln City Banter  
Facebook Group

**AWAY:** Phil and Lea Auger

**BOOTS:** Music Reviews  
Leonardslair.wordpress.com



Danny **HONE**



Jamie **TAYLOR**

**HOME:** Richard Solk

**AWAY:** Lincoln City Banter  
Facebook Group

**BOOTS:** Spalding Branch  
Supporters Club 07889084473



Alan **POWER**

**FULL KIT:**  
Hugh, Alan, Ruby  
and Lucy Johnson



Kyle **PERRY**

**FULL KIT:**  
Vital Lincoln &  
The 12th Man



Richard **HINDS**

**HOME:** Emily Biggs

**AWAY:** Double 'M' Snack Vans.  
Buffet Requests 07734852080

**BOOTS:** Lincoln City Banter  
Facebook Group



Francis **LAURENT**

**HOME:** Terry and Sue Miller

**AWAY:** The Morley Family

**BOOTS:** The Downs Family,  
Welbourn



Tony **SINCLAIR**



Sam **SMITH**



Simon **RUSSELL**

**HOME:** Available

**AWAY:** Russell Campling

**BOOTS:** Available



Nicky **NICOLAU**

**HOME:** Russell Campling

**AWAY:** James and Sonia  
Harbridge

**BOOTS:** Available



Bradley **BARRACLOUGH**

**FULL KIT:**  
Paul Brewer  
Geological Services Ltd



Andy **HUTCHINSON**



www.vipbincleaning.co.uk/lincoln



Josh **O'KEEFE**

**HOME:** Andy and Craig Bulley

**AWAY:** Available

**BOOTS:** Available



Gavin **McCALLUM**

**HOME:** Available

**AWAY:** Mark Ruane

**BOOTS:** Spalding Branch  
Supporters Club 07889084473



Adam **WATTS**

**FULL KIT:**  
Andrew Cottingham



John **NUTTER**

**FULL KIT:**  
James and Sonia Harbridge



James **WILSON**

**HOME:** Available

**AWAY:** Available

**BOOTS:** Available



Jean-Francois **CHRISTOPHE**

**FULL KIT:**  
Spalding Branch Supporters  
Club 07889084473



To sponsor your favourite Imps  
player contact the Commercial  
Department on 01522 563783



## ROLL CALL 2011/12

Name	11/12 BSBP			11/12 Cups			LCFC Career		
	A	S	G	A	S	G	A	S	G
Joe Anyon	17	0	0	1	0	0	44	0	0
Jean Arnaud	0	1	0	0	0	0	0	1	0
Bradley Barraclough	4	8	0	0	0	0	4	8	0
Jean-François Christophe	11	2	1	2	0	0	13	2	0
Nick Draper	0	0	0	1	1	0	1	1	0
Karl Cunningham	2	0	0	0	0	0	2	0	0
Paul Farman	5	0	0	0	0	0	5	0	0
Josh Gowling	15	1	0	0	0	0	21	1	0
Richard Hinds	5	0	0	0	0	0	5	0	0
Danny Hone	9	0	1	0	0	0	93	7	4
Andy Hutchinson	0	0	0	0	0	0	5	17	1
Francis Laurent	1	4	0	0	2	0	1	6	0
Gavin McCallum	16	1	3	1	0	0	42	13	6
Luke Medley	0	4	0	0	0	0	0	4	0
Mitchell Nelson	8	1	0	2	0	0	10	1	0
Nicky Nicolau	6	3	0	2	0	0	8	3	0
John Nutter	22	0	1	2	0	0	24	0	1
Josh O'Keefe	3	6	1	2	0	0	41	10	5
Kyle Perry	13	8	3	0	2	0	13	3	0
Conal Platt	5	0	1	0	0	0	5	0	1
Alan Power	21	0	2	2	0	0	23	0	2
Simon Russell	15	2	1	1	0	0	16	2	1
Jake Sheridan	2	1	0	0	0	0	2	1	0
Tony Sinclair	17	1	0	2	0	0	19	1	0
Sam Smith	14	5	6	2	0	0	2	16	5
Jamie Taylor	3	6	0	0	1	0	3	7	0
Jordan Thomas	0	1	0	0	0	0	0	1	0
Tyrone Thompson	3	0	0	0	0	0	5	1	0
Adam Watts	10	0	0	2	0	0	76	0	1
James Wilson	0	0	0	0	0	0	0	0	0
Ali Fuseini	15	2	1	0	0	0	30	5	1
Doug Lindberg	0	0	0	0	0	0	0	0	0
Curtis Thompson	0	1	0	0	0	0	0	1	0

**BLUE SQUARE BET PREMIER - TABLE**

	Team	P	W	D	L	F	A	GD	Pts
1	Wrexham	22	14	5	3	37	15	22	47
2	Fleetwood Town	22	14	5	5	35	27	18	47
3	Southport	23	13	5	5	48	34	4	44
4	York City	23	12	7	4	49	22	27	43
5	Cambridge United	22	10	9	3	31	19	12	39
6	<b>LUTON TOWN</b>	<b>22</b>	<b>10</b>	<b>8</b>	<b>4</b>	<b>38</b>	<b>22</b>	<b>16</b>	<b>38</b>
7	Gateshead	22	10	7	5	36	33	3	37
8	Mansfield Town	22	9	9	4	36	26	10	36
9	Kidderminster H	22	10	6	6	40	33	7	36
10	Forest Green Rovers	23	8	10	5	35	22	13	34
11	Barrow	23	10	4	9	35	34	1	34
12	Tamworth	21	9	6	6	26	23	3	33
13	Darlington	23	9	5	9	25	28	-3	32
14	Braintree Town	23	9	4	10	41	41	0	31
15	Grimsby Town	22	8	4	10	37	35	2	28
16	Ebbsfleet United	24	6	9	9	33	37	-4	27
17	Telford United	23	5	8	10	24	32	-8	23
18	Newport County	23	5	7	11	28	33	-5	22
19	<b>LINCOLN CITY</b>	<b>23</b>	<b>6</b>	<b>4</b>	<b>13</b>	<b>21</b>	<b>33</b>	<b>-12</b>	<b>22</b>
20	Kettering Town	23	5	5	13	26	49	-23	20
21	Stockport County	23	3	10	10	26	41	-15	19
22	Hayes & Yeading	22	4	5	13	30	48	-18	17
23	Alfreton Town	23	3	5	15	23	53	-30	14
24	Bath City	23	2	7	14	22	42	-20	13

## BLUE SQUARE BET PREMIER - RESULTS

**SATURDAY, 3 DECEMBER 2011**

Barrow 1-1 Ebbsfleet United
Bath City 3-1 Telford United
Darlington 0-0 Forest Green Rovers
Mansfield Town 4-1 Braintree Town
Newport County 1-0 Lincoln City
Southport 2-1 Alfreton Town
York City 7-0 Kettering Town

Date	V	Opposition	Res	Att	Away	Pts	Pos	Referee
Sat 13 Aug	A	Southport	2-2	1,687	578	1	7	R Clark
Tue 16 Aug	H	Kidderminster Harriers	0-1	2,448	84	1	17	K Evans
Fri 19 Aug	H	Wrexham	1-2	2,211	159	1	20	R Wigglesworth
Tue 23 Aug	A	AFC Telford United	2-1	2,323	179	4	14	D Bond
Fri 26 Aug	H	Stockport County	1-1	2,152	267	5	17	S Martin
Mon 29 Aug	A	Darlington	1-3	2,252	294	5	18	R West
Sat 03 Sep	A	Braintree Town	0-1	1,182	206	5	21	W Atkin
Sat 10 Sep	H	Kettering Town	0-2	2,269	173	5	22	N Kinsele
Sat 17 Sep	A	Luton Town	0-1	6,316	206	5	22	S Martin
Tue 20 Sep	H	Gateshead	1-0	1,587	36	8	19	M Bull
Sat 24 Sep	H	Forest Green Rovers	1-1	2,076	40	9	19	R Joyce
Tue 27 Sep	A	Barrow	0-1	1,181	110	9	21	S Duncan
Sat 01 Oct	H	Bath City	2-0	2,244	58	12	19	S Stockbridge
Sat 08 Oct	A	Tamworth	0-4	1,232	353	12	19	D Bond
Tue 11 Oct	A	Alfreton Town	3-1	1,323	410	15	19	T Harrington
Fri 14 Oct	H	Fleetwood Town	1-3	2,332	86	15	19	R West
Tue 18 Oct	H	Mansfield Town	1-1	2,944	981	16	21	P Bankes
Fri 21 Oct	A	Cambridge United	0-2	2,875	277	16	21	M Bull
Sat 29 Oct	A	Alfreton Town FAC4Q	1-1	1,000	488	-	-	A Fearn
Tue 01 Nov	H	Alfreton Town FAC4Qr	1-2	1,728	98	-	-	R Wigglesworth
Sat 05 Nov	H	Barrow	2-1	2,090	151	19	18	S Stockbridge
Sat 19 Nov	A	Wrexham	0-2	3,424	230	19	20	R West
Sat 26 Nov	H	Ebbsfleet United	3-0	2,111	91	22	18	S Martin
Tue 29 Nov	A	York City	0-2	3,155	325	22	18	D Handley
Sat 03 Dec	A	Newport County	0-1	1,270	127	22	19	K Evans
Tue 06 Dec	H	Luton Town						
Sat 10 Dec	A	Colwyn Bay FAT1						
Sat 17 Dec	A	Forest Green Rovers						
Mon 26 Dec	H	Grimsby Town (1pm)						
Sun 01 Jan	A	Grimsby Town						
Sat 07 Jan	H	York City						
Sat 14 Jan		FA Trophy 2						
Sat 21 Jan	A	Gateshead						
Tue 24 Jan	H	Southport						
Sat 28 Jan	A	Kettering Town						
Sat 04 Feb	H	Cambridge United						
Sat 11 Feb	A	Hayes & Yeading United						
Tue 14 Feb	H	Braintree Town						
Sat 18 Feb	A	Kidderminster Harriers						
Sat 25 Feb	H	AFC Telford United						
Sat 03 Mar	A	Mansfield Town						
Sat 10 Mar	H	Alfreton Town						
Sat 17 Mar	A	Bath City						
Sat 24 Mar	H	Newport County						
Sat 31 Mar	H	Tamworth						
Sat 07 Apr	A	Stockport County						
Mon 09 Apr	H	Darlington						
Sat 14 Apr	A	Fleetwood Town						
Sat 21 Apr	H	Hayes & Yeading United						
Sat 28 Apr	A	Ebbsfleet United						

[illegible]

# ENJOY THE GAME

**We want you to enjoy your match day experience here at Sincil Bank Stadium.**

If you feel intimidated or threatened on match day and are not comfortable speaking to a steward please text our dedicated help line 07530 794710 giving your name, stand, block, row and seat number.

We will then ask a senior steward to closely monitor the situation and take any action that they feel is appropriate

Enjoy the game!

**Steve Prescott**  
Chief Executive





## TICKET OFFICE

### NEXT UP HOME MATCH



## LINCOLN CITY v GRIMSBY TOWN

Sincil Bank Stadium, Lincoln, LN5 8LD

Blue Square Bet Premier

Monday 26 December 2011, ko 1.00pm

Please see below for pricing structure. Early Bird prices for this game will be valid up until 12.00pm on Friday 23 December 2011.

### TICKET OFFICE OPENING HOURS

Home match tickets can be purchased either in person at the Sincil Bank Stadium Ticket Office or by telephone using a credit/debit card on 01522 563786 (a £1 handling fee per card transaction will be in operation).

Ticket Office opening hours: 10.00am-4.00pm, Monday-Friday. Alternatively, early bird tickets can be purchased from MSR Newsagents on High Street, Lincoln between 7.00am-6.00pm Monday to Saturday and 10.00am-4.00pm on Sundays. Tickets for selected matches can also be purchased online at [www.redimps.com/tickets](http://www.redimps.com/tickets)

### MATCHDAY PRICES 2011/12

AREA	EARLY BIRD			MATCHDAY		
	ADT	CNC	JNR	ADT	CNC	JNR
Co-op Stand	£16	£12	£6	£18	£13	£7
Echo Stand	£16	£12	£6	£18	£13	£7
Stacey West Stand	£14	£10	£6	£16	£11	£7
Bridge McFarland Stand	£14	£10	£6	£16	£11	£7*
Family Stand	£14	£10	£6	£16	£11	£7
T&R Exec Lounge	£23	£23	£23	£25	£25	£25

#### Notes:

- Early Bird prices will be in operation until 5.00pm on the last working day before the day of the game (12.00pm for Internet purchases)
- Concession: 60 years or over / Student with NUS card / Disabled with proof of medium/high rate of Disability Living Allowance. To qualify for a complimentary helper's ticket, the supporter must be in receipt of a high rate of Disability Living Allowance. Proof of such criteria is always required when applying for tickets and will only be issued at the discretion of Lincoln City FC.
- Junior: 15 years or under.
- Students, on production of NUS card, will be charged junior rate for selected fixtures only, otherwise concession price will apply.

**PLEASE NOTE THAT CHEQUES ARE NOT ACCEPTED AS PAYMENT FOR MATCH TICKETS.**

Official Ticket Sponsors:



## COLWYN BAY v LINCOLN CITY

Red Lion Foods Stadium at Llanellan Road, Old Colwyn, Conwy, LL29 8UN, FA Trophy Round One  
Saturday 10 December 2011, ko 3.00pm

Admission prices will be £9 for adults, £5 for concessions and £2 for juniors. Seating and terracing available with no segregation. All fans pay on the turnstile.

#### RED IMPS TRAVEL SECTION COACHES:

Departs Sincil Bank at 9.15am - price £19.



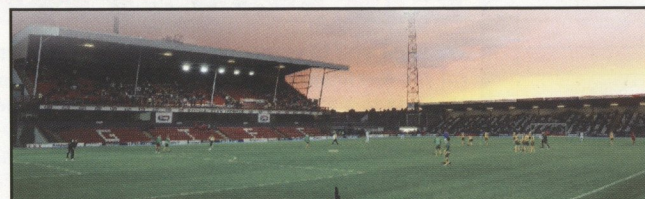
## FOREST GREEN ROVERS v LINCOLN CITY

The New Lawn, Nympsfield Road, Forest Green, Nailsworth, Gloucestershire, GL6 0ET, Blue Square Bet Premier  
Saturday 17 December 2011, ko 3.00pm

Visiting supporters are housed in the South (EES) Stand with admission prices being £15 for adults, £10 concessions and £3 juniors. Concessions: 65+ and students in possession of a valid student card.

#### RED IMPS TRAVEL SECTION COACHES:

Departs Sincil Bank at 10.00am - price £21.



## GRIMSBY TOWN v LINCOLN CITY

Blundell Park, Cleethorpes, DN35 7PY

Blue Square Bet Premier, Sunday 1 January 2012, ko 3.00pm

This game has been made all-ticket for visiting supporters and we have been given an allocation of 1,099 tickets for the Osmond Stand. Early Bird admission prices are £16 for adults, £10 for concessions and £6 for under-15s. Match day prices (subject to availability) are subject to a £2 increase in all age categories. Concession: Senior Citizen 65+ / Full-time Students (with ID) / 15-18 Years of age. Disabled supporters please contact Grimsby Town FC on 01472 605050.

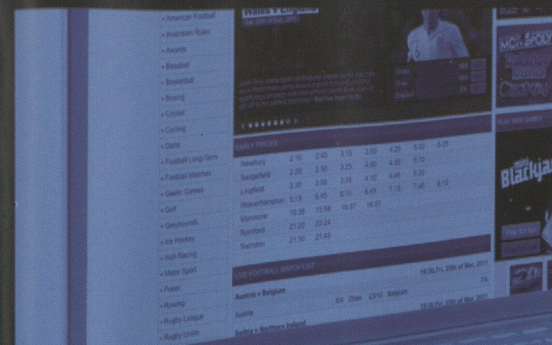
#### RED IMPS TRAVEL SECTION COACHES:

Sincil Bank at 12.30pm - price £10.

# ODDS FOR EARNING MONEY FOR YOUR CLUB WHEN YOU BET WITH BLUE SQUARE: ODDS ON



# ODDS FOR FINDING THE BEST RANGE OF NON- LEAGUE MARKETS ON BLUESQ.COM: ODDS ON



# ODDS FOR ANOTHER GREAT SEASON OF NON-LEAGUE FOOTBALL: ODDS ON



Visit [bluesq.com/fans](http://bluesq.com/fans) to find out how your bets can make money for your club



**bluesq.com**  
EVERYTHING IS PROBABLE



Available on the  
App Store

See website for full terms and conditions. Over 18's only. Blue Square encourages responsible gambling. [gambleaware.co.uk](http://gambleaware.co.uk)



## THE TEAMS



## LINCOLN CITY

**Manager:** David Holdsworth

**Colours:** Red & White

		PLD	GLS		
1	Joe ANYON	<input type="checkbox"/>	<input type="checkbox"/>	<input type="checkbox"/>	<input type="checkbox"/>
2	Richard HINDS	<input type="checkbox"/>	<input type="checkbox"/>	<input type="checkbox"/>	<input type="checkbox"/>
3	John NUTTER	<input type="checkbox"/>	<input type="checkbox"/>	<input type="checkbox"/>	<input type="checkbox"/>
4	Adam WATTS	<input type="checkbox"/>	<input type="checkbox"/>	<input type="checkbox"/>	<input type="checkbox"/>
5	Josh GOWLING	<input type="checkbox"/>	<input type="checkbox"/>	<input type="checkbox"/>	<input type="checkbox"/>
6	Danny HONE	<input type="checkbox"/>	<input type="checkbox"/>	<input type="checkbox"/>	<input type="checkbox"/>
7	Jamie TAYLOR	<input type="checkbox"/>	<input type="checkbox"/>	<input type="checkbox"/>	<input type="checkbox"/>
8	Alan POWER	<input type="checkbox"/>	<input type="checkbox"/>	<input type="checkbox"/>	<input type="checkbox"/>
9	Kyle PERRY	<input type="checkbox"/>	<input type="checkbox"/>	<input type="checkbox"/>	<input type="checkbox"/>
11	Francis LAURENT	<input type="checkbox"/>	<input type="checkbox"/>	<input type="checkbox"/>	<input type="checkbox"/>
12	Conal PLATT	<input type="checkbox"/>	<input type="checkbox"/>	<input type="checkbox"/>	<input type="checkbox"/>
13	Tony SINCLAIR	<input type="checkbox"/>	<input type="checkbox"/>	<input type="checkbox"/>	<input type="checkbox"/>
14	Sam SMITH	<input type="checkbox"/>	<input type="checkbox"/>	<input type="checkbox"/>	<input type="checkbox"/>
15	Simon RUSSELL	<input type="checkbox"/>	<input type="checkbox"/>	<input type="checkbox"/>	<input type="checkbox"/>
16	Mitchell NELSON	<input type="checkbox"/>	<input type="checkbox"/>	<input type="checkbox"/>	<input type="checkbox"/>
17	Nicky NICOLAU	<input type="checkbox"/>	<input type="checkbox"/>	<input type="checkbox"/>	<input type="checkbox"/>
18	Jean ARNAUD	<input type="checkbox"/>	<input type="checkbox"/>	<input type="checkbox"/>	<input type="checkbox"/>
19	Bradley BARRACLOUGH	<input type="checkbox"/>	<input type="checkbox"/>	<input type="checkbox"/>	<input type="checkbox"/>
21	Nick DRAPER	<input type="checkbox"/>	<input type="checkbox"/>	<input type="checkbox"/>	<input type="checkbox"/>
22	Andy HUTCHINSON	<input type="checkbox"/>	<input type="checkbox"/>	<input type="checkbox"/>	<input type="checkbox"/>
23	Josh O'KEEFE	<input type="checkbox"/>	<input type="checkbox"/>	<input type="checkbox"/>	<input type="checkbox"/>
24	James WILSON	<input type="checkbox"/>	<input type="checkbox"/>	<input type="checkbox"/>	<input type="checkbox"/>
25	Karl CUNNINGHAM	<input type="checkbox"/>	<input type="checkbox"/>	<input type="checkbox"/>	<input type="checkbox"/>
27	Jean-Francois CHRISTOPHE	<input type="checkbox"/>	<input type="checkbox"/>	<input type="checkbox"/>	<input type="checkbox"/>
28	Paul FARMAN	<input type="checkbox"/>	<input type="checkbox"/>	<input type="checkbox"/>	<input type="checkbox"/>
29	Jordan THOMAS	<input type="checkbox"/>	<input type="checkbox"/>	<input type="checkbox"/>	<input type="checkbox"/>
30	Gavin McCALLUM	<input type="checkbox"/>	<input type="checkbox"/>	<input type="checkbox"/>	<input type="checkbox"/>
32	Luke MEDLEY	<input type="checkbox"/>	<input type="checkbox"/>	<input type="checkbox"/>	<input type="checkbox"/>
34	Tyrone THOMPSON	<input type="checkbox"/>	<input type="checkbox"/>	<input type="checkbox"/>	<input type="checkbox"/>
36	Jake SHERIDAN	<input type="checkbox"/>	<input type="checkbox"/>	<input type="checkbox"/>	<input type="checkbox"/>

## MATCH OFFICIALS

**REFEREE:** Richard Clark

**ASSISTANT REFEREES:**

Stuart Richardson & Mark Hutchinson

**FOURTH OFFICIAL:** Andy Wood

## COMING UP

Monday 26 December 2011

## GRIMSBY TOWN

Blue Square Bet Premier, ko 1.00pm

Saturday 7 January 2012

## YORK CITY

Blue Square Bet Premier, ko 3.00pm

Tuesday 24 January 2012

## SOUTHPORT

Blue Square Bet Premier, ko 7.45pm

## FIXTURES

### TUESDAY 6 DECEMBER 2011

AFC Telford v York

Alfreton Town v Newport County

Braintree Town v Hayes & Yeading

Ebbsfleet United v Cambridge Utd

Forest Green v Tamworth

Grimsby v Mansfield

Kettering v Darlington

Kidderminster v Bath City

Lincoln City v Luton

Stockport v Gateshead

Wrexham v Southport

## SPONSORS

Kit



Pitch



Matchball



FOR TICKET INFO AND ALL THE LATEST CLUB NEWS PLEASE SCAN HERE WITH YOUR SMART PHONE...



## LUTON TOWN

**Manager:** Gary Brabin

**Colours:** White & Orange

		PLD	GLS		
1	Mark TYLER	<input type="checkbox"/>	<input type="checkbox"/>	<input type="checkbox"/>	<input type="checkbox"/>
2	Dan GLEESON	<input type="checkbox"/>	<input type="checkbox"/>	<input type="checkbox"/>	<input type="checkbox"/>
3	Greg TAYLOR	<input type="checkbox"/>	<input type="checkbox"/>	<input type="checkbox"/>	<input type="checkbox"/>
4	Keith KEANE	<input type="checkbox"/>	<input type="checkbox"/>	<input type="checkbox"/>	<input type="checkbox"/>
5	Dean BECKWITH	<input type="checkbox"/>	<input type="checkbox"/>	<input type="checkbox"/>	<input type="checkbox"/>
6	George PILKINGTON	<input type="checkbox"/>	<input type="checkbox"/>	<input type="checkbox"/>	<input type="checkbox"/>
7	Alex LAWLESS	<input type="checkbox"/>	<input type="checkbox"/>	<input type="checkbox"/>	<input type="checkbox"/>
8	Amari MORGAN-SMITH	<input type="checkbox"/>	<input type="checkbox"/>	<input type="checkbox"/>	<input type="checkbox"/>
9	Matthew BARNES-HOMER	<input type="checkbox"/>	<input type="checkbox"/>	<input type="checkbox"/>	<input type="checkbox"/>
10	Danny CROW	<input type="checkbox"/>	<input type="checkbox"/>	<input type="checkbox"/>	<input type="checkbox"/>
11	Robbie WILLMOTT	<input type="checkbox"/>	<input type="checkbox"/>	<input type="checkbox"/>	<input type="checkbox"/>
12	Shane BLACKETT	<input type="checkbox"/>	<input type="checkbox"/>	<input type="checkbox"/>	<input type="checkbox"/>
13	Stuart FLEETWOOD	<input type="checkbox"/>	<input type="checkbox"/>	<input type="checkbox"/>	<input type="checkbox"/>
14	Aaron O'CONNOR	<input type="checkbox"/>	<input type="checkbox"/>	<input type="checkbox"/>	<input type="checkbox"/>
15	Jake HOWELLS	<input type="checkbox"/>	<input type="checkbox"/>	<input type="checkbox"/>	<input type="checkbox"/>
16	Ed ASAFU-ADJAYE	<input type="checkbox"/>	<input type="checkbox"/>	<input type="checkbox"/>	<input type="checkbox"/>
17	Will ANTWI	<input type="checkbox"/>	<input type="checkbox"/>	<input type="checkbox"/>	<input type="checkbox"/>
18	Curtis OSANO	<input type="checkbox"/>	<input type="checkbox"/>	<input type="checkbox"/>	<input type="checkbox"/>
19	James DANCE	<input type="checkbox"/>	<input type="checkbox"/>	<input type="checkbox"/>	<input type="checkbox"/>
20	John Paul KISSOCK	<input type="checkbox"/>	<input type="checkbox"/>	<input type="checkbox"/>	<input type="checkbox"/>
21	Charlie HENRY	<input type="checkbox"/>	<input type="checkbox"/>	<input type="checkbox"/>	<input type="checkbox"/>
22	Paul CARDEN	<input type="checkbox"/>	<input type="checkbox"/>	<input type="checkbox"/>	<input type="checkbox"/>
23	Ryan BRUNT	<input type="checkbox"/>	<input type="checkbox"/>	<input type="checkbox"/>	<input type="checkbox"/>
24	Alex LACEY	<input type="checkbox"/>	<input type="checkbox"/>	<input type="checkbox"/>	<input type="checkbox"/>
25	Godfrey POKU	<input type="checkbox"/>	<input type="checkbox"/>	<input type="checkbox"/>	<input type="checkbox"/>
26	JJ O'DONNELL	<input type="checkbox"/>	<input type="checkbox"/>	<input type="checkbox"/>	<input type="checkbox"/>
27	Jamie HAND	<input type="checkbox"/>	<input type="checkbox"/>	<input type="checkbox"/>	<input type="checkbox"/>
28	Adam WATKINS	<input type="checkbox"/>	<input type="checkbox"/>	<input type="checkbox"/>	<input type="checkbox"/>
29	Dan WALKER	<input type="checkbox"/>	<input type="checkbox"/>	<input type="checkbox"/>	<input type="checkbox"/>
30	Kevin PILKINGTON	<input type="checkbox"/>	<input type="checkbox"/>	<input type="checkbox"/>	<input type="checkbox"/>
31	Lewis KIDD	<input type="checkbox"/>	<input type="checkbox"/>	<input type="checkbox"/>	<input type="checkbox"/>
32	Ash DEENEY	<input type="checkbox"/>	<input type="checkbox"/>	<input type="checkbox"/>	<input type="checkbox"/>
33	Ryan DASILVSA	<input type="checkbox"/>	<input type="checkbox"/>	<input type="checkbox"/>	<input type="checkbox"/>
34	Janos KOVACS	<input type="checkbox"/>	<input type="checkbox"/>	<input type="checkbox"/>	<input type="checkbox"/>
36	Christian TAVERNIER	<input type="checkbox"/>	<input type="checkbox"/>	<input type="checkbox"/>	<input type="checkbox"/>
39	Tommy WRIGHT	<input type="checkbox"/>	<input type="checkbox"/>	<input type="checkbox"/>	<input type="checkbox"/>