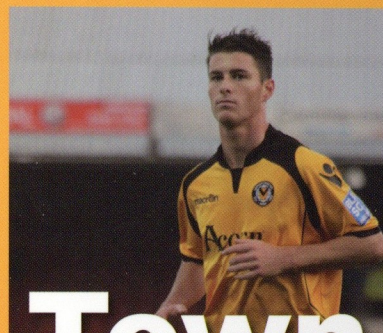


County

Official 2011-12 programme



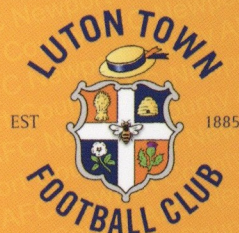
Luton Town

£3

Blue Square Bet Premier

3.00pm KO

Saturday 26th November 2011



Acorn



COUNTY PROFILE

Tim Thraves

Last time out we profiled Lisa Savage, who does a huge amount of work in various roles, much of it unseen. This week's interviewee, Tim Thraves, is heard every week as our main PA announcer, and by many of us over iRadio either home, away or both.

I needed reminding how long iRadio has been running and wondered if Tim can recall his first game. "This is the fourth season, and this season it's in conjunction with Newport City Radio. Unfortunately I can't quite remember my first game but I have a feeling it could have been Bishop's Stortford at home. I joined the team who had been broadcasting for a few weeks, and they of course were Phil Morgan and Ray Taylor. I was perhaps fortunate that I'd had previous experience having commentated with Richard Shepherd for Gwent Hospitals over 35 years ago in the good old Fourth Division as it was then. I'm almost certain that we were the first club with this initiative in the Blue Square South and possibly in all of non-league football."

Fortunately, commentating doesn't mean haling large amounts of kit, but Tim does keep two microphones on the go. "For home matches I have a dual role combining iRadio with being public address announcer. It's hard work with never a moment to spare, but I'm very fortunate to have Steve Williams alongside me for home games. I can't thank him enough because I often have to pause commentary to hand over to Steve while I announce a goal etc.. He has added so much and does a lot of hard work and preparation for match days. For away games I take the traditional laptop praying that it will always work. Again we can experience some problems but most of the time it appears to be okay. The equipment hasn't really changed that much and I'm always in contact with Steve to try and solve any problems. I wouldn't say that it's turned me into an audio geek; I just get a lot of pleasure bringing the service to County fans all over the world."

Travelling supporters don't find all clubs we visit uniformly welcoming, but Tim was full of praise for the help he gets and, indeed, singled out today's visitors Luton: "I've found nearly all clubs to be very welcoming but the best for me have to be Luton Town - different class - and Fleetwood Town. Luton are so professional. The press box at Kenilworth Road is superb, with individual lighting systems and a press room. I also like Grimsby Town, Cambridge United and Mansfield Town. My least favourite has to

be Braintree Town, with a shallow ledge and only enough space for five press when we played there this season. I had to commentate with the laptop literally on my lap for three hours with a microphone in my left hand and a clipboard in my right."

Tim has to arrive at away grounds about two hours before kickoff, and there's hours of homework to be done before any game, but one thing is easier now we are in Blue Square Premier. "Squad names on the back of the shirts are a godsend."

And it's good to hear that our own media facilities are now well up to scratch: "This season we have

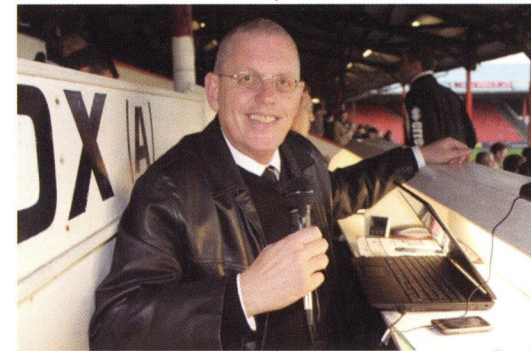
a new press box which had to be done and now accommodates up to 18 press and takes up part of the back row of the main stand. It has a really good view and has been well received by all visiting press and they are able to broadcast quite easily."

I wondered if Tim can still enjoy a game while commentating, or if it just passes by. "The games just seem to fly by because of the concentration I have to give for every game. It's never easy but no matter what you just have to keep talking throughout and never try to hesitate."

And exposure to the elements? "The coldest I have ever been had to be the away match at Eastleigh during our promotion season. We were perched up in an exposed grandstand and it felt like minus 5 degrees that night. Still we won the match I think 4-1 (correct) and Sam Foley scored a cracker."

Does Tim have time to follow any other sport? "I'm certainly not into egg chasing I'd rather watch a good film. I devote all my spare time to the club that I love and I have a very understanding wife in Liz. I don't mind watching cricket, Formula One and events like Wimbledon. If I could have a freebie for any event in world sport then I would have to answer in all fairness and say that I have already had this, having been so lucky that I was at the World Cup final in 1966. It was an incredible experience being one of 100,000 in Wembley that day and I still have memorabilia."

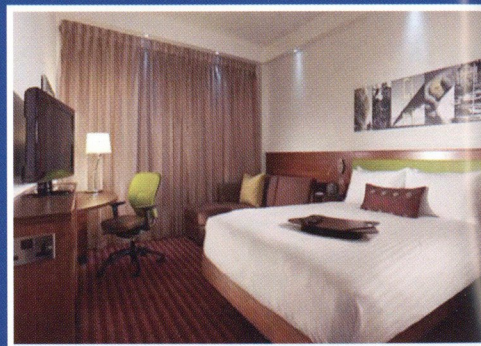
Finally, where does someone who never misses a minute of any of our games stand in the "amber versus orange" debate? "I know I'm going to upset a lot of people when I say this, but I liked the all orange strip. It stood out and it certainly worked for us. Why change when it worked so well?"



there's a new hotel in town!

With a great location at junction 23a of the M4 Newport, the Hampton by Hilton Newport East hotel puts South Wales at your doorstep at a price to suit every pocket. Enjoy the spoils of the FREE Breakfast, FREE Car Park and FREE High Speed Internet, making the Hampton by Hilton Newport East "The Smarter Way to Stay".

Proud supporter of Newport County AFC



we love having you here.



FREE high-speed internet



100% satisfaction guarantee



FREE hot breakfast



Rates from
£55*



Newport/East, UK • Wales 1 Business Park, Newport Road • Magor, United Kingdom
www.hamptonbyhilton.co.uk • 01633 749999

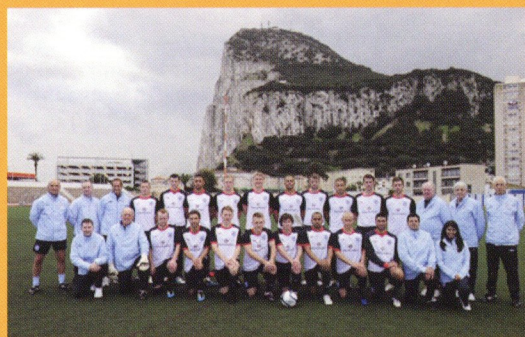


Official Sponsor



SCENE AT SPYTTY

With Phil Tanner



FURTHER HONOUR FOR DANNY:

Danny Rose is becoming a fixture for the England "C" team and was named in the squad to play in Gibraltar the Tuesday after the Shrewsbury game. Better than that, Danny captained England, although it was no happy ending as the team from The Rock won 3-1. The game was technically a representative friendly as Spanish influence is blocking the hosts' bid for full international status despite a ruling in Gibraltar's favour by the International Court of Arbitration in Sport.

Danny told the club website: *"I did have a lump in my throat, I have to admit. As a player you want to just be in the starting line-up, but to be captain, well it doesn't get much better than that and it does give that bit more spring in your step – everybody in the room clapped."*

DATE FOR YOUR DIARY:

As reported on the NCAFC Trust's page elsewhere in this edition, there will be a **Christmas Fayre at BarAmber on Monday evening, 5 December** with local traders in attendance. **Amber Sports** will also be open for your County-related Christmas shopping that evening from 5.30 till late. How about one of these anti-rain devices for the outdoor devotee in your family, as modelled by Sam Foley?



AND MORE DATES:

Don't forget the Trust is putting on tribute band **The Smiths Ltd** at Six Feet Under on Stow Hill this very evening. The gig is a fundraiser for **St Anne's Hospice**, a most worthwhile cause.

Christmas will be on us before we know it. **The Newport County AFC Carol Service** featuring the City of Newport Male Choir and Eveswell School Choir will be held at St John's Church in Maindee on Thursday 15 December at 7 p.m. All most welcome.



CALLING COUNTY FANS on the Costa Blanca: Supporters **Margot** and **Dave Bowen** have relocated to Spain and are now mine hosts at **The Bar Sol** on the seafront in the resort of La Cala Finistat on the

outskirts of Benidorm. (Look for the black and amber sign!). If you live on the Costa Blanca or are ever visiting Benidorm, the number 12 and 41 buses from Avenue Europa will take you there at a fare of 1.30 euros, or a taxi will cost roughly 12 euros (assuming the euro survives...) And of course EasyJet pays commission on flights booked through the NCAFC Trust web shop. Bar Sol screened the Shrewsbury FA Cup tie. This photo has reached us via Peter Board of **Seren Fach Nursery**:



If you are drinking closer to home this Christmas, don't forget that **Newport County Bitter** by the Rhymney Brewery can be ordered by the case via Hospitality - £20 for a case of 12.



WELCOME BACK:

In a series of profiles in the first half-dozen programmes this season we said thanks to players who had left us during the summer, and particularly those who were members of the record-breaking Blue Square Premier championship squad two seasons ago. It's stating the obvious, but we are very unlikely to see anything like it again and these guys will be legends in Newport like the Lisbon Lions are in Glasgow or the 1968 European Cup team in Manchester. Or half of Glasgow and half of Manchester, at least.

Today we welcome back the first of that great group to play against us in the shape of Charlie Henry. Charlie played 43 + 12 games in the league in a season and a bit here, scoring 11 goals, before joining the Hatters almost exactly a year ago as he was understandably keen to move back to his home area. Previously he was a thorn in our side on behalf of Cambridge City, a goal here helping knock the final nail in our hopes of making the playoffs in 2006-07, and for Havant & Waterlooville. Charlie has had a nightmare since with a foot injury and was only recently back in action with Luton's reserves, so he may not feature today, but if he does he's sure of a great welcome – as he was when chairman Chris Blight presented him with his shirt ahead of the Hayes game at Spytty just after he left.

Thanks for the memories, Charlie, and all the usual stuff about wishing you three points except when you play against us...

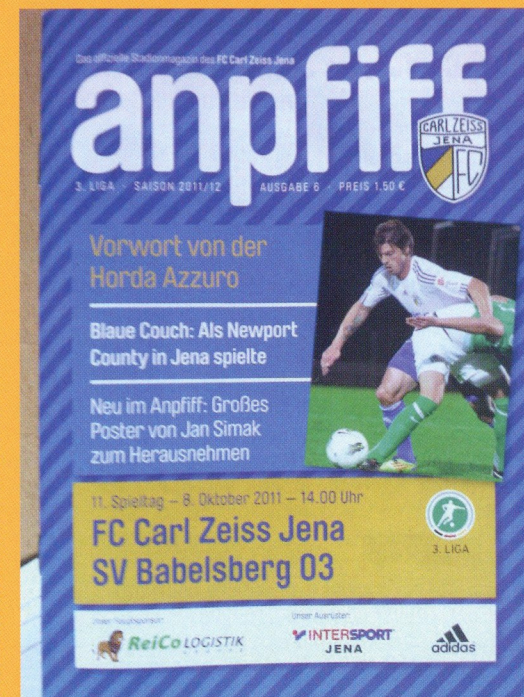


NOSTALGIA'S NOT WHAT IT USED TO BE:

Many of you will have seen the 20 minutes or so of highlights from the March 1981 Carl Zeiss Jena Cup Winners' Cup game on ESPN Classic the evening of the Shrewsbury FA Cup game.

I'd only ever seen a few seconds of the game before and the save at the very end by Hans-Ulrich Grapenthin to deny County a 1-1 draw and passage through on away goals was simply extraordinary, one of the best you will ever see on TV. And that's apart from half a dozen efforts off the line or the woodwork. Keith Oakes, whose header was tipped over in that dramatic finale, features in "Look Back in Amber" elsewhere in this edition.

As we reported in the programme for the Hayes & Yeading game in August, NCAFC Trust chairman Tony Pring went back to Jena this summer 30 years on and it's clear the



games are well remembered there too. We have since featured in one of their matchday programmes:



TODAY'S BALLBOYS are from Usk Juniors 9-11s. Big thanks for joining us and we hope you have a great day at one of our biggest games of the season so far.

Newport County Supporters' Trust



The Supporters' Trust has been working away behind the scenes trying to expand its influence and find imaginative ways to raise funds and promote our club.

The ever popular Pontoon competition has been running again and we have a winner for game one in the shape of Director of Football Tim Harris, who we hope will be reinvesting some of the £200 cash prize in game two! If you are interested in taking part please email info@ncfctrust.org or call in to the Trust table before any home game. For those unable to get to a game we are also happy to take payment via the PayPal link on the Trust website. A team costs £10 and once payment has been received a team will be drawn at random for you.

Elsewhere the Trust is arranging a Christmas Fayre in BarAmber on Monday 5 December when local vendors will show off their wares to the Newport public. This exciting venture should bring in many visitors and also help to attract potential future users of BarAmber. Only a small number of stalls are still available for the evening and if you are interested in participating or know anyone who would be, in the evening please contact us at the email address above. There will also be local carol singers. The Trust sees such an event as a natural extension of the successful summer open day.

Tickets are now being sold for the County Bounty Christmas draw. It's £1 a ticket and prizes include an LCD TV, Nintendo Wii, Apple iPod, a Kindle e-book reader, an X-Box and many more. Tickets are available on match days and also from Icon Computers on Malpas Road. If you could help by selling tickets at home or in work please contact any committee member or email us at the address above. Hopefully we'll help make some County supporters very joyous for Christmas!

The other fundraising event that the Trust wants to promote heavily is the on-line shop, which you can find at www.countyshop.co.uk Proceeds passed £7,000 last weekend and it is absolutely essential that all supporters and their friends and family search for their on-line purchases via the Trust link. Anything you buy via this link at retailers including Amazon, Play.com, Marks & Spencer and John Lewis generates a percentage to the Trust by way of commission. Effectively it's free money to help the Trust meet its fundraising target for this season. Please spread the word as far as possible!

Away from fundraising and into the more practical areas of how our club is run. Trust chairman Tony Pring has been working with County chairman Chris Blight to arrange a brainstorming session with other Trust-run clubs so we can learn from best practice and further strengthen the fundamental core of our club through supporter involvement. High on the list of targets to meet will be AFC Wimbledon, though plenty of other clubs also have strengths well worth reviewing, including Telford and Exeter. This very forward way of thinking is to be welcomed as it will lead to a club that is run within its means and a club that draws its strength from its community rather than a heavy reliance on any one person's individual wealth. To quote an old BT advert, "it's good to talk".

Last weekend we played at Grimsby Town, whose own trust formed in 2007 currently owns over £15,000 worth of shares. The Grimsby Trust was dormant until recently but now has a growing membership and is in dialogue with the club's board. The simple fact is that carrying the burden of running a club in such difficult times is a huge burden for any board of directors, so any chance to spread the load should be grasped with both hands as is happening up on the north Lincolnshire coast. We are always happy to make contact with trust members from other clubs and we enjoy the exchange of ideas and draw off their enthusiasm for their clubs. The Grimsby Trust's current position is that they don't want a seat on the board, but with a large amount of shares it can only be a case of how long before they get drawn towards the heat of the flame of power that comes with making vital decisions for your club. We wish them luck.

On other fronts it's great to see the Trust movement achieving success within Wales. Our old rivals Swansea City, who rightly make great play of their 20 per cent supporter involvement, have been illuminating the Premier League. It's hard to believe that only nine years ago Swansea fans were asking other Welsh supporters to support their fundraising to help save the Swans from relegation from the Football League. At the time of writing this they have just gone off to a standing ovation from Anfield after a display of exciting attacking football. The Swans really are a fine example of not only how to play football but also how a partnership of fans and business and local government can work together to promote the game as a community project that enriches their city and the surrounding areas.

Way up north our friends in Wrexham are defying all the odds and starting to succeed both on the field and more remarkably off it as their Trust takes over the running of the club and tries to secure a safe and long future for it. It was absorbing to watch the strength of mind and clarity of vision shown by their Trust as they played hardball with the club's former owners, who coveted the money the Trust had in the coffers but refused to let them acquire any power. Eventually the Trust won through and we wish them good luck as they now have to deliver on many different fronts and not just on a single issue.

Please join our Trust and enjoy the game!

AMBER ARCHIVE

with Ade Williams
Honours all even

Today's visitors Luton Town are arguably the biggest fish currently in the Conference Premier pond; certainly it doesn't seem so very long ago to this scribe that they were playing at slightly more illustrious venues than Spytty Park! Who remembers that epic Hatters side of the mid-1980s, circa Ricky Hill, Brian Stein and Paul Walsh; League Cup winners in 1988 et al and of course "that" plastic pitch? It's almost a footballing crime to see them playing at this level.

County gaining promotion to the country's pinnacle non-league division in 2010 and swapping the likes of Thurrock for Luton was what promotion was all about; and fixtures like today's only grotesquely emphasise just how vital it is that Newport remain in this league. The difference between the "now" and "then" in terms of fixture quality couldn't be more striking.



When we faced the Hatters home and away last season, it was with great excitement amongst our long suffering fan base; especially the initial fixture at Kenilworth Road on a balmy August evening on which over 400 Newport supporters headed to Bedfordshire. Many older followers had feared we might never see nights like this again and the boisterous Welsh contingent certainly added to a sparkling atmosphere from a crowd just shy of seven thousand; the largest gathering the newly-formed club had appeared in front of.

The Exiles did themselves justice too, contributing fully to a highly entertaining

match in which the honours ended all even. If last Saturday's draw at Grimsby felt rather more like a defeat, then this one undoubtedly felt like a victory. Kerry Morgan had already blasted an early shot wide before Newport opened the scoring on 26 minutes. Charlie Henry cut menacingly inside from the left flank before rattling a 20-yard effort past Town keeper Mark Tyler. The celebration that followed was more emphatic than the goal itself;

Henry sprinting the length of the pitch before performing an audacious flip in front of the jubilant away fans; what ever happened to him, I wonder?!

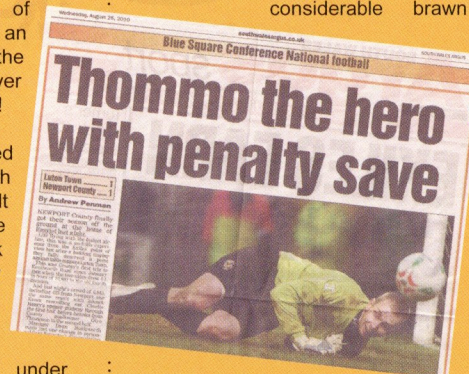
Unfortunately, that lead lasted all of four minutes; a Keith Keane corner wasn't dealt with terribly well and in the melee that followed, Zdenek Kroca bundled the ball over the line. A fine save from Glyn Thompson ensured half-time parity for Newport, before the visitors came under increasing pressure in the second-half. When Danny Rose tripped his namesake Crow, 17 minutes from time, referee Mr Berry pointed to the penalty spot and it looked as if all County's hard work would count for nothing. Thankfully, Matthew Barnes-Homer stepped up and drew loud cheers from the away end as Glyn Thompson dived to palm away his spot kick and earn Newport a memorable point.

By the time the Hatters came to South Wales for the return fixture on a chilly Friday night in February, much had changed at County. The team that had gone into the New Year absolutely flying, proudly sitting second in the table, were now slipping away at a rate of knots; the club was searching for a new manager and the prolific top scorer had been sold. The Exiles hadn't won in their previous eight games and the contrast in mood between now and that enjoyable evening in August was rather emphatic.

Once again the honours ended even; only this time it was thanks to the very last kick

of the match. Certainly Luton would have felt a little miffed not to have taken maximum points; they led for an awfully long time after Robbie Willmott had drilled them into the lead on 18 minutes. Sure there were question marks over County's defending; but Willmott's finish past Thompson was quite clinical. The Hatters could and probably should have even added to their tally on occasions.

The second period produced considerable brawn



from the now energetic home side, albeit without ever possessing the necessary quality to penetrate a Luton defence that now seemed more than happy to see the game out. As the minutes ticked furiously by, Newport felt they had more than one extremely valid penalty shout; particularly when substitute Yemi Odubade had his legs unceremoniously whipped from under him, only for Crawley whistler Mr Atkin to bizarrely wave play on. Just as the collective blood pressure amongst the exasperated crowd of 2,834 reached boiling point, the pendulum swung and County's luck dramatically changed

some three minutes into added time, when a penalty was finally awarded for a trip on marauding full-back Paul Bignot. It seemed the least likely of the three shouts for a spot-kick in all honesty, but nevertheless Jamie Collins stepped up and showed nerves of steel to whack the ball into the bottom corner and earn County another precious point.



NOEL FITZPATRICK LTD

CIVIL ENGINEERING & PLANT HIRE CONTRACTORS



OVER 35 YEARS OF QUALITY & RELIABILITY

SUPPORTING NEWPORT COUNTY

CIVIL ENGINEERING DEMOLITION & EXCAVATION

CPA

Langland Way, Reevesland Industrial Estate,
Newport, South Wales, NP19 4PT

TEL: (01633) 290077

FAX: (01633) 277222 Visit our website at: www.noelfitzpatrick.ltd.uk

ROBERTS & CO

Simply Leagues Ahead!!

www.robertsandcoestateagents.co.uk

Welsh Autoparts Distribution Ltd

MOTOR SPARES FOR ALL MAKES

(George Ford & Sons)



GEORGE FORD & SONS

Unit 30 Leeway Industrial
Estate, Newport
Tel: 01633 281008
Fax: 01633 284832
Exhaust Warehouse, Npt.
Tel: 01633 212422

BRANCHES AT

Bessemer Rd, Cardiff
Tel: 029 20230333
Pontypridd Road, Porth
Tel: 01443 681019
Broad Street, Barry
Tel: 01446 747552

JAPANESE PARTS

Bessemer Rd, Cardiff
Tel: 029 20225586

John Griffiths

AM for Newport East

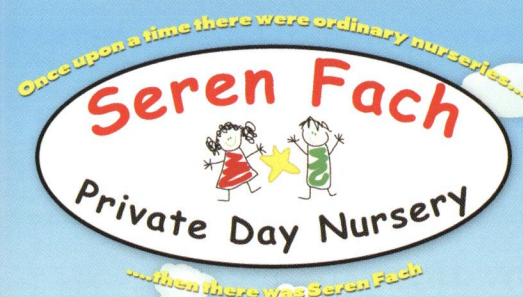
John holds regular advice
surgeries throughout
Newport East.

For help, advice or
surgery details,
please get in touch



Tel: 01633 222 302 or
029 2089 8303

E-mail: john.griffiths@wales.gov.uk



**Beautiful Architect designed Nursery.
Idyllic rural location in 3/4 acre grounds.
Outstanding inspection reports.**

School Close,
Caerleon Rd,
Ponthir,
Newport,
South Wales
NP18 1GA

01633 431300
serenfach.com

M G & M V TAYLER

Family Business Est. 1934



**The General Store
for all your Local Goods**

**20-21 Church Road,
Newport**

Telephone 01633 662679

COMMERCIAL SCENE

with Alan Coombs

Today's Match Sponsor

ADRIAN SIMMONDS

Newport County AFC are delighted to welcome long standing Newport County supporter Adrian Simmonds as match sponsor for today's match with Luton Town. Adrian lives in Enfield nowadays but still looks out for our results and listens to our radio commentaries whenever possible. We would like to thank him for sponsoring our match and hope he and his party have a great day – and see a home win!



We asked Adrian about his life following Newport

County: "I first started supporting Newport County as a seven-year-old in 1950. My father, Ron Simmonds, was a regular and one of the army of 10,000 who went to Portsmouth in 1948. I became an "exile" myself in 1961 when I went up to King's

College London and my subsequent travels started with a year in France where I kept in touch by picking up BBC Sports Report. I went much further afield in 1970 when my London-based international steel-trading company posted me to Bombay to run the India business. Every Saturday I'd be tuned in to the BBC World Service on short wave, praying that our result wasn't drowned out by interference, in which case I'd have to await the arrival of The Sunday Telegraph which normally arrived on the Monday. We returned to Enfield in late 1974 and have lived here ever since, though my short wave radio got plenty of use again on my regular travels to the sub-continent and other parts of the world. I followed the County to a number of grounds not too far away such as Enfield, of course, where we lost 3-0 at Southbury Rd in 1988. This is now the site of a leisure centre and cinema complex.

I did drive down with a friend to watch all three of our European Cup Winners' Cup matches, 4-0 against Crusaders, 6-0 against the Norwegians and that 1-0 defeat against Carl Zeiss Jena. Illness has reduced my attendances at County matches over the last few years but I did sponsor the Havant and Waterlooville match in season 2009-10. I was determined to get Luton this season and as soon as the fixture list was out, I was on to Alan Coombs to reserve this "plum" match for me.

On the Friday evening before this match, most of my local relatives will be joining us for a small celebration dinner to mark the anniversary of our engagement on 25/11/1967. Let's hope the date is a good omen and that come 5.00 p.m., we'll have 3 points to celebrate. One thing's for sure, all my "extended family" - the Jenkins, Wilkins, Thomas and Graves families - as well as Anne

and I will be rooting hard for County today."

By the way, Jon Wilkins is the owner of the company, Jdsignandprint which is advertising on page 41 of the programme. Jon's younger son, Matt, is in the Newport County Academy under-12 side while 16-year-old Nathan plays for Caldicot under-18s. Jon and both boys will be in Adrian's party today along with Frank Jenkins, who had a long career in the old Welsh League First Division.

Today's match ball sponsor

We are fortunate to have two ball sponsors for this afternoon's match, Peter Chappel and PBH Cleaning. We would like to thank both for their support.

Newport County AFC would like to welcome Paul Hughes and PBH Cleaning Services Ltd yet again to this afternoon's match and would like to thank them for their regular sponsorship. So far this season, PBH Cleaning have been match ball sponsors at our friendlies with Stoke City and Bolton Wanderers,

**P.B.H.CLEANING
SERVICES LTD**

our league match with Stockport County and our FA Cup tie with Shrewsbury Town. PBH Cleaning is a

family-run firm with over 18 years experience in contract cleaning covering the South Wales area.

"We have only trusted and experienced staff at our disposal and take pride in our excellent customer retention rate due to our unparalleled service and excellent results". PBH covers all areas and aspects of cleaning such as office cleaning, graffiti removal, void cleans, floor maintenance, bin area cleans, domestic cleaning, kitchen deep cleans, end of tenancy cleans, carpet cleaning and much more.

"Our company is growing and continuing to perform

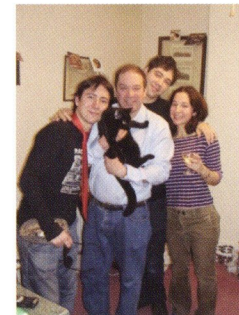
to the highest standard providing our customers with reassurance, professionalism and expertise when they need it most. Therefore if you need it cleaned call us - we'll be happy to help".

Tel. 07988071248 - E-mail phughes106@aol.com

Many thanks Paul for your support. Let's hope you see a home win today.

PETER FORD CHAPPEL



Newport County AFC would also like to welcome Peter Chappel and his family to this afternoon's match with Luton Town and would like to thank them for sponsoring the match ball.



Peter Chappel has been a Newport County fan since the mid 60s. Although he now lives in London and works in the City he usually "gets down" to see a few games a year and always watches our matches in the London area. When asked about his favourite players of all time, he: "Alfie Hale: Irish inside forward 1966. Top scorer, signed from Doncaster and always gave 100 per cent. Len Hill: Inside forward 1966-1971. Very attacking and exciting player, also played cricket for Glamorgan. John Aldridge: Played early 1980s - Was a hero for the Port and went on to be a superstar at Liverpool".

The photograph above shows Peter with his children William, Edward and Anna along with his black cat Collins. Let's hope Collins brings us luck this afternoon! We hope that William, Edward and Peter enjoy their day at the stadium and thank them again for their support. Let's hope they see us collect three points.

County Lottery

 **Your chance to win
£3000 in the County Lottery
Christmas Draw!** 

Every year there is the special Christmas Draw with a prize of £3,000 and three prizes of £1,000. The draw will be made during the first week of December. If you join now you will be eligible for this year's draw. Don't delay, join up right away.

The following winners were drawn on Thursday 17th November.

£500 M Gibson Risca

£100 S Sullivan Newport
£50 P Burgess Newport
£50 D Powell Newport

Congratulations to you all.

If you wish to join the County Lottery, please telephone 01633 662262 or use our website: www.newport-county.co.uk



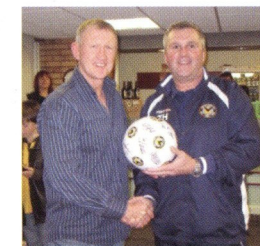
Match ball sponsorship



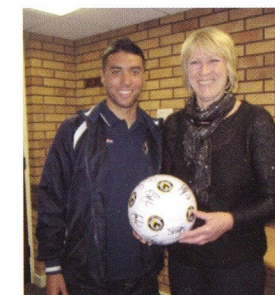
Here's another idea for a Christmas present. Why not take out a match ball sponsorship for a friend or relative and support Newport County at the same time. Match ball sponsorship costs £125 for two people and includes reserved grandstand seats, match programmes, a two course pre-match meal in our sponsor's lounge, a write up in the programme and an autographed football.

Here's one of the match ball sponsors, Mark Levenson receiving his signed ball from Tim Harris after the Ebbsfleet match.

Oh yes, we must mention that on the commercial



page for the Ebbsfleet match comments made by Leonie Hunter concerning Charlie Henry, Kerry Morgan and Danny Rose were incorrectly attributed by me to Mark Levenson. Apologies to Mark and Leonie and to set the record straight, here's Leonie with HER favourite player Danny Rose.



**NOW
OPEN!**

ADVENTURE GOLF



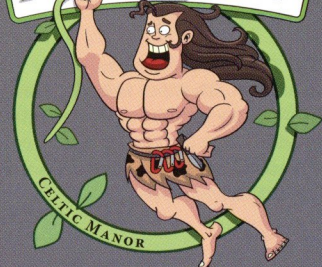
**CELTIC MANOR
RESORT**

This fun putting challenge comprises of two spectacular nine hole courses which feature water hazards, bridges and rafts to add to the fun, but also pose a skilful putting challenge.

INTRODUCTORY OFFER

PRICES
ADULT £4.00
(16+ YRS)
JUNIOR £3.50
(11-15 YRS)
CHILD £3.00
(UNDER 11 YRS)

FOREST JUMP



Located in woodland on the Resort's grounds, this exhilarating new treetop adventure will feature bridges, walkways, obstacles and an adrenaline-pumping freefall 'Power Fan' jump.

New high ropes treetop adventure now open

For more information, visit celtic-manor.com or call 01633 410587

Terms and conditions apply – please see website for full details.

Building a future together
with the County

Aspen

Construction
& civil engineering Ltd

residential
retail and showroom
refurbishment
industrial and commercial
waste recycling facilities
civil engineering and groundworks

- www.aspencce.com -

Newport County AFC
Subscription Draw



**Join the
subscription
draw
today!**

£74'150

Raised for the club to date!

£50'500

Returned to Members in prizes!

**£50 and £20 Prizes
at each Home Game**

ALL FOR £2 A MONTH

Contact David Hando - 07802 487042

John's Electrics (1989) Ltd

Commercial Catering Equipment
Engineers, Sales, Service
and Repairs



13 Mill Parade
Newport NP20 2JQ

Tel: 01633 212933 • Fax: 01633 250666
Email: johns-electrics@btconnect.com

Whitbread Restaurants Catering
Equipment Maintenance Contractor
of the Year 2003/4

THE WARDROBE

POLO RALPH LAUREN
LACOSTE
LYLE & SCOTT
TIMBERLAND
TOMMY HILFIGER
HOLLAND ESQUIRE
HUGO BY HUGO BOSS
HACKETT
LEVI'S
RAY BAN

WWW.WARDROBECLOTHING.CO.UK

3 FRIAR'S ST. JOHN FROST SQ NEWPORT

01633 262837

10% OFF WITH THIS ADVERT



THE PEOPLE'S GAME

With Colin Everett

International football has been making the headlines. The row over the entry of a Great Britain Team in the 2012 London Olympics has been re-ignited; FIFA eventually had to compromise and allow the English and Welsh teams to wear poppies to commemorate Remembrance Day following public and political outcry over the original refusal; FIFA President Sepp Blatter has scored an 'own goal' by denying that racism exists on the field of play in the modern game and has claimed that where words have been said between players in the heat of the moment, words which could be construed as racist, a simple shake of hands when leaving the pitch should make amends. The backlash has been of major proportions and the ailing President is again under pressure to resign.

Having appeared to "poach" Welsh star Gareth Bale and then Aaron Ramsey for the GB team, despite the opposing stance of the Football Association of Wales, the English-run team planning the player selection has been slammed for running roughshod over the independence of the other Home Nations. Both players had been prompted to pose by their sponsor Adidas in photo-shoots in a GB team supporters' kit and I doubt had realised what uproar would follow. The Welsh Football Association is understandably nervous about developments and, having made its opposing position clear from the outset, can claim that Team GB has hardly acted in a team spirit.



Great Britain has not entered a football team in the Olympics since 1974 under the direction of the Football Association. That

year signified the point when the FA chose to no longer distinguish between amateur and professional status. With the Olympic team only being open to the amateur, Great Britain was effectively removing itself from the competition. Few people cared at the time. The World Cup was the quest for all the Home Nations and with the European Championships taking on a new importance no-one was going to cry over absence from a world event which was traditionally viewed as the pinnacle for track and field with side sports being secondary.

Great Britain had won three of the first four official modern Olympic football tournaments – in 1900, 1908 and 1912 – but as time moved on the competition became dominated by the Eastern Bloc who often fielded teams packed with military personnel who trained hard and knew a football far better than they knew a Kalashnikov. The international football authorities were content with the arrangement as the prestigious World Cup tournament went unthreatened by the amateur competition. Then in 1984 it all changed. To raise the profile of football in the Olympiad, and with an expectation that vital ticket

sales and television income could be raised to help plug the financial black hole which increasingly expensive tournament staging was leaving as a legacy for its hosts, the amateur ruling was lifted. Now entrants could field professionals under 23 years of age, with up to three "veterans" older than the age limit, provided that they had not previously featured in a World Cup finals. So the "Young World Cup" was born.

The well-remembered Pole Kazimierz Deyna topped the scoring charts at the Olympics in 1972 with seven goals before going on to bigger and better things. From 1984 the power in Olympic football shifted away from Eastern Europe with the African nations and the South Americans taking over by fielding their young starlets. In 1996 Brazilian Bebeto and Argentinian and later Chelsea player Herman Crespo shared the Golden Boot with six goals apiece, whereas Brazilian Romario, with seven, was the hot shot in 1988. In 2004 none other than a young and presumably innocent Carlos Tevez hit the back of the net eight times to enter the stage of world football and its transfer industry. In the last two decades the football tournaments have been played to packed stadia with much greater media interest worldwide. Women's football was admitted in 1996 and the London Olympics' organisers see football as a top attraction in their marketing plan for next summer.

The controversy sparked by England's determination to enter a GB team in the 2012 Olympiad is of such proportions that Hadrian and King Offa will be sitting up in their graves and rehearsing the arguments for and against union in these proud old isles. England has been appointed to plot a team and Stuart Pearce is the one anointed as manager. Pearce has made it clear that the door is open to all Home Nations players. The Scots were first out of the blocks to distance themselves from any involvement and the battle cry was quickly echoed in Belfast and in Cardiff. The Celtic Home Nation FAs have stood behind the argument that our footballing independence as separate countries and entities in the FIFA fold will be compromised by a merger under the GB colours, and that we may become rolled into one for the purposes of international competition qualification at some future point. The risk may be small, but nonetheless there is perceived threat to our sovereignty. With the break-up of the Soviet Union and countries such as Yugoslavia, there has been a sudden growth in independent states being recognised in both international politics and in world sport. The tide of change is not against the small nations standing alone. Gareth Bale's agent did defend him with the words "while he is 100% Welsh, he is also British". Whilst some can forgive Bale and his peers for wanting to be Olympians and not just mortal footballers and while sport and politics should not mix, in the real world unfortunately they do.



The Amber Album

Newport County 0-1 Shrewsbury Town



macron store

Gloucester

The Professional Teamwear Specialist

**FOOTBALL
RUGBY
BASKETBALL
TRAINING WEAR
LEISURE WEAR
BASE LAYERS
BAGS, BALLS &
EQUIPMENT
WORKWEAR
PRINTING &
EMBROIDERY**

Proud to be the
Technical Teamwear
Supplier for
Newport County FC

**CALL US
01452 386400**

VISIT US
UNIT B9, ELMBRIDGE COURT
GLOUCESTER, GL3 1JZ

www.macronstoregloucester.com

Tim O'Brien

Heating & Plumbing Engineers

Approved contractors to local authorities

- Boilers servicing and repairs
- Central Heating
- Solid Fuel
- Condensing Boiler replacements
- Landlord Certificate



Tel: (01633)277202

Fax: (01633)272567

Mobile: 07721587427

Email: timobrien.htg@talktalk.net



FL Wangler
FCOPTOM

MF Watkins
BSC, MCOPTOM

T Miller
BSC, MCOPTOM

E J Shackson
BSC, MCOPTOM



282 CHEPSTOW ROAD, NEWPORT, NP19 8NN ☎ 01633 273684
3 VICTORIA TERRACE, NEWBRIDGE, NP11 4ET ☎ 01495 244922



TYRES • EXHAUSTS • BRAKES

**HIGH QUALITY
LOW PRICE TYRES**
SPECIALIST PERFORMANCE TYRES

- ALL LEADING BRANDS & SIZES INCLUDING 4X4 & LOW PROFILE
- TRACKING • OPEN 6 DAYS A WEEK • DIGITAL BALANCING
- EXHAUSTS WITH 1 YEAR GUARANTEE • ECONOMY RANGES
- PUNCTURE REPAIRS • MOBILE SERVICE AVAILABLE

We stock:



CWMBRAN BRANCH - 01633 864006
NEWPORT BRANCH - 01633 258585
CARDIFF BRANCH - 02920 494452

Email info@discount-tyres.co.uk Web www.discount-tyres.co.uk

PAUL FLYNN MP - SERVING NEWPORT

Time to Talk?

Telephone Surgeries
An additional service for constituents

To discuss any parliamentary issues or problems phone

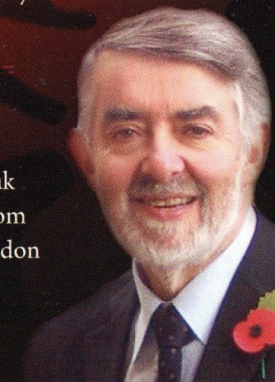
01633 262348

I will call you back at your convenience

Other contacts:

www.paulflynnmp.co.uk
paulflynnmp@talk21.com

House of Commons London
SW1A 0AA



Last time out in the programme for the Shrewsbury Town FA Cup game we did oldfootballshirts.co.uk, which is an Ali Baba's cave of photographs sent in by supporters of shirts from their collections. These are real shirts, even if ironically some diehards go as far as collecting real shirts from teams and even individual players existing only in TV series, soft-drink ads or cartoon strips. I should also have mentioned that they put profits from their own ads into shirt sponsorship, and sponsored Charlie Griffin's during his first spell with us a few years ago.

Today's site essentially ploughs the same field, but from a different direction and via graphics. Its scope is breathtaking and by definition the work can never be completed as pretty much every club changes at least two kits pretty much every season. For obvious reasons there's far more historical depth than could ever be offered by a site using photographs, but equally obviously it can't cover the whole world as oldfootballshirts does. In a nutshell, if you have any interest in the subject you really need both websites.

Just the home page reflects the comprehensive nature of the research involved, with several updates per month as detail becomes available. Take the most recent one as I write this: "The Hull City section has been revised with new crests (1947 & 1957), embossing details (1982-1997) and colour adjustments. AFC Bournemouth (crest 1936-74 revised)." Or even more arcanely from a few weeks earlier: "It is well established that Chelsea's first colours were taken from the Earl of Cadogan's racing colours, but precisely what shade of blue these were has, until now, been unclear. Enquiries by HFK have revealed that this was in fact Eton Blue, an unusual shade of light, greenish blue worn by the famous Old Etonians club in the 19th century. As far as we know, this is the only instance of these colours appearing in the Football League."

County supporters will naturally turn straight to the page covering the 1912-1989 incarnation of the club and before they do, will ask the acid question: Do they know about the striped shorts we wore briefly in the early seventies, which the team reportedly rebelled against after a couple of games? Yes, it was in February 1972 and it also makes it into the site's "Room 101" gallery of the worst ever kits. (I think that's a bit harsh and this seems to be the only one owing its place there solely to the shorts.) Some of those selected for this hall of shame defy description in mere words. HFK has launched a book this autumn, by Dave Moor, with over 200 examples. (Order it from Amazon via countyshop.co.uk and the Trust will receive a commission.)

One thing I've noticed when researching other clubs for the programme is how often they started out with something completely different from the kit with which they are now synonymous. Bolton Wanderers, for example, seem to have gone through a bewildering range of kits, including one in plain pink and one in red and white spots like the Tour de France's King of the Mountains jersey, before settling on white shirts and navy shorts in the 1880s. A couple of interesting points about our Championship neighbours up the road is that their famous FA Cup win in the 1920s fell during a brief window when they wore sky blue rather than royal blue, and that their predecessor club, Riverside, wore amber. Okay, it was quartered with chocolate.

You do wonder what lies behind any club's original choice of colours. Sometimes it must stem from wanting to accommodate both halves of a merger. Rushden & Diamonds' appear to have trodden this path and the result was a series of truly horrible kits in red, white and blue. It seems a sensible guess that while a century and more ago a club

founded by old boys of a public school could insist on its traditional colours and afford whatever that cost, some clubs funded by working men's subscriptions might have had to choose whatever colour they could afford. If there was a special offer on black and white stripes, maybe that got the nod.

County can be tracked wearing amber from the outset, with some conflicting information about whether the 1912 team wore a shirt with a collar (I'm betting they did) and black or white shorts. I'm betting it's both. We seem to have diverted into red and white stripes for three years in the 1930s – although conceivably that was an away kit – and we only really settled on plain amber shirts with black shorts post-World War Two. We spent much of the 20s and 30s in stripes (maybe we could try it again some time?) and the 1938-39 kit was beauty. I'm puzzled by the one illustrated above which reverses the colours in the shirt and seems only to have featured briefly the same season. Surely black shirts were a bit iffy in 1938?

We spent most of a decade in orange from 1969, posed briefly as Argentina in 1976-77, then sanity was restored up to the old club's demise. And that's the only real pity – it would be wonderful if only the effort and bandwidth could be made available at some point to extend the coverage to the upper reaches of non-league, even if only for ex-league clubs and successor clubs now at that level. Fingers crossed, but in the meantime there's enough art and social history here to keep you occupied for weeks on end.



MEET THE AMBER ARMY

Hannah Shingler talks to Rob Dare

Today we feature **Hannah Shingler**. Many of you will have been served by Hannah in our excellent club shop. Away from County Hannah attends nearby Hartridge School and some of you will recognise the Shingler name through club photographer and brother Sam and long-standing supporter dad Chris.



Hannah at Amber Sports with Chris Todd

Why do I support Newport County?

Because of my Dad's been a supporter since he was little, in fact most of our family are regular fans. At one time I was the youngest club shareholder. It's just been part of growing up really!

My first County memories:

Can't really remember but I have been told it was our first match at Spyttly Park in August 1994 against Redditch – I can't really remember it as I had only been born in the May! A photo of me was printed in the Argus the following night, the headline was Baby It's Good To Be Back! A pic of me, Dad and my brother Sam was also in Wales On Sunday. I have attended ever since and my Dad says I used to fall asleep on his lap in the stand. I was also a mascot twice when I was younger.

(The four-month-old Hannah was one on 2,475 people at Spyttly to watch our victorious homecoming against Redditch United. Newport

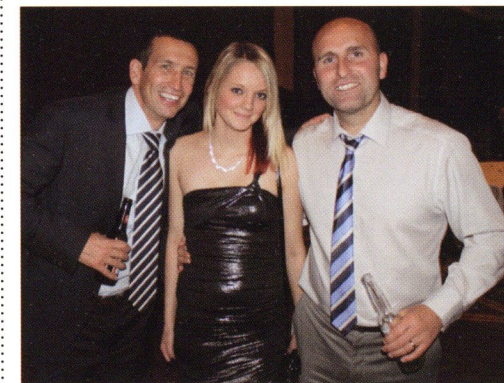
AFC won 4-0 thanks to a double from Mark Tucker and further goals from Linden Jones and Ceri Williams.)

My favourite County moments:

Winning the league in 2010 and the after match party the night we beat Havant was brilliant! Whenever I hear the Black Eyed Peas song *Tonight's Going To Be A Good Night* I think of that night, it was great seeing all the players enjoying themselves and dancing on the tables! I also enjoyed beating Cardiff at Ninian Park in the FAW Premier Cup on penalties, a great night and had a good laugh with my cousin Emily!

My funniest County moments:

At one match when I was about 12 or 13 I had braids in my hair and was leaning forward with my head down and a man in front sat down and lent back trapping me by my hair! More recently at the dinner held at the Celtic Manor with Keys and Gray, was when I had to ask Andy Gray for his details as he had won an auction for Wales v France rugby tickets but ended up asking Welsh team manager Gary Speed by mistake!



With Justin and Jimmy at the recent Celtic Manor evening

My favourite County goals:

I like penalties best, they are exciting. Any County goals are good but I've lost count of the times I've been hit by my Dad accidentally when he has been celebrating!

My best County players:

My first favourite was Martin Paul as the fans use to sing the *Hey, Hey Birdie* song to him, then I liked Jason Bowen because he was exciting and use to do some great tricks on the ball and always scored from the spot. I also like Charlie Henry because he was about the same size as me! I had him on my shirt last season and was sad to see him go.

(The much travelled Martin Paul scored the first of his 17 County goals against former club Bath City in September 2001. County finished 5th and City 17th. Jason Bowen continues to shine at Llanelli whilst Charlie Henry could be contention for a place for Luton today.)

My favourite County manager:

Deano because we were so successful. Hopefully Justin will be just as good if not better.

My favourite away ground:

I enjoyed going to Kidderminster last season as it was just after Christmas and there was snow around and it was foggy – and we won!

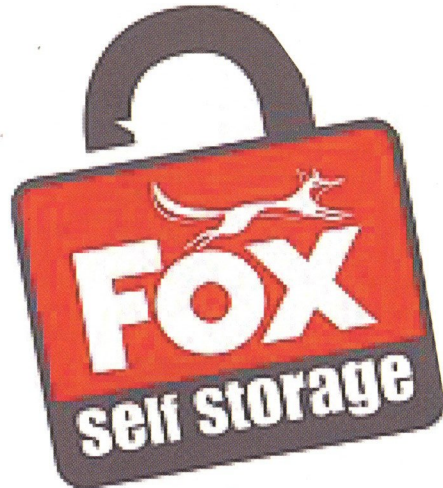
Where do I hope to see County in a few years time?

Winning promotion back to the Football League.

Thanks go to Hannah for sharing her great County memories. Do you want to? Then email me at robertdare@aol.com.



Imagine what you could do...



Buy 3 months and get the first FREE

- ◆ Clean, dry, secure units
- ◆ All sizes from 15 sq ft
- ◆ Easy-in, easy out Terms
- ◆ CCTV Monitored - The safest place in town
- ◆ Large range of cartons and packing materials available
- ◆ Discounted Removals Services available
- ◆ Perfect for Home or Business use

...with a little extra space!

NOW OPEN IN NEWPORT

Unit 25, Leeway Ind Est, Newport, NP19 4SL

01633 280080 newport@foxselfstorage.com

Pentland Close, Cardiff Industrial Park,
Llanishen, Cardiff CF14 5DJ

08000 092 5974

cardiff@foxselfstorage.com

Somerset Road, Cwmbran NP44 1OX

01633 488 109

cwmbranf@foxselfstorage.com

www.foxselfstorage.com for more details

FIT IN BODY
SSN
SERIOUS SPORTS NUTRITION LTD
FIT IN MIND
WWW.SSNONLINE.CO.UK

- ✂ STRENGTH AND POWER
- ✂ MUSCLE AND SIZE
- ✂ PERFORMANCE
- ✂ ENDURANCE
- ✂ RECOVERY
- ✂ WEIGHT LOSS
- ✂ BURN FAT
- ✂ TONE UP
- ✂ FREE ADVICE AND SUPPORT
- ✂ TRAINING AND EATING PLANS



Come & Visit Us At:



SERIOUS SPORTS NUTRITION LTD
17 THE KINGSWAY CENTRE
NEWPORT
NP20 1EU

WORKTOP SPECIALIST



wtlaminates.co.uk

- 1. Laminate Worktops
- 2. Solid Surfaces
- 3. Upstands
- 4. Hobs
- 5. Sinks
- 6. Taps
- 7. Solid Wood Worktops
- 8. Cutting Service
- 9. Fitting & Measuring
- 10. Sheet Laminate
- 11. Splashbacks

T: 01633 251908 E: info@wtlaminates.co.uk

1 & 1A Courtybella Terrace, Newport, South Wales, NP20 2LA

Open Saturday only till 2pm (Sorry we need to get to the County for 3pm)

accent
on EDUCATION
education recruitment



For all your education supply needs:

- Teachers
- Teaching Assistants and Nursery Nurses
- Administrators
- Ancillary Staff

Telephone: 01633 334466

Mobile: 07974573511

E: marierogers@accentoneducation.co.uk

Website: www.accentoneducation.co.uk



YOUR OWN CLUBS STICKERBOOK

MiSYB
The Sticker Year Book People

WE OFFER THE COMPLETE BESPOKE SERVICE -
DESIGN, PRODUCTION, FULFILLMENT AND PROJECT MANAGEMENT

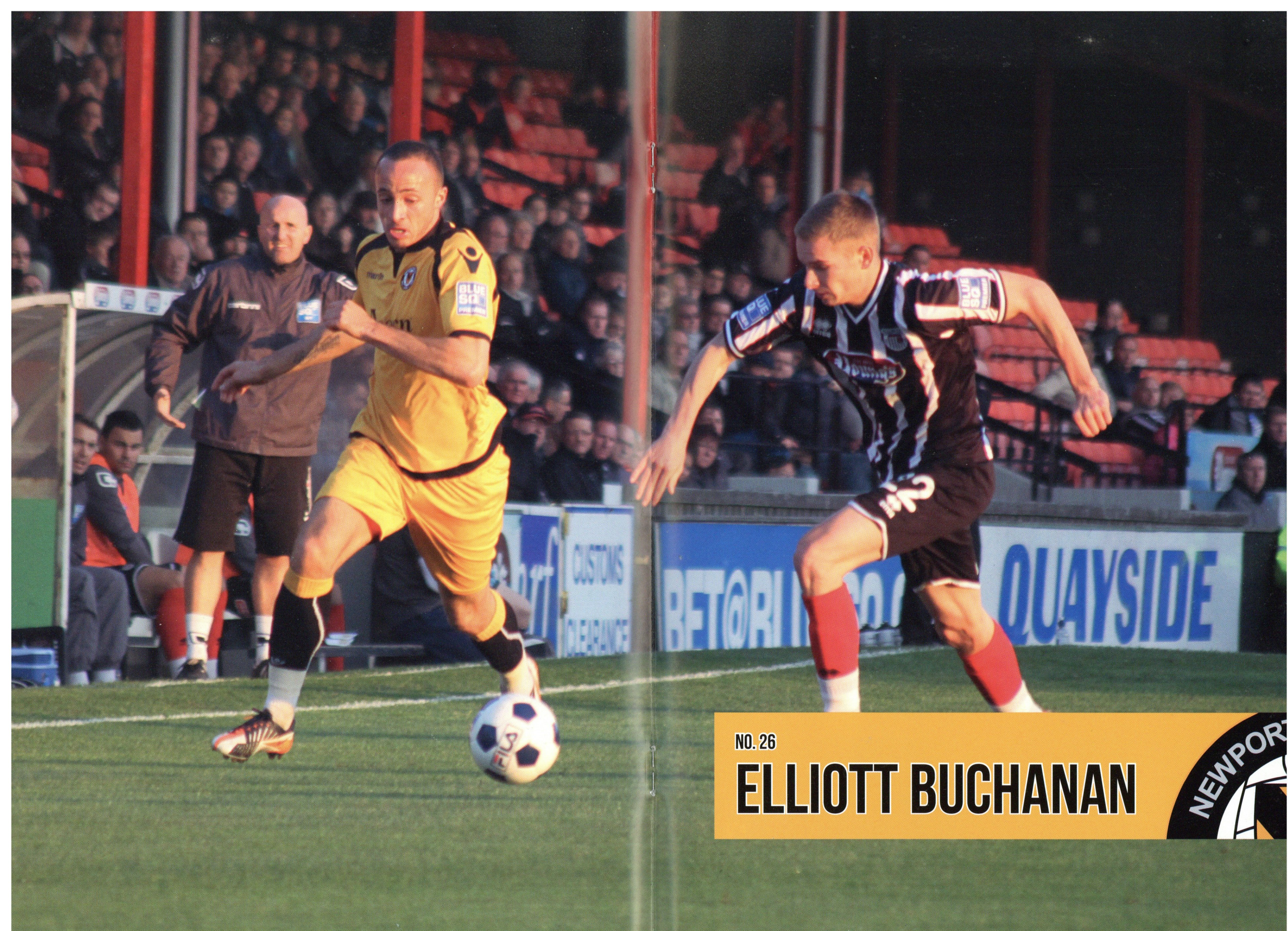
- NEW REVENUE STREAM FOR THE CLUB
- THROUGH ADVERTS AS WELL AS ALBUM AND STICKER SALES
- TREMENDOUS INCREASED AWARENESS AND INTERACTION WITH SUPPORTERS
- A GREAT PIECE OF MEMORABILIA
- STICKERS OF PLAYERS PAST AND PRESENT
- CAN INCLUDE PRIZES ...

IT TICKS ALL THE BOXES ✓

THE JUNIOR SUPPORTERS LOVE THEM, THERE CAN BE A CHANCE TO
WIN PRIZES AND THE CLUB MAKES MONEY.

CONTACT US
SALES@MISYB.COM
WWW.MISYB.COM





NO. 26

ELLIOTT BUCHANAN



LOOK BACK IN AMBER

With Andrew Taylor

Keith Oakes

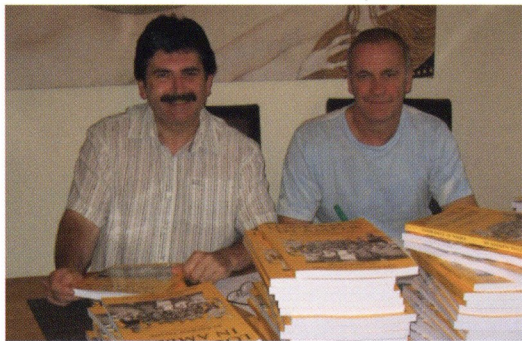
KEITH OAKES – Andrew talks to our legendary captain.

Our last home game in the FA Cup against Shrewsbury evoked memories of our Welsh Cup final triumph over them in 1979-80. Covered by ESPN, County subscribers had a rare treat the same evening as ESPN Classic also broadcast highlights of our home leg in the quarter finals of the 1980-81 European Cup Winners' Cup tie against Carl Zeiss Jena. The CZJ keeper's wonder save in the dying moments from skipper Keith Oakes remains a defining moment in the club's history. We were that close! If only! Keith lives just 10 minutes from me in Lincoln and he talks fondly of his time at the club where he is regarded by many as one of our best ever players; his record £15,000 signing in September 1978 from Peterborough attributed as a turning point in our fortunes.

Keith speaks warmly of his time in Newport: "My brother Dennis was an established player at Peterborough and arranged to get me a trial after I left school. I made my debut as a 16-year-old against Aldershot in March 1973, with Dennis in the same side. I was happy to play anywhere, but Noel Cantwell and John Barnwell saw me more as a centre-half and that was where I spent the rest of my career. There was no way I could displace Chris Turner and he rarely ever missed a game. When he was sold I thought it would be my time and so I was very disappointed to find the club signing Bill Green from West Ham and asked to go on the transfer list. We had a midweek afternoon reserve game at Brentford and our reserve team manager Jim Barron was actually playing in goal. Len Ashurst was stood behind the goal with two men and a dog and kept asking Jim questions about me while the game was going

on! Jim must have said some good things as a couple of days later the Secretary Phil Dauncey picked me up at Newport Station and took me for a slap up meal at Wimpey's! When we walked towards the ground I thought, 'Oh dear!' I'd seen better, but I hit it off with Len even though he had a terrible dress sense! I signed later in the week and because it was for a club record fee I was quite confident that I would get my chance to go straight into the team."

Keith made his debut on 9th September 1978, losing 2-1 at Reading. Settling into Newport was not going to be made any easier by another two defeats - at home against Crewe and Wimbledon. "They were matches we should have won, but we gave some bad goals away probably through a lack of understanding, but I soon gelled with Grant Davies." For wife Susan, it was also a big adjustment. "I was only young and it was hard to move from Peterborough to Newport where it was very different and I didn't know anyone. It was very lonely and strange at first. We rented a house in Caerleon. Keith took me to 'Woolies' and bought us a little black and white telly and then had to go straight off for an away game and left me all on my own! I went out once in my



dressing gown to pick up the milk and our son Gary locked me out! I had to go across to the corner shop and phone the ground to get Keith home from training!" "I took some stick for that," adds Keith.

Against Rochdale, Keith was involved in an incident which sums

up his character, playing for half an hour with a broken arm! "To be honest I didn't know it was broken at the time! I didn't have the best of luck with fractures at Newport. I didn't miss many games through the normal knocks and pulls. That broken arm put me out for two months. I hurt my ribs against Portsmouth, which was agony. I fractured a bone in my foot in pre-season training for 1982-83 which kept me out until October and had only been back for 10 games when I had my jaw broken at Reading by Kerry Dixon."

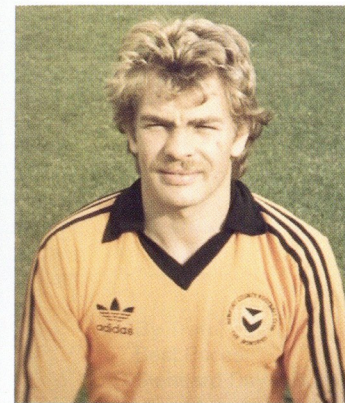
In his autobiography, Phil Stant, a future colleague of Keith's at Lincoln, mentions this game as he made his League debut that day and scored a hat trick in Reading's 4-2 win. However, it is clear that he wondered what he had come into as he was being taught a few "welcome to the league" lessons by Keith! Stant goes on to say how Dixon later clattered Keith breaking his jaw and how Keith walked off the field screaming, 'I'll f***** get you, Dixie you b*****'. So how did Keith view the incident?

"It was deliberate; there is no doubt in my mind about that. I was in Chepstow Hospital that night and was in a bad way. I certainly did not say that going off the pitch... I couldn't have said anything even if I wanted to with the state my jaw was in!" Susan winces: "I brought home wire cutters from the hospital for his jaw as I was worried that he would be sick and choke. His food had to be liquidised and he lost a stone in the first week!" Keith adds "I played against Dixon

again but never had a chance to get my own back. There was never an apology from him. That kept me out for another two months." Keith's cheekbone was also fractured in December 1983 giving him another two months out; this time courtesy of one of his own! "Yes, that was from a clash

of heads with one of our young players in a training session!"

The highlight of Keith's first season was the FA Cup victory over West Ham. "They were full of household names like Trevor Brooking, 'Pop' Robson who scored a great goal and David Cross the big centre forward who was a real handful. It was great to play against people like that. It was a very icy night and a few of us had a wonderful time after the game at a pub in Malpas. Neil Bailey drove us back home to Caerleon through the back roads. It was really quite dangerous but what a night! I did actually think we had a chance of promotion within two years after I signed, given the quality of the players Len was bringing in. Dave Bruton was an important signing for us. He was very experienced and Len was spot on in thinking he was what we needed. People like Richard Walden and John Relish were always very constructive on the pitch but very calm and quiet. Dave was loud and could be cutting. He was a more aggressive character



which the younger players needed around them."

Player of the Year in his first season, Keith's prediction of promotion within two years came true. "We somehow managed to lose 2-0 at Rochdale in the last week of the season. They were rock bottom and we had to win to go up. It was a horrible night! The last game was then on the Saturday at Walsall, who were playing for the championship, so for just a short while I feared the worst.

"Most of us were young, though, and we soon got over it and it didn't seem to faze us. What a good day that was! We had champagne back at the ground when we returned to Newport and had a good old celebration even though we had

the first leg of the Welsh Cup final a couple of days later."

Keith laments the broken leg that season which would see the end of Howard Goddard's time at Somerton. "It was such a great shame for Howard (left) and the club. Up until he broke his leg then I consider him to have been the best I played with at Newport, better even than Tynan and Aldridge. He would not give defenders a moment's peace. Tommy was an absolutely outstanding finisher - brilliant in the box - and Kenny Stroud was a superb player and my best defensive partner and while there was very little between these guys, for me, Howard shades it. Tommy was best overall during my time at the club, but as I say, when Howard was fit he was special."

Keith's career highlight was the European campaign. "I remember flying into Belfast and going to the hotel for a brief kip. We took a coach to the Crusaders ground and it was frightening. Everything was boarded up. The tight ground seemed choc a bloc with the crowd right up on you. It was a bit intimidating and of course the whole experience was all very new to us. Haugar was very cold and a few of the lads took gloves. The plane to Norway had a propeller! 'Relo' was frightened of flying anyway and was cacking himself! Jena was a long trip and a very dour, miserable and cold place. It was a big ground and a very hostile crowd.

"We really did believe in ourselves when we brought them back, especially as we had the two away goals that would count double if we drew. I honestly can't remember a game with so many chances hitting the woodwork, being cleared off the line and I'm convinced one of them was well over, or bringing out great saves from the keeper. I can't believe to this day that my header late on was saved. From the moment it left my head I thought it was in. They scored a very poor goal from a free-kick which I gave away. Nine times out of ten, 'Plums' (Gary Plumley) would have thrown his cap on it. It was so very disappointing and didn't help our season. Such a special occasion to look back on, though.

"We were such a young, hardworking team. We nearly all lived locally which you don't often find these days and that was very important as it helped us create such a good team spirit which was a big factor in our success. We would always go to the Wayfarers

Café after training. We were all very fit and while Richard Walden used to mainly train on his own in Fleet, he was amazing. We used to call him 'Rolls Royce.' We were quite dangerous at set pieces and I got a lot of goals from these.

"Signing Alan Waddle was the major downfall for Len. If you spend that kind of money at a club like Newport then it has to work out and it didn't. There was also a lot spent on Jeff Johnson which didn't work out either. I have the highest respect for Len. He was very professional and serious although we could have the occasional laugh about him. We were pre-season training at Aberystwyth and Len was in the swimming pool. He had great big bushy eyebrows and was bobbing up and down and John Aldridge came in and said, 'F***** hell, there's a water otter in the pool!' Colin Addison came in and was a more outgoing, bubbly and excitable personality. I wouldn't say he was more motivational than Len, but he was certainly louder! Colin liked us to play good football and with Kenny at the back we had someone who could find players and added another dimension to our game rather than just trying to hit the front man or get it out to Kevin Moore. That was important as Tommy and Aldridge were not the biggest. Waddle was, but the ball came straight back at us! I had great respect for both managers."

Some blame boardroom troubles for missing promotion in 82-83. "I can honestly say that I was unaware of the things going on. The plain fact is that good players didn't perform and we threw it away. Almost every player had a bad relationship with a certain individual at the club, Bobby Smith, and so things were not what they should have been. Bad feeling crept in and inevitably affected performances. This is also I think the single biggest factor in the breakup of that side. I was very sad to leave for Gillingham in 1984 as we'd met some great people and had a bit of success, but Susan wanted to get back more towards Peterborough so the move suited us.

"Eddie May asked me to go back in 1988, but I'd heard that the club was in turmoil and so instead returned to Peterborough. I always had a little dream, though, about one day going back to the County. As manager. The first result I look for on a Sunday is always Newport's."

The right **products**

The right **support**

The right **price**



ABBEY
BUSINESS EQUIPMENT

BETTING ON THE MOVE JUST GOT **FASTER**



**Bet live throughout the season on
your iPhone or Android handset**

If you don't have a smart phone you can bet by calling our telebet service
on **0800 587 0400** or by visiting **bluesq.com**.



bluesq.com
EVERYTHING IS PROBABLE



Available on the
App Store



Tel: **0800 083 6064** or
text **"BET"** to **64555**

Supplying print management solutions
in South Wales direct from our **NEW**
Sales & Service Centre in NEWPORT!

In partnership with
RICOH

Call **Tim Harris** for more information on **01633 415420**
or email **tim@abbeybusinessequipment.com**

Abbey Business Equipment, Newport Sales & Service Centre, Merlin House,
1 Langstone Business Park, Priory Drive, NEWPORT NP18 2HU

www.abbeybusinessequipment.com



Over 18's only. Blue Square encourages responsible gambling. gambleaware.co.uk

With our great
offers you can
also enjoy sporty
performance
off the pitch.

**Sinclair Volkswagen
(Newport)**

Corporation Road,
Newport,
NP19 0HE
Telephone: 01633 270727
www.sinclairvolkswagen.co.uk



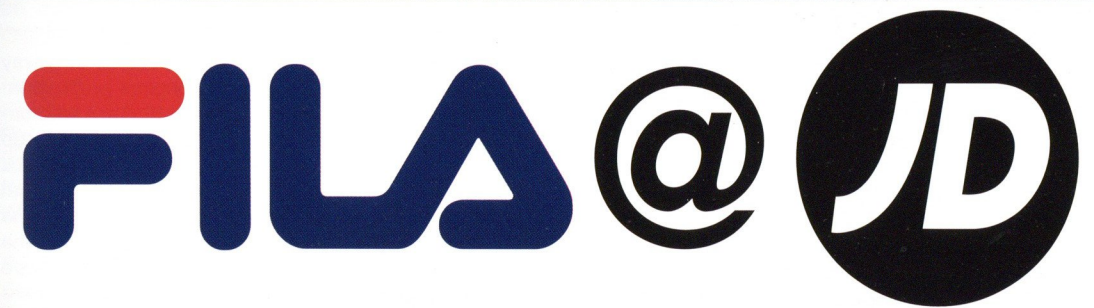
Mercedes-Benz of Cardiff & Newport

Mulberry Drive,
Cardiff Gate Business Park,
Pontprennau,
CF23 8RS

Telephone: 02920 542400
www.sinclairmercedes.co.uk



Mercedes-Benz



JD - Best of the Best
JDSPORTS.CO.UK

**PROUD SPONSORS OF THE
FOOTBALL CONFERENCE**

OVER GEORGE STREET BRIDGE

with Phil Tanner

I've always said that if the house catches fire and I can rescue only one thing, it would be my grandfather's World War One medals. Two service medals and one for rescuing a comrade under fire. He was a stretcher bearer in the Royal Army Medical Corps and goodness knows what he must have seen; apparently he never talked about it. He was from Castleton and died in 1962, when I was seven, and I can remember him playing a mouth organ as he must have done in the trenches.

I think of him every Remembrance Day, which is when I happen to be writing this, and at many other times too, as I'm sure many of us do with relatives who have served, whenever. And as more and more people take advantage of the availability of online archives to research their family history and follow TV programmes like the brilliant "Who Do You Think You Are?", interest in these events will only grow. These people are more alive to us now than they were, say, 40 years ago, and this will increase as the centenary of 1914 nears and the ranks of 1939-45 veterans thin out.

As the photo above indicates, this column is about what football can do by way of remembrance, and the hoo-ha around FIFA's initial refusal to allow Wales, England and Scotland to wear the poppy embroidered into shirts for their games a fortnight ago.

Obviously it's reasonable for the authorities to expect any national association wanting to do something like this to seek permission beforehand, and it would be easy enough to stipulate that it can only be done for matches coinciding with national remembrance days. On top of that, there should be no scope for causing offence to the country you are playing against. (Just in case some banana republic pegs its national remembrance to a particular war against some other banana republic, although they'd probably want another date for the game in the first place.)

This doesn't apply to those three games – Wales played Norway, who were our staunch allies in WWII and lost thousands of merchant seamen while neutral in WWI; Scotland were in Cyprus, which was in British hands for nearly all the first war and all the second; and England hosted Spain, neutral first time round and then officially "non-belligerent", apparently not quite the same thing. All national FAs sport a badge with a national symbol which is a sort of political statement, anyway. What are a dragon or three lions if not belligerent?

I did wonder if maybe commercial interests

came into it, but that might be a theory too far. The FIFA ban applies to political, religious or commercial messages and just maybe there's a fear that shirts could become festooned with images which distract attention from the branding which kit manufacturers pay national associations zillions to promote. Obviously the suppliers of Welsh, English and Scottish kit weren't concerned – or the suggestion to incorporate poppies wouldn't have arisen in the first place – but the risk of a drift into over-zealous

brand protection more broadly is, in my humble opinion, something to keep an eye on. It was a bit blatant when that bunch of unspeakably gorgeous Dutch models turned up in identical orange dresses at a World Cup game in South Africa not involving the Netherlands to promote a "non-official" beer, but I'd bet good money that at least once during the Olympics the Daily Mail will track down a case where some poor kid unknowingly tried to wear a baseball cap of an unapproved brand, had it confiscated and then got sunstroke. (The paper will then blame the last Labour government, but that's another story...)

I have heard it said that the reason players get booked for removing their shirts when celebrating a goal is more to do with kit branding than with inflaming spectators or offending decency. It's highly plausible, as is the view that one thing driving the goal-line technology debate is the desire of manufacturers to create a situation where only one brand of ball embedded with sensors can be used at the topmost levels of the game worldwide – a commercial holy grail if ever there was one.

Anyway, the FIFA poppies issue was settled in a way which I think was neater than the original proposition. Hats off to Conservative backbench MP Chris Heaton-Harris, who is also a qualified referee, for coming up with the idea of the national teams instead wearing black armbands with a poppy. FIFA appears to have leapt at the idea. We'll give them the benefit of the doubt and accept that they just weren't attuned beforehand to the sensitivities involved. Prince William seems also to have got involved; good for him.

The real beauty of it is that while it isn't feasible for many clubs to incorporate a poppy into a shirt, as NCAFC admirably did for the Shrewsbury game, there's no reason why the Royal British Legion shouldn't market a set of poppy armbands for every team in the country in every sport for next year onwards, and by the time you read this I hope they'll be planning it.



Hayes & Yeading United

Tue 29th November 19.45 KO



One of my favourite grounds in non league football, Church Road, sadly bit the dust in the summer, and with developments of The Warren far from complete, it's a trip to the west of Surrey and to the home of Woking FC that awaits us on Tuesday for what may turn out to be an important match against fellow strugglers Hayes & Yeading United. The home club support is traditionally low for this level and the 20-mile exile exaggerates this, with a current seasonal low of just 172 attending a Tuesday match against Bath City. Hardly intimidating – but that never has seemed to worry the Hayes lot too much over the years. Here's the preview:

HOW TO GET THERE

By Car (GU22 9AA)



Take M4 towards London before taking the M25 Southbound at Junction 4B. Leave the M25 at Junction 11 and take the A317 and then the A320 towards Woking. Continue on the A320 through Woking town centre. After passing a hospital on your left you will come to a fork in the road, where you want to leave the A320 and branch left into Claremont Road towards Old Woking (A247). At the bottom of Claremont Road turn left onto the A247 Kingfield Road and the entrance to the ground is down on the right. There is no parking available as such at the ground. Therefore, it is either street parking (if you arrive early enough there are spaces on Westfield Avenue) or at the Woking Leisure Centre which is opposite the entrance to the ground and is free to park in for up to four hours. Distance 120 miles.



By Train

Best Prices:

Standard Day Return is £58, but Advanced purchases can work out cheaper. GroupSave 4 should be available from £29. Please check in advance, especially for engineering works on the outbound leg.

Newport	15.39	Woking	21.55
Reading	17.00	Guildford	22.03
Reading	17.07	Guildford	22.15
Basingstoke	17.31	Reading	23.01
Basingstoke	17.57	Reading	23.21
Woking	18.15	Newport	00.52

By Coach

Esso Garage	15.30	Adults	£18
Castle Bingo	no pick-up	Concessions	£16
Toby Carvery	15.40	Juniors	£15



Bookings can be made by contacting Jeff Challingsworth in BarAmber on matchdays or by calling Jeff on 01633 270609, or Bob Herrin on 01633 274440.

ON THE ROAD

with Dave Butcher

OUT AND ABOUT

I have previously found the most convenient pub near the town centre, and on the main road to the ground to be The Sovereigns on Guilford Road. The Kingfield Arms is another option and only 10 minutes walk from the ground on Kingfield Road heading towards Old Woking. I have discovered a previously visited establishment, The Cricketers is now closed, so no need to get the whites on for a few months yet... The Cardinals Bar is at the ground behind the main stand, and access shouldn't be an issue.

GROUND DESCRIPTION

Although sports stadia often have one large stand that dominates the rest of the ground, when that structure is behind one goal the ground can look lop-sided or unbalanced. Bearing similarities to Weston's Woodspring Stadium which has a huge terrace behind one goal and little else, is Woking's Kingfield Stadium. The towering structure here though is a single-tiered seated affair, and although the Leslie Gosden Stand is splendid, it makes at least two of the other sides of the ground look miniscule in comparison. One of those sides is a shallow open terrace which runs the full length of the pitch. Opposite this are two small, and quite old stands and a section of terrace known as Moaners Corner – love it! Behind the other goal is The Kingfield Road End, which is a fully covered terrace. Admission is just £12 (adults), with seniors/students £8 and Under 16's a mere £2.



SUMMARY

If County finish below our opponents at the end of April, then in my opinion we won't be in Tier One next season. We have to play most of the bottom six teams twice, and it's these games that will define our season. See you on Tuesday, for a proper six-pointer!



Keep up to date
with all your local
sports news
with the South
Wales Argus

SOUTH WALES
Argus

southwalesargus.co.uk



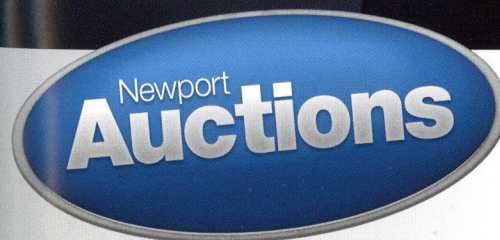
WINNING DEALS

FOR COUNTY FANS

Produce your Newport County season ticket upon purchasing or selling a vehicle at Newport Auctions and benefit from our special deals.

**Car auctions every
Mon, Wed & Fri at 6pm**

Visit our website for full stocklists at
newportauctions.co.uk



the fastest way to buy and sell

 Find us on facebook  Follow @newportauctions

Find us at **Usk Way, Newport, NP20 2BX** For enquiries call us on **01633 262626**

The Amber Album

Grimsby Town 2-2 Newport County



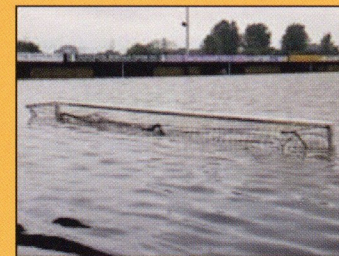
THE BIGGER PICTURE

With Mike Tasker

New grounds?

For many of us County supporters, our two years of groundsharing at **Gloucester City's** Meadow Park are still fresh in the memory. It is, though, 17 years since we played our last "home" game in Gloucester and how times have changed. During our time at Gloucester, County (or AFC, as we were known at the time) were of course in the Southern League Midland Division, two levels below our current status, whilst Gloucester were in the Southern League Premier Division. Newport supporters may have looked at our hosts with some kind of envy at their higher status and decent non-league stadium, whilst we had no home of our own and the future was uncertain.

Whilst County have now reached the top level of the non-league game and have a Football League-ready stadium, Gloucester have had terrible luck with their own ground, but are still just one promotion away from the Conference. Meadow Park has suffered from flooding on numerous occasions but the floods of 2007 left it in an unusable state with the flood waters reaching as high as the crossbars.



Gloucester have been forced to ground-share at Forest Green Rovers, Cirencester and more recently Cheltenham Town, but are obviously desperate for a return to their home city. A new stadium has recently been designed which will be situated on the site of the original Meadow Park.



Gloucester have had a period of consultation since the plans were publicized in February 2011 with issues such as transport and noise being discussed. The plans are due to be submitted to the local council shortly and if planning permission is granted, work is likely to start in 2012. With a build time of approximately 12 months, City will need to groundshare for at least one more year.

Meanwhile another of our regular opponents over the years, **Worcester City**, have been making progress with plans for their new stadium. Worcester have to leave St. George's Lane at the end of the 2012-13 season and have had long-standing plans to build a new stadium on a site at Nunnery Way on the outskirts of the city.

Worcester announced 12 months ago that they would not be able to afford to build the new stadium, and this sparked worries about the future existence of the club. Worcester, however, have since announced scaled-down plans which will enable them to go ahead with the build.

Although Worcester will have funds from the sale of St. George's Lane to put towards the construction of Nunnery Way, after paying off their debts there was still likely to be a funding gap of about £1.5 million on the cost of £3.2 million of the new stadium. Worcester have now come up with a solution which should see them start life in their new stadium debt-free. The new plans now include a 550 seat main stand and a 1,600 capacity covered terrace behind one goal, with the rest of the ground featuring hard-standing in an overall capacity of 3,200 which is sufficient to satisfy Conference North requirements. The cost reductions would come from using cheaper modular buildings and also by reducing the spend on the surrounding infrastructure. The original plans included a footbridge over the nearby main road, but this has now been replaced by a pedestrian crossing.

Some City fans are not happy with the new plans, though it does not appear that the club has much choice. Worcester had previously signed agreements with the property developer which state that the club must vacate St. George's Lane in 2013 with the developer providing a space to build a replacement stadium. With the club reported to have significant debts, they have little room to manoeuvre and also a shortage of available funds to build the kind of stadium that they want. With their options limited, Worcester City are bound to leave their existing ground and the new plans, whilst not providing state of the art facilities, will at least ensure that they have a home in the city.



St. George's Lane, Worcester

tiles Ahead®

VISIT THE ULTIMATE SHOWROOM TODAY
TILES • NATURAL STONE • BATHROOMS • SHOWERS



**NEW STORE
NOW OPEN IN CARDIFF**

DOMINIONS WAY
OFF NEWPORT ROAD
CARDIFF CF24 1RP
Tel: 02920 470556

TY COCH WAY
CWMBRAN NP44 7HF
Tel: 01633 875003
Fax: 01633 867713

Opening times: Mon - Fri 8.30am - 5.30pm Sat 9.00am - 5.00pm

www.tilesahead.co.uk



We make room for you

Uskside Business Park, Uskway, Newport, NP20 2BY

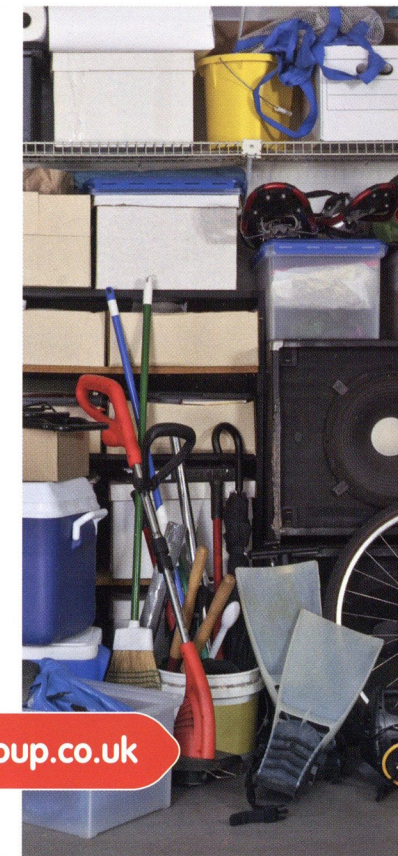
Need more space at home?

Self storage from **£7** per week

- ◻ Business archive storage and delivery service
- ◻ 75 years experience in the self storage industry
- ◻ Newly refurbished offices available for let
- ◻ No minimum storage period
- ◻ 24 Hour CCTV Surveillance

For more info
or to book
your storage
space...

call us on **0800 400 540** or visit www.thestoragegroup.co.uk



**NO
METERS,
FIXED
PRICES**

Be Safe

Night out?
Trust us to
get you home
safely!

Pre-book your journey

For August & Bank Holiday nights out

ABC TAXIS

Free phone

0800 0521273

01633 271007 | 664488 | 271971

www.abctaxisnewport.co.uk



Proud
sponsors
of Newport
County FC

League Table

19 November 2011



	Pld	W	D	L	F	A	W	D	L	F	A	GD	Pts
1 Wrexham	20	6	2	2	16	7	7	2	1	19	7	21	43
2 Fleetwood Town	20	5	4	1	18	11	8	0	2	23	15	15	43
3 Southport	20	4	4	2	13	15	7	1	2	21	15	4	38
4 Cambridge United	20	6	3	1	17	7	4	4	2	13	11	12	37
5 York City	20	5	3	2	19	10	5	3	2	20	11	18	36
6 Gateshead	20	4	4	2	17	14	6	1	3	17	17	3	35
7 Luton Town	20	6	1	3	23	9	3	6	1	13	12	15	34
8 Kidderminster Harriers	20	4	4	2	21	16	6	0	4	16	14	7	34
9 Mansfield Town	19	4	3	3	18	14	4	4	1	12	9	7	31
10 Braintree Town	20	5	2	3	21	16	4	1	5	19	20	4	30
11 Tamworth	19	5	3	1	15	8	3	3	4	10	13	4	30
12 Barrow	20	6	2	2	20	10	3	1	6	13	22	1	30
13 Forest Green Rovers	20	3	3	4	14	12	4	5	1	17	8	11	29
14 Darlington	20	5	2	3	10	9	3	2	5	12	17	-4	28
15 Ebbsfleet United	21	3	3	5	16	17	3	4	3	13	13	-1	25
16 Grimsby Town	20	5	1	4	21	16	1	3	6	7	18	-6	22
17 Kettering Town	20	2	2	6	15	24	3	3	4	10	13	-12	20
18 Stockport County	21	2	3	5	14	17	1	7	3	12	16	-7	19
19 AFC Telford United	20	3	3	4	9	12	1	4	5	12	16	-7	19
20 Lincoln City	20	3	3	4	10	12	2	1	7	8	18	-12	19
21 Hayes & Yeading United	20	3	2	5	15	18	1	3	6	13	23	-13	17
22 Newport County	20	2	3	5	12	14	1	4	5	11	18	-9	16
23 Alfreton Town	20	1	4	5	10	23	1	1	8	9	25	-29	11
24 Bath City	20	1	2	7	9	17	0	3	7	8	22	-22	8

Appearances

19 November 2011

	LEAGUE		CUP		TOTAL		CARDS	
	App	Gl	App	Gl	App	Gl	Yel	Red
Lee BAKER	8 (1)	0	1	0	9 (1)	0	0	0
Elliott BUCHANAN	12 (4)	3	0 (2)	0	12 (6)	3	0	0
Tom DOHERTY	15	0	2	0	17	0	3	1
Sam FOLEY	10 (7)	4	2	1	12 (7)	5	2	0
Ryan GILLIGAN	3 (3)	0	0	0	3 (3)	0	3	0
Lee HARRISON **	0	0	1	0	1	0	0	0
Troy GREENING	0 (1)	0	1	0	1 (1)	0	0	0
Jake HARRIS	0	0	1	4	1	4	0	0
Wayne HATSWELL	7	1	3	0	10	1	3	0
Andrew HUGHES	12 (2)	0	3	0	15 (2)	0	1	0
Felino JARDIM	4 (4)	0	1	0	5 (4)	0	0	0
Nat JARVIS	7 (6)	3	0 (2)	1	9 (8)	4	1	0
Darryl KNIGHTS	6 (4)	1	2	0	8 (4)	1	0	0
Robbie MATTHEWS	1 (1)	0	0	0	1 (1)	0	0	0
Craig McALLISTER	16 (4)	0	3	2	19 (4)	2	1	0
Tom MILLER	15 (4)	0	1	0	16 (4)	0	5	0
David PIPE	10	0	1	0	11	0	3	0
Danny POTTER	10	0	2	0	12	0	1	0
Ryan NEWMAN	0	0	1	0	1	0	0	0
Paul ROBSON **	7	0	0	0	7	0	1	0
Scott ROGERS	7 (5)	1	1 (1)	0	8 (6)	1	3	1
Paul RODGERS	15 (1)	1	2	1	17 (1)	1	3	1
Danny ROSE	19	10	2	0	21	10	5	0
Matt SWANN	0	0	0 (1)	0	0 (1)	0	0	0
Glyn THOMPSON	10 (1)	0	0	0	10 (1)	0	0	0
Guillaume VELEZ	3 (1)	0	1	0	4 (1)	0	0	0
Gary WARREN	14	0	0 (1)	0	14	1	2	0
Ismail YAKUBU	9	0	2	0	11	0	3	1
Own Goals	0	0	0	0	0	0	0	0

** No longer with club



FIRST HALF.

GREAT OFFERS AVAILABLE FOR ALL SUPPORTERS AND FRIENDS OF NEWPORT COUNTY AFC.

At Sytner Newport we believe being part of a team should have its rewards, so if you're looking for a new BMW or an Approved Used BMW why not see how we can help you. Call or visit today.

BMW EfficientDynamics
Less emissions. More driving pleasure.

Sytner Newport

Usk Way, The Old Town Dock,
Newport NP20 2DS.

Tel: 01633 241500

www.sytnernewportbmw.co.uk

BMW Range

Sytner Newport



The Ultimate Driving Machine

Official fuel economy figures for the BMW 1 Series 5-door range: Extra Urban 52.3-70.6mpg (5.4-4.0l/100km). Urban 32.5-52.3mpg (8.7-5.4l/100km). Combined 42.8-62.8mpg (6.6-4.5l/100km). CO2 emissions 154-118g/km.



SECOND HALF.

MORE GREAT OFFERS AVAILABLE FOR ALL SUPPORTERS AND FRIENDS OF NEWPORT COUNTY AFC.

At Sytner Newport we believe being part of a team should have its rewards, so if you're looking for a new MINI or a Cherished Used MINI why not see how we can help you. Call or visit today.

SYTNER NEWPORT

Usk Way, The Old Town Dock,
Newport NP20 2DS.

01633 255322

www.sytnernewportmini.co.uk



Official Fuel Economy Figures for the MINI Range: Urban 27.4-67.4mpg (10.3-4.2 l/100km). Extra Urban 45.6-80.7mpg (6.2-3.5 l/100km). Combined 36.7-74.3mpg (7.7-3.8 l/100km). CO2 Emissions 180-99 g/km.

ARE YOU LOOKING FOR A LOCAL
GRAPHIC DESIGNER/PRINTER ?
THEN YOU NEED LOOK NO FURTHER
Contact Jon at -

**j dsign
& print**

Unit 1, Towngate Industrial Estate,
Ty-Coch Way,
Cwmbran NP44 7EZ

T: 07598 160457 F: 01633 874208

E: jdsignandprint@yahoo.co.uk

For a full design & print service (litho and digital):
letterheads, business cards, flyers, posters, banners, leaflets,
logos, business stationery, party invites, copying and more!

PREVIOUSLY IN THIS SERIES:

We've had very little playing contact with the Hatters, at least this side of World War Two. There was a 20-year gap after they did the double in Division 3 South in 1946-47, then honours were shared when Town bottomed out for two seasons in Division 4 in the sixties. Both games in 1966-67 were home wins, **Gordon Fraser** scoring in a 1-3 reverse at Kenilworth Road and **Fraser** and **Kenny Morgan** scoring without reply at Somerton. The following season – when Luton were champions and we placed 12th – yielded two 1-1 draws, with **Gerald King** netting at home and **Len Hill** away.

Since then, before last season we met only in two home pre-season friendlies. We drew 2-2 in 1979 in a game arranged as part of the deal which took **Mark Aizlewood** to Luton, with goals by **Nigel Vaughan** and **Mike Bruton**, then a 1982 game was goalless. Surprisingly, only 709 turned up despite the Hatters going into the top flight after winning the second tier by eight points in 1981-82.

LAST SEASON:



The mid-February game, played on a Friday night, was eagerly anticipated with Town pressing for promotion, although our own hopes were pretty much extinguished after no wins since Boxing Day. (As things turned out, we'd have to wait five more games before we next collected maximum points, at home to Altrincham on 12 March.) The game was one of the few for which the Spytty Road terrace was used for visitors. Like this season, we were in a bad habit of conceding points at the very end of games, but this time the boot was on the other foot, as newport.county.co.uk reported:

"Considering the contest first from a Luton viewpoint, it is possible to feel at least some empathy in that they had two points denied them with the last kick of the game. Possible, but not necessary or justifiable! Any concern is only because of the timing of the equaliser. Luton had

*produced an organised but totally sterile performance, especially in the first half, so we will instead concur with their manager **Richard Money**, for the second time this season in games between the clubs, that a draw was a fair outcome...*

*"Much is made of qualities like desire which are difficult to measure and Luton produced them in abundance and County searched for the guile to break down the Hatters. An 18th minute throw-in reached the centre of the goal where big money signing **Robbie Willmott** showed his instincts and gave recalled keeper **Glyn Thompson** no chance and put Luton in front. **Knights**, **Hatswell** and **Griffin** all made attempts, but the visitors were not seriously troubled and there were calls for the injection of pace with **Odubade**, **Graeme Montgomery** and fans' favourite **Kerry Morgan**, who were all on the bench... It took two fine saves in quick succession stop the dangerous **Willmott** adding to the lead...*

"It was County who enjoyed probably more of the ball and there were more decisions where the fans felt that the officials got it wrong, but it was one of those evenings where the visitors are not among the more attractive to watch and the home side found it difficult to break them down...

*"Having given Luton credit for their organisation, we should assess County's performance and it was a little short of where [caretaker manager] **Tim Harris** would want to be, though, after the disruption within the club there was is still much to commend, particularly as this has been a very good season with a play-off place a possibility. That place was looking more remote as the game drifted into injury time when **Carden** tripped an advancing **Paul Bignot** (below) and the referee was emphatic. Any foul escaped most observers, but **Jamie Collins** blasted the penalty into the corner of the net with a certainty that had the crowd in raptures."*



VIEW FROM THE OPPOSITION:

Hatters fan Simon Pitts has kindly answered this week's questionnaire:

How much pressure do you feel being the biggest club in the Conference in terms of support and pedigree puts on the team? Would missing promotion this season be seen as a failure, or are supporters more patient? There is certainly an increased level of pressure and expectation in comparison to other clubs within the Conference, given the level of support and history the club has. The setup behind the scenes, our home attendances, the number of fans who travel to away games and the quality of players in the squad is certainly better than a good number of League One and Two clubs. Just six years ago we were doing well in the Championship. We do not have a right to promotion, though, and it is has to be earned. There's not enough space in this programme to discuss the full definition of what would be classed as "success" and "failure" amongst fans, and whether the latter would describe this season if we weren't back in the Football League for 2012-13! A football club isn't just about the players on the pitch, the long-term future of the club has to be financially secure and stable too.

Has the Conference been a shock to the system, or has the gap narrowed so it feels much like League Two? I've been watching the Hatters since the early 1980s so have seen some of the best years in the club's history, as well as more recently some of the worst! Successive relegations were a shock to the system as was the financial plight that the club found themselves in at that time, but at the end of the day there has always been a season of football to watch, something fans of some other clubs no longer have. You have only got to look at how promoted clubs have fared in League Two to see that potentially there is little or no gap between a large number in League Two and clubs in our league.

Conversely, is there anything about the League you find you don't miss? Without wanting to sound disrespectful to some League Two clubs (I'm hoping to be visiting them in 2012-13!) there are certainly some good away days to be had at this level as opposed to League Two, including location, ground atmosphere and general "welcome" from the club we are visiting. Likewise a better record on the pitch is also an improvement on the last few seasons in the League, and the only points that have been taken off us by the Conference were because the results against Chester two seasons ago were expunged...

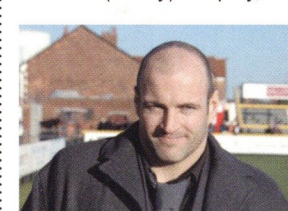
Which of your players should we particularly look out for? Any of our players are capable of having a great game, and at times this can happen on the same day when we look capable of beating anyone at the level. I would not want to single out one player as being our key man, but going through the squad, and for different reasons I'll mention a few. In goal many feel we have the best keeper outside of the Football League in Mark Tyler, always consistent, reliable and joins a small number of goalkeepers to win a man of the match award after a 5-1 win! Left-sided defender/midfielder Jake Howells is a Welsh under-21 international having also played for

England "C", and he has won our young player of the season award for the last three years. Keith Keane is our most experienced player and he has made over 250 appearances for the club, in four different divisions, despite only turning 25 last week! John Paul Kissock has that added bit of flair and skill on the ball that isn't seen at this level too often, whilst top scorer Amari Morgan-Smith is relishing his role as a regular starter, injury permitting. Finally a word for Adam Watkins, a Luton fan who just a few years ago was supporting the side like the rest of us by watching in the stands. He has scored three goals from just five starts and nine substitute appearances this season including the winner in the first round of the FA Cup against Northampton, having only been on the pitch for five minutes!

Are there still plans for a new ground, or will you stay at Kenilworth Road indefinitely? There has been talk of Luton looking for a new ground for longer than I have been supporting the club and whilst at times this has appeared to be closer to happening than perhaps it does at the moment, we find ourselves at Kenilworth Road after 106 years. Many fans would be sorry to see the club move, whereas others would no doubt prefer more modern facilities than those on offer, although the current board continues to invest in the facilities and maintenance of the ground to ensure that it's a still a welcoming place for fans on match day. The board continue to review various options, both with the ongoing improvement of the current ground, and also looking at the feasibility of available land, and the building of a new stadium for the club. However, no timescales are being discussed publicly at this stage.

MEET THE MANAGER:

Liverpudlian **Gary Brabin**, 41 in a couple of weeks, was an abrasive midfielder in a playing career which saw him move back into the league with Doncaster, Blackpool and Hull and (briefly) Torquay, after he initially failed to make



the grade with Stockport and then played almost 100 games for Runcorn. He had two spells in the Welsh Premier with TNS, first as a player and then assistant manager. In his first managerial post Gary took charge at

Southport late in 2007-08, and that summer he moved on to take the helm at Cambridge United. A single season at The Abbey saw him get the divisional Manager of the Season award, followed almost immediately by a parting of the ways, and he came to Kenilworth Road first as chief scout, then assistant to Richard Money. Gary was promoted to arguably the post with the highest expectations in Blue Square Premier when Money left in March, and the Hatters' board confirmed their faith in him with a two-year deal immediately after the playoff final defeat on penalties at AFC Wimbledon in Manchester. He was recently in Gibraltar with England "C", along with several of his playing squad.

Goalkeepers:

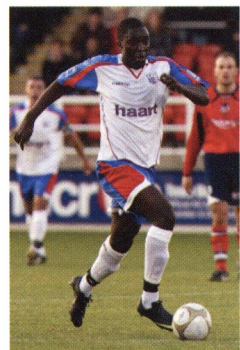


MARK TYLER is a near-fixture between the posts. Now 34, he is in his third season at Kenilworth Road after 15 years with **Peterborough**. He is understudied by **KEVIN PILKINGTON**, a former

Man Utd trainee who spent most of his long career with **Mansfield** and **Notts County** and had a rare outing in the FA Cup win over **Northampton** and then kept his place, and youth product **LEWIS KIDD**, who is yet to make his debut.

Defence:

Club captain **GEORGE PILKINGTON** – no relation to Kevin – spent five years at **Everton** without breaking into the first team, then played more than 200 games for **Port Vale**. **JANOS KOVACS** is on loan from **Hereford** pending a permanent move and had a previous loan at **Luton** while with **Lincoln**. He first played in England for **Chesterfield** after arriving from **MTK** in Hungary six years ago. Justin Edinburgh will be familiar with



CURTIS OSANO (left), a former **Reading** trainee who was with the now defunct **Rushden** last season. He is Kenyan-born but an England "C" cap and recently signed a contract extension. **JAMIE HAND** has already appeared once at Spytty this season, for **Hayes**, who he captained before a loan switch in September. **DAN GLEESON**, a 6'3" right back, is another England "C" cap, originally with home-town **Cambridge**

Utd. He is returning from injury and as of writing yet to start for the first team this season. With injury seemingly ending Irish left back **FRED MURRAY'S** **Luton** career, **GREG TAYLOR** has come in from financially troubled **Darlington**, initially on loan with a permanent switch due in January. Taylor was harshly sent off at Spytty last season while with **Kettering**. Youth product **JAKE HOWELLS** can play anywhere on the left, and another former trainee, **ED ASAFU-ADJAYE**, anywhere across the back four. Ghanaian cap **WILL ANTWI** was a summer signing from **Dagenham** who was a trainee at **Crystal Palace** before moving on to **Aldershot** and **Wycombe**. **DEAN BECKWITH** also joined pre-season, turning down several League clubs, after two seasons at **Northampton** preceded by four at **Hereford**. Completing the defensive roster, **Luton-born SHANE BLACKETT** had a circuitous route to his home town club, starting locally in non-league with **Dunstable** and **Arlesly** before spending three seasons each at **Dagenham** and **Peterborough** and joining the Hatters in 2009.

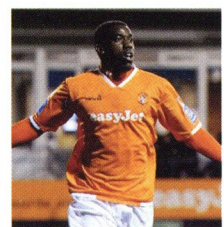
Midfield:

Rhondda-born **ALEX LAWLESS** was spotted by **Fulham** at Welsh League **Ton Pentre**, and was then with **Torquay** before chalking up 150 Conference games with **Forest Green** and **York** and joining **Luton** last season.

He has Welsh caps at U/19, U/21 and semi-pro levels. Ball-winner **KEITH KEANE** is a one-club man with over 200 games to his name across four divisions. Recently turned 25, he was capped by Ireland as an under-19 and an under-21. **JAMES DANCE** and **JOHN PAUL KISSOCK** both caused us all sorts of problems last season. James (who was later hoovered up by **Crawley** before moving on again in the summer) hit two when **Kettering** ended our 32-game unbeaten home league run last autumn, and John Paul was singled out by our website as **Southport's** best player when we lost at Haig Avenue. More about **CHARLIE HENRY** on a previous page. **ROBBIE WILLMOTT**, signed in January from **Cambridge Utd**, can play on either wing or behind the front two. **PAUL CARDEN** is also a former **Cambridge** player but these days concentrates on his coaching role at Kenilworth Road. Youth product **ADAM WATKINS** is out to establish himself in his second season and came off the bench to put League Two **Northampton** out of the FA Cup recently, though, as the then Cobblers manager Gary Johnson pointed out, it was no shock as **Luton** are "not just any non-league team". **CHRISTIAN TAVERNIER** is a highly rated youth player yet to make his debut, and **ALEX LACEY** and **JONATHAN O'DONNELL** are both out on loan in Blue Square South, at **Thurrock** and **Hampton & Richmond** respectively.

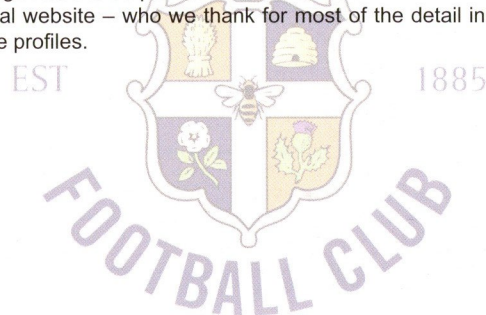
Attack:

Fortunately we won't have to contend with **MATTHEW BARNES-HOMER**, loaned out to League Two **Rochdale**. Top scorer **AMARI MORGAN-SMITH** (left) was briefly with **Stockport**, then scored prolifically for **Ilkeston Town** and joined **Town** as a free agent when they were liquidated. He has been called up for England "C"



along with midfielders Willmott, Watkins and Kissock. **DANNY CROW** is one of numerous squad members with connections to **Cambridge Utd**, and also spent time with **Peterborough**, **Notts County** and **Norwich**. **STUART FLEETWOOD** joined from **Hereford** on August deadline day. Among other clubs he

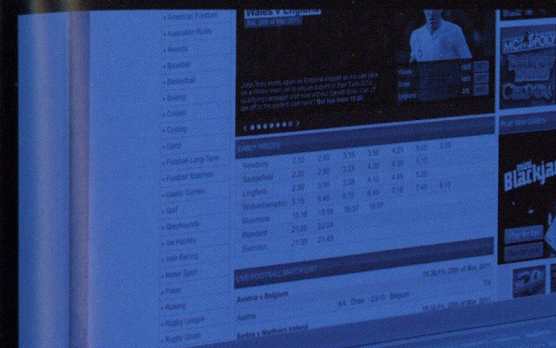
has scored prolifically in the Conference for **Forest Green**, after starting as a trainee with **Cardiff**. **AARON O'CONNOR** played under Justin Edinburgh at both **Grays** and **Rushden** and among other clubs had a prolific spell at **Gresley Rovers**. Journeyman **TOMMY WRIGHT** joined on a three-month deal after starting the season non-contract at **Kidderminster**. Youth teamer **ALASAN ANN** is yet to get a squad number, but highly enough rated to be profiled with the first team on **Luton's** official website – who we thank for most of the detail in these profiles.



ODDS FOR EARNING MONEY FOR YOUR CLUB WHEN YOU BET WITH BLUE SQUARE: ODDS ON



ODDS FOR FINDING THE BEST RANGE OF NON-LEAGUE MARKETS ON BLUESQ.COM: ODDS ON



ODDS FOR ANOTHER GREAT SEASON OF NON-LEAGUE FOOTBALL: ODDS ON



Visit bluesq.com/fans to find out how your bets can make money for your club

BLUE SQ BET **bluesq.com**
EVERYTHING IS PROBABLE



Available on the
App Store

See website for full terms and conditions. Over 18's only. Blue Square encourages responsible gambling, gambleaware.co.uk.

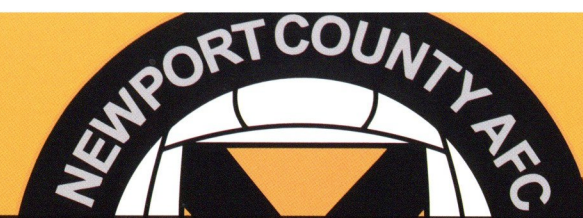
THE SEASON SO FAR

Key: Scorer in bold. Number in brackets after substitute's name indicates player replaced.

Number of away fans shown if information is supplied

Yellow and red cards indicated by colours behind players' names.

DATE	OPPONENTS	RES	SCORE	ATT	AWAY ATT	POS	1	2	3	4	5	6	7	8	9	10	11	12	14	15	16	17	Referee
Sat 13 Aug	Kettering Town	L	2-3	2047	546	20	Potter	Robson	Baker	Doherty	Miller	Yakubu	Rose	Rogers	Buchanan	Velez	Jardim	McAllister (10)	Foley	Rodgers	Hughes	Harrison	A. Davies
Tue 16 Aug	HAYES & YEADING UTD	W	4-0	1519	18	10	Potter	Rodgers	Baker	Doherty	Miller	Yakubu	Rose 2	Rogers	Buchanan	McAllister	Jardim	Velez (8)	Foley (10)	Hatswell	Hughes (11)	Thompson	J. Amey
Sat 20 Aug	GRIMSBY TOWN	D	0-0	1679	179	11	Potter	Rodgers	Baker	Doherty	Miller	Yakubu	Rose	Rogers	Buchanan	McAllister	Jardim	Gilligan (8)	Foley	Hatswell	Hughes	Thompson	R. Merchant
Tue 23 Aug	Ebbsfleet United	D	1-1	992	128	12	Potter	Rodgers	Hughes	Doherty	Miller	Yakubu	Rose	Gilligan	Buchanan	McAllister	Baker	Rogers (4)	Foley (8)	Jardim (9)	Velez	Thompson	G. Norwood
Sat 27 Aug	AFC Telford	L	1-2	2147	214	16	Potter	Rodgers	Hughes	Doherty	Warren	Yakubu	Rose	Miller	Buchanan	McAllister	Jardim	Rogers (2)	Foley (11)	Baker	Velez	Thompson (1)	P. Bankes
Mon 29 Aug	KIDDERMINSTER H.	L	1-3	1672	181	17	Thompson	Rodgers	Hughes	Velez	Warren (rescinded)	Yakubu	Rose	Miller	Buchanan	McAllister	Foley	Hatswell	Greening (4)	Jardim (9)	Newman	Harrison	K. Johnson
Sat 3 Sep	CAMBRIDGE UNITED	L	0-1	1515	132	20	Thompson	Rodgers	Hughes	Doherty	Warren	Miller	Rose	Velez	Buchanan	McAllister	Foley	Hatswell	Baker (4)	Jardim (9)	Greening	Harrison	S. Martin
Sat 10 Sep	Mansfield Town	L	0-5	2324	121	21	Thompson	Robson	Baker	Doherty	Warren	Yakubu	Rose	Miller	Buchanan	McAllister	Rodgers	Hatswell	Hughes	Jardim (11)	Jarvis (9)	Harrison	J. Simpson
Mon 12 Sep	CROESYCEILIOG (GSC)	W	5-0	250	10	-	Harrison	Greening	Newman	Hatswell	Hughes	Velez	Baker	Rogers	McAllister	Harris (4)	Jardim	Warren	Patten	Maher	Buchanan (9)	Swann (1)	D. Adie
Sat 17 Sep	Braintree Town	L	0-1	786	89	21	Thompson	Robson	Hughes	Doherty	Warren	Miller	Rose	Rogers	Jarvis	McAllister	Pipe	Hatswell	Foley (11)	Rodgers (2)	Buchanan (10)	Harrison	A. Fearn
Tue 20 Sep	STOCKPORT COUNTY	D	1-1	1205	117	23	Thompson	Robson	Hughes	Pipe	Warren	Miller	Rose	Rogers	Jarvis	McAllister	Foley	Hatswell	Gilligan (4)	Knights (11)	Buchanan (9)	Harrison	G. Horwood
Sat 24 Sep	BARROW	D	2-2	1350	61	23	Thompson	Robson	Baker	Pipe	Warren	Miller	Rose	Rogers	Jarvis	McAllister	Foley	Hatswell	Gilligan (8)	Knights (10)	Buchanan (9)	Harrison	A. Davies
Tue 27 Sep	Forest Green Rovers	D	1-1	1203	389	23	Thompson	Robson	Baker	Pipe	Warren	Miller	Rose	Rogers	Jarvis	Gilligan	Foley	Hatswell	McAllister (11)	Knights (7)	Buchanan (9)	Harrison	R. Merchant
Sat 1 Oct	Darlington	L	0-2	1785	68	23	Thompson	Rodgers	Robson	Pipe	Warren	Miller	Rose	Knights	Jarvis	Gilligan	Buchanan	Hughes	Rogers (8)	McAllister (11)	Foley (10)	Jardim	P. Bankes
Sat 8 Oct	SOUTHPORT	L	0-3	1576	68	23	Thompson	Rodgers	Baker	Doherty	Warren	Hatswell	Rose	Miller	Jarvis	McAllister	Buchanan	Hughes (3)	Gilligan	Knights (11)	Foley (8)	Swann	J. Amey
Tue 11 Oct	Fleetwood Town	W	4-1	1277	67	22	Thompson	Rodgers	Hughes	Doherty	Warren	Hatswell	Rose (pen)	Knights	Foley 3	McAllister	Buchanan	Miller (9)	Rogers (8)	Jarvis (10)	Jardim	Swann	R. Wigglesworth
Sat 15 Oct	TAMWORTH	L	1-2	1310	56	22	Potter	Rodgers	Hughes	Doherty	Warren	Hatswell	Rose	Pipe	Foley	McAllister	Knights	Miller	Rogers	Jarvis (9)	Jardim	Thompson	J. Hopkins
Tue 18 Oct	KETTERING TOWN	W	3-1	1249	14	22	Potter	Rodgers	Hughes	Doherty	Warren	Hatswell	Rose 3 (1 pen)	Pipe	Foley	McAllister	Knights	Miller (2)	Rogers (4)	Jarvis (8)	Jardim	Thompson	S. Martin
Sat 22 Oct	Wrexham	D	0-0	4232	237	22	Potter	Rodgers	Hughes	Doherty	Warren	Hatswell	Rose	Pipe	Foley	McAllister	Knights	Miller (8)	Rogers	Jarvis (11)	Jardim	Thompson	A. Harrington
Sat 29 Oct	BRAINTREE TOWN (FAC)	W	4-3	1234	15	-	Potter	Rodgers	Hughes	Doherty	Yakubu	Hatswell	Rose	Miller	Foley	McAllister	Knights	Velez	Rogers (4)	Jarvis (8)	Jardim / Greening	Thompson / Newman	P. Bankes
Sat 5 Nov	EBBSFLEET UNITED	L	0-1	1412	26	22	Potter	Rodgers	Hughes	Doherty	Yakubu	Hatswell	Rose	Pipe	Foley	McAllister	Knights	Miller (4)	Rogers	Jarvis (10)	Matthews (8)	Thompson	D. Ford
Sat 26 Nov	SHREWSBURY (FAC)	L	0-1	2362	475	-	Potter	Rodgers	Hughes	Doherty	Yakubu	Hatswell	Rose	Pipe	Foley	McAllister	Knights	Warren (6)	Buchanan (4)	Jarvis (11)	Miller / Rodgers	Thompson / Harris	D. Drysdale
Sat 19 Nov	Grimsby Town	D	2-2	2701	45	22	Potter	Rodgers	Hughes	Doherty	Yakubu	Hatswell	Miller	Pipe	Buchanan	Matthews	Jarvis	Warren	Rogers (4)	Foley (8)	McAllister (11)	Thompson	R. Clark
Sat 26 Nov	LUTON TOWN																						
Wed 30 Nov	BARRY TOWN (WC)																						
Tue 29 Nov	Hayes & Yeading United																						
Sat 3 Dec	LINCOLN CITY																						
Tue 6 Dec	Alfreton Town																						
Sat 10 Dec	FA Trophy R1																						
Sat 17 Dec	FLEETWOOD TOWN																						
Mon 26 Dec	BATH CITY																						
Tue 3 Jan	Bath City																						
Sat 7 Jan	Luton Town																						
Sat 21 Jan	FOREST GREEN ROVERS																						
Tue 24 Jan	Cambridge United																						
Sat 28 Jan	Gateshead																						
Sat 4 Feb	BRAINTREE TOWN																						
Sat 11 Feb	Stockport County																						
Sat 18 Feb	MANSFIELD TOWN																						
Tue 21 Feb	Tamworth																						
Sat 25 Feb	YORK CITY																						
Sat 3 Mar	Southport																						
Sat 10 Mar	DARLINGTON																						
Sat 17 Mar	WREXHAM																						
Sat 24 Mar	Lincoln City																						
Sat 31 Mar	GATESHEAD																						
Sat 7 Apr	AFC TELFORD																						
Mon 9 Apr	Kidderminster Harriers																						
Sat 14 Apr	York City																						
Sat 21 Apr	ALFRETON TOWN																						
Sat 28 Apr	Barrow																						



Today's Match Officials

Referee:

Tim Robinson (Bognor Regis)

Assistant Referees:

Peter Lavelle (Southampton)

Steve Finch (Southampton)

4th Official:

Daniel Jacecko (Swindon)

Ball Boy Team

Usk Juniors 9-11 year olds

Match Sponsor

**ADRIAN
SIMMONDS**

Next Home Game

Welsh Cup Round 3

Wednesday 30th November 2011

7.45pm KO



BARRY TOWN

macronstore
/Gloucester

FILA @ JD

☐ Sub ☐ Played
☐ Red Card ☐ Yellow Card

TEAMSHEET

Saturday 26th November 2011



Newport County

Amber Shirts, Black Shorts



Luton Town

White Shirts, White Shorts

<input type="checkbox"/>	<input type="checkbox"/>	<input type="checkbox"/>	<input type="checkbox"/>	1	DANNY POTTER
<input type="checkbox"/>	<input type="checkbox"/>	<input type="checkbox"/>	<input type="checkbox"/>	3	LEE BAKER
<input type="checkbox"/>	<input type="checkbox"/>	<input type="checkbox"/>	<input type="checkbox"/>	4	TOM MILLER
<input type="checkbox"/>	<input type="checkbox"/>	<input type="checkbox"/>	<input type="checkbox"/>	5	GARY WARREN
<input type="checkbox"/>	<input type="checkbox"/>	<input type="checkbox"/>	<input type="checkbox"/>	6	ISMAIL YAKUBU
<input type="checkbox"/>	<input type="checkbox"/>	<input type="checkbox"/>	<input type="checkbox"/>	7	DANNY ROSE
<input type="checkbox"/>	<input type="checkbox"/>	<input type="checkbox"/>	<input type="checkbox"/>	8	SCOTT ROGERS
<input type="checkbox"/>	<input type="checkbox"/>	<input type="checkbox"/>	<input type="checkbox"/>	9	CRAIG McALLISTER
<input type="checkbox"/>	<input type="checkbox"/>	<input type="checkbox"/>	<input type="checkbox"/>	10	SAM FOLEY
<input type="checkbox"/>	<input type="checkbox"/>	<input type="checkbox"/>	<input type="checkbox"/>	11	DARRYL KNIGHTS
<input type="checkbox"/>	<input type="checkbox"/>	<input type="checkbox"/>	<input type="checkbox"/>	12	RYAN GILLIGAN
<input type="checkbox"/>	<input type="checkbox"/>	<input type="checkbox"/>	<input type="checkbox"/>	14	TOMMY DOHERTY
<input type="checkbox"/>	<input type="checkbox"/>	<input type="checkbox"/>	<input type="checkbox"/>	15	NAT JARVIS
<input type="checkbox"/>	<input type="checkbox"/>	<input type="checkbox"/>	<input type="checkbox"/>	16	ANDREW HUGHES
<input type="checkbox"/>	<input type="checkbox"/>	<input type="checkbox"/>	<input type="checkbox"/>	17	WAYNE HATSWELL
<input type="checkbox"/>	<input type="checkbox"/>	<input type="checkbox"/>	<input type="checkbox"/>	18	GLYN THOMPSON
<input type="checkbox"/>	<input type="checkbox"/>	<input type="checkbox"/>	<input type="checkbox"/>	19	DAVID PIPE
<input type="checkbox"/>	<input type="checkbox"/>	<input type="checkbox"/>	<input type="checkbox"/>	21	ROBBIE MATTHEWS
<input type="checkbox"/>	<input type="checkbox"/>	<input type="checkbox"/>	<input type="checkbox"/>	22	RYAN NEWMAN
<input type="checkbox"/>	<input type="checkbox"/>	<input type="checkbox"/>	<input type="checkbox"/>	23	JAKE HARRIS
<input type="checkbox"/>	<input type="checkbox"/>	<input type="checkbox"/>	<input type="checkbox"/>	24	TROY GREENING
<input type="checkbox"/>	<input type="checkbox"/>	<input type="checkbox"/>	<input type="checkbox"/>	25	PAUL RODGERS
<input type="checkbox"/>	<input type="checkbox"/>	<input type="checkbox"/>	<input type="checkbox"/>	26	ELLIOTT BUCHANAN
<input type="checkbox"/>	<input type="checkbox"/>	<input type="checkbox"/>	<input type="checkbox"/>	27	FELINO JARDIM
<input type="checkbox"/>	<input type="checkbox"/>	<input type="checkbox"/>	<input type="checkbox"/>	29	GUILLAUME VELEZ
<input type="checkbox"/>	<input type="checkbox"/>	<input type="checkbox"/>	<input type="checkbox"/>	39	MATT SWANN
<input type="checkbox"/>	<input type="checkbox"/>	<input type="checkbox"/>	<input type="checkbox"/>		
<input type="checkbox"/>	<input type="checkbox"/>	<input type="checkbox"/>	<input type="checkbox"/>		
<input type="checkbox"/>	<input type="checkbox"/>	<input type="checkbox"/>	<input type="checkbox"/>		

					MARK TYLER	1	<input type="checkbox"/>	<input type="checkbox"/>	<input type="checkbox"/>	<input type="checkbox"/>	<input type="checkbox"/>
					DANIEL GLEESON	2	<input type="checkbox"/>	<input type="checkbox"/>	<input type="checkbox"/>	<input type="checkbox"/>	<input type="checkbox"/>
					GREG TAYLOR	3	<input type="checkbox"/>	<input type="checkbox"/>	<input type="checkbox"/>	<input type="checkbox"/>	<input type="checkbox"/>
					KEITH KEANE	4	<input type="checkbox"/>	<input type="checkbox"/>	<input type="checkbox"/>	<input type="checkbox"/>	<input type="checkbox"/>
					DEAN BECKWITH	5	<input type="checkbox"/>	<input type="checkbox"/>	<input type="checkbox"/>	<input type="checkbox"/>	<input type="checkbox"/>
					GEORGE PILKINGTON	6	<input type="checkbox"/>	<input type="checkbox"/>	<input type="checkbox"/>	<input type="checkbox"/>	<input type="checkbox"/>
					ALEX LAWLESS	7	<input type="checkbox"/>	<input type="checkbox"/>	<input type="checkbox"/>	<input type="checkbox"/>	<input type="checkbox"/>
					AMARI MORGAN-SMITH	8	<input type="checkbox"/>	<input type="checkbox"/>	<input type="checkbox"/>	<input type="checkbox"/>	<input type="checkbox"/>
					MATTHEW BARNES-HOMER	9	<input type="checkbox"/>	<input type="checkbox"/>	<input type="checkbox"/>	<input type="checkbox"/>	<input type="checkbox"/>
					DANNY CROW	10	<input type="checkbox"/>	<input type="checkbox"/>	<input type="checkbox"/>	<input type="checkbox"/>	<input type="checkbox"/>
					ROBBIE WILLMOTT	11	<input type="checkbox"/>	<input type="checkbox"/>	<input type="checkbox"/>	<input type="checkbox"/>	<input type="checkbox"/>
					SHANE BLACKETT	12	<input type="checkbox"/>	<input type="checkbox"/>	<input type="checkbox"/>	<input type="checkbox"/>	<input type="checkbox"/>
					STUART FLEETWOOD	13	<input type="checkbox"/>	<input type="checkbox"/>	<input type="checkbox"/>	<input type="checkbox"/>	<input type="checkbox"/>
					AARON O'CONNOR	14	<input type="checkbox"/>	<input type="checkbox"/>	<input type="checkbox"/>	<input type="checkbox"/>	<input type="checkbox"/>
					JAKE HOWELLS	15	<input type="checkbox"/>	<input type="checkbox"/>	<input type="checkbox"/>	<input type="checkbox"/>	<input type="checkbox"/>
					ED ASAFU-ADJAYE	16	<input type="checkbox"/>	<input type="checkbox"/>	<input type="checkbox"/>	<input type="checkbox"/>	<input type="checkbox"/>
					WILL ANTWI	17	<input type="checkbox"/>	<input type="checkbox"/>	<input type="checkbox"/>	<input type="checkbox"/>	<input type="checkbox"/>
					CURTIS OSANO	18	<input type="checkbox"/>	<input type="checkbox"/>	<input type="checkbox"/>	<input type="checkbox"/>	<input type="checkbox"/>
					JAMES DANCE	19	<input type="checkbox"/>	<input type="checkbox"/>	<input type="checkbox"/>	<input type="checkbox"/>	<input type="checkbox"/>
					JOHN KISSOCK	20	<input type="checkbox"/>	<input type="checkbox"/>	<input type="checkbox"/>	<input type="checkbox"/>	<input type="checkbox"/>
					CHARLIE HENRY	21	<input type="checkbox"/>	<input type="checkbox"/>	<input type="checkbox"/>	<input type="checkbox"/>	<input type="checkbox"/>
					PAUL CARDEN	22	<input type="checkbox"/>	<input type="checkbox"/>	<input type="checkbox"/>	<input type="checkbox"/>	<input type="checkbox"/>
					ALEX LACEY	24	<input type="checkbox"/>	<input type="checkbox"/>	<input type="checkbox"/>	<input type="checkbox"/>	<input type="checkbox"/>
					JONATHAN O'DONNELL	26	<input type="checkbox"/>	<input type="checkbox"/>	<input type="checkbox"/>	<input type="checkbox"/>	<input type="checkbox"/>
					JAMIE HAND	27	<input type="checkbox"/>	<input type="checkbox"/>	<input type="checkbox"/>	<input type="checkbox"/>	<input type="checkbox"/>
					ADAM WATKINS	28	<input type="checkbox"/>	<input type="checkbox"/>	<input type="checkbox"/>	<input type="checkbox"/>	<input type="checkbox"/>
					KEVIN PILKINGTON	30	<input type="checkbox"/>	<input type="checkbox"/>	<input type="checkbox"/>	<input type="checkbox"/>	<input type="checkbox"/>
					LEWIS KIDD	31	<input type="checkbox"/>	<input type="checkbox"/>	<input type="checkbox"/>	<input type="checkbox"/>	<input type="checkbox"/>
					JANOS KOVACS	39	<input type="checkbox"/>	<input type="checkbox"/>	<input type="checkbox"/>	<input type="checkbox"/>	<input type="checkbox"/>

Manager: Justin Edinburgh

Manager: Gary Brabin

Acorn

www.newport-county.co.uk