

HATTERS

LUTON TOWN FC OFFICIAL MATCHDAY PROGRAMME: £3.00

V NOTTS COUNTY 23/08/08 3.00PM

Official Club sponsor

Today's Mascot



Jordan Murray



JDSports.CO.UK



**carbrini®
sportswear**

PROUD TO SUPPORT LUTON TOWN

CARBRINI SPORTSWEAR ONLY AT YOUR LOCAL JD STORE IN
THE ARNDALE SHOPPING CENTRE, LUTON.

Contents

Luton Town v Notts County



04 MICK HARFORD

The Hatters boss looks ahead to this afternoon's game

04



06 GARY SWEET

The Managing Director gives his view on what's happening on and off the pitch

09 THE SKIPPER

Nico believes the Hatters need to go on an unbeaten run

09



11 LOYAL LUTON

Kevin Lennon gives us the supporters opinion



14 IN TOWN

We welcome Notts County to kenilworth Road this afternoon

26

20 ONE ON ONE

We talk to newcomer Claude Gnaka on why he came to Luton Town.



COMMERCIAL 22

Help support the Hatters this season with a variety of sponsorship packages

FRIENDLY FIRE 24

All the action from our Carling Cup game with Plymouth Argyle

JUNIOR HATTERS 26

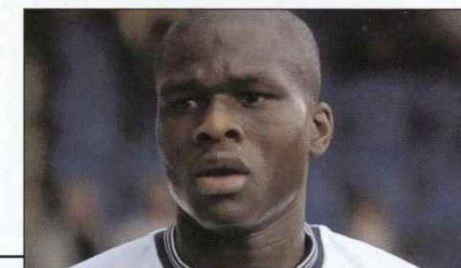
Harry the Hatter is back with fun and games.

FRIENDLY FIRE 38

All the action from our League Two game with Gillingham

FLASHBACK 40

Roger Wash looks back at Ken Hawkes' first game for Luton



Luton Town Football Club Official Matchday Programme

Editor: Zoe Wood Designed by Lee Wood Contributors: Chris Rivett, Matt Coleman, Becky Ashton, Simon Pitts, Roger Wash, Chris Owen. Photographer: Gareth Owen.

Printed by: Queensway Publishing 020 8807 7669



"It is paramount that we get our home form up and running and hopefully we can start this afternoon"

mickharford



Good afternoon and welcome to Kenilworth Road for our encounter against Notts County.

I would like to extend a warm welcome to Charlie McParland, his directors, staff, players and fans and hopefully you all have a safe journey back to Nottingham.

As all games this season are of a massive importance, it is paramount that we get our home form up and running and hopefully we can start this afternoon, in what will be a tough encounter against a Notts County team who like to play football in the right manner.

It was very pleasing in the last two games to see us keep two clean sheets and come out of what were very contrasting games with two wins to our credit.

It proved to us as a group that we can play decent, attractive football and also go to Gillingham and

scrap and battle in what was a tough game and come away with a deserved win, and again see Big Sam on the scoresheet.

Also, after a deserved win against a strong Plymouth team, we have been handed a draw at Reading in the next round of the Carling Cup.

A home draw was what

we were looking for, but we will go there full of confidence and looking to upset another Championship team.

Keep the faith
Big Mick





72 Clubs. The 'Coca-Cola' Football League.

garysweet



Managing Director of Luton Town

In this together

Good afternoon and welcome to all supporters of two of the oldest professional Clubs in the league and two Clubs who have frequently entertained each other over recent years.

On behalf of all at the Club I would like to thank County for their support today and every Town fan for your attendance so far this season and I'm confident our performance today will reward your loyalty.

It's an incredible and surreal honour to be able to write these notes for a Luton Town programme today.

As you will all know by now, we at LTFC 2020 are all dedicated Hatters and we'll all be kicking every ball during the game today. Your support in the three games so far has been magnificent, passionate, committed and loud.

I'm sure our opposition today wouldn't mind me urging you all to continue this enthusiasm today and throughout the season.

If ever there was a Club that needed its twelfth man to be present, it is ours this season. I can assure you it is appreciated by the players and everyone at the Club.

In addition to the atmospheric support you create, your attendance and sponsorship is also crucial income for our business this season, as huge sums of cash intended for the Club were needed to be diverted to the administration process, not to mention the financial demands from the footballing authorities.

Whilst we may be out of administration now, the regeneration of Luton Town Football Club will be an ongoing evolutionary process. Our priority was to support Mick in revitalising our squad to maximise our

chances of remaining in League Two and to establish a strong squad to launch a promotion challenge twelve months from now. I'm delighted at the progress made in this area particularly as we need to reduce our budget by over 60% to stabilise the Club's finances.

I would like to take this opportunity to formally thank Mick Harford and Antony Brown for their hard work and determination in their unbelievable progress so far in putting together an excellent team that have the spirit and commitment to rise to the greatest challenge in football.

This mission will be a real white knuckle ride for us all but the camp is full of confidence. Should we succeed in this challenge, it will be as exciting as any Hatter will have witnessed and not one to be missed.

Enjoy the game!

"Our priority was to support Mick in revitalising our squad to maximise our chances of remaining in League Two and to establish a strong squad to launch a promotion challenge twelve months from now"

Thomas
Cook

Going Places

Still fancy
your pie & pint?

Hatters Holidays

You save! - With a guaranteed discount off a wide range of UK & overseas holidays.
We win! - With a royalty payment to the club on every booking made.

Stores nationwide • lutontown.thomascooksport.com

No membership or proof of being a supporter required. Supporters receive a guaranteed discount on package holidays operated by a Thomas Cook tour operator and on holidays operated by selected non-Thomas Cook tour operators. Applies to summer or winter package holidays, city breaks, cruises, worldwide travel and UK weekend breaks/hotel-only. Discount can vary - please ask for details at time of booking. Bookings must be made at a Thomas Cook or Going Places store, by calling 0870 751 9954 or online at lutontown.thomascooksport.com. Calls are charged at local rate plus network extras (price correct at time of printing). Discount cannot be combined with any other discount or offer. All holidays are subject to availability and relevant tour operator's booking conditions. Thomas Cook Sport is a trading name of Thomas Cook Retail Ltd, ABTA 10601.

thecaptain



NICO HOPES THE TEAM CAN PRODUCE ANOTHER VICTORY THIS AFTERNOON

Welcome back to Kenilworth Road for our afternoon game against Notts County.

It was fantastic to put the disappointment of Port Vale behind us and produce a win against Plymouth Argyle, particularly in the fashion we did.

I was very pleased for the two young lads who scored their first goals for Luton and for this season.

I felt we produced a good all round performance against what was a very strong Championship side and we continued this into our away game at Gillingham.

As with all our games, Gillingham was a must win fixture and Sam Parkin ensured our three points with a really good and clean goal.

"It was fantastic to put the disappointment of Port Vale behind us and produce a win against Plymouth Argyle, particularly in the fashion we did."

Our four defenders and Dean Brill worked really well together, particularly in the second half considering they have only been together for two weeks and as a team they have ensured we have come away from the last two games with clean sheets.

It has been a long time since we have won two games on the trot and we haven't won an away game since our trip to Port Vale last year.

I believe our success was helped by the great following that kept behind us for the entire 90 minutes, creating a party atmosphere.

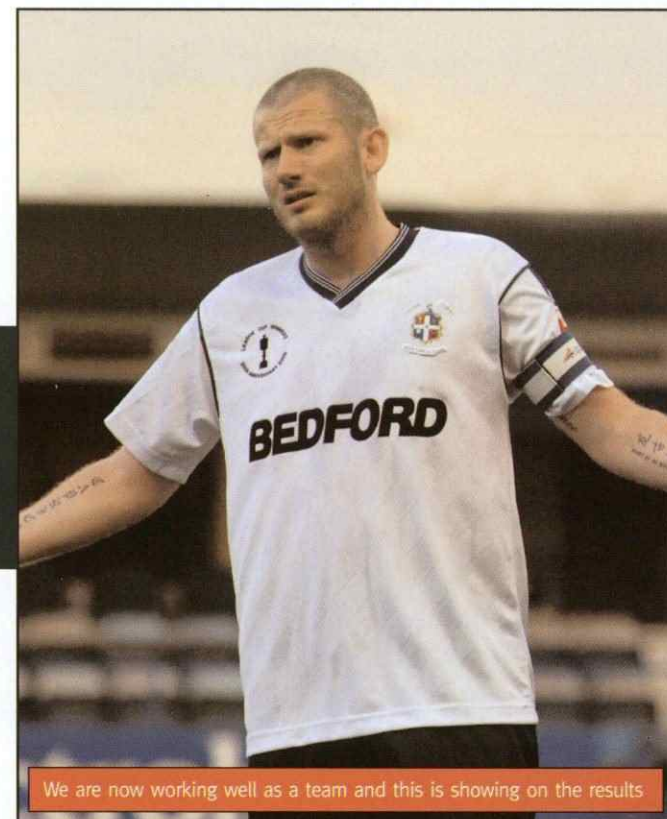
You won't find many directors, owners or club secretaries who will come to an away game

and sit in the away end. This proves that everyone at the club is behind the team and means a lot to each of us.

Now we really need to push on. We have had a taste of a win and we now need to put together a run and show consistency in our performances, starting with this afternoon's match.

Get behind the lads

Nico



We are now working well as a team and this is showing on the results



- FREE day visit to David Lloyd Luton for 2 adults and 2 children. Valid up to 30th November 2008.
- Over 130 adult group exercise classes a week.
- Family activities timetable for 6 months - 16 year olds. Classes include: **Lindy Lou's Dinky Dancers, Tatty Bumpkin Yoga, Stretch & Grow, Football Frenzy, Ballet, Teen Spin, Teen Circuits, Teen Combat, Karate and Kick Boxing.**
- Swimming pool with jacuzzi and saunarium.
- Swimming pool family fun with Water World and Family Splash Hour.
- Swimming coaching available for all levels from 3 months including adult lessons.
- Gymnasium with extensive range of cardiovascular and resistance equipment.
- Extensive free weights area.
- NEW! Power Plate - the celebrity 15 minute work out.
- Club lounge with Costa Coffee, licensed bar and restaurant.
- **Call David Lloyd Luton on 01582 692 045**

LIFE. Be fit for it



kevinlennon



Chairman of Loyal Luton Supporters Club

Independent supporters group Loyal Luton Supporters Club was formed in 1990 to provide a strong voice for the fans.

Since last November Loyal Luton has worked closely with both TIL and LTSC to help the Club finally move in the right direction. We all fully supported 2020's cornerstone investment principles which we firmly believe in as a blueprint for the future based on long-term stability and financial security.

This season sees the Club embark on a potentially momentous journey. With the Club finally in safe hands there is an exciting future ahead and one that could shape the Club in a way that will be unprecedented amongst its peers.

Mick Harford, a born winner and leader of men, has spent much of the summer re-shaping the squad and so far there have been some

extremely encouraging signs while the return of Kevin Nicholls was also just what the doctor ordered.

As fans we have a significant role to play being that infamous 12th man.

We need to get behind every player through every minute of every game, turning up in numbers, being vociferously supportive until the bitter end and we should not underestimate the role we have to play.

The atmosphere during the first half against Port Vale was incredible so let's keep that up until full-time for every game.

There will be some rollercoaster moments along the way but we must stay mentally strong and maintain a positive belief.

Winners never give in.

The ingredients are there for legends to be made and for

everyone to go down in world football folklore in a season none of us will ever forget.

Above all we now have OUR Club back in safe hands with custodians that listen to and respect all fans so during any down moments let's not forget the bigger picture here.

So let's all get our best singing voices out for the next nine to ten months and be an integral part of a history-making successful season which will be full of fun, positivity and free-flowing attractive football.

Further information on Loyal Luton can be found at www.loyalluton.com

Regards

Kevin

"We need to get behind every player through every minute of every game, turning up in numbers, being vociferously supportive until the bitter end and we should not underestimate the role we have to play"



Today there will be a bucket collection around the ground for the Luton and Dunstable Neonatal Unit.

The NICU (Neonatal Intensive Care Unit) Appeal will help to treat more babies and save even more precious lives.

One in ten babies needs specialist care when they are born.

The Luton & Dunstable Hospital treats over 600 premature and sick babies each year.

However demand for intensive care cots has dramatically increased and the Hospital is now building a new Unit.

The NICU Appeal needs to raise £1.5 million to equip and enhance the Unit so that it provides the best possible environment for our babies to get better.

If donate, or organise your own fundraising event for the Appeal, please contact Sarah Newby on 01582 718 043 or visit www.ldh.nhs.uk/fundraising

PROGRAMME SUBSCRIPTION

If you would like to have your programmes delivered straight to your door then join our home programme subscription service!

For just £124 all of the Hatters home programmes will be sent to you, this includes all of their home Cup games. For more information or to sign up to this great service contact the Club Shop on 01582 488864.



GOODBYE'S

Everyone at Luton Town would like to say thank you to Sharon and Nush for all their commitment and hardwork.

Sharon worked in the Secretary's office for thirteen years and has now got a job at Queensbury Sixth Form, Dunstable.

Nush worked in the Club Shop for five years and has been offered a place at Luton University doing Youth and Community Studies.

We wish them both luck in the future.

GOOD LUCK!

Pauline and Brian Patrick Shepard would like to wish the team and everyone connected with the Club good luck this season.

CLUB SHOP

Due to technical problems we have had to temporarily close down the Club Shop's website.

We apologise for any problems this may cause.

Supporters wishing to purchase items can do so either by phoning the Club Shop on 01582 488864, by visiting the shop on Kenilworth Road or going to our shop on the second floor of Debenhams in the Arndale Centre.

The Club Shop's opening hours are as follows:

Monday	Closed
Tuesday	10-5
Wednesday	10-5
Thursday	10-5
Friday	10-5
Saturday	9-12
(home game)	9-kick off, half-time, at the end of the game as required



WHO'S WHO

Chairman
Nick Owen

Advisory Board
Bob Curson
Godfrey Ingram
Mick Pattinson David Wilkinson

Managing Director
Gary Sweet

Director
Stephen Browne

Manager
Mick Harford

Assistant Manager
Warren Neill

Physiotherapist
Harry Scott-Stackman

Coaches
Dmitri Kharine
Joe Dunbar

Youth Development Officer
Gregg Broughton

Youth Team Coach
Alan Neilson

Football and Community Development Officer
Stuart Smith

Club Secretary
Cherry Newbery

Club Chaplain
Alan West



NottsCounty

Welcome to Today's visitors

Universally recognised as the Oldest League Club in the World, Notts County F.C. was formed in 1862 and was a founder member of the English Football League in 1888. The Formation of Notts County Football Club took place in 1862 with the Nottingham Guardian of November 28th 1862 saying:-

"The opening of the Nottingham Football Club commenced on Tuesday last at Cremorne Gardens. A aide was chosen by W. Arkwright and Chas Deakin. A very spirited game resulted in the latter scoring two goals." Official formation came in 1864 as the 'Notts. Football Club'.

Notts County's most famous player was the England International Tommy Lawton, whose arrival at Meadow Lane in November 1947 put 10,000 on the gates and the Boxing Day game against Swansea caused the gates to be locked with more than 45,000 in the ground and an estimated 10,000 outside! 'The Lawton Era' were halcyon days at Notts County with other great players such as Jackie Sewell and Tommy Deans gracing the Third Division.

However, the death of Club Captain Leon Leuty sparked the rapid break-up of the 1954/55 side that had done so well. Relegation to Division Three and then Four followed



The Ground: Meadow Lane

In 1910, County moved to their current home, Meadow Lane.

The first game there was a 1-1 draw with old rivals Nottingham Forest, played in front of 28,000 fans.

Notts County's Meadow Lane and Nottingham Forest's City Ground are the two closest grounds in England, situated only 330 yards (300m) apart, though the River Trent flows between them.

Meadow Lane lies to the north of the river, the City Ground to the south.

Notts County is the only fully professional football club based within the boundary of the city of Nottingham, as the City Ground stands in West Bridgford in the Borough of Rushcliffe.

The Magpies

www.lutontown.co.uk

on the trot, and despite a return to Division Three Notts were back in Division Four before long. On 21 September 1968 Notts slumped to the bottom of the Division Four table, but luckily found their form and moved clear.

Arguably the most successful period in the Club's history, under arguably the most successful manager, came in the 1970's when Jimmy Sirrel put so much pride back into the Club including promotion to Division One in 1981 after a historic win at Chelsea. Sirrel spent many years of hard work building together a team that would eventually gain top-flight status.

He took over with the Magpies in Division Three, and promotion was achieved in 1970/71 from Division Four and in 1972/73 from Division Three with the likes of Les Bradd and Don Masson doing the business. Dave Needham, Brian Stubbs, Tony Hatley, Kevin Randall and Arthur Mann were the spine of the team that was so successful.

Bradd scored 124 goals during eleven years with the club.

However, there were tough times in the 1986/87 and the financial situation at the club saw a crisis meeting that drew 1,500 supporters to the Astoria night club on September 15 1986, with many more locked outside. £2 Million debts had forced the directors to consider putting the club into liquidation.

Players and Directors pledged to carry on with the financial support from the fans. A friendly match with Forest brought 3,299 to Meadow Lane and added £14,000 to the survival funds as well as the formation of Notts County Lifeline. However, another new chapter in Notts' history was just about to begin.

The Manager

Ian 'Charlie' McParland was appointed as Notts County's Manager on Thursday 18th October 2007, replacing Steve Thompson.

The Scotsman spent eight years at Meadow Lane, scoring 90 goals in 267 appearances after beginning his career as an apprentice at Sunderland.

He also played for Walsall, Dunfermline, Lincoln and Northampton, ending his playing career in Hong Kong.

McParland returned to the UK to begin his management career with a brief spell at Arnold Town before moving to Forest, where he acted as reserve team coach for 10 years and then stepped up as joint caretaker manager with Frank Barlow following the end of Gary Megson's tenure.

The pair almost inspired Forest to the League 1 play-offs 18 months ago, and McParland returned to a coaching role once Colin Calderwood was appointed as manager.

He left the City Ground in August 2007, but has now returned to the club where he was a true fans' favourite and guided the Club to League Two survival last term.



Ian McParland

The Magpies

www.lutontown.co.uk



Kevin Pilkington

Experienced goalkeeper Kevin is now in his fourth season with Notts County. Kevin joined the Club from local rivals Mansfield Town in June 2005 after rejecting a new deal at Field Mill. Last season Kevin claimed the Supporters' & Players' Player of the Year Awards after an impressive season between the posts, although his season was cut short in March due to a fractured fibula sustained in training.

Mike Edwards

Mike is now in his fifth season with Notts County, making him the longest serving player on the books at Meadow Lane. Mike is no-nonsense central defender who also provides the Magpies back-line with a calming influence, and he has performed to a consistent level throughout his time in the black

and white stripes.

Adam Tann

Adam is versatile defender is comfortable playing at right-back and centre-back who claimed the Player of the Season Award at Meadow Lane in the 2007/08 season. Adam is a calm and assured defender who adds depth and experience to the squad who joined the Club in July 2007.

Jay Smith

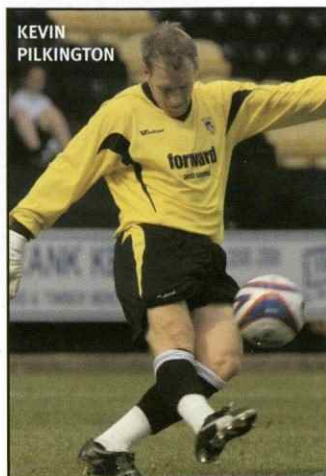
Jay initially joined Notts on loan from Southend United in November 2006, adding strength and depth to the Magpies midfield, and having impressed greatly in the middle of the park during his two months at Meadow Lane he later joined the Club on a permanent basis in January 2007.

Neil MacKenzie

Neil joined Notts County in 2007, and provides a creative edge to the Magpies' midfield. His experience on the ball and passing abilities have made him a renowned figure in the lower leagues, as well as his trademark free-kicks which secured Notts a number of points last season in key matches.

Paul Mayo

'Left-back Paul rejected fresh terms at fellow League Two rivals Lincoln City to join Notts in the summer of 2007. A full-back who likes to power forward and provide accurate crosses into the box, Paul is a experienced player despite his relatively young age.



KEVIN PILKINGTON

Gavin Strachan

Gavin, the son of Celtic Manager Gordon, became Ian McParland's first permanent signing at Meadow Lane in January 2008 by putting pen-to-paper on an eighteen-month contract.

Myles Weston

Left-winger Myles is an exciting prospect on the books at Meadow Lane, who has bags of pace and skill in his locker, something defenders at any level hate coming up against. He was released by Charlton in the summer of 2007 and was quickly secured on a two-year contract by former Manager Steve Thompson after a brief loan spell with the Club the previous season.

Richard Butcher

Richard is a midfielder with a real eye for goal – as his goalscoring tally of twelve displayed last season. He is a player who has plenty of

RICHARD BUTCHER



experience at League Two level, and hit a number of vital goals last season - including a crucial strike against Wycombe Wanderers.

Spencer Weir-Daley

Striker Spencer joined the Club in July 2007, and the Magpies held off interest from other parties to secure the services of the lively and speedy goal-getter. He turned down a new contract at Nottingham Forest and also the opportunity to join Bradford City in favour of a move to Meadow Lane. After waiting in the wings at Forest for too long for his own liking, he opted for a fresh start in a bid to secure first-team football at Meadow Lane.

Tim Sandercombe

Young goalkeeper Tim joined the Club in July 2007 after being released by Plymouth Argyle after completing his Scholarship with the Championship club. The giant shot-stopper made one appearance for the Club last

season in the Johnstone's Paint Trophy, spending the season as back-up to Kevin Pilkington and Russell Houlth and feeding off their invaluable experience.

Stephen Hunt

Left-footer Stephen adds balance and versatility to the Magpies backline, and is currently in his third season with Notts County. The defender has all the attributes to have a good career in the game with excellent strength, pace and awareness.

Michael Johnson

'Jonno' is idolised by the Magpies faithful, and the defender turned down various moves to Championship clubs from Derby County when dropping down to League Two.

Jamie Forrester

Much-travelled Jamie agreed to join the Magpies in June 2008, ended his two-year association with Lincoln City in favour of a move to Nottingham. The acute shortage of goals from strikers

was Notts' major problem last season and Manager Ian McParland believed the signing of Forrester would go a long way towards ensuring there was no repeat this term.

Matthew Hamshaw

Creative right winger Matthew signed for Notts County in the summer of 2008 after leaving local rivals Mansfield Town.

Adam Nowland

The midfielder has endured a frustrating few years with injuries, but is determined to use his switch to Meadow Lane as fresh opportunity to put his past behind him.

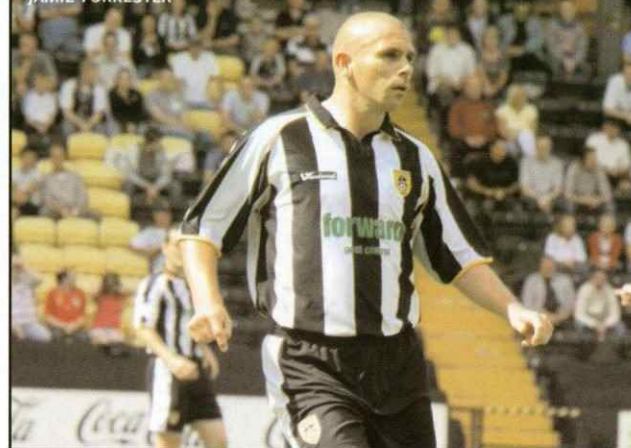
Russell Houlth

Houlth played a massive part in the fight to avoid relegation by keeping seven clean sheets in those fourteen games and enjoyed the experience so much that he was keen to team up with Ian McParland's men on a permanent basis.

Jason Beardsley

Young defender Jason joined the Magpies on a three-month loan from Championship side Derby County in July 2008. The youngster, who is a product of the Rams' Academy, is at home at right back but can also perform at left back if required. He made his Derby debut last season in the Carling Cup and is using his time at Meadow Lane to gain valuable first-team experience.

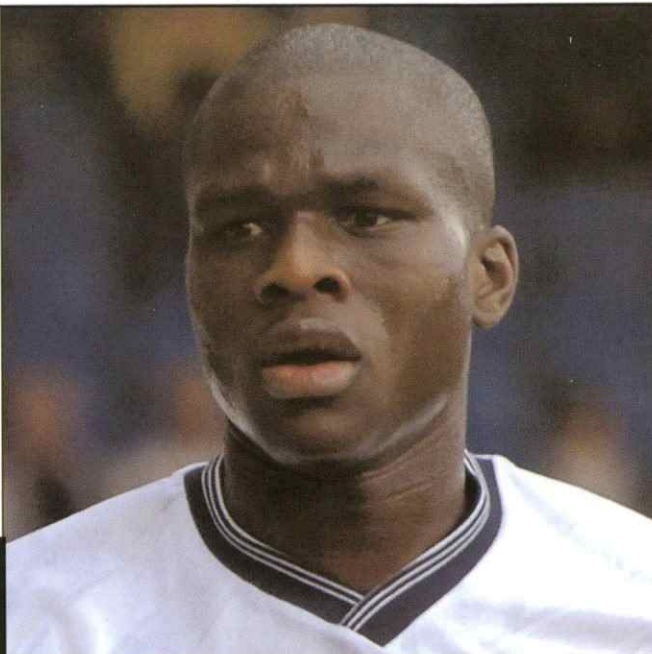
JAMIE FORRESTER



The Hatters new look defence has been boosted by the summer arrival of right-back Claude Gnakpa from newly-promoted League 1 side Peterborough United.

Along with fellow summer signing Ian Roper and Sol Davis, Gnakpa knows what it takes to be successful at this level.

A regular in the promotion winning Peterborough United side



"He wants good players at the club who can play football, and I really like to get the ball down and play it around."

OneonOne

Frenchman Claude Gnakpa is one of Mick Harford's summer signings

last season, Gnakpa started 25 Coca-Cola League 2 games for the Posh.

He joined the Cambridgeshire club after impressing boss Darren Ferguson while on trial, and the 'Flying Frenchman' was quickly made a regular at London Road.

He has a notoriously strong tackle and terrifying pace, a modern-

day full-back who enjoys attacking just as much as defending.

His experience at this level will no doubt make him a good addition to the dressing room.

"I'm very happy to be here at Luton," explains the right-back who had no hesitation in joining Town.

"It is a big club, a Championship side I

think. In my first game here at Kenilworth Road it was a big sensation to walk out in front of all the fans and it has made me feel very proud to be here."

The pacey Frenchman stated that the decisive factor that underpinned his move to Kenilworth Road was manager Mick Harford.

"The main reason for me coming here was the gaffer. He showed me a

claudenakpa

lot of interest and really wanted to have me here. He wants good players at the club who can play football, and I really like to get the ball down and play it around.

"I played in Spain before and that has really helped me."

Gnakpa has joined a side that has only recently been put together, but he doesn't see this as being a problem.

He said, "We are young players in the team so it makes it easier to all come together, which is good because a lot of us have only been together for a short

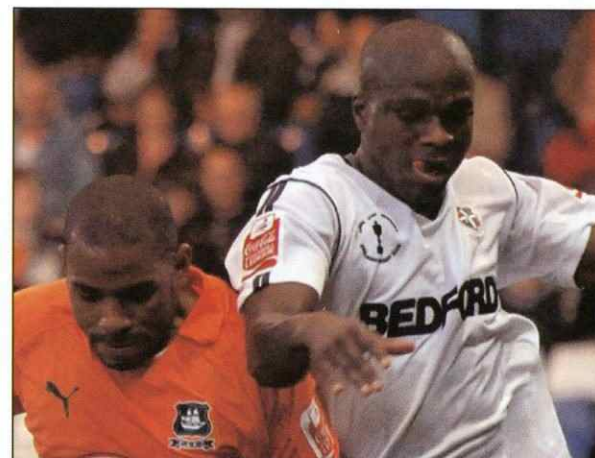
time."

He has gelled well with his new teammates, and has admitted that he is particularly impressed with captain Kevin Nicholls.

"For me, the most important part of the team is the captain Nico.

"He is the spirit of the team and when you are on the pitch he really brings the team up."

The right-back understands the situation that the club has found itself in, but is fully committed to retaining League status with the Hatters.



"It was difficult to build the team and a lot of players came in late.

"Now the team is more settled we have to play together, get to know each other even more and keep winning.

"I am very confident that we will stay up.

"All of the players know about the problems that the club has, but we are good players and we are good enough to win most of our games.

"After that, you never know what will happen."

"It is a big club, a Championship side I think. In my first game here at Kenilworth Road it was a big sensation to walk out in front of all the fans and it has made me feel very proud to be here."



A huge welcome to this afternoon's matchday mascot.

Jordan Murray



Date Of Birth: 23/2/98
School Attended: Sundon Park Juniors
Fav Luton player: Kevin Nicholls

Here is a picture of Max Hutchison and Bradley Slater lining up before kick-off at our Tuesday evening cup fixture against Plymouth Argyle.



Commercial Matters



TAKE ADVANTAGE OF OUR SPONSORSHIP AND MASCOT PACKAGES

MATCH & MATCHBALL SPONSOR (from £499 inc. VAT based on 6 guests)
Individual Match and Matchball sponsorships offer the perfect way to enhance

your company's brand or entertain your family and friends whilst offering an unforgettable experience.

Benefits include:

Hospitality in the Joe Payne Lounge

Reserved seating in the David Preece Stand

PA exposure and programme branding/editorial

Reserved parking space/s,

Complimentary programmes, souvenir photograph and visit to home dressing room, through tunnel and onto pitch.

Match sponsor receives a signed shirt and opportunity to choose the Man of the Match. The Matchball sponsor receives the matchball.

Warm up with Luton Town FC before the match and lead out the team with the Captain with our MASCOT PACKAGE (from £229 inc. VAT based on 1 mascot and 3 guests)

Benefits include:

Hospitality in the Joe Payne Lounge



Reserved seating in the David Preece Stand

PA exposure and programme recognition

Reserved parking space, complimentary programmes, souvenir photograph and visit to home dressing room, through tunnel and onto pitch.

Replica kit for Mascot

Mascot included in the pre-

match team warm up and walks with the Captain onto the pitch for the start of the match.

For additional Commercial Opportunities at Luton Town Football Club including Executive Boxes, Executive Memberships, Advertising, Player Kit Sponsorships, please contact:

COMMERCIAL DEPARTMENT:
01582 411622
E: commercial@lutontown.co.uk



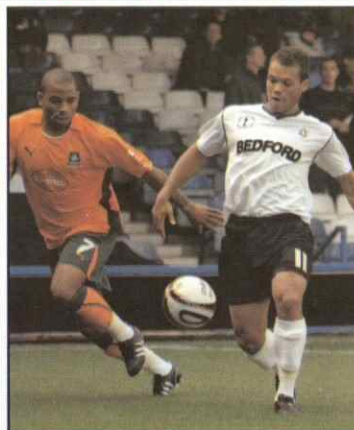


CARLING CUP FIRST ROUND

Tuesday 12th August 2008

Hatters 2 Plymouth Argyle 0

Kick off: 7.45pm Kenilworth Road



As It Happend:

Rossi Jarvis scores for the Hatters

A foul on Tristan Plummer, Asa Hall to take freekick from 35 yards

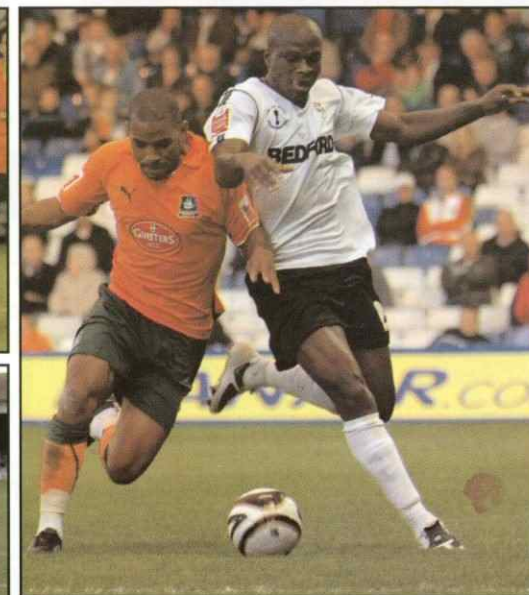
LUTON 1-0 PLYMOUTH

Plymouth goal disallowed due to a foul in the area

Tristan Plummer doubles Luton's advantage

LUTON 2-0 PLYMOUTH

0 15 40 45 62 78 90



Luton Town: Brill, Gnackpa, Davis (Keane 71), Pilkington, Nicholls, Parkin, Emanuel (Plummer 31), Hall, Jarvis, Martin (Watson 88), Spillane



Junior Watters



CALLING ALL JUNIOR HATTERS!!

Hello and welcome to all Junior Hatters

Please accept our apologies for the delay in contacting you this season. We are pleased to announce that we are now in a position to send out renewal forms and welcome new members. Hopefully you will have received your form already, so if you would like to be part of our next mascot draw, send your form back to us as soon as you can.

For any young fans who are not Junior Hatter members, these are some of the benefits you can get for joining:-

The chance to be a mascot at home games- receive a free kit and lead the team out at Kenilworth Road
The chance to be ball boys/girls at home matches
A birthday and Christmas card signed by LTFC players

A christmas party with the players
10% off our Community Football coaching courses
A free match ticket offer on your birthday
Watch matches under supervision in the Kenilworth Stand

If you would like to find out more, call Trish on 01582 391927

Can you find all these football based words in the grid opposite?

Good luck!!

ASSISTANT
CUP
WORLD
PENALTY
THROW
GOAL

HATTERS WORDSEARCH

T	P	E	R	O	L	G	S
N	I	A	A	W	L	D	T
A	W	W	W	A	Y	G	L
T	H	R	O	W	O	G	A
S	E	S	R	A	R	O	G
I	Y	T	L	A	N	E	P
S	S	T	D	S	W	U	L
S	N	O	T	R	C	U	T
A	D	O	S	T	T	L	I

QUIZ

1. Who apart from Bill Nicholson is the only other Manager to have won the League Championship with Tottenham Hotspur?

2. When coming on as substitute for Sheffield United v Reading on 20th January 2007, which record was broken by Keith Gillespie 12 seconds later?

3. Which player represented England in the 1966 World Cup match v France and then was not capped again until 1977 v. Switzerland?

4. Apart from Ipswich Town, with whom he won the League Championship in 1961/62, which other league club was managed by Sir Alf Ramsey?

5. Following the demise of Gretna, which club have been elected into Scottish League Division 3 to replace them?

6. Which player was the first substitute ever used in a Football League match?

7. Who won an FA Cup winners medal with Spurs in 1991 after having been an un-used substitute against them in the 1987 final?

8. Which country (having originally not qualified) replaced Yugoslavia just prior to Euro 92 and then went on to win the competition?

9. When West Ham won the FA Cup in 1975, which player scored two goals in each of the games v Arsenal in the Quarter Final, Ipswich Town in the Semi Final and Fulham in the Final itself?

10. Who was England Caretaker Manager for the matches following Glenn Hoddle's sacking (v France in 1999) and Kevin Keegan's resignation (v Finland in 2000)?

The answers are on page 55.

Spot the difference

There are FIVE differences between the two pictures below. Can you spot them all?

The answers are on page 55.



executivebox holders



G.P. Quorenton
(Ductwork)

Tel: 01582 882561

BILLINGTON

Tel: 01582 726100

**SHALLOWFORD
CONSULTING**

Tel: 01438 831013

Admiral
GROUP OF COMPANIES

Tel: 01582 653333

Butterfields

01582 491100

Mr Mick Connolly

SKF

Tel: 01582 490049

F&S PIPEWORK

OFFICIAL BEER OF LUTON TOWN F.C.

Enjoy Responsibly



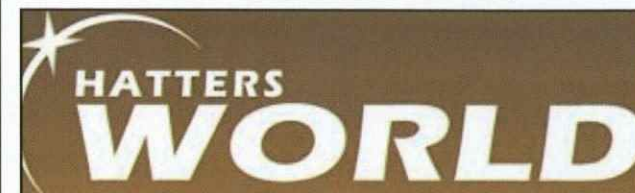
LutonTown.co.uk is powered by a search engine provided by Yahoo!, which makes it easier for you to search the website, as well as the world wide web from the same convenient search box. The Hatters earn revenue from various aspects of the official website's portfolio and by using this Yahoo box (located in the top right hand corner of the page) you will be able to contribute to the income the club receives, just by doing something you probably do everyday any way. As well as being able to search the whole internet from this location, you can also click the button to focus your search on LutonTown.co.uk and look at the growing archive of Hatters related information that has been posted on this website over the years.

**LOOKING FOR
SOMETHING?**

Google™

Online

CAN'T MAKE IT TO THE MATCH?



If you have ever wondered what complimentary services the video subscription site, www.hattersworld.co.uk, provides in addition to the official website, www.lutontown.co.uk, on a matchday, we have provided a taster below:

TEAMSHEETS

Match line-ups have to be confirmed in writing to the referee one hour before kick off; not long after the match officials have seen them they are available to for you to view on www.lutontown.co.uk.

FEEE CLOCKWATCH

On the homepage of www.lutontown.co.uk, you can see a live, minute-by-minute text commentary absolutely free. Luton Town were the first club in the Football League interactive network to provide this service. Every incident is reported from the games - chances, goals, substitutions, bookings, you name it - it is the most comprehensive free service for Town games anywhere on the internet.

LIVE COMMENTARY

If you want to get closer to the action, Hatters World's

Match Live console brings you full live and interactive audio commentary in association with BBC Radio Three Counties. Complimented with score flashes from around the country and real-time match stats everything you need to know will be right here.

FULL-TIME REPORT

As soon as the full-time whistle blows, a complete match report is available to read on www.lutontown.co.uk. Complimented by all the statistics that matter, as supplied to us by the Press Association.

POST-MATCH REACTION

We will bring you a brief transcript of Mick Harford's reaction from his post-match press conference on www.lutontown.co.uk. Hatters World subscribers can then listen to a more in-depth interview on the site, later in the evening.

SEE THE HIGHLIGHTS

Approximately 24 hours after the final whistle, you can relive all of the action again with match highlights on Hatters World.

snapshot 



claudegnankpa



Bobbers Travel Club

Coach Travel Price List - Season 2008/09



LIFE MEMBERSHIP
ONLY £2.00 per Adult
&
£1.00 for OAP/Child

For **ALL** Luton Town F.C. 1st Team Away Fixtures

For Bookings telephone: **01234 856542**

(Answer phone service will operate at times)

Bobbers
Travel Club
Est. 1979

	DATE		DESTINATION	ADULT Fare	*CHILD / OAP Fare	CRANFIELD Departure	LUTON Departure
2008	Sat Aug 16		GILLINGHAM	£15	£13	10.30	11.30
	Sat Aug 30		EXETER CITY	£25	£22	07.30	08.30
	Sat Sep 6		MACCLESFIELD TOWN	£18	£15	09.00	10.00
	Sat Sep 20		ROTHERHAM UNITED	£18	£15	09.30	10.30
	Sat Oct 4		BRADFORD CITY	£20	£17	08.30	09.30
	Tue Oct 21		GRIMSBY TOWN	£20	£17	13.30	14.30
	Sat Oct 25		BURY	£20	£17	08.30	09.30
	Sat Nov 1		SHREWSBURY TOWN	£18	£15	09.30	10.30
	Sat Nov 22		ROCHDALE	£20	£17	08.30	09.30
	Sat Dec 13		WYCOMBE WANDERERS	£13	£11	11.30	12.30
	Fri Dec 26		CHESTERFIELD	£17	£14	10.00	11.00
	2009 Sat Jan 3		CHESTER CITY	£20	£17	08.30	09.30
	Sat Jan 17		DARLINGTON	£25	£22	07.30	08.30
	Tue Jan 27		AFC BOURNEMOUTH	£17	£14	14.00	15.00
	Sat Feb 7		ACCRINGTON STANLEY	£23	£20	08.00	09.00
	Sat Feb 14		DAGENHAM & REDBRIDGE	£13	£11	10.30	11.30
	Sat Feb 28		PORT VALE	£17	£14	10.00	11.00
	Tue Mar 10		NOTTS COUNTY	£16	£14	15.00	16.00
	Sat Mar 14		ALDERSHOT TOWN	£15	£13	10.30	11.30
	Sat Mar 28		MORECAMBE	£25	£22	07.30	08.30
	Sat Apr 11		LINCOLN CITY	£17	£14	09.30	10.30
	Sat Apr 18		BARNET	£13	£11	11.30	12.30
	Sat May 2		BRENTFORD	£13	£11	11.30	12.30

* Child rate is for a youth under 16 years of age. Prices and times may be subject to change

■ For any problem that arises on the day of travel, please contact this Mobile Phone No. **(0779) 4140352**
(Only between the times of the Cranfield & Luton departures) - PLEASE USE MAIN NUMBER AT ALL OTHER TIMES.

BOOK FOR COACHES IN ANY OF THE FOLLOWING WAYS:-

1. FROM OUR TICKET KIOSK IN KENILWORTH ROAD TURNSTILES - SEE A BOBBERS TRAVEL CLUB COMMITTEE MEMBER **BEFORE** ANY FIRST TEAM HOME MATCH UNTIL 15 MINUTES PRIOR TO KICK-OFF.
2. ON THE RETURN JOURNEY FROM THE PREVIOUS AWAY GAME,
3. OR BY TELEPHONE ON **(01234) 856542**

Payment of Membership covers you for a Life Membership

PLEASE NOTE:-

1. Any member who books and then fails to turn up without notifying us in advance will be required to pay for that journey IN FULL, before being allowed to travel again.
2. If a match is postponed ALL members will be required to book again when the match is re-arranged.
NO BOOKINGS WILL BE AUTOMATICALLY CARRIED FORWARD TO THE REVISED DATE.
3. Being a membership club, we do insist that you are issued with a Travel Club Card, which MUST be carried on every journey.

BOBBERS TRAVEL CLUB COMMITTEE ARE:

JOHN PYPYR - President STEVE RUSSELL - Vice President
LES MILLER - Travel Co-ordinator & Treasurer SUE MILLER - Committee Steward

lutontownladies



KANE SMASHES FIVE

With the women's game constantly evolving Town have now been moved into their geographically correct region of the South East of England, leaving behind the delights of winter journey's to far flung places such as Plymouth, Yeovil and Penzance.

Time will tell as to whether that will be a good thing with our ambition to bring National League football to Luton at the earliest possible time.

The Ladies have worked hard pre-season in preparation and once again we have decided that the way forward is to go with our locally produced youth talent in pursuit of our goals with strategic reinforcements being brought in from other clubs.

Last week a mixture of our squads visited last seasons Eastern Region champions Kettering Town and in spite of fielding seven 16 year old's we proved far too strong for our hosts running out winners by 5-0 with a brace from Rebecca Kane and further strikes from Janet Ligouri, Micky Taylor and Nicki Livingstone.

The opening league game sent us up the M1 to

Northampton Town who have a reputation for strength and durability at this level.

The opening exchanges were even but Luton showed the greater threat going forward and it was no surprise when Janine Daly sent Rebecca Kane free to open the scoring after just 10 minutes.

Within 5 minutes it was 2-0 when Micky Taylor again played in Kane who finished with a first time shot.

The keeper produced a couple of fine saves to keep the home side in the game but on the stroke of half-time Kane produced a brilliant finish smashing the ball high into the net from an acute angle to complete her hat trick.

After the interval Northampton pressed hard but were held at arms length by a well organised Town defence.

Once the storm was weathered it was Kane again who extended the lead with a 20 yard strike into the bottom corner.

A deflected shot from Janine Daly from the edge of the area made it 5-0 and the home side were powerless to resist a rampant Luton side as they over ran their defence.

Debutant Nicki Livingstone then picked out Kane with a measured through ball and she crashed the ball in for her fifth goal of the game.

The scoring was completed by Livingstone when she powerfully converted a cross from Janet Ligouri.

An outstanding performance from a new Luton side who inflicted the Cobblers record ever defeat in their first outing in this league.

Town's next three fixtures are at home entertaining Tottenham Hotspur, Cambridge City and Gillingham.

Matches take place on Sundays at Stockwood Park Athletics Stadium with a 2pm kick off.

Admission is just £2 and £1 for concessions so please come along and support your Luton Town Ladies.



Good afternoon, I would like to remind you there is still plenty of time to book on one of our Summer Holiday Courses taking place throughout the County.

It is always a pleasure to receive complimentary feedback from satisfied clients and we do receive many letters complimenting us on our various courses and activities

I would like to share with you a letter received after a recent holiday course.

Dear Sir,

My son Finley Jennings, recently attended the two day course at Queensbury School in Dunstable. It was the first time he has been left to do anything like this and I was nervous about leaving him. I had no need to worry because he loved both days and wished he could have done more. I just wanted to say thank you. Not only did Finley have a fantastic experience but it has

boosted his confidence in his football skills. We are now looking for a club to join so he can continue to improve.

We really appreciate the opportunity you gave him. Thank you again

Yours sincerely

Maria Adams
Houghton Regis

Why not send your child on a Luton Town Course this Summer and enjoy the positive experience that Finley had?

Enjoy the game
Stuart Smith

VENUE	COURSE	AGE	DATES	COST
BARNFIELD COLLEGE New Bedford Road, Luton, LU2 7BF	4 DAYS FOOTBALL	4 - 14	Tue 26 - Fri 29 Aug	£40
BARNFIELD COLLEGE New Bedford Road, Luton, LU2 7BF	2 DAYS GOALKEEPING	8 - 14	Tue 26 - Wed 27 Aug	£24
BARNFIELD COLLEGE New Bedford Road, Luton, LU2 7BF	2 DAYS STRIKERS	8 - 14	Thu 28 - Fri 29 Aug	£24
STOPSLEY REGIONAL CENTRE St. Thomas's Road, Luton, LU2 7UX	4 DAYS FIRST KICKERS	4 - 6	Tue 26 - Fri 29 Aug	£40
POTTON Potton Lower School, SG19 2PB	4 DAYS FOOTBALL	5 - 12	Tues 26 - Fri 29 Aug	£40
LEIGHTON UNITED FC Stanbridge Rd, Tilsworth	4 DAYS FOOTBALL	5 - 12	Tues 26 - Fri 29 Aug	£40



SPONSORS SEASON 2008/09



TOUR SPONSORS

Good afternoon and welcome to a new addition to your match day programme. Through this page every home game we will give you the latest news from our clubs Girls Centre of Excellence.

The concept of Girls Centre of Excellence is much the same as the boys; this is to provide a Development Opportunity for the Elite Girls players in the Country where they are provided with the very best coaching available and the opportunities to progress to Regional and National Training Camps.

Girls COE, unlike boys, only runs at 4 age groups currently, Under 10, Under 12, Under 14

and Under 16. As the local game grows the system will expand to 8 age groups, with also the possibility of an Under 18 age band to bridge the gap between girls and ladies football.

Our longterm aim is to bring girls into the club at 5 and 6 years old through our First Kicks programme and give them the opportunity to develop right through the system up to the ages of 16 to 18, when we can then pass them on to Dave Bakers ladies squads.

I would like to congratulate our 3 squads that have recently returned from the prestigious Kakkola Cup in Finland.

We took 1998, 1996 and a 1993 born squads to the tournament and were delighted to return with a first, a second and a third place respectively.

The quality of football against mixed standard opposition was in the main very good, with the girls learning to deal with different styles of play and also being encouraged to play in the Luton Town way.

Also our club was awarded the tournaments overall Fair Play Award; which is something I will always be grateful to receive at any tournament.

Enjoy today's game

Stuart Smith



UPGRADE TO OUR DIAMOND PACKAGE AND PAY NO EXTRA TODAY!

Adult Diamond Package's cost just £150 extra with benefits worth in excess of £250

If you upgrade to a Diamond Package you will receive:

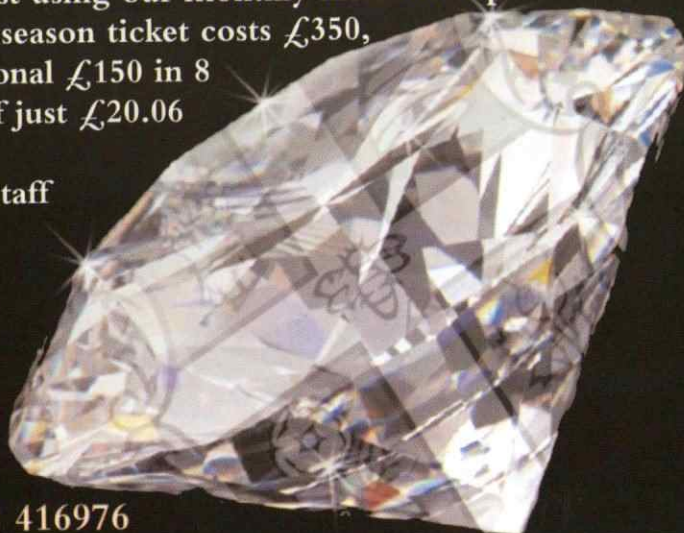
- * Distinctive, premium leather season ticket wallet with the Luton Town Football Club crest.
- * Complimentary official home, away or legends shirt signed by Mick Harford.
- * Free admittance to one home tie of each cup competition.
- * Five complimentary Junior and Youth ticket vouchers redeemable for any league match.
- * Five complimentary Adult ticket vouchers redeemable for any league match.
- * Automatic entrance into our free monthly 'Director for a Match' draw

Please note: Junior Diamond package benefits differ slightly

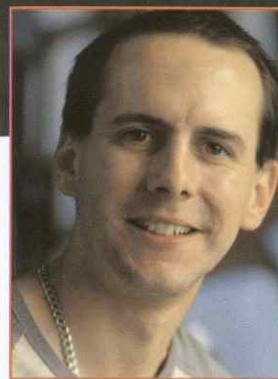
Why not spread the cost using our monthly instalment plan!!

For example: An adult season ticket costs £350, you can pay the additional £150 in 8 monthly instalments of just £20.06

Ask the Ticket Office staff for more details.



Ticket Office: 01582 416976



The Numbers Game

Simon Pitts looks back at the Hatters previous fixtures against Notts County

and a second from Stein confirming an emphatic score line.

31 The number of previous league meetings at Kenilworth Road. Luton have 20 victories, with 7 draws and just 4 defeats. The Hatters have scored 70 goals and conceded just 29.

2 The number of Luton hat tricks in this fixture. Tony Read scored the first in 1965/66 when Luton won 5-1, and Paul Walsh repeated the feat in 1982/83 when the Hatters hit five once more, this time conceding three! Ricky Hill and David Moss were the other scorers in this fixture.

24,511 The biggest attendance for this victory, back in September 1951. The home fans were treated to a goal fest as Luton ran out 6-0 winners. Jack Taylor and George Stobbart both netted twice with Bert Mitchell and Willie Davie also scoring. The lowest attendance, 4021, in February 1999, witnessed a 1-0 win to the visitors.

6 The most goals scored by Luton in this fixture, and it's happened twice! As well as the match in 1951/52, the Hatters also won 6-0 in October 1978. Bob Hatton opened the scoring, and Brian Stein doubled the lead just before the interval. It was a wonderful second half performance that wrapped up the win, with goals from Alan West, David Moss, Lil Fuccillo

4 Luton have only failed to score on four occasions, and one of these was a 0-0 draw in 1992/93, the only time this fixture has finished goal-less. The other three matches all finished 1-0 to County, and these came in 80/81, 98/99 and 2000/01.

3 The number of penalties converted by Luton in this fixture. The first was scored by Lil Fuccillo in the 6-0 win in 78/79. Luton won 3-2 in 83/84, but this doesn't tell the full story as the match was goal-less with 22 minutes remaining! County took the lead but Luton

immediately equalised through David Moss, before Brian Horton netted from the spot to put the Hatters into the lead. The visitors equalised with five minutes remaining, but Frankie Bunn scored a last minute winner! Nearly 11 years passed before Luton scored from the spot again. Paul Telfer gave the Hatters an early lead before Scott Oakes netted from 12 yards after Dwight Marshall had been fouled.

4 The most common scoreline is 2-0 to Luton. John O'Rourke scored both the goals in 1963/64, with Keith Allen and Graham French scoring in 1967/68. In October 1977 Lil Fuccillo and Phil Boersma both scored, with Telfer and Oakes netting in 94/95 as previously mentioned. Seven months after this victory and Luton repeated the scoreline courtesy of goals from Tony Thorpe and Ceri Hughes in two first half minutes. The last time the sides met was in December 2003, and Luton were victorious with Adrian Forbes and Emmerson Boyce scoring.

10 The longest run of unbeaten matches for Luton in this fixture. It actually started with the first ever league meeting at Kenilworth Road between the sides in April 1931. It was nine victories, and just one draw later before the visitors went home with maximum points. County ended the run in style though with a 5-2 victory in October 1966, David Pleat and Tony Thear were the scorers.



Scott Oakes scored from the spot



LEAGUE TWO

Saturday 16th August 2008

Gillingham 0 Hatters 1

Kick off: 3pm Priestfield Stadium



As It Happend:

0

3

5

45

48

70

90

Sam Parkin headers the Hatters into an early lead

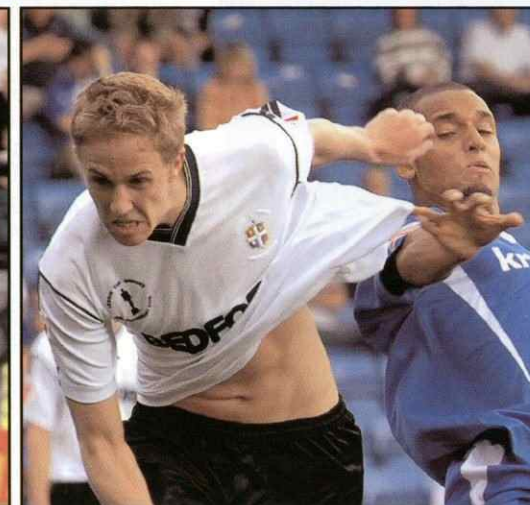
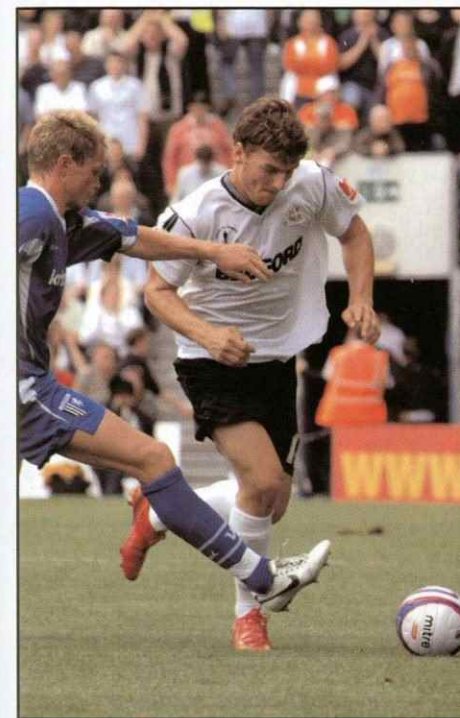
Rossi Jarvis misses a golden opportunity

GILLINGHAM 0-1 LUTON

Sol Davis clears a Gillingham attempt off the line

A Gillingham causes a scramble. However the Hatters block all shots

GILLINGHAM 0-1 LUTON



Luton Town: Brill, Gnackpa, Davis, Keane (Watson 58), Pilkington, Nicholls, Hall, Spillane, Jarvis, Parkin, Martin (Plummer 90+)



FlashBack

Club Historian Roger Wash looks back at Ken Hawkes' first game for the Hatters

Bud Aherne.

Ken was further frustrated in the knowledge that when Aherne suffered one of his rare injuries, and indeed after he retired in the summer of 1957, Welshman Les Jones was preferred in the left-back slot.

This all changed when the Town suffered a 0-5 thrashing at Portsmouth on December 7th 1957 leading to manager Dally Duncan ringing the changes in the side for the visit of West Brom the following week.

"I was certainly ready for my chance as I had been at Kenilworth Road for six years and was, by then, 24," recalled Ken.

"The trainer, Tom Mackey, pulled me to one side on the Friday morning and told me I was in the team the following day. He said that I should go to bed on the Friday night at my normal time and not think about turning in early!"

"Not being bigheaded, but I

was quite relaxed and felt comfortable against West Brom. I was up against Frank Griffin who was an experienced, goalscoring winger and I held him well. We won 5-1 and I kept the left-back slot for the next two years."

Ken went on to appear for the Town in the 1959 F A Cup final before leaving the club in 1961 after new manager Sam Bartram decided to bring in his own men.

After spells at Peterborough, Bedford Town and St Neots, Ken hung up his boots but continued to work in the area until retirement and is still a regular at Kenilworth Road.

The game.

Luton 5 West Bromwich 1
14th December 1957

The Town were enjoying a reasonable season in the top flight and had been in the top half of the table since the start of the campaign.

Their confidence had taken a jolt, however, when they lost 0-5 at lowly Portsmouth which left Dally Duncan with no alternative but to make some changes to the side leading to Ken Hawkes making his long awaited League debut against West Brom.



■ Allan Brown heads in goal number three.

West Brom were likely to prove tough opponents. They were second in the table, had not lost away all season and had gone 17 games without defeat.

They also included six England internationals in their ranks!

A pre-Christmas crowd of only 15,365 was present to see the heavily sanded pitch quickly turn into a quagmire which seemed to suit the Town more with their quick, short passing game.

The Hatters deservedly took the lead on 25 minutes when Jim Adam was first to react to an Allan Brown shot that was not held by the West Brom goalkeeper Jim Sanders, but it was all square four minutes

later when Bobby Robson fired home at the end of a Baggies breakaway.

That was as good as it got for the Albion as the Town were soon back in the lead after a pin-point Adam cross was headed home by Brown.

Ace predator Gordon Turner than crashed the ball home from close range before Albion's Joe Kennedy put through his own goal after his back-pass was over-hit past the stranded Sanders, who was stuck in the mud.

The players then trooped off to a standing ovation at the interval, leading

the form team of the division 4-1, and were not prepared to let go of their stranglehold and continued in the second period where they left off.

Turner put the game beyond doubt just after the hour mark when he was well placed to thump a Brown cross past the helpless Sanders and although West Brom refused to give up, their highly regarded forward line was well held by the strong and quick Luton defence.

The game ended with an injured player from each side limping up and down the wing in those far off days before substitutes.



Luton Town:
Baynam, Dunne, Hawkes, Morton, Owen, Pearce, Adam, Turner, Brown, Groves, McLeod.



West Bromwich Albion:
Sanders, Howe, Williams, Setters, Kennedy, Barlow, Griffin, Robson, Allen, Kevan, Horobin.





DEAN BRILL **01**

Age: 22
Position: Goalkeeper
Signed:

www.lutonoutlaws.co.uk
606

CLAUDE GNAKPA **02**

Age: 25
Position: Defender
Signed: August 2008

Andy & Drew Cornelius
Kevin Lennon

SOL DAVIS **03**

Age: 28
Position: Defender
Signed: 2002

Trust in Luton (2003) Ltd
Tommy Lennon

KEITH KEANE **04**

Age: 21
Position: Defender
Signed: August 2008

Trust in Luton (2003) Ltd
Maddie Knight

IAN ROPER **05**

Age: 31
Position: Defender
Signed: August 2008

LTSC - Scandinavia
Available

GEORGE PILKINGTON **06**

Age: 26
Position: Defender
Signed: August 2008

WHOSH
Bobbys Travel Club

KEVIN NICHOLLS **08**

Age: 29
Position: Midfielder
Signed: August 2008

Pulse Beauty
WHOSH

SAM PARKIN **09**

Age: 27
Position: Striker
Signed: 2006

Les & Sue Miller
Available

RYAN CHARLES **10**

Age: 18
Position: Striker
Signed: August 2008

Available
Performance Car Hire

LEWIS EMANUEL **11**

Age: 24
Position: Midfielder
Signed: August 2008

Available
606

ASA HALL **14**

Age: 21
Position: Midfielder
Signed: August 2008

Carole Jinks & Sharon Skinner
WHOSH

ED ASAFU-ADJAYE **15**

Age: 21
Position: Defender
Signed: August 2008

Paul & Jacqui Peacock
Loyal Luton Supporters Club

ROSSI JARVIS **16**

Age: 20
Position: Midfielder
Signed: August 2008

Carole Jinks & Sharon Skinner
Oscar & Rosie Baron

KEVIN WATSON **17**

Age: 34
Position: Midfielder
Signed: August 2008

Available
Available

CHRIS MARTIN **18**

Age: 19
Position: Striker
Signed: August 2008
On Loan

Luton Town Ladies FC
Richard & Zac Tiley

DREW TALBOT **19**

Age: 22
Position: Striker
Signed: January 2007

Available
LTSC - Scandinavia

MICHAEL SPILLANE **20**

Age: 19
Position: Defender
Signed: August 2008
On Loan

Kelly Knight
Available

JOSH KLEIN-DAVIES **22**

Age: 19
Position: Striker
Signed: August 2008
On Loan

Available
Available

TRISTIAN PLUMMER **23**

Age: 18
Position: Midfielder
Signed: August 2008
On Loan

M&S Water Services
Available

PAUL UNDERWOOD **24**

Age: 35
Position: Midfielder
Signed: 2004

Available
Available

GEORGE BEAVAN **25**

Age: 18
Position: Defender
Signed: August 2008

Stone Futures Ltd - Good Luck
WHOSH

RICHARD JACKSON **26**

Age: 28
Position: Defender
Signed: 2007

Available
Available

DEAN MORGAN **27**

Age: 24
Position: Striker
Signed: 2005

Available
Available

PAUL McVEIGH **28**

Age: 30
Position: Striker
Signed: 2007

Available
Available

MICK HARFORD

Age: 49
Role: Manager
Signed: January 2008

Mr & Mrs Langford Hat
Available

WARREN NEILL

Age: 45
Role: Assistant Manager
Signed: January 2008

Available
Available

ALAN NEILSON

Age: 35
Role: Youth Manager
Signed: August 2008

Available
Available

If you would like to sponsor one of our available players please phone the Commercial Department on **01582 411622**

supporting Youth Development at Luton Town

MATCHDAY PRIZES | UNIQUE MEMORABILIA | 'MONEY CAN'T BUY' CLUB PRIZES | SPONSOR PRIZES | MATCHDAY VIP HOSPITALITY | CASH PRIZES



The Luton Town Lottery

for only £2 per week - the Luton Supporters weekly lottery gives you the chance to win a wide range of fabulous prizes and lets you help your club's youth development at the same time...



Supported by

We need YOUR support at Luton Town Football Club and with this help we can make a real impact on the local community by giving many more young footballers the opportunity to play professional football by improving their skill levels.



The funds generated from the lottery scheme will be used to provide additional coaching staff, facilities, equipment and other requirements, enabling Luton Town FC to work more with local clubs and schools.

The lottery prizes give you the chance to be involved with your Club whilst helping us to achieve our aim, which is to make the youth policy first in class.

So please join the lottery and help us achieve our goal.

R.J. Curson - Youth Development Director

THE MORE MEMBERS THE BIGGER THE PRIZES AND THE MORE FUNDS GENERATED FOR YOUTH DEVELOPMENT, SO SIGN UP TODAY AND SUPPORT THE FUTURE OF LUTON TOWN

DEBENHAMS

STYLING THE NATION

Visit Debenhams Luton where you can find everything you need for all the family from the latest fashion to great gift ideas.

Debenhams are proud to support the in2win lottery scheme, working together for the Luton community.



Pick up a lottery leaflet and join today to be in2win

Luton Town FC. would like to thank Debenhams Luton, for their support and sponsorship

youthsponsors



If you would like to sponsor a youth player please phone the Commercial Department on 01582 411622

BARKER

Sponsored by:

Michael Capp
Executive
Club Member



BIGGI



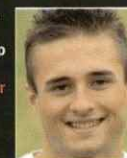
CLEAVER



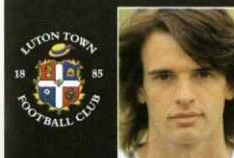
DEENEY

Sponsored by:

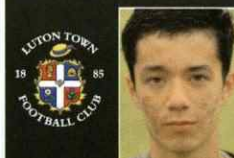
Michael Capp
Executive
Club Member



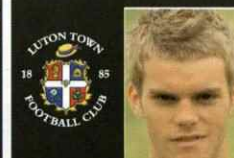
FARTHING



FLETCHER



HOGARTH



HOWELLS



NATHANIEL



OWSUS



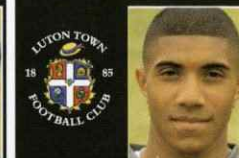
QUINN

Sponsored by:

Michael Capp
Executive
Club Member



SINCLAIR



WATKINS

Sponsored by:

Michael Capp
Executive
Club Member



WOOD

Sponsored by:

Michael Capp
Executive
Club Member



the future



The injury room has been very busy with pre-season injuries as training was stepped up, but the boys are all getting fitter and the injury room is slowly emptying.

It has mainly been the first years that we have seen struggle as they have gone from training twice a week in the evening to up to three times a day, but we are already seeing a huge change in the lads.

We currently have four players in the injury room: Aidan Quinn, Ashley Deeney, Adam Watkins and Oly Cleaver.

Unfortunately Aidan has picked up a long term injury. He has damaged his anterior cruciate ligament which is behind the knee, and has had surgery on it earlier this week.

Aidan picked up the injury just 15 minutes into our game against Buckingham, which they went on to win 9-0.

Ashley and Adam have similar injuries, both damaging their lateral ankle ligament. This is the ligament which is on the outside of the ankle bone.

Ashley is making good progress and should be back training in the next few weeks.

Originally we thought Adam's injury was a lot worse and he was taken to hospital during the second half of our game against Dunstable, but he is now making steady progress.

injuryroom

Oly originally strained his thigh in pre season and continuous pressure to this area has caused it to repetitively break down.

Maintenance and Recovery

When players get injured it's important that we try not to let their general fitness levels drop to much, while making sure they make a full and speedy recovery.

To do this we do a variety of core and muscular strengthening exercises and cardiovascular work.

We work on spin bikes, cross trainers and rowers as none of these are impact exercises.

We also use the pool for running and swimming as this puts less pressure on damaged muscles than running on the ground.

This is all done in between the players individual treatment.

Ottillie Morgan



Luton Town 1 Brentford 0

Luton Town Under 18's began their campaign with an efficient performance against Brentford.

With injuries to Aidan Quinn, Oliver Cleaver, Ashley Deeney & Adam Watkins, coupled with Jake Howells being called up into the First Team Squad for the Gillingham game, it was a chance for others to get a place in the starting eleven. This included triallist Lewis Osbourne and Jordan Patrick from the Under 16's.

Luton started brightly with Sinclair looking dangerous whenever in possession.

On a small pitch, clear cut chances were few and far between.

Brentford threatened from crosses, but Scott Sinclair came close when bursting through for a last ditch tackle rescuing the Bees defence.

The best opportunity of the first half came with a long ball catching out the Luton back four, and as the Brentford striker raced onto the ball he

collided with Fletcher as he raced off his line. The Luton keeper was relieved to only receive a yellow card, and the defence held out from the resulting free-kick.

Luton made two changes at half time with triallist Ahmed Duale replacing Patrick at Centre forward and Farthing replacing Owusu in midfield.

These changes proved to be crucial as Luton were able to gain control down the centre.

A foul on Taylor on the left wing allowed Luton to work a free kick which coach Neilson described as being "Almost straight off the training pitch!".

Sinclair's shot was blocked but Duale managed to cross the ball for Osbourne to head in at the back post.

After this Brentford began to commit more players forward but Hogarth and Wood were resolute in defence for the Hatters.

Another Under 16, Ryan Da Silva, replaced Osbourne with 15 minutes to go and moments later he burst past the Brentford left back, but then

shot into the side netting from an acute angle.

Brentford had two great chances to level the game, but Luton held on to ground out a battling 1-0 victory.

Youth Team Coach Neilson added: "The match was very tight on a tricky and small pitch.

There wasn't a lot of football played, but we will have games this season where the boys need to learn how to grind out a result.

I was especially pleased that we started with a clean sheet and scored from a set piece that we worked on in training."

Man of the Match: Harry Hogarth



MATCH

REPORT

LUTON TOWN SUPPORTERS CLUB FOLLOWING THE HATTERS AWAY, THROUGHOUT THE UK

BOOKING NUMBER – 07960 567465
ONLINE @ www.lutontownsc.co.uk

******UNDER 7's TRAVEL FREE******

When accompanied by a full paying adult

DEPARTURE TIMES + PRICES 2008/09

DATE	DESTINATION	DEPARTURE TIME	ADULTS	CONCESSIONS
Sat 16.08.08	Gillingham	11:00	£13	£11
Sat 30.08.08	Exeter City	08:00	£22	£20
Sat 06.09.08	Macclesfield Town	10:00*	£18	£16
Sat 20.09.08	Rotherham United	10:00*	£16	£14
Sat 04.10.08	Bradford City	09:30*	£19	£17
Tue 21.10.08	Grimsby	15:00*	£20	£17
Sat 25.10.08	Bury	09:00*	£19	£16
Sat 01.11.08	Shrewsbury	10:00	£17	£14
Sat 22.11.08	Rochdale	09:00*	£19	£17
Sat 13.12.08	Wycombe Wanderers	12:30	£11	£9
Fri 26.12.08	Chesterfield	11:00*	£15	£13
Sat 03.01.09	Chester City	09:00*	£18	£16
Sat 17.01.09	Darlington	08:30*	£23	£21
Tue 27.01.09	Bournemouth	15:30	£17	£15
Sat 07.02.09	Accrington Stanley	09:00*	£21	£19
Sat 14.02.09	Dagenham & Redbridge	12:00	£11	£9
Sat 28.02.09	Port Vale	11:00	£16	£14
Tue 10.03.09	Notts County	16:00*	£16	£16
Sat 14.03.09	Aldershot	11:30	£13	£11
Sat 28.03.09	Morecambe	08:00*	£23	£21
Sat 11.04.09	Lincoln	10:00*	£17	£15
Sat 18.04.09	Barnet	12:30	£11	£9
Sat 02.05.09	Brentford	12:00	£11	£9

A supplement of £2 per trip is payable by non-LTSC Members

Prices and departure times may be subject to change

PICK UP POINTS

LUTON TOWN FC – MAPLE ROAD CAR PARK

Parking is available here costing £5 per car (payable to LTFC staff)

Northbound journeys include a pickup at:

MILTON KEYNES – NEWPORT PAGNELL SERVICE STATION

30mins after Luton pickup

Other pick-ups will be considered providing a minimum of 5 passengers joining the coach. Please contact us for further discussion.

*****NEWSPAPERS ON REQUEST*****

Want a newspaper for your trip? Request this when booking and pay a £5 deposit and your paper will be waiting for you on board.

Terms & Conditions

A valid Luton Town Supporters Club membership card must be shown at time of payment or a supplement of £2 will be payable on published prices. Passengers between the ages of 12 and 16 may only travel unaccompanied on production of a completed Parental Permission form (please ask on booking). Under NO circumstances will any child under 12 years be permitted to travel unless accompanied by a responsible adult (over 18). Town on Tour reserve the right to refuse travel to any passenger

Full terms and conditions can be obtained on request

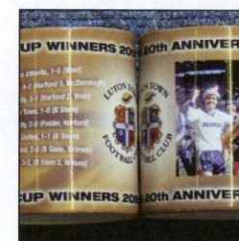


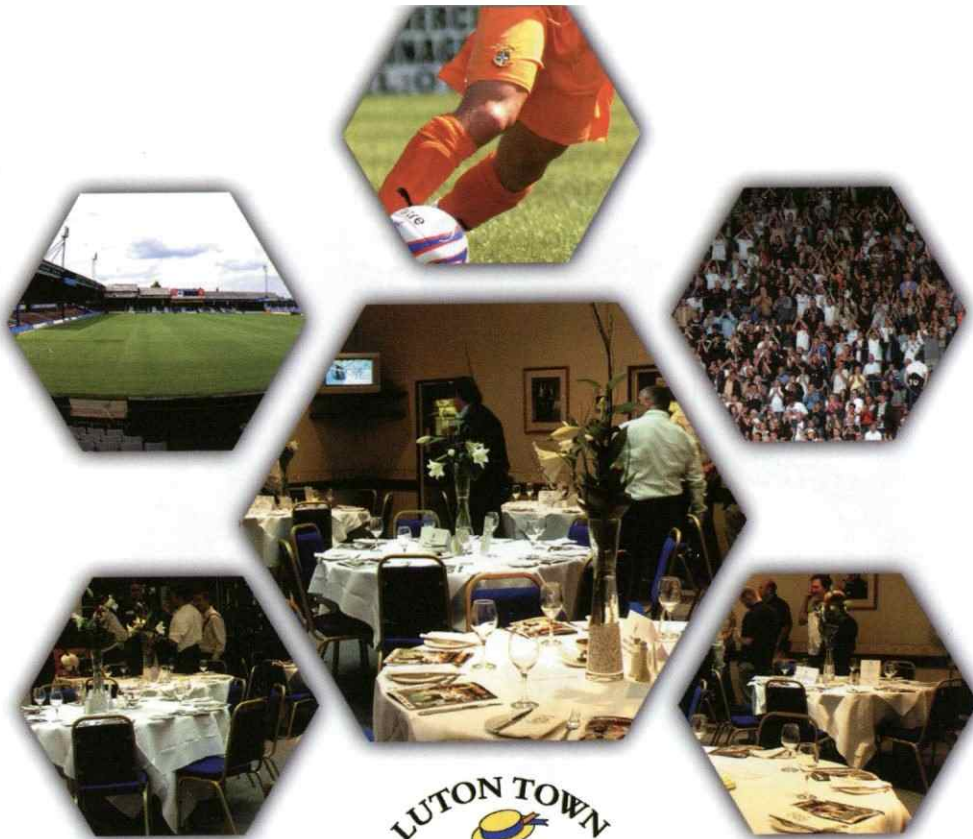
CLASS OF 88

Buy your 88' replica shirt today and receive a free May 10th programme.

88' Replica Shirt: Extra Small £19.99 Small – Extra Large £24.99

10th May Programme - £2 Littlewoods Cup Mug - £6.99 Littlewoods T-Shirt - £5





THE ERIC MORECAMBE SUITE

From £599 inc VAT (per person)

10% concession reduction for over 65's and under 17's

Reserved seating in the main stand for all our League matches
Exclusive use of the Morecambe lounge and private cash bar facility on matchdays
Matchday programme and teamsheet
Sky Sports TV
Adult and Junior food menu



CARLING CUP SECOND ROUND

Tuesday 26th August

Reading

Kick off: 8.00pm Madejski Stadium, Reading, RG2 0FL



What's the Ground Like?

This stadium opened in 1998 is light years away from the old Elm Park, the Club's former home for over a century. It is purpose built on the very outskirts of Reading, close to the M4, and the complex even boasts a hotel attached to the back of the West Stand. The stadium is of a fair size and is totally enclosed, with all four corners being occupied. Three sides are single tiered, whilst on one side the West Stand is two tiered, including a row of executive boxes. The ground has been designed with the supporter in mind as the supporters are very close to the pitch and the acoustics are good. The stadium also has a video screen in the South East corner.

What is It Like For Visiting Supporters?

Away fans are located in one end of the stadium, in the Fosters Lager South Stand, where up to 4,300 can be accommodated. The facilities in this stand are good with plenty of leg room and the views of the pitch are superb, as there is good height between rows. Entrance to the stadium is by ticket only. You enter the stadium by inserting your ticket into a ticket reader which scans the bar code on the ticket.

Where To Eat & Drink?

Apart from a Harvester on the road towards Reading, there are no pubs as such near to the ground. However there is a Holiday Inn a 15 minute walk away. The

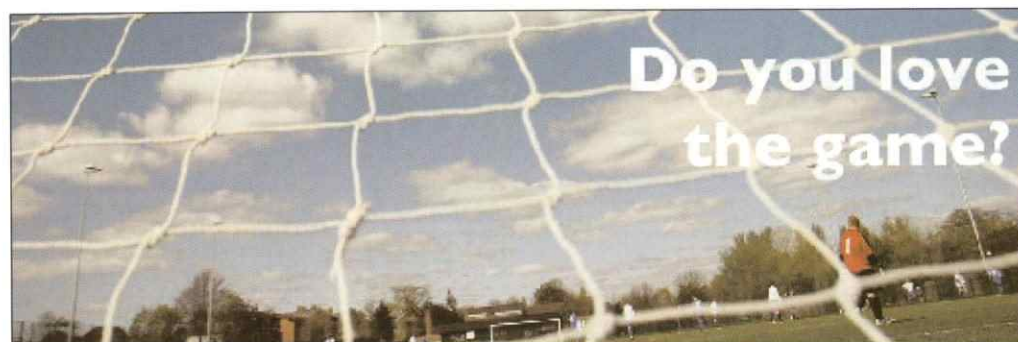
hotel had a small bar inside it, but then attached had a larger Irish themed separate bar area, called Callaghans. Across the road from the hotel is a Harry Ramsdens fish & chip shop (take away only). Alcohol is available inside the stadium. Next to the ground on a Retail Park are the following food outlets; McDonalds, KFC & Pizza Hut.

How To Get There By Car?

Turn onto the A505. At Castle Street Roundabout take the 2nd exit onto the A505. Stay on the A505 until Kidney Wood Roundabout then take the 2nd exit onto the M1 SPUR. Join the M1 motorway (signposted London). Leave the M1 at junction 6a, then join the M25 motorway (signposted Heathrow Airport). Leave the M25 at junction 15, then join the M4 motorway (signposted The West). Leave the M4 at junction 11, then at roundabout take the 3rd exit onto the A33 (signposted Reading). Continue on the A33 until you reach the third roundabout, then take the 1st exit onto Northern Way (signposted Park and Ride). Turn left onto Hoops Way. Turn right onto Royal Way. Turn left onto Biscuit Way.

Car Parking

There is a car park at the ground and at the nearby speedway/greyhound track, both of which cost £7. They hold about 2,500 cars between them. However if you do not arrive in good time before the game you may find that they are already full.



Do you love
the game?

The Football Foundation provides grants for kit, goalposts, pitches, floodlights, clubhouses, coaching and innovative projects that use football to deliver a wide range of community benefits. If you are a local authority, football club, youth group, charity or a school looking to update your football facility or need to build a new one, or have an idea for using football to tackle a local issue you can take advantage of this funding.

For more information visit
www.footballfoundation.org.uk



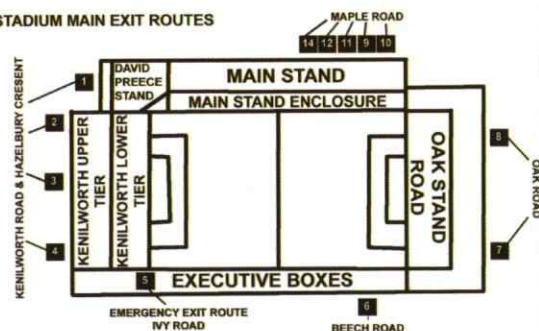
The Football Foundation, 10 Abchurch Lane, London EC4N 3DF
T: 020 7545 4155 F: 020 7545 4157 Email: info@footballfoundation.org Website: www.footballfoundation.org
Registered Charity No. 107899 Registered in England and Wales. Company No. 04060000. Company Director: Mr. Peter Jones.

Football Foundation
The Football Foundation supports

improving facilities • creating opportunities • building communities

kenilworthroad

STADIUM MAIN EXIT ROUTES



In the event of any emergency in the stadium, Luton Town FC and the emergency services have agreed on an evacuation procedure which is designed to ensure the safe and controlled evacuation from the area, to allow the emergency services to carry out their tasks.

In the event of an evacuation from all or part of the stadium, you will receive instructions over the public address system on how you should leave. In an evacuation of the main stand you will be instructed to use the pitch. Stewards will direct you to the nearest exit. It may be that your normal exit route will not be available.

On leaving the stadium, you will find some roads closed to pedestrians, to enable swift and unobstructed access for the emergency services. Please leave the area of the ground as quickly as possible, by the route directed. Your co-operation will be much appreciated.

Geoff Lovell
Safety Officer

fireprocedures

ticketnews



FORTHCOMING FIXTURES

Tuesday 26th August

Reading

Kick off: 8.00pm Madejski Stadium



TICKETS WILL BE AVAILABLE ON THE NIGHT (SUBJECT TO AVAILABILITY)
AT CASH TURNSTILES, HOWEVER PRICES DO INCREASE BY £2.00

We have received an initial allocation of 1000 seats
Tickets are on general sales from the Ticket Office

TICKET PRICES

Prices (pre-match): Adults £10, Concessions £6
Prices (matchday): Adults £12, Concessions £8
Concession tickets are available for Over 65's and Under 21's

Saturday 30th August

Exeter City

Kick off: 3.00pm St James Park



THIS MATCH IS PAY ON THE DAY VIA CASH TURNSTILES ONLY AT
THE ST JAMES ROAD END

There will be 1000 terrace spaces and 80 seats available to Luton Town supporters.

TICKET PRICES

Prices (terrace): Adult £13.00, Senior Over 60/Student with valid
NUS £8.00, Under 18's £5.00,
To upgrade to seating you need to pay the upgrade of £2.00 for
Adults and £1.00 for Concessions once through the terrace
turnstiles at the transfer gate in the Stage Coach stand

Ticket Office: 01582 416976

Saturday 13th September

Aldershot Town

Kick off: 3pm Kenilworth Road



Tickets are now on general sale at
normal pre-matchday prices.

There will be a £2.00 increase for tickets
purchased on the day of the game.

Saturday 27th September

Chester City

Kick off: 3pm Kenilworth Road



Tickets are now on general sale at normal
pre-matchday prices.

There will be a £2.00 increase for tickets
purchased on the day of the game.





Coca-Cola League Two

Team	P	W	D	L	F	A	GD	PTS
1 Dagenham	2	2	0	0	9	1	8	6
2 Shrewsbury T	2	2	0	0	5	0	5	6
3 Bradford City	2	2	0	0	4	1	3	6
4 Bury	2	2	0	0	4	1	3	6
5 Rochdale	2	1	1	0	3	1	2	4
6 Wycombe W	2	1	1	0	3	1	2	4
7 Aldershot	2	1	1	0	2	1	1	4
8 Brentford	2	1	0	1	4	1	3	3
9 Accrington S	2	1	0	1	2	1	1	3
10 Chesterfield	2	1	0	1	4	4	0	3
11 Port Vale	2	1	0	1	3	3	0	3
12 Darlington	2	0	2	0	1	1	0	2
13 Exeter City	2	0	1	1	1	2	-1	1
14 Gillingham	2	0	1	1	1	2	-1	1
15 Notts County	2	0	1	1	1	2	-1	1
16 Morecambe	2	0	1	1	1	3	-2	1
17 Grimsby Town	2	0	1	1	0	4	-4	1
18 Lincoln City	2	0	0	2	1	4	-3	0
19 Barnet FC	2	0	0	2	2	6	-4	0
20 Macclesfield T	2	0	0	2	0	6	-6	0
21 Chester City	2	0	0	2	0	8	-8	0
22 Rotherham U	2	2	0	0	4	1	3	-11
23 Bournemouth	2	0	2	0	2	2	0	-15
24 Luton Town	2	1	0	1	2	3	-1	-27

OTHER LEAGUE TWO FIXTURES

Saturday, 23 August 2008

Accrington	vs	Macclesfield
Barnet	vs	Brentford
Bournemouth	vs	Exeter
Bradford	vs	Rochdale
Bury	vs	Morecambe
Dag & Red	vs	Port Vale
Darlington	vs	Gillingham
Grimsby	vs	Chesterfield
Rotherham	vs	Chester
Shrewsbury	vs	Aldershot
Wycombe	vs	Lincoln

Stats08/09

Date	Opponent	Score	Att	Away	Pos
August					
Sat 9	H Port Vale	FL2	L3-1	7149	546 24
Tue 12	H Plymouth	LGCP	W2-0	2682	340 n/a
Sat 16	A Gillingham	FL2	W1-0	5339	743 24
Sat 23	H Notts County	FL2			
Sat 30	A Exeter City	FL2			
September					
Sat 6	A Macclesfield	FL2			
Sat 13	H Aldershot Town	FL2			
Sat 20	A Rotherham	FL2			
Sat 27	H Chester City	FL2			
October					
Sat 4	A Bradford City	FL2			
Sat 11	H Darlington	FL2			
Sat 18	H Accrington	FL2			
Tue 21	A Grimsby Town	FL2			
Sat 25	A Bury	FL2			
Tue 28	H Bournemouth	FL2			
November					
Sat 11	A Shrewsbury	FL2			
Sat 15	H Dagenham & Red	FL2			
Sat 22	A Rochdale	FL2			
Tue 25	H Brentford	FL2			
December					
Sat 6	H Barnet	FL2			
Sat 13	A Wycombe	FL2			
Sat 20	H Morecambe	FL2			
Fri 26	A Chesterfield	FL2			
Sun 28	H Lincoln City	FL2			
January					
Sat	A Chester City	FL2			
Sat 10	H Rotherham	FL2			
Sat 17	A Darlington	FL2			
Sat 24	H Bradford City	FL2			
Tue 27	A Bournemouth	FL2			
Sat 31	H Bury	FL2			
February					
Tue 3	H Grimsby Town	FL2			
Sat 7	A Accrington	FL2			
Sat 14	A Dagenham & Red	FL2			
Sat 21	H Shrewsbury	FL2			
Sat 28	A Port Vale	FL2			
March					
Tue 3	H Gillingham	FL2			
Sat 7	H Exeter City	FL2			
Tue 10	A Notts County	FL2			
Sat 14	A Aldershot Town	FL2			
Sat 21	H Macclesfield	FL2			
Sat 28	A Morecambe	FL2			
April					
Sat 4	H Wycombe	FL2			
Sat 11	A Lincoln City	FL2			
Mon 13	H Chesterfield	FL2			
Sat 18	A Barnet	FL2			
Sat 25	H Rochdale	FL2			
May					
Sat 2	A Brentford	FL2			



Brill	Gnakpa	Davis**	Pilkington	Roper	Nicholls	Emanuel	Hall	Jarvis*	Parkin 1	Martin	K-Davis**	Plummer*	Keane	Watson	Spillane
Brill	Gnakpa	Davis**	Pilkington	Spillane	Jarvis 1	Hall	Nicholls	Emanuel*	Martin***	Parkin	Keane**	Plummer 1*	Watson***	Fletcher	McVeigh
Brill	Gnakpa	Spillane	Pilkington	Davis	Jarvis	Nicholls	Hall	Keane	Parkin	Martin	Watson*	Plummer**	Roper	Jackson	McVeigh

Spot the difference answers: Luton badge, Littlewoods Cup, number on shorts, strip added on shirt sleeve, collar

Quiz answers: 1. Arthur Rowe. 2. Keith Gillespie was sent off for violent conduct after elbowing Reading's Stephen Hunt and thereby achieved the dubious honour of becoming the fastest sending-off of a substitute in English football. In addition, he was sent off before the ball had come back into play and so technically was dismissed having been on the pitch for zero seconds of play. 3. Ian Callaghan. 4. Birmingham City, between September 1977 and March 1978. 5. Annan Athletic. 6. Keith Peacock, when he came on as sub for Charlton at Bolton Wanderers on 21st August 1965, replacing injured goalkeeper Mike Rose in the 11th minute. 7. Steve Sedgley, an unused sub for Coventry v Spurs in the 1987 Final during the Sky Blues 3-2 victory at Wembley before receiving another winners medal when playing for Spurs in their 2-1 victory v Nottingham Forest in 1991. 8. Denmark. 9. Alan Taylor. 10. Howard Wilkinson.

queensway

The most important piece of your puzzle



Proud to be supporting Luton Town Football Club
and 123 years of history

Queensway Publishing, 4 Centre Way, Claverings Industrial Estate, Edmonton, London N9 0AP
T: 0208 807 7669 F: 0208 807 6123 E: queenswaypub@aol.com

competitiontime!



ARE YOU A WINNER?



If this is your face circled you have just won a £10 Club Shop voucher!

To claim your prize please visit the Club Shop either at half-time or at the end of the game or phone the Commercial Department on 01582 411622.

(Prize must be claimed by Friday 29th August 2008, photo ID may be required)

GARETH OWEN Photography

Corporate **PR** photography

Tel: 07850 560289

www.garethowen.co.uk

e-mail: gareth@go-photo.co.uk



FOR THE HATTERS

Saturday 13th September

Aldershot Town

Kick off: 3pm Kenilworth Road



The next League 2 home game in the second week of September sees the Hatters face newly-promoted Aldershot Town, who have made an encouraging start to life in the Football League.

The Shots kicked off their campaign with an impressive away victory at Accrington Stanley, winning 1-0 thanks to a Scott Donnelly free-kick.

An early exit in the Carling Cup was no real surprise, as Gary Waddock's men made the trip north to Championship high-flyers Coventry City. Despite a spirited performance, the Sky Blues ran out 3-1 victors, striker Marvin Morgan notching his first goal for the club with the consolation goal.

The first home fixture for the Hampshire-based club this season saw AFC Bournemouth visit the EBB Stadium. A late Ricki Stapleton goal gave Bournemouth a share of the spoils, cancelling out Louie Soares's first home goal in the Football League for the Shots.

Boss Gary Waddock was appointed manager at Aldershot Town in May 2007, and achieved great success in his first season at the club.

The former Queens Park Rangers player and manager led the Shots to the Blue Square Premier League title with a record 101 points from 46 games, ensuring the team would play in League 2 this season. He also managed the team to victory in the Setanta Shield, thanks to a penalty shoot-out victory against Rushden and Diamonds.

The Shots have made a few signings over the summer, with Dean Howell, Chris Blackburn and Marvin Morgan arriving from Rushden and Diamonds, Swindon Town and Woking respectively. Two loan

signings were also added to their playing squad, with Scott Davies returning from Reading and Ben Starosta coming in from Sheffield United.

The Hatters have never faced the current Aldershot Town club, who were only formed in their current existence in the spring of 1992 following the closure of debt-ridden Fourth Division Aldershot F.C.

Previous encounters with the former Aldershot team have seen Luton run out winners on over half of the occasions, with the last meeting between the two sides back in 1968.

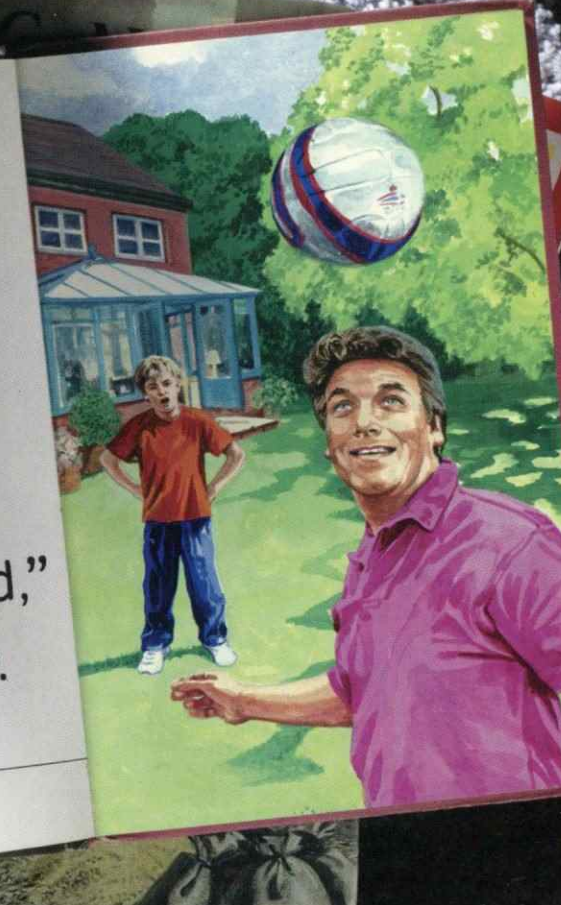


Illustration by Kaye Hodges
www.artistpartners.com

"What a ***** goal!" screamed Johnny's dad.

"I don't like football with Dad," thought Johnny.

Pass ball dad



BAD LANGUAGE HAS NO PLACE IN FAMILY ACTIVITIES. PLEASE RESPECT YOUR FELLOW SUPPORTERS IN OUR FAMILY AREA.



HATTERS

LUTON TOWN

1	DEAN BRILL		
2	CLAUDE GNAKPA		
3	SOL DAVIS		
4	KEITH KEANE		
5	IAN ROPER		
6	GEORGE PILKINGTON		
8	KEVIN NICHOLLS		
9	SAM PARKIN		
10	RYAN CHARLES		
11	LEWIS EMANUEL		
14	ASA HALL		
15	ED ASAFU-ADJAYE		
16	ROSSI JARVIS		
17	KEVIN WATSON		
18	CHRIS MARTIN		
19	DREW TALBOT		
20	MICHAEL SPILLANE		
22	JOSH KLEIN-DAVIES		
23	TRISTAN PLUMMER		
24	PAUL UNDERWOOD		
25	GEORGE BEAVAN		
26	RICHARD JACKSON		
27	DEAN MORGAN		
28	PAUL MCVEIGH		
33	JAKE HOWELLS		
36	AARON FLETCHER		

NOTTS COUNTY

1	RUSSEL HOULT		
2	JASON BEARDSLEY		
3	PAUL MAYO		
4	MIKE EDWARDS		
5	ADAM TANN		
6	MICHAEL JOHNSON		
7	MATTHEW HAMSHAW		
8	NEIL MACKENZIE		
9	JAMIE FORRESTER		
10	JAY SMITH		
11	MYLES WESTON		
12	KEVIN PILKINGTON		
14	SEAN CANHAM		
15	GAVIN STRACHAN		
16	BEN FAIRCLOUGH		
18	STEPHEN HUNT		
21	SPENCER WEIR-DALEY		
22	DELROY FACEY		
23	RICHARD BUTCHER		
25	ADAM NOWLAND		

REFEREE

A. BATES

ASSISTANT

I.J. CROUCH

ASSISTANT

T. MASON

4TH OFFICIAL

M. BLACKLEDGE



Saturday 13th September
Aldershot Town



Kick off: 3.00pm
Kenilworth Road



Next up at home