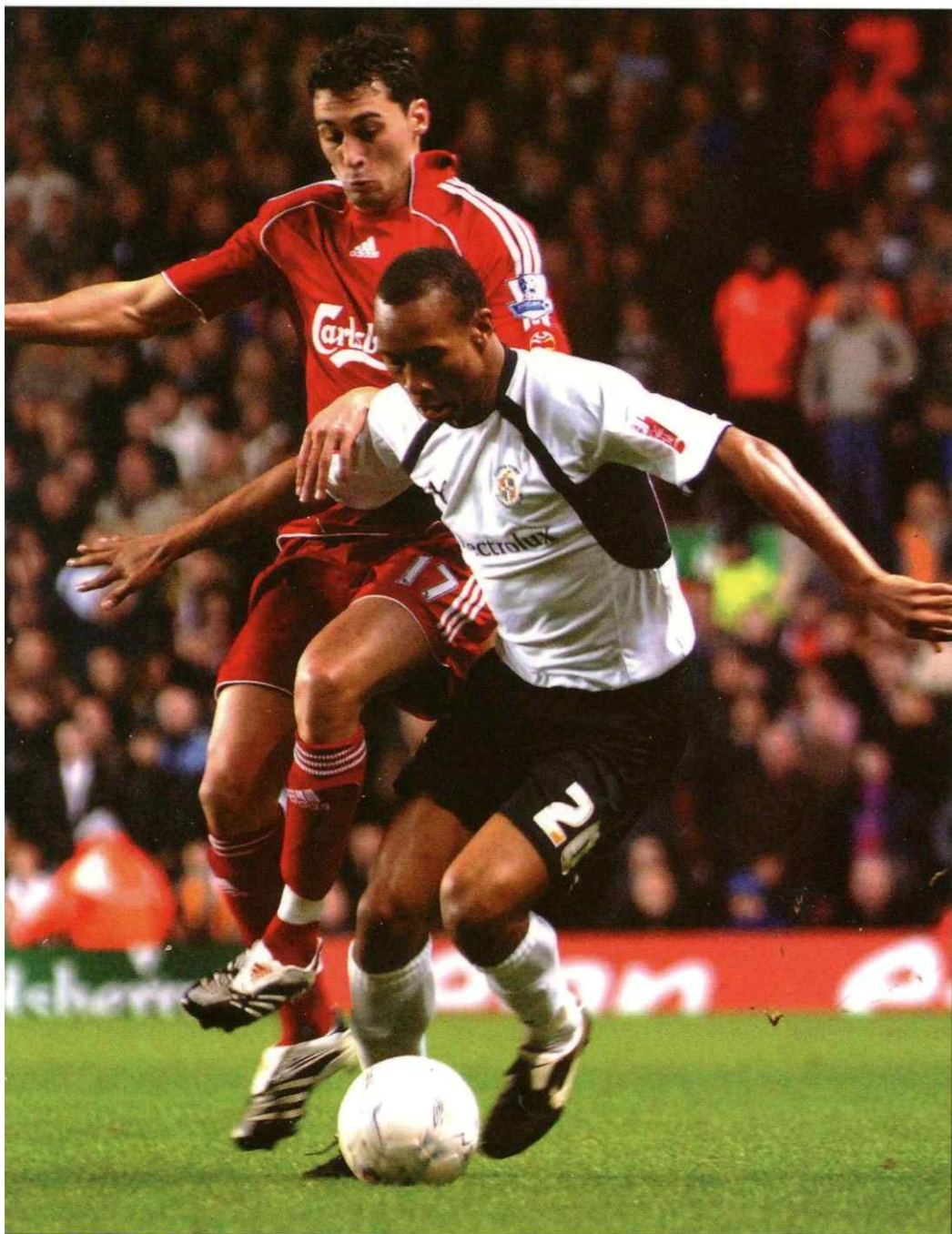


the hatters



Coca-Cola League One **Saturday January 26, 2008** v Leeds United **Kick-off 3pm £3**

Issue
21

Leeds United



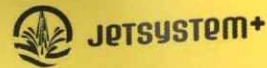
Electrolux
Club sponsor



ULTRA
CONTRACT SERVICES
Match Sponsor

Hi-Tech Flooring
LIMITED

Matchball Sponsor



use the right amount of water for every job

Our unique new proportional Jetsystem washing machine works out how much water, energy and time it needs according to load size. Plant one in your kitchen.



THE APPLIANCE OF SCIENCE

ZANUSSI

Electrolux

INSIDE



Kenilworth Road Stadium
1 Maple Road, Luton
Bedfordshire LU4 8AW

Main Reception: 01582 411622
Fax: 01582 405070
Ticket Office: 0870 017 0656

Joint Administrators
Brendan Guilfoyle, John Russell and
Chris White

Club Ambassadors
Nick Owen and Gary Hopper

Vice Presidents
R. L. Banks, C. S. Bassett, C.T.F. Green,
D. Ludlow MBE, J. Sapsworth MBE,
R. Stringer

Club Secretary
Cherry Newbery

Manager
Mick Harford

Assistant Manager
Warren Neill

Director of Youth
Chris Cummins

Physiotherapist
Harry Scott-Stackman

Sport Scientist
Neil Lewis

**Football and Community
Development Manager**
Stuart Smith

Safety Officer
Geoff Lovell

Stadium Manager
Peter Kemp

Financial Controller
Tania Buonpane FCCA

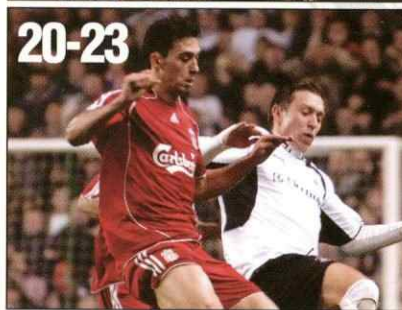
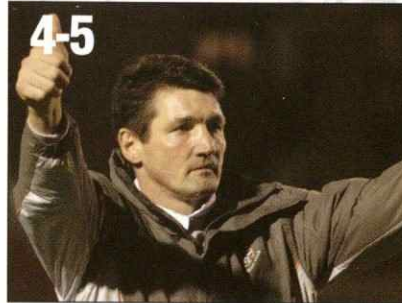
Head of Retail
Tracy Maddox

Club Chaplain
Alan West

Honours

Littlewoods Cup: Winners 1987-88,
Finalists 1988-89
FA Cup: Finalists 1958-59,
Semi-Finalists 1984-85, 1987-88 & 1993-94
Simod Cup: Finalists 1987-88
League One: Champions 2004-05
Division Two: Champions 1981-82
Division Three: Champions 1936-37
Division Four: Champions 1967-68

The views expressed in this programme are
not necessarily those of Luton Town Football Club.



CONTENTS

Saturday January 26, 2008 **Leeds United Coca-Cola League One 3pm**

Manager Mick Harford	4-5
Skipper Chris Perry	7
The arrival of Mick Harford	13
Leeds	14-17
Liverpool match action	20-23
Leyton Orient match action	28-31
Interview with Keith Keane	32-33
Commercial	36-37
Youth	42
Reserves	43
Junior Hatters	47
Ladies	49
Shop	57
A to Z of Luton players	58-59
Ticket news	62-63
Results and fixtures	64-65
Next at the Kenny	66
Teamsheet	68

COVER PICTURE: Calvin Andrew powers past a
challenge from Liverpool's Alvaro Abaloa



MICK



HARFORD

GOOD afternoon and a warm welcome to Kenilworth Road after what has been a roller-coaster few weeks in the history of Luton Town Football Club.

We were all thoroughly disappointed not to have picked up any points in our recent games against Leyton Orient and Bournemouth. In both games we looked very strong in all aspects of our attacking play, but we showed a little naivety in our defending and got punished.

The last two games have shown me that we certainly have what it takes to get out of our current predicament and climb the table; at Bournemouth the players showed a lot of spirit to come back from two goals down.

It goes without saying that it is fantastic to be back at LTFC – it is a club that I have served as a player as well as a number of other rolls and I have great affection for the town, the fans and everyone involved with LTFC.

In the short-term, our objectives will be to stay in this division and to climb the table as quickly as possible and hopefully, we can do that be collecting three points today.

“The last two games have shown me that we have what it takes to get out of our current predicament”

The long-term aims are to galvanise and bring stability to LTFC. We face a considerable challenge to ensure Luton Town FC is in safe hands, but, if we confront it together then the future of our club looks promising.

I have brought in Warren Neil as my assistant – Warren played for QPR and Portsmouth and he brings with him a lot of experience of the game and well-honed coaching skills.

Dennis Wise, his staff, players and fans are most welcome at Kenilworth Road this afternoon and we trust they will have a safe journey home to Yorkshire.

Finally, I would like to thank the fans wholeheartedly for all the support I

have received since my appointment and I can assure you that the players and staff will be working long and hard as a group to retain our League One status. I know that you have faced plenty of ups and downs, but be sure of this – this club will never die.

Enjoy the game.

Mick

THE FOOTBALL LEAGUE
AWARDS
INCORPORATING THE
FourFourTwo
TOP 50 FOOTBALL LEAGUE PLAYERS

Vote for the League's Top 50 players

What do Jason Koumas, Billy Sharp and Izale McLeod have in common?

All were winners at the 2007 Football League Awards. And now's your chance to influence who follows in their footsteps for the 2008 Football League Awards. Vote for the best player from your own team or the player from another team who's most impressed you this season and you could win VIP tickets to the gala awards night and the chance to rub shoulders with the stars.

Vote now at: FourFourTwo.com

PLUS!

Nominate the EA SPORTS
Fan of the Year at
FourFourTwo.com

THE CAPTAIN

Our last two games against Leyton Orient and Bournemouth have been very frustrating for everyone involved, particularly as we felt we had done enough to get something from them.

We played some great football at Orient and at Bournemouth we showed plenty of fighting spirit to come back from two goals down.

It was disappointing to lose in the manner that we did at Bournemouth, particularly as we had taken the lead so late on in the game. However, hopefully we can learn from this and bounce back to winning ways.

I would like to thank the fans for their brilliant support over the last three away games.

To take over 5,000 supporters to Anfield was an amazing turnout and to follow that up with huge support at Orient was brilliant.

It has been a busy week at the Club with two fixtures in quick succession and the appointment of Mick Harford as manager. Despite all the upheaval there seems to be some light at the end of the tunnel.

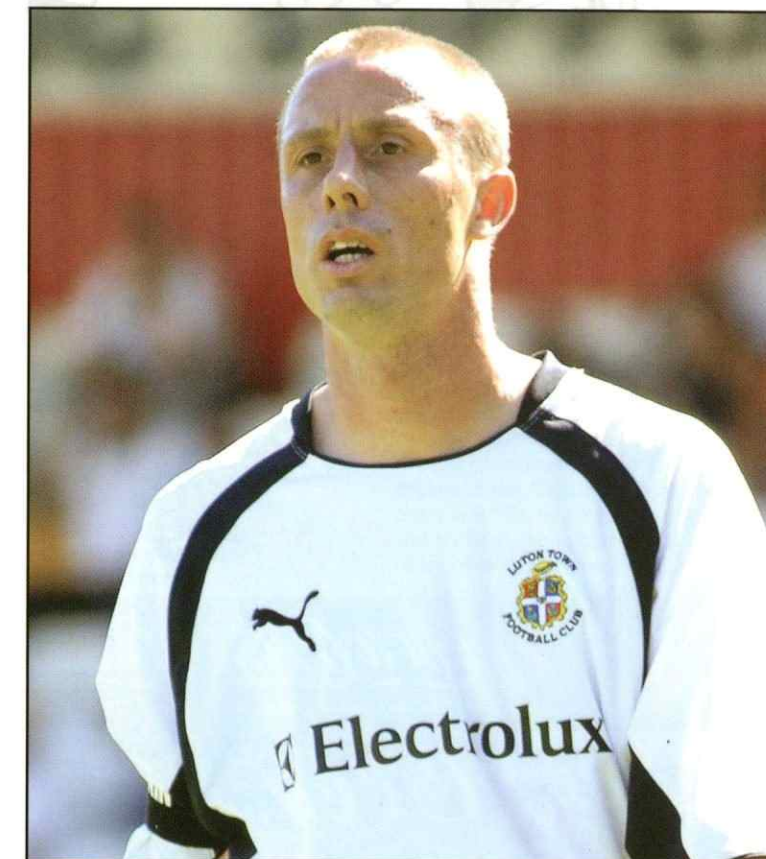
It seems as though the future of the Club will eventually sort itself out. As players, all we can do is concentrate on getting results on the pitch and we are working hard to try and push up the league table.

We certainly have enough quality within the squad and it is important that we all stick together.

With players such as Sam Parkin and Sol Davis back in training we are starting to see competition for places return amongst the squad.

For me personally, I was honoured to be given the captain's armband following the departure of Chris Coyne. I know Chris was a loyal servant to the Club and became a terrific captain and it will be a difficult act to follow.

I would also like to wish Dave Edwards and Ahmet Brkovic the best of luck in the future. They played a key role during



I would like to thank the fans for their brilliant support over the last three away games

their time at Luton Town and it's now up to others to take their opportunities in the team.

Today we welcome a Leeds United side who have been terrific this season following their 15 point penalty at the start of the campaign.

They are a side who traditionally play attractive football and we know that we are in for a difficult contest.

However, our home form has been good this season and if we can match the performances from home games such as

Liverpool and Everton then we will have a strong chance of coming away with three points this afternoon.

As each game becomes more vital, it's important that you remain fully behind us.

With a full house expected at Kenilworth Road this afternoon, hopefully there will be a great atmosphere.

Enjoy the game

Chris



Luton Town F.C.

Vs

 A.F.C. Bournemouth	 Huddersfield Town F.C.	 Crewe Alexandra F.C.	 Gillingham F.C.
 Swindon Town F.C.	 Northampton Town F.C.	 Brighton & Hove Albion F.C.	 Walsall F.C.
 Southend United F.C.	 Swansea City A.F.C.	 Doncaster Rovers F.C.	 Port Vale F.C.
 Leeds United F.C.	 Millwall F.C.	 Carlisle United F.C.	 Nottingham Forest F.C.
 Cheltenham Town F.C.	 Leyton Orient F.C.	 Yeovil Town F.C.	 Oldham Athletic F.C.
 Tranmere Rovers F.C.	 Hartlepool United F.C.	 Bristol Rovers F.C.	 LEAGUE 1

72 Clubs. The 'Coca-Cola' Football League.

CLUB SECRETARY

THE events of the past few weeks will have seemed surreal to all Luton supporters- none of us could ever have expected the highs and lows that have affected us all.

However, the most important thing now is for all of us to work hard together to support Mick Harford, Warren Neill and the players at this time.

With everything else that is going on there are still the day-to-day football requirements of the club to be attended to, so can I please advise you that due to a County Cup commitment Southend United cannot play our reserve match, which was scheduled for Tuesday February 5, and this will now be played on Tuesday April 22. We have also been able to arrange our outstanding reserve fixture with Ipswich Town and this will now be played on Tuesday 29th April. Both these matches will kick-off at 2.00pm and will be played here at Kenilworth Stadium.

At our last home match we held a collection for the Motor Neurone

Association and I have been asked to pass on their sincere thanks for the grand sum of £513.24 that supporters so generously gave.

With the support of our caterers we are pleased to advise supporters that the much requested draught beer is now back and available in both the Hatters Bar (under the Kenilworth Stand) and in the Nick Owen Bar. We are always willing to listen to supporters requests and ideas, so here are a few contact details that you might find useful. For ticketing contact Mike Hooker, ticketoffice@lutontown.co.uk; matchday stewarding Geoff Lovell safety@lutontown.co.uk; shop/retail Tracy Maddox tmaddox@lutontown.co.uk and matchday catering Gerry Dowd catering@lutontown.co.uk

We are delighted today to be presenting Jack Sapsworth, who is representing our local Pasque Charity, with cheques of £2,500 each for Keech Cottage Childrens and the Adult Hospice. These funds are donated by The FA Charity Sheild Fund for clubs to give to their own

local charities.

Yesterday saw the 90th birthday of an ardent Luton Supporter Mr Leonard Pedder who has supported the Club since he was four! Mr Pedder is a Main Stand season ticket holder and is here today and we send him our very good wishes.

I regret to advise supporters of the sad loss of Doug Boast, who tragically passed away this week aged 47. Many supporters will know Doug who, despite living some distance away, travelled to both home and away games. He even had his car number plate personalised as a tribute to the Club. His favourite chant was "Come on you Hatters" and his family hope that as it is sung today his friends will remember him. We send our sincere condolences to his family at this time.

Finally, enjoy the game, get behind the team, united we can succeed.

Enjoy the game

Cherry

Football's Future

Cash in on our support for:

- pitches
- social inclusion projects
- changing rooms
- education schemes
- kit and equipment
- pavilions



Football Foundation

football's biggest supporter

www.footballfoundation.org.uk Helpline 0800 0277766



David Lloyd and Luton Town Football Club are now at "Another Level"

Join us and Feel the Difference

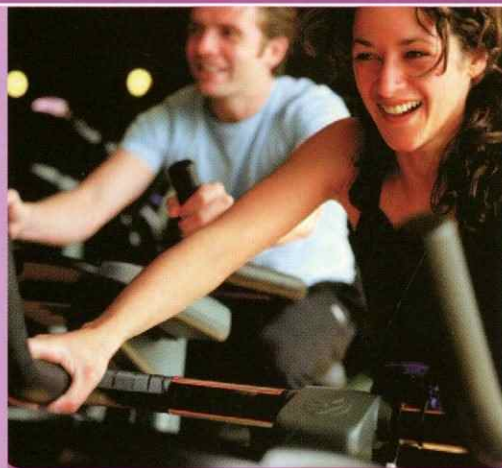
Be inspired in our newly refurbished club



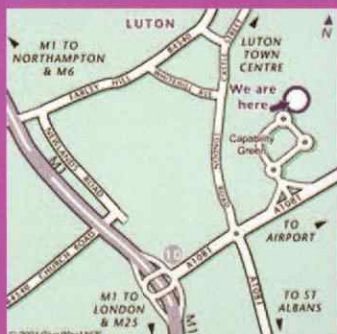
David Lloyd

feel the difference

Over 120 Cardiovascular & Resistance Machines, TV screens on CV equipment, Keiser Studio, Kinesis Wall, 20m Indoor pool spa & sonarium, Large Free Weights Area, 40 hours of free children's activities, children's play zone, homework stations, internet and play stations, Friendly and approachable Staff, Over 140 adult classes across 3 studios, Adults lounge area with plasma screen, Massage and Physiotherapy Clinic, Express Workout Zone, Exclusive new Health & Beauty Salon with full range of beauty treatments.



David Lloyd Luton - the player's choice



To find out more contact us on **01582 692046/7**

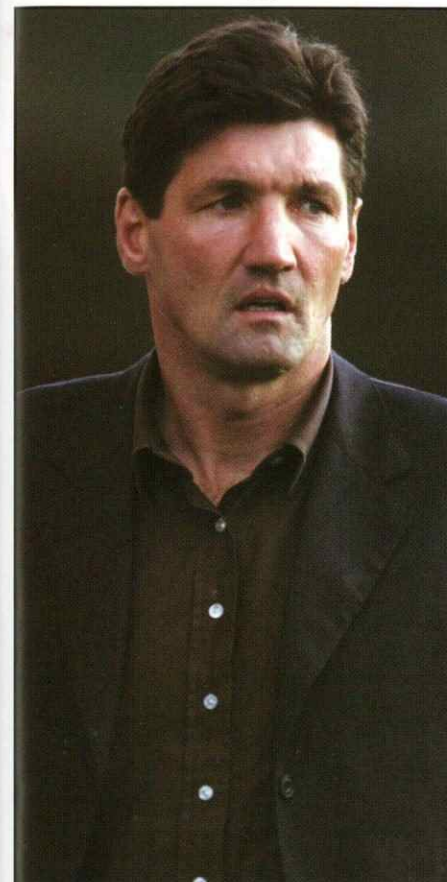
or visit our website www.davidlloydleisure.co.uk

David Lloyd Leisure
Capability Green
Luton Bedfordshire LU1 3LU

CLUB NEWS

CLUB NEWS

The 'Big Mick' Signed Season Ticket



Big Mick Harford is back at Kenilworth Road and is calling on your support for the remainder of the season.

Harford has urged the Club's supporters to continue to show their tremendous backing this season, and as a show of gratitude for you much needed additional custom, every season ticket ordered will be signed by the great man himself.

With adult season ticket prices starting from just £148 for the remainder of the season (before today's game with Leeds), it really is the best time to get behind the Hatters.

Speaking earlier this week, Harford said: "It is great to be back. This is my home club and I have got a lot of affection for the area and for the fans.

"The fans have been on a real rollercoaster ride for years and years. But this is the start of a new era and I want everyone to turn up week-in, week-out and get behind the players."

Meanwhile, Luton fans have snapped up tickets for Harford's first home game in charge against Leeds United.

It's sure to be a roof-raising affair as Harford is unveiled before Luton supporters prior to kick-off against the Elland Road club.

Due to administration, we regret payment would need to be made by cheque or cash as we cannot accept cards for season payments.

Tickets are still on sale from the Ticket Office for the game against Swindon on Tuesday January 29, but supporters are urged to come along and give their backing to Harford and his team.

The Ticket Office can be contacted on 0870 017 0656

Enjoy Hatters World for £19.99

Christmas has been and gone and we all know how much of a drain it is on the purse strings, which is why we're back with another great Hatters World special for the New Year.

We don't want you to miss a piece of the League One action during the rest of the season, so we're going to give you the opportunity to try out Hatters World for just £19.99, right up until 18th August 2008 where it will then be followed by a £34.99 annual repeating plan unless cancelled.

Here's what you'll get:

Giant Screen - as requested by users we've doubled the size of our media player!

Crystal Clear Video - we've doubled the stream

quality and online football has never looked so good!

Multi-Channels - exclusive interviews, archive, classic matches, live audio commentary and much more - the choice is yours!

Around the Grounds - now you can access over 70 clubs' official online TV sites, so check out what the opposition are saying about us before and after match day!

To find out more information about this fantastic offer, log onto the Club's official website, www.lutontown.co.uk

We want our new online TV service to become a crucial part of every supporter's week, it's the best way to stay in the know, anytime, anywhere!



0%

FINANCE OVER 3 YEARS

& NO REPAYMENTS UNTIL EASTER

ON ABSOLUTELY EVERY USED CAR IN STOCK!

**STEVEN EAGELL TOYOTA
APPROVED
USED CAR EVENT!**

Thursday 27th December
until Sunday 6th January
(Normal opening times)

TOYOTA APPROVED USED CARS

- TOYOTA WARRANTY
- APPROVED QUALITY CHECK
- VEHICLE MILEAGE CHECK
- RAC ROADSIDE ASSISTANCE
- VEHICLE EXCHANGE PLAN

STEVEN EAGELL TOYOTA (LUTON)

Latimer Road,
Luton LU1 3BH
Telephone: 01582 400063
www.toyota.co.uk/steveneagell

**WE ARE OPEN ON
NEW YEARS DAY**



TODAY TOMORROW **TOYOTA**

*Finance subject to status. Over 18's only. Written quotations available on request. A guarantee may be required. Terms & conditions apply. Maximum loan advance £7,000. Please ask for details. Model portrayed is for illustration purposes only. Details correct at time of going to press.



MICK HARFORD

New Manager Mick Harford spoke exclusively to Hatters World shortly after his appointment. Reproduced below is a transcript of that interview as Mick explains the decision to return to Luton, a club that he holds close to his heart, and his desire to provide the stability he feels the club needs on the pitch, whilst a prospective takeover is negotiated with the Administrators.

Welcome back again Mick, you must be delighted to be back?

Absolutely. It is great to be back. This is my home club and I have got a lot of affection for the area, for the players, for the staff and for the fans. There is a lot of sentiment involved, but I am here to do a job and I am looking forward to the challenge. It is going to be a difficult challenge, but I feel I am ready for the job.

How did the move back to Luton come about?

I had brief discussions with the Administrators over the last 36 hours. I spoke to Brendan Guilfoyle briefly and he asked whether I would step in and take over the mantle until the end of the season, which I was delighted to do. It is an opportunity for me to take over what I believe is a great football club and it is a challenge I'm looking forward to.

You say that you are here until the end of the season, does that mean you are looking at this as a short-term position?

I understand the question but I think at the moment it's not about me. It's about the football club and its future. It's all about trying to get the team moving forward and to try and bring a bit of stability. In the future, whatever happens to me, happens to me. If we get success then I will probably be rewarded, but if we don't then I know what the consequences will be.

With new potential buyers around the corner, have you had the chance to speak with them?

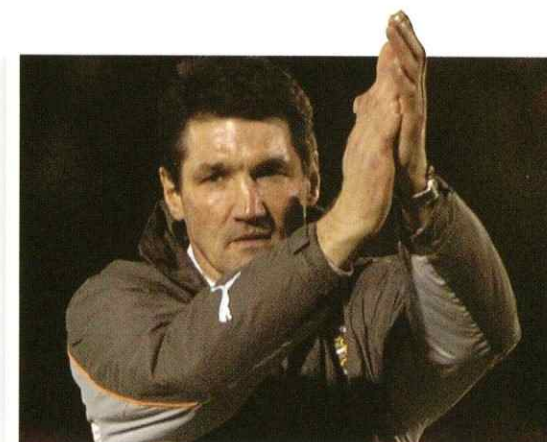
I know some of the people on the consortium like Nick Owen, who is heading the consortium, but I haven't spoken to anybody. However, I have seen their prospectus and I do believe in what they are trying to do. If I didn't believe it then I wouldn't be here. It is a fantastic package they have put together for the future of this Football Club and I thoroughly believe in that.

What are your short-term aims at Luton Town?

The first objective is to stay in this division and climb the table. If players have to leave for the benefit of this Football Club and the move is right for the player, then they will be free to leave because we also have to protect the future of Luton Town. Short-term, I will also be looking at getting the players playing attractive football and trying to win some football matches.

Have you been told if any more players will have to be sold in the January transfer window?

The Administrator will give me directives and I will put my ideas to him. There are no offers in for any of our players at the moment. I believe there have been offers for our players but none of them have been accepted. At the moment it is all up in the air. I have been only been in the building for five minutes and there are a lot of questions which need to be answered.



But I will sit down over the next 48 hours and have a think of what needs to be done. I think the most important thing is to get the team winning game on the pitch and trying to move up the League One table as quickly as we can.

Just tell us who you have brought in as part of your backroom staff.

I have brought in Warren Neill, who played at QPR and Portsmouth. He brings with him a lot of experience and coaching. He has been at QPR looking after their youth team for five years. When I was Caretaker Manager at QPR, Warren became my Caretaker Assistant Manager. We have a good relationship and he is a fantastic coach. He knows what it takes to win football matches.

What would your message be to the supporters and your players?

The fans have been on a real rollercoaster ride for years and years. I would say to them that at this moment in time, with the 2020 people coming

in, there is going to be some stability. I just want them to turn up, like they always do, week-in, week-out and get behind the players. They got right behind me when I was a player. The message to the players is that they have done exceptionally well over the past few weeks. The players have come out with a lot of credit over the Liverpool games and it's just a process of carrying that on really. We have to show our passion and desire and I will try and give them that belief and the organisation to try and win games.

Finally, I bet noting much has really changed since you were last at the Club?

I don't care what people say, Kenilworth Road is still a great stadium and I am glad it hasn't changed. There was a shiver down my spine when I walked into the Club. It is great to be back and it is a great place to be.

The LEEDS Story

Beginnings: 1919

Leeds United came into being in 1919 following the demise of the old Leeds City Football Club and joined the Midland League, playing their first game in that competition in November 1919. It was on May 31, 1920 that Leeds United were elected to the Football League, polling 31 votes to step into the Second Division along with Cardiff City, who had polled 23 votes. United's first ever fixture in the Second Division was against Port Vale, who, ironically, were the club who had taken over Leeds City's fixtures after their expulsion.

Top Player: Bremner



Regarded by many Leeds United fans as the best ever player to pull on their famous white shirt, Billy Bremner captained the side during the 1960s and 1970s. Billy played 772 times for Leeds (only Jack Charlton played more games for the Club) and scored 115 goals. His legacy at Elland Road still lives on to this day with

a statue of the great man erected in front of the stadium. He made 53 appearances for Scotland and was voted footballer of the year in 1970.

Top Manager: Revie

During his 740 matches in charge of Leeds United, Don Revie secured no fewer than eight trophies as the Elland Road club dominated the world of football. As well as League Championship success during the 1968-69 season and the 1973-74 campaign, Revie also won the FA Cup in 1972, the League Cup in 1968 and were two-time winners of the UEFA Cup in 1968 and 1971. Don ended his managerial career at Leeds United with an amazing 62.12% win record.

Top Game:

September 17, 1969,
Leeds United 10 SK Lyn Oslo 0,
European Cup First Round, Elland Road

If you want to make a major impact in your first European Cup game then there is no better way to do it than by knocking ten goals past your opponents without reply, as United did against SK Lyn Oslo on September 17 1969. Mike O'Grady scored after 35 seconds, before Mick Jones added a second three minutes later and then scored again in the ninth minute. United were five goals up at the break, Allan Clarke netting after 19 minutes and Johnny Giles in the 34th minute. Clarke scored again two minutes into the second half, Giles after 51 minutes and Jones got his hat-trick just after the hour mark to put United 8-0 in front. Then Billy Bremner completed the rout by scoring in the 65th and 88th minutes to make it 10-0.

WELCOME TO LEEDS UNITED

Leeds United are one of the most distinguished clubs in British football, but they arrive at Kenilworth Road knowing only too well the problems currently faced by the Hatters.

After living the dream of a Champions League semi-final spot in 2001, the last few seasons have tested the resolve of the Elland Road faithful, who have seen their club not only suffer two relegations in four years, but also fall into administration.

However, things again appear to be on the up for the three times League Champions. Despite starting the current season with a fifteen point penalty

incurred because of their financial woes, Dennis Wise's side has overcome this deficit and most of their opponents to find themselves mounting a serious promotion charge.

Incredibly, The Whites even topped the division - albeit for only a few hours - over the festive period, and, with former Chelsea chairman Ken Bates providing some economic stability at the helm, Leeds fans are once again marching on together with a degree of optimism.

Wise, who was retained by Bates

despite last season's relegation, has created a side with the same sparky creativity and tenacity that marked his own playing career at Wimbledon and Chelsea. Indeed, as chairman and captain respectively, Bates and Wise were vital to Chelsea's resurgence as a footballing force in the 1990s and beyond.

As combative on the pitch as Bates was outspoken off it, Wise may have had his detractors, but he also picked

up plenty of silverware, including three FA Cups and a European Cup Winners' Cup medal.

His move into management continued

his love affair with knock-out competitions, and, as player-boss of Millwall, Wise guided The Lions to the 2004 FA Cup final, the first team from outside the top-flight to do so since 1982. Brief spells as a player at Southampton and Coventry followed before the ex-England international - via a short, but successful, managerial stint at Swindon - took up the hot seat at Leeds in the wake of the sacking of former Luton boss, Kevin Blackwell.

Leeds have had an very attacking



approach this term, netting 48 times in the league so far, with striker Jermaine Beckford notching 16 of them.

Beckford, who is reportedly a target for a number of Premiership clubs, has pace, strength and athleticism as well as an eye for the acrobatic in the penalty area. His partnership with Tresor Kandol - who himself has eight this term - was one of the key factors in Leeds remaining unbeaten for the first 13 league games of the season, of which they won the first eight.

Also worth watching out for, as Wise's side attempts to secure their eighth away win of the season, are workaholic midfielder Andrew Hughes and ex-Southampton man, David Prutton, the latter of whom was once tipped as a future England prospect during his time at St. Mary's.

Luton will have pleasant memories of Leeds' last visit to Kenilworth as the Hatters turned in one of their best performances of the season winning 5-1.

How Luton will be hoping for a similar result in two weeks time.

Head 2 Head

	Luton	Draw	Leeds
League	12	14	15
FA Cup	1	0	0
Other	1	0	2
Total	14	14	17

Last meeting: Sept 1, 2007: Football League One
Leeds United 1 - 0 Luton Town.

Last season: Leeds finished bottom of the Championship with -26 points and so started this season in League One.



The Fan's View

HANNAH DUNNE
Leeds United supporter

How has this season gone?

It has been a roller-coaster ride for everyone connected with the Club, but on the field it has been excellent. I think losing the 15 points at the beginning of the season has increased team spirit and that propelled us up the division. The football at times this season has been a joy to watch and that has kept the crowds flooding through the gates at Elland Road.

What are Leeds' aims this season?

I'm not sure if I would have said this at the beginning of the season, but I think we have an excellent chance of winning promotion this season. Dennis Wise has done a fantastic job and although we have slipped to a couple of defeats in recent weeks I think we can maintain the pace.

Who is your key signing?

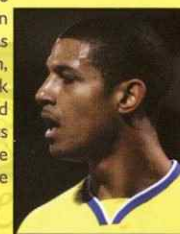
There has been a lot of new players at Leeds this season. I think the signing of Casper Ankergrén, the goalkeeper, has been key and David Prutton has certainly added something to midfield. However, I think Andy Hughes has been brilliant for Leeds this season and he should play a key role if he is involved this afternoon.

Who will be your star players?

Rumors are rife that there has been a lot of interest in Jermaine Beckford. He has been brilliant this season, scoring 16 goals so far. I think it's important that we hold onto him if we are serious about mounting a challenge for promotion to the Championship.

Who will win League One?

Swansea have been the best team I have seen this season so I think they will go up automatically. Then I think it's two from about six or seven teams who will join Swansea in the Championship. Carlisle have been good this season, but I do fancy our chances of winning promotion.



The Captain

Alan Thompson

Alan Thompson started his career at Newcastle and was capped once by England against Sweden in 2004. He joined Celtic in 2000 for £2.75m from Aston Villa. He is best remembered for his spell at Bolton Wanderers, where he enjoyed a distinguished career making over 150 appearances. He scored the only goal in the 2005 Scottish Cup final for Celtic against Dundee United, and then moved on to Leeds United in January 2007. Has become an influential player under Dennis Wise and in the main free-kick specialist in the Leeds United side. Thompson was recently made Acting Assistant Manager after the departure of Gus Poyet to Tottenham, but returned to his playing role upon the arrival of Dave Bassett.



Goalkeepers

Casper Ankergren

Danish international goalkeeper who became the Club's first permanent signing last August. Casper, who had been training with Brondby, signed a three-year deal for an undisclosed fee and made 14 appearances for Leeds United last season.

Alan Martin

Leeds signed this Scotland youth international goalkeeper from SPL side Motherwell for an undisclosed fee on deadline day last August. Glasgow born Martin penned an initial two-year deal and is certainly one for the future at Elland Road. Is currently waiting to make his Leeds United debut.

Defenders

Frazer Richardson

Popular right-back who is now a regular after taking over from Gary Kelly. Rotherham-born, Richardson is a lifelong Leeds fan coming through the Academy to become an established youth international. He also represented England at U-20 level. He recently signed a four-year contract and spent a month on loan with Stoke City in Nov 2003 making six appearances.



Paul Huntingdon

Joined Leeds on deadline day last August from Newcastle United in what was quite a coup for Dennis Wise. The 19-year-old made 16 appearances for the Magpies last season and also featured in their UEFA Cup campaign.

Rui Marques

Marques made his debut for United in a 2-0 Carling Cup win over Oldham. He had a loan spell at Hull City but now the centre-back is a regular in the Leeds team, forming a useful relationship with Matt Heath. Scored his debut goal for Leeds in a 4-1 win over Southend.

Matt Heath

Began his career at his hometown club Leicester making 60 appearances for the club, scoring six goals. He was loaned out to Stockport in the 2003-04 season to gain first-team experience. Heath signed for Coventry for a nominal fee in 2005, before he joined Leeds on loan. Heath's loan spell at Leeds came to an end on January 1, 2007 but the following day he was transferred to Leeds on a free, with a permanent contract.

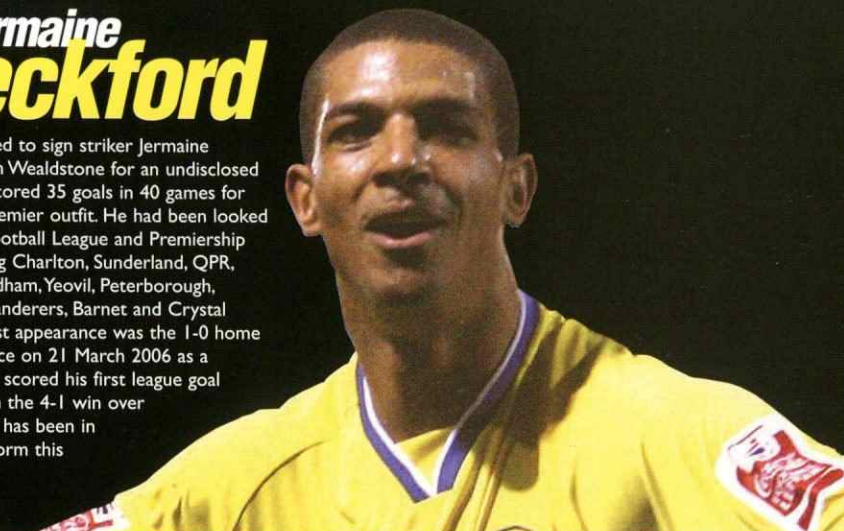
Alan Tate

Currently on-loan from Leicester City, where he has struggled to make a real impact. But Kenton will certainly add plenty of strength to the Leeds defence. He started his career at Norwich City, where he made over 150 appearances, before being transferred to Southampton.

Top Scorer

Jermaine Beckford

Leeds swooped to sign striker Jermaine Beckford from Wealdstone for an undisclosed fee after he scored 35 goals in 40 games for the Ryman Premier outfit. He had been looked at by many Football League and Premiership clubs, including Charlton, Sunderland, QPR, Brentford, Oldham, Yeovil, Peterborough, Wycombe Wanderers, Barnet and Crystal Palace. His first appearance was the 1-0 home defeat to Palace on 21 March 2006 as a substitute. He scored his first league goal for the club in the 4-1 win over Southend and has been in inspirational form this season.



Midfielders

Jonathon Douglas

Republic of Ireland international who made his debut in the Football League of Ireland for Monaghan before joining Blackburn. In March 2003 he was loaned out to Chesterfield for six weeks and then he joined Blackpool for three months. His first-team chances at Blackburn remained limited and he jumped at the chance of a move back to Leeds on a permanent three-year deal after making 47 appearances for the Whites on loan, chipping in with five goals.



David Putton

Former Nottingham Forest and Southampton midfielder who joined Leeds on trial last July after leaving St Mary's. The 25-year-old made over 300 appearances at Forest and Saints and is proving to be a hit at United.

Ian Westlake

Ian Westlake joined Leeds from Ipswich in a deal which involved Dan Harding going the other way. The

midfielder was with Town since the age of nine and signed his first professional contract in 2002 and was a revelation in his first full season, 2003/4, when he picked up the Supporters' Player of the Year award as well as the most improved player by the coaches.

Sebastien Carole

A former Monaco midfielder who gained his main experience playing for the French team. He signed with Brighton at the beginning of the 2005/6 season on a two year contract and had trials with Watford and Southampton.



Strikers

Leon Constantine

Former Port Vale striker who joined Leeds on a free, signing a two-year deal last August. He suffered with an ankle injury in pre-season and he made a belated full debut only in November, scoring against Bury in the JP Trophy defeat. Leon scored 38 goals for Vale in 85 appearances, including 26 last season in all competitions.



Tresor Kandol

Signed from Barnet, initially on a two month loan deal in November 2006, before making the deal permanent. The striker has also played at Darlington, Dagenham & Redbridge, Thurrock, Bournemouth, Cambridge and Luton. He made his debut for Leeds as a substitute, replacing Robbie Blake in the 2-1 victory at Plymouth Argyle. He scored on the opening day of the season at Tranmere and his partnership with

Jermaine Beckford is looking very promising.

Tore-Andre Flo

Flo linked up again with his former Chelsea team-mate Dennis Wise after signing a short-term deal at Leeds. The 33-year-old striker initially moved from Norwegian side Valerenga but signed a permanent deal this season. Flo, who scored 23 goals in 76 caps for Norway, played alongside Wise at Chelsea before making a Scottish record £12.5m move to Rangers in July 2001. The striker scored on his debut in a 5-1 win over Celtic notching 18 goals in 30 appearances in total. He was sold to Sunderland in 2002, and again scored on his debut, a 1-1 draw with Man United.

Tom Elliott

Elliott became Leeds' first ever schoolboy player when he made his debut at Norwich last February. He joined the club's scholarship scheme in July 2007 and then a pro deal in August which becomes effective from the summer of 2008.

EXCLUSIVE TO STRATSTONE

Stratstone
quality with style



JAGUAR
X-TYPE

WE'VE MADE LUXURY
EVEN MORE AFFORDABLE.

LOW MONTHLY PAYMENTS

Deposit	£6,500.00	24 Monthly Payments of	£178.90
Cash Price	£21,500.00	Balance Payable	£15,954.85
Amount of Credit	£15,000.00	1 Final Payment of	£11,661.25
Total Charge for Credit	£954.85	Total Amount Payable	£22,454.85

3.5% APR TYPICAL

01582 726500. lutonjaguar@stratstone.com

49-57 Castle Street, Luton, Bedfordshire, LU1 3AQ.



OFFICIAL FUEL ECONOMY FIGURES FOR THE X-TYPE 2.0 LITRE DIESEL 5 SALOON MPG (L/100KM), URBAN 36.6(7.7), EXTRA URBAN 61.4(4.6), COMBINED 49.1(5.7). CO2 EMISSIONS 149 G/KM.

Applies to X-TYPE 2.0 Diesel 5 Saloon model only. The offer may be varied or withdrawn at any time. Prices, offers and finance terms are correct at time of going to print and are subject to change without prior notice. Not to be used in conjunction with any other offers. Offer ends 31/03/2008.

Motor trade **Glass's Guide**, has confirmed that the X-TYPE will have an outstanding residual value after 2 years, therefore allowing you the customer to benefit the most from this exclusive Stratstone offer.

CONTACT US TODAY FOR A TEST DRIVE, OR TO PLACE YOUR ORDER.

►► Stratstone.com

GREAT PICTURES

ROGER WASH tells the stories behind some special moments in Hatters history

FLASHBACK



Hatters end Leeds' promotion hopes

Luton players line up after training in Spring 1952 during their most successful campaign since 1939.

After two successive seasons when relegation from the old Division Two had been stared in the face, the 1951/52 campaign had come as a breath of fresh air with realistic promotion thoughts at one point and a trip to the FA Cup quarter-finals, for only the second time in the club's history, an added bonus.

The Town team had a much more settled look about it and the defence, in particular, looked far stronger with full-backs Billy Cooke and Bud Aherne complementing the virtually ever present half-back line of Bob Morton, Syd Owen and Charlie Watkins.

Up front, new signing Bert Mitchell was a revelation, hammering goals from the wing as well as providing excellent service for the dangerous Jack Taylor and a young Gordon Turner.

Six goals were scored against Notts County and West Ham and five against future champions Sheffield Wednesday but it was in the FA Cup that the name

Score: Luton 2-1 Leeds
Date: Saturday April 5, 1952
Place: Kenilworth Road

of Luton Town came to the fore. In Round Three, Charlton from Division One were seen off, then it was Brentford's turn, after two replays, before Swindon were beaten 3-1 in front of a new Kenilworth Road record crowd of 27,553.

The record was broken again two weeks later when 28,433 were shoe-horned in to see the Hatters go down unluckily 2-3 to mighty Arsenal after losing both Owen and Roy Davies to injury in the days before substitutes.

With the clamour of the Cup having died down it was now back to the bread and butter of the League and whereas at Christmas the Town were in a strong challenging position, four successive defeats meant that the long awaited home clash with fellow challengers Leeds was now regarded as little more

than an afterthought, especially after a 0-4 defeat the previous week at Sheffield Wednesday.

The fixture was still important to Leeds though, as a defeat would virtually end their hopes for the season.

Late-comers to the match missed an amazing start as the Town took a two goal lead in the first four minutes. Bernard Moore netted the first with the game only a minute old, after he had intercepted a poor back pass, and followed it up soon after with a close range shot from an accurate Wally Shanks centre.

From then on it was one-way traffic with Moore leading John Charles a merry dance and it was a mixture of wayward finishing and desperate defending by Leeds that prevented a rout.

With the Town fully in control it came as a major surprise when Leeds pulled a goal back through Ray Iggledon with three minutes to go to bring about a completely unrealistic scoreline.



Hatters Line-Up

4-4-2



Goals: None
 Substitutes: O'Leary (68 Robinson),
 Furlong (68 Andrew),
 McVeigh (73 Bell)
 Not used: Parkin, Emanuel

None
 None

Liverpool Line-Up

4-4-2



Goals: Babel (45), Gerrard (52, 64, 72)
 Hyypia (57)

Substitutes:
 Kuyt (65 Crouch)
 Lucas (73 Gerrard)
 Aurelio (73 Torres)

Not used: Martin, Kewell

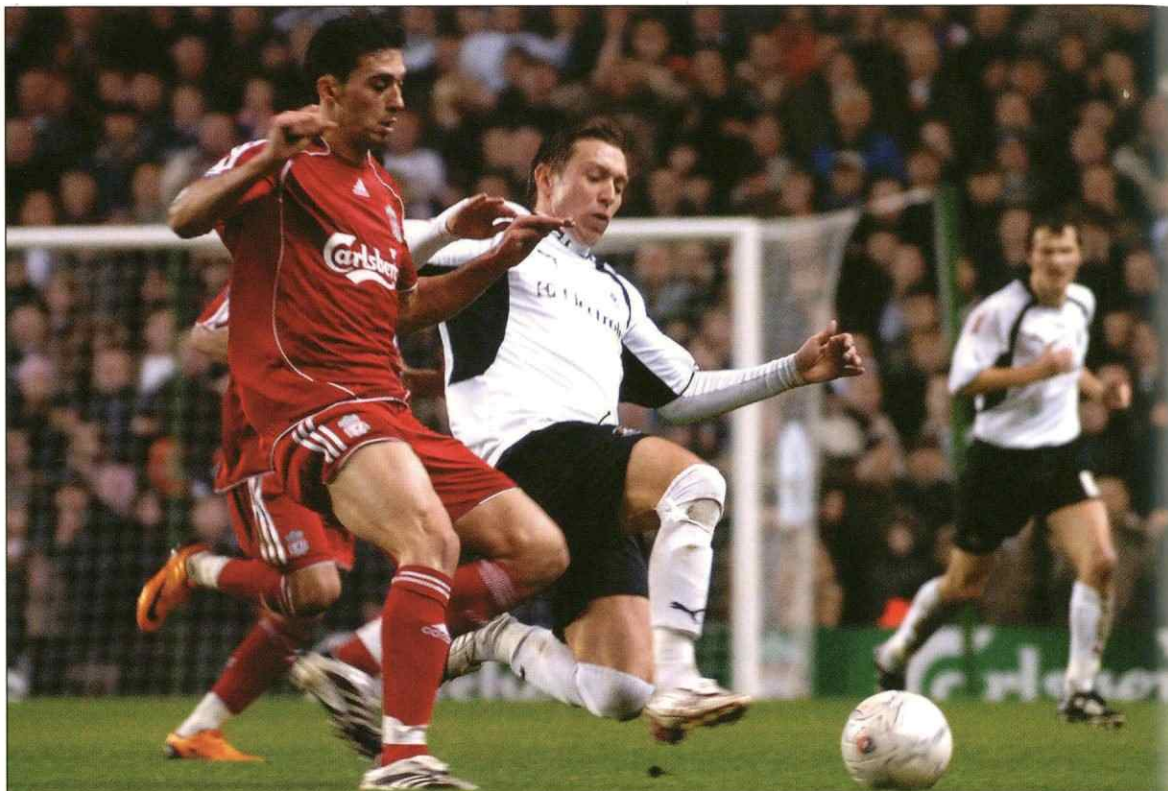
Hyypia,
 None

REFEREE: Peter Walton (Northamptonshire)

LIVERPOOL 5 LUTON 0



FA CUP THIRD ROUND REPLAY TUESDAY JANUARY 15, 2008 ANFIELD ATT: 41,446 SEE YA... David Bell powers through the Liverpool midfield to leave Steven Gerrard and Jamie Carragher in his wake



FEET FIRST...Hatters midfielder Darren Currie puts in a tough tackle to gain possession at Anfield.

Luton's night on the big stage ended in disappointment, but although a 5-0 defeat against Liverpool suggests an embarrassment - it was far from that.

As predicted, Liverpool made much of the early running as Luton were penned back in their own half and on six minutes a Jermaine Pennant cross was headed wide by Peter Crouch from six-yards.

But Luton refused to sit back and won two early corners which were celebrated by Hatters' huge support as if their side had taken the lead.

Luton were rarely out of their own half, but Darren Currie and David Bell both had sniffs at the Liverpool goal although they failed to trouble Charles Itandje.

It looked as if Luton would hold out until half-time, but with the last attack of the game Liverpool surged forward and Fernando Torres picked out Ryan Babel down the flank whose cross-field shot beat the outstretched arms of Dean Brill.

There was almost an immediate goal in the second-half as Alonso tried a cheeky shot straight from kick-off, but Brill was fully alert to make a comfortable save.

Liverpool were intent on building on their first goal and got their reward on 52 minutes as Steven Gerrard grabbed the home-sides second, heading home from Crouch's cross.

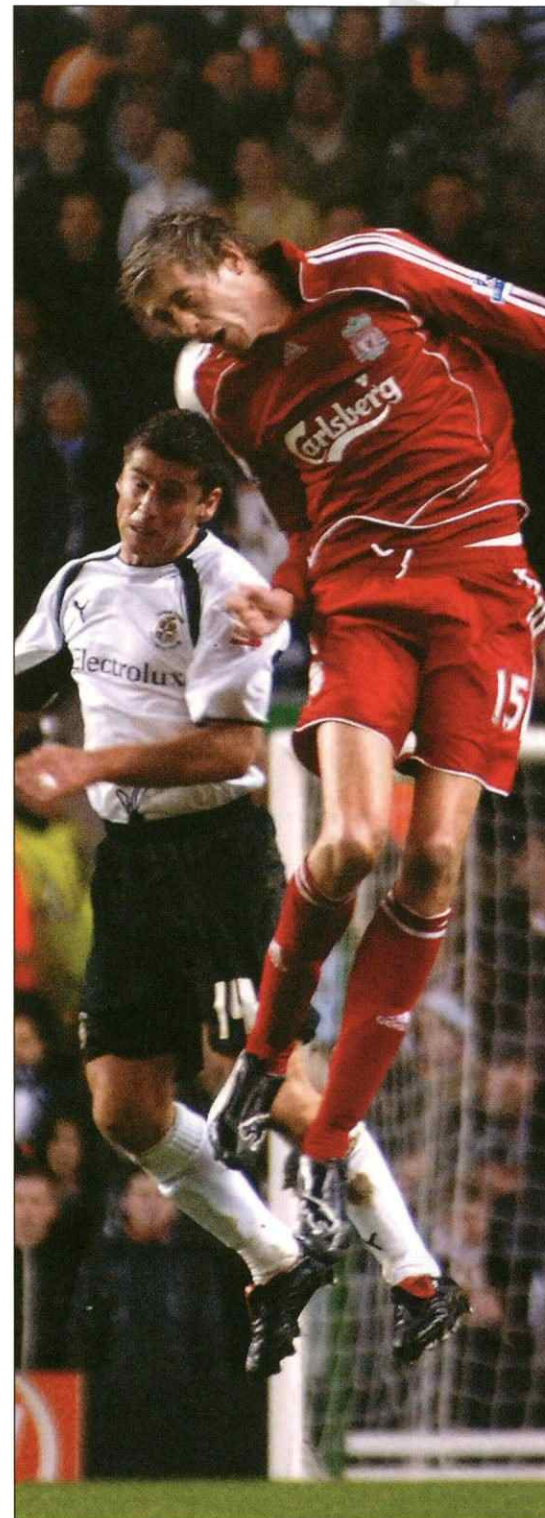
The home-side didn't have to wait long to extend their lead when on 57 minutes Gerrard sent a corner to the near post which was flicked home by Sami Hyypia, off the inside of the far post.

Liverpool were intent on taking full advantage and on 64 minutes Gerrard grabbed his second when a blocked shot from Torres rolled into the path of the England midfielder.

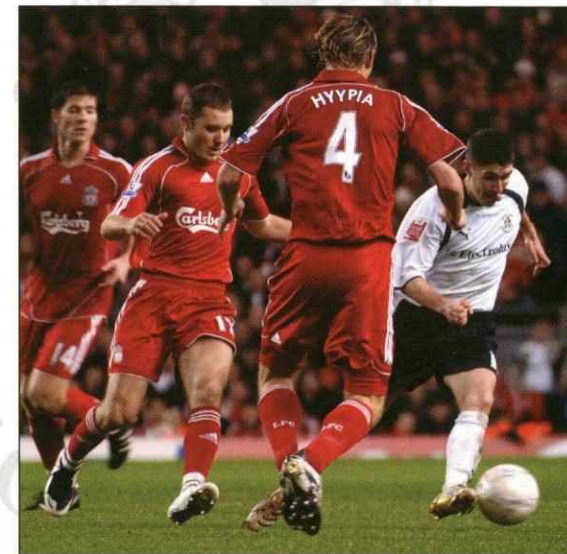
Gerrard grabbed his hat-trick on 71 minutes when he sweetly hit a curling effort from 30-yards that gave Brill no chance.

But the Hatters did themselves proud as the players were backed by over 5,000 non-stop singing fans from start to end, who also deserve much of the applause.

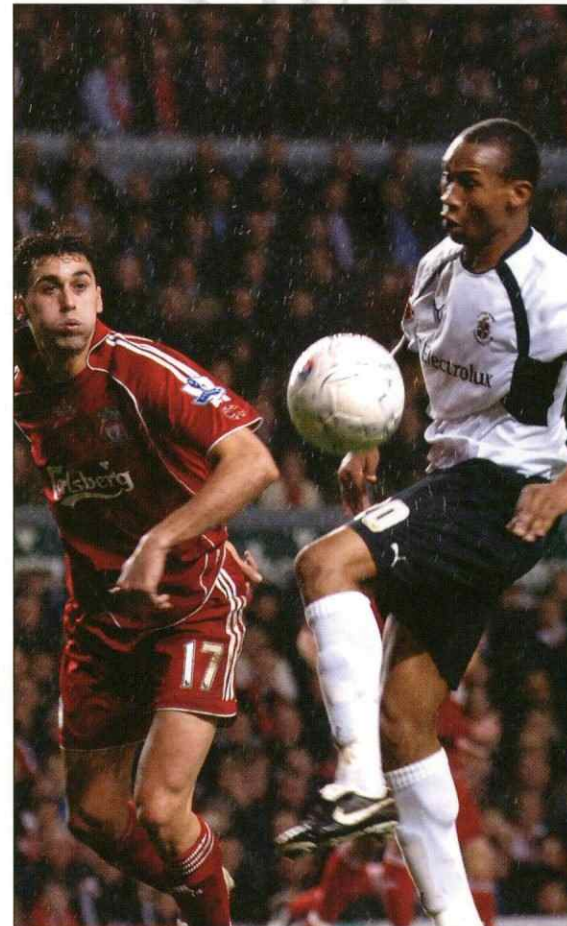
LIVERPOOL 5 LUTON 0



UP WE GO... Steve Robinson tries to beat Peter Crouch for this header



COMING THROUGH... Stephen O'Leary mounts a Luton attack at Anfield



UNDER CONTROL... Calvin Andrew sees sight of the Liverpool goal

Environmentally friendly units for longer life

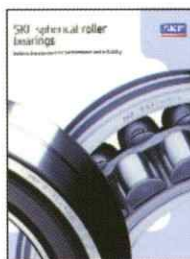


SKF Explorer sealed spherical roller bearings

Simplify maintenance and make operation safer with fewer unscheduled stops, and a radical reduction in grease usage – saving both cost and the environment.

Longer service life, safer handling, ready-to-mount, same basic load ratings as open bearings, downsizing possibilities – just some of the benefits of selecting SKF Explorer sealed spherical roller bearings.

To find out how your operational costs can be dramatically reduced contact SKF today for further information.



For a free catalogue contact SKF today.

SKF

SKF (U.K.) Limited
01582 490049
www.skf.co.uk

THE STATISTICS

SIMON PITTS finds some fascinating facts about today's teams

SIMON'S STATS



20 The two sides have met 20 times previously in the league at Kenilworth Road, with the Hatters winning eight, and the visitors taking maximum points on only three occasions. Amazingly there has been nine draws, and three of each of the scorelines 0-0, 1-1 and 2-2!

6 The most goals scored by Luton in this fixture. In came the first time the two sides met at Kenilworth Road, on 27th December 1947. Joe O'Brien scored Luton's first, with further strikes from Syd Ottewill, Ted Duggan, a brace from Bobby Brennan and a penalty converted by Frank Soo. The Hatters were 6-1 winners on the day, which is unsurprisingly also the biggest margin of victory.

2 No-one has managed a hat-trick in this fixture, although five players have netted a brace. O'Brien was the first as already mentioned, with Bernard Moore matching that feat in April 1952 when he scored both goals in a 2-1 win. Four years later and Gordon Turner scored both Luton goals in a 2-2 draw, but in November 1961 Roly Legate scored twice in a 3-2 win, with Jim Fleming netting the other. The most recent double for a Luton player came last season when Carlos Edwards netted both the first and last goals in a 5-1 win. It was 1-1 at the interval after Hayden Foxe equalised Edwards' opener, but Luton took full control in the second half as Rowan Vine and David Bell both scored within a couple of minutes of each other. Markus Heikkinen added the fourth with a header before Edwards scored his second, and Luton's fifth, in injury time.



DOUBLE.. Carlos Edwards

25,775 The biggest attendance for this fixture, saw a goal-less draw, during the promotion season of 1954/55. Whereas as the lowest crowd, 8916, were treated to a 2-2 draw in 1962/63! Gordon Turner scored for the third consecutive game, and Brendan McNally scored the second of the game, which turned out to be his third and final career goal for Luton.

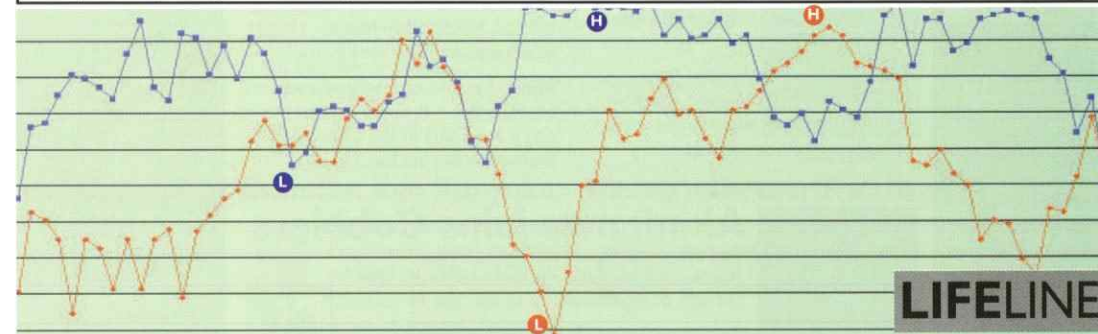
15 Amazingly 15 of the 20 matches between the sides came in a 16 season run from 1947/48 to 1962/63 inclusive. The only season where the sides didn't meet was in 1955/56 when the Hatters were in the top flight. Leeds were to join them the following season, and both sides were relegated at the end of the 1959/60 season. Luton suffered further relegation at the end of the 62/63 season, and the sides were not to meet again until 1974/75 when the Hatters returned to the top flight for a solitary year. There was then a 15 year gap before the sides met in the league again, when Kingsley Black scored the only goal of the game in September 1990. Leeds won the following season, 2-0, and this was of course the last time the Hatters have featured in the top flight. There was a 14 year gap before the sides played a 0-0 draw in the 2005/06 season.

6 The number of clean sheets kept by Luton, although three of these were in the goal-less draws in 1948/49, 1954/55, and 2005/06. Luton won 1-0 in 1949/50 courtesy of a goal from Jack Taylor. On Boxing Day 1952 and the Hatters were 2-0 winners after McCabe scored an own goal and Jesse Pye secured the points. As mentioned previously Luton won 1-0 in 1990/91 courtesy of Kingsley Black. Leeds have kept five clean sheets, as well as the draws they won 1-0 in 1959/60 and 2-0 in 1991/92.

Each way movers

3 The number of players who have made a permanent move from Leeds to Luton, and two more have come to Kenilworth Road on loan. Tom Alderson was the first, and he featured for the Hatters during the 1932/33 season, appearing 18 times and scoring 5 times. John Faulkner made over 200 appearances in the 1970's after his move from Leeds, but managed only one goal more than Alderson! In 1991/92 then Luton boss David Pleat raided the Elland Road Club three times! First to arrive, and the only permanent of the three moves, was Chris Kamara, who went on to play 54 times for the Hatters, although he failed to score! Imre Varadi on the other hand took only 27 minutes of his debut to score the equaliser against Wimbledon. Varadi made a further five appearances whilst on a months loan at the end of the season, but was unable to help the Hatters from avoiding relegation. As Varadi arrived from Leeds, loan keeper Mervyn Day had returned to Yorkshire, having played four times, and keeping one clean sheet, but never experiencing a win in Luton colours!

3 Leeds have also only bought three players from Luton over the years, and two of these have come in the last four summers! Matthew Spring moved on a free transfer in July 2004 after making 289 appearances and scoring 30 goals for the Hatters. Two years on and Leeds once again bought a midfielder, this time £750k exchanged hands to secure the services of Kevin Nicholls. Nicholls made 187 appearances, and scored 33 goals, after joining from Wigan in 2001, and captained the Hatters to two promotions, including of course the League One title in 2004/05.



Hatters and Leeds past...

THIS week's **LIFELINE** shows how Luton and Leeds' fortunes have risen and fallen over the years. Leeds' high point came in the 1968-69, 1973-74, 1991-92 season when they won the old Division One. Leeds low point came in the 1920-21

season when the Yorkshire club finished 14th in the Second Division. Luton's low point came with a 17th place in Division Four in 1966-67 and their high a top flight 7th place in 1986-87.



Cheltenham hope to keep loanees

Cheltenham boss Keith Downing hopes to extend the loan spells of Blackpool's Michael D'Agostino and Bristol City duo Alex Russell and Steve Brooker.

"I'm hoping we can lengthen one or two of the loans. I'd like to do it to all three if we could but it's down to the respective managers.

"D'Agostino has really enjoyed his time here because he's been playing," Downing told BBC Radio Gloucestershire.

"He's not been having that chance at Blackpool at the moment."



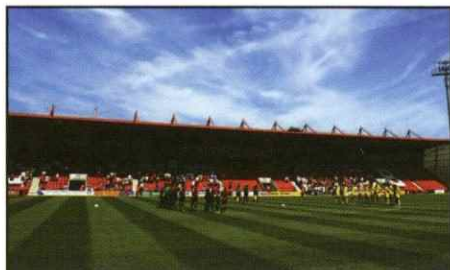
Cherries bid to avoid meltdown

Bournemouth are in talks with an accountancy firm in a bid to stave off the threat of administration.

BDO Stoy Hayward are now working with the board in an advisory capacity, after the directors lodged a notice of intention to appoint an administrator.

But chairman Jeff Mostyn stressed in a club statement that "the club is not in administration and it is not a foregone conclusion that it will be".

Bournemouth are bottom of League One with only



CRISIS... Bournemouth could face administration

five league wins this season.

Mostyn added that "this action was taken to prevent our current negotiations being frustrated by aggressive and unhelpful creditors.

"We were professionally advised to serve a Notice of Intention to appoint an administrator, which we have done."

The Dean Court club has debts of around £4m

Leeds to offer Marques new deal

Leeds United manager Dennis Wise has confirmed he will offer central defender Rui Marques a new contract.

Marques' current deal runs out at the end of this season, and Wise has revealed he will wait until then to start negotiations.

The centre-back is currently with Angola at the Africa Cup of Nations after putting in some impressive performances at Elland Road.



Nolan returns home

Hartlepool have allowed defender Eddie Nolan to return to Blackburn following a two-month loan spell.

The 19-year-old started 12 games during his stay with the League One side.

"I'm certain that Eddie will have a very bright future in front of him and I wish him well," Pools boss Danny Wilson told the club website.

LEAGUE ONE ROUND-UP

Huddersfield complete Page swoop

Huddersfield Town have signed Coventry City defender Robert Page, after the Sky Blues cancelled the remainder of his contract at the Ricoh Arena.

The former Wales international, 33, has put pen to paper on a deal running until the end of the season.

"He's been captain of Wales and will give us a great sense of leadership," boss Andy Ritchie told Town's website.

"Frank Sinclair excluded, we have a very young back line and it's important to have a couple of older heads."

Page joined Coventry from Cardiff City in February 2005, but has not played a league game for Coventry since April 2007, and has featured in just two Carling Cup ties this season.

He retired from international football in September 2006 after winning 41 caps for his country.

"Robert has been a tremendous professional while with Coventry," Sky Blues boss Iain Dowie told his club's website.

"We both felt it was the right time in his career for Pagey to move, and I wish him all the best because he is a top bloke."



EXPERIENCE... Huddersfield have swooped for Robert Page



Kirk signs for Yeovil

Yeovil Town have completed the signing of Northern Ireland striker Andy Kirk from League One rivals Northampton.

Kirk has agreed a two-and-a-half-year deal with the Glovers.

"We're delighted that we have got him," said Yeovil boss Russell Slade. "He is a proven goal scorer and we're looking forward to seeing him play."

The 28-year-old former Hearts man, who has 11 goals this season, joined the Cobblers from Boston United in 2005, scoring 36 goals in 123 appearances.



Brighton have completed the signing of Ipswich midfielder Matt Richards on a loan deal until the end of the season.



Bristol Rovers boss Paul Trollope thinks there is a "50-50" chance of him signing Jeff Hughes from Crystal Palace.



Carlisle United have signed midfielder Grant Smith on a short-term deal which runs until the end of the season.



Crewe are reported to be lining up a bid to lure Steve Morison away from Stevenage Borough.



Gillingham boss Mark Stimson has admitted they are trying to sign Grays' promising defender Jon Ashton.



Scunthorpe have signed striker Ben May from League One side Millwall for an undisclosed fee on a two-and-a-half year contract.



Oldham have given a first professional contract to teenage left-back Paul Black on a two-and-a-half year deal.



Swansea boss Roberto Martinez has ruled out signing Cardiff striker Warren Feeney on a permanent basis during the January transfer window.



Tranmere have clinched the permanent signing of defender Andy Taylor from Blackburn for an undisclosed fee.



Orient capture Oji

Leyton Orient have signed defender Sam Oji and tied midfielder Adam Chambers to a new two-and-a-half-year contract. Oji, 22, has signed a deal with Orient until the end of the season after being released by Birmingham. He impressed while on loan at Orient earlier in the season while Chambers, 27, has been a key player for the O's.



Doncaster have signed Manchester City defender Matthew Mills on loan for the second time this season.

The 21-year-old had joined Rovers on a six-month loan in August, which was cut short after 18 appearances when he suffered a knee cartilage injury.

He will now remain at the Keepmoat

Stadium for the rest of the season.

It is the third time that Doncaster boss Sean O'Driscoll has signed Mills on loan, having taken him to Bournemouth for a stint in 2005.

Mills did not feature when Rovers beat Carlisle 1-0, but is expected to play a huge part in the Club's bid for promotion this season.



RETURNING... Matthew Mills



MOVE... Akinfenwa

Akinfenwa joins Cobblers

Northampton Town have signed striker Adebayo Akinfenwa on a deal which runs until the end of the season.

Akinfenwa joined Millwall on a month-to-month contract in November but left the Lions after his contract expired on 15 January.

The former Swansea striker has scored 42 goals from 89 starts and 51 substitute appearances.



Southend halt Walker move

Charlton striker James Walker's move to Southend fell through because he was found to have an irregular rhythm of the heart.

BBC Essex says Walker told the Essex club previous medical tests had revealed a similar problem.

But a consultant at Southend Hospital told chairman Ron Martin his condition should be monitored for three months.



Tyson fighting for fitness

Forest striker Nathan Tyson is desperate to put his injury woes behind him and play his full part in the push for promotion from League One.

Tyson is fit again after missing four games with a ham-

string injury. And he says he is due some good luck after an injury-hit time at the City Ground which has seen him suffer two knee ligament injuries in 18 months.

"I think someone out there is trying to get me. It's hard but I have to keep focused," he said.



FIT... Tyson

Swindon sign Kanyuka

Swindon have signed defender Pat Kanyuka, who was recently released by QPR.

Kanyuka, 20, was one of a number of fringe players told he had no future at QPR following the arrival of several new players at Loftus Road. He made 12 league appearances during nearly three years with the R's.

Money quiet over Fox bid

Walsall boss Richard Money is not confirming whether Wolves are about to hijack Colchester's move for Dan Fox.

The defender has been linked with a number of clubs and seemed set to move to Layer Road. Money said: "Until I'm told differently he'll remain a Walsall player. A number of clubs have shown an interest."



Vale capture Mikaelsson

Port Vale manager Lee Sinnott has made his sixth signing of the January window by bringing in Aston Villa striker Tobias Mikaelsson on loan.

And the 19-year-old Swede admitted that Chris Herd's loan move from Villa to Vale last week had been a factor.

"I first knew of Vale's interest two days ago when Chris Herd spoke to me about it," said Mikaelsson.

**Hatters Line-Up****4-4-2****Goals:** Keane (67)**Substitutes:** Morgan (60 Andrew),
Furlong (60 Robinson),
Emanuel (85 Goodall)**Not used:** Beresford, Jackson
 Perry, Robinson

 None
Leyton Orient Line-Up**4-4-2****Goals:** Boyd (39), Barcham (55)**Substitutes:**
Echanomi (59 Barcham)
Not used: Morris, Melligan, Corden,
Palmer
 None

 None
REFEREE: Paul Armstrong (Berkshire)

LEYTON ORIENT 2 LUTON 1



COCA-COLA LEAGUE ONE SATURDAY JANUARY 19, 2008 BRISBANE ROAD ATT: 5,516 ■ WATCHFUL EYE... Luton's Dean Morgan and Orient's Sean Thornton keep an eye on the ball - as well as each other



SLIDING IN...Matthew Spring goes in with a tough looking challenge on former Hatter Adam Boyd in the wet conditions at Brisbane Road

MANAGER'S VIEW



"We have got things which we can work on. We have got a good group of players who can compete at this level and they have proved to me that they are more than capable of getting out of trouble. We are all disappointed with the defeat, but we will take that on board and move on. I hate saying it was a good performance when you lose, but in my opinion it was. We are very thin on numbers at the moment, but we are going to stick together to try and get ourselves out of the predicament we are in. The fans were great today and I can take a lot of heart from a lot of good things done this afternoon."

Mick Harford

Mick Harford failed to get his managerial stint at Luton to a dream start as he watched his side slip to a 2-1 defeat at Leyton Orient. But the new Luton boss would have been encouraged by his teams display.

Luton settled quickly with Matthew Spring and Steve Robinson imperious in midfield and Don Hutchison and Chris Perry looking calm and composed.

Darren Currie's resulting driven corner caused problems for the home defence and it was Spring again who couldn't quite get a decent enough connection to trouble Stuart Nelson in the Orient goal.

But after 39 minutes it was Boyd who answered the scriptwriters' dreams when he put the home side ahead against the run of play.

Daniels's seemingly futile run from deep looked a lost cause as Brill came out to gather the ball on the right hand side of the area, but the Hatters keeper somehow allowed the ball to squirm free from his grasp, leaving Daniels a clear run on goal. Daniels unselfishly squared for Boyd, who gleefully rammed home from eight yards to put the O's 1-0 up.

The start of the second half was evenly balanced but, as Luton pressed forward in search of the equaliser, they were caught on the break.

Just ten minutes into the restart the Hatters pushed too many men forward and were caught three against two on the halfway line.

Boyd was again the thorn in the side as his through ball set up Barcham to drive a powerful low shot past Brill.

But The Hatters were on the up, and it was no surprise when they finally grabbed a goal just minutes later as Currie whipped in a left wing corner to the near post.

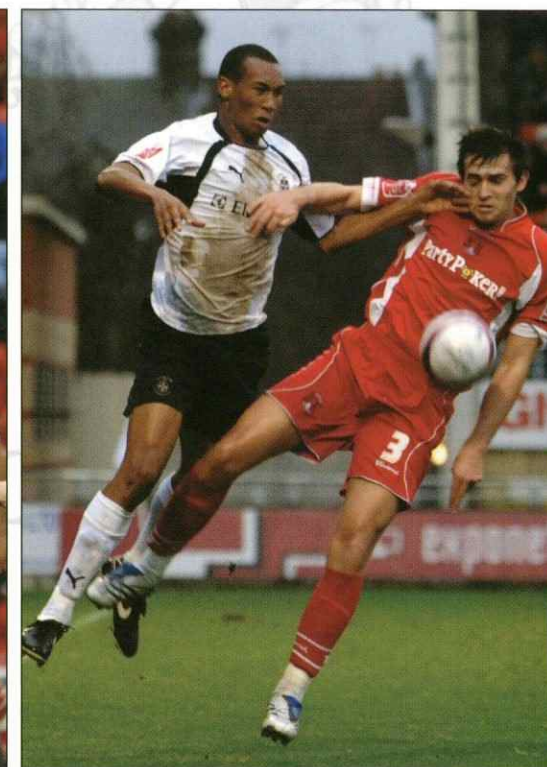
Talbot seemed to get the faintest of touches on the ball, causing Nelson to weakly parry the ball downwards. Keane couldn't believe his luck as he neatly tucked away the loose ball with the outside of his right foot from ten yards out.

Wave after wave of Luton attacks followed, and Hutchison cleverly picked out Talbot, but he just couldn't control the through ball when well-placed to score.

LEYTON ORIENT 2 LUTON 1



PILE UP... It's mayhem inside the Luton penalty area during an Orient attack



GET AWAY... Calvin Andrew forces his way past Charlie Daniels



GOING FOR GOAL...Hatters defender Keith Keane ventures forward for a Luton attack and hits a shot at the Leyton Orient goal



An interview with

KEITH KEANE

Keith Keane won't go down as a prolific Luton Town goalscorer, but the few goals he has scored are certainly worth a mention.

The Luton full-back has only scored four times for the Hatters, but supporters won't forget his goal against West Brom last season in a hurry – a strike that was voted Goal of the Season.

And who can forget Keane's last minute goal in a thrilling game against Bristol City a few years ago.

The Republic of Ireland Under-21 international now has another goal to add to his scrapbook following his effort during the 2-1 defeat at Leyton Orient.

Keane's goal may have not had much of an impact on the final result, but it was certainly a cool finish from the youngster, as he guided a volley into an unguarded net.

Speaking after the game, Keane joked: "I think I get a goal every season so that is probably it for me."

"I was pleased to score. I suppose I was just at the right place at the right time and I just put my shot towards the goal and it went in."

But Keane admits that he was more disappointed that the Hatters failed to pick up some much-needed points at Brisbane Road.

The Hatters certainly played plenty of attractive football, but individual errors helped Orient pick up only their second win in eight games.

"We were thoroughly disappointed not to have got something from the game, particularly because I felt we were the better team through the entire match."

"I think Leyton Orient played well for about ten minutes after they went in front, but we played some good football – some of the best we have played all season."

"On the bright side if we play football like we did against Orient then we will certainly win more games than we lose."

“ It has been a big change but with a new manager and potential new owners, I think things are on the up ”

With Mick Harford only unveiled as Luton's new boss three days before the visit to Brisbane Road, the Hatters had little time to prepare for the fixture under the new boss.

But Keane believes Harford's arrival will reap good reward in the future and believes the future finally looks good for everyone at Kenilworth Road.

"It has been a big change but with a new manager and potential new

owners I think things are on the up for the Football Club.

"All we need to do now is to try and get things right on the pitch."

"There has been a bit of a lift around the place over the past few days since Mick has been back."

"It does look like the Club is back on the up, but it's now important for everyone to stick together and hopefully we can keep our League One status this season."

"Mick likes to play football, which I think will help us because that is the style we like to play. He doesn't want us to hoof the ball forward all the time."

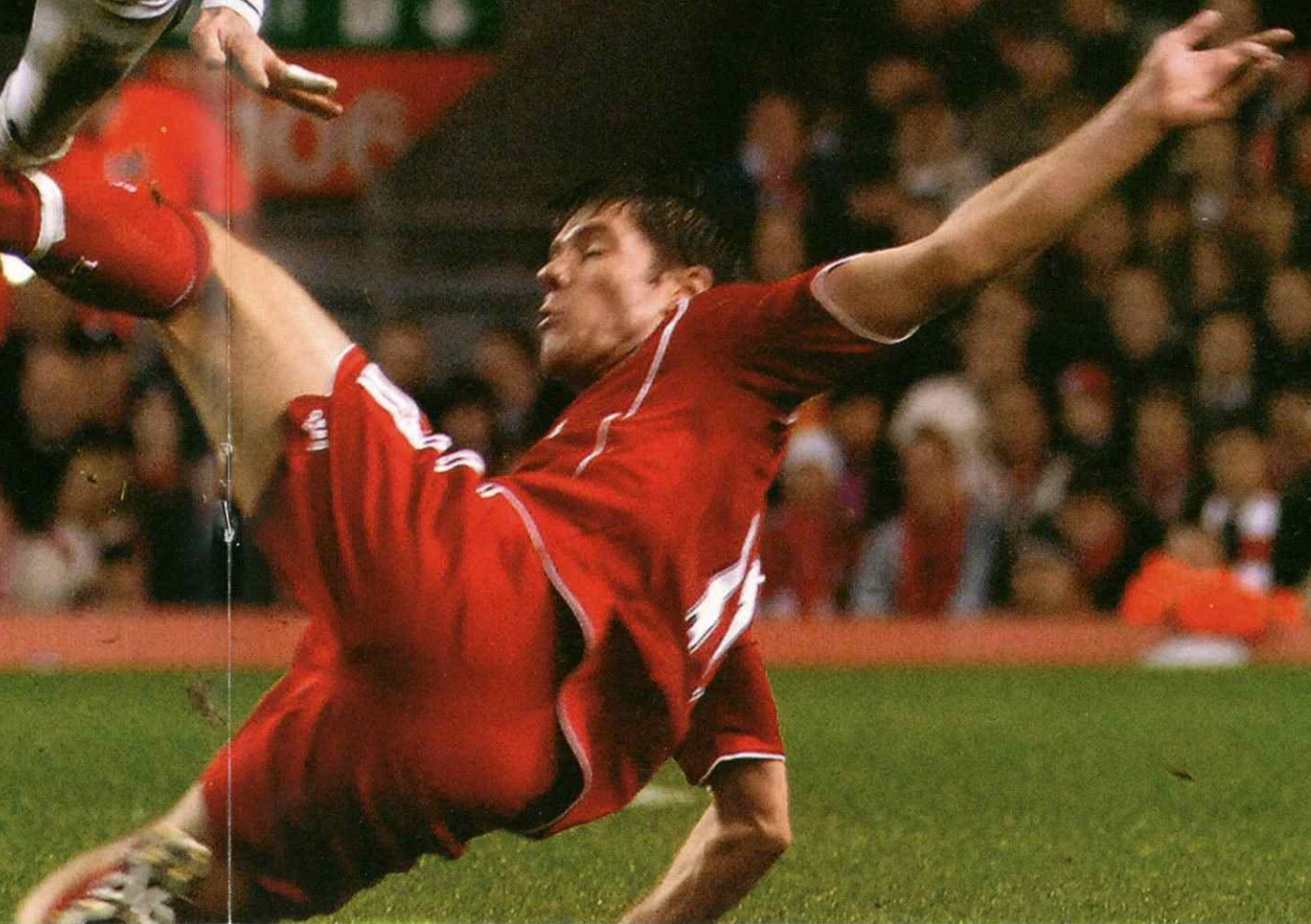


TOUGH TACKLER.. Keith Keane in the thick of the action for Luton.

MATCH ACTION EXTRA

LIVERPOOL v LUTON TOWN

FLYING HIGH.. Luton midfielder Matthew Spring makes a brave attempt to jump over the challenge of Liverpool's Xabi Alonso during the FA Cup Third Round replay at Anfield.



Hospitality Opportunities

Bronze Package

Eric Morecambe Suite
£75 per head ex VAT



- Pre-match stadium tour
- Reserved parking on a 1 to 4 ratio
- 3 course meal
- Half-time refreshments
- Reserved seating in the sponsors balcony
- Complimentary programme
- Visit from 2-3 players from the first team squad (subject to availability)
- Cash bar facility
- Post "man of the match" presentation
- Free entry to competitions
- prizes: signed football and current replica shirts

Silver Package

Executive Box
£500 for 5 seater / £750 for 8 seater ex VAT
(price on application if catering NOT required)



- Complimentary drink on arrival
- Indoor and balcony seats
- Match live on plasma screen in box
- 3 course meal
- Full waitress service in box
- Half-time refreshments
- 1 reserved car parking space for 5 seater box / 2 reserved car parking spaces for 8 seater box
- Private visit from 2-3 players from the first team squad
- A signed shirt
- Complimentary programme

Gold Package *the Club*

£250 per head ex VAT
(additional guests - price on application)

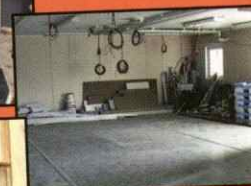


- Hostess Service
- Complimentary Full Bar
- 4 Course Gourmet Meal
- Ticket in the Director's Box
- Reserved Parking Space
- Admission to the boardroom at half-time and post game
- Ideal Networking Opportunities

Today's Sponsors Match Sponsors



Ultra Contract Services, who are today's match sponsors, were solely responsible for the interior fit out of the training ground in Ely Way and various additional services/assistance supplied to ensure the training ground development was implemented and completed to schedule. Ultra Contract Services wishes the Club all the best at this difficult time and good luck to the team today against Leeds.



Matchball Sponsors

Hi-Tech Flooring
LIMITED

Hi-Tech Flooring are pleased to sponsor today's match as the Matchball sponsors. We would like to introduce ourselves, we are a Contract and Domestic Flooring Company Established since 1993. We offer a fast efficient flooring service, coverage to whole of the UK, installing all types of flooring to a very high standard. All works covered by a two year fitting warrantee.

COMMERCIAL Commercial Mascot



We would like to give a warm welcome to our Commercial Mascot this afternoon.

He is Harry Elliott, who despite living in Sussex, is a mad Luton Town supporter.

Harry, who is aged seven, attends Luton Town games with his dad and grandad and he will be hoping to meet up with his football heroes at this afternoon's game.

Harry attends St Jameses School and lists his hobbies as football, tennis, rugby and golf.

We hope Harry and his family enjoy their stay with us this afternoon.

To contact the
Commercial
Department,
telephone the
Club on 01582
411622. You can
also contact
them via
email on
commercial@lutontown.co.uk

Calvin Andrew Hannant Lawson WHOSH	Chris Cummins AVAILABLE AVAILABLE	Mick Harford Luton Town Supporters Club (Milton Keynes Branch) Hitchin Hatters	Dean Morgan Pam and Derek Ludlow AVAILABLE	Chris Perry Loyal Luton Supporters Club FourFourTwo EA Sports	Drew Talbot information design associates Chris Purcell SOUTH EAST SECURITY
Ed Asafu-Adjaye AVAILABLE AVAILABLE	Darren Currie G.Owen Ceramic Tiling Ltd Carole Jinks & Sharon Skinner	Don Hutchison Andy Board Ceramic Tiling & Kelly Maintenance Pulse Beauty	Warren Neill Protexx Mortgage & Financial Services AVAILABLE	Paul Peschisolido Graham Bates & Chris Park Oscar Barron	Paul Underwood AVAILABLE AVAILABLE
Zac Barrett AVAILABLE AVAILABLE	Sol Davis Trust In Luton (2003) Ltd Kelly Knight	Richard Jackson Luton Town Ladies FC Sally Mayne & Fred Mayne	Stephen O'Leary Brian Hall Hand Bookbinding Miller & Company Les & Sue Miller	Steve Robinson M & S Water Services R S Robinson Plumbing & Heating Contracts	
David Bell Lynn, Ben & Rhannon Town on Tour	Lewis Emmanuel Matthew Crossland AVAILABLE	Keith Keane Trust In Luton (2003) Ltd Maddie Knight	Sam Parkin Kevin Lennon John Pyper, Graham Denton, Gary Rovner & David Wilkinson	Matthew Spring TJ Fordham Plumbing & Heating Nicola Guy	
Marlon Beresford AVAILABLE AVAILABLE	Paul Furlong information design associates Roger Davies, Carole Jinks & Sharon Skinner Chris Purcell SOUTH EAST SECURITY	Richard Langley G.Owen Ceramic Tiling Ltd AVAILABLE	Dean Brill N G Kirton Ltd Tape / Joining N G Kirton Ltd Tape / Joining	Alan Goodall Andy Finch Bobbars Travel Club	Paul McVeigh WHOSH G.Owen Ceramic Tiling Ltd



To sponsor a player
this season contact
the commercial
department on
**01582
411622**



The Luton Town Lottery

for only £2 per week - the Luton Supporters weekly lottery gives you the chance to win a wide range of fabulous prizes and lets you help your club's youth development at the same time...



Supported by

We are entering a new era at Luton Town Football Club and with your help we can make a real impact on the local community by giving many more young footballers the opportunity to play professional football by improving their skill levels.



The funds generated from the lottery scheme will be used to provide additional coaching staff, facilities, equipment and other requirements, enabling Luton Town FC to work more with local clubs and schools.

The lottery prizes give you the chance to be involved with your Club whilst helping us to achieve our aim, which is to make the youth policy first in class.

So please join the lottery and help us achieve our goal.

R.J. Curson - Youth Development Director

THE MORE MEMBERS THE BIGGER THE PRIZES AND THE MORE FUNDS GENERATED FOR YOUTH DEVELOPMENT, SO SIGN UP TODAY AND SUPPORT THE FUTURE OF LUTON TOWN

SEE THIS ADVERT IN THE NEXT PROGRAMME FOR SOME GREAT NEW PRIZES

Luton Town FC. would like to thank Debenhams Luton, for their support and sponsorship

Look out for the Luton girls distributing lottery leaflets at today's game

DEBENHAMS
STYLING THE NATION

Visit **Debenhams Luton** where you can find everything you need for all the family from the latest fashion to great gift ideas.

Debenhams are proud to support the in2win lottery scheme, working together for the Luton community.

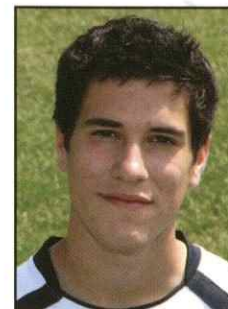


SPONSOR
OUR YOUTHS

YOUTH SPONSORSHIP



George Beavan



Riccardo Biggi



Ryan Charles
Sponsored by:
Performance Car Hire



Joshua Cranwell



Mark Farthing



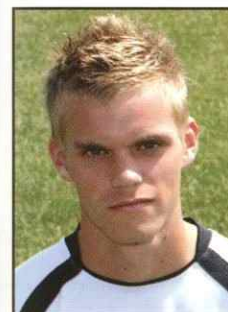
Ross Faulds



Dean Hamilton



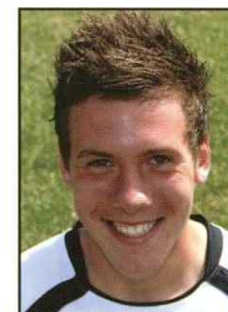
Ashley Harrison-Barker



Harry Hogarth
Sponsored by:
Mat Phillips



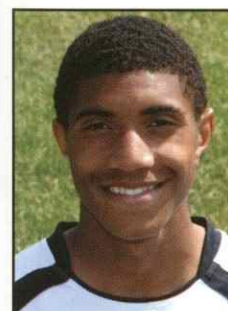
Jake Howells



Jamie McGuiness
Sponsored by:
David Wilkinson



Elliott Osborne-Ricketts



Scott Sinclair

To sponsor Luton Town's current crop of young professionals, please contact the commercial department on 01582 411622



We take a look back over the latest news from the Hatters Youth Team

Hatters eyeing top two finish this season

With Luton's scheduled match against Southend United falling victim to the weather last weekend, Chris Cummins' side dropped one place in the League table.

The wet weather around the country saw only one game played in the Youth Alliance League, but it was enough to see Luton move down to fourth in the division.

Gillingham's comfortable win over Barnet propelled them into second place, leaving the London club rooted to the bottom of the League.

Gillingham could actually move to within five points of league-leaders QPR this afternoon as they travel to struggling Brighton.

But despite Luton slipping down in the League table, the Hatters are still nicely placed to mount a top two finish.

The Hatters have only lost twice in the League this season and have been showing some encouraging form.

Luton, who recently suffered a 3-1 loss against Wycombe, were hoping to return to winning ways this morning at home to Northampton Town.

Then Cummins' team host Gillingham, in a match that will undoubtedly go a long way to determining if Luton are going to mount a top two finish.

On March 1, Luton will have a stern test in the shape of QPR, who the Hatters have already faced on three occasions this season in all competitions - winning one, drawing one and losing one.

Luton will be hoping that Ryan Charles can continue to keep his momentum going. The young striker, who has been involved in the first-team this season, has already scored eight times.

And Ashley Harrison-Barker has continued his good form this season, scoring five times.

It will certainly make for an interesting end to the season.

The current teams who are founder members of the Luton Town Partnership Club scheme are as follows:

Club Name	Number of Teams	Number of Players
AFC Kempston Colts	16	240
AFC Shillington	8	120
Arlesey Town	tdc	180
Bedford Town Colts	tdc	75
Crawley Green FC	27	405
Dunstable College	1	20
Dunstable Town	10	150
H.R. Hatters	1	15
Houghton Athletic	3	45
Leighton United	tdc	295
Luton Dynamos	1	15
Luton Town Ladies	5	75
Luton United	6	90
Maulden Magpies	3	45
Potterton Lower School	3	45
St Joseph Youth	11	165
Studham & Kensworth	1	15
Warden Hill Tigers	5	75
Wheatshaf, Flitwick	1	15
Totals	101	2085

Under-18 results, fixtures and table

August			November			Sat 12			Gillingham			11am						Pld			W			D			L			F			A			Pts																																																																																																																																																																																																																																																																																																																																																																																																																																																																																																																																																																																																																																																																																																																																																																																																																																																																																																																																																																																																																																																																																																																
Sat 18	Southend	D 3-3	Fri 2	Leyton Orient (FA)	W2-1	Sat 19	Peterborough	11am	Sat 19	Peterborough	11am	QPR	9	7	2	0	3	27	5	23	Gillingham	8	5	0	3	13	10	15	Wycombe	7	4	2	1	18	9	14																																																																																																																																																																																																																																																																																																																																																																																																																																																																																																																																																																																																																																																																																																																																																																																																																																																																																																																																																																																																																																																																																																																
September			Sat 10	Brentford	W2-0	February			Sat 9	Brighton	11am	LUTON	8	4	2	2	16	12	14	Leyton O	8	3	2	3	11	12	11	Northampton	7	3	1	3	11	13	10																																																																																																																																																																																																																																																																																																																																																																																																																																																																																																																																																																																																																																																																																																																																																																																																																																																																																																																																																																																																																																																																																																																	
Sat 1	QPR	D 1-1	Sat 17	Northampton	P-P	Sat 16	Southend	11am	Sat 8	Colchester	11am	Rushden & D	8	3	1	4	7	9	10	Colchester	10	3	1	6	11	19	10	Brighton	6	2	3	1	9	6	9																																																																																																																																																																																																																																																																																																																																																																																																																																																																																																																																																																																																																																																																																																																																																																																																																																																																																																																																																																																																																																																																																																																	
Sat 8	Colchester	W 3-0	Wed 21	Corby Town (FA)	W4-1	Sat 15	Brentford	11am	Sat 8	Colchester	11am	Brentford	7	2	3	2	7	11	9	Peterborough	8	2	2	4	6	8	8	Southend	7	1	1	5	9	20	4																																																																																																																																																																																																																																																																																																																																																																																																																																																																																																																																																																																																																																																																																																																																																																																																																																																																																																																																																																																																																																																																																																																	
Sat 15	Plymouth (PY)	L 5-2	Sat 24	QPR (PY)	L 2-0	March			Sat 29	Northampton	11am	Southend	7	1	1	5	9	20	4	Barnet	7	1	0	6	7	18	3																																																																																																																																																																																																																																																																																																																																																																																																																																																																																																																																																																																																																																																																																																																																																																																																																																																																																																																																																																																																																																																																																																																									
Sat 22	QPR (PY)	W 2-1	December			Sat 1	Barnet	W 3-1	April <td>Sat 5</td> <td>Rushden</td> <td>11am</td> <td></td> <td></td> <td></td> <td></td> <td></td> <td></td> <td></td> <td></td> <td></td> <td></td> <td></td> <td></td> <td></td> <td></td> <td></td> <td></td> <td></td> <td></td> <td></td> <td></td> <td></td> <td></td> <td></td> <td></td> <td></td> <td></td> <td></td> <td></td> <td></td> <td></td> <td></td> <td></td> <td></td> <td></td> <td></td> <td></td> <td></td> <td></td> <td></td> <td></td> <td></td> <td></td> <td></td> <td></td> <td></td> <td></td> <td></td> <td></td> <td></td> <td></td> <td></td> <td></td> <td></td> <td></td> <td></td> <td></td> <td></td> <td></td> <td></td> <td></td> <td></td> <td></td> <td></td> <td></td> <td></td> <td></td> <td></td> <td></td> <td></td> <td></td> <td></td> <td></td> <td></td> <td></td> <td></td> <td></td> <td></td> <td></td> <td></td> <td></td> <td></td> <td></td> <td></td> <td></td> <td></td> <td></td> <td></td> <td></td> <td></td> <td></td> <td></td> <td></td> <td></td> <td></td> <td></td> <td></td> <td></td> <td></td> <td></td> <td></td> <td></td> <td></td> <td></td> <td></td> <td></td> <td></td> <td></td> <td></td> <td></td> <td></td> <td></td> <td></td> <td></td> <td></td> <td></td> <td></td> <td></td> <td></td> <td></td> <td></td> <td></td> <td></td> <td></td> <td></td> <td></td> <td></td> <td></td> <td></td> <td></td> <td></td> <td></td> <td></td> <td></td> <td></td> <td></td> <td></td> <td></td> <td></td> <td></td> <td></td> <td></td> <td></td> <td></td> <td></td> <td></td> <td></td> <td></td> <td></td> <td></td> <td></td> <td></td> <td></td> <td></td> <td></td> <td></td> <td></td> <td></td> <td></td> <td></td> <td></td> <td></td> <td></td> <td></td> <td></td> <td></td> <td></td> <td></td> <td></td> <td></td> <td></td> <td></td> <td></td> <td></td> <td></td> <td></td> <td></td> <td></td> <td></td> <td></td> <td></td> <td></td> <td></td> <td></td> <td></td> <td></td> <td></td> <td></td> <td></td> <td></td> <td></td> <td></td> <td></td> <td></td> <td></td> <td></td> <td></td> <td></td> <td></td> <td></td> <td></td> <td></td> <td></td> <td></td> <td></td> <td></td> <td></td> <td></td> <td></td> <td></td> <td></td> <td></td> <td></td> <td></td> <td></td> <td></td> <td></td> <td></td> <td></td> <td></td> <td></td> <td></td> <td></td> <td></td> <td></td> <td></td> <td></td> <td></td> <td></td> <td></td> <td></td> <td></td> <td></td> <td></td> <td></td> <td></td> <td></td> <td></td> <td></td> <td></td> <td></td> <td></td> <td></td> <td></td> <td></td> <td></td> <td></td> <td></td> <td></td> <td></td> <td></td> <td></td> <td></td> <td></td> <td></td> <td></td> <td></td> <td></td> <td></td> <td></td> <td></td> <td></td> <td></td> <td></td> <td></td> <td></td> <td></td> <td></td> <td></td> <td></td> <td></td> <td></td> <td></td> <td></td> <td></td> <td></td> <td></td> <td></td> <td></td> <td></td> <td></td> <td></td> <td></td> <td></td> <td></td> <td></td> <td></td> <td></td> <td></td> <td></td> <td></td> <td></td> <td></td> <td></td> <td></td> <td></td> <td></td> <td></td> <td></td> <td></td> <td></td> <td></td> <td></td> <td></td> <td></td> <td></td> <td></td> <td></td> <td></td> <td></td> <td></td> <td></td> <td></td> <td></td> <td></td> <td></td> <td></td> <td></td> <td></td> <td></td> <td></td> <td></td> <td></td> <td></td> <td></td> <td></td> <td></td> <td></td> <td></td> <td></td> <td></td> <td></td> <td></td> <td></td> <td></td> <td></td> <td></td> <td></td> <td></td> <td></td> <td></td> <td></td> <td></td> <td></td> <td></td> <td></td> <td></td> <td></td> <td></td> <td></td> <td></td> <td></td> <td></td> <td></td> <td></td> <td></td> <td></td> <td></td> <td></td> <td></td> <td></td> <td></td> <td></td> <td></td> <td></td> <td></td> <td></td> <td></td> <td></td> <td></td> <td></td> <td></td> <td></td> <td></td> <td></td> <td></td> <td></td> <td></td> <td></td> <td></td> <td></td> <td></td> <td></td> <td></td> <td></td> <td></td> <td></td> <td></td> <td></td> <td></td> <td></td> <td></td> <td></td> <td></td> <td></td> <td></td> <td></td> <td></td> <td></td> <td></td> <td></td> <td></td> <td></td> <td></td> <td></td> <td></td> <td></td> <td></td> <td></td> <td></td> <td></td> <td></td> <td></td> <td></td> <td></td> <td></td> <td></td> <td></td> <td></td> <td></td> <td></td> <td></td> <td></td> <td></td> <td></td> <td></td> <td></td> <td></td> <td></td> <td></td> <td></td> <td></td> <td></td> <td></td> <td></td> <td></td> <td></td> <td></td> <td></td> <td></td> <td></td> <td></td> <td></td> <td></td> <td></td> <td></td> <td></td> <td></td> <td></td> <td></td> <td></td> <td></td> <td></td> <td></td> <td></td> <td></td> <td></td> <td></td> <td></td> <td></td> <td></td> <td></td> <td></td> <td></td> <td></td> <td></td> <td></td> <td></td> <td></td> <td></td> <td></td> <td></td> <td></td> <td></td> <td></td> <td></td> <td></td> <td></td> <td></td> <td></td> <td></td> <td></td> <td></td> <td></td> <td></td> <td></td> <td></td> <td></td> <td></td> <td></td> <td></td> <td></td> <td></td> <td></td> <td></td> <td></td> <td></td> <td></td> <td></td> <td></td> <td></td> <td></td> <td></td> <td></td> <td></td> <td></td> <td></td> <td></td> <td></td> <td></td> <td></td> <td></td> <td></td> <td></td> <td></td> <td></td> <td></td> <td></td> <td></td> <td></td> <td></td> <td></td> <td></td> <td></td> <td></td> <td></td> <td></td> <td></td> <td></td> <td></td> <td></td> <td></td> <td></td> <td></td> <td></td> <td></td> <td></td> <td></td> <td></td> <td></td> <td></td> <td></td> <td></td> <td></td> <td></td> <td></td> <td></td> <td></td> <td></td> <td></td> <td></td> <td></td> <td></td> <td></td> <td></td> <td></td> <td></td> <td></td> <td></td> <td></td> <td></td> <td></td> <td></td> <td></td> <td></td> <td></td> <td></td> <td></td> <td></td> <td></td> <td></td> <td></td> <td></td> <td></td> <td></td> <td></td> <td></td> <td></td> <td></td> <td></td> <td></td> <td></td> <td></td> <td></td> <td></td> <td></td> <td></td> <td></td> <td></td> <td></td> <td></td> <td></td> <td></td> <td></td> <td></td> <td></td> <td></td> <td></td> <td></td> <td></td> <td></td> <td></td> <td></td> <td></td> <td></td> <td></td> <td></td> <td></td> <td></td> <td></td> <td></td> <td></td> <td></td> <td></td> <td></td> <td></td> <td></td> <td></td> <td></td> <td></td> <td></td> <td></td> <td></td> <td></td> <td></td> <td></td> <td></td> <td></td> <td></td> <td></td> <td></td> <td></td> <td></td> <td></td> <td></td> <td></td> <td></td> <td></td> <td></td> <td></td> <td></td> <td></td> <td></td> <td></td> <td></td> <td></td> <td></td> <td></td> <td></td> <td></td> <td></td> <td></td> <td></td> <td></td> <td></td> <td></td> <td></td> <td></td> <td></td> <td></td> <td></td> <td></td> <td></td> <td></td> <td></td> <td></td> <td></td> <td></td> <td></td> <td></td> <td></td> <td></td> <td></td> <td></td> <td></td> <td></td> <td></td> <td></td> <td></td> <td></td> <td></td> <td></td> <td></td> <td></td> <td></td> <td></td> <td></td> <td></td> <td></td> <td></td> <td></td> <td></td> <td></td> <td></td> <td></td> <td></td> <td></td> <td></td> <td></td> <td></td> <td></td> <td></td> <td></td> <td></td> <td></td> <td></td> <td></td> <td></td> <td></td> <td></td> <td></td> <td></td> <td></td> <td></td> <td></td> <td></td> <td></td> <td></td> <td></td> <td></td> <td></td> <td></td> <td></td> <td></td> <td></td> <td></td> <td></td> <td></td> <td></td> <td></td> <td></td> <td></td> <td></td> <td></td> <td></td> <td></td> <td></td> <td></td> <td></td> <td></td> <td></td> <td></td> <td></td> <td></td> <td></td> <td></td> <td></td> <td></td> <td></td> <td></td> <td></td> <td></td> <td></td> <td></td> <td></td> <td></td> <td></td> <td></td> <td></td> <td></td> <td></td> <td></td> <td></td> <td></td> <td></td> <td></td> <td></td> <td></td> <td></td> <td></td> <td></td> <td></td> <td></td> <td></td> <td></td> <td></td> <td></td> <td></td> <td></td> <td></td> <td></td> <td></td> <td></td> <td></td> <td></td> <td></td> <td></td> <td></td> <td></td> <td></td> <td></td> <td></td> <td></td> <td></td> <td></td> <td></td> <td></td> <td></td> <td></td> <td></td> <td></td> <td></td> <td></td> <td></td> <td></td> <td></td> <td></td> <td></td> <td></td> <td></td> <td></td> <td></td> <td></td> <td></td> <td></td> <td></td> <td></td> <td></td> <td></td> <td></td> <td></td> <td></td> <td></td> <td></td> <td></td> <td></td> <td></td> <td></td> <td></td> <td></td> <td></td> <td></td> <td></td> <td></td> <td></td> <td></td> <td></td> <td></td> <td></td> <td></td> <td></td> <td></td> <td></td> <td></td> <td></td> <td></td> <td></td> <td></td> <td></td> <td></td> <td></td> <td></td> <td></td> <td></td> <td></td> <td></td> <td></td> <td></td> <td></td> <td></td> <td></td> <td></td> <td></td> <td></td> <td></td> <td></td> <td></td> <td></td> <td></td> <td></td> <td></td> <td></td> <td></td> <td></td> <td></td> <td></td> <td></td> <td></td> <td></td> <td></td> <td></td> <td></td> <td></td> <td></td> <td></td> <td></td> <td></td> <td></td> <td></td> <td></td> <td></td> <td></td> <td></td> <td></td> <td></td> <td></td> <td></td> <td></td> <td></td> <td></td> <td></td> <td></td> <td></td> <td></td> <td></td> <td></td> <td></td> <td></td> <td></td> <td></td> <td></td> <td></td> <td></td> <td></td> <td></td> <td></td> <td></td> <td></td> <td></td> <td></td> <td></td> <td></td> <td></td> <td></td> <td></td> <td></td> <td></td> <td></td> <td></td> <td></td> <td></td> <td></td> <td></td> <td></td> <td></td> <td></td> <td></td> <td></td> <td></td> <td></td> <td></td> <td></td> <td></td> <td></td> <td></td> <td></td> <td></td> <td></td> <td></td> <td></td> <td></td> <td></td> <td></td> <td></td> <td></td> <td></td> <td></td> <td></td> <td></td> <td></td> <td></td> <td></td> <td></td> <td></td> <td></td> <td></td> <td></td> <td></td> <td></td> <td></td> <td></td> <td></td> <td></td> <td></td> <td></td> <td></td> <td></td> <td></td> <td></td> <td></td> <td></td> <td></td> <td></td> <td></td> <td></td> <td></td> <td></td> <td></td> <td></td> <td></td> <td></td> <td></td> <td></td> <td></td> <td></td> <td></td> <td></td> <td></td> <td></td> <td></td> <td></td> <td></td> <td></td> <td></td> <td></td> <td></td> <td></td> <td></td> <td></td> <td></td> <td></td> <td></td> <td></td> <td></td> <td></td> <td></td> <td></td> <td></td> <td></td> <td></td> <td></td> <td></td> <td></td> <td></td> <td></td> <td></td> <td></td> <td></td> <td></td> <td></td> <td></td> <td></td> <td></td> <td></td> <td></td> <td></td> <td></td> <td></td> <td></td> <td></td> <td></td> <td></td> <td></td> <td></td> <td></td> <td></td> <td></td> <td></td> <td></td> <td></td> <td></td> <td></td> <td></td> <td></td> <td></td> <td></td> <td></td> <td></td> <td></td> <td></td> <td></td> <td></td> <td></td> <td></td> <td></td> <td></td> <td></td> <td></td> <td></td> <td></td> <td></td> <td></td> <td></td> <td></td> <td></td> <td></td> <td></td> <td></td> <td></td> <td></td> <td></td> <td></td> <td></td> <td></td> <td></td> <td></td> <td></td> <td></td> <td></td> <td></td> <td></td> <td></td> <td></td> <td></td> <td></</td>			Sat 5	Rushden	11am																																																																																																																																																																																																																																																																																																																																																																																																																																																																																																																																																																																																																																																																																																																																																																																																																																																																																																																																																																																																																																																																																																																																						</

Parkin fires Luton to reserve team win over Grays Athletic

SAM Parkin took another giant step towards a return to first-team football by playing 90 minutes in Wednesday's reserve team victory over Grays Athletic.

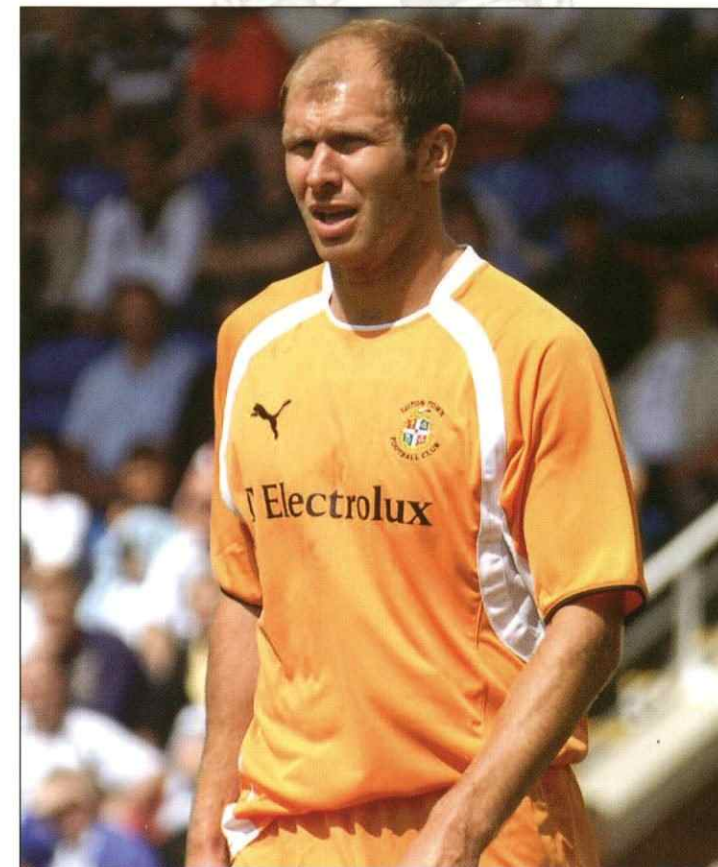
The Luton striker has been out of action since August, but completed his first full game since sustaining an ankle injury with a goal in a 4-1 victory over the non-leagueurs.

And there was further good news concerning Sol Davis. The Luton full-back, who has also been on the sidelines, came through his first taste of competitive action in over three months.

Davis played the full 90 minutes and along with the likes of Stephen O'Leary and Marlon Beresford, got some much-needed game time under his belt.

Luton stormed into a three goal lead before half-time with O'Leary breaking the deadlock from the penalty spot after Parkin was brought down inside the area following a delightful cross by Ryan Charles.

Parkin then extended Luton's lead, displaying quickness to break away from Grays' offside trap to calmly slot



COMEBACK... Sam Parkin scored and played the full game against Grays Athletic

the ball past Grays' goalkeeper.

Chris Cummins, who took charge of the team, said: "It was a good finish from Sam. He is a goal scorer of a high quality and when he got into that position he was always going to score."

The Hatters were in full control of this one-sided affair and despite playing in difficult conditions managed to extend their lead before half-time through another O'Leary penalty.

Grays displayed plenty of fighting spirit and were back in the game after the restart, but Luton quickly wrapped up victory with a delightful fourth goal.

A terrific through ball played in by Charles released Rob Sinclair who

slotted home past the bewildered Grays goalkeeper.

The Hatters had more chances to add to their scoreline, but Cummins was still delighted with the performance from his side.

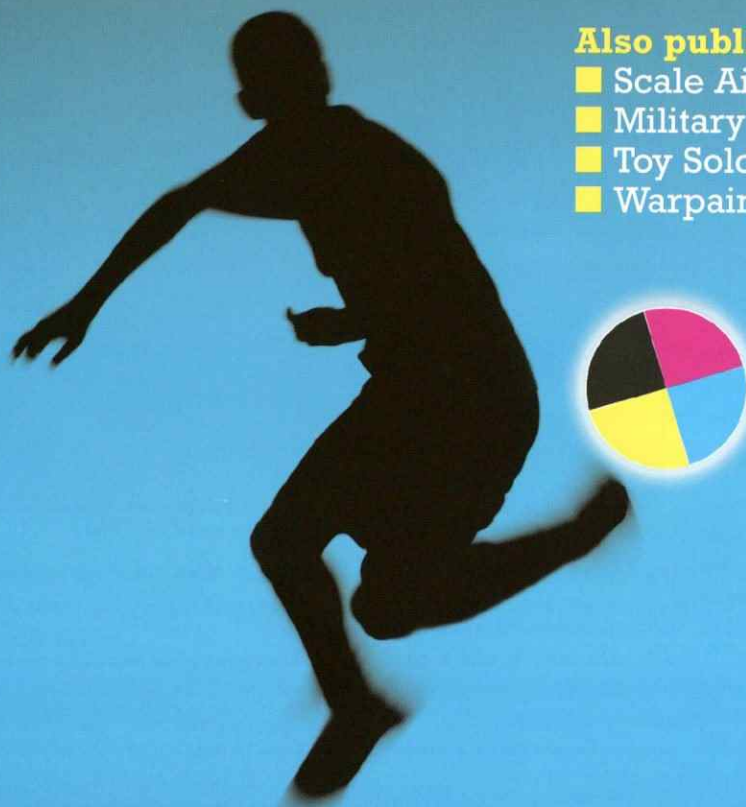
"I was pleased with the way the players performed. On a pitch that wasn't fantastic, their attitude and application was first class.

"It was a good run out for the lads and even when Grays really came at us in the second-half, we never looked in much trouble."

Luton's next reserve game is against MK Dons on Monday February 11, kick-off 7pm.

A different league

At **Regal Litho** we pride ourselves on great teamwork and our ability to perform again and again. There's no competition when it comes to quality and customer service, that's why our clients keep coming back. So whatever your printing requirements try us out, you won't be disappointed.



Also publishers of

- Scale Aircraft Modelling
- Military Modelcraft
- Toy Soldier Collector
- Warpaint Books Ltd



Regal Litho

t: 01908 270400 | f: 01908 270614 |

e: estimating@regallitho.co.uk | www.regallitho.co.uk

Unit 3, Enigma Building, Bilton Road, Denbigh East,
Bletchley, Bucks MK1 1HW

COMMUNITY CHAT



FOOTBALL IN THE COMMUNITY

STUART SMITH gives us the latest news from the Community Department



Good afternoon a welcome to this this afternoon's game. Today we are delighted to give Luton Town supporters the opportunity to go behind the scenes at the new Wembley Stadium. This is a great opportunity to experience the Wembley dream with Luton Town. Full details can be found below.

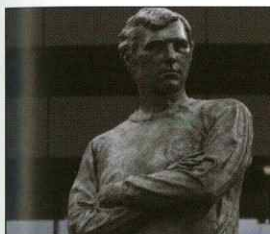
Enjoy the game

Stuart Smith



Visit the New Wembley Stadium with Luton Town

Beneath the Arch, Behind the Scenes, Beyond your Dreams



We will be meeting at the Players Car Park at the Luton Town FC at 8am on Bank Holiday Monday 24th March, the coach will take you directly to Wembley Stadium. There will be Luton Town staff on the coach to supervise youngsters.

Stroll into the dressing room like a superstar. Limber up in the world's most exclusive warm-up zone. Stride through the tunnel towards the hallowed turf. Climb 107 steps, stand triumphantly in front of the Royal Box to the roar of the crowd.

Until your dream of playing at Wembley Stadium comes true, there's only one way to experience all this and more. Enjoy privileged access behind the scenes at the world's most magnificent stadium. Walk the footsteps of legends. Feel what the world's greatest footballers feel during the build-up to a big match

There will then be a chance to visit the stadium shop and enjoy your packed lunch before the coach brings you back to Luton Town for 2:30pm

Tour highlights can include:

England's changing rooms
Players warm-up zone
VIP reception area
The Royal Box
Lift the Cup

Dugouts
Post-match interview area
Press conference room
Treatment rooms
The Bobby Moore Statue

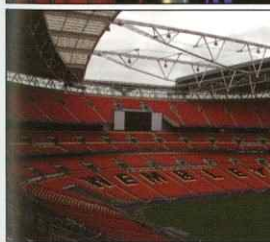
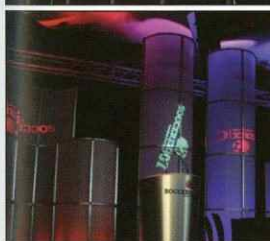
Prices:

Children (Unaccompanied): £25
Children (Accompanied): £20
Adults: £30

Ages 5-16 and Adults welcome!

Places are allocated on a first come first served basis so be sure to book early! For more information call 01582 391927.

Please send the form below to: Football in the Community, Luton Town FC, 1 Maple Road, Luton, Beds, LU4 8AW. Cheques Payable to Luton Town FITC



Are you getting your share?



The Football Foundation provides grants for kit, goalposts, pitches, floodlights, clubhouses, coaching and innovative projects that use football to deliver a wide range of community benefits. Since 2000, over **£500 million** worth of projects have been supported. If you are a football club, youth group, local authority, charity or a school, or have an idea for using football to tackle a local issue, contact the Football Foundation to get your share.



For more information visit
www.footballfoundation.org.uk
or call us on 0845 345 4555



The Football Foundation 30 Gloucester Place London W1U 8FF
T 0845 345 4555 F 0845 345 7057 E enquiries@footballfoundation.org.uk W www.footballfoundation.org.uk
Registered Charity Number 107939 Registered in England and Wales. Company limited by guarantee. Company Number 3876305

Improving facilities • creating opportunities • building communities

GARETH OWEN Photography

Corporate **PR** photography

Tel: 07850 560289

www.garethowen.co.uk

e-mail: gareth@go-photo.co.uk

KIDS' CORNER

JUNIOR HATTERS

HAPPY
HARRY
SAYS

COME & JOIN US!

KIDS! Why not join our popular Junior Hatters Club this season? Here's a list of all the goodies you'll get for just £12 a year (or £8 for renewals):

- * Entry to draw to be home game mascot
- * Chance to be ball boy/girl (for over 10s)
- * Birthday card signed by your favourite player
- * Christmas card signed by the players
- * Christmas disco with the players
- * Chance to be mascot at away games (please call us for details)
- * Newsletters
- * 10% off our coaching courses
- * Saturday matchday club (supervised) – play football, have lunch and watch the game for £8 (Season Ticket holders) or £15 (includes a match ticket)
- * Evening match clubs – watch the game with the Junior Hatters for a bargain £7 (fully supervised)
- * Exclusive use of the Junior Hatters family room in Kenilworth stand on match days, with half time table football competitions and quizzes
- * Vote for the Young Supporters' Player Of The Year



LINE UP... The mascot poses for the cameras prior to our game with Swansea

TODAY'S MASCOT



Name: Aidan Duffy
Age: 10
School Attends: Sacred Heart Primary
Hobbies: Playing football and computer games
Favourite Player: Drew Talbot
Where do you sit: Family Stand

BALL BOY / GIRL

We would like to welcome today's ball boy, Daniel McMillan, and our ball girl, Chloe Battlebury to Kenilworth Road this afternoon.

Our thanks to the Junior Hatters' sponsor:

CONSTRUCTION PLANT
SPECIAL ATTACHMENTS
POWER TOOLS & ACC'S
SITE ACCOMMODATION
POWERED ACCESS

GLO
Hire and Sales Ltd
www.glohire.co.uk

KENT/ESSEX	01322 866666
SURREY/SUSSEX	01323 844800
LONDON & CITY	0207 538 9586
HEATHROW & WEST	01895 234678
HERTS/BEDS/BUCKS	01582 665555



Wishing all the team and supporters a successful 2007/2008 season!...



Supporting our local team!

Drylining - Rendering - Partitioning - Suspended Ceilings - Screeding

t. 01582 722060 f. 01582 722040 e. info@macsplasterboards.co.uk

www.macsplasterboards.co.uk



*Taking care of
your business...*

t. 0845 6060 426
f. 0845 6060 425
e. info@markersupplies.com

Here's to a successful 07/08 season for Luton Town FC!

Marker Supplies Limited provide high quality safety apparel, corporate clothing and other safety related equipment to the UK. For further information on our products and services please call us on **0845 6060 426** or visit:

www.markersupplies.com

GIRL TALK

LUTON LADIES

DAVE BAKER reports on the latest action from the Luton Town Ladies



GOAL... Luton Ladies striker Laura Day celebrates her memorable hat-trick against Forest Green Rovers

Day grabs 15 minute hat-trick as Ladies thrash Forest Green Rovers

Following Town's goal fest at the expense of Frome Town the week before it was important that the momentum was continued with the visit of Forest Green Rovers, who were also fresh off the back of an FA Cup run.

Rovers proved a tough nut to crack in the high winds and although Luton dominated the first half possession it took a real high quality piece of finishing to break the deadlock just before the break.

Becky Clark's through ball was seized upon by Rebecca Kane who made a diagonal run in behind the Rovers defence and clipped the ball over the diving keeper with a fine one touch finish.

Forest Green were kept at bay by a neat stop with her legs by keeper Nikki

Duncan before Town almost extended their lead when Michelle Byrne's corner was met by Amy Summerfield, but her shot into the ground bounced up and rebounded off the crossbar to safety.

With 25 minutes to go the Hatters changed their strike force with devastating effect. Laura Day and Janet Ligouri both came off the bench and within minutes Day broke clear and sent her shot high into net past the diving keeper.

It was soon game over as Day again found space on the left wing and used her pace to surge past the chasing defenders before tucking the ball past the Rovers keeper for Luton's third.

With ten minutes remaining Day popped up on the right and was played in by a superb reverse pass from Ligouri

and finished off the move to complete a 15 minutes hat-trick.

Once again Town displayed a versatility coping with several reorganisations during the game due to injury to move them up the league table to third place in what is a very strong league.

Regrettably, in women's football only one club is promoted each season which means that it is very difficult to make the jump to the second tier especially when competing against the strongest female footballers in the South West of England.

That being said it is arguably far more difficult to gain promotion from this league but once achieved the experience should place the club in a stronger position to maintain that status.



LONDON'S HIGH-STYLE HAS NOW ARRIVED IN LUTON



FEATURES AT A GLANCE:

10,000² ft of adaptable space for up to 850 people
Brides room with salon facilities
Exclusive Lounge Bar and private roof terrace
Two additional large bars with late licenses
Free 24-hour secure parking for 230 cars
Very easy access by car, plane or train



THE
AUCTION HOUSE
BANQUETING BAR CONFERENCE

Latest AV equipment plus wireless broadband
State-of-the-art lighting to match your colour scheme
Fully air conditioned
Large screens for live coverage of events
Beneficial rates with hotels and suppliers
Full disabled access and facilities

HOST YOUR CHRISTMAS PARTY / BUSINESS EVENT AT THE AUCTION HOUSE

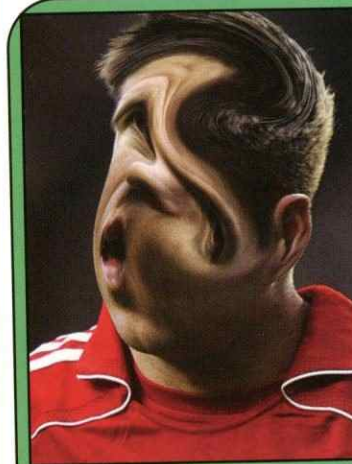


With its sophisticated contemporary feel, the Auction House creates a warm, welcoming and professional atmosphere that is perfect for your business event. The purpose-designed, stylish surroundings can be easily adapted to suit your brand and needs, so that your delegates or attendees will experience just the right corporate environment for your organisation.

Call 01582 732 655 The Auction House Crescent Road Luton LU2 0AH www.theauctionhouse.uk.com

FOOTBALL POSERS

LET'S GET QUIZZICAL



GUESS WHO... Can you name him?

Bit of a blur

Can you spot the famous footballer who we have blurred.

Each week we will test out how well you really know your football stars with a different face for you to try and identify.

We are starting our new section of this quiz with a slightly easy one, but we have plenty more players in store and we think they will get a lot harder.

No cheating!

10 to test you

1 At which club did Rafael Benitez begin his playing and managerial career?

2 From which Dutch club did Chelsea buy Salomon Kalou?

3 How many times have Everton won the League Cup?



Question 2

4 With which French club did Arsene Wenger win the league in 1988?

5 Marlon Harewood qualifies to play for which international team other than England?

6 In which year did Nottingham Forest win the European Cup?

7 Who was recently sacked as the manager of League Two side Bury?

8 Who are the only non-league side left in this seasons FA Cup?

9 Which club play their home games at the Recreation Ground?



Question 9

10 David Moyes started his managerial career at which club?



Badge bodge

WE'VE got in a bit of a muddle with our soccer club badges. Which TWO badges make up each of the ones printed here?



* LETTERS PLAY *

CAN you unjumble these letters to find the name of:

1 a Luton player,

2 a team's nickname,

3 a Premiership manager,

4 a League One ground and

5 a Luton Town legend.

1 BATTLE WORD

2 ACE RAINS

3 DOGY HONORS

4 HALTED IRONWORK

5 TORN REGROUND

All answers on Page 65



Win a shirt signed by your team.

Visit carbonfootyprint.com and make a simple energy saving pledge for your chance to win a shirt signed by your team.

carbonfootyprint.com

Entrants must be 18 or over. All entries must be received by Thursday 14 February. Details of the club shirts available and the full Terms and Conditions can be found on the website.



RESULTS FROM LEAGUE ONE

We take a look back at the results from the weekend in League One

League One results:

Bournemouth 1 Southend United 4

Bournemouth's miserable week ended with a heavy home defeat to Southend.

Mark Gower opened the scoring on 18 minutes and Simon Francis doubled the lead five minutes later.

Tommy Black added a third a minute before the break before Warren Cummings reduced the arrears five minutes after half-time.

Gary Hooper ended Bournemouth's chances of a comeback with Southend's fourth goal on 65 minutes.

Brighton & Hove Albion 1 Huddersfield Town 1

Brighton and Huddersfield shared the spoils at the Withdean Stadium.

Tommy Elphick fired Brighton in front on 74 minutes, but the lead proved short-lived with Robbie Williams drawing Huddersfield level three minutes later.

Both sides ended the game with ten men after Gary Hart and Chris Brandon were sent off for violent conduct.

Bristol Rovers 1 Walsall 1

Craig Disley's late goal earned Bristol Rovers a point at home to Walsall.

Edrissa Sonko fired Walsall in front on 37 minutes and that looked like being enough until Disley popped up with the leveller three minutes from time.

Carlisle United 1 Crewe Alexandra 0

Carlisle capitalised on losses for their promotion rivals with a narrow win over Crewe.

Joe Garner scored the all-important winning goal on 52 minutes for the home side.

Gillingham 0 Northampton Town 1

Northampton climbed further clear of trouble with a hard-fought win at Gillingham.

Daniel Jones' early strike after just three minutes proved to be the only goal of the game.



DREAM START... Maurice Malpas got off to a winning start as boss of Swindon Town.

LEAGUE ROUND-UP

Leeds United 0 Doncaster Rovers 1

Doncaster leapfrogged Leeds in the table with an impressive victory at Elland Road.

Brian Stock proved to be the hero for the visitors with the winner on 21 minutes to boost Doncaster's promotion hopes

Millwall 0 Tranmere Rovers 1

Anthony Kay's late goal gave Tranmere all three points from their trip to Millwall.

Kay struck three minutes from time to give Ronnie Moore's men a much-needed away day success.

Swansea City 2 Port Vale 0

Swansea bounced back from their shock FA Cup defeat to Havant & Waterlooville with a 2-0 win over Port Vale.

Ferrie Bodde opened the scoring on 28 minutes and Darren Pratley made sure of the points with a second goal two minutes after the break.

Swindon Town 2 Nottingham Forest 1

Maurice Malpas got off to a dream start as Swindon boss as he saw his side beat Nottingham Forest.

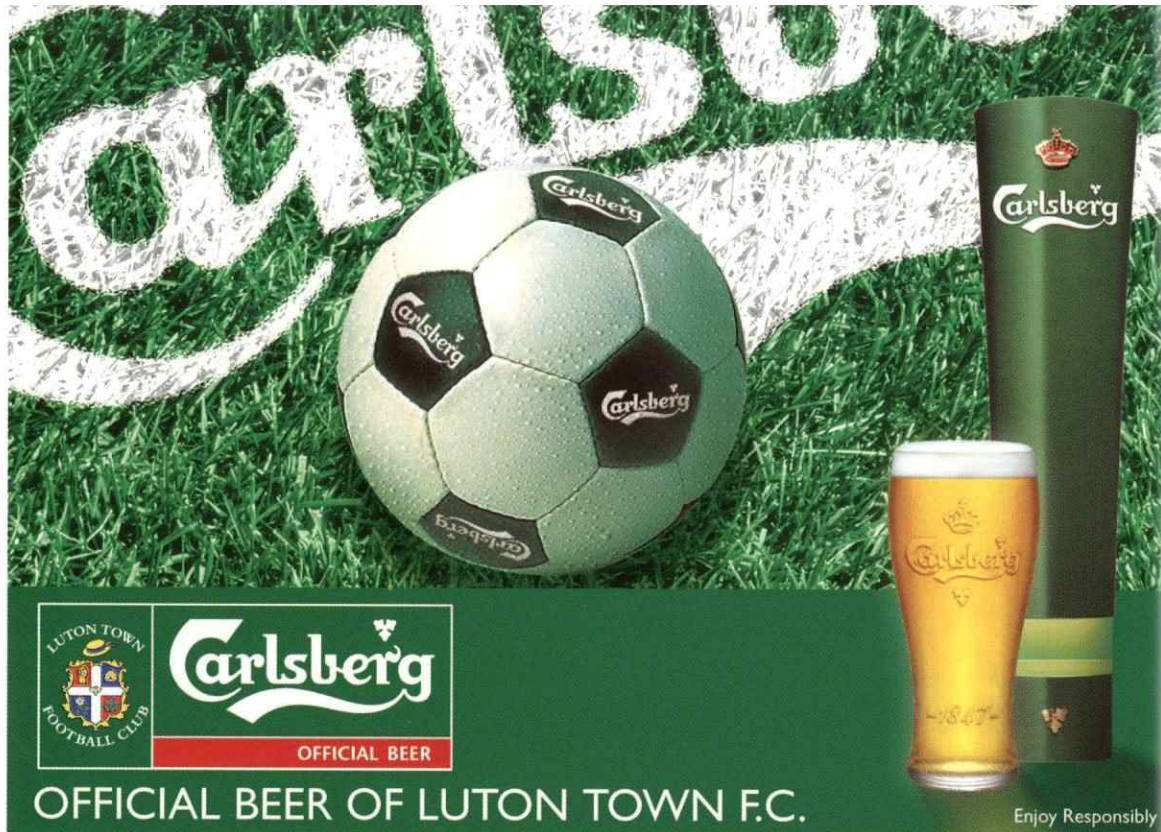
Forest were their own worst victims with two own goals.

James Perch put through his own net on 35 minutes to give Swindon the lead on 35 minutes, but Luke Chambers drew Forest level just past the hour mark.

Ian Breckin's unfortunate own goal eight minutes from time gifted Swindon the points.

Yeovil Town 0 Oldham Athletic 0

Yeovil and Oldham cancelled each other out after a goalless stalemate at Huish Park.



LUTON TOWN FOOTBALL CLUB

Carlsberg

OFFICIAL BEER

OFFICIAL BEER OF LUTON TOWN F.C.

Enjoy Responsibly

KENILWORTH SUITE MEMBERS

Connolly Homes
DBF Crosswinds Ltd
Gary & Kitty Chamberlain

Mr K Harvey

Mr R Harvey

Mr P Mitchell

Protexx Mortgage & Financial Services

Dr D Siegler

South East Security

Interested in becoming a Kenilworth Suite Member? Please contact the Commercial Department on 01582 411622

TODAY'S MATCHES

With FA Cup fixtures disrupting the League One programme this weekend, the handful of teams involved in action this afternoon have a great chance to move up the table.

SWINDON (11th), who are Luton's visitors to Kenilworth Road on Tuesday evening, are currently undergoing a transformation period and boss Maurice Malpas will hoping to continue his unbeaten League start at the County Ground.

The former Motherwell manager picked up a 2-1 win over NOTTINGHAM FOREST (2nd) last weekend and make the tricky trip to CREWE ALEXNADRA (19th).

The Railwaymen are in desperate need of the points having won once in their last 12 games, which included a 4-0 home defeat at the hands of DONCASTER ROVERS (4th).

Elsewhere, two other struggling sides met this afternoon with PORT VALE (24th), taking on BOURNEMOUTH (23rd).

Vale, who have only won five games all season, did recently complete a 3-1 victory over MILLWALL (20th), while Bournemouth will still be fresh from their win over LUTON (22nd) on Tuesday night.

WALSALL (7th) are flying up the League One table and boss Richard Money has guided the Saddlers to an unbeaten run stretching to mid-October.

They will fancy their chances to extend that run when they face GILLINGHAM (16th), who have been actively busy in the January transfer window signing five new players, including experienced midfielder Craig Rocastle.

Finally, TRANMERE ROVERS (9th), who have won just once in their previous six games, will be hoping to keep in touch with the play-off pack when they face YEOVIL TOWN (10th).

Yeovil, haven't won in their previous four games, scoring just once in a 1-1 draw against SOUTHEND UNITED (8th).



ON THE UP.. Richard Money has guided Walsall to seventh in League One

FORM GUIDE

TODAY'S LEAGUE ONE FIXTURES

Crewe v Swindon

Port Vale v Bournemouth

Tranmere v Yeovil

Walsall v Gillingham

HOME FORM TABLE

Last six League games

	W	D	L	F	A	GD	Pts
Swansea	6	0	0	17	4	13	18
Carlisle	6	0	0	15	5	10	18
Nottm Forest	5	1	0	16	4	12	16
LUTON	4	1	1	6	4	2	13
Cheltenham	4	1	1	5	3	2	13
Leeds	4	0	2	12	4	8	12
Leyton Orient	3	2	1	7	2	5	11
Hartlepool	3	2	1	12	8	4	11
Doncaster	3	2	1	7	3	4	11
Swindon	3	2	1	7	7	0	11
Millwall	3	1	2	11	7	4	10
Walsall	2	4	0	8	4	4	10
Yeovil	3	1	2	7	6	1	10
Bournemouth	3	1	2	11	13	-2	10
Bristol Rovers	2	3	1	8	6	2	9
Brighton	2	3	1	10	9	1	9
Tranmere	3	0	3	6	5	1	9
Southend	2	2	2	9	7	2	8
Gillingham	2	2	2	7	5	2	8
Huddersfield	2	1	3	7	8	-1	7
Crewe	2	1	3	7	11	-4	7
Northampton	1	3	2	8	8	0	6
Port Vale	1	2	3	6	8	-2	5
Oldham	0	5	1	4	6	-2	5

AWAY FORM TABLE

Last six League games

	W	D	L	F	A	GD	Pts
Oldham	4	2	0	10	3	7	14
Doncaster	3	3	0	11	4	7	12
Walsall	3	3	0	8	2	6	12
Bristol Rovers	3	0	3	5	4	1	9
Swansea	2	2	2	10	9	1	8
Leeds	2	2	2	8	7	1	8
Gillingham	2	2	2	8	7	1	8
Huddersfield	2	1	3	6	11	-5	7
Northampton	2	1	3	5	11	-6	7
Brighton	1	3	2	7	8	-1	6
Yeovil	1	3	2	5	6	-1	6
LUTON	1	2	3	8	10	-2	5
Nottm Forest	1	2	3	5	8	-3	5
Swindon	1	2	3	7	11	-4	5
Southend	1	1	4	9	13	-4	4
Tranmere	1	1	4	5	11	-6	4
Cheltenham	1	1	4	5	11	-6	4
Millwall	1	1	4	6	13	-7	4
Carlisle	0	3	3	4	10	-6	3
Port Vale	1	0	5	4	12	-8	3
Leyton Orient	0	2	4	3	11	-8	2
Hartlepool	0	1	5	6	13	-7	1
Bournemouth	0	1	5	6	14	-8	1
Crewe	0	1	5	2	11	-9	1

Latest League One table is on Page 64

Executive Box Holders

**Relyon Engineering
Services Ltd**

Tel: 01582 730806



**SHALLOWFORD
CONSULTING**

Tel: 01438 831013



**BILLINGTON
& LAWRENCE**

Tel: 01582 726100



Tel: 01582 730633



LUTON PLASTICS LTD
Plastic Extrusion & Injection Moulding

Tel: 01582 883188



Tel: 01234 764488

J.J. KELLY & SONS LTD

Tel: 01582 455406



Tel: 01582 618288



**Genesis
Homes**

Tel: 01280 821300

N&J CREMIN (contracting) Ltd
Brickwork & Scaffolding
Contractors

Tel: 01582 865855



Tel: 01582 491234



Tel: 01582 653333



Tel: 01582 721122



Tel: 01582 583220

Mr Mick Connolly

Ray Williams



01582 491100

G.P. Quoreenton
(Ductwork)

Tel: 01582 882561



Tel: 01234 740883



and N.E.D.

01234 845930



Tel: 01582 490049

For further details regarding executive box packages and all
commercial enquiries, please contact the department on
01582 411622

Club Shop

Sale now on!



20% OFF

All leisurewear, including
Puma trainingwear.
(does not include replica kit
and souvenir merchandise)

Opening Hours:

Monday - Closed
Tuesday - Friday: 10-5
Friday (prior to home game): 10-6
Saturday (home game) 9-3
Saturday (non-home game) 9-12



THE A-Z

ROGER WASH looks at every post-war

Peter James STONE

Peter was almost 30 when he was thrust in to the Luton Town first team for his one and only Football League appearance in February 1952.

Signed as an amateur for the Hatters from Oxford City, Peter made several impressive appearances for the reserve side before being given the opportunity at centre-half replacing the injured Syd Owen in a home Division Two clash with Hull which finished 1-1.

With Owen fit to return the following week it was back to the reserves for Peter who eventually moved on to Worcester and then back to Oxford City.

Peter lives in Oxford in retirement.

Kevin STREET

Crewe born Kevin joined his local side from school and worked his way up through Dario Gradi's academy at Gresty Road before making his League debut during the 1997/98 campaign.

A hard working, attacking right-sided midfielder, Kevin became a valuable squad player but when he found first team starts drying up he accepted a loan move to Joe Kinnear's Luton in 2001.

At Kenilworth Road, Kevin was injured in his first full game, a 1-4 defeat at Macclesfield, and so returned to Crewe before joining non-League Northwich Victoria and then bouncing back to turn out for Bristol Rovers and finally Shrewsbury.

Kevin is now caretaker manager at Stafford as well as studying for a degree in Theology with a view to becoming a priest in the future.

**Bernard Reginald STREten**

Before becoming one of the all-time favourites at Kenilworth Road, Bernard was a well regarded amateur international goalkeeper plying his trade with Shrewsbury. He was enticed to Luton by an old team-mate, Frank Soo, in 1947 and was soon the Hatters first choice.

Although not very tall, Bernard made up for his lack of inches with agility and bravery as well as a certain amount of showmanship and went on to make 276 League appearances at a time when the Town boasted Welsh international Iorwerth Hughes and fellow England international Ron Baynham as goalkeeping opponents.

After retiring from the game in 1957, and taking over a business in Mundesley, Bernard was tempted back between the posts by Kings Lynn!

A publican in Bacton in later life, Bernard passed away in Norwich in 1994.

**Stephen (Steve) John SUTTON**

Goalkeeper Steve began his career at Nottingham Forest, working his way up through the ranks to become under-study to Peter Shilton. After Shilton left, Steve eventually made the position his own and was a regular for five years, a period at the City Ground that took in two League Cup final wins, one of which was against the Hatters in 1989.

After losing his place to Mark Crossley, Steve went out on loan and in his short spell at Luton in 1992 he was inspirational.

Sadly the Hatters, who were struggling against relegation from the top flight, could not afford to sign him permanently and the superb shot-stopper went to Derby instead.

After spells at Reading, Birmingham, Notts County and Grantham, Steve is now back at Forest on the coaching staff.

Ronald (Ron) McDonald SWAN

Scotsman Ron began his football career as a centre-half and during his four years with East Stirling also turned out at centre-forward, scoring twice against Dundee. He was in goal, though, when East Stirling won promotion to Division One in 1963.

Signed by Oldham a year later, Ron enjoyed a couple of good seasons at Boundary Park before losing his place in the 1966/67 campaign. The call from new Luton manager Allan Brown in January 1967 came as a relief therefore but soon turned out to be a disaster as the Hatters were enduring the worst season in their history.

Ron managed 14 consecutive Division Four League games before handing the shirt back to Tony Read.

After many years in the Greater Manchester Police, Ron retired in 1999 and is now a security man on the Oldham Athletic players' tunnel.

OF LUTON TOWN

player to have appeared for THE HATTERS in the Football League

Arthur Alexander TAYLOR

Rarely can a player have made such an impact on his first-team debut as Arthur, who netted in the first minute of an FA Cup Third Round tie for the Hatters against Blackburn in January 1953 and scored again a few minutes later in an eventual 5-1 romp.

Poached from Glentoran as a teenager by the Town, Arthur was made to bide his time in the reserve side, playing mainly on the wing, before his amazing debut. Arthur was used again in the Hatter's Division Two side the week after the cup-tie but then had to wait until the start of the following campaign for his next chance.

After only five League games in three seasons Arthur was surprisingly handed the number 11 shirt as the Town entered Division One in 1955 but after only three starts he was not given a further chance and returned to his home city of Belfast where he still lives.

John (Jack) Ephraim TAYLOR

Spotted by Luton scout Dick Trembath while playing for Stockton, Hatters officials needed to move quickly, and pay £2,100, to secure the services of the powerful inside-forward in February 1949.

After scoring on his League debut for the Town during a 6-0 hammering of Lincoln, two months after moving to Kenilworth Road, Jack did not seem to make the required progress over the next couple of seasons although a succession of injuries did not help.

In 1951/52, though, he banged in 20 League goals, won an England 'B' cap, and was then sensationally transferred to Wolves for £16,000 where he was disappointed to become merely an understudy there.

Jack finished his career with spells at Notts County and Bradford PA before looking after his General Stores in Beechwood Road and breeding poodles for display. Jack sadly passed away whilst still in his 40's.

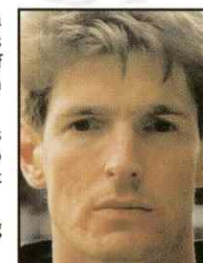
John Patrick TAYLOR

After being made surplus to requirements at first club Colchester, John worked as a shipping clerk whilst playing part-time for Sudbury. Spotted by Cambridge United's Gary Johnson he went back into the Football League in 1988 and was a member of John Beck's successful 'U's side where he formed part of a powerful spearhead with Dion Dublin.

Surprisingly transferred to Bristol Rovers in 1992, John continued to bang in the goals leading to a £300,000 move to Bradford City followed by a £200,000 transfer to Luton in 1995. Sadly, a back injury cut short his appearances at Kenilworth Road just as he seemed to be setting up a good understanding with Dwight Marshall.

John went back to Cambridge where he achieved 'Legend' status before becoming manager at the Abbey for two years.

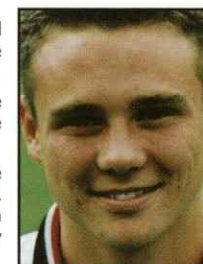
Bad back or not, John is still playing for Mildenhall Town at 43!

**Matthew Simon TAYLOR**

Rejected by his home town club Oxford United for being too fat, Matthew joined Luton as a Youth Trainee before making his League debut for the Hatters on the opening day of the 1999/00 season at Notts County.

With the Town in receivership at the time, promising young talent needed to be pitched in perhaps before they were ready but 17 year old Matthew looked like he had been playing in the first-team for years such was his maturity.

A left sided midfielder or attacking full back Matthew possessed both pace and a fierce shot and quickly picked up a host of 'Player of the Year' awards at Kenilworth Road. After helping the Hatters to promotion in 2002 it came as no real surprise when Portsmouth stepped in with a bid and the England Under-21 international is now parading his talents at Premiership level.

**Steven (Steve) John TAYLOR**

Born in Royton, hard-running and strong forward Steve played for a host of League clubs in the Greater Manchester area, netting regularly for each, but he was unable to reproduce his goalscoring abilities whenever he moved south.

With Luton struggling with major injury problems in January 1979 Steve was brought to Kenilworth Road by Luton manager David Pleat for £50,000 on the back of previous performances against the Hatters while he was with Bolton and Oldham.

Steve sadly failed to settle, managing only one goal in 20 appearances, before becoming part of the deal that brought Mike Saxby to Luton from Mansfield. He was not a success at Field Mill either but later spells at Burnley and Rochdale saw him back to his predatory best.

Steve later managed Mossley and was on the coaching staff at Oldham.

A
B
C
D
E
F
G
H
I
J
K
L
MZ
Y
X
W
V
U
T
S
R
Q
P
O
N

bet365.com**08000322365**

Simply dial
0800 0323365
and quote
HATTERS BET

RESULT - 90 mins

Luton 3/1
Draw 12/5
Leeds 4/5

HALF TIME/FULL TIME

Luton	Luton	13/2
Luton	Draw	14/1
Luton	Leeds	28/1
Draw	Luton	8/1
Draw	Draw	4/1
Draw	Leeds	7/2
Leeds	Luton	40/1
Leeds	Draw	14/1
Leeds	Leeds	7/4

**If you're going to bet,
bet with Hatters Bet!**

**CORRECT
SCORE****Luton Win**

1-0 8/1
2-0 20/1
2-1 12/1
3-0 66/1

Match Draw

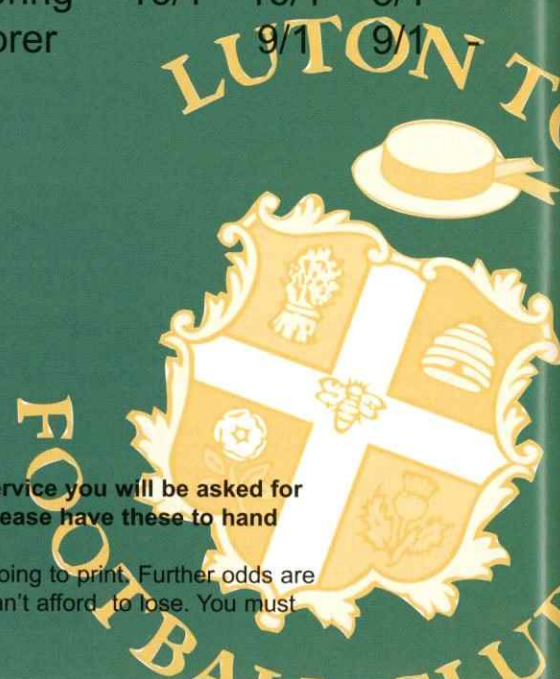
0-0 9/1
1-1 6/1
2-2 12/1
3-3 66/1

Leeds Win

1-0 11/2
2-0 6/1
2-1 7/1
3-0 14/1

GOALSCORER

Player	First	Last	Anytime
Paul Furlong	8/1	8/1	11/4
Calvin Andrew	9/1	9/1	3/1
Drew Talbot	10/1	10/1	10/3
Paul McVeigh	10/1	10/1	10/3
Matthew Spring	16/1	16/1	5/1
No goal scorer	9/1	9/1	



When placing a bet via the Hatters Bet telephone service you will be asked for your Name, Date of Birth and Credit Card details. Please have these to hand when you phone.

PLEASE NOTE: All prices were correct at the time of going to print. Further odds are available on request. Do not bet with money that you can't afford to lose. You must be over 18 to register for an account with Hatters Bet.

LUTON TRAVEL

ON THE ROAD

Hartlepool v Luton Town
Saturday February 2, kick-off 3pm
Hartlepool's Victoria Park

Address: Victoria Park, Clarence Road, Hartlepool, TS24 8BZ

Road: From the A19 take the A689 signposted Hartlepool. Follow the A689 towards the Town Centre. Follow Town Centre signs for 2.8 miles, over two roundabouts. Go straight over the next two sets of lights, passing Hartlepool College on your right. The next left takes you to the stadium.

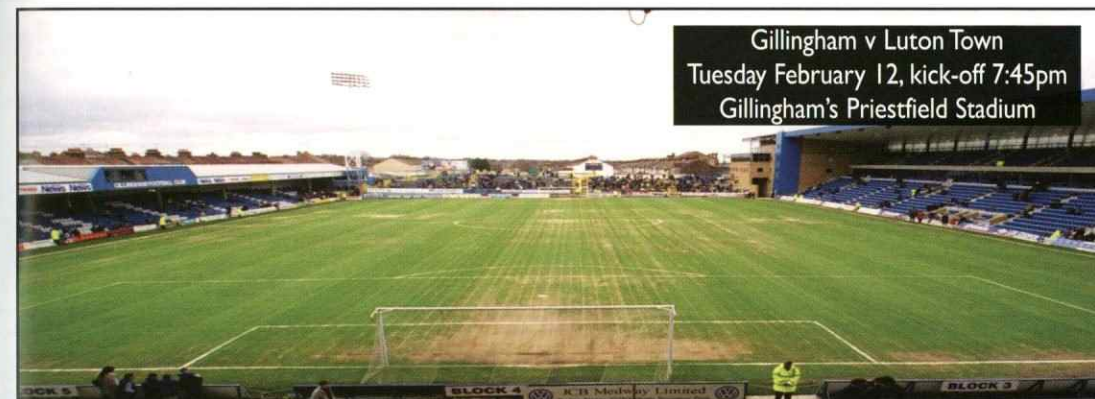
Parking: There is a fair sized car park at the ground. Otherwise there is plenty of street parking to be found behind the away end.

Pubs: The Victoria Suite near the entrance to the away end is for members only. At the same end, but at the opposite corner, is the 'Corner Flag Supporters Bar' that welcomes away fans. The entrance fee is 50p. Also popular with away fans is the Jackson's Wharf Pub near the ground. It has good food and real ale on tap. This pub is over the road from the ASDA store, to the left of the old sailing ship.

Town on Tour will be leaving Maple Road at 8:30am with a pickup at the MK Coachway approximately 30 minutes later. The fare for LTSC members is £25,

concessions £22 and non-members £28. To book seats for this trip, visit the supporters kiosk or phone 07960 567465. You can book online by visiting the fans section at www.lutontown.co.uk or via www.lutontownsc.co.uk

The Bobbers Travel Club will depart from Cranfield at 7:30am and Luton at 8:30am. Cost for this trip is £23 adults and £19 child and OAP. Supporters wishing to book their place for this trip should visit the Bobbers Travel Kiosk at the back of the Kenilworth Road end of the ground, or telephone 01234 856542.



Gillingham v Luton Town
Tuesday February 12, kick-off 7:45pm
Gillingham's Priestfield Stadium

Address: KRBS Priestfield Stadium, Redfern Avenue, Gillingham, Kent, ME7 4DD

Road: Leave the M2 at Junction 4 and take the A278 towards Gillingham, going straight across two roundabouts. At the 3rd roundabout turn left onto the A2 towards Gillingham town centre. At the traffic light junction with the A231, turn right into Nelson Road and passing the small bus station take a right turn into Gillingham Road, the ground is down on your right.

Parking: There is a residents only parking scheme in operation around the

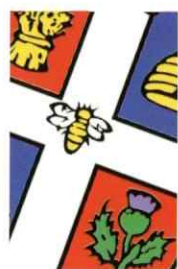
ground, so if you want to street park, this will mean driving a bit further away to do so. There is also a pay and display car park (£1 for 3 hours) on Railway Street near Gillingham station, which is less than 10 mins walk from the ground.

Pubs: The 'Livingstone Arms' on Gillingham Road is known as an away supporters pub. The atmosphere within the pub is both warm and friendly and there is even complimentary bar food laid on for fans.

Town on Tour will be leaving Maple Road at 4pm with a pickup at the MK Coachway approximately 30 minutes

later. The fare for LTSC members is £15, concessions £13 and non-members £17. To book seats for this trip, visit the supporters kiosk or phone 07960 567465. You can book online by visiting the fans section at www.lutontown.co.uk or via www.lutontownsc.co.uk

The Bobbers Travel Club will depart from Cranfield at 2:30pm and Luton at 3:30pm. Cost for this trip is £14 adults and £11 child and OAP. Supporters wishing to book their place for this trip should visit the Bobbers Travel Kiosk at the back of the Kenilworth Road end of the ground, or telephone 01234 856542.



LUTON TOWN v SWINDON TOWN

Tuesday January 29, 2008 League One 7.45pm

Tickets are now on sale at normal pre-matchday prices.



HARTLEPOOL v LUTON TOWN

Saturday February 2, 2008 League One 3pm

Tickets are now on General Sale from the Ticket Office.

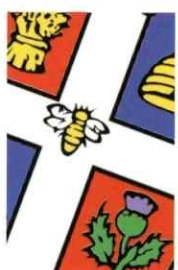
Tickets can be purchased on the day from Hartlepool via cash turnstiles.

ALLOCATION: We have received an allocation of 960 tickets.

TICKET PRICES:

Adult £20, Seniors (over 65), Students (with valid ID) and Juniors (under 16) £10

Ambulant/Wheelchair Disabled tickets also available



LUTON TOWN v AFC BOURNEMOUTH

Saturday February 9, 2008 League One 3pm

Tickets are now on sale at normal pre-matchday prices.



GILLINGHAM v LUTON TOWN

Tuesday February 12, 2008 League One 7:45pm

Tickets are now on General Sale from the Ticket Office.

Tickets can be purchased on the day from Gillingham via cash turnstiles although all ticket prices will increase by £3.

ALLOCATION: We have received an allocation of 1000 tickets.

TICKET PRICES:

Adult £17, Seniors (over 60) £12, Young Adult (16-21yrs) £11, Juniors (under 16) £9

Ambulant/Wheelchair Disabled tickets also available



LUTON TOWN v LEYTON ORIENT

Saturday February 16, 2008 League One 3pm

Tickets are now on sale at normal pre-matchday prices.



SWANSEA CITY v LUTON TOWN

Friday February 22, 2008 League One 7:45pm

Tickets are now on General Sale from the Ticket Office.

This game is ALL TICKET

ALLOCATION: We have received an initial allocation of 415 tickets.

TICKET PRICES:

Adult £16, Seniors (over 65) and Students (valid ID) £10, Juniors (under 16) £7

Ambulant/Wheelchair Disabled ticket (with a Carer free of charge) - £16



LUTON TOWN v MILLWALL

Tuesday February 26, 2008 League One 7:45pm

This game is ALL TICKET, no tickets will be available on the day of the game.

Tickets are now on sale at normal pre-matchday prices.

Please note that tickets purchased for the original fixture on Saturday December 8 remain valid.



TICKET OFFICE OPENING HOURS

Monday-Friday 10am - 5pm

Home Matchday Saturday 9am - 3pm

plus after the game

Friday before a home match 10am - 6pm

Non home matchday Saturday 9am - 12pm

For further ticket information for future matches log onto the Hatters official website, www.lutontown.co.uk

LATEST COCA-COLA LEAGUE ONE TABLE

	HOME										AWAY										
	P	W	D	L	F	A	W	D	L	F	A	Gd	Pts								
Swansea City	25	9	3	2	24	10	7	2	2	24	12	+26	53								
Nottingham Forest	26	8	4	1	25	7	4	5	4	17	13	+22	45								
Carlisle	25	10	1	1	24	7	3	5	5	15	18	+14	45								
Doncaster	26	7	3	3	20	10	5	5	3	19	14	+15	44								
Leeds United*	27	11	1	2	29	9	7	3	3	19	13	+26	43								
Leyton Orient	27	7	4	3	19	16	5	3	5	16	21	-2	43								
Walsall	27	4	6	3	16	13	6	6	2	17	10	+10	42								
Southend	27	6	2	5	21	14	5	2	7	20	26	+1	37								
Tranmere	27	6	3	4	17	11	4	4	6	12	17	+1	37								
Yeovil Town	27	6	3	5	14	15	4	4	5	11	13	-3	37								
Swindon Town	25	7	3	3	21	13	2	5	5	14	19	+3	35								
Brighton	25	5	4	3	19	15	4	4	5	13	14	+3	35								
Oldham	26	2	5	5	9	13	6	5	3	17	11	+2	34								
Hartlepool	27	5	4	3	24	17	3	1	9	15	23	-1	33								
Northampton	27	5	4	4	19	14	3	4	7	13	25	-7	32								
Gillingham	26	6	5	3	19	14	2	2	8	9	25	-11	31								
Huddersfield	26	5	3	5	17	16	4	1	8	9	26	-16	31								
Bristol Rovers	24	2	6	3	14	16	5	3	5	12	11	-1	30								
Crewe	27	6	2	5	16	18	1	5	8	10	24	-16	28								
Millwall	25	6	2	6	21	17	1	4	7	7	22	-11	27								
Cheltenham	25	5	5	3	12	13	2	1	9	9	22	-14	27								
Luton Town*	26	8	2	2	19	11	1	4	9	11	22	-3	23								
Bournemouth	27	3	3	8	16	29	3	2	8	16	23	-20	23								
Port Vale	27	3	3	7	13	17	2	2	10	10	24	-18	20								

*Leeds deducted 15 points
 *Luton deducted 10 points

2007-08 APPEARANCES

	This Season										Luton Career	
	LEAGUE	CUPS	TOTAL	DISCIPLINARY	APPEARANCES	GOALS						
	App	Gls	App	Gls	App	Gls	Yel	Red	App	Gls	App	Gls
Ben ALNWICK	4	0	0	0	4	0	0	0	4	0	0	0
Calvin ANDREW	13(8)	2	6(3)	2	19(11)	4	2	0	48	6	0	0
David BELL	21	3	9	1	30	4	3	0	77	8	0	0
Mark BRESFORD	0	0	0	0	0	0	0	0	132	0	0	0
Dean BRILL	17	0	10	0	27	0	0	0	51	0	0	0
Ahmet BRKOVIC	0(1)	0	1(2)	0	1(3)	0	1	0	223	38	0	0
Chris COYNE	18	0	7	1	25	1	3	0	251	16	0	0
Darren CURRIE	19(4)	2	5(2)	0	24(8)	2	3	0	29	2	0	0
Sol DAVIS	0	0	0	0	0	0	0	0	184	2	0	0
Dave EDWARDS	18(1)	4	7	0	25(1)	4	1	0	25	4	0	0
Jaroslav FOJUT	15(1)	2	7	1	22(1)	3	2	0	23	3	0	0
David FORDE	5	0	1	0	6	0	0	0	6	0	0	0
Paul FURLONG	15(6)	7	5(2)	4	20(8)	11	5	1	27	11	0	0
Alan GOODALL	21	1	6(1)	0	27(1)	1	3	1	27	1	0	0
Anthony GRANT	1(3)	0	0(2)	0	1(5)	0	2	0	6	0	0	0
Don HUTCHISON	6(5)	0	5	1	11(5)	1	2	0	16	1	0	0
Richard JACKSON	15(2)	0	8	0	23(2)	0	2	0	25	0	0	0
Keith KEANE	8(1)	1	4(2)	0	12(3)	1	1	0	86	4	0	0
Richard LANGLEY	0	0	0	0	0	0	0	0	33	1	0	0
Paul McVEIGH	3(9)	0	2(6)	0	5(15)	0	1	0	19	0	0	0
Dean MORGAN	4(6)	1	3(2)	0	7(8)	1	1	0	94	12	0	0
Stephen O'LEARY	0(1)	0	0(2)	0	0(3)	0	0	0	41	3	0	0
Sam PARKIN	0(1)	0	1	0	1(1)	0	0	0	10	1	0	0
Chris PERRY	25	1	9	0	34	1	8	0	34	1	0	0
Paul PESCHISOLDO	2(2)	0	0(1)	1	2(3)	1	0	0	5	1	0	0
Steve ROBINSON	18(1)	0	7	1	25(1)	1	9	0	202	12	0	0
Matthew SPRING	24	6	10	3	34	9	5	0	336	40	0	0
Drew TALBOT	8(9)	0	5(4)	2	13(13)	2	0	0	42	5	0	0
Paul UNDERWOOD	0	0	0	0	0	0	0	0	72	5	0	0
Marc WILSON	4	0	0	0	4	0	1	0	4	0	0	0

PROGRAMME Editor: Steven Dove Editorial Assistant: Zoe Wood
 Photography: Gareth Owen Design: Lee Wood Contributors:
 Roger Vash, Simon Pitts, Des Christian, Stewart Curtis, James Marsh
 Printers: Regal Litho

RESULTS AND FIXTURES

SUBSTITUTES

Date	Opponent	Venue	Score	Att	Away	Pos
Sat Aug 11	HARTLEPOOL UNITED	H	2-1	8,013	608	3
Tue Aug 14	Dagenham & Redbridge (CC1)	A	2-1	1,754	397	-
Sat Aug 18	Swindon Town	A	1-2	7,520	1,013	10
Sat Aug 25	GILLINGHAM	H	3-1	6,178	508	4
Tues Aug 28	SUNDERLAND (CC2)	H	3-0	4,401	787	-
Sat Sept 1	Leeds United	A	0-1	26,856	tb	7
Tues Sept 4	NORTHAMPTON (JPT1)	H	2-0	2,532	373	-
Sat Sept 8	BRISTOL ROVERS	H	1-2	6,131	564	11
Fri Sept 14	Tranmere Rovers	A	1-2	6,525	252	17
Sat Sept 22	PORT VALE	H	2-1	6,084	138	13
Tues Sept 25	CHARLTON ATH (CC3)	H	3-1(aet)	4,534	776	-
Sat Sept 29	Huddersfield Town	A	0-2	9,028	543	16
Tue Oct 2	Yeovil Town	A	0-0	4,848	tb	17
Sat Oct 6	DONCASTER ROVERS	H	1-1	6,513	472	17
Tue Oct 9	Gillingham (JPT2)	A	3-4	1,417	101	-
Mon Oct 15	NORTHAMPTON TOWN	H	4-1	5,881	420	14
Sat Oct 20	Crewe Alexandra	A	0-2	4,490	435	15
Sat Oct 27	NOTTINGHAM FOREST	H	2-1	8,524	1,800	13
Wed Oct 31	EVERTON (CC4)	H	0-1(aet)	8,944	1,777	-
Sat Nov 3	Brighton	A	1-3	5,317	tb	15
Tue Nov 6	CARLISLE UNITED	H	0-0	5,462	408	17
Sat Nov 10	BRENTFORD: FA Cup 1	H	1-1	4,167	789	-
Sat Nov 17	Walsall	A	0-0	5,056	510	17
Sat Nov 24	SOUTHEND UNITED	H	1-0	6,820	690	21
Tues Nov 27	Brentford: FA Cup 1 Rep	A	2-0	2,643	350	-
Tue Dec 4	Oldham Athletic	A	1-1	4,251	176	22
Fri Dec 11	NOTTM F: FA Cup 2	H	1-0	5,758	1,013	-
Fri Dec 14	Cheltenham Town	A	0-1	3,702	355	23
Sat Dec 22	TRANMERE ROVERS	H	1-0	6,070	235	22
Wed Dec 26	Bristol Rovers	A	1-1	7,556	413	23
Sat Dec 29	Port Vale	A	2-1	4,224	579	22
Sun Jan 1	YEovil TOWN	H	1-0	6,811	392	21
Sun Jan 6	LIVERPOOL: FA Cup 3	H	1-1(og)	10,226	tb	-
Sat Jan 12	SWANSEA CITY	H	1-3	6,756	827	22
Tues Jan 15	Liverpool: FA Cup 3 Rep	A	0-5	41,446	5,716	-
Sat Jan 19	Leyton Orient	A	1-2	5,516	1,023	22
Tues Jan 22	Bournemouth	A	3-4	3,489	232	22
Sat Jan 26	LEEDS UNITED	H	15:00			
Tue Jan 29	SWINDON TOWN	H	19:45			
Sat Feb 2	Hartlepool United	A	15:00			
Sat Feb 9	AFC BOURNEMOUTH	H	15:00			
Tue Feb 12	Gillingham	A	19:45			
Sat Feb 16	LEYTON ORIENT	H	15:00			
Fri Feb 22	Swansea City	A	19:45			
Tues Feb 26	MILLWALL	H	19:45			
Sat Mar 1	WALSALL	H	15:00			
Sat Mar 8	Southend United	A	15:00			
Tue Mar 11	Carlisle United	A	19:45			
Sat Mar 15	OLDHAM ATHLETIC	H	15:00			
Sat Mar 22	CHELTHENHAM TOWN	H	15:00			
Mon Mar 24	Millwall	A	15:00			
Sat Mar 29	CREWE ALEXNDRA	H	15:00			
Sat Apr 5	Northampton Town	A	15:00			
Sat Apr 12	BRIGHTON	H	15:00			
Sat Apr 19	Nottingham Forest	A	15:00			
Sat Apr 26	Doncaster Rovers	A	15:00			



Brill	Jackson	Perry	Coyne	GOODALL	Edwards	Robinson	Spring	CURRIE	Peschisoldo	Furlong	Hutchison	Keane	McVeigh	Parkin	Talbot
Brill	Jackson	Keane	Coyne	Emanuel	Edwards	Hutchison	SPRING	Morgan	Parkin	TALBOT	Brkovic	Furlong	McVeigh	Perry	O'Leary
Brill	Jackson	Perry	Coyne	Goodall	EDWARDS	Robinson	Spring	Currie	Peschisoldo	Furlong	Hutchison	Keane	McVeigh	Morgan	Talbot
Forde	Jackson	Perry	Coyne	Goodall	Currie	Edwards	SPRING	BELL	FURLONG	Talbot	Andrew	Hutchison	Keane	McVeigh	Robinson
Forde	Jackson	Perry	Coyne	Goodall	BELL	Robinson	Spring	Morgan	FURLONG	Talbot	Andrew	Brkovic	Hutchison	Keane	McVeigh
Forde	Keane	Perry	Coyne	Goodall	Currie	Edwards	Spring	Bell	Furlong	Talbot	Andrew	Hutchison	McVeigh	Morgan	Robinson
Brill	Keane	Perry	Fojut	Goodall	Brkovic	HUTCHISON	Robinson	Bell	Andrew	Talbot	Coyne	McVeigh	Morgan	O'Leary	PESCHISOLDO
Forde	Jackson	Perry	Coyne	Goodall	Currie	Robinson	SPRING	Bell	Furlong	Talbot	Andrew	Fojut	Hutchison	Morgan	Peschisoldo
Forde	Jackson	Perry	Coyne	Goodall	BELL	Robinson	Spring	Edwards	Morgan	FURLONG	Andrew	Currie	Fojut	McVeigh	Talbot
Brill	Jackson	Perry	Fojut	Goodall	Bell	ROBINSON	SPRING	Morgan	McVeigh	Furlong	Andrew	Brkovic	Coyne	Currie	TALBOT
Alnwick	Jackson	Perry	Fojut	Goodall	Bell	Robinson	Spring	Morgan	McVeigh	Furlong	Andrew	Coyne	Currie	Edwards	Talbot
Alnwick	Perry	Fojut	Coyne	Goodall	Bell	Robinson	Spring	Edwards	Currie	Andrew	Brkovic	Hutchison	Jackson	McVeigh	Talbot
Alnwick	Perry	Fojut	Coyne	Goodall	Currie	Robinson	Spring	Edwards	Andrew	FURLONG	Brkovic	Hutchison	Jackson	McVeigh	Talbot
Brill	Jackson	Perry	Fojut	Emanuel	Edwards	Hutchison	SPRING	McVeigh	Andrew	FURLONG	Brkovic	Charles	Goodall	O'Leary	Talbot
Brill	Jackson	Perry	Fojut	Goodall	CURRIE	Hutchison	SPRING	Bell	Talbot	FURLONG	Andrew	Brkovic	Coyne	Edwards	Morgan
Alnwick	Jackson	Perry	Fojut	Goodall	Currie	Hutchison	Spring	Bell	Andrew	Furlong	Brkovic	Coyne	Edwards	Morgan	Robinson
Brill	PERRY	Fojut	Coyne	Goodall	Currie	Robinson	Spring	BELL	Edwards	Furlong	Andrew	Hutchison	Jackson	McVeigh	Morgan
Brill	Perry	Fojut	Coyne	Goodall	Currie	Robinson	Spring	Bell	Edwards	Furlong	Andrew	Hutchison	Jackson	McVeigh	Morgan
Brill	Perry	Fojut	Coyne	Goodall	Currie	Robinson	Spring	Bell	EDWARDS	Andrew	Hutchison	Jackson	McVeigh	Morgan	O'Leary
Brill	Perry	Fojut	Coyne	Goodall	Currie	Robinson	Spring	Bell	Edwards	Andrew	Hutchison	McVeigh	Morgan	O'Leary	Talbot
Brill	Perry	Fojut	Coyne	Jackson	Wilson	Hutchison	Spring	Bell	Edwards	Furlong	ANDREW	Goodall	Hutchison	McVeigh	Talbot
Brill	Perry	Fojut	Coyne	Jackson	Wilson	Hutchison	Spring	Bell	Edwards	Furlong	ANDREW	Goodall	Hutchison	McVeigh	Talbot
Brill	Perry	Fojut	Coyne	Jackson	Wilson	Hutchison	Spring	Bell	Edwards	Furlong	ANDREW	Goodall	Hutchison	McVeigh	Talbot
Brill	Perry	Fojut	Coyne	Jackson	Wilson	Hutchison	Spring	Bell	Edwards	Furlong	ANDREW	Goodall	Hutchison	McVeigh	Talbot
Brill	Perry	Fojut	Coyne	Jackson	Wilson	Hutchison	Spring	Bell	Edwards	Furlong	ANDREW	Goodall	Hutchison	McVeigh	Talbot
Brill	Perry	Fojut	Coyne	Jackson	Wilson	Hutchison	Spring	Bell	Edwards	Furlong	ANDREW	Goodall	Hutchison	McVeigh	Talbot
Brill	Perry	Fojut	Coyne	Jackson	Wilson	Hutchison	Spring	Bell	Edwards	Furlong	ANDREW	Goodall	Hutchison	McVeigh	Talbot
Brill	Perry	Fojut	Coyne	Jackson	Wilson	Hutchison	Spring	Bell	Edwards	Furlong	ANDREW	Goodall	Hutchison	McVeigh	Talbot
Brill	Perry	Fojut	Coyne	Jackson	Wilson	Hutchison	Spring	Bell	Edwards	Furlong	ANDREW	Goodall	Hutchison	McVeigh	Talbot
Brill	Perry	Fojut	Coyne	Jackson	Wilson	Hutchison	Spring	Bell	Edwards	Furlong	ANDREW	Goodall	Hutchison	McVeigh	Talbot
Brill	Perry	Fojut	Coyne	Jackson	Wilson	Hutchison	Spring	Bell	Edwards	Furlong	ANDREW	Goodall	Hutchison	McVeigh	Talbot
Brill	Perry	Fojut	Coyne	Jackson	Wilson	Hutchison	Spring	Bell	Edwards	Furlong	ANDREW	Goodall	Hutchison	McVeigh	Talbot
Brill	Perry	Fojut	Coyne	Jackson	Wilson	Hutchison	Spring	Bell	Edwards	Furlong	ANDREW	Goodall	Hutchison	McVeigh	Talbot
Brill	Perry	Fojut	Coyne	Jackson	Wilson	Hutchison	Spring	Bell	Edwards	Furlong	ANDREW	Goodall	Hutchison	McVeigh	Talbot
Brill	Perry	Fojut	Coyne	Jackson	Wilson	Hutchison	Spring	Bell	Edwards	Furlong	ANDREW	Goodall	Hutchison	McVeigh	Talbot
Brill	Perry	Fojut	Coyne	Jackson	Wilson	Hutchison	Spring	Bell	Edwards	Furlong	ANDREW	Goodall	Hutchison	McVeigh	Talbot
Brill	Perry	Fojut	Coyne	Jackson	Wilson	Hutchison	Spring	Bell	Edwards	Furlong	ANDREW	Goodall	Hutchison	McVeigh	Talbot
Brill	Perry	Fojut	Coyne	Jackson	Wilson	Hutchison	Spring	Bell	Edwards	Furlong	ANDREW	Goodall	Hutchison	McVeigh	Talbot
Brill	Perry	Fojut	Coyne	Jackson	Wilson	Hutchison	Spring	Bell	Edwards	Furlong	ANDREW	Goodall	Hutchison	McVeigh	Talbot
Brill	Perry	Fojut	Coyne	Jackson	Wilson	Hutchison	Spring	Bell	Edwards	Furlong	ANDREW	Goodall	Hutchison	McVeigh	Talbot
Brill	Perry	Fojut	Coyne	Jackson	Wilson	Hutchison	Spring	Bell	Edwards	Furlong	ANDREW	Goodall	Hutchison	McVeigh	Talbot
Brill	Perry	Fojut	Coyne	Jackson	Wilson	Hutchison	Spring	Bell	Edwards	Furlong	ANDREW	Goodall	Hutchison	McVeigh	Talbot
Brill	Perry	Fojut	Coyne	Jackson	Wilson	Hutchison	Spring	Bell	Edwards	Furlong	ANDREW	Goodall	Hutchison	McVeigh	Talbot
Brill	Perry	Fojut	Coyne	Jackson	Wilson	Hutchison	Spring	Bell	Edwards	Furlong	ANDREW	Goodall	Hutchison	McVeigh	Talbot
Brill	Perry	Fojut	Coyne	Jackson	Wilson	Hutchison	Spring	Bell	Edwards	Furlong	ANDREW	Goodall	Hutchison	McVeigh	Talbot
Brill	Perry	Fojut	Coyne	Jackson	Wilson	Hutchison	Spring	Bell	Edwards	Furlong	ANDREW	Goodall	Hutchison	McVeigh	Talbot
Brill	Perry	Fojut	Coyne	Jackson	Wilson	Hutchison	Spring	Bell	Edwards	Furlong	ANDREW	Goodall	Hutchison	McVeigh	Talbot
Brill	Perry	Fojut	Coyne	Jackson	Wilson	Hutchison	Spring	Bell	Edwards	Furlong	ANDREW	Goodall	Hutchison	McVeigh	Talbot
Brill	Perry	Fojut	Coyne	Jackson	Wilson	Hutchison	Spring	Bell	Edwards	Furlong	ANDREW	Goodall	Hutchison	McVeigh	Talbot
Brill	Perry	Fojut	Coyne	Jackson	Wilson	Hutchison	Spring	Bell	Edwards	Furlong	ANDREW	Goodall	Hutchison	McVeigh	Talbot
Brill	Perry	Fojut	Coyne	Jackson	Wilson	Hutchison	Spring	Bell	Edwards	Furlong	ANDREW	Goodall	Hutchison	McVeigh	Talbot
Brill	Perry	Fojut	Coyne	Jackson	Wilson	Hutchison	Spring	Bell	Edwards	Furlong	ANDREW	Goodall	Hutchison	McVeigh	Talbot
Brill	Perry	Fojut	Coyne	Jackson	Wilson	Hutchison	Spring	Bell	Edwards	Furlong	ANDREW	Goodall	Hutchison	McVeigh	Talbot
Brill	Perry	Fojut	Coyne	Jackson	Wilson	Hutchison	Spring	Bell	Edwards	Furlong	ANDREW	Goodall	Hutchison	McVeigh	Talbot
Brill	Perry	Fojut	Coyne	Jackson	Wilson	Hutchison	Spring	Bell	Edwards	Furlong	ANDREW	Goodall	Hutchison	McVeigh	Talbot
Brill	Perry	Fojut	Coyne	Jackson	Wilson	Hutchison	Spring	Bell	Edwards	Furlong	ANDREW	Goodall	Hutchison	McVeigh	Talbot
Brill	Perry	Fojut	Coyne	Jackson	Wilson	Hutchison	Spring	Bell	Edwards	Furlong	ANDREW	Goodall	Hutchison	McVeigh	Talbot
Brill	Perry	Fojut	Coyne	Jackson	Wilson	Hutchison	Spring	Bell	Edwards	Furlong	ANDREW	Goodall	Hutchison	McVeigh	Talbot
Brill	Perry	Fojut	Coyne	Jackson	Wilson	Hutchison	Spring	Bell	Edwards	Furlong	ANDREW	Goodall	Hutchison	McVeigh	Talbot
Brill	Perry	Fojut	Coyne	Jackson	Wilson	Hutchison	Spring	Bell	Edwards	Furlong	ANDREW	Goodall	Hutchison	McVeigh	Talbot
Brill	Perry	Fojut	Coyne	Jackson	Wilson	Hutchison	Spring	Bell	Edwards	Furlong	ANDREW	Goodall	Hutchison	McVeigh	Talbot
Brill	Perry	Fojut	Coyne	Jackson	Wilson	Hutchison	Spring	Bell	Edwards	Furlong	ANDREW	Goodall	Hutchison	McVeigh	Talbot
Brill	Perry	Fojut	Coyne	Jackson	Wilson	Hutchison	Spring	Bell	Edwards	Furlong	ANDREW	Goodall	Hutchison	McVeigh	Talbot
Brill	Perry	Fojut	Coyne	Jackson	Wilson	Hutchison	Spring	Bell	Edwards	Furlong	ANDREW	Goodall	Hutchison	McVeigh	Talbot
Brill	Perry	Fojut	Coyne	Jackson	Wilson	Hutchison	Spring	Bell	Edwards	Furlong	ANDREW	Goodall	Hutchison	McVeigh	Talbot
Brill	Perry	Fojut	Coyne	Jackson	Wilson	Hutchison	Spring	Bell	Edwards	Furlong	ANDREW	Goodall	Hutchison	McVeigh	Talbot
Brill	Perry	Fojut	Coyne	Jackson	Wilson	Hutchison	Spring	Bell	Edwards	Furlong	ANDREW	Goodall	Hutchison	McVeigh	Talbot
Brill	Perry	Fojut	Coyne	Jackson	Wilson	Hutchison	Spring	Bell	Edwards	Furlong	ANDREW	Goodall	Hutchison	McVeigh	Talbot
Brill	Perry	Fojut	Coyne	Jackson	Wilson	Hutchison	Spring	Bell	Edwards	Furlong	ANDREW	Goodall	Hutchison	McVeigh	Talbot
Brill	Perry	Fojut	Coyne	Jackson	Wilson	Hutchison	Spring	Bell	Edwards	Furlong	ANDREW	Goodall	Hutchison	McVeigh	Talbot
Brill	Perry	Fojut	Coyne	Jackson	Wilson	Hutchison	Spring	Bell	Edwards	Furlong	ANDREW	Goodall	Hutchison	McVeigh	Talbot
Brill	Perry	Fojut	Coyne	Jackson	Wilson	Hutchison	Spring	Bell	Edwards	Furlong	ANDREW	Goodall	Hutchison	McVeigh	Talbot
Brill	Perry	Fojut	Coyne	Jackson	Wilson	Hutchison	Spring	Bell	Edwards	Furlong	ANDREW	Goodall	Hutchison	McVeigh	Talbot
Brill	Perry	Fojut	Coyne	Jackson	Wilson	Hutchison	Spring	Bell	Edwards	Furlong	ANDREW	Goodall	Hutchison	McVeigh	Talbot
Brill	Perry	Fojut	Coyne	Jackson	Wilson	Hutchison	Spring	Bell	Edwards	Furlong	ANDREW	Goodall	Hutchison	McVeigh	Talbot
Brill	Perry	Fojut	Coyne	Jackson	Wilson	Hutchison	Spring	Bell	Edwards	Furlong	ANDREW	Goodall	Hutchison	McVeigh	Talbot
Brill	Perry	Fojut	Coyne	Jackson	Wilson	Hutchison	Spring	Bell	Edwards	Furlong	ANDREW	Goodall	Hutchison	McVeigh	Talbot
Brill	Perry	Fojut	Coyne	Jackson	Wilson	Hutchison	Spring	Bell	Edwards	Furlong	ANDREW	Goodall	Hutchison	McVeigh	Talbot
Brill	Perry	Fojut	Coyne	Jackson	Wilson	Hutchison	Spring	Bell	Edwards	Furlong	ANDREW	Goodall	Hutchison	McVeigh	Talbot
Brill	Perry	Fojut	Coyne	Jackson	Wilson	Hutchison	Spring	Bell	Edwards	Furlong	ANDREW	Goodall	Hutchison	McVeigh	Talbot
Brill	Perry	Fojut	Coyne	Jackson	Wilson	Hutchison	Spring	Bell	Edwards	Furlong	ANDREW	Goodall	Hutchison	McVeigh	Talbot
Brill	Perry	Fojut	Coyne	Jackson	Wilson	Hutchison	Spring	Bell	Edwards	Furlong	ANDREW	Goodall	Hutchison	McVeigh	Talbot
Brill	Perry	Fojut	Coyne	Jackson	Wilson	Hutchison	Spring	Bell	Edwards	Furlong	ANDREW	Goodall	Hutchison	McVeigh	Talbot
Brill	Perry	Fojut	Coyne	Jackson	Wilson	Hutchison	Spring	Bell	Edwards	Furlong	ANDREW	Goodall	Hutchison	McVeigh	Talbot
Brill	Perry	Fojut	Coyne	Jackson	Wilson	Hutchison	Spring	Bell	Edwards	Furlong	ANDREW	Goodall	Hutchison	McVeigh	Talbot
Brill	Perry	Fojut	Coyne	Jackson	Wilson	Hutchison	Spring	Bell	Edwards	Furlong	ANDREW	Goodall	Hutchison	McVeigh	Talbot
Brill	Perry	Fojut	Coyne	Jackson	Wilson	Hutchison	Spring	Bell	Edwards	Furlong	ANDREW	Goodall	Hutchison	McVeigh	Talbot
Brill	Perry	Fojut	Coyne	Jackson	Wilson	Hutchison	Spring	Bell	Edwards	Furlong	ANDREW	Goodall	Hutchison	McVeigh	Talbot
Brill	Perry	Fojut	Coyne	Jackson	Wilson	Hutchison	Spring	Bell	Edwards	Furlong	ANDREW	Goodall	Hutchison	McVeigh	Talbot
Brill	Perry	Fojut	Coyne	Jackson	Wilson	Hutchison	Spring	Bell	Edwards	Furlong	ANDREW	Goodall	Hutchison	McVeigh	Talbot
Brill	Perry	Fojut	Coyne	Jackson	Wilson	Hutchison	Spring	Bell	Edwards	Furlong	ANDREW	Goodall	Hutchison	McVeigh	Talbot
Brill	Perry	Fojut	Coyne	Jackson	Wilson	Hutchison	Spring	Bell	Edwards	Furlong	ANDREW	Goodall	Hutchison	McVeigh	Talbot
Brill	Perry	Fojut	Coyne	Jackson	Wilson	Hutchison	Spring	Bell	Edwards	Furlong	ANDREW	Goodall	Hutchison	McVeigh	Talbot
Brill	Perry	Fojut	Coyne	Jackson	Wilson	Hutchison	Spring	Bell	Edwards	Furlong	ANDREW	Goodall	Hutchison	McVeigh	Talbot
Brill	Perry	Fojut	Coyne	Jackson	Wilson	Hutchison	Spring	Bell	Edwards	Furlong	ANDREW	Goodall	Hutchison	McVeigh	Talbot
Brill	Perry	Fojut	Coyne	Jackson	Wilson	Hutchison	Spring	Bell	Edwards	Furlong	ANDREW	Goodall	Hutchison	McVeigh	Talbot
Brill	Perry	Fojut	Coyne	Jackson	Wilson	Hutchison	Spring	Bell	Edwards	Furlong	ANDREW	Goodall	Hutchison	McVeigh	Talbot
Brill	Perry	Fojut	Coyne	Jackson	Wilson	Hutchison	Spring	Bell	Edwards	Furlong	ANDREW	Goodall	Hutchison	McVeigh	Talbot
Brill	Perry	Fojut	Coyne	Jackson	Wilson	Hutchison	Spring	Bell	Edwards	Furlong	ANDREW	Goodall	Hutchison	McVeigh	Talbot
Brill	Perry	Fojut	Coyne	Jackson	Wilson	Hutchison	Spring	Bell	Edwards	Furlong	ANDREW	Goodall	Hutchison	McVeigh	Talbot
Brill	Perry	Fojut	Coyne	Jackson	Wilson	Hutchison	Spring	Bell	Edwards	Furlong	ANDREW	Goodall	Hutchison	McVeigh	Talbot
Brill	Perry	Fojut	Coyne	Jackson	Wilson	Hutchison	Spring	Bell	Edwards	Furlong	ANDREW	Goodall	Hutchison	McVeigh	Talbot
Brill	Perry	Fojut	Coyne	Jackson	Wilson	Hutchison	Spring	Bell	Edwards	Furlong	ANDREW	Goodall	Hutchison	McVeigh	Talbot
Brill	Perry	Fojut	Coyne	Jackson	Wilson	Hutchison	Spring	Bell	Edwards	Furlong	ANDREW	Goodall	Hutchison	McVeigh	Talbot
Brill	Perry	Fojut	Coyne	Jackson	Wilson	Hutchison	Spring	Bell	Edwards	Furlong	ANDREW	Goodall	Hutchison	McVeigh	Talbot
Brill	Perry	Fojut	Coyne	Jackson	Wilson	Hutchison	Spring	Bell	Edwards	Furlong	ANDREW	Goodall	Hutchison	McVeigh	Talbot
Brill	Perry	Fojut	Coyne	Jackson	Wilson	Hutchison	Spring	Bell	Edwards	Furlong	ANDREW	Goodall	Hutchison	McVeigh	Talbot
Brill	Perry	Fojut	Coyne	Jackson	Wilson	Hutchison	Spring	Bell	Edwards	Furlong	ANDREW	Goodall	Hutchison	McVeigh	Talbot
Brill	Perry	Fojut	Coyne	Jackson	Wilson	Hutchison	Spring	Bell	Edwards	Furlong	ANDREW	Goodall	Hutchison	McVeigh	Talbot
Brill	Perry	Fojut	Coyne	Jackson	Wilson	Hutchison	Spring	Bell	Edwards	Furlong	ANDREW	Goodall	Hutchison	McVeigh	Talbot
Brill	Perry	Fojut	Coyne	Jackson											



Tuesday
January 29, 2008
League One
Kick-Off 7:45pm

Luton Town v **SWINDON TOWN**

With new owners and a new manager now onboard, Swindon Town are finally a Club moving in the right direction.

After a transfer embargo was placed on the Club earlier in the campaign, the immediate future of the Robins looked bleak.

But the successful takeover of the Club, spearheaded by local businessmen Andrew Fitton, has seen light at the end of the tunnel.

The first task of the new consortium was to find a manager to replace Paul Sturrock, who returned to his former Plymouth Argyle earlier in the campaign.

Swindon's vision for the future was clear and Fitton got his man in the form of former Motherwell boss Maurice Malpas.

Although unfamiliar to many, Malpas is highly regarded in the managerial circle despite his lack of experience and became the caretaker manager of the Scottish Under-21 side.

But it was as a player Malpas carved out a distinguished career when he made 617 appearances for Dundee United, setting a new Club record.

Only time will tell if Swindon have found the right man at the helm and the new boss quickly suffered his first setback when they were recently sent crashing out of the FA Cup to Barnet.

As a result of that disappointing defeat, Malpas is set to wield the axe to his current squad in order to bring in more new faces.

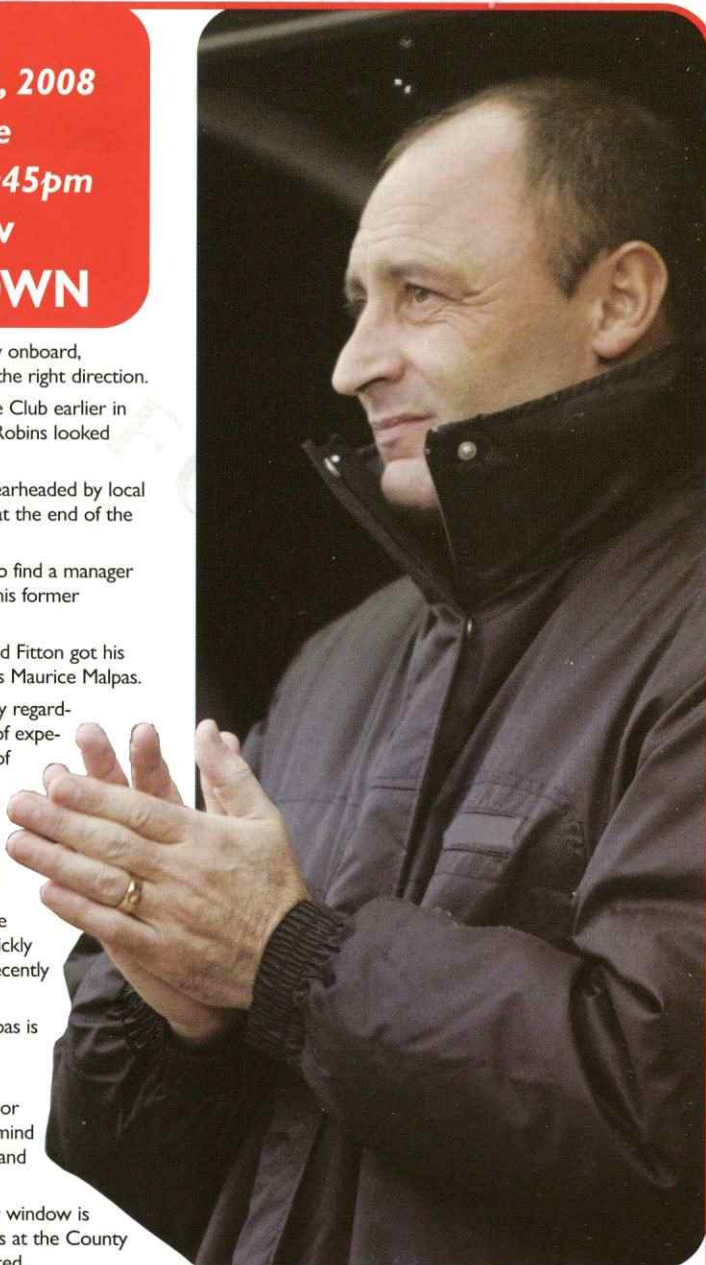
Speaking recently, Malpas said: "There's one or two that we have to get out. I've made my mind up already having watched them in training and a reserve game.

Unlikely to leave during the January transfer window is Billy Paynter is has quickly become a success at the County Ground since his move from Southend United.

Craig Eatson has also strengthened the midfield department and has been a consistent member of the Swindon side.

Recent meetings between the two side have been evenly balanced. The Hatters will be looking to gain revenge for their 2-1 defeat earlier in the season, in a match that Luton should have gone on to win.

The most recent fixture at Kenilworth Road between the two sides was in March 2005 when goals from Kevin Nicholls, Ahmet Brkovic and Peter Holmes sealed a 3-1 win.



Head 2 head

	Luton	Draw	Swindon
League	24	15	18
FA Cup	4	0	3
League Cup	0	0	0
TOTAL	28 (44%)	15 (23%)	21 (33%)

Jermaine Jenas



Vive Le Body!



LIGHT

The lightweight highly functioning compression technology offers ultimate support and comfort with minimal bulk.



OXYGENATING

The Energy system improves oxygen delivery to working muscles and speeds recovery time.



NON-IRRITATING

Ergonomic flat lock seaming details enhance mobility and eliminate irritation and chafing.



WICKING

The USP wicking system rapidly moves moisture away from the skin and optimizes body temperature.



PROTECTIVE

UV protection reduces the effects of the sun's rays.



Complete Bodywear*
 *Advanced

PUMA
 puma.com

The line-ups

Luton Town

Manager: Mick Harford

Colours: White shirts, black shorts

	PI	Sc
1 Dean Brill	■	■
3 Alan Goodall	■	■
4 Don Hutchison	■	■
5 Chris Perry	■	■
7 Dean Morgan	■	■
8 David Bell	■	■
9 Sam Parkin	■	■
10 Darren Currie	■	■
11 Paul Peschisolido	■	■
12 Richard Jackson	■	■
14 Steve Robinson	■	■
15 Stephen O'Leary	■	■
17 Lewis Emanuel	■	■
19 Drew Talbot	■	■
20 Calvin Andrew	■	■
21 Keith Keane	■	■
22 Richard Langley	■	■
24 Paul Underwood	■	■
25 Matthew Spring	■	■
26 Sol Davis	■	■
28 Paul McVeigh	■	■
29 Paul Furlong	■	■
35 Marlon Beresford	■	■

Leeds United

Manager: Dennis Wise

Colours: White shirts and white shorts

	PI	Sc
1 Casper Ankergrén	■	■
2 Frazer Richardson	■	■
3 Paul Huntington	■	■
4 Jonathan Douglas	■	■
5 Rui Marques	■	■
6 Matt Heath	■	■
7 David Prutton	■	■
9 Jermaine Beckford	■	■
10 Leon Constantine	■	■
11 Ian Westlake	■	■
12 Alan Martin	■	■
14 Jonathan Howson	■	■
16 Bradley Johnson	■	■
17 Sebastien Carole	■	■
18 Robert Bayly	■	■
19 Tore Andre Flo	■	■
20 Tresor Kandol	■	■
21 Shaun Derry	■	■
22 Andy Hughes	■	■
23 Curtis Weston	■	■
24 Peter Sweeney	■	■
25 David Lucas	■	■
26 Ben Parker	■	■
27 Scott Gardner	■	■
28 Fabian Delph	■	■
29 Tom Elliott	■	■
30 Filipe Da Costa	■	■
31 Tomi Ameobi	■	■
32 Mark De Vries	■	■
33 Radostin Kishishev	■	■
34 Simon Madden	■	■
35 Darren Kenton	■	■
36 Sebastian Sorsa	■	■
37 Neil Kilkeny	■	■

Hatters' last team

Bournemouth 4 Luton 3



Goals: Spring (45 p), Morgan (60), Furlong (68)
 Subs: O'Leary for Morgan (70), Andrew for Talbot (82)
 Not used: Beresford, Emanuel, Jackson

■ Keane
 ■ none

Leed's last team

Leeds 0 Doncaster 1



Goals: none
 Subs: Heath for Kenton (46), Kandol for Flo (54), Weston for Kilkeny (72)
 Not used: Prutton, Thompson
 ■ Kilkeny
 ■ none

MATCH OFFICIALS

- Referee: **A Wiley**
- Assistant: **S Rubery**
- Assistant: **G Stott**
- 4th Official: **R Beeby**

bet365



KEITH KEANE
 is 28-1 to score
 the first goal
 in today's game.

To bet, call **FREE** on
08000 322 365

Electrolux

Squad lists correct at time of print