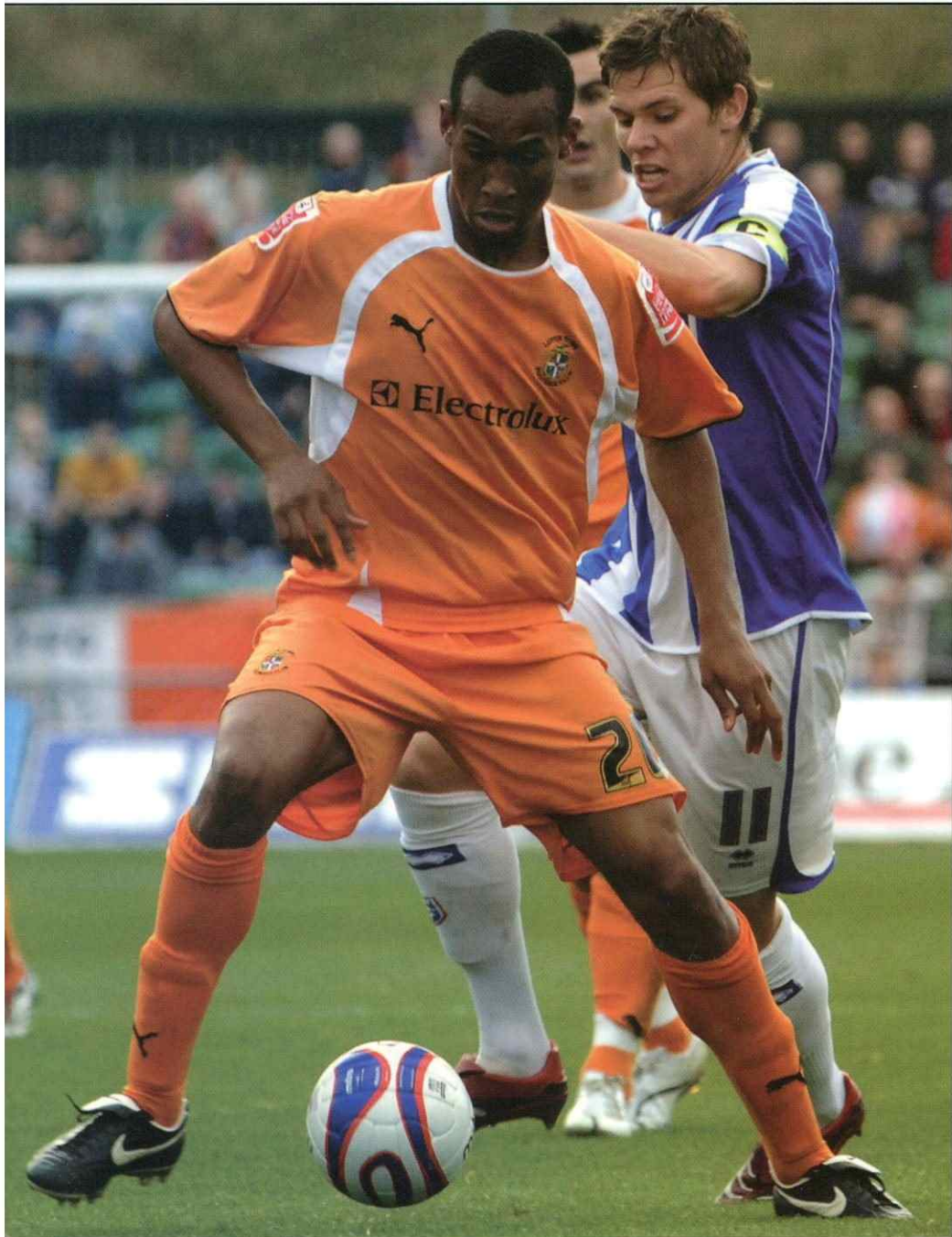


the hatters



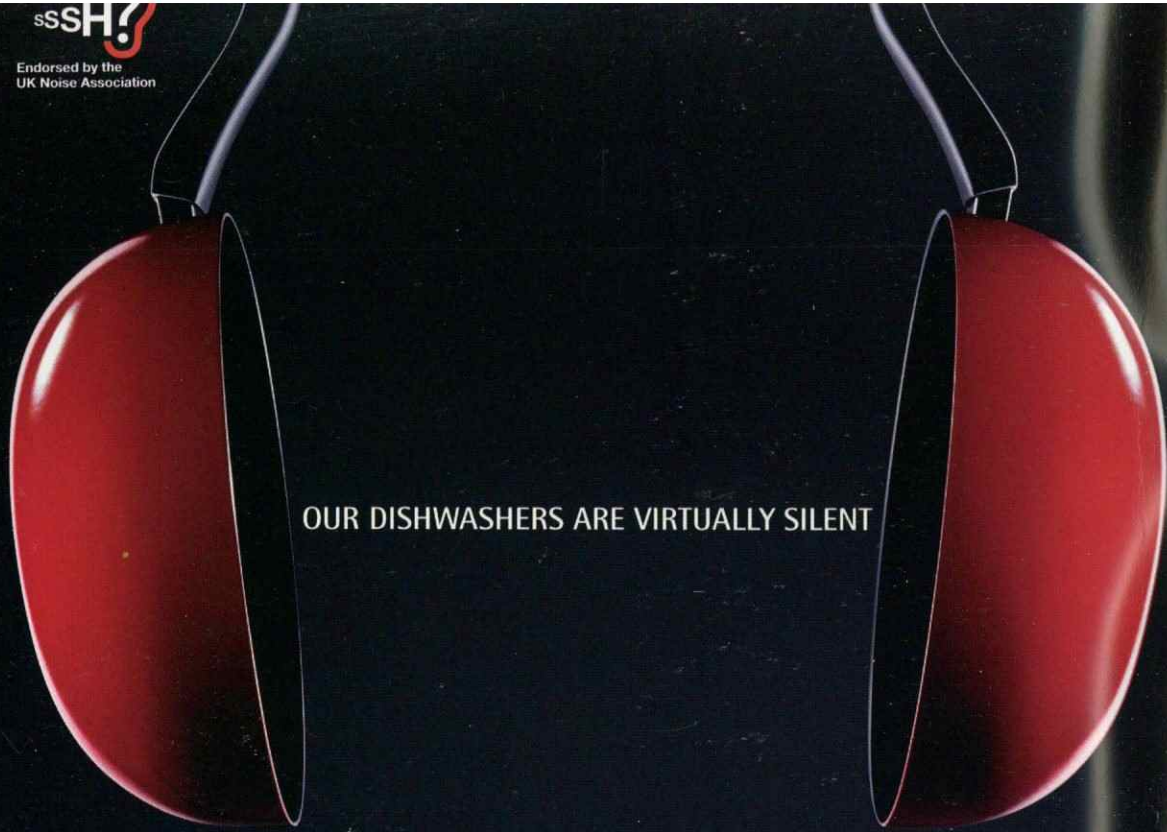
Coca-Cola League One **Tuesday November 6** v Carlisle United **Kick-off 7:45pm** £3

Issue
12

v Carlisle United



ssSH!
Endorsed by the
UK Noise Association



OUR DISHWASHERS ARE VIRTUALLY SILENT



Kitchens are seldom quiet. Fortunately, we design dishwashers that always are. In fact, one of them runs at just 41db. So you're able to hear yourself think. Of course, one thing you won't have to think about is who'll be doing the washing up. www.aeg-electrolux.co.uk

AEG

Electrolux

PERFEKT IN FORM UND FUNKTION

YEAR
5
GUARANTEE

Subject to registration and conditions of guarantee

INSIDE



Kenilworth Road Stadium
1 Maple Road, Luton
Bedfordshire LU4 8AW

Main Reception: 01582 411622
Fax: 01582 405070
Ticket Office: 0870 017 0656

Chairman

D. Pinkney

Directors

D. Antcliff, R. Bagehot, A. Dean,
K. James J. Mitchell,

Chief Executive

J. Mitchell

Vice Presidents

R. L. Banks, C. S. Bassett, C.T.F. Green,
D. Ludlow MBE, J. Sapsworth,
R. Stringer

Club Secretary

Cherry Newbery

Manager

Kevin Blackwell

Assistant Manager

Sam Ellis

Head Coach

John Carver

Director of Youth

Chris Cummins

Head Physiotherapist

Jon Edmondson

Physiotherapist

Harry Scott-Stackman

Sport Scientist

Neil Lewis

**Football and Community
Development Manager**

Stuart Smith

Safety Officer

Geoff Lovell

Stadium Manager

Peter Kemp

Financial Controller

Tania Buonpane FCCA

Head of Retail

Tracy Maddox

Club Chaplain

Alan West

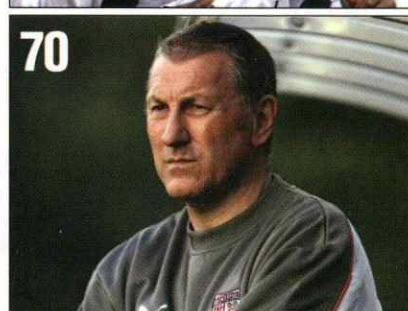
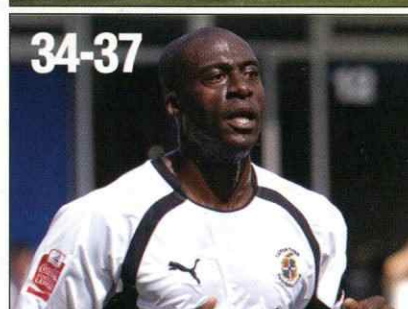
Honours

Littlewoods Cup: Winners 1987-88,
Finalists 1988-89
FA Cup: Finalists 1958-59,
Semi-Finalists 1984-85, 1987-88 & 1993-94
Simod Cup: Finalists 1987-88
League One: Champions 2004-05
Division Two: Champions 1981-82
Division Three: Champions 1936-37
Division Four: Champions 1967-68

The views expressed in this programme are not necessarily those of Luton Town Football Club.

Tuesday November 6, 2007 **Carlisle United** Coca-Cola League One 7.45pm

CONTENTS



Manager Kevin Blackwell4-5

Skipper Chris Coyne.....7

Club shop.....12-13

Carlisle United14-17

Flashback.....19

Everton match action20-23

Youth.....26-29

Football in the Community30-31

Reserves33

Star man Paul Furlong.....34-37

Brighton match action.....40-43

League One news.....48-49

A to Z of Luton players.....58-59

Luton Ladies63

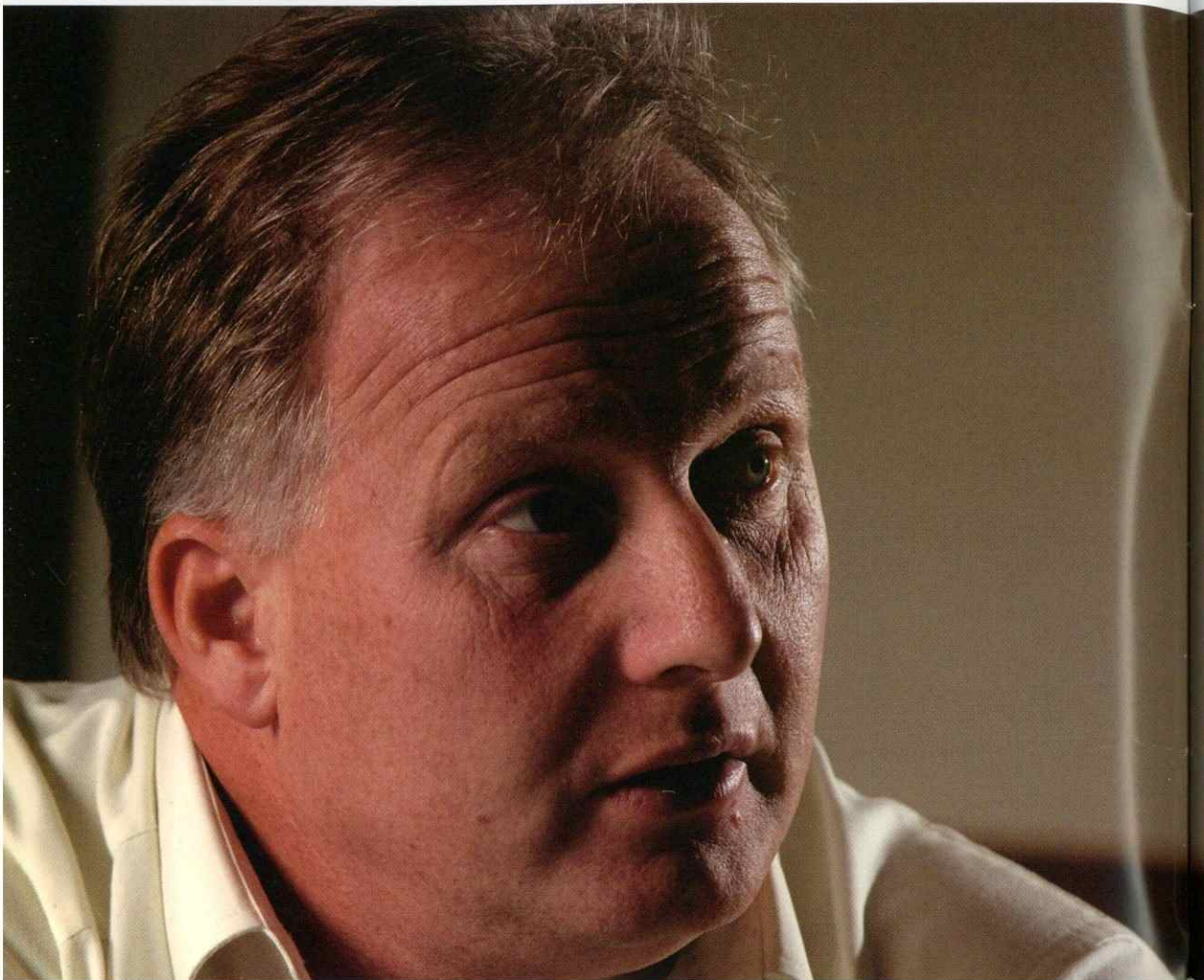
Ticket news.....66-67

Results and fixtures68-69

Next at the Kenny.....70

Teamsheet.....72

COVER PICTURE: Calvin Andrew in the thick of the action at the Withead



KEVIN



BLACKWELL

WELCOME to Kenilworth Road for another midweek game under the lights and if it's anything like our last game here against Everton then we're in for a cracking evening.

Tonight we welcome John Ward, his staff and players, and we congratulate them for their season so far which sees them on top of the League One table.

It's going to be a tough match for us as they're flying high at the moment – but that's the way we like it. The harder the game, the better we are as anyone who has seen us here against Everton, Sunderland, Charlton and Nottingham Forest will know.

Our home form has been first class this season – as good as almost anybody's in the League and that's why it's been so frustrating that our away form has not done us justice. Away from home we've only won one in the last 25. That is a rubbish statistic and we all want to get rid of it.

It's the same players going out against 11 other players home or away, so there's no logical reason for it, but that's the way football goes sometimes and we're trying as hard as we can to arrest the slide. If we can just harness our home form away from Kenilworth Road then we know where we'd be in the table.

Of course we're not helped at the moment by the number of injuries we have. To go into the Everton game without Paul Peschisolido, Sam Parkin and Drew Talbot and then to lose our top scorer Paul

Furlong so early on didn't do us any favours.

It makes things especially hard on young Calvin Andrew. He has had to carry the mantle, which he is having to do at a very young stage of his career and while we are without other players, it will be a massive learning curve for him.

“ Our home form has been first class this season - as good as almost anybody in the League and that's why it's been so frustrating that our away form has not done us justice ”

He's a young lad and people need to give him time but I can assure everyone that he's working his socks off and learning fast. With two years more experience he could be a real asset.

Meanwhile I'm looking around to see if we can bring in someone on loan who can help us out. I've let players go out on loan but they'll be back in two weeks time, ready for the busy Christmas period and set to play if required. Christmas is a time where many teams have their resources stretched and we will need to have everyone available.

Now we must hope that we can get one or two of our injured players back, and there are some hopeful signs. Paul Furlong has had a scan but it's unlikely that we'll risk him today or even on Saturday because it's a groin problem and if he tears it then it's an op and we could lose him for several weeks.

Drew Talbot is back in light training

and we might be able to put him on the bench tonight.

We have Keith Keane and Paul Peschisolido back in light training, too, so it's possible that in two or three games we might have some of them back.

Looking even further ahead,

congratulations to our Youth Team, who won through to the Second Round of the FA Youth Cup on Friday with a good win over Leyton Orient. They're on a terrific run at the moment and haven't lost in seven games.


We set great store by our youth set-up here at Luton Town as they are our future and it's good to see them doing so well.

As always, get behind the lads tonight. You really do make a difference and we appreciate your support.

Enjoy the game,

Kevin

THE ESSENTIAL GUIDE TO YOUR SEASON

official  **preview**
MAGAZINE - SEASON 2007/08

£3.50

ONLY **£3.50**



ARE YOU READY?
Pundits Chris Kamara and Tony Gale look into their Football League crystal ball

WIN a Beko plasma TV



get set for kick-off!

Unbeatable analysis profiling all 72 League clubs



the next generation

Meet the young managers with a growing reputation



- OVER 150 PAGES INCLUDING... PROFILES OF ALL 72 CLUBS
- FULL FIXTURE LISTS • KAMARA AND GALE'S VERDICT
- THE LEAGUE'S FOOTBALLING DYNASTIES

Available at your club shop or official club website, from your local high street, or online at

www.programmemaster.com



THE CAPTAIN

IT'S been a tough run of games with four matches over ten days, but it's tonight's type of match that we all want to play in – no matter when it is.

Carlisle arrive here on a great run of form, having become the first team to defeat Leeds United at the weekend.

And you couldn't ask for anything better than a night game at Kenilworth Road against the team top of the division.

This is the game I would prefer for us to be involved in. We want to be playing against the teams who are going well this season, and show others in this division what we are made of.

We have already had some cracking nights under the floodlights at Kenilworth Road, and everyone is confident we can do the same tonight.

Obviously it has been a bitterly disappointing weekend after our performance against Brighton on Saturday.

We have to start taking responsibility as individuals and collectively for our performances and results away from Kenilworth Road

Talk is cheap and what was particularly frustrating about the result against Brighton was that we were unable to build on our performance against Everton and Nottingham Forest.

We have the belief in the camp that we can really go for it this season, but we know we can't perform in the manner that we did at Brighton if we are to have any chance. Our home form has been good this season. We

CHRIS COYNE



You can't ask for anything better than a night game at Kenilworth Road against the team top of the division

have one of the best home records in the division, so while we look at rectifying our away form, it's important that we continue to be strong at Kenilworth Road.

Anybody who was here for our game against Everton will know that we have a decent side. I felt we matched them in every department and even after they went in front in extra time, we kept battling to the very end and we almost took the tie into penalties.

There was a fantastic atmosphere inside the ground that night, and it certainly made a huge difference to the game.

Hopefully you will again show the same support this evening, for what is another huge match at Kenilworth Road.

Enjoy the game

Coyne

Coca-Cola

Luton Town F.C.

Vs

 A.F.C. Bournemouth	 Huddersfield Town F.C.	 Crewe Alexandra F.C.	 Gillingham F.C.
 Swindon Town F.C.	 Northampton Town F.C.	 Brighton & Hove Albion F.C.	 Walsall F.C.
 Southend United F.C.	 Swansea City A.F.C.	 Doncaster Rovers F.C.	 Port Vale F.C.
 Leeds United F.C.	 Millwall F.C.	 Carlisle United F.C.	 Nottingham Forest F.C.
 Cheltenham Town F.C.	 Leyton Orient F.C.	 Yeovil Town F.C.	 Oldham Athletic F.C.
 Tranmere Rovers F.C.	 Hartlepool United F.C.	 Bristol Rovers F.C.	

72 Clubs. The 'Coca-Cola' Football League.

LATEST NEWS

LIVE FOOTBALL

£264m TV deal signed



LIGHTS, CAMERA, ACTON... BBC and Sky will both be showing live Championship football from the start of the season after next in a new deal

BBC to show live League & cup football from 2009-10

THERE will be live football back on the BBC by the season after next thanks to a £264m deal signed today between the Football League, Sky Sports and the BBC.

The new agreement will run for three seasons from 2009-10 and means that Sky will continue to show live Coca-Cola Football League, Carling Cup and Johnstone's Paint Trophy matches.

But they will share some of the action with the Beeb, who will screen 10 games from the Championship live on terrestrial plus TV Carling Cup action, including the Final.

The deal is worth £88m per season to Football League clubs and as well as TV, also covers broadband internet, video-on-demand and mobile services.

Sky Sports will screen:

- 65 matches from the Coca-Cola Football League, exclusively live.
- The Coca-Cola Football League Play-Offs – including all three Finals – exclusively live.
- Exclusive live matches from Rounds 1

SKY WILL SHOW:

- 65 live Coca-Cola League games
- All League Play-Offs live
- 2 live Carling Cup games in Rounds 1-5
- 2 live Carling Cup Semi-Finals & Final live
- Live Johnstone's Paint Trophy games
- Highlights and clips of League, Cup and Trophy games

BBC WILL SHOW:

- 10 live Coca-Cola Championship games
- 2 live Carling Cup Semi-Finals
- Carling Cup Final live
- Highlights and clips of League and Cup games

to 5 of the Carling Cup – two matches per round – and two legs of the Carling Cup Semi-Finals exclusively live, plus live coverage of the Carling Cup Final.

- Live matches from the Johnstone's Paint Trophy.
- Highlights and clips of the Coca-Cola Football League, Carling Cup & Johnstone's Paint Trophy.

The BBC will show:

- 10 matches from the Coca-Cola Championship, exclusively live.
- Two legs of the Carling Cup Semi-Finals exclusively live, plus live coverage of the Carling Cup Final.
- Highlights and clips of the Coca-Cola Football League and the Carling Cup.

Football League Chairman Lord Mawhinney said: "We are delighted to be continuing our strong partnership with Sky Sports and are excited by the prospect of working with the BBC. I am grateful to them both for their recognition of the value that The Football League brings to football.

"£88m a year coupled with unparalleled coverage on Sky and the BBC will provide a fantastic boost to Football League clubs and their supporters."

Vic Wakeling, Managing Director of Sky Sports, said: "We shall be covering at least 95 live matches each season from all Football League competitions – including all the Play-Off Semis and Finals – under this new agreement, and are delighted to be so deeply involved yet again in a competition which continues to attract a growing audience"

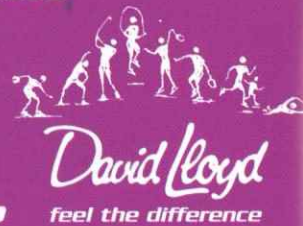
Roger Mosey, Director of BBC Sport, added: "We're delighted to be entering a partnership with The Football League. This adds to our football portfolio of Match Of The Day, Euro 2008 and the World Cups of 2010 and 2014.

"The agreement is a terrific development in the way we work with Football League clubs across England and Wales - bringing fans the best action across our range of services."



David Lloyd and Luton Town Football Club are now at "Another Level"

Join us and Feel the Difference
Be inspired in our newly refurbished club



Over 120 Cardiovascular & Resistance Machines, TV screens on CV equipment, Keiser Studio, Kinesis Wall, 20m Indoor pool spa & sonarium, Large Free Weights Area, 40 hours of free children's activities, children's play zone, homework stations, internet and play stations, Friendly and approachable Staff, Over 140 adult classes across 3 studios, Adults lounge area with plasma screen, Massage and Physiotherapy Clinic, Express Workout Zone, Exclusive new Health & Beauty Salon with full range of beauty treatments.



David Lloyd Luton - the player's choice



To find out more contact us on **01582 692046/7**

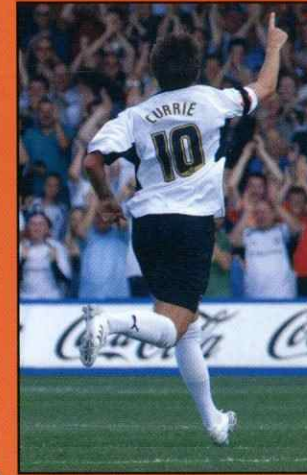
or visit our website www.davidlloydleisure.co.uk

David Lloyd Leisure
Capability Green
Luton Bedfordshire LU1 3LU

AROUND
THE GROUND

CLUB NEWS

Text today's Man of the Match and win a ball signed by the Luton Town squad



All you have to do is text **MOTM** followed by your favourite player's shirt number to **88080**. So if you think Darren Currie is the best player, text **MOTM 10** to **88080**

TEXT US YOUR VOTE FOR TODAY'S MAN OF THE MATCH
MAKE sure your voice is heard. We want you to tell us who you think deserves the coveted title of Luton Town Man Of The Match this evening. And one lucky fan will win a Luton Town Football signed by the entire first team squad.

Text your Man Of The Match vote to 88080

THE LTFC Man Of The Match will be announced at the game and the winner will be notified by mobile phone and text. All votes received by 9.15pm on Tuesday November 6, 2007 will be entered into a draw. Winner's name may be used in announcements and in future publicity. Standard network rates apply. Text entries cost £1 each. No correspondence will be entered into. Promoter is Luton Town Football Club.

Ladies progress in Women's FA Cup



LUTON Ladies have been drawn at home to Enfield in the Second Round of the Women's FA Cup.

That's their reward for beating Long Lane 5-1, thanks to a hat-trick from Laura Day, who was making her FA Cup debut, and strikes from Janine Daly and Cath Tomlin.

This is the third successive year that Luton have met Enfield in the FA Cup.

The game will take place at Stockwood Park Athletics Track on Sunday November 11 and all supporters are welcome to attend and cheer on our ladies team.

The game gets underway at 1pm.



Enjoy matchday hospitality for our FA Cup game against Brentford

Enjoy a special hospitality package for our FA Cup First Round match against Brentford on Saturday November 10.

Offering you the ideal opportunity to enjoy the matchday experience, for the smaller groups, incorporating all the vital ingredients to make your day even more special.

Hospitality Package:

- Reserved car parking on a 1 to 4 ratio
- Three course meal
- Half time refreshment
- Complimentary Match Programme and Team Sheet
- Sky Sports TV

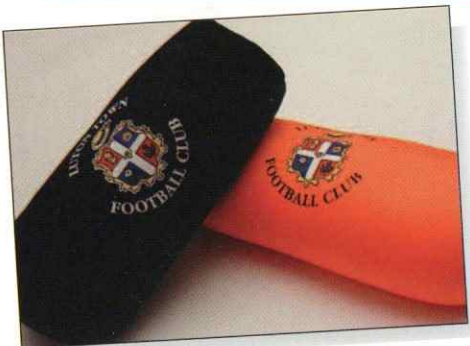
Cost based per person

£49.95

HATTERS SHOP



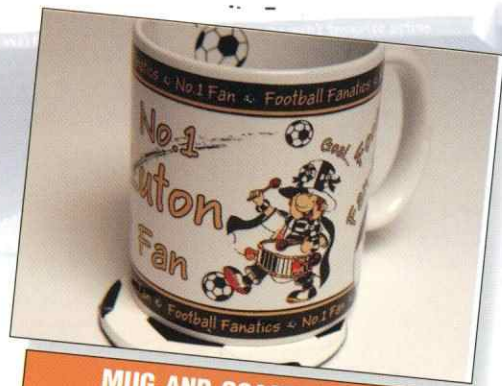
GLOVES: Kids - £6.99,
Youth - £8.99, Adults - £9.99



CUSHIONS: £7.99



CAR AIR FRESHENER: £1.75
MUG: £7.99



MUG AND COASTER: £5.49



GOALIE GLOVES: Kids - 6.99
Youth - 7.99, Adult - £8.99



SCARF: £9.99



HOODIE: S - XXL £23.99



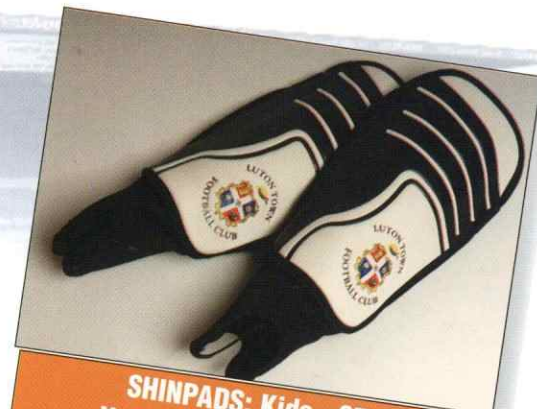
LTFC RETRO HAT: £6.99



JACKET: S-XXL: £34.99



GOLF SET: £8.99



SHINPADS: Kids - £7.99,
Youth - £8.99, Adult - £9.99



COAT: S - XXL: £34.99

OPENING HOURS

Monday - Friday: 10am - 5pm Saturday Matchdays : 9am - kick-off - reopen at half-time and at end of game
Non Saturday Matchdays : 9am - 12pm
Tel: 01582 488864

www.hattersshop.com

The Cumbrians story from 1904 Beginnings

ON Tuesday May 17, 1904, the Annual General Meeting of Shaddongate United voted by about three to one to change their name to Carlisle United. A year later, the club joined the Lancashire Combination League after offering to pay all visiting teams' expenses because of the distance. They prospered in spite of some hard times – including in 1911 when the players agreed to play for nothing to stop the club folding – and on June 4, 1928, they were elected to the Football League to replace Durham.

Top player

MALCOLM Poskett scored on his debut for Carlisle and a month later hit all four goals in a 4-1 win at home to Crystal Palace. No wonder the fans took to him. The striker, who could be explosive or subtle, went on to play 186 games for Carlisle and score 60 goals. He also helped both Brighton and Watford win promotion to the top flight.



Top manager

BOB Stokoe was manager of Carlisle three times and also acted as scout for the club he loved. In his first stint as boss, he introduced a new style of football to Brunton Park and it worked with Carlisle reaching the Semi-Finals of the League Cup, where they beat West Brom 1-0 at home before losing 4-1 in the away leg. The much-loved boss died in 2004 aged 73.



Top game

Carlisle 2-1 Plymouth
League Two: May 8, 1999

CARLISLE were bottom on the last day of the season, a point behind Scarborough and facing relegation from the Football League. They fell behind after 50 minutes while Scarborough were drawing at home to Peterborough. David Brightwell equalised but in stoppage time it was still level. Carlisle had to score. Keeper Jimmy Glass, on loan from Swindon, was the hero who did just that. Carlisle were safe.

ALTHOUGH they're probably not getting too carried away, supporters of Carlisle United are feeling that the good times could be just around the corner at Brunton Park.

After years in the doldrums, struggling at the lower end of Football League, Carlisle arrive at Kenilworth Road on the crest of a wave.

With a new manager at the helm in ex-Cheltenham boss John Ward and a strong squad at his disposal, the Cumbrians are sensing a new lease of life.

Since former boss Paul Simpson arrived at Brunton Park during the 2003-04 season, Carlisle have been moving in the right direction.

After relegation to the Conference in 2004, they bounced back to League football in style in 2005 before moving up to League One in 2006.

Now there seems a real possibility that this former top-tier club could force their way into the Championship next season.

Carlisle were promoted to the old Division One – along with the Hatters – in 1973-74 and having briefly and proudly led the Division One table the following season, they finally finished bottom and were relegated – along with the Hatters – at the end of the season.

This time around, a rejuvenated Carlisle will certainly have a strong push for promotion if Danny Graham continues his fine run of form. The former Middlesbrough man has been a real hit with the Carlisle fans, scoring 16 times since he joined the club in January.

And with Joe Garner also providing good

Head 2 Head

	Luton	Draw	Carlisle
League	8	7	5
FA Cup	0	0	0
Lge Cup	0	0	0
Total	8	7	5

Last meeting:

Jan 19, 2002: League Two: Luton 1 (Perrett 68) v Carlisle 1 (Soley 52)

Last season:

Carlisle finished eighth in League One, seven points off a Play-Off position and 21 clear of the relegation places.

Last three Carlisle games:

Oct 13, 2007: Yeovil 2-1 Carlisle (Hackney 49)

Oct 20, 2007: Carlisle 2-0 Gillingham (og 15, Hackney 54)

Oct 27, 2007: Southend 0-1 Carlisle (Garner 59)

support to the attack, Carlisle certainly have plenty of threat up front.

The Cumbrians are also strong at the back. Zigor Aranalde provides the aerial strength in the centre of defence, while goalkeeper Kieran Westwood is regarded as one of the best goalkeepers in League One, having kept more than 40 clean sheets in the past two seasons.

The backbone of Carlisle's impressive season has come at home, where impressive victories over Millwall and Oldham have shown they will be a force this season.

Even on the road, Carlisle have been impressive. A 1-0 win at Southend, a team



OUTSTANDING... Brunton Park is one of relatively few grounds left that still has some terracing

This is a tough month, but if Carlisle are still in the top six by the end of November, says Ward, then the Cumbrians can look ahead with some satisfaction

looking for an immediate return to the Championship, showed their class. Carlisle have also gained away wins over Bournemouth and Huddersfield.

But they now face one of the most challenging months of their season. After last weekend's game at home to Leeds and tonight's trip to Kenilworth Road, they face tough games against Nottingham Forest and Brighton.

Looking ahead to these games, boss Ward said: "If we are going to be tested, this is it. If we are still sat in the top six by the end of November we can look ahead and see if we can stabilise this position, but it will be a major test for us."



TESTING TIMES... manager John Ward

From searching for a pitch to Brunton Park

CARLISLE United have been at Brunton Park for all but the first six years of their history. They began playing at Millholme Bank but in bad weather often had to hunt around for a decent bit of grass to play on. From 1904-09 they played at Devonshire Park, which had a stand big enough for 800 people. Brunton Park, which now holds 16,600 fans, staged its first game in September 1909 – a 2-0 defeat to Newcastle.

Record attendance: 27,500: v Middlesbrough 07-02-1970 FA Cup R5

Highest gate receipts: £146,000: v Tottenham Hotspur 30-09-1997 FA Cup R3

Best League win: 8-0: v Hartlepool United 01-09-1928 Division 3N

Worst League loss: 1-11: v Hull City 14-01-Division 3N

Best cup win: 6-0: v Shepshed Dynamo 16-11-1996 FA Cup R1

Most caps: Eric Welsh: 4 Northern Ireland

Most League appearances: Alan Ross: 466 1963-79

Most League goals: Jimmy McConnell: 126 1928-32

Most goals in a season: Jimmy McConnell: 42 1928-29 Division 3N

Transfer fee received: £1,500,000: Matt Jansen Crystal Palace February 1999

Transfer fee paid: £140,000: Joe Garner Blackburn 10 August 2007

The fan's view



WALTER ABELSON

gives a supporter's view of Carlisle's season so far

How have Carlisle found the opening few months?

Four wins and a draw from the first five League games was more of a pleasant surprise than an expectation! All the games were close and three of those wins were 1-0, so we stayed realistic. But going all the way to Bournemouth and winning 3-1 made us think this might be a good season.

What are the club's aims for this season?

You always try to improve on last season, when we fell a bit short of the Play-Offs, so in August, the top six was our goal. Now, though, many fans are starting to think that we could even do a bit better than that.

Who was your most important close-season signing?

Danny Graham joined from Middlesbrough and Joe Garner signed from Blackburn, and between them they have 14 goals already this season, so I'd love to see them battling it out between them all the way to the end of the season in May.

Who will be your star players?

Apart from those two, the keeper Kieran Westwood is hugely important to us at the back – we've already had seven clean sheets this season – and for me Chris Lumsdon is the man who makes Carlisle tick and keeps the heart beating.

Who will win League One?

If you'd asked me at the beginning of the season, I'd have said it was between Tranmere, Luton and Nottingham Forest, but now I can't see anyone stopping Leeds. They're on such a roll that I can't see the belief being shaken whatever happens.

THE KEY MEN FOR

THE SKIPPER: 1 | PAUL THIRLWELL

SKIPPER
Paul Thirlwell is an experienced midfielder

INITIALLY joined the Cumbrians on a three-month loan from Derby County in September 2006. Thirlwell started his career at Sunderland, making 77 First Team appearances, and having a loan spell with Swindon before signing for Sheffield United in the summer of 2004. A year later, he moved to Derby where he made just 17 starting appearances. After failing to really establish himself in the Derby team, he went on loan to Carlisle. His loan spell at Brunton Park went extremely well – so well, in fact, that he signed a two-and-a-half year contract during the January 2007 transfer window. A holding midfielder, he has taken on the duty of breaking up the play and doing the hard work across the centre of the park.

KEEPERS

1 | KIERAN WESTWOOD: Joined United in the summer of 2004 after being released from Manchester City. Deservedly claimed the No 1 shirt after three very successful seasons at Brunton Park. A quick, agile keeper, he has had a big hand in more than 40 clean sheets over the course of two seasons, contributing massively to the success that his team has enjoyed.



NO 1: WESTWOOD

13: ADAM BRADLEY: Highly-rated goalkeeper, who is making his way through the ranks at Brunton Park. He has progressed through the YTS system, playing in both the Youth and Reserve teams. A capable understudy for the senior keepers, he is eagerly awaiting his chance to make his League debut. He is tipped to have a bright future in the game.

20: CHRIS HOWARTH: Goalkeeper who joined Carlisle from Bolton Wanderers initially on loan towards the end of the 2006-07 season. After impressing at Brunton Park, he made the move permanent in the summer of 2007.

TEAM SHEET

Southend 0-1 Carlisle

- 1 Kieran Westwood
 - 2 David Raven
 - 5 Danny Livesey
 - 6 Peter Murphy
 - 3 Zigor Aranalde
 - 22 Joe Anyinsah
 - 8 Chris Lumsdon
 - 4 Marc Bridge-Wilkinson
 - 18 Simon Hackney
 - 14 Joe Garner
 - 9 Danny Graham
- Subs:
- 10 Paul Arnison
(for Aranalde 78)
 - 20 Chris Howarth
 - 7 Kevin Gall
 - 10 Danny Carlton
 - 17 Neale McDermott,



TALENTED: Spanish defender Zigor Aranalde

CARLISLE



TOP SCORER: 9 DANNY GRAHAM

DANNY Graham finally signed a permanent deal with United in the summer of 2007 after a very successful loan period with the club in the previous season. He impressed Carlisle fans with seven goals in just 11 starts and has yet again been in form this season. Moving from Middlesbrough he has had previous loan spells at Darlington, Derby County, Leeds and Blackpool. A tall, strong forward, he has an eye for goal and an ability to bring others in to play, making him a real handful for opposition defenders.

HOTSHOT
Danny Graham is a favourite among Carlisle fans

THE STRIKERS

14: JOE GARNER: Signed in the summer of 2007 from Blackburn Rovers after impressing on a loan spell at Brunton Park. His signature for £140k broke United's transfer record, and he has already repaid the Club by scoring 10 times.

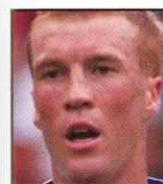


IMPRESSED: Garner

7: KEVIN GALL: Arrived in the summer of 2006 from Yeovil. Gall started his career as a trainee at Newcastle United before making a move to Bristol Rovers in 2001. He has several Welsh Under-21 caps to his name, also managing to score on his debut against Azerbaijan.

10: DANNY CARLTON: After enjoying six years of football at Morecambe, Danny moved to Carlisle in the summer of 2007.

THE MIDFIELDERS



POPULAR: Lumsdon

4 MARC BRIDGE-WILKINSON: Joined Carlisle in the summer of 2007 for his second spell at the club. He made seven appearances for the Cumbrians in March 1999, on loan from Derby, where he started his football career. After leaving the Rams, he spent four years at Port Vale then had a brief spell at Stockport County, before joining Bradford City in February 2005.

8 CHRIS LUMSDON: Started his football career at Sunderland before moving to Barnsley, where he made 75 appearances. He joined Carlisle in the summer of 2004 and has become a popular member of the Cumbrians squad.

16 JEFF SMITH: Arrived from Port Vale in the January 2007 transfer window on a two-and-a-half year contract for a £60,000 fee. Started his career with non-League Bishop Auckland before quickly being snapped up by Bolton Wanderers in 2000. Four years at the Reebok saw First Team opportunities limited, but he enjoyed fruitful loan spells with Macclesfield, Scunthorpe, Rochdale and Preston before his summer 2004 switch to the Valiants. Smith made a total of 103 appearances at Vale Park in three years, scoring seven goals.

18 SIMON HACKNEY: An energetic midfielder who signed from non-League Woodley Sport after playing as a triallist in two Carlisle reserve games and scoring in each of them.

THE DEFENDERS

2 DAVID RAVEN: Became the second summer signing of 2006, joining United from Liverpool. He made four appearances in total for the Reds, also proudly wearing the captain's armband as an England Youth International during his time at Anfield. He ended the 2005-06 season on loan at Tranmere Rovers, where he made 11 First Team appearances for the League One side.

3 ZIGOR ARANALDE: A native of the Basque region of Spain, Aranalde joined Carlisle at the start of July 2005 after four years with Walsall. A talented left-back, he was a regular in Ray Graydon's side before a spell on loan with Sheffield Wednesday.

5 DANNY LIVESEY: Joined Carlisle on Christmas Eve 2004, on a one month loan from Bolton Wanderers, and made his move permanent the following month. He made his First Team debut for Bolton, aged 17, in the FA Cup and has had loan spells with Rochdale, Notts County and Blackpool.

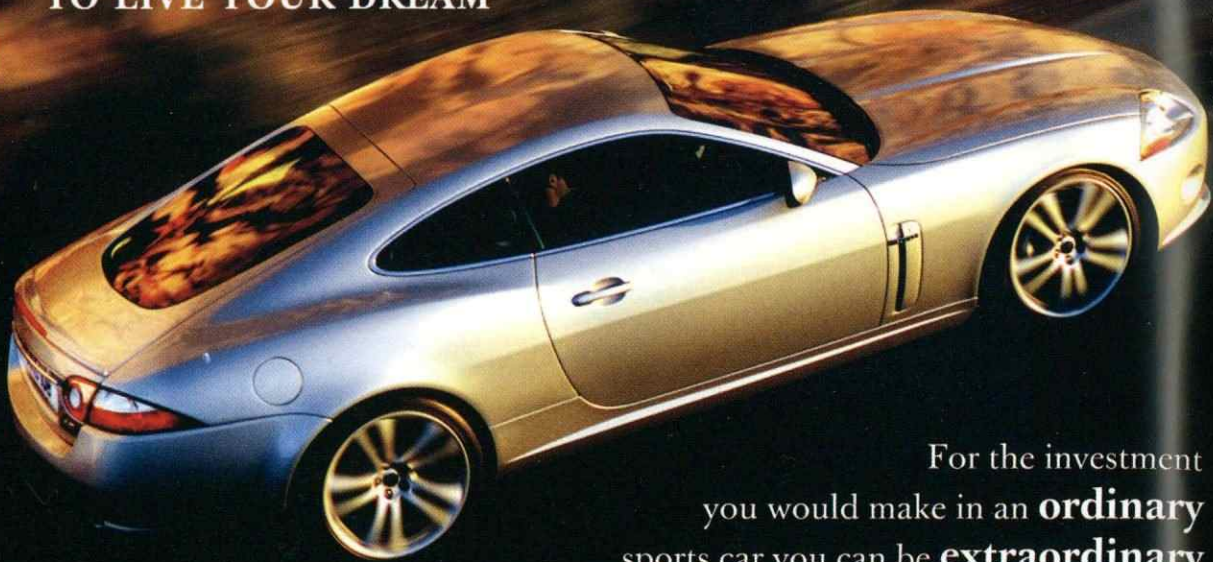
6 PETER MURPHY: Signed from Blackburn Rovers and has gone on to complete more than 250 games for the Cumbrians. Scored the winning goal in the Conference Play-Off Final at the end of the 2004-05 season that catapulted United back into the League.

16 PAUL ARNISON: Signed from Hartlepool on loan in October 2003 and made his move permanent the following February, after making the position his own in a resurgent Carlisle side.

21 HARRY WORLEY: Started his career at Stockport before moving to Chelsea. He was most recently on loan at Doncaster Rovers.

Stratstone
quality with style

IT HAS NEVER BEEN MORE JUSTIFIABLE
TO LIVE YOUR DREAM



For the investment
you would make in an **ordinary**
sports car you can be **extraordinary**

£12,500 Deposit £599 Per Month
2.5% APR Typical

If you currently own a Porsche Boxster, Mercedes-Benz SL or an Audi TT, you probably do not realise what a justifiable proposition one of the world's greatest sports car brands "Jaguar" can be.

Stratstone, **THE No.1 CHOICE** for Luxury Cars, has acquired a strictly limited number of Jaguar XK, that are being made available to owners of "ordinary sports cars".

We think you will find the proposition irresistible.
Call today on our dedicated telephone line
01582 726500.

Deposit	£12,500.00	23 Monthly Payments	£598.76
Cash Price	£60,000.00	1st Monthly Payment of	£763.76
Amount of Credit	£47,500.00	1 Final Payment of	£35,047.50
Total Charge for Credit (inc. £165.00 Acceptance Fee, £125.00 Credit Facility Fee & £10.00 Option to Purchase Fee)	£2,082.74	Balance Payable	£49,582.74
		Total Amount Payable	£62,082.74

49-57 Castle Street, Luton, Bedfordshire, LU1 3AQ. lutonjaguar@stratstone.com

►► Stratstone.com



FUEL CONSUMPTION FOR THE JAGUAR XK COUPE AND CONVERTIBLE MPG (L/100 KM), URBAN 16.5 (17.1), EXTRA URBAN 34.9 (8.1), COMBINED 25.0 (11.3), CO2 EMISSIONS 269 G/KM.

THE OFFER MAY BE VARIED OR WITHDRAWN AT ANY TIME. PRICES, OFFERS AND FINANCE TERMS ARE CORRECT AT TIME OF GOING TO PRINT AND ARE SUBJECT TO CHANGE WITHOUT PRIOR NOTICE. NOT TO BE USED IN CONJUNCTION WITH ANY OTHER OFFERS. OFFER ENDS 31ST DECEMBER 2007.

GREAT PICTURES

FLASHBACK

ROGER WASH tells the stories behind some special moments in Hatters history



CHEERS... (from left) manager David Pleat, physio John Sheridan, Kirk Stephens, Richard Money, Jake Findlay (on floor), Brian Horton, Brian Stein (at back), Clive Goodyear, Lil Fuccillo, Steve White and coach David Coates.

Soaring Hatters back in the top flight

HAPPY Hatters celebrate in style at the end of a long, hard season. After two near misses at promotion to the old Division One, Luton supporters were beginning to feel they had missed the boat as 1981-82 approached.

The feeling was compounded by the transfer of midfielder Tony Grealish to Brighton in a straight exchange for the veteran Brian Horton.

Many eyebrows were raised as most supporters thought Horton was past his best but managers know best and the new man proved an inspirational captain as he led the Hatters to three straight wins at the start of the season.

The players were then brought down to earth as Sheffield Wednesday won 3-0 at Kenilworth Road at a canter and the Hatters lost their next home game to Cardiff, but continued winning away with victories at Leicester and Orient. Home form was mercifully quick to return and Watford were on the receiving end of a 4-1 thrashing in a game that saw David Moss score the first two of 11 penalties that season.

Just as Luton seemed to have a settled

Score: Luton 4-1 Shrewsbury
Date: Saturday April 30, 1982
Place: Kenilworth Road

look, disaster struck when, in a 1-0 home win over Crystal Palace, central defender Mike Saxby turned innocuously and twisted a knee. The injury was so bad that his professional career was effectively ended.

Clive Goodyear was thrust into the First Team and after being carefully groomed by Mal Donaghy in his early games played the rest of the season as if he had been in the team for years, thus saving manager David Pleat an expensive transfer fee.

By Christmas, after a 3-1 win at Norwich when all Luton's goals came in the first 15 minutes, the team was so far ahead it was difficult to see how anyone could catch them.

But away draws and blank Saturdays through bad weather saw main challengers Watford close the gap and Easter, so often a graveyard for Luton, saw a dismal 1-1 draw at Cambridge.

Normal order was resumed, though, on Easter Monday when Norwich, who were on a long unbeaten run, did everything but score in the first half but ran out of steam after the break allowing Brian Stein and on-loan striker Billy Jennings to seal a vital win which in retrospect clinched promotion.

With five games to go the Hatters needed a home win over Shrewsbury to secure a Division One place but with the minutes ticking away and the score 1-1 it seemed as if the party would have to wait. A Ricky Hill volley eventually broke down the Shrews defence before goals from Steve White and Moss made the score unrealistic.

The thousands who swarmed across the pitch did not care that the game had not been a classic as promotion had finally been won. The championship was clinched when the Town beat QPR 3-2 in the next home game and the season finished with a trophy award ceremony before the Barnsley home game and a 3-2 win at Cardiff which sealed a record-breaking year with only four defeats along the way and a massive 88 points won.



Hatters Line-Up

4-4-1-1



Goals:
 Substitutes: Andrew (20 Furlong), Morgan (104 Currie), McVeigh (104 Edwards)
 Not used: Hutchison, Jackson

Yellow: Fojut, Perry
 Red: None

Everton Line-Up

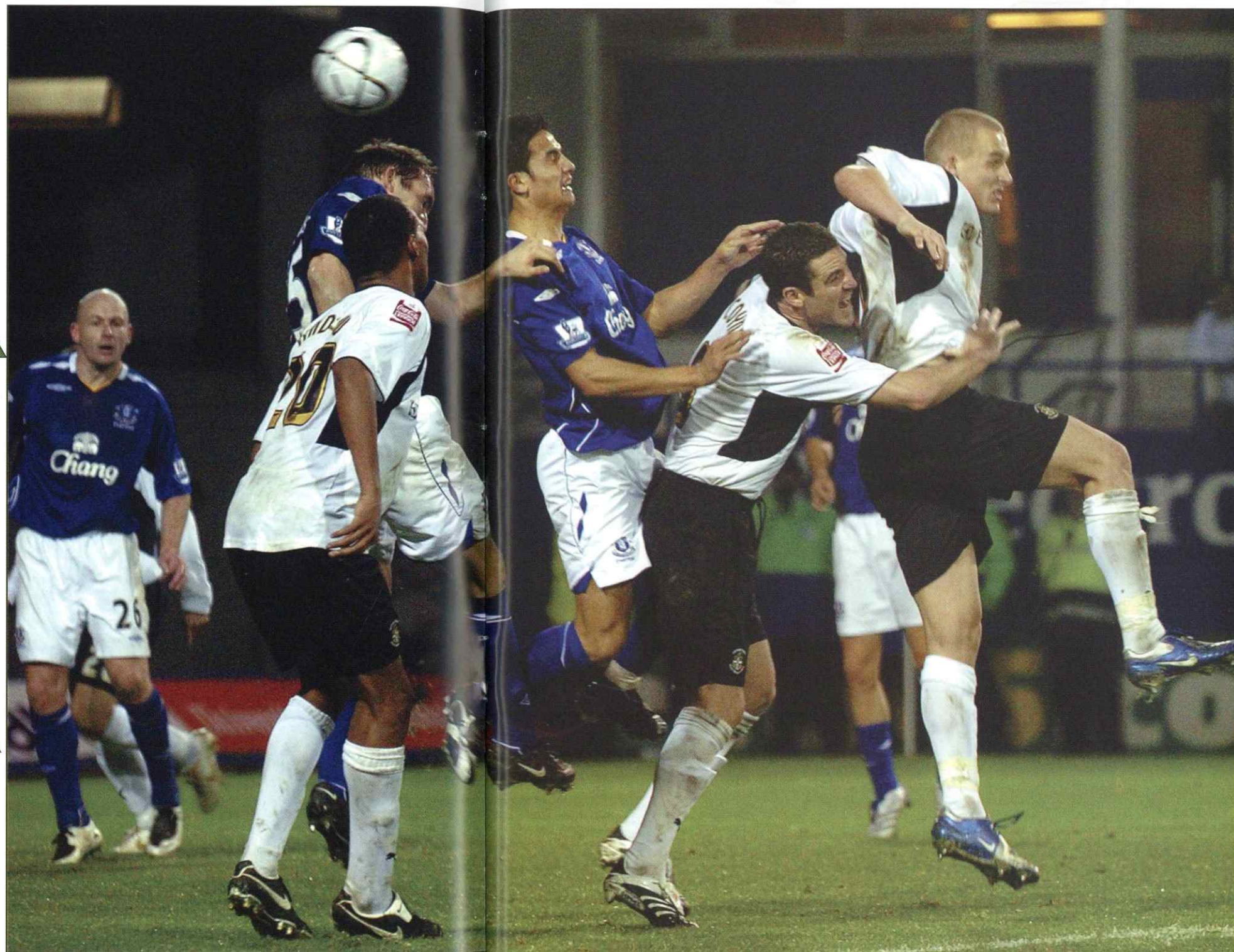
4-4-2



Goals: Cahill (101)
 Substitutes: Vaughan (71 McFadden), Cahill (78 Anichebe), Gravesen (95 Pienaar)
 Not used: Yakubu, Howard

Yellow: Cahill
 Red: None

REFEREE: Steve Tanner (Somerset)



CARLING CUP FOURTH ROUND WEDNESDAY OCTOBER 31, 2007 KENILWORTH ROAD ATT: 8,944 UP WE GO... Jaroslav Fojut wins the vital header as a packed Everton defence look to clear the danger



LEAN BACK...Luton captain, Chris Coyne, is inches away from steering Luton into the lead as he goes close from six-yards out

MANAGER'S VIEW



"WE kept in there right until the end. It just wouldn't pop in for us. You have to give the lads a lot of credit. After going behind to a Premier League side, it didn't effect them, they just kept going.

"I thought it was a fantastic game from start to finish from the boys so it's pure credit to the players.

"I thought both teams had a real go and they have had to put on their big boys at the end to rescue a situation, which I'm sure David Moyes felt could have been away from him.

"The boys kept going and when you look at losing Furlis after 20 minutes, someone who has been our talisman all season, it left us with a very young strike force.

"However, we got stronger as the game went on and stretched Everton all the way."

KEVIN BLACKWELL

LUTON gave Everton a real fright on Hallowe'en night, but despite a valiant effort from the Hatters it was the Premiership side who booked their place in the Quarter-Finals of the Carling Cup.

After a goalless 90 minutes, in which both teams had a number of great chances, it was Tim Cahill who grabbed the only goal of the game in the first half of extra time.

Luton weren't helped when Paul Furlong had to be substituted early in the first half, but despite that setback, Everton were fully tested under the lights at Kenilworth Road.

But Cahill's winner was enough to settle the tie as he popped up at the back post to steer home a Thomas Gravesen corner.

Hatters boss Kevin Blackwell went into the game keeping faith with the same team that had beaten Nottingham Forest at Kenilworth Road our days earlier.

Everton, who comfortably beat Derby 2-0 at the weekend, made six changes to their side, with James McFadden, Alan Stubbs, Phil Neville, Nuno Valente, Victor Anichebe and goalkeeper Stefan Wessels all coming in.

Luton almost made the perfect start when David Bell rifled a low free-kick from 30-yards that deflected inches wide of the Everton goal.

And even at the end of the second period of extra time, Luton kept pressing and Matthew Spring had a shot cleared off the line by Joleon Lescott in the last minutes. Close but it was just not Luton's night.



BRING IT ON... Substitute Calvin Andrew squeezes in a shot at the Everton goal inside a packed penalty area as Alan Stubbs tries to block the shot



UNDER ATTACK... Darren Currie almost beats Stefan Wessels to the ball



TAKE THAT... Paul McVeigh tries his luck at goal from distance



HEADS UP... Dave Edwards gives chase as Joleon Lescott clears the danger



Environmentally friendly units for longer life

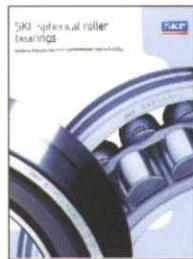


SKF Explorer sealed spherical roller bearings

Simplify maintenance and make operation safer with fewer unscheduled stops, and a radical reduction in grease usage – saving both cost and the environment.

Longer service life, safer handling, ready-to-mount, same basic load ratings as open bearings, downsizing possibilities – just some of the benefits of selecting SKF Explorer sealed spherical roller bearings.

To find out how your operational costs can be dramatically reduced contact SKF today for further information.



For a free catalogue contact SKF today.



SKF (U.K.) Limited
01582 490049
www.skf.co.uk

THE STATISTICS

SIMON'S STATS



SIMON PITTS finds some fascinating facts about today's teams

10 is the number of League meetings between the sides at Kenilworth Road. Luton have won five, with three draws and two wins for Carlisle. Luton have scored 25 and conceded 12.

7 is the most goals in this fixture when Luton won 6-1 on September 1, 1973. Luton scored all their goals in an amazing first half. Tom Finney scored twice on his first start after signing from Crusaders, with Peter Anderson also scoring a brace, and John Aston and Barry Butlin one each as Luton netted six goals in 23 minutes.

5 is the biggest margin of victory against Carlisle. As well as the 6-1 win above, Luton won 5-0 in March 1977. The visitors, who were relegated at the end of the season, were well beaten with five different players scoring. It would have been six but Paul Futcher missed a penalty. Luton were two up at half time thanks to Lil Fuccillo and Ron Futcher, with Jimmy Husband, Alan West and John Aston all scoring after the break.



SCORER... Luton's Russ Perrett

2 is the number of clean sheets kept by each side. Carlisle's only two victories at Luton came with clean sheets as they won 2-0 in 1971-72 and 1-0 next season. Luton also kept their clean sheets in consecutive seasons with a 3-0 win in 1975-76 and a 5-0 victory a year later.

1 is the number of penalties scored by Luton against Carlisle at Kenilworth Road. It was converted by Jim Ryan in September 1974, with Peter Anderson and Adrian Alston giving Luton a 3-1 win, their first of the season – after crowd favourite and top scorer Barry Butlin had been sold to Nottingham Forest on the morning of the match.

2,117 days have passed since these sides last met at Kenilworth Road. Back in January 2002 the match ended 1-1 after Russell Perrett equalised a Stephen Soley opener.

14,837 is the biggest attendance for this fixture. It came in November 1970, and what a game was. Carlisle looked set for a comfortable win as they led 3-0 with just 17 minutes remaining. Jim Ryan and Alan Slough then scored quick goals to bring Luton back into the game, before Malcolm Macdonald equalised in the 89th minute. Luton were even denied a win in the dying seconds.

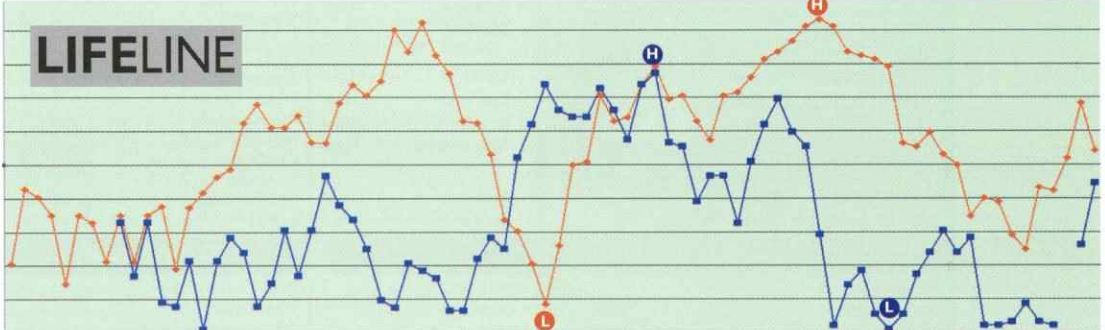
The seven each way movers

2 players moved from Carlisle to Luton. Davie Hutchison played at Kenilworth Road between 1932 and 1934, making 58 appearances and scoring 20 goals. The only other player to make this transfer was Alan McBain, who featured for the Hatters in the mid 1960s before a move to Corby Town. McBain made 60 League and six cup, appearances without scoring for Luton.

5 Luton players moved on to Carlisle. Most of these had hardly featured for the Hatters, with George Harford the only notable exception. Joe Taylor made just one appearance at the end of the 1934-35 season, with William Beck playing three games in the same season before their transfers. Hugh Mills played twice at the beginning of 1936-37 – incidentally in the absence of Joe Payne, who went on to score 55 League goals as Luton were promoted as Champions of Division 3 (South). Harford was just one appearance short of a hundred in the League, but cup appearances took his total to 107 during his five seasons at Kenilworth Road from 1929 to 1933. Jack Lornie was signed from Leicester City in 1961, and went on to play 21 times for Luton, scoring six goals, before his transfer to Carlisle two seasons later.



The Hatters have met Carlisle 20 times in all. Luton have won 8, Carlisle 5 with 7 draws



Hatters and Carlisle past

THIS week's LIFELINE shows how Luton and Carlisle's fortunes have risen and fallen over the years. Carlisle's high point was actually a relegation season when they finished bottom of Division One in 1975, their only top-flight season to date. Their low point came when they finished bottom of the old Division Four in 1991-92. Luton's low point came with a 17th place in Division Four in 1966-67 and their high a top flight 7th place in 1986-87.



IN CONTROL... Mark Farthing takes on the Orient back line



GET AWAY... Mark Farthing skips round the challenge of an Orient defender



COOL HEAD... midfielder Jamie McGuinness keeps calm under pressure



GOAL HERO... Ryan Charles, who grabbed both Luton goals, almost turns home a shot past the Leyton Orient defence in the first half

A DOUBLE from Ryan Charles in the second half helped Luton's youth triumph over Leyton Orient and saw them safely into the Second Round of the FA Youth Cup.

Luton put out a strong first team which included top goal scorer Ryan Charles, while their bench was made up of four Under-16s.

With both sides creating numerous chances in the first half it seemed unlucky that the score remained 0-0 at half-time.

However Luton took broke the deadlock and took the lead on 49 minutes when a cross from Elliott Osborne-Ricketts found Ryan Charles, who slipped the ball under the keeper from 12 yards.

But Orient were quick to retaliate and equalised in just two minutes when a cross from the left was headed past keeper Ross Faulds.

Luton scored the second and final goal after 83 minutes when a mistake from the Orient defence gave Charles the space to fire the ball home from distance to see the young Hatters safely through.

● The Hatters are back in action on November 10 when they make the short trip to Brentford. The youth will be looking to extend their unbeaten run which now stands at seven games.

COACH'S VIEW



"It was a good occasion for the lads to go and play on the pitch. It was probably one of the biggest games they've played.

"I thought we deserved it. We were the better team and obviously Ryan's come up with the goods again.

"We started the game very well. We imposed ourselves. We tried to play. I just think at times we overplayed and didn't have the cutting edge. But generally I'm pleased.

"I think our two centre-halves played very well. They imposed themselves and I think they were the catalyst of the game really. "The crowd was fantastic and we've got another home draw next in the Cup so hopefully we can get a load of people down to cheer the lads on."

CHRIS CUMMINS

Under-18 results, fixtures and table

Month	Date	Home	Score	Away	Time
August	Sat 27	Swansea (PY)	1-1	Swansea (PY)	11am
September	Sat 18	Southend	D 3-3	Southend	11am
October	Sat 6	Brentford (PY)	W 3-1	Brentford (PY)	11am
November	Fri 2	Leyton Orient (FA)	W 2-1	Leyton Orient (FA)	11am
December	Sat 1	Barnet	1-1	Barnet	11am
January	Sat 5	Wycombe	1-1	Wycombe	11am
February	Sat 9	Brighton	1-1	Brighton	11am
March	Sat 1	QPR	1-1	QPR	11am
April	Sat 5	Rushden	1-1	Rushden	11am

Appearances

Elliott Osborne-Ricketts.....	10 (1)
George Beavan.....	10
Ross Faulds.....	10
Mark Farthing.....	9 (2)
Jake Howells.....	9 (2)
Harry Hogarth.....	9 (1)
Ryan Charles.....	9
Dean Hamilton.....	8 (3)
Jamie McGuinness.....	7
Riccardo Biggi.....	6 (3)
Joe Selby.....	5 (3)
Matthew Maitland.....	5 (1)
Ashley Harrison-Barker.....	5
Richard Owusu.....	4 (1)
Loren Maxwell.....	4
Scott Sinclair.....	3 (3)

Leading scorers

Ryan Charles.....	7
Mark Farthing.....	2
Ashley Harrison-Barker.....	2
Jake Howells.....	2
Loren Maxwell.....	2
Richard Owusu.....	2
Dean Hamilton.....	1
Ben Strang.....	2
Joshua Cranwell.....	1 (2)
Aaron Fletcher.....	1 (2)
Taylor Nathaniel.....	1 (1)
Billy Greulich.....	1
Adam Watkins.....	5
Ashley Deeny.....	4

Pld	W	D	L	F	A	Pts	
Northampton	3	2	1	0	6	4	7
Brentford	3	2	1	0	5	3	7
Wycombe	3	1	2	0	8	4	5
LUTON	3	1	2	0	7	4	5
QPR	3	1	2	0	3	2	5
Brighton	2	1	1	0	7	4	4
Leyton O	3	1	1	1	5	4	4
Rushden & D	2	1	1	0	4	3	4
Gillingham	2	1	0	1	4	3	3
Colchester	3	1	0	2	4	9	3
Southend	3	0	1	2	6	12	1
Peterborough	3	0	0	3	2	5	0
Barnet	3	0	0	3	2	6	0



The Luton Town Lottery

for only £2 per week - the Luton Supporters weekly lottery gives you the chance to win a wide range of fabulous prizes and lets you help your club's youth development at the same time...



Supported by

DEBENHAMS
STYLING THE NATION

Visit Debenhams Luton where you can find everything you need for all the family from the latest fashion to great gift ideas.

Debenhams are proud to support the in2win lottery scheme, working together for the Luton community.

We are entering a new era at Luton Town Football Club and with your help we can make a real impact on the local community by giving many more young footballers the opportunity to play professional football by improving their skill levels.



The funds generated from the lottery scheme will be used to provide additional coaching staff, facilities, equipment and other requirements, enabling Luton Town FC to work more with local clubs and schools.

The lottery prizes give you the chance to be involved with your Club whilst helping us to achieve our aim, which is to make the youth policy first in class.

So please join the lottery and help us achieve our goal.

R.J. Curson - Youth Development Director



THE MORE MEMBERS THE BIGGER THE PRIZES AND THE MORE FUNDS GENERATED FOR YOUTH DEVELOPMENT, SO SIGN UP TODAY AND SUPPORT THE FUTURE OF LUTON TOWN

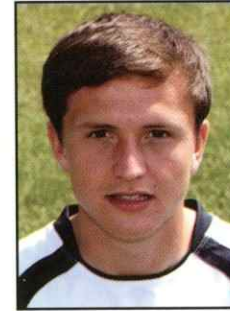
SEE THIS ADVERT IN THE NEXT PROGRAMME FOR SOME GREAT NEW PRIZES

Luton Town FC. would like to thank Debenhams Luton, for their support and sponsorship

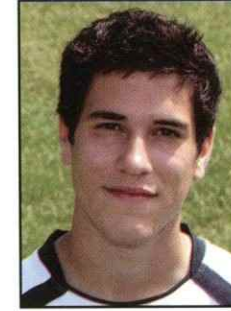
Look out for the Luton girls distributing lottery leaflets at today's game

SPONSOR OUR YOUTHS

YOUTH SPONSORSHIP



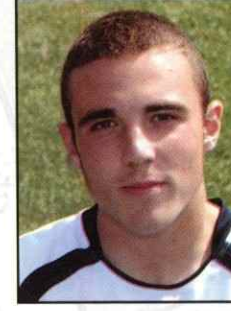
George Beavan



Riccardo Biggi



Ryan Charles
Sponsored by:
Performance Car Hire



Joshua Cranwell



Mark Farthing



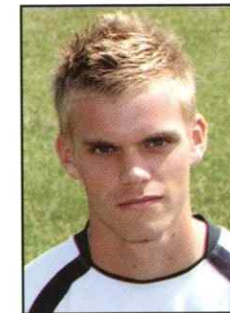
Ross Faulds



Dean Hamilton



Ashley Harrison-Barker



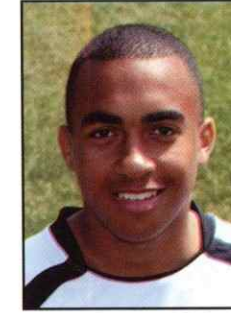
Harry Hogarth



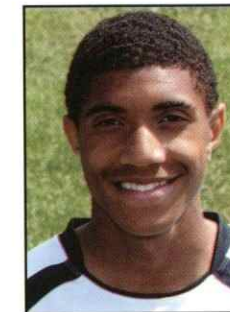
Jake Howells



Jamie McGuinness
Sponsored by:
David Wilkinson



Elliott Osborne-Ricketts



Scott Sinclair

To sponsor Luton Town's current crop of young professionals, please contact the commercial department on 01582 411622



FOOTBALL IN THE COMMUNITY

STUART SMITH gives us the latest news from the Community Department



GOOD evening and welcome to tonight's game. Today I would like to update you on the progress of the Luton Town FC Girls Centre of Excellence.

This Centre is a component of the National FA initiative that was launched in 1997 introducing its Talent Development Plan for Women's Football, as part of The FA's Charter for Quality, to provide a sound structure for the development of elite talent. An integral part of this plan is the establishment and development of girls aged 10 to 16.

The purpose of the Centres is to identify players of outstanding ability and place them in a technical and educational programme designed to produce excellence in conjunction with personal development.

The criteria for becoming a Centre of Excellence is as follows:

- A Centre Director will be appointed to oversee the programme of coaching and education.
- The Centre Director will hold The FA Advanced / 'A' Licence.
- The Centre Director must be present at all times (if this is not possible a deputy must be identified as a replacement).
- All lead coaches will have the minimum of The UEFA 'B' Coaching Qualification.
- All staff will be suitably screened and registered by The Football Association.

● All staff will be committed to a minimum of 18 hours continuing professional development per year through in-service training provided by The Football Association.

● All staff to maintain a personal portfolio of their Continuing Professional Development Plans.

● The coach / pupil ratio will be 1 : 15.

It is the responsibility of the centres of excellence to provide safe and adequate facilities.

The facilities must include the following:

- Outdoor coaching areas 60 x 40 yards
- Changing rooms / showers
- Separate medical room
- Either: floodlit outdoor area (minimum 50 x 30 yards) or indoor sports hall (minimum 50 x 30 yards)

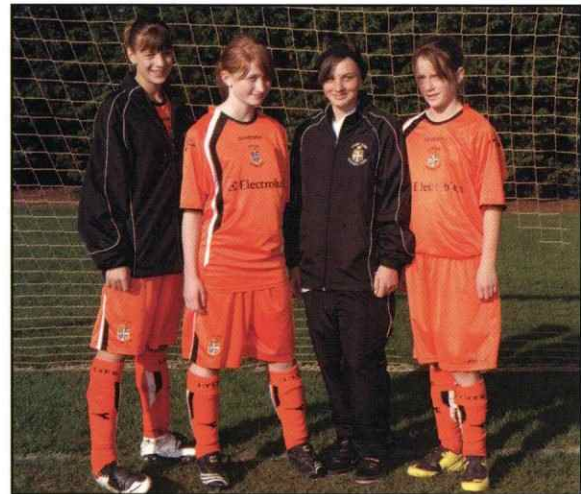
Operational Requirements

Centres of Excellence will operate for the following age groups:

- U10 (within 2 year age banding)
- U12 (within 2 year age banding)
- U14 (within 2 year age banding)
- U16 (within 2 year age banding)

Registered players must receive a minimum of 1 hour coaching a week.

Players are not permitted to travel for more than 1 hour



Charlotte Talbot, Alexia Maroudias, Kaye Henton and Stacey Hardacre were all selected for the regional training camps at Under-14 level



Lauren Bilston, Rachel Carter, Nicola Livingstone and Jessica Nash were all selected for the regional training camps at Under-16 level



Pictured clockwise from top left are the Under-10s, Under-12s, Under-14s and Under-16s Centre of Excellence Girls squads who participated in last Saturday's games with Northampton Town

from their place of residence to the Centre. A Centre must operate for a minimum of 20 weeks per year.

The Football Association will provide an outline of the required learning programme and provide the necessary support to assist clubs in the delivery of their programme.

Fixtures

To enhance the player's development, a programme of fixtures should be seen as an integral part of the child's development.

Any player registered at a Centre of Excellence must be registered with a team.

Each player will participate in a minimum of 10 and a maximum of 40 games per year (including school, club, Centre of Excellence, Representative and International matches).

Conduct

All staff, parents and players will commit themselves to and promote the Code of Conduct, as determined by The Football Association.

Our club has met all these standards and is able to offer girls football of the very highest standard, where they can develop, make mistakes and enjoy their football without the pressure from managers and coaches of having to win games of football.

This year in our first season as a part time club the girls will play eight fixtures against clubs from the Eastern region such as Norwich and Ipswich while also playing for their clubs.

Next season when all being well we are in possession of a Full Time Licence, the girls will be given the opportunity to

play for the Centre of Excellence full time and participate in a 24-game fixture list.

From this environment the girls also have the opportunity to be seen by scouts for the national teams. A new process has now been put in place for selection at national level.

The FA rightly has decided that the gap between club Football and International is too vast and therefore they will not watch players in local clubs. Now for a girl to be considered for International recognition she must be playing in a Professional Club Centre of Excellence.

Even then the gap is immense so a mechanism has been put in place to help bridge the gap between COE and national level. The FA have now set a number of Regional Coaching camps where girls can go and be coached by the Centre of Excellence Directors and FA staff. England scouts are present at these events and any girl showing the necessary ability or promise is added to the National scouting database and then watched within their COE environment.

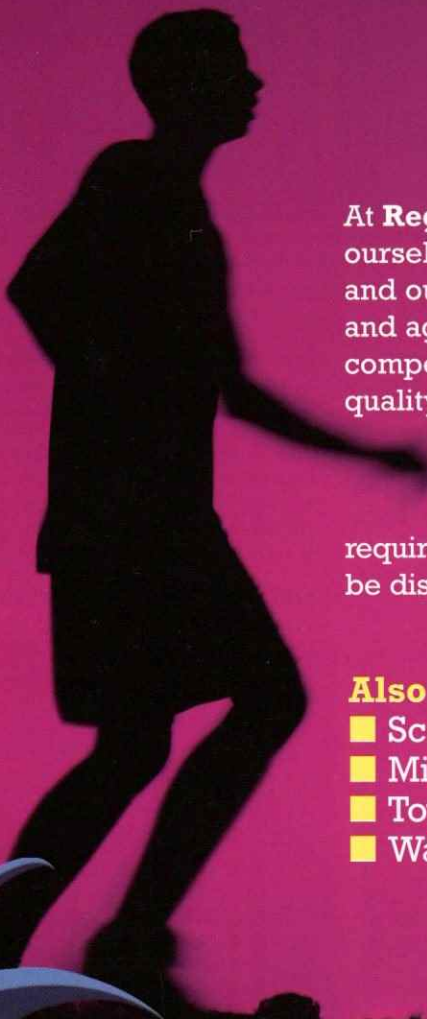
Recently four of our Under-14 squad and four of our Under-16 squad were selected to go on the first regional camp in Cambridge.

If you or a player you know fits into the Centre of Excellence age banding and are interested in being part of this exciting project next season, watch this page for future trial dates.

If you are interested in being involved this season, call me or 01582 391927 and we will send a scout to watch you to see whether you are currently of the standard required in the Centre of Excellence.

Enjoy the game,
Stuart Smith

We don't take our eye off the ball



At **Regal Litho** we pride ourselves on great teamwork and our ability to perform again and again. There's no competition when it comes to quality and customer service, that's why our clients keep coming back. So whatever your printing requirements try us out, you won't be disappointed.

- Also publishers of**
- Scale Aircraft Modelling
 - Military Modelcraft
 - Toy Soldier Collector
 - Warpaint Books Ltd

Regal Litho
 t: 01908 270400 | f: 01908 270614 |
 e: estimating@regallitho.co.uk | www.regallitho.co.uk
 Unit 3, Enigma Building, Bilton Road, Denbigh East,
 Bletchley, Bucks MK1 1HW

LUTON RESERVES

Very young Reserves side goes down with a fight at Ipswich

LUTON fielded a very young Reserves side for a match at Ipswich Town and although the youngsters gained great experience by playing on the Portman Road pitch, they went down to a 3-0 defeat.

Only four pros played – Sol Davis, Rob Sinclair, Stephen O'Leary and Calvin Andrew. The rest were youth team players.

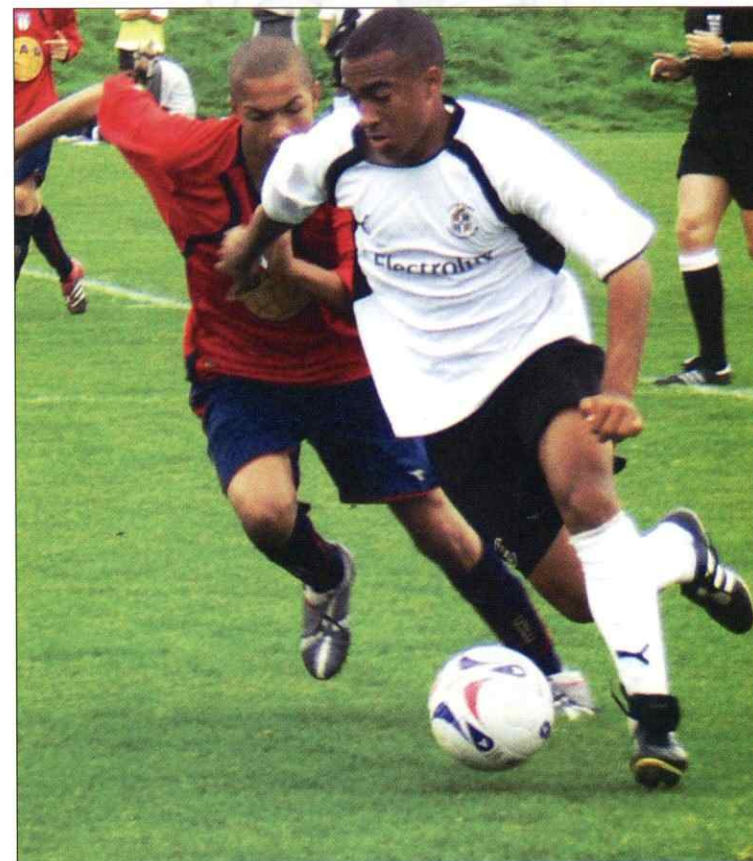
Ipswich scored early in the first half and added two more in the second, all from crosses.

Coach Dimitri Kharine, who took the team along with Youth Coach Chris Cummins, said: "We had a very young side out and we were up against a very good Ipswich team, a very good passing side who were very good technically.

"We didn't start the game well and conceded a very quick goal but after that we decided to try to keep possession and take the pressure off the boys and we created some chances. We did very well, but in



CHANCES... Luton coach Dimitri Kharine



GRUELLING... Elliott Osborne-Ricketts was one player who had two games in three days.

football if you don't take your chances, the opposition will take theirs.

"Then in the second half we hit the crossbar and Calvin Andrew had a good chance but unfortunately we didn't take them and we lost.

"But it was a very positive start from the young kids. They weren't afraid to play football. They weren't afraid to pass the ball. I was quite surprised, you know, quite surprised because they're still young and still have a lot to learn.

"I was a little bit disappointed in how we conceded the goals. Three crosses and three headers, that's how we conceded the goals.

"Twice we didn't put pressure on the ball around our 18-yard box and the third was bad marking from a corner.

"So the goals came from those simple mistakes. Any manager and any coach will forgive technical mistakes. That's what happens with young kids. They're

on a learning process right now."

It was also a test of endurance for some of the team as six of them – including midfielder Elliot-Osborne Ricketts – had played a youth team game only two days before.

"Yes, some played on Saturday and some of those players were very tired by the second half. It's a lot to ask of them.

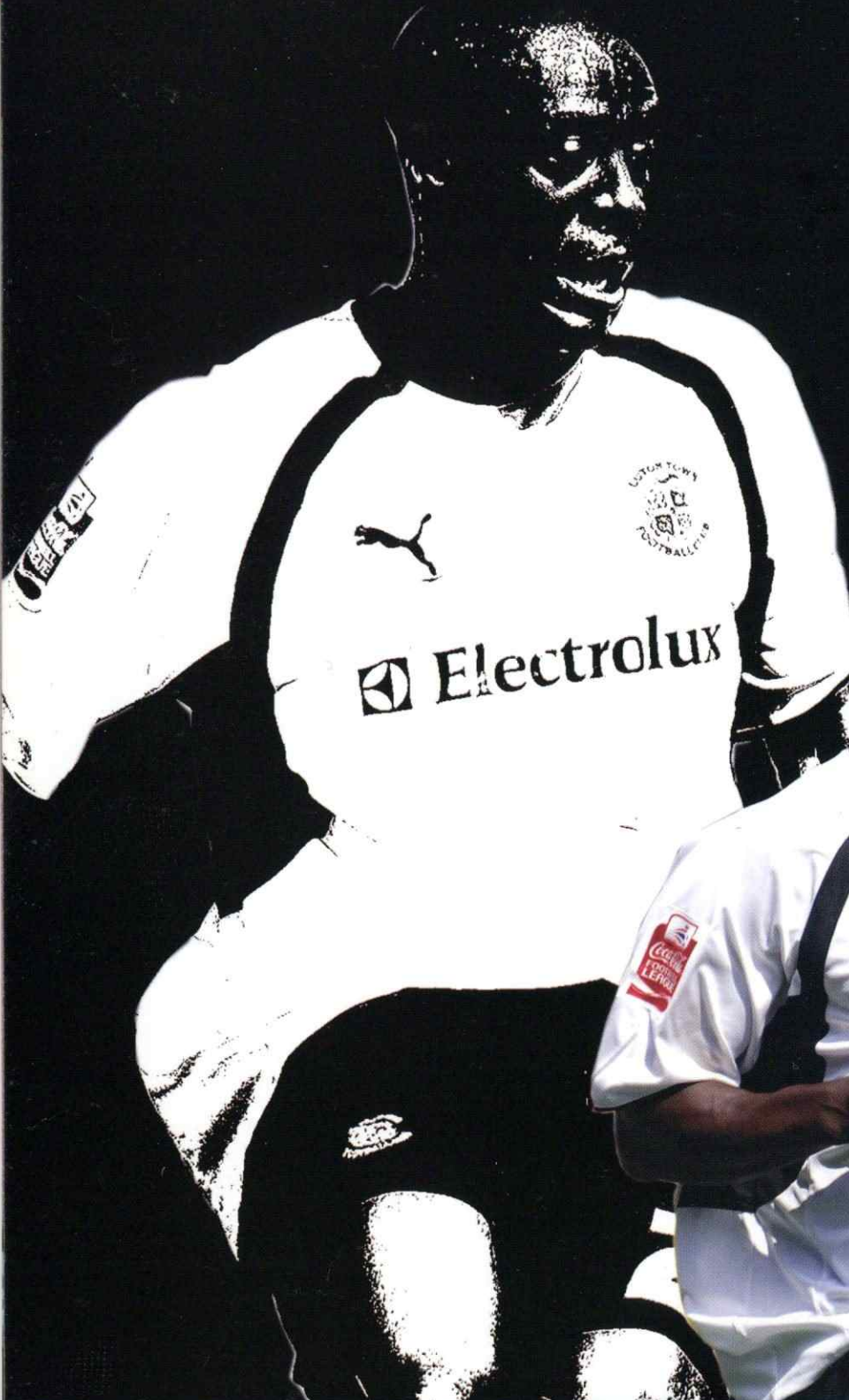
"I like Elliott as a professional. He can pass the ball. He's got good vision, but by the second half, he was very tired."

Luton Reserves: Ross Faulds, Rob Sinclair, Ed Asafu-Adjaye, George Beavan, Sol Davis, Daniel Bocande (Mark Farthing 75), Stephen O'Leary, Elliott Osborne-Ricketts (Dean Hamilton 85), Jake Howells (Scott Sinclair 65), Ryan Charles, Calvin Andrew.

Subs not used: Harry Hogarth, Riccardo Biggi.

Paul

Furlong



WHEN Paul Furlong lost his job as a van driver at the age of 22, life looked grimmer than an EastEnders script for the part-time Enfield striker.

What he didn't know in those dark days was that within one weekend he would have **TWO** League clubs trying to sign him.

And within three years his boyhood idol Glenn Hoddle would pay £2.3million to take him to Chelsea.

From oily rags to King's Road riches... it's the sort of stuff that only happens to Lottery winners.

"I used to drive a van and deliver motor parts but then I got made redundant," he recalls.

"I was talking to Peter Taylor, who went on to be England Under-21 boss. He knew Steve Perryman at Watford and he said to me: 'OK, you're not working, how about going to Watford for a week and training with them?' and I was delighted.

"I thought I did well that week. They were going away on tour for the weekend and Steve Perryman said to me on the Friday: 'When we come back on Monday I'm going to look to sign you.'

"But in between that time, Coventry manager Terry Butcher got on the phone to me and said: 'I'd like to have a word with you.'

And I went and had a word and liked what he was saying and signed for Coventry.

"So from being unemployed I suddenly had two job offers. It was fantastic. Brilliant. It was a dream come true to say the least."

And it perhaps partly explains why Paul became the perfect model pro footballer that he is today.

"I know what it's like to have to load the van up in the morning and do the hard stuff, the hard graft, you know. So to get an opportunity like I had... it was never something that I was going

to throw away easy."

And the ex-van driver learned quickly. So quickly that from Enfield to Chelsea took just three years.

"I'm a Tottenham fan at heart. I've always supported them as a boy, and to have someone like Glenn Hoddle, who was one of my idols - I used to watch him from the Paxton Road End - to have him wanting me for £2.3million was amazing. I'm very thankful for it."

It must have been enough to turn a young boy's head, though?

"I'm a pretty level-headed sort of guy and I've got decent people around me who keep it that way. So I wasn't going to let it go to my head.

"There were some very big players at Chelsea and sometimes you'd walk in and be a little bit in awe of them, but it was a question of me getting down to it. Getting there was perhaps one of the easy bits. It was staying there that was going to be the most difficult thing."

Paul suddenly found himself playing alongside some of the biggest names in football. Like Mark Hughes and Ruud Gullit for starters.

"Mark Hughes was another idol of mine. I remember being carried to Spurs and watching him play, watching the way he held the ball up - and then to play with him was another highlight of my career.

"I played a spell with Ruud Gullit at Chelsea, John Spencer... and Robert Rosario with Coventry City - all good players and people I used to watch when I was at school. So to actually play with them was a dream come true.

"You watch and you learn. You copy the way they conduct themselves and I like to think I've done that."

It was the start of a career that is still going strong nearly 600 games and 200 goals later. But even at 39, the hunger has not faded and Paul is Luton's top scorer with nine goals.

"It's really pleasing, but I just try to stay focussed and keep doing what I'm doing because there's a long time to go before the season ends."

Many thought that his role would be the one he played against Luton for QPR at the end of last season when he came off the bench and turned the game on its head, scoring and winning a penalty to give QPR a 2-1 win. Is that what Paul expected?

"Not really. I said when I came here that I didn't want to make up the numbers. I still feel that I have something to offer and I want to offer it to Luton Town. I want to be part of what is going on here."

So when he started the season on the bench, with Sam Parkin and Paul Peschisolidu up front, did that just make Paul more determined?

"Yes, I'd say so. In football, things can change very quickly. I wasn't in the team at the time and I thought that if I get my chance, I will take it. I'll grab it with both hands."

There's not an ounce of arrogance or bravado in his answer. It's just a statement of fact. And now he's grabbed it, he often finds himself at the age of 39 playing as the lone striker - one of the most gruelling jobs in football.

"It can be difficult but you need people around you and people that can support you very quickly and I think we have that. We have a lot of youth here and good youth as well, which helps me.

"I'm just enjoying it and enjoying scoring goals. I love what I'm doing and that's probably why I'm still doing it at the age I am now. The day I wake up and think that I've had enough, or I don't fancy doing what I'm doing, will be the time to quit."

Meanwhile, can Paul explain the difference in Luton's home and away form?

"It's strange. It's a real roller-coaster of a season. We feel we're a match for anybody at home. At the minute our away form is a little bit indifferent and for what reason we don't really know. But there's not too much wrong and once we get that right then we'll be away and sailing."

And the boy from Enfield who didn't make it as a van driver will be enjoying every minute of the career he thought he'd never have.

Paul Furlong

Favourite film?

Cape Fear with Robert De Niro

Favourite TV programme?

EastEnders

Your hero?

Pele

What car do you drive?

Land Rover

Where in the world would you most like to live?

Antigua

Favourite meal?

My Mum's cooking – all of it

Which CDs are in your car at the moment?

My 11-year-old boy has done me a mixed CD of R&B music

Favourite other sport?

Snooker

What would you be if you were not a footballer?

A carpenter

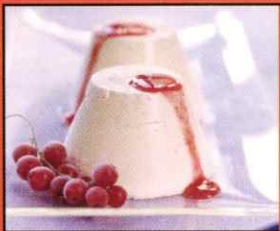
What is your most prized possession?

My health



Commercial Opportunities

Match Sponsor



Match Sponsorship at Luton Town Football Club represents the very best and the highest standards of corporate entertaining at Kenilworth Road Stadium.

This corporate package provides all of the vital ingredients necessary for the entertaining of your valued business clients, or perhaps a club or family celebration.

Your Hospitality Package includes

- Two reserved car park spaces in our Directors Car Park
- Company Logo on the front of the match programme
- Editorial write-up in the match programme

- Framed commemorative programme
- Presentation of Man of the Match award
- Plus three-course meal
- Half-time refreshments
- Matchday programme and teamsheet

Cost based on a minimum of 8 guests

£760 plus vat

Please note that additional guests can be added to the Match Sponsorship.

Matchball Sponsor



Match Ball Sponsorships at Luton Town Football Club are designed specifically for the smaller corporate group.

Our matchball sponsorship provides all of the key elements

essential to the delivering of a powerful sponsors statement.

Your Package includes

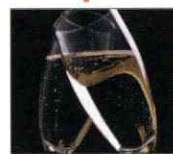
- One reserved car park spaces in our Directors Car Park
- Company Logo on the front of the match programme
- Editorial write-up in the match programme
- Presentation of the actual matchball, plus meet the players
- 3 course mean

Cost based on a minimum of 4 guests

£380 plus vat

Please note that additional guests can be added to the Matchball Sponsorship.

Corporate Hospitality



Offering you the ideal opportunity to enjoy the matchday experience, for the smaller groups, incorporating all the vital ingredients to make your

day even more special

Your Hospitality Package includes

- Reserved cap parking on a 1 to 4 ratio
- Exclusive matchday hospitality
- Three course meal
- Half-time refreshment
- Complimentary match programme and teamsheet
- Sky TV

Cost based per person

£75 plus vat



Enjoy matchday hospitality for our FA Cup game against Brentford

Enjoy a special hospitality package for our FA Cup First Round match against Brentford on Saturday November 10.

Offering you the ideal opportunity to enjoy the matchday experience, for the smaller groups, incorporating all the vital ingredients to make your day even more special.

Hospitality Package:

- Reserved car parking on a 1 to 4 ratio
- Three course meal
- Half time refreshment
- Complimentary Match Programme and Team Sheet
- Sky Sports TV

Cost based per person

£49.95



Commercial Mascot



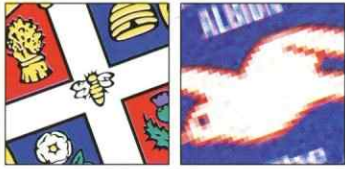
FOR a birthday, or as special gift, we have created the opportunity to let your child's dream come true, with the chance for your son or daughter to become part of a Luton Town Matchday Mascot Experience.

Package includes:

- One reserved car park space in our Directors Car Park
- Complete Luton Town Replica Kit for your chosen mascot
- Mascot to be part of pre-match warm up
- Mascot to lead out the team
- Photograph & mascot details in match programme
- Framed programme, to commemorate the day
- Plus matchday hospitality for mascot and guests

Cost based on a minimum of 4 guests

£380 plus VAT



Hatters Line-Up

4-4-1-1



Goal: Edwards (79)
 Substitutes: McVeigh (66 Bell),
 Hutchison (80 Edwards),
 Jackson (80 Andrew)
 Not used: Morgan, O'Leary

Yellow: Goodall, Robinson, Spring
 Red: Goodall

Brighton's Line-Up

4-4-2



Goals: Savage (40), Forster (69 & 85)
 Substitutes: O'Callaghan (52 Fraser)
 Forster (66 Cox)
 Not used: Sullivan, Butters, Elder

Yellow: None
 Red: None

REFEREE: Darren Deadman (Cheshunt)

BRIGHTON 3 LUTON 1



COCA-COLA LEAGUE ONE SATURDAY NOVEMBER 3, 2007 WITHEAN STADIUM ATT: 5,317 **GOING FOR GOAL...** Chris Coyne ventures forward to almost round Brighton goalkeeper Michel Kuipers in the second half



GOAL... Dave Edwards (partly hidden) guides home a header across the face of the goal from Calvin Andrew to get Luton back in the game

MANAGER'S VIEW



"THE goal was a sloppy goal three minutes before half-time. Players switched off and it was a free header – but what can you do?"

"We've had the lion's share but we came with nothing. We had to go for it and we were making the substitutions before the goal went in, so we stuck with it.

"It just shows what we are having to do putting a centre-half up front. The referee has led himself into a bad mistake with Alan Goodall's sending off. The referee was particularly poor today.

"At the moment anything that can go wrong is going wrong, especially away from home."

KEVIN BLACKWELL

LUTON'S winless run on the road showed no signs of any improvement after a miserable afternoon at Brighton's Withdean Stadium.

The Hatters once again had their chances, but their fortunes in front of goal was the difference.

A brace from Nicky Forster and a first half strike from Ben Savage maintained Brighton's impressive run of form, and kept them in touch of the Play-Off pack.

For Luton, it was another bad day at the office. They got themselves back in the game through Dave Edwards after going two goals down.

But when Alan Goodall was sent off for a second yellow card, Luton's chances of picking up a point vanished.

Brighton took the lead on 41 minutes as Luton were left sleeping at a Brighton free-kick. Tom Fraser's pinpoint ball into the area found the rising head of Savage, who guided his effort beyond the reach of Dean Brill as the ball cannoned off the inside of a post.

The home side doubled their advantage on 69 minutes when Forster scored with his first touch of the game, cutting inside the challenge of Chris Perry, to tuck a shot past the stranded Brill.

Luton were back in the game when Edwards scored from close range, as Andrew headed back across goal, but Forster restored the two goal advantage when he headed home Jake Robinson's free-kick from the foul which resulted in Goodall getting his marching orders.

BRIGHTON 3 LUTON 1



SWEEPING MOVE... Darren Currie delivers a telling pass into the Brighton penalty area as Luton mount an attack at the Withdean Stadium



BATTLE... Matthew Spring beats Dean Cox to the ball



SURGING FORWARD... David Bell breaks past the Brighton defence



TUSSELE... Calvin Andrew looks for a way past Brighton's Tommy Elphick

Calvin Andrew




Hannant Lawson



AVAILABLE

Dean Brill




N G Kirton Ltd
Tape / Joining



N G Kirton Ltd
Tape / Joining

Dave Edwards






Kelly Knight




Trust In Luton (2003) Ltd

Richard Jackson






Luton Town Ladies FC




Sally Mayne & Fred Mayne

Sam Parkin






Kevin Lennon




John Pyper, Graham Denton, Gary Rovner & David Wilkinson

Drew Talbot






Information design associates




Chris Purcell South East Security

Ed Asafu-Adjaye

AVAILABLE



AVAILABLE

Ahmet Brkovic






Pam & Derek Ludlow




AVAILABLE

Sam Ellis

Protexx Mortgage & Financial Services



AVAILABLE

Keith Keane




Trust In Luton (2003) Ltd



Maddie Knight

Chris Perry






Loyal Luton Supporters Club




FourFourTwo

Paul Underwood






AVAILABLE




AVAILABLE

Zac Barrett

AVAILABLE



AVAILABLE

John Carver






AVAILABLE




AVAILABLE

Levi Emmanuel

Matthew Crossland



AVAILABLE

Richard Langley




G.Owen Ceramic Tiling Ltd



AVAILABLE

Paul Peschisolido






Graham Bates & Chris Park




Oscar Barron

David Bell

Lynn, Ben & Rhiannon



Town on Tour

Chris Coyne




WHOSH



Emma Banks

Paul Furlong




Information design associates
Roger Davies, Carole Jinks & Sharon Skinner



Chris Purcell South East Security

Paul McVeigh






WHOSH




G.Owen Ceramic Tiling Ltd

Steve Robinson






M & S Water Services




R S Robinson Plumbing & Heating Contracts

Marlon Beresford

AVAILABLE



AVAILABLE

Chris Cummins






AVAILABLE




AVAILABLE

Alan Goodall






Andy Finch




Bobbys Travel Club

Dean Morgan

AVAILABLE



AVAILABLE

Sal Davis




AVAILABLE



AVAILABLE

Kevin Blackwell




Luton Town Supporters Club (Milton Keynes Branch)



Hitchin Hatters

Darren Currie




G.Owen Ceramic Tiling Ltd



Carole Jinks & Sharon Skinner

Don Hutchison






Andy Board Ceramic Tiling & Kelly Maintenance




Pulse Beauty

Stephen O'Leary

Brian Hall Hand Bookbinding



Miller & Company
Les & Sue Miller

Matthew Spring




TJ Fordham Plumbing & Heating



Nicola Guy



To sponsor a player this season contact the commercial department on 01582 411622

JOIN 2 DAY



Build your savings,
back your club



Now you can help support us on and off the field with the Luton Town Club Savers Account. It's the great way to save money and give something back to the Hatters at the same time. It's easy to sign up; the application only takes a few minutes.

As well as receiving an attractive interest rate, Luton Town Football Club will get a bonus each year based on the average total balance held in all the Club Savers Accounts during the previous year. **This could be up to 1.25% of this sum.**

Sign up today at

www.lutonclubsavers.com



Norwich and Peterborough
BUILDING SOCIETY

Luton Town Club Savers Account is provided by Norwich and Peterborough Building Society. Principal Office: Peterborough Business Park, Lynch Wood, Peterborough PE2 6WZ. Telephone 0845 122 2270. Authorised and regulated by the Financial Services Authority. Member of The Building Societies Association. The Society subscribes to the Banking Code. No trade mark, service mark, corporate name or other trading name of Luton Town Football Club or any of its subsidiary companies may be used by a customer without that customer first obtaining the prior written permission of Luton Town Football Club.

DREAM TEAMS

FANTASY FOOTBALL

Edwards Cechs in



DRAGON SLAYER... Luton midfielder Dave Edwards

Chelsea keeper puts Dave up to second, but Hutch extends his lead at top

CHELSEA keeper Petr Cech helped boost Dave Edwards to second place in the players' Fantasy League, overtaking his captain Chris Coyne, who drops to third after picking up only four points over the weekend.

Czech keeper Cech has kept four clean sheets, earning a massive 12 points so far for Dave's Welsh Wizards team. And his Chelsea team-mate Frank Lampard has also boosted the Welsh cause with 13 points.

But Lampard is also one of the reasons why Don Hutchison extended his lead at the top from 10 to 12 points.

Hutch also has Chelsea's Didier Drogba, whose three goals and one assist give him 11 points, plus three players on nine points in Manchester United's Cristiano Ronaldo, Sol Campbell of Portsmouth and Elano, Manchester City's Brazilian midfielder.

The top three of Hutch, Edwards and Coyne are beginning to pull away from the pack, but Luton's full-backs Alan Goodall and Richard Jackson are only just off the pace with 36 points, waiting to pounce if the leaders make any mistakes.



WELSH ON FIRE... Dave Edwards's team that rose to second place in the Fantasy League

	Manager	Goals	Assists	Pts
1 (1)	Don Hutchison (Max and Daddy)	10	11	60
2 (3)	Dave Edwards (Welsh Wizards)	8	8	48
3 (2)	Chris Coyne (Coyne's XI)	10	3	46
=4 (4)	Richard Jackson (Alfies Army)	9	4	36
=4 (6)	Alan Goodall (Two Shoes)	5	8	36
=6 (5)	Drew Talbot (Northern Monkey)	7	3	33
=6 (8)	Chris Perry (Pezzers PPlace)	6	6	33
=8 (8)	Darren Currie (Ruby's)	7	5	31
=8 (7)	Paul McVeigh (Bring Back Bring Joe)	6	7	31
10 (10)	Chris Cummins (Commo's 11)	7	6	28
11 (12)	John Carver (Geordie Boys)	6	7	22
12 (13)	Stewart Bannister (Harey + Luca XI)	3	3	18
13 (11)	Jon Edmondson (Taking It Back North)	6	0	13

● Last week's positions in brackets



Thirlwell blow for Carlisle

CARLISLE midfielder Paul Thirlwell, who has not played since mid-September, is facing a further month on the sidelines with a calf problem.

"Paul had a scan, which has shown a rupture of a muscle fibre, which wasn't what we had expected," physio Neil Dalton told the Cumbrians' website.

"It's quite bad news, as it means he'll be out for about a month.



Leeds boss hit with FA charge

LEEDS boss Dennis Wise has been given a three-match touchline ban and fined £5,000 for using abusive language towards referee Danny McDermid.

And McDermid has been charged by the Football Association after he allegedly swore at Wise.

The United manager confronted McDermid at half-time when Leeds played away against Gillingham on September

29. Wise had a previous suspended one-match touchline ban invoked and a further two-match suspension issued.

"In reaching its decision, a Regulatory Commission hearing took into account Wise's poor recent disciplinary record," the FA confirmed in a statement.

Leeds had Tresor Kandol and Jermaine Beckford sent off during the 1-1 draw, leaving Wise furious.



BAN... Denis Wise



Grecians assistant joins Lions

EXETER City have confirmed the departure of assistant manager Joe Gallen, who is set to take up a role with Millwall's academy.

The Lions are currently without a manager, but Gallen is set to be part of a new coaching set-up.

"The news that Joe was to move on came as a surprise to all of us, but that is the nature of football," Tisdale told the

Skipper Finnigan set for foot scan

CHELTENHAM club captain John Finnigan will have a scan after he picked up a foot injury on his return to training following a knee problem.

"We need to get it looked at straight away," Robins sports therapist Ian Weston told the club's website.

"I would rate him as very doubtful for the next two games."



GERMAN keeper Jonas Sela is training with Brighton in the hope of earning a contract.

BRISTOL Rovers are considering making a move to sign Hull defender Danny Coles.

WEST Bromwich Albion midfielder Ronnie Wallwork is to spend a second month on loan at Huddersfield Town.

ORIENT boss Martin Ling will not be punished by the FA after an incident during the 1-1 draw at Leeds.

NORTHAMPTON'S Giles Coke came through his first game in 10 months during a reserve game against Southend.



Cooper signs

TRANMERE have signed Cardiff winger Kevin Cooper on a month's loan.

The 32-year-old has also been given permission to play in the FA Cup First Round on November 10. "Kevin will add balance to the side," Tranmere boss Ronnie Moore told his club's website.

Bennett joins Crewe on loan

WOLVES teenager Elliott Bennett has joined League One side Crewe Alexandra on a one-month loan.

The 18-year-old winger has appeared for Wolves' First Team in games against Bradford City and Morecambe so far this season.

"We had come to an agreement with



NEW DEAL... Eardley

Eardley signs contract extension

OLDHAM defender Neal Eardley has signed a one-year extension to his contract.

The 18-year-old has been highly impressive since making his debut on the final day of the 2005-06 season.

Latics chief executive Alan Hardy said: "Neal continues to show promise and he is also now a full Wales international."



Wolves about another player, Lewis Govern," Crewe First Team coach Steve Holland told his club's website.

"But his injury was worse than first feared, so Wolves boss Mick McCarthy said he had an alternative in Elliott."

Crewe currently have a number of key players out with injuries.



HAPPY... Steve Holland

LEAGUE ONE ROUND-UP

Cherries chief gives Bond his full backing

BOURNEMOUTH chairman Jeff Mostyn has pledged his support to boss Kevin Bond, insisting he has "the full support of the board for the foreseeable future".

The Cherries are bottom of League One, and have taken just one point from their first six home games.

However, Mostyn said in a statement: "Everyone has been disappointed with the results this season, but Kevin only has 12 fit players to choose from.

"To call for him to be replaced in these circumstances is ludicrous."

Mostyn became chairman in March after the club's shareholders voted to accept a takeover bid from his consortium, which also includes vice-chairman Steve Sly.

"At the beginning of the season, it was going to be a 'work in progress' with the team," Mostyn added.

"We started with some encouraging displays, and then an injury crisis followed.

"The manager is going nowhere. I do not think any manager would take on this job at present with 12 fit players to select from, and no ability to bring in new players."



BACKING... Bournemouth have backed manager Kevin Bond



O'Driscill hails Price performance

DONCASTER boss Sean O'Driscill felt the introduction of Jason Price was the key to a 4-2 victory over Leyton Orient.

All the goals came in the second half as substitute Price inspired Rovers to victory.

"We felt we needed a bit more strength in the forward areas,"

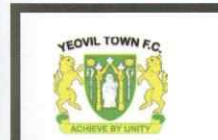
O'Driscill said. "Jason gave us that. Once you have that, it gives you a platform to go and play."

MIDFIELDER Adam Nowlan has returned to Preston after Gillingham opted not to extend his loan spell.

TEENAGE striker Eric Odhiambo has returned to Leicester following a spell on loan at Southend United.

SWANSEA City have taken Trinidad and Tobago defender Radanfah Abu Bakr on a week's trial.

ANTON Reid, 16, collapsed and died during a training session with Walsall FC. He died of natural causes, an inquest heard.



Yeovil get Cup TV date

The BBC have selected Yeovil's FA Cup first round tie against Torquay for live TV broadcast on Sunday November 11.

The game will kick off at 3.15 at Torquay's Plainmoor ground.

Paul Buckle's Gulls booked their place in the first round proper by beating Bath City 2-0 in the Fourth Qualifying Round.

Forest explain Lennon's absence

NOTTINGHAM Forest have announced that Neil Lennon has returned to Scotland for family reasons.

The former Northern Ireland international missed the draw against Oldham at the City Ground, although he

had played at Luton on October 27. However, the club have said that boss Colin Calderwood expects Lennon to return "in the near future".

Lennon has made 15 league and cup appearances since joining Forest from Celtic during the summer.



ABSENT... Lennon

Pools retire number Robins get transfer ban

HARTLEPOOL are to retire their number 25 shirt after the death of young midfielder Michael Maidens in a road accident.

All the Pools players wore his surname on the back of their shirts for the recent 2-1 defeat by Brighton.

However, the club has now confirmed plans to retire his shirt number.

SWINDON have confirmed that they have been placed under a transfer embargo by the Football League.

The action has been taken against the Robins due to unpaid football bills. It means the League One club cannot bring in any new players until outstanding bills are settled.



Quinn rules out move to Port Vale

CAMBRIDGE United boss Jimmy Quinn has insisted that he is not interested in Port Vale's managerial vacancy.

Rejecting newspaper reports to the contrary, Quinn told Cambridge's website: "I haven't applied for it. Someone's spoken to the chairman on my behalf, but I can assure Cambridge fans that I'm not going anywhere."

**LOSE THE SMOKE
KEEP THE FIRE**



**GO
SMOKE FREE
WIN CASH FOR YOUR CLUB**

**WIN UP TO £30,000 FOR YOUR CLUB AND A TRAINING SESSION
WITH YOUR TEAM. SIGN UP TO THE SMOKE FREE LEAGUE AT
WWW.KEEPTHEFIRE.CO.UK/FOOTBALL**

NICOTINELL STOP SMOKING AIDS. CONTAINS NICOTINE.
ALWAYS READ THE LABEL.
TERMS & CONDITIONS APPLY. FOR FULL DETAILS SEE
WWW.KEEPTHEFIRE.CO.UK/FOOTBALL. NO PURCHASE NECESSARY

Nicotinell



KIDS' CORNER

JUNIOR HATTERS



**Paint Happy
Harry and
win a VIP
matchday
for four
at Luton**

HAPPY Harry's thrilled to bits with all the pictures you're sending in for our great Paint Happy Harry contest – have you started yours yet? Harry wants a picture of himself for his bedroom wall but his daubs were hopeless and he much prefers the ones you do. Send us in your pictures, paintings, sketches or whatever. You can even draw them on your computer if you like. The ones Harry likes best will win a great VIP day out for four people at a Luton game – with your chance to go on a stadium tour including a peek in the players' dressing rooms. Post your entries to us at Paint Harry, Luton Town Football Club, Kenilworth Stadium, 1 Maple Road, Luton LU4 8AW. Or if you prefer, you can e-mail them to programme@luton.town.co.uk. Closing date is December 14, 2007 and winners will be announced in our programme of December 22 against Tranmere. Harry says good luck and he hopes you'll send in enough for him to be able to paper his whole bedroom!



WORK OF ART... Harry by eight-year-old Maddy Wood

**PLEASE
NOTE..**

● THERE will be no **Saturday Club** for the Brentford game on Saturday November 10 because it is an FA Cup match. They will start again for the Southend match on Saturday November 24. To book, call **01582 391929**.



HATTER-BOY... Steven Day

TODAY'S MASCOTS

Name:Steven Day
Age:Eight
Favourite Player:David Bell
School:Ashwell Primary
Hobbies:Football, PlayStation
Where do you sit?Main Enclosure
Favourite player:Dean Morgan

VISITING MASCOT

Name:Sam Clarkson
Age:13
Favourite Player:Simon Hackney



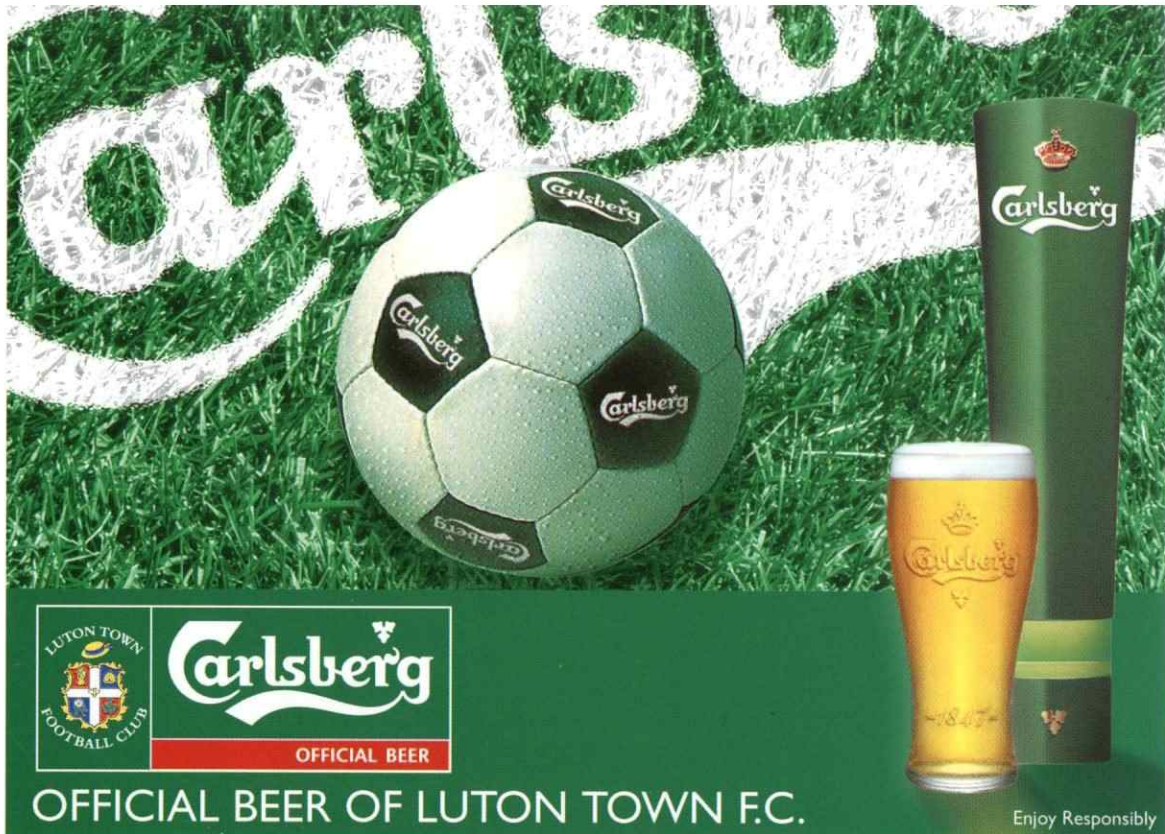
CUMBRIAN... Sam Clarkson

Our thanks to the Junior Hatters' sponsor:

CONSTRUCTION PLANT
SPECIAL ATTACHMENTS
POWER TOOLS & ACC'S
SITE ACCOMMODATION
POWERED ACCESS

GLO
Hire and Sales Ltd
www.glohire.co.uk

KENT/ESSEX	01322 866666
SURREY/SUSSEX	01323 844800
LONDON & CITY	0207 538 9586
HEATHROW & WEST	01895 234678
HERTS/BEDS/BUCKS	01582 665555



OFFICIAL BEER OF LUTON TOWN F.C.

Enjoy Responsibly

KENILWORTH SUITE MEMBERS

Connolly Homes
DBF Crosswinds Ltd
Gary & Kitty Chamberlain

Mr K Harvey
Mr R Harvey
Mr P Mitchell

Protexx Mortgage & Financial Services
Dr D Siegler
South East Security

Interested in becoming a Kenilworth Suite Member? Please contact the Commercial Department on 01582 411622

TODAY'S MATCHES

With just ten points separating **LUTON** (15th) and today's visitors **CARLISLE UNITED** (1st), the League One table remains very close.

The pick of the games this evening is at the City Ground, where **NOTTINGHAM FOREST** (4th) play their third home game on the spin against **SOUTHEND UNITED** (3rd).

Forest have been in good form at home this season, with only one defeat there from seven league games. It's that form which is likely to see them challenging for promotion this season.

But Southend have been equally good on the road. Steve Tillson's side have won four times away from Roots Hall this season, including impressive victories over **NORTHAMPTON** (12th) and **WALSALL** (13th) in recent weeks.

At the other end of the table, **BOURNEMOUTH** (21st), who moved off the bottom of the table with a 2-0 win at **BRISTOL ROVERS** (19th) on Saturday, will be hoping to capitalise on **LEEDS'** first loss of the season at the weekend.

The Elland Road club were 3-1 los-



NEW BOSS... Keith Downing is the new man in charge of Cheltenham

ers against today's visitors to Kenilworth Road, and with assistant boss Gus Poyet leaving the Club recently, could these be testing times for Leeds United?

One team who show no signs of dipping from their early season form is **LEYTON ORIENT** (2nd). They were once again winners on Saturday, beating **OLDHAM** (20th) 1-0 at Brisbane Road.

And they might be confident of extending that winning run this evening when they travel to **SWINDON TOWN** (11th), whose problems behind the scenes seem to be having a knock on effect on the pitch.

With the Club being placed under a transfer embargo by the Football League and after suffering back-to-back defeats, these seem to be a difficult period for Paul Sturrock's team.

PORT VALE (23rd), with only one league win from their last five games, go into their game with **CREWE ALEXANDRA** (16th) under new management.

The Valiants appointed former Watford and Bradford player Lee Sinnott, whose only previous experience as a manager has come at non-league Farsley Celtic.

Another team who are in desperate need of points are **CHELTHENHAM TOWN** (24th), who have also appointed a new manager after previous boss John Ward moved to Carlisle. The Robins gave the job to Keith Downing, who had been Ward's assistant at Whaddon Road since 2004.

He will be hoping to gain his first win as boss in tonight's game with **YEOVIL TOWN** (14th).

Finally, one of the most in-form teams in the division **DONCASTER ROVERS** (8th) will be hoping to extend their winning run. They have won three on the spin and tonight make the trip to struggling **GILLINGHAM** (18th), who have the second-best home form in the League and the worst away record.

FORM GUIDE

TONIGHT'S LEAGUE ONE FIXTURES

Bournemouth v Leeds
Brighton v Walsall
Cheltenham v Yeovil
Gillingham v Doncaster
Huddersfield v Hartlepool
Millwall v Swansea
Northampton v Bristol R
Nottm Forest v Southend
Port Vale v Crewe
Swindon v Leyton Orient
Tranmere v Oldham

HOME FORM TABLE

Last six League games

	W	D	L	F	A	GD	Pts
Leeds	5	1	0	11	3	8	16
Gillingham	4	2	0	11	6	5	14
Carlisle	4	1	1	11	3	8	13
LUTON	4	1	1	13	7	6	13
Doncaster	4	0	2	13	7	6	12
Southend	4	0	2	11	5	6	12
Tranmere	3	3	0	10	4	6	12
Northampton	4	0	2	10	5	5	12
Nottm Forest	3	2	1	9	3	6	11
Swindon	3	1	2	12	5	7	10
Brighton	3	1	2	10	6	4	10
Crewe	3	1	2	7	6	1	10
Leyton Orient	3	1	2	9	12	-3	10
Swansea	2	3	1	6	5	1	9
Hartlepool	2	2	2	9	7	2	8
Huddersfield	2	2	2	9	8	1	8
Walsall	2	1	3	7	8	-1	7
Millwall	2	0	4	7	8	-1	6
Port Vale	2	0	4	6	8	-2	6
Oldham	2	0	4	5	7	-2	6
Yeovil	1	2	3	4	8	-4	5
Cheltenham	0	4	2	6	10	-4	4
Bristol Rovers	0	3	3	6	12	-6	3
Bournemouth	0	2	4	4	12	-8	2

AWAY FORM TABLE

Last six League games

	W	D	L	F	A	GD	Pts
Leeds	5	1	0	10	3	7	16
Leyton Orient	4	1	1	10	7	3	13
Swansea	4	0	2	15	7	8	12
Nottm Forest	3	3	0	11	3	8	12
Tranmere	3	2	1	7	4	3	11
Walsall	3	1	2	7	6	1	10
Yeovil	3	1	2	6	5	1	10
Southend	3	1	2	9	9	0	10
Bristol Rovers	2	3	1	5	4	1	9
Carlisle	2	2	2	10	8	2	8
Bournemouth	2	1	3	8	9	-1	7
Brighton	2	1	3	4	5	-1	7
Hartlepool	2	0	3	8	8	0	6
Swindon	1	3	1	6	6	0	6
Huddersfield	2	0	4	3	12	-9	6
Oldham	1	2	2	6	7	-1	5
Doncaster	1	2	3	6	9	-3	5
Port Vale	1	1	4	4	8	-4	4
Northampton	0	3	3	7	13	-6	3
Crewe	0	3	3	5	11	-6	3
Cheltenham	1	0	5	4	11	-7	3
Millwall	0	3	3	1	9	-8	3
LUTON	0	1	5	2	9	-7	1
Gillingham	0	0	6	1	18	-17	0

Latest League One table is on Page 69

Are you getting your share?



The Football Foundation provides grants for kit, goalposts, pitches, floodlights, clubhouses, coaching and innovative projects that use football to deliver a wide range of community benefits. Since 2000, over **£500 million** worth of projects have been supported. If you are a football club, youth group, local authority, charity or a school, or have an idea for using football to tackle a local issue, contact the Football Foundation to get your share.



For more information visit
www.footballfoundation.org.uk
 or call us on 0845 345 4555



The Football Foundation: 30 Gloucester Place London W1U 8FF
 T 0845 345 4555 F 0845 345 7057 E enquiries@footballfoundation.org.uk W www.footballfoundation.org.uk
 Registered Charity Number: 107939 Registered in England and Wales. Company limited by guarantee. Company Number: 1876305

improving facilities • creating opportunities • building communities



University of Bedfordshire

www.beds.ac.uk

University of Bedfordshire Sport & PE

The University has provided high-quality PE and sport science teaching for more than 100 years, and is one of the largest providers of secondary PE teachers in the UK.

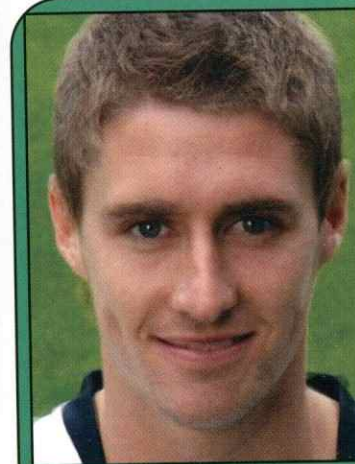
- 12th in the country for Sport courses according to the 2007 *Guardian* newspaper league table
- Brand new £8m state-of-the-art Physical Education and Sport Science Centre for use by students, elite performers, local businesses and primary Care Trusts
- Former students include Chair of UK Sport Sue Campbell, CBE, top-class long distance runner Liz Yelling and England and Saracens' flanker, Maggie Alphonsi
- We offer a wide range of sport and PE-related courses.

For more information about sport courses at the University of Bedfordshire please visit www.beds.ac.uk/sport email admissions@beds.ac.uk or call 01582 489286



FOOTBALL POSERS

LET'S GET QUIZZICAL



Two's who?

HOW well do you know your Luton stars? Through the magic of computers we have morphed two players into one, so the picture on the left is half-way between TWO Hatters favourites – but which ones? And who are the TWO players who go to make up the image on the right? It's a whole new twist to the old one-two, but will it leave you seeing double?



TWO'S THIS... Which Luton stars are these?

TWO BECOME ONE... Can you spot them?

10 to test you

- 1 WHO were the sponsors of the League Cup prior to Carling?
- 2 WHO was recently appointed manager of Norwich City?
- 3 BEFORE moving to their new home, where did Oxford United play their home games?
- 4 BARCELONA striker Samuel Eto'o is an international for which country?
- 5 WHICH country was recently named as the hosts to the 2014 FIFA World Cup?

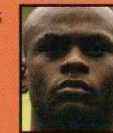


Question 4



Question 7

- 6 WHO, in May 2007, was sacked after just ten minutes of becoming manager of Torquay United?
- 7 ALEX Ferguson managed which Scottish club before taking over at Old Trafford?
- 8 MACCLESFIELD Town play their home games at which ground?
- 9 WHICH team has the smallest ground in the Football League?
- 10 READING striker Leroy Lita started his career at which club?



Question 10



Badge bodge

WE'VE got in a bit of a muddle with our soccer club badges. Which TWO badges make up each of the ones printed here?



* LETTERS PLAY *

CAN you unjumble these letters to find the name of:

- ① a Luton player,
- ② a team's nickname,
- ③ a Premiership manager,
- ④ a League One ground and
- ⑤ a Luton Town legend.

① TAKE HI KNEE

② HER PRISMS

③ A GREENER NEWS

④ PRANK TO BURN

⑤ NASTIER BIN

All answers on Page 69



**Hatters
Holidays
Just for you!**

Our world revolves around you

WIN

each and every time
you book your holiday with
Hatters Holidays
and receive a discount
simply for being a
Luton Town FC fan!



To take advantage of your holiday club call into
or phone one of our dedicated Thomas Cook stores:
George Street, Luton 0845 308 9432
Quadrant Shopping Centre, Dunstable 0845 308 9265



3 YEARS

0%

APR

TYPICAL
(minimum 30% deposit)*.

Arrange a test drive online at www.toyota.co.uk/steveneagell

STEVEN EAGELL TOYOTA (LUTON)

Latimer Road Luton LU1 3BH

Telephone: **01582 206001**

Branches also at Milton Keynes & Aylesbury

**Yaris TR 1.3 VVT-i 3 door
from £9,645.^^**

9 airbags, including driver's knee airbag
ABS with electronic brake force distribution and brake assist
Alloy wheels
Manual air conditioning
6 speaker CD audio with MP3 and WMA CD capability
Front electric windows and electric mirrors
Remote central locking

**Auris TR 1.6 VVT-i 3 door
from £12,795.^^**

9 airbags including curtain and driver's knee airbag
ABS with electronic brake force distribution and brake assist
Air conditioning
16" alloy wheels
6 speaker CD audio with MP3 and WMA CD capability
Electric windows and mirrors
Front fog lamps



Arrange a 24 hour test drive online^^ at
www.toyota.co.uk/steveneagell



TODAY TOMORROW TOYOTA

Models and specification shown Auris TR 1.6 VVT-i 3 door manual manufacturer's list price £12,795. Yaris TR 1.3 VVT-i 3 door manual manufacturer's list price £9,645. ^^ Metallic paint £350 extra. *Advised finance offer available on Yaris TR 1.3 VVT-i 3 door and Auris TR 1.6 VVT-i 3 door when ordered, registered and financed through Toyota Financial Services, on a 3 year Hire Purchase Drive Plan with minimum customer deposit of 30% between 1st October and 31st December 2007, at participating centres. Other finance offers and available but cannot be used in conjunction with this offer. Terms and conditions apply. Indemnities may be required. Yaris 1.3 TR 3 door. Cash Price £9,645. Deposit £2,893.50. Balance to finance £6,751.50. 36 monthly payments of £187.54. 0% APR. Auris TR 1.6 3 door. Cash Price £12,795. Deposit £3,898.50. Balance to finance £8,896.50. 36 monthly payments of £246.79. 0% APR. Finance subject to status to over 18s only. ^^ 24 hour test drive available on selected vehicles, for terms and conditions go to www.toyota.co.uk/24hourterms. Toyota Financial Services, Great Burgh, Burgh Heath, Epsom, Surrey, KT18 3UZ. Prices correct at time of going to press and includes VAT, delivery charge, number plates, one year's road fund licence and £50 first registration fee. Subject to availability.

Auris 1.6 VVT-i Official Fuel Consumption Figures in mpg (l/100km), Urban 31.4 (9.0), Extra Urban 47.9 (5.9), Combined 39.8 (7.1). CO2 Emissions 166 g/km. Yaris 1.3 VVT-i manual Official Fuel Consumption Figures in mpg (l/100km), Urban 39.2 (7.2), Extra Urban 53.3 (5.3), Combined 47.1 (6.0). CO2 Emissions 141 g/km.



THE A-Z OF LUTON TOWN

ROGER WASH looks at every post-war player to have appeared for THE HATTERS in the Football League

A
B
C
D
E
F
G
H
I
J
K
L
M

James (Jim) Thomas PEMBERTON

Starting out with West Brom during the war years, utility man Jim then stepped down to non-League football with Stourbridge as he could earn far more at that level and it was closer to home.

But he missed League football, and the lure of an offer from Luton Town in 1947 was too good to refuse. So began a ten-year spell at Kenilworth Road where Jim played in every position for the Hatters bar right wing and goalkeeper.

His ability to play almost anywhere meant that he could never claim a regular place in the side but he seemed to get more opportunities as the Town won promotion to the top flight in 1955.

Leaving for Kings Lynn in 1957, Jim then worked at the docks there after hanging up his boots before returning to the midlands where he lives in retirement.

Mark Anthony PEMBRIDGE

Mark was one of a procession of players who was spotted by Luton Town's South Wales scout Cyril Beach and went on to join the Hatters, signing professional forms in July 1989.

A left-sided midfielder with a vicious shot, Mark made his League debut on New Year's Day 1991 and from then on was ever present in the Town's Division One side, scoring some spectacular goals along the way.

Following relegation, a £1.25 million bid from Derby was reluctantly accepted and the Welsh international then went on to carve out a long career for himself at the Baseball Ground then Sheffield Wednesday, Benfica, Everton and, latterly, Fulham.



Russell (Russ) PERRETT

Russ started his football career with Portsmouth and was a member of Pompey's acclaimed youth side of the late 1980s but he was allowed to leave to join non-League Lymington before being given a second chance at Fratton Park which he grasped with both hands.

A tough, brave and clever central defender, Russ made his League debut in 1995-96 but moved to Cardiff four years later after becoming surplus to requirements. At Ninian Park injuries cut back his appearances and he was grateful for a fresh start with Joe Kinnear's Luton in 2001.

Although injury also curtailed his Luton career, he never gave less than 100 per cent and was the longest serving player on the Club's books by the time he signed for Bournemouth last summer.

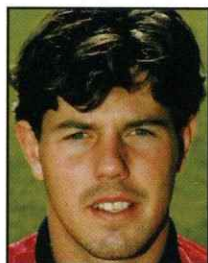


Andrew (Andy) Keith PETERSON

Australian goalkeeper Andy was so desperate to make a name for himself in the English professional game that he paid his own passage to take up a trial at Luton Town. Fortunately, his gamble paid off as he was offered a contract at Kenilworth Road in 1988 although he had to wait until the start of the 1992-93 season before making his League debut.

Impressing in pre-season with his shot-stopping ability and quick reflexes, Andy was ever present for the first 14 games but a calamitous performance during a 3-3 draw at Cambridge effectively put paid to his Luton career.

Undeterred by this rejection, Andy went to play for 14 clubs in this country in a long career before returning to Australia in 2006 where he has subsequently turned out for Newcastle and ECU Joondalup.



Edward (Ted) John PHILLIPS

Leiston-born Ted was turning out for his local side when he was plucked by Ipswich in 1953 to start a tremendous rise through the divisions with the Suffolk side.

Starting in Division Three (South), Ted scored 161 goals in 269 League starts for the Blues as they swept all before them, with the crowning pinnacle being the Division One title in 1962.

After a spell at Leyton Orient, Ted moved to Luton in February 1965 as the Hatters fought to keep out of Division Four. Although past his best, Ted showed some glimpses of his previous prowess with frightening shooting and heading power.

Having failed to save the Town from the drop, Ted finished his career with Colchester, a town where he still lives in retirement.

Z
Y
X
W
V
U
T
S
R
Q
P
O
N

Peter Stuart PHILLIPS

Peter was a successful England amateur international, combining studies at Cambridge University for an Electronics degree with playing at centre-forward for Bishops Cleeve, when he was persuaded by Luton Town to sign professional forms in 1969.

A fast and tricky forward, Peter made his League debut at Brighton in October 1969 but with Malcolm Macdonald banging in the goals for the Hatters at the time his chances were infrequent and after a loan spell at Torquay he joined Cambridge United where he was altogether more successful.

After 53 League appearances in two years at the Abbey, Peter signed on for Bedford where he took up studying again, this time to become a Chartered Accountant. Peter is now based in Finedon.



Forbes Ernest PHILLIPSON-MASTERS

Bournemouth-born Forbes joined Southampton from school as a goalkeeper but having failed to make the grade in that position was converted into a centre-half by the Saints coaching staff.

Relishing his new role as a commanding stopper, Forbes was loaned out to, among others, Luton who were in desperate need having lost Chris Turner to the lure of the USA. The impressive Forbes played the last ten games of the 1978-79 campaign and helped the Hatters to avoid the drop from Division Two.

His reward was a £50,000 move to Plymouth where he was guaranteed a First Team slot and from there he enjoyed a successful spell at Bristol City.

Forbes is now a painter and decorator in Verwood.

Courtney Leon PITT

After working his way up through the youth ranks at Chelsea alongside the likes of John Terry, quicksilver winger Courtney was offered a £200,000 move to Portsmouth in 2001 and was virtually ever-present in his first season there.

New manager Harry Redknapp brought in his own players which left Courtney sidelined, and he jumped at the chance to join Luton on loan at the start of the 2003-4 campaign.

He played reasonably well at Kenilworth Road but was not retained at the end of his loan period and instead went on to sign on for Oxford and then on to Boston United.

Courtney is now starring for Cambridge United, where he is playing as a wing-back.

David John PLEAT

Born in Nottingham, David starred for England Schoolboys before being snapped up by Nottingham Forest at 17. Sadly, his early promise did not fully materialise and he made the move to Luton in 1964.

In a poor side, Pleat was a revelation with his genuine speed and skill on the wing until injuries severely restricted his blistering pace.

After spells at Shrewsbury, Exeter and Peterborough, David moved into management with Nuneaton Borough before returning to Kenilworth Road under Harry Haslam, working his way up on the coaching side.

Suddenly catapulted into the hot seat at Luton, David justified the Board's faith by winning the championship of the old Division Two in 1982 with an attractive side but a bid from Tottenham in 1986 was too tempting to refuse and at White Hart Lane, David took Spurs to an FA Cup Final. After a spell at Leicester, David returned to Luton in 1991 and took the side to the FA Cup Semi-Finals three years later.

In recent years, David had become one of the most respected pundits on television.



Maitland (Matt) Alexander Inglis POLLOCK

Scottish Schoolboy international Matt chose Nottingham Forest from a list of suitors but in three years at the City Ground failed to make a First Team appearance. After a trial at Walsall he accepted a move to non-League Burton where he was spotted by Luton scout Paddy Sowden who had gone to watch future Hatters star Steve Buckley.

At Kenilworth Road Matt, an industrious midfielder, managed only three League starts in two years and moved on again, this time to Portsmouth where he enjoyed a long run in the side.

A spell with Queen of the South followed before he hung up his boots to concentrate on a career as a pharmaceutical buyer.



EXECUTIVE BOX HOLDERS

**Relyon Engineering
Services Ltd**
Tel: 01582 730806

**SHALLOWFORD
CONSULTING**
Tel: 01438 831013

**BILLINGTON
& LAWRENCE**
Tel: 01582 726100

Luton Building
Tel: 01582 730633

LUTON PLASTICS LTD
Plastic Extrusions & Injection Mouldings
Tel: 01582 883188

**Westacre
HOMES LTD**
Tel: 01234 764488

J.J. KELLY & SONS LTD
Tel: 01582 455406

CME Heating Ltd
COMMERCIAL & RESIDENTIAL HEATING & INSTALLATION SERVICES
Tel: 01582 618288

**Genesis
Homes**
Tel: 01280 821300

Electrolux
Tel: 01582 491234

**For further details
regarding executive
box packages and
all commercial
enquiries, please
contact the
department on
**01582
411622****

Admiral
GROUP OF COMPANIES
Tel: 01582 653333

N&J CREMIN (contracting) Ltd
Brickwork & Scaffolding
Contractors
Tel: 01582 865855

Mr Mick Connolly

VAUXHALL
Tel: 01582 721122

**G.P. Quorenton
(Ductwork)**
Tel: 01582 882561

**Sundon
Dry Lining Ltd.**
Plastering, Screeding & Partition Contractors
Tel: 01582 583220

SKF
Tel: 01582 490049

Ray Williams



Bargod (Electrical) Ltd.
and N.E.D.
01234 845930

Butterfields
01582 491100

T&S Plumbing & Heating
Tel: 01234 740883

Wishing all the team and supporters a successful 2007/2008 season!...



Supporting our local team!

Drylining - Rendering - Partitioning - Suspended Ceilings - Screeding

t. 01582 722060 f. 01582 722040 e. info@macsplasterboards.co.uk

www.macsplasterboards.co.uk



*Taking care of
your business...*

t. 0845 6060 426
f. 0845 6060 425
e. info@markersupplies.com

Here's to a successful 07/08 season for Luton Town FC!

Marker Supplies Limited provide high quality safety apparel, corporate clothing and other safety related equipment to the UK. For further information on our products and services please call us on **0845 6060 426** or visit:

www.markersupplies.com

LONDON'S HIGH-STYLE HAS NOW ARRIVED IN LUTON



FEATURES AT A GLANCE:

- 10,000² ft of adaptable space for up to 850 people
- Brides room with salon facilities
- Exclusive Lounge Bar and private roof terrace
- Two additional large bars with late licenses
- Free 24-hour secure parking for 230 cars
- Very easy access by car, plane or train



- Latest AV equipment plus wireless broadband
- State-of-the-art lighting to match your colour scheme
- Fully air conditioned
- Large screens for live coverage of events
- Beneficial rates with hotels and suppliers
- Full disabled access and facilities

HOST YOUR CHRISTMAS PARTY / BUSINESS EVENT AT THE AUCTION HOUSE



With its sophisticated contemporary feel, the Auction House creates a warm, welcoming and professional atmosphere that is perfect for your business event. The purpose-designed, stylish surroundings can be easily adapted to suit your brand and needs, so that your delegates or attendees will experience just the right corporate environment for your organisation.

Call 01582 732 655 The Auction House Crescent Road Luton LU2 0AH www.theauctionhouse.uk.com

GIRL TALK

LUTON LADIES

DAVE BAKER reports on the latest action from the Luton Town Ladies



ALL SMILES... Luton Ladies players Micky Taylor, Nikki Baker, Nikki Duncan, Kaylee Owen and Laura Day get to grips with the Women's FA Cup

Luton Ladies make it through to the next round of the FA Cup

HAVING got their hands on the FA Womens Cup the Ladies took the first steps towards the May final at the City Ground, Nottingham in far less appealing surroundings in south London against Long Lane. The hosts are a level below us but with home advantage a test of character was certain and the ladies came through with flying colours.

Luton took the lead after 28 minutes through Laura Day who was making her FA Cup debut. She latched onto a through ball before outpacing the home defence and producing a cool finish.

As the physical battle intensified, Luton began to show their class and extended their lead when skipper Janine Daly volleyed in at the near post after an exchange of passes with Micky Taylor.

Minutes later it was 3-0 when Cath Tomlin produced a trademark free kick. Laura Day then completed her hat-trick with two well-placed finishes after good work by Janine Daly.

The Second Round draw disappointingly pairs Luton with Enfield Town for the third successive year and we hope that this year we will prevail after feeling very hard done by last year having led 1-0 two

minutes into injury time. The tie kicks off at 1pm at Stockwood Park Athletics Track on November 11 and all supporters are welcome.

At Under-15 level we remain unbeaten as the girls went some way to avenging last season's cup final defeat to Tottenham Hotspur. Few sides have won at Spurs over the years but Leah Maddix gave Luton an early lead before the match swung back in the home side's favour. Town kept plugging away and were rewarded when Stephanie Anes produced two late goals to round off a fine 3-2 away win.

The Under 14's can consider themselves unlucky not to have collected two major scalps in the last week with two score draws against QPR and Birmingham City.

QPR are the reigning league champions but were fortunate to escape with a point in a 1-1 draw with Maisie Wyatt the

Town's scorer. The half term break allowed the squad to host Premier League Birmingham City's crop of Under-14s although they were also reinforced by four Under-16s in this floodlit encounter. Luton produced some excellent passing football and thoroughly deserved their lead when Holly Sheridan sprinted clear to finish with a low shot into the corner.

A defensive error allowed City to equalise and a second goal midway through the second half looked like it was going to be enough for the visitors.

A late Town rally brought a much deserved leveller with a rasping right foot volley from 15 yards by Maisie Wyatt. This was the latest in a series of testing fixtures against high grade opposition which will hopefully prepare the girls for promising futures in senior football with our ladies.



The Official Energy Partner of The Football League.

E.ON, the energy behind Powergen, is proud to partner the world's oldest league football competition.

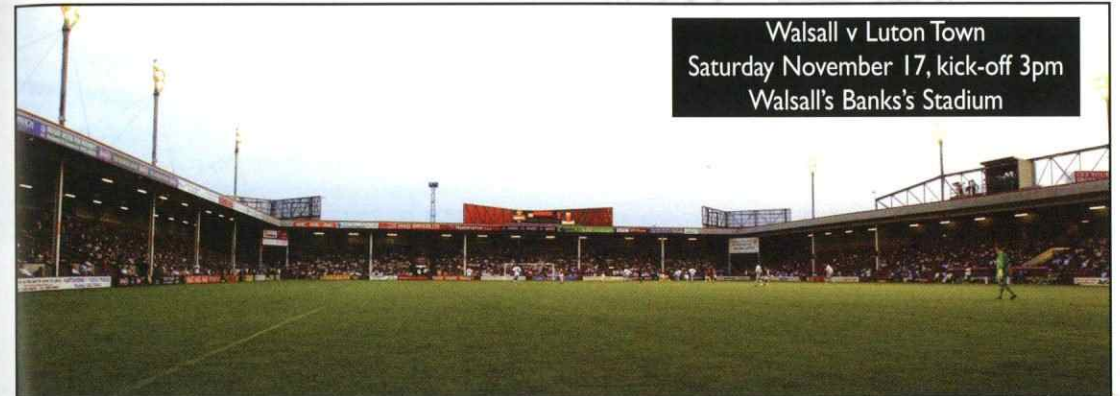


e-on

LUTON TRAVEL

ON THE ROAD

Walsall v Luton Town
Saturday November 17, kick-off 3pm
Walsall's Banks's Stadium



Address: Banks's Stadium, Bescot Crescent, Walsall, WS1 4SA

Road: Leave the M6 at Junction 9 and take the A461 towards Walsall. Bear right on to the A4148 and turn right at the second set of traffic lights.

Parking: There is a good sized car park located at the ground (cost £3) and behind the away stand.

Pubs: The King George V in Wallowes

Lane is about a ten minute walk away from the stadium, opposite the Morrisons Supermarket. If you are walking from the stadium, go out of the lane turn left onto the main road and the pub is just setback on the left.

Town on Tour will leave Maple Road at 11:15am and stop at Milton Keynes Coachway half an hour later. Prices:

LTSC members £15, concessions £13, non-members £17. Book at the supporters kiosk, phone 07960 56746 or book online by visiting the Fans section of www.lutontown.co.uk or at www.lutontownsc.co.uk

The Bobbers Travel Club will leave Cranfield at 10:30am and Luton at 11:30am. Cost is £15 adults and £12 child and OAP. Book at the Bobbers Travel Kiosk at the back of the Kenilworth Road stand or, phone 01234 856542.

Oldham Athletic v Luton Town
Tuesday December 4, kick-off 7.45pm
Oldham's Boundary Park



Address: Boundary Park, Oldham, OL1 2PA

Road: M1 north, M6 to Junction 21A, M62 towards Manchester. Exit at Junction 12 to the M60 towards Leeds. Exit at Junction 20 onto A627(M) following the signs for Royton (A663). At the top of the slip road is a large roundabout with a McDonald's and a KFC. Turn left here onto the A663 towards Royton. You will be able to see Boundary Park on your right.

Parking: Take the right hand turn into

Hilbre Avenue, which will take you up to the large Club car park. Price: cars £2, mini buses £5, coaches £10.

Pubs: The Clayton Green is 200 yards from the corner of the main stand and the Chaddy End. The Old Grey Mare on Rochdale Road is worth a visit. If you walk to the top of Sheepfoot Lane and turn left at the newspaper shop, the pub is about 100 yards down the road on the right.

Town on Tour will leave Maple Road at 2.30pm and stop at Milton Keynes

Coachway half an hour later. Prices: LTSC members £20, concessions £18, non-members £22. Book at the supporters kiosk, phone 07960 56746 or book online by visiting the Fans section of www.lutontown.co.uk or at www.lutontownsc.co.uk

The Bobbers Travel Club will leave Cranfield at 1:30pm and Luton at 2:30pm. Cost is £19 adults and £15 child and OAP. Book at the Bobbers Travel Kiosk at the back of the Kenilworth Road stand or, phone 01234 856542.



LUTON TOWN v BRENTFORD

Saturday November 10, 2007 FA Cup Round One 3pm

Tickets are now on general sale. Season Ticket holder seats will be reserved until close of business on Tuesday November 6, 2007. Season Ticket holders who completed the Cup Authorisation Form need do nothing – their tickets will be posted automatically.

TICKET PRICES: There are **SPECIAL PRICE REDUCTIONS** in all areas for this game and further reductions for Season Ticket holders, and **ALL** children's tickets are £5.

	Reduced Price	Season Ticket Holder Price	Normal Match Price
Main Stand A-E	£18*	£14*	£26*
Main Stand F	£14.50*	£12*	£21.50*
Main Stand G (Restricted View)	£10.50*	£8.50*	£15*
Main Stand Enclosure C-G	£14.50*	£12*	£21.50*
Restricted View Blocks A B H J	£10.50*	£8.50*	£15*
Kenilworth Upper & Lower Tier	£14.50*	£12	£21.50**
Family Ticket			
Min 1 adult & 1 junior (same family)			
Adult	£10*	£10*	£17.50*
Under 16	£5	£5	£8
Family Stand			
Minimum 1 adult & 1 junior (same family)			
Adult	£10*	£10*	£17.50*
Under 16	£5	£5	£8

* PLEASE NOTE: These prices quoted are for adults. Concessions have similar reductions. See www.lutontown.co.uk for full details.

WALSALL v LUTON TOWN

Saturday November 17, 2007 League One 3pm

Tickets will be on sale on the day at Walsall, but all prices will rise by £2. Tickets are now on general sale from the Ticket Office and will remain on sale until Friday November 16 at 12 noon.

ALLOCATION: Initial allocation of 500 seats. (Allocation available: 3,000)

PRICES: Adults - £17, Seniors (over 60) - £11, Juniors (under 18) - £11, Wheelchair Disabled tickets (with a Carer free of charge) - £17

LUTON TOWN v SOUTHCEND UNITED

Saturday November 24, 2007 League One 3pm

Tickets are now on sale at normal pre-matchday prices. Please note there is a £2 price increase for tickets bought on the day of the game

TICKET OFFICE OPENING HOURS

Monday-Friday 10am - 5pm
 Home Matchday Saturday 9am - 3pm
 plus after the game

Friday before a home match 10am - 6pm
 Non home matchday Saturday 9am - 12pm

OLDHAM ATHLETIC v LUTON TOWN

Tuesday December 4, 2007 League One 7.45pm

Tickets will be on sale on the night at Oldham, but all prices will rise by £2. Tickets are now on general sale from the Ticket Office and will remain on sale until Monday December 3 at 5pm.

ALLOCATION: Initial allocation of 500 seats. (Allocation available: 2,985)

PRICES: Adults - £18, Seniors (over 65) - £9, Juniors (under 16) - £9, Juniors (under 12) - £3, Wheelchair Disabled tickets (with a Carer free of charge) - £18

LUTON TOWN v MILLWALL

Saturday December 8, 2007 League One 3pm

This is an ALL TICKET GAME for all supporters. Tickets will not be available on the day of the game. Tickets are now on sale at normal pre-matchday prices.

LUTON TOWN v TRANMERE ROVERS

Saturday December 22, 2007 League One 3pm

Tickets are now on sale at normal pre-matchday prices. Please note there is a £2 price increase for tickets bought on the day of the game

GET DOOR-TO-DOOR DIRECTIONS

NEVER get lost going to an away game again... you can get door-to-door directions for any match from your house to the stadium on the Official Luton Website.

Click on the **Match** tab at the top of the Home Page, choose **Route Planner** from the drop-down menu and follow our 1-2-3 guide.

Another great idea at www.lutontown.co.uk

- For more travel news, including away teams' postcodes, see Page 65.

- 1 Just type your own postcode into the **From** box, and the away team's postcode into the **To** box. Choose the date and time you will be leaving, then tick the **Car Route** box and click **Go**.
- 2 You are shown an overview of the journey, including how long it will take. Click **Details** at the top and you get full directions from your house to the away ground (or anywhere else you choose).
- 3 Click **Maps** at the top and you get a map of your trip showing where traffic may be heavy. You can zoom in to different parts, print the map and directions and you're on your way.

LATEST COCA-COLA LEAGUE ONE TABLE

	HOME					AWAY					Gd	Pts	
	P	W	D	L	F A	W	D	L	F A				
Carlisle	14	5	1	12	3	3	2	2	11	8	+12	27	
Leyton Orient	14	4	1	2	10	12	4	1	2	12	11	-1	26
Southend	14	4	0	3	12	7	4	1	2	10	9	+6	25
Nottm Forest	14	3	3	1	9	3	3	3	1	12	5	+13	24
Swansea City	13	2	3	1	6	5	5	0	2	17	8	+10	24
Tranmere	14	3	3	1	11	6	3	2	2	7	6	+6	23
Brighton	14	4	1	2	12	7	3	1	3	6	6	+5	23
Doncaster	14	4	1	2	13	7	2	2	3	8	10	+4	21
Leeds United	14	6	1	0	15	4	5	1	1	11	6	+16	20
Hartlepool	13	3	2	2	11	8	3	0	3	9	8	+4	20
Swindon Town	13	4	1	2	14	6	1	3	2	7	8	+7	19
Northampton	14	4	1	2	11	6	1	3	3	8	13	0	19
Walsall	14	2	2	3	8	9	3	2	2	8	7	0	19
Yeovil Town	14	2	2	3	5	8	3	1	3	6	7	-4	18
Luton Town	14	5	1	1	15	8	0	1	6	3	12	-2	17
Crewe	14	4	1	2	9	7	0	4	3	7	13	-4	17
Huddersfield	14	3	2	2	10	8	2	0	5	3	15	-10	17
Gillingham	14	4	2	1	11	8	0	1	6	2	19	-14	15
Bristol Rovers	14	0	4	3	7	13	2	3	2	7	7	-6	13
Oldham	13	2	0	4	5	7	1	3	3	6	8	-4	12
Bournemouth	14	0	2	5	4	13	3	1	3	10	9	-8	12
Millwall	14	3	0	4	8	8	0	3	4	3	13	-10	12
Port Vale	14	2	1	4	7	9	1	1	5	5	11	-8	11
Cheltenham	14	1	4	2	7	10	1	0	6	4	13	-12	10

*Leeds deducted 15 points

2007-08 APPEARANCES

	This Season				Luton Career			
	LEAGUE	CUPS	TOTAL	DISCIPLINARY	APPEARANCES	GOALS		
Ben ALNWICK	4	0	0	4	0	0	4	0
Calvin ANDREW	4(4)	0	2(2)	6(6)	0	1	0	30
David BELL	11	3	4	14	4	3	0	63
Dean BRILL	5	0	5	10	0	0	0	35
Ahmet BRKOVIC	0(1)	0	1(2)	1(3)	0	1	0	223
Chris COYNE	11	0	3	0	14	0	1	242
Darren CURRIE	11(2)	2	1(1)	12(3)	1	2	0	15
Sol DAVIS	0	0	0	0	0	0	0	184
Dave EDWARDS	10(1)	2	3	13(1)	2	0	0	14
Lewis EMANUEL	0	0	2	0	2	0	0	44
Jaroslav FOJUT	7(1)	0	4	0	11(1)	0	0	12
David FORDE	5	0	1	0	6	0	0	6
Paul FURLONG	12	5	4(1)	4	16(1)	9	3	17
Alan GOODALL	14	1	4	0	18	1	2	18
Don HUTCHISON	2(4)	0	3	1	5(4)	0	0	9
Richard JACKSON	9(2)	0	4	0	14(2)	0	0	16
Keith KEANE	1	0	2(1)	0	2(1)	0	0	75
Richard LANGLEY	0	0	0	0	0	0	0	33
Paul McVEIGH	1(7)	0	2(4)	0	3(11)	0	0	14
Dean MORGAN	3(4)	0	3(2)	0	6(6)	0	1	82
Stephen O'LEARY	0	0	0(1)	0	1	0	0	39
Sam PARKIN	0(1)	0	1	0	1(1)	0	0	10
Chris PERRY	14	1	5	0	19	1	2	19
Paul PESCHISOLDO	2(2)	0	1	1	3(2)	0	0	5
Steve ROBINSON	10(1)	0	4	1	14(1)	1	2	192
Matthew SPRING	14	4	5	3	19	7	1	322
Drew TALBOT	4(3)	0	2(3)	2	6(6)	1	0	28
Paul UNDERWOOD	0	0	0	0	0	0	0	72

Date	Opponent	Venue	Score	Att	Away	Pos
Sat Aug 11	HARTLEPOOL UNITED H		2-1	8,013	608	3
Tue Aug 14	Dagenham & Redbridge (CCI) A		2-1	1,754	397	-
Sat Aug 18	Swindon Town A		1-2	7,520	1,013	10
Sat Aug 25	GILLINGHAM H		3-1	6,178	508	4
Tues Aug 28	SUNDERLAND (CC2) H		3-0	4,401	787	-
Sat Sept 1	Leeds United A		0-1	26,856	tbc	7
Tues Sept 4	NORTHAMPTON (JPT1) H		2-0	2,532	373	-
Sat Sept 8	BRISTOL ROVERS H		1-2	6,131	564	11
Fri Sept 14	Tranmere Rovers A		1-2	6,525	252	17
Sat Sept 22	PORT VALE H		2-1	6,084	138	13
Tues Sept 25	CHARLTON ATH (CC3) H		3-1(aet)	4,534	776	-
Sat Sept 29	Huddersfield Town A		0-2	9,028	543	16
Tue Oct 2	Yeovil Town A		0-0	4,848	tbc	17
Sat Oct 6	DONCASTER ROVERS H		1-1	6,513	472	17
Tue Oct 9	Gillingham (JPT2) A		3-4	1,417	101	-
Mon Oct 15	NORTHAMPTON TOWN H		4-1	5,881	420	14
Sat Oct 20	Crewe Alexandra A		0-2	4,490	435	15
Sat Oct 27	NOTTINGHAM FOREST H		2-1	8,524	1,800	13
Wed Oct 31	EVERTON (CC4) H		0-1(aet)	8,944	1,777	-
Sat Nov 3	Brighton A		1-3	5,317	tbc	15
Tue Nov 6	CARLISLE UNITED H		19-45			
Sat Nov 10	BRENTFORD: FA Cup 1 H		15:00			
Sat Nov 17	Walsall A		15:00			
Sat Nov 24	SOUTHEND UNITED H		15:00			
Sat Dec 1	FA Cup 2					
Tue Dec 4	Oldham Athletic A		19:45			
Sat Dec 8	MILLWALL H		15:00			
Fri Dec 14	Cheltenham Town A		19:45			
Sat Dec 22	TRANMERE ROVERS H		15:00			
Wed Dec 26	Bristol Rovers A		15:00			
Sat Dec 29	Port Vale A		15:00			
Tue Jan 1	YEOVIL TOWN H		15:00			
Sat Jan 5	AFC Bournemouth A		15:00			
Sat Jan 12	SWANSEA CITY H		15:00			
Sat Jan 19	Leyton Orient A		15:00			
Sat Jan 26	LEEDS UNITED H		15:00			
Tue Jan 29	SWINDON TOWN H		19:45			
Sat Feb 2	Hartlepool United A		15:00			
Sat Feb 9	AFC BOURNEMOUTH H		15:00			
Tue Feb 12	Gillingham A		19:45			
Sat Feb 16	LEYTON ORIENT H		15:00			
Fri Feb 22	Swansea City A		19:45			
Sat Mar 1	WALSALL H		15:00			
Sat Mar 8	Southend United A		15:00			
Tue Mar 11	Carlisle United A		19:45			
Sat Mar 15	OLDHAM ATHLETIC H		15:00			
Sat Mar 22	CHELTHENHAM TOWN H		15:00			
Mon Mar 24	Millwall A		15:00			
Sat Mar 29	CREWE ALEXNDRA H		15:00			
Sat Apr 5	Northampton Town A		15:00			
Sat Apr 12	BRIGHTON H		15:00			
Sat Apr 19	Nottingham Forest A		15:00			
Sat Apr 26	Doncaster Rovers A		15:00			
Sat May 3	HUDDERSFIELD TOWN H		15:00			



SUBSTITUTES

Brill	Jackson	Perry	Coyne	GOODALL	Edwards	Robinson	Spring	CURRIE	Peschisoldo	Furlong	Hutchison	Keane	McVeigh	Parkin	Talbot
Brill	Jackson	Keane	Coyne	Emanuel	Edwards	Hutchison	SPRING	Morgan	Parkin	TALBOT	Brkovic	Furlong	McVeigh	Perry	O'Leary
Brill	Jackson	Perry	Coyne	Goodall	EDWARDS	Robinson	Spring	Currie	Peschisoldo	Furlong	Hutchison	Keane	McVeigh	Morgan	Talbot
Forde	Jackson	Perry	Coyne	Goodall	Currie	Edwards	SPRING	BELL	FURLONG	Talbot	Andrew	Hutchison	Keane	McVeigh	Robinson
Forde	Jackson	Perry	Coyne	Goodall	BELL	Robinson	Spring	Morgan	FURLONG	Talbot	Andrew	Brkovic	Hutchison	Keane	McVeigh
Forde	Keane	Perry	Coyne	Goodall	Currie	Edwards	Spring	Bell	Furlong	Talbot	Andrew	Hutchison	McVeigh	Morgan	Robinson
Brill	Keane	Perry	Fojut	Goodall	Brkovic	HUTCHISON	Robinson	Bell	Andrew	Talbot	Coyne	McVeigh	Morgan	O'Leary	PESCHISOLDO
Forde	Jackson	Perry	Coyne	Goodall	Currie	Robinson	SPRING	Bell	Furlong	Talbot	Andrew	Fojut	Hutchison	Morgan	Peschisoldo
Forde	Jackson	Perry	Coyne	Goodall	Bell	Robinson	Spring	Edwards	Morgan	FURLONG	Brkovic	Currie	Fojut	McVeigh	Peschisoldo
Forde	Jackson	Perry	Coyne	Goodall	BELL	Robinson	Spring	Edwards	Morgan	FURLONG	Andrew	Currie	Fojut	McVeigh	Talbot
Brill	Jackson	Perry	Fojut	Goodall	Bell	ROBINSON	SPRING	Morgan	McVeigh	Furlong	Andrew	Brkovic	Coyne	Currie	TALBOT
Alnwick	Jackson	Perry	Fojut	Goodall	Bell	Robinson	Spring	Morgan	McVeigh	Furlong	Andrew	Coyne	Currie	Edwards	Talbot
Alnwick	Perry	Fojut	Coyne	Goodall	Bell	Robinson	Spring	Edwards	Currie	Andrew	Brkovic	Hutchison	Jackson	McVeigh	Talbot
Alnwick	Perry	Fojut	Coyne	Goodall	Currie	Robinson	Spring	Edwards	Andrew	FURLONG	Brkovic	Hutchison	Jackson	McVeigh	Talbot
Brill	Jackson	Perry	Fojut	Emanuel	Edwards	Hutchison	SPRING	McVeigh	Andrew	FURLONG	Brkovic	Charles	Goodall	O'Leary	Talbot
Brill	Jackson	Perry	Fojut	Goodall	CURRIE	Hutchison	SPRING	Bell	Talbot	FURLONG	Andrew	Brkovic	Coyne	Edwards	Morgan
Alnwick	Jackson	Perry	Fojut	Goodall	Currie	Hutchison	Spring	Bell	Andrew	Furlong	Brkovic	Coyne	Edwards	Morgan	Robinson
Brill	PERRY	Fojut	Coyne	Goodall	Currie	Robinson	Spring	BELL	Edwards	Furlong	Andrew	Hutchison	Jackson	McVeigh	Morgan
Brill	Perry	Fojut	Coyne	Goodall	Currie	Robinson	Spring	Bell	Edwards	Furlong	Andrew	Hutchison	Jackson	McVeigh	Morgan
Brill	Perry	Fojut	Coyne	Goodall	Currie	Robinson	Spring	Bell	EDWARDS	Andrew	Hutchison	Jackson	McVeigh	Morgan	O'Leary

From Page 55

QUIZ ANSWERS

TWO'S WHO First picture: Stephern O'Leary and Dave Edwards. Second picture: Sol Davis and Drew Talbot.

10 TO TEST YOU 1) Worthington, 2) Glenn Roeder, 3) The Manor Ground, 4) Cameroon, 5) Brazil, 6) Leory Rosenior, 7) Aberdeen, 8) Moss Rose, 9) Accrington Stanley, 10) Bristol City

BADGE BODGE Top: Tranmere Rovers and Norwich. Bottom: Preston and Brighton.

LETTERS PLAY Luton player: Keith Keane. Team's nickname: Shrimpers (Southend). Premiership manager: Arsene Wenger (Arsenal). League One ground: Brunton Park (Carlisle United). Luton legend: Brian Stein

Goalscorers in Capitals & bold. ■ Denotes player booked ■ Denotes player sent off ▲ First Substitute ▲ Second Substitute ▲ Third Substitute OG Denotes own goal in Luton's favour

PROGRAMME Editors: Geoff Stimson and Steven Dove Editorial Assistant: Zoe Wood Photography: Gareth Owen

Design: Lee Wood Contributors: Roger Wash, Simon Pitts, Des Christian, Stewart Curtis, James Marsh Printers: Regal Litho



**Saturday
November 10, 2007
FA Cup
Round One
Kick-Off 3pm**

**Luton Town v
BRENTFORD**

MANAGING Brentford, says Bees boss Terry Butcher, is like being on a white-knuckle ride. "It's a real roller-coaster – we should rename ourselves Alton Towers FC there have been so many highs and lows."

The season started unbeaten in their first four games, but then they lost four out of their next five games, and since then they are unbeaten in four again.

It all leaves the Bees in 13th place in the table, but only seven points off a Play-Off spot if they can push on with more highs than lows.

Butcher will also bear in mind, though, that they are only 10 points away from the drop zone.

Brentford also have a tricky end to November coming up, with games at home to Darlington (5th) and away to moneybags Peterborough (4th).

Butcher became boss at Griffin Park in May this year after the Bees finished rock bottom of League One a big 14 points from safety. It had been a season of turmoil after Martin Allen left for MK Dons at the end of 2005-06. Three managers in a season isn't usually a recipe for success, but Leroy Rosenior, Scott Fitzgerald and Barry Quinn all had a go at stopping the slide into the bottom division without any luck.

That's when Brentford turned to the experience of Terry Butcher. A competitive centre-back as a player, he won 77 England caps and captained his country with passion and pride. As a manager, he had a spell at Coventry and Sunderland and then saw Motherwell to three mid-table finishes in the Scottish Premier League.

Since arriving, Butcher has been busy in the transfer market, bringing in seven players without spending a penny on fees.

In came defenders Craig Peard (Walsall) and John Mackie (Orient), keeper Simon Brown (Hibs), midfielder Gary Smith (MK Dons), strikers Alan Connell (Hereford) and Lee Thorpe (Torquay) and Ricky Shakes (Swindon).

Bedding in so many new players at the same time can be difficult, and conceding 12 goals at home against eight scored will be a worry, but three away wins (at Bury, Chester and Bradford) will cheer Bees fans.

It all means that the FA Cup is probably not a high priority for Brentford this season, although try telling that to the players and fans. They know that two wins at this stage and they could be running out in Round Three at Old Trafford or Stamford Bridge or Anfield or the Emirates.

That's the magic of the FA Cup...



Head 2 head

	Luton	Draw	Brentford
League	30	12	22
FA Cup	1	2	1
League Cup	1	0	0
Other	1	0	0
TOTAL	33 (47%)	14 (20%)	23 (33%)

Vive Le Body!

- LIGHT**
The lightweight highly functioning compression technology offers ultimate support and comfort with minimal bulk.
- OXYGENATING**
The Energy system improves oxygen delivery to working muscles and speeds recovery time.
- NON-IRRITATING**
Ergonomic flat lock seaming details enhance mobility and eliminate irritation and chafing.
- WICKING**
The USP wicking system rapidly moves moisture away from the skin and optimizes body temperature.
- PROTECTIVE**
UV protection reduces the effects of the sun's rays.

**Complete Bodywear*
*Advanced**

puma
puma.com

TEXT US YOUR MAN OF THE MATCH

DON'T forget to vote for your top Luton player by texting his shirt number. So if you want to vote for Chris Perry, text **MOTM 5** to **88080** by 9:15pm and you could win a signed Luton Town Football.

● Full details on Page 11

The line-ups

Luton Town

Manager: Kevin Blackwell
Colours: White shirts, black shorts

	PI	Sc
1 Dean Brill	■	■
3 Alan Goodall	■	■
4 Don Hutchison	■	■
5 Chris Perry	■	■
6 Chris Coyne	■	■
7 Dean Morgan	■	■
8 David Bell	■	■
9 Sam Parkin	■	■
10 Darren Currie	■	■
11 Paul Peschisolido	■	■
12 Richard Jackson	■	■
14 Steve Robinson	■	■
15 Stephen O'Leary	■	■
16 David Edwards	■	■
17 Lewis Emanuel	■	■
18 Ahmet Brkovic	■	■
19 Drew Talbot	■	■
20 Calvin Andrew	■	■
21 Keith Keane	■	■
22 Richard Langley	■	■
24 Paul Underwood	■	■
25 Matthew Spring	■	■
26 Sol Davis	■	■
28 Paul McVeigh	■	■
29 Paul Furlong	■	■
31 Jaroslaw Fojut	■	■
32 Ryan Charles	■	■

Carlisle United

Manager: John Ward
Away Colours: Red shirts, red shorts

	PI	Sc
1 Keiren Westwood	□	□
2 David Raven	□	□
3 Zigor Aranalde	□	□
4 Marc Bridge-Wilkinson	□	□
5 Danny Livesey	□	□
6 Peter Murphy	□	□
7 Kevin Gall	□	□
8 Chris Lumsdon	□	□
9 Danny Graham	□	□
10 Danny Carlton	□	□
11 Paul Thirwell	□	□
12 Luke Joyce	□	□
13 Adam Bradley	□	□
14 Joe Garner	□	□
15 Paul Arnison	□	□
16 Jeff Smith	□	□
17 Neale McDermott	□	□
18 Simon Hackney	□	□
19 Ged Dalton	□	□
20 Chris Howarth	□	□
21 Harry Worley	□	□
22 Joe Anyinsah	□	□
23 Dan Kirkup	□	□
24 Shaun Vipond	□	□
28 Stephen Hindmarch	□	□
30 Gary Madine	□	□

Hatters' last team Brighton 3 Luton 1



Goal: Edwards (79)
Subs: McVeigh for Bell (66), Hutchison for Edwards (80), Jackson for Andrew (80)
Not used: Morgan and O'Leary

■ Goodall, Robinson, Spring
■ Goodall

Cumbrians' last team Carlisle 3 Leeds 1



Goals: Hackney (61), Garner (70), Bridge-Wilkinson (90)
Subs: Gall for Anyinsah (72), Carlton for Garner (89)
Not used: Howarth, Arnison, Smith

■ Bridge-Wilkinson
■ None

MATCH OFFICIALS

- Referee: **G L Ward**
- Assistant: **D Belbin**
- Assistant: **D Ford**
- 4th Official: **G C Law**

bet365



DARREN CURRIE is 17-2 to score the first goal in tonight's game.

To bet, call **FREE** on **08000 322 365**

Electrolux