

blues

VS LUTON TOWN

flybe.com



THE OFFICIAL MATCHDAY MAGAZINE OF BIRMINGHAM CITY FOOTBALL CLUB 2006/07

COCA-COLA CHAMPIONSHIP >> FRIDAY 29TH DECEMBER >> KO 7.45PM

£3



Match Sponsor



Matchball Sponsor



Manager's Sponsor



Chairman's Sponsor



Legends Sponsor

flybe.com

>> CAMERON JEROME

The young striker is enjoying the Christmas schedule.

>> PLUS

Q&A
Class of 06/07
Footballers' Drives



Issue 16

T-Mobile

STREET ICE



Bringing you closer
to your perfect winter

Centenary Square 25th Nov - 14th Jan

www.visitbirmingham.com
or call 0870 2250127



T-Mobile
simply closer

Birmingham City Council

brmb
fm-dab-online

ICE
ASSOCIATES



Birmingham City Football Club

St. Andrew's Stadium, Birmingham, B9 4NH

Tel 0871 226 1875

Fax 0871 226 1975

Web www.bcf.com

Ticket Office 0871 226 1875

Commercial Department 0871 226 1875

Club Shop/Mail Order 0871 226 1875

Presidents David Sullivan,

Ralph Gold and David Gold

Chairman David Gold

Vice Chairman Jack Wiseman

Managing Director Karren Brady

Directors Ralph Gold, Henri Brandman,

Bradley Gold, Michael Wiseman

and Perry Deakin

Executive Directors Joanne Allsopp and Steve Pain

Team Manager Steve Bruce

First Team Coach Eric Black

Fitness Coach Dan Harris

Reserve Team Coach Keith Bertschin

Head Physiotherapist Neil McDiarmid

Chief Scout Bernard Paintin

Club Doctors Dr J Sanghera, Dr R Evans,

Dr Gerwyn Edwards, Dr Chris Howland

Football Secretary Julia Shelton

Photography Action Images

The views in this programme are not necessarily
the views of Birmingham City Football Club.
Material in this programme is copyrighted and
may only be reproduced with the written
permission of Birmingham City Football Club.

blues Matchday Magazine

Designed & produced by

CRE8

Editor Dene Mullen Design Ben Goddard

CRE8, the old brewery, priory lane, burford, ox18 4sg
tel 01993 822811 email studio@cre8ing.com

CONTENTS

- 4/5 Managers Thoughts
- 6/7 Inside St. Andrew's
- 9 From The Boardroom
- 10/13 24: A Lot Can Happen In A Day
- 14/15 DJ's Mix
- 16/17 Ticket Update
- 18/23 Visitors >> Luton Town
- 26/31 Action Replay
- 32/35 Former Players >> Bob Hatton
- 36/41 Main Feature >> Cameron Jerome
- 42/43 Championship Round-Up
- 44/45 Footballers' Drives
- 47 Quiz
- 48/49 Club Shop
- 54/55 Eye On The Academy
- 58/59 Junior Blues
- 60/61 Class Of 06/07
- 65 Grass Roots
- 68/71 Q & A >> Nigel Spink
- 73 Commercial Matters
- 80/81 First Team Stats

36/41



32/35



60/61



68/71



MANAGERS THOUGHTS

STEVE BRUCE

I am pleased to be able to say we have had two fantastic wins in the past week. First at Southend, who we did probably catch at the right time, but it was still a great result and was possibly as good as we've played all season. As a unit we were excellent, defensively we were very good, and at the moment we have got that cutting edge as well. We looked a very good team against Southend and then we followed it up with another good

"AS A UNIT WE WERE EXCELLENT, DEFENSIVELY WE WERE VERY GOOD, AND AT THE MOMENT WE HAVE GOT THAT CUTTING EDGE AS WELL"

win at home against QPR. That was probably the first time in a few weeks now where we have created chances but not taken them, so it shows we still have to work hard and grind out results every now and then.

I was delighted to see people come into the side and do well, particularly at Southend, and that is one of our main strengths at the moment. A manager's job can be very difficult sometimes, but I am paid to make big decisions and it is certainly a nice problem to have a squad which is as good as ours. There are about 21 players who have all contributed immensely, so we've got strength in depth in a lot of areas.

It is certainly great news that we have moved eight points clear at the top of the table but, as I've said before, we are there to be shot at now.

We have dealt with the expectations placed upon us and have been on a tremendous run recently, which is probably the most pleasing thing for me as the manager.

Today, of course, we play Luton and I'd like to extend a warm welcome to everyone associated with them. I've always kept in touch with Mike Newell since we played together at Birmingham and he has done a smashing job at

Luton over the years. He has been forced to sell a player here and there, the finances are somewhat restricted but he has always just got on with it and he can be very proud of what he has achieved so far.

I have always said that the table will begin to take shape in January and we have got two games left in the festive period. We start against Luton today and then we go to Ipswich but I think that come the end of January, the league will have a look about it where you will start to see who is going to be challenging. We have done fantastically well so far to be where we are, so now the main aim is to continue moving onwards and upwards.

Enjoy the game.

Steve Bruce

ORS-2-GO
our home Beautiful

flyb

e.co

FLC
Make

SI
ND

Bring the game home
with **Champions Pitch**
laminated flooring
Stores nationwide 08000 830 330
www.floors2go.co.uk

 **FLOORS-2-GO^{plc}**
MAKE YOUR HOME BEAUTIFUL

INSIDE ST. ANDREW'S

PAINTER STAYS ON WITH THE SWANS

Blues defender Marcos Painter has extended his loan move to Swansea City into a second month.

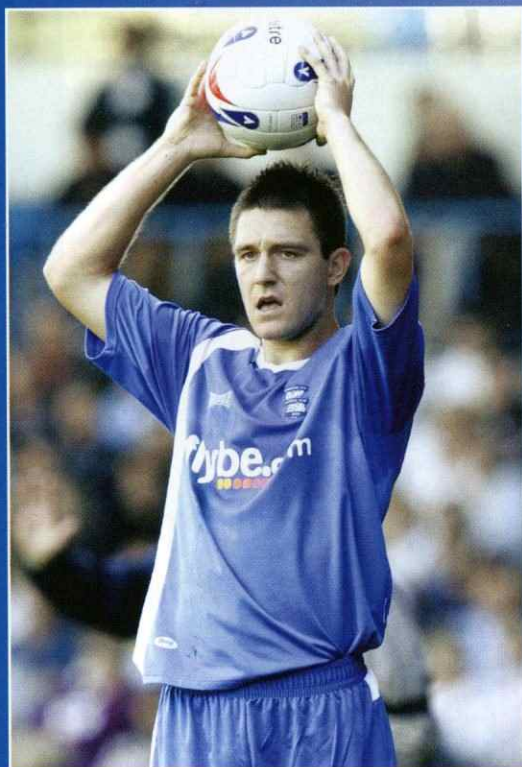
Painter only played three games for the Swans during his first month at the Liberty Stadium due to an ankle injury but the team kept a clean sheet on each occasion that he was on the pitch.

Swansea boss Kenny Jackett commented: "For a 20-year-old he is proving to be a very good player."

He added: "Whether the loan will go beyond a second month I don't know at this stage."

"Steve Bruce wants to see how his side comes through the busy Christmas and New Year period first with regards to injuries."

Painter will remain at the South Wales club until at least January 20, although Blues can recall the player at any time.



FA CUP TICKET REMINDER

Don't forget to buy your tickets in advance for next week's FA Cup clash with Premiership side Newcastle United at St. Andrew's on Saturday January 6, kick-off 3pm.

Fantastic savings can be made by booking your seats before the day of the match – turn to page 16 for more details.

Meanwhile, Blues and Newcastle have agreed that if the tie ends in a draw then the replay will take place at St. James' Park on Wednesday January 17, kick-off 7.45pm.

Although if a replay is needed then Blues' Championship fixture away to Leicester City, scheduled for Friday January 19, will automatically revert back to the original date of Saturday January 20, but with a 5.15pm kick-off so it can still be televised by Sky.



BLUEBIRDS GAME SWITCHED



Blues' Championship fixture at home to Cardiff City in March has been put back a day following Sky's decision to screen the game live.

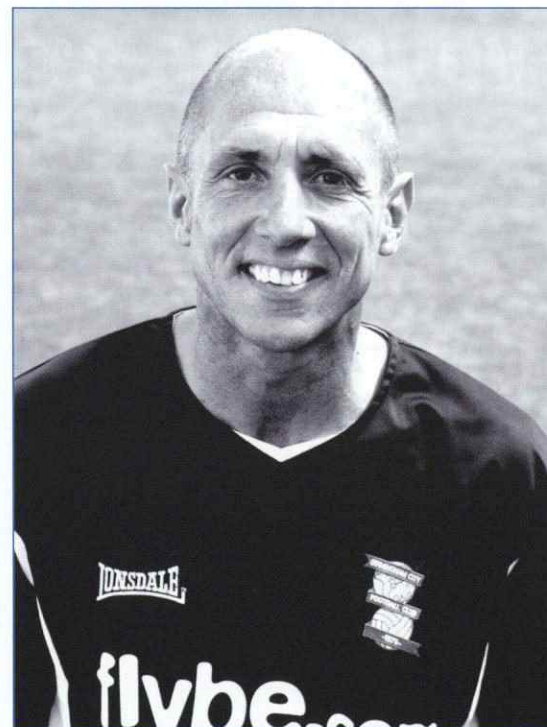
The match was due to take place at St. Andrew's on Saturday March 3 but will now be played on Sunday March 4, kick off 11.30am.

SENIOR CUP DRAW

Blues Reserves have been drawn at home to either Willenhall Town or Wolverhampton Wanderers in the fourth round of the Birmingham Senior Cup.

Keith Bertschin's side came from a goal down to beat Conference outfit Tamworth in the last round at the Lamb with Krystian Pearce and Jamie Price on the mark.

Willenhall and Wolves are scheduled to meet at the non-league club's Noose Lane ground on Wednesday January 10.



CLASH OF THE FLYBE TEAMS FINALE

flybe.com

All three fixtures within the Flybe Mini League competition have now been played after the final game took place between Norwich and Southampton at St Mary's Stadium.

Fans through from the first and second round of all three clubs in the Mini League, Birmingham, Norwich and Southampton, were offered the opportunity to predict the score of this game.

Ten Blues fans entered the competition and had the chance to predict the score of the remaining fixture in the competition.

Only two entrants correctly guessed the final score, which was Norwich 1 Southampton 2.

The two lucky winners were Peter Woodfield and David McCollums.

They will now be entered into a draw to be in with the chance of winning full VIP hospitality here at St. Andrew's courtesy of Flybe.

The draw for this prize will take place on the pitch during half-time of the game against Leeds United.

Good luck to both of you and Flybe would like to take this opportunity to thank everyone who participated in the first "Clash of the Flybe teams".

ROSE GOLD MEMORIAL SERVICE



A memorial service for Rose Gold will be held at St. Martin's Church, Bull Ring, Birmingham, on Friday January 5 at 2.30pm.

Any Blues supporters are welcome to attend to pay their respects.



Carlsberg

OFFICIAL BEER

LOOK OUT FOR PROMOTIONAL VOUCHERS AT

QPR & LUTON
TUES 26th OCT SAT 30th OCT

FOR YOUR CHANCE TO BE A GUEST OF CARLSBERG AT STOKE CITY F.C

SAT 10th FEB

1 PAIR OF TICKETS TO BE WON

WINNER ANNOUNCED AT THE LEEDS UTD GAME, SAT JAN 13th

SEE PROMOTIONAL VOUCHER FOR FULL TERMS & CONDITIONS

PROBABLY THE BEST SUPPORTER IN THE WORLD

TICKET HOTLINE: 0871 226 1875 OPT.2

www.bcf.com



DAVID SULLIVAN

FROM THE BOARDROOM

I would like to start by saying how nice it was to see the ground full on Boxing Day, when we celebrated 100 years at St. Andrew's with yet another good win. The team is playing really well at the moment, so tell your friends all about that and I would love to see it full up again tonight. We have done all we can to entice people into coming along with regard to the prices. Children cost just £2, adults £15 and a family of four can come along to the game for £24.

The way things are going at the moment, it looks as though we are going to get promoted this year but, of course, there are still a lot of games to be played. If we are going to achieve that then we do need your support, both numerically and vocally. We know you are nervous but there can be times where a little more noise would help a great deal. We feel exactly the same as you do when a match is in the balance

"THE WAY THINGS ARE GOING AT THE MOMENT, IT LOOKS AS THOUGH WE ARE GOING TO GET PROMOTED THIS YEAR BUT, OF COURSE, THERE ARE STILL A LOT OF GAMES TO BE PLAYED"

but if you can all shout with real passion, it does help the players. If there is a claim for a penalty and 30,000 people shout for it then nine times out of ten you get it, whereas if no-one shouts for it then we probably won't.

However, when all is said and done, I am confident that we are the best team in the league and I hope people start to realise it. We have got a team to be

proud of here; in the last six matches we have averaged three goals per game, so we are also beginning to play exciting football. I know the QPR game was a bit frustrating but it could quite easily have been 6-1 on another day.

That game allowed us to open up quite a nice gap at the top of the table and let's hope that tonight that gap will have increased to 11 points. Yet it is still the gap to third which matters the most, not the gap to second. That doesn't mean we don't want to win the title, of course we do, but the most important thing will always be getting promoted straight back into the Premiership.

We have got a cracking game coming up against Newcastle in the FA Cup and I hope to see the stadium packed for that one as well. As I said, promotion is the main aim this season but if we can

do well in the Cup as well then that would be brilliant. Firstly though, the perfect way to finish our home games over the Christmas period would be with a win tonight, so let's all get behind the team and help them turn St. Andrew's into a real fortress.

Keep Right On

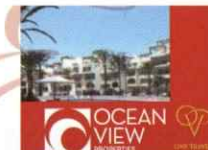
David Sullivan



GUARANTEED RENTAL RETURN
€12,750 - €22,250
PER ANNUM

t: 0121 693 0176 abdul@edgbaston.ovpgroup.co.uk

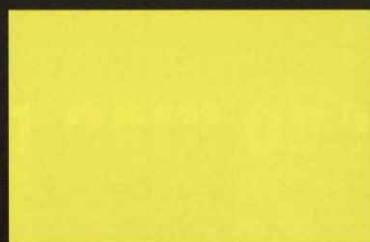
FOR THE FIRST TWO YEARS OF OWNERSHIP OF YOUR PROPERTY... WHICH SIMPLY MEANS... YOUR MORTGAGE PAYMENTS ARE COVERED FOR THE FIRST TWO YEARS*



FABRICE MUAMBA

24

A LOT CAN HAPPEN IN A DAY



WHAT TIME DID YOU WAKE UP THIS MORNING?

About 8.30, which is my normal time.

ARE YOU A MORNING PERSON?

Yes, I'm quite used to waking up early so I don't mind getting up at all.

WHAT WAS THE FIRST THING YOU SAID THIS MORNING AND TO WHO?

I live by myself so I just woke up and thanked God for being there to wake me up.

WHAT DID YOU HAVE FOR BREAKFAST?

Just a bowl of Corn Flakes.

DO YOU READ THE PAPERS? IF SO, WHICH ONES?

I don't really read them to be honest.

WHAT DID YOU HAVE TO DO BEFORE YOU COULD LEAVE FOR WORK?

I just have a shower, have some breakfast, make sure the house is clean and then leave.

HOW DO YOU GET INTO TRAINING AND HOW LONG DOES THE JOURNEY TAKE YOU?

I have recently passed my test so I can finally drive in! The journey takes between 20 and 25 minutes.

WHAT RADIO STATION OR CD DID YOU HAVE ON IN THE CAR?

I had Beyoncé's album on this morning.

WHAT IS THE FIRST THING YOU DID WHEN YOU GOT TO THE TRAINING GROUND?

I just went into the changing rooms, said hello to everybody and then got changed.

DID YOU DO ANY EXTRA WORK AFTER TRAINING? IF SO, WHAT DID YOU DO?

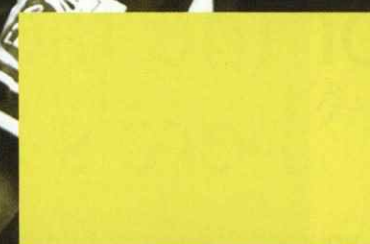
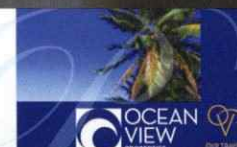
I didn't today but I normally do. I just work on my technique and try to improve my all-round game really.

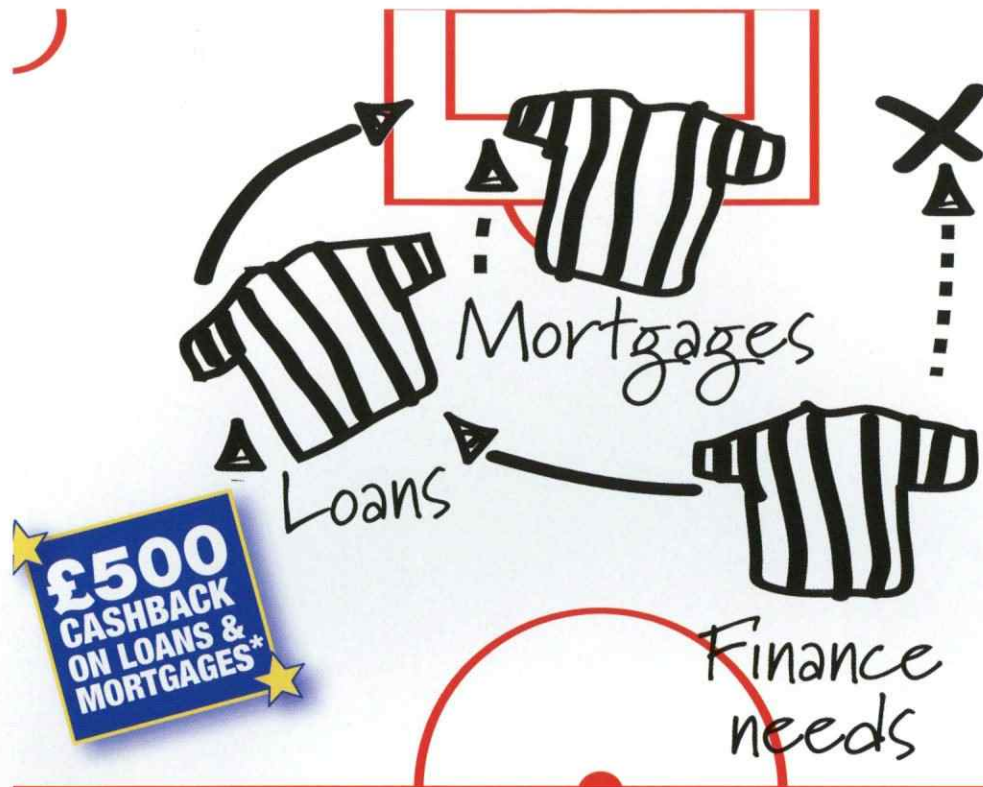
Imagine...
a new generation of
overseas property investment

UP TO
**25%
DISCOUNT**
on release prices
t: 0121 693 0176

GUARANTEED 8% RENTAL RETURN
FOR 5 YEARS GOVERNMENT
TAX INCENTIVES
ONLY 30% DEPOSIT BALANCE
ON COMPLETION PRICES
FROM \$392,000

abdul@edgbaston.ovpgroup.co.uk





For the tactically minded... here's a great move

Put yourself in the right financial position, call blackandwhite.co.uk today
for all your mortgage, loans and commercial finance needs



Freephone 0800 0191 457

...for your free mortgage or loan quote,
or visit www.blackandwhite.co.uk/blues



blackandwhite.co.uk
mortgages loans insurance

OFFICIAL BLUES FINANCIAL SERVICES PARTNER



YOUR HOME MAY BE REPOSSESSED IF YOU DO NOT KEEP UP REPAYMENTS ON YOUR MORTGAGE

*Terms and conditions apply. Please visit www.blackandwhite.co.uk/blues
Calls may be recorded for training and monitoring purposes

24

DO YOU TAKE A LONG TIME TO GET
SHOWERED AND CHANGED AFTER
TRAINING?

Yes. I just like to chill out a bit after I've been
training hard and the showers here are quite
nice, so I take my time.

WHAT AFTERSHAVE HAVE YOU GOT
IN YOUR SHOWER BAG?

I have got 'Ultraviolet' by Paco Rabanne.

WHO DO YOU NORMALLY SIT AND
HAVE LUNCH WITH?

Anybody really; it just depends on who is
in there.

AFTER TRAINING, WHAT DO YOU
NORMALLY DO IN THE AFTERNOON?

I go home and sleep for two hours and then
plan the rest of my day when I wake up.

WHEN YOU ARE AT HOME, WHO
COOKS THE DINNER?

As I said, I live by myself so I have to cook,
every day!

DO YOU HAVE A SPECIALITY?

Spaghetti Bolognese because it is quick
and simple.

IF YOU EAT OUT, WHAT TYPE OF
RESTAURANT IS YOUR FAVOURITE?

Wagamama!

WHAT DO YOU WATCH ON TELEVISION
IN THE EVENING?

I watch the news quite a lot and whenever
there is a football match on I will watch it.

WHAT ELSE MIGHT YOU DO ON A
TYPICAL EVENING?

I've got some family in Birmingham, so
sometimes I go to visit them.

WHAT TIME WILL YOU GO TO BED
TONIGHT?

Some time between 10.30 and 11.30.



"I SUPPOSE YOU ARE ALL WONDERING WHAT I GOT FOR CHRISTMAS...WELL, THE TRUTH IS THAT IT WAS JUST VERY BORING, STANDARD STUFF LIKE SOCKS, BOXER SHORTS AND NEW DVDS MAINLY. I THINK I'M GETTING OLD BEFORE MY TIME!"

We've got two great wins in the last week or so and I'm sure people will have looked at those fixtures and thought we should win, but let me tell you; every game in this division is tough. Southend and QPR are both near the bottom of the league, fighting against relegation, but we still have got to be professional and do a job. Winning 4-0 at Southend was a great result and then the QPR game was a bit more frustrating but we should really have won by more.

At the end of the day though, three points is three points and there is a nice little gap opening up now. Luton come here today and I'm sure they will want to win, especially after they beat us down at their place earlier in the season. If we can win again that will mean we still have, at least, an eight point gap going into the New Year and that is a great cause for celebration for all the fans and everyone associated with Birmingham City.

On a more personal note, I was delighted to get on the scoresheet against Southend last weekend. To score a goal and play a part in the team winning 4-0 was a great feeling and I probably should have followed it up with a goal against QPR as well. Nevertheless, that

goal against Southend really gave me a boost and, even if I do say so myself, it was quite a good one.

I want to keep scoring different types of goals because that is something I have always done in my career. Since I came to Birmingham I've only really got tap-ins! So it was great to score a long-range shot for a change.

Moving away from football for a moment and, of course, we have all been celebrating Christmas this week. I was just chilling at home really with my missus and my daughter. I didn't get the chance to go down to London to see the rest of my family and they couldn't come up here, which was a bit of a shame, but it was still really nice to see my little girl opening all her presents.

After that we just put on some DVDs and my missus made a lovely Christmas dinner. I suppose you are all wondering what I got for Christmas...well, the truth is that it was just very boring, standard stuff like socks, boxer shorts and new DVDs mainly. I think I'm getting old before my time!

I hope you all enjoy the game today and have a fantastic New Year.

DJ



GET AHEAD OF THE GAME!

Buy the Ergo Ensis 211 Blues laptop NOW with Intel® Centrino® Duo Mobile Technology. buy online at: www.bcfclaptops.co.uk

Centrino, Centrino Logo, Intel and Intel Logo are trademarks or registered trademarks of Intel Corporation or its subsidiaries in the United States and other countries.



TICKET UPDATE



BLUES V NEWCASTLE UNITED

FA CUP
SPONSORED BY E.ON 3RD ROUND
SATURDAY 6TH JANUARY,
KO 3PM

SEASON TICKET HOLDERS:
 £20 ADULTS / £10 CONCESSIONS
 TICKETS MUST BE PURCHASED IN
 ADVANCE UP UNTIL CLOSE OF
 BUSINESS DAY BEFORE THE FIXTURE

NON-SEASON TICKET HOLDERS:
 £25 ADULTS / £12.50 CONCESSIONS
 TICKETS MUST BE PURCHASED
 IN ADVANCE UP UNTIL CLOSE
 OF BUSINESS DAY BEFORE
 THE FIXTURE

MATCH DAY PRICE
(FOR SEASON TICKET
HOLDERS AND NON-SEASON
TICKET HOLDERS):
 £28 ADULTS / £15.50 CONCESSIONS

SAVE MONEY BY
BOOKING IN ADVANCE

WIN SEASON TICKET!

Buy online: www.solukenterprises.co.uk

© 2006 Birmingham City Football Club, Birmingham.

BLUES V LEEDS UNITED



COCA COLA CHAMPIONSHIP
SATURDAY 13TH JANUARY, KO 3PM

SEE BLUES TAKE ON THE WHITES AT
ST. ANDREW'S!

ALL UNDER 12'S £10
CONCESSIONS FROM £15
ADULTS FROM £29

WAYS TO BUY

- 1. ONLINE** - Home tickets are available online six weeks before every game. Register for the service following the links at www.bcfc.com
- 2. BY PHONE** - Call the ticket office on 0871 226 1875
- 3. IN PERSON** - Visit the ticket office
- 4. PAY ON THE DAY**

Please have your client reference number ready when booking.

AWAY TICKET INFO

IPSWICH TOWN V BLUES



MONDAY 1ST JANUARY 2007
KO 3PM

ADULTS £26
SENIOR CITIZENS £18
JUNIORS £9.50

TICKETS ARE NOW ON GENERAL SALE
 ALL TICKETS ARE SUBJECT TO A £1.50 BOOKING FEE.

AWAY COACH TRAVEL

IPSWICH TOWN
 Coaches depart at 9.30am

Away Travel Club Members
 Adult £15
 Concession £13

Non-Travel Club Members
 Adult £17
 Concession £15





Tonight we welcome Luton Town and their ambitious young manager Mike Newell to St. Andrew's for yet another game in quick succession during the busy Christmas period. With Christmas dinner and the excitement of opening presents now firmly behind us all, the emphasis shifts firmly to the pitch at St. Andrew's as we entertain a Luton side who will be hoping to climb the table once more after an impressive opening to the season.

The Hatters were sitting pretty in the Championship table as recently as mid-October before a disastrous run saw them slip down into the nether regions of English football's second tier. Nonetheless, Newell is far too good a manager to allow such a slump to continue unabated and in recent weeks, the Kenilworth Road side have addressed the situation and begun to look more like the side which surprised everyone last season.

After winning promotion with a staggering 98 points the season before, it was predicted that Luton would, as is so often the case, struggle with the step up to the Championship. Yet, despite losing their star player in Curtis Davies, Newell and his troops showed there is a lot more fight and talent in this Luton squad than people realised by finishing an impressive 10th.

With things beginning to look up once again for the Hatters, Newell and his team will be hoping to repeat the result in the corresponding fixture at Kenilworth Road earlier in the season. Blues put up a valiant fight but were eventually beaten 3-2 in Bedfordshire as a Rowan Vine double and a late winner from David Bell won it for the home side. However, their determination to repeat that result will be more than matched by Blues' desire for revenge and we should be in for a mightily exciting game tonight.

>> THE GAFFER

Mike Newell was appointed as the Luton Town manager on June 23rd 2003 on a two-year contract after winning a phone poll that John Gurney, the club's Managing Director, had set up as a unique exercise in sport PR. Replacing the extremely popular Joe Kinnear, Newell knew he had his work cut out if he was to prove as successful as his predecessor. Yet it would not take him long to do so and in the 2004/05 season, Newell surpassed all expectations by leading Luton to the League One title in some style as they amassed an incredible 98 points. He followed this up by guiding the Hatters to mid-table safety in the Championship last season and now the next challenge for Newell is to try to break his side into the upper echelons of the Championship.



ROWAN VINE

The Basingstoke-born striker initially joined Luton on a three-month loan deal from Premiership Portsmouth but that arrangement was extended to the whole season before Newell swooped to sign the young forward permanently. During his time at Kenilworth Road, Vine has become a true fans' favourite with a number of vital strikes as well as his never-say-die attitude. Vine will often be seen chasing down lost causes and generally running himself into the ground for the team. He is a superb all-round striker who is good when the ball is in the air and sharp whenever a chance comes in and around the penalty box.



VISITORS >> LUTON TOWN

DEAN KIELY

Kiely is one of the most experienced players in the Championship and arrived at Kenilworth Road this season after a short stint at Portsmouth. During his time at Charlton, Kiely established himself as one of the most consistent stoppers in the Premiership and he is clearly enjoying a return to regular action.

MARLON BERESFORD

Another highly experienced keeper, Marlon Beresford has made almost 100 league appearances for the Hatters. Beresford is a sound shot-stopper, an expert at saving penalties, a popular figure with the fans and, perhaps most importantly, a calming influence on a relatively young squad.

KEVIN FOLEY

First choice right-back at Luton, Foley is extremely talented and one of a new breed of promising youngsters to come through the Hatters never-ending manufacturing line. The young Irishman rarely gives the ball away, is strong defensively and has also become very effective when going forward.

CHRIS COYNE

A firm favourite with the Hatters faithful, Coyne has been a regular in the Luton rearguard since signing in 2001. He has made just over 200 appearances for the Kenilworth Road club and the powerful central defender is continuing the kind of form which earned him the captaincy under Newell.

RUSSELL PERRETT

Perrett joined Luton in 2001 from Cardiff City as first team opportunities became hard to come by. Since then he has become an integral part of the squad, although injuries have disrupted his career at Kenilworth Road somewhat. Nevertheless, Perrett has always given 100% when he steps into the side.

LEON BARNETT

A strong and pacy central defender who can also be used at centre forward, Barnett is a local lad, and made a great impression in a record-breaking first season of full-time training at the club, making his senior debut as a 16-year-old. Since then, his progress has continued and the young defender has won a host of admirers.

MARKUS HEIKKINEN

Finland international Heikkinen joined Luton Town on a two-year deal from Scottish Premiership side Aberdeen



in July 2005. Heikkinen is capable of playing at the back or in a holding midfield role and his exceptional form last year in Luton's first Championship season earned him the Player of the Year award.

CARLOS EDWARDS

A pacy and tricky right-winger, who can operate equally effectively at wing-back or on the left-hand side of midfield, Edwards joined Luton on a free transfer from Wrexham in 2005. He has rapidly established himself as a fans' favourite, largely because of his natural game being one of skill and direct dribbling.



STEVE ROBINSON

An attacking midfielder who can play either down the right or through the centre, Robinson joined Luton from Preston North End in June 2002. The Northern Ireland international has since gone on to establish himself firmly in the Luton team, where his hard working style is essential.

DEAN MORGAN

Morgan arrived at Luton from Reading and quickly went about earning a reputation at his new club by scoring Luton's goal of the season. Capable of playing up front or on the left wing, it is the latter in which he has usually been utilised during his time at Kenilworth Road.

LEWIS EMANUEL

A tough tackling left-back with plenty of pace who can also operate on the left-hand side of midfield, Emanuel joined Luton on a free transfer from Bradford in July

VISITORS >> LUTON TOWN

2006. He has been used mainly on the wing this season and big things are expected of the young Ireland 'B' international.

RICHARD LANGLEY

Langley arrived at Kenilworth Road in the summer from Queens Park Rangers. Once coveted as one of the most promising young performers in the country, Langley has matured into a combative midfield player who is also an expert from dead ball situations.

AHMET BRKOVIC

Brkovic arrived at Luton just over five years ago from Leyton Orient after beginning his career in his native Croatia. Nicknamed the 'Croatian Sensation' by Hatters fans, Brkovic can play on the left or in the centre of midfield and has chipped in with a number of important goals in recent seasons.

DAVID BELL

A tricky midfielder who loves to get forward and can operate through the centre and on both flanks, Bell joined Luton Town in the January 2006 transfer window from Rushden & Diamonds. He has become a regular in the side this season and will be a real worry for Blues this evening.

WARREN FEENEY

A Northern Ireland international, Warren Feeney joined Luton from Stockport County in 2005. Last season was his first full campaign at the club and during the Hatters' first year in the Championship, Feeney's tireless work rate and all-round ability earned him widespread praise from fans and pundits alike.

ADAM BOYD

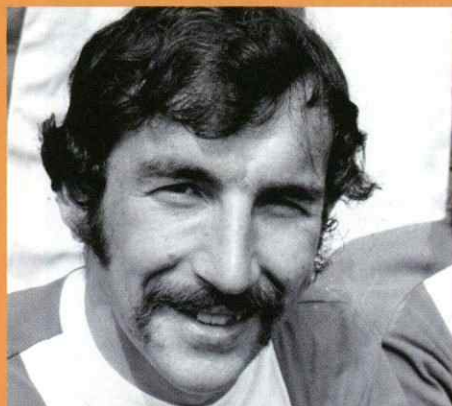
A skilful striker with a real eye for goal, Boyd ended a yearlong pursuit by Mike Newell when he joined Luton in July 2006 from Hartlepool United. Boyd is a forward with an impressive record in the lower leagues and Luton will be hoping he continues his goalscoring touch this season.

SAM PARKIN

Parkin began his career with Chelsea but when it became clear that first team chances would be limited he moved on. Arriving at Luton this summer from Ipswich, Parkin carries a significant aerial threat and will undoubtedly be hoping to kick-start his Kenilworth Road career with a goal at St. Andrew's.

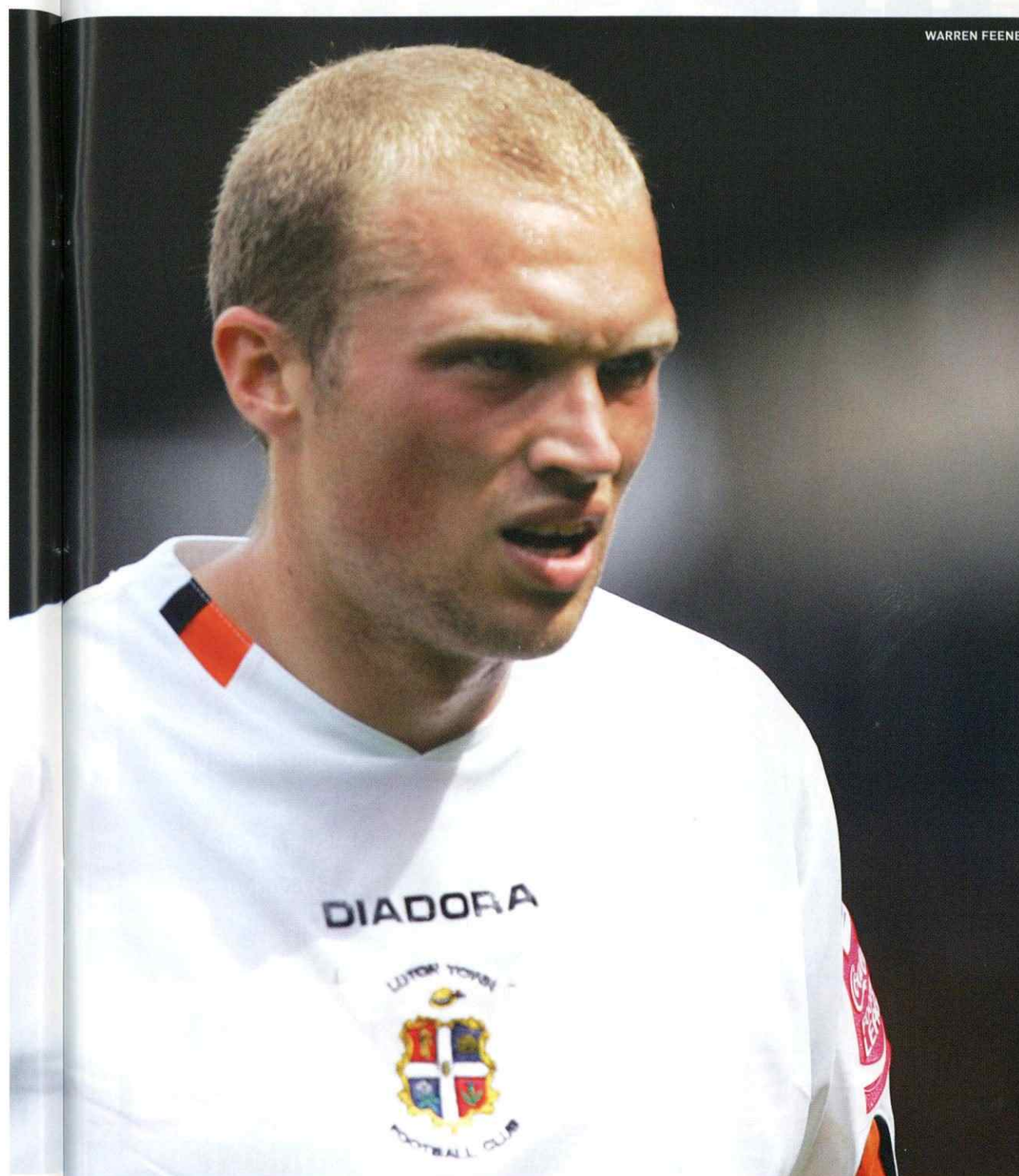
THEY PLAYED FOR BOTH >> BOB HATTON

Hatton was a classic goal-getter and had already had fruitful spells at Wolves, Bolton, Northampton and Carlisle before arriving at Blues in October 1971. The fee was a club record at the time of £82,500 and after making his debut in a home draw with Burnley, Hatton spent the longest spell of his career with one club at St. Andrew's. He scored 15 goals in 26 games during his first season, helping the club into the First Division and FA Cup semi-final in the process. Hatton was the club's leading scorer in the 1973/74 season, before repeating the trick in the following campaign, and had scored 73 goals for Blues when he left to join Blackpool in 1976, before finishing his career at Luton, Sheffield United and Cardiff.



HEAD 2 HEAD >> LUTON TOWN

| Home | Away |
|-----------------|-----------------|
| Played: 28 | Played: 30 |
| Blues Wins: 16 | Luton Wins: 8 |
| Luton Wins: 4 | Blues Wins: 12 |
| Draws: 8 | Draws: 10 |
| Blues Goals: 58 | Luton Goals: 37 |
| Luton Goals: 27 | Blues Goals: 39 |



take a massive resource



Official
Recruitment Partner

Temporary and
Permanent Staff

- Industrial
Warehouse
Distribution
Food
Manufacturing
- Office Personnel
- Technical
- Social Care
- Executive
- Sales

0121 771 1195

www.primetime.co.uk



Stat Pack



2006/07 LEAGUE STATS

| | | | |
|----|---------------|----|--|
| 1 | Position | 19 | |
| 22 | Played | 22 | |
| 13 | Won | 7 | |
| 4 | Drawn | 4 | |
| 5 | Lost | 11 | |
| 35 | Goals For | 29 | |
| 22 | Goals Against | 38 | |
| 43 | Points | 25 | |

| Record Against Top Half of Table | | | | | | | |
|----------------------------------|---|---|------|---|---|---|------|
| W | D | L | RANK | W | D | L | RANK |
| 8 | 1 | 2 | 1 | 3 | 3 | 6 | 12 |

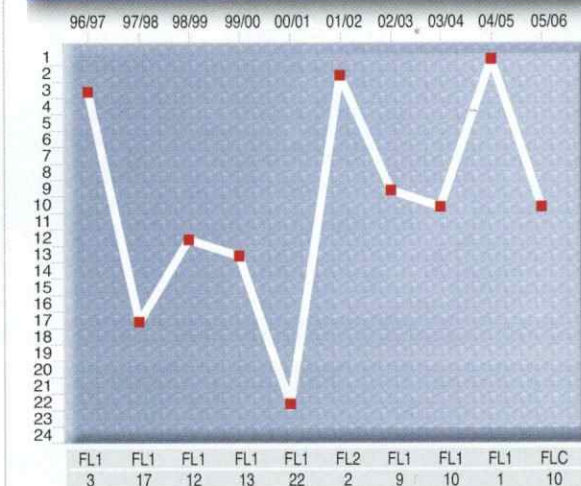
| Record Against Bottom Half of Table | | | | | | | |
|-------------------------------------|---|---|------|---|---|---|------|
| W | D | L | RANK | W | D | L | RANK |
| 5 | 3 | 3 | 12 | 4 | 1 | 5 | 21 |

| Record When Scoring First | | | | | | | |
|---------------------------|---|---|------|---|---|---|------|
| W | D | L | RANK | W | D | L | RANK |
| 11 | 2 | 1 | 2 | 6 | 2 | 2 | 16 |

| Record When Conceding First | | | | | | | |
|-----------------------------|---|---|------|---|---|---|------|
| W | D | L | RANK | W | D | L | RANK |
| 2 | 1 | 4 | 13 | 1 | 1 | 9 | 18 |

| Match Scores | | | | | |
|---|---|--|--|--|--|
| Wins: 1-0[4], 2-0[3], 2-1[4], 3-0[1], 3-1[1], Losses: 0-1[1], 0-2[1], 2-3[2], 3-4[1], Draws: 0-0[1], 1-1[2], 2-2[1] | Wins: 1-0[1], 2-0[2], 2-1[2], 3-2[1], 5-1[1], Losses: 0-1[2], 0-2[2], 0-3[1], 0-5[1], 1-2[2], 1-4[1], 2-3[2], Draws: 0-0[1], 1-1[1], 2-2[2] | | | | |

LUTON - TEN SEASON RECORD



*up to and including 14/12/2006

MANAGERIAL RECORDS

| Steve Bruce | Mike Newell |
|--|---|
| Played 197 Won 68 Drawn 56 Lost 73 For 220 Against 235 Av Pts/game 1.32 Biggest Win(s) Birmingham 5 Portsmouth 0 (21/01/2006). Biggest Loss(es) Lost 4-0 on 2 occasions | Played 160 Won 70 Drawn 40 Lost 50 For 251 Against 219 Av Pts/game 1.56 Biggest Win(s) Luton 5 Bristol City 0 (05/03/2005). Biggest Loss(es) Ipswich 5 Luton 0 (29/10/2006). |

MANAGER HEAD TO HEAD RECORD

| | | |
|------------|-------------------|-------------------|
| Played ..1 | Steve Bruce.....0 | Mike Newell.....1 |
| Draws ..0 | Goals 2 | Goals 3 |

| Player with the most... | shots | shots on target | shots off target | assists | crosses | fouls | free-kicks-won |
|-------------------------|-------|-----------------|------------------|---------|---------|-------|----------------|
| Gary McSheffrey 61 | 61 | 36 | 25 | 9 | 47 | 47 | 37 |

| Player with the most... | shots | shots on target | shots off target | assists | crosses | fouls | free-kicks-won |
|-------------------------|-------|-----------------|------------------|---------|---------|-------|----------------|
| Rowan Vine 55 | 55 | 26 | 29 | 4 | 59 | 42 | 33 |

SHARP SHOOTERS

| Birmingham | CCFC Cup | | | Tot | Luton | CCFC Cup | | | Tot |
|------------------|----------|---|----|-----|----------------|----------|---|----|-----|
| Gary McSheffrey | 9 | 2 | 11 | | Rowan Vine | 9 | 1 | 10 | |
| Nicklas Bendtner | 8 | 2 | 10 | | Carlos Edwards | 6 | 0 | 6 | |
| Dudley Campbell | 5 | 1 | 6 | | Dean Morgan | 2 | 1 | 3 | |

TEAM HEAD TO HEAD RECORD

| | | |
|--------------|--------------------------|--------------------------|
| Played....51 | Birmingham wins.....25 | Luton wins.....11 |
| Draws15 | Goals 87 (1.7 per game) | Goals 56 (1.1 per game) |
| 0-0's4 | Times failed to score 10 | Times failed to score 16 |

Biggest League win at Birmingham for each team:
12/11/1898 Birmingham 9-0 Luton
19/04/1975 Birmingham 1-4 Luton



The Football League's *Fans of the Future* initiative is aiming to attract the next generation of supporters to watch live football at their local club

Find out more at www.football-league.co.uk



ACTION REPLAY

Blues 3 Preston 1

Date 09/12/06



MATCH STATS



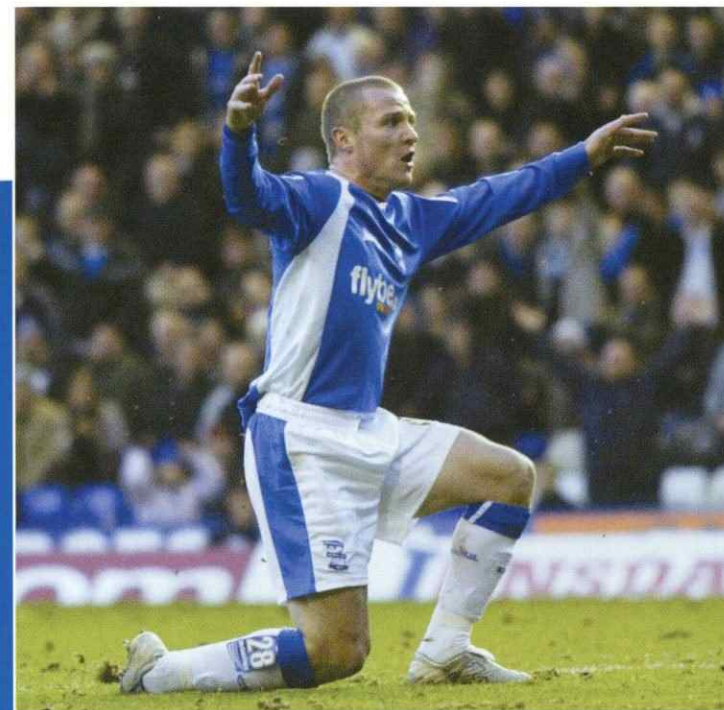
LINE-UPS

| | | | |
|----|--------------------------|----|--------------------|
| 1 | MAIK TAYLOR | 22 | NASH |
| 5 | UPSON | 4 | PUGH |
| 24 | JAIDI | 14 | CHILVERS |
| 3 | SADLER | 12 | ST. LEDGER |
| 2 | KELLY | 18 | HILL |
| 26 | MUAMBA | 2 | ALEXANDER |
| 7 | LARSSON | 16 | MCKENNA |
| 6 | CLEMENCE | 15 | WHALEY |
| 10 | JEROME (NAFTI 86) | 7 | SEDGWICK |
| 27 | BENDTNER | 17 | ORMEROD |
| 28 | MCSHEFFREY (CAMPBELL 90) | 10 | (DICHIO 82) NUGENT |

SUBS NOT USED

| | | | |
|----|---------------|----|----------|
| 13 | DOYLE | 1 | LONERGAN |
| 4 | MARTIN TAYLOR | 28 | WILSON |
| 17 | DANNS | 23 | NEAL |
| | | 20 | MILLER |

| | | |
|----|----------------------|----|
| 7 | GOAL ATTEMPTS | 11 |
| 6 | ON TARGET | 2 |
| 1 | OFF TARGET | 8 |
| 0 | HIT WOODWORK | 1 |
| 0 | OFFSIDES | 2 |
| 6 | CORNERS | 8 |
| 18 | FOULS | 12 |
| | REFEREE | |
| | M RILEY, W YORKSHIRE | |
| | ATTENDANCE | |
| | 23,159 | |



WHAT THE MANAGERS SAID

STEVE BRUCE

"Gary McSheffrey has been a fantastic acquisition for us. There were times in the summer when it looked like the move from Coventry was not going to happen. I kept pushing and pushing. Gary was my number one target. He is everything I admire in a player. He is full of life and guts and determination and he is a very good finisher."

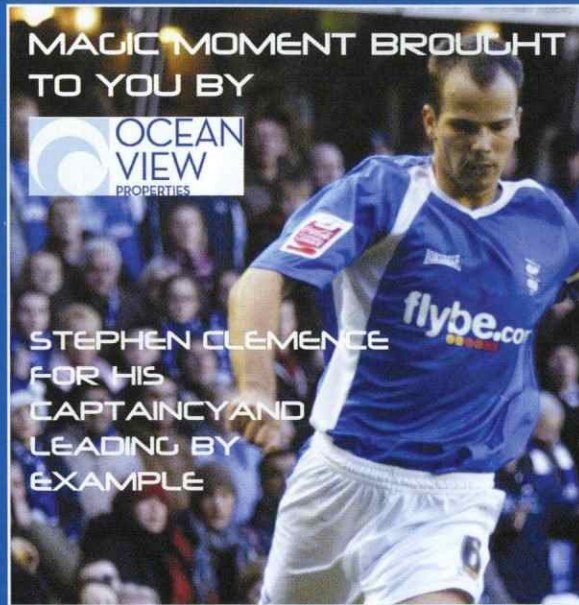
PAUL SIMPSON

"Everyone would admit the finishing was the difference, we played as well as we have for a long time. We created plenty of chances but if you don't finish them you're going to be punished, we had one of those days. On this occasion we were excellent but we have been punished by a quality team in Birmingham."

MAGIC MOMENT BROUGHT TO YOU BY



STEPHEN CLEMENCE
FOR HIS
CAPTAINCY AND
LEADING BY
EXAMPLE



01 02 03 04 05 06 07 08 09 10 11 12 13 14 15 16 17 18 19 20 21 22 23 24 25 26 27 28 29 30 31 32 33 34 35 36 37 38 39 40 41 42 43 44 45 46 47 48 49 50 51 52 53 54 55 56 57 58 59 60 61 62 63 64 65 66 67 68 69 70 71 72 73 74 75 76 77 78 79 80 81 82 83 84 85 86 87 88 89 90

2 mins

Maik Taylor saves Brett Ormerod's shot and David Nugent's follow-up hits the post.

32 mins

McSheffrey's shot takes a deflection and beats Carlo Nash to give Blues the lead.

39 mins

Sadler's pass releases McSheffrey who dances round a defender and finishes with aplomb.

45 mins

A corner causes confusion in the Blues box and Ormerod smashes home from close range.

50 mins

Bendtner sends Muamba clean through, but his shot is well saved by Nash.

88 mins

McSheffrey completes his hat-trick by blasting a penalty home.

ACTION REPLAY

Date 16/12/06
Sheffield Wednesday 0 Blues 3



MATCH STATS



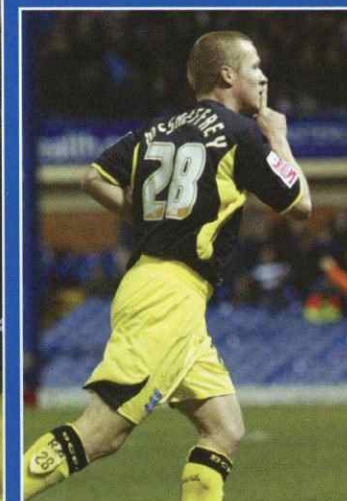
LINE-UPS

| | | | |
|----|----------------------|----|--------------------------|
| 1 | CROSSLEY | 1 | MAIK TAYLOR |
| 21 | BOUGHERRA | 3 | SADLER |
| 32 | SPUR | 2 | KELLY |
| 2 | BULLEN | 5 | UPSON |
| 20 | SIMEK | 24 | JAIDI |
| 4 | LUNT | 7 | LARSSON (DANNS 86) |
| 31 | FOLLY (O'BRIEN 77) | 6 | CLEMENCE |
| 11 | BRUNT | 12 | NAFTI |
| 17 | ANDREWS (MACLEAN 45) | 28 | MCSHEFFREY (KILKENNY 85) |
| 7 | TUDGAY | 27 | BENDTNER (CAMPBELL 90) |
| 10 | BURTON (TALBOT 76) | 10 | JEROME |

SUBS NOT USED

| | | | |
|----|---------|----|---------------|
| 1 | COYNE | 13 | DOYLE |
| 4 | MCGREAL | 4 | MARTIN TAYLOR |
| 11 | ELLIOTT | | |

| | | |
|----|---------------------|----|
| 11 | GOAL ATTEMPTS | 5 |
| 5 | ON TARGET | 3 |
| 6 | OFF TARGET | 2 |
| 0 | HIT WOODWORK | 0 |
| 0 | OFFSIDES | 2 |
| 5 | CORNERS | 1 |
| 7 | FOULS | 14 |
| | REFEREE | |
| | G LAWS, TYNE & WEAR | |
| | ATTENDANCE | |
| | 26,083 | |



WHAT THE MANAGERS SAID

BRIAN LAWS

"It's the biggest travesty I've ever seen in my life. We were the better side and lost. We really took the game to them and I thought we were excellent. I can't understand how we haven't scored. But there are a lot of positives to come out of the game and I'll pick the players up."

STEVE BRUCE

"We got away with it, it's as simple as that. That was as tough a game as we've had. Wednesday were excellent and the crowd was right behind them. But they couldn't do the vital thing, sticking the ball in the net. With Gary McSheffrey, Cameron Jerome and Nicklas Bendtner up front, we're always a threat. I wouldn't swap any of them for anybody."



01 02 03 04 05 06 07 08 09 10 11 12 13 14 15 16 17 18 19 20 21 22 23 24 25 26 27 28 29 30 31 32 33 34 35 36 37 38 39 40 41 42 43 44 45 46 47 48 49 50 51 52 53 54 55 56 57 58 59 60 61 62 63 64 65 66 67 68 69 70 71 72 73 74 75 76 77 78 79 80 81 82 83 84 85 86 87 88 89 90

25 mins

Maik Taylor pushes away Brunt's long range effort.

31 mins

Taylor makes a fantastic reflex save and then Upson is on the line to clear the follow-up effort.

42 mins

Crossley can not hold Jerome's powerful shot and Clemence is on hand to tap in the rebound.

59 mins

Burton's shot from six yards is superbly saved by Taylor and Brunt fires over with the goal gaping.

65 mins

A piece of McSheffrey wizardry puts Blues two goals up as he advances into the area and strikes the ball firmly home.

90 mins

Jerome picks up a loose back pass and smashes the ball in to make it 3-0.

ACTION REPLAY

Southend 0 Blues 4

Date 23/12/06



MATCH STATS



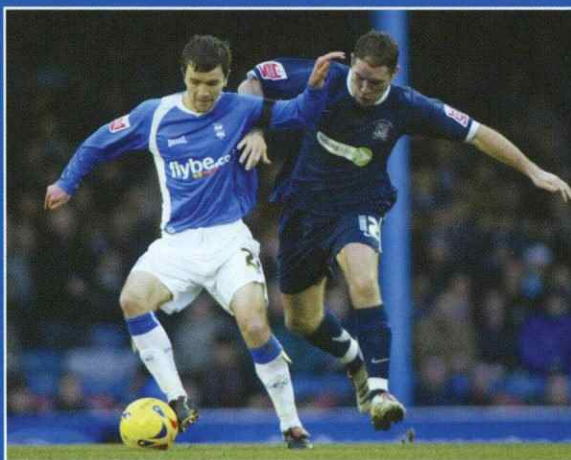
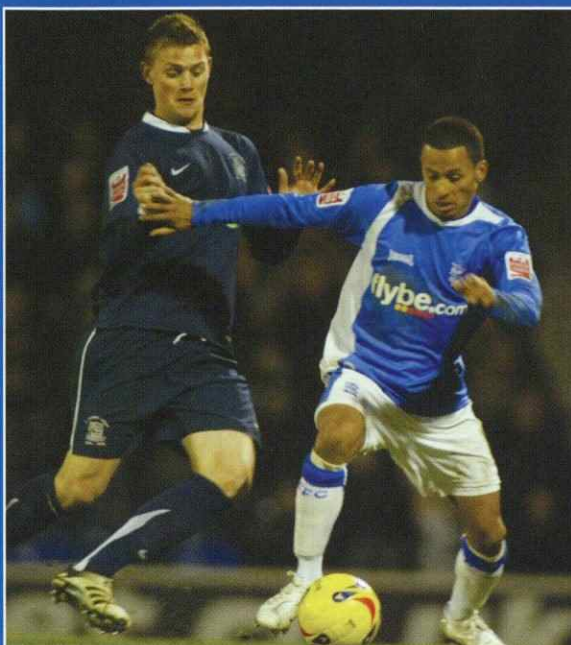
LINE-UPS

| | | |
|-------------------------------|---------------------------|----|
| 1 FLAHAVAN | 18 MAIK TAYLOR | 1 |
| 4 HUNT | 2 KELLY | 2 |
| 16 SODJE | 24 JAIDI | 24 |
| 15 CLARKE | 5 UPSON | 5 |
| 18 HAMMELL | 3 SADLER | 3 |
| 17 CAMPBELL-RYCE (HARROLD 61) | 22 JOHNSON | 22 |
| 26 MCCORMACK (FRANCIS 60) | 12 NAFTI | 12 |
| 8 MAHER | 6 [MUAMBA 82] CLEMENCE | 6 |
| 7 GOWER | 28 [DANNS 73] MCSHEFFREY | 28 |
| 10 EASTWOOD (HOOPER 60) | 14 CAMPBELL | 14 |
| 12 BRADBURY | 27 (KILKENNY 78) BENDTNER | 27 |

SUBS NOT USED

| | |
|-----------|-----------------|
| 30 WELCH | 13 DOYLE |
| 6 BARRETT | 4 MARTIN TAYLOR |

| | | |
|----|-------------------|----|
| 8 | GOAL ATTEMPTS | 11 |
| 2 | ON TARGET | 6 |
| 6 | OFF TARGET | 5 |
| 0 | HIT WOODWORK | 0 |
| 2 | OFFSIDES | 4 |
| 1 | CORNERS | 1 |
| 10 | FOULS | 12 |
| | REFEREE | |
| | M THORPE, SUFFOLK | |
| | ATTENDANCE | |
| | 9,781 | |



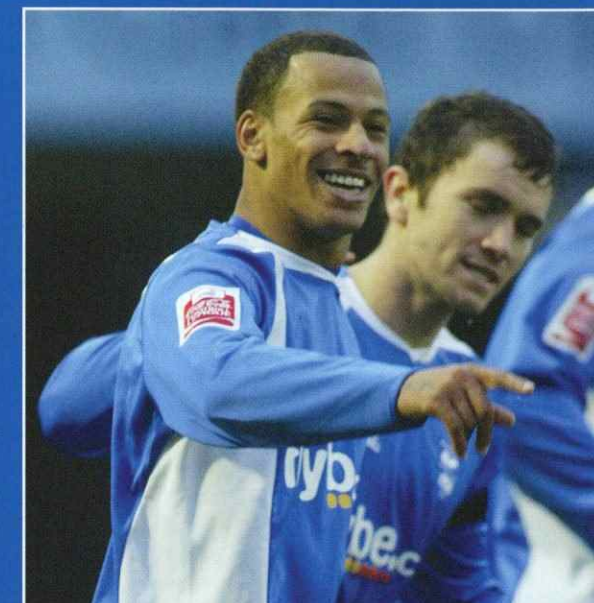
WHAT THE MANAGERS SAID

STEVE TILSON

"If we had got a good start today then the tired minds and tired legs from our midweek Carling Cup game might have gone away. But when you go down within five minutes then the tired legs and minds get worse. We got punished today. Yes we were tired but they are a good side."

STEVE BRUCE

"We are on course and have a chance. Fifteen players have gone since last season and we have brought in a lot of younger players. It has been a huge turnaround, so we are delighted it has clicked and it can only get better. It was a potential banana skin coming here because we are top and they are bottom, so it was a good win."



01 02 03 04 05 06 07 08 09 10 11 12 13 14 15 16 17 18 19 20 21 22 23 24 25 26 27 28 29 30 31 32 33 34 35 36 37 38 39 40 41 42 43 44 45 46 47 48 49 50 51 52 53 54 55 56 57 58 59 60 61 62 63 64 65 66 67 68 69 70 71 72 73 74 75 76 77 78 79 80 81 82 83 84 85 86 87 88 89 90

8 mins

DJ Campbell collects McSheffrey's pass and fires an unstoppable shot into the roof of the net.

38 mins

Clemence fires a volley into the ground and the ball bounces over a helpless Flahavan.

45 mins

McSheffrey's snap shot from close range forces Flahavan into a smart save.

54 mins

McSheffrey effectively finishes the game when he curls in a low free-kick for 3-0.

80 mins

Maik Taylor makes his first save of the game from Hammell's free-kick.

84 mins

Jaidi makes it 4-0 by heading in Johnson's deep cross at the far post.

FORMER BLUES

BOB HATTON

When Bob Hatton pulled on a Blues shirt and walked out on to the St. Andrew's turf for the first time in October 1971 there wasn't a happier man around than his father. For the former Blues and Luton striker it was just another step up in his blossoming football career but for Hatton Senior it meant so much more.

I am a Yorkshireman but my Dad was a Brummie and he was born in Trinity Street, just off Deritend," explains Hatton.

"Going back all those years ago he used to talk to me about Birmingham City and St. Andrew's because he was a supporter as a lad.

"He was born in 1904 and he reckoned that he was one of the first people into the ground for that first game in 1906 because he was taken by his Dad even though he was just a toddler.

"He was as pleased as punch when I signed for the Blues and it meant something to me because I had quite a few relatives in Birmingham and it was nice to play football at a place that I'd heard so much about."

Hatton marked his home debut with a goal as Blues won 2-0 against Leyton Orient to get their promotion bid back on track after a run of six games without a victory.

But it was the return match at Orient that was far more memorable for all the right reasons as Freddie Goodwin's side secured their return to the top flight in front of one of the biggest crowds ever seen at Brisbane Road.

"Although it was a small ground everyone was packed into the gunnels so it was a terrific atmosphere," recalls Hatton.

"It was probably one of the worst pitches that I have ever played on, very bumpy and rutted.

"But Bob Latchford scored with a header from a corner to ensure we got promoted."

Blues returned to the old First Division after a seven-year absence but for Hatton it wasn't his first experience of the highest echelon of English football.

The Hull-born forward started his career at Wolverhampton Wanderers, signing professional

terms in November 1964 when the Molineux club were still playing in the top flight.

"It was a great club to be with, especially in those days when they were a well established side towards the top of the old First Division," says Hatton.

"They had an excellent youth system so I was very fortunate to start with them and I got a good football education.

"I did okay at Wolves and got something like eight goals in 12 matches but then Bolton offered £30,000 for me, which in those days was quite a lot of money and I moved on in March 1967."

Hatton's early career in the game was marked by his nomadic tendencies as he served Wolves, Bolton, Northampton and Carlisle, all by the age of 22.

It was in Cumbria under the management of Bob Stokoe that his career was taken on to a new level.

"Carlisle was a smashing place to play your football at that time," continues Hatton.

"They used to say that the Carlisle pitch was the best playing surface in the country because of the Cumberland turf.

"They were an excellent team in the old Second Division and I re-established my career there.

"I scored quite a few goals and built my reputation at Carlisle and there was a lot of conjecture about which club I would be going to next."

In the end it was Blues that splashed out £80,000 to bring the prolific striker to St. Andrew's and it proved to be a wise investment as Hatton's goals fired Blues back into the top division just six months later.

"I perceived it as a better move even though Carlisle were in the same division at the time," remembers Hatton.

"Blues were a big city club with larger crowds and a better chance of promotion, and so it proved.



PokerRoom.com

UPSIDE: THERE'S SPACE FOR THE WHOLE FAMILY.



DOWNSIDE: THERE'S SPACE FOR THE WHOLE FAMILY.

- 635 litre boot
- 6 airbags
- dual zone climate control
- front fog lights
- cruise control
- forward sliding rear seats
- roof rails
- ABS and Traction Control System (TCS)

Prices range from £12,995 RRP*

The new SEAT Altea XL. Space for more than just family.



SEAT
auto emoción

seat.co.uk



Official Vehicle
Supplier

Colliers

884 Warwick Road, Acocks Green, Birmingham.

Tel: 0121 764 4466

*Model shown is Altea XL 2.0 TDI 140PS Stylance with Metallic Paint (£350) and optional 17" alloy wheels (£300) at £17,545 RRP. Official fuel consumption figures for the Altea XL range in mpg (litres/100km): urban 21.9 (12.9) - 40.9 (6.9); extra urban 40.9 (6.9) - 62.8 (4.5); combined 31.0 (9.1) - 52.3 (5.4). CO2 emissions 146-214 g/km.

"When I joined in October 1971 Blues were about halfway up the table and nothing special but we ended up winning promotion at the end of that season."

Hatton went on to form part of the legendary forward line that also included Bob Latchford and a young up-and-coming striker by the name of Trevor Francis.

Hatton scored 73 goals in 218 appearances during five enjoyable seasons at St. Andrew's, despite the club's annual fight against the drop.

Blues survived a few relegation scares during Hatton's time which included one memorable last day win over Norwich in April 1974 when he scored one of the goals in a 2-1 win.

But the biggest disappointments came in the FA Cup with two semi-final defeats.

"It was a pity that we didn't get to a final," he admits.

"Leeds beat us in 1972 but that was against the great Leeds team so it was no shame to lose that one.

"But against Fulham three years later the players felt that they had let the supporters down.

"There were all kinds of reasons put down for the loss. It was a fluke winning goal but we should have won and seen off Fulham, who were just a Second Division club at the time."

After leaving Blues in the summer of 1976, Hatton spent two years at Blackpool before moving on to tonight's visitors Luton.

David Pleat had just taken over at the helm at the age of just 33 and set about building a totally new side at Kenilworth Road.

"I was actually David's first signing after he joined the club," adds Hatton.

"When we played our first game of the season at home to Oldham the whole team were making their debut.

"We were 1-0 down at half time but ended up winning 6-1."

Hatton says he enjoyed his two years playing under Pleat at the Bedfordshire club.

"Luton were a small club and we didn't get massive gates but the football was fun," he continues.

"Dave was a young tracksuit manager at the time. He was a good coach and probably the most innovative I have played for.



"We would try things on the training field that I had never tried in my 19 years in football.

"He would have us trying to kick the ball in a certain way so it would dip or spin which wasn't easy with the old footballs.

"He would always make training interesting and when you arrived you thought 'what is he going to throw at us today?'"

Hatton finished his career at Sheffield United and Cardiff before retiring and leaving football behind in 1982 to join the insurance industry, which later brought him back into the football environment as part of the PFA.

But he is now semi-retired and enjoying quality time with his wife and family that includes three grandchildren, the oldest of which, Thomas, is already mad on football and eager to follow in his grandfather's footsteps.

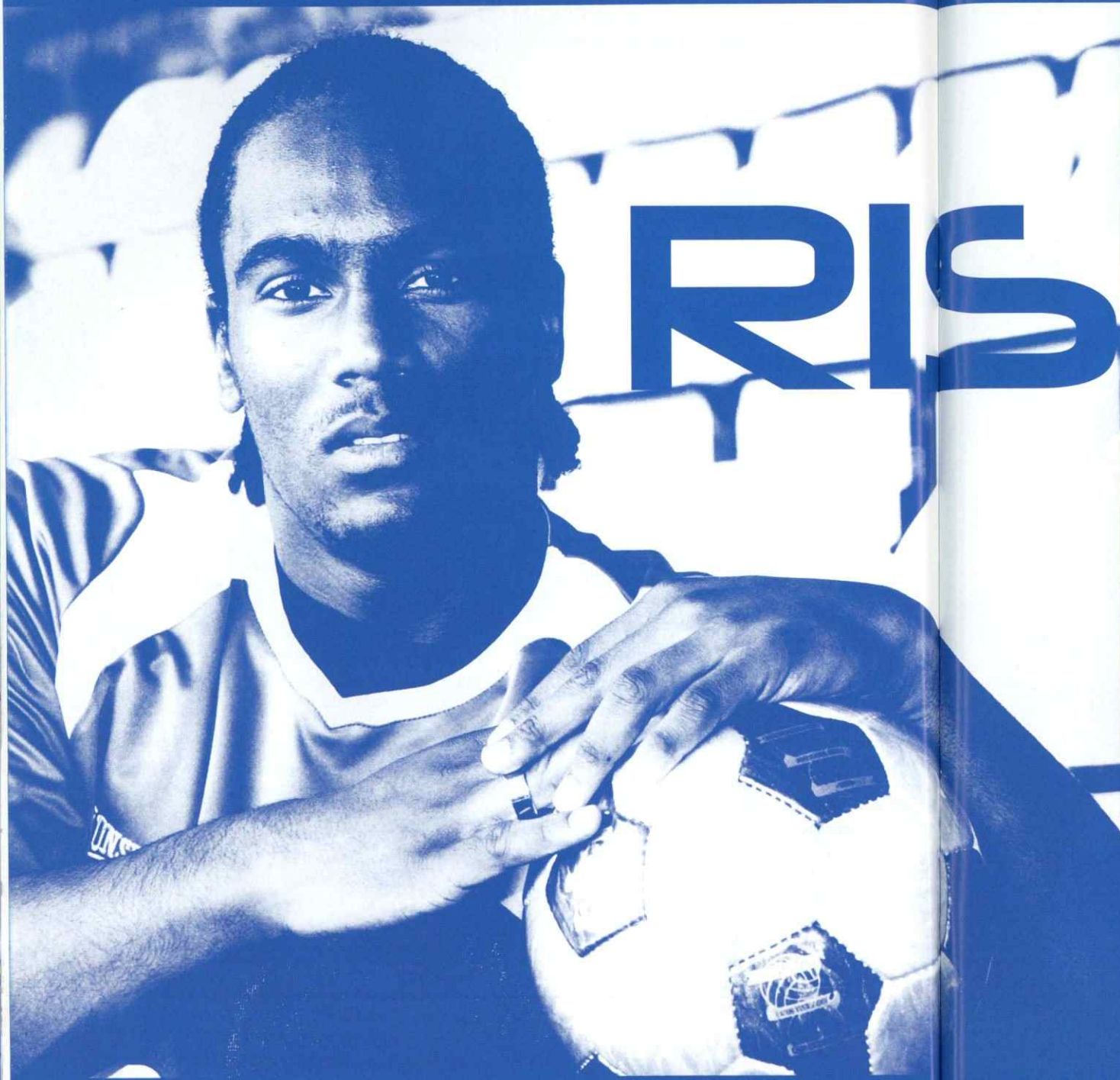
Hatton adds: "He said to me earlier this year, can you take me to a football match?"

"I took him straight down to Blues' club shop and got him kitted out in Birmingham City gear.

"And we went to the Hull game in September and he thought it was great!

"He keeps saying that he wants to be a footballer, 'like you granddad'!

"We've got a set of goals at the top of the garden and he certainly likes to see the ball hit the back of the net!"



RISING STAR

AFTER A SOMEWHAT DIFFICULT START TO HIS BIRMINGHAM CAREER, CAMERON JEROME HAS BEGUN TO PROVE IN RECENT WEEKS JUST WHY STEVE BRUCE SPLASHED OUT £3MILLION FOR HIS SERVICES IN THE SUMMER. THE POWERFUL FRONT MAN HAS CEMENTED HIS PLACE IN THE TEAM AND BEEN A VITAL COMPONENT IN OUR RECENT SURGE TO THE TOP OF THE CHAMPIONSHIP TABLE. HIS PHYSICAL PRESENCE ALONE IS OFTEN ENOUGH TO CAUSE PANIC AMONGST OPPOSITION DEFENDERS AND ALLIING THIS WITH AN EVER-IMPROVING ALL-ROUND GAME HAS ALLOWED 'CAM' TO SHOW WHAT HE IS ALL ABOUT. HERE, THE ENGLAND UNDER-21 INTERNATIONAL DISCUSSES THE BUSY CHRISTMAS SCHEDULE BUT FIRST REVEALS HIS DELIGHT AT BECOMING AN IMPORTANT PART OF THE BLUES FRONTLINE.



"I've been very pleased to have won my place back in the side because that is what I came here to do. I want to play football and I've been given the opportunity to do that recently. I've been quite happy with my performances, I feel I've been contributing to the team and we are doing very well, so everything is good at Blues at the moment."

Indeed it is, the whole team have clicked into top gear in recent weeks and there are very few Bluenoses who have not been pleased with our form overall. Cameron has taken this opportunity to quietly find his form and the powerful striker is especially pleased to have added an extra dimension to his game since arriving at Birmingham.

"I think I've put in a few good performances in recent weeks. I set myself very high standards and, while I could, of course, do even better I have been quite satisfied. Last year I was criticised in some quarters because people were saying all I do is score goals and that I didn't really contribute to the team. However, this season people will have seen that I've been involved in setting up goals as well as scoring them and that is very pleasing for me.

"I've been enjoying getting involved in the build-up play a bit more than I did in the past and that has come since I arrived here at Birmingham. I'm definitely more confident in my all-round game now and I hope to continue to improve in every aspect as time goes by."

The way in which we have been racking up the points this season has not always been pretty, but in a league which demands hard work and true grit, as well as no small amount of talent, it is

undoubtedly the way forward. Jerome feels that the time has to be right to play attractive football and reveals that the team now realise what is required to get points on the board in the Championship.

"We do play some decent football at times because we have got the sorts of players to do that. There is a good blend in the team and we have learnt that sometimes you have got to be direct in this Division. At times earlier in the season we were too determined to play pretty football and the opposition were trying to bully us out of games. But recently we have been much more physical, a bit more direct and it is working very well; as shown by the results we have 'got'."

A feature of Blues' recent successes has been the burgeoning partnership between Jerome and his usual strike partner Nicklas Bendtner. Cameron acknowledges that the two of them are beginning to discover how to play together as a pairing but is quick to add that Gary McSheffrey is also a vital part of the Blues goal threat.

"It really helps to be playing with Nicklas so often and also working together in training. We are beginning to develop a bit of an understanding now and Gary McSheffrey has been pushing up with us as well. Between the three of us I think we show a lot of diversity and it has been enough to hurt teams. We all bring something different to the attack and I think people have seen we are starting to click now."

Of course, it is not just those three players who are capable of hurting teams in the final third. DJ Campbell has scored some vital goals this season and with Mikael Forssell making progress in his injury battle, Blues undoubtedly have a striking quota which is the envy of the

“

WE DO PLAY SOME DECENT FOOTBALL AT TIMES BECAUSE WE HAVE GOT THE SORTS OF PLAYERS TO DO THAT. THERE IS A GOOD BLEND IN THE TEAM AND WE HAVE LEARNT THAT SOMETIMES YOU HAVE GOT TO BE DIRECT IN THIS DIVISION

Championship. Jerome is currently one of the men in possession of a starting berth but feels that the variety offered by the other strikers at Birmingham is vital to our success.

“It is definitely a good thing for the club. It is not an easy position to play in and I think between me, Nicklas, DJ and Mikael, the gaffer has got a good foursome. Of course, Macca [McSheffrey] can also be pushed up but I would consider the four of us to be the out-and-out strikers because Gary is just as effective on the wing. I think we are all very different players and the manager has obviously brought us in for that reason. Between us we can cause a lot of damage and you would hope that in the final third we have got a bit too much for a lot of the teams in this league.”

Steve Bruce has often said as much and perhaps the most encouraging thing about the striking options at the club is that they are all young players with plenty of room for improvement. This is particularly true of Cameron who, somewhat unbelievably given his physical stature, only turned 20 in October. While his obvious power is undoubtedly a potent weapon on the football pitch, Cam reveals that it sometimes fools people into expecting too much of a striker who is still learning the game.

“I think that sometimes that does come into the equation but it is not just my physical appearance which leads people into doing that. I have been playing first team football for two and a half seasons now, so sometimes people do tend to forget that I am only young. They hype you up so quickly but want to bring you down just as fast. One minute you can be flavour of the month but then if you go four or five games without scoring then all of a sudden people are asking questions. But I suppose that in this profession you have to take the rough with the smooth.”

Such a mature outlook on the fickle nature of football punditry once again makes Jerome seem older than his years. Yet the young forward

is rapidly coming to terms with the life of a professional footballer and reveals that even the hectic Christmas schedule is something which he has grown accustomed to.

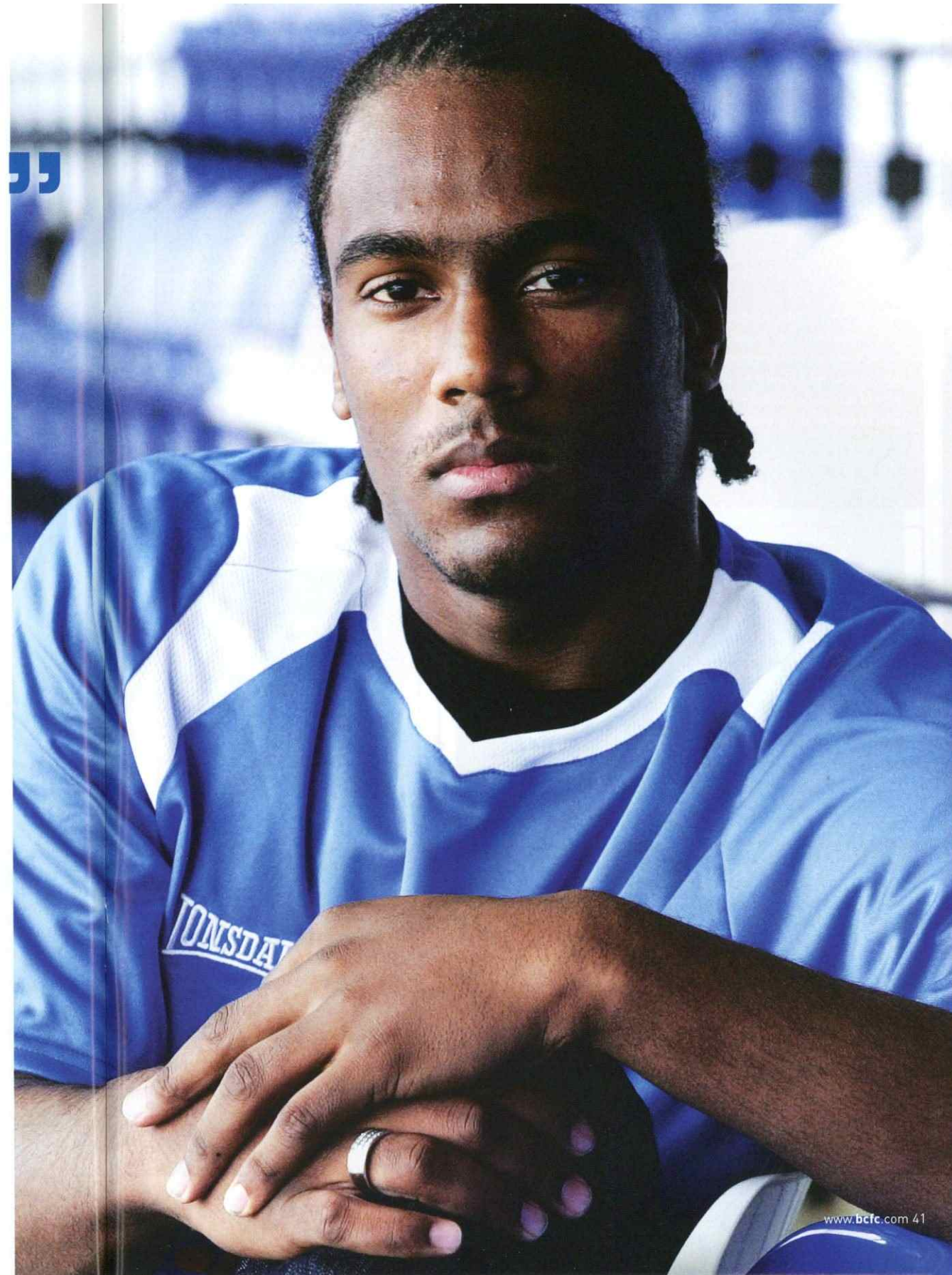
“It is part and parcel of being a footballer really; I think most of the lads are used to it now. The majority of us still wake up with our families on Christmas morning and even though we have to go to training, it is only for a couple of hours. It is a bit more difficult for the lads who live away from home but we all realise we are still in a very privileged position; the Christmas period is just one of very few downsides.”

While this time of year places both a physical and emotional strain on professional footballers, it is also one of the most important periods of the season. A team's form over Christmas can make or break their season and Cameron reveals that Blues will be going all out to ensure we come out the other side in just as healthy a position.

“I think it is a vital time because it is leading us into the second half of the season. It is difficult but it is the same for everybody to be fair, every team play the same number of games in the same amount of days. The gaffer has been drumming it into us that the most important thing is not to take our foot off the pedal. We want to continue performing how we have been in recent weeks, which will hopefully allow us to pick up enough points to maintain our promotion push.

“Obviously we want to win every game we play in. That is our main aim because we would like to open up a gap an even bigger gap when we come out of the Christmas period. That would be wonderful but we have to take every game as it comes; as long as we are up there at the business end of the season that is all that matters. We can't look at what other teams are doing too much; we just need to concentrate on ourselves because in the end it will all come down to our own performances.”

”



SUPPLE HOPING FOR QUIET LOAN WINDOW

Shane Supple has admitted that he is keeping his fingers crossed Jim Magilton does not bring in a loan keeper when the transfer window opens. Wigan's Mike Pollitt came in last month, and impressed in a 3-1 win over Norwich before being recalled by his Premiership club. Supple said: "It is up to the manager and I respect his decisions. But it would be a blow if he was to bring in a second loanee goalkeeper. If so, I would have to see what my next move would be. It is very frustrating to be sitting on the bench, but I have every confidence that my time will come again."

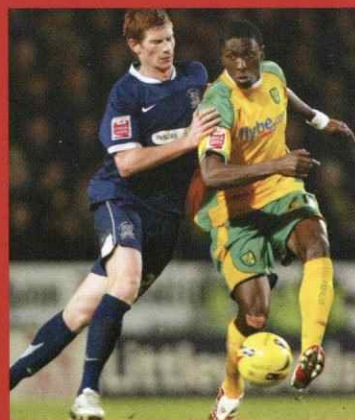


ELLAND ROAD IN SAFE HANDS

Leeds have confirmed Elland Road has been sold to new owners, but have assured fans the ground's future is in safe hands. United chief executive Shaun Harvey said: "We can confirm that the change in ownership in relation to Elland Road actually took place in excess of 15 months ago. The change of ownership has no material effect on Leeds United as we still have the same lease as originally entered into, albeit with a different company. More importantly, the buy-back provision has also been transferred. The ownership of the stadium is noted at the Land Registry."

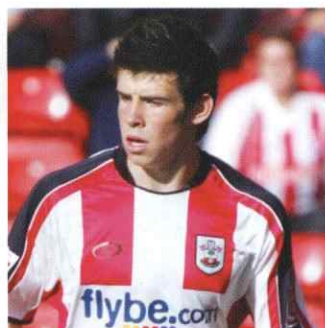
GRANT: FANS RIGHT TO BE FRUSTRATED

Peter Grant said he could understand the frustration of the home fans after Norwich were held to a goalless draw by rockbottom Southend. The Shrimpers were forced to play the final half-hour with only 10 men following the dismissal of defender Efe Sodje for a dangerous tackle on Dickson Etuhu, but still held out for a point without any undue alarm. "That is typical of the whole performances since I have been here and there are no excuses for it," Grant said, "We were very poor, it is as simple as that. There was not enough quality on show and on the rare occasions we did get into good positions, the final ball was awful. I heard what the supporters were saying at the end and I have every sympathy for them. I was saying the same sort of things myself and I take responsibility for trying to put things right."



BURLEY: NO BID FOR BRILLIANT BALE

George Burley insists Southampton have 'not received an official bid' from Tottenham for highly-rated defender Gareth Bale. The 17-year-old has been linked with a possible £6million move to either Tottenham or Newcastle once the transfer window opens, while Arsenal and Manchester United are also keeping tabs on his progress. But Burley said: "There is all sorts of speculation, but no official bid has been received from Tottenham. We want to keep Gareth for as long as possible because he is one of the best young players in the country."



Sumptuous
GARDENS of MANILVA COUNTRY CLUB
Linked Villas

NEW PRICE
€425,000

ONLY 20% DEPOSIT
WITH A THREE YEAR
5% RENTAL OPTION*

* Rental based on 9 months occupancy per annum (over 3 years) Applicants are in process with regard to rental return
t: 0121 693 0176 abdul@edgbaston.ovpgroup.co.uk



TIATTO HOPES FOR QUICK TAKEOVER

Defender Danny Tiatto is hoping Milan Mandaric's proposed takeover of Leicester will be completed soon. Former Portsmouth owner Mandaric is understood to be on the verge of a £25million takeover of the Foxes. And Australian international Tiatto believes the move would increase City's chances of success on the field. "Everyone wants to see it move forward. The sooner it gets sorted the better," Tiatto said. "If there's money available, it will be good to add to the squad and make it stronger."



LUTON EXTEND KIELY LOAN DEAL

Luton boss Mike Newell confirmed he has signed Dean Kiely on loan for a further month after his fine form in recent weeks. The Hatters' boss admitted he would love to keep hold of Kiely on a permanent basis when the January transfer window reopens, but finances at Kenilworth Road are unlikely to stretch far enough. "We re-signed him for another month," said Newell. "But obviously now they can take him back at any time, while somebody else could sign him permanently. He's told us he wants to get away from Portsmouth in January but it might be beyond us to take him permanently. A lot of things would have to happen if we were even to be in contention to take him."





FOOTBALLERS' DRIVES

MIKAEL FORSSELL

Who taught you to drive?
My cousin taught me the basics in a parking lot in Finland and then I finished off with an instructor down in London.

How many attempts did it take you to pass your test?
Just one, but I was very lucky. I hit the kerb and stalled about eight times during the test! But the guy was a Chelsea fan, so that helped massively!

What was the first car you ever had?
It was a green Vauxhall Astra.

How many different cars have you had since then?
Just two, because I believe that if you buy something you should make good use of it. I don't want to change my car all the time.

What do you drive at the moment?
A convertible Mercedes CLK 55 AMG.

What is your favourite car you have ever had?
For the moment it is my current car, until a new version comes out.

What would be your dream car?
A convertible red Ferrari F430.

What CDs have you got in the car?
I've got a six CD changer, so my six CDs are The Game, 50 Cent, 2 Pac, Jay-Z, Snoop Dogg and a Finnish rapper called Elastinen.

What do you always make sure you have got in the glovebox?
Just CDs really.

If you were to have a rally with all the players driving their own cars, who do you think would win?
Me! Because I'm from Finland and so are Mika Hakkinen and Kimi Raikkonen! We rule the whole driving thing!

Have you ever trusted your car to someone else at the club?
I have. I lent it to Robbie Savage because he got my windows tinted but he brought it back ok. To be fair, I borrowed his Porsche in exchange, so it was a pretty good trade.

Have you ever been to a racing track and driven a rally car?
No, but I have been go-karting which was very good fun.

Are you a fan of private number plates?
Yes, I have one.

Do you prefer to drive or be driven?
I definitely prefer to drive, simply because I love driving.

How would you describe yourself as a driver?
I used to like driving very fast but nowadays I am extremely calm.

Have you ever had any scary moments?
I did crash my car in Finland once but it wasn't my fault; this guy just pulled out right in front of me. He had been on his phone writing a text message so he had to pay the insurance and everything and it was just lucky it wasn't too serious.

If you could be driving in any car, anywhere in the world, which car would it be and where?
I would be in a nice Ferrari, with the top down, just cruising at home in Finland. Or, if I can choose a second one, I would be driven around in a Mercedes Maybach while I was chilling in the back drinking.....water!

Mikael Forssell drives the Mercedes CLK 55 AMG



Get to the game!

10% off Avis UK car rentals

Call 0870 6086318 and quote 'Blues' or visit avis.co.uk/gb/Blues

Conditions apply.



See a different type of blue!

Amazing May Offers flying from Birmingham Airport!

| | | | | | |
|----------|-----------|---------------|--------------|------|------|
| 04th May | 07 nights | Self Catering | Turkey | from | £159 |
| 11th May | 07 nights | Self Catering | Menorca | from | £148 |
| 18th May | 07 nights | Self Catering | Costa Dorada | from | £144 |

BIRMINGHAM
INTERNATIONAL AIRPORT

To book your next holiday pop into
your local Thomas Cook Store

(Please quote: Blues Holiday Club)

**Thomas
Cook**

Thomas Cook
Bullring
0121 254 2200

Thomas Cook
Dudley High St.
0384 557700

Thomas Cook
Castle Vale
0121 7488790

Thomas Cook
Sutton Coldfield
0121 255 3500

Thomas Cook
Harborne
0121 253 7600

Terms and Conditions: The above prices are based on maximum occupancy and do not include in-flight meals and under occupancies (if applicable). The prices are subject to availability and change. Prices are correct as of 02nd October 2006. Offers above apply to: Turkey (DLM) - Lunamar Apts To6A60 - Self Catering - from £159, Menorca (MAH) - Nuramar Apts B62A07 - Self Catering - from £148, Costa Dorada (REU) - Vancouver Apts D60A26 - Self Catering - from £144

QUIZ

PUT YOUR FOOTBALL KNOWLEDGE TO THE TEST WITH OUR BLUES QUIZ

BLUES

1. Who scored our first goal on Tuesday as we celebrated 100 years at St. Andrew's with a win?
2. What squad number does Sone Aluko wear?
3. How many goals has Seb Larsson scored this season for Blues?
4. And how many league appearances has he made for Arsenal?
5. How tall was our former hitman Kevin Francis?

CHAMPIONSHIP

1. Who is Derby's manager?
2. Preston signed which striker from Liverpool in the summer?
3. What is the name of Stoke City's Chairman?
4. And what is the club's nickname?
5. On which road would you find Leicester's Walkers Stadium?

VISITORS

1. Who was Luton manager before Mike Newell?
2. In which year was Newell appointed?
3. Who is the club's leading goalscorer so far this season?
4. Which club did Luton sign Richard Langley from in the summer?
5. Who is the only Croatian player in the Luton squad?

EUROPEAN FOOTBALL

1. Which club does Frederic Piquionne currently play for?
2. Which club are top of the French Le Championnat table?

3. Juventus are believed to be interested in which West Ham player?
4. Can you name the only team in Dutch football's top flight whose name begins with the letter 'S'?
5. Which Uruguayan international striker plays for Villarreal in Spain?



Sone Aluko

ANSWERS: Blues 1. Matthew Upson, 2. 25, 3. Three, 4. Three, 5. Six foot, seven inches. **Championship** 1. Billy Davies, 2. Neil Mellor, 3. Peter Coates, 4. The Pottery, 5. Filbert Way. **Visitors** 1. Joe Kinnear, 2. 2003, 3. Rown Vine, 4. QPR, 5. Ahmet Brkovic. **European Football** 1. St. Etienne, 2. Lyon, 3. Javier Mascherano, 4. Sparta Rotterdam, 5. Diego Forlan.



PokerRoom.com

BLUES SALE

STARTS TUESDAY JANUARY 2
MANY ITEMS HALF PRICE!

GET DOWN TO THE ST. ANDREW'S
SUPERSTORE OR THE NEW STORE IN
THE PALLASADES SHOPPING CENTRE...

...AND GRAB YOURSELVES
A NEW YEAR BARGAIN!



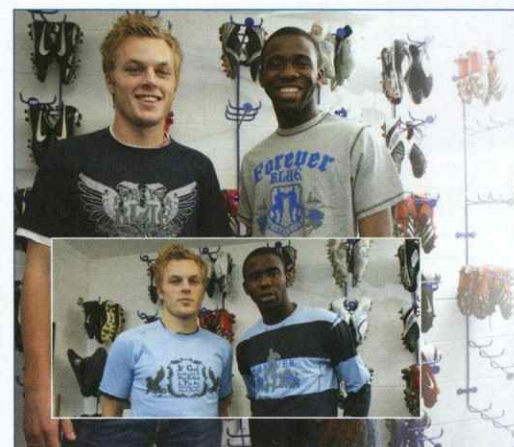
NOW IN STORE IN YOUR BLUES SHOPS



1. 100 Years Coaster Set - £8.99
2. Jumbo 100 Years Mug - £7.99
3. Piggy Bank - £6.99
4. Egg Cup - £2.99
5. Salt and Pepper Pots - £4.99



ALL UNDER £10!



NEVER EVER RANGE

Take a look at the fabulous new range, designed and developed for the serious football fan. Our **NEVER EVER** range defines the passion of Blues fans. Designs are in keeping with the latest high street trends and slogans such as '**NEVER CLARET, FOREVER BLUE!**' make it clear where your allegiances lie.

The Blues **NEVER EVER** range is available to purchase in-store and online **NOW** with T-Shirts starting from **ONLY £20!**

WAYS TO BUY

ONLINE:
www.bcfc.com

MAIL ORDER:
0870 066 8286

BLUES SUPERSTORE

St. Andrew's Stadium
Birmingham,
B9 4NH
Tel: 0871 226 1875

NEW PALLASADES STORE!

Unit 27, The Pallasades, Birmingham

CITY CENTRE STORE

64 Dale End
Birmingham
B4 7LS
Tel: 0121 212 0873

Back to business!

Keep right on to the Premiership with **TOM ROSS** and **KEVAN BROADHURST** with live 'kick by kick' commentary of every game

IPSWICH v BLUES

Monday 1 January on BRMB at 3.00pm
with all the build up from 2.00pm

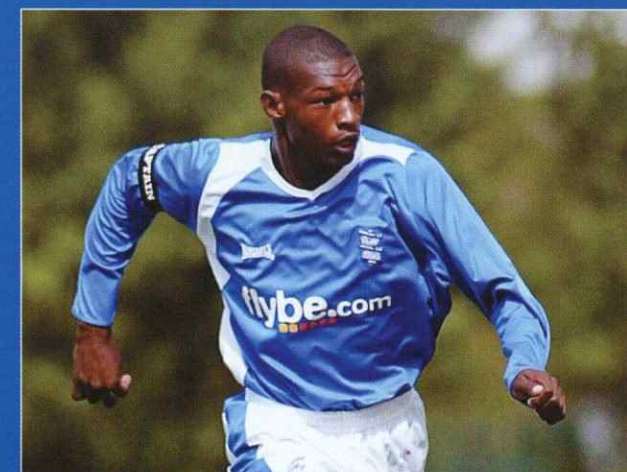
After the match, react to the action
by calling Tom Ross on 0121 226 9000

brmb
fm · dab · online

RESERVES FIXTURES

| DATE | OPPOSITION | VENUE | SCORE | SCORERS |
|-------------|----------------------|-------|-------|-----------------|
| 2006 | | | | |
| MON AUG 14 | BARNSELY | HOME | 1-1 | GRAY |
| TUE AUG 29 | WALSALL | AWAY | 2-1 | TILL, PEARCE |
| TUE SEP 5 | HUDDERSFIELD TOWN | HOME | 2-2 | ALLEN, A HALL |
| MON SEP 18 | SHEFFIELD WEDNESDAY | HOME | 1-0 | TILL |
| WED OCT 4 | STOKE CITY | AWAY | 1-0 | DANNS |
| MON OCT 9 | WEST BROMWICH ALBION | HOME | 2-0 | ALLEN, A HALL |
| WED OCT 18 | BRADFORD CITY | AWAY | 1-1 | A HALL |
| MON NOV 6 | NOTTINGHAM FOREST | HOME | 1-2 | J MCPIKE |
| WED NOV 15 | LEEDS UNITED | AWAY | 0-1 | |
| TUE NOV 28 | TAMWORTH (BSC3) | AWAY | 2-1 | PEARCE, PRICE |
| TUE DEC 19 | PORT VALE | AWAY | 2-3 | ALLEN, KAVANAGH |
| 2007 | | | | |
| MON JAN 15 | SHREWSBURY TOWN | HOME | | |
| MON JAN 22 | PORT VALE | HOME | | |
| WED JAN 31 | HUDDERSFIELD TOWN | AWAY | | |
| MON FEB 5 | STOKE CITY | HOME | | |
| WED FEB 21 | SHEFFIELD WEDNESDAY | AWAY | | |
| MON FEB 26 | WALSALL | HOME | | |
| MON MAR 5 | WEST BROMWICH ALBION | AWAY | | |
| MON MAR 19 | BRADFORD CITY | HOME | | |
| TUE APR 3 | NOTTINGHAM FOREST | AWAY | | |
| TUE APR 10 | LEEDS UNITED | HOME | | |
| MON APR 23 | SHREWSBURY TOWN | AWAY | | |
| TBA | BARNSELY | AWAY | | |

- ALL BCFC HOME FIXTURES KICK OFF 7.00PM
- FREE ENTRY FOR SEASON TICKET HOLDERS & JUNIOR SUPPORTERS CLUB MEMBERS
- £4.00 ENTRY NON-SEASON TICKET HOLDERS
- £2.00 CONCESSIONS NON-SEASON TICKET HOLDERS
- PLEASE NOTE SOLIHULL BOROUGH OPERATE A £2.00 PARKING CHARGE





RAISE YOUR GAME

WIN YOUR TEAM A PROFESSIONAL COACH.

Whether the team you play for is bottom of the league or fighting for the title, Powerade can help. We've teamed up with Virgin Radio to offer you the chance to win a Football League Coach. For more details and to register your team visit www.virginradio.co.uk

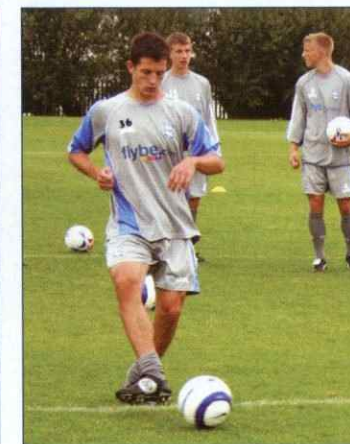
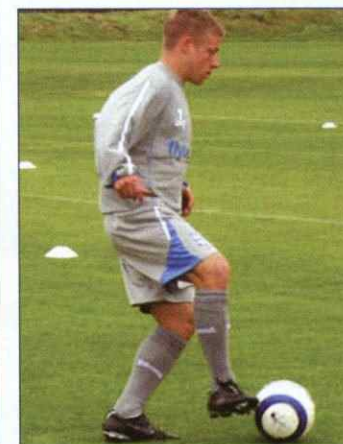
Inspired by athletes.
Developed by scientists.
Recommended by
Football League coaches.



POWERADE IS A REGISTERED TRADEMARK OF THE COCA-COLA COMPANY.

ACADEMY FIXTURES

| DATE | OPPOSITION | VENUE | KICK OFF | SCORE | SCORERS |
|--------------|----------------------|-------|----------|-------|----------------------------------|
| 2006 | | | | | |
| 19 AUGUST | NEWCASTLE UNITED | HOME | 1.00PM | 2-1 | M MCPIKE, ALUKO |
| 26 AUGUST | HUDDERSFIELD TOWN | AWAY | 12.00PM | 3-2 | GREEN, J MCPIKE, WRIGHT |
| 2 SEPTEMBER | CHARLTON ATHLETIC | AWAY | 12.00PM | 2-3 | WRIGHT, CAMPION |
| 9 SEPTEMBER | ARSENAL | HOME | 12.00PM | 2-3 | PEARCE, LEA |
| 16 SEPTEMBER | SOUTHAMPTON | HOME | 11.00AM | 1-4 | WILSON |
| 30 SEPTEMBER | LEICESTER CITY | HOME | 11.00AM | 1-2 | BURGE |
| 7 OCTOBER | READING | AWAY | 11.00AM | 3-4 | J MCPIKE, SHELDON (2) |
| 14 OCTOBER | CARDIFF CITY | HOME | 11.30AM | 1-0 | BURGE |
| 21 OCTOBER | WATFORD | AWAY | 10.30AM | 2-3 | BURGE, O'BRIEN |
| 4 NOVEMBER | TOTTENHAM HOTSPUR | HOME | 12.00PM | 1-4 | BURGE |
| 11 NOVEMBER | BRISTOL CITY | AWAY | 11.00AM | 4-3 | GREEN, BOSSEKOTA, M HALL, PEARCE |
| 18 NOVEMBER | ASTON VILLA | HOME | 11.00AM | 0-3 | |
| 1 DECEMBER | MILTON KEYNES DONS | HOME | 11.00AM | 2-1 | BURGE, JOYCE |
| 12 DECEMBER | CHESTERFIELD (FAYC3) | HOME | 7.00PM | 4-0 | ALUKO, FEARON (OG), SHELDON (2) |
| 16 DECEMBER | COVENTRY CITY | AWAY | 11.00AM | 0-0 | |
| 2007 | | | | | |
| 6 JANUARY | WATFORD | HOME | 11.00AM | | |
| 9 JANUARY | CHARLTON (FAYC4) | HOME | 7.00PM | | (AT SOLIHULL BOROUGH FC) |
| 13 JANUARY | TOTTENHAM HOTSPUR | AWAY | | | |
| 20 JANUARY | BRISTOL CITY | HOME | 11.00AM | | |
| 3 FEBRUARY | ASTON VILLA | AWAY | 11.00AM | | |
| 10 FEBRUARY | MILTON KEYNES DONS | AWAY | 11.00AM | | |
| 17 FEBRUARY | COVENTRY CITY | HOME | 11.00AM | | |
| 24 FEBRUARY | LEICESTER CITY | AWAY | 11.00AM | | |
| 3 MARCH | READING | HOME | 11.00AM | | |
| 10 MARCH | CHELSEA | HOME | 11.00AM | | |
| 17 MARCH | CRYSTAL PALACE | AWAY | | | |
| 24 MARCH | IPSWICH TOWN | AWAY | 12.00PM | | |
| 14 APRIL | NORWICH CITY | AWAY | 12.00PM | | |
| 21 APRIL | FULHAM | HOME | 12.00PM | | |
| TBA | CARDIFF CITY | AWAY | | | |



EYE ON THE ACADEMY

BLUES GO THROUGH IN YOUTH CUP

Blues progressed to the fourth round of the FA Youth Cup for the first time in five years with a comfortable 4-0 victory over visiting Chesterfield at Damson Parkway earlier this month.

After dominating the opening period, Terry Westley's side finally made their pressure count with two late first half goals, one by Sone Aluko and then visiting defender Cameron Fearon put through his own net.

Chesterfield were reduced to ten men early in the second half and the hosts took full advantage with schoolboy Jamie Sheldon scoring twice.

In fact the 15-year-old schoolboy could have claimed a hat-trick but saw his penalty saved by the impressive Spireites keeper Aaron Bellairs.

Blues took the game to their visitors from the first whistle with Krystian Pearce, Lewis Green and James McPike all going close to scoring early on.

Aluko saw another effort whistle just past the post and was also denied by a five save from Bellairs.

But it was third time lucky for the 17-year-old when he latched on to Jared Wilson's pass and fired a low shot into the far corner on 44 minutes.

And before the break Fearon could only look on in horror as his attempted clearance looped back over his own keeper and into the net to hand Blues a two-goal advantage at the break.

Blues missed a glorious opportunity to put the game beyond their visitors five minutes into the second half when Sheldon's penalty was blocked by Bellairs.

But after Chesterfield had Paul Roome sent off on 53 minutes for a second bookable offence there was only ever going to be one winner.

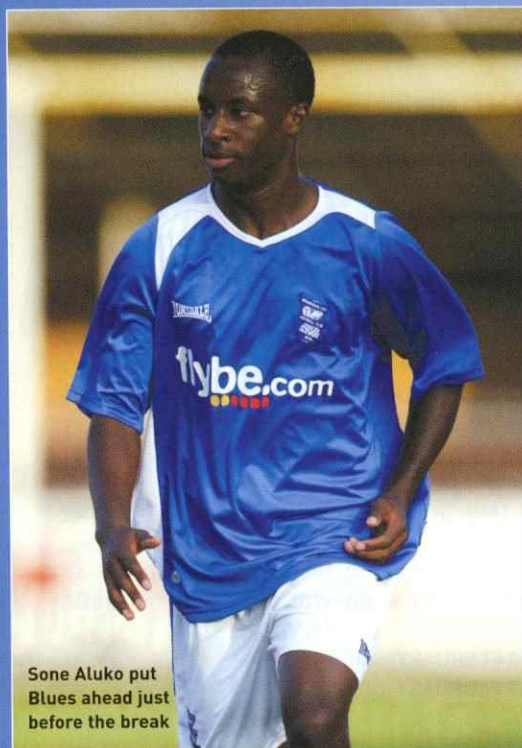
With the advantage of an extra man, Blues began to play the ball around nicely on an increasingly sticky surface and added the third on 74 minutes.

Sheldon made up for his penalty miss as he turned sharply in the box and fired into the top corner.

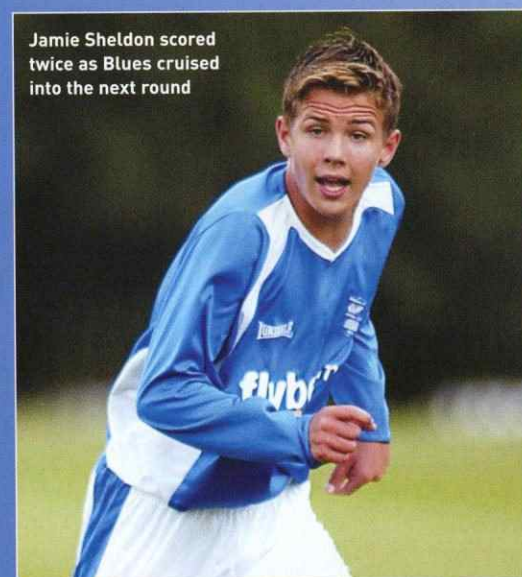
Blues keeper Artur Krysiak had to be on his toes to turn aside a shot from Lowe and at the other end home substitute Aaron Moses Garvey was unlucky to see his shot crash back off the foot of the post.

But Blues did add to their tally as Sheldon grabbed his second from close range.

Blues now go through to face Charlton Athletic in a home fourth round tie at Solihull Borough's Damson Lane ground on Tuesday January 9, kick-off 7pm.



Sone Aluko put Blues ahead just before the break



Jamie Sheldon scored twice as Blues cruised into the next round

WESTLEY DELIGHT AT CUP WIN

Terry Westley insisted that his side's FA Youth Cup victory over Chesterfield should not be underestimated after his youngsters sailed through to the fourth round with a comprehensive 4-0 win on a soggy Damson Parkway pitch.

Westley's charges may have made light work of their lower-graded opponents but Blues' Academy boss believes that the game was a potential banana skin waiting to happen.

Chesterfield had scored five goals in the previous round to reach this stage but they were allowed just two shots on target as the Blues youngsters produced a professional performance to secure their progression in the competition.

"I had watched Chesterfield in the previous round so I knew what they'd got and that it was going to be difficult," said Westley.

"The really pleasing thing was that all the players, including the boys that came on as substitutes, went about their job properly.

"If Chesterfield wanted to battle, we matched that. If they wanted to run, we matched it and then our superior technical ability and strike force got us through in the end.

"We did try and play football at the right time. We had to get our noses in front first and try to get a bit of breathing space and not play silly football, which we've done in the past.

"Once Chesterfield had a lad sent off it opened the game up and we really played."

Hot prospect Sone Aluko opened the scoring for Blues just before half-time and schoolboy Jamie Sheldon put the shine on the victory with two late goals.

Westley picked out his scorers for special praise after the game.

He added: "Sometimes you need your big players to play and Sone had too much in his locker for Chesterfield.

"I was also delighted with Jamie. I've said ever since I arrived that I was going to be tough with decision-making and I wouldn't back away from playing the younger ones.

"We had scholars on the bench and a 15-year-old in the line-up which I was delighted with.

"Jamie rewarded our faith in picking him with a good performance."



MCPIKE'S ENGLAND CLINCH VICTORY SHIELD

Blues schoolboy Mitchell McPike was part of the England squad that clinched the Victory Shield earlier this month.

The 15-year-old made his international bow in November when he came on as a substitute in a 3-0 success in Northern Ireland.

But McPike remained on the bench as Kenny Swain's boys secured a 2-1 win over Scotland at Glanford Park to claim the Victory Shield from under

the noses of the Auld Enemy.

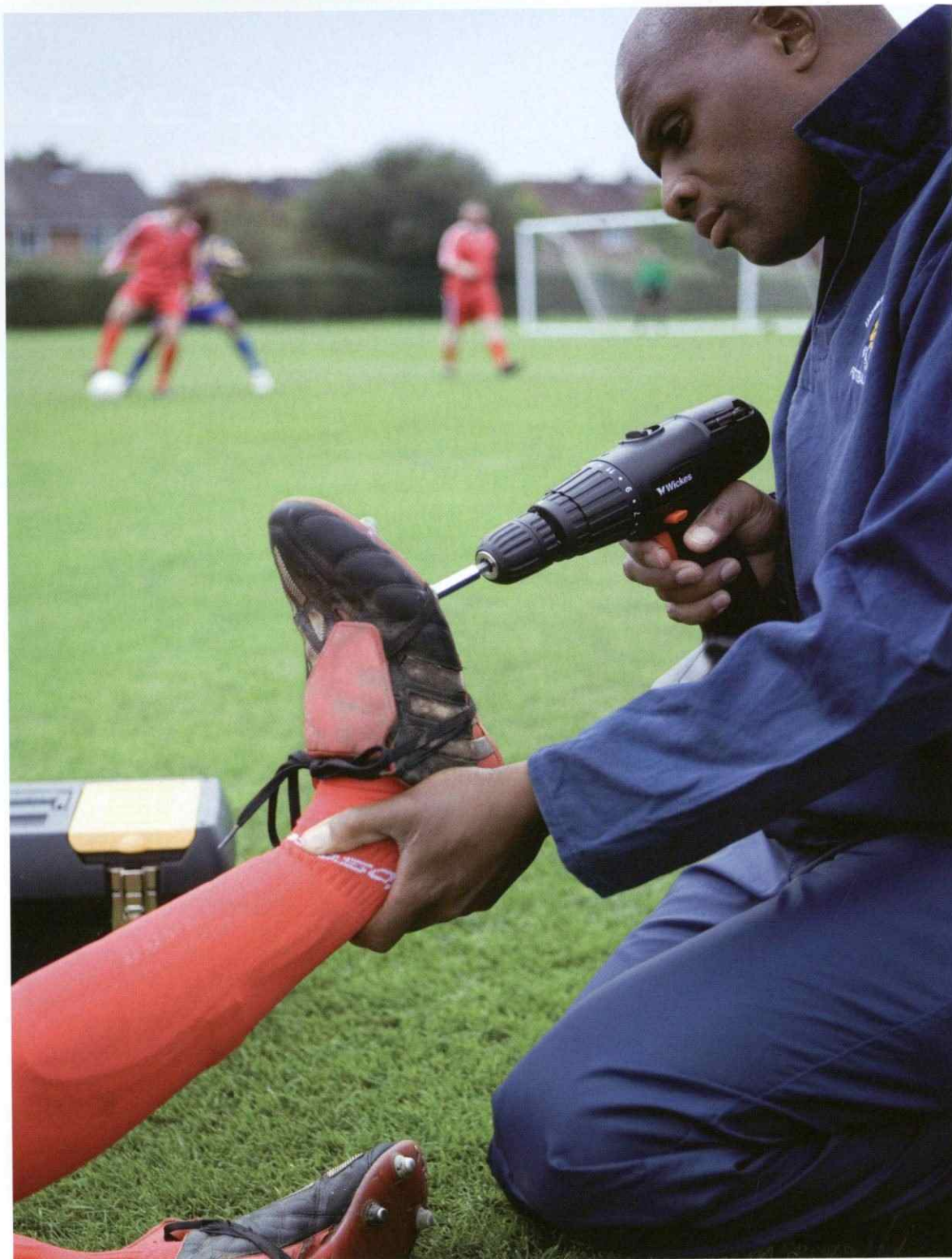
It was still another great learning experience for the teenage midfielder who is already a regular in Blues' under-18 side.





STAND OUT FROM THE CROWD!
Buy the Ergo Microlite 411 Pink laptop NOW
with Intel® Centrino® Duo Mobile Technology.
buy online at: www.bcfclaptops.co.uk

Centrino, Centrino Logo, Intel and Intel Logo are trademarks or registered trademarks of Intel Corporation or its subsidiaries in the United States and other countries.



Wickes. Official partner of the Football League Championship.



179 Wickes stores nationwide. Find your local Wickes store call 0800 321 004.



With over £290m already invested into projects since 2000 and another £45m worth of grants available this year alone, Grass Roots football is undergoing its biggest ever transformation.



We provide grants for pitches, changing rooms, community schemes, kit and much more.
Are you getting your share?



For further information visit www.footballfoundation.org.uk

improving facilities • creating opportunities • building communities



PLAYER SPONSORSHIP 06/07



DJ CAMPBELL

FULL SPONSOR
CAMPBELL WATSON
GOOD LUCK FOR
THE SEASON

CAMPBELL WATSON
www.campbellwatson.co.uk
DESIGNER FURNITURE & LIGHTING



CAMERON JEROME

HOME KIT SPONSOR
SMALL HEATH ALLIANCE
www.smallheathalliance.co.uk

AWAY KIT SPONSOR
TO SPONSOR CONTACT
HELEN TIMS 0870 066 8245



DAMIEN JOHNSON

FULL SPONSOR
TO SPONSOR
CONTACT HELEN TIMS
0870 066 8245

HOME KIT SPONSOR
TO SPONSOR CONTACT
HELEN TIMS 0870 066 8245
AWAY KIT SPONSOR
TO SPONSOR CONTACT
HELEN TIMS 0870 066 8245



GARY MCSHEFFREY

HOME KIT SPONSOR
LINDA GOODMAN
(BEST WISHES TO
THE SQUAD)

AWAY KIT SPONSOR
TO SPONSOR CONTACT
HELEN TIMS 0870 066 8245



MIKAEL FORSSELL

FULL SPONSOR
MPZ TECHNOLOGY
ALL THE BEST TO
THE SQUAD

 **mpz technology**
www.mpztechnology.com



MATHEW SADLER

FULL SPONSOR
LIZ DIX AND PMMD PROPERTIES
BEST WISHES TO THE WHOLE SQUAD
WWW.PMMDPROPERTIES.CO.UK



NEIL DANNIS

HOME KIT SPONSOR
BIRMINGHAM CITY FC
SUPPORTERS CLUB

AWAY KIT SPONSOR
TO SPONSOR CONTACT
HELEN TIMS 0870 066 8245



STEPHEN KELLY

HOME KIT SPONSOR
ULSTERMO

AWAY KIT SPONSOR
TO SPONSOR CONTACT
HELEN TIMS 0870 066 8245

Junior Blues

Hi guys and gals and welcome to St. Andrew's!

Yesterday was our Junior Blues New Year Party at the training ground. I had such a great time and a big thank you goes out to our Football in the Community department for giving us a helping hand.

On Boxing Day, Blues celebrated 100 years of St. Andrew's! I had a fantastic time and it was so nice to see so many supporters join in. Let's make as much noise as we can today and end 2006 on a high.

Hope you have a wonderful New Year.

Keep Right On

Beau

TODAY'S MASCOT'S

1. Daniel's birthday is New Years Eve, happy birthday from us all here at BCFC. Daniel loves the whole squad and is a big fan of Beau Brummie.

2. Lucy's favourite players are McSheffrey, Bendtner and Larsson. Lucy also plays football and hockey for the school and enjoys tennis and netball.

3. Conor's favourite players are David Dunn and Cameron Jerome. He has supported Blues for as long as he can remember.

4. Alex celebrated his 8th birthday last Thursday. He has always been a Blues fan and his favourite player is Maik Taylor who he thinks is "just truly brilliant"!

5. Our away mascot is Lewis whose favourite player is Rowan Vine

Each home game a VIP Junior Blue is selected to be a MASCOT for FREE! Make sure you register as a VIP Junior Blue for only £15 a season to be in with a chance of winning!

ST. ANDREW'S 100 YEAR STADIUM TOUR

As a special treat to our Junior Blues we invited 100 of you down to St. Andrew's to have an exclusive tour around the ground just before Christmas.

Tickets went fast and everyone had a great time!



VIP JUNIOR BLUE MEMBERSHIP NOW ONLY £15!!!

Make sure you upgrade and become an official member of the Junior Blues.

Just look at some of the incredible things you will receive once you've registered.

- * Welcome pack
- * Birthday card and present
- * Exclusive access to the VIP Junior Blues competitions

Look on www.bcfjuniorblues.com for more information, call 0871 226 1875 (press option 2), email Beaubrummie@bcfcjuniorblues.com or visit the ticket office.



VIP COMPETITION

VIP

Win a Blues birthday party for you and 14 friends at the West Hills training ground, where the Blues train!

To win: Design a Blues birthday card.

Closing date: Friday 19 January 2007



JUNIOR BLUES COMPETITION

Win 2 tickets (1 adult and 1 child) for Blues v Southend United on Tuesday 30 January, 7.45pm kick off.

For your chance to win answer the following question:
Which Blues player wears the number 9 shirt?

Closing date: Wednesday 17 January 2007

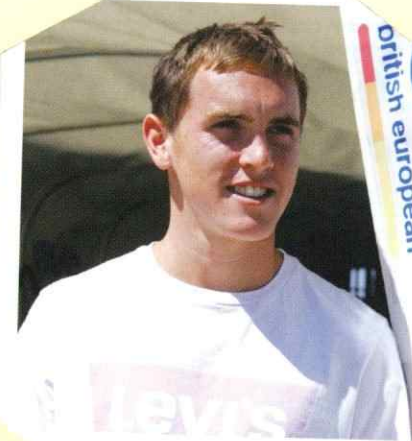


Send your entries for both competitions to:
Beau Brummie, Birmingham City Football Club,
St. Andrew's Stadium, Birmingham. B9 4NH.
Include your name, address, contact telephone number and age on all entries.

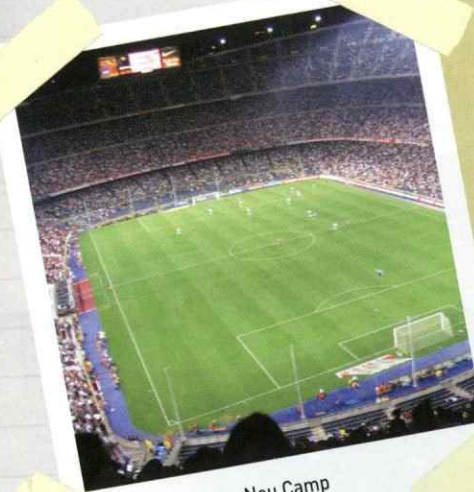
SEE UR KID PLAY 4 THE BLUES
Bring your child's dream to life!
Personalised books @ www.saronti.com

THIS WEEK
NEIL KILKENNY

DENE MULLEN ASKS THE QUESTIONS.....



Nou Camp



N IS FOR NEW...

What is the last thing you bought?
It was a jumper from USC.

E IS FOR ELECTRICS...

What one piece of technology could you not live without?

My alarm clock because it has got an LCD display so I can see the time even if it is dark. I hate not knowing the time.

I IS FOR ISLAND...

What one item would you want with you if you were marooned on a desert island?
Food!

L IS FOR LIVE...

What was the last gig you went to?
I don't really go to concerts.

K IS FOR KARAOKE...

What song would you sing if you had to do karaoke and why?

It would have to be 'Summer of '69' by Bryan Adams.

I IS FOR IRRITATE...

What is your pet hate?
When people come into my house and put their bags on the dining table!

L IS FOR LANGUAGE...

How many languages do you speak?
What are they and which would you most like to learn?

I only speak English and if I were to learn one it would have to be Spanish.

K IS FOR KING...

If you ruled the country which law would you abolish?

That is a difficult question, I don't know really.

E IS FOR EUROPE...

Which city would you most like to visit and why?
Probably Barcelona, so I could see the Nou Camp.

N IS FOR NAUGHTY...

Which player gets up to the most practical jokes at the club?

David Dunn tries to!

N IS FOR NAUTICAL...

Are you a good swimmer?

Yeah, I'm pretty good.

Y IS FOR YOUNGSTER...

Which younger member of the squad do you think we should look out for this season?

Me!

CLASS OF 06/07 REGISTER



| Name | Position | Register Number | |
|-------------------|------------|-----------------|---|
| Maik Taylor | Goalkeeper | 1 | |
| Stephen Kelly | Defender | 2 | |
| Mathew Sadler | Defender | 3 | ✓ |
| Martin Taylor | Defender | 4 | ✓ |
| Matthew Upson | Defender | 5 | ✓ |
| Stephen Clemence | Midfielder | 6 | |
| Sebastian Larsson | Midfielder | 7 | ✓ |
| David Dunn | Midfielder | 8 | |
| Mikael Forssell | Striker | 9 | |
| Cameron Jerome | Striker | 10 | ✓ |
| Julian Gray | Midfielder | 11 | |
| Mehdi Nafti | Midfielder | 12 | ✓ |
| Colin Doyle | Goalkeeper | 13 | ✓ |
| DJ Campbell | Striker | 14 | |
| Neil Kilkenny | Midfielder | 15 | ✓ |
| Olivier Tebily | Defender | 16 | ✓ |
| Neil Danns | Midfielder | 17 | |
| Samuel Oji | Defender | 18 | ✓ |
| Peter Till | Midfielder | 19 | ✓ |
| Marcos Painter | Defender | 20 | |
| Bruno N'Gotty | Defender | 21 | ✓ |
| Damien Johnson | Midfielder | 22 | |
| Mathew Birley | Midfielder | 23 | |
| Alex Bruce | Defender | 24 | |
| Sone Aluko | Striker | 25 | |
| Fabrice Muamba | Midfielder | 26 | ✓ |
| Nicklas Bendtner | Striker | 27 | |
| Gary McSheffrey | Striker | 28 | ✓ |
| Steve Bruce | Teacher | | |

CLASS OF 06/07

The Blues Board Game



TM & © 2006 Birmingham City Football Club, Birmingham. Licenced by Birmingham City Football Club, Birmingham.

Have Fun with your Whole Family and Friends!

Play Birmingham City Interactive Board Game

- Throw dice and move ball in a straight line to score goals.
- Play full time 90 minutes match, or extra time 30 minutes match, or take penalty kicks to find winner.
- Play 'The Blues Board Game' with up to 12 people, including children.

Buy online at: www.solukenterprises.co.uk



BLUES PHYSIOTHERAPIST NEIL MCDIARMID AND HIS TEAM AT



WELCOMES OUR FIRST FEMALE PHYSIOTHERAPIST

IF YOU REQUIRE TREATMENT FOR:

SPORTS INJURIES
ACCIDENT PHYSIOTHERAPY
BACK AND SPINAL PHYSIOTHERAPY
REMEDIAL MASSAGE
EXERCISE/INJURY REHABILITATION
POST-OPERATIVE PHYSIOTHERAPY ie Hip Replacements
ROAD TRAFFIC ACCIDENTS
BIOMECHANICS/GAIT ANALYSIS

We welcome both Male and Female patients.
We are recognised by all major Insurance companies

FOR AN APPOINTMENT OR DETAILS CONTACT:

0800 032 5543
OR www.Physioworld.net



Birmingham City Official Partners

flybe.com

Principal Partner

ONSDALE

LONDON

Kit Sponsor



Platinum Partners



Partners

GRASS ROOTS



Community Officer
Dean Holtham

Football Development Coaches

Chris Beard
Kevan Broadhurst
Jimmy Haarhoff
Graham Hyde
Martin O'Connor
Garry Stevens

Football Development School Manager
Louise Macey

Office Manager
Stella Breeze

Blue Zone Learning Centre Manager
Becky Perkes

FEBRUARY SOCCER CAMPS

We may still be in the midst of the Christmas festivities but plans are already in place to stop your football-mad youngsters from getting bored during the February half-term holidays with eight soccer camps confirmed around the West Midlands region.

The camps, which are run by fully qualified FA coaches and designed for boys and girls of all abilities, are being staged between Monday 12 and Friday 16 February 2007.

Venues:

- Arden School, Station Road, Knowle, B93 0PT
- Bromsgrove Private School, Worcester Road, Bromsgrove, B61 7DU
- Coleshill High School, Coventry Road, Coleshill, B46 3EX
- Fox Hollies Leisure Centre, Shirley Road, Acoccks Green, B27 7NS
- Hagley RC High School, Brake Lane, Hagley, DY8 2XL
- Kings Heath Boys School, Holly Bank Road, Kings Heath B13 0RS
- Lode Heath School, Lode Lane, Solihull, B91 2HW
- Shenley Court Leisure Centre, Long Nuke Road, Northfield, B29 4HE
- Wilnecote High School, Tinkers Green Road, Tamworth B77 5LF

Cost:

7 to 15 year olds; £45 per week or £15 per day. Each day starts at 10am and finishes at 3.45pm
Mini ankle biters (4 to 6 year olds); £25 per week or £6 per day
Each day starts at 10am and finishes at 12pm
For working parents supervision starts at 8.30am

For an application form and/or further information please contact the Community Office on 0870 066 8210.

FOOTBALL LEAGUE COMMUNITY CUP

The Community Department would like to invite local teams to enter the Girls' Community Cup national six-a-side competition for under 11's.

The event will take place at The Goals Soccer Centre, Star City, Watson Road, Nechells, Birmingham, B7 5FA, on Thursday 22 February 2007, 2.30pm to 5.00pm.

The winning team will be invited to attend a match here at St. Andrew's where they will be presented to the supporters and then get the opportunity to watch the game.

The winners will also go forward to represent the club in the southern regional final at the end of April and if they are successful there they will go forward to the national finals, held at Wembley before the Championship play-off final in May 2007.

For an application form and the competition rules please contact the Community Office on 0870 066 8210

* The competition is open to boys and girls who were under the age of 11 on 1st September 2006.

SATURDAY MORNING FOOTBALL COACHING

The Saturday morning football coaching clubs will recommence on 6 January 2007.

So if you want to improve your football skills in a fun and safe environment, why not come along and join us?

The sessions are for boys and girls aged five to 15, regardless of ability, and all aspects of football will be covered.

Venues:

- Ryland Centre, New Road, Bromsgrove, 9am to 11am.
 - Arden School, Station Road, Knowle, 10am to 12pm.
 - West Hills Training Ground, Redhill Road, Kings Norton, 10am to 12pm
- Cost: £30 for six weeks

BIRMINGHAM AND SOLIHULL CONNEXIONS

During the last year we have been delivering football coaching sessions to youngsters at Shenley Court Leisure Centre on behalf of Connexions. Connexions Birmingham and Solihull have provided funding through the Governments Positive Activities for Young People (PAYP) programme.

The aim of the sessions is to channel a young person's energy, using the power of football, to provide an activity that will engage them, give them an opportunity to mix with different children whilst developing their interpersonal as well as their football skills.

On Monday December 18 the youngsters enjoyed a surprise visit from Blues defender Mat Sadler.

Mat presented the star struck youngsters with their certificate of attendance, signed autographs and took part in a question and answer session.

Kate Donohoe, PAYP Personal Adviser, said: "I believe it is vital for young people to be able to access activities within their local areas.

"In doing so they learn many new skills including teamwork and communication. A large number of the targeted young people that I work with have accessed the football activity run by Blues' Community Dept.

"The improvement within each of them has been tremendous.

"They have developed and progressed into confident and motivated young people".



Volkswagen Van Centre (Birmingham) 0121 260 3000





RANDOM BLUENOSE

Today's Random Bluenose is 32 year-old Tom Meekings who currently lives in London but was born in Selly Oak. Tom is a university lecturer and has been supporting Blues for seven years

Why did you first start supporting Blues?

I was never into football when I was younger but then a few years ago I made a concerted effort to get into it. I toyed with the idea of supporting a London club because that is where I live now but my Dad is a massive Blues fan and I knew I would never get away with it. Plus, I knew in my heart that I had to support my hometown club.

Where do you sit in St. Andrew's?

When I can get up to a game, which is about ten times per season, I like sitting in the Kop.

How old were you when you attended your first game, and can you remember what game it was?

I was 26 and it was against Bolton.

What do you recall from that game?

We won 2-1 and Dele Adebola scored the winner. I remember thinking it was amazing and cursing myself that I had missed out on the thrill of live football for so long. As soon as I felt that buzz of excitement when Blues scored, I knew I was hooked forever.

Who is your all-time favourite Blues player, and why?

Of the players I have seen, Christophe Dugarry was by far the most talented but he wasn't there for long enough to qualify. Therefore, it would have to be Geoff Horsfield.

Who is your favourite current player, and why?

I think Gary McSheffrey has got everything needed to become a top-class player. He can beat players, score goals and is not afraid of a bit of hard work.

Which Birmingham player of the past do you most wish you had seen play?

It has to be Trevor Francis.

What is your greatest Blues moment?

Definitely seeing us win promotion to the Premiership in Cardiff. It was an unbelievable day and even though I hadn't been supporting the Blues for that long, I was completely swept away in the passion of it all.

And your worst moment?

It was really horrible getting relegated last season. It was my first real experience of failure as a Blues fan but I'm sure we'll be bouncing straight back and the good times will roll again.

Which away ground do you most enjoy visiting and why?

A lot of my friends in London are Arsenal supporters and I can't wait until Blues visit the Emirates Stadium because it is unbelievable.



Gary McSheffrey



PokerRoom.com

What is the funniest or strangest thing you have seen while following Blues?

It was probably my Dad's face when I turned up to his house wearing a Birmingham shirt, scarf and hat! I decided to go the whole hog and show him I was finally a football fan!

What is your pre-match ritual?

If I am going to a Saturday match I usually travel up on the Friday and stay at my parents' house overnight. Then I wake up at about 12 o'clock - I'm used to lay-ins as I'm a lecturer - and get ready for the game.

Which non-Birmingham footballer do you admire the most and why?

I'm trying to branch out into foreign football and I really love watching Barcelona on Sky. My favourite player is definitely Ronaldinho, although I think that Deco is a bit of a genius as well.

What is your greatest ambition as a Blues fan?

To see us get into the Champions League; that would be amazing.

How would you persuade a neutral to support Blues?

I'd take them to a game; that atmosphere is enough to get anyone hooked.

What do you do when there is no football in the summer?

I get a lovely long break from university so I usually try to travel as much as I can. I've been to every single country in Europe and want to top up on my South American experiences this summer.

If you could change one thing in football, what would it be?

I would launch a football-awareness campaign for any youngsters who, like me, were stupid enough not to get into football! Seriously though, I think I would try to clamp down on diving in some way.

What would you like to be doing in ten years time?

I don't know really, perhaps still lecturing but I know I want to be watching Blues in Europe if possible.

What is your all time favourite Blues XI?



Q&A

NIGEL SPINK

Benatalaya
Luxury at its best

5%

Guaranteed Rental Return

t: 0121 693 0176 abdul@edgbaston.ovpgroup.co.uk

63 luxurious apartments on a fabulously landscaped site bordering the Atalaya and El Paraíso Golf Courses
EXCLUSIVE SETTING OF MARBELLA
PANORAMIC VIEWS OF THE COAST
WHERE QUALITY AND STYLE
ARE FELT IN EVERY DETAIL



OCEAN VIEW



Any goalkeeper who kept a Bayern Munich side containing the likes of Paul Breitner and Karl-Heinz Rummenigge at bay in only his second senior appearance is not one to be sniffed at. Add to that the fact that the occasion was the European Cup final and you have the stuff from which legends are made. Nigel Spink has long been a part of the Blues coaching staff and therefore, if you can excuse the pun, our goalkeeping situation could not be in safer hands. Here, Spink reveals all about his role as goalkeeping coach at the club, starting by giving a brief overview of a week in the life of a goalkeeper at our West Hills training ground.

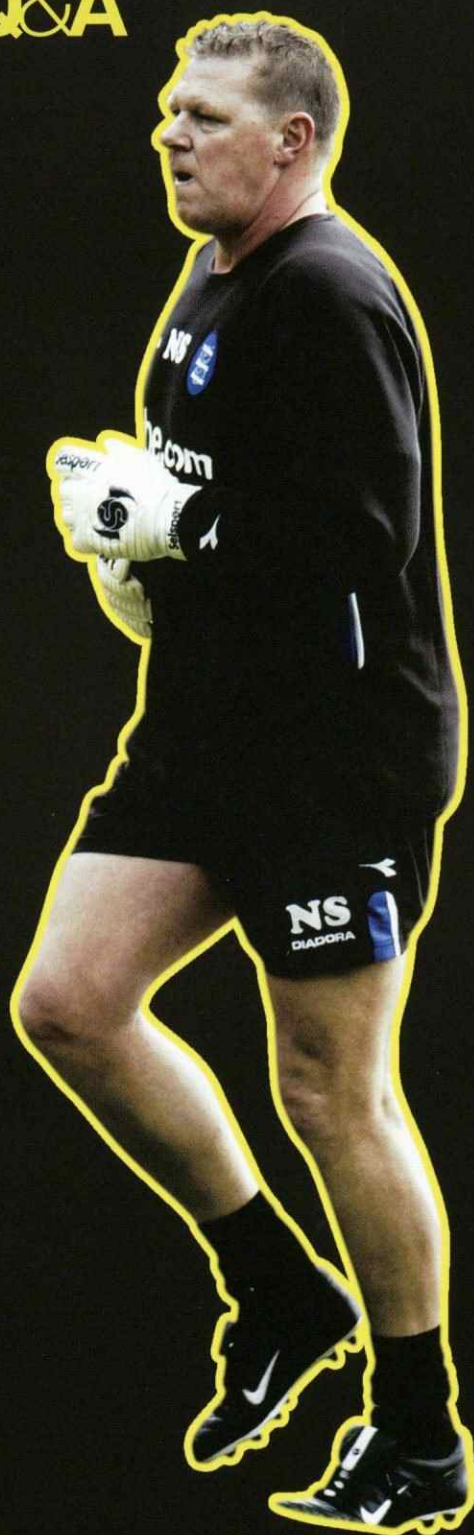
"Generally Monday is a fairly steady day, quite light-hearted and we just try to get the weekend's game out of their systems. Tuesday is quite a physical day; they do a physical session with me for 50 minutes to an hour and then work with the outfield players before finishing with another physical session, which usually involves a bit of gym work. Wednesday is generally a day off to rest and then Thursday is only half a day but it will be quite intense, sharp training. Then Friday will see them do 40 minutes preparation work with me before they join up with the rest of the team to prepare for the game."

What are the main differences between a goalkeeper's training and that of an outfield player?

"Obviously the outfield players will do a lot more running, checking and turning, and involve the ball a lot more. Keepers do a lot of technical handling, position-specific fitness stuff with me, which involves reflex and speed work, and a lot of shot-stopping. Their training has to cover every aspect of goalkeeping as there are a number of things which are necessities for a goalkeeper to be able to do."

Goalkeeper training is a lot tougher physically than a lot of people might expect, isn't it?

"Yes, it is. With the involvement of fitness coaches, which we have had over the past few years, the work they do is a lot more structured. Their fitness training is tailored very much to their needs and with the sports scientists involved, we have every area of their fitness



covered nowadays. It is all about getting them in perfect condition so they are ready to go out and deal with the game on Saturday."

How have the goalkeepers at the club been reacting to the training?

"They have been very positive. Maik is a great ambassador for working hard; he wants to work on his own and he wants to work with the team. He is a great role model for the younger keepers at the club and then we've got Colin Doyle who is the up-and-coming one behind Maik as number two. Again, he has got a fantastic work ethic and has been training with me for the best part of five years. He has done fantastically well and just needs his break now because he has proved to Maik, with his performances in the League Cup, that he is ready to grab hold of that number one spot when the chance comes along."

Maik is obviously a very experienced goalkeeper now. Is it easier or more difficult for you to work with a keeper who has been in the game for so long and therefore knows so much about the position?

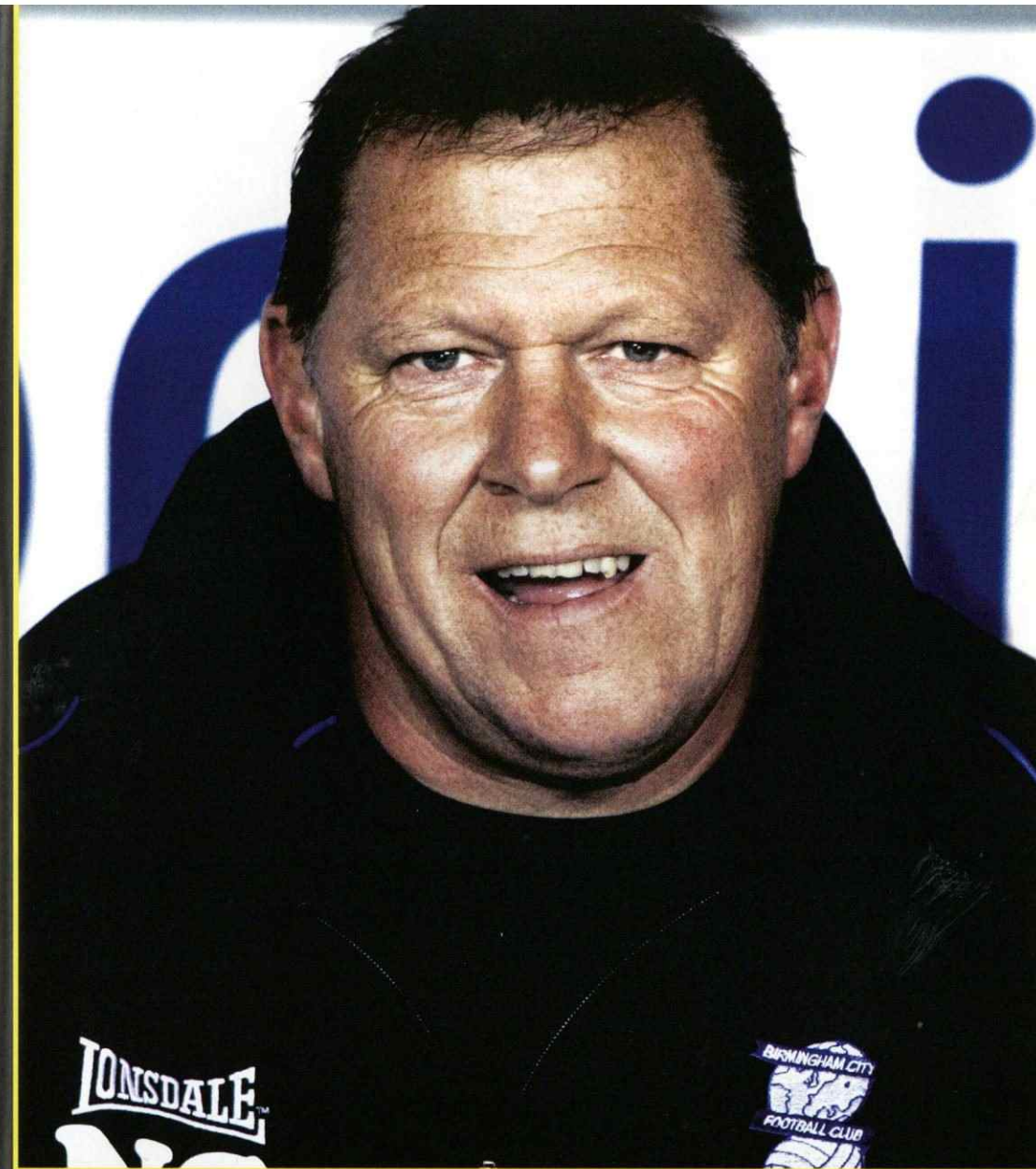
"It doesn't make that much difference to be honest, what we do do is sit down and talk about what his needs are. Given his age and his experience, he needs to tell me about the physical aspect of things and our main job is to keep him as sharp as possible for the games. The younger lads are a little bit different and with Colin, for example, we try to make sure his fitness is kept up and he is on top of his game because he doesn't play in as many matches. It is a bit of a juggling act but they are both very receptive to ideas and always give useful feedback on where they are at."

Do you have a specific style of coaching the goalkeepers?

"My coaching is based on how I felt as a goalkeeper when I was playing; what my needs were, and the fact that sometimes I needed a shoulder to cry on, while sometimes I needed someone to gee me up a bit. Until the latter part of my career I didn't have a goalkeeping coach or an experienced keeper to bounce things off, so I try to do as much as I can for any of the lads who need it."

What are your main duties on a matchday?

"I'm there to observe Maik or Colin's performance, to observe what they are doing or not doing, and also what they could do better. I take notes during the game and analyse what has happened, so if Maik is



not doing something as well as he can then I will try to come up with why that might be and we will work on it together. Basically, I am the goalkeeper's third eye and I will give my view on anything he might ask me to do with his performance. More generally, I'm also there to help Eric (Black) if he needs anything once I've got Maik and Colin ready for the match."

What do you rate as the most satisfying part of your job?

"I love everything about the job really; from trying to keep Maik at his best in every way, to helping bring

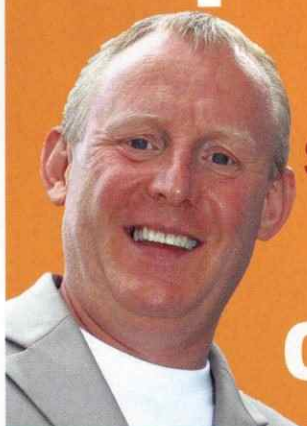
along the younger ones. Colin Doyle has been a big satisfaction for me; to see him get a pro contract was fantastic. Then we've got Adam Legzdins and the new Polish protégé Artur Krysiak, who have both been rewarded with pro contracts. Artur poses me a different challenge in that he is already very good technically and rather than start with him on basic techniques, like I normally do, I've got a goalkeeper who is already sound on the basics and I've got to take him on to a new level. There is never a day goes by where there isn't a new problem to solve and that makes my life very interesting and enjoyable."

BBC WM 95.6 FM
& DAB Digital Radio

Speak frankly...

**Call us
straight after
every match**

08453 00 99 56



Jimmy Franks



Paul Franks

BBC WM YOUR NUMBER 1 SOCCER STATION

Giorgio Armani

Hugo Boss

Oliver Sweeney

Ralph Lauren

Eton

Paul Smith

Stone Island

C.P. Company

Fake London

Evisu

sarto
menswear.com

11 Old Red Lion Court, Stratford upon Avon, Warwickshire
Tel, 01789 269 621

Opening Soon in Streetly, Sutton Coldfield



COMMERCIAL MATTERS

END OF SEASON DINNER 2007 – LIMITED AVAILABILITY!

Places are already being snapped up for the Birmingham City End of Season Dinner which takes place at the Hilton Metropole Hotel on 2 May 2007.

This is always a special event as the Board, management, players and supporters alike come together to look back on another season.

Obviously we hope the 2007 Dinner will be a particularly memorable and joyous occasion if the team have already secured promotion back to the top flight.

Make sure you book up early to avoid disappointment as interest is already high.

Individual places are available at £95 per person plus vat or a table of ten costs £875 plus vat. Contact the commercial department on 0871 226 1875.



Today's Sponsors

Main Match Sponsor
JLP Events Ltd

Matchball Sponsor
Sokatyes

Manager's Sponsor
Sports Revolution

Chairman's Sponsor
West Bromwich Building Society

Legends Sponsor
Flybe

VIP Guests
Primetime Recruitment
Oakfields UPVC
Paul Harrodine
PBS Deliveries
Mrs Darby
Geologistics Expo Ltd
Stuart Lane

CELEBRITY GOLF DAY

The Birmingham City Celebrity Golf Day takes place at the Marriott Forest of Arden Hotel and Country Club on Tuesday 3 April 2007.

Join players, management and celebrities for this star-studded event, hosted by Jasper Carrott and friends, as 42 teams compete on

the world-class championship course.

For more details on how to enter a team or the various sponsorship packages available, pick up a brochure from Kop reception or contact the commercial department on 0871 226 1875.



FRANK BRUNO SPORTING DINNER

Our next Sporting Dinner takes place on Thursday February 22 when boxing great Frank Bruno will be our special guest.

Frank is one of the most recognisable and liked sportsman in this country with an illustrious boxing career that included 40 victories from 44 contests, the World WBC Championship amongst them.

He was voted Sports Personality of the Year for 1989 and 1990 and since retiring from boxing in 1996 he has remained in the public eye making numerous stage appearances in pantomime.

Tables of ten are now available at a cost of £700 or you can book individual places at £75 per person – contact the Events department on 0871 226 1875.



On the ball with The Blues

eminence
RECORDS • LEISURE • ENTERTAINMENT • CORPORATE
www.eminenceleisure.com

ON THE RADIO

TOM ROSS DISCUSSES ALL THINGS BLUE



The 100 years anniversary celebrations before the kick off against QPR on Boxing Day were part of an emotional day for many Bluenoses, including myself. I started thinking about the good times I had enjoyed here at my spiritual second home and also about the sad and miserable times that all contribute to the life of not only a Bluenose but any fan at any club's ground.

2006 was also the 50th anniversary of my first ever visit to St Andrews when 38,891 fans and me watched Blues beat the Baggies 2-0. I was excited that day and it's exactly the same today. I will arrive here tonight with a tingle down my spine, as I get ready to host the football phone-in before commentating on the game for BRMB.

It's been the same every single time I have walked into this great ground. Why? Because it's been such a huge part of my life from that day in April 1956. I dread the day the club moves from St. Andrew's to a new state-of-the-art stadium that I am sure will have all the mod cons needed apart from a soul, tradition and history. The spirits of players, goals and games past haunt not only the terraces but every nook and cranny and I love it.

I went to Arsenal's new Emirates stadium on the opening day of the season and let me tell you it's fantastic. Every seat is comfortable with plenty of leg-room. There is a station as part of the stadium complex. However it was soul-less and not a patch on Highbury for that inexplicable feeling of tradition and history that any fan can relate to.

I accept that one day Blues will have to move from here at St Andrews to a brand new home, but for me and many others our hearts will stay here in Small Heath until the day we die. We not only have our own great memories, but in many cases, we have memories of friends and family who are no longer with us but were also St Andrews regulars.

I admit to shedding a tear or two when the Kop, Railway and Tilton terraces were demolished and in fact, I put a piece of the terraces where I stood as a

young man in my garden. However, I realised that although there were new stands, the very spirit and soul of St. Andrew's still existed.

I know for fact that David Sullivan, the Gold Brothers and Karren Brady all want nothing but the best for the fans in terms of facilities, comfort, access etc. That is why they want a new high-tech stadium and I respect them for that. In another 100 years, I am sure fans will feel about a new stadium, if there is one, the way many of us feel about St Andrews.

By the way, 2006 is also the 50th anniversary of the club's anthem "Keep Right On" which is another part of the great Blues history and tradition that will never die.

I want to finish by wishing a Happy New Year to every single Bluenose; I hope 2007 brings the club and you much success and happiness.



NOTICE BOARD

To get your message on the notice board contact Sarah Gould on 0871 226 1875 or email sarah.gould@bcfc.com



Happy 10th Birthday to Joe.
From all at BCFC



Happy 40th Birthday to Dan Harrison
From Ego, Jim, Scott, Bridgeo, Moley, Colin and Adam

If one of your friends or family have a birthday or anniversary coming up, why not mark the occasion with one of our special on-the-pitch presentations or how about a commemorative brick in the Walkway of Fame?

For more details contact Helen Tims on 0870 066 8245.

WIN SEASON TICKET!

Buy online: www.solukenterprises.co.uk

© 2006 Birmingham City Football Club, Birmingham.



Lead the team out in front of a packed St. Andrew's

flybe.com

Prices for all budgets
All games still available including away fixtures

Contact Helen Tims - 0871 226 1875
email Helen.tims@bcfc.com



An ideal gift for any occasion!

personalised programme covers!

YOUR
FACE
ON THE
COVER

Have you ever wondered what the cover of the official Blues Matchday Programme would look like with **YOUR** photo on it?

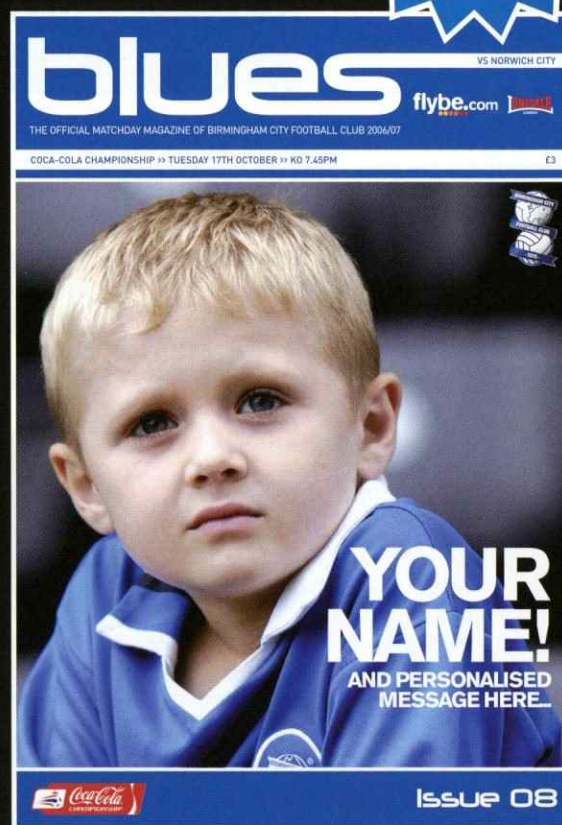
Simply send us whatever photo you'd like to feature on the cover of the official Blues Matchday Programme along with your own personal message details and we will design it accordingly and send you a full colour print, just like the one pictured, for you to keep forever.

The prints cost **just £14.95 each**, plus £3 postage and packaging. You can also order additional copies of your cover for only £5 each. The quickest and easiest method is via email, but photographs can also be posted too.

Payment can be made by either cheque or credit/debit card. Please make all cheques payable to CRE8 UK LTD. Or to pay by credit/debit card please call **0800 856 0103**

POST: My front cover, CRE8, The Old Brewery, Priory Lane, Burford, Oxfordshire OX18 4SG.

EMAIL: myfrontcover@cre8ing.com



CRE8
publishing

the old brewery, priory lane
burford, oxfordshire ox18 4sg

tel: 01993 822811
fax: 01993 825928

email: studio@cre8ing.com
web: www.cre8ing.com

NEXT ONE UP IPSWICH TOWN

MONDAY 1ST JANUARY, PORTMAN ROAD, 3PM KO



Following tonight's game against Luton Town, Blues finish off the festive fixture programme when we travel to Suffolk to take on Jim Magilton's Ipswich Town side. It will be a difficult trip for Steve Bruce and his charges, with Ipswich having recently won at Coventry to push them towards mid-table and sooth any lingering worries about the possibility of relegation. Of course, there is still a long way to go before any such outcomes are decided but with Jim Magilton insisting on his team playing football the right way, there is certainly a lot more entertainment in store for the Portman Road faithful.

Magilton took over as manager of Ipswich in the summer, replacing Joe Royle who had been boss at Portman Road for almost four years. During that time, Ipswich turned from perennial promotion chasers to more of a mid-table side although, to be fair to Royle, much of that was down to him being forced to sell most of his best players during his time in charge.

Magilton has found things no less difficult since taking over as manager in June and, once again, the purse strings have been loosened only minimally for the new gaffer. The young manager swooped for one of our own, when Steve Bruce decided to part with his son Alex in the summer and Magilton followed this up with a number of other signings. Perhaps the most high-profile capture was that of Sylvain Legwinski from Fulham and the French midfielder man has been a big hit since moving to Portman Road.

It has been a steady season for the Tractor Boys so far and Magilton is fortunate to have a lot of

affection from the Portman Road crowd. He served the club magnificently as a player and, as such, will probably be given more of a chance than an outsider may have got. Nonetheless, the team will need to start climbing the table sooner rather than later and New Year's Day should see an exciting game take place at Portman Road.



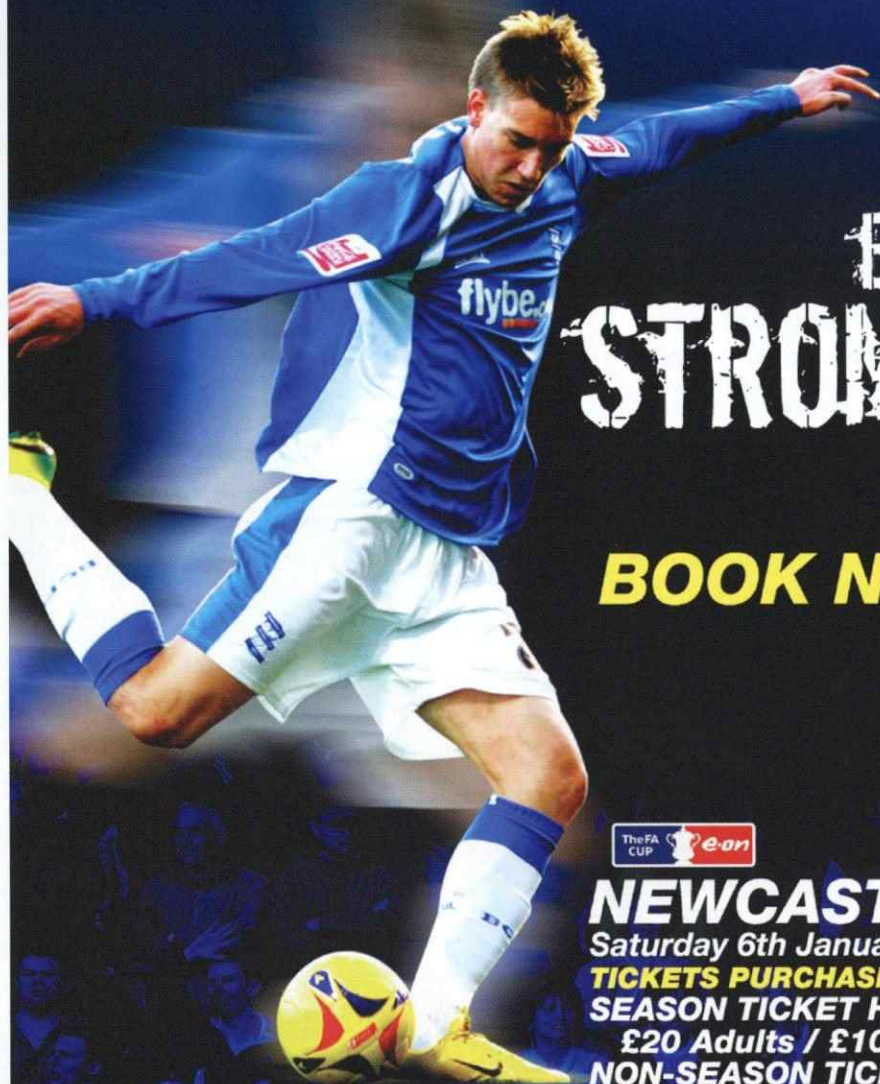
BLUES Magazine

www.bluesmagazine.co.uk • 01225 899975

- Interviews
- Features
- News
- Posters

www.bcf.com 77

TOGETHER...



EVEN STRONGER

BOOK NOW



NEWCASTLE UTD

Saturday 6th January 2007, 3pm

**TICKETS PURCHASED IN ADVANCE
SEASON TICKET HOLDERS**

£20 Adults / £10 Concessions

NON-SEASON TICKET HOLDERS

£25 Adults / £12.50 Concessions

TICKETS PURCHASED MATCHDAY

ALL SUPPORTERS

£28 Adults / £15.50 Concessions

A booking fee applies to all credit/debit card transactions

**CALL 0871 226 1875
VISIT THE TICKET OFFICE**

**BUY ONLINE @ www.bcf.com
PAY ON THE DAY**

SHARP SHOOTERS

| Player | Team | Lge | Cup | Ttl |
|------------------|-------------|-----|-----|-----|
| Grzegorz Rasiak | Southampton | 14 | 0 | 14 |
| Robert Earnshaw | Norwich | 13 | 0 | 13 |
| Freddy Eastwood | Southend | 7 | 4 | 11 |
| Gary McSheffrey | Birmingham | 9 | 2 | 11 |
| Michael Chopra | Cardiff | 11 | 0 | 11 |
| Rowan Vine | Luton | 9 | 1 | 10 |
| Nicklas Bendtner | Birmingham | 8 | 2 | 10 |
| Andy Gray | Burnley | 10 | 0 | 10 |
| Jamie Cureton | Colchester | 10 | 0 | 10 |

WHERE TO SEE GOALS (By Ground)

| Ground | Home Team | M | Gls | G/Mt |
|---------------------|-------------|----|-----|------|
| Layer Road Ground | Colchester | 10 | 34 | 3.40 |
| Kenilworth Stadium | Luton | 11 | 37 | 3.36 |
| Portman Road | Ipswich | 11 | 37 | 3.36 |
| Loftus Road Stadium | QPR | 11 | 35 | 3.18 |
| Carrow Road | Norwich | 11 | 32 | 2.91 |
| The Hawthorns | West Brom | 10 | 29 | 2.90 |
| Roots Hall | Southend | 12 | 34 | 2.83 |
| Turf Moor | Burnley | 11 | 31 | 2.82 |
| Oakwell Stadium | Barnsley | 11 | 30 | 2.73 |
| St Andrews | Birmingham | 11 | 29 | 2.64 |
| Hillsborough | Sheff Wed | 11 | 29 | 2.64 |
| Elland Road | Leeds | 12 | 31 | 2.58 |
| The KC Stadium | Hull | 10 | 25 | 2.50 |
| The Walkers Stadium | Leicester | 11 | 27 | 2.45 |
| Home Park | Plymouth | 12 | 29 | 2.42 |
| Stadium of Light | Sunderland | 11 | 26 | 2.36 |
| Selhurst Park | Crystal Pal | 12 | 28 | 2.33 |
| Pride Park Stadium | Derby | 10 | 23 | 2.30 |
| Deepdale | Preston | 11 | 25 | 2.27 |
| Ninian Park | Cardiff | 11 | 25 | 2.27 |
| Molineux Stadium | Wolves | 12 | 26 | 2.17 |
| St Marys Stadium | Southampton | 10 | 21 | 2.10 |
| Britannia Stadium | Stoke | 11 | 21 | 1.91 |
| Ricoh Arena | Coventry | 11 | 20 | 1.82 |

TEAM LEADERS

Team with the most..
shots on target 172 Southampton, shots off target 151 Southampton, corners 178 Plymouth, hit woodwork 10 West Brom, offsides 93 Luton, fouls 351 Hull, yellow cards 54 Ipswich, red cards 5 Burnley.

PLAYER POWER

Player with the most..
Shots 89 Robert Earnshaw (Norwich). Shots on target 45 Robert Earnshaw (Norwich). Shots off target 44 Robert Earnshaw (Norwich). Assists 9 Gary McSheffrey (Coventry). Crosses 102 Wade Elliott (Burnley). Offsides 43 Rowan Vine (Luton). Fouls 77 Steve Howard (Derby). Free-kicks won 51 Patrick Kisnorbo (Leicester).



2006/07 SEASON



GOAL COUNTER

685

RIGHT FOOT 360 goals

52.6%

LEFT FOOT 169 goals

24.7%

HEADERS 135 goals

19.7%

Own goals 19 (2.8%), Other body part 2 (0.2%)

QUICK-FIRE GOALS

From the start of a match
Daryl Murphy (Sunderland vs Plymouth) 0:31

By a substitute after coming on
Wayne Andrews (Coventry vs Barnsley) 0:47

DISCIPLINARY



3.2 cards per match

0.2 cards per match

QUICK-FIRE BOOKINGS

From the start of a match
Dexter Blackstock (QPR vs Southend) 0:15

By a substitute after coming on
Andrew Surman (Southampton vs Ipswich) 1:30

SUB TOTALS

Subs used1305

Offsides1738

Corners2915

Shots Off Target2892

BEAT THE TRAFFIC

Total number of goals you would have missed by leaving every match ten minutes early

1 0 8

In the Coca Cola Championship this season there have been 2926 shots on target, goals constitute 23.4% of all shots (doesn't include own goals). The woodwork has come to the rescue of the defending side on 126 occasions (the biggest beneficiaries being Leicester 12). There have been 62 penalties awarded this season and of those 55 have been scored (a success rate of 88.7%). Ipswich have been awarded most penalties - 7. Stoke have given most penalties, away 5. The team to score the most penalties is Sheff Wed 6. Leeds missed 2 penalties in the Coca Cola Championship this season.

RESULTS

How many times each result has occurred this season - home sides score shown first

| | |
|-----|----|
| 0-0 | 17 |
| 1-0 | 33 |
| 2-0 | 23 |
| 3-0 | 10 |
| 4-0 | 2 |
| 5-0 | 2 |
| 0-1 | 28 |
| 0-2 | 7 |
| 0-3 | 3 |
| 0-4 | 1 |
| 0-5 | - |
| 1-1 | 28 |
| 2-1 | 24 |
| 3-1 | 14 |
| 4-1 | 3 |
| 5-1 | 3 |
| 6-1 | - |
| 1-2 | 20 |
| 1-3 | 4 |
| 1-4 | 2 |
| 1-5 | 1 |
| 2-2 | 14 |
| 3-2 | 8 |
| 4-2 | 3 |
| 5-2 | - |
| 2-3 | 7 |
| 2-4 | 1 |
| 2-5 | - |
| 3-3 | 4 |
| 4-3 | 2 |
| 5-3 | - |
| 3-4 | - |
| 3-5 | - |
| 4-4 | - |
| 5-4 | - |
| 4-5 | - |
| 5-5 | - |

*up to and including 14/12/2006



STATS 06/07

DATE FIXTURE RES ATT PTS POS

| | | | | | | | | | | | | |
|------------|-------------------------------|-----------|--------|----|---|-------------|---------|---------------|---------------|---------|----------|----------|
| SAT AUG 5 | COLCHESTER UNITED | 2-1 | 24,238 | 3 | 4 | MAIK TAYLOR | KELLY | N'GOTTY | TEBILY | SADLER | DANNS | JOHNSON |
| WED AUG 9 | SUNDERLAND | 1-0 | 26,668 | 6 | 4 | MAIK TAYLOR | KELLY | TEBILY | N'GOTTY | SADLER | JOHNSON | MUAMBA |
| SAT AUG 12 | STOKE CITY KO 12:30 | 0-0 | 12,347 | 7 | 5 | MAIK TAYLOR | KELLY | TEBILY | N'GOTTY | SADLER | LARSSON | MUAMBA |
| SAT AUG 19 | CRYSTAL PALACE | 2-1 | 20,223 | 10 | 1 | MAIK TAYLOR | KELLY | N'GOTTY | JAIDI | SADLER | JOHNSON | DUNN |
| TUE AUG 22 | SHREWSBURY TOWN CCR1 | 1-0 | 12,428 | - | - | DOYLE | LARSSON | JAIDI | MARTIN TAYLOR | GRAY | KILKENNY | CLEMENCE |
| SAT AUG 26 | CARDIFF CITY | 0-2 | 20,109 | 10 | 4 | DOYLE | KELLY | N'GOTTY | JAIDI | SADLER | JOHNSON | NAFTI |
| SAT SEP 9 | HULL CITY | 2-1 | 19,228 | 13 | 2 | MAIK TAYLOR | JOHNSON | N'GOTTY | JAIDI | GRAY | LARSSON | DUNN |
| TUE SEP 12 | QUEENS PARK RANGERS | 2-0 | 10,936 | 16 | 1 | MAIK TAYLOR | JOHNSON | JAIDI | N'GOTTY | GRAY | DANNS | MUAMBA |
| SAT SEP 16 | IPSWICH TOWN | 2-2 | 20,841 | 17 | 2 | MAIK TAYLOR | JOHNSON | JAIDI | N'GOTTY | LARSSON | DANNS | DUNN |
| TUE SEP 19 | WREXHAM CCR2 | 4-1 (AET) | 10,491 | - | - | DOYLE | KELLY | MARTIN TAYLOR | TEBILY | PAINTER | LARSSON | MUAMBA |
| SAT SEP 23 | LEEDS UNITED | 2-3 | 18,898 | 17 | 2 | MAIK TAYLOR | JOHNSON | MARTIN TAYLOR | JAIDI | PAINTER | DANNS | DUNN |
| SAT SEP 30 | LEICESTER CITY | 1-1 | 18,002 | 18 | 2 | MAIK TAYLOR | KELLY | JAIDI | TEBILY | SADLER | LARSSON | NAFTI |
| SAT OCT 14 | LUTON TOWN | 2-3 | 9,275 | 18 | 7 | MAIK TAYLOR | KELLY | N'GOTTY | JAIDI | SADLER | DANNS | NAFTI |
| TUE OCT 17 | NORWICH CITY | 0-1 | 20,537 | 18 | 9 | MAIK TAYLOR | TEBILY | JAIDI | N'GOTTY | SADLER | DANNS | MUAMBA |
| SAT OCT 21 | DERBY COUNTY | 1-0 | 25,673 | 21 | 8 | MAIK TAYLOR | KELLY | MARTIN TAYLOR | JAIDI | SADLER | JOHNSON | NAFTI |
| TUE OCT 24 | SHEFFIELD UNITED CCR3 | 4-2 | 10,584 | - | - | DOYLE | KELLY | MARTIN TAYLOR | JAIDI | SADLER | LARSSON | DANNS |
| SAT OCT 28 | WEST BROMWICH ALBION KO 12.00 | 2-0 | 21,009 | 24 | 6 | MAIK TAYLOR | KELLY | JAIDI | MARTIN TAYLOR | SADLER | JOHNSON | MUAMBA |
| TUE OCT 31 | COVENTRY CITY | 1-0 | 27,212 | 27 | 4 | MAIK TAYLOR | KELLY | JAIDI | MARTIN TAYLOR | SADLER | DANNS | MUAMBA |
| SAT NOV 4 | PLYMOUTH ARGYLE | 1-0 | 17,008 | 30 | 4 | MAIK TAYLOR | KELLY | JAIDI | MARTIN TAYLOR | SADLER | DANNS | MUAMBA |
| WED NOV 8 | LIVERPOOL CCR4 | 0-1 | 23,061 | - | - | MAIK TAYLOR | KELLY | MARTIN TAYLOR | JAIDI | SADLER | LARSSON | NAFTI |
| SAT NOV 11 | BARNLEY | 2-0 | 19,344 | 33 | 3 | MAIK TAYLOR | KELLY | JAIDI | MARTIN TAYLOR | SADLER | LARSSON | MUAMBA |
| SAT NOV 18 | WOLVES KO 12.00 | 1-1 | 22,256 | 34 | 3 | MAIK TAYLOR | KELLY | JAIDI | MARTIN TAYLOR | SADLER | LARSSON | MUAMBA |
| SAT NOV 25 | BURNLEY | 2-1 | 12,889 | 37 | 3 | MAIK TAYLOR | KELLY | MARTIN TAYLOR | JAIDI | SADLER | LARSSON | DANNS |
| WED NOV 29 | SOUTHAMPTON | 3-4 | 21,889 | 37 | 3 | MAIK TAYLOR | KELLY | MARTIN TAYLOR | JAIDI | SADLER | DANNS | MUAMBA |
| SAT DEC 2 | PLYMOUTH ARGYLE | 3-0 | 22,592 | 40 | 1 | MAIK TAYLOR | KELLY | JAIDI | UPSON | SADLER | LARSSON | NAFTI |
| SAT DEC 9 | PRESTON NORTH END | 3-1 | 23,159 | 43 | 1 | MAIK TAYLOR | KELLY | JAIDI | UPSON | SADLER | LARSSON | MUAMBA |
| SAT DEC 16 | SHEFFIELD WEDNESDAY | 3-0 | 26,083 | 46 | 1 | MAIK TAYLOR | KELLY | JAIDI | UPSON | SADLER | CLEMENCE | LARSSON |
| SAT DEC 23 | SOUTHEND UNITED | 4-0 | 9,781 | 49 | 1 | MAIK TAYLOR | KELLY | JAIDI | UPSON | SADLER | JOHNSON | NAFTI |
| TUE DEC 26 | QUEENS PARK RANGERS | 2-1 | 29,431 | 52 | 1 | MAIK TAYLOR | KELLY | JAIDI | UPSON | SADLER | JOHNSON | NAFTI |
| FRI DEC 29 | LUTON TOWN | | | | | | | | | | | |
| MON JAN 1 | IPSWICH TOWN | | | | | | | | | | | |
| SAT JAN 6 | NEWCASTLE FAC3 | | | | | | | | | | | |
| SAT JAN 13 | LEEDS UNITED | | | | | | | | | | | |
| FRI JAN 19 | LEICESTER CITY | | | | | | | | | | | |
| TUE JAN 30 | SOUTHEND UNITED | | | | | | | | | | | |
| SAT FEB 3 | COLCHESTER UNITED | | | | | | | | | | | |
| SAT FEB 10 | STOKE CITY KO 12.00 | | | | | | | | | | | |
| SAT FEB 17 | CRYSTAL PALACE | | | | | | | | | | | |
| TUE FEB 20 | SUNDERLAND | | | | | | | | | | | |
| SAT FEB 24 | HULL CITY | | | | | | | | | | | |
| SUN MAR 4 | CARDIFF CITY KO 11.30 | | | | | | | | | | | |
| SAT MAR 10 | DERBY COUNTY | | | | | | | | | | | |
| TUE MAR 13 | NORWICH CITY | | | | | | | | | | | |
| SAT MAR 17 | WEST BROMWICH ALBION KO 12.00 | | | | | | | | | | | |
| SUN APR 1 | COVENTRY CITY KO 2.00 | | | | | | | | | | | |
| SAT APR 7 | BURNLEY | | | | | | | | | | | |
| MON APR 9 | BARNLEY | | | | | | | | | | | |
| SAT APR 14 | SOUTHAMPTON | | | | | | | | | | | |
| SAT APR 21 | WOLVES KO 12.00 | | | | | | | | | | | |
| SAT APR 28 | SHEFFIELD WEDNESDAY | | | | | | | | | | | |
| SUN MAY 6 | PRESTON NORTH END | | | | | | | | | | | |



Booking Sending off Scorer1 Sub1 Sub2 Sub3

| | | | | | | | | |
|----------|------------|----------|------------|-------------|---------------|---------------|---------------|----------|
| CLEMENCE | DUNN | FORSSELL | CAMPBELL | DOYLE | LARSSON | MUAMBA | BENDTNER | JEROME |
| MUAMBA | LARSSON | BENDTNER | FORSSELL | DOYLE | DUNN | MARTIN TAYLOR | DANNS | CLEMENCE |
| JOHNSON | NAFTI | BENDTNER | FORSSELL | DOYLE | DUNN | MARTIN TAYLOR | DANNS | CLEMENCE |
| NAFTI | MCSHEFFREY | CAMPBELL | BENDTNER | DOYLE | FORSSELL | LARSSON | DANNS | TEBILY |
| MUAMBA | DANNS | FORSSELL | JEROME | MAIK TAYLOR | PAINTER | BENDTNER | CAMPBELL | KELLY |
| DUNN | MCSHEFFREY | BENDTNER | CAMPBELL | LEGZDINS | LARSSON | FORSSELL | TEBILY | JEROME |
| NAFTI | MCSHEFFREY | CAMPBELL | BENDTNER | DOYLE | FORSSELL | DANNS | MARTIN TAYLOR | KILKENNY |
| MUAMBA | MCSHEFFREY | CAMPBELL | BENDTNER | DOYLE | MARTIN TAYLOR | FORSSELL | KILKENNY | JEROME |
| NAFTI | MCSHEFFREY | CAMPBELL | JEROME | DOYLE | MARTIN TAYLOR | MUAMBA | KILKENNY | FORSSELL |
| KILKENNY | MCSHEFFREY | FORSSELL | JEROME | MAIK TAYLOR | DANNS | DUNN | BENDTNER | CAMPBELL |
| NAFTI | MCSHEFFREY | BENDTNER | CAMPBELL | DOYLE | TEBILY | LARSSON | JEROME | FORSSELL |
| MUAMBA | MCSHEFFREY | BENDTNER | CAMPBELL | DOYLE | DANNS | KILKENNY | JEROME | FORSSELL |
| MUAMBA | MCSHEFFREY | JEROME | CAMPBELL | DOYLE | TEBILY | KILKENNY | FORSSELL | LARSSON |
| DUNN | MCSHEFFREY | JEROME | CAMPBELL | DOYLE | KELLY | KILKENNY | LARSSON | GRAY |
| CLEMENCE | MCSHEFFREY | DUNN | BENDTNER | DOYLE | LARSSON | DANNS | JEROME | CAMPBELL |
| MUAMBA | GRAY | CAMPBELL | JEROME | MAIK TAYLOR | BENDTNER | KILKENNY | MCSHEFFREY | PAINTER |
| CLEMENCE | MCSHEFFREY | BENDTNER | JEROME | DOYLE | NAFTI | DANNS | LARSSON | CAMPBELL |
| CLEMENCE | MCSHEFFREY | JEROME | BENDTNER | DOYLE | LARSSON | GRAY | NAFTI | CAMPBELL |
| DANNS | GRAY | CAMPBELL | JEROME | DOYLE | KILKENNY | MUAMBA | MCSHEFFREY | BENDTNER |
| CLEMENCE | MCSHEFFREY | JEROME | BENDTNER | DOYLE | KILKENNY | NAFTI | DANNS | CAMPBELL |
| CLEMENCE | MCSHEFFREY | JEROME | BENDTNER | DOYLE | KILKENNY | NAFTI | DANNS | CAMPBELL |
| MUAMBA | CLEMENCE | BENDTNER | MCSHEFFREY | DOYLE | UPSON | NAFTI | CAMPBELL | KILKENNY |
| CLEMENCE | LARSSON | BENDTNER | MCSHEFFREY | DOYLE | UPSON | NAFTI | JEROME | CAMPBELL |
| CLEMENCE | MCSHEFFREY | BENDTNER | JEROME | DOYLE | MUAMBA | MARTIN TAYLOR | DANNS | CAMPBELL |
| CLEMENCE | MCSHEFFREY | BENDTNER | JEROME | DOYLE | MARTIN TAYLOR | NAFTI | DANNS | CAMPBELL |
| NAFTI | MCSHEFFREY | JEROME | BENDTNER | DOYLE | MARTIN TAYLOR | KILKENNY | DANNS | CAMPBELL |
| CLEMENCE | MCSHEFFREY | CAMPBELL | BENDTNER | DOYLE | MARTIN TAYLOR | MUAMBA | DANNS | KILKENNY |
| CLEMENCE | MCSHEFFREY | BENDTNER | CAMPBELL | DOYLE | DANNS | MUAMBA | JEROME | LARSSON |



CHAMPIONSHIP TABLE 2006/07

| TEAM | PLD | W | D | L | F | A | PTS | GD |
|-------------|-----|----|----|----|----|----|-----|-----|
| BIRMINGHAM | 25 | 16 | 4 | 5 | 44 | 23 | 52 | +21 |
| PRESTON | 25 | 12 | 8 | 5 | 38 | 26 | 44 | +12 |
| DERBY | 25 | 13 | 5 | 7 | 33 | 27 | 44 | +6 |
| SOUTHAMPTON | 25 | 11 | 8 | 6 | 41 | 31 | 41 | +10 |
| CARDIFF | 25 | 11 | 8 | 6 | 36 | 28 | 41 | +8 |
| WEST BROM | 25 | 11 | 7 | 7 | 45 | 28 | 40 | +17 |
| COLCHESTER | 25 | 12 | 4 | 9 | 43 | 28 | 40 | +15 |
| STOKE | 25 | 11 | 7 | 7 | 32 | 20 | 40 | +12 |
| WOLVES | 25 | 11 | 6 | 8 | 25 | 27 | 39 | -2 |
| BURNLEY | 25 | 10 | 7 | 8 | 32 | 26 | 37 | +6 |
| SUNDERLAND | 25 | 11 | 4 | 10 | 34 | 31 | 37 | +3 |
| SHEFF WED | 25 | 10 | 7 | 8 | 35 | 35 | 37 | 0 |
| PLYMOUTH | 25 | 8 | 11 | 6 | 32 | 32 | 35 | 0 |
| COVENTRY | 25 | 10 | 3 | 12 | 23 | 28 | 33 | -5 |
| IPSWICH | 25 | 9 | 5 | 11 | 36 | 35 | 32 | +1 |
| LEICESTER | 25 | 8 | 8 | 9 | 26 | 30 | 32 | -4 |
| NORWICH | 25 | 8 | 7 | 10 | 32 | 39 | 31 | -7 |
| C PALACE | 25 | 8 | 6 | 11 | 28 | 31 | 30 | -3 |
| LUTON | 25 | 8 | 5 | 12 | 33 | 43 | 29 | -10 |
| QPR | 25 | 7 | 6 | 12 | 33 | 40 | 27 | -7 |
| BARNLEY | 25 | 7 | 5 | 13 | 29 | 42 | 26 | -13 |
| HULL CITY | 25 | 5 | 6 | 14 | 23 | 37 | 21 | -14 |
| LEEDS | 25 | 6 | 3 | 16 | 24 | 45 | 21 | -21 |
| SOUTHEND | 25 | 3 | 8 | 14 | 18 | 43 | 17 | -25 |

FIRST TEAM APPEARANCES 2006/07

| PLAYER | LEAGUE | | FA CUP | | C CUP | |
|---------------|---------|------|--------|------|-------|------|
| | APP | GOAL | APP | GOAL | APP | GOAL |
| N BENDTNER | 21 (1) | 8 | 0 (0) | 0 | 0 (4) | 2 |
| D CAMPBELL | 12 (7) | 6 | 0 (0) | 0 | 2 (2) | 1 |
| S CLEMENCE | 14 (2) | 3 | 0 (0) | 0 | 1 (0) | 0 |
| N DANNS | 10 (12) | 2 | 0 (0) | 0 | 3 (0) | 0 |
| C DOYLE | 1 (0) | 0 | 0 (0) | 0 | 3 (0) | 0 |
| D DUNN | 9 (2) | 1 | 0 (0) | 0 | 0 (1) | 0 |
| M FORSSELL | 3 (4) | 1 | 0 (0) | 0 | 2 (0) | 0 |
| J GRAY | 1 (2) | 0 | 0 (0) | 0 | 3 (0) | 0 |
| R JAIDI | 22 (0) | 3 | 0 (0) | 0 | 3 (0) | 0 |
| C JEROME | 11 (8) | 4 | 0 (0) | 0 | 4 (0) | 2 |
| D JOHNSON | 13 (0) | 0 | 0 (0) | 0 | 0 (0) | 0 |
| S KELLY | 20 (0) | 0 | 0 (0) | 0 | 3 (1) | 0 |
| N KILKENNY | 0 (7) | 0 | 0 (0) | 0 | 2 (1) | 0 |
| S LARSSON | 13 (11) | 1 | 0 (0) | 0 | 4 (0) | 2 |
| A LEGZDINS | 0 (0) | 0 | 0 (0) | 0 | 0 (0) | 0 |
| MAIK TAYLOR | 24 (0) | 0 | 0 (0) | 0 | 1 (0) | 0 |
| MARTIN TAYLOR | 9 (2) | 0 | 0 (0) | 0 | 4 (0) | 0 |
| G MCSHEFFREY | 22 (0) | 11 | 0 (0) | 0 | 1 (1) | 2 |
| F MUAMBA | 14 (2) | 0 | 0 (0) | 0 | 3 (1) | 0 |
| B N'GOTTY | 10 (0) | 1 | 0 (0) | 0 | 0 (0) | 0 |
| M NAFTI | 14 (7) | 0 | 0 (0) | 0 | 1 (0) | 0 |
| M PAINTER | 1 (0) | 0 | 0 (0) | 0 | 1 (0) | 0 |
| M SADLER | 21 (0) | 0 | 0 (0) | 0 | 2 (0) | 0 |
| O TEBILY | 5 (1) | 0 | 0 (0) | 0 | 1 (0) | 0 |
| M UPSON | 5 (1) | 2 | 0 (0) | 0 | 0 (0) | 0 |



TEAMS

MATCH STATS

BIRMINGHAM CITY VS LUTON TOWN

RESULT H/T F/T

BIRMINGHAM CITY ☐ ☐

LUTON TOWN ☐ ☐

TODAY'S OFFICIALS

REFEREE: P J JOSLIN
 ASSISTANT 01: R S GANFIELD
 ASSISTANT 02: K J MATTOCKS
 4TH OFFICIAL: K A WOOLMER

BIRMINGHAM CITY SCORERS

LUTON TOWN SCORERS

ATTENDANCE

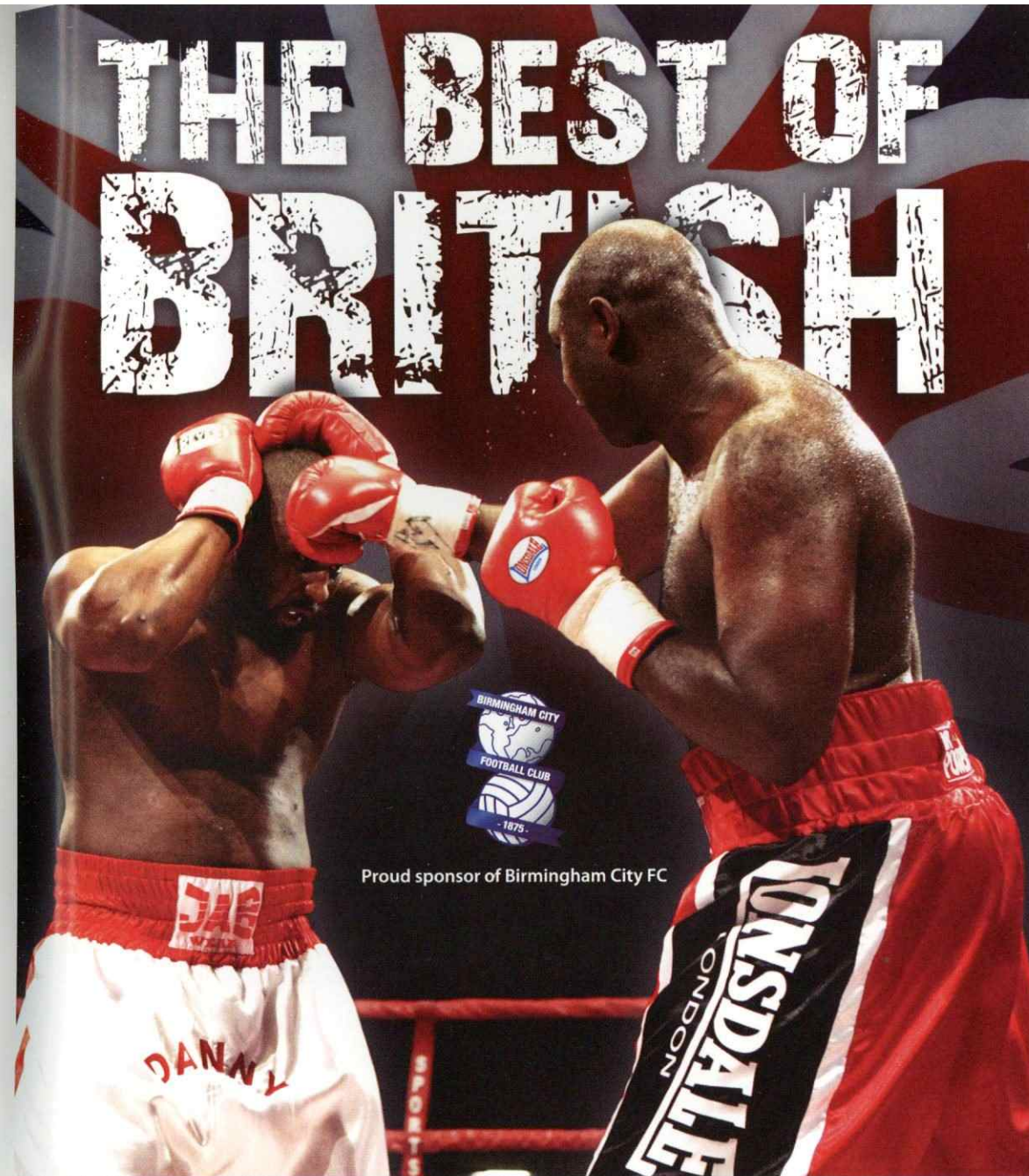
MAN OF THE MATCH

BIRMINGHAM CITY

- 01 MAIK TAYLOR
- 02 STEPHEN KELLY
- 03 MATHEW SADLER
- 04 MARTIN TAYLOR
- 05 MATTHEW UPSON
- 06 STEPHEN CLEMENCE
- 07 SEBASTIAN LARSSON
- 08 DAVID DUNN
- 09 MIKAEL FORSELL
- 10 CAMERON JEROME
- 11 JULIAN GRAY
- 12 MEHDI NAFTI
- 13 COLIN DOYLE
- 14 DJ CAMPBELL
- 15 NEIL KILKENNY
- 16 OLIVIER TEBILY
- 17 NEIL DANNS
- 18 SAMUEL OJI
- 19 PETER TILL
- 20 MARCOS PAINTER
- 21 BRUNO N'GOTTY
- 22 DAMIEN JOHNSON
- 23 MATHEW BIRLEY
- 24 RADHI JAIDI
- 25 SONE ALUKO
- 26 FABRICE MUAMBA
- 27 NICKLAS BENDTNER
- 28 GARY MCSHEFFREY
- 29 ADAM LEGZDINS

LUTON TOWN

- 01 MARLON BERESFORD
- 02 KEVIN FOLEY
- 03 SOL DAVIS
- 04 CHRIS COYNE
- 05 RUSSELL PERRETT
- 06 PAUL UNDERWOOD
- 07 CARLOS EDWARDS
- 08 STEVE ROBINSON
- 09 ROWAN VINE
- 10 WARREN FEENEY
- 11 DEAN MORGAN
- 15 STEPHEN O'LEARY
- 16 LEWIS EMANUEL
- 17 RICHARD LANGLEY
- 18 AHMET BRKOVIC
- 19 SAM PARKIN
- 20 ADAM BOYD
- 21 KEITH KEANE
- 22 DANNY STEVENS
- 23 DEAN KIELY
- 24 SHAUN ROSS
- 25 LEON BARNETT
- 26 MARKUS HEIKKINEN
- 27 PETER HOLMES
- 28 DAVID BELL
- 29 CALVIN ANDREW
- 34 ZAC BARRETT
- 35 CHRIS PENDLETON



Proud sponsor of Birmingham City FC

LONSDALE
LONDON



Lonsdale available at Sports World stores nationwide and online at sportsdirect.com

FLYBE - PROUD SPONSORS OF BIRMINGHAM CITY F.C.



flybe.com

The Midlands' low fare airline.

Fares are one way including taxes & charges, only available online, subject to availability. £1.99 handling fee applies to all credit cards & 99p for debit cards per passenger per one way flight, minimum fee may apply. 21 day advance purchase required. Available for travel on or before 27.10.07. Not all routes operate throughout the entire travel period check website for details. Headline fare does not apply to all routes.