

INTERVIEWS

John **HILLS**

Patrick **COLLINS**

MATCHACTION

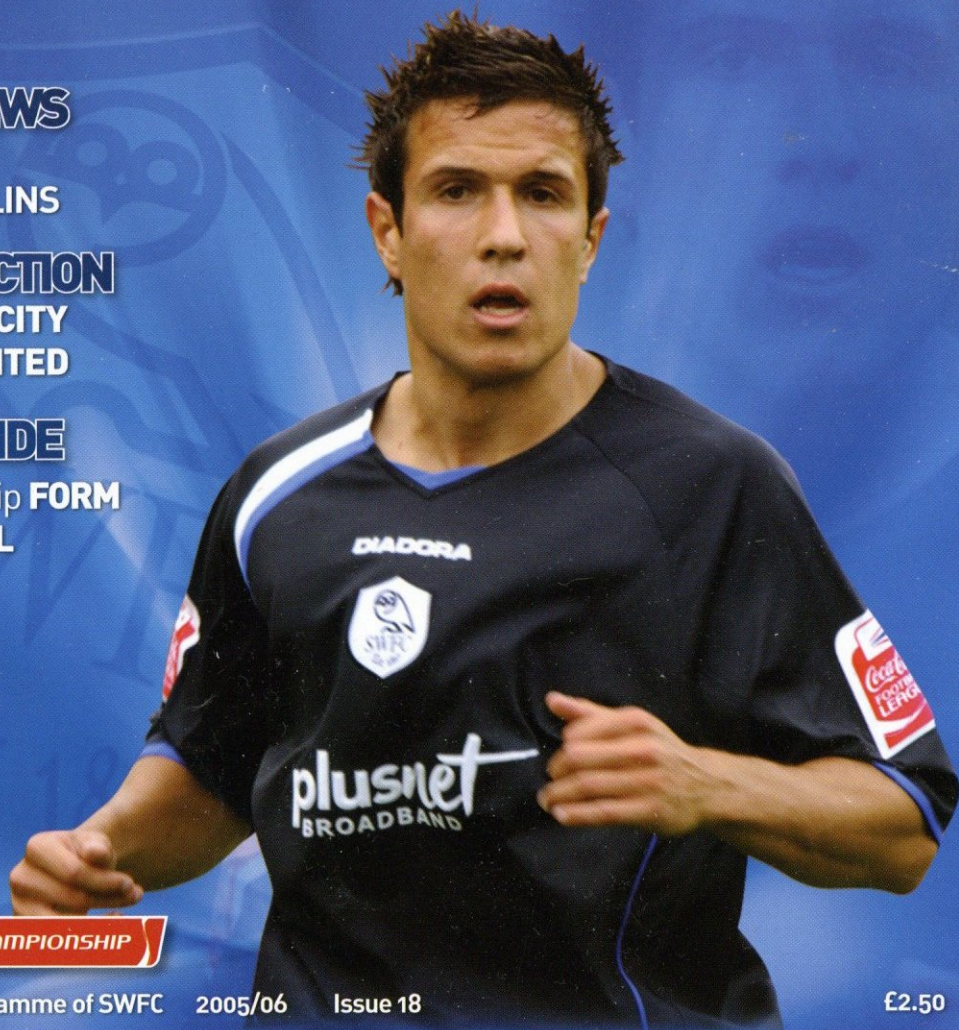
vs Leicester **CITY**

vs Leeds **UNITED**

ALSOINSIDE

Championship **FORM**

Time **TRAVEL**



The Official Programme of SWFC

2005/06

Issue 18

£2.50

WEDNESDAY

Tuesday 31st January 2006 Kick Off : 7.45pm
vs Luton Town



OWLS AGAINST
RACISM



CLUB SPONSOR



KIT SPONSOR



PROGRAMME
SPONSOR



OFFICIAL BEER OF
SHEFFIELD WEDNESDAY



MATCHDAY SPONSORS

Not another sales pitch

BROADBAND

£14.99

Super-fast broadband from only £14.99

Now with **FREE** setup

Already got broadband? Move to PlusNet for FREE.

PlusNet broadband is subject to survey and availability. BT line or similar required. Prices Correct at time of going to press. Terms and conditions apply. See www.plus.net for more details.

Proud sponsors of Sheffield Wednesday

www.plus.net/swfc

plusnet
Broadband made in Sheffield



Sheffield Wednesday
Football Club

Club Directory

Directors: D.E.D. Allen
(Chairman)

K.T. Addy, A.M. Carson, K. Cooke,
R.M. Grierson F.C.A.
G.K. Hulley

President: K.T. Addy

Vice Presidents:

M. Sheppard J.P., F.C.A.
E. Barron, H.E. Culley,
G.A.H. Thorpe, M.G. Wright

Team Manager:

Paul Sturrock

Assistant Manager:

Kevin Summerfield

Defensive Co-Ordinator:

John Blackley

Physiotherapist:

John Dickens MSc, Grad Dip PT,
Grad Dip RG, MCSP

Medical Officer:

Dr. Richard Higgins

Academy Manager:

Sean McAuley

Assistant Academy Managers:

Mark Smith, Neville Burbeary

Chief Executive:

Kaven B. Walker

Company Secretary:

Paul Johnson

Commercial Manager:

Steve Coakley

Communications Manager:

Steve Chu DipCIPR, MCIPR

Community Manager:

Julian Winter

Community Officer:

Marcus Brameld

Conference & Banqueting

Manager: Dean Stones

Events Manager:

Christopher Caress

Groundsman: Steve Kiddy

Head of Catering:

David Smith

Marketing Manager:

Karen Brookfield

Operations Manager:

Alan Roberts

Retail Manager: Sue Evans

Ticket Office Manager:

Julie Hollingworth

Crowd Safety Doctors:

Dr. O.P. Purohit, Dr. N. Smith

The Contents

04→



vs Luton Town
Tue 31st Jan 2006

- 04 Paul Sturrock
- 06 S6 Latest
- 12 John Hills
- 19 Today's Opponents
- 30 vs Leicester City
- 39 Captain's Column
- 40 Championship Form
- 47 Patrick Collins
- 50 Time Travel
- 52 vs Leeds United
- 54 The Business
- 57 In the Spotlight
- 59 Ticket News
- 66 Heroes

12→



52→



Alan Roberts, SWFC Operations
Manager **0114 221 2361**
or text **07963 138580**

South Yorkshire Police -
football-related incidents
0114 296 4531

Kick Racism Out of Football
FREEPHONE HOTLINE
0800 169 9414

wednesday is brought to you by:
Designed & Produced by Dunwoody Sports
Publishing. Telephone: 01635 35599.

Design: Steve Eyley

Programme Editor: Steve Chu

Programme Contributors: Francis Hall,
Mark Brailsford, Trevor Braithwait, Jason
Dickinson, James Oldfield, Allie Tinsley

Club Photographer: Steve Ellis.

Additional Pictures: Empics. The views
expressed by individual contributors are
not necessarily the views of Sheffield
Wednesday FC, the Editor or Dunwoody
Sports Publishing.

Club Honours

Division 1 Champions: 1902-03, 1903-04, 1928-29, 1929-30,
Runners-up: 1960-61.

Division 2 Champions: 1899-1900, 1925-26, 1951-52, 1955-56, 1958-59,
Runners-up: 1949-50, 1983-84. **Promoted:** 1990-91.

Division 3: **Promoted:** 1979-80.

League One: Play-Off Winners: 2004-05.

F.A. Cup Winners: 1896, 1907, 1935, **Runners-up:** 1890, 1966, 1993.

League Cup Winners: 1991, **Runners-up:** 1993.

Emergency Procedures

Sheffield Wednesday Football Club has significantly enhanced
security measures to ensure your safety, comfort and enjoyment.
However, an incident may occur which is beyond our control and it
is important you are aware of how we intend to look after you in the
event of an emergency.

As part of our safety management, we have employed professionally
trained and experienced stewards who are located at various
points throughout the stadium. In the event of a situation which
requires a partial or full evacuation of the stands, announcements
will be broadcast and stewards will undertake the responsibility of
ushering you to a place of safety; it is essential that you follow their
instructions. Please take your belongings with you and proceed
quickly and quietly under the guidance of the stewards.

The evacuation procedures have been carefully planned to lead you to
a safe area. It may give you some peace of mind if you pre-plan and
agree a meeting place, just in case you become separated from your
party. If we are unable to re-occupy the stands for any reason, you
will be advised immediately, and, if it is considered safe to do so, you
will be invited to return to your car or coach.

The departure from club parking areas will be under the direction of
the Police. These details are purely precautionary and we trust the
procedures will not be required.



Paul Sturrock

Nick and everyone at **Classic Business Forms** are delighted to sponsor Paul Sturrock's programme notes.

The Owls boss is hoping to start a crucial spell of Championship football with a third consecutive home league win tonight.

Good evening and welcome to Hillsborough for another big league game for us. Tonight's match starts an important run of four fixtures, with these difficult home matches against Luton and Crystal Palace and away trips to Millwall and Coventry, two of our rivals at the bottom end of the table.

We come into this game having put in some reasonable performances of late, even though we suffered that defeat at Leeds, ten days ago. The scoreline will have been very disappointing for all the supporters but it was never a 3-0 game and I wasn't downhearted, despite the result. We went to a promotion-chasing side and looked comfortable for 70 minutes before conceding a disappointing opener. The only reason they were able to add their late goals was that I had put my cavaliers on to try to get the point and I make

I would rather go down fighting than meekly accept a 1-0 defeat.

no apologies for that. I would rather go down fighting than meekly accept a 1-0 defeat.

It's often the case that you learn more from losing than you do in victory and Barry Corr's influence in the closing stages at Leeds made a big impression on me. He has given us a different option up front in recent weeks, particularly in the away games at Preston and Burnley. His presence ensures that defenders won't get an easy header and his ability to hold the ball up enables the midfield to join in our attacks.



The match at Elland Road was the last of Nicky Weaver's loan spell here and I'd like to thank him for his contribution while at Hillsborough. I know he enjoyed playing for his boyhood team and he did very well for us. I'm grateful to Manchester City for allowing him to come here for the past few months. As you know, some other players have left the club over the past few weeks and I would also like to thank them all for their services rendered to Sheffield Wednesday. The likes of Graeme Lee, Paul Heckingbottom and Lee Peacock played a big part in our promotion last season and I didn't want senior players like that sitting in our reserves. I'm glad they've found new homes and I wish them well.

The decision on Danny Reet was a slightly different one. We loaned him out to Bury, where he scored goals in League Two, and I had to make the decision about whether he would fit into our plans or whether we should cash in on him now. The fact that we moved up a division last season was an influence and, with four or five other strikers ahead of him in the pecking order, he could have been kicking his heels here for another 18 months waiting for a chance. I felt it best to accept the offer from Mansfield, with the benefit of a good sell-on clause, and give Danny the opportunity to get his senior career going now. With the arrivals of Deon Burton and Marcus Tudgay, the



Barry Corr...has impressed the manager with his recent displays.

emergence of Barry Corr, and the returns of Steven MacLean and Drew Talbot, I also allowed David Graham to join Huddersfield on loan until the end of the season. There was a lot of pressure on David when he arrived, and his struggle to score regularly for us has caused that pressure to grow. I'm sure he will benefit from his loan move and I hope he can score the goals that will enable him to return here in the summer full of confidence.

On the arrivals front, I was still trying to add to the squad at the time of writing these notes, ahead of the closure of the transfer window today. I'm hoping that by the time you read these notes I will have been successful in bringing in a player or two to give us the extra numbers we need to kick on until the end of the season.

Tonight we are hoping to continue our recent home league form against opponents with whom we have become very familiar. I'm not surprised that Luton have done so well in the Championship with a settled side, built up over a number of years, who all know their jobs. It was an entertaining game when we drew at Kenilworth Road in September, when we worked hard and got our rewards. We will have to compete in the same way this evening if we are to get the win we need and, as always, I'm calling on your backing to help us to those three points.

Enjoy the game.

Paul Sturrock

Paul Sturrock

**PRE-ORDERS
WILL BE
AVAILABLE
FROM 22ND
APRIL 2006.**



SWFC NEW AWAY KIT

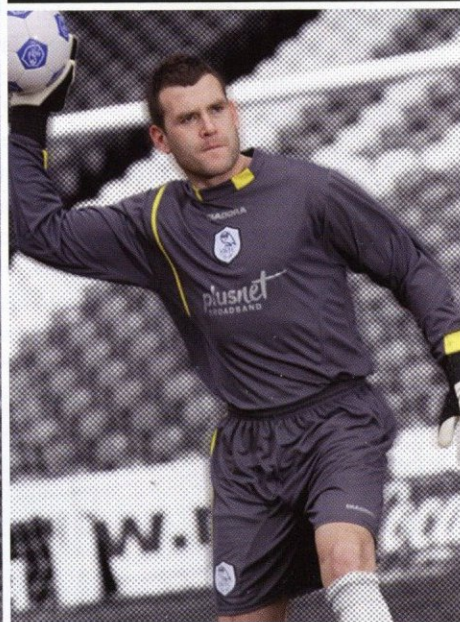
Away Shirts S, M, L, XL, XXL £39.99
Away Shirts JS, JM, JL £29.99
Away Shirt JXL £34.99

Away Shorts S, M, L, XL, XXL £22.99
Away Shorts JS, JM, JL £17.99
Away Shorts JXL £20.99

Away Infant Kit 1 UP TO 6YRS £27.99
Away Baby Kit 3 UP TO 12MTH £24.99
(Above comprise shirt, shorts, socks)

Away GK Shirt S, M, L, XL, XXL £44.99
Away GK Shirt JS, JM, JL £34.99
Away GK Shirt JXL £39.99

Away GK Shorts S, M, L, XL, XXL £22.99
Away GK Shorts JS, JM, JL £17.99
Away GK Shorts JXL £20.99



Its **MORE** than just a Game

www.swfc.co.uk

Sheffield Wednesday Football Club | Hillsborough | Sheffield | S6 1SW
Telephone: 0870 999 1867 | Fax: (0114) 221 2122

S6 Latest

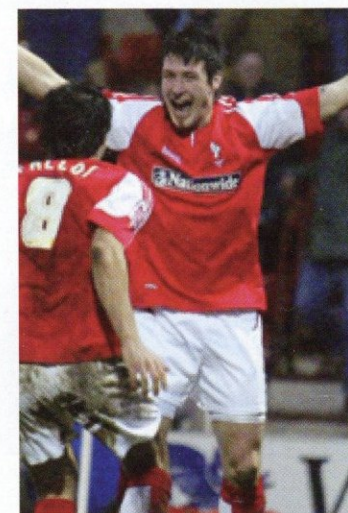
January Sale

Today was the final day of the January transfer window, a period in which six Wednesday players moved on to pastures new.

After being informed by Paul Sturrock they were surplus to requirements, Graeme Lee, Lee Peacock, Paul Heckingbottom and Richard Evans switched to Doncaster, Swindon, Barnsley and Shrewsbury respectively. Academy striker Danny Reet departed S6 too, sealing a transfer to League Two outfit Mansfield. Defender Maurice Ross also signed for Wolves

until the summer after his initial loan stint at Molineux. Craig Rocastle was another player listed by Sturrock but the midfielder's pursuit of a new club was hampered by a knee injury suffered during a reserve encounter against Rotherham. As a result, Craig is expected to be sidelined for around four more weeks. We wish all our former players well in the future.

*Wednesday striker David Graham also went out on loan; he has joined Huddersfield Town until the end of the season.



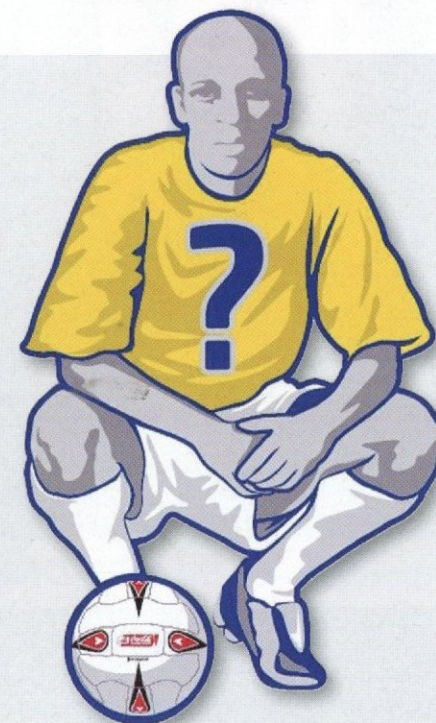
Win A Player

The race is on to win this season's £250,000, which will go to one lucky club drawn by League sponsors Coca-Cola, for spending on a new player – and Wednesdayites have given the Owls a great chance by texting in their thousands.

By last Thursday, the Owls had received over 33,000 entries into the draw and lay narrowly behind Leeds in second place. You can boost this number by

entering every day – text SHEFFIELD WEDNESDAY to 88555 or visit www.coca-colafootball.co.uk

*Win a Mitre football simply by spotting the ball hidden in this programme and e-mailing comp@sheffieldwednesday.co.uk to tell us which page it is on. Last time's winner was Joshua Bramall.



SWFC VALENTINES EVENING



THE INCREDIBLES ULTIMATE MOTOWN & SOUL



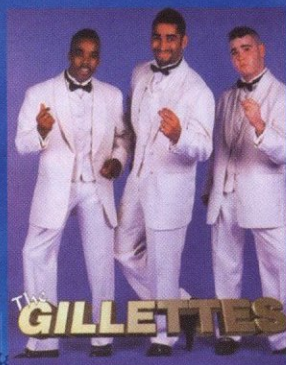
Tuesday 14th February 2006

Spend this special day of the year at Hillsborough in splendour in our Chatsworth suite, making this Valentines Day a memorable evening. Treat your partner and yourself to a four-course meal, in an intimate and romantic setting where you can share all your loving thoughts together. We assure you it will be an enjoyable evening starting with an outstanding romantic meal followed by a lovers quiz and then dance to the sounds of **THE INCREDIBLES** a fabulous 4 piece harmony Soul & Motown tribute show.

Priced at **£22.50** per person or **£200** for a table of 10

This evening is extremely popular and will sell out, so be quick to confirm your booking by emailing chris@sheffieldwednesday or call Chris direct on Tel: 0870 999 1867 (option 5)

THE MAGIC OF MOTOWN



Friday 3rd March 2006

Sponsored by **County Glazing Services**

There will be no time for kissing in the back row in this non-stop musical extravaganza! Celebrating the music of Motown. Be prepared for a fantastic evening of spectacular musical entertainment.

Featuring renowned artistes The Gillettes who have performed worldwide, the show presents a fantastic musical journey throughout the days when Motown became synonymous with the Detroit legends.

The show will leave everyone feeling nostalgic and in the mood to reminisce about those great days of yesteryear. And of course, the evolution of Motown.

Priced at **£18** per person or **£170** for a table of 10 this includes A quality Buffet and Disco till late

This evening of Motown great's will sell out, so be quick to confirm your booking by emailing chris@sheffieldwednesday or call Chris direct on Tel: 0870 999 1867 (option 5)

Its **MORE** than just a Game

www.swfc.co.uk

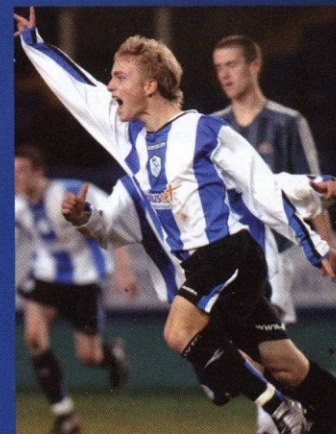
Sheffield Wednesday Football Club | Hillsborough | Sheffield | S6 1SW
Telephone: 0870 999 1867 | Fax: (0114) 221 2122

S6 Latest

Broad Appeal

Wednesday academy defender Andrew Broadbent is in the running for a prestigious Football League honour after being shortlisted for this season's 'Top Apprentice Award' sponsored by Wickes.

The inaugural award ceremony will take place at London's Hilton Hotel in early March and, of course, we wish Andy every success. The nomination is a real feather in the cap for all concerned in guiding the SWFC youngsters, including assistant academy manager Mark Smith, who said: "Andrew fits the bill perfectly, not just because of his football but also his academic work and attitude around the club."



HELP!!



Is your name Jim? Were you teaching in the western Chinese city of Cheng Du from September 2004 to June 2005?

If so, one of your former pupils is trying to get in touch with you. Li Xiang, who is pictured here, got in touch with the club to tell us how Wednesdayite Jim inspired him to become a follower of the Owls. Jim, if you're reading, e-mail us at enquiries@swfc.co.uk and we'll forward Li's details onto you.

A Messiah Returns

The Owls' leading goalscorer from last season Steven MacLean is fast approaching a return to first team duty

If the striker himself had his way, he would be on the bench for tonight's visit of Luton - but that decision, of course, will rest with boss Paul Sturrock. MacLean came through 45 minutes of last week's second string Hillsborough encounter with Huddersfield unscathed and said after the contest: "It was just nice to be back and take another step on the road to recovery. I just need to keep working hard and I'll get back to my old self. I'm still a yard or two short; I know that. That comes from playing and training. I've had injuries before and then got back my old sharpness and that extra yard. I know I'll do it again." Meanwhile, the second of Sturrock's 'Messiahs' Drew Talbot has now returned to full training following the back injury that has sidelined the youngster for the whole of the term to date.





Sheffield Wednesday
Football Club
Lottery

SWFC Superdraw

The Superdraw is Sheffield Wednesday's super lottery set up to fund our Youth Academy, ensuring the continued delivery of exciting initiatives at grass roots level.

The Wednesday Superdraw is about the people of Sheffield having the chance to win some big cash prizes and in turn help ensure that the new generation of Sheffield Wednesday footballers help fire the Owls into the big time!!!

For just £1.00 per week you get the chance to win and weekly prizes of **1 x £500, 2 x £50, 10 x £10 cash prizes and 10 x Sheffield Wednesday home match tickets, every week, 52 weeks of the year!! That's nearly 1200 Sheffield winners every year!!** For each £1.00 membership you will receive 5 lucky numbers, those 5 lucky numbers are entered into the weekly draw giving you 5 chances of winning £500 every week! With those odds can you afford not to play The Wednesday Superdraw!!

For more information on how to join this fantastic lottery simply contact the lottery office on 0114 2212412 or pick up an application form at The Lottery Office, Sheffield Wednesday Football Club, Hillsborough, Sheffield, S6 1SW.

Want to earn more cash? Feeling the pinch before Christmas?

The Lottery Department

urgently require Agents and Door to Door Collectors to collect weekly and fortnightly lottery subscriptions from our members.

To become a Wednesday Superdraw agent all you have to do is enrol some friends, family and work colleagues onto The Wednesday Superdraw and collect their weekly subscriptions! To become a Wednesday Superdraw collector all you have to do is collect members weekly or fortnightly subscriptions from an established round.

For doing this you will receive:-

- Commission on all monies you collect
- Match ticket to all Owls home league games
- An agents bonus should one of you lucky members win the weekly top prize of £500!
- Plus a whole host of benefits exclusive to lottery agents and collectors.

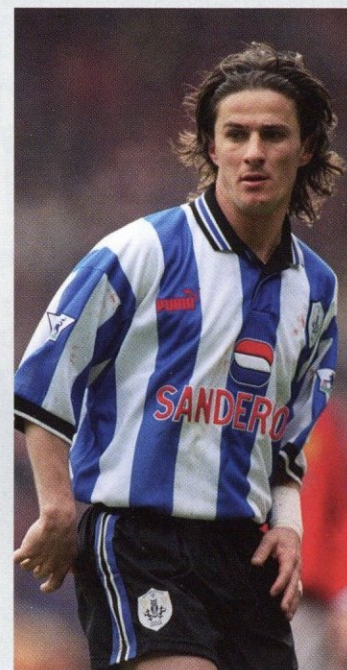
For more information on becoming a lottery agent or collector contact The Lottery Office on **0870 9991867 Opt. 6.**



Mr Vernon collecting his £500 cheque from Yates Newsagents.

London Calling

If you thought English football had already hosted the talents of Benito Carbone for the final time...then think again. Because if the ex-Owl and Italian maverick gets his wish, he will play out the final throes of a controversial career next season here on these shores with Queens Park Rangers. Carbone is currently on the books of Serie B outfit Vicenza - his 15th club so far - in his homeland but has his eyes fixed firmly on a Championship swansong. "I would welcome a call from QPR chairman Gianni Paladini," said the 34-year-old. "Next year I would like to play in London." Why Rangers, you might ask. Well, the fact that their chairman Paladini is also the very same person who served as Beni's agent in England could be influencing the latter's mindset...



A NEW FAN



We are pleased to introduce a brand new Wednesdayite - Harley George Richardson was born to proud parents Nicola and Craig on January 6th, weighing 6lbs. "You will always be in his heart Uncle Barrie!"

FIXTURE CHANGES

The League have confirmed that all Championship fixtures on the final day of the season, including our visit to Derby County, will kick off at 1.30pm. The earlier start has become commonplace in the Championship over recent years, with Sky televising the season's finale and all matches being started at the same time to ensure a fair finish. There have also been four other fixture changes affecting the Owls at reserve and academy levels:

Pontins League - our next reserve team fixture, away to Nottingham Forest has been brought forward by one day. It will now take place next Tuesday at Burton's Pirelli Stadium (kick-off 7.00pm). Pontins League Cup - the Owls have been drawn at home to Hull City in the quarter-finals. This game will be played on Tuesday 28th February at Hillsborough (kick-off 2.00pm). Pontins League - the visit to Oldham, which was postponed in November, has been rearranged for Wednesday 15th March at Boundary Park (kick-off 2.00pm).

Academy League - the under-18s' visit to Nottingham Forest on Saturday 18th February has been brought forward an hour and will now kick off at 10.00am.

Picture This

A little belatedly - okay, about 20 years late - we are delighted to include in Wednesday the outstanding work of amateur artist and Owls fanatic John Stack.

Lincoln-based John sketched this picture of Hillsborough's South Stand, as it was in 1985, and the work was signed by Howard Wilkinson's entire squad from that season. John tells us: "I had my photo taken on the pitch with the old chairman Bert McGee and he promised me it would appear in a match day programme that season but, for whatever reason, it didn't happen." Well, John, we're happy to put that error right this afternoon. Sorry for the wait - we hope it was worth it!



Fit Not To Drop

Whether playing in defence or midfield, John Hills is determined to banish the memory of the relegation from the Championship he suffered last season.



A lot of teams will come here hoping to turn the crowd against us but they've been behind us all the way this season.

It came as no surprise to find John Hills putting in some extra time on the Middlewood Road training ground when we caught up with the Owls' summer signing last week.

With the routine session complete, Hills stayed behind to work on his general fitness in a bid to regain optimum levels after a pre-Christmas stint on the sidelines. The 27-year-old cites fitness as key to his kind of all-action game, a point he was quick to underline once he had finally warmed down for the day.

"The blank Saturday has given me an extra chance to work on my fitness," he said, with beads of sweat prominent on his brow. "We've had plenty of games

since I came back and that's helped me a lot. The good things is, there's nothing like playing games to get your sharpness back and I don't mind doing extra work on the training ground as well to keep on top of my fitness. I know I've only recently returned from injury, but I'm feeling quite fit so I want to build on the levels I have at the moment."

Having kicked off the campaign in the full-back berth now occupied by Peter Gilbert, Hills has since moved up into a midfield slot, patrolling the left side in a role to which he is already accustomed from past experience. Indeed, John's versatility was one of the positive traits identified by Paul Sturrock when the gaffer recruited him on a Bosman transfer last June.

Equally at home in defence or the engine room, the Blackpool product has lived up to his billing with the Owls so far this term. Asked if he leans towards one position or the other, Hills stated no particular preference so long as his name remains on Sturrock's starting sheet.

"As long as I'm playing, I'm happy. I give it 100 per cent wherever I'm asked to play. I enjoy both positions to be honest...I just enjoy playing football. Obviously, the position on the left of midfield does take peak fitness to do the job right, because the gaffer wants you up and down the pitch and I don't have a problem with that. I'm always working hard on my fitness, it's a big factor in my game and I do enjoy the work."

Hills



Wickes THE FOOTBALL LEAGUE
CHAMPIONSHIP
OFFICIAL HOME IMPROVEMENT PARTNER

Just the job

Even in the summer when the season's out, I still work a lot on my fitness when I can."

As well as the knee injury from which he is now recovered and heading back towards the peak of his powers, John has also had to contend with the ramifications of last year's well-documented and very serious car accident - "it was obviously devastating" being his first observation - but the erstwhile Gillingham player is a strong character in both body and mind. He has had to be when push came to shove. After an eight-week absence, Hills returned to first team duty at Burnley on New Year's Eve, helping the Owls to the first of three successive Championship wins. That mini-run of impressive pedigree was checked last time out in West Yorkshire facing Leeds but he is confident that Wednesday can bounce back to winning ways

It's great to be out of the relegation zone but it's easy to get sloppy and slip right back in there.



against the Hatters tonight.

"Luton had a fantastic start to the season, and they're looking good again now after a little slip a few weeks ago. They're clearly a strong side, Mike Newell has them fired up, with a lot of hard workers in the team. Other sides have found it hard to take points from them at Kenilworth Road but Luton don't seem to be as strong away from home so we have to be confident of a good result. Teams are finding it harder to play against us more recently so that's something we can build on. Obviously we slipped up at Leeds but anyone who was there will tell you that 3-0 was not a fair reflection of the game. With 20 minutes to go it was 0-0 and we changed our formation after their first goal to try and get one back ourselves. It didn't work in the end but Leeds certainly knew they'd been in a game."

The trio of triumphs

Wednesday recorded prior to that derby defeat at Leeds rounded off a prosperous S6 holiday period - but Hills is quick to underline the need to dispel the merest hint of complacency entering the camp. He tasted the bitterness of relegation last season with Gillingham in the most dramatic and unpalatable circumstances and thus has added incentive to avoid the drop this time around.

He recalls: "We played Forest on the last day of the season and we knew that a win would keep us up. We were winning 2-1 with five minutes to go but they pulled it back to 2-2. Crewe came back from 1-0 down against Coventry to win 2-1 and that sent us down on goal difference. They had just one goal better than us to be precise and it was such a devastating feeling. But these are the kind of experiences that help make you a better and stronger player for the future. The last two seasons at Gillingham were both spent fighting relegation so I have been in this situation before. I know we've had the three straight

wins but we've also had the bad defeat since, no matter how unjust it was. We've got to keep our sleeves rolled up, keep working hard and do what we are good at. I'm not going to say it will be easy because it won't...I think it could go right to the wire. It's great to be out of the relegation zone but it's easy to get sloppy and slip right back in there. It's a real dogfight at the bottom as it always is, but in our favour, we've been getting better and better of late, you can see the confidence rise in the boys as the season goes along so hopefully we can use that to have a good, strong end to the campaign."

With eight games left to unfold at Hillsborough before the curtain falls on the term in late April, John agreed that our home form could well decide the club's destiny for the 2006-07 season. The previous two S6 league outings have met with success for the hosts and Hills is hoping for more of the same tonight. And finishing on the subject of plying his trade in front of regular crowds averaging over 24,000, a beaming smile adorned his face.

Hills on...

THE FALL GUYS?

Derby are not doing too well at the moment and Crewe look in real trouble but Leicester are the surprise team for me. They looked really strong when we played them at their place early in the season, you'd have had high hopes as a Leicester fan back then. But they're below us now and we have to make sure that remains the case.

WINDOW SHOPPING

Obviously, the transfer rules have changed these days and managers have a limited period in which to do their business. Things need to be done quickly and that's the way it is. The first half of the season, we were in and around the relegation zone so we needed changes. The gaffer has done things the best way he can and that's what we've seen over the last few weeks with the comings and goings.

FINDING THE TARGET

I've scored a few goals in the past so hopefully there's a few left in there somewhere! The gaffer likes to see the goals spread around the team so fingers crossed I can chip in myself. There are more chances to get forward playing in midfield, although it's good to get some assists as well, like the cross that led to Cocco's winner against Leicester.

He signed off with this: "Playing at Hillsborough is fantastic to be honest. We have a great ground and great fans here and it's so important we use that to our advantage for the rest of the season. I know it's worked to the advantage of the opposition before now and that's something we have to continue to avoid. A lot of teams will come here hoping to turn the crowd against us by keeping us quiet in the first 15 or 20 minutes but the crowd has been

behind us all the way this season. It's brilliant to hear the fans getting right behind the boys. As soon as you walk out at Hillsborough - you can ask any of the new signings, I guarantee they will say the same thing - when they play 'Hi Ho Silver Lining' it makes the hairs on the back of your neck stand on end. The Wednesday fans are just awesome and if that atmosphere doesn't get you up for a game then you shouldn't really be here."



Sheffield Wednesday FC
would like to thank
our associate partners
for their continued
support of the Club.



DIADORA

October Player of the Month

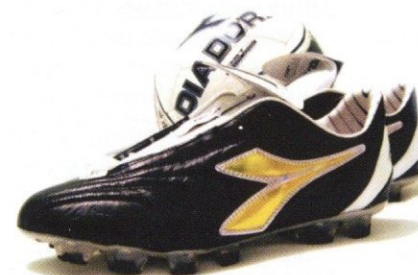
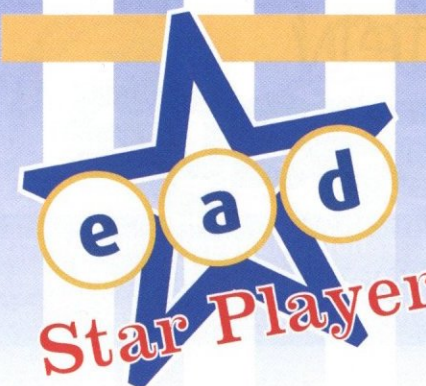
Chris Brunt

Congratulations to Chris on winning the October EAD Star Player Award after a highly productive month in which he scored four goals helping Wednesday to wins over Coventry City and Norwich City. Last month's winner Graham Coughlan was second with Frank Simek in third.

EAD Solicitors have been a loyal supporter of the Sheffield community for the past seven years and are proud to be associated with Sheffield Wednesday and The Star.

That's why EAD Solicitors are delighted to sponsor the Owls' "Star Player" Competition for 2004-05, and even more delighted to announce that this season, the introduction of text voting will make it even easier for you to cast your vote and win fantastic prizes such as tickets to the big games at Hillsborough, signed SWFC shirts courtesy of Diadora, and the opportunity to meet your favourite player.

If you travel on the Inter City Owl, you can nominate your chosen player each month by filling in a voting slip and handing it to your coach steward. In addition, at the end of each month in **The Star** and **Green 'Un** we'll be printing details of how to cast your vote and enter yourself into our fabulous prize draw.



★ **The Star**

★ **The Star**
Green 'Un

PERSONAL INJURY

NO WIN NO FEE

ACCIDENTS AT WORK

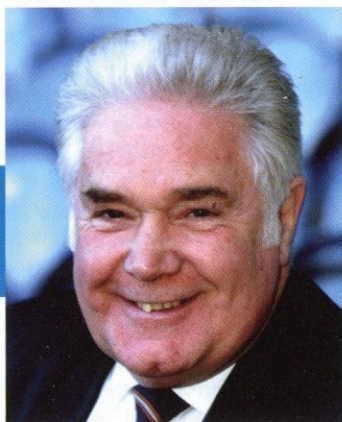
GENERAL LEGAL ADVICE



for the best advice, backed with a friendly professional service at all times call Garry Dickinson or Gail Simmonds at EAD today

put your shirt on us **e a d** solicitors

EAD SOLICITORS | OMEGA COURT | 354 CEMETERY ROAD | SHEFFIELD S11 8FT | FAX: 0114 263 1445 | EMAIL: ggt@eadsolicitors.co.uk



Safety Message

This evening SWFC Operations Manager Alan Roberts urges parents to protect the safety of young supporters by preventing them from standing on their seats.

Occasionally we have incidents where young Wednesday supporters who were standing on their seats have stood too far back and slipped between the backrest and the seat itself. In doing so they have caused themselves injuries to their legs.

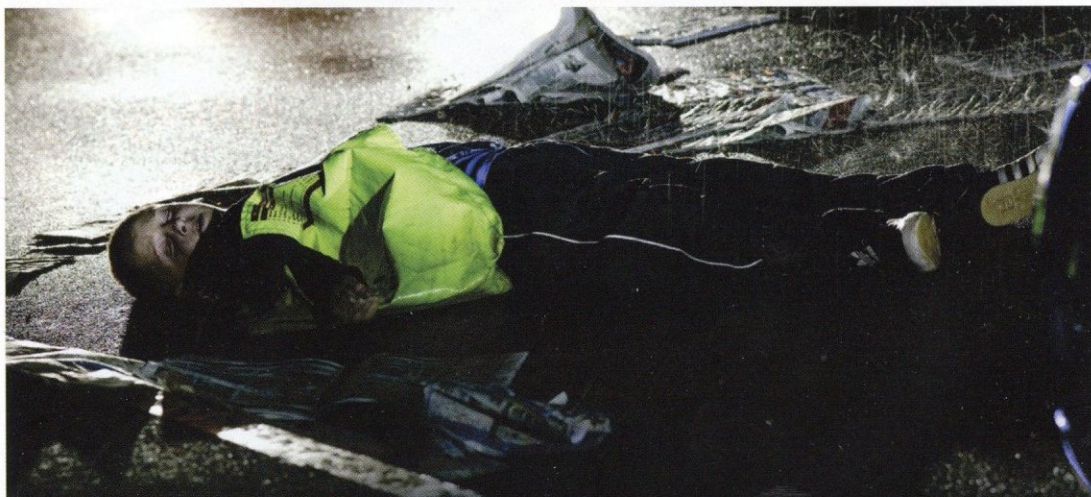
I know that if all the other fans in your area are standing it can be a very difficult situation for those who aren't at the front, who then have great difficulty in seeing the game.

Perhaps this happens more often at some away grounds where many other fans are standing.

I would ask all parents to help us to help them to prevent their children from hurting themselves in this manner by ensuring young fans don't stand on their seat. I understand it is frustrating if you can't see the game and, for our part, we work hard on a match-by-match basis to try to ensure all supporters remained seated for the vast majority of the match, in accordance with the ground regulations.

But, especially if the problem is at Hillsborough, I would instead advise you to contact a steward, who will try to find you alternative seating. It may be an inconvenience but it is obviously much safer situation than the possibility of young supporters injuring themselves by falling after standing on their seat.

If you wish to report any incident at Hillsborough, you can contact Alan in the strictest of confidence. Text him NOW on **07963 138580**. Or, next week, phone him on **(0114) 221 2361**, fax on **(0114) 221 2122** or e-mail: **enquiries@swfc.co.uk**



Sorry, but we have some bad news for you.

Over 700 people, many of them children, were killed or seriously injured on South Yorkshire roads in the last year.

Please slow down.
Drive within the speed limit and help us to try and save lives.
www.safetycamera.org



**SOUTH
YORKSHIRE
SAFETY CAMERA
PARTNERSHIP**



Today's Opponents

TODAY'S
OPPONENTS

The Introduction

Our visitors must remedy a chronic case of travel sickness if they are to stay in the hunt for an end-of-season play off slot.

Few teams in the Championship own such a contrasting record in and out of base. Check out Luton's stats to date this term and their Achilles heel moves sharply into focus - eight wins on home soil but a giant ten defeats suffered away from the comforts of Kenilworth Road.

Indeed, the Hatters' tally of losses on the road is the highest in the division and requires urgent attention if a promotion charge is to remain feasible.

They arrive in Sheffield handily placed on the cusp of the top six but boss Mike

Newell will need little reminding that his side could boast a better position with even an average travelling return. Thankfully, Luton have proved a pretty formidable outfit in front of their own fans, with their most recent victory unfolding ten days ago against QPR. Rangers took the short hop from Loftus Road in confident mood on the back of a four-match unbeaten league run but the hosts promptly ended that pedigree with a 2-0 win to register a maiden success for 2006. That triumph, in fact, was just what the doctor ordered given that prior to QPR's visit, the Hatters had lost their three previous Championship games, as well as having exited the FA Cup at the hands of Liverpool in a thrilling third round encounter that

finished 5-3 to the Premiership giants. Thus the points stored from the Super Hoops were particularly welcome as Luton recovered from that mid-season blip to return to winning ways. Strikes from Markus Heikkinen and Steve Howard were sufficient to overcome Rangers, with the latter inching ever closer to a personal landmark. Howard's second half conversion took the one-time Owls target to within a single goal of his century for our visitors, thus this evening could prove a special occasion for the towering targetman. History certainly suggests that Howard will emerge from the Hillsborough tunnel with a spring in his step too, as the 29-year-old has netted five times during the last quintet of games contested by tonight's teams.



The CaptainKevin Nicholls

The tough-tackling midfielder is immensely popular at Luton, both on off the pitch. Kevin is the Hatters' current Player of the Year, having led our visitors to the League One title last season - chipping in with a very impressive 14 goals from the engine room along the way. Nicholls' leadership qualities were immediately evident in Bedfordshire following a move from Wigan in 2001 and he was handed the captain's armband shortly after his arrival. The 27-year-old has also skippered England youth teams at under 18, under 19 and under 20 levels.

Luton Town



Team News

Luton travel to Hillsborough this evening aiming to emulate their success at home on the road. The Hatters are one of the most impressive sides in the division on home soil but have failed to collect maximum points away from home since October 1st. The early weeks of the season saw Luton pick up four wins from their first six away fixtures, beating Hull City (1-0), Leicester City (2-0) and Cardiff City and Crystal Palace (both 2-1). But they have since gained just one point from their last nine away dates, collected from their 1-1 draw at Derby County on Boxing Day. In contrast, Luton have won eight of their 15 home matches, suffering just three defeats at their Kenilworth Road base – form which has been a cornerstone of their push for a play-off place.

Line-Up

v QPR (4-4-2) - 21 January 2006:

Subs: Barnett for Showunmi 64, Feeney for Vine 65, Morgan for Brkovic 75.



Marlon Beresford has been the regular choice in goal for Mike Newell with 27 appearances while the Hatters boss has had a strong defensive unit to call upon. Markus Heikkinen (30 apps), Kevin Foley (25) and Chris Coyne and Paul Underwood (both 24) have all been regulars at the back. The Town midfield has largely been populated by Carlos Edwards (30 apps), Ahmet Brkovic (29 apps), Kevin Nicholls (26) and Steve Robinson (23). Luton's attacking threat has come from Warren Feeney (31 apps), Steve Howard (29), Dean Morgan (25) and Rowan Vine (16).

Goalkeeper

Marlon Beresford

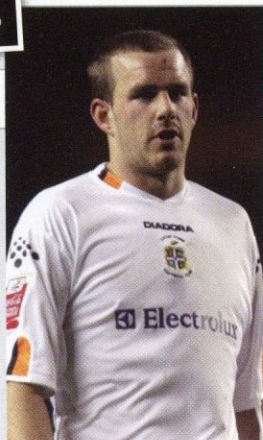
Well-travelled keeper who started out at Hillsborough and returned on loan five years ago. The 36-year-old is now in his second spell with Luton after rejoining from Barnsley in 2004 and also had three stints at Burnley – one on loan.



The Forwards

Rowan Vine

This 23-year-old completed his £250,000 move from Portsmouth in the summer, after spending the whole of 2004-05 on loan at Kenilworth Road. The Basingstoke product also had similar loan stints at Brentford in 2002-03 and Colchester the following season.



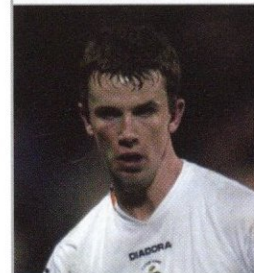
Steve Howard

The imposing targetman is looking for his 100th Luton goal this evening, after scoring in the Hatters' last three games. He joined from Northampton in 2001 having represented Hartlepool between 1995 and 1999.



The Defenders

Kevin Foley



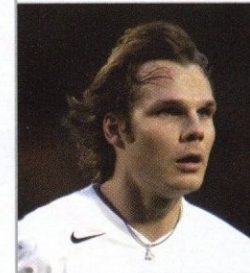
A Luton lad who came through the Hatters ranks to make his first team bow in 2002. The 21-year-old passed a century of Town appearances last month and has been a defensive mainstay this season.

Chris Coyne



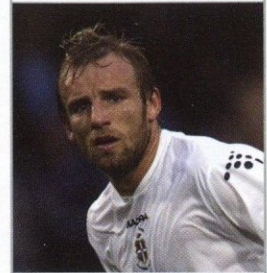
The Australian has proved great value for the £50,000 Luton paid Dundee for his services in 2001 and is just four appearances away from his 200th Hatters outing. The 27-year-old started with West Ham, moving north to Scotland in 2000.

Markus Heikkinen



The Finnish international quickly settled into the Hatters side after moving from Aberdeen last summer and netted his second goal against QPR last time out. The 27-year-old came to Britain on loan with Portsmouth before joining the Dons.

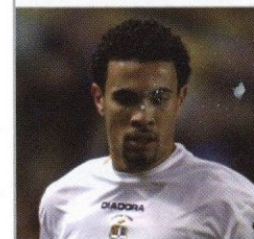
Paul Underwood



The 32-year-old has become an important part of the Hatters side since joining from Rushden in 2004. He made over 200 Diamonds appearances as the Irthlingborough side charged into the Football League.

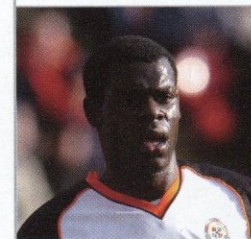
The Midfielders

Carlos Edwards



This Trinidad & Tobago international has been a mainstay since completing his summer move from Wrexham in the summer. He made 180 Dragons appearances during his five-year stay at the Racecourse Ground. Aged 27.

Enoch Showunmi



The 23-year-old joined the Hatters from Willesden Constantine in 2003 and has steadily progressed at Kenilworth Road. Made his 100th Luton appearance at Wolves earlier this month.

Kevin Nicholls



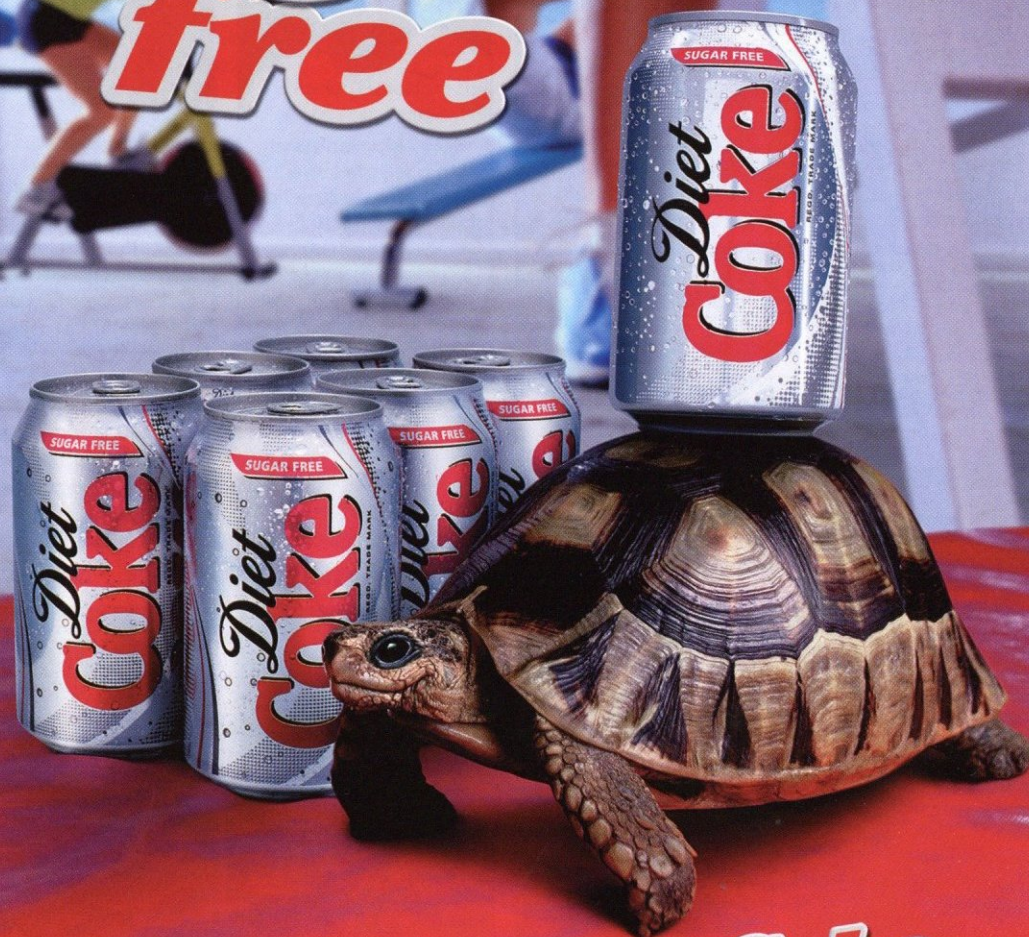
The £25,000 Luton paid Wigan for this 27-year-old in 2001 has proved to be money well spent. The former Charlton man has appeared 178 times for the Hatters and has 32 goals to his name so far.

Ahmet Brkovic



The Croatian midfielder joined the Hatters on a free from Leyton Orient in 2001 and is in line for his 180th Town outing this evening. The 31-year-old came to England in 1999, joining Orient from HNK Dubrovnik.

my
six pack's
sugar
free



diet Coke
love life

www.dietcokelovelif.co.uk

'diet Coke', 'diet Coca-Cola', 'Love Life' and the Dynamic Ribbon device are registered trade marks of The Coca-Cola Company

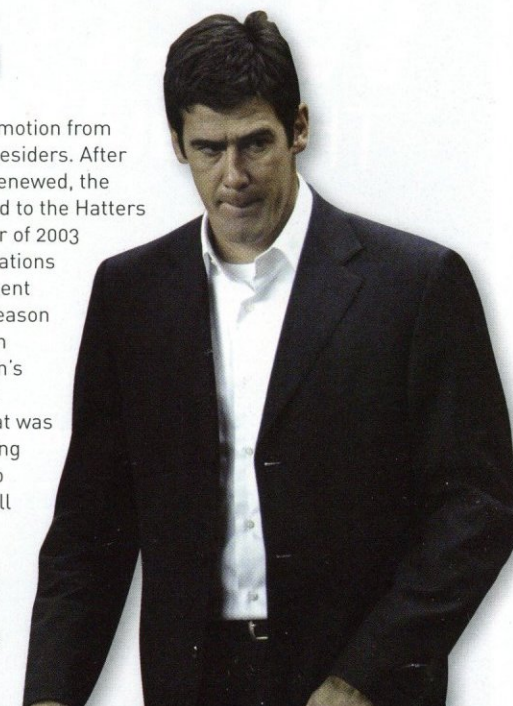
TODAY'S
OPPONENTS

Manager/Player Roll Call

Mike Newell

Hatters boss Mike Newell is engineering a new spell of success at the Kenilworth Road ground where he made his name with 19 goals in under two years as a player in the 1980s. A Premiership Champion with Blackburn in 1995, Mike was a hardworking centre forward who was on the books of 13 different clubs in a 19-year career, playing a total of 530 league games and scoring 120 goals. While playing for Blackburn against Rosenborg in the 1995-96 season, Mike scored the fastest hat-trick ever in the UEFA Champions League, netting his three goals in a spell of only nine minutes. Newell cuts his teeth as a manager by following Chris Turner at Hartlepool United, and completing

the job of winning promotion from League Two for the Teesiders. After his contract was not renewed, the Scouser was appointed to the Hatters hotseat in the summer of 2003 and built on the foundations laid by former incumbent Joe Kinnear. After a season of consolidation, Luton stormed to last season's League One title by 12 points and showed that was no fluke with a storming start on their return to the Championship. Still only 41, Newell's two promotions in three seasons have marked him out as one of football's bright young managerial talents.



| No | Name | Pos | Date/Place of Birth | Date Signed/From | 2005-06 LTFC Apps/Goals | LTFC Career Apps/Goals |
|----|------------------|-----|------------------------------|----------------------------------|-------------------------|------------------------|
| 1 | Marlon Beresford | G | 02 Sep 69, Lincoln | 24 Jun 04, Barnsley | 27/0 | 68/0 |
| 2 | Kevin Foley | D | 01 Nov 84, Luton | 19 Jul 02, Trainee | 25/0 | 108/4 |
| 3 | Sol Davis | D | 04 Sep 79, Cheltenham | 16 Aug 02, Swindon Town | 14/0 | 147/2 |
| 4 | Chris Coyne | D | 20 Dec 78, Brisbane (AUS) | 18 Sep 01, Dundee | 24/1 | 196/13 |
| 5 | Russell Perrett | D | 18 Jun 73, Barton-on-Sea | 10 Aug 01, Cardiff City | 9/0 | 102/8 |
| 6 | Paul Underwood | D | 16 Aug 73, Wimbledon | 25 Mar 04, Rushden & Diamonds | 24/0 | 66/5 |
| 7 | Carlos Edwards | M | 24 Oct, Port of Spain (T&T) | 18 May 05, Wrexham | 30/2 | 30/2 |
| 8 | Kevin Nicholls | M | 02 Jan 79, Newham | 03 Aug 01, Wigan Athletic | 26/5 | 178/32 |
| 9 | Rowan Vine | F | 21 Sep 82, Basingstoke | 05 Jul 05, Portsmouth | 16/3 | 16/3 |
| 10 | Warren Feeney | F | 17 Jan 81, Belfast | 24 Mar 05, Stockport County | 31/7 | 37/7 |
| 11 | Steve Robinson | M | 10 Dec 74, Lisburn | 20 Jun 02, Preston North End | 23/2 | 131/10 |
| 16 | Enoch Showunmi | F | 21 Apr 82, Kilburn | 05 Sep 03, Willesden Constantine | 30/1 | 101/15 |
| 17 | Paul Hughes | M | 19 Apr 76, Hammersmith | 10 Aug 01, Southampton | 0/0 | 88/7 |
| 18 | Ahmet Brkovic | M | 23 Sep 74, Dubrovnik (CRO) | 04 Oct 01, Leyton Orient | 29/6 | 179/33 |
| 19 | Steve Howard | F | 10 May 76, Durham | 22 Feb 01, Northampton Town | 29/11 | 212/99 |
| 21 | Keith Keane | M | 20 Nov 86, Luton | 01 Jul 03, Trainee | 6/0 | 42/1 |
| 22 | Danny Stevens | M | 26 Nov 86, Enfield | 20 Sep 05, Tottenham Hotspur | 0/0 | 0/0 |
| 23 | Dean Morgan | M | 03 Oct 83, Enfield | 27 Jul 05, Reading | 25/5 | 25/5 |
| 26 | Markus Heikkinen | D | 13 Oct 78, Katrineholm (FIN) | 22 Jul 05, Aberdeen | 29/2 | 29/2 |
| 27 | Peter Holmes | M | 18 Nov 80, Bishop Auckland | 01 Aug 01, Sheffield Wednesday | 17/2 | 112/12 |
| 28 | David Bell | M | 21 Jan 84, Kettering | 12 Jan 06, Rushden & Diamonds | 0/0 | 0/0 |
| 29 | Calvin Andrew | F | 19 Dec 86, Luton | 01 Sept 04, Trainee | 0/0 | 11/0 |
| 33 | Dean Brill | G | 10 Dec 85, Luton | 01 Aug 02, Trainee | 6/0 | 13/0 |
| 45 | Leon Barnett | D | 30 Nov 85, Stevenage | 28 Sep 04, Trainee | 11/0 | 16/0 |
| 47 | Rob Beckwith | G | 12 Sep 84, London | 01 Aug 02, Trainee | 0/0 | 19/0 |

Wall of Fame

The Paul Sturrock Gallery

Is your name in the Wall of Fame?

Introducing the next Gallery in our wall of fame - **The Paul Sturrock Gallery.**

After a successful season the Owls have been promoted to the Championship. Now you can add your own personal backing for Paul by purchasing a brick in the Paul Sturrock Gallery. This will remain in the historic Hillsborough stadium forever.

only a few bricks now remaining in the gallery?

Priced at **£30 per brick** you can have two lines stating a message of your choice made up of **14 characters** on each line.

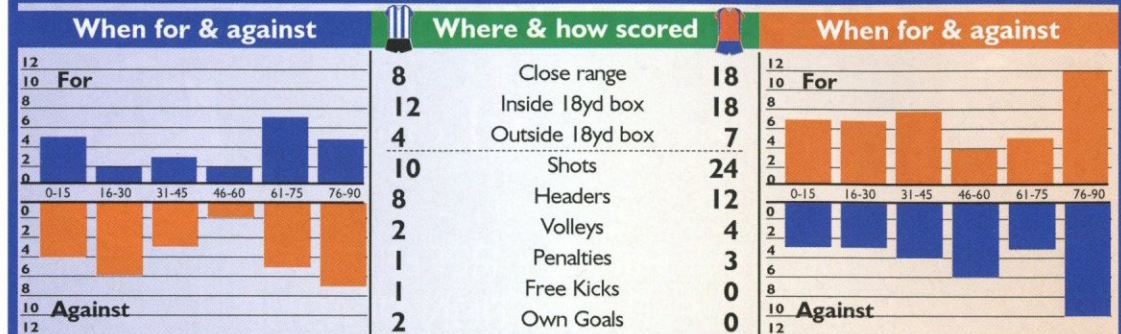
These bricks will sell out soon so to order yours today please call **Kerry Arliss on (0114) 221 2151.**

www.swfc.co.uk

Sheffield Wednesday Football Club | Hillsborough | Sheffield | S6 1SW
Telephone: 0870 999 1867 | Fax: (0114) 221 2122

Its **MORE** than just a Game

Sheff Wednesday v. Luton Town



| Last 6 results | Seasonal progress comparison | Last 6 results | | | | | | | | | | | | | | | | | | | | | | | | | | | | | | | | | | | | | | | | | | |
|--|------------------------------|----------------|-------|-------|---|-----|-----------|---|-----|-------|---|-----|---------|---|-----|--------|---|-----|---------|---|-----|--|---|-----------|-----|-------|-----|---|-----|--------|---|-----|---------|---|-----|---------|---|-----|----------|---|-----|-------|---|-----|
| <table border="1"> <tr><th>Opponents</th><th>H/A</th><th>Score</th></tr> <tr><td>Leeds</td><td>A</td><td>0-3</td></tr> <tr><td>Leicester</td><td>H</td><td>2-1</td></tr> <tr><td>Crewe</td><td>H</td><td>3-0</td></tr> <tr><td>Burnley</td><td>A</td><td>2-1</td></tr> <tr><td>Wolves</td><td>H</td><td>0-2</td></tr> <tr><td>Preston</td><td>A</td><td>0-0</td></tr> </table> | Opponents | H/A | Score | Leeds | A | 0-3 | Leicester | H | 2-1 | Crewe | H | 3-0 | Burnley | A | 2-1 | Wolves | H | 0-2 | Preston | A | 0-0 | | <table border="1"> <tr><th>Opponents</th><th>H/A</th><th>Score</th></tr> <tr><td>QPR</td><td>H</td><td>2-0</td></tr> <tr><td>Wolves</td><td>A</td><td>1-2</td></tr> <tr><td>Watford</td><td>H</td><td>1-2</td></tr> <tr><td>Ipswich</td><td>A</td><td>0-1</td></tr> <tr><td>Brighton</td><td>H</td><td>3-0</td></tr> <tr><td>Derby</td><td>A</td><td>1-1</td></tr> </table> | Opponents | H/A | Score | QPR | H | 2-0 | Wolves | A | 1-2 | Watford | H | 1-2 | Ipswich | A | 0-1 | Brighton | H | 3-0 | Derby | A | 1-1 |
| Opponents | H/A | Score | | | | | | | | | | | | | | | | | | | | | | | | | | | | | | | | | | | | | | | | | | |
| Leeds | A | 0-3 | | | | | | | | | | | | | | | | | | | | | | | | | | | | | | | | | | | | | | | | | | |
| Leicester | H | 2-1 | | | | | | | | | | | | | | | | | | | | | | | | | | | | | | | | | | | | | | | | | | |
| Crewe | H | 3-0 | | | | | | | | | | | | | | | | | | | | | | | | | | | | | | | | | | | | | | | | | | |
| Burnley | A | 2-1 | | | | | | | | | | | | | | | | | | | | | | | | | | | | | | | | | | | | | | | | | | |
| Wolves | H | 0-2 | | | | | | | | | | | | | | | | | | | | | | | | | | | | | | | | | | | | | | | | | | |
| Preston | A | 0-0 | | | | | | | | | | | | | | | | | | | | | | | | | | | | | | | | | | | | | | | | | | |
| Opponents | H/A | Score | | | | | | | | | | | | | | | | | | | | | | | | | | | | | | | | | | | | | | | | | | |
| QPR | H | 2-0 | | | | | | | | | | | | | | | | | | | | | | | | | | | | | | | | | | | | | | | | | | |
| Wolves | A | 1-2 | | | | | | | | | | | | | | | | | | | | | | | | | | | | | | | | | | | | | | | | | | |
| Watford | H | 1-2 | | | | | | | | | | | | | | | | | | | | | | | | | | | | | | | | | | | | | | | | | | |
| Ipswich | A | 0-1 | | | | | | | | | | | | | | | | | | | | | | | | | | | | | | | | | | | | | | | | | | |
| Brighton | H | 3-0 | | | | | | | | | | | | | | | | | | | | | | | | | | | | | | | | | | | | | | | | | | |
| Derby | A | 1-1 | | | | | | | | | | | | | | | | | | | | | | | | | | | | | | | | | | | | | | | | | | |

| Swings | Swings | Swings |
|---------------------|--------|---------------------|
| Won when Behind 2 | | Won when Behind 2 |
| Drawn when Behind 1 | | Drawn when Behind 3 |
| Drawn when Ahead 0 | | Drawn when Ahead 3 |
| Lost when Ahead 5 | | Lost when Ahead 2 |

| Discipline | Discipline | Discipline |
|------------------------|------------|-----------------------|
| Red cards 1 | | Red cards 3 |
| Yellow cards 34 | | Yellow cards 35 |
| Fouls committed 352 | | Fouls committed 402 |
| Average per game 11.73 | | Average per game 13.4 |

| Set piece goals | Set piece goals | Set piece goals |
|-------------------------|-----------------|-------------------------|
| Scored from free kick 1 | | Scored from free kick 6 |
| Scored from corner 5 | | Scored from corner 3 |
| Conc from free kick 3 | | Conc from free kick 9 |
| Conc from corner 6 | | Conc from corner 3 |

| Strike ratio | Luton's Last 10 Years | Strike ratio |
|----------------------|-----------------------|----------------------|
| Shots on target 130 | | Shots on target 185 |
| Goals scored 24 | | Goals scored 43 |
| % shots scored 18.5 | | % shots scored 23.2 |
| Divisional rating 21 | | Divisional rating 12 |

| Top scorer | Top scorer | Top scorer |
|-----------------|------------|-----------------|
| Chris Brunt | | Steve Howard |
| Goals Scored 6 | | Goals Scored 10 |
| Games Played 30 | | Games Played 27 |
| Points Won 10 | | Points Won 5 |

THE LATEST SPORTS NEWS ON YOUR DESKTOP
EVERY DAY

SPORTBOX.tv
NOTHING INSIDE BUT SPORT

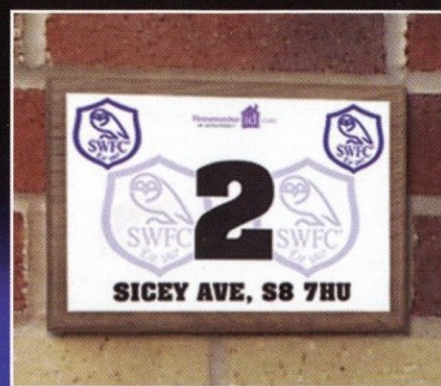
SHEFFIELD WEDNESDAY



Housenumber **id**.com
pat. pending 0505655.1

Bring you

THE NEW HIGHLY REFLECTIVE HOUSE IDENTIFICATION PLAQUE



The "Cats Eyes" for the 21st Century

- As seen on the BBC
- Easy to see in the dark
- Quicker response times
- Instantly visible
- Faster deliveries
- Highly reflective

This could save your life!

"With these numbers I will find you day or night, without them I only might."
Paul Higgins, Paramedic, Sheffield.

"With these numbers I can spend more time with my patients rather than looking for them."
Dr. D. S. Liversey, Sheffield.

"A simple idea that has the potential to save your life and our valuable time."
Sergeant Neil Boast, Suffolk Constabulary & Crime Reduction & Community Safety Unit.

Helping us to find you



Sheffield Wednesday supporting a national safety project



Now available in the Owls Superstore

Prior Engagements

TODAY'S
OPPONENTS
Prior Engagements

Recent Meetings

Friday 23rd September 2005 – Kenilworth Road

Luton Town 2-2 Wednesday

Luton: Beresford, Edwards, Coyne, Perrett, Davis (Heikkinen), Brkovic, Robinson, Nicholls, Morgan (Showunmi), Feeney, Howard.

Subs not used: Brill, Keane, Holmes.

Wednesday: Lucas, Simek, Lee, Wood, Hills, Eagles (McGovern), Whelan, O'Brien (Rocastle), Brunt, Peacock (Bullen), Graham. **Subs not used:** Ross, Corr.

Scorers: Howard 2, 66, Lee 14, Graham 64.

Attendance: 9,500

Saturday 1st January 2005 – Kenilworth Road

Luton Town 1-1 Wednesday

Scorers: Jones 45, Howard 47.

Saturday 4th September 2004 – Hillsborough

Wednesday 0-0 Luton Town

Scorers: N/A

Saturday 1st May 2004 – Kenilworth Road

Luton Town 3-2 Sheffield Wednesday

Scorers: Shaw 23, Cooke 33, Howard 54, 90, O'Leary 78.

Saturday 22nd November 2003 – Hillsborough

Wednesday 0-0 Luton Town

Scorers: N/A



Back on terms...Graeme Lee celebrates his early leveller at Luton in September.

at Hillsborough

| | P | W | D | L | F | A |
|------------|----|----|----|---|----|----|
| LEAGUE | 26 | 14 | 10 | 2 | 53 | 25 |
| LEAGUE CUP | 1 | 1 | 0 | 0 | 4 | 2 |
| TOTAL | 27 | 15 | 10 | 2 | 57 | 27 |

Overall

| | P | W | D | L | F | A |
|------------|----|----|----|----|----|----|
| LEAGUE | 53 | 20 | 19 | 14 | 86 | 69 |
| LEAGUE CUP | 1 | 1 | 0 | 0 | 4 | 2 |
| TOTAL | 55 | 21 | 20 | 14 | 92 | 73 |

Biggest Wednesday win at Hillsborough: 6-0 (Division 2) 02/12/1899

Biggest Luton Town win at Hillsborough: 5-1 (Division 2) 10/10/1970

Lucky Numbers

4

In the two meetings of Luton Town and Sheffield Wednesday during the 1951-52 season legendary Wednesday front man Derek Dooley scored four goals, two in each game. SWFC managed a total of nine goals in two meetings against the Hatters that season.

11

The Owls were unbeaten in their first 11 home meetings with the Hatters, Luton finally ending that run in style with a 5-1 triumph in 1970.

70

In the League Cup meeting between Wednesday and Luton in November 1984, Andy Blair scored a hat-trick of penalties inside 70 minutes of the game at Hillsborough.



Andy Blair...netted three penalties in a game against Luton, 22 years ago.



Carlsberg



Carlsberg



Proud to support Sheffield Wednesday



Official Beer of Sheffield Wednesday. www.carlsberg.co.uk

Executive **Box Holders**

Sheffield Wednesday are pleased to welcome the following Executive Box holders to Hillsborough for the 2005-06 season.

**COUNTY GLAZING
SERVICES LTD**

SEAMS
www.seamsltd.com



AQUAFORCE
PLUMBING SOLUTIONS LTD
24HR CALL OUT

davis
WE DAVIS GROUP OF COMPANIES

newcentury
developments

dunwoody

irwinmitchell (IM)

BRADSHAW
(PRECISION ENGINEERING) LTD

**COMPLETE
CABLING
LIMITED**
(ELECTRICAL ENGINEERING CONSULTANTS
& PROJECT MANAGEMENT)



BARIS

T.A.S.C
DIAMOND DRILLERS LTD



Clearcom **LEISURE**

INDAIR
FACILITY SERVICES

EVENORT

NFT Nick Firth Tiles Ltd.

rillatech

**ELG HANIEL
METALS LTD**

TKL

Tel: 01298 871435 Tel: 01298 871435
HOLDSWORTH
PARTNERS IN REGENERATION



bp
Beardsall Properties

Whitehouse
www.whitehouseconstruction.co.uk

plusnet
The smarter way to broadband

WINDSOR
FOODSERVICE

David Ford
MECHANICAL ELECTRICAL

Highfield **ELECTRONICS**

VIP radio
Paul Carder

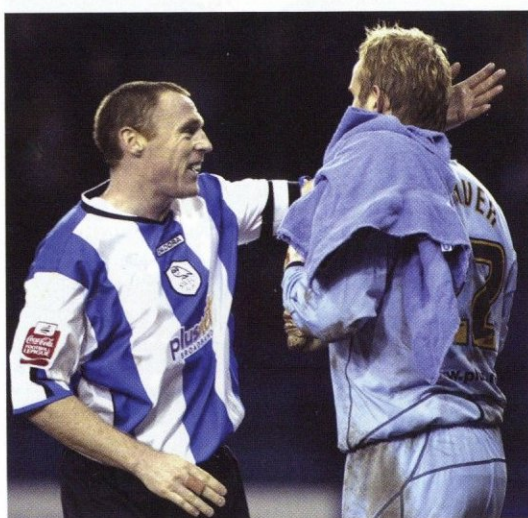
P&A The P&A Partnership
Business Recovery & Insolvency



HILLSIDE
CONSTRUCTION AND JOINERY

Match Review

14th January 2006, Hillsborough



Match SUMMARY:

The Owls made it three wins in a row with a sterling first-half fightback against a Foxes side that arrived in S6 on the back of their FA Cup defeat of Tottenham. Leicester had put our Walkers Stadium meeting with them in September out of sight after 12 minutes and they again got an early goal when Richard Stearman

netted a spectacular overhead kick after loose defending at a corner. But Wednesday are made of sterner stuff nowadays and, after Chris Brunt equalised with a scorching 30-yarder, Graham Coughlan nodded home John Hills' cross to earn Paul Sturrock's side three priceless points against a visiting side that dropped into the bottom three.

Team Line-ups

| POS | PLAYER | SUB | Y/R | POS | PLAYER | SUB | Y/R |
|-----|-----------|-----|-----|-----|-----------|-----|-----|
| G | Weaver | | | G | Douglas | | |
| RB | Simek | | | RB | Stearman | HT | |
| CB | Coughlan | | | CB | McCarthy | | |
| CB | Wood | | | CB | Johansson | | |
| LB | Gilbert | | | LB | Maybury | | |
| RM | Brunt | | | RM | Hughes | | |
| CM | Whelan | 79 | | CM | Kisnorbo | | |
| CM | O'Brien | | | CM | Williams | | |
| LM | Hills | | | LM | Hamill | 75 | |
| CF | Tudgay | 69 | | CF | de Vries | | |
| CF | Burton | | | CF | Hammond | 66 | |
| S | Lucas | | | S | O'Grady | | |
| S | Bullen | 79 | | S | Dublin | | |
| S | Diallo | | | S | Gerrbrand | HT | |
| S | Partridge | | | S | Hume | 66 | |
| S | Corr | 69 | | S | Fryatt | 75 | |



Key Moment

90th minute

Wednesday had held out against strong Leicester pressure for much of the second period but the prospect of another late equaliser at Hillsborough was raised when the ball broke to deadly hitman Mark de Vries, eight yards out. The Dutchman looked set to score with a low shot until Nicky Weaver appeared out of nowhere to pull off a vital save and preserve all three points.

Match Reaction

from Craig Levein

"We started well, but they came back into it with a magnificent goal. Maybe this was a reality check after last week. The players dream about playing in the Premiership, but in reality it's a lot different."



Match Reaction

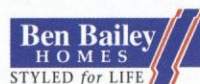
from Paul Sturrock

"I was pleased with the reaction of the players after going 1-0 down so early. Many a time here we've gone behind and then our heads have dropped and we've gone 2-0 down. But they responded properly. We made it hard for ourselves in the second half but we hung on."

SWFC Community Programme



Sheffield Wednesday
Football Club
Community Programme



Welcome to this tonight's game.

Pre game entertainment – "BT Community Cup"



Tonight SWFC hosts the final of the under-13 girls BT Community Cup. The SWFC Community Programme recently completed a very successful local tournament at Concord Sports Centre with 15 secondary school teams taking part. The two winners of the tournament play off tonight for the privilege of moving into the area final and representing SWFC against other local professional football clubs. The girls will then have opportunity to move to the northern regional final and ultimately the national final which will be played at either the new Wembley or the Millennium Stadium in Cardiff prior to one of the League play-off finals. The final tonight will see Westfield Secondary School play Wisewood Secondary School, coincidentally both schools are already or are about to be Sports Colleges and so have lived up to their billing! Good luck to both teams and well done to both for getting to this stage.



"Holiday" Football Fun 4 All

SWFC Community Programme will be delivering a busy programme of "Holiday Football Fun 4 All" during the February half term holiday period.

The courses are open to all ability levels and provide professional coaching in excellent settings for children to enjoy the game of football and develop their skills.

| Restarts | Venue | Time | Age | Open To | Price |
|--------------|---------------------------|-------------|------|------------|-------|
| 13 to 17 Feb | T. Ground | 10am to 3pm | 6-13 | Mixed | £45 |
| 13 to 17 Feb | Sports Hall | 10am to 3pm | 6-13 | Girls only | £45 |
| 13 to 15 Feb | Goals Soccer Centre | 10am to 3pm | 6-13 | Mixed | £30 |
| 16 & 17 Feb | HSBC Sports Ground - Dore | 10am to 3pm | 6-13 | Mixed | £20 |
| 20 to 24 Feb | Workshop Leisure Centre | 10am to 3pm | 6-13 | Mixed | £45 |

** Childcare facilities are available for the courses at SWFC Sports hall and Training ground – for children ages 8 to 13 charged at £5.00 per day. The facility enables parents to drop off their children at 8am and collect at 6pm. You can ring the Community Office on **0114 2212215** or email community@sheffieldwednesday.co.uk for details and a booking form.

After School - Football Fun 4 All

New Year Times and Dates

| Restarts | Venue | Time | Age | Open To | Price |
|--------------|------------|-----------|------|----------------|-------|
| Monday 9th | T. Ground | 3.45-5.00 | 7-11 | Girls only | £2 |
| Monday 9th | T. Ground | 3.45-5.00 | 7-11 | Junior Kickers | £2 |
| Thursday 5th | T. Ground | 4.00-5.15 | 7-14 | GK coaching | £3 |
| Friday 9th | T. Ground+ | 4.00-5.00 | 5-7 | Mini Kickers | £2 |

*NOTE CHANGE OF VENUE

*PLEASE NOTE ACTIVITIES WILL NOT RUN IN SCHOOL HOLIDAYS

BIRTHDAY Football Fun 4 All

The SWFC Community Programme operates a range of birthday party opportunities for boys and girls. Parties include football coaching, fun games, competitions, prizes and lots more. Different catering packages are available along with a bespoke birthday cake for the birthday boy or girl.

Please ring Steve Adams (Projects Officer) on **0114 221 2215** - to book a party or receive the information regarding all the birthday offers.



Non Match Day Saturday Club

The FITC team have now restarted their non match day Saturday Club – the club takes place between 10am and 12.00noon on every Saturday when SWFC are NOT at home – for 7 to 10 year olds - £3.50 per week.

Please ring – **0114 221 2215** – to receive a booking form or register.

Representative Teams

SWFC Ability Counts Club

Sheffield Wednesday Ability Counts Club

The Sheffield Wednesday Ability Counts Club provides football opportunities for people with special needs and disabilities.

The Ability Counts Club, supported by the FA and County FA, is a pan disability club where players are assessed on their ability not their disability. Three teams, Premiership, Championship and League One represent SWFC in local, regional and national events and train at SWFC Sports Hall twice per week and play fixtures on a Sunday afternoon.

For more information contact the Community Office on – **0114 221 2215**.

SHEFFIELD WEDNESDAY FOOTBALL CLUB PLC
YOUNG OWLS FC
HILLSBOROUGH, SHEFFIELD S6 1SW
TEL: 0114 221 2378



Contact details –

| | | |
|-----|---------------------------|----------------------------|
| U7 | Frank Hayes/Steve Peacock | 0114 230 3978/07764 207954 |
| U8 | Darren Fairest | 0114 239 3651/0798 4153220 |
| U9 | Steve Dale | 0114 273 7562/07985 287250 |
| U10 | Steve Fox | 01226 744461 |
| U11 | John Hinde | 0114 233 5148 |
| U12 | Chris Hague | 0114 233 4937/07789 997880 |
| U13 | Lee Chadburn | 07884 070107 |
| U14 | Kevan Hall | 077393 12673 |
| U15 | Robin Hughes | 0114 237 4443 |
| U16 | John Bradley | 0114 257 0691 |

The Young Owls would like to thank their sponsors - CMC Motorcycles, Crane Force, TRC Truck Rental, Wrigley's Solicitors, ideasbynet.com, Beevor Scaffolding, The Cheque Shop and Food 4 Thought.



SODA

SWFC now has a well established disabled supporters club, SODA (Sheffield Owls Disabled Association). The group has been created with its own constitution and clear aims and objectives to enhance the experience of disabled supporters at SWFC

Anyone interested in being part of SODA should contact Pauline Bronks at SWFC on **0870 999 1867**.

The next committee meeting is scheduled for Wednesday 8th February 2006 in the Riverside Suite at SWFC – 6.30 for 6.45pm start

Wise Old Owls

Sheffield Wednesday's Wise Old Owls Luncheon Club for the over 50's meets at SWFC on a monthly basis. A three course meal and guest speaker provide an excellent afternoon's entertainment. New members are most welcome. For further details contact Eric and Marjorie on **0114 243 5564**.

The next luncheon is scheduled for Wednesday 15th February 2006 at SWFC – 12.00noon

Enjoy the game and see you next time.
Julian Winter – Community Manager

076



Glenn
Whelan



Sheffield Wednesday
Football Club

PuzzleTime



This afternoon, we are delighted to introduce our Study Support Centre's recently-appointed manager Lynn Paradine.

GoalGetters



Name: Lynn Paradine
Age: 49

About Yourself. I am from Sheffield and have lived here all my life. I am trained as a secondary school teacher and worked at High Storrs School

for many years. I have three grown up children. When I am not work I enjoy socialising, walking in the Peak district and visiting other countries.

What do you do at the club? I work in the study centre, where we provide educational support for children from local school with their Maths, English and ICT.

Best thing about working of Sheffield Wednesday? Meeting the players

Who is your favourite player? Chris Brunt

Who is your favourite band? Rolling Stones

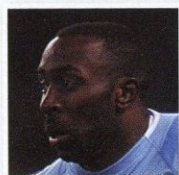
Best place to visit? South of France

What is the best thing about living in Sheffield? Living near the Peak District and the M1.

Identify these four Premiership players



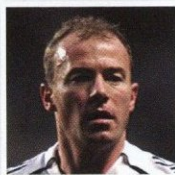
Clues: This Dutch master is a bit of a devil



Psycho has given this international a new lease of life



This man has become a Pharaoh at the Lane



The greatest Premiership striker

WhoseGround?

Clue: The newest ground in the League.



TheAnagram

Can you un-jumble the letters to reveal a football team?

A N T I L I M E R N

Clue: There are 2 words.

Last IssuesAnswers

Anagram: Bayern Munich **Marvellous Midfield:** Frank Lampard, Tim Cahill, Papa Bouba Diop, Robert Pires.
Ground: Sincil Bank (Lincoln City)

OWLS AGAINST RACISM

OAR mission statement...

"SWFC opposes racism in all its forms and will actively seek to involve all communities in the life of the Club"

Owls Against Racism (OAR) is a steering group set up with the following agreed aims & objectives -

- To advise SWFC on anti racism and anti discrimination policy.
- To advise SWFC in the monitoring of its anti racism and anti discrimination policy, procedures and training.
- To encourage more people (especially children) of ethnic minority background to play football.
- To encourage more people (especially children) of ethnic minority background to watch football.
- To develop closer links between SWFC and ethnic minority communities.
- To encourage more people of ethnic minority background to become interested in and support SWFC
- To encourage more people of ethnic minority background to utilise the facilities at SWFC.
- To utilise the game of football as a vehicle for improvements, for people of ethnic background, in education, health and social inclusion.
- To promote inclusive football initiatives to all regardless of age, gender, ethnicity or ability.
- To ensure that issues of racism become an 'everybody' issue.

Contact Julian Winter (Community Manager) on 0114 221 2152 to find out more about the group and how you can make a difference.

Show Racism the Red Card

football unites racism divides

LET'S KICK RACISM OUT OF FOOTBALL



Sheffield Wednesday Football Club



cash in on our support for

- pitches
- social inclusion projects
- changing rooms
- education schemes
- kit and equipment
- pavilions

improving facilities
creating opportunities
building communities



FootballFoundation

football's biggest supporter

www.footballfoundation.org.uk Helpline 0800 0277766

Travelcare[®]

For a great range of fabulous holidays...

Our independence means honest, upfront and impartial advice to customers

Low deposit schemes currently running

We have branches at:

Castle House, Angel Street, Sheffield S3 8LS. Tel: 0114 249 1001

60 - 70 Middlewood Road, Hillsborough, Sheffield S6 4HA. Tel: 0114 285 4875

Unit 2, Morrison's Supermarket, 699 Penistone Road, Hillsborough, Sheffield S6 2GY. Tel: 0114 285 4146

Chapel Street, Woodhouse, Sheffield S13 7JN. Tel: 0114 269 1888

Drakehouse Home Furnishings, Unit 6 Drakehouse Way, Waterthorpe, Sheffield S20 7JJ. Tel: 0114 251 3300

8 - 10 Ridgeway Road, Sheffield S12 2SS. Tel: 0114 281 6661

www.travelcareonline.com

a co-operative business



BBC RADIO SHEFFIELD

The team behind your team



Luke Wileman, Paul Walker and Seth Bennett with exclusive commentary on the Owls

88.6, 104.1FM & Digital Radio
bbc.co.uk/southyorkshire

CAPTAIN'S COLUMN

with Lee Bullen



Captain's Column

Welcome back to Hillsborough for another crucial encounter against Luton Town this evening.

Luton are a team who we know well after our battles with them last year and it was a good game down at Kenilworth Road earlier in the season, in which there were a few goals.

Therefore we know we have a very tough match ahead of us. Our recent meetings with Luton have been exciting and are normally quite close. Games with them are always something to look forward to because they play good football. The three meetings over the past season and a half have all been draws so that it is bound to change sometime and hopefully it will be in our favour. Luton have fantastic individual players which generally I don't feel they get credit for. Because they are a so-called 'smaller club', people tend to describe them as hard-working and well-organised but they have some really good footballers with tremendous quality. They also have a young good manager who has done excellently since taking over there. He will have done his homework on us, will know our strengths and

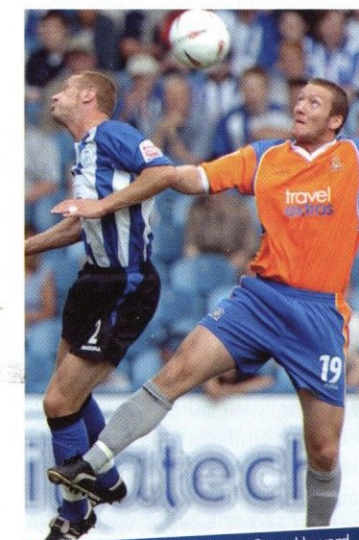
weaknesses and will have his team wound up for this match.

FLASHES

Steven MacLean came through unscathed from 45 minutes in the reserves last week and it was brilliant to see him back. He showed flashes of his old self and was as positive as always. He wanted to play on but I think the coaching staff were right to wrap him up in cotton wool a bit. We have Deon and Marcus up front so there's more cover in that department now. Steven will have a few tough training sessions and then, you never know, he could be on the bench very shortly. We suffered a disappointing result in our last game against a very strong Leeds side who are challenging for promotion. Before the game we thought it would be difficult to come away with something but we were a bit disappointed looking back on the match. We were solid as a unit and made it difficult for them. I don't think Nicky Weaver had a save to make until they got the first goal and their tails were up after that. We were chasing to get a goal back

and they caught us soon after. The 3-0 scoreline put a bit of a gloss on it for Leeds but there are a lot of positives we can take out of the game. We went to a very difficult place, held them for 70 minutes and the shape of the team looked really strong. If we can take that into tonight's game and get a break in front of goal then we won't be far away from getting the three points.

Enjoy the game.



Good players...Lee up against Steve Howard, who is chasing his 100th Luton goal this evening.

Lee Bullen's Captain's Column is sponsored by **BBC RADIO SHEFFIELD**

Championship Form

Last Saturday and FA Cup exit apart, 2006 is so far proving productive for Wednesday (touch wood), but some clubs in the division aren't enjoying the fledgling year quite as much. In his regular Championship round-up, James Oldfield spotlights three sides whose current form is prompting nervous glances at the table as the season enters its final third...



CLARETS GOING DOWN TOO SWIFTLY

They might occupy a comparatively lofty placing of tenth, but at their present rate of descent, **Burnley** could find themselves embroiled in the relegation scrap by the onset of spring.

It's six games without a win now for Steve Cotterill's outfit – a sequence encompassing five defeats (including an FA Cup exit to Derby plus a damaging 2-0 home reverse to Preston in the Lancashire derby the weekend before last) and causing a slide out of the top six slot they inhabited on Boxing Day. Perhaps even more worryingly, they've notched only one league goal so far in 2006.

The protracted tug-of-war with the Blades over leading marksman Ade Akinbiyi seemed to have been resolved at the time of writing, with Burnley finally accepting United's offer for the giant striker. It's a decision that could have massive ramifications for the Clarets' season. With 14 to his credit, Akinbiyi is responsible for over a third of the team's goals tally this term – having to find that contribution from elsewhere would be a headache Cotterill could do without.

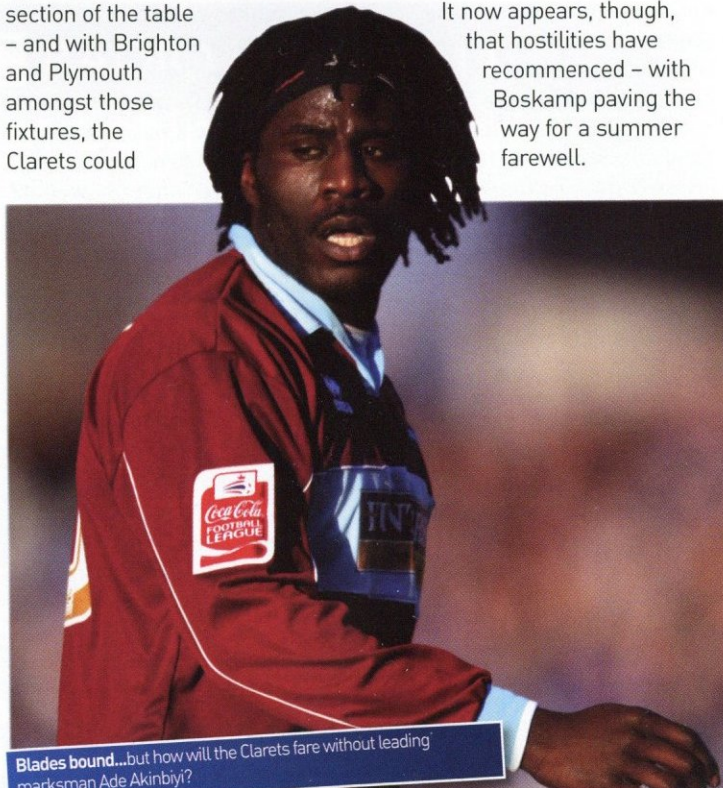
To say they once nurtured play-off ambitions (and probably still do), Burnley haven't convinced against their fellow Premiership wannabees, having won only three out of 16 fixtures versus sides in the upper half. Thankfully for Cotterill, five of his club's next six matches are against sides in the bottom section of the table – and with Brighton and Plymouth amongst those fixtures, the Clarets could

have a big say in the relegation issue as they attempt to safeguard being dragged into it themselves.

WHO RULES BRITANNIA?

Last time this feature checked out **Stoke**, gaffer Johan Boskamp had seemingly buried the hatchet with assistant boss Jan de Koning and Director of Football John Rudge.

It now appears, though, that hostilities have recommenced – with Boskamp paving the way for a summer farewell.



Blades bound...but how will the Clarets fare without leading marksman Ade Akinbiyi?

"My contract finishes on June 30th," he retorted, when asked to clarify the situation recently. "Everyone knows the problems and I haven't changed my mind. I have my principles. I'm disappointed because I like it here very much, but it's not in my hands."

Oh dear. We can only guess what impact the Dutchman's impending departure will have on the squad for the remainder of the campaign – but having taken only one point from the last six games and needing a replay plus penalties to overcome non-league Tamworth in the cup, something is clearly amiss at the Britannia.

And it's at their Staffordshire HQ that the Potters' have suffered most: whilst only five Championship teams have registered more 'away' points than City (with 21 to date), they've collected fewer points on their own patch (just 17) than everyone bar Crewe and Millwall. Essentially, Stoke look like play-off contenders on the road (triumphing at Preston and Luton, amongst others), but degenerate into relegation candidates at home – their 3-0 drubbing by Hull ten days ago, for instance, during which the over-generous hosts missed two penalties.

The absence of joint top scorer Sam Bangoura (away on African Cup of Nations duty with Guinea) won't help, although the other box is where the problem lies; it's now nine league games since City's last clean sheet, with just four sides in the division conceding more than their 44 against so far.

FOXES BECOME ENDANGERED SPECIES

On current form, Leicester are the Championship's weakest



Paying the price...the Foxes' Craig Levein was culled after their sixth straight league defeat.

link – and face the growing prospect of saying 'goodbye' to the top two divisions for the first time in their 112-year league history. Their FA Cup exploits aside, a surprise 4-2 pounding of our red and white neighbours back in November is the Foxes' only win in the last 15 games, and they're presently reeling from a salvo of six straight league defeats.

City's worries are compounded by the fact that they've actually created more attempts on goal than any other side in the division (315 at the last count) but have found the net less often than all but three Championship outfits. The stat didn't impress the club's Executive Director Tim Davies.

"Our main issue is scoring goals," he mused. "We are top of the shots on target table

but must be bottom of the chances converted table." When directors start coming over all tactical, it's usually a cue to begin updating your CV – and so it proved in this case, with a 1-0 reverse at Plymouth a week ago bringing down the curtain on Craig Levein's Leicester career.

First priority for whoever replaces the Scotsman in the Walkers hot-seat will surely be to address the team's crippling wastefulness in front of goal. In that respect, much rests on the talented but inexperienced shoulders of 19-year-old striker Matty Fryatt (freshly recruited from Walsall), who duly netted on his full debut against Cardiff but couldn't prevent an eventual 2-1 defeat. City visit Brighton in 11 days time; a potentially decisive encounter which will come uncomfortably early in the new manager's reign.

Match Review

18th January 2006, Hillsborough


SWFC
 Broadbent 50


NUFC
 Carroll 6, Troisi 65

ATT: 684

Match SUMMARY:

The Owls were sent out of the FA Youth Cup despite enjoying the lion's share of possession in this fourth round tie. Newcastle made the most of two errors to advance to a meeting with Brentford in the last 16 but they were made to fight all the way by Mark Smith's gritty side. Andy Carroll opened the scoring

early on, racing onto Kozenga Lua Lua's pass to score with a low shot, but the hosts were undeterred and edged the midfield battle. Andy Broadbent struck the leveller with a fine 20-yard drive but, after Lua Lua put James Troisi away for the winner, the Owls could not recover for a second time.



Team Line-ups

| POS | PLAYER | SUB | Y/R | POS | PLAYER | SUB | Y/R |
|-----|----------------|-----|-----|-----|------------|-----|-----|
| G | O'Donnell | | | G | Krul | | |
| CB | McMenamin | | | RB | Cowan | | |
| CB | Spurr | | | CB | Huntingdon | | |
| CB | Appleyard | | | CB | Marr | | |
| RWB | Fores-Chambers | | | LB | Deverdics | | |
| CM | McClements | | | RM | Donninger | | HT |
| CM | Brackenridge | | | CM | Cavener | | |
| CM | Broadbent | | | CM | Lua Lua | | 65 |
| LWB | Jones | | | CM | Troisi | | |
| CF | Bowman | | 72 | LM | Critchlow | | |
| CF | Kee | | 72 | CF | Kee | | |
| S | Jameson | | | S | Forster | | |
| S | Kay | | | S | Terrell | | |
| S | White | | | S | Morris | | |
| S | Ellis | | 72 | S | Reay | | HT |
| S | Modest | | 72 | S | Godsmark | | 65 |



Key Moment

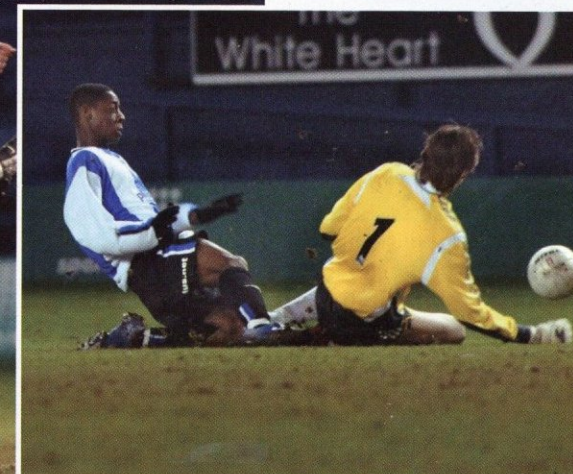
65th minute

The Owls had come out strongly at the start of the second half and were pushing to build on Andy Broadbent's equaliser. But, out of nothing, the visitors capitalised on a defensive mistake for the second time in the match, with James Troisi's mazy run ending in the winning goal.

Match Reaction

from Glenn Roeder

"I've got to be pleased with the result although there is still improvement to be made in the quality of some of our passing. I've praised the boys for their great effort, determination and character."



Match Reaction

from Mark Smith

"I thought we were excellent from start to finish. We didn't get what we deserved but we got a lot of pride out of it. We tried to play football and had a good link, with the midfielders getting ahead of the ball."



Academy Patrons 05-06

We would like to thank the following Patrons of the Sheffield Wednesday academy:



EVENORT



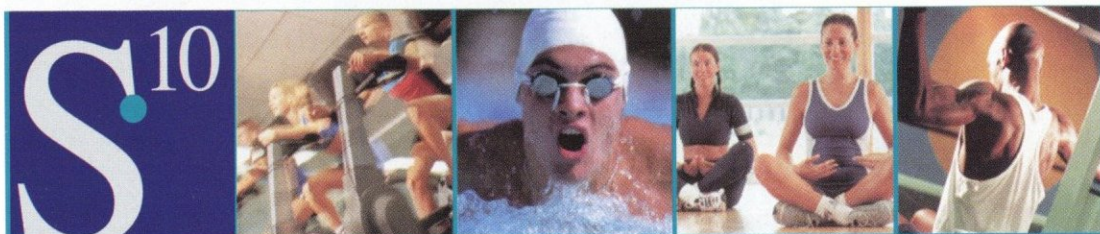
London Owls

Universal
Office Products Ltd

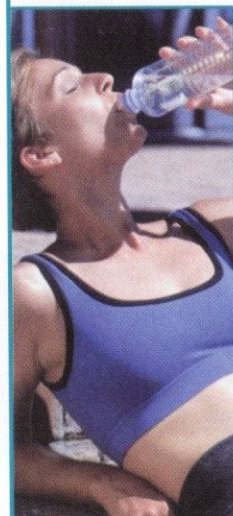
Roy Hattersley

Matt Sheppard

Alfredos



health "a first class experience"



- Spacious 2 floor gym
- Air conditioning
- Broadcast TV and music system
- Friendly, qualified supervision
- Personal, computerised exercise programmes
- Wide range of exercise classes
- Full size swimming pool
- Poolside health suite
- Discounts on sports facilities including squash, badminton, climbing etc.



Telephone 0114 222 6969

Goodwin Sports Centre, Northumberland Road, Sheffield S10 2TZ
Email: membership.enquiries@shef.ac.uk website: www.usport.co.uk



Reserves Round-Up

The second-string began the New Year with two disappointing performances but remain well-placed in the Pontins League.



Wednesday 11 January
Rotherham United 1
Wednesday 1

Kyle Fores-Chambers fired a last-minute equaliser to earn the Owls reserves a draw at Millmoor. The youngster netted from close-range to secure a point for Wednesday, bringing SWFC level after Ryan Taylor put Rotherham ahead in the 70th minute.

The hosts had twice hit the post in the first half, during which time Patrick Collins' long-range drive was Wednesday's best opening. David Lucas made a great save to thwart Mark Newsham after the Millers scored but, after substitute David Kee was denied an Owls equaliser in the 88th minute, Lee Bullen set up Fores-Chambers to clinch a point. Coach Mark Smith felt Wednesday got out of jail after a below-par display.

"I thought we were quite fortunate," he said. "We were generally lacklustre, lethargic and there was a poor attitude shown by some players for whatever reason. "The kids didn't respond or perform and we were lucky to come out with a 1-1. But to be fair, that is probably the first time the older players have

come into the reserves with the slightly different attitude. "It was embarrassing at half-time, they should have been four or five goals up. I thought it would be interesting to see how we reacted when they scored and in the last ten minutes, we started having a go."

Team: Lucas; Fores-Chambers, Diallo (Brackenridge 73), Spurr, Heckingbottom (McAllister 62); Bullen, Collins, Rocastle, Thorpe; Bowman, Jordan (Kee 61).
Unused sub: O'Donnell.



Returning messiah...Steven MacLean made his Owls comeback in the reserve defeat to Huddersfield.

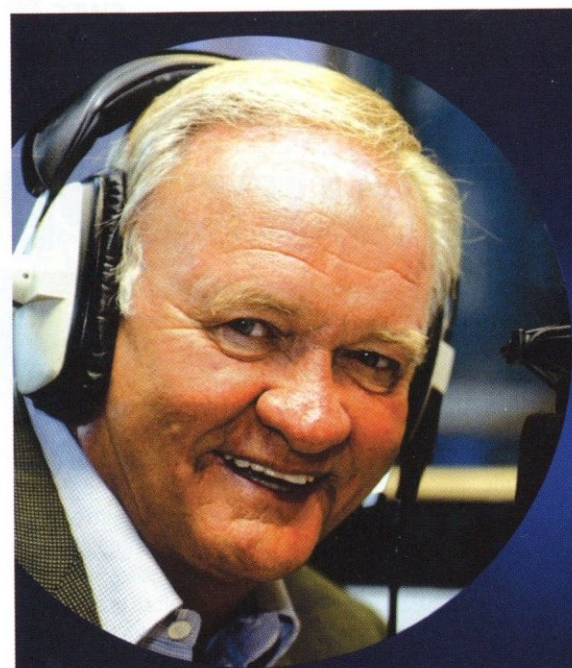
Tuesday 24 January
Wednesday 0
Huddersfield Town 1

Steven MacLean's comeback pleased a healthy Hillsborough crowd, despite the reserves slipping to defeat. MacLean came through the first half with no problems, though his opposite number John McAliskey

headed the 15th-minute winner from Adnan Ahmed's corner. MacLean showed intent with two efforts in the final 15 minutes of the first half, shooting wide from a Sean McAllister lay-off before blasting past the angle just before the break. The Owls went close after the break with a long-range effort from skipper Lee Bullen, who also hit the bar from a 25-yard curling free kick. Patrick Collins' effort was chalked off for offside and McAllister forced a diving save from Simon Eastwood but Town held out.

"We had more than enough opportunities to have got something," said coach Mark Smith. "We got the ball into enough areas, caused them problems and really should have come away with something. But sometimes you get games where it doesn't look like it's going to run for you in the box. "Bully hit the bar with a free-kick and had a couple of headers when we shoved him up front with five or ten minutes to go. Kyle Jordan had a couple of incidents, he should have played David Kee in and then should have shot. All our chances fell to kids who are still learning."

Team: Adamson, Bullen, Diallo (Broadbent 45), Appleyard, Spurr; Thorpe (McClements 80), McAllister, P Collins, Partridge; MacLean (Jordan 45), Kee.
Unused subs: O'Donnell, Fores-Chambers.



It's all
kicking off
again with
Big Ron.



The Real Football Phone-in is back with
special guest presenter Ron Atkinson.
6pm Monday-Friday.

106~108fm
Yorkshire's real good feel good music

I SEE YOUR SUN
IS SHINING

With Westfield Health, now there's
a way to stay **healthy every day.**

From less than £5 a month, we can help you cover the
costs of dental, optical and physio treatments. We also
give you money towards in-patient stays, consultations,
complementary healthcare and much more.

With cover for your kids on some benefits, and no
need for a medical to join, it's little wonder we're
world-famous in Sheffield.

Applying for cover is easy, so don't stay sitting
on the bench. Call us today on **0845 602 1629**
or visit us at www.westfieldhealth.com



making a healthy difference

Q&A



with...
Patrick Collins

Patrick Collins has returned from his loan spell at Swindon
and is targeting a place in the Owls first-team – possibly in
his new midfield role.

SW: You have had a rather
unusual season so far, going
out on loan to Swindon before
returning here to play in a
new position. What has
been your view of
it?

the team in a higher league. To
be honest, the season hasn't
really started for me
yet. I really want
to try and get
into the team. I
have played two
reserve games
and feel I'm getting
better and better in that
position.

SW: You have now played
two reserve games in
central midfield, how do you
feel it has gone?

PC: Alright, it is difficult
adjusting. I'm learning
different things each game,
sometimes I have the mindset
of a defender and have to think
'I'm a midfielder and have to
do this and that.' I've enjoyed
getting on the ball more and
being able to influence the
game instead of just defending.

SW: Did it come as a surprise
when the manager told you he
wanted to see you in midfield?

PC: It was a little bit, though
not massively so. I have
always known my strength was

PC: It has definitely
been a different season.
I signed a one-year
contract extension, then the
manager said he felt the
best thing was for me to
go out to Swindon to get
my fitness up and a bit
more experience. I did
that, then came back here
and changed position with



Half time betting

Check out the 1st half
form and place your bets
on the 2nd half.
Coupons are available at
our kiosks throughout the
stadium

| IT'S A GAME OF TWO HALVES! | | | |
|--|------------|---|------------|
| Second Half Betting Now Available | | | |
| First Goalscorer in the Second Half | | Second Half Correct Score | |
| Enter your stake for your Player to score the First Goal of the Second Half. | | What will the Second Half scoreline be? | |
| Player | Stake | Score | Stake |
| Whelan | | 1-0 | |
| McGovern | | 2-0 | |
| O'Brien | | 2-1 | £10 |
| MacLean | £10 | 3-0 | |
| Peacock | | | |

Ladbroke's

going forward so, if I wasn't playing right-back, it could be utilised in a different position. I know I'm not a forward so the obvious thing was to try midfield.

SW: The manager has spoken about using your fitness and ability to get forward in midfield. You used these attributes well in the play-off final and helped to change the game...

PC: It was good to be able to help the team and I was thrilled to be a part of it. I would have been devastated not to be involved after getting there. When it was tight, me and the other two lads – Steven MacLean and Drew Talbot – got on, the manager told me to get up and down and affect the game. It was probably the biggest highlight of my career so far – a great day. I still watch the DVD to inspire me to think 'this is where you've been, you need to take this a step further and get back in the team.' It spurs me on to know I have that under my belt.

SW: You spent the first half of the season on loan with Swindon, what did you learn from that spell?

PC: I played the first 10-15 games, then a new manager came in and wasn't picking me. I had to adjust my mindset to think 'when I get a chance, I'll impress.' I had to

'I'm a midfielder and have to do this and that.' I've enjoyed getting on the ball more and being able to influence the game instead of just defending.

wait about six weeks until we played Rotherham and kept a clean sheet as we drew 0-0, so in my opinion I did impress. It was a big learning curve but it has made me mentally tougher than I was last year. A lot of the time I was bitterly disappointed because I wanted to be in the team and impress the Swindon manager and the manager here at Wednesday. I'm always willing to work hard and show what I can do but, for whatever reason, I wasn't

QUESTION & ANSWER

with Patrick Collins

playing. I learnt a lot about what it takes to work hard and get back in the team.

SW: You have been told that you have a few months to impress in midfield, so you have a challenge ahead...

PC: Yeah, but you never stand still and think 'I'm settled here and have a contract.' You are always wanting to improve and pushing yourself. Whether I have a month, two months or two years, I'm always going to play the same and work just as hard. It is a lot of added pressure but you just have to take that. All I'll ever do is try my best, listen to what people have to say and try and learn from that.

SW: How do you see your career developing over the next year or two?

PC: I honestly think I can play in midfield. The hardest decision for the management is deciding where my best position is. It is hard to improve when you aren't in a position for an extensive period of time. It is about figuring out whether I'm good enough to play in midfield at this level. I have felt happy and comfortable there, it is just about waiting for that chance if someone is suspended or injured and whether the manager will ask me to come in. That's when the test will come.

Jason Dickinson steps back in time to review a solid top-flight season in the 1960s for the Owls.

TIME TRAVEL

1964-1965
8TH DIVISION ONE

SUMMER

The Owls went into the summer recess without a manager after Vic Buckingham's departure in April 1964. His replacement proved to be a familiar face as Alan Brown – who sensationally walked out on Sunderland after having led them to promotion to the First Division – had worked as trainer at Wednesday in the early 1950s and joined a club which was still reeling from the bribes scandal of a few months earlier. The two star players implicated in the case – David Layne and Peter Swan – were told to report for training along with the rest of the squad although sadly neither would play another top-flight game for Wednesday. The Owls' pre-season consisted of two games during a tour of West Germany, with future UEFA Cup foes Kaiserslautern beating Wednesday 2-1 and then Werder Bremen winning by a solitary goal. Unfortunately for promising young forward David Ford, the tour was disastrous as he picked up a serious injury that kept him out of the game for the whole of the 1964-65 campaign.

AUGUST

A 1-0 home win over Blackburn Rovers kicked off the Brown era and a draw at Highbury ensured the new man at the helm enjoyed a fine start. Meanwhile, off the field, the

club announced plans to build, at a cost of £40,000, an indoor training centre behind the new North Stand

SEPTEMBER

September was a busy month for the Owls as, in addition to playing eight league games, they also travelled to Denmark to take part in an exhibition game as part of British Trade week. In the competitive action Wednesday opened the month with a win over Arsenal but there was gloom on the blue side of Sheffield a few days later when a brace from Alan

| SWFC score printed first | | |
|--------------------------|-----|-----|
| | H | A |
| ARSENAL | 2-1 | 1-1 |
| ASTON VILLA | 3-1 | 0-2 |
| BIRMINGHAM | 5-2 | 0-0 |
| BLACKBURN | 1-0 | 1-0 |
| BLACKPOOL | 4-1 | 0-1 |
| BURNLEY | 5-1 | 1-4 |
| CHELSEA | 2-3 | 1-1 |
| EVERTON | 0-1 | 1-1 |
| FULHAM | 1-1 | 0-2 |
| LEEDS UNITED | 3-0 | 0-2 |
| LEICESTER CITY | 0-0 | 2-2 |
| LIVERPOOL | 1-0 | 2-4 |
| MANCHESTER UTD | 1-0 | 0-1 |
| NOTTINGHAM FOREST | 0-0 | 2-2 |
| SHEFFIELD UTD | 0-2 | 3-2 |
| STOKE CITY | 1-1 | 1-4 |
| SUNDERLAND | 2-0 | 0-3 |
| TOTTENHAM H | 1-0 | 2-3 |
| WEST BROMWICH A | 1-1 | 0-1 |
| WEST HAM NITED | 2-0 | 2-1 |
| WOLVES | 2-0 | 1-3 |

Birchenall secured a Hillsborough win for old foes United. A thumping home win over Burnley put the smile back on Wednesday faces with a rare hat-trick from post-war top scorer John Fantham helping the Owls record a nap hand to move into the top half of the table. However there was bad news for striker Mark Pearson as he suffered the first of two leg breaks he would endure during the season. The aforementioned friendly in Scandinavia proved a major embarrassment for the Owls as they slumped 4-1 against part-timers Aarhus.

OCTOBER

Just six days after the Danish pasting the Owls showed their true mettle when travelling to the German town of Dusseldorf to face a strong Select XI side. The opposition boasted several full German internationals in their line-up but, despite Wednesday having Peter Eustace sent off near the end, they held on for a praiseworthy 0-0 draw in front of 30,000 fans. On their return, the Owls drew at Everton and then hit another five goals at home – Birmingham being on the receiving end this time with both Fantham and Derek Wilkinson grabbing braces. A win at Upton Park and home draw with West Brom left the Owls in ninth place as autumn dawned.

NOVEMBER

Three points from four games was the club's record in November with Manchester United the only side to lower Wednesday's colours.

DECEMBER

Bad weather ensured the Owls played only twice over the festive period – back-to-back meetings with Leicester City – with the highlight of the month coming on the last Saturday before Christmas when Blackpool were well beaten at Hillsborough. The days before Sunday trading ensuring the crowd was 4,000 down on the average for the season.

JANUARY

The New Year could not have started better for Wednesday fans as a double from Fantham helped the Owls to a 3-2 win at Bramall Lane – Fantham's winner coming with just seven minutes left. A week later it needed an injury-time equaliser from Everton to deny the Owls an FA Cup win at Goodison Park but the result was clear cut in the replay – the Toffees winning 3-0 in front of a bumper Hillsborough crowd of 50,080. It was Merseyside opposition again on the following Saturday and, despite losing 4-2 at Anfield, it was a memorable day for rookie goalie Peter Wicks who became the club's youngest

ever player at 16 years, eight months and two days (a record subsequently beaten by Peter Fox in the 1970s). The major story of January 1965 revolved around the 'bribes scandal' with Owls players Kay and Layne both being found guilty and sentenced to four months in jail – in addition to being banned for life from football. The verdict would have a damning effect on the Owls fortunes as they lost two of the best players to have ever worn the blue and white shirt with not even a penny of compensation forthcoming to replace them.

FEBRUARY

Just a solitary win was accrued in February to keep the Owls firmly in mid-table while defender Robin Hardy moved to neighbours Rotherham United on a contract until the end of the season.

MARCH

Hopes of a top six finish rose dramatically in the month as three wins moved the club up into the top eight – the two-point hauls coming against West Ham, Villa and Manchester United. The period also saw the Owls host a return clash with pre-season opponents Werder Bremen that saw the Germans complete a double after a 3-2 success.

TOP SCORERS: (All competitions)

| | |
|--------------|----|
| John FANTHAM | 20 |
| John HICKTON | 10 |
| Colin DOBSON | 9 |
| John QUINN | 7 |
| Mark PEARSON | 3 |

TOP APPEARANCES: (All competitions)

| | |
|--------------|----|
| Colin DOBSON | 44 |
| Don MEGSON | 44 |
| Vic MOBLEY | 44 |
| John FANTHAM | 43 |
| John QUINN | 42 |

AVERAGE HOME ATT:

| | |
|--------|-----|
| LEAGUE | ??? |
|--------|-----|

APRIL/MAY

The first away game of the period saw future Owls attacker John Ritchie score all four goals as Wednesday were beaten heavily in the Potteries. A couple of home wins, over Spurs and Leeds, lifted the club into seventh spot but a poor end to the season saw the club drop back down the league. Three days after losing their final game of the season – at Sunderland – the Owls were in Poland facing a Warsaw Select XI and they faced another select side in front of an astonishing 70,000 crowd in Katowice. On their way home, the Owls flew into Madrid to face local side Valencia and finally brought the curtain down on the season by winning 4-3 against Dublin side Shamrock Rovers!

Match Review

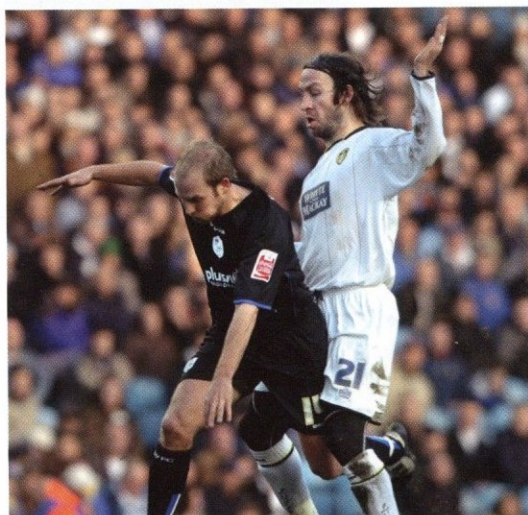
21st January 2006, Elland Road



Match SUMMARY:

Wednesday went down to defeat against their Yorkshire rivals but the final scoreline flattered the hosts after the Owls had charged forward in a bid to retrieve the match. Paul Sturrock's side had looked fairly comfortable soaking up the home side's pressure and created the odd chance of their own on the break.

But the match hinged on a seven-minute period in which Graham Coughlan's header was deemed by the officials not to have crossed the line, before Paul Butler finally made a breakthrough that Leeds were determined not to relinquish. Richard Cresswell's late double "merely adding salt" to the wounds.



Team Line-ups

| POS | PLAYER | SUB | Y/R | POS | PLAYER | SUB | Y/R |
|-----|-----------|-----|-----|-----|-----------|-----|-----|
| G | Sullivan | | | G | Weaver | | |
| RB | Kelly | | | RB | Simek | | |
| CB | Butler | | | CB | Coughlan | | |
| CB | Gregan | | | CB | Wood | | |
| LB | Crainey | | | LB | Gilbert | | |
| CM | Derry | 83 | | CM | O'Brien | | |
| CM | Douglas | 63 | | CM | Whelan | 76 | |
| CM | Miller | | | CM | Hills | | |
| RF | Blake | | | RF | Brunt | | |
| CF | Cresswell | | | CF | Burton | | |
| LF | Lewis | | | LF | Tudgay | 76 | |
| S | Bennett | | | S | Lucas | | |
| S | Pugh | | | S | Diallo | | |
| S | Einarsson | | | S | Bullen | | |
| S | Walton | 83 | | S | Partridge | 76 | |
| S | Healy | 63 | | S | Corr | 76 | |



Key Moment

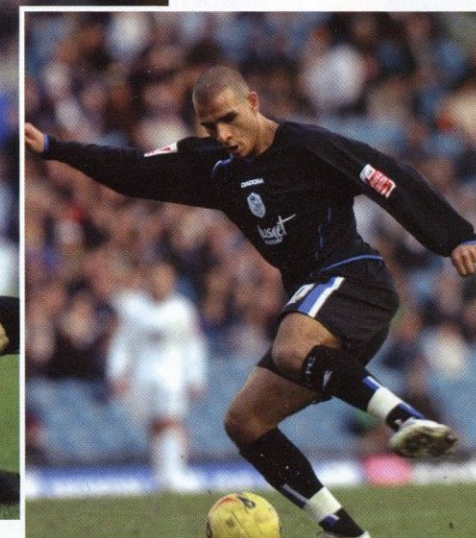
70th minute

The first goal was always going to be vital and, seven minutes after Graham Coughlan thought he had put the Owls ahead, Leeds finally broke the visitors down. Paul Butler headed home Jonathan Douglas' cross to leave no way back for Wednesday.

Match Reaction

from Kevin Blackwell

"I thought 3-0 was a fair result and am pleased with the attitude of the players. The three points were vital and we showed no signs of tiredness from the Wigan game on Tuesday."



Match Reaction

from Paul Sturrock

"I didn't feel that 3-0 was a fair result. I chucked my cavaliers on to see if we could chase the game. I'd rather lose two or three-nothing than sit back and saunter out with a 1-0 defeat."

Wednesday Business

Match Day Sponsor



Today's Match Sponsors are **Hatfield Catering Equipment Ltd**, we welcome **Mr Hale** and his invited guests.

Associate Match Day Sponsor



Today's Associate Match Sponsors are **Windsor Foodservice**, we welcome **Peter Whitehead** and his invited guests.

Matchball Sponsor



Our Matchball Sponsors this evening are all **Owls Mastercard holders**, a very warm welcome to you all.

Chairman's Guests



The Keep Moat Group are the Chairman's Guests for the 2005-06 season. A very warm welcome to **David Blunt** and his invited guests to this evening's game.

South Stand Sponsor



We are delighted to welcome **Windsor Foodservice** as the new sponsors of **Hillsborough's South Stand** for the 2005-06 season. They are also the club's main nominated suppliers and we are delighted to extend our relationship with them this season.

Programme Sponsor



We are delighted that the **Sheffield Assay Office** are continuing to sponsor both the Programme and the North Stand for the 2005-06 season. Our thanks to **Assay Master Ashley Carson** for his outstanding support of Sheffield Wednesday Football Club.

Sponsors Photos

Pictured at our home game against **Leicester City** are:



Match Day Sponsors - News International



Associate Matchday Sponsors - EAD Solicitors



Matchball Sponsors - Maid 2 Clean



Pictured receiving his **EAD Solicitors Player of the Month** award for December is **Graham Coughlan**.

Sheffield Wednesday Football Club are delighted to welcome our Match Day Sponsors **Hatfield Catering Equipment** to this evening's game against **Luton Town Football Club**



Hatfield Catering equipment specialise in supplying quality commercial catering equipment and installing full commercial kitchens. Whatever the size of the project, Kitchens can be designed and fitted to suit all requirements. We supply all types of catering equipment, backed by a 7 days a week service cover.

Proprietor: **John Hale**
Hatfield Catering Equipment, Foundry Street, Whittington Moor,
Chesterfield. S41 9AU

Tel: 01246 454533. Fax: 01246 455316
email: gill@hatcat.demon.co.uk

Fancy a transfer to
PLOVDIV Bulgaria
 from £300 a week?

departing every Saturday from
 Nottingham East Midlands Airport with Balkan Holidays

BOOK NOW at your local travel agent or visit www.balkanholidays.co.uk
 or call 0845 130 1114 for more information.



 **Nottingham
 East Midlands Airport**

 **Balkan Holidays**



40 years of specialist holidays

IN THE
 SPOTLIGHT

Who's making the news?

In the Spotlight

In a season of mixed fortunes for Tottenham, boss Martin Jol finds his side out of both Cups at the first hurdle, yet flying high in unfamiliar territory in the league well over half way through the season. With the Premiership's second biggest squad at his disposal, will the 'maybe next year' team of the Premiership finally lay the ghost of a campaign with no European football

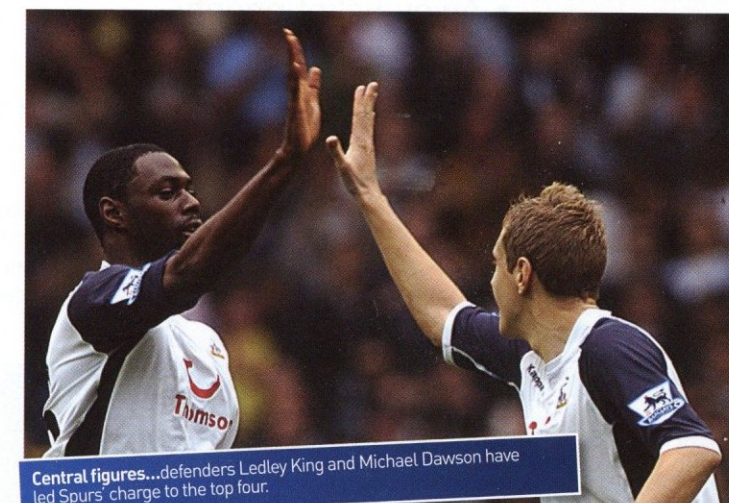
Labelled traditionally as a 'Cup Team', Tottenham certainly didn't live up to that mantle this season, as both knockout competitions passed them by at the first hurdle.

Usually the cups act as the only route to European football for Spurs, considering their mostly mid-table finishes since the Premiership's commencement. But in stark contrast this season, Tottenham find themselves embroiled in a battle not only for a Uefa Cup spot, but the Champions League. In addition to this, it is likely that if qualification to the 'holy land' were to be achieved, it would come at the expense of their beloved neighbours Arsenal. On the eve of the opening-day games, Spurs fans – and probably Martin Jol – would have tightly grasped the thought of a Uefa Cup spot, and now that the season enters its last third this is a real opportunity for them to make this a reality. Even the most optimistic of Tottenham supporters could not have envisaged being in fourth place with 23 games played, but to be fair to Tottenham, who led the Premiership table for a short stint back in September, they have not dropped outside the top six for the season's entirety. This, it would seem is largely down to the team's stout defence, led by the talented skipper Ledley King, whose partnership with Michael Dawson

has come to fruition of late. Dawson, who with winger Andy Reid cost the club £8 million exactly a year ago, has made a real leap in his development, and there have been murmurs around the England camp of a possible inclusion to the squad that will head for Germany at the end of the season. Tottenham's defensive record is bettered only by Champions Chelsea, the very much in-form Liverpool, and rivals Arsenal. Which is just as well, because goals have been hard to come by at times with Defoe only on five for the season, and Keane just ahead with seven. However it is loan-signing Mido who has been claiming the plaudits of late. Although he has now departed for African Nations Cup duty, the man borrowed from Roma has

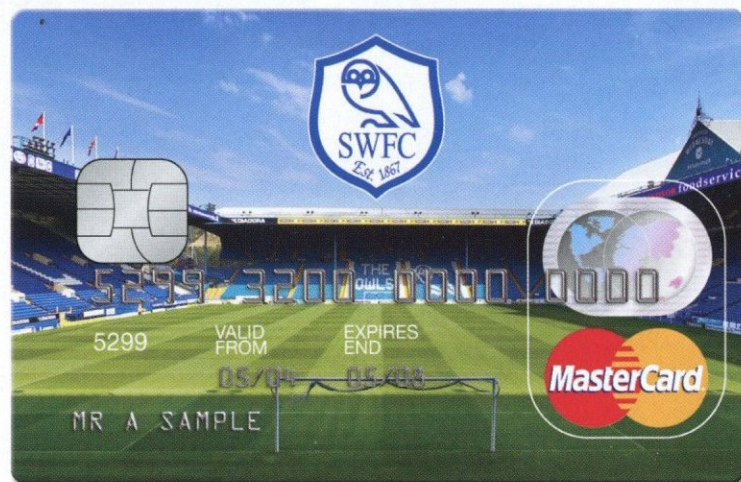
displayed a number of impressive performances, top scored with nine goals, and is an automatic inclusion for Martin's men.

Morale around the club is high, and the focus of the team has been on youth, with Defoe, Jenas, Carrick, Dawson, King and Robinson all possibles for Sven's World Cup squad, but a particular mention should be given to Aaron Lennon, the 18-year-old a summer signing from Leeds, who has been a real bright spark and looks to have exceptional talent and a very successful future ahead. There is little doubt that Tottenham is a club on the up and really going places, and perhaps the team whose motto has been 'maybe next year', for so long, can make that year this one.



Central figures...defenders Ledley King and Michael Dawson have led Spurs' charge to the top four.

SUPPORT THE CARD THAT SUPPORTS YOUR CLUB...



Every time you use it a proportion of what you spend is contributed to your club.

- Free match day ticket*
- Monthly free prize draw
- Away ticket priority*
- No booking fees*
- Exclusive high street savings vouchers

So what are you waiting for? Open an Owls MasterCard Today!

Call into the club shop, ticket office or main reception to collect an application form or call the commercial team on 0870 999 1867.

18.9 TYPICAL
% APR
VARIABLE

*Terms and conditions apply see ticket office or club shop for full terms and conditions. Subject to status. Applicants for credit must be aged 18 years or over and UK resident. The Owls MasterCard is issued by Sygma Bank UK, Equipoint, Coventry Road, Yardley, Birmingham B25 8FE.



TICKET
OFFICE

Ticket Prices & News

Opening Hours

Main Ticket Office, Hillsborough

Mon-Fri 9.00-5.00,

Sat 9.00-12.00

Tel: 0870 999 1867

Fax: 0114 221 2401

Note - All matchdays - open until kick-off and for 30 minutes after the game.

*Please note that the Ticket Office opens at 10am the morning after a night game.

Payment Details

Cheques should be made payable to SWFC Ltd and sent to : Sheffield Wednesday FC Ltd, Hillsborough, Sheffield S6 1SW.

Keep Your Ticket Stubs

Due to the limited number of tickets available for some away games, all supporters should be aware that they should keep all their ticket stubs, especially from away games. Where tickets for away matches are in short supply, we may prioritise fans who have regularly travelled to away games and may ask fans to produce ticket stubs from designated matches.

Ticket News

Todays Mascot - Wednesday



Joshua Sutton

Age: 8

School: Angram Bank Primary School

Favourite players: Chris Brunt, Lee Peacock, Chris Eagles

Hobbies: Football, tennis and maths



Our mascot at Leeds United was: William Frain

Age: 10

School: St Peter's Catholic Primary School, Doncaster

Favourite player:

Jon-Paul McGovern

Hobbies: Playing football, watching SWFC and listening Football Heaven



Our mascots for the Leicester game were: Ashleigh Grace Sykes, aged 11, and nine-year-old Georgia Alice Sykes.

Ticket Prices

League Matches Only

Windsor Foodservice South Stand

Matchday £24 adults, £14 concessions

Pre-Matchday £23 adults, £13 concessions

Sheffield Assay Office North Stand

Matchday £22 adults, £13 concessions

Pre-Matchday £20 adults, £12 concessions

Hallam FM Kop

Matchday £18 adults, £10 concessions

Pre-Matchday £17 adults, £10 concessions

Family Enclosure

Matchday £18 adults, £10 concessions

Pre-Matchday £17 adults, £10 concessions

*Note: non-members of the Family Enclosure are required to pay a £3 match day membership.



Fast Forward

Sat 4 Feb 2006
Millwall

Kick Off: 3.00pm
The Den



ALL TICKET GAME

The Lions' form can be read one of two ways – pessimists would say they haven't scored in three matches and haven't won in four. Optimists would point to just one defeat in their last six league games, putting them in the top half of the post-Christmas form table.

Ticket Prices

Adult £17, Over-60 £10, Under-16 £7

Ticket Availability

NOW ON GENERAL SALE

Inter-City Owl departs at 9.15am

| | |
|----------------|--------|
| ADULT MEMBERS | £16.00 |
| JUNIOR MEMBERS | £14.00 |
| NON-MEMBERS | £18.00 |

Directions

From M1, then A1, follow signs for City, then for Shoreditch and Whitechapel. Then follow Ring Road signs for Dover, cross over Tower Bridge, then after 1 mile take first exit off roundabout onto A2. Follow A2 New Kent Road and Old Kent Road, then after 3 miles left at Canterbury Arms pub into Ilderton Road, which becomes Zampa Road. No parking – Millwall recommend travelling by official supporters coach.

Sat 11 Feb 2006
Crystal Palace

Kick Off: 3.00pm
Hillsborough



TICKET STUBS VALID FOR SHEFFIELD UNITED MATCH
– ONE OTHER GAME REQUIRED

Our next visitors, the Eagles, are positively flying after five consecutive wins and a draw with Reading which took them into the heart of the

Crystal Palace cont..



TICKET STUBS VALID FOR SHEFFIELD UNITED MATCH
– ONE OTHER GAME REQUIRED

play-off shake-up. They will fancy their chances of completing a league double over a Wednesday side which has won only one of its last ten league meetings with Palace.

Ticket Availability

NOW ON GENERAL SALE

Wed 15 Feb 2006
Coventry City

Kick Off: 7.45pm
Ricoh Arena



ALL TICKET GAME

The Sky Blues' 6-1 thrashing of Derby only underlines the size of the task facing the Owls when they visit the Ricoh Arena. City are unbeaten in seven matches at their new home.

Ticket Prices

Adult £21, Over-60 and NUS £11, Under-16 £8

Ticket Availability

NOW ON GENERAL SALE

Inter-City Owl departs at 4.30pm

| | |
|----------------|--------|
| ADULT MEMBERS | £10.50 |
| JUNIOR MEMBERS | £8.50 |
| NON-MEMBERS | £12.50 |

Directions

M1, then M6 to J3. Take the A444 towards Coventry city centre, then left at the first roundabout. NOTE – there is a residents parking scheme for over a mile around the ground. Visiting fans are advised to use the Park and Ride scheme (cost £7) at BBS Transport, Bayton Road, Bedworth. This is 2.6 miles away on the opposite side of M6 J3 to the stadium. There are also (pay-to-use) Park and Walk schemes.

Sat 18 Feb 2006
Sheffield United

Kick Off: 3.00pm
Hillsborough



ALL TICKET GAME

The Blades' promotion juggernaut is still showing no signs of being halted but there's nothing like a local derby to upset the form book.

Ticket Availability

Now available to supporters who are in possession of tickets/stubs for any two of the three following home matches: Leicester City, Luton Town, Crystal Palace.

Sat 25 Feb 2006
Southampton

Kick Off: 3.00pm
Friends Provident
St Mary's Stadium



ALL TICKET GAME

A first visit for the Owls to the Saints' new home, and a maiden return to the St Mary's Stadium for former Southampton boss Paul Sturrock.

Ticket Prices

Adult £22, Over-65/Age 13-19 £17, 12 and under £10

Ticket Availability

Mon 6 Feb – Season ticket holders with corresponding OAC
Tue 7 Feb – Season ticket holders
Thu 9 Feb – Members with corresponding OAC
Mon 13 Feb – Members and all other priority holders
Tue 14 Feb – General sale

Inter-City Owl departs at 8.30am

| | |
|----------------|--------|
| ADULT MEMBERS | £22.50 |
| JUNIOR MEMBERS | £20.00 |
| NON-MEMBERS | £25.00 |

Directions

M1, M42, M40, then A34 to the M3. Then A33 into Southampton until turning left onto A3024 Northam Road, towards Northam. Finally, right into B3038 Britannia Road for the ground. For parking, there is a FREE Park and Ride scheme for away fans off M27, J8. Alternatively park in the city centre and take the 15-20 minute walk to the ground.

Sat 4 Mar 2006
Cardiff City

Kick Off: 3.00pm
Ninian Park



The Preview

It is 22 years since our last trip to Ninian Park, a ground on which Wednesday have won on their last two visits.

Ticket Prices

(Seats) Adult £20, Over-60/Under-16 £14
(Standing) Adult £18, Over-60/Under-16 £13

Ticket Availability

Mon 13 Feb – Season ticket holders with corresponding OAC
Tue 14 Feb – Season ticket holders
Thu 16 Feb – Members with corresponding OAC
Mon 20 Feb – Members and all other priority holders
Tue 21 Feb – General sale

Inter-City Owl departs at 8.30am

| | |
|----------------|--------|
| ADULT MEMBERS | £22.50 |
| JUNIOR MEMBERS | £20.00 |
| NON-MEMBERS | £25.00 |

Directions

M1, M42, M5 and M4 to J33, then follow Cardiff West signs onto A4232. After 6 miles turn onto B4267 Leckwith Road (signs City Centre). Right at lights into Sloper Road, the ground is on the left. Most streets around the ground are residents' parking.

Sat 11 Mar 2006
QPR

Kick Off: 3.00pm
Hillsborough



The Preview

Rangers celebrated promotion to the Championship on their last visit to Hillsborough and have remained in a solid mid-table position for most of the 18 months since that success.

Ticket Availability

Mon 6 Feb – Members
Mon 13 Feb – General Sale

David Lucas 01

Position Goalkeeper
Height 6ft 1" Weight 13st 7lbs
D.O.B 23/11/77 - Preston
Date Signed 25/05/04 from Preston
Other Clubs Darlington (loan),
Scunthorpe United (loan)
SWFC Career Apps 78 Goals 0

Amelia Wainwright
Sheffield Assay Office

Lee Bullen 02

Position Defender
Height 6ft 1" Weight 12st 7lbs
D.O.B 29/03/71 - Edinburgh
Date Signed 01/07/04 from Dunfermline
Other Clubs Meadowbank Thistle,
Stenhousemuir, Kilmarnock (GRE), Kaitum,
South China, Golden AA (all HK), Stanmore and
Wollongong (both AUS)
SWFC Career Apps 68 Goals 7

Matthew Ensor
Matt Bridger

Graham Coughlan 05

Position Defender
Height 6ft 2" Weight 13st 7lbs
D.O.B 18/07/74 - Dublin (IRE)
Date Signed 11/07/05 from Plymouth
Other Clubs Livingston, Swindon Town
(loan), Blackburn Rovers
SWFC Career Apps 22 Goals 5

The Royal
The London Owls www.londonowls.co.uk
PO Box 233, Borehamwood, WD6 3WA.

Glenn Whelan 06

Position Midfielder
Height 5ft 11" Weight 12st 7lbs
D.O.B 13/01/84 - Dublin
Date Signed 01/07/04 from Man City
Other Clubs Bury (loan)
SWFC Career Apps 75 Goals 5

Tom Culley
Tom Culley

Jon-Paul McGovern 07

Position Midfielder
Height 5ft 10" Weight 12st 2lbs
D.O.B 03/10/81 - Glasgow
Date Signed 25/05/05 from Livingston
Other Clubs Celtic, Sheffield United (loan)
SWFC Career Apps 56 Goals 8

Penistone Reinforcements Co Ltd
Lewis Carder

Burton O'Brien 08

Position Midfielder
Height 5ft 10" Weight 11st 9lbs
D.O.B 10/06/81 - South Africa
Date Signed 14/07/05 from Livingston
Other Clubs St Mirren, Blackburn
Rovers
SWFC Career Apps 31 Goals 0

Tristan and Alex Holland
Revive Beauty Salon

Steven MacLean 09

Position Striker
Height 5ft 11" Weight 12st 6lbs
D.O.B 23/08/82 - Edinburgh
Date Signed 07/07/04 - Rangers
Other Clubs Scunthorpe United (loan)
SWFC Career Apps 41 Goals 20

David Johnson Ventilation
Specsavers Opticians

Chris Brunt 11

Position Midfielder
Height 6ft 1" Weight 13st 4lbs
D.O.B 14/12/84 - Belfast
Date Signed 02/03/04 from Middlesbrough
Other Clubs -
SWFC Career Apps 91 Goals 13

Bethany Wainwright
Sheffield Assay Office

Patrick Collins 12

Position Defender
Height 6ft 2" Weight 14st 0lbs
D.O.B 04/02/85 - Oman
Date Signed 01/07/04 from Sunderland
Other Clubs -
SWFC Career Apps 33 Goals 1

The Blue Ball Inn
Gretna Green Weddings

John Hills 14

Position Defender
Height 5ft 9" Weight 12st 8lbs
D.O.B 21/04/78 - Blackpool
Date Signed 28/06/05 from Gillingham
Other Clubs Blackpool, Everton,
Swansea City (loan)
SWFC Career Apps 22 Goals 0

County Glazing Services
Y2K Childrens Wear

Steve Adams 15

Position Midfielder
Height 6ft Weight 12st 3lb
D.O.B 25/09/80 - Plymouth
Date Signed 09/03/05 from Plymouth
Other Clubs -
SWFC Career Apps 16 Goals 0

Study Support
Isabell and Lucas Beardsall

Richard Wood 16

Position Defender
Height 6ft 3" Weight 12st 13lbs
D.O.B 05/07/85 - Assett
Date Signed 09/03/05 from Plymouth
Other Clubs -
SWFC Career Apps 88 Goals 4

Mick Ransford
Study Support

Drissa Diallo 17

Position Defender
Height 6ft 1" Weight 11st 13lbs
D.O.B 04/01/73 - Mauritania
Date Signed 01/07/05 from Ipswich
Other Clubs Burnley, Mechelen (BEL),
RC Tilleur, Sedan, AS Brevannes
(all FRA)
SWFC Career Apps 7 Goals 0

Rich Designs
James, Robert and Laura Pennington

Richie Partridge 18

Position Midfielder
Height 5ft 8" Weight 11st 0lbs
D.O.B 12/09/80 - Dublin (IRE)
Date Signed 29/07/05 from Liverpool
Other Clubs
Bristol Rovers, Coventry City (both loan)
SWFC Career Apps 17 Goals 1

Nige Hewitt
Nige Hewitt

Deon Burton 19

Position Striker
Height 5ft 10" Weight 11st 9lbs
D.O.B 25/10/75 - Ashford
Date Signed 01/01/06 from Rotherham
Other Clubs Portsmouth, Derby, Brent-
ford. Plus loans at Cardiff, Barnsley,
Stoke, Walsall, Swindon
SWFC Career Apps 3 Goals 0

The Covey Family
Phil Cracknell

Frank Simek 20

Position Defender
Height 6ft 0" Weight 11st 6lbs
D.O.B 13/10/84 - St Louis (USA)
Date Signed 27/07/05 from Arsenal
Other Clubs
QPR, Bournemouth (both loan)
SWFC Career Apps 31 Goals 0

Nicola and Craig Metcalfe
Bradshaw Engineering

Chris Adamson 21

Position Goalkeeper
Height 6ft 2" Weight 13st 7lbs
D.O.B 04/11/78 - Ashington
Date Signed 28/01/05 - Unattached
Other Clubs WBA, IK Brage (loan),
Mansfield T. (loan), Halifax T. (loan),
Plymouth Arg. (loan), St. Patrick's (IRE)
SWFC Career Apps 2 Goals 0

Wright Brickwork
The Swedish Owls

Craig Rocastle 23

Position Midfielder
Height 6ft 1" Weight 13st 9lbs
D.O.B 17/08/81 - London
Date Signed 03/02/05 from Chelsea
Other Clubs Hibernian, Lincoln City,
Barnsley
SWFC Career Apps 33 Goals 1

Phil Cracknell
Phil Cracknell

Drew Talbot 25

Position Striker
Height 5ft 10" Weight 11st 4lbs
D.O.B 19/07/86 - Barnsley
Date Signed Trainee
Other Clubs -
SWFC Career Apps 25 Goals 5

Ian Thrall & Anthony Hirst
CTW Hardfacing

Barry Corr 26

Position Striker
Height 6ft 3" Weight 12st 7lbs
D.O.B 02/04/85 - County Wicklow (IRE)
Date Signed 19/04/05 from Leeds Utd
Other Clubs -
SWFC Career Apps 13 Goals 0

Specsavers Opticians
Penistone Reinforcements

David Graham 30

ON LOAN TO HUDDERSFIELD
Position Striker
Height 5ft 11" Weight 12st 7lbs
D.O.B 06/10/78 - Edinburgh
Date Signed 11/08/05 from Wigan Athletic
Other Clubs Rangers, Dunfermline Ath.,
Inverness CT (loan), Torquay United
SWFC Career Apps 26 Goals 3

Owlsonline.com - THE Fans Forum
'Buttymann'

Peter Gilbert 35

Position Defender
Height 5ft 11" Weight 12st 13lbs
D.O.B 31/07/83 - Newcastle
Date Signed 25/11/05 from Leicester City
Other Clubs Plymouth Argyle
SWFC Career Apps 9 Goals 0

Rotary Machining Ltd - 0114 244 2501
Phil Cracknell

Marcus Tudgay 40

Position Striker
Height 5ft 9" Weight 11st 7lbs
D.O.B 03/02/83 - Shoreham
Date Signed 01/01/06 from Derby County
Other Clubs -
SWFC Career Apps 4 Goals 1

Peter Bland Opticians
Chartsign Ltd

-

Position
Height Weight
D.O.B
Date Signed
Other Clubs
SWFC Career Apps Goals

Specsavers Opticians
Specsavers Opticians

-

Position
Height Weight
D.O.B
Date Signed
Other Clubs
SWFC Career Apps Goals

Sheffield Assay Office
Tim and Oliver Wardman

-

Position
Height Weight
D.O.B
Date Signed
Other Clubs
SWFC Career Apps Goals

Central Park Computing Ltd
Bar Yorkshire Lad, Fuengirola

-

Position
Height Weight
D.O.B
Date Signed
Other Clubs
SWFC Career Apps Goals

Specsavers Opticians
Specsavers Opticians

Paul Sturrock -

Manager
D.O.B 10/10/56 - Ellon, Aberdeenshire

sheffieldwednesday.com
wednesdayite.com

Kevin Summerfield -

Assistant Manager
D.O.B 07/01/59 - Walsall

owlszone.co.uk
Amelia and Isabel Johnson

Ozzie Owl -

Wednesday Mascot

Jim McKay
Emily Kettell & Jessica France

The Stats Spread



The Key

SCORER IN
BOLD

 BOOKED

SENT OFF

• DENOTES OWN GOAL IN WEDNESDAY'S FAVOUR

* PENALTY SHOOTOUT
SCORER

W/L WON/LOST AFTER
PENALTY SHOOTOUT

→ FIRST SUBSTITUTION

→ SECOND SUBSTITUTION

→ THIRD SUBSTITUTION

KICK-OFF TIMES ARE 3.00PM FOR WEEKEND FIXTURES, 7.45PM FOR MID-WEEK FIXTURES UNLESS OTHERWISE STATED

| DATE | OPPONENTS | RES | ATT | AWAY ATT | POS | REFEREE | | | | | | | | | |
|-------------|----------------------|-----|---------|----------|-------|---------|---------------|--------|---------|----------|-----------|----------------|------------|---------|-----------|
| SAT AUG 6 | STOKE CITY | A | 0-0 | 18,744 | 4,739 | 12 | M CLATTENBURG | LUCAS | SIMEK | LEE | WOOD | HILLS | EAGLES→ | WHELAN | ROCASTLE |
| TUE AUG 9 | HULL CITY | H | 1-1 | 29,910 | 4,097 | 15 | M JONES | LUCAS | SIMEK | LEE | WOOD | HILLS | EAGLES→ | WHELAN | ROCASTLE |
| SAT AUG 13 | SOUTHAMPTON | H | 0-1 | 26,688 | 1,303 | 19 | M PIKE | LUCAS | SIMEK | LEE | WOOD | HILLS | EAGLES→ | WHELAN | ROCASTLE→ |
| SAT AUG 20 | IPSWICH TOWN | A | 1-2 | 24,238 | 1,469 | 22 | G HEGLEY | LUCAS | SIMEK | COUGHLAN | WOOD | HILLS | EAGLES→ | WHELAN | ADAMS→ |
| TUE AUG 23 | STOCKPORT C. CCR1 | A | 4-2 AET | 3,001 | 1,025 | - | C WEBSTER | LUCAS | SIMEK | DIALLO | COUGHLAN→ | HILLS | PARTRIDGE→ | WHELAN | O'BRIEN |
| FRI AUG 26 | QUEENS PARK RANGERS | A | 0-0 | 12,131 | 1,007 | 22 | C PENTON | LUCAS | SIMEK | DIALLO→ | COUGHLAN | HILLS | PARTRIDGE | WHELAN→ | ROCASTLE |
| SAT SEPT 10 | LEICESTER CITY | A | 0-2 | 22,618 | 3,229 | 23 | G SALISBURY | LUCAS | SIMEK | COUGHLAN | WOOD | ROSS→ | EAGLES | WHELAN | O'BRIEN |
| TUE SEP 13 | LEEDS UNITED | H | 1-0 | 29,986 | 3,802 | 22 | P TAYLOR | LUCAS | SIMEK | COUGHLAN | WOOD | HILLS | EAGLES→ | WHELAN | O'BRIEN |
| SAT SEP 17 | MILLWALL | H | 1-2 | 22,446 | 410 | 24 | T KETTLE | LUCAS | SIMEK | COUGHLAN | WOOD | HILLS | EAGLES→ | WHELAN | O'BRIEN |
| TUE SEP 20 | WEST HAM UTD CCR2 | H | 2-4 | 14,976 | 1,878 | - | S TANNER | LUCAS | ROSS | COUGHLAN | WOOD | BULLEN | MCGOVERN→ | WHELAN→ | ROCASTLE |
| FRI SEP 23 | LUTON TOWN | A | 2-2 | 8,267 | 750 | 24 | R BEEBY | LUCAS | SIMEK | LEE | WOOD | HILLS | EAGLES→ | WHELAN | O'BRIEN |
| TUE SEP 27 | CRYSTAL PALACE [BPM] | A | 0-2 | 17,473 | 978 | 24 | L PROBERT | LUCAS | SIMEK→ | LEE | WOOD | HILLS | EAGLES | WHELAN | O'BRIEN |
| SAT OCT 1 | COVENTRY CITY | H | 3-2 | 22,732 | 1,452 | 22 | L MASON | LUCAS | SIMEK | LEE | COUGHLAN | HILLS | EAGLES→ | WHELAN | ROCASTLE |
| SAT OCT 15 | PLYMOUTH ARGYLE | A | 1-1 | 16,534 | 1,470 | 22 | I WILLIAMSON | LUCAS | SIMEK | LEE | COUGHLAN | HILLS | EAGLES | WHELAN→ | ROCASTLE |
| TUE OCT 18 | WATFORD | H | 1-1 | 21,189 | 493 | 22 | A LEAKE | LUCAS | SIMEK | LEE | COUGHLAN→ | HILLS | EAGLES | WHELAN | ROCASTLE→ |
| MON OCT 24 | BRIGHTON & HOVE A. | H | 1-1 | 21,787 | 462 | 21 | N MILLER | LUCAS | SIMEK→ | LEE | COUGHLAN | HILLS | EAGLES | WHELAN | ROCASTLE |
| SAT OCT 29 | NORWICH CITY | A | 1-0 | 25,383 | 1,340 | 18 | K FRIEND | LUCAS | SIMEK | LEE | WOOD | HILLS | EAGLES→ | WHELAN | ROCASTLE |
| TUE NOV 1 | READING [BPM] | A | 0-2 | 16,188 | 1,620 | 21 | M THORPE | LUCAS | SIMEK | LEE | WOOD | HILLS→ | PARTRIDGE→ | WHELAN | ROCASTLE |
| SAT NOV 5 | DERBY COUNTY | H | 2-1 | 26,334 | 3,411 | 16 | M FLETCHER | WEAVER | SIMEK | LEE | WOOD | HILLS | EAGLES | WHELAN | ROCASTLE→ |
| WED NOV 9 | CARDIFF CITY | H | 1-3 | 20,324 | 621 | 17 | T KETTLE | WEAVER | SIMEK | LEE | WOOD | HECKINGBOTTOM | EAGLES→ | WHELAN | O'BRIEN |
| SAT NOV 19 | WATFORD | A | 1-2 | 16,988 | 2,844 | 18 | B CURSON | WEAVER | BULLEN→ | DIALLO | WOOD | HECKINGBOTTOM | GRAHAM→ | WHELAN | O'BRIEN |
| TUE NOV 22 | PLYMOUTH ARGYLE | H | 0-0 | 20,244 | 614 | 19 | C WEBSTER | WEAVER | SIMEK | DIALLO | WOOD | HECKINGBOTTOM | EAGLES→ | WHELAN | O'BRIEN |
| SAT NOV 26 | STOKE CITY | H | 0-2 | 21,970 | 1,111 | 20 | A HALL | WEAVER | SIMEK | DIALLO | COUGHLAN | HECKINGBOTTOM→ | PARTRIDGE→ | WHELAN | ROCASTLE |
| SAT DEC 3 | SHEFFIELD UNITED | A | 0-1 | 30,558 | 4,962 | 21 | R BEEBY | WEAVER | SIMEK | COUGHLAN | WOOD | GILBERT | PARTRIDGE→ | WHELAN | ROCASTLE→ |
| SAT DEC 10 | HULL CITY | A | 0-1 | 21,329 | 2,793 | 22 | M ATKINSON | WEAVER | SIMEK | COUGHLAN | WOOD | GILBERT | PEACOCK→ | WHELAN→ | ADAMS |
| SAT DEC 17 | IPSWICH TOWN | H | 0-1 | 21,716 | 1,203 | 22 | I WILLIAMSON | WEAVER | SIMEK | COUGHLAN | WOOD | GILBERT | PEACOCK→ | WHELAN | ADAMS→ |
| MON DEC 26 | PRESTON NE [1:30PM] | A | 0-0 | 18,867 | 3,240 | 22 | C FOY | WEAVER | SIMEK | COUGHLAN | WOOD | GILBERT | EAGLES | WHELAN | ADAMS |
| WED DEC 28 | WOLVERHAMPTON W. | H | 0-2 | 24,295 | 1,891 | 23 | M JONES | WEAVER | SIMEK | COUGHLAN | WOOD | GILBERT | EAGLES→ | ADAMS→ | O'BRIEN |
| SAT DEC 31 | BURNLEY [1PM] | A | 2-1 | 14,607 | 1,930 | 22 | K WOOLMER | WEAVER | SIMEK | COUGHLAN | WOOD | GILBERT | EAGLES→ | ADAMS→ | O'BRIEN |
| MON JAN 2 | CREWE ALEXANDRA | H | 3-0 | 25,656 | 586 | 20 | A D'URSO | WEAVER | SIMEK | COUGHLAN | WOOD | GILBERT | PARTRIDGE→ | WHELAN | O'BRIEN |
| SAT JAN 7 | CHARLTON ATH [FAC3] | H | 2-4 | 14,851 | 1,391 | - | P DOWD | LUCAS | SIMEK | COUGHLAN | WOOD | HECKINGBOTTOM | PARTRIDGE→ | WHELAN | O'BRIEN |
| SAT JAN 14 | LEICESTER CITY | H | 2-1 | 25,398 | 2,090 | 19 | E ILDERTON | WEAVER | SIMEK | COUGHLAN | WOOD | GILBERT | BRUNT | WHELAN→ | O'BRIEN |
| SAT JAN 21 | LEEDS UNITED | A | 0-3 | 27,843 | 3,366 | 20 | D GALLAGHER | WEAVER | SIMEK | COUGHLAN | WOOD | GILBERT | BRUNT | WHELAN→ | O'BRIEN |
| TUE JAN 31 | LUTON TOWN | H | | | | | | | | | | | | | |
| SAT FEB 4 | MILLWALL | A | | | | | | | | | | | | | |
| SAT FEB 11 | CRYSTAL PALACE | H | | | | | | | | | | | | | |
| WED FEB 15 | COVENTRY CITY | A | | | | | | | | | | | | | |
| SAT FEB 18 | SHEFFIELD UNITED | H | | | | | | | | | | | | | |
| SAT FEB 25 | SOUTHAMPTON | A | | | | | | | | | | | | | |
| SAT MAR 4 | CARDIFF CITY | A | | | | | | | | | | | | | |
| SAT MAR 11 | QUEENS PARK RANGERS | H | | | | | | | | | | | | | |
| SAT MAR 18 | PRESTON NORTH END | H | | | | | | | | | | | | | |
| SAT MAR 25 | WOLVERHAMPTON W. | A | | | | | | | | | | | | | |
| SAT APR 1 | BURNLEY | H | | | | | | | | | | | | | |
| SAT APR 8 | CREWE ALEXANDRA | A | | | | | | | | | | | | | |
| SAT APR 15 | NORWICH CITY (3-15) | H | | | | | | | | | | | | | |
| MON APR 17 | BRIGHTON & HOVE A. | A | | | | | | | | | | | | | |
| SAT APR 22 | READING | H | | | | | | | | | | | | | |
| SUN APR 30 | DERBY COUNTY | A | | | | | | | | | | | | | |

| BRUNT | - | PEACOCK | BEST→ | HECKINGBOTTOM | ADAMS | O'BRIEN | ←PARTRIDGE | ←PROUDLOCK |
|---------|---------|----------|-------------|---------------|-----------|------------|------------|-------------|
| BRUNT | - | PEACOCK | BESTI→ | COUGHLAN | ADAMS | O'BRIEN | ←PARTRIDGE | ←PROUDLOCK |
| BRUNT | - | PEACOCK | GRAHAM→ | COUGHLAN | ADAMS | ←O'BRIEN | ←PARTRIDGE | ←PROUDLOCK |
| O'BRIEN | BRUNT | GRAHAM→ | - | ←DIALLO | ROCASTLE | PARTRIDGE | ←PEACOCK | ←PROUDLOCK |
| BRUNT→ | - | PEACOCK | GRAHAM→ | ADAMSON | LEE | ←WOOD | ←ROCASTLE | ←PROUDLOCK |
| O'BRIEN | - | PEACOCK→ | GRAHAM | LEE | ←WOOD | ←BRUNT | EAGLES | ←PROUDLOCK |
| O'BRIEN | - | PEACOCK | GRAHAM→ | ADAMSON | LEE | ←BULLEN | ←BRUNT | ←CORR |
| BRUNT→ | - | PEACOCK | GRAHAM→ | ROSS | ←BULLEN | ←ROCASTLE | MCGOVERN | CORR |
| BRUNT→ | - | PEACOCK | GRAHAM→ | ROSS | ←BULLEN | ←ROCASTLE | MCGOVERN | ←PROUDLOCK |
| BRUNT | - | CORR→ | GRAHAM | ADAMSON | LEE | ←HILLS | ←O'BRIEN | ←PEACOCK |
| BRUNT | - | PEACOCK→ | GRAHAM | ROSS | ←BULLEN | ←ROCASTLE | ←MCGOVERN | CORR |
| BRUNT→ | - | PEACOCK | GRAHAM→ | COUGHLAN | ←BULLEN | ←ROCASTLE | ←PARTRIDGE | ←CORR |
| BRUNT | - | PEACOCK | GRAHAM→ | WOOD | ←BULLEN | ←O'BRIEN | PARTRIDGE | CORR |
| BRUNT→ | - | PEACOCK | GRAHAM→ | ←WOOD | ←BULLEN | ←O'BRIEN | PARTRIDGE | CORR |
| BRUNT | - | PEACOCK | GRAHAM→ | ←WOOD | BULLEN | ←O'BRIEN | ←PARTRIDGE | CORR |
| BRUNT | - | PEACOCK | GRAHAM→ | WOOD | ←BULLEN | ←O'BRIEN | PARTRIDGE | CORR |
| BRUNT→ | - | PEACOCK | AGBONLAHOR→ | HECKINGBOTTOM | BULLEN | ←O'BRIEN | ←PARTRIDGE | ←GRAHAM |
| BRUNT | - | PEACOCK→ | AGBONLAHOR | HECKINGBOTTOM | BULLEN | ←O'BRIEN | ←EAGLES | ←GRAHAM |
| BRUNT | - | PEACOCK→ | AGBONLAHOR→ | HECKINGBOTTOM | ←BULLEN | ←O'BRIEN | PARTRIDGE | ←GRAHAM |
| BRUNT | - | GRAHAM→ | CORR→ | ADAMSON | ←BULLEN | ROCASTLE | ←PARTRIDGE | ←AGBONLAHOR |
| BRUNT | - | EAGLES | PEACOCK | ADAMSON | ←LEE | ROCASTLE | PARTRIDGE | ←AGBONLAHOR |
| BRUNT | - | LEE→ | AGBONLAHOR→ | ADAMSON | ROCASTLE | ←PARTRIDGE | ←GRAHAM | ←CORR |
| BRUNT | - | MURPHY | GRAHAM→ | WOOD | ←O'BRIEN | ←MCGOVERN | CORR | ←AGBONLAHOR |
| BRUNT | - | MURPHY | GRAHAM | ADAMSON | LEE | ←O'BRIEN | ←EAGLES | AGBONLAHOR |
| O'BRIEN | - | MURPHY | GRAHAM→ | HILLS | LEE | ←BRUNT | ←EAGLES | ←AGBONLAHOR |
| O'BRIEN | - | MURPHY | GRAHAM | HILLS | LEE | ←BRUNT | ←EAGLES | ←CORR |
| O'BRIEN | - | BRUNT→ | CORR→ | HILLS | DIALLO | PARTRIDGE | ←PEACOCK | ←GRAHAM |
| O'BRIEN | - | CORR→ | GRAHAM | HILLS | DIALLO | ←PARTRIDGE | ←BRUNT | ←PEACOCK |
| HILLS | - | BRUNT | CORR→ | ←DIALLO | ←BULLEN | ←WHELAN | PARTRIDGE | REET |
| HILLS→ | - | BURTON→ | TUDGAY | DIALLO | ←ROCASTLE | ←BRUNT | ←CORR | ←CORR |
| BRUNT | - | CORR | TUDGAY | ADAMSON | ←DIALLO | BULLEN | ROCASTLE | THORPE |
| HILLS | - | BURTON | TUDGAY→ | LUCAS | DIALLO | ←BULLEN | PARTRIDGE | ←CORR |
| HILLS | TUDGAY→ | BURTON | - | LUCAS | DIALLO | BULLEN | ←PARTRIDGE | ←CORR |

Games & Goals 2005/06

| | CHAMPIONSHIP | FA CUP | CARLING CUP | 05-06 TOTAL |
|---------------------|--------------|---------|-------------|-------------|
| 1 DAVID LUCAS | 16 - 0 | 1 - 0 | 2 - 0 | 19 - 0 |
| 2 LEE BULLEN | 1 (1) 0 | 0 (1) 0 | 1 - 0 | 2 (1) 0 |
| 5 GRAHAM COUGHLAN | 19 - 4 | 1 - 0 | 2 - 1 | 22 - 5 |
| 6 GLENN WHELAN | 29 1 1 | 1 - 0 | 2 - 0 | 32 (1) |
| 7 JON-PAUL MCGOVERN | 0 (2) 0 | | 1 - 0 | 1 (2) 0 |
| 8 BURTON O'BRIEN | 18 (10) 0 | 1 - 0 | 1 (1) 0 | 20 (11) 0 |
| 9 STEVEN MACLEAN | | | | |
| 11 CHRIS BRUNT | 24 (6) 6 | 1 - 0 | 2 - 0 | 27 (6) 6 |
| 12 PATRICK COLLINS | | | | |
| 14 JOHN HILLS | 20 - 0 | | 1 (1) 0 | 21 (1) 0 |
| 15 STEVE ADAMS | 6 - 0 | | | 6 - 0 |
| 16 RICHARD WOOD | 24 (3) 1 | 1 - 0 | 1 (1) 0 | 26 (4) 1 |
| 17 DRISSA DIALLO | 4 (2) 0 | | 1 - 0 | 5 (2) 0 |
| 18 RICHIE PARTRIDGE | 5 (10) 0 | 1 - 0 | 1 - 1 | 7 (10) 1 |
| 19 DEON BURTON | 3 - 0 | | | 3 - 0 |
| 20 FRANK SIMEK | 29 - 0 | 1 - 0 | 1 - 0 | 31 - 0 |
| 21 CHRIS ADAMSON | | | | |
| 23 CRAIG ROCASTLE | 14 (3) 0 | | 1 (1) 0 | 15 (4) 0 |
| 25 DREW TALBOT | | | | |
| 26 BARRY CORR | 4 (7) 0 | 1 - 0 | 1 - 0 | 6 (7) 0 |
| 30 DAVID GRAHAM | 19 (5) 2 | | 2 - 1 | 21 (5) 3 |
| 35 PETER GILBERT | 9 - 0 | | | 9 - 0 |
| 40 MARCUS TUDGAY | 3 - 1 | 1 - 0 | | 4 - 1 |
| OTHER 2005-06: | | | | |

| | |
|-----------------|-------------------|
| GABY AGBONLAHOR | 4+4 APPS, 0 GOALS |
|-----------------|-------------------|

LEON **BEST 2 APPS, 1 GOAL**

CHRIS EAGLES 21+4 APPS, 2 GOALS

PAUL WESINGBOTTOM - 1996 - 60 M.L.

PAUL HECKINGBOTTOM 5 APPS

GRAEME LEE 14+1 APPS, 1 GOAL

DARYL MURPHY 4 APPS, 0 GOAL

LEE PEACOCK 20+4 APPS, 3 GOALS

ADAM PROUDLOCK 0+7 APPS. 2

MAURICE ROSS 2 ARDE, 0 GOAL

| |
|-------------------------------|
| MAURICE ROSS 2 APPS, 0 GOALS |
| LESLIE MANTON 1 APPS, 0 GOALS |

Discipline

| | | | | |
|----------|---|---|-----------|---|
| SIMEK | 7 | 0 | BRUNT | 6 |
| HILLS | 5 | 1 | PEACOCK | 4 |
| GILBERT | 4 | 0 | WHELAN | 3 |
| WHELAN | 4 | 0 | WOOD | 3 |
| BRUNT | 3 | 0 | HILLS | 2 |
| ROCASTLE | 3 | 0 | PARTRIDGE | 2 |

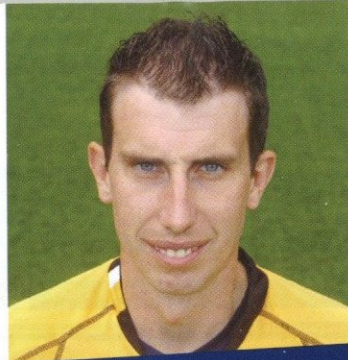
Assists

| | |
|-----------|---|
| BRUNT | 6 |
| PEACOCK | 4 |
| WHELAN | 3 |
| WOOD | 3 |
| HILLS | 2 |
| PARTRIDGE | 2 |

Heroes

with Chris Adamson

The Wednesday keeper begins his selection of Heroes with the man who has inspired him through his own career.



Footballing Hero

Neville Southall

I was a big Everton fan when I was younger and I thought that not only was Neville one of the best keepers around, but also one of the most under-rated. He achieved so much in the game after previously working



Under-rated...legendary Everton keeper Neville Southall in his early days.

as a binman, yet I don't think he gets mentioned as much as he should. I believe his reputation would have been greater had he been English and got into the England national side.

He was always someone I looked up to and I have actually played against him, which was one of the highlights of my career to date. He was at Torquay and I was with Halifax and he pulled off one of the best saves I've ever seen, though he was nearly 40 at the time. He still had it and I think he's an absolute legend in that sense.

Other Sporting Hero

Andrew Flintoff

I have gone for Freddie in this section, he gives 100 per cent for England and Lancashire every time he plays and is also a down to earth guy who lives for his family. He will go down as a legend for what he did in the Ashes last year and is one of the best cricketers in the world, as well as the best English all-rounder since Ian Botham.

Freddie enjoys himself at the right time but also knows when it is time to work hard. In the past some criticism was levelled at him about his weight but he got that down. That showed in the Test series leading up to the Ashes when we played the Aussies. Hopefully he will smash them all over Down Under next winter.

Non Sporting Hero

Jim Carrey

To me, Jim is one of the funniest men ever. Every film he's been in has had me in stitches, he's never done a bad one in my opinion. I'd love to have them on DVD. The Mask typified everything and he went on from there with the rest of the films he's been in, such as Bruce Almighty, Dumb and Dumber, The Cable Guy and Liar Liar.

He has been around for a long time now because he keeps everyone laughing, you can't not laugh when you watch his films. Whatever someone throws at him, he will bounce back with something funny.

Squadra '005

Teamwear from Diadora

Create a kit for your team using the same designs and technology that we include in all our professional kits, like the new Scotland Away kit (pictured). **Squadra** is Diadora's new collection of, professional quality, football playing kits, training wear and equipment. Choose from the designs in the Diadora collection and put together the most suitable kit for your team.

Diadora's football technology, research and styling for professionals is now available to everybody who plays



Professional quality team kits from Diadora

DIADORA

Call Diadora Teamwear on 01625 421 212 and speak with one of our teamwear specialists or visit www.diadora.com

C Oliver

K Lawson

A Raynor

E Tarry

M Paul **STURROCK**



| PLAYED | SCORED |
|--------|--------|
|--------|--------|

[illegible]

M Mike **NEWELL**



| | PLAYED | SCORED |
|-----|--------|--------|
| 1 | 1 | 1 |
| 2 | 1 | 1 |
| 3 | 1 | 1 |
| 4 | 1 | 1 |
| 5 | 1 | 1 |
| 6 | 1 | 1 |
| 7 | 1 | 1 |
| 8 | 1 | 1 |
| 9 | 1 | 1 |
| 10 | 1 | 1 |
| 11 | 1 | 1 |
| 12 | 1 | 1 |
| 13 | 1 | 1 |
| 14 | 1 | 1 |
| 15 | 1 | 1 |
| 16 | 1 | 1 |
| 17 | 1 | 1 |
| 18 | 1 | 1 |
| 19 | 1 | 1 |
| 20 | 1 | 1 |
| 21 | 1 | 1 |
| 22 | 1 | 1 |
| 23 | 1 | 1 |
| 24 | 1 | 1 |
| 25 | 1 | 1 |
| 26 | 1 | 1 |
| 27 | 1 | 1 |
| 28 | 1 | 1 |
| 29 | 1 | 1 |
| 30 | 1 | 1 |
| 31 | 1 | 1 |
| 32 | 1 | 1 |
| 33 | 1 | 1 |
| 34 | 1 | 1 |
| 35 | 1 | 1 |
| 36 | 1 | 1 |
| 37 | 1 | 1 |
| 38 | 1 | 1 |
| 39 | 1 | 1 |
| 40 | 1 | 1 |
| 41 | 1 | 1 |
| 42 | 1 | 1 |
| 43 | 1 | 1 |
| 44 | 1 | 1 |
| 45 | 1 | 1 |
| 46 | 1 | 1 |
| 47 | 1 | 1 |
| 48 | 1 | 1 |
| 49 | 1 | 1 |
| 50 | 1 | 1 |
| 51 | 1 | 1 |
| 52 | 1 | 1 |
| 53 | 1 | 1 |
| 54 | 1 | 1 |
| 55 | 1 | 1 |
| 56 | 1 | 1 |
| 57 | 1 | 1 |
| 58 | 1 | 1 |
| 59 | 1 | 1 |
| 60 | 1 | 1 |
| 61 | 1 | 1 |
| 62 | 1 | 1 |
| 63 | 1 | 1 |
| 64 | 1 | 1 |
| 65 | 1 | 1 |
| 66 | 1 | 1 |
| 67 | 1 | 1 |
| 68 | 1 | 1 |
| 69 | 1 | 1 |
| 70 | 1 | 1 |
| 71 | 1 | 1 |
| 72 | 1 | 1 |
| 73 | 1 | 1 |
| 74 | 1 | 1 |
| 75 | 1 | 1 |
| 76 | 1 | 1 |
| 77 | 1 | 1 |
| 78 | 1 | 1 |
| 79 | 1 | 1 |
| 80 | 1 | 1 |
| 81 | 1 | 1 |
| 82 | 1 | 1 |
| 83 | 1 | 1 |
| 84 | 1 | 1 |
| 85 | 1 | 1 |
| 86 | 1 | 1 |
| 87 | 1 | 1 |
| 88 | 1 | 1 |
| 89 | 1 | 1 |
| 90 | 1 | 1 |
| 91 | 1 | 1 |
| 92 | 1 | 1 |
| 93 | 1 | 1 |
| 94 | 1 | 1 |
| 95 | 1 | 1 |
| 96 | 1 | 1 |
| 97 | 1 | 1 |
| 98 | 1 | 1 |
| 99 | 1 | 1 |
| 100 | 1 | 1 |

| | | | |
|----|-------------------------|--|--|
| 1 | Marlon BERESFORD | | |
| 2 | Kevin FOLEY | | |
| 3 | Sol DAVIS | | |
| 4 | Chris COYNE | | |
| 5 | Russell PERRETT | | |
| 6 | Paul UNDERWOOD | | |
| 7 | Carlos EDWARDS | | |
| 8 | Kevin NICHOLLS | | |
| 9 | Rowan VINE | | |
| 10 | Warren FEENEY | | |
| 11 | Steve ROBINSON | | |
| 16 | Enoch SHOWUNMI | | |
| 17 | Paul HUGHES | | |
| 18 | Ahmet BRKOVIC | | |
| 19 | Steve HOWARD | | |
| 21 | Keith KEANE | | |
| 22 | Danny STEVENS | | |
| 23 | Dean MORGAN | | |
| 26 | Markus HEIKKINEN | | |
| 27 | Peter HOLMES | | |
| 28 | David BELL | | |
| 29 | Calvin ANDREW | | |
| 33 | Dean BRILL | | |
| 45 | Leon BARNETT | | |
| 47 | Rob BECKWITH | | |
| | | | |
| | | | |
| | | | |
| | | | |
| | | | |

1. Kevin Doyle (Reading) 5.62 pts
2. Glen Little (Reading) 5.54 pts
3. Ibrahima Sonko (Reading) 5.45 pts
4. James Harper (Reading) 5.37 pts
5. Ade Akinbiyi (Sheffield United) 5.17 pts
71. Frank Simek (Wednesday) 3.32 pts
83. Chris Brunt (Wednesday) 3.21 pts

| | P | W | D | L | GF | GA | Pts |
|---------------|----|----|----|----|----|----|-----|
| Reading | 30 | 22 | 7 | 1 | 62 | 16 | 73 |
| Sheffield Utd | 30 | 20 | 6 | 4 | 57 | 28 | 66 |
| Leeds | 29 | 16 | 6 | 7 | 41 | 24 | 54 |
| Watford | 30 | 14 | 10 | 6 | 49 | 36 | 54 |
| Crystal P | 29 | 14 | 7 | 8 | 44 | 29 | 49 |
| Preston | 29 | 11 | 14 | 4 | 37 | 22 | 47 |
| Gardiff | 30 | 12 | 8 | 10 | 41 | 36 | 44 |
| Wolves | 30 | 10 | 13 | 7 | 34 | 26 | 43 |
| Luton | 30 | 12 | 5 | 13 | 43 | 41 | 41 |
| Burnley | 30 | 11 | 6 | 13 | 49 | 40 | 39 |
| Norwich | 30 | 11 | 6 | 13 | 35 | 40 | 39 |
| QPR | 30 | 10 | 9 | 11 | 34 | 41 | 39 |
| Stoke City | 30 | 12 | 2 | 16 | 35 | 44 | 38 |
| Ipswich | 30 | 9 | 10 | 11 | 33 | 43 | 37 |
| Southampton | 30 | 7 | 14 | 9 | 29 | 32 | 35 |
| Coventry | 30 | 8 | 11 | 11 | 40 | 44 | 33 |
| Plymouth | 29 | 8 | 11 | 10 | 27 | 35 | 35 |
| Hull City | 30 | 8 | 9 | 13 | 31 | 36 | 33 |
| Derby | 30 | 6 | 14 | 10 | 40 | 47 | 32 |
| Wednesday | 30 | 7 | 9 | 14 | 24 | 37 | 30 |
| Brighton | 30 | 5 | 13 | 12 | 30 | 47 | 28 |
| Leicester | 30 | 5 | 11 | 14 | 29 | 40 | 26 |
| Millwall | 30 | 5 | 11 | 14 | 22 | 42 | 26 |
| Crewie | 30 | 4 | 10 | 16 | 33 | 63 | 22 |

*All stats correct up to Monday 23rd January

**Official Sponsor of the
Programme Squad page**

E A D
Solicitors