

THE OFFICIAL MATCHDAY PROGRAMME OF PETERBOROUGH UNITED F.C.

£2.50
Issue 17

THE POSH

www.theposh.com



**PETERBOROUGH
UNITED
VS
LUTON TOWN**



**Saturday 28th
February 2004
Kick-off 3.00pm**

MATCH SPONSORS



MATCHBALL SPONSORS



MATCHDAY PROGRAMME SPONSOR



SEASON PROGRAMME SPONSOR



THE
POSH

HE'LL GET
A BONUS
FROM YOU

LIKE AN EXTRA
£1 A WEEK
POCKET MONEY
FOR STARTERS

REMINDE HIM THAT
IF HE PROMISES TO
SUPPORT THE POSH
FOREVER

THEN TELL HIM YOU'VE OPENED
A POSH ACCOUNT ON HIS BEHALF
FOR JUST £10

REMINISCE ABOUT
WHEN YOU USED
TO COME HERE
WITH YOUR DAD

AND HOW IT PAYS
AN ANNUAL BONUS
TO THE CLUB

TAKE HIM TO HIS
FIRST EVER MATCH

DRESS YOUR SON IN
A REPLICA POSH STRIP

THE POSH - TODAY'S TACTICS

Listen up team, the Norwich and Peterborough POSH Account is a great feature-packed, flexible savings account that earns interest for you, whilst raising money for your club. Its features include:

- Bonus paid to Peterborough United FC each year (over £347,000 to date)¹
- 5% off a POSH season ticket²
- 10% off Peterborough United FC merchandise bought in the club shop in excess of £50²
- 10% off weddings of immediate family held at Peterborough United's ground²

- One free standard mortgage valuation (subject to conditions) when you apply for a Norwich and Peterborough mortgage³
- Tiered, variable rates of interest (so the more you save the more you earn)
- Easy access to your money without notice or loss of interest
- Open an account with just £100 (£10 for under 16's).

To find out more about opening a POSH Account, please call us on 0845 300 2511, or visit your local Norwich and Peterborough branch. Calls are recorded.

**The Norwich and Peterborough POSH Account.
What a result.**

www.npbs.co.uk

1. Each April, we will pay a bonus to Peterborough United FC equivalent to 1% gross of the average total balance held in POSH accounts in that year. 2. This offer is made by Peterborough United FC and not by the Society, and may be withdrawn at any time without notice. Conditions will apply (please refer to the Club for further details). 3. Residential properties only. You will need to meet the Society's standard lending criteria and that of your chosen mortgage.

YOUR HOME IS AT RISK IF YOU DO NOT KEEP UP REPAYMENTS ON A MORTGAGE OR OTHER LOAN SECURED ON IT.

Mortgages are subject to status and satisfactory security. In certain circumstances a life assurance policy may be required. Mortgage loans are not available to anyone under the age of 18. Loans are secured on your home. Written quotations are available on request from the Society. The Society subscribes to the Mortgage Code and the Banking Code. Copies of the Codes are available on request.

Norwich and Peterborough Building Society **Principal Office:** Peterborough Business Park, Lynch Wood, Peterborough PE2 6WZ. Telephone: Peterborough (01733) 372372. Member of The Building Societies Association. Member of LINK. Norwich and Peterborough Building Society is authorised and regulated by the Financial Services Authority.



**PETERBOROUGH UNITED
FOOTBALL CLUB**
LONDON ROAD STADIUM,
PETERBOROUGH PE2 8AL

Telephone 01733 563947
Facsimile 01733 344140
Official Website
www.theposh.com
E-mail info@theposh.com

Chairman: Alf Hand
Directors: Barry Fry,
Nigel Hards, Ted Hennessey,
Steve Holt, Leigh Porter,
Bob Symms.

Company Secretary:
John Magee

Club Solicitors: Waller
Needham & Green

Club Secretary:
Julie Etherington

General Manager: Joan Hill

Manager: Barry Fry
Coach: Andy Legg
Reserve Team Manager
& Coach: John Morling
Goalkeeping Coach: Tony
Godden

Kit Manager:
Gordon Ogbourne

Physiotherapist: Paul Showler
Club Doctor:
Cosmas C.P. Nnochiri

Head of Business
Development: Clair Finnigan
Sales Executive: Katie
Woolnough
Press Officer: Philip Adlam
Webmaster: Chris Brewer

Ticket Office & Club Shop
Manager: Debbie Corry
Accounts Administrator:
Graham Motley
Office Manager: Mary Faxon
Bars Manager: Vash Taylor
Hospitality and Banqueting:
Ray Watson

Acting Safety Officer: Rocky
Thompson
Head Groundsman: Derek Poole
Maintenance Technician: Tony Dixon
Match day Announcer: David Teague
Club Chaplain:
Rev. Anthony Wareham

Contents

Commercial News
On The Bench With Barry Fry
Inside Information
Welcome To Our Visitors
Luton Town Who's Who
Meet The Luton Town Manager
Flashback to Bristol City
In The Spotlight
Coaching Perspective
Commercial Break
Steve Cooper
Flashback to QPR
Physio Focus
Name That Stand
Poster - Reynopoly
Junior Jargon
London Road Latest
Head to Head History
Supporters Club
Supporters Trust
Kit Sponsorship
From the Reserves
Executive Box Holders
View On Two
Soundbites
Click with The Posh
Posh Players Kick-Off Campaign
FIS Stats
POSH Fixtures
On The Road

Page 5
Page 6 & 7
Page 9
Page 11
Page 12 & 13
Page 15
Page 16 & 17
Page 18 & 19
Page 21
Page 22 & 23
Page 25
Page 26 & 27
Page 29
31
Page 32 & 33
Page 35
Page 37
Page 38 & 39
Page 41
Page 42 & 43
Page 44 & 45
Page 47
Page 49
Page 50 & 51
Page 53
Page 55
Page 57
Page 59
Page 60 & 61
Page 62

EMERGENCY PROCEDURES

In the unlikely event of an emergency at London Road requiring the evacuation of all or part of the ground, spectators are requested to remain where they are, stay calm and listen for announcements over the public address system. All emergency announcements will be preceded by a distinctive chime. The announcements may direct spectators in specified areas to evacuate through exit gates to the outside of the ground, or on the pitch. Club stewards and police officers will assist in directing spectators to the safest locations. If requested to vacate a particular area in the ground, spectators should do so as calmly and quickly as possible to assist in a safe and speedy evacuation. STUART FENSOME (Safety Officer, Peterborough United)

Ground Regulations

Persons are admitted to this ground subject to their acceptance of the Ground Regulations and the Rules and Regulations of the Football Association and the Football League which are posted in and outside the Stadium. Entry to the ground shall constitute unqualified acceptance. The club reserves the right for its stewards, servants, agents and Police to remove from the ground any person who does not comply with these rules and regulations, or whose presence within the ground is, or could reasonably be construed as constituting a source of danger, nuisance or annoyance to any other person. Throwing of any object within the ground. Taking part in chanting of an indecent or racist nature. Entry onto the field of play or the surrounding track without lawful authority or excuse. Additionally, the use of threatening behaviour or abusive language is strictly forbidden and will result in ejection from the ground.

Parking

During last season numerous complaints were made by the public regarding illegal, dangerous and inconsiderate parking. In response to these justified complaints and to minimise the dangers/inconvenience caused by such activity, the police will actively enforce the parking regulations.

Supporters are advised to use a common sense approach when parking and to fully utilise specified parking areas, thereby avoiding on street parking and minimise any congestion. Your assistance and co-operation regarding this matter will be appreciated.

**All photography by theposh.com Action Images
and Peter Barnard**



Sheer Quality



MARSHALL MOTOR GROUP

CHRYSLER Jeep

Tyrrell Park, Boongate, Peterborough
01733 558588



VAUXHALL

Tyrrell Park, Boongate, Peterborough
01733 898088



Tyrrell Park, Boongate, Peterborough
01733 566011



Mallory Road, Boongate, Peterborough
01733 566767



JAGUAR

Tyrrell Park, Boongate, Peterborough
01733 313335



HONDA

Tyrrell Park, Boongate, Peterborough
01733 340044



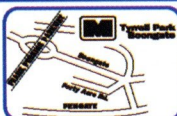
PEUGEOT

Tyrrell Park, Boongate, Peterborough
01733 896666

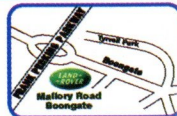


TOYOTA

Tyrrell Park, Boongate, Peterborough
01733 555496



**MARSHALL
MOTOR GROUP**



www.marshallweb.co.uk

Commercial News

Reynopoly Live on SKY TV

Peterborough United Football Club wore their new away strip at Queen's Park Rangers last week and the new shirt sponsors Reynopoly were certainly happy with their live TV exposure.

Reynopoly agreed to become shirt sponsors until the end of the campaign to continue their fantastic backing for the Football Club. The polythene manufactures became the Moy's End stand sponsors earlier in theseason on a three-year deal.

Discussions are taking place for sponsorship of the shirts for next season, but if anyone is interested please contact Commercial Director Steve Holt through the Football Club.

Steve Holt said: 'It is fantastic when companies and individuals who are already providing support come forward at the

11th hour and offer their extra financial support to the club. An enormous thank you to Steve Reynolds (pictured right) and family for coming in at such a late stage and helping us out for the rest of the season.'

Reynopoly were started in 1986 by Stephen and Susan Reynolds. Originally working from home, within six months they moved to our first factory in Woodston where they started converting pallet stretch film. A move to Padholme Road in 1990, trebling the factory size and enabling them to offer their existing stock delivery system for the customers. Today they operate from 12,000 square feet purpose built factory in Newark Road, Peterborough where the

company make polythene bags and stretch film.

At this site Reynopoly have storage space for up to 500 pallets which allows them to supply their customers with ex stock or standard packaging goods. Although the main business is polythene orientated, they also supply vast amounts of food trays, specialists films, tapes, strapping and all general packaging. If you would like to find out more, contact Reynopoly on 01733 891322.



On The Bench With...

Sponsored by Adrian Darby Aircraft & Windsock Sales 01780 740644

Barry Fry

I hope I am welcoming the new chairman and Board of Directors of Luton Town Football Club (as they are due to come out of administration any day now) to London Road this afternoon. I also welcome the players, officials and supporters of Luton, especially their manager Mike Newell and the Director of Football Mick Harford.

Mike Newell (pictured below) has worked miracles since taking over the Kenilworth Road hot-seat. In the summer, Luton Town were in turmoil after their former chairman sold the club. Our ex-director Roger Terrell and former player Lee Power were announced as the new chairman and vice-chairman of the Hatters.

However, owing to the hostility they received from the Luton fans after the sacking of Joe Kinnear and Mick Harford (pictured above), the pair decided to resign almost immediately. This left Luton in further crisis and many people questioned whether they would start the season.

In my opinion, but for one person, they would not have began the campaign. My unsung hero is Chief Executive Cherry Newbery (pictured opposite page top), who almost single handed kept the ship afloat, dealing with the Football League, the Football Association and dealing with problem after problem.

After a while, it was announced that Mike Newell would become the new manager, but of course, Luton were in administration and were unable to sign any new players. Mike made his best ever signing when he immediately talked to his



mate Mick Harford about staying on at Kenilworth Road. As everyone knows, Mick is Luton through and through as he showed recently when he turned down the job of assistant manager to Joe Kinnear at Nottingham Forest.

After last Saturday's result, it was even more remarkable, as Luton put themselves into the play-off



positions with a couple of games in hand. It would be a fairytale story if they managed to gain promotion. They are due to come out of administration any day now, so it would be great if the new owners could fully back the management team 100% now the transfer embargo has been lifted. You could certainly see Luton Town gaining promotion to Division One this year and that would be a remarkable achievement.

I anticipate there will be a lot of Luton fans travelling to London Road. Going to press, they are unbeaten in the last eight matches and are flying. The Hatters fans will be vocal, so it will be a tough game. Our disappointment continued in the last home game. We played very well against Bristol City, but although we got the plaudits, we didn't get the points.

Bristol City are, of course, top of the league now and won their

11th straight league win last weekend. I couldn't have asked for anymore from my players, as indeed I couldn't from the game against Queen's Park Rangers last Friday night. The players performed magnificently and we were all absolutely gutted that QPR equalised in the final moments of the match.

Nevertheless, we must be positive, and take the positives from the two performances against two of the top sides. Luton, as I have already said, are in the play-off picture, as are Tuesday's opponents Barnsley. We seem to play well against the top teams so maybe it is good in the next few games we play teams near the top of the League.

It will be another fantastic and entertaining game today. We have got a lot to do to get out of the relegation zone, but the players and the management team, like last year, are

determined to stick together and fight for the cause. It will be nice if the supporters could join us with plenty of encouragement from start to finish.

Last, but my no means least, there will be a minutes silence prior to the game today for one of our old players, whose contribution towards getting the club promoted to the First Division back in 1992 was huge. Anybody that knew Steve Cooper will know he is a great character and a great bloke to have around the place. We were all devastated to hear the news that he had passed away in his sleep at the age of 39 and our condolences go to his wife and two young children.

Enjoy today's game

Barry

Curtis Woodhouse is pictured below in action against Queens Park Rangers last week.



March
Martin Avenue
March Trading Park
Tel 01354 662000
Fax 01354 662039

Cambridge
Cromwell Road
Nuffield Road
Tel 01223 466000
Fax 01223 466479

Newmarket
Depot Road
Tel 01638 666900
Fax 01638 666909

Snettisham*
School Road
Tel 01485 544300
Fax 01485 543269

Saffron Walden
Ashdon Road
Com. Centre
Tel 01799 583000
Fax 01799 583039

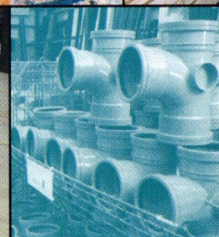
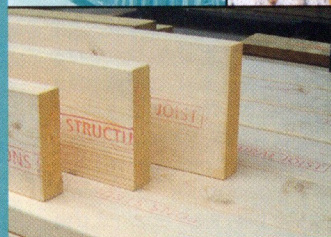
Also at:

Attleborough* 01953 482000
Bury St Edmunds 01284 731500
Colchester* 01206 548001
Diss 01379 641414
Halesworth 01986 875000
Ipswich 01473 241200
Kelvedon* 01376 570700
Lowestoft 01502 517126
Mildenhall* 01638 712300
Norwich 01603 408400
Sawbridgeworth 01279 600600
Sudbury 01787 881777
Thetford 01842 760400

*Closed for Lunch
Our core opening hours are
Mon to Fri 7.30am - 5pm
Sat 8am - 12noon



- Bricks
- Aggregate
- Timber/Boards
- Heating
- Plumbing



- Paving
- Fencing
- Paint
- Kitchens
- Doors

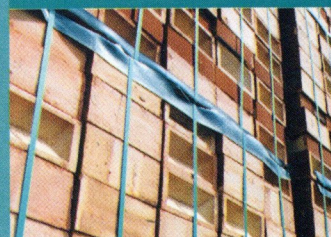


Professional service from the...

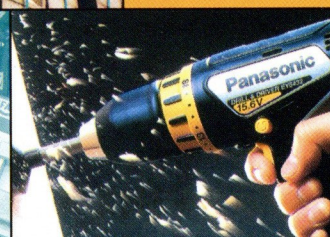
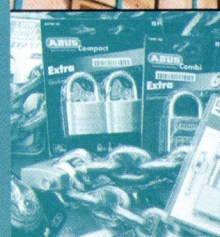
RIDGEONS
TIMBER & BUILDERS MERCHANTS



...winning team!



- Bathrooms
- Security
- Electrical
- Ironmongery
- Sanitaryware



- Hand Tools
- Power Tools
- Workwear
- Plant Hire
- Decking



Inside Information

We spoke to Chris Rivett, Luton Town website editor, to find out the inside information on the Hatters.

Luton Town are currently inside the play-off positions. After all the problems off the field, Mike Newell has done a fantastic job at the club. Do the players and supporters believe they can achieve promotion this season?

Mike has done a superb job with very limited resources because of the situation the club is in. When the opportunity has presented itself, he has been very shrewd with the signings that he has made and together with Mick Harford and Brian Stein they've worked hard with the players to get them into a position where they can challenge.

Certainly from the position the club is in, with two games in hand, we've got to be confident of a play-off position at least and that would be a great achievement when you consider everything that has happened but whether the club can do more than that will depend on staying clear of injuries and suspensions in the remaining games.

Queen's Park Rangers, Bristol City and Plymouth Argyle are vying for the automatic promotion slots. Who has been the best teams to visit Kenilworth Road this season and who is your tip for automatic promotion?

If I am honest I think the best teams have yet to come to Kenilworth Road. We've still got to play Plymouth and Bristol City at home this season but I think

that the strength-in-depth of QPR's squad will see them go up with Bristol City. They have both been up there for the last couple of seasons and will fancy their chances of getting it right this year. Barnsley are probably the best side that we've played at home so far, they were very solid and organised and inflicted our first league defeat at home for over four months when they beat us in December.

Adrian Forbes has been on the sidelines for a month now. Has he been missed upfront?

Adrian has done very well since re-inventing himself as a striker. He'd never played up front until he filled in for Steve Howard when he picked up a hernia injury and after scoring fourteen times he doesn't really see himself as a winger anymore, which will add to the competition for places up front when he does return!

Which players should Posh fans look out for this afternoon?

Enoch Showunmi is the man catching people's attention at the moment after his hat-trick last weekend but I think Luton's success this season has been down to the fact that they have had a lot of consistent performers across the pitch.

The players versatility has been tested to the full, there have been a handful of the senior players who have been absent because of long-term injuries but it's testimony to the players that they've carried on getting results and in effect, the injured players haven't been missed, there is always someone waiting in the sidelines waiting to take their chance.

Was it a blow to lose the services of goalkeeper Marlon Beresford and how is the replacement doing at Kenilworth Road?

It was disappointing at the time because Marlon had done very well during his three months with us but since then Morten Hyldgaard has come in he has kept three clean sheets in his first three games. He looks a very capable replacement and with a good defence in front of him I expect him to do well for us.

What is your view of Peterborough United?

I don't think many people can think about Peterborough without immediately thinking of Barry Fry and the sort of character he is. Football wouldn't be the same without him and I think the side he's got reflects his approach to the game.

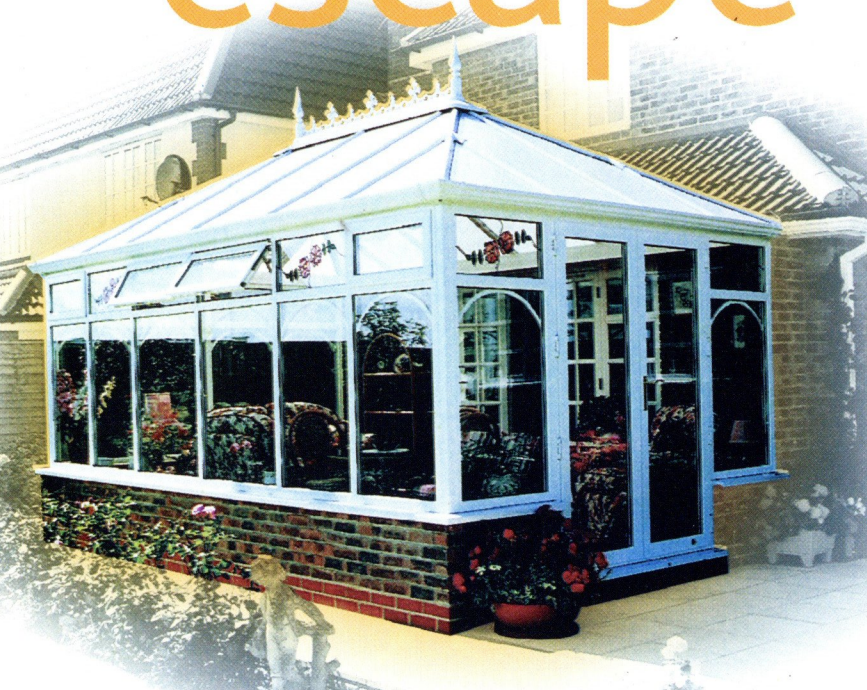
When the two teams have met over the last few years there hasn't been much between them and that was the case in October. Although we're at opposite ends of the table at the moment there is still a third of the season left and plenty of time for both teams to get the points they need.

What is your prediction for today's game?

Luton are on a good run at the moment and I don't expect them to lose, looking back at the games with Peterborough they have always been tight but I'm going to say Luton will nick it by the odd goal today. Andy Clarke does have a nasty habit of popping up with a goal though, so I hope he doesn't prove me wrong.



a great escape



We all need to get away from the pressures of everyday life once in a while - but who can afford go on holiday each week? Take time out and escape a busy household by spending some valuable free time in a beautifully crafted Tudor Design conservatory.

Individuality

Whether you want a relaxing area to kick back and view the garden, or if its for a unique dining room with exceptional ambiance, its up to you how to make the most of the extra room.

Get closer to nature

No matter what size your garden is, it can be transformed with a Tudor installation, from Victorian, lean-to, Edwardian to P-shaped, we can create a haven for you to enjoy without the weather putting a dampner on your view.

Competitive Price

Tudor prides itself on being competitively priced in the market place and deliver a wide range of offers on a regular basis.

Tailor made for you

Tudor Design guarantees excellent craftsmanship coupled with a warm, friendly service. From the initial CAD imaging designs that allow you to visualise before you buy, to our showrooms or our fast and easy to use website. We provide a variety of options for you to view our extensive range of products.

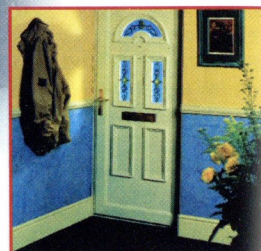
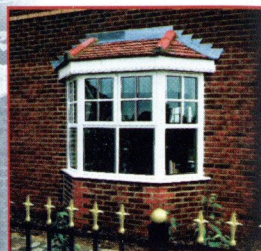
Windows, Doors & Conservatories Showroom:

6 Brassey Close, Lincoln Rd,
Peterborough

Fascias, Soffits & Guttering Showroom:

5 Skaters Way, Werrington,
Peterborough

Tudor
DESIGN
FIRST FOR PRICE - FIRST FOR QUALITY
Windows & Conservatories & Roofline



Welcome to Our Visitors

Mike Newell's Luton Town arrive at London Road this afternoon on the back of a four-match unbeaten run and the Hatters are currently sitting just outside the play-off slots, in a good position as we enter the final quarter of the Division Two campaign.

Luton strengthened their promotion hopes with a comfortable 4-1 victory over Brentford at Kenilworth Road last week with Enoch Showunmi bagging a hat-trick. Showunmi has been a real find and manager Newell was quick to praise his raw striker.

'Enoch Showunmi will grab the headlines with his hat-trick. He took his goals well and as we said a few weeks ago, once he gets one the goals will come. He is getting more comfortable with the lads and he is also getting fitter with the games and it is beginning to show. We had an off day last week against Wycombe and we've bounced back near the form we showed in the Brighton game.'

Newell also knows there is a long way to go in the season and plenty of teams in this division can put a run together to get into the play-off positions. Newell added: 'There is still a long way to go, we've got sixteen matches left and that is a big part of the season. Our success will depend

on the side that we can put out and we need to keep everyone fit and away from suspensions.

It is a testimony to Newell's management and the commitment of the players that Luton are anywhere near the play-off places after the nightmare of going into administration during the summer. Selling players and injuries to key personnel have also hampered their squad. Adrian Forbes, who is the leading goal-scorer at Kenilworth Road, is on the sidelines with a knee injury and fellow striker Steve Howard has occasionally had to play at the heart of the Luton defence to cover for injuries to regular centre backs.

Matthew Spring (pictured left) is one of the best midfielders in the division with his long-range passing ability, while Ahmet Brkovic gives the side some craft in the middle of the park. Kevin Nicholls has returned to the side in recent weeks after a long injury lay-off and has already settled into the team.

One of the best results of the season so far was the FA Cup win at First Division Bradford City back in January, with a 2-1 success for the Hatters at Valley Parade. They went on to lose in the next round though against Tranmere Rovers.

Earlier in the season, Posh drew 1-1 against Luton in Hertfordshire with Leon McKenzie salvaging a point for Barry Fry's men. Adrian Forbes had put the hosts in front, but the Hatters went on to play the second half with 10-men after Ian Hillier was dismissed for two bookable offences. Posh have never beaten Luton in the league at London Road since 1964, but there was a 1-0 LDV Vans Trophy win to celebrate back in 2000 with Francis Green scoring the winner nine minutes from time.



The Visitors

call our freephone number **0800 0740714** or visit our website **www.tudor-design.co.uk**
to arrange an appointment for an instant on-line quote

Ten year insurance-backed guarantee. Ten year colour fastness guarantee. Finance available. Written details on request.

www.theposh.com



Luton Town

Morten Hylgaard

The 6' 6" stopper arrived at the Hatters in January 2004 on a free transfer from Scottish Premier League side Hibernian. He began his career with Danish First Division side Ikast before a £200,000 move to Coventry City followed. He appeared just over thirty times for the club in a four-and-a-half year stay at Highfield Road. During that time he also had loan spells with Scunthorpe United and Grimsby before he made the switch north of the border during the close season.

Emmerson Boyce (pictured below)

One of the many to come through from Luton's schools and youth development programme, the defender was signed as a YTS boy in the summer of 1995, and made the breakthrough to the League squad at the age of 19 midway through the 1999/2000 season after occasional appearances following a debut in the Auto Windscreens Shield in January 1999. He became a regular at right back, with a liking to attack on the overlap, and signed a new contract in the summer of 2002 to the delight of the fans at Luton and he scored last week.



Chris Coyne (pictured above)

The centre-half was playing for Perth Soccer Club when he was selected for the Australian Under-17 squad for the 1994 youth World Cup, and came to the notice of Harry Redknapp, then manager of West Ham. Coyne signed for the Hammers as a teenager, but Premiership chances were few and far between, and after loan spells at Brentford and Southend, Coyne went to Dundee.

Ahmet Brkovic

Believing a move would be good for his career, the Croatian midfielder refused new terms at Leyton Orient in the summer of 2001, to join Luton on a Bosman free transfer. Orient had signed him on a free from HNK Dubrovnik in the autumn of 1999. He was bitterly disappointed when Orient failed in the play-offs to win promotion to the Second Division, and decided he might have a better chance if he joined Luton. He was right, playing a valuable role, mainly on the right flank, to help Luton return to the Second Division at the first attempt however it is on the opposite side of midfield.

Who's Who

Peter Holmes.

A two-footed midfielder, he came to Luton as one of the then manager Ricky Hill's first signings. he arrived from Sheffield Wednesday with a good pedigree, he is a product of the F.A.'s School Of Excellence, from the same year as Michael Owen. After initially being released in the summer of 2003 as a result of the Hatters' financial situation he continued to train with the Club and agreed a fresh deal to stay with the Hatters in November 2003.

Kevin Nicholls

The tough-tackling midfielder began his career as a trainee at Charlton and quickly made an impact after skipping England youth teams at under-18, under-19 and under-20 levels. Surprisingly, Wigan decided to put him on the transfer list in the summer of 2001, for a bargain fee of £150,000, and Luton snapped him up. Just five games into this season he picked up a knee injury which has ruled him until January 2004 but he recently returned to first team action in the F.A. Cup Fourth Round tie with Tranmere.

Matthew Spring

There was relief all round when the competitive midfielder accepted a new contract at Kenilworth Road in the summer of 2002. He has been at Luton since he was a schoolboy, and was a driving force in the side which reached the F.A. Youth Cup semi-finals in 1997. He has developed into a very consistent midfielder, always willing to drive forward and look for goals. His long-range shooting is particularly admired by the Hatters fans.

Steve Robinson

Looking to add experience to a young midfield department, Luton snapped up a man who had earned respect wherever he played. They paid £50,00 to Preston North End in the summer

of 2002 for a player who had been capped five times by Northern Ireland. His return to the football field recently, and his preferred central-midfield berth, have resulted in some impressive performances.

Steve Howard (pictured below)

Rarely can £50,000 have been better spent in football than the fee Luton paid Northampton on deadline day in March 2001 to prise the bustling striker away from the Cobblers. He has been Luton's leading marksman in each of the past two seasons and is a huge favourite at Kenilworth Road - he was the fans player of the year in 2002, and the players' player of the year 12 months later.

Enoch Showunmi

Joined the Hatters on the eve of their trip to Notts County in September 2003. The big striker was handed the number 16 shirt after impressing on trial with the club. He appeared in pre-season friendlies but the club were unable to give him a contract because of a transfer embargo until they received special dispensation from the Football League. The London-born forward has joined the club fresh from non-league football with Willesden Constantine.



CARTERS

SOLICITORS

HAD AN ACCIDENT, TRIP OR FALL?

- No Win - No Fee, No Middlemen
- No Deductions, No Delay
- Yes - You will receive a **FREE** appointment or telephone interview
- Yes - Your claim will be handled directly by a qualified experienced legal professional
- Yes - You will receive a 100% of your damages

MOVING HOME?

Let Carters remove the stress out of moving house. Utilising our vast experience coupled with the latest technology, Carters can work to the tightest of deadlines and still provide a friendly and professional service.

- Fast and efficient service
- Dedicated and highly experienced team
- City centre premises with secure parking
- Competitive fees
- FREE Quotation

Call Carters, your local approachable legal experts for your free quotation or telephone interview on 01733 779977

Carters Solicitors, Priestgate House, Priestgate, Peterborough PE1 1JN. www.carters-solicitors.com

T2 Studios
LIMITED

Meet The Luton Town Manager



Mike Newell's second managerial appointment came less than a month after his first taste of life in the hot-seat had ended on a sour note despite the fact he had led his team to promotion. Mike was not given a new contract by Hartlepool United, who finished runners-up in Division Three in May 2003, after taking the helm at the end of November following Chris Turner's departure for Sheffield Wednesday.

However, he was not out of the game for long as he topped an unprecedented vote to become Luton Town's new manager on June 22, 2003, beating off competition from the previous incumbent Joe Kinnear and former Cheltenham and Stoke boss Steve Cotterill.

Hartlepool chairman Ken Hodcroft took something of a risk on the inexperienced Newell, giving him the job with the Victoria Park club placed at the top of the league at the time. The former Leicester, Everton and Blackburn striker's only previous managerial experience was at Tranmere Rovers, where he was reserve team boss, and Doncaster Rovers, where he coached before accepting the post at nearby Hartlepool.

Newell's career began with his hometown club, playing for Liverpool juniors before moving to Crewe Alexandra, where he would return in the twilight of his career.

He only made three appearances for Crewe during his first spell, but managed to secure a move to Wigan Athletic where he established himself as a professional.

He signed for Luton in January 1986 and made 63 league appearances for The Hatters, scoring 18 goals before moving on to Leicester in September 1987.

After two seasons with The Foxes, the Liverpoolian returned to Merseyside to play for Everton before making the move to Blackburn where he helped take Kenny Dalglish's side into the Premier League and then to the title. Although Mike's close friend Alan Shearer and Chris Sutton became the first choice strike pairing in the championship winning season of 1994-95, he made a telling contribution and played regularly as a substitute.

He also set a new record in the Champions League the following season scoring the fastest ever hat-trick in the competition with his quick-fire ten-minute treble against Rosenborg. In total Newell played over 500 league games for 14 clubs in a 19-year professional career that saw him compete at every level.

He continues to take his UEFA coaching badges and also began the Certificate of Applied Management at Warwick University in the summer 2003 as he further develops his knowledge and experience in a profession that he is still relatively new to, although you wouldn't have guessed with the recent results.

The
Visitors



Flashback to Bristol City

A spirited effort by Peterborough United didn't yield any points at London Road as in-form Bristol City weathered a first half storm to claim all three points with a second half header from substitute Tommy Doherty the difference between the two sides.

Posh made a determined start to the encounter with the in-form visitors and Robins goalkeeper Phillips had an early touch as he gathered a low centre from Jelleyman. At the other end, Tyler made a comfortable save from a downward header by Peacock as City responded.

Farrell forced Phillips into a good save after a sharp volley as Posh pressed for an opening goal. Wilkshire had a similar effort saved at the other end as both sides settled down to play some good football. Posh then had an injury scare as Tyler stayed down following a collision with Brown, but, the shot-stopper

was soon up and able to resume. Experienced midfielder Tinnion flashed a long-range effort past the far post on the quarter hour mark as several Posh players through themselves into challenges to try and block the shot. A long throw from Legg caused all sorts of problems for the City back-line moments later and Phillips had to be alert to tip a back header from Butler around the post.

Posh, lifted by one or two ferocious tackles in the midfield by Jelleyman and Thomson, were certainly fired up and some good hold up play from Clarke found Newton, but the latter's cross was fired well over by Clarke. Another long throw ended with Woodhouse seeing a goal-bound volley headed away from danger by Butler as Posh continued to look dangerous.

A far-post corner from Thomson on 35 minutes was headed wide by Arber as Barry Fry's men pushed for the opening goal.

Former Wimbledon striker Clarke hooked an effort over the crossbar on 41 minutes after good dogged persistence from Farrell on the wing.

On the stroke of half-time Farrell saw a shot blocked before Arber was denied a goal by a sprawling save by Phillips, with Rea and Platt just waiting for the rebounds. A rare error from goalkeeper Tyler nearly created a chance for Miller, but the shot-stopper atoned for his fumble by pouncing on the loose ball. A long throw from Legg on 50 minutes looped off the head of Arber before Phillips used his full frame to tip it over the crossbar.

Bristol City made a double change just before the hour mark in an attempt to force their way into the game with the pacy Lita one of the two introduced. Peacock headed straight at Tyler from a deep cross by Hill as the visitors counter-attacked with pace.

Posh 0 - 1 Bristol City

Newton was forced off the field to receive stitches for a head wound and with Thomson filling in at right back, Brown got around the back, but crossed straight at Tyler. Woodhouse came close to breaking the deadlock on 65 minutes as Platt caused problems from a Newton cross, but the midfielder drove his low shot against the legs of Butler.

An injury to Clive Platt cut short his afternoon with Richard Logan, who scored the equaliser at Ashton Gate earlier in the campaign introduced. Bristol City got the opening goal on 75 minutes as a deep cross from Marvin Brown was met at the far post by Doherty who squeezed his header past Tyler and into the back of the net.

The visitors confidence was now flowing back after eight straight wins and they were dominating proceedings in the final third. Posh, in the shape of long

throws and looping crosses, pressed for a leveller, but the City defence coped admirably with the threat and Posh couldn't force an equaliser.

Manager Barry Fry commented: 'We did well for the majority of the game, but couldn't get the first goal we deserved in the game and it was just our luck to see Bristol City go down the other end and score.'

'We can take a lot of positives out of the game and hopefully that will stand us in good stead for the future matches.'

Final Score:

Posh 0-1 Bristol City

Attendance: 4449

Referee: G. Salisbury

Posh: Tyler, Legg, Arber, Rea, Farrell, Newton, Woodhouse, Thomson, Jelleyman, Clarke (sub Willock 80min), Platt (sub Logan 72min). Unused subs: Williams, Jenkins, St. Ledger.

Bristol City: Phillips, Carey, Butler, Hill, Wilkshire (sub Doherty 57min), Tinnion, Brown, Coles, Goodfellow (sub M. Brown 72min), Miller (sub Lita 57min), Peacock. Unused subs: Woodman, Stowell



Simon Rea and Gareth Jelleyman battle in the air for possession against City forward Lee Peacock (opposite page). Mark Arber uses his head (pictured above), while Jelleyman shows his ability on the ball (pictured right) as Posh lost 1-0 against the division's in-form side. Tommy Doherty scored the only goal of the game for the visitors.



Clive Platt

Off the mark and hungry for more goals

QUICK STATS

Height: 6' 4"

Weight: 12st 7lbs

Birthplace: Wolverhampton

Date of birth: 27th October 1977

Position: Striker

Squad number: 10



Striker Clive Platt broke his goal-scoring duck for Peterborough United in the 1-1 draw at Queen's Park Rangers last week and the giant front man insists there is more to come from him as Barry Fry's men look to pull away from the relegation zone.

Platt rose to head home a perfect Tom Williams centre a minute before the break at Loftus Road and it looked like being the winning goal until Kevin Gallen popped up in injury time to beat goalkeeper Mark Tyler with a low drive.

'It is great that I have finally got off the mark for Peterborough, but it is just a shame it didn't mean we collected all three points, because it was what we deserved. The goal was a great feeling. It was a good ball from Tommy, he has a quality left-foot and if you give him time on the ball, he will punish you.

'I just managed to get on the end of the cross and luckily for me it found the back of the net. I was pleased with my performance, it was very hard work. It was a tough game, everyone worked

hard and battled for the cause. It might not have been the prettiest to watch, but we need results right now and I think we were unlucky not to take all three points,' Platt said.

Gallen's equaliser came in the 91st minute of the match and Platt admitted that the dressing room was a pretty weird atmosphere after the game because the players knew they were so close to a much-needed three points.

'It was a strange feeling after the final whistle, because before the game we would have been happy with a 1-1 score-line, but the circumstances surrounding their goal, with it coming so late, is such a blow. The three points were taken out of our grasp,' Platt added.

The former Rochdale and Notts. County front man admitted before the game that he was itching to break his duck in front of goal, especially after scoring an own goal in the 2-2 draw with strugglers Stockport County at the end of last month.



'It was disappointing at Stockport to score at the wrong end, I felt I had got in a position to clear that ball, so it is great that I have scored at the right end. We have been playing quite well lately and it is just a bit disappointing we haven't got the results we have deserved,' Platt added.

Platt moved to London Road on a free transfer after his contract came to an end at Notts. County, where he scored three goals in 19 league starts. He scored 27 league goals in over 100 appearances in Division Three for Rochdale where he was a fans favourite.

The 6'4" front man started his football career as a trainee at Walsall, scoring four goals in 18 league starts, but the loan move to Rochdale kick-started his career. His work-rate, hold-up play and aerial ability has certainly given an extra option to the Posh strike-force.

Clive is pictured above scoring against GPR last Friday as Posh drew 1-1 with the promotion contenders. Also pictured left celebrating with midfielder Curtis Woodhouse.

Football's Future

Cash in on our support for:

- pitches
- social inclusion projects
- changing rooms
- education schemes
- kit and equipment
- pavilions



FootballFoundation
football's biggest supporter

www.footballfoundation.org.uk Helpline 0800 0277766

KRYSTAL KLENE
Industrial & Commercial Cleaners

- Office Cleaning • Factory Cleaning • Window Cleaning •
- Carpet Cleaning • Shops • Supermarkets • Grass Cutting •
- Floor Maintenance • Outside Area Maintenance •

Backing Posh Again

The Limes, 29 Westwood Park Road, Peterborough. PE3 6JL
Tel: 01733 340020 Fax: 01733 896099

Coaching Perspective

by Andy Legg

Welcome to today's game with Luton Town and we are hoping to carry the last two performances into the match with the Hatters. Looking back at last Friday's game with Queen's Park Rangers and it was so demoralising to concede such a late equaliser after playing so well.

I think before the game we would have taken the 1-1 score-line, but to be a minute away from a win and having defended so well throughout the match, it was a kick below the belt to see QPR get an equaliser. We have to lift our heads up, take the positives out of it and put it into today's match with Luton.

It was always going to be tough against Ian Holloway's team as they have got a good forward line, as they showed when they brought Tony Thorpe and Jamie Cureton on as substitutes, so it is a credit to us that we kept them quiet for the 90 minutes.



Obviously we were going to be put under a lot of pressure as we were the away side, but we coped quite well with it. It was just unfortunate we conceded late on. We are looking to win our home games now, because that is the most important factor of the run-in.

The last two games have been a massive improvement, with the organisation and the lads' will to win and survive in this league. There is a lot of work going in at the training ground with all the coaches and the players are putting in 100% and hopefully we will start getting the rewards.

Luton got a good result last week against Brentford. I know their manager Mike Newell (**pictured below**) well, he is a lovely guy. It is going to be a tough game, but if we continue our recent improvement, then we have got a good chance of picking up the three points. I am sure Luton will have watched our game against QPR and they won't be looking forward to today's match.

I think we have to play 'ugly' like we did at times during the game against QPR, because it is a relegation battle we are in. I think the fans need to be patient with us, I don't think they want to see us play ugly at London Road, but that is football for you.

It might not be pretty, but it is effective and if we can mix our play up and get three points then I am sure the fans will forgive us. Then when we are out of danger, we can start playing the passing



football that everyone likes to see. It is going to be interesting in the next four games because we play Luton, Barnsley, Rushden and Diamonds and Plymouth Argyle, so it will be tough.

We are well capable of picking up points from these fixtures. Hopefully, we may have won a few fans following the live Sky TV game last week. The fans have to be patient, away from home we can get away with playing long-ball, but we need you to stay with us for the whole 90 minutes.

We are all trying for the club, there is no point going against us. If we lose players because fans are booing them, it doesn't help the team or the club. We are all frustrated, we know it has been a poor season, but we need to all stick together and work for the same end result, which is three points today.

Enjoy the game

Leggy

www.theposh.com



Commercial Break

TODAY'S MASCOT IS

Ridgeons Match Sponsors

We would like to welcome Ridgeons to London Road today as match sponsors. The March-based Timber and Builders Merchants are sponsoring a Peterborough United match for the first time this season and we hope they enjoy the experience.

For any building job, large or small, visit Ridgeons and they will be happy to help you. They stock building materials, timber and boards, paving and fencing, paint and ironmongery, heating and sanitaryware, kitchens and bathrooms as well as hand and power tools.

You can find Ridgeons at Martin Avenue, March Trading Park, March, Cambridgeshire, or contact them on 01354 662000. For more information, visit www.ridgeons.co.uk

Carters Solicitors Match Ball Sponsors

We would like to welcome city solicitors Carters to London Road as match ball sponsors. Based in Priestgate, you can contact the law firm on 01733 779977.

T2 Studio Match Day Programme Sponsors

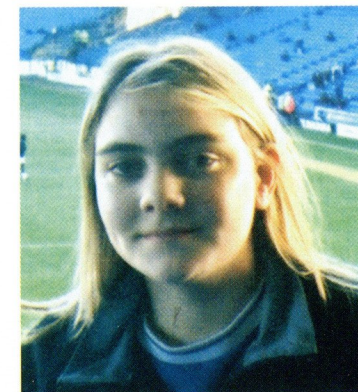
T2 Creative applies commercial creativity and a pragmatic approach to building innovative marketing strategies. Based at 79a in Broadway, you can contact the advertising agency on 01733 313166.



Match sponsors Krystal Klene and match ball sponsors the Official Supporters Club are pictured above lining up for the pre-match photograph prior to the game against Bristol City. Manager Barry Fry is pictured below presenting a signed football to a representative of the Official Supporters Club, who were the match ball sponsors for the day. We thank them for their continued support and hope all their guests had an enjoyable afternoon.



Manager Barry Fry is pictured above with two guests from one of the VIP packages at the recent game with Bristol City. Fry is pictured below presenting Graham Church of Krystal Klene a signed Peterborough United away shirt for his continued involvement with the Football Club. The cleaning company also recieved a signed football as part of their match sponsorship. Graham celebrated his birthday at the game against the Robins so many belated happy returns.



Charley York is 14-years-old and attends the Raunds Manor School Sports College. She loves football and reading and her favourite Posh players are Christopher Kanu and Dave Farrell. Charley is the only mascot this afternoon.

PETERBOROUGH UNITED MASCOT SPONSORSHIP

The mascot is fitted out with a full Posh replica strip and up to three additional family members are greeted by our host on arrival at London Road.

- * Behind the scenes tour
- * Meet the Posh manager
- * Visit the dressing room to be introduced to the Team
- * Photographs of the mascot with favourite player(s)
- * Mascot leads the team on to the pitch
- * Photographs with the match officials and two captains
- * Complimentary Match Day Programmes
- * Full Posh replica kit (shirt, shorts and socks)
- * Four Main Stand match tickets and day membership of the Executive 200 Club (including Mascot) To book this great day out, please telephone 01733 563947

Cost £160.00 (plus VAT)

PEUGEOT CAR & VAN HIRE

FROM ONLY £19.95 PER DAY*



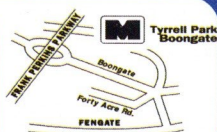
PEUGEOT HOUSE,
TYRRELL PARK,
BOONGATE,
PETERBOROUGH PE1 5PT

01733 213194

* Excludes insurance and VAT



MARSHALL
OF PETERBOROUGH



www.marshallweb.co.uk

Steve Cooper Rest in Peace

Peterborough United Football Club were notified recently of the sad death of one of the Football Club's legendary players. Steve Cooper might have only been at London Road for two months during a loan spell, but his name is etched in the club's history after he scored one of the most memorable goals Posh have ever scored.

Cooper's diving header in the Division Three Play Off semi-final at Huddersfield Town earned Posh a place at Wembley Stadium and earned the striker a place in the hearts of every United supporter.

Cooper died in his sleep at his home in Yardley, Birmingham earlier this month at the age of just 39. The previous weekend, he had watched his team, Studley FC, lose in the FA Vase at Wessex League side Gosport Borough. Peterborough United boss Barry Fry led the tributes.

'It is terrible news about Steve Cooper, who leaves a wife and two children. For one so young, it is a real tragedy. Everybody connected with Peterborough United Football Club would like to offer our condolences and our thoughts are with his family.

'I have asked the Football League to allow us to have a



minute's today and I hope everyone gives Steve a fitting tribute. Although Steve was only with us for two months, his contribution was so great during his time at the club, as he scored the goal that took the club to Wembley,' Fry said.

Cooper became a fans favourite after he threw himself at a Bobby Barnes cross late on at Leeds Road to earn Posh a place at Wembley after the striker joined Posh on-loan following spells at Tranmere Rovers, Plymouth Argyle and Barnsley. Cooper went on to play for Airdrie in Scotland from 1998-1999 and had arguably his best moment of his career.

Cooper played for the Scottish minnows against Glasgow Rangers in the 1992 Scottish League Cup semi-final and earlier that same season scored against

giants Celtic in the Scottish FA Cup third round as the Hoops beat the Airdrie 3-1 at Parkhead.

The striker had been managing Studley in Birmingham prior to his death and Studley manager Mark Chambers said: 'I've had some of the lads in the team phoning up and they're in tears. It's devastating news. It has knocked everybody for six. Coops was as tough as old boots and he was one of football's and life's larger-than-life characters.'

Steve Cooper might have only been at London Road for two months, but he is a legend in the eyes of every Posh supporter. RIP Steve Cooper.

Pictured above: Striker Steve Cooper heads home Peterborough United's winner against Huddersfield Town at Leeds Road in the play-off semi-final.

Flashback to Queen's Park Rangers

A last minute goal from Kevin Gallen earned Queen's Park Rangers a point after Peterborough United looked to have secured all three points following a superb performance at Loftus Road on Friday night.

Posh made a good start to the game in the black away kit with Platt's persistence on the right hand side ending with Clarke getting in front of his marker, only to stab the ball straight at Culkin in the QPR goal. QPR had appeals for a penalty kick turned down as the ball bounced up and struck Legg, but the official correctly saw the ball hit the Welshman's mid-drift.

Some adventurous play from right-back Forbes lifted the home faithful as he burst past a defender before striking from 30-yards, although the ball drifted well over the crossbar. At the other end, Woodhouse volleyed past the post after Platt did well to win the ball in the air.

QPR were inches away from breaking the deadlock on 13 minutes as Newton got back on

the goal-line to block a Furlong header at the far post, just as it looked like the home side had scored. Appeals for a penalty kick were rightly turned down as the ball hit the stomach of the former West Ham United midfielder before Legg hacked the ball to safety.

Legg did well to deny Bircham getting a shot at goal after rampaging through the middle of the park as the hosts pressed for the opening goal. Jelleyman was then substituted after staying down following a challenge by Carlisle with ex-QPR star Tommy Williams given a chance to impress from the bench.

Clarke then hooked a shot over the bar from just inside the box with QPR waiting for the whistle to blow as the striker clearly used his hands to control the ball. Woodhouse was lucky not to go into the book after catching Rose with a late challenge as the midfield battle became heated.

It was Posh who broke the

deadlock moments before the interval as Williams' centre was met by a superb Platt header, as he planted his effort past Culkin and into the back of the net. It was the first goal for Platt in a Posh shirt since his arrival from Notts County.

Posh were inches away from adding to the score moments after the interval as Arber got on the end of a Woodhouse free-kick, only to direct his effort narrowly past the post. It was a chance that could have sealed the game for Barry Fry's men.

Goalkeeper Tyler produced a world-class save to deny McLeod's volley at the far post as Rangers tried to get back in the game. Tyler fisted the ball over the crossbar to deny the winger's effort and was then in the right place at the right time to stop a goal-bound McLeod shot.

QPR boss Ian Holloway made a triple change just before the hour mark with Jamie Cureton, Richard Johnson and Tony Thorpe introduced into the fray. QPR were playing with 10-men midway through the half as Carlisle suffered an injury and with the home side already making the three substitutions there was real concern on the home bench. The defender was able to make a return to action on 67 minutes.

Argentine defender Padula whipped a free-kick over the bar with his left foot on 71 minutes after Woodhouse miss-timed his tackle on Cureton. Manager Fry made a change on 74 minutes as Dave Farrell replaced the hard-working Clarke.



QPR 1 - 1 Posh

QPR missed a glorious chance to level the scores on 75 minutes as a poor Legg header allowed Cureton time and space to shoot, but the former Reading front man and one-time Posh target, ballooned his effort well over the crossbar.

Tyler was then called upon to make a routine save from Gallen as he beat the offside trap before Carlisle headed straight at Tyler from a decent Cureton cross.

QPR goalkeeper Culkin should have been sent-off on 81 minutes as he raced out of his goal and denied Platt a goal with his hands. He was well outside the box, but the official only booked the former Manchester United shot-stopper. The fourth official indicated four minutes of stoppage time at the end of the match to groans of disapproval from the visiting fans.

In the first minute of that stoppage time, QPR got back on



level terms as Gallen raced onto a Cureton flick to drill the ball past Tyler and into the back of the net.

It was heart-breaking for the Posh side, who had battled so bravely throughout the 90 minutes to be undone so late in the game. The final shot of the game was by Jenkins, who looped a volley over the crossbar.

Final Score:

Queen's Park Rangers 1-1 Posh

Attendance: 13, 276

Referee: Phil Joslin



Posh: Tyler, Arber, Burton, Legg, Jelleyman (sub Williams 25min), Newton, Woodhouse, Jenkins, Thomson, Clarke (sub Farrell 75min), Platt. Unused subs: Kanu, Logan, Willock.

QPR: Culkin, Forbes, Padula, Carlisle, Palmer (sub Johnson 60min), Rose (sub Cureton 59min), Bircham, Gallen, Gnohere, McLeod, Furlong (sub Thorpe 59min). Unused subs: Sabin, Marney.

Striker Clive Platt lays the ball off (pictured opposite page), and went on to score his first goal for Posh a minute before half-time (pictured above) at Loftus Road. QPR responded late on, but Posh played well throughout with forward Andy Clarke doing well. He is pictured left getting stuck in against the Hoops.



Official
The Posh Broadband Offers

SIGN UP!

to AOL or NTL
BROADBAND

and get **THE POSH WORLD**

- ➔ Broadband from £24.99 a month
- ➔ 10 times faster downloads
- ➔ Phone & surf at the same time
- ➔ Enjoy fast, high quality video



FREE!

★ **THE POSH
WORLD**
INTERNET, TV AND RADIO

To sign up to AOL or NTL broadband
and get your **FREE** World subscription
visit **www.theposh.com**

* Broadband subscription fees and conditions apply



Physio's Focus

by Paul Showler

I would like to welcome the players, officials and fans of Luton Town Football Club for this afternoon's game which we would class as a local derby. Over recent seasons games between our two clubs have been hard fought and particularly close and I am sure this one will be no different.

In recent years Luton have been through many changes, suffered relegation, re-investment on a huge scale and have been promoted and are now still attempting to stabilise the club financially whilst in a strong position within Division Two. We have nowhere near the financial difficulties of Luton but find ourselves toward the bottom of the Division. Therefore, three points today would be a huge boost following our recent improvement in form.

There were a few casualties after our clash with Queen's Park Rangers last Friday as I am sure most of you saw on the television with Gareth Jelleyman being the most severe. Gareth was forced to leave the pitch

midway through the first half with an injury to his ankle, which was sustained in a high energy tackle in the opponents half.

We compressed the injury once Gareth had exited the pitch and we are waiting for it to settle before assessing it and x-raying it. If the injury is just a soft tissue one then I would expect Gareth to be out of action for between three and five weeks, should the injury have a bone involvement then this could be extended. It is unfortunate for Gareth who seems to pick up injuries just when things seem to be going right for him.

Another injury that we sustained in the same game was an injury to Clive Platt our centre forward who gave us the lead in Friday's game. Clive put himself about and ran himself into the ground and as a result he has picked up a slight strain to his right hamstring muscle. We don't feel that it is a serious injury and we are hopeful that he will be available for this afternoon's clash.

Mark Arber sustained an injury



to his right shoulder following a challenge when he landed on the floor and an opponent landed on top of him. Again we don't expect Mark to miss any games and Luton is definitely a game that he would want to play in.

Anyone watching our last two games will have seen a more resilient attitude within the team and we will be attempting to build on that in today's game. We are entering the last phase of matches in this years campaign and the togetherness we have shown recently will stand us in good stead to pull clear of trouble. Your support is vital to us so keep up your excellent support and get behind the lads.

Enjoy today's game.

Paul

Curtis Woodhouse (pictured left) gets stuck in, right in front of the Posh bench, during the 1-1 draw at Kenilworth Road back in October



www.theposh.com



theposhbet

Our Official Online Betting Service

Powered by
bet365

WIN, LOSE or DRAW?

IT'S YOUR CALL!

**FREE
£10 BET***



**TO PLACE YOUR BET
PHONE 08000 323 365**
Quote: theposhbet

Match Markets Include: • 1st GOAL SCORER • SCORECASTS
• 90 MINUTES • CORRECT SCORE
AND MANY MORE...

Each bet benefits the club!

First time telephone betting customers placing a bet in their first call will receive a **FREE** bet on their club's next match to the same stake total (maximum free bet £10)

*To qualify, the free bet must be placed during the first call. The stake on the free bet is not returned. Existing bet365/clubbet account holders do not qualify. This offer cannot be used in conjunction with any other offer. Only one open account offer per customer, household, family and debit card. Offer only applies to debit cards. www.theposh.com

Name The Stand

Peterborough United Football Club have been amazed by the sales so far for our 'Name That Stand' Competition. This unique offer allows businesses and individuals in the Peterborough area entry for just £100 giving them the opportunity to become London Road stand sponsors for the 2004/2005 season.

In late September last year, Reynopoly became the Moyes End sponsors on a three year deal (**pictured right**).

The lucky winner will have the chance to have their company name branded on Posh's London Road Stand's terrace roof (**pictured below**) and will become it's first ever stand sponsors. The competition was inspired by a letter received from an avid fan suggesting a variety of commercial opportunities.

Steve Holt, Commercial Director of Peterborough United said: 'This is a fantastic opportunity for a company in Peterborough to get their name in front of a large audience all next season. Everyone who enters will receive two free tickets to our home



league match against Wrexham on Saturday 13th March when the draw and the announcement of the winner will take place at half-time.

'Over the last few months the Commercial Department have been investigating different ideas put forward by fans and implementing those possible.

Recently we saw the launch of Pitch Official Sponsor Holding (POSH) scheme which enables fans to sponsor square yards of the pitch for just £10 and there are many more initiatives to follow. Everyone at the club

would like to say a big thank you to all the fans who suggested ideas.'

For anyone requiring more information or a competition entry form, please contact Katie Woolnough, Commercial Sales Executive in the Commercial Department on 01733 563947 or email Katie@theposh.com. You will be able to pick up an entry form from the Main Reception at London Road and from the Club Shop on match days.



www.theposh.com





JUNIOR Jargon

by Rachael Church



"Barry Fry-Day"

Listen to Peterborough's 106.8 Lite FM every Friday morning at 8.10am and hear the Posh Manager chat to Kev Lawrence. There's also the chance to win tickets to home league games at London Road.



**FAST FRIENDLY LEGAL ADVICE
YOU CAN DEPEND ON!**

FOR ALL YOUR LEGAL REQUIREMENTS

WALLER NEEDHAM & GREEN
SOLICITORS

72/74 BROADWAY, PETERBOROUGH
01733 311422
RIGHTWELL, EAST BRETTON
01733 262182

Hi everyone and welcome to today's game against Luton Town, and a big Posh welcome to all the visiting Junior Hatters fans. Hope you all had a good half term. The good news is, it's only five weeks until the Easter holidays! The bad news is, we only have six home matches left this season. I hope to see you here at all of these matches, as the players really need our support.

Were you lucky enough to go to QPR last week, or did you watch the game on Sky? Either way, what an exciting match it was? The only problem about watching it on TV was, we had to watch their goal over and over again. I'm sure you will all agree that our players did us proud in front of a nation-wide audience.

It must have felt like a perfect day for the team (especially Clive Platt!) when he put us 1-0 up just before half time. Unfortunately, in real life, dreams don't always come true, which is why I recently asked some of the players to tell me about their fantasy "Perfect Day."



I asked four of the younger members of our squad (Gilly, Jelly, Logan and Newts) to give me their ideas for their Perfect "POSH" Day. I think you will be surprised by some of the things they said. Whilst Gilly, Jelly (pictured bottom left) and Newton (pictured top right) would be happy for Posh to play in an FA Cup match against the teams they supported as children, Norwich City, Wrexham and West Ham United, Richard Logan set his sights much higher.

In contrast, he would like Posh to play against Real Madrid in the Champions League Final at the Nou Camp stadium in Barcelona. The Posh team would also include Clive Platt (because "he's big") Curtis Woodhouse (because "he's good") and Sagi Burton to keep Ronaldo at bay (because "he's an animal!").

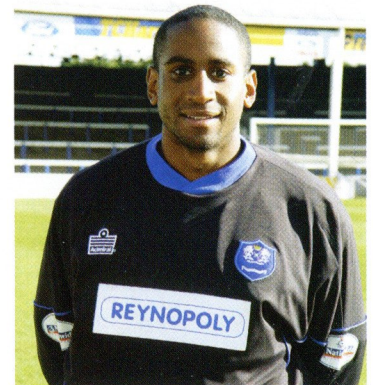
On a perfect day, it was the players chance to eat what ever they wanted. However, Matthews choice would be a good old Macdonald's, and Gareth wanted Spaghetti Bolognaise for all. Richard Logan's ideal meal is beans - with anything! (That's more like it!) Pre match entertainment ranged from the Spice Girls (Adam Newton) to Lord Brockett (Gareth Jelleyman - we won't ask!)

Finally, I asked them if they had one wish, what would it be.

Logan: I wish..... I was Ronaldo.

Newts: I wish..... I had 20 million pounds tomorrow.

Jelly: I wish... Posh would win



10 out of their last 15 games and avoid relegation

Let's hope Gareth's wish, at least, comes true.

Don't forget to email me at Rachael@theposh.com or write to me via the club before the next home game against Wrexham. I'd love to hear from you on any subject.

Here is a quick quiz to keep you occupied at half time:

Match the player to the team.....

Jimmy BULLARD	ARSENAL
Kevin CAMPBELL	LINCOLN
Matthew ETHERINGTON	
	BRENTFORD
Francis GREEN	NORWICH
Tim HOWARD	WIGAN
Darren HUCKERBY	QPR
Stephen HUNT	MAN UNITED
Ray PARLOUR	PORTSMOUTH
Martin ROWLANDS	WEST HAM
Teddy SHERINGHAM	EVERTON

See you next time, have a good week.
Rach

'Best Wishes to
Peterborough FC from
Britvic Soft Drinks for
the rest of the season'



BRITVIC
SOFT DRINKS

NO-ONE KNOWS THE SOFT DRINKS MARKET BETTER

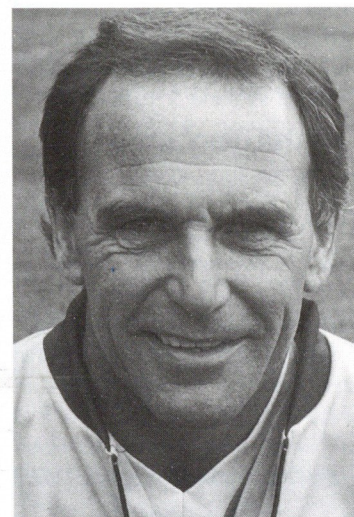
London Road Latest

Marshall Peugeot Set To Entertain Posh Legends In April

On Friday 30th April Marshall Peugeot are playing their annual charity football match against the Posh Legends with several former Peterborough United stars expected to line-up for the Legend outfit in the game, which is being held at London Road.

The Posh team will again consist of many ex-Posh stars of the past including Tommy Robson (pictured below left), Mick Gynn, Ken Charley (pictured below right), and Dave Gregory. The game kicks off at 7.30pm and entry will be **FREE** via the main stand with refreshments available and the Executive bar open after the game.

Chris Turner, ex Posh manager, will again link up with Marshall as their manager and he feels that this year they will clinch their first victory after three years of trying. More details about this charity match will be released to theposh.com at a later date.



Signed Shirts On Sale From London Road

Supporters can purchase signed Peterborough United home, away or goalkeeper shirts for just £20 from the London Road Ticket Office. The Posh squad have autographed the home and away shirts from this season's shirts, while the club's goalkeepers have signed the goalkeepers shirts.

The shirts were reduced in price to £15 (all sizes) last week after shirt sponsors Van Asten Logistics went into receivership earlier this year. The Ticket Office is open from 9am-5pm, and the autographed shirts will also be on sale in the Club Shop on Saturday 28th February. Autographed shirts subject to availability.

Platt Delight After Breaking Posh Goal Duck

Striker Clive Platt scored his first goal for Peterborough United against Queen's Park Rangers last week, but the former Rochdale front man was obviously disappointed his header didn't prove to be the winning goal at Loftus Road.

Platt guided home a superb Tommy Williams cross to put Posh in front moments before the interval and it looked like being the only goal of the game until Kevin Gallen popped up in the 91st minute to earn QPR an undeserved point.

Platt said: 'It is great that I have finally got off the mark for Peterborough, but it is just a shame it didn't mean we collected all three points, because it was what we deserved. The goal was a great feeling. It was a good ball from

Tommy, he has a quality left-foot and if you give him time on the ball, he will punish you.

'I just managed to get on the end of the cross and luckily for me it found the back of the net. I was pleased with my performance, it was very hard work. It was a tough game, everyone worked hard and battled for the cause. It might not have been the prettiest to watch, but we need results right now and I think we were unlucky not to take all three points.

'It was a strange feeling after the final whistle because before the game we would have been happy with a 1-1 score-line, but the circumstances surrounding their goal, with it coming so late, was such a blow. The three points were taken out of our grasp. Barry and Bobby Gould said afterwards that a lot of teams will have seen our performance and know what we can do, if we can play like we did against QPR, then I am sure we will start moving in the right direction,' Platt said.



www.theposh.com



Head to Head History by Matt Hill

LEAGUE RECORD AGAINST LUTON TOWN

	P	W	D	L	F	A
Home	7	1	4	2	6	6
Away	8	2	3	3	10	14
Total	15	3	7	5	16	20

A Neale Fenn goal earned Posh a point from a 1-1 draw on Luton's last visit to London Road on February 1, 2003. A crowd of 6,760 included nearly 3,000 travelling Hatters fans, many of whom expected better from their team after Steve Howard had fired them into an early lead. A 1-1 draw was again the outcome when the sides met at Kenilworth Road earlier this season - Leon McKenzie's header cancelling out Adrian Forbes' (pictured below) opener.

PLAYER OF THE YEAR

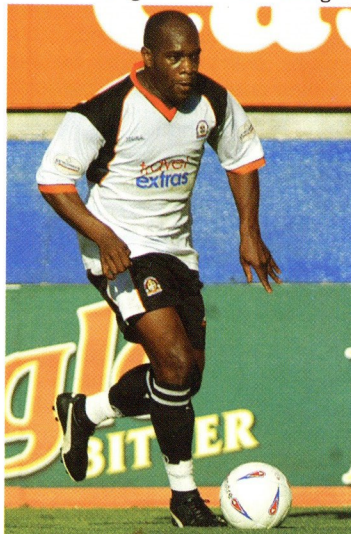
Ex-Luton midfielder David Oldfield helped Posh to promotion via the play-offs in May 2000. Progressing through the ranks at Kenilworth Road, the England under-21 international played 29 First Division games for the Hatters before joining Manchester City for £600,000 in March 1989. He later appeared in three losing play-off finals with Leicester before returning for a second spell at Luton.

Barry Fry brought him to London Road from Stoke City in March 2000, and after appearing as an emergency centre-forward against Darlington at Wembley, he returned to a more familiar

midfield role to win our Player of the Season award in 2000-01. Netting four goals in 78 League outings while at London Road, he also had a stint as player-coach before joining Oxford United in 2002.

LEADING SCORER

Former Luton midfielder Billy Kellock was Peterborough United's leading scorer in 1979-80. Moving to London Road from non-League Kettering Town in August 1979, the tough Glaswegian was captain of Peter Morris' team that narrowly missed promotion to Division Three for two seasons running in the early 1980s. He netted 43 goals in 134 League



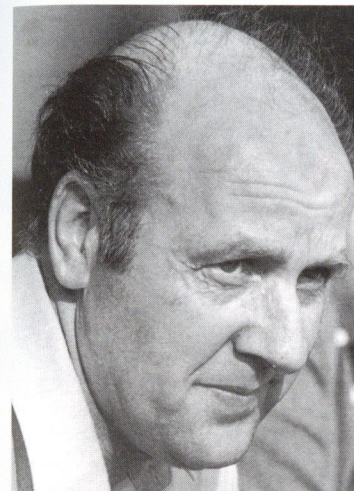
games prior to joining Luton for £30,000 in July 1982. Things never worked out for him at Kenilworth Road however, and after just seven First Division appearances he took his talents to Wolves, whom he helped win promotion to the top flight at the end of the 1982-83 season. After subsequent spells with Southend, Port Vale and Halifax he ended his League career in 1987.

WEMBLEY FINALIST

Left-back Ken Hawkes played over 100 first team games for Luton Town, including the 1959 FA Cup final by Nottingham Forest, before joining Posh in the 1961 close season. Manager Jimmy Hagan signed him as experienced defensive cover as Posh prepared for life in Division Three, but injuries restricted Ken to just one appearance, in a memorable 5-4 home defeat of Lincoln City. He suffered a broken arm, cracked ribs and had a cartilage removed, all within ten months. He was released to non-League Bedford in June 1962.

UNLUCKY STRIKER

Well-travelled Welsh forward Laurie Sheffield scored nearly 150 League goals during a 15-year professional career in which he served eight clubs, including Luton Town and Posh. London Road proved to be his final port of call as a broken ankle brought a premature end to his career. Moving to Posh from Doncaster in August 1970



he scored six goals in 18 league games for Jim Iley's side. He earlier netted 12 League goals from 34 games for the Hatters between July 1967 and October the following year.

LOCAL BOY

A former Leicester City trainee, winger Martin Williams made his League debut following a move to his hometown club, Luton, in September 1991. He went on to make 40 League appearances for the Hatters, then spent five years with Reading before switching to Swindon in 2000. From there he was loaned to Posh during the second half of the 2000-01 season, playing 14 Second Division games and netting a couple of goals, including a 25-yard free-kick against Wigan. His form dipped however, and after failing to land a permanent contract at London Road he signed for Stevenage Borough.

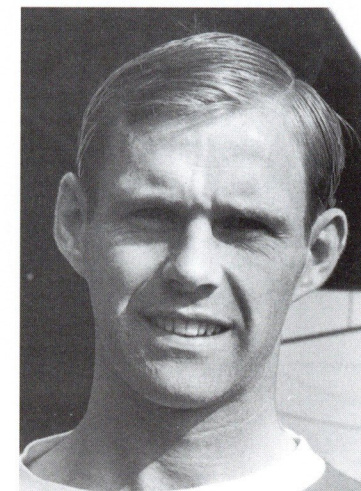
FOR THE RECORD:

* A Brian Horton penalty plus other goals by Ricky Hill and Paul Walsh gave Luton a 3-0 FA Cup third round win over Posh in front of 11,151 at Kenilworth Road on January 8, 1983.

Fourth Division Posh had recorded good wins over Division Three sides Chesterfield and Doncaster in earlier rounds, but found top-flight Luton too hot to handle despite creating a couple of early chances.

* Peter Price scored to earn Posh a 1-1 draw at home to Luton in the League Cup first round first leg on August 13, 1969. Tommy Robson and player-boss Jim Iley (pictured above left) were on target in the second leg at Kenilworth Road a week later, but the Hatters scored five - including a strike from future England star Malcolm MacDonald - to triumph 6-3 on aggregate. The Hatters also beat us over two legs in the same competition in 2000-01.

* Current Posh forward Andrew Fotiadis scored for Luton at London Road on May 3, 1997 to condemn Barry Fry's team to relegation to Division Three. Fotiadis came off the bench to score the only goal of the game in front of 9,499, a crowd boosted by a large away following. The Hatters line-up also included former Posh goalkeeper Ian Feuer and Australian-born midfielder David Oldfield, who helped clinch our return to Division Two three years later.



* Posh have beaten Luton at London Road just once in seven League attempts. Our one and only success came in February 1965, back in the days when Derek Dougan was our leading light. 'The Doog' scored one and made another for Ollie Conmy (pictured above right) to secure a 2-0 win in front of a 12,946 crowd still basking in the glory of our famous FA Cup win over Arsenal seven days earlier.

* Posh first entertained the Hatters at London Road on November 2, 1963, when the sides shared the points following a drab 0-0 draw. In what tends to be a low-scoring fixture it also finished goalless here in December 1993, despite the best efforts of Town's former England striker Kerry Dixon, whose header hit the woodwork.

Early Bird Special



To book call 0870 400 9063

Offers are subject to availability and inclusive of VAT.
Offer cannot be used in conjunction with any other promotion.



by Andy Jardine

Onto brighter things and the player of the month award for January went to Curtis Woodhouse (**pictured above**) for the fourth month in a row. Can someone else win it in February? The winner of the



Our next quiz night is taking place on Friday March 19th in the Executive Suite. The cost for

The away travel is still proving popular and coach travel for the QPR match was sold out. Advice for anyone wanting to purchase coach travel with us is always book as early as possible to avoid disappointment.

Any unsold coach tickets will be put on sale at the London Road ticket office one week before departure.

www.theposh.com



POSH Supporters Trust

FORUM

Recently we set up on our website (www.theposhtrust.co.uk) a forum for exchanging views and putting questions to the Trust Board. We suggest you try out this very popular new facility. Since Leigh Porter was appointed to the Posh Board of Directors, Trust members have had a direct line to the club. It is up to members to make use of the facility through the Forum, by e-mail or by post.

SUPPORTERS DIRECT

All those interested in news from the supporters' trust movement will enjoy the new issue of Supporters Direct magazine, which is available from the Trust counters in the Club Shop and the Family Stand. It includes a full-page article about The Posh Supporters' Trust. We ask for a nominal donation to Trust funds.

NEWS FROM OTHER TRUSTS

Darlington Supporters' Trust is now battling to save the club following its recent "descent" into administration. It has set a fund-raising target of £250,000 in order to consolidate its future role at the club with a 20% shareholding.

Swansea City Supporters' Trust is one of seven parties in a consortium, four of which have invested over £50,000 in order to secure a place on the club board. The club, now in a CVA (creditors' voluntary agreement), is run by volunteers.

Norwich City Supporters' Trust has launched its own real ale, "In the Hands of Fans".

BRIGHTON CRISIS

In response to an urgent request from Brighton & Hove Albion Supporters' Club we wrote a letter to John Prescott, the Deputy Prime Minister, imploring him on behalf of Peterborough United supporters to approve the plans for a new community stadium at Falmer on the outskirts of Brighton. Any Posh fan who has visited the Withdean Stadium knows that it is unsuitable and inadequate. It is also a very short-term solution and one that can only be resolved by the approval of planning permission for a permanent home for the club.

SPECIAL DAY FOR LUCKY MEMBER

How would you like to be a matchday guest of Leigh Porter and sit in the directors' box at a home game this season? We have decided to hold a draw for such a prize, open to every fully paid-up member. The winner will be announced in the next programme (13 March, v Wrexham). (In case the winner declines the prize, preferring to remain in his/her own usual place, a couple of 'reserve' names will also be drawn out of the hat.)

"BIG FRY"

One of our members is still seeking a hardback copy of Barry Fry's autobiography, "Big Fry". If you are willing to sell your copy, please let us know.

TRUST INCREASES SHAREHOLDING

Following the allocation of 1,000 shares by Barry Fry in recognition of the funds raised for the floodlight refurbishment

appeal, The Posh Supporters' Trust now owns 1,390 shares in Peterborough United Football Club Limited and is the second largest shareholder in the club. As one other shareholder has recently donated her single share to the Trust, we will soon have a total of 1,391. In addition the Trust has been promised proxy voting rights in respect of a further 27 shares.

STEVE COOPER

The Posh Supporters' Trust was saddened to learn of the untimely death of Steve Cooper, whose superb diving header at Huddersfield in 1992 set up our first appearance at Wembley and two seasons in Division 1. We will work with the official supporters' club and PISA2000 to ensure a fitting tribute to Steve.

GOLD BOND SUPER DRAW

Have you signed up for the Gold Bond Super Draw yet? It guarantees prizes of £2,000 every week, £5,000 every month, a new car four times a year and 400 cash prizes weekly. You pay only £1 a week to buy seven numbers. Full details are available on our website, in the Club Shop or at our counter in the family stand. If you become an agent, you will receive 15% commission on all sales and 10% of winnings on tickets sold. Gold Bond is an established lottery operating for the benefit of football clubs and supporters' trusts.

By buying tickets you help The Posh Supporters' Trust to build its funds. Full details of winners are published every week on our website.

POSH Supporters Trust

WHO' WHO IN THE POSH SUPPORTERS' TRUST:

KEITH JENNINGS (pictured right), BUSINESS DEVELOPMENT DIRECTOR

- Age: 66
- Occupation: Retired.
- How long have you supported Posh? Almost 60 years.
- What was your first match? As it's so long ago, I can't remember, but one of the Posh players was named Tom Rudkin. He left in 1946 for Arsenal after scoring 14 goals in 18 matches for Posh.
- Where do you sit/stand in the ground? North Stand, Block C.
- Have you ever supported any other club? No.
- Best Posh player ever seen: Dennis Emery.
- Worst Posh player ever seen: Difficult to say - possibly Dominic Iorfa.
- Best all-time Posh XI: Seaman, Killin, Davies, Rankmore, Crowe, Hails, Emery, Bly, Hill, McNamee.
- Worst all-time Posh XI: Cooksey, Linton, Rioch, Sharkey, Firm, Clamp, Lambert, Guy, Iorfa, Rowe, Holman.
- Best Posh match ever: 2-1 at home v Arsenal, 30 January 1965, in the F A Cup 4th Round. (Scorers: Dougan and McNamee.)
- Worst Posh match ever: 0-1 at home v Doncaster, 10 February 1998 - Doncaster's only away win all season when they were relegated to the Conference
- Favourite manager: Jimmy Hagan.
- Favourite all-time Posh



player: Dennis Emery.

15. Current favourite player: Curtis Woodhouse and David Farrell.

MORE BENEFITS FOR TRUST MEMBERS

We are delighted to add two more names to our list of companies offering a discount to members of The Posh Supporters' Trust:

PD Kitchens & Bedrooms - made to order units (tel 01733 762039). 10% off trade price list for kitchen and bedroom cabinets.

Gallery Worktops Limited - specialists in granite, marble, Corian and Marlan solid surface kitchen worktops (installation service available). Tel 07900 557001 (James Teggerdine). 10% off trade price list.

Every Trust member has a membership card (sponsored by Charters Bar) that, on production of the card, entitles him/her to benefits generously provided by a number of

businesses in and around Peterborough. Members can save much more than their annual subscription every year if they use their card.

Arriva Willhire, Best Bodies Gymnasium, Blinds Direct, The Brewery Tap, Charters Bar, City Electrical Factors, Escape Health & Beauty.

F Wade & Son Fishing Tackle, Fitzjohn Ingle Estate Agents, Fleur Florists, Gallery Worktops Limited.

Golden Cod Fish Bars (4 Staniland Way,

Werrington and 2a Crawthorne Road), Huntingdon Steeplechases, J W D'Arcy Limited Jewellers, Lambe's Lawnmowers.

Living Well Premier Health Club, Michael John Hair Stylists (30 Queensgate and 289 Lincoln Road, Millfield).

PD Kitchens & Bedrooms, Penco Arts & Graphics, Peterborough Greyhound Stadium, Peterborough United FC, Plough Inn (Ramsey Road, Farcet).

RAC (0800 716796), Speedy Hire Centres, Thorney Golf Club, Terry Wright Cycles (Deeping St James), Woodston MoT Centre.

Full details of the discounts are available on our website and in our Newsletter, copies of which are obtainable from the club shop or our counter in the family stand.

The Posh Supporters' Trust, P O Box 587, Peterborough PE4 5XL.

E-mail address:

theposhtrust@yahoo.co.uk

Website:

www.theposhtrust.co.uk

Kit Sponsors

2003-2004

Player Sponsorship

Player Sponsorship



BARRY FRY

Adrian Darby
Klingair Limited
01780 740644



MARK TYLER

Peterborough United
Official Supporters'
Club
01733 761652



MATHEW GILL

KrystalKlene
29 Westwood Park
Road, Peterborough
01733 340020



CLIVE PLATT

S.T. Evans Heating &
Plumbing Services
01778 343411



MATT NOLAN

Waller Needham &
Green Solicitors
72 Broadway, P'boro
01733 311422



SIMON REA

Peterborough United
Official Supporters'
Club
01733 761652



MARK ARBER

Waller Needham &
Green Solicitors
72 Broadway, P'boro
01733 311422



DAVID FARRELL

Adrian Rands Consulting
Engineers, Unit 4 Orton
Enterprise Centre,
Bakewell Road, P'boro.
01733 236350



ADAM FRY

E. Hennessey & Co.
Accountants, taxation
and book-keeping
01923 710458



ANDY CLARKE

SCA Food Services
01733 761350



JAMES PULLEN

Steff Jackson



ADAM NEWTON

Stephen & John
Dawes,
Boston



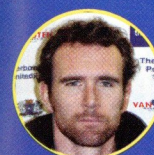
SEAN ST LEDGER

Jennings Racing
London Road Stadium
01733 554749



CALUM WILLOCK

Peterborough United
Official Supporters'
Club
01733 761652



STEVE JENKINS

If you wish to sponsor
a player please contact
the club on
01733 563947



JAMIE DAY

Samuel Bowles



ANDREW FOTIADIS

KrystalKlene,
29 Westwood Park Road,
Peterborough
01733 340020



CURTIS WOODHOUSE

KrystalKlene, 29
Westwood Park Road,
Peterborough.
01733 340020



GARETH JELLEYMAN

Jennings Racing
London Road Stadium
01733 554749



LEE CLARKE

Waller Needham &
Green Solicitors
72 Broadway, P'boro
01733 311422



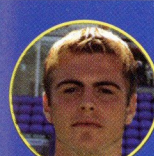
SAGI BURTON

Cherry Tree Pub
Oundle Road
Peterborough
01733 703495



STEVE THOMSON

Apex Philatelic
Auctions
Oaklands, Crowhurst,
Lingfield, Surrey.
01342 833413



SHANE HUKU

Ray Watson



MARK COULSON

D G M Personally
Tailored Homes
Spalding
01775 766816



BRADLEY THOMAS

Peterborough United
Official Supporters' Club
01733 761652



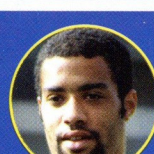
ANDY LEGG

Robert Whitehead
Opticians
1 Blunts Lane Whittlesey
01733 205466



CHRIS KANU

Reynopoly
01733 891322



RICHARD LOGAN

Peterborough United
Official Supporters'
Club
01733 761652



POSH PUB

11am - 11pm, Thursday to Saturday
Not Open Sundays

POSH CONFERENCE FACILITIES

Catering for up to 150 people
Various size rooms available

THE STARLITE SUITE

Open Friday nights from 9pm to 2am
Over 25s Disco - smart casual dress
£3 admission before midnight - £3.50 after

A few extra stops

Peterborough Kings Cross

Save £1,184

wagn

Save £1,184 a year when you buy a Wagn-dedicated Annual Season Ticket from Peterborough to London, instead of one which lets you travel on any service from Peterborough to London.

From the Reserves

The Peterborough United second string were held 0-0 by Gillingham at London Road recently with former Posh goalkeeper Bertrand Bossu playing a starring role for the Gills.

Calum Willock miss-hit a shot early on when well-placed before Andrew Fotiadis struck the top of the crossbar after shrugging off the attentions of his marker. Fotiadis was then denied by a smart Bossu save after capitalising on a defensive error from Green, whose clearance was charged down by the former Luton Town front man.

Posh came desperately close to opening the scoring just after the quarter hour mark as a forceful run from Chris Kanu created a chance for Matthew Gill, but his rasping effort struck the crossbar before rebounding to safety. A superb cross from Tommy Williams created a half-chance for Fotiadis, but his header drifted over.

Manager John Morling made two changes at the interval with Adam Fry and Rory Hutton replacing Williams and Burton, who may have played themselves into contention for a first team place at QPR on Friday night.

A great cross from Kanu created an opportunity for Willock, but his glancing header drifted past the far post and Mark Coulson fired straight at Bossu from a tight angle. Willock then dragged an effort well wide after beating Rose for pace as Posh pressed for an opening goal.

Bradley Thomas then missed an absolute sitter (pictured below) as he poked a Coulson corner wide from inside the six-yard box after Gillingham failed to deal with the flat set-piece. Willock then forced a superb reflex save out of Bossu after getting in behind the Gills back-line as Posh continued to create the chances.



Gillingham striker Edusei blazed over in a rare attack by the visitors, but with 20 minutes left on the clock, it looked likely that Posh would claim all three points. Midfielder Gill forced Bossu into a low save with a fierce volley before screwing the rebound wide of the target.

Willock then saw a deflected shot loop into the arms of Bossu after a good challenge from Gill opened the play up. Posh continued to press in the final moments, but couldn't force a winner in the Pontins Holiday Combination League clash.

Final Score: Posh 0-0 Gillingham

Posh: Pullen, Kanu, Coulson St. Ledger, Thomas, Burton (sub Fry 46min), Huke, Gill, Williams (sub Hutton 46min), Willock, Fotiadis (sub Logan 65min). Unused subs: Semple, Chatfield.

Referee: K. Woolmer

www.theposh.com





www.carlsberg.co.uk

Probably the best lager in the world.

Executive Box Holders

Focus On The Rolton Group

The Rolton Group provides Professional Engineering services in the areas of Mechanical and Electrical, Civil and Structural, Geotechnical and Environmental Engineering and Project Management.

The Rolton Group are one of the leading providers of professional engineering services in the UK. They are accredited to ISO9001 standard and are currently applying for ISO14000 status. They are members of the MIA and SMMT plus are registered with Constructionline-UK register of pre-qualified construction services. Additionally we are Investors in People.

The Rolton Group were established in 1999 and you can contact them by calling 0193 341 0909, emailing them: elaine.bulmer@rolton.com or click on their website at www.rolton.com.



Peterborough United would like to thank all of the companies who have purchased an executive box for the new 2003-2004 campaign and we hope you enjoy the Nationwide League Division Two campaign here at London Road. There are still executive boxes available at London Road so if you are interested or want to find out more, contact the club. Below is the view from one of the boxes.



Executive Box Holders 2003-2004 Season

Perkins Engines Limited - Diesel Engine Manufacturer - 01733 583000
Dean House Developments - 01733 380956
Cousins of Emneth - Manufacturer's of Agricultural Machinery - 01945 584600
Marshall Motor Group - Multi-Franchise Car Dealer - www.marshallweb.co.uk
Howard Richard Sales - Hand Tool Distributor - 01733 237779
Red Robin Toy - Toy Manufacturer - 01733 371170
Rolton Group - Engineering and Management Consultants - 01733 325232
Chiltern Cold Storage - Cold Storage Specialist - 01733 370808
Reynopoly - Polythene Manufacturers - 01733 891322
Evening Telegraph - Local Evening Newspaper - 01733 555111
Emap UK - Magazine Publishers - 0207 868 7609
Caterfix Limited - Catering Suppliers - 01733 561555 - www.caterfix.com

Executive boxes for ten guests are available on a match by match basis. If you are interested in a particular match please contact PUFC on 01733 563947

View on Two



Bristol City Claim 11th Straight Win

Bristol City are closing in on a club record 14th successive win after the Robins chalked up their 11th consecutive victory with a narrow 1-0 win over play-off hopefuls Wrexham at Ashton Gate. It was the second 1-0 success in a row after the win at London Road against Posh.

It was Luke Wilshire who scored the only goal of the game against the Red Dragons as he found the back of the net inside the first quarter of an hour. The win keeps City top of the Second Division and piles on the pressure for the chasing pack.

The two other contenders for the automatic promotion slots both had late goals to thank in their games last weekend. Posh, of course, were at Queen's Park Rangers and looked to be heading for maximum points when Clive Platt (pictured below) scored, but a 91st minute leveller from Kevin Gallen earned the Hoops a point. The following day saw Plymouth Argyle entertain Port Vale at Home Park and when Stephen McPhee put the visitors in front, the nerves were jangling amongst the Pilgrims fans, especially after their defeat at Brighton and Hove Albion the previous week.

Plymouth are made of stern stuff though, and equalised on 80 minutes through substitute Martin Phillips. With time added on at the end of the fixture, up popped Ian Stonebridge to earn Paul Sturrock's side an unlikely, but vital, three points.

Swindon Keep Up Pressure On Top Three

'Super Sam Parkin' was on the score-

sheet again as Swindon Town kept up the pressure on the top three with a comfortable 2-0 success over resurgent Chesterfield at the County Ground. Swindon needed a late goal from Parkin to secure the win after Sean O'Hanlon had given Andy King's side the lead.

Brighton and Hove Albion were the big movers in the division last week as they leapt into the top five with a 3-0 success over out of form AFC Bournemouth at the Withdean Stadium. The Seagulls had the game won by half-time thanks to goals from Leon Knight, Trevor Benjamin and Gary Hart.

Enoch Keeps Luton Knocking On Promotion Door

Luton Town have unearthed a star in striker Enoch Showunmi and he took home the match ball after bagging a hat-trick in the Hatters 4-1 success over Brentford at Kenilworth Road. Showunmi might have pundits struggling to pronounce his name, but he is on the lips of every Luton fan at present and he fired Mike



Newell's men to a comfortable win over the Bees. Emerson Boyce had set Luton on their way to the home success on 10 minutes when he opened the scoring before Showunmi took over. The Bees found consolation when on-loan Tommy Wright found the back of the net, but it was to no avail.

Heffernan On Fire Against Stockport

Paul Heffernan scored all four goals as Notts. County secured a much needed victory over Stockport County at Meadow Lane. The Magpies ran out 4-1 winners to strengthen their battle against relegation with Stockport still struggling in the bottom four.

With Chesterfield beaten at Swindon, Grimsby Town had the chance to leapfrog the Spireites in the league table, but were beaten 2-0 at Colchester United with Craig Fagan scoring his first goal for the U's since late November. Kemal Izzet scored the other goal to give Phil Parkinson's side their first win of the month.

Bottom-placed side Wycombe Wanderers went back to basics as

they held out for a creditable 0-0 draw at Barnsley, who have one of the division's strongest attacks. Tony Adam's side are still well adrift at the foot of the table though.

Rushden In Free-Fall

Rushden and Diamonds were hoping for a play-off push not so long ago, but Brian Talbot's men are now looking over their shoulders after suffering their third straight defeat as they went down 2-1 against Sheffield Wednesday at Nene Park.

Another one of the commentators nightmares scored both goals for the Owls with Ndumbo-Nsungu converting two penalties. Rodney Jack pulled a goal back for the Diamonds late on, but it was not enough to salvage a point for the Northamptonshire outfit.

Meanwhile, in the other game played last weekend, Oldham Athletic shared the points with Tranmere Rovers at Boundary Park with Scott Vernon's goal cancelled out by the 'Daddy' with Eugeni Dadi firing a late equaliser (pictured above) for cup-kings Tranmere.



The POSH
Home & Away
LIVE & EXCLUSIVE
commentary on
95.7 FM & 1026 MW

Never miss a match
with

BBC RADIO CAMBRIDGESHIRE

(and catch Barry Fry on the Peterborough Breakfast Show every Wednesday morning!)

Log on to

www.bbc.co.uk/cambridgeshire

to read the full match report



Soundbites

by Edwin Overland

BBC Radio Cambridgeshire FM95.7 AM 1026



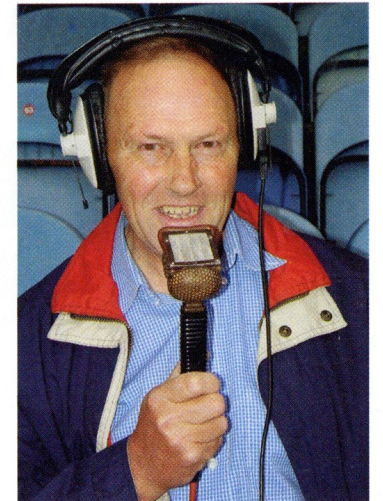
It was certainly a case of Mark Arber (pictured above) to the rescue at Loftus Road last Friday night and I am not just referring to the South African-born defender's outstanding defensive performance which rightfully earned him SKY TV's Man of the Match award.

No, it was actually after the game when Mark came to my rescue agreeing to a BBC Radio Cambridgeshire post-match interview after the mini-disc machine had earlier failed to record Barry Fry's choice comments.

Modestly the former Barnet man refused to accept that he was the night's top performer, preferring instead to praise the other 10 players for their outstanding contribution to what was a hugely improved Posh performance.

'Bobby Gould has had a major effect on the way we play, it's perhaps not so pretty to watch, but we're organised, everyone knows their job and we all know which way we are going. Against QPR tonight we have succeeded in quietening their supporters for long periods and at the end we are unlucky that we haven't collected all three points. Just one point from our last two games doesn't really do us justice, but we have to take massive positives from those two battling performances as we attempt to get ourselves out of relegation trouble. Rest assured we will be doing our best all the way and I believe we will survive.'

As a TV football pundit, former Posh manager Mark Lawrensen doesn't always get it right, but he was spot on last Saturday luncheon when he declared that 'legend' is an over-used word - but not in the case of 'Gigante



Buono', who sadly died last weekend. John Charles' character as much as his immense footballing ability gained him world-wide respect - the supreme professional who was never even booked let alone sent-off in his 25-year career.

I love the story of how he was once fouled in the area and won a penalty. Charles knew the decision was wrong and such was his sportsmanship, that he amazed everyone in the ground by deliberately blasting the spot-kick wide of the goal. Then there was the other tale of how the Queen, who was on a visit to Turin, expressed a wish to meet the great Welshman.

Where do I have to go?' asked Charles on hearing the news. 'Nowhere,' replied the messenger, 'she's coming to the Juventus training ground to see you, because she doesn't want to interrupt your schedule.' That's how good he was and it's stories like those that simply add lustre to the legend of John Charles (pictured left).



www.theposh.com

53

Win a pair of tickets to see England play



Just answer this simple question;

In which country will England take part in the European Championships this summer?

Spain	text	ENGLAND A	to →	88099
Japan	text	ENGLAND B	to →	88099
Portugal	text	ENGLAND C	to →	88099

or enter via www.nationwide.co.uk/football

Nationwide is an Official Partner of the England Team
and sponsor of The Football League

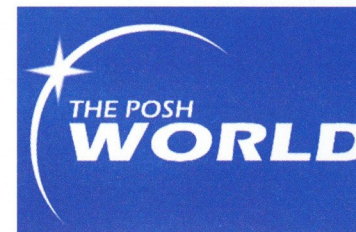
Text entries cost 25p per entry, in addition to your standard rate. All correct entries will be entered into a draw to win a pair of England Senior Team home international tickets. The deadline for entries is midnight on Sunday 9 May 2004. The competition is powered by textsport.com on behalf of Nationwide. For full terms and conditions visit www.nationwide.co.uk/football

Seven Days On The Posh World

The Posh World has all the latest news from London Road and in the past few weeks we have brought you interviews with the players making the headlines, the pre-match build up with manager Barry Fry and exclusive interviews with coach Bobby Gould.

We bring you closer to the team, we show you all the highlights from Peterborough United league games and on match days, you can listen to live commentary, courtesy of BBC Radio Cambridgeshire. Just take a look at what you have missed out on in seven days.

Prior to the Queen's Park Rangers game at Loftus Road, we brought you an interview with defender Sagi Burton, who



talked about his future at London Road as well as his pre-match thoughts. Boss Barry Fry also gave subscribers all the latest team news and his opinions on QPR's danger men.

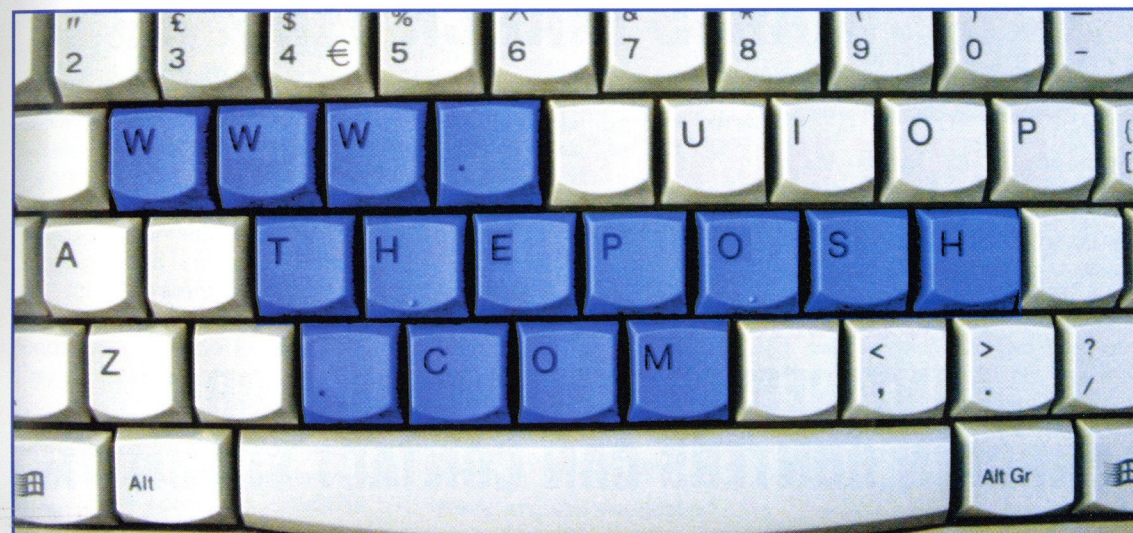
The Posh World also brought you an exclusive interview with Tommy Williams, who spent the majority of last season and the first two months of this season, on-loan at Queens Park Rangers. Tommy also gave hints on his future after joining on-loan from Birmingham City. The Posh World spoke to Bobby Gould after the defeat by Bristol City

and also brought you an interview with striker Clive Platt, who scored his first goal for Posh in the draw against QPR.

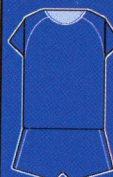
Earlier this week, we spoke with Welshman Gareth Jelleman, who picked up an ankle injury at Loftus Road, and with physiotherapist Paul Showler to get a diagnosis on the injury.

You see, here at The Posh World, we want to bring you closer to the team. If you want to see an interview with any of the players, then email in and we will try and speak to the player you want. You can get the Posh World for just £39.99 with daily news TV bulletins, highlights, live commentary and all the gossip from London Road.

For more details, visit theposh.com



www.theposh.com
the official posh website

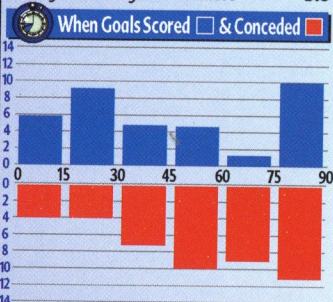


Form Guide:

Won: 0
 Drawn: 3
 Lost: 3
 Scored: 3
 Conc: 8
 Points: 3
 Goal Diff: -5
 Last 6: DLDLD
 Last 5 Home: DWDLL
 Last 5 Away: LLLDD
 Miscellaneous
 Players Used: 30
 Clean Sheets: 6
 Failed to Score: 13

The Guys to Watch

Headed goals	Clarke A	2
Long range shots	Woodhouse	2
Inside 6 yards	Logan	2
Shots from 6-18 yards	Clarke A	4
Volleyed shots	Logan	2
Penalties	Arber	2
Scored 1st Goal in match	Clarke A, Woodhouse	2
Most goals in last 10	Clarke A	2
Points gained from goals	Clarke A	5.6



Goalkeeping

Opp. attempts on target	154
Goals conceded	45
On target/goals scored	3.42
Division 2 rating	24

Goalscoring Strike Rate

Shots on target	181
Goals scored	36
On target / goals	5.03
Division 2 Rating	21

Goals in last 10 mins

Goals For, last 10	5
Points won	3
Goals Against, last 10	8
Points lost	5

Fouls & Offsides

Average fouls per game	12.47
Div 2 Rating (1=least, 24=most)	11
Average Offsides per game	4.38
Div 2 Rating	22

Swings

WON when behind	1
DRAWN when behind	5
LOST when ahead	3
DRAWN when ahead	6
WON 2 down	0
WON 1 down	1
LOST 2 up	1
LOST 1 up	2
DRAWN 2+ down	0
DRAWN 1 down	5
DRAWN 2+ up	0
DRAWN 1 up	6

Margins

WON BY:	LOST BY:
1 Goal	3
2 Goals	1
3 Goals	2
4 Goals	0
5+ Goals	0

Attendances

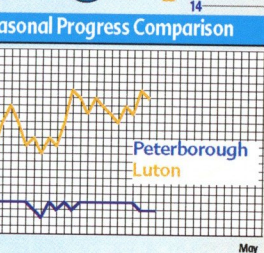
Aggregate	85,208
Highest	10,194
Lowest	3,855
Average	5,326

Where Goals

10 Close Range	9
20 Inside Area	36
6 Outside Area	5

How Goals

20 Shots	30
7 Headers	12
5 Volleys	3
3 Penalties	3
1 Free Kicks	0
0 Own Goals	2



Set Piece Goals

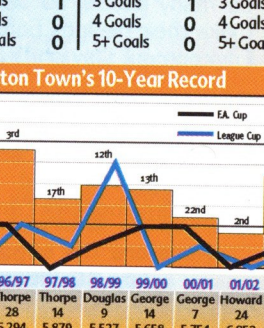
CORNERS:	
Scored from C	1
Conceded from C	1
FREE KICKS:	
Scored from FK	5
Conceded from FK	8

Cards

49	5
----	---

Margins

WON BY:	LOST BY:
1 Goal	6
2 Goals	6
3 Goals	1
4 Goals	0
5+ Goals	0



Attendances

Aggregate	97,404
Highest	8,339
Lowest	5,002
Average	6,088

The Guys to Watch

Headed goals	Howard, Perrett	2
Long range shots	3 players	1
Inside 6 yards	Perrett	2
Shots from 6-18 yards	Forbes	6
Volleyed shots	Boyce, Robinson	1
Penalties	Nicholls	2
Scored 1st Goal in match	Howard	4
Most goals in last 10	5 players	1
Points gained from goals	Howard	8



Goalkeeping

Opp. attempts on target	166
Goals conceded	43
On target/goals scored	3.86
Division 2 rating	19

Goalscoring Strike Rate

Shots on target	195
Goals scored	50
On target / goals	3.90
Division 2 Rating	7

Goals in last 10 mins

Goals For, last 10	5
Points won	1
Goals Against, last 10	8
Points lost	9

Fouls & Offsides

Average fouls per game	13.32
Div 2 Rating (1=least, 24=most)	20
Average Offsides per game	4.42
Div 2 Rating	23

Swings

WON when behind	3
DRAWN when behind	4
LOST when ahead	2
DRAWN when ahead	5
WON 2 down	1
WON 1 down	2
LOST 2 up	0
LOST 1 up	3
DRAWN 2+ down	0
DRAWN 1 down	4
DRAWN 2+ up	0
DRAWN 1 up	5

Margins

WON BY:	LOST BY:
1 Goal	6
2 Goals	6
3 Goals	1
4 Goals	0
5+ Goals	0

Attendances

Aggregate	97,404
Highest	8,339
Lowest	5,002
Average	6,088



Form Guide:

Won: 3
 Drawn: 2
 Lost: 1
 Scored: 11
 Conc: 6
 Points: 11
 Goal Diff: 5
 Last 6: DWWDWL
 Last 5 Home: WDWWW
 Last 5 Away: WDDDL
 Miscellaneous
 Players Used: 33
 Clean Sheets: 8
 Failed to Score: 5

JENNINGS RACING

BOOKMAKERS

Posh 6/4
Draw 11/5
Luton 6/4

MATCH SPECIALS

Posh to keep a clean sheet 2/1
 Posh to score 3 goals or more 5/1
 C. Platt to score first goal 6/1
 Goal in the 1st ten minutes? 7/2
 Posh to stay in Division Two 5/2

Many more match specials available
 including 1st goal scorer and correct score.

Visit Our Shop Here At PUFC
 now open 7 days a week

Branches Also At 7 Midgate & 90 Bridge Street

LUTON FANS
 COLLECT YOUR WINNINGS FROM
 25 MANCHESTER STREET, LUTON
 75 HIGH TOWN ROAD, LUTON
 OR HERE AFTER THE MATCH

"Instead of getting qualified to get a job, I got a job and got qualified."

Not having qualifications wasn't a problem. The Army offer £213 per week (at 16+), the chance to gain recognised qualifications including NVQs, BTECs, City and Guilds and the choice of 9 career groups.

The Army have guests at this event today who have recently left school and are in the process of joining the Army. You could do the same.

Find out more about joining the Army at your local Army Careers Office: at 21 Hereward Centre, Peterborough.

The Army is committed to Equal Opportunities

01733 554366

or visit www.armyjobs.co.uk



STARTS MARCH 7th



SUNDAY MARKET & CAR BOOT SALE AT PETERBOROUGH UNITED

FOOTBALL CLUB LONDON ROAD

INTERESTED STALL HOLDERS OR BARGAIN HUNTERS CAN CONTACT SHAUN ON

07788 577353

FOR FURTHER INFORMATION

Posh Players Kick-Off Campaign



Players from Peterborough United Football Club have given the Environment Agency's new online pledge campaign a good kick-off by making their own promises to help the environment. The Environment Agency is asking everyone to visit their web site and sign-up to at least one of ten simple pledges. The pledges aim to make people think about simple things they can do in their everyday life which will give a long-term benefit to our environment.

Sagi Burton (pictured right), Mark Tyler and Richard Logan have pledged to turn the tap off while brushing their teeth which will save around 28 litres of water a day each, or around 10,000 litres a year. Even though the UK gets a lot of rain each year, the density of our population means that water supplies are limited and must be looked after carefully.

Other pledges include replacing 1 bath each week with a shower, switching off the TV instead of leaving it on stand-by, re-using plastic carrier-bags when shopping and hanging washing out to dry rather than tumble drying it. The pledge campaign leads up to World Environment Day on 5 June.

So far, celebrities who have already made pledges include Peter Sissons, Elliott Morley MP and the comedian Alastair McGowan.

Posh goalkeeper Mark Tyler said: 'This is a great initiative and I will make sure that when I brush my



teeth that I turn the tap off. This will save a lot of water over the calendar year and I urge all Posh fans to do the same.'

Joanne Hayward, Corporate Affairs Manager at the Environment Agency commented:

'We want people to know that by making just one or two small changes to their everyday lives, together we can make a big difference to our environment. We're hoping that as many people as possible will make their pledges before World Environment Day on 5 June.'

To make your pledge, visit the Environment Agency web site at www.environment-agency.gov.uk and click on 'World Environment Day'.

Here are the suggested top 10 ideas

I will replace 1 light bulb in my house with an energy saving version.

I will hang out, rather than tumble dry, one load of washing per week

I will put a 'water hippo' in my cistern to reduce the amount of water used per flush.

I will plant 1 tree either in my garden or as part of a community forest.

I will switch off my television, rather than leave it on stand-by.

I will turn the thermostat on my gas-fired central heating down by one degree centigrade.

I will replace 1 two-mile car journey per week by walking, cycling, or taking a bus.

I will start re-using plastic bags when shopping.

I will take showers instead of baths

I will turn the tap off when I brush my teeth.



On The Road

TICKET PRICES

Posh fans are accommodated in the North Stand and ticket prices have been set at £16 for adults and £9 for concessions.

DISABLED FANS

There are a few places allocated for wheelchair users, for more information contact the club.

PROGRAMME PRICE: £2.50

TICKET PRICES

This game has been made all-ticket for Posh fans with just over 2,000 tickets allocated for fans. Ticket prices have been set at £14 for adults, £9 for concessions and £4 for under 12s. Tickets are available from the London Road Ticket Office.

DISABLED FANS

There are a minimum of six spaces allocated for wheelchair users, please contact Nikki Roberts for more details on 01933 652000.

PROGRAMME PRICE: £2.50

TICKET PRICES

Posh fans can buy tickets in advance to receive a discount. The telephone number is 01752 562562. Tickets are priced at £15 for adults, £10 for concessions and students and £5 for children if they reserve them in advance. On the day, adults will pay £17, concessions and students £12 and children £5.

DISABLED FANS

There are eight spaces for wheelchair users, to book a place, telephone the club on 01752 562561.

PROGRAMME PRICE: £2.50

Barnsley Tuesday 2nd March K.O. 7.45pm



Rushden & Diamonds Saturday 6th March K.O. 3.00pm



Plymouth Argyle Tuesday 16th March K.O. 7.45pm



THE POSH weddings



Have a Posh Wedding at Peterborough United Football Club.

- * All parties/budgets catered for
- * Executive Suite: up to 220 people
- * Starlite Suite: up to 220 people
- * Van Asten Suite: up to 120 people

We have a dedicated team to help plan your special occasion.

We also hold a license for civil weddings in the Boardroom or the Van Asten Suite.



The Executive Suite

For more information...

Contact Ray or Vash in the hospitality department:

Telephone **01733 563947**

Email **weddings@theposh.com**



SQUAD LIST



PETERBOROUGH UNITED

Manager
Barry Fry

- 1 MARK TYLER (GK) ✓
- 2 MATHEW GILL ✗
- 3 ANDY LEGG ✓
- 4 GUY BRANSTON ✓
- 5 SIMON REA ✗
- 6 MARK ARBER ✓
- 7 DAVID FARRELL S
- 8 ADAM FRY
- 9 ANDY CLARKE
- 10 CLIVE PLATT
- 11 ADAM NEWTON ✓
- 12 SEAN ST LEDGER
- 13 LUKE MCSHANE (GK)
- 14 MATT NOLAN
- 15 CHRISTOPHER KANU S
- 16 ANDREW FOTIADIS
- 17 CURTIS WOODHOUSE ✓
- 18 LEE CLARKE ✓
- 19 GARETH JELLEYMAN
- 21 SAGI BURTON ✓
- 22 RYAN SEMPLE
- 23 RICHARD LOGAN S
- 24 MARK COULSON
- 25 BRADLEY THOMAS
- 26 TOM WILLIAMS ✓
- 27 JAMIE DAY
- 28 RORY HUTTON
- 29 STEVEN THOMSON ✓
- 30 CALUM WILLOCK ✓
- 31 SHANE HUKU
- 32 JAMES PULLEN (GK)
- 33 STEVE JENKINS

LUTON TOWN

Manager
Mike Newall

- 1 MORTEN HYLDGAARD (GK) ✓
- 3 ALAN NEILSON S
- 4 MATTHEW SPRING
- 5 RUSSELL PERRETT
- 7 ADRIAN FORBES
- 8 KEVIN NICHOLLS ✓
- 11 STEVE ROBINSON ✓
- 12 CHRIS COYNE ✓
- 16 ENOCH SHOWUNMI ✓
- 17 EMMERSON BOYCE ✓
- 18 AHMET BRKOVIC ✓
- 19 STEVEN HOWARD ✓
- 21 PAUL HUGHES ✓
- 22 DAVID BAYLISS
- 23 IAN HILLIER
- 24 SOL DAVIS ✓
- 27 PETER HOLMES ✗
- 31 CURTIS DAVIES
- 32 LEE MANSELL ✗
- 33 DEAN BRILL ✗
- 34 DEAN CROWE
- 36 DAVID DEENEY
- 37 KEITH KEANE ✓
- 38 MICHAEL LEARY ✗
- 39 STEPHEN O'LEARY
- 41 KEVIN FOLEY
- 43 MATTHEW JUDGE
- 44 PARY OKAI
- 45 LEON BARNETT
- 47 ROB BECKWITH

THE POSH



MATCH OFFICIALS

REFEREE:
P.T.CROSSLEY

ASSISTANTS
M.C.DEXTER
A.PAGE

4TH OFFICIAL
P.C.MARTIN

NEXT MATCH
AT LONDON
ROAD

Wrexham
Saturday 13th
March 2004
3.00pm. kick-off