

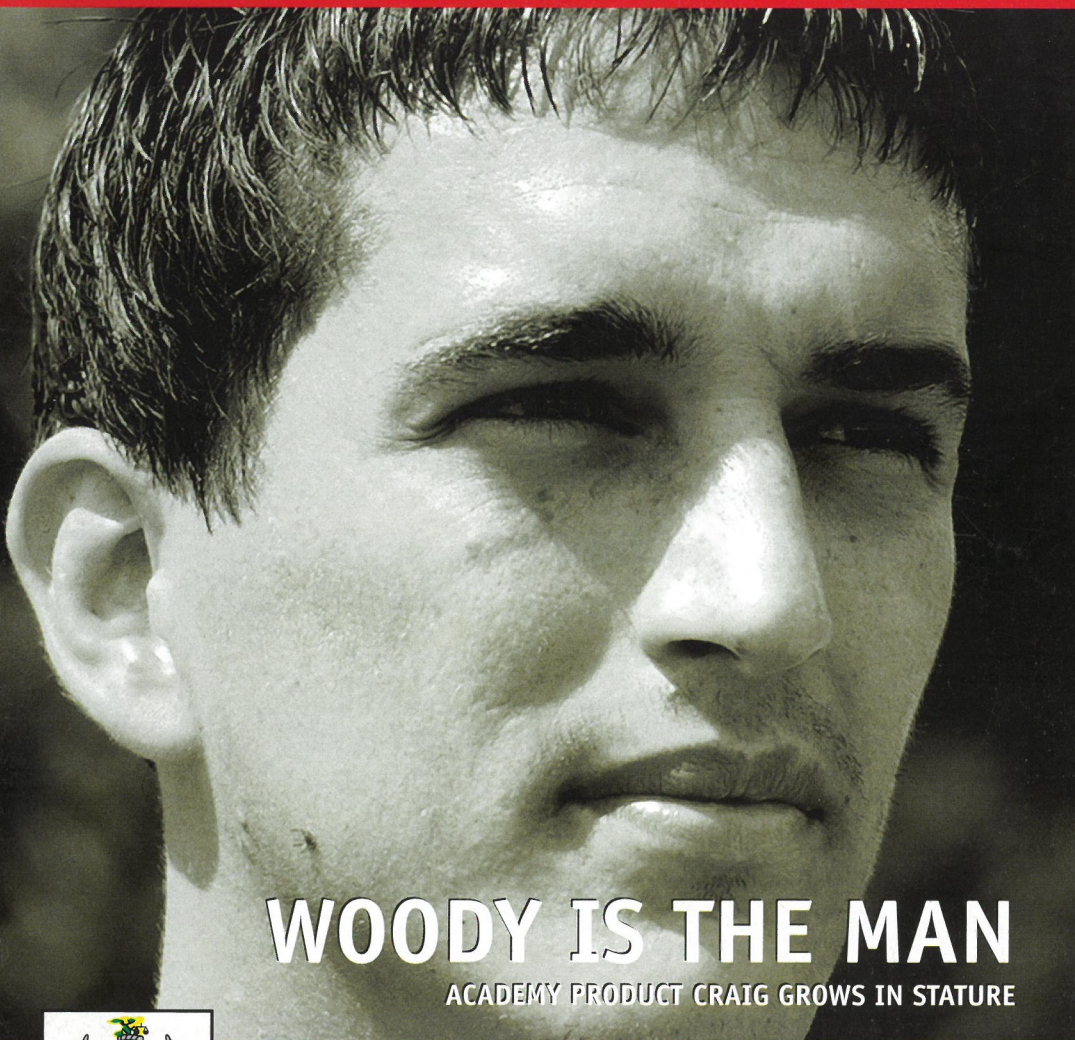
01.11.03 | 14

wellred

Nationwide  2

Bristol City Football Club
OFFICIAL MATCH PROGRAMME 2003/04

£2.50



WOODY IS THE MAN

ACADEMY PRODUCT CRAIG GROWS IN STATURE



v LUTON TOWN

SHIRT SPONSOR



MATCH SPONSOR



Determination And Strength



DAS, sponsor of Bristol City, have protected the legal rights of millions of people and thousands of businesses for more than 25 years.

Our experience, strength and commitment give DAS policyholders the information they need to avoid legal problems and the support they need when facing legal action.

If either your business or your family is unprotected against the cost of legal action, ask your insurance advisor about Legal Protection from DAS.

Ask your insurance advisor for DAS Legal Protection.

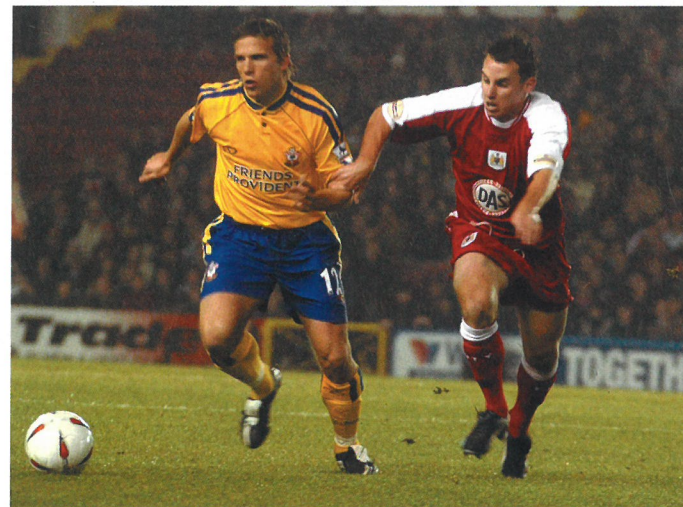


For more information
Tel: **0117 934 2000**
Fax: **0117 934 2109**
Visit: **www.das.co.uk**

DAS is a member of the General Insurance Standards Council.



Opening Shot: Saints Day



↑ Swedish World Cup star Anders Svensson is chased by City's Aussie ace Luke Wilkshire during Tuesday night's Carling Cup third round tie versus Premiership side Southampton at Ashton Gate, watched by a crowd of 17,408.

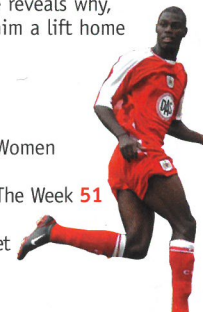
Contents

FEATURES

- 10 LUTON TOWN** The Hatters have survived a nightmare summer which saw them go into administration with debts of £11 million.
- 19 PHOTO GALLERY** All the action from City's big games versus Sheffield Wednesday and Southampton, and the more forgettable trip to Wycombe.
- 29 INTERVIEW** Leading scorer Lee Peacock – who recently scored his 100th career goal – reveals how fear of the needle has driven him on this season.
- 30 INSIDE STORY & POSTER** Full-back Clayton Fortune reveals why, among other things, Craig Woodman won't be giving him a lift home tonight.

REGULARS

- 4** Danny Wilson **6** Steve Lansdown **8** News
- 16** Division Two Review **27** Reserves **34** Academy **36** Women
- 39** Football In The Community **41** CJS **43** On The Air
- 45** bcfc.co.uk **47** Voice From The Stands **48** That Was The Week **51** Commercial **52** Sponsors **55** Hospitality
- 57** Supporters Club **58** Coming Up **60** Statistics **62** Teamsheet



Bristol City Football Club

Ashton Gate Stadium,
Bristol BS3 2EJ
Tel: **0117 963 0630**
Fax: **0117 963 0700**
bcfc.co.uk

Formed: 1897
Elected to Football League: 1901
Honours: Football League runners-up 1906/07; FA Cup finalists 1908/09; Division Two champions 1905/06; Division Three (South) champions: 1922/23, 1926/27, 1954/55; Welsh Cup winners: 1934; Anglo-Scottish Cup winners: 1978; Freight Rover Trophy winners: 1985/86; LDV Vans Trophy winners: 2002/03

Chairman: Steve Lansdown
Directors: Keith Dawe, John Laycock, A.W. Gooch MBE, JP
Club President: Marina Dolman D.St.J., JP
Vice-Presidents: Betty Rosemary Bennett, John Bennett, Brian Cook, Bernard Cripps, Norman Lavis, Graham Thompson
Chief Executive: Colin Sexstone
Manager: Danny Wilson
Academy Manager and Football Co-ordinator: Tony Fawthrop
First Team Coach: Frank Barlow
Development Coach: Shaun Taylor
Financial Accountant: Roger Pearce
Commercial & Communications Manager: Richard Gould
Football Secretary: Michelle McDonald
Operations Manager: Keith Draisey
Medical Officer: Dr Heather Montague
Chartered Physiotherapists: David Harris and Gill Holt BSc (Hons), MCSP, SRP
Chaplain: Derek Cleave
Club Historian: David Woods

wellred is designed and produced by Bristol City's Media Department – media@bcfc.co.uk
Media Editor: Ed Furniss **Media Consultant:** Richard Latham **Website Editor:** Adam Baker
Club Photographer: Joe Meredith
Media Assistant: Graham Douglas
Sales: Lisa Fillingham and Becky Tovey
Printed by BCCF's official printer: TL Visuals, Yate. Tel: 01454 319555. Paper supplied by Howard Smith.
Individual contributions made to this programme do not necessarily reflect the views of Bristol City FC.



CRAIG WOODMAN
COVER PIC BY
JOE MEREDITH



Danny Wilson

While our 3-0 Carling Cup exit at the hands of Southampton may have looked disappointing on paper, it in no way reflected our contribution to the game



I was delighted with the performance against a side doing very well in the Premiership and it is no exaggeration to say that had we taken our chances we would have been the team going through to the next round.

We created numerous opportunities in the game, something which hasn't been happening against Southampton this season, but we didn't convert any of them and that is the bottom line in any game.

They were good chances, not half-chances, and you must at least force the goalkeeper to make a save. In the end

Southampton gave us a lesson in finishing and that was the difference on the night.

James Beattie and Brett Ormerod are quality strikers and that's why they are in the Premiership. Having said that, we contributed to our own downfall with a couple of basic errors at the back.

Overall, I felt we defended well. Southampton didn't open us up at any stage in the game, other than once in the second half when Ormerod went through and Steve Phillips came to our rescue.

But the two mistakes we did make fell straight to their strikers and were punished. For all that, we took the game

to Southampton and there were many positives to take out of it.

I hope that everyone in the club takes confidence from Tuesday night. In a way it is also a warning ahead of our FA Cup first round tie at Bradford Park Avenue when they will be the underdogs.

Now it is essential that we reproduce the same sort of form in the Second Division, which is proving unbelievably tight this season.

No one team have been able to put together the run of results necessary to break away and if we can string together the sort of sequence I believe we are capable of we will be strongly placed going into the New Year.

For the second successive Saturday we entertain one of my old clubs in Luton Town and I would like to welcome Mike Newell and Mick Harford, my old playing buddies, and their team.

Having performed with credit against Sheffield Wednesday and Southampton, it's important that we get three points against a side directly below us in the table.

The support for the last two games has been tremendous, with our fans responding to the vast away following at both matches. We do appreciate the strain that three home games in a week places on the pockets of supporters, but I hope we can count on similar backing today.

'I HOPE EVERYONE TAKES CONFIDENCE FROM TUESDAY. NOW IT IS ESSENTIAL WE REPRODUCE THE SAME FORM IN THE DIVISION TWO'



WEST STREET GLAZING

GLAZIERS TO THE RICH AND FAMOUS

**TEL: 01275 475375
MOB: 07976 947117**



ASHCROFT SERVICES

ROOFING & BUILDING CONTRACTORS

- Approved Local Authority Contractor
- Competitive Rates
- Free Estimates
- Full Public & Employers Liability Insurance
- Fully Skilled Craftsmen
- Over 20 Years Experience
- Approved Installers For many Material Manufacturers
- Finance Available (Written Details On Request)

**181 SOUTH LIBERTY LANE,
ASHTON VALE TRADING EST,
ASHTON VALE, BRISTOL BS3 2TN
TELEPHONE: 01179 660819
FASCIMILE: 01179 668668**



**Yes! Over 40%
lower in price than
equivalent products!**



**Tel: (0117) 963 2536
Fax: (0117) 963 5248**
Randalls Office Furniture Ltd.
TC House, 13 Brookgate,
South Liberty Lane, Bristol BS2 2UN



FROM THE BOARDROOM

Steve Lansdown

One of the problems with having to write articles and do interviews on a regular basis is that you tend to come up with one or two stock phrases.



I realise that "I want to take the club forward" and "I am happy as long as we are making progress" are two of mine. So I thought a word of explanation might be in order.

Love the club as we do, there is no getting away from the fact that we support a club which has been in existence for more than 100 years, but one which has won very little.

To take the club forward we have to win things. This applies throughout – from the senior, reserve, youth and women's teams on the pitch to picking up awards for our

matchday programmes, website and service awards to customers etc off it.

It is a question of restoring pride in the club and establishing Bristol City Football Club as a name to be respected.

So let us look over the past 12 months. We won the LDV Vans Trophy and made the play-offs, finishing third in the League and just missing out on promotion.

That is certainly progress on having finished seventh and ninth in previous seasons and not winning anything.

OK, we are out of the LDV

this season but we reached the third round of the Carling Cup for the first time in ages beating first Division Watford (to whom we had lost two years earlier at the same stage) and only got knocked out after giving a good account of ourselves to a Southampton team currently sixth in the Premiership. That too is progress.

We continue to develop young players which is increasingly being recognised. Indeed, a caller to Geoff Twentyman the other week said our young reserve side which beat a Yeovil first team in the Somerset Cup was the best team he had seen this season!

Bristol City Women are currently top of the Premier Southern Division and unbeaten in the League this season after finishing a very creditable third last year in their first season in that division.

This matchday programme regularly gets commended. The pitch is one of the best. Our community programme is highly successful.

There is much to be proud of and we must all work hard to get the world at large to recognise that Bristol City is a great football club and one to be taken seriously.

It will not be easy but together we can make progress and take the club forward.

**'THERE IS MUCH TO BE PROUD OF
AND WE MUST ALL WORK HARD
TO GET THE WORLD AT LARGE TO
RECOGNISE THAT BRISTOL CITY IS
A GREAT FOOTBALL CLUB AND ONE
TO BE TAKEN SERIOUSLY'**

OUT NOW!



THE LATEST EDITION of **gatepost**, the free magazine for City supporters, is about to drop through fans' letter-boxes this week.

As usual, it is packed with news, interviews and features. There is also an eight-page merchandise pull-out and the results of the fans' questionnaire from the previous edition.

Danny Wilson answers questions sent to him by fans via bcfc.co.uk in a double-page feature, while chairman Steve Lansdown writes about City as a sleeping giant, saying "it's about time it woke up".

There are features about City's Academy and women's team. And Brian Tinnion talks about his forthcoming testimonial.

Make sure you are on the club's database mailing list to be sure of your copy.

TICKET HOTLINE | 0870 112 1897

WOODY IS A REAL SAINT

Craig Woodman's impressive first team contributions over the past month brought a glowing tribute from Danny Wilson after the Carling Cup tie against Southampton.

City's manager said: "Craig gave a terrific performance and certainly would not have looked out of place in the Saints team.

"We've asked him to play at right-back and in a more advanced role on the left this season and he has never let us down."

Craig reeled off eight successive starts early on last season, but his only full appearance after that came in the LDV Vans Trophy.

He has now started seven of the last nine games and will be looking for further first team experience against Luton Town this afternoon.

LIAM SAGA DRAGS ON

A HEARING TO consider City's appeal over the Liam Rosenior affair, due to take place this week, was postponed and no new date has yet been fixed.

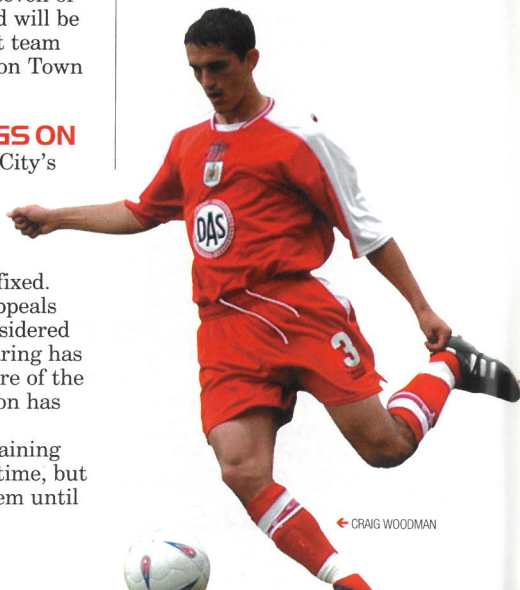
A Football League Appeals Panel were to have considered City's case, but the hearing has been put back until more of the necessary documentation has been gathered.

Rosenior has been training with Fulham for some time, but is unable to sign for them until the matter is resolved.

City are disputing a Football League tribunal decision that they are not entitled to any compensation for the youngster because a letter offering him a new deal at Ashton Gate did not arrive before the stipulated deadline.

YOUTH CUP ACTION

CITY'S UNDER-18 TEAM will be in FA Youth Cup action at Ashton Gate next Tuesday when Cheltenham Town are the



← CRAIG WOODMAN



CITY'S FA CUP first round match with Bradford Park Avenue will take place on Sunday November 9th with a 1pm kick-off.

The match – which will be played at Park Avenue's Horsfall Stadium (pictured above) – has been switched from next Saturday on the instruction of police to avoid a clash with Bradford City's First Division home game with Walsall.

The tie is all-ticket and City's allocation of 865 will go on sale to priority purchasers early next week – for full details see page 59.

Tickets will be priced at £12 for adults and £6 under-16s/OAPs. Should a replay be necessary, it will take place at Ashton Gate on Tuesday 18th November.

visitors for a second round tie. The match kicks-off at 7.45pm.

DANNY GETS A YELLOW!

DANNY WILSON HAS had an unwanted addition to his training kit this week. City's manager was forced to don the dreaded yellow shirt, handed out after a vote for the worst player in training.

Danny was nominated for his performance in a five-a-side match, but claimed he had been stitched up.

"My team won 7-2 and I thought I was superb," he

told bcfcworld.co.uk. "The lads obviously thought differently, but may think again when they see how much running I have planned for them!"



TODAY'S FREE STICKER: JOE BURNELL



Stickers are given away free ONLY with each purchase of League issues of **wellred**

Notices

THE CLUB WOULD like to send its sincere condolences to the family and friends of Bryan Morse – a devoted City supporter – who died recently.

← CITY2000 MEMBER FIONA BAKER was presented with a bumper cheque for £5,000 during last Saturday's home game versus Sheffield Wednesday. For more on the draw turn to page 45.

THE GAFFER

Mike Newell

Born: Liverpool, 27.1.65. Former Luton forward who was appointed manager at Kenilworth Road this summer in fairly unique circumstances, after winning a telephone poll.

Started his playing career with Crewe before moves to Wigan, Luton – for whom he scored 19 goals in 89 matches – Leicester City, Everton (£1.1 million), Blackburn Rovers (where he won a Premiership winners medal), Birmingham, West Ham, Bradford, Aberdeen, Crewe again and Blackpool.

Moved into a coaching role at Tranmere before cutting his management teeth at Hartlepool, guiding them to promotion from Division Three last season as runners-up until, surprisingly, his contract was not renewed.

He is assisted by former City striker Mick Harford, who fulfils the dual role of Director of Football and First Team Coach.



← MIKE NEWELL (picture courtesy of Luton Town FC)

After a terrible summer which saw the club go into receivership with debts of £11 million, Luton have been further hit by a Football League transfer embargo and the loss of eight players after going into administration. The Hatters survive, however, and go into today's game just one point behind City in the table.

45 LEON BARNETT
Born: Stevenage, 30.11.85. Forward who became one of Luton's youngest-ever players when he made his debut aged just 17 in a LDV Vans Trophy tie last season, after impressing for the club's youth sides. **Total Luton career appearances: 1+1 sub, 0 goals**

47 ROB BECKWITH
Born: London, 12.9.84. Goalkeeper who started his career in the youth team at Kenilworth Road, and was the seventh 'keeper to be used by the Hatters last season after a run of injuries. Amazingly, after Luton were plunged into receivership this summer, Beckwith found himself the most senior 'keeper on the books! **19, 0**

29 MARLON BERESFORD
Born: Lincoln, 2.6.69. Experienced goalkeeper currently on loan from Bradford City. Started his career with Sheffield Wednesday before moves to Burnley and Middlesbrough. Has played on loan for Bury, Northampton Town, Crewe, Wolves, Burnley and York City. **1, 0**

17 EMMERSON BOYCE
Born: Aylesbury, 24.9.79. Right-back who started his career as a YTS trainee at Kenilworth Road in the summer of 1995, making his debut during the 1999/2000 season. Signed a new contract in the summer of 2002. **162+17, 4**

18 AHMET BRKOVIC
Born: Dubrovnik (Croatia), 23.9.74. Versatile midfielder who was a free transfer signing in October 2001 from Leyton Orient, with whom he started his English career in the 1999/2000 season following a move from HNK Dubrovnik. **61+15, 10**

12 CHRIS COYNE
Born: Brisbane (Australia), 20.12.78. Voted Player Of The Year by Luton supporters last season, this central defender was a £50,000 capture from Scottish club Dundee in September 2001. Originally moved to the UK to play for West Ham in a £150,000 deal from Australian club Perth SC and has also played for Brentford and Southend on loan. **90+4, 6**

→ LUTON'S EMMERSON BOYCE DUELS WITH LEE PEACOCK DURING LAST SEASON'S 2-2 DRAW AT KENILWORTH ROAD



HATTERS FACTFILE

FORMED: 1885
GROUND: Kenilworth Road, since 1905
CAPACITY: 9,975
JOINED FOOTBALL LEAGUE: 1897, elected to Division Two
HONOURS: Division Two champions 1981/82; Division Four champions 1967/68; Division Three (South) champions 1936/37; League Cup winners 1988
HIGHEST-EVER LEAGUE FINISH: Seventh in Division One, 1986/87
RECORD VICTORY: 12-0 v Bristol Rovers, April 1936 (Division Three South)
RECORD DEFEAT: 0-9 v Small Heath, November 1898 (Division Two)
MOST LEAGUE APPEARANCES: 495, Bob Morton (1948-64)
MOST LEAGUE GOALS: 243, Gordon Turner (1949-64)
MOST CAPPED PLAYER: Mal Donaghy, 58 of his 91 Northern Irish caps

↓ KENILWORTH ROAD



HATTERS VIEW

“ WHATEVER SORT OF season Luton might be having, their supporters are just glad to have a team to follow. The summer of 2003 will go down in club legend as the worst in memory.

“When the club was sold to new owners in May the impact was immediate.

“Popular manager Joe Kinnear, and his assistant Mick Harford, were sacked by recorded delivery letter and staff and players were made to wait for their wages.

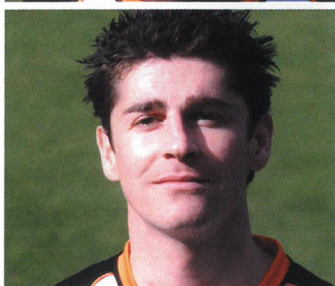
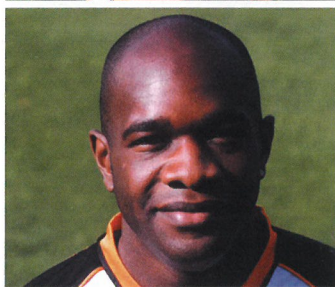
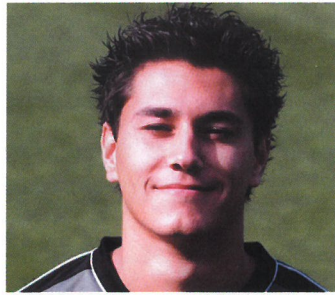
“Fans erupted in fury with their anger directed at John Gurney, the only publicly-known face of a consortium which had bought the controlling shareholding.

“Gurney responded by staging a fans’ phone poll to choose a new manager – won by Mike Newell.

“Matters came to a head when one of the club’s biggest creditors tried to call in their debt. The club were unable to pay up, so Luton went into administrative receivership. Barry Ward, a financial consultant took control and Gurney was forced out.

“Fans responded by snapping up 3,000 season tickets in a matter of days and Harford agreed to return to the club as Newell’s right-hand man.”

**BRIAN SWAINN,
PROGRAMME EDITOR**



↑ FROM TOP: ROBERT BECKWITH, SOL DAVIS, ADRIAN FORBES AND STEVE ROBINSON (pic: Luton Town FC)

24 SOL DAVIS
Born: Cheltenham, 4.9.79. Left-back who arrived at Kenilworth Road in the summer of 2002 after his contract had expired at Swindon Town, with whom he had started his career as a trainee. Is returning to action this afternoon after completing a three-match suspension. **48+3, 0**

41 KEVIN FOLEY
Born: London, 1.11.84. Defender who was voted Young Player Of The Year for the second season running in 2002/03. Started his career as a trainee at Kenilworth Road, and made his debut against City last season. **17+3, 3**

7 ADRIAN FORBES
Born: Ealing, 23.1.79. Right-winger who was a £75,000 signing in the summer of 2001 from Norwich City, with whom he started his career as a trainee. Capped by England at youth level. **27+27, 12**

23 IAN HILLIER
Born: Neath, 26.12.79. Utility player who was a £30,000 signing in August 2001 from Tottenham Hotspur, with whom he started his career as a trainee and skippered the reserves. Can play at right-back as well as in central defence or midfield. Sent-off for two bookable offences in Saturday’s home game against Peterborough. **32+25, 1**

21 PAUL HUGHES
Born: Hammersmith, 19.4.76. Attacking midfielder who was a free transfer signing in the summer of 2001 from Southampton, where a

promising career was hit by a serious groin injury. Started his career at Chelsea – making 21 Premiership appearances – and has also played on loan for Stockport and Norwich. **64+15, 7**

43 MATTHEW JUDGE
Born: Barking, 18.1.85. Striker who started his career as a trainee at Kenilworth Road, making his first-team debut last season against Woking in the LDV Vans Trophy. **1+5, 1**

38 MICHAEL LEARY
Born: Ealing, 17.4.83. Midfielder who started his career at Kenilworth Road as a junior, making his debut in the 2001/02 season. Capped by Republic of Ireland at youth level. **4+3, 0**

25 GARY McSHEFFREY
Born: Coventry, 13.8.82. Striker who arrived at Kenilworth Road this summer after being placed on the transfer list by Coventry, with whom he made 48 appearances after starting his career as a trainee at Highfield Road. Has also played on loan for Stockport. **16, 8**

32 LEE MANSELL
Born: Gloucester, 28.10.82. Central midfielder who scored within 58 seconds of making his senior debut for Luton in a FA Cup third round tie two seasons ago, after progressing from the youth team. Has also played on loan for Nuneaton Borough. **30+10, 7**

3 ALAN NEILSON
Born: Wegburg (Germany), 26.10.72. Utility player

who was a free transfer signing from Grimsby Town in October 2001. Capped five times by Wales, he started his career as a trainee with Newcastle United and has also played for Southampton and Fulham. **36+9, 1**

44 PARYS OKAI
Born: London, 23.11.84. Left winger who made his senior debut in a LDV Vans Trophy game against Woking last season and has been at Kenilworth Road since a schoolboy. **1+2, 0**

5 RUSSELL PERRETT
Born: Barton-on-Sea, 18.5.73. Central defender who arrived on a free transfer from Cardiff City in the summer of 2001. Started his career with non-League side Lymington before beginning his League career at Portsmouth. **67+3, 7**

11 STEVE ROBINSON
Born: Lisburn, 10.12.74. Attacking midfielder who was a £50,000 signing from Preston North End in the summer of 2002, after completing a two-month loan spell at Ashton Gate where he made six appearances, scoring one goal. Capped five times by Northern Ireland, he started his career as a trainee with Tottenham before a six-year spell at Bournemouth. **31+9, 1**

4 MATTHEW SPRING
Born: Harlow, 17.11.79. Midfielder who started his career as a trainee at Kenilworth Road, making his League debut aged 17. A member of the Hatters side that reached the 1997 FA Youth Cup semi-finals. **256+8, 30**

LAST TIME WE MET



↑ TINMAN CELEBRATES HIS FIRST-HALF GOAL

Luton 2 City 2

Nationwide League Div. Two
Saturday 19th April 2003

STEVE HOWARD STUNNED
City’s 1,200-strong travelling support by scoring after just 61 seconds, before the visitors fought back through two goals by Brian Tinnion and Lee Peacock.

Tinnion netted from the spot after Aaron Brown had been fouled by Peter Holmes before Peacock exploited some hesitant defending to net City’s second after a long ball out of defence from Danny Coles.

All that good work was undone when Howard snatched a late equaliser.

City: Phillips; Carey, Coles, Butler, Hill; Murray, Burnell, Doherty (A. Brown 38), Tinnion (Lita 87); Roberts (Beadle 57), Peacock. Subs: Bell, Stowell.
Luton: Beckwith, Boyce, Willmott, Neilson, Davis, Holmes (Foley 69), Nicholls, Spring, Hughes (Kimble 88), Howard, Griffiths. Subs: Bayliss, Judge.
Attendance: 6,381
Goals: City – Tinnion 66 (pen.), Peacock 75; Luton – Howard 2, 82

Bristol City v Luton Town

Location <http://www.soccer-stats.com/headtohead>



Clubs Comparison

Goals Scored

25	Shots	19
6	Headers	7
7	Volleys	3
3	Penalties	2
3	Free Kicks	0
1	Own Goals	0

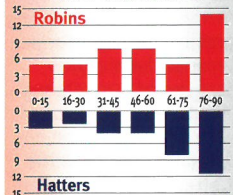
Where Goals Scored



Where Goals Conceded



When Goals Scored

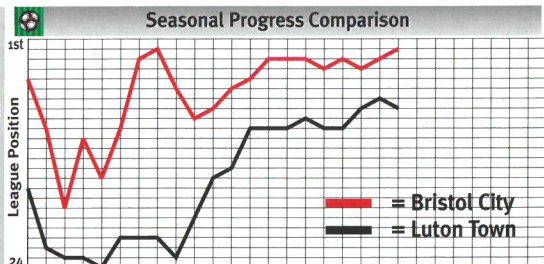


Form Guide - Last 6

4	Won	2
2	Drawn	2
0	Lost	2
15	For	5
10	Against	6
14	Points	8
5	Goal Difference	-1
WDWDWW	Sequence	WLDDWL

Yellow & Red Cards

23	Yellow	40
3	Red	3



2002-2003 Attendances

Robins	Aggregate	Hatters
112,743	74,293	
13,205	9,477	
9,597	5,890	
11,274	6,754	
52	% of Capacity	68

10 Year Record

Robins	Avg Pos.	Hatters
47.9	among 92 clubs	53.3
8,853	Avg Att 1993	7,878
11,274	Avg Att 2002	6,754
27	+ / - %	-14

Top League Scorers

Murray	Howard	
12	League Goals	9
21	Games Played	19
0.57	Lge Goals/Game	0.47
7	Points Gained	5
3	Scoring Run	4
0	Hat-Tricks	0
2	Close Range	4
1	Inside Area	4
1	Long Range	1
10	Shots	4
0	Headers	4
2	Volleys	1
0	Penalties	0
0	Direct FKs	0

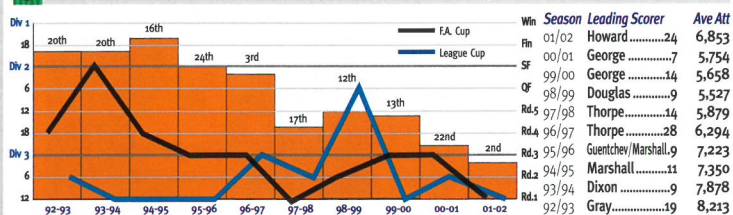
Average Goals per game

2.14	For	1.48
2.30	Home For	1.64
2.00	Away For	1.30
1.19	Against	1.38
0.70	Home Against	1.36
1.64	Away Against	1.40

2002-2003 Figures

23	Players Used	33
8	Clean Sheets	8
4	Failed to Score	5
3	Goals scored from...	
3	Corners	4
5	Free Kicks	2
2	Goals conceded from...	
2	Corners	1
3	Free Kicks	2

Luton Town's 10 Year History



Swings

BC	Games Won from:	LT
0	3 Goals Down	0
1	2 Goals Down	0
2	1 Goal Down	4

Lost from:		
0	3 Goals Up	0
0	2 Goals Up	0
1	1 Goal Up	2

Drawn from:		
0	3 Goals Down	0
1	2 Goals Down	1
0	1 Goal Down	0
0	3 Goals Up	0
0	2 Goals Up	0
1	1 Goal Up	1

Margins

5	Won by 1 Gl	5
5	Won by 2 Gl	1
3	Won by 3 Gl	2
1	Won by 4 Gl	0
0	Won by 5+ Gl	0
2	Lost by 1 Gl	5
3	Lost by 2 Gl	0
0	Lost by 3 Gl	2
0	Lost by 4 Gl	0
0	Lost by 5+ Gl	0

Misc stats

2	Highest Pos.	7
18	Lowest Pos.	24
6	Winning Run	5
11	Unbeaten Run	7
2	Losing Run	4
2	No Win Run	5



15

THE OPPOSITION | LUTON TOWN



POSSIBLE LINE-UP



THE SCORE

FORM:
All matches: DWLLD
Away: DLLDL

(Based on previous six League games during 2003/04, most recent result last)

LAST MATCH
2-2 at home to Peterborough, 25.10.03.
Starting line-up: Beresford; Foley, Coyne, Boyce, Hillier; Mansell, Robinson, Spring, Brkovic; McSheffrey, Forbes.

TEAM NEWS
Sol Davis returns from a three-match suspension this afternoon and is likely to start on the left side of defence in place of Ian Hillier. Kevin Nicholls (knee operation), Steve Howard (hernia) – who scored twice in the last game between the sides – and David Bayliss (ruptured achilles) are long-term absentees for the Hatters.

HEAD-TO-HEAD

P 51 W 21 D 15 L 15
City v Luton in all competitions

Current sequence: City unbeaten in 15 games since January 1993; and in 16 League games since March 1981.

Record City victory: 6-0 at Ashton Gate, April 1927 (Division Three)

Record City defeat: 4-5 at Kenilworth Road, January 1933 (Division Three South)

MATCHDAY BETTING

Odds courtesy of mybcfbet.co.uk. Bets can be placed by ringing 0800 03 23 365 and quoting "mybcfbet.co.uk".

CITY WIN: 8/11 DRAW: 5/2 HATTERS WIN: 3/1
FIRST GOALSCORER*: 22/1, Craig Woodman
CITY TO WIN WITHOUT CONCEDED GOAL: 13/8

ALL BETS PLACED BENEFIT THE CLUB FINANCIALLY VIA ITS PARTNERSHIP WITH FLPTV. * SELECTED ODDS

THE SP YOUR FREE SPORTS PAPER WITH THE PEOPLE

TwoStats

Comebacks - Games won by teams who were trailing

Blackpool	3	Hartlepool	1	Stockport	1	Notts County	0
Bournemouth	3	Barnsley	1	Swindon	1	Oldham	0
Port Vale	3	Brentford	1	Tranmere	1	Peterborough	0
Wrexham	3	Brighton	1	Chesterfield	0	QPR	0
Luton	2	Bristol City	1	Colchester	0	Sheff Wed	0
Rushden	2	Plymouth	1	Grimsby	0	Wycombe	0

Throwaways - Games lost by teams who were in the lead

Oldham	3	Rushden	2	QPR	1	Brighton	0
Peterborough	2	Swindon	2	Sheff Wed	1	Bristol City	0
Wycombe	2	Barnsley	1	Stockport	1	Chesterfield	0
Blackpool	2	Colchester	1	Tranmere	1	Hartlepool	0
Grimsby	2	Notts County	1	Bournemouth	0	Plymouth	0
Luton	2	Port Vale	1	Brentford	0	Wrexham	0

Nationwide Division 2 2003-2004 Season - The Stats So Far

Highest Attendance	24,630Sheff Wed v Oldham
Lowest Attendance	3,079Colchester v Bristol City
Average Gate	7,044	
Aggregate Attendance	1,331,408	
Biggest Home Win	Hartlepool 8-1 Grimsby	
Biggest Away Win	Port Vale 1-5 Plymouth	
Biggest Aggregate Score	Bournemouth 6-3 Luton, Hartlepool 8-1 Grimsby	
Total Games	189	
Home Wins	79 (42%)	
Away Wins	50 (26%)	
Draws	60 (32%)	
1-1 Draws	19 (11%)	
0-0 Draws	16 (8%)	
Winning Sequence	Plymouth, Colchester4
Unbeaten Sequence	QPR11
Losing Sequence	Chesterfield6
Winless Sequence	Wycombe, Chesterfield13
Total Yellow Cards	603	
Total Red Cards	47	
Current Winning Sequence	Plymouth4
Current Unbeaten Sequence	Bournemouth6
Current Losing Sequence	Brighton3
Current Winless Sequence	Peterborough12

Use Your Head! - Goals Scored & Conceded from Headers

Scored			All Gls %			Conceded			All Gls %		
Plymouth	17	36	47.2	Brentford	9	23	39.1				
Bournemouth	10	23	43.5	Barnsley	6	17	35.3				
Port Vale	9	24	37.5	Luton	10	30	33.3				
Tranmere	6	17	35.3	Rushden	9	28	32.1				
Luton	9	28	32.1	Sheff Wed	6	19	31.6				
Sheff Wed	7	22	31.8	Bournemouth	5	17	29.4				
Bristol City	5	18	27.8	Blackpool	7	26	26.9				
Wrexham	5	18	27.8	Oldham	7	26	26.9				
Rushden	7	26	26.9	Stockport	7	27	25.9				
Barnsley	5	19	26.3	Peterborough	6	24	25.0				
Stockport	5	19	26.3	Brighton	4	16	25.0				
Swindon	6	23	26.1	Bristol City	3	13	23.1				
Brentford	4	18	22.2	Plymouth	4	18	22.2				
Notts County	3	15	20.0	Wrexham	3	14	21.4				
Chesterfield	2	12	16.7	Tranmere	5	25	20.0				
Wycombe	3	19	15.8	Colchester	4	20	20.0				
Colchester	3	20	15.0	Hartlepool	4	20	20.0				
Grimsby	3	20	15.0	Wycombe	5	29	17.2				
Brighton	3	24	12.5	Chesterfield	4	24	16.7				
QPR	3	25	12.0	QPR	2	12	16.7				
Oldham	3	27	11.1	Notts County	4	27	14.8				
Peterborough	2	18	11.1	Swindon	3	21	14.3				
Hartlepool	2	28	7.1	Grimsby	3	22	13.6				
Blackpool	1	21	4.8	Port Vale	3	22	13.6				

Set Piece Power - Goals Scored & Conceded from Free Kicks

Scored			All For %			Conc.			All Agt %		
Hartlepool	7	28	25.0	Bristol City	4	13	30.8				
Swindon	5	23	21.7	Brighton	3	16	18.8				
Stockport	4	19	21.1	Blackpool	4	26	15.4				
QPR	5	25	20.0	Oldham	4	26	15.4				
Luton	4	28	14.3	Colchester	3	20	15.0				
Plymouth	5	36	13.9	Stockport	4	27	14.8				
Bournemouth	3	23	13.0	Rushden	4	28	14.3				
Brentford	2	18	11.1	Grimsby	3	22	13.6				
Peterborough	2	18	11.1	Luton	4	30	13.3				
Barnsley	2	19	10.5	Brentford	3	23	13.0				
Wycombe	2	19	10.5	Peterborough	3	24	12.5				
Colchester	2	20	10.0	Tranmere	3	25	12.0				
Grimsby	2	20	10.0	Bournemouth	2	17	11.8				
Blackpool	2	21	9.5	Barnsley	2	17	11.8				
Sheff Wed	2	22	9.1	Sheff Wed	2	19	10.5				
Brighton	2	24	8.3	Wycombe	3	29	10.3				
Port Vale	2	24	8.3	Swindon	2	21	9.5				
Chesterfield	1	12	8.3	Port Vale	2	22	9.1				
Rushden	2	26	7.7	Chesterfield	2	24	8.3				
Oldham	2	27	7.4	Notts County	2	27	7.4				
Notts County	1	15	6.7	Wrexham	1	14	7.1				
Tranmere	1	17	5.9	Plymouth	1	18	5.6				
Bristol City	1	18	5.6	Hartlepool	1	20	5.0				
Wrexham	1	18	5.6	QPR	0	12	0.0				

Goals Scored & Conceded from Corners as % of all corners for & agt.

Scored			Corners For %			Conc			Corners Agt %		
Port Vale	5	72	6.94	Wycombe	5	79	6.33				
Sheff Wed	4	68	5.88	Chesterfield	5	97	5.15				
Rushden	4	83	4.82	Brentford	6	136	4.41				
Plymouth	4	100	4.00	Bristol City	3	70	4.29				
Brentford	4	104	3.85	Bournemouth	3	71	4.23				
Grimsby	3	80	3.75	Notts County	3	84	3.57				
Wrexham	3	82	3.66	Blackpool	3	89	3.37				
Luton	3	90	3.33	Stockport	3	94	3.19				
Brighton	3	92	3.26	Oldham	2	68	2.94				
Bristol City	3	92	3.26	Rushden	3	109	2.75				
Tranmere	3	100	3.00	Brighton	2	75	2.67				
Blackpool	2	67	2.99	Plymouth	2	78	2.56				
Colchester	2	85	2.35	Barnsley	2	80	2.50				
QPR	2	86	2.33	Sheff Wed	2	83	2.41				
Bournemouth	2	92	2.17	Colchester	2	85	2.35				
Stockport	2	93	2.15	Wrexham	2	86	2.33				
Oldham	2	98	2.04	Grimsby	2	98	2.04				
Hartlepool	1	64	1.56	Port Vale	2	102	1.96				
Barnsley	1	66	1.52	Peterborough	1	74	1.35				
Chesterfield	1	76	1.32	Hartlepool	1	80	1.25				
Peterborough	1	89	1.12	Luton	1	92	1.09				
Swindon	1	96	1.04	Tranmere	1	100	1.00				
Notts County	0	105	0.00	QPR	0	71	0.00				
Wycombe	0	87	0.00	Swindon	0	66	0.00				

www.soccer-stats.com

5 Leagues and 12 Seasons of Stats

"If you want to impress the lads down the pub...this site is for you."

- 5 star rating and Gold Award, Webuser magazine

Sammy's County goal

After three fruitless years as Northern Ireland manager, Sammy McIlroy is beginning to rediscover the relative luxury of Second Division football with Stockport County.

One pleasure that he will surely be savouring more than most at the moment is the simple fact of goalscoring. In McIlroy's final 18 months with the Northern Ireland squad he presided over an unprecedented run of results that saw his side fail to score in 13 consecutive matches, and plummet the depths of the FIFA rankings, falling just below Botswana and Madagascar in the latest table.

But now that McIlroy's nightmare is over, County fans will hope that his results at Edgeley Park will be more akin to those he enjoyed in an eventful seven years with Macclesfield Town before he resigned the Moss Rose position in 2000 to take over at Windsor Park.

Although his later days with the Silkmen proved more difficult and saw relegation to the basement division in 1998/99, he

PLAYING TODAY

Brentford v Barnsley
CITY v Luton
 Chesterfield v Port Vale
 Notts County v Hartlepool
 Peterborough v Brighton
 Plymouth v Oldham
 Rushden v Grimsby
 Sheffield Wednesday v Blackpool
 Stockport v QPR
 Swindon v Wycombe
 Tranmere v Bournemouth

had previously guided Town to promotion from the Conference to Division Two in consecutive seasons (as well as to various minor trophy triumphs).

County fans, of course, are well aware that international experience is no guarantee of managerial acumen after the less than impressive leadership of

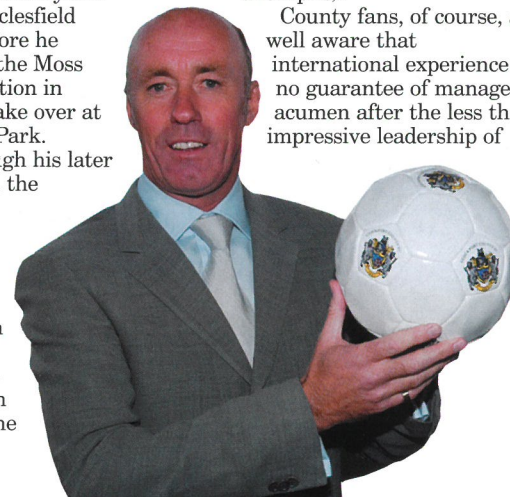
former England midfielder Carlton Palmer in recent years. In his first weeks at the job Sammy McIlroy has already suggested that he has the wherewithal to bring the best out of his Stockport squad.

Young striker Aaron Wilbraham netted the 89th-minute winner in last weekend's impressive 1-0 away victory over **Brighton**, which will have done wonders for the confidence of a struggling side; whilst 18-year-old James Spencer has earned strong reviews in his half-dozen starts as first-choice goalkeeper, and points the way to a bright County future.

With Brighton losing, **Port Vale** held to a goalless draw against a **Swindon** side also stuttering slightly after an impressive start, and **Barnsley** and **Bournemouth** both taking only a point from last weekend's encounters, McIlroy will no doubt consider that a play-off push is a realistic proposition for his new charges.

Today's encounter with **QPR** (who also drew last weekend, 1-1 with **Tranmere**) will certainly prove his biggest test so far. If he can get the best out of his young Wilbraham and Luke Beckett striking partnership then that test might be within the County's capabilities.

ED HAYES



← STOCKPORT BOSS SAMMY MCILROY



Recruitment

Opportunities for

1 x Recruitment Consultant

OTE 1st year £20-£22k

1 x Onsite Co-Ordinator (industrial client)

OTE 1st year £19-£20k

Prime Time Recruitment are a national recruitment agency with 163 branches throughout the UK. We cover 13 divisions, including Industrial, and have created opportunities in our Bristol City FC branch.

If you are looking for a career in a fast-moving sales environment, where you are rewarded with career progression and financial benefits – along with ongoing training – then call us now to join our team at Ashton Gate or e-mail andrea.grant@primetime.co.uk.

ASHTON GATE OFFICE
RING 0117 953 0195



WORKING *with Bristol*



Lee to the rescue



CITY 0 WYCOMBE 3
21.10.03 | League

CITY SAW TWO men sent off on a miserable night.

The game turned on the first-half dismissal off of Tommy Doherty, for violent conduct, before Gavin Holligan (twice) and Jermaine McSpornan turned the screw on the away side.

City: Phillips; M. Bell (Woodman 87); Butler, Coles, Carey; A. Brown (Burnell 30); Timmin, Doherty, Wilks; Peacock, Miller (C. Roberts 45). Subs not used: Lita, Stowell.
Wycombe: Talia; Senda, Branston, Thomson, Yinnicombe, Currie, Bulman, Simpson, S. Brown (S. Roberts 64); Holligan, McSpornan. Subs not used: Williams, A. Bell, Ryan, Mapes.
Attendance: 4,613
Goals: Wycombe – Holligan 40, 70; McSpornan 90

CITY 1 SHEFFIELD WED. 1
25.10.03 | League

LEE PEACOCK'S CLOSE-RANGE header after 69 minutes rescued a deserved point for City.

Adam Proudlock had earlier put Wednesday – backed by 2,830 away supporters – ahead in the first half.

City: Phillips; Hill, Butler, Coles; Woodman, Timmin, Doherty, Wilks; Carey (Amankwaah 58); Peacock, Roberts (Lita 63). Subs not used: Miller, Stowell, Fortune.
Sheffield Wednesday: Lucas, Geary, Bromby, Lee, D. Smith, Mustoe, Wood, Reddy, McLaren, Owusu. Proudlock. Subs not used: Pressman, P. Smith, Shaw, Holt, Haslam.
Attendance: 13,668
Goals: City – Peacock 69; Wednesday – Proudlock 33

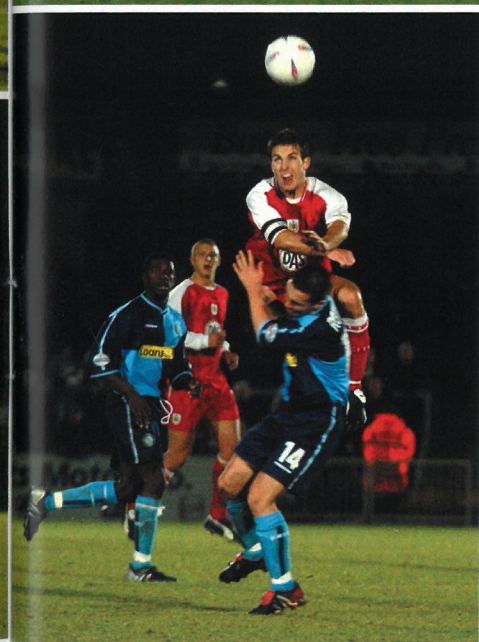
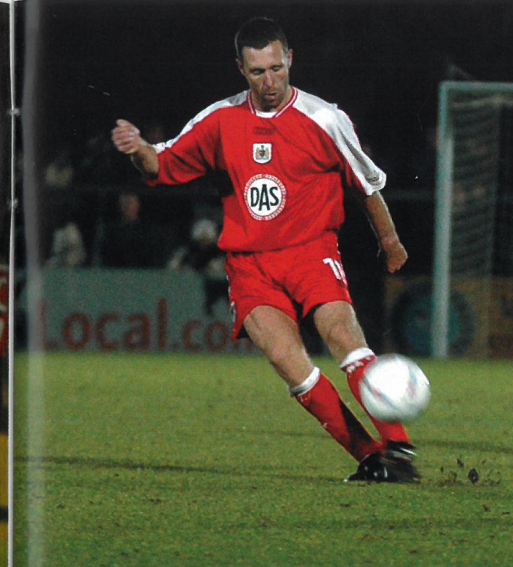
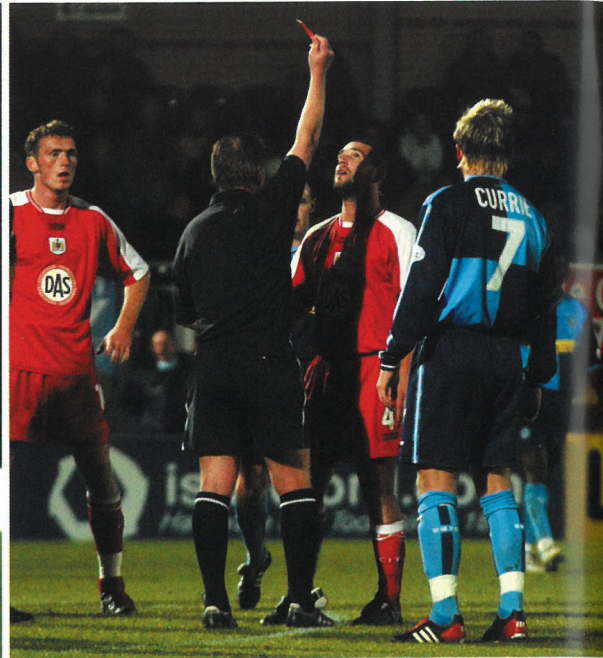
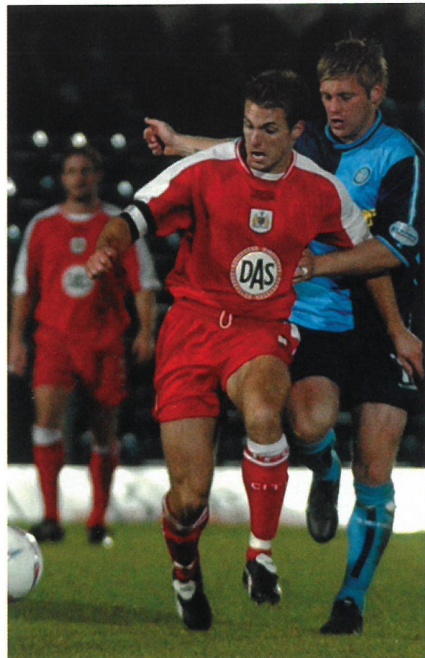
CITY 0 SOUTHAMPTON 3
28.10.03 | Carling Cup R3

GOALS FROM JAMES BEATTIE, Brett Ormerod and Graeme Le Saux ended the home side's ambitions.

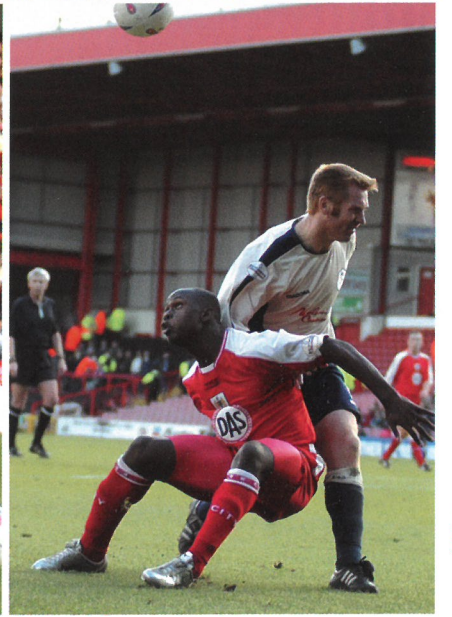
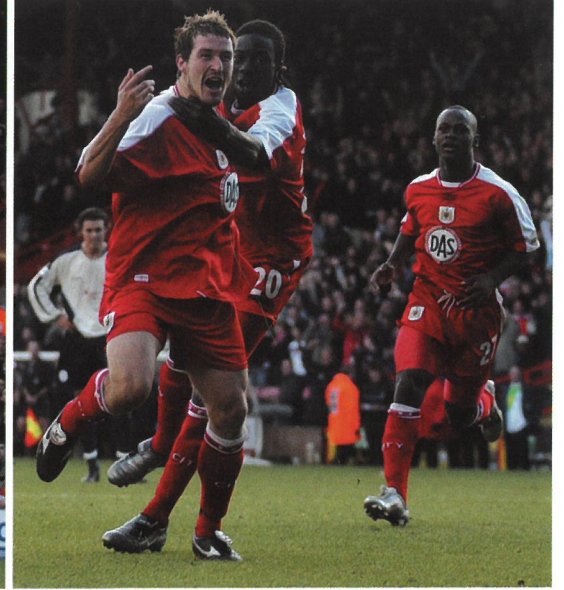
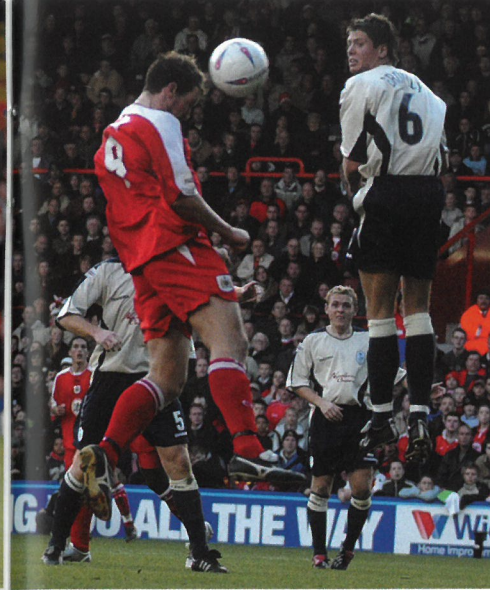
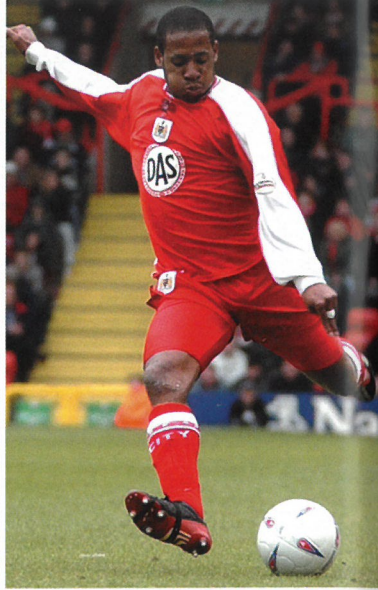
City put up a good fight against a strong Saints side, however, and saw Lee Peacock's goal disallowed for offside in the first half.

City: Phillips; Hill, Butler, Coles; Woodman, Timmin, Burnell, Wilks; Carey (Hulbert 75); Amankwaah (Miller 84); Peacock, Roberts (Lita 62). Subs not used: Fortune, Stowell.
Southampton: Niemi (Jones 46); Dodd, Marsden, Lundekvam, Beattie; M. Svensson, A. Svensson, Delap (Telfer 62); Fernandes (McCann 71); Ormerod, Le Saux. Subs not used: Higginbotham, Griffith.
Attendance: 17,408
Goals: Southampton – Beattie 31, Ormerod 67, Le Saux 89

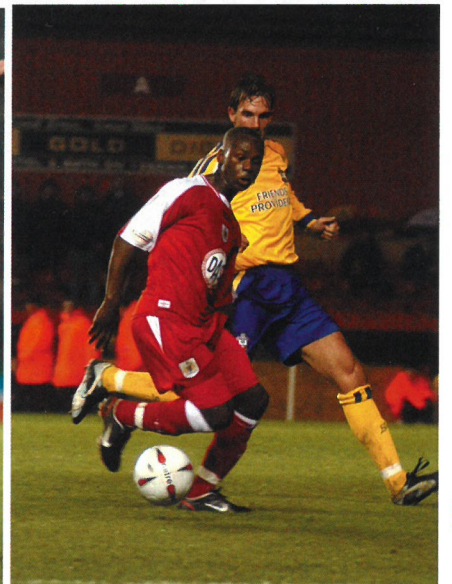
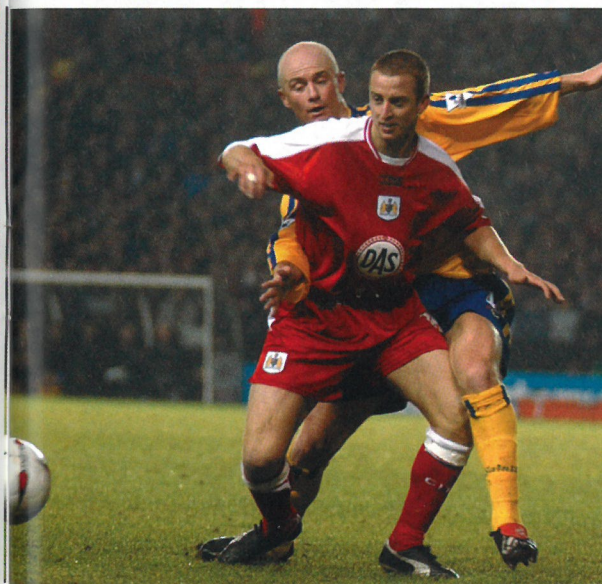
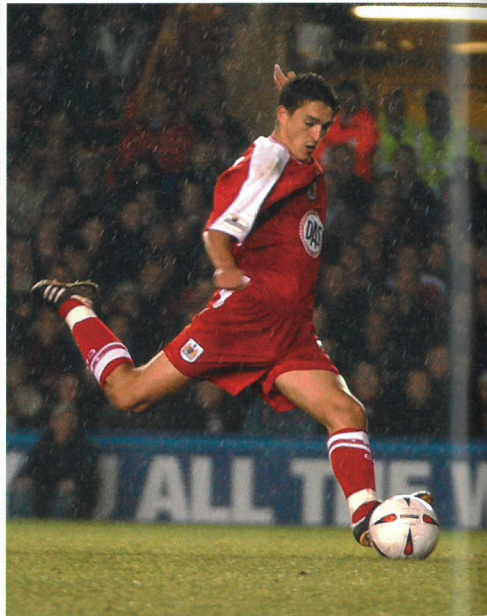
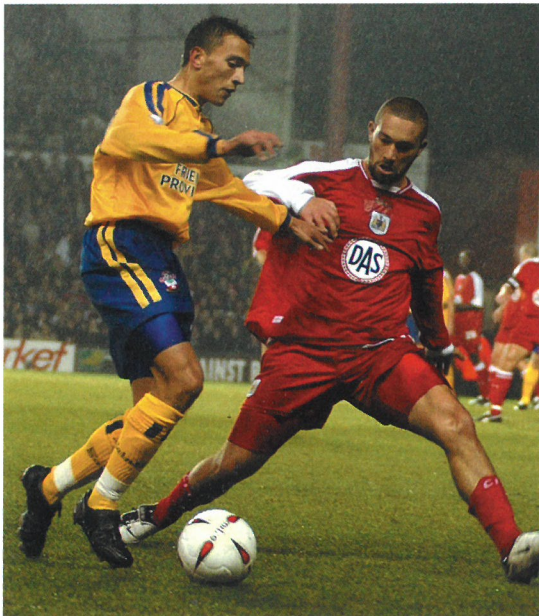
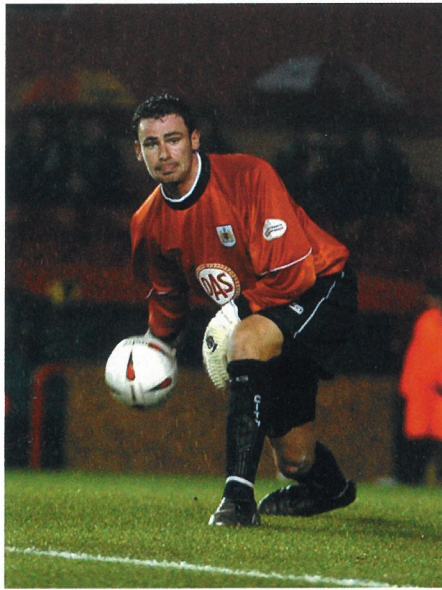
CLOCKWISE FROM TOP LEFT, JOE BURNELL COMES UNDER PRESSURE; TOMMY DOHERTY IS SHOWN A RED CARD FOR HEADBUTTING WYCOMBE'S DANNIE BULMAN; BRIAN TINNIION IN ACTION AT THE CAUSEWAY STADIUM, CHRISTIAN ROBERTS HURDLES DANNY SENDA. DANNY COLES HAS HIS HEAD IN HIS HANDS AFTER A LATE DISMISSAL FOR A SECOND BOOKABLE OFFENCE (LATER RESCINDED); BURNELL GIVES IT 110%; LEE PEACOCK GETS A LIFT FROM WYCOMBE'S ANDY THOMSON; ROBERTS HAS POT AT GOAL.



CLOCKWISE FROM TOP LEFT: TWO MIDFIELD VETERANS IN ACTION – WEDNESDAY'S NEIL MUSTOE AND CITY'S BRIAN TINNIN; MATTHEW HILL PUTS IN A CROSS; LEE PEACOCK HEADS CITY'S SECOND-HALF EQUALISER BEFORE CELEBRATING WITH KEVIN AMANKWAHAH; LEROY LITA PUTS HIS BACK INTO IT; AMANKWAHAH, WHO STARTED HIS FIRST SENIOR GAME FOR ALMOST 20 MONTHS; CRAIG WOODMAN HEADS TOWARDS GOAL; CHRISTIAN ROBERTS SHOWS OFF HIS BALL CONTROL.

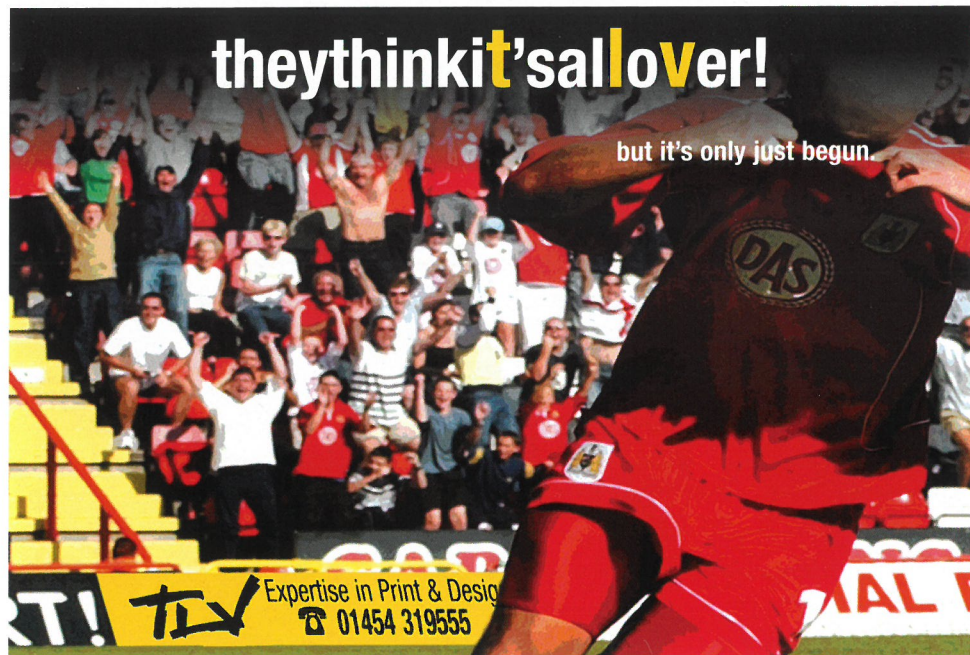


CLOCKWISE FROM TOP LEFT: STEVE PHILLIPS, WHO MARKED HIS 200TH APPEARANCE BY MAKING SEVERAL FINE SAVES; LUKE WILKSHIRE CHASES SWEDISH WORLD CUP STAR ANDERS SVENSSON; THE BALL IS IN THE NET - BUT LEE PEACOCK'S 23RD-MINUTE HEADER WAS DISALLOWED FOR OFFSIDE; SUB LEROY LITA TRIES HIS LUCK AGAINST THE SAINTS; ROBIN HULBERT HOLDS OFF SOUTHAMPTON MIDFIELDER CHRIS MARSDEN; CRAIG WOODMAN SHOWS NO FEAR; CHRISTIAN ROBERTS SHADOWS FRENCH WIZARD FABRICE FERNANDES



they think it's all over!

but it's only just begun.



Expertise in Print & Design
01454 319555

TODAYS BEST MIX
IN THE WORLDS
BEST CITY



Reserves' late show

Development Coach **Shaun Taylor** watches the reserves progress to the next round of the Gloucestershire Cup.



CHELTENHAM TOWN 1 CITY 3
Gloucestershire Senior
Challenge Cup Round Two

TWO LATE GOALS from Lee Matthews and Simon Clist ensured we go through to the next round of the competition.

Robin Hulbert had earlier opened the scoring before Cheltenham hit back through striker Luke Corbett with just 16 minutes to play.

It was a pleasing win as we played a team which featured a fair number of youngsters, playing alongside more experienced players like striker Lee Miller, who got a full 90 minutes under his belt.

In fact the highlight for me was the fact we finished the game with a defence made up entirely of Academy youngsters.

We took Clayton (Fortune) and Ryan (Harley) off in the second half and replaced them with two young lads in Sam Bailey and Kye Holly and they were excellent.

That meant our back four at the final whistle was made up purely of Academy lads, which

just goes to prove how vital it is to this club. It's also a major confidence boost for those players.

We created plenty of chances in the first half but it took until the 48th minute before we finally grabbed a goal, Darren Hawkins sending a pin-point cross into the box for Hulbert to score with his head from ten yards.

Goalkeeper Mike Stowell thought there was an element of offside about Cheltenham's equaliser on 74 minutes. Ben Cleverley, released by City in the summer, sent Corbett through on goal with a neat pass.

We kept our focus, however, and just as it looked like the tie would be going into a further half-hour Matthews tumbled in the box, tripped by young Robins defender Michael Wylde, and powered home the resultant spot-kick.

We made certain of victory in the 89th minute when a pass from Marvin Brown set-up Clist to make the final score 3-1.

City Reserves: Stowell; Harley (Bailey 78), Aubrey, Fortune (Holly 51), Hart; Hawkins, Hulbert, Clist, M. Brown; Matthews, Miller. Subs not used: McGuire, Stabler, Skuse.



← LEE MATTHEWS

PONTIN'S
HOLIDAYS COMBINATION
FIXTURES

AUGUST 2003	
Wed 20 OXFORD UNITED	5-0
Wed 27 Cardiff City	3-0
SEPTEMBER	
Wed 3 Plymouth Argyle (PC)	3-0
Wed 10 CHELtenham TOWN	4-4
Wed 24 PLYMOUTH ARGYLE	0-1
OCTOBER	
Wed 1 CARDIFF CITY (PC)	0-0
Tue 7 Yeovil Town (SC R1)	3-2
Wed 15 Bristol Rovers (PC)	P-P
Wed 22 YEovil TOWN	0-2
Wed 29 Cheltenham Tn. (GC R2)	3-1
NOVEMBER	
Wed 5 AFC Bournemouth	A
Wed 19 Swansea City	A
Tue 25 TAUNTON TOWN (SC R2 - 7.45pm)	H
Wed 26 Swindon Town	P-P
DECEMBER	
Wed 3 SWANSEA CITY (PC)	H
Wed 10 BRISTOL ROVERS	H
JANUARY 2004	
Wed 14 SWANSEA CITY	H
Wed 21 Cheltenham Town (PC)	A
Tue 27 Plymouth Argyle (7.45pm)	A
FEBRUARY	
Wed 18 AFC BOURNEMOUTH	H
MARCH	
Wed 3 Yeovil Town (7.45pm)	A
Wed 10 Bristol Rovers (7pm)	A
Wed 24 SWINDON TOWN	H
Wed 31 Pontin's Holidays Cup Semi-Final	
APRIL	
Wed 7 Oxford United	A
Wed 14 CARDIFF CITY	H
Wed 28 Cheltenham Town	A
MAY	
Wed 12 Pontin's Holidays Cup Final	

Appearances: 9 - M. Brown, Clist, Hulbert; 8 - Harley, Fortune, Simpson, Stowell; 6 (+1 sub) - Lita; 6 - Woodman, Hawkins; 5 (+3 sub) - McGuire; 5 - Matthews; 4 (+2) - Aubrey; 2 (+1 sub) - Lambu; 1 (+3 sub) - Anyinsah; 1 (+2 sub) - C. Hart; 1 - Amankwaah, A. Brown, J. Brown, S. Brown, Jones, Miller; 0+2 sub - Loxton; 0+1 sub - Bailey, Coupe, Flurry, Holly.

Goalscorers: 6 - Lita; 3 - Hulbert, Matthews; 2 - M. Brown, Clist; 1 - Harley, Hawkins, Loxton, McGuire.

Home matches to be played at Ashton Gate Stadium unless stated. All matches kick-off 2pm unless stated. Pontin's Holidays Combination fixtures unless PC (Pontin's Holidays Cup group match), SC (Somerset Cup) or GC (Gloucestershire Cup). Fixtures are subject to alterations.

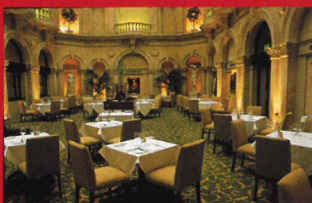
Marriott®

BRISTOL ROYAL HOTEL



The Terrace Restaurant

Relaxing and with modern cuisine
Sunday Carvery Lunches - great for all the family



Bristol's Finest Restaurant

Michael Caines at the Bristol Marriott Hotel
Renowned chef
Stunning Surroundings

Elegant Accommodation

Weekend Packages
Corporate Rates
Family Rooms



Drawing Room

Royal Afternoon Teas
Light Lunches
Pampering Day Teas



BRISTOL'S PREMIER HOTEL

Marriott
BRISTOL ROYAL HOTEL

Telephone 0870 400 7220

College Green, Bristol, BS1 5TA www.marriotthotels.com/brsry

29

THE INTERVIEW | LEE PEACOCK

Fear of the needle

Lee Peacock hopes the 100th goal of his career in last Saturday's 1-1 draw with Sheffield Wednesday will prove a milestone in a memorable season.

It took the striker's tally for the campaign to ten. At the same stage last season he had scored only three, having missed seven games through injury.

Lee went on to net 15 times and, understandably, is now very hopeful of improving considerably on that figure.

"I've always maintained I will score goals if I can stay fit," he said. "For one reason or another I have had several spells out of the team since joining City and I always feel sharper when I'm on a long run of games.

"That's why I've been trying hard to battle through my current ankle problem. It hasn't been right for a number of games, but I have kept going and the goal against Wednesday was the reward."

Another incentive for Lee to keep playing has been the threat of the big needle. He has been told a cortisone injection might be needed if the ankle doesn't settle down.

"It's a deep injection and not all that nice so hopefully I can avoid it," he said. "There has been an improvement and I'm hoping the worst is over now.

"I knew I was somewhere close to 100 goals, but didn't realise at the time that the header last Saturday brought it up. The most important thing was that it got us a point, which was the least we deserved.

"We've let ourselves down with some results in recent weeks, but I thought the performance against Sheffield Wednesday was much more encouraging.

"I had more chances than in the previous few games put together. Whether that was down to a change in my performance or that of the team I'm not sure."

Lee revealed that before the Carling Cup tie against Southampton coach Frank Barlow had called City's strikers in to watch a video of the Saints' forwards in action against Everton.



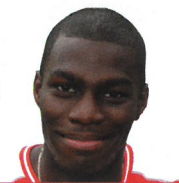
"We were told to watch James Beattie's work-rate as well as his ability. Even when he loses possession he battles so hard to get back behind the ball and win it again," he said. "You can obviously learn by watching the top players in your position and hopefully we can take some of it into future games.

"I'm still very hopeful about our season. We've not been able to put a really good run together, yet we are still well in touch with the leading clubs.

"At some point we are going to start stringing some wins together. There are some strong sides in this division, but we don't need to fear anyone."



Central defender **Clayton Fortune** reveals his innermost secrets in the latest in our series of player Q&As.



INSIDE YOUR HEAD

What is your earliest football memory?
Playing headers and volleys with my cousin and uncle – Jon Fortune (now at Charlton) and Leo Fortune-West (Doncaster Rovers striker) when I was about six.

What are you most frightened of?
Craig Woodman's driving!

What is your strangest dream or nightmare?
The nightmare is being stuck in a hotel room with Joe Burnell and Colesey (pictured).
Do you



believe in ghosts or UFOs?
No.

Is there a God?
Yeah, I think there is.

What makes you happy?
Being in the starting line-up for the first team.

What makes you sad?
Not being in the first team.

Were you clever at school?
I was quite clever ... when I wanted to be.

How do you prepare mentally for a game?
I visualise myself doing the things I am good at.

Who would you most like to be?
No one in particular. I'm happy being me.

INSIDE YOUR HOME

Where do you live?

In digs at Staple Hill.

How many TV sets do you have?
Four

What's in the fridge?
Whatever landlady Becky fills it with.

Describe the contents of your wardrobe?
Some radical designer gear.

How many pairs of shoes do you own?
Four.

What is your garden like?
Pretty normal. Trees, lawn and flowers.

Who does the housework?
Becky. Thank God!

What chore do you hate?
I like them all because Becky does them.

A room needs decorating. Who does it?
Not me or Craig (Woodman, whom I share digs with)!

Do you eat microwaved food?
Yes.

Do you have a computer?
I have a couple of gaming consoles but no PC.

INSIDE YOUR HEART

When did you last send someone flowers?
I gave my mum some on her birthday.

Do you send Valentine cards?
Depends if I've got a chick at the time.

Did you have a girlfriend at school?
I did, but she didn't go to my school because it was an all-boys school.

Where would you spend a romantic evening?
A candlelit dinner under the stars.

What is the most romantic song you have heard?
I'm Gonna Love You Better, by LL Cool J.

Who is your favourite pin-up?
Halle Berry. She's a bit hot!

Do you like sappy films?

I don't mind them.

Have you ever cried like Gazza?
No, I'm a big boy.

What is the best present you have ever received from a woman?
I can't think of one in particular. They've all been nice.

What do you look for in the ideal woman?
A pulse! No, actually, a good personality goes a long way.

wellred
POSTER



CLAYTON
FORTUNE

UNDER-17 FIXTURE LIST

AUGUST 2003		
Sat 23	SHEFFIELD UNITED	1-3
Sat 30	Manchester United	1-3
SEPTEMBER		
Sat 6	WEST HAM UNITED	1-4
Sat 13	Millwall	3-3
Sat 20	Tottenham	1-4
Sat 27	CRYSTAL PALACE	0-1
OCTOBER		
Sat 4	Wimbledon	5-3
Sat 11	READING	5-4
Sat 18	CHARLTON ATHLETIC	3-1
Sat 25	Leicester City	2-3
NOVEMBER		
Sat 1	FULHAM	H
Sat 8	Arsenal	A
Sat 15	Aston Villa	A
Sat 22	BIRMINGHAM CITY	H
DECEMBER		
Sat 6	Coventry City	A
Sat 13	WATFORD	H
JANUARY 2004		
Sat 10	Fulham	A
Sat 17	ARSENAL	H
Sat 24	ASTON VILLA	H
FEBRUARY		
Sat 7	Birmingham City	A
Sat 14	COVENTRY CITY	H
Sat 21	Watford	A
Sat 28	LEICESTER (12 noon)	H
MARCH		
Sat 6	Crystal Palace	A
Sat 13	SOUTHAMPTON	H
Sat 20	Reading	A

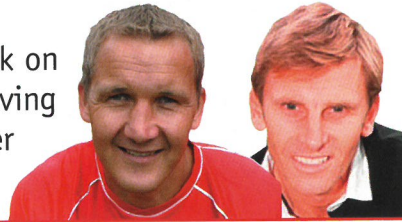
All matches kick-off at 11am unless stated. Home matches are played at the Abbots Leigh Training Ground (directions from M5: leave motorway at junction 19, travel along A369 for three miles and turn right approx. half-a-mile before Beggar Bush Lane traffic lights; from Bristol: travel along A369 Bristol/Portishead road and turn left approximately half-a-mile after the Beggars Bush Lane traffic lights).

FA Premier Academy League fixtures unless stated. Fixtures subject to alterations. See bfcf.co.uk for details of changes.

Appearances: 10+1 (sub) - Wring; 10 - Benyon, Golbourne, Pearce; 9+1 - Allward; 8+3 - Cotterill; 7+1 - Titcombe; 6 - Barnes, Best, Taylor; 5+2 - Osman; 5+1 - Grubb, Lamb, Rivers; 3+3 - MacKay; 3 - Jones; 2+3 - Smart; 1+4 - Padfield; 1+1 - Shallcross; 0+1 - Williams, Artis, Alison.
Goalscorers: 10 - Cotterill; 8 - Benyon; 1 - MacKay, Taylor, Padfield, Rivers.

U17s foxed in final minute

Keith Millen and Alan Walsh look back on recent matches involving City in the FA Premier Academy League.



CITY UNDER-19S 0 WATFORD UNDER-19S 1 FA Premier Academy League

THIS WAS A disappointing result and performance in a game which saw us have the majority of possession.

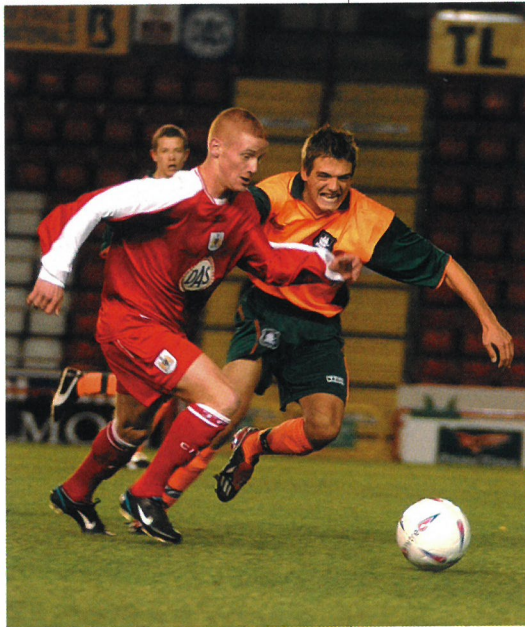
The only goal of the game came on 75 minutes when our goalkeeper James Stabler fumbled a cross and a Watford striker nodded home.

We should have taken the lead when Kyle Allcock's cross from the right fizzed

dangerously across the face of goal, with no strikers available in the box to prod home.

That summed up our day. We should have had people diving in there, dying for the cause if you like.

We created a few half chances throughout the match, but were never really



← KYLE ALLOCK

able to impose ourselves on the opposition.

At the interval, with neither side having made a breakthrough, we challenged the lads to go out and take the game by the scruff of the neck.

Sadly, they were unable to do so, which meant that one error was always going to prove costly.

City Under-19s: Stabler, Holly, C.Hart, Monelle, Aubrey, Bailey (Barnes 75), Skuse, Harley, Allcock, Long, Flurry.

ALAN WALSH

LEICESTER CITY UNDER-17s 3 CITY UNDER-17s 2 FA Premier Academy League

A 90TH-MINUTE WINNER ended our recent run of good results, but it was still a very encouraging performance.

We had a number of younger players involved and lost Lee Titcombe early on through injury. Unfortunately, he's going to be out for a number of weeks and the problem forced us to change things around a bit.

Leicester are top of the table and that certainly seems their rightful place, but we shocked them by taking a 12th-minute lead. Sean Rivers netted his first goal of the season, volleying home Dave Cotterill's cross.

The home side levelled things up on 35 minutes to make it 1-1 at

the break, before moving into a 2-1 lead on the hour-mark.

We equalised again five minutes later from the penalty spot. Elliot Benyon was brought down in the area and took the spot-kick himself to make it 2-2.

Leicester created chance after chance as the game entered its final stages, Sam Pearce twice having to pull off great saves to keep the score level.

But another Pearce save in the final minute was pounced on in the area by a home striker, who swept home the rebound to steal the points.

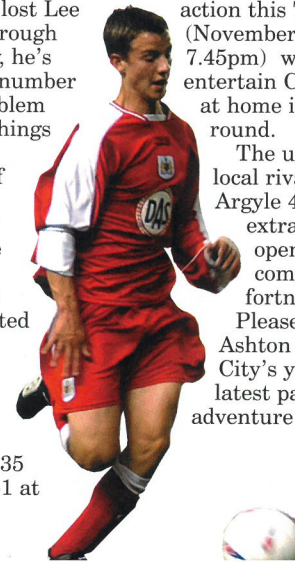
City Under-17s: Pearce, Best, Titcombe (Padfield 30), Lamb, Taylor, Allward, Wring, Golbourne (Shalcross 80), Rivers, Benyon, Cotterill.

KEITH MILLEN

YOUTH CUP ACTION
CITY ARE IN FA Youth Cup action this Tuesday (November 4th, kick-off 7.45pm) when they entertain Cheltenham Town at home in the second round.

The under-18 side beat local rivals Plymouth Argyle 4-2 after extra-time in the opening stage of the competition a fortnight ago.

Please get down to Ashton Gate to cheer on City's youngsters in the latest part of their Cup adventure if you can.



← ELLIOT BENYON

UNDER-19 FIXTURE LIST

AUGUST 2003		
Sat 23	SHEFFIELD UNITED	3-6
Sat 30	Manchester United	1-1
SEPTEMBER		
Sat 6	Norwich City	1-4
Sat 13	CHARLTON ATHLETIC	1-2
Sat 20	Ipswich Town	1-1
Sat 27	C. PALACE	2-3
OCTOBER		
Sat 11	CHELSEA	0-0
Sat 18	Reading	3-4
Sat 25	WATFORD	0-1
NOVEMBER		
Sat 1	Arsenal	A
Sat 8	LEICESTER CITY (12 noon)	H
Sat 15	Fulham (12 noon)	A
Sat 22	ASTON VILLA	H
DECEMBER		
Sat 6	Birmingham City	A
Sat 13	Watford	A
JANUARY 2004		
Sat 10	ARSENAL	H
Sat 17	Leicester City	A
Sat 24	FULHAM	H
FEBRUARY		
Sat 7	Aston Villa	A
Sat 14	BIRMINGHAM CITY	H
Sat 28	Chelsea	A
MARCH		
Sat 6	READING	H
Sat 13	TOTTENHAM (12 noon)	H
Sat 20	Millwall	A
Sat 27	WIMBLEDON	H
APRIL		
Sat 3	Southampton	A

All matches kick-off at 11am unless stated. Home matches are played at the Abbots Leigh Training Ground (directions from M5: leave motorway at junction 19, travel along A369 for three miles and turn right approx. half-a-mile before Beggar Bush Lane traffic lights; from Bristol: travel along A369 Bristol/Portishead road and turn left approximately half-a-mile after the Beggars Bush Lane traffic lights).

FA Premier Academy League fixtures unless stated. Fixtures subject to alterations.

Appearances: 11 - Skuse; 10+1 - C. Hart, Holly; 10 - Aubrey, Allcock, Long; 9+1 - Monelle; 9 - Stabler; 7 - Anyinsah; 7+3 - Bailey; 7+2 - Harley; 6+2 - Flurry; 5 - Loxton; 4 - Lamb; 2 - Coupe; 1+1 - Pollinger; 1 - Lita, Morris; 0+1 - D. Hart, Legister, Lamb, Barnes.
Goalscorers: 3 - Harley; 2 - Allcock, Anyinsah, Flurry, Lita; 1 - C. Hart, Long, Loxton, Monelle.

Rachael ALLEN



ABUS FARESAVER
SUPPORTING CITY LADIES

Position: Defender | Born: 2.9.85 | 2003/04 apps: 4+1, 0 goals


Cheril BABER



0117 963 0605

Position: Forward | 2003/04 apps: 6+4, 1

Jade BAILEY



0117 963 0605

Position: Midfielder | Born: 10.5.87 | 2003/04 apps: 10+1, 3

Lizzie BARRATT



0117 963 0605

Position: Forward | 2003/04 apps: 4+6, 0

Kath BESSELL



SHARON B

Position: Midfielder | Born: 17.5.82 | 2003/04 apps: 3+2, 0


Heidi BEVAN



MAGGIE LANSDOWN

Position: Forward | Born: 7.4.83 | 2003/04 apps: 5+2, 5


Carly BRYANT



0117 963 0605

Position: Defender | Born: 1.5.82 | 2003/04 apps: 12, 1


Tracey DUINN



0117 963 0605

Position: Defender | Born: 4.8.70 | 2003/04 apps: 0+1, 0


Alex ESKENAZI



0117 963 0605

Position: Goalkeeper | 2003/04 apps: 0, 0


Abbie GOULD



0117 963 0605

Position: Defender | 2003/04 apps: 9, 0

Jo JOHNSON-TAYLOR



0117 963 0605

Position: Defender | Born: 19.10.76 | 2003/04 apps: 12, 0


Charlotte KING



GAIN BUSINESS SERVICES

Position: Striker | Born: 29.12.86 | 2003/04 apps: 10+1, 11


Katy LITTLE



0117 963 0605

Position: Midfielder | Born: 25.3.86 | 2003/04 apps: 11, 5

Michelle MUNRO



0117 963 0605

Position: Midfielder | Born: 9.3.83 | 2003/04 apps: 11, 1


Genevieve REID



PUDSEY

Position: Goalkeeper | Born: 14.2.80 | 2003/04 apps: 12, 0


Kristy RICHARDSON



0117 963 0605

Position: Midfielder | Born: 19.10.79 | 2003/04 apps: 12, 1


Sarah ROMBURGH



0117 963 0605

Position: Midfielder | Born: 17.9.81 | 2003/04 apps: 0, 0


Julie SINKINS



0117 963 0605

Position: Midfielder | Born: 28.1.72 | 2003/04 apps: 2, 0

Angie TINSON



DI AND WENDY ROWLAND

Position: Forward | Born: 22.11.79 | 2003/04 apps: 9, 9

Shantylie BALDWIN

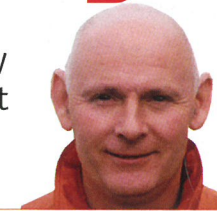


MAD RICHARD SEYMOURS FAMILY CLUB
TEL: 0117 929 0093

Position: Midfielder | 2003/04 apps: 0+1, 0

Girls won't give it up

Manager Jack Edgar on how City Women held on to their top spot with a 2-1 win at their closest rivals Southampton Saints.



SOUTHAMPTON SAINTS 1 CITY WOMEN 2 FA Premier Southern Division

WE TURNED IMMINENT defeat into a sensational away victory last Sunday to move three points clear at the top of the table.

After a first half of very few chances, the Saints went ahead through leading scorer Kelly Baker shortly after the interval. She cut in from the right before firing a shot across goal and into the corner of Genevieve's net.

The second half was a stop-start affair with numerous Saints players receiving treatment for injuries, which forced many minutes of added time to be played at the end of the game.

It was in that stoppage time that we equalised. Skipper Carly Bryant went up for a 92nd-minute corner and, as Jade Bailey swung a looping ball into the box, our captain rose high to power a header into the top corner of the goal.

I would have settled for a draw, as we hadn't played very well, but the girls just couldn't allow that to happen.

No sooner had the celebrations died down we had scored again. A cross into the

box was controlled by Charlotte King, who then turned and fired past the Saints' keeper.

It extends our winning League run to nine matches, which we hope to make ten tomorrow when we take on Langford at Oaklands Park (kick-off 2pm).

City Women: Reid, Johnson-Taylor, Bryant, Sinkins, Bailey, Munro, Richardson (Barratt 75), Baber, Little, Tinson (Bevan 75), King.

↓ CAPTAIN FANTASTIC CARLY BRYANT



2003/04 FIXTURE LIST

AUGUST 2003

Sun 24	Portsmouth	2-1
Sun 31	Brighton & Hove Albion	2-2

SEPTEMBER

Sun 7	ENFIELD	4-2
Sun 14	Leeds United (FA Cup R1)	1-3
Wed 17	MERTHYR TYDFIL	4-1
Sun 21	WIMBLEDON	4-3
Sun 28	IPSWICH TOWN	2-1

OCTOBER

Sun 5	Millwall Lionesses	5-1
Sun 12	CHELSEA	3-1
Wed 15	Merthyr Tydfil	4-2
Sun 19	WATFORD	5-1
Sun 26	Southampton Saints	2-1

NOVEMBER

Sun 2	LANGFORD	H
Sun 16	Langford	A
Sun 23	BARNET	H

DECEMBER

Sun 14	PORTSMOUTH	H
--------	------------	---

JANUARY 2004

Sun 11	BRIGHTON & HOVE ALBION	H
Sun 18	Enfield	A
Sun 25	Ipswich Town	A

FEBRUARY

Sun 1	WIMBLEDON	H
Sun 8	Watford	A
Sun 15	MILLWALL LIONESSES	H
Sun 22	Chelsea	A
Sun 29	SOUTHAMPTON SAINTS	H

MARCH

Sun 7	Barnet	A
-------	--------	---

Home matches to be played at Oaklands Park, Almondsbury (directions: leave M5 at junction 16 and take third exit at the roundabout (s/p A38 - Thornbury, Gloucester) before taking the first turning on your left.

All matches kick-off 2.00pm unless stated. FA Southern Premier Division fixtures unless stated.

Fixtures are subject to alterations. See bcfc.co.uk for details of changes as they are announced.



Football's Future

Cash in on our support for:

- pitches
- social inclusion projects
- changing rooms
- education schemes
- kit and equipment
- pavilions



FootballFoundation
football's biggest supporter

www.footballfoundation.org.uk Helpline 0800 0277766

New Club, New You...



David Lloyd Leisure, the UK's No. 1 Racquets, Health & Fitness Group has completed the refurbishment of it's facilities and is now looking *even better!*

Why settle for second best?

Come and see for yourself!

Call **0117 953 2829** today to book a tour



The David Lloyd Leisure Club
Ashton Road
Ashton Bristol
BS3 2HB
(next to Park & Ride before Long Ashton and 2 miles from Clifton)
T. 0117 953 2829/
0117 953 1010
F. 0117 953 2690

David Lloyd
www.davidlloydleisure.co.uk
sales.bristol@whitbread.com

39

FOOTBALL IN THE COMMUNITY

BRISTOL CITY FC
STUDY CENTRE

Helping Kick It Out!

We would like to say a big thank you this week to the children who came out onto the pitch before the Sheffield Wednesday game in support of the Kick Racism Out Of Football campaign.



↑ YOUNGSTERS FROM CITY'S STUDY SUPPORT CENTRE SHOW OFF THE CLUB'S KICK RACISM OUT OF FOOTBALL BANNER BEFORE LAST SATURDAY'S HOME GAME VERSUS SHEFFIELD WEDNESDAY

They are all attending the Study Centre at the moment and were thrilled to be able to lead the team out before the game.

We are strong supporters of the campaign and have run a variety of events over the years to support it.

This week has been fairly quiet in the Study Centre as all of our schools are out on half-term. We have been preparing the Centre ready for the second part of the term and working on various projects that need sorting out.

The Football in the Community team has been busy running courses.

On Monday and Tuesday they had more than 60 youngsters each day for a soccer Fun Day course. There were some very excited youngsters in the car park at Ashton Gate at 9:30 on Monday morning, I can tell you.

We are also looking forward to the England v Switzerland under-17 international on Wednesday 12th November. We are hoping to get as many of the youngsters that we work here to watch the rising England stars of the future. We are already contacting schools and local clubs to give them the opportunity to come and watch. Last time there was an under-17 match here we were able to watch a young Wayne Rooney play. Who knows who we might see this time?

I have been busy this week editing together short films and animations that some of our children have been making here at the Study Centre.

They have each made a model of themselves in a Bristol City kit and we have taken their photos to make the heads. They have then decorated their models and used the computer to film their model moving and kicking a football. We then edit the films together and add a soundtrack.

You never know, we might discover the next Oscar winning filmmaker here at Bristol City! If so, I'm hoping that club will get a mention in their acceptance speech.

We are also looking forward to next year and the Centenary celebrations for Ashton Gate. We are going to be working with two of our local primary schools before Christmas to start to put together our own video history of 100 years of football at Ashton Gate.

MANDY THORPE,
STUDY SUPPORT CENTRE MANAGER

in
association
with our
partners:



Playing for Success

John
Fitzgerald
& Co



COME ON FLO, NOW THE DOC'S CHECKED MY LUNGS OUT, LET'S HAVE A LOOK AT YOURS...



Andy Capp strip courtesy of Mirrorpix

Do you know what to look for?

Having a cough for more than three weeks. Feeling more tired than usual. Not being able to shake off a chest infection even after taking antibiotics. These are symptoms you should get checked out by your GP. If it's not serious, then you'll have peace of mind. If it is lung cancer, it needs treating quickly, because early diagnosis saves lives.

Macmillan
cancer relief

www.macmillan.org.uk
Registered Charity Number 261017

For further information or support,
or a copy of our leaflet call the
Macmillan CancerLine free on 0808 808 2020



www.roycastle.org
Registered Charity Number 1046854

Advertising space donated by **Nationwide**

41

CITY JUNIOR STRIKERS | JOHN BANKS

CITY
Jnr
STRIKERS

A warm welcome to Dave Lewis and Luton Town Juniors for this afternoon's game. We hope they enjoy their day - if not the result!



We will be playing the Juniors in a series of football matches this morning before watching the match. I hope we can repeat our good form of two weeks ago, when we travelled to North Wales for City's game against Wrexham, and beat the Red Dragons' junior supporters in

both the games we played!

Our next trip away to watch City will take place in a fortnight (Saturday 15th November) when we go to Brighton.

Please confirm your places with Clare in the Clubroom today or by phoning 01454 883440 before the game.

TODAY'S MASCOT



CHANEL ABRAHAMS is aged 11 this month and attends Gracefield School.



ELLA NEALE will also be 11 this month and goes to Bromfield Heath Junior School.



HANNAH ROAN is aged nine and attends Churchill Primary School. Her

hobbies are playing football, keyboard and Gameboy Advance. Her favourite City players are Danny Coles and Lee Peacock.

MATCHDAY EXPERIENCE

EX-ST LAWRENCE'S GIRLS FOOTBALL TEAM



WELCOME TO OUR Matchday Experience guests today - ex-pupils from St. Lawrence's Primary School, Westbury-sub-Mendip, girls football team.

On departing St. Lawrence's for their secondary school the girls made a pledge with school sports teacher Clare Blackmore that they would have a reunion once a year

at Ashton Gate to watch their favourite football team.

After a recent visit to the ground the girls wrote a poem about City, which won first prize in a national poetry competition run by the FA.

The school has close links with the club: Brian Tinnion is patron of the St. Lawrence's School football teams.



top dog for music-dvd-games

HMV | P&G

FOR ALL QUERIES RELATING TO CJS CALL JOHN OR CLAIRE BANKS ON 01454 883440



Family Information Service Choices for Children

- Are you looking for Childcare or Early Years Education for children and young people aged 0-14?
- Would you like free, friendly advice on choosing the type of provision that best suits the needs of your family?
- Do you need to know where there are places currently available?
- Would you like to work with children?

Bath & North East Somerset's Family Information Service is here to help you make the right choice.

"Making B&NES a better place to live, work and visit"



BRISTOL TILE

Clearance Warehouse Now OPEN!
- everybody's talking about it...

Huge stock of quality tiles from Italian and Spanish manufacturers

Tiles from **10P EACH**

We also sell Bathrooms

FREE car parking

End of line bargains

A GREAT DEAL MORE

543/551 Fishponds Road, Fishponds, Bristol BS16 3AF
(Opposite Kwik Fit, Fishponds Road, 2 minutes from junction 2 M32)
TEL: 0117 965 8000 FAX: 0117 958 3863
E-Mail info@bristol-tile.co.uk www.bristol-tile.co.uk
ALL MAJOR CREDIT CARDS ACCEPTED



43

VOICE FROM THE STANDS

ALL CONTRIBUTIONS MADE TO THIS PAGE ARE PROVIDED BY SUPPORTERS AND DO NOT NECESSARILY REFLECT THE VIEWS OF THE CLUB

The spirit of '76

I've long believed that the quality of players at any club can be determined by viewing the substitutes bench, writes City fan **James Ryan**.



Although it would be foolish to be drawn into comparing differing eras and levels, in principle the whole ethos of youth development is still highly comparable.

In today's climate, it is commendable that City could not only field a positionally-sound first team of homegrown/local players, but a side strong enough to compete with many of the top teams in the division.

Of course, it is unlikely that this will happen, as the likes of Butler, Tinnion and Peacock are an integral part of the team. Nevertheless, it is a wonderful position to be in – that is, not *having* to rely on the Academy, but *wanting* to rely on it.

Promotion in 1976 was the culmination of years of hard work, a prosperous FA Cup run two years previous – during which City faced some of England's finest teams – and emerging victorious over countless knock-backs along the way.

The fact that faith in the system employed was maintained, says a lot about the character of those in charge at the time.

So, in conclusion, maybe only a fool would start drawing comparisons to the euphoria of the mid-1970s, but football history has an uncanny knack of repeating itself and, consequently, maybe only a fool would rule it out.



↑ CITY'S YOUNG 1975/76 PROMOTION-WINNING SQUAD – HOW DOES THE CURRENT ACADEMY-BASED TEAM COMPARE?

At first glance it may appear a somewhat debatable rationale. In analysing those players who are unable to break into the first eleven, however, it is possible to build a picture of the talent on the pitch.

I'm sure I'm not alone in believing that, on paper, City have potentially the strongest squad in the division.

Recent inconsistencies in results and a team lacking in confidence may cast a shadow on this theory but, nevertheless, with injuries and suspensions already having kicked in, quality has always replaced quality – both on the

pitch and on the bench.

The progressive youth and Academy set-up must take a lot of the credit. How many teams in the country can boast the quantity of homegrown first-team regulars we have at Ashton Gate?

In this situation, comparisons could be made to the 1975/76 Second Division promotion-winning team, where six of the regular starting line-up were Bristolian, and nine of the eleven were products of the youth system.

THE ULTIMATE SPEED-DATING NIGHT OUT!



Can you keep it up for three minutes? Again and again and again ...

www.speedmateuk.com

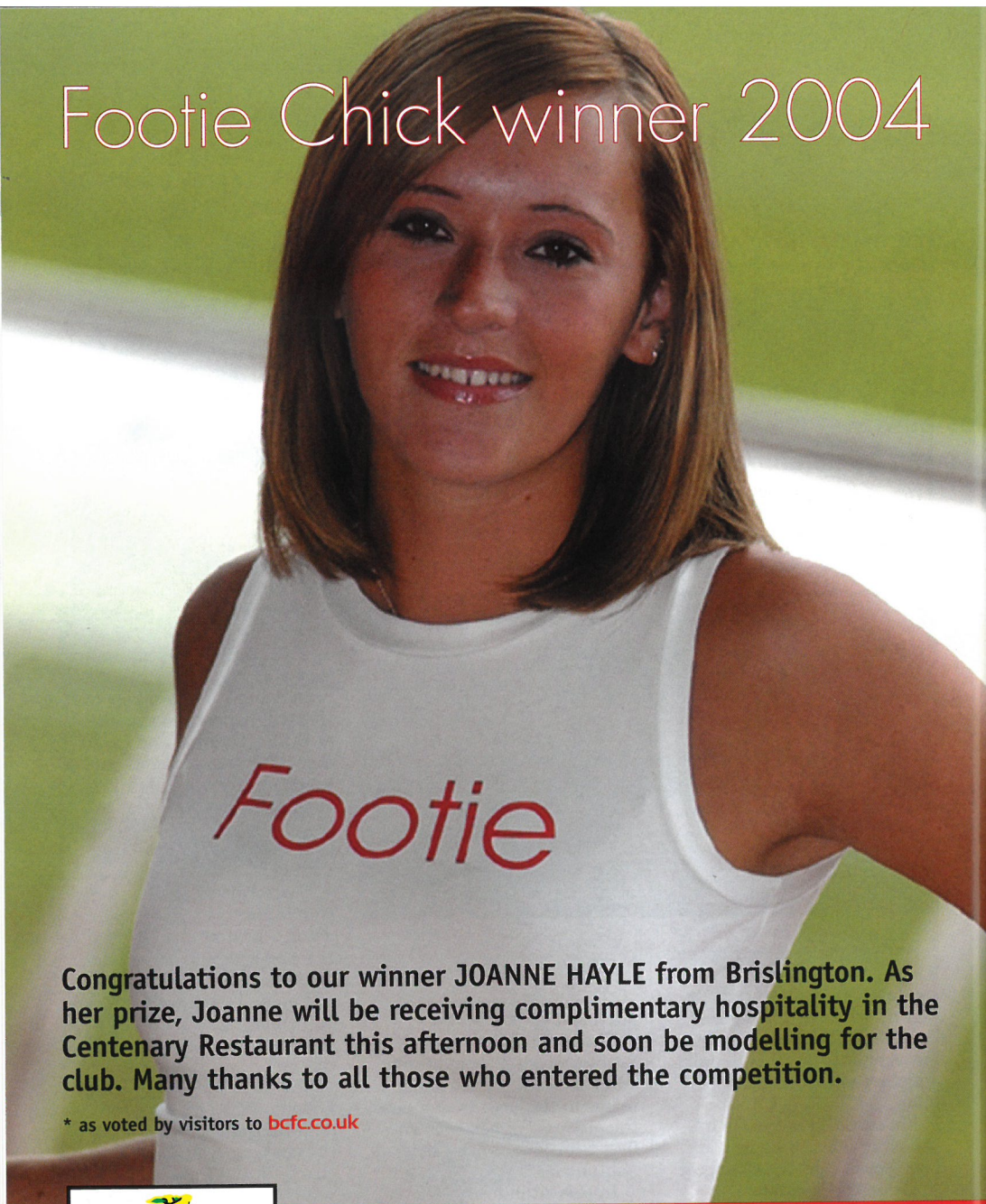
0117 962 25 25

Forthcoming events:

5th Nov Pitcher & Piano; 12th Nov Blue Rooms, Bath;
26th Nov Pam & Pam; 3rd Dec Pitcher & Piano



Footie Chick winner 2004



Congratulations to our winner JOANNE HAYLE from Brislington. As her prize, Joanne will be receiving complimentary hospitality in the Centenary Restaurant this afternoon and soon be modelling for the club. Many thanks to all those who entered the competition.

* as voted by visitors to bcfc.co.uk



Bristol City

Shop

shop.bcfc.co.uk



45

bcfc.co.uk | ADAM BAKER

For the fans

city2000

Are you the brain of Ashton Gate? Do you fancy your mugshot being on the club's official website? Do you have an opinion you would like to share?



If you've answered yes to any or all of the last three questions then bcfc.co.uk is the place for you because we've just opened up three brand new sections devoted to the club's fans:-

WEEKLY QUIZ

OUR NEW FEATURE where supporters can prove their Ashton Gate knowledge and also become the club's online quizmaster for a week.

Each week we will carry three posers from a member of the Ashton Gate faithful. If you answer all three correctly, you will be the next fan to pose the questions.

All correct entries will go into the hat to be the next bcfc.co.uk quizmaster.

This week the questions come from Mick Hunter (aka Red 'Un), who runs the excellent unofficial website *Bright Cider Life*. Do you have the answers?

FAN GALLERY

YOU MEET OTHER supporters all the time at Ashton Gate, at away grounds, down the pub etc. Now we want to put names to all those faces.

Simply send us a photo of yourself (in jpg, gif or png form, sized 200x200 pixels minimum) to

webmaster@bcfc.co.uk and we'll put you on the club's official website.

You should also include your full name (plus Forum username if appropriate) and your district.

FEEDBACK FORM

OUR NEW ONLINE form gives you the ideal opportunity to sort out any queries or problems you have, with direct e-mails to the Ticket Office, Commercial department, website editor, programme editor and more.

It also gives you a chance to air your footballing views online in a special Fans' Columns section.

That's just three ways in which bcfc.co.uk has increased its supporter involvement in creating the official website ... and I haven't even mentioned our new-look official Fans' Forum yet!

Please log on soon and support your club – all hits benefit the club financially.

ADAM BAKER
WEBSITE EDITOR

Big cheque winner

CONGRATULATIONS AGAIN TO Fiona Baker, of Kingswood, on her great win – a cheque for £5,000.

Fiona has been a Dolman Stand season ticket holder for six years and her friend David Pick, who sits with her in stand, persuaded her to join **city2000** last year.

At first she thought she had just won the weekly £500 draw and was delighted with just that. So to have won £5,000 was fantastic. She is now trying to persuade her friends to join **city2000**.

MAKE THE DRAW

ALL OUR WEEKLY draws are done on Wednesday by computer. The draw only takes a few minutes to perform and, if you are available to do one, please contact me.

The draw for Fiona Baker's £5,000 cheque win was made by Pam Wright, Marg Smith and Jean Woodburn. Thanks girls!

RICHARD GARDNER
city2000 CO-ORDINATOR
richard.gardner@bcfc.co.uk



THE DRIVE OF YOUR LIFE

PEUGEOT summer of temptation

Hotsavings

at Templegate City Centre and Cribbs Causeway
Order your new **53 plate** Peugeot today

Brand new **53** Peugeot **206 Look 1.1 3dr**



- Driver's & front passenger's airbag •Immobiliser •Power assisted steering
- Electric front windows •Air conditioning •CD player •Remote central locking

RRP **£8700**
Now **£7999** Save **£701**
or only **£149** per month⁽¹⁾ **3 years** of warranty⁽²⁾
(Plus deposit & final payment)

2 years Free Insurance⁽³⁾
on selected Peugeot 206's with Peugeot Passport



Brand new **53** Peugeot **307 S 1.4 3dr**

- Driver's & front passenger airbags •Front side airbags & curtain airbags
- Electric front windows •CD player •Air conditioning •Remote central locking



RRP **£11600**
Now **£10600** Save **£1000**
or only **£249** per month⁽¹⁾ **2 years** Free Insurance⁽²⁾ **3 years** of warranty⁽²⁾
(Plus deposit & final payment)



• New & Used Car Sales • Van Sales • Service • Express Fit • Parts • Rental • Fleet Sales • Bodyshop • Motability

TEMPLEGATE

Clarence Road
Central Bristol
BS1 6PR
Tel : 0117 926 1200

Lysander Road
Cribbs Causeway
BS10 7TS
Tel : 0117 301 1700



www.peugeot.co.uk/templegate

All new Peugeots come with 3 years of warranty⁽²⁾. The official fuel consumption figures in mpg (l/100km) for the Peugeot 307 S 1.4 3dr: Urban 32.5(8.7), Extra Urban 51.4(5.5) and combined 42.2(6.7). The official CO2 emission is 159g/km.

⁽¹⁾Finance subject to status. Over 18's only. A guarantee may be required. Written quotations available on request. Passport payments based on 6,000 miles per annum. A £95 Credit Facility Fee is payable with your first monthly Passport payment, a £45 option to purchase fee is payable with your final payment. ⁽²⁾Typical Passport example: Brand New Peugeot 206 Look 1.1 3dr: Passport price £8059, Deposit £1535.95, 1 payment of £244, Followed by 23 monthly payments of £149. Followed by a final payment of £4261. Total charge for credit £1468.95. Total amount payable £9467.95. APR 13.3%. ⁽³⁾Typical Passport example: Brand New Peugeot 307 S 1.4 3dr: Passport price £10660, Deposit £1640.00, 1 payment of £244, followed by 23 monthly payments of £249. Followed by a final payment of £4713. Total charge for credit £1794.00. Total amount payable £15454.00. APR 13%. Subject to certain terms, conditions and approval of the Insurer; available on 206 LX and Look hatch and XLSW models and all 307 S models when financed through Peugeot Passport over 2 years available to private purchasers aged 21-80 years. ⁽⁴⁾3 years warranty = 1 years manufacturer warranty (unlimited mileage) & 2 years dealer extended warranty (60000 miles). Details correct at time of going to press. All offers and vehicles offered are subject to availability while stocks last. Please note models portrayed are for illustration purposes only.

13.3% Typical APR



BRISTOL CITY WORLD LIVE MATCH COMMENTARY PROVIDED BY

www **BBC** RADIO BRISTOL **Well**
95.5, 94.9FM & 1548AM **Well**

Weekend in Bradford

So, are you going to Bradford? Make a weekend of it is Radio Bristol commentator **Alistair Durden's** advice.



City's trip to Bradford Park Avenue next weekend gives fans the opportunity of visiting a quite under-rated area of the country.

I know you're probably thinking I'm mad - Yorkshire in November and all that - and I must admit I am speaking from a slightly-biased perspective having spent three years on the poverty line as a student in the city.

The experience did teach me plenty about life, however, not least about curries. Did you know the word "balti" means "bucket"?

Bradford battles with the likes of Birmingham and Leicester in the premier league of curry houses, and it appears

to boast more of them than it does pubs!

I jest not, there's at least one on every major road and, while they are of varying quality, they do tend to be pretty cheap on the whole.

The Nawaab, Spice Garden and Anam's Restaurant come with good recommendations. If you're feeling really brave (and stupid) after a few post-match pints and want to sample the hottest curry on the market, forget the vindaloo, go for a Phal. Just don't expect to be able to drive home the next day without more than a couple of pit-stops!

If you're a bit of a novice and need some hints on what to try then visit

www.thisisbradford.co.uk/bradforddistrict/curryguide/begin.htm before you set off.

The National Museum of Photography, Film and Television is always worth a visit, and like Bristol has an IMAX cinema as part of its attractions.

There are five floors of stuff to see and do, and it's located quite close to the city centre in the student part of Bradford.

Literary fans might want to head into the nearby Penines and pay a visit to the internationally famous village of Haworth. It's where the Bronte sisters, (who were born in Thornton, near Bradford), wrote most of their books while living at the parsonage.

It's now a museum owned and maintained by the Bronte Society, although you might remember Haworth better for that famous steep cobbled street, immortalised by the Hovis adverts. Never mind the bread, I always felt sorry for that poor bloke pushing the bike up the hill!

So that's Bradford and the surrounding area. Benny Lennartsson may not have too many good memories of it (I seem to remember the team coach even got lost before a five-nil thrashing on his debut as City manager) but I'm a little fonder of it.

Far be it for me to tell you what to do but, if you are going, you might as well as get full value for the 400-mile round trip.



Leigh Edwards looks back at what was happening to both our featured teams all those years ago ...

1964

Gordon Parr scored to give the following City team a 1-1 Third Division draw against Reading in front of 11,120 at Elm Park on 7th October 1964: Mike Gibson, Tony Ford, Alec Briggs, Gordon Parr, Jack Connor, Gordon Low, Ray Savino, Brian Clark, Terry Bush, Bobby Williams, Lou Peters.

Brian Bedford and Mike Keen both scored hat-tricks as QPR stormed to a 7-1 Third Division win over the following Luton Town side at Loftus Road: Colin Tinsley, Alan McBain, Fred Jardine,

David Pacey, Gordon Fincham, John Bramwell, Billy Hails, David Pleat, Robin Chandler, John Reid, Billy Harber.

Willie Bell's strike gave Leeds a 1-0 victory in a top-of-the-table clash against Everton at Goodison Park. Title rivals Manchester United triumphed 1-0 at home to Sheffield Wednesday with a goal from David Herd. Frank Wignall netted a hat-trick as Nottingham Forest won 4-2 at home to Aston Villa.

1971

Goals from Les Barrett and Roger Cross gave Fulham a 2-1 Second Division victory over the following City team at Ashton Gate on 6th November 1971: Mike Gibson, Ken Wimshurst, Brian Drysdale, John Emanuel (Trevor Jacobs), Dickie Rooks, Geoff Merrick, Trevor Tainton, Peter Spiring, John Galley, Gerry Sweeney, Gerry Gow.

Keith Peacock scored twice as Charlton secured a 2-1 Second Division win over the following Luton side in front of 11,011 at Kenilworth Road: Tony Read, John Ryan, Alan Slough, Don Shanks, Chris Nicholl, John Moore, Peter Anderson, Mike Keen, Vic Halom, Don Givens, Gordon Hindson.

Manchester rivals City and United shared six goals in a top-of-the-table clash watched by 63,366 at Maine Road. Brian Clough's Derby triumphed 3-0 at home to Crystal Palace to remain in second place. Goals by Emlyn Hughes, Steve Heighway and Tommy Smith gave Liverpool a 3-2 win at home to Arsenal.

1978

City travelled to Middlesbrough in the First Division on 4th November 1978 and the following team secured a 0-0 draw watched by 20,471 at

Chamberlain, Des Linton (Paul Telfer), Julian James, Darren Salton, Marvin Johnson, Trevor Peake, Steve Claridge (Jamie Campbell), Chris Kamara, Jason Rees, Phil Gray, Scott Oakes.

Arsenal went top after Alan Smith, Ian Wright and Kevin Campbell scored in their 3-0 win at home to Coventry. Tottenham triumphed 2-0 at Blackburn with goals from David Howells and Teddy Sheringham. Ian Rush scored his 200th League goal as Liverpool beat Middlesbrough 4-1 at Anfield.

Ayresome Park: John Shaw, Gerry Sweeney, Donnie Gillies, Gerry Gow, David Rodgers, Norman Hunter, Trevor Tainton, Tom Ritchie, Joe Royle, John Bain, Kevin Mabbutt.

Trevor Christie's second-half strike gave Leicester a 1-0 Second Division win over the following Luton side in front of 10,608 at Kenilworth Road: Milija Aleksic, Mal Donaghy, Mark Aizlewood, Ricky Hill, Chris Turner, Paul Price (David Carr), Alan West, Lil Fuccillo, Brian Stein, Bob Hatton, David Moss.

Unbeaten title rivals Nottingham Forest and Everton fought out a 0-0 draw at the City Ground. Liverpool remained top after Terry McDermott's penalty clinched a 1-1 draw at home to Leeds. Nick Holmes scored to give Southampton a 1-1 draw against Manchester United in front of 46,259 at Old Trafford.

1985

Glyn Riley's goal gave City a 1-1 Third Division draw against Doncaster Rovers in front of 2,871 at Belle Vue on 2nd November 1985: Keith Waugh, Andy Llewellyn, Rob Newman, Keith Curle, Lee Rogers, Glyn Riley, Howard Pritchard, Bobby Hutchinson, David Tong, Alan Walsh, Steve Neville.

Brian Stein and Mick Harford netted to give the following Luton side a 2-0 First Division win over Birmingham City watched by 8,550 at Kenilworth Road: Les Sealey, Tim Breacker, Mitchell Thomas, Peter Nicholas, Steve Foster, Mal



Donaghy, Ricky Hill, Brian Stein, Mick Harford, Emeka Nwajobi, David Preece.

Frank McAvennie scored twice as West Ham came from behind to beat Everton 2-1 at Upton Park. Liverpool maintained their title challenge as Ian Rush scored to clinch a 1-0 victory over Leicester City at Anfield. Manchester United remained top after Jesper Olsen netted both goals in their 2-0 win at home to Coventry.

1999

Steve Jones' strike gave Tony Pulis' City a 1-1 Second Division draw against Cambridge United in front of 8,646 at Ashton Gate on 6th November 1999: Billy Mercer, Gerard Lavin (Greg Goodridge) (John Burns), Mickey Bell, Paul Mortimer, Shaun Taylor, Paul Holland, Scott Murray, Carl Hutchings, Steve Jones, Peter Beadle, Brian Tinnion (Alex Meechan).

↑ ANDY COLE (INSIDE THE NET) AFTER SCORING IN CITY'S 3-0 WIN OVER BIRMINGHAM CITY AT ASHTON GATE IN NOVEMBER 1992. CITY'S SQUAD CONTAINED ARGUABLY THE MOST EXCITING MIDFIELD/ FORWARD LINE OF RECENT YEARS: COLE WAS PARTNERED BY LEROY ROSENOR UP FRONT, WHILE WAYNE ALLSION WAS ON THE BENCH ALONGSIDE THE MERCURIAL POLE JACKI DZIEKANOWSKI

Two goals from Neil Midgley gave Luton a 2-1 Second Division victory over Burnley watched by 7,205 at Kenilworth Road: Nathan Abbey, Emmerson Boyce, Matt Taylor, Julian Watts, Gary Doherty, Marvin Johnson, Liam George, Paul McLaren (Adam Locke), Stuart Douglas (Michael McIndoe), Neil Midgley (Tresor Kandol), Matthew Spring.

Manchester United returned to the top after Andy Cole scored twice in their 2-0 win at home to Leicester. Chris Malkin was sent-off as Sunderland drew 1-1 at Middlesbrough. Goals by John Hartson and Marcus Gayle gave Wimbledon a 2-0 victory at home to high-flying Leeds.

BRISTOL CITY F.C.



Barclays League Division One
BRISTOL CITY
BIENNIAL SPONSOR
THORN Security

MATCH SPONSOR
Bristol Door Services



SEE ENGLAND IN ACTION

U17 INTERNATIONAL

ENGLAND v SWITZERLAND

BRISTOL CITY, ASHTON GATE

Wednesday 12th November 2003, Kick-off 7.45pm



£3.00 Adults (£5.00 on the day of game) £1.00 Children (U16s)/OAPs Family Tickets £5 advance bookings; no Family Tickets on sale on day of game (2 adults and 2 children; additional children pay £1 each)

U17



TICKET HOTLINE: 0870 112 1897

websales//www.bcfco.co.uk

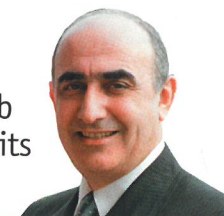
(£1 ADMIN FEE PER CREDIT/DEBIT CARD BOOKING)

51

COMMERCIAL

Your club, your say!

Chief Executive **Colin Sextone** reveals plans to set up a regular fans' forum to help guide the club on any decisions made affecting its supporters.



Although the club already runs an online forum, and has recently undergone its biggest ever fans questionnaire, the aim of the new forum will be to act both as a focus group to gain feedback on future policy and as a think tank to help generate new initiatives.

The forum plan comes as we have made significant strides over the past few years in developing the business side of the club and in trying to provide improved facilities and communication links with our supporters.

The forum will consist of 12 individuals and these will initially be selected by the club. The first

meeting is planned for the beginning of December.

Fans wishing to be involved will need to commit to attending evening meetings every six to eight weeks at Ashton Gate.

We are hoping to attract a wide spectrum of fans who will fully represent the supporter base.

I will chair the forum, but other members of staff will attend when it is appropriate.

If you are interested in joining please complete the form on this page and return it to the Commercial Office, Bristol City FC, Ashton Gate Stadium, Bristol, BS3 2EJ by 10.11.2003.

ON NOVEMBER FIFTH the club are staging its annual Family Firework Display at Ashton Gate.

Produced with GWR FM and fireworks professionals Fantazia, the event offers a spectacular display in a safe, family environment.

The show starts at 7.30pm and advance tickets cost £13 (£17 on the night) for a family ticket (admits four), £5 (£7) adults and £3 (£5) children.

Tickets are available online at bcfc.co.uk, at the Club Shop, or by phoning 0870 112 1897.

↓ **MEMBERS OF THE BNI** Networking Group at Ashton Gate for an exhibition organised by Tony Randall of Randalls Office Furniture. Also pictured are two classic cars supplied by fellow exhibitors The Classic Car Club. Randalls will soon be refurbishing the club's boardroom furniture.



Name Age

Occupation

Season Ticket Holder: Yes No Club member: Yes No

Website user: Yes No

How long have you supported the club?


What stand do you normally sit in?

Do you regularly attend away games? Yes No

Contact address

..... Telephone

Kevin AMANKWAH



COLIN FOX

PREMIER CONSERVATORY ROOFS LTD
0117 960 0736
Manufacturers and suppliers of the K2 Conservatory Roof System

Position: Right-back | Born: Kenton, 19.5.82
Signed: Academy | City apps: 36+19, 2 goals

Danny COLES




ASSOCIATED WINDOWS & CONSERVATORIES
Tel: 0117 931 1777

MARBELLO MARBLE GRANITE

Position: Central defender/right-back | Born: Bristol, 31.10.81
Signed: Academy | City apps: 95+7, 5

Mickey BELL



JOE, JEAN AND PAUL REEVES

L & C P L C

Position: Left-back | Born: Newcastle, 15.11.71
Signed: Wycombe (£150,000), 7.97 | City apps: 285+6, 37

Tommy DOHERTY



ABS ELECTRICAL & HEATING ENGINEERS

signmarket

Position: Midfielder | Born: Bristol, 17.3.79
Signed: Academy | City apps: 137+29, 6

Aaron BROWN

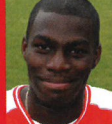


ServiceMASTER Clean

FRIDAYS

Position: Midfielder | Born: Bristol, 14.3.80
Signed: Academy | City apps: 138+31, 10

Clayton FORTUNE




0117 963 0605

ROB & HAZEL

Position: Central defender | Born: London, 10.11.82
Signed: Tottenham/Academy | City apps: 9+9, 0

Marvin BROWN



RICHARD KNIGHT AND RUSSELL CLIFFORD

MATT & MALKY!
Insel (ASIC) Designs Ltd

Position: Forward | Born: Bristol, 6.7.83
Signed: Academy | City apps: +22, 0

Darven HAWKINS



SENIOR REDS

Position: Midfielder | Born: Bristol, 25.4.84
Signed: Academy | City apps: Yet to make senior appearance


Joe BURNELL



SENIOR REDS

Position: Defender/Midfielder | Born: Bristol, 10.10.80
Signed: Academy | City apps: 138+17, 2

Matthew HILL




NIGEL RICKETTS AND SCOTT GOLBOURNE

ASSOCIATED WINDOWS & CONSERVATORIES
Tel: 0117 931 1777

Position: Central defender/left-back | Born: Bristol, 26.3.81
Signed: Academy | City apps: 170+21, 4

Tony BUTLER



L & C P L C

WILKSI

Position: Central defender | Born: Stockport, 28.9.72
Signed: West Bromwich Albion, 11.02 | City apps: 71, 2

Robin HULBERT




DI AND WENDY ROWLAND

DUSK STEAK & MORE
017 925 1115

Position: Midfielder | Born: Plymouth, 14.3.80
Signed: Swindon (£25,000), 03.00 | City apps: 28+24, 0

Louis CAREY




UNITY TYRE Co. Ltd

BRISTOL TILE

Position: Central defender/right-back | Born: Bristol, 22.1.77
Signed: Trainee | City apps: 321+15, 5

Darren JONES



MARK, LAURA AND BOB

CITY LIST

(ON LOAN TO CHELTENHAM TOWN)

Position: Central defender | Born: Newport, 28.12.83
Signed: Academy | City apps: 1+4, 0

Simon CLIST




THE WILTSHIRE FAMILY

VICKY, PAT, IAN, ALAN, RICH AND JON

Position: Midfielder | Born: Shaftesbury, 13.6.81
Signed: Tottenham/Academy | City apps: 65+22, 9

Leroy LITA




MATT, DAWN, SHARON AND GRAHAM B

cubo
www.cubo.com

Position: Forward | Born: Congo, 28.12.84
Signed: Academy | City apps: 1+26, 4

Lee MCGUIRE



ABUS FARESAVER
SUPPORTING BRISTOL CITY

Position: Midfielder | Born: Telford, 3.1.84
Signed: Academy | City apps: Yet to make senior appearance

Brian TINNION



Sound Commercial

JON TOOGOOD

Position: Midfielder | Born: Durham, 23.2.68
Signed: Bradford C. (£180,000) 03.93 | City apps: 442+42, 40

Lee MATTHEWS




LP

LESLIE DARK & CO
CHARTERED ACCOUNTANTS BUSINESS ADVISORS
01276 872692

M&B
Sports Memorabilia Ltd
Tel: 0117 8049591
www.sportmemorabilia.org.uk

Position: Forward | Born: Middlesbrough, 6.1.79
Signed: Leeds (£105,000), 03.01 | City apps: 16+35, 11

Luke WILKSHIRE



PAUL HEMBERY

JOE, JEAN AND PAUL REEVES

Position: Midfielder | Born: Wollongong (Aus.), 2.10.81
Signed: Middlesbrough (£250,000), 08.03 | City apps: 17+1, 0

Lee MILLER




SBJ Professional

Incider
www.theincider.com
BFCF's Online Fanzine

Position: Forward | Born: Lanark, 15.3.83
Signed: Falkirk (£300,000), 07.03 | City apps: 15+3, 3

Craig WOODMAN



PREMIER CONSERVATORY ROOFS LTD
0117 960 0736
Manufacturers and suppliers of the K2 Conservatory Roof System

STERLING TOWING & ALARMS

Position: Left-back | Born: Tiverton, 22.12.82
Signed: Academy | City apps: 27+7, 0

Lee PEACOCK



MARBELLO MARBLE GRANITE

S. W. WREN BUILDING SERVICES LTD

Position: Forward | Born: Paisley, 9.10.76
Signed: Man. City (£600,000), 08.00 | City apps: 131+11, 57

Danny WILSON



Paul & Debbie Chesley
Kim & Hugh Dash
THE STAR, TICKENHAM
01275 858836

Position: Manager
Appointed: 06.00

Steve PHILLIPS



FURNITURE FIT
07733 226233

P.S.S. Scaffolding
Telephone: 01639 822922

Position: Goalkeeper | Born: Bath, 6.5.78
Signed: Paulton Rovers, 11.96 | City apps: 199+1, 0

Frank BARLOW



Chairman's CLUB

Position: First Team Coach
Appointed: 08.00

Christian ROBERTS



DI AND WENDY ROWLAND

TIM & DAVE, BUSINESS EXECUTIVE CLUB

Position: Forward | Born: Cardiff, 22.10.79
Signed: Exeter City (£100,000), 03.02 | City apps: 55+24, 18

Shaun TAYLOR



GOODFELLA'S BARBER SHOP
172a Raleigh Road, Ashton, Bristol
0117 963 3852

Position: Development Coach
Appointed: 08.02

Sekani SIMPSON



BCFC DEVELOPMENT CENTRE
SHEPTON MALLET

0117 963 0605

Position: Central defender | Born: Bristol, 11.3.84
Signed: Academy | City apps: Yet to make senior appearance


Tony FAWTHROP



0117 963 0605

Position: Academy Director and Football Co-Ordinator
Appointed: 12.00

Mike STOWELL



0117 963 0605

0117 963 0605

Position: Goalkeeper | Born: Preston, 19.4.65
Signed: Wolves, 07.01 | City apps: 27, 0

David HARRIS



ARCHIE GOOCH

Position: Chartered Physiotherapist
Appointed: 08.03

Adecco

for all your recruitment needs...

temporary, permanent and Christmas positions

• Commercial • Industrial • Hotel & Catering • Retail

Central

0117 921 3551

North Bristol

01454 613944

• 24 hour service • 7 days p/week • excellent pay rates
• holiday pay • friendly service

Central

11 Colston Avenue,
Bristol BS1 4UB

Tel: 0117 921 3551

Fax: 0117 925 7565

Email: 760.bristol@adecco.co.uk

www.adecco.co.uk


North Bristol

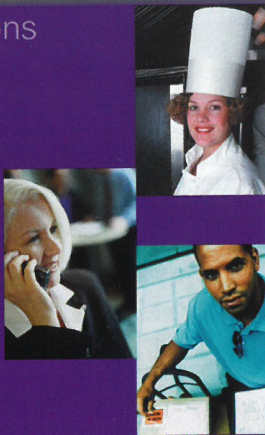
2 Woodlands Court,
Ashbridge Road,

Almondsbury

BS32 4LB

Email: 770.bristol@adecco.co.uk

 recruitment solutions



Caring at Christmas

For the 17th year Caring at Christmas will provide shelter, meals, comfort and entertainment for homeless people in Bristol 24 hours a day over the Christmas week.

OUR CHALLENGE IS YOUR CHALLENGE!

The work of Caring at Christmas is crucial for people who might not have anywhere else to go and relies totally on volunteers and donations to ensure its success.

CARING AT CHRISTMAS NEEDS YOUR HELP!

Are you interested in giving a little of your time, or would like to make a financial or goods donation?

Would you like to find out more about what we do? Come along to our Open Morning on Saturday 22nd of November from 10:30 to 12:30 at Caring at Christmas, Little Bishop Street, St Pauls, Bristol, BS2 9JF.

For further information contact
Katherine on 0117 924 4444 or
e-mail caringatchristmas@lineone.net

McCLUSKY'S

THE WURZELS

LIVE AT McCLUSKY'S

Friday 21st November 2003

OPEN 5PM 'TIL 2AM

FREE ENTRY B4 8PM

Advanced tickets £3

DRINKS DEAL
£1 on all drinks
B4 10.30pm

* THIS OFFER EXCLUDES LINES SUCH AS COCKTAILS, CHAMPAGNE, BUD, STELLA, SMIRNOFF ICE AND VODKA KICK.



 **0117 930 0008**
 bristol@mcluskys.com

55

HOSPITALITY | HELEN TAYLOR

MATCHDAY SPONSORS

SHIRT AND ACADEMY



WILLIAMS STAND



WEDLOCK STAND



ATYEO STAND



DOLMAN STAND



BOARDROOM



CORPORATE FACILITIES



MATCH SPONSOR GIFTS



MATCH SPONSOR

BUTTON HOLES

Supplied by
FLOWERVISION

MATCHDAY GUIDE

STEVE WEBB

IS SPONSORED BY



Christmas cracker!

Season ticket holders are being invited to use the Centenary Restaurant for just £25 inc. VAT, writes **Helen Taylor**.



This offer applies to City's home game versus Bournemouth on Saturday 28th December.

Your day will include a two-course buffet before the match, half-time tea and coffee, match programme and stadium tour. The cost to non-season ticket holders is £42.

Full hospitality is also available at £50+VAT per person (includes a three-course meal).

FESTIVE FUN

THE FIXTURE AGAINST Stockport is ideal for your annual Christmas outing. Whether it is a group of friends or your works Christmas do, celebrate it with City!

The package will include a three-course dinner with turkey and trimmings, Platinum seat, a ground tour and programme. The cost is £60 plus VAT per person.

BIG BANGER

ENJOY THE ASHTON Gate Family Firework Display in style and join us in the Centenary Restaurant for bangers and mash before the show. The package will cost £15 adults, £12 children or £130 for a table of ten.

TENNER DISCOUNT

SEASON TICKET HOLDERS receive a discount of £10+VAT when booking hospitality for a League game.

FUTURE PACKAGES

City v	Centenary Restaurant	Price
Luton Town	01.11.03	£70+VAT
Barnsley	22.11.03	£60+VAT
Stockport County	20.12.03	£60+VAT**
AFC Bournemouth	28.12.03	SPECIAL
Colchester United	03.01.04	£50+VAT

* Red 'n'White Bar only ** Christmas Special

Standard hospitality package includes a three-course meal, stadium tour (Saturdays only), match programme, Platinum seating, half-time refreshments, car park pass (subject to availability) and is available for most home League matches. Prices vary from £50+VAT to £70+VAT depending on the fixture. Package and cost may also vary for Cup matches and Bank Holiday matches.

TODAY'S CENTENARY RESTAURANT MENU

Egg
Mayonnaise
on a
Bed of
Greens

Braised
Lamb Steak
with Rich
Mint Gravy

Served with
Roast
Potatoes
and a
Parsnip and
Carrot
Medley

Apple Pie
with
Custard

Coffee and
Mints

CHEF JOHN ASHLEY



 **Nationwide**

LADIES DAY

**SATURDAY 20TH DECEMBER 2003
V STOCKPORT COUNTY**

- **400 FREE MATCH TICKETS** – to be given away to Bristol City Women's team and local girls' schools for distribution
 - **400 FREE TICKETS** – to be given away for Bristol City Women's home game against Brighton and Hove Albion on Sunday 11th January 2004
 - **PRE-MATCH FESTIVE DISPLAY** by Bristol City's official cheerleading squad, The Ashton Angels
 - **HALF-TIME PENALTY SHOOT-OUT** with female members of the Bristol City Academy
 - **100 FREE MINCE PIES** courtesy of Posh Pudds available on a first-come, first-served basis to ladies who make a purchase in the Club Shop on the day of the game
- PLUS additional promotions and give-aways on the day

* Forthcoming fixtures: Sunday 11th January 2004 v Brighton (home); Sunday 18th January 2004 v Enfield (away); Sunday 25th January 2004 v Ipswich Town (away)

Please note the next Ladies Day will be taking place for the home league match against Wrexham on Saturday 21st February 2004



**Bristol City
Football Club**

IN PARTNERSHIP WITH THE
NATIONWIDE SUPPORTERS
OF TOMORROW SCHEME

 **Nationwide**

**SUPPORT
BRISTOL CITY
WOMEN***



57 SUPPORTERS CLUB

☎ 0117 966 5554 | ✉ SUPPORTERS.CLUB@BCFC.CO.UK
🔍 LOG ON TO BCFC.CO.UK AND SEARCH UNDER "CLUB"
SPONSORED BY MARK II JOINERY

The generation game

Today we are featuring the achievements of Supporters' Club members who span the generations.

First, congratulations to our Junior Supporters Club members, who have taken their own leagues by storm this season.

The Under-12 side are currently top of Division B of the Avon Youth League, while the Under-11s remain unbeaten at the top of Division A of the Hanham Minor League.

Congratulations too to Ben O'Brien and George Browning who have both made it into the Bristol Boys Club.

By word of explanation: Bristol City Junior Supporters Club (BCJSC), formerly Luckwell Football Club, is a comparatively new club to the local football scene.

It was founded by Chairman Sean O'Brien in 1998, who felt there was a lack of local choice for young

boys and girls wanting to participate in football

In a very short period of time the club has gone from strength to strength and currently boasts around 100 members playing for teams at Under-7 to Under-12 levels.

Training takes place every week under the watchful eye of the club's various FA-qualified coaches and managers.

Sessions are held at Ashton Park Secondary School, Bower Ashton. Now, through the club's new affiliation with the Supporters Club, they are looking to attract new players at all age groups to take the club further forward.

Should any youngsters wish to be part of this exciting new club please contact Sean on 0117 963 6526 or Roger on 0117 963 9541.

RECENT RESULTS

WEEK-END 04.10.03:
U12 – 3-3 v Bradley Stoke;
U11 – 4-1 v Ingleside; U10 –
3-3 v St Nicks; U9 – 9-1
v Frys 1; U8 – 9-2 v Frys 2.
WEEK-END 11.10.03:
U12 – 5-2 v Wick; U11 – 5-2
v BOCCO; U10 – 3-0 v Stoke
Lane; U9 – 15-3 v St Vallier;
U8 – 5-3 v Keynsham Town.



I was born in the Ashton area and have been supporting Bristol City for over 50 years.

My father would take me along to stand in what was known as "Crackers Corner". When I was 15, I joined the City Ladies team and played alongside the late Beryl Fudge – they were great days.

My best memories include promotion to the old Division One in 1976; our trips to Wembley and the Millennium Stadium; and watching City beat Manchester United 3-0 at Old Trafford. How things have changed! My favourite players were John Atyeo, Jackie Dziekanowski and Tom Ritchie.

I now watch City with my husband, son, and granddaughter Kim, and am a member of both the Supporters' Club and the Senior Reds.

It's nice to see the youngsters coming through, and I believe this year Danny will take us to promotion.

PAM WRIGHT



HOME MATCHES

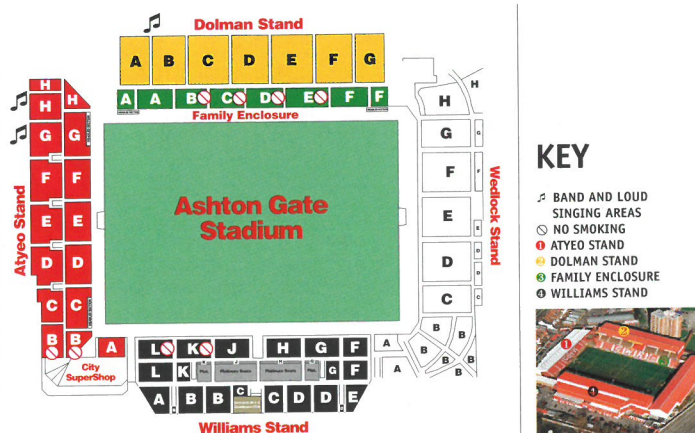


BARNSELY
Ashton Gate Stadium
Saturday 22nd November,
kick-off 3pm
This match is a Category C match (see price table below right). Tickets are now on general sale.

STOCKPORT COUNTY
Ashton Gate Stadium
Saturday 20th December,
kick-off 3pm
Special ticket prices of £10 adults, £5 OAP/student and £1 under-16s (except for Platinum Seating: £12 adults, £8 OAP/students and £3 under-16s) will apply for this game.

AFC BOURNEMOUTH
Ashton Gate Stadium
Sunday 28th December,
kick-off 3pm
This match is a Category B match (see price table below right). Tickets are now on general sale.

GROUND PLAN



MATCHDAY PRICES

	MEMBER	C	B
ATYEO STAND			
Adults	N/A	£15	£16
OAP	N/A	£12	£13
Under-19/student	N/A	£10	£11
Under-16	N/A	£5	£5
DOLMAN STAND			
Adults	£15	£17	£18
OAP	£11	£13	£14
Under-19/student	£8	£10	£11
Under-16	N/A	£5	£5
FAMILY ENCLOSURE			
Adults	£15	£17	£18
OAP	£11	£13	£14
Under-19/student	£8	£10	£11
Under-16	N/A	£5	£5
WILLIAMS STAND			
Adults	£15	£17	£18
OAP	£11	£13	£14
Under-19/student	£8	£10	£11
Under-16	N/A	£5	£5
PLATINUM SEATING			
Adults	£20	£22	£23
OAP	£14	£16	£17
Under-19/student	£11	£13	£14

MEMBERSHIP DISCOUNTS

Membership discounts should be claimed by 11am on the day of a Saturday game and 5.30pm on the day of a midweek game.

STANDING IN SEATED AREAS

Bristol City endorse the Football League campaign to reduce the problem of persistent standing in football stadia. Whilst the club in no way wants to stop fans showing their support for the team, supporters are reminded that persistent standing in seated areas whilst play is in progress contravenes ground regulations. Offenders can face prosecution and/or prohibition notices.

Cup preview AWAY MATCHES

The FA CUP

BRADFORD PARK AVENUE
Horsfall Stadium
FA Cup Round One
Sunday 9th November,
kick-off 1pm

This match is all-ticket. City have been allocated 868 tickets for the tie priced £12 adults or £6 OAP/under-16s. Due to their late arrival, tickets will be on sale to personal callers only (the deadline for postal applications closed yesterday). The following sales procedure will apply:-

Season Ticket Holders, city2000 members and Club Members

Tickets will be on sale to the above categories from Tuesday 4th-Wednesday 5th November. Season ticket holders should produce Voucher C from the rear of their season ticket book while members should produce the appropriate card.

General Sale

Any remaining tickets will be placed on general sale from Thursday 6th November at 9am. This will be to PERSONAL CALLERS ONLY.

CATS are running coaches to Horsfall Stadium, departing Ashton Gate at 7am. Seats will cost £18 (£16 members).



BRIGHTON & HOVE ALBION
Withdean Stadium
Nationwide League Div. Two
Saturday 15th November,

Bradford (Park Avenue) may nowadays be the less glamorous cousin of Bradford City but they boast a proud history.

An older generation of City fans will remember them as members of the Football League where they remained until 1970, when they were voted off after finishing bottom two seasons in succession.

After financial trouble in the early 1970s, Park Avenue plied their trade in the lower leagues but recently worked their way up to Unibond Premier League level – where they are presently 20th in the table.

The Bradford side are no stranger to FA Cup success either, having reached the last eight on three occasions, most recently in 1945/46.

↓ BRIGHTON'S NEW BOSS
MARK MCGHEE



Their current home at Horsfall Stadium is just a mile from their original Park Avenue ground.

Meanwhile Brighton have appointed former City apprentice Mark McGhee as their new manager, following the departure of Steve Coppell to Reading.

McGhee was dismissed by Millwall last month.

kick-off 3pm

This match is all-ticket for visiting supporters – tickets must be purchased in advance by POSTAL APPLICATION ONLY. City have received only 756 reserved and uncovered seating tickets for the North East Stand at the Withdean Stadium, priced £21 adults, £14 OAP and £13 under-16s. When making postal applications supporters should enclose the relevant voucher(s), credit card details or cheques, made payable to "Bristol City Football Club", and a stamped addressed envelope. All applications must be received by close of business on Saturday 8th November and will be dealt with on a priority basis, as detailed below.

Season ticket holders OR holders of Special Away Match Voucher A.

From Wednesday 29th October until Monday 3rd November inclusive, tickets will be available to supporters producing either season ticket Voucher B from the rear of their books OR Special Away Match Voucher A. One ticket will be issued on production of either voucher.

city2000 Members, Club Members and Supporters Club Members.

From Tuesday 4th November until Saturday 8th November inclusive tickets will be available to supporters producing a valid membership card. One ticket will be issued on production of a valid membership card.

General sale.

Any remaining tickets will be placed on general sale from Monday 10th November.

CATS are running coaches to the game, with the departure time still to be confirmed. Seats will cost £15 (£13).

Bristol City v LUTON TOWN

MANAGER: DANNY WILSON

MANAGER: MIKE NEWELL

1	STEVE PHILLIPS	✓
2	LOUIS CAREY	✓
3	MICKEY BELL	✓
4	TOMMY DOHERTY	✗
5	TONY BUTLER	✓
6	MATTHEW HILL	✓
7	LUKE WILKSHIRE	✓
8	JOE BURNELL	✓
9	LEE PEACOCK	✓
10	LEE MILLER	✓
11	BRIAN TINNION	✓
12	AARON BROWN	✓
14	MIKE STOWELL	✗
15	ROBIN HULBERT	✓
16	SIMON CLIST	✓
17	LEE MATTHEWS	✓
18	CHRISTIAN ROBERTS	✓
19	DANNY COLES	✓
20	KEVIN AMANKWAAH	✓
22	MARVIN BROWN	✓
23	DARREN JONES	✓
24	CRAIG WOODMAN	✓
25	CLAYTON FORTUNE	✗
27	LEROY LITA	✓
28	SEKANI SIMPSON	✓
29	DARREN HAWKINS	✓
30	LEE MCGUIRE	✓
31	THE FANS	✓

✓	ALAN NEILSON	3
✓	MATTHEW SPRING	4
✓	RUSSELL PERRETT	5
✓	ADRIAN FORBES	7
✓	KEVIN NICHOLLS	8
✓	STEVE ROBINSON	11
✓	CHRIS COYNE	12
✓	ENOCH SHOWUNMI	16
✓	EMMERSON BOYCE	17
✓	AHMET BRKOVIC	18
✓	STEVE HOWARD	19
✓	PAUL HUGHES	21
✓	DAVID BAYLISS	22
✓	IAN HILLIER	23
✓	SOL DAVIS	24
✓	GARY MCSHEFFREY	25
✓	MARLON BERESFORD	29
✓	LEE MANSELL	32
✓	DEAN BRILL	33
✓	DEAN CROWE	34
✓	MICHAEL LEARY	38
✓	STEVEN O'LEARY	39
✓	KEVIN FOLEY	41
✓	MATTHEW JUDGE	43
✓	PARYS OKAI	44
✓	LEON BARNETT	45
✓	ROB BECKWITH	47

TEAMSHEET
IN ASSOCIATION WITH
EVENING POST
GREEN 'UN

REFeree:

A.R. Leake (Lancashire)

ASSISTANT REFEREES:

S.J. Dorr (Worcestershire) 
I.K. Scarr (West Midlands) 

FOURTH OFFICIAL:

R.G. Vaughan (North Somerset)

MATCH SPONSOR



MATCHBALL SPONSOR



MATCH PROGRAMME SPONSOR



EVENING POST

FANS' MAN OF THE MATCH
SPONSORED BYTO VOTE, TEXT
07736 101010
AND TYPE
'MATCH
(PLAYERS NAME)'

NEXT UP

BARNSELY

Ashton Gate Stadium
Saturday 22nd November,
kick-off 3pm
Nationwide League
Division Two

BRISTOL TRADE CENTRE Ltd.

THE SOUTH WEST'S
LARGEST INDEPENDENT
USED CAR SUPERMARKET



NUMBER 1 FOR SERVICE • NUMBER 1 FOR CHOICE • NUMBER 1 FOR VALUE • NUMBER 1 FOR QUALITY

CALL FOR OUR LATEST DEALS

0117 955 2240

OPEN 7 DAYS
A WEEK
MON-SUN*
9AM-9PM

LARGEST SELECTION OF VEHICLES AVAILABLE IN THE SOUTH WEST



CHECK OUT OUR LOW LOW PRICES!!!

SPOILT FOR CHOICE

MORE CHOICE | MORE QUALITY | MORE VALUE
FOR YOUR MONEY, THAN YOU WILL FIND ELSEWHERE

www.bristoltradecentre.com

£99
DEPOSIT UP
TO 5 YEARS
TO PAY
APR 13.5%

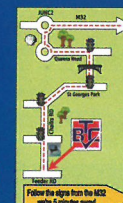
LARGEST
SELECTION
OF FLEET
VEHICLES
AVAILABLE

100%
OF PRESTIGE
VEHICLES
AVAILABLE

LARGE
SELECTION
OF MPV/4X4
AVAILABLE

100%
OF DIESELS
AVAILABLE

AA
INSPECTIONS
WELCOME



Bristol Trade Centre Ltd.
Netham Road, St George,
Bristol BS5 9PQ.

Tel: 0845 45 81 82 83
LOCAL RATE
Fax: 0117 941 2256

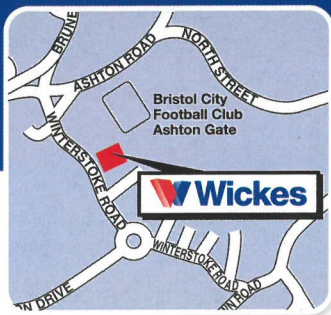
* SUNDAY TRADING HOURS
11AM-5PM. VIEWING ONLY
9AM-11AM / 5PM-8PM.

FULL DEALER
FACILITIES
AVAILABLE

TYPICAL FINANCE EXAMPLE FOR £99 DEPOSIT: CASH PRICE £7,999. DEPOSIT £99. AMOUNT OF CREDIT £7,900. CREDIT FACILITY FEE £120. INTEREST £2,664.80. TOTAL CHARGE FOR CREDIT £2,824.80. APR 13.5%. THE CREDIT AND THE CHARGE FOR CREDIT IS REPAYABLE BY 59 MONTHLY PAYMENTS OF £178.08, FOLLOWED BY 1 FINAL PAYMENT OF £216.08. TOTAL AMOUNT PAYABLE (A) + (C) £10,823.80. WRITTEN QUOTATIONS AVAILABLE ON REQUEST. * TYPICAL FINANCE EXAMPLE FOR £1 DEPOSIT: CASH PRICE (A) £3,999. DEPOSIT (B) £1. AMOUNT OF CREDIT (C) £3,998. INTEREST CHARGES (D) £1,000. ACCEPTANCE FEE (E) £120. CREDIT FACILITY FEE (F) £90. TOTAL CHARGES FOR CREDIT (G) £1,180 (=D+E+F). APR 13.5%. THE CREDIT AND THE CHARGES FOR CREDIT ARE REPAYABLE BY 1 MONTHLY PAYMENT OF £120 FOLLOWED BY 49 MONTHLY PAYMENTS OF £99.96 FOLLOWED BY 1 FINAL PAYMENT OF £159.96. BALANCE PAYABLE (C + G) £5178.00. TOTAL AMOUNT PAYABLE (A + G) £5179.00. WRITTEN QUOTATIONS AVAILABLE ON REQUEST.

NO SELECTION PROBLEMS

THE RIGHT CHOICE
AT THE RIGHT PRICE



Visit your local store at

Wickes

Home Improvement Centres

Do yourself proud.