



Luton Town Football Club

Official Matchday Magazine • Price £2.50

Nationwide League Division Two

Saturday 30th August 2003 • Kick Off 3.00pm



Official Shirt Sponsor

travelextras

dedicated to the independent traveller

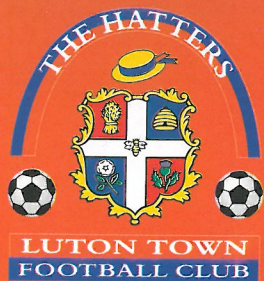
Official Kit Supplier

XARA



Luton Town v Hartlepool United

Match Sponsor: **Stanley Casino**



Function & Conference Suites at Kenilworth Stadium



For meetings, receptions, presentations, parties, AGM's or product launches, all year round.

Luton Town Football Club offers unique facilities with a warm welcome.

Six function rooms offering professional catering from coffee to buffets to waitress silver service, from 8 to 80 persons.

Comprehensive business facilities include projectors and screens, flip charts, fax and photocopying.

Room layouts can be boardroom, theatre or banqueting.

Bar, dance floor and disco information available on request



Function Suite	Reception or Bar only	Conference or Dinner
Eric Morecambe Suite	100	80
Century Club	100	80
Kenilworth Suite	100	50
Joe Payne Lounge	100	45
Millennium Suite	70	35
The Boardroom	50	30

For more information call the Commercial Department on 01582 411622 or

email: commercial@lutontown.co.uk

www.lutontown.co.uk

Inside Today

Manager slams agents

Page 5

Captain's Column

Page 7

Let's get on with it!

Page 9

Awayday travel offers

Page 11

Ticket office latest

Page 12

Welcome to Hartlepool

Page 18

Blast from the Past

Page 22

Manager booked by fans

Page 25

Why Tony Thorpe left

Page 27

Grimsby report

Page 28

Miserable Bank Holiday

Page 32

Town Teaser

Page 34

easyJet to the rescue

Page 35

Under-19s grab a point

Page 39

Under-17s' first win

Page 41

Belles set for kick-off

Page 45

Junior Hatters latest

Page 49

Football in the Community

Page 51

Receiver's progress report

Page 54

Scene in the Second Division

Page 55

All the stats

Page 56

Today's squads and officials

Page 58

Honours

Littlewoods Cup

Winners 1987-88

Finalists 1988-89

FA Cup

Finalists 1958-59

Simod Cup

Finalists 1987-88

Division 2

Champions 1981-82

Division 3 (S)

Champions 1936-37

Division 4

Champions 1967-68

Official Matchday Magazine

Editor

Brian Swain

Design & Printing

Regal Litho Ltd

Photography

Gareth Owen

The views expressed in this programme are not necessarily those of Luton Town Football Club.



Luton Town FC

Kenilworth Road Stadium
1 Maple Road, Luton
Bedfordshire LU4 8AW

Main Reception:

01582 411622

Fax: 01582 405070

Ticket Office: 01582 416976

Community Dept: 01582 391927

Vice Presidents

R. L. Banks, D. Ludlow MBE,
R. Safranek, J. Sapsworth

Chief Executive/Secretary

Cherry Newbery

Manager

Mike Newell

Director of Football & First Team Coach

Mick Harford

Coach

Brian Stein

Youth Team Coach

John Moore

Assistant Youth Coach

Marvin Johnson

Youth Development Officer

Mark Ridgway

Medical Officer

Dr. Bill Berry

Football in the Community

Stuart Smith

Consultant Physio

John Sheridan

Commercial Manager

Peter Davis

Catering Manager

Peter Saul

Safety Officer

Geoff Lovell

Ticket Office

Darren Bell

Financial Controller

Tania Buonpane FCCA

Club Dentist

A. Chris BDSA (Syd)

Club Chaplain

Rev Catherine Moss

Log on to Luton Town's official website at
www.lutontown.co.uk

CONNECT WITH YOUR CLUB



Luton Town

09068 121 123

teletext 09068

Calls cost 60p/min. ClubCall EC2A 4PF



Last Season

The Nationwide Football
League saw an Increase in

Attendance of 13.5%;

Why...?



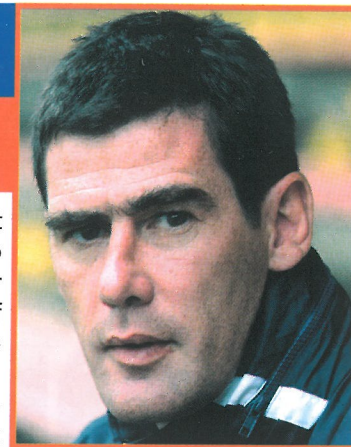
The authority...



The Quality of the Football

Image by Empics 0115 840 444 Digital Artwork by SentyBox 01895 251 220

The Manager's Message



HELLO, and welcome to Kenilworth Road. After believing that the club was returning to some sort of normality after the summer of turmoil, the harsh reality of what is going on here hit us with the sale of Tony Thorpe to Queens Park Rangers.

Now it's not the fact that we lost a player that hurts us so much, but the manner in which the deal was conducted and settled well before we were informed. There is no doubt that QPR took advantage of the situation that we are in, and having been in that situation themselves recently I find it all the more surprising that they felt it necessary to go direct to the player via a mercenary faceless agent with one thing on his mind, pound signs.

The FA and Football League will have you believe there are rules preventing clubs approaching a player who is under contract. But it seems to me that as long as it's done through an agent, then they will be prepared to bury their heads in the sand. As a group, I don't like agents, and have little respect for them. I never had one as a player – I never felt it necessary. Money has been allowed to pour out of the game in the last decade, money it clearly could not afford. That is still being allowed to happen, and I wonder why. Every now and then there will be an investigation. Whatever comes of it? Nothing! Is anyone going to tell me that the only person guilty of accepting a "bung" is George Graham? No, let's sweep it under the carpet! Agents don't get players moves in the same way that estate agents don't sell your house. The house sells itself, but the commission is always demanded. Words are cheap and a few weeks ago Tony Thorpe said

publicly that we all need to pull together for the sake of the club. We wish him well.

I am still finding out about players, and about them as characters, and over the next few weeks we will discover who wants to be here and who doesn't.

I will not stand in the way of anyone who wants to better themselves, or play at a higher level, and that's what eventually makes the club stronger in the long run. But there is a time for everything, and the players need to recognise that this club has looked after them well in the last couple of years, and they might just have to bite the bullet for the time being until we sort ourselves out. Kissing badges has never kidded me. Sweat is a better indication.

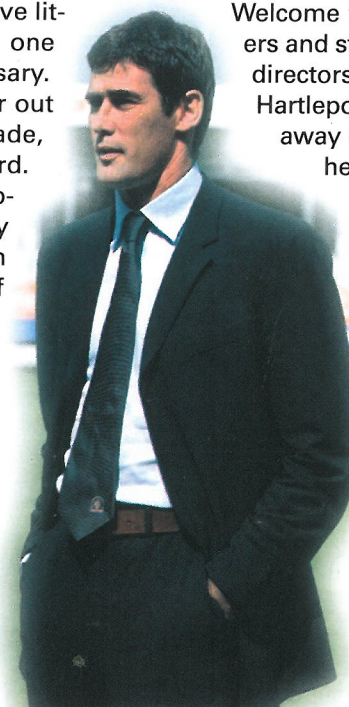
Welcome to Neale Cooper and his players and staff. I normally say the same to directors, but in my time as manager of Hartlepool they travelled to only one away game, so it's unlikely they'll be here. Also welcome to United

supporters, from some of whom I have received messages and letters since I left. I hope you are enjoying the Second Division.

My stay was a short one, but in that time I learned a lot about football management and people. I enjoyed a fantastic relationship with the players – or most of them, anyway – and I wish them well, after today of course.

Enjoy the game

Mike Newell



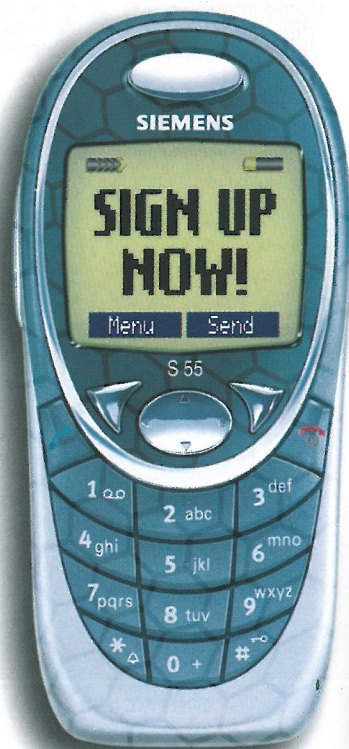
For the latest news, views & interviews call:
CLUB CALL on 09068 121123

Calls cost 60p per minute at all times



The **OFFICIAL** Club SMS Service

MOBILE! WHAT'S THE SCORE? MOBILE! MOBILE! WHAT'S THE SCORE?



Every league & cup goal • Exclusive club breaking news • Full time divisional round ups

Text **CLUB LUTON** to **88442**

Or, if you only want away game results, text **CLUB LUTON AWAY** to **88442**

This service is available to UK Vodafone, Orange, T Mobile & O2 mobile customers. The cost of each SMS text message sent shall be a maximum of 25p and will be charged direct to your mobile phone bill or deducted from your mobile phone's pre-pay balance. The cost of texting 88442 for your club's official SMS service will be charged at your normal text rate. All charges are inclusive of VAT. Full terms & conditions can be found on the mobile zone at your club's official website. www.lutontown.co.uk
The Siemens S55 handset featured has been manipulated for the purpose for this advertisement, please note that an alternative design is available for purchase in the UK.

The Town Captain's View



TWO defeats last weekend were the last thing I expected after our good start to the season, but while I felt we should have got something out of the Grimsby game, we couldn't complain too much about the defeat at Brighton.

It was interesting to see the differences between two teams who had been in the First Division last season. Grimsby were fortunate to go home with their first win of the season, on a day when for the first time we did not have all 11 players on song. On our overall performance we deserved a draw at least, but didn't get it because we didn't have a cutting edge.

Grimsby did their job well, but I don't think supporters would turn up week in, week out, to see the sort of football they chose to use. They were determined to make it a stop-start match, concentrating on upsetting our rhythm. They weren't brilliant, but they had two chances and took them both on a day when we were nothing like as good as we can be. Perhaps we missed Tony Thorpe, but he's gone and we have to get on with the job in hand.

Unfortunately, we had another bad day at Brighton, and I can't remember a match in which so many of our team were off form together. Brighton were a much better team than Grimsby. We missed Emmerson Boyce's pace at the back, and then suffered a blow when Steve Howard was sent off.

That was for bad language, yet I have

heard similar many, many times in games, and the officials usually settle for a smile and a word of warning. You

may have wondered why I got a bit hot under the collar later in the game when Brighton's Leon Knight was booked. He used exactly the same swear word that had got Howie sent off, but this time it was to the referee, and he settled for a booking. The big man has accepted he was wrong, and will take his punishment, but Knight got away with a yellow card.

Where's the justice in that?

We still need more common sense and consistency from referees, but having said that we did not deserve to get anything at Brighton, and it was a painful journey home as we thought about the game, and the need to put things right quickly.

You can be sure that we will be very determined this afternoon to make sure we don't suffer our third defeat on the spin. We know Hartlepool have had a good start to the season, unbeaten in their five league and cup games so far, but they couldn't beat us when we were in the same division the season before last, when we took four points off them. We will be going all out to get three more today.

Kevin Nicholls



Log on to Luton Town's official website at
www.lutontown.co.uk

Kenilworth Suite Members

Corporate Coaching

DBF Crosswinds Ltd

Mr K Harvey

Mr R Harvey

J P Hygiene Supplies

Mr P Mitchell

Regal Litho Ltd

Remdex UK Ltd

Mr J Siegler

Dr D Siegler

Stanley Casinos

Travel Extras

Vangis UK Ltd

Mr & Mrs R Williams

Mr J Ashton

From The Chief Executive



A LOT has been said over the past week regarding the transfer of Tony Thorpe, and elsewhere in this programme the background to the transfer is explained. We didn't want him to go, and the Manager, with the full backing of the Administrative Receiver, made every effort to keep him. But if players choose to leave, as Tony Thorpe did, we have to accept it, draw a line in the sand, and get on with the job in hand.

A few weeks ago we all had that uncertainty about whether we would actually be playing football this season. We are, thankfully, very much still in business, and now is the time for those of us who want to help the club to roll up our sleeves and get on with it.

The response to the Ray Harford memorial appeal at last Saturday's match was tremendous. The bucket collection brought in the magnificent sum of £1,507, and in line with Ray's wishes the money is going to the children's department at the Royal Marsden Hospital, where Ray was treated during his illness. Thank you everyone for your generosity, and thanks also to the Luton Town Supporters Club members and everyone else who volunteered to be collectors on the day.

A fixtures clash involving our under-17 and under-19 teams' games against Cambridge United has been avoided after Cambridge kindly agreed to swap our under-17 home and away games. So we will now be away to Cambridge next Saturday, and will play them at home on February 21.

We are into September next week, and can I remind you about our offer to keep this office open longer in the evening on the first Monday of each month. That means Monday, of course, and I will be here until 7pm to answer any questions, or listen to any complaints or ideas you may have. We

really would like to keep up the dialogue between the club and its supporters that opened up during the summer.

I know it has been frustrating for supporters not to be able to order match tickets by credit or debit card, and we have been working to get this facility back in place. While I don't think we will be able to accept seasonal bookings by card, I am hopeful that we will be able to accept cards to some degree very soon.

Another area of frustration has been our web site. I am pleased to report that this situation has been resolved, and our new web editor starts work at Kenilworth Road on Monday. Although we will not be able to operate World Plus, all the other services will be back to normal on the site.

Meanwhile, we are as always keen to make sure we have the best possible playing conditions at Kenilworth Road, and we need some help with that. At the end of each game groundsman Richard Bird and his team get to work to repair the inevitable damage the pitch suffers during matches. If you can spare an hour or so help tend the pitch, replacing divots and so on, please phone Richard at the club, on Luton 411622.

Finally, confirmation of a note for your diaries about a fixture change in the Nationwide League. We will be playing in front of a live TV audience when we entertain Tranmere Rovers in October, so the match has been switched from Saturday the 4th to the evening of Monday the 6th with an 8pm kickoff.

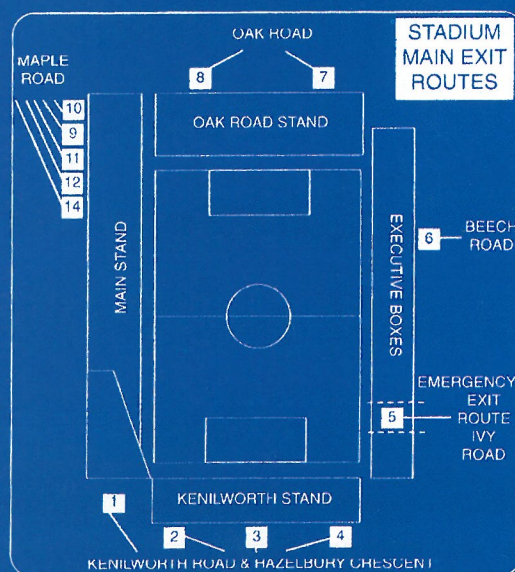
Cherry Newbery

EVACUATION PROCEDURE

IN THE event of any emergency in the stadium, Luton Town FC and the emergency services have agreed on an evacuation procedure which is designed to ensure the safe and controlled evacuation of the crowd, and to ensure their safe dispersal from the area, to allow the emergency services to carry out their tasks.

In the event of evacuation from all or part of the stadium, you will receive instructions over the public address system on how you should leave. In an evacuation of the main stand you will be instructed to use the pitch. Stewards will direct you to the nearest exit. It may be that your normal exit route will not be available. On leaving the stadium, you will find some roads closed to pedestrians, to enable swift and unobstructed access for the emergency services. Please leave the area of the ground as quickly as possible, by the route directed. Your co-operation will be most appreciated.

Geoff Lovell, Safety Manager.



03/04 stats			Fouls conceded/game			Caught offside/game			03/04 stats		
Comebacks behind by -2 -1			Tranmere 16.50 Brighton 12.75			Brighton 6.50 Wycombe 3.75			Throwaways ahead by +2 +1		
Blackpool	1	1	Grimsby 15.25 Rushden 12.75	Luton 6.50 Colchester 3.50			Oldham 0	2			
Port Vale	0	2	Colchester 15.00 Wrexham 12.75	Rushden 6.25 Tranmere 3.50			Peterborough 1	0			
Hartlepool	1	0	QPR 15.00 Oldham 12.50	Oldham 5.75 Brentford 3.25			Wycombe	1	0		
Brentford	0	1	Wycombe 15.00 Swindon 12.50	Peterborough 5.75 Wrexham 3.25			Colchester	0	1		
Brighton	0	1	Chesterfield 14.75 Sheff Wed 12.25	Stockport 5.75 QPR 3.00			Grimsby	0	1		
Luton	0	1	Luton 14.50 Brentford 12.00	Chesterfield 4.75 Swindon 2.75			QPR	0	1		
Wrexham	0	1	Bristol City 13.75 Peterborough 12.00	Blackpool 4.50 Plymouth 2.50			Rushden	0	1		
			Notts County 13.75 Port Vale 11.75	Grimsby 4.50 Port Vale 2.25			Sheff Wed	0	1		
			Barnsley 13.50 Plymouth 11.50	Bristol City 4.25 Bournemouth 1.75							
			Stockport 13.25 Blackpool 11.25	Hartlepool 3.75 Barnsley 1.50							
			Bournemouth 12.75 Hartlepool 11.00	Sheff Wed 3.75 Notts County 1.00							

Goals Per Game - The Division's Most Consistent Strikers

Minimum of 3 goals													
Player:	Ainsworth	Peacock	Taylor	Lowe	Thorpe	Knight	McGleish	Boulding	Clarke	Kuqi	Mooney	Anderson	
Lge Gls:	4	4	3	3	2	4	4	4	4	4	3	2	
CC Gls:	1	2	2	1	1	0	0	0	0	0	1	1	
Total:	5	6	5	4	3	4	4	4	4	4	4	3	
Gls/Game:	1.25	1.20	1.00	1.00	0.80	0.80	0.80	0.80	0.80	0.80	0.80	0.80	

Goals from Outside Area

Blake	Burnley	2
Hughes	West Brom	2
Anderson	Grimsby	2
Ainsworth	QPR	2
Currie	Wycombe	2
Stead	Huddersfield	2
Williams	Kidderminster	2
Arteta	Rangers	2

Headed Goals

Knight	Brighton	3
Amoruso	Blackburn	2
Peacock	Bristol City	2
Boulding	Grimsby	2
Kuqi	Sheff Wed	2
Jones	Tranmere	2
Lawrence	Wrexham	2
Patterson	Wycombe	2
Kitson	Cambridge	2
Fortune-West	Doncaster	2
Christie	Mansfield	2

Goals in last 10 mins

Sheringham	Portsmouth	2
Hughes	West Brom	2
Trundle	Swansea	2

stats from Premiership, Nationwide and SPL

Most Potent Attack - Shots On Target : Goals

Team	OnT	Gls	Ave
Sheff Wed	21	8	2.63
Oldham	16	6	2.67
Hartlepool	20	7	2.86
Wycombe	20	7	2.86
Grimsby	23	8	2.88
Blackpool	18	6	3.00
Rushden	24	8	3.00
Luton	19	6	3.17
Port Vale	27	8	3.38
Colchester	17	5	3.40
QPR	35	10	3.50
Brighton	26	7	3.71

Tightest Defence - Shots On Target : Goals Conc

Team	OnT	Gls	Ave
Swindon	35	9	3.89
Bournemouth	21	5	4.20
Barnsley	26	6	4.33
Peterborough	31	7	4.43
Bristol City	38	8	4.75
Tranmere	31	6	5.17
Chesterfield	26	5	5.20
Wrexham	28	5	5.60
Plymouth	42	7	6.00
Stockport	19	3	6.33
Brentford	22	3	7.33
Notts County	26	0	-

Team	OnT	Gls	C	Ave
Wrexham	29	2	14.50	
Barnsley	26	2	13.00	
Hartlepool	28	4	7.00	
Grimsby	38	6	6.33	
Bristol City	22	4	5.50	
Chesterfield	26	5	5.20	
Colchester	36	7	5.14	
Rushden	41	8	5.13	
Brighton	15	3	5.00	
Plymouth	29	6	4.83	
Peterborough	22	5	4.40	
Sheff Wed	28	7	4.00	

Team	OnT	Gls	C	Ave
Swindon	18	5	3.60	
Stockport	25	7	3.57	
QPR	17	5	3.40	
Luton	20	6	3.33	
Notts County	36	11	3.27	
Tranmere	13	4	3.25	
Blackpool	34	11	3.09	
Brentford	24	9	2.67	
Wycombe	24	9	2.67	
Oldham	26	10	2.60	
Bournemouth	17	7	2.43	
Port Vale	17	7	2.43	

Hatters Away Twice On The Trot

SUPPORTERS wanting to watch the Town's next two games will have to clock up over 700 miles, with a trip to Notts County on Saturday followed by the season's longest league journey, to Plymouth, a week later.

Driving to both destinations is not too difficult, but the easiest travel is by coach, with Town on Tour and the Bobbers Travel Club offering reliable services.

For the game at Meadow Lane both leave Luton at 11.30am, with the Bobbers coach setting off from Cranfield at 10.30am which is also the time Town on Tour start off from Bletchley. Town on Tour fares are £12 for adult members of LTSC and £10 for concessions, or £14 for non-members. The Bobbers will charge £11 for adults, £9 for concessions.



Drive It Yourself

THE drive to Meadow Lane can be done in two hours if the motorway is running smoothly. Take the M1 north, and leave at junction 24, to join the A453, signposted to Nottingham south. Follow the signs towards West Bridgford and after nearly seven miles watch for the junction just before a big fly-over. Turn off, to avoid going onto the fly-over, onto the A52, signposted towards Grantham. At the first roundabout turn left, still on the A52, and you soon come to a mini-roundabout where you turn right, staying on the A52, and you will then pick up the signs for football and cricket traffic - Notts County, Nottingham Forest, and Trent Bridge cricket ground are all close together.

The route keeps you on the Grantham Road for nearly six more miles, and at the third roundabout turn left on the A6011 signposted to Nottingham. At a T junction, with the Trent Bridge Inn on your left, turn

right, passing Forest's ground on your right. Meadow Lane is on the right immediately you cross over the River Trent. Mileage from Luton: 103

Early Start For Plymouth

FOR the trip to Home Park, the Bobbers will leave Cranfield at 6.30am and Luton an hour later, and their fares will be £18.50 for adults and £15 for concessions.

Town on Tour will leave Luton at 8am, an hour after Bletchley departure, and fares are £20 for LTSC members, £17 concessionary members and £23 for others.

The Road to Home Park

THERE are two main choices if you want to drive to Plymouth. Our man likes the shorter and more interesting route: south on M1, west on M25 and going beyond Heathrow to junction 12, turning right down the M3 and then onto the A303, which takes you past Stonehenge. Follow the



signs towards Exeter, and near there join the M5 briefly, to follow the signs to Plymouth.

Go into Plymouth on the A38, heading towards Cornwall. Watch for the Manadon junction, and turn on to the A386, signposted towards the city centre. After just over a mile you will see the ground, and its car park, on your left.

The problem with the A303 is that it is not all dual carriageway, and if you prefer a route which is nearly all motorway, leave Luton on the M1, but then take the M4 west, and M5 south, before picking up the route into Plymouth outlined above.

Mileage: About 265 via M4 and M5, around 245 via M3 and A303.

BOOKINGS for away games travel can be made at the LTSC or Bobbers kiosks in Kenilworth Road, before or after home games. Paul Deason on 01234 750996 will take phone bookings for the Bobbers, whose service includes pick-ups at Cranfield, Marston Moretaine, Ampthill, Flitwick, Westoning and opposite the Travelodge Motel in Dunstable Road, Luton, close to the M1.

Town on Tour offers LTSC members the best deals, and seats can be reserved at the Supporters Club kiosk or by phoning 07960 567465. They offer additional pick-ups at Bletchley, Linslade, Leighton Buzzard and Houghton Regis, as an experiment which will be run until the turn of the year. Its future will depend on demand.

www.soccer-stats.com

5 Leagues and 12 Seasons of Stats

"If you want to impress the lads down the pub...this site is for you."

- 5 star rating and Gold Award, Webuser magazine

Log on to Luton Town's official website at www.lutontown.co.uk

News From The Ticket Office



Nationwide League Division Two Notts County v Luton Town

Saturday, September 6, 2003, kick-off 3pm
Prices: Adults £16, Senior Citizens £10,
12-15 Year Olds £7, Under-12s £3.



This match is pay on the day only for Luton Town supporters, with no tickets available in advance from Kenilworth Road. Proof of age will be required to purchase children's concession tickets.



Nationwide League Division Two Plymouth Argyle v Luton Town

Saturday, September 13, 2003, kick-off 3pm
Luton supporters have a choice of paying on the day or booking tickets in advance direct from Plymouth Argyle's ticket office (phone 01752 562562), with discounted rates available for adults.



Prices for advance purchase:
Adults £15, Senior Citizens & Students £10, Juniors £5.
On the day: Adults £17, Senior Citizens & Students £10,
Juniors £5.



Nationwide League Division Two Luton Town v Port Vale

Tuesday, September 16, 2003, kick-off 7.45pm
Tickets are now on sale at normal matchday prices.



Cash turnstiles will be open on the day subject to availability, but please remember there are
NO CONCESSIONS available on cash turnstiles.

News From The Ticket Office



Nationwide League Division Two Luton Town v Queens Park Rangers

Saturday, September 20, 2003, kick-off 3pm
This is an ALL TICKET match for ALL SUPPORTERS, with no tickets available on the day.



Tickets are now on sale at normal matchday prices, and supporters are advised to purchase early to avoid disappointment.



Carling Cup, Second Round Charlton Athletic v Luton Town

Tuesday September 23, 8pm
Prices: Adults £10, Senior Citizens £5,
Juniors £1



We have been allocated the South Stand that holds 3,000 and whilst this is not an all ticket match for Luton supporters it is advisable to purchase tickets in advance from the ticket office in Kenilworth Road before travelling.



Nationwide League Division Two Oldham Athletic v Luton Town

Saturday, September 27, 2003, kick-off 3pm
Prices: Adults £16, Senior Citizens
and Juniors £8.



Pay on the day only, at Boundary Park.
No advance tickets are available from Kenilworth Road.

Ticket Office Opening Hours

MONDAY TO FRIDAY

10am to 4pm, except on Fridays before
Saturday home games when it is 10am to 6pm

SATURDAY

9am to 5.15pm on match days; 10am until the
away coaches depart on days when there is no
game at Kenilworth Road.



Commercial Corner

WELCOME to everyone in our sponsors and executive lounges for this afternoon's game, and once more the local business community is

here in force to give us backing which we very much appreciate.

MATCH SPONSOR Stanley Casino



STANLEY Casino re-join us today, for the second time in three games, as our principle match sponsor. Based here in Luton, Stanley Casino are one of the football club's brand new sponsors for this season and will be featuring throughout the season with a series of match sponsorships, as well as maintaining a permanent presence with an executive box, Kenilworth Club membership, and stadium advertising. We would like to take the opportunity to thank Scott Cambell Cowan, Stanley Casino's general manager, for his support, and hope that his guests and management team have a great day with us.

Stanley Casino offers a comprehensive choice in how to spend your leisure time, away from Kenilworth Road, with their modern gaming facilities, relaxed quality dinning, late bars and live entertainment. They are open every day from 2pm until 6am, and Sunday morning until 4am. Why not contact them today for details of how to acquire your free membership on 01582 591148

COMMERCIAL MASCOT James Beesley



WE ALSO wish to extend a warm Kenilworth Road welcome to the Beesley family, and in particular eight-year-old James Beesley, who joins us today as commercial mascot.

Hailing from Milton Keynes, James is a regular visitor to Kenilworth Road with his father Lee and godfather Anthony, who are season ticket

holders. James attends Wellsmead Middle School in Bletchley and plays football for Newport Pagnell and cricket for Long Marston. His favourite footballers are the Luton Town team, especially Matt Spring and Rob Beckwith. James's birthday was on July 30, so we would like to take the opportunity of wishing him many happy returns, albeit slightly late, and hope that he and his family have a memorable day with us.



WELCOME BACK: The party from Stanley Casino, who were match ball sponsors last Saturday, and who are returning this afternoon as match sponsors.

KENILWORTH SUITE MEMBERSHIP

The Kenilworth Suite is probably the best VIP presentation currently available here at the stadium. Based on a maximum membership of 35, and designed as an exclusive membership organisation, plus guests' match day suite, the Kenilworth Suite membership allows you the flexibility to just enjoy your day amongst friends and colleagues, or as a base for any important business guests that you wish to entertain.

Membership for the season includes:

- Seating in the directors box
- Reserved car parking in Maple Road directors car park
- A three-course pre-match meal
- A half bottle wine with your meal
- Half time tea, coffee and biscuits
- A post-match buffet
- Complementary programme and teamsheet
- Private cash bar facility
- Sky Sports TV

Welcome to All Our Sponsors and Guests

Cost for a full season is only £1,425.00 pp, which is only an amazing £61.95 per match based on 23 league games. There are also special reduced rates for senior citizens and juniors under 16.

Charlton Athletic v Luton Town - 2nd Round Carling Cup 23rd September

We are now taking bookings for our VIP Trip to the Valley on the 23rd September for the Clubs Carling Cup 2nd Round match with Charlton Athletic. This is a superb opportunity of travelling and dining in style, whilst showing your support for the club in this vital game in which success and a move into the 3rd round would bring a vitally important additional revenue opportunity into the Club. Package price £80.00pp

Sporting Dinner - Thursday November 13 - Riverside Suite Luton

MAKE a date in your diary for Thursday November 13, when Luton Town FC will be staging its first celebrity Sporting Dinner for many a season. Full details will be announced shortly, but in the meantime note the date and look forward to a tremendous evening. Contact the commercial department on 01582 411622 for further details of any of the above.

Have a great day

Peter Davis



JOINT MATCH SPONSORS: Left the party from Critical Research, who sponsored the game against Grimsby, and on the right are their fellow sponsors Wickes in Stevenage and their guests.

COMMERCIAL OPPORTUNITIES

Match Ball and full match sponsorship are just two of the superb corporate entertainment opportunities available at Kenilworth Road. Designed for today's business hospitality needs, these two specific packages offer a high profile event, with first-class catering, and every ingredient to produce a memorable day.

Your Company's Sponsorship will include:

- Reserved match seating in the family stand
- Reserved car parking in the Maple Road directors car park
- Bucks Fizz Reception
- A superb four-course meal
- Half a bottle of wine per person
- Half-time refreshments
- A post-match buffet
- Cash bar facility
- Executive gift
- Stadium tour, including dressing rooms
- Souvenir group photograph
- Company name on the front of the match programme
- Complimentary match programme
- Framed certificate to commemorate of your sponsorship
- Matchday competitions
- Luton man of the match award plus meet the players
- Club host to ensure the smooth running of your day

Match Ball Sponsorship for a minimum of 6 guests from £650.00

Match Sponsorship based on minimum of 12 guests from £950.00

Contact the Commercial Department on 01582 411622 or commercial@lutontown.co.uk for match availability and bookings.



Special Cup-Tie Offer

A VIP Trip to The Valley



PREMIERSHIP club Charlton Athletic are Luton Town's next opponents in the second round of the Carling Cup, to be played on Tuesday September 23, kick off 8pm.

In conjunction with Charlton's commercial department, we have been able to organise a superb VIP trip to the Valley, giving you the opportunity of being there and witnessing what we hope will be a memorable and historic evening.

Package to include:

- Access from 3pm to the Eric Morecambe Lounge for complementary tea/coffee and cash bar
- Departure at 4pm by luxury air-conditioned coach that includes TV/Video, tea and coffee refreshments, and toilet facilities
- Private use of the Observatory Suite at the Valley, which includes a private cash bar
- Superb hot and cold fork buffet, with vegetarian options
- Half-time refreshments
- Souvenir match programme and team sheet
- A reserved match ticket in the South Stand

Cost per person: £80.00 including vat

Please note that, as with all our VIP away trips, a minimum of 40 guests are required to cover the basic costs and financial commitments.

Contact the commercial department on 01582 411622 for further details and booking information, or e-mail us at commercial@lutontown.co.uk



Hatters



Form Guide:

Won: 2
Drawn: 0
Lost: 2
Scored: 6
Conc: 6
Points: 6
Goal Diff: 0
Last 6: WWLL

Last 5 Home: WL
Last 5 Away: WL

Miscellaneous

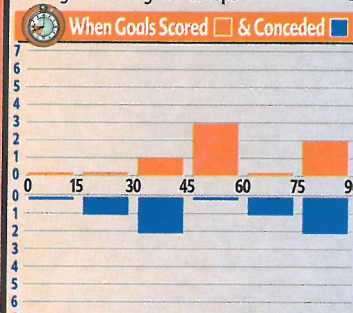
Players Used: 18

Clean Sheets: 0

Failed to Score: 1

The Guys to Watch

Headed goals	Neilson, Spring, Thorpe	1
Long range shots	none	
Inside 6 yards	Neilson	1
Shots from 6-18 yards	Thorpe, Howard	1
Volleyed shots	none	
Penalties	Nicholls	1
Scored 1st Goal in match	Neilson	1
Most goals in last 10	Spring, Nicholls	1
Points gained from goals	Thorpe	2



Goalkeeping

Opp. attempts on target	20
Goals conceded	6
On target/goals scored	3.33
Division 2 rating	16

Goalscoring Strike Rate

Shots on target	19
Goals scored	6
On target / goals	3.16
Division 2 Rating	8

Goals in last 10 mins

Goals For, last 10	2
Points won	0
Goals Against, last 10	1
Points lost	0

Fouls & Offsides

Average fouls per game	14.5
Div 2 Rating (1=least, 24=most)	19
Average Offsides per game	6.5
Div 2 Rating	24

Swings

WON when behind	1
DRAWN when behind	0
LOST when ahead	0
DRAWN when ahead	0
WON 2 down	0
WON 1 down	1
LOST 2 up	0
LOST 1 up	0
DRAWN 2+ down	0
DRAWN 1 down	0
DRAWN 2+ up	0
DRAWN 1 up	0

Attendances

Aggregate	12,705
Highest	6,878
Lowest	5,827
Average	6,353

The Guys to Watch

Headed goals	Gabbiadini	1
Long range shots	Nelson, Strachan	1
Inside 6 yards	Robinson	2
Shots from 6-18 yards	Robson	1
Volleyed shots	Robson, Robinson	1
Penalties	Gabbiadini	1
Scored 1st Goal in match	Robinson	1
Most goals in last 10	Nelson, Gabbiadini	1
Points gained from goals	Gabbiadini	2.5



Goalkeeping

Opp. attempts on target	28
Goals conceded	4
On target/goals scored	7
Division 2 rating	4

Goalscoring Strike Rate

Shots on target	20
Goals scored	7
On target / goals	2.85
Division 2 Rating	3

Goals in last 10 mins

Goals For, last 10	2
Points won	2
Goals Against, last 10	0
Points lost	0

Fouls & Offsides

Average fouls per game	11
Div 2 Rating (1=least, 24=most)	1
Average Offsides per game	3.75
Div 2 Rating	12

Swings

WON when behind	1
DRAWN when behind	1
LOST when ahead	0
DRAWN when ahead	0
WON 2 down	1
WON 1 down	0
LOST 2 up	0
LOST 1 up	0
DRAWN 2+ down	0
DRAWN 1 down	1
DRAWN 2+ up	0
DRAWN 1 up	0

Attendances

Aggregate	10,671
Highest	5,357
Lowest	5,314
Average	5,336



Hatters



Form Guide:

Won: 2
Drawn: 2
Lost: 0
Scored: 7
Conc: 4
Points: 8
Goal Diff: 3
Last 6: WDDW

Last 5 Home: DW
Last 5 Away: WD

Miscellaneous

Players Used: 18

Clean Sheets: 2

Failed to Score: 1

www.soccer-stats.com

5 Leagues and 12 Seasons of Stats

"If you want to impress the lads down the pub...this site is for you."

- 5 star rating and Gold Award, Webuser magazine

Welcome to Today's Visitors



Back row (left to right): Peter Darke (Kit Manager) Darrell Clarke, Eifion Williams, Antony Sweeney, Mark Robinson, Mark Tinkler, Marcus Richardson, Andrew Jordan, Michael Nelson, Dan Lewis (Fitness Coach), Ian Kerr (Director of Youth)

Middle: Ian Gallagher (Youth Team Physio), John Murray (Physio), Adam Boyd, Matty Robson, Ritchie Humphreys, Jim Provett, Anthony Williams, John Brackstone, Marco Gabbiadini, Jermaine Easter, Tommy Miller (Chief Scout), Paul Stephenson (Youth Team Coach)

Front: Kevin Henderson, Steven Istead, Paul Arnison, Neale Cooper (Manager), Michael Barron (Captain), Martin Scott (Reserve Team Manager), Chris Westwood, Paul Robinson, Gavin Strachan

Football's Future

Cash in on our support for:

- pitches
- social inclusion projects
- changing rooms
- education schemes
- kit and equipment
- pavilions



Football Foundation
football's biggest supporter

www.footballfoundation.org.uk Helpline 0800 0277766



Hartlepool United



1 Anthony Williams (Goalkeeper)

DOB 20 Sep 77 - Ogwr - 6 ft 2 ins - 13 st 8 lbs
Signed from Blackburn Rovers in the summer of 2000, Williams is a former Wales Under-21 international. Whilst representing his country he saved two penalties in a match on two occasions. He has established himself as the No. 1 at Victoria Park after some fine displays. He won the North East Save of the Year Award in 2002 after a remarkable double stop at York City.

14 Paul Arnison (Defender)

DOB 18 Sep 77 - Hartlepool - 5 ft 10 in - 10 st 12 lbs

Local boy Arnison spent his early career at Newcastle United but despite captaining the Reserve side could not break in to the First Team. After an initial loan period, he made a permanent move to Victoria Park in March 2000. A utility player who is comfortable anywhere down the right flank or in central midfield.

3 Mark Robinson (Defender)

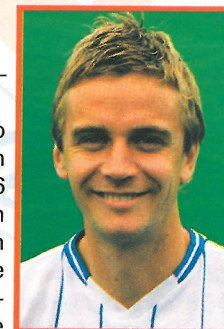
DOB 24 Jul 81 - Guisborough - 5 ft 9 in - 11 st 0 lbs

A developing full-back with a sweet left foot. He made his League debut at Lincoln in August 2000 and has continued to show good potential. He briefly lost his place to loan signing Brian Barry-Murphy during last season but soon came back in to the team and re-established himself.

2 Michael Barron (Defender)

DOB 22 Dec 74 - Lumley - 5 ft 11 in - 11 st 10 lbs

Micky made the move to Victoria Park from Middlesbrough in 1996 after a successful loan spell. Although he can operate well in the centre of defence or as a sweeper, he has captained the team from right-back for the last two seasons. He is a good organiser on the pitch and leads by example.



5 Michael Nelson (Defender)

DOB 15 Mar 82 - Gateshead - 6 ft 2 ins - 13 st 3 lbs
The Gateshead born defender was signed in June 2003 and became manager Neale Cooper's first signing after being brought in on the same day Cooper was appointed. The 6ft 2" defender started his career at Bishop Auckland before moving to Bury in April 2002 where he made 71 league appearances and found the net 8 times. Prior to his move to Victoria Park he was named Bury's Player of the Year in only his second season in League football after his stint in the Unibond league.

6 Chris Westwood (Defender)

DOB 13 Feb 77 - Dudley - 5 ft 11 in - 12 st 10 lbs

Chris joined Pools from Wolves in 1999 and has been a rock at the heart of defence. A classy defender who prefers to stay on his feet and read the game rather than dive in recklessly. He took the Supporters' Association Away Player of the Year Award last season for his fine displays and was voted in to the PFA Division Three Team of the Year.

4 Mark Tinkler (Midfield)

DOB 24 Oct 74 - Bishop Auckland - 6 ft 2 ins - 13 st 0 lbs

Mark arrived at Victoria Park in November of 2000 and has become an integral part of the Pools midfield. During last season's promotion, 'Tinks' hit the net no fewer than 13 times, including a hat trick against Wrexham in October, to make him the Club's second highest scorer. He likes to get stuck in but also spray the ball around the park, and he is not averse to shooting from distance.

8 Ritchie Humphreys (Midfield)

DOB 30 Nov 77 - Sheffield - 5 ft 11 ins - 12 st 7 lbs

Last season was particularly sweet one for Ritchie. He was a member of the PFA Division Three Team of the Year and was also voted the Supporters' Player of the Year. His 11 goals from 49 classy displays last term also saw him honoured with the Nationwide Player of the Year accolade at the North East Football Awards. A firm favourite with the fans who came in to his own on the left flank last term.

Welcome to Today's Visitors

9 Eifion Williams (Forward)

DOB 15 Nov 75 – Bangor – 5 ft 11 in – 11 st 2 lbs

Eifion joined the Club from Torquay United in March 2002 and has since established himself as a natural goalscorer. Ironically, he scored a hat-trick against Pools on his League debut for Torquay but his 16 goals during the promotion season have seen him forgiven by the Victoria Park faithful.

7 Darrell Clarke (Midfield)

DOB 16 Dec 77 – Mansfield – 5 ft 10 ins – 11 st 6 lbs

Darrell joined Pools during the summer of 2001 from Mansfield Town. Although he prefers a central role, he has been employed wide on the right for much of his time at Victoria Park. Managed 7 goals last season despite not getting off the mark until the game against Cambridge in late December.

11 Kevin Henderson (Forward)

DOB 8 Jun 74 – Ashington – 5 ft 11 in – 13 st 12 lbs

Kevin is in his fifth season with the Club after previously playing for Burnley. A model professional, 'Hendo' has been fighting hard for a place in the starting line-up by registering good performances in the Reserves.

15 Adam Boyd (Forward)

DOB 25 May 82 – Hartlepool – Height 5 ft 9 in – 10 st 12 lbs

A young player tipped to have a bright future in the game. Adam is one of the most skilful players at the Club but is yet to hold down a regular First Team place. He can play in mid-field or attack and after signing a new contract towards the end of last season he will be focussed on playing his part in Division Two.

12 Jon Bass (Defender)

DOB 1 Jan 76 – Western-Super-Mare – 6 ft 0 in – 12 st 2 lbs

A reliable defender who joined Pools from Birmingham in the summer of 2001. He has operated mainly at right-back when called upon in the First Team. He was handed the

captaincy of the Reserves last season and subsequently registered a series of commanding displays at the back. Signed a new one-year deal at the end of the last campaign.

17 Jermaine Easter (Forward)

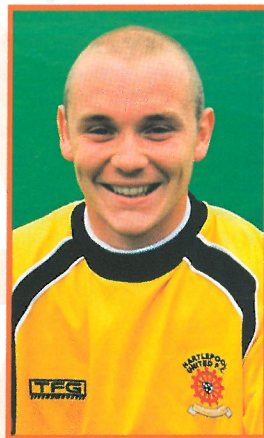
DOB 15 Jan 82 – Cardiff – 5 ft 10 ins – 12 st 3 lbs

A pacy forward who was a product of the Wolves Youth set-up. Easter is yet to establish himself in the First Team but having signed a new contract at the end of last season will be looking to make a bigger impact in the near future. He can play as an out and out striker but was employed on the right wing for the Reserves last term.

19 Jim Provett (Goalkeeper)

DOB 22 Dec 82 – Trimdon – 6 ft 0 ins – 13 st 4 lbs

Young goalkeeper who turned professional at the start of last season after coming through the Youth ranks. Provett has time on his side but has gained valuable experience in recent seasons by going out on loan to Spennymoor United.



18 Antony Sweeney (Midfield)

DOB 05 Sep 83 – Stockton – 6 ft 0 ins – 11 st 7 lbs

The young midfielder has progressed through the ranks at Victoria Park and is showing good potential. He started last season in the First Team when Pools visited Carlisle but could not hold on to his place. A powerful player with the ability to get forward and contribute goals.

22 Matty Robson (Defender)

DOB 23 Jan 85 – Durham – 5ft 9 ins – 11st 2 lbs

The Durham-born youngster is showing great promise on the left flank. He was a regular in the Reserves last season and has a great left foot that can be particularly productive from set-pieces.



Hartlepool United



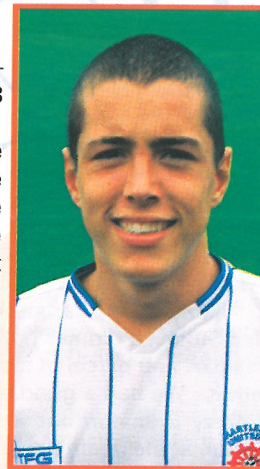
16 Marcus Richardson (Forward)

DOB 31 Aug 77 – Reading – 6ft 3 ins – 13st 0 lbs
Marcus joined the Club from Torquay United in October 2002. At 6ft 3ins, he offers the side a different dimension and has caused problems for opposition defences when in the side. He scored 7 times last season, including a goal on his full debut against Wrexham and a late winner against old club Torquay.

21 Steven Istead (Forward)

DOB 23 Apr 86 – South Shields – 5ft 8 ins – 11st 6lbs

Livewire, young wide man with a lot of pace in his armoury. Came off the bench to make his debut against Bristol Rovers in October and only the woodwork prevented him from scoring with his first touch. A positive player who can excite the crowd.



20 John Brackstone (Defender)

DOB 09 Feb 85 – Hartlepool

A young left-back who showed great promise in both the Youth Team and the Reserves last campaign. Broke his leg in a Youth Cup tie but made a good recovery to return to action before the end of the season.

24 Andrew Jordan (Defender)

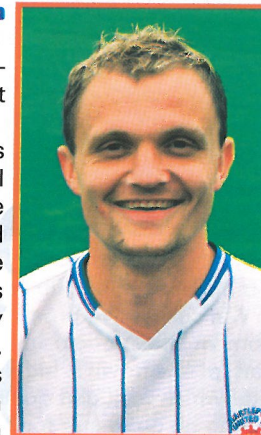
DOB 14 Dec 79 – Manchester – 6ft 2ins – 13st 4lbs

Commanding left-sided central defender signed on a free transfer after leaving Cardiff City in 2003. Son of former Scotland striker Joe Jordan, Andrew came through the ranks at Bristol City where he shone in the reserves before making ten appearances in the first team. He made a £30,000 move to Cardiff City in 2000, although injury marred his three years there and he made only a handful of appearances for the Bluebirds.

23 Paul Robinson (Forward)

DOB – 20 Nov 78 – Sunderland – 5ft 11ins – 12st 11lbs

Quick forward who is confident with the ball at his feet, Neale Cooper signed Robinson on a free transfer after he was released by Wimbledon in 2003. 'Robbo' started his career with Darlington before making a £250,000 move to Newcastle in March 1998. After a frustrating time at St James' Park, he made a 1.5m move to Wimbledon. There he made only a handful of appearances before making moves out on loan to a number of clubs including Grimsby and Burnley.



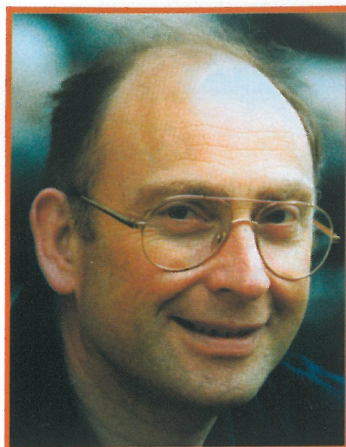
25 Gavin Strachan (Midfielder)

DOB – 23 Dec 78 – Aberdeen – 5ft 10ins – 11st 7lbs

Signed on a free transfer in time to make his league debut in the opening day victory over Peterborough. Gavin, son of Southampton manager Gordon, spent over 5 years at Coventry City, which included loan spells with Dundee, Motherwell and Peterborough. He left the Sky Blues to spend five months at Southend, making 7 appearances for the Shrimpers before becoming Neale Cooper's fifth signing in the summer of 2003. He played against Pools for Sheffield Wednesday in a pre-season match weeks before signing.

Manager Neale Cooper





Blast From The Past

Despite making only 83 league appearances for the Hatters, Jack Bannister was fortunate enough to be part of one of the most exciting periods in

the history of the club with the team threatening to win successive promotions in the late 1960's. Born in Chesterfield in January 1942, Jack was part of the town's highly successful schoolboy side which included goalkeeper Bob Wilson who was to go on to star for Arsenal. Three members of the team were invited to West Bromwich Albion for trials with Jack the lucky (!) recipient of a place on the Hawthorns ground staff.

"In those days the groundstaff boys had to sweep the terraces and clean the toilets and dressing rooms but it did me no harm," recalls Jack. "I was eventually given a professional contract in August 1959 and made my league debut in April of the following year at Manchester City where we won 1-0."

At the time West Brom boasted such players as Bobby Robson, Maurice Setters, Chuck Drury and Bobby Cram all contesting Jack's favoured left-half spot and in five years he only managed eight further league appearances.

"I was married at 21 and wanted more security for my family rather than continue to play reserve team football and took up the offer to join Scunthorpe in 1964. After only nine games a new manager, Fred Goodwin, came in and for whatever reason I did not figure in his plans."

A year after joining Scunthorpe, Jack was on his way again this time to Crystal Palace where he met up with a lot of his old West Brom colleagues.

"Dick Graham was manager at Palace and had been trainer at West Brom when I was there. He had recruited quite a few of my old team-mates and so I was made to feel welcome straight away."

Jack enjoyed three good years at Palace in the old Division Two and was virtually ever present during his time there playing at left-half. He even managed time to score

seven goals with three of them coming against Plymouth in different games! Palace were building up a side that was to finally win promotion to the top flight in 1969 but Jack was not part of it as, in October 1968, he was transferred to Luton for £10,000.

"Brian Whitehouse, who was assistant manager at Luton, was give permission to talk to me and I figured that as Palace had agreed to the talks then I was not wanted at Selhurst Park. The move suited me as I knew Brian, having worked with him before, and Luton was closer to my wife's family in West Bromwich."

Jack made his debut for the Town alongside another debutee, goalkeeper Sandy Davie, at home to Northampton on October 26th 1968 in a 2-1 win in front of a crowd of 17,818. Although starting at left-half it was not long before he was switched to left-back where he played for the rest of his Luton career.

"Within a few weeks of me joining Luton manager Allan Brown was sacked, to be replaced by Alec Stock. It did not bother me particularly as it was part and parcel of football and we just got on with it. We had a good team with a good leader in Terry Branston but we just failed to win promotion at the death finishing third to Watford and Swindon."

In the summer of 1969 the Town signed a little known left-back from Fulham by the name of Malcolm Macdonald and Jack was initially wor-



Jack Bannister in typical match action.

Jack Bannister Smooth Operator

ried that he might lose his place in the side. He need not have fretted, however, as Alec Stock soon converted the newcomer to the left wing and the rest is history leaving Jack to make 40 appearances as a calm and assured full-back as the Town won promotion to the old Division Two in 1969/70.

When questioned about his relationship with 'enfant terrible' Graham French he replied, "I had no trouble at all with Graham although I used to get a little frustrated when I went on an overlap down the wing and he refused to give me the ball. But what a player."

Jack made only fleeting appearances in 1970/71 as the Hatters made an ultimately unsuccessful bid for further promotion but his major memory of his time at Kenilworth Road came during that campaign. The Town were drawn away to Nottingham Forest in the third round of the F.A.Cup and on a frozen pitch we managed to come away with a 1-1 draw before losing 3-4 in the replay on a night of high drama. Macdonald should also remember these games as he scored all four Luton goals as well as breaking a goalpost at the City Ground!

In the summer of 1971, Jack joined a mass exodus from Kenilworth Road which saw four players moving to a Cambridge United set-up then twelve months into its Football League career.

Jack did not particularly enjoy his time at Cambridge due to the daily travel from his Houghton Regis home but he stuck it out for five years before quitting the professional game and joining Barry Fry's Dunstable Town. At the time the later discredited Keith Cheeseman owned the club and recruited the likes of Jeff Astle and George Best to turn out for the team but once all the dust had settled and the carnival had left town Jack had a short spell managing the side.

Jack then turned out for Vauxhall Motors and Whitwell amongst others and was still playing Sunday football at the age of 48. Nowadays Jack prefers to play golf, despite three hip operations, and watch his grandchildren play local football. He still lives in the same Houghton Regis house he bought 35 years ago.

Jack's last visit to Kenilworth Road, two years ago, almost ended in disaster as he felt chest pains but due to the prompt action of the medical staff on duty he was rushed to hospital and had heart by-pass surgery within days. He was immensely impressed with the speed and professionalism of those people behind the scenes who are vital to ensure that a match day passes off without a hitch. He did add though, "The things people will do to avoid watching a relegation dog-fight with Port Vale!"

Roger Wash

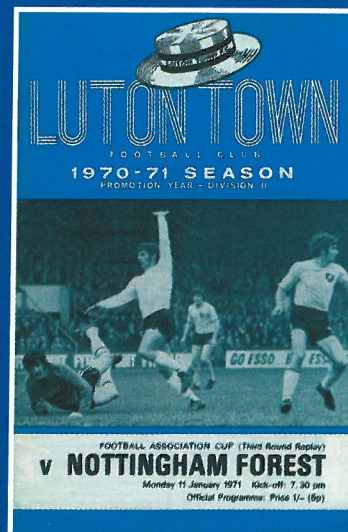
Yesterday's pages

The programme featured today relates to Jack Bannister's most memorable game during his time at Kenilworth Road - the F.A.Cup replay with Nottingham Forest in 1971.

Forest were a struggling Division One side at the time and the Town, pushing for promotion from Division Two, were probably favourites to win the tie. An amazing game eventually finished 4-3 in Forest's favour but the tie could have gone either way.

As you would expect, much was made in the programme of the F.A.Cup final clash with Forest of 12 years before with pictures of that famous game and a virtual 'where are they now' of the players taking part.

Elsewhere, in secretary Bob Readhead's column was confirmation that stand tickets for a possible fourth round tie with either Orient or Sunderland would command a top



Regal Litho

352 Selbourne Road
Luton Beds LU4 8NU
Tel: 01582 493332
Fax: 01582 560731
ISDN: 01582 560854
Email: regallithold90@atlas.co.uk
www.regallitho.co.uk

- ◆ Digital Artwork
- ◆ Conventional Repro
- ◆ Platemaking
- ◆ Colour Printing
- ◆ Finishing
- ◆ Distribution
- ◆ Stationery
- ◆ Point of Sale
- ◆ Brochures
- ◆ Commercial Print
- ◆ Magazine Publishing

The Publishers & Printers of:

**Scale
Aircraft
Modelling**

**Scale
Aircraft
Monographs**

The Golden Gamble Bunch Of Fivers On Offer

A BIG bundle of ready cash will be on offer again this afternoon in our popular 50/50 lottery, the Golden Gamble. And while it might not compare in prize money to the National Lottery, we offer

much better odds of winning. The sums are simple: the jackpot depends on how many £1 tickets are sold. Half of each pound goes towards the prize and the other 50p to club funds, so your support is vital.



At the Grimsby match last Saturday the prize was £675, and was won by Robert Wheeler, from Potters Bar. He is pictured with his wife and with Town Commercial Manager Peter Davis with the lucky winning ticket, which was bought in one of the executive boxes. The three prizes paid out so far this season have seen wedges of cash totalling £1,750 paid out, an average of £583 each.

Golden Gamble ticket sellers are on duty in all parts of the ground again this afternoon, eager to give you the chance to cash in. The draw is made on the pitch during the half time interval, and the money is available there and then.

SUMMER SIZZLERS

20% off all rentals **

Helping you make the best of summer

Whatever your needs, Europcar guarantee to give you an unbeatable deal.

HURRY! Book now to avoid disappointment!

For the best car rental deals around, simply call your local Europcar branch quoting promotional code 42103531 and see how easy it is to get away from it all.

Europcar

YOU RENT A LOT MORE THAN A CAR.



Bedford 01234 218881 Luton 01582 545454 Stevenage 01438 369991

The summer is here and Europcar have got some great rates for wherever you are travelling!

We are offering you a fantastic 20% off all rentals** until 30th September 2003 - unbeatable prices you can't afford to miss.

With Europcar you can travel wherever you like, whenever you want to.

Examples:

Car Group	Typical Car	Original Rate*	Summer Sizzler Rate*
Economy	VW Polo	£31.00	NOW £24.80!
Standard	Rover 75 1.8	£58.00	NOW £46.40!
Premium	Mercedes C180	£74.00	NOW £59.20!
MPV	Renault Espace	£87.00	NOW £69.60!

Terms & Conditions:
* Rental rates quoted are per day based on 3-6 day rental. Daily rentals vary per length of duration. **Subject to availability at participating Europcar locations only. Standard rental terms and conditions apply. This promotion cannot be used in conjunction with any other promotional offer or discount.



LUTON TOWN SUPPORTERS CLUB

Presents

AN AUDIENCE WITH MIKE NEWELL

The manager will be our guest for an "Any Questions?" evening on Monday September 29, at the Eric Morecambe Suite, kick-off 7.30pm.

Ticket prices are £3 for members of LTSC, £6 for others, but supporters can qualify for the discount if they join LTSC at the time they buy their tickets.

Tickets are on sale, in the first instance to members only until kick-off in the game against QPR on Saturday September 20, at the Supporters Club kiosk in Kenilworth Road. If any are still available after then, they will go on general sale immediately after that match.

Shop online at:
www.hattersshop.com

GARETH OWEN Photography

...working **PR** photography

Tel: 07850 560289

Fax: (01582) 616567

e-mail: gareth@go-photo.co.uk



*Offering a comprehensive
choice in modern gaming,
relaxed dining, late bars and
live entertainment*

**Open every day from 2.00pm until 6.00am,
Sunday morning until 4.00am**

**STANLEY
LUTON CASINO**
Skimpot Road,
Luton, Bedfordshire LU4 0JB
Telephone: 01582 591148
Fax: 01582 490349

**STANLEY LUTON
INTERNATIONAL CASINO**
85 Park Street,
Luton, Bedfordshire LU1 3HG
Telephone: 01582 439080
Fax: 01582 439089

FREE MEMBERSHIP is just a phone call away
All applicants must be 18yrs or over. 24hrs must elapse from receipt of application
www.stanleycasinos.com

Eagle IPA - Proud to sponsor Luton Town F.C.



**Your 'local beer'
supporting your local
Football Club
Now available at the Bar!**

Striker's Departure Annoys Manager

IF SUPPORTERS were choked when Tony Thorpe left Kenilworth Road to join Queens Park Rangers, manager Mike Newell was even angrier about the way it happened. And administrative receiver Barry Ward has made it clear that Thorpe's departure was not down to him – see page 54.

With the Town in administrative receivership, football's vultures are hovering to pick up bargains. What hurt Newell in the Thorpe case was that the deal was done by an agent, without him knowing about it, and the club snatching Thorpe had been in administration at one time, so might have felt a little more sympathy for the Town's plight. And the manager is concerned that the Town might find it hard to prevent others snatching players at cut-price fees.

The receiver has asked players to accept new contracts, at lower wages than they had been offered when money was no object under Mike Watson-Challis. Negotiations with the PFA are ongoing, but in the meantime players have had to accept the deferral of part of their salaries. That means they can, if they choose, leave and sign for another club, which is what Tony Thorpe did.

Mike Newell said: "The £50,000 fee is an insult, a long way behind our valuation. There might be something extra if QPR win promotion, but that's pie in the sky.

"We are not happy with the way QPR dealt with it. They were in administration some time ago, so they realised our situation. And selling one of your best players for £50,000 doesn't make any sense.



NEW RECRUIT: Gary McSheffrey, on loan from Coventry City, pictured on his Luton Town debut, against Grimsby.

"An agent got involved, and the deal was done before we even knew about it. I wouldn't be surprised if the agent got more than us.

"I know there will be players here who other clubs will be interested in, and if they haven't been paid their full wages, after 14 days they can, if they chose, walk away. That is where we are, and what happened with Tony Thorpe's transfer. QPR and the agent knew that, and I was very disappointed that Ian Holloway went behind my back to sign the player. He could have picked up the phone and told me he was interested in one of our players, and at least I would have known what was happening."

The boss said that some players were on wages which were very high for the Second Division, but that was not down to them – the club had made those offers, and players could not be blamed for taking the best wage deals they could get.

The receiver is trying to cut the wages bill by 30 per cent, with back money to be paid later, but with an extra year added to players' contracts to give them greater security. Tony Thorpe, said the manager, decided against accepting that, and chose to move to Loftus Road, where he made his debut in Saturday's 1-0 win over Bournemouth.

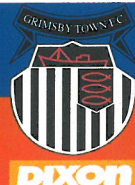
Mike Newell said there was no point in giving his valuation of the player, except that it was considerably more than the fee the Town have received. It is the second time Thorpe has been transferred from the Town. A free signing from Leicester in 1993, he had become the first player since Malcolm Macdonald to hit more than 30 goals in a season when his 31 strikes made him the fans' player of the year in 1997. Those were the days when the Town were selling at least £1million worth of talent a year to balance the books, and Thorpe went to Fulham for £800,000 in February 1998, and then on to Bristol City a few months later for £1m. He returned to Kenilworth Road as a Bosman free transfer just over a year ago, having previously enjoyed two loan spells with the Town. In 189 appearances, he scored 81 goals for the Town, including three in three this month.

Consolation for the Town boss was that the Football League relaxed its transfer embargo enough for him to be able to sign 22-year-old Gary McSheffrey on loan from Coventry, and he made an encouraging debut against Grimsby.

Brian Swain



Kenilworth Road Action



Luton Town 1 Grimsby 2

AFTER the marvellous start to the season, the Town and their fans were brought down to earth with a painful bump as the 100 per cent record was trashed by a team looking for its first win of the season. Uncompromising defence and spoiling tactics did the job for Grimsby, although it offered precious little entertainment for the customers.

The Town were below par. In the first three games of the season every player was on form. On Saturday, said disappointed manager Mike Newell, too many were not at the races, making it a very difficult occasion for 22-year-old Gary McSheffrey, who came in on loan from Coventry to replace Tony Thorpe.

"I think that for the first time what is going on at the club has got to the players," said the manager. "The loss of Thorpe hasn't helped, but the situation is dragging on, and it showed on the pitch. We had plenty of the ball but did go the extra couple of yards to make things happen. We looked as though we were feeling sorry for ourselves." He had a go at Grimsby's tactics, with players laying down time and time against to break of the game. "I can't accept that. It's really frustrating. But we cannot use that as an excuse," said the boss. "We had plenty of possession but it's no good passing the ball around if there is nothing at the end of it." Grimsby had just two on-target goal attempts, and scored from both: a quality strike against the run of play by Iain Anderson on 34 minutes, and a carefully-placed header by Michael Boulding 13 minutes from time. With six minutes to go the last of several penalty shouts was answered by referee George Cain, when sub Dean Crowe was brought down by Simon Ford, and Kevin Nicholls

slammed home his first goal of the season from the spot.

Visiting player-manager Paul Groves said he was delighted that his men had been rewarded for their hard work. And he pointed out that the Town could have been three down at the interval, with Stuart Campbell's long range shot shaving the angle of bar and post, and Marcel Cas delivering a dipper which went into the crowd off the top of the bar.

The Town could only regret not taking the few chances that came their way. McSheffrey scuffed his shot when he might have made it a memorable debut after being put through by Paul Hughes and Steve Howard before Grimsby scored. And in a hectic finale to the first half, he and Hughes were crowded out by a massed defence as Grimsby opted to build a defensive wall with men prepared to stand tall to make blocks.

The Town looked good in patches, and Chris Coyne, who with Emmerson Boyce had another excellent game in the heart of defence, almost netted after a storming solo run from one penalty area to the other. His thundering shot was headed out by Ford.

Dean Crowe replaced McSheffrey for the last 25 minutes, but the game lacked any real sparkle, and Boulding's header on 77 minutes left the Town looking rather bedraggled.

Groves thought the penalty was harsh, suggesting that the ref had been swayed by several earlier appeals as Grimsby used bodies to block shots. His only complaint was that in the second half Grimsby sat back too much, but he was delighted at the way his men made it very difficult for Luton, and offered very few clear-cut scoring chances.

Match Details

TOWN: Beckwith; Foley, Coyne, Boyce, Neilson (Davis 67 mins); Nicholls, Hughes Spring (Brkovic 80 mins), Pitt; Howard, McSheffrey (Crowe 65 mins). Unused subs: Bayliss, Davis, Brill.

BOOKED: McSheffrey for a foul.

GRIMSBY: Davison; Crowe, Crane, Ford, Barnard; Cas (Groves 80 mins), Campbell, Hamilton, Anderson (Mansaram 89 mins); Boulding, Ten Heuvel (Rowan 57 mins).

BOOKED: Ten Heuvel and Crane for fouls.

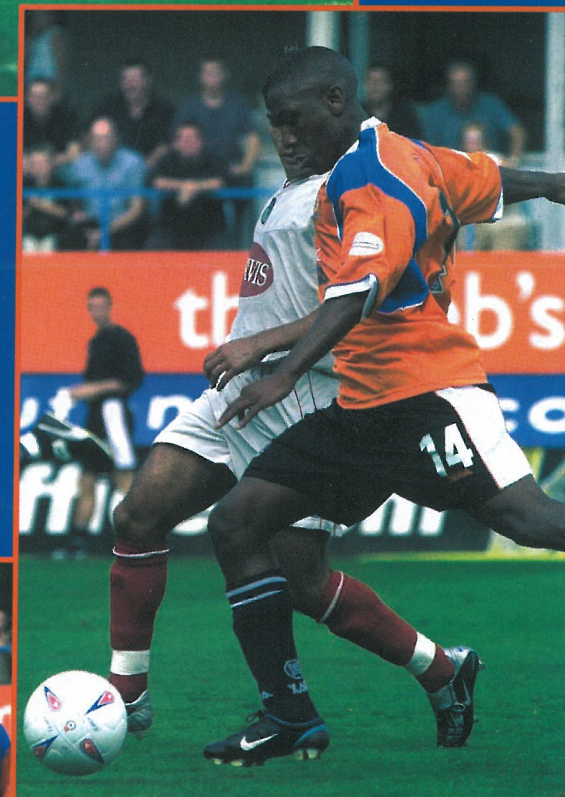
ATTENDANCE: 5,827 including 218 from Grimsby.



PENALTY: Dean Crowe takes on his man, and Simon Ford lunges in for the challenge that led to the Town being awarded the spot kick which Kevin Nicholls converted.

RIGHT: Courtney Pitt ghosts past Des Hamilton on a run for goal.

BELOW: Chris Coyne provided one of the best attacking moments, surging past Iain Anderson among others in a long solo run which ended with a thundering shot being beaten out.



Hatters Pic of the Week

RISING STAR: Chris Coyne demonstrates his ability in the air by getting well above Michael Boulding in Saturday's game against Grimsby.





Withdean Action Replay



Brighton 2 Luton Town 0

A RED card for Steve Howard and the banishment of Mike Newell from the dug-out completed a miserable bank holiday as the Town's first visit to the Withdean Stadium saw them suffer for a lacklustre performance.

Howard was sent off on 56 minutes, for foul and abusive language to referee's assistant Jarnal Singh, and as so often happens the ten men suddenly raised their game, and for a few minutes looked as though they might pull back the one-goal deficit. Brighton clinched their third win in four games with a lucky goal five minutes from time.

It was hard to begrudge the Seagulls, even if they were not too clever themselves as they come to terms with the Second Division after last season's relegation from the First.

Steve Coppell claimed Brighton played some outstanding football in the first half, which surprised even Brighton pressmen, who spent most of the game moaning about the poor entertainment on offer from both sides.

The Brighton manager added: "The second half was a matter of different sections: I was pleased with our first ten minutes, but the sending-off inspired Luton and they gave us more problems with ten men than they had done with 11. They had nothing to lose, but we came through it, and we deserved to win. Howard is fundamental to the way they play."

On a warm afternoon the Town's defensive was more ponderous than usual. Emmerson Boyce was out with a calf strain, and replaced by David Bayliss, while Sol Davis operated at left back to the exclusion of Alan Neilson. The marking was wretched when Darius Henderson was given all the time he wanted to take a long far-post cross on his chest, control and shoot. Chris Coyne got the final touch, but Henderson claimed the goal.

Matthew Spring popped up in attack several time

to back up Howard and Gary McSheffrey, and twice went close to an equaliser. But one shot, after exchanging passes with Howard, lacked power, and a second from a tight angle, and perhaps intended as a centre after a super move involving Courtney Pitt and Paul Hughes, bounced onto the top of the bar.

The Town had one or two good moments after that, but after the brief surge following Howard's red card Robert Beckwith had to make an excellent save from Nathan Jones. Most of the danger in the Brighton attack came from diminutive Leon Knight, who has been signed on a free after his Chelsea career was wrecked by Stamford Bridge's Russian revolution. His right wing cross led to the second goal, with Coyne heading out, only for Charlie Oatway to left fly from 25 yards. Beckwith, for once, shared the blame because the ball went through his hands. In view of his many fine saves in this and previous matches, one blemish is nothing to complain about.

Mike Newell saw that goal from the tunnel, having been sent off from the dug-out when he stepped out of his technical area to kick the ball back into play for a Town throw-in. He had noticed that, with Brighton winning, the ball-boys had become much slower in doing their jobs when throws went the Town's way.

Unfortunately, it was an afternoon when precious little went the Town's way. Howard will be disciplined by the club and the FA for his red card. With such a small squad, the striker's suspension is an unwelcome self-inflicted blow. His manager was bitterly disappointed with Howard, and very unhappy with both goals. The spell after Howard's red card had been the one positive element of the Town's display, but he added: "We got more of the ball, but there was still no end product. And if you start like we did, it's always going to be difficult to fashion anything."

Match Details

TOWN: Beckwith; Foley, Coyne, Bayliss, Davis; Nicholls, Spring, Hughes, Pitt; Howard, McSheffrey (Crowe 64 mins) Unused subs: Neilson, Brkovic, Hillier, Brill

BOOKED: Kevin Nicholls dissent, Sol Davis and Chris Coyne for fouls.

SENT OFF: Steve Howard for foul and abusive language to a linesman.

BRIGHTON: Roberts; Hinshelwood, Butters, Pethick, Mayo; Hart, Carpenter, Oatway, Jones; Knight (Piercey 86 mins), Henderson (McPhee 67 mins). Unused subs: Wilkinson, Harding, Kuipers

BOOKED: Leon Knight, dissent.

ATTENDANCE: 6,604, including 727 very disappointed Town fans.



BIT OF A HANDFUL: Brighton were well pleased to see the back of Steve Howard, whose bustling attacking has upset better defences than their's. Guy Butters is the man using a crafty shirt-tug to stop the Town striker on this occasion.

RIGHT: Dean Crowe jumping to it with Butters.

BELOW: Gary McSheffrey in close competition with Richard Carpenter.



Town Teaser

IF YOU know your Town Trivia, you could win a pair of match tickets in our Town Teaser competition. Listen to the PA announcer before kick-off for your chance to have a go.

On Saturday we asked about the link between Luton Town, Grimsby, and Charlton, our next opponents in the Carling Cup. The answer was Lennie Lawrence, who had been manager at all three clubs.

TODAY'S QUESTION

Who am I? I scored our first goal against Hartlepool on their last visit here, a 2-2 draw nearly two years ago, and went on to become the Third Division's leading scorer that season. So who am I?

We're ready for the New-ell season Are you?

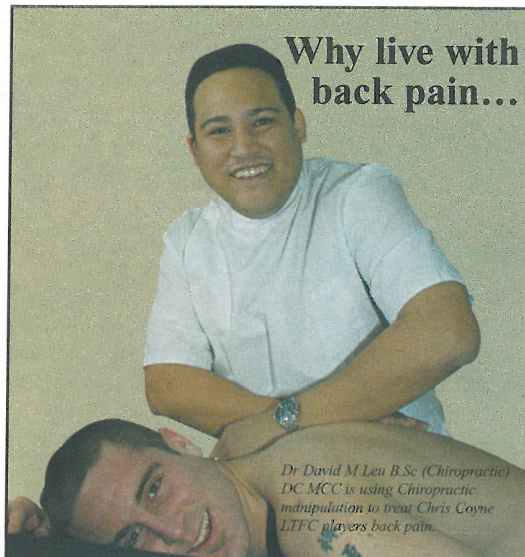
The Luton News
The Dunstable Gazette

The **Winning** Team

Every Wednesday read the latest match reports, transfer news, interviews *plus much more...*

There's even more news on our website
www.lutononline.co.uk

FOR SUBSCRIPTION DETAILS CALL 01234 409218



Why live with back pain...

Dr David M. Leu B.Sc. (Chiropractic)
DC MCC is using Chiropractic
manipulation to treat Chris Coyne
LTFC players back pain.

Major professional teams are benefiting from Chiropractic treatment for their sporting injuries



BACK TO BACK Chiropractic Clinic
Member of the British Chiropractic Association
Registered with the General Chiropractic Council

To make an appointment: **01582 391000**

268 Crawley Green Rd, Stopsley, Luton, Bedfordshire, LU2 0SJ



Supporters Club Wins A Rebate

LUTON-based budget airline easyJet has taken pity on Town fans who were done out of a pre-season trip to Scotland. At the end of last season, the club announced it would be going north of the border to prepare for the new campaign, and was lining up friendlies with Scottish clubs.

Luton Town Supporters Club, with a wealth of experience from running Town on Tour to away games, and having organised a successful trip to the Isle of Man the previous summer, decided to branch out and take to the skies. A total of 24 fans committed themselves to the trip, and seats were duly booked with easyJet.

But then came the start of the summer of huge discontent, and the pre-season programme, sorted out by the previous manager, was cancelled.

The normal policy at easyJet is that if customers fail to turn up for their flights, they lose out, and refunds are rarely given. The Supporters Club had paid £1,200 for seats on easyJet flights, and faced a dilemma – it did not want to see its customers stand the loss, but could not afford to cover the deficit from its own funds.



So a heartfelt plea for help went to easyJet, on behalf of fans who had lost their football trip through no fault of their own, and the airline came up trumps. As a goodwill gesture, it refunded all the fares cash, bar £10 for each passenger as a cancellation fee to cover admin expenses.

"We were delighted, and cannot thank easyJet enough for the way they handled our request," said LTSC chairman Mark Chapman. "It would have been a huge blow to us if we had to fork out the £1,200, so to lose around £200 is a good result. And it means that if we ever get a similar opportunity to fly with easyJet we will take it."

THE NORMAL details of travel to forthcoming away matches is on page 11 today, but fans planning to attend the Carling Cup second round tie against Charlton are asked to make their arrangements as early as possible for the match on September 23. A year ago Town on Tour organised a fleet of 10 coaches to go to Aston Villa, and is ready to lay on a similar operation for the game at The Valley. The Bobbers Travel Club will also be going to Charlton, and both organisations are ready to take early bookings.



If you want to go with Town on Tour, it would help if you could apply early by post, and pay by cheque, payable to Luton Town Supporters Club. Please enclose a stamped addressed envelope, and send you booking and payment to Luton Town FC, marking the envelope Charlton Coach on the top left. You can also book at the Supporters Club kiosk in Kenilworth Road before or after today's game.

The Bobbers also have a kiosk open this afternoon for bookings. Their service will leave Cranfield at 3.30pm and Luton an hour later, and fares will be £8.50 for adults, £7 for senior and junior citizens. Town on Tour will depart from Bletchley at 3.30, and Luton at 4.30, and as always their best deals are for Luton Town Supporters Club members. Their fares will be £10 for members, £8 for members' concessions, and £12 for others. You can, of course, join the Supporters Club today, and immediately qualify for the discount.

And if you want to make it a luxury day out, please see the executive package being offered by Luton Town – full details are on page 14.

KIT SPONSORS

Home Kit


	Kevin Nicholls WHOSH
	Chris Coyne Mel Westwood
	Matthew Spring Brian Hall
	David Bayliss Kenilworth Connection
	Alan Neilson LTFC Barmy Army, London Branch
	Paul Hughes Les & Sue Miller
	Steve Howard Sally & Sue
	Lee Mansell Elsie & Danny Clubb
	Brian Stein Danny Clubb
	Marvin Johnson Gill, Julie & Yvonne
	Russell Perrett Graham Bates & Chris Park
	Adrian Forbes CMO Bird Proofing Specialists
	Steve Robinson David Hobbs & Maya Robinson
	Ian Hillier The Regular Rabble
	Dean Crowe Two Madhatters & The Big 'G'
	Dean Brill Available

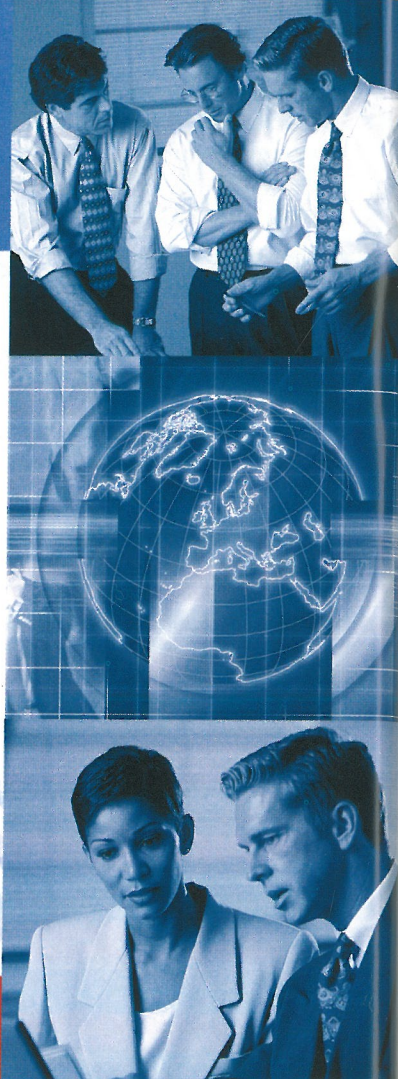
	Emmerson Boyce Elsie Clubb
	Robert Beckwith Danny & Elsie Clubb
	Richard Mansell Danny & Elsie Clubb
	Cherry Newbery WHOSH
	Mike Newell LTFC Supporters Club (MK)
	Ahmet Brkovic G. Owen Ceramic Tiling Ltd
	Player to be Advised Luton Town Supporters Club
	Sol Davis Personal Security Services
	Mick Harford Les Miller, Miller & Company
	John Moore Ian Smith
	Kevin Foley Sally Mayne & Family
	Matthew Judge The Regular Rabble
	Leon Barnett Available
	Parys Okai Available
	Michael Leary Available
	Steven O'Leary Available

Sponsorship Now Available For Home & Away Kits.
Please contact the Commercial Department on 01582 411622 for more details and a list of current players available for sponsorship

Away Kit

	Kevin Nicholls WHOSH
	Chris Coyne Andrew Bates
	Matthew Spring www.locateinbedfordshire.co.uk
	David Bayliss Available
	Alan Neilson Available
	Paul Hughes G. Owen Ceramic Tiling Ltd
	Steve Howard Denise, Nicky & Wendy
	Lee Mansell Available
	Brian Stein Available
	Russell Perrett Available
	Adrian Forbes Bobbars Travel Club
	Steve Robinson Available
	Ian Hillier Available
	Dean Brill Available
	Dean Crowe Available
	Marvin Johnson Available

	Emmerson Boyce Elsie Clubb
	Mike Newell Nikki & Robert Ginsberg
	Robert Beckwith CMO Bird Proofing Specialists
	Mick Harford T, P, S, J & R Oliver
	Kevin Foley Kelly Maintenance Ltd
	Cherry Newbery WHOSH
	Sol Davis Nicola Guy
	Ahmet Brkovic New Bloke and KTF
	Michael Leary Available
	Steven O'Leary Available
	Richard Mansell Available
	Matthew Judge Available
	Parys Okai Available
	Leon Barnett Available
	John Moore Available



SLEEP WELL

SKF Total Shaft Solutions

SKF is uniquely qualified to provide not only the correct products, but also the most comprehensive total solution for industrial shaft arrangements.

You can now take full advantage of SKF's in-depth capabilities with our new Total Shaft Solutions concept.

Total Shaft Solutions is built on the basis that industry today recognises that performance of equipment has a direct impact on a company's profits.

Benefits of Total Shaft Solutions

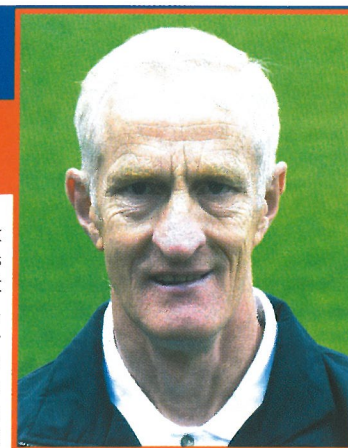
- Reduced number of unplanned stops
- Lower maintenance costs
- Increased delivery reliability
- Higher speed and output levels
- A controlled and reliable process
- Reduced energy consumption
- Lower administration costs
- An indepth knowledge of your plant
- One price and one supplier for the complete solution

For a FREE brochure on Total Shaft Solutions please complete and return to:
SKF FREEPOST MK1540 Luton LU3 4BR

Name
Company
Address
.....
Postcode
Tel
E-mail

SKF

Youth Soccer: The under-19s



Luton Town 1 Kidderminster Harriers 1

I FELT the performance could have been much better, in a game with isolated chances at both ends, so the draw was probably about right. It is difficult to select the right side for this league, when it is all about helping young players make progress. Robert Beckwith, Dean Brill and Kevin Foley are all still eligible for under-19 football, now are involved in first team squad training, while other boys of their age ought to be playing reserve team football, which is no longer available to us.

If I use third-year YTS boys, it can be de-motivating. Parys Okai, for instance, was in this squad when he was a schoolboy and then as a second-year YTS boy. He is now on the fringe of the first team, so it would be something of a backward step if we used him regularly at this level, because it would do little to add to his general development. Some of our third-year players are training with the first team, and that's great for them, except that only Beckwith and Foley are getting games. We have always pushed our young players as far and as quickly as possible, but there are problems now that we have no reserve team.

We fielded six first-year players against Kidderminster, which is a wonderful incentive to them to do well. But they are learning and not yet fully tuned in,

and it can be difficult coming to terms with the physical demands of the game. All we ask is that the boys focus for the 90 minutes, and do their best.

Our team display was not bad, but not really good enough. We had 75 per cent of the play in the first half, but conceded a poor goal just before the break. Until then trialist keeper Paul Godfrey had not had a save to make, but the defence let him down when Kidderminster scored. No-one made a challenge as their man was allowed to run at us before shooting into the far corner.

Although we had much more of the play than Kidderminster, we rarely looked like breaking them down before Matthew Judge went through for the equaliser after 66 minutes. A ball down the middle was touched on for him, and for once he resisted the temptation to try to do something flashy, ran after the ball, and potted it.

Both sides were in danger of losing after that, with occasional chances being created and wasted. Judge had two, heading wide once and then hitting a post, and Calvin Andrew mistimed a header when a firm contact should have brought a goal. After the equaliser we were pushing up to try to win the game, and Kidderminster had chances on the break. Fortunately their finishing was no better than ours.

Luton Town: Godfrey, Howell, Mountford, O'Leary, Deeney, Barnett, Maitland (Judge 56 mins), Ridgway, Andrew, Keane, R. Mansell.

WE WILL be at home to Cheltenham on Saturday. We play at Luton Rugby Club's ground at Newlands Road, Farley Hill, kick-off 11am, and spectators are welcome.

APPEARANCES: (as sub in brackets): Barnett 3, Howell 3, Mountford 3, Keane 3, R. Mansell 3, Davies 2, Ridgway 3, Judge 2(1), Andrew 2(1), Deeney 2(1), Maitland 2, O'Leary 2, Godfrey 2, Lambu 1, Wright 0(1).

GOALS: Judge 3, Andrew 1, Barnett 1

John Moore

Football League Youth Alliance Under-19 South East Conference

August

9	Rushden	H	3-2 Judge 2, Andrew
16	Cambridge	A	1-2 Barnett
23	Kidderminster	H	1-1 Judge

September

6	Cheltenham	H	
13	Walsall	A	
27	Oxford	H	

October

4	Northampton	H	
11	Alliance Cup 1		
18	West Brom	A	
25	Cheltenham	A	

November

1	Walsall	H	
15	Oxford	A	
22	Alliance Cup 2		
29	Northampton	A	

December

6	West Brom	H	
13	Rushden	A	

January

10	Cambridge	H	
17	Alliance Cup 3		
24	Kidderminster	A	
31	Merit Division starts		

The Football Emporium

225 High Street, Bromley, Kent

WHETHER IT BE A BIRTHDAY OR CHRISTMAS PRESENT, OR EVEN A GIFT FOR YOURSELF, YOU WILL FIND SOMETHING UNIQUE, INTERESTING, OR EVEN AMUSING, FOR SUPPORTERS OF ALL CLUBS, AT THE FOOTBALL EMPORIUM. OR IF BROMLEY IS A LITTLE FAR, VISIT OUR WEBSITE

WWW.PREMIERIMAGE.CO.UK

OR CALL FOR A BROCHURE

020 8464 9421

World Cup Merchandise ~ Clothing ~ Original Art Books ~ Photography ~ Autographs ~ Toys & Games Housewares ~ Memorabilia ~ Antiques ~ Ephemera

www.hummingbirdmotors.co.uk

STRIKING BRAND NEW MITSUBISHI'S from only £7995

and a full range of Mitsubishi pre-owned vehicles

also available

• SALES • SERVICE • PARTS

Good luck Hatters, may your success continue this season



HUMMING BIRD MOTORS

41-45 LONDON RD ST ALBANS HERTS AL1 1LJ

01727 852323

email: hbmotors@btinternet.com

Open: Mon-Fri 8.30-6pm • Sat 8.30-5pm • Sun 10.30-3pm (Demonstrations on Sunday by appointment only)



Join Britain's fastest growing trade union. Phone me on:

0800 731 81 51

Paul Kenny

Paul Kenny

Paul Kenny
GMB London Regional Secretary

GMB - PROTECTING OVER 80,000 PEOPLE AT WORK IN THE LONDON REGION

Youth Soccer The under-17s

Rushden & Diamonds 1 Luton Town 3

OUR first win of the season was all the more welcome because it was well-deserved, although we might have been a little fortunate to be 2-1 up at half time. Diamonds have magnificent facilities, and the pitch was perfect, a lovely surface on which to play passing football.

We were very lively in the early stages, and had Rushden pinned back, but they got back into it and started to cause us some problems, getting behind us too often for comfort.

But we weathered that spell, and took the lead on 30 minutes, when Paul Burrows smashed in a 20-yard free kick which took a deflection off the top of the wall and looped over the goalkeeper.

The game was pretty even at that stage, and eight minutes later we conceded an equaliser. It came from a long ball over the top, with our back

four pushing too far upfield, and leaving too big a gap between themselves and the goalkeeper. I would have been happy with a 1-1

scoreline at the interval, but two minutes before the break another free kick led to us regaining the lead, and a pleasing feature of our play this season is that we are doing well from set pieces. Chris Pendleton delivered a very good cross from the free kick, and as everyone piled in for headers the ball dropped for little Russell Preston to score from close range, a real Johnny on the Spot effort.

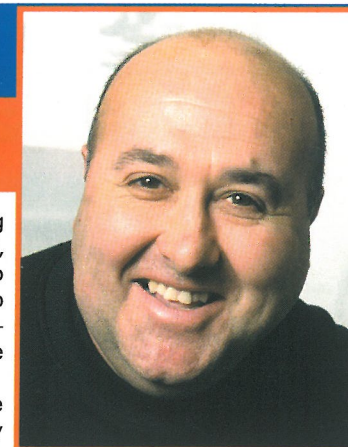
We expected Rushden to come at us in the second half, but we had sorted things out at the back and we all but ran away with it after the interval. Another free kick gave Burrows his second goal of the game on the hour mark, and the only disappointment after that was that we should have taken more goals. I wanted us to stretch the lead so that we could give our young subs 20 minutes or so, but felt I couldn't risk it at 3-1. Harrison Tague hit the post with a header when he should have scored, and Peter Clark missed a great chance when he shot straight at the keeper from inside the six-yard box. We would not have been flattered if we had won by four or five goals. All the players deserve credit for the way they approached the game, and it was god to see that in the closing stages our boys looked fitter than Rushden's.

Luton Town: Goodchild, Smyth, Pendleton, Burrows, Green, Tague, Hanley, S. Sinclair, R. Sinclair, Clark, Preston (Asafu'Adjaye 89 mins),

APPEARANCES, as sub in brackets: Smyth 3, Green 3, Tague 3, Pendleton 3, S. Sinclair 3, Burrows 3, R. Sinclair 2, Richardson 2, Goodchild 2, Preston 2(1), Farrell 1, Potter 1, Kelly 1, Hanley 1, Clark 1, Field 1, McNaly 1, Foley 0(1), Asafu'Adjaye 0(2)

Goals: Burrows 4, Preston 1

Mark Ridgway



Football League Youth Alliance Under-17 South East Conference

August

9 Brentford	A 1-2 Burrows
16 Brighton	H 1-2 Burrows
23 Rushden	A 3-1 Burrows 2, Preston

September

6 Cambridge	A
13 Portsmouth	A
20 L. Orient	H
27 Southend	A

October

4 Northampton	A
11 Colchester	H
18 Oxford	A
25 QPR	H

November

1 Gillingham	A
8 Wycombe	H
15 L. Orient	A
22 Southend	H
29 Northampton	H

December

6 Colchester	A
13 Oxford	H

January

10 QPR	A
17 Gillingham	H
24 Wycombe	A
31 Brentford	H

February

7 Brighton	A
14 Rushden	H
21 Cambridge	H
28 Portsmouth	H

Log on to Luton Town's official website at www.lutontown.co.uk

new business environments

refurbishment • interiors • design and build

'All In One Solution' providing services from complete commercial property refurbishment design and build to individual office installation

- Design and Build
- Joinery
- Suspended Ceilings
- Painting and Decorating
- Electrical
- Carpets and Flooring
- Partitioning
- Exteriors
- Refurbishment

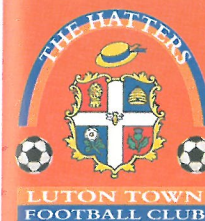


London
Midlands
South East

SPONSORS OF THE EXECUTIVE BOXES NET

Tel: 01525 405430 / 840426 Fax: 01525 840095 www.cpcontracts.co.uk

CP Contracts, The old Coach House, 6 Woburn Street, Ampthill, Bedfordshire MK45 2HP



PRE-MATCH AND HALF TIME ENTERTAINMENT

With Justin Dealey and Steve Faulkner

TODAY'S MATCH:

2.15 Team Line Up Announced

2.20 HMV Single of the Week

2.35 Dedications Announced

2.40 Town Teaser
See page 34

2.55 Teams runout to - The Blues Brothers
"Gimme Some Lovin"

3.00 THE BIG KICK OFF

HALF TIME

3.50 Golden Gamble -
Winning ticket drawn on pitch

3.55 Run down of half time scores from
around the country

4.00 Dedications

4.05 Teams arrive back on pitch to theme
song "Gimme Some Lovin"

4.55 - FULL TIME

Matchday music supplied by:



Justin Dealey is sponsored by:

BBC THREE COUNTIES RADIO
95.5 FM (BEDS) 104.5 FM (BUCKS)
103.8 FM (HERTS)

If you would like your dedication read
out, please contact the Club prior to
matchdays.

Find Freedom within.....

Fitnessfirst
Health Clubs



no other Health Club offers you more for less...
.....with no need for contracts

Fitness First Luton, Skimpot Lane, Luton, Beds, LU14 0JB
Tel: 01582 560200
www.fitnessfirst.co.uk

David Lloyd Leisure... now in your town



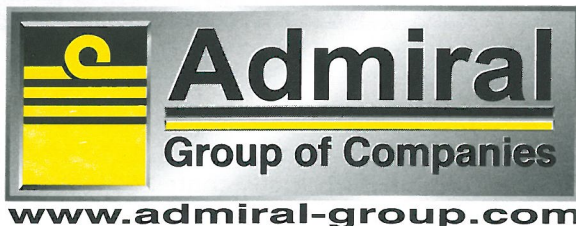
Call us on 01582 692046/7

Special introductory offer on presentation
of this Match Day Programme

Offer available at the Luton Club only. Terms and conditions apply.



www.davidlloydleisure.co.uk



Bedfordshire and Luton's Company of the Year
Admiral Group of Companies – *Solutions for the Digital Age*

INTER-TEL
Europe

ascom

AVAYA
BUSINESS PARTNER



Copiers, Printers, Faxes, Telephone Systems, Low Cost Calls, AV and Video Conferencing and Facilities Management

Call: 0870 330 7500

Visit us at www.admiral-group.com

RICOH
Image Communication

MINOLTA

hp
invent

Canon
EPSON

KYOCERA
mita

SHARP

Solutions for the Digital Age

With The Luton Town Belles

A VERY busy close season has resulted in the addition of two more squads to the Luton Town Belles, so next season we will be fielding eight teams in various leagues. The senior squad will be competing in an enlarged Division One of the Southern Region, which involves teams from as far afield as Milton Keynes and Portsmouth. Although there is an increased travel commitment, the competition level will also increase, which can only be of benefit in the future. With a couple of new additions to the squad, and one or two of the under-15s also knocking on the door, competition for places is expected to be tougher than ever. Last season saw the Town narrowly finish as runners up in both the league and the Four County Cup, and it is hoped that we can go one better this term. Belles opening league fixture takes place tomorrow, when they play away to Leighton Linlade. The under-15s defend their league championship, having won 18 of their 20 league

fixtures last season. They rounded off their campaign with a hotly contested last day 3-1 away win at Watford, with goals from Michelle Byrne (2) and Natalie Forbes. Our under-14s will hope to improve on last season's fourth place, which was some achievement for a squad where over half the players are still eligible to play in the under-13 age group this season. The foundation of this new squad is last year's record-breaking under-12 squad, who won all 26 of their matches to complete a league and cup double. With several additional signings there is hope that they may develop into quite a team once they have settled as a squad.

The real growth age group this year are the under-12s. Last year's treble winners will be staying together, and with a number of new faces the transition to eleven a side football should not present too many problems. As the total squad size is almost 40, we have also entered the local girls league to ensure that all our players have regular competitive football.

Any successful club must have a solid base, and the under-10s have been reintroduced this season to ensure our youth policy continues to develop players who can progress into senior football with the Belles.

For anyone interested in joining or supporting the Belles, our home matches are played in the Stockwood Park Athletics Stadium, under-12 to senior on Sundays, and under-10 and under-12 Mini Soccer on Saturdays. Details of fixtures can be found on our website or by e mailing the address below.



CHEERS: When you're just 11 and have beaten Spurs 5-0 in a cup final, where else for those champagne moments?

Dave Baker

LUTON Belles organises football for girls of all ages, from six upwards. If you want to know more, or fancy being involved, e-mail Dave Baker at lutonbelles@hotmail.com The Belles also have a website – pay a visit to www.lutontownbelles.com

Log on to Luton Town's official website at
www.lutontown.co.uk

Available Now in the Club Shop

XARA

travelextras

dedicated to the independent traveller

We are now taking pre-paid orders for the new season's home and away short sleeve shirts.

Childrens YS, YM, YL **£29.99**

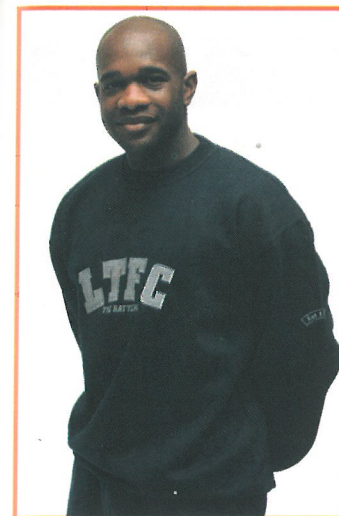
Youths YXL **£34.99**

Adults S, M, L, XL, XXL **£39.99**

Place your order personally or by post providing full name and address and daytime telephone number using cash or cheque payable to:

Luton Town Football Club.

(Please include £2.00 p&p for deliveries).



LTFC Applique Navy Sweatshirt

Childrens **£19.50**

Adults: **£26.00**
S,M,L,XL,XXL



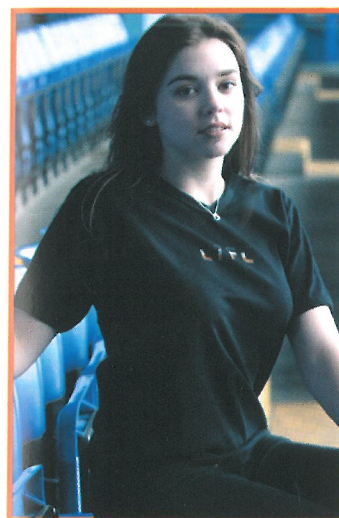
Ladies Long Sleeve Hooded T-Shirt

8, 10, 12, 14 **£15.00**



Navy St. Georges T-Shirt

Adult sizes only **£15.00**
S,M,L,XL,XXL



Black Ladies T-Shirt

32, 34, 36, 38 **£12.50**



Baseball Caps
£8.95

Shin Pads **£6.00**



Goal Keeper Gloves **£6.00**



Beige LTFC Sweatshirt

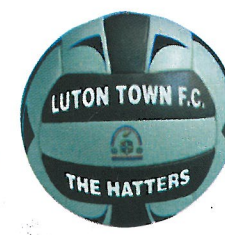
Childrens
Adults: S,M,L,XL,XXL **£10.00**



Scarves **£3.00**



Club Ties **£6.00**



Large Football **£9.99**

Luton Town Executive Box Holders

**BILLINGTON
& LAWRENCE**
Tel: 01582 726100

travelextras
dedicated to the independent traveller
Tel: 01582 545400

G.P. Quorenton
(Ductwork)
Tel: 01582 882561

Graham's
Tel: 01582 731199

**Wheeler Construction
Co Ltd**
Tel: 01707 647508

RED KITE
COMMERCIAL SERVICES
Tel: 01525 211441

Buttle's
Everything for Busy Builders
Tel: 01727 844558

**Rob Stringer of
Epic Records**

VAUXHALL
Tel: 01582 721122

**Bargad (Electrical) Ltd.
and N.E.D.**
01234 845930

**Hi-Tech Flooring
LIMITED**
Tel: 01582 670303

**Marandon Engineering
Ltd**
Tel: 01582 604534

**Genesis
Homes**
Tel: 01280 821300

J.J. KELLY & SONS LTD
Tel: 01582 455406

Admiral
Group of Companies
www.admiral-group.com
Tel: 01582 653333

GMB
KEEP PUBLIC
SERVICES PUBLIC
Tel: 020 8202 8272

**Allsop
Building**
Tel: 01582 458000

CASINO
01582 591148

Butterfields
01582 491100

Luton Building
01582 730633

**ANC
EXPRESS**

Mr Mick Connolly

SKF
Tel: 01582 490049

**Danny &
Elsie Clubb**

Focus On: WH Allsop & Sons Ltd

Founded 53 years ago by Wally Allsop, WH Allsop & Sons Ltd is one of the oldest and most respected independent building companies in Bedfordshire. The business, now principally run by Wally's sons and directors, Ian, Stuart and John, specialises in building private and domestic extensions, but there is no aspect of the job which cannot be undertaken. From the foundations to the roof, to the complete and final fitting out, WH Allsop & Sons remain the local builder you can depend on. Loyal Luton Town fans for over 20 years, Wally and his sons have also been Executive Box holders for four years. The Club thanks them for their unstinting support, and looks forward to entertaining them for many years to come.

WH Allsop & Sons Ltd can be contacted on 01582 458000

Allsop
Building

Junior Hatters With Happy Harry

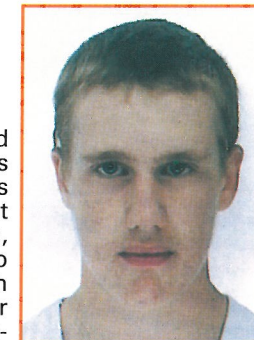
WELCOME to all young football fans to today's game, especially Junior Hatters and any who have made the long trip from Hartlepool. We too have a long journey in prospect in a fortnight, when the Town play at Plymouth. We are still hopeful that we will be able to run a coach for Junior Hatters and guests, but it depends on demand. Until we know how many are interested, we cannot make a decision on the trip's viability, nor give a firm price. If you want to go, please contact Junior Hatters headquarters, at the Community Office by Monday week, September 8, at the latest.

We have just heard that Notts County are able to offer us facilities for next Saturday's game at Meadow Lane, and if there is enough demand we will put on a Junior Hatters coach. The price will be the usual bargain: £12 for Junior Hatters, £13.50 for guests who are senior citizens or schoolchildren £15 for others. That includes a match ticket, so it's very good value for money. Please book as quickly as possible.



OFFICIAL PARTY: The scene before kick-off against Grimsby, when Juniors Hatters mascot William Davies had a close look at the toss of the coin ritual.

Today's Mascot



FOURTEEN-year-old Aaron Coleman is today's Junior Hatters mascot. He lives at Strathmore Avenue, Luton, and goes to South Luton High School, and is a regular at Town games, watching from the Junior Hatters section at the Kenilworth Road end, along with his mum and dad. Aaron tells us that top of his hobbies list is football, especially Luton Town, followed by golf. His duties today include a pre-match visit to the dressing room, where he will be delighted to have the chance to meet Chris Coyne, who is his favourite player. Today's ball boys are cousins Dario Ruocco, of Turnpike Drive, Luton, and John Ruocco, from Montrose Avenue.



SPORTING FRIENDSHIP: Young fans of both clubs enjoyed the day out when we went to Stockport, and pictured exchanging club pennants with his opposite number is the day's Junior Hatters mascot, Bradley Currington.

JUNIOR Hatters membership is open to any boy or girl aged from 0 to 16 who supports Luton Town, and if you want to know more please contact the Community Department. There are lots of advantages, including value for money trips to away games, and the chance to be picked out as mascot at home matches - the choice is made at random from the membership list.

Our Saturday Club is in operation again, offering entertainment from 12 noon onwards. To book a place, please call the Junior Hatters headquarters in the Community office, on 01582 391927 before 12 noon on the Friday before the match.

Something on your mind?

FA CUP FEVER COURTESY OF NATIONWIDE. IT'S ONLY NATURAL



OFFICIAL
PARTNER
Nationwide

An Official Partner of The FA Cup

www.nationwide.co.uk/football

Banking Credit Card Insurance Investments Loans Mortgages Pensions Savings

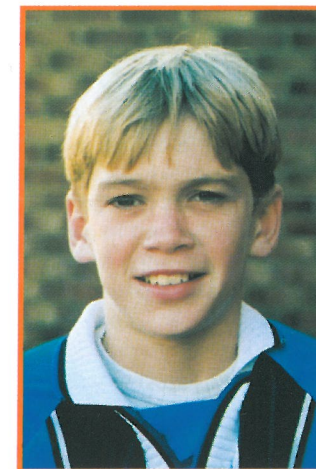
LTFC in the Community



THIS is a very proud day for me. By now you will know that we have an international amputees friendly between England and Sierra Leone immediately after today's game. I have spent the last two weeks continually nagging you all to stay behind and watch the game, so I shan't go there again. However I do hope you all enjoy the match. I'm hoping that this is an event we will be able to host again in the future, so fingers crossed for a successful day. Throughout last season the participants in our Saturday Matchday Club were able to take part in a speed dribbling challenge on the pitch at half time in each home game. We split this competition into three age groups, under 7s, 8 to 11 year-olds and over 11s. On the pitch at half time today we will present the prizes to the winner of each age group

The Winner of the Over 11's is:

Ryan Northwood won the over-11 section with a time of 7.80 seconds.



The Winner of the Under 7's is:

Lucas Kirkpatrick was the under-7s winner with a time of 9.56 seconds.



Winner of the Under 8 to 11 group was Jake Gillingwater with a time of 8.44 seconds.



Saturday Soccer Clubs Invitation

WE HAVE a few remaining dates available for our Saturday Soccer Clubs during the rest of this season. They are open to children of all ages, and will occupy them between 10am and 5pm. Schools, Football Clubs or maybe even children looking for an unusual way to celebrate their birthday or just looking for a fun day out will enjoy taking part in these clubs.

Places are allocated on a first come first served basis. The first group to enroll will have the choice of league fixture. Should the Luton Town fixture on your chosen day be postponed, your match ticket will be valid for the re-scheduled date. Please turn the page for more information.



LTFC in the Community

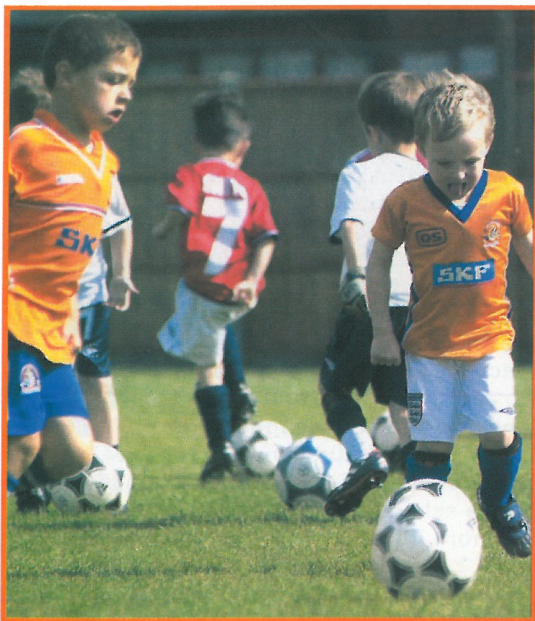
Football and Community Department Match Day Saturday Soccer Clubs

The soccer clubs will consist of the following activities:

10am till 12noon: Professional soccer coaching on the new state-of-the-art Pro Zone at Vauxhall Recreation Club.

12.30 till 1.30: Buffet lunch in the Trophy Room at Vauxhall Recreation Club. During this time we will also run a mini quiz for the children, and the six best scorers will be invited to take part in an activity on the pitch at half-time during Luton Town's game.

1.30pm: Depart for Kenilworth Road.
2pm: Arrive Kenilworth Road to watch the first team game.



The coaching part of the package will be limited to 20 children, due to the size of the facility, using either of the following two options:

Coaching, buffet and match. (Child only)	£20.00
Coaching, buffet and match. (Child + 1 Parent. Buffet and match)	£35.00

Up to a maximum of four additional places are available for the buffet and match for party organisers, at a cost of £15.

Any additional match tickets required will be on sale, subject to availability, at normal match day prices.

Bramingham Soccer School

WE HAVE instigated a new idea linked to our successful Saturday Soccer School at Bramingham School. It gives you the opportunity to purchase a season ticket for the two events planned, and of course they will offer reduced rates. You can still enroll for just one of the courses if you choose.

The first course will run for ten weeks on the following dates:

September	13th	20th	27th	
October	4th	11th	18th	25th
November	8th	15th	22nd	

The second will also run for ten weeks on the following dates in 2004:

January	17th	24th	31st	
February	7th	14th	28th	
March	6th	13th	20th	27th

The price for each course is £3 per week or £25 for a block booking of all ten sessions.. But if you block book for both courses, the price is only £40.

If you book for two courses you will be issued with a proof of payment pass which you should bring to each session.

Stuart Smith



**Luton Town Football in the Community
in Conjunction with EFDS Presents
International Football**



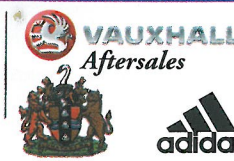
ENGLAND V SIERRA LEONE

**Amputee's International Football Match
Today!**

Kenilworth Road Kick-off 5.00pm

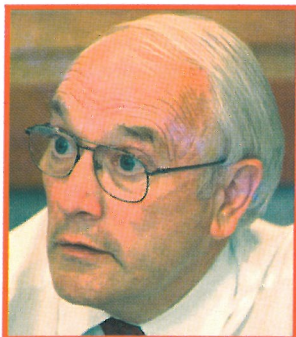
**The game will kick off immediately after
the first team fixture versus
Hartlepool United. Expected duration of
the game 45minutes.**

**Please stay behind after the
match to support your
national team**



Chattering Hatter

LUTON Town might be in financial difficulties, but the man in charge is upbeat about the future. Barry Ward, who was put in by creditors in mid-July to run the club, said: "In the five weeks since my appointment as administrative receiver much progress has been made towards the



Barry Ward

ultimate aim of putting the club back on a sound financial footing and ensuring the long term viability of the club.

"There is still much work to be done, but at this difficult time I would like to put on record my appreciation of the co-operation that has been received from all the administration and football staff at the club.

"Some very necessary financial decisions have had to be made, including some substantial contract renegotiations with the playing staff. Whilst these negotiations are still ongoing it should be recognised that the players have approached this problem in a very mature and sensible manner.

"Information details with regard to the sale of the club have now been issued to several interested parties, and I hope to be in a position to commence negotiations in early September.

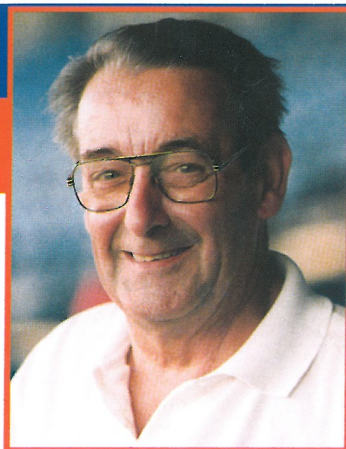
"On the playing side we could not have wished for a better start, Mike Newell and Mick Harford should be congratulated on the manner in which the team is playing, and the team spirit that has been very apparent.

"It is disappointing to see the departure of Tony Thorpe, but it was his decision to leave, albeit that the manager tried to retain his services, and a good contract offer, bearing in mind the present state of the football market, was made.

"I know that the management team are fully committed to Luton Town Football Club, and likewise

they expect their players to have the same attitude. From my dealing with the players this spirit is very much in evidence.

"The supporters can help our cause by continuing the excellent support that has been evident at our recent matches, and by buying our new shirt which is now available in the club shop."



Striker Banned For Two Games

STEVE Howard has been suspended for two matches by the FA for his sending-off at Brighton on Monday for using foul language to a referee's assistant. He will serve the ban quickly, missing the away game at Plymouth a fortnight today, and the home match with Port Vale on the following Tuesday.

The Town decided they would not appeal against the striker's red card, and he has been disciplined by the club. The manager's only comment in favour of Howard, with whom he was "bitterly disappointed" was that football needs more consistency from officials – some accept a greater degree of bad language than others.

Mr Newell, meanwhile, is still waiting to hear if he too will suffer FA wrath for being banished from the dug-out for stepping out of the technical area to try to return a ball that had gone out of play.

The FA was awaiting the report of referee Phil Crossley, but said that technically the Town boss had been sent off even though a red card was not shown. Video evidence confirms his claim that the ball was out of play when he moved to return it quickly as the Town's ten men were seeking an equaliser, and the ref knew that, because he awarded a throw-in to the Town.

Brian Swain

Programmes Wanted

TOWN fan Andrew Barringer is seeking to buy programmes to fill in gaps in his collection: the postponed Reading home match on 27/1/01, a league cup programme at home to Brighton from 65/66, and any programmes from the Town's tours of Scandinavia, Germany and Scotland from the 1980s and 1990s. His e-mail address is andrew.barringer@ntlworld.com and his mobile phone number is 07754 943764.

The Second Division Doing An Andy Job!

ANDY Dibble was back in Luton this week, enjoying a day off and visiting old friends. Our Wembley hero of 1988 had plenty to smile about – at 38 he is not only still playing league football, but is also currently the most successful goalkeeper in the Second Division.

He helped Wrexham win promotion from Division Three last season, and today they are one of only four sides in this division still unbeaten. Their current league run is 18 games without defeat, including 11 wins out of the last 12. Wrexham had a shock on Monday when Sheffield Wednesday took the lead at Hillsborough, the first goal the Welshmen had conceded in their last eight league matches. But Dibble had the last laugh, with Wrexham winning 3-2 to shake the promotion favourites and stun most of the crowd of 24,478.

With four games played, not a single 100 per cent record survives, but the unbeaten teams include our visitors this afternoon. Hartlepool knocked Brian Horton's Port Vale off the top of the table on Monday with a 2-0 home win, to end the Division's last 100 per cent record. Barnsley extended their unbeaten run with a 1-0 home win over Brighton and a 2-0 success at Blackpool to become the fourth team this season to go top of the table.

The other unbeaten side languishes down in 17th place – Chesterfield, who have drawn all four of their opening games.

The Town's two holiday weekend defeats dropped them down to 12th place, but at this stage of the season one result can make a huge difference,

with only three points between the Town and the top three.

After today's stiff test with fifth-placed Hartlepool, we travel to Meadow Lane next week, which is at present a happy hunting ground for visitors. Notts County are the only team in the Second Division without a goal or a point to their name. They have leaked 11 goals, including five at Bristol City and four at Swindon, so perhaps they don't like meeting teams managed by former Luton Town players. What price Mike Newell making it a hat-trick to add to the exploits of Danny Wilson and Andy King?

Hartlepool come to Kenilworth Road today showing every sign that they have acclimatised rapidly to the Second Division after last season's promotion as Division Three runners-up to Rushden & Diamonds.

They opened the campaign with a 4-3 win at Peterborough, drew 0-0 at home to Tranmere, took a point from a 1-1 at Ashton Gate and then beat Port Vale at home. They also collected a Carling Cup victory at Hillsborough, holding Sheffield Wednesday to 2-2 after extra time, and then winning 5-4 on penalties.

Their trump card in the last two games has been Marco Gabbiadini, now 35 but still as sharp as ever in the box. Signed on a free transfer from Northampton in the summer, he came off the bench to head a point-saving goal at Bristol City on Saturday, and against Port Vale on Monday he was a scoring sub again. Paul Robinson, Hartlepool's leading marksman so far, shot his third goal of the season after only 90 seconds, and Port Vale's hopes were killed off when Gabbiadini netted Pool's late second from a twice-taken penalty.

Today's Other Second Division Fixtures

Barnsley v Notts County
Bristol City v Grimsby
Oldham v Rushden & Diamonds
Peterborough v Stockport
Plymouth v Brighton
Port Vale v Brentford
QPR v Chesterfield
Swindon v Blackpool
Tranmere v Colchester
Wrexham v Bournemouth
MONDAY
Wycombe v Sheffield Wed

The Table

	P	H	O	M	E	A	W	D	L	F	A	GD	Pts
Barnsley	4	2	0	0	2	0	1	1	0	4	2	4	10
Wrexham	4	1	1	0	1	0	2	0	0	4	2	3	10
Brighton	4	2	0	0	4	1	1	0	1	3	2	4	9
Port Vale	4	2	0	0	6	4	1	0	1	2	3	1	9
Hartlepool	4	1	1	0	2	0	1	1	0	5	4	3	8
QPR	4	2	0	0	6	0	0	1	1	4	5	5	7
Swindon	4	1	0	1	6	3	1	1	0	3	2	4	7
Grimsby	4	1	0	1	4	3	1	1	0	4	3	2	7
Sheff Wed	4	0	1	1	4	5	2	0	0	4	2	1	7
Rushden	4	1	1	0	5	4	1	0	1	3	4	0	7
Peterborough	4	0	0	2	3	5	2	0	0	4	0	2	6
Luton Town	4	1	0	1	4	3	1	0	1	2	3	0	6
Blackpool	4	1	0	1	3	4	1	0	1	3	7	-5	6
Bristol City	4	1	1	0	6	1	0	1	1	2	3	4	5
Tranmere	4	1	0	1	5	3	0	2	0	1	1	2	5
Plymouth	4	1	1	0	5	3	0	1	1	2	3	1	5
Chesterfield	4	0	2	0	2	2	0	2	0	3	3	0	4
Wycombe	4	1	1	0	4	3	0	0	2	3	6	-2	4
Colchester	4	1	0	1	2	2	0	0	2	3	5	-2	3
Brentford	4	1	0	1	2	4	0	0	2	1	5	-6	3
Bournemouth	4	0	2	0	4	4	0	0	2	1	3	-2	2
Oldham	4	0	0	2	3	6	0	1	1	3	4	-4	1
Stockport	4	0	1	1	2	3	0	0	2	1	4	-4	1
Notts County	4	0	0	2	0	2	0	0	2	0	9	-11	0

Luton Town League & Cup

2003/2004 Date	Opponents	D2 Last Season (LT first)	Venue	Kick Off Time/Result	Score (LT first)	Attendance	Competition/Position	Referee	Yellow Cards (LT first)	Red Cards (LT first)	Goalkeepers	47	33	3	41	12
Sat 9 Aug	RUSHDEN & DIAMONDS	D3 Team	H	W	3-1	6,878	5	I Williamson	3/0	0/0	Rob BECKWITH			Alan NEILSON		
Tue 12 Aug	YEovil TOWN	-	H	W	4-1	4,337	CC1	L Cable	3/2	0/0	Dean BRILL			Kevin FOLEY		
Sat 16 Aug	Stockport County	W 3-2	A	W	2-1	4,566	1	P Joslin	1/1	0/0				Chris COYNE		
Sat 23 Aug	GRIMSBY TOWN	D1 Team	H	L	1-2	5,827	7	G Cain	1/2	0/0						
Mon 25 Aug	Brighton & Hove Albion	D1 Team	A	L	0-2	6,604	12	P Crossley	3/1	1/0						
Sat 30 Aug	HARTLEPOOL UNITED	D3 Team	H	3:00pm			D2									
Sat 6 Sep	Notts County	L 1-2	A	3:00pm			D2									
Sat 13 Sep	Plymouth Argyle	L 1-2	A	3:00pm			D2									
Tue 16 Sep	PORT VALE	D 0-0	H	7:45pm			D2									
Sat 20 Sep	QUEENS PARK RANGERS	D 0-0	H	3:00pm			D2									
Tue 23 Sep	Charlton Athletic	-	A	8:00pm			CC2									
Sat 27 Sep	Oldham Athletic	W 2-1	A	3:00pm			D2									
Wed 1 Oct	Swindon Town	L 1-2	A	7:45pm			D2									
Mon 6 Oct	TRANMERE ROVERS	D 0-0	H	8:00pm			D2									
Sat 11 Oct	WYCOMBE WANDERERS	W 1-0	H	3:00pm			D2									
Tue 14 Oct	-	-	-	-			LDVVT1									
Sat 18 Oct	Brentford	D 0-0	A	3:00pm			D2									
Tue 21 Oct	AFC Bournemouth	D3 Team	A	7:45pm			D2									
Sat 25 Oct	PETERBOROUGH UNITED	L 2-3	H	3:00pm			D2									
Tue 28 Oct	-	-	-	-			CC3									
Sat 1 Nov	Bristol City	D 1-1	A	3:00pm			D2									
Tue 4 Nov	-	-	-	-			LDVVT2									
Sat 8 Nov	-	-	-	-			FAC1									
Sat 15 Nov	WREXHAM	D3 Team	H	3:00pm			D2									
Sat 22 Nov	Sheffield Wednesday	D1 Team	A	3:00pm			D2									
Sat 29 Nov	CHESTERFIELD	W 3-0	H	3:00pm			D2									
Sat 6 Dec	-	-	-	-			FAC2									
Tue 9 Dec	-	-	-	-			LDVVT3									
Sat 13 Dec	Blackpool	L 2-5	A	3:00pm			D2									
Sat 20 Dec	BARNSEY	L 2-3	H	3:00pm			D2									
Fri 26 Dec	Colchester United	W 5-0	A	3:00pm			D2									
Sun 28 Dec	NOTTS COUNTY	D 2-2	H	3:00pm			D2									
Sat 3 Jan	BRIGHTON & HOVE ALBION	D1 Team	H	3:00pm			D2									
Sat 10 Jan	Rushden & Diamonds	D3 Team	A	3:00pm			D2									
Sat 17 Jan	STOCKPORT COUNTY	D 1-1	H	3:00pm			D2									
Sat 24 Jan	Grimsby Town	D1 Team	A	3:00pm			D2									
Sat 31 Jan	Hartlepool United	D3 Team	A	3:00pm			D2									
Sat 7 Feb	COLCHESTER UNITED	L 1-2	H	3:00pm			D2									
Sat 14 Feb	Wycombe Wanderers	W 2-1	A	3:00pm			D2									
Sat 21 Feb	BRENTFORD	L 0-1	H	3:00pm			D2									
Sat 28 Feb	Peterborough United	D 1-1	A	3:00pm			D2									
Tue 2 Mar	AFC BOURNEMOUTH	D3 Team	H	7:45pm			D2									
Sat 6 Mar	Barnsley	W 3-2	A	3:00pm			D2									
Sat 13 Mar	BLACKPOOL	L 1-3	H	3:00pm			D2									
Tue 16 Mar	Port Vale	W 2-1	A	7:45pm			D2									
Sat 20 Mar	PLYMOUTH ARGYLE	W 1-0	H	3:00pm			D2									
Sat 27 Mar	Queens Park Rangers	L 0-2	A	3:00pm			D2									
Sat 3 Apr	OLDHAM ATHLETIC	D 0-0	H	3:00pm			D2									
Sat 10 Apr	Tranmere Rovers	W 3-1	A	3:00pm			D2									
Mon 12 Apr	SWINDON TOWN	W 3-0	H	3:00pm			D2									
Sat 17 Apr	BRISTOL CITY	D 2-2	H	3:00pm			D2									
Sat 24 Apr	Wrexham	D3 Team	A	3:00pm			D2									
Sat 1 May	SHEFFIELD WEDNESDAY	D1 Team	H	3:00pm			D2									
Sat 8 May	Chesterfield	L 1-2	A	3:00pm			D2									

NEXT AT KENILWORTH ROAD
Nationwide League Division Two
Luton Town v Port Vale
Tuesday September 16

2003-2004 Statistics & Fixtures

Defenders				Midfielders				Forwards				Own Goals	
7	22	24	23	4	8	7	14	18	44	9	19		34
David BAYLISS	Sol DAVIS	Ian HILLIER		Matthew SPRING	Kevin NICHOLLS	Paul HUGHES	Courtney PITT	Ahmet BRKOVIC	Parys OKAI	Tony THORPE	Steve HOWARD	Dean CROWE	Gary MCSHEFFREY
●●●●●	●●●●●	●●●●●	●●●●●	●●●●●	●●●●●	●●●●●	●●●●●	●●●●●	●●●●●	●●●●●	●●●●●	●●●●●	●●●●●
●●●●●	●●●●●	●●●●●	●●●●●	●●●●●	●●●●●	●●●●●	●●●●●	●●●●●	●●●●●	●●●●●	●●●●●	●●●●●	●●●●●
●●●●●	●●●●●	●●●●●	●●●●●	●●●●●	●●●●●	●●●●●	●●●●●	●●●●●	●●●●●	●●●●●	●●●●●	●●●●●	●●●●●
●●●●●	●●●●●	●●●●●	●●●●●	●●●●●	●●●●●	●●●●●	●●●●●	●●●●●	●●●●●	●●●●●	●●●●●	●●●●●	●●●●●
●●●●●	●●●●●	●●●●●	●●●●●	●●●●●	●●●●●	●●●●●	●●●●●	●●●●●	●●●●●	●●●●●	●●●●●	●●●●●	●●●●●
●●●●●	●●●●●	●●●●●	●●●●●	●●●●●	●●●●●	●●●●●	●●●●●	●●●●●	●●●●●	●●●●●	●●●●●	●●●●●	●●●●●
●●●●●	●●●●●	●●●●●	●●●●●	●●●●●	●●●●●	●●●●●	●●●●●	●●●●●	●●●●●	●●●●●	●●●●●	●●●●●	●●●●●
●●●●●	●●●●●	●●●●●	●●●●●	●●●●●	●●●●●	●●●●●	●●●●●	●●●●●	●●●●●	●●●●●	●●●●●	●●●●●	●●●●●
●●●●●	●●●●●	●●●●●	●●●●●	●●●●●	●●●●●	●●●●●	●●●●●	●●●●●	●●●●●	●●●●●	●●●●●	●●●●●	●●●●●
●●●●●	●●●●●	●●●●●	●●●●●	●●●●●	●●●●●	●●●●●	●●●●●	●●●●●	●●●●●	●●●●●	●●●●●	●●●●●	●●●●●
●●●●●	●●●●●	●●●●●	●●●●●	●●●●●	●●●●●	●●●●●	●●●●●	●●●●●	●●●●●	●●●●●	●●●●●	●●●●●	●●●●●
●●●●●	●●●●●	●●●●●	●●●●●	●●●●●	●●●●●	●●●●●	●●●●●	●●●●●	●●●●●	●●●●●	●●●●●	●●●●●	●●●●●
●●●●●	●●●●●	●●●●●	●●●●●	●●●●●	●●●●●	●●●●●	●●●●●	●●●●●	●●●●●	●●●●●	●●●●●	●●●●●	●●●●●
●●●●●	●●●●●	●●●●●	●●●●●	●●●●●	●●●●●	●●●●●	●●●●●	●●●●●	●●●●●	●●●●●	●●●●●	●●●●●	●●●●●
●●●●●	●●●●●	●●●●●	●●●●●	●●●●●	●●●●●	●●●●●	●●●●●	●●●●●	●●●●●	●●●●●	●●●●●	●●●●●	●●●●●
●●●●●	●●●●●	●●●●●	●●●●●	●●●●●	●●●●●	●●●●●	●●●●●	●●●●●	●●●●●	●●●●●	●●●●●	●●●●●	●●●●●
●●●●●	●●●●●	●●●●●	●●●●●	●●●●●	●●●●●	●●●●●	●●●●●	●●●●●	●●●●●	●●●●●	●●●●●	●●●●●	●●●●●
●●●●●	●●●●●	●●●●●	●●●●●	●●●●●	●●●●●	●●●●●	●●●●●	●●●●●	●●●●●	●●●●●	●●●●●	●●●●●	●●●●●
●●●●●	●●●●●	●●●●●	●●●●●	●●●●●	●●●●●	●●●●●	●●●●●	●●●●●	●●●●●	●●●●●	●●●●●	●●●●●	●●●●●
●●●●●	●●●●●	●●●●●	●●●●●	●●●●●	●●●●●	●●●●●	●●●●●	●●●●●	●●●●●	●●●●●	●●●●●	●●●●●	●●●●●
●●●●●	●●●●●	●●●●●	●●●●●	●●●●●	●●●●●	●●●●●	●●●●●	●●●●●	●●●●●	●●●●●	●●●●●	●●●●●	●●●●●
●●●●●	●●●●●	●●●●●	●●●●●	●●●●●	●●●●●	●●●●●	●●●●●	●●●●●	●●●●●	●●●●●	●●●●●	●●●●●	●●●●●
●●●●●	●●●●●	●●●●●	●●●●●	●●●●●	●●●●●	●●●●●	●●●●●	●●●●●	●●●●●	●●●●●	●●●●●	●●●●●	●●●●●
●●●●●	●●●●●	●●●●●	●●●●●	●●●●●	●●●●●	●●●●●	●●●●●	●●●●●	●●●●●	●●●●●	●●●●●	●●●●●	●●●●●
●●●●●	●●●●●	●●●●●	●●●●●	●●●●●	●●●●●	●●●●●	●●●●●	●●●●●	●●●●●	●●●●●	●●●●●	●●●●●	●●●●●
●●●●●	●●●●●	●●●●●	●●●●●	●●●●●	●●●●●	●●●●●	●●●●●	●●●●●	●●●●●	●●●●●	●●●●●	●●●●●	●●●●●
●●●●●	●●●●●	●●●●●	●●●●●	●●●●●	●●●●●	●●●●●	●●●●●	●●●●●	●●●●●	●●●●●	●●●●●	●●●●●	●●●●●
●●●●●	●●●●●	●●●●●	●●●●●	●●●●●	●●●●●	●●●●●	●●●●●	●●●●●	●●●●●	●●●●●	●●●●●	●●●●●	●●●●●
●●●●●	●●●●●	●●●●●	●●●●●	●●●●●	●●●●●	●●●●●	●●●●●	●●●●●	●●●●●	●●●●●	●●●●●	●●●●●	●●●●●
●●●●●	●●●●●	●●●●●	●●●●●	●●●●●	●●●●●	●●●●●	●●●●●	●●●●●	●●●●●	●●●●●	●●●●●	●●●●●	●●●●●
●●●●●	●●●●●	●●●●●	●●●●●	●●●●●	●●●●●	●●●●●	●●●●●	●●●●●	●●●●●	●●●●●	●●●●●	●●●●●	●●●●●
●●●●●	●●●●●	●●●●●	●●●●●	●●●●●	●●●●●	●●●●●	●●●●●	●●●●●	●●●●●	●●●●●	●●●●●	●●●●●	●●●●●
●●●●●	●●●●●	●●●●●	●●●●●	●●●●●	●●●●●	●●●●●	●●●●●	●●●●●	●●●●●	●●●●●	●●●●●	●●●●●	●●●●●
●●●●●	●●●●●	●●●●●	●●●●●	●●●●●	●●●●●	●●●●●	●●●●●	●●●●●	●●●●●	●●●●●	●●●●●	●●●●●	●●●●●
●●●●●	●●●●●	●●●●●	●●●●●	●●●●●	●●●●●	●●●●●	●●●●●	●●●●●	●●●●●	●●●●●	●●●●●	●●●●●	●●●●●
●●●●●	●●●●●	●●●●●	●●●●●	●●●●●	●●●●●	●●●●●	●●●●●	●●●●●	●●●●●	●●●●●	●●●●●	●●●●●	●●●●●
●●●●●	●●●●●	●●●●●	●●●●●	●●●●●	●●●●●	●●●●●	●●●●●	●●●●●	●●●●●	●●●●●	●●●●●	●●●●●	●●●●●
●●●●●	●●●●●	●●●●●	●●●●●	●●●●●	●●●●●	●●●●●	●●●●●	●●●●●	●●●●●	●●●●●	●●●●●	●●●●●	●●●●●
●●●●●	●●●●●	●●●●●	●●●●●	●●●●●	●●●●●	●●●●●	●●●●●	●●●●●	●●●●●	●●●●●	●●●●●	●●●●●	●●●●●
●●●●●	●●●●●	●●●●●	●●●●●	●●●●●	●●●●●	●●●●●	●●●●●	●●●●●	●●●●●	●●●●●	●●●●●	●●●●●	●●●●●
●●●●●	●●●●●	●●●●●	●●●●●	●●●●●	●●●●●	●●●●●	●●●●●	●●●●●	●●●●●	●●●●●	●●●●●	●●●●●	●●●●●
●●●●●	●●●●●	●●●●●	●●●●●	●●●●●	●●●●●	●●●●●	●●●●●	●●●●●	●●●●●	●●●●●	●●●●●	●●●●●	●●●●●
●●●●●	●●●●●	●●●●●	●●●●●	●●●●●	●●●●●	●●●●●	●●●●●	●●●●●	●●●●●	●●●●●	●●●●●	●●●●●	●●●●●
●●●●●	●●●●●	●●●●●	●●●●●	●●●●●	●●●●●	●●●●●	●●●●●	●●●●●	●●●●●	●●●●●	●●●●●	●●●●●	●●●●●
●●●●●	●●●●●	●●●●●	●●●●●	●●●●●	●●●●●	●●●●●	●●●●●	●●●●●	●●●●●	●●●●●	●●●●●	●●●●●	●●●●●
●●●●●	●●●●●	●●●●●	●●●●●	●●●●●	●●●●●	●●●●●	●●●●●	●●●●●	●●●●●	●●●●●	●●●●●	●●●●●	●●●●●
●●●●●	●●●●●	●●●●●	●●●●●	●●●●●	●●●●●	●●●●●	●●●●●	●●●●●	●●●●●	●●●●●	●●●●●	●●●●●	●●●●●
●●●●●	●●●●●	●●●●●	●●●●●	●●●●●	●●●●●	●●●●●	●●●●●	●●●●●	●●●●●	●●●●●	●●●●●	●●●●●	●●●●●
●●●●●	●●●●●	●●●●●	●●●●●	●●●●●	●●●●●	●●●●●	●●●●●	●●●●●	●●●●●	●●●●●	●●●●●	●●●●●	●●●●●
●●●●●	●●●●●	●●●●●	●●●●●	●●●●●	●●●●●	●●●●●	●●●●●	●●●●●	●●●●●	●●●●●	●●●●●	●●●●●	●●●●●
●●●●●	●●●●●	●●●●●	●●●●●	●●●●●	●●●●●	●●●●●	●●●●●	●●●●●	●●●●●	●●●●●	●●●●●	●●●●●	●●●●●
●●●●●	●●●●●	●●●●●	●●●●●	●●●●●	●●●●●	●●●●●	●●●●●	●●●●●	●●●●●	●●●●●	●●●●●	●●●●●	●●●●●
●●●●●	●●●●●	●●●●●	●●●●●	●●●●●	●●●●●	●●●●●	●●●●●	●●●●●	●●●●●	●●●●●	●●●●●	●●●●●	●●●●●
●●●●●	●●●●●	●●●●●	●●●●●	●●●●●	●●●●●	●●●●●	●●●●●	●●●●●	●●●●●	●●●●●	●●●●●	●●●●●	●●●●●
●●●●●	●●●●●	●●●●●	●●●●●	●●●●●	●●●●●	●●●●●	●●●●●	●●●●●	●●●●●	●●●●●	●●●●●	●●●●●	●●●●●
●●●●●	●●●●●	●●●●●	●●●●●	●●●●●	●●●●●								

Today's Squads



3 (3)

Manager: Mike Newell

3	Alan NEILSON	<input type="checkbox"/> ○
4	Matthew SPRING	<input checked="" type="checkbox"/> ○
5	Russell PERRETT	<input type="checkbox"/> ○
7	Adrian FORBES	<input type="checkbox"/> ○
8	Kevin NICHOLLS	<input type="checkbox"/> ○
11	Steve ROBINSON <i>Pitt</i>	<input checked="" type="checkbox"/> ○
12	Chris COYNE	<input checked="" type="checkbox"/> ○
17	Emmerson BOYCE	<input checked="" type="checkbox"/> ○
18	Ahmet BRKOVIC	<input type="checkbox"/> ⊗
19	Steve HOWARD	<input checked="" type="checkbox"/> ○
21	Paul HUGHES	<input checked="" type="checkbox"/> ○
22	David BAYLISS	<input checked="" type="checkbox"/> ○
23	Ian HILLIER	<input type="checkbox"/> ⊗
24	Sol DAVIS	<input type="checkbox"/> ⊗
25	Gary McSHEFFREY	<input checked="" type="checkbox"/> ○
32	Lee MANSELL	<input type="checkbox"/> ○
33	Dean BRILL	<input type="checkbox"/> ⊗
34	Dean CROWE	<input type="checkbox"/> ⊗
38	Michael LEARY	<input type="checkbox"/> ○
39	Steven O'LEARY	<input type="checkbox"/> ○
41	Kevin FOLEY	<input checked="" type="checkbox"/> ○
43	Matthew JUDGE	<input type="checkbox"/> ○
44	Parys OKAI	<input type="checkbox"/> ○
45	Leon BARNETT	<input type="checkbox"/> ○
47	Rob BECKWITH	<input checked="" type="checkbox"/> ○

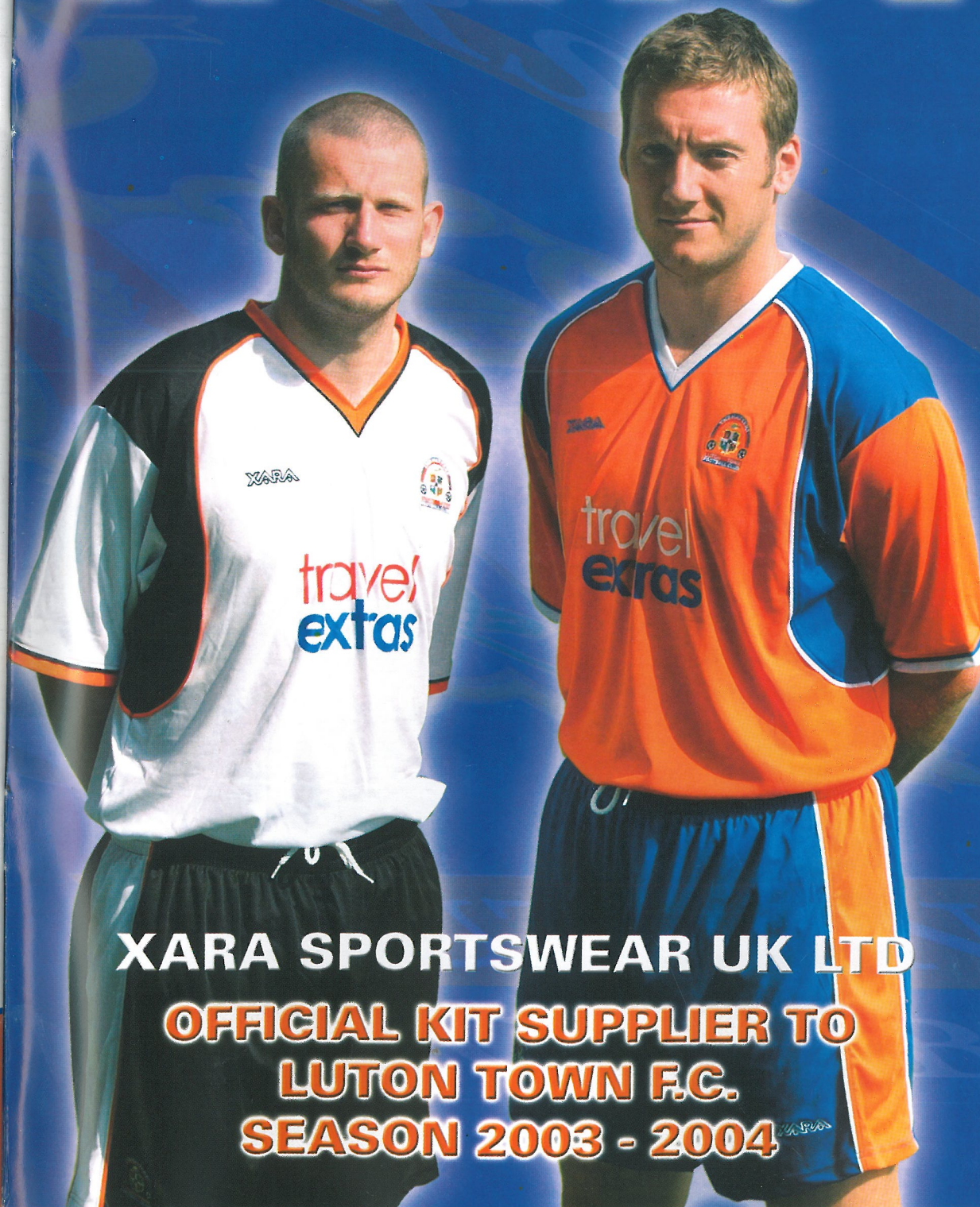


(1) 2

Manager: Neale Cooper

1	Anthony WILLIAMS	<input type="checkbox"/> ⊗
2	Michael BARRON	<input checked="" type="checkbox"/> ○
3	Mark ROBINSON	<input type="checkbox"/> ○
4	Mark TINKLER	<input checked="" type="checkbox"/> ○
5	Michael NELSON	<input checked="" type="checkbox"/> ○
6	Chris WESTWOOD	<input checked="" type="checkbox"/> ○
7	Darrel CLARKE	<input checked="" type="checkbox"/> ○
8	Richie HUMPHREYS	<input checked="" type="checkbox"/> ○
9	Eifion WILLIAMS	<input type="checkbox"/> ○
11	Kevin HENDERSON	<input type="checkbox"/> ⊗
12	Jon BASS <i>GABRIADINI</i>	<input checked="" type="checkbox"/> ○
14	Paul ARNISON	<input type="checkbox"/> ○
15	Adam BOYD	<input type="checkbox"/> ⊗
16	Marcus RICHARDSON	<input type="checkbox"/> ○
17	Jermaine EASTER	<input type="checkbox"/> ○
18	Antony SWEENEY	<input type="checkbox"/> ○
19	Jim PROVETT	<input checked="" type="checkbox"/> ○
20	John BRACKSTONE	<input type="checkbox"/> ○
21	Steven ISTEAD	<input type="checkbox"/> ⊗
22	Matty ROBSON	<input checked="" type="checkbox"/> ○
23	Paul ROBINSON	<input checked="" type="checkbox"/> ○
24	Andrew JORDAN	<input type="checkbox"/> ⊗
25	Gavin STRACHAN	<input checked="" type="checkbox"/> ○

XARA



XARA SPORTSWEAR UK LTD
OFFICIAL KIT SUPPLIER TO
LUTON TOWN F.C.
SEASON 2003 - 2004

Today's Officials

Referee: Brian Curson, Leicestershire
 Assistants: Gary Ives, Essex (red and yellow flag);
 Steve Tomlinson, Hampshire (yellow flag)
 Fourth official: Peter Kirkup, Northamptonshire

Support the Hatters by giving back to the club – join Hatter Travel!

Luton-based Travel Extras is proud to be the official shirt sponsor for Luton Town Football Club, offering great deals to football fans – home and away. What's more, if you book any product from Travel Extras' vast range, we will give 10% of EVERY booking straight back to the club!

How does the deal work?

Travel Extras will not compromise its' already unbeatable prices for holiday Travel. We will continue to offer fantastic travel deals "dedicated to the independent Traveller" with a vast portfolio of Car Rental, Hotels and accommodation, Travel Insurance, UK Airport Parking or VIP- style airport lounges. This means that we have not added 10% onto our prices to compensate for the deal – we want to make sure that the club gets as much benefit as possible to take the Hatters forward.

How do I get involved?

Continue to support your club!

To take advantage of Travel Extras' super Hatters deals, simply call your dedicated Hatters Travel Advisors on 08707 27 37 27 or visit www.travelextras.com/lffc

What's more, our fantastic deals are for business or pleasure, sunshine or snow, offering a competitive price all year round.

Group Managing Director, Ray Mulford said: "Many of our staff are Hatters Fans and are getting behind the Club. Now is your chance to get involved and have a great holiday at the same time!"



Ray Mulford, Travel Extras Group Managing Director with Chris Coyne and Kevin Nicholls wearing the new Luton Town home and away strips

SIGN UP FOR GREAT HATTERS TRAVEL OFFERS!

Fancy New York for shopping or Paris in the springtime? Travel Extras can offer great deals on any worldwide destination. Simply register for fantastic up to the minute and on the ball Special offers! Just visit www.travelextras.com/lffc for more details!



Global car rental from less than £11 per day!



Travel insurance from £15 for 10 days European cover!



Worldwide hotel rates from £25 pppn!



UK airport parking from £4.25 per day!



Introducing VIP Airport lounges from JUST £12.95! Relax in style and comfort with food and drink supplied!

08707 27 37 27
travelextras.com/lffc

travelextras



dedicated to the independent traveller