

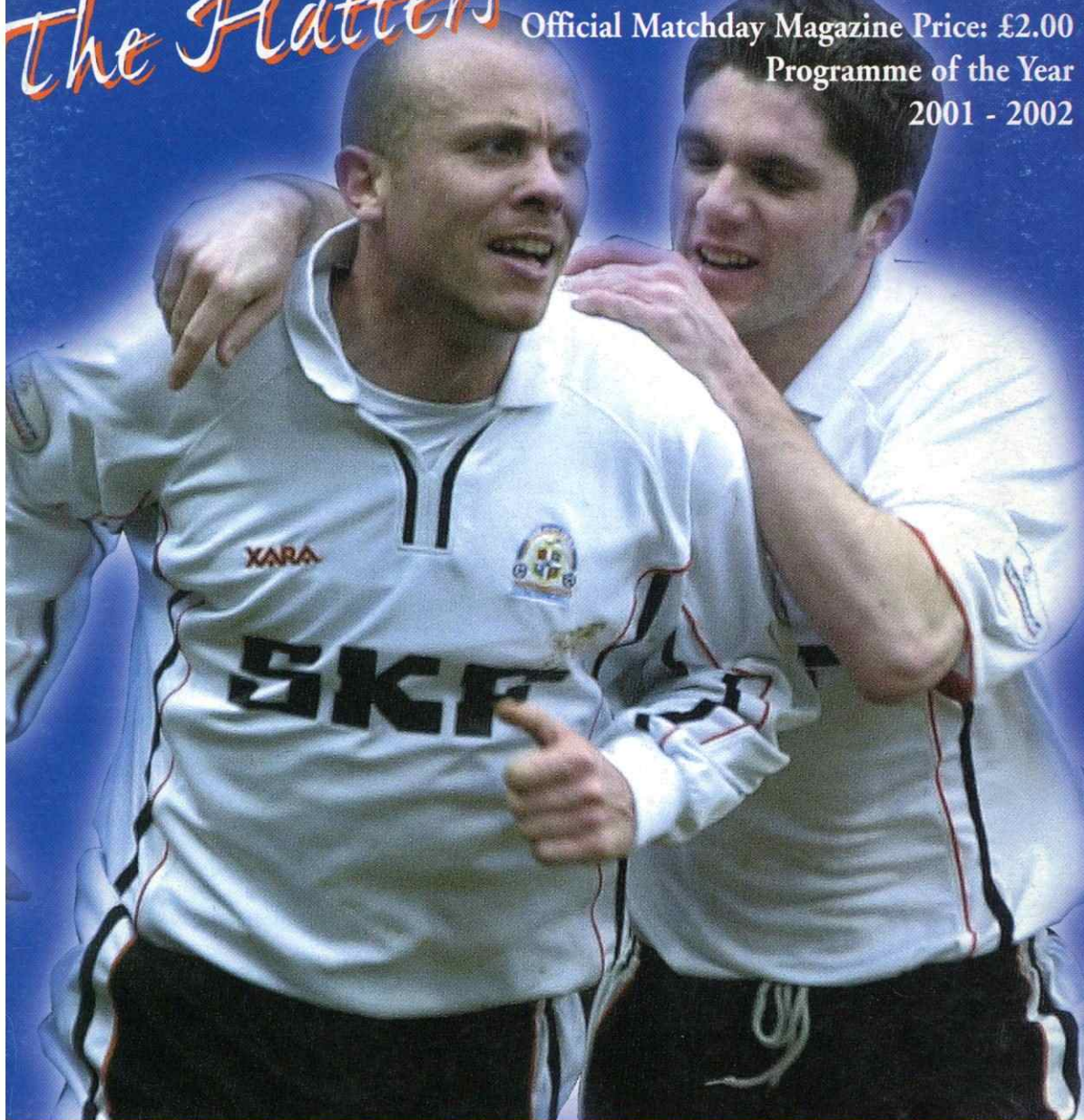
LUTON TOWN

The Hatters

Official Matchday Magazine Price: £2.00

Programme of the Year

2001 - 2002



Official Shirt Sponsors



Official Kit Supplier



Luton Town v Brentford

Saturday February 22, 2003, kick-off 3pm

Match Sponsor - Intasport

Match Ball Sponsor - Black & Blue Restaurants



LUTON TOWN
FOOTBALL CLUB
www.lutontown.co.uk

Luton Town FC

Kenilworth Road Stadium
1 Maple Road, Luton
Bedfordshire LU4 8AW

Main Reception:
01582 411622
Fax: 01582 405070

Ticket Office: 01582 416976

Community Dept: 01582 391927

Honours

Littlewoods Cup

Winners 1987-88
Finalists 1988-89

FA Cup

Finalists 1958-59

Simod Cup

Finalists 1987-88

Division 2

Champions 1981-82

Division 3 (S)

Champions 1936-37

Division 4

Champions 1967-68

Official Matchday Magazine

Editor

Brian Swain

Design & Printing

Regal Litho Ltd

Photography

Gareth Owen

The views expressed in this
programme are not necessarily
those of Luton Town Football Club.

Cover Story



What a strike! Paul Hughes earns
admiration from everyone,
including Tony Thorpe, after the
first of his two cracking goals
against Northampton.

Inside Forward

TWO strikers have slipped through the net, and two more came in for a trial this week as Joe Kinnear continues the search to beef up his squad for the final push towards promotion.

He had reached agreement with Reading manager Alan Pardew to take either Martin Butler or Tony Rougier on loan, but the deals were stalled by the players.

Joe said: "They both liked what they saw here. Butler will be free at the end of the season, and his agent told me he would not come on loan. He wants a permanent deal and is looking for a two-year contract, which I was not prepared to offer.

"I understand his situation. Players are concerned about what is going to happen at the end of the season when a lot of them will probably be looking for work, and they want to get contracts sorted out as soon as possible before the summer.

"When I met Rougier, he told me that he would like to come here, but had already promised Steve Coppell he would give Brighton first chance. He said he would not break his word, which was fair enough, but that he might talk to me again after a month at Brighton. But he might have missed the boat by then, because I have other irons in the fire."

The boss re-iterates that his attempts to strengthen competition for places in the squad are no reflection on the men he already has. The current team is good enough for promotion, but we are approaching a crucial part of the season, and he wants as much cover as possible in case of injuries or suspensions.

Two potential candidates were on view on a windswept training ground in South Wales on Wednesday, playing for the reserves. Both are available, and Brian Stein, in charge of the Combination squad that drew 0-0 with Cardiff, will report back to the boss on his appraisal of them.

One was Craig McAllister, who plays for Basingstoke, and is a current non-league international. The other was Amos Foyewa, who played for Bournemouth reserves at Kenilworth Road a month ago, and looked their best player in a 4-4 draw. He had tremendous pace, but on a cold and windy day at Cardiff this week neither of the strikers could find a goal.

Skipper On A Fizzer

THE TOWN intend to put up a strong case in defence of Kevin Nicholls, who is facing four charges before an FA disciplinary panel next month.

INSIDE TODAY...

The manager's column - P 5; Nicho on "that goal" - P 7; Today's visitors - Pp 18-21; Latest injury news - P 8; From the Secretary's office - P 9; Blast from the Past - Pp 22 & 23; Ticket office news - Pp 10 & 11; Travel offers to Nottingham and Mansfield - P 31; Luton Belles latest - P 45; Junior Hatters awayday offers - P 35; With the youth teams - Pp 50-51; In reserve - P49; Bees due to sting? - P 53; All the stats: Pp 54-55.



NICE ONE, SKIP: Ian Hillier leads the congratulations after Kevin Nicholls thundered in a cracking free kick to put the Town on their way to victory over Northampton. More pictures and a report will be in Tuesday's match day magazine.

Joe Kinnear will lead the counter-attack to dispute the allegations made by Eddie Wolstenholme following the match against QPR in late November. Steve Howard was sent off for a red card offence, and Nicholls went for two yellows.

The Town dispute in particular the first dished out to the skipper, who claimed from the moment it happened that he was the victim, not the aggressor.

The FA hearing follows a report Mr Wolstenholme submitted after the game. He accused Nicholls of taking too long to leave the field of play after being sent off, of crowd incitement by pointing to the name on the back of his shirt, and of getting involved after the game with QPR players, and their manager Ian Holloway.

Nicholls will plead not guilty, and his manager believes he has a very strong case. But the FA has extensive powers to crack down on disciplinary matters, and although Nicholls has already served a suspension for the two yellow cards he could be hit by another. Ironically, the first forced him to miss the FA Cup-tie against his former club Wigan. And if he gets another ban it might well rule him out of the league trip back to the JJB Stadium in three weeks' time.

Brian Swain



Chairman

M. Watson-Challis

Directors

E. Hood, R. Stringer,
Y. Fletcher,

R. H. G. Kelly, C. Newbery

Vice Presidents

C. T. F. Green, N. S. Terry,
R. L. Banks, D. Ludlow MBE,
C. Bygrave, R. Safranek,
J. Sapsworth, D. Mortimer

Club Secretary

Cherry Newbery

Manager

Joe Kinnear

First Team Coach

Mick Harford

Reserve Team Coach

Brian Stein

Youth Team Coach

John Moore

Youth Development Officer

Mark Ridgway

Medical Officer

Dr. Bill Berry

Consultant Physio

John Sheridan

Commercial Manager

Linda Layton

Catering Manager

Peter Saul

Safety Officer

Geoff Lovell

Ticket Office

Darren Bell

Financial Controller

Tania Buonpane FCCA

Club Dentist

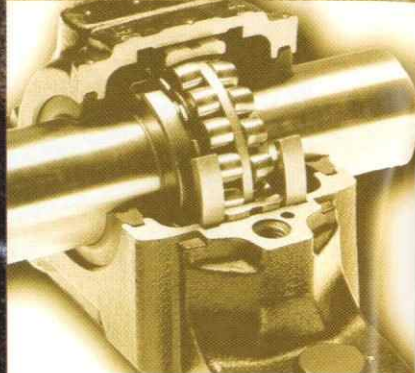
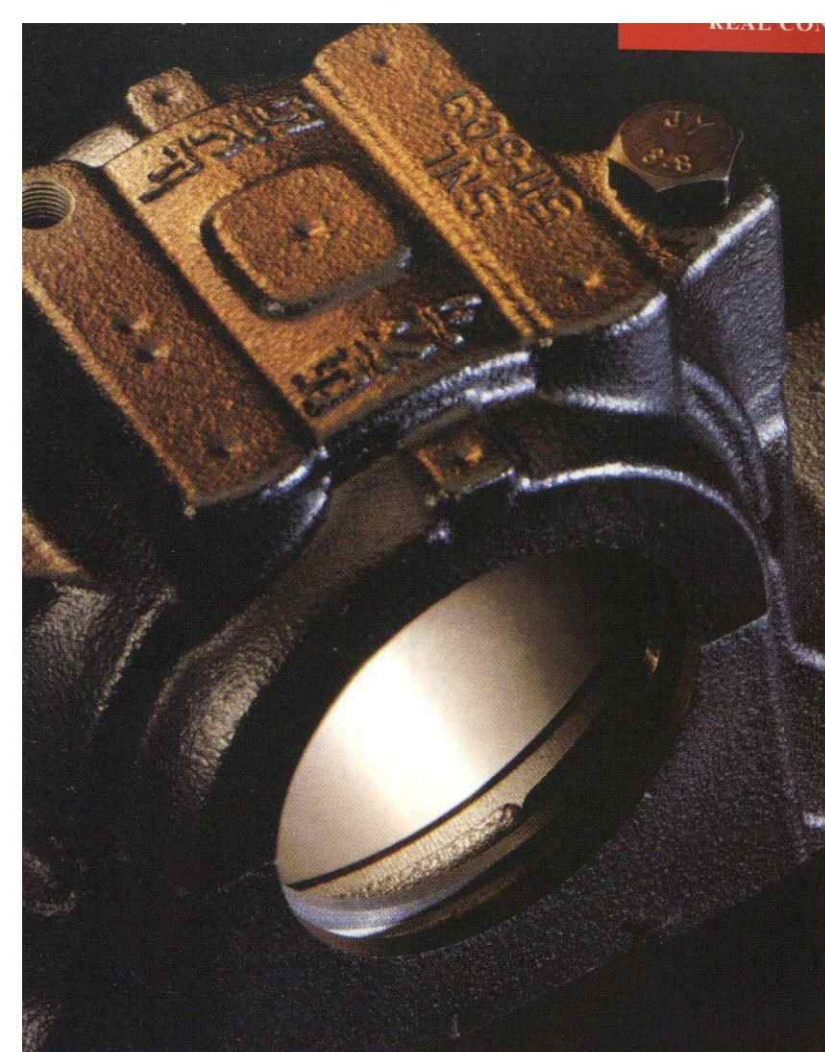
A. Chris BDSA (Syd)

Club Chaplain

Rev Catherine Moss

Company Secretary

Cherry Newbery



SOLVING THE HOUSING PROBLEM SNL Bearing housings

SKF are able to offer the perfect product partnership - synonymous with operational reliability, quality and versatility.

SNL bearing housings enable the full service life potential of the incorporated bearings to be exploited with less need of maintenance.

Standard SNL housings are available for shafts from 20 to 160mm diameter; together with the new SNL 30 and SNL 31 range for shafts from 150 to 500mm diameter.

Standard features

- Easy installation
- Reinforced design
- High load carrying capacity
- Relubrication facility as standard
- Condition monitoring options
- Wide range of sealing solutions

Application benefits

- Long service life
- Robust design
- Reduced maintenance costs
- Insensitive to excessive tightening
- Reduced lubricant consumption

For a FREE catalogue on SNL bearing housings please complete and return to:
SKF FREEPOST MK1540 Luton LU3 4BR

Name
Company
Address
.....
Postcode
Tel
E-mail

SKF

Manager's View



WE KNEW some weeks ago, when a couple of January matches were postponed and put into the February fixture list, that this was going to be a massive month for us, with 18 points to play for, and with four of the six games at home.

I wanted us to go through February undefeated, so after the blow of losing at home to Blackpool it was all the more important that we came out with all guns firing for the visit of Northampton. And while it was disappointing not to win by a greater margin, the result was all that really mattered, and I was pleased with the way the team stuck to its task to collect a win that was very well deserved.

It has put us back on track, and the February points haul so far is a reasonable seven out of 12. It will look even better if can round off the month with maximum points from the remaining games, against Brentford this afternoon and at home to Plymouth on Tuesday. There was not a lot wrong with the team performance that saw off Northampton. The goals we conceded were poor, and we didn't have much luck with important decisions. Chris Willmott was unlucky with a bad bounce that the referee called handball, a few minutes after he had turned down our claims for a penalty when Dean Crowe was body-checked. We thought that was inside the area, not just outside.

We should have scored more goals, of course, but if the strikers suffer an off day occasionally we

can usually expect someone else to come up with the goods. I have always believed that goals should come from all quarters.

So congratulations to Paul Hughes for two tremendous finishes - his first goals in almost a year were very well taken, and I will, naturally, expect more of the same, and more often, from him in the near future! The free kick by Kevin Nicholls was something special, and his performance, as player and leader, was inspirational, and instrumental in beating a team that was bound to scrap for everything in its fight to escape the relegation zone. The victory also laid a ghost, because we owed one to Northampton after our poor showing at their place in November.

I hope we have laid another ghost as well by beating a team in the bottom four. Except for Blackpool, not one of the promotion and play-off contenders has been able to beat us in the league this season. But four of our five home defeats - Blackpool is the exception - have been against teams who are currently in the relegation battle.

Last season we won promotion with a record that showed only three home defeats, so if we are to go up into the First Division at the first attempt we cannot afford many more setbacks on our own pitch. That might put a bit of pressure on us, but I am sure we have the mental strength required.

The league table gets more interesting every week, and

there are a few signs that some of the teams above us are feeling the strain. For a long time we have been striving to close the gap on sixth place, which is the least I will accept for this club when the final whistle blows on the last day of the season.

We are three points adrift, with a game in hand on QPR, who are sixth, and also with Bristol City, who have tumbled since we gave them an almighty scare at Ashton Gate just before Christmas.

The good thing is that matters are entirely in our own hands. We need to improve our goals difference figure, but if we win our game in hand that would put us level on points with fifth place.

We collected a good draw at Griffin Park in September, when Brentford were going well and we were still struggling to find our Second Division feet. We have got better since then, and must prove the point once more this afternoon.

We will be without Steve Howard again, but if we turn on the attacking style like we did against Northampton we have very reason to be confident. Tony Thorpe and Dean Crowe drew blanks, but they are both due a goal or two. Your support, which has played a large part in our progress so far, can help us take another step towards our goal.

Keep the faith, and enjoy the game.

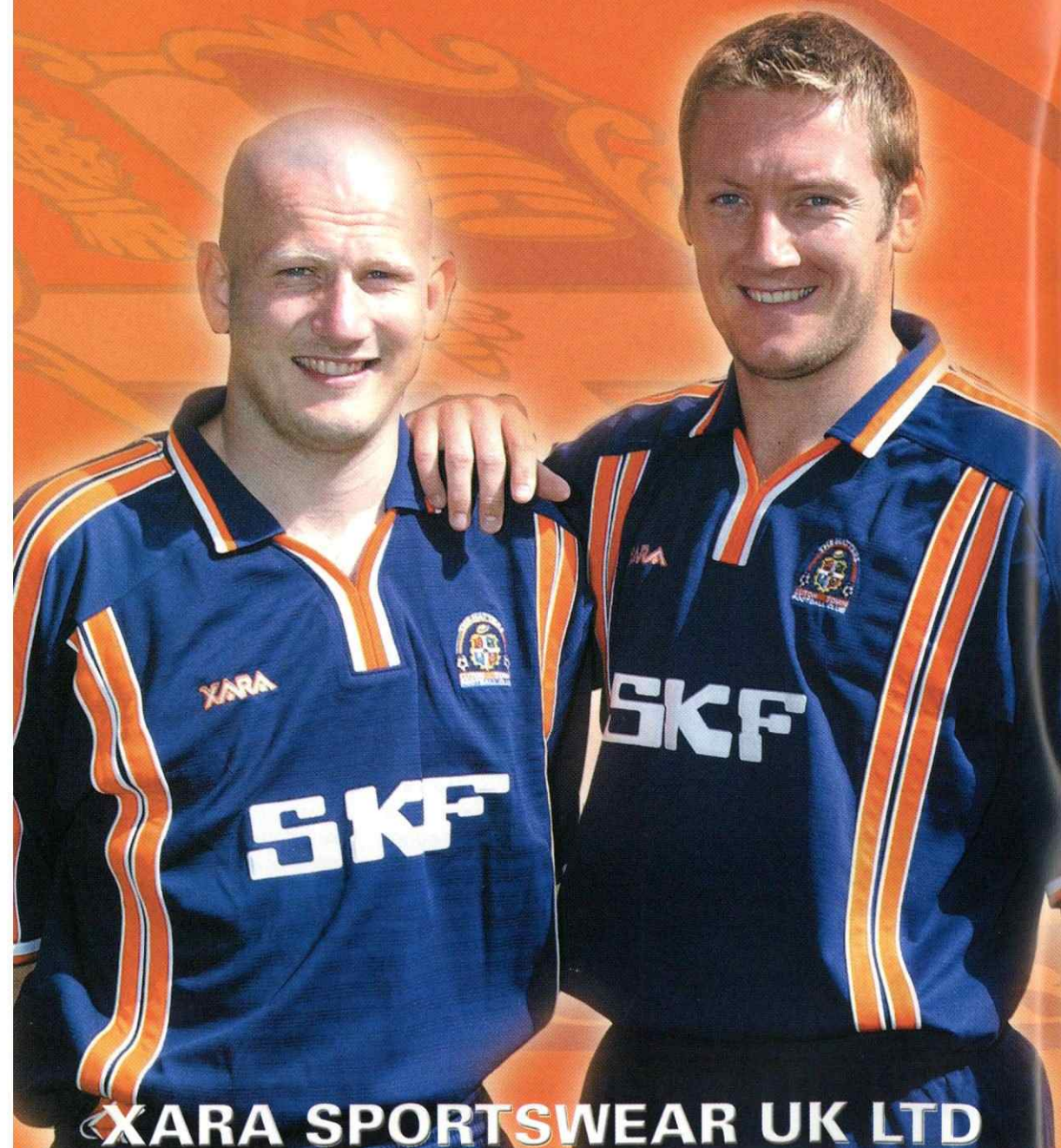
Joe Kinnear



The place to shop in Bedfordshire
Horne Lane, Bedford - 01234 357330

XARA

**OFFICIAL KIT SUPPLIER TO LUTON TOWN F.C.
SEASON 2002 - 2003**



Captain's View



WE WERE all very pleased to get the three points we wanted from the match against Northampton after the disappointment of losing to Blackpool. We knew it was a game where we had to dig in and do a job, with the quality of the performance not as important as the result. As it happened I would think it was an entertaining game to watch, and it was one I enjoyed playing in. But we were not happy with the way we defended as a team – the 3-2 result flattered Northampton, and it should have been 3-0.

We want to be more consistent in keeping clean sheets, and it is disappointing that having been pretty solid at the back for some time we have conceded five goals in two home games. We know that is one aspect of our play that has to be improved. But the way we took the game to Northampton was very encouraging, and if we had beaten them by four or five goals I don't think they could complain.

We have proved we can create plenty of scoring chances, and it was a shame we didn't take more against the Cobblers. Of course you miss a striker like Steve Howard, but Thorpey has been in a tremendous run of form recently and it was only the goalkeeper who denied him on Saturday.

He is looking so bright, and

defenders are always going to be wary of him. Steve Howard is on course to get 20 goals at least this season, and I expect Thorpey to do the same.

We don't mind who gets our goals, but naturally, as a midfielder, I was pretty pleased that Paul Hughes and I were on target.

Hughesie, like most midfielders, is a bit of a frustrated striker, and any footballer will tell you the greatest pleasure in a match is scoring. Against Northampton he was under orders to get more forward than usual, and how well he did that. He is a very talented player, and like all of us likes nothing more than to be given a chance to have a go at goal. But you cannot allow everyone to be gung-ho and drive forward. Teams need to keep a shape, with each man having his job. In midfield, that includes defensive duties, and filling in behind others when they go forward. Hughesie's strikes were ones that any centre-forward would be proud of.

As you might guess, I was pretty pleased with my effort as well. The minute the free kick was given, in the middle of the goal, I fancied my chances. The goal was certainly my best since being at Luton.

The other I remember well was one from open play 33 seconds into my debut as a 17-year-old for Charlton,

against

Barnsley. But all goals we score are good ones, and we won't mind how they go in this afternoon so long as we put another three points in the bag. Brentford won't be easy, and it was a tough match when we drew at their place early in the season. They were particularly dangerous on set pieces, a bit like Wycombe. I don't know if today's game will be as entertaining as last week's, but once more it is one we are determined to win. I would rather see us grab a scrappy 1-0 victory than give away silly goals. The clean sheet is overdue – the last was against Wycombe a month ago, and that was a scrappy 1-0.

But the incentive for us could hardly be greater. We all want the chance to play at a higher level, and if we win today, and win our game in hand on Tuesday, we could well be one of three teams on the same points. We could even be within a couple of points of third place.

This is the time of the season when we must make the big push, with an extended unbeaten run, especially as some of the teams above us have still to come to Kenilworth Road.

Kevin Nicholls



Treatment Room

ONCE again it is pleasing to report that we came through the Northampton match with no major injury worries, except that if you were at the game you will have seen Emmerson Boyce had to be taken off at half time.

He was feeling unwell because of a lower abdominal problem, which restricted his ability to sprint. At the time of writing he was responding to treatment.

Mark Ovendale is under my care after injuring his hip during training. It's a problem with a muscle flexor, and not connected with the operation he had at

the start of the season. I am treating him with ultrasound and ice, and working him in the gym, and he is getting better and better.

Adrian Forbes is still flying in training, and is keen to be back in serious action, but first he must continue to work to build up muscle bulk following his knee surgery. But he will be in contention for a place in the first team squad before too long.

Aaron Skelton is still coming on well. He is working hard on his set regime, and is now starting to see light at the end of the tunnel.

Carl Griffiths is doing OK after taking a kick on a calf muscle, and I expect to see

him running again next week.

Already back in action is Sol Davis, who has not figured in the first team since New Year's Day. His reward for his hard work was to go with the reserves for half a game at Cardiff on Wednesday. Brian Stein was happy with his playing performance, and it is very pleasing for me to report that he came through with no ill-effects at all. If all continues to go well in training he should be in contention for this afternoon's game, and available for selection.

Lee Taylor

David Lloyd Leisure... now in your town



Call us on 01582 692046/7

Special introductory offer on presentation of this Match Day Programme

Offer available at the Luton Club only. Terms and conditions apply.


www.davidlloydleisure.co.uk

Club Secretary



I HAVE been pleasantly surprised by the number of supporters who noticed that I did not have my normal column in last Tuesday's programme, and it was good to know it was missed. The main reason, as you might guess, is that we have been extremely busy behind the scenes during the current run of home games. When we get a win, it makes it all the more worthwhile!

We are, of course, very optimistic that we will be in the play-offs at the very least, so you might like a few dates for your diary. Our league season ends with a visit to Swindon on Saturday May 3. Play-off matches, over two legs, are provisionally arranged for between May 10 and May 16, with the dates depending on selection of matches for TV coverage. The Second Division final will be at the Millennium Stadium, Cardiff, on Sunday May 25.

I am sorry if you think I am tempting providence by giving this information at this stage of the season, but a lot of supporters have asked about the play-offs, particularly those who usually take holidays at that time of year. I know the Supporters Club is already thinking about the play-off possibility, and looking forward to the prospect of organising a fleet of coaches to take an army of fans to Cardiff. Watch this space!

One function which has

become an essential "fixture" towards the end of the season is the annual player of the year presentation evening, organised jointly by Luton Town and the Luton Town Supporters Club.

It has grown bigger and bigger in recent years, and no doubt this season's function, at Vauxhall's Riverside Suite on April 27, will be another sell-out. The organisers have been giving a lot of thought about the fairest way to distribute tickets, but it is impossible to meet the demand. Capacity is limited, and is less than half the total membership of the Supporters Club. So sales will be to LTSC members only, one ticket per member, and they will be contacted in the near future about how to book. And if you are not already a member of the official Supporters Club, joining today will not make you eligible to buy a ticket – but it will give you a better chance for the presentation night in 2004. Other advantages of membership include a discount on coach trips to the Millennium Stadium!

A regular feature of the LTSC programme is a series of guest nights at which supporters can meet players and members of the management team. I reported a couple of weeks ago that an evening with Joe Kinnear had to be postponed because of horrendous traffic problems in

Luton following a motorway accident. The new date is now confirmed for Monday March 10 (7.30pm) at the Eric Morecambe Suite. The original tickets are valid for the rearranged date, and the meeting remains a sell-out.

Finally, a word about a well-known supporter. If you have been wondering where "Jack" has gone, he has been unwell, but I am pleased to tell you he is undergoing tests and is resting. He hopes to be back supporting the team at Kenilworth Road in the very near future, and we send him our very best wishes. I for one have missed seeing him at matches with his autograph book – he must be the world champion collector of Luton Town signatures.

I had intended to include in this column a lot of information about forthcoming fixtures, but space means that will have to wait until Tuesday's programme. However, just one reminder: the youth team is at home to Middlesbrough in the FA Youth Cup fifth round on Thursday, kick-off 7pm. Please come and support the youngsters – admission is only £3, and £1 for concessions. Turnstiles will be open at Kenilworth Road and at Maple Road bridge.

Cherry Newbery

You can e-mail Cherry Newbery on
clubsec@lutontown.co.uk

Ticket Office News

Nationwide League Division Two

Rearranged Luton Town v Plymouth Argyle

Tuesday February 25, 2003, kick-off 7.45pm

This is no longer an all ticket match for Luton Town supporters, but you are advised to book early to avoid disappointment

Tickets purchased for the original date on January 11 will be valid for this re-arranged date

Cash turnstiles will be open SUBJECT TO AVAILABILITY but please remember there are NO CONCESSIONS available on cash turnstiles.



Notts County v Luton Town

Saturday March 1, 2003, kick-off 3pm

This match is pay on the day only for Luton Town supporters, with no tickets available in advance from Kenilworth Road.

Prices: Adults £14, Senior Citizens £8, 12-15-year-olds £5, under-12s free

Students and unemployed people can gain entry for £7 by producing relevant identification at the Notts County ticket office.



Mansfield Town v Luton Town

Tuesday March 4, 2003, kick-off 7.45pm

This match is pay on the night only for Luton supporters, with no tickets available in advance from Kenilworth Road.

Prices: Adults £14, Senior Citizens and Juniors £7.



Luton Town v Huddersfield Town

Saturday, March 8, 2003, kick-off 3pm

Tickets are now on sale at normal matchday prices

Cash turnstiles will be open on the day subject to availability, but please remember there are NO CONCESSIONS available on cash turnstiles.



Luton Town Credit Card Hotline

By using our telephone hotline system you can order match tickets up to 48 hours prior to any game by ringing

01582 730748

You can order tickets via email on
ticketoffice@lutontown.co.uk



Wigan Athletic v Luton Town

Saturday March 15, 2003, kick-off 3pm

This match is pay on the day only for Luton Town supporters, with no tickets available in advance from Kenilworth Road.

Prices: Adults £14, Senior Citizens and Juniors £9



Luton Town v Oldham Athletic

Tuesday, March 18, 2003, kick-off 7.45pm

Tickets are now on sale at normal matchday prices

Cash turnstiles will be open on the day subject to availability, but please remember there are NO CONCESSIONS available on cash turnstiles.



Luton Town v Crewe Alexandra

Saturday, March 22, 2003, kick-off 3pm

Tickets are now on sale at normal matchday prices

Cash turnstiles will be open on the day subject to availability, but please remember there are NO CONCESSIONS available on cash turnstiles.



See Every Home League Game Guaranteed

Join the Promotion Push

and

BUY A SEASON TICKET NOW!

**Prices from £63 adult £44 concessions
for the 7 remaining games**

Just Call Luton Town Ticket Office

Tel: 01582 416976

"They will do the rest!"

Opening Hours 10am-4pm Mon-Fri.

Saturdays please ring ticket office for hours.

www.lutontown.co.uk



THE WINNING COMBINATION!

Camden



Executive Box Holders



**BILLINGTON
& LAWRENCE**

**Rob Stringer of
Epic Records**



Graham's



Ladyswood Ltd



Kenilworth Suite Members

Mr P Armitage
Belldene Construction Services Ltd
C P Contracts
Corporate Coaching
Danny & Elsie Clubb
Datapace Ltd
DBF Crosswinds Ltd
Mr M Eade
Mr R Eade
Mr K Harvey
Mr R Harvey
J P Hygiene Supplies

Mr P Mitchell
Protexx Mortgage & Financial Services
Regal Litho Ltd
Remdex UK Ltd
Mr J Siegler
Dr D Siegler
SKF (UK) Ltd
Space Display Systems
Vangis UK Ltd
Mr & Mrs R Williams
Woburn Media Ltd

If you would like a brochure or further information on Kenilworth Suite Membership please contact the Commercial Department on 01582 411622

Function & Conference Suites at Kenilworth Stadium



For meetings, receptions, presentations, parties, AGM's or product launches, all year round.

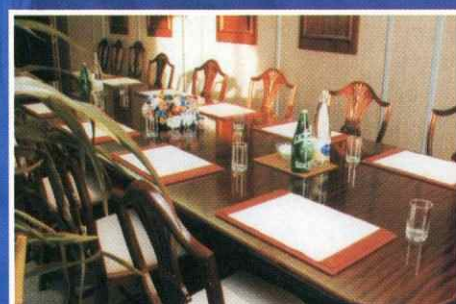
Luton Town Football Club offers unique facilities with a warm welcome.

Six function rooms offering professional catering from coffee to buffets to waitress silver service, from 8 to 80 persons.

Comprehensive business facilities include projectors and screens, flip charts, fax and photocopying.

Room layouts can be boardroom, theatre or banqueting.

Bar, dance floor and disco information available on request



Function Suite	Reception or Bar only	Conference or Dinner
Eric Morecambe Suite	100	80
Century Club	100	80
Kenilworth Suite	100	50
Joe Payne Lounge	100	45
Millennium Suite	70	35
The Boardroom	50	30

For more information call the Commercial Department on 01582 411622 or email: commercial@lutontown.co.uk

www.lutontown.co.uk

Commercial Corner



WE OFFER a warm welcome to our match sponsors this afternoon, Intasport, from Stafford. This energetic sports promotion and corporate hospitality company prides itself on giving quality and excellent services to its rapidly expanding client base.

Intasport has earned a high reputation within

DANNY Coggins takes centre stage today as a VIP visitor to Kenilworth Road. Aged ten, and from Aldbanks, Dunstable, he is our commercial mascot, which gives him an inside view of some of what goes on behind the scenes.



He has a meeting with the team in the dressing room before kick-off, and then runs out onto the pitch with them for the pre-match rituals, including a close view of the toss of the coin. Danny is a pupil at Brewers Hill Middle School, Dunstable, and his other sporting enjoyment is watching wrestling.

sporting circles as publishers of fixture charts, year planners, desk pads, team sheets and brochures for football, rugby and cricket clubs, and racecourses.

We are delighted to greet the company's two representatives and their guests, from local companies who have supported production of fixture charts and year planners. They are from R. W. Transport Services Ltd, A. E. Meeks, Shepherd Interiors, Silcoe Conference Centre, Prigmore Demolition, Michael K. Howard, Professional Driver Services, Logistic Design UK Ltd and E. Georgas & Co. We hope they have a most enjoyable afternoon.

THE MATCH ball is being sponsored by a restaurant in London run by a keen Luton Town supporter. The Black & Blue restaurant is in Gloucester Road, and the manager is Mark Fuller, who lives in Clarendon Road, Luton. It is one of two steak restaurants owned by his uncle, Alan Brown, once of Half Way Avenue, Luton, and two more Black & Blues are in the pipeline, one of them at Chiswick, within a long free kick of Griffin Park. The chain is a family-run business, run by a Luton Town family.

Linda Layton

Golden Gamble

THERE were two very good results for Town fan Jack Titmus at the Northampton game. He expected a home victory, of course, but was surprised - and very pleased - when he went home to Streatley Road, Sundon, with an extra £765 in his pocket. It was the prize in the Golden Gamble, after his ticket was picked out of the drum by Sol Davis. A nice little earner, considering the winning ticket cost only £1.

The size of the prize depends on sales: half the income goes into the jackpot kitty, and the other 50p is donated to club funds, so everyone who enjoys our little flutter helps Luton Town. So far this season 17 winners have shared £11,130 an average of £700 each. Another jackpot is on offer today, and as usual the draw is made on the pitch at half time, with the cash available immediately.



To advertise in the matchday magazine phone Luton 411622 or e-mail us at: commercial@lutontown.co.uk



Kit Sponsors

David Bayliss
WHOSH

Mick Harford
Les Miller
Miller & Company Bedford

James Osborn
Michael Capp & Danny Clubb

Emmerson Boyce
Elsie Clubb

Happy Harry
Maureen Barrett

Mark Ovendale
Sally & Sue

Chris Coyne
Mel Westwood & Family

Ian Hillier
St Mary's Church, Luton

Russell Perrett
Graham Bates & Chris Park

Dean Crowe
John Pyper & John Waterworth
"Mad Hatters"

Peter Holmes
Gill, Julie, Yvonne

Aaron Skelton
The Bobbers Travel Club

Justin Dealey
BBC Three Counties Radio

Steve Howard
Jeremy Cain of DAP Consulting

Matthew Spring
Brian Hall

Joseph Deeney
Michael Capp & Danny Clubb

Paul Hughes
Les & Sue Miller

Brian Stein
Danny Clubb

Tony Thorpe
Luton Town Supporters club

Alan Neilson
LTFC Barmy Army London Branch

Carl Emberson
The Kenilworth Connection

Marvin Johnson
Fred Barrett & Son
Licensed Property Valuers

Ahmet Brkovic
G&S Ceramics

Adrian Forbes
The Regular Rabble

Joe Kinnear
LTFC Supporters Club (MK)

Alan Kimble
Office Power Systems Ltd

Andrew Fotiadis
Sally Mayne & Family

Lee Mansell
Danny Clubb & Michael Capp

Steve Robinson
G.Owen Ceramic Tiling

Robert Gillman
Century Club

John Moore
Ian Smith

Kevin Foley
The Regular Rabble

Carl Griffiths
Paul Deason

Kevin Nicholls
WHOSH

Sol Davis
Personal Security Services



Clubs Comparison

Goals Scored	
28	Shots
9	Headers
7	Volleys
3	Penalties
1	Free Kicks
0	Own Goals

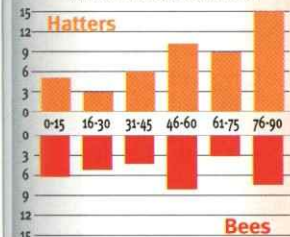
Where Goals Scored



Where Goals Conceded



When Goals Scored



Form Guide - Last 6

4	Won	0
1	Drawn	3
1	Lost	3
11	For	3
9	Against	6
13	Points	3
2	Goal Difference	-3
WWDLW	Sequence	LDL

Yellow & Red Cards	
61	Yellow
5	Red



2002-2003 Attendances

Hatters	Aggregate	Bees
103,060	81,977	
9,477	7,145	
5,890	5,112	
6,871	5,856	
69	% of Capacity	46

Average Goals per game

	For	1.10
1.55	Home For	1.21
1.67	Away For	1.00
1.44	Against	1.10
1.35	Home Against	0.64
1.33	Away Against	1.50

2002-2003 Figures

34	Players Used	27
10	Clean Sheets	11
5	Failed to Score	9
7	Goals scored from...	7
4	Corners	6
3	Free Kicks	4
5	Goals conceded from...	1
3	Corners	4
5	Free Kicks	1

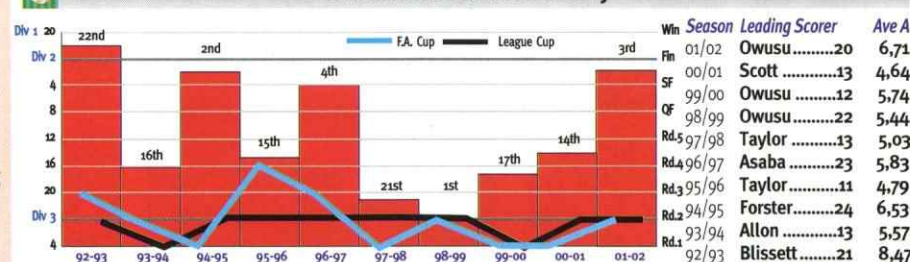
10 Year Record

Hatters	Avg Pos.	Bees
53.3	among 92 clubs	57.2
7,878	Avg Att 1993	5,570
6,842	Avg Att 2002	5,953
-13	+ / - %	7

Top League Scorers

 Howard	 Vine	
14	League Goals	9
28	Games Played	28
0.50	Lge Goals/Game	0.32
10	Points Gained	7
4	Scoring Run	1
0	Hat-Tricks	0
5	Close Range	4
7	Inside Area	5
2	Long Range	0
6	Shots	6
5	Headers	1
3	Volleys	2
0	Penalties	0
0	Direct FKs	0

Brentford's 10 Year History



Swings

LT	Games Won from:	B
0	3 Goals Down	0
0	2 Goals Down	0
6	1 Goal Down	0
0	Lost from:	0
0	3 Goals Up	0
0	2 Goals Up	0
3	1 Goal Up	1
0	Drawn from:	0
1	3 Goals Down	0
0	2 Goals Down	1
0	1 Goal Down	2
0	3 Goals Up	0
0	2 Goals Up	0
3	1 Goal Up	1

Margins

10	Won by 1 Gl	7
2	Won by 2 Gl	2
2	Won by 3 Gl	0
0	Won by 4 Gl	0
0	Won by 5+ Gl	1
6	Games	
6	Lost by 1 Gl	8
1	Lost by 2 Gl	2
2	Lost by 3 Gl	0
0	Lost by 4 Gl	1
0	Lost by 5+ Gl	0

Misc stats

6	Highest Pos.	1
24	Lowest Pos.	14
5	Winning Run	2
7	Unbeaten Run	7
3	Losing Run	3
4	No Win Run	6



MORE BITE THAN A ROY KEANE TACKLE...



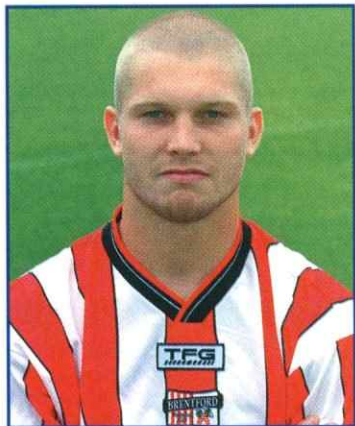


Welcome To



SQUAD NO 2 MICHAEL DOBSON b. 9.4.81

Previous Club: None



Michael established himself in the side last season as a first class defender. But his abilities show no bounds as he has also given a good account of himself both in midfield and

as a goal scoring forward. He was handed the captaincy of the side this season.

SQUAD NO 4 JAY SMITH b. 29.12.81

Previous Club: None

Jay, a former Youth team captain, is now into his second season as a professional and has established a regular place in the side this season.

SQUAD NO 6 SCOTT MARSHALL b. 1.5.73

Previous Clubs: Arsenal, Rotherham (loan), Sheffield United (loan), Southampton, Celtic (loan)

The former Youth and Under 21 Scottish International spent a tantalisingly time on the treatment table last season. But the former Arsenal and

Southampton stalwart has recovered to full fitness and has re-established his place in the side.

SQUAD NO 7 STEPHEN EVANS b. 25.9.80

Previous Club: Crystal Palace, Swansea City (loan). Twenty two year old Stephen joined the Bees from Crystal Palace just before the end of last season where he gained Welsh Under 21 honours. He has now forced his way into contention with sterling performances in both central defence and midfield.

SQUAD NO 8 MARK WILLIAMS b. 19.10.81

Previous Club: None Mark, a speedy and direct forward, who is a product of the

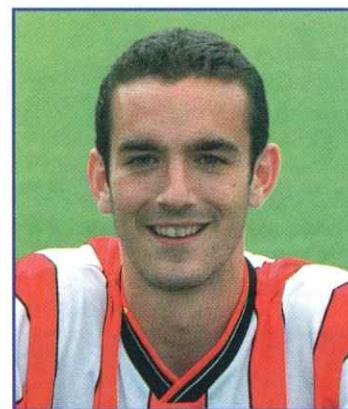
Brentford FC



Bees Youth squad, has now made more substitute appearances for Brentford than anyone in the Club's history. However he is keen to change that to full appearances this season.

SQUAD NO 9 KEVIN O'CONNOR b. 24.2.82

Previous club: None



Twenty year old Kevin has progressed through the ranks and signed pro forms as a seventeen year old. He has forged a permanent place in the first team this season with very consistent performances.

SQUAD NO 10 STEPHEN HUNT b. 1.8.80

Previous Club: Crystal Palace Steve joined the Club last season from Crystal Palace having graduated through their youth team and went on to make almost 40 appearances for the Bees which earned him an international call up to the Republic of Ireland Under 21 squad.

SQUAD NO 11 MARTIN ROWLANDS b. 8.2.79

Previous Club: Farnborough Town.

Locally born Martin with both Football League and Republic of Ireland Under 21 honours already under his belt will, after a disappointing season injury wise, be looking to return to his scintillating best this year. Although limited to just eleven full League appearances last season he scored seven goals in the process.

SQUAD NO 12 JAY TABB b. 21.2.84

Previous Club: Youth

Jay, an influential midfielder with the Youth squad over the past few seasons, is expected to make the transition to first teamer this season. But has had to bide his time having collected an injury in pre season.

SQUAD NO 13 PAUL SMITH



b. 17.12.79 Previous

Club: Carshalton Athletic, Barnet, Charlton Athletic, Tottenham Hotspur.

6' 4" Paul forced his way into the side last season and held his place as the Bees progressed to the Play Off Final keeping a clean sheet in 50% of his appearances. He has since held his place with confidence showing lots of potential.

SQUAD NO 14 MATTHEW SOMNER b. 8.12.82

Previous Club: Youth

Matt graduated through the Bees youth team and made his debut for the Bees towards the end of the season before last. This season he has been a regular in the side.

SQUAD NO 15 JAY LOVETT b. 22.1.78

Previous Club: Crawley Town

24 year old Jay was signed by the Bees having impressed in a pre season friendly against Crawley Town two years ago, but has been unable to gain a regular place in the side this season.

SQUAD NO 16 LEE FIELDWICK b. 6.9.82

Previous Club: Youth

Lee, a graduate of the youth squad, is now in his second year as a professional.



Welcome To

SQUAD NO 17

MARK McCAMMON
b. 7.8.78

Previous Club: Cambridge United, Charlton Athletic
6'3" Mark was signed by the Bees during the 2000 close season. Formerly a non-contract player with Cambridge United, he earned himself a contract with the then First Division Champions Charlton following an impressive trial period in which he scored seven goals in ten Reserve team outings.

SQUAD NO 18
EDDIE HUTCHINSON
b. 23.2.82

Previous Club: Sutton United

Eddie was signed two seasons ago from Sutton United in a deal worth up to £75,000. The 6'1" midfielder had made his debut for the Nationwide Conference side the previous season as a seventeen year old and immediately impressed a number of League clubs. He is expected to progress even further this season.

SQUAD NO 19
MARK PETERS
b. 4.10.83

Previous Club: Southampton
Nineteen year old Mark joined the Bees from Southampton towards the end of last season where he had top scored for their Under 17 Academy side

for each of the past two seasons.

SQUAD NO 20
RIZ REHMAN
b. 19.11.82

Previous Club: Youth
One of five Youth team players who have signed their first pro contracts.

SQUAD NO 21
DANNY ALLEN-PAGE
b. 30.10.83

Previous Club: Youth
One of five Youth team players who have signed their first pro contracts

SQUAD NO 22
ALAN JULIAN
b. 11.3.83

Previous Club: Youth

Last Season
The Nationwide Football
League saw an Increase in
Attendance of 13.5%;
Why...?



The authority.



The Quality of the Football

Image by Emptek 0115 840 444 Digital Artwork by SennyBox 01895 251 220

Brentford FC



Alan has graduated through the youth ranks at Griffin Park, and during the past two seasons has earned international recognition with the Northern Ireland Under 18 squad.

SQUAD NO 23
LLOYD BLACKMAN
b. 24.9.83

Previous Club: Youth
One of five Youth team players who have signed their first pro contracts

SQUAD NO 24
ROBERT TRAYNOR
b. 1.11.83

Previous Club: Youth
One of five Youth team players who have signed their first pro contracts

SQUAD NO 25
STEPHEN HUGHES
b. 26.1.84

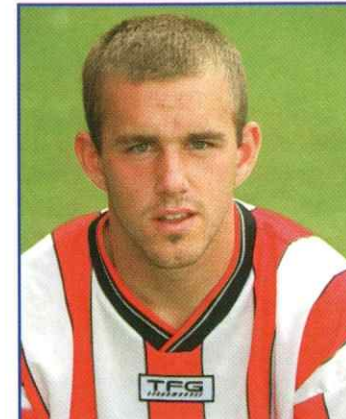
Previous Club: Youth
One of five Youth team players who have signed their first pro contracts.

SQUAD NO 26
LEON CONSTANTINE
b. 24.2.78

Previous Club: Millwall
Leon was signed by Millwall from Edgware Town in the summer of 2000. He impressed in pre season for the Bees, including a hat trick against Crawley and was subsequently offered a year's contract.

SQUAD NO 27
ROWAN VINE
b.12.9.82

Previous Club: Portsmouth



A product of Pompey's Youth system, the 6'1" striker joined the Bees on a season long loan, scored on his debut at Huddersfield on the first day of the season, and has led the Bees' scoring charts ever since

SQUAD NO 28
JAMIE FULLARTON
b. 20.7.75

Previous Clubs: St Mirren, Bastia (France), Crystal Palace, Bolton, Dundee United.

Jamie, is a former Scottish Under 21 International having gained 17 caps at that level. He scored on his debut for the Bees, Brentford's first goal of the season, and his experience in midfield has proved invaluable.

SQUAD NO 29
LEO ROGET
b. 1.8.77

Previous Clubs: Southend United, Stockport County, Reading (loan) Leo played in the Bees final pre season friendly at Millwall, and was

immediately offered a contract. However he picked up an injury against Port Vale in October which has ruled him out until the new year.

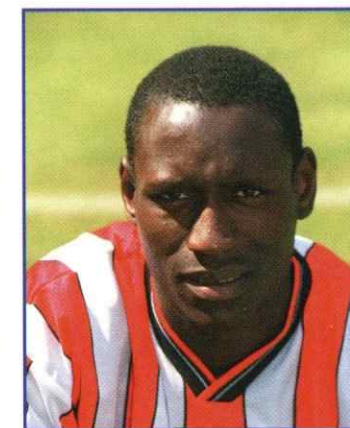
SQUAD NO 30
ANDREW FRAMPTON
b. 3.9.79

Previous Clubs: Crystal Palace

The Wimbledon born player is predominantly a left sided defender, and had made about thirty First Team appearances for the Selhurst Park side before signing for the Bees in October 2002.

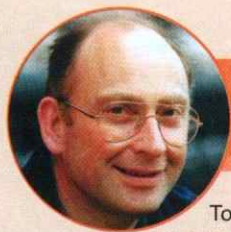
SQUAD NO 31
IBRAHIMA SONKO
b. 22.1.81

Previous Clubs: FC Grenoble



Ibu, as he is affectionately known, impressed in a pre season friendly at Fulham and was immediately offered a contract. Has since been selected for International honours by his native Senegal as captain of the Under 21s.

For the latest news, views and interviews call:
CLUB CALL on 09068 121123 (calls cost 60p per minute at all times)



Blast From the Past

Today we welcome Brentford back to Kenilworth Road after an absence of a couple of seasons. The Bees are one of our oldest opponents with games stretching back to the beginning of the last century.

A James Blessington strike for the Hatters separated the two sides in our first competitive meeting on 28th September 1901. A crowd of 2,460 had turned out at York Road to see the Bees in their first home Southern League Division One fixture after their promotion as champions of Division Two the previous season.

Both clubs became founder members of Football League Division Three in 1920 with the first clash at this new level taking place at Kenilworth Road on 4th December 1920 when goals from Ernie Simms and Allan Mathieson secured a 2-0 victory.

We went down 0-1 at Griffin Park the following week, but during the period leading up to the Bees' eventual promotion in 1933 we were successful three times in West London and proudly remained unbeaten at Kenilworth

Road.

The game at Kenilworth Road in February 1933 stands out in our history as the only 5-5 draw we have experienced in the league. We were coasting 4-1 up at the interval with Tom Tait having banged home a hat-trick but eventual champions Brentford fought back with a vengeance in the second period and we were, in the end, lucky to hang on at 5-5. Jack Holliday scored all five for the Bees, a club record still standing to this day. It was a pity that only 3,044 witnessed this amazing game.

Fourteen years were to pass before we were to meet again, in the old Division Two, and in two early season games in 1947/48 the Town's Hugh Billington went some way towards emulating Holliday's record by netting all six goals in two 3-0 wins.

Apart from a 3-3 draw at Griffin Park in 1952, all games were low scoring leading up to Brentford's relegation in 1954, and a 1-0 win in West London in April 1954 typified affairs and was the final nail in the coffin as the Bees were demoted to Division Three.

Paths crossed again in 1963/64, and when we travelled to Griffin Park in February 1964 we needed little reminding that over 16 months had passed since we last won on foreign soil in the league. Also mindful that Brentford had coasted to an easy victory at Kenilworth Road earlier in the season no one could have predicted that the Town would end up 6-2 winners!

New striker John O'Rourke netted four that afternoon, making an instant name for himself and setting up a grandstand fight against relegation which was won with a game to spare at the end of the campaign.

Brentford did not allow O'Rourke to repeat this feat as, on the opening day of the following season, he was badly injured during the 2-2 draw at Griffin Park and his absence for the major part of the campaign was the main factor behind the Town's eventual relegation to Division Four.

The Bees were relegated the season after and following an early campaign defeat at Griffin Park we gained ample revenge in winning 3-0 at Kenilworth Road with



Jack Taylor scores a spectacular goal at Griffin Park during the 3-3 draw in 1952.



Hatters v Bees through the ages

David Pleat on the scoresheet.

We won promotion the year after and Griffin Park holds a special memory during that campaign as we went top of the table for the first time following a 2-0 win there in February 1968, a position we then held to the end of the season. The championship trophy was presented to us on the final day with Brentford the visitors to Kenilworth Road. Unfortunately, the T.V. cameras, plus a crowd of 14,643 were treated to a tired performance but a 2-1 win all the same.

We met briefly again during 1992/93 with our win at Griffin Park the first of the campaign and coming after six starts which had seen us holding up the rest of the table.

The 0-0 draw at Kenilworth Road the following February is best forgotten, but it is interesting to note that the Bees were nine points ahead of us at that stage in the season but ended up being relegated while we avoided the drop at the death.

The remainder of our meetings have all taken place in the new

Division Two starting with an early season clash at Griffin Park in 1996 following our own relegation. Most Luton supporters were confident of an instant promotion but received a rude awakening as the Bees fought back to win 3-2 after being behind twice.

We gained some revenge in the return when Tony Thorpes' single strike earned all three points in front of the Sky cameras and with it a brief flirtation with top spot in the table.

Both ourselves and Brentford reached the play-offs that season with neither side successful and the following campaign proved to be an anti-climax as we both struggled throughout.

A 2-0 win over the Bees at Kenilworth Road in October 1997 courtesy of strikes from Graham Alexander and Thorpe turned out to be vital for, in our last away game of the season at Griffin Park, the game was billed as a proverbial 'six pointer' with both sides fighting to avoid the drop.

Able led by Gary Waddock, playing his last game for the Town, we secured a vital point and with it

safety for another season.

Goals from Dwight Marshall and the best loan signing we have ever made, Rory Allen, made it 2-2 in a tense and fractious game. Brentford were relegated the following Saturday but bounced back at the first time of asking as a much improved side as witnessed by their double win over us in 1999/2000.

During our own relegation season of 2000/01 two goals from Stuart Douglas, in his first start of the campaign, helped earn a 3-1 win over the Bees at Kenilworth Road. The victory proved to herald a false dawn as by the time of the return at Griffin Park we were dead and buried.

The game had 'end of season' written all over it but sparked into action when Mark Ovendale was sent off early on leaving Scott Ward, on his debut, saving the resultant penalty. The game then swung from end to end finishing 2-2 with the highlight being Steve Howard's strike from near the half-way line into an empty net!

Roger Wash

Yesterday's pages



The programme for the amazing game against Brentford in 1933 which finished 5-5 was the Town's normal issue for the time. Most of the 16 pages were taken up with adverts and the choice of pale green paper of an almost blotting paper consistency does make reading difficult and sends your eyes funny!

The match was played on a Wednesday afternoon only a few days after the famous F.A Cup victory over Tottenham and reference is made in the programme to the thaw which had set in since the weekend being bound to affect the pitch. Perhaps the low attendance for the match against the Bees can be attributed to both the early kick-off and doubts over whether the game was to be played.

Elsewhere in the programme, gramophones and radiograms were obviously all the rage as there were no fewer than four adverts encouraging Town supporters to buy. The prices ranged from 12 guineas (£12.60) up to a massive 32 guineas (£33.60).

Fans on the road

THEY didn't fill the away end, but at least Northampton brought more than the average number of fans for last week's game. The figures for the season so far:

Hatters Away

Blackpool	781
Plymouth	773
Cardiff	314
Brentford	1,493
Watford(WC)	4,404
Huddersfield	700
Aston Villa (WC)	4,588
Stockport	680
Oldham	610
Woking (LDV)	262
Crewe	585
Northampton	1,250
Stevenage (LDV)	1,199
Tranmere	839
Wigan (FAC 2)	769
Bristol City	709
Wycombe	2,039
Chesterfield	1,076
Barnsley	858
Peterborough	2,928
Port Vale	884
Total:	27,741
Average:	1,321

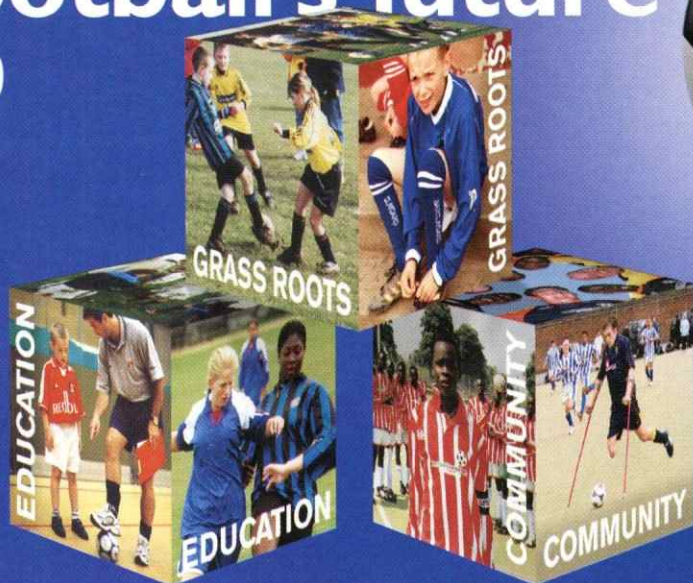
Visitors to Luton

Peterborough	990
Barnsley	504
Chesterfield	366
Notts County	341
Mansfield	160
Cheltenham	328
Wigan	425
Port Vale	247
Guiseley (FAC)	467
QPR	1,851
Cambridge (LDV)	571
Colchester	527
Cardiff	1,090
Wycombe	702
Blackpool	491
Northampton	905

9,965
623

football's future

building



FootballFoundation

football's biggest supporter



Helpline 0800 0277766 www.footballfoundation.org.uk



Sealed Explorer spherical roller bearings

The SKF Explorer bearing range represents a totally new generation of spherical roller bearings. The Explorer range has accommodated up to 25 per cent higher torque loadings, and provided a 300% increase in service life, compared with the equivalent size of standard spherical roller bearings.

Now, SKF has unveiled a range of sealed-for-life Explorer bearings that reduce grease consumption, lower life cycle cost, lower recycling costs and reduce pressure on the environment.

Sealed Explorer bearings are supplied in normal and high temperature versions. The normal version uses a nitrile rubber double lip seal and a standard grease. The high temperature version, which is primarily suited to low speed operation, has a fluoro rubber seal and a high-temperature grease, and can withstand high axial and radial loads and tolerate up to 0.5° misalignment.



SYSTEM 24 automatic lubricators

SKF SYSTEM 24 is a practical, cost-effective solution to overcome the fact that 36 per cent of all premature bearing failures are caused by poor or inadequate lubrication. It's 'fit and forget' concept between extended scheduled changes reduces demands on maintenance staff bringing new levels of confidence and lowers overhead charges.

SYSTEM 24 is ideal for applications such as pumps, fans, compressors, chain drives, cranes and especially machinery running around the clock as part of a continual process.

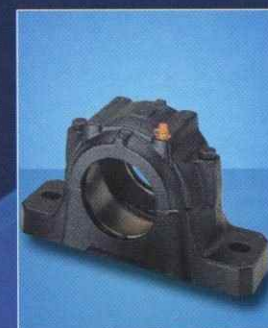
Each SYSTEM 24 cartridge is hermetically sealed to prevent ingress of dirt and foreign matter. Grease flow rate is set via a simple Allen key adjustment. A transparent container shows visually the dispense rate, and lubricant cartridges are available pre-filled with a variety of greases or oils.



SPEEDI-SLEEVE sealing solution

An oil seal's job is to 'seal in' oil or grease, keeping bearings lubricated and contaminants out. However, in most industrial environments, dirt or other abrasive particles collect and become lodged under the lip of the seal, where they eventually cut a groove in the surface of the shaft. These grooves cause oil to leak out past the seal, ultimately leading to bearing damage.

To combat this problem, SKF has introduced SPEEDI-SLEEVE for fast and effective refinishing of seal-worn shafts. SPEEDI-SLEEVE is quicker and more efficient than remetalizing or regrounding and, in contrast to these methods, provides a perfect seal, even in the harshest environments. SPEEDI-SLEEVE bridges the gap between a standard sleeve and an expensive custom shaft treatment such as diamond coating, and the super hardened surface provides protection against corrosion and abrasion.



SNL bearing housings

Split plummer block bearing housings are primarily used to simplify self-aligning bearing installation. SKF's SNL bearing housing range is a premier quality product that has increased stiffness and improved lubrication to provide an economical solution to demanding applications. Available for shafts from 20 to 160mm diameter; together with the new Large SNL range for shafts from 150 to 500mm diameter.

The quality of the bearing housing has a dramatic impact on the performance and lifetime of the bearings themselves. Even high quality bearings installed into poor fitting housings have their lifetimes shortened. This occurs for a variety of reasons, such as the bearings becoming distorted due to poor clamping, or misalignment through poor geometry or manufacture.

Value-Added Solutions

SKF's Value-Added programme consists of an extensive range of standard and problem-solving products and services, designed to increase your competitiveness.

Contact SKF today for further information on any of the products featured, or to receive a FREE SKF Interactive Engineering Catalogue on CD-ROM.



Version 2.0
now available

For further information please complete the relevant areas and return to:
SKF FREEPOST MK1540 Luton LU3 4BR.

- ☐ Sealed Explorer ☐ SPEEDI-SLEEVE
☐ SYSTEM 24 ☐ SNL bearing housing
☐ Interactive Engineering Catalogue

Name
Company
Address
Postcode
Tel
E-mail

SKF

SKF (U.K.) Limited
01582 496436 marketing.uk@skf.com www.skf.co.uk



Action Replay

A VIRTUOSO display of old-fashioned winger's skills led to the Town missing the chance to move back into the play-off zone. And while Joe Kinnear shared the admiration for visiting right winger Martin Bullock, he was not pleased with the defensive failings which contributed to the Town's fifth home defeat of the season.

"We should have dealt better with the crosses that led to the goals," he said. "Bullock did well, but we have let ourselves down defensively. And if we had been more clinical with our finishing we could have got something out of the game."

Defeat was tough on Tony Thorpe, who shared man of the match honours with Bullock. Blackpool assistant manager Mark Seagraves said that they had decided they must work hard to try to shackle Thorpe and Steve Howard, and he was well pleased to restrict the Town to a single goal.

Bullock tortured the Town's left flank with his pace and strength on the ball, with the ability to cross on the run the final thrust into the heart of the Town defence.

The Blackpool press followers chuckled as the Town struggled against the former Barnsley man. If only he could play like that every game, they said, wistfully.

Bullock's first decisive contribution came after ten minutes, in Blackpool's first seri-

Luton Town 1 Blackpool 3 (HT 0-1)

ous attack, after they had been content to do a containing job in the early minutes. They had been fortunate when livewire Thorpe fired narrowly wide after combining well with Ahmet Brkovic and Howard. We can only wonder if things might have been different if that third-minute effort had given the Town the lead. But there was a lot to admire about Blackpool's well-drilled organisation.

The opening goal came when Bullock hared down the right and played a neat ball into the path of John Murray, whose angled shot produced the first of his hat-trick. In a good contest both sides looked decent, and we thought we had the platform for victory when Thorpe netted his tenth of the season three minutes into the second half, from a chance expertly conceived and taken, with Kevin Nicholls and Dean Crowe setting it up.

Alas, Murphy replied with a header from another Bullock cross four minutes later, and the final goal came on 76 minutes, after Bullock and Scott Taylor carved out a tap-in for Murphy.

The Town had chances after that, but Blackpool stood firm, pulling men back to defend in numbers, and always a threat on the break as they took their unbeaten run in the league to ten games.

Seagraves said: "We defended well against Thorpe and Howard, and while Bullock was tremendous, so were the rest of the team. We like to pass and play, and we came here to match Luton for work rate and then let the football take over.

"Even when Luton got their equaliser I felt we would create more chances. I think we played well. We had to."

The Town boss was disappointed but not too downhearted, and will not be at all surprised if we have to play Blackpool twice more this season. Both look good bets for the play-offs, he said, and while every defeat is unwelcome the top six is still a realistic target.

Luton Town: Ovendale; Boyce, Willmott, Coyne, Neilson; Crowe, Nicholls, Spring, Brkovic (Hillier 72 mins); Howard, Thorpe. Unused subs: Emberson, Kimble, Hughes, Griffiths.

Booked: Matt Spring, Dean Crowe, Alan Neilson and Ian Hillier, all for fouls.

Blackpool: Barnes; Grayson, Flynn, Hendry (Clarke 73 mins), Richardson; Bullock, Evans, Southern, Coid; Murphy, Taylor. Unused subs: Wellens, Thornley, Walker, Loneragan.

Booked: Leam Richardson and Mike Flynn, for fouls on Dean Crowe and Tony Thorpe.

Referee: Grant Hegley, Hertfordshire.

Attendance: 6,563 including 491 visiting fans.



HELD BACK: Dean Crowe manages to get his shot away despite Chris Clarke's crafty tug on his shirt.

RIGHT: Chris Coyne gets down to business to halt Blackpool striker Scott Taylor.

BELOW: Matt Spring sat full stretch in the midfield battle.



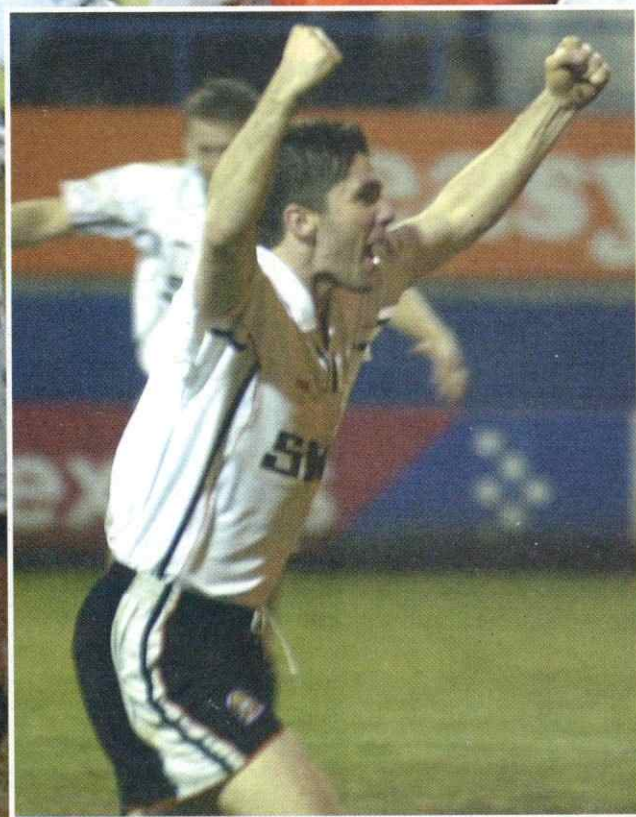
Action Highlights

Luton Town 1 Blackpool 3

OUTNUMBERED BUT STILL ON TOP: Steve Howard rises above everyone to win a header.

RIGHT: At the double are Chris Coyne and Tony Thorpe in competition with Blackpool goalkeeper Phil Barnes.

BELOW: Tony Thorpe celebrates after his tenth goal of the season.



Find Freedom within.....

Fitnessfirst
Health Clubs



*no other Health Club offers you more for less...
.....with no need for contracts*

*Fitness First Luton, Skimpot Lane, Luton, Beds, LU4 0JB
Tel: 01582 560200
www.fitnessfirst.co.uk*

CONNECT WITH YOUR CLUB



Luton Town
09068 121 123

Club Call

TELETEXT OnTV p21 Calls cost 60p/min. ClubCall EC2A 4PF

Hatters Away



Meadow Lane

THE TOWN make two trips to Nottinghamshire next week, for games at Notts County on Saturday and Mansfield on the following Tuesday evening. Town on Tour and the Bobbers Travel Club will be running to both matches.

For the trip to Meadow Lane, the Bobbers will set off from Cranfield at 10.30am, leaving Luton an hour later. Fares are £10.50 for adults, and £5.50 for concessions.

Town on Tour departure time from Luton is also 11.30, with a pick-up at Milton Keynes Coachway at around 11.50. Their fares are £12 for adult LTSC members and £10 for concessions, and £14 for non-members.

For the game at Mansfield Town on Tour will leave Luton at 4pm, calling at MK Coachway about 20 minutes later. Fares are £13 for adult LTSC members, £11 for concessions, and £15 for non-members.

The Bobbers will leave Cranfield at 3pm and Luton at 4pm and their seat prices are £11 for adults and £9 for pensioners and under-16s.

The Road To Meadow Lane

DRIVING to Meadow Lane is usually easy, taking two hours or less if the motorway is running smoothly. Take the M1 north, and leave at junction 24, to join the A453, signposted to Nottingham south. Follow the signs towards West Bridgford and after nearly two miles watch for the junction just before a big fly-over. Turn off, to avoid going onto the fly-over, onto the A52 signposted towards Grantham. At the first roundabout turn left, still on the A52,

and you soon come to a mini-roundabout where you turn right, staying on the A52, and you will then pick up the signs for football and cricket traffic - Notts County, Nottingham Forest, and Trent Bridge cricket ground are all close together.

The route keeps you on the Grantham Road for nearly six more miles, and at the third roundabout turn left on the A6011 signposted to Nottingham. At a T junction, with the Trent Bridge Inn on your left, turn right, over the bridge over the Trent, passing Forest's ground on your right. Meadow Lane is the first on your right after you cross the bridge. Street parking can be a little difficult, but there are plenty of car parks around the ground, at reasonable prices.

Mileage from Luton: 103

Motoring To Mansfield



Field Mill

MANSFIELD is a little further than Meadow Lane, and you might be

well advised to allow longer for the drive because of evening traffic on the motorway. Leave Luton on M1 going north, and carry on beyond Leicester and Nottingham to junction 27, where you turn right to follow the signs towards Mansfield on the A608. Pick up and follow the signs to Mansfield on the A611, and about four miles beyond the motorway you come to a T junction, where you turn left onto the A60, the Nottingham Road. Follow that and after nearly a mile bear left to take the ring road, signposted towards the town centre. Watch for a pub on your left, called the Early Doors, and just after that, at the next set of traffic lights, turn left into Quarry Lane and the ground is on your right. It has a good car park.

Mileage: 110.

Bookings for away games travel can be made at LTSC or the Bobbers kiosks in Kenilworth Road, before or after home games. Paul Deason on 01234 750996 will take phone bookings for the Bobbers, whose service includes pick-ups at Cranfield, Marston Moretaine, Ampthill, Flitwick, Westoning and opposite the Travelodge Motel in Dunstable Road, Luton, close to the M1. Town on Tour is an offshoot of Luton Town Supporters Club, and members get the best deals. You can book seats by calling 07960 567465. Maple Road car park, which will be stewarded, is available for coach passengers, at £4 per car.

Ever thought about being a match ball sponsor?
Call the Commercial Department on **01582 411622**



LTFC in the Community

Working in conjunction with Bedfordshire Football Association

TODAY is a special day for the Luton Town FC Community Department, because this afternoon's game sees the launch of our Disability Development Plan.

This has been put together under the guidance of Christie Tonev, Glen Keeley and Steve Johnson of the English Federation of Disability Sport, with the assistance of Luton Borough Council and The Bedfordshire Football Association. To celebrate the occasion Steve, who was captain of the English National Amputees team in the last World Cup, has bought the current squad today to put on a small exhibition game.

We have been given permission by the EFDS to implement the ideas outlined in our development plan. The EFDS will assist us initially with a grant to help us find our feet, and as we progress more funding opportunities will open up to us. In turn they will help us to provide more opportunities for local people. The cheque will be presented to us before today's game.

To complete the occasion I have asked a group of local children who will, hopefully, be among the first to benefit from this scheme, to receive the cheque on my behalf.

The club, through myself and Community Coach Steve Patterson, have two qualified disability coaches, and it is my intention to eventually ensure that all of my coaches hold this qualification.

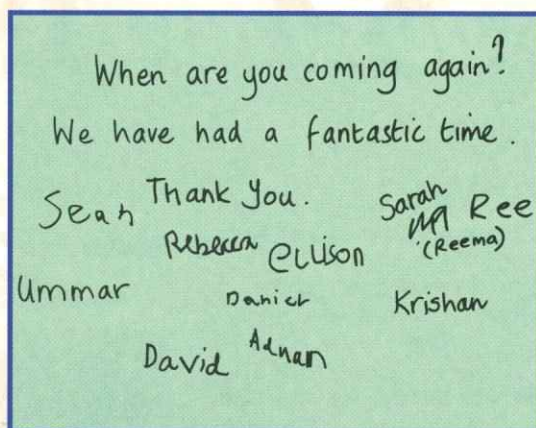
We have begun our work in this area by delivering Curriculum Time Coaching to the special needs children at Richmond Hill School. The response has been fantastic, from pupils and staff alike, and the enthusiasm they have shown has made it all so worthwhile.

Additionally, in six weeks the children have improved their football skills no end. We will continue this in other local schools, and in the



not too distant future begin to put together a series of out-of-school activities for the children who wish to participate.

I am very proud of the response we have received from the children, and have included in this article a picture of the communication we received from the children. It shows a small group of the children we have been working with, I think their words say more than I can.



Stuart Smith



RAILTRACK
SAFETY IS OUR GOAL



The place to shop
in Bedfordshire
Home Lane,
Bedford -
01234 357330
HARPER SHOPPING

LTFC in the Community

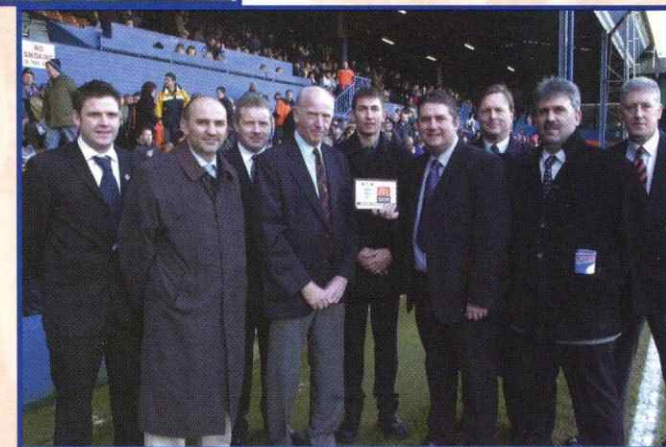
On my page a few weeks ago I told you about the outstanding achievements of Crawley Green Youth, Leighton Utd Youth and Kempston Colts/Rovers in achieving the Football Association Charter Standard Community Club Award.

As recognition of this achievement we invited the clubs to the Wycombe match, where their awards were presented to them by Russ Perrett, along with Richard Robinson and Simon McQueen of the Beds FA.



Crawley Green

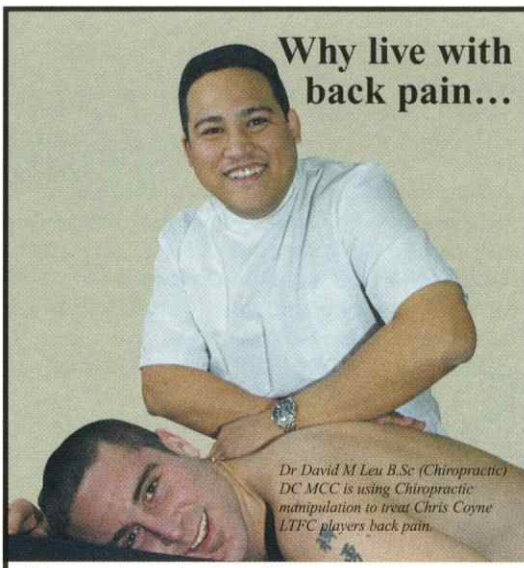
Kempston Colts/Rovers



Leighton United Youth



Why live with back pain...



Dr David M Leu B.Sc (Chiropractic)
DC MCC is using Chiropractic manipulation to treat Chris Coyne LITFC players back pain.

Major professional teams are benefiting from Chiropractic treatment for their sporting injuries

BACK TO BACK Chiropractic Clinic
Member of the British Chiropractic Association
Registered with the General Chiropractic Council

To make an appointment: **01582 391000**
268 Crawley Green Rd, Stopsley, Luton, Bedfordshire, LU2 0SJ

TOWN TEASER

IF YOU know your Town Trivia, you could win a pair of match tickets in our Town Teaser competition. Listen to the PA announcer before kick-off for your chance to have a go. Last week we asked about the player who was gutted to miss the game with Northampton, and the answer, of course, was Steve Howard, who was unable to play against his former club because he was suspended.

TODAY'S QUESTION

THE LAST time we saw any goals in a match between Luton and Brentford was in a 2-2 draw at Griffin Park in May 2001. Paul McLaren got one of the Town's goals. Who hit the other, from a range of about 50 yards?

www.lutononline.co.uk

The Luton News The Dunstable Gazette

The Winning Team

Get the latest Hatters news every Wednesday

Every Wednesday read the latest match reports, transfer news, interviews **plus much more...**



FOR SUBSCRIPTION DETAILS CALL 01234 409218



Junior Hatters



TICKETS are selling well for our next Junior Hatters awayday football trip, to Notts County on Saturday. We always enjoy our visits to Meadow Lane, and once more the Young Magpies are putting on entertainment, including a five-a-side soccer tournament. We might also be able to send out a mascot with the Town team, in which case the choice will be made by lucky dip on the coach to Nottingham.

If you want to be considered, or would like to play

in the football game, make sure you bring your Luton Town kit with you, including trainers.

The coach will leave at 10am, and the cost is £10 for Junior Hatters and £13 for guests. You can reserve a place on any weekday at the Community Department, which is in Oak Road, or by phoning the department on Luton 391927. Bookings on match days are taken at the ticket office.

We expect to be running a trip to Wigan on March 15, and hopefully details will be available in time for publication in Tuesday's match day magazine.

TODAY'S MASCOT

WHEN his family moved home up to Leicestershire, 13-year-old Chris Gollop was not going to let that get in the way of supporting Luton Town and keeping up his Junior Hatters membership.



He now lives in Main Street, Cotesbach, Lutterworth, but is still a regular, with his dad Mark, in the Kenilworth Stand.

Today, thanks to the luck of the draw, he is our mascot, which means that he joins the team in the dressing room before the game, and no doubt will be able to have a chat with Chris Coyne. The defender is his favourite player.

A pupil at Eton, Chris loves watching Luton Town, and his ambition is to be a professional cricketer. Golf is the other sport which figures on his hobbies list.

Today's ball boys are Daniel Barnes, of Hooper Close, Kempston, and Thomas Ashford, of Pipers Lane, Aley Green.



JUNIOR Hatters mascots have important duties at Luton Town games, including meeting the VIPs before kick-off. Pictured with the skippers and match officials as they gathered for the toss of the coin at the Blackpool match is 11-year-old Kieran Doherty, of Sunset Drive, Luton, who enjoyed everything about the day, except the result!

Happy Harry

JUNIOR Hatters membership is open to any boy or girl aged from 0 to 16 who supports Luton Town, and if you want to know more please contact the Community Department in Oak Road, or phone Luton 391927. There are lots of advantages, including bargain-price trips to away games, and the chance to be mascot at home matches - the choice is made at random from the membership list.

The Official Club SMS text service.
use your mobile to **sign up now!**



BE AT THE MATCH WHEREVER YOU ARE!

The Gold Service

- Team line-ups before kick-off
- Every league & cup goal
- Half & full time divisional round ups
- Red cards
- **Exclusive** match quotes from the gaffer or key player – straight after the game!
- **Exclusive** club breaking news

To receive this package simply text:
CLUB LUTON GOLD ON
to 82222

The Silver Service

- Every league & cup goal
- Full time divisional round ups
- **Exclusive** club breaking news

To receive this package simply text:
CLUB LUTON SILVER ON
to 82222

The Away Service

If you already go to all the home games, this one's perfect for you!

- Every away league & cup goal
- Full time divisional round ups for all away matches
- **Exclusive** club breaking news

To receive this package simply text:
CLUB LUTON AWAY ON
to 82222



By signing up to this official service you're directly supporting the club.

Brought to you by www.lutontown.co.uk

This service is available to UK Vodafone, Orange & O2 mobile customers. The cost of each SMS text message sent shall be a maximum of 25p and will be charged direct to your mobile phone bill or deducted from your mobile phone's pre-pay balance. The cost of calling 8222 for your club's official SMS service will be charged at your normal text rate. All charges are inclusive of VAT. Full terms & conditions can be found on the mobile zone at your club's official website.

Limited Offer!

10% OFF Travel Insurance!

Travel Extras are offering Hatters supporters the opportunity to book 'everything but the flight' with 10% OFF Car Rental!

PLUS! Book before 31 March and get 10% OFF your Travel Insurance!

So, whether you would like to travel within the UK, to a low-cost airline destination or worldwide, choose from over 500,000 cars, thousands of 3 to 5 star apartments and hotels, great price insurance and parking at all major UK airports!

Book now!

To book, simply call one of Travel Extras dedicated LTFC advisors and quote 'The Hatters'.

Alternatively, visit the web site to select your car rental, accommodation, insurance and parking - and remember to book before 31 March to receive your Travel Insurance discount!

Hatters supporters preferential pricing structure will automatically be discounted both on and off-line. Remember to also take advantage of your car rental discount for all your business travel needs.

Global car rental from less than £10 per day!

- ❖ 500,000 cars at 5,000 locations
- ❖ **GUARANTEED** on-airport
- ❖ Quality trusted suppliers
- ❖ Wide choice of vehicles
- ❖ One way rentals
- ❖ Fully inclusive rates!



10% OFF car rental!

Worldwide hotel rates from £25 pppn!

- ❖ Hotels, apartments and villas
- ❖ UK and European City breaks!
- ❖ Sunshine, snow and shopping destinations
- ❖ Leisure and business
- ❖ Low-cost airline locations
- ❖ Great choice of 3 to 5 star!



Travel insurance from £15 for 10 days European cover!

- ❖ UK, Europe and worldwide cover
- ❖ Single trip or annual policies
- ❖ Winter sports
- ❖ Group bookings
- ❖ Comprehensive cover
- ❖ Extra-ordinary value!



10% OFF until 31 March!

UK airport parking from £4.25 per day!

- ❖ All major UK airports
- ❖ On and off-airport
- ❖ Secure parking
- ❖ Short and long term rates
- ❖ **GUARANTEED** availability
- ❖ **NEW!** Eurostar (Waterloo) parking at great rates!



08707 27 37 27
travelextras.com/ltfc

travelextras 
for everything but the flight



Regal Litho

352 Selbourne Road
Luton Beds LU4 8NU
Tel: 01582 493332
Fax: 01582 560731
ISDN: 01582 560854
Email: regallithold90@atlas.co.uk
www.regallitho.co.uk

- ◆ Digital Artwork
- ◆ Conventional Repro
- ◆ Platemaking
- ◆ Colour Printing
- ◆ Finishing
- ◆ Distribution
- ◆ Stationery
- ◆ Point of Sale
- ◆ Brochures
- ◆ Commercial Print
- ◆ Magazine Publishing

The Publishers & Printers of:

**Scale
Aircraft
Modelling**

**Scale
Aircraft
Monographs**



IMPROVE YOUR OUTLOOK WITH SERENADE WINDOWS

Fitted as standard

- Saracen shootbolt locking white scotia bead & white gaskets
- Internal or external glazed windows
 - 10 year trades insurance backed guarantee
- 1000's of satisfied customers throughout the Home Counties
- Products available in white, woodgrain and light oak
 - Coloured leaded light specialists

Before you buy elsewhere let us quote for a free no obligation estimate and friendly advice
Direct From Factory Prices • 0% Interest Available

**Serenade Windows
by design Ltd.**
HOME TRANSFORMATION
~ COLOURED LEADED LITE SPECIALISTS ~

Call 0800 214432
www.serenadewindows.com



Are You A Hatters Fan? Then Come And Join Us!



Luton Town Supporters Club is the official Hatters fans' club, but is independent and run by its members.

Benefits include discounts on away match travel, and reduced admission charges to regular meetings with players and staff, and to the end of season presentation night.

Annual membership costs a minimum donation of £7 for adults, £6 for pensioners and under-16s, or £12 for families.

For more information call at the LTSC kiosk in Kenilworth Road before or after any home game.

EVACUATION PROCEDURE

IN THE event of any emergency in the stadium, Luton Town FC and the emergency services have agreed on an evacuation procedure which is designed to ensure the safe and controlled evacuation of the crowd, and to ensure their safe dispersal from the area, to allow the emergency services to carry out their tasks.

In the event of evacuation from all or part of the stadium, you will receive instructions over the public address system on how you should leave. In an evacuation of the main stand you will be instructed to use the pitch. Stewards will direct you to the nearest exit. It may be that your normal exit route will not be available. On leaving the stadium, you will find some roads closed to pedestrians, to enable swift and unobstructed access for the emergency services. Please leave the area of the ground as quickly as possible, by the route directed. Your co-operation will be most appreciated.



Geoff Lovell, Safety Manager.

The Football Emporium



225 High Street, Bromley, Kent

WHETHER IT BE A BIRTHDAY OR CHRISTMAS PRESENT, OR EVEN A GIFT FOR YOURSELF, YOU WILL FIND SOMETHING UNIQUE, INTERESTING, OR EVEN AMUSING, FOR SUPPORTERS OF ALL CLUBS, AT THE FOOTBALL EMPORIUM. OR IF BROMLEY IS A LITTLE FAR, VISIT OUR WEBSITE

WWW.PREMIERIMAGE.CO.UK

OR CALL FOR A BROCHURE

020 8464 9421

World Cup Merchandise ~ Clothing ~ Original Art Books ~ Photography ~ Autographs ~ Toys & Games Housewares ~ Memorabilia ~ Antiques ~ Ephemera

www.hummingbirdmotors.co.uk

STRIKING BRAND NEW MITSUBISHI'S from only £7995

and a full range of Mitsubishi pre-owned vehicles

also available
• SALES • SERVICE • PARTS

Good luck Hatters, may your success continue this season



HUMMING BIRD MOTORS

41-45 LONDON RD ST ALBANS HERTS AL1 1LJ

01727 852323

email: hbmotors@btinternet.com

Open: Mon-Fri 8.30-6pm • Sat 8.30-5pm • Sun 10.30-3pm (Demonstrations on Sunday by appointment only)

Life begins at £17,995.

The new Jeep Cherokee 2.4 Sport.



It's affordable, it's available now. So what's stopping you? For details visit www.allelectricj.co.uk or phone 0121 355 0110

Hitchin Road Stopsley, Luton,
Bedfordshire. LU2 7UG
01582 725506

CANNON LANE



CHRYSLER

Jeep
THERE'S ONLY ONE

OFFICIAL FUEL CONSUMPTION FIGURES IN MPG FOR THE JEEP CHEROKEE 2.4 SPORT: URBAN 20.2, EXTRA URBAN 32.8, COMBINED 26.7. OFFICIAL CO₂ EMISSION IS 253 CO₂ G/KM. MODEL FEATURED: JEEP CHEROKEE 2.4 SPORT (171995). PRICE IS ON THE ROAD AND INCLUDES ONE YEAR'S ROAD FUND LICENCE (£110) AND 125 FIRST REGISTRATION FEE. PRICES AND SPECIFICATIONS ARE CORRECT AT TIME OF GOING TO PRESS (20/02).

new business environments

refurbishment • interiors • design and build

'All In One Solution' providing services from complete commercial property refurbishment design and build to individual office installation

- Design and Build
- Joinery
- Suspended Ceilings
- Painting and Decorating
- Electrical
- Carpets and Flooring
- Partitioning
- Exteriors
- Refurbishment



London
Midlands
South East

SPONSORS OF THE EXECUTIVE BOXES NET

Tel: 01525 405430 / 840426 Fax: 01525 840095 www.cpcontracts.co.uk

CP Contracts, The old Coach House, 6 Woburn Street, Amptill, Bedfordshire MK45 2HP



Join Britain's fastest growing trade union. Phone me on:

0800 731 81 51



Paul Kenny

Paul Kenny

Paul Kenny
GMB London Regional Secretary

GMB - PROTECTING OVER 80,000 PEOPLE AT WORK IN THE LONDON REGION

GARETH OWEN Photography

....working **PR** photography

Tel: 07850 560289
Fax: (01582) 616567
e-mail: gareth@go-photo.co.uk

GROSVENOR CASINO LUTON

For FREE membership call
08080 212121 or 01582 414166

Please quote 065



24 hours must elapse between receipt of application and participation in gaming.
Members must be aged 18 and over.
www.grosvenor-casinos.co.uk



Eagle IPA - Proud to sponsor Luton Town F.C.

Your 'local beer'
supporting your local
Football Club
Now available at the Bar!



PRE-MATCH AND HALF TIME ENTERTAINMENT

With Justin Dealey and Steve Faulkner

TONIGHTS MATCH:

- 2.15** Team line up to be announced
- 2.20** HMV Single of the week
Moloko - Familiar Feeling
- 2.35** Dedications announced
- 2.40** Town Teaser -
See Page 34
- 2.45** Player Track
See Right
- 2.55** Teams run out to - The Blues Brothers
"Gimme Some Lovin"
- 3.00** THE BIG KICK OFF

HALF TIME

- 3.50** Golden Gamble -
Winning ticket
drawn on pitch
- 3.55** Run down of half time
scores from around the
country
- 4.00** Dedications
- 4.05** Teams arrive back on pitch
to theme song
"Gimme Some Lovin"

4.55 - FULL TIME

Player Track



Matthew Spring
DONNELL JONES
SHORTY GOT HER
EYES ON ME

Matchday music supplied by:

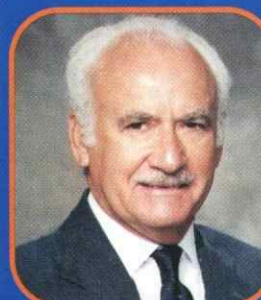


Justin Dealey is sponsored by:

BBC THREE COUNTIES RADIO
95.5 FM (BEDS) 104.5 FM (BUCKS)
103.8 FM (HERTS)

If you would like your dedication read
out, please contact the Club prior to
matchdays.

POLICY STATEMENT - SPECTATOR SAFETY



The Chairman and Directors of Luton Town Football Club undertake to ensure as far as humanly possible that all activities that take place at the Kenilworth Road Stadium are conducted in such a way that as far as is reasonably practical the safety of everybody at the stadium is assured.

It is the policy of the Chairman and Directors to ensure that the conditions set out in the General Safety Certificate, issued under the Safety at Sports Grounds Act, 1975, are fully complied with.

It is the Club's policy to provide at any activity sufficient and competent staff and management systems to ensure as far as humanly possible the safe admission, accommodation and exiting of spectators attending the stadium. These systems will be subject to continual monitoring, testing and updating where necessary.

Mike Watson-Challis Chairman

Reviewed August, 2002.

SIGN UP ON A BOSMAN!

ONE WEEK'S TRIAL – COMPLETELY FREE!

DAILY TV
NEWS BULLETINS

INTERACTIVE
MATCH LIVE CONSOLE

SEARCHABLE
VIDEO ARCHIVE

MATCH
HIGHLIGHTS

LIVE AUDIO
COMMENTARY

EXCLUSIVE, OFFICIAL, UNMISSABLE!

sign up today at
www.lutontown.co.uk

Terms and conditions apply. See website for details.

Luton Belles



BELLES under-14s continued their good form with a fine 3-0 victory over West Ham United. Town were again on the offensive from the first whistle and forced two goal-line clearances before taking the lead in the sixth minute. As the ball dropped into the danger area from a corner Michelle Byrne pounced to turn and shoot into the roof of the net for her 23rd goal of the season. Tanya Blacksley was then denied by a flying save from the Hammers keeper, who also made last-ditch saves to keep out two good efforts by Rebecca Kane. Luton had pinned West Ham back for most of the half and created enough chances to have won three or four matches, but failed to add to their score and would have paid the price were it not for a tremendous block tackle from Gemma Vale.

Ten minutes into the second half Luton won a free kick on the edge of the box and Fay Rolls stepped up to take it. For the third game running she was on the score-sheet with another 'Nicholls style' free kick into the top corner. After that the points were safe, and it was left to the hard-working Holly Flynn to fire in number three in the last minute.

Town's under-13s went goal-crazy for the second week running with an 18-0 win against bottom of the table Buntingford. Brittany Murtagh again led the way with a double hat trick. Her strike partner Natalie Burchnall added four, and Rebecca Dimmock, Kayleigh Watkins and Ann Folan all netted twice, with Micky Osman and Laura Massey completing the scoring. This squad has now scored exactly 100 goals this season.

Belles under-12s swept aside local rivals St Martins in their League Cup quarter final with a 7-0 win. Micky Osman and Natalie Burchnall scored in the first ten minutes before defender Sarah Pickering swept in a corner on the half volley to give Luton a 3-0 interval lead.

Natalie Burchnall finished off a sweeping move for number four before Sarah Pickering scored again from a corner, volleying in at the far post. Micky Osman made it 6-0 with a cross shot before Sarah Pickering surged upfield to complete her first-ever hat trick with a low shot.

Manager Jenny Tucker said "I was very pleased with the performance as conditions were very heavy, but we kept our shape well and played some good football."

Belles are the current League Cup holders and the semi-final was due to take place this morning against Leighton United.

Dave Baker



ON THE BALL: Tanya Blacksley, who starred for the Belles under-14s in their victory over West Ham.

LUTON Belles organises football for girls of all ages, from ten upwards. If you want to know more, or fancy being involved, e-mail Dave Baker at lutonbelles@hotmail.com. The Belles also have a website – pay a visit to www.lutontownbelles.com

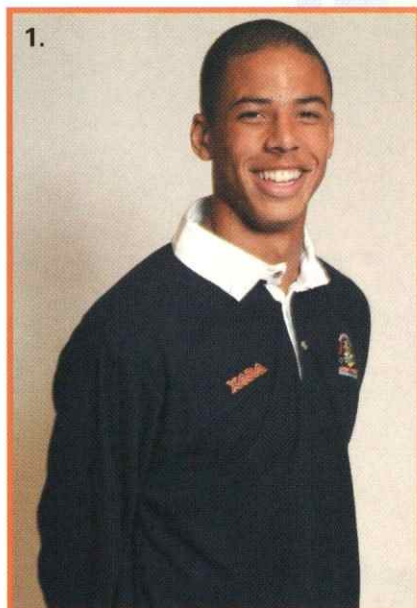
For the latest news, views and interviews call:
CLUB CALL on 09068 121 123 (calls cost 60p per minute at all times)



Available Now In The Club Shop



XARA Leisure Wear 100% Pure Egyptian Cotton



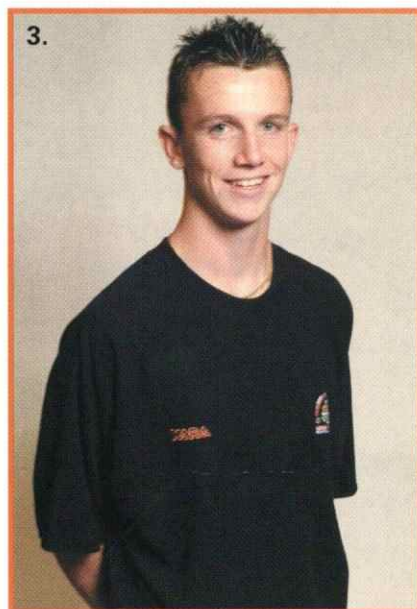
1.



2.

1. Navy Rugby Shirt
YS, YM, YL
£15.00
S, M, L, XL, XXL
£22.50

2. Navy Polo Shirt
Childrens
£15.00
Adults:
S, M, L, XL, XXL
£22.50



3.



4.

3. Navy T-Shirt
Childrens
£12.50
Adults:
S, M, L, XL, XXL
£15.00

4. Navy Sweatshirt
Childrens
£19.50
Adults:
S, M, L, XL, XXL
£26.00



Black LTFC Bronx Hat £6.99



Black Classic Bronx Hat £6.99



Adult Knitted Gloves £4.25



Royal & Navy Crest
Baseball Cap £8.95



Suede Peek
Baseball Cap £8.95



Come On You Hatters
Scarf £5.99



3 Badge Scarf £5.99



Follow Hatters Scarf £5.99



Charcoal Luton Town
Scarf £5.99



Time to get a bigger sofa?

Time for a Nationwide Personal Loan

Our lowest
rate ever
7.9%
APR FIXED

Call us today for a quick decision •

Nationwide. Proud to be different

www.nationwide.co.uk | 0800 30 20 10 |  or just call in

Banking | Credit Card | Insurance | Investments | Loans | Mortgages | Pensions | Savings

LOANS ARE SUBJECT TO AN APPLICANT'S FINANCIAL STANDING AND ARE AVAILABLE TO THOSE AGED 18 OR OVER. CREDIT FACILITIES PROVIDED BY AND WRITTEN QUOTATIONS AVAILABLE FROM NATIONWIDE TRUST LIMITED, NATIONWIDE HOUSE, 20 LOWER DAGNALL STREET, ST. ALBANS, HERTS AL3 4RR. NATIONWIDE TRUST IS A WHOLLY OWNED SUBSIDIARY OF NATIONWIDE BUILDING SOCIETY. PLEASE NOTE FOR VARIOUS LEGAL, REGULATORY AND CUSTOMER SERVICE REQUIREMENTS YOUR CALL MAY BE RECORDED.

In Reserve



Cardiff City 0 Luton Town 0

WE WERE good value for a draw against a very strong team on a difficult training ground pitch. We were never in much danger of losing, with Russ Perrett and David Bayliss the cornerstone of our defence, but unfortunately, with two trialists in attack, we failed to turn good forward play into goals, even when Cardiff were down to ten men for the last 20 minutes. They lost a man who unaccountably decided to punch Bayliss.

The pitch was hard and a bit rutted, and with a very cold wind blowing the bounce of the ball was often difficult to judge and the key was to limit your mistakes.

Cardiff included players whose transfer value went into millions, but their only threat to our goal came from corners and free kicks, and we dealt with them competently.

We coped well in a first half in which we played against the wind, and dominated the second, and the disappointment was that we did not turn our advantage into goals. We created a lot of half-chances and two or three should have been put away.

The trialists, Craig McAllister, from Basingstoke, who has played for the England non-league side, and Amos Foyewa, an African who destroyed us earlier in the season playing for Bournemouth, ought to have got on the scoresheet, and so should several others. On occasions good play put us in with three against two, but wrong options were chosen. As always, it

was pleasing to see openings made, but disappointing not to see them turned into goals.

The summing up was that we did well, but not quite well enough, and we certainly should have finished off the opposition, especially after the red card. It was two points lost more than one gained, although to be fair to the players I probably would have taken the draw had it been offered against a team with a lot of league and Premiership experience.

Luton Town: Brill, Jupp, Perrett, Bayliss (Davies 70 mins), Davis (Barnett HT); Mansell, Leary, Holmes, Osborn (Okai 75 mins); McAllister, Foyewa.

WE ARE at home to Cheltenham next Wednesday, with a 2pm kick-off at Kenilworth Road.

APPEARANCES, as sub in brackets: L. Mansell 14(1), Leary 12(2), Foley 11(1), Holmes 11, Skelton 9, Hillier 9, J. Deeney 8, Fotiadis 8, Griffiths 6, Osborn 5(8), Gillman 5(3), Barnett 5(2), Ovendale 5, Kimble 5, Okai 4(6), Brill 4(1), Hughes 4, Neilson 4, Bayliss 4, Barnett 3(2), Brkovic 3, Emberson 3, Perrett 3, O'Leary 2(5), Judge 2(4), Eberendo 2(2), Howell 2(1), Beckwith 2, Thorpe 2, Michael Johnson 2, Crowe 2, Jupp 2, Davies 1(4), Davis 1, Kovacevic 1, De Souza 1, Berthelin 1, Nicholls 1, Maitland 1, Viander 1, Pandong 1, McAllister 1, Foyewa 1, Marvin Johnson 0(1).

Goals: Judge 4, Fotiadis 3, Griffiths 3, Brkovic 3, Crowe 2, Howell 2, Thorpe 2, Skelton 1, Eberendo 1, Holmes 1, Gillman 1, Barnett 1, Maitland 1, Mansell 1, Leary 1.

Brian Stein

AVON COMBINATION TABLE

	P	W	D	L	F	A	Pts
Crystal Palace	15	12	2	1	43	10	38
Norwich	16	9	6	1	26	9	33
Portsmouth	14	10	1	3	31	12	31
Colchester	17	9	3	5	26	16	30
Brighton	14	9	2	3	29	14	29
Plymouth	15	8	1	6	24	24	25
Bristol City	16	7	4	5	28	29	25
Reading	15	7	3	5	27	15	24
Cardiff	16	6	6	4	18	12	24
Brentford	16	7	3	6	27	25	24
Luton Town	14	6	5	3	27	16	23
Millwall	15	7	2	6	20	16	23
Swindon	13	7	2	4	20	19	23
L. Orient	18	5	7	6	32	33	22
Cheltenham	16	6	3	7	32	28	21
Oxford	15	6	1	8	19	22	19
QPR	13	5	4	4	16	19	19
Southend	16	5	4	7	19	25	19
Bristol Rov	17	4	4	9	18	30	16
Wycombe	16	4	4	8	17	32	16
Gillingham	17	3	6	8	21	30	15
Bournemouth	15	3	5	7	23	31	14
Peterborough	14	4	1	9	18	29	13
Northampton	15	3	2	10	20	38	11
Cambridge	13	2	3	8	16	27	9
Barnet	17	2	2	13	17	52	8

August			
Wed 14	Bristol City(LC)	A	0-3
Wed 21	Reading	A	1-2 Skelton
Wed 28	Bristol Rov	H	1-1 Griffiths
September			
Wed 4	Millwall	H	2-1 Griffiths 2(1p)
Wed 18	Swindon	A	4-0 Fotiadis 2, Eberendo, Howell
Wed 25	Peterborough	H	4-1 Thorpe 2, Fotiadis, Holmes
October			
Wed 9	Plymouth	A	4-0 Brkovic 2, Gillman, Judge
Wed 16	Wycombe	H	3-1 Judge 2, Howell
Wed 30	Cambridge	A	1-0 Barnett
November			
Wed 13	QPR	H	postponed
Wed 20	Wootton (BSC)	A	0-0 Won 4-3 on pens
Wed 27	Northampton	A	1-3 Judge
December			
Wed 11	Barnet	H	1-2 Maitland
January			
Wed 8	Brighton	A	Postponed
Wed 15	C. Palace	H	Postponed
Wed 22	Bournemouth	H	4-4 Crowe 2, Brkovic, Mansell
Wed 29	Leyton Orient	A	1-1 Leary
February			
Wed 12	Southend	A	0-0
Wed 19	Cardiff	A	0-0
Wed 26	Cheltenham	H	2pm
March			
Wed 12	Norwich	H	2pm
Wed 25	Brentford	A	2pm
April			
Wed 2	Colchester	H	2pm
Tue 8	Bedford (BSC)	A	7.45pm

For the latest news, views and interviews call:
CLUB CALL ON 09068 121123 (calls cost 60p per minute at all times)



Youth Soccer - U17s

Portsmouth 6 Luton Town 2

THE LOSS of our goalkeeper after only 15 minutes proved a decisive turning point in a match where we were always going to be up against it. Pompey had no under-19 game, so fielded a very strong side, while our keeper and three of the back four were under 15.

In the early stages we were playing well, and coping with a lively attack. But then Zak Barrett bravely went down at the feet of an onrushing striker, and suffered a gashed knee. He had to be taken off, and later had five stitches inserted. We had no other keeper available, so midfielder John De Souza went into goal.

Within a couple of minutes we took the lead, Peter Clark netting after a shot by Paul Danaher hit the bar, but before we could build on that we were hit by another injury, with Mutsa Magadah having to be subbed because of a twisted ankle.

Portsmouth scored twice in the last five minutes of the first half, and we knew that our young back four and makeshift keeper would

be up against it from then on.

They were, and it was 4-1 within ten minutes of the restart, with our defence not really able to cope with strikers who were quick and powerful. We conceded further goals on 70 and 80 minutes, but at least we had the last word, and it was pleasing that the boys kept going to the bitter end in difficult circumstances. Clark got behind the Portsmouth back four, sprinted away, went round the goalkeeper, and scored despite being pushed wide to make it a difficult shooting angle.

Luton Town: Barrett (Blake 15 mins), Smyth, Pendleton, De Souza, D. Deeney, Green, Burrows, Blythe, Magadah (Sinclair 35 mins), Clark, Danaher.

APPEARANCES, as sub in brackets: D. Deeney 17, Blythe 17, Ridgway 16, Mountford 16, Smyth 14(3), Magadah 13(3), Blake 12(2), De Souza 12(2), Brill 12, P. Clark 11(3), Shea 9(3), Reid 8, Danaher 7(3), Keane 7, Freeman 5, Pendleton 4(5), Skelton 4(1), Barrett 4, Green 3(5), Maitland 3(2), Howell 3, R. Mansell 3, Hurst 3, Sinclair 1(12), Richardson 1(3), McCarthy 1(2), Barnett 1, Burrows 1, R. Clark 1, Kelly 0(1), Robinson 0(1).

Goals: Magadah 7, Ridgway 5, Freeman 4, P. Clark 4, Keane 3, Blythe 3, Maitland 2, Shea 1, Barnett 1, R. Mansell 1

Mark Ridgway

FLYA UNDER-17 SE CONFERENCE

	P	W	D	L	F	A	Pts
Peterborough	18	11	4	3	34	17	37
L. Orient	18	11	3	4	41	16	36
Brighton	16	11	2	3	39	18	35
Wycombe	18	9	3	6	35	38	30
Luton Town	18	8	5	5	29	21	29
Cambridge	18	7	4	7	38	33	25
Colchester	17	5	4	8	26	41	19
Portsmouth	16	4	5	7	34	29	17
QPR	18	3	8	7	26	38	17
Brentford	18	4	4	10	28	39	16
Gillingham	17	5	1	11	35	51	16
Southend	18	3	5	10	28	52	14

Youth Soccer - U19s



Luton Town 2 Peterborough 1

IT WAS a struggle to get there, but a young side did well to earn a victory after being a goal down at the interval. With Dean Brill drafted into the first team squad and Robert Beckwith injured, we had 14-year-old Zak Barrett from Hitchin in goal.

Fortunately he is big for his age, and he handled himself well. He got on with the job, playing steadily and not trying to be flashy.

We looked better the longer the game went on, but might have been robbed of two points if the goalkeeper had not been on the ball in the closing stages.

I was not very happy with our first half showing. And our defenders should have been more aware of the possibilities when a Peterborough throw-in

led to their goal after five minutes. We didn't play as a team, and half-time instructions were to tighten up all round, and not stand back and allow Peterborough to play around us, as they had done in the first half. We got at them much better in the second half, gained more ball and the pressure built up as we were winning more 50-50s and loose balls. Curtis Davies headed the equaliser from a corner on 62 minutes, and then we were up for it, and Matthew Judge hit a tremendous shot into the top corner for the 70th-minute winner.

We turned off slightly after that, and Barrett had to make a good save when we might have conceded an equaliser.

Luton Town: Barrett, Gillman, Barnett, O'Leary, Davies, J. Deeney, Ridgway, Foley, Osborn, Judge, Okai.

WE WENT out of the Alliance Cup with a disappointing defeat at Cardiff, and a report will be in Tuesday's match day magazine. This morning we were due to kick off our Merit Division Two South programme at home to Oxford. Our big game is on Thursday, against Middlesbrough in the FA Youth Cup fifth round, kick-off 7pm.

APPEARANCES, as sub in brackets: Barnett 22(1), O'Leary 21, Okai 20, Davies 18(2), Judge 17(1), Foley 17, Howell 17, Freeman 15(2), Maitland 14(3), Osborn 14(1), J. Deeney 14, Gillman 13(1), Beckwith 13, R. Mansell 12(3), Brill 9(2), Ridgway 7(2), Keane 6(8), De Souza 1(2), Mountford 1(1), D. Deeney 1, Barrett 1, Magadah 0(1).

Goals: Judge 11, Freeman 7, Osborn 4, Maitland 3, Barnett 3, Okai 2, Ridgway 2, O'Leary 2, Davies 2, Foley 2.

John Moore

FLYA UNDER-19 SOUTH CENTRAL CONFERENCE

	P	W	D	L	F	A	Pts
West Brom	15	9	2	4	26	19	29
Peterborough	13	9	0	4	33	11	27
Oxford	15	8	0	7	21	28	24
Northampton	14	7	3	4	17	13	24
Luton Town	13	7	2	4	19	11	23
Cambridge	14	6	3	5	23	18	21
Walsall	14	5	2	7	20	21	17
Kidderminster	13	3	1	9	18	33	10
Rushden	15	1	3	11	14	37	6

FL Youth Alliance Under-19

August						
17	Walsall	H	0-0			
31	Kidderminster	A	1-0	Freeman		
September						
7	Brentford (LC)	A	2-0	Freeman, Okai		
14	Oxford (LC)	H	4-1	Osborn 2, Okai, Freeman		
21	Wycombe (LC)	H	2-2	Judge, Barnett		
28	Northampton	H	0-1			
October						
12	Peterborough	A	1-3	O'Leary		
19	West Brom	A	0-1			
23	Brentford(FAYC1)	A	3-0	Judge, Freeman 2		
26	Rushden	H	3-1	Judge, Freeman, Osborn		
November						
2	Oxford Utd	H	5-1	Judge 3, Freeman, Osborn		
7	Tooting(FAYC2)	A	3-1	Judge 2, Davies		
16	Brighton (LC1)	A	2-1	Barnett, O'Leary		
30	West Brom	H	2-1	Judge, Maitland		
December						
4	Stoke(FAYC3)	H	1-0	Judge		
7	Rushden & D	A	2-1	Maitland 2		
14	Oxford Utd	A	0-1			
21	Cambridge	A	0-0			
January						
11	Cambridge	H	postponed			
15	Bradford (FAYC4)	H	1-0	Foley		
18	Walsall	A	postponed			
25	Kidderminster	H	3-0	Ridgway 2, Barnett		
February						
1	Northampton	A	0-3			
8	Peterborough	H	2-1	Davies, Judge		
15	Cardiff (LC2)	A	1-3	Foley		
22	Oxford (MD2)	H				
27	Middlesbrough(FAYC5)	H				
Merit Div Two South						
March						
1	Cambridge	A				
8	Exeter	A				
15	Brighton	H				
29	Gillingham	A				
April						
12	Bournemouth	H				
19	L. Orient	A				
26	Cheltenham	H				

WINNING MARGINS

Games won by:	1 gl	2 gls	3 gls	4+
Wigan	9	11	1	0
Crewe	7	7	2	2
Cardiff	11	2	1	3
Oldham	10	3	0	3
QPR	5	7	1	2
Bristol City	5	5	4	1
Tranmere	9	2	2	1
Blackpool	6	5	3	0
Luton	10	2	2	0
Plymouth	7	4	1	0
Wycombe	4	4	2	1
Chesterfield	9	1	0	1
Swindon	6	3	2	0
Brentford	7	2	0	1
Mansfield	5	2	0	2
Stockport	4	3	1	1
Barnsley	7	2	0	0
Port Vale	7	1	1	0
Colchester	7	1	0	0
Northampton	4	1	3	0
Peterborough	4	1	1	1
Huddersfield	5	1	1	0
Notts County	3	1	3	0
Cheltenham	3	3	0	0

FULL GROUNDS - ATTENDANCES

Club	Aggregate	% Capacity
Luton	103,060	69
QPR	204,756	67
Northampton	81,937	67
Blackpool	107,962	66
Cardiff	207,389	65
Cheltenham	76,506	65
Crewe	96,160	63
Chesterfield	68,097	61
Wycombe	96,264	60
Bristol City	189,058	55
Oldham	108,803	50
Mansfield	78,408	49
Plymouth	151,844	47
Tranmere	120,928	46

CLEAN SHEETS

Gms without conceding	Lge Pos
Wigan	16
Chesterfield	14
Oldham	13
Crewe	12
Cardiff	12
QPR	12
Bristol City	11
Brentford	11
Blackpool	10
Luton	10
Huddersfield	10
Plymouth	9
Wycombe	9
Peterborough	9
Northampton	8
Cheltenham	8
Tranmere	7
Port Vale	7
Notts County	6
Colchester	6
Stockport	6
Mansfield	5
Swindon	4
Barnsley	3

FAILED TO SCORE

Gms without scoring	Lge Pos
Huddersfield	15
Northampton	15
Mansfield	14
Peterborough	13
Chesterfield	13
Cheltenham	10
Swindon	10
Blackpool	10
Barnsley	9
Brentford	9
Wycombe	9
Plymouth	9
Bristol City	8
Port Vale	8
Colchester	8
Notts County	8
Tranmere	8
Stockport	6
Crewe	6
Luton	5
Cardiff	5
Wigan	4

SEQUENCES: DIV 2

CONSECUTIVE WINS:	
Wigan	11
Bristol City	6
Oldham	6
Luton	5
Port Vale	5
QPR	5
Crewe	4
Plymouth	4
UNDEFEATED RUN:	
Wigan	21
Bristol City	14
Blackpool	11
Cardiff	10
Crewe	8
Plymouth	8
Brentford	7
Luton	7
Oldham	7
Swindon	7
LOSING STREAK:	
Swindon	6
Colchester	5
Mansfield	5
Peterborough	5
Blackpool	4
Luton	4
Northampton	4
Port Vale	4
Wycombe	4
NO WINS:	
QPR	9
Bristol City	8
Cheltenham	8
Colchester	8
Notts County	8
Plymouth	8
Stockport	8
Chesterfield	7
Mansfield	7
Northampton	7
Peterborough	7
Swindon	7

HEADERS SCORED

Oldham	15
Wigan	13
Barnsley	12
Wycombe	12
Crewe	11
Tranmere	11
Peterborough	10
Stockport	10
Blackpool	9
Cardiff	9
Luton	9
Mansfield	8
Plymouth	8
Port Vale	8
Brentford	7

HEADERS CONCEDED

Mansfield	17
Brentford	15
Notts County	13
Chesterfield	12
Port Vale	11
Barnsley	10
Cheltenham	10
Colchester	10
Swindon	10
Blackpool	9
Bristol City	9
Luton	9
Stockport	9
Tranmere	9
Oldham	7

GOALS FROM OUTSIDE 18 YARD BOX

SCORED	Gls	Total	%	CONCEDED	Gls	Total	%
Mansfield	11	48	23	Blackpool	8	39	21
Colchester	7	32	22	Peterborough	8	39	21
Crewe	11	55	20	Plymouth	7	35	20
Bristol City	10	54	19	Northampton	10	51	20
QPR	8	46	17	Luton	8	42	19
Northampton	5	30	17	Colchester	8	43	19
Huddersfield	4	24	17	Oldham	5	28	18
Wigan	8	50	16	Cheltenham	8	49	16
Barnsley	6	38	16	Cardiff	4	25	16
Plymouth	6	40	15	Notts County	8	52	15
Luton	7	48	15	Stockport	8	53	15
Tranmere	6	42	14	Wycombe	6	40	15
Chesterfield	4	29	14				

ordered as % of all goals scored

GOALS PER GAME - THE MOST CONSISTENT STRIKERS

Player	Rob Hulse	Robert Earnshaw	Luke Beckett	Ilysedien Christie	Mark Stallard	Sam Parkin	Simon Haworth	Scott Murray	Steven Howard	John Murphy	Andy Clarke	Nathan Ellington	Andy Liddell
Lge Gls	19	23	22	15	17	17	15	12	14	12	12	11	13
WC Gls	1	3	1	0	1	0	1	0	1	0	0	5	0
FAC Gls	0	1	1	1	0	0	1	3	0	2	1	2	0
LDV	4	0	0	0	0	1	0	4	0	1	2	0	0
Gls/Gme	0.80	0.75	0.65	0.53	0.53	0.53	0.53	0.48	0.48	0.45	0.45	0.45	0.45

HIGHEST & LOWEST ATTENDANCES

Premiership	67,691 Man U v Southampton
Division 1	14,253 Fulham v Boro
Division 2	33,016 Derby v Reading
Division 3	849 Wimbledon v Rotherham
Division 2	18,085 Bristol C v Plymouth
Division 3	2,721 Colchester v Wigan
Division 3	22,319 Hull v Hartlepool
Division 3	1,576 Macc v Hartlepool

Second Division Scene



THE GOOD news of the Town's victory over Northampton was followed by the not so good, as other Second Division results came in. The top three teams were all out of action because of frost, and the Town's chance of regaining a place in the play-off zone was wrecked because QPR and Blackpool both won to stay sixth and seventh. Worse, Rangers' 4-0 romp over Port Vale at Loftus Road increased their goal difference advantage. Blackpool, who looked so good at Kenilworth Road, were given a hard fight by our visitors today, but took their run to 11 games without defeat. The only goal came from John Murphy, who got a hat-trick in their win at Luton. Micky Bullock, who destroyed us on the right wing, was unable to do the same against the Bees. And if we would be happy to take sixth spot in the final table, there must be a chance that we can aim higher, because Danny Wilson's Bristol City have hit an awful patch. A 2-0 defeat at lowly Notts County added to a poor run which kicked off after they were very fortunate to grab a home draw against the Town just before Christmas. One win, four draws and four defeats is the record

since then, although they may have the consolation of a place in the LDV Vans Trophy final. On Tuesday they beat Third Division Cambridge 4-2 at home in the Southern Section semi-final first leg. Brentford are another club who have suffered a decline since playing the Town. They were top briefly in late August, when Wally Downes was the Second Division manager of the month, but are now down to 13th. A 1-0 success against Derby in the third round of the FA Cup has been this year's only bright spot, and they are still looking for their first league win of 2003. They must have had high hopes of achieving it on Tuesday when they were at home to Colchester, in a match postponed on New Year's Day because Griffin Park was waterlogged. But the second attempt to play the game also failed - it was abandoned at half-time because of a frostbound pitch, after neither side had managed to score. Brentford have not won a league match in six attempts since a 1-0 home success over Mansfield on December 28, and have scored only three goals in the process. Their four away wins all came in the first three months of the season, at Huddersfield and Colchester in August, and Northampton and Stockport in October. They have picked up four draws on their travels, at Notts County, QPR, Mansfield and Bristol City and eight awayday defeats came at Tranmere, Cardiff, Peterborough, Crewe, Cheltenham, Swindon, Oldham and Blackpool.

Brian Swain

Nationwide League Division Two

	HOME					AWAY					GD	Pts
	P	W	D	L	F A	W	D	L	F A			
Wigan	31	10	5	1	27 12	11	2	2	23 7	31	70	
Crewe	31	9	2	4	21 11	9	5	2	34 17	27	61	
*Cardiff	30	10	4	2	28 11	7	3	4	19 14	22	58	
Oldham	32	7	3	6	25 15	9	7	0	23 13	20	58	
Bristol City	32	8	5	3	26 12	7	3	6	28 24	18	53	
QPR	32	10	2	4	27 15	5	6	5	19 20	11	53	
Blackpool	32	9	5	2	27 14	5	4	7	16 25	4	51	
Luton Town	31	6	4	5	25 20	8	4	4	23 22	6	50	
Tranmere	32	8	4	4	21 16	6	2	8	21 30	-4	48	
*Plymouth	31	7	4	5	24 19	5	5	5	16 16	5	45	
Wycombe	32	7	4	5	31 25	4	5	7	15 15	6	42	
Swindon	32	6	4	6	21 20	5	5	6	21 26	-4	42	
Brentford	30	6	5	3	17 9	4	4	8	16 24	0	39	
Chesterfield	32	8	4	4	20 15	3	2	11	9 28	-14	39	
Barnsley	32	5	6	5	21 24	4	3	9	17 24	-10	33	
Notts County	32	5	6	5	26 26	2	7	7	21 26	-5	34	
Colchester	31	4	6	6	14 16	4	4	7	18 27	-11	34	
Port Vale	31	5	3	7	21 22	4	4	8	16 27	-12	34	
Stockport	32	5	6	6	27 28	4	1	11	16 25	-10	33	
Peterborough	31	4	4	7	16 16	3	7	6	15 23	-8	32	
Mansfield	32	6	2	8	30 33	3	3	10	18 34	-19	32	
Northampton	32	5	3	8	17 20	3	4	9	13 31	-21	31	
Huddersfield	31	5	6	5	18 17	2	3	10	6 21	-14	30	
Cheltenham	32	4	4	8	14 24	2	7	7	17 25	-18	29	

*Not including Cardiff v Plymouth last night

Today's other Second Division fixtures

Barnsley v Huddersfield
Cheltenham v Colchester
Chesterfield v Crewe
Northampton v Bristol City
Oldham v Notts County
Peterborough v Stockport
Port Vale v Swindon
QPR v Mansfield
Tranmere v Blackpool
Wycombe v Wigan
Last night
Cardiff v Plymouth

Statistics and all the fixtures

Date	Opponents	Venue	Kick Off Time/Result	Score (LT first)	Attendance	Competition/Position	Referee	Yellow Cards (LT first)	Red Cards (LT first)	Goalkeepers						Defenders										Midfielders										Forwards										Own Goals		
										1	16	33	34	35	47	2	3	5	6	2	17	22	23	24	31	37	41	42	45	4	7	8	11	18	20	21	30	32	38	39	40	44	9	10	14		15	19
Sat 10 Aug	PETERBOROUGH UNITED	H	L	2-3	7,860	16th	B Curson	2/1	0/0	Mark OVENDALE	Carl EMBERSON	Dean BRILL	Ben ROBERTS	Cedric BERTHELIN	Rob BECKWITH	Aaron SKELTON	Alan NEILSON	Russell PERRETT	Marvin JOHNSON	Emmerson BOYCE	David BAYLISS	Ian HILLIER	Sol DAVIS	Alan KIMBLE	Chris WILLMOTT	Kevin FOLEY	Joe DEENEY	Leon BARNETT	Matthew SPRING	Adrian FORBES	Kevin NICHOLLS	Steve ROBINSON	Ahmet BRKOVIC	Peter HOLMES	Paul HUGHES	Robbie WINTERS	Lee MANSELL	Michael LEARY	Steven O'LEARY	James OSBORN	Parys OKAI	Tony THORPE	Carl GRIFFITHS	Andrew FOTIADIS	Dean CROWE	Steve HOWARD	Matthew JUDGE	0
Tue 13 Aug	Blackpool	A	L	2-5	6,377	22nd	M Clattenburg	2/2	0/0																																				0			
Sat 17 Aug	Plymouth Argyle	A	L	1-2	10,973	23rd	T Parkes	4/1	1/0																																				0			
Sat 24 Aug	BARNSELY	H	L	2-3	6,230	23rd	R Beeby	1/1	0/1																																				0			
Mon 26 Aug	Cardiff City	A	D	0-0	13,564	24th	P Danson	3/1	0/0																																				0			
Sat 31 Aug	CHESTERFIELD	H	W	3-0	6,060	21st	P Taylor	1/3	0/0																																				0			
Sat 7 Sep	Brentford	A	D	0-0	7,145	21st	D Pugh	2/1	0/0																																				0			
Tue 10 Sep	Watford	A	W	2-1	14,171	WC1	P Walton	2/1	0/0																																				0			
Sat 14 Sep	NOTTS COUNTY	H	D	2-2	6,456	21st	A Kaye	2/2	0/0																																				0			
Tue 17 Sep	MANSFIELD TOWN	H	L	2-3	6,004	23rd	B Knight	2/0	0/0																																				0			
Sat 21 Sep	Huddersfield Town	A	W	1-0	9,249	19th	F Stretton	2/0	0/0																																				0			
Sat 28 Sep	SWINDON TOWN	H	W	3-0	6,393	15th	P Joslin	1/1	0/0																																				0			
Wed 2 Oct	Aston Villa	A	L	0-3	20,833	WC2	C Webster	2/0	0/0																																				0			
Sat 5 Oct	Stockport County	A	W	3-2	5,932	14th	M Cowburn	2/2	0/0																																				0			
Sat 12 Oct	CHELTEMHAM TOWN	H	W	2-1	6,447	10th	C Penton	1/1	0/0																																				0			
Sat 19 Oct	Oldham Athletic	A	W	2-1	6,916	10th	C Boyeson	3/2	0/0																																				0			
Tue 22 Oct	Woking	A	W	2-0	1,216	LDVVT1	M Thorpe	1/2	0/0																																				0			
Sat 26 Oct	WIGAN ATHLETIC	H	D	1-1	7,364	10th	S Tomlin	2/3	0/1																																				0			
Tue 29 Oct	Crewe Alexandra	A	W	1-0	6,030	9th	T Bates	2/0	0/0																																				0			
Sat 2 Nov	Northampton Town	A	L	0-3	5,750	10th	P Durkin	0/0	0/0																																				0			
Sat 9 Nov	PORT VALE	H	D	0-0	6,112	10th	P Robinson	1/2	0/0																																				0			
Tue 12 Nov	Stevenage Borough	A	W	4-3	2,601	LDVVT2	P Rejer	0/1	0/0																																				0			
Sat 16 Nov	GUISSELEY	H	W	4-0	5,248	FAC1	J Ross	0/1	0/0																																				0			
Sat 23 Nov	QUEENS PARK RANGERS	H	D	0-0	9,477	8th	E Wolstenholme	4/2	2/0																																				0			
Sat 30 Nov	Tranmere Rovers	A	W	3-1	8,273	7th	A Penn	1/3	0/0																																				0			
Sat 7 Dec	Wigan Athletic	A	L	0-3	4,544	FAC2	H Webb	3/1	0/0																																				0			
Tue 10 Dec	CAMBRIDGE UNITED	H	L	1-2	3,578	LDVVT3	M Jones	3/2	0/0																																				0			
Sat 14 Dec	COLCHESTER UNITED	H	L	1-2	5,890	8th	M Cowburn	1/2	0/0																																				0			
Sat 21 Dec	Bristol City	A	D	1-1	14,057	8th	M Cooper	5/1	1/0																																				0			
Thu 26 Dec	CARDIFF CITY	H	W	2-0	7,805	6th	P Armstrong	0/5	0/0																																				0			
Sat 28 Dec	Wycombe Wanderers	A	W	2-1	7,740	6th	P Walton	1/1	0/0																																				0			
Wed 1 Jan	Chesterfield	A	L	1-2	4,638	6th	M Ryan	4/2	0/0																																				0			
Sat 18 Jan	Barnsley	A	W	3-2	9,079	7th	S Mathieson	2/4	1/0																																				0			
Sat 25 Jan	WYCOMBE WANDERERS	H	W	1-0	7,351	7th	C Wilkes	2/3	0/0																																				0			
Sat 1 Feb	Peterborough United	A	D	1-1	6,760	8th	P Joslin	1/0	0/0																																				0			
Sat 8 Feb	Port Vale	A	W	2-1	4,714	7th	L Mason	1/2	0/0																																				0			
Tue 11 Feb	BLACKPOOL	H	L	1-3	6,563	8th	G Hegley	4/2	0/0																																				0			
Sat 15 Feb	NORTHAMPTON TOWN	H	W	3-2	7,048	8th	K Hill	1/2	0/0																																				0			
Sat 22 Feb	BRENTFORD	H	3:00pm			D2																																							0			
Tue 25 Feb	PLYMOUTH ARGYLE	H	7:45pm			D2																																							0			
Sat 1 Mar	Notts County	A	3:00pm			D2																																							0			
Tue 4 Mar	Mansfield Town	A	7:45pm			D2																																							0			
Sat 8 Mar	HUDDERSFIELD TOWN	H	3:00pm			D2																																							0			
Sat 15 Mar	Wigan Athletic	A	3:00pm			D2																																							0			
Tue 18 Mar	OLDHAM ATHLETIC	H	7:45pm			D2																																							0			
Sat 22 Mar	CREWE ALEXANDRA	H	3:00pm			D2																																							0			
Sat 29 Mar	Cheltenham Town	A	3:00pm			D2																																							0			
Sat 5 Apr	TRANMERE ROVERS	H	3:00pm			D2																																							0			
Sat 12 Apr	Queens Park Rangers	A	3:00pm			D2																																							0			
Sat 19 Apr	BRISTOL CITY	H	3:00pm			D2																																							0			
Mon 21 Apr	Colchester United	A	3:00pm			D2																																							0			
Sat 26 Apr	STOCKPORT COUNTY	H	3:00pm			D2																																							0			
Sat 3 May	Swindon Town	A	3:00pm			D2																													</													

SQUAD CHECK

LUTON TOWN

Manager: Joe Kinnear

1	Mark Ovendale	<input type="checkbox"/>	<input type="checkbox"/>
2	Aaron Skelton	<input type="checkbox"/>	<input type="checkbox"/>
3	Alan Neilson	<input type="checkbox"/>	<input type="checkbox"/>
4	Matthew Spring	<input type="checkbox"/>	<input type="checkbox"/>
5	Russell Perrett	<input type="checkbox"/>	<input type="checkbox"/>
6	Marvin Johnson	<input type="checkbox"/>	<input type="checkbox"/>
7	Adrian Forbes	<input type="checkbox"/>	<input type="checkbox"/>
8	Kevin Nicholls	<input type="checkbox"/>	<input type="checkbox"/>
9	Tony Thorpe	<input type="checkbox"/>	<input type="checkbox"/>
10	Carl Griffiths	<input type="checkbox"/>	<input type="checkbox"/>
11	Steve Robinson	<input type="checkbox"/>	<input type="checkbox"/>
12	Chris Coyne	<input type="checkbox"/>	<input type="checkbox"/>
14	Andrew Fotiadis	<input type="checkbox"/>	<input type="checkbox"/>
15	Dean Crowe	<input type="checkbox"/>	<input type="checkbox"/>
16	Carl Emberson	<input type="checkbox"/>	<input type="checkbox"/>
17	Emmerson Boyce	<input type="checkbox"/>	<input type="checkbox"/>
18	Ahmet Brkovic	<input type="checkbox"/>	<input type="checkbox"/>
19	Steve Howard	<input type="checkbox"/>	<input type="checkbox"/>
20	Peter Holmes	<input type="checkbox"/>	<input type="checkbox"/>
21	Paul Hughes	<input type="checkbox"/>	<input type="checkbox"/>
22	David Bayliss	<input type="checkbox"/>	<input type="checkbox"/>
23	Ian Hillier	<input type="checkbox"/>	<input type="checkbox"/>
24	Sol Davis	<input type="checkbox"/>	<input type="checkbox"/>
31	Alan Kimble	<input type="checkbox"/>	<input type="checkbox"/>
37	Chris Willmott	<input type="checkbox"/>	<input type="checkbox"/>

tick if playing ■ tick if substitute ●

BRENTFORD

Manager: Wally Downes

2	Michael Dobson	<input type="checkbox"/>	<input type="checkbox"/>
4	Jay Smith	<input type="checkbox"/>	<input type="checkbox"/>
6	Scott Marshall	<input type="checkbox"/>	<input type="checkbox"/>
7	Stephen Evans	<input type="checkbox"/>	<input type="checkbox"/>
8	Mark Williams	<input type="checkbox"/>	<input type="checkbox"/>
9	Kevin O'Connor	<input type="checkbox"/>	<input type="checkbox"/>
10	Stephen Hunt	<input type="checkbox"/>	<input type="checkbox"/>
11	Martin Rowlands	<input type="checkbox"/>	<input type="checkbox"/>
12	Jay Tabb	<input type="checkbox"/>	<input type="checkbox"/>
13	Paul Smith	<input type="checkbox"/>	<input type="checkbox"/>
14	Matt Somner	<input type="checkbox"/>	<input type="checkbox"/>
15	Jay Lovett	<input type="checkbox"/>	<input type="checkbox"/>
16	Lee Fieldwick	<input type="checkbox"/>	<input type="checkbox"/>
17	Mark McCammon	<input type="checkbox"/>	<input type="checkbox"/>
18	Eddie Hutchinson	<input type="checkbox"/>	<input type="checkbox"/>
19	Mark Peters	<input type="checkbox"/>	<input type="checkbox"/>
20	Rizwan Rehman	<input type="checkbox"/>	<input type="checkbox"/>
21	Danny Allen-Page	<input type="checkbox"/>	<input type="checkbox"/>
22	Alan Julian	<input type="checkbox"/>	<input type="checkbox"/>
23	Lloyd Blackman	<input type="checkbox"/>	<input type="checkbox"/>
24	Robert Traynor	<input type="checkbox"/>	<input type="checkbox"/>
25	Stephen Hughes	<input type="checkbox"/>	<input type="checkbox"/>
26	Leon Constantine	<input type="checkbox"/>	<input type="checkbox"/>
27	Rowan Vine	<input type="checkbox"/>	<input type="checkbox"/>
28	Jamie Fullarton	<input type="checkbox"/>	<input type="checkbox"/>
29	Leo Roget	<input type="checkbox"/>	<input type="checkbox"/>
30	Andrew Frampton	<input type="checkbox"/>	<input type="checkbox"/>
31	Ibrahima Sonko	<input type="checkbox"/>	<input type="checkbox"/>
33	Barry Marchena	<input type="checkbox"/>	<input type="checkbox"/>

Today's Officials

Referee: Andy Hall, West Midlands

Assistants: Bernard Baker, Hampshire (yellow flag); Andy Garratt, West Midlands (red & yellow flag)

Fourth Official: Mike Fletcher, Worcestershire



New & Network Q Car Sales

Masterfit . Servicing . Parts . Accident Repair Specialists

The Largest Range Of New & Network Q Vehicles On Display

Marsh Road
Leagrave
Luton

01582 567500

Kimpton Road
Luton

01582 454666

www.motorbodies.com

Memorial Road
Leagrave
Luton

01582 567500

"Genuine Deals For Genuine Fans"



VAUXHALL