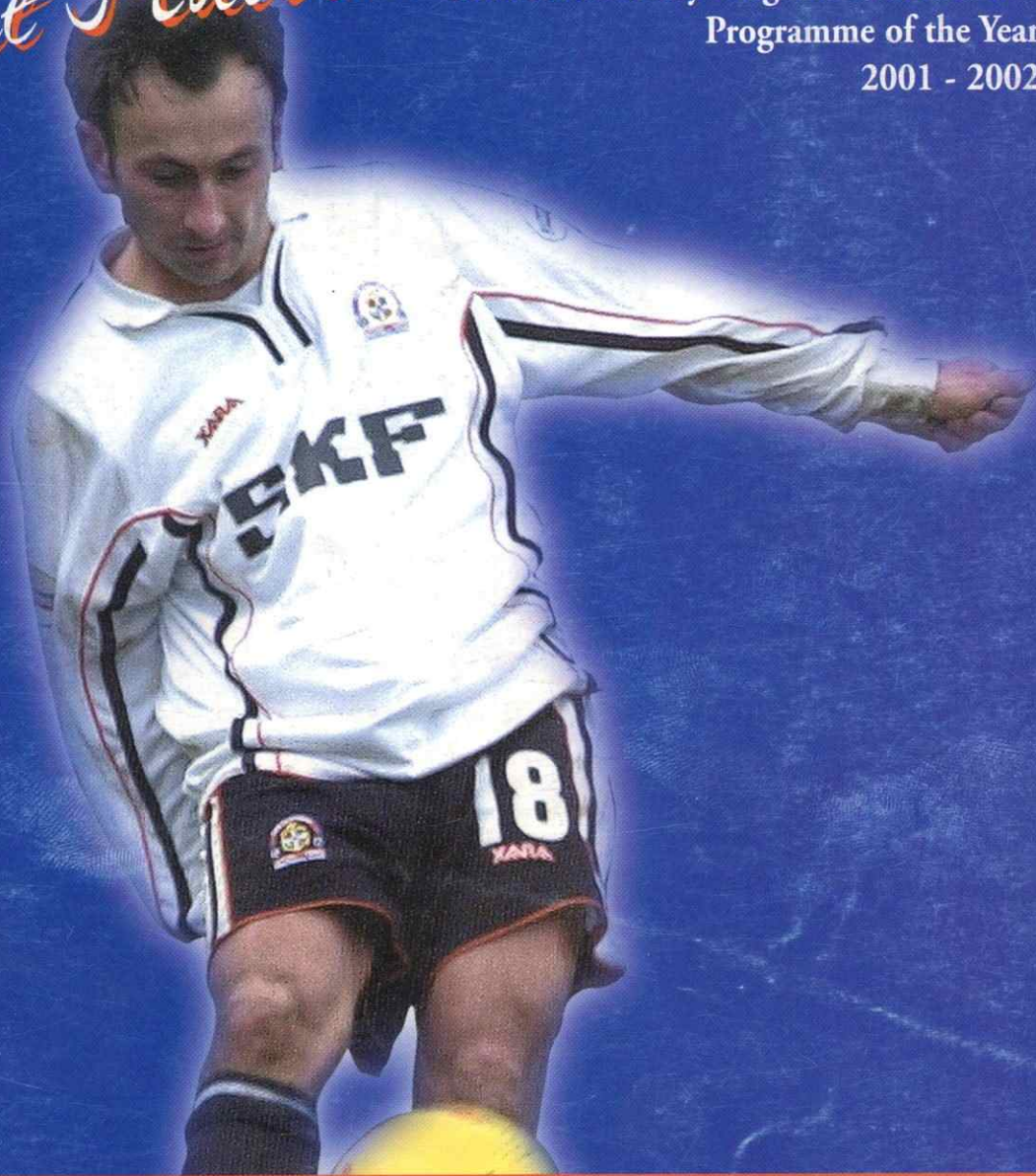


LUTON TOWN

The Hatters

Official Matchday Magazine Price: £2.00
Programme of the Year
2001 - 2002



Official Shirt Sponsors

SKF

Official Kit Supplier

XARA

Nationwide  **2**
FOOTBALL LEAGUE

Luton Town v Blackpool

Tuesday February 11, 2003, kick-off 7.45pm

Joint Match Sponsors - Charles Wells & John Ingram

Match Ball Sponsor - Danny & Elsie Clubb



**LUTON TOWN
FOOTBALL CLUB**
www.lutontown.co.uk

Luton Town FC

Kenilworth Road Stadium
1 Maple Road, Luton
Bedfordshire LU4 8AW

Main Reception:
01582 411622
Fax: 01582 405070

Ticket Office: 01582 416976

Community Dept: 01582 391927

Honours

Littlewoods Cup

Winners 1987-88
Finalists 1988-89

FA Cup

Finalists 1958-59

Simod Cup

Finalists 1987-88

Division 2

Champions 1981-82

Division 3 (S)

Champions 1936-37

Division 4

Champions 1967-68

Official Matchday Magazine

Editor

Brian Swain

Design & Printing

Regal Litho Ltd

Photography

Gareth Owen

The views expressed in this
programme are not necessarily
those of Luton Town Football Club.

Cover Story



Perky Berkovic on the ball: Ahmet
Brkovic, who played on both
flanks in the 2-1 win at Port Vale.
More pictures and a report will be
in Saturday's match day maga-
zine.

Inside Forward



CHRIS Willmott will make his second home debut for the Town this evening, after signing on loan from Wimbledon. We will be delighted if it matches his first – also against Blackpool, in February 1999. On that occasion he came into the team as a 21-year-old because Marvin Johnson and Sean Dyche were injured, and turned in an excellent performance in a 1-0 victory, earned by a goal from Stuart Douglas.

By the following summer the Town were in receivership and after 14 league

appearances the young centre-half was sold to Wimbledon, who were then in the Premiership, for £350,000.

The Dons were relegated a year later, and this season Willmott has been out of their starting line-up since August.

He has returned on loan for a month, with Joe Kinnear hoping that it might be turned into a permanent deal. Willmott will be a free agent when his contract expires at the end of the season.

Whatever happens, the player is delighted with the opportunity to play first team football again, and the manager is equally pleased with the form Willmott showed when he went on as a sub at Peterborough and then played the whole game in Saturday's win at Port Vale.

Striker Makes A Posh Move

While one comes in, Andrew Fotiadis has left on a free transfer. He knew he would be released in the summer, and asked for his contract to be terminated early to enable him to find another club. He has joined Peterborough, signing on loan on Friday so that he could play for them in a 0-0 draw at Chesterfield a day later. The Town boss said: "Peterborough wanted to sign him on a month's loan, but I wouldn't have it. I was happy to let him go because he wasn't going to get in front of Steve Howard, Tony Thorpe or Dean Crowe, and we also have Carl Griffiths coming back.

"Fotty wasn't too happy sitting on the bench, and his agent told me he wanted a new two-year contract in the summer. I refused, and he said Peterborough were offering one. So I have let him take it, and he leaves with our best wishes. I allowed him to sign on loan so that he could qualify for their game at Chesterfield, on the understanding that

INSIDE TODAY...

The manager's column – P 5; The captain's views – P 7; Today's visitors – Pp 18-21; Latest injury news – P 8; Blast from the Past – Pp 22 & 23; Ticket office news – Pp 10 & 11; Peterborough report and pictures – Pp 30-31; Luton Belles latest – P 45; Junior Hatters – P 41; Youth and reserves – Pp 49-51; Good old Andy! – P 53; All the stats: Pp 54-55.



CHARITY DONATION: Linda Layton our Commercial Manager and Joe Kinnear are shown receiving the certificate from Paul Davies, Chairman of the local branch of the NSPCC in recognition of a cheque they handed over for £2,135 from the recent Luton Town FC Golf Day held between the players and supporters.

The money having been raised following an auction and raffle. We would like to thank everybody who supported the event particularly the individuals and companies that donated prizes.

they must then sign him on a contract."

Fotiadis, a former England schools international, first came to the Town on schoolboy forms, and made his full league debut in September 1996 in a 1-0 victory at Wycombe. He created the opening for David Oldfield's goal in that game, but has failed to win a regular place in the Town squad since. In 143 appearances, more than half of them as a sub, he scored 19 goals.

Before going to Peterborough Fotiadis looked set to sign for Third Division Bristol Rovers. He played for them in a reserve game on Monday last week, and Joe said: "On Tuesday he was signing for them, but by Thursday the deal was off."

Irons In The Fire

THE MANAGER was yesterday trying to set up a meeting with the agent of a striker he hopes to snatch from a club facing financial problems, and already in administration. His identity is a secret, but the boss said: "He is a proven goalscorer, and there is the squeak of a chance I can get him."

He is also looking at a young French winger – another J-LV? – who was due to arrive this week for a trial after failing to win a contract at Leeds. The boss is also tracking Jeremy Allierdare, a young Arsenal reserve striker who could be available on loan.

Brian Swain



Chairman

M. Watson-Challis

Directors

E. Hood, R. Stringer,
Y. Fletcher,
R. H. G. Kelly, C. Newbery

Vice Presidents

C. T. F. Green, N. S. Terry,
R. L. Banks, D. Ludlow MBE,
C. Bygrave, R. Safranek,
J. Sapsworth, D. Mortimer

Club Secretary

Cherry Newbery

Manager

Joe Kinnear

First Team Coach

Mick Harford

Reserve Team Coach

Brian Stein

Youth Team Coach

John Moore

Youth Development Officer

Mark Ridgway

Medical Officer

Dr. Bill Berry

Consultant Physio

John Sheridan

Commercial Manager

Linda Layton

Catering Manager

Peter Saul

Safety Officer

Geoff Lovell

Ticket Office

Darren Bell

Financial Controller

Tania Buonpane FCCA

Club Dentist

A. Chris BDSA (Syd)

Club Chaplain

Rev Catherine Moss

Company Secretary

Cherry Newbery

For the latest news, views and interviews call:
CLUB CALL on 09068 121123 (calls cost 60p per minute at all times)

Log on to Luton Town's official website at
www.lutontown.co.uk

DISCOVER THE POWER SKF Plain bearings

Spherical plain bearings and rod ends are a machine's joints. They embody strength, flexibility and endurance.

SKF engineers have created these state-of-the-art spherical plain bearings and rod ends, available from stock in a wide range of designs, dimension series and sizes.

All designed to minimise friction and maximise machine reliability.

Standard features

- Extensive product range
- Wide choice of materials
- With or without seals
- Wide operating temperature range

Applications features

- Long service life
- Minimal maintenance
- High operational reliability

For a FREE catalogue on SKF Plain bearings please complete and return to:
SKF FREEPOST MK1540 Luton LU3 4BR

Name
Company
Address
.....
.....
Postcode
Tel
E-mail

SKF®

Manager's View



AFTER two away games, we are pleased to be back at Kenilworth Road, for the first of four consecutive home matches which give us a golden opportunity to break into the play-off zone. Tonight is the first of our two games in hand on Queens Park Rangers, who currently hold sixth place, and we have every incentive to do well and get the win that will put us above Rangers.

We know it will not be easy, and Blackpool are one of several other teams with a chance of making it into the top six. But as we all know there is a lot of football to be played before those top six places are sorted out.

I am glad to say we have embarked on a very good run of late, taking 13 points from the last 15. It is the type of run we must continue to have a realistic chance of a place in the play-offs. Since my last column we have beaten Wycombe at home much more comfortably than the one-goal margin suggests, drawn at Peterborough and then a very good team performance claimed maximum points at Port Vale on Saturday.

It was a difficult game. Port Vale are in administration and fighting for Second Division survival, and they made it hard for us to get our game going. They harried and scrapped, and I was not too pleased with our failure to impose ourselves on the game in the first half.

It got better after that, when I decided we could afford to be more attack-minded, and sent on an extra striker at the expense of a midfielder. The players responded

to our demands and we were very deserving winners for the way we took the game to them in the second half. We probably did not hit the heights we are capable of, but credit to Port Vale for that because they battled hard, especially in midfield, where they concentrated on trying to shut us down.

I couldn't see us losing, and once we made the breakthrough we were fairly comfortable until the closing minutes. Tony Thorpe did wonderfully well with the far post header for the opening goal, but others played a part in that, including Chris Willmott, helping to cause confusion in the goal area as the corner was played in by Kevin Nicholls.

And well done Nicho, for keeping his composure and concentration in the run-up to the penalty for our second goal. Thorpey was in no doubt it was a penalty, having had his legs swept from under him as he was taking on defenders in the box. We had to wait for well over a minute before the kick could be taken because some nutter went onto the pitch to have a go at the ref, but it was never going to wreck Nicho's concentration, and the keeper had no chance of saving the spot kick.

The only blemish on our day's good work was that in the closing minutes we allowed Port Vale to put on a bit of pressure. It was pretty desperate stuff, with a succession of crosses being banged in. We always looked like getting them away, but there is always the problem of winning the second ball. Port Vale did, from a corner, to score with a few minutes to go, but despite that we were good value for the win. I am sure you will give a

welcome tonight to Chris Willmott, who will be making his first home appearance for us for nearly four years after joining us on loan from Wimbledon. He has settled in very quickly, and his performance at Peterborough, when he had to go on as a sub after we collected yet another injury to a defender, was all the more praiseworthy when you know that he did not meet his new team-mates until late in the evening the night before the game.

His move was a case of mutual interest: he gets the chance of first team football to get his career moving again, and we have acquired the services of a very good player, who can help us achieve our promotion ambition.

It was another case of mutual interest when I allowed Andrew Fotiadis to leave and sign for Peterborough. I hope a change of club will put new life into his career. It is fair to say he was not in my top three choices for first team strikers, and I am hoping to bring in another in the near future. Fotty was unhappy playing in the reserves, and asked if I would let him terminate his contract and join another club, and I agreed. He left with our best wishes.

I am always working to strengthen the squad, but the lads already here have done us proud. They have gone up another league in my estimation since the start of the season, and I am sure there is more to come. Thank you for your support. Keep the faith, and enjoy the game.

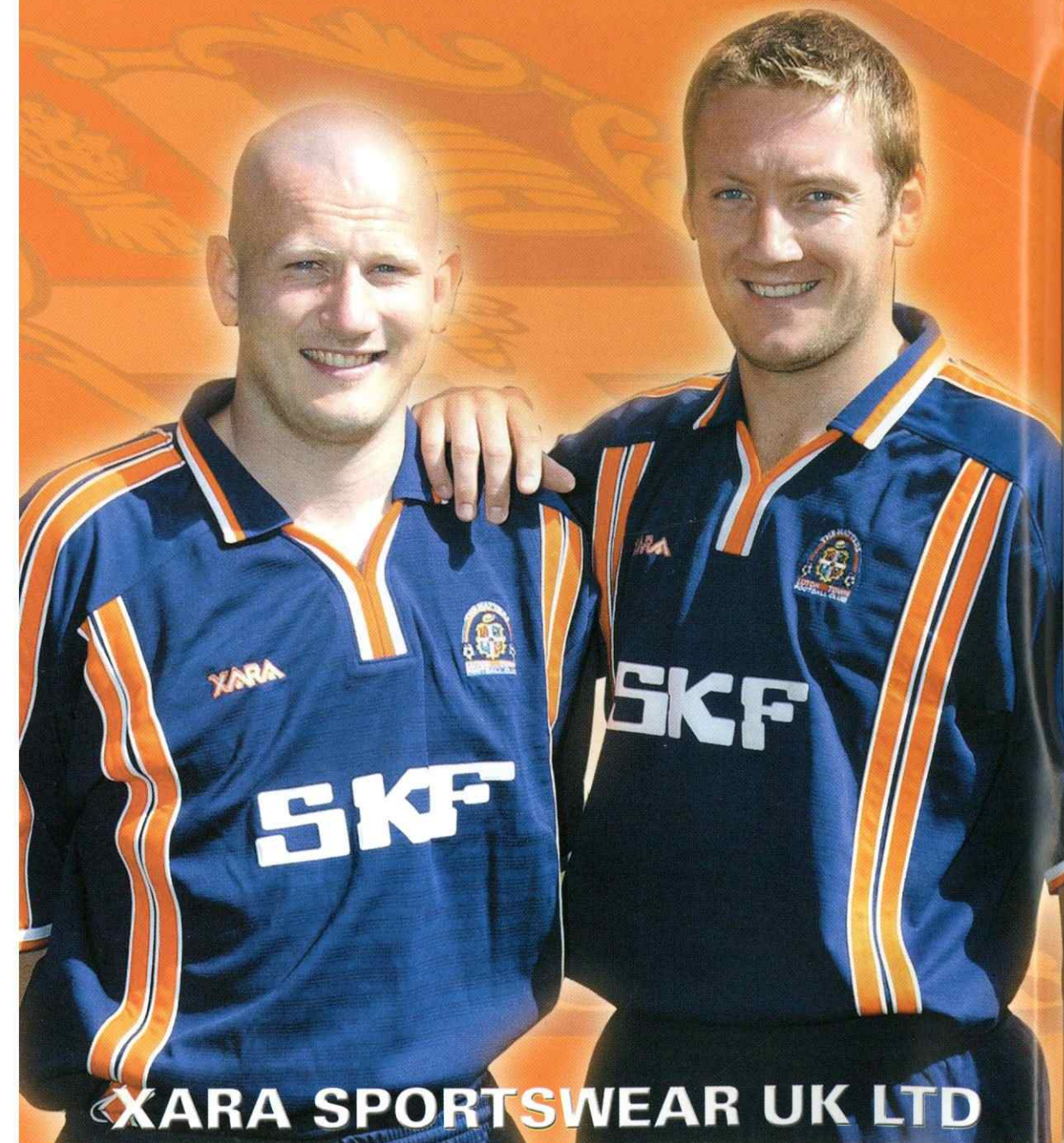
Joe Kinnear



The place to shop in Bedfordshire . . .
Horne Lane, Bedford - 01234 357330

XARA

**OFFICIAL KIT SUPPLIER TO LUTON TOWN F.C.
SEASON 2002 - 2003**



Captain's View



WE ARE in very good spirits as we return home tonight after two more decent away performances kept our unbeaten run going. At Port Vale on Saturday I enjoyed the second half, when we were much sharper all over the field than we had been in the first.

The boss told us in no uncertain terms that our first 45 minutes was not good enough, and we knew he was right. You can't play at your best all the time, but we were good value for the three points. In terms of pure football it was not a brilliant performance, but it showed a lot of character, and they say the mark of a good team is that it can win when it is not on the very top of its form.

We are all well aware that the need now is to cash in on the run of home games that starts this evening. Why we have done better away from home than we have done on our own pitch is a real mystery, but we intend to put the record straight.

I am glad that it is very much in our own hands: win the games in hand, and we're in the top six, and if we start with a victory tonight things will be looking very good. This and the next three games are so very important, and we don't intend to pass up the chance to keep our run going. We owe Blackpool. The result flattered them when we lost at their place back in August, but we are a much better

team now. In that match we looked good early on, and took the lead, only to fall apart as a team after that. Thankfully, we have not made the same mistake too often since then. The requirement tonight is to take the lead and then go on to win. Apart from anything else I do not want any side to do the double over us this season.

In our last home game the victory over Wycombe was a very good result, against a side who worked hard to try to get a draw. We turned in a good solid professional performance, with the bonus of another clean sheet.

At Peterborough the lads were gutted to get only one point, knowing that we should have taken all three. On the other hand, we appreciate that if you cannot win every game, it is important not to get beaten, and there was not much danger of us losing to the Posh.

It was another solid display at Port Vale. We might not have played our best football of the season, and we were certainly not on song in the first 45 minutes. The boss and Mick Harford gave it to us straight at half time, and I have no problems with that. I like to speak my mind, and I like managers and coaches to do the same.

We knew we could do so much better, and we did in the second half. Tony Thorpe's goal was one to enjoy,

because it came from a set piece which we practised in training. We were baffled when Thorpe scooped up a handful of snow and threw it into the Luton fans celebrating behind the goal. He got a yellow card for that, which was ridiculous, and something I have never seen before on a football field.

The second goal was a penalty, and there is no doubt it was a foul on Thorpe, who has such quick feet when he takes on defenders

At 2-0 after 74 minutes we were cruising, and it was a pity that we could not come home with another clean sheet. Port Vale's goal had an element of lucky bounce about it, but we got through the last few minutes with no more alarms, and were all well pleased with maximum points. We are going on a run again, and with games coming thick and fast in the rest of this month we have a chance to push it quickly into double figures. We did that last season, and a repeat this year will see us flying.

We have given a warm welcome to Chris Willmott, and I hope he enjoys his time with us. He has looked very good in his two appearances so far and he's unbeaten in this spell with Luton Town. Long may it continue!

Kevin Nicholls

Log on to Luton Town's official website at
www.lutontown.co.uk



Treatment Room

WE CAME home from Vale Park with no additions to our injury list, and the players currently under treatment are all making good progress. Aaron Skelton and Adrian Forbes have had to show dedication and mental as well as physical strength as they work to get over their problems, and I am pleased to report that they are being rewarded for their efforts. Skelton was unlucky to suffer a minor setback after a knee operation which took away around 50 per cent of his cartilage. It takes the body time to adjust to something like that, but he has worked hard to aid his recovery, and should be back

in training soon.

Adrian Forbes is also doing very well, and is another who has a great attitude, which has helped him cope with his cruciate ligament injury. Not many years ago something like that would probably have finished a career, but modern surgery and treatment methods have changed all that. Even so, it takes a long time, quite often a year or so, to get over the injury.

Forbes, however, is still ahead of that kind of schedule, and is now taking part in some first team training sessions in the mornings, and then spending afternoons in the gym and swimming pool to

build up muscle strength.

Obviously he is not at full power yet, but we hope it will not be long before he will be able to think about playing half a game for the reserves.

David Bayliss is back in training after his lengthy lay-off, and if all goes well he might be able to play for the reserves at Southend tomorrow.

Sol Davis is also recovering after a thigh injury received in training three weeks ago. He has just started running again, and will pick up the pace in the next few days.

Lee Taylor

David Lloyd Leisure... now in your town



Call us on 01582 692046/7

Special introductory offer on presentation
of this Match Day Programme

Offer available at the Luton Club only. Terms and conditions apply.



www.davidlloydleisure.co.uk

Club Secretary



WELCOME to the first of four consecutive first team home matches. It means we are all going to be very busy.

The bucket collection held at the Wycombe match by Luton North Rotary Club in Aid of Polio Plus raised a magnificent total of £466, which enables 1,398 children to be inoculated against a disease which has been conquered in this country, but is still a problem in many parts of the world. Thank you all for your generosity.

Thank you, also, to everyone who came to hear Joe Kinnear speak at the Supporters Club on January 27, and proved to be very understanding when it had to be called off at short notice. You may recall that on that day there was a horrific accident on the M1, which brought traffic in and around Luton to a standstill. Joe's best efforts to get to Kenilworth Road were defeated by the gridlock, and it was not until 6pm, 90 minutes before the meeting was due to start, that we reluctantly decided to postpone the event. We did our best to publicise it, and I was a late substitute for any supporters who did turn up. It was surprising how many did (but then, they did expect to see Joe).

They had an insight into what goes on behind the scenes at the club, on match days, and also about contracts and regulations. The reaction from a very kind audience suggested it was an enjoyable evening once we got over the initial disappointment. The new date for Joe's evening is Monday March 10 (7.30pm). All tickets have been sold, and will be valid for the new date.

Last week's bad weather caused

the postponement of our Avon Insurance Combination match with Bristol City on Wednesday. The pitch was frozen solid, but hopefully we will be enjoying a touch of spring when the game is played – the provisional date is Wednesday April 9, and I will let you know when we have confirmation, or a different date.

As I am sure supporters know, the youth team has reached the fifth round of the FA Youth Cup, and we were scheduled to play at home to Middlesbrough on Tuesday February 18. Borough, however, have had players called up for international duty, and on the instructions of the Football Association the game will now take place on Thursday February 27. Kick-off at Kenilworth Road will be at 7pm. Do come and support the youngsters, who play some excellent football. Turnstiles will be open at both Kenilworth Road and Maple Road bridge, and entry will cost only £3 for adults and £1 for concessions.

An added fixture problem is that should we be successful in reaching the quarter-finals – Manchester United and West Ham are already there – the sixth round tie must be played by Saturday March 8. We have been drawn at home again, so John Moore's boys could be playing here again on Monday March 3. Our opponents would either be Crystal Palace or Tottenham Hotspur, who play their match on Thursday February 20. The reserves are due to be at home to Cheltenham the day before the youth team's game with Middlesbrough, so that fixture will have to be moved. I am

beginning to wonder when we will get them all played, especially as we have now been informed that our Bedfordshire Senior Cup tie away to Bedford, a reserve team game, has been arranged for the evening of Tuesday April 8, the night before our re-arranged game at home to Bristol City. As you can see, we like a challenge behind the scenes to ensure the smooth running of our various fixture lists!

The Worthington Cup match at Watford on September 10 seems a long time ago, and following a full investigation by both the Hertfordshire and Bedfordshire Police Forces, there were five arrests in the Luton area last Thursday. We are advised by Peter Palmer, our Football Liaison Office, that more arrests are imminent. While it does seem a long time after the event, the authorities wanted to be certain that the evidence they have is of good quality. We have co-operated fully with the Police during the past months, and anyone who is convicted will be banned from attending football for a minimum of three years.

Finally, on a happier note, I must once again mention the superb away support at our matches, with nearly 3,000 travelling to Peterborough for a mid-day kick-off. It was fantastic, and makes such a difference for the team. It therefore comes as no surprise to me that you are top of the away supporters league for Division Two this season. Please keep it up, and at home as well.

Cherry Newbery

You can e-mail Cherry Newbery on
clubsec@lutontown.co.uk

Ticket Office News

Nationwide League Division Two



Luton Town v Northampton Town Saturday February 15, 2003, kick-off 3pm

This match is ALL TICKET for ALL SUPPORTERS, with no tickets available on the day of the game.

Tickets are now on sale at normal matchday prices and supporters are advised to book early to avoid disappointment.

There will be no cash turnstiles available on the day.



Luton Town v Brentford Saturday, February 22, 2003, kick-off 3pm

Tickets are now on sale at normal matchday prices

Cash turnstiles will be open on the day subject to availability, but please remember there are

NO CONCESSIONS available on cash turnstiles.



Rearranged Luton Town v Plymouth Argyle Tuesday February 25, 2003, kick-off 7.45pm

This match is ALL TICKET for ALL SUPPORTERS, with no tickets available on the day of the game.

Tickets are now on sale at normal matchday prices and supporters are advised to book early to avoid disappointment. Tickets purchased for the game postponed on January 11 will be valid for this re-arranged date. There will be no cash turnstiles available.



Ticket Office Opening Hours

MONDAY TO FRIDAY

10am to 4pm, except on Fridays before Saturday home games when it is 10am to 6pm

SATURDAY

9am to 5.15pm on match days; 10am until the away coaches depart on days when there is no game at Kenilworth Road.

Luton Town Credit Card Hotline

By using our telephone hotline system you can order match tickets up to 48 hours prior to any game by ringing

01582 730748



Notts County v Luton Town

Saturday March 1, 2003, kick-off 3pm

This match is pay on the day only for Luton Town supporters, with no tickets available in advance from Kenilworth Road.

Prices: Adults £14, Senior Citizens £8, 12-15-year-olds £5, under-12s free

Students and unemployed people can gain entry for £7 by producing relevant identification at the Notts County ticket office.



Mansfield Town v Luton Town

Tuesday March 4, 2003, kick-off 7.45pm

This match is pay on the night only for Luton supporters, with no tickets available in advance from Kenilworth Road.

Prices: Adults £14, Senior Citizens and Juniors £7.



Luton Town v Huddersfield Town Saturday, March 8, 2003, kick-off 3pm

Tickets are now on sale at normal matchday prices

Cash turnstiles will be open on the day subject to availability, but please remember there are

NO CONCESSIONS available on cash turnstiles.



See Every Home League Game Guaranteed

Join the Promotion Push

and

BUY A SEASON TICKET NOW!

Prices from £81 adult £57 concessions
for the 9 remaining games

Just Call Luton Town Ticket Office

Tel: 01582 416976

"They will do the rest!"

Opening Hours 10am-4pm Mon-Fri.

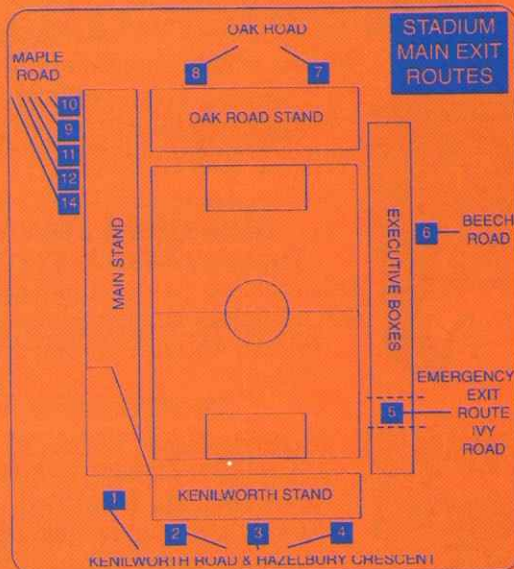
Saturdays please ring ticket office for hours.

www.lutontown.co.uk

EVACUATION PROCEDURE

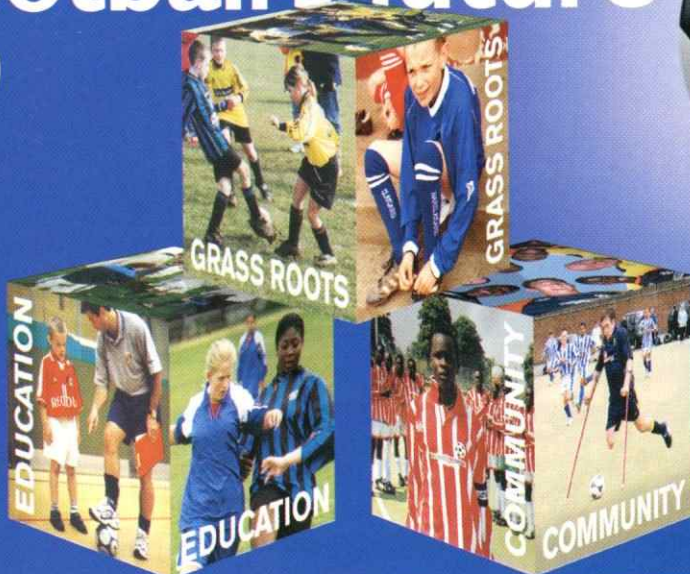
IN THE event of any emergency in the stadium, Luton Town FC and the emergency services have agreed on an evacuation procedure which is designed to ensure the safe and controlled evacuation of the crowd, and to ensure their safe dispersal from the area, to allow the emergency services to carry out their tasks.

In the event of evacuation from all or part of the stadium, you will receive instructions over the public address system on how you should leave. In an evacuation of the main stand you will be instructed to use the pitch. Stewards will direct you to the nearest exit. It may be that your normal exit route will not be available. On leaving the stadium, you will find some roads closed to pedestrians, to enable swift and unobstructed access for the emergency services. Please leave the area of the ground as quickly as possible, by the route directed. Your co-operation will be most appreciated.



Geoff Lovell, Safety Manager.

building football's future



Football Foundation
football's biggest supporter

Helpline 0800 0277766 www.footballfoundation.org.uk

Executive Box Holders



Kenilworth Suite Members

Mr P Armitage
Belldene Construction Services Ltd
C P Contracts
Corporate Coaching
Danny & Elsie Clubb
Datapace Ltd
DBF Crosswinds Ltd
Mr M Eade
Mr R Eade
Mr K Harvey
Mr R Harvey
J P Hygiene Supplies

Mr P Mitchell
Protexx Mortgage & Financial Services
Regal Litho Ltd
Remdex UK Ltd
Mr J Siegler
Dr D Siegler
SKF (UK) Ltd
Space Display Systems
Vangis UK Ltd
Mr & Mrs R Williams
Woburn Media Ltd

If you would like a brochure or further information on Kenilworth Suite Membership please contact the Commercial Department on 01582 411622

The Official Club SMS text service.
use your mobile to **sign up now!**



BE AT THE MATCH WHEREVER YOU ARE!

By signing up to this official service you're directly supporting the club.

Brought to you by www.lutontown.co.uk

This service is available to UK Vodafone, Orange & O2 mobile customers. The cost of each SMS text message sent shall be a maximum of 25p and will be charged direct to your mobile phone bill or deducted from your mobile phone's pre-pay balance. The cost of calling 8222 for your club's official SMS service will be charged at your normal text rate. All charges are inclusive of VAT. Full terms & conditions can be found on the mobile zone at your club's official website.

The Gold Service

- Team line-ups before kick-off
- Every league & cup goal
- Half & full time divisional round ups
- Red cards
- **Exclusive** match quotes from the gaffer or key player – straight after the game!
- **Exclusive** club breaking news

To receive this package simply text:
CLUB LUTON GOLD ON
to 82222

The Silver Service

- Every league & cup goal
- Full time divisional round ups
- **Exclusive** club breaking news

To receive this package simply text:
CLUB LUTON SILVER ON
to 82222

The Away Service

If you already go to all the home games, this one's perfect for you!

- Every away league & cup goal
- Full time divisional round ups for all away matches
- **Exclusive** club breaking news

To receive this package simply text:
CLUB LUTON AWAY ON
to 82222



Commercial Corner



A LIFELONG supporter of Luton Town is enjoying a very special visit to Kenilworth Road this evening, and by now should have recovered from his surprise – John Ingram is one of our joint match sponsors, but did not know it until he got here. The package has been bought by his loving wife Jackie to celebrate his 50th birthday in two days' time.

The couple are from Lavendon, near Bedford, and John is the Flooring Director of Crown Contracts in Milton Keynes. He has been a regular here since he first came to see the Town when he was eight years old. He, his wife, and business partner Dave Kingham are season ticket holders in the Kenilworth End, but they and their friends are enjoying the VIP treatment in the sponsorship lounges.

Tonight's other match sponsors are Charles Wells Brewery, whose guests are the Territorial Football Club from Huntingdon. The team are sponsored by Charles Wells, and play in the second division of the St. Neots Sunday league. The club has been in existence for four years, and club coach and founder Sean Hewitt is looking forward to a successful second half of

the season. They are currently in seventh place, just four points off a promotional place, and look forward to returning to the First Division, which they also wish for Luton Town this year!

Charles Wells are long-time friends and supporters of Luton Town, and their products, of course, are appreciated with relish in our bars.

TONIGHT'S match ball sponsors are Danny and Elsie Clubb, who live in Blackpool, but rarely miss a Town match, home or away. Brought up in Dovehouse Hill, Stopsley – Alan Slough was one of his neighbours – Danny later lived in Hazelbury Crescent, in the end house next to Kenilworth Road.

He and Elsie now run a residential hostel for homeless men in Blackpool, but they are as fanatical about following Luton Town as they ever were. Members of the Kenilworth Suite, they clock up 424 miles to watch every home game, and with travelling to away matches as well they reckon they drive around 30,000 miles a year just to watch the Hatters.

Linda Layton

Golden Gamble

TOWN fan Rob Horton enjoyed the Wycombe game more than most, because he was the winner of the day's Golden Gamble, and went home to High Street, Barwell, Leicestershire, with £840 in cash. His winning ticket cost him only £1, and was drawn out of the drum by Aaron Skelton.

Another wedge of cash is on offer this evening, although we cannot guarantee just how big it will be. Half of each £1 you spend on the Golden Gamble goes into the jackpot, and the other 50p is donated to club funds, so everyone who buys a ticket helps Luton Town.

So far this season 15 winners have shared £10,4159, an average of £694 each. The draw is made on the pitch at half time, with the prize money available immediately.



To advertise in the matchday magazine phone Luton 411622 or e-mail us at:
commercial@lutontown.co.uk



Kit Sponsors

David Bayliss
WHOSH

Mick Harford
Les Miller
Miller & Company Bedford

James Osborn
Michael Capp & Danny Clubb

Emmerson Boyce
Elsie Clubb

Happy Harry
Maureen Barrett

Mark Ovendale
Sally & Sue

Chris Coyne
Mel Westwood & Family

Ian Hillier
St Mary's Church, Luton

Russell Perrett
Graham Bates & Chris Park

Dean Crowe
John Pyper & John Waterworth
"Mad Hatters"

Peter Holmes
Gill, Julie, Yvonne

Aaron Skelton
The Bobbers Travel Club

Justin Dealey
BBC Three Counties Radio

Steve Howard
Jeremy Cain of DAP Consulting

Matthew Spring
Brian Hall

Joseph Deeney
Michael Capp & Danny Clubb

Paul Hughes
Les & Sue Miller

Brian Stein
Danny Clubb

Tony Thorpe
Luton Town Supporters club

Alan Neilson
LTFC Barmy Army London Branch

Carl Emberson
The Kenilworth Connection

Marvin Johnson
Fred Barrett & Son
Licensed Property Valuers

Ahmet Brkovic
G&S Ceramics

Adrian Forbes
The Regular Rabble

Joe Kinnear
LTFC Supporters Club (MK)

Alan Kimble
Office Power Systems Ltd

Andrew Fotiadis
Sally Mayne & Family

Lee Mansell
Danny Clubb & Michael Capp

Steve Robinson
G.Owen Ceramic Tiling

Robert Gillman
Century Club

John Moore
Ian Smith

Kevin Foley
The Regular Rabble

Carl Griffiths
Paul Deason

Kevin Nicholls
WHOSH

Sol Davis
Personal Security Services



Clubs Comparison

Goals Scored	
27	Shots
9	Headers
5	Volleys
3	Penalties
0	Free Kicks
0	Own Goals

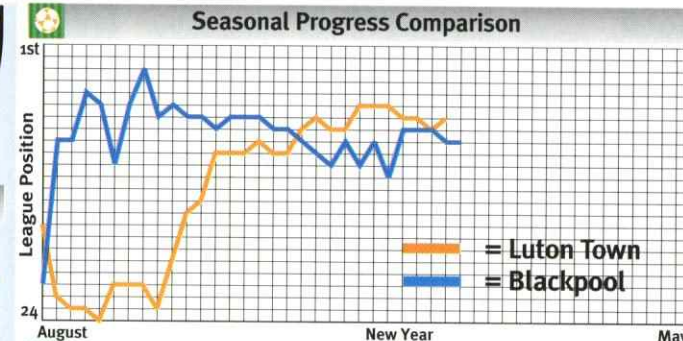
Where Goals Scored	
15	18
23	19
6	3

Where Goals Conceded	
10	14
19	16
8	8

When Goals Scored	
15	Hatters
12	16-30
9	31-45
6	46-60
3	61-75
0	76-90
15	Seasiders
12	16-30
9	31-45
6	46-60
3	61-75
0	76-90

Form Guide - Last 6	
4	Won
1	Drawn
1	Lost
10	For
7	Against
13	Points
3	Goal Difference
WLWWDW	Sequence
DWDWDD	

Yellow & Red Cards	
56	Yellow
5	Red



2002-2003 Attendances

Hatters	Aggregate	Seasiders
89,449	101,759	
9,477	Highest	8,201
5,890	Lowest	5,068
6,881	Average	6,784
69	% of Capacity	67

Average Goals per game

	For	Against
1.52	Home For	1.73
1.62	Away For	0.87
1.44	Against	1.27
1.28	Home Against	0.93
1.15	Away Against	1.60

2002-2003 Figures

34	Players Used	31
10	Clean Sheets	9
5	Failed to Score	10
7	Goals scored from...	
2	Corners	9
2	Free Kicks	1
3	Goals conceded from...	
4	Corners	7
	Free Kicks	8

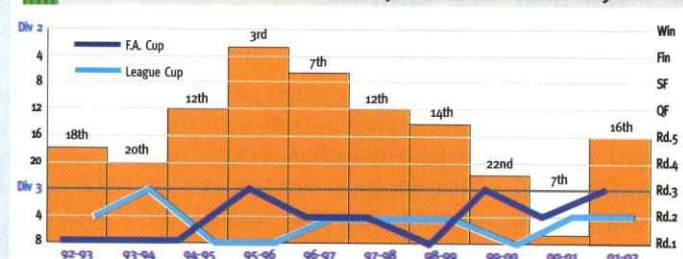
10 Year Record

Hatters	Avg Pos.	Seasiders
53.3	among 92 clubs	59.3
7,878	Avg Att 1993	4,756
6,842	Avg Att 2002	6,833
-13	+ / - %	44

Top League Scorers

Howard	Murphy
14	League Goals
27	Games Played
0.52	Lge Goals/Game
10	Points Gained
4	Scoring Run
0	Hat-Tricks
5	Close Range
7	Inside Area
2	Long Range
6	Shots
5	Headers
3	Volleys
0	Penalties
0	Direct FKs

Blackpool's 10 Year History



Swings

LT	Games Won from:	B
0	3 Goals Down	0
0	2 Goals Down	0
5	1 Goal Down	4
0	Lost from:	0
0	3 Goals Up	0
0	2 Goals Up	0
3	1 Goal Up	1
0	Drawn from:	0
1	3 Goals Down	0
0	2 Goals Down	0
0	1 Goal Down	3
0	3 Goals Up	0
0	2 Goals Up	0
3	1 Goal Up	2

Margins

9	Won by 1 Gl	5
2	Won by 2 Gl	4
2	Won by 3 Gl	3
0	Won by 4 Gl	0
0	Won by 5+ Gl	0
6	Lost by 1 Gl	3
0	Lost by 2 Gl	3
2	Lost by 3 Gl	1
0	Lost by 4 Gl	1
0	Lost by 5+ Gl	1

Misc stats

6	Highest Pos.	3
24	Lowest Pos.	21
5	Winning Run	2
7	Unbeaten Run	9
4	Losing Run	4
5	No Win Run	6



Welcome To

MANAGER

STEVE MCMAHON



Steve was appointed manager on January 7th 2000 to replace Nigel Worthington who had resigned just before Christmas 1999. Steve gained managerial experience with Swindon Town and in his four years there he won the 2nd Division Championship title. He ended his time at Swindon in September 1999 and worked with the media until being appointed by Blackpool.

As a player he will be remembered for his very competitive attitude in midfield where he made over 600 appearances for Everton, Aston Villa, Liverpool, Manchester City and Swindon Town. Added to these he picked up 17 appearances for England during an illustrious career in top-flight English soccer.

Unfortunately he could not prevent Blackpool from being relegated despite the influx of several experienced players. During the summer of 2000 he brought in some younger players as he started to rebuild the side that after a roller coaster season finally gained promotion via the end of season play-offs at the Millennium Stadium Cardiff. In February 2001 he pledged his future to the club by signing a two-year extension to his contract and now looks to continue his rebuilding programme with success in Division 2.

GOALKEEPERS

1. PHIL BARNES

Sheffield born Phil, joined the Seasiders for £100,000 from Rotherham in 1997. A good shot stopper with a great pair of hands, he has grown in confidence and has already kept nine clean sheets this term including one against Oldham which earned him the Save of the Month Award.

13. MICHAEL THEOKLITOS

Michael joined the 'Seasiders' following an impressive trial period, which included brave performances in the pre-season games against Livingston and Accrington earning the Greek Australian a one-year

contract. Michael played last season for Auckland Kingz in the Australian Premier League earning himself the 'player's player of the year award'

DEFENDERS

29. CHRIS CLARKE

A very promising young central defender who signed from Halifax Town for £100,000 on a contract till June 2004. He was born in Leeds and was a trainee at Wolverhampton Wanderers. He is a tall, powerful player who reads the game well. His twin brother Mathew plays for Darlington. He quickly endeared himself to Seasiders fans when he scored the all important second goal in the LDV final at the Millennium Stadium against Cambridge United.

20. COLIN HENDRY

The much travelled ex Scotland captain joined the Seasiders on loan from Bolton just before Christmas, despite his advancing years he is still a commanding figure at the heart of the Seasiders defence and recently extended his loan for a further two months.

22. LEAM RICHARDSON

The talented fullback arrived along with Colin Hendry on a month's loan from Bolton,

Blackpool F.C.



2. SIMON GRAYSON

Simon became Steve McMahon's first pre-season signing ahead of the 2002/3. Aged 33, Simon is a vastly experienced player who can play in either defence or midfield. Simon was released by Blackburn Rovers at the end of last season having spent most of last term out on loan at Notts. County and Bradford. Simon started his career at Leeds before moving on to Leicester, Aston Villa and Blackburn Rovers.

15. JOHN HILLS

Left sided defender/midfielder who started as a YTS at Blackpool before being transferred to Everton before making a first team appearance. He returned to Blackpool in February 1998 when he had failed to hold down a place with the Premiership outfit. He is a local lad who played his youth football for the YMCA club. He is a real crowd pleaser who always gives 100% and had his best season last year, sweeping the board in the player of the season awards.

5. IAN HUGHES

Ian signed from Bury in the deal that took Tony Ellis in the opposite direction in December 1997. This former Welsh U-21 International has settled into a central defen-

sive role after initially being employed as a midfielder. He has signed a contract keeping him at the club to June 2003. Injuries restricted his appearances in 2001/2 but he is hoping to get in a full season this year. Not a prolific goal scorer he notched the first in the Play-off final at Cardiff in 2001.

3. TOMMY JASZCZUN

Steve McMahon's first signing, Tommy is a left sided defender who joined the club on a three-year contract in January 2000 from Aston Villa for £50,000. This contract was extended in 2002 to take him to the end of the 2003/4 season. He was previously a schoolboy and YTS at Villa made his first team debut their against Chelsea in the Worthington Cup. He is a hard working player who likes to get forward and support the attack when possible.

4. JOHN O'KANE

The first of Steve McMahon's summer 2001 signings, John joined from Bolton Wanderers who had just been promoted to the Premiership. He has excellent credentials having played with Manchester United, Everton and Bolton Wanderers plus loan spells with Bury, Bradford City and Burnley. He played in a num-



having impressed the manager in his first three games, his loan move to the Seaside was extended for the season. Tough tackling Leam last season was on loan at Notts County where he was instrumental in their relegation.

12. DANNY COID

Young defender/midfielder from Liverpool who having broke into the side in 1999/2000 and has held down a place ever since. He is a product of the clubs successful youth policy. Danny likes to get forward at every opportunity and possesses a powerful shot. To date he has made 105 full and 14 substitute appearances with 5 goals. He missed a first few games through injury last season but is hoping that this is now fully cleared up.



Welcome To

ber of rolls last term but was probably best suited to that of right back. Much will be expected of this talented player this term.

6. MIKE FLYNN



Oldham born Flynn is another loanee at Bloomfield Road joining the Seaside on a three month loan from Barnsley. The powerful central defender make his mark at his home town club before moving to Norwich. The spell in East Anglia wasn't a happy one for the 6'0" centre back. A move to Preston in 1989 was followed by a £125,000 move to Stockport. Whilst with County Flynn lead the Hatters to promotion and a League Cup Semi Final.

MIDFIELDERS

24. MARTIN BULLOCK



Signed a two-year contract with the club after impressing in an initial one-month spell at the start of the 2000/1 season. Although diminutive he is a very aggressive midfielder who offers a different approach as he loves to run at defences with the ball. He was surprisingly released by Barnsley in the summer of 2001 after making more than 200 appearances for them. Hero of the Seaside fans scoring the 'Golden Goal' at Huddersfield to take the Seaside to Cardiff for the LDV final.

14. LEE COLLINS

Midfielder who signed on a 'Bosman' during the summer of 2000 on a free transfer when he was out of contract. Steve McMahon took Lee to Swindon for £15,000 from Albion Rovers in Scotland. He is a hard tackling player who suffered a hernia during the 2000/1 season restricting his

appearances to 28 full and 5 substitute. Having had the operation in the summer he battled to regain his place and is now playing some of the best football of his Blackpool career. He signed an extension to his contract to keep him at Blackpool till the summer of 2004.

8. BEN THORNLEY

Ben became Steve McMahon's first signing of 2003. The former Huddersfield and Manchester United winger joined the Seaside when the transfer window re-opened on January 1st. The former England Under 21 can operate down either flank and is sure to add the quality of the Pool squad.

16. KEITH SOUTHERN

Keith joined the club from Everton following a successful three-month loan. Southern (21) last season captained The Toffee's second string. The skilful, battling midfielder has impressed manager Steve McMahon with both his ability and tremendous work rate and has slotted well into the midfield and was voted PFA Player of the Month for January.

7. RICHARD WELLENS

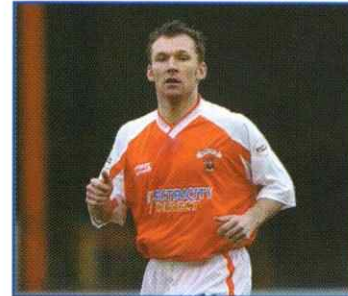
22 Year old Richie joined

Blackpool F.C.



Pool from Manchester United in March 2000. Tigerish in the tackle he also displays some neat creative touches and has a good scoring record.

19. PAUL EVANS



Welsh International midfielder Evans joined the Seaside on loan from Bradford prior to Northampton game in early January. The former Shrewsbury and Brentford man was inspirational in the Bees push for promotion last term. A powerful ball winner Paul has earned a reputation for David Beckham style free kicks.

FORWARDS

23. GRAHAM FENTON

A very experienced front player who signed a two-year contract in the summer of 2001 after a clause in his St Mirren contract allowed him to leave if the club were relegated from the Scottish Premiership. He started his league career at Aston Villa

before moving to West Bromwich Albion, Blackburn Rovers, Leicester City, Walsall and Stoke City. Suffered an injury that meant he missed much of last season and has found his chances limited this year.

9. JOHN MURPHY

Big striker signed from Chester City for an initial £50,000 fee on the eve of the 99/2000 season. He has blossomed to become a very important part of the side. Was the subject of transfer talk linking him with other clubs including former manager Nigel Worthington at Norwich City before finally putting pen to paper and signing a new contract keeping him at the club till June 2004.

10. SCOTT TAYLOR



Scott is a striker/wide player who signed as a free transfer from Stockport County after a change of management at the Hatters saw him out in the cold. He previously spent a short loan spell at

Blackpool in 1998 whilst a pro at Bolton Wanderers and although wanting to sign full time then he eventually moved to Tranmere Rovers. He has signed a two and a half year deal and made his first appearance against Bury on January 26th 2002. Previously he has also represented Millwall and Rotherham United (loan).

25. RICHARD WALKER

Striker who signed for an initial fee of £50,000 from Aston Villa on December 20th 2001 on a contract to the end of the 2003/4 season. He had previously been at the club on three-month loan during the back end of the 3rd division promotion season 2000/1. He endeared himself to Blackpool fans with a last minute wonder header against Plymouth Argyle at Bloomfield Road. Earlier in the 2001/2 season he spent a successful three-month loan at Wycombe Wanderers who Blackpool beat to get Richards permanent signature. He continued to score well and is now forming a good relationship with John Murphy.



Blast From the Past

The welcome return of Blackpool to Kenilworth Road after a three season absence gives the opportunity to unashamedly recall our most famous victory over the Seaside which took place during our F.A.Cup run of 1959.

When the Hatters were drawn to play Leeds at home in round three in the 1958/59 season most Luton supporters did not give the game much thought, and certainly cup euphoria was not evident on the streets of the town.

Since winning promotion to the old Division One four years earlier we had been knocked out of the competition at the first time of asking each season and the thoughts of the 'twin towers' were a long way from our minds.

Of rather more importance was our dismal league record that season for, after a bright start, our form had slumped and relegation was a real danger. The week before the Leeds game we had lost at home to Birmingham and the team looked bereft of ideas especially up front.

The Town were without a manager, Dally Duncan having left for Blackburn the previous autumn, and the selection committee, which included the directors and captain Syd Owen, decided to make sweeping changes. For the game against Leeds out went winger Jim Adam and terrace favourite Gordon Turner to be replaced by Allan Brown and youngster Tony Gregory.

A crowd of 'only' 18,534 turned out to see the new

look Luton side and the supporters went home impressed after seeing Billy Bingham turn on a masterful display on the wing as we thrashed Leeds 5-1 on a snowy pitch. In Leeds' defence it must be said that their right back Ashall was a passenger for most of the match after breaking his wrist early on. No substitutes in those days!

In the next round, the Town were drawn to meet Leicester at Filbert Street, and over 3,000 Luton supporters made the trip to see Bingham score a late equaliser and bring the tie back to Kenilworth Road. The replay, under floodlights for the first time, was watched by 27,277 and this time it was Brown's turn to shine with a hat-trick in a 4-1 win.

Cup fever was now in evidence, and when it was announced that we were to travel to second division Ipswich in round five, the Town's initial allocation of 6,000 tickets was snapped up immediately. Fortunately, a price hike by the Suffolk club did not go down well with the locals, with the result that the Town's allocation was eventually increased.

"Play it tight for the first few minutes," said captain Owen as the players went out on the pitch, but his instructions were blown to smithereens straight away with Ipswich scoring almost from the kick-off. By the 17th minute, however, we had amazingly scored four times in a display of attacking football that has rarely been bettered by a Luton side.

The Town were now through to the quarter-finals for only the third time in their history but the draw was unkind, pitting us against arguably the strongest side left in the competition, Blackpool, who still boasted the mercurial Stanley Matthews and a good many of the side

Matthews fails to shine



that had lifted the trophy six years before.

It was a dream come true for Allan Brown who had missed out on a winners medal with the Seaside after breaking his leg scoring the winning goal in the quarter-final of 1953. Here was the chance to make up for that disappointment and against his old side to boot!

A crowd of 30,634 gathered at Bloomfield Road to see two rugged defences in action with very little in the way of goalmouth action. The game seemed to be petering out to a scoreless draw when quicksilver Bingham, anticipating a long cross from Bob Morton, ran between two defenders and crouched low to head the Town into the lead.

With only five minutes remaining all the Town defence had to do was the same as it had done for the previous 85 and, ably marshalled by Owen, looked more than capable of holding on to the advantage. Only seconds remained and with the referee looking at his watch disaster struck when the normally reliable Luton full-back Ken Hawkes played an

underhit back pass to goalkeeper Ron Baynham which allowed Blackpool's Ray Charnley to nip in for an undeserved equaliser and a replay at Kenilworth Road the following Wednesday.

Everyone felt sorry for Hawkes who was distraught at the end of the game. "I had time to put the ball into the sea. I deserve to be whipped," he said afterwards.

Due to the fact that Blackpool (and more particularly Matthews so it was rumoured) objected to the Luton floodlights, the replay was scheduled to take place in the afternoon which the Town officials felt would affect the attendance.

As it turned out, when the turnstiles had stopped clicking, the crowd was recorded at 30,069, a ground record. Truancy was rife that afternoon and the major employers in the town turned a blind eye to absenteeism (or so they said afterwards).

This time the play was more open with Blackpool trying to bring Matthews more into the game, but the Luton defence held firm. It was felt that the team scoring first would

be the winner, but as the game wore on in the second period it looked increasingly likely that we were in for a stalemate.

In true storybook fashion it was Brown who broke the deadlock with 15 minutes to go. George Cummins split the defence for Brown to run on and sweep the ball past George Farm in the Blackpool goal. The two players collided, but this time unlike in 1953, Brown struggled to his feet as the crowd went wild.

Despite frantic efforts by Blackpool the Town defence held on and when the referee called an end to the game the crowd surged on to the pitch to celebrate the club's first appearance in an F.A.Cup semi-final. **Luton (both games):** Baynham, McNally, Hawkes, Groves, Owen, Pacey, Bingham, Brown, Morton, Cummins, Gregory.

Blackpool: Farm, Armfield, Garrett, Hauser, Gratrix, H.Kelly, Matthews, Mudie, Charnley, Durie, Perry. J.Kelly replaced Perry for the replay.

Roger Wash



Syd Owen (centre) and Dave Pacey watch Ron Baynham gather the ball safely during the F.A.Cup replay with Blackpool in March 1959.

Yesterday's pages

The programme for the F.A.Cup quarter-final replay with Blackpool was the Town's standard eight page effort which had remained unchanged since the War.

Although far removed from today's colourful and glossy issue it probably covered the basics adequately with a list of fixtures and an up to date league table as well as the line-ups for the game due to be played. It is interesting to note that nine times out of ten the line-ups turned out to be as printed in the programme in those days.

By far the most important section is the 'Club Notes' page which gives a total overview of all things coming out of Kenilworth Road. In this issue much is made of the Town's misfortune at Blackpool the previous weekend but everyone was confident of eventual victory at Kenilworth Road to the extent that details of ticket arrangements for the semi-final were talked about even though we did not know who our opponents were to be or the venue!

LUTON TOWN
F.A. CUP - Round 4 (Replay)
LUTON TOWN
v
BLACKPOOL
Official Programme
Price 5d.
WEDNESDAY, 4th MARCH, 1959
NOW YOU CAN RENT
a murphy
14 in. from 8/6 per week
17 in. from 10/6 per week
21 in. from 13/- per week
No Bills! No Worry! Details from
WILLIAMS & RICHARDSON
174, BISCOE ROAD, LUTON Phone: Luton 6897/8

The Winning Team

Get the latest Hatters news every Wednesday

Every Wednesday read the latest match reports, transfer news, interviews *plus much more...*



FOR SUBSCRIPTION DETAILS CALL 01234 409218



IMPROVE YOUR OUTLOOK WITH SERENADE WINDOWS

Fitted as standard

- Saracen shootbolt locking white scotia bead & white gaskets
- Internal or external glazed windows
- 10 year trades insurance backed guarantee
- 1000's of satisfied customers throughout the Home Counties
- Products available in white, woodgrain and light oak
- Coloured leaded light specialists

Before you buy elsewhere let us quote for a free no obligation estimate and friendly advice
Direct From Factory Prices • 0% Interest Available

Serenade Windows by design Ltd.
HOME TRANSFORMATION
COLOURED LEADED LITE SPECIALISTS

Call 0800 214432

www.serenadewindows.com

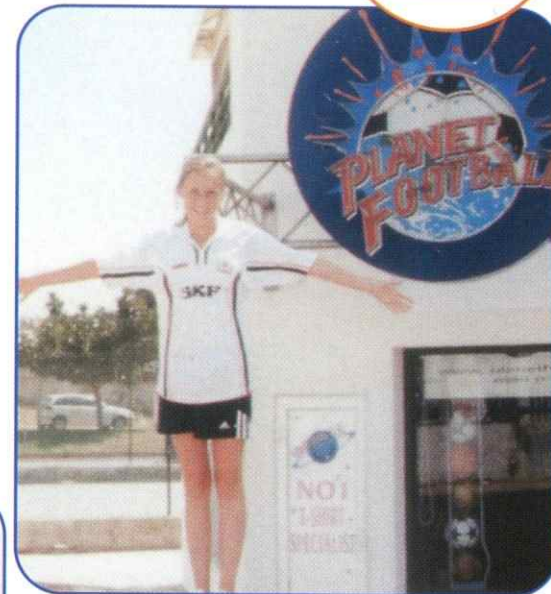
Hatters Abroad



WE FEATURE two of our younger supporters today, both of whom are proud to carry the Town's colours on their holidays.

Nicola Collins has had to be patient to see her picture in the matchday magazine, because she sent it in some time ago. It is a real summer holiday memory. She wrote: "I am 12 years old and I come from Luton. I go to most of Luton's home games, and sit in the New Stand with my dad."

"The picture was taken in Portugal, at Praia da Oura in the Algarve. I missed the Blackpool v Luton game as I was away, but we watched the results on Sky." Nicola chooses her games to miss with great care: she got back home from her holiday in Portugal on the day we played Plymouth away, where we also lost, but she hopes to see the record put straight this afternoon.



THE scenery in our other picture will be more familiar if you can make out the background: it was a misty old day in Paris when nine-year-old Matthew Fleckney posed on one world-famous landmark in front of another.

Behind him you might be able to pick out the Eiffel Tower. Matthew, from Atterbury Way, Great Houghton, Northampton, posed for his dad's camera on top of what proud father David Fleckney describes as the Hatters Building in Paris. Some might also know it as The Arc de Triomphe, but we know what he means!



WE ARE always pleased to receive photographs of Hatters supporters in their club colours anywhere in the world. If you have an interesting snap you would like to see published please send it, with a few details, to the editor, by post to Luton Town FC, or by e-mail to brian.swain@btinternet.com. If you use e-mail, please include your home address and a day-time phone number. Please enclose a stamped self-addressed envelope if you want the photographs back, but don't offer us anything which is irreplaceable, because with the best will in the world items sometimes go astray.



Sealed Explorer spherical roller bearings

The SKF Explorer bearing range represents a totally new generation of spherical roller bearings. The Explorer range has accommodated up to 25 per cent higher torque loadings, and provided a 300% increase in service life, compared with the equivalent size of standard spherical roller bearings.

Now, SKF has unveiled a range of sealed-for-life Explorer bearings that reduce grease consumption, lower life cycle cost, lower recycling costs and reduce pressure on the environment.

Sealed Explorer bearings are supplied in normal and high temperature versions. The normal version uses a nitrile rubber double lip seal and a standard grease. The high temperature version, which is primarily suited to low speed operation, has a fluoro rubber seal and a high-temperature grease, and can withstand high axial and radial loads and tolerate up to 0.5° misalignment.



SYSTEM 24 automatic lubricators

SKF SYSTEM 24 is a practical, cost-effective solution to overcome the fact that 36 per cent of all premature bearing failures are caused by poor or inadequate lubrication. It's 'fit and forget' concept between extended scheduled changes reduces demands on maintenance staff bringing new levels of confidence and lowers overhead charges.

SYSTEM 24 is ideal for applications such as pumps, fans, compressors, chain drives, cranes and especially machinery running around the clock as part of a continual process.

Each SYSTEM 24 cartridge is hermetically sealed to prevent ingress of dirt and foreign matter. Grease flow rate is set via a simple Allen key adjustment. A transparent container shows visually the dispense rate, and lubricant cartridges are available pre-filled with a variety of greases or oils.



SPEEDI-SLEEVE sealing solution

An oil seal's job is to 'seal in' oil or grease, keeping bearings lubricated and contaminants out. However, in most industrial environments, dirt or other abrasive particles collect and become lodged under the lip of the seal, where they eventually cut a groove in the surface of the shaft. These grooves cause oil to leak out past the seal, ultimately leading to bearing damage.

To combat this problem, SKF has introduced SPEEDI-SLEEVE for fast and effective refinishing of seal-worn shafts. SPEEDI-SLEEVE is quicker and more efficient than remetalizing or regrinding and, in contrast to these methods, provides a perfect seal, even in the harshest environments. SPEEDI-SLEEVE bridges the gap between a standard sleeve and an expensive custom shaft treatment such as diamond coating, and the super hardened surface provides protection against corrosion and abrasion.



SNL bearing housings

Split plummer block bearing housings are primarily used to simplify self-aligning bearing installation. SKF's SNL bearing housing range is a premier quality product that has increased stiffness and improved lubrication to provide an economical solution to demanding applications. Available for shafts from 20 to 160mm diameter; together with the new Large SNL range for shafts from 150 to 500mm diameter.

The quality of the bearing housing has a dramatic impact on the performance and lifetime of the bearings themselves. Even high quality bearings installed into poor fitting housings have their lifetimes shortened. This occurs for a variety of reasons, such as the bearings becoming distorted due to poor clamping, or misalignment through poor geometry or manufacture.

Value-Added Solutions

SKF's Value-Added programme consists of an extensive range of standard and problem-solving products and services, designed to increase your competitiveness.

Contact SKF today for further information on any of the products featured, or to receive a FREE SKF Interactive Engineering Catalogue on CD-ROM.



Version 2.0 now available

For further information please complete the relevant areas and return to:
SKF FREEPOST MK1540 Luton LU3 4BR.

- ☐ Sealed Explorer ☐ SPEEDI-SLEEVE
☐ SYSTEM 24 ☐ SNL bearing housing
☐ Interactive Engineering Catalogue

Name
Company
Address
.....
Postcode
Tel
E-mail

SKF®

Mini Hatters



WE TRY to make the matchday magazine attractive to fans of all ages, but few of our readers can be as young as this one!

Sophie Louise Collins is all of four months old, but obviously has extremely good taste when it comes to choosing reading material.

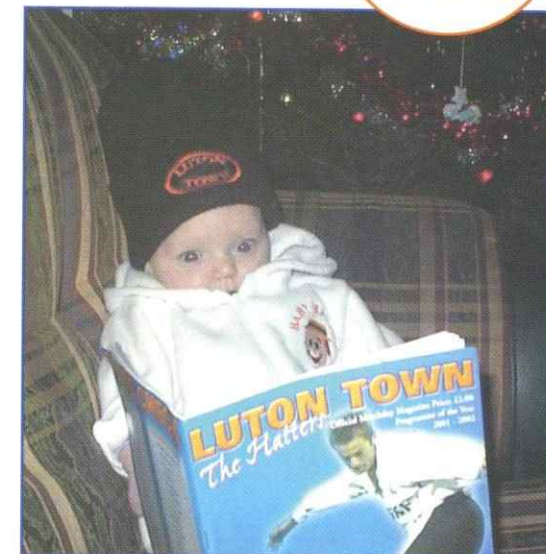
The photo was sent in by her dad, Andrew, from Wiltstead, who explained why little Sophie is so keen to read all the latest news from Kenilworth Road.

He has been a season ticket holder since 1986, and follows the Hatters home and away, along with Sophie's granddad, Brian. Andrew has no doubts that his daughter will be the third generation of Town fanatics in the family: "She's already supporting Luton, and can't wait until her first match!" he said.

TODAY'S other picture qualifies for Hatters Abroad as well as for this page. Mason, McCauly and Mackenzie Davis were snapped at Surfside Beach in Freeport, Texas. They are nephew and nieces of Robert Kerch, who is spreading the Luton Town gospel in the States after being a season ticket holder for a couple of years.

Nigel Atha, a Kenny End season ticket holder, from Wisley Gardens, Farnborough explained: "In early 2000 Robert moved from Texas into our London offices. He showed great interest in seeing an English football game, and although he had many offers to go to Arsenal and Chelsea, he decided to join me in the Kenilworth Road end. He was hooked, and for the following two seasons he was probably the club's only American season ticket holder.

"Last summer he was moved back to Dallas, but the photograph shows he is spreading the word in the USA. And his wife has given him permission to fly back for the promotion-deciding game this spring!"



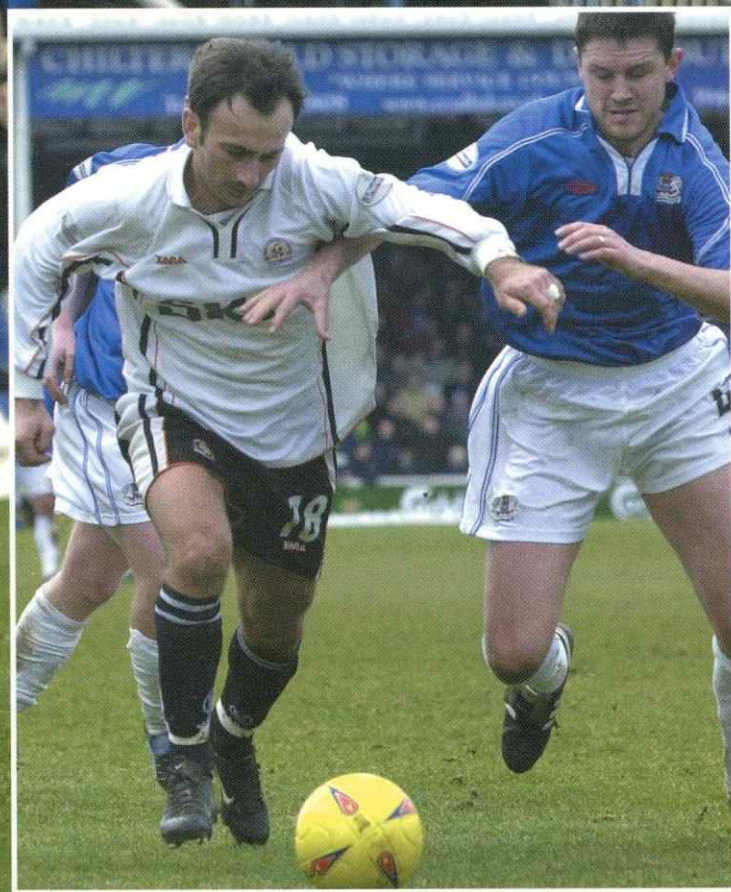
IF YOU have a nice photo of a very young Town fan, and would like to see it published in this occasional series, please get in touch with the programme editor.

Please send it, with a few details, either by post to Luton Town FC, or by e-mail to brian.swain@btinternet.com. Whatever method you use, please include your home address and a day-time phone number. If sending by post, please enclose a stamped self-addressed envelope if you want the photographs back, but don't offer anything which is irreplaceable, just in case letters go astray.

Action Highlights

Peterborough Utd I

Luton Town I



ON ITS WAY: Steve Howard approaching the end of his run and going past the second of two defenders, Simon Rea, before knocking in his 15th goal of the season to give the Town the lead at London Road.

ABOVE: Matt Spring, who hit the bar when he looked set to score for the third consecutive match, in typical forceful action against Richard Scott

LEFT: Ahmet Brkovic, who proved to be effective on both flanks, takes on Mark Arber.



Action Replay

REACTIONS

by the managers gave the perfect summing-up of events at London Road. Barry Fry was delighted to escape a beating on his own pitch, while Joe Kinnear knew the Town should have won handsomely. They were both spot-on. The Town were on cruise control after Steve Howard knocked in his 15th goal of the season after 12 minutes, but seemed to ease off for a spell and slack defending cost a 39th-minute equaliser. The Town responded by increasing the tempo again, but Peterborough survived, thanks mainly to excellent work by goalkeeper Lee Harrison, who is on loan from Barnet. He denied Tony Thorpe a hat-trick on a day when the striker looked a class above everyone else with his ability on the ball. One mazy run took him across almost the full width of the pitch from left to right, with desperate defenders powerless to halt his progress, only for Harrison to produce a flying save as Thorpe fired off a thundering angled drive. The opening goal was a model of simplicity. A winning tackle by right back Alan Neilson led to the ball being fed down the right via Thorpe and Steve Robinson, who advanced quickly before laying off a pass to Howard. The big striker had plenty to do, nearly 30 yards from goal, and with two defenders ahead of him, but he settled on the ball, went strongly forward, and held off his opponents to get near the six-yard box before finishing expertly.

Mark Ovendale, deputising for suspended Carl Emberson, might have wished for more to do as the Town took command

Peterborough 1 Luton Town 1 (HT 1-1)

all too easily, and it was completely against the run of play when Neale Fenn was left unmarked near the angle of the penalty area to collect a headed square pass by Simon Rae and strike the equaliser into the bottom corner.

That sparked the Town into being more positive, and just before the break Harrison produced his first quality save, getting back to clear for a corner after Thorpe was driven to a wide angle after going round him.

There wasn't much wrong with the Town's performance after that, with Ahmet Brkovic and Robinson swapping wings and backing up the front runners. Matt Spring was unlucky with a drive which came back off the bar following a Chris Coyne header from a corner, before Coyne limped off with a knee injury to allow Chris Willmott to make his "second debut" for the Town.

He has matured spectacularly, and although Peterborough huffed and puffed their attacking never carried the menace we saw from the Town. True, a shot by Richard Scott was deflected onto a post, but goals always looked more likely at the other end. The search for them led to Dean Crowe being put on in place of Robinson as the Town enjoyed being able to field three attackers, but Harrison was equal to anything the Town, and Thorpe in particular, could produce.

Barry Fry had watched the Town

murder Wycombe 1-0 a week previously, and admitted that he feared Thorpe and Howard could do immense damage to his side.

"I am delighted to get a point out of that," he said. "Luton are a good side and full of confidence. Their front two are tremendous, and we did well to restrict them. It was a gutsy performance. We had a 20-minute spell in the second half when we pinned them down, but we didn't really look like scoring.

Joe Kinnear said: On the balance of play we should have taken three points. Their keeper had to be their best player. Tony Thorpe was on fire, and I am disappointed we didn't get more goals. If we had been more ruthless we would have killed them off."

The day's other disappointment was that Howard collected another booking, for a foul on Posh hard man Sagi Burton, and his third suspension of the season keeps him out of the games against Northampton and Brentford.

Luton Town: Ovendale; Neilson, Coyne (Willmott 52 mins), Kimble; Robinson (Crowe 77 mins), Spring, Hughes, Ahmet; Howard, Thorpe. Unused subs: Beckwith, Hillier, Holmes.

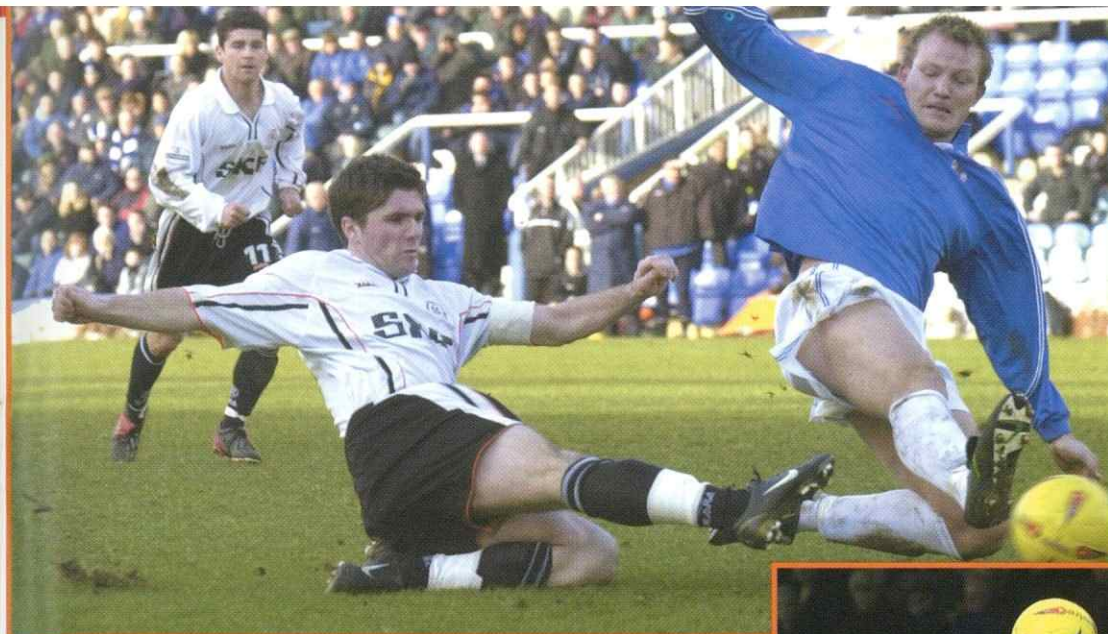
Booked: Steve Howard for a foul.

Peterborough: Harrison; Burton, Rea, Arber; Scott, Gill (Semple 85 mins), Shields, Danielsson, Jelleyman; (Farell 63 mins); Clarke, Fenn. Unused subs: Newton, Connor, Laurie.

Booked: No-one.

Referee: Phil Joslin, Nottinghamshire.

Attendance: 6,760, including another magnificent Town following of 2,928



ON FIRE: Tony Thorpe blazed a trail through the Posh defence time and time again, only to be thwarted by an inspired goalkeeper. Simon Rea is the centre-back trying to stop him here.

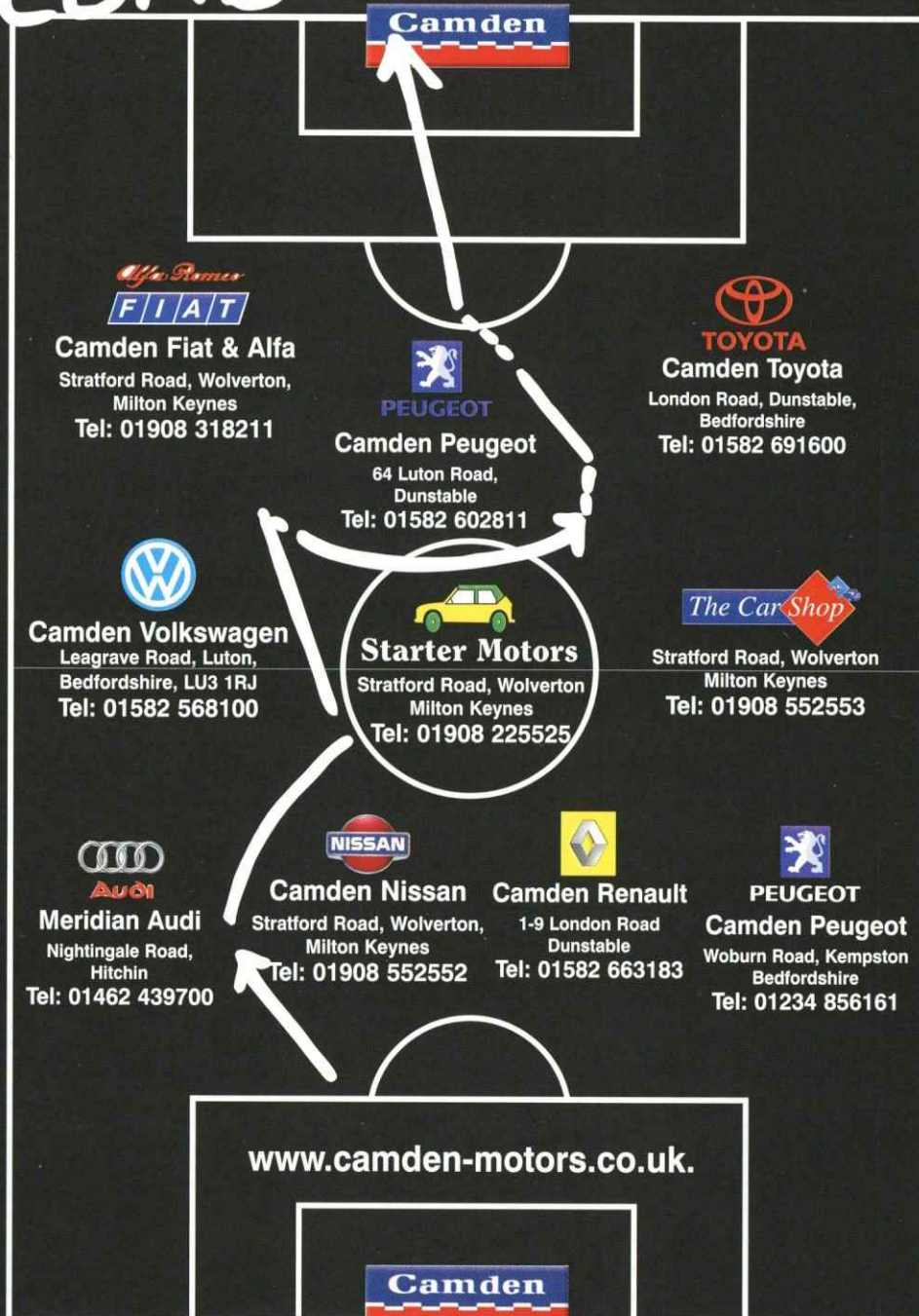
RIGHT: Rea tries to deal with another attacking handful as Steve Howard rises to the occasion.

BELOW: Ahmet Brkovic, back in the starting line-up to replace suspended Kevin Nicholls, fires in a late shot on a day when he showed that he could operate on either side of midfield.

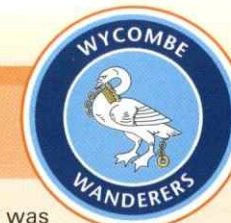


THE WINNING COMBINATION!

Camden



Action Replay



Luton Town 1 Wycombe W 0 (HT 0-0)

MATT Spring's eighth goal of the season was enough to give the Town their first double of the campaign at the expense of a visiting side which seemed to have little to offer beyond massed defence and a determination to snuff out midfield play-making.

It made for poor entertainment until Spring's 57th-minute strike forced Wycombe to be more adventurous, by which time the Town were well in command. Wycombe produced only one serious shot on target, four minutes after the goal, a 20-yarder by Steve Brown which was a comfortable save for Carl Emberson.

Frank Talia, at the other end, was much busier, and but for his good work and a few near-misses the result would have

been a far better reflection of the way the game went.

The goal came when Paul Hughes athletically crossed from the left with an overhead kick. For a change Tony Thorpe was free of the close marking for a split second, and although he was closed down quickly he was able to knock the ball on for Spring to hammer in his shot from a narrow angle.

Referee Clive Wilkes booked five players in the first half hour, but none after that on a day when physical confrontation was needed too often for the match to flourish as a spectacle. "The only difference between

the sides was in putting the ball into the back of the net," claimed visiting manager Lawrie Sanchez. Neutral pressmen, let alone the local boys, were astonished to hear him add: "We were the better team until Luton scored."

Joe Kinnear's response to that: "They were a big side but there wasn't much fluency about their play. They tried a lot of long throws, and it was a case of lump it in and hope for the best. "We should have punished them more in the last 15 or 20 minutes when we should have racked up two or three more goals. But we must be pleased with three valuable and very welcome points."

MATCH DETAILS

Luton Town: Emberson; Boyce, Neilson, Coyne, Kimble; Robinson (Brkovic 67 mins), Spring, Nicholls, Hughes; Howard, Thorpe. Unused subs: Ovendale, Fotiadis, Crowe, Hillier.

Booked: Nicholls and Howard for fouls.

Wycombe: Talia; Senda, Rogers, Thomson (Currie 76 mins), Johnson, Ryan (Cook 88 mins); Bulman, Simpson, Brown (Roberts 76 mins); Harris, Faulconbridge. Unused subs: Simpemba, Lee.

Booked: Richard Harris, Michel Simpson, Steve Brown for fouls on Emberson, Robinson and Nicholls respectively.

Referee: Clive Wilkes, Gloucestershire.

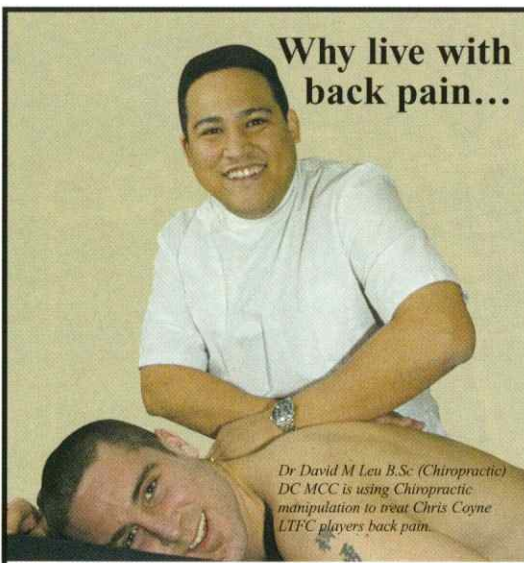
Attendance: 7,351, including 702 visiting fans.



ONE ON ONE: Kevin Nicholls wins an aerial duel with Steve Brown.

Log on to Luton Town's official website at
www.lutontown.co.uk

Why live with back pain...



Dr David M Leu B.Sc. (Chiropractic) DC MCC is using Chiropractic manipulation to treat Chris Coyne LTFC players back pain.

Major professional teams are benefiting from Chiropractic treatment for their sporting injuries

BACK TO BACK Chiropractic Clinic
Member of the British Chiropractic Association
Registered with the General Chiropractic Council

To make an appointment: **01582 391000**
268 Crawley Green Rd, Stopsley, Luton, Bedfordshire, LU2 0SJ

TOWN TEASER

IF YOU know your Town Trivia, you could win a pair of match tickets in our Town Teaser competition. Listen to the PA announcer before kick-off for your chance to have a go. The question for the Wycombe game was about a Town player's double delight, and was of course about Steve Howard, who scored twice against the Chairboys. This evening we have gone back a bit further to test your football memories.

TONIGHT'S QUESTION

WHO was the striker who joined the Town from Blackpool, played for us in the 1959 FA Cup final, and later became Town manager?



Are You A Hatters Fan? Then Come And Join Us!



Luton Town Supporters Club is the official Hatters fans' club, but is independent and run by its members.

Benefits include discounts on away match travel, and reduced admission charges to regular meetings with players and staff, and to the end of season presentation night.

Annual membership costs a minimum donation of £7 for adults, £6 for pensioners and under-16s, or £12 for families.

For more information call at the LTSC kiosk in Kenilworth Road before or after any home game.



Regal Litho

352 Selbourne Road
Luton Beds LU4 8NU

Tel: 01582 493332

Fax: 01582 560731

ISDN: 01582 560854

Email: regallithold90@atlas.co.uk

www.regallitho.co.uk

- ◆ Digital Artwork
- ◆ Conventional Repro
- ◆ Platemaking
- ◆ Colour Printing
- ◆ Finishing
- ◆ Distribution
- ◆ Stationery
- ◆ Point of Sale
- ◆ Brochures
- ◆ Commercial Print
- ◆ Magazine Publishing

The Publishers & Printers of:

**Scale
Aircraft
Modelling**

**Scale
Aircraft
Monographs**

Limited offer! 10% OFF Travel Insurance!

Travel Extras are offering Hatters supporters the opportunity to book 'everything but the flight' with 10% OFF Car Rental!

PLUS! Book before 31 March and get 10% OFF your Travel Insurance!

Book now!

To book, simply call one of Travel Extras dedicated LTFC advisors and quote 'The Hatters'.

So, whether you would like to travel within the UK, to a low-cost airline destination or worldwide, choose from over 500,000 cars, thousands of 3 to 5 star apartments and hotels, great price insurance and parking at all major UK airports!

Alternatively, visit the web site to select your car rental, accommodation, insurance and parking - and remember to book before 31 March to receive your Travel Insurance discount!

Remember Travel Extras for your corporate travel needs!

travelextras
for everything but the flight

-  **Worldwide Car Rental from £11 per day!**
 - Wide choice of vehicles
 - Fully inclusive rates
-  **Worldwide hotel rates from £25 pppn!**
 - Hotels, apartments and villas
 - Sunshine, snow and shopping destinations
-  **Worldwide hotel rates from £25 pppn!**
 - Single trip and annual policies
 - Comprehensive cover
-  **UK Airport Parking from £4.25 per day!**
 - All major UK airports
 - Guaranteed availability

10% off car rental!

10% OFF until 31 March!

call now! 08707 27 37 27

travelextras.com/lffc

Fans on the road

PETERBOROUGH worked hard to beat the snow and ice and get their pitch playable for the visit of the Town – and must have felt it was well worthwhile as nearly 3,000 Hatters fans turned up to boost an attendance which would otherwise have been under 4,000. Latest figures for visiting supporters home and away:

Hatters Away

Blackpool	781
Plymouth	773
Cardiff	314
Brentford	1,493
Watford(WC)	4,404
Huddersfield	700
Aston Villa (WC)	4,588
Stockport	680
Oldham	610
Woking (LDV)	262
Crewe	585
Northampton	1,250
Stevenage (LDV)	1,199
Tranmere	839
Wigan (FAC 2)	769
Bristol City	709
Wycombe	2,039
Chesterfield	1,076
Barnsley	858
Peterborough	2,928
Total:	26,857
Average:	1,343

Visitors to Luton

Peterborough	990
Barnsley	504
Chesterfield	366
Notts County	341
Mansfield	160
Cheltenham	328
Wigan	425
Port Vale	247
Guiseley (FAC)	467
QPR	1,851
Cambridge (LDV)	571
Colchester	527
Cardiff	1,090
Wycombe	702

8,569
612

new business environments

refurbishment • interiors • design and build

'All In One Solution' providing services from complete commercial property refurbishment design and build to individual office installation

- Design and Build
- Joinery
- Suspended Ceilings
- Painting and Decorating
- Electrical
- Carpets and Flooring
- Partitioning
- Exteriors
- Refurbishment



London
Midlands
South East

SPONSORS OF THE EXECUTIVE BOXES NET

Tel: 01525 405430 / 840426 Fax: 01525 840095 www.cpcontracts.co.uk

CP Contracts, The old Coach House, 6 Woburn Street, Ampthill, Bedfordshire MK45 2HP



Find Freedom within.....

Fitnessfirst
Health Clubs



*no other Health Club offers you more for less....
.....with no need for contracts*

*Fitness First Luton, Skimpot Lane, Luton, Beds, LU14 0JB
Tel: 01582 560200
www.fitnessfirst.co.uk*

GMB
BRITAIN'S GENERAL UNION
LONDON



Join Britain's fastest growing trade union. Phone me on:

0800 731 81 51

Paul Kenny

Paul Kenny

Paul Kenny
GMB London Regional Secretary

GMB – PROTECTING OVER 80,000 PEOPLE AT WORK IN THE LONDON REGION



LTFC in the Community

Working in conjunction with Bedfordshire Football Association

ATTENTION ALL JUNIOR HATTERS AND YOUNG SUPPORTERS

- THE JUNIOR HATTERS IS NOW UNDER THE CONTROL OF THE COMMUNITY DEPARTMENT •
- MEMBERSHIP WILL NOW RUN FROM AUGUST 1 TO JULY 31 ANNUALLY •
- IF YOU JOIN NOW YOUR MEMBERSHIP WILL RUN UP TO 31/7/04 AT NO EXTRA COST •
- YOU WILL THEN BE ASKED TO RENEW ON AUGUST 1 EACH YEAR •
- ANY MEMBERS RENEWING PRIOR TO 31/7/03 WILL ALSO BE ENROLLED TO 31.7.04 AT NO EXTRA COST •
- ALL THE USUAL BENEFITS OF BEING A JUNIOR HATTER STILL APPLY •
- IN ADDITION YOU WILL BE ABLE TO OBTAIN A 10% DISCOUNT ON ALL COMMUNITY COACHING COURSES AND FUN DAYS •
- YOU CAN ENTER OUR FREE TABLE FOOTBALL TOURNAMENT (DETAILS ON FACING PAGE) •

TO MAKE BOOKINGS AND ENQUIRIES CALL THE COMMUNITY OFFICE ON 01582 391927. OR VISIT US IN THE COMMUNITY OFFICE AT THE TOP OF OAK ROAD OPPOSITE THE MAIN CAR PARK.

COST OF JOINING JUNIOR HATTERS FOR THE NEXT YEAR IS:

NEW MEMBERS £12.00; RENEWALS £7.00



I will leave you today with a photograph of the manager and two players from Ampthill Boys Under 12 B team. They were the proud recipients of the Luton Town FC/Beds FA Youth Fair Play award for December 2002. They were delighted to receive their award from Russ Perrett and Peter Brown, the Chief Executive of The Bedfordshire Football Association, at the last home game against Wycombe.

Well done Ampthill!

Stuart Smith



RAILTRACK
SAFETY IS OUR GOAL



The place to shop in Bedfordshire
HARPER SHOPPING
Home Lane, Bedford - 01234 357330

LTFC in the Community

SMOBY TABLE FOOTBALL CHAMPIONSHIP 2003 - ENTRY FREE

Free table football tournament on Tuesday 18th February. This competition is open to boys and girls under 11 years old (must be under 11 by 27-3-03), whether able-bodied, disabled or even wheelchair bound. Approximate start time 10.00 am. To enter and for more details please ring the Community Office on 01582 391927

Half-Term Coaching Courses Available

Course Code	No. of Days	Venue	Start Date	Time	Cost	Course Type
LSC 1	3	Icknield High School Riddy Lane LUTON	Mon 17 - Wed 19 Feb	10.00 am - 3.00pm	£30	5-7 yrs 8-11 yrs 12-15 yrs
LSC 2	1	Icknield High School Riddy Lane LUTON	Mon 17 Feb	10.00 am - 3.00pm	£10	Specialist Strikers Course 8-11 yrs 12-15 yrs
DSC 1	3	Queensbury School Meadway DUNSTABLE	Wed 19 - Fri 21Feb	10.00 am - 3.00pm	£30	5-7 yrs 8-11 yrs
DGK 1	1	Queensbury School Meadway DUNSTABLE	Fri 21 Feb	10.00 am - 3.00pm	£10	Goalkeepers 8-13 yrs
TOD 1	1	Parkfield School Park Road DUNSTABLE	Fri 21 Feb	10.00 am - 3.00pm	£10	5-7 yrs 8-11 yrs

Please reserve a place on the above course (please put course in the box on right)

NameAge.....D.O.B.....

Address.....

.....Postcode.....

Home Tel No.....School.....

Any health problems ☐ Disorders ☐ or medication. ☐ Please ring to confirm details

I acknowledge and accept that Luton Town FC, their football in the community scheme or the organisations providing the facilities and their respective agents, servants and employees, are not under liability whatsoever in respect of personal injury, loss or damage however caused whilst in attendance on the above course. I authorise the coaches employed by Luton Town Football in the Community to administer first aid treatment should it be required.

Signature of Parent / Guardian:

The Football Emporium

225 High Street, Bromley, Kent

WHETHER IT BE A BIRTHDAY OR CHRISTMAS PRESENT, OR EVEN A GIFT FOR YOURSELF, YOU WILL FIND SOMETHING UNIQUE, INTERESTING, OR EVEN AMUSING, FOR SUPPORTERS OF ALL CLUBS, AT THE FOOTBALL EMPORIUM. OR IF BROMLEY IS A LITTLE FAR, VISIT OUR WEBSITE

WWW.PREMIERIMAGE.CO.UK

OR CALL FOR A BROCHURE

020 8464 9421

World Cup Merchandise ~ Clothing ~ Original Art Books ~ Photography ~ Autographs ~ Toys & Games Housewares ~ Memorabilia ~ Antiques ~ Ephemera

www.hummingbirdmotors.co.uk

STRIKING BRAND NEW MITSUBISHI'S
from only **£7995**

and a full range of Mitsubishi pre-owned vehicles

also available
• SALES • SERVICE • PARTS

Good luck Hatters, may your success continue this season



HUMMING BIRD MOTORS
41-45 LONDON RD ST ALBANS HERTS AL1 1LJ

01727 852323

email: hbmotors@btinternet.com

Open: Mon-Fri 8.30-6pm • Sat 8.30-5pm • Sun 10.30-3pm (Demonstrations on Sunday by appointment only)

Life begins at £17,995.

The new Jeep Cherokee 2.4 Sport.



It's affordable, it's available now. So what's stopping you? For details visit www.allelectricccj.co.uk or phone 0121 355 0110

Hitchin Road Stopsley, Luton,
Bedfordshire. LU2 7UG

01582 725506

CANNON LANE



CHRYSLER

Jeep
THERE'S ONLY ONE

OFFICIAL FUEL CONSUMPTION FIGURES IN MPG FOR THE JEEP CHEROKEE 2.4 SPORT: URBAN 20.2, EXTRA URBAN 32.8, COMBINED 26.7. OFFICIAL CO₂ EMISSION IS 253 G/KM. MODEL FEATURED JEEP CHEROKEE 2.4 SPORT (1700). PRICE IS ON THE ROAD AND INCLUDES ONE YEAR'S ROAD FUND LICENCE (ST15) AND £25 FIRST REGISTRATION FEE. PRICES AND SPECIFICATIONS ARE CORRECT AT TIME OF GOING TO PRESS (09/02).

Junior Hatters



OUR big news today is about a change of headquarters, with a move away from the club shop to the Community Department offices on the corner of Oak Road and Maple Road.

With our membership list growing longer all the time, and the shop getting ever-busier with sales because of the bargains on offer, we needed to re-organise to ensure our administration system remained on the ball.

For more details please see page 39 today. The move to the Community Department means we can improve the range of advantages offered by Junior Hatters membership, and of course all the old favourites will continue as before, including our very

popular Saturday Club, and value-for-money trips to away games.

We would like to run more Junior Hatters outings to away fixtures, but we have noticed this season that many clubs are having to tighten their belts and their purse-strings, and some that we used to visit are no longer able to offer facilities.

Junior Hatters can, of course, get to all away games by using Town on Tour or the Bobbers Travel Club, and they both offer discounts to under-16s.

Tonight, of course, is the first of four consecutive home games, so our next official Junior Hatters away trip will not be until March 1, when the Town play Notts County. The price will be the usual bargain: £10 for Junior Hatters and £13 for guests. We will give more details in Saturday's programme.

TONIGHT'S MASCOT

ONE OF the benefits of Junior Hatters membership is that it gives young fans the chance to be mascot for the day, and the lucky dip choice this evening is Kieran Doherty, from Sunset Drive, Luton.

He has just celebrated his 11th birthday, and goes to St. Margaret of Scotland School, Luton. Kieran comes to games with his older brother Darren.

As mascot Kieran gets the VIP treatment, including meeting the players before kick-off, including his favourite Kevin Nicholls, and then joining them on the pitch for the arm-up and toss of the coin.

As well as supporting the Town, Kieran likes playing football, especially for Celtic Youth, and also enjoys golf.

Today's ball boys are Nathan Osborn and Adam Smith, and by co-incidence both live in Telscombe Way, Luton.



MASCOTS' duties at games include seeing the toss of the coin formalities at close range, and two young fans were there when we played Wycombe. Six-year-old Luke Griffin, from Mendip Way, Sundon Park, was on duty for the Junior Hatters and Keiran Morris, 11, from Cartmel Drive, Dunstable, was the commercial mascot.

Happy Harry

JUNIOR Hatters membership is open to any boy or girl aged from 0 to 16 who supports Luton Town, and if you want to know more please contact the Community Department in Oak Road, or phone Luton 391927. There are lots of advantages, including bargain-price trips to away games, and the chance to be mascot at home matches - the choice is made at random, with names drawn out of the computerised drum.

GARETH OWEN Photography

....working **PR** photography

Tel: 07850 560289
Fax: (01582) 616567
e-mail: gareth@go-photo.co.uk

GROSVENOR CASINO LUTON

For FREE membership call
08080 212121 or 01582 414166

Please quote 065



24 hours must elapse between receipt of application and participation in gaming.
Members must be aged 18 and over.
www.grosvenor-casinos.co.uk



Eagle IPA - Proud to sponsor Luton Town F.C.

Your 'local beer'
supporting your local
Football Club
Now available at the Bar!



PRE-MATCH AND HALF TIME ENTERTAINMENT

With Justin Dealey and Steve Faulkner

TONIGHTS MATCH:

- 7.15** HMV Single of the Week
Sinead Quinn - I Can't Break Down
- 7.20** Dedications Announced
- 7.25** Team Line Up Announced
- 7.30** Player Track
See Right
- 7.35** Town Teaser
See page 34
- 7.40** Teams run out to - The Blues Brothers
"Gimme Some Lovin"
- 7.45** THE BIG KICK OFF

HALF TIME

- 8.35** Golden Gamble -
Winning ticket
drawn on pitch
- 8.40** Dedications
- 8.45** Run down of half time
scores from around the
country
- 8.50** Teams arrive back on pitch
to theme song
"Gimme Some Lovin"

9.35 - FULL TIME

Player Track



Steve Howard
FRANK SINATRA
MAC THE KNIFE

Matchday music supplied by:



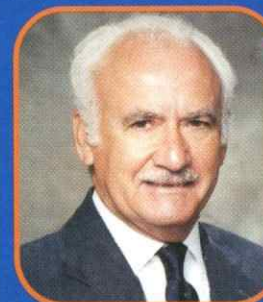
top dog for music-video games

Justin Dealey is sponsored by:

BBC THREE COUNTIES RADIO
95.5 FM (BEDS) 104.5 FM (BUCKS)
103.8 FM (HERTS)

If you would like your dedication read
out, please contact the Club prior to
matchdays.

POLICY STATEMENT - SPECTATOR SAFETY



The Chairman and Directors of Luton Town Football Club undertake to ensure as far as humanly possible that all activities that take place at the Kenilworth Road Stadium are conducted in such a way that as far as is reasonably practical the safety of everybody at the stadium is assured.

It is the policy of the Chairman and Directors to ensure that the conditions set out in the General Safety Certificate, issued under the Safety at Sports Grounds Act, 1975, are fully complied with.

It is the Club's policy to provide at any activity sufficient and competent staff and management systems to ensure as far as humanly possible the safe admission, accommodation and exiting of spectators attending the stadium. These systems will be subject to continual monitoring, testing and updating where necessary.

Mike Watson-Challis Chairman

Reviewed August, 2002.



Gift Suggestions for Valentine's Day



I Love Luton Town Sticker

£1.50

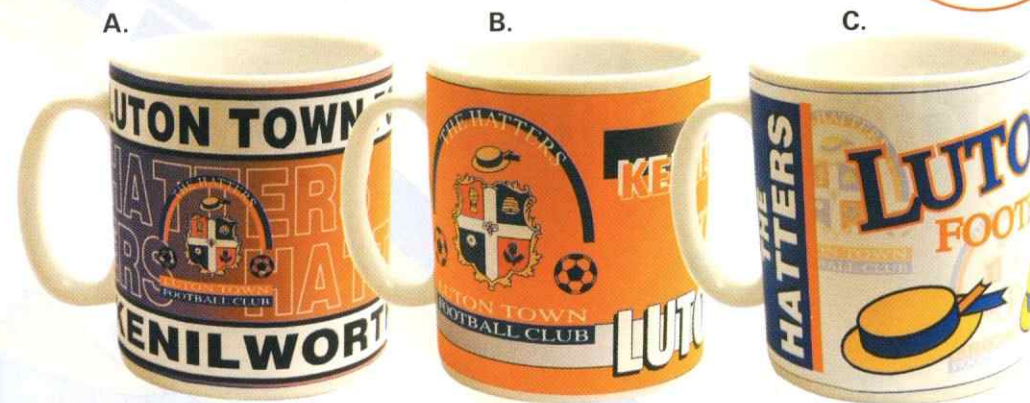


Luton Nut
(Home or Away kit)
£2.95



Large Beanie Bear
Small Beanie Bear
Mug & Bear

£7.50
£4.50
£7.50



A. Shadow Hatters Mug £4.95
B. Kenilworth Road Mug £4.95
C. Luton Hatters mug £4.95



Classic Colours Scarf £5.99
Classic Colours Bronx Hat £6.99



A. Club Tie £12.00
B. Black Shadow Weave Tie £12.00
C. Navy Silk Crest Tie £25.00
D. Charcoal Silk Crest Tie £25.00



SIGN UP ON A BOSMAN!

ONE WEEK'S TRIAL – COMPLETELY FREE!

DAILY TV
NEWS BULLETINS
INTERACTIVE
MATCH LIVE CONSOLE
SEARCHABLE
VIDEO ARCHIVE
MATCH
HIGHLIGHTS
LIVE AUDIO
COMMENTARY

EXCLUSIVE, OFFICIAL, UNMISSABLE!

sign up today at
www.lutontown.co.uk

Terms and conditions apply. See website for details.

Luton Belles



BELLES returned to league action at Newport Pagnell and came away with a comfortable 2-0 win to give them a two-point lead at the top of the table.

Luton found it hard going in a goal-less first half and were unable to convert their constant pressure into a goal. A succession of corners kept the ball in the danger area for extended periods, but the closest Town came to a goal was a Samantha Mather effort which dipped narrowly over the crossbar.

After the break the pressure finally told in the 48th minute when Kim Hide found Louise Evans with a slide rule pass and she just diverted the ball into the net past the onrushing keeper. Soon it was

2-0 when from yet another Louise Evans corner a Newport defender sliced her clearance into the roof of her own net. A third goal proved elusive with the closest effort coming from Vicky Moody, whose flick spun off the inside of the post before being hacked off the line.

A week earlier Belles were handed a very harsh lesson by Southampton Saints in the League Cup, suffering a 5-1 defeat at the hands of a very strong team who are mainly academy-based. There was no sign of things to come when the score was 0-0 after 40 minutes, but two goals in as many minutes put Saints firmly in charge at the half waypoint. It was 3-0 early in the second half

when a harmless-looking shot took a wicked deflection off a divot but Luton fought back and scored the goal of the game through a powerful Amy Gray header.

Just as the Belles began to threaten a fight back another terrible piece of luck ended with a clearance striking a Town player and flying into the top corner for an own goal. The prolific Saints centre forward scored her fourth goal near the end but Belles can consider themselves unlucky to have been on the end of such a harsh scoreline.

The Under 14s visited Denham United, who have taken points off all the leading contenders so far this season. Luton were soon in control and took an early lead when Fay Rolls fired in from close range.

Minutes later left winger Lizzie Randall hammered a powerful shot towards the top corner. It was brilliantly saved, but Tanya Blacksley crashed home the rebound to make it 2-0.

It was three goals in 15 minutes when Luton won a free kick on the edge of the box and Fay Rolls stepped up to take it. With everyone waiting for the cross, Fay whipped the ball Beckham-style over the wall into the near post top corner for one of the goals of the season so far. Michelle Byrne completed the scoring 10 minutes from time with a well-placed penalty to extend the lead at the top of the table to four points with a game in hand.

Dave Baker



CLINCHER: The scene in the Newport Pagnell goal area as the Belles netted their second goal, thanks to a home side's defender. Amy Gray is the Belles player celebrating, after helping to put on the pressure from a corner by Louise Evans.

LUTON Belles organises football for girls of all ages, from ten upwards. If you want to know more, or fancy being involved, e-mail Dave Baker at lutonbelles@hotmail.com The Belles also have a website – pay a visit to www.lutontownbelles.com

For the latest news, views and interviews call:
CLUB CALL on 09068 121 123 (calls cost 60p per minute at all times)

Pride. Belief. Passion.



An Official Partner of the England Team



www.nationwide.co.uk/football

Banking Credit Card Insurance Investments Loans Mortgages Pensions Savings

In Reserve



Leyton Orient 1 Luton Town 1 (At Luton)

TWTH Orient's pitch unplayable this game was switched to Kenilworth Road, but even home advantage was not made to count in a match which left me very frustrated, knowing we should have done so much better.

We had the boost of an early goal, but after the bright start we fell away badly, and it became a very poor game. Too many players made wrong decisions on the ball, and I expected much more from men who should be trying to win first team squad places. On the evidence of this game there was hardly anyone who pushed his claims. Michael Leary was probably the only player who came out of the match with some credit.

We should have been flying after taking the lead in three minutes. A throw-in by Leon Barnett was helped on by Carl Griffiths, who set up Leary to score.

But it was frustration all the way after that. If we had had anything about us we should have murdered Orient, but instead we were shaky at the back, indifferent in midfield, and unable to use the ball properly in attack. It would have helped if we had simplified our game.

Griffiths and Kevin Foley failed with headers which should have been put away, but I am not singling

them out for criticism because it was one of those games when too many players had off days.

The equaliser we conceded was typical: we failed to organise ourselves at a set piece, and Orient scored after working a short corner routine.

We had plenty of possession after that, but some of the players who should be determined to put on pressure for first team places seemed to be living in dreamland. To put it mildly, I wasn't pleased with this performance.

Luton Town: Brill, Foley, Perrett (Gillman HT), J. Deeney, Hillier, Barnett (Howell HT), Leary, Holmes, Mansell, Griffiths, Crowe (Osborn 71 mins).

OUR game against Bristol City last Wednesday was postponed because the pitch was unplayable, and the fixture has now moved provisionally to Wednesday April 9. We are away to Southend tomorrow.

APPEARANCES, as sub in brackets: L. Mansell 12(1), Foley 11, Leary 10(2), Skelton 9, Holmes 9, Fotiadis 8, Hillier 8, J. Deeney 8, Griffiths 6, Gillman 5(3), Ovendale 5, Kimble 5, Okai 4(4), Barnett 4(2), Hughes 4, Neilson 4, Osborn 3(8), Brill 3(1), Barnett 3(1), Brkovic 3, O'Leary 2(5), Judge 2(4), Eberendo 2(2), Howell 2(1), Emberson 2, Beckwith 2, Thorpe 2, Michael Johnson 2, Bayliss 2, Crowe 2, Davies 1(3), Kovacevic 1, De Souza 1, Berthelin 1, Nicholls 1, Maitland 1, Viander 1, Perrett 1, Marvin Johnson 0(1).

Goals: Judge 4, Fotiadis 3, Griffiths 3, Brkovic 3, Crowe 2, Howell 2, Thorpe 2, Skelton 1, Eberendo 1, Holmes 1, Gillman 1, Barnett 1, Maitland 1, Mansell 1, Leary 1.

Brian Stein

AVON COMBINATION TABLE

	P	W	D	L	F	A	Pts
Crystal Palace	15	12	2	1	42	10	38
Portsmouth	13	10	0	3	30	11	30
Colchester	16	8	3	4	25	14	30
Norwich	15	8	6	1	24	8	30
Brighton	13	9	2	2	27	11	29
Reading	14	7	2	5	25	13	23
Brentford	15	7	2	6	26	24	23
Swindon	13	7	2	4	20	19	23
Cardiff	14	6	4	4	17	11	22
Plymouth	14	7	1	6	22	23	22
Bristol City	15	6	4	5	25	27	22
Luton Town	12	6	3	3	27	16	21
Cheltenham	16	6	3	7	32	28	21
L. Orient	16	5	6	5	30	28	21
Millwall	13	6	2	5	17	13	20
QPR	13	5	4	4	16	19	19
Southend	15	5	3	7	19	25	18
Oxford	14	5	1	8	16	22	16
Bristol Rov	17	4	4	9	18	30	16
Bournemouth	14	3	4	7	22	31	13
Gillingham	15	3	4	8	19	28	13
Peterborough	14	4	1	9	18	29	13
Wycombe	15	3	4	8	15	31	13
Northampton	13	3	1	9	18	35	10
Cambridge	12	2	3	7	15	25	9
Barnet	16	2	1	13	16	51	7

August			
Wed 14	Bristol City(LC)	A	0-3
Wed 21	Reading	A	1-2 Skelton
Wed 28	Bristol Rov	H	1-1 Griffiths
September			
Wed 4	Millwall	H	2-1 Griffiths 2(1p)
Wed 18	Swindon	A	4-0 Fotiadis 2, Eberendo, Howell
Wed 25	Peterborough	H	4-1 Thorpe 2, Fotiadis, Holmes
October			
Wed 9	Plymouth	A	4-0 Brkovic 2, Gillman, Judge
Wed 16	Wycombe	H	3-1 Judge 2, Howell
Wed 30	Cambridge	A	1-0 Barnett
November			
Wed 13	QPR	H	postponed
Wed 20	Wootton (BSC)	A	0-0 Won 4-3 on pens
Wed 27	Northampton	A	1-3 Judge
December			
Wed 11	Barnet	H	1-2 Maitland
January			
Wed 8	Brighton	A	Postpone
Wed 15	C. Palace	H	Postponed
Wed 22	Bournemouth	H	4-4 Crowe 2, Brkovic, Mansell
Wed 29	Leyton Orient	A	1-1 Leary
February			
Wed 5	Bristol City	H	2pm
Wed 12	Southend	A	2pm
Wed 19	Cardiff	A	2pm

For the latest news, views and interviews call:
CLUB CALL on 09068 121123 (calls cost 60p per minute at all times)



Youth Soccer - U17s

FL Youth Alliance Under-17 Luton Town 1 Peterborough 0

THIS WAS probably our best result and display of the season so far, with the league leaders beaten on their own pitch by a side made up entirely of schoolboys except for goalkeeper Dean Brill. Officially we were at home, but with no pitch available in Luton we agreed to play at Peterborough.

Brill was the man of the match, with three or four outstanding saves, but as a team we defended well under pressure, and passed the ball around better than the opposition.

Peterborough were very direct, but we coped well, and produced some good attacking moves of our own. The only criticism was that we missed a few chances.

A great team spirit was evident throughout, and it was tested to the full when Peterborough raised the tempo after the break. But Brill twice made excellent saves in one-on-one situations before Darren Blake volleyed over from six yards when we should have taken the lead.

With 20 minutes to go we were awarded a penalty by the referee after Peter Clark was

brought down, but the ref changed his decision when his assistant over-ruled him and gave a foul against Clark. At that stage we would have happily settled for a draw, but with five minutes to go Clark went through again, and was brought down by the keeper. There was no doubt it was a penalty this time, and Jason Blythe put it away for the winner.

Peterborough fought hard after that, aided by seven minutes of stoppage time, but Brill made two more good saves from headers to complete an excellent all-round team performance.

Luton Town: Brill, Smyth, Danaher, De Souza, R. Clark, Pendleton, Sinclair (Robinson 75 mins), Blake, P. Clark, Richardson, Blythe.

WE ARE away to Portsmouth on Saturday, but at home the following week, February 22, to Gillingham. Kick-off at Luton Rugby Club, Newlands Road, is 11am, and admission is free.

APPEARANCES, as sub in brackets:

Ridgway 16, Mountford 16, D. Deeney 16, Blythe 16, Magadah 12(3), Smyth 13(3), Blake 12(1), Brill 12, Shea 9(3), P. Clark 10(3), De Souza 11(2), Reid 8, Keane 7, Danaher 6(3), Freeman 5, Skelton 4(1), Maitland 3(2), Howell 3, R. Mansell 3, Hurst 3, Barrett 3, Green 2(5), Pendleton 3(5), McCarthy 1(2), Barnett 1, R. Clark 1, Sinclair 1(11), Richardson 1(3), Kelly 0(1), Robinson 0(1).

Goals: Magadah 7, Ridgway 5, Freeman 4, Keane 3, Blythe 3, Maitland 2, P. Clark 2, Shea 1, Barnett 1, R. Mansell 1

Mark Ridgway

FLYA UNDER-17 SE CONFERENCE

	P	W	D	L	F	A	Pts
Peterborough	18	11	4	3	34	17	37
L. Orient	18	11	3	4	41	16	36
Brighton	16	11	2	3	39	18	35
Wycombe	18	9	3	6	35	38	30
Luton Town	18	8	5	5	29	21	29
Cambridge	18	7	4	7	38	33	25
Colchester	17	5	4	8	26	41	19
Portsmouth	16	4	5	7	34	29	17
QPR	18	3	8	7	26	38	17
Brentford	18	4	4	10	28	39	16
Gillingham	17	5	1	11	35	51	16
Southend	18	3	5	10	28	52	14

Youth Soccer - U19s



Luton Town 3 Kidderminster Hrrs 0

THE RESULT was more satisfactory than the performance in a game where we were not tested too much. Kidderminster looked out of sorts, and we were too good for them despite being under strength.

With Matthew Judge injured and Tom Freeman banned, we were struggling for forwards, and Leon Barnett, a centre-half, was used in attack alongside Luke Maitland, who is in the under-17 squad.

We seemed to sense early on that the game would not be too difficult, but in the early stages we were not giving enough thought to how we should build attacks. The visiting back four stood there and hardly ever moved, and it took us half an hour or so to realise that if we spread ourselves more evenly over the pitch the game would be there for the taking.

We were playing safe early on, and not looking as though we would hurt the opposition,

despite being on top. But after switching from wing-backs to a 4-4-2 we got our passing going, and took the lead in the final minute of the first half through an opportunist effort by Barnett.

We had a chat during the interval about how to create and use space, and we had no problems after that. Sean Ridgway, another from the under-17s, scored two well-taken goals in the first 15 minutes of the second half, and the game was all over. I wanted us to go for more goals, but too many players turned off at 3-0, taking too many touches and dwelling on the ball too much.

Luton Town: Beckwith, D. Deeney, Okai, Gillman, Davies, J. Deeney, Foley (Keane 70 mins), O'Leary, Barnett (Magadah 80 mins), Maitland, Ridgway.

WE ARE away to Cardiff on Saturday, in a League Cup fixture, and our next scheduled home game is a big occasion for our boys: we are at home to Middlesbrough in the FA Youth Cup fifth round on Thursday, February 27, 7pm.

APPEARANCES, as sub in brackets:

Barnett 19(1), O'Leary 18, Howell 16, Okai 17, Freeman 15(2), Davies 15(2), Judge 14(1), Foley 14, R. Mansell 12(2), Maitland 13(2), Osborn 11(1), J. Deeney 12, Beckwith 12, Gillman 11(1), Brill 8(2), Keane 6(7), Ridgway 4(2), De Souza 1(2), Mountford 1(1), D. Deeney 1, Magadah 0(1).

Goals: Judge 10, Freeman 7, Osborn 4, Maitland 3, Barnett 3, Okai 2, Ridgway 2, O'Leary 2, Davies 1, Foley 1.

John Moore

FLYA UNDER-19 SOUTH CENTRAL CONFERENCE

	P	W	D	L	F	A	Pts
West Brom	15	9	2	4	26	19	29
Peterborough	12	9	0	3	32	9	27
Northampton	14	7	3	4	17	13	24
Oxford	14	7	0	7	19	27	21
Luton Town	12	6	2	4	17	10	20
Cambridge	13	5	3	5	20	16	18
Walsall	14	5	2	7	20	21	17
Kidderminster	12	3	1	8	16	30	10
Rushden	14	1	3	10	13	35	6

FL Youth Alliance Under-19

August							
17	Walsall	H	0-0				
31	Kidderminster	A	1-0	Freeman			
September							
7	Brentford (LC)	A	2-0	Freeman, Okai			
14	Oxford (LC)	H	4-1	Osborn 2, Okai, Freeman			
21	Wycombe (LC)	H	2-2	Judge, Barnett			
28	Northampton	H	0-1				
October							
12	Peterborough	A	1-3	O'Leary			
19	West Brom	A	0-1				
23	Brentford(FAYC1)	A	3-0	Judge, Freeman 2			
26	Rushden	H	3-1	Judge, Freeman, Osborn			
November							
2	Oxford Utd	H	5-1	Judge 3, Freeman, Osborn			
7	Tooting(FAYC2)	A	3-1	Judge 2, Davies			
16	Brighton (LC1)	A	2-1	Barnett, O'Leary			
30	West Brom	H	2-1	Judge, Maitland			
December							
4	Stoke(FAYC3)	H	1-0	Judge			
7	Rushden & D	A	2-1	Maitland 2			
14	Oxford Utd	A	0-1				
21	Cambridge	A	0-0				
January							
11	Cambridge	H	postponed				
15	Bradford (FAYC4)	H	1-0	Foley			
18	Walsall	A	postponed				
25	Kidderminster	H	3-0	Ridgway 2, Barnett			
February							
1	Northampton	A	0-3				
8	Peterborough	H					
15	Cardiff (LC2)	A					
27	Middlesbrough(FAYC5)	H					

check out the stats @
www.soccer-stats.com

Most Scoring chances per game

	On Target	Off T		On Target	Off T
Wigan	6.45	7.26	Luton	5.17	5.31
Cardiff	6.37	6.27	Oldham	4.68	5.65
Plymouth	5.63	6.90	Huddersfield	5.07	5.17
Crewe	6.74	5.65	Cheltenham	5.40	4.63
Barnsley	5.73	6.10	Swindon	5.03	4.84
Mansfield	6.29	5.45	Stockport	5.23	4.52
QPR	5.48	6.16	Port Vale	4.66	5.07
Blackpool	5.43	5.27	Notts County	5.00	4.35
Peterborough	5.84	4.84	Northampton	4.71	4.61
Tranmere	5.45	5.19	Chesterfield	4.17	4.33
Wycombe	5.39	5.23	Colchester	4.00	4.10
Bristol City	5.40	5.17	Brentford	3.36	4.21

Goals in last 15 Mins of match

FOR	76-90	Tot	%	AGAINST	76-90	Tot	%
Peterborough	12	31	39	Chesterfield	12	36	33
Huddersfield	7	21	33	Plymouth	10	34	29
Luton	14	44	32	Northampton	14	48	29
Bristol City	17	54	31	Mansfield	19	66	29
Blackpool	12	39	31	Tranmere	13	46	28
Notts County	13	45	29	Cardiff	7	25	28
Wycombe	12	43	28	Wigan	5	19	26
Tranmere	11	41	27	Huddersfield	9	35	26
Oldham	12	46	26	Peterborough	10	39	26
Cardiff	12	47	26	Swindon	11	43	26
Swindon	10	42	24	Brentford	8	32	25
				Crewe	7	28	25

ordered by late goals as % of all goals

TOP GOALSCORERS

Headed Goals			Volleyed Goals		
Player	Club	Tot	Player	Club	Tot
Larsson	Celtic	8	Earnshaw	Cardiff	10
Taylor	Burnley	7	Hulse	Crewe	5
De Vos	Wigan	7	Kewell	Leeds	4
Johnson	Forest	6	McVeigh	Norwich	4
Helguson	Watford	6	Todorov	Portsmouth	4
Beckett	Stockport	6	Cureton	Reading	4
Deane	Leicester	5	Stallard	Notts County	4
Mackay	Norwich	5	Beckett	Stockport	4
Fallon	Barnsley	5	Parkin	Swindon	4
Howard	Luton	5	Haworth	Tranmere	4
Christie	Mansfield	5	Henriksen	Kidderminster	4
Haworth	Tranmere	5	Gray	Rushden	4
Kitson	Cambridge	5	Hartson	Celtic	4
Conlon	Darlington	5			
Cort	Southend	5			
Morrell	Wrexham	5			
Hartson	Celtic	5			
De Vries	Hearts	5			

Average Shots On and Off target per game

Goals from Set Pieces for and against

SCORED	Co	FK	CONCEDED	Co	FK
Crewe	4	12	Mansfield	10	10
Plymouth	10	6	Blackpool	7	8
Brentford	7	6	Cheltenham	9	5
Oldham	7	6	Huddersfield	6	8
Wigan	6	6	Northampton	2	10
Bristol City	4	7	Barnsley	3	7
Wycombe	7	4	Notts County	6	4
Blackpool	9	1	Port Vale	8	2
Swindon	6	4	Stockport	9	1
Tranmere	5	5			

Co = Corners FK = Free Kick Routines

Scorers' Points Gained & Scoring Run

Club	Gls	Gl/gm	Pts	Run	1stG
Robert Earnshaw	23	0.77	17	3	6
Sam Parkin	17	0.61	16	6	5
Rob Hulse	19	0.73	14	4	7
Luke Beckett	22	0.71	12	4	10
Steven Howard	14	0.52	10	4	7
Martin Smith	9	0.39	10	1	4
Mark Stallard	16	0.53	9	3	3
Simon Haworth	14	0.54	9	8	4
Andy Liddell	13	0.52	9	2	7
Andy Clarke	12	0.40	8	3	3

eg if player scores the goal in a 1-0 win, the goal is worth 2 pts as score would have been 0-0, or if 2 goals in 2-1 win, goals worth 3 pts. Also shown is goals per game figure and number of games player scored 1st goal

COMEBACKS

Won from	-3	-2	-1	Tot
Luton	0	0	5	5
Blackpool	0	0	4	4
Mansfield	0	0	4	4
Tranmere	0	0	4	4
Bristol City	0	1	2	3
Crewe	0	0	3	3
Port Vale	0	0	3	3
QPR	0	0	3	3
Swindon	0	0	3	3

THROWAWAYS

Lost from	+3	+2	+1	Tot
Barnsley	0	0	5	5
Cheltenham	0	0	5	5
Stockport	0	1	3	4
Notts County	0	0	4	4
Mansfield	0	1	2	3
Chesterfield	0	0	3	3
Luton	0	0	3	3
Plymouth	0	0	3	3

number of games when clubs have come behind to win or been ahead and lost

Fouls and Offsides per game

avg. fouls per game	avg. offsides per game
Tranmere 14.39	Luton 5.03
Luton 13.97	Barnsley 4.50
Brentford 13.89	Tranmere 4.13
Wycombe 13.71	Peterborough 3.94
Oldham 13.48	Crewe 3.77
Notts County 13.45	Wycombe 3.74
QPR 13.39	Cheltenham 3.57
Swindon 13.32	Stockport 3.55
Bristol City 12.93	Oldham 3.35
Barnsley 12.67	Plymouth 3.33
Mansfield 12.65	Swindon 3.23
Chesterfield 12.57	Brentford 3.21
Plymouth 12.47	Northampton 3.13

Second Division Scene



WHILE the Town were upsetting one old friend, Brian Horton, at Port Vale on Saturday, another, Andy King, was doing us a favour.

He took his Swindon side to Prenton Park, and a 1-0 victory enabled the Town to overtake Tranmere and move back into seventh place in the table.

Northampton also helped the Town cause, holding Queens Park Rangers to a draw at Sixfields, which leaves the Londoners just three points ahead of the Town.

So a win tonight will edge the Town ahead of QPR on goal difference and in the play-off places again for the first time since the New Year's Day defeat at Chesterfield. And the Town will still have one game in hand, the home match with Plymouth in a fortnight's time.

The automatic promotion places still look a very long way off, but the top sides have all demonstrated a wobble or two in recent weeks. Leaders Wigan were held to a 1-1 home draw by Blackpool on Saturday, and while the Town are seeking a play-off frame place tonight, our visitors have every incentive to peg us back.

A Blackpool win would take them a notch above the Town, two points short of the top six. It would also give them their third double of the season, having beaten the Town 5-2 at Bloomfield Road in their first home game of the season.

Doubles already in the bag were over Northampton and Colchester. And to underline Blackpool's capabilities, they are seeking to extend a run of nine league games without defeat, including the draw on Saturday away to runaway leaders Wigan. Their last reverse, oddly, was a 4-0 belting at Mansfield, who were battling to get away from the other end of the table.

That was early in December, and since then Blackpool have won four and drawn five. Their away record shows four victories, four draws and seven defeats. The wins were 1-0 at Northampton in August, 2-1 at Wycombe in September, 3-1 at Plymouth in October and 2-0, at Colchester last month.

The draws were 0-0 at Huddersfield, and 1-1 at Oldham, Swindon and Wigan.

The seven defeats on the road were 0-2 at Bristol City, 1-2 at Barnsley, 0-1 at Chesterfield, 1-2 at QPR, 0-5 at Brentford, 0-3 at Crewe and 0-4 at Mansfield.

Brian Swain

Nationwide League Division Two

	HOME					AWAY					GD	Pts
	P	W	D	L	F A	W	D	L	F A			
Wigan	31	10	5	1	27 12	11	2	2	23 7	31	70	
Crewe	31	9	2	4	21 11	9	5	2	34 17	27	61	
Cardiff	30	10	4	2	28 11	7	3	4	19 14	22	58	
Oldham	31	7	3	6	25 15	8	7	0	21 12	19	55	
Bristol City	30	8	4	3	26 12	7	3	5	28 22	20	52	
QPR	31	9	2	4	23 15	5	6	5	19 20	7	50	
Luton Town	29	5	4	4	21 15	8	4	4	23 22	7	47	
Plymouth	30	7	4	4	24 18	5	5	5	16 16	6	45	
Blackpool	30	8	5	2	26 14	4	4	7	13 24	1	45	
Tranmere	31	8	4	4	21 16	5	2	8	20 30	-5	45	
Swindon	31	6	4	5	21 17	5	5	6	21 26	-1	42	
Wycombe	31	7	4	5	31 25	3	5	7	12 15	3	39	
Chesterfield	30	8	4	4	20 15	3	2	9	6 21	-10	38	
Brentford	28	6	5	3	17 9	4	3	7	16 23	1	38	
Stockport	31	5	5	5	26 26	4	1	11	16 25	-9	33	
Peterborough	31	4	4	7	16 16	3	7	6	15 23	-8	32	
Mansfield	31	6	2	8	30 33	3	3	9	18 33	-18	32	
Notts County	31	4	6	5	24 26	2	7	7	21 26	-7	31	
Port Vale	29	4	3	7	16 20	4	4	7	16 23	-11	31	
Colchester	30	3	6	6	13 16	4	4	7	18 27	-12	31	
Northampton	31	5	3	8	17 20	3	4	8	11 28	-20	31	
Barnsley	30	4	6	5	19 23	3	3	9	14 23	-13	30	
Huddersfield	30	5	5	5	15 14	2	3	10	6 21	-14	29	
Cheltenham	30	4	4	7	13 21	2	6	7	14 22	-16	28	

Tonight's Other Second Division Fixtures

Bristol City v Brentford
Port Vale v Chesterfield

The Weekend games

Friday

Colchester v Mansfield

Saturday

Barnsley v Chesterfield

Blackpool v Brentford

Crewe v Wigan

Huddersfield v Cheltenham

Notts County v Bristol City

Peterborough v Cardiff

Plymouth v Tranmere

QPR v Port Vale

Stockport v Oldham

Swindon v Wycombe

Statistics and all the fixtures

Date	Opponents	Venue	Kick Off Time/Result	Score (LT first)	Attendance	Competition/Position	Referee	Yellow Cards (LT first)	Red Cards (LT first)	Goalkeepers										Defenders										Midfielders										Forwards										Own Goals																																																																																																																																																																																																																																																																																																																																																																																																																																																																																																																																																																																																																																																																																																																																																																																																																																																																																																																																																																																																																																																																																																																																																																																																																																																					
										1	16	33	34	35	47	2	3	5	6	2	17	22	23	24	31	37	41	42	45	4	7	8	11	18	20	21	30	32	38	39	40	44	9	10	14	15	19	43																																																																																																																																																																																																																																																																																																																																																																																																																																																																																																																																																																																																																																																																																																																																																																																																																																																																																																																																																																																																																																																																																																																																																																																																																																																							
Sat 10 Aug	PETERBOROUGH UNITED	H	L	2-3	7,860	16th	B Curson	2/1	0/0																																																																																																																																																																																																																																																																																																																																																																																																																																																																																																																																																																																																																																																																																																																																																																																																																																																																																																																																																																																																																																																																																																																																																																																																																																																																																														

SQUAD CHECK

LUTON TOWN

Manager: Joe Kinnear

1	Mark Ovendale	<input type="checkbox"/> ○
2	Aaron Skelton	<input type="checkbox"/> ○
3	Alan Neilson	<input type="checkbox"/> ○
4	Matthew Spring	<input type="checkbox"/> ○
5	Russell Perrett	<input type="checkbox"/> ○
6	Marvin Johnson	<input type="checkbox"/> ○
7	Adrian Forbes	<input type="checkbox"/> ○
8	Kevin Nicholls	<input type="checkbox"/> ○
9	Tony Thorpe	<input type="checkbox"/> ○
10	Carl Griffiths	<input type="checkbox"/> ○
11	Steve Robinson	<input type="checkbox"/> ○
12	Chris Coyne	<input type="checkbox"/> ○
14	Andrew Fotiadis	<input type="checkbox"/> ○
15	Dean Crowe	<input type="checkbox"/> ○
16	Carl Emberson	<input type="checkbox"/> ○
17	Emmerson Boyce	<input type="checkbox"/> ○
18	Ahmet Brkovic	<input type="checkbox"/> ○
19	Steve Howard	<input type="checkbox"/> ○
20	Peter Holmes	<input type="checkbox"/> ○
21	Paul Hughes	<input type="checkbox"/> ○
22	David Bayliss	<input type="checkbox"/> ○
23	Ian Hillier	<input type="checkbox"/> ○
24	Sol Davis	<input type="checkbox"/> ○
31	Alan Kimble	<input type="checkbox"/> ○
37	Chris Willmott	<input type="checkbox"/> ○

tick if playing ■ tick if substitute ●

BLACKPOOL

Manager: Steve McMahon

1	Phil Barnes	<input type="checkbox"/> ○
2	Simon Grayson	<input type="checkbox"/> ○
3	Tommy Jaszczun	<input type="checkbox"/> ○
4	John O'Kane	<input type="checkbox"/> ○
5	Ian Hughes	<input type="checkbox"/> ○
6	Mike Flynn	<input type="checkbox"/> ○
7	Richie Wellens	<input type="checkbox"/> ○
8	Ben Thornley	<input type="checkbox"/> ○
9	John Murphy	<input type="checkbox"/> ○
10	Scott Taylor	<input type="checkbox"/> ○
11	Paul Dalglish	<input type="checkbox"/> ○
12	Danny Coid	<input type="checkbox"/> ○
13	Michael Theoklitos	<input type="checkbox"/> ○
14	Lee Collins	<input type="checkbox"/> ○
15	John Hills	<input type="checkbox"/> ○
16	Keith Southern	<input type="checkbox"/> ○
18	Jamie Milligan	<input type="checkbox"/> ○
19	Paul Evans	<input type="checkbox"/> ○
20	Colin Hendry	<input type="checkbox"/> ○
22	Leam Richardson	<input type="checkbox"/> ○
24	Martin Bullock	<input type="checkbox"/> ○
25	Richard Walker	<input type="checkbox"/> ○
29	Chris Clarke	<input type="checkbox"/> ○
30	Jamie Burns	<input type="checkbox"/> ○
31	Matthew Blinkhorn	<input type="checkbox"/> ○
32	Phil Doughty	<input type="checkbox"/> ○

Tonight's Officials

Referee: Grant Hegley, Hertfordshire

Assistants: Greg Pryme, Essex (yellow flag); Jarnail Singh, Middlesex (red & yellow flag)

Fourth Official: Patrick Miller, Bedfordshire

"Genuine Deals For Genuine Fans!"
Luton Fans Are
Guaranteed To Score At
Motorbodies Luton

NETWORK Q

Total Commitment to used car quality

Motorbodies Central

15 Hitchin Road, Luton Bedfordshire.

Telephone 01582 454666

e-mail: enquiry@caxtongroup.co.uk

- 12 months Assistance
- 12 months/15,000 mile Guarantee

Motorbodies Leagrave

166 Marsh Road, Leagrave, Luton

Telephone 01582 567500

e-mail: sales@caxtongroup.co.uk

114 Point Service

12 Months/ 15,000 mile guarantee

12 Months AA Assistance Mileage Check

30 Day Exchange Plan

Free MOT for life

HPI Check

- 114 point service
- 30 day exchange pledge

OPENING HOURS

Mon-Fri 9am-7pm

Sat 9am-5pm

Sun 10.30-430pm

NETWORK

Q

