

LUTON TOWN

The Hatters

Official Matchday Magazine Price: £2.00

Programme of the Year

2001 - 2002

*Merry
Christmas!*



Official Shirt Sponsors



Official Kit Supplier



Luton Town v Cardiff City

Thursday December 26, 2002 Kick Off 12 noon

Match Sponsor - Jon Ring and

Belldene Construction Services (UK & IRL)

Match Ball Sponsor - The Wheelwrights Arms



www.lutontown.co.uk

Luton Town FC

Kenilworth Road Stadium
1 Maple Road, Luton
Bedfordshire LU4 8AW

Main Reception:
01582 411622

Fax: 01582 405070

Ticket Office: 01582 416976

Community Dept: 01582 391927

Honours

Littlewoods Cup

Winners 1987-88

Finalists 1988-89

FA Cup

Finalists 1958-59

Simod Cup

Finalists 1988-89

Division 2

Champions 1981-82

Division 3 (S)

Champions 1936-37

Division 4

Champions 1967-68

Official Matchday Magazine

Editor

Brian Swain

Design & Printing

Regal Litho Ltd

Photography

Gareth Owen

The views expressed in this programme are not necessarily those of Luton Town Football Club.

Cover Story



Back on his old stamping ground: Tony Thorpe in action at Ashton Gate on Saturday, when he skippered the Town against his former club.

Inside Forward

ON THE way to Ashton Gate few Town fans would quibble if they were told that a draw was the least we would get from a meeting with a top three team which had been unbeaten for 17 games. We got it, but were left feeling angry that a victory that had been worked so hard for was denied by an equaliser after an injury-time pantomime.

Sol Davis was sent off after 91 minutes, and the ten-man battlers conceded a goal five minutes later. It was a stunner, leaving Town players distraught, for all the world as though they had lost, and City players and fans in their biggest crowd of the season celebrating as though it had been a victory.

Town fans were on edge from the moment referee Mark Cooper signalled five extra minutes, having added on four at the end of the first half. Many of his other decisions angered both sides in turn, on a wet day which added pace to every pass struck. There were six bookings, five against the Town, before the red card, and Joe Kinnear was raging at the official's performance. Stewards prevented him getting into the referee's changing room to express his forthright views.

Danny Wilson also criticised the men in black, particularly for a "goal" that was ruled out for a most unlikely offside decision. And when we thought back to that let-off, and to the three occasions when City hit the woodwork, perhaps the Town were not quite as hard done by as we first thought.

A much-changed team, on paper still below strength, combined into a solid, hard-to-beat unit. Five changes were made after the wretched home display against Colchester, with Carl Emberson, Sol Davis, Paul Hughes, Tony Thorpe and Steve Howard returning to the starting line-up in place of Mark Ovendale, Alan Kimble, Matt Spring, Kevin Nicholls and Andrew Fotiadis.

Dean Crowe was used on the right of midfield, with Steve Robinson moving inside, and that formation played a major part in the Town taking the lead early in the second half.

The first half had brought little goalmouth excitement. Thorpe was made captain against his old club, and was jeered almost every time he touched the ball, especially when he put an early header wide after Howard flicked on a free kick by the impressive Chris Coyne.

Just before that Lee Peacock shot against a post after City's liveliest attacker, Scott Murray, crossed from the right.

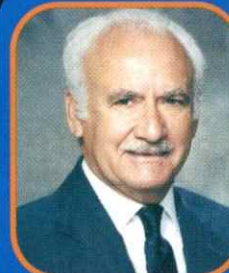
That apart, the goalkeepers were not seriously troubled until Emberson made a good save from Mickey Bell in stoppage time at the end of the half.

The Town seemed to have drawn the sting out of City and the sixth away win of the season looked in prospect after Howard struck his 11th goal of the campaign on 53 minutes. He sauntered in on the blind side after smart work by Crowe, Robinson and Ahmet Brkovic shifted the ball rapidly across the home penalty area, from right to left.

Thorpe and Brkovic both went close to scoring before City roused themselves for a last-ditch desperation push. A volley by Tommy Doherty hit the bar, bounced on the line and Coyne headed to safety. Then from a similar sequence on 81 minutes sub Peter Beadle hit the frame, and this time Peacock got in quickly to net. City were baffled by the offside flag.

INSIDE TODAY...

The manager's column - P 5; The captain's views - P 7; Today's visitors - Pp 18-21; Latest injury news - P 8; From the Secretary's office - P 9; Blast from the Past - Pp 22 & 23; Travel offers to Wycombe and Chesterfield - P 25; Colchester match report and pictures - Pp 38 & 39; Junior Hatters - P 41; Memories of Eric Morecambe - P 45; Club shop sale offers - Pp 46-47; Latest from the youth teams - Pp 49 & 51; Heading for the play-off frame - P 53.



From The Chairman's Office

WELCOME to your club, and on behalf of myself, fellow directors and everyone connected with Luton Town I would like to wish all supporters a very happy Christmas, and a peaceful and prosperous New Year. Our ambition for 2003, of course, is to continue our progress on and off the field, and I would like to thank Joe and our hard-working staff for what has been achieved so far.

I want a second successive promotion to be gained this season, but our long-term future is equally, if not more, important. To safeguard it, we must have

our new stadium as quickly as possible.

I am sure you, like me, feel frustrated at the apparent lack of progress on that score. Behind the scenes, however, I can promise that a huge amount of work is being done as we try to draw in all the various strands that must be tied up before we can start building at Junction Ten. We are working as quickly as possible, and as soon as we have the expected good news on the subject, we will give it to you.

Meanwhile, the directors are proving they too are real supporters. We have ensured that Joe, unlike previous managers, is not forced to sell our best players to make ends meet, but that means that we are covering the expenses of the club. We do it for the love of Luton Town, and in the hope that one day we will achieve our ambitions of seeing the club once more among the country's elite, and playing in a stadium fit for the 21st century.

We need your support as well. Your backing throughout the old year is appreciated. Thank you all, and please continue to give Joe and the boys your support through the New Year as well.

Mike Watson-Challis Chairman

It was still 0-1 at 90 minutes, but on 91 Davis was dismissed for retaliation after a clash with Murray. If it was harsh, Davis did himself no favours when City skipper Doherty seemed to be goading him as he trudged away, and reacted angrily with an elbow.

With the crowd screaming for blood, and the Town defending desperately, the game was allowed to continue until Beadle crashed in the equaliser. It was more agony for the Town - it came from a corner, after City had broken from their own half by taking a throw-in that should have been the Town's. Crowe ran down the wing towards the corner-flag. Most of us saw him kick the ball carefully at a defender and into touch to gain the throw-in. Pity the ref or his assistant didn't.

Luton Town: Emberson; Boyce, Neilson (Hillier 70 mins), Coyne, Davis; Crowe, Robinson, Hughes, Brkovic; Howard, Thorpe (Kimble 91 mins). Unused subs Ovendale, Mansell, Fotiadis.

Booked: Thorpe and Brkovic for dissent, Hughes for retaliation and Emberson for time-wasting when he interrupted a goal kick because the ball rolled into a hollow as he went to kick it.

Sent off: Sol Davis for retaliation on Scott Murray.

Bristol City: Phillips; Coles, Carey, Hill, Bell; Murray, Tinnion (Beadle 73 mins) Doherty, Burnell (Brown 49 mins); Roberts (Rosenior 61 mins), Peacock. Unused subs Stowell, Fortune.

Booked: Roberts for trying a "hand of God" touch.

Referee: Mark Cooper, West Midlands.

Attendance: 14,057, including 709 Town fans.



Chairman

M. Watson-Challis

Directors

E. Hood, R. Stringer,

Y. Fletcher,

R. H. G. Kelly, C. Newbery

Vice Presidents

C. T. F. Green, N. S. Terry,

R. L. Banks, D. Ludlow MBE,

C. Bygrave, R. Safranek,

J. Sapsworth, D. Mortimer

Club Secretary

Cherry Newbery

Manager

Joe Kinnear

First Team Coach

Mick Harford

Reserve Team Coach

Brian Stein

Youth Team Coach

John Moore

Youth Development Officer

Mark Ridgway

Medical Officer

Dr. Bill Berry

Consultant Physio

John Sheridan

Commercial Manager

Linda Layton

Catering Manager

Peter Saul

Safety Officer

Geoff Lovell

Ticket Office

Darren Bell

Financial Controller

Tania Buonpane FCCA

Club Dentist

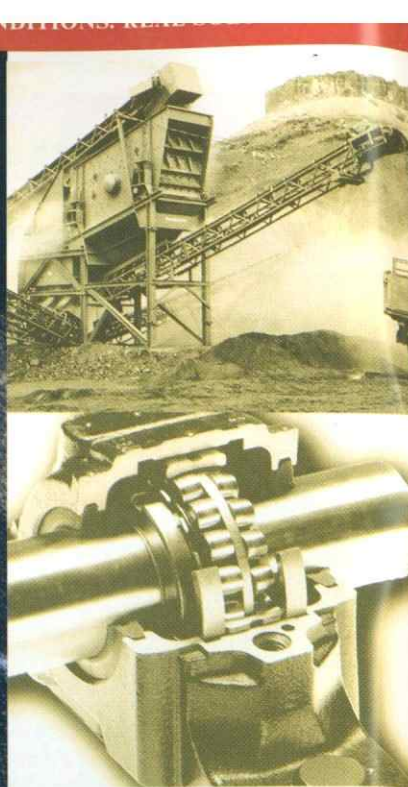
A. Chris BDSA (Syd)

Club Chaplain

Rev Catherine Moss

Company Secretary

Cherry Newbery



SOLVING THE HOUSING PROBLEM SNL Bearing housings

SKF are able to offer the perfect product partnership - synonymous with operational reliability, quality and versatility.

SNL bearing housings enable the full service life potential of the incorporated bearings to be exploited with less need of maintenance.

Standard SNL housings are available for shafts from 20 to 160mm diameter; together with the new SNL 30 and SNL 31 range for shafts from 150 to 500mm diameter.

Standard features

- Easy installation
- Reinforced design
- High load carrying capacity
- Relubrication facility as standard
- Condition monitoring options
- Wide range of sealing solutions

Application benefits

- Long service life
- Robust design
- Reduced maintenance costs
- Insensitive to excessive tightening
- Reduced lubricant consumption

For a FREE catalogue on SNL bearing housings please complete and return to:
SKF FREEPOST MK1540 Luton LU3 4BR

Name

Company

Address

Postcode

Tel

E-mail

SKF®

Manager's View



AT A time of year when peace on earth and goodwill to all men is the traditional wish, I offer it today to all supporters. But it is difficult to feel the same about one or two individuals who have managed to make our lives a misery on occasion. It happened again at Bristol on Saturday, when we came home feeling that we had been cheated out of two points for which we had worked so hard. People who were not there will look at the result and think the 1-1 draw was quite an achievement, against a team going well for promotion, who were unbeaten in their previous 17 games, and who had lost at home only once.

We went to Ashton Gate decimated by injuries, but put in a tremendous team performance. We had to stand firm and be strong in all areas of the pitch as a big crowd gave its backing to a confident home side. We went into the game as underdogs, but the team showed tremendous character. At the interval, having denied the home side the lead they wanted, we had done half the job, and knew that we were in a good position to finish it if we could snatch a goal.

We did, exactly that, and despite some close calls we got to 90 minutes with the lead intact, having battled hard and done a thoroughly professional job.

We couldn't believe it when the board went up showing another five minutes to be played. Perhaps we should have

expected it because somehow the referee had found cause to add on four minutes at the end of the first half, and that too had been a complete mystery.

The extra time was a chance for Bristol City to get out of jail, and I was furious at the way they were helped. The incident that ended with Sol Davis being sent off a minute into stoppage time came when their man was penalised for a foul on Davis. Inexplicably, as the two players tangled, the ref changed his mind and sent Davis off, then gave them the free kick.

Eventually the extra time proved crucial, and we were robbed of two points. Our players deserved better than they got, and left us once again worrying about the quality of referees we have seen from time to time this season. I could, of course, say an awful lot more about Mr Cooper. Indeed, I wanted to say a lot more to his face, but I was not allowed in to see him after the game. Apparently he was taking longer than normal to get out of his clown's outfit!

However, having blown my top about him, I was delighted with the way the team did their work. The point was the least they deserved for all-out commitment and effort, and they came off feeling as though they had lost. It shows our true feelings about what we want from this season: any other team, I am sure, would have come away from City's fortress delighted to get a point instead of being gutted, which we were. Fortunately, we have another chance to go one better today,

and we know we face another tough test. We have now played all three top teams, two of them away from home. We drew at Cardiff, which was the right result, were unlucky to be pegged back by Wigan on our own pitch, and worked hard at Bristol for a well-earned point. It suggests to me that we are capable of achieving the play-off place we want.

Our home results are a slight concern, although we are not the only team in this division whose form is better away from home than it is on our own pitch. We have to learn to cope with the pressure of expectation felt by players and supporters alike.

And as we play our final game of the old year, my congratulations to our top drawer fans, especially those who have followed us on our trips up and down the country in the last 12 months. They have seen the club make progress, with promotion well earned. But while we were delighted to come back up into the Second Division, we would rather be in the First, and given a little more luck with injuries - and perhaps with referees! - we must be in with a chance. It has been a pretty good year for us all, and I trust we can enjoy another in 2003. And don't forget to keep a bottle handy - in victory we deserve it, and in defeat we need it. It's up to you to work out what that means! Keep the faith, and enjoy the game.

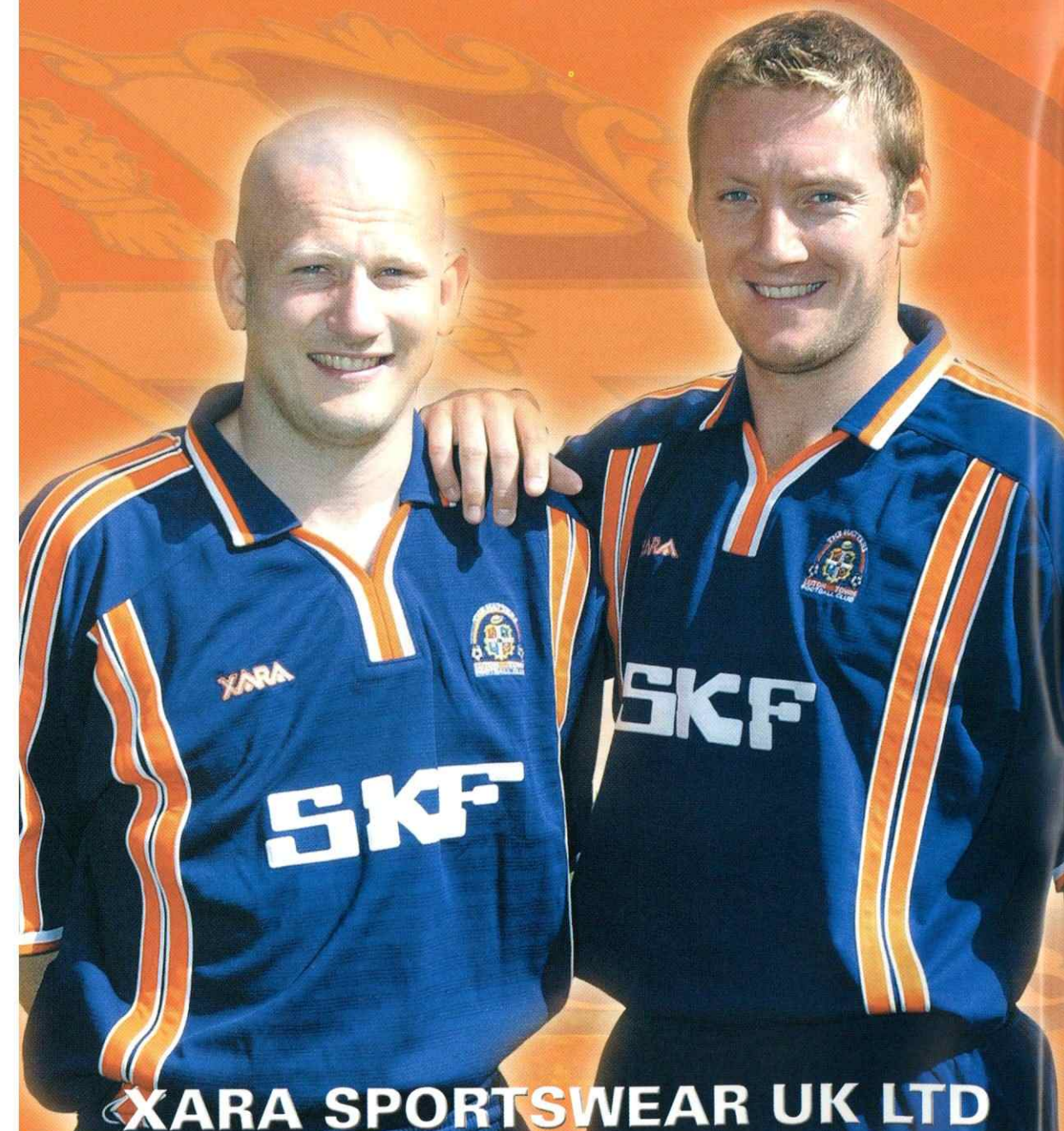
Joe Kinnear



The place to shop in Bedfordshire
Horne Lane, Bedford - 01234 357330

XARA

**OFFICIAL KIT SUPPLIER TO LUTON TOWN F.C.
SEASON 2002 - 2003**



Captain's View



THERE were plenty of frustrated footballers around Kenilworth Road when we reported in for training on Sunday after the painful experience we suffered at Ashton Gate. The frustration was all the worse for me because I had to miss the game through injury.

I was not 100 per cent fit against Colchester, but felt able to do a job, and then to lose Matt Spring early in that game was another blow. It turned out to be the end of a miserable week, three defeats in a row, which was something we had not experienced since the start of the season. We certainly never expected it to happen.

To go out of the FA Cup at Wigan was, perhaps, not a major shock, but we really felt we could take care of Cambridge and Colchester on our own pitch. It didn't happen, and to be honest we were gobsmacked at the way both those games turned against us.

It is a concern that we are not getting the results we need at home, and I don't know why it should be. I know we are not the only team with a better away record than at home, but as we saw last season if we are to put in a serious promotion bid, we have to make Kenilworth Road a place that no teams like visiting. We were gobsmacked by what happened against Colchester, and it is still hard to believe we lost that game. At one up we were on cruise control, well in command and playing some free-flowing football. We were defending well as a team, and I couldn't see Colchester scoring until we shot ourselves in the foot by gifting them an equaliser. Perhaps one lesson is that we

need a second goal to increase the comfort margin. But I would be much more concerned if we were not creating chances.

I was gutted to miss the game at Bristol, where we were all in the right mood to bounce back from the run of poor results.

The lads worked their socks off, and to be denied a win by a 96th-minute goal was cruel in the extreme. We all have our views about referees, and as you might guess we were not very impressed by the one we met at Ashton Gate. It was not only about the red and yellow cards, but also about his general decision-making.

Having worked so well to stay in front of one of the best teams in the division, we felt as though we had lost the game when that very late equaliser went in. To judge by their celebrations, Bristol City felt as though they had won it.

Today, having had time to come to terms with Saturday's events, we can take pride in our performance there. It's a shame that recent results have stopped us breaking into the play-off places, but it is still encouraging that we are within touching distance of the top six.

It is important now that we do not drop off the pace. To be comfortably in the top ten of the division at this stage of the season is not bad, particularly when you remember what a poor start we made. I would love to see us win automatic promotion, but will settle for a finishing place anywhere between third and sixth, and I think we can do it, even though there are four or five other teams also in with a shout. My only worry is that we are ten points

below fifth spot, and we need to close that gap.

It should be an interesting second half of the season, and once more today we have the chance to test ourselves against a side who are one of the best in the division. We need to rise to the occasion: our record against top teams this season is excellent, and we need to extend it today.

We are still a happy dressing room, focused on the job in hand, and enjoying excellent team spirit. I suppose the verdict on the old year is that there have been more plus points than minus marks, and we have proved to be better able to adapt to the Second Division than the other three teams who came up with us. We always look likely to score goals, and compared to what we have seen of this division we look a very capable side.

The only real minus is the home form this season, but we are working on it. There is willingness throughout the club to work hard for success, and once we sort out our home results we will be even more of a promotion force to be reckoned with than we are now. Finally, in wishing everyone a happy Christmas and peaceful and prosperous New Year, our thanks once again go to the fans who have followed us through thick and thin. Like you, we want the best possible future for Luton Town, and I hope that we will see another step up the league ladder by the time the New Year is five months old.

Kevin Nicholls

Log on to Luton Town's official website at
www.lutontown.co.uk



Treatment Room

W H I L E everyone was very disappointed at seeing points slip away in stoppage time at Bristol, the game brought some positive news – Tony Thorpe and Sol Davis both came through it with no ill-effects after their injuries, fair reward for hard work put in by them and the treatment room staff.

This column had to be put written on Sunday, and at that stage it was impossible to say if Kevin Nicholls and Matt Spring would be available for today's game after missing the match at Bristol. Both are making good progress, with Nicholls recovering well from a thigh strain and Spring getting over an ankle injury.

He took a hefty kick on the joint against Colchester. A scan and X-rays have shown it was nothing serious, but he had considerable swelling and discomfort, and with two games in three days this week, and another to come next Wednesday, we will not take any chances. Both players Spring understand the need to be fully recovered before they play again.

I am delighted to report that Carl Griffiths is back in training, although still under treatment, after his long-term problem. That is a tribute not only to him and his professionalism, but also to the efforts put in by Simon, the club masseur.

Russ Perrett and David Bayliss both continue to make

excellent progress, but Peter Holmes has suffered a groin injury which required minor surgery earlier this week.

Adrian Forbes and Aaron Skelton have undergone keyhole surgery to clean up the inside of knee joints. It was routine in both cases, and will have no effect on the schedule for Forbes's comeback. He is still well ahead of himself, thanks to his outstanding professionalism, and looking forward to a happy new year. So is David Bayliss, who should be able to resume playing when the reserves return to action after the holiday break.

Lee Taylor

David Lloyd Leisure... now in your town



Call us on 01582 692046/7

Special introductory offer on presentation of this Match Day Programme

Offer available at the Luton Club only. Terms and conditions apply.



www.davidlloydleisure.co.uk

Club Secretary



FIRST today, I want to pass on the thanks of everyone involved for the tremendous support you gave to the collection taken at our last home game by the two local Rotary Clubs. They collected £571 for the Mayor's Christmas appeal for the benefit of the senior citizens of the Town.

I have had a lot of comment on what a good atmosphere we had in the ground before the game, with Father Christmas and the excellent Salvation Army band being very popular visitors. We have built up real Christmas traditions at Kenilworth Road, and long may that continue.

Another tradition that is getting established more firmly each year is the Club's annual carol service. As usual it was held at Luton Parish Church, and it was a lovely service. It was good to see so

many people there, easily the best turn-out we have had yet. It was one of those occasions when we all enjoyed being friends together, and my thanks go to everyone who helped organise the service, and who took part, especially our club chaplain, the Rev Catherine Moss.

The Someries school choir sang beautifully, and the congregation joined in with the old familiar favourites.

And how nice for a committed Arsenal supporter, the Rev Andrew Blyth, to give us a Christmas talk including plenty of references to one of the best days of our Luton Town lives, when we won the Littlewoods Cup at Wembley. It was also good to see so many supporters accepting our invitation to enjoy coffee and mince pies after the service,

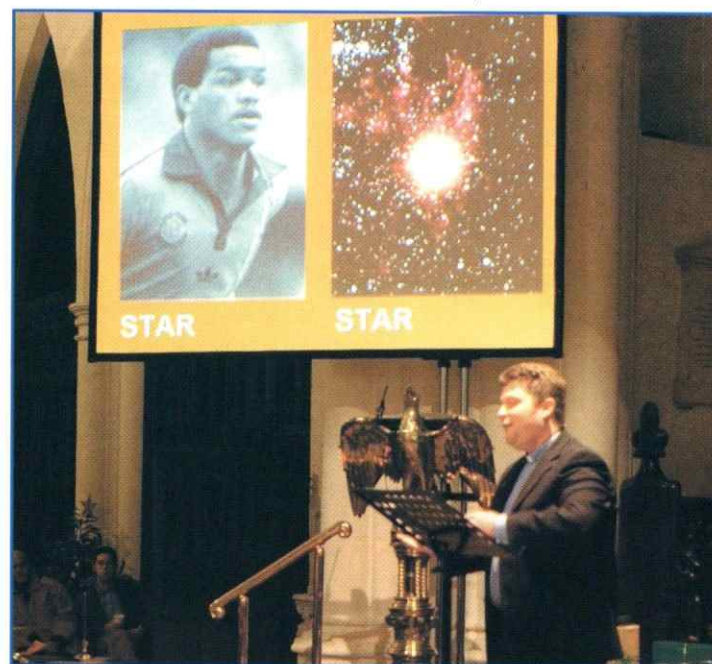
and I thought the whole evening was a great success. Today, of course, we are back to routine, and one of the very old traditions at football is the attendance of the St. John Ambulance Brigade at matches. They are all volunteers, and we are just one of many clubs who appreciate their help.

However, they have been finding it difficult recently to provide stretcher-bearers during matches. As you probably know, every ground has to have a stretcher party available throughout the game so that injured players can be taken off quickly. We have decided that the sensible thing is for us as a club to provide them, so we are looking for able-bodied volunteers, men or women, to do the job. We will, of course, provide full training and the appropriate clothing, and match tickets will be supplied as well. If you would like to help, please contact our safety officer, Geoff Lovell, at the club.

Finally today, a couple of reminders: the club shop will hold a New Year sale, with bargains galore, from January 4, and we now have a new date for our reserve fixture which had to be postponed because of the FA Youth Cup match against Bradford at Kenilworth Road on January 15. The Avon Insurance Combination match, at home to Crystal Palace, will be played on Wednesday, March 5.

Hopefully, by then, the first team will be well-established in the play-off zone at least, which is my New Year's wish for all Luton Town supporters. May 2003 be peaceful and prosperous for everyone.

Cherry Newbery



A CHRISTMAS STAR: The Rev Andrew Blyth in action at the carol service, ready to admit that when his team, Arsenal, were beaten at Wembley in 1988 the day's top man was two-goal Brian Stein.

You can e-mail Cherry Newbery on clubsec@lutontown.co.uk

TICKET OFFICE AND CLUB SHOP OPENING HOURS CHRISTMAS AND NEW YEAR

December 27: 10am – 2pm
December 28: 10am – 12 noon
December 30: 10am- 2pm
December 31: 10am – 2pm
January 1, 2003: Closed

Normal opening hours will be in operation from January 2:
Monday to Friday: 10am to 4pm except on Fridays before
Saturday home games, when it is 10am to 6pm
Saturdays: 9am to 5.15pm on match days;
10am until the away coaches depart when there is no game
at Kenilworth Road

Luton Town Credit Card Hotline

By using our telephone hotline system you can
order match tickets up to 48 hours prior to any
game by ringing

01582 730748
24 HOURS A DAY

For the latest news, views and interviews call:
CLUB CALL on 09068 121123 (calls cost 60p per minute at all times)

Ticket Office News



Wycombe Wanderers v Luton Town Saturday December 28, 2002, kick-off 3pm

This match is ALL TICKET for Luton Town supporters with no
tickets available on the day of the game.
If any tickets are still available, they are now on general sale until
close of business on Friday

Prices: Adults £14, Senior Citizens/Students £12, Juniors £10
If supporters wish to make a family booking in the Family Stand they must contact Wycombe
Wanderers direct on 01494 441118.



Chesterfield v Luton Town

Wednesday January 1, 2003, kick-off 3pm

PLEASE NOTE DETAILS FOR THIS GAME ARE DIFFERENT FROM
THOSE PREVIOUSLY PUBLISHED

This match is now ALL TICKET for Luton Town supporters, with
no tickets available on the day of the game. Tickets are now on general sale.

Prices: SEATING: Adults £14, Senior Citizens and Juniors £8
TERRACING: Adults £13, Senior Citizens and Juniors £7



Luton Town v Blackpool

Saturday January 4, 2003

This fixture has been postponed, due to Blackpool's involvement in the FA Cup



Luton Town v Plymouth Argyle

Saturday January 11, 2003, kick-off 3pm

This match is ALL TICKET for ALL SUPPORTERS, with no tickets
available on the day of the game.

Tickets are now on sale at normal matchday prices and
supporters are advised to book early to avoid disappointment.



Barnsley v Luton Town

Saturday January 18, 2003, kick-off 3pm

This match is pay on the day only for Luton Town supporters,
with no tickets available in advance from Kenilworth Road.

Prices: Adults £16, Senior Citizens and Juniors £9.



Luton Town v Wycombe Wanderers

Saturday January 25, 2003, kick-off 3pm

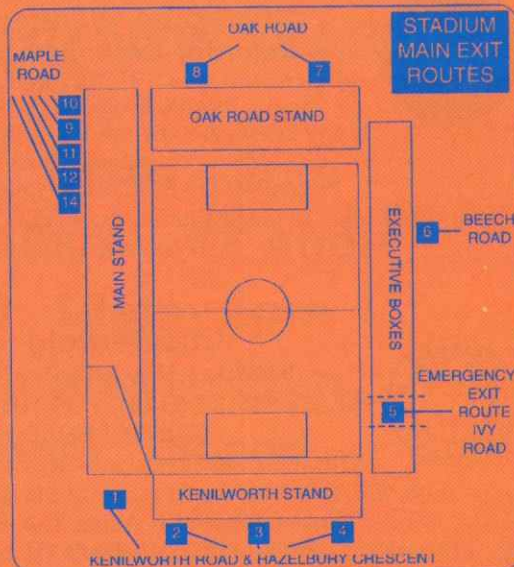
Tickets are now on sale at normal matchday prices
Cash turnstiles will be open on the day subject to availability, but
please remember there are NO CONCESSIONS available
on cash turnstiles.



EVACUATION PROCEDURE

IN THE event of any emergency in the stadium, Luton Town FC and the emergency services have agreed on an evacuation procedure which is designed to ensure the safe and controlled evacuation of the crowd, and to ensure their safe dispersal from the area, to allow the emergency services to carry out their tasks.

In the event of evacuation from all or part of the stadium, you will receive instructions over the public address system on how you should leave. In an evacuation of the main stand you will be instructed to use the pitch. Stewards will direct you to the nearest exit. It may be that your normal exit route will not be available. On leaving the stadium, you will find some roads closed to pedestrians, to enable swift and unobstructed access for the emergency services. Please leave the area of the ground as quickly as possible, by the route directed. Your co-operation will be most appreciated.



Geoff Lovell, Safety Manager.

CONNECT WITH YOUR CLUB



Luton Town

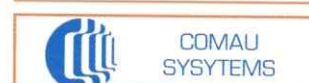
09068 121 123

teletext 0114 224

Calls cost 60p/min. ClubCall EC2A 4PF



Executive Box Holders



Kenilworth Suite Members

Mr P Armitage
Belldene Construction Services Ltd
C P Contracts
Corporate Coaching
Danny & Elsie Clubb
Datapace Ltd
DBF Crosswinds Ltd
Mr M Eade
Mr R Eade
Mr K Harvey
Mr R Harvey
J P Hygiene Supplies

Mr P Mitchell
Protexx Mortgage & Financial Services
Regal Litho Ltd
Remdex UK Ltd
Mr J Siegler
Dr D Siegler
SKF (UK) Ltd
Space Display Systems
Vangis UK Ltd
Mr & Mrs R Williams
Woburn Media Ltd

If you would like a brochure or further information on Kenilworth Suite Membership please contact the Commercial Department on 01582 411622

The **Official** club SMS text service:
use your mobile to **sign up now!**



BE AT THE MATCH WHEREVER YOU ARE!

By signing up to this official service
you're directly supporting the club.

Brought to you by www.lutontown.co.uk

This service is available to UK Vodafone, Orange & O2 mobile customers. The cost of each SMS text message sent shall be a maximum of 25p and will be charged direct to your mobile phone bill or deducted from your mobile phone's pre-pay balance. The cost of calling 8222 for your club's official SMS service will be charged at your normal text rate. All charges are inclusive of VAT. Full terms & conditions can be found on the mobile zone at your club's official website.



The Gold Service

- Team line-ups before kick-off
- Every league & cup goal
- Half & full time divisional round ups
- Red cards
- **Exclusive** match quotes from the gaffer or key player – straight after the game!
- **Exclusive** club breaking news

To receive this package simply text:
CLUB LUTON GOLD ON
to 82222

The Silver Service

- Every league & cup goal
- Full time divisional round ups
- **Exclusive** club breaking news

To receive this package simply text:
CLUB LUTON SILVER ON
to 82222

The Away Service

If you already go to all the home games,
this one's perfect for you!

- Every away league & cup goal
- Full time divisional round ups for all away matches
- **Exclusive** club breaking news

To receive this package simply text:
CLUB LUTON AWAY ON
to 82222

Commercial Corner



PAYING a welcome return visit to our executive lounges today are this afternoon's match sponsors, Jon Ring and the staff of Belldene Construction Services (UK & Ireland). They want to wish all their clients here with them today a prosperous New Year.

Based in Luton, Belldene is a supplier of quality

trade and labour to the construction industry. The company has made its name in both the public and private sectors, with clients ranging from prisons to local authorities and contractors.

Belldene wish Joe Kinnear and all at Luton Town FC a happy new year, and promotion. For our part, we welcome the company to Kenilworth Road, and their guests from Botes, Tring Court, Clancy Docwra, Murtagh, SDC and Andy Ring publishers.

IT'S A real family outing when 11-year-old Conor Doyle comes to Kenilworth Road. His mum and dad, Linda and Stephen, and his sisters Colette, Meghan and Charlotte are also Hatters supporters. But today, they will enjoy seeing Conor, from Kitchenend, Silsoe, taking part in the afternoon's entertainment, because he is our commercial mascot.



His duties include meeting the team, including his favourite, Kevin Nichols, in the dressing room, and running out onto the pitch with them for the warm-up and toss of the coin.

A pupil at Bedford Modern School, Conor's other hobbies are rugby, swimming, golf and cricket.

THE MATCH ball is being sponsored by the Wheelwrights Arms, a pub in Guildford Street which is popular with Town fans, not least because mine hosts, Alex and Helena Dalgarno, are themselves Hatters supporters.

A free house, the Wheelwrights serves food all day, including evening meals and all-day breakfast, with a traditional roast on Sundays. They have a wide range of real ales, with ESB and London Pride always popular, along with various guest ales. Live football on TV is all part of the service, and there is live entertainment every Sunday. The pub is also able to offer accommodation, and Alex invites anyone who wants to know more to give him a call on Luton 759321.

Linda Layton

Golden Gamble

OUR Golden Gamble team will be on duty again this afternoon to give one lucky supporter the chance to pick up a very handy "Christmas box." The jackpot at the last home game was £765, and was won by Mr Gurney, from Guernsey Close, Luton. He claimed his cash after the game, which meant he missed the usual half-time photo opportunity.

Another wedge of cash will be won today, and all for an outlay of £1. The size of the prize depends on sales, with half of each pound going to the jackpot and the other 50p to club funds, so everyone who buys a ticket helps Luton Town.

So far this season 13 lucky fans have shared £8,665, an average of £667 each. The draw is made at half time and the prize money is available immediately.



To advertise in the matchday magazine phone Luton 411622 or e-mail us at:
commercial@lutontown.co.uk



Kit Sponsors

David Bayliss
WHOSH

Mick Harford
Les Miller
Miller & Company Bedford

Mark Ovendale
Available

Emmerson Boyce
Elsie Clubb

Happy Harry
Available

Russell Perrett
Graham Bates & Chris Park

Chris Coyne
Mel Westwood & Family

Ian Hillier
St Mary's Church, Luton

Bruce Sewell Hobbs
Sally & Sue

Dean Crowe
John Pyper & John Waterworth
"Mad Hatters"

Peter Holmes
Gill, Julie, Yvonne

Aaron Skelton
The Bobbers Travel Club

Justin Dealey
BBC Three Counties Radio

Steve Howard
Jeremy Cain of DAP Consulting

Matthew Spring
Brian Hall

Joseph Deeney
Michael Capp & Danny Clubb

Paul Hughes
Les & Sue Miller

Brian Stein
Danny Clubb

Tony Thorpe
Luton Town Supporters club

Marvin Johnson
Fred Barrett & Son
Licensed Property Valuers

Alan Neilson
LTFC Barmy Army London Branch

Carl Emberson
The Kenilworth Connection

Joe Kinnear
LTFC Supporters Club (MK)

Ahmet Brkovic
G&S Ceramics

Adrian Forbes
The Regular Rabble

Lee Mansell
Danny Clubb & Michael Capp

Alan Kimble
Office Power Systems Ltd

Andrew Fotiadis
Sally Mayne & Family

John Moore
Ian Smith

Steve Robinson
G.Owen Ceramic Tiling

Robert Gillman
Century Club

Kevin Nicholls
WHOSH

Kevin Foley
The Regular Rabble

Carl Griffiths
Paul Deason

James Osborn
Michael Capp & Danny Clubb

Sol Davis
Personal Security Services



For/Against Goalscoring Home/Away Top Scorer Form Guide Discipline Attendances Swings/Margins Miscellaneous



Clubs Comparison

Goals Scored	
Shots	14
Headers	8
Volleys	11
Penalties	2
Free Kicks	0
Own Goals	0

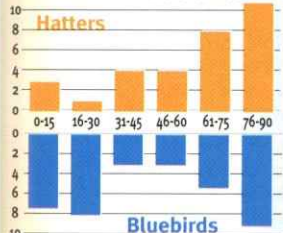
Where Goals Scored



Where Goals Conceded



When Goals Scored



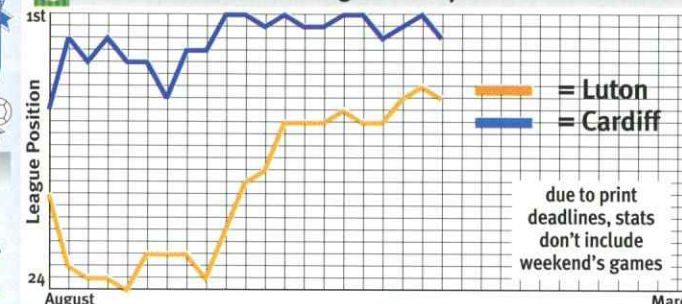
Form Guide - Last 6

2	Won	4
2	Drawn	0
2	Lost	2
5	For	11
6	Against	5
8	Points	12
-1	Goal Difference	6
WLDDWL	Sequence	WWLWWL

Yellow & Red Cards

40	Yellow	26
3	Red	0

Seasonal Progress Comparison



2002-2003 Attendances

Hatters	Aggregate	Bluebirds
74,293		143,681
9,477	Highest	15,239
5,890	Lowest	11,546
6,754	Average	13,062
68	% of Capacity	65

10 Year Record

Hatters	Avg Pos.	Bluebirds
53.3	among 92 clubs	68.9
7,878	Avg Att 1993	6,588
6,754	Avg Att 2002	13,062
-14	+ / - %	98



Average Goals per game

1.48	For	1.67
1.64	Home For	1.73
1.30	Away For	1.60
1.38	Against	0.81
1.36	Home Against	0.64
1.40	Away Against	1.00

2002-2003 Figures

33	Players Used	24
8	Clean Sheets	10
5	Failed to Score	3
	Goals scored from...	
4	Corners	5
2	Free Kicks	0
	Goals conceded from...	
1	Corners	1
3	Free Kicks	4

Top League Scorers

		
9	League Goals	16
19	Games Played	21
0.47	Lge Goals/Game	0.76
5	Points Gained	9
4	Scoring Run	3
0	Hat-Tricks	1
4	Close Range	2
4	Inside Area	14
1	Long Range	0
4	Shots	6
4	Headers	2
1	Volleys	6
0	Penalties	2
0	Direct FKs	0

Cardiff City's 10 Year History



YOUR **FREE** SPORTS PAPER WITH





Welcome To



Back row (left to right): Jason Bowen, Daniel Gabbidon, Andy Campbell, Peter Thorne, Scott Young, Gavin Gordon, Des Hamilton, Gareth Whalley, Gary Croft.

Middle row: Rhys Weston, James Collins, Leo Fortune-West, Neil Alexander, Mark Walton, Martyn Margetson, David Hughes, Spencer Prior, Chris Barker.

Front row: Mark Bonner, Willie Boland, Andy Legg (Club Capt.), Clive Goodyear (Physio.), Lennie Lawrence (Manager), Ian Butterworth (Asst. Manager), George Wood (Goalkeeping Coach), Graham Kavanagh (Team Capt.), Layton Maxwell, Robert Earnshaw.

MANAGER

LENNIE LAWRENCE
BORN: BRIGHTON, 14.12.47



Lennie was appointed as manager on 18th February 2002, just six weeks after leaving Grimsby Town. He replaced Alan Cork in the manager's role having initially been brought to Ninian Park as Director of Football by Sam

Hammam.

After a playing career in non-league football, Lennie began his professional coaching career at Plymouth Argyle in 1977 under Mike Kelly. He took over as caretaker manager in 1978 following Kelly's resignation and then became the assistant to Malcolm Allison following his appointment in March 1978.

He left Plymouth Argyle in January 1979 following Allison's departure to Manchester City and was then appointed assistant to Colin Murphy at Lincoln City. Having helped Lincoln to promotion from Division Four in 1980-81, Lennie left to take a reserve team post at Charlton in 1982, taking over as manager "temporarily" in November after Ken Craggs was sacked. He remained in charge at Charlton for nine years leading The Addicks to promotion

to the old First Division.

He left Charlton in the summer of 1991 to take up the managerial reins at Middlesbrough and won promotion to the newly formed Premier League in his first season. Unable to maintain their place in Premiership, 'Boro were relegated at the end of the 1992-93 season and Lawrence left at the end of the following year.

He became Bradford City's manager in July 1994 but left after just fifteen months at Valley Parade, having finished in mid-table in Division Two. He was then appointed Luton Town manager but with the team five points adrift at the bottom of Division One, he could not prevent their relegation. Finished 3rd in Division Two the following season, Lawrence left in the summer of 2000 but he wasn't out of work for long as Grimsby moved to

Cardiff City



acquire his services just two matches into the season. Grimsby's league form left them fighting relegation once again and he was dismissed just before the New Year.

Lawrence was not even out of the game for a week before being appointed as the Director of Football at Cardiff and less than two months later he was back in management as The Bluebirds' new boss. Lennie is one of only eight managers to be in charge of a club for over 1000 competitive matches.

GOALKEEPERS

1. NEIL ALEXANDER
BORN: EDINBURGH, 10.3.78

Neil is a very highly rated former Scotland U21 international who arrived from Scottish Premier League side Livingston during the summer of 2001. Widely tipped to become the number one goalkeeper for Scotland over the next few seasons. Neil was an ever present in last seasons League fixtures.

22. MARK WALTON
Born: Merthyr Tydfil, 1.6.69

Ex Swansea City, Luton Town, Colchester, Norwich City, Wrexham, Dundee Utd, Bolton Wanderers, Fakenham Town, Fulham, Gillingham and Brighton. Mark signed in July 2000 from Brighton & Hove Albion. He played in last seasons FAW Premier Cup winning side.

13. MARTYN MARGETSON
Born: Neath, 8.9.71

Signed on August 3rd 2002 following a successful trial at the Club. Former Welsh U-21 keeper, Martyn joins the Bluebirds after surprisingly being released from Huddersfield Town at the end of last season after playing in every 1st team game. Martyn's previous

clubs include Manchester City and Southend together with loan spells at Bristol Rovers, Bolton and Luton.

DEFENDERS

5. SPENCER PRIOR
BORN: SOUTHEND, 22.4.71



Spencer joined his hometown Cub Southend United from trainee in 1989 before moving on to Norwich City, Leicester City, Derby County and Manchester City before making the move to Cardiff in summer 2001. His ability in the air makes him a threat in both defence and attack. A regular in last season's first team, he formed a formidable defensive partnership with Scott Young.

2. RHYS WESTON
Born: Kingston, 27.10.80

Joined Arsenal in the summer of 1997. A good tackler and strong in the air, Rhys made his first Wales senior squad appearance when he came on from the subs' bench against Portugal at the beginning of June 2000. Signed for Cardiff in November 2000 and was the Club's regular right-back last season. His consistency saw him once again called into the Full Squad.

23. CHRIS BARKER
Born: Sheffield, 2.3.80

Chris signed for Barnsley in August 1998 after being spotted

playing for non-league Alfreton Town. He made his 1st team debut in September 1999. Given his chance due to injuries, he proved to be a keen passer with a cultured left foot. Before moving to Cardiff City in the summer of 2002, Chris had played in 125 first team games for his former club.

3. ANDY LEGG
Born: Neath, 28.7.66

Andy joined Swansea City from Briton Ferry during the summer of 1988. He moved to Notts County for £275,000 in 1993 where he made 89 league appearances, before joining Birmingham City and later Reading. Signed for Cardiff in December 1998 on a free transfer, Andy has been a consistent member of the first team ever since.

18. SCOTT YOUNG
Born: Tonypandy, 14.1.76

Scott is the Club's longest serving player having turned professional from YTS in 1994. He is a versatile defender at his best in the heart of defence. His consistent defensive performances last season led to him being called into the Full Welsh Squad.

6. DANIEL GABBIDON
Born: Cwmbran, 8.8.79

Former West Bromwich Albion player, for whom he made 26 League & Cup appearances, Daniel signed for Cardiff in September 2000 following a successful loan spell at the start of the season. Daniel is a quality player, with pace, who has played in every defensive position.

26. GARY CROFT
Born: Burton-on-Trent, 17.2.74

Gary spent six seasons at Grimsby, making 149 League appearances before heading to



Welcome To

Blackburn in March 1996 for £1.7 million. After 40 League games and one goal at Rovers, the versatile defender joined Ipswich Town in September 1999 for an initial fee of £540,000. He represented England at Under-21 level, alongside David Beckham, winning four caps. He joined Cardiff on loan at the end of last season and made the move permanent in July 2002.

19. MICHAEL SIMPKINS Born: Sheffield, 28.11.78

Snapped up on a free transfer from Chesterfield during June 2001. Mike will be looking to add to the 13 League appearances he made last season.

33. FAN ZHIYI Born: Shanghai, China 6.11.69

Signed for Cardiff on November 14th 2002. Fan has previous Football League experience with Crystal Palace and actually played against the Bluebirds in a pre-season friendly in August 2001. A regular in the Chinese National team and has accumulated 107 caps to date. A superb defender – pacy, hard working and an excellent passer of the ball.

27. RYAN GREEN Born: Cardiff, 20.10.80

Snapped up on a short-term contract after his release from Millwall during the summer. Ryan, who began his career at Wolves, made his Cardiff City 1st Team debut in the LDV 2nd Round tie at Exeter City.

28. ANDREW JORDAN Born: Manchester, 14.12.79

Son of former Scottish International Joe, Andrew started his career with Bristol City as a trainee in 1997, before joining the Bluebirds in October 2000.

24. GETHIN JONES (DEFENDER)

Born: Carmarthen, 8.8.81
Promising centre back Jones signed on 10th August 2000 following a successful pre-season at Ninian Park. Gethin was spotted playing for Mid-Wales at the Ian Rush Tournament in Aberystwyth during the summer and made his first team debut as a substitute during a pre-season friendly against Swindon Town.

17. JAMES COLLINS Born: Newport, 23.8.83

Signed up for Cardiff on Scholarship forms in July 1999, but was quick to impress and show his potential and signed his pro contract in November 2000. James has played in an attacking role but he finished last season playing in the heart of the defence.

21. DAVID HUGHES Born: Wrexham, 1.2.78

Signing from Shrewsbury Town, David started his career at Aston Villa as a trainee and went on to make four Premiership appearances before joining the Shrews on a free transfer in October 1999.

MIDFIELDERS

8. GRAHAM KAVANAGH BORN: DUBLIN, 2.12.73



Graham became Cardiff City's first ever £1 million signing following

his move from Stoke City in the summer of 2001. Kav started his career at Home Farm in Ireland before spending 5 years at Middlesbrough. He moved to Stoke City for £250,000 in 1996. Graham is a natural leader and was last season's joint leading scorer with 13 League and 2 FA Cup goals. His consistent form will hopefully see him adding to his 3 Eire full caps.

12. WILLIE BOLANDER Born: Ennis, County Clare, 6.8.75

Signed on a three-year contract from Coventry City in the summer of 1999 on a free transfer. Willie became a pro with Coventry in 1992 on his 17th birthday and he went on to make over 60 appearances in The Premiership. His work rate and consistent form in the midfield engine room last year was rewarded with two separate Player of the Year awards.

4. GARETH WHALLEY Born: Manchester, 19.12.73

Signed this summer after being released by Bradford City. Originally a trainee at Crewe, Gareth made over 200 first team appearances for the 'Railwaymen' before signing for Bradford in July 1997 for £600,000. Gareth is a good passer of the ball with excellent vision and was influential in Bradford's rise to the Premiership. Gareth was a regular during their two-season spell in the top flight and last season played in 25 League games for the Bantams before ending the season on loan to former club Crewe.

15. MARK BONNER Born: Ormskirk, 7.6.74

A former Blackpool player - he made over 200 appearances for them before signing for Cardiff City in the summer of 1998. Mark has been a regular in the City side

Cardiff City



and he played in 34 first team games last season. Mark is a gutsy and tenacious midfielder and last season was one of unsung heroes of the City midfield.

16. LAYTON MAXWELL Born: Rhyl, 3.10.79

Layton was a product of the Liverpool youth academy. His debut came for Liverpool when he played against Hull City in the Worthington Cup, and was made all the more special as he scored at the Kop end at Anfield in a 4-2 win. Released by Liverpool and quickly snapped up by City in July 2001. Layton made just 5 League appearances last season but was a substitute in a further 12 matches.

25. DES HAMILTON Born: Bradford, 15.8.76

Des joined Cardiff City from Newcastle United on a free transfer. He started his career with Bradford City in 1994 before he moved on to Newcastle United. Following the departure of Kenny Dalglish, Des found it difficult to progress under Ruud Gullit and Bobby Robson. Des has a great engine and is not afraid to make tackles when and where they are needed. Due to a series of niggling injuries Des was limited to just 14 League Starts last season.

FORWARDS

20. GAVIN GORDON BORN: MANCHESTER, 24.6.79

Signed from Lincoln City in December 2000. Gavin started out with Hull City as a youngster for whom he made 40 first team appearances before joining the Imps for £30,000 in November 1997. Scored 29 goals in 99 League appearances before becoming a recruit for the

Bluebirds. Gavin was another player hampered by injury last season, but his 5-goal demolition of Rushden & Diamonds in the LDV Trophy gave supporters a chance to see the youngsters potential.

10. ROBERT EARNSHAW Born: Zambia, 6.4.81



Joined Cardiff City as an YTS player in 1997 and was offered a professional contract after just one year. He had brief loan spells with Middlesbrough in February/March 1999 and Greenock Morton in 2000. Earnie's frightening pace and goalscoring record has made him a regular member of the first team squad. His form last season saw him making his full Welsh debut – where he was the man of the match and scored the only goal of the game against Germany.

11. PETER THORNE Born: Manchester, 21.6.73

Peter began his career as a trainee at Blackburn Rovers before a £225,000 move to Swindon Town in January 1995. After a successful spell at Swindon the potteries club signed Peter for £350,000 in July 1997. He became the Bluebird's record signing in September 2001. He was the top goalscorer at the Potteries Club when he joined City. Peter was hampered by a spell out through injury last season. A constant

threat in the air and good with his back to goal Peter will hope to add to his 8 goals from 23 League starts when this season commences.

9. LEO FORTUNE-WEST Born: Stratford, 9.4.71

Signed from Rotherham United for £300,000 in September 2000. Started his career with Stevenage Borough and went on to play for Gillingham, Leyton Orient, Lincoln City and Brentford. Scored on his debut for Cardiff City in a 4-2 win over Halifax Town. Last season Leo scored 11 goals in 42 first team appearances.

7. ANDY CAMPBELL Born: Middlesbrough, 18.4.79

Andy came to Cardiff on loan from Premiership Middlesbrough in February 2002. Following his impressive loan spell he signed a contract on February 25th 2002. He had signed as a trainee for 'Boro in August 1995 before signing professional forms in July 1996. He made 56 first team appearances for the North-East Club whilst also gaining England honours at Youth and U-21 levels. Andy had also had loan spell with Sheffield United (twice) and Bolton. Andy scored 7 goals in just 8 League starts before a niggling ankle injury saw him sidelined.

14. JASON BOWEN Born: Merthyr Tydfil, 24.8.72

Jason was signed from Reading in January 1999. A former trainee with Swansea City, he signed for Birmingham City in July 1995 for £275,000, before moving to Southampton on loan. Jason is a creative attacking midfielder who made 27 first team appearances last season.



Blast From the Past

With the Hatters languishing at the wrong end of the old Division One during the last months of 1984, Kenilworth Road was not a happy place to be.

The team was woefully short of experience and although the youngsters were trying their hardest they were being found out all too easily leaving manager David Pleat, with no money to spend, tearing his hair out.

The problems, though, were not all on the field and in the boardroom there was a great deal of unrest leading to chairman Denis Mortimer resigning. His replacement, David Evans, set about reorganising the club's finances in a bid to make some money available to Pleat. "Come what may, we will not be relegated," was the new chairman's brave promise.

Pleat, freed of the

shackles of working from hand to mouth, did not need to be told twice and immediately went out to sign ex-England centre-half Steve Foster from Aston Villa quickly followed by the tiny left sided midfielder, David Preece, who came from Walsall in a £150,000 package. This second signing coincided with the Town's first win in seven games, with Aston Villa seen off 1-0 at Kenilworth Road. Preece netted the winner in that match but he had not been brought in as a goalscorer and with only four wins to their name and 21 goals scored the Hatter's need for a proven marksman was obvious.

Pleat admitted afterwards that the £250,000 spent on Mick Harford caused him some sleepless nights due to the size of the fee but the big centre-forward immediately repaid a big slice when he

became the second player to score on his debut in successive weeks when he netted a late equaliser in a 2-2 draw at Leicester.

Only a midfield anchorman was needed to complete the rebuilding of the spine of the side and Peter Nicholas from Crystal Palace was the chosen player but the Town still had a lot of catching up to do if they were to avoid the drop.

Unfortunately, a good run in the F.A.Cup, which eventually ended in semi-final defeat against Everton at Villa Park, was getting in the way of league games and by the end of March the Town were still in a relegation position.

Two home wins in successive weeks against Q.P.R and fellow strugglers Ipswich allowed some breathing space but a solitary goal defeat at Southampton opened up the gap again. But by the time of the visit of Manchester United on April 21st 1985, the Town had lifted themselves to just outside the bottom three by dint of a very important 4-0 win at bottom club Stoke and an equally vital 3-1 home victory over Norwich immediately after the F.A.Cup semi-final.

Although a highly attractive fixture, the game against Manchester United was not one that Luton supporters looked forward to due to the fact that the Town had never beaten them at Kenilworth Road in a Division One clash.

The game was scheduled to be televised live and the watching millions were doubtless hoping for a



Mick Harford nets the winning goal against Manchester United in 1985.

Hatters sink the Man Utd bogey



repeat of the previous season's meeting in front of the cameras, when the Town capitulated to a rampant United who won all too easily 5-0..

The match had added spice as United were hot on the heels of Everton at the top of the table, but it was the Town that made the early running, and in the first half Gary Bailey was certainly the busier of the two goalkeepers, making smart saves from both Preece and Brian Stein.

The second half began as the first had ended, with the Town surging forward, and after Bailey did well to tip over a 30 yard drive from Nicholas he was left hopelessly exposed in the 68th minute. Stein was sent clear by Foster and a desperate attempt at a back-pass by Graham Hogg fell short, leaving Bailey with little option but to up-end the striker.

Harford converted the penalty but the goal stung United into

life and only three minutes later they equalised when Norman Whiteside netted from close range, with the Hatter's defenders complaining that Les Sealey in the Luton goal had been fouled in the build up.

It was at this point that Luton supporters realised they were watching a Luton side with rather more steel and backbone than that of the previous season because, after playing so well and suffering such a setback, the old team would have probably wilted and conceded another goal.

Instead of sitting back and feeling sorry for themselves, this time the players attacked in waves in search of the winner until, with only a minute to go, Preece was brought down on the edge of the area by Bryan Robson. The resulting free-kick was smacked against the bar by Foster and with a dozen players waiting for the ball to drop, Harford launched himself over

friend and foe to bravely glance home the winner with his head.

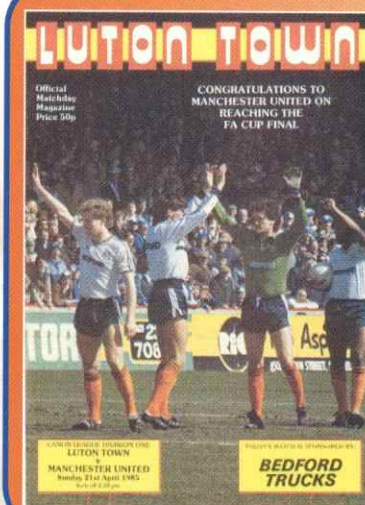
There was hardly time for the restart and with the dejected United players trooping off the pitch the supporters savoured the moment when the Red Devils were finally beaten, avenging the embarrassing defeat of the previous campaign and pushing the team up to 17th spot to boot.

Four wins from the remaining eight games eventually enabled the Hatters to finish mid-table, a position that could have only been dreamed of in those dark days prior to Christmas.

Luton: Sealey, Breacker, Donaghy, Nicholas, Foster, Thomas, Hill, Preece, Stein, Harford, Nwajiobi.

Manchester United: Bailey, Gidman, Albiston, Whiteside, Hogg, McGrath, Robson, Muhren, Stapleton, Hughes, Olsen.

Roger Wash



Yesterday's pages

The programme for the visit of Manchester United in April 1985 contains little about the Reds but concentrates on the F.A.Cup semi-final against Everton the previous week.

Over 18,000 Luton supporters had travelled to Villa Park 100 years and one day since the formation of the club to see the Hatters denied a deserved win due to a dubious refereeing decision.

David Pleat, in his managers notes, suggested that the Hatters were more likely than referee John Martin to reach Wembley. He also pointed out (as if we needed reminding) that the same official failed to penalise the brutal tackle that broke Lil Fuccillo's leg at Brighton in 1978.

Elsewhere it was reported that the youth team had walked away with the South East Counties league championship with runners-up Oxford beaten 13-1 and 7-1 over the course of the season. Four players had been called up for schoolboy internationals and the majority of the squad were young enough to compete at the same level in the following campaign. The future was bright!

The Winning Team

Get the latest Hatters news every Wednesday

Every Wednesday read the latest match reports, transfer news, interviews *plus much more...*

FOR SUBSCRIPTION DETAILS CALL 01234 409218



The Sport
UP

Now Joe asks town to raise stadium cash



Fitted as standard

- Saracen shootbolt locking white scotia bead & white gaskets
- Internal or external glazed windows
- 10 year trades insurance backed guarantee
- 1000's of satisfied customers throughout the Home Counties
- Products available in white, woodgrain and light oak
- Coloured leaded light specialists

Before you buy elsewhere let us quote for a free no obligation estimate and friendly advice
Direct From Factory Prices • 0% Interest Available

Serenade Windows
by design Ltd.
HOME TRANSFORMATION
- COLOURED / LEADED LIGHT SPECIALISTS -

Call 0800 214432
www.serenadewindows.com

IMPROVE YOUR OUTLOOK WITH SERENADE WINDOWS

Hatters Away



THE New Year kicks off for the Town the same as the old one ends – with an away match. It's almost a local derby on Saturday, for the game against Wycombe Wanderers, and on Wednesday, January 1, 2003, the Town are away to Chesterfield. Don't forget both are all-ticket matches.

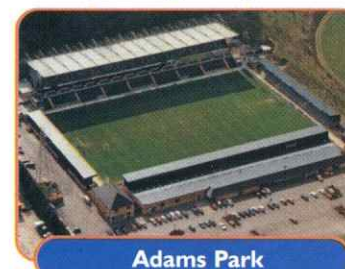
If you want to be driven to the games, the Bobbers Travel Club and Town on Tour are both offering their usual reliable services. For Wycombe Town on Tour will leave the Town ground at 12.30pm, and fares are £10 for LTSC members, and £9 for junior and senior citizen members. Otherwise it's £10.

The Bobbers begin collecting passengers at Cranfield at 11.30am, calling at various villages en route before a 12.30 departure from Luton. Fares are £8 for adults, £6.50 for pensioners and under-16s.

For the trip to Chesterfield the Bobbers departure times are 10am from Cranfield and 11am from Luton, and the fares are £11 for adults and £9 for concessions. Town on Tour offer a pick-up at Milton Keynes Coachway on the Chesterfield trip, calling there about 20 minutes after an 11.30am departure from Luton. Fares are £13 for LTSC members, £11 concessionary members and £15 for non-members. You can, of course, join the Supporters Club before departure, and

immediately qualify for the discount.

Easy Riding to Wycombe



Adams Park

THE DRIVE to Wycombe is one of the easiest and quickest of the season, although it can be frustrating trying to leave the ground after the match because there is only one road in and out of the industrial area in which Adams Park stands.

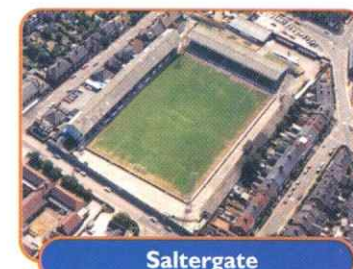
You can do the journey from Luton in an hour comfortably. Leave town on the M1 going south, and then take the M25 heading west, signposted towards Heathrow. Leave M25 at junction 16, to join the M40, taking care to head west, signposted towards Birmingham, and not towards London.

Leave M40 at junction 4. Follow the signs towards Aylesbury A4010 for 2.3 miles, over three roundabouts. After going down a long hill you come to a mini-roundabout where you turn left into Lane End Road. After half a mile turn right at a roundabout,

signposted to the industrial estate, into Hillbottom Road, and that leads you to the ground, where there is ample parking.

Mileage from Luton: about 45.

Motorway Gladness



Saltergate

THE ROUTE to Chesterfield is simple: head up the M1 all the way to junction 29, and then follow the signposts towards Chesterfield. Five miles on from the motorway you come to a roundabout, where you take the second exit, signposted towards the town centre. Another roundabout comes up quickly, where you take the first exit, going towards Bakewell and Buxton. Take the third exit at the next roundabout and you are in Foljambe Road and the stadium is ahead of you, to the right. Street parking is not too bad.

Mileage from Luton: about 125.

Bookings for away games travel can be made at LTSC or the Bobbers kiosks in Kenilworth Road, before or after today's match.

Paul Deason on 01234 750996 will take phone bookings for the Bobbers, whose service includes pick-ups at Cranfield, Marston Moretaine, Ampthill, Flitwick, Westoning and opposite the Travelodge Motel in Dunstable Road, Luton, close to the M1.

Town on Tour is an offshoot of Luton Town Supporters Club, and members get the best deals. You can book seats on the phone by calling 07960 567465.

Maple Road car park, which will be stewarded, is available for coach passengers, at £4 per car.

To advertise in the matchday magazine
call the Commercial Department on 01582 411622



Sealed Explorer spherical roller bearings

The SKF Explorer bearing range represents a totally new generation of spherical roller bearings. The Explorer range has accommodated up to 25 per cent higher torque loadings, and provided a 300% increase in service life, compared with the equivalent size of standard spherical roller bearings.

Now, SKF has unveiled a range of sealed-for-life Explorer bearings that reduce grease consumption, lower life cycle cost, lower recycling costs and reduce pressure on the environment.

Sealed Explorer bearings are supplied in normal and high temperature versions. The normal version uses a nitrile rubber double lip seal and a standard grease. The high temperature version, which is primarily suited to low speed operation, has a fluoro rubber seal and a high-temperature grease, and can withstand high axial and radial loads and tolerate up to 0.5° misalignment.



SYSTEM 24 automatic lubricators

SKF SYSTEM 24 is a practical, cost-effective solution to overcome the fact that 36 per cent of all premature bearing failures are caused by poor or inadequate lubrication. It's 'fit and forget' concept between extended scheduled changes reduces demands on maintenance staff bringing new levels of confidence and lowers overhead charges.

SYSTEM 24 is ideal for applications such as pumps, fans, compressors, chain drives, cranes and especially machinery running around the clock as part of a continual process.

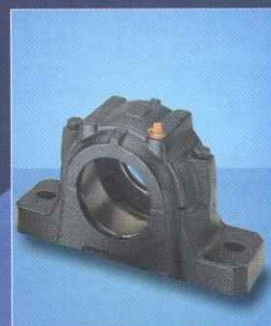
Each SYSTEM 24 cartridge is hermetically sealed to prevent ingress of dirt and foreign matter. Grease flow rate is set via a simple Allen key adjustment. A transparent container shows visually the dispense rate, and lubricant cartridges are available pre-filled with a variety of greases or oils.



SPEEDI-SLEEVE sealing solution

An oil seal's job is to 'seal in' oil or grease, keeping bearings lubricated and contaminants out. However, in most industrial environments, dirt or other abrasive particles collect and become lodged under the lip of the seal, where they eventually cut a groove in the surface of the shaft. These grooves cause oil to leak out past the seal, ultimately leading to bearing damage.

To combat this problem, SKF has introduced SPEEDI-SLEEVE for fast and effective refinishing of seal-worn shafts. SPEEDI-SLEEVE is quicker and more efficient than remetalizing or regrinding and, in contrast to these methods, provides a perfect seal, even in the harshest environments. SPEEDI-SLEEVE bridges the gap between a standard sleeve and an expensive custom shaft treatment such as diamond coating, and the super hardened surface provides protection against corrosion and abrasion.



SNL bearing housings

Split plummer block bearing housings are primarily used to simplify self-aligning bearing installation. SKF's SNL bearing housing range is a premier quality product that has increased stiffness and improved lubrication to provide an economical solution to demanding applications. Available for shafts from 20 to 160mm diameter; together with the new Large SNL range for shafts from 150 to 500mm diameter.

The quality of the bearing housing has a dramatic impact on the performance and lifetime of the bearings themselves. Even high quality bearings installed into poor fitting housings have their lifetimes shortened. This occurs for a variety of reasons, such as the bearings becoming distorted due to poor clamping, or misalignment through poor geometry or manufacture.

Value-Added Solutions

SKF's Value-Added programme consists of an extensive range of standard and problem-solving products and services, designed to increase your competitiveness.

Contact SKF today for further information on any of the products featured, or to receive a FREE SKF Interactive Engineering Catalogue on CD-ROM.



Version 2.0 now available

For further information please complete the relevant areas and return to:
SKF FREEPOST MK1540 Luton LU3 4BR.

- ☐ Sealed Explorer ☐ SPEEDI-SLEEVE
☐ SYSTEM 24 ☐ SNL bearing housing
☐ Interactive Engineering Catalogue

Name

Company

Address

Postcode

Tel

E-mail

SKF®

SKF (U.K.) Limited
01582 496436 marketing.uk@skf.com www.skf.co.uk

Fans on the road

A HEALTHY following from Colchester helped boost the gate at the last game before Christmas, traditionally one of the worst of the season for soccer attendances. Only three of the 12 clubs to visit us so far this season have had better backing.

Hatters Away

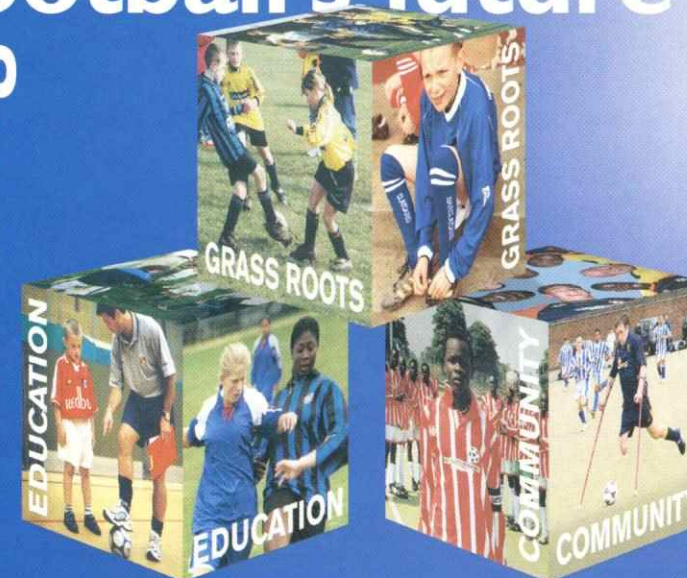
Blackpool	781
Plymouth	773
Cardiff	314
Brentford	1,493
Watford(WC)	4,404
Huddersfield	700
Aston Villa (WC)	4,588
Stockport	680
Oldham	610
Woking (LDV)	262
Crewe	585
Northampton	1,250
Stevenage (LDV)	1,199
Tranmere	839
Wigan (FAC 2)	769
Total:	19,247
Average:	1,214

Visitors to Luton

Peterborough	990
Barnsley	504
Chesterfield	366
Notts County	341
Mansfield	160
Cheltenham	328
Wigan	425
Port Vale	247
Guiseley (FAC)	467
QPR	1,851
Cambridge (LDV)	571
Colchester	527

6,777
565

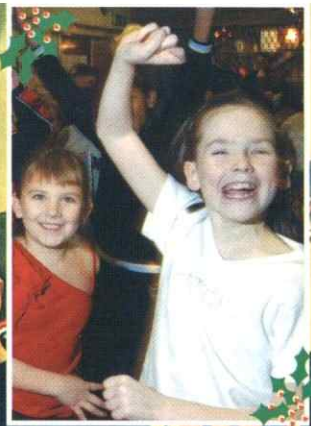
football's future building



FootballFoundation
football's biggest supporter

Helpline 0800 0277766 www.footballfoundation.org.uk

Merry Christmas, Everyone



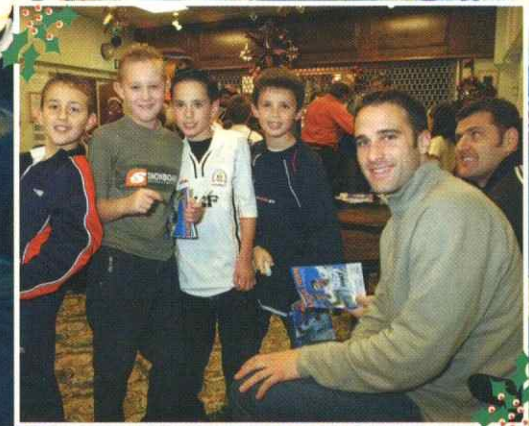
SEASON'S GREETINGS: Gareth Owen's pictures capture the atmosphere as Town players join Junior Hatters for their annual Christmas party. The message from them all, and from everyone connected with Luton Town is traditional, but still heartfelt: we wish everyone a happy Christmas, and a peaceful, prosperous and points-filled New Year.

Top left: Junior Hatters know how to celebrate... a young prize-winner finds out how Town goal-scorers feel as the back-slapping begins.

Left: Winners of a disco dance competition enjoy meeting Town stars Michael Leary, Carl Emberson, Mark Owendale and Andrew Fotiadis.

Top right: Pretty cheerleaders lead a boisterous welcome as the players arrive.

Right: Paradise for autograph-hunters, with Andrew Fotiadis and Carl Emberson among those in demand from the young fans.





LTFC in the Community

Working in conjunction with Bedfordshire Football Association

I WOULD like to start this afternoon by wishing you all a Merry Christmas and a Happy and Prosperous New Year.

While I am in the festive spirit I thought it might be a good opportunity to offer the children a chance to win themselves an extra Christmas present.

So here is the chance to win a family group of tickets (2 Adults and 2 Children) for any of the remaining Nationwide League home games of this season, except for the final match, against Stockport County in April.

The quiz is open to boys and girls between the ages of five and 12. Just answer one simple question for your chance to win.

It should not be too difficult. We want to know the answer to this: **Who scored Luton Town's winning goal in the 1988 Littlewoods Cup Final?**

To enter, fill in the slip below and post it to:

Stuart Smith (Competition)

Football and Community Development Officer

Kenilworth Stadium

1 Maple Rd

Luton

Beds

LU4 8AW

The closing date for entries to be received is 5pm on Friday January 10, 2003 when the competition draw will take place. The Community Office will contact the winner.

In closing, I would like to thank all the Schools, teachers, parents and children who have supported the Community programme in the past year. We will go on to achieve bigger and better things in the next twelve months.

The photograph sums up the support we have received. It shows the children of Someries Junior School

Choir who performed so brilliantly at the club's annual carol service. Thanks for your contribution, Someries, and thanks to everybody else who attended to make it a memorable evening.

Happy New Year, everyone.



Stuart Smith

Answer: _____

Name: _____ Age: _____ DOB: _____

Tel: _____

Address: _____

Post Code: _____

Favourite Town Player: _____



LTFC in the Community

Dallow School Soccer Coaching Course

5-11 Year Old Boys and Girls

coaching by LTFC Community Coaches

DATES - MONDAY'S 4.30PM TO 6.00PM

JAN	FEB	MARCH
6	3	3
13	10	10
20	24	17
27		

Fill in form below using course code: **DAL 1**

Course Code	No. of Weeks	Venue	Start Date	Time	Cost	Course Type
DSC 1	5	Dunstable Leisure Centre Court Drive DUNSTABLE	Fri 22nd Nov	4.30 pm - 6.00 pm	£2.50 per week	5-11 yrs Girls Only
LSC 1	7	Putteridge Leisure Centre Putteridge Road Stopsley LUTON	Mon 2nd Dec	4.30 pm - 6.00 pm	£2.50 per week	8-11 yrs
BRAM 1	10	Bramingham Primary School LUTON	Sat 18th Jan 2003	10.00 am - 11.30 am	£2.50 per week £20 block booking	5-11 yrs Boys & Girls
DAL 1	10	Dallow Junior School Dallow Road LUTON	Mon 6th Jan 2003	4.30 pm - 6.00 pm	£2.50 per week £20 block booking	5-11 yrs Boys & Girls

Please reserve a place on the above course (please put course in the box on right)

☐

Name Age D.O.B.

Address.....

.....Postcode.....

Home Tel No.....School.....

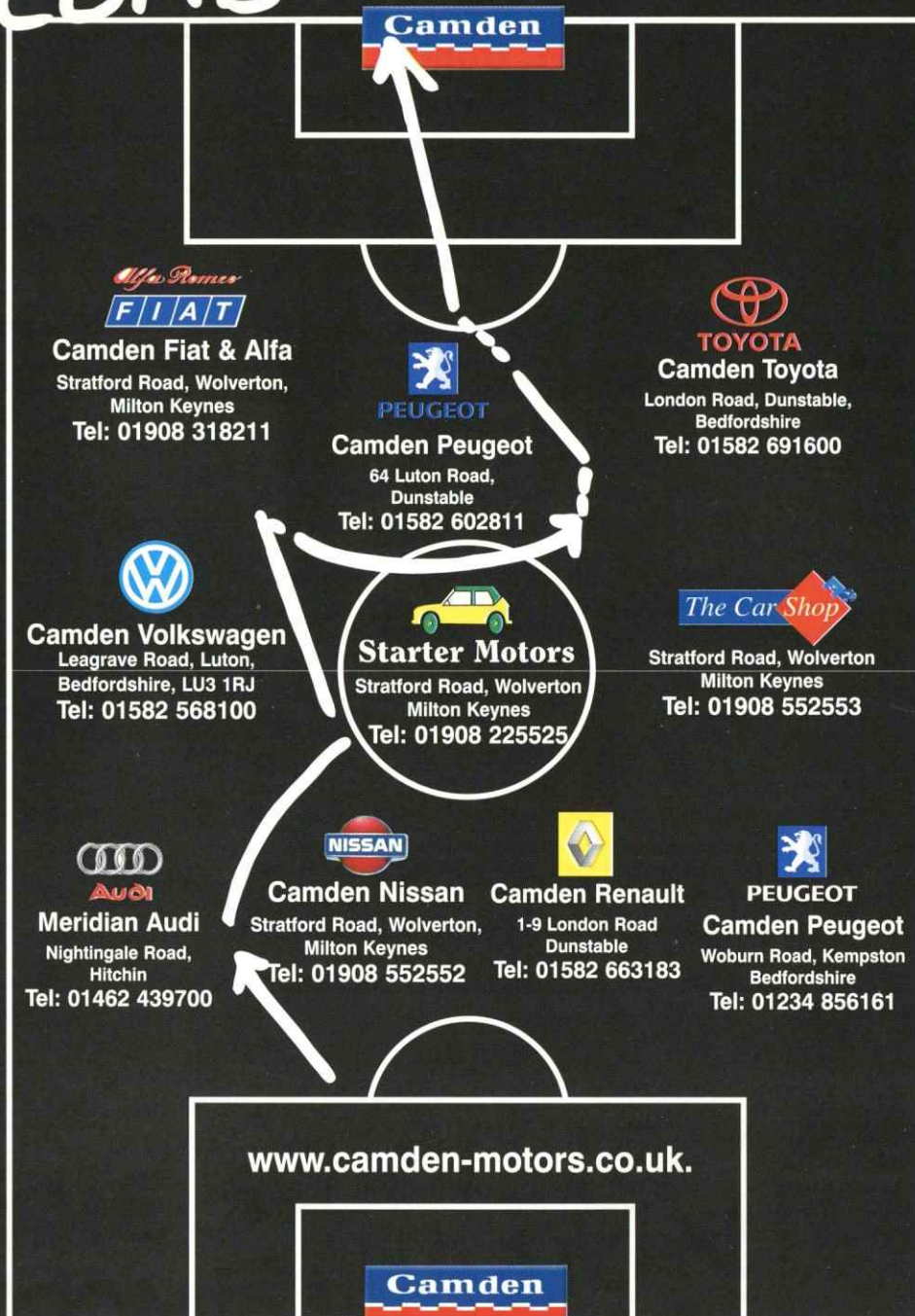
Any health problems ☐ Disorders ☐ or medication. ☐ Please ring to confirm details

I acknowledge and accept that Luton Town FC, their football in the community scheme or the organisations providing the facilities and their respective agents, servants and employees, are not under liability whatsoever in respect of personal injury, loss or damage however caused whilst in attendance on the above course. I authorise the coaches employed by Luton Town Football in the Community to administer first aid treatment should it be required.

Signature of Parent / Guardian:

THE WINNING COMBINATION!

Camden



new business environments

refurbishment • interiors • design and build

'All In One Solution' providing services from complete commercial property refurbishment design and build to individual office installation

- Design and Build
- Joinery
- Suspended Ceilings
- Painting and Decorating
- Electrical
- Carpets and Flooring
- Partitioning
- Exteriors
- Refurbishment



London
Midlands
South East

SPONSORS OF THE EXECUTIVE BOXES NET

Tel: 01525 405430 / 840426 Fax: 01525 840095 www.cpcontracts.co.uk

CP Contracts, The old Coach House, 6 Woburn Street, Amphill, Bedfordshire MK45 2HP



Join Britain's fastest growing trade union. Phone me on:

0800 731 81 51

Paul Kenny

Paul Kenny

Paul Kenny
GMB London Regional Secretary

GMB - PROTECTING OVER 80,000 PEOPLE AT WORK IN THE LONDON REGION

Function & Conference Suites at Kenilworth Stadium



For meetings, receptions, presentations, parties, AGM's or product launches, all year round.

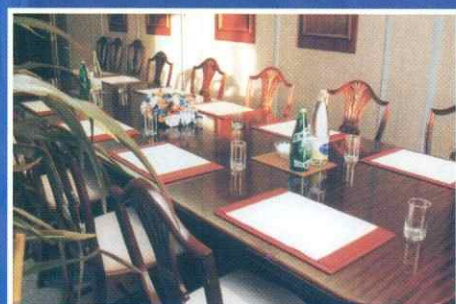
Luton Town Football Club offers unique facilities with a warm welcome.

Six function rooms offering professional catering from coffee to buffets to waitress silver service, from 8 to 80 persons.

Comprehensive business facilities include projectors and screens, flip charts, fax and photocopying.

Room layouts can be boardroom, theatre or banqueting.

Bar, dance floor and disco information available on request



Function Suite	Reception or Bar only	Conference or Dinner
Eric Morecambe Suite	100	80
Century Club	100	80
Kenilworth Suite	100	50
Joe Payne Lounge	100	45
Millennium Suite	70	35
The Boardroom	50	30

For more information call the Commercial Department on 01582 411622 or email: commercial@lutontown.co.uk

www.lutontown.co.uk

Hatters Abroad

THE Burns Stadium in Calgary, Canada, provided the rather sad backdrop when Town fan Peter Bulkeley posed for the camera. His father Russell, of Park Hall Road, Walsall, who submitted the picture, wrote: "This was the home of the Calgary Canons baseball team. Except that now it is their former home. A fortnight later they moved 'Wimbledon style' because they had no support in the area, as evidenced by the crowd in the picture. It was 38 degrees though!

"Peter is 13 and has been a Luton fan for nine years. His first game was the 5-1 home thrashing of Middlesbrough in 1994. His favourite current player is Steve Howard, but he has always been a Marvin fan (who hasn't?!). He is trying to visit all 92 grounds, and Tranmere was number 74."



A TOWN fan known only as Paul, and quite possibly at today's game, might be interested in the picture of the Jones family, taken in the summer on the Greek island of Zakynthos.

Rod Jones, from Harold Road, Barton, explained: "I had booked an open-topped Landrover tour of the island through a website, and looking at the site it seemed that one of the guides, Paul, was a big Luton Town fan. So when it came to the day of our 'Zakfari' my son and I made sure we wore our Luton shirts.

"You can be sure that the Town got a few mentions that day, and Paul told us he gets back to see the Town whenever he can, out of the holiday season, and sits in the Main Stand. I can't remember his surname, but he is also known as Rimmer, due to his resemblance to the Red Dwarf character. The Landrovers had a Luton address emblazoned on the side, Cumberland Street, if I remember correctly.

"The photo of my family was taken on the tour at the highest point on the island. I've been a regular at Kenny Road for over a 30 years, a season ticket holder for the last 15, and my son Ian is in his first season as a season ticket holder."

WE ARE always pleased to receive photographs of Hatters supporters in their club colours anywhere in the world. If you have an interesting snap you would like to see published please send it, with a few details, to the editor, by post to Luton Town FC, or by e-mail to brian.swain@btinternet.com If you use e-mail, please include your home address and a day-time phone number.

Please enclose a stamped self-addressed envelope if you want the photographs back, but don't offer us anything which is irreplaceable, because with the best will in the world items sometimes go astray.

Log on to Luton Town's official website at www.lutontown.co.uk



Regal Litho

352 Selbourne Road
Luton Beds LU4 8NU
Tel: 01582 493332
Fax: 01582 560731
ISDN: 01582 560854
Email: regallithold90@atlas.co.uk
www.regallitho.co.uk

- ◆ Digital Artwork
- ◆ Conventional Repro
- ◆ Platemaking
- ◆ Colour Printing
- ◆ Finishing
- ◆ Distribution
- ◆ Stationery
- ◆ Point of Sale
- ◆ Brochures
- ◆ Commercial Print
- ◆ Magazine Publishing

The Publishers & Printers of:

**Scale
Aircraft
Modelling**

**Scale
Aircraft
Monographs**

Find Freedom within.....

Fitnessfirst
Health Clubs



*no other Health Club offers you more for less...
.....with no need for contracts*

Fitness First Luton, Skimpot Lane, Luton, Beds, LU4 0JB
Tel: 01582 560200
www.fitnessfirst.co.uk

TOWN TEASER

IF YOU know your Town Trivia, you could win a pair of match tickets in our Town Teaser competition. Listen to the PA announcer before kick-off for your chance to have a go. It is a poser from the late 1970s.

At the last home game we asked who was the latest former Hatter to become a manager, and the answer was Mike Newell, who is now in charge of Hartlepool.

TODAY'S QUESTION

Who was the former Luton Town goalkeeper who came back to Kenilworth Road as a Cardiff City player for a Second Division match which ended in a 7-1 victory for the Town?

Are You A Hatters Fan? Then Come And Join Us!



Luton Town Supporters Club is the official Hatters fans' club, but is independent and run by its members.

Benefits include discounts on away match travel, and reduced

admission charges to regular meetings with players and staff, and to the end of season presentation night.

Annual membership costs a minimum donation of £7 for adults, £6 for pensioners and under-16s, or £12 for families.

For more information call at the LTSC kiosk in Kenilworth Road before or after any home game.



Luton Town Supporters Club Present

AN AUDIENCE WITH JOE KINNEAR



On Monday January 27, 2003, 7.30pm, at the Eric Morecambe Suite Tickets, at £2 each, go on sale to LTSC members only, first come,



first served, at the Supporters Club kiosk, Kenilworth Road, at 1.45pm on Saturday January 11, 2003, and, subject to availability also after that day's match with Plymouth Argyle.

LTSC membership cards MUST be produced. Free stewarded parking and bar facilities will be available on the night.



Action Replay

A CHANCE to push up into the play-off places for the first time this season was blown away as a visiting team showed the value of effort and commitment without looking brilliant footballers.

Joe Kinnear was livid at the way the Town threw away a lead, and then stumbled to the fourth home defeat of the season, a statistic which is already threatening to undermine promotion dreams. Colchester boss Steve Whitton thought his team's preparation had been helpful. While the Town were playing and losing their third game in eight days, United had not played for a fortnight, which gave them the chance to get injured players rested and fit, and to work on the training ground.

He said he had some sympathy with the Town and their supporters if they felt they had been hard done by, but added: "It's not how well or badly you play - it's all about goals."

"We haven't played at our best here, but we defended brilliantly at times and I felt we might have scored more than two goals if we had used the ball better when we broke. Simon Brown was magnificent in goal, and his early saves were very important. After Luton got the lead they might have had two or three more goals before half time and then it would have been a different game. But for us that was a hard-fought away performance, showing plenty of character after we went behind, and the result showed the value of team work and workrate."

Mr Whitton had good cause to be grateful to his goalkeeper, because the game was a cruel reminder of the knife-edge difference between success and failure. Andrew Fotiadis was given the

Luton Town 1 Colchester Utd 2 (HT 1-1)

chance to prove a point by leading the attack alongside Dean Crowe because Steve Howard was completing his suspension and Tony Thorpe was injured. Fotiadis fired an early drive powerfully but nearly straight to the keeper and the Town's bright opening spell gave every indication that this was a game they could win comfortably.

Brown's heroics denied Steve Robinson twice, but the lead the Town deserved came on 35 minutes, with Fotiadis crashing in an 18-yarder after quick passes by Crowe and Emmerson Boyce.

An injury to Matt Spring caused a long stoppage and the introduction of Paul Hughes as sub, and he and Kevin Nicholls settled to boss the midfield.

But disaster hit in the fourth minute of injury time at the end of the first half. Robinson was pulled up for a foul on Carl Duguid, who was playing his first match since being injured in early August. The Town man argued with the ref, was booked for dissent, and then like everyone else had to retreat as the ball was moved ten yards nearer goal. Earlier Duguid had shown his capabilities with a fierce 25-yard free kick which Mark Ovendale held at the second attempt. We might have known what was coming when Duguid was presented with his second set piece opportunity, near the angle of the penalty area. He waved away colleagues who were ready to try a little subterfuge, making it obvious he fancied his chances of whacking the ball straight into the net. He did, into the far corner, and it turned

out to be a mortal blow for the Town.

Colchester looked a better side after the interval, their confidence growing as the Town's sagged. Ovendale did well to deny Kevin Rapley after a mishit back pass by Alan Neilson, but Colchester got the winner on 58 minutes. Dean Morgan charged down a clearance by Chris Coyne, and Micky Stockwell chased the loose ball, evaded Ovendale's desperate challenge, and crossed for Morgan to tuck away the winning header.

The Town switched to a 3-4-3 formation, with Boyce adding his height, pace and at times trickery to a flagging attack but for all their pressure the Town rarely threatened to carve open a determined defence. When they did, Fotiadis headed over the bar from a cross by Ahmet Brkovic, and goalkeeper Brown, almost inevitably, had the last word by finger-tipping a cracking drive by Coyne over the bar.

Luton Town: Ovendale; Boyce, Neilson, Coyne, Kimble; Robinson, Nicholls, Spring (Hughes 15 mins), Brkovic; Crowe, Fotiadis. Unused subs: Emberson, Holmes, Hillier, Mansell..

Booked: Steve Robinson for dissent.

Colchester: Brown; Warren (Baldwin HT), Fitzgerald, White; Duguid, Bowry, Izett, Stockley; Stockwell; Morgan, Rapley (Pinault 89 mins). Unused subs: Coote, Atangana, McKinney.

Booked: Alan White, foul on Emmerson Boyce; Kevin Rapley for time-wasting.

Referee: Mark Cowburn, Lancashire

Attendance: 5,890 including 527 away fans.



CLOSE CONTEST: Andrew Fotiadis, whose fifth goal of the season put the Town ahead, battles for possession with Colchester's Pat Baldwin.

Right: Chris Coyne dominating Kevin Rapley, head and shoulders above the visitor to clear his lines.

Below: Town man of the match Emmerson Boyce gets the better this time of Carl Duguid.



The Football Emporium



225 High Street, Bromley, Kent

WHETHER IT BE A BIRTHDAY OR CHRISTMAS PRESENT, OR EVEN A GIFT FOR YOURSELF, YOU WILL FIND SOMETHING UNIQUE, INTERESTING, OR EVEN AMUSING, FOR SUPPORTERS OF ALL CLUBS, AT THE FOOTBALL EMPORIUM. OR IF BROMLEY IS A LITTLE FAR, VISIT OUR WEBSITE

WWW.PREMIERIMAGE.CO.UK

OR CALL FOR A BROCHURE

020 8464 9421

World Cup Merchandise ~ Clothing ~ Original Art Books ~ Photography ~ Autographs ~ Toys & Games Housewares ~ Memorabilia ~ Antiques ~ Ephemera

www.hummingbirdmotors.co.uk

STRIKING
BRAND NEW
MITSUBISHI'S
from only
£7995

and a full range
of Mitsubishi
pre-owned vehicles

also available

• SALES • SERVICE • PARTS

Good luck Hatters, may your success continue this season



HUMMING BIRD MOTORS

41-45 LONDON RD ST ALBANS HERTS AL1 1LJ

01727 852323

email: hbmotors@btinternet.com

Open: Mon-Fri 8.30-6pm • Sat 8.30-5pm • Sun 10.30-3pm (Demonstrations on Sunday by appointment only)

Life begins at £17,995.

The new Jeep Cherokee 2.4 Sport.



It's affordable, It's available now. So what's stopping you? For details visit www.allelectricj.co.uk or phone 0121 355 0110

Hitchin Road Stopsley, Luton,
Bedfordshire. LU2 7UG
01582 725506

CANNON LANE



CHRYSLER

Jeep

THERE'S ONLY ONE

OFFICIAL FUEL CONSUMPTION FIGURES IN MPG FOR THE JEEP CHEROKEE 2.4 SPORT: URBAN 20.2, EXTRA URBAN 32.8, COMBINED 26.7. OFFICIAL CO₂ EMISSION IS 253 CO₂ G/KM. MODEL FEATURED JEEP CHEROKEE 2.4 SPORT £17,995. PRICE IS ON THE ROAD AND INCLUDES ONE YEAR'S ROAD FUND LICENCE (E15) AND CDS FIRST REGISTRATION FEE. PRICES AND SPECIFICATIONS ARE CORRECT AT TIME OF GOING TO PRESS (2003).

Junior Hatters



IN WISHING Happy Christmas to all supporters, especially Junior Hatters, we can look back on another very successful year for the team, and for our members.

Our two Christmas parties were both huge successes, and elsewhere today you can find pictures showing what happy occasions they were. Our thanks to everyone at the club who helped, especially the staff in the shop and the players who gave up their spare time to attend. We went to Bristol on Saturday, and because of printing deadlines we cannot give you a full report today. But the Junior Robins always

give us a very warm and friendly welcome and doubtless they lived up to their reputation again.

Our final away trip of the year will be to Wycombe on Saturday. They are another very friendly club, and it should be a good day out. Full details were not available as we went to press, but if you want to go the fare will be the usual bargain, £10 for Junior Hatters and £16 for guests. Call at the club shop today or tomorrow for further information, or to book seats.

Chesterfield, where the Town play on New Year's Day, are unable to offer facilities for a Junior Hatters trip, but supporters' coaches will be going – see page 25 for details.

TODAY'S MASCOT

HOWEVER kind Father Christmas was yesterday to ten-year-old Bradley Currington, the lucky young Town fan enjoys an extra "present" today, because his name was picked out of the drum to be the Junior Hatters mascot.



He lives at Riddy Lane, Luton, and is a regular at Kenilworth Road along with his older brother Adam, who is also a Junior Hatter. Bradley goes to Icknield School, and loves his football – as well as supporting the Town, he plays for Bushmead Wanderers under-10s. His other hobbies are swimming, and studying insects.

Today his duties include meeting the team in the dressing room before kick-off, including his favourite player, Matt Spring, before going onto the pitch with his heroes for the traditional pre-match rituals.



THE VIPs: Mascots, skippers and match officials pictured before the toss of the coin at our last home game, against Colchester. Karl Hilton, 13, was the Junior Hatters mascot, and the other young fan was 12-year-old Harry Layton, who was the commercial mascot.

Happy Harry

JUNIOR Hatters membership is open to any boy or girl aged from 0 to 16 who supports Luton Town, and if you want to know more please contact the club shop. There are lots of advantages, including bargain-price trips to away games, and the chance to be mascot at home matches – the choice is made at random, with names drawn out of the computerised drum.

GARETH OWEN Photography

...working **PR** photography

Tel: 07850 560289
Fax: (01582) 616567
e-mail: gareth@go-photo.co.uk

GROSVENOR CASINO LUTON

For FREE membership call
08080 212121 or 01582 414166

Please quote 065



24 hours must elapse between receipt of application and participation in gaming.
Members must be aged 18 and over.
www.grosvenor-casinos.co.uk

Eagle IPA - Proud to sponsor Luton Town F.C.



Your 'local beer'
supporting your local
Football Club
Now available at the Bar!



PRE-MATCH AND HALF TIME ENTERTAINMENT

With Justin Dealey and Steve Faulkner

TODAYS MATCH:

11.20 HMV Single of the week -
Skater Boy - Avril Lavigne

11.30 Dedications announced

11.35 Team Line Ups Announced

11.40 Town Teaser -
See Page 37

11.45 Player Track
See Right

11.55 Teams runout to - The Blues Brothers
"Gimme Some Lovin"

12.00 THE BIG KICK OFF

HALF TIME

12.50 Golden Gamble -
Winning ticket
drawn on pitch

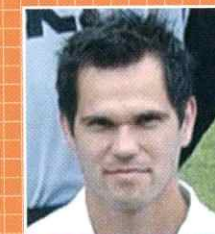
12.55 Run down of half time
scores from around the
country

1.00 Dedications

1.05 Teams arrive back on pitch
to theme song
"Gimme Some Lovin"

1.55 - FULL TIME

Player Track



Aaron Skelton
Jamiroquai
Space Cowboy

Matchday music supplied by:

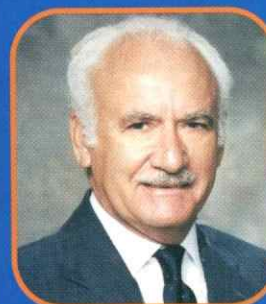


Justin Dealey is sponsored by:

BBC THREE COUNTIES RADIO
95.5 FM (BEDS) 104.5 FM (BUCKS)
103.8 FM (HERTS)

If you would like your dedication read
out, please contact the Club prior to
matchdays.

POLICY STATEMENT - SPECTATOR SAFETY



The Chairman and Directors of Luton Town Football Club undertake to ensure as far as humanly possible that all activities that take place at the Kenilworth Road Stadium are conducted in such a way that as far as is reasonably practical the safety of everybody at the stadium is assured.

It is the policy of the Chairman and Directors to ensure that the conditions set out in the General Safety Certificate, issued under the Safety at Sports Grounds Act, 1975, are fully complied with.

It is the Club's policy to provide at any activity sufficient and competent staff and management systems to ensure as far as humanly possible the safe admission, accommodation and exiting of spectators attending the stadium. These systems will be subject to continual monitoring, testing and updating where necessary.

Mike Watson-Challis Chairman

Reviewed August, 2002.

**ALL THE ACTION:
Exclusive,
Official,
Unmissable!**

**ANY CLOSER...
YOU'D BE IN THE
TEAM**

**DAILY TV
WEEKDAY TV NEWS BULLETIN
EXCLUSIVE
INTERVIEWS AND FEATURES
SEARCHABLE
VIDEO ARCHIVES
COMPREHENSIVE
MATCH HIGHLIGHTS
INTERACTIVE
MATCH LIVE CONSOLE**

BEHIND THE SCENES, BEHIND THE HEADLINES

8 all this for only
PENCE per day

£34.99 FOR 12 MONTHS

go to www.lutontown.co.uk

Terms and conditions apply. See website for details.

**Don't forget! For all the latest scores and news sign up to our SMS
text messaging service. Full details on the official website.**

Hatters Chatter



QUITE often our "Hatters Abroad" postbag includes pictures taken in this country, and, to be brutally honest, rarely do they have that extra something that will make them appealing to readers of the matchday magazine.

It was why, for instance, we rejected a photo sent in by a family posing in front of the Plymouth Argyle stadium in the summer. One of the most prominent features was the background, where Argyle had proudly painted a huge board to tell everyone that they were the Third Division champions. We didn't really want to be reminded of that, thank you!

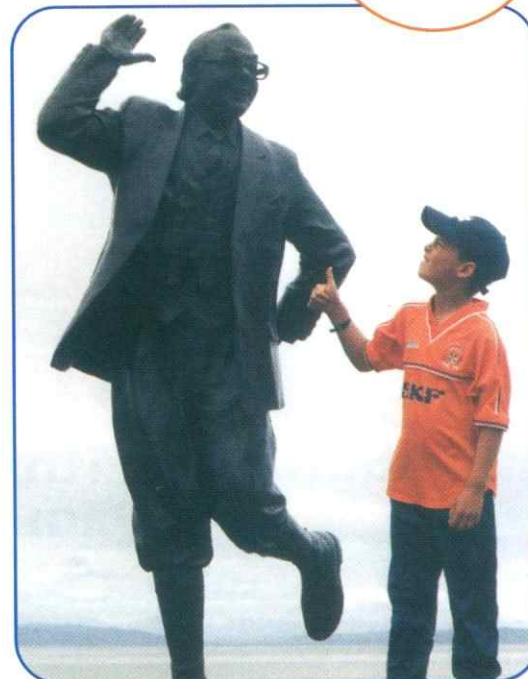
But we thought Town fans would like the picture of young supporter Matthew Fleckney, taken at Morecambe.

The statue, of course, is of the most famous fan we have ever had. Eric Morecambe chose his stage name in honour of the town where he was born. He was loved by millions – Christmas isn't the same without a Morecambe and Wise show – but those of us lucky enough to know him knew that his love of Luton Town was certainly no joking matter. He lived at Harpenden, and claimed that when he moved there he couldn't decide whether to support the Hatters or a club in Hertfordshire, so he tossed a coin. Fortunately, it was a double-headed penny!

Eric's statue stands on the sea front at Morecambe, the town's cheerful tribute to a remarkable man.

David Fleckney, from Atterbury Way, Great Houghton, Northampton, sent in the picture of his nine-year-old son admiring the bronze of the great man.

"We were lucky to have the statue to ourselves for a few minutes, because it is very prominently situated, and is a real focus for tourists, who were soon queuing up to take pictures," he said.



"If you haven't seen it, we recommend it! And we think a replica should be commissioned for the new stadium.

"Matthew is nine years old, and has a season ticket with me in the Kenny end. He refuses to have anything to do with the Cobblers, our local team, and cannot understand the attraction of the other ball sport played here.

"He was enrolled as a Junior Hatter at the age of one week, and became a regular at a younger age than his dad. His father's first match was at home to Sunderland in either 1955 or 1956, but he cannot remember which as he couldn't count very well then. It was 8-2 to Luton in '55 and 6-2 the following year, but I'm sure you knew that."

WE ARE always pleased to receive interesting letters or photographs, and if they are newsworthy enough there is occasional space in the matchday magazine to give fans the chance to have their say, so long as it is of interest, and not likely to cause offence. If you want to get in touch, please don't forget to include your full name and address, and, if possible, a day-time phone number. You can write to the editor at Luton Town FC, or use e-mail, for words and pictures, to brian.swain@btinternet.com

For the latest news, views and interviews call:
CLUB CALL on 09068 121 123 (calls cost 60p per minute at all times)

Luton Town Football Club Club Shop **Genuine New Year Sale**

Starts
Saturday 4th January 2003
9am - 4pm

Adult Long Sleeve Tops	£29.50	£15.00
XL Tracksuits	£69.99	£35.00
Adult Polo Shirts	£22.50	£10.00
Discontinued T-Shirts	£15.00	£7.50
Away Shorts (Adult)	£19.99	£10.00
Away Shorts (Child)	£15.99	£8.00

Plus much, much more!
NOT TO BE MISSED!



Club Shop Kenilworth Road Luton
Tel: 01582 411622

www.lutontown.co.uk

**Sale Items Available from
4th January**



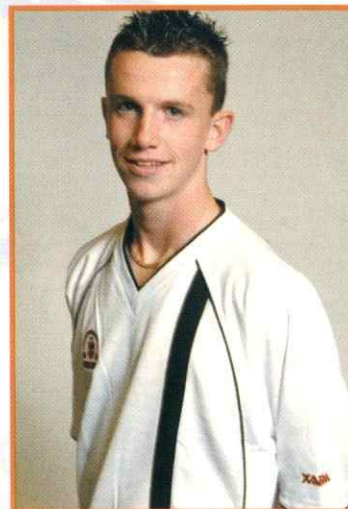
V-Neck Navy Sweatshirt
Adult Sizes Only
S,M,L,XL

was **£39.99**
now **£29.99**



White St. Georges T-Shirt
Adult Sizes Only
S,M,L,XL,XXL

was **£15.00**
now **£9.00**



Xara World Cup V-Neck
Childrens

was **£19.50**
now **£12.00**
Adults was **£25.00**
now **£15.00**



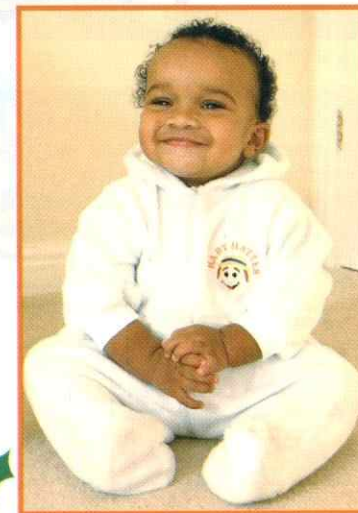
Black Chunky Crest Scarf was **£5.99** now **£3.50**



Christening Suite

was **£23.00**
now **£10.00**

**A
selection
of LTFC
socks at
only
£1.00 a
pair**



Fleece All In One
0-6m, 6-12m, 12-18m

was **£14.00**
now **£7.00**

**The Club Shop will be closed on
Friday the 3rd January.**



Time to get a bigger car?

Time for a Nationwide Personal Loan

Our lowest
rate ever
7.9%
APR FIXED

Call us today for a quick decision •

Nationwide. Proud to be different

 www.nationwide.co.uk |  0800 30 20 10 |  or just call in

Banking | Credit Card | Insurance | Investments | Loans | Mortgages | Pensions | Savings

LOANS ARE SUBJECT TO AN APPLICANT'S FINANCIAL STANDING AND ARE AVAILABLE TO THOSE AGED 18 OR OVER. CREDIT FACILITIES PROVIDED BY AND WRITTEN QUOTATIONS AVAILABLE FROM NATIONWIDE TRUST LIMITED, NATIONWIDE HOUSE, 20 LOWER DAGNALL STREET, ST. ALBANS, HERTS AL3 4RR. NATIONWIDE TRUST IS A WHOLLY OWNED SUBSIDIARY OF NATIONWIDE BUILDING SOCIETY.

Youth Soccer - U17s



Luton Town 0 Leyton Orient 1

WE HAD to accept that we were beaten by a very good side, who were bigger and stronger than us. We fielded a team of schoolboys, and it was a big test for the boys against a team who passed the ball better than we did.

But there were plenty of positives for us, and Orient were very happy to go home with the win after thinking they might achieve their second consecutive 6-0, which was their result against Colchester the previous week. They opened very brightly, and a sharp attack ended with a good cross being whipped in from which they scored with a glancing header after five minutes. We went through a rocky patch for a few minutes after that, but we kept together and worked our way back into the game, but Nick Mountford put a close-range header wide when we might have equalised. Mutsa Magadah made a chance for himself, but after cutting in he hit his shot too early, and straight at the goalkeeper.

I was reasonably happy with our performance and the scoreline when we reached the interval one down. Although Orient had had plenty of the play, we prevented them creating many real chances. We switched to a 4-3-3 formation for the second half, and that enabled us to pin back their defence, and we also got at them in midfield. It worked to a point: Orient were not able to open us up, but nor did we

create much in front of goal.

We didn't cave in, and we kept our shape, and it was no disgrace to lose to an older and stronger side. When you rely on schoolboys you always fear that you might get a real hammering one day, but it didn't look like happening, and the lads are learning that sometimes the game is about digging in and doing the nitty-gritty. At the mid-winter break, our first season in this grade of football looks like being reasonably successful, and it is encouraging to see boys learning from experience.

Luton Town: Barrett, Smyth, D. Deeney, Skelton (Pendleton 70 mins), De Souza, Mountford, Magadah, Ridgway, Blythe, Clark (Green 80 mins), Danaher (Sinclair 65 mins).

THE LEAGUE now takes a mid-winter break, and our next game will be on January 11, 2003, away to Brentford.

APPEARANCES, as sub in brackets: Ridgway 15, Mountford 15, D. Deeney 15, Blythe 14, Magadah 12(2), Smyth 12(2), Blake 11(1), Brill 10, Shea 9(3), Clark 9(3), De Souza 9(2), Reid 8, Keane 6, Danaher 4(3), Skelton 4(1), Freeman 4, R. Mansell 3, Hurst 3, Barrett 3, Green 2(5), Pendleton 2(4), Maitland 2(2), Howell 2, McCarthy 1(2), Barnett 1, Sinclair 0(11), Richardson 0(3), Kelly 0(1).

Goals: Magadah 7, Ridgway 5, Freeman 3, Keane 3, Maitland 2, Blythe 2, Clark 2, Shea 1, Barnett 1, R. Mansell 1.

Mark Ridgway



THE RESERVES take a break from the Avon Insurance Combination over Christmas and the New Year, and resume with an away match at Brighton on January 8.

FL Youth Alliance Under-17

August				
17	Brighton	A	0-3	
24	Peterborough	A	6-0	Shea, Barnett, Blythe, Freeman, Keane, Maitland.
September				
7	Southend	A	2-1	Ridgway 2 pens
14	Portsmouth	H	1-0	Magadah
21	Gillingham	A	4-3	Ridgway 2, Clark, Mansell
28	Cambridge	A	0-0	
October				
5	Colchester	H	3-0	Magadah, Keane, Blythe
19	QPR	H	0-2	
26	Wycombe	A	4-1	Magadah 4
November				
2	L. Orient	A	1-3	Ridgway
9	Brentford	H	0-0	
16	Cambridge	H	1-1	Maitland
23	Colchester	A	3-1	Freeman 2, Keane
30	QPR	A	2-2	Magadah, Clark
December				
7	Wycombe	H	0-2	
14	L. Orient	H	0-1	
January				
11	Brentford	A		
18	Brighton	H		
25	Peterborough	H		
February				
8	Southend	H		
15	Portsmouth	A		
22	Gillingham	H		

FLYA UNDER-17 SE CONFERENCE

	P	W	D	L	F	A	Pts
Peterborough	15	10	3	2	30	15	33
L. Orient	15	9	3	3	36	15	30
Brighton	13	9	1	3	28	16	28
Luton Town	15	7	4	4	27	19	25
Wycombe	15	7	2	6	29	36	23
Cambridge	15	6	4	5	31	24	22
Gillingham	14	5	1	8	32	39	16
Colchester	14	4	3	7	18	33	15
QPR	15	2	8	5	19	24	14
Southend	15	3	4	8	25	42	13
Portsmouth	12	2	4	6	22	22	10
Brentford	14	3	1	10	21	33	10

For the latest news, views and interviews call:
CLUB CALL on 09068 121123 (calls cost 60p per minute at all times)

Book your holiday now for only £50!

Travel Extras are offering Hatters supporters the opportunity to book 'everything but the flight' for only a £50 deposit - PLUS you will receive 10% discount on car rental.

Whether you would like to travel within the UK, Europe or worldwide, Travel Extras 'Early-Extras' offer allows you to secure your car rental, accommodation, travel insurance and airport parking now - and you won't have to pay until 8 weeks before your departure date!

And with a fantastic range of 3 to 5 star apartments, hotels and villas to choose from at low-cost airline destinations and far beyond - the world really is your oyster with Travel Extras 'Early-Extras' offer!

Book now!

To book, simply call one of Travel Extras dedicated LTFC advisors and quote 'Hatters Early-Extras'.

Alternatively, visit the web site to select your car rental, accommodation, insurance and parking - but please be aware that you can only book 'Early-Extras' through an advisor.

Hatters supporters preferential pricing structure will automatically be discounted both on and off-line. Remember to also take advantage of your car rental discount for all your business travel needs.

Please note that unfortunately deposits are non-refundable.

Global car rental from less than £10 per day!

- 500,000 cars at 5,000 locations
- Guaranteed on-airport
- Quality trusted suppliers
- Wide choice of vehicles
- Fully inclusive rates
- One way rentals

10% off car rental!

Worldwide hotel rates from £25 pppn!

- Hotels, apartments and villas
- City breaks
- Sunshine destinations
- Worldwide locations

Travel insurance from £15 for 10 days European cover!

- UK, Europe & worldwide cover
- Single trip or annual policies
- Winter sports and groups
- Comprehensive cover

UK airport parking from £4.25 per day!

- All major UK airports
- On and off-airport
- Secure parking
- Short and long term rates
- Guaranteed availability

Youth Soccer - U19s



Football League Youth Alliance Oxford Utd 1 Luton Town 0

WE HAVE hammered Oxford twice this season, 4-1 and 5-1, and this time they were waiting for us and won a fierce game in which we had a man sent off. Oxford tried to get stuck in from the start, and were determined to stop us playing our game, and all credit to them for doing the job after setting out their stall.

There were only a few bits of football played, and perhaps I should have fielded a stronger team, but I felt young players who had done so well in our win over Rushden the week before deserved another chance.

It was a difficult game to get into, and Oxford probably had the better of the few chances that were created. But we defended well, and while I had no complaints about the result, it could have been different because we nearly took a lead that could have changed the pattern of the game. Curtis Davies hit the face of the bar with a tremendous header.

But the Oxford centre-halves were for the most part too strong for our young front runners, Luke Maitland and Keith Keane, in a game, which was the most physical I have seen for a long time at this level.

Challenges were fierce, and sometimes illegal, and I am concerned that players seem to be ready to go in studs first too often. On the day, it was perhaps a little surprising that only one player was in serious trouble with the referee, with James Osborn sent off for his second yellow card offence after 67 minutes. The decision was correct.

The goal that settled the game was a disappointment, because it was knocked in from about eight yards after a corner was not dealt with properly.

But overall I was pleased with the team's efforts, and the ten men could easily have saved a point, because they worked really hard to try to force the issue.

Luton Town: Brill, Barnett, Mansell, O'Leary, Davies, Gillman, Maitland (Freeman 65 mins), Osborn, Keane (Judge 55 mins), Foley, Okai.

WE ARE now in our mid-season break, and our next fixture is not until January 11, when we are at home to Cambridge in the FL Youth Alliance at Luton RFC. On the following Wednesday evening we entertain Bradford at Kenilworth Road in the fourth round of the FA Youth Cup.

APPEARANCES, as sub in brackets: Barnett 16(1), Howell 15, O'Leary 15, Okai 14, Freeman 13(2), Judge 13(1), Davies 12(2), Foley 12, Osborn 11(1), J. Deeney 11, R. Mansell 10(2), Maitland 10(2), Gillman 9(1), Beckwith 9, Brill 8(2), Keane 5(5), Ridgway 2(1), De Souza 1(2), Mountford 1.

Goals: Judge 10, Freeman 7, Osborn 4, Maitland 3, Okai 2, Barnett 2, O'Leary 2, Davies 1.

John Moore

FL Youth Alliance Under-19

August				
17	Walsall	H	0-0	
31	Kidderminster	A	1-0	Freeman
September				
7	Brentford (LC)	A	2-0	Freeman, Okai
14	Oxford (LC)	H	4-1	Osborn 2, Okai, Freeman
21	Wycombe (LC)	H	2-2	Judge, Barnett
28	Northampton	H	0-1	
October				
12	Peterborough	A	1-3	O'Leary
19	West Brom	A	0-1	
23	Brentford(FAYC1)	A	3-0	Judge, Freeman 2
26	Rushden	H	3-1	Judge, Freeman, Osborn
November				
2	Oxford Utd	H	5-1	Judge 3, Freeman, Osborn
7	Tooting(FAYC2)	A	3-1	Judge 2, Davies
16	Brighton (LC1)	A	2-1	Barnett, O'Leary
30	West Brom	H	2-1	Judge, Maitland
December				
4	Stoke(FAYC3)	H	1-0	Judge
7	Rushden & D	A	2-1	Maitland 2
14	Oxford Utd	A	0-1	
21	Cambridge	A		
January				
11	Cambridge	H		
15	Bradford (FAYC4)	H		
18	Walsall	A		
25	Kidderminster	H		
February				
1	Northampton	A		
8	Peterborough	H		
15	Cardiff (LC2)	A		

FLYA UNDER-19 SOUTH CENTRAL CONFERENCE

	P	W	D	L	F	A	Pts
Peterborough	10	8	0	2	28	6	24
West Brom	12	7	2	3	22	15	23
Northampton	11	7	2	2	16	10	23
Walsall	13	5	2	6	19	17	17
Luton Town	10	5	1	4	14	10	16
Oxford	12	5	0	7	15	26	15
Cambridge	11	4	2	5	16	15	14
Kidderminster	9	2	1	6	11	21	7
Rushden	12	1	2	9	9	32	5

08707 27 37 27
travelextras.com/lffc

travelextras
for everything but the flight

Log on to Luton Town's official website at
www.lutontown.co.uk

due to print deadlines, stats don't include weekend's games

check out the stats @
www.soccer-stats.com

Most Scoring chances per game

	On Target	Off T		On Target	Off T
Wigan	6.48	7.48	Luton	4.62	5.48
Cardiff	6.38	6.33	Bristol City	5.52	4.57
QPR	5.62	6.86	Port Vale	4.62	5.29
Plymouth	5.33	6.76	Blackpool	4.95	4.81
Barnsley	5.57	6.14	Notts County	5.10	4.62
Crewe	6.10	5.48	Oldham	4.43	5.24
Mansfield	6.24	5.29	Swindon	4.81	4.86
Wycombe	6.24	5.29	Northampton	5.05	4.19
Peterborough	6.14	5.29	Stockport	4.90	4.29
Tranmere	5.48	5.14	Chesterfield	4.14	4.29
Huddersfield	5.33	5.00	Brentford	3.38	4.43
Cheltenham	5.81	4.38	Colchester	3.67	4.00

Goals in 1st 15 Mins of 2nd Half

FOR	46-60	Tot	%	AGAINST	46-60	Tot	%
Colchester	7	21	33	Peterborough	8	30	27
Chesterfield	5	18	28	Cardiff	4	17	24
Brentford	6	27	22	Tranmere	7	33	21
Plymouth	6	28	21	Cheltenham	6	29	21
QPR	6	28	21	QPR	5	25	20
Notts County	6	30	20	Swindon	6	31	19
Mansfield	7	36	19	Blackpool	6	32	19
Port Vale	5	26	19	Port Vale	6	33	18
Northampton	4	21	19	Crewe	3	17	18
Bristol City	8	45	18	Luton	5	29	17
Barnsley	4	24	17	Stockport	5	31	16
Crewe	5	32	16	Wycombe	5	31	16
				Bristol City	4	25	16

ordered by early 2nd half goals as % of all goals

TOP GOALSCORERS

shots from outside area headed goals

Player	Club	Tot	Player	Club	Tot
Zola	Chelsea	5	Johnson	Forest	6
Tudor	Cambridge	5	Larsson	Celtic	6
Henry	Arsenal	4			
Liddell	Wigan	4	Taylor	Burnley	5
Simpson	Rochdale	4			
Lowe	Rushden	4	Helguson	Watford	5
Thompson	Blackburn	3	Christie	Mansfield	5
Shearer	Newcastle	3	Conlon	Darlington	5
Mulryne	Norwich	3	Morrell	Wrexham	5
Sheron	Barnsley	3			
Roberts	Bristol City	3	Thorne	Cardiff	4
Hulse	Crewe	3	Howard	Luton	4
Corden	Mansfield	3	Faulconbridge	Wycombe	4
Gabbadini	Northampton	3	Kitson	Cambridge	4
Wotton	Plymouth	3	Cort	Southend	4
Langley	QPR	3			
Preece	Bury	3			
Tinkler	Hartlepool	3			

Average Shots On and Off target per game

Goals from Set Pieces for and against

SCORED	Co	FK	CONCEDED	Co	FK
Brentford	7	6	Mansfield	9	9
Plymouth	8	5	Blackpool	7	7
Bristol City	3	6	Huddersfield	5	6
Crewe	3	6	Barnsley	3	7
Mansfield	2	6	Cheltenham	5	4
Notts County	1	7	Northampton	1	6
Oldham	4	4	Stockport	7	0
Wigan	3	5	Tranmere	5	2
Wycombe	6	2	Cardiff	1	5
Tranmere	3	4	Notts County	2	4
Barnsley	2	4	Peterborough	3	3
Blackpool	6	0	QPR	4	2
Cheltenham	3	3	Swindon	1	5
Luton	4	2			
QPR	2	2			

Co = Corners FK = Free Kick Routines

Margins of Victory

Games WON by	1gl	2gl	3gl	4gl	5+gl
Bristol City	5	5	3	1	0
Wigan	4	9	1	2	0
Cardiff	8	2	1	2	1
Oldham	5	3	0	2	1
Crewe	4	4	2	0	1
Brentford	6	2	0	0	1
Chesterfield	7	1	0	1	0
Tranmere	5	2	1	1	0
QPR	1	5	1	1	0
Blackpool	4	2	2	0	0
Luton	5	1	2	0	0
Northampton	3	1	3	0	0
Port Vale	6	2	1	0	0
Stockport	4	2	1	0	0
Wycombe	3	3	1	0	0
Barnsley	5	1	0	0	0
Colchester	5	1	0	0	0
Plymouth	4	1	1	0	0
Swindon	3	3	0	0	0
Mansfield	2	1	0	1	1
Peterborough	2	1	1	1	0
Cheltenham	3	2	0	0	0
Huddersfield	3	1	1	0	0
Notts County	1	0	3	0	0

Scorers' Points Gained & Scoring Run

Club	Cl	GI/gm	Pts	Run	1stG
Sam Parkin	12	0.67	13	6	2
Rob Hulse	15	0.79	11	3	6
Luke Beckett	14	0.67	10	4	6
Robert Earnshaw	16	0.76	9	3	4
Nathan Ellington	9	0.43	9	3	4
Martin Smith	7	0.50	8	1	3
Ilysedien Christie	13	0.68	7	5	2
Scott Murray	12	0.57	7	3	2
Paul Wotton	5	0.24	7	4	1
Dean Morgan	4	0.21	7	1	2
Marco Gabbadini	10	0.50	6	1	4
Rowan Vine	7	0.35	6	1	2
Bruce Dyer	6	0.33	6	2	2

eg if player scores the goal in a 1-0 win, the goal is worth 2 pts as score would have been 0-0, or if 2 goals in 2-1 win, goals worth 3 pts. Also shown is goals per game figure and number of games player scored 1st goal

Fouls and Offsides per game

avg. fouls per game		avg. offsides per game	
Wycombe	14.24	Barnsley	4.90
Luton	14.19	Luton	4.81
Tranmere	14.05	Cheltenham	4.00
Brentford	13.81	Tranmere	4.00
Oldham	13.52	Peterborough	3.86
Swindon	13.10	Wycombe	3.71
Wigan	13.05	Crewe	3.67
Bristol City	12.81	Plymouth	3.67
Chesterfield	12.62	Oldham	3.62
Mansfield	12.48	Northampton	3.57
QPR	12.48	Stockport	3.52
Notts County	12.43	Brentford	3.48
Barnsley	12.33	Huddersfield	3.29

Second Division Scene



THE HEART-breaking injury time goal conceded at Ashton Gate cost the Town the chance of going into the play-off zone as the league season reaches its half-way point today.

The other two points would have pushed the Town into the top six for the first time, ahead of Brentford on goal difference, but still eight points adrift of fifth place. Instead, the Town remain eighth, one of four teams on 31 points.

A play-off spot begins to look the best that the chasing pack can hope for as the top three pull away. The scrap for the two automatic promotion places is becoming a three-way tussle between Wigan, Cardiff and Bristol City.

Lennie Lawrence was doubtless pleased to see the Town deny Danny Wilson's men two home points on Saturday because the Ashton Gate result, coupled with Cardiff's 2-1 win at Colchester on Friday, sent Cardiff up one place and back into the top two. They had been stung a week earlier when Wilson's men won 2-0 at Ninian Park, Cardiff's first home defeat since August.

Wigan are looking good bets for the championship. Skipper Jason De Vos, whose very late goal saved a point for them at Kenilworth Road two months ago, was on target again on Saturday as Wigan made it six league wins on the trot with a 1-0 home victory over Huddersfield. That took Wigan to 50 points, and

the other contenders for honours will be hoping that two ex-Hatters can do the Christmas business - Wigan are away to Brian Horton's mid-table Port Vale today, and entertain Andy King's Swindon strugglers on Saturday.

Iain Dowie's Oldham are still firmly established in the play-off zone, despite poor home results. The Town are one of four visiting teams to take all three points from Boundary Park, but Oldham are the only team anywhere in the Nationwide League with an unbeaten away record. Fitz Hall got the only goal at Chesterfield to make it six wins and five draws in 11 away games so far.

Cardiff's travelling tally is only slightly less. Robert Earnshaw, the Second Division's leading scorer, got both goals in the victory at Layer Road, and has now hit 21 for a team which has been beaten only twice on the road this season, 1-0 at Blackpool in October and 3-2 at Barnsley in November.

They have taken maximum points from six trips, 2-1 at Oldham, 1-0 at Swindon, Notts County and Mansfield, 4-0 at QPR and 2-1 at Colchester. Three away games ended in draws: 1-1 at Cheltenham, and 2-2 at Plymouth and Wigan.

Brian Swain

Today's Other Second Division Fixtures

Bristol City v Plymouth	Cheltenham v Crewe
Colchester v Peterborough	Huddersfield v Tranmere
Mansfield v Stockport	Northampton v Chesterfield
Notts County v Barnsley	Oldham v Blackpool
Port Vale v Wigan	QPR v Wycombe
Swindon v Brentford	Saturday's Games
Barnsley v Port Vale	Blackpool v Colchester
Brentford v Mansfield	Chesterfield v Cheltenham
Peterborough v Northampton	Plymouth v Notts County
Stockport v Bristol City	Tranmere v QPR
Wigan v Swindon	Wycombe v Luton Town
Sunday	Cardiff v Huddersfield
Crewe v Oldham	

Nationwide League Division Two															
	HOME					AWAY					GD	Pts			
	P	W	D	L	F	A	P	W	D	L			F	A	
Wigan	22	7	3	1	19	9	8	2	1	18	4	24	50		
Cardiff	22	8	1	2	19	7	6	3	2	18	11	19	46		
<hr/>															
Bristol City	22	8	2	1	24	8	6	1	4	22	18	20	45		
Oldham	22	6	1	4	21	9	6	5	0	14	7	19	42		
Crewe	22	7	1	3	14	6	5	4	2	21	12	17	41		
Brentford	22	5	4	2	14	6	4	2	5	14	19	3	33		
<hr/>															
QPR	22	6	2	3	18	12	2	5	4	11	14	3	31		
Luton Town	22	3	4	4	18	15	5	3	3	14	15	2	31		
Blackpool	22	6	3	2	20	11	3	1	7	8	21	-4	31		
Tranmere	22	6	3	2	15	12	3	1	7	13	23	-7	31		
Chesterfield	22	7	2	2	13	6	2	1	8	5	18	-6	30		
Plymouth	22	4	4	3	17	15	3	4	4	13	15	0	29		
Stockport	22	5	3	3	21	15	3	0	8	9	16	-1	27		
Wycombe	22	5	2	4	23	19	2	4	5	6	12	-2	27		
Port Vale	22	4	2	5	15	17	3	3	5	12	18	-8	26		
Colchester	22	3	4	4	9	9	3	3	5	13	20	-7	25		
Northampton	22	5	2	4	16	11	2	2	7	5	22	-12	25		
Swindon	22	3	3	5	13	14	3	3	5	13	20	-8	24		
Barnsley	22	3	5	3	13	16	3	1	7	11	18	-10	24		
Notts County	22	2	5	4	16	18	2	6	3	16	15	-1	23		
<hr/>															
Cheltenham	22	3	3	5	10	14	2	4	5	10	15	-9	22		
Peterborough	22	4	2	5	14	11	1	4	6	12	22	-7	21		
Huddersfield	22	3	5	3	12	11	2	1	8	5	15	-9	21		
Mansfield	22	4	0	7	22	27	2	3	6	15	26	-16	21		

Statistics and all the fixtures

Date	Opponents	Venue	Kick Off Time/Result	Score (LT first)	Attendance	Competition/Position	Referee	Yellow Cards (LT first)	Red Cards (LT first)	Goalkeepers							Defenders										Midfielders										Forwards							Own Goals																																																																																																																																																																																																																																																																																																																																																																																																																																																																																																																																																																																																																																																																																																																																																																																																																																																																																																																																																																																																																																																																																																																																																																																																																																																																																																																								
										1	16	33	34	35	47	2	3	5	6	17	22	23	24	31	41	42	45	4	7	8	11	18	20	21	30	32	38	39	40	44	9	10	14		15	19	43																																																																																																																																																																																																																																																																																																																																																																																																																																																																																																																																																																																																																																																																																																																																																																																																																																																																																																																																																																																																																																																																																																																																																																																																																																																																																																																					
Sat 10 Aug	PETERBOROUGH UNITED	H	L	2-3	7,860	16th	B Curson	2/1	0/0																																																																																																																																																																																																																																																																																																																																																																																																																																																																																																																																																																																																																																																																																																																																																																																																																																																																																																																																																																																																																																																																																																																																																																																																																																																																																																																																																											

SQUAD CHECK

LUTON TOWN

Manager: Joe Kinnear

1	Mark Ovendale	<input type="checkbox"/>	<input type="checkbox"/>
2	Aaron Skelton	<input type="checkbox"/>	<input type="checkbox"/>
3	Alan Neilson	<input type="checkbox"/>	<input type="checkbox"/>
4	Matthew Spring	<input type="checkbox"/>	<input type="checkbox"/>
5	Russell Perrett	<input type="checkbox"/>	<input type="checkbox"/>
6	Marvin Johnson	<input type="checkbox"/>	<input type="checkbox"/>
7	Adrian Forbes	<input type="checkbox"/>	<input type="checkbox"/>
8	Kevin Nicholls	<input type="checkbox"/>	<input type="checkbox"/>
9	Tony Thorpe	<input type="checkbox"/>	<input type="checkbox"/>
10	Carl Griffiths	<input type="checkbox"/>	<input type="checkbox"/>
11	Steve Robinson	<input type="checkbox"/>	<input type="checkbox"/>
12	Chris Coyne	<input type="checkbox"/>	<input type="checkbox"/>
14	Andrew Fotiadis	<input type="checkbox"/>	<input type="checkbox"/>
15	Dean Crowe	<input type="checkbox"/>	<input type="checkbox"/>
16	Carl Emberson	<input type="checkbox"/>	<input type="checkbox"/>
17	Emmerson Boyce	<input type="checkbox"/>	<input type="checkbox"/>
18	Ahmet Brkovic	<input type="checkbox"/>	<input type="checkbox"/>
19	Steve Howard	<input type="checkbox"/>	<input type="checkbox"/>
20	Peter Holmes	<input type="checkbox"/>	<input type="checkbox"/>
21	Paul Hughes	<input type="checkbox"/>	<input type="checkbox"/>
22	David Bayliss	<input type="checkbox"/>	<input type="checkbox"/>
23	Ian Hillier	<input type="checkbox"/>	<input type="checkbox"/>
24	Sol Davis	<input type="checkbox"/>	<input type="checkbox"/>
31	Alan Kimble	<input type="checkbox"/>	<input type="checkbox"/>

tick if playing ■ tick if substitute ●

CARDIFF CITY

Manager: Lennie Lawrence

1	Neil Alexander	<input type="checkbox"/>	<input type="checkbox"/>
2	Rhys Weston	<input type="checkbox"/>	<input type="checkbox"/>
3	Andy Legg	<input type="checkbox"/>	<input type="checkbox"/>
4	Gareth Whalley	<input type="checkbox"/>	<input type="checkbox"/>
5	Spencer Prior	<input type="checkbox"/>	<input type="checkbox"/>
6	Daniel Gabbidon	<input type="checkbox"/>	<input type="checkbox"/>
7	Andy Campbell	<input type="checkbox"/>	<input type="checkbox"/>
8	Graham Kavanagh	<input type="checkbox"/>	<input type="checkbox"/>
9	Leo Fortune-West	<input type="checkbox"/>	<input type="checkbox"/>
10	Robert Earnshaw	<input type="checkbox"/>	<input type="checkbox"/>
11	Peter Thorne	<input type="checkbox"/>	<input type="checkbox"/>
12	Willie Boland	<input type="checkbox"/>	<input type="checkbox"/>
13	Martyn Margetson	<input type="checkbox"/>	<input type="checkbox"/>
14	Jason Bowen	<input type="checkbox"/>	<input type="checkbox"/>
15	Mark Bonner	<input type="checkbox"/>	<input type="checkbox"/>
16	Layton Maxwell	<input type="checkbox"/>	<input type="checkbox"/>
17	James Collins	<input type="checkbox"/>	<input type="checkbox"/>
18	Scott Young	<input type="checkbox"/>	<input type="checkbox"/>
19	Michael Simpkins	<input type="checkbox"/>	<input type="checkbox"/>
20	Gavin Gordon	<input type="checkbox"/>	<input type="checkbox"/>
21	David Hughes	<input type="checkbox"/>	<input type="checkbox"/>
22	Mark Walton	<input type="checkbox"/>	<input type="checkbox"/>
23	Chris Barker	<input type="checkbox"/>	<input type="checkbox"/>
24	Gethin Jones	<input type="checkbox"/>	<input type="checkbox"/>
25	Des Hamilton	<input type="checkbox"/>	<input type="checkbox"/>
26	Gary Croft	<input type="checkbox"/>	<input type="checkbox"/>
27	Ryan Green	<input type="checkbox"/>	<input type="checkbox"/>
28	Andrew Jordan	<input type="checkbox"/>	<input type="checkbox"/>
30	Martyn Giles	<input type="checkbox"/>	<input type="checkbox"/>
33	Fan Zhiyi	<input type="checkbox"/>	<input type="checkbox"/>

Today's Officials

Referee: Paul Armstrong, Berkshire

Assistants: John Hayto, Essex (yellow flag); Gary Ives, Essex (red and yellow flag)

Fourth Official: Steve Chittenden, Hertfordshire

"Genuine Deals For Genuine Fans!"
Luton Fans Are
Guaranteed To Score At
Motorbodies Luton

NETWORK Q
Total Commitment to used car quality

Motorbodies Central

15 Hitchin Road, Luton Bedfordshire.

Telephone 01582 454666

e-mail: enquiry@caxtongroup.co.uk

- 12 months Assistance
- 12 months/15,000 mile Guarantee

Motorbodies Leagrave

166 Marsh Road, Leagrave, Luton

Telephone 01582 567500

e-mail: sales@caxtongroup.co.uk

114 Point Service

12 Months/ 15,000 mile guarantee

12 Months AA Assistance Mileage Check

30 Day Exchange Plan

Free MoT for life

HPI Check

- 114 point service
- 30 day exchange pledge

OPENING HOURS

Mon-Fri 9am-7pm

Sat 9am-5pm

Sun 10.30-430pm

NETWORK

Q

