

Merry Christmas to all supporters



BRISTOL CITY FC'S OFFICIAL 2002/03 MATCH PROGRAMME • 187



VERSUS

LUTON TOWN

211202

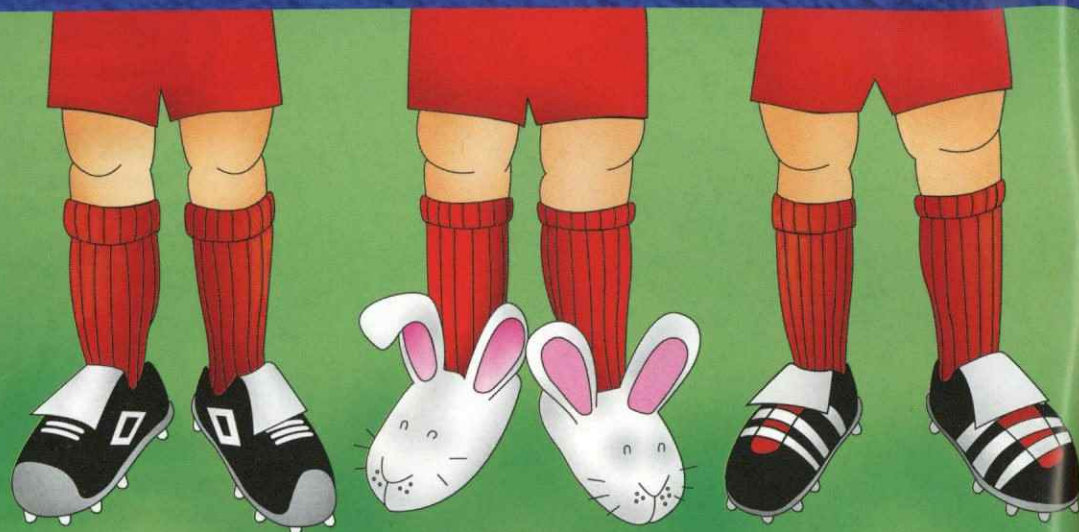
SPONSOR



MATCH SPONSOR



Relax. with DAS



Legal Disputes can be both stressful and costly.

DAS have been providing legal protection and advice for over 25 years, and now insure millions of people and thousands of businesses against the threat of legal action.

So, our policyholders know who to turn to if a legal problem crops up, which means that they can concentrate on more important things, like taking it easy!



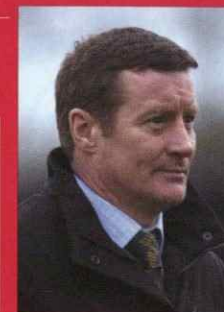
DAS Legal Expenses Insurance Company Limited
DAS House, Quay Side, Temple Back, Bristol, BS1 6NH
Telephone: 0117 934 2000 Fax: 0117 934 2109
Or visit our website at www.das.co.uk

FAMILY • MOTOR • COMMERCIAL • ASSISTANCE



CHRISTIAN SCORES AT HOME
Cardiff-born Christian Roberts shows admirable restraint after scoring against his boyhood club in City's 2-0 win at Ninian Park

- 4-5 DANNY WILSON
- 7 FROM THE BOARDROOM
- 8-9 NEWS ROUND-UP
- 11-15 THE OPPOSITION
- 17 POSSIBLE LINE-UPS
- 19 RESERVES
- 20-21 ACADEMY
- 22-23 WOMEN
- 24-25 ACTION
- 27 WE'VE MET BEFORE
- 28 DIVISION TWO STATS
- 29 DIVISION TWO REVIEW
- 30-31 WORK, REST AND PLAY
- 32-33 LOUIS CAREY PULL-OUT
- 35 CITY JUNIOR STRIKERS
- 37 CJS SHOGUNS OFFER
- 38-39 FOOTBALL IN THE COMMUNITY
- 41 VOICE FROM THE STANDS
- 43 FEMALE PITCH
- 45 WHAT THEY SAID
- 46 HOSPITALITY
- 47 BCFC.CO.UK
- 48-49 COMMERCIAL: KATIE LEWIS INTERVIEW
- 51 IN THE DUG OUT
- 52-53 COMING UP
- 55 SUPPORTERS CLUB
- 56-57 PLAYER SPONSORS
- 58-59 ACTION
- 60-61 STATS
- 62 TEAMSHEET



Bristol City Football Club

Ashton Gate Stadium, Bristol BS3 2EJ
Tel: 0117 963 0630
Fax: 0117 963 0700

bcfc.co.uk

Chairman: Steve Lansdown

Directors: Keith Dawe, John Laycock, A.W. Gooch MBE, JP.

Club President:

Marina Dolman D.St.J., JP

Vice-Presidents:

Betty Rosemary Bennett, John Bennett,

Brian Cook, Bernard Cripps,

Norman Lavis, Graham Thompson

Chief Executive: Colin Sextstone

Manager: Danny Wilson

Academy Director and Football

Co-ordinator: Tony Fawthrop

First-team Coach: Frank Barlow

Development Coach: Shaun Taylor

Financial Accountant: Roger Pearce

Commercial & Communications

Manager: Richard Gould

Football Secretary:

Michelle McDonald

Operations Manager: Keith Draisey

Medical Officer: Dr Heather Montague

Chartered Physiotherapist:

Gill Holt BSc (Hons), MCSP, SRP

Dentist: Jonathan York BCh D

PA to Chairman/Chief Executive:

Rita Murgatroyd

Football in the Community

Officers: Tommy Hutchison and

Ian Docherty

Hospitality Executive: Helen Taylor

Stadium Manager: Dave Lewis

Head Groundsman: Martin Plumley

Box Office Manager: Helen Mills

Retail Manager: Steve Gray

Commercial Co-ordinator: Kerry Price

Chaplain: Derek Cleave

Study Support Centre Manager:

Mandy Thorpe

Club Historian: David Woods

well red is designed and produced

by Bristol City's Media Department

media@bcfc.co.uk

Media Editor: Ed Furniss

Media Consultant: Richard Latham

Website Editor: Adam Baker

Media Assistant: Graham Douglas

Sales and marketing: Lisa Fillingham,

Becky Tovey and Mark Wederell

Match Magazine contributors:

Adam Baker, Leigh Edwards, Ed

Furniss, Ed Hayes, Richard Latham,

Emily Ryan and Pete Smith

Printed by BCFC's official printer:

TL Visuals, Yate. Tel: 01454 319555.

Paper supplied by Howard Smith.

Individual contributions made to this magazine do not necessarily reflect the views of Bristol City FC.



OUR VICTORY OVER Cardiff City at Ninian Park has to rank as one of the best since I became manager and hopefully has laid to rest any suggestion that we cannot compete with the top teams in our division.

I still regard Cardiff as the team to beat in the promotion race as a whole, so to win 2-0 on their ground in what we knew would be a hostile atmosphere was a terrific performance by the players.

If there has been a criticism levelled at us it is that we have found it hard to beat the very best in the Second Division. Even during our long unbeaten run there were people suggesting we hadn't played anyone of note.

So it was nice to see the lads getting the credit they deserve after a game broadcast live to a nationwide audience by Sky TV.

Our defending under pressure was tremendous and we could have had more goals. We were grateful for referee Alan Wiley's excellent positioning and correct decision to award a penalty for a foul on Matthew Hill. And we couldn't have asked for a cooler and more experienced head than Brian Tinnion to put the spot-kick away.

Christian Roberts was then rewarded for all his hard work against his former club with the second goal, which capped a superb all-round team performance against arguably the promotion favourites.

No one will be getting carried away. There is an awfully long way to go in the season and promotion is not won simply by beating the top

sides. You have to perform consistently week-in, week-out, in front of small crowds as well as big ones and in all types of stadia.

I believe we are better equipped to do that this season because of the progress made by a number of young players, which has given us greater strength in depth.

'PROMOTION IS NOT WON SIMPLY BY BEATING THE TOP SIDES IN THE DIVISION'

That was demonstrated when I made a few changes for the recent LDV Vans Trophy match against Wycombe Wanderers and the team still functioned impressively enough to earn a well-deserved 3-0 win.

Now we face a tough away assignment in the Southern Area semi-finals with a trip to Bournemouth, who of course knocked out Cardiff in the last round. I saw that game and Bournemouth played very well.

That is for the future. This afternoon we face a Luton Town side who have adapted well to the Second Division after winning promotion last season. They have aspirations of reaching the play-offs at least and, under Joe Kinnear and my old buddy Mick Harford, are sure to provide another stern test.

As always, please get behind the team from the first whistle and we will do our best to kick-off the holiday period with a win. A very Merry Christmas to you all.

DANNY WILSON

OPEN A BRISTOL CITY FC BRISTOL & WEST SAVINGS ACCOUNT AND GET FIVE PER CENT OFF THE PRICE OF A SEASON TICKET!

ONE PER CENT OF THE SAVINGS SCHEME POOL IS PAID BY BRISTOL & WEST TO OUR ACADEMY. THIS INCREASED BY £506,000 IN JULY - OUR BIGGEST-EVER INCREASE IN ONE MONTH. THE TOTAL NOW STANDS AT £6.61 MILLION. THANK YOU TO ALL OF OUR FANS WHO SAVE WITH THE BRISTOL & WEST.



BRISTOL & WEST CITY FC SAVINGS POOL - TARGET £10m

Alan, Marie and the customers of

THE JOLLY COBBLER

are pleased to sponsor

Bristol City Football Club

The Jolly Cobbler, Chiphouse Road, Kingswood, Bristol BS15 4TS
Telephone (0117) 960 2109

THE GOOD INTENT

Broomhill Road, Brislington

Hugh and Kim warmly welcome you!

**LIVE MUSIC ON FRIDAY
AND SATURDAY EVENING
LARGE SCREEN TV
RESTAURANT
CHARITY QUIZ NIGHTS**

Tel: 0117 983 0550

SOMERSET PLUMBING AND HEATING

**2 Ash Close, Bridgwater,
Somerset, TA6 4EP**

Phone 01278 456483

Fax 01278 425513

Mobile 07879 464103

*Services to Local Authorities
and Industries' gas oil,
steam, air and water
installations.*

City fans get up for the Cup!

A BIG THANK you to all those fans who crawled from their beds at some unearthly hour and made the long trek to Harrogate for our second round FA Cup tie.

To cap it all it was freezing cold, but at least it didn't rain and the boys did play well for you.

Your support on the day was vital because only by being there could you appreciate the difficult task the players faced. Freezing cold, dark, a pitch with a wicked slope from side to side, with muddy conditions and grass much longer than we are used to.

The day itself, however, was a triumph for cup football and everyone who was involved in it should take a pat on the back.

Without doubt the greatest credit should go to all those at Harrogate Railway for all the hard work they put in getting the game on at their ground. They also made us all very welcome and looked after us royally.

I am sure both Steve Phillips and Matthew Hill will not agree with me but, on reflection, I was pleased for them they scored and gave us a fright, if only for a moment. It certainly added a little bit extra to their day.

That Sunday morning, however, illustrated what is great about Bristol City FC. In the build up to the game not only did our own staff, with their expertise, help Harrogate to get the game on, and in

IMAGES OF HARROGATE:
City and Railway fans mingle at Station View ...
Pic: Maggie Lansdown



particular live on TV, but our own stewards were there on the day to ensure it could happen.

On the pitch the players were exemplary in going about their job in a professional manner without a word of complaint. I am sure there would be many teams who would have moaned and groaned about having to put up with such conditions.

Once again, to those fans who made the trip, your support and behaviour was superb. I

know some people thought it was unfair on fans to have the game kick-off at 11am but, with only 500 tickets available, surely the fact that so many City fans around the country (and world for that matter) could see the tie was great news. The £100,000 TV fee came in handy as well!

We can all be proud that we were part of such an event. Now bring on the Leicester!

STEVE LANSDOWN

DRAWN AWAY AGAIN

CITY HAVE NOT enjoyed the best of luck in the most recent cup draws, with away ties in two competitions.

The FA Cup third round takes us to Leicester City's Walker Stadium for a repeat of the fifth round tie of two seasons ago. The tie will be played on Saturday January 4th and looks sure to draw a 20,000-plus crowd.

In the LDV Vans Trophy Southern Area semi-finals we have been handed a trip to Bournemouth's Fitness First Stadium where Cardiff City were beaten during golden goal extra time in the last round.

City were 3-1 winners the last time they visited the Cherries' new-look stadium in March 2002, with goals coming from Mickey Bell (from the penalty spot), Lee Peacock and Tony Thorpe.

Area semi-final matches will take place on Tuesday 21st or Wednesday 22nd January.

Last season City defeated local rivals Bristol Rovers 3-0 at Ashton Gate at the same stage.

Kevin back so soon

KEVIN AMANKWAH IS back in competitive action just nine months after breaking a bone in his neck in a car crash.

The 20-year-old defender featured as a second half substitute in Monday's Avon Insurance Combination match against Bournemouth at Almondsbury.

Kevin was expected to be out for over a year, but his recovery has been much quicker than expected and he is delighted to be back in action so soon.

His last first team outing was on Saturday 9th March this year when City defeated Cambridge United by two goals to nil at Ashton Gate.

Manager Danny Wilson said: "Kevin has been given the go ahead to return to full training, which is a big bonus for everybody. We won't be hurrying him after such a long absence and it's a case of seeing how his body reacts to each game."

Kevin's comeback was filmed exclusively by BRISTOL CITY WORLD and broadcast on our Tuesday programme – which also

featured an interview with the young defender.

BUTLER SERVES BAN

TONY BUTLER SERVES a one-match ban today after picking up his fifth caution of the season in the 3-2 victory over Notts County.

City's defensive lynchpin was booked on 18 minutes for a foul on Danny Allsopp and must sit out the Luton match after a towering performance in last Saturday's 2-0 win at Cardiff City.

It is the first game Tony has missed since joining City initially on loan from West Bromwich Albion in August, since when he has reeled off 22 successive appearances.

Manager Danny Wilson said: "It's disappointing because you hope players will avoid bans, particularly before Christmas.

"But I'm afraid it's part and parcel of the game these days that lads who do a lot of tackling pick up yellow cards. We'll just have to organise things a bit differently for Luton."

On the positive side, Louis Carey's return to first team action



Kevin Amankwaah

following pre-season knee surgery could hardly have been better timed as he provides a natural option for Danny today.

BRIAN TO STAY AT CITY

BRIAN TINNIION HAS revealed exclusively to bfc.co.uk that he will end his playing days with City, whether or not he is offered a new contract in the summer.

The 34-year-old midfielder says he is ready to hang up his boots if the club do not offer him a new deal.

"My current contract expires at the end of the season and I am looking no further ahead than that at the moment," Brian told the official website.

"But I have already decided I won't move to another club. If I don't sign a new contract at Ashton Gate that will be the end as far as playing is concerned.

"Of course, I hope the manager and Board think I am worth keeping on as a player. I've never felt fitter and I am enjoying my football more than ever.

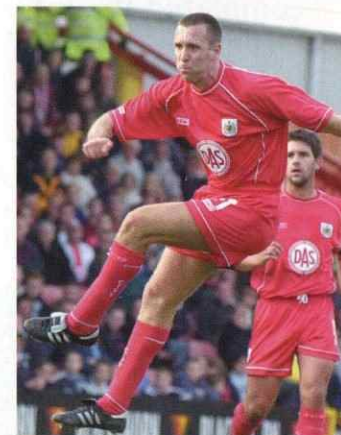
"Danny Wilson has been great

with me because he lets me manage my own fitness. I've worked really hard, but there are times when there is more value for me in resting than joining in with every session.

"As a result, I have felt in great nick since a knee problem at the start of the season. When you get to my age you appreciate every game even more and I am playing with no pressure, which means I can enjoy myself to the full.

"I hope that is showing in my performances. My future as a player is not really down to me so I am not looking too far into the future, although I would certainly like to go into coaching and management one day."

After missing the first five games of the season through injury, Brian has been in the squad for every fixture since, producing some of the best form of his career in contributing to the 16-match unbeaten run going into this afternoon's fixture.



PLYMOUTH CLOSE TO SELL-OUT

CITY'S HOME BOXING DAY fixture against West Country rivals Plymouth Argyle on Thursday, kick-off 12 noon, is close selling out and has been made all-ticket. No tickets will be available to purchase on the day of the game. The club advise buying tickets in advance to avoid disappointment.

OPENING HOURS

THE CLUB WILL close at 12 noon on Christmas Eve, briefly re-opening for the Boxing Day home game versus Plymouth.

For full details of Ticket Office and Ticket Hotline (0117 966 6666) opening hours turn to page 53. For City Shop opening times see the ad on page 26.

May we wish all our supporters a very Happy Christmas.

KEY

- Story was revealed first on SMS, City's text-messaging service
- Revealed first on bfc.co.uk
- Coverage on bfcworld.co.uk

city2000 – £10,000 raised for the Academy



→ City chairman Steve Lansdown (second right) is presented with a cheque for £10,000 at the recent home game versus Crewe Alexandra, by representatives of **city2000** draw. For more details turn to page 51.

The Football Emporium

225 High Street, Bromley, Kent

WHETHER IT BE A BIRTHDAY OR CHRISTMAS PRESENT, OR EVEN A GIFT FOR YOURSELF, YOU WILL FIND SOMETHING UNIQUE, INTERESTING, OR EVEN AMUSING, FOR SUPPORTERS OF ALL CLUBS, AT THE FOOTBALL EMPORIUM. OR IF BROMLEY IS A LITTLE FAR, VISIT OUR WEBSITE

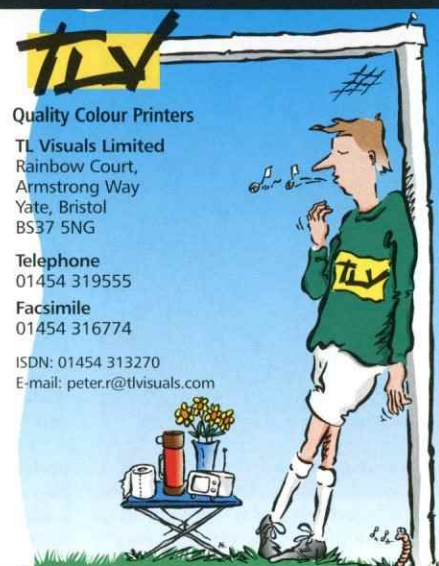
WWW.PREMIERIMAGE.CO.UK

OR CALL FOR A BROCHURE

020 8464 9421

World Cup Merchandise ~ Clothing ~ Original Art Books ~ Photography ~ Autographs ~ Toys & Games Housewares ~ Memorabilia ~ Antiques ~ Ephemera

'the Best Team'



Quality Colour Printers

TL Visuals Limited
Rainbow Court,
Armstrong Way
Yate, Bristol
BS37 5NG

Telephone
01454 319555

Facsimile
01454 316774

ISDN: 01454 313270
E-mail: peter.r@tlvisuals.com

New Club, New You...



David Lloyd Leisure, the UK's No. 1 Racquets, Health & Fitness Group has completed the refurbishment of its facilities and is now looking *even better!*

Why settle for second best?

Come and see for yourself!

Call **0117 953 2829** today to book a tour



The David Lloyd Leisure Club
Ashton Road
Ashton Bristol
BS3 2HB
(next to Park & Ride before
Long Ashton and 2 miles
from Clifton)
T. 0117 953 2829/
0117 953 1010
F. 0117 953 2690



www.davidlloydleisure.co.uk
sales.bristol@whitbread.com



HATTERS VIEW

IT'S BEEN A strange season, in which we have had the edge on a number of higher-placed sides, but have lost against the majority of teams lower in the table than us.

We've been hit by a lot of long-term injuries: Adrian Forbes has recently had a second knee operation, while David Bayliss (shoulder operation), Russell Perrett (groin operation) and Aaron Skelton (knee) have all missed games.

That means we have been forced to play the majority of the season with fringe players, all of whom have done well.

Coming up against an in-form Bristol City side is going to be tough.

But we do seem to lift ourselves for games against the top teams, and, although we haven't won since 1973 at Ashton Gate, with Steve Howard back after a three-match suspension (we have lost all three matches without him), things could change.

My prediction:
0-0, a battling draw

Our thanks to Jeff Stimpson,
Website Editor

THE MANAGER

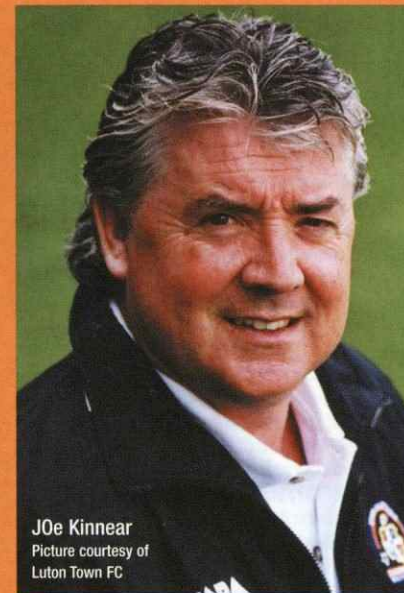
JOE KINNEAR

Born: Dublin, 27.12.46. Former Wimbledon manager who was appointed Hatters boss in February 2001, becoming the club's third manager that season.

He failed to stop his new side being relegated that year, but led the Bedfordshire club to promotion from the Third Division at the first time of asking last season as runners-up to Plymouth Argyle.

Spent his playing career as a defender with St. Albans City, Tottenham Hotspur - for whom he made more than 280 appearances winning FA Cup, League Cup and UEFA Cup-winners medals - and Brighton, before moving into coaching.

Former national team coach of the United Arab Emirates, he spent seven seasons in charge of Wimbledon in the Premiership, winning two Manager of the Year awards before stepping down in June 1999 for health reasons.



Joe Kinnear
Picture courtesy of
Luton Town FC

THE SQUAD

22 DAVID BAYLISS

Born: Liverpool, 8.6.76.

Experienced central defender who was a free transfer signing in November 2001 from Rochdale, where he was the Lancashire club's longest-serving player at the time after starting his career at Scotland as a trainee.

Total career Luton appearances: 21 + 4 sub, 0 goals

17 EMMERSON BOYCE

Born: Aylesbury, 24.9.79.

Right-back who started his career as a trainee with the Hatters after being spotted by the club's schools and youth development programme, making his senior debut in January 1999.

130+17, 4

18 AHMET BRKOVIC

Born: Dubrovnik (Croatia), 23.9.74. Right-sided midfielder who arrived at Kenilworth Road in the summer of 2001 under the Bosman ruling, after completing a two-year spell with Leyton Orient. Originally arrived in England in 1999 on a free transfer from HNK Dubrovnik.

37+7, 9

12 CHRIS COYNE

Born: Brisbane (Australia), 20.12.78.

Central defender who was a £50,000 buy from Scottish club Dundee in September 2001. Was spotted by West Ham playing in the 1994 World Youth Cup. Has also played on loan for Brentford.

50+4, 4



EMMERSON BOYCE

IAN HILLIER

HATTERS FACTS

Formed: 1885
Ground: Kenilworth Stadium (picture courtesy of www.lutontown.co.uk)
Capacity: 9,975
Joined Football League: 1897, elected to Division Two
Honours: Division Two champions 1981/82; Division Four champions: 1967/68; Division Three (South) champions: 1936/37; League Cup winners: 1988
Highest League finish: 7th in Division One, 1986/87
Position last season: 2nd in Division Three (promoted)
Record League victory: 12-0 v Bristol Rovers, April 1936 (Division Three South)
Record League defeat: 0-9 v Small Heath, November 1898 (Division Two)
Most League appearances: Bob Morton, 494 between 1948-64
Most League goals: Gordon Turner, 243 between 1949-64



15 DEAN CROWE
 Born: Stockport, 6.6.79.
 Forward who signed a permanent deal in November 2001, after completing loan spell from Stoke City, with whom he started his career as a trainee. Has also played on loan for Northampton Town and Bury. **43+10, 17**

24 SOL DAVIS
 Born: Cheltenham, 4.9.79. Left-back who was a summer signing from Swindon Town, after failing to agree a new contract with the club with whom he started his career as a trainee. **22, 0**

16 CARL EMBERSON
 Born: Epsom, 13.7.73. Goalkeeper who arrived at Kenilworth Road in the summer of 2001 under the Bosman ruling, after completing a two-year spell at Walsall. Started his career as a trainee at Millwall before spending seven seasons with Colchester United. **46+1**

14 ANDREW FOTIADIS
 Born: Hitchin, 6.9.77. Centre forward who began his career with the Hatters as a trainee, but has found his progress delayed by injury to date. Scored in last Saturday's 2-1 home defeat by Colchester. Capped by England at schoolboy level. **61+83, 19**

23 IAN HILLIER
 Born: Neath, 26.12.79. Right-back who was a £30,000 signing in November 2001 after completing a three-month loan spell from Tottenham Hotspur, where he skippered the

Londoners' reserve side. Capped by Wales at under-21 level. **17+16, 1**

20 PETER HOLMES
 Born: Bishop Auckland, 18.11.80. Midfielder who began his professional career under Danny Wilson at Sheffield Wednesday, before joining the Hatters for a nominal fee in the summer of 2000. A former student at the FA School Of Excellence. **29+17, 3**

19 STEVE HOWARD
 Born: Durham, 10.5.76. Striker who was a £50,000 transfer deadline day signing from Northampton Town in March 2001. Voted Player of the Year last season after his 24 goals helped fire the Hatters to promotion from Division Three. Started his career with non-League side Tow Law Town before a move to Hartlepool United. **77, 37**

21 PAUL HUGHES
 Born: Hammersmith, 19.4.76. Midfielder who was a free transfer signing from Southampton in the summer of 2001. Started his career as a trainee with Chelsea, where he played on loan for Stockport, Norwich and Crewe. **27+13, 3**

31 ALAN KIMBLE
 Born: Dagenham, 6.8.66. Defender who was a free transfer signing this summer from Wimbledon, where he had played under his new boss Joe Kinnear in the Premiership. Started his career as a junior with Charlton Athletic and has also played for Exeter City (loan), Cambridge United and Peterborough United. **6+2, 0**

con. on page 13



Tony Thorpe
 Picture courtesy of Luton Town FC

FORM GUIDE

Sat 10 Aug	PETRBORO	2-3
Tue 13 Aug	Blackpool	2-5
Sat 17 Aug	Plymouth	1-2
Sat 24 Aug	BARNSELEY	2-3
Mon 26 Aug	Cardiff	0-0
Sat 31 Aug	CHSTRFD.	3-0
Sat 7 Sep	Brentford	0-0
Sat 14 Sep	NOTTS CO.	2-2
Tue 17 Sep	MANSFD.	2-3
Sat 21 Sep	Huddersfd.	1-0
Sat 28 Sep	SWINDON	3-0
Sat 5 Oct	Stockport	3-2
Sat 12 Oct	CHELTNHM.	2-1
Sat 19 Oct	Oldham	2-1
Sat 26 Oct	WIGAN	1-1
Tue 29 Oct	Crewe	1-0
Sat 2 Nov	Northmptn.	0-3
Sat 9 Nov	PORT VALE	0-0
Sat 23 Nov	QUEENS PR	0-0
Sat 30 Nov	Tranmere	3-1
Sat 14 Dec	COLCHSTR.	1-2

Leading scorer: Steve Howard, 9

Remaining fixtures

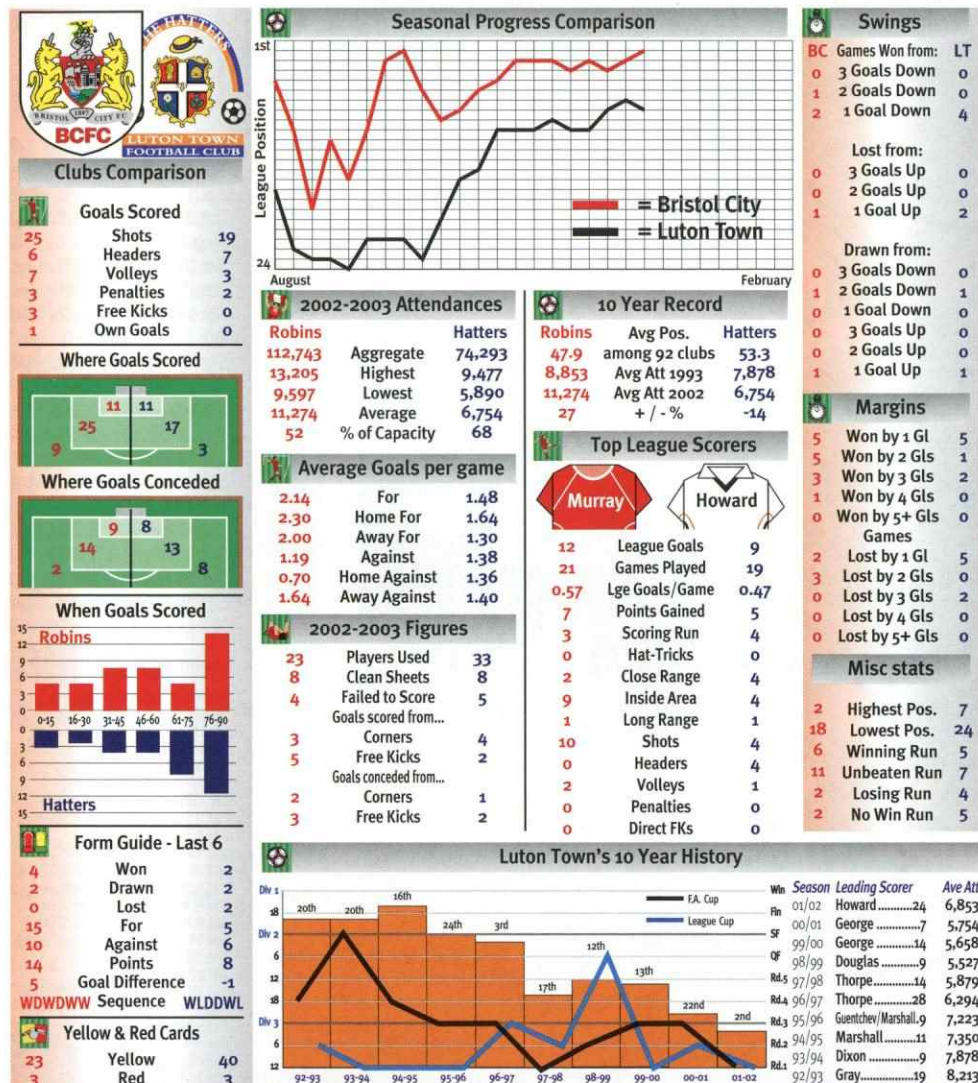
Thu 26 Dec	CARDIFF CITY
Sat 28 Dec	Wycombe
Wed 1 Jan	Chesterfield
Sat 11 Jan	PLYMOUTH
Sat 18 Jan	Barnsley
Sat 25 Jan	WYCOMBE
Sat 1 Feb	Peterborough
Sat 8 Feb	Port Vale
Sat 15 Feb	NORTHAMPTON
Sat 22 Feb	BRENTFORD
Sat 1 Mar	Notts County
Tue 4 Mar	Mansfield Town
Sat 8 Mar	HUDDERSFIELD
Sat 15 Mar	Wigan
Tue 18 Mar	OLDHAM
Sat 22 Mar	CREWE
Sat 29 Mar	Cheltenham
Sat 5 Apr	TRANMERE
Sat 12 Apr	Queens PR
Sat 19 Apr	BRISTOL CITY
Mon 21 Apr	Colchester
Sat 26 Apr	STOCKPORT
Sat 3 May	Swindon
TBA	BLACKPOOL

HOME GAMES IN CAPITALS. Nationwide League Division Two games only. Copyright: The Football League, The FA Premier League and Luton Town FC

Bristol City v Luton Town

Location <http://www.soccer-stats.com/headtohead>

SP For/Against Goalscoring Home/Away Top Scorer Form Guide Discipline Attendances Swings/Margins Miscellaneous **SP**



32 LEE MANSELL
Born: Gloucester, 23.9.82. Midfielder who scored 58 seconds into his senior debut for the Hatters in January 2001 after starting his career at Kenilworth Road as a schoolboy. **28+6, 7**

3 ALAN NEILSON
Born: Wegburg (Germany), 26.9.72. Experienced right-back who was a free transfer signing from Fulham in February last season. Started his career as a trainee with Newcastle United and has also played at the top level with Southampton. Has also played on loan for Grimsby. Capped at full, under-21 and youth levels by Wales. **18+7, 0**

8 KEVIN NICHOLLS
Born: Newham, 2.1.79. Luton's club captain is a midfielder who was a £150,000 buy from Wigan Athletic in August 2001. Started his career with Charlton Athletic as a trainee and captained England at under-18 through to under-20 level. Has also played on loan for Brighton. **61+1, 8**

1 MARK OVENDALE
Born: Leicester, 22.11.73. Goalkeeper who was a £425,000 signing from Bournemouth in the summer of 2000. Has also played for Wisbech, Northampton Town and Barry. **50,0**

11 STEVE ROBINSON
Born: Lisburn, 10.12.74. Northern Ireland international midfielder who was a £50,000 summer signing from

Preston North End, after seeing out the end of last season on loan at Ashton Gate, where he scored once in six appearances. Started his career with Tottenham Hotspur as a trainee before moving to Bournemouth. **19+5, 1**

2 AARON SKELTON
Born: Welwyn, 22.11.74. Defender who is currently in his second spell with the Hatters. Started his career at Kenilworth Road as a trainee before moving to Colchester on a free transfer in the summer of 1997. He returned in the summer of 2000 under the Bosman ruling. **25+4, 2**

4 MATTHEW SPRING
Born: Harlow, 17.11.79. Midfielder who started his career at Kenilworth Road as a schoolboy, and was part of the side that reached the FA Youth Cup semi-finals in 1996/97 before making his League debut aged just 17. **230+8, 27**

9 TONY THORPE
Born: Leicester, 10.4.74. Striker who needs no introduction to City fans after scoring 61 goals in 150 appearances, following a £1 million move from Fulham in the summer of 1998. Returned to Luton for his fourth spell with the Hatters this summer, after turning down the offer of a new contract at Ashton Gate. Started his career as a trainee with Leicester City before enjoying a successful first spell at Kenilworth Road, scoring 60 goals in 144 games. Played on loan for Luton (twice) and Reading during his time at City. **129+41, 71**

LAST TIME WE MET ...

CITY 3
(A. Brown 33, 65, Thorpe 78)
LUTON TOWN 1
(George 59)

Saturday 28th April 2001, Nationwide League Division Two



BOTH CITY AND
relegated-Luton's seasons were already over

when they met for this end-of-season encounter which boasted a rare double by Aaron Brown as its highlight.

City: Phillips, Murray, Burnell (Amankwaah 45), Carey, Hill, Bell, Clist (Maddison 60), Tinnion, A. Brown, Da Silva (Thorpe 54), Peacock. Subs not used: Coles, Correia.
Luton: Ovendale, Shepherd, Dryden, Boyce, Johnson, Helin (Locke 76), Spring, McLaren, Taylor, George (Stein 73), Howard (Douglas 73). Subs not used: Ward, Watts
Attendance: 9,161

HEAD-TO-HEAD

P 49 W 21 D 13 L 15

City v Luton Town in all competitions

Current sequence: City undefeated in League since March 1981; unbeaten at home since December 1973

Record City victory: 6-0 at Ashton Gate, April 1927 (Div. Three South)

Record City defeat: Goals conceded: 5-4 in Jan. 1933 (Division Three); Margin of victory: 4-0 in October 1936 (Div. Three South). Both games played at Kenilworth Rd.

SP YOUR FREE SPORTS PAPER WITH **PEOPLE**



**GET
KITTED
OUT!**

**2002/03
HOME AND
AWAY KITS ON
SALE IN THE
CITY SHOP**

PRICES : Adults £39.99,
Juniors £29.99

PLUS

TFG CAN ALSO KIT OUT YOUR CLUB FOR THE NEW SEASON.
STRIPS ARE AVAILABLE NOW FROM BRISTOL CITY FC.
RING 0117 963 0635 OR 07866 956995 FOR MORE DETAILS.



**Bristol City
Football Club**

bcfc.co.uk



BRISTOL CITY 4-4-2



FORM*: WDWDWW HOME FORM*: LWWWLW

LAST MATCH: Cardiff City, away – won 2-0 on 14.12.2002. Starting line up: Phillips; Bell, Hill, Butler, Coles; Tinnion, Doherty, Burnell. Murray; Peacock, Roberts.

TEAM NEWS: TONY BUTLER is the major absentee with a one-match suspension – LOUIS CAREY will be in the reckoning to replace him in defence for what would be his first League start since coming back from a knee injury. KEVIN AMANKWAH played for the reserves this week in his first competitive outing since a car crash in March but is some way off first-team action, as are ROBIN HULBERT (knee) and LEE MATTHEWS (back).

* based on last six League games, most recent last

4-4-2 LUTON TOWN



FORM*: WLDDWL AWAY FORM*: WWWLW

LAST MATCH: Colchester United, home – lost 2-1 on 14.12.2002. Starting line-up: Ovendale; Kimble, Coyne, Neilson, Boyce; Brkovic, Spring, Nicholls, Robinson; Fotiadis, Crowe.

TEAM NEWS: TONY THORPE missed training this week with a hamstring injury but could still replace DEAN CROWE, while STEVE HOWARD is back from suspension and should come in for ANDREW FOTIADIS. MATTHEW SPRING came off with an ankle injury on Saturday – PAUL HUGHES replaced him from the bench. SOL DAVIS is in competition with ALAN KIMBLE for the left-back spot. RUSSELL PERRETT (groin), ADRIAN FORBES and CARL GRIFFITHS are long-term absentees.

* based on last six League games, most recent last

The information on this page was correct at the time of going to press on 19.12.2002

CHOOSE YOUR CITY MAN OF THE MATCH BY TEXT – SEE PAGE 62 FOR DETAILS

Paying too much for your mortgage?

To see how much you could save by switching your mortgage call
0800 9530533

for a free no obligation quotation. You could save thousands of pounds.



We don't charge you a penny

Proprietors: London & Country Mortgages Ltd

Beazer House, Lower Bristol Road, Bath BA2 3BA www.lcplc.co.uk

WRITTEN QUOTATIONS ARE AVAILABLE ON REQUEST. LENDERS MAY REQUIRE INSURANCE TO BE IN PLACE. YOUR HOME IS AT RISK IF YOU DO NOT KEEP UP REPAYMENTS ON A MORTGAGE OR OTHER LOAN SECURED ON IT.

Christmas at Bristol Zoo Gardens

Enjoy a winter sing-along in the spectacular Bristol Zoo Gardens. Our Victorian theme will add a touch of seasonal magic.

Family Carol Evenings

Wednesday 18th,
Thursday 19th and
Friday 20th December
6.30pm - 9pm

Adult £3.80 Child £2.20
Annual Members:
Adult £3.00 Child £1.80
Group discounts available.

Santa's Grotto

Saturday 14th December to
Monday 23rd December 2002
11am - 4pm

Make this Christmas extra special with a visit to Santa's Grotto at Bristol Zoo Gardens. £3.20 per child including gift (price does not include entry to the Zoo).



We're open 9am - 5pm every day except Christmas Day. Call (0117) 973 8951 for information and ticket prices or look us up online at www.bristolzoo.org.uk



THE WINNING TEAM

A GREAT DEAL MORE

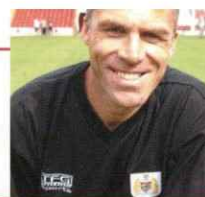


The first team includes:

Ceramic Wall & Floor Tiles	Baths
Adhesives & Grouts	Taps & Wastes
Tiling Tools	Seats & Panels
Tiling Trims	Shower Trays
Tile Cleaning Products	Shower Enclosures & Bath Screens
Bathroom Suites	Bathroom Furniture & Vanity Units

Trade Counter & Retail Showroom

543/551 Fishponds Road, Fishponds, Bristol BS16 3DD
Telephone 0117 965 8000 Fax 0117 958 3863
E-Mail info@bristol-tile.co.uk www.bristol-tile.co.uk



Reserves sting Bees

CITY 2 BARNET 1 Avon Insurance Combination

A GOAL IN each half from Leroy Lita and Marvin Brown gave us a deserved 2-1 win over Barnet in the Avon Insurance Combination.

The match was played on our training ground at Abbots Leigh. We had been due to visit Barnet, but they were unable to stage the fixture because their secretary and safety officer were away attending a tribunal.

It is a rule of the competition that those two club officials are present at home games. Rather than postpone the clash, we offered to switch it because we had a number of players who needed the match practice.

There were only a few minutes on the clock when Albano Correia broke through the visiting defence. Although his shot was saved, Leroy Lita followed up to net the rebound.

We went on to have the better of the first half without being able to convert our pressure into further goals.

That was also the case in the second half until 12

minutes from time when Marvin Brown rose to powerfully head home Simon Clist's left-wing cross.

Goalkeeper Ben Foster had little to do over the 90 minutes, but was beaten in the closing stages as Barnet grabbed a late consolation.

Louis Carey played the first 45 minutes - before giving way to substitute Lee Gardner - prior to his return to the first-team squad for the FA Cup second round tie at Harrogate Railway.

It was important for several players, including Louis, to get a game because not many reserve fixtures were scheduled for December. Of course, we would have preferred to play at Ashton Gate, but that was not possible at such short notice.

In the circumstances, it was a good performance. The only disappointment was getting a bit sloppy and conceding late on. In general, we passed the ball well and were in control throughout.

City Reserves: Foster; Carey (Gardner), Simpson, Fortune, Woodman; Rosenior (Shanahan), Cleverley, Clist; M.Brown, Correia, Lita (Burke).

SHAUN TAYLOR,
DEVELOPMENT COACH



2002/03 FIXTURES

AUGUST		
Wed 14	LUTON TOWN (LC)	3-0
Tue 20	Brentford	1-1
Wed 28	GILLINGHAM *	1-1
SEPTEMBER		
Tue 3	Cirencester (GC Final)	6-0
Wed 18	PORTSMOUTH	1-2
Wed 25	OXFORD UNITED+	2-3
OCTOBER		
Wed 2	Northampton Town	2-1
Wed 9	LEYTON ORIENT *	2-1
Wed 23	Reading	0-6
Wed 30	BRIGHTON +	P-P
NOVEMBER		
Thu 7	TEAM BATH (SC 1) *	2-0
Tue 12	BRISTOL ROVERS *	4-0
Mon 18	Gloucester City (GC 1)	2-1
Wed 20	Cheltenham Town	3-5
Wed 27	Norwich City	1-1
DECEMBER		
Wed 4	Barnet **	2-1
Wed 11	BOURNEMOUTH+	4-3
JANUARY 2003		
Wed 8	QPR	
Wed 15	Colchester United	
Wed 29	MILLWALL	
FEBRUARY		
Tue 4	Luton Town	
Wed 19	PETERBOROUGH U.	
Wed 26	Swindon Town	
MARCH		
Wed 12	Cambridge United	
Wed 26	CARDIFF CITY	
Mon 31	Crystal Palace	
APRIL		
Wed 16	SOUTHEND UTD.	
Wed 23	Plymouth Argyle	
Wed 30	WYCOMBE WANDERERS	

All home games are in **BOLD CAPS**. Venues are still to be decided unless marked * when they will be played at Ashton Gate Stadium and * at Almondsbury Town FC. ** switched to Abbots Leigh Training Ground
Kick-off times are 2pm unless stated. LC = League Cup, GC = GFA Cup, SC = Somerset Premier Cup

PETE AMOS
UNDER-19 MANAGERALAN WALSH
UNDER-17 MANAGER

UNDER-19S FIXTURES/RESULTS

AUGUST		DECEMBER	
Sat 24 Birmingham 1-3		Sat 7 COVENTRY 0-1	
Fri 30 BARNSELY 1-5		Sat 14 Millwall 0-2	
SEPTEMBER		JANUARY 2003	
Sat 7 Wimbledon 2-4		Sat 11 SOUTHAMPTON	
Sat 14 WATFORD 1-0		Sat 18 Fulham	
Sat 21 Leicester 1-2		Sat 25 READING	
Sat 28 A. VILLA 1-3		FEBRUARY	
OCTOBER		Sat 8 Norwich City	
Sat 5 C. Palace 1-3		Sat 15 Charlton A.	
Sat 12 Tottenham 1-2		Sat 22 ARSENAL	
Sat 19 Chelsea 0-4		MARCH	
Sat 26 MILLWALL 1-1		Sat 1 IPSWICH TOWN	
NOVEMBER		Sat 8 WEST HAM U.	
Sat 2 Southampton 2-6		Sat 15 Coventry City	
Sat 9 FULHAM 0-0		Sat 22 C. PALACE	
Sat 16 Reading 0-4		Sat 29 TOTTENHAM H.	
Sat 23 W. Ham 2-2		APRIL	
		Sat 5 CHELSEA	

REMAINING SCHOOLBOY FIXTURES

JANUARY 2002	Sun 27 Crystal Palace
Sat 19 Wolves	MAY
Sun 26 Arsenal	Sun 4 Chelsea
FEBRUARY	
Sun 9 Coventry City	FA YOUTH CUP 2002/03
Sun 16 Millwall	OCTOBER
Sun 23 Birmingham City	Tue 22 SWANSEA C. (R1) 5-3
MARCH	NOVEMBER
Sun 9 Southampton	Wed 6 Cambridge U. (R2) 0-1 (aet)
Sun 16 Aston Villa	
Sun 23 Tottenham Hotspur	
Sun 30 Fulham	
APRIL	
Sun 6 Charlton Athletic	
Sun 13 Reading	

UNDER-17S FIXTURES/RESULTS

AUGUST		DECEMBER	
Sat 24 Birmingham 2-1		Sat 7 COVENTRY 4-0	
Fri 30 DERBY C. 0-2		Sat 14 Millwall 3-1	
SEPTEMBER		JANUARY 2003	
Sat 7 Leeds U. 0-4		Sat 11 SOUTHAMPTON	
Sat 14 BLACKBURN 1-5		Sat 18 Fulham	
Sat 21 WEST HAM 0-2		Sat 25 Reading	
Sat 28 Coventry 0-6		FEBRUARY	
OCTOBER		Sat 8 C. PALACE	
Sat 5 C. Palace 3-1		Sat 15 Arsenal	
Sat 12 Wimbledon 1-4		Sat 22 WATFORD	
Sat 19 IPSWICH 1-2		MARCH	
Sat 26 MILLWALL 1-3		Sat 8 Wolves	
NOVEMBER		Sat 22 C. PALACE	
Sat 9 FULHAM 2-2			
Sat 16 READING 1-2			
Sat 23 W. Ham 3-2			

KEY

• HOME GAMES IN BOLD

- Kick-off times for under-17 and under-19 games are 11am unless stated
- Schoolboy fixtures have been arranged for the club's under-9 to under-16 sides. At least three home games are played per "fixture".
- Schoolboy home games are played at Clifton College Sports Ground, Abbots Leigh and under-17/under-19 matches are held at City's Training Ground. To get there from Bristol travel along the A369 and turn left approximately 300 metres after Beggars Bush Lane. Clifton College Sports Ground is the left turning BEFORE City's Training Ground.

Sky Blues hit for four

**CITY UNDER-17S 4
COVENTRY CITY UNDER-17S 0**
FA Premier Academy League

DANNY LUKEMAN'S SPECTACULAR early strike after just 32 seconds set the tone for a resounding victory.

The midfielder struck a wonderful 25-yard dipping effort into the top corner of the net to give us the perfect start.

After the interval we were awarded a penalty after shirt-pulling by a Coventry defender was spotted at a free kick. Joe Flurry stepped up to convert the 55th minute spot-kick.

Flurry notched his second, and our third of the game, ten minutes later. The striker took on two visiting defenders before curling the ball into the top corner from 18 yards. The scoring was completed with 15 minutes to go.

Cole Skuse finished off a well-worked move with a coolly guided shot into the bottom corner of the net.

It was our first clean sheet of the season and first home victory so there was plenty of cause for satisfaction, and proved that the performance at West Ham was no flash in the pan.

City under-17s: Hodgson, Bailey, C.Hart, Allward, Monelle (Pollinger 46), Holly, Skuse, Lukeman, Golbourne, Flurry, Allcock (Davis 65).

ALAN WALSH

**CITY UNDER-19S 0
COVENTRY CITY UNDER-19S 1**
FA Premier Academy League

WE ENJOYED THE majority of the possession and chances in this game so it was bitterly disappointing to lose by the only goal.

We dominated the whole of the first half and were unlucky not to take the lead when a Joe Anyinsah shot cannoned back off the post.

Craig Loxton also forced the Coventry keeper into making a fine save as the score remained goalless at the break.

We were then dealt a major blow immediately after the interval. A poor Matthew Rouse pass put the defence under pressure and, after a goalmouth scramble, the ball was poked home from close range by a Coventry forward.

We still had a number of good chances to equalise, but failed to take them, ending the game pointless.

It has really been the story of our season so far, we just can't put the ball in the back of the net.

It is frustrating watching from the sidelines, but we played some superb football and I know we will get it right.

City under-19s: Lindsay, Simpson, Gardner, Folkes, Rouse (Harley 60), Metitiri (Soski 55), McGuire, Hawkins, Loxton, Anyinsah, Donkor (Aubrey 70).

PETE AMOS

ACADEMY STAFF

Academy Director:

Tony Fawthrop

Assistant Director (under-17/under-21) and Under-19 Manager: Pete Amos

Assistant Director (under-19/under-16) and Under-17 Manager: Alan Walsh

Head of Education and Welfare:

Pete Coleman

Recruitment Officer:

Roger Barton

Academy Doctor

Heather Montague

Physiotherapist

(under-17-21): Anna Easton

Football Secretary:

Michelle McDonald

Academy Administrator:

Becky Henderson

SCHOOLBOY MANAGERS

Under-16: Alan Walsh

Under-15: John Clayton

(assistant: Ralph Hood)

Under-14: Graham Muxworthy

(assistant: Mark Pullman)

Under-13: Frank Jacobs

Under-12: Dean Ackland

(assistant: Chris Sayce)

Under-11: Dave McGibbon

Under-10: Ian Tinknell

(assistant: Gareth Lukins)

Under-9: Junior Burke

Goalkeeping Coach: Billy Mercer

(assistant David Horseman)

LOCAL JOBS FOR LOCAL PEOPLE

Current vacancies in warehousing, distribution, production, electronics, loading, assembly operating and lots more

PHONE 0117 953 0195 OR VISIT OUR OFFICE AT ASHTON GATE STADIUM
(OPPOSITE THE PRIME TIME WILLIAMS STAND)

SHIRT SPONSORS TO CITY'S ACADEMY





SPONSOR
MIDFIELDER
MARIE CAMPBELL
6+ TAPPS, 0 GOALS
BY RINGING
0117 963 0605



ABUS FARESAVER
SUPPORTING CITY LADIES

Defender • 2002/03 appearances: 9+3 Goals: 0

Taylor Woodrow

Midfielder • 2002/03 appearances: 13+2 Goals: 5

Taylor Woodrow

Midfielder • 2002/03 appearances: 3+6 Goals: 0

SHARON B

Midfielder • 2002/03 appearances: 3+4 Goals: 0

MAGGIE LANSDOWN

Striker • 2002/03 appearances: 15 Goals: 10

Taylor Woodrow

Midfielder • 2002/03 appearances: 1+7 Goals: 0

STERLING TOWING AND ALARMS

Midfielder • 2002/03 appearances: 15+1 Goals: 1

KWIK MOVE
The Right Move
Freephone 08000 19 19 79

Goalkeeper • 2002/03 appearances: 5 Goals: 0

GEOFF, JAMIE, TIM, DAVE AND PAUL BUSINESS EXECUTIVE CLUB

Defender • 2002/03 appearances: 1+7 Goals: 0

Nevard Roland

Defender • 2002/03 appearances: 9+1 Goals: 0

DCM Computers
1a Atlas Road, Bristol
Tel: 0117 9497790

Defender • 2002/03 appearances: 16 Goals: 0

tindirect.com

Striker • 2002/03 appearances: 15+2 Goals: 6

Taylor Woodrow

Midfielder • 2002/03 appearances: 8+1 Goals: 1

P & G CONTRACTORS

Striker • 2002/03 appearances: 15+1 Goals: 2

H.O.SOCCER

Goalkeeper • 2002/03 appearances: 12 Goals: 0

tindirect.com

Defender • 2002/03 appearances: 14 Goals: 2

Carillion
T-Shirt Printers and Embroiders
Tel: 0117 942 4193

Defender • 2002/03 appearances: 11+1 Goals: 1

DI AND WENDY ROWLAND

Striker • 2002/03 appearances: 16 Goals: 9

Millwall tamed in Cup

CITY 2
MILLWALL LIONESSES 0
Womens FA Cup Round Three

WE OVERCAME A strong Millwall side to move into the fourth round of the FA Women's Cup.

The game was played at the club's training ground at Abbots Leigh in wintry conditions.

In a very uneventful first half our keeper Genevieve Reid pulled off a wonderful save to keep the scores level going in at the break.

We struck the opener just 50 seconds after the interval through midfielder Katy Little. Jade Bailey's 25-yard strike was only parried out by the visiting keeper and, with the rebound falling the way of Katy, she guided the ball calmly into the goal with her weaker right foot.

We were made to wait for our second, as the game continued with few chances for either side.

Then, as the game reached the 89th minute, Heidi Bevan held the ball in the corner, before evading a sliding challenge with a superb turn. Heidi's curling cross found Charlotte King unmarked in the box who made no mistake firing the ball powerfully into the corner of the goal with a right-footed shot.

The good thing is that the FA Women's Cup is no longer regionalised so, unlike in previous seasons where we would have just been paired with Bristol Rovers in round four, we've now got a better chance of progressing further.

I had hoped that we draw one of the ten Premier Division sides so that we get the chance to really



Katy Little

compare ourselves with quality opposition, but we've been handed a home tie with Northern Premier Division side Oldham Curzon, who will provide a very tough test in January.

We deserve another home tie for our gritty display against Millwall. It was a bitterly cold day, but we were motivated, up for the game and thoroughly deserved our win. We closed our opponents down well and restricted them to very few chances, which pleased me greatly.

It was also nice to see Katy on the scoresheet. She really deserved her goal and you could see by the smile on her face that she will take great confidence from it.

For the second goal, Heidi's turn and cross showed true quality but Charlotte still had to finish it and struck the ball with great technique.

City Women: Reid, Johnson-Taylor, Bryant, Dunn, King, Roxburgh, Bevan, Munro, Bailey, Little, Tinson.

JACK EDGAR, BCWFC MANAGER

2002/03 FIXTURES

AUGUST	
Sun 18	Enfield 7-3
Sun 25	IPSWICH TOWN 1-1
SEPTEMBER	
Sun 1	Chelsea 0-0
Sun 8	Aston Villa (LC1) 2-5
Sun 15	Millwall Lionesses 4-2
Sun 22	WIMBLEDON 2-0
Wed 25	BRISTOL ROVERS* 2-3
Sun 29	MERTHYR TYDFIL 0-0
OCTOBER	
Sun 6	CHELSEA 1-2
Sun 13	BARNET 3-1
Sun 20	Barking 2-1
Wed 23	Bristol Rovers 1-4
NOVEMBER	
Sun 3	LANGFORD 2-2
Sun 10	ENFIELD 2-1
Sun 17	Ipswich Town 3-4
DECEMBER	
Sun 8	MILLWALL (FA R3) 2-0
Sun 15	Merthyr Tydfil 5-3
JANUARY 2002	
Sun 5	OLDHAM C2NL (FA R4, 1pm ko)
Sun 12	MILLWALL LIONESSES
Sun 19	Wimbledon
Sun 26	FA Cup R5
FEBRUARY	
Sun 2	Barnet
Sun 9	BARKING (or FA R6)
Sun 16	Langford
All home games are in BOLD CAPS	
and will be played at Clifton College Training Ground, kick-off 2pm unless marked * when they will be played at Ashton Gate Stadium, kick-off 7.30pm	
LC = League Cup FA = FA Cup	
FA PREMIER LEAGUE SOUTHERN DIVISION	
(Top three only)	
P W D L F A GD Pts	
1 Rovers	12 11 0 1 53 13 40 33
2 Ipswich	11 7 1 3 33 20 13 22
3 CITY	14 6 4 4 30 24 6 22

MATCH REPORT

CITY 3 (Beadle 32, Richardson og. 57, Peacock 83) NOTTS COUNTY 2 (Stallard 19, 80)

A **SCOTT MURRAY** super show helped City storm into third spot with a devastating second half display.

The Scot, starting his 200th game for the club, had a hand in all three City goals.

After Mark Stallard had given the visitors a surprise lead in the 19th minute, Murray set-up Peter Beadle to score an equaliser against his former club.

In the second period Murray tormented the County defence at will and it was his header that Magpies skipper Ian Richardson steered into his own net to give City a 2-1 lead.

Stallard scored against the run of play to level the scores at 2-2, but Murray was again on hand to tee up sub Lee Peacock for the winner.

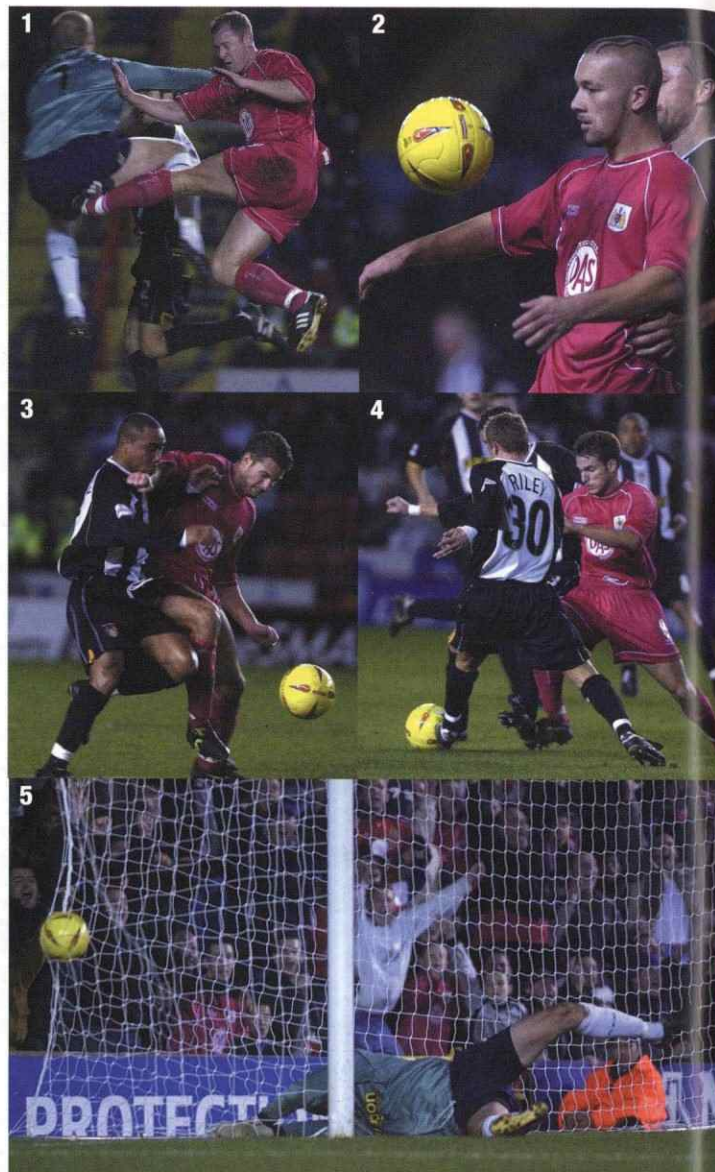
City: Phillips; Bell, Hill, Butler, Coles, Tinnion, Doherty, Burnell, Murray, Beadle (Peacock 61), Roberts (Rosenior 79). Subs not used

A. Brown, Woodman, Foster

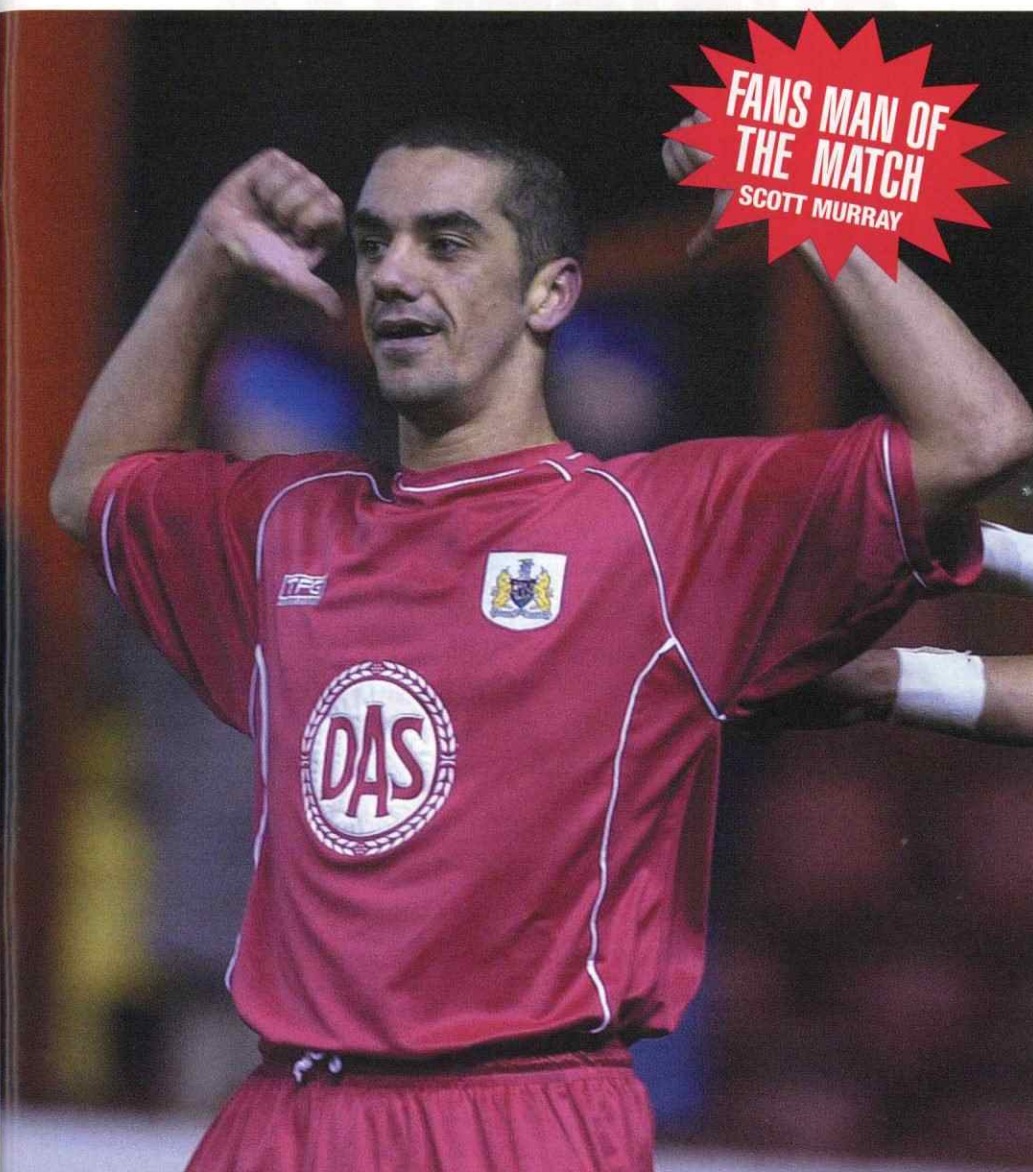
Notts County: Mildenhall, Fenton, Ashton (Caskey 46), Richardson, Riley (Francis 82), Jupp (Heffernan 85), Whitley, Ramsden, Baraclough, Stallard, Allsopp. Subs not used: Garden, Ireland.

Attendance: 10,690

• Full reports appear on **bcfc.co.uk** within an hour of the final whistle



**FANS MAN OF
THE MATCH
SCOTT MURRAY**



1. Peter Beadle mixes it with County keeper Steve Mildenhall before scoring an early equaliser against his former club
2. The scores locked at 1-1 Beadle's striking partner Christian Roberts keeps his eye on the ball
- 3 & 4. The enforcer. Joe Burnell stamps his authority on the midfield
5. Mildenhall can only look on in despair as County skipper Ian Richardson hooks Scott Murray's shot into the net to give City a 2-1 lead

bristol city



CHRISTMAS OPENING HOURS

SUNDAY 22ND DECEMBER: 10AM-2PM
MONDAY 23RD DECEMBER: 9AM-5.30PM
TUESDAY 24TH DECEMBER: 9AM-12 NOON
CHRISTMAS DAY: CLOSED
BOXING DAY: 10AM-2.30PM
FRIDAY 27TH DECEMBER: 9AM-12 NOON
SATURDAY 28TH DECEMBER: CLOSED
SUNDAY 29TH DECEMBER: CLOSED
MONDAY 30TH DECEMBER: 9AM-5.30PM
TUESDAY 31ST DECEMBER: 9AM-12 NOON
NEW YEAR'S DAY: CLOSED
THURSDAY 2ND JANUARY: 9AM-5.30PM
FRIDAY 3RD JANUARY: 9AM-5.30PM
SATURDAY 4TH JANUARY: 9AM-12 NOON

MAIL ORDER HOTLINE: 0117 963 0637
 OR LOG ON TO THE ONLINE SHOP ON **bcfc.co.uk**

*May we take this opportunity to wish all of our customers
 a Merry Christmas and a Happy New Year*



**Bristol City
Football Club**

bcfc.co.uk

WE'VE MET BEFORE... | LEIGH EDWARDS



Peter Spiring

ENGLAND YOUTH INTERNATIONAL

midfielder Peter Spiring was a young member of Alan Dicks' squad at Ashton Gate in the early seventies.

The son of former Bristol City player Gordon Spiring, he signed professional at Ashton Gate in June 1968 and made his debut as a substitute for Gerry Sharpe in the League Cup second round replay at Leicester City in September 1969.

He was given his Second Division debut in Bristol City's 2-0 win at home to Birmingham a month later and provided reliable cover for the likes of Chris Garland and Alan Skirton, playing in the 1970/71 League Cup semi-final second-leg at Tottenham Hotspur.

Securing a regular first-team slot the following season, he netted 16 goals in 63 Second Division games for City before a surprise £60,000 move to Bill Shankly's

Liverpool in March 1973.

He failed to gain a first-team place with the League Champions but remained in the top-flight after joining Luton Town for £70,000 in November 1974.

Unable to prevent the Hatters from being relegated straight back to the Second Division that season, he scored twice in 15 League outings for today's opponents before reuniting with John Sillett at Hereford United for £8,000 in February 1976.

Helping them to clinch the Third Division title that season, he briefly played alongside John Galley again and spent seven years at Edgar Street.

He still lives in Hereford and has been an electrical contractor since October 1983.

Leigh Edwards acts as the club's Past Players Co-Ordinator.



CURRENT VIEW

"I look out for the results of both Bristol City and Luton Town and am pleased to see both clubs currently doing well in the Second Division. I think City could go up this season under Danny Wilson, while the Hatters might achieve a second consecutive promotion success under Joe Kinnear via the play-offs."

CITY HIGHLIGHT

"I played for Bristol City in the 1970/71 League Cup semi-final second-leg at Tottenham and we were unlucky to lose 2-0 after extra-time to a side including the likes of Pat Jennings, Alan Mullery, Martin Chivers, Alan Gilzean and Martin Peters. Spurs went on to beat Aston Villa in that season's final."

PLAYING RECORD

BRISTOL CITY

	L	FA	LC	Total
1969/70	4		1	5
1970/71	6		1	7
1971/72	31 (9)	1 (1)	1	33 (10)
1972/73	22 (7)	3	1	26 (7)
Total	63 (16)	4 (1)	4	71 (17)

LUTON TOWN

	L	FA	LC	Total
1974/75	7 (1)			7 (1)
1975/76	8 (1)			8 (1)
Total	15 (2)			15 (2)

Goals in brackets



WINNING MARGINS

Games won by:	1 gl	2 gls	3 gls	4+
Bristol City	5	5	3	1
Wigan	4	9	1	0
Cardiff	8	2	1	2
Oldham	5	3	0	3
Crewe	4	4	2	1
Tranmere	5	2	1	1
Brentford	6	2	0	1
Chesterfield	7	1	0	1
QPR	1	5	1	1
Blackpool	4	2	2	0
Luton	5	1	2	0
Northampton	3	1	3	0
Stockport	4	2	1	0
Wycombe	3	3	1	0
Port Vale	6	1	0	0
Plymouth	4	1	1	0
Barnsley	5	1	0	0
Colchester	5	1	0	0
Swindon	3	3	0	0
Mansfield	2	1	0	2
Peterborough	2	1	1	1
Huddersfield	3	1	1	0
Cheltenham	3	2	0	0
Notts County	1	0	3	0

FULL GROUNDS - ATTENDANCES

Club	Aggregate	% Capacity
Blackpool	70,531	69
Cheltenham	50,036	68
Luton	74,293	68
Northampton	55,658	66
QPR	126,767	66
Cardiff	143,681	65
Crewe	68,240	61
Chesterfield	40,592	58
Wycombe	63,937	58
Bristol City	112,743	52
Oldham	74,173	50
Brentford	65,597	47
Plymouth	102,067	46
Stockport	52,727	46

CLEAN SHEETS

Gms without conceding	Lge Pos
Wigan	11
Oldham	11
Chesterfield	11
Cardiff	10
Crewe	9
Bristol City	8
Brentford	8
Luton	8
QPR	7
Northampton	7
Huddersfield	7
Blackpool	6
Port Vale	6
Plymouth	5
Colchester	5
Notts County	5
Cheltenham	5
Tranmere	4
Wycombe	4
Stockport	4
Peterborough	4
Swindon	2
Barnsley	2
Mansfield	2

FAILED TO SCORE

Gms without scoring	Lge Pos
Huddersfield	10
Mansfield	9
Northampton	9
Blackpool	9
Chesterfield	9
Peterborough	8
Swindon	8
Colchester	7
Tranmere	7
QPR	7
Notts County	6
Barnsley	6
Brentford	6
Crewe	6
Cheltenham	5
Stockport	5
Wycombe	5
Plymouth	5
Luton	5
Oldham	5
Port Vale	4
Bristol City	4
Cardiff	3
Wigan	3

SEQUENCES:

CONSECUTIVE WINS:

Bristol City	6
Oldham	6
Luton	5
Port Vale	5
QPR	5
Wigan	5
Plymouth	4
Cardiff	3
Chesterfield	3
Northampton	3
Stockport	3

UNDEFEATED RUN:

Wigan	15
Bristol City	11
Cardiff	10
Crewe	8
Blackpool	7
Brentford	7
Luton	7
Oldham	7
Swindon	7

LOSING STREAK:

Swindon	6
Colchester	5
Mansfield	5
Peterborough	5
Blackpool	4
Luton	4
Northampton	4
Port Vale	4
Wycombe	4
Brentford	3
Cheltenham	3
Huddersfield	3
Stockport	3

NO WINS:

Cheltenham	8
Notts County	8
Plymouth	8
QPR	8
Colchester	7
Mansfield	7
Peterborough	7
Swindon	7

HIGHEST & LOWEST ATTENDANCES

Premiership	67,691 Man U v Southampton
Division 1	33,016 Derby v Reading
Division 2	15,491 QPR v Oldham
Division 3	14,162 Hull v Darlington
	1,583 Macclesfield v Oxford

HEADERS SCORED

Peterborough	10
Oldham	9
Wycombe	9
Barnsley	8
Cardiff	8
Port Vale	8
Wigan	8
Crewe	7
Luton	7
Mansfield	7
Plymouth	7
Brentford	6
Bristol City	6
Tranmere	6

PENALTIES SCORED

Wycombe	5
Brentford	4
Oldham	4
Swindon	4
Bristol City	3
Port Vale	3
Wigan	3
Blackpool	2
Cardiff	2
Chesterfield	2
Colchester	2
Luton	2
Plymouth	2

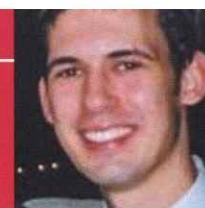
GOALS FROM OUTSIDE 18 YARD BOX

SCORED	Gls	Total	%
Mansfield	9	36	25
Crewe	8	32	25
Colchester	5	21	24
Chesterfield	4	18	22
Plymouth	6	28	21
Barnsley	5	24	21
Bristol City	9	45	20
Notts County	6	30	20
Tranmere	5	26	19
Northampton	4	21	19
QPR	5	28	18
Wigan	6	36	17
Oldham	4	34	12
Huddersfield	2	17	12
Stockport	3	26	12

ordered as % of all goals scored

GOALS PER GAME - THE MOST CONSISTENT STRIKERS

Player	Rob Hulse	Robert Earnshaw	Scott Murray	Clyde Wijnhard	Luke Beckett	Iyden Christie	Sam Parkin	Nathan Ellington	Andy Clarke	Andy Liddell	Marco Gabbiadini
Lge Gls	15	16	12	8	14	13	12	9	9	9	10
WC Gls	1	3	0	2	1	1	0	0	0	0	0
FAC Gls	0	0	3	0	0	0	1	0	1	0	1
LDV	3	0	2	0	0	0	0	2	0	0	1
Gls/Game	0.86	0.76	0.65	0.65	0.62	0.61	0.57	0.57	0.52	0.50	0.48



Individual contributions made to this page are supplied by supporters and do not necessarily reflect the views of Bristol City FC

Kenyon idea an insult

MANCHESTER UNITED: THE finest English side of the last decade and, along with recent success, able to boast a proud history.

From their breathtaking European Champions' League victory of 1999, to the imprint left on the nation's psyche by the Munich air disaster, and to visions of Best, Law and Charlton in their pomp, the club has a fine heritage.

Which is why the insularity, the single-mindedness, and the disregard for the rich tapestry of English football in Chief Executive Peter Kenyon's statement that the League should be restructured with only 40 full-time clubs, is so insulting.

The idea that the top two divisions should remain professional whilst the third level of the game adopts semi-professional status fails to respect the history of English football (of which Manchester United are just one part). That is bad enough in itself, but it also presumes that because the Stretford club has succeeded in generating vast profits for itself it is qualified to give advice on how the rest of the game is run.

The major flaw with Kenyon's argument is that, whilst Manchester United view themselves as a brand that can be dished up in any language in any country, the majority of clubs in the League are part of the communities from which they have emerged and rely on

supporters who attend football matches rather than customers who purchase merchandise for their income and existence.

So, whilst these so-called "smaller" clubs can never rival Manchester United's business model, the point is that they are not trying to, and do not need to be preached at by an individual who has no experience of their needs and aspirations.

The reason for Kenyon's argument is, of course, selfish: the less competition there is, the larger United's share of television income; the further his club can franchise themselves into towns and cities around England, the easier it is for them to hive off young talent nationwide, and the stronger their share price becomes.

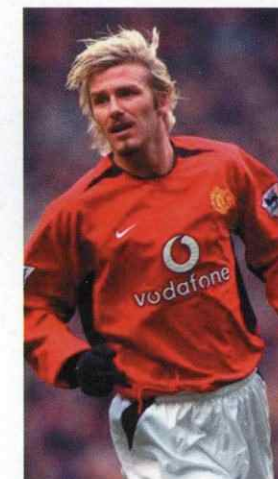
It is the flip-side of the argument in terms of the stock-market price, however, that makes Kenyon's point of view so tenuous.

Ultimately, the financial viability of Manchester United depends on the whims of share-dealers, the success of Sky TV as a company, and increasingly the world economy.

Should a world recession occur it will be Manchester United who will face immediate difficulty, rather than the clubs they seek to destroy.

ED HAYES

Ed is a regular contributor to the City List and Fans' Forum



WEEKEND FIXTURES

PLAYED, YESTERDAY
Colchester v Cardiff
Stockport v Northampton

PLAYING TODAY
Barnsley v Mansfield
Blackpool v Peterboro'
CITY v LUTON
Cheltenham v Wycombe
Chesterfield v Oldham
Port Vale v Plymouth
QPR v Brentford
Swindon v Crewe
Tranmere v Notts Co
Wigan v Huddersfield



BORN: BRISTOL, 22.1.77
POSITION: DEFENDER
SIGNED: FROM YOUTH
CITY APPEARANCES: 279+12 SUB
CITY GOALS: 3



WORK

**ON A TYPICAL HOME MATCHDAY
 WHAT TIME DO YOU USUALLY GET UP?**

Between 10 o'clock and 11 o'clock

**WHAT'S A TYPICAL MATCHDAY
 BREAKFAST?**

I don't have breakfast, just a pre-match meal of pasta and beans at about midday.

**WHO DO YOU ROOM WITH ON AWAY
 TRIPS?**

Scott Murray. I'm told he has been quiet on the trips while I've been out injured, but that will change when we are together again because we spark each other off.

**HAVE YOU GOT ANY DRESSING ROOM
 SUPERSTITIONS?**

No, I'm not superstitious.

WHAT'S YOUR PRE-MATCH ROUTINE?

Eat, shower, get changed and take part in the team warm-up. Nothing special
**DO YOU GET ANY NERVES BEFORE
 THE GAME?**

I don't feel nervous in my mind, but I always get a few knots in the stomach and visit

the toilet a few times. As soon as we run out all the butterflies disappear as if by magic.

**WHAT IS YOUR POST-MATCH
 ROUTINE?**

After a warm down I jump in the shower. Then I drink lots and lots of . . . water and have a jam sandwich.

**WHICH IS THE FIRST RESULT YOU
 LOOK FOR?**

My favourite team Liverpool and whoever I have down on my coupon!

**HOW DO YOU SPEND THE EVENING
 AFTER A HOME MATCH?**

Stay in with my girlfriend and relax.

WHAT TIME DO YOU GO TO BED?

Really late. I don't sleep well after games so it is normally in the early hours.

**HOW MUCH CAN YOU HEAR OF THE
 INSTRUCTIONS COMING FROM THE
 BENCH?**

As much as you want to hear. If it's a rollicking you try not to notice.

**WHAT'S BEEN YOUR WORST INJURY
 TO DATE?**

A facial injury against Millwall at Ashton Gate a few years ago when I was caught by some studs.

**WHAT WOULD YOU SAY WAS YOUR
 BEST GOAL?**

Very difficult because they were all pretty special – all three of them! Two close range headers and a deflected shot. All equally good in my book.

WHAT HAS BEEN YOUR BEST GAME?

There have been so many I can't think of one in particular!

**HAVE YOU EVER HAD A NIGHTMARE
 MATCH WHERE NOTHING SEEMS TO**

GO RIGHT?

I'm not sure about one particular game, but I have been credited with about five own goals. These days it seems the striker always gets the credit when the ball is deflected, but that wasn't always the case.

**WHAT DO YOU REGARD AS YOUR
 MAIN STRENGTHS?**

Reading the game and defending strongly.

**WHAT ASPECT OF YOUR GAME NEEDS
 WORKING ON?**

My heading, left-foot and concentration.

**HOW MUCH SUPPORT/CRITICISM CAN
 YOU HEAR FROM THE STANDS?**

You definitely notice a collective buzz when the crowd are behind you, but individual comments or criticism usually goes over your head.

PLAY

**WHERE DO YOU POSITION YOURSELF
 FOR KICK-OFF?**

Somewhere in the back-line, depending on what position I am playing.

like we know them!

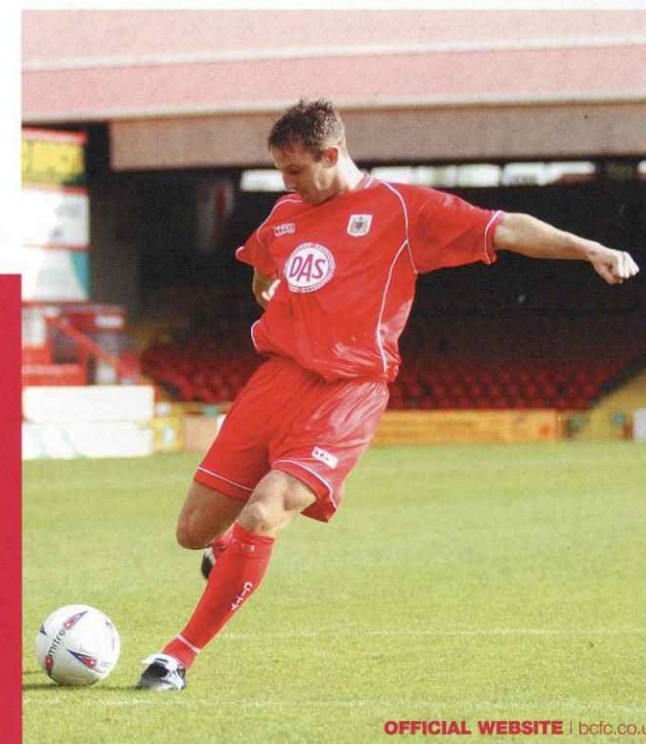
DO YOU HAVE ANY PETS?

Yes, I have a rottweiler called Lottie.

**WHAT DO YOU SPEND MOST
 EXTRAVAGANTLY ON?**

DVDs and music.

**FOR DAILY INTERVIEWS WITH THE
 PLAYERS AND MANAGEMENT
 SUBSCRIBE TO CITY'S ONLINE TV
 SERVICE bcfcworld.co.uk
 TODAY.**



REST

**WHAT'S THE TUNE ON YOUR MOBILE
 PHONE?**

The Godfather theme.

**WHAT'S THE FUNNIEST THING YOU
 HAVE SEEN UP ON THE TRAINING
 GROUND?**

Tony Thorpe throwing the toys out of the pram after being awarded the yellow jersey for having a stinker in

training. He threw a right tantrum and chucked the jersey down.

**WHICH TUNE WOULD YOU LIKE TO
 RUN OUT TO?**

Simply the Best.

**WHICH RADIO STATION DO YOU LIKE
 TO LISTEN TO?**

GWR. Well, they do sponsor the club.

WHO OR WHAT MAKES YOU LAUGH?

Looking in the mirror.

**WHAT'S YOUR MOST
 EMBARRASSING MOMENT IN**

TRAINING?

Being top of Buster Footman's list for losing kit. It's on the notice board for all to see.

**WHAT GOOD CAUSES ARE CLOSE TO
 YOUR HEART, WHAT CHARITIES DO
 YOU SUPPORT?**

Nothing in particular. I try to support any that ask me.

GOT ANY FAMOUS FRIENDS?

Not really. But Lee Matthews goes on so much about Leeds United players "Bows and Woody" that the rest of us feel



 **LOUIS CAREY**

**CITY
Jnr
STRIKERS**

CO-HOSTED BY



**MEET THE PLAYERS
DISCO, GAMES AND FOOD
GREAT GIVEAWAYS
RAFFLE***

* Prizes include a City mascot package and
unbelievably special gift from GWR FM!

**EVENT HOSTED BY
GWR FM'S HOWARD TAYLOR**

PLUS APPEARANCE BY THE GWR BLACK THUNDER TEAM

CHILDREN £5 • ADULTS FREE

TO BOOK RING THE TICKET HOTLINE ON 0117 966 6666

Those who have already booked a place will be sent tickets for the new date

**RED'N'WHITE BAR, ASHTON GATE STADIUM
MONDAY 6TH JANUARY 2003, 6PM-8PM**



**Bristol City
Football Club**

bcfc.co.uk

**NEW YEAR
PARTY 2003**

**FREE
FOOTBALL
FOR
EACH CHILD**



**CITY
Jnr
STRIKERS**

CITY JUNIOR STRIKERS | JOHN BANKS

MATCHDAY CLUBROOM:
OLD BOWLS CLUB, DOLMAN STAND
ENQUIRIES: 01454 883440

Merry Christmas everybody!

WELCOME TO TODAY'S GAME against Luton Town. As it is the last game before the holidays may we take this chance to wish you all a very Happy Christmas.

LET'S PARTY!

WHAT BETTER WAY to kick off the holiday season than with a party? Well, that is just what we are having in the CJS area today, and all our young members are invited.

Our guests today are the Luton Town Junior Supporters Club. We will be challenging them to games of five-a-side football, pool, table football and air hockey.

Every youngster who comes into the Club Area today will receive a free raffle ticket. Every 20 minutes we will draw out a ticket to win a selection box, but to win you must be in the CJS area when the number is drawn.

As well as a party buffet, we will be having lots of great giveaways and City Cat has also promised to pop along.

STOCKPORT TRIP

THERE ARE STILL seats left for our away day trip to Stockport County on Saturday 28th December.

We will be guests of Stockport County Juniors and they are hoping to challenge us to a football match before the main game.

To reserve your place phone Claire on 01454 883440.

JOHN BANKS



ANSWER THIS QUESTION . . . AND YOU COULD **WIN** HMV MUSIC VOUCHERS

A great new competition in which you can win HMV music vouchers. Simply send the answer to the following question on a postcard to the Media Department, Ashton Gate Stadium, Bristol BS3 2EJ. The answer will appear in the next issue of **wall red**.

Q: Which Northern Ireland international, now playing for Luton, played on loan at Ashton Gate last season?

The answer to the question in the last issue was Carl Heffernan.

OHMV
top dog for music-video-games

wall red | LUTON TOWN 21/12/02

SEYMOUR'S FAMILY CLUB

47/49 BARTON VALE, ST PHILIPS, BRISTOL BS2 0LJ

Telephone 0117 929 0093

CHILDREN'S PARTIES

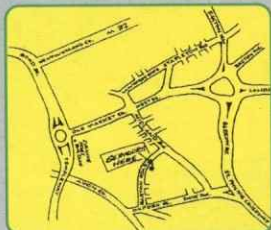
PARTIES ARE AVAILABLE FOR CHILDREN AGED 6 TO 15 YEARS.

TEENAGE PARTIES ARE ALSO AVAILABLE.

THE CHARGE FOR THE PARTY IS ONLY £150

(A £20 deposit is required – the balance payable on the day in cash)

The party will consist of three hours of fun, with DISCO, GAMES, KARAOKE, BALLOONS and COMPETITIONS with prizes provided.



HOW TO FIND US
Seymour's is behind the Barley Mow
Tel: (0117) 929 0093

SEYMOUR'S SILVER MEMBERSHIP

Cut out and return for one year's FREE membership from 2 Jan 2003

Mr / Mrs / Miss / Ms

SURNAME

FIRST NAME

ADDRESS

POSTCODE

TELEPHONE No. of CHILDREN

ADULT PARTIES

OUR SPACIOUS FUNCTION ROOM IS AVAILABLE FOR HIRE.

THE BAR AREA CAN BE USED FOR UP TO 40 PEOPLE ON A SATURDAY.

THE FUNCTION ROOM CAN ACCOMMODATE UP TO 200 PEOPLE, WE ALSO HAVE TWO SKITTLE ALLEYS, WHICH YOU CAN BOOK AT NO CHARGE.

ROOM HIRE CHARGE

Any day up to 7.00pm: £50.00

Monday to Thursday

8.00pm – 1.00am: £150

Friday to Saturday

8.00pm – 2.00am: £300

Prices include our fully stocked Disco and Karaoke.

£100 deposit required, balance payable one week prior to event.

Hours of Business

Mon – Thurs 7.00pm–11.00pm

Fri 11.30am–3.00pm &

7.00pm–2.00am

Sat 8.00pm–2.00am

Sun Noon–10.30pm

WE ENJOY CHILDREN!
Why not cut out this advert and hand it in any Sunday for FREE admission – 10.30
IT'S FAMILY FUN NIGHT
Go on treat the kids 'phone 9290093



APPLICATION FORM | RUGBY TICKET OFFER

CJS Shoguns ticket offer

CITY HAVE TEAMED up with Bristol Shoguns Rugby Football Club, and National Deposit, to offer all CJS members a FREE ticket to watch a top Zurich Premiership match next year.

And, in a ground-breaking ticketing initiative, CJS members' counterparts, the Junior Shoguns, will be guests at Ashton Gate for the Mansfield Town home game on Saturday 12th April 2003.

The CJS visit to the Memorial Ground will take place on Sunday 2nd February 2003 for Shoguns' fixture against Leeds Tykes. There will be one free junior ticket available to each member of the CJS by postal application only – an application is printed below. Alternatively they are available from the Club Area on matchdays, or Non-Matchday Reception during the week.

All applications must be received by the rugby club no later than Monday 27th January 2003 to allow for return postage. Additional tickets for the same match can only be purchased using the application form, and are priced as follows: £11 adults, £7 OAP and students and £2 under-16s.



APPLICATION FORM

NAME CJS MEMBERSHIP NO.

ADDRESS

POSTCODE PHONE No.:

I would like to claim my free South Stand under-16 ticket plus _____ additional adult tickets at £11 each, _____ additional OAP/student tickets at £7 each and _____ additional Under-16 tickets at £2.

I enclose a cheque/credit card details (delete as appropriate) to the value of £

Credit/Debit card number

Expiry date Issue number (Switch only)

Cardholders signature



PARTNERS



Spreading City's name far and wide

WE WOULD LIKE to wish all of our sponsors a Very Merry Christmas and a Happy New Year.

We would especially like to thank everyone at the Football Foundation, Sportsmatch, TL Visuals, Bristol City Council, Blackwells, National Deposits, Children's Fund, Nationwide and Moyra at McDonalds.

We would also like to say a huge thank you to everyone at Bristol City Football Club for all of their continued support.

BRIDGWATER COLLEGE STUDENTS VISIT

DURING LATE OCTOBER City threw open its doors to welcome three parties of special needs students from Bridgwater College in Somerset.

They were treated to a tour of Ashton Gate and were introduced to the entire City team before leaving for Bridgwater. The City lads were preparing to leave by coach for the away trip to Peterborough, and all of them took time out to pose for photos and sign autographs, which finished off a spectacular day out for our guests from Somerset.

It was a pleasure to welcome Bridgwater College to Ashton Gate, as part of our ongoing commitment to supporting Ability sports in the Community.

The day was a tremendous success for all, and we look forward to repeating it again in the very near future. We will now be visiting the students at college to increase and further develop our commitment and presence in the area of South Somerset.

Jane Irons of Bridgwater College said: "We received a truly warm welcome from everyone at



City including the players. We felt very much at home and can't wait to come back again soon."

MARK WEDERELL

FORZA ROSSI!

WE HAVE RECEIVED the following letter from Neil Barnes, who gave us this entertaining account of a recent trip to Italy:-

"For the last 18 months, we have been working alongside several Italian companies on projects throughout Europe.

"We soon found some common ground in the international language of football and exchanges of Bristol City and Napoli scarves and visits to the Napoli Stadium to watch Serie B games (not as good as Nationwide League Division Two in our opinion!) inevitably

led to a five-a-side challenge match at the end of the project.

"The Bristol City European All Stars team – comprising two Brits, two Italians and a Serb (myself, Clive Burlton, Francesco Barone, (IPI), Salvatore Apolito (Grant Thornton) and Igor Stevovic (SEDA)) – took to the field donning new Bristol City shirts.

"The opponents were hand picked from the SEDA food packaging factory in Naples and the match took place in Arzano, a boulder throw away from Mount Vesuvius.

"In front of a large and partisan crowd the 'friendly' match was competitively contested and, although Bristol City never fell behind, a late injury-time goal by SEDA ensured a diplomatic 6-6 draw.

"After the match, two copies of 'Bristol City FC: The First 100 Years', signed by the City players and kindly donated by the club, were presented to our Italian colleagues as a thank you for their help during the project.

"Francesco, Igor, and Salvatore have kept their City shirts and promise to wear them around Naples whenever they can – an Italian branch of the City Supporters Club has been born!

"They wish the club every success for the rest of this season and hope that come the start of next, we shall be playing at the same standard as Napoli.

"As they say in Italiano: 'Forza Rossi' (Come on you Reds)!"

**NEIL BARNES OF
NEIL BARNES COMMERCIAL
MARKETING CONSULTANCY**



From left to right: Clive Burlton, Francesco Barone (IPI), Salvatore Apolito (Grant Thornton), Igor Stevovic (SEDA), Neil Barnes



THE TEAM

Football In The Community Officer: Tommy Hutchison

Football In The Community Officer: Ian Doherty

Study Support Manager: Mandy Thorpe

Assistant Study Support Manager: Russell Tanner

Community Development Officer (Disability): Geoff Stevens

Football In The Community (YTS): Ashley Morgan

CHARITABLE OBJECTIVES

To further and assist in the education (on both a social and physical basis) of children attending schools within the neighbouring area through the use of football and other activities as educational tools. In the furtherance of this aim Ashton Gate Stadium will be used as a venue for meetings, lectures and classes for the benefit of children regardless of sex, colour, creed or ability.



Time to get a bigger car?

Time for a Nationwide Personal Loan

Our lowest
rate ever
7.9%
APR FIXED

Call us today for a quick decision •

Nationwide. Proud to be different

 www.nationwide.co.uk |  0800 30 20 10 |  or just call in

Banking | Credit Card | Insurance | Investments | Loans | Mortgages | Pensions | Savings

LOANS ARE SUBJECT TO AN APPLICANT'S FINANCIAL STANDING AND ARE AVAILABLE TO THOSE AGED 18 OR OVER. CREDIT FACILITIES PROVIDED BY AND WRITTEN QUOTATIONS AVAILABLE FROM NATIONWIDE TRUST LIMITED, NATIONWIDE HOUSE, 20 LOWER DAGNALL STREET, ST. ALBANS, HERTS AL3 4RR. NATIONWIDE TRUST IS A WHOLLY OWNED SUBSIDIARY OF NATIONWIDE BUILDING SOCIETY.



Individual contributions made to this page are supplied by supporters and do not necessarily reflect the views of Bristol City FC

Thorpe deserves applause

LAST SEASON OUR record against the top opposition was poor and, with defeats against Wigan, Oldham, QPR and the draw against Crewe already this term, there was little to suggest that we had improved that much from last season.

Last weekend's fantastic 2-0 away win at Cardiff is proof, however, that progress has been made.

The tough Christmas period continues today with the visit of Luton Town, currently placed eighth in the Second Division table.

Following a poor start to the season, in which Joe Kinnear's side lost their first four games, the Hatters have progressed up the table and are now in the thick of the promotion race.

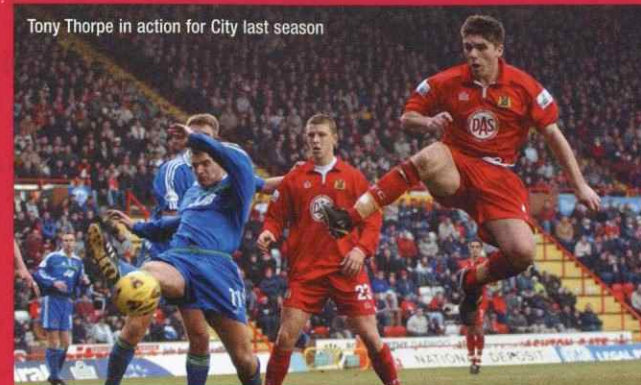
One player who will no doubt be key to Town's successes this season is Tony Thorpe.

At the time of writing it is not known whether or not Thorpe will overcome a hamstring injury in time to face his old club at Ashton Gate.

Should Thorpe make the starting line-up, it will be interesting to see what reception he gets from the Ashton Gate crowd.

After Thorpe left Luton in 1998 for £800,000 he still enjoyed legendary status back at Kenilworth Road following his goal scoring exploits

Tony Thorpe in action for City last season



during his initial spell at the Bedfordshire club.

Feelings amongst City fans, however, appear to be somewhat more mixed.

Thorpe is obviously a talented player. His quick feet and eye for goal make him a menace to any defence and this is reflected in his goal scoring record. During his spell with City, Thorpe bagged himself 61 goals in just 122 starts.

There are those, however, that question his work-rate. Frustrating though Thorpe can be, his work rate is not as poor as many people believe. While some may consider Thorpe to be lazy, it is more to do with his style of play than lack of enthusiasm. Thorpe is a quiet player who drifts in and out of the action but if a defender forgets him for one second they are likely to be

punished.

In truth Thorpe struggled to shake off his £1 million price tag during his time at City but he was brought in to score goals and he did just that.

In Thorpe's departure from City, Luton have gained a quality marksman. Crucially for us his goals have not been missed as Scott Murray has already netted 17 to date.

It would be nice to welcome Tony Thorpe back to Ashton Gate this afternoon alongside ex-City loanee Steve Robinson and, although we hope that City come away with another three points from today's game, I'm sure many fans will join me in wishing Thorpe, Robinson and Luton the best of luck for the rest of the season.

PETE SMITH
(AKA 'PERCY PARROT' ON THE FANS' FORUM ON bcfc.co.uk)

well red | LUTON TOWN 21/12/02

AVON AIRE

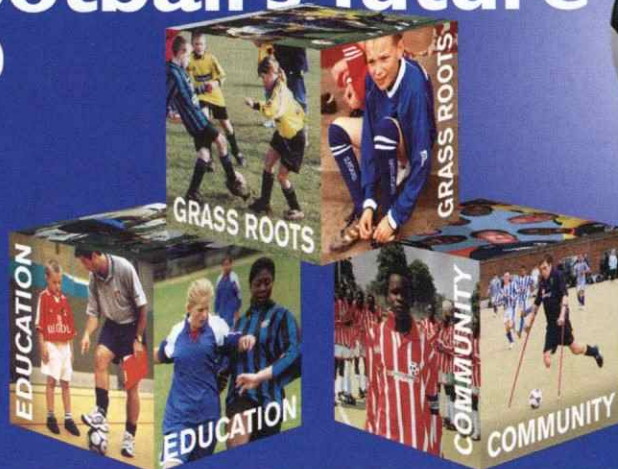
AIR CONDITIONING INSTALLATION

SERVICING AND MAINTENANCE

WE ARE PROUD TO SUPPORT
BRISTOL CITY FOOTBALL CLUB

UNIT 3, BARNACK TRADING ESTATE
NOVERS HILL, BEDMINSTER, BRISTOL BS3 5QE
TEL 0117 963 2400 FAX 0117 963 2444

building football's future



Football Foundation
football's biggest supporter

Helpline 0800 0277766 www.footballfoundation.org.uk

City Foxed again in draw

HAVING WATCHED CITY overcome Harrogate Railway in the FA Cup on TV a fortnight ago, I was keen to learn of their reward in terms of the third round.

I hoped for either another non-League club, or one of the Premiership giants.

I wasn't worried about the location. It would be great to see a full house at Ashton Gate, but I wouldn't have turned my nose up at a trip to Highbury, Anfield, or similar.

I sat through the game between Oxford and Swindon, not because I was particularly interested in the outcome (although it was satisfying to see the hosts go through) but because, for some reason, I was really excited about the forthcoming draw.

Once it finally began, I didn't have to hold my breath for long. Second out of the bag, we were pitted against First Division Leicester City... again.

Memories of a shabby ground and poor defending came flooding back as I recalled City's visit to Filbert Street two years ago. That was the fifth round and the opposition were then in the top flight. Sadly for us, the difference in standard showed, and City's FA Cup dream was over for another season.

Initially I was disappointed with the draw, but we have come a long way since January



Robbie Savage pounces on Aaron Brown in the fifth round tie at Leicester in 2000/2001

2001. A win, or at least a replay, is not out of the question. This is the FA Cup, after all.

The remainder of the draw went on to produce some nicer results for other teams, although no Second Division clubs will be playing Premiership sides in this round. Oxford's reward for knocking out local rivals Swindon was a trip to Highbury; Exeter travel to Charlton; Shrewsbury Town host Everton, and either Scunthorpe or Carlisle will entertain Leeds United. Whoever wins that replay must surely fancy their chances with the form Leeds are currently in.

Of the non-League clubs remaining in the competition,

Morecambe have a trip to Ipswich, Dagenham & Redbridge go to Plymouth, whilst Farnborough have a half-chance of progressing after being drawn away to Darlington.

Manchester City manager Kevin Keegan returns to his former club, Liverpool, in one of six all-Premiership ties, whilst another tasty meeting takes place between Manchester United and Portsmouth, who are both around the top of their respective tables.

One thing is for sure – with six Premiership sides guaranteed not to make the last 32, there is every hope for the lower League clubs still in the competition.

EMILY RYAN

Peugeot 206 LX



- Power assisted steering
- Remote central locking
- CD player
- Electric front windows
- Twin airbags
- Air conditioning

From only **£9,205**

Just **£199** deposit and only **£199** per month with Peugeot Passport **(9.9% APR)**⁽¹⁾



Peugeot 307.
International Car of the Year 2002



Peugeot 307 Style

- Power assisted steering
- Remote central locking
- Radio/cassette
- Electric front windows
- 6 airbags
- ABS with EBD

From only **£9,995**

0% APR and other low rate finance packages available*

www.peugeot.co.uk/templegate

TEMPLEGATE

Clarence Road
Bristol
Tel: 0117 926 1200



PEUGEOT

The official fuel consumption figures in mpg (l/100km) for the 307 range are Urban 22.8-51.4 (12.4-5.5), Extra urban 45.6-70.6 (6.0-4.0), Combined 34.0-62.8 (8.3-4.5) and the official CO2 emission is 120-198g/km.

*Finance subject to status. Over 18's only. A guarantee may be required. Written quotations available on request. 1. Typical 0% Finance example: Peugeot 307 Style 1.4 petrol 307. Cash price £9995. Deposit 20% £4997.50. 12 monthly payments of £416.46. Total amount payable £9995. APR 0%. This offer supercedes any previously advertised 0% offer. Peugeot payments based on an agreed mileage contract of 6,000 miles per annum. A 95% Credit Facility Fee with your first monthly Peugeot payment. 1117 typical Peugeot Finance example. New Peugeot 206 307 LX 1.4. Peugeot Price £9205.00. Deposit £199. Total charge for credit £1901.36. Monthly Payments of £198.56 Followed by a Final Payment to purchase the Vehicle of £3749. Total Amount Payable £11206.64. APR 9.9% offers and vehicles offered are subject to availability while stocks last. Please note models portrayed are for illustration purposes only.



"My header was on target and the keeper would have had no chance! Okay, I didn't get the final touch, but if I am credited with the goal I won't be complaining."

"The gaffer gave us a right roasting at half time because we had been sloppy by our standards. In the second half we just played our probing, passing football in the knowledge that we have the ability to score goals, even when other things are going against us."

SCOTT MURRAY AFTER THE 3-2 WIN OVER NOTTS COUNTY, WHICH FEATURED AN OWN GOAL BY IAN RICHARDSON.



"I can't blame the pitch for the chances I missed. It was bobbly in places, but not a great problem. I

was off target by inches with a first-half shot and had another couple of opportunities, but kept going to the end and finally got my goal."

"It was strange kicking-off so early, but the atmosphere at the ground was terrific. I thought we passed the ball around well for most of the game and were in control of things pretty much throughout."

CHRISTIAN ROBERTS ON THE 3-1 FA CUP WIN AT HARROGATE RAILWAY.



"I remember them getting a couple of early goals, but really, daft as it may sound, we were desperately

unlucky not to get something from the game. Both myself and Mickey Bell hit the woodwork."

"I think the environment there will suit us and we will go there with nothing to lose and with no fears. It's a very good draw for us and a game we are capable of winning."

BRIAN TINNIION ON CITY'S 3-0 FA CUP FIFTH ROUND DEFEAT BY LEICESTER CITY TWO YEARS AGO.

"I wasn't particularly nervous because I had done a lot of training, but it felt great to pull on a City shirt again. There were no problems and now it is a case of getting a number of reserve games under my belt before challenging for a first team place."

"I don't expect to be in contention for a while because the lads have been doing so well. But if things go okay there is no reason why I shouldn't be available for selection before the end of the season."

KEVIN AMANKWAH AFTER HIS RETURN TO ACTION FOR THE RESERVES AGAINST BOURNEMOUTH - HIS FIRST GAME SINCE BREAKING A BONE IN HIS NECK IN A CAR CRASH.



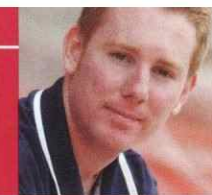
well red | LUTON TOWN 211202



HELEN TAYLOR



JOHN ASHLEY



SPONSORS

SHIRT



WEDLOCK STAND



ATYEO STAND

WILLIAMS STAND
AND ACADEMY

DOLMAN STAND



BOARDROOM



KINGSWOOD CONSTRUCTION

CORPORATE FACILITIES

AMCOR FLEXIBLES
EUROPEMATCH SPONSOR
GIFTSMATCH SPONSOR
BUTTON HOLESSupplied by
FLOWERVISIONFor further sponsorship
opportunities ring 0117 963 0600

CITY V PLYMOUTH ARGYLE

Thursday 26th December,
noon kick-offBacon Roll on arrival, hot fork
buffet post-match, Platinum
Seating and matchday programme
Cost: £20 for season-ticket holders and
£35+VAT for guests

CITY V WIGAN ATHLETIC

Friday 10th January, 7.45pm kick-
offHospitality is available for this
crucial match.

The package includes:-

- Four-course meal
- Platinum Seating
- Half-time Refreshments
- Complimentary Programme
- Man-of-the-Match presentation
- Hosted by Paul Cheesley

Cost: £65+VAT per person

LEGENDS EVENING

Thursday 6th February 2003

This event is now SOLD OUT,
but we are still taking bookings
for the end of season dinner.

PLAYER OF THE YEAR AWARD DINNER

Tuesday 27th May 2003

We are also taking bookings now
for the end-of-season dinner
featuring the Player of the Year
awards to be held for the first time
in the Dolman Exhibition Hall.
Cost: £55 pp (£500 a table of 10)

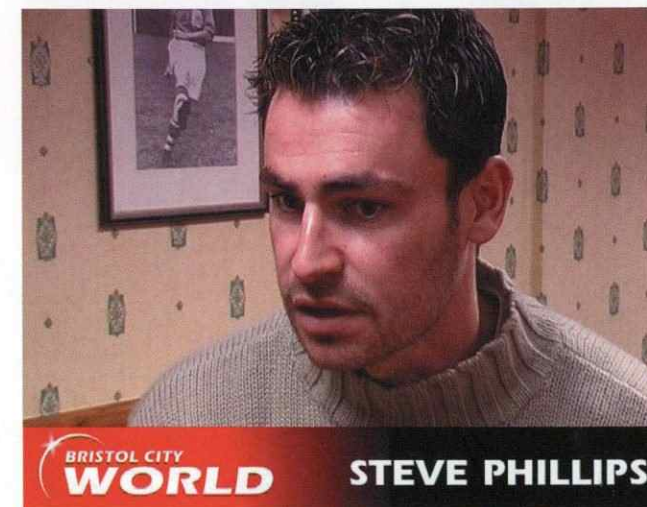
HOSPITALITY OPTIONS FOR FORTHCOMING MATCHES

City vs		Centenary Restaurant (Four-course meal)
PLYMOUTH ARGYLE	Thurs. 26 Dec	Hospitality available in the Bistro (see above)
WIGAN ATHLETIC	Fri. 10 Jan	£65+VAT
STOCKPORT	Sat. 21 Jan	£55+VAT
COLCHESTER	Sat. 8 Feb	£45+VAT
CHELTENHAM	Sat. 1 March	£45+VAT (Dolman Stand)
OLDHAM	Tue. 4 March	£55+VAT

Two-course hot buffet options are available at selected matches at £35 + VAT

PLEASE CONTACT HELEN TAYLOR DIRECTLY ON 0117 963 0604 FOR
FURTHER INFORMATION OR E-MAIL HELEN.TAYLOR@BCFC.CO.UKThere's still time to take up our great festive offer
Net a Christmas bargainIF YOU'RE STILL to complete
your Christmas shopping don't
forget that **BRISTOL CITY
WORLD** would make an ideal
gift.Even more so since our
special Christmas offer is still
running.Fans who subscribe
throughout the month of
December receive a free gift –
and you'll kick yourself if you
miss out!Supporters signing up to six
month's worth of **BRISTOL
CITY WORLD** (for £19.99) will
receive a £5 gift voucher that
can be redeemed in the City
Shop.City fans who sign-up for a
twelve-month **BRISTOL CITY
WORLD** subscription will
receive a choice of a £10 gift
voucher for the City Shop or a
ticket for the match of their
choice at Ashton Gate.We'll contact you and you'll
have your voucher or match
ticket in the post and dropping
through your letterbox before
you know it.If you're still not sure what
Bristol City World has to offer,
here's a guide to just a few of
the benefits you can enjoy as a
subscriber:

- Exclusive daily TV News bulletins
- Exclusive audio match commentary for all City

BRISTOL CITY
WORLD

STEVE PHILLIPS

- matches (except FA Cup)
- Exclusive audio match commentary for all other Nationwide League matches – so you can check up on our opponents
- Match highlights of all City games (except FA Cup)
- Divisional round-ups for all the goals from all the games in Divisions One, Two and Three
- Searchable video archive
- Weekly divisional highlights show
- Much, much more!

Bristol City World TV News
videos are available in 56kdial-up, 200k download and
300k broadband streams for
all supporters' specifications.For more information on
our Christmas special offer or
for subscription details click
onto bcfc.co.uk or
bcfcworld.co.uk

MERRY CHRISTMAS

May I just take this chance to
wish all supporters a very
Merry Christmas. Don't forget
that Bristol City World
doesn't stop over the holiday
period, so why not log-on for
our Christmas Day special!ADAM BAKER,
WEBSITE EDITOR



'Fame Academy' star headlines Exhibition Hall Katie does City proud

A WARM WELCOME to well red cover star Katie Lewis, who is performing live in the Dolman Exhibition Hall at 1pm.

Katie did Bristol proud in BBC's recent hit series "Fame Academy", and it was very good of her to agree to come down to Ashton Gate.

She will also be on the pitch at half-time, so I would urge all supporters to show her our appreciation.

Katie, who lives down the road from Ashton Gate in Bedminster, spoke exclusively to Adam Baker on our online TV channel **BRISTOL CITY WORLD** this week.

She said: "I've been really busy since my time ended at the Fame Academy. There have been loads of interviews to do, a Christmas carol service to perform at and I also went on Ireland's Jon Daly TV show.

"I've been back and forth to London for the Fame Academy final and the after-show party, which I can't really remember much about if you know what I mean!

"I'm looking forward to today's performance, but I'll be nervous in front of the City supporters.

"My sister used to play for City women when she was younger, but my two brothers have split loyalties, one being a City fan, one Rovers."



Dolman Exhibition Hall

Katie admitted that she doesn't really follow football, but once the club had presented her with a City shirt with 'Katie Lewis - No.1' printed on the back, she declared: "I'm officially a City supporter now."

Well done Katie.

EXHIBITION HALL IS HIT
THE HALL IS becoming a really popular venue at Ashton Gate, within a few months of its opening.

The recent Wurzels concert was a huge success and the Hall also allowed the club to hold its Annual General Meeting back in November without having to look for an outside venue.

Additionally, the screening of the Cardiff game last Saturday was a great occasion (despite a problem with one of the screens), with more than 650 fans singing so loudly that

those actually in Cardiff could probably hear it.

We will be gradually increasing the facilities in the Hall to make it an even more attractive area to use before the match, at half-time and after the game.

Furniture left over from when the shop was re-fitted in the summer has been used to build a shop area in the Hall, and we will soon be installing new TV screens that will feature an exclusive Bristol City FC pre-match programme with interviews and action from previous games. In addition, we are hoping to acquire an inflatable five-a-side football pitch that will go into the far side of Dolman Hall to be used by City Junior Strikers on matchdays and hired out for parties other days.

The Red'n'White Bar and Exhibition Hall are free to enter for all season ticket holders and club members.

AUTOGRAPH



FOOTBALL SUPPORTER

BUS DRIVER

All sorts of
people become
First Bus Drivers
- and so could you.

All you need is:

- A valid driving licence
- To be aged 18 to 63 with the confidence to deal with people
- A willingness to work shifts

You'll enjoy:

- Full professional training
- Up to £300 a week after training (average gross weekly rate)
- Credit Union facility
- NVQ level 2 qualifications
- Pension Scheme
- Free travel for you and your family
- Social club
- Free uniform

Interest, reward, independence - Bus Driving offers more - and First offer most.

For details just call Mark on

**0117 955
3584.**

First
transforming travel



A SERIES WHICH places a City supporter in the home dug out ahead of a fictional Division Two game. Today's gaffer is Trevor Murphy, of Pucklechurch.

WHAT IS YOUR MESSAGE TO THE FANS IN YOUR PROGRAMME NOTES?

Be loud, be supportive, be patient and be proud! You have got a team that can go all the way.

WHAT TEAM DO YOU SELECT, GIVEN THAT EVERYONE IS FIT?

(3-5-2) Steve Phillips; Louis Carey, Tony Butler, Matthew Hill; Scott Murray, Joe Burnell, Tommy Doherty, Brian Tinnion, Mickey Bell; Peter Beadle, Christian Roberts. Subs: Danny Coles, Liam Rosenior; Lee Peacock, Robin Hulbert, Ben Foster.

WHAT ARE THE MAIN POINTS OF YOUR PRE-MATCH TEAM TALK?

Play to your strengths and play with confidence. Work hard for each other and stick to your game plan. If you carry out these disciplines your natural passing game will create openings. Maintain concentration at the back and defend all over the field.

WHAT DO YOU SAY TO THE REFEREE BEFORE THE GAME?

Shake his hand and wish him all the best for the game ahead, no more than that.

WHAT FORMATION DO YOU EMPLOY AND WHY?

3-5-2. The fact that we are at home means I would employ a formation that all personnel are confident with and which has

generated a string of successful results. When it works well, it gives us depth at the back and, allied with the extra pace we have in the team, gives us a spring board to attack quickly from defence.

CITY ARE AWARDED A FIRST-MINUTE PENALTY. WHO TAKES IT AND WHY?

Brian Tinnion - confident, consistent and excellent under pressure.

THE OPPOSITION GET A PENALTY AND AN INJURY GIVES YOU TIME TO SPEAK TO YOUR GOALKEEPER. WHAT DO YOU SAY?

Make yourself big. Increase the pressure on the penalty-taker. Look at his eyes and his run and decide which way you want to go, then go for it.

IT'S 1-1 WITH TIME RUNNING OUT. WHICH OF YOUR SUBSTITUTES DO YOU SEND ON TO WIN THE GAME?

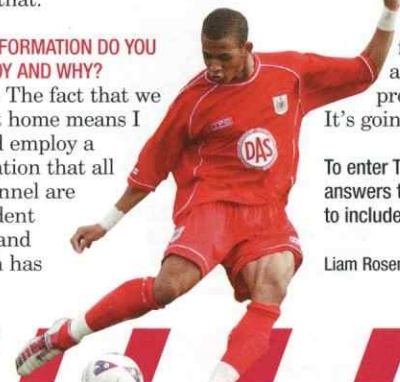
Liam Rosenior. An attacking midfielder will allow us to push Murray further up the field. Scott is a player who is always dangerous and has lightning pace at a time when there are a lot of heavy legs in defence.

HOW DO YOU SEE THE FINAL OUTCOME?

There is no doubt that we would win this match. Then, as long as we continue to pick up points away from home, we can forget a play-off final in downtown Cardiff and bag an automatic promotion place with Wigan. It's going to be a memorable season!

To enter The Dug Out simply e-mail your answers to media@bcfc.co.uk. Remember to include a daytime telephone number.

Liam Rosenior



**city
2000**
BUILDING THE DREAM



MANY THANKS
TO all those members whose loyal support over the

past year enabled us to make a donation of £10,000 to the Academy at the recent Crewe Alexandra home game.

Membership numbers are increasing month on month which means we will be in a position to donate another bumper cheque later in the season.

BIG ONE DRAW MADE

THE BIG ONE draw to win a Nissan Almera 1.5S car was made earlier this week and the lucky winner has been told of their good fortune.

The car itself will be presented to the winner by Steve Patch, Managing Director of Wessex Garages, at half-time during the Boxing Day home game versus Plymouth Argyle.

HAPPY CHRISTMAS

CAN I THANK all **city2000** members for their fantastic support this year, and wish you and your families a very happy Christmas and prosperous New Year.

RICHARD GARDNER
city2000 Co-Ordinator
0117 963 0704



TICKET INFORMATION | HOME



PLYMOUTH ARGYLE
Ashton Gate Stadium
Thursday 26th December 2002,
kick-off 12 noon
THIS MATCH HAS BEEN MADE ALL-TICKET. NO TICKETS WILL BE AVAILABLE ON THE DAY OF THE GAME.

Sales for the fixture are very high – please book early to avoid disappointment. This match is a category B game (see price table opposite) and tickets are now on general sale – see note above.

• **ABUS FARESAVER WILL** be running services to Ashton Gate for this fixture from one hour prior to kick off from Keynsham church, Brislington and Temple Meads via Haymarket and the centre. Normal fares apply on the day.

SECOND HALF SEASON TICKET

SEASON TICKETS FOR the second half of the 2002/03 season are now on sale – representing fantastic savings on matchday prices for City's final 12 League games of the campaign.

The offer is valid from the Boxing Day home game versus Plymouth Argyle – on Thursday 26th December, noon kick-off – and includes all home Division Two fixtures scheduled to be played from that date.

Tickets can be purchased now through the Club Shop; by ringing the Ticket Hotline on 0117 966 6666; or by postal application.

TICKET PRICE CHART | 2002/03

AREA	MATCHDAY PRICES		
	Members*	C	B
ATYEO STAND			
Adult	N/A	14	15
OAP	N/A	11	12
Under-19 and Student	N/A	10	11
Under-16	N/A	5	5
DOLMAN STAND			
Adult	14	16	17
OAP	11	13	14
Under-19 and Student	6	8	9
Under-16	N/A	5	5
FAMILY ENCLOSURE			
Adult	14	16	17
OAP	11	13	14
Under-19 and Student	6	8	9
Under-16	N/A	5	5
Family Ticket (two adults and two children)	N/A	N/A	N/A
WILLIAMS STAND			
Adult	14	16	17
OAP	11	13	14
Under-19 and Student	9	11	12
Under-16	N/A	5	5
PLATINUM SEATING			
Adult	19	21	22
OAP	14	16	17
Under-19 and Student	11	13	14
Under-16	N/A	8	8

***CLUB MEMBERSHIP**
Club memberships are available now priced £25 adults and £20 OAP/students.

It gives holders a discount on the price of a matchday ticket and priority on away and Cup ticket sales, if supply is limited.

This season Club Membership is restricted to the Dolman Stand, Family Enclosure and Williams Stand.

Discounts can only be claimed by 11am on a Saturday matchday, or 5.30pm on the day of a midweek game.

For an application form call the City Ticket Office on 0117 966 6666 or download a copy from bcfc.co.uk

STADIUM LAYOUT | ASHTON GATE



No smoking
Band Area

CHRISTMAS OPENING HOURS

TICKET HOTLINE: 0117 966 6666

SUNDAY 22ND DECEMBER 2002: 10AM-2PM*
MONDAY 23RD DECEMBER 2002: 9AM-7PM
TUESDAY 24TH DECEMBER 2002: 9AM-12 NOON

CHRISTMAS DAY: CLOSED
BOXING DAY: 10AM-2.30PM

FRIDAY 27TH DECEMBER: 9AM-12 NOON*

SATURDAY 28TH DECEMBER: CLOSED

SUNDAY 29TH DECEMBER: CLOSED

MONDAY 30TH DECEMBER: 9AM-5.30PM*

TUESDAY 31ST DECEMBER: 9AM-12 NOON*

NEW YEAR'S DAY: CLOSED

THURSDAY 2ND JANUARY 2003: 9AM-5.30PM

* Tickets only available in person from the Bristol City Shop

DIRECTIONS

EDGELEY PARK: Take the M6 to junction 19, then turn off following the A556 towards Manchester/Altrincham. Join the M56 towards Manchester Airport before, after a few miles, leaving the M56 and joining the M60 towards Stockport. Leave the M60 at Junction 1 and turn right at the second set of traffic lights to go onto the A560 towards Cheadle. Turn left into Edgeley Road (there is a pub on the left hand corner at the lights at this junction). The ground is down this road on the right. The ground is well sign posted around the area.

TON-UP TAKEAWAY AND PROGRAMME SALES POINTS



TICKET INFORMATION | AWAY



STOCKPORT COUNTY | Edgeley Park
Saturday 28th December 2002,
kick-off 3pm

An allocation of 745 seated/covered tickets are now on general sale for this game priced £16 adults, £9 OAPs and £4 under-16s. In addition, 1,030 uncovered seats will be available on the day of the game priced £14 adults, £9 OAPs and £4 under-16s.

CATS (City Away Travel Service) are running coaches to the match departing Ashton Gate at 9am. The return trip will cost £13 (£11 members).

WYCOMBE WANDERERS | Adams Park
Wednesday 1st January 2003,
kick-off 3pm

This match is ALL-TICKET to visiting supporters. An allocation of 1,950 tickets have been made available for the seated and covered Roger Vere Stand. Tickets are now on general sale priced £14 adults, £12 OAP/students and £10 under-16s. CATS (City Away Travel Service) are running coaches to the match departing Ashton Gate at 11am. The return trip will cost £12 (£10 members).



LEICESTER CITY | Walkers Stadium
FA Cup Round Three
Saturday 4th January 2003,
kick-off 3pm

This tie is ALL-TICKET for visiting supporters. No tickets will be available on the day of the game. An allocation of 4,766 for the North Stand are now on general sale priced £15 adults (£13 season ticket holders and members), £13 (£11) OAPs and £10 (£8) under-16s.

CATS are running coaches to the game departing Ashton Gate at 9am, costing £15 (£13 non-members).



Bristol 2008
european capital of culture bid

TODAY'S BEST MIX IN THE WORLDS BEST CITY



TELEPHONE/FAX/ANSWERPHONE: 0117 966 5554
E-MAIL: supporters.club@bcfc.co.uk
WEBSITE: Log on to bcfc.co.uk and search under "Club Info"

Your club needs YOU

THERE ARE NOW just a few days to go before our big Christmas Draw on Boxing Day.

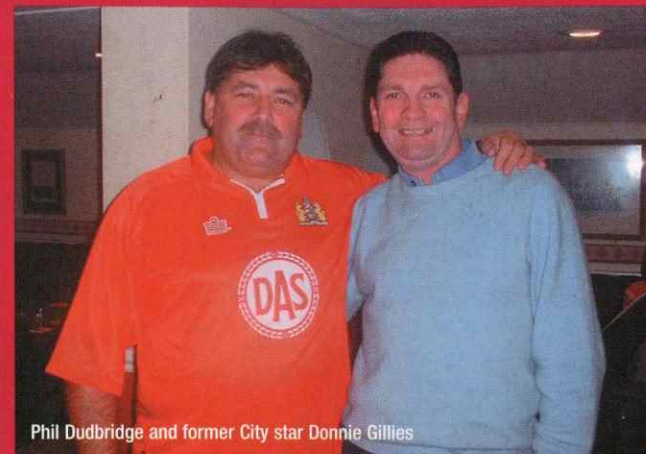
We need your support in raising funds to help Bristol City, and in particular the Academy.

Today, we hope all supporters will do their bit by buying, or even selling, some of our 50p Christmas Draw tickets to ensure this is a bumper year for fundraising. Remember, this is your chance to help us raise vital cash for the club. Tickets are now available at the Supporters' Club – so please pick up a book from us today!

As always there are some brilliant prizes up for grabs. The star prize this year is a computer but others include a portable colour TV; video; Hi-Fi system; a luxury weekend for two in London; dinner, bed and breakfast for two at the Bristol Marriott Hotel; £50 service vouchers; bowling for six; four bottles of spirit; car valet and set of car mats; 25% discount on leather goods and a Bristol City keepsake clock.

We would like to thank the following companies who have so kindly contributed prizes, and without whom none of this would be possible:-

European Electronique, Refinish Systems, Peter Carol, Bristol Marriott Hotel, Popular Insulation, Roman Toyota, Megabowl, Prestbury Cars, GRC



Phil Dudbridge and former City star Donnie Gillies

PHIL DUDBRIDGE HAS been following City for 36 years and is a valued member of the Supporters' Club.

He was probably the top seller of tickets for our Christmas Draw last year, and is always willing to help out with fund raising events.

Typical of his efforts was organising, together with Hugh (manager of the Good Intent pub at Brislington), a charity football match in aid of the Luke Allen Appeal, which recently took place on a very wet and windy Sunday afternoon at Brislington FC.

(Luke, a young lad, tragically lost his life after a wall collapsed on him near his home this year).

More than 500 people turned out to support the game, which was played between The Good Intent team and a Bristol City All-Stars XI, which included Paul Cheesley, Tom Ritchie and Donnie Gillies.

The match ended in a 6-1 win for The Good Intent but, most importantly, raised £2,867 for Luke's family.

Phil would like to express his sincere thanks to all those who lent their support to the event.

Leathers (Redcliffe), The Bloomfield Inn, and The Raymend.

Best of luck to all those who

have already entered.

If you have yet to do so, just remember our Draw motto: "We Have To Be In It To Win It!"



SPONSOR
MIKE STOWELL
BY RINGING
0117 963 0605
BORN: Preston, 19.4.65
TOTAL CITY APPS: 26



SPONSOR
ALBANO CORREIA
BY RINGING
0117 963 0605
BORN: Guinea Bissau,
18.10.81
TOTAL CITY APPS: 14-3

	Home	Away
	COLIN FOX	PREMIER CONSERVATORY ROOFS LTD <small>Manufacturers and suppliers of the K2 Conservatory Roof System</small>
Born: Kenton, 19.5.82 City apps: 35+16 Goals: 2		

	Home	Away
	COLIN FOX	Senior Reds
Born: Bristol, 12.9.81 Yet to make a senior appearance		

	Home	Away
	VICKY AND PAT HARRISON	Bristol City Supporters Club
Born: Lambeth, 13.5.72 City apps: 60+27 Goals: 17		

	Home	Away
	Bristol City Supporters Club	VICKY, PAT IAN AND ALAN
Born: Shaftesbury, 13.6.81 City apps: 65+21 Goals: 9		

	Home	Away
	JOE, JEAN AND PAUL REEVES	ROB AND VICKY
Born: Newcastle, 15.11.71 City apps: 246+3 Goals: 33		

	Home	Away
	SBJ Professional	JASON AND RICHARD JOYCE
Born: Bristol, 31.10.81 City apps: 52+6 Goals: 2		

	Home	Away
	S. W. WREN BUILDING SERVICES LTD	ServiceMASTER Clean
Born: Bristol, 14.3.80 City apps: 115+21 Goals: 7		

	Home	Away
	ABS ELECTRICAL & HEATING ENGINEERS	signmarket
Born: Bristol, 17.3.79 City apps: 97+27 Goals: 5		

	Home	Away
	RICHARD KNIGHT AND RUSSELL CLIFFORD	CITY LIST <small>www.citylist.org.uk</small>
Born: Bristol, 6.7.83 City apps: 3+22 Goals: 0		


	Home	Away
	www.jpgracing.com	
Born: London, 10.11.82 City apps: 5+5 Goals: 0		

	Home	Away
	Senior Reds	
Born: Bristol, 10.10.80 Total City apps: 93+16 Goals: 1		

	Home	Away
	NIGEL RICKETTS AND SCOTT GOLBOURNE	ASSOCIATED WINDOWS & CONSERVATORIES Tel: 0117 931 1777
Born: Bristol, 26.3.81 City apps: 132+14 Goals: 3		

	Home	Away
	TFG Quality Football Kits Contact: Mark Wederell 07966 430993	ASSOCIATED WINDOWS & CONSERVATORIES Tel: 0117 931 1777
Born: Stockport, 28.9.72 City apps: 22 Goals: 1		

	Home	Away
	DI ROWLAND	Bristol City Supporters Club
Born: Plymouth, 14.3.80 City apps: 28+21 Goals: 0		

	Home	Away
	UNITY TYRE Co. Ltd	BRISTOL TILE
Born: Bristol, 22.1.77 Total City apps: 279+12 Goals: 3		

	Home	Away
	MARK, LAURA AND BOB	
Born: Newport, 28.8.83 City apps: 1+4 Goals: 0		

	Home	Away
	MATT, DAWN, SHARON AND GRAHAM B	Bristol City Supporters Club
Born: Congo, 28.12.84 City apps: 0+12 Goals: 4		

	Home	Away
	www.theincider.com BCFC's Online Fanzine	FINESSE BLINDS The shining light in window treatments 01934 516080
Born: Wandsworth, 9.7.84 City apps: 2+11 Goals: 0		

	Home	Away
	LP LESLIE DARK & CO CHARTERED ACCOUNTANTS BUSINESS ADVISORS 01275 872592	WILKSI
Born: Middlesbrough, 6.1.79 City apps: 15+26 Goals: 9		

	Home	Away
	Sound Commercial <small>the first out of CONFERENCE SERVICE</small>	JON TOOGOOD
Born: Durham, 23.3.68 City apps: 410+25 Goals: 35		

	Home	Away
	THE GOOD INTENT Hugh & Kim Dash	VICKY CARDY
Born: Liverpool, 22.5.69 City apps: 32		

	Home	Away
	CBS 21 21st Century Building and Electrical Services	MARK TUNBRIDGE
Born: Tiverton, 22.12.82 City apps: 20+5 Goals: 0		

	Home	Away
	Bristol Blue Glass 0117 929 8900	
Born: Croydon, 29.6.66 City apps: 74+1 Goals: 4		

	Home	Away
	JIM BRAGG - J&P BUILDERS Brickwork and Stonework Contractors: 07831 287289	
MANAGER		

	Home	Away
	cubo www.cubo.com	MARMOBELLO MARBLE GRANITE
Born: Aberdeen, 26.5.74 City apps: 203+37 Goals: 51		

	Home	Away
	FAST Merchandising suppliers for DIY chains 07747 882059	
FIRST TEAM COACH (picture courtesy of Sheffield Star)		

	Home	Away
	MARMOBELLO MARBLE GRANITE	C.A.T.S. (CITY AWAY TRAVEL SERVICE)
Born: Paisley, 9.10.76 City apps: 88+9 Goals: 41		

	Home	Away
	GOODFELLA'S BARBER SHOP 172a Raleigh Road, Ashton, Bristol 0117 963 3852	
DEVELOPMENT COACH		

	Home	Away
	FURNITURE FIT 07733 226233	P.S.S. Scaffolding Telephone: 01639 822922
Born: Bath, 6.5.78 City apps: 150+1		

	Home	Away
	FAST Furniture Assembly Service Team 07747 882059	
ACADEMY DIRECTOR AND FOOTBALL CO-ORDINATOR		

	Home	Away
	DI AND WENDY ROWLAND	TIM & DAVE, BUSINESS EXECUTIVE CLUB
Born: Cardiff, 22.10.79 City apps: 26+4 Goals: 11		

	Home	Away
	ARCHIE GOOCH	
PHYSIOTHERAPIST		

MATCH REPORT

HARROGATE RAILWAY 1

(Davey 78)

CITY 3

(Walker og. 20, Murray 52,
Roberts 90)

DESPITE A LATE scare, City produced a controlled display to avoid a potential upset and progress to the FA Cup third round.

An own goal by Phil Walker and Scott Murray's 50th goal for the club seemed to be enough to ease the visitors through at Station View.

But Harrogate substitute Steve Davey set up a nervy finale when he pulled a goal back for the North East Counties League side in the 78th minute.

In the end City held out and Christian Roberts rounded off a thoroughly professional performance with a goal deep in injury time.

City: Phillips, Coles (Carey 65), Butler, Hill, Bell, Murray, Doherty, Burnell, Tinnion, Peacock, Roberts. Subs not used: A. Brown, Rosenior, Lita, Stowell.

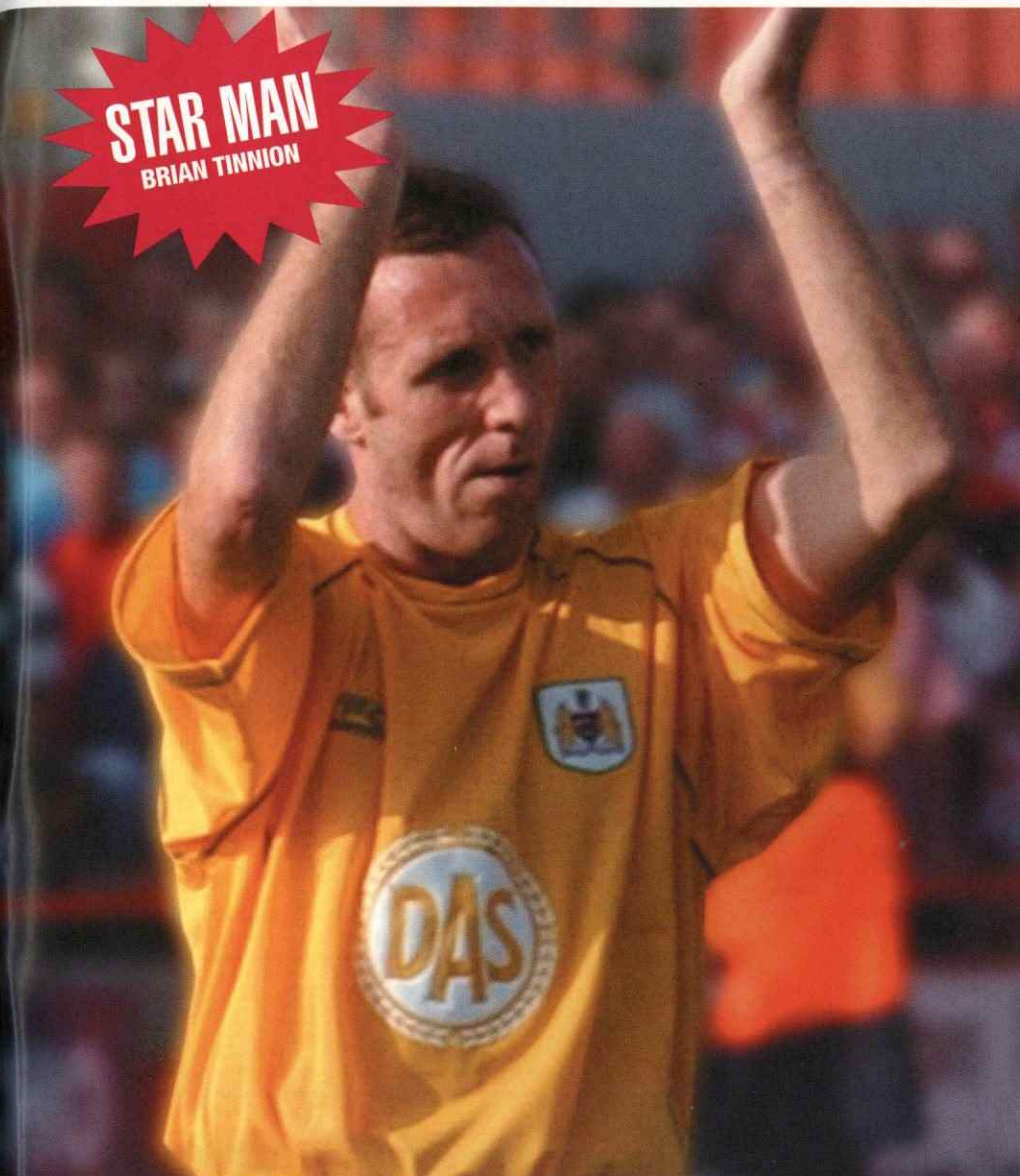
Boston: Neale, Danby, Wilson, Ames, Walker, Watkinson (Constable 69), Stansfield (Hart 77), Gore, McLean, Flynn (Davey 65), Smith. Subs not used: Sunley, McDaid

Attendance: 3,500

• Full reports appear on bcfc.co.uk within an hour of the final whistle



STAR MAN
BRIAN TINNION



1. Christian Roberts looks almost apologetic as City take the lead through a Phil Walker own goal

2. It's no friendly – Lee Peacock duels with his marker

3. Roberts finds his way to goal blocked as Railway defend keenly to keep the score down

4. Louis Carey returns to first-team action following a knee injury 5. Scott Murray, who scored City's second after half-time

Date	Opponents	Result	Pos.	Att.	Away fans	1	2	3	4	5	-	6	7	8	9	10	11	12	13	14	15	16	17	18	19	20	21	22	23	24	25	26	27	28	29	30	31	32	33	-	34	
Sat 10	BLACKPOOL	2-0	5th	11,891	549																																					
Tue 13	Brentford	0-1	10th	7,130	1,803																																					
Sat 17	Wigan Athletic	0-2	18th	6,548	825																																					
Sat 24	WYCOMBE WANDERERS	3-0	11th	9,597	459																																					
Sat 26	Plymouth Argyle	0-2	15th	11,922	1,738																																					
Sat 31	TRANMERE ROVERS	2-0	10th	9,849	407																																					
Fri 6	NORTHAMPTON TOWN	3-0	4th	11,104	306																																					
Tue 10	OXFORD UNITED (Worthington Cup R1)	0-1	-	4,065	354																																					
Sat 14	Cheltenham Town	3-2	2nd	5,895	1,897																																					
Tue 17	Oldham Athletic	0-1	7th	5,583	353																																					
Sat 21	QUEENS PARK RANGERS	1-3	9th	12,221	1,631																																					
Sat 28	Port Vale	3-2	8th	4,286	576																																					
Sat 5	CHESTERFIELD	4-0	6th	10,107	273																																					
Sat 12	Barnsley	4-1	5th	10,495	681																																					
Sat 19	SWINDON TOWN	2-0	3rd	13,205	857																																					
Tue 22	Queens Park Rangers (LDV Area R1)	0-0 (5-4 on pens.)		4,722	339																																					
Sat 26	Peterborough United	3-1	3rd	5,332	934																																					
Tue 29	HUDDERSFIELD TOWN	1-0	3rd	11,474	182																																					
Sat 2	NOTTS COUNTY (Match abandoned: 49 mins.)	0-1	-	10,708	262																																					
Sat 9	Colchester United	2-2	4th	3,338	520																																					
Wed 13	Boston United (LDV Area R2)	2-1 ⁶	-	1,408	161																																					
Sat 16	Heybridge Swifts (FA Cup Round One)	7-0	-	2,046	432																																					
Sat 23	Mansfield Town	5-4	3rd	4,081	1,346																																					
Sat 30	CREWE ALEXANDRA	2-2	4th	12,585	460																																					
Tue 3	NOTTS COUNTY	3-2	3rd	10,690	153																																					
Sun 8	Harrogate Railway (FA Cup R2)	3-1	-	3,500	377																																					
Wed 11	WYCOMBE WANDERERS (LDV SA QF)	3-0	-	3,506	112																																					
Sat 14	Cardiff City	2-0	2nd	15,239	553																																					
Sat 21	LUTON TOWN																																									
Thu 26	PLYMOUTH ARGYLE (12 noon kick-off)																																									
Sat 28	Stockport County																																									
Wed 1	Wycombe Wanderers																																									
Sat 4	Leicester City (FA Cup R3)																																									
Fri 10	WIGAN ATHLETIC (LIVE on Sky Sports)																																									
Sat 18	Tranmere Rovers																																									
Tue 21	AFC Bournemouth (LDV Vans Trophy Southern Area Semi-Final)																																									
Sat 25	STOCKPORT COUNTY (or FA Cup Round Four)																																									
TBA	BRENTFORD																																									
Sat 1	Blackpool																																									
Sat 8	COLCHESTER UNITED																																									
Sat 15	Notts County (or FA Cup Round Five)																																									
Tue 18	LDV Vans Trophy Southern Area Final, First Leg																																									

**FOR DAILY NEWS BULLETINS, PLAYER AND MANAGER INTERVIEWS
PLUS MATCH HIGHLIGHTS LOG ON TO bcfcworld.co.uk**



@ 191202











	HOME					AWAY								
	P	W	D	L	F	P	W	D	L	F	A	G	P	L
Wigan	21	6	3	1	18	9	8	2	1	18	4	23	47	
CITY	21	8	1	1	23	7	6	1	4	22	18	20	44	
Cardiff	21	8	1	2	19	7	5	3	2	16	10	18	43	
Oldham	21	6	1	4	21	9	5	5	0	13	7	18	39	
Crewe	21	7	1	3	14	6	4	4	2	18	11	15	38	
Brentford	21	5	4	2	14	6	4	1	5	13	18	3	32	
QPR	21	6	1	3	17	11	2	5	4	11	14	3	30	
Luton	21	3	4	4	18	15	5	2	3	13	14	2	30	
Chesterfd.	21	7	2	1	13	5	2	1	8	5	18	-5	30	
Tranmere	21	6	2	2	13	10	3	1	7	13	23	-7	30	
Blackpool	21	5	3	2	17	11	3	1	7	8	21	-7	30	
Plymouth	21	4	4	3	2	17	15	2	4	4	11	14	-1	26
Wycombe	21	5	2	4	23	19	2	3	5	6	12	-2	26	
Port Vale	21	4	2	4	14	15	3	3	5	12	18	-7	26	
Colchester	21	3	4	3	8	7	3	3	5	13	20	-6	25	
Northmptn.	21	5	2	4	16	11	2	6	5	18	5	-8	25	
Stockport	21	4	3	3	17	15	3	0	8	9	16	-5	24	
Swindon	21	3	3	4	12	11	3	3	5	13	20	-6	24	
Barnsley	21	3	5	2	13	15	3	1	7	11	18	-9	24	
Notts Co.	21	2	5	4	16	18	2	5	3	14	13	-1	22	
Peterboro	21	4	2	5	14	11	1	4	5	12	19	-4	21	
Huddersfd.	21	3	5	3	12	11	2	1	7	5	14	-8	21	
Cheltenham	21	3	2	5	10	14	2	4	5	10	15	-9	21	
Mansfield	21	4	0	7	22	27	1	3	6	14	26	-17	18	

PLAYER STATS

@ 191202 (23 PLAYERS USED)

	APPEARANCES (FULL+SUB)			GOALS	
	Total	League	Cup	Total	League
Steve PHILLIPS	27	21	6	—	—
Scott MURRAY	26	21	5	17	12
Matthew HILL	25	19	6	2	2
Joe BURNELL	24+1	19+1	5	—	—
Tommy DOHERTY	23+1	18	5+1	—	—
Danny COLES	23	19	4	2	1
Christian ROBERTS	22+4	18+3	4+1	11	8
Tony BUTLER	22	16	6	1	—
Brian TINNION	19+3	15+1	4+2	6	5
Mickey BELL	19	17	2	1	—
Lee PEACOCK	17+2	12+2	5	9	7
Aaron BROWN	13+6	10+5	3+1	1	—
Craig WOODMAN	10+3	7+3	3	—	—
Peter BEADLE	8+5	7+2	2+2	2	—
Robin HULBERT	5+5	2+5	3	—	—
Clayton FORTUNE	5+3	4+2	1+1	—	—
Lee MATTHEWS	3+5	3+4	0+1	1	—
Keith MILLEN	3	3	—	—	—
Liam ROSENIOR	2+9	0+8	2+1	—	—
Louis CAREY	1+1	—	1+1	—	—
Leroy LITA	0+12	0+11	0+1	4	2
Simon CLIST	0+3	0+2	0+1	1	—
Albano CORREA	0+2	—	0+2	—	—

KEY

-  Started game
-  Came on as substitute and replaced number
-  Substitute, did not play
-  Penalty  City's goals include own goal
-  Goal (number scored in circle)
-  Golden Goal scored
-  Yellow card
-  Red card
-  Home supporters' Man of the Match



Referee: M.A. Cooper (West Midlands)
Assistant Referees: K.G. Barnes (Wiltshire)
and J. Flynn (Wiltshire)
Fourth Official: K.R. Butler (Somerset)



1	STEVE PHILLIPS
2	LOUIS CAREY
3	MICKEY BELL
4	TOMMY DOHERTY
5	TONY BUTLER
6	MATTHEW HILL
7	SCOTT MURRAY
8	JOE BURNELL
9	PETER BEADLE
10	LEE PEACOCK
11	BRIAN TINNIION
12	AARON BROWN
14	MIKE STOWELL
15	ROBIN HULBERT
16	SIMON CLIST
17	LEE MATTHEWS
18	CHRISTIAN ROBERTS
19	DANNY COLES
20	KEVIN AMANKWAAH
21	BILLY MERCER
22	MARVIN BROWN
23	DARREN JONES
24	CRAIG WOODMAN
25	CLAYTON FORTUNE
26	LIAM ROSENIOR
27	ALBANO CORREIA
28	ANDREW BURKE
29	AARON SHANAHAN
30	BEN CLEVERLEY
31	THE FANS
32	KEITH MILLEN
33	LEROY LITA
34	BEN FOSTER



MARK OVENDALE	1
AARON SKELTON	2
ALAN NEILSON	3
MATTHEW SPRING	4
RUSSELL PERRETT	5
MARVIN JOHNSON	6
ADRIAN FORBES	7
KEVIN NICHOLLS	8
TONY THORPE	9
CARL GRIFFITHS	10
STEVE ROBINSON	11
CHRIS COYNE	12
ANDREW FOTIADIS	14
DEAN CROWE	15
CARL EMBERSON	16
EMMERSON BOYCE	17
AHMET BRKOVIC	18
STEVE HOWARD	19
PETER HOLMES	20
PAUL HUGHES	21
DAVID BAYLISS	22
IAN HILLIER	23
SOL DAVIS	24
ALAN KIMBLE	31
LEE MANSELL	32
DEAN BRILL	33
ROBERT GILLMAN	36
MICHAEL LEARY	38
STEPHEN O'LEARY	39
JAMES OSBORN	40
KEVIN FOLEY	41
JOE DEENEY	42
MATTHEW JUDGE	43
PARY OKAI	44
LEON BARNETT	45
ROBERT BECKWITH	47

VOTE FOR MAN OF THE MATCH

Simply send
"TEXTCLUB_BCFC"
(the squad number
of your choice)" to
82231 during
today's game. The
winner will be
announced at the
end of the game.

Texts cost 25p (mobile
network costs may vary)

WATCH THE
HIGHLIGHTS OF
TODAY'S GAME ON
bcfcworld.co.uk

MATCH SPONSOR

THE JOLLY
COBBLER

MATCHBALL
SPONSOR

THE GOOD
INTENT

MATCH
PROGRAMME
SPONSOR

SOMERSET
PLUMBING
AND HEATING

MAN OF THE MATCH
SPONSORED BY



211202 LUTON TOWN

C.A.T.S.
CITY AWAY TRAVEL SERVICE



in conjunction with
PETER CAROL
Prestige Coaching
Official Travel Partner of B.C.F.C.

**TRAVEL TO AWAY
FIXTURES IN STYLE**

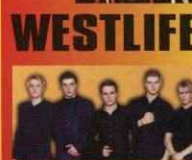
FOR C.A.T.S. TRAVEL INFORMATION & PRICES
CALL: 0117 966 6666

PETER CAROL
Prestige Coaching

LUXURY DAY EXCURSIONS, WEST END THEATRE PACKAGES & SHORT BREAKS

CONCERTS

CURRENTLY AVAILABLE



SHORT BREAKS

DISNEYLAND PARIS
LONDON
BRUSSELS & BRUGES
BRITTANY
PARIS



LONDON THEATRE

LUXURY DAY TOURS
INCLUDING TOP PRICE
THEATRE TICKET

CHITTY CHITTY
BANG BANG
THE LION KING
MAMMA MIA
MY FAIR LADY



DAY TOURS

AN EXCITING RANGE OF
EXCURSIONS INCLUDING:

THE LONDON EYE
THE CLOTHES SHOW
THE BOAT SHOW
LONDON SHOPPING
& MANY MORE



For information & booking call: **01275 839839** or visit our website at

www.petercarol.co.uk

Peter Carol Prestige Coaching, Bamfield House, Whitchurch, Bristol BS14 0XD



Security Officers



**Bristol and
surrounding
areas**

**Leading
the way in
security**

We never forget that our continued success is based on professionalism, commitment to our customers and the quality of our people — and we reward them accordingly.

We now have opportunities for men and women to join us at prestigious assignments in this area. As well as a professional approach, you will need to be smart and alert, a good communicator with a fully checkable background, and be able to work shifts.

In return, we can offer:

- Up to 4 weeks' holiday
- Life Assurance/Health Care options
- Pension plan
- Free uniform
- Fully paid training.

We encourage applications from the government's New Deal Scheme.

Please ring Natalie Rolfe on 0845 6015583. Securicor Guarding Limited, 20 Portland Square, Bristol BS2 8SJ.

securicor Thinking professionally

An equal
opportunity
employer