

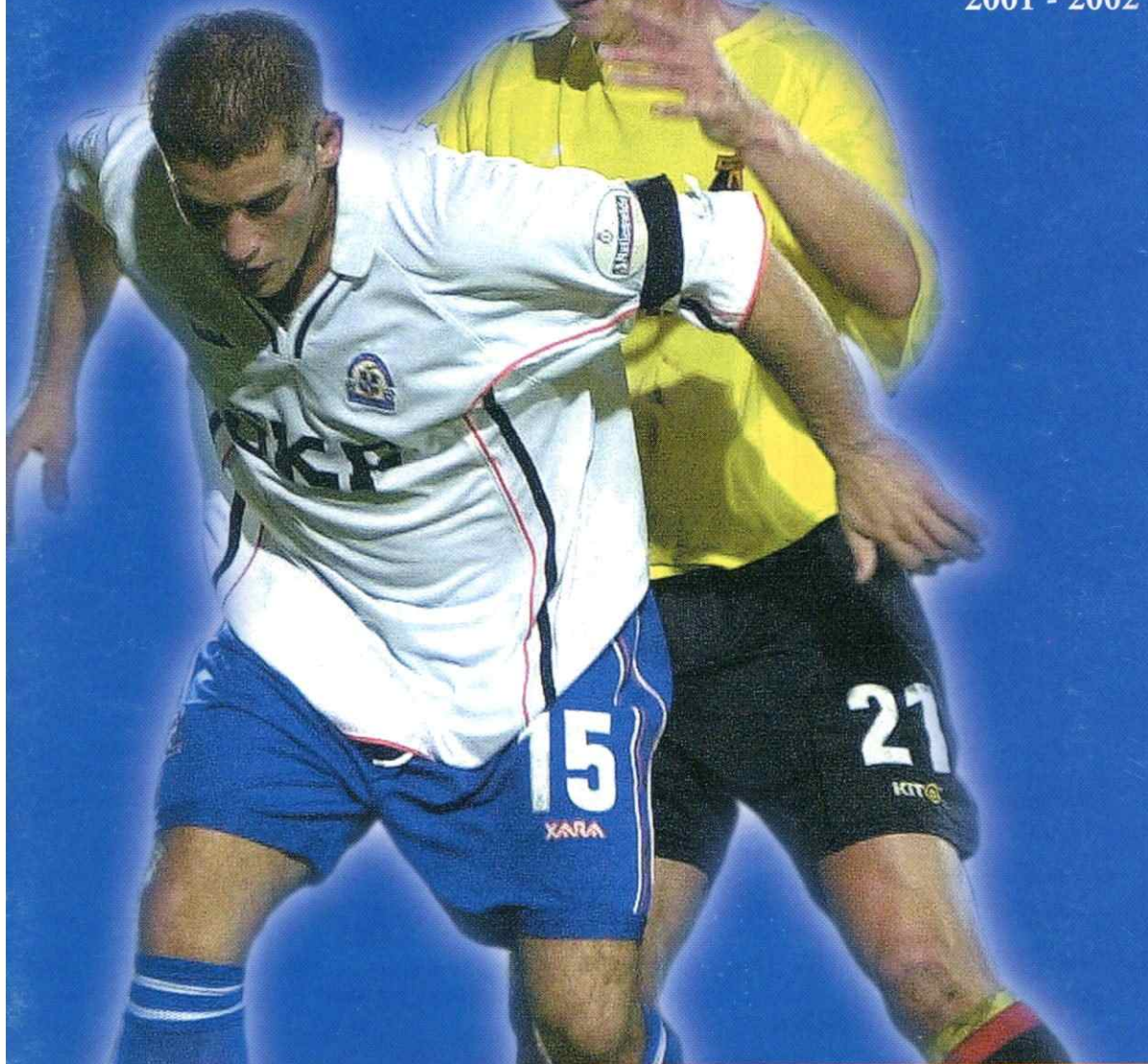
LUTON TOWN

The Hatters

Official Matchday Magazine Price: £2.00

Programme of the Year

2001 - 2002



Official Shirt Sponsors

SKF

Official Kit Supplier

XARA

Nationwide  **2**

Luton Town v Notts County

Saturday September 14, 2002 Kick Off 3pm

Joint Match Sponsors - GMAC and Intasport

Match Ball Sponsor - Mathew Black



Luton Town FC

Kenilworth Road Stadium
1 Maple Road, Luton
Bedfordshire LU4 8AW

Main Reception:
01582 411622

Fax: 01582 405070

Ticket Office: 01582 416976

Community Dept: 01582 391927

Honours

Littlewoods Cup

Winners 1987-88
Finalists 1988-89

FA Cup

Finalists 1958-59

Simod Cup

Finalists 1987-88

Division 2

Champions 1981-82

Division 3 (S)

Champions 1936-37

Division 4

Champions 1967-68

Official Matchday Magazine

Editor

Brian Swain

Design & Printing

Regal Litho Ltd

Photography

Gareth Owen

The views expressed in this
programme are not necessarily
those of Luton Town Football Club.

Cover Story



Striking success: Dean Crowe in action
at Vicarage Road, where the home
defence needed help to keep him quiet
- striker Dominic Foley is the man try-
ing to do the marking job.

Inside Forward

AFTER Tuesday's superb win at Vicarage Road, manager Joe Kinnear is hoping for a juicy reward in the second round of the Worthington Cup. We know we are unlikely to win the tournament, but it can bring in useful extra cash, says the boss, and he realises how important that is to a club like Luton.

In his column inside today the man brought up in Watford airs his other feelings about the result, and so far as the second round is concerned his attitude is that the Town can take on anyone on their day.

But, he added: "I would like a home tie for the benefit of our supporters, who were tremendous at Watford, preferably against one of the Premiership clubs who come in at this stage of the competition."

By the time you read this you may know if he has got his wish - the draw was due to be made at 2.30pm today on Sky Sport's Soccer Saturday.

If we are drawn at home the second round tie will be played on Tuesday October 1. If we are away, it will depend on our opponents' normal choice of Tuesday or Wednesday for midweek games.

Loan Extension Plea

GOALKEEPER Ben Roberts completes his month's loan to the Town next week, but Joe Kinnear hopes to be able to extend it. He is to ask Charlton manager Alan Curbishley to renew the temporary transfer for a further three months. Any agreement would include a proviso for Roberts to be recalled to The Valley at short notice if Charlton requested it. Curbishley has already confirmed that while he is happy to see his 27-year-old keeper gain further league experience, he is not for sale.

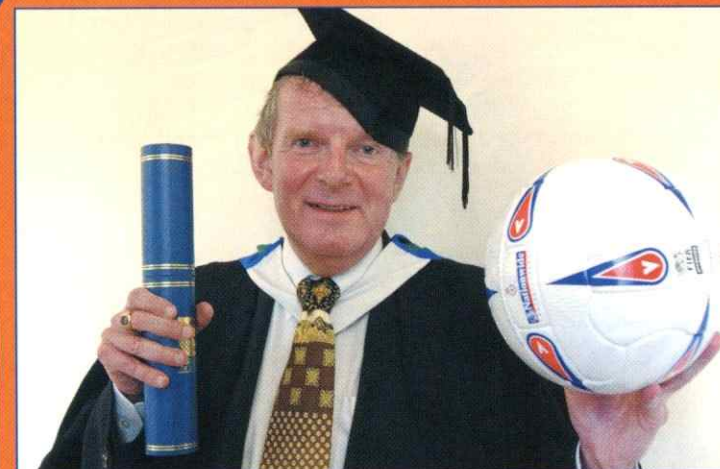
The Town boss said: "I am pleased with the way Roberts has settled into the squad, and I think Charlton will be agreeable to him staying here longer."

Roberts has kept three clean sheets in his four appearances for the Town so far, but the boss admitted he faced a ticklish team selection decision in deciding whether Roberts or Carl Emberson should face Notts County this afternoon.

Roberts had to be left out of the squad at Watford because Charlton were unwilling to allow him to be cup-tied. Emberson returned, for

INSIDE TODAY...

The manager's column - P 5; The captain's views - P 7; Reports and pictures on the games against Chesterfield and Brentford - Pp 34-37; Latest injury news - P 8; Help us beat the hooligans - P 9; Ticket news - Pp 10 & 11; With the reserves - P.51; The road to Huddersfield - P 27; Blast from the Past - P 22 & 23; Junior Hatters news - P 41; Second Division Scene - P 53.



MASTER OF HIS ART: Congratulations to John Motson, who has been awarded an honorary MA degree by Luton University. The BBC commentator has a soft spot for Luton Town - he lives at Harpenden, and his admiration of the Hatters dates back more than 20 years. One of his many highlights, working for television, was at Maine Road, Manchester, in May 1983 on the famous occasion when Raddy Antic prevented relegation and David Pleat danced joyously across the pitch to celebrate the unlikely great escape.

his first senior appearance since the defeat at Plymouth a month ago, and had an excellent game. The Town were particularly grateful to him for denying Dominic Foley a goal early in the second half, in a one-on-one confrontation. Watford were two down at the time, and desperate to get back into the game early enough to give them a sniff of saving it. In the event they were kept waiting for ten more minutes, and the Town safely negotiated the final quarter-hour after that.

Just A Blinking Rumour!

THE absence of Tony Thorpe from the Town squad at Vicarage Road might have had something to do with a rumour suggesting the striker was about to ask for a transfer after losing his place to Dean Crowe. When Joe Kinnear was asked about it, he said it was complete rubbish.

Thorpe has been ordered to take a fortnight's rest from football because of an eye infection which is affecting his vision, and that was why he is currently out of the 16-strong squad. See Joe's column on page 5 for his view.

Brian Swain



Chairman

M. Watson-Challis

Directors

E. Hood, J. Mitchell,
R. Stringer, Y. Fletcher,
R. H. G. Kelly

Vice Presidents

C. T. F. Green, N. S. Terry,
R. L. Banks, D. Ludlow MBE,
C. Bygrave, R. Safranek,
J. Sapsworth, D. Mortimer

Club Secretary

Cherry Newbery

Manager

Joe Kinnear

First Team Coach

Mick Harford

Reserve Team Coach

Brian Stein

Youth Team Coach

John Moore

Medical Officer

Dr. Bill Berry

Sports Therapist

Bruce Sewell Hobbs
BS(Chons), MSST, FA Treatment of Injuries

Consultant Physio

John Sheridan

Commercial Manager

Linda Layton

Catering Manager

Peter Saul

Safety Officer

Geoff Lovell

Ticket Office

Darren Bell

Financial Controller

Tania Buonpane FCCA

Club Dentist

A. Chris BDSA (Syd)

Club Chaplain

Rev Catherine Moss

Company Secretary

Cherry Newbery

For the latest news, views and interviews call:
CLUB CALL on 09068 121 123 (calls cost 60p per minute at all times)

Log on to Luton Town's official website at
www.lutontown.co.uk

DISCOVER THE POWER SKF Plain bearings

Spherical plain bearings and rod ends are a machine's joints. They embody strength, flexibility and endurance.

SKF engineers have created these state-of-the-art spherical plain bearings and rod ends, available from stock in a wide range of designs, dimension series and sizes.

All designed to minimise friction and maximise machine reliability.

Standard features

- Extensive product range
- Wide choice of materials
- With or without seals
- Wide operating temperature range

Applications features

- Long service life
- Minimal maintenance
- High operational reliability

For a FREE catalogue on SKF Plain bearings please complete and return to:
SKF FREEPOST MK1540 Luton LU3 4BR

Name
Company
Address
Postcode
Tel
E-mail

SKF

Manager's View



IT WAS really great to get off to a good start in the Worthington Cup, firstly because I am well aware of the cash rewards it can bring to the club, and secondly because we knew how much this result meant to our supporters, who were desperate for us to win at Vicarage Road.

I give credit to the players for the way they coped with an away game against a team from a higher division.

It was an excellent team effort, and we deserved the victory. There is always a little bit more edge to a local derby, and although Matt Spring was the only member of our team with previous experience of Watford v Luton games, everyone in the squad, not least myself, realised just how much importance supporters attach to these games.

We went there in confident mood, having earned a good win in our last home game, against Chesterfield. We just about played them off the park. Then we stood up well to take a point off the league leaders at Brentford on Saturday.

We have discovered that the Second Division calls for strength of body and mind, and proved to ourselves that if our attitude is right we have the ability to succeed.

In each of this week's games, at Griffin Park and Vicarage Road, we met teams who tried

to bomb us with a succession of crosses, and for me the clean sheet at Brentford, our third on the trot, was very satisfying.

I know we are always capable of scoring goals, and we were unlucky not to get a winner at Brentford when the best move of the match ended with Steve Howard heading against the bar. We hardly ever looked like conceding a goal.

We don't have the biggest squad in the world, but we have been able to make a couple of changes to ginger up our players and keep them on their toes. Dean Crowe has grabbed his chance in attack, but knows that Tony Thorpe is breathing down his neck and itching to get back into the side. Tony has been plagued by an eye infection and we are glad we have got to the bottom of it. He has to rest for two weeks, but after that I look forward to seeing him back to his goal-scoring best.

David Bayliss came in when Chris Coyne was suspended, and has done well enough to keep his place, and at Watford Carl Emberson returned in goal and did well. Watford were desperate for a goal early in the second half after we had hit them with two magnificent strikes in the first. They looked like scoring when Foley was played in for a one-on-one, but Embo did the business with a vital save, and by the time Watford did get their goal I felt we had more than drawn the sting out of

them.

We had to defend hard in the late stages, but we did the job, and I don't think anyone could deny that we earned that result by a mixture of top quality finishing, hard work, organisation and team spirit. It was a great night out for all of us, and great to see the feel-good factor come back.

As always, a little cup glory is all very well, but we know that the real business has to be done week in, week out, in the league. Fortunately, we made our mistakes early enough in the season to give ourselves time to put things right.

The league table does not lie, although it is still early days and one or two results can make a big difference. We have no intention of hanging around in the relegation zone, and it is nice to know that we will climb out of it if we win this afternoon. It might be a bit early in the season to be playing a "six-pointer" but the table underlines how important a good result is today for both teams.

We will be in the right frame of mind to get the result we all desire. County, on the other hand, suffered a disappointment in the cup on Tuesday, and will be very keen to bounce back. We must make sure we are on top of our game to deny them that chance. Keep the faith, and enjoy the game.

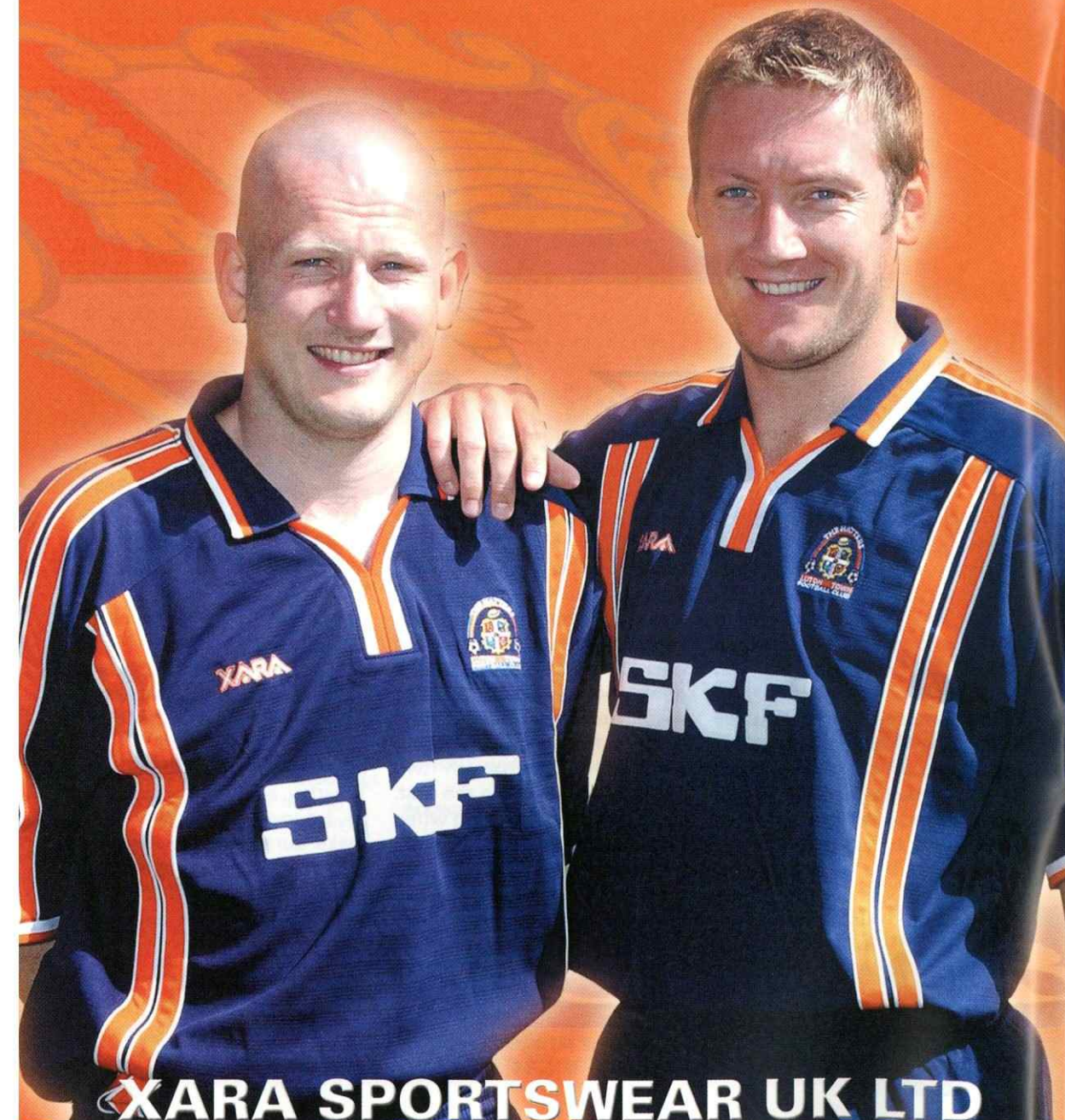
Joe Kinnear



The place to shop in Bedfordshire . . .
Horne Lane, Bedford - 01234 357330

XARA

**OFFICIAL KIT SUPPLIER TO LUTON TOWN F.C.
SEASON 2002 - 2003**



Captain's View



WITH two home games in four days, we hope we are all set to build on the good work of the past week or two, and make more progress up the table. We think we are capable of getting the two wins we need, but we have already been reminded by our early results this season that it will need 100 per cent effort and commitment.

That was the key to our success at Watford on Tuesday, when we turned in a performance that brought a lot of satisfaction. My only other experience of a local derby was playing for Charlton against Millwall, and the passion on that occasion did not compare to what we experienced on Tuesday. Marvin Johnson had told us what to expect, so while we were not taken by surprise, it was quite an occasion to play in a ground with such a cracking atmosphere.

It helped to make it a "big game" occasion, and we were delighted to come through it with a good performance and result.

We enjoyed testing ourselves against a side who are tipped to finish well up in the First Division, and who were in the Premiership not that long ago. On the night, I don't think Watford could have any complaints about the result.

There were three good goals, and I took a lot of satisfaction at the start of both moves which led to ours. The first came from a great tackle by Paul Hughes, with Matt Spring completing the move with a tremendous drive. The second started when I won the ball in another tackle

in midfield, and once more Steve Howard's finishing was top drawer. Matt's pass to put him through was also a bit special.

We reaped the reward for the new formation we have had to use this season. Obviously we have missed Matthew Taylor, but we have compensated by the way we use the midfield, with Hughes and Ahmet Brkovic playing key roles just in front of me, and Matt breaking forward. If we win the ball consistently, we always look as though we can turn possession into goals.

I imagine the fans were a bit on edge for the last 15 minutes or so, after Watford scored. That gave them a lift, as goals always do, but we defended well as a team, as we have done in the last four games.

Three clean sheets out of four isn't bad, and Carl Emberson deserves credit for his contribution at Vicarage Road. He put his hand up for a mistake which cost us a goal at Plymouth, but came back into the side on a night when he might have been under a lot of pressure. He did well, and made an important save to prevent Watford getting the goal they desperately needed early in the second half.

But the real reason for our success was that it was a great team effort, in fact a squad effort. It's not just about the 11 who start each game, as we have already seen as the gaffer has made changes to the side. I think that as a squad we are getting stronger compared to last season.

We also had the luxury at Watford of being backed by tremendous support. The fans were unbelievable – we heard you all night, and that was one of the best matches I have ever played in so far as atmosphere is concerned.

If I had a choice, my wish for the next round in the Worthington Cup would be for a home tie, preferably against one of the top clubs – firstly, to reward our home fans, and secondly to test ourselves against good opposition.

I think we could give anyone a game, especially in a cup-tie, and it would be nice to test ourselves against a Premiership side at Kenilworth Road.

Today, however, the cup is very much on the back burner. Unusually, for one who believes in taking one game at a time, I am looking at two together. We want six points from the visits of Notts County and Mansfield.

We haven't played County for a while, but we know they are a well-organised team, and that Mark Stallard can be a bit of a handful. If we are on song, we can take care of him and his team-mates, as we have demonstrated in the past four matches. And your support, as at Watford on Tuesday, can play a big part in getting the results we want as we try to move up to mid-table within the next few days.

Kevin Nicholls

Log on to Luton Town's official website at
www.lutontown.co.uk



Treatment Room

IT'S very nearly all good news from the treatment room today, with Tony Thorpe the only addition to the sick list and ruled out of this afternoon's match.

He has an eye infection which affects his vision, and has been advised not to play football until an ophthalmic specialist examines him. First, we are treating him with anti-biotics and eye-drops to reduce the infection, and he will see the specialist on Tuesday. His report will decide how quickly the player can be considered for competitive football again, but as usual it will probably be a case of time being the greatest healer.

That is always the case, but I



have been amazed at how Mark Ovendale has "beaten the clock" as he recovers from a hip operation. He has worked exceptionally hard, and was back in full training by the middle of this week, and that is

almost unbelievable.

Experience from others who have undergone such surgery suggested he would need three months before he could get anywhere near full training, but he has done it in six weeks.

He is still nowhere near playing, but he has done remarkably well to make so much progress so quickly, and he has already tested the hip by indulging in full goalkeeper training routines, including full dives.

Speaking of goalkeepers, Ben Roberts took a blow to the shoulder at Brentford a week ago, when a player ran full tilt into him. He didn't need treatment, then or later, but we had him X-rayed as a precaution, and that confirmed he was perfectly OK.

Our long-term injury victim, Adrian Forbes, continues to do well, thanks to his attitude and willingness to work hard. He went to see his specialist on Wednesday, and the verdict is that Forbes is coming along nicely. The graft to cure his ligament injury has taken, which is good news, and he is making exceptional progress.

He is still very much part of the first team pool, and in terms of effort to get over his injury he is doing everything required of him. After the good report from the specialist he can now get on with the next stage of his rehabilitation, but I have warned him that the hard work starts now. Knowing the player, he will be ready for it, and willing to do whatever is necessary to make the long road back to fitness as short as he can.

Bruce Sewell Hobbs



FITNESS WORK: Youth team goalkeeper Dean Brill has been under treatment for a thigh muscle strain, and part of the cure is to work out in the gym to strengthen the muscle, under the full supervision of the club physio.

Club Secretary



SADLY, I have to start today's column with a reference to the one item of bad news in a week when football has given us so much to enjoy.

As a club, we have been let down by a tiny minority of so-called supporters who seemed determined to spoil the occasion for the rest of us at Tuesday's Worthington Cup-tie.

At the time of writing, we believe about 40 people were involved in the disturbance before kick-off – just one per cent of our following.

But we view with extreme concern the problems caused by that small minority. The club is co-operating fully with the Police in efforts to identify the culprits, and I would ask all true supporters to help in those endeavours. We are co-operating fully with the police to do everything we can to help their investigations.

We value our tradition of being a family club, and will do all in our power to help the police to bring troublemakers to justice.

As well as any court action which may follow Tuesday's events, the club will take steps to ban anyone found guilty of football-related offences.

So please, will any supporter who can help identify those involved in the disturbance contact Bedfordshire Police or me at the club.

We have worked hard over the years to make Kenilworth Road a place where people

can enjoy themselves, and where it is safe for all the family.

We are determined that a very small minority should not be allowed to spoil the enjoyment and safety of the large majority. And on behalf of the club, well done to that well-behaved majority for the way they conducted themselves in supporting the team at Watford. It made for a terrific atmosphere, and I know the players and coaching staff appreciated your efforts.

I suppose it is inevitable that while the trouble involved very few people, it attracted the sort of headlines we can do without, but otherwise it was an excellent evening, with a superb display by the team.

The Worthington Cup second round draw is due to be made a few minutes before this afternoon's kick-off. We are ready to swing into action as quickly as possible to confirm ticket arrangements, but I am sure you will appreciate that it will take a few days for us and our opponents to get together, so the earliest opportunity we will have to pass on the information will be via our website and ClubCall.

Incidentally, we have a chance of drawing a Premiership club. Some, because of their European qualifications, have byes through to round three, but today's second round draw includes a dozen clubs from the Premiership: Tottenham,

Charlton, Manchester City, Middlesbrough, Sunderland, Everton, Birmingham, Aston Villa, West Brom, Southampton, West Ham and Bolton.

In our local cup competition, the Bedfordshire Premier Cup, in which we traditionally field our reserve side, we have received a bye through to the second round, which is due to be played in the second week of November. Our first match in this tournament will be away to the winners of a first round game between Kempston Rovers and Wootton Blue Cross. I will advise you of the outcome of that fixture as soon as I have the information.

This afternoon we are having a bucket collection for the Great Ormond Street Children's Hospital, and as usual Mary Biswell and her helpers will be doing their best to boost funds, with your help.

I am sure you will be as generous as usual, and on this occasion there is a Luton Town connection with this very good cause. A group of fans are walking 16 miles from Letchworth to the ground – see page 27 for more details. I hope they completed their journey without too many blisters, and are able to enjoy this afternoon's game free of aches and pains!

Cherry Newbery

Latest News From The Ticket Office

Nationwide League Division Two



Luton Town v Mansfield Town Tuesday September 17, 2002, kick-off 7.45pm

Tickets are now on sale at normal matchday prices
Cash turnstiles will be available on the day, subject to availability,
but please remember there are NO CONCESSIONS
available on cash turnstiles



Huddersfield Town v Luton Town Saturday September 21, 2002, kick-off 3pm

This match is pay on the day only for Luton supporters, with no
tickets available in advance from Kenilworth Road.
Luton Town supporters will be accommodated in the covered
South Stand
Prices: Adults £14.50, Senior Citizens £7, Juniors £5



Luton Town v Swindon Town Saturday September 28, 2002, kick-off 3pm

Tickets are now on sale at normal matchday prices
Cash turnstiles will be available on the day, subject to availability,
but please remember there are NO CONCESSIONS available on
cash turnstiles



Ticket Office Opening Hours

MONDAY TO FRIDAY
10am to 4pm,
except on Fridays before
Saturday home games
when it is 10am to 6pm.

SATURDAY
9am to 5.15pm on match
days; 10am until the
away coaches depart on
days when there is no
game at Kenilworth
Road.

Nationwide League Division Two



Stockport County v Luton Town Saturday October 5, 2002, kick-off 3pm

This is not an all ticket match. However, 400 tickets, all for seating,
were made available to us, and are on sale at the ticket office.
Prices: Adults £16, Senior Citizens £9, Juniors £4.
Unfortunately there are no student
concessions available for this game.
If supporters wish to pay on the day, prices are the same.



Luton Town v Cheltenham Town Saturday October 12, 2002, kick-off 3pm

Tickets are now on sale at normal matchday prices
Cash turnstiles will be available on the day, subject to availability,
but please remember there are NO CONCESSIONS available on
cash turnstiles



Oldham Athletic v Luton Town Saturday October 19, 2002, kick-off 3pm

This match is pay on the day only for Luton Town supporters, with
no tickets available in advance from Kenilworth Road.
Prices: Adults £16, Senior Citizens, Students and Juniors £7.



Luton Town v Wigan Athletic Saturday October 26, 2002, kick-off 3pm

Tickets are now on sale at normal matchday prices
Cash turnstiles will be available on the day, subject to availability,
but please remember there are NO CONCESSIONS
available on cash turnstiles



Luton Town Credit Card Hotline

By using our telephone hotline system you can order match tickets up to 48 hours prior to any game by ringing

01582 730748 24 HOURS A DAY

CONNECT WITH YOUR CLUB

Luton Town
09068 121 123
TELETEXT ON TV 52M
Calls cost 60p/min. ClubCall EC2A 4PF

Club Call

www.lutononline.co.uk
The Luton News The Dunstable Gazette

The Winning Team

Get the latest Hatters news every Wednesday

Every Wednesday read the latest match reports, transfer news, interviews *plus much more...*

FOR SUBSCRIPTION DETAILS CALL 01234 409218

Executive Box Holders



BILLINGTON & LAWRENCE

travelextras
 for everything but the flight

Hi-Tech Flooring

G.P. Quoreenton
 (Ductwork)

Graham's

OPS Office Power Systems
 The Power In The Office

RED KITE COMMERCIAL SERVICES
Battle's Everything To Stay Builders

Templeview Developments Ltd
McGirls Money Management

Ladyswood Ltd

Rob Stringer of
Epic Records

VAUXHALL

Bargad (Electrical) Ltd.
 and N.E.D.

T.S.I. (U.K.) LTD.
 TECHNICAL SERVICES TO INDUSTRY

COMAU
 SYSYSTEMS

Genesis
 Homes

CANNON LANE

J.J. KELLY & SONS LTD

ADMIRAL

GMB KEEP PUBLIC SERVICES PUBLIC

Allsop
 Building

Bargad (Electrical) Ltd.
 and N.E.D.

Markyate Precision
Machine Co. Ltd

Butterfields

Luton Building

Mr Dave Crawford

Mr Mick Connolly

SKF

Kenilworth Suite Members

Mr P Armitage
Belldene Consruction Services Ltd
C P Contracts
Corporate Coaching
Datapace Ltd
DBF Crosswinds Ltd
Mr M Eade
Mr R Eade
Mr K Harvey
Mr R Harvey
J P Hygiene Supplies

Mr P Mitchell
Protexx Mortgage & Financial Services
Regal Litho Ltd
Remdex UK Ltd
Mr J Siegler
Dr D Siegler
SKF (UK) Ltd
Space Display Systems
Vangis UK Ltd
Mr & Mrs R Williams
Woburn Media Ltd

If you would like a brochure or further information on Kenilworth Suite Membership please contact the Commercial Department on **01582 411622**



hattersbet powered by
Our official online betting service **bet365**

**20 quid
says you're
a winner!**

**Sign up to HattersBet,
our official online betting service,
and have a £20 bet for free*.**

Having a flutter has never been easier!

- 90 minutes, correct score, scorecasts, first goalscorer, half time/full time and 'specials' – available on every one of our matches this season
- Unrivalled international sports betting coverage

**And remember,
every bet you place,
big or small,
directly benefits
the club.**

Bookie-mark the page!

www.lutontown.co.uk

*See site for details, terms and conditions apply.

Commercial Corner



WE ARE fortunate this afternoon to enjoy return visits by both of our joint match sponsors, GMAC and Intasport.

General Motors Acceptance Corporation (GMAC), a wholly owned subsidiary of General Motors, is one of the world's largest financial services companies, with business lines in automotive finance, commercial and residential mortgages, and insurance.

GMAC operates in the UK trading as Vauxhall Finance

RYAN Sellers is enjoying an early birthday present this afternoon, as our commercial mascot. He lives at Abbots Road, Edgware, and will be eight years old next month. He comes to matches with his mum and dad, but today he will do much more than just watch his favourite football team. He will join the players in the dressing room as they prepare for the game, and then go out onto the pitch with them to take part in the warm-up and kick-about. He will also have a close look at the centre circle formalities when the skippers meet the match officials for the toss of the coin. Ryan goes to Dollis Junior School, and as well as football he enjoys golf and cricket.



and Saab Finance, and in 40 other countries. Since its inception in 1919, the company has extended more than \$1trillion in credit financing for more than 150 million vehicles worldwide.

Intasport, from Stafford, is an energetic sports promotion and corporate hospitality company which prides itself on giving excellent service to a rapidly expanding client base. Intasport has earned a high reputation within sporting circles as publishers of fixture charts, year planners, desk pads, team sheets and brochures for football, rugby and cricket clubs, and racecourses.

We are delighted to greet the company's two representatives, who will be bringing with them guests from eight local companies which have supported production of fixture charts and desk pads. We trust it will be a most enjoyable afternoon for them all, representing The Daily Roast, Autair Freight, Allied Dunbar, T. J. Robins Ltd, Ella & White Ltd, Neves Solicitors, R. J. Blow & Co and NQA.

OUR BALL sponsor is Mathew Black, from Brooklands Drive, Leighton Buzzard, and we leave it to him to explain why he is here in that capacity. "I would like to thank my parents," he said, "Because they are responsible for me being the match ball sponsor today. I would also like to thank Mark Harker, the person I can blame for me being an avid supporter of Luton Town FC!"

Linda Layton

Golden Gamble

TOWN fan Justin Langdon, from Buchanan Drive, Luton, had even more reason than most to enjoy our victory over Chesterfield – he went home with a £670 bonus in his pocket. It was the prize in our popular Golden Gamble draw, and his ticket was picked out of the drum by Mark Ovendale.

Another cash prize is on offer this afternoon. Tickets cost just £1, and the size of the prize depends on sales. Half of each pound goes into the day's jackpot, and the other 50p goes towards club funds, so your support is very much appreciated.

Jackpots paid out in the first three league games have totalled £2,050, an average of £683. Golden Gamble ticket sellers will be on duty around the ground again today and as usual the draw will be made at half-time, and the cash will be paid out immediately.



To advertise in the matchday magazine phone Luton 411622 or e-mail us at:
commercial@lutontown.co.uk



Kit Sponsors

David Bayliss
WHOSH

Mick Harford
Les Miller
Miller & Company Bedford

Mark Ovendale
Available

Emmerson Boyce
Elsie Clubb

Happy Harry
Available

Russell Perrett
Graham Bates & Chris Park

Chris Coyne
Mel Westwood & Family

Ian Hillier
Available

Bruce Sewell Hobbs
Sally & Sue

Dean Crowe
John Pyper & John Waterworth
"Mad Hatters"

Peter Holmes
Gill, Julie, Yvonne

Aaron Skelton
The Bobbers Travel Club

Justin Dealey
BBC Three Counties Radio

Steve Howard
Jeremy Cain of DAP Consulting

Matthew Spring
Brian Hall

Joseph Deeney
Michael Capp & Danny Clubb

Paul Hughes
Les & Sue Miller

Brian Stein
Danny Clubb

Tony Thorpe
Luton Town Supporters club

Marvin Johnson
Fred Barrett & Son
Licensed Property Valuers

Alan Neilson
LTFC Barmy Army London Branch

Carl Emberson
The Kenilworth Connection

Joe Kinnear
LTFC Supporters Club (MK)

Ahmet Brkovic
G&S Ceramics

Adrian Forbes
The Regular Rabble

Lee Mansell
Danny Clubb & Michael Capp

Alan Kimble
Office Power Systems Ltd

Andrew Fotiadis
Sally Mayne & Family

John Moore
Ian Smith

Steve Robinson
G.Owen Ceramic Tiling

Robert Gillman
Century Club

Kevin Nicholls
WHOSH

Kevin Foley
The Regular Rabble

Carl Griffiths
Paul Deason

James Osborn
Michael Capp & Danny Clubb

Sol Davis
Personal Security Services



For/Against



Goalscoring



Home/Away



Top Scorer



Form Guide



Discipline



Attendances



Swings/Margins



Miscellaneous



Clubs Comparison

Goals Scored		
5	Shots	4
4	Headers	1
0	Volleys	2
1	Penalties	0
0	Free Kicks	0
0	Own Goals	0

Where Goals Scored		
4	Inside the box	3
5	Outside the box	4
0	Set pieces	0

Where Goals Conceded		
6	Inside the box	1
2	Outside the box	4
3	Set pieces	3

When Goals Scored		
1	0-15 mins	1
0	16-30 mins	1
2	31-45 mins	2
1	46-60 mins	3
4	61-75 mins	0
2	76-90 mins	0

Form Guide - Last 6		
1	Won	1
2	Drawn	3
3	Lost	2
8	For	6
10	Against	7
5	Points	6
-2	Goal Difference	-1
LLLDWD	Sequence	WDLDDL
LLW	Home Seq.	DLDL
LLDD	Away Seq.	WDD

Yellow & Red Cards		
16	Yellow	7
1	Red	0

Seasonal Progress Comparison



2002-2003 Attendances		
Hatters	20,150	Aggregate
	7,860	Highest
	6,060	Lowest
	6,717	Average
	67	% of Capacity
Magpies	23,300	
	6,302	
	5,435	
	5,825	
	29	

Average Goals per game		
1.43	For	1.00
2.33	Home For	1.00
0.75	Away For	1.00
1.86	Against	1.14
2.00	Home Against	2.00
1.75	Away Against	0.00

2002-2003 Figures		
20	Players Used	17
3	Clean Sheets	3
2	Failed to Score	3
	Goals scored from...	
2	Corners	1
0	Free Kicks	2
	Goals conceded from...	
1	Corners	0
0	Free Kicks	1

10 Year Record		
Hatters	54.6	Avg Pos. among 92 clubs
	7,878	Avg Att 1993
	6,717	Avg Att 2002
	-15	+ / - %
Magpies	55.1	
	8,346	
	5,825	
	-30	

Top League Scorers		
Howard	3	League Goals
	7	Games Played
	0.43	Lge Goals/Game
	0	Points Gained
	2	Scoring Run
	0	Hat-Tricks
	1	Close Range
	1	Inside Area
	1	Long Range
	1	Shots
	1	Headers
	0	Volleys
	0	Penalties
	0	Direct FKs

Swings		
LT	Games Won from:	
0	3 Goals Down	
0	2 Goals Down	
0	1 Goal Down	

Lost from:		
0	3 Goals Up	
0	2 Goals Up	
1	1 Goal Up	

Drawn from:		
0	3 Goals Down	
0	2 Goals Down	
0	1 Goal Down	
0	3 Goals Up	
0	2 Goals Up	
0	1 Goal Up	

Margins		
0	Won by 1 Gl	
0	Won by 2 Gl	
1	Won by 3 Gl	
0	Won by 4 Gl	
0	Won by 5+ Gl	
	Games	
3	Lost by 1 Gl	
0	Lost by 2 Gl	
1	Lost by 3 Gl	
0	Lost by 4 Gl	
0	Lost by 5+ Gl	

Misc stats		
16	Highest Pos.	6
24	Lowest Pos.	21
0	Winning Run	0
3	Unbeaten Run	3
4	Losing Run	0
5	No Win Run	5

Notts County's 10 Year History





Welcome To



Club History

Throughout the years Notts have moved between the Divisions on no less than 26 occasions. In recent times the club have had just two spells at the highest level in English football, between 1981-1984 and for one season only, 1991-1992 in the last season of Division One it was re-named 'The Premiership'

Notts County's most famous player was the England International Tommy Lawton, whose arrival at Meadow Lane in November 1947 put 10,000 on the gates and the Boxing Day game against Swansea caused the gates to be locked with more than 45,000 in the ground and an estimated 10,000 outside! 'The Lawton Era' were halcyon days at Notts

County with other great players such as Jackie Sewell and Tommy Deans gracing the Third Division.

Arguably the most successful period in the Club's history, under arguably the most successful manager, came in the 1970's when Jimmy Sirrel put so much pride back into the Club including promotion to Division One in 1981.

Later, Neil Warnock became only the second manager in recent times to steer Notts to the top flight in 1991. After just one season at that level the club have spent most of the nineties fighting to establish consistency. Season 1997-98 however was quite unique with a number of National and Club

records falling as Notts County surged to the Third Division Championship.

During a campaign which saw the Club become the first to pass the 4,000 League games landmark, Sam Allardyce's team won a League Championship at the earliest ever date (March 18th) and by the largest number of points (19).

The Meadow Lane Stadium, Notts home since 1910, has been completely rebuilt during the early 1990's at a cost of £8 million and currently has a capacity of 20,300 all seated, boasting some of the best facilities outside of the Premiership.

Notts County F.C.



GOALKEEPERS

1. STEVE MILDENHALL

Born: Swindon 13.5.78

Height: 6'4"

One of the new recruits brought in by manager Jocky Scott last summer, is one of the brightest stars in the Nationwide League. A former Player of the Year at his native Swindon (despite only playing for half the season) Notts moved quickly to secure his signature despite reported interest from Sunderland and Arsenal. Started last season brightly but a dip in form allowed Stuart Garden to take over the number one spot. Will be looking to start the season afresh.

12. STUART GARDEN

Born: Dundee 10.2.72

Height: 5'12"

Another keeper brought to the club by Jocky Scott when both Darren Ward and Paul Gibson left the club. Was expected to fill a supporting role at the club to Steve Mildenhall, but when called upon Garden made a string of impressive saves in the run-in to contribute as much as anyone to the club avoiding relegation.

19. SAUL DEENEY

Young goalkeeper who is in the second year of a four-year contract; testament of the club's hopes for the young Irishman. Although yet to make a first team appearance for the Magpies, Saul is highly regarded at the club.

DEFENDERS

28. DANNY STONE

A former trainee at Ewood Park, Notts quickly snapped up on a one-year contract after he was released by Blackburn, and earned a twelve month extension at the end of the season. Although Danny was expected to spend the first year gaining experience at reserve level, his impressive performances persuaded Gary Brazil to give the full-back his debut against Reading Queens Park Rangers. A very composed young player who looks to have a bright future, and is yet to have a poor game for the first team.

13. RICHARD LIBURD

Born: Nottingham 26.9.73

Height: 5'9"

Very much a talisman for the club and one of the crowd favourites, Richard Liburd has cemented his place in the squad as a player able to fill in numerous positions, and has also revealed a talent for scoring crucial goals. Returned to the team in the relegation run-in last season to great effect and will once more begin the season as one of the senior players many will look to.

3. IAN BARACLOUGH

Born: Leicester 4.12.1970

Height: 6'1"

Experienced defender who returned to The Aaron Scargill Stadium for the 2001/02 season after a spell with QPR. Able to

play in any left-sided role in defence (and also operate in midfield), Ian is a very experienced player. Able to supplement the attack with a willingness to get forward, and can chip in with the odd goal. Finished the season with injury problems and will be looking to start the new campaign fully fit.

17. RICHARD HOLMES

Born: Grantham 7.11.80

Height: 5' 11"

After making a big impact in the right-back berth in season 1999/2000, Richard failed to establish himself in the side last season, with Nicky Fenton's arrival at the club pushing him further down the pecking order. Spent a period on loan last season at Hereford, where the club hope 'Richard will regain some confidence and challenge for a spot in the Magpies team this season.

2. NICKY FENTON

Born: Preston 23.10.1979

Height: 5' 10"

Signed from Manchester City last season for £150,000, Nicky was actually in his second term with Notts after a loan spell the previous season. A very pacy, composed defender who slotted into the side last season with consummate ease and is hugely popular with the fans. His performances belie his young years and as one of the club's main performers, able to operate in the centre or on the right hand side of the defence with great ability. Crucial in last season's team, many will be



Welcome To

hoping that his obvious talent is ignored once again by clubs in the top flight.

27. CRAIG IRELAND

Born: Dundee 19.11.1975

Height: 6'3"

Signed by former manager Jocky Scott, Craig is a tough centre-back whose aerial ability enables him to snuff out the opposition's threat in the air. Initially joined the Magpies in the 200/01 season on loan, but it seemed a permanent deal would be scuppered when the two clubs could not agree on a fee. Eventually an agreement was reached, and Ireland started last season with some composed performances. A no-nonsense performer with a lot of strength, and after an injury to Ian Richardson formed a strong alliance with both Mark Warren and Nicky Fenton.

30. PAUL RILEY

Born: Nottingham 29.9.1982

A product of the club's youth system, Paul recently found himself in the side after injury to Ian Baraclough. The young defender is very composed on the ball and has confidence with the ball at his feet. Highly-rated by Billy Dearden, the youngster is beginning to establish himself in the squad and it will not be long before he is challenging Baraclough and Nicholson for the left-back slot.

11. KEVIN NICHOLSON

Born: Derby 2.10.1980

Height: 5'8"

Began his career with Sheffield

Wednesday, but found it difficult to force his way into the team and subsequently joined Northampton on loan. Unfortunately, the Cobblers failed to secure Nicholson to a contract and Notts were able to nip them to the player's signature after he impressed against the Magpies in a game at The Aaron Scargill Stadium last season. A player who can deputise anywhere on the left hand side of the team, Nicholson was not having the best of seasons when injuries to Paul Riley and Ian Baraclough meant a spot in the left-back berth. Enjoyed his best period for the side and has staked a very strong claim to start the season as first-choice. His goal in the last game of the season against Huddersfield, ensuring Division Two safety, will certainly have helped his cause.

MIDFIELDERS

14. PAUL BOLLAND

Born: Bradford 23.12.79

Height: 6'0"

Spent another season ravaged with injury last time out, but showed once again that few can match his work rate and commitment to the side. Paul's never-say-die attitude has made him popular with Billy Dearden and if he can avoid the injury problems which have dogged him recently, may well start the season alongside Darren Caskey.

24. DARREN CASKEY

Born: Basildon 21.8.1974

Height: 5'8"

Arrived at the Aaron Scargill Stadium with a lot of expectation on his shoulders, and it might be fair to say that Darren took a while to settle in before his obvious talent came to the fore. Took on the captaincy late in the season and his ability to dictate a game came to prominence. Fans will be hoping that Caskey can continue where he left off in the last campaign and his passing range will be crucial to the Magpies promotion aspirations.



7. MARCEL CAS

Born: Holland 30.4.1972

Height: 5'11"

Arrived in the summer of 2002 from RBC Roosendaal. A right-sided player who can operate in midfield or defence, Marcel's willingness to run at players and his impressive turn of speed certainly gained him a reputation in Division Two. Suffered a dip in form mid-sea-

Notts County F.C.



son but crucially returned to his best in the relegation dog-fight, attacking relentlessly down the right-hand side and bagging a forty-yard volley at the Withdean Stadium against Brighton—the supporters choice for Goal of the Season.



15. MICHAEL BROUGH

Born: Nottingham 1.8.

Height: 5'9"

Another player who will give his all for the side, Michael was again impressive when called upon last season. Will be challenging Paul Bolland for a place in the middle of the park this time around, with his determination and tough-tackling the equal of Bolland, manager Billy Dearden will have to split hairs to decide between the two.

STRIKERS

9. MARK STALLARD

Born: Derby 24.10.74

Height: 6'0"

After a season in which he

proved his reputation as one of the finest strikers in Division Two, Stallard spent a frustrating 2001/02 trying to shake off a hernia injury which denied Gary Brazil, and subsequently Billy Dearden, his obvious scoring talent. Played through the pain barrier to little avail, Stallard went under the surgeon's knife before returning to a rapturous reception in the final game of the season. With a fully-fit Stallard and Heffernan and Allsopp, few clubs will be able to match the scoring threat of the Magpies.

26. TONY HACKWORTH

Born: Durham 19.05.1980

Height: 6'2"

Arrived at The Aaron Scargill Stadium with a lot of expectation last season, but was the odd man out with Paul Heffernan developing such a good understanding with Danny Allsopp. Performed consistently in the reserves but was never able to dislodge the young striking duo. Will be hoping for better luck this time around.

10. DANNY ALLSOPP

Born: Australia 10.8.1978

Height: 6'1"

The 2001/02 season was one of a similar story for Danny Allsopp—goals. Despite playing in a side that struggled for most of the season, Danny still managed to notch up over 30 goals. Shouldered a lot of responsibility with the loss of Mark Stallard, and despite a dip in form over Christmas, was still on hand to fire the Magpies to Division Two safety. His tal-

ents have understandably drawn attention from the higher divisions, and if Billy Dearden can keep hold of him, promises yet another season of free-scoring.



21. PAUL HEFFERNAN

Born: Dublin 29.12.1981

Height: 5'10"

Has been touted for two years as a star of the future, and when Mark Stallard suffered injury, Heffernan grabbed his chance with both hands. Despite his age, Heffernan possesses maturity far beyond his years and is as cool as they come in front of goal. Scored a goal against Bristol City that Paul Gascoigne would have been proud of, and after such a long period waiting for his chance, Heffernan will begin the season very much part of the first team squad.



Blast From the Past

After David Pleat was handed the manager's job at Kenilworth Road in January 1978 he had some difficulty in finding his feet during his first few months in charge.

Fortunately, the points gained in the early part of that season were enough to ensure that we did not exactly struggle to avoid relegation but it was a close run thing when you look back at the league table.

In his first close season, Pleat took stock and quickly decided that he wanted his own men around him and set about one of the biggest clearouts in the club's history.

Many of the players who had served the Town well over the previous few years were dispensed with and new faces brought in. We were all worried about the effect such a massive shake up would bring, but argued that the previous set of players had failed to win promotion so it was a

perhaps time for a re-think. In came Mal Donaghy from Larne for £15,000, signed while his manager was on holiday, while Chris Turner who had played well over 300 games in the heart of the Peterborough defence cost rather more. Mark Aizlewood, an up and coming defender, was signed from Newport, winger David Moss from Swindon and that wily old campaigner Bob Hatton came from relegated Blackpool.

These five players, together with Kirk Stephens, signed from Pleat's old club Nuneaton Borough, and free transfer signing Steve Sherlock, all made their debuts in the opening game of the 1978/79 season with Oldham the visitors to Kenilworth Road. A bemused but very curious Luton crowd of 8,043 gathered to have a look at the new boys, and I would reckon that most people in the ground purchased a programme that afternoon in order to check the names of the

players. Unfortunately, when the half-time whistle sounded with the Town 0-1 down, we all thought that the players should spend the interval reading the programme so that they might recognise their teammates! Taking heed of our advice, the team started the second period like whirlwinds and scored two quick goals through Hatton and Moss before people had taken their seats, and went on to win the game 6-1 to send the crowd home happy and praising the ability of David Pleat in the transfer market.

The bubble soon burst as the next two games, away at Crystal Palace and Newcastle, were both lost. At Kenilworth Road, though, we were a different side, as proved when Charlton visited us in our second home game of the season and returned to London having suffered a 0-3 defeat with Hatton, Brian Stein and Ricky Hill on the scoresheet.

Charlton were probably pleased with this performance however, as they had suffered a 1-7 thrashing here the previous campaign.

With the team now boosted by the return of Paul Price and Alan West from a summer playing in the USA, a trip to Bristol Rovers was not seen as particularly difficult and the ideal opposition to take on and break our away duck.

Our 0-2 defeat in a lacklustre performance was therefore seen as a massive disappointment, and this was reflected when



David Moss hammers in goal number four during the 6-0 win over Notts County in 1978.

Magpies caught up in autumn of goals.



the crowd dropped to 7,752 for the visit of Cardiff to Kenilworth Road the following week.

Cardiff included ex-Luton goalkeeper Keith Barber, who was on loan from Swansea, but there was no happy homecoming as everything the Town players tried came off, and when the final whistle sounded the lucky few in the ground had been treated to a 7-1 victory. Suitably disgusted, Barber decided to call it a day and did not play league football again.

The crowd increased by over 3,000 for the first ever visit of Cambridge to Kenilworth Road the following week, but with an eleven man defence they managed to hold out for a 1-1 draw to shatter our home record.

It was now back to normality as we broke our away duck by drawing at Sheffield United, narrowly beat Wrexham at Kenilworth Road, and then fought out a 0-0

stalemate at Blackburn. Those big victories at Kenilworth Road were just a flash in the pan we all thought!

Next in line, as we slowly climbed the table, were Notts County who were one place above us in seventh position. The crowd, after the early season excitement, had dipped back to 8,651 and they were treated to a fairly even opening spell with Mick Vinter and Iain McCulloch going close for Notts, while Hatton and Stein brought good saves from Eric McManus.

The deadlock was broken after 22 minutes when Hatton rounded off a four man move, and we went further ahead just before the interval when Stein headed home a cross from the increasingly dangerous Moss.

A comfortable victory was on the cards we all thought, but we had forgotten how potent the Luton forward line could be, given the

chance, and the second period turned into yet another rout with a further four goals coming in a 20 minute spell.

West, Moss, Stein and Lil Fuccillo were the players whose efforts counted but it could have been more had McManus not performed heroics.

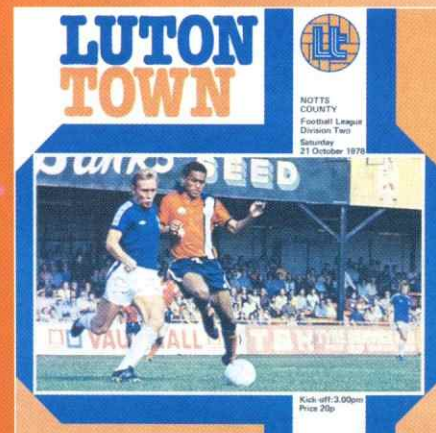
"A majestic performance," said Pleat afterwards. "We always looked as though we were going to score goals."

We just reflected on 25 goals in just six home games that season, and fourth place in the table.

Luton: Alekic, Price, Aizlewood, Hill, Turner, Donaghy, West, Fuccillo, Stein, Hatton (Jones), Moss.

Notts County: McManus, Richards, O'Brien, Benjamin, Stubbs, Mann, McCulloch, Masson, Hooks, Hunt (McVay), Vinter.

Roger Wash



Yesterday's pages

For the third season running the Town produced an awkward, oblong shaped programme in 1978/79. Having said that, the amount of reading material inside stood comparison with anything else on offer in the league. Manager David Pleat, in his column, was proudly offering congratulations to Jim McNichol, John Lucas, Mal Donaghy and Gary Sisman who had been called up for various international squads, representing the four home countries.

Gerry Harrison, then Anglia TV's football commentator, provided a column and his topic of the week was the exodus of U.K. players to the States over the summer months. The subject had created a great many newspaper column inches as observers wondered if the return-

ing players were able to give of their best after performing non-stop for twelve months and in the case of Alan West even longer. We all knew that Pleat was not happy with the situation especially when players such as Chris Turner saw their long term future on the other side of the Atlantic and disappeared from Kenilworth Road at a time when his steadying influence in defence was vitally needed.



Join the GMB, the Union that listens and cares by phoning 01582 494492

building football's future

GRASS ROOTS
EDUCATION
COMMUNITY



Football Foundation
football's biggest supporter

Helpline 0800 0277766 www.footballfoundation.org.uk

new business environments

refurbishment • interiors • design and build

'All In One Solution' providing services from complete commercial property refurbishment design and build to individual office installation

- Design and Build
- Joinery
- Suspended Ceilings
- Painting and Decorating
- Electrical
- Carpets and Flooring
- Partitioning
- Exteriors
- Refurbishment



London
Midlands
South East

SPONSORS OF THE EXECUTIVE BOXES NET

Tel: 01525 405430 / 840426 Fax: 01525 840095 www.cpcontracts.co.uk

CP Contracts, The old Coach House, 6 Woburn Street, Ampthill, Bedfordshire MK45 2HP



Find Freedom within.....

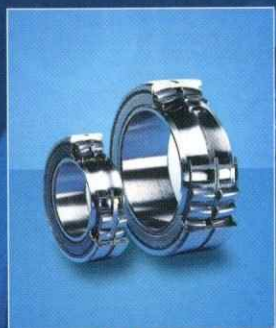
Fitnessfirst

Health Clubs

no other Health Club offers you more for less...
.....with no need for contracts

Fitness First Luton, Skimpot Lane, Luton, Beds, LU14 0JB
Tel: 01582 560200
www.fitnessfirst.co.uk

To advertise in the matchday magazine
call the Commercial Department on 01582 411622



Sealed Explorer spherical roller bearings
The SKF Explorer bearing range represents a totally new generation of spherical roller bearings. The Explorer range has accommodated up to 25 per cent higher torque loadings, and provided a 300% increase in service life, compared with the equivalent size of standard spherical roller bearings.

Now, SKF has unveiled a range of sealed-for-life Explorer bearings that reduce grease consumption, lower life cycle cost, lower recycling costs and reduce pressure on the environment.

Sealed Explorer bearings are supplied in normal and high temperature versions. The normal version uses a nitrile rubber double lip seal and a standard grease. The high temperature version, which is primarily suited to low speed operation, has a fluoro rubber seal and a high-temperature grease, and can withstand high axial and radial loads and tolerate up to 0.5° misalignment.



SYSTEM 24 automatic lubricators

SKF SYSTEM 24 is a practical, cost-effective solution to overcome the fact that 36 per cent of all premature bearing failures are caused by poor or inadequate lubrication. It's 'fit and forget' concept between extended scheduled changes reduces demands on maintenance staff bringing new levels of confidence and lowers overhead charges.

SYSTEM 24 is ideal for applications such as pumps, fans, compressors, chain drives, cranes and especially machinery running around the clock as part of a continual process.

Each SYSTEM 24 cartridge is hermetically sealed to prevent ingress of dirt and foreign matter. Grease flow rate is set via a simple Allen key adjustment. A transparent container shows visually the dispense rate, and lubricant cartridges are available pre-filled with a variety of greases or oils.



SPEEDI-SLEEVE sealing solution

An oil seal's job is to 'seal in' oil or grease, keeping bearings lubricated and contaminants out. However, in most industrial environments, dirt or other abrasive particles collect and become lodged under the lip of the seal, where they eventually cut a groove in the surface of the shaft. These grooves cause oil to leak out past the seal, ultimately leading to bearing damage.

To combat this problem, SKF has introduced SPEEDI-SLEEVE for fast and effective refinishing of seal-worn shafts. SPEEDI-SLEEVE is quicker and more efficient than remetalizing or regrinding and, in contrast to these methods, provides a perfect seal, even in the harshest environments. SPEEDI-SLEEVE bridges the gap between a standard sleeve and an expensive custom shaft treatment such as diamond coating, and the super hardened surface provides protection against corrosion and abrasion.



SNL bearing housings

Split plummer block bearing housings are primarily used to simplify self-aligning bearing installation. SKF's SNL bearing housing range is a premier quality product that has increased stiffness and improved lubrication to provide an economical solution to demanding applications. Available for shafts from 20 to 160mm diameter; together with the new Large SNL range for shafts from 150 to 500mm diameter.

The quality of the bearing housing has a dramatic impact on the performance and lifetime of the bearings themselves. Even high quality bearings installed into poor fitting housings have their lifetimes shortened. This occurs for a variety of reasons, such as the bearings becoming distorted due to poor clamping, or misalignment through poor geometry or manufacture.

Value-Added Solutions

SKF's Value-Added programme consists of an extensive range of standard and problem-solving products and services, designed to increase your competitiveness.

Contact SKF today for further information on any of the products featured, or to receive a FREE SKF Interactive Engineering Catalogue on CD-ROM.



Version 2.0 now available

For further information please complete the relevant areas and return to:
SKF FREEPOST MK1540 Luton LU3 4BR.

- ☐ Sealed Explorer ☐ SPEEDI-SLEEVE
☐ SYSTEM 24 ☐ SNL bearing housing
☐ Interactive Engineering Catalogue

Name
Company
Address
Postcode
Tel
E-mail

SKF®

Hatters Home and Away

SOME people will do almost anything to watch Luton Town, and use any method to get to Kenilworth Road. But not many have walked 16 miles to get here, which is what five fans have done this afternoon.

There is a worthy motive for the pain and suffering inflicted on themselves by Jim Abraham, Paul Abraham, Richard Swift, Gavin Hollis and Paul Madden.

In March their close friends, Richard and Georgie Orton, were blessed with their second child, a son named Josh. But their initial joy faded because within days the baby was admitted to Great Ormond Street Children's Hospital with a rare and incurable heart defect. Despite a brave fight, little Josh passed away a month after he was born.

Despite their loss, Richard and Georgie were determined his life would not be in vain, and that some good should come from it. They launched a fundraising scheme in memory of Josh, to purchase a new ventilator machine for the Great Ormond Street hospital.

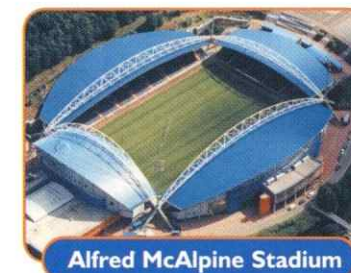
So far they have raised an amazing £20,500, including £18,000 from an auction which Luton Town FC were pleased to support by donating a signed shirt and a ball.

Jim, the two Pauls, Richard and Gavin, all lifelong Hatters supporters, wanted to do their bit, which explains why this afternoon they have organised a sponsored walk

from Jim's home in Letchworth to see their favourites play Notts County. They hope to raise £2,000. So if you see five Hatters fans limping towards Kenilworth Road, or walking rather gingerly, give them a pat on the back – they deserve it. Better still, give them money!

And everyone can add a contribution today, because this afternoon's charity bucket collection in the ground, organised by the redoubtable Mary Biswell, is also for Great Ormond Street. Please give generously.

By Coach and Car to Huddersfield



WE GO to Yorkshire on Saturday, for only the second visit we have ever made to Huddersfield Town's Alfred McAlpine Stadium. The first was in March 1996, when Lennie Lawrence's team was beaten 1-0 a month or so before we were relegated from Division One. For Saturday's match, two organisations are offering coach travel to and from the game. Town on

Tour will depart at 9.30, calling at Milton Keynes Coachway about 20 minutes later. Their fare is £15 for adult members of Luton Town Supporters Club, £13 for senior and junior citizens who are members and £17 for others.

The Bobbers Travel Club services villages to the north of Luton, and they set out from Cranfield at 8.30am, leaving Luton at 9.30. The fare is £14 for adults and £11.50 for pensioners and under-16s.

DRIVING to Huddersfield on a Saturday is usually quick because most of the journey is on the M1, and the Alfred McAlpine Stadium, built in 1995, has reasonable parking facilities, although the car park tends to fill up early with many spaces already booked out to home season ticket holders.

From Luton go north on the M1 up to junction 38, just beyond Barnsley and follow the signs towards Huddersfield, on the A637, for just over six miles. Then, at a roundabout take the first exit, onto the A642, still sign-posted to Huddersfield. Go straight on for just over five miles and after going through several sets of traffic lights watch for an old church on your left, now a carpet shop. At that junction, turn right into St. Andrews Road, and in less than a mile watch for the sign to turn right into Stadium Way, which leads to the ground.

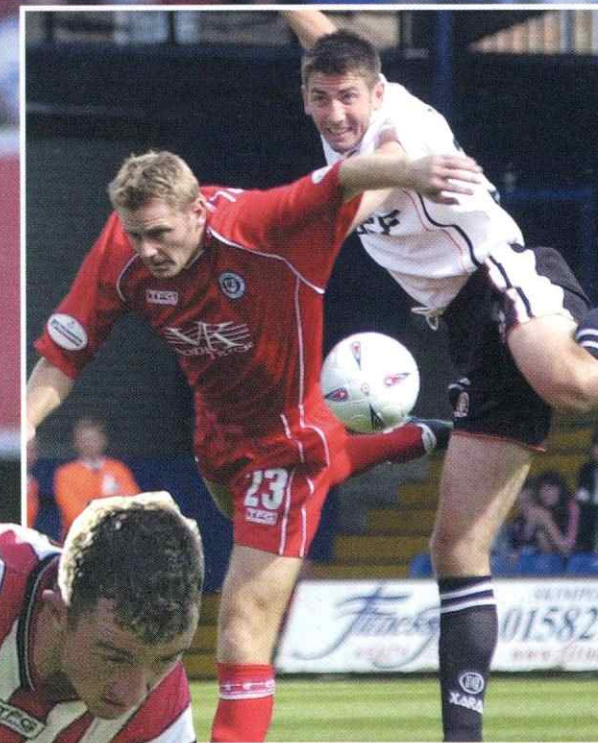
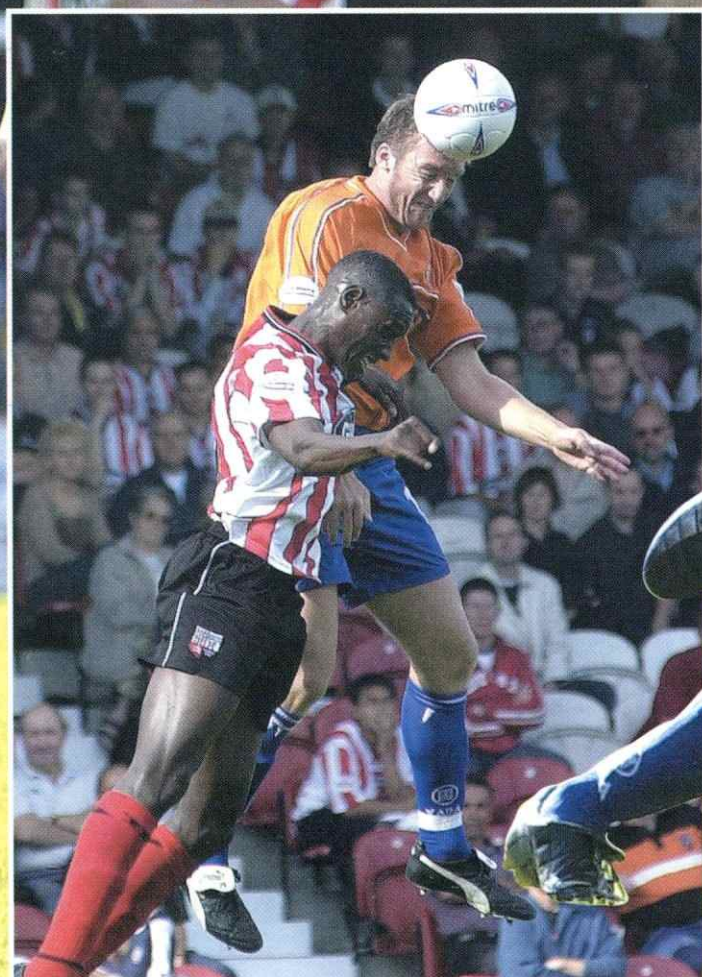
Mileage from Luton: 167.

Bookings for away games travel can be made at the LTSC and the Bobbers kiosks in Kenilworth Road before or after home matches. Paul Deason on 01234 750996 will take phone bookings for the Bobbers, who pick-up at Cranfield, Marston Moretaine, Ampthill, Flitwick, Westoning and opposite the Travelodge Motel in Dunstable Road, Luton, close to the M1.

Town on Tour offers its best deals to members of Luton Town Supporters Club. You can visit the club shop to book seats, or reserve them by phoning 07960 567465.

Maple Road car park, which will be stewarded, is available for coach passengers, at £4 per car.

Action Highlights



Main: DEFENDER ATTACKS: Emmerson Boyce instigates a Town counter-attack at Griffin Park.

Left: TOP HATTER: Steve Howard rises well above Brentford defender Ibrahimi Sonko.

Above: NO WAY THROUGH: Chesterfield were forced to fire blanks as the Town beat them convincingly at Kenilworth Road, with Russell Perrett seen here getting the better of David Reeves.



LTFC in the Community

Working in conjunction with Bedfordshire Football Association

I WOULD like to use my column today to update you on one of the activities that took place in the close season. The department hosted the local heats of the Football in the Community Skills Challenge, sponsored by Adidas and supported by Sportsmatch.

This is a competition designed to test children's shooting accuracy and power, dribbling speed and passing accuracy, through a series of fun tests. All the children were given three attempts at each of the four disciplines, and gained points for the levels they achieved.

The day was completed with a Mini Soccer World Cup

Tournament.

The competition was divided into two age groups, school years 4 and 5, and school years 6 and 7. The top three in each group were then invited to take part in regional finals at a London Sports Centre organised by Queens Park Rangers Community Department.

The lads who progressed to the next round were Dean Wrench, Mathew Collett, Kieran Doherty, Husnath Khan, Shakawaath Hussain and Ryan Wilkins.

Unfortunately, because of holidays previously arranged, Dean and Kieran were unable to participate. However we will involve them in something else to make it up to

them. The other lads all did extremely well, finishing in the top third of their age groups.

This was, unfortunately, not enough to take them through to the national finals but I know they all had a thoroughly enjoyable day, and relished the opportunity to compete at such a high level.

I will leave you today with a table showing the current evening and Saturday morning coaching courses available. We are in the process of putting more together, so watch this space. Should you wish to register please call me on 01582 391927 or fill in the form on the opposite page.

Stuart Smith



UNITED IN FOOTBALL: The happy youngsters who enjoyed the summer's Skills Challenge




QUICK FOOTED: Practising the nimble approach to dribbling.



RAILTRACK
SAFETY IS OUR GOAL




LTFC in the Community



LUTON TOWN FOOTBALL CLUB

FOOTBALL AND COMMUNITY PROGRAMME

DIAL - A - COACH allows you to complement your club's training/coaching sessions. Professional Football Association and UEFA qualified coach's from The Luton Town F.C. Football in the Community Department can deliver the session required. We can deliver sessions for your whole club, or just the one team that you think needs a little extra help. The coach can offer a structured course over a period of ten weeks (more or less if you require). Or maybe he can just come to you and deliver a one off session on that problem area. For further information please call Stuart Smith, the clubs Football and Community Development Officer on 01582 411622. Or return the form overleaf.



VENUE	AGE GROUP	START DATE	DAY & TIME	TOTAL WEEKS	WEEKS REMAINING	COST
Bramingham Freemans Avenue Luton	7 - 11	14/9-02	Sat 10.00 - 11.30am	10	9	£2.50pw
Warden Hill Junior School Birdsfoot Lane Luton	5 - 6 7 - 11	5/9/02	Thurs 4.15 - 5.45pm	7	5	£2.50pw
Queensbury School Meadow 7 - 11 Dunstable	5 - 6 7 - 11	16/9/02	Mon 4.00 - 5.30pm	10	10	£2.50pw

Please reserve a place on the..... course.....

Name: Age:

Address:

Postcode:

Home Tel No: School:

Any Health Problem Disorders or Medication? Please ring to give details.

I acknowledge and accept that Luton Town FC, their football in the community scheme, or the organisation providing facilities and their respective agents, servants and employees, are not under any liability whatsoever in respect of personal injury, loss or damage however caused whilst in attendance on the above course.

Signature of Parent / Guardian:



Regal Litho

352 Selbourne Road
Luton Beds LU4 8NU

Tel: 01582 493332

Fax: 01582 560731

ISDN: 01582 560854

Email: regallithold90@atlas.co.uk

www.regallitho.co.uk

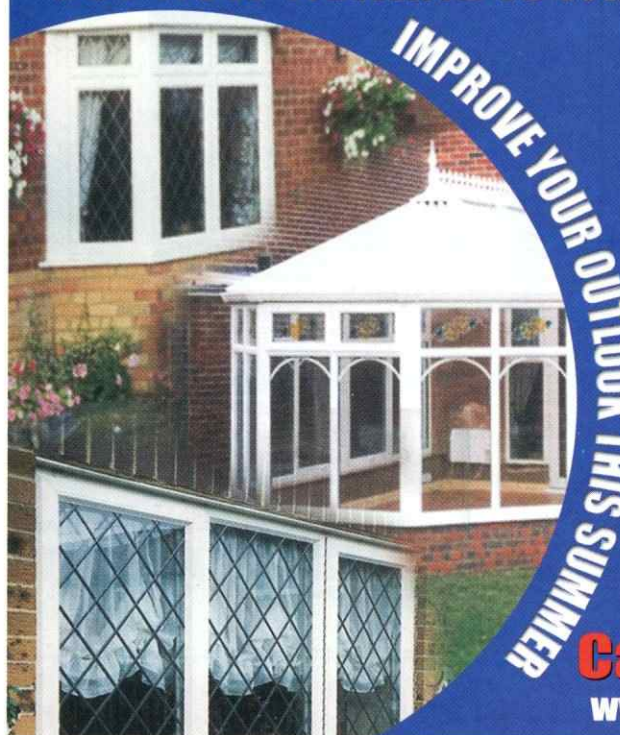
- ◆ Digital Artwork
- ◆ Conventional Repro
- ◆ Platemaking
- ◆ Colour Printing
- ◆ Finishing
- ◆ Distribution
- ◆ Stationery
- ◆ Point of Sale
- ◆ Brochures
- ◆ Commercial Print
- ◆ Magazine Publishing

The Publishers & Printers of:

**Scale
Aircraft
Modelling**

**Scale
Aircraft
Monographs**

BUY NOW NOTHING TO PAY UNTIL OCTOBER 2002



IMPROVE YOUR OUTLOOK THIS SUMMER

Fitted as standard

- Saracen shootbolt locking white scotia bead & white gaskets
- Internal or external glazed windows
 - 10 year trades insurance backed guarantee
- 1000's of satisfied customers throughout the Home Counties
- Products available in white, woodgrain and light oak
 - Coloured leaded light specialists

Before you buy elsewhere let us quote for a free no obligation estimate and friendly advice
Direct From Factory Prices • 0% Interest Available

**Serenade Windows
by design Ltd.**

HOME TRANSFORMATION
• COLOURED LEADED LITE SPECIALISTS •

Call 01582 415529

www.serenadewindows.com

LUTON TOWN FOOTBALL CLUB

A Unique Christmas Venue For Your Party

- Choice of rooms including the Joe Payne lounge which overlooks the pitch.
- Up to 100 guests.
- Choice of menus.
- Disco available.
- Bar facilities.
- Secure stewarded parking

PHONE : 01582 411622

or email: commercial@lutontown.co.uk

Kenilworth Stadium 1 Maple Road, Luton Beds
www.lutontown.co.uk



Action Replay

THE FIRST win of the season could hardly have been more emphatic – the team performance, the best of the campaign so far, as was impressive as the result, and visiting manager David Rushbury admitted: "Luton deserved it. We gave away two goals at set pieces, and then lost concentration for the third, but fair play to Luton, because they were on the front foot and we weren't."

"On the day we were not as strong as Luton, and you could tell by the way they played how much they wanted to win."

There was much to admire in the Town's display, not least in defence, where we enjoyed a second consecutive clean sheet after conceding 13 goals in the first four outings. It was a nice afternoon for David Bayliss, who came in for suspended Chris Coyne and played well, much better than on his last appearance, in the 5-2 drubbing at Blackpool.

Dean Crowe was another who enjoyed himself more than most, having got back into the team at the expense of Tony Thorpe.

He knew he was heading for the bench when Thorpe was signed, but was prepared to wait for his chance, and then grab it. He did, with his pace frightening the life out of an understrength Chesterfield rearguard whose members were perhaps too inexperienced to operate the back three with wingbacks style their manager likes.

Joe Kinnear said: "I felt Chesterfield were slow on the left of their defence. Crowe has the pace to get at defenders, and I asked him to do just that. He did it well, but I am delighted for all

the players, and for the fans – we wanted to give them something to enjoy at home, and I am glad we did.

"We have had to learn fast in this division, but that was like the old Luton, like we were playing last season."

There was not a weak link in the Town side, with all three goals well taken on a day when Steve Howard might have had a hat-trick. He scuffed one shot at the keeper, and put a free header well wide before he finally got the goal that made it 2-0 and convinced the visiting boss that the Town were sure to win.

Before that Chesterfield had their moments, and twice in the first half Ben Roberts had to be alert and in the right place to keep out decent efforts by Chris Brandon and Glyn Hurst.

But the visitors' threat faded as the Town took charge, with Kevin Nicholls, Paul Hughes and Matt Spring bossing the midfield despite the niggly attempts by Brandon to upset their rhythm and composure.

Russ Perrett headed the opening goal on 36 minutes, from a right wing corner by Sol Davis, and that was one of the changes Joe Kinnear made during the first half. The original plan had been for Bayliss to take the far post and Perrett the near, but the boss swapped them over to make better use of Perrett's extra height. Alan Neilson replaced injured Emmerson Boyce for the second half, which meant that Crowe had to do more foraging for himself. He responded magnificently,

although the second goal, on 69 minutes, was another case of Chesterfield dozing at the back. It was also poetic justice: firebrand Brandon was booked for a late and wild tackle on Davis, who exerted full retribution by floating the free kick into the penalty area, where Howard neatly nudged a would-be marker out of his way before carefully directing his header into the top corner.

Rushbury took off Brandon soon afterwards, worried that the midfielder would go over the top again and get himself sent off.

The final goal was one to savour, starting with a full-stretch clearance under pressure from Perrett leading to a series of swift passes via Ahmet Brkovic, Spring and Howard to set Crowe free on the right wing. He cut in rapidly, and thundered a drive into the far corner. The ball really did travel as the crowd flies!

Luton Town: Roberts; Boyce (Neilson HT), Perrett, Bayliss, Davis; Brkovic, Spring, Nicholls, Hughes (Robinson 85 mins); Howard, Crowe. Unused subs: Emberson, Thorpe, Fotiadis.

Booked: Nicholls, for "aggressive behaviour" after Martyn Booty fouled him to earn a yellow card.

Chesterfield: Muggleton; Payne, Dawson, Howson; Davies (Howard 78 mins), Booty, Brandon (Allott 74 mins), Hudson, Innes (Rushbury 31 mins); Hurst, Reeves. Unused subs: Richmond, Rowland.

Booked: Davies, Brandon, Booty, all for fouls

Referee: Paul Taylor, Hertfordshire

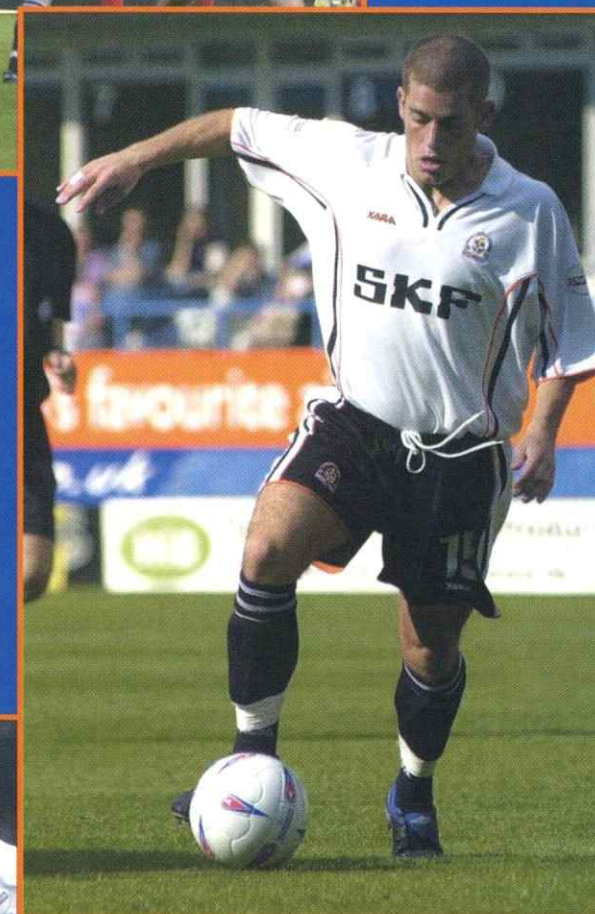
Attendance: 6,060, including 366 away fans.



ABOVE: We're on our way as Russell Perrett, on the extreme right, heads the Town into the lead from a corner, with four defenders and the goalkeeper powerless to do anything about it.

RIGHT: Here comes the clincher. Dean Crowe in full control as he starts the run that led to him making it 3-0 after a sweeping Town move.

BELOW: Enjoying his football with the Town after his move from Swindon, Sol Davis makes sure there is no chance of Martyn Booty breaking forward for the visitors.





Action Replay

Brentford 0 Luton Town 0

HAVING disposed of Chesterfield fairly easily at Kenilworth Road, the Town knew they faced a tougher test at Griffin Park, meeting the league leaders and the only side in the Second Division still to taste defeat this season.

It needed 90 minutes of professionalism to earn a point, and the Town, as at Cardiff, achieved their objective by working first on not being beaten, but then missing out on the chance to steal all three points when a header by Steve Howard hit the bar.

It was not the most attractive football match we have ever seen, with Brentford choosing to bomb long balls towards goal and the Town defending solidly and at times bravely. At the end, both managers were reasonably content with the result.

Wally Downes, of Brentford, had at least escaped the Manager of the Month curse, having just won the first award of the season for an August in which the Bees won four games and drew the other two, and conceded only three goals.

He swung both ways in his summing up: "I felt we deserved to win," he said. "We took the game to Luton enough to have got more than a draw. Yet, Luton deserved something out of it because they didn't roll over, so perhaps the draw was a fair result."

"It was the first time we had come up against a team who set out their stall not to lose, and it was just one of those days when the ball wouldn't go into the net. In the end I am happy to take a point – it might be a vital point at the end of the season."

Town fans would echo that, having seen the team work hard for the third clean sheet in a row, to

build a platform which could today see us move out of the bottom four of the Second Division. Not only that: on a day when the Town never looked like losing, they could have come home with all three points. Joe Kinnear rightly called it "the best move of the game" when he spoke of the moment when a matter of inches denied Howard his fourth goal of the season.

The Town spent most of the match in deep defence, working to repel the succession of high crosses and long throws which Brentford shelled in relentlessly. David Bayliss, retaining his place at the expense of Chris Coyne, formed the crucial aerial barrier with Russell Perrett, aided by close and very positive support from Ben Roberts. Kevin Nicholls operated effectively just in front of the back four, in which Emmerson Boyce and Sol Davis were dogged and determined in their tackling and jockeying, and always willing to look for the chance to break forward. Paul Hughes had another impressive game, whether dropping back to cover, or getting stuck in to help launch counter-attacks.

Brentford were a disappointment – a one-style team which had no invention when the up and at 'em tactics foundered.

Joe reckoned the ball should have been taken away for medical treatment and dosed up with Aspros having spent so much time in the air. "Brentford threw in a million long balls," he said. "We stood up to them well, and we could have hurt them on the break. I am pleased that we didn't

conceded anything, and defensively we were certainly OK."

Matt Spring gave everything in breaking from midfield to support counter-attacks, and the power of Steve Howard and the pace of Dean Crowe could easily have brought a goal on a day when there were very few clear scoring chances.

The Town's most worrying moment was when Eddie Hutchinson's near-post header from a corner went wide after clipping the outside of a post. It was a much closer call when the woodwork saved Brentford in the 37th minute. The Town mounted a break down the right, which led to Boyce and Crowe exchanging passes at speed, and Boyce's cross was perfectly placed for Howard to choose his spot with the header. Unfortunately, he was inches too high, and the ball came back off the bar.

Hutchinson missed a harder chance in the second half, when for once he was allowed a free header, but was so surprised he put it over the bar.

Luton Town: Roberts; Boyce, Perrett, Bayliss, Davis; Brkovic (Robinson 64 mins), Spring, Nicholls, Hughes (Neilson 85 mins); Howard, Crowe. Unused subs: Emberson, Thorpe, Coyne.

Booked: Steve Howard and Russell Perrett for fouls..

Brentford: Paul Smith; Dobson, Sonko, Somner, Anderson; O'Connor (Williams 78 mins). Jay Smith (Fullarton 78 mins), Hutchinson, Hunt (Hughes 86 mins); McCammon, Vine. Unused subs: Julian, Chorley.

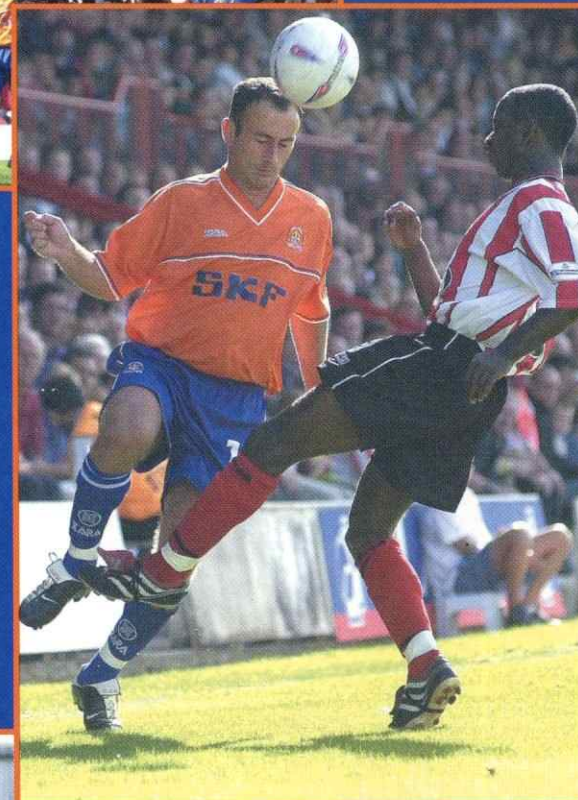
Booked: Matt Somner, foul on David Bayliss.

Referee: David Pugh, Merseyside

Attendance: 6,060, including 1,493 away fans.



ABOVE: Brentford's lucky escape – Steve Howard rises above the opposition to power in a header which came back off the bar.



RIGHT: One on one – Ahmet Brkovic in competition with Ijah Anderson.



BELOW: Midfield action man Paul Hughes, who has made the left midfield role his own, closes down his man.

THE WINNING COMBINATION!

Camden



Play a round of golf with Mick Harford



Great new auction - top three bidders in Mick's team for our golf day

How do you fancy playing a round of golf with Hatters legend Mick Harford and then enjoying a three-course dinner with prizes. You could even win a car if you're lucky enough to get a hole in one on the prize hole.

Luton Town are holding a golf day sponsored by Grosvenor Casino Luton on the Old Course at Hatfield London Country Club in Bedwell Park, Essendon on Wednesday October 23. There will be 12 teams of four players in each competing in an 18-hole Fourball Stableford Competition.

Each team will have a Luton player or member of the management and there will be prizes for the first three teams, for the longest drive, for nearest the pin, plus an auction and raffle in the evening.

There will be more details of the other players and arrangements later.

It's a great day out - and YOU could be there. The day starts with a breakfast of bacon rolls and coffee at 10.45 and the first match tees off at 11.56.

You could win a Mini Cooper S, kindly donated by Specialist Cars of Luton and Hitchin if you get a hole in one on the prize hole.

The dinner with wine and presentations of the prizes, together with an auction and raffle starts at 7.30 and the whole event is in support of the NSPCC, the National Society For The Prevention Of Cruelty To Children.

So if you fancy being one of the lucky golfers in Mick Harford's team, then go to the Luton Town website (www.lutontown.co.uk), follow the link and start bidding now.

The auction is live now and closes at 6pm on Friday September 20 and the top THREE bids will be Big Mick's team on the day. Golfers MUST have an official handicap to take part - maximum 26.

Imagine sharing the fairways and greens with the great man himself and chatting about some great moments, goals, players and incidents from the past and the present. You'll also no doubt come away with a good idea of Mick's thoughts on the current season.

This sort of opportunity doesn't come around very often, so if you love Luton and you love golf, this is a day from your wildest dreams.

To bring you this great auction, we have again teamed up with QXL, the leading online auction website. If you have never tried your luck at an online auction before, they are very simple. You can make a bid at any time. Bids can come in thick and fast, so to help you keep up you can even ask for SMS alerts to your mobile phone to tell you if your bid has been topped. At the end of the auction, the THREE highest bids are the winners as long as the bidders have an official golf handicap of 26 or below. If you want to bid but cannot get online, call the Commercial Department on 01582 411622 and we'll make your bid for you.

Now get bidding and a day out with The Legend could be yours.



SPONSORED BY GROSVENOR CASINO LUTON



The Football Emporium



225 High Street, Bromley, Kent

WHETHER IT BE A BIRTHDAY OR CHRISTMAS PRESENT, OR EVEN A GIFT FOR YOURSELF, YOU WILL FIND SOMETHING UNIQUE, INTERESTING, OR EVEN AMUSING, FOR SUPPORTERS OF ALL CLUBS, AT THE FOOTBALL EMPORIUM. OR IF BROMLEY IS A LITTLE FAR, VISIT OUR WEBSITE **WWW.PREMIERIMAGE.CO.UK**

OR CALL FOR A BROCHURE

020 8464 9421

World Cup Merchandise ~ Clothing ~ Original Art Books ~ Photography ~ Autographs ~ Toys & Games Housewares ~ Memorabilia ~ Antiques ~ Ephemera

www.hummingbirdmotors.co.uk

STRIKING BRAND NEW MITSUBISHI'S from only £7995

and a full range of Mitsubishi pre-owned vehicles

also available
• SALES • SERVICE • PARTS

Good luck Hatters, may your success continue this season



HUMMING BIRD MOTORS

41-45 LONDON RD ST ALBANS HERTS AL1 1LJ

01727 852323

email: hbmotors@btinternet.com

Open: Mon-Fri 8.30-6pm • Sat 8.30-5pm • Sun 10.30-3pm (Demonstrations on Sunday by appointment only)



Kick Off...

...the new season with some JUMBO SAVINGS on all your holiday essentials from Travel Extras!

Celebrate Luton Town's promotion to Division 2 with 10% discount on Car Rental



Car Rental
from
£11
per day



Accommodation
from
£15
pppn



Insurance
from
£15 for 10 days
European cover



Airport Parking
from
£4.25
per day

travelextras

for everything but the flight

Tel: **0870 727 3 727**

www.travelextras.com/lffc

Junior Hatters



WE WELCOME all young supporters to today's game, especially our visitors from the Junior Magpies. We have had a good friendship with our counterparts from Notts County for a long time, and we hope they enjoy everything about their visit to Kenilworth Road today except, of course, the result! We were all joining forces before the game in our Saturday Club, and next Saturday it will be our turn to be visitors, when we will be guests of the Young Terriers at Huddersfield.

We are now taking bookings for the trip to the McAlpine Stadium, and it should be a tremendous day out. We will be leaving Luton at 8.15am, so that we arrive at Huddersfield early enough to have a game of football against our

hosts. If you want to play, bring your boots! We have also been invited to provide a mascot, and as usual the choice will be made by lucky dip on the coach journey to Yorkshire. If you want to be considered, bring your Luton kit with you. As usual, the price of the trip is a real bargain: just £10 for Junior Hatters, and £13 for guests and parents, and that includes a ticket to the match.

The trip is likely to be popular, so if you want to go, book early at the club shop. That is the HQ of the Junior Hatters, which is open to all Luton Town fans aged 16 and under. A year's membership costs £12 for new members and £7 for those rejoining. Benefits include a free gift when you join, a birthday card signed by your favourite play-

er, a regular newsletter, the chance to be chosen as a mascot or ball boy/girl, subsidised travel to some away games and a Christmas disco.

It also gives you the right to attend our Saturday Club, which offers entertainment before and during the game. A sausage-and-chips lunch is included and the price is just £5 for Junior Hatters with season tickets, and £11 for others, to include a match ticket.

For more information, visit the club shop, or phone Luton 411622. You can also e-mail us on clubshop@lutontown.co.uk

Happy Harry

ELEVEN-year-old Danielle Lack is a regular at Kenilworth Road, and while she always enjoys watching the Town, today will be very special. Her name has been picked out of the hat to be the Junior Hatters mascot. She will meet the team in the dressing room as they prepare for the match, and that means she will have the chance to chat with her favourite player, Steve Howard. Danielle will run out onto the pitch with the players for the pre-match formalities, including meeting the officials in the centre circle for the toss of the coin.

Danielle lives at Almond Road, Leighton Buzzard, and goes to the Gilbert Inglefield School. She says that watching Luton Town - she sits with her dad in the Kenilworth lower tier - is her number one hobby, and she also likes music.

We also have two ballboys this afternoon: Matthew Collett, from Truro Gardens, Luton, and Oliver Faulconer, of Rosslyn Crescent, Luton.



VIP PARTY: Pictured before kick-off at our last home game, against Chesterfield, are the officials and skippers, and the two mascots who were on duty. Nine-year-old Harry Smith did the honours for the Junior Hatters, while George Edwards, aged 10, was the commercial mascot.

GARETH OWEN Photography

...working **PR** photography

Tel: 07850 560289
Fax: (01582) 616567
e-mail: gareth@go-photo.co.uk

GROSVENOR CASINO LUTON



For FREE membership call
08080 212121 or 01582 414166
Please quote 057

24 hours must elapse between receipt of application and participation in gaming.
Members must be aged 18 and over.
www.grosvenor-casinos.co.uk



Eagle IPA - Proud to sponsor Luton Town F.C.

Your 'local beer'
supporting your local
Football Club
Now available at the Bar!



PRE-MATCH AND HALF TIME ENTERTAINMENT

With Justin Dealey and Steve Faulkner

TODAYS MATCH:

- 2.15** Team line up to be announced
- 2.25** HMV Single of the week
Liberty X - Got To Have Your Love
- 2.35** Dedications announced
- 2.40** Town Teaser -
See Page 54
- 2.45** Player Track
See Right
- 2.55** Teams runout to - The Blues Brothers
"Gimme Some Lovin"

HALF TIME

- 3.50** Golden Gamble -
Winning ticket
drawn on pitch
- 3.55** Run down of half time
scores from around the
country
- 4.00** Dedications
- 4.05** Teams arrive back on pitch
to theme song
"Gimme Some Lovin"

4.55 - FULL TIME

3.00 THE BIG KICK OFF

Matchday music supplied by:



Justin Dealey is sponsored by:
BBC THREE COUNTIES RADIO
95.5 FM (BEDS) 104.5 FM (BUCKS)
103.8 FM (HERTS)

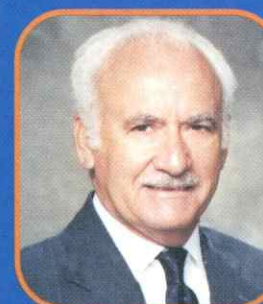
If you would like your dedication read
out, please contact the Club prior to
matchdays.

Player Track



Carl Griffiths
ARTFUL DODGER
MOVING TOO
FAST

POLICY STATEMENT - SPECTATOR SAFETY



The Chairman and Directors of Luton Town Football Club undertake to ensure as far as humanly possible that all activities that take place at the Kenilworth Road Stadium are conducted in such a way that as far as is reasonably practical the safety of everybody at the stadium is assured.

It is the policy of the Chairman and Directors to ensure that the conditions set out in the General Safety Certificate, issued under the Safety at Sports Grounds Act, 1975, are fully complied with.

It is the Club's policy to provide at any activity sufficient and competent staff and management systems to ensure as far as humanly possible the safe admission, accommodation and exiting of spectators attending the stadium. These systems will be subject to continual monitoring, testing and updating where necessary.

Mike Watson-Challis Chairman

Reviewed August, 2002.

HATTERS WORLD

7 DAYS OF NON-STOP BULLETINS



**ALL THE ACTION:
Exclusive,
Official,
Unmissable!**

**ANY CLOSER...
YOU'D BE IN THE
TEAM**

**DAILY TV
WEEKDAY TV NEWS BULLETIN**

**EXCLUSIVE
INTERVIEWS AND FEATURES**

**SEARCHABLE
VIDEO ARCHIVES**

**COMPREHENSIVE
MATCH HIGHLIGHTS**

**INTERACTIVE
MATCH LIVE CONSOLE**

BEHIND THE SCENES, BEHIND THE HEADLINES

8 all this for only
PENCE per day

£34.99 UNTIL END OF AUGUST 2003

go to www.lutontown.co.uk

Terms and conditions apply. See website for details.

**Don't forget! For all the latest scores and news sign up to our SMS
text messaging service. Full details on the official website.**

Hatters Chatter



WE ARE printing this article and picture on behalf of a group of fans who wanted a very special christening present for a mate who has just become a father. Not that they won't push the boat out when it comes to a trip to the jeweller's for a trinket or two, but they thought the best possible gift for proud dad Richard Tilley was the surprise of seeing himself and his new-born son featured in these pages.

Elliott Kenyon, from Tennyson Road, Flitwick, was the driving force behind the idea, and is sure Richard's first son is certain to become a Hatters' fan when he gets older.

Said Elliott: "The baby, born on August 7, is called Zak Harford Tilley, named after Richard's all-time favourite player. Mick Harford was, and is, a Luton Legend, and my favourite player as well."

The Tilley family used to live at Bedford, but work took Richard to Reading, where he had no trouble in turning down the delights of the Madejski Stadium to continue his 20-year love affair with Luton Town.

"He is still very much a committed Luton Town fan," said Elliott. "He's always here, and is one of a group of about ten of us who sit in the Kenilworth and have become friends over the years."

"Richard is Luton Town through and through – he has seen us play away games at every other club in the league except Blackburn and Boston."



Last Season

The Nationwide Football
League saw an Increase in
Attendance of 13.5%;
Why...?



The authority...



The Quality of the Football

Image by Emptics 0115 840 444 Digital Artwork by SentryBox 01895 251 220



Available in Matchday Accessories

Baseball Caps

Navy/Royal Crest
£8.95



Side Logo Suede Peak
£8.95



Stone/Navy Canvas
£8.95



Bronx Hats

Black or Navy Crest
£6.99



Navy LTFC Fleece Hat
£6.99

Black or Navy 70's Logo
£6.99

Scarfs



I Support
£5.99



Black Classic Stripe
£5.99



Royal Classic Stripe
£5.99



Grey Luton Town FC
£5.99



Black Chunky Scarf
£5.99

Golf Umbrella

Navy with Gold Crest
£17.00



Gloves



Childrens & Youths £3.25
Adults £4.25

The Club Shop



Souvenirs



Glass Wear

Not Dishwasher Safe

- | | |
|----------------------|-------|
| A. 1 Pint Football | £4.50 |
| B. Lager Glass | £3.95 |
| C. 1/2 Pint Football | £3.95 |
| D. Whiskey | £4.25 |
| E. Wine Goblet | £4.25 |
| F. Tankard | £4.50 |
| G. Drinks Mat | £0.65 |



Leather Goods

- | | |
|-----------------------|--------|
| A. Ladies Purse | £13.00 |
| B. Key Holder | £2.50 |
| C. Gents Wallet | £13.00 |
| D. Credit Card Holder | £6.25 |

Ripper Wallet

£2.50



Vehicle Set

£9.99

Bull Nose Morris

£6.50



Harry Lunch Box

£6.95



Harry Bowl
£2.50

Water Bot

£3.50

Harry Plate
£2.00

Drive away a real bargain with our lowest rate ever



Take out a Personal Loan today



Everyone taking out one of our great value loans before 31 October 2002 will also be entered into our prize draw to win a brand new MINI.

Nationwide. Proud to be different

 www.nationwide.co.uk |  0800 30 20 10 |  or just call in

Banking | Credit Card | Insurance | Investments | Loans | Mortgages | Pensions | Savings

LOANS ARE SUBJECT TO AN APPLICANT'S FINANCIAL STANDING AND ARE AVAILABLE TO THOSE AGED 18 OR OVER. CREDIT FACILITIES PROVIDED BY AND WRITTEN QUOTATIONS AVAILABLE FROM NATIONWIDE TRUST LIMITED, NATIONWIDE HOUSE, 20 LOWER DAGNALL STREET, ST ALBANS, HERTS AL3 4RR. NATIONWIDE TRUST LIMITED IS A WHOLLY OWNED SUBSIDIARY OF NATIONWIDE BUILDING SOCIETY. RATE CORRECT AT TIME OF GOING TO PRINT. CALLS MAY BE RECORDED.

SOURCE CODE: PLB0

Youth Soccer



FLYA Under-19: Kidderminster Harriers 0 Luton Town 1

OUR second-half performance brought the result we deserved on a sloping pitch. We played uphill in the first half, and were forced to reorganise after only 15 minutes when Max Howell had to go off with an injury.

We included three schoolboys in the team, and Kidderminster were older than us, but we matched them for football, and it was obvious our lads were doing their best, which is all you can ask for.

We created one or two chances in the first half, but Robert Beckwith, in our goal, had to make a good double save on the only occasion Kidderminster looked dangerous.

After the break we played down the slope, and we put more passes together which enabled us to put on more attacking pressure. We had three or four chances before the goal came on the hour mark, with schoolboy Tom

Freeman netting from close range.

It had been a little bit backs to the wall in the first half, but we shaded the second, and I was pleased with the effort made by everyone.

Luton Town: Beckwith, Howell (Brill 15 mins), Barnett, Foley, Davis (Ridgway 69 mins), Deeney, Keane, Okai, Freeman, Maitland, R. Mansell.

Double Delight

BOTH League Alliance teams enjoyed victories on Saturday – the under-19s beat Brentford 2-0 in the League Cup, while the under-17s enjoyed a 2-1 success away to Southend. There will be reports on both games in Tuesday's matchday magazine.

Next Saturday the under-19s entertain Wycombe at Luton RFC, kick-off 11am, while the juniors are away to Gillingham.

John Moore

UNDER-19 appearances, as sub in brackets: Beckwith 3, Howell 3, Barnett 3, J. Deeney 3, Freeman 3, Okai 3, O'Leary 2, Davis 2, Osborn 2, Foley 2, Maitland 2, de Souza 1, Judge 1, Keane 1, R. Mansell 1, Gillman 1, Brill 0(2), Ridgway 0(1).

Goals: Freeman 2, Okai 1

UNDER-17 appearances, as sub in brackets: D. Deeney 3, Reid 3, Blake 3, Ridgway 3, Shea 2(1), Brill 2, Smyth 2, Mountford 2, Blythe 2, Green 1(2), McCarthy 1(2), Clark 1(1), Maitland 1(1), Barrett 1, Howell 1, Magdah 1, Barnett 1, Freeman 1, Keane 1, de Souza 1, Sinclair 0(2).

Goals: Ridgway 2 pens, Shea 1, Barnett 1, Blythe 1, Freeman 1, Keane 1, Maitland 1

FL Youth Alliance Under-19

August				
17	Walsall	H	0-0	
31	Kidderminster	A	1-0	Freeman
September				
7	Brentford (LC)	A	2-0	Freeman, Okai
14	Oxford (LC)	H		
21	Wycombe (LC)	H		
28	Northampton	H		
October				
12	Peterborough	A		
19	West Brom	A		
26	Rushden	H		
November				
2	Oxford Utd	H		
9	Cambridge	A		
16	Peterborough	H		
30	West Brom	H		
December				
7	Rushden & D	A		
14	Oxford Utd	A		
January				
11	Cambridge	H		
18	Walsall	A		
25	Kidderminster	H		
February				
1	Northampton	A		
8	Merit Division starts			

FL Youth Alliance Under-17

August				
17	Brighton	A	0-3	
24	Peterborough	A	6-0	Shea, Barnett, Blythe, Freeman, Keane, Maitland.
September				
7	Southend	A	2-1	Ridgway 2 pens
14	Portsmouth	H		
21	Gillingham	A		
28	Cambridge	A		
October				
5	Colchester	H		
19	QPR	H		
26	Wycombe	A		
November				
2	L. Orient	A		
9	Brentford	H		
16	Cambridge	H		
23	Colchester	A		
30	QPR	A		
December				
7	Wycombe	H		
14	L. Orient	H		
January				
11	Brentford	A		
18	Brighton	H		
25	Peterborough	H		
February				
8	Southend	H		
15	Portsmouth	A		
22	Gillingham	H		

For the latest news, views and interviews call:
CLUB CALL on 09068 121 123 (calls cost 60p per minute at all times)

Life begins at £17,995.

The new Jeep Cherokee 2.4 Sport.



It's affordable, it's available now. So what's stopping you? For details visit www.allelectriccj.co.uk or phone 0121 355 0110

Hitchin Road Stopsley, Luton,
Bedfordshire. LU2 7UG
01582 725506

CANNON LANE



Jeep
THERE'S ONLY ONE

OFFICIAL FUEL CONSUMPTION FIGURES IN MPG FOR THE JEEP CHEROKEE 2.4 SPORT: URBAN 20.2, EXTRA URBAN 32.8, COMBINED 26.7. OFFICIAL CO₂ EMISSION IS 253 G/KM. MODEL FEATURED JEEP CHEROKEE 2.4 SPORT £17,995. PRICE IS ON THE ROAD AND INCLUDES ONE YEAR'S ROAD FUND LICENCE (E155 AND C25 FIRST REGISTRATION FEE. PRICES AND SPECIFICATIONS ARE CORRECT AT TIME OF GOING TO PRESS (VAT)).

David Lloyd Leisure...
now in your town



Call us on 01582 692046/7

Special introductory offer on presentation
of this Match Day Programme

Offer available at the Luton Club only. Terms and conditions apply.



www.davidlloydleisure.co.uk

In Reserve



Luton Town 2 Millwall 1

THIS win was well deserved. We turned in a good performance, and after the first five minutes I thought we would win by a lot more. We had Tony Thorpe, Andrew Fotiadis and Carl Griffiths in attack, and we should have won by four or five goals.

We got into some great positions, but the "first team" players could have made better options, and because they failed on that score we didn't capitalise.

But that was the only disappointing feature of our game. We looked good defensively, despite having a couple of youngsters in the back four. Millwall had two good strikers who caused us a few problems, but we coped quite well. Carl Emberson did OK in goal, although I felt he should have done better when Millwall scored.

We took the lead after 25 minutes from a very good move. It started with a clever back-heel by Thorpe to give Michael Leary the chance to go past a defender and shoot. The keeper blocked that effort, but Griffiths was quick to net from the rebound.

Our second goal came after an hour when Fotiadis played in Thorpe, who was brought down. Griffiths scored from the penalty.

We created other good chances and Griffiths and Thorpe could each have had two goals, but with 20 minutes to go we were reduced to ten men. Leary foolishly earned a second yellow card and although we still looked quite comfortable after that, Millwall scored after 85 minutes. It was a goal we should have prevented. It came from a free kick, with a striker able to shoot home at Emberson's near post.

Despite that disappointment, it was a decent team performance.

Luton Town: Emberson, Foley, Skelton (Okai HT), Gillman, Barnett, Holmes, Leary, Lee Mansell (Osborn 35 mins), Thorpe, Fotiadis, Griffiths (Eberendo 80 mins).

OUR next game in the Avon Insurance Combination is away to Swindon on Wednesday, and we are at home seven days later, to Peterborough. Kick-off at Kenilworth Road will be at

2pm, and admission is free to season ticket holders, £3 for adults, and £1 for concessions, with entrance via the Kenilworth Road end only.

Appearances: Fotiadis 4, Foley 4, Skelton 4, Holmes 3, L. Mansell 3, Hillier 3, Griffiths 3, Leary 2(2), Hughes 2, Beckwith 2, Howell 2, Gillman 2, Okai 1(2), Eberendo 1(2), Kovacevic 1, Neilson 1, Emberson 1, Deeney 1, de Souza 1, Brill 1, Barnett 1, Thorpe 1, Osborn 0(3), O'Leary 0(1), Judge 0(1).

Goals: Griffiths 3, Skelton 1

Brian Stein

AVON COMBINATION TABLE

	P	W	D	L	F	A	Pts
Portsmouth	4	4	0	0	10	2	12
Crystal Palace	4	3	1	0	15	2	10
Swindon	4	3	1	0	8	3	10
Bournemouth	4	3	0	1	8	8	9
Brighton	4	2	1	1	11	6	7
Reading	4	2	1	1	5	3	7
Colchester	3	2	1	0	3	1	7
QPR	4	2	1	1	5	6	7
Norwich	4	1	3	0	4	2	6
Millwall	4	2	0	2	6	5	6
Plymouth	4	2	0	2	6	5	6
Gillingham	4	1	2	1	6	5	5
L. Orient	3	1	1	1	9	6	4
Cardiff	4	1	1	2	8	7	4
Luton Town	3	1	1	1	4	4	4
Southend	4	1	1	2	7	8	4
Brentford	4	1	1	2	4	9	4
Cambridge	4	1	1	2	3	11	4
Oxford	3	1	0	2	2	3	3
Wycombe	4	1	0	3	6	10	3
Bristol Rov	4	0	3	1	3	7	3
Bristol City	2	0	2	0	2	2	2
Cheltenham	3	0	1	2	4	6	1
Barnet	3	0	1	2	4	7	1
Peterborough	3	0	0	3	3	8	0
Northampton	3	0	0	3	4	14	0

August		
Wed 14 Bristol City(LC)	A	0-3
Wed 21 Reading	A	1-2 Skelton
Wed 28 Bristol Rov	H	1-1 Griffiths
September		
Wed 4 Millwall	H	2-1 Griffiths 2(1p)
Wed 18 Swindon	A	2pm
Wed 25 Peterborough	H	2pm
October		
Wed 2 Bournemouth	H	2pm
Wed 9 Plymouth	A	2pm
Wed 16 Wycombe	A	2pm
Wed 30 Cambridge	A	2pm
November		
Wed 13 QPR	H	2pm
Wed 27 Northampton	A	2pm
December		
Wed 4 Southend	A	2pm

Wed 11 Barnet	H	2pm
January		
Wed 8 Brighton	A	7pm
Wed 15 C. Palace	H	2pm
Wed 29 Leyton Orient	A	2pm
February		
Wed 5 Bristol City	H	2pm
Wed 19 Cardiff	A	2pm
Wed 26 Cheltenham	H	2pm
March		
Wed 12 Norwich	H	2pm
Wed 25 Brentford	A	2pm
April		
Wed 2 Colchester	H	2pm
Wed 16 Gillingham	A	2pm
Wed 23 Portsmouth	H	2pm
Mon 28 Oxford	A	2pm

DIVISION 2 STATS

check out the stats @
www.soccer-stats.com

Average League Position, Last 10 Years

QPR	32.1	Brentford	56.3
Barnsley	33.5	Blackpool	58.7
Tranmere	37.7	Wycombe	59.1
Huddersfield	42.3	Chesterfield	61.9
Port Vale	44.2	Wigan	62.2
Stockport	44.3	Peterborough	64.8
Swindon	45.2	Plymouth	67.5
Crewe	45.4	Colchester	68.9
Bristol City	48.1	Cardiff	69.4
Oldham	48.3	Northampton	70.3
Luton	54.6	Mansfield	78.3
Notts County	55.1	Cheltenham	94.4

Goals Scored in last 15 Minutes

FOR	0-15	Tot	%	AGAINST	0-15	Tot	%
Plymouth	5	13	38	Mansfield	5	22	23
QPR	5	13	38	Chesterfield	4	11	36
Blackpool	4	9	44	Northampton	4	11	36
Bristol City	4	10	40	Luton	3	13	23
Wycombe	4	11	36	Peterborough	3	8	38
Brentford	2	9	22	Barnsley	2	8	25
Chesterfield	2	11	18	Blackpool	2	4	50
Luton	2	10	20	Bristol City	2	5	40
Oldham	2	7	29	Huddersfield	2	7	29
Port Vale	2	7	29	Notts County	2	8	25
Tranmere	2	8	25	Oldham	2	5	40
Wigan	2	12	17	Plymouth	2	9	22
				Port Vale	2	11	18
				Tranmere	2	10	20
				Wycombe	2	12	17

TOP GOALSCORERS

PENALTY SCORERS

Player	Club	Tot	Player	Club	Tot
Ferguson	Rangers	3	Taylor	Blackpool	3
Ricketts	Bolton	2	Bramble	Southend	3
Merson	Portsmouth	2	Christie	Derby	2
Cureton	Reading	2	Counago	Ipswich	2
Clarke	Stoke	2	Nielsen	Norwich	2
Hunt	Brentford	2	Cresswell	Preston	2
Lockwood	Orient	2	Wotton	Plymouth	2
Simpson	Rochdale	2	Angell	Port Vale	2
Gray	Rushden	2	Gallen	QPR	2
			Kitson	Cambridge	2
			Duffield	York	2
			Lovenkrands	Rangers	2
			De Vries	Hearts	2
			Pearson	Motherwell	2

late goals scored in last 15 mins of match

A position of 1 would mean team had been top of Premier and 92 bottom of Div 3 for last 10 years

Goals scored from Set Pieces

CLUB	Co FK	CLUB	Co FK
Plymouth	3 4	Luton	2 0
Wycombe	2 2	Wigan	1 1
Blackpool	3 0	Bristol City	1 0
Crewe	1 2	Cheltenham	1 0
Mansfield	0 3	Huddersfield	0 1
Notts County	1 2	QPR	1 0
Oldham	2 1	Stockport	1 0
Tranmere	2 1	Barnsley	0 0
Brentford	0 2	Northampton	0 0
Cardiff	2 0	Peterborough	0 0
Chesterfield	0 2	Port Vale	0 0
Colchester	1 1	Swindon	0 0

Co = Corners FK = Free Kick Routines

Scorers' Points Gained & Scoring Run

Club	Player	Pts	SR
Plymouth	Paul Wotton	6	4
Stockport	Luke Beckett	5	3
Colchester	Joe Keith	4	1
Northampton	Marco Gabbiadini	4	1
Barnsley	Bruce Dyer	3	1
Cardiff	Andy Campbell	3	1
Port Vale	Marc Bridge-Wilkinson	3	1
Swindon	Sam Parkin	3	2

eg if player scores the goal in a 1-0 win, the goal is worth 2 pts as score would have been 0-0, or if 2 goals in 2-1 win, goals worth 3 pts

Outside the area

Scored from long range	Conceded from distance
Crewe	4
Plymouth	4
Bristol City	3
Colchester	3
Mansfield	3
Wigan	3
QPR	2
Tranmere	2
Wycombe	2
Luton	5
Cheltenham	3
Mansfield	3
Notts County	3
Plymouth	3
Wycombe	3
Northampton	2
Peterborough	2
Port Vale	2
Wigan	2

COMEBACKS

Won from	-3	-2	-1	Tot
Tranmere	0	0	2	2
Blackpool	0	0	1	1
Mansfield	0	0	1	1
Oldham	0	0	1	1
Plymouth	0	0	1	1
Port Vale	0	0	1	1
QPR	0	0	1	1
Swindon	0	0	1	1

THROWAWAYS

Lost from	+3	+2	+1	Tot
Barnsley	0	0	1	1
Cheltenham	0	0	1	1
Chesterfield	0	0	1	1
Huddersfield	0	0	1	1
Luton	0	0	1	1
Notts County	0	0	1	1
Plymouth	0	0	1	1
Port Vale	0	0	1	1
Swindon	0	0	1	1

number of games when clubs have come behind to win or been ahead and lost

Second Division Scene



AN INVITATION to move clear of the relegation zone is on offer to the Town through two consecutive home games in four days. A victory this afternoon will lift the Town out of the bottom four for the first time this season, because Notts County are one place and two points ahead.

Tuesday's visitors, Mansfield, are also in desperate need of points, because they are currently a point below the Town, and facing a tricky trip to Oldham this afternoon. The season is still early enough for two or three results, good or bad, to have a big impact on the league table. A fortnight ago the Town's first win of the season lifted them off bottom place and up to 21st, and there were even bigger improvements earned by one victory elsewhere in the table.

Danny Wilson's Bristol City, for instance, jumped six places, to go into the top four, with a 3-0 home win over Northampton, while Blackpool shot up five places and into the play-off zone thanks to a similar win over Tranmere.

The Town's point at Brentford was good news for Wigan - they regained the league leadership by beating Wycombe after losing twice on the trot.

Brentford slipped to second place, with Plymouth dropping to third because their game against Cardiff was postponed, due to Lennie Lawrence's side being affected by Welsh international calls.

In the scrap for survival, Cheltenham inched off bottom place with a 1-1 draw at Colchester. Peterborough replaced them on an enforced day off - their trip to

Stockport was postponed because of internationals.

Barry Fry's success on opening day at Kenilworth Road looks all the more painful to Luton eyes today. Having won 3-2, Posh have since lost all five of their league games since then, without scoring a single goal. It became six consecutive defeats on Tuesday when they lost 2-0 to Portsmouth at Fratton Park. Brian Horton's Port Vale were among the teams who filled their boots against Posh, and they are another example of how a decent run can bring huge benefits at this stage of the campaign.

In late August Vale were bottom of the table, but three consecutive wins, away to Wigan and Swindon and at home to Peterborough, have hoisted them to 15th.

Another ex-Luton man in management, Andy King, will not be so keen to look at the results of a bad run. In early August he guided Swindon to the top of the first league table to be published. Swindon won their two opening games, but now they have lost four consecutively and are 19th in the table.

The other "non form" team at present is Mansfield, still struggling to cope with the Second Division, and another ex-Hatter could add to Mansfield's woes this afternoon. The Stags are away to Oldham, managed by Iain Dowie, and will be trying to end a run of four successive defeats during which they have leaked 13 goals.

Notts County are also trying to end a winless run this afternoon. They drew at home to Wycombe on opening day, then won 3-0 at Crewe to take sixth place in the early league table. Since then they have slumped to 20th, with three points from the next five league games. And they know how good Iain Dowie's men are: a week ago Oldham went to Meadow Lane and won 3-1, and on Tuesday County played the Latics again, in the Worthington Cup, and were edged out 3-2 at Boundary Park. County's other away results after the 3-0 at Crewe in August were two 0-0 draws, at Stockport and Barnsley. Mark Stallard and Paul Heffernan head County's score-chart, with three goals each.

Brian Swain

Today's Other Second Division Fixtures

Barnsley v Plymouth
Cardiff v Stockport
Cheltenham v Bristol City
Northampton v Huddersfield
Oldham v Mansfield
Peterborough v Crewe
Port Vale v Colchester
QPR v Swindon
Tranmere v Brentford
Wycombe v Blackpool

Nationwide League Division Two																		
HOME										AWAY								
	P	W	D	L	F	A	G	D	Pts		P	W	D	L	F	A	G	Pts
Wigan	7	3	0	1	8	3	2	0	14	1	8	15						
Brentford	7	2	2	0	4	1	2	1	0	5	2	8	15					
Plymouth	6	3	0	0	6	2	1	1	1	7	7	4	13					
Bristol City	7	4	0	0	10	0	0	3	0	5	5	12						
Crewe	7	2	1	1	3	3	1	2	0	7	2	5	12					
Blackpool	7	2	2	0	8	2	1	1	1	1	2	5	12					
QPR	7	2	1	0	7	3	1	1	2	6	6	4	11					
Cardiff	6	1	1	1	4	3	2	1	0	4	2	3	11					
Stockport	6	1	2	0	3	1	2	0	1	2	1	3	11					
Oldham	7	1	0	2	3	4	2	2	0	4	1	2	11					
Colchester	7	2	1	1	3	2	1	1	1	2	3	0	11					
Chesterfield	7	2	0	1	8	5	1	1	2	3	6	0	10					
Tranmere	7	2	1	0	4	2	1	0	3	4	8	-2	10					
Wycombe	7	1	2	0	8	5	1	1	2	3	7	-1	9					
Port Vale	7	1	0	2	2	5	2	0	2	5	6	-4	9					
Barnsley	7	1	2	0	2	1	1	0	3	4	7	-2	8					
Huddersfield	7	1	2	1	2	3	1	0	2	3	4	-2	8					
Northampton	7	1	1	1	2	2	1	1	2	3	9	-6	8					
Swindon	7	1	0	3	4	5	1	1	1	5	5	-1	7					
Notts County	7	0	2	2	4	8	1	2	0	3	0	-1	7					
Luton Town	7	1	0	2	7	6	0	2	2	3	7	-3	5					
Mansfield	7	1	0	3	4	14	0	1	2	5	8	-13	4					
Cheltenham	7	0	1	2	2	5	0	2	2	2	4	-4	3					
Peterborough	6	0	0	3	0	3	1	0	2	3	5	-5	3					

You can email the programme editor at
brian.swain@btinternet.com

At Your fingertips...
www.soccer-stats.com
Online, Up-to-date, 24/7



Statistics and all the fixtures

[illegible]

SQUAD CHECK

LUTON TOWN

Manager: Joe Kinnear

1	Mark Ovendale	<input type="checkbox"/>
2	Aaron Skelton	<input type="checkbox"/>
3	Alan Neilson	<input type="checkbox"/>
4	Matthew Spring	<input type="checkbox"/>
5	Russell Perrett	<input type="checkbox"/>
6	Marvin Johnson	<input type="checkbox"/>
7	Adrian Forbes	<input type="checkbox"/>
8	Kevin Nicholls	<input type="checkbox"/>
9	Tony Thorpe	<input type="checkbox"/>
10	Carl Griffiths	<input type="checkbox"/>
11	Steve Robinson	<input type="checkbox"/>
12	Chris Coyne	<input type="checkbox"/>
14	Andrew Fotiadis	<input type="checkbox"/>
15	Dean Crowe	<input type="checkbox"/>
16	Carl Emberson	<input type="checkbox"/>
17	Emmerson Boyce	<input type="checkbox"/>
18	Ahmet Brkovic	<input type="checkbox"/>
19	Steve Howard	<input type="checkbox"/>
20	Peter Holmes	<input type="checkbox"/>
21	Paul Hughes	<input type="checkbox"/>
22	David Bayliss	<input type="checkbox"/>
23	Ian Hillier	<input type="checkbox"/>
24	Sol Davis	<input type="checkbox"/>
31	Alan Kimble	<input type="checkbox"/>
32	Lee Mansell	<input type="checkbox"/>
34	Ben Roberts	<input type="checkbox"/>
36	Rob Gillman	<input type="checkbox"/>
38	Michael Leary	<input type="checkbox"/>
39	Steven O'Leary	<input type="checkbox"/>
40	James Osborn	<input type="checkbox"/>
41	Kevin Foley	<input type="checkbox"/>

tick if playing ■ tick if substitute ●

NOTTS COUNTY

Manager: Billy Dearden

1	Steve Mildenhall	<input type="checkbox"/>
2	Nick Fenton	<input type="checkbox"/>
3	Ian Baraclough	<input type="checkbox"/>
6	Ian Richardson	<input type="checkbox"/>
7	Marcel Cas	<input type="checkbox"/>
9	Mark Stallard	<input type="checkbox"/>
10	Danny Allsopp	<input type="checkbox"/>
11	Kevin Nicholson	<input type="checkbox"/>
12	Stuart Garden	<input type="checkbox"/>
13	Richard Liburd	<input type="checkbox"/>
14	Paul Bolland	<input type="checkbox"/>
15	Michael Brough	<input type="checkbox"/>
17	Richard Holmes	<input type="checkbox"/>
18	Simon Ramsden	<input type="checkbox"/>
19	Saul Deeney	<input type="checkbox"/>
21	Paul Heffernan	<input type="checkbox"/>
24	Darren Caskey	<input type="checkbox"/>
26	Tony Hackworth	<input type="checkbox"/>
27	Craig Ireland	<input type="checkbox"/>
28	Danny Stone	<input type="checkbox"/>
30	Paul Riley	<input type="checkbox"/>

Today's Officials

Referee: Alan Kaye, Yorkshire

Assistants: Tim Howes, Norfolk (yellow flag); Gavin Ward, Kent (red and yellow flag)

Fourth Official: Steve Chittenden, Hertfordshire

"Genuine Deals For Genuine Fans!"
Luton Fans Are
Guaranteed To Score At
Motorbodies Luton

114 Point Service

- 12 Months/ 15,000 mile guarantee
- 12 Months AA Assistance Mileage Check
- 30 Day Exchange Plan
- Free MoT for life
- HPI Check

NETWORK Q

total Commitment to road car quality

Motorbodies Central

5 Hitchin Road, Luton Bedfordshire.

Telephone 01582 454666

e-mail: enquiries@cxxtongroup.co.uk

- 12 months Assistance
- 12 months/15,000 mile Guarantee

Motorbodies Leagrave

166 Marsh Road, Leagrave, Luton

Telephone 01582 567500

e-mail: sales@cxxtongroup.co.uk

OPENING HOURS

Mon-Fri 9am-7pm

Sat 9am-5pm

Sun 10.30-4.30pm

NETWORK

Q

