

Issue 20

Peterborough United v Luton Town

Kick-Off 7.45pm



Posh Soccer • **Barry Fry** • Wayne Turner • **Click With The Posh**
Welcome to Luton Town • **Kit Carson** • Match Action • **Academy Update**



first National

Official Match Sponsor



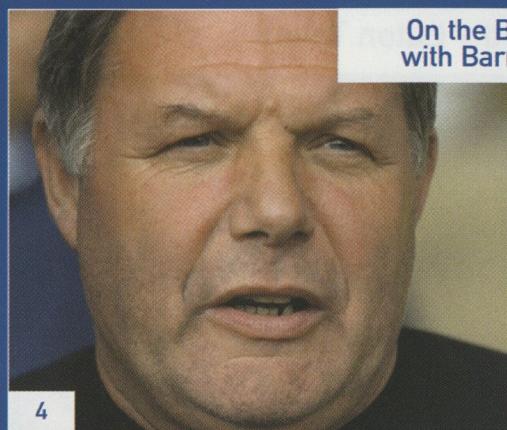
Nationwide Division Two

WALLER NEEDHAM
& GREEN

Official Match Ball Sponsor

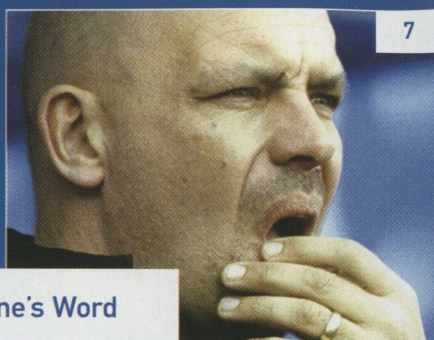
www.theposh.com

THE POSH Contents...



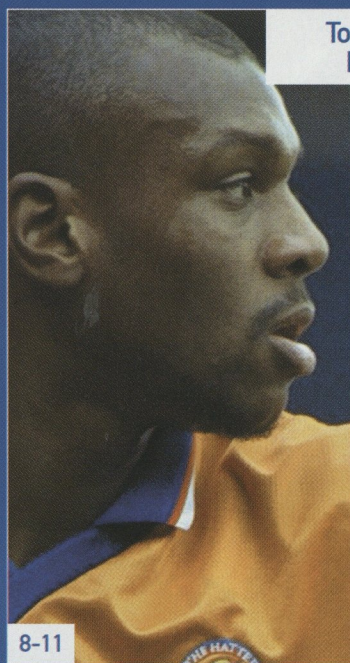
On the Bench with Barry Fry

4



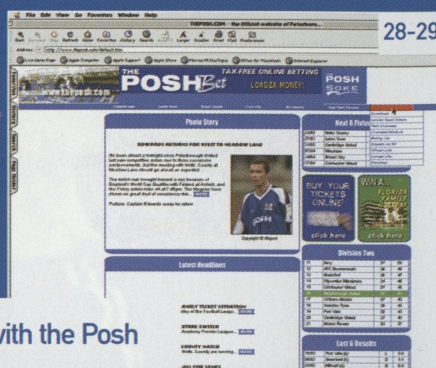
Wayne's Word

7



Today's Visitors
Luton Town

8-11



Click with the Posh

28-29

3. From the Chairman	4-5 On the Bench with Barry
7. Wayne's Word	13. Division Two Review
17. Around the Ground	21. A Game to Remember
22-23 Kit Carson Column	24-25 Latest Match Action
27. Sound Bites	28-29. Click with the Posh
31. Academy Update	32. Physio's News
34. Supporters' Club	37. Commercial Break
41. Posh Soccer	42. Posh Ladies

FRONT COVER PICTURE: Action Images

Club Directory

London Road Ground,
Peterborough PE2 8AL

Telephone 01733 563947
Facsimile 01733 344140
Club shop 01733 319666
Ticket Line 01733 319863
Official Website www.theposh.com
e-mail football@theposh.com

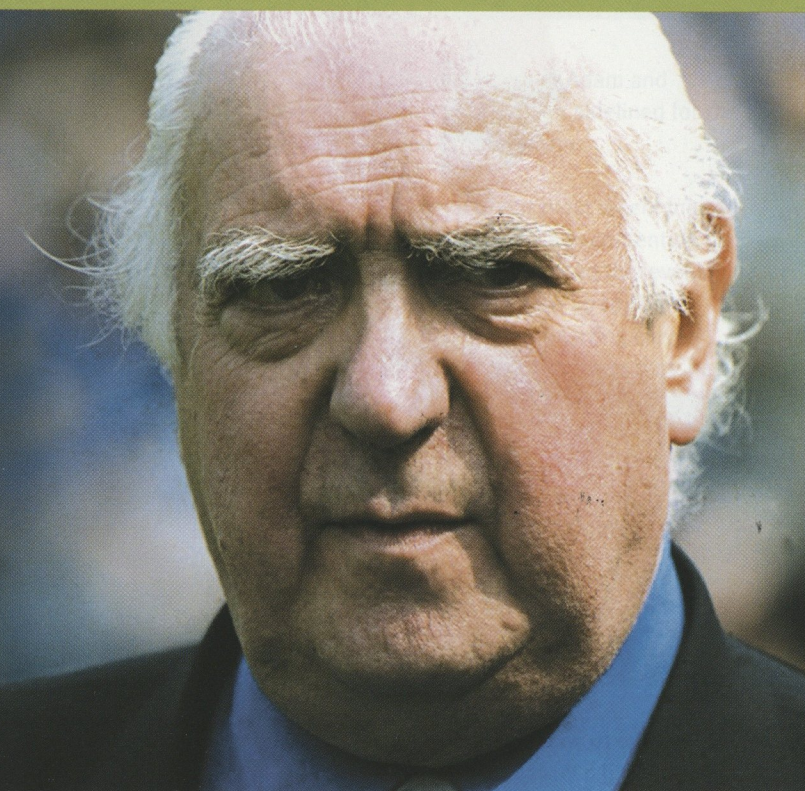
Chairman Peter Boizot, MBE DL
Vice Chairman Roger Terrell
Directors Alf Hand, Philip Sagar
Football Manager Barry Fry
Assistant Manager Wayne Turner
Physiotherapist Paul Showler
Goalkeeping Coach Tony Godden
Kit Manager Gordon Ogbourne
Director of Youth Football Kit Carson
Academy Director Dan Ashworth

Under 19 Manager John Morling
Chief Executive Nigel Hards
Design & Sales Co-ordinator Scott Dennison
Club Secretary Julie Etherington
Accountant Charmaine Hall
Sales Manager Chris Turner
Head of Comms. & Website Pep Cipriano
Webmaster/PC Support Chris Brewer
Blue Bond Manager Keith Wilson
Safety Officer Stuart Fensome

From the Chairman

Peter Boizot, MBE DL

"Our footballers
are playing
with skill,
determination
and great
sporting spirit"



We are lucky to have in the Evening Telegraph a local newspaper which devotes so much of its space to local football and especially Peterborough United Football Club. I had the pleasure of entertaining Kevin Booth, editor and Chris Pennock, managing director to lunch recently.

It was an eye-opener for them to see the Broadway Cinema nearly finished - it will open in May - and the Gildenburgh Gallery above Gaston, which will be hosting some fine art exhibitions. Also great interest was shown in Miss Pears on Market Square, a

splendid wine lodge and cafe which it is hoped will open before Easter.

We were able to have a good chat about the Posh as we went round, and I made a plea not to keep talking of Barry's men as if they were possible candidates for relegation. Apart from our crushing defeat with a greatly changed team last week, our footballers are playing with skill, determination and great sporting spirit.

In my view we should write about them in positive terms as a team likely to finish in the top half of

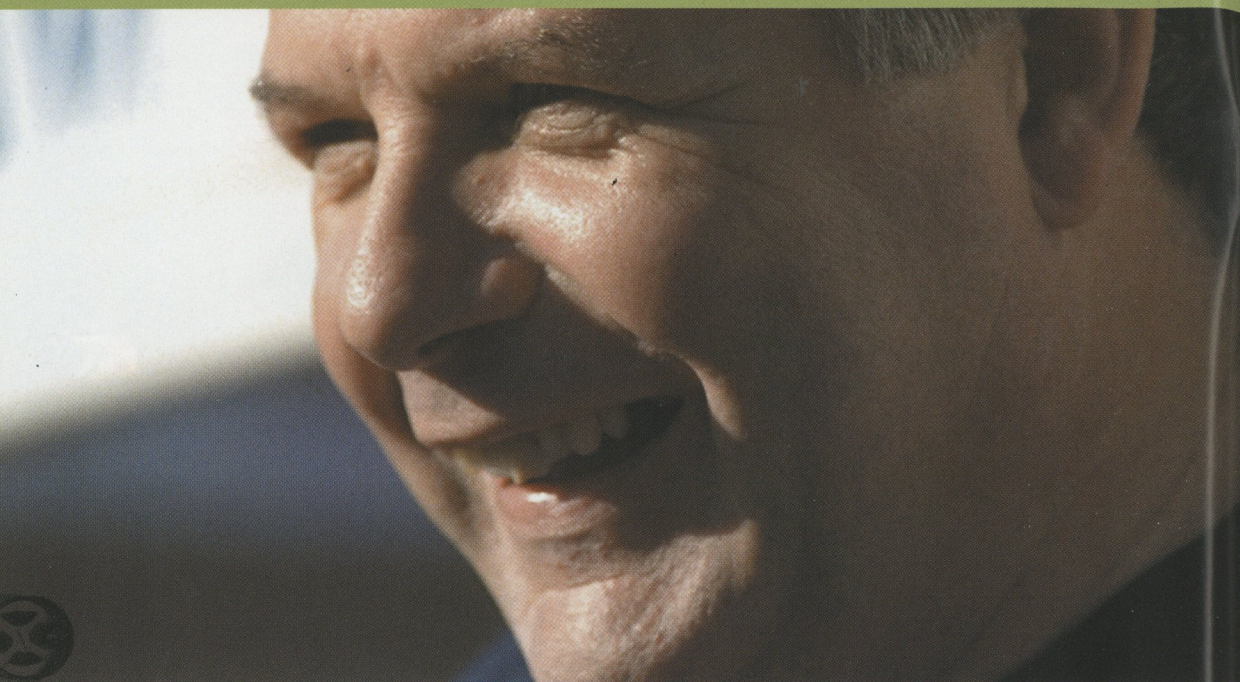
the table and not make continual references to forthcoming games being relegation dogfights.

You will see the Posh Academy players and some of our stewards around the ground with collecting boxes for Red Nose Day this afternoon. Please dig deep into your pockets for your small change and possibly a few notes so the Posh can make a worthy contribution to the deserving charity Comic Relief.

Peter Boizot MBE DL
Chairman, Peterborough United Football Club

On the Bench

With Barry Fry



I would like to welcome chairman Mike Watson-Challis, his fellow directors, players officials and supporters of Luton Town Football Club - and a special welcome to London Road to manager Joe Kinnear

Everyone knows Joe managed a miraculous achievement while in charge of Wimbledon when, against all odds, he got them into the Premier League and competed and regularly beat the best. It is no coincidence since his departure from Wimbledon that the club has gone down hill rapidly.

Luton are currently battling to lift themselves out of the drop zone but I am sure Joe will go close to

performing one of his miracles at Kenilworth Road before long. Since he took over the club's form has been more like that of a side gunning for promotion rather than one battling to get out of the relegation zone. All of the players, apart from a couple signed on transfer deadline day, were already at the club under Lil Fuccillo and he must get some of the credit. Lil brought in Richard Dryden and Keith Rowland and these two left-sided players have given Luton a lovely left-sided balance blending youth and experience to the side.

The Hatters are currently one of the division's in form sides and we will have to be at our best to gain the much needed three

points to keep us progressing up the table. It will be a very difficult game and Luton come here in a positive frame of mind after beating us the last time we met. Our matches with them have been entertaining this season, the Worthington Cup meetings ended in draws and Luton went through on the away goals rule.

We managed to beat this evening's opponents in the LDV Vans trophy but they got their revenge when it mattered in the League when we were beaten 3-2 at Kenilworth Road on Boxing Day. I desperately want a win tonight but it will not be easy and the team needs your vocal encouragement, which counts for a lot on Tuesday night fixtures.

Three of our games have recently been postponed after falling victim to the awful weather conditions and this is frustrating to say the least because we now have to play catch-up football for the next few weeks.

It was annoying to travel all the way to Bristol Rovers and be told the game was off when we arrived there. This was unfair on us and more so our supporters who took half days and full days off to make the journey and the whole situation could have been avoided with a little common sense. The pitch could have been inspected much earlier than it was and this would have gone a long way in preventing any inconvenience to everyone.

I am sure all our supporters will join me in wishing Adam Drury the best of luck with his new club Norwich City whom he joined 24 hours before transfer deadline day. Adam has been at Posh for over 10 years and although only 22 years of age he played over 200 games for us and has been a tremendous credit to Posh both on and off the field. We wish him continued success in his career and I would like to thank him for his wonderful service. I had several long talks with Adam and his agent for the past six months in trying to convince him to sign a new contract but to no avail. This left us in a vulnerable position as the new transfer rules, which

no-one really understands, stipulate a player like Adam who is 23 next birthday can walk away from his club and we would receive nothing. We did not want one of our assets to leave like that and I know there is disappointment among us but selling him was the right thing to do.

I managed to secure two new faces on loan until the end of the season with Steve Morrow arriving from QPR and Tom Williams from West Ham United. Steve is a Northern Ireland international with 39 caps and he won a Cup Winners' Cup medal with Arsenal during his time at Highbury. I've worked with Steve before when he was on loan with Wayne and I at Barnet - be it for one game! Tom is another left sided player and I felt we needed to bring in cover in this area with

the departure of Adam and Gareth Jelleyman sidelined for the rest of the season.

Several of our most recent injured players are back in contention for a place in the squad this evening and there will be up to eight changes in our starting eleven from the side that were thrashed by Port Vale. It is pleasing to see so many of our established players coming back on the road from injury as we have a hectic programme coming up. No need to tell you that we have a mouth-watering game coming up on Saturday when Cambridge United visit London Road. Bring all your neighbours and friends here and roar us on to a famous victory!

Enjoy the game

Barry



Steve Morrow joins Posh until the end of the season

"Great saver!"

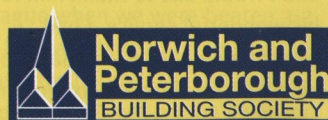


With a Posh Account from Norwich and Peterborough, you can earn interest on your savings and help your favourite club, Peterborough United.

Here are some of the features of the Posh Account:

- Bonus paid to Peterborough United FC
- 10% discount off Peterborough United goods bought in the Club Shop in excess of £50†
- 10% discount off weddings held at Peterborough United's ground for immediate family†
- 5% discount off season tickets (this offer does not run in conjunction with any other offer)†
- One free mortgage valuation (subject to conditions)
- Tiered rates of interest
- Open an account from £100 (£10 for under 16s). Maximum £20,000
- Available exclusively to Peterborough United FC members and season ticket holders

So get down to your nearest Norwich and Peterborough branch and open a **POSH** Account today!



www.npbs.co.uk

we can help

*This offer is made by Peterborough United FC and not by the Society, and may be withdrawn at any time without notice. Conditions will apply (please refer to the Club for further details). Norwich and Peterborough Building Society **Principal Office:** Peterborough Business Park, Lynch Wood, Peterborough PE2 6WZ. Telephone: (01733) 372372. www.npbs.co.uk Member of The Building Societies Association. Member of LINK. Assets exceed £2.2 billion.

Wayne's Word

With Wayne Turner



Weather permitting let's hope you are reading these programme notes tonight. As we enter the last 10 games of the season, with six of them at home and four away, we now really want to push on for a positive climax to this campaign.

My target has always been 54 points and we are now in a position where we need 10 points in our last 10 games. To get two victories in our next two fixtures this week against our local rivals will give you a wonderful feeling to take into our last eight games and it would give us the platform to finish the job off.

I am obviously going to meet a lot of old friends from Luton tonight and also new faces that have come into the fold at the club recently. This will be our fifth meeting of the season but tonight's game will be in mild contrast to the previous four as

there has been a complete turn around in personnel at the Kenilworth Road club. From a personal point of view I enjoyed playing against Luton five times but spare a thought for the supporters of the Scottish clubs where it is the norm to meet with one another on so many occasions. I think we all agree that we wouldn't want to be playing against the same team that many times a season, however, for me it has been a bonus as you always like to be playing against your old club whether you are a player or a coach.

My stomach still churns when I think of our first half performance at Kenilworth Road on Boxing Day - let's put that right tonight. If we play with the same attacking flair as we did at Notts. County on last Friday night we will have a real cracker this evening. I thought some of our

forward play and our inter-movement around the penalty area was exceptional and we thoroughly deserved the three goals if not more. Obviously we were disappointed with our defensive display but when you get caught up in a game where two teams are determined to attack then anything could happen and it did. I think you enjoyed it as much as we did and your response from behind the goal was absolutely magnificent. I thank you yet again for your support.

Talking of support, I would like to thank you all for your contributions at the recent fans forum which was very positive and enjoyable. Keep up that good work tonight - be loud, be proud and see the Posh through.

Cheers

Wayne

visit www.theposh.com for all the latest news and views **THE POSH 7**

Luton Town



LUTON TOWN FOOTBALL CLUB LINING UP FOR THE CAMERA. FRONT ROW (LEFT TO RIGHT): LIAM GEORGE, EMMERSON BOYCE, PETRI HELIN, MATTHEW SPRING, LIL FUCCILLO (MANAGER), PAUL MCCLAREN, JULIAN WATTS, MARVIN JOHNSON, ADAM LOCKE. SECOND ROW: JOHN MOORE (ASSISTANT MANAGER), PETER THOMPSON, JUDE STIRLING, KENT KARLSEN, NATHAN ABBEY, MARK OVENDALE, JAMES AYRES, FRIEDRICH BREITENFELDER, TRESOR KANDOL, ROCKY BAPTISTE, BRIAN STEIN (YOUTH TEAM COACH). BACK ROW: MARK STEIN, ANDRE SCARLETT, STUART FRASER, ANDREW FOTIADIS, MATTHEW TAYLOR, PETER HOLMES, STUART DOUGLAS, GAVIN MCGOWAN, DEAN BRENNAN.

LUTON FACT FILE - FORMED: 1885 • GROUND: KENILWORTH ROAD • CAPACITY: 9,975 • MANAGER: JOE KINNEAR

Luton Town could argue they know Peterborough United better than any other Division Two club after having clashed with Barry Fry's team on four occasions already this term.

Kinnear's team have been in excellent form with five successes in their last eight matches and it is vital that they win tonight with relegation looming large.

When the two sides met early on in the season in the Worthington Cup the spoils were shared in a goalless draw at Kenilworth Road. This was followed by an end to end thriller at London Road, which finished 2-2, however, the

Hatters squeezed through on the away goals rule.

They faced Premiership giants Sunderland in the next round and although they put up a brave fight they narrowly lost 2-1 at home. A solitary Francis Green strike earned Posh their first success over the Hatters in the first round of the LDV Vans Trophy competition at the beginning of December.

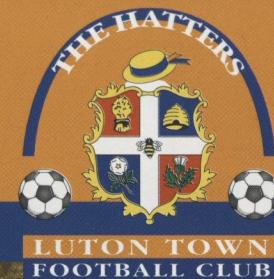
The first league encounter between the sides took place on Boxing Day when Posh fought back from 2-0 down but did not have enough in reserve to stop Town securing a crucial 3-2 win.

This time around Posh will have to beat a Hatters side who are now on their third manager of the season and trying to outwit Joe Kinnear's team will not be easy.

A recent draw with Bristol Rovers and a 2-1 victory over Cambridge United gave this evening's visitors a boost against two teams also involved in the relegation dogfight.

Defeat in their meeting with league leaders Millwall at the New Den was expected, however, a win this afternoon would go a long way in consolidating Luton's status as a Division Two club.

Joe Kinnear



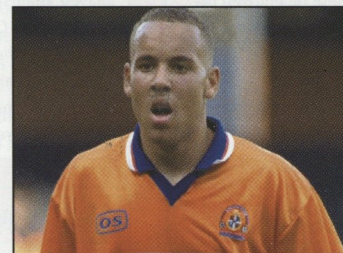
A new board of directors took control of Luton Town in the summer of 2000 with the intention of bringing back the glory days to Kenilworth Road.

Joe Kinnear was viewed as the messiah in charge of making this happen, however, a surprise heart attack kept Kinnear out of the game for 18 months before taking up his post at the beginning of February. Football has been Kinnear's life since he was a teenager, playing non-league football for St. Albans City, when Tottenham Hotspur spotted his potential and signed him in 1965. He was a reliable defender who enjoyed 10 of the best years in the history of Spurs making more than 280 appearances. His honours include an FA Cup success in 1967, League Cup Winners medals in 1971 and 1973 and a UEFA cup triumph in 1972. The 'crazy gang' were still in the Premier League when Kinnear was forced to step down due to ill health and his managerial accomplishments with Wimbledon brought him more awards to add to his playing accolades.

He received two Premiership 'Manager of the Year' awards, another as Carlton TV Manager of the Year and yet another voted by Sky TV viewers. Posh's previous four meetings with the Hatters this season will stand for nothing as the Kenilworth Road side are sure to be fired up under the attention of Kinnear.



Players to Watch



Liam George

Local pacy and nimble striker who was also a regular member of the Republic of Ireland youth squad that progressed to the European youth championships final in the summer of 1998. Was Luton's leading scorer last season after returning from a broken leg and also made a return to the international scene winning Under-21 honours.



Lee Mansell

Made his Luton Town debut in the FA Cup third round tie against Queens Park Rangers this season after an injury crisis hit Kenilworth Road. Had a dream debut scoring a stunning goal after only 58 seconds. Has been with Luton since the age of 11 and was then signed as a soccer scholar (previously the YTS scheme) as soon as he left school.

The Squad



Nathan Abbey

DOB: 11/07/1978
POSITION: Goalkeeper

Battled defiantly to keep his career going at Kenilworth Road after joining Luton as a YTS boy.

A succession of good goalkeepers left him as a near-permanent understudy, however, since the sale of Kelvin Davis, he has excelled and been rewarded with the Number one shirt.

Mark Ovendale

DOB: 22/11/1973
POSITION: Goalkeeper

Chairman Mike-Watson Challis made money available for former boss Ricky Hill to secure this highly rated goalkeeper from AFC Bournemouth for a substantial fee. Previously with Wisbech Town, Northampton Town and Barry Town, he was given the number one jersey immediately upon his arrival.

Emmerson Boyce

DOB: 24/09/1979
POSITION: Defender

One of the many to come through from Luton's schools and youth development programme, the defender was signed as a YTS boy in the summer of 1995, and made the breakthrough to the League squad last season after occasional appearances following a debut in the Auto Windscreens Shield.

Julian Watts

DOB: 17/03/1971
POSITION: Defender

Reliable member of the team who joined on a free transfer from Bristol City where he was out of favour. Started his League career at Rotherham United where he enjoyed his first taste of league football before moving to Sheffield Wednesday and Leicester City. He went on to Ashton Gate in 1998.

Petri Helin

DOB: 13/12/1969
POSITION: Midfielder

Finnish international secured by Lil Fuccillo and made his debut against Bury on November 4th. Capped 18 times for his county, he played against England in the recent World Cup qualifying match, and the former FC Jokerit skipper had just earned a runners-up medal in the Finnish Premier League.



Adam Locke

DOB: 20/08/1980
POSITION: Midfielder

Well travelled midfielder who joined the Hatters on a free transfer from Bristol City to add experience to a predominantly young squad in the summer of 1999. Began as a YTS at his home club Crystal Palace then moved to Southend United before joining Colchester United and Bristol City.

Paul McLaren

DOB: 17/11/1976
POSITION: Midfielder

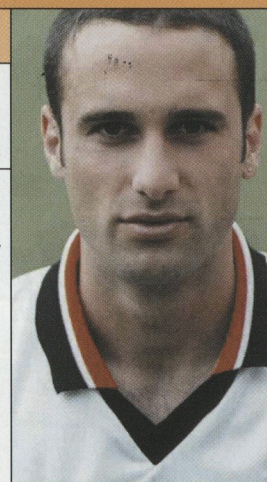
A strong and talented midfielder who started playing for the Hatters youth team while still at school. A YTS offer was a formality and was signed up on professional terms at the age of 17. Forceful and always ready to back up attacks, he soon became a regular in the first team after making his debut in 1994.

Andrew Fortiadis

DOB: 06/09/1977
POSITION: Striker

Old-fashioned centre forward with good physique and power who is a constant worry to opposing defences.

Born not far from Luton in Hitchin, he won England Schools caps at Under 15 and Under 18 level, and chose to gain his GCSE exams before being a full time professional.



Richard Dryden

DOB: 14/06/1969
POSITION: Defender

The big defender signed on a free transfer from Southampton in February of this year. Started his football career at Bristol Rovers before being allowed to move on to Exeter for £10,000. The much-travelled defender has also enjoyed spells at Notts. County, Birmingham, Bristol City and Southampton.

Stuart Fraser

DOB: 09/01/1980
POSITION: Defender

Stylish player who captained last season's successful youth team and reckoned by the Kenilworth Road management team to be an outstanding prospect.

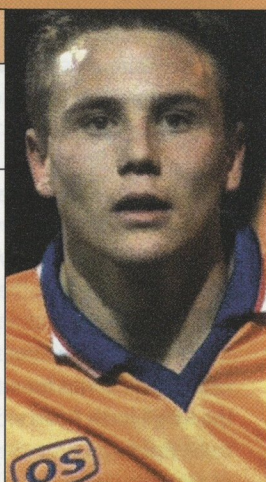
Was first choice left back last time around and is looking to win back his regular spot this time around.

Matthew Taylor

DOB: 27/09/1981
POSITION: Midfielder

Young wing-back who came through the ranks and was given his chance at the age of 17. Settled in immediately and became a regular, gaining over 50 appearances and several goals to his credit.

Made his league debut on the opening day of the 1999-2000 campaign.



Mark Stein

DOB: 28/01/1966
POSITION: Striker

Returned to Kenilworth Road in the summer nearly 20 years after joining as a schoolboy. Enjoyed four years with the Hatters and won the League Cup in 1988. The South Africa born forward furthered his career at QPR, Oxford United, Stoke City, Chelsea and AFC Bournemouth.

Keith Rowland

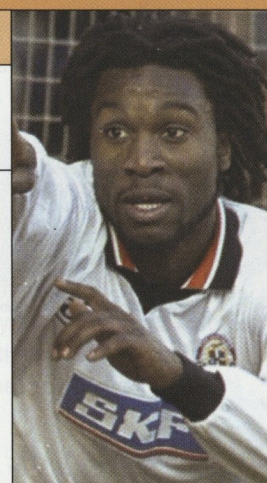
DOB: 01/09/1971
POSITION: Midfielder

Ex-Luton boss Lil Fuccillo tracked the former Northern Ireland midfielder for several months before persuading him to move from Queens Park Rangers to Kenilworth Road on a three-month loan agreement, which began on January 27 this year. Began his career as trainee at AFC Bournemouth.

Stuart Douglas

DOB: 09/04/1978
POSITION: Forward

A pacy striker, he was a 17-year-old trainee when he scored on his league debut for Luton against Oldham in 1995. A number of injuries hampered his progress; however, determination overcame all difficulties and has now established himself as a Luton regular, flourishing as a marksman.



Customer service has
been a tradition of
ours for 90 years.



Tyrrell Park Boongate Peterborough
01733 558588



Mallory Road Peterborough
01733 566767



Tyrrell Park Boongate Peterborough
01733 340044



Tyrrell Park Boongate Peterborough
01733 898088



Tyrrell Park Boongate Peterborough
01733 898088



Tyrrell Park Boongate Peterborough
01733 896666



Oundle Road Peterborough
01733 566011



Tyrrell Park Boongate Peterborough
01733 313335



Tyrrell Park Boongate Peterborough
01733 555496

Marshall
PETERBOROUGH

Division Two Review

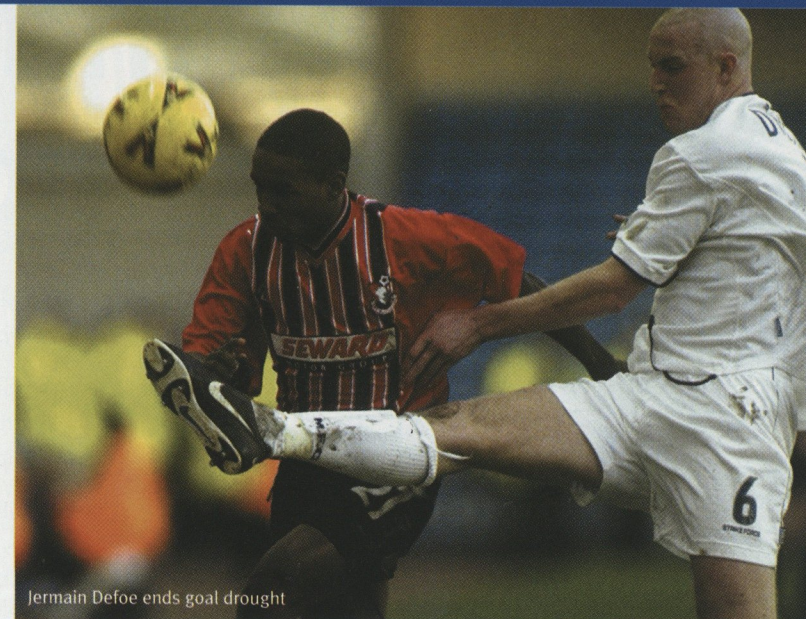
By Paul Crisp

'Rotherham United surely won't last the pace.' That was the general view of football spectators when the Millers strode into the top three of the Second Division before Christmas. Now, as the final stages of the season approach, Ronnie Moore finds his side top of the pile.

Last week's victory at Wycombe secured that feat, and just when you thought that perhaps Rotherham should be considered as serious championship challengers, complacency comes into the equation - although Oxford United will not mind.

Rooted to the foot of the table 25 points adrift of safety, The U's recorded a spectacular 4-3 win at the Manor Ground against the league leaders on Saturday and Manny Omoyimni will be delighted to have finally got off the mark following his pre-season switch from West Ham United. He netted once in either half along with Robert Quinn and Andy Scott - likewise netting their first for the club after moving in a joint deal from Brentford halfway through the campaign.

Mark Robins did grab his 21st of the season for The Millers, but his effort was in vain as was the case for Guy Branston and Alan Lee



Jermain Defoe ends goal drought

who also got on the score sheet. Port Vale stretched their unbeaten sequence to 12 games as they held play-off hopefuls Wigan Athletic to a goal-less draw, whilst Bristol Rovers and Swindon Town fought out an equally frustrating stalemate in their relegation clash.

Wycombe Wanderers have obviously set their sights firmly on the FA Cup as they meet Liverpool in just under a fortnight, but Walsall made Lawrie Sanchez's men pay by hitting them for five at the Bescot Stadium - Spanish winger Pedro Matias hitting a hat-trick in the process. Elsewhere on Saturday Jermain Defoe ended his seven-match goal drought by dispatching the only goal in AFC

Bournemouth's success over Bury. Friday evening's matches also brought plenty of action, and Bristol City did their play-off aspirations no harm by coming from behind to win at high-flying Reading. Leading scorer Tony Thorpe, lethal strike partner Lee Peacock and deadline day snatch Lee Matthews were all on target to record a 3-1 win following Graeme Murty's early opener.

It was a similar story at Boundary Park, as Northampton Town's John Frain gave The Cobblers a first-half lead over Oldham Athletic. Inspirational home skipper Lee Duxbury stole the show however, hitting the target twice to bag a 2-1 comeback for the Latics.



visit www.theposh.com for all the latest news and views **THE POSH 13**

POSH makes hot new signing

When it comes to helping you make the most of your leisure time no-one works harder than Thomas Cook.

And, in Peterborough, it's not just your holidays, flights and foreign exchange we're supporting - it's also your football!

So, for all your holiday needs you know where to come.

**Thomas
Cook**

sponsors of the
FAMILYstand

**Thomas
Cook**
DIRECT
eeeeee

For all your holiday needs
08705 666 222

**THOMAS COOK
HOLIDAYS**
Signature

Visit your local Thomas Cook

63 Queensgate, Peterborough Tel: 01733 412700 - Thorpe Wood Travel Shop, Peterborough Tel: 01733 416800
93/95 Broadmead, Bristol Tel: 0117 948 7900 - 12 Baldwin St, Bristol Tel: 0117 948 7800

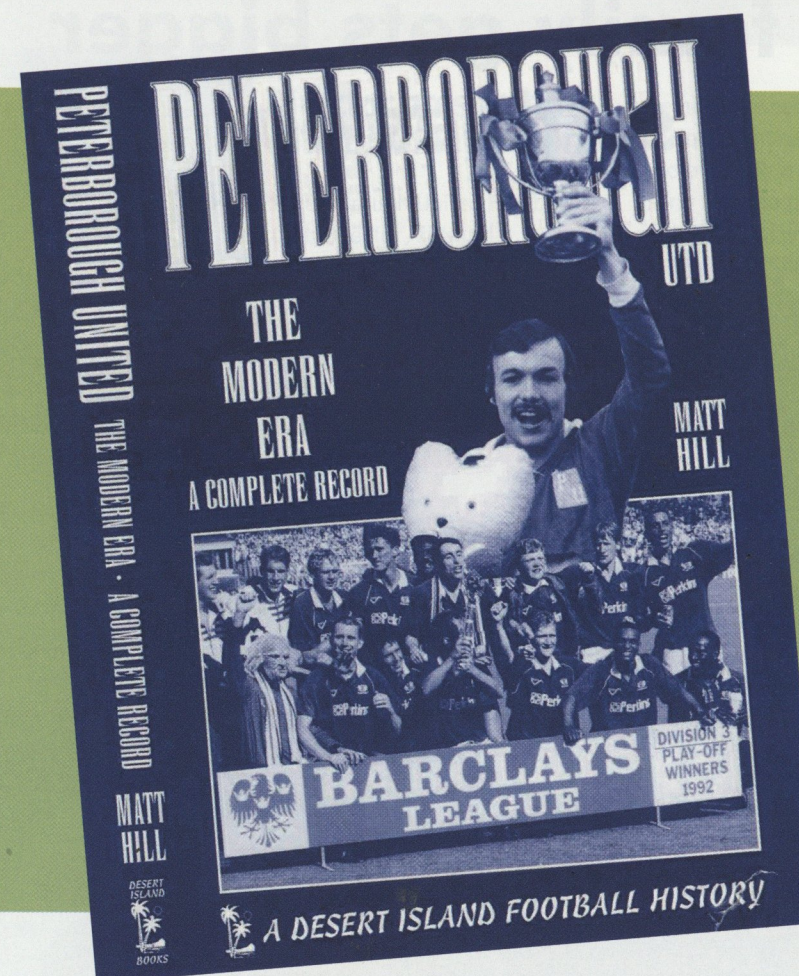
47 Queens Road, Clifton, Bristol Tel: 0117 948 7700 - The Mall, Cribbs Causeway, Bristol Tel: 0117 948 1500

J Sainsburys, Emmersons Green, Bristol Tel: 0117 991 1000 - 12 Broad St, Staple Hill, Kingswood, Bristol Tel: 0117 975 3555

14 Canford Lane, Westbury on Trym, Bristol Tel: 0117 959 2222

THOMAS COOK DIRECT - Lines are open 24 hours a day, 7 days a week. ABTA: 29653
(To ensure quality service, calls to Thomas Cook Direct and Flights Direct will be recorded.)

PETERBOROUGH UNITED: THE MODERN ERA A COMPLETE RECORD - By Matt Hill



A great new book on Peterborough United covering 1973 to the present season, written by programme contributor and club historian Matt Hill, includes details and reports of every match played, Did You Knows, pictures, and much more.

This 320-page hardback book, priced at £16.99, is now available in the Posh Club Shop (11-15 London Road) and on-line through the official website securely served Club Shop at www.theposh.com

Alternatively, contact the publishers sending a cheque for £18.99 (including p&p) per book to: Desert Island Books (Posh book), 89 Park Street, Westcliff-on-Sea, Essex SSo 7PD. Or subscribe through the website: www.desertislandbooks.com

**Funny, as your
family gets bigger
so does ours.**



Cooks

Storey's Bar Road, Peterborough PE1 5YS Tel: 01733 312213
Uffington Road, Stamford PE9 2EX. Tel: 01780 751439
www.cookspeterborough.volkswagen.co.uk

**ULTIMATE
POWER**

**MAXIMUM
CONTROL**



ULTIMAX
the best football in the world

Mitre
www.mitre.com

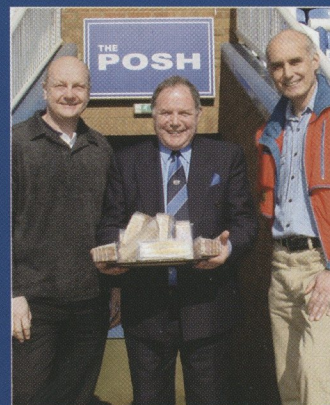
Around the Ground

Lunchtime gesture to St. Theresa's

Posh came up with the perfect bread and butter solution to off load over 50 sandwiches that players and officials were set to tuck into for the trip to Bristol Rovers that was postponed because of a waterlogged pitch earlier this week.

The club contacted St. Theresa's Centre, Manor House Street in Peterborough, and manager Doug Styles was quickly on his way to London Road to make a collection of the freshly prepared food in time for lunch.

'The timing could not have been any better for us as our chef was off sick and we were very appreciative of the offer from the club,' said St. Theresa's marketing and fund raising manager Richard Hunt who is seen to the right of the picture along with Doug Styles and Barry Fry.



Director presented with birthday surprise

Peterborough United Football Club director Alf Hand celebrated his 70th birthday on the eve of Posh's 1-1 draw with Brentford. Alf, who is the club's longest serving board

member, is seen with Peter Boizot, Brentford chairman and owner Ron Noades and Barry Fry who presented him with a specially produced first team shirt signed by the playing staff and members of the behind the scenes London Road team.



Posh players support national no smoking day

Richard Forsyth and Matthew Gill took time off from the treatment room and headed for the city centre on national no smoking day where they helped give members of the public some moral support in kicking the habit.

'Kiss it Goodbye' is the current theme of a campaign held each year to encourage smokers to quit - and the Posh midfielders were aboard a fun bus in Cathedral Square where smokers could test their lung

power on a special machine and collect a gift for their cigarettes. Pictured with Richard Forsyth is Smoking Cessation Facilitator Annie Wilson.



Campaign Records

Highest Gate
22,133

Stoke v Port Vale

Lowest Gate
1,584

Wrexham vs Cambridge

Highest Aggregate Score

Brentford

Bristol Rovers

Bristol City

Cambridge

Luton

Swansea

Wrexham

Oxford

Biggest Home Win

Cambridge

Rotherham

Reading

Oldham

Foy

Riley

Cooper

Oxford

Millwall

Colchester

Port Vale

Peterborough

Biggest Away Win

Brentford

Bristol Rovers

Peterborough

Stoke

Consec. Wins

Walsall

Rotherham

Games Unbeaten

Wigan

Consec. Defeats

Bury

Swansea

Winless Run

Bristol Rovers

Cambridge

Cambridge

Nationwide 2Stats

Statistics Compiled by
Football
Information
Services
Tel: 0181 432 5679

Div.2 Results Grid

HOME \ AWAY	0	1	2	3	4	5	6	7	8
0	35	39	27	19	10	3			
1	47	95	35	24	5	4	2		
2	19	21	20	15	3	1			
3	8	9	9	5	1	2			
4	1	4	4						
5									
6									
7									
8									

(For clubs below, read across row to right for Big Wins/Defeats and last 5 results)

Division 2 Ave. Attendances

	3000	6000	9000	12000	15000
Bournemouth					4,158
Brentford					4,918
Bristol City					10,333
Bristol Rovers					7,191
Bury					3,276
Cambridge					4,317
Colchester					3,435
Luton					5,866
Millwall					10,711
Northampton					5,749
Notts County					5,378
Oldham					4,649
Oxford					5,087
Peterborough					5,800
Port Vale					4,334
Reading					11,636
Rotherham					5,331
Stoke					13,324
Swansea					5,646
Swindon					5,927
Walsall					5,592
Wigan					6,583
Wrexham					3,584
Wycombe					5,385

Biggest Wins & Losses

Win -vs-	Defeat -vs-
Bristol City 1-3 Old/Rth	Bristol City 1-3 Old/Rth
Oxford 2-6 B Rovers	Oxford 2-6 B Rovers
Cambridge 0-4 Col/Bmt	Cambridge 0-4 Col/Bmt
Brentford 0-3 Clubs	Brentford 0-3 Clubs
Swansea 0-4 Millwall	Swansea 0-4 Millwall
Rotherham 2-6 Bristol City	Rotherham 2-6 Bristol City
Bristol City 1-6 Millwall	Bristol City 1-6 Millwall
Swansea 0-4 Swansea	Swansea 0-4 Swansea
Colchester 2-3 Clubs	Colchester 2-3 Clubs
Rotherham 1-5 Walsall	Rotherham 1-5 Walsall
Wrexham 0-5 Reading	Wrexham 0-5 Reading
Northampton 0-5 Millwall	Northampton 0-5 Millwall
Swansea 0-5 Port Vale	Swansea 0-5 Port Vale
Peterborough 0-4 Cambridge	Peterborough 0-4 Cambridge
Oldham 0-4 Bristol City	Oldham 0-4 Bristol City
Stoke 0-3 Walsall	Stoke 0-3 Walsall
Luton 1-5 Rtd/Wal	Luton 1-5 Rtd/Wal
Bury/Oldh 0-4 Pboro	Bury/Oldh 0-4 Pboro
Walsall 1-3 Wyl/Swa	Walsall 1-3 Wyl/Swa
Millwall 1-3 Clubs	Millwall 1-3 Clubs
Oldham 1-5 Oldham	Oldham 1-5 Oldham
Bury 1-5 Oldham	Bury 1-5 Oldham
Swansea 0-3 Bournemouth	Swansea 0-3 Bournemouth

Last 5 Home Results

	1	2	3	4	5
Bournemouth	DLWLW				
Brentford	DLWWD				
Bristol City	WWDWL				
Bristol Rovers	DDWW				
Bury	LDWW				
Cambridge	LDWL				
Colchester	LDWL				
Luton	LDWL				
Millwall	LDWL				
Northampton	LDWL				
Notts County	LDWL				
Oldham	LDWL				
Oxford	LDWL				
Peterborough	LDWL				
Port Vale	LDWL				
Reading	LDWL				
Rotherham	LDWL				
Stoke	LDWL				
Swansea	LDWL				
Swindon	LDWL				
Walsall	LDWL				
Wigan	LDWL				
Wrexham	LDWL				
Wycombe	LDWL				

Referees Report

	G	RC	YC	Av. Yell
Fletcher	20	1	91	4.35
Oliver	21	4	88	4.19
Prosser	18	7	75	4.17
Hall	24	11	96	4.00
Mathieson	24	2	96	4.00
Dowd	22	8	83	3.77
Foy	22	5	82	3.73
Riley	10	3	37	3.70
Cooper	13	5	47	3.62
Jones P	12	0	43	3.58
Harris	7	2	25	3.57
Ryan	18	4	63	3.50
Knight	11	4	38	3.45
Winter	9	0	31	3.44

Grid shows the number of games ending with each result, e.g. 55 matches have been 1-1 draws and 87 games have ended 1-0 away win.

Hotshots - Div.2 Clubs' most prolific marksmen, inc. the difference their goals made

see key below	Leading Scorer	GS	1stGl	Se1	Se2	HT	Gms	Ave	W/L	W/D	D/L	Pts	Run	Dry	PU	CS	FS	Results
Bournemouth	Defoe	13	4	9	2	0	20	0.65	1	2	2	9	10	6	30	9	4	LDLD
Brentford	Owusu	7	2	7	0	0	24	0.29	0	2	3	7	2	6	28	9	10	DLDL
Bristol City	Thorpe	17	3	9	1	2	33	0.52	1	2	2	9	2	5	32	9	10	DDLL
Bristol Rovers	Ellington	10	3	6	2	0	29	0.34	1	1	4	9	3	10	32	11	15	DWDL
Bury	Newby	5	3	3	1	0	10	0.50	0	4	0	8	1	3	27	11	11	WDDLW
Cambridge	Youngs	11	2	7	2	0	31	0.35	0	3	2	8	3	5	35	8	10	LLLL
Colchester	Stockwell	7	1	5	1	0	37	0.19	1	0	2	5	1	16	27	11	13	DLLW
Luton	George	5	0	5	0	0	31	0.16	0	0	1	1	2	9	30	6	13	WWLWL
Millwall	Harris	24	8	11	2	3	36	0.67	1	4	2	13	3	3	30	16	5	DDWLL
Northampton	Forrester	16	9	12	2	0	35	0.46	1	5	5	18	5	8	30	9	11	LDLD
Notts County	Stallard	13	7	13	0	0	32	0.41	0	5	2	12	3	5	34	12	8	DWLDL
Oldham	Corazzini	8	3	4	0	1	31	0.26	0	2	0	4	1	10	27	10	12	LLLL
Oxford	Beauchamp	6	1	4	1	0	31	0.19	0	1	0	2	1	7	38	3	14	LLDL
Peterborough	McKenzie	10	3	6	2	0	20	0.50	1	1	1	6	2	3	25	11	12	DLDDL
Port Vale	Naylor	9	4	5	2	0	29	0.31	0	2	0	4	2	7	25	9	10	LDWW
Reading	Butler	17	10	10	2	1	34	0.50	1	1	2	7	5	11	28	14	6	WWWDW
Rotherham	Robbins	18	6	12	3	0	33	0.55	1	5	3	16	2	2	27	15	3	LDLWW
Stoke	Thorne	14	6	7	2	1	28	0.50	1	4	2	13	3	6	27	12	5	WDLWD
Swansea	Savarese	12	2	3	3	1	22	0.55	1	0	4	7	2	4	29	8	15	LLWD
Swindon	Invincible	8	2	4	2	0	32	0.25	0	2	1	5	2	10	35	10	13	DWDWW
Walsall	Leitao	14	8	14	0	0	36	0.39	0	4	1	9	3	5	23	11	8	WDDLW
Wigan	Liddell	9	4	7	1	0	34	0.26	0	5	0	10	3	8	30	14	11	LWLL
Wrexham	Trundle	7	0	4	0	1	8	0.88	1	2	0	7	5	2	27	7	9	LLWW
Wycombe	Rammell	10	3	4	3	0	20	0.50	2	2	1	11	2	4	30	8	15	LDWWL

Key: GS=Goals Scored; 1st Gl=Games Scored 1st Goal; Set=Games Scored 2 Goals; HT=Half-Time; Each club's leading league scorer and their goals per game (Ave). Next 3 columns show taking off their goals, how many games change from Win to Loss (W/L), Win to Draw (W/D), Draw to Loss (D/L) and Points (Pts). Last 2 figures show best scoring run, and longest dry spell in consecutive games. NUMBERS: PU=Players Used; CS=Clean Sheets; FS=Games Failed to Score

Goalscoring Head 2 Head

in the graphics below, POSH's figures are to the left with the goals scored indicated in blue and Hatters' to the right and scored in orange

Where



How



SCORING SEQUENCES



CONSECUTIVE GAMES WITHOUT SCORING



POSH Results

OPPONENT	GOALS
0	4
1	2
2	4
3	2
4	1
5	1
6	1
7	1

shows the number of results for each scoreline. e.g. 1 (Luton) has won 4 games 3-1 and lost 2 games 2-3

Hatters' Results

OPPONENT	GOALS
0	3
1	3
2	3
3	1
4	1
5	1
6	1
7	1

shows the number of results for each scoreline. e.g. 1 (Luton) has won 4 games 3-1 and lost 2 games 2-3

Seasonal Progress Comparison

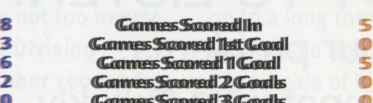
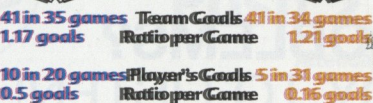
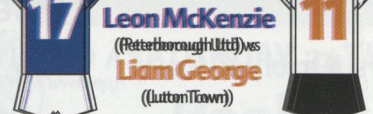


note: due to print deadlines, stats do not include weekend's fixtures

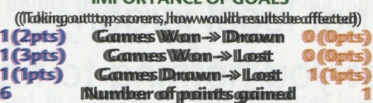
Stats & Facts

Stats compiled by Football Information Services

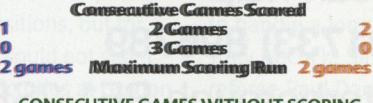
Top League Scorers



When goals scored & conceded



Average time of Scoring / Conceding



Last 10 Games Form Guide Comparison



Luton Town's Last 10 Years - The Complete Record

1	2	4	1	1
2	2	4	2	1
3	2		1	
4	1	1		
5	1			



**ROGER
TERRELL & CO.**

SOLICITORS

Incorporating Jeffreys, Orrell & Co.



A QUALITY SERVICE
Approved by The Legal Aid Board

**LEGAL PROBLEMS?
WE ARE READY TO LISTEN!**

We deal with your problems....

Professionally Competently Quickly

We use English not legal jargon

Remember 'It will cost you nothing to find
out if we can help'

Call now on **(01733) 896789**

61 Lincoln Road, Peterborough PE1 2SE
FREE CAR PARKING AVAILABLE

**MATCH
COVERAGE**

POSH CLUBCALL 09068 121654



With a network of more than 200 dedicated football journalists nationwide, covering over 100 clubs, you can count on ClubCall to bring you the best in match coverage, as well as management and player interviews, match coverage and much more!
For the facts not the fiction call 08000 27 99 27

NO-ONE GETS CLOSER!

Club Call

Calls cost 60p per min.

A Game to Remember

By Paul Crisp



SATURDAY 24TH OCTOBER 1992

Posh 2 Luton 3

Attendance: 7,125



The Hatters were not too happy prior to this First Division encounter in October 1992, lying second from bottom having only picked up seven points from their opening 11 games.

Peterborough United, in contrast, were three places and four points off the play-off positions, but for whatever reason, could not seem to win at home. Victories at London Road were hard to come by in the opening stages of the campaign for Chris Turner's men, but inspired by a 2-0 success at Leicester City the previous weekend, went into this clash on a high.

Prolific Luton marksman Phil Gray brought Posh firmly back down to earth however with his well taken goal after 20 minutes. Latching

on to a long through ball, Gray produced a fine 20-yard lob with the outside of his right boot, curling the ball over the approaching Ian Bennett.

Posh found themselves level just five minutes later, when Hatters' defender Darren Salton appeared to handle a long ball targeted at Tony Adcock. Salton went into referee Paul Danson's book for his protests, feeling the red-haired striker had unfairly pushed him. His misery was complete moments later, Gary Cooper dispatching the set piece low into Andy Petterson's goal after twisting the ball around the inadequately constructed wall. The visitors hit back with two headed goals before the break. Midfielder Paul Telfer put the

Hatters back in front with a free header on the penalty spot, leaving Bennett in the Posh goal furious with his defenders. And with five minutes to go until half-time, Phil Gray grabbed his second and Luton's third with another unchallenged header from Steve Claridge's left-footed cross.

United piled on the pressure in the second period and managed to get back in the game with time running out. Right back Noel Luke launched a 45-yard ball into the box which was met by the head of forward Tony Philliskirk. Petterson did fantastically well to tip the header onto the crossbar, only to see Adcock pounce to nod into the now-vacant net.

And despite all of Posh's late pressure to clinch a point, Luton held on for only their second win of the season - leaving the London Road side without a home success since the opening day of the campaign.

POSH:

Ian Bennett, Noel Luke, Ronnie Robinson, Mick Halsall, Lee Howarth, Steve Welsh, Worrell Sterling, Gary Cooper, Tony Adcock, Tony Philliskirk, Bobby Barnes (sub Dominic Iorfa). Unused sub: Darren Bradshaw.



Phil Gray

Kit Carson Column

Kit Carson

Barry Fry often says to me that I am a producer of left backs and certainly the Posh Academy is set up for years with players in this position if they all make the progress I expect them to.

The first Academy boy to gain this position was now Norwich City acquisition ADAM DRURY or 'Adamski' as I used to call him. He was a winger with substantial pace when he first joined me as an 11 year-old, and I recall a truly professional boy from the outset who trained hard and worked on every aspect of his game. Adam switched to left back during his youth team years, a position from where he delighted Posh fans.

GARETH JELLEYMAN, already a Welsh Under 21 international, was the next Academy player at left



Adam with the team that lost the Under 13 Kkokkia Cup final in Finland

back to make the first team. He joined us as a 12 year-old and used to travel from North Wales as a young boy by train and stay the weekend. Every Sunday night, after working extra, he would catch the

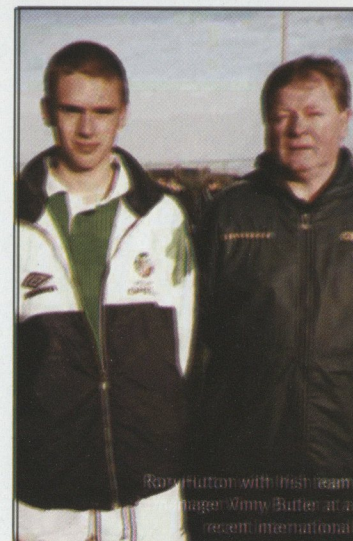
7pm train, which would get him back home by midnight. I recall Chris Turner watching him in his Under 16 year and immediately saying he was special.

Wayne Turner said some nice things about Gareth and the way we all feel about him in the last home programme following his injury, and I hope he knows how much we are all willing him to get back to full strength soon.

Breathing down Gareth's neck is 18 year-old ADAM LANG. 'Langa' has already played Reserve team football and I have a hunch he may make his first team debut within the next 12 months. He was another dedicated lad travelling up every weekend from Hampshire and making lots of sacrifices to spend each weekend at Posh.



Gareth Jelleyman as an Under 13 recovering after a fitness session in Liechtenstein



Rory Hutton with first team manager Wimpy Butler at a recent international

Under 16 Republic of Ireland international Rory Hutton leaves the schoolboy ranks this season and joins the youth team next time around.

Rory comes from Ely and has made dramatic progress since joining us as a nervous 13 year-old and being taken off by manager Kevin Flynn against Millwall to receive a few well chosen words from me on bravery!! He came over a few weeks ago to talk to my Irish Dad who was delighted to meet his first Irish international at the age of 13.

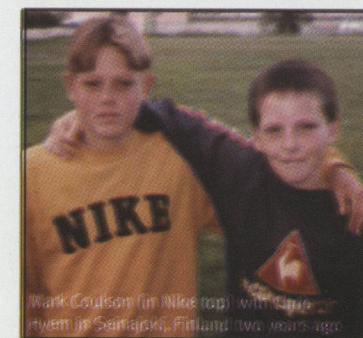
Mark Coulson from Huntingdon is the Under 15 left back and a really outstanding prospect. He is another totally dedicated player determined to make it with Posh. He has a very similar personality to Adam Drury at the same age and we have high hopes for him. Our Under 14 lad



Adam Lang (middle back row) Under 14 in Austria

Stephen Hipkiss or 'Hippo' as he is better known comes from Sleaford. He has exceptional pace and scores quite a few goals, and like the others Stephen plays regularly up a year.

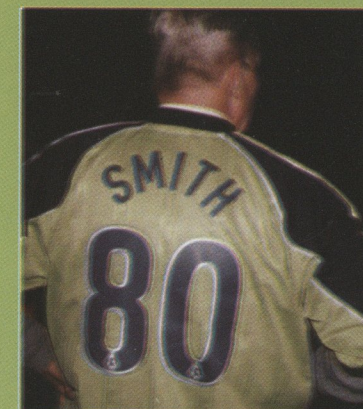
I doubt very much that Barry will ever need to go seeking any left backs for the next 10 years or so!



Mark Coulson (in Nike top) with Steve Hyatt in Seinajoki, Finland two years ago

Happy birthday Uncle Archie!

Many thanks To Barry Fry who sent my Uncle Archie an 80th birthday note with the message: 'I understand you're a football legend in Kent. We are struggling with injuries and so if you're fit, here's a shirt, just bring your boots!' Uncle Archie is pictured posing in his new Posh away shirt, which made his day.





David Farrell

Match Action

Nationwide League Division Two, Friday 23rd March 2001
Attendance: 6,510 Referee: R Beeby (Northampton)

Notts Co. 3 **THE POSH** 3

David Farrell scored a contender for goal of the season in an entertaining end to end game but it was not enough to secure Peterborough United's first away win in the league since the 4-1 drubbing of Oldham Athletic on August 26th.

Posh were quickly into their stride and after two minutes McKenzie was unlucky to see his 25-yard effort zoom just over the crossbar after finding himself with plenty of time and space. County strode quickly down the other end to form an attack of their own, and Tyler had to be alert to punch away a Nicholson cross with Stallard lurking near.

Referee Richard Beeby, who gave a controversial penalty against Posh at Halifax two years ago, did not give Morrow the same leniency as he had given Hooper two minutes earlier after he had upended Richard Liburd in the area. Australian forward Allsopp stepped up to blast into the corner and give the home side the advantage.

County started to take control of the match and looked threatening every time they went forward. Allsopp and Andy Hughes were guilty of missing a good opportunity after 17 minutes - both unable to connect with the ball after Tyler had parried Stallard's powerful shot into their path. The scores were level on 20

minutes, rookie striker Green firing low beyond Ward after getting on the end of a superb Tony Shields through ball and escaping the attentions of a couple of home defenders. Shields was again the talisman on 37 minutes, sending Hanlon clear down the left-hand side. Green was alone in the area but the midfielder went for goal himself and was unlucky to see his effort thwarted by Ward.

Tyler was helpless a couple of minutes on however, as Nicholson marked his home debut with a goal, heading past the Posh shot-stopper following a precise right-wing cross from skipper Gary Owers. Posh started the brightest after the break and on 53 minutes Shields made his second successful assist of the match, looping a perfect ball over the defence for McKenzie to latch onto. The former Crystal Palace man kept his composure and steadied himself before rifling into the roof

of the net. That equalising strike brought joy for the thousand or so loud Posh fans behind the goal, and Green almost gave them an excuse to roar again - juggling delicately with the ball before firing inches over with his weaker left foot from 20-yards out. If that pressure was not enough, substitute Farrell certainly made sure Posh were not going to lie down and play for a point. Picking up a loose ball from well inside his own half on 68 minutes, the speedy winger set off on a glamorous run which resulted in one of the best goals of the season - beating a number of players before launching an exquisite thunderbolt, which goalkeeper Ward could only help on it's way into the back of the net.

The strike partnership of Allsopp and Stallard was equally effective and with just 12 minutes remaining Allsopp slotted the ball to Stallard who levelled the match with his 21st strike of the season.



David Farrell lets fly



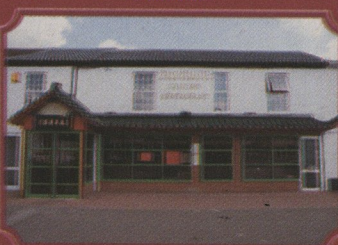
REAL TRADITION AND REAL FOOD

THE BELL INN HOTEL, GREAT NORTH ROAD,
STILTON, PETERBOROUGH, PE7 3RA,
TEL: 01733 241066 FAX: 01733 245173

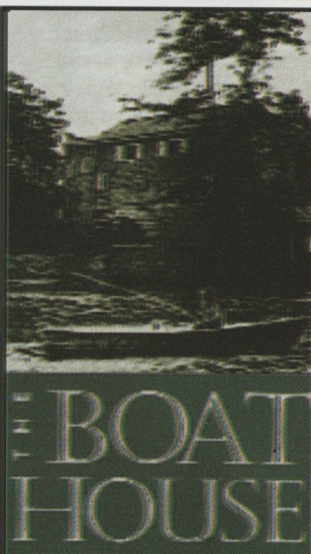
**To advertise in this programme,
contact Chris Turner on 01733 - 569760**



**Emperor
Restaurant**
Cantonese
Cuisine



195-197 LINCOLN ROAD
PETERBOROUGH
Telephone: (01733) 50090/40138



Paul & Rachelle
welcome all
supporters to
**Talk Posh
Drink Posh
Eat Posh**
at the Boathouse

THORPE MEADOWS,
LONGTHORPE,
PETERBOROUGH PE3 6GA.
TEL: 01733 898469



First and Foremost!

**BUY
ONE
GET
ONE
FREE**

**'Go for it
boys'
Posh on
PIZZA
POWER**

**01733 577844
01733 371122**

Sound Bites

Edwin Overland of BBC Radio Cambridgeshire on 95.7 & 96 FM



● There was a refreshing change in the BBC Radio Cambridgeshire coverage of the Cambridge United versus Wrexham match a fortnight ago with regular commentator Trevor Peer employing the services of female fan Wicky Rayment as his first half summariser. Contrary to rumours, however, I shall not be following Trevor's lead as I'm more than happy to continue with the services of Tommy, my regular London Road summariser, and Swampy of the Evening Telegraph who's competently adopted the role for away matches. Alan, in fact, was quite proud of his record of Posh having never lost whilst he was 'on air', having covered the drawn games at Swansea, Reading and Millwall - until the other Saturday at Port Vale of course when everything came to a very abrupt end.

● Isn't it surprising who you meet in the most unusual places? After coming across Adam Druzy's aunt in the corridor of a Wisbech school last Friday I then met former Panthers' speedway rider Brett Woodfield in the Conley services on the M6 the following day. 'Woody', just back in the country from his native Australia, was on his way to tie up a few deals at his new track at St Austell in Cornwall who are operating in the Premier League this year under the guise of Trelawny Tigers. Under the rather complex points system operating in British Speedway Brett couldn't be included in Panthers' plans for

this season. However, unlike last year when he sat out the opening weeks of the 2000 campaign, the 25 year old from Gawler, South Australia, has found an alternative track - albeit one that's situated in a disused clay quarry which rather resembles a lunar landscape. Needless to say Brett is 'over the moon' about his new challenge.

● So it's a match tonight between two sides who should know each other pretty well by now as this is the fifth clash between Posh and Luton this season. So far the honours have been shared between the two teams, however, Barry Fry's side will certainly be looking to pull ahead tonight as they seek a confidence boosting victory ahead of Saturday's massive derby against Cambridge United.

● Three matches postponed within the space of seven days...in MARCH! The weather's gone all haywire this season causing all sorts of fixture problems. But it's another argument really against those who advocate a winter break to avoid the worst of the weather. When would you have it?

Presumably most would plump for January, not many I suspect would opt for the middle of March! From early August until well into May I think the season is long enough as it is, especially for those teams involved in the play-offs.

The best idea I think is to leave it well alone and let fate take its chance with the unpredictable and often unseasonal weather.



Click With The Posh

www.theposh.com

Surf on to get your Cambridge game tickets

Posh's on-line seat booking service for this weekend's mouth-watering derby clash with Cambridge United has already sold tickets valued at more than £1,500.

The easy to use menu-driven ticket site allows fans to select from a wide selection of seat options before credit card

payment through a secure server. Unlike some clubs, Posh are not charging a booking fee and the only additional cost is 50 pence per booking to cover administration and postage.

Bookings can be made on-line up to 72 hours prior to kick-off and adult tickets qualify for a £1 early purchase discount. Prices are Centre Main Stand and Thomas Cook Stand £14, Main Stand Wings and London Road/ Moy's End Enclosures £11, Children/ Senior Citizens £5 (all areas).

Terrace tickets also qualify for a £1 early purchase discount and will cost £9. Seat tickets will continue to be available to personal callers at the Posh Club Shop and via the Posh Ticketline on 01733 319863 between 10am and 5pm Monday to Friday.

BUY YOUR TICKETS ONLINE!



Schools voting result announced on Monday

More than 30,000 votes have been registered from schools over the past month as pupils and their families have gone click mad in their attempt to win tickets to see a Posh Division Two game at London Road next month. The competition closes on Monday morning and

the winning primary / junior school will be invited to watch the London Road action against Bristol City April 14th, while the top secondary school will attend the meeting with AFC Bournemouth on Saturday 21st April.

At the time of going to press Werrington Primary School and Eyrescroft Primary School were battling it out for the top spot in their section, and rising as

challengers to leaders King's School in the secondary school category are Stanground College who are closely followed by Sawtry Community College.



Win a Florida holiday!

A fantastic official Posh website competition starts on Saturday with a fabulous prize of a fly-drive holiday to Florida for a family of four that is worth almost £4,000!

Two adults and two children will be jetting across the Atlantic with British Airways to enjoy a seven nights Thomas Cook Holidays stay at the Quality Inn Plaza in Orlando and with seven days inclusive car hire.

The Plaza, located on International Drive, is right at the hub of Orlando's attractions with Sea World and the Universal Studios just minutes away while the Walt Disney World Resort is within 15 minutes' drive.

To enter click to the holiday banner where there will be a question to answer each day before a winner is announced later next month.

Now you can place your bets on-line

'ThePoshBet' has kicked off on the official Peterborough United website and this personalised, secure, tax free betting service covers football and a whole range of sports including horse racing, greyhounds, golf, motor racing, Rugby League. American Football and baseball.

Anyone opening an account can take advantage of a special

launch offer whereby they receive a 50% cashback on their first settled bet up to a maximum value of £25 cashback.

A full range of bets are available for every Posh game and options include: betting on the half time score and match result, the game's first and last goal scorer, and a selection of home and away specials.

To open an account click to 'ThePoshBet' banner where you can place your bets or simply just

view the site. Remember you can bet on almost every football competition whether it is Manchester United to win the UEFA Champions League at 11/4 or Wycombe Wanderers for the AXA FA Cup at 25/1.



£250 Account competition ends Friday

Peterborough United supporters bidding to claim the £250 Posh Account prize by guessing the amount of annual bonus money the club has earned from the Account have until first thing Friday morning to submit their answers.

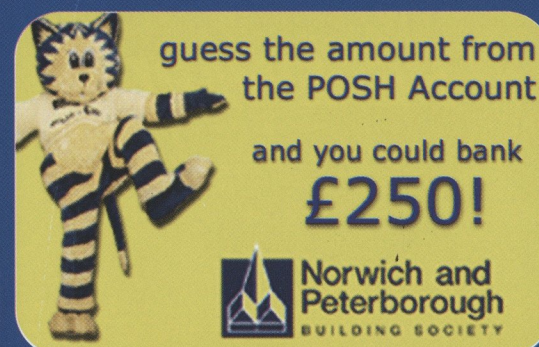
By going to the Posh News page and clicking to the special banner to enter the competition,

fans are asked to fill in the six figure sum in the blanks provided along with their contact details.

Thousands of supporters' have open an account since its launch in July 1999 and the bonus tally to date will go towards improving the London Road playing surface.

The figure will be announced on Saturday during the interval

of the derby clash with Cambridge United when the winner will receive their prize and spend the afternoon as our guests.



Keep those Quiz Match sign-ups coming

Fans are signing up in their droves for the national football Quiz Match competition where visitors can pit their wits answering a range of multiple choice questions and win prizes for themselves and cash for Posh.

The club is holding its own in the League and we want to see every member of the family signing-up to send Posh further up the Quiz Match table.

So if you think you know the answers to questions like: 'Which club has the lowest average attendance in the Premier League?' then play the game.

Registration is free and all you have to do is click on the green The Quiz Match banner.

Every Friday is a Barry Fry day



**For the inside info
on what's really
happening with
POSH this season
turn onto Kev and
Laura - The Morning
Crew with Barry Fry
every Friday
Morning on
102.7 Hereward FM**



**TODAY'S BETTER
MUSIC MIX**

Academy Update

By John Morling

The club received some brilliant news last week after one of our brightest prospects Shane Tolley (pictured) won a place in an 18-strong England Schoolboy squad for the eight-nation Montaigu International tournament which kicks off in France from 11th until the 17th of April.

Every player called into the squad represents a Premier League club with the exception of Posh and York City. This is a huge credit to Peterborough United Football Club and the Academy are extremely proud of this achievement with Shane following on from a long line of international players to come out of London Road.

The tournament is split into two groups of four and England have been teamed up in the same pool as the Czech Republic, Peru and Morocco. The remaining entrants are France, Portugal, Cameroon and Japan. It promises to be a fantastic event and hopefully Shane will earn his first England cap.

'Custard' as he is known to his team mates, has been involved with the England set-up before when he trained with the Under 15s before joining a squad of 20 to play their most recent game against Spain which was held at Rushden & Diamonds. He was unlucky not to feature against the Spanish and I know it is a matter

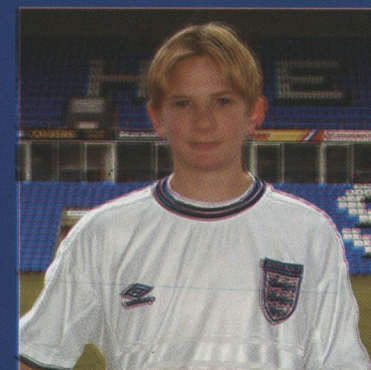
of time before 'Custard' will be wearing an England jersey on a regular basis.

Shane was born in Devon and joined us two years ago when he started at Deacon's School, with Under 17 player Guy Last, after moving into the club's youth hostel. He begins an Academy Scholarship with us in July, which means he will be with Posh for another three years at least, before hopefully turning professional.

Off the pitch 'Custard' is a fantastic lad who has coped with moving a long distance from his home to follow his dream of becoming a professional footballer. His mum, dad and two sisters often come up to visit and it is comforting to see a player's family support him at such an important stage in his young life.

On the field he is a very intelligent and technical player who passes the ball with great effect. Shane is capable of producing the unexpected when he plays behind the front two, which is his preferred position, and in England's 4-3-3 formation he sits just off the main strikers.

This term he has hit the target with his head, which is brilliant for a player of his size and Barry Fry, has been impressed with this young man who he likens to the great Kenny Dalglish.



Another Academy player, Under 19 midfielder James Bishop has been selected to train with the USA Under 18 squad who are preparing for a tournament in June.

This is fantastic news for James who was born in Orlando and joined us a 10 year-old after moving to Fenstanton in Huntingdon. He is a regular in the Under 19 team and has featured for the Reserves where I expect him to settle next season. Everyone at Posh would like to wish both players the very best of luck, they have done our club proud and deserve the recognition they have received.

'Gaffa'

Posh's Under 19 FA Premier Academy League fixture versus Watford has been re-arranged for Wednesday 4th April at the Watford training ground, London Colney - kick-off 11am.

Physio's News

By Paul Showler



The worst of the most recent injuries suffered by our players was to Gareth Jelleyman who stretched for a ball in training three weeks ago and ruptured his Patella tendon.

He was taken to the BUPA Lea Hospital in Cambridge and diagnosis was easy, as he could not straighten his lower leg.

The force of the injury had snapped of the lower part of Gareth's kneecap and left him in a great deal of pain. Mr Ahmed Shair, Posh's orthopaedic consultant, operated on him the following day and we would like to extend our gratitude to Mr. Shair who always has the club and the players at heart. Gareth

is eyeing a return for pre-season. The other major blow was to Gareth's room-mate Matthew Gill who sustained a knee injury in the meeting with Brentford. His foot gave way in the mud on the far side of the pitch causing the knee joint to be stressed in a strange way, which resulted the tearing of soft tissue structures.

It is thought he has torn some tendon fibres in one of his hamstrings and he has strained his lateral collateral knee ligament, and sprained a muscle at the back of the knee called Popliteus.

With injuries of this nature, it would be easy to carry on rehabilitating him but there is always a danger his symptoms

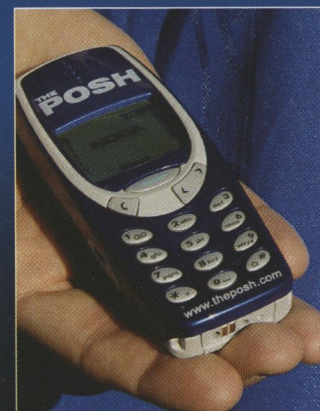
are masking other structural problems. With the number of structures involved, we do not want to take any chances and Matthew underwent a scan at Nottingham MRI centre at the time of writing. He has made good progress so far and is already running at a good pace on the treadmill. At first it looked as if he would have been sidelined for a while but now I'm confident he will return in about four weeks.

I would like to extend a warm welcome to all the staff from Luton Town and hope long term injuries like to that of Stuart Fraser are progressing well.

Paul

The Posh Phone

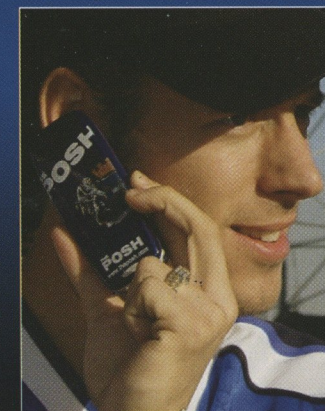
FANS CAN NOW GET THEIR HANDS ON THE NEW EAGERLY AWAITED POSH MOBILE PHONE, WHICH OFFERS AN UNBEATABLE PACKAGE WORTH OVER £150! JUST VISIT ACORN COMMUNICATIONS IN COWGATE, PETERBOROUGH, TEL: 01733 568687 AND THEY WILL DO THE REST.



Minimum 12 months contract. Subject to status and availability.

THE RECENTLY INTRODUCED FREE NOKIA 3310 COMES WITH:

- AN EXCLUSIVELY DESIGNED POSH FRONT AND BACK REMOVABLE COVER
- FREE CONNECTION TO A NETWORK AND TARIFF OF YOUR CHOICE
- FREE PERSONAL HANDS FREE KIT
- FREE IN-CAR CHARGER



**FAST FRIENDLY LEGAL ADVICE
YOU CAN DEPEND ON!**

FOR ALL YOUR LEGAL REQUIREMENTS

WALLER NEEDHAM & GREEN
SOLICITORS

72/74 BROADWAY, PETERBOROUGH
01733 311422
RIGHTWELL, EAST BRETTON
01733 262182

There's a brand new team at the heart of English football.

Football and the Government have teamed up in a new partnership to provide new lifeblood for the grass roots of English football – pumping financial support into the game that's so close to the hearts of so many. From parks pitches to professional football clubs, we'll be there to help everyone who loves football, providing a new generation of facilities for all



by pooling resources from The FA Premier League, The Football Association, Sport England and the Government into a single substantial fund for redistribution throughout the game. Together, we intend to ensure that football enjoys a healthy future for many generations to come.



FootballFoundation

football's biggest supporter

1 Waterhouse Square, 138-142 Holborn, London EC1N 2ST.
T: (020) 7832 0100 F: (020) 7832 0119
E: enquiries@footballfoundation.org.uk
W: www.footballfoundation.org.uk



Supporters' Club

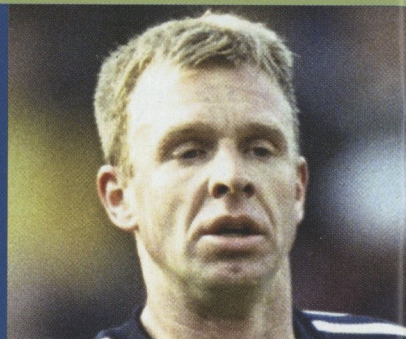
By Paul Starr

David wins again!

David Oldfield has won the February 'Player of the Month' award for the second month in a row. The midfielder has continued to give some very solid displays in the centre of midfield

and was sorely missed in the last two games against Brentford and Port Vale.

Supporters' Club member Nicky Harris, accompanied by her father, prior to the game this afternoon will present David with his award.



Special offer on Posh April away travel

April is a 'special offer' month for regulars who use the Posh away travel. There are three away games during the month and each one is available at the same price! - Members £8 Non-members £9.50

There will also be a FREE TRIP for REGULARS. If you have travelled to 10 or more Second Division fixtures on our coaches you can claim a voucher which will entitle you to travel free of charge to one of the April away fixtures. Please contact Tony Broughton or Barry Bennett, via the Posh Club Shop to claim your free trip.

Fans forum well received

The first fans forum of the season took place last Monday and many of the questions were directed towards London Road chief executive Nigel Hards. He stated that he was putting together a package of measures designed to see the club become self-supporting and not rely on the generosity of chairman Peter Boizot. This would not be achieved overnight but a plan was being constructed to safeguard the future of the football club. Several projects for the close season were outlined, the major ones being installing a new drainage system for the pitch and upgrading the floodlighting system. I for one was impressed with the positive enthusiasm and

professionalism shown by him and left feeling that for once the club may have a real asset at the helm, to take us forward through what are bound to be some stormy seas. Barry Fry and Wayne Turner came across positively and both were delighted with the away support the team has received this season. Kit Carson covered all aspects of youth football and made special reference to the future of Peterborough United as an Academy, which looks to be positive. On behalf of the Supporters' Club Committee I would like to thank the panel for making it such a useful and informative evening, and a comprehensive account of the forum can be found in the next edition of the POSH POST.

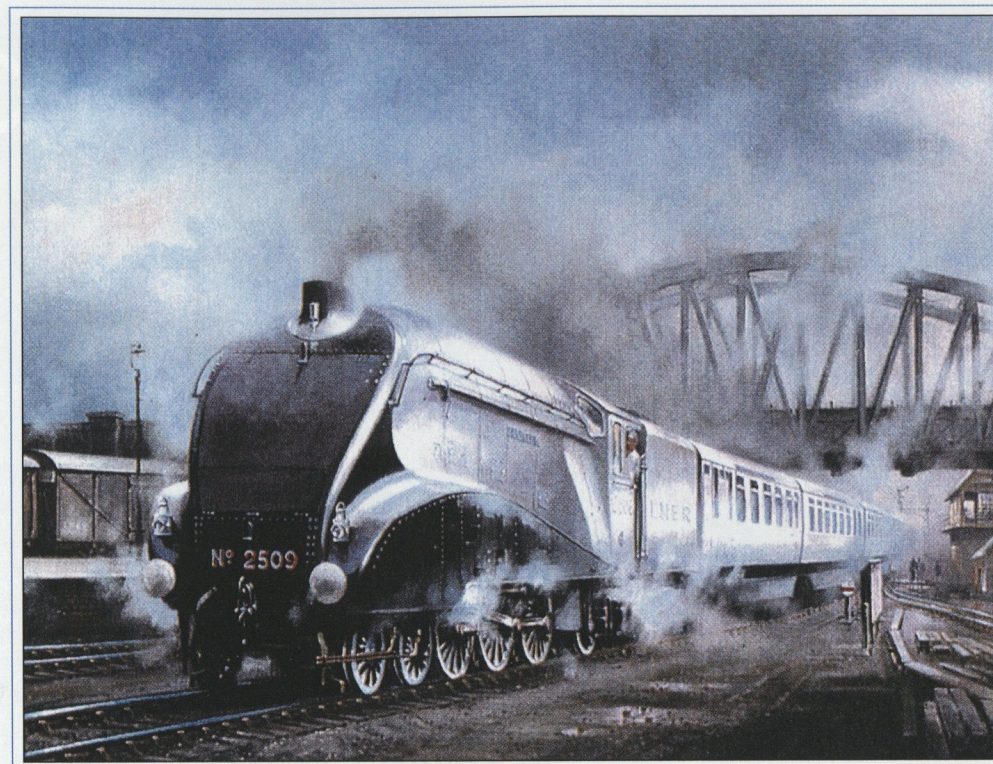
Posh away travel for April

Please book as early as possible to guarantee a space on the coach this season. Remember you need to show your membership card in the Posh Club Shop to receive members prices. Reservations using credit cards can be made by

Date	Game	Depart	Members	Non-member
Sat 7th (Apr)	Wrexham	9.00am	£8.00	£9.50
Tue 17th (Apr)	Colchester	4.00pm	£8.00	£9.50
Sat 28th (Apr)	Swindon Town	10.00am	£8.00	£9.50

telephone on: 01733 319666. We also offer 'pick-up' points for members, but the coaches will not deviate from their planned

routes. This can be organised by prior arrangement when contacting Tony Broughton through the Supporters' Club.



Dine in Elegance at the Silver Link Restaurant

The Great
Northern Hotel
PETERBOROUGH
Telephone 01733 552331
www.greatnorthernhotel.co.uk

Last orders at 10.00pm, or later by arrangement

Match Sponsor



first National

**Proud to
be
banking
on
The
Posh!**

Commercial Break

First National Bank return

First National Bank Plc return to London Road as sponsors of this evening's meeting with Luton Town and we hope our guests enjoy their day with us. The organisation's Northampton branch backed the most recent derby fixture with Northampton Town just before Christmas and this is the third successive season they have banked on Posh. Part of the Abbey National group,

today's guests, with 14 branches across the county, pride themselves in being one of the UK's leading providers of unsecured and secured facilities to intermediaries in various fields providing financial solutions for their customers. First National are the largest lenders to the home improvement industry for consumer finance and also specialise in second charge mortgage business finance, sales and leasing and commercial loans. We welcome First

Executive Box Holders

Kennedys
GBS Corporate Catering
Perkins Engines
Lance Publishing
Dene House Developments
Cousins of Emneth
Marshall Group
Howard Richard Sales
Red Robin Toys
Will-Be-Co
Avicorn
R.A.Baker Glazier
Office Angels
Coca-Cola Schweppes

National's Business Manager, Simon Harrison and Operations Manager Jared Osborne, together with Carl Gedney of Freedom Home Improvements will between them present the 'Man of the Match' award after today's game.

Brothers Louie and Oliver are tonight's mascots

Leading out the Posh team this evening are brothers Louie and Oliver Medwynter, aged nine and eight, from Yaxley in Peterborough. Both go to school locally at William de and Oliver was recently chosen to attend the Posh Under 8 development centre. He enjoys computer games and motorcycling, while

Louie, also a big football fan, prefers to go swimming when he is not skipping the Yaxley Colts Under 9s football team. Louie's favourite Posh players are Leon McKenzie, Jason Lee, Andy Clarke, David Farrell and Francis Green. Eight year-old Oliver is a fan of Andy Clarke, Dean Hooper, David Farrell and Mark Tyler.



Waller, Needham and Green sponsor ball

City based solicitors Waller, Needham and Green are back at London Road sponsoring the Match Ball for an impressive 24th time! Until the recent meeting with the Cobblers, Posh had never lost a game when our guests from the Broadway and Rightwell Bretton) solicitors firm were backing the team.

Waller, Needham and Green, who offer a full range of legal services, are kit sponsors for Posh trio Andy Edwards, Jason Lee and Jon Cullen.

Presenting the ball to referee D. Laws will be Waller, Needham and Green representative and great friend of Posh John Magee.

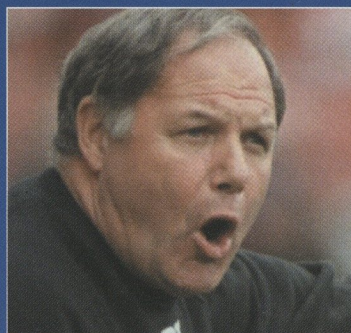
Posh Kit Sponsorship

Season 2000 - 2001

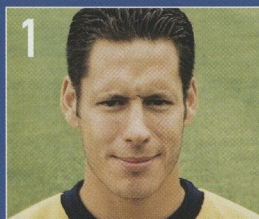
The package comprises:

Personal appearance by sponsored player
(subject to availability) - Participation in special
Kit Sponsors' events - End of season presentation
of signed shirt by sponsored player.

Posh Kit Sponsorship costs £350 (plus VAT) per player.
For full details contact the Posh Commercial
Department, tel 01733 560760.



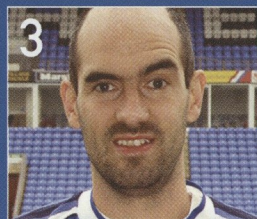
Barry Fry
Klingair
Aircraft
Sales &
Maintenance
01487-832022



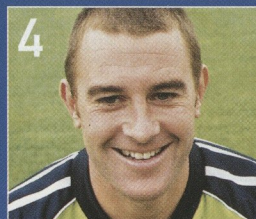
Mark Tyler
Surgipath Europe
01733-333100



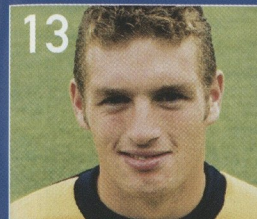
Dean Hooper
Millen & Co. Certified
Accountants 01733-238587



Steve Morrow
For Sponsorship
Call 01733-569760



Richard Scott
NDM Lead Sheet Specialists
0208-922-8445



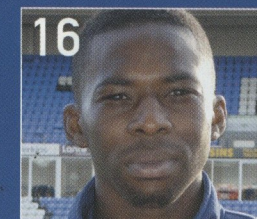
Dan Connor
For Sponsorship
Call 01733-569760



Francis Green
Robert L.Whitehead Ophthalmic
Optician, Whittlesey 01733-205466



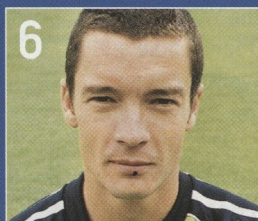
Daniel Murray
For Sponsorship
Call 01733-569760



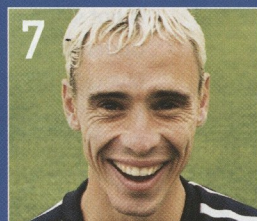
Martin Williams
For Sponsorship
Call 01733-569760



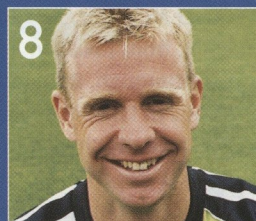
Simon Rea
P'boro Utd Supporters'
Club 01733-703658



Andy Edwards
Waller, Needham and Green
Solicitors 01733-311422



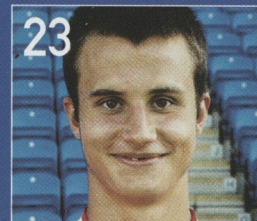
David Farrell
Adrian Rands Consulting
Engineer 01733-322885



David Oldfield
Risborrow Management
Services 01283-711601



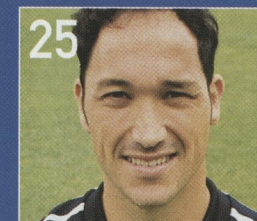
Howard Forinton
For Sponsorship
Call 01733-569760



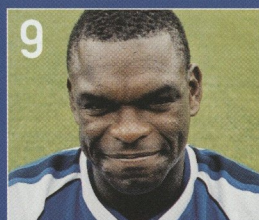
Helgi Danielsson
For Sponsorship
Call 01733-569760



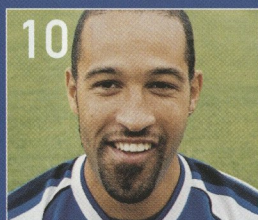
Daniel French
Cambridgeshire Careers
Guidance P'boro 01733-311094



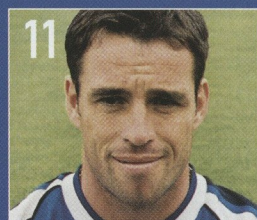
Richard Forsyth
www.countybiz.co.uk
01480-382000



Andy Clarke
Risborrow Management
Services 01283-711601



Jason Lee
Waller, Needham and Green
Solicitors 01733-311422



Jon Cullen
Waller, Needham and Green
Solicitors 01733-311422



Matthew Gill
P'boro Utd Supporters'
Club 01733-703658



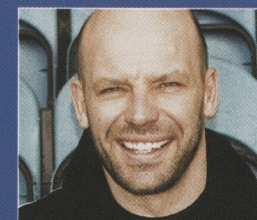
Grant Haley
Posh Out West
www.posh.net



Niall Inman
For Sponsorship
Call 01733-569760



Gary MacDonald
Risborrow Management
Services 01283-711601



Wayne Turner
Splash Cleaning Company
0797-4285816

MAN ON!

HOLD!

YESSS!!!!

If you want to
find out
how the lads
are doing, turn
the **Lite** on...

106.8

FM | 88 | 92 | 96 | 100 | 104 | 108 | FM

For up to the minute local sports coverage
in association with

CRIGHTONS'
OF PETERBOROUGH LIMITED



SAAB



always top of their division!

Saturday Sport 3-6pm *plus* daily sports bulletins

Lite*fm*
PETERBOROUGH
106.8

good company
great music

Posh Soccer

Marc Tracy, Regional Community Officer

Tonight's game is more than just a Division Two game for me, I'm a Lutonian, but a Posh fan through and through. As much as I would like to see the Hatters climb out of the relegation zone, I would much rather watch Posh gain the three points today!

Posh Soccer are pleased to announce their Soccer School dates with Easter approaching and this is where you can find us in April between 9am - 2pm:

- Mon 9th
Neale Wade School, March
- Tues 10th
Stewart & Lloyd Sports, Corby
- Wed 11th
Queen Eleanor School, Stamford
- Thurs 12th
Deeping Leisure Centre, Market Deeping
- Fri 13th
PUFC Training Ground, Eye
- Tues 17th
Haverhill Leisure Centre, Haverhill
- Wed 18th
Longsands College, St. Neots
- Thurs 19th
Alameda Middle School, Ampthill
- Fri 20th
Prince William School, Oundle

The £10 courses are designed to provide youngsters with as much fun as possible whilst playing football. Girls and boys aged 5-14 are welcome regardless of ability and all participants receive:

- 5 hours of qualified coaching, fun football
- Certificates
- Discounted Posh tickets (1 child / 1 adult = £3) to a home league game of their choice
- Opportunities to win Posh prizes in Posh Soccer competitions
- Opportunities to attend advanced Centres or Academy trials

To book your place:

- Visit www.theposh.com/junior or email: poshsoccer@theposh.com
- Collect a Posh Soccer Easter Bonzana form from school or

the Posh Club Shop (11-15 London Road)
• Contact Posh Soccer on: 01733 313514 or fax: 01733 344140

The annual Posh Soccer Cup also kicks off at London Road over Easter and this tournament is aimed at an Under 8 age group who play hosts to a number of professional clubs. Spectators are welcome to attend this event which will take place on Tuesday 10th April starting at 11am and entrance is through Moy's End / Thomas Cook Stand gates.

'Ginge'



visit www.theposh.com for all the latest news and views **THE POSH 41**

The Posh Ladies

Peterborough United Ladies will be looking to consolidate their mid table status when they play host to struggling side Walsall in Midland Combination League action at their Bushfield Sports Centre home at 2pm on Sunday.

Back in charge of the Ladies is player manager Maria Rudd who was recalled to the hot-seat following the departure of Steve Chamberlain for last week's meeting with Arnold Town, and the club's general manager Dominic Sorrell is on the look out for a new

face. 'Maria did a splendid job with the team earlier in the season when I left the post to become general manager and her efforts are very much appreciated by everyone at the club. She has a special bond with the players and the team's motivation will go through the roof now she is back in charge until the end of the campaign.

'The committee have began the search for a new manager to take over the reigns permanently next time around when the aim is to win the Midland Combination League,' said Sorrell.

Posh will remember sweeping aside next weekend's opponents on the first day of the season when Walsall where comprehensively beaten 3-1. Two of the goal scorers that afternoon, Adele Johnson and Heidi Lockyer, have since joined University and made sporadic appearances for the side in between their studies.

Cronin is expected to make a return to the line-up on Sunday following time out on the sidelines after picking up a nasty knee injury in the recent meeting with Stafford Rangers. The striker has been on target several times this season and Rudd is looking forward to seeing her return to the front line.

'Sherrina has been sorely missed and she made a terrific comeback in training as did the whole squad

Midland Combination Fixtures

Date	Opposition	Result
SEPT		
Sun 3	Walsall	1-3
SUN 10	HIGHFIELD RANGERS	2-3
Sun 17	Ilkeston	P-P
SUN 24	DERBY COUNTY	2-2
OCT		
Sun 1	Arnold Town	P-P
Sun 8	Shrewsbury Town	1-1
SUN 22	KETTERING AMAZONS CC1	2-1
Sun 29	DERBY CO. FA Cup 1	0-2
NOV		
Sun 5	Telford	P-P
Sun 26	Cambridge Acad. CC2	3-1
DEC		
SUN 3	PARKGATE	2-1
SUN 10	ILKESTON	1-2
JAN 2001		
Sun 7	Ilkeston	1-0
Sun 14	Derby County	1-2
SUN 21	ARNOLD COUNTY	P-P
Sun 28	Shrewsbury	4-1
FEB		
Sun 4	Chesterfield	2-0
SUN 11	TELFORD	0-2
Sun 18	Mansfield Town	P-P
SUN 25	STAFFORD TOWN	2-0
MAR		
Sun 4	Parkgate	3-0
Sun 11	Mansfield Town	5-1
SUN 18	CHESTERFIELD TOWN	P-P
Sun 25	Arnold Town	P-P
APR		
SUN 1	WALSALL	
Sun 8	Telford United	
SUN 22	MANFIELD	
Sun 29	Stafford Rangers	

HOME VENUE: BUSHFIELD SPORTS CENTRE

who want to finish the campaign with a flourish. We would like to see more goals go in and establishing a degree of consistency in attack is important as we go into the final series of games,' said Rudd.

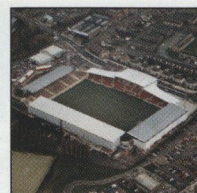
The Ladies' Reserves side take on Milton Keynes Shenley at Bushfield, Sunday's visitors scored a 4-0 success over the girls earlier in the season and avenging the defeat is very much on the agenda. The team is aiming for a third place finish after getting their campaign back on track following a disappointing start. Rebecca Bays and Melanie Chappell hit two apiece in a recent 4-2 win at Leicester side Newbold Vernon and both are certain to pose a threat against Shenley.



Maria Rudd

On the Road with Posh

Coach Bookings at The Posh Club Shop. Tel: 01733 319666



WREXHAM Saturday 7th April



Peterborough United travel to the north of Wales for a Nationwide Division Two encounter at the Racecourse ground to face Wrexham on Saturday 7th April (kick-off 3pm).

TICKET PRICES:

Posh supporters are accommodated in The Eric Roberts Builder's Stand with covered seating costing £13 adults and £8 for juniors and senior citizens.

DISABLED FANS:

There are spaces for disabled fans who are accommodated for free and care assistants pay. For information contact Tony Millington on: 01978 351 332.

MATCHDAY PROGRAMME:

The Robins' official matchday programme costs £2.



COLCHESTER Tuesday 13th March



Posh travel to Essex for a Second Division clash at Layer Road when they face mid-table Colchester United on Tuesday 17th April (kick-off 7.45 pm).

TICKET PRICES:

Fans are accommodated in The Layer Road Terrace with covered terracing costing £10 adults and £5 for children and senior citizens.

DISABLED FANS:

There are spaces for disabled fans in wheelchairs who are accommodated for free. Helpers pay £5 if they are children or senior citizens, and £10 if they are adults.

MATCHDAY PROGRAMME:

Matchday programme for the U's is priced at £2.

Emergency Procedures

In the unlikely event of an emergency at London Road requiring the evacuation of all or part of the ground, spectators are requested to remain where they are, stay calm and listen for announcements over the public address system. All Emergency Announcements will be preceded by a distinctive chime.

The announcements may direct spectators in specified areas to evacuate through exit gates to the outside of the ground, or on to the pitch. Club stewards and police officers will assist in directing spectators to the safest locations. If requested to vacate a particular area in the

ground, spectators should do so as calmly and quickly as possible to assist in a safe and speedy evacuation.

Ground Regulations

Persons are admitted to this Ground subject to their acceptance of the Ground Regulations and the Rules and Regulations of the Football Association and the Football League which are posted in and outside the Stadium. Entry to the Ground shall constitute unqualified acceptance. The Club reserves the right for its stewards, servants, agents and police to remove from the Ground any person who does not comply with these rules and regulations, or whose presence within the Ground is, or could

reasonably be construed as constituting a source of danger, nuisance or annoyance to any other person. The attention of spectators is drawn to the following: The obstruction of gangways, access ways, exits and entrances, stairways and like places is strictly forbidden as is the climbing of any structure forming part of the ground. Smoking in non-smoking areas is similarly strictly forbidden. Any person attempting to gain admission, or being found within a section of the ground designated for

members only without the appropriate authorisation may be ejected from the Ground. Any person found damaging or defacing the property of the Club will be prosecuted. Persons failing to comply with instructions from a steward, police officer or other authorised agent of the Club will be ejected from the Ground. PHOTOGRAPHY AT LONDON ROAD IS STRICTLY FORBIDDEN. ANYONE FOUND USING A CAMERA WILL HAVE THE EQUIPMENT CONFISCATED

Peterborough United F.C.

Nationwide Division Two 2000-01 Season

Statistics 2000-2001



THE POSH

The Posh Fact Files

The Key...

FAC - F.A. CUP
WC - WORTHINGTON CUP

Date	Opponents	F.A.	Attn	Tyler	Scott	Rea	Edwards	Drury	Cullen	Hanlon	Shields	Farrell
AUG SAT 12	OXFORD UNITED	1-0	5,870	TYLER	SCOTT	REA	EDWARDS	DRURY	CULLEN(5)	HANLON(1)	SHIELDS	FARRELL
AUG SUN 20	BRISTOL ROVERS	2-2	6,997	TYLER	SCOTT	REA	EDWARDS	DRURY	CULLEN(1)	HANLON	SHIELDS	FARRELL
AUG TUES 22	LUTON TOWN WC1 (1)	0-0	3,175	TYLER	HOOPER	REA	EDWARDS	DRURY	OLDFIELD(3)	HANLON(4)	SHIELDS(5)	FORSYTH
AUG SAT 26	OLDHAM ATHLETIC	4-1	4,967	TYLER	SCOTT	REA	EDWARDS	DRURY	CULLEN(5)	HANLON	SHIELDS	FARRELL
AUG MON 28	SWANSEA CITY	0-2	6,428	TYLER	SCOTT(5)	REA	EDWARDS	DRURY	HANLON	CULLEN(1)	SHIELDS	GREEN(2)
SEPT SAT 2	BURY	1-1	5,286	TYLER	SCOTT(5)	REA	EDWARDS	DRURY	CULLEN	HANLON	SHIELDS	FARRELL(5)
SEPT TUES 5	LUTON TOWN WC1 (2)	2-2	4,286	TYLER	HOOPER(5)	REA	EDWARDS	DRURY	OLDFIELD	WHITTINGHAM	FORSYTH	FARRELL(1)
SEPT SAT 9	STOKE CITY	0-3	13,011	TYLER	SCOTT	JELLEYMAN	EDWARDS	DRURY	CULLEN(1)	HANLON(4)	SHIELDS	FARRELL
SEPT TUES 12	WIGAN ATHLETIC	0-1	4,798	TYLER	SCOTT(1)	JELLEYMAN	EDWARDS	DRURY	CULLEN	FORSYTH	SHIELDS(4)	FARRELL
SEPT SAT 16	READING	1-0	5,767	TYLER	HOOPER	JELLEYMAN	EDWARDS	DRURY	SHIELDS(1)	HANLON	FORSYTH	FARRELL(4)
SEPT SAT 23	WYCOMBE WANDERERS	0-2	4,980	TYLER	HOOPER	JELLEYMAN	EDWARDS	DRURY	CULLEN(3)	HANLON(1)	FORSYTH	FARRELL
SEPT SAT 30	MILLWALL	1-4	7,126	TYLER	HOOPER(3)	REA	EDWARDS	DRURY	OLDFIELD(4)	SHIELDS	FORSYTH	FARRELL
OCT SUN 8	PORT VALE	2-0	4,752	TYLER	HOOPER	REA	EDWARDS	DRURY(1)	OLDFIELD	SHIELDS(3)	FORSYTH	FARRELL
OCT SAT 14	BRENTFORD	0-1	4,479	TYLER	HOOPER	REA(1)	EDWARDS	JELLEYMAN	OLDFIELD(3)	CULLEN	FORSYTH	FARRELL
OCT TUES 17	WALSALL	1-1	4,716	TYLER	HOOPER	REA	EDWARDS	DRURY	OLDFIELD	CULLEN	FORSYTH	FARRELL
OCT SAT 21	NOTTS.COUNTY	1-0	5,889	TYLER	HOOPER	REA	EDWARDS	DRURY	OLDFIELD	CULLEN(3)	FORSYTH	FARRELL(4)
OCT TUES 24	BRISTOL CITY	1-2	9,219	TYLER	HOOPER(4)	REA	EDWARDS	DRURY	OLDFIELD	SHIELDS(3)	FORSYTH	FARRELL
OCT SAT 28	COLCHESTER UNITED	3-1	5,469	TYLER	HOOPER(1)	REA	EDWARDS	DRURY	OLDFIELD	FARRELL	FORSYTH	LEE(1)
NOV SAT 4	A.F.C. BOURNEMOUTH	1-2	3,986	TYLER	HOOPER(1)	REA	EDWARDS	DRURY	OLDFIELD(5)	FARRELL	FORSYTH	LEE
NOV SAT 11	SWINDON TOWN	4-0	5,700	TYLER	HOOPER(3)	REA	EDWARDS	DRURY	OLDFIELD	FARRELL	FORSYTH	LEE
NOV SAT 18	MANSFIELD TOWN (FAC 1)	1-1	3,257	TYLER	HOOPER	REA	EDWARDS	DRURY	OLDFIELD	FARRELL	FORSYTH	LEE
NOV SAT 25	ROTHERHAM UNITED	0-3	5,519	TYLER	HOOPER	REA	EDWARDS	DRURY	OLDFIELD(3)	FARRELL	FORSYTH	SHIELDS
NOV TUES 28	MANSFIELD TOWN (FAC 1 REPLAY)	4-0	4,540	TYLER	HOOPER	REA	EDWARDS	DRURY(1)	OLDFIELD	FARRELL	FORSYTH	LEE
DEC SAT 2	WREXHAM	1-0	5,381	TYLER	HOOPER	REA(5)	EDWARDS	OLDFIELD	SHIELDS	FARRELL	FORSYTH	LEE
DEC SAT 5	LUTON TOWN (LDV 1)	1-0	2,075	CONNOR	MURRAY	ROGERS	GILL	JELLEYMAN	HANLON	HOOPER(1)	CULLEN	FORINTON
DEC SUN 10	OLDHAM ATHLETIC (FAC 2)	1-1	5,662	TYLER	OLDFIELD	GILL(4)	EDWARDS	DRURY	CULLEN(1)	FARRELL	FORSYTH	LEE
DEC FRI 15	CAMBRIDGE UNITED (8.00PM)	0-0	7,505	TYLER	GILL	REA	EDWARDS	DRURY	OLDFIELD	FARRELL	FORSYTH	SHIELDS
DEC TUES	OLDHAM ATHLETIC (FAC 2 REPLAY)	1-0	3,404	TYLER	HOOPER	REA	EDWARDS	DRURY	OLDFIELD	FARRELL	FORSYTH	LEE(1)
DEC SAT 23	NORTHAMPTON TOWN	1-2	9,868	TYLER	HOOPER(1)	OLDFIELD	EDWARDS	DRURY	GILL	SHIELDS	FORSYTH	LEE
DEC TUES 26	LUTON TOWN (1.00PM)	2-3	7,374	TYLER	HOOPER(1)	ROGERS(3)	EDWARDS	DRURY	GILL	FARRELL	FORSYTH	SHIELDS
JAN MON 1	OLDHAM ATHLETIC	0-0	5,039	TYLER	GILL	JELLEYMAN	EDWARDS	DRURY	OLDFIELD	FARRELL	FORSYTH	GREEN
JAN SAT 6	CHELSEA (F.A. CUP 3)	0-5	31,912	TYLER	GILL	JELLEYMAN(1)	EDWARDS	DRURY	OLDFIELD	FARRELL	FORSYTH	GREEN(3)
JAN TUE 9	BARNET (LDV 2)	1-3	1,891	CONNOR	HOOPER	JELLEYMAN	REA(1)	SCOTT	CULLEN	HANLON	MURRAY	GREEN
JAN SAT 13	SWANSEA CITY	2-2	5,288	TYLER	GILL	SCOTT	EDWARDS	DRURY	OLDFIELD	FARRELL	FORSYTH	HANLON
JAN SAT 27	NORTHAMPTON TOWN (12.00)	0-0	7,079	TYLER	GILL	SCOTT	EDWARDS	DRURY	OLDFIELD	FARRELL(1)	WILLIAMS	HANLON
JAN TUE 30	OXFORD UNITED	4-2	4,004	TYLER	GILL	SCOTT	EDWARDS	REA	OLDFIELD	FARRELL	HANLON	WILLIAMS
FEB SAT 3	BURY	2-1	2,725	TYLER	GILL	SCOTT	EDWARDS	REA(4)	OLDFIELD	FARRELL	CULLEN(1)	HANLON
FEB SAT 10	STOKE CITY	0-4	7,568	TYLER	GILL	SCOTT(4)	EDWARDS	REA	OLDFIELD	FARRELL	HANLON	SHIELDS
FEB SAT 17	READING	1-1	10,342	TAYLOR	HOOPER	REA	EDWARDS	DRURY	OLDFIELD	FORSYTH	HANLON(2)	WILLIAMS
FEB TUES 20	WIGAN ATHLETIC	2-0	4,111	TAYLOR	HOOPER	REA	EDWARDS	DRURY	OLDFIELD	FORSYTH(3)	HANLON(1)	WILLIAMS
FEB SAT 24	WYCOMBE WANDERERS	3-2	4,731	TAYLOR	HOOPER	REA	EDWARDS	DRURY	OLDFIELD	FARRELL(3)	SHIELDS	WILLIAMS
MAR SAT 3	MILLWALL	0-0	11,658	TAYLOR	GILL	REA	EDWARDS	DRURY	OLDFIELD	CLARKE	SHIELDS	WILLIAMS
MAR TUES 6	BRENTFORD	1-1	4,479	TAYLOR	GILL(1)	REA	EDWARDS(2)	DRURY	OLDFIELD	CLARKE(3)	SHIELDS	WILLIAMS
MAR SAT 10	PORT VALE (F.A. CUP 6)	0-5	4,787	TAYLOR	HOOPER	REA	MURRAY	DRURY	WILLIAMS(1)	SCOTT	SHIELDS	FARRELL
MAR TUES 20	BRISTOL ROVERS	P-P										
MAR FRI 23	NOTTS COUNTY	3-3	6,510	TYLER	HOOPER	REA	EDWARDS	MORROW	OLDFIELD(1)	FORSYTH	SHIELDS	HANLON
MAR TUE 24	WALSALL											
MAR TUE 27	LUTON TOWN											
MAR SAT 31	CAMBRIDGE UNITED											
APR SAT 7	WREXHAM (F.A. CUP SEMI-FINAL)											
APR SAT 14	BRISTOL CITY											
APR TUES 17	COLCHESTER UNITED											
APR SAT 21	A.F.C. BOURNEMOUTH											
APR SAT 28	SWINDON TOWN											
MAY SAT 5	ROTHERHAM UNITED											
MAY SAT 12	F.A. CUP FINAL											

PLAYER IN RED DENOTES
GOAL SCORER

NUMBER IN (BRACKETS)
DENOTES SUBSTITUTE USED

Green	Clarke	Oldfield	Forinton	Hooper	Connor	Forsyth
GREEN(2)	CLARKE	OLDFIELD	FORINTON	HOOPER	CONNOR	FORSYTH
GREEN	FORINTON	WICKS	CONNOR	CULLEN	FARRELL	SCOTT
GREEN(4)	CLARKE(3)	OLDFIELD	CONNOR	HOOPER	WHITTINGHAM	FORSYTH
CLARKE	FARRELL	FORSYTH	WHITTINGHAM	HOOPER	OLDFIELD	CONNOR
GREEN(4)	CLARKE	OLDFIELD	CONNOR	HOOPER	WHITTINGHAM	FORSYTH
GREEN(3)	CLARKE	HANLON	CONNOR	SHIELDS	CULLEN	SCOTT
GREEN(3)	CLARKE	OLDFIELD	CONNOR	WHITTINGHAM	FORSYTH	HOOPER
GREEN(3)	CLARKE	HOOPER	CONNOR	OLDFIELD	HANLON	WHITTINGHAM
WHITTINGHAM(3)	CLARKE	CULLEN	CONNOR	GREEN	LEE	GILL
GREEN(4)	CLARKE	OLDFIELD	CONNOR	REA	LEE	GILL
GREEN(3)	CLARKE	CULLEN	CONNOR	HANLON	LEE	JELLEYMAN
GREEN(4)	CLARKE	JELLEYMAN	CONNOR	CULLEN	LEE	HANLON
MCKENZIE	CLARKE	ROGERS	CONNOR	LEE	HANLON	SHIELDS
MCKENZIE	CLARKE	LEE	JELLEYMAN	GREEN	SHIELDS	ROGERS
MCKENZIE(1)	CLARKE	LEE	CONNOR	GREEN	SHIELDS	ROGERS
MCKENZIE(1)	CLARKE	LEE	CONNOR	DANIELSSON	GILL	ROGERS
MCKENZIE(4)	CLARKE	GILL	CONNOR	SHIELDS	GREEN	CULLEN
MCKENZIE(3)	CLARKE	GILL	CONNOR	GREEN	JELLEYMAN	SHIELDS
MCKENZIE(2)	CLARKE(1)	GREEN	CONNOR	CULLEN	SHIELDS	JELLEYMAN
MCKENZIE(1)	CLARKE	SHIELDS	CONNOR	CULLEN	GILL	GREEN
MCKENZIE(1)	CLARKE(3)	LEE	CONNOR	CULLEN	GILL	GREEN
GREEN	CLARKE	SHIELDS	CONNOR	CULLEN	GILL	FORINTON
MCKENZIE(1)	GREEN(4)	CLARKE	CONNOR	ROGERS	GILL	FORINTON
GREEN	CLARKE(3)	FORSYTH	TYLER	LEE	FRENCH	OLDFIELD
MCKENZIE	SHIELDS(3)	JELLEYMAN	CONNOR	HANLON	FORINTON	MURRAY
MCKENZIE(1)	CLARKE	LEE	CONNOR	HOOPER	GREEN	JELLEYMAN
GILL	CLARKE	MCKENZIE	CONNOR	GREEN	JELLEYMAN	SHIELDS
MCKENZIE	CLARKE(3)	GREEN	CONNOR	FARRELL	ROGERS	CULLEN
MCKENZIE	CLARKE(4)	GREEN	CONNOR	JELLEYMAN	FORINTON	CULLEN
MCKENZIE	CLARKE	HOOPER	CONNOR	CULLEN	SHIELDS	FORINTON
MCKENZIE(4)	CLARKE	HOOPER	CONNOR	SHIELDS	FORINTON	REA
FORINTON	FRENCH	DRURY	TYLER	OLDFIELD	GILL	FORSYTH
MCKENZIE	CLARKE	MURRAY	CONNOR	FORINTON	BROUGHTON	FRENCH
MCKENZIE	CLARKE	FORINTON	CONNOR	CULLEN	JELLEYMAN	MURRAY
MCKENZIE	CLARKE	DRURY	CONNOR	CULLEN	FORINTON	FRENCH
WILLIAMS(3)	CLARKE	FORINTON	CONNOR	SHIELDS	MURRAY	HOOPER
WILLIAMS(1)	CLARKE	FORINTON	CONNOR	HOOPER	LEE	GREEN
MACKENZIE	FORINTON(1)	LEE	CLARKE	GILL	MACDONALD	GREEN
MACKENZIE(2)	LEE	FARRELL	CLARKE	GILL	MACDONALD	FORINTON
MACKENZIE(2)	LEE(2)	CLARKE	GREEN	GILL	FORINTON	MACD
MCKENZIE	LEE	SCOTT	FARRELL	CULLEN	GREEN	FORINTON
MCKENZIE	LEE	SCOTT	MURRAY	FARRELL	CULLEN	FORINTON
CLARKE(3)	FORINTON(2)	CULLEN	GREEN	DANIELSSON	CONNOR	
MCKENZIE	GREEN(2)	FARRELL	CONNOR	M. WILLIAMS	SCOTT	T. WILLIAMS

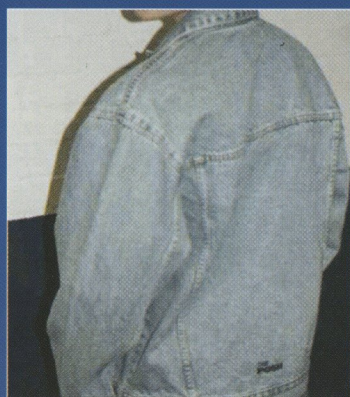
Nationwide League Division Two

	Pld	W	D	L	F	A	W	D	L	F	A	GD	Pts
Rotherham Utd	38	13	4	3	43	22	9	4	5	25	24	22	74
Millwall	37	12	2	4	36	11	10	4	5	34	25	34	72
Reading	36	13	3	3	47	19	7	4	6	20	21	27	67
Walsall	38	13	4	3	46	20	6	5	7	21	23	24	66
Wigan Athletic	39	11	8	0	25	11	4	9	7	19	22	11	62
Stoke City	37	9	5	5	28	18	7	8	3	31	22	19	61
Bristol City	37	10	4	5	40	23	6	6	6	19	22	14	58
Notts County	36	8	5	4	31	24	7	5	7	18	27	-2	55
Northampton Tn	38	8	6	4	24	20	6	5	9	19	27	-4	53
AFC B'mouth	37	7	6	5	27	18	6	6	7	32	28	13	51
Wrexham	36	8	4	7	26	24	6	4	7	28	33	-3	50
Bury	38	9	5	5	23	19	5	3	11	15	28	-9	50
Brentford	36	7	7	3	25	23	4	7	8	16	28	-10	47
Oldham Athletic	38	10	4	6	32	23	2	6	10	13	31	-9	46
Colchester Utd	37	7	4	8	22	19	5	5	8	19	27	-5	45
Wycombe Wdrs	35	8	3	7	21	19	4	6	7	14	22	-6	45
P'borough Utd	36	9	4	4	27	21	2	7	10	17	32	-9	44
Swindon Town	37	5	7	7	26	30	6	4	8	12	21	-13	44
Port Vale	33	7	7	4	30	16	4	2	9	10	22	2	42
Cambridge	37	6	5	7	26	22	5	3	11	23	39	-12	41
Bristol Rovers	34	2	9	4	12	16	6	5	8	23	23	-4	38
Luton Town	34	5	2	9	19	27	4	5	9	22	33	-19	34
Swansea City	35	3	7	6	15	16	3	4	12	20	41	-22	29
Oxford United	35	4	3	12	19	29	1	1	14	20	49	-39	19

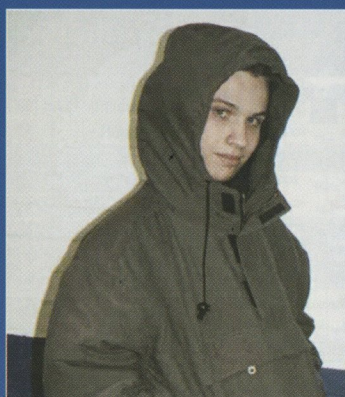
First Team Appearances

Player	Lge	Cup	Total	Goals
Mark Tyler	31	6	37	-
Richard Scott	12(1)	1(2)	16	-
Dean Hooper	20(1)	7(1)	29	-
Simon Rea	28(1)	6	35	1
Andy Edwards	36	6	42	1
Adam Drury	30	6(1)	37	-
Gareth Jelleyman	5(2)	3(1)	11	-
Jon Cullen	13(4)	2(2)	21	2
Ritchie Hanlon	17(4)	3(1)	25	-
Tony Shields	23(5)	1(4)	33	3
David Farrell	31(4)	5(1)	41	9
Francis Green	14(10)	6	30	5
Andy Clarke	31(4)	6	41	9
David Oldfield	26(3)	5(1)	35	4
Richard Forsyth	22(1)	6(1)	30	1
Howard Forinton	2(6)	3(1)	12	1
Jason Lee	10(9)	3(1)	23	5
Matthew Gill	11(6)	2	19	1
Leon McKenzie	22	2(1)	25	11
Helgi Danielsson	(2)	-	2	-
Dan Connor	-	2	2	-
Dan Murray	1(2)	2	5	-
Daniel French	-	1	1	-
Martin Williams	9(1)	-	10	2
Stuart Taylor	6	-	6	-
Steve Morrow	1	-	1	-
Tom Williams				

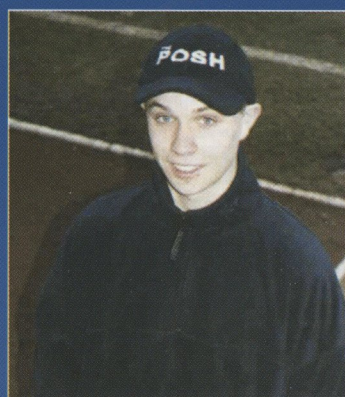
THE POSH Club Shop



Denim Jacket - now £20

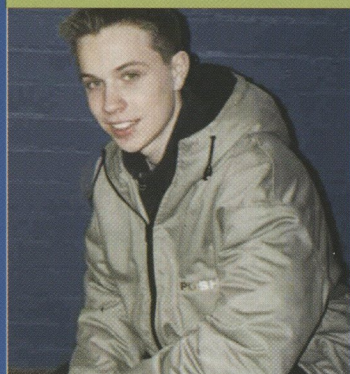


MoD Jacket (Kaki) - £39-99



1/4 zip fleece - now £19-99

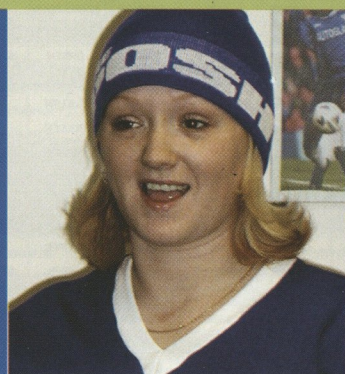
Orders over £80 receive a FREE Posh Woolly Hat!



MoD Jacket (Stone) £39-99



Yellow Gilet now £19-99



Snow Hat £3

Available on-line

www.theposh.com

10% off all internet purchases until the end of March 2001

Or at our London Road Shop

All major Credit Cards acceptable on our Credit Card Hotline:

01733 319666

Club shop is open: Monday-Friday 10am-6pm, Saturday 9am- 5pm, Sunday 10am-4pm.

46 THE POSH visit www.theposh.com for all the latest news and views

INVESTMENTS

Nationwide



Play FTSE with the professionals

Over the last 5 years the FTSE All-Share Index rose by 87%* •

Apply by April 3rd for an Index Tracking ISA to make the most of this year's tax free allowance •



www.nationwide.co.uk | 0500 30 20 10 | **OPEN** or just call in

Banking | Credit Card | Insurance | Investments | Loans | Mortgages | Pensions | Savings

*Source: Standard and Poor's Micropal 1/1/96 to 1/1/01, offer to offer, net income reinvested.

This information is based on our understanding and interpretation of current and proposed legislation and Inland Revenue practice, which is subject to change. The value of any tax relief is dependent on personal financial circumstances. The favourable tax treatment of ISAs may not be maintained. The 10% tax credit currently paid on dividends will be removed in April 2004. The value of investments, and the income from them, may go down as well as up and may not be guaranteed. You may not necessarily get back the full amount invested. Past performance is not necessarily a guide to the future. Nationwide Building Society, Nationwide Life Limited and Nationwide Unit Trust Managers Limited represent only the Nationwide Marketing Group, which is regulated by the Personal Investment Authority for life assurance, pensions and unit trust products. Nationwide Unit Trust Managers Limited is also regulated by IMRO. Nationwide Unit Trust Managers Limited is registered in England No. 2022725. Registered office: Nationwide House, Pipers Way, Swindon, Wiltshire, SN3B 1NW. Operations Support Telephone: 01793 732300.

Today's Squads

THE
POSH



Luton Town



VS



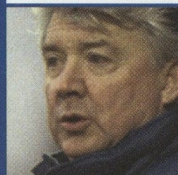
	P	G	R/Y	S		S	R/Y	G	P	
Mark Tyler	<input type="checkbox"/>	<input type="checkbox"/>	<input type="checkbox"/>	<input type="checkbox"/>	1	<input type="checkbox"/>	<input type="checkbox"/>	<input type="checkbox"/>	<input type="checkbox"/>	Mark Owendale
Dean Hooper	<input type="checkbox"/>	<input type="checkbox"/>	<input type="checkbox"/>	<input type="checkbox"/>	2	<input type="checkbox"/>	<input type="checkbox"/>	<input type="checkbox"/>	<input type="checkbox"/>	Gavin McGowan
Steve Morrow	<input type="checkbox"/>	<input type="checkbox"/>	<input type="checkbox"/>	<input type="checkbox"/>	3	<input type="checkbox"/>	<input type="checkbox"/>	<input type="checkbox"/>	<input type="checkbox"/>	
Richard Scott	<input type="checkbox"/>	<input type="checkbox"/>	<input type="checkbox"/>	<input type="checkbox"/>	4	<input type="checkbox"/>	<input type="checkbox"/>	<input type="checkbox"/>	<input type="checkbox"/>	Matthew Spring
Simon Rea	<input type="checkbox"/>	<input type="checkbox"/>	<input type="checkbox"/>	<input type="checkbox"/>	5	<input type="checkbox"/>	<input type="checkbox"/>	<input type="checkbox"/>	<input type="checkbox"/>	Julian Watts
Andy Edwards	<input type="checkbox"/>	<input type="checkbox"/>	<input type="checkbox"/>	<input type="checkbox"/>	6	<input type="checkbox"/>	<input type="checkbox"/>	<input type="checkbox"/>	<input type="checkbox"/>	Marvin Johnson
David Farrell	<input type="checkbox"/>	<input type="checkbox"/>	<input type="checkbox"/>	<input type="checkbox"/>	7	<input type="checkbox"/>	<input type="checkbox"/>	<input type="checkbox"/>	<input type="checkbox"/>	Peter Thompson
David Oldfield	<input type="checkbox"/>	<input type="checkbox"/>	<input type="checkbox"/>	<input type="checkbox"/>	8	<input type="checkbox"/>	<input type="checkbox"/>	<input type="checkbox"/>	<input type="checkbox"/>	Paul McLaren
Andy Clarke	<input type="checkbox"/>	<input type="checkbox"/>	<input type="checkbox"/>	<input type="checkbox"/>	9	<input type="checkbox"/>	<input type="checkbox"/>	<input type="checkbox"/>	<input type="checkbox"/>	Stuart Douglas
Jason Lee	<input type="checkbox"/>	<input type="checkbox"/>	<input type="checkbox"/>	<input type="checkbox"/>	10	<input type="checkbox"/>	<input type="checkbox"/>	<input type="checkbox"/>	<input type="checkbox"/>	Mark Stein
Jon Cullen	<input type="checkbox"/>	<input type="checkbox"/>	<input type="checkbox"/>	<input type="checkbox"/>	11	<input type="checkbox"/>	<input type="checkbox"/>	<input type="checkbox"/>	<input type="checkbox"/>	Liam George
Matthew Gill	<input type="checkbox"/>	<input type="checkbox"/>	<input type="checkbox"/>	<input type="checkbox"/>	12	<input type="checkbox"/>	<input type="checkbox"/>	<input type="checkbox"/>	<input type="checkbox"/>	Adam Locke
Dan Connor	<input type="checkbox"/>	<input type="checkbox"/>	<input type="checkbox"/>	<input type="checkbox"/>	13	<input type="checkbox"/>	<input type="checkbox"/>	<input type="checkbox"/>	<input type="checkbox"/>	Stuart Fraser
Francis Green	<input type="checkbox"/>	<input type="checkbox"/>	<input type="checkbox"/>	<input type="checkbox"/>	14	<input type="checkbox"/>	<input type="checkbox"/>	<input type="checkbox"/>	<input type="checkbox"/>	Andrew Fotiadis
Daniel Murray	<input type="checkbox"/>	<input type="checkbox"/>	<input type="checkbox"/>	<input type="checkbox"/>	15	<input type="checkbox"/>	<input type="checkbox"/>	<input type="checkbox"/>	<input type="checkbox"/>	Matthew Taylor
Martin Williams	<input type="checkbox"/>	<input type="checkbox"/>	<input type="checkbox"/>	<input type="checkbox"/>	16	<input type="checkbox"/>	<input type="checkbox"/>	<input type="checkbox"/>	<input type="checkbox"/>	Nathen Abbey
Leon McKenzie	<input type="checkbox"/>	<input type="checkbox"/>	<input type="checkbox"/>	<input type="checkbox"/>	17	<input type="checkbox"/>	<input type="checkbox"/>	<input type="checkbox"/>	<input type="checkbox"/>	Emmerson Boyce
Ritchie Hanlon	<input type="checkbox"/>	<input type="checkbox"/>	<input type="checkbox"/>	<input type="checkbox"/>	18	<input type="checkbox"/>	<input type="checkbox"/>	<input type="checkbox"/>	<input type="checkbox"/>	Tresor Kandol
Gareth Jelleyman	<input type="checkbox"/>	<input type="checkbox"/>	<input type="checkbox"/>	<input type="checkbox"/>	19	<input type="checkbox"/>	<input type="checkbox"/>	<input type="checkbox"/>	<input type="checkbox"/>	James Aryes
Tony Shields	<input type="checkbox"/>	<input type="checkbox"/>	<input type="checkbox"/>	<input type="checkbox"/>	20	<input type="checkbox"/>	<input type="checkbox"/>	<input type="checkbox"/>	<input type="checkbox"/>	Peter Holmes
Howard Forinton	<input type="checkbox"/>	<input type="checkbox"/>	<input type="checkbox"/>	<input type="checkbox"/>	21	<input type="checkbox"/>	<input type="checkbox"/>	<input type="checkbox"/>	<input type="checkbox"/>	Andre Scarlett
Tom Williams	<input type="checkbox"/>	<input type="checkbox"/>	<input type="checkbox"/>	<input type="checkbox"/>	22	<input type="checkbox"/>	<input type="checkbox"/>	<input type="checkbox"/>	<input type="checkbox"/>	Dean Brennan
Helgi Danielsson	<input type="checkbox"/>	<input type="checkbox"/>	<input type="checkbox"/>	<input type="checkbox"/>	23	<input type="checkbox"/>	<input type="checkbox"/>	<input type="checkbox"/>	<input type="checkbox"/>	Jude Stirling
Daniel French	<input type="checkbox"/>	<input type="checkbox"/>	<input type="checkbox"/>	<input type="checkbox"/>	24	<input type="checkbox"/>	<input type="checkbox"/>	<input type="checkbox"/>	<input type="checkbox"/>	Scott Ward
Richard Forsyth	<input type="checkbox"/>	<input type="checkbox"/>	<input type="checkbox"/>	<input type="checkbox"/>	25	<input type="checkbox"/>	<input type="checkbox"/>	<input type="checkbox"/>	<input type="checkbox"/>	Dean Standen
Gary MacDonald	<input type="checkbox"/>	<input type="checkbox"/>	<input type="checkbox"/>	<input type="checkbox"/>	26	<input type="checkbox"/>	<input type="checkbox"/>	<input type="checkbox"/>	<input type="checkbox"/>	Friedrich Breitenfelder
					28	<input type="checkbox"/>	<input type="checkbox"/>	<input type="checkbox"/>	<input type="checkbox"/>	Rocky Babbiste
					29	<input type="checkbox"/>	<input type="checkbox"/>	<input type="checkbox"/>	<input type="checkbox"/>	Kent Karlsen
					30	<input type="checkbox"/>	<input type="checkbox"/>	<input type="checkbox"/>	<input type="checkbox"/>	Petri Helin
					31	<input type="checkbox"/>	<input type="checkbox"/>	<input type="checkbox"/>	<input type="checkbox"/>	Lee Nogan

P - Who Played - Goalscorer
R/Y - Cautions S - Substituted

Barry Fry



Joe Kinnear



REFEREE D.LAWS ASSISTANT REFEREES P.BARSTON / S.R.M. PROCTOR-GREEN FOURTH OFFICIAL S.S. THIARRA

NEXT HOME GAME:



Saturday 31st March 2001 Kick-Off 3.00pm
v **CAMBRIDGE UNITED**