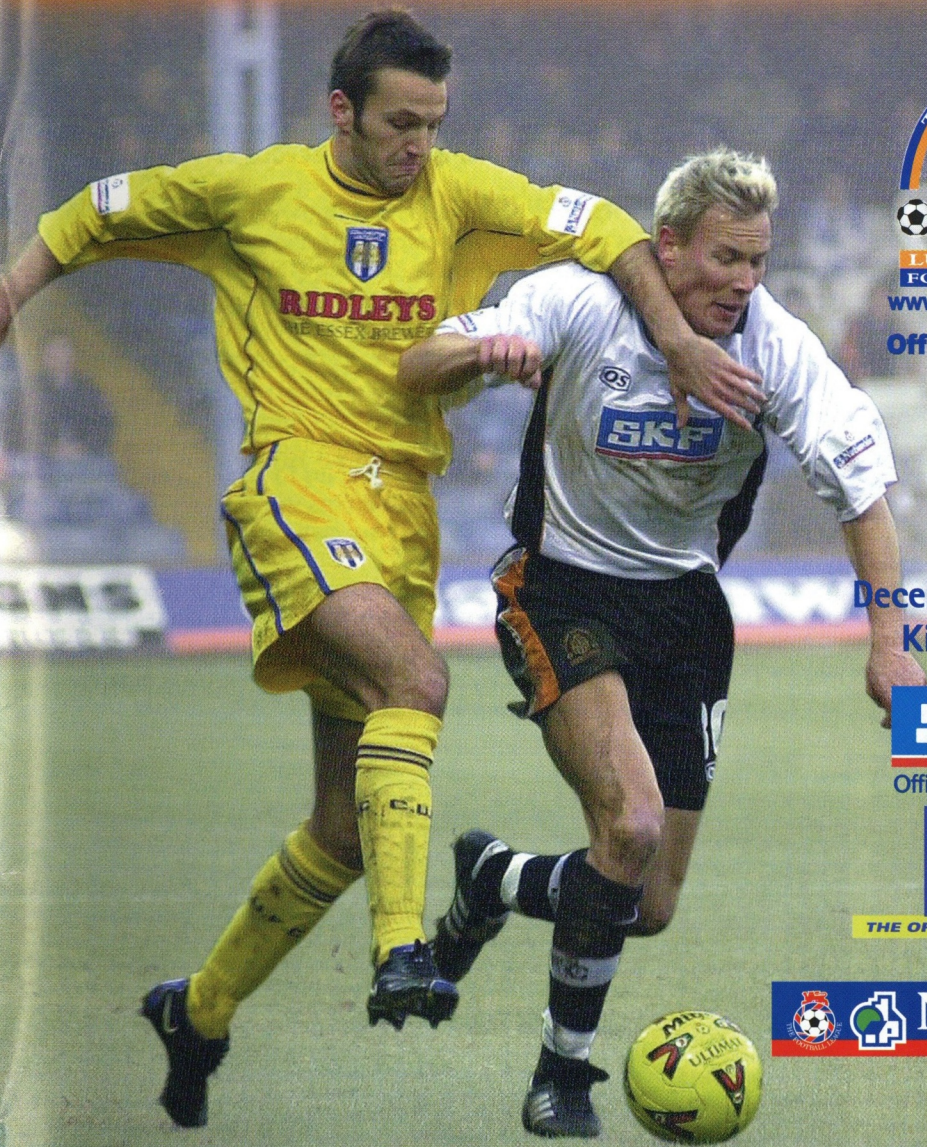


# Luton Town



**LUTON TOWN  
FOOTBALL CLUB**  
[www.lutontown.co.uk](http://www.lutontown.co.uk)

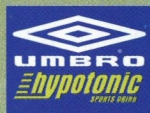
**Official Matchday  
Magazine**



**Tuesday  
December 26, 2000  
Kick Off 1pm**

**SKF**

Official Shirt Sponsors



THE OFFICIAL SPORTS DRINK



## Luton Town v Peterborough United

Match Sponsors: [www.findthatfilm.com](http://www.findthatfilm.com)

The Ludlow Group

Match Ball Sponsors: Beechwood Shirts & Litho Ltd



## Luton Town FC

Kenilworth Road Stadium  
1 Maple Road, Luton  
Bedfordshire LU4 8AW

Main Reception: 01582 411622

Fax: 01582 405070

Ticket Office: 01582 416976

## Honours

### Littlewoods Cup

Winners 1987-88

Finalists 1988-89

### FA Cup

Finalists 1958-59

### Simod Cup

Finalists 1987-88

### Division 2

Champions 1981-82

### Division 3 (S)

Champions 1936-37

### Division 4

Champions 1967-68

## Official Matchday Magazine

Editor

**Brian Swain**

Layout & Printing

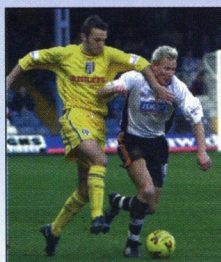
**Regal Litho**

Photography

**Gareth Owen**

The views expressed in this programme  
are not necessarily those of Luton Town  
Football Club.

## Front Cover



BREAKING THROUGH - Petri Helin  
tries to get the Town attack moving  
against Colchester.

# Inside

HOLIDAY printing arrangements have prevented us being as up to date as we like to be with this column, and as we went to press we were hoping to have news of at least one new player Lil Fuccillo is chasing to strengthen his squad.

Before Christmas he was well down the line with moves for a midfielder and a striker, but was suffering considerable frustration as hundreds of phone calls failed to produce the goods.

As always, clubs with decent players available are unwilling to move too quickly to let them go as a busy spell approaches, while the manager's desk is piled high with circulars offering all sorts of players who are available.

Other clubs have received something similar from the Town, with the manager having taken stock of what he has inherited, and deciding that he can release five or six who are felt to be surplus to requirements. His circular does not name names, and while the boss wants to create room for newcomers he also wants to help find new clubs for the men he is prepared to let go.

The board is willing to spend money on transfer fees, but the manager also has to keep within a wages budget, which is a tricky balancing act. Lee Nogan did himself a potential favour with his performance, not to mention his goal, in the cup replay against Darlington. He had come to the Town effectively on trial, accepting a one-month contract after



A tie-up between the Town and the Luton Belles, a ladies football club, has just been announced - see the article on page 37 - and to mark the occasion Belles players and officials were guests of the club at the game against Colchester. Their young stars included Nicole Emmanuel, 14, who had good reason to lead the cheering. She received a personal trophy from Town chairman Mike Watson-Challis to mark her achievement in being the first Luton Belles player to score 100 goals for the club. It took her only three seasons, playing for the Belles under-15 and under-16 sides.

# Forward

*THE Chairman, directors and all  
the staff of Luton Town Football Club  
wish all supporters a very happy Christmas,  
and a peaceful and prosperous New Year.  
We thank you for supporting our efforts through  
2000, and look forward to success in 2001.*

leaving Darlington. The deal expired on Saturday, but the manager was planning to have a chat with him about extending it. Nogan was brought in as cover, and got his chance because Mark Stein is suspended after being sent off at Peterborough in the LDV Vans trophy, and Peter Thomson and Stuart Douglas are out of action through injuries.

Adrian Whitbread, meanwhile, has taken his loan from Portsmouth into a second month, and having made a big impression with coaches, players and fans, looks set to extend it further when the time comes. He is a free agent, but at 29 he will want to think carefully about any permanent move. But he is willing to take a cut in pay to achieve a move which gives him a realistic chance of regular first-team football.

THE league fixture list has had to be changed because of the Town's FA Cup success. The third round tie at home to QPR will be played on January 6, with the Second Division visit to Notts County postponed to a date to be arranged. Ticket details for the QPR match can be found on page 10 of this magazine.

WE owe an apology to a good servant of Luton Town, who was surprised to read in a previous matchday magazine that our new physio, sports therapist Bruce Sewell, had been working part-time for the club for a year as physio to the youth team. We should have said that Mr Sewell had worked with the School of Excellence youngsters. The youth team physio was Mr John Smith, who gave sterling service before retiring. We put on record our appreciation of his efforts for the club.



Chairman

**M. Watson-Challis**

Directors

**E. Hood, J. Mitchell,  
C. Bassett, R. Stringer,  
Y. Fletcher, R. H. G. Kelly**  
Vice Presidents

**C. T. F. Green, N. S. Terry,  
R. L. Banks, D. Ludlow  
MBE, C. Bygrave,  
R. Safranek, J. Sapsworth**

Club Secretary

**Cherry Newbery**

First Team Manager

**Lil Fuccillo**

First Team Assistant Manager

**John Moore**

Reserve Team Coach

**Kevan Broadhurst**

Youth Coach

**Brian Stein**

Physiotherapist

**Bruce Sewell** BSc (Hons) MSST

Consultant Physio

**John Sheridan**

Youth Development Officer

**Dean Rastrick**

Chief Scout

**Les Shannon**

Sales and Marketing Manager

**John Bailey**

Catering Manager

**Marie Hunter**

Safety Officer

**Geoff Lovell**

Medical Officer

**Dr. Bill Berry**

Club Dentist

**A. Chris BDSA (Syd)**

Club Chaplain

**Rev Catherine Bell**

Company Secretary

**Cherry Newbery**

For all the latest news, views and interviews call

**CLUBCALL - 09068 121123**

(Calls charged at 60p per minute at all times)

Up and Running!

Luton Town's very own official website.

**www.lutontown.co.uk**



# Catch a ride with a winner!

SKF *AquaMax*



Boost profits – and customer confidence – with SKF AquaMax, the new quality standard for replacement pumps. Designed to meet or exceed all OE standards, these new pumps produce maximum flow under all driving conditions, while providing added protection from corrosion and vapour leakage. For more information about SKF, talk to your SKF Automotive Parts Distributor or visit our website: [www.vsm.skf.com](http://www.vsm.skf.com)

**SKF**



## The Manager Lil Fuccillo

IT IS a pleasure today to offer the traditional good wishes to everyone for Christmas and the New Year, and to give a special welcome to supporters of both teams, and to my old pal Barry Fry. He and I are good friends, but I am still very keen to see him go home disappointed after today's game.

These notes had to be written before the game at Reading, but my hope for that was that we would take into it the confidence that was returning to the team in the Darlington cup-tie. The result was well-deserved, and reward for the work the players put into the game. The difference between that match and the previous one, against Colchester, was that we put chances away, which was my main demand after we wasted so many three days earlier.

In most of the games since I have been manager, we have done well in creating chances, and that has been a plus point. The minus one was that we did not take as many as we should have done. But the biggest headache for a manager is if his team is not making scoring opportunities. Like many managers, I want to bring in a 20-goals-a-season striker, and I hope to have some success on that in the very near future.

I think we have made some progress since my first game in charge, and the FA Cup offers a pleasant distraction. Mind you, I wish the games against Rushden and Darlington had been league fixtures – just look at what seven more points would do for us in the Second Division! We have got to start looking for regular returns along those lines – seven points out of nine – and most important of all we have to get into a good long run of winning many more games than we lose.

Overall, I think the picture is a little rosier than it was a month or so ago, and I am enjoying the job, and as keen as everyone in the club to get us moving up the league table. I have also been devoting some thought and time to the longer-term, a project I began when I came in to join the scouting staff.

I am re-structuring that side of our activities, par-

ticularly in our contacts with local football at schoolboy level. We need to service our youth team with the best young players possible, and with Dean Rastrick's enthusiastic support we are improving our network of contacts. If there is a good young schoolboy player within 25 miles of Luton I want to be sure we will be the club he joins. Too many boys have been leaving this patch for Aston Villa, Arsenal and elsewhere when they should be coming to their local club. I want us to build up relationships with schools and youth clubs to the point where if they get a good young player they ring us first to tip us off. Our biggest advantage over the "glamour clubs" is that we can point to our current squad and tell the lads "Look at Liam George, for instance... Be like him – come to your local club and if you are good enough you have every chance of playing league football. And if you get better you can one day go on to the Premiership and earn a mint."

That's a hobby horse I shall come back to in the future, but for now the focus is on collecting league points, and winning more consistently. It would be nice to put one over my old boss and long-time friend this afternoon. I learned a lot from Barry Fry, and I know that no manager works harder than he does. The number of games he watches is phenomenal, and possible only because he has a supportive wife Kirsty. He deserves success, because he is dedicated to his profession. I hope he has to be a sporting loser this afternoon, as we strive to pull ourselves up from the lower reaches of the table. The boys are rallying, but we cannot afford to meander along winning one here and one there. We have suffered enough home defeats already to fill this season's quota.

We want to enjoy a happy Christmas. The only way it will be truly happy for us is if everyone in the ground shares the responsibility for helping Luton Town towards safety. I will ensure the players work hard to that end. If you can give your support, I am sure that will help.

*Lil Fuccillo*

Up and Running!  
Luton Town's very own official website.

[www.lutontown.co.uk](http://www.lutontown.co.uk)



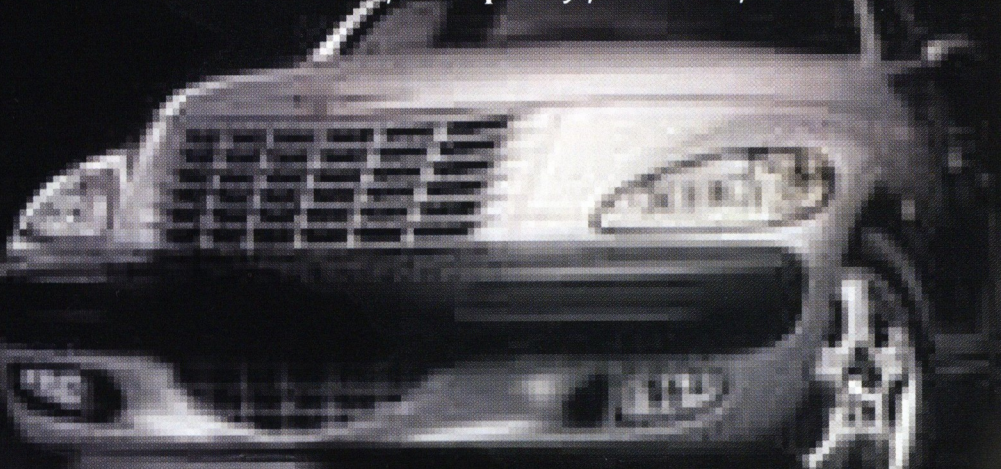
## The Hatters roll-call 2000-2001

Appearances (as sub in brackets)

Goals

	League	WC	FAC	LDV	Total	League	WC	FAC	Total
Nathan Abbey	10	0	3	0	13	0	0	0	0
James Ayres	0	0	0	1	1	0	0	0	0
Rocky Baptiste	0(2)	0	0	0	0(2)	0	0	0	0
Emmerson Boyce	18	4	1(1)	0	23(1)	0	0	0	0
Dean Brennan	2(7)	1(1)	0	0	3(8)	0	0	0	0
Friedrich Breitenfelder	1(2)	0	0	0	1(2)	0	0	0	0
Stuart Douglas	3	0	0	0	3	2	0	0	2
Andrew Fotiadis	6(4)	1	1	1	9(4)	1	0	0	1
Stuart Fraser	6(4)	4	2	1	13(5)	0	0	0	0
Liam George	17(3)	3(1)	3	0	23(4)	3	0	1	4
Petri Helin	5	0	2	1	8	1	0	0	1
Peter Holmes	8(6)	2(1)	0	0	10(7)	0	0	0	0
Marvin Johnson	5	0	2	0	7	0	0	0	0
Tresor Kandol	6(4)	2(1)	0	0	8(5)	3	1	0	4
Kent Karlsen	3(1)	0	1	1	5(1)	0	0	0	0
Adam Locke	11(3)	1(1)	1(1)	1	14(5)	0	0	0	0
Gavin McGowan	4(1)	0	0	0	4(1)	0	0	0	0
Paul McLaren	18	4	3	1	26	1	0	1	2
Lee Nogan	2	0	1	0(1)	3(1)	0	0	1	1
Mark Owendale	10	4	0	1	15	0	0	0	0
Andre Scarlett	5(1)	2	0	0	7(1)	0	1	0	1
Matthew Spring	18	4	3	1	26	2p	0	0	2p
Mark Stein	16(1)	3	1	0(1)	20(2)	3	1	0	4
Jude Stirling	1	0	0	0	1	0	0	0	0
Matthew Taylor	20	4	3	1	28	0	0	0	0
Peter Thomson	3(3)	1(1)	1(1)	1	6(5)	2	0	0	2
Julian Watts	19	4	3	0	26	2	0	0	2
Adrian Whitbread	3	0	2	0	5	0	0	0	0

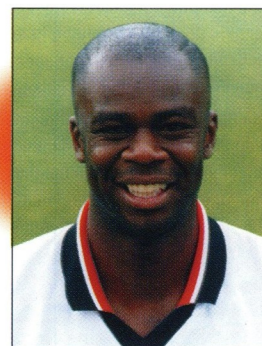
**CANNON LANE**  
Hitchin Road, Stopsley, Luton, Beds



CHRYSLER

01582 725506

www.cannonlane.co.uk



## Captain's Log

Marvin Johnson

WE HAD our Christmas party after the Darlington cup

replay, and as you might imagine it was a pretty happy affair, a brief moment of celebrations before we started concentrating again on the very serious job ahead of us.

I thought we deserved to beat Darlington for our performances over both games, and we were well pleased that the general view in the dressing room and among the coaches had been proved correct - our belief was that despite the defeat by Colchester we would win more than we lose if we maintained the overall form we showed in that game.

The extra touch, of course, was to get goals, and it was good to see Lee Nogan collect his first for us. I suppose it was almost inevitable that it would be against the club that let him go a few weeks earlier. And what about Paul McLaren's effort? It was a tremendous strike, and hopefully there will be plenty more to come. Considering his ability - good feet and a powerful shot - I reckon he should be capable of getting anything up to ten goals a season.

It has been interesting to see Lee Nogan in action, and I can't help comparing him with his brother Kurt, who used to play for us. They are similar in many ways, but I think Lee probably has more about him in terms of his all-round game than Kurt, who was an out and out goal-scorer when he was here. Lee contributes a lot by his actions off the ball, as well as on it, and against Darlington he worked as hard as anyone to help us gain domination of the match.

He also has that priceless commodity that makes any good player better - experience. Adrian Whitbread has brought in more of the same, and perhaps that is the major factor in our recent improvement in form. We have an awful lot still to do, but I think we are in better shape now than we were six weeks ago.

The manager has tinkered with the formation a little, using an extra man in midfield in most matches. We had been struggling in that department too often early in the season, but the boss has got us into a pattern where we are tighter in the middle, with the defence receiving better support.

That has to be the priority as we seek the results we need, but it was good to see that for the Darlington game the formation was changed a little bit more. We played with three strikers, Liam George floating behind Nogan and Andrew Fotiadis, with Macca and Matthew Spring getting up in support when needed. It worked well, but we also realise that if it does not come off playing three at the front can be a gamble.

The boss is canny enough to know how to approach each game, and indeed how to change things during a match if necessary, and we all understand what he is trying to do.

Top of the list of objectives is to win consistently, and I still think we are good enough to get out of trouble in the league. Today's game comes in the middle of a very important period for us, with Christmas and the New Year traditionally a time that plays a major part in success or failure.

After two draws and one defeat at the hands of Peterborough this season, it is about time we gave ourselves a Christmas present of three points in the fourth meeting. I will be pleased to see old friends back at Kenilworth Road - David Oldfield, Wayne Turner and Paul Showler - but equally delighted if we send them home pointless!

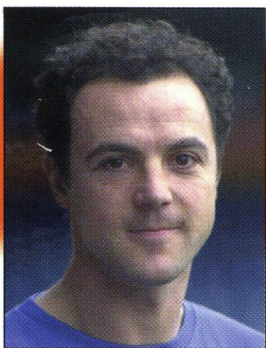
More importantly, we want to send our supporters home feeling good. Like you, we want to enjoy a Happy Christmas, and a good win today would go a long way towards achieving that.

*Marvin Johnson*

Up and Running!  
Luton Town's very own official website.

[www.lutontown.co.uk](http://www.lutontown.co.uk)





# Treatment Room

Bruce Sewell

THIS column had to be written before we went to Reading, but as we were preparing for that match I was hopeful that we would begin our holiday games with almost a full squad of senior players fit and available to the manager. We collected a few aches and pains from the Darlington FA Cup replay, but nothing too threatening. The three who suffered most were Julian Watts, Liam George and Matthew Spring, and the only one to give me serious worry was Watts. He went down and asked for treatment during the cup game, and was replaced by Emmerson Boyce. Experience was important in that incident: Watts felt a little hamstring problem, knew immediately what it was, and did the right thing in asking for treatment straight away.



A bemused-looking Liam George looks as though he is in stitches as he gets first aid after a whack on the head from a Darlington player. The striker soon was - four were inserted by the club doctor.

It was a potential problem, and we made a safety first decision to sub him as a precaution. The doctor and I came to the conclusion that the quick reaction had been right, and certainly the injury was not as bad as it might have been. The player came in for ice bag treatment and stretching exercises, and had every chance of being available for selection for the following game.

Liam George received an unpleasant gash after a clash of heads, and needed four stitches, but it was no real problem for him.

Matthew Spring also took a blow to the head, near his ear, which is the weakest point of the skull. It left him with a very severe headache, and as a precaution he went to hospital for a check-up. The verdict was that no serious damage had been done, and he was able to train as normal afterwards.

Our two long-term injured strikers are having to accept a frustrating Christmas. Peter Thomson had a scan to try to discover the exact cause of his foot injury, and the results of that will determine where we go from here.

Stuart Douglas is on the way back, training again after his hamstring problems, and we are hoping he will be able to make a comeback shortly, probably in a reserve game, to work on his match fitness.

The other treatment room "customers" in the run-up to Christmas were three youth team players, all of whom are making steady progress. Marcus Jeffrey, recovering from a leg injury sustained in a game six weeks ago, is back in light training, and John Carroll, who has had a foot injury, will step up his training routine within the next few days.

Dean Mortara, who has a cruciate ligament problem, is working hard to get over it, and has started running again, but will have to take it very carefully. He is to see a specialist again in the near future for an expert surgeon's view on progress so far, and at this stage we cannot give him a firm target date for a return to competitive football.

Bruce Sewell



# Club Secretary

Cherry Newbery

THE FA Cup success over Darlington means, of course,

that our Second Division game at Notts County on January 6 has been postponed because on that day we will be entertaining Queens Park Rangers in the third round.

As it happens, Notts County are also still in the cup - they will be away to Wimbledon - and with the holiday period intervening I do not expect to be able to sort out a new date for the league fixture until after January 6.

On the subject of the third round game, if it is drawn the replay will be at Loftus Road on Wednesday January 17, kick-off 8pm, and we will publicise ticket arrangements in the matchday magazine on January 6.

The extra home game will of course mean more busy times for the ticket office, and you might like to know that we now have another facility for supporters wishing to buy match tickets.

The updating of our computer systems means that we can now offer tickets via e-mail. You can place your orders by contacting [ticketoffice@lutontown.co.uk](mailto:ticketoffice@lutontown.co.uk) and then collect tickets in person when it is convenient, or if you prefer we can post them. But please note that orders for tickets must be placed at least 24 hours before the match.

Speaking of cup-ties, our youth team now knows that its next hurdle in the FA Youth Cup will be a home tie with Manchester City. They beat Fulham 5-1 in a replay last week, and again the holiday period has made it difficult to make arrangements for the match, but I anticipate it will go ahead early in January.

We also have a Bedfordshire Premier Cup match to organise. We were drawn against Dunstable, and were due to play there in November, but storms damaged the floodlights at Creasey Park, and Bedfordshire FA have decided to give Dunstable more time to get the repairs done before sorting out a new date.

You may have seen that we gained an honourable mention in the national press with our offer to Vauxhall employees for free tickets to matches, and it was nice to discover that the gesture was appreciated. I have received a lot of letters and phone calls from people affected, thanking the club for its thoughtful gesture.

Perhaps the season of goodwill has something to do with it, and certainly supporters were in generous mood at the Colchester game when a bucket collection was taken for the Mayor of Luton's Christmas appeal. It produced a wonderful response, £524, which is the most we have ever raised for the local charity. Thank you all, very much.

There was also a good turn-out for the Club's annual Christmas Carol Service, and I would like to thank all who helped to make that an enjoyable occasion. Once more it was a sign of the friendliness that runs throughout this football club, and long may it continue.

I hope all supporters are having a very good Christmas, and that we have an even better New Year. Thanks for your support throughout 2000, and please keep coming in 2001 - and bring a friend or two as well if you can!

Cherry Newbery

To advertise in this matchday programme  
call the Commercial Department on:

**01582 411622**

Up and Running!  
Luton Town's very own official website.

**[www.lutontown.co.uk](http://www.lutontown.co.uk)**





## AXA FA CUP, THIRD ROUND



### Luton Town v Queens Park Rangers



Saturday January 6, 2001, kick-off 3pm.

TICKETS ARE NOW ON SALE AT NORMAL MATCH DAY PRICES.

SEASON TICKET HOLDERS' SEATS WILL BE HELD FOR THEM UNTIL  
THE CLOSE OF BUSINESS ON SATURDAY DECEMBER 30.  
CUP VOUCHER F APPLIES

ALL OTHER SEATS ARE ON GENERAL SALE. SUPPORTERS ARE  
ADVISED TO BOOK EARLY TO AVOID DISAPPOINTMENT

Please note that because of this match, our Nationwide Second Division fixture at Notts  
County has been postponed, with a new date yet to be arranged.

## TICKET OFFICE OPENING HOURS OVER THE HOLIDAY PERIOD

**Today**

Match day hours

**Wednesday December 27 and Thursday December 28**

10am - 4pm

**Friday December 29**

10am - 6pm

**Saturday December 30**

Match day hours (Luton v Wigan, kick-off 3pm)

**Sunday December 31 and Monday January 1, 2001**

Closed.

**Monday January 1 to Thursday January 4**

10am - 4pm

**Friday January 5**

10am - 6pm

# Ticket News



**Nationwide League - Division Two**



### Luton Town v Wigan

Saturday December 30, kick-off 3pm

Tickets are now on sale at normal match day prices.

Cash turnstiles will be available on the day



### SPECIAL OFFER - BUY TWO, GET ONE FREE

Supporters who purchase tickets for the home matches against Wigan on  
December 30 and Wycombe on January 12 will receive a free ticket for the  
home match with Reading on January 27



### AFC Bournemouth v Luton Town

Monday, January 1, 2001, kick-off 3pm

It will be pay on the day only for Luton supporters  
Admission: Adults £12, Junior and Senior Citizens £5



### AXA FA CUP, THIRD ROUND Luton Town v QPR

Saturday January 6, 2001, kick-off 3pm.

See page opposite for details.



### Luton Town v Wycombe Wdrs

Friday January 12, 2001, kick-off 7.45pm

Please note the change of date and kick-off time for this match,  
which will be shown live on Sky Television

Tickets are now on sale at normal match day prices.

Cash turnstiles will be available on the night



### Peterborough Utd v Luton Town

Saturday, January 20, 2001, kick-off 3pm

It will be pay on the day only for Luton supporters  
Terrace, standing: Adults £10, Junior and Senior Citizens £5

Seats: Adults £12, Junior and Senior Citizens £5



### Oldham Athletic v Luton Town

Tuesday, January 23, 2001, kick-off 7.45pm

It will be pay on the day only for Luton supporters at Boundary Park

Admission to the cantilever stand, behind the goal

Adults £15, Junior and Senior Citizens £8



### Luton Town Credit Card Hotline

By using our telephone hotline system you can order match tickets up to 48 hours prior to any game by ringing:

**01582 730748 24 HOURS A DAY**

Please have your credit card to hand when you make the call.

Up and Running!  
Luton Town's very own official website.

[www.lutontown.co.uk](http://www.lutontown.co.uk)

You can order tickets via email on:

[ticketoffice@lutontown.co.uk](mailto:ticketoffice@lutontown.co.uk)



# Executive Box Holders



**T.S.I. (U.K.) LTD.**  
TECHNICAL SERVICES TO INDUSTRY



**VAUXHALL**



**Bargad (Electrical) Ltd.**  
and N.E.D.



**Mick Connolly**

**Mr H. Khatab**



**G.P. Quorenton**  
(Ductwork)



## Kenilworth Suite Members

Paul Armitage	Woburn Media Ltd	SKF (UK) Ltd
Corporate Coaching	Critical Research	DBF Crosswinds Ltd
RW Harvey & Son	Dr David Siegler	Regal Litho Ltd
Mr Malcolm Eade	Mr J Siegler	Mr D Ryder
Mr Roger Eade	Datapace Ltd	Mr P Mitchell
Vangis UK Ltd	J P Hygeine Supplies	Travel Extras
	Filmergraphics	

To reserve an Executive Box or become a Kenilworth Suite member call Commercial on:

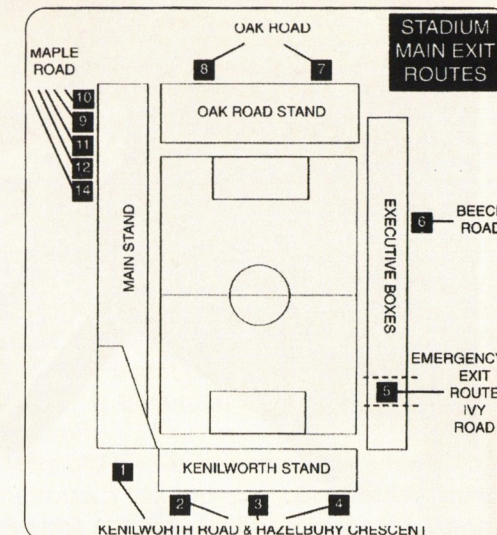
**01582 411622**

## EVACUATION PROCEDURE

IN THE event of any emergency in the stadium, Luton Town FC and the emergency services have agreed on an evacuation procedure which is designed to ensure the safe and controlled evacuation of the crowd, and to ensure their safe dispersal from the area, to allow the emergency services to carry out their tasks.

In the event of evacuation from all or part of the stadium, you will receive instructions over the public address system on how you should leave. In an evacuation of the main stand you will be instructed to use the pitch. Stewards will direct you to the nearest exit. It may be that your normal exit route will not be available. On leaving the stadium, you will find some roads closed to pedestrians, to enable swift and unobstructed access for the emergency services. Please leave the area of the ground as quickly as possible, by the route directed. Your co-operation will be most appreciated.

Geoff Lovell, Safety Manager.



*Find Freedom within.....*



*no other Health Club offers you more for less...  
.....with no need for contracts*

*Fitness First Luton, Skimpot Lane, Luton, Beds, LU14 0JB  
Tel: 01582 560200  
[www.fitnessfirst.co.uk](http://www.fitnessfirst.co.uk)*

**Up and Running!**  
Luton Town's very own official website.  
**[www.lutontown.co.uk](http://www.lutontown.co.uk)**





**Official Kit Suppliers of  
Luton Town Football Club**



## Commercial

### John Bailey

WE have been fortunate in attracting two match sponsors for today's game, successful local companies using the occasion to celebrate Christmas with their friends and clients, and we welcome all who are with the Ludlow Group and, for the first time ever we think, a company which wishes to be named by its website address, [www.findthatfilm.com](http://www.findthatfilm.com).

The Ludlow family firm is well known in Luton, and is Bedfordshire's only industrial and powder coating manufacturer and supplier. Also serving Luton is Frank Ludlow Ltd, a motor accident repair company, Premier Bodyshops, the Ludlow operation at Bilton Way providing an executive vehicle repair business, and Ludlow Hills, a small wine company selling to corporate and trade customers.

This afternoon's other match sponsors are also at the forefront of the latest business techniques. Supporters may not have heard of [www.findthatfilm.com](http://www.findthatfilm.com) but will be familiar

with another part of the same operation, Chartbusters Video, of Stockingstone Road, Luton.

The website proudly offers every single film currently available on DVD and video in this country. It also gives access to a massive range of up to 40,000 deleted titles, making it the UK's biggest video and DVD retailer. "If you can't find it there, you won't find it anywhere," is the proud boast of [www.findthatfilm.com](http://www.findthatfilm.com).

More old friends have come back today to be our match ball sponsors - Beechwood Shirts & Litho Ltd. Ron Hedley, a long-time Luton Town supporter, runs the company, which is based in High Wycombe. It specialises in producing embroidered and silk screen printed garments for work, leisure and sport, and a lot of its business is in helping companies and clubs to promote themselves through such things as tee-shirts. To find out more you can ring Ron on 01494 463653, or by e-mail to [rhedley@beechwoodshirts.co.uk](mailto:rhedley@beechwoodshirts.co.uk).

We thank all our sponsors, and hope they and their guests have a thoroughly enjoyable afternoon at Kenilworth Road.

*John Bailey*



Supplier of today's  
matchday music.

## Golden Gamble

IT WAS not only Happy Harry wearing the very big smile during the interval at our game against Colchester. The match result might not have been very pleasing, but Tom Arthurs has good cause to enjoy the considerable "consolation prize" he is clutching on behalf of himself and a few mates who are regular supporters.

They were the day's lucky Golden Gamble jackpot winners, and on their behalf Mr. Arthurs, from Wetherne Link, Leagrave, collected £470.

It was the lucky 13th prize paid out so far this season a total of £5,960, an average of £458 each.

Golden Gamble sellers are on duty in all parts of the ground again today. The lucky number is pulled out of the drum at half time, and the prize is paid out immediately.

Half the Golden Gamble income goes into the prize fund, and the other half to the club, so every ticket sold helps the Town.



To advertise in this matchday programme  
call the Commercial Department on:

**01582 411622**



# Kit Sponsors

NATHAN ABBEY	Paul Deason
GAVIN MCGOWAN	Luton Town Supporters Club
MATTHEW SPRING	Brian Hall
MARVIN JOHNSON	Space Display Systems
PETER HOLMES	G & S Ceramics
PAUL McLAREN	Elsie Clubb
STUART DOUGLAS	Les & Sue Miller
KENT KARLSEN	Icknield Windows Ltd
PETER THOMSON	The Bobbers Travel Club
LIAM GEORGE	WHOSH
STUART FRASER	David & Jonathan Siegler
ANDREW FOTIADIS	Sally Mayne & Family
MATTHEW TAYLOR	Mick Garbutt, Inside Media
MARK STEIN	Wendi Arnold & Graham Bates
ADAM LOCKE	Jeremy Caine of D.A.P. Consulting
FRIEDRICH BREITENFELDER	Regal Litho and Corporate Coaching
EMMERSON BOYCE	Michael Capp & Danny Clubb, Century Club Members
ANDRE SCARLETT	WHOSH
PETRI HELIN	Icknield Windows Ltd
JUDE STIRLING	Century Club
SCOTT WARD	G. Owen Ceramic Tiling Ltd
MARK OVENDALE	JEWSON Ltd
JULIAN WATTS	Les Miller, Miller & Company, Bedford
JAMES AYRES	E.C. Smith & Sons Ltd.
DEAN BRENNAN	B.D. Sanders
To Be Agreed	Luton Town Supporters Club, Milton Keynes
LIL FUCCILLO	Loyal Luton Supporters Club
BRUCE SEWELL	Century Club
JOHN MOORE	Ian Smith
JOHN CARROLL	Danny Clubb & Michael Capp, Century Club Members
LEE MANSELL	Danny Clubb & Michael Capp, Century Club Members
DEAN STANDEN	Available
TRESOR KANDOL	Terry Neale
BRIAN STEIN	Danny Clubb

If you are interested in sponsoring a players kit please contact the Commercial Department on 01582 411622.

## Goalscoring Head 2 Head

in the graphics below, Hatters' figure is to the left with the goals scored indicated in orange and POSH's to the right and scored in blue

# Stats&Facts

supplied by FIS. stats don't include Saturday's fixtures

## Where



## How



## Top League Scorers



Games Scored In  
Games Scored 1st Goal  
Games Scored 2 Goals  
Games Scored 3 Goals

## IMPORTANCE OF GOALS

(Taking out top scorers, how would results be affected)  
0 (0pts) Games Won -> Drawn 1 (2pts)  
0 (0pts) Games Won -> Lost 0 (0pts)  
1 (1pts) Games Drawn -> Lost 1 (1pts)  
1 Number of points gained 3

## SCORING SEQUENCES

Consecutive Games Scored  
2 Games 1  
3 Games 0  
2 games Maximum Scoring Run 2 games

## CONSECUTIVE GAMES WITHOUT SCORING

1 2 Games 2  
1 3 Games 2  
3 4 Games 1  
8 games Maximum Dry Spell 7 games

## Hatters' Results

LUTON TOWN GOALS	0	1	2	3	4	5	6	7
0	2	1						
1	2	3	2					
2	1	2						
3	3	1	1					
4	1	1						
5								
6								
7								

shows the number of results for each scoreline.  
eg. Luton have won 2 games 3-1

## POSH Results

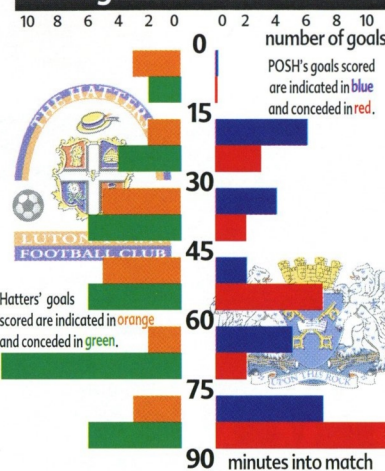
PETERBOROUGH GOALS	0	1	2	3	4	5	6	7
0	1	4	1	1				
1	2	2	1	1				
2	2	2	1					
3	2							
4	1							
5								
6								
7								

eg. Peterborough have won 4 games 1-0 and lost 1 game 1-4

## Seasonal Progress Comparison



## When goals scored & conceded



## Average time of Scoring / Conceding

90 mins	All Goals for	79 mins
100 mins	Home Goals For	56 mins
82 mins	Away Goals For	124 mins
50 mins	All Goals Against	73 mins
50 mins	Home Goals Against	90 mins
50 mins	Away Goals Against	62 mins

Table shows average time taken for both teams to score and concede goals in home and away games.

## Last 10 Games Form Guide Comparison

Hatters	: LLDWLSLLWL	F 11 A 19 Pts 8
POSH	: LSWLWLWLWD	F 12 A 10 Pts 14

Form Guide shows last 10 results. W = Won, L = Lost, S = Score Draw, D = No Score Draw. Most recent result to the right

## Peterborough's Last 10 Years - The Complete Record

	DIV	FAC	WC	LS	Gls	Ave Att
90/91	4	3	2	Culpin	10	5,200
91/92	3	2	QF	Charley	16	6,279
92/93	1	2	2	Adcock	16	8,030
93/94	1	3	4	Adcock	12	7,412
94/95	2	2	1	Charlery	16	5,055
95/96	2	4	2	Martindale	15	4,655
96/97	2	4	2	Houghton	8	5,297
97/98	3	3	2	Quinn	20	6,184
98/99	3	1	1	Grazioli	15	5,312
99/00	3	1	1	Clarke	15	6,568

It only takes a second to score a goal.  
And 17.3 seconds to celebrate it.

on digital  
0808 100 0101





# Today's Visitors

## Peterborough United



### Peterborough United F.C.

**Back row (left to right):** James Campbell, Daniel Murray, Simon Rea, Drewe Broughton, Peter Corder (Academy physiotherapist), Dan Connor, Mark Tyler, Tony Godden (Goalkeeping coach), Jon Cullen, Jason Lee, Ritchie Hanlon, Matthew Wicks.

**Middle row:** Gordon Ogbourne (Kit manager), Niall Inman, Dean Hooper, Richard Forsyth, David Farrell, Andy Edwards, Phil Chappell, David Oldfield, Richard Scott, Howard Forinton, Adam Drury, Paul Showler (Physiotherapist).

**Front row:** Grant Haley, Matthew Gill, Gareth Jelleyman, Andy Clarke, Barry Fry (Manager), Peter Boizot (Chairman), Wayne Turner (Assistant Manager), Francis Green, Tony Shields, Daniel French, Matthew Hann.



#### BARRY FRY - MANAGER

Barry Fry enjoyed success with each of the Football League clubs he has previously managed and has now finally returned to the promotion trail with Peterborough United. One

of football's most flamboyant and animated characters, Barry managed to weave his magic and achieve success after three disappointing previous seasons at London Road.

Barry's own football career started in 1960 when he was signed by Manchester United fol-

lowing a glittering run as a schoolboy including England representation and a goal scoring display in front of a Wembley full house against Scotland. After four years at Old Trafford without making it into the senior squad, spells followed with Bolton Wanderers, Luton Town and Leyton Orient before he dropped into non-league soccer with Gravesend and Northfleet. After brief return to Leyton Orient, Barry played with several non-league clubs including Romford, Bedford Town, Stevenage Borough and Dunstable Town, gaining his first managerial experience with the latter and steering them to promotion in his debut campaign as player-manager.

#### NO 1 - MARK TYLER - GOALKEEPER

DOB: 2/4/77

Norwich born, he came through the ranks at Posh and showed promise in his first full season, earning a call up to the England Under 20 squad prior to the Toulon Tournament where he played one game. He was the only Division Three player to represent the Nationwide League against Italy's Serie B three seasons ago.

#### NO 2 - DEAN HOOPER - DEFENCE

DOB: 13/4/71

Arrived at London Road after signing a two year deal for an undisclosed fee from Kingstonian on 6th August 1998, the club where he gained England Semi-Professional international honours. Started his career with Swindon Town and had a month loan stint at Posh in the 1995-96 season. Has proved to be a bargain buy with his tenacious and attacking qualities, signed a two year extension to his contract in June 1999.

#### NO 3 - ADAM DRURY - DEFENCE

DOB: 29/8/78

A cultured left back with precision in the tackle and one of the most consistent performers at London Road in recent years. Enjoyed yet another immaculate season but was forced to leave the hallowed Wembley turf after suffering concussion in the first half of the Play-off final. Came to prominence three seasons ago, pocketing the 'Player of the Year' award after some stunning displays.

#### NO 4 - RICHARD SCOTT - MIDFIELD

DOB: 29/9/74

A controlled and dominant player who spiced up the Posh midfield following his arrival from Shrewsbury Town during in the 1998-99 close season following a couple of impressive campaigns at the Gay Meadow. Played out the final weeks of last season in the right back spot in place of injured Dean Hooper. Began his career with Birmingham City, making 12 senior appearances before moving to Shrewsbury. With a habit of scoring vital goals he has a tireless work rate and is a real asset with his complete style of play.



## Regal Litho

352 Selbourne Road  
Luton Beds LU4 8NU  
Tel: 01582 493332  
Fax: 01582 560731  
ISDN: 01582 560854  
Email: [regallithold90@atlas.co.uk](mailto:regallithold90@atlas.co.uk)  
[www.regallitho.co.uk](http://www.regallitho.co.uk)

- ◆ Digital Artwork
- ◆ Conventional Repro
- ◆ Platemaking
- ◆ Colour Printing
- ◆ Finishing
- ◆ Distribution
- ◆ Stationery
- ◆ Point of Sale
- ◆ Brochures
- ◆ Commercial Print
- ◆ Magazine Publishing

*The Publishers & Printers of:*

**Scale**  
**Aircraft**  
**Modelling**

**Scale**  
**Aircraft**  
**Monographs**

For all the latest news, views and interviews call

**CLUBCALL - 09068 121123**

(Calls charged at 60p per minute at all times)

Up and Running!  
Luton Town's very own official website.

**[www.lutontown.co.uk](http://www.lutontown.co.uk)**



**NO 5 - SIMON REA - DEFENCE**

DOB: 20/09/76

Initially bought in as cover in both defensive and attacking areas, he seized proved his worth at the centre of defence from March 2000 when Matthew Wicks was sidelined for 10 weeks. Marked the end of the campaign with a faultless display on the hallowed Wembley turf, and is favourite to play along side skipper Andy Edwards this time around.

**NO 6 - ANDY EDWARDS - DEFENCE**

DOB: 13/9/71

Club captain labelled 'Mr. Consistency' by Barry Fry last season after making 52 faultless appearances in the heart of the back line. Skipped the side at Wembley and led by example throughout a campaign that saw Posh tighten up in defence. Has been a steady rock since arriving at London Road from Birmingham City during the 1996-97 season when Posh were leaking goals at an alarming rate.

**NO 7 - DAVID FARRELL - MIDFIELD**

DOB: 11/11/71

Fired Posh into the Play-off final after claiming his first hat-trick for the club in the return semi-final meeting with Barnet at London Road. Can turn a game with a flash of brilliance on his day, and is able to play on either flank where his blistering pace and abundance of tricks terrorise opposing defenders. Was in sparkling form for the majority of last season when he made 36 appearances and scored some magnificent solo goals.

**NO 8 - DAVID OLDFIELD - MIDFIELD**

DOB: 30/05/68

Australia-born player who started his career with Luton Town before joining Manchester City for £600,000 in 1989. He made a £150,000 move to Leicester City the following year before re-joining Luton for the same fee in 1995. A move to Stoke City on a free transfer in the summer of 1998 followed, and he was released by the Potters to join Posh on deadline day, 23rd March 2000, signing a two and a half year contract and making his debut in a 1-1 draw away to leaders Rotherham United two days later.

**NO 9 - ANDY CLARKE - STRIKER**

DOB: 22/7/67

Scored the only goal in Peterborough United's 1-0 Wembley victory over Darlington in last season's Play-off final. A long time target of Barry Fry who finally landed his man in May 1999 from Premiership Wimbledon, Andy finished the campaign as Posh's top scorer with 17 League strikes in 38 appearances. He started his professional career under Fry with the then non-league Barnet. Gained Conference 'Player of the Year' and England non-league honours before joining the Dons for £350,000 in the 1991-92 season making 227 senior appearances and scoring 23 goals. Last term he won the Posh 'Player of The Season' accolade by a landslide.

**NO 10 - JASON LEE - STRIKER**

DOB: 09/05/71

Has played more than 300 senior games in a career spanning 10 different clubs, his most successful spells coming at Lincoln City (21 goals in 76 league games) and Nottingham Forest (14 goals in 76 league appearances). Has given Posh a much needed aerial threat and his decisive goals in crunch games helped the team gain promotion.

**NO 11 - JON CULLEN - MIDFIELD**

DOB: 10/01/73

Experienced midfield operator signed for a small fee from Sheffield United at the end of February 2000 after a frustrating couple of years at Bramhall Lane, following a big money move from Hartlepool United when first team opportunities never materialised. Began his career with Doncaster Rovers and then had a spell in non-league soccer with Morpeth Town before returning to the league scene with Hartlepool.

**NO 12 - MATTHEW GILL - MIDFIELD**

DOB: 08/11/80

A regular starter until November 1998 when knee and ankle ligament injury problems saw him lose his place. Skipped the Under 18s in their 1997-98 Times FA Youth Cup run and featured in Combination Reserve team action in a season where he made over 40 appearances in all competitions at three different levels. Comfortable in possession with an excellent range of passing and can play anywhere across the park including centre back.

**NO 13 - DANIEL CONNOR - GOALKEEPER**

DOB: 31/1/81

Injury to Mark Tyler and Bart Griemink catapulted him into the first team for two consecutive matches the season before last. Will play the 2000-2001 campaign as the club's number two goalkeeper following Griemink's move to Swindon Town.

**NO 14 - FRANCIS GREEN - STRIKER**

DOB: 25/4/80

Growing in confidence with every season he showed more glimpses of exciting potential in 19 league outings last term. A pacy and powerful striker who forced his way into the Posh reckoning towards the end of season 1997-98 and is prepared to bide his time for a regular

start in the side. Another to have joined Posh from the non-league scene.

**NO 15 - DANIEL MURRAY - DEFENCE**

DOB: 16/05/82

Was handed his first taste of senior action last season at the tender age of 17, a week after pledging his London Road future by signing a five-year contract. Hailed by Barry Fry as 'the best player on the pitch' at Macclesfield Town in March 2000 where he first donned a senior shirt in place of the injured skipper Andy Edwards.

**NO 17 - LEON MCKENZIE - STRIKER**

DOB: 17/05/78

Lightening quick striker who was captured by Fry for an undisclosed fee on a four-year deal from Crystal Palace in October 2000.

Made his name at London Road during two highly successful loan spells in August and November 1998 where he netted eight times in 15 appearances. Two of those strikes were on his debut outing when he inspired Posh to 3-1 victory over Cardiff City at Ninian Park.

**THE CANE INDUSTRIES (UK) LTD  
QUALITY CANE FURNITURE**

Daytona



Toronto



San Francisco



Wyoming

Established 1980 SHOWROOM OPEN

**2-B LAPORTE WAY,  
LUTON, BEDS LU4 8RJ**

Tel: 01582 727123 Fax: 01582 727233

**www.superkarts.co.uk**

**SUPER KARTS**  
Indoor Karting Centre

For further information and bookings telephone **01462 485959**

2 Pixmore Avenue  
Letchworth  
Herts SG6 1JS

Arrive and Drive Group Events  
Karting Clubs  
Birthday Parties  
Corporate Events  
Open Events

**Up and Running!**  
Luton Town's very own official website.

**www.lutontown.co.uk**

**Treat yourself and your friends to an Executive Box.**  
Call the Commercial Department on:

**01582 411622**





**Premierimage.co.uk**

**THE SOCCER STUFF & NONSENSE STORE**

Aerial & Fisheye photos of all British  
Stadiums... Paintings... Cakes...

Mousemats... Jigsaws...

Garden Kit Gnomes... House nameplates...  
& much much more

For a FREE gift catalogue

**Call: 0208 461 4214**

or write to: Unit 12  
157-159 Beaufield Rd  
London SE6 1PE



**R. J. BLOW &  
C O M P A N Y**

*THE FRIENDLY ACCOUNTANTS*

*Book-Keeping  
Taxation and Wages etc.*



24 GUILDFORD STREET  
LUTON  
BEDS, LU1 2NR



Tel: (01582) 738792

Fax: (01582) 423347

## There's a brand new team at the heart of English football.

Football and the Government  
have teamed up in a new  
partnership to provide new  
lifeblood for the grass roots  
of English football – pumping  
financial support into the game  
that's so close to the hearts of  
so many. From parks pitches  
to professional football clubs,  
we'll be there to help everyone who  
loves football, providing a  
new generation of facilities for all



by pooling resources from  
The FA Premier League, The  
Football Association, Sport  
England and the Government  
into a single substantial fund  
for redistribution throughout  
the game. Together, we intend  
to ensure that football  
enjoys a healthy  
future for many  
generations to come.



**FootballFoundation**

football's biggest supporter

1 Waterhouse Square, 138-142 Holborn, London EC1N 2ST.

T: (020) 7832 0100 F: (020) 7832 0119

E: enquiries@footballfoundation.org.uk

W: www.footballfoundation.org.uk



## FANS ON THE MOVE

### Visitors to Luton

Notts Co	.606
Peterborough (WC)	.360
Bournemouth	.539
Northampton	.1,240
Walsall	.313
Swindon	.531
Sunderland (WC)	.1,366
Millwall	.1,389
Brentford	.695
Wrexham	.352
Bristol City	.1,396
Rushden (FAC)	.1,736
Colchester	.309

### Away-day Hatters

Wigan	.640
Wycombe	.1,266
Rotherham	.603
Peterborough (WC)	.908
Swansea	.285
Sunderland (WC)	.332
Bristol Rovers	.333
Cambridge	.1,210
Oxford	.817
Bury	.419
Port Vale	.420
Stoke	.499
Peterborough	.290
Darlington	.527

Total: .10,832

.8,529

Average: .833

.609

## Town Teaser

WE OFFER another little prize this  
afternoon in our popular Town  
Trivia quiz, when one lucky support-  
er will be given the chance to win.  
Today's managers, Barry Fry and Lil  
Fuccillo, are old friends in football,  
and have worked together in the  
past, including at Peterborough.  
Today's Town Teaser is about their  
careers.

Tuesday's question was about our  
goal-scorer at Darlington in a cup-  
tie in 1975, and the answer was  
Ronnie Fletcher.

The PA announcer will pose another  
question this afternoon, so listen  
out for your chance to have a go,  
and if you don't already know the  
answer, you can find it elsewhere in  
this magazine.

## Today's Question

Which was the big-city  
Midlands club where Barry  
Fry was manager, with Lil  
Fuccillo as his coach?

If you've been turned down for a mortgage  
for one of these reasons, it could be you're  
talking to the wrong people.

you have no wage slips

you work for yourself but don't yet have accounts

your salary is made up of commission and bonuses

you're a company director

you're self employed or a contractor



**Call 0845 950 1500**

(local rate)

now quoting code AFAS0

or visit our website @ [www.ucbhomeloans.co.uk](http://www.ucbhomeloans.co.uk)

WRITTEN QUOTATIONS AVAILABLE ON REQUEST.  
Security will be required on property.

YOUR HOME IS AT RISK IF YOU DO NOT KEEP UP REPAYMENTS ON A MORTGAGE OR OTHER LOAN SECURED ON IT.

UCB Home Loans Corporation Limited is a wholly owned subsidiary of Nationwide Building Society.  
UCB Home Loans Corporation Limited. Regd. No 1063539. Registered in England. Registered Office: 36 Sutton Court Road,  
Sutton, Surrey SM1 4TE. UCB Home Loans operates within the guidelines of The Mortgage Code.



The specialist mortgage lender  
of Nationwide Building Society

For all the latest news, views and interviews call

**CLUBCALL - 09068 121123**

(Calls charged at 60p per minute at all times)



## Christmas Greetings From Luton Town FC

Worries about football results were put into perspective when the Town players made their annual Christmas visit to the children's ward at Luton and Dunstable Hospital to distribute presents from the club.

Gareth Owen was there with his camera, to catch a flavour of an occasion which brought a lot of happiness to the youngsters in Ward 24.

The children were all remarkably cheerful in face of adversity, and those in the pictures are Scott Penney, Isan Khan, Amy George, Hayley Spokes, baby Bess Waggott and Donna Evans.

Our thanks go to the players, who gave their time and their usual whole-hearted support, for a visit which was much appreciated by patients, parents and staff alike.





# Entire system

Like a finely balanced ecosystem, SKF offers you a complementary range of products and services.

- Bearings
- Seals
- Housings
- Lubricants
- Maintenance tools
- Condition monitoring solutions
- Engineering advisory services
- Product refurbishment



# SKF

Helping your world run smoother

Tel: 01582 496436  
www.skf.co.uk



## Matchday Hospitality & Sponsorships

### SPECIAL OCCASIONS & CELEBRATIONS

For special occasions and celebrations, why not book a table in the The Joe Payne Sponsor Lounge and treat yourself and your party to a memorable day out with Luton Town Football Club.

Your day kicks off with a wine reception, followed by a tour of the dressing room area and photographs on the football pitch.

Also included is a four course meal plus a pre and post match complimentary bar, half - time refreshments, a match day programme and ticket in the New Stand and a opportunity to meet the players after the match.



Joe Payne Sponsors Lounge

### COMMERCIAL MASCOT

Give your child the memory of a lifetime. Every young supporters dream is to lead their team out on to the pitch. With our commercial mascot package, you can turn your child's dreams into reality. This incredible 3 person package includes:

- 1 home or away replica kit
- Tour of the Player's Dressing Room area
  - Meet the players
- Pre-match warm-up with the players
- Leading the team out on the pitch
  - Four Course meal
- Complimentary pre and post match drinks
- A photograph and recognition in the match day programme
  - Seats in the Director's Box
  - Complimentary match day programmes
- Certificate commemorating the day, signed by the Manager and photographs of the occasion.

### MATCHBALL SPONSOR

Match Ball Sponsorships provide supporters and small businesses a unique way to be a part of the ever growing world of football sponsorship. This four person package includes:

- Signed Match Ball
- Name on match day programme cover
- Write up in match day programme
- Pre-match announcement
- Tour of the Player's Dressing Room area
  - Four Course meal
- Complimentary pre and post match drinks
  - Seats in the Director's Box
- Complimentary match day programmes
- Certificate commemorating the day, signed by the Manager and photographs of the occasion.

For more information on any of these or to make reservations contact the Commercial Department on 01582 411622.

MATCH BALL SPONSORSHIP	£395 for 4 people
JOE PAYNE LOUNGE	£70 per person
COMMERCIAL MASCOT	£250 (2 adults & 2 children)

ALL PRICES INCLUDE VAT

For the latest ticket information call  
the Luton Ticket Office on:

**01582 416976**





# Blast from the Past

Roger Wash

## Brave Hatters fall at the final fence

As Christmas 1974 approached, with the Town back in the old Division One for the first time since 1960, instant relegation seemed a foregone certainty. In the days of only two points for a win only nine had been gleaned from 21 games and the Hatters seemed destined for a lowest ever tally in the top flight.

Manager Harry Haslam had tried many combinations to try and bring about a winning formula, to little avail, but had recently blooded teenagers Steve Buckley and Paul Futcher into the side and their youthful enthusiasm certainly raised a few eyebrows amongst the watching press corps.

Paul Futcher had been signed from Chester during the close season, along with his twin brother Ron, for a then record fee for a teenager while Buckley had been signed for rather less money from non-league Burton Albion. Both players were in the side for the home clash with eventual champions Derby on 21st December 1974 and acquitted themselves well as the game went into its final ten minutes scoreless.

Recent signing from Liverpool, Peter Spiring, chased a ball into the Derby box and was upended by Colin Todd. Jim Ryan netted the resultant spot-kick and suddenly the gloom lifted a little from Kenilworth Road. Spiring broke his toe in the clash with Todd and another teenager came off the bench as substitute for his debut. Welcome, Lil Fuccillo to the Football League!

Fuccillo did not take over from Spiring for the Boxing Day game at league leaders Ipswich but instead Haslam chose the marginally more experienced Ron Futcher to partner Jim Husband up front. As expected the Town came under incessant pressure in this top versus bottom clash but with back passes galore and a ten man defence Graham Horn in the

Luton goal was well protected.

As so often happens in this type of game the Town broke out of defence in the final minute and a long cross from John Aston was met with a lovely header from Ron Futcher and with it both points. The locals were not happy at the final whistle and lobbed hundreds of cushions on to the pitch, more in frustration at their own team's shortcomings rather than the mean spirited tactics of the Town.

Two days later Ron Futcher followed up his strike at Ipswich with an amazing hat-trick on his home debut against Wolves with his third coming five minutes from time and clinching a valuable 3-2 victory making it three wins on the trot.

A point at home to fellow strugglers, Chelsea, in early January finally pushed the Town off bottom spot and now the light at the end of the tunnel could be spotted but there was still a lot of hard work to do if relegation was to be avoided. Only one win bonus was picked up from the next seven games with the Hatters desperately unlucky not to make it more as single goal defeats and draws that should have been victories seeming to indicate that we were not destined to clear the drop zone.

Then, just as we had given up hope, came the stroke of luck that gave us fresh impetus in the relegation battle. The game at Carlisle seemed to be petering out to a dull 1-1 draw when, with two minutes to go, Ron Futcher from way out on the right wing floated over a long cross which completely deceived ex-Hatter, Alan Ross, in the Carlisle goal, and went into the net off the far post.

Fired up by this lucky win the players could not wait for the visit of the mighty Leeds the following Saturday. Leeds, the previous season's champions, had fought their way through to the European Cup final where they were due to



*Luton goalkeeper, Keith Barber, gathers the ball cleanly during the 2-5 defeat at Wolves over Easter 1975.*

play Bayern Munich. Before this, however, they had to travel to little Luton, be handed two points on a plate, then saunter back to Yorkshire.

What they did not expect was an absolute bombardment that left them 0-2 down after only twelve minutes much to the delight of the packed Kenilworth Road crowd of 23,048.

Although Leeds managed to get back into their stride a little, they could not find their way past a resolute Luton defence and their consolation goal, from Joe Jordan, came far too late to set the panic bells ringing.

Arsenal were steamrollered at Kenilworth Road three days later in front of another noisy, appreciative crowd and the 2-0 victory signalled a run of three wins in eleven days leaving the relegation issue wide open again. In this strange season just as you pulled yourself up by the bootstraps then you were knocked back again, and so it proved with three defeats in a row over Easter, traditionally a footballing graveyard for the Town.

We all travelled to Derby on Easter Saturday fully expecting a continuance of our winning run or a point at the very least. We were not, however, prepared for a 0-5 thrashing in a totally demoralising performance. Roger Davies, the Ram's lanky centre-forward, scored all five and missed as many again in what could easily have been a record defeat. I do

not recall the Derby goalkeeper having a save to make such was the one-sided nature of the contest.

Worse was to follow with a 2-1 lead at Wolves two days later turning into a 2-5 defeat and a 1-2 reversal at Tottenham the following Saturday with the Spurs winner just before the end coming from a miles offside Alfie Conn. Paul Futcher also thought it was offside and was dismissed for making his feelings known to the referee in rather colourful language apparently!

Just as the Town were at their lowest ebb came another twist to this topsy-turvy season in the shape of three straight victories. Firstly championship chasing Everton were seen off 2-1 at Kenilworth Road followed up with a 3-0 home victory over Leicester which featured that often repeated 30 yard own goal from Keith Weller. A 4-1 win at Birmingham on the penultimate Saturday of the season set up a grandstand finish with the Town needing to beat Manchester City at Kenilworth Road at the same time hoping that Tottenham would fail to pick up anything from their final two games.

In a brave final flurry the Town could not manage to find a winner in a 1-1 draw with City but as Spurs had lost to Arsenal it all hinged on the North London side taking one point from their final home game to be played a couple of days after the normal season had ended.

Their opponents were to be Leeds and a good many Luton supporters travelled to White Hart Lane fully convinced that a poor Spurs side would be no match for the European Cup finalists.

Over 25 years on I still cannot fathom how Spurs overwhelmed Leeds 4-2 leaving the Town relegated after one season back in the top flight but perhaps one day the full story will come out!

*Roger Wash*

For all the latest news, views and interviews call

**CLUBCALL - 09068 121123**

(Calls charged at 60p per minute at all times)

Up and Running!

Luton Town's very own official website.

**www.lutontown.co.uk**





The Dunstable Gazette

The Luton News



## ntl: NTL Schools Visit Project

Yes 20,000 is the incredible number of local schoolchildren who have received free coaching from the Hatters since our School Visits project began in January 1999, almost two years ago. During that time we have visited over 100 individual schools covering over 70,000 miles throughout Beds, Herts and Bucks. Our total number of visits has just passed the 650 mark. All in all that's an awful lot of footballs that have been kicked, thrown, headed and occasionally passed by an awful lot of children - all with Luton Town Football Club.

Much of the schemes popularity goes down to the quality of our full time Football Development Officers, Ben Smith and Simon King and the coaching they deliver. We doubt there are two more in demand coaches than these two at any Club in the Country - shame they can't play!

And of course what can we say about our sponsors NTL. Well quite simply guys - we could not have done it without you, your support has been fantastic. Special mention should go to both Richard Pettifer and Andy Jones in particular for their support. As a Club having NTL involved with our Community scheme has been of immeasurable importance - without them this scheme would not exist.

Finally, thanks to all those schools who have taken part we hope you have enjoyed the addition to your curriculum. To find out more about the Schools Visit Project simply ring the Club on 01582 411622.



Ardley Hill Lower, Dunstable

Thomas Jefferson Lower, Lidlington

Pirton Hill Juniors, Luton

Downside Lower, Dunstable

Etonbury Middle, Arlesey

Brooklands Middle, Leighton Buzzard

Puttridge Junior, Luton

Linslade Lower, Leighton Buzzard

Henlow Middle, Henlow

Beech Hill Infants, Luton

Cedars High, Leighton Buzzard

Whitehill Junior, Hitchin

St Mary, Aôs Lower, Baldock

Wenlock Junior, Luton

Templefields Lower, Flitwick

All Saints Lower, Clifton

Overstone Combined, Wing

Langford Lower, Langford

Cheynes Infants, Luton

Leagrave Primary, Luton

Shefford Lower, Shefford

Studham Lower, Studham

Hart Hill Infants, Luton

Downside Juniors, Luton

Surrey Street junior Luton

St Georges Lower, Toddington

Ramsey Lower, Barton

Tennyson Road Junior, Luton

Wigmore Primary, Luton

Westoning Lower, Westoning

Cheynes Junior, Luton

The Firs Lower, Amptill

Dallow Junior, Luton

St Marys Lower, Stotfold

Beauesert Lower, Leighton Buzzard

Mary Bassett Lower, Leighton Buzzard

Heathfields Lower, Caddington

Moorfields Prep, Luton

Willowfields Lower, Caddington

Pinchmill Lower, Bedford

Somerles Junior, Luton

Emerson valley, Milton Keynes

Leedon Lower, Leighton Buzzard

Harpenden Prep, Harpenden

Edlesborough Combined

Ramridge Juniors, Luton

St Josephs Junior, Luton

Oughtonhead Junior, Hitchin

Ashcroft high, Luton

Bushmead Primary, Luton

Gilbert Inglefield, Leighton Buzzard

Sundon Park Junior, Luton

Icknield Junior, Luton

Sacred Heart Junior, Luton

Stopsley Junior, Luton

Icknield Infants, Luton

## Community & Schools Football Programme



Sacred Heart Infants, Luton

Oughtonhead Infants, Hitchin

Stopsley Infants, Luton

Thomas Whitehead, Houghton Regis

Leighton Middle, Leighton Buzzard

Sreetfield Middle, Dunstable

St Martin de Porres Junior, Luton

Robert Bruce Middle, Bedford

Ashton St Peter, Dunstable

Harlington Lower, Harlington

Hawthorne Lower, Houghton Regis

Whipperley Infants, Luton

Doverly Down, Leighton Buzzard

Warden Hill Infants, Luton

Bramingham Primary, Luton

Clipstone Brook, Leighton Buzzard

Southfields Lower, Houghton Regis

Ashton Middle, Dunstable

Warden Hill Juniors, Luton

St Margarets Junior, Luton

Hadrian Lower, Dunstable

St Georges Lower, Leighton Buzzard

Beechwood junior, Luton

Brewers Hill Middle, Dunstable

Redborne Upper, Amptill

Shefford Middle, Shefford

Maulden Lower, Maulden

Totternhoe Lower, Totternhoe

St Martin de Porres Infant, Luton

Five Oaks Middle, Caddington

Ferrars Junior, Luton

Southcote Lower, Leighton Buzzard

Lancot Lower, Dunstable

Wood End Junior, Harpenden

Chantry Infants, Luton

Cottesloe Lower, Cottesloe

Slip End Junior, Caddington

Pirton Hill Infants, Luton

Cottesloe Upper, Cottesloe

Foxdell Junior, Luton

Arnold Middle, Barton

Church End Lower, Barton

Cardinal Newman, Luton

Kings Houghton Middle, Houghton Regis

Northfields Upper, Dunstable

Maidenhall Junior, Luton

Greenfields Lower, Dunstable

Denbigh Junior, Luton

Flitwick Lower, Flitwick

Tithe Farm Lower, Houghton Regis

William Ransome, Hitchin

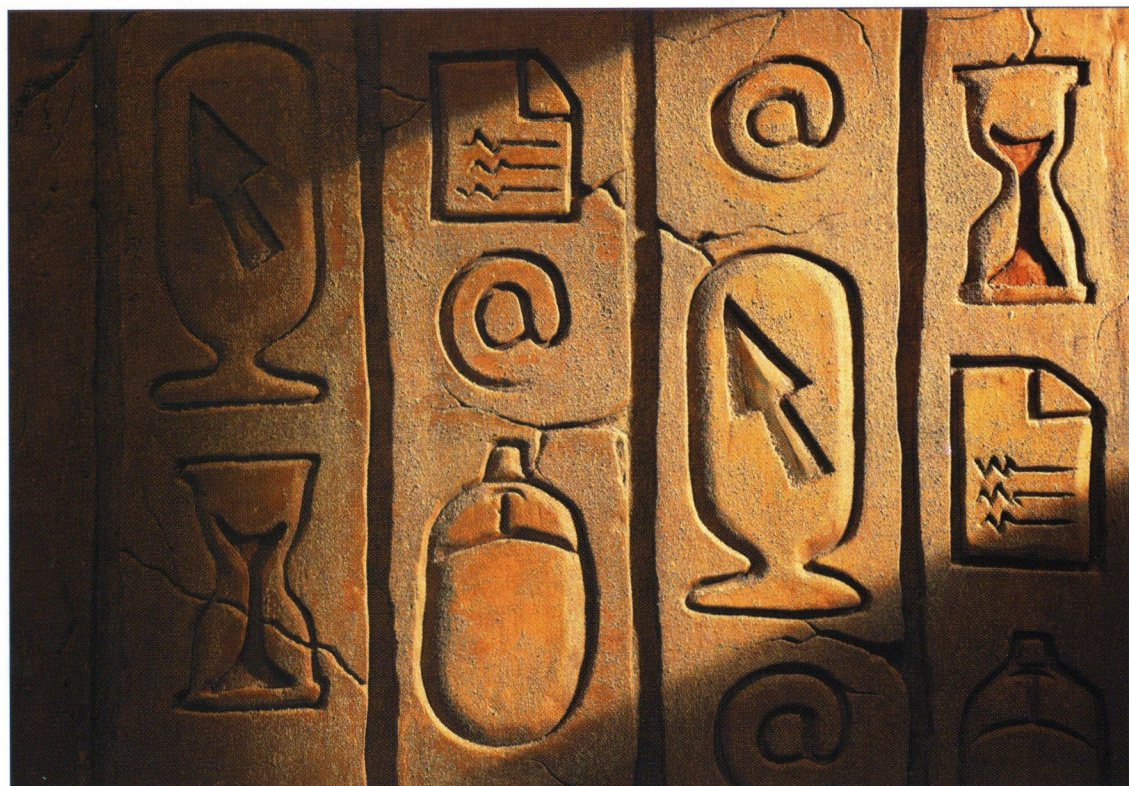
Clophill Lower, Amptill

Woodlands Middle, Flitwick



INTERNET BANKING

 **Nationwide**



## If your Internet current account over charges for overdrafts - it's archaic

Discover a Nationwide Internet current account and you'll never be cursed with bank charges again.

We don't charge for day to day services, for arranging an overdraft, or to use 500,000 cash machines worldwide. We don't over charge for overdrafts and you'll earn ten times more interest on credit balances than you'll get from most of the banks. You can even choose the way you bank with us - from Internet, branch and telephone banking.

So, leave your bank dead and buried, and get in touch today.

**That's why it pays to decide Nationwide**

 [www.nationwide.co.uk](http://www.nationwide.co.uk) |  0500 30 20 10 |  or just call in

Banking | Credit Card | Insurance | Investments | Loans | Mortgages | Pensions | Savings

YOU MUST BE 16 OR OVER TO APPLY FOR A FLEXACCOUNT (NATIONWIDE'S CURRENT ACCOUNT). THE OPENING OF A FLEXACCOUNT AND THE PROVISION OF CERTAIN FACILITIES IS SUBJECT TO AN APPRAISAL OF YOUR FINANCIAL STANDING. OVERDRAFTS, DEBIT CARDS AND CHEQUE GUARANTEE CARDS ARE ONLY AVAILABLE TO THOSE AGED 18 OR OVER. OVERDRAFTS ARE REPAYABLE ON DEMAND. FEES MAY BE PAYABLE FOR OVERDRAFTS NOT PREVIOUSLY AGREED BY US. WRITTEN QUOTATIONS FOR CREDIT FACILITIES ARE AVAILABLE ON REQUEST. NATIONWIDE WILL NOT CHARGE MEMBERS FOR USING CASH MACHINES BUT THE MACHINE PROVIDER MAY MAKE CHARGES OVER WHICH WE HAVE NO CONTROL. YOUR PC MUST MEET A MINIMUM SPECIFICATION FOR ONLINE BANKING. NATIONWIDE IS A MEMBER OF THE BUILDING SOCIETIES OMBUDSMAN SCHEME, INVESTOR PROTECTION SCHEME AND SUBSCRIBES TO THE BANKING AND MORTGAGE CODES. CALLS MAY BE RECORDED. RATES AND INFORMATION CORRECT AT 1/10/2000.

The Junior Hatters are sponsored by London-Luton Airport

**LONDON LUTON**  
AIRPORT  
[www.london-luton.com](http://www.london-luton.com)

# Junior Hatters



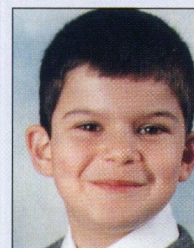
IT WAS a birthday to remember for Sinead Doherty, pictured with the skippers and match officials before the game against Colchester, when she was the Junior Hatters mascot. Sinead, from The Close, Limbury, was 13 on the day of the game.

THE Junior Hatters began the Christmas football festivities with a trip to Reading, for the Town's match there on Saturday, and will open the New Year with another visit, to our old friends at Bournemouth, on New Year's Day.

We had some vacancies for the trip when we went to press, and if you want to go please check as soon as possible with the club shop in Kenilworth Road. As usual, it has to be first come, first served. The price is £10 for Junior Hatters and £13 for guests, and as that includes a match ticket it represents very good value. It is possible thanks to the generosity of our sponsors, London Luton Airport, and we would like to take this opportunity to express our thanks to them.

And, of course, we wish a very happy Christmas and a successful new year to all Luton Town supporters, young and old alike, and especially to Lil Fuccillo and the players.

## Today's Mascot



NINE -year-old Fabio Buonpane usually sits in the main stand to shout for the Town, but today he has a very important part to play in the afternoon's events.

He has been chosen to be the Junior Hatters mascot, which means he meets the team before kick-off, and joins them on the pitch for the pre-match rituals, including the warm-up and kick-about.

He hopes that he will meet Stuart Douglas, because the striker, currently being out action through injury, is Fabio's favourite player.

A pupil at St. Joseph's School, Fabio comes to games with his mum and granddad, and as well as football and being a Junior Hatter he enjoys Pokemon card trading, WWF wrestling, cycling and walking.

If you would like to join the Junior Hatters, call the Club Shop on:  
**01582 411622**



# Hatters Web Shop Is Now Open @ [www.lutontown.co.uk](http://www.lutontown.co.uk)



powered by  
Instant Business Ltd  
[www.ibltd.com](http://www.ibltd.com)



## KIDS AT KENILWORTH

SPONSORED BY

**SKF**

**Sainsbury's**

# Hatters on Card

Alan Robinson

OVER the years Luton have figured in many thrilling Boxing Day matches, but one particular encounter has passed into Hatters folklore. Few who were at Vicarage Road for the local derby on this day in 1979 will forget how defender Kirk Stephens turned up in the opposition's goal area to head a last-minute winner for a memorable Town victory.

This popular full-back went on to figure in several series of stickers following Luton's promotion to Division One, including this offering from Panini a couple of seasons later.

David Pleat went back to his old club, Nuneaton, in 1978 to sign the Coventry-born defender who was then 23. He made his league bow in the opening fixture of the 1978-79 campaign against Oldham at Kenilworth Road. Six others were also making their debuts for the Town, who romped home 6-1 after Oldham had been ahead at the interval. Unfortunately, after a couple more outings, injury kept Stephens out of the side until January. By this time Luton's bright start had faded, and his tigerish tackling and gritty, committed displays were an important feature as the club eventually avoided relegation. These qualities, combined with a genuine rapport with the fans, made Stephens a popular personality during his time at Luton. His shock of curly hair and wide grin also helped to endear him to the Kenilworth Road faithful. That goal at Watford, his first in the league, also helped, of course!

During that and the following season Stephens was virtually ever-present in the No. 2 jersey as Town narrowly missed promotion each time. But they made no mistake the following year, and Stephens made the transition to the First Division just as easily as when he stepped up from non-

league football.

One of the early games that season was at Liverpool, where he helped the Town gain a point in a thrilling 3-3 draw. He was one of four goalkeepers beaten that afternoon. Towards the end of the first half Jake Findlay went off injured and Stephens replaced him. There were no goalkeeper subs in those days, and the Kop, then a swaying mass of tightly-packed standing fans, took Stephens to their hearts, singing "Shakin Stephens" to him before he stood aside for Mal

Donaghy to take over in the second half.

On the last day of that season Stephens again put his battling determination into the unforgettable match at Maine Road when Raddy Antic scored four minutes from time to save the Town from relegation and send Manchester City down instead.

Stephens missed only a couple of league games in the following season, but it was to be his last at Kenilworth Road. Many fans were puzzled and upset when he was transferred to Coventry. However, he welcomed the chance to join his home town club and to be closer to the family business in which he was heavily involved.

What is certain is that Luton have rarely had such a loyal and hard-working player, who always gave 100 per cent in every one of the 248 games he played for the club. He played regularly for Coventry in his first season there, but made only two appearances the season after, and retired in 1986.

These stickers are still quite readily available for just a few pence each, and most of the Town's first team squad from that era are featured, including Trevor Aylott, Frankie Bunn, Paul Elliott, Ricky Hill, Brian Horton, Les Sealey and Brian Stein.

*Alan Robinson*



Up and Running!  
Luton Town's very own official website.  
[www.lutontown.co.uk](http://www.lutontown.co.uk)



Last Season  
The Nationwide Football  
League saw an Increase in  
Attendance of 13.5%;  
Why...?



The authority...

The Quality of the Football

Image by Empics 0115 840 444, Digital Artwork by SentryBox 01895 251 220



# The Best in post-match reports

*The Luton News The Dunstable Gazette*



ON SALE  
EVERY WEDNESDAY  
STILL ONLY 25P

CT&C-PROJ-053-W34

## Hatters Chatter Ladies Football

ALWAYS keen on supporting the local community, especially in sport, the Town have agreed to go into partnership with another football club - the Luton Belles, a thriving club for soccer-mad girls who are winning friends and trophies to prove that it is not only a man's game.

They started three years ago, when a small group of girls aged 10 and 11 began training with what is now the AFC Luton boys under-13s.

Dave Baker, now general manager of the Belles, said: "Their natural ball skills and ability was obvious even at that stage, but there was no follow-up club for them to join and play competitively. My own daughter, Nikki, was in this position, so we decided to set up our own club.

"I am a lifelong Luton Town fan, and this is reflected in our club, with the colours being orange, blue and white, and some of our teams carrying the Hatters name. We already have links with the club as our under-13 boys squad is sponsored by the Century Club.

"The partnership with Luton Town is an exciting development for the Belles, and another step towards our ambition of rising to the National League. There is no reason why it cannot be achieved - the girls are talented enough throughout the age groups, and their dedication, and the support of their parents, has been first class."

The Belles' achievements in three short years have been remarkable. They entered the Bedfordshire Girls League in 1997, and carried off the under-12 and under-14 league championships and the league cup. The following year three squads were entered in the larger and more competitive

Milton Keynes League and the under-14s did the league and cup double, with younger teams picking up medals in four other competitions.

Within 12 months the Belles were league and cup double winners in three age groups, with the under-10, under-14 and under-15 going through the season undefeated.

Having established a pyramid structure for the club's development, those 1997 Belles are now in the Hertfordshire Girls League, ready to step up to adult football for the 2001/2002 season. They had a 100 per cent record so far this season as we went to press.

Six squads are still in the Milton Keynes League, and the under-12s, under-14s and under-16s were all unbeaten as Christmas approached.

Altogether, in their three years the Belles have won 15 trophies and been runners-up in another seven. But they welcome girls of all abilities. "We are certainly not an elitist club," said Mr Baker. "We will welcome any girls who want to play football.

"Our home is the Stockwood Park athletics stadium, which is a superb facility provided by Luton Borough Council, who have been tremendously supportive throughout our development.

"The girls are often involved in community festivals and other events promoting the sport, and a number of them have represented Luton and Bedfordshire during the national Millennium Youth Games last summer."

The Luton Belles welcome any girls, from the age of seven upwards, as new members, and if you want to know more you can contact Mr. Baker on Luton 896140.

Up and Running!  
Luton Town's very own official website.

[www.lutontown.co.uk](http://www.lutontown.co.uk)



# Action Replay

## Luton Town 2 Darlington 0 (HT 0-0)

WE HAD to wait until the last half hour for the goals, but there was no doubting the Town deserved to overcome Third Division battlers to earn a place in the third round of the FA Cup for the second consecutive season.

A year ago we were beaten by Fulham in a replay, but the prospect of facing First Division strugglers at Kenilworth Road on January 6 should not be too daunting.

To neutral eyes Darlington looked a team of triers, concentrating on battling away in defence and hoping for counter-attacking success, but their manager, Gary Bennett, was scathing about his players after the game, accusing them of lack of passion.

That ignored the old cliché that you can only play as well as the opposition lets you, and Darlington discovered that to their cost as the Town got to grips from the first minute. Paul McLaren set the tone with an early blistering 20-yarder which was finger-tipped over the bar.

Lil Fuccillo had told his men that the 3-0 home defeat against Colchester three days earlier was unrealistic, and if they continued to attack with purpose, and be sharper in the box, they would be all right.

He was spot on, although Darlington showed a lot of defiance and spirit in midfield, where it was more battle than pretty football.

At the interval the crowd were fretting again, with the Town on top but still not ahead. Andrew Fotiadis, recalled as the Town opted for a third attacker, put himself about to good effect, and was denied a goal when he netted from the rebound after McLaren's pile driver bounced off the midriff of the goalkeeper, who knew little about it. An offside flag came to Andy Collett's rescue.

Kevin Kyle forced his own keeper to a spectacular save to prevent a corking own goal from a header following a corner, and Adrian Whitbread, a commanding and calming influence, wasted a chance with a header wide after ghosting in unseen to meet Matthew Spring's free kick.

Darlington's only real threat in the first half was a 25-yarder by Stuart Elliott which Nathan Abbey saved at full stretch. The Town kept to their game plan after the interval, and eventually got two of the several goals they might have scored. The crucial opener was a delight for Lee Nogan, who left Darlington a month earlier after falling out with a controversial chairman. He got in among the defenders to head his first Luton goal after Spring's diagonal free kick was returned into the danger area by Whitbread's head. In view of the hard work he put in, Nogan deserved his goal, and the chance of a new contract offer which resulted.

For the first time Darlington seemed to accept their fate, which was probably what upset their manager, and if the Town had been sharper there could have been two or three more goals. Fotiadis deserved one for his efforts, but the closest he came was with a drive which hit the bar.

But McLaren, revelling in the demands of captaincy, and always willing to have a pop from distance, finished it off 12 minutes from time with a thundering drive which was a goal from the moment it left his foot.

"Comfortable and deserving winners," was the Town boss's summing up of the team and its performance. He added: "I hope the lads will gain confidence from it, and can carry that on into the league."

## Match Details

**Luton Town:** Abbey, Whitbread, Watts (Boyce 68 mins), Johnson, Helin, McLaren, Spring (Locke 86 mins), Taylor, George, Fotiadis, Nogan. Unused subs: Baptiste, Fraser, Ovendale.

**Booked:** No-one.

**Darlington:** Collett, Liddle (Brumwell 74 mins), Reed, Aspin, Heckingbottom, Elliott, Himsworth (Hodgson 63 mins), Gray, Atkinson, Kyle (Hjorth HT), Naylor. Unused subs: Kilty, Van der Geest.

**Booked:** Paul Heckingbottom, 44 mins, foul on Andrew Fotiadis; Martin Gray, foul on Liam George, 61 mins.

**The goals:** Lee Nogan header, 60 minutes, after Adrian Whitbread headed back a free kick by Matthew Spring; Paul McLaren, 78 minutes, screaming drive from just outside the penalty area.

**Referee:** John Brandwood, Staffordshire.

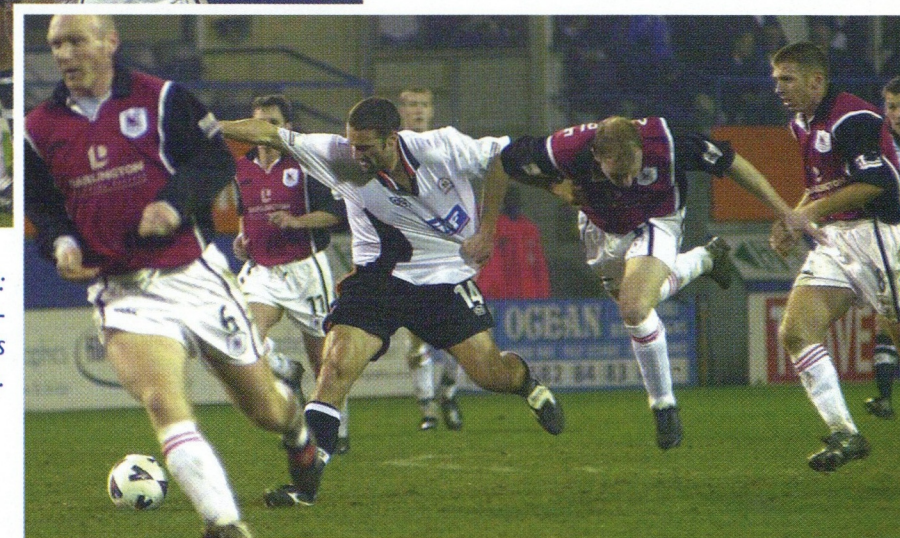
**Attendance:** 3,563, including 221 following Darlington, the lowest away following of the season so far.



*UP AND AT 'EM: Lee Nogan rises higher than everybody else to head the Town into the lead.*



*HOLDING OPERATION: Andrew Fotiadis is determination personified as he burst through.*



*GOING FOR GOAL: Liam George trying to break through.*



For the latest ticket information call  
the Luton Ticket Office on:

**01582 416976**

Up and Running!  
Luton Town's very own official website.

**www.lutontown.co.uk**



# Hats & Scarfs



- |                                       |       |                                |       |
|---------------------------------------|-------|--------------------------------|-------|
| 1. Beanie Hat                         | £2.50 | 6. Childs/Youth Gloves         | £3.25 |
| 2. Black Bronx Hat (Adults)           | £6.99 | 7. Adults Gloves               | £4.25 |
| 3. Black Kenilworth Road Baseball Cap | £8.95 | 8. Adults Crest Bronx Hat      | £4.99 |
| 4. LTFC Denim Baseball Cap            | £8.95 | 9. Childs LTFC Bronx Hat       | £4.99 |
| 5. Navy Luton Town FC Baseball Cap    | £8.95 | 10. EST 1885 Bronx Hat         | £6.99 |
|                                       |       | 11. Bronx Hat Crest on Reverse | £6.99 |



- |                          |        |
|--------------------------|--------|
| 1. Goal Scarf            | £4.95  |
| 2. Kenilworth Road Scarf | £4.95  |
| 3. Tartan Scarf          | £4.95  |
| 4. Jumbo Scarf           | £6.25  |
| 5. Harry Scarf           | £4.95  |
| 6. Luton Town Scarf      | £4.95  |
| 7. Lambswool Navy Scarf  | £13.00 |

# Leisure Wear



- |  |        |
|--|--------|
| 1. Full Zip Navy/Royal Fleece<br>S,M,L,XL,XXL      | £39.00 |
| 2. Navy Waterproof Gillet Fleece<br>S,M,L,XL       | £41.00 |
| 3. UK T-Shirt Navy or Grey<br>S,M,L,XL,XXL         | £15.00 |
| 4. UK Sweatshirt Navy or Grey<br>S,M,L,XL,XXL      | £26.00 |
| 5. Navy/Ecrl Crew Neck Fleece<br>S,M,L,XL,XXL      | £26.00 |
| 6. Navy/Grey Half-Zip Polar Fleece<br>S,M,L,XL,XXL | £41.50 |

Available Now In

The Club Shop





# Christmas Past

Roger Wash

A fact missed by most people here this afternoon is that Christmas day has not always been an occasion for sitting comatose in front of the television watching the Queen's Speech and yet another re-run of Mary Poppins. Up until the late 1950's it was mainly regarded, the country over, as one of the most important days in the football calendar.

Although a bit before my time, the accepted practice was for the women of the house to prepare the Christmas dinner while their menfolk toddled off to watch festive football before returning home exhausted, ready to be fed. (All letters on this subject can be addressed to Mr B Swain-Programme editor!).

Looking back through the record books it was accepted practice for home and away games to be played against the same side on Christmas Day and Boxing Day. In those pre-computer days though, the fixture compilers often got it wrong with the result that both teams used to be travelling on a train together on Christmas night from some far-flung outpost of the country. Upon entering the Football League Division Three in 1920, the Town had to face Southampton twice over the festivities, but luckily Boxing Day fell on a Sunday that year so there was a chance for the players to travel at their leisure between the two fixtures. As both games ended 1-1 the players probably wished they could have agreed the results beforehand and therefore enjoy an extended break.

Our first 'double header' took place two years later when we played Q.P.R. on consecutive days. We lost 0-4 in West London

on Christmas Day, then won the return 1-0 at Kenilworth Road after making only one change to the side.

The most amazing pair of games during this decade came about in 1926. A hat-trick from Sid Reid set us on our way to a 6-0 home win over Millwall but, on the following day, we lost 0-7 at the Den with the same side and by all accounts we were lucky to get nil!

Probably our longest trip of the season was saved for the Christmas period in 1930 when the fixture planners, in their wisdom, paired us with Torquay. We won convincingly here 3-1 on Christmas Day but, not surprisingly, both sides put on a jaded performance 24 hours later in the return and 'fought' out a 1-1 draw.

Throughout the remainder of that decade 'local derbies' at places such as Cardiff, Bournemouth, Brighton and Barnsley were played on a home and away basis over the Christmas period, and from reading the match reports it would appear that no-one complained and travelling long distances at an awkward time was accepted as a fact of life. The supporters obviously loved it, however, and turned out in their droves. One surprising fact is that it took until 1935 before either the Town or one of their opponents achieved the double over the Christmas period. The sequence was finally broken when we won 3-0 at Notts County on Christmas Day and followed it up with a solitary Fred Roberts goal in front of a then record Kenilworth Road League attendance of 18,100. We achieved the 'double' again, this time over Nottingham Forest, in 1938 and then over Leeds in 1947.

Attendance records were broken all over the country two years after that, but the



*Action from the Kenilworth Road leg of the last 'double header' to be played over the Christmas period. The Town forwards put pressure on the Manchester United defence on Boxing Day 1957.*

Town played their Christmas fixtures against Southampton- two clubs with small ground capacities- and although the crowds appear large in today's climate, 18,765 at Kenilworth Road and 26,878 at the Dell, they were no more than normal at the time.

We then settled into a spell of playing West Ham over the Christmas period, although 'local' games against Swansea and Leeds did spring up to test the resolve of any travelling supporters.

By the mid-1950's, crowds for the Christmas Day fixture were beginning to dwindle due, in the main, to a cut back in public transport services on that day. Our final Christmas Day fixture took place in 1957, and the game has rather poignant memories for many people as it was against the 'Busby Babes' only a matter of weeks before the Munich disaster.

The Town travelled to Manchester where the United officials were worried about the size of the crowd. The attendance of 39,444 was, however, still 10,000 higher than any other crowd that day!

We could have done without the fixture as key first teamers Bob Morton, Syd Owen

and Gordon Turner were all absent through injury, which meant a debut for Dave Pacey and first outings of the campaign for Terry Kelly and Tony Gregory.

The previous season's league title holders were awarded a dubious penalty in the 19th minute when John Groves seemed to win the ball fairly in a tussle with Bobby Charlton. The referee, however, thought otherwise and Duncan Edwards slammed home the resultant spot-kick.

We went two down just before the interval when Tommy Taylor deflected a Charlton shot past the now injured Ron Baynham in the Luton goal, and the scoring was completed in the 70th minute when Charlton tapped the ball home from close range after a mix-up in the Town defence. It seems quaint to hear that the two sets of players travelled back to Luton by train together that evening ready for the return the following day. The return finished 2-2, incidentally, thanks to a last minute equaliser from Allan Brown, in front of a bumper crowd of 26,478, to save our proud record of never being beaten twice by the same side in Christmas and Boxing Day clashes.

*Roger Wash*

For all the latest news, views and interviews call

**CLUBCALL - 09068 121123**

(Calls charged at 60p per minute at all times)

Up and Running!

Luton Town's very own official website.

**www.lutontown.co.uk**



Campaign Records

Highest Gate  
16,022  
Reading  
vs Oxford

Lowest Gate  
1,584  
Wrexham  
vs Cambridge

Highest  
Aggregate  
Score  
Brentford .....2  
Bristol Rovers .6

Biggest  
Home Win  
Cambridge .....1  
Rotherham ....1

Reading .....5  
Oldham .....0  
Millwall .....5  
Oxford .....0

Biggest  
Away Win  
Brentford .....2  
Bristol Rovers .6

Consec. Wins  
Walsall .....5

Games  
Unbeaten  
Wigan .....17

Consec. Defeats  
Bury .....5  
Winless Run  
Cambridge ....11

Total Games  
245

Home Wins  
104 .....42%

Away Wins  
77 .....31%

Draws  
64 .....27%

1-1 Draws  
31 .....13%

0-0 Draws  
18 .....7%

Yellow Cards  
761

Red Cards  
40

# Nationwide2Stats

Statistics Compiled by  
Football  
Information  
Services  
Tel: 0151-632 5679

Div.2 Results Grid										Division 2 Ave. Attendances					Biggest Wins & Losses		Last 5 Home Results	
HOME GOALS										3000	6000	9000	12000	15000	Win - vs.	Defeat - vs.		
0	1	2	3	4	5	6	7	8										
0	18	23	14	10	8	2				Bournemouth				3,752	5-2 Bury	1-3 Colch	LDLWW	
1	29	31	18	13	3	2	1			Brentford				4,564	3-2 B'mouth	2-6 B Rovers	WWWLD	
2	11	11	11	8	1					Bristol City				9,832	4-0 NtsC/Read	1-2 Stk/Bfrd	WWDWL	
3	8	6	3	4	1					Bristol Rovers				7,184	6-2 Brentford	0-3 Stoke	LDLL	
4	4									Bury				3,412	2-0 3 Clubs	0-4 Millwal	WLLDD	
5										Cambridge				4,587	6-1 Roth'ham	0-3 BRv/Rdg	DLDDD	
6										Colchester				3,531	3-0 Luton	1-3 3 Clubs	WWLDW	
7										Luton				5,574	3-1 Btfd/Stke	0-4 Swansea	LWLLL	
8										Millwall				9,771	5-0 Oxford	2-3 Stk/Roth	WDWWW	
										Northampton				5,838	2-0 3 Clubs	0-3 Bth/Wsl	WLDLL	
										Notts County				4,641	3-2 3 Clubs	1-5 Walsall	DDWWW	
										Oldham				4,357	4-1 Port Vale	0-5 Reading	WWDLW	
										Oxford				4,692	3-1 Nrthmptn	0-5 Millwall	DLLLL	
										Peterborough				5,880	4-0 Swindon	1-4 Millwall	WWWWW	
										Port Vale				4,420	3-0 3 clubs	0-4 Cmrbrge	DDDWL	
										Reading				11,676	5-0 Oldham	0-4 Brstl City	WWWLW	
										Rotherham				4,688	3-0 3 clubs	1-6 Cmrbrge	WWDWW	
										Stoke				12,653	4-0 Oxford	0-3 Walsall	DWLWL	
										Swansea				5,830	4-0 Luton	1-5 Reading	DLDL	
										Swindon				5,617	3-1 Cambridge	0-4 P'boro	WDDLW	
										Walsall				6,055	5-1 Notts C	1-3 Wycambe	DWWWW	
										Wigan				6,145	3-1 Wxm/Cich	0-2 Walsall	WWWWW	
										Wrexham				3,673	4-1 Bury	1-4 Reading	DLDW	
										Wycombe				5,270	3-1 3 Clubs	0-3 Bmouth	WWLWL	

stats don't include matches on Sat 23rd Dec

Grid shows the number of games ending with each result, e.g. 31 matches have been 1-1 draws and 29 games have ended a 1-0 away win.

Hotshots - Div.2 Clubs' most prolific marksmen, inc. the difference their goals made															Numbers			Last 5 Away Results	
Club	Leading Scorer	GS	1stGl	Sc1	Sc2	HT	Gms	Ave	W/L	W/D	D/L	Pts	Run	Dry	PU	CS	FS		
Bournemouth	Defoe	6	1	4	1	0	5	1.20	0	1	0	2	5	0	27	5	4	DWLWW	
Brentford	Scott	10	4	8	1	0	19	0.53	1	3	3	12	4	3	25	5	4	LDDWL	
Bristol City	Thorpe	10	3	5	1	1	19	0.53	1	1	2	7	2	5	27	7	5	DWDWW	
Bristol Rovers	Ellington	5	1	3	1	0	17	0.29	0	0	3	3	3	9	28	6	8	WLWLD	
Bury	Littlejohn	3	2	3	0	0	20	0.15	0	1	1	3	1	6	22	7	6	LLLLL	
Cambridge	Youngs	9	1	5	2	0	21	0.43	0	2	2	6	3	5	22	4	5	LLLDL	
Colchester	Duguid	4	2	4	0	0	19	0.21	0	1	1	3	2	6	25	8	8	LLWW	
Luton	George	3	0	3	0	0	20	0.15	0	0	1	1	2	8	27	3	9	LDDLW	
Millwall	Harris	13	5	6	2	1	20	0.65	0	3	1	7	3	3	29	9	2	DLWWL	
Northampton	Forrester	12	8	8	2	0	19	0.63	1	3	4	13	5	4	23	6	6	DWVLL	
Notts County	Stallard	9	5	9	0	0	17	0.53	0	5	1	11	3	3	28	5	6	LWLWL	
Oldham	Corazzin	3	1	3	0	0	17	0.18	0	1	0	2	1	10	26	5	5	LLWWD	
Oxford	Beauchamp	4	1	2	1	0	19	0.21	0	1	0	2	1	7	33	2	9	LLLWL	
Peterborough	Clarke	5	2	5	0	0	21	0.24	0	1	1	3	2	7	22	7	7	DLLLD	
Port Vale	Naylor	6	2	2	2	0	17	0.35	0	1	0	2	2	5	22	4	6	LLWL	
Reading	Butler	12	7	7	1	1	19	0.63	0	0	2	2	5	5	25	7	5	DLWLL	
Rotherham	Robins	9	4	7	1	0	17	0.53	0	1	2	4	2	2	23	8	0	WDWWL	
Stoke	Thorne	9	4	4	1	1	13	0.69	1	3	2	11	2	4	26	6	4	LWDWW	
Swansea	Savarese	7	2	1	3	0	10	0.70	1	0	3	6	2	4	24	7	10	LLDDL	
Swindon	Invincible	7	1	3	2	0	20	0.35	0	2	1	5	2	9	26	4	9	LDLLW	
Walsall	Leitao	8	4	8	0	0	21	0.38	0	2	0	4	3	3	22	8	5	WLLDL	
Wigan	Haworth	7	4	4	0	1	11	0.64	1	2	1	8	2	2	24	8	4	DWDDD	
Wrexham	Sam	6	2	4	1	0	18	0.33	0	1	1	3	5	12	25	3	5	LWDLL	
Wycombe	Rammell	6	2	4	1	0	16	0.38	0	2	1	5	2	4	24	7	9	LDDL	



## Second Division Scene Brian Swain

LIKE us, today's visitors have an FA Cup tie to look forward to in a couple of weeks, with Peterborough relishing a trip to Stamford Bridge on the day we entertain Queens Park Rangers.

They earned the money-spinning tie by winning 1-0 at Boundary Park, where they had to battle hard after being a touch lucky to earn the replay with a 1-1 draw at London Road - their equaliser from Jason Lee came in the third minute of injury time in the first meeting.

At Oldham goalkeeper Mark Tyler, a target for Charlton, was man of the match as Peterborough snatched a first-half goal through Richard Forsyth, a free transfer from Blackpool last summer, and denied Oldham any way back.

This is our fourth meeting of the season with Barry Fry's men, after playing them in the Worthington Cup and the LDV Vans Trophy, and they come with an away record only marginally better than our home results - on the road Posh have managed two wins, two draws, and seven defeats. They also drew 0-0 at Kenilworth Road in August, in the first leg of the Worthington Cup first round.

The league victories came at Oxford, 1-0 on the first day of the season, and by 4-1 at Oldham a fortnight later.

After that they suffered a run of four consecutive away defeats, at Stoke, Wigan, Wycombe and

Brentford. A David Oldfield goal gave them a 1-1 draw at Walsall, before they embarked on another run of three away losses on the trot, at Bristol City, Bournemouth and Rotherham. Their only away point between mid-October and today came from a goal-less draw at Cambridge ten days ago.

By contrast Wigan, who are here next, have proved to be one of the division's best away teams, hard to beat even if they do not win too many. They went into the Christmas programme in second place in the league, level on points with Millwall.

Going into today's local derby at Oldham, Wigan had suffered only one away defeat in the league, although they surprisingly went out of the FA Cup in a second round replay at Notts County ten days ago.

Bruce Rioch's only taste of away defeat on the road in the league was at Walsall way back in early September. They won 3-1 at Wrexham in late August and 2-0 at Oxford in October. Their eight other away games have ended in draws, the sequence being at Swansea 0-0, Bristol Rovers 0-0, Swindon 2-2, Notts County 2-2, Bournemouth 0-0, Rotherham 1-1, Bristol City 1-1 and Brentford 2-2.

The Town, of course, seek revenge for a 2-1 reverse at Wigan in August, when we might have earned a point but for conceding goals at two set pieces.

Wigan at least have no worries about cup distractions after losing to Notts County, but the month's most recent egg-on-face day was suffered by Reading, who lost 3-1 on their own ground to Third Division York City. By now, we will know how Reading's reaction affected our trip. to the Madejski Stadium on Saturday, four days later.

Because of holidays, that report has to wait for Saturday's matchday magazine, so we sign off with the wish that we all have a very happy and successful Christmas and New Year - but not too successful, of course, for the good folks of Oxford, Swansea, Port Vale, Swindon, Oldham, and the blue half of Bristol!

Brian Swain

Nationwide Division Two Table														
Not including Saturday's games														
	HOME					AWAY								
	P	W	D	L	F	A	W	D	L	F	A	Pts		
Millwall	21	7	1	2	20	5	6	2	3	20	14	42		
Wigan	21	9	1	0	16	6	2	8	1	13	11	42		
<hr/>														
Walsall	21	8	3	0	25	9	4	2	4	12	12	41		
Rotherham	21	6	2	3	23	15	6	2	2	14	11	40		
Reading	20	8	1	1	32	9	3	1	6	10	16	35		
Bristol City	21	4	3	4	21	13	5	4	1	13	6	34		
<hr/>														
Stoke	20	4	2	3	14	9	5	4	2	19	14	33		
Wycombe	21	6	1	3	16	11	2	5	4	5	9	30		
Wrexham	21	4	2	5	12	15	4	3	3	20	19	29		
Peterborough	21	6	2	2	16	10	2	2	7	8	16	28		
Northampton	20	3	3	3	10	11	5	1	5	12	13	28		
Colchester	21	4	3	4	11	10	3	3	4	10	11	27		
Notts County	20	3	3	3	15	15	5	0	6	9	18	27		
Brentford	19	4	4	2	12	15	2	4	3	10	15	26		
Bournemouth	20	3	4	3	11	8	3	3	4	20	16	25		
Cambridge	21	4	4	3	19	13	2	3	5	11	18	25		
Bury	20	4	3	3	11	13	3	1	6	8	15	25		
Bristol Rov	20	0	5	4	6	13	5	3	3	18	10	23		
Oldham	20	4	2	4	13	13	2	3	5	10	19	23		
Swindon	21	3	4	4	14	20	3	1	6	7	18	23		
<hr/>														
Port Vale	19	4	4	3	18	10	1	1	6	4	16	20		
Swansea	20	2	4	4	9	10	2	3	5	10	17	19		
Luton Town	20	2	1	7	9	18	1	5	4	11	18	15		
Oxford Utd	21	2	2	7	10	15	1	0	9	12	31	11		



# Statistics Fixtures

# 2000 / 2001

	Date	Opposition	Result	Scorers	League Place	Attnd.	Team
AUGUST	Sat 12	Notts County	H 3pm 0-1		-	7,059	Ovendale Boyce Watts McLaren Johnson
AUGUST	Sat 19	Wigan	A 3pm 1-2	Watts	-	6,518	Ovendale Boyce Watts McLaren Johnson
AUGUST	Tue 22	Peterborough WC1(1)	H 7.45pm 0-0		-	3,175	Ovendale Boyce Watts McLaren Fraser
AUGUST	Sat 26	Bournemouth	H 3pm 1-0	Spring pen	18	5,221	Ovendale Boyce Watts McLaren Fraser
AUGUST	Mon 28	Wycombe Wdrs	A 3pm 1-1	Kandol	17	6,001	Ovendale Boyce Watts McLaren Fraser
SEPTEMBER	Sat 2	Rotherham Utd	A 3pm 1-1	Fotiadis	17	4,061	Ovendale Boyce Watts McLaren Locke
SEPTEMBER	Tue 5	Peterborough WC2(2)	A 7.45pm 2-2	Stein, Scarlett	17	4,286	Ovendale Boyce Watts McLaren Fraser
SEPTEMBER	Sat 9	Northampton Town	H 3pm 0-2		19	6,712	Abbey Boyce Watts McLaren Fraser
SEPTEMBER	Tue 12	Walsall	H 7.45pm 0-0		19	4,362	Abbey Boyce Watts McLaren Locke
SEPTEMBER	Sat 16	Swansea City	A 3pm 0-4		20	6,011	Ovendale Boyce Watts McLaren Locke
SEPTEMBER	Tue 19	Sunderland WC2(1)	A 7.45pm 0-3		20	24,668	Ovendale Boyce Watts McLaren Fraser
SEPTEMBER	Sat 23	Swindon Town	H 3pm 2-3	Stein, George	21	4,933	Ovendale Boyce Watts George Fraser
SEPTEMBER	Tue 26	Sunderland WC2(2)	H 7.45pm 1-2	Kandol	21	5,262	Ovendale Boyce Watts George Fraser
SEPTEMBER	Sat 30	Bristol Rov	A 3pm 3-3	Kandol 2, George	22	7,901	Ovendale Boyce Watts George Fraser
OCTOBER	Sun 8	Millwall	H 12pm 0-1		22	5,345	Ovendale Boyce Watts George McGowan
OCTOBER	Fri 13	Cambridge Utd	A 8pm 1-2	Stein	23	6,191	Ovendale Boyce Watts George McGowan
OCTOBER	Tue 17	Oxford Utd	A 7.45pm 0-0		23	4,537	Abbey Boyce Watts George McGowan
OCTOBER	Sat 21	Brentford	H 3pm 3-1	Douglas 2, Spring pen	23	5,382	Abbey Boyce Watts George Locke
OCTOBER	Sat 28	Wrexham	H 3pm 3-4	Stein, Watts, George	23	5,341	Abbey Boyce Watts George Johnson
NOVEMBER	Sat 4	Bury	A 3pm 1-1	Helin	23	2,861	Abbey Boyce Watts George Karlson
NOVEMBER	Sat 11	Bristol City	H 3pm 0-3		23	6,595	Abbey Boyce McGowan George Karlson
NOVEMBER	Fri 17	Rushden & D FAC1	H 8pm 1-0	George	23	5,771	Abbey Boyce Fraser Watts Karlson
NOVEMBER	Sat 25	Port Vale	A 3pm 0-3		23	4,194	Abbey Boyce Whitbread Watts Karlson
DECEMBER	Sat 2	Stoke City	A 3pm 3-1	McLaren, Thomson 2	23	12,389	Abbey Johnson Whitbread Watts Locke
DECEMBER	Tue 5	Peterborough LDVT1	A 7.45 0-1		23	2,075	Ovendale Ayres Karlson Fraser Locke
DECEMBER	Sat 9	Darlington FAC2	A 3pm 0-0		23	3,641	Abbey Johnson Whitbread Watts Locke
DECEMBER	Sat 16	Colchester Utd	H 3pm 0-3		23	4,791	Abbey Johnson Whitbread Watts Locke
DECEMBER	Tue 19	Darlington FAC2R	H 7.45 2-0	Nogan, McLaren	23	3,563	Abbey Johnson Whitbread Watts Fotiadis
DECEMBER	Sat 23	Reading	A 3pm				
DECEMBER	Tue 26	Peterborough	H 1pm				
DECEMBER	Sat 30	Wigan	H 3pm				
JANUARY	Mon 1	Bournemouth	A 3pm				
JANUARY	Sat 6	QPR FAC3	H 3pm				
JANUARY	Fri 12	Wycombe	H 7.45pm				
JANUARY	Sat 20	Peterborough	A 3pm				
JANUARY	Tue 23	Oldham	A 7.45pm				
JANUARY	Sat 27	Reading OR FA Cup 4	H 3pm				
FEBRUARY	Sat 3	Rotherham Utd	H 3pm				
FEBRUARY	Sat 10	Northampton Tn	A 3pm				
FEBRUARY	Sat 17	Swansea City OR FA Cup 5	H 3pm				
FEBRUARY	Tue 20	Walsall	A 7.45pm				
FEBRUARY	Sat 24	Swindon	A 3pm				
MARCH	Sat 3	Bristol Rov	H 3pm				
MARCH	Tue 6	Cambridge Utd	H 7.45pm				
MARCH	Sat 10	Millwall OR FA Cup 6	A 3pm				
MARCH	Sat 17	Oxford Utd	H 3pm				
MARCH	Sat 24	Brentford	A 3pm				
MARCH	Sat 31	Colchester	A 3pm				
APRIL	Sat 7	Stoke City OR FA Cup S-F	H 3pm				
APRIL	Sat 14	Oldham	H 3pm				
APRIL	Mon 16	Wrexham	A 3pm				
APRIL	Sat 21	Bury	H 3pm				
APRIL	Sat 28	Bristol City	A 3pm				
MAY	Sat 5	Port Vale	H 3pm				

The FA Cup final is on May 12  
To be arranged: Notts County A

## Next Home Match



**Luton Town  
versus  
Wigan Athletic**

**Saturday December 30, kick-off 3 pm**

## Substitutes

Taylor	Spring	Locke,	George,	Stein	Fotiadis	Holmes for Locke 57, Fraser for Watts 78. Unused: Stirling, Brennan, Abbey.
Taylor	Holmes	Locke	George	Stein	Fotiadis	Fraser for Johnson HT, Scarlett for Locke 73, Brennan for Holmes 83. Unused: Stirling, Abbey
Taylor	Holmes	Spring	George	Stein	Fotiadis	Brennan for Fotiadis 81. Unused: Stirling, Locke, Scarlett, Abbey.
Taylor	Holmes	Spring	George	Stein	Fotiadis	Brennan for George 57, Locke for Holmes 86. Unused: Stirling, Kandol, Abbey.
Taylor	Scarlett	Spring	George	Stein	Fotiadis	Brennan for George 55, Kandol for Fotiadis 76. Unused: Locke, Stirling, Abbey.
Taylor	Scarlett	Spring	Holmes	Stein	Fotiadis	Kandol for Fotiadis HT; Brennan for Holmes 65; George for Stein 81. Unused: Stirling, Abbey.
Taylor	Scarlett	Spring	Brennan	Stein	George	Holmes for Brennan 74; Locke for Spring 105; Kandol for Stein 113. Unused: Stirling, Abbey
Taylor	Scarlett	Spring	Brennan	Stein	George	Holmes for Spring 75; Kandol for Brennan 60. Unused: Locke, Stirling, Brietenfelder.
Taylor	Scarlett	Spring	Brennan	Stein	Thomson	George for Brennan 52; Kandol for Thomson 72; Holmes for Scarlett 82. Unused: Fraser, Ovendale.
Taylor	Stirling	Spring	Holmes	Stein	Kandol	George for Stein 75. Unused: Fraser, Scarlett, Thomson, Abbey.
Taylor	Scarlett	Spring	Holmes	Stein	Kandol	George for Stein 70; Thomson for Kandol 70. Unused: Brennan, Stirling, Abbey.
Taylor	Scarlett	Spring	Holmes	Stein	Kandol	Locke for Spring 66; Thomson for Kandol 72. Unused: Brennan, Ayres, Abbey.
Taylor	McLaren	Spring	Locke	Thomson	Kandol	Brennan for Thomson 81. Unused: Holmes, Breitenfelder, Ayres, Abbey.
Taylor	McLaren	Spring	Locke	Thomson	Kandol	Mc Gowan for Fraser HT; Stein for Thomson HT; Holmes for Spring 79. Unused: Brennan, Abbey
Taylor	McLaren	Spring	Locke	Stein	Kandol	All unused: Brennan, Holmes, Stirling, Scarlett, Abbey.
Taylor	McLaren	Spring	Locke	Stein	Kandol	Holmes for Kandol HT; Brennan for McGowan 89. Unused: Fraser, Breitenfelder, Abbey.
Taylor	Fraser	Spring	Holmes	Stein	Kandol	Breitenfelder for McGowan HT; Brennan for Kandol 79. Unused: Locke, Thomson, Ovendale.
Taylor	McLaren	Spring	Holmes	Stein	Douglas	Brietenfelder for Locke 18 mins; Thomson for Douglas 44 mins; Brennan for George 86 mins. Unused: Kandol, Ovendale.
Taylor	McLaren	Brietenfelder	Holmes	Stein	Fotiadis	Fraser for McLaren 47 mins; Thomson for Fotiadis 70 mins. Unused: Brennan, Baptiste, Ovendale.
Taylor	McLaren	Spring	Helin	Stein	Douglas	Baptiste for Douglas 75 mins; Holmes for George 80 mins. Unused: McGowan, Breitenfelder, Ovendale.
Taylor	McLaren	Spring	Helin	Stein	Douglas	Fotiadis for Douglas 44 mins; Baptiste for Stein 74 mins. Unused: Watts, Locke, Ovendale.
Taylor	McLaren	Spring	Helin	George	Stein	Thomson for Stein 73 mins. Unused: McGowan, Locke, Fotiadis, Ovendale.
Taylor	McLaren	Spring	Helin	George	Nogan	Fotiadis for Nogan 74 mins; Fraser for Helin 77 mins. Unused: Locke, Scarlett, Ovendale.
Taylor	McLaren	Spring	Helin	George	Thomson	Fotiadis for Thomson 89 mins; Karlson for George 90 mins. Unused: Fraser, Nogan, Ovendale.
Taylor	McLaren	Spring	Helin	Fotiadis	Thomson	Stein for Thomson HT; Nogan for Fotiadis 56 mins. Unused: Fraser, Stirling, Abbey
Taylor	McLaren	Spring	Fraser	George	Thomson	All unused: Stein, Nogan, Karlson, Stirling, Ovendale.
Taylor	McLaren	Spring	Helin	George	Nogan	Fotiadis for Locke 56 mins. Unused: Scarlett, Holmes, Fraser, Ovendale.
Taylor	McLaren	Spring	Helin	George	Nogan	Boyce for Watts 68 mins; Locke for Spring 86 mins. Unused: Baptiste, Fraser, Ovendale.



# goals oncd

**The Official  
Sponsors of the  
Substitute Board**

[www.goals-oncd.com](http://www.goals-oncd.com)

For all the latest news, views and interviews call

**CLUBCALL - 09068 121123**

(Calls charged at 60p per minute at all times)

Up and Running!  
Luton Town's very own official website.

[www.lutontown.co.uk](http://www.lutontown.co.uk)



The Big Match

Today's Teams

# Today's Teams

Today's Teams

The Big Match

**Luton Town**

**Peterborough United**



Manager: Lil Fuccillo

NATHAN ABBEY **16**

PETRI HELIN **30**

JULIAN WATTS **5**

MARVIN JOHNSON **6**

ADRIAN WHITBREAD **40**

MATTHEW TAYLOR **15**

PAUL McLAREN **12**

MATTHEW SPRING **4**

LIAM GEORGE **11**

ANDREW FOTIADIS **14**

LEE NOGAN **31**

Substitutes

ADAM LOCKE **12**

STUART FRASER **13**

ROCKY BAPTISTE **28**

EMMERSON BOYCE **17**

MARK OVENDALE **1**

Changes

## Today's Officials

Referee:

Barry Knight, Kent

Assistants:

R. P. Desmond (red flag)

R. P. Griggs (yellow and red flag)

Fourth Official:

S. W. Tincknell



Manager: Barry Fry

**1** MARK TYLER

**2** DEAN HOOPER

**3** ADAM DRURY

**6** ANDY EDWARDS

**5** SIMON REA

**7** DAVID FARRELL

**25** RICHARD FORSYTH

**8** DAVID OLDFIELD

**12** MATTHEW GILL

**10** JASON LEE

**9** ANDY CLARKE

Substitutes

**17** LEON McKENZIE

**14** FRANCIS GREEN

**19** GARETH JELLEYMAN

**20** TONY SHIELDS

**13** DAN CONNOR

Changes

*"Genuine Deals For Genuine Fans!"*

**Luton Fans Are  
Guaranteed To Score At  
Motorbodies Luton**

**NETWORK Q**

Total Commitment to used car quality

**Motorbodies Central**

15 Hitchin Road, Luton Bedfordshire.

Telephone 01582 454666

e-mail: enquiries@cxrtongroup.co.uk

- 12 months Assistance
- 12 months/15,000 mile Guarantee

**Motorbodies Leagrave**

166 Marsh Road, Leagrave, Luton

Telephone 01582 567500

e-mail: sales@cxrtongroup.co.uk

**114 Point Service**

**12 Months/ 15,000 mile guarantee**

**12 Months AA Assistance Mileage Check**

**30 Day Exchange Plan**

**Free MoT for life**

**HPI Check**

- 114 point service
- 30 day exchange pledge

**OPENING HOURS**

Mon-Fri 9am-7pm

Sat 9am-5pm

Sun 10.30-4.30pm

NETWORK

**Q**

