

Luton Town



LUTON TOWN
FOOTBALL CLUB
www.lutontown.co.uk

Official Matchday
Magazine



Saturday,
November 11, 2000
Kick Off 3pm



Official Shirt Sponsors



THE OFFICIAL SPORTS DRINK



Luton Town
v
Bristol City

Joint Match Sponsors: Laura Feekins
Andrew Davies Construction Ltd

Luton Town FC

Kenilworth Road Stadium
1 Maple Road, Luton
Bedfordshire LU4 8AW

Main Reception: 01582 411622

Fax: 01582 405070

Ticket Office: 01582 416976

Honours

Littlewoods Cup

Winners 1987-88

Finalists 1988-89

FA Cup

Finalists 1958-59

Simod Cup

Finalists 1987-88

Division 2

Champions 1981-82

Division 3 (S)

Champions 1936-37

Division 4

Champions 1967-68

Official Matchday Magazine

Editor

Brian Swain

Layout & Printing

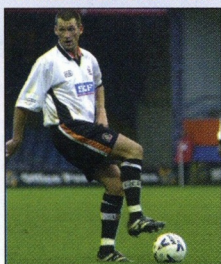
Regal Litho

Photography

Gareth Owen

The views expressed in this programme
are not necessarily those of Luton Town
Football Club.

Front Cover



LEADING by example: Paul McLaren, enjoying being team captain in the absence of injured Marvin Johnson, pictured in typical action during the Wrexham game.

Inside Forward



Petri Helin

LOOKING for more experience in his squad, manager Ricky Hill was delighted with a double transfer swoop that brought in new players for last week's game at Bury. And Kent Karlsen and Petri Helin made telling contributions to the draw at Gigg Lane, Helin netting the equaliser and Karlsen preventing a late Bury winner. When the manager was appointed most of the good players released at the end of last season had already been snapped up by other clubs, and after seeing what was available in this country it became apparent that the net would have to be cast wider.

Peter Holmes and Dean Brennan came in from Sheffield Wednesday as young players to be brought on for the future. In the event they had to be thrown into action earlier than the boss anticipated.

Friedrich Breitenfelder, from Austria, has impressed everyone in the club with the way he conducts himself, and the two new men, Helin from Finland, and Karlsen from Norway, have also settled in quickly.

The boss had to travel to Finland to wrap up Helin's transfer from Jokerit of Helsinki, who have just finished runners-up in the Finnish Premier League. He was their captain, and has played 18 times for his country, including the recent World Cup qualifier against England. Born in Helsinki, he will be 31 on December 13. The official record says he is 180 cms tall and weighs 78 kg. In old money, I think that is 6ft and 12stone 4lbs. He is best known as a midfielder, but played at right wing-back at Gigg Lane. He and Kent Karlsen have signed contracts running to the summer of 2002. Karlsen played on the right of three centre-backs at Bury, having been signed after being invited over for trials last month. A former Norwegian under-21 international, he had been with Valerengen of Norway for five years, collecting a winner's medal in Norway's equivalent of the FA Cup.

Like Helin, he is keen to prove himself in English soccer, which is followed avidly in his home country. He came with a reputation of being a dominating central defender, and won his contract after the boss watched him closely in training, and in a private friendly with QPR. Karlsen was born in Oslo, in February 1973 and is 188cms tall and weighs 84kg.

THE link between supporters and boardroom will offer another chance for fans to get their views across to the directors on Thursday. Yvonne Fletcher will again be a willing Aunt Sally in the Eric Morecambe Suite, kick-off 7.30. Admission is free, but because accommodation is limited tickets must be obtained in advance. You can collect them today from the Supporters Club kiosk in Kenilworth Road, or apply by post to the football club, including a stamped addressed envelope.

Brian Swain



Mike Watson-Challis

From the chairman's office

LIKE all Luton Town supporters, the directors are very concerned about our results so far this season. Everyone in the club knows we have to do better, and I will not be satisfied to see us struggling in the lower reaches of the Second Division, instead of fighting for a place among the promotion contenders.

I know from my postbag that supporters are unhappy with events at Kenilworth Road. I thank everyone who has taken the trouble to write, and can assure you that all views are welcome. But some have been abusive, and almost all of those were anonymous. Letters without names and

addresses go into the waste paper bin - if you cannot stand up and be counted, your views are not likely to carry much weight.

Many other letters are critical but also constructive, and we welcome them all. I think some fans might have forgotten that we on the board are also keen supporters, and I personally am pleased that I am in a position where I can put my money where my mouth is.

We have a manager who cares as deeply about this club as much as we do, and we have listened carefully to Ricky Hill's views on the team, and on his advice about what should be done to improve matters.

The manager and the rest of the "back room" staff are dedicated to putting Luton Town on the road back to football's higher levels. Anyone who has seen our games so far this season will appreciate that it is a difficult task.

We as a board are determined to play our part, which was why we were able to bring in two new recruits last week. Before that, we had been on the verge of signing three other players, permanently or on loan, but the deals foundered for reasons entirely beyond our control. That will not stop us trying other avenues - we will back the manager's judgement and give him all the help we can to bring in players who can do a job for us.

I have been supporting this club for many years, as a fan and as a director, and I am hungry for success. But experience has taught me that it is easy to be a supporter when a team is doing well. The time when support is needed much more is when things are not going according to plan.

So my heartfelt plea this afternoon is to ask all supporters to stick with it, and give the team the backing it needs. We are going through a rough patch, but everyone at Kenilworth Road has a vision of what can be achieved if we all pull together.

It has been done in the past, and it can be done again if we are united in the common cause. The boardroom is, and everyone within the club believes that a much brighter future can be attained.

We hope soon to be able to make an announcement about a new ground, which is obviously vital for the development of the club. It will take time, but we will push on with all possible speed. In the meantime I am as keen as anyone to see the team make progress where it matters most, on the pitch.

So once again, thank you to all who have written with suggestions about how we can improve things. Your views are much appreciated. All I ask is that as well as writing, you come to Kenilworth Road as often as possible, preferably bringing others with you, and shout as loudly as I do for the team. Better times are ahead, I promise.

Mike Watson-Challis



Chairman

M. Watson-Challis

Directors

E. Hood, J. Mitchell,

C. Bassett, R. Stringer,

Y. Fletcher, R. H. G. Kelly

Vice Presidents

C. T. F. Green, N. S. Terry,

R. L. Banks, D. Ludlow

MBE, C. Bygrave,

R. Safranek, J. Sapsworth

Club Secretary

Cherry Newbery

Team Manager

Ricky Hill

Reserve Team Manager

John Moore

Youth Coach

Brian Stein

Physiotherapist

Clive Goodyear

Consultant Physio

John Sheridan

Youth Development Officer

Dean Rastrick

Chief Scout

Les Shannon

Sales and Marketing Manager

John Bailey

Catering Manager

Marie Hunter

Safety Officer

Geoff Lovell

Medical Officer

Dr. Bill Berry

Club Dentist

A. Chris BDSA (Syd)

Club Chaplain

Rev Catherine Bell

Company Secretary

Cherry Newbery

For all the latest news, views and interviews call

CLUBCALL - 09068 121123

(Calls charged at 60p per minute at all times)

Up and Running!

Luton Town's very own official website.

www.lutontown.co.uk

Entire system

Like a finely balanced ecosystem, SKF offers you a complementary range of products and services.

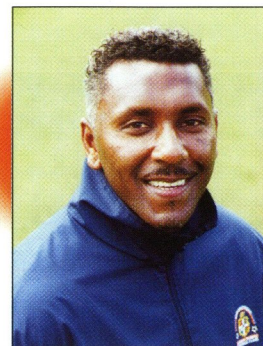
- Bearings
- Seals
- Housings
- Lubricants
- Maintenance tools
- Condition monitoring solutions
- Engineering advisory services
- Product refurbishment



SKF

Helping your world run smoother

Tel: 01582 496436
www.skf.co.uk



The Manager Ricky Hill

IT HAS been quite hectic around Kenilworth Road since

we last met here for a league game, and I think we have taken some important steps in our drive to get Luton Town moving up the league table. I suppose it is a case of least said, soonest mended, about the performance against Wrexham. They were a very good team, and we were flattered when the scoreline reached 3-0 in our favour. But then we let ourselves down very badly, and our performance in the last 30 minutes, when we contrived to concede four goals, was unacceptable.

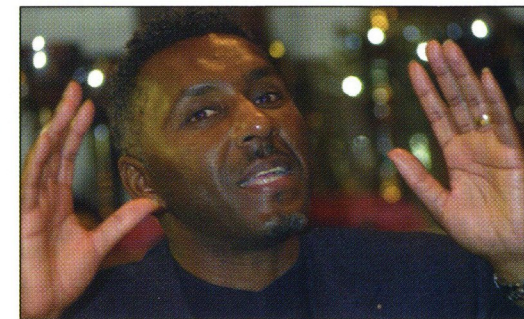
We had been knocked back several times in attempts to bring more players into the club, but it was painfully obvious that while we have young players who are good prospects for the future, we were short of experience, guile and steel.

The signings of Petri Helin and Kent Karlsen were steps towards filling those needs. I am sure you will give them a warm welcome this afternoon, assuming they are fit for the game. Both made valuable contributions to the draw at Bury last week, and while Nathan Abbey had to work harder than their keeper, we deserved reward for a battling performance. We refused to cave in after falling behind, and something of the resilience I want was demonstrated, with one new signing netting the equaliser and the other making a tremendous last-ditch clearance to protect the point.

That was our fifth draw in eight away league games to date, and we came home wondering if we might now have turned the corner after our poor start to the season. By the middle of the week, however, we were facing a lengthening injury list again which might stretch our resources this afternoon.

The new arrivals have given us a lift and they have brought a new level of professionalism with them. I had just one season as a player in France, and was amazed at the different approach to the job of being a professional footballer that I encountered there.

Continental often have more dedication in their



Expressing ideas: Ricky Hill during his meeting with members of Luton Town Supporters Club.

determination to do well, and we are working to bring that work ethic culture into our routine.

Last week I spent an enjoyable evening with the Supporters Club, exchanging views with fans at an event which was very enlightening. Some of the questions were blunt and critical, but never unfriendly, and it was good to be reminded that supporters care deeply about what happens at their club, but also understand some of the difficulties we have faced recently.

I too care deeply about Luton Town. It was my dream to be manager here, and I am hungry for success. One of the great days, of course, was at Wembley in 1988, and it will be a pleasure this afternoon to meet up again with Danny Wilson, one of our goalscorers on that wonderful afternoon.

I know from first hand that Danny has become a very good manager. I was on the coaching staff for a year when he was in charge at Sheffield Wednesday, and Danny and his assistant, Frank Barlow, are top men. Needless to say, while both will be given a warm welcome today, I want to see my old boss make a pointless journey.

Our home results have been awful so far, but Danny and Bristol City have shown what can be achieved. They had a patchy start to the season, and in fact were below us in 23rd place at one stage. Since then they have gone 11 games without defeat, to go into the top ten. It's time we showed signs of doing something similar, particularly in terms of home results.

Ricky Hill

Up and Running!
Luton Town's very own official website.
www.lutontown.co.uk

The Hatters roll-call 2000-2001

Appearances (as sub in brackets)

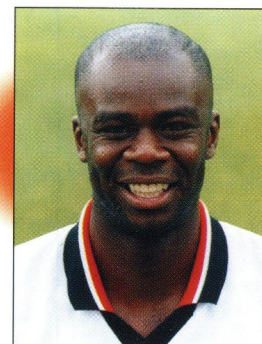
Goals

	League	WC	Total	League	WC	Total
Nathan Abbey	6	0	6	0	0	0
Rocky Baptiste	0(1)	0	0(1)	0	0	0
Emmerson Boyce	16	4	20	0	0	0
Dean Brennan	2(7)	1(1)	3(8)	0	0	0
Friedrich Breitenfelder	1(2)	0	1(2)	0	0	0
Stuart Douglas	2	0	2	2	0	2
Andrew Fotiadis	6	1	7	1	0	1
Stuart Fraser	6(3)	4	10(4)	0	0	0
Liam George	13(3)	3(1)	16(4)	3	0	3
Petri Helin	1	0	1	1	0	1
Peter Holmes	8(6)	2(1)	10(7)	0	0	0
Marvin Johnson	3	0	3	0	0	0
Tresor Kandol	6(4)	2(1)	8(5)	3	1	4
Kent Karlsen	1	0	1	0	0	0
Adam Locke	9(3)	1(1)	10(4)	0	0	0
Gavin McGowan	3(1)	0	3(1)	0	0	0
Paul McLaren	14	4	18	0	0	0
Mark Ovendale	10	4	14	0	0	0
Andre Scarlett	5(1)	2	7(1)	0	1	1
Matthew Spring	14	4	18	2p	0	2p
Mark Stein	15(1)	3	18(1)	3	1	4
Jude Stirling	1	0	1	0	0	0
Matthew Taylor	16	4	20	0	0	0
Peter Thomson	2(3)	1(1)	3(4)	0	0	0
Julian Watts	16	4	20	2	0	2

CANNON LANE
Hitchin Road, Stopsley, Luton, Beds

CHRYSLER

01582 725506
www.cannonlane.co.uk



Captain's Log

Marvin Johnson

I HAVE got to sit it out again today, and pass up the chance

to give my old friend Tony Thorpe a kicking. After getting over my hamstring trouble, it was galling to be hit by another problem. I was getting pains in my neck and shoulder, and the verdict is that a backbone disc in my neck is pressing on a nerve. It needs physiotherapy and manipulation, and it could be a week or two before I am able to play again.

It's upsetting to collect another injury, but pleasing to know that we have the cause sorted out, and that it can be cured.

Some of you might well be thinking my return for the Wrexham game was not exactly brilliant, and it is still hard to believe we could let a three goal lead be overturned in the last half-hour. We all put up our hands to accept our share of the blame. I think it should also be remembered that Wrexham were a very good team, and our goals were scored very much against the run of play.

The boss took action with his two new signings, and it is a pleasure to welcome Petri Helin and Kent Karlsen to Luton Town. They have settled into the dressing room very quickly and comfortably, and they also settled into the team to very good effect at Bury.

Fortunately for us they speak English much better than any of us can manage in Finnish or Norwegian. Come to think about it, they speak better English than some of the lads who have lived here all their lives!

Memo for the dressing room: only kidding, guys!

All new recruits bring something different with them, and in the cases of Petri and Helin I think their most valuable contributions will be their experience. We have a good crop of lads aged between 20 and 22 who will probably become good players, but as things have turned out this season the club cannot afford to wait for them to prove their point tomorrow, when

results are desperately needed today.

The league table is depressing for all of us who feel for Luton Town, yet I still have a strong feeling that we are capable of putting things right. Think back to the last four games: a draw at Bury, an unbelievable defeat to Wrexham, a win against Brentford and a draw at Oxford on a night when we would have won by a mile but for an inspired goalkeeper playing against us.

To me, the evidence of those four games suggests we are not the worst team in this division. The crying need, of course, is to prove it this afternoon, against a team who are proof positive that things can be turned around.

Tony Thorpe and I are still good friends, and speak to each other regularly. If my phone goes early in the morning, I can be sure it will be Thorpey, ringing up to tell me he has scored again! Only a couple of months ago, Bristol City were in the bottom four, but even then Tony was confident better times were ahead. He also said how impressed he was with Danny Wilson as a manager, and that the players wanted to do a job for him. They have done - 11 games without defeat speaks for itself.

I remember Danny Wilson, of course, as a team-mate at Kenilworth Road, and I hope we have time for a chat. Brian Stein and he got the goals at Wembley in 1988, so it will be nice for them to meet up again as well. Ricky Hill and Mark Stein were in the same side, so there will be some happy memories to talk about. I was there as 14th man, when there were only two subs.

That was then, and today we simply have to win games, especially at home, so while we welcome all our friends from Ashton Gate, there will be a determination in our side to see them off, and then enjoy a drink with them. So far, we have failed to give supporters what we all want, and we have to put that right today. I think we will.

Marvin Johnson

Up and Running!
Luton Town's very own official website.
www.lutontown.co.uk



Treatment Room

Clive Goodyear

PHYSICALLY, our players had to come through a tough, testing game at Bury, and while we collected a few knocks and bruises I am glad to report that there was nothing serious. Our two new players could hardly have chosen more difficult circumstances to begin their Luton careers, but not only did Kent Karlsen and Petri Helin play well, they also passed the test of physical fitness and stamina with flying colours.

Sadly, Marvin Johnson had to miss the match, having returned a week earlier against Wrexham for his first game since August. He has shaken off his hamstring injury, but still has a problem with his neck and shoulder. He is now in the care of a specialist on neck and back injuries, and his verdict, after looking at scans, is that Johnson has a condition which occasionally traps a nerve in his neck.

He is able to train without problems, but the pain and soreness seems to strike at random. Fortunately now we have diagnosed the problem, we can put it right with physiotherapy and manipulation, but at this stage it is difficult to know how long it will take to complete the cure.

www.superkarts.co.uk

For further information and bookings telephone
01462 485959

2 Pixmore Avenue
Letchworth
Herts SG6 1JS

Arrive and Drive Group Events
Karting Clubs Birthday Parties
Corporate Events Open Events

It is also difficult to know how, where and when the skipper picked up the injury. It is fairly commonplace in all walks of life. For footballers, it might be caused by years and years of heading a ball, or in a collision during a game. It might even be nothing more than normal wear and tear affecting a body which is pushed to greater limits than in other occupations. Whatever it is, the player and I are both delighted that we have a good diagnosis, and with luck he should be fully fit within two or three weeks. In the meantime he can continue to train at something less than full power, and obviously we will get the problem sorted out once and for all before we consider him for first team action again.

Adam Locke, who picked up a hamstring strain in the win over Brentford three weeks ago, has worked well to get over it, and was able to train normally this week, and I expected him to be fully fit in time to be considered for a place in the squad this afternoon.

We had the same hope about Stuart Douglas, but at the time of writing he had to be rated doubtful for today's game. He has been feeling some soreness in the left hamstring, the one which kept him out for so long after he was injured in pre-season, and while it is nothing like as serious this time, we will be very wary about asking him to play league football if the problem was still there at the latter end of this week. Thankfully, the other hamstring, the right, has healed completely.

Injuries like this are almost inevitable at this time of the year, when we have heavy pitches and have to play in bad weather, but overall we have been fortunate in not being hit too hard.

Paul McLaren, for instance, is still affected by his calf muscle injury, caused when he was kicked against Wrexham. It was not bad enough to keep him out of the team at Bury, and this week he has been able to train, and then put up with the resulting soreness. I would expect him to be all right for today's match, subject to a late check. Finally, there was some good news this week for one of our youth players, Dean Mortara. He has been under treatment for several weeks for a knee injury. It affects the cruciate ligament, and not so long ago injuries like that were career-threatening - one nearly finished Paul Gascoigne, if you remember.

A surgeon who specialises in such injuries has examined Mortara thoroughly, and is very hopeful that the young player can get over the problem without the need for an operation.

He will have to work in the treatment room and in the gym, and undergo more examinations by the specialist, but all the signs are that he will make a full recovery, with the injury being much less serious than it might have been.

Clive Goodyear



Club Secretary

Cherry Newbery

FIRST today I wish to say a big thank-you to everyone involved in the

NSPCC bucket collection at the last home match. It was part of football's support for the charity's Full Stop appeal, and the response from our supporters was as generous as usual, with £431.58 raised. Thanks are also due to members of Luton Town Supporters Club, who provided the collectors.

There is another collection in the ground today, for the Royal British Legion poppy appeal. It is particularly apt this afternoon, because today is Armistice Day, when we remember those who gave their lives in service to the country, including some Luton Town players.

Because of the very wet weather, we have had two matches postponed this week, with the reserves unable to play Brentford at Baldock on Monday and the FA Youth Cup tie against Walsall being washed out on Tuesday.

The reserves game has been re-arranged for Monday February 5, 2001, also at Baldock, kick-off 7pm. Our home reserves fixtures will be played at Baldock, to save wear and tear on our pitch, until near the end of February, and the first game back here at Kenilworth Road will be against Cambridge on February 21. Kick-off times will then revert to 2pm.

I get a mixed reaction from supporters about switching games to neighbouring towns, but everyone understands the reasons, and of course fans who live in North Hertfordshire are pleased to be able to have Luton Town games on their doorsteps. Admission prices at Baldock, incidentally, are £2 for adults and £1 for concessions.

Our FA Youth Cup second round game against Walsall will now be played, weather permitting, on Tuesday evening, kick-off 7pm. and admission will be £3 for adults, £1.50 for concessions. Entry will be via Kenilworth Road, and please come and support the lads if you can. If a replay is needed it will be at the Bescot the following Tuesday (7pm).

On the subject of pitches, we were delighted with the response to an item in my column at the last home game, asking for help with pitch maintenance work for an hour or so after home games. There was a very good response, and thanks to all the

volunteers. But Richard Bird, our groundsman, would still appreciate more help.

We also have a few vacancies for various other jobs on match days, and if you can help us out, please phone me on Luton 411622.

Another fixture change has just been agreed. I am delighted to report that our Second Division game at home to Wycombe Wanderers in January has been chosen for live TV coverage by SKY, and it will be switched to the previous evening, Friday January 12, kick-off 7.45.

Supporters who went to Bury will have noticed that the yellow Fluo-Flare Ultimax match ball has made its reappearance, for its third season. Yellow is apparently much easier to see in the dark winter months, and all Football League games between now and February 24 will use the Fluo-Flare. Except, that is, if the referee thinks the conditions are so bright that he would prefer to use the traditional white ball. Here's hoping!

Our next home game, of course, is Friday's FA Cup-tie against Rushden and Diamonds, and although it is being shown live by SKY we are hoping there will still be a good attendance to create a cup-tie atmosphere in the ground. A reminder for season ticket holders: their seats will be reserved for them at the ticket office until 5.15pm today. Please see page 11 for full details of ticket arrangements.

And finally today, I am delighted to report that our new arrangements for the catering unit in the New Stand have been very well received by supporters, and have improved our service to them. The new system has worked very well, to the benefit of everyone. Customers were served very quickly, so if you have not already done so, give it a try!

From today, we are putting the same system into operation in the Kenilworth K1 catering unit, and I hope you will agree that it makes purchases of food and drinks very much easier. We always try to be efficient in everything we do, and we are always happy to receive letters from supporters - we need everyone we can get into the ground and it is our business, whenever possible, to give the customers what they want.

Cherry Newbery

To advertise in this matchday programme
 call the Commercial Department on:

01582 411622

Up and Running!
 Luton Town's very own official website.

www.lutontown.co.uk



352 Selbourne Road
Luton Beds LU4 8NU
Tel: 01582 493332
Fax: 01582 560731
ISDN: 01582 560854
Email: regallitholtd90@atlas.co.uk

- ◆ Digital Artwork
- ◆ Conventional Repro
- ◆ Platemaking
- ◆ Colour Printing
- ◆ Finishing
- ◆ Distribution
- ◆ Stationery
- ◆ Point of Sale
- ◆ Brochures
- ◆ Commercial Print
- ◆ Magazine Publishing

The Publishers & Printers of:

**Scale
Aircraft
Modelling**

**Scale
Aircraft
Monographs**

If you've been turned down for a mortgage for one of these reasons, it could be you're talking to the wrong people.

- you have no wage slips
- you work for yourself but don't yet have accounts
- your salary is made up of commission and bonuses
- you're a company director
- you're self employed or a contractor



Call 0845 950 1500 (local rate)

now quoting code AFAS0
or visit our website @ www.ucbhomeloans.co.uk

WRITTEN QUOTATIONS AVAILABLE ON REQUEST.
Security will be required on property.

YOUR HOME IS AT RISK IF YOU DO NOT KEEP UP REPAYMENTS ON A MORTGAGE OR OTHER LOAN SECURED ON IT.

UCB Home Loans Corporation Limited is a wholly owned subsidiary of Nationwide Building Society.
UCB Home Loans Corporation Limited. Regd. No 1063539. Registered in England. Registered Office: 36 Sutton Court Road,
Sutton, Surrey SM1 4TE. UCB Home Loans operates within the guidelines of 'The Mortgage Code'.



The specialist mortgage lender
of Nationwide Building Society

Ticket News

AXA FA Cup First Round Luton Town v Rushden & Diamonds

Friday November 17, kick-off 8pm

Season ticket holders' seats will be reserved for them until close of business today
Cup voucher C applies. All other seats are now available for sale

Prices: MAIN STAND Blocks A-E: Adults £12, concessions £5, Block F: Adults £10, concessions £5, Block G: Adults £8, concessions £5

MAIN STAND ENCLOSURE Blocks C, D, E, F & G Adults £10, concessions £5 Blocks A, B, H. & J: Adults £8, concessions £5
KENILWORTH STAND Upper and Lower Tiers: Adults £10, concessions £5

FAMILY STAND (NEW STAND) Two adults and one child: £22 One adult and two children: £17 Each extra child: £4

REPLAY ARRANGEMENTS

If a replay of this match is necessary, it will be at Rushden & Diamonds on Tuesday, November 28, kick-off 7.45pm.

This match would be ALL TICKET for Luton supporters.

Adults: £8.50, concessions £5



Nationwide League - Division Two



Port Vale v Luton Town

Saturday November 25, kick-off 3pm

It will be pay on the day only for Luton supporters

Admission: Adults £15, OAPs £10, Juniors £8



Stoke City v Luton Town

Saturday December 2, kick-off 3pm

It will be pay on the day only for Luton supporters

Admission: Adults £16, Junior and senior citizens £9



Luton Town v Colchester Utd

Saturday December 16, kick-off 3pm

Tickets are now on sale at normal match day prices

Cash turnstiles will be open on the day



Luton Town Credit Card Hotline

By using our telephone hotline system you can order match tickets up to
48 hours prior to any game by ringing:

01582 730748
24 HOURS A DAY

Please have your credit card to hand when you make the call.

Luton Town Credit Card Hotline:
01582 730748 (available 24 hours)

Executive Box Holders



Mick Connolly

Mr H. Khatab



G.P. Quorenton
(Ductwork)



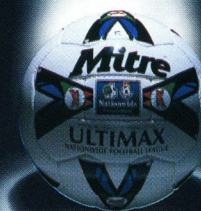
Kenilworth Suite Members

Paul Armitage	Woburn Media Ltd	SKF (UK) Ltd
Corporate Coaching	Critical Research	DBF Crosswinds Ltd
RW Harvey & Son	Dr David Siegler	Regal Litho Ltd
Mr Malcolm Eade	Mr J Siegler	Mr D Ryder
Mr Roger Eade	Datapace Ltd	Mr P Mitchell
Vangis UK Ltd	J P Hygeine Supplies	Travel Extras
	Filmergraphics	

To reserve an Executive Box or become a Kenilworth Suite member call Commercial on:

01582 411622

Last Season
The Nationwide Football
League saw an Increase in
Attendance of 13.5%;
Why...?



The authority...

The Quality of the Football

Image by Empics 0115 840 444 Digital Artwork by SentryBox 01895 251 220

The Best in post-match reports

The Luton News The Dunstable Gazette



ON SALE
EVERY WEDNESDAY
STILL ONLY 25P



**Official Kit Suppliers of
Luton Town Football Club**



Commercial John Bailey

SPONSORSHIP at Luton Town matches is very often used as a business tool by companies who take advantage of good-value packages to entertain guests and clients, but to underline the fact that we can offer something from everyone this afternoon we also have personal sponsors, who are marking a happy family occasion. Laura Feekins is one of today's joint match sponsors, and it is a very special occasion for her, because she is celebrating her 18th birthday.

She first saw the Town in a 2-2 home draw against Watford in 1993, and is attending today's game with her family and friends as part of a present with a difference from her parents. Her favourite player is Matthew Spring, although she also still has a soft spot for Tony Thorpe, from the time when he played for the Town. But she adds that she hopes he doesn't spoil her day by scoring for this afternoon's opposition!

We also welcome to our sponsorship lounges representatives and guests of Andrew Davies Construction Ltd, who are based at

Buntingford. The company is entertaining members of the management team from Wilcon Homes North London, and that name may be familiar to Town supporters. Wilcon are currently offering a choice of two prestigious developments locally. Meridian Gate at London Colney is a superb development of two, three and four bedroomed houses, and Castlemead at Pitstone offers an excellent selection of one, two and three bedroomed homes. Full details can be found on the Wilcon Homes web site, www.wilcon.co.uk, or by phoning 020 8207 3408.

More loyal supporters are today's match ball sponsors, IBC Vehicles of Luton. The company was formed in 1987 and is now wholly owned by General Motors, the parent company of Vauxhall Motors. IBC produces the successful Frontera range, one of Europe's best-selling 4 x 4 vehicles. Next year production of this range will cease at IBC to make way for the new joint venture vehicle, the Vauxhall Vivaro/Renault Trafic.

We welcome all our guests, and hope they enjoy their day with us. And if you want to know more about the wide variety of packages we offer, please telephone the commercial department on Luton 411622.

John Bailey



Golden Gamble

WE know that supporters were disappointed by the result at our last home game, but for one Town fan there was considerable consolation as he saw Wrexham pinch the points.



Barry Griggs, from Whipperley Green, Luton, had every reason to smile for the camera at the interval because he was the Golden Gamble winner, picking up £545 in cash after his lucky number, which cost only £1, was drawn out of the drum by Matthew Spring.

It was the tenth prize paid out this season, and the jackpots have totalled £4,510, an average of £451. Another wedge of cash will be won this afternoon. We cannot forecast what the prize will be because it depends on sales. Golden Gamble sellers are on duty in all parts of the ground and tickets are £1 each. Half of the takings go to the jackpot prize, and the other half to the club, so even if you are not the winner, you are helping the Town. The draw is made during the interval, and the money is paid out instantly.

**To advertise in this matchday programme
call the Commercial Department on:
01582 411622**

Kit Sponsors

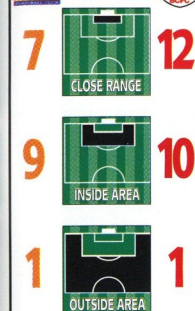
NATHAN ABBEY	Paul Deason
GAVIN MCGOWAN	Luton Town Supporters Club
MATTHEW SPRING	Brian Hall
MARVIN JOHNSON	Space Display Systems
PETER HOLMES	G & S Ceramics
PAUL McLAREN	Elsie Clubb
STUART DOUGLAS	Les & Sue Miller
KENT KARLSEN	Icknield Windows Ltd
PETER THOMSON	The Bobbers Travel Club
LIAM GEORGE	WHOSH
STUART FRASER	David & Jonathan Siegler
ANDREW FOTIADIS	Sally Mayne & Family
MATTHEW TAYLOR	Mick Garbutt, Inside Media
MARK STEIN	Wendi Arnold & Graham Bates
ADAM LOCKE	Jeremy Caine of D.A.P. Consulting
FRIEDRICH BREITENFELDER	Regal Litho and Corporate Coaching
EMMERSON BOYCE	Michael Capp & Danny Clubb, Century Club Members
ANDRE SCARLETT	WHOSH
PETRI HELIN	Icknield Windows Ltd
JUDE STIRLING	Century Club
SCOTT WARD	G. Owen Ceramic Tiling Ltd
MARK OVENDALE	Phil Norton, JEWSON Ltd
JULIAN WATTS	Les Miller, Miller & Company, Bedford
JAMES AYRES	E.C. Smith & Sons Ltd.
DEAN BRENNAN	B.D. Sanders
RICKY HILL	Luton Town Supporters Club, Milton Keynes
LIL FUCCILLO	Loyal Luton Supporters Club
CLIVE GOODYEAR	Century Club
JOHN MOORE	Ian Smith
JOHN CARROLL	Danny Clubb & Michael Capp, Century Club Members
LEE MANSELL	Danny Clubb & Michael Capp, Century Club Members
DEAN STANDEN	Available
TRESOR KANDOL	Terry Neale
BRIAN STEIN	Danny Clubb

If you are interested in sponsoring a players kit please contact the Commercial Department on 01582 411622.

Goalscoring Head 2 Head

in the graphics below, Hatters' figure is to the left with the goals scored indicated in orange and Robins' to the right and scored in red

Where



How



Top League Scorers

Mark Stein (Luton Town) vs **Tony Thorpe** (Bristol City)

17 in 16 games Team Goals 23 in 16 games
1.06 goals Ratio per Game 1.44 goals

3 in 16 games Player's Goals 9 in 14 games
0.19 goals Ratio per Game 0.64 goals

Games Scored In
Games Scored 1st Goal
Games Scored 1 Goal
Games Scored 2 Goals
Games Scored 3 Goals

IMPORTANCE OF GOALS
(Taking out top scorers, how would results be affected)
0 (0pts) Games Won -> Drawn 1 (2pts)
0 (0pts) Games Won -> Lost 1 (3pts)
0 (0pts) Games Drawn -> Lost 2 (2pts)
0 Number of points gained 7

SCORING SEQUENCES
Consecutive Games Scored
2 Games 1
3 Games 0
1 game Maximum Scoring Run 2 games

CONSECUTIVE GAMES WITHOUT SCORING
2 Games 1
3 Games 1
4 Games 0
8 games Maximum Dry Spell 5 games

Hatters' Results

LUTON TOWN GOALS	0	1	2	3	4	5	6	7
0	2	1						
1	2	3	1					
2	1	2						
3			1	1				
4	1			1				
5								
6								
7								

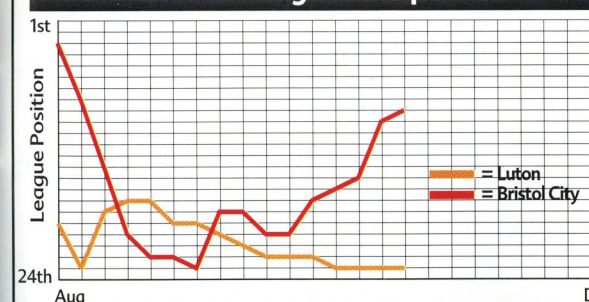
shows the number of results for each scoreline.
eg. Luton have drawn 3 games 1-1

Robins' Results

BRISTOL CITY GOALS	0	1	2	3	4	5	6	7
0	2	1	1					
1	3	2						
2		1	1					
3				1				
4								
5								
6								
7								

eg. Bristol City have won 2 games 4-0 and lost 3 games 0-1

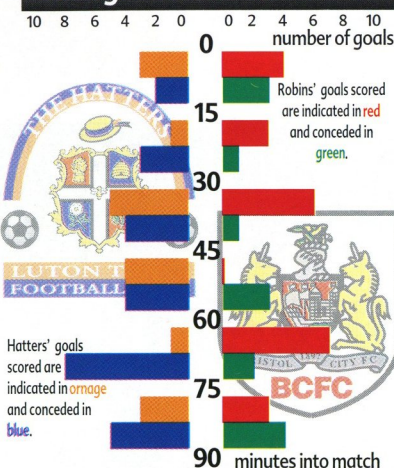
Seasonal Progress Comparison



Stats&Facts

Stats compiled by Football Information Services

When goals scored & conceded



Average time of Scoring / Conceding

85 mins	All Goals for	63 mins
80 mins	Home Goals For	48 mins
90 mins	Away Goals For	90 mins
55 mins	All Goals Against	103 mins
60 mins	Home Goals Against	80 mins
51 mins	Away Goals Against	144 mins

Table shows average time taken for both teams to score and concede goals in home and away games.

Last 10 Games Form Guide Comparison

Hatters	: DLLSLDWLS	F 13 A 19 Pts 7
Robins	: SWSDSWWWWSW	F 20 A 9 Pts 20

Form Guide shows last 10 results. W = Won, L = Lost, S = Score Draw, D = No Score Draw. Most recent result to the right

Bristol City's Last 10 Years - The Complete Record

	DIV	FAC	WC	LS	Gls	Ave Att
90/91	2	3	2	Morgan	13	13,493
91/92	2	5	2	Allison	10	11,475
92/93	1	3	2	Cole	12	11,000
93/94	1	5	1	Allison	15	8,853
94/95	1	4	2	Allison	13	8,005
95/96	2	1	2	Agostino/Seal	10	7,017
96/97	2	3	2	Goater	23	10,794
97/98	2	2	2	Goater	17	11,846
98/99	1	3	2	Akinbiyi	19	12,840
99/00	2	3	2	Thorpe	14	9,803

More matches than anyone

call 0808 100 0101 or visit us at www.ondigital.co.uk

UEFA Champions League FA Carling Premiership FA Cup Sponsored by AXA Nationwide Divisions 1, 2 & 3 Worthington Cup Competitive Internationals

ONDigital showed more of the 1999/2000 season's football than any other UK TV platform. Services are available subject to coverage, status and terms. Calls may be monitored/recorded.

Up and Running!
Luton Town's very own official website.

www.lutontown.co.uk



Today's Visitors

Bristol City



Bristol City F.C. - 2000/2001

Back Row (Left to Right): Gerard Lavin, Tony Thorpe, Mickey Bell, Joe Burnell, Marvin Brown, Aaron Brown, Carl Hutchings, Scott Murray, Peter Beadle, Alex Ball, Paul Holland, Neil Ashley, Simon Clist, Paul Mortimer.
Middle Row (Left to Right): Kyle Sheppard, Danny Coles, Kevin Amankwaah, Kayode Odejayi, Steve Phillips, Billy Mercer, Antony Malessa, Mark Lever, Andrew Jordan, Damian Spencer, Louis Carey, Simon Clist.
Front Row (Left to Right): Tony Fawthrop (Football Co-Ordinator), Matt Hill, Jamie Edwards, Alex Meechan, Ivan Tistimetanu, Shaun Taylor (Reserve Team Manager), Keith Millen (Club Captain), Danny Wilson (Manager), Brian Tinnion (Senior Coach), Leroy Rosenior (Senior Coach), John Burns, Tommy Doherty, Craig Woodman, Robin Hulbert, Gill O'Shea (Physiotherapist), Buster Footman (Kit Manager).



DANNY WILSON - MANAGER

Born: Wigan, 1.1.60.
 Former Northern Ireland international midfielder who was appointed as City manager on 27th June 2000 on a 12-month rolling contract. Previously at Barnsley whom he guided into the Premiership for the first time in the club's history in 1997, only to see them relegated after only one season. Appointed as manager at Sheffield Wednesday in July 1998. He took the Yorkshire giants to 12th in the Premiership during his first season but was dismissed shortly before the club were relegated last season. As a player Danny was capped 24 times by Northern Ireland and won League Cup winners medals with Luton Town in 1988 and Wednesday in 1991.

NO 2 - LOUIS CAREY

Born: Bristol, 20.1.77.
 Versatile defender who is a product of the club's youth system. Has never looked back since making his first team debut in October 1995. Began his first team career as a right-back, but feels more at home in central

defence. Gained international recognition when he trained with the Scottish under-21 squad, for whom he qualifies through his grandparents. Signed a new four-year deal in July 2000.

NO 3 - MICKEY BELL

Born: Newcastle 15.11.71.
 Stylish left-back snapped up from Wycombe Wanderers for a tribunal-set fee of £150,000 in the summer of 1997. Formerly with Northampton Town, he provides City with a number of options down the left flank linking up especially well with Brian Tinnion. A member of City's 1997/98 Second Division promotion-winning side he is the club's main penalty and free-kick specialist. Signed a new four-year deal in May 2000.



NO 5 - KEITH MILLEN - CLUB CAPTAIN

Born: Croydon, 26.9.66. Vastly experienced centre-back who quickly established himself after signing from Watford for £35,000 in November 1999. City's skipper made more than 500 career appearances for

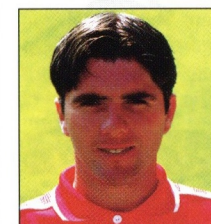
Brentford and Watford and played a leading role in the Hornets' promotion campaigns from Divisions Two and Three. Originally signed as cover for the injured Shaun Taylor but now a first choice centre-back.

NO 7 - SCOTT MURRAY

Born: Aberdeen 26.5.74.
 Right-winger/full-back now valued in the £1 million bracket after his match-winning performances for City last season when he scored 11 goals. Signed from Aston Villa in December 1997 for an initial fee of £85,000, rising to £150,000 on appearances. Began his career as a striker at Fraserburgh, before converting to the right flank at Villa Park. Popular with both fans and teammates at Ashton Gate, he has signed a new four-year contract this summer.

NO 9 - PETER BEADLE

Born: Lambeth, 13.5.72.
 Well-travelled striker who arrived at Ashton Gate from Notts County in a £200,000 deal in November 1999. Scored ten goals in City's colours last season. Began his career at Gillingham as a trainee before moving to Tottenham Hotspur where he failed to establish himself in the first team. Has also appeared for Bournemouth (loan), Southend (loan), Watford, Bristol Rovers - where he scored three times against City in local derbies - and Port Vale.



NO.10 - TONY THORPE

Born: Leicester 10.4.74.
 Leading scorer last season with 17 goals. Had found his first team appearances limited at Ashton Gate since becoming City's second million-pound buy in the summer of 1998 from Fulham. The skilful striker even appeared on loan for Reading and Luton Town before enjoying a revival under caretaker manager Tony Fawthrop in the latter half of last season. Started out at Leicester City as an attacking midfield player before moving to Luton where scored 31 goals during the 1996/97 season. That was enough to persuade Kevin Keegan to bring him to Craven Cottage for £800,000.



NO.11 - BRIAN TINNION

Born: Durham, 23.3.68.
 Cultured left-sided midfielder who is currently City's longest-serving player. Has been an influential member of the first-team since a £180,000 move from Bradford City in 1993. Started his League career at Newcastle United, where he played in the same youth team as Paul Gascoigne. Has enjoyed legendary status at Ashton Gate since scoring the goal that knocked Liverpool out of the FA Cup at Anfield in January 1994. A UEFA qualified coach, he was appointed player/coach in the summer of 2000.

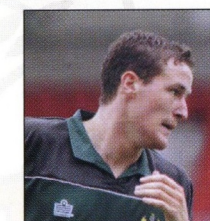
NO 12 - GREG GOODRIDGE

Born: Barbados 10.7.71.
 Barbadian international winger who joined City from Queens Park Rangers in the summer of 1996. Began his

career for Barbados side Lambada WI before moving to England in 1994. Originally with Torquay United, QPR splashed out £100,000 to take him to Loftus Road. A crowd favourite at Ashton Gate since scoring two goals on his debut, he can be a match-winner on his day with his electric runs down the right flank.

NO 14 - STEVE PHILLIPS

Born: Bath, 6.5.78.
 Goalkeeper who joined City in November 1996 from local non-league side Paulton Rovers. A good shot-stopper, he made steady progress at Ashton Gate under goalkeeping coach Mike Gibson, and earned his first team debut in December 1998. Played a total of 16 games in City's First Division campaign and began the 1999/2000 as first choice before Mercer's arrival.



NO.16 - LEE PEACOCK

Born: Paisley, 9.10.76.
 Striker who became City's third-most expensive signing when he arrived from Manchester City in a £600,000 deal in August 2000. Began his career as a trainee at Carlisle United before moving to Mansfield Town where he was a prolific scorer for The Stags in Division Three. Moved to Maine Road in a £500,000 deal in the autumn of 1999.

NO 19 - GERARD LAVIN

Born: Corby 5.2.74.
 The combative right-back, who also played for Watford, endured a difficult start at City when he was sent-off on his debut and then suffered a series of injuries. Has since worked hard to return to full fitness.



THE CANE INDUSTRIES (UK) LTD

QUALITY CANE FURNITURE



Daytona



Toronto



San Francisco



Wyoming

Established 1980 SHOWROOM OPEN
2-B LAPORTE WAY,
LUTON, BEDS LU4 8RJ
 Tel: 01582 727123 Fax: 01582 727233

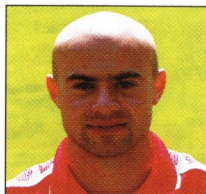
For all the latest news, views and interviews call

CLUBCALL - 09068 121123

(Calls charged at 60p per minute at all times)

Up and Running!
 Luton Town's very own official website.

www.lutontown.co.uk

**NO.21 - IVAN TISTIMETANU**

Born: Moldova 27.4.74.
Moldovan international defender who also can also operate effectively in a midfield role. Strong in the tackle and a good reader of the game, he signed for City in December

1998 for £225,000 from leading Moldovan club FC Zimbru. Recovered from a serious knee injury sustained in City's 1998/99 First Division campaign to feature regularly in the first team squad last season.

NO 22 - AARON BROWN

Born: Bristol 14.03.80.

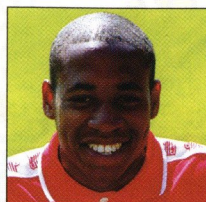
Made his first-team debut as an 18 year-old in the First Division in December 1998 and is now a regular member of the senior squad. When he and younger brother Marvin appeared in last season's Worthington Cup tie at Nottingham Forest, they became the first brothers to represent the club since the early 1970s. Spent a month on loan to Exeter City in January 2000.

NO 23 - JOE BURNELL

Born: Bristol 10.10.80.

Cool-headed central defender who can also play at right-back. Joined City as a schoolboy midfielder before switching to defence where he played for the

club's under-19/reserve sides. Showed maturity beyond his years when he made his first team debut in January 2000, and scored his first goal for the club during City's Auto Windscreens Shield run. Now a regular in the first team squad.

**NO.24 - MATT HILL**

Born: Bristol 26.3.81.

Tough-tackling defender who can play at left-back or in the centre of defence. Progressed through the ranks to make his first team debut at the age of 17 in the First Division in

November 1998. Featured regularly in the first team squad towards the latter half of the 1999/2000 season and is regarded as one of the club's brightest prospects.

NO 27 - KEVIN AMANKWAH

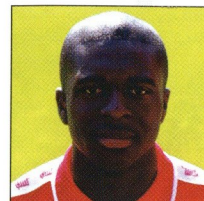
Born: Kenton (London), 19.5.82.

Pacy right-back who has progressed through the ranks since signing schoolboy forms with City after being spotted playing for Middlesex Youth. Made his first team debut in March 2000 after impressing for the reserve/under-19 sides and came on as substitute at Wembley in the Auto Windscreens Shield Final versus Stoke City. Capped a fine season with a call-up to the England under-17 side in May.

NO 29 - ROBIN HULBERT

Born: 14.3.80.

Midfielder snapped up for £25,000 on transfer deadline day in March 2000 from Swindon Town in a two-and-a-half year deal. Began his career at Everton before moving to the County Ground, during which time he spent a spell on loan to Newcastle United. Has previously played under City's Director of Academy Dave Burnside for the England Youth side.

**NO.30 - MARVIN BROWN**

Born: Bristol 6.7.83.

England under-16 international striker, who became City's youngest ever player at 16 years and 71 days old when he came on as sub in a Worthington Cup tie at

Nottingham Forest in September 1999. A product of the club's Academy, Marvin is younger brother of City midfielder Aaron. An outstanding prospect.

NO 31 - SIMON CLIST

Born: Shaftesbury (Dorset), 13.6.81.

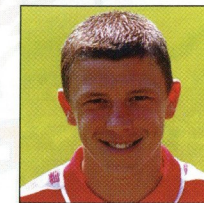
Attacking central midfielder who joined City after impressing as a trialist in an Academy tour of Holland in May 1999. Previously at Tottenham where he spent two years as a trainee. His impressive form for the reserves last season won him a first team debut in January 2000, and has been a regular in the squad since.

NO 32 - KAYODE ODEJAYI

Born: Nigeria, 21.2.82

A late-starter in footballing terms, Kay opted to finish his studies in Greenwich before launching his career at City. He was recommended for a trial in the

summer of 1999 as a 17-year old by his cousin and ex-City striker Ade Akinbiyi. Has since made meteoric progress through the under-19/reserve sides and won a first team debut in February 2000. Signed a four-year deal in the summer keeping him at the club until 2004.

**NO.33 - DANNY COLES**

Born: Bristol, 31.10.81.

Young central defender who has worked his way up through the ranks since joining City as a schoolboy. Made a number of cool, steady displays for the reserves/under-

19s last season, scoring a number of goals from set-pieces. Was rewarded with his first team debut in April and has signed a four-year contract keeping him at the club until the summer of 2004.

NO 41 - ANTONY MALESSA

Born: Ashton Park (Berkshire), 13.11.80.

Promising goalkeeper who joined City in May 1999 after being released from Southampton. Played on the Academy's tour of Holland in the same month and featured regularly for the reserves/under 19s last season, winning a place on the first team bench during City's Auto Windscreens Shield run. Enjoys dual nationality through his German-born father and has trained with both the England under-16 and German under-18 squads.



Find Freedom within.....

Fitnessfirst
Health Clubs



no other Health Club offers you more for less...

.....with no need for contracts

Fitness First Luton, Skimpot Lane, Luton, Beds, LU4 0JB

Tel: 01582 560200

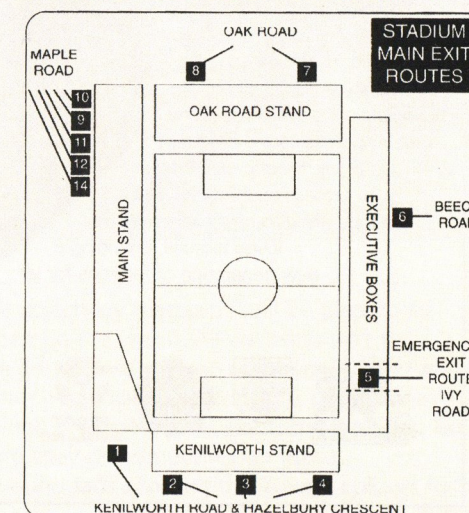
www.fitnessfirst.co.uk

EVACUATION PROCEDURE

IN THE event of any emergency in the stadium, Luton Town FC and the emergency services have agreed on an evacuation procedure which is designed to ensure the safe and controlled evacuation of the crowd, and to ensure their safe dispersal from the area, to allow the emergency services to carry out their tasks.

In the event of evacuation from all or part of the stadium, you will receive instructions over the public address system on how you should leave. In an evacuation of the main stand you will be instructed to use the pitch. Stewards will direct you to the nearest exit. It may be that your normal exit route will not be available. On leaving the stadium, you will find some roads closed to pedestrians, to enable swift and unobstructed access for the emergency services. Please leave the area of the ground as quickly as possible, by the route directed. Your co-operation will be most appreciated.

Geoff Lovell, Safety Manager.



For all the latest news, views and interviews call

CLUBCALL - 09068 121123

(Calls charged at 60p per minute at all times)

Treat yourself and your friends to an Executive Box.

Call the Commercial Department on:

01582 411622



Premierimage.co.uk

THE SOCCER STUFF & NONSENSE STORE

Aerial & Fisheye photos of all British

Stadiums... Paintings... Cakes...

Mousemats... Jigsaws...

Garden Kit Gnomes... House nameplates...

& much much more

For a FREE gift catalogue

Call: 0208 461 4214

or write to: Unit 12
157-159 BOUNDFIELD RD
LONDON SE6 1PE



**R. J. BLOW &
C O M P A N Y**

THE FRIENDLY ACCOUNTANTS

*Book-Keeping
Taxation and Wages etc.*



24 GUILDFORD STREET
LUTON
BEDS, LU1 2NR

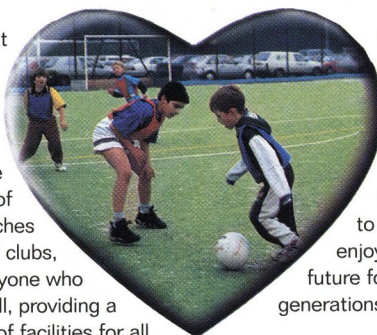


Tel: (01582) 738792

Fax: (01582) 423347

There's a brand new team at the heart of English football.

Football and the Government have teamed up in a new partnership to provide new lifeblood for the grass roots of English football – pumping financial support into the game that's so close to the hearts of so many. From parks pitches to professional football clubs, we'll be there to help everyone who loves football, providing a new generation of facilities for all



by pooling resources from The FA Premier League, The Football Association, Sport England and the Government into a single substantial fund for redistribution throughout the game. Together, we intend to ensure that football enjoys a healthy future for many generations to come.



FootballFoundation

football's biggest supporter

1 Waterhouse Square, 138-142 Holborn, London EC1N 2ST.

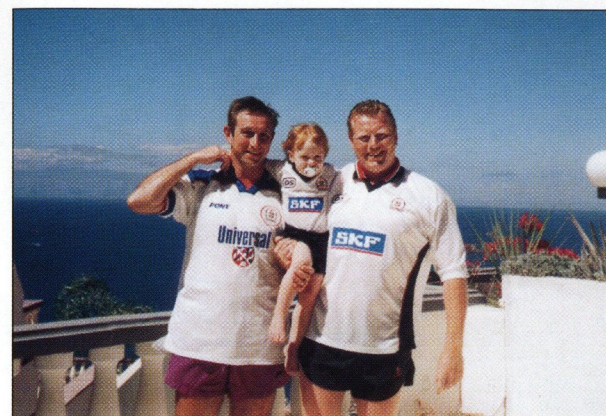
T: (020) 7832 0100 F: (020) 7832 0119

E: enquiries@footballfoundation.org.uk

W: www.footballfoundation.org.uk



Hatters Abroad



IF YOUR dad goes on holiday with his Luton Town strip included in the luggage, it's hardly surprising that any self-respecting holiday maker aged two and a half wants to be equally well-dressed.

Shannon West, the centre-piece of this holiday snapshot, is a case in point. Her father Graham, from Coverdale, Luton, is on the right, and on the left is his brother Andy.

Graham explained: "We are sporting our Luton colours on a trip to Los Gigantes in Tenerife. Andy and I have

been lifelong supporters of the Town, and now Shannon is following the family tradition. "She spent two weeks running around Tenerife screaming 'Luton!, Luton!' everywhere she went. She can sing as well. After I returned from the win at Scunthorpe last season, I was singing a song of joy from the terrace. Now Shannon runs around singing it too - Eeh aye, eeh aye, eeh aye, oh... Up the Football League we go!"

GARY Booth clocks up thousands of miles each season to watch his favourite teams in action - Luton Town and England. And naturally the Town's colours go with him.

Gary, from Kinross Crescent, Sundon Park, tells us: "The picture was taken when I went to see the France v England friendly at the Stade de France in Paris in September.

"We travel with England Supporters Club to all home and away games, as I do with Luton."



THIS page is open to all Luton Town fans, and the matchday magazine will be pleased to consider for publication photographs from anywhere in the world. All we ask is that the Hatters colours are well to the fore. So if you have an interesting snap of Town kit in far-off places, please send it, with a few details, to the matchday magazine editor at Luton Town FC. Please enclose a stamped self-addressed envelope if you want the photographs back, but please be aware that with the best will in the world they do sometimes go astray. We are also interested in hearing about our very young fans sporting the Town's colours for our occasional "Mini Hatters" series.

For all the latest news, views and interviews call

CLUBCALL - 09068 121123

(Calls charged at 60p per minute at all times)

Ever thought about being a match ball sponsor?

Call the Commercial Department on:

01582 411622

Photo Action

Luton Town 3 Wrexham 4



WELCOME BACK: Marvin Johnson returned to the team for the first time since August, but was injured again, and missed the match at Bury.

ABOVE: Julian Watts forces in the goal that put us three up.

LEFT: Wrexham keeper and Luton lad Kevin Dearden goes in bravely as Mark Stein looks for his second goal of the day.

Photos: Gareth Owen/LTFC

Ideal

fit

When your housing is as critical as this, you need to ensure that you choose the best.

SKF offers you an extensive range of bearing housings designed to suit all of your needs.



SKF

Helping your world run smoother

Tel: 01582 496436
www.skf.co.uk

Hatters Chatter

WITH the club well into the internet revolution, we were delighted to receive news from our old friends at Whosh, reporting on their success in the IFA, the Internet Football Association. The lads are the footballing side of the Worldwide Hatters on the Superhighway internet mailing list, and play in the league on Saturday mornings before the Town games in the afternoon. Jonathan Miller e-mailed us to report on their first full season which culminated in the presentation of a shield and medals as runners-up at the IFA awards evening.

He reports: "Around 40 teams make up the IFA league, from England, Scotland and Wales, and the Luton side came second to champions Arsenal and above such teams as Spurs, QPR, Watford and Celtic.

"In the whole of the year we only lost two games, one to Arsenal, the other to Celtic, in the semi final of the IFA cup, and they went on to beat Arsenal in the final.

"The highlights of the season would have to be beating Watford 3-2 at home after coming back from 0-2 down, QPR 3-2 away, an 8-0 victory over Gillingham away and a 1-1 draw away at Arsenal.

"The squad also went on to win a one-day tournament in Huddersfield, Land Ut Gods, winning the final on penalties, our first trophy.

"At our annual presentation evening the awards went to Ben Gray as top goalscorer, Daniel Soper as player of the season and Martin Stanhope as clubman of the season.

"We receive a massive amount of support from the club and in particular from Cherry Newbery and we thank them for the kit they have kindly donated, as seen in the photo. The support given by the club culminated in a game versus the stewards and ground staff after the final home game of last season."

Whosh won 2-0 and the picture shows Jon netting the second goal.



For the latest ticket information call
the Luton Ticket Office on:
01582 416976



Blast from the Past

Roger Wash

Hatters v Hornets. Twenty years on.

It is, amazingly, twenty years ago today that the Hatters beat the Hornets at Vicarage Road to record their fourth successive 1-0 victory over the old enemy and were, at the time, accused of being cynical and negative in local derby clashes while Watford were seen as the paragons of virtue in all things football.

It, of course, depended on whether you read the 'Watford Observer' or the 'Luton News' or, in the case of myself, both as I was living in Bushey at the time!

Both the Town and Watford started the 1980/81 campaign with wins. While we were beating F.A.Cup holders, West Ham, 2-1 at Upton Park the Hornets were seeing off Swansea by a similar scoreline at Vicarage Road.

The fixture computer decreed that the first derby clash of the season should take place four days into the new season and a crowd of 13,887 turned up at Kenilworth Road to see if the Town could repeat their double of the previous year. Then, as if you need reminding, a header from full-back Kirk Stephens in the final minute of the game at Watford on Boxing Day earned both points followed up with a solitary Bob Hatton strike in the return fixture.

The respective managers, David Pleat and Graham Taylor, tried desperately to play down the importance of the derby but the rivalry was always going to be intense. I hurried home from the Boxing Day clash to make sure that I was back before my neighbours. I could then pretend to be pottering around in my front garden awaiting the return of all my Hornet supporting neighbours, but what I was pottering around with in a snow covered garden in the dark beats me now. Petty and juvenile, but it had to be done!

The game at Luton in August 1980 hinged on

a controversial decision. The Town had taken the lead mid-way through the first half when Steve White headed his first goal for the club, getting on the end of a perfect cross from David Moss, but then Watford decided to throw caution to the wind.

In the second period wave after wave of Watford attacks were thwarted by resolute defending, a clever offside trap and the excellence of Jake Findlay in goal. In the 65th minute, however, the offside trap failed to operate efficiently allowing Malcolm Poskett through, trailed by Alan West. Watford's Luther Blissett also broke through to give Poskett an alternative but was brought down by Mike Saxby just as Poskett fired home. The referee, Alan Seville, disallowed the goal, booked Saxby and awarded Watford a free-kick which was wasted. 'Barbarous Seville' roared the headline in the 'Watford Observer', (quite clever, I thought) as the match report went on to devote 95% of its content into a rant, criticising the referee, the Town's offside trap and the professional foul by Saxby and then finished up by accusing the Luton centre-half of having the 'mobility of a wardrobe' which were words that were to come back to haunt him later on in the season as we shall see. Brian Swain, writing in the 'Luton News' showed admirable restraint and barely mentioned the Saxby incident!

By the time of the return on November 11th 1980 both sides were sitting relatively comfortably in mid-table. The Town had gone through a spell where they had picked up only one win in eleven that had seen them plummet following their brilliant start. They had, though, picked up of late following an unlikely 3-1 victory at Cambridge where the Hatters were reduced to ten men after Jake Findlay was

injured with the substitute already used.

Watford boasted a decent home record but could do nothing on their travels with the result that the game had draw writen all over it.

A crowd of 16,939 turned up to see if the Hornets could secure their first win over the Hatters since 1971 but they were undone as early as the eleventh minute. Brian Stein, with his back to the goal, took a pass just outside the area. He twisted and turned,

leaving two defenders stranded and crossed low for White to drive a fierce shot past Eric Steele in the Watford goal. White, who had been dropped and then transfer listed after scoring the winner against Watford in August, continued to lead the line well as the Town's superior passing and technical abilities threatened to tear Watford apart, but desperate defending managed to keep the Hornets in the game as the interval approached.

Surprisingly, the Town decided to sit on their lead in the second period and gradually Watford pushed forward and huffed and puffed around the Luton penalty area. The Luton defence was rarely troubled though and with Saxby completely dominating Watford dangerman, Ross Jenkins, it was left to the Hornet's midfield players to pose what little threat there was.

Les Taylor, on as a substitute for Watford at half-time and making his debut for the Hornets following his transfer from Oxford, missed a sitter while he was still cold and another effort was hacked off the line by Moss. Good use of the offside trap meant that Watford became increasingly frustrated and long before the end they resorted to the long ball which was gobbled up gratefully by Saxby and his fellow defenders.

Luton manager, David Pleat, knew he was on to a loser when he walked into the post-match



Steve White heads home during the 1-0 win over the Hornets in August 1980.

press conference to be greeted by a local reporter who commented, 'Close the door quick before he runs out and catches us all offside.' Pleat countered this by saying, 'We decided to close down on Ray Train and Wilf Rostron and needed to be clever and push out to deny Watford space. If that's the offside trap, the other side has to be clever enough to beat it.' 'I read a very cynical report of our last game which talked about Saxby's mobility but I was proud of the way he totally held Jenkins tonight. Just ask the Luton supporters whether they found it a worthwhile trip.' Even the Watford men, writing in Watford newspapers for Watford supporters had to hold their hands up and accept that point. I certainly had no misgivings about the performance and had no problems in sleeping that night. After a bit of pottering around in the front garden, of course!

Luton: Findlay, Stephens, Aizlewood (West), Saxby, Price, Hill, Grealish, Donaghy, Stein, White, Moss.

Watford: Steele, Henderson, Harrison, Sims, Jackett, Blissett, Train, Callaghan (Taylor), Rostron, Poskett, Jenkins.

Roger Wash

For all the latest news, views and interviews call

CLUBCALL - 09068 121123

(Calls charged at 60p per minute at all times)

Up and Running!

Luton Town's very own official website.

www.lutontown.co.uk



The Dunstable Gazette

The Luton News



AFTER SCHOOLS WEEKLY INDOOR WINTER COACHING PROGRAMME

LUTON

TUESDAYS
Luton Regional Sports Centre
School Years 1 to 3 at 4.00 pm to 5.00 pm

WEDNESDAYS
Luton Regional Sports Centre
School Years 4 to 8 at 4.00 pm to 5.00 pm

FRIDAYS
Cardinal Newman High School
School Years 1 to 3 at 4.00 pm to 5.00 pm
School Years 4 to 8 at 5.00 pm to 6.00 pm

FRIDAYS
Lealands High School
School Years 1 to 3 at 4.00 pm to 5.00 pm
School Years 4 to 8 at 5.00 pm to 6.00 pm

DUNSTABLE

THURSDAYS
Manshead Upper School
School Years 1 to 3 at 6.00 pm to 7.00 pm
School Years 4 to 8 at 7.00 pm to 8.00 pm

FRIDAYS
Northfields Upper School
School Years 1 to 3 at 4.00 pm to 5.00 pm
School Years 4 to 8 at 5.00 pm to 6.00 pm

LEIGHTON BUZZARD

MONDAYS
Vandyke Upper School Floodlit astro-turf
School Years 5 to 8 at 7.30 pm to 8.30 pm

WEDNESDAYS
Vandyke Upper School
School Years 1 to 2 at 4.00 pm to 5.00 pm
School Years 3 to 4 at 5.00 pm to 6.00 pm

AMPTHILL

TUESDAYS
Alameda Middle School
School Years 1 to 3 at 4.00 pm to 5.00 pm
School Years 4 to 8 at 5.00 pm to 6.00 pm

HARLINGTON

THURSDAYS
Harlington Upper School
School Years 1 to 3 at 6.00 pm to 7.00 pm
School Years 4 to 8 at 7.00 pm to 8.00 pm

All venues run during term time from next week. For further information or to register a place simply phone the Community & Schools dept on 01582 411622 or 0958 438322.



Community & Schools Football Programme



Bedfordshire
Football Association Limited



BEDFORDSHIRE FOOTBALL ASSOCIATION & LUTON TOWN F C's FAIR PLAY AWARD

Sponsored by WINDOWCRAFT

Today we are pleased to present the first of our monthly Windowcraft Fair Play Awards. Each month a youth team will be nominated by The Beds FA in recognition of their fair play. Their reward will be to receive 25 complimentary tickets to today's game where they will be presented with their award on the pitch at half time.

Fair Play Winners - September Shefford Saints Under 12's
Fair Play Winners - October St Joseph's Youth Under 11's

Both the Beds FA and Luton Town are grateful to Windowcraft for their support of this joint initiative which we hope will remind both players, parents and managers that more than just the result is the importance we place on playing the game in the spirit of fair play. Congratulations to both teams - we hope you enjoy today's game.



SCHOOLS VISIT PROJECT



Our NTL School Visits Project takes a break next week with the October half term school holiday, however we already have many visits planned for next term leading all the way up to Christmas, in fact with the increased popularity of the project we have decided to increase our "In Schools Days" allocation.

The in schools days simply mean that instead of our coaches visiting your school for one PE lesson in the day we arrive in the morning and coach as many children as we can within the whole school day. Quite a number of schools have already set aside their curriculum for a whole day to have an "In Schools Day" and we are pleased to be able to add this to our Schools Visit Project. Of, course schools can still contact us to book individual PE lessons.

The Schools Visit Project is jointly funded

by NTL and Sportsmatch and aims to provide curriculum time PE and football coaching in schools to youngsters of all abilities. We're well on our way to reaching a total of some 20,000 youngsters who will have benefited from the scheme over the last couple of years and our aim is to reach more and more youngsters each term.

Although we have visited over 150 schools in our area there are still schools we've not yet reached - if you're reading this and think you might be one of them why not give us a ring at the Club to arrange an "In Schools Day" or to answer any questions you may have.

The number to ring is 01582 411622





STEP 1. Approach defender with ball under close control.



STEP 2. As defender prepares to tackle, wait for perfect moment.



STEP 3. When opening appears seize opportunity. (Precisely what a Personal Loan from Nationwide enables you to do.)

SPONSORS OF THE FOOTBALL LEAGUE

www.nationwide.co.uk

0800 30 20 13

The Junior Hatters are sponsored by London-Luton Airport

LONDON LUTON
AIRPORT
www.london-luton.com

Junior Hatters

IN offering our usual welcome to all Junior Hatters today, we are also delighted to be entertaining John and Claire Banks and our counterparts from Bristol City. The young reds were joining us at our Saturday Club, and playing us at ten-pin bowling.

They have also brought their own mascot, ten-year-old Avril Ross (pictured) who enjoys watching City home and away. She goes to Henleaze Junior School in Bristol and her favourite players are Tony Thorpe and Micky Bell. Her hobbies are karate, horse riding, swimming, Scottish dancing, and hand bell ringing.

It is a great pity that while clubs like us and Bristol City try hard to encourage young supporters to be involved, and to foster sporting relationships with each other, there are some clubs who are not willing to do the same. That was why we did not have a trip to Bury last week, and Port Vale are also unable to offer us facilities for a visit.

However, we will be going to the Potteries in three weeks' time, when we play Stoke City. Their family enclosure has PlayStations for young supporters, and we will join them there before the game. Tickets for the trip are selling well, but there are still some available at the bargain price of £10 for Junior Hatters and £13 for others, coach fare and match ticket included. We will leave at 10am, and you can book through the club shop.



ONE OF our biggest "fixtures" of the season has now been confirmed: our Christmas party will be on Wednesday December 6, at the Ascot Room, Luton Co-op Club, from 7 till 9.30. Music will be by Disco Duck and there will be the usual mix of games and jigging around, and our guests will be the Town players, Happy Harry, and of course Father Christmas with a sackful of presents. Tickets are now on sale at the club shop at £5, and each Junior Hatter can buy one extra for a friend.



TAKING centre stage with the skippers and match officials for the Wrexham game were three mascots, with one in the middle representing the visitors. The two young Town supporters are Thomas Skinner, of Powers Close, Sandy, who was the Junior Hatters mascot, and Michael Harrison-King, from Churchill Way, Shefford, who was the commercial mascot.

Today's Mascot

NINE-year-old Aaron Colbert, from Glenfield Road, Luton, is today's Junior Hatters mascot after his name was picked out at random from the computerised membership list. He is a regular at Kenilworth Road, coming with his dad and his brother Ross,



but today he is the VIP member of the family, meeting the team before kick-off and going onto the pitch with them for the pre-match formalities.

Aaron goes to Warden Hill Junior School, and plays football for Bramingham FC. He also likes swimming and pool, and this afternoon one of his biggest thrills will be to meet his hero - Matthew Taylor, his favourite player.

If you would like to join the Junior Hatters, call the Club Shop on:

01582 411622

**The Web Shop is
Coming Soon @
www.lutontown.co.uk**



**KIDS
AT
KENILWORTH**

SPONSORED BY

SKF

Sainsbury's

Hatters on Card

Alan Robinson

EXACTLY 20 years ago today the Town completed a league double over our friends from Watford, with a 1-0 triumph at Vicarage Road. Wearing the number 10 shirt that night was Mark Aizlewood, who co-incidentally had a spell with this afternoon's visitors later in his career. Back in 1979 Aizlewood was included in the Sun's mammoth series of "soccercards" which could be obtained by sending off tokens appearing in the newspaper. The cards were, frankly, disappointing, consisting in the most part of poorly-drawn portraits. One or two bore some likeness to the men they were supposed to be portraying, but as you can see Aizlewood's card was not among them!

Born in Newport on October 1, 1959, Aizlewood joined his home town club from school. Newport County were then a Football League club, and Aizlewood made his senior debut at 16 in their midfield. In the summer of 1978 David Pleat, about to start his first full season as Town manager, made the Welshman his first major signing.

Aizlewood was one of seven who made Town debuts on the opening day of the following season, a memorable 6-1 thrashing of Oldham after we had been one down at half-time. Aizlewood wore the number 6 shirt, but settled down at left back for the rest of the season. However, on the last day, he was sent off at Wrexham for dissent, and this was to cost him dear. Suspended for the start of the following campaign, he was left out in the cold, and made only five Second Division starts. in the second half of the 1979-80 season.

His versatility was underlined the next year, when he had a lengthy run in midfield, before it was a return to left back for the start of the Town's 1981-82 championship campaign. His first goal for us was historic, our first-ever on an

artificial pitch. Andy King, a former Luton player, gave QPR the lead with football's first plastic pitch goal at Loftus Road on the notorious Omniturf. Aizlewood and Ricky Hill scored to give us a 2-1 win. The defender "celebrated" by falling through a plate glass door, causing an injury which required several stitches, but it did not prevent him from notching the winner at Bolton the following Saturday.

Aizlewood kept the left back place until March, but the loan signing of Richard Money from

Liverpool kept him out for the promotion run-in. Money's move was made permanent in the summer, and Aizlewood was allowed to move on to Charlton after 110 senior appearances for the Town. In 1985-86 he was a regular midfielder in the Charlton side that finished runners-up in the old Second Division. He also won the first of his 39 full caps for Wales. In the top flight for the first time in his career, Aizlewood came back to Kenilworth Road with Charlton in November 1986, and had a superb game despite our 1-0 win with a goal by Mark Stein.

By the time the return was played in the following April Aizlewood had dropped down a division to play for Leeds, before further transfers took him to Bradford and then

to Bristol City.

He enjoyed three good seasons at Ashton Gate, clocking up over a hundred first-team appearances before ending his league career back in Wales with Cardiff City in 1995. In nearly 20 years as a professional, Aizlewood played well over 500 league games for his seven clubs. This series of Sun Soccercards ran to 1,000 different subjects, and other Hatters featured were Milija Aleksic, Lil Fuccillo, Bob Hatton, David Moss and Alan West, plus a whole host of players who had Luton connections.

Alan Robinson

The Sun Soccercards (1979)

SUN SOCCERCARD No 352



M. AIZLEWOOD (Luton Town)

Up and Running!
Luton Town's very own official website.
www.lutontown.co.uk

Action Replay

Luton Town 3 Wrexham 4 (HT 2-0)

THREE up after 54 minutes, the Town were sunk by a memorable four-goal blast by Wrexham in the final half-hour, and bitter though that pill was for Town fans to swallow, both managers knew the result was no more than the Welshmen deserved.

"We were flattered to be two up at half-time," said Ricky Hill. "Wrexham had played very well, and only Nathan Abbey stopped them going ahead before we scored. To get three ahead was a bonus, but I never felt really confident that we would hold on. We needed to be more determined as a team, and to tough things out, but we could not do that. Our performance was not good enough, while Wrexham were very good. It was dreadfully disappointing to lose in the closing minutes, but Wrexham deserved the points. They did the simple things better - control, pass and move."

The battle was lost in midfield, which was missing Matthew Spring through suspension, and Adam Locke through injury, and then left without Paul McLaren when he went off with a calf muscle injury early in the second half.

Darren Ferguson, 28-year-old son of Sir Alex, was outstanding for Wrexham in that department, and helped to make it an unhappy return for Marvin Johnson, playing his first game since August on the day before his 32nd birthday.

He and his team-mates had to endure jeers and catcalls as they trooped off, except for goalkeeper Abbey, who had the rare distinction of being man of the match despite conceding four goals. "Without him it would have been a lot more," said Wrexham boss Brian Flynn. "We could have had three at least before Luton scored, but the goalkeeper was outstanding. And one in the second half from Chalk was absolutely magnificent, as good a save as I have seen in a very long time."

"I was very disappointed to be two down at half-time, because that was no reflection on the way the game went. But we knew if we kept going we would get something out of the game, and overall we deserved the points."

Chairman Mike Watson-Challis was among the supporters who were devastated by the day's dramatic events, and his response was to sanction the quick conclusion of the approaches that brought two experienced players into the club within a few days.

Match Details

Town: Abbey, Boyce, Johnson, Watts (Fraser 47 mins), McLaren, Brietenfelder, Holmes, Taylor, George, Stein, Fotiadis (Thomson 70 mins). Unused subs: Brennan, Baptiste, Ovendale.

Booked: Marvin Johnson, 86 mins, foul on Martyn Chalk.

Wrexham: Dearden, McGregor, Ridler (Mardon 38 mins), Chalk, Faulconbridge, Ferguson, Barrett (Owen 78 mins), Edwards, Roche, Killen, Bouanane (Sam, 87 mins). Unused subs: Gibson, Rogers.

Booked: Darren Ferguson, 86 mins, foul on Andrew Fotiadis.

The goals: 1-0, 38 mins - Mark Stein, ghosting clear of his marker to head home a right wing cross by Friedrich Brietenfelder; 2-0 43 mins - Julian Watts, bundling in a far post right wing corner by Peter Holmes; 3-0 54 mins - Liam George from close range, after Wrexham's defence blocked but failed to clear a low drive by Stein; 3-1 59 mins - Craig Faulconbridge header from right wing cross by Carlos Edwards; 3-2 62 mins - Chris Killen shot after Darren Ferguson beat Holmes to the ball in midfield and delivered a pass for Faulconbridge to flick the ball into space on the edge of the box for Killen; 3-3 82 mins - Martyn Chalk drive through a crowd of players from the edge of the box after collecting Marvin Johnson's headed half-clearance; 3-4 86 mins - man of the match Ferguson, composed strike after swapping passes with Faulconbridge.

Referee: Mark Cowburn.

Attendance: 5,341, including 352 supporting the visitors



AGAINST THE ODDS: Andrew Fotiadis finds the Wrexham cover comes two at a time as he tries to force his way goalwards on his return to the side.

RISE TO THE CHALLENGE: The camera angle is deceiving - Mark Stein's foot as he flicked the ball towards goal was not as close to the Wrexham man's head as it looks.



SUPER-SAVE: Nathan Abbey, man of the match despite being beaten four times, tips over a first-half shot by Darren Ferguson.

For all the latest news, views and interviews call

CLUBCALL - 09068 121123

(Calls charged at 60p per minute at all times)

Up and Running!

Luton Town's very own official website.

www.lutontown.co.uk

Action Replay

Bury 1 Luton Town 1 (HT 0-0)

MOST of the pre-match chat among Town supporters at Gigg Lane concerned the two new signings from Scandinavia about to make their debuts for a team desperately in need of a lift. We got it, with right wing-back Petri Helin marking the occasion with his first goal, to save a point, and Karl Karsten completing a solid defensive display with an amazing goal-line clearance to ensure we hung on for the draw.

Bury boss Andy Preece was still wondering after the game how his side had failed to win by three or four goals, and once more we heard an opposing manager heap praise on goalkeeper Nathan Abbey. He was outstanding again, with several top class saves thwarting opponents desperate to end a run of five successive defeats.

The Town had to hold on grimly at times, but there was an extra touch of steel about the team performance on a day when we might have nicked all three points if more scoring attempts had been on target. But on the run of play Bury had more justification for making the same claim.

The Town made four team changes, with Karlsen and Helin making impressive debuts, and Matthew Spring and Stuart Douglas recalled. We also saw a debut, as sub, by Rocky Baptiste, who could have become an instant hero when set up by Helin two minutes from time, but shot wide.

Mark Stein flashed a first-half header narrowly wide, but Bury looked more threatening in the first 45 minutes, with Abbey denying Nicky Daws twice and Redmond once. All three of those efforts would have been goals against a lesser keeper.

Ironically, it was a close call at the other end, in the second minute after the interval, that led to Bury taking the lead. Julian Watts shot wide following a corner, and Bury broke quickly for Dean Barrick shoved his way past Karlsen to set up Adrian Littlejohn to score.

But the Town refused to cave in, and nine minutes later Helin was leaping with delight and running to acclaim the travelling supporters after firing the equaliser from a through ball by Paul McLaren.

Not since 1970 have the Town won at Gigg Lane, but we might have pinched it as the contest became good end to end stuff on a wet pitch. But so might Bury, with Emmerson Boyce and Karlsen clearing off the line. Karlsen's recovery run and full-stretch clearance to deny Littlejohn, who had been forced wide by Abbey but still got his shot on target, was little short of miraculous.

"I thought our performance overall warranted the point, even though our goalkeeper made some excellent saves," said Ricky Hill. "It was a blow to concede the first goal ten seconds after we had gone close to scoring ourselves, but I was pleased with the resilience we showed to get the equaliser."

Match Details

Town: Abbey, Karlsen, Boyce, Watts, Helin, McLaren, Spring, Taylor, George (Holmes 80 mins), Stein, Douglas (Baptiste 75 mins). Unused subs: McGowan, Breitenfelder, Ovendale.

Booked: No-one.

Bury: Kenny, Barrick (Bhutia 73 mins), Daws, Collins, Swailes, Billy, Littlejohn, Reid, Redmond, Preece, Unsworth (James 81 mins). Unused subs Forrest, Barnes, Jarrett.

Booked: No-one.

The goals: 1-0, 47 mins - Adrian Littlejohn from Dean Barrick's pass with the Town caught stretched after an attack failed at the other end; 1-1, 56 mins - Petri Helin on his debut, converting Paul McLaren's through ball with a determined burst into the penalty area before chesting the ball down and carefully placing his shot.

Referee: Paul Robinson

Attendance: 2,861, including 419 supporting the Town.



INSTANT HERO: Petri Helin has just netted the point-saver at Gigg Lane, and his reaction tells the visiting fans how much he enjoyed his debut goal for Luton Town.



BELOW: Nearly another one - Rocky Baptiste was close to the second debut goal of the day, but after going on as sub this late effort flew wide of the target.



SHOOTING STAR: Matthew Spring lefts fly, with Matthew Taylor in support and Baichung Bhutia covering.

For the latest ticket information call
the Luton Ticket Office on:

01582 416976

Up and Running!
Luton Town's very own official website.
www.lutontown.co.uk

**Just Arrived! Full Length
Fleece Lined Coats.**



LTFC Sweatshirt

Childs Size, 28" - 32"
Adult Size, S,M,L,XL

£19.50

£26.00

Navy/Orange Crew T-Shirt

Childs Size, 28" - 32"
Adult Size, S,M,L,XL

£15.00

£19.50

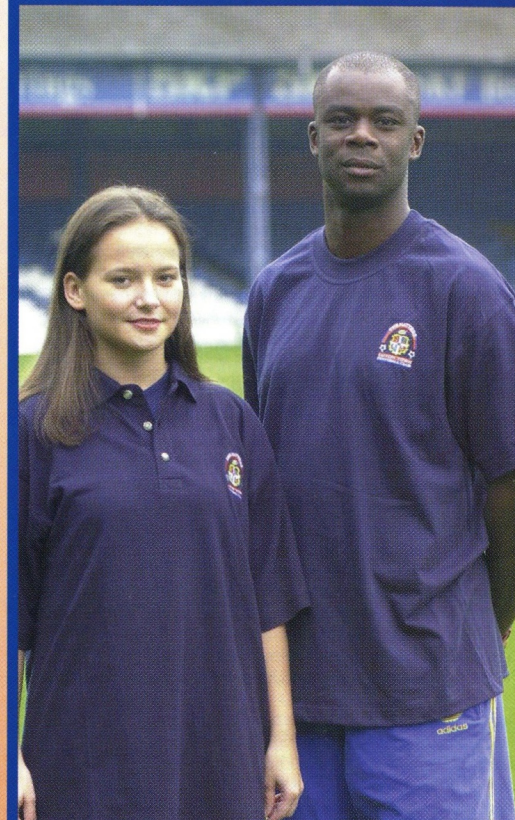
Navy/Orange 2 Fold Shirt

Childs Size, 28" - 32"
Adult Size, S,M,L,XL

£15.00

£19.50

**Now Available in Club Shop
£91.00. Adult Sizes Only**



**Navy or Royal Crest Polo
Adult Sizes Only, S,M,L,XL**

£22.50

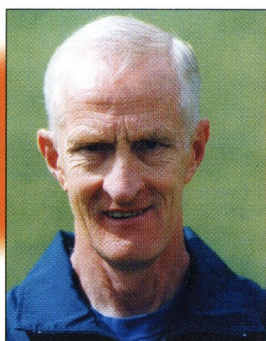
**Navy or Royal Crest T-Shirt
Adult Sizes Only, S,M,L,XL**

£15.00



Available Now in

The Club Shop



The Reserves

John Moore



WE WERE due to begin our mid-winter programme at Baldock Town on Monday evening, but the game against

Brentford was called off because of the saturated pitch. It meant frustration for a lot of players who were hoping to catch the manager's eye to press claims for places in the first team squad. It was also frustrating for the coaching staff, because while we can make pretty good assessments of players in training sessions, you learn much more from proper competitive games. Mark Ovendale, for instance, is champing at the bit, his professional pride hurt by being dropped from the first team, and desperate for a chance to get back. He has taken the setback like the good profes-

sional he is, but was probably more disappointed than most to discover that Monday's game would not go ahead. Ironically, having been short of players for a long time, and having used a lot of trialists previously, we would probably have fielded a decent side - as well as Ovendale, the game would have been an opportunity to impress for the likes of Stuart Fraser, Gavin McGowan, Dean Brennan, Peter Holmes, Friedrich Brietenfelder, Peter Thomson, Rocky Baptiste, Andrew Fotiadis, Dean Standen, Andre Scarlett, Tresor Kandol, Jude Stirling and James Ayres. Hopefully, we will have better luck with the weather next week - we are due to be away to Bristol City in the Avon Insurance Combination on Wednesday afternoon. Our next home game is not scheduled until Monday December 4, when Portsmouth are due to provide the opposition at Baldock.

Avon Insurance Combination

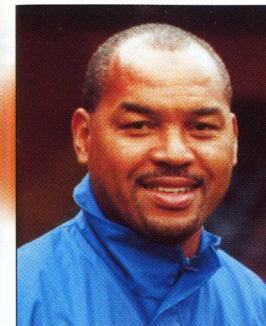
	P	W	D	L	F	A	Pts
QPR	7	7	0	0	15	4	21
Swindon	9	5	1	3	18	9	16
Norwich	6	4	2	0	17	8	14
Reading	8	4	2	2	12	8	14
Fulham	6	4	1	1	14	8	13
Portsmouth	6	3	2	1	10	7	11
Cambridge	7	3	2	2	9	7	11
Oxford	8	3	2	3	14	13	11
Brighton	5	3	1	1	19	11	10
Gillingham	5	3	1	1	7	5	10
Millwall	6	3	1	2	6	6	10
Brentford	7	2	4	1	8	10	10
Bristol City	7	2	3	2	10	9	9
Bournemouth	7	2	3	2	10	11	9
Crystal Palace	7	3	0	4	10	13	9
Luton Town	5	2	1	2	8	7	7
Northampton	5	2	0	3	5	9	6
Cheltenham	6	2	0	4	6	11	6
Bristol Rovers	7	2	0	5	8	14	6
Southend	8	0	5	3	6	11	5
Peterborough	8	1	2	5	7	13	5
Wycombe	6	1	2	3	6	14	5
Colchester	7	1	1	5	4	12	4
Barnet	5	1	0	4	7	11	3
Leyton Orient	4	0	0	4	3	9	0

Avon Insurance Combination League Results and Fixtures

AUG					
Wed 16	Barnet	H	3-1	Brennan 2, Kandol	
Mon 21	Peterborough (LC)	A	2-1	Kandol, Carter	
Tues 29	Millwall	A	0-2		
SEPT					
Wed 13	L. Orient	A		postponed	
Wed 20	Gillingham (LC)	H	1-1	Ayres pen	
Tues 26	QPR	A		postponed	
OCT					
Wed 4	Fulham	H	4-1	Thomson 3, Brennan	
Wed 18	Gillingham	A	1-1	Brennan	
NOV					
Wed 1	Reading	A	0-2		
Mon 6	Brentford	H*		Postponed	
Wed 15	Bristol City	A			
Wed 29	Swindon	A			
DEC					
Mon 4	Portsmouth	H*	7pm		
Wed 13	Colchester (LC)	A	2pm		
Mon 18	Oxford Utd	H*	7pm		

JAN					
Thurs 4	Norwich (LC)	A	7.30pm		
Wed 10	Wycombe	A	2pm		
Mon 15	Brighton	H*	7pm		
Wed 24	Bournemouth	A	2pm		
Mon 29	Bristol Rov	H*	7pm		
FEB					
Mon 12	Cheltenham	H*	7pm		
Mon 26	Colchester	A	2pm		
Wed 21	Cambridge Utd (LC)	H	2pm		
MAR					
Thurs 8	Norwich City	A	7.30pm		
Wed 14	Southend	H	2pm		
Mon 19	Peterborough	A	2pm		
Wed 28	Cambridge Utd	H	2pm		
APRIL					
Tues 3	Northampton	A	2pm		
Wed 18	C. Palace	H	2pm		

*To be played at Baldock Town.



Youth Soccer

Brian Stein

FA Youth Cup, first round:
Luton Town 2 Lincoln Utd 1(aet)

WE earned a second round tie at home to Walsall in the FA Youth Cup on a night when our finishing was so poor as to be embarrassing. The visitors could hardly believe their luck as we let them off the hook time and time again, and not until extra time did we complete a win that should have been very much easier. Chris Dillon was unlucky to hit the bar twice, but we should have scored at least four in the first half. Our very poor finishing gave the visitors hope.

Duane Clarke gave us a tenth-minute lead, but we failed to add to it, and in a rare Lincoln attack poor defending cost us an equaliser with 15 minutes to go. As the replay went into extra time a penalty shoot-out was looming, when the night's third scrappy goal, by Joe Deeney, settled it three minutes before the final whistle.

Luton Town: Chatfield, Dogbe (Okai 118), Leary, Deeney, Gillman, Bruce, Osborne (James-Barriteau 80), Mansell, Clarke (Jeffrey 70), Dillon, O'Leary.

FL Youth Alliance:

Luton Town 4 Colchester 2

THE RESULT was excellent, but the performance was below the standards I set. But the way we took our chances against worthy opponents was pleasing.

Our third goal was the pick of the bunch, a 30-yard screamer by James Osborne to finish a move of about ten passes, and after he had been played in by Lee Mansell.

FOOTBALL LEAGUE YOUTH ALLIANCE

South East Conference Results and fixtures

AUG					
16	Southend	H		2-2 Carroll, James-Barriteau	
26	L. Orient	A	0-4		
SEPT					
2	Portsmouth	H	1-1	Dillon	
9	Wycombe Wdrs	H	2-0	Dillon 2	
16	Northampton	A	1-1	Dillon pen	
23	Cambridge	H	1-2	Dillon	
OCT					
7	Barnet	A	4-0	Gillman, Leary, O'Leary, Mansell	
14	Brighton	H	1-2	Dillon	
17	FAYC1 Lincoln Utd	A	2-2	Carroll pen, Dillon	
21	Brentford	A	0-0		
28	Colchester	H	4-2	Dillon, Leary, Osborne, Jeffrey	
31	FAYC1R Lincoln Utd	H	2-1	Clarke, Deeney	
NOV					
4	Gillingham	A	2-3	Dillon, Mansell	
11	Southend	A			
18	L. Orient	H			
25	Portsmouth	A			
DEC					
2	Northampton	H			
16	Wycombe Wdrs	A			
JAN					
13	Barnet	H			
20	Cambridge	A			
27	Brighton	A			
FEB					
3	Brentford	H			
10	Colchester	A			
17	Gillingham	H			

Chris Dillon gave us a first-half lead, cancelled out following a corner just before the interval. Michael Leary made it 2-1 on 50 minutes, and it should have been all over when Osborne netted on 65. But very poor defending cost us a goal at a free kick, before sub Marcus Jeffrey showed the commitment I expect from everyone with the final goal.

Luton Town: Ward, Bruce, Deeney, Gillman, Dogbe, Mansell, Osborne (James-Barriteau 80), Leary, O'Leary, Clarke (Jeffrey 75), Dillon (Koo-Boothe 85).

Gillingham 3 Luton Town 2

A RED card for Michael Leary's second caution led to us losing a match we had looked like winning. We were looking tired and jaded after our FA Youth Cup exertions a few days earlier, and had no complaints about being a goal down at the interval.

But we looked a much better side in the second half, and turned it round to lead 2-1 with goals by Chris Dillon on 56 minutes and Lee Mansell on 60. Five minutes later a harsh booking after a clash between Leary and an opponent, who was also yellow-carded, left us with ten men, and we made more problems for ourselves by missing two excellent chances. We paid a high price, with Gillingham equalising in the 90th minute, and stealing a winner in stoppage time. On our second half performance we deserved a point at least.

Luton Town: Ward, Dogbe, Leary, Deeney, Gillman (Dillon HT), Bruce, Osborne (Carroll 66), Mansell, Jeffrey (Clarke 80), James-Barriteau, O'Leary.

Appearances (as sub in brackets): Gillman 13, Dogbe 13, Mansell 13, Dillon 11(1), Ward 11, Bruce 11, James-Barriteau 10(2), Clarke 9(2), Leary 9(1), O'Leary 8(5), Carroll 8(1), Deeney 8(1), Osborne 7(3), Mortara 3, Jeffrey 2(8), Nurse 2(2), Chatfield 2, Meike 1(1), Carter 1, Minton 1, Okai 0(1), Koo-Boothe 0(1) Fashanu 0(1), Ramirez 0(1).

Goals: Dillon 9, Carroll 2, Leary 2, Mansell 2, James-Barriteau 1, Gillman 1, O'Leary 1, Osborne 1, Jeffrey 1, Clarke 1, Deeney 1.

WE were away to Southend this morning in the Football League Youth Alliance South East Conference, and on Tuesday we entertain Walsall in the FA Youth Cup at Kenilworth Road, kick-off 7pm.

South East Conference

	P	W	D	L	F	A	Pts
Cambridge Utd	9	7	1	1	20	9	22
Colchester	10	6	2	2	21	14	20
Brighton	8	6	1	1	14	6	19
Wycombe Wdrs	9	5	3	1	19	7	18
Leyton Orient	10	4	3	3	23	15	15
Brentford	10	3	4	3	18	14	13
Luton Town	11	3	4	4	18	17	13
Southend	9	3	3	3	18	21	12
Portsmouth	9	2	3	4	14	20	9
Gillingham	9	2	2	5	11	21	8
Barnet	10	0	3	7	8	24	3
Northampton	10	0	3	7	7	23	3

For all the latest news, views and interviews call

CLUBCALL - 09068 121123

(Calls charged at 60p per minute at all times)

Up and Running!

Luton Town's very own official website.

www.lutontown.co.uk

Campaign Records

Highest Gate
16,022
Reading
vs Oxford

Lowest Gate
2,126
Wrexham
vs Rotherham

Highest
Aggregate
Score
Brentford2
Bristol Rovers .6

Biggest
Home Win
Cambridge6
Rotherham1

Reading5
Oldham0
Millwall5
Oxford0

Biggest
Away Win
Brentford2
Bristol Rovers .6

Consec. Wins
Walsall5

Games
Unbeaten
Wigan13

Consec. Defeats
Bury5
Winless Run
Luton,
Oldham10

Total Games
197

Home Wins
8242%

Away Wins
6030%

Draws
5528%

1-1 Draws
2915%

0-0 Draws
147%

Nationwide2Stats

Statistics Compiled by
Football
Information
Services
Tel: 0151-632 5679

Div.2 Results Grid										Division 2 Ave. Attendances					Biggest Wins & Losses		Last 5 Home Results	
HOME GOALS										3000	6000	9000	12000	15000	Win - vs.	Defeat - vs.		
0	1	2	3	4	5	6	7	8										
0	14	20	11	6	7	2				Bournemouth				3,754	5-2 Bury	1-3 Colch	LLDLW	
1	25	29	12	12	2	2	1			Brentford				4,619	3-2 B'mouth	2-6 B Rovers	DWVWW	
2	11	7	9	5	1					Bristol City				9,741	4-0 NtsC/Read	1-2 Stoke	DDVWW	
3	1	5	2	3	1					Bristol Rovers				7,463	6-2 Brentford	0-2 Oldham	DDLDL	
4										Bury				3,238	2-0 3 Clubs	0-4 Millwal	WWLLD	
5										Cambridge				4,409	6-1 Roth'ham	0-3 B Rovers	LWDL	
6										Colchester				3,546	3-1 B'mouth	1-3 3 Clubs	LLWWL	
7										Luton				5,544	3-1 Brentford	0-4 Swansea	DLWL	
8										Millwall				9,545	5-0 Oxford	2-3 Stoke	LWWDW	
										Northampton				5,862	2-0 3 Clubs	1-2 Wigan	WDWLD	
										Notts County				4,583	3-2 Swindon	1-5 Walsall	LDDWW	
										Oldham				4,350	4-1 Port Vale	0-5 Reading	DLWWD	
										Oxford				4,661	1-0 Bury	0-5 Millwall	LLDLL	
										Peterborough				5,964	4-1 Oldham	1-4 Millwall	WLWWV	
										Port Vale				4,479	3-0 Oxf/Swind	0-4 Cambridge	LWDDD	
										Reading				11,951	5-0 Oldham	0-4 Brstl City	WWWVW	
										Rotherham				4,322	3-0 Oldham	1-6 Cambridge	LWWWD	
										Stoke				12,712	4-0 Oxford	0-3 Walsall	WWDVW	
										Swansea				5,980	4-0 Luton	1-5 Reading	LWDL	
										Swindon				5,765	3-1 Cambridge	1-4 Walsall	LWDD	
										Walsall				6,123	5-1 Notts C	1-3 Wycmbe	WDDWW	
										Wigan				6,142	3-1 Wxm/Cich	0-2 Walsall	WDVWW	
										Wrexham				4,251	4-1 Bury	1-4 Reading	LLWDL	
										Wycombe				5,379	3-1 3 Clubs	0-2 Rdg/Old	LWWVL	

Referees Report

	G	RC	YC	Av. Yell
Hall	10	5	49	4.90
Olivier	10	3	49	4.90
Prosser	8	4	39	4.88
Fletcher	7	0	32	4.57
Cooper	7	2	29	4.14
Wilkes	8	2	32	4.00
Hill	10	1	40	4.00
Jones T	10	7	40	4.00
Bates	9	0	36	4.00
Foy	9	2	36	4.00
Jordan	10	2	39	3.90
Dowd	11	6	42	3.82
Alcock	10	5	37	3.70
Winter	3	0	11	3.67
Barry	5	0	18	3.60
Riley	5	1	18	3.60

Hotshots - Div.2 Clubs' most prolific marksmen, inc. the difference their goals made

Club	Leading Scorer	GS	1stGl	Sc1	Sc2	HT	Gms Ave	W/L	W/D	D/L	Pts	Run	Dry	PU	CS	FS	Results
Bournemouth	Hayter	5	0	1	0	1	13 0.38	1	0	0	3	1	5	26	2	4	DLDWL
Brentford	Scott	9	4	7	1	0	15 0.60	1	3	2	11	4	3	24	5	3	LDLDD
Bristol City	Thorpe	9	3	4	1	1	14 0.64	1	1	2	7	2	5	27	6	5	WDDWD
Bristol Rovers	Ellington	5	1	3	1	0	12 0.42	0	0	3	3	3	4	26	4	4	WLWLW
Bury	Littlejohn	3	2	3	0	0	17 0.18	0	1	1	3	1	6	21	7	6	LWLLL
Cambridge	Youngs	8	1	4	2	0	16 0.50	0	2	1	5	3	4	20	3	3	DWLLL
Colchester	Duguid	4	2	4	0	0	15 0.27	0	1	1	3	2	6	23	4	7	DDLLL
Luton	Kandol	3	0	1	1	0	10 0.30	0	0	2	2	1	5	25	3	6	LDLDD
Millwall	Harris	12	4	5	2	1	15 0.80	0	2	1	5	3	2	29	6	2	WLWDL
Northampton	Forrester	12	8	8	2	0	15 0.80	1	3	4	13	5	2	19	6	3	LWDVWW
Notts County	Stallard	8	5	8	0	0	15 0.53	0	4	1	9	3	3	26	5	5	LLLWL
Oldham	Dudley	3	2	1	1	0	11 0.27	0	2	0	4	2	7	25	4	4	LDLWL
Oxford	Beauchamp	3	1	1	1	0	15 0.20	0	0	0	0	1	7	28	2	9	LLLLL
Peterborough	Clarke	5	2	5	0	0	17 0.29	0	1	1	3	2	7	22	4	5	LDLWL
Port Vale	Naylor	5	2	1	2	0	14 0.36	0	1	0	2	2	5	22	3	6	LLLWL
Reading	Butler	12	7	7	1	1	16 0.75	0	0	2	2	5	2	24	6	4	WDLWL
Rotherham	Robins	8	4	6	1	0	13 0.62	0	1	2	4	2	2	22	6	0	WDVWDV
Stoke	Thorne	6	3	4	1	0	9 0.67	1	2	2	9	2	2	23	4	3	LDLWD
Swansea	Savarese	5	2	1	2	0	7 0.71	1	0	2	5	2	4	23	6	8	WLLLD
Swindon	Invincible	6	1	2	2	0	16 0.38	0	1	1	3	2	9	24	3	7	LWLDL
Walsall	Leitao	7	3	7	0	0	17 0.41	0	2	0	4	3	3	20	6	3	DWVWL
Wigan	Liddell	6	3	6	0	0	13 0.46	0	4	0	8	3	4	22	8	4	DDVWD
Wrexham	Sam	6	2	4	1	0	15 0.40	0	1	1	3	5	9	22	2	3	DWLWD
Wycombe	Rammell	6	2	4	1	0	12 0.50	0	2	1	5	2	4	20	6	7	WLWDD

Key: GS=Goals Scored; 1stGl=Goals Scored 1st Goal; Sc1=Goals Scored 1st Goal; Sc2=Goals Scored 2nd Goal; HT=Half-Time; Each club's leading league scorer and their goals per game (Ave). Next 3 columns show taking off their goals, how many games change from Win to Loss (W/L), Win to Draw (W/D), Draw to Loss (D/L) and Points (Pts) lost. Last 2 figures show best scoring run, and longest dry spell in consecutive games. NUMBERS: PU=Players Used CS=Clean Sheets FS=Games Failed to Score



2nd Division Brian Swain

OLD friends did us few favours this week, as our draw at Bury left us well

clear of Oxford in the league table, but four points adrift of the current safety mark. We are in a group of eight teams in danger of falling behind the rest. Andy King turned the screw a little on Tuesday evening. The former Town midfielder is now manager of Swindon, after Colin Todd decamped to Derby, and a 2-2 draw at home to Wrexham lifted Swindon out of the bottom four, at the expense of Bournemouth. After defeat in his first game in charge, King has now seen five points gathered from three unbeaten matches.

Not so long ago Port Vale, our next league opponents, were being dragged into the depths of the relegation battle, but Brian Horton's team picked up another valuable point at home to Millwall on Saturday, and Vale have lost only once - to promotion contenders Wigan - in their last six outings.

The Second Division manager of the month award went to Ronnie Moore, of Rotherham, for an unbeaten October sequence, which must leave Bristol City fans wondering what Danny Wilson has to do to earn recognition of his achievements. I recall meeting Tony Thorpe at Rotherham in early

September when City were in the bottom four. Don't be kidded, we will get going when our injuries clear up was the burden of Thorpe's conversation. He also spoke of the respect the players had for their new manager, and events have proved that to be well justified.

Their current run is 11 games without defeat since a surprise reverse at home to Swindon in mid-September. And they have not tasted away defeat since their only one so far, at Cambridge way back in August.

Thorpe is leading scorer, with ten, including a couple of penalties, and he was on target last Saturday as City hammered Notts County 4-0 at Ashton Gate. At the top of the table Walsall, Wigan and Reading have all had spells as leaders in the last couple of weeks. The crunch for Reading came a week ago, when they were knocked off the top spot by Walsall, who beat them 2-1 at the Bescot. And on Tuesday Wigan, led by Bruce Rioch, shoved Reading out of the top two by regaining second place with a 1-0 home win over Millwall.

Brian Swain

Nationwide Division Two Table

	HOME							AWAY							Pts
	P	W	D	L	F	A		W	D	L	F	A			
Walsall	17	6	3	0	20	8		4	1	3	12	10	34		
Wigan	17	7	1	0	12	4		2	6	1	10	8	34		
Reading	17	7	1	0	29	8		3	1	5	8	13	32		
Rotherham	17	4	2	3	17	13		5	2	1	10	9	31		
Millwall	16	5	1	2	17	5		4	2	2	15	10	30		
Northampton	16	3	3	1	10	7		5	1	3	11	7	28		
Stoke	16	4	2	1	13	5		3	4	2	13	14	27		
Wycombe	17	5	1	2	14	7		2	4	3	4	7	26		
Bristol City	16	3	2	3	15	9		3	4	1	8	5	24		
Bury	17	4	2	3	10	12		3	1	4	6	9	24		
Cambridge	16	4	2	3	16	10		2	2	3	8	11	22		
Wrexham	16	2	1	5	7	12		4	3	1	20	17	22		
Brentford	15	4	3	1	10	10		1	4	2	7	12	22		
Bristol Rov	15	0	4	2	5	8		5	2	2	18	9	21		
Peterborough	17	4	2	2	11	10		2	1	6	8	13	21		
Notts County	17	2	3	3	12	13		4	0	5	6	14	21		
Port Vale	16	3	4	2	14	8		1	1	5	3	14	17		
Swansea	16	2	3	3	8	8		2	2	4	7	12	17		
Colchester	17	3	2	4	9	10		1	3	4	6	11	17		
Swindon	17	2	4	3	12	16		2	1	5	6	14	17		
Bournemouth	17	2	4	3	9	8		1	3	4	14	16	16		
Oldham	16	3	2	3	10	10		1	2	5	8	18	16		
Luton Town	16	2	1	5	9	12		0	5	3	8	14	12		
Oxford Utd	17	1	2	6	5	11		0	0	8	8	27	5		

Today's other 2nd Division Fixtures

Brentford v Rotherham
Bristol Rovers v Walsall
Millwall v Wrexham
Northampton v Bournemouth
Notts County v Port Vale
Peterborough v Swindon
Reading v Colchester
Stoke v Oldham
Swansea v Oxford
Wigan v Cambridge
Wycombe v Bury

More matches than anyone
call 0808 100 0101 or visit us at www.ondigital.co.uk

UEFA Champions League FA Carling Premiership FA Cup Sponsored by AXA Nationwide Divisions 1, 2 & 3 Worthington Cup Competitive Internationals

ONDigital showed more of the 1999/2000 season's football than any other UK TV platform. Services are available subject

Statistics Fixtures

2000 / 2001

	Date	Opposition	H	A	3pm	0-1	Watts	League Place	Attd.	Team
AUGUST	Sat 12	Notts County	H	A	3pm	0-1		-	7,059	Ovendale Boyce Watts McLaren Johnson
AUGUST	Sat 19	Wigan	A	A	3pm	1-2		-	6,518	Ovendale Boyce Watts McLaren Johnson
AUGUST	Tue 22	Peterborough WC1(1)	H	H	7.45pm	0-0		-	3,175	Ovendale Boyce Watts McLaren Fraser
AUGUST	Sat 26	Bournemouth	H	A	3pm	1-0	Spring pen	18	5,221	Ovendale Boyce Watts McLaren Fraser
AUGUST	Mon 28	Wycombe Wdrs	A	A	3pm	1-1	Kandol	17	6,001	Ovendale Boyce Watts McLaren Fraser
SEPTEMBER	Sat 2	Rotherham Utd	A	A	3pm	1-1	Fotiadis	17	4,061	Ovendale Boyce Watts McLaren Locke
SEPTEMBER	Tue 5	Peterborough WC1(2)	A	A	7.45pm	2-2	Stein, Scarlett	17	4,286	Ovendale Boyce Watts McLaren Fraser
SEPTEMBER	Sat 9	Northampton Town	H	H	3pm	0-2		19	6,712	Abbey Boyce Watts McLaren Fraser
SEPTEMBER	Tue 12	Walsall	H	H	7.45pm	0-0		19	4,362	Abbey Boyce Watts McLaren Locke
SEPTEMBER	Sat 16	Swansea City	A	A	3pm	0-4		20	6,011	Ovendale Boyce Watts McLaren Locke
SEPTEMBER	Tue 19	Sunderland WC2(1)	A	A	7.45pm	0-3		20	24,668	Ovendale Boyce Watts McLaren Fraser
SEPTEMBER	Sat 23	Swindon Town	H	H	3pm	2-3	Stein, George	21	4,933	Ovendale Boyce Watts George Fraser
SEPTEMBER	Tue 26	Sunderland WC2(2)	H	H	7.45pm	1-2	Kandol	21	5,262	Ovendale Boyce Watts George Fraser
SEPTEMBER	Sat 30	Bristol Rov	A	A	3pm	3-3	Kandol 2, George	22	7,901	Ovendale Boyce Watts George Fraser
OCTOBER	Sun 8	Millwall	H	H	12pm	0-1		22	5,345	Ovendale Boyce Watts George McGowan
OCTOBER	Fri 13	Cambridge Utd	A	A	8pm	1-2	Stein	23	6,191	Ovendale Boyce Watts George McGowan
OCTOBER	Tue 17	Oxford Utd	A	A	7.45pm	0-0		23	4,537	Abbey Boyce Watts George McGowan
OCTOBER	Sat 21	Brentford	H	H	3pm	3-1	Douglas 2, Spring pen	23	5,382	Abbey Boyce Watts George Locke
OCTOBER	Tue 24	Oldham	A	A	7.45pm		Postponed, pitch waterlogged			
OCTOBER	Sat 28	Wrexham	H	H	3pm	3-4	Stein, Watts, George	23	5,341	Abbey Boyce Watts George Johnson
NOVEMBER	Sat 4	Bury	A	A	3pm	1-1	Helin	23	2,861	Abbey Boyce Watts George Karlsen
NOVEMBER	Sat 11	Bristol City	H	H	3pm					
NOVEMBER	Fri 17	Rushden & D FAC1	H	H	8pm					
NOVEMBER	Sat 25	Port Vale	A	A	3pm					
DECEMBER	Sat 2	Stoke City	A	A	3pm					
DECEMBER	Sat 9	FAC2			3pm					
DECEMBER	Sat 16	Colchester Utd	H	H	3pm					
DECEMBER	Sat 23	Reading	A	A	3pm					
DECEMBER	Tue 26	Peterborough	H	H	1pm					
DECEMBER	Sat 30	Wigan	H	H	3pm					
JANUARY	Mon 1	Bournemouth	A	A	3pm					
JANUARY	Sat 6	Notts County OR FA Cup 3	A	A	3pm					
JANUARY	Sat 13	Wycombe	H	H	3pm					
JANUARY	Sat 20	Peterborough	A	A	3pm					
JANUARY	Sat 27	Reading OR FA Cup 4	H	H	3pm					
FEBRUARY	Sat 3	Rotherham Utd	H	H	3pm					
FEBRUARY	Sat 10	Northampton Tn	A	A	3pm					
FEBRUARY	Sat 17	Swansea City OR FA Cup 5	H	H	3pm					
FEBRUARY	Tue 20	Walsall	A	A	7.45pm					
FEBRUARY	Sat 24	Swindon	A	A	3pm					
MARCH	Sat 3	Bristol Rov	H	H	3pm					
MARCH	Tue 6	Cambridge Utd	H	H	7.45pm					
MARCH	Sat 10	Millwall OR FA Cup 6	A	A	3pm					
MARCH	Sat 17	Oxford Utd	H	H	3pm					
MARCH	Sat 24	Brentford	A	A	3pm					
MARCH	Sat 31	Colchester	A	A	3pm					
APRIL	Sat 7	Stoke City OR FA Cup S-F	H	H	3pm					
APRIL	Sat 14	Oldham	H	H	3pm					
APRIL	Mon 16	Wrexham	A	A	3pm					
APRIL	Sat 21	Bury	H	H	3pm					
APRIL	Sat 28	Bristol City	A	A	3pm					
MAY	Sat 5	Port Vale	H	H	3pm					

The FA Cup final is on May 12

FANS ON THE MOVE

MORE than 400 Town fans made it to Bury on Saturday, although some missed kick-off because of bad weather and congested motorways. Our congratulations to Town fan Simon - no, not Oxley! - who got onto BBC Radio Five Live's Six-O-Six to pay tribute to all the Nationwide League travellers, especially Elsie and Danny Clubb, who attend every Town game despite living in Blackpool, 200 miles away. Latest stats for away supporters:

Visitors to Luton

Notts Co	606
Peterborough (WC)	360
Bournemouth	539
Northampton	1,240
Walsall	313
Swindon	531
Sunderland (WC)	1,366
Millwall	1,389
Brentford	695
Wrexham	352
Total:	7,391
Average:	739

Away-day Hatters

Wigan	640
Wycombe	1,266
Rotherham	603
Peterborough (WC)	908
Swansea	285
Sunderland (WC)	332
Bristol Rovers	333
Cambridge	1,210
Oxford	817
Bury	419
Total:	6,813
Average:	681

Town Teaser

OUR "Town Trivia" quiz will be asked again this afternoon, offering a prize to one lucky supporter. The question at the last home game was about the player who celebrated his birthday the day after the game, and the answer was Marvin Johnson.

This afternoon the PA announcer will ask another Town Teaser, and if you know the answer listen for your chance to step up and have a go. If you don't know the answer, it is to be found elsewhere among the pages of this magazine.

Today's Question

SEVERAL old pals will be meeting this afternoon, including one from each club who scored for us in a big game at Wembley. Who are they, and what was the match?

Substitutes

Taylor	Spring	Locke,	George,	Stein	Fotiadis	Holmes for Locke 57, Fraser for Watts 78. Unused: Stirling, Brennan, Abbey.
Taylor	Holmes	Locke	George	Stein	Fotiadis	Fraser for Johnson HT, Scarlett for Locke 73, Brennan for Holmes 83. Unused: Stirling, Abbey
Taylor	Holmes	Spring	George	Stein	Fotiadis	Brennan for Fotiadis 81. Unused: Stirling, Locke, Scarlett, Abbey.
Taylor	Holmes	Spring	George	Stein	Fotiadis	Brennan for George 57, Locke for Holmes 86. Unused: Stirling, Kandol, Abbey.
Taylor	Scarlett	Spring	George	Stein	Fotiadis	Brennan for George 55, Kandol for Fotiadis 76. Unused: Locke, Stirling, Abbey.
Taylor	Scarlett	Spring	Holmes	Stein	Fotiadis	Kandol for Fotiadis HT; Brennan for Holmes 65; George for Stein 81. Unused: Stirling, Abbey.
Taylor	Scarlett	Spring	Brennan	Stein	George	Holmes for Brennan 74; Locke for Spring 105; Kandol for Stein 113. Unused: Stirling, Abbey
Taylor	Scarlett	Spring	Brennan	Stein	George	Holmes for Spring 75; Kandol for Brennan 60. Unused: Locke, Stirling, Brietenfelder.
Taylor	Scarlett	Spring	Brennan	Stein	Thomson	George for Brennan 52; Kandol for Thomson 72; Holmes for Scarlett 82. Unused: Fraser, Ovendale.
Taylor	Stirling	Spring	Holmes	Stein	Kandol	George for Stein 75. Unused: Fraser, Scarlett, Thomson, Abbey.
Taylor	Scarlett	Spring	Holmes	Stein	Kandol	George for Stein 70; Thomson for Kandol 70. Unused: Brennan, Stirling, Abbey.
Taylor	Scarlett	Spring	Holmes	Stein	Kandol	Locke for Spring 66; Thomson for Kandol 72. Unused: Brennan, Ayres, Abbey.
Taylor	McLaren	Spring	Locke	Thomson	Kandol	Brennan for Thomson 81. Unused: Holmes, Breitenfelder, Ayres, Abbey.
Taylor	McLaren	Spring	Locke	Thomson	Kandol	Mc Gowan for Fraser HT; Stein for Thomson HT; Holmes for Spring 79. Unused: Brennan, Abbey
Taylor	McLaren	Spring	Locke	Stein	Kandol	All unused: Brennan, Holmes, Stirling, Scarlett, Abbey.
Taylor	McLaren	Spring	Locke	Stein	Kandol	Holmes for Kandol HT; Brennan for McGowan 89. Unused: Fraser, Breitenfelder, Abbey.
Taylor	Fraser	Spring	Holmes	Stein	Kandol	Breitenfelder for McGowan HT; Brennan for Kandol 79. Unused: Locke, Thomson, Ovendale.
Taylor	McLaren	Spring	Holmes	Stein	Douglas	Breitenfelder for Locke 18 mins; Thomson for Douglas 44 mins; Brennan for George 86 mins. Unused: Kandol, Ovendale.
Taylor	McLaren	Brietenfelder	Holmes	Stein	Fotiadis	Fraser for McLaren 47 mins; Thomson for Fotiadis 70 mins. Unused: Brennan, Baptiste, Ovendale.
Taylor	McLaren	Spring	Helin	Stein	Douglas	Baptiste for Douglas 75 mins; Holmes for George 80 mins. Unused: McGowan, Breitenfelder, Ovendale.

SALES & HIRE

For all your presentation needs



Data / Video Projectors - Plasma Screens
Conference Furniture-Interactive Whiteboard
Video Conferencing-Presentation Cabinets
Audio Systems - OHP's - plus so much more

vangis

PRESENTATION SOLUTIONS

T: 01582 416026 F: 01582 483590

e: sales@vangis.com

www.vangis.com

For all the latest news, views and interviews call

CLUBCALL - 09068 121123

Up and Running!

Luton Town's very own official website.

www.lutontown.co.uk

The Big Match

Today's Teams

Today's Teams

Today's Teams

The Big Match

Luton Town



Manager: Ricky Hill

NATHAN ABBEY 16

PETRI HELIN 30

KENT KARLSEN 29

JULIAN WATTS 5

EMMERSON BOYCE 17

MATTHEW TAYLOR 15

PAUL McLAREN 12

MATTHEW SPRING 4

LIAM GEORGE 11

STUART DOUGLAS 9

MARK STEIN 10

Substitutes

GAVIN McGOWAN 2

PETER HOLMES 20

FRIEDRICH BREITENFELDER 26

ROCKY BAPTISTE 28

MARK OVENDALE 1

Changes

Today's Officials

Referee:

Mark Cooper

Assistants:

S. G. Artis (red flag)

C. J. Hills (yellow and red flag)

Fourth Official:

G. D. Horwood



Manager: Danny Wilson

14 STEVE PHILLIPS

5 KEITH MILLEN

2 LOUIS CAREY

24 MATTHEW HILL

7 SCOTT MURRAY

3 MICKEY BELL

11 BRIAN TINNIION

31 SIMON CLIST

22 AARON BROWN

10 TONY THORPE

16 LEE PEACOCK

Substitutes

41 ANTONY MALESSA

9 PETER BEADLE

23 JOE BURNELL

21 IVAN TISTIMETANU

27 KEVIN AMANKWAAH

Changes

"Genuine Deals For Genuine Fans!"

**Luton Fans Are
Guaranteed To Score At
Motorbodies Luton**

NETWORK Q
Total Commitment to used car quality

- 12 months Assistance
- 12 months/15,000 mile Guarantee

114 Point Service

12 Months/ 15,000 mile guarantee

12 Months AA Assistance Mileage Check

30 Day Exchange Plan

Free MoT for life

HPI Check

- 114 point service
- 30 day exchange pledge

NETWORK

Q



Motorbodies Central

15 Hitchin Road, Luton Bedfordshire.
Telephone 01582 454666

Motorbodies Leagrave

166 Marsh Road, Leagrave, Luton
Telephone 01582 567500

OPENING HOURS

Mon-Fri 9am-7pm
Sat 9am-5pm
Sun 10.30am-4.30pm