

LUTON TOWN

Tuesday, October 19, 1999, 7.45pm

Official Matchday Programme £2.00



v Wycombe Wanderers



Match Sponsors: Royal Navy and Royal Marines
Careers Service; Critical Research Ltd
Matchball Sponsor: Beechwood Shirts & Litho Ltd



Luton Town 3 Gillingham 1 (HT 0-1)

Brian Swain reports



THE unbeaten home record looked in jeopardy at half time on Saturday, after Gillingham grabbed a goal, then defended in numbers on a day when they were without their main strike force because of injuries. It was the first time we had fallen behind at home this season, but a tremendous second-half performance rapidly wiped out the deficit, and tore the visitors apart.

The highlight was another stupendous individual goal by Liam George, who became a one-man demolition expert of a defence which had no idea how to handle his skill on the ball.

Gillingham were without Carl Asaba and Robert Taylor, and manager Peter Taylor said they missed their attacking quality. We were still without Phil Gray and Andrew Fotiadis, but George and Gary Doherty returned after international duty, and we went with three attackers, with Neil Midgley restored to the side.

The Town looked classy in a bright opening phase, but Vince Bartram pulled off a difficult flying save to keep out a curling drive by George, before our central defence obligingly opened up for Junior Lewis to swap passes with on-loan Manny Omoyinmi and then drive the ball past blameless Nathan Abbey.

Luton Town Football Club

Kenilworth Road
Stadium
1 Maple Road, Luton
Bedfordshire LU4 8AW
Tel 01582 411622

Fax 01582 405070

Ticket Office
01582 416976

Editor **Brian Swain**

Design & Layout
Wolff Evans

Printing **Regal Litho**

Photography
Gareth Owen

The views expressed in this programme are not necessarily those of Luton Town Football Club.



Front cover:

Number One: Neil Midgley salutes the first league goal of his career, at Boundary Park. But his equaliser was brief pleasure for the Town, with Oldham grabbing a last-minute winner. Full report, and more pictures: page 36. And Midgley had more to smile about on Saturday, when he created a goal for Stuart Douglas in the win over Gillingham.

The Town poured forward in search of an equaliser, but Gillingham defended in numbers and survived a couple of close calls, including a penalty shout when Stuart Douglas tumbled under a challenge by Adrian Pennock.

"We should have gone for the second goal instead of dropping back," said Gills boss Taylor. "I was quite pleased with our first-half show, but in the second there was some sloppy defending." Gillingham were unhappy with the penalty, our first of the season, that sparked the Town's winning surge after the break. The Town had no doubt it was the right decision, given when the abrasive Andy Hessenthaler, a player we love to hate because of his previous experience, tried to halt George on the edge of the box. George was ready to take on anyone and everyone following quick accurate passes by Gary Doherty and Neil Midgley when Hessenthaler sent him tumbling.

Match Details

Luton Town: Abbey, Fraser, Watts, Doherty, Johnson, George, McLaren (McIndoe 85 mins), Douglas, Spring, Midgley (Locke 80 mins), Taylor. Unused subs: Sodje, Kandol, Tate.

Booked: Marvin Johnson, 46 mins, for his second foul on Manny Omoyinmi

Gillingham: Bartram, Smith (Hodge 77 mins), Ashby, Butters (Nosworthy 77 mins), Hessenthaler, Omoyinmi, Saunders, Pennock, Lewis, Thomson, McGlinchey. Unused subs Edge, Pinnock, Mitten.

Booked: No-one

The goals: 0-1 16 mins - Junior Lewis, exploiting a big gap in the centre of the Town defence and shooting in after exchanging passes with Manny Omoyinmi; 1-1 51 mins - Liam George, with our first penalty of the season, after he had been tripped on the edge of the box by Andy Hessenthaler; 2-1 64 mins - Stuart Douglas's first of the season, poking in a close-range chance from a near post cross by Neil Midgley; 3-1 73 mins - wonderful solo goal by Liam George, taking on and beating two defenders and then the goalkeeper.

Referee: Eddie Wolstenholme, Blackburn

Attendance: 6,394, highest of the season so far, including 1,241 backing Gillingham, the highest visiting following of the season so far.



"Not a foul, and not in the area," said Taylor. "Yes it was," said George and the Town manager.

Referee Eddie Wolstenholme, who had let a lot go to keep the game flowing, turned down the protests and George hit the equaliser from the spot.

The Town then took command, with Stuart Douglas netting his first goal of the season from close range, following a near-post cross by Midgley, and George bringing three-quarters of the crowd to its feet with his eighth goal of the season. If only he had been with us at Oldham instead of in Macedonia with the Irish under-21s!

Abbey had to make a late save from Omoyinmi to preserve the goal difference, but Gillingham by then were well beaten.

Said Lennie Lawrence: "We were mugged for their goal when we were a bit nervous at the back. At half time we knew we had to build up a head of steam, and we did, and for 20 minutes we slaughtered Gillingham. The penalty decision was right, but we would have won even without it."

Cup Trail Starts At Home

LENNIE Lawrence will go to Boston tomorrow to see the Dr. Martens Premier Division leaders entertain Kingstonian, who are second in the Nationwide Conference. The winners come to Kenilworth Road on Saturday week in the FA Cup first round.

The form book says that Kingstonian should win, but they failed to do it in a goal-less game on their own ground on Saturday.

The Town boss's view is that home advantage means we would have no excuse for failing to progress into round two, even if non-league opposition has been a bit of a problem to us in the past.

And one man is very keen to see Kingstonian win tomorrow: Dwight Marshall joined them in the summer, after leaving Plymouth for the second time in his career, and is already looking forward to the prospect of playing at Kenilworth Road again.

Cover Story

MARK Cartwright, the goalkeeper we nearly signed on a short-term contract at the start of the season, could be joining us after all later this week. He impressed in a couple of pre-season friendlies, was set to sign on loan, but then recalled by Wrexham when another of their keepers was injured.

Last week Cartwright was all set to go to Northern Ireland, to sign on loan for Mal Donaghy at Newry, but Lennie Lawrence timed a renewed enquiry expertly and it now looks as though 26-year-old Cartwright will be here by the end of the week.

The Town boss stresses that if the deal is done it will be no reflection on Nathan Abbey. The manager is delighted with the way the 21-year-old has grabbed his chance, and he will still be No. 1 if Cartwright is signed. The problem was that for FA Cup games, players must be registered seven days before fixtures, and the boss felt he could not afford to take a chance on having no experienced cover just in case Abbey were to be injured between now and Saturday's week's first-round tie.

Brian Swain

- 5 The manager's view, by Lennie Lawrence
- 6 On the Road
- 7 Captain's log, by Marvin Johnson
- 8 Latest injury news, by Clive Goodyear
- 9 From the secretary's office, by Cherry Newbery
- 11 Latest ticket news
- 13 Hatters Abroad
- 15 Thanks, sponsors
- 17 Wycombe's Stats
- 18 Our visitors who's who
- 22 Junior Hatters
- 24 Top Hatter - Phil Gray
- 27 Hatters on the road
- 28 Football memories, by Roger Wash
- 30 Club and Community
- 33 The tiny tot Hatters
- 35 Hatters on Card, by Alan Robinson
- 36 Action replay: Oldham v Luton Town
- 39 Hatters Chatter
- 40 Club Shop Bargains
- 42 With the Reserves - Trevor Hartley & John Moore
- 43 Youth team - Paul Lowe
- 45 The Second Division Scene
- 46 The season so far

Total input

SKF MARLIN™
– Machine ReLiability
INspection system

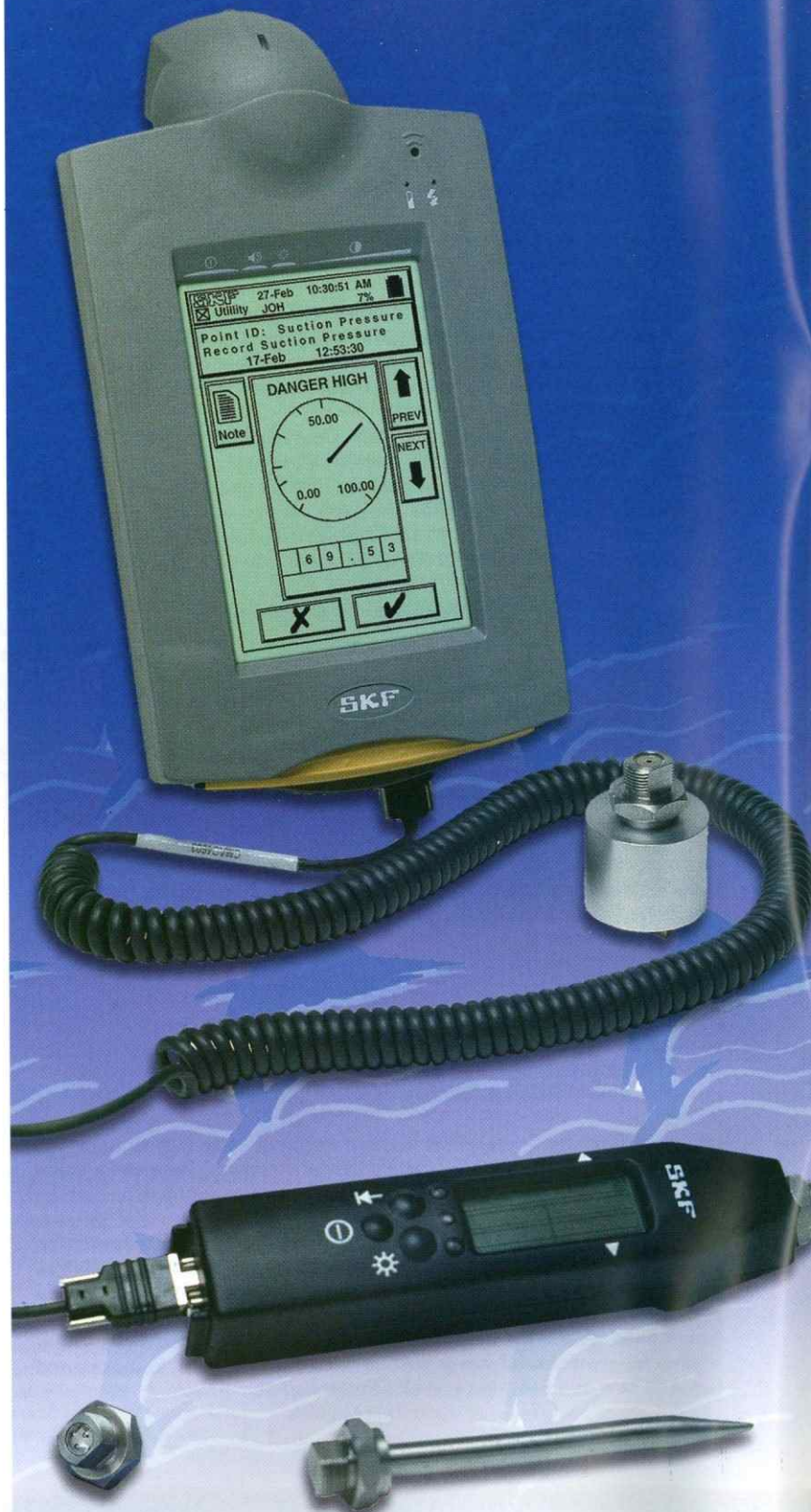
– the smarter way to collect machine and process data, giving you greater productivity and higher profits.

- Provides advance warning of machine problems
- Streamlines the collection of plant process data
- Facilitates plant-wide communications
- Quick to learn, easy to use

SKF

Helping your world run smoother

Tel: 01582 496436
www.skf.co.uk



The Manager

Lennie Lawrence



WE HAVE just passed the quarter-time stage of the season, the right time to assess our progress and prospects. We have played 12 games, six at home and six away, and met a cross-section of teams, and today's league table positions cannot be totally false.

We can take some pleasure in being a top eight team, but obviously want to do better than that, and clearly we must do something to improve the away results. At home we are scoring goals and doing well, and if we improve on our travels there is no reason why we should not realistically move up into the top six at least, possibly the top two.

I think Wigan will take some stopping, but this year the division is not as unbalanced as it was a year ago, when it included Fulham and Manchester City. Luton Town are in with a chance of achieving our ambition of a return to the First Division as quickly as possible. The first requirement is to collect three more points tonight, and then we will sort out what must be done to gather away points, starting at Oxford on Saturday, to cement a place in the top six.

The game against Gillingham was very significant in terms of the performance as well as the result. For the first time this season we had to come from behind at home, and that was a test of character as well as of ability.

I don't think we played too badly in the first half, despite being a goal down at the break, although the defending for the Gillingham goal was not good enough. It was important for us to get at them early in the second half, and we did, with the crowd also playing its part. I have seen Gillingham many times snatch a goal and then sit back and defend. It was important that we got our passing and movement right, and that was where the test of character came in. It would be all too easy to get a touch desperate and kick it long, which would just play into Gillingham's hands.

In the event, we passed and moved to such good effect that we had them pinned back for the first 20 minutes of the second half, and the three goals were no more than we deserved.

I have seen the TV replay of the penalty incident, and the referee's decision was spot on. But even if it had not been given, I think the way we were playing would have brought victory anyway.

Gillingham will point to the fact that they were without their man strike force of Carl Asaba and Robert Taylor, but we were without two strikers as well, Phil Gray and Andrew Fotiadis, so it was a very good scalp for us to take on Saturday.

Gillingham are a decent team, and it was good to see us outsmart a side which got within minutes of promotion at Wembley last May.

Tonight we have to build on that and collect more points, and it is a pleasure to welcome Wycombe and their supporters to Kenilworth Road. To be honest, when they last came to Luton, in January, I expected that to be their last league trip here for some time. It was not a pretty match, despite our 3-1 win, with three red cards on the field.

Lawrie Sanchez became manager shortly afterwards, and he worked a miracle. It seemed impossible for them to escape relegation, but they did, and this season they are going well, despite Saturday's reverse at Notts County, which came after three successive victories.

They will want to bounce back tonight, while we need to keep up our push for a top six place, and I will be happy if we get the same result tonight, without the aggravation, as we did the last time we entertained Wycombe.

But there is another aspect of that game on which we must focus: our victory in January ended a run of eight league games without a win, and that sequence cost us dear. This time a year ago we were third in the table after a home win over Northampton. Then we got side-tracked by the Worthington Cup, and it was nearly three months before we won another league game. We must not make that mistake again.

We will not start to think about the FA Cup on Saturday week until we have concentrated on getting more points in the bag, but we will need no reminding of our difficulties against allegedly smaller clubs in cup-ties in recent years. I will watch the Boston v Kingstonsian replay tomorrow as part of our preparations, knowing that whoever wins, the cup-tie here could be a banana skin for us. There must be no slip-ups then, or in the league games, starting with tonight, and I trust that once more supporters and everyone in Kenilworth Road will be focused on getting another good home result tonight. I hope we all enjoy the game.

Lennie Lawrence

For all the latest news, views and interviews call

CLUBCALL - 09068 121 123

(Calls charged at 60p per minute at all times)

Hatters Away

travel information

Oxford United v Luton Town

Saturday 23rd October, kick-off 3.00pm

WITH THE FA Cup first round draw giving us a home tie, the last away game of this month is at Oxford on Saturday.

As usual the two regular coach services will be running, and if you pre-book you can leave your car at Maple Road, with security guards in attendance until the coaches get back. The cost is £3 per vehicle, but you must book in advance, through the club shop.

Town on Tour offers its best deals to Luton Town Supporters Club members, and their coaches will leave Maple Road at 12.30. The fare is £7.50 for adult members of LTSC, £6 for concessions, and £8.50 for all others. You can book at the LTSC kiosk in Kenilworth Road after today's game, or through the club shop at other times. The Bobbers Travel Club, a members-only service, will have a coach leaving at Cranfield at 11 am, with various pick-up points on the way to Luton, and departure time from Kenilworth Road is 12 noon. You can also board near the Travel Lodge Hotel, at the junction of Dunstable Road

and the M1 motorway. The fare is £6.50 adults, and £5.50 for junior and senior citizens and tickets can be bought at the Bobbers Travel Club kiosk in Kenilworth Road after today's game.

DIY Travellers

YOU can drive to Oxford in just over an hour via the M1 south, M25 west and M40 west. Leave M40 when you see Oxford signposted, and see below for the final approach. The cross-country route is shorter in miles, takes a little longer, but is a more pleasant drive. Leave Luton on the A505, through Dunstable, and follow the signs to Aylesbury. There pick up the A418 and go beyond Thame to join the A40, which is signposted to Oxford. On the outskirts of Oxford you come to the Headington roundabout, with the ring road running left and right. Go straight ahead at the roundabout, and you are in London Road, and in just under a mile you will see the ground on your right.

Mileage from Luton: 47.

Hatters Roll-Call Season 1999/2000

	APPEARANCES (as sub in brackets)			GOALS		
	League	WC	Total	League	WC	Total
Nathan Abbey	12	2	14	0	0	0
Emmerson Boyce	0(1)	2	2(1)	0	0	0
Gary Doherty	10	0(2)	10(2)	0	1	1
Stuart Douglas	8(3)	2	10(3)	1	0	1
Andrew Fotiadis	6	0(2)	6(2)	2	0	2
Stuart Fraser	12	1	13	1	0	1
Phil Gray	6	2	8	1	0	1
Liam George	10	0(1)	10(1)	8(1p)	0	8(1p)
Marvin Johnson	12	0	12	0	0	0
Tresor Kandol	1(2)	1	2(2)	0	1	1
Adam Locke	4(1)	1	5(1)	1	0	1
Michael McIndoe	1(8)	2	3(8)	0	0	0
Ray McKinnon	0(3)	1	1(3)	0	0	0
Paul McLaren	10	1	11	0	0	0
Neil Midgley	2(2)	0	2(2)	1	0	1
Efetobore Sodje	1(2)	1	2(2)	0	0	0
Matthew Spring	12	1	13	2	0	2
Matthew Taylor	12	1	13	1	0	1
Julian Watts	12	2	14	0	0	0
Alan White	1	2	3	0	0	0
Landry Zahana-Oni	0(1)	0	0(1)	0	0	0

Captain's Log

Marvin Johnson



AFTER letting ourselves down at Oldham a week previously, we were all delighted with the way we played against Gillingham. It was the much better team performance we knew we had to produce.

Even when we went a goal down we felt confident of getting a result.

On behalf of the defence, sorry about that Gillingham goal - I think it is the first time this season we have been caught out so badly, leaving a gap in the middle, and not taking opportunities to clear the ball before it reached the man who scored. It was too easy for him.

It knocked the wind out of our sails for a few minutes, but not for long, and we soon started to play our football again. We were really determined to get a result on Saturday, and it showed. There is a deep desire to succeed running right through the squad, and if we can continue playing that kind of top notch football we will be all right.

We had no doubts about the penalty award, but I agree with the manager that even if it had not been given we were playing so well that goals were bound to come.

Gary Doherty and Liam George came back from their trip to Macedonia, and slotted straight back into the side with ease, and without any sign of being jaded, which sometimes happens when players return from internationals.

And what a goal Liam scored to finish off Gillingham. He is a bit of a football rarity, a man who likes to take on defenders, and he is a player I love to see when he is on song. Some of the things Liam does remind me of Paul Walsh and Tony Thorpe, the last attackers we had with that ability to take on opponents and trick their way to goals. Luckily for me, there are not too many like him playing for other sides in this division!

I thought the best thing about Saturday's win was that it was achieved by what we call proper football. Players and formations might change, but in all my time here there has been an acknowledged "Luton style" and we enjoy it.

I am sure Wycombe will be doing their best tonight to stop us, and it has the makings of a very good game. They have done very well since Lawrie Sanchez became their manager, and having talked about good forwards I am well aware that Sean Devine can be a bit of a handful. We will have to watch him, and the rest of the visiting side because their results so far this season show they are capable of doing well. But we are full of confidence, and glad to be at home again.

After tonight, we will start to think about Oxford. It is strange to be playing them again so soon after their visit to Kenilworth Road, particularly as there are other teams we have not yet met once, let alone twice.

Our away record is letting us down at present, and after losing four in a row on our travels, next week gives us the ideal opportunity to redress the balance, and on a ground where we have a reasonable record, including a good win there in the Worthington Cup last season.

Not until that game is over will we start thinking about the FA Cup. We have to wait until tomorrow evening to know who we will be playing, but I know one striker who fancies his team will win the replay between Boston and Kingstonian.

Our old mate Dwight Marshall now plays for Kingstonian, and he has already phoned to say that he thinks they can do the business tomorrow, and then he is looking forward to coming back to Kenilworth Road. I imagine he fancies his chances of doing a Liam George on me!

I hope Dwight gets his wish in the replay, but at present my mind is focused on the more important matter of getting a good result here tonight. We think we can, and if the support continues to be as good as it has been this season, we have every chance of complying with the manager's demand that we build a fortress at Kenilworth Road. Players want success just as much as supporters, perhaps more so, so give us your backing and we can all pull together for the good of Luton Town. I hope we have a game and a result for everyone to enjoy.

Marvin Johnson

Treatment Room

Clive Goodyear



SATURDAY was a real rarity for me - I was able to enjoy watching the team's excellent performance against Gillingham from the dug-out without once being

called on to administer the magic sponge or spray can.

I can't remember the last time I did not get onto the pitch at least once during a game, but obviously it is always good news when it happens.

We came out of the match just about unscathed - Matthew Spring got a knock on his ankle, but it was nothing serious, and none of the other bumps and bruises caused concern.

Paul McLaren, who took a knock at Oldham, came through OK, and if the boss wants to use Saturday's team for tonight's match they should all be available, subject to training sessions yesterday and today.

Phil Gray was hoping that he might be back in contention for tonight, but I do not think he is yet ready for a return.

We can afford to be patient as we wait for his hamstring problem to settle down. He had to come off during the game at Oldham and while he is not seriously injured, it is not something we will take a risk with. As I explained in Saturday's programme, he has not pulled or strained the hamstring muscle again, but there is some damage to the nerve running through it. The muscle has a good range of movement and strength, and Gray is able to train.

The nerve seems to pinch every now and then, and we would not want that to happen during a game, so he will have to wait patiently for treatment and nature to take its course.

The other news from the treatment room is very much as it was on Saturday, but if you missed it, it is pretty optimistic.

Andrew Fotiadis is on the mend after his knee injury. The supporting brace has been taken off and he is now jogging. But it will take time to build up to full fitness, and after a ligament injury like his it is a job that cannot be rushed.

His knee is now getting stronger, and we are working on building up his muscle strength. But at this stage he needs patience and more work to regain full fitness, and it will probably take up to another month before he is in full training.

Recovery time for Gavin McGowan may be a little less than that. A week at Lilleshall did him good, with new surroundings proving the old adage about a change being as good as a rest.

Having been injured since pre-season, he is keen to be fully involved again, and is working hard. He is progressing nicely, and perhaps in another two or three weeks he will be able to consider full training.

Landry Zahana-Oni resumed jogging this week, and it looks as though his cartilage operation has been successful. I expect he and McGowan will be able to resume work with the first team squad training sessions at about the same time.

Finally, there was good news for reserve goalkeeper Daniel Tate, who had to leave the field with a shoulder injury during a game against Oxford. It was the same shoulder which caused him problems last season, when it needed surgery to clear up the injury. So it was a delight for us to discover that although the latest injury caused him plenty of pain at the time, it has turned out to be just heavy bruising, and I would hope he will be able to play again within a month.

Clive Goodyear

Club Secretary

Cherry Newbery



BY THE time these notes are published we will know who are to be our first FA Cup opponents of the season. The draw for the first round was made on Saturday evening, giving clubs just 13 days to make

all the necessary arrangements, and as this column had to be prepared before then, it is impossible to print details of the game.

But we will make announcements over the public address system this evening as we prepare for what we all hope will be the first tie in a successful cup run.

Before then, there is another cup-tie at Kenilworth Road tomorrow: we are at home to Sutton United in the first round proper of The Times FA Youth Cup, and our lads would appreciate support. Kick-off is at 7.30 and under FA rules we have to charge for admission - £3 for adults and £1 for senior citizens and juniors. We will be using the main stand and enclosure only, and admission will be via the turnstiles at the top of Kenilworth Road. If a replay is needed, it will be a week tomorrow, October 27, at Sutton United, kick-off 7.45.

We will of course have plenty of staff on duty, but we still need more help on match days. We offer "Saturday jobs" in various roles, including gate men, ticket office staff, stewards and catering staff. For further information, please ring Luton 411622.

I have been asked by several supporters about where our mid-winter reserve team games are to be played this season. You may recall that in the last couple of years we have been to Hitchin Town and to Leighton Town to save wear and tear on our pitch, and while we were very grateful for their help, we know it was inconvenient for some supporters.

I am pleased to be able to tell you that this season, we will not be going on our travels for any home games - they will all be played at Kenilworth Road, weather permitting. The reason is that there are not so many fixtures in the Avon Insurance League this season, so we do not have the previous problem about over-use of the pitch.

My notes on Saturday mentioned my appreciation of the way all the staff here pulled out all the stops during the difficult days of receivership, but I would like to add to that the thanks of Shelter, the charity for the homeless, for the staff's efforts on "Strip 4 Shelter" day. The idea was that for one day millions of people should wear their favourite team's kit at work, and make a donation to Shelter for the privilege. The staff here took up the idea enthusiastically - no prizes for guessing which club colours we wore! - and we now know we raised £40.16p for the appeal. We are still puzzled as to where the odd 16p came from.

Cherry Newbery

FOOTBALL AND HOOLIGANISM - OUR POLICY

SUPPORTERS probably know that there was some trouble in the away supporters' end at Notts County on the first day of the season. A series of court cases is currently under way, for public order offences, at Nottingham and elsewhere. It is very sad that one or two bring discredit to the name of Luton Town, but we intend to do everything we can to stop them marring the enjoyment of the real supporters.

In line with club policy - and recent legislation backs this up - supporter's who are found guilty of any football-related offences will be banned from Luton Town for the rest of the season. Six persons are now banned from the club until the end of the season after being convicted of offences at the Notts County match.

We are a family club, and are determined to make football a pleasure, and safe, for everyone at Kenilworth Road. Anyone else convicted of offences, home or away, will also be banned. The trouble-makers are a small minority, but we do not want them "supporting" us.

World class

The SKF Explorer Series –
a better class of workhorse.

If the standard spherical roller bearing is the workhorse, reliable, solid and strong, then SKF now introduces the thoroughbred – Explorer.

- Up to three times longer life
- Higher load ratings
- Reduced noise
- Lower maintenance costs
- Increased machine uptime
- Option to power-up or size-down



SKF

Helping your world run smoother

Tel: 01582 496436
www.skf.co.uk



Tickets



Nationwide League Division Two

Oxford United v Luton Town

**Saturday October 23,
kick-off 3pm**

Pay on the day only
Terracing £12 adults, £7 concessions
(under-16s and over-65s)
Seating £15 adults, £10 concessions

FA Cup, First Round

Saturday October 30,

We were still making arrangements for this match when the matchday magazine went to press, but hope to be able to make announcements tonight on the public address system about ticket prices and availability.

Nationwide League
Division Two

Millwall v Luton Town

**Tuesday November 2,
kick-off 7.45pm**

Pay on the turnstiles only at the New Den, seating only in the North Stand upper tier. Adults £13, senior citizens £7, juniors £6.

Nationwide League
Division Two

Luton Town v Burnley

**Saturday November 6,
kick-off 3pm**

Tickets are on sale at discounted prices until October 23, and after that at normal league prices.

But please see Tuesday's matchday magazine for a special offer through which season ticket holders can bring new supporters in for just £5.

Cash turnstiles will be open on the day.

SPECIAL OFFER TO SEASON TICKET HOLDERS

Bring a new supporter for just £5. Subject to availability this offer is for all areas of the ground but tickets must be purchased before the close of business on Thursday November 4.

**Cash turnstiles are open
at all games, EXCEPT
all-ticket matches.**

Ticket Office Opening Hours

Monday to Friday 10am to 4pm,

(except on Fridays before Saturday home matches when it is 10am to 6pm).

Saturday 9am to 5.30pm on matchdays;

10am until the away coaches depart on days when there is no game at Kenilworth Road.

Luton Town Ticket Office Hotline
01582 416976



Executive Box Holders



Kenilworth Suite Members

Hatters Abroad

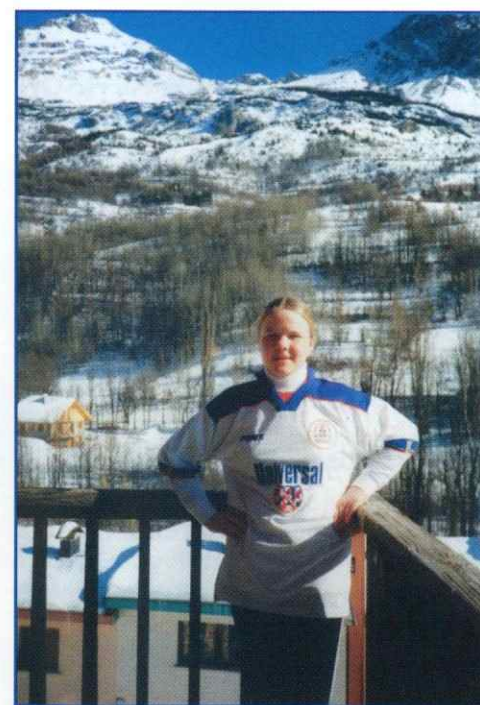
carrying the colours

IT WAS a case of double delight when Dale Williams posed for a picture in one of the world's most famous football grounds.

You might recognise the club badge behind him - the snap was taken in August at the Nou Camp, home of Barcelona. Dale, of Nevis Grove, Bletchley, was on holiday in Barcelona, and could not resist having a look round the stadium.

He reckons the arena alone is worth the trip to Spain, but admits there was another reason for the happy grin and thumbs-up gesture - "Just as I was getting this photo taken an English supporter came in, and told me Luton had beaten Reading. That's what put the massive smile on my face."

He added wistfully: "If only Luton could have a stadium like this..."



IF YOU look carefully you might spot that this young Town fan has had the good sense to wear sensible warm clothing, as you should for a skiing holiday.

But taking pride of place on top of the high-necked jumper is the Luton Town strip as modelled by 13-year-old Susanne Forsey, from Adams Close, Ampthill.

It was taken during a holiday in France, and was sent in by her dad, who has ensured that it is a case of like father, like daughter - they are both regulars at Kenilworth Road.

OUR Hatters Abroad file is looking a little thin, so if you have an interesting snap of Town kit in far-flung places - or even close to home if the subject or location is picturesque - there is every chance that if you submit it for publication, it will appear in a future programme. Please send it, with a few details, to the matchday magazine editor at Luton Town FC. Please enclose a stamped self-addressed envelope if you want the photographs back.

We are also interested in hearing about our very young fans sporting the Town's colours, for instance like the mini-Hatters on page 33.

Matchday Hospitality & Sponsorships

STAND SPONSORSHIP

FROM £4,000 PER SEASON

MATCH SPONSORSHIP

FROM £550

MATCH BALL SPONSORSHIP

FROM £360

JOE PAYNE LOUNGE

FROM £55 PER PERSON

MILLENNIUM SUITE

FROM £30 PER PERSON

EXECUTIVE BOXES

FROM £29.50 PER PERSON

COMMERCIAL MASCOT

£200

The Commercial Department is also taking bookings for non-match day use of the executive suites and lounges. These rooms are ideal for meetings, seminars, social events, etc.

..... Hire Costs start from just £65

We can also offer you a wide selection of catering to meet your requirements ranging from light buffets to four course silver-served meals.

(ALL PRICES INCLUDE VAT)

Commercial

John Bailey



WE OFFER a warm welcome this evening to our joint match sponsors.

The Royal Navy and Royal Marines Careers Service have had an office in Luton for nearly 30 years, recruiting young people from 16 to 32 years of age to a variety of trades in the in the Royal Navy, or offering the ultimate challenge of the Royal Marines Commandos.

The local office in Dunstable Road is manned by two careers advisors and a Royal Marine corporal, and recruits an average of 100 men and women each year from this area.

The office is always keen to keep the Royal Navy in the public eye, and points out that its Luton operation is closer to the football ground than the nearest pub! They always welcome anyone who wants to drop in during normal office hours.

We hope our guests enjoy this evening's game, and we offer the same good wishes to our other sponsors, Critical Research Ltd.

They have been loyal supporters of Luton Town for a long time, and it is nice to see them back at Kenilworth Road again. The company, based in Alma Street, Luton, has built up an excellent reputation for its expertise in market research, gathering information and opinions for a wide variety of concerns to help them with such things as effectively targeting sales drives.

We are also delighted today to welcome Ron Hedley and his guests. Ron is the matchball sponsor, and has a double interest in tonight's game. He runs Beechwood Shirts and Litho Ltd, a company based in High Wycombe. They are specialists in producing embroidered and silk screen printed garments for work, leisure and sport.

T shirts, polo shirts and sweatshirts are an excellent way to promote any company or club, and Ron is the man who knows how to do it. He can be contacted on 01494 463653, or by e-mail at rhedley@beechwoodshirts.co.uk

And despite the High Wycombe business address, Ron is a lifelong supporter of Luton Town, and is accompanied to matches by his daughter Alexandra, who is following in her father's footsteps despite living near High Wycombe.

Matchball sponsorships are just one of the many attractive packages on offer at Kenilworth Road - we have something for all tastes, and for all budgets. For more information, please contact the commercial department at the football club, on Luton 411622.

John Bailey

GOLDEN GAMBLE

BECAUSE of printing schedules we are unable to publish the result of Saturday's Golden Gamble tonight, but we will give the details at our next home match. And by then there will have been another winner, because this evening one lucky supporter will go home considerably richer than he or she was at the start of the game.

As usual Golden Gamble sellers are on duty again tonight, offering tickets at a pound each. The income is split 50-50 between Luton Town FC and the jackpot, with recent prizes pushing towards the £500 mark.

The draw is made at half-time, and the prize is paid out instantly, in ready cash and nine lucky winners have so far shared around £3,000 from the quid-a-go flutter.

Kit Sponsors

NATHAN ABBEY	Paul Deason
GAVIN McGOWAN	Luton Town Supporters Club
MATTHEW SPRING	Brian Hall
ALAN WHITE	Rob Stringer, Epic Records
MARVIN JOHNSON	Space Display Systems
PHIL GRAY	G & S Ceramics
PAUL McLAREN	Elsie Clubb
STUART DOUGLAS	Les & Sue Miller
MICHAEL McINDOE	The Bobbers Travel Club
LIAM GEORGE	WHOSH
GARY DOHERTY	Peter Johnson
STUART FRASER	David & Jonathon Siegler
ANDREW FOTIADIS	Sally Mayne & Family
MATTHEW TAYLOR	Mick Garbutt, Inside Media
LANDRY ZAHANA-ONI	Elsie & Danny Clubb
EMMERSON BOYCE	In discussions
TRESOR KANDOL	Danny Clubb
JAMES AYRES	E.C. Smith & Sons Ltd
ANDRE SCARLETT	WHOSH
JERRY MOSES	AVAILABLE
DANIEL TATE	AVAILABLE
JUDE STIRLING	AVAILABLE
SCOTT WARD	AVAILABLE
ADAM LOCKE	In discussions
EFETOBORE SODJE	Graham Group Plc
JULIAN WATTS	Les Miller, Miller & Company, Bedford
LENNIE LAWRENCE	Luton Town Supporters Club, Milton Keynes
JOHN MOORE	Ian Smith

The sponsorship package includes:

- Publicity within the matchday programme for every league and club fixture for season 1999/2000.
- Invitation to a VIP day to one match during the season 1999/2000 along with other sponsors.*
- Presentation evening at the end of the season, to include wine reception, 3-course dinner, entertainment and the presentation by your sponsored player of his match shirt.*

For both the VIP day and presentation evening, this package includes yourself only, but additional tickets will be available at an extra cost of £45.00 (inc. VAT) for any guests you may wish to bring along. Tickets will be sold on a first come, first served basis.

The Total Cost of the package is £400 (inc. VAT) per sponsorship for season 1999/2000.



Hatters v Chairboys



Chairboys' Goals For & Against



Chairboys' Cards



Hatters' Timing - Goals Scored & Conceded



Chairboys' Contenders

- Martin Taylor**
Goalkeeper 9 Apps 0 Goals
Age 32 Ht 5'11" Wt 13:11
Prev Club: Derby Int.:-
- Matthew Lawrence**
Defender 12 Apps 1 Goal
Age 25 Ht 6'1" Wt 12:12
Prev Club: Fulham Int.: Eng Sch
- Jamie Bates**
Defender 12 Apps 0 Goals
Age 31 Ht 5'11" Wt 14:06
Prev Club: Brentford Int.:-
- Paul McCarthy**
Defender 8 Apps 1 Goal
Age 28 Ht 5'10" Wt 13:10
Prev Club: Brighton Int.: Eire U21
- Chris Vinnicombe**
Defender 4(2) Apps 0 Goals
Age 28 Ht 5'8" Wt 10:12
Prev Club: Burnley Int.: Eng U21
- Jason Cousins**
Defender 4(5) Apps 0 Goals
Age 29 Ht 5'10" Wt 12:07
Prev Club: Brentford Int.:-
- Mark Rogers**
Defender (1) App 0 Goals
Age 23 Ht 6'1" Wt 12:12
Prev Club: - Int.:-
- Keith Ryan**
Midfield 12 Apps 1 Goal
Age 29 Ht 5'11" Wt 12:06
Prev Club: - Int.:-
- Michael Simpson**
Midfield 11(1) Apps 0 Goals
Age 25 Ht 5'6" Wt 11:07
Prev Club: Notts County Int.:-
- Dave Carroll**
Midfield 11 Apps 1 Goal
Age 33 Ht 6'0" Wt 11:12
Prev Club: Ruislip Int.: Eng Sch
- Stephen Brown**
Midfield 9(3) Apps 1 Goal
Age 33 Ht 5'11" Wt 11:12
Prev Club: Northampton Int.:-
- Jermaine McSparran**
Forward 12 Apps 3 Goals
Age 22 Ht 5'7" Wt 10:12
Prev Club: Oxford City Int.:-
- Sean Devine**
Forward 9 Apps 8 Goals
Age 27 Ht 5'11" Wt 13:00
Prev Club: Barnet Int.:-
- Paul Emblen**
Forward 7(2) Apps 0 Goals
Age 23 Ht 5'11" Wt 12:12
Prev Club: Charlton Int.:-
- Danny Senda**
Forward (5) Apps 0 Goals
Age 18 Ht 5'9" Wt 10:02
Prev Club: - Int.: Eng Yth
- Maurice Harkin**
Forward (3) Apps 0 Goals
Age 20 Ht 5'9" Wt 11:05
Prev Club: - Int.:-

Luton Town's Goals For & Against



MATCH

The UK's Biggest Selling Football Magazine
Matchmen of the Month
 Whilst Burnley's Mitchell Thomas and Cardiff's Andy Legg shared the Matchman of the Month Award, Luton Town had the most star performers in the top 20. Liam George, Marvin Johnson & Matthew Spring all made the grade for the Hatters' last month.


Team	Player	GP	SR	Ave
1. Mitchell Thomas	Burnley	4	3	8.00
2. Andy Legg	Cardiff	4	3	8.00
3. Jason Roberts	Bristol Rovers	4	3	7.75
4. Liam George	Luton	4	3	7.75
5. Gregg Goodridge	Bristol City	4	2	7.75
6. Peter Fear	Oxford	3	2	7.66
7. Richard Wilkins	Colchester	3	1	7.66
8. Tony Warner	Millwall	3	1	7.66
9. Stuart Barlow	Wigan	3	0	7.66
10. Junior Lewis	Gillingham	4	2	7.50
11. Gavin Mahon	Brentford	4	2	7.50
12. Shaun Taylor	Bristol City	4	1	7.50
13. Kyle Lightbourne	Stoke	4	1	7.50
14. Hermann Hreidarsson	Brentford	4	1	7.50
15. Marvin Johnson	Luton	4	1	7.50
16. Matthew Spring	Luton	4	1	7.50
17. James O'Connor	Stoke	4	1	7.50
18. Mark Rankine	Preston	5	3	7.40
19. Stuart Nethercott	Millwall	3	1	7.33
20. Claus Jorgensen	Bournemouth	3	1	7.33

Wycombe's Timing - Goals Scored & Conceded



Chairboys' Form Guide - Result, Points, Position

W	L	D	Pts	Pos
11	8	10	10	13
15	8	10	10	13
15	8	10	10	13
15	8	10	10	13
15	8	10	10	13
15	8	10	10	13
15	8	10	10	13
15	8	10	10	13
15	8	10	10	13
15	8	10	10	13

	Ground :	Adams Park	FA Cup 3rd round, 7 Jan 1995	Record Defeat :	0-5 v Walsall, Auto	Top League scorer in a season :	Miguel
	Capacity :	10,000	Year Formed :	1884	Windscreens Shield 1st round, 7 Nov	De Souza, 18, 1995-96	
	Pitch Measurement :	115 x 75	Record League Win :	5-0 v Burnley, Division 2, Apr, 1997	1995	Most Capped Player :	None
	Record Attendance :	9,007 v West Ham, FA Cup 3rd round, 7 Jan 1995	Record Cup Win :	5-0 v Hitchin Town (away), FA Cup 2nd round, 3 Dec 1994	Most Lge Goals : 66, Division 3, 1993-94	Most Lge Appearances :	Dave Carroll, 210, 1993-98
	Record Receipts :	£61,221 v West Ham,			Most Lge Points : 70, Division 3, 1993-94		

Tonight's Visitors

welcome to Wycombe Wanderers



LAWRIE SANCHEZ MANAGER

Started his career at Reading playing in the Third and Fourth Divisions. Moved to Wimbledon for £30,000 just before Christmas 1984 when Dave Bassett was Manager. In the 10 seasons at Wimbledon he played 317 games and scored 35 goals. Had a knack of scoring vital goals, got the winner against Huddersfield that took the Dons into the First Division (now Premiership) and the winner against Liverpool in the 1988 F.A.Cup Final. Went to Swindon for a short period before managing Sligo Rovers. Took Sligo into Europe in the Cup Winners Cup before losing to F C Bruges. Lawrie was enticed back to Wimbledon by Joe Kinnear to manage the

Dons reserve side. He won the Football Combination in his second year in charge, the only time Wimbledon have won the competition. He was appointed first team Coach last season. He played for N. Ireland. His Mother was from Belfast and his Father from Ecuador. Lawrie is 39 years of age and was appointed Manager of Wycombe Wanderers on 5~ February 1999.

With 18 games remaining, it was always going to be a tough task to keep Wycombe up, bottom of the league and without an away win at that stage of the season. When Wanderers lost at Reading after dominating the game, it looked as if the blues were doomed. However, the first away win came at Bristol Rovers in the very next game. It was the end of March, was it too late? When he arrived at the club, Sanchez said that if it went to the last game at Lincoln, he would settle for that. A sensational



WYCOMBE WANDERERS FOOTBALL CLUB 1999-2000

Back Row: Terry EVANS (Youth Team Sports Therapist), Lee Holsgrove, Steve Brown, Gary Wraight (no longer with Club), Maurice Harkin, Martin Taylor, Mark Westhead, Mark Osborn, Alan Beeton, Eddie Gray.
Middle Row: Nas Bashir (Community Officer), Dave Jones (Sports Therapist), Nicky Leach, Paul McCarthy, Keith Ryan, Dave Carroll, Sean Devine, Jamie Bates, Comanche, Mark Rogers, Andy Baird, Paul Emblen, Matt Lawrence, Gary Goodchild (Youth Team Manager), Dave Evans (Community Officer), Adrian Cole (Youth Development Officer).

Front Row: Jason Cousins, Martyn Lee, Richard Thompson, Dannie Bulman, Terry Gibson (Coach), Lawrie Sanchez (Manager), Michael Simpson, Jermaine McSparran, Chris Vinnicombe, Danny Senda.



the players

victory at Maine Road, Manchester was just one of six away wins during the run in that led to Lincoln and the last gasp winner by Paul Emblen with just 7 minutes remaining that assured Second Division survival.

TERRY GIBSON ASSISTANT MANAGER

Appointed on 9th February 1999. Both were former teammates at Wimbledon and played in the Wembley winning cup final side of 1988. Terry started his career at Spurs making his debut at 17, he then moved to Coventry City and became a leading goal scorer. He moved to Manchester United but was in and out of the team owing to the competition for first team places. his transfer to Wimbledon proved a good one spending six years in a very good Wimbledon side before moving onto Barnet. It was at Underhill he became involved with running the youth team while playing first team football. He then took over the reserve side in the Capital League, then had a spell as caretaker manager before the arrival of Alan Mullery.



ANDREW BAIRD (Striker)

Striker with pace and skill joined Wycombe as YT. Broke into the first team owing to injuries to Keith Scott and Paul Read. Made debut as sub in the last home game of 97-98 against Chesterfield. Became a regular choice under Lawrie Sanchez and finished last season with 7 goals.

JAMIE BATES (Defender)

Joined Wycombe from Brentford on a free transfer just before transfer deadline March 99. Strong central defender who played over 500 games for the Bees making his debut in 1986. Can play in any of the defensive positions.

ALAN BEETON (Defender)

Signed from the YTS in the 1996/97 Season. Alan made his debut Sept 97. A regular towards the end of last season and finished really well. Has signed a new two year contract.

STEVE BROWN (Midfield)

Joined in February 1994 from Northampton Town, where he was team captain, for a fee of £40,000. Made over 200 appearances for the Cobblers and 230 League appearances for Wycombe scoring 16 goals. Signed a new 2 year contract in June 98.

DANNIE BULMAN (Midfield)

Joined local club Ashford Town at 15 and made first team debut at 16. Spotted by John Gregory when manager at Wycombe and played four games for reserve side. Signed at start of 98-99 season for £10,000 and made first team debut against Bristol Rovers 31st August 98.

Scored equaliser coming on as sub when Rovers keeper slammed ball against his backside.



DAVE CARROLL (Midfield)

Signed in the summer of 1988 from Ruislip Manor following a short loan spell the previous season. Started out as a Fulham youth player before joining Wembley FC. Has represented England youth (3 caps), the FA and was a FA Trophy winner in 1991 and 1993. He scored two goals in the Play-off Final against Preston 1994. He has now made over 500 appearances for Wycombe with 96 goals and can play anywhere in midfield or up front. Signed a new two year contract in June 98. He is the fifth longest serving player in the clubs history.

Tonight's Visitors



the players

JASON COUSINS (Defender)

A summer 1991 signing from Brentford where he spent four seasons making a total of 28 appearances. Scored the first goal in the 1993 FA Trophy Final and was included in the 1992-93 Conference Team of the Year and the 1993-94 PFA Division Three Team of the Year. Voted Supporters' Player of the Year in 1994. Jason has made over 360 appearances for the Club. Now in his ninth season at Wycombe. He picked up the 'Supporters Player of the Year' award for the second time last season, 98-99, despite missing the final six weeks through injury.



SEÁN DEVINE (Striker)

Exciting striker who joined Wanderers from Barnet in the club's biggest transfer fee of £200,000 in April 1999. His goals helped Wycombe to Second Division survival last season, scoring 5 in 12 games.

PAUL EMBLEN (Midfield/Striker)

Signed from Charlton Athletic for £60,000 after a month's loan. Spotted playing for Tonbridge before moving to Charlton start of 97-98. His first season at Charlton he won a Combination Championship medal, younger brother Neil Emblem (Wolves). Brought to Wycombe by Neil Smillie in September 1998. Scored winning goal against Wigan and followed that with the only goal of the game at Lincoln in the last match of 98-99 to keep Wanderers in Division Two.

EDDIE GRAY (Defender/Midfield)

Another player who came to the pro game via YT scheme at club. Right sided defender/midfielder. Yet to make his Football League debut.

MAURICE HARKIN (Midfield/Winger)

Had trials with Watford, Brentford and Nottingham Forest before joining the YTS

scheme at W.W.F.C. Has also made 9 appearances for Northern Ireland Youth. He made his debut for the Wanderers 1st Team vs Barnet (FA Cup 2nd Round) on the 7th of December, 1996. Very promising youngster who has attracted attention from the Premiership. Missed the whole of last season through injury.

LEE HOLSGROVE (Defender/Midfield)

Son of former Wolves defender John Holsgrove, elder brother, Paul, plays for Brighton & Hove Albion, while younger brother Peter is a member of Wycombe Youth Team. Lee was signed from Millwall in March 1997. Made his Football League debut coming on as a sub against Wigan 5th May 1999.

MATTHEW LAWRENCE (Defender)

In his second stay at the club having been signed by Alan Smith from Grays Athletic in January 1996. Made his Football League debut at Crewe. On the arrival of John Gregory as Manager Matt found himself out of favour and moved to Fulham for £30,000 in October 97. Re-signed for Wycombe under Neil Smillie having played 55 matches for Kevin Keegan at Fulham. Good defender who can play mid field.

NICKY LEACH (Defender)

Central Defender signed on pro contract after being YT at club. Yet to make his Football League debut.

MARTYN LEE (Midfield)

Signed a professional contract May 99 having been a YT at the club. Left sided mid fielder who made his Football League debut at Chesterfield 30 January 1999.

PAUL MCCARTHY (Central Defender)

Joined from Brighton & Hove Albion for £100,00. He has 10 under 21's Caps for the Republic of Ireland. A strong central defender who missed the last part of season 98-99 through injury.



JERMAINE McSPARRAN (Striker)

Signed for Wycombe from Non League Oxford City 5.11.98 on a 3 year contract. Played for Oxford City then moved to Abingdon Town before re-joining Oxford City in 1996. Played for Arsenal in the Avon Insurance Combination scored two goals. Offered trials at West Ham, attracted lots of attention from Premier and Division One sides. Debut for Wycombe at Northampton Town on 7th November 1998.

MARK OSBORN (Goalkeeper)

Highly promising goalkeeper now a full time pro signed from the YT ranks. Yet to make his Football League debut.

MARK ROGERS (Defender)

Arrived from Canada in July 1998. Yet to make his first team debut but has appeared regularly in the Avon Insurance Combination. Can play defence or mid field.



KEITH RYAN (Midfield)

Arrived from Berkhamsted during the 1990 close season after making some reserve appearances the previous year. A central midfielder who can also play up front. He scored on his debut for Wycombe and was an FA Trophy winner in 1991 and 1993, and a Play-off winner in 1994. Keith should reach the 300 Football League appearances mark for the Club during this season. Made two successful comebacks from serious injuries.

DANNY SENDA (Striker)

Young striker with a lot of promise. Has played for England U17 side. Made Football League debut against Oldham March 27 1999.

MICHAEL SIMPSON (Midfield)

Signed by tribunal from Notts County in January 1997. Trainee with Notts County 1992 to 1997. Made his debut for Wycombe vs Chesterfield on December 14th, 1996. Signed a new 2 year contract in April 99.

MARTIN TAYLOR (Goalkeeper)

Started his career with Mile Oak Rovers and after two seasons joined Derby County, where he made a total of 140 league and cup appearances. He made his debut for Wycombe, whilst on loan from Derby County, at a home match vs Shrewsbury on the 29th of March, 1997. Kept 18 clean sheets last season and has now made over 100 appearances.

RICHARD THOMPSON (Striker)

Striker signed from Crawley Town April 99, Yet to make his Football League debut.

CHRIS VINNICOMBE (Defender)

Started as YTS at Exeter City, before moving to Glasgow Rangers for £150,000 in November 1989. Did not make too many appearances for Rangers before being transferred to Burnley for £200,000 in May 1991. A good left sided defender he made over 70 appearances for Burnley before joining Wycombe on a free in the summer of 1998.

MARK WESTHEAD (Goalkeeper)

Goalkeeper who signed for Bolton Wanderers at 17. Went on loan to a number of clubs before released at end of 97-98 season. Signed for Wycombe from a goalkeeping course at Bisham Abbey in July 1998. Made first team debut at Burnley on 12th September 1998.

GARY WRIGHT (Defender)

Signed from the YTS in the 1996/97 season. Gary has been on the bench last season, still waiting to make an impact in the first team. Made his first team debut coming on as a sub against Southend December 9th 1997 in the Autowindscreen Shield competition.

Junior Hatters

welcome

WE OFTEN mention our Saturday Club in the Junior Hatters column, and this evening we have a chance to show you pictures of some of the youngsters who take advantage of a feature which is a regular part of our entertainment on Saturdays when the Town are at home.

You will see that we cater for all ages and all sizes - anyone aged between 7 and 17 is welcome, boys and girls alike.

We meet at 12 noon, and if the weather is kind we use the Dallow pitch for football, sometimes against junior teams from the clubs who are visiting Kenilworth Road.

If the weather is bad we have a foam ball for indoor soccer, and that is always popular. All sorts of other entertainment is on offer, and naturally the Saturday Club is fully supervised.

The small group picture shows some of our youngest members, with Glenn Lewis, who helps to look after them.

In the larger group the players are a little older, and the helpers are Ben Green, in the blue top, and Adam Lewis, in the red shirt.

Unless we have been drawn at home in the FA



● **GOING FOR GOAL: Penalty area action from one of our Saturday Club football matches at Dallow Road School.**

Cup - these notes had to be written before Saturday's draw - our next Saturday Club will be on November 6, when the Town play Burnley.

We have a few vacancies, so if you want to get everything possible out of coming to football at Luton Town, why not join us? The price is pitched to suit everyone: £5 for Junior Hatters who have season tickets, or £9 with a match



● **THE mascots exchanged pennants before kick-off when the Town played at Oldham, and the picture shows the group that gathered for the toss of the coin.**

The Junior Hatters mascot, chosen through the luck of the draw on the coach going to Lancashire, was 14-year-old Jamie Sales, of New Woodfield Green, Dunstable.

He goes to Manshead School, and his favourite player is Matthew Spring. Jamie is a regular at Hatters games, and he also likes swimming and playing football, for Dunstable Town Juniors.



ticket included. Very often we have visits by Town players, and we provide a lunch of sausage and chips, with a drink. We have a quiz in our family room, then watch the game from the Kenilworth lower tier and meet up with parents and friends after the game.

The Saturday Club is available to all Junior Hatters, and for more information, or to join the Junior Hatters, please contact the Town ticket office on Luton 416976.

We have a smashing Christmas Party for all Junior Hatters, at which players are among the guests, and all members receive a birthday card signed by their favourite player. Being a Junior Hatter also means you have a chance of being chosen as mascot for a home match.

We also organise trips to a lot of away games, often to meet up with the juniors of other clubs, and sometimes we have mascots at away games. If you are under 16 and support Luton Town, come and join us!



Today's Mascot



NINE-year-old Georgina Adair is this evening's Junior Hatters mascot, which will make it a match to remember for her.

She lives at Park Meadow Close, Barton, and attends Arnold Middle School. As well as football, she likes ice skating, skiing and horse riding.

She comes to matches with her dad and they watch from the Kenilworth lower tier, but tonight Georgina will have lots of people watching her. After meeting the players in the dressing room, she will join them for the pre-match formalities, including the kick-about and the centre circle ritual of the toss-up with the skippers and match officials.

Top Hatters Gallery



Phil Gray

Born: Belfast, 2.10.1968
Previous clubs: Tottenham Hotspur, Luton Town, Sunderland, Nancy, Fortuna Sittard
Joined Luton Town for the second time: September 1997
Luton debut this time: v Wrexham 20.9.97
Luton Town record, current spell until 15.10.99: 70 appearances,

Autograph

Fans can have their say on footballNOW! - the new-look Nationwide soccer web site with up-to-the-minute news and features on England's European Championship campaign, the Premiership and all the big European competitions as well as the Nationwide Football League and The Nationwide Conference.

football NOW!

Central to the re-launch of the football site, will be fanFARE - a fans' forum aimed at giving supporters the chance to air their opinions, tell their silly soccer stories and ask key questions to the top names in the game.

The exciting new format includes prize competitions - the first of which is for a trip for two to see England in training, a signed England shirt, a signed England ball and tickets for the Euro 2000 qualifier against Luxembourg - plus special offers on soccer merchandise and, from the autumn, an interactive Manager game in which fans across the nation will be invited to take part.

For all this plus the latest news on the international fortunes of Scotland, Wales and Northern Ireland, domestic competitions such as the F.A Cup and Northern Ireland's Nationwide Gold Cup - and not forgetting Manchester United's participation in the World Club Championship - log on to footballNow! at

www.football.nationwide.co.uk

OFFICIAL WEBSITE OF THE



www.football.nationwide.co.uk

Last Season
The Nationwide Football
League saw an Increase in
Attendance of 13.5%;
Why...?



The authority...

The Quality of the Football

Image by Empics 0115 840 444 Digital Artwork by SentryBox 01895 251 220

R. J. BLOW & C O M P A N Y

THE FRIENDLY ACCOUNTANTS

*Book-Keeping
Taxation and Wages etc.*

24 GUILDFORD STREET
LUTON
BEDS, LU1 2NR

Tel: (01582) 738792
Fax: (01582) 423347

**This space
could be selling
for you!**

**And you might be
surprised how little it
can cost.**

Matchday programme advertising,
from a quarter to a full page, is
available at competitive rates.

Interested?

Please ring the commercial
department, on Luton 411622
for details of the various packages
on offer.

Why not have your next Function at Kenilworth Road?

Function Suite	Reception or Bar Only	Conference or Dinner	Room Hire Per Day
• Eric Morecambe Suite	100	80	£100
• Century Club	100	50	£65
• Kenilworth Suite	100	50	£90
• Joe Payne Lounge	100	45	£100
• Millennium Suite	70	35	£65
• The Boardroom	50	30	£175
• Our 28 Executive Boxes with Executive Lounge and Bar are also available for hire.			
• Car Park Steward (secure parking for 200+ cars) and/or Reception Steward	£35 each		
• Tea/Coffee/Biscuits	£1.50pp		
• Buffet	from £8.50pp		
• Sit Down Meal	from £14.50pp		
• Conference and Banqueting facilities also available throughout the year.			

All prices include VAT.

For the latest ticket and travel information call the Luton Ticket Office on
01582 416976

Blast FROM THE Past

Roger Wash

Luton Town v Wycombe Wanderers



Fourteen years ago today the Town were due to take part in a run of the mill Division One game against Southampton at Kenilworth Road but, by the time of the final whistle, the word 'ordinary' was the

last one that could be used to describe an amazing match.

The 1985/86 season had started off to a fanfare of trumpets as the club unveiled its new artificial surface at Kenilworth Road but, after the London press had all travelled up the M.1 to take a look and offer their grudging approval, the football started off in gentle fashion.

After an opening day draw at Kenilworth Road with Nottingham Forest the Town drew at Newcastle before winning 1-0 at West Ham with Mick Harford netting the only goal from the spot.

The next three away games were all lost and although points were still being picked up at home the season was rapidly turning into a disappointment given the high expectation of the club following the massive investment of the previous campaign. At great cost, by normal Luton standards, Mick Harford, David Preece, Peter Nicholas and Steve Foster had been brought to the club and a position in the bottom half of the table was unacceptable.

The season actually turned with, of all things, a home draw. Manchester United came to Kenilworth Road in early October on the back of ten straight wins and were obviously hoping to equal the winning start to a campaign set by Tottenham in 1960. In a tremendous game, watched by a crowd of 17,454, the Town were more than a match for United and but for a glaring late miss by central defender turned striker, substitute Paul Elliott, all three points would have been won.

Manager David Pleat felt that he still needed more firepower and was on the lookout for another forward, after narrowly losing out in the chase for Frank McAvennie who had decided to opt for West Ham rather than the Town in the summer. In the lead up to the Southampton game Pleat was quoted as being frustrated by the lack of goals which the general build up play deserved.

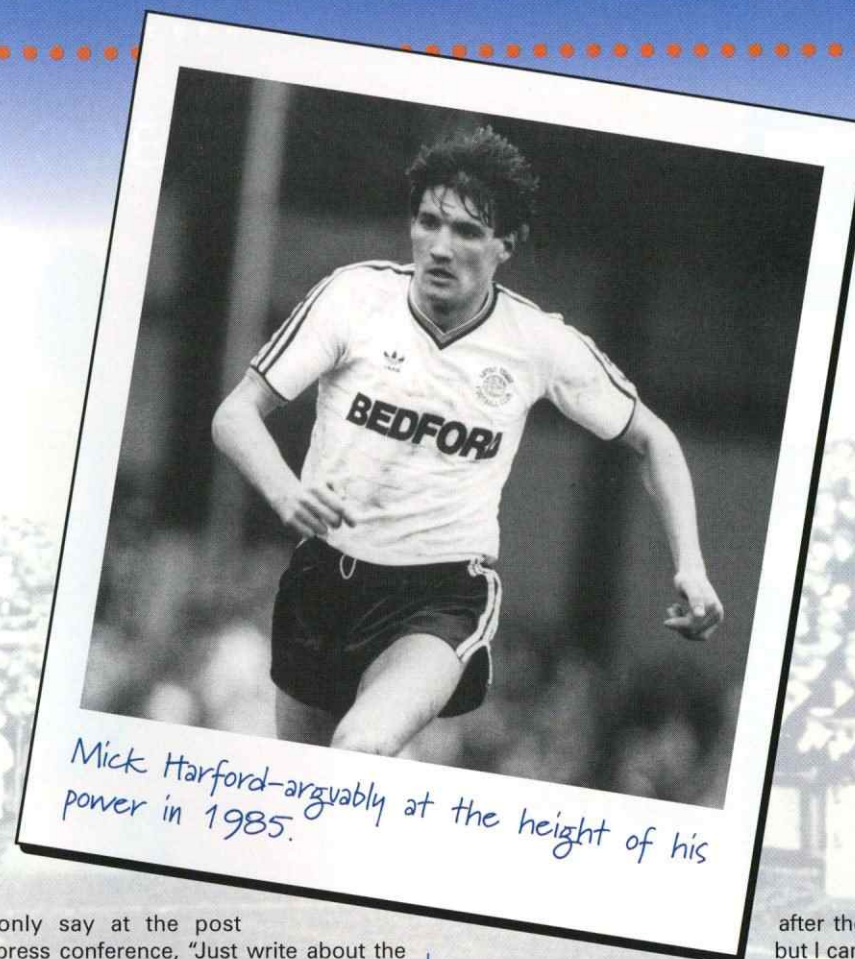
Equally frustrated were the Luton supporters as only 8,876 bothered to turn up for the visit of the Saints, half the attendance that had witnessed the game with United only a fortnight previously. The fans who stayed away missed a treat as the Town went goal crazy making a complete mockery of Pleat's misgivings.

Seven goals were slammed past England goalkeeper Peter Shilton without reply making it the most miserable day of his career. He was offered no protection by his defenders when Harford and Brian Stein interchanged passes to set up Emeka Nwajioi to open the scoring after only five minutes.

Ricky Hill and Harford combined to put in Stein to double the score on the half hour and, when Hill sidefooted home the third before the interval the game was as good as over.

Harford was dragging another England international, Mark Wright, around in circles as the Town continued in the second period as they finished the first. With gaps appearing all over the place Steve Foster found time to join the attack and when his shot was blocked Stein followed up to make it 4-0. Preece was on hand to touch in a far post cross to make it five with sub Ray Daniel knocking in number six just before the end. Stein's hat trick was completed in the final minute when he converted a penalty after Harford was pushed by Wright in the area.

Pleat was as dumbfounded as the crowd and



Mick Harford-arguably at the height of his power in 1985.

could only say at the post match press conference, "Just write about the football, it spoke for itself." Saints manager, and ex-Luton centre half, Chris Nicholl bravely attended the conference even though he was shell shocked.

"It was just rank bad defending," fumed Nicholl, "My defenders badly let me down. I was always an honest player but there's a few who can't look me in the face right now."

Exonerated from blame was Glenn Cockerill who was making his debut for the Saints after turning down the overtures of David Pleat and probably regretting his decision. Also blameless was Shilton who had not let in seven since he was a 19 year old at Leicester and who kept the score down with a string of fine saves. "No-one likes letting in seven but I don't think I made a bad mistake for any of them. There is no self pity. I don't want to talk about how I felt

after the match, but I can tell you that the dog was

in the basket when I got home!"

As well as the previously mentioned worry at the lack of goals being scored the pulsating display was all the more remarkable when it is remembered that the players had only just returned from a gruelling trip to Trinidad where they had played two exhibition games against an Armed Services side and, believe it or not, Norwich City!

Luton: Sealey, Breacker, Thomas, Nicholas, Foster, Donaghy, Hill, Stein, Harford, Nwajioi, Preece (Daniel).

Southampton: Shilton, Baker, Wright, Bond, Dennis, Case, Lawrence, Armstrong, Townsend, Cockerill, Moran.

Community & Schools Programme

OCTOBER HALF TERM COACHING VENUES

All courses run from
10am to 3pm

LUTON

FRIDAY 22nd Oct
Barnfield College
Sacred Heart Junior School
Sundon Park Junior School
Price £5.00 or FREE if attending
St Josephs or Icknield Courses

MONDAY to WEDNESDAY
25th to 27th Oct
St Josephs Junior School
Price £20.00

THURSDAY & FRIDAY
Icknield junior School
Price £15.00



FLITWICK/AMPTHILL

WEDNESDAY to FRIDAY
27th to 29th Oct
Redborne Upper School
Price £20.00

LEIGHTON BUZZARD

MONDAY to WEDNESDAY
25th to 27th Oct
Linslade Middle School
Price £20.00

CADDINGTON

THURSDAY & FRIDAY
Heathfield Lower School
Price £15.00

DUNSTABLE

MONDAY & TUESDAY
Beecroft Lower School
Price £15.00

TODDINGTON

MONDAY to WEDNESDAY
St Georges Lower School
Price £20.00

For further information or
to book a place please call
the Community & Schools
Department on

01582 411622

ntl: Schools Visit Project reaches 7,000 kids

Yes that is the amazing total we
have reached so far this year -
7,000 youngsters from around
Beds & Herts.

As many schools have now
experienced, our NTL Schools
Visit Project jointly funded by NTL
and Sportsmatch, aims to provide
curriculum time PE and football
coaching in schools to
youngsters of all abilities. With
future visits planned for lots of
schools in and around Luton and

Dunstable as well as the rest of
Beds & Herts we have set
ourselves a target of 10,000
children for 1999 - not a bad way
to enter the millenium!

If you would like to help us reach
our target or would like further
information about the project, it
couldn't be easier - just give us a
ring at the Club on 01582 411622
and we will do our best to arrange
a visit or answer any questions
you may have.



Healthier looking mortgages with great value & flexibility



At Nationwide all our mortgages have the two in one benefit of value and flexibility built in. We keep all our rates in great condition and our special flexible formula is perfect for different mortgage types.

There's the opportunity for you to overpay or alternatively, to take a payment holiday if you wish. As an added ingredient you could also choose a 'Flexible Advance', which allows you to borrow more when you need to – at our great value standard variable rate.

We can do all of this because we're a building society and not a bank, and we have no shareholders to pay. We can pass profits back to our members in the form of great value and extra benefits. So, with Nationwide you really have got a healthy combination of flexibility and value.

For full details just pop into your local Nationwide branch, call **free** on **0800 30 20 10**, quoting FB01, or find us at www.nationwide.co.uk

It pays to decide...



The World's No.1 Building Society

5.3%
APR (VARIABLE)

Typical example assumes borrowers take out a variable rate of 5.15% after a 1.30% two year discount off our current standard variable rate of 6.45%. This rate is only available to existing Nationwide mortgage borrowers moving home. A minimum deposit of 10% is required for this rate. A couple (male and female), non-smokers, aged 25, applying for a £40,000 endowment mortgage over 25 years on a purchase price of £45,000. 300 monthly payments of £158.80 net of MIRAS at 10% will be required. APR 5.3% (variable). APR is based on the two year discount applying throughout the term of the mortgage. In practice after the discount rate period, our then standard variable interest rate will apply. Total Amount Payable (TAP) will be £91,782, which includes 300 mortgage interest payments, final repayment of capital, solicitor's mortgage costs of £100 excluding VAT (and assuming the same solicitor acts for both of us), and a valuation fee of £140 which is refunded upon completion. For loans exceeding 90% of the purchase price or valuation, whichever is the lower, an additional charge will be made. This additional charge does not apply to existing Nationwide mortgage borrowers moving home. A typical monthly endowment premium is £78 (variable) which is not included in the monthly interest payment shown or the TAP. Flexible Advance is available to new and existing residential mortgage borrowers, excluding Shared Ownership, Equity Share, Homebuy and Right to Buy, where the combined total of the main mortgage and Flexible Advance will not exceed 75% of the value of the property or the purchase price, whichever is the lower and the Flexible Advance is conducted on a capital and interest repayment basis. Payments must be made by Direct Debit or FlexAccount transfer for the term of the discounted rate. Mortgages are subject to status, valuation and security. Available to those aged 18 or over only. The product shown above is subject to availability and may be withdrawn without notice at any time. Rates correct at time of going to press. Nationwide Building Society, Nationwide Life Limited and Nationwide Unit Trust Managers Limited represent only the Nationwide Marketing Group which is regulated by the Personal Investment Authority for life assurance, pensions and unit trust products. Nationwide Unit Trust Managers Limited is also regulated by IMRO. Written quotations available on request from Nationwide Building Society, Nationwide House, Pipers Way, Swindon SN38 1NW. Nationwide is a member of the Building Societies Ombudsman Scheme and subscribes to the Banking and Mortgage Codes, copies of which are available on request. Please note that for various legal, regulatory and customer service requirements, your call will be recorded.

Hatters Chatter

our youngest fans

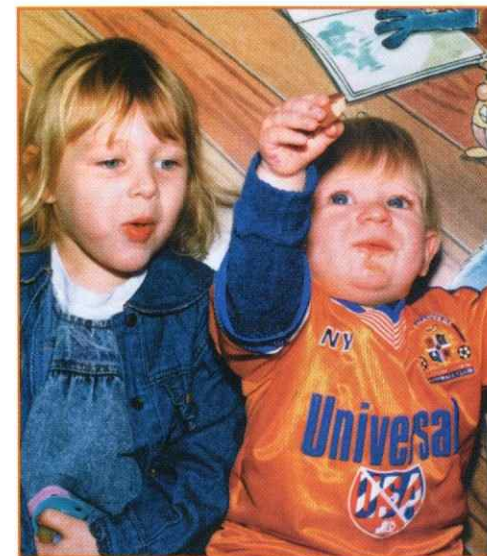
YOU can be a Luton Town supporter at any age... even if you are too young to know it! Our open invitation to Town fans to show us just how quickly tiny tots can wear the colours brought in a couple of nice pictures this week.

The small brother and sister are not only very small supporters - they have never actually been to England, let alone Kenilworth Road.

They are Taigen, aged three, and one-year-old Connor Marks, and they live near Melbourne, Australia. So how come little Connor is resplendent in a Town kit?

Mrs Shirley Hobbs, from Meyrick Avenue, Luton, provided the explanation as well as the photograph. Their father is Craig Marks, who emigrated from Luton to Australia four years ago. He came back on a visit in August, and watched the opening home games of the season - he has always been a Town supporter.

Before returning to the other side of the world, he left this photo for inclusion in the matchday magazine to prove that he is bringing up his children properly, to wear the colours, and publicise Luton Town down under.



OUR other tiny tot fan is the latest of the Sellars family to wear the colours with pride. This is Jamie, aged 15 months, whose picture was sent in by Rosemary Sellars, of North Gate, Bletchley. Look carefully, and you can see that he is clutching a very valuable package - he is already getting used to carrying his Luton Town season ticket!

Mrs Sellars says that within a year or so Jamie will join his father James, uncle Stacey, cousin Grant, grandma and granddad, Rose and Jim, and last but definitely not least great-granddad Peter, who started the family tradition of going to Luton Town games.



HAVE you got a tiny tot who looks good in Luton Town colours? We are always interested in supporters' pictures - anything with a Luton Town flavour about it. If you would like to see your picture included in the programme, please send it to the programme editor, at the football club. If you want pictures returned, please enclose a stamped, self-addressed envelope.

If you would like join the Junior Hatters, call the Ticket Office on
01582 416976

Over the Bar

drink to the Hatters in these pubs

Tony and Rikki welcome you to

The Anchor

1 Dunstable Road, Tilsworth,
Nr. Leighton Buzzard

Tel: (01525) 210289



To
be announced.

Pitchers Sports Bar & Diner

26 Chapel Street
Luton
01582 485473

Come in and enjoy a pre-match pint!



Mac's Bar

80 Russell Street
Luton LU1 5EB
Tel: 01582 727848

Live music every Friday, Saturday and
Sunday night. Karaoke every Monday
night. Sky & Setanta Sports shown on
Big Screen TV



To advertise
your pub on
this page call
the Commercial
Department
on
**01582
411622**

The White Swan

93 High Street South, Dunstable
Dunstables favourite meeting place

Tel: (01582) 667833
Fax: (01582) 475552



Fox & Hounds

1 Milton Road, Clapham,
Beds, MK41 5AP.
(01234) 352889

Live Music, Good Bar Food, Games
Room, Satellite TV & Large Beer Garden.

Come in and enjoy a pre-match pint!



The Hansom Cab

Wigmore Lane
Stopley, Luton LU2 8AB
Tel: 01582 727400

Xmas party menu from only £7.95 for
2 courses, all served on our famous
17" big plates.

Please phone for more details



The Painters Arms

High Town Road
Luton
Tel: (01582) 876972



Hatters On Card

Alan Robinson

SOON after the first world war, several new
comics for boys appeared on the scene, such
as Rover, Wizard and Champion.

In an effort to attract readers, several of the
early issues offered incentives such as free
gifts, including picture cards.

One such publication was
Adventure, from publishing
giants D. C. Thomson, who
issued cards in 1922 bearing
photographs of footballers.
There was a facsimile
autograph of the featured
player on the reverse, and
these cards formed a set
totalling 22 subjects.

Although the Hatters were
then a Third Division outfit,
they featured in this set by
virtue of the fact that their
centre-forward, Ernest
Simms, had played for
England against the Irish
the previous October. Appearing
for Ireland in that match were
two other Luton forwards,
Louis Bookman and Allan
Mathieson.

Ernie Simms, born and bred
in South Shields, joined
Luton from Barnsley in the
summer of 1913. The Town
were then languishing in the Second Division of
the Southern League, which was
predominantly Welsh teams, but Simms hit 28
goals to ensure promotion back to the Premier
Division.

After league football had been suspended
during the great war Simms joined the Army
and went to France, but was wounded in action.

Fortunately he soon recovered, to the extent
that when Luton joined the newly-formed Third
Division (South) of the Football League in 1920
he was the section's leading scorer with 29
goals.

He managed another five in an exciting FA Cup
run which saw Luton overcome three Second
Division sides before finally being beaten by
Preston North End, who were then enjoying life
in the top flight.

Such prolific marksmanship
brought Simms to the
attention of the international
selectors, and in the spring of
1921 the Luton player was
chosen as a reserve for the
England matches against
Wales and Scotland.

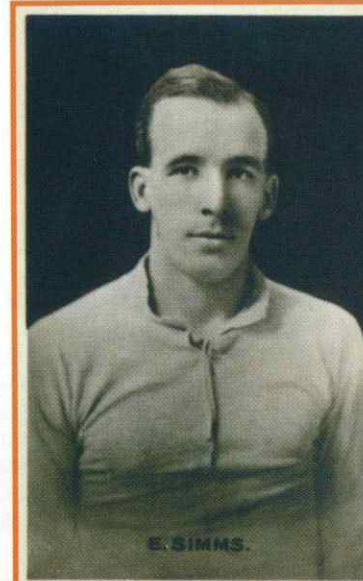
Disappointing form by the
English attack in those two
matches meant that Simms,
by then approaching 30, got
his chance in the following
home international, in Belfast.
By all accounts he had a
reasonable game in a 1-1
draw, but he did not receive
any further calls from
England.

Simms left Luton in March
1925 to join South Shields,
who were then a Second
Division team. In total he had
netted 109 league goals in
only 160 Southern and
Football League appearances
for us - a magnificent ratio
considering that this was

before the offside laws were changed in 1925.

He enjoyed several productive seasons with his
home-town club before ending his football
career with spells at Stockport County and
Scunthorpe.

These Adventure cards are slightly larger than
the standard cigarette card of that era. There is
no informative text on the back, apart from a
reproduction of the player's autograph. You can
expect to pay around £2 for examples of this
set, which are now becoming harder to find in
good condition.



D. C. Thomson
Footballers - Real Signed
Photos. 1922

Action Replay

Oldham 2 Luton Town 1 (HT 0-0)

Brian Swain reports

OLDHAM manager Andy Ritchie turned the air blue to castigate his team at half-time at Boundary Park. His angry blast at a team that had been made to look like donkeys against thoroughbreds was so loud and vitriolic that even the Town players heard him, the other side of a brick wall.

By the end of 90 minutes it was Lennie Lawrence who was seething, having seen the Town claw their way back into the game with six minutes to go, only to lose to the Second Division's bottom club to a set piece goal in the dying seconds.

The difference between the Town's performance in each half defies all belief and logic. For the first 45 minutes Oldham were given a comprehensive run-around. They were swamped in midfield, and under the cosh as the Town poured forward. With Gary Doherty and Liam George away on Irish duties, Phil Gray returned to attack, and Effy Sodje made his league debut in defence.

Until Ritchie sounded off, Oldham could have been forgiven for chuckling at the interval - how a team so much second best could still be on level terms was a mystery. Twice the woodwork saved them, with Matthew Taylor the unlucky man both times. Matthew Spring created a chance for Gray which ended with a drive over the bar and for Town fans the worry was that we would do well to be as good in the second half, while Oldham for sure could not be as bad.

Marvin Johnson made the point that you cannot hope to have 90 minutes of complete domination, and if you fail to turn half a match's excellence into goals you might well suffer for it.

We did. Collectively the Town lost their way, not helped when Gray limped off after 50 minutes with another hamstring problem. Oldham responded to their manager's harsh words, and started to get their passing right, while ours fell away.

Oldham got the breakthrough on 65 minutes, with David McNiven looking well offside as he collected a through-ball by Mark Allott, and strode through the wide open spaces down the middle before scoring.

Match Details

Luton Town: Abbey, Fraser, Watts, Sodje, Johnson, Locke, McLaren (McIndoe 67 mins), Spring, Taylor, Douglas (Midgley 67 mins), Gray (Kandol 50 mins). Unused subs: White, Ward.

Booked: Stuart Fraser, 89 minutes, foul on Andrew Holt

Oldham: Kelly, Scott McNiven, Holt, Thom (Hottel 86 mins), Duxbury, Rickers, Sheridan, Allott, David McNiven, Adams, Graham. Unused subs: Innes, Miskelly, Sugden, Tipton.

Booked: no-one.

The goals: 1-0 65 mins - David McNiven, clear down the middle, and possibly offside, before shooting in; 1-1 86 mins - Neil Midgley, with the first league goal of his career, collecting Adam Locke's pass and going round the goalkeeper before placing the ball into the empty net; 2-1 90 mins - Mark Allott, far post header, from a free kick by John Sheridan.

Referee: Mark Cowburn, Blackpool.

Attendance: 4,532 including 451 Town supporters.

But we had a golden opportunity to save the game after 84 minutes when the Oldham goalkeeper Gary Kelly hacked a poor clearance straight to Adam Locke in midfield. He sized up the situation perfectly, and placed and weighted his ball down the middle for Neil Midgley, sub for Stuart Douglas, to net his first league goal.

That should have been that, but 90 seconds from time Stuart Fraser went diving in with a rash challenge on Andrew Holt. The defender was booked, and then the whole team was punished for not dealing with the set piece. John Sheridan delivered a good free kick to the far post, and Allott stooped to head the winner. The Town boss thought the biggest single influence on the game was the half-time "pep talk" by the Oldham manager, and he admitted: "We took a battering in the second half. Our inexperience shone through like a beacon."

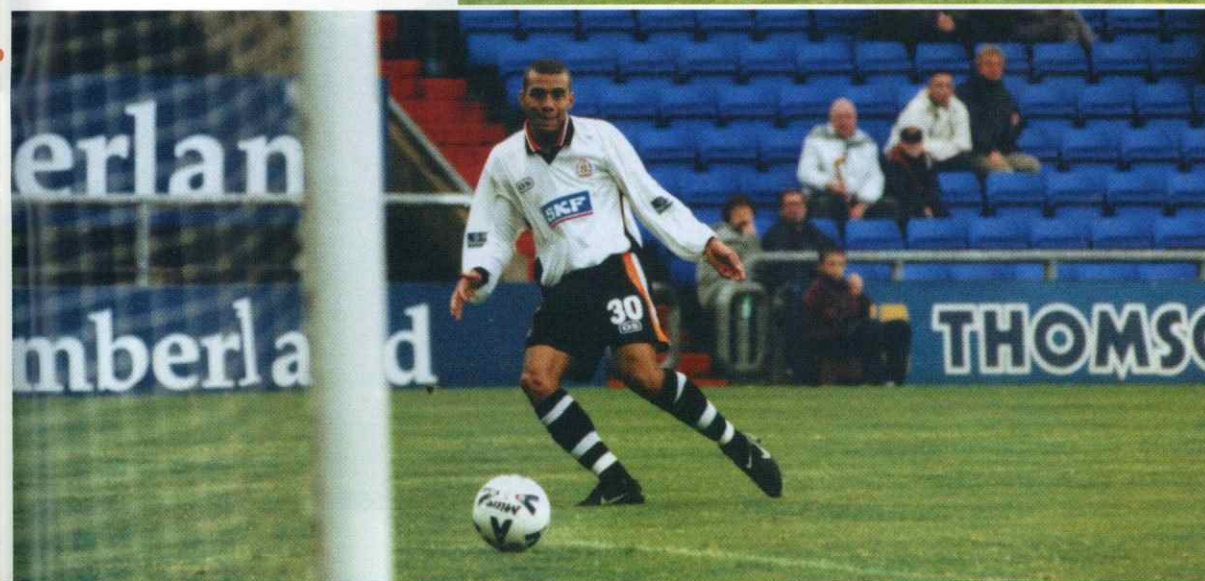


DEBUT GOAL: Gareth Owen's camera captures the making and taking of Neil Midgley's goal at Boundary Park.

▲ Midgley takes on defender Stuart Thom and the goalkeeper.

► The keeper floors his own man as Midgley side-steps them both

▼ In it goes, the shot perfectly placed despite the angle.



For all the latest news, views and interviews call

CLUBCALL - 09068 121 123

(Calls charged at 60p per minute at all times)

COLOUR AERIAL PHOTOGRAPHS

12" x 10" framed & mounted just £15 each
Premier Image stock colour aerial photographs of
ALL English and Scottish stadiums



PREMIER IMAGE

Unit 12, 157-159 Boundfield Road,
London SE6 1PE. Telephone 0181 461 4214
www.premierimage.co.uk



Get on the Ball with Luton Town

Have you thought about being a match ball sponsor at a Hatters game?

It's a good deal, including four seats in the directors box, reserved parking, a four-course meal and various other delights, including a complimentary bar.

You will have the chance to meet the players, and go home with a match ball signed by them.

Interested?

Call the commercial department on
Luton 411622 for more
information.

Football. It's a game of two halves



Many sides play their football in magnificent stadiums. Others play theirs on park pitches. At the Football Trust, we're here to make sure that everyone is a winner thanks to the grant aid we can offer at every level, from ground redevelopment and safety work at league clubs right down to the very grass roots. And now pools income is boosted by annual contributions from The Football Association, The F.A. Premier League, The Football League, the Professional Footballers Association and Sport England. Together, we are working hard to ensure a healthy future for our national game... now, and for generations to come.

the football trust
helping the game

1 Waterhouse Square, 138-142 Holborn, London EC1N 2ST. E-mail: enquiries@football-trust.org.uk

Hatters Chatter

Brian Swain reports

THE delight at further international recognition for two of our outstanding young prospects was not quite unbounded as the Town counted the cost. Liam George and Gary Doherty were called up for the Irish under-21 squad to play Macedonia last weekend, so had to be left out of our team at Oldham.

Lennie Lawrence would have preferred the Oldham game to be postponed. Seven other league games were called off, because one or other of the teams had three players or more taken away for internationals.

That arbitrary ruling, said the Town boss, was not fair on clubs like ours, with small squads. How can it be right, for instance, that big clubs lose three players out of massive squads and get a postponement, and we lose two and still have to play?

The boss suggests a sliding scale might be fairer: postponements should be allowed for Third Division clubs where one player was called away, and in the Second Division for two players. "As the system operates at present, small clubs with small squads are hit harder than the bigger clubs," said the boss. "In our case we have been forced to play a league game while being denied two key players, our leading scorer and a pivotal defender. And what makes it worse was that the Irish game was a meaningless fixture."

For the record, Ireland won 1-0, and Doherty and Douglas both played in attack. Thankfully, they also both came home fully fit.

WE HAVE a cup-tie at Kenilworth Road on Wednesday evening, with the Town at home to Sutton Utd in the first round proper of the Times FA Youth Cup. It kicks off at 7.30 and admission is £3 for adults, and £1 for juniors. Only the main stand and enclosure will be open, and entrance will be via Kenilworth Road only. If there is a replay it will be on Wednesday week.

ASHLEY Grimes, who will forever be loved by Town fans for the astonishing "wrong foot" cross that laid on our 1988 Littlewoods Cup winner for Brian Stein, was among the crowd at Oldham last week, looking remarkably young for his 42 years. The former Manchester United star, who had five years at Kenilworth Road and later went into coaching, was at Boundary Park watching our young team with very keen interest - he is now scouting for Birmingham City after being sacked as a coach by Stoke City 18 months ago.

He keeps in touch with a lot of his old mates in football, and passed on the news that Mal Donaghy, until recently development officer for the Irish FA, has just become a manager. He has taken over at Newry, and his assistant is another former Luton Town man, Seamus Heath, who was an outstanding prospect as a youth team player, but never managed to make the breakthrough into the league squad.

At Oldham, Grimes, still very fair-haired and chipper, sat near Darron McDonough, who missed our famous Wembley victory through being injured in training 48 hours before the great day. Having started his playing career at Oldham, McDonough is now a regular spectator at Boundary Park, and makes a living in a property business.

IT WAS hard to deny Wigan boss John Benson his pleasure at the Latics victory over us at the JJB Stadium. The last time he was a manager who sent out a team to oppose Luton was at Maine Road on May 14, 1983. Raddy Antic scored the most famous goal in Luton's history, we stayed in the First Division, Manchester City were relegated and John Benson became the first of ten managers sacked by City between then and now. The clear-out that followed the Town's 1-0 win that day also saw youth coach John Ryan lose his job. I will always remember him on that afternoon and evening of pandemonium. He spent ages telling everyone how pleased he was for Luton Town, the club he served with such distinction, yet he already knew the Town's victory would put him out of work within a few days.

CONGRATULATIONS are due to Mark Stein, the striker who began his career with Luton Town. He notched up his 500th league and cup appearance a fortnight ago by helping Bournemouth to their first away win of the season, 1-0 at Chesterfield. His first game was in the old First Division, for the Town at home to Everton in April, 1984, when he played alongside his brother Brian because Paul Walsh was out of the side injured.

The 500 appearances have been achieved in a career which included a brief spell on loan to Aldershot before transfers to QPR, Oxford, Stoke, Chelsea, Stoke again on loan, Ipswich on loan, and finally to Dean Court early last year.

And the 500 included one of our best-ever days - he went on as a sub to help us beat Arsenal in the Littlewoods Cup final of 1988.

HATTERS SHOP

AVAILABLE TO ORDER NOW

A Framed Team Shirt signed by all the players
for £139.99



● An ideal gift
for birthdays
and special
occasions

● Personalised
with your own
message

CLUB SHOP ORDER FORM

Name _____

Address _____

Postcode _____

Telephone _____

☐ Home Shirt ☐ Away Shirt (please tick)

Message (70 letters incl. spaces) _____

Credit Card Number _____

Expiry Date _____

Cheques should be made payable to Luton Town F.C.

Please send this completed form to:

Club Shop, Luton Town F.C.
Kenilworth Road, Luton, Beds LU1 1DH
Tel. 01582 411622 Fax. 01582 405070

Please allow 3-4 weeks.

Collection from Club Shop only.

HATTERS SHOP

AVAILABLE TO PURCHASE NOW

Polo Shirt (S, M, L, XL)
£19.99



Baseball Cap
(one size)
£9.99

CLUB SHOP ORDER FORM

Name _____

Address _____

Postcode _____

Telephone _____

	Quantity	Size	Unit Cost	Total Cost
Polo Shirt	<input type="text"/>	<input type="text"/>	£19.99	<input type="text"/>
Baseball Cap	<input type="text"/>	one size	£9.99	<input type="text"/>
+ UK Postage £2.00 = TOTAL				<input type="text"/>

Credit Card Number _____

Expiry Date _____

Cheques should be made payable to Luton Town F.C.

Please send this completed form to:

Club Shop, Luton Town F.C.
Kenilworth Road, Luton, Beds LU1 1DH
Tel. 01582 411622 Fax. 01582 405070

If mail order, please allow 7 working days for delivery.

The Reserves

Trevor Hartley and John Moore



Brighton 1 Luton Town 2

AFTER losing our first four matches in the Avon Insurance Combination, our second consecutive victory, and our first of the season away from home, brought considerable satisfaction on the South Coast on Wednesday.

Once again we could not field as strong a side as we would have liked. The combination of a small squad of professionals and injuries to strikers left us short in attack, so we used midfielder Moses Jerry up front, and he responded with a whole-hearted performance and a goal.

Andre Scarlett had his second run-out as a right wing-back, and did all right. He got a bit of a hammering at times from a team that was big, strong and physical, and was unlucky to collect a booking, for a mis-timed tackle. Jude Stirling was also booked, for picking up the ball to delay a free kick and we expect him to learn quickly that there is no excuse for collecting silly yellow cards like that.

Even so, we were pleased with the team performance, and for the first time this season

the starting 11 were left on the field throughout the 90 minutes. The team included Lee Mansell, from the youth team, making his debut for the reserves in midfield. It turned out to be the kind of game where he could have got lost, but he did not, and held up his end well.

The back three, Alan White, Emmerson Boyce and James Ayres were solid for most of the game, although when Brighton tried to stage a revival in the second half, after we were two up, there were occasional signs of panic. But after conceding a goal, we settled again, and overall could have won by a wider margin.

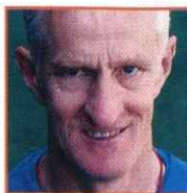
Jerry gave us the lead with a cool finish after beating the offside trap, and consistent marksman Tresor Kandol smashed in the second goal with a drive from just outside the box.

Before the game we went round the side asking them if they were homers or really wanted to win away matches, and the young team delivered the perfect answer. They rolled up their sleeves, put in plenty of effort, and deserved the reward.

Luton Town: Ward, White, Boyce, Ayres, Scarlett, Stirling, Graham, McIndoe, Mansell, Kandol, Jerry. Subs, all unused: Moran, Clarke, Mortara, Carroll, Wraith.

SEVERAL of our reserve team still qualify for the youth squad, and tomorrow some of them will be in action in the Times FA Youth Cup, against Sutton United at Kenilworth Road (7.30). Our next home game in the Avon Insurance Combination, after a trip to Bristol Rovers next Wednesday, October 27, is against Norwich on November 3.

Reserve team appearances, including as sub: Kandol 6, Boyce 6, Scarlett 6, Ayres 5, Stirling 5, Tate 4, Sodje 4, White 4, McIndoe 4, Jerry 4, Locke 3, O'Connor 3, Ward 3, Graham 3, Pearson 2, Davis 2, Brkovic 2, Mansell 1, Hunt 1, Zahana-Oni 1, Bowes 1, O'Brien 1, Ryan 1, Moran 1, Jack 1, Gray 1, Antunes 1, McKinnon 1
Goals: Kandol 7, Jerry 2, OG 1.



Youth Soccer

Paul Lowe

THE FOOTBALL LEAGUE
YOUTH ALLIANCE



Shrewsbury 2 Luton Town 0

OUR away results in the Football League Youth Alliance continue to disappoint, and there can be very few excuses for the latest defeat, which leaves us still

looking for our first away point of the season. We have conceded 11 goals in three games on opponents' grounds, so the major problem is obvious. But at Shrewsbury the attack as well as the defence failed to reach the required standard.

Shrewsbury is our longest league trip of the season, but we prepared properly to meet a team who had not won a single game. We had the comfort of the first team's coach for the journey, and arrived 90 minutes before kick-off, so we should have been right for the game.

We looked quite good in the early stages, and created more chances than the home team. Unfortunately, we did not turn that spell of good play into goals. As in our previous away games, we were without Tresor Kandol, who was wanted for the first team's substitutes bench, and we missed his instinctive scoring ability.

By half-time it should have been 3-1 or 4-1 to us, but Duane Clarke and Steve Dogbe both missed reasonable chances, while Shrewsbury were gifted a goal with what looked like a fluke. Was it a cross? Was it a shot? It was

difficult to tell from the bench, but what is certain is that the man who delivered it should have been closed down before he had the chance, and secondly goalkeeper Graham Wraith might have done better as the ball floated over him.

When things like that happen you begin to think it might become "just one of those days" when nothing goes right for the attack and too much goes wrong for the defence, and so it turned out.

We said at half time that if we stopped Shrewsbury scoring again we had enough ability to turn the game round, but our performance fell away, and it became a scrappy game. Fifteen minutes from time we conceded a goal on the break, a real kick-and-run job, with the final shot hardly worth a goal, but getting one as the ball went under the goalkeeper's body, and that finished us.

It was not a dreadfully bad performance, and the team included a lot of first-year boys. It is testing time for them. So far, they are not doing as well as they should, and games like this one are a reminder that they will have to do better if they are to succeed in professional football.

Luton Town: Wraith, Stirling, Carroll, Moran, Ayres, Oughan (Mortara 60 mins), Mansell, Jerry, Mentor (Barriteau 70 mins), Clarke (Deeney 75 mins), Dogbe.

TOMORROW evening we begin our campaign in the Times FA Youth Cup at Kenilworth Road. We are at home in the first round proper to Sutton United, kick-off 7.30. Entrance will be via Kenilworth Road only, to the main stand and enclosure. Admission prices, fixed by the FA, are £3 for adults, and £1 for juniors. If a replay is needed it will be at Sutton a week tomorrow. On Saturday we are away to Southend in the FL Youth Alliance Cup.

Youth team appearances, including as sub: Ayres 8, Mortara 8, Stirling 8, Moran 8, Clarke 8, Mansell 7, Jerry 7, Carroll 7, Barriteau 7, Wraith 6, Dogbe 5, Jeffrey 4, Minton 3, Deeney 3, Mentor 3, Thresher 3, de Freitas 2, Kandol 2, Flaherty 2, Ward 2, Oughan 2, Coktas 2, Miller 1, Wilson 1.

Goals: Kandol 2, Ayres 2, Stirling 2 (1 pen), Jerry 1, Jeffrey 1, Clarke 1.

Football League Youth Alliance South Central Conference Results and Fixtures

AUG	Sat 14	Walsall	H	0-0
	Sat 21	West Brom	H	2-1 (Kandol 2)
	Sat 28	Cambridge Utd	A	1-4 (Ayres)
SEPT	Sat 4	Notts Co	H	2-1 (Ayres, Stirling pen)
	Sat 18	Oxford Utd	H	1-1 (Jerry)
	Sat 25	Wolves	A	0-5
OCT	Sat 2	Northampton	H	3-1 (Jeffrey, Clarke, Stirling)
	Sat 16	Shrewsbury	A	0-2
	Wed 20	Sutton Utd	H	(FAYC)
	Sat 23	Southend	A	(FLYAC)
NOV	Sat 6	Cambridge Utd	H	(FLYAC)
	Sat 13	Barnet	A	(FLYAC)
	Sat 20	Colchester	H	(FLYAC)
	Sat 27	Notts Co	A	
DEC	Sat 11	Oxford Utd	A	
	Sat 18	Wolves	H	
JAN	Sat 8	Shrewsbury	H	
	Sat 15	Northampton	A	
	Sat 22	Walsall	A	
	Sat 29	Cup rd 2		
FEB	Sat 5	West Brom	A	
	Sat 12	Cambridge Utd	H	
MAR	Wed 1	Cup quarter-final		
	Wed 22	Cup semi-final		
APRIL	Sun 16	Cup final		

League Table

	HOME					AWAY					Pts
	P	W	D	L	F A	P	W	D	L	F A	
West Brom	7	4	0	0	14 0	1	0	2	4	6 15	
Wolves	6	3	1	0	9 1	1	0	1	3	4 13	
Oxford	7	2	1	0	8 5	1	1	2	2	7 11	
Luton Town	8	3	2	0	8 3	0	0	3	1	11 11	
Walsall	7	2	0	0	5 1	1	1	3	6	10 10	
Cambridge	7	2	1	1	7 4	0	2	1	3	4 9	
Notts Co	7	1	0	2	4 4	1	1	2	2	4 7	
Northampton	7	0	1	2	5 8	2	0	2	6	10 7	
Shrewsbury	8	1	1	2	4 5	0	2	2	4	8 6	

Current form guide - the last six Division 2 games.

Team	W	D	L	F	A	Pts	Sequence	Team	W	D	L	F	A	Pts	Sequence
Stoke	4	2	0	10	5	14	DWWWDW	Oldham	2	2	2	9	8	8	DWLDLW
Brentford	3	3	0	12	7	12	WDWDWD	Scunthorpe	2	2	2	5	5	8	DWLDLW
Wycombe	4	0	2	12	9	12	LWWWLW	Burnley	1	4	1	7	5	7	DLDDWD
Notts County	4	0	2	10	8	12	WWWLLW	Cardiff	1	3	2	7	8	6	DDLDDW
Preston	3	3	0	8	4	12	DWWDWD	Bristol City	1	3	2	2	5	6	DLLDWD
Wigan	3	3	0	8	3	12	WWDDWD	Cambridge	1	2	3	11	11	5	WLLDLW
Bristol Rovers	3	2	1	10	7	11	DDWWWL	Wrexham	1	2	3	8	14	5	DLDLWL
Millwall	3	2	1	7	5	11	DWLWWD	Reading	1	1	4	7	13	4	LLDLWL
Bury	3	1	2	12	8	10	WLWDWL	Oxford	1	0	5	7	12	3	LLWLLL
Gillingham	3	1	2	12	9	10	LWWDWL	Chesterfield	0	3	3	1	5	3	DDLDDL
Luton	3	0	3	11	9	9	WLLWLW	Blackpool	0	2	4	3	12	2	LDLDDL
Bournemouth	2	3	1	7	5	9	DWDDWL	Colchester	0	1	5	6	17	1	LDLLLL

When Clubs have scored goals... and conceded them

0-15	16-30	31-45	46-60	61-75	76-90		0-15	16-30	31-45	46-60	61-75	76-90
0	5	3	3	1	4	Bournemouth	1	3	2	2	3	1
2	1	2	0	0	6	Blackpool	1	2	5	4	5	8
2	2	3	2	5	4	Brentford	1	1	1	2	1	3
0	1	1	2	2	7	Bristol City	2	2	2	1	2	4
0	4	3	3	4	2	Bristol Rovers	2	1	0	1	3	2
2	1	6	2	2	1	Burnley	0	2	2	1	2	2
3	2	1	8	5	4	Bury	1	0	3	2	3	7
1	2	3	5	5	4	Cambridge United	2	5	0	8	2	6
1	1	2	3	4	3	Cardiff City	1	4	2	3	3	4
0	1	1	3	3	1	Chesterfield	1	1	2	4	2	1
0	1	1	2	1	5	Colchester United	3	4	3	5	4	7
2	4	2	2	5	4	Gillingham	0	0	1	4	7	5
3	2	1	4	3	5	Luton Town	0	2	0	3	5	4
0	1	1	2	4	5	Millwall	1	2	1	4	4	1
2	1	6	4	3	4	Notts County	0	1	0	4	2	4
1	1	0	1	4	3	Oldham Athletic	2	2	3	0	5	3
1	2	1	2	5	2	Oxford United	2	3	2	3	4	4
0	2	4	2	5	2	Preston North End	1	1	2	4	3	3
1	2	0	4	3	5	Reading	1	1	6	5	4	7
0	2	0	4	1	2	Scunthorpe United	1	2	4	4	1	4
1	3	0	5	2	8	Stoke City	1	3	0	3	0	6
3	2	2	5	3	5	Wigan Athletic	0	2	0	1	1	4
2	1	1	5	2	5	Wrexham	3	3	6	3	3	3
2	4	4	2	1	4	Wycombe Wanderers	2	1	1	4	3	3

Nationwide Division Two Leading Goalscorers 1999-00

14	12	10	8	6	4	2	0
Cambridge	14	12	10	8	6	4	2
Wigan	12	10	8	6	4	2	0
Bristol Rovers	10	8	6	4	2	0	0
Bury	8	6	4	2	0	0	0
Chesterfield	6	4	2	0	0	0	0
Gillingham	4	2	0	0	0	0	0
Wycombe	2	0	0	0	0	0	0
Bristol Rovers	0	0	0	0	0	0	0
Burnley	0	0	0	0	0	0	0
Notts County	0	0	0	0	0	0	0
Oxford	0	0	0	0	0	0	0
Preston	0	0	0	0	0	0	0
Wigan	0	0	0	0	0	0	0
Luton	0	0	0	0	0	0	0
Bournemouth	0	0	0	0	0	0	0
Wrexham	0	0	0	0	0	0	0

Player	Lge Gls	Lge Cup	Tot
Martin Butler	9	3	12
Stuart Barlow	9	2	11
Jason Roberts	6	3	9
Ian Lawson	8	1	9
David Reeves	7	2	9
Bob Taylor	8	1	9
Sean Devine	8	1	9
Jamie Cureton	7	1	8
Andy Payton	8	0	8
Mark Stallard	8	0	8
Matt Murphy	5	3	8
Jonathan Macken	6	2	8
Simon Haworth	5	3	8
Liam George	7	0	7
Mark Stein	4	2	6
Craig Faulconbridge	6	0	6

1999-00 Attendances

(Bands behind represent average attendance as percentage of ground capacity)

100%	90%	80%	70%	60%	50%	40%	30%
Highest: 8,514							
Lowest: 6,574							
Average: 7,568							
Capacity: 9,173							
Highest: 6,638							
Lowest: 5,098							
Average: 5,879							
Capacity: 9,572							
Highest: 6,616							
Lowest: 5,884							
Average: 6,254							
Capacity: 10,600							
Highest: 13,348							
Lowest: 6,932							
Average: 8,605							
Capacity: 15,000							
Highest: 11,168							
Lowest: 5,650							
Average: 8,211							
Capacity: 14,660							
Highest: 7,042							
Lowest: 4,982							
Average: 5,662							
Capacity: 10,000							
Highest: 6,394							
Lowest: 4,633							
Average: 5,467							
Capacity: 9,975							
Highest: 13,885							
Lowest: 8,506							
Average: 11,188							
Capacity: 21,412							
Highest: 9,432							
Lowest: 4,532							
Average: 6,838							
Capacity: 13,559							
Highest: 16,011							
Lowest: 8,439							
Average: 11,118							
Capacity: 21,479							
Highest: 6,007							
Lowest: 4,208							
Average: 5,177							
Capacity: 10,770							
Highest: 3,986							
Lowest: 3,280							
Average: 3,506							
Capacity: 7,556							
Highest: 11,328							
Lowest: 10,090							
Average: 10,653							
Capacity: 22,546							
Highest: 5,924							
Lowest: 2,603							
Average: 4,223							
Capacity: 9,200							
Highest: 7,100							
Lowest: 5,074							
Average: 6,008							
Capacity: 12,763							
Highest: 5,039							
Lowest: 4,007							
Average: 4,491							
Capacity: 9,617							
Highest: 5,336							
Lowest: 3,376							
Average: 4,361							
Capacity: 9,183							
Highest: 7,481							
Lowest: 5,976							
Average: 6,871							
Capacity: 16,500							
Highest: 13,068							
Lowest: 7,054							
Average: 10,101							
Capacity: 24,054							
Highest: 8,601							
Lowest: 6,256							
Average: 7,492							
Capacity: 20,146							
Highest: 5,270							
Lowest: 3,452							
Average: 4,346							
Capacity: 11,295							
Highest: 4,285							
Lowest: 2,775							
Average: 3,122							
Capacity: 8,880							
Highest: 4,014							
Lowest: 3,293							
Average: 3,564							
Capacity: 11,841							
Highest: 6,197							
Lowest: 5,506							
Average: 5,813							
Capacity: 20,300							

2nd Division Scene

Brian Swain



OUR FIFTH home win of the season on Saturday took us up three places in the Second Division table, up to seventh, and for nearly 24 hours we could dream of being just one victory off equal top place.

By Sunday we were four points off pace-setters Bristol Rovers, after their 0-0 draw in the local derby at Ashton Gate.

It was their attack's first blank first time since the opening day of the season, while Bristol City have now gone five full games without a goal.

Notts County enjoyed being top of the table again for a day after beating tonight's visitors at Meadow Lane 48 hours after being rocked by the resignation of manager Sam Allardyce. His directors were not too pleased at his decision, 12 months into a four-year contract. They thought he might be planning to apply for the vacant manager's job at Bolton, where he was a popular player.

County's teamwork hardly faltered even after Wycombe took a 20th-minute lead. Sean Devine netted a penalty, his ninth goal of the season, after Jermaine McSpornan was brought down. Two goals in four minutes either side of the interval gave County victory, and Wycombe's day ended with Matt Lawrence being sent off eight minutes from time for a reckless challenge.

Wigan are still looking good, in third place and with games in hand after a 2-0 win at Reading, where we were the only previous away winners. The Royals have dropped back into the bottom four, suggesting that the change of manager has not yet had the desired effect - since Tommy Burns was sacked for reaching that lowly situation, Alan Pardew and John Gorman have overseen a run of one win, one draw, and three consecutive defeats.

Stoke City, who flattered to deceive a year ago, are moving steadily upwards, and are in the top four after a 1-1 draw at Bournemouth. The Cherries are still unbeaten at home, a record they share with us, Bristol Rovers, Wigan, Brentford, Millwall and Bristol City. Wigan and Brentford are the only teams in the division yet to taste league defeat.

Brentford share with us the best home record in the division, and they maintained it on Saturday by beating Oxford 2-0 a week before we go looking for our first double of the season at the Manor Ground. Malcolm Shotton's team travel to take on improving Scunthorpe this evening. Our former trialist, Guy Ipoua, netted a penalty to give Scunthorpe a home

The Second Division

	HOME						AWAY						Pts
	P	W	D	L	F	A	P	W	D	L	F	A	
Bristol Rov	12	4	2	0	9	4	3	1	2	7	5	24	
Notts Co	11	3	1	1	7	4	4	1	1	13	7	23	
Wigan	10	4	1	0	10	3	2	3	0	10	5	22	
Stoke	12	3	2	1	9	6	3	1	2	10	7	21	
Brentford	10	5	1	0	12	3	0	4	0	6	6	20	
Burnley	12	4	1	1	11	6	1	4	1	3	3	20	
Luton Town	12	5	1	0	15	7	1	1	4	3	7	20	
Preston	12	3	1	2	6	8	2	4	0	9	6	20	
Bury	12	4	1	1	15	10	1	3	2	8	6	19	
Wycombe	12	3	2	1	11	7	2	2	2	6	7	19	
Bournemouth	11	4	2	0	12	4	1	1	3	4	8	18	
Gillingham	12	3	1	2	11	7	1	3	2	8	10	16	
Wrexham	12	3	1	2	9	8	1	2	3	7	13	15	
Millwall	10	2	3	0	8	6	1	2	2	5	7	14	
Bristol City	11	2	4	0	9	4	1	0	4	4	9	13	
Cardiff	12	1	5	0	6	5	1	1	4	8	12	12	
Scunthorpe	12	1	2	3	5	7	2	1	3	4	9	12	
Oxford	12	2	1	3	8	8	1	1	4	5	10	11	
Chesterfield	11	1	1	3	4	6	1	3	2	5	5	10	
Cambridge	12	2	3	1	14	11	0	1	5	6	12	10	
Oldham	11	2	0	3	5	5	0	2	4	5	10	8	
Reading	11	2	2	3	7	8	0	0	5	8	16	8	
Blackpool	12	1	3	2	5	10	0	1	5	6	15	7	
Colchester	10	1	1	2	5	8	1	0	5	5	18	7	

	date	opposition	result	scorers	league place	attnd.	team
AUGUST	Sat 7	Notts Co	A	0-0	-	6,141	Abbey Fraser Watts White Johnson Douglas McLaren
	Tue 10	WC1 (1) Bristol Rov	H	0-2	-	2,984	Abbey Fraser Watts White Boyce Douglas McLaren
	Sat 14	Blackpool	H	3-2	George 2, Spring	5,176	Abbey Fraser Watts Doherty Johnson George McLaren
	Sat 21	Reading	A	2-1	Fotiadis, George	8,741	Abbey Fraser Watts Doherty Johnson George McLaren
	Wed 25	WC1 (2) Bristol Rov	A	2-2	Kandol, Doherty	4,414	Abbey Locke Sodje Boyce White Watts Gray
	Sat 28	Cardiff	H	1-0	Gray	5,374	Abbey Fraser Watts Doherty Johnson George McLaren
	Tues 31	Bournemouth	A	0-1		4,797	Abbey Fraser Watts Doherty Johnson George McLaren
SEPT	Sat 4	Bury	H	1-1	Fotiadis	4,633	Abbey Fraser Watts Doherty Johnson George McLaren
	Sat 11	Wrexham	H	3-1	Taylor, Spring, George	5,121	Abbey Fraser Watts Doherty Johnson George McLaren
	Sat 18	Brentford	A	0-2		7,039	Abbey Fraser Watts Doherty Johnson George Locke
	Sat 25	Oxford Utd	H	4-2	George 2, Fraser, Locke	6,102	Abbey Fraser Watts Doherty Johnson George Locke
OCTOBER	Sat 2	Wigan	A	0-1		6,866	Abbey Fraser Watts Doherty Johnson George Locke
	Sat 9	Oldham	A	1-2	Midgley	4,532	Abbey Fraser Watts Sodje Johnson Gray Locke
	Sat 16	Gillingham	H	3-1	George 2 (1pen), Douglas	6,394	Abbey Fraser Watts Doherty Johnson George Midgley
	Tue 19	Wycombe	H	7.45pm			
	Sat 23	Oxford Utd	A	3pm			
	Sat 30	FA Cup 1	H	3pm			
NOVEMBER	Tue 2	Millwall	A	7.45pm			
	Sat 6	Burnley	H	3pm			
	Sat 13	Cambridge Utd	A	3pm			
	Sat 20	FA Cup 2		3pm			
	Tue 23	Preston	H	7.45pm			
	Sat 27	Bristol Rov	A	3pm			
DECEMBER	Sat 4	Notts County	H	3pm			
	Tue 7	AWS 1		7.45pm			
	Sat 11	Stoke City OR FA Cup 3	H	3pm			
	Fri 17	Colchester	A	7.45pm			
	Sun 26	Chesterfield	H	3pm			
	Tue 28	Bristol City	A	7.45pm			
JANUARY 2000	Mon 3	Scunthorpe	H	3pm			
	Sat 8	Stoke OR FA Cup 4	A	3pm			
	Tue 11	AWS 2		7.45pm			
	Sat 15	Blackpool	A	3pm			
	Sat 22	Reading	H	3pm			
	Tue 25	AWS 3		7.45pm			
	Sat 29	Cardiff OR FA Cup 5	A	3pm			
FEBRUARY	Sat 5	Bournemouth	H	3pm			
	Sat 12	Bury	A	3pm			
	Tue 15	AWS Semi		7.45pm			
	Sat 19	Bristol Rov OR FA Cup 6	H	3pm			
	Sat 26	Brentford	H	3pm			
	Tue 29	AWS area final (1)		7.45pm			
MARCH	Sat 4	Wrexham	A	3pm			
	Tue 7	Burnley	A	7.45pm			
	Sat 11	Millwall	H	3pm			
	Tue 14	AWS area final (2)		7.45pm			
	Sat 18	Preston	A	3pm			
	Tue 21	Cambridge Utd	H	7.45pm			
	Sat 25	Chesterfield	A	3pm			
APRIL	Sat 1	Colchester OR AWS Final	H	3pm			
	Sat 8	Scunthorpe	A	3pm			
	Sun 9	FA Cup semi-final		3pm			
	Sat 15	Bristol City	H	3pm			
	Sat 22	Gillingham	A	3pm			
	Mon 24	Wigan	H	3pm			
	Sat 29	Wycombe	A	pm			
MAY	Sat 6	Oldham	H	3pm			

The FA Cup final will be on May 20

Tonight's Referee

THIS evening's man in the middle should have a good feeling for footballers - when Scott Mathieson from Stockport is not refereeing, he likes taking part in all kind of sports, including five-a-side football.

A joiner in the building trade, he first took up the whistle in the Stockport and Cheshire Leagues, and progressed to the Football League as a linesman in 1990 by doing well as a referee in the Northern Premier League. He was promoted to the national list of referees in 1994.

Town Teaser

OUR "Town Trivia" quiz, as usual, gives a supporter the chance to win a prize this evening. Listen to the PA announcer before the game, and if you know the answer to the Town Teaser watch and listen for your chance to have a go.

TODAY'S QUESTION

Who scored our winning goal against a team from Hertfordshire in an FA Cup fifth round second replay at Kenilworth Road in 1985, on the way to a Villa Park semi-final game against Everton?

substitutes

Gray	Spring	McIndoe	Taylor	Boyce for Taylor, 70 mins. Unused: George, Scarlett, Zahana-Oni, Tate
Gray	Spring	McIndoe	Taylor	Doherty for White HT; Fotiadis for Douglas 60 mins; George for McIndoe 60 mins. Unused: Zahana-Oni, Tate
Douglas	Spring	Fotiadis	Taylor	McKinnon for Fotiadis 75 mins; Zahana-Oni for Douglas 83 mins; McIndoe for McLaren 89 mins. Unused: Boyce, Tate
Gray	Spring	Fotiadis	Taylor	McIndoe for Fotiadis 79 mins. Unused: Sodje, White, McKinnon, Tate
McKinnon	Douglas	McIndoe	Kandol	Doherty for Douglas 67 mins; Fotiadis for Kandol 67 mins. Unused: Scarlett, Davis, Ward
Gray	Spring	Fotiadis	Taylor	Douglas for Fotiadis 66 mins; McIndoe for McLaren 81mins; McKinnon for George 84 mins. Unused: Sodje, Tate
Gray	Spring	Fotiadis	Taylor	Douglas for Fotiadis 60 mins; McIndoe for McLaren 81mins. Unused: McKinnon, Sodje, Tate
Gray	Spring	Fotiadis	Taylor	Douglas for Fotiadis 73 mins; McIndoe for George 73 mins. Unused: McKinnon, Sodje, Tate
Douglas	Spring	Fotiadis	Taylor	Kandol for Fotiadis HT; McKinnon for McLaren 62 mins; Sodje for Johnson 75 mins. Unused: Scarlett, Tate
Douglas	Spring	Kandol	Taylor	Sodje for Kandol 70 mins. Unused: White, Boyce, Scarlett, Tate
Douglas	Spring	Midgley	Taylor	McIndoe for Midgley 66 mins. Unused: Sodje, Kandol, Scarlett, Tate
Douglas	Spring	McLaren	Taylor	McIndoe for McLaren 73 mins; Midgley for Locke 77 mins. Unused: Sodje, White, Ward
Douglas	Spring	McLaren	Taylor	Kandol for Gray 50 mins; McIndoe for McLaren 67 mins; Midgley for Douglas 67 mins. Unused: White, Ward
Douglas	Spring	McLaren	Taylor	Locke for Midgley 80 mins; McIndoe for McLaren 85 mins. Unused: Kandol, Sodje, Tate

Travelling fans

SATURDAY saw the recent trend of rising attendances at Kenilworth Road continue, with Gillingham's following helping to boost the gate to the biggest of the season. The Kent club are the only one so far to bring more than a thousand fans, while the Town have had bigger followings than that three times already this season. The figures so far:

OURS

Notts County	1,531
Reading	1,536
Bristol Rovers (WC)	134
Bournemouth	665
Brentford	1,704
Wigan	985
Oldham	451

TOTAL SO FAR	7,006
AVERAGE	1,001

THEIRS

Bristol Rovers (WC)	240
Blackpool	464
Cardiff	992
Bury	198
Wrexham	307
Oxford	745
Gillingham	1,241

Tonight's Teams



Luton Town

NATHAN ABBEY	1
STUART FRASER	13
JULIAN WATTS	40
GARY DOHERTY	12
MARVIN JOHNSON	6
LIAM GEORGE	11
ADAM LOCKE	28
STUART DOUGLAS	9
MATTHEW SPRING	4
NEIL MIDGLEY	30
MATTHEW TAYLOR	15

Substitutes

EMMERSON BOYCE	17
EFETOBORE SODJE	3
ANDRE SCARLETT	21
MICHAEL McINDOE	10
DANIEL TATE (GK)	22

V



Wycombe Wanderers

1	MARTIN TAYLOR
2	MATT LAWRENCE
3	CHRIS VINNICOMBE
4	JASON COUSINS
6	JAMIE BATES
7	DAVE CARROLL
8	KEITH RYAN
10	SEAN DEVINE
11	PAUL EMBLEN
15	JERMAINE McSPORRAN
28	MICHAEL SIMPSON

Substitutes

9	ANDREW BAIRD
14	MAURICE HARKIN
17	MARK ROGERS
30	STEVE BROWN
13	MARK WESTHEAD (GK)

Tonight's Officials

Referee: Scott Mathieson, Stockport.

Assistants: M. D. Postles, West Sussex (red flag)
S. S. Thiarra, Houghton Conquest (yellow and red flag)

Reserve official: F. Graham, Essex

Motorbodies Luton

NETWORK Q
Total Commitment to used car quality

Motorbodies Central

15 Hitchin Road, Luton, Bedfordshire.
Telephone 01582 454666
e-mail: enquiry@caxtongroup.co.uk

- 12 months Assistance
- 12 months/15,000 mile Guarantee

Motorbodies Leagrave

166 Marsh Road, Leagrave, Luton
Telephone 01582 567500
e-mail: sales@caxtongroup.co.uk

Raising the standard

- 114 point service
- 30 day exchange pledge

OPENING HOURS

Mon-Fri 9am-7pm
Sat 9am - 5pm
Sun 10.30 - 4.30pm

