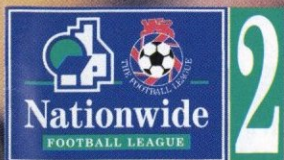


LUTON

Town Football Club



**MEET
TODAY'S
VISITORS
p12-15**

**LENNIE LAWRENCE ON
TODAY'S GAME - p2&3**

MATCH SPONSORS

**Bobbers Travel Club
Sky Ford**

MATCHBALL SPONSORS

Roger Anderson & Family



**Sponsors of
Luton Town F.C.**

**OFFICIAL MATCHDAY
PROGRAMME**

£1.50

v WREXHAM

**Saturday, January 18, 1997
Kick-off 3pm**

From the manager's chair

OUR enforced break has now stretched to over three weeks, following Tuesday night's postponement of our FA Cup tie with Bolton for the second time.

Hopefully it will be third time lucky and we can play this game this coming Tuesday.

Of course it was disappointing for everyone that last Tuesday's postponement came as late as it did, but the temperature dropped considerably in a matter of hours.

The pitch was playable at 2pm, when both Colin Todd and myself inspected the surface, but not at 6.30, and we, along with many other clubs, were caught out by the sudden, swift frost.

I believe that the referee's decision, which he correctly made based on the safety of the players, was the right one.

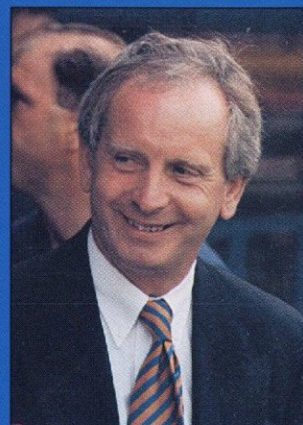
Unlike most clubs, Bolton have hardly been affected by the recent freeze as their undersoil heating has ensured that they have continued to play their home games at Burnden Park, and apart from the cup fixtures I think they have only lost one in the league.

Tuesday's game would have been their third in six days, following a home defeat by Wimbledon in the Coca-Cola Cup, and a very professional performance at Portsmouth last Saturday - a game Wayne Turner and I were able to attend.

By contrast we would not have played for virtually three weeks, our last game being on Boxing Day at Gillingham.

Tuesday would have been a fresh Luton against a very tired Bolton, but we will never know how that would have turned out.

But for certain Bolton will be playing again this afternoon, as the undersoil heating will again guarantee a home fixture, and will



with **LENNIE LAWRENCE**

still prove to be a real test when we eventually play them.

So we turn attentions back to the league, and to be honest I would prefer not to be coming back after a three-and-a-half week break straight into a league game.

But we should be fresh and keen to play again.

I am happy with the general fitness of the players, as they have worked hard in whatever facilities we have managed to obtain.

At least we have managed some sessions on grass in the last week.

Last Wednesday we were able to organise a friendly against an Arsenal XI, thanks to the undersoil heating at Highbury, and have trained on grass on Sunday, Monday and the latter stages of this week.

Hopefully the thaw will prove well timed for us.

Our last home game seems a long time ago now, and resulted in probably the best performance

since I have been here, with a 6-0 demolition of Crewe.

Two successive away wins at Millwall and Gillingham followed, and they have left us, despite losing three league games to the weather, in second place in Division Two.

Hopefully we can consolidate our position in the top two in the next week or two, although cup games could take centre stage in this period.

We know the winners of the Bolton tie will be at home to Chesterfield in round four, and whilst we still have to play our Auto Windscreens second round match against Northampton, the third round draw has given us a possible trip to Plymouth.

As I told the press on Tuesday, I am concerned not worried about the fixture situation.

We have plenty of free midweeks in March and April for outstanding league matches, but the next two weeks are a concern with potentially four cup ties to be fitted in, together with league matches which include one on a Monday against Watford.

The way the FA Cup is going we could have the draw for the fifth round before the third round has been completed, and it is important we play today and on Tuesday.

It remains to be seen how the break has affected us, but it will be a massive test today and a great achievement if we can pick up the winning thread once again and extend our sequence of victories to seven.

This afternoon we welcome the players, supporters and officials of Wrexham, as we play the Welsh side for the first time this season following the postponement of our autumn trip to the Racecourse ground.



Like us, Wrexham suffered frustration in the week as fog forced the postponement of their FA Cup replay at West Ham, a game I was hoping to see, but they have been able to play some league and cup matches in the recent cold spell.

We have a virtually full squad to select from, with the possible exception of Gary Waddock, who would have missed Tuesday's game with a

calf injury.

Congratulations to Stuart Douglas and Andrew Fotiadis who were selected for training with the England Under 19 squad last weekend, and also to Kim Grant who won another international cap for Ghana, after coming on as a substitute against Morocco last Sunday.

Let's hope we can get 1997 off to a winning start, and a belated Happy New Year to you all.

ABOVE: There hasn't been much to celebrate following the recent cold spell. These supporters were the last fans to see the Town in action.... on Boxing Day at Gillingham!

Nationwide and The Football League – A winning team –

Nationwide Building Society is delighted to be sponsoring The Football League and is proud to be associated with the national game. Millions of people around the country enjoy League games, with an increasing number of families attending matches.

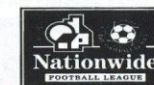
Similarly, Nationwide has a relationship with many households in the UK – around one in four. It looks after the financial needs of over seven million people and is the UK's largest building society intending to remain customer owned, committed to putting customers first.

Nationwide is an organisation with strong roots in the community and we are always looking for new ways to promote awareness of the benefits we can offer and to strengthen relationships with customers even further. With 72 league

clubs and 630 Nationwide branches throughout England and Wales, we are looking forward to working with The League and its member clubs to support community initiatives and forge even closer links with local people. Wherever you find a football team you'll find a Nationwide team.

Nationwide's philosophy is to be "in tune with people", and we believe that the help we can give in investing in football's future will further demonstrate this and underline our general commitment to meeting customers' needs.

We would like to take this opportunity to wish your club a successful season.



Luton Town Football Club
Kenilworth Road Stadium,
1, Maple Road,
Luton, Beds LU4 8AW.

Tel: (01582) 411622
Fax: (01582) 405070
Ticket Office: (01582) 416976
Clubcall: 0891 121 123

Chairman and Managing Director:
David Kohler BSc (Hons)
ARICS

Directors:
C.S. Bassett, C.T.F. Green,
N.S. Terry

Vice Presidents:
R.L. Banks, D. Ludlow,
C. Bygraves, R. Safranek,
P. Ireton, J. Sapsworth.

Club Secretary:
Cherry Newbery

Manager:
Lennie Lawrence

First-Team Coach:
Wayne Turner

Player Coach/Reserves:
Trevor Peake

Youth Team Coach:
John Moore

Physiotherapist:
Clive Goodyear

Consultant Physio:
John Sheridan

Youth Development Officer:
Paul Lowe

Scouting:
Les Shannon

Community Football Officer:
Jeff Vetere

Company Secretary and Financial Controller:
Bob Bird

Commercial Manager:
Kathy Leather

Safety Manager:
Geoff Lovell

Catering Manager:
Peter Saul

Medical Officer:
Dr Bill Berry

Club Dentist:
A. Chris BDS (Syd)

Press Officer/P.R.O.:
Simon Oxley

SEVERAL FA Cup ties suffered the same fate as our match against Bolton on Tuesday - with late cancellations due to frost.

On Tuesday evening, Brentford's home game with Manchester City was postponed, with Watford's home match against Oxford called off just as the teams were due to come out for the start of the match.

At Gillingham, where a 12 noon kick-off enabled Luton's match on Boxing Day to go-ahead, their FA Cup tie with Derby was abandoned after 66 minutes.

In the games that were played, Chesterfield beat Bristol City 2-0, with Jon Howard scoring both, after City's Darren Barnard had been sent off.

In round four, Chesterfield visit the winners of our tie with Bolton Wanderers.

Two other Division Two sides held their own against Premiership opposition, with Crewe (1-1) and Notts County (0-0) drawing at home to Wimbledon and Aston Villa respectively.

The Auto Windscreens Shield also

continued on Tuesday, with Plymouth beating Brighton at Home Park.

Plymouth will be at home to the winners of our second round game with Northampton.

Elsewhere, the frost that prevented our trip to Blackpool at the weekend had eased at Bloomfield Road, and Gary Megson's side beat Lincoln 4-0.

In Nationwide League Division Three, leaders Fulham lost 2-1 at Colchester - despite the home side having ex-Hatter David Greene sent off midway through the first half.

On Wednesday evening, there were FA Cup postponements at Coventry (frost) and West Ham (fog) - the latter where today's opponents Wrexham were hoping to play their third round replay.

But Division Two Stockport took their Coca-Cola Cup form into the FA Cup, with a 2-0 win at first division Stoke.

Luton's reserve side won 2-1 away to Bristol Rovers - in a game played at non-league Yate Town.

Robert Kean and Sean Evers were the Luton scorers.

IMPORTANT MESSAGE FOR ALL SUPPORTERS

FOLLOWING THE RECENT POSTPONEMENTS A NUMBER OF CHANGES HAVE BEEN MADE TO TICKET AND FIXTURE ARRANGEMENTS IN THE FORTHCOMING WEEKS.

PLEASE SEE PAGES 8 AND 9 FOR ALL THE UP-TO-DATE FIXTURE AND TICKET INFORMATION FOR MATCHES IN THE FA CUP, AUTO WINDSCREENS SHIELD, AND NATIONWIDE FOOTBALL LEAGUE DIVISION TWO



KIM Grant appeared as a second-half substitute for Ghana in last Sunday's World Cup qualifier against Morocco. The match in Accra finished 2-2.

ENJOY IT AGAIN... AND AGAIN... AND AGAIN...



The video of our match against Crewe is available to order from Luton Town Football Club - price £10 (including postage and packing). Send your order to: Simon Oxley, LTFC, 1 Maple Road, Luton, Beds, LU4 8AW. (Cheques/postal orders made payable to Luton Town FC).

SAFETY NOTE

The Chairman and Directors of Luton Town Football Club undertake to ensure as far as humanly possible that all activities that take place at the Kenilworth Stadium are conducted in such a way that, as far as is reasonably practicable, the safety of everybody at the stadium is assured.

It is the policy of the Chairman and Directors to ensure that the conditions set out in the General Safety Certificate, issued under Safety at Sports Ground Act 1975 are fully complied with.

It is the club's policy to provide at any activity sufficient and competent staff and management systems to ensure as far as humanly possible, for the safe admission, accommodation, and exiting of spectators attending the stadium. These systems will be subject to continual monitoring, testing and updating where necessary.

In the interests of public safety, the safety authority (Beds County Council) have imposed a NO SMOKING restriction in and beneath our main stand. Your co-operation is appreciated.

FRONT COVER: Lennie Lawrence and Wayne Turner keep a watchful eye on proceedings at the New Den before Christmas, when the Town beat Millwall. Picture: ANDY HANDLEY.

LUTON TOWN FC MATCHDAY PROGRAMME

Editor: Simon Oxley
Tel: 01582 411622
Fax: 01582 405070

Pictures: Andy Handley

Design and Print:
McLeod Warner, Luton.
Tel: 01582 38389

Paper supplied by:
James McNaughton, Dunstable



Universal Salvage Auctions

OVER 200 REPAIRABLE/STOLEN AND RECOVERED VEHICLES ON SALE AT EACH AUCTION

WEEKLY AUCTIONS

TUESDAYS
CORBY

MITCHELL ROAD
PHOENIX PARKWAY
CORBY NN17 5AF
01536 202333

FOR DETAILS OF VEHICLES AT THE NEXT AUCTION FAX 0336 418116. CALLS CHARGED AT 49p PER MIN PEAK AND 39p PER MIN AT OTHER TIMES. AVAILABLE FROM 12 NOON ON THE DAY PRECEDING THE AUCTION.

WEDNESDAYS
REDBOURN

DUNSTABLE Rd (J9 M1)
REDBOURN
HERTS AL3 7PX
01582 792690

FOR DETAILS OF VEHICLES AT THE NEXT AUCTION FAX 0336 418115. CALLS CHARGED AT 49p PER MIN PEAK AND 39p PER MIN AT OTHER TIMES. AVAILABLE FROM 12 NOON ON THE DAY PRECEDING THE AUCTION.

WEDNESDAYS FORTNIGHTLY
DENNY

STONEWOOD
DENNY
STIRLINGSHIRE FK6 5HS
01324 825566

FOR DETAILS OF VEHICLES AT THE NEXT AUCTION FAX 0336 418118. CALLS CHARGED AT 49p PER MIN PEAK AND 39p PER MIN AT OTHER TIMES. AVAILABLE FROM 12 NOON ON THE DAY PRECEDING THE AUCTION.

THURSDAYS
WESTBURY

QUARTERMASTER Rd
WEST WILTS TRADING ESTATE
WESTBURY, WILTS BA13 4JA
01373 858976

FOR DETAILS OF VEHICLES AT THE NEXT AUCTION FAX 0336 418116. CALLS CHARGED AT 49p PER MIN PEAK AND 39p PER MIN AT OTHER TIMES. AVAILABLE FROM 12 NOON ON THE DAY PRECEDING THE AUCTION.

FRIDAYS
SANDTOFT

SANDTOFT IND. EST.
SANDTOFT Rd, BELTON
NR DONCASTER DN9 1PN
01427 873777

FOR DETAILS OF VEHICLES AT THE NEXT AUCTION FAX 0336 418115. CALLS CHARGED AT 49p PER MIN PEAK AND 39p PER MIN AT OTHER TIMES. AVAILABLE FROM 12 NOON ON THE DAY PRECEDING THE AUCTION.

FOR THE LATEST NEWS - CLUBCALL 0891 121 123

Calls cost 45p per minute at cheap rate and 50p per minute at all other times

**NO
DEPOSIT**

AND

**3
YEARS
INTEREST
FREE CREDIT**

**AVAILABLE ON
HUNDREDS OF SUITES**

the
FURNITURE SHOP
FOR SERVICE, STYLE, VALUE



Up to
£300
TRADE IN
This is a limited offer.

DUNSTABLE
22 BEDFORD SQUARE, HOUGHTON REGIS
01 582 867531

OPEN MON - SAT 9-5.30pm SUN 10-4pm
OTHER BRANCHES: CORBY 01 536 400445, BEDFORD 01 234 742030,
LEIGHTON BUZZARD 01 525 378619, WATFORD 01 923 230845
MILTON KEYNES 01908 520094



Subject to status. Licensed Credit Broker. Written details on request.

**MARTIN SMITH
COMMERCIAL
MOTORS**

**USED COMMERCIAL VEHICLE
SALES & SERVICE**

Always a large selection of quality late
used commercial vehicles on display

199 & 207 Leagrave Road,
Luton, LU3 1JD,
Bedfordshire.

Telephone: (01582) 574455/505854
Fax: (01582) 490858

**THE MAD HATTERS
CLUB LTD**
**LUTON'S NO.1
MEMBERS CLUB**

Two floors of music
- Soul, Swing, Lovers Rock
- House, Garage

OPEN MONDAY TO SUNDAY
11am to 3am

VIP Lounge - Top Floor

**Find us at
Cheapside**

Phone: 01582 411894
Membership Available

It's.. **TRIVIA TIME**

© Metro Marketing (UK) Ltd 1996

TRUE or FALSE?

1. In 1984/85, Telford United
knocked out four League clubs
in the FA Cup.

2. Clive Allen used
to play for Marseille
in France

3. In 1969, Preben
Arentoft became the first
foreign player to win a
European medal with a
British club.

4. Arsenal's leading
scorer last season was
Dennis Bergkamp.

WHO'S TROPHY CABINET?

Which club has lifted
the following trophies?

FA Cup: 1965, 1974, 1986,
1989, 1992
League Cup: 1981, 1982,
1983, 1984, 1995
Division 1 Championship:
18 times
Division 2 Championship:
1893/94, 1895/96,
1904/05, 1961/62
European Cup: 1977, 1978,
1981, 1984
UEFA Cup: 1973, 1976
Euro Super Cup: 1977

? QUICK QUIZ?

- For how many years has the
Rothman's Football Yearbook been
published?
- How much did Liverpool pay Bolton
for Jason McAteer?
- How many Brazil caps did Pele win?
- Which Scottish International was
voted European Footballer of the
Year in 1964?
- Who were the first team to win an
FA Cup semi-final on penalties?
- Which player did Coventry City sign
from Highlanders?

IN WHICH YEAR DID...?

Liverpool win the League, Southampton win the FA Cup, 1-0,
Rangers do the treble in Scotland again, Bayern Munich win
the European Cup, 1-0 and Czechoslovakia beat West
Germany on penalties to win the European Championships?

ALL THESE EVENTS TOOK PLACE IN THE SAME YEAR

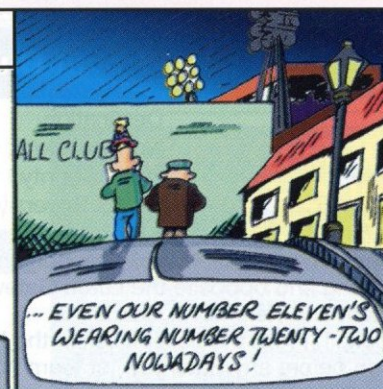
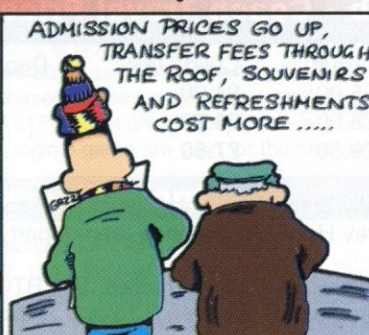


SPOT THE GROUND

It is one of the oldest grounds where football
is still played. Believed to be the first ground
visited by a member of the Royal Family when
Queen Victoria's son, Albert, watched a
match there. In the 1920's the crowd's were
as large as the town's population. There is a
cricket pitch next door. The owners are a
founder member of the Football League.

'Norm & Ec'

by Norman Hood



Answers

QUICK QUIZ: 1. 27; 2. £4.5 million; 3. 11; 4. Denis Law; 5. Liverpool; 6. Peter Ndlovu.
WHO'S TROPHY CABINET? Liverpool
TRUE OR FALSE? 1. True; 2. False; he played for Bordeaux; 3. True, with Newcastle United; 4. False, it was Ian Wright.
IN WHICH YEAR? 1976.
SPOT THE GROUND: Turf Moor, Burnley.

**DAILY
STAR**

This page is sponsored by the Daily Star

**DAILY
STAR**

THANKFULLY we can resume playing this afternoon, after a weather-enforced break which has been frustrating for everyone involved with the club.

There was no alternative but to postpone early the home league games against Wycombe and Bury, and the first game against Bolton, with the pitch conditions deemed totally unplayable by the officials who made the inspections.

Our pitch covers were of course in use, but despite their excellent success rate in recent seasons even the covers could not cope with the temperatures of -11 on occasions.

We also had the added problem of frozen pipes which meant a lack of water supply to the main office complex. Indeed, even if we had the luxury of under-soil heating, the first scheduled game against Bolton could have been in doubt because we had no water.

With regard to last Tuesday's postponement, there was no possibility of such an early decision.

From the secretary's chair



with **CHERRY NEWBERY**

Indeed, the pitch was perfectly playable the previous day, and as late as mid-afternoon on Tuesday. But the sudden drop in temperatures from 4pm onwards meant that by the time the referee and the two

managers inspected the surface at 6.30pm, the game could not go-ahead.

The match will now be played on Tuesday, and if a replay is required it will be at Bolton on Saturday, January 25.

If we progress to the fourth round, we will entertain Chesterfield on Tuesday, February 4. We would not play Chesterfield on Saturday 25th.

We are still waiting to confirm new dates for the league games against Wycombe, Bury and also the away games at Chesterfield and Blackpool. But a provisional date of Tuesday, March 11, has been agreed for our game at Wrexham.

The Auto Windscreens Shield game at Northampton will now be played on Tuesday, January 4, kick-off 7.45pm, subject to us not being involved in the fourth round of the FA Cup. If we are in FA4, then the match at Northampton will be a week later on January 11.

Following their win at Torquay last week, the youth team have been drawn away to Oldham or Sunderland in the fourth round of the FA Youth Cup.

TOWN TEASER

Luton beat a Welsh club on their way to the FA Cup semi-finals in 1994. Which club, and what was the score?

Listen out for the PA announcer asking this question before this evening's game.

Luton Town v Bolton Wanderers

FA CUP (sponsored by Littlewoods) THIRD ROUND

Tuesday, January 21, kick-off 7.45pm.

Tickets for this match are on sale at normal league prices, at two per member and three per season ticket holder (subject to availability). Normal gisting facilities apply. Tickets purchased for either of the two previous dates remain valid. If you require a refund, please return your ticket to the LTFC ticket office by 4pm on Monday, January 20.

If it's a draw..... Bolton W v Luton Town

FA CUP (sponsored by Littlewoods) THIRD ROUND REPLAY

Saturday, January 25, at Burnden Park, kick-off 3pm.

Seats would be priced at £15 for adults and £9 for juniors and senior citizens, with standing £11 for adults and £8 for juniors and senior citizens.

Seats would be very limited for this match. They would be available to ONE per season ticket holder on production of cup voucher E (subject to availability) until Wednesday, January 22, at 4pm. If any seat tickets are still remaining they would be available to ONE per member (subject to availability) from Thursday, January 23 at 10am. Terracing would be pay on the night only at Bolton.

If we beat Bolton..... Luton T v Chesterfield

FA CUP (sponsored by Littlewoods) FOURTH ROUND

Tuesday, February 4, kick-off 7.45pm.

Normal league prices would apply. SEASON TICKET HOLDERS' seats will be reserved until Tuesday, January 28, at 4pm - cup voucher E. Season Ticket Holders can purchase up to three guest tickets (subject to availability). MEMBERS can purchase up to two tickets (subject to availability) that are not reserved for season ticket holders.

Ticket Office opening hours remain as normal, apart from the following:

Friday, January 24 - 10am to 6pm
Saturday, January 25 - 10am to 4pm
Sunday, January 26 - 10am to 4pm
Saturday, February 1 - 9am to 12 noon

Northampton Town v Luton Town

AUTO WINDSCREENS SHIELD - SECOND ROUND

If we are not in the FA Cup fourth round, we will play this fixture on Tuesday, February 4, kick-off 7.45pm. If we are in the FA Cup fourth round, the game at Northampton will be played on Tuesday, February 11, kick-off 7.45pm.

Pay on the night only at Northampton.

Prices are £8.50 for adults and £5.50 for juniors and senior citizens.

(If you require a refund on tickets purchased for the original game on January 7, these tickets should be returned to the LTFC ticket office by 4pm the day prior to the match. Tickets purchased for the original game are valid for the new date).

Luton Town v Watford

NATIONWIDE LEAGUE DIVISION TWO

Monday, January 27, 1997, kick-off 7.45pm

Please note the change of date for the above fixture - due to live TV coverage **THIS IS AN ALL-TICKET MATCH, AND THERE WILL BE NO TICKETS AVAILABLE ON THE DAY OF THE GAME**

Tickets for this match are now on sale at normal league prices. Normal gisting facilities apply. Please note that the ticket office will be open on Saturday, January 25, from 10am to 4pm, and on Sunday, January 26, from 10am to 4pm.

Travelling to...

Northampton Town

Address: Sixfields Stadium, Northampton, NN5 4EG.
Tel: (01604) 757773

Take M1 north, exiting at junction 15a (s/p Northampton (N), Oxford A43, Services). At first three roundabouts follow signs to Northampton A43. At 4th roundabout (1.3 miles from M1) go straight on (s/p Coventry A45, Market Harborough A508, and Sixfields Leisure). At Upton Way roundabout turn right into Sixfields complex, where there is plenty of free parking.

Bolton Wanderers

Address: Burnden Park, Manchester Road, Bolton, BL3 2QR.
Tel: (01204) 389200

Take M1 north, M6 north, exiting M6 at M62 east. Exit M62 at junction 14 (s/p Bolton, Preston M61), joining the M61 after 0.3 miles. Follow signs to Bolton A666 onto the A666 which becomes St Peter's Way. You pass the ground on the LHS and exit the dual carriageway (s/p Bury A58, Burnden Park). Turn left at the top of the slip road, and then left at the lights into Manchester Road. The ground is on the LHS after half a mile.

Directions courtesy of FOOTBALL FAN'S GUIDE. Editor's note: This highly acclaimed and well-researched book is now available in the Club Shop. There is an updated version for the 96/97 season, and it includes a wide range of information for the travelling supporter.

TICKET OFFICE OPENING HOURS

Monday to Friday: 10am-4pm. Saturday (matchdays): 9am-3pm and 4.45-5.15pm. Saturdays (non matchdays): Subject to change. Please contact ticket office on 416976. For bookings, membership and enquiries, ring the Ticket Office direct on (01582) 416976. Supporters wishing to order by credit card can do so by using the 24-hour credit card hotline on (01582) 30748.

Paint your favourite Town player!

THIS is an opportunity for all budding young artists to show your talents. The Club want you to paint or draw a portrait of your favourite Town player, and we will divide the entries into the following age groups: Under 9s, 10s to 13s, and 14s to 16s.

The winners from each group will have a chance to present their portrait to their chosen player before a match here at Kenilworth Road.

Send your entry to: Portraits, Luton Town FC, 1 Maple Road, Luton, Beds, to arrive no later than January 31, 1997. Please include your name, address, age and telephone number.

Bobbers Travel Club - Coach Travel Price List 1996/97

Date	Destination	Adult	Child/OAP	Depart Cranfield	Depart Luton
TBA	Northampton	£5.00	£4.00	4.30pm	5.30pm
Sat Feb 1	Notts County	£8.00	£6.50	10.30am	11.30am
Sat Feb 15	Bristol Rovers	£9.50	£7.50	9.30am	10.30am

Coaches from Cranfield pick-up additionally at the following places: Marston Moretaine, Ampthill, Flitwick, Westoning and opposite the Luton Gateway Hotel. All coaches then depart from the junction of Hazelbury Crescent and Kenilworth Road.

To book: 1) From the ticket kiosk in the Kenilworth Road turnstiles. See BTC travel club co-ordinator Paul Deason before any Saturday 1st team home match between 2.15 and 2.45pm. (No bookings taken at midweek matches). 2) On the return journey from the previous away game. 3) Telephone Paul Deason on Bedford 01234 750996.

Life Membership of the Bobbers Travel Club is £1 for adults and 50p for children/OAPs.

What if
the wedding of a close
relative coincided with the
divisional play-off final?





Nationwide Banking :

You've followed your team the length and breadth of the country and witnessed their incredible climb to third place and the chance to go up a division. Then out of the blue your sister announces that her wedding is at three o'clock that Saturday. You'd have to spend hundreds on the mother of all floral displays to compensate for your absence from the ceremony. In such unfortunate circumstances it's good to know that your banking facility will allow an automatic £250 overdraft with no setup or monthly fees other than the interest. To find out more about Nationwide's FlexAccount just give us a call. All the best for the season!

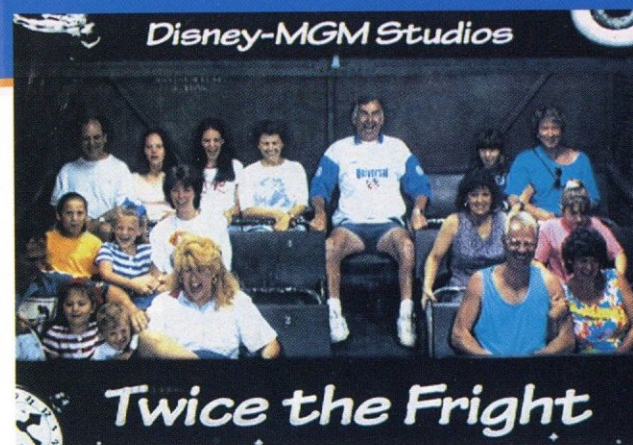
Call free on: **0800 30 20 10** quoting ref: FB018

or visit our football site on
<http://www.nationwide.co.uk>

 In tune with people


Nationwide
THE BUILDING SOCIETY.

You must be 16 or over to apply for a FlexAccount. Overdrafts, Payment Cards and cheque guarantee cards are only available to those 18 or over. The opening of a FlexAccount, the provision of a cheque book and the provision of a credit facility are subject to appraisal of an applicant's financial standing. The automatic overdraft of £250 is available for customers with a Payment Card. Written quotations for credit facilities are available from: Nationwide Building Society, Nationwide House, Pipers Way, Swindon, SN38 1NW. Nationwide is a member of the Building Societies Ombudsman Scheme, and subscribes to the Code of Banking Practice. Please note that for various legal, regulatory and customer service requirements your call will be recorded.



Twice the Fright
ABOVE: Keith Litchfield says the 'Tower of Terror' ride at Disney's MGM studios is the only time as a Luton supporter that he has enjoyed the drop!



ABOVE: The Bulkeley family, from Walsall, on holiday at Dunn's River Falls in Jamaica.

LEFT: Joanne and Ian Harris in Barbados.

LUTON TOWN v WATFORD

Nationwide League Division Two

This game will now be played on
MONDAY, JANUARY 27, 1997,
kick-off 7.45pm, and will be
televised live on Sky Sports.

(NB Fixture will be postponed if either side are involved in an FA Cup fourth round tie on Sunday, January 26. If either side are involved in a cup match on Saturday, January 25, the league match will still go ahead on Monday).

We apologise for any inconvenience caused by a second change of date for this match.

**R. J. BLOW &
C O M P A N Y**

THE FRIENDLY ACCOUNTANTS

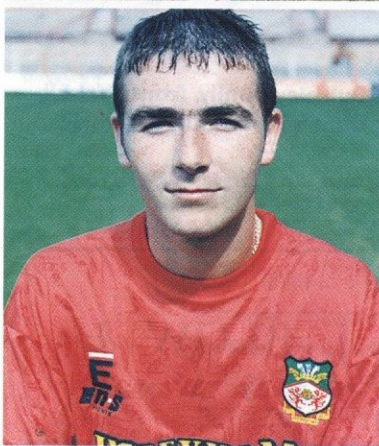
*Book-Keeping
Taxation and Wages etc.*

GUILD HOUSE,
28 GUILDFORD STREET,
LUTON, BEDS, LU1 2NR

Tel: (01582) 38792
Fax: (01582) 423347

FOR THE LATEST NEWS - **CLUBCALL 0891 121 123**

Calls cost 45p per minute at cheap rate and 50p per minute at all other times

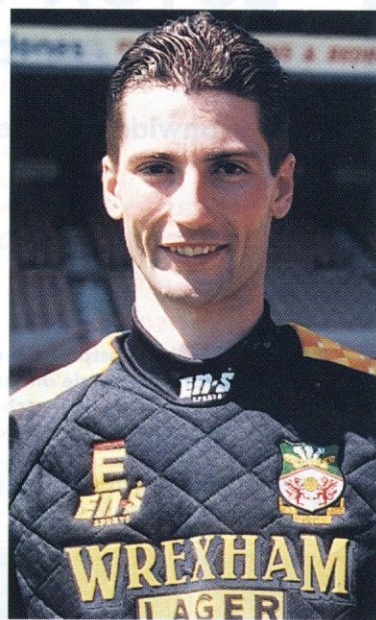
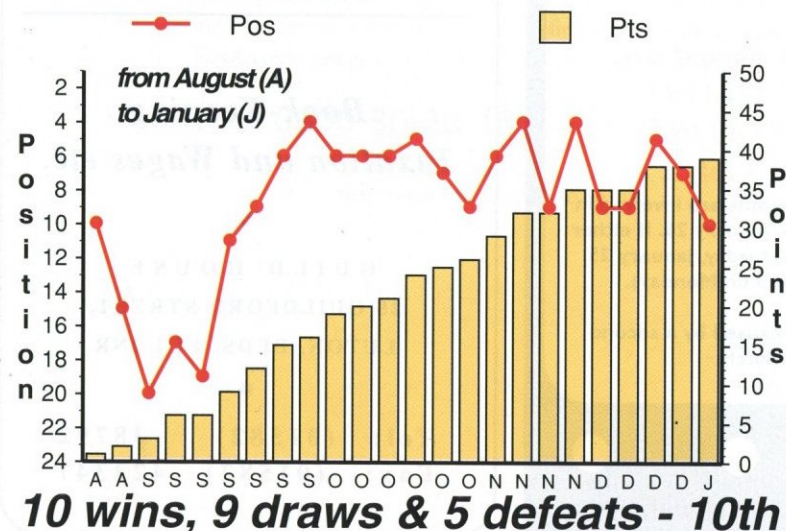


Back row: l to r: Paul Jones, Craig Skinner, Lewis Coady, Brian Carey, Mark Cartwright, Andy Marriott, Scott Williams, Jonathan Cross, Mark McGregor, Steve Watkin.

Middle row: l to r: Steven Fitcher, Bryan Hughes, Karl Connolly, Andrew Thomas, Barry Jones, David Ridler, Neil Wainwright, David Brammer, Wayne Phillips, Steve Morris, Martyn Chalk.

Front row: Gareth Owen, Gareth Wilson, Kevin Russell, Neil Roberts, Robert Williams, Tony Humes, Phil Hardy, Deryn Brace, Stephen Carragher.

LEFT: Bryan Hughes



ABOVE: Welsh international Andrew Marriott

SPOTLIGHT ON TODAY'S VISITORS



Graphics: FOOTBALL INFORMATION SERVICES

(Due to printing deadlines, stats up to and including Saturday, January 11 only).

DERYN BRACE - A native of west Wales, Deryn began his career with Norwich City, but it was following a move to the Racecourse Ground in 1994, that he made his league bow. Now a regular in the Wales Under 21 team, only injuries have prevented Deryn adding to his appearances for both club and country.

DAVE BRAMMER - A product of the Wrexham youth policy, Dave hails from the Wirral and has progressed successfully to the senior ranks. Injury has hampered his efforts to secure a regular first-team spot.

BRIAN CAREY - A case of third time lucky for Wrexham, as the big Republic or Ireland international finally joined the Reds on a permanent transfer this summer. Twice the Cork-born centre-half had been on loan at the Racecourse, but on both occasions Wrexham could not raise the cash needed to buy him from Manchester United. He eventually joined Leicester City in 1993, but after three seasons at Filbert Street, the money Wrexham received following Barry Hunter's move to Reading, finally allowed the Reds to get their man.

MARTYN CHALK - Moved to Wrexham from Stockport County, as part of the deal which saw Kieron Durkan move in the opposite direction last March. Came out of non-league football with Louth United to join Derby County, and then switched to Stockport in a £40,000 deal in 1994.

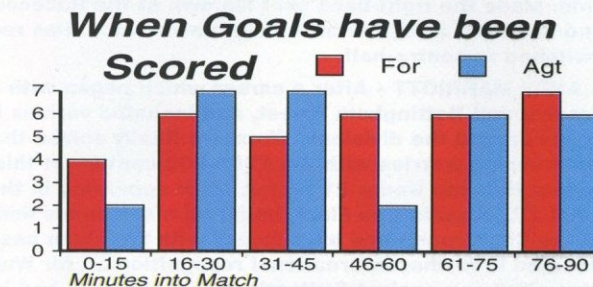
KARL CONNOLLY - Since the sale of leading scorer Gary Bennett in 1995, the responsibility of filling the gap has been with the shaven-headed winger from Liverpool. Discovered playing Sunday League football in his home city five years ago, he found the net on 20 occasions last year.

JONATHAN CROSS - Burst onto the scene while still a YTS trainee, earning himself an early pro contract. Suffered from injury last season, but regained fitness with a loan spell with Irish League club Cliftonville. Scored the goal which took the Belfast club into the Intertoto Cup.

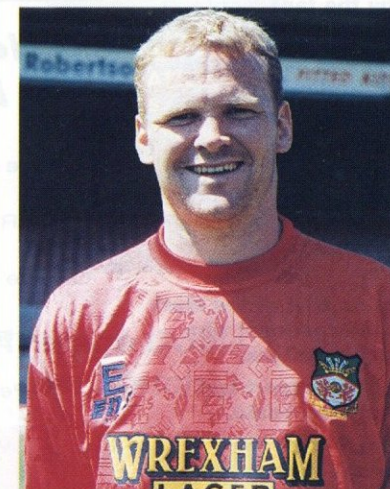
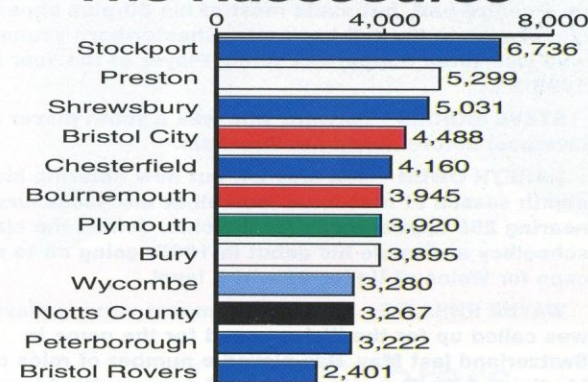
PHIL HARDY - Wrexham's regular left-back for the last six seasons, since he was 17, when he dislodged former European Cup winner Alan Kennedy. Played for, and captained, the Republic of Ireland at Under 21 level. Over 200 appearances for Wrexham and captains the side when Tony Humes is unavailable.

BRYAN HUGHES - Came through the ranks at the Racecourse after being spotted in junior football on Merseyside. Injuries gave him his chance at just 17, and he retained his place on merit before suffering with injury last season.

(Continued on page 14).



Attendances at The Racecourse



BRIAN Carey

**KARL Connolly**

TONY HUMES - Centre-half who was a bargain £40,000 buy from Ipswich Town in 1992. Club captain who is a native of Blyth, starting in football as an apprentice at Portman Road, spending nearly 10 years in Suffolk. Plays at the heart of the defence for Wrexham, but can switch to midfield if required.

BARRY JONES - Defender who arrived at Wrexham in 1992, after four years playing in Liverpool's Pontins League side. Made the right-back spot his own at the Racecourse and has been a regular in the team ever since. Has recently switched to centre-half.

ANDY MARRIOTT - After a career which began with Arsenal and Nottingham Forest, and included various loan spells around the divisions, Wrexham finally solved their goalkeeping worries with the £200,000 capture of this former England Under 21 player. After appearing in the 1991 Littlewoods Cup Final, he found his chances limited at the City Ground and his success with Wrexham has resulted in further international recognition..... for Wales. Won a full cap against Switzerland last summer, and is deputy to Neville Southall for Bobby Gould's side.

MARK MCGREGOR - Captained the Wrexham youth team before moving into the full-time ranks in 1995. Recognised as a centre-half, but made most of his 30-plus appearances last season in the full-back role. Chester-born youngster who was voted Supporters Young Player of the Year for 1995/96.

STEVE MORRIS - Forward who was a youth player at Liverpool before moving to Wrexham.

GARETH OWEN - Still only 24, but now entering his eighth season of first-team football at the Racecourse, nearing 250 appearances for the club. Joined the club as a schoolboy and made his debut in 1989, going on to win caps for Wales at Under 21 and B level.

WAYNE PHILLIPS - Wrexham's longest serving player who was called up for the Wales squad for the game in Switzerland last May. Has played a number of roles during his time at the Racecourse, but has now settled in midfield, and was voted Player of the Season by the fans last term.

KEVIN RUSSELL - Free-scoring forward who nearly carried the Reds to promotion in 1989. Has since turned out for Portsmouth, Leicester, Stoke, Burnley, Peterborough, Cardiff, Hereford, Bournemouth and Notts County before returning to the Racecourse in 1995.

CRAIG SKINNER - Came through the junior ranks at Blackburn as wing partner to Jason Wilcox, turning pro in 1989 and making 20 appearances in the next three years. Moved to Plymouth before joining Wrexham for £50,000 in the summer of 1995.

JASON SOLOMAN - Joined Wrexham on trial at the start of the season. Former England youth international who made over 100 first team appearances for Watford.

PETER WARD - Joined Wrexham from Stockport last summer, after spells at Huddersfield and Rochdale.

STEVE WATKIN - Another long-serving player who progressed through the youth system, shooting to national fame with an FA Cup winner against Arsenal. Capped at B level by Wales.

MEET THE MANAGER

BRIAN FLYNN was appointed manager of Wrexham in November 1989, succeeding former player Dixie McNeil who had held the post for four years.

Former Middlesbrough boss John Neal was Wrexham's longest serving manager of recent times, in charge from 1968 to 1977, a period when Flynn was making his name as a player with Burnley.

The midfielder was a member of the successful Turf Moor side of the mid-1970s, and won his first Welsh cap in 1975.

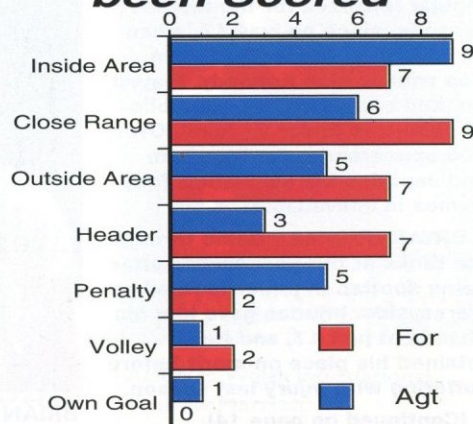
He went on to make 66 appearances for the Welsh, his final appearance coming in 1984 by which time he was back at Burnley.

Inbetween these two spells in Lancashire, he had moved across the Pennines to Leeds, in the post-Revie era, linking up with former Burnley manager Jimmy Adamson who had taken charge at Elland Road.

Now firmly established at the Racecourse Ground, Flynn has former Norwich and Manchester City striker **KEVIN REEVES** as his assistant, with **JOEY JONES**, who won European Cup honours with Liverpool, also on the coaching staff.



How Goals have been Scored



A Hatter and a Robin.....

Although born in Stranraer, **HARVEY MCCREADIE** joined Accrington Stanley from school and when he made his league debut in February 1959, coincidentally against Wrexham, he became Stanley's youngest ever debutant at 16 years 143 days.

After a further 28 games for Accrington, and ten goals, he was attracted to Kenilworth Road by Luton manager Syd Owen in exchange for £5,500 in January 1960. But he only made one league appearance, at Wolves, as the Town tumbled towards relegation from the old Division One.

Unfortunately McCreadie was a free spirit who did not take kindly to discipline, and after various club fines for failure to report for training and going 'walkabout', the final straw came when he was arrested following an altercation at the California Ballroom in Dunstable.

New manager Sam Bartram decided that McCreadie should go, and after tentative enquiries from QPR and Oxford came to nothing, he moved to Wrexham in November 1960 for a nominal fee.

At the Racecourse Ground he was less than successful, and after only ten games and two goals he drifted into non-league football with Northwich Victoria, before finally transferring to Hibernian in 1962. - **ROGER WASH.**



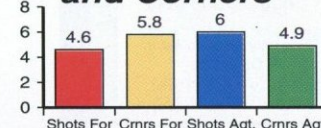
ABOVE: Harvey McCreadie

Bookings

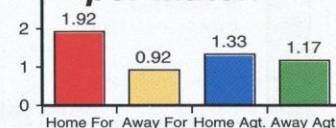


Graphics by:
**FOOTBALL
INFORMATION
SERVICES**
(Due to printing
deadlines, stats up to
and including
Saturday, January 11
only).

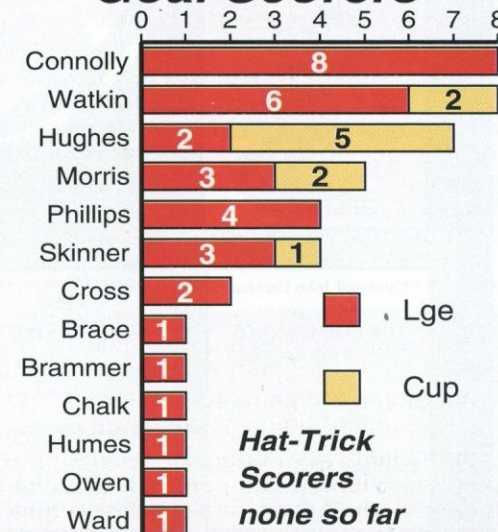
Average Shots and Corners



Average Goals per Match



Goal Scorers



**Hat-Trick
Scorers
none so far**

OVER THE BAR!

Drink a toast to the Hatters in the following pubs...



THE BOATER

Traditional fayre
Real ales, jazz nights
& quiz nights

121 Icknield Way,
Luton
Tel: (1582) 575191

Monty's Bar

'Live music
every Thursday'

23 Hastings Street, Luton
Tel: 01582 486683

THE SOMERSET TAVERN

Berni

Good food and fine
selection of cask ales.
Quiz nights and karaoke.
Crawley Grn Rd, Luton.
Tele: 01582 29912.

Richard
and Karen
welcome
you to



Hotel accommodation, good
food and fine selection of cask
ales & lagers.
Kings Walden Rd, Offley.
01462 768281

THE RED LION Breachwood Green Hitchin, Herts

Fine traditional ales
Bar snacks & buffets
(Parties catered for)

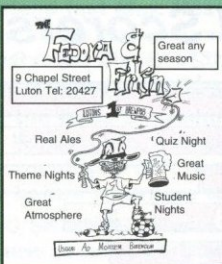
Regular traditional jazz and
live music evenings
Phone for details:
(01438) 833123



6 West Street, Dunstable
Jim and Joy Morris
Tele: (01582) 661035

THE BREWERY TAP
22 Park Street, Luton
(01582) 31797

Disco on Thurs, Fri, Sat
and Sun nights



Cork & Bull

FREE HOUSE
Air conditioning and waitress
service. Daily fresh home
cooked specials
4 CUMBERLAND STREET,
LUTON. (01582) 29586

Carol and John Brennan
welcome you to
THE FARMERS BOY
Common Rd, Kensworth

Real ales (CAMRA 'Good
Beer Guide')

Traditional Sunday lunches
£4.75 per person
(01582) 872207

Kim and Chris welcome you to
**THE
WHEATSHEAF**

Traditional country pub serving
snacks and real ales.

Large garden, children
welcome.

15 High Street, Flitwick.
Tel: (01525) 712574.

THE BRITANNIA

A warm and friendly welcome
awaits you from all the staff.

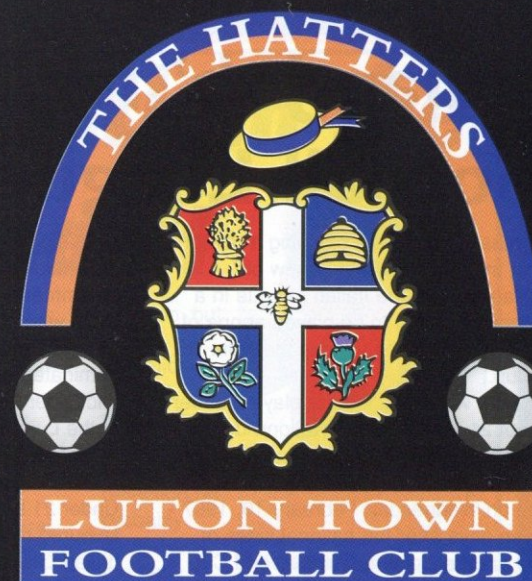
Weekly live entertainment,
games bar and Sky Sports..

157 Biscot Road, Luton.
Tele: (01582) 23420



93 High Street
South, Dunstable

The only place to eat in
Dunstable
Tele: (01582) 667833
Fax: (01582) 475552



Official Supplier to
Luton Town FC



'Over the Bar' Part Two is on page 23.....

'Italian Job' for Horton's Football League starlets

THE Football League are planning a raid on Italy next month, when they renew old acquaintances with the Italian League in a representative match to be played at one of the magnificent venues used in the Italia '90 World Cup.

The game, which will feature players under the age of 21 from both the Nationwide Football League and the Italian League Serie B, will be played at Genoa's Luigi Ferraris Stadium on Wednesday, February 19, 1997 - just seven days after the national sides of England and Italy play a crucial World Cup qualifying fixture at Wembley Stadium.

Huddersfield Town manager, and former Luton skipper, Brian Horton will once again take charge of the representative squad for the match, as he did for the last encounter between the two Leagues which ended 1-1 at the Alfred McAlpine Stadium in November 1995.

The Football League have already contacted

all managers throughout the three divisions of the Nationwide League, seeking recommendations for young players from their clubs who are qualified to play for England.

Hatters manager Lennie Lawrence has nominated goalkeeper Kelvin Davis and midfielder Paul McLaren, both of whom played at the Luigi Ferraris Stadium when Luton lost to Genoa in last season's Anglo-Italian Cup.

The League squad will be selected on an Under 21 basis, and mirrors the arrangements favoured over some considerable time by the Italian League, who regard these matches as part of the long-term development programme and select a squad of young players featuring outside the top flight.

Following discussions with England coach Glenn Hoddle, it has been decided to continue the same approach as in the previous two representative fixtures, in order to identify and provide international experience for youngsters players qualified to play for England.

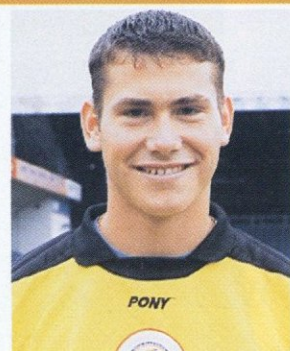
The last time a Football League representative side played on Italian soil it produced one of the most memorable matches in the series between the two bodies.

A side which included Premiership young guns Andy Booth and Ben Thatcher, who were then playing in the Football League, battled back after trailing early on and sealed a 3-2 victory in Italy, in February 1995, with a goal just two minutes from time.

The League side was managed by the then Luton boss David Pleat.

Results over the years:

- 1960 (Milan) - Italian League 4 Football League 2
- 1961 (Old Trafford) - Football League 0 Italian League 2
- 1962 (Highbury) - Football League 3 Italian League 2
- 1964 (Milan) - Italian League 1 Football Lge 0
- 1991 (Naples) - Italian League 3 Football League 0
- 1992 (Caserta) - Italian League 2 Football League 1
- 1992 (Ashton Gate, Bristol) - Football League 3 Italian League 1
- 1995 (Andria) - Italian League 2 Football League 3
- 1995 (Huddersfield) - Football League 1 Italian League 1.



KELVIN Davis



PAUL McLaren

Matt's reunited with 'Max' at Carrow Road

Former Luton Town defender MATTHEW JACKSON has joined first division Norwich City, in a £400,000 move from Everton.

The transfer, completed over Christmas, reunites Jackson with his former youth team coach at Luton, John 'Max' Faulkner, who is Mike Walker's number two at Carrow Road.

Jackson, now 25, left Luton in 1991 after just nine league matches in the Hatters' first team - joining Everton for a £600,000 fee.

The defender, who attended Sharnbrook School near Bedford, made over 130 league appearances for Everton, and also appeared in their 1995 FA Cup Final triumph against Manchester United.

JOHN DREYER was on target for Bradford City this month, scoring both goals in their 2-0 FA Cup third

round win at Wycombe.

The win set up a fourth round trip to Everton, but the former Luton skipper, who put the scoring success down to new boots, wasn't able to build on his new found talents last weekend - he was suspended!

Ex-Hatter and former Commercial Manager at Kenilworth Road, ANDY KING, has joined Grimsby Town, as assistant to newly-appointed manager Kenny Swain.

King, formerly manager of Mansfield, had been assisting with coaching duties at Doncaster, where another ex-Lutonian Kerry Dixon is in charge.

Former Hatters striker MIKE NEWELL has joined West Ham, on loan from Birmingham, as cover for the injured ex-Hatter Iain Dowie.

Taylor back in the Abbey habit

JOHN Taylor has rejoined one of his former clubs Cambridge United, after being released by Luton, by mutual consent.

The striker signed for the Hatters in March 1995 for £200,000 from Bradford City, after spells with Colchester, Cambridge and Bristol Rovers.

But he struggled with injury last term, and this season went on loan to Lincoln and Colchester.

He made 27 full league appearances for Luton, plus 10 as sub, and three in cup matches, scoring three league goals and one in the Anglo-Italian Cup.

Hatters boss Lennie Lawrence, who signed and sold Taylor for Bradford, told ClubCall he was pleased the striker had been able to get a permanent move.

"He has a contract for this year and next, and he's one of the best types I have met in professional football," said Mr Lawrence.

"John did very well when he first came

to Luton, but a back operation made it difficult for him, and I think on reflection he probably came back too early.

"He tried his hardest, as he always does, but lost his confidence a bit in front of goal.

"That gave him a mountain to climb this year really, and other people have come in and done well up front.

"John went out on loan, with a couple of months at Colchester, and they were keen to sign him.

"But Cambridge have come in for him, and I wish him well back at the Abbey Stadium."

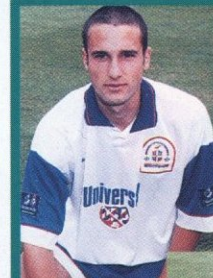


JOHN Taylor - back at the Abbey.

Hatters duo get U19 call

LUTON Town duo Andrew Fotiadis and Stuart Douglas were called up for England Under-19 training at Bisham Abbey last weekend.

The Hatters duo spent a couple of days training with the England party, both having recovered from recent injuries.



LEFT: Andrew Fotiadis

RIGHT: Stuart Douglas



League announce new Board of Directors

THE Football League's new Board of Directors held their first meeting in London last week, with the first item of business being the appointment of Ipswich Town chairman David Sheepshanks as the new Chairman of the League.

The new nine-man board is:

North:

Division One - Ian Stott (Oldham)

Division Two - Terry Robinson (Bury)

Division Three - David Kilpatrick (Rochdale)

Midlands:

Division One - David Sheepshanks (Ipswich)

Division Two - John Bowler (Crewe)

Division Three - Keith Haslam (Mansfield)

South:

Division One - Ron Noades (Crystal Palace)

Division Two - Paul Scally (Gillingham)

Division Three - Glyn Hammond (Swansea)

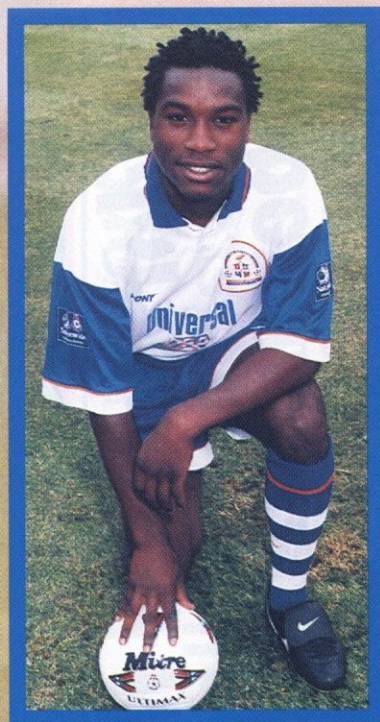
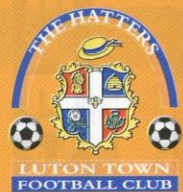
LUTON TOWN v BRENTFORD

Nationwide League Division Two

This game will now be played on **FRIDAY, MARCH 21, 1997,** kick-off 7.45pm, and will be **televised live on Sky Sports.**

(NB The original date for this fixture was Saturday, March 22, 1997, with a 3pm kick-off).

**STUART
DOUGLAS**



AUTOGRAPH

EXECUTIVE MEMBERS

KENILWORTH SUITE

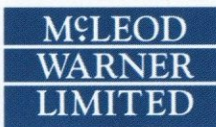
TSI (UK) Ltd
Anachem Ltd
Fisher Frozen Foods Ltd
F & T Goodwin Ltd
Handscombe Financial Services Ltd
R W Harvey & Son
Wilton Contract and Vehicle Rental
Information Design Associates
Mr Malcolm Eade
Mr Roger Eade
Arrow Business Systems Limited
J Sapsworth Ltd

Dr D Siegler
Neahurst Ltd
Mr P Dimery
Mr P Doyle
Grosvenor Casino
Churchman Thacker
Good Fennemore
Mr R Banks
Ludlow Group
Holmes Commercial
Regal Litho Ltd
James McNaughton Paper Merchants Ltd

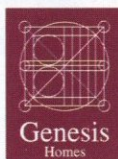
EXECUTIVE BOX HOLDERS



Murtagh Demolition



DBF
Crosswinds Ltd
COMPUTER AND BUSINESS STATIONERY



SKF



Cope Brothers (Printers) Limited



Luton News

Herald & Post

Bargad (Electrical) Ltd.
and N.E.D



Stephens
- Wheeler SOLICITORS

CLUB 82

C P Contracts
C P Contracts Flooring
Mr S Goodman
Mr S Gildea
Nordic Supplies
Mr F W Pearce
Shorey's Travel

Chris and Kim Clarke - The Wheatsheaf,
Flitwick
Space Display Systems Limited
The Home Counties Newspaper Group
J and P Hygiene Supplies
Luton Contract Packaging

OVER THE BAR!

Drink a toast to the Hatters in the following pubs...



THE BEDFORDSHIRE YEOMAN

Just a two-minute walk from the ground
Food available on matchdays
Supporters welcome

214 Dallow Road, Luton
(01582) 30469



Home of Dunstable Darts League, monthly quizzes, lounge and large games area.
Wide selection of real ales and lagers available.
Prop: Andy Duncan
(01582) 667617



THE BISCOT MILL
Live jazz every Monday, plus big plate value meals

Biscot Road, Luton.
(01582) 572363

THE LILLEY ARMS

Food for all occasions, fine ales, accommodation, beautiful gardens with farm animals.
Coach parties welcome, advance warning please!

West Street, Lilley
Tele: 01462 768371
"It's worth passing a few pubs for."



Live music and good food

115 Castle Street
Luton
Tel: 01582 414061

KINGSWAY ARMS

Kingsway, Luton
(01582) 584581

Home of the Loyal Luton Supporters Club.
Luton videos on matchdays, new members welcome.
Wide selection of real ales and lagers available. Large car park.
Prop: Ian Robinson

Kevin and Hayley welcome all supporters to
THE CENTURION
Poynters Road,

For a great atmosphere and live music on Saturday nights!

Coming soon..... "Jesters"
01582 661721

THIS COULD BE YOUR PUB!

Contact (01582) 411622 to advertise.



THE CHEQUERS
Park Road, Westoning
(off J12, M1)

For all live TV games
(01525 713125)



You'll find an authentic Irish welcome together with superb ales, great Guinness and a warm, friendly atmosphere. Don't miss the opportunity to experience the 'only Irish pub'

1 Castle St, Luton. 29826

THIS COULD BE YOUR PUB!

Contact (01582) 411622 to advertise.



THE WHEELWRIGHT ARMS
34 Guildford Street, Luton.
Tel: 01582 20023.

Bed and breakfast.
Fine selection of cask ales and lagers.

EDDIES BAR

THE live music venue
Food available seven days a week.
"The original and best"

106 Church Street, Luton
(01582) 400005

To advertise in the matchday programme contact the Commercial Department on (01582) 411622



KIM GRANT
Regal Litho



WAYNE TURNER
Danny and Elsie Clubb,
from Blackpool



JULIAN JAMES
Shorey's Travel



LENNIE LAWRENCE
201 Hertfordshire and
Beds Yeomanry



TONY THOPE
Bedfordshire Rural
Communities Charity



RICHARD HARVEY
Paul Deason



MITCHELL THOMAS
J and P Hygiene Supplies



DES LINTON
Simkins Solicitors of
Balldock and Sandy



IAN FEUER
Grosvenor Casino



DAVID OLDFIELD
Luton Town Supporters
Club



MATTHEW UPSON
Ian Smith, from Ampthill



JOHN TAYLOR
Mick Garbutt
Virgin Records



BEN CHENERY
Pete and Mandy Carney



MARVIN JOHNSON
Capital Golf



CERI HUGHES
Les and Sue Miller



CLIVE GOODYEAR
Danny and Elsie Clubb,
from Blackpool



DAVID KOHLER
Critical Research



PAUL SHOWLER
Graham Group plc



AARON SKELTON
Vacation Club International
Limited - Travel Agents
0181 780 5885



JAMIE WOODSFORD
Worldwide Hatters on the
Super Highway (WHOSH)



BONTCHO GUENTCHEV
The Bobbers Travel Club



SEAN EVERS
David Forman -
West Malaysian Branch
of the Luton Town
Supporters Club



PAUL McLAREN
Danny and Elsie Clubb,
from Blackpool



KELVIN DAVIS
Space Display Systems
Ltd



DWIGHT MARSHALL
Milton Keynes Branch of the
Luton Town Supporters Club



TREVOR PEAKE
Bennetts Gate Bakery of
Hemel Hempstead



GRAHAM ALEXANDER
Mad As A Hatter



GARY WADDOCK
Mad As A Hatter



DARREN PATTERSON
Rob Stringer - EPIC
Records



ANDREW FOTIADIS
2 Print



STEVE DAVIS
Loyal Luton Supporters
Club



STUART DOUGLAS
Richard Culley and
Pete Carney



HALF-TERM HOLIDAY COACHING COURSES

with Football in the Community Officer **JEFF VETERE**

THANKS to everyone who took part in our Christmas coaching courses across the region, with sessions in Bedford, Milton Keynes and Luton.

We can now give details of forthcoming Half-Term Holiday Courses to be held in February:

Venue: Wood End, JMI School, Yeomans Avenue, HARPENDEN

Dates: Monday 17 and Tuesday 18 February.

Time: 10am to 1pm

Age: 6 to 13 years

Cost: £18 (to include free adult and junior ticket for Luton Town v Millwall on March 8).

Venue: St Joseph's Junior School, Gardenia Avenue, LUTON

Dates: Monday 17 and Tuesday 18 February

Time: 10am to 1pm

Age: 6 to 13 years

Cost: £18 (to include free adult and junior ticket for Luton Town v Millwall on March 8).

Venue: Edward Peake Middle School, Potton Road, BIGGLESWADE

Date: Wednesday 19 February

Time: 10am to 1pm

Age: 6 to 13 years

Cost: £8

Venue: MK Sports Club, Woughton-on-the-Green, MILTON KEYNES

Dates: Thursday 20 and Friday 21 February

Time: 10am to 1pm

Age: 6 to 13 years

Cost: £18 (to include free adult and junior ticket for Luton Town v Millwall on March 8).

Bar facilities now available for supporters on matchdays

Eric Morecambe Lounge (season ticket holders only, passes to be shown): the bar will be open from 12 noon to 2.45pm on Saturday matchdays, and at midweek games from 6 to 7.30pm. Rolls and hot pies will also be available to buy, and entry to this bar is via Maple Road bridge.

Nick Owen Lounge (season ticket holders only, passes to be shown): the bar will be open from 1.30 to 2.45pm and 4.45 to 7pm on Saturdays, and from 6.30 to 7.30pm, and from 9.30 to 11pm at midweek games. Rolls and hot pies are available to buy, and entry is via the door opposite the iron staircase at the rear of the main stand.

The Hatters Bar, under the Kenilworth Stand (members over 18): this bar will be open from 1.30 to 2.45pm on Saturdays, and from 6.30 to 7.30pm at midweek games. Drinks must be consumed in the licensed area which is marked by the wide yellow line.



Venue: St Gregorys Middle School, Biddenham Turn, BEDFORD (in conjunction with Samba Soccer).

Dates: Thursday 20 and Friday 21 February

Time: 10am to 1pm

Age: 5 to 12 years

Cost: £12 or £16 (the latter to include free adult and junior ticket for Luton Town v Brentford on March 21).

For all these courses, please bring warm clothing, football boots, and a drink/snack.

Please note that the course at Milton Keynes will be on astroturf, and trainers or astroturf boots will be required.

To book your place on any of the above courses, or for further information, please contact Jeff Vetere on (01582) 411622.

YOKOHAMA Serious Rubber

AT A PRICE YOU CAN AFFORD

FINA

WARSTEINER

YOKOHAMA

TSN

ALLOY WHEELS

A510 AVS A509

BMW & MERCEDES

SERVICING AND REPAIRS

OFFICIAL BOSCH SERVICE AGENT

R.M. FENSOME & CO

15 KELVIN CLOSE, LUTON, BEDS. FAX: (01582) 405108

AA APPROVED

BOSCH SERVICE

TEL: (01582) 22705

RESERVES AND YOUTH ROUND-UP



Wed Aug 28	WEST HAM (LC)	lost 3-0
Thur Sep 5	WIMBLEDON	lost 2-1
Wed Sep 18	Portsmouth	won 2-0
Thu Sep 26	BRISTOL CITY	won 2-1
Thu Oct 3	Arsenal (LC)	won 1-0
Mon Oct 7	Swindon Town	lost 1-0
Mon Oct 21	WEST HAM UTD	won 2-1
Wed Nov 6	TOTTENHAM	won 2-1
Mon Nov 18	NORWICH C (LC)	won 3-0
Mon Dec 9	OXFORD UNITED	lost 2-0
Mon Dec 16	Crystal Palace	lost 2-0
Wed Jan 15	Bristol Rovers	7pm
Mon Jan 20	CARDIFF CITY	7pm
Wed Feb 5	Ipswich Town	7.30pm
Mon Feb 10	BRIGHTON	7pm
Thu Feb 27	Arsenal	2pm
Wed Mar 5	Charlton Athletic	2pm
Wed Mar 12	BOURNEMOUTH	2pm
Wed Mar 19	Southampton	7.30pm
Wed Mar 26	WATFORD	2pm
Wed Apr 9	Norwich City	7.30pm
Wed Apr 16	CHELSEA	2pm
Tue Apr 22	Millwall	2pm
Mon Apr 28	Queens Park Rgrs	7pm
TBA	Ipswich Town (LC)	
TBA	SWANSEA CITY	

Games in CAPITALS denotes home fixture.

Home matches played at Kenilworth Road will now kick-off at 2pm. Home matches will be played at Hitchin Town FC from November 18 to February 10 inclusive, and will kick-off at 7pm.

LC - Avon Insurance Combination League Cup.

THE Reserves were due to resume Avon Insurance Combination League action on Wednesday, with a trip to Bristol Rovers.

The game at home to Swansea, due to be played at Hitchin on January 6, was postponed due to frost.

The Reserves are due to play at Hitchin this Monday, January 20, at home to Cardiff, kick-off 7pm.

Some of the Town reserve players took part in last week's friendly at Highbury against Arsenal, which gave the Hatters much needed practice on grass courtesy of Highbury's undersoil heating.

But few Combination games have survived the frost, and up-to-date league tables will be available as soon as there is a significant change to the one printed right.

Reserve goalkeeper Nathan Abbey has had his loan spell to non-league Basingstoke extended by another month.

Luton Town's youth team reached the fourth round of the FA Youth Cup, with a 2-0 win at Torquay, with Liam George scoring both goals. - one a penalty.

Team: Webb, Lawes, Fraser, Spring, Boyce, Upson, Cox, George, Doherty, Sweeney, Scarlett.

Subs (not used): Jones, McIndoe, McCoy.

In the fourth round, Luton will travel away to the winners of the third round tie between Oldham Athletic and

Sunderland.

The youth team were in league action on December 21, with a 2-1 home win over Bristol Rovers.

The Luton scorers were Matthew Spring and Liam George.

Team: Webb, Lawes, McIndoe, Spring, Doherty, Boyce, Scarlett, George, Barr (Fraser), Sweeney, Jerry (McCoy).

Sub not used: Ayres.

But the games due to be played on January 4, at Bristol City, and January 11, at home to Colchester, were

AVON INSURANCE COMBINATION

	P	W	D	L	F	A	Pts
Wimbledon	10	7	2	1	26	14	23
Tottenham	10	7	0	3	26	10	21
Chelsea	10	6	2	2	20	11	20
Portsmouth	11	6	1	4	15	13	19
Arsenal	9	5	2	2	23	7	17
Ipswich	9	5	2	2	17	7	17
QPR	10	4	3	3	18	17	15
Swindon	9	4	2	3	18	14	14
Swansea	9	4	1	4	14	14	13
LUTON T	8	4	0	4	9	10	12
Bournemouth	8	4	0	4	18	10	12
Bristol C	9	3	2	4	16	16	11
Brighton	10	2	5	3	20	22	11
Oxford	9	3	2	4	17	21	11
Cardiff	10	2	5	3	8	13	11
C Palace	9	3	2	4	7	15	11
Millwall	9	3	1	5	16	18	10
Watford	9	3	1	5	12	19	10
Norwich	9	2	3	4	14	18	9
West Ham	10	2	3	5	10	17	9
Southampton	8	2	1	5	12	14	7
Charlton	7	2	1	4	8	19	7
Bristol R	10	1	3	6	8	23	6

League table up to and including 23.12.96.

AVON INSURANCE COMBINATION 1996/97 APPS & SCORERS (16.12.96)

	APPS	G		APPS	G
Kelvin DAVIS	8		Des LINTON	3	
Sean EVERS	10	1	Kim GRANT	1	
Ben CHENERY	10		Dwight MARSHALL	(1)	
Paul McLAREN	10	1	Jimmy COX	(1)	
Gary SIMPSON	2		Stuart FRASER	1	
Chris WILLMOTT	10 (1)		Mark BROWN	1	
Bontcho GUENTCHEV	3		David OLDFIELD	2	
Tony THORPE	3		Michael MCINDOE	1	
John TAYLOR	4	1	Andrew FOTIADIS	1	
Stuart DOUGLAS	6	1			
Robert KEAN	11	1			
Jamie WOODSFORD	3 (1)	2			
Andre SCARLETT	1 (2)				
Matthew UPSON	6	2			
Steve AUGUSTINE	(3)				
Nathan ABBEY	3				
Trevor PEAKE	2				
Darren PATTERSON	5				
Paul SHOWLER	3				
Aaron SKELTON	6	1			
Liam GEORGE	4 (3)	3			
Andrew BARR	(3)				
Matthew SPRING	(1)				
Terry SWEENEY	1 (2)				

League Cup Group 3

	P	W	D	L	F	A	PTS
West Ham	4	3	0	1	7	3	9
Arsenal	3	2	0	1	4	1	6
LUTON	3	2	0	1	4	3	6
Ipswich	2	0	0	2	1	5	0
Norwich	2	0	0	2	0	4	0

postponed due to frost.

As in the Combination, very few matches in the South East Counties League survived the recent cold spell, and consequently no up-dated tables are available.

There is little change to the figures shown.

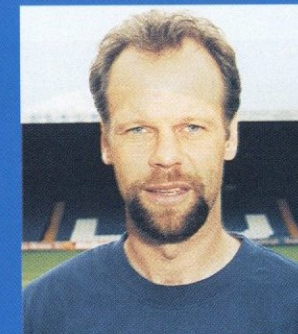


ABOVE: Andrew Fotiadis returned after a lengthy absence for the reserves at Crystal Palace, in a game played just before the recent frosty spell.

SOUTH EAST COUNTIES DIV TWO

	P	W	D	L	F	A	Pts
C Palace	16	11	4	1	38	15	26
LUTON TOWN	16	11	3	2	35	14	25
Southampton	15	11	0	4	36	13	22
Oxford	16	8	5	3	29	22	21
Tottenham	18	7	6	5	26	16	20
Swindon	17	7	5	5	33	22	19
Wycombe	18	7	4	7	20	19	18
Brighton	17	6	4	7	20	31	16
Bristol C	15	5	5	5	25	27	15
Wimbledon	16	5	4	7	20	20	14
Bournemouth	14	6	2	6	25	27	14
Bristol R	16	7	0	9	32	37	14
Colchester	15	5	3	7	23	23	13
Brentford	16	3	3	10	22	34	9
Reading	17	4	1	12	19	50	9
Barnet	18	2	1	15	14	47	5

League table as at December 21, 1996



with **TREVOR PEAKE**



and **JOHN MOORE**

South East Counties League, FA Youth Cup, Southern Jnr Floodlit Cup, and Eastern Junior Cup

Sat Aug 17	Bristol Rovers	won 4-1	Mon Dec 2	Oxford Utd (FAYC2)	drew 1-1
Sat Aug 24	READING	won 7-0	Sat Dec 7	Brentford	won 3-1
Tue Aug 27	Bournemouth (SJFC)	drew 1-1	Tue Dec 10	Royston (EJC)	won 2-1
Sat Aug 31	Colchester	lost 3-2	Thur Dec 19	OXFORD U (FAYC2)	won 3-2
Tue Sep 3	B'MOUTH (SJFC)	won 3-1	Sat Dec 21	BRISTOL ROVERS	won 2-1
Sat Sep 7	SOUTHAMPTON	won 1-0	Wed Jan 8	Torquay (FAYC3)	won 2-0
Sat Sep 14	Cambridge U (LC1)	won 2-0	Sat Jan 18	Southampton	
Tue Sep 17	Wolves (SJFC)	lost 2-1	Sat Jan 25	Crystal Palace	
Sat Sep 21	CRYSTAL PALACE	lost 1-0	Sat Feb 1	Reading	
Sat Sep 28	Tottenham	won 2-0	Sat Feb 8	TOTTENHAM	11am
Sat Oct 5	OXFORD UTD	drew 1-1	Sat Feb 15	Oxford United	
Sat Oct 12	Swindon Town	drew 2-2	Sat Mar 1	Wimbledon	
Wed Oct 16	Rushden & D (EJC)	won 3-2	Sat Mar 8	WYCOMBE W	11am
Sat Oct 19	Colchester (LC2)	lost 3-2	Sat Mar 15	BOURNEMOUTH	11am
Sat Oct 26	WIMBLEDON	won 2-0	Sat Mar 22	Barnet	
Sat Nov 2	Wycombe W	won 1-0	Sat Apr 5	Brighton	
Sat Nov 9	BARNET	won 2-1	Sat Apr 12	BRENTFORD	11am
Tue Nov 12	Hereford U (FAYC1)	won 3-1		TBA BRISTOL CITY & Bristol City	
Sat Nov 16	Bournemouth	won 2-0		TBA COLCHESTER	
Sat Nov 23	SWINDON TOWN	won 2-1		Home league matches at Luton Rugby Club.	
Sat Nov 30	BRIGHTON	drew 2-2			

LGE APPS G CUP APPS G YOUTH TEAM 1996/97 LEAGUE AND CUP APPEARANCES & SCORERS

	LGE APPS	G	CUP APPS	G
Daniel TATE	11		7	
Gary DOHERTY	15	3	7 (1)	
Ian JONES	7		4	
Matthew UPSON	4		7	
Steve AUGUSTINE	8	3	5	3
Matthew SPRING	15 (1)	1	10 (1)	2
Jimmy COX	11 (2)	1	8 (2)	3
Liam GEORGE	14 (1)	9	9	6
Andre SCARLETT	9 (6)		6 (2)	1
Andrew BARR	15 (1)	9	8	1
Andrew SMITH	4 (2)	3	4	2
Russell LAWES	10 (1)		8 (1)	
Mark HILLYARD	1 (3)		1	1
Richard CLARKE	6 (3)	1	6 (2)	1
Terry SWEENEY	11	5	8	2
Nick WEBB	5		4	
Emerson BOYCE	10 (1)		4 (1)	
Stuart FRASER	8 (1)		6 (1)	
Michael MCINDOE	9		4 (1)	
Moses JERRY	1 (3)		2	
Delroy MCKOY	1 (1)		1	
James AYRES	1		1	
Jon CHALLINOR			1	
Sean CURRAN			1	

LUTON Town FC require landladies on a permanent and/or part-time basis for our YTS players.

We are ideally looking for families, in Luton, with an interest in football, who have room available for one of our youngsters, either on a permanent (seven days a week) basis, or on a temporary basis (for example in school holidays).

Anyone interested should contact Youth Development Officer Paul Lowe on (01582) 411622.



Rephotographs by Sentybox Tel: 01895 251220

Caught.
Ball watching!

The official ball supplier to:



Trust us to help football

The Football Trust is helping the game at all levels - from providing kit for school teams, pitches and changing rooms for grass roots football, safety and improvement work throughout the game right up to providing vital assistance to help League clubs complete the essential task of redeveloping their grounds in line with the Taylor Report.

Over the last 20 years the Trust has received and distributed £250m from Littlewoods, Vernons and Zettlers Pools and Littlewoods Spot the Ball competition for the benefit of football.

Up and down the country, clubs are building new grounds and stands, installing seating, and providing safe and comfortable facilities for their spectators to enjoy. Every club depends on the support of the FOOTBALL TRUST and the success of the pools companies. Both are crucial for football's future.



THE FOOTBALL TRUST
Helping the game



LITTLEWOODS VERNONS ZETTERS
Making sure football wins
the Pools each week

THE FOOTBALL TRUST, WALKDEN HOUSE, 10 MELTON STREET, LONDON NW1 2EB



82-86 Luton
Arndale Centre.
Tel: (01582)
20592

We stock a wide selection of sports supports
and injury treatments

**To advertise
in the LTFC Matchday
Programme contact the
Commercial Department on
01582 411622**

SAINSBURY'S

serving Luton since 1926

stores at:

Dunstable Road, Luton. Tel 01582 422622
Quantock Rise, Bramingham Park, Luton.
Tel 01582 573919
Luton Road, Dunstable. Tel 01582 477082

CARPETS SUPPLIED & FITTED

Martin Ayres Carpets Ltd.

SHOWROOM AT:

614 Hitchin Road, Stopsley Village, Luton, Beds.
Telephone: (01582) 454184 (Day) 24 Hr Answer Phone



call now
01582 456958

or visit
12/14 Park Square,
Luton

The Link

For the widest
range of
Mobile Phones,
Faxes, Pagers
and Telephones.

Tel: 01582 487222
Fax: 01582 876155

**To advertise
in the LTFC
Matchday
Programme
contact the
Commercial
Department on
01582 411622**



CB SECURITY SERVICES

CB SECURITY
SERVICES
4 Gordon Street
Luton, Beds.
LU1 2QP.
Tel: 01582 410058



**THE HAIRDRESSING
COMPANY**

THE
HAIRDRESSING
COMPANY

7 Chapel Street
Luton
Bedfordshire
Tel: 01582 29422

17 New Bedford Rd.
Luton
Bedfordshire
Tel: 01582 454106

BEST for PRICE Top of the league for
building materials
BEST for CHOICE gibbs & dandy
BEST for DELIVERY 226 Dallow Road
Tel: 01582 21233

STORAGE

MENSWEAR
5 & 7 CHAPEL STREET, LUTON, BEDS.
TEL: 01582 450412

FOR THE LATEST NEWS - **CLUBCALL 0891 121 123**

Calls cost 45p per minute at cheap rate and 50p per minute at all other times

Those were the days

DESPITE both clubs being in existence for over a century, league clashes between the sides did not start until 1963 following the Town's relegation to the old Division Three.

In truth we were a poor side at the time and only avoided further relegation in the 1963/64 season at the death.

Wrexham failed to avoid the drop so the games between the sides that campaign were hardly likely to set the football world alight.

The first meeting between the sides took place at the Racecourse on November 30, 1963, in front of a crowd of 6,281.

We had recorded only one win from the previous eight games, while the home side had won only one point from the previous 12 matches.

Despite the introduction of John Reid, our new big money signing from Northampton, the Robins had little difficulty in winning 2-0 in a scrappy game, with Arfon Griffiths and Mick Metcalf scoring the goals, one in each half.

By the time of the return, the following April, we had discovered a new goalscoring diamond in John O'Rourke and were attempting to pull ourselves out of the bottom four.

Wrexham goalkeeper Steve Fleet was a hero and kept the score down to 3-1 with a succession of good saves, but he was powerless to stop efforts from O'Rourke, Mark Lownds and Gordon Turner.

We parted company at the end of that season but it was only 12 months before we were meeting again, this time in Division Four.

Both clashes in 1965/66 were early season affairs, and in the game at the Racecourse the Town were always second best against a side that included four teenagers.

Sammy McMillan scored both goals for the Robins but was missing in the return three weeks later, as the Wrexham forwards squandered a hatful of early chances, only to see Ray Whittaker give the Town the lead with a volley.

It was then the Town's turn to miss chances, and Bruce Rioch spurned three good opportunities to sew



by **ROGER WASH**

the game up, but a contest that could have finished 5-5 ended in a narrow 1-0 win for the Town.

In the following season we suffered our, by now, normal 2-0 defeat at the Racecourse with McMillan again on the scoresheet. But in the return we turned the tables once more, when two late goals from ex-England international Derek Kevan secured a 3-1 win against a side that was left to consider what might have been, given their domination of large parts of the match.

In 1967/68 we ended up as champions of Division Four, but we started the campaign at Wrexham, proudly parading our new look side. In a bad tempered affair, both Graham French and Wrexham skipper Terry Bradbury were sent off for fighting, and the Town finished with nine men after substitute Brian Johnson had to go off after a foul.

Ray Smith gave the home side the lead just after the interval, but the Town bravely fought back and

equalised through new signing Rodney Green two minutes from the end.

A fightback against the odds was not something we had been led to expect after several seasons in the doldrums.

By the time of the return in December, we were still proudly holding on to a 100 per cent home record, and Wrexham made us fight hard to retain it despite making their intentions known early on when employing a ten man defence.

The game came to life in the second half when Rioch gave the Town the lead, but following a Wrexham equaliser it was left to skipper Terry Branston to save the day with a late goal.

It was to be 11 years before our paths crossed again, this time in the old Division Two, following Wrexham's promotion from Division Three, in a blaze of glory, in 1978.

The first reacquaintance took place at Kenilworth Road in October 1978 at a time when we were going through a 'purple' patch at home scoring a hatful of goals.

After Brian Stein and Lil Fuccillo had given us a two-



LEFT: Alan West powers in a header against Wrexham in 1980, watched by Paul Price (left) and Frank Bunn.

goal cushion in the game's first quarter it looked like a rout was on the cards, but Wrexham fought hard and pulled one back through Micky Thomas just before the interval.

Surprisingly, Wrexham seemed to hold back in the second period and it was the Town who came closest to scoring just when we thought we were in for a torrid time.

Our early season promise soon ran out and we struggled against relegation during the second half of the campaign.

We made sure of safety on the final Saturday, but had one game left to play, at Wrexham, and in a typical end of season affair we went down 2-0 to goals from Steve Buxton and Peter Williams.

The second goal was scored after Town defender Mark Aizlewood was sent off for dissent, hotly disputing the referee's decision not to award a penalty for blatant handball. A poor end to the season, but a good one for Wayne Turner who made his full debut for the Town.

In the next campaign we went down 3-1 to a rampant Wrexham side at the Racecourse with Bob Hatton's late strike the only consolation, but in the return we took full revenge with a 2-0 victory.

A strike from David Moss on the hour was probably the best of the 24 he scored that season, and it was mostly carnival play against a negative Wrexham side. By coincidence Clive Goodyear, another current staff member, made his debut for the Town that afternoon.

Both games in 1980/81 ended in draws with 17-year-old Frank Bunn rescuing the Town with a last minute equaliser in the game at Kenilworth Road, and two long shots from Raddy Antic that hit the bar the only bright spots from a sterile 0-0 draw at the Racecourse later on in the season.

The final clashes took place during our championship winning season of 1981/82 when we finally managed to win at the Racecourse, with our goals coming courtesy of Mal Donaghy and Steve White on a very wet pitch.

This was manager David Pleat's first win on Welsh soil, at the ninth attempt, and we followed it up with another victory at the Racecourse four days later in a League Cup second leg game.

Wrexham gained some revenge when they took a point at Kenilworth Road later on in the season, after a run of nine straight home victories for the Town which had taken us to the top of the table. The setback was, however, just a blip as we marched on to the title.

5 YEARS AGO

18/1/92: After three successive home wins we suffered the disappointment of going down 1-0 to West Ham at Kenilworth Road. The Hammers were below us before the game and the defeat pushed us to the bottom of the table. To rub salt in the wound, ex-Hatter Mike Small scored the only goal.

10 YEARS AGO

17/1/87: Our away game at Southampton was put off because of the weather, but results of other matches still preserved our fifth place in the old Division One.

15 YEARS AGO

19/1/82: In a hastily re-arranged game at Charlton, following the postponement of the match the previous week, the Town fought out a 0-0 draw in front of a crowd of 7,013. Due to the weather this was only our third league game played since the end of November.

20 YEARS AGO

22/1/77: In front of the 'Match of the Day' cameras, goals from Jim Husband (2) and Ron Futcher secured an easy 3-0 win at Sheffield United. Little did we know that this was to be the start of a run of nine straight wins.

League's weather warning

IN the event of wintry weather causing disruption to Nationwide League fixtures, and the Football League have once again outlined their early warning procedure for the inspection of pitches.

In an effort to prevent unnecessary inconvenience to supporters, League clubs are instructed to liaise closely to ascertain the travelling arrangements of visiting supporters.

Home clubs are also asked to contact match referees for travel details and any plans to stay overnight in order that they can be reached at short notice.

Clubs can also request referees to travel the day before the match if an early pitch inspection is necessary.

In the event that the match referee is unable to travel early, the Football League would call in a local official to advise them on the condition of the pitch.

Regardless of weather conditions prevailing at the time, referees are required to report at the home club during the months of November, December, January and February at least two hours before the advertised kick-off time.

Chesterfield await third round winners

THE winners of our much delayed FA Cup third round tie with Bolton will be at home to Chesterfield in round four.

The Spireites booked their place at either Kenilworth Road or Burnden Park with Tuesday's 2-0 home win over Bristol City.

The fourth round is scheduled for the weekend of January 25 and 26, but several third round replays may have to be played on those dates.

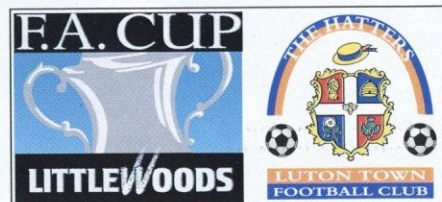
Because of the bad weather, 50 teams went into the fourth round draw, with 18 third round ties undecided and only 14 clubs assured of their place in the fourth round. The pairings mean that at least five Nationwide League teams will go into the last 16.

It was the worst affected third round weekend since 1979, when only three ties survived, though that pales into insignificance in comparison with 1963 when the round lasted 66 days due to bad weather, power cuts and no under-soil heating, ending on March 11!

Fourth round draw:

Peterborough v Wrexham or West Ham
Charlton or Newcastle v Nottingham
Forest

Blackburn v Coventry or Woking
LUTON or Bolton v Chesterfield



Birmingham v Stoke or Stockport
QPR v Barnsley
Portsmouth v Reading
Carlisle v Sheffield Wed
Everton v Bradford City
Hednesford v Middlesbrough
Chelsea v Liverpool
Gillingham or Derby v Notts C or Aston
Villa
Leicester or Southend v Norwich
Arsenal or Sunderland v C Palace or
Leeds

Brentford or Man City v Watford or Oxford
Manchester Utd v Crewe or Wimbledon

Two games have been selected for live TV coverage on Sunday, January 26.

Televised FA Cup ties will be played only on Sundays this season. Sky will screen the game Charlton or Newcastle v Nottingham F, with the BBC showing Chelsea v Liverpool.

Win tickets for your Junior team

OUR latest Junior Team of the Month will be announced shortly..... and why not nominate your team?

The Loyal Luton Supporters Club are once again sponsoring the Young Team of the Month Award.

Having received a £200 grant from NatWest Bank as part of the bank's Community Action Scheme, and through monies raised through the summer, the supporters, in conjunction with Luton Town FC, have again funded the award.

The award is run on a monthly self-nomination basis, and is open to all teams, boys and girls under the age of 16. Winners receive 15 tickets (13 children and 2 adults) to a chosen Luton home match.

Anyone wanting to nominate their local youth, school, cubs or girls team, should send a letter to Simon Oxley at Luton Town Football Club, briefly explaining why they think they deserve to win one of the monthly awards.

We have already received a number of nominations. If your team wasn't selected this time, they might be next month.

All remaining nominations will be considered throughout the rest of the season.

Cobblers to Plymouth in Shield area draw

THE draw for the third round of the Auto Windscreens Shield - the southern area quarter-finals - has given Luton a possible trip to Plymouth!

First the Hatters must overcome Northampton in the second round, after Neil Warnock's side beat third division strugglers Brighton 1-0 at Home Park on Tuesday.

Luton's proposed trip to Northampton's Sixfields Stadium on Tuesday has been postponed as we will be attempting to finally play our FA Cup third round tie against Bolton.

The game, our first at Sixfields, will now take place on February 4 or 11, depending on FA Cup commitments.

Third round draw:

Southern section: Plymouth v Northampton or Luton; Brentford v Colchester; Watford v Swansea or Bristol City; Exeter v Peterborough or Walsall.

Northern section: York or Preston v Carlisle or Hull; Bury v Burnley or Stockport; Wrexham or Crewe v Blackpool; Shrewsbury v Scunthorpe or Notts C.

To be played w/c January 27!

Beds Premier Cup Semi-Final

**STOTFOLD v
LUTON TOWN**

**Monday, February 3, 1997
Kick-off 7.30pm**

**NB: The other semi-final is between Wootton
Blue Cross and Leighton Town.**

Sky and ITV confirm more 'live' matches

SKY Television and ITV have announced further Nationwide League fixtures which they will be transmitting live over the next couple of months.

Sky Sports have confirmed they will be showing Fulham v Cardiff on Friday, January 31; Stoke v Oxford on Friday, February 7; and Sheffield Utd v Norwich on Sunday, February 9.

Meanwhile, ITV have announced a further game from their quota of 10 live fixtures for the season which will come from the Manor Ground between Oxford and Manchester City on Sunday, February 2.

Nationwide League matches being shown live on Sky Sports:

Friday, January 17 - Burnley v Bury
Friday, January 24 - Chester v Carlisle
Monday, January 27 - LUTON TOWN v Watford
Friday, January 31 - Fulham v Cardiff
Friday, February 7 - Stoke v Oxford
Sunday, February 9 - Sheffield Utd v Norwich

Today's Mascot



This afternoon's Junior Hatters mascot is 14-year-old BENJAMIN GREEN.

He attends Lord Grey School, in Bletchley, Milton Keynes, and his hobbies are rugby and soccer.

His favourite Luton Town player is Kelvin Davis.

FORTHCOMING MATCHES IN NATIONWIDE LEAGUE DIVISION TWO

Friday, January 17
Nationwide League Div Two
Burnley v Bury

Saturday, January 18
Nationwide League Div Two
Blackpool v Crewe
Brentford v Bristol City
Bristol R v York City
LUTON TOWN v Wrexham
Notts County v Gillingham
Peterborough v Plymouth
Preston v Watford
Rotherham v Wycombe
Shrewsbury v Chesterfield
Stockport C v Millwall
Walsall v Bournemouth

Saturday, January 25
Nationwide League Div Two
Blackpool v Millwall
Brentford v Bristol R
Bristol City v Bournemouth
Burnley v Preston
Bury v Wrexham
Chesterfield v Stockport
Gillingham v Plymouth
Rotherham v Crewe
Shrewsbury v Peterborough
Walsall v Notts County
Wycombe v York

Monday, January 27
Nationwide League Div Two
LUTON TOWN v Watford

Luton Roadstone

**Quality products -
Quick turnaround &
Friendly service for
collects and delivery of:**

**Macadams, Asphalts,
Type 1, Colourtex,
Leisuretex, Versatex**

**30-31 Cosgrove Way, Luton,
Beds LU1 1XL
Tel: 01582 26663**



TicketLine 0645 10 10 10
The exclusive ticket booking service for fans
of Endersleigh League First Division clubs
24 HOURS A DAY, 7 DAYS A WEEK

LOOK OUT FOR OUR MERCHANDISE CATALOGUE AVAILABLE TODAY.....

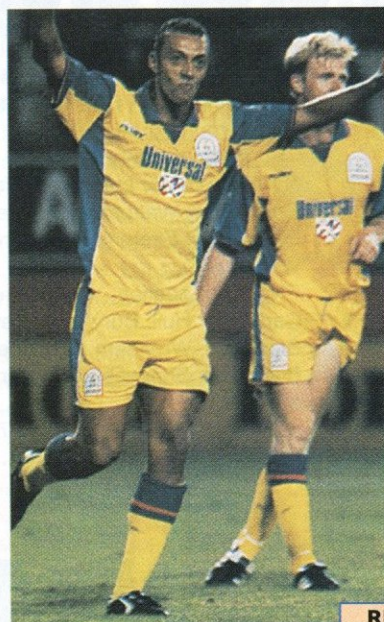
OPENING TIMES

MONDAY TO FRIDAY
10am to 4pm

EVENING MATCHDAYS
10am to 10pm

SATURDAYS - MATCHDAYS
10am-3pm & 4.45-5.15pm
- non matchdays 9am
until coaches leave for
away game

LTFC KIT PRICES 1996/97



LEFT: Luton Town 'Third' Shirts
SB (22-24), B (26-28),
LB (30-32) - £29.99
Youths - £34.99
S (34-36), M (38-40),
L (42-44)
XL (46-48), XXL (50+)
- £38.99

Luton Town 'Third' Shorts
SB, B, LB, Yths - £15.99
S, M, L, XL - £19.99

Luton Town 'Third' Socks
B, LB - £5.99
Mens - £7.99

RIGHT:
Luton
Town
baseball
caps
- £8.50
each.



Luton Town Away Shirts
SB (22-24), B (26-28),
LB (30-32) - £27.99
S (34-36), M (38-40),
L (42-44) - £34.99
XL (46-48), XXL (50+) - £36.99

Luton Town Away Shorts
SB, B, LB - £14.99
S, M, L - £19.99
Luton Town Away Socks
B, LB - £5.99
Mens - £6.99



**ABOVE: College style jacket - grey
with navy sleeves - fully lined.**
M, L, XL - £55.00



**ABOVE: Luton Town FC
scarves - £5.75 each**



**ABOVE: Luton Town FC
golf umbrella
- top quality, fully
guaranteed - £35.00**



ABOVE: Bronx hats - navy & black - £4.99

RIGHT:
Monster
scarf -
£12.50



LEFT: Luton Town Home Shirts
SB (22-24), B (26-28),
LB (30-32) - £27.99

S (34-36), M (38-40),
L (42-44) - £34.99

XL (46-48), XXL (50+)
- £36.99

Luton Town Home Shorts
SB, B, LB - £14.99
S, M, L - £19.99

Luton Town Home Socks
B, LB - £5.99
Mens - £6.99



LEFT:
Bench coat -
B, LB - £49.99

- XS, S, M, L,
XL - £59.99



enquiries
01582
411622

HATTERS SHOP

FOR THE LATEST NEWS - **CLUBCALL 0891 121 123**

Calls cost 45p per minute at cheap rate and 50p per minute at all other times

This afternoon we welcome our match sponsors - the Bobbers Travel Club and Friends; and Sky Ford.

THE BOBBERS TRAVEL CLUB organise coach travel to every away game, and you can find details of their service on page 8 of today's programme.

They are valued supporters, and have donated thousands of pounds to the club over the years for the purchase of important medical and physiotherapy equipment.

Travel Club organiser Paul Deason completed a remarkable milestone at Christmas, completing 20 years without missing a game..... home or away.

The last match he missed was at Bolton on December 21, 1976, a game arranged at very short notice.

Our joint match sponsors are SKY FORD who continue to expand after a successful 1996.

Chris Green is a director of Luton Town and a director of Sky Ford, and his company continue to support the club in many ways, with sponsored cars for example, and he looks forward to welcoming fellow Luton Town supporters to Sky Ford in Redbourn Road, Hemel Hempstead.

Ceri Hughes is currently driving a Ford Probe, supplied by Sky Ford, with Commercial Manager Kathy Leather driving the new range Ford Ka.

Today's matchball sponsor is Mr Roger Anderson and family,

COMMERCIAL NEWS



with **KATHY LEATHER**

and we hope they enjoy their day. David Anderson, who was 80 yesterday, is at today's game with his two sons and two grandsons, and has been a supporter for many years - having watched the Town at Wembley finals in 1959, 1988 and 1989.

If you or your company would like details of match or matchball sponsorship, please contact the Commercial Department on (01582) 411622.

We in the Commercial Department are always willing to talk to you about how you and your company can get involved with Luton Town. We have packages to suit all budgets, and a variety of ways in which your company can get involved.

Luton Town can cater for everything from business breakfasts, lunches or dinners to birthday, anniversary and wedding celebrations.

We can help to plan events by either clients visiting the club or by making a private visit to the clients own premises.

We have a number of function suites available, from our boardroom, which is

an exclusive setting for senior management meetings, to our adjacent suites which can cater for up to 100 or more delegates for conferences and seminars. Our catering operation, which prides itself on a personal service, can provide quality refreshments to complement any occasion.

For full details, or to arrange a visit, please contact the Commercial Department on Luton (01582) 411622.

This afternoon's CableTel kids are: Mathew Galbrath, Ceiron Galbrath, Kersey Galbrath, Lisa Fletcher, Karl Fletcher, Donna Fletcher, Lauren Fletcher, James Clarke, Scott Clarke, Ashley Chapman and Stephanie Chapman.

Antony's Tailor

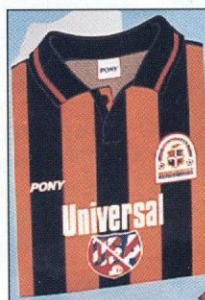
OF LONDON

THE MOST
ESTABLISHED
AND RELIABLE
TAILORS IN
LUTON

DRESS HIRE
LADIES AND GENTS
BESPOKE TAILORING



12 DUNSTABLE ROAD, LUTON,
BEDS OPPOSITE MAIN POST OFFICE
TEL: (01582) 424687



LEFT: Send a greetings card to a loved one, signed by their favourite LTFC player! Cost per signed card is £2.00, and cheques (to LTFC) should be sent to: Kathy Leather, Greeting Card Offer, Luton Town FC, 1 Maple Road, Luton, Beds, LU4 8AW.



Make a date with the Hatters!

THE OFFICIAL 1997 LUTON TOWN FC CALENDAR

Full colour action pictures
featuring the first-team squad

Price - £4.99
ON SALE NOW!



Limited edition print of Kenilworth Road now available for £49.00 from the Club Shop.

NB: Cheques should be made payable to Kevin James. Postage and packing is £4, or £11 for outside the UK.

WINDOWS, DOORS & CONSERVATORIES

IN UPVC, ALUMINIUM OR TIMBER

- Over 20 Years Experience
- Friendly, No Pressure Advice Without Obligation
- No Deposit

• Payment On Completion & Satisfaction

For Personal Attention Call

BARRY BOLTON

ON

TEL: (01582) 484600
(01908) 240094 (01525) 854008

Unit 3, 57 Dudley Street, Luton

*Becoming
Bigger by
Being
Better!*

DISCOUNTS FOR
PENSIONERS AND
THE RETIRED

ASDA

THERE IS NOW A LUTON TOWN FC CLUB SHOP AT THE ASDA STORE IN WIGMORE LANE, LUTON. This retail outlet will trade on the same days, and open the same hours, as Asda.

ASDA

TEAMStatistics

1996-97

LUTON TOWN 1996/97

PLAYER (figure in bracket = sub app.)	LEAGUE APPS	LEAGUE GOALS	CUP APPS	CUP GOALS
Ian FEUER	24		8	
Julian JAMES	24	1	9	1
Mitchell THOMAS	24	2	6	
Gary WADDOCK	21		8	
Darren PATTERSON	3		2 (1)	
Marvin JOHNSON	22		7	
Bontcho GUENTCHEV	11 (9)*	1	5 (3)	
Graham ALEXANDER	23 (1)	1	8 (1)	
David OLDFIELD	12 (4)	3	5 (1)	2
Kim GRANT	8 (7)	2	5 (1)	3
Tony THORPE	18 (2)	16	4 (1)	2
Andrew FOTIADIS	5 (4)	1	(2)	
Des LINTON	(2)		2	
Steve DAVIS	22 (1)	4	9	1
Ceri HUGHES	21	3	9	2
Paul SHOWLER	13 (2)	6	5 (2)	
Matthew UPSON	(1)			
Stuart DOUGLAS	2 (7)		1 (1)	
Paul McLAREN	3 (5)		(1)	
Aaron SKELTON	2 (1)		3	
Dwight MARSHALL	6 (1)	3	2 (1)	2
Kelvin DAVIS			1	
Own goal				1

Nationwide League Division Two 96/97

	P	W	D	L	F	A	PTS
Brentford	26	14	8	4	45	27	50
LUTON TOWN	24	14	4	6	43	26	46
Millwall	26	12	8	6	36	28	44
Bristol City	26	12	7	7	45	29	43
Bury	24	11	9	4	36	23	42
Stockport C	25	11	8	6	32	27	41
Chesterfield	24	12	5	7	24	18	41
Burnley	26	12	4	10	39	30	40
Crewe	25	13	1	11	34	28	40
Wrexham	24	10	9	5	34	30	39
Watford	24	9	12	3	25	19	39
Shrewsbury	27	8	8	11	35	43	32
Blackpool	25	7	10	8	28	28	31
Bournemouth	27	8	7	12	24	32	31
Plymouth	26	7	9	10	30	38	30
Walsall	24	8	6	10	26	28	30
Bristol R	26	7	8	11	26	30	29
Preston	26	8	5	13	26	32	29
York City	25	8	5	12	26	38	29
Peterborough	25	6	9	10	37	43	27
Gillingham	26	7	6	13	25	36	27
Wycombe	25	6	5	14	22	38	23
Notts County	25	5	8	12	18	29	23
Rotherham	25	3	9	13	21	37	18

Up to and including Saturday, January 11.

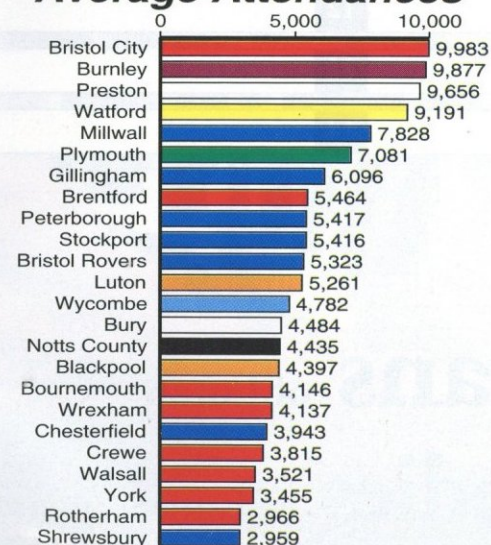
DATE OPPONENTS F-A ATT POS

Sat Aug 17	BURNLEY	1-2	6,484	-
Tue Aug 20	BRISTOL ROVERS CCC1 (1)	3-0	2,643	-
Sat Aug 24	Brentford	2-3	5,404	22
Tue Aug 27	Bristol City	0-5	7,028	24
Sat Aug 31	ROTHERHAM	1-0	4,547	19
Wed Sep 4	Bristol Rovers CCC1 (2)	1-2	2,320	-
Sat Sep 7	Wycombe Wanderers	1-0	6,471	15
Tue Sep 10	GILLINGHAM	2-1	4,604	11
Sat Sep 14	CHESTERFIELD	0-1	4,763	12
Tue Sep 17	DERBY COUNTY CCC2 (1)	1-0	4,459	-
Sat Sep 21	Bury	0-0	3,588	15
Wed Sep 25	Derby County CCC2 (2)	2-2	13,569	-
Sat Sep 28	BLACKPOOL	1-0	5,303	12
Sat Oct 5	WALSALL	3-1	5,002	11
Sat Oct 12	Shrewsbury Town	3-0	3,357	8
Tue Oct 15	Stockport County	1-1	5,352	9
Sat Oct 19	PETERBOROUGH UTD	3-0	5,964	7
Tue Oct 22	Wimbledon CCC3	1-1	5,043	-
Sat Oct 26	BOURNEMOUTH	2-0	5,635	5
Tue Oct 29	Watford	1-1	14,109	6
Sat Nov 2	Plymouth Argyle	3-3	7,134	8
Sat Nov 9	NOTTS COUNTY	2-0	5,664	5
Tue Nov 12	WIMBLEDON CCC3R	1-2	8,076	-
Sat Nov 16	Torquay Utd FAC1	1-0	3,450	-
Tue Nov 19	Preston North End	2-3	7,004	7
Sat Nov 23	BRISTOL ROVERS	2-1	5,315	4
Sat Nov 30	Bournemouth	2-3	4,322	6
Tue Dec 3	YORK CITY	2-0	4,401	4
Sat Dec 7	BOREHAM WOOD FAC2	2-1	5,332	-
Tue Dec 10	LEYTON ORIENT AWS1	2-1	1,594	-
Sat Dec 14	CREWE ALEXANDRA	6-0	5,455	3
Wed Dec 18	Millwall	1-0	7,077	1
Thu Dec 26	Gillingham	2-1	8,598	2
Sat Jan 18	WREXHAM			
Tue Jan 21	BOLTON WANDERERS FA3			
Mon Jan 27	WATFORD (7.45pm)			
Sat Feb 1	Notts County			
Tue Feb 4	Northampton AWS2 (or Feb 11 if in FA4)			
Sat Feb 8	PLYMOUTH ARGYLE			
Sat Feb 15	Bristol Rovers			
Sat Feb 22	PRESTON NORTH END			
Sat Mar 1	York City			
Sat Mar 8	MILLWALL			
Tue Mar 11	Wrexham			
Sat Mar 15	Crewe Alexandra			
Fri Mar 21	BRENTFORD			
Sat Mar 29	Burnley			
Tue Apr 1	BRISTOL CITY			
Sat Apr 5	Rotherham United			
Sat Apr 12	Walsall			
Sat Apr 19	SHREWSBURY TOWN			
Sat Apr 26	Peterborough Utd			
Sat May 3	STOCKPORT COUNTY			
TBA WYCOMBE				
TBA BURY				
TBA CHESTERFIELD				
TBA BLACKPOOL				

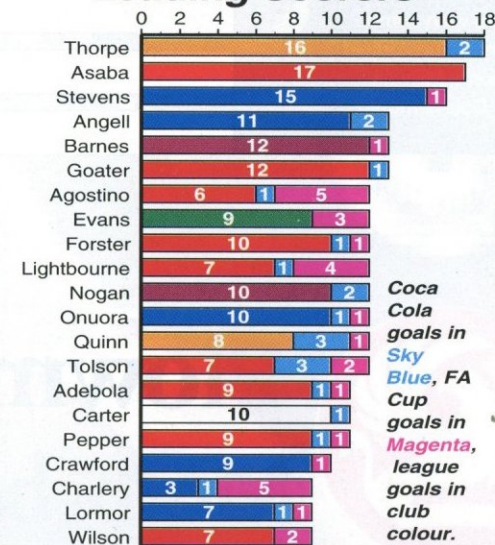
Game in BOLD denotes home match. Name in CAPITALS denotes goalscorer. Name in (brackets) denotes player substituted or substitute used.

GK	2	3	4	5	6	7	8	9	10	11	12	13	14
Feuer	James	Thomas	Waddock	(Patterson)	Johnson	Guentchev	Alexander (Oldfield)	(Grant)	THORPE		(Fotiadis)	(Linton)	(S.Davis)
Feuer	(James)	Thomas	Waddock	S.Davis	(Johnson)	Hughes	Alexander OLDFIELD	GRANT	(THORPE)		(Patterson)	(Guentchev)	(Showler)
Feuer	James	Thomas	Waddock	S.Davis	Patterson	HUGHES	Alexander Oldfield	(Grant)	THORPE		Linton	(Guentchev)	Showler
Feuer	James	Thomas	Waddock	S.Davis	Patterson	Hughes	(Showler)	(Oldfield)	(Grant)	Thorpe	(Alexander)	(Guentchev)	(Fotiadis)
Feuer	(James)	THOMAS	Waddock	S.Davis	Johnson	Hughes	Alexander (Oldfield)	(Grant)	Showler		(Thorpe)	(Guentchev)	(Upson)
Feuer	James	Thomas	Linton	S.Davis	Johnson	Hughes	Alexander OLDFIELD	Guentchev	(Showler)		Thorpe	(Fotiadis)	McLaren
Feuer	James	Thomas	Waddock	S.Davis	Johnson	Hughes	Alexander OLDFIELD	(Fotiadis)	Guentchev		(Thorpe)	Showler	McLaren
Feuer	James	Thomas	Waddock	S.Davis	Johnson	Hughes	Alexander OLDFIELD	(Fotiadis)	GUENTCHEV		(Grant)	Showler	McLaren
Feuer	James	Thomas	Waddock	S.Davis	Johnson	Hughes	Alexander (Oldfield)	(Fotiadis)	Guentchev		(Showler)	(Grant)	McLaren
Feuer	JAMES	Thomas	Waddock	S.Davis	Johnson	Hughes	Alexander Oldfield	(Grant)	Guentchev		Showler	(Fotiadis)	McLaren
Feuer	James	Thomas	Waddock	S.Davis	Johnson	Hughes	Alexander Oldfield	(Fotiadis)	Guentchev		Showler	(Douglas)	McLaren
Feuer	James	Thomas	Waddock	S.Davis	Johnson	(Hughes)	Alexander Oldfield	GRANT	Guentchev		Patterson	Showler	(THORPE)
Feuer	James	Thomas	Waddock	S.Davis	Johnson	Thorpe	Alexander (Oldfield)	(GRANT)	Guentchev		Showler	(Fotiadis)	(Douglas)
Feuer	James	Thomas	Waddock	S.Davis	Johnson	(Hughes)	Alexander THORPE	(FOTIADIS)	(Guentchev)		(SHOWLER)	(McLaren)	(Douglas)
Feuer	(James)	THOMAS	Waddock	S.Davis	Johnson	Hughes	Alexander (Thorpe)	GRANT	SHOWLER		(Guentchev)	(McLaren)	(Douglas)
Feuer	James	Thomas	Waddock	S.DAVIS	Johnson	Hughes	Alexander (Thorpe)	Grant	Showler		Guentchev	McLaren	(Oldfield)
Feuer	James	Thomas	Waddock	S.DAVIS	Johnson	(Hughes)	Alexander (Oldfield)	(Thorpe)	SHOWLER 2		(Guentchev)	(McLaren)	(Douglas)
Feuer	James	Thomas	Waddock	S.Davis	Johnson	HUGHES	Alexander Oldfield	Thorpe	SHOWLER		Guentchev	McLaren	(Douglas)
Feuer	James	Thomas	Waddock	Skelton	Johnson	Hughes	(Alexander)	(Oldfield)	THORPE 2	(Showler)	(Guentchev)	(McLaren)	(Douglas)
Feuer	James	Thomas	Waddock	S.Davis	Johnson	Hughes	Alexander (Oldfield)	Thorpe	SHOWLER		Guentchev	McLaren	(Douglas)
Feuer	James	Thomas	Waddock	S.Davis	Johnson	Hughes	Alexander (Douglas)	THORPE 3	(Showler)		(Guentchev)	McLaren	(Grant)
Feuer	James	Thomas	Waddock	S.Davis	Johnson	HUGHES	Alexander	Grant	(THORPE)	Guentchev	Marshall	McLaren	(Douglas)
Feuer	James	Thomas	Waddock	S.Davis	Johnson	Hughes	Alexander (Grant)	(Thorpe)	(Showler)		(Guentchev)	(McLaren)	(Douglas)
Feuer	James	Skelton	Waddock	S.Davis	Johnson	HUGHES	Alexander (Douglas)	Guentchev	Showler		Patterson	McLaren	(Marshall)
Feuer	James	Thomas	(Waddock)	S.DAVIS 2	Johnson	Hughes	Alexander (Douglas)	(Guentchev)	Showler		(Skelton)	(McLaren)	(Marshall)
Feuer	James	Thomas	McLaren	S.Davis	Johnson	Hughes	Alexander (Showler)	THORPE	(MARSHALL)		(Guentchev)	(Grant)	Skelton
Feuer	JAMES	Thomas	(Skelton)	S.Davis	Johnson	Hughes	Alexander (Showler)	(Thorpe)	MARSHALL		(Guentchev)	(Grant)	(Linton)
Feuer	James	Thomas	McLaren	S.Davis	Johnson	Hughes	Alexander Showler	THORPE	(MARSHALL)		Guentchev	(Grant)	Linton
Feuer	James	(Skelton)	Waddock	S.Davis	Patterson	Hughes	(Alexander)	Showler	Thorpe	MARSHALL 2	(Guentchev)	(Grant)	McLaren
K.Davis	(James)	Skelton	(Waddock)	S.DAVIS	Patterson	Hughes	Linton	Guentchev	GRANT	(Marshall)	(Oldfield)	(Showler)	(Alexander)
Feuer	James	Thomas	Waddock	S.Davis	Johnson	McLaren	ALEX'DERSHOWLER	(THORPE 3)	(Marshall)		(OLDFIELD)	(Grant)	Linton
Feuer	James	Thomas	Waddock	S.Davis	Johnson	HUGHES	Alexander	Guentchev	Thorpe	(Marshall)	(Oldfield)	Grant	McLaren
Feuer	James	Thomas	Waddock	S.Davis	Johnson	Hughes	Alexander	Guentchev	THORPE 2	(Marshall)	Grant	(Oldfield)	McLaren

Average Attendances



Leading Scorers



Coca Cola goals in Sky Blue, FA Cup goals in Magenta, league goals in club colour.

Division Two stats from 96/97 - by FOOTBALL INFORMATION SERVICES (Due to printing deadlines, stats up to and including Saturday, January 11).

**TODAY'S
OFFICIALS**

TEAM CHECK

Today's referee is

**ROBERT
STYLES**

from Waterlogville,
in Hampshire.

Mr Styles, a Quantity
Surveyor, is married with
three children. His is in
his first season as a
Football League referee.

**W.G.
Gowers**



M.J. Perry



WEEKEND'S OTHER DIV TWO MATCHES

Burnley v Bury (Fri)
Blackpool v Crewe
Brentford v Bristol City
Bristol R v York
Notts County v Gillingham
Peterborough v Plymouth
Preston v Watford
Rotherham v Wycombe
Shrewsbury v Chesterfield
Stockport v Millwall
Walsall v Bournemouth

LUTON TOWN

Manager: Lennie Lawrence

WREXHAM

Manager: Brian Flynn

Ian FEUER	1	Andy MARRIOTT
Julian JAMES	2	Mark McGREGOR
Mitchell THOMAS	3	Phil HARDY
Gary WADDOCK	4	Bryan HUGHES
Steve DAVIS	5	Tony HUMES
Marvin JOHNSON	6	Brian CAREY
Ceri HUGHES	7	Martyn CHALK
Graham ALEXANDER	8	Gareth OWEN
Paul SHOWLER	9	Karl CONNOLLY
Tony THORPE	10	Steve WATKIN
Dwight MARSHALL	11	Peter WARD
	12	
	13	
	14	



Plowmans of Luton
Motorbodies of Luton

AND
**LUTON
TOWN**

THE
**PERFECT
MATCH**

You'll do a great deal better with us!

Open 7 Days Plowmans, 15 Hitchin Road, Luton. Tel: 454666
Motorbodies, Memorial Road, Leagrave, Luton. Tel: 567500