



**MEET  
TODAY'S  
VISITORS  
p12-14**

**F.A. CUP**



**LITTLEWOODS**

**MATCH AND  
MATCHBALL  
SPONSORS**

**DBF Crosswinds Ltd**

**LENNIE LAWRENCE ON  
TODAY'S GAME - p2&3**

**KOHLERDOME LATEST:  
MP QUIZZED - p22&23**



**Sponsors of  
Luton Town F.C.**

**OFFICIAL MATCHDAY  
PROGRAMME**

**£1.50**

**v BOREHAM WOOD**

**FA Cup (sponsored by Littlewoods) 2nd round  
Saturday, December 7, 1996, kick-off 3pm**



## From the manager's chair

TODAY we extend an especially warm welcome to the players, officials and supporters of Boreham Wood Football Club, who have already battled through a total of six games in previous rounds of the competition to reach their place in the sun today.

Having witnessed their epic replay at Rushden and Diamonds 10 days ago, I can vouch for the fact that they certainly deserve to have reached this stage of the competition.

The FA Cup is a totally unique competition, and probably no competition in the world could throw up this kind of tie at the second round stage.

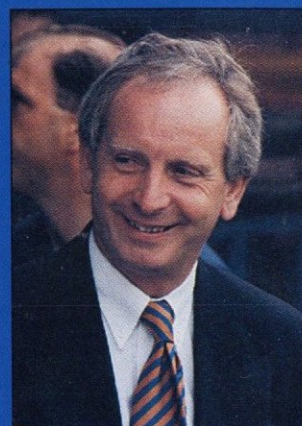
For sure, a league club or two will be back page headlines tomorrow for all the wrong reasons as far as they are concerned, as Millwall were in the previous round.

I made a point of telling the players before the game at Torquay in round one, that we didn't even want to make headlines in the south-west, never mind nationally.

It is up to us to ensure that we approach the game in a thoroughly professional manner, indeed like any league game, and hope that we can produce somewhere near our best form.

We can take for granted the fact that Boreham Wood will raise their game, just as we did against Wimbledon in the Coca-Cola Cup when the roles were reversed.

A possibly lucrative place in the third round beckons, and while we want Boreham Wood



with **LENNIE LAWRENCE**

to enjoy their day and retain their pride, an extended run in the FA Cup will hopefully maintain and increase our confidence for the league programme ahead - as did our run in the Coca-Cola Cup.

Looking back at Tuesday's performance against York City, the first half was uninspiring from an attacking point of view, but nevertheless hardworking and solid from a defensive point of view.

At least going in at half-time not looking remotely like conceding a goal gave us the opportunity to improve and attack more effectively in the second half.

This we were able to do, to maintain our recent scoring rate, and run out worthy 2-0 winners.

York would be a bit disappointed on the night, but had not conceded a goal in their previous four games.

So it was heartening that we

could win clearly, without ever being near our best.

That win, combined with other results on the night, saw us move up to a nice position of fourth in the league table, three points behind the leaders, but with a game in hand.

Today of course is the second of four consecutive home games in various competitions, which is a first for me in my career, and it would certainly be a first if we could win all four.

After today's FA Cup tie, the next in the sequence is Tuesday's home game against third division Leyton Orient in the Auto Windscreens Shield.

This is a game in which we will be fielding a near first-choice team in the hope that we can progress towards the latter stages of this competition which can be financially rewarding.

Congratulations to Ceri Hughes who is back in the Welsh squad, albeit as a standby player, for next Saturday's World Cup qualifier against Turkey.

We have a difficult home game against Crewe that afternoon, and although we all hope that he gets a place in the Wales team, it would at the same time be disappointing to lose him for such a key league fixture.

On the injury front, David Oldfield is back in training, and is set to return in the reserves at Hitchin on Monday, when we entertain Oxford.

Andrew Fotiadis should be back in the reserve team for a game on Monday week, against



Crystal Palace, which was rearranged for this date late this week. That game incidentally will be played at Wimbledon's old Plough Lane ground.

Stuart Douglas will resume training in the middle of next week, and I'm pleased to report that Gary Waddock is fit to return today after his groin injury.

Barring any further

mishaps, by Christmas we may well have a full compliment of players for what is always a physically demanding stage of the season.

Thank you for your support on Tuesday, and again this afternoon. We are well aware of the demands that four home matches in such quick succession make on supporters.

**ABOVE:** Ceri Hughes' recent form has seen him put on standby for the Welsh squad for next weekend's World Cup qualifier against Turkey, in Cardiff. See page 7.

## Make a date with the Hatters!



# THE OFFICIAL 1997 LUTON TOWN FC CALENDAR

Full colour action pictures featuring the first-team squad

**Price - £4.99**  
**ON SALE NOW!**



Luton Town Football Club  
Kenilworth Road Stadium,  
1, Maple Road,  
Luton, Beds LU4 8AW.

Tel: (01582) 411622  
Fax: (01582) 405070  
Ticket Office: (01582) 416976  
Clubcall: 0891 121 123

**Chairman and Managing Director:**  
David Kohler Bsc (Hons)  
ARICS

**Directors:**  
C.S. Bassett, C.T.F. Green,  
N.S. Terry

**Vice Presidents:**  
R.L. Banks, D. Ludlow,  
C. Bygraves, R. Safranek,  
P. Iretton, J. Sapsworth.

**Club Secretary:**  
Cherry Newbery

**Manager:**  
Lennie Lawrence

**First-Team Coach:**  
Wayne Turner

**Player Coach/Reserves:**  
Trevor Peake

**Youth Team Coach:**  
John Moore

**Physiotherapist:**  
Clive Goodyear

**Consultant Physio:**  
John Sheridan

**Youth Development Officer:**  
Paul Lowe

**Scouting:**  
Les Shannan

**Community Football Officer:**  
Jeff Vetere

**Company Secretary and Financial Controller:**  
Bob Bird

**Commercial Manager:**  
Kathy Leather

**Safety Manager:**  
Geoff Lovell

**Catering Manager:**  
Peter Saul

**Medical Officer:**  
Dr Bill Berry

**Club Dentist:**  
A. Chris BDS (Syd)

**Press Officer/P.R.O.:**  
Simon Oxley



BRENTFORD moved to the top of the Division Two table with Tuesday's 2-0 home win over Notts County, writes **SIMON OXLEY**.

Marcus Bent and Carl Asaba were on target as David Webb's side moved above Millwall, after the Lions suffered a shock 1-0 reverse at lowly Wycombe.

The Bucks side moved off the bottom with that victory, to be replaced by Rotherham who lost at home to Stockport.

Bury stayed in third place with a 3-0 home win over Lancashire rivals Preston, with Luton Town moving into fourth with the 2-0 victory over York.

Dwight Marshall, with his third goal in his third start since returning from a broken leg, opened the scoring for the Hatters after 47 minutes.

Tony Thorpe, with his 13th of the season, made it 2-0.

Burnley moved into fifth place with a 2-0 win over Wrexham, with ex-Hatter Kurt Nogan among the scorers. It was only Wrexham's third league defeat of the season so far.

A goal two minutes from time by Jonathan Howard gave Chesterfield a 2-1 win over Barry Fry's

Peterborough, and moved them into sixth place. Stockport are seventh after that win at Rotherham, but Watford slipped to eighth after a 1-1 draw at Bristol City where 16-year-old Gifton Noel-Williams scored his second goal in as many games.

Elsewhere, Blackpool drew 2-2 at home to Plymouth, Gillingham beat Crewe 2-1, Shrewsbury drew 1-1 with Bournemouth, and Walsall beat Bristol Rovers 1-0.

See page 46 for up-to-date league table.



LEFT: Hatters striker Tony Thorpe is tackled by Bournemouth's on-loan defender Rio Ferdinand, during last Saturday's Division Two clash at Dean Court.

**Welcome Boreham Wood FC.....**

THIS afternoon we welcome ICIS Premier Division side Boreham Wood to Kenilworth Road. You can read all about our visitors on pages 12 to 14 of today's match programme.

Boreham Wood's FA Cup progress so far:

- 1st qualifying round - Sat Sept 14 - TRING TOWN (h) - won 8-1
- 2nd qualifying round - Sat Sept 28 - Aylesbury Utd (a) - won 3-0
- 3rd qualifying round - Sat Oct 12 - EDGWARE TOWN (h) - won 3-2
- 4th qualifying round - Sat Oct 26 - THATCHAM TOWN (h) - won 5-0

- 1st round - Sat Nov 16 - RUSHDEN & DIAMONDS (h) - drew 1-1
- 1st round replay - Tue Nov 26 - Rushden & Diamonds (a) - won 3-2

**SAFETY NOTE**

The Chairman and Directors of Luton Town Football Club undertake to ensure as far as humanly possible that all activities that take place at the Kenilworth Stadium are conducted in such a way that, as far as is reasonably practicable, the safety of everybody at the stadium is assured.

It is the policy of the Chairman and Directors to ensure that the conditions set out in the General Safety Certificate, issued under Safety at Sports Ground Act 1975 are fully complied with.

It is the club's policy to provide at any activity sufficient and competent staff and management systems to ensure as far as humanly possible, for the safe admission, accommodation, and exiting of spectators attending the stadium. These systems will be subject to continual monitoring, testing and updating where necessary.

In the interests of public safety, the safety authority (Beds County Council) have imposed a NO SMOKING restriction in and beneath our main stand. Your co-operation is appreciated.

FRONT COVER: Dwight Marshall continued his goalscoring return from injury with Luton's second at Bournemouth last Saturday. There's more action from Dean Court on pages 16 and 17. (Picture: ANDY HANDLEY).

**LUTON TOWN FC MATCHDAY PROGRAMME**

Editor: Simon Oxley  
Tel: 01582 411622  
Fax: 01582 405070

Design and Print:  
McLeod Warner, Luton.  
Tel: 01582 38389  
Paper supplied by:  
James McNaughton, Dunstable

Pictures: Andy Handley



# Universal Salvage Auctions

**OVER 200 REPAIRABLE/STOLEN AND RECOVERED VEHICLES ON SALE AT EACH AUCTION**

**WEEKLY AUCTIONS**

**TUESDAYS**

## CORBY

**MITCHELL ROAD  
PHOENIX PARKWAY  
CORBY NN17 5AF  
01536 202333**

FOR DETAILS OF VEHICLES AT THE NEXT AUCTION FAX 0336 418116. CALLS CHARGED AT 49p PER MIN PEAK AND 39p PER MIN AT OTHER TIMES. AVAILABLE FROM 12 NOON ON THE DAY PRECEDING THE AUCTION.

**WEDNESDAYS**

## REDBOURN

**DUNSTABLE Rd (J9 M1)  
REDBOURN  
HERTS AL3 7PX  
01582 792690**

FOR DETAILS OF VEHICLES AT THE NEXT AUCTION FAX 0336 418115. CALLS CHARGED AT 49p PER MIN PEAK AND 39p PER MIN AT OTHER TIMES. AVAILABLE FROM 12 NOON ON THE DAY PRECEDING THE AUCTION.

**WEDNESDAYS FORTNIGHTLY**

## DENNY

**STONEWOOD  
DENNY  
STIRLINGSHIRE FK6 5HS  
01324 825566**

FOR DETAILS OF VEHICLES AT THE NEXT AUCTION FAX 0336 418118. CALLS CHARGED AT 49p PER MIN PEAK AND 39p PER MIN AT OTHER TIMES. AVAILABLE FROM 12 NOON ON THE DAY PRECEDING THE AUCTION.

**THURSDAYS**

## WESTBURY

**QUARTERMASTER RD  
WEST WILTS TRADING ESTATE  
WESTBURY, WILTS BA13 4JA  
01373 858976**

FOR DETAILS OF VEHICLES AT THE NEXT AUCTION FAX 0336 418116. CALLS CHARGED AT 49p PER MIN PEAK AND 39p PER MIN AT OTHER TIMES. AVAILABLE FROM 12 NOON ON THE DAY PRECEDING THE AUCTION.

**FRIDAYS**

## SANDTOFT

**SANDTOFT IND. EST.  
SANDTOFT RD, BELTON  
NR DONCASTER DN9 1PN  
01427 873777**

FOR DETAILS OF VEHICLES AT THE NEXT AUCTION FAX 0336 418115. CALLS CHARGED AT 49p PER MIN PEAK AND 39p PER MIN AT OTHER TIMES. AVAILABLE FROM 12 NOON ON THE DAY PRECEDING THE AUCTION.



**NO  
DEPOSIT**

**AND**

**3  
YEARS  
INTEREST  
FREE CREDIT**

**AVAILABLE ON  
HUNDREDS OF SUITES**

the  
**FURNITURE SHOP**  
FOR SERVICE, STYLE, VALUE

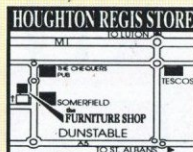
Subject to status. Licensed Credit Broker. Written details on request.



Up to **£300**  
**TRADE IN**  
This is a limited offer.

**DUNSTABLE**  
22 BEDFORD SQUARE, HOUGHTON REGIS  
**01 582 867531**

OPEN MON - SAT 9-5.30pm SUN 10-4pm  
OTHER BRANCHES: CORBY 01 536 400445, BEDFORD 01 234 742030,  
LEIGHTON BUZZARD 01 525 378619, WATFORD 01 923 230845  
MILTON KEYNES 01908 520094



**MARTIN SMITH  
COMMERCIAL  
MOTORS**

**USED COMMERCIAL VEHICLE  
SALES & SERVICE**

Always a large selection of quality late  
used commercial vehicles on display

199 & 207 Leagrave Road,  
Luton, LU3 1JD,  
Bedfordshire.

Telephone: (01582) 574455/505854  
Fax: (01582) 490858

**THE MAD HATTERS  
CLUB LTD**  
**LUTON'S NO.1  
MEMBERS CLUB**

**Two floors of music**  
**- Soul, Swing, Lovers Rock**  
**- House, Garage**

**OPEN MONDAY TO SUNDAY**  
**11am to 3am**

**VIP Lounge - Top Floor**

**Find us at  
Cheapside**

**Phone: 01582 411894**  
**Membership Available**

# LEADING THE LINE

by Club Captain  
**STEVE DAVIS**



**LEFT: Paul Showler in action during  
Luton's FA Cup first round win at  
Torquay.**

TUESDAY night's win over York was a big boost after the disappointment of the defeat at Bournemouth, and with other results in the main going our way, we moved back up to fourth in the table.

We kept it tight in the first half, but chances were few and far between before Dwight popped up with the opening goal just after the break. He and Tony Thorpe seem to have hit it off up front, and long may that continue.

Now we turn our attentions to two cup competitions, with today's FA Cup tie followed by the Auto Windscreens Shield on Tuesday.

This afternoon will be a big game for our visitors, and we must treat them with the utmost respect. We have done our own bit of giantkilling this season in the

Coca-Cola Cup, and it is always the way in football that sides raise themselves for matches against teams from higher leagues.

This will be a first for me, as I have never played non-league opposition before in the FA Cup, and apart from our win at Torquay last month my FA Cup memories with Luton are confined to listening to the radio reports from Grimsby last January ..... not the best of afternoons!

But the cup does give you the chance of playing against non-league sides one day, and Premiership sides the next. In my last season at Burnley, we came up against Liverpool. After a 0-0 draw at Turf Moor, we lost the replay 1-0, but it was a great experience to play at Anfield.

Who knows, if we can progress this afternoon, as we should, then we could find ourselves up against one of the best sides in the country on January 4. Those players still here who were involved in Luton's cup run to Wembley in 1994, I know have fond memories of the occasion and the matches along the way. I'm sure supporters share the same emotions when it comes to the cup.



## Oh boyo..... Ceri's back!

HATTERS midfielder Ceri Hughes is right back in contention for a return to international football, after being put on standby for the Wales squad for next Saturday's World Cup qualifier, against Turkey in Cardiff.

Ceri has been capped five times for Wales, making his debut in 1992 as a substitute against Holland. His other appearances have been against Norway, Sweden and Estonia in 1994, and last season against Albania.

Wales manager Bobby Gould has included former Luton players John Hartson and Mark Pembridge in his squad. The Welsh need a win to rekindle their World Cup ambitions, following the 7-1 defeat by Holland last month.

FOR THE LATEST NEWS - **CLUBCALL 0891 121 123**

Calls cost 45p per minute at cheap rate and 50p per minute at all other times



## From the secretary's chair

IF a replay is required following today's game, it will be at Boreham Wood on Tuesday, December 17, which would mean the postponement of our league game the following evening at Millwall.

Ticket details can be found on the facing page, but this game would be ALL-TICKET.

The draw for the third round takes place on Monday evening at 10.15pm, and will be broadcast live on BBC2 and Radio Five.

We are still awaiting a new date for the league game at Wrexham, and a reminder once again that the home league game with Watford has now been switched to Sunday, January 26, kick-off 1pm, for live coverage on Sky Sports.

But this game will only go ahead if neither side are involved in the fourth round of the FA Cup which is also that weekend.

The youth team drew their FA Youth Cup second round match at Oxford United on Monday.

The replay will be here at Kenilworth Road on Thursday, December 19, kick-off 7.30pm.

Admission will be £3 for adults and £1.50 for concessions.

Apologies for the late postponement of Wednesday's reserve game at Ipswich due to a



with **CHERRY NEWBERY**

waterlogged pitch. Ipswich had hosted a game there on Monday, and felt that a further match on Wednesday would do serious damage to the surface.

There is, as yet, no new date for this game.

Thanks to all supporters who attended the charity match at Slip End last Sunday, when a Luton Town XI played against the village side.

This game, and associated events, raised £2,000 following a tragic

house fire in which one of the Slip End members lost his life. The first team players are once again visiting local hospitals in the run up to Christmas, and were at the Lister Hospital in Stevenage on Thursday, and will be at the Luton and Dunstable Hospital next Thursday.

Apologies to supporters who use the Nick Owen bar after the game. This facility will not be available after today's game, or after next Saturday's game, due to long-standing functions being held at the club.

Finally a note regarding PA announcements and Happy Birthday messages etc.

We are always happy to make these on a matchday, but please could you contact us before the day of the game with details of any messages. Thank you.

## TOWN TEASER

One of Luton's best FA Cup runs in recent years was in the 1984/85 season. In the fifth round against Watford, we won the second replay 1-0. Who scored the goal?

Listen out for the PA announcer asking this question before the game!

## Bobbers Travel Club - Coach Travel Price List 1996/97

Date	Destination	Adult	Child/OAP	Depart Cranfield	Depart Luton
Wed Dec 18	Millwall	£5.50	£4.50	3.45pm	4.45pm
Thurs Dec 26	Gillingham	£7.50	£6.00	8.00am	9.00am
Sat Jan 4	Chesterfield	£9.00	£7.00	10.00am	11.00am
Sat Jan 11	Blackpool	£13.50	£11.00	8.00am	9.00am

Coaches from Cranfield pick-up additionally at the following places: Marston Moretaine, Ampthill, Flitwick, Westoning and opposite the Luton Gateway Hotel. All coaches then depart from the junction of Hazelbury Crescent and Kenilworth Road.

To book: 1) From the ticket kiosk in the Kenilworth Road turnstiles. See BTC travel club co-ordinator Paul Deason before any Saturday 1st team home match between 2.15 and 2.45pm. (No bookings taken at midweek matches). 2) On the return journey from the previous away game. 3) Telephone Paul Deason on Bedford 01234 750996.

Life Membership of the Bobbers Travel Club is £1 for adults and 50p for children/OAPs.

## Luton Town v Leyton Orient

## AUTO WINDSCREENS SHIELD ROUND ONE

Tuesday, December 10, 1996, kick-off 7.45pm

Tickets for this match are now on sale at the following prices:

Main Stand A-E - Adults £12.50, Juniors/Seniors £6.50

Main Stand F - Adults £9.50, Juniors/Seniors £4.50

Main Stand G - Adults £5, Juniors/Seniors £4

Enclosure C-G - Adults £9.50, Juniors/Seniors £4.50

Enclosure A,B,H,J - Adults £5, Juniors/Seniors £4

New Stand A-D - Adults £12.50, Juniors/Seniors £6.50

Kenilworth Upper & Lower - Adults £9.50, Juniors/Seniors £4.50

Season Ticket Holders' seats will be reserved for them to claim up until Saturday, November 30, at 11am. Members can now purchase tickets that are not reserved for season ticket holders. Normal guesting facilities apply.

## Luton Town v Crewe Alexandra

## NATIONWIDE LEAGUE DIVISION TWO

Saturday, December 14, 1996, kick-off 3pm

Tickets for this match are now on sale at normal league prices.

Normal guesting facilities apply.

## Millwall v Luton Town

## NATIONWIDE LEAGUE DIVISION TWO

Wednesday, December 18, 1996, kick-off 7.45pm

Pay on the night only at Millwall. Seats allocated in the North Stand, entrance through turnstiles 31-36. Prices: £12 adults, £6 juniors and senior citizens.

## Gillingham v Luton Town

## NATIONWIDE LEAGUE DIVISION TWO

Thursday, December 26, 1996, kick-off 12 noon.

Seat tickets are very limited for this match. Tickets will be available to ONE per Season Ticket Holder (subject to availability) until Saturday, December 7, at 5.15pm. If any tickets remain, they will go on sale to ONE per Member (subject to availability) on Monday, December 9, at 10am. Tickets will be available until Friday, December 20 at 4pm (providing there are tickets left). If any seat tickets are still available they will be on sale on the day at Gillingham.

Seat prices: £11 adults, £6.50 senior citizens, £4 juniors (under 16).

Terracing: Pay on the day only at Gillingham.

Prices: £8.50 adults, £6.50 senior citizens, £4 juniors (under 16).

## If it's a draw today..... Boreham Wood v Luton Town

## FA CUP SECOND ROUND REPLAY

Tuesday, December 17, 1996, kick-off 7.30pm

This would be an ALL-TICKET match. Bookings will be taken after today's game. Seats: £10 adults and £7 concessions. Standing: £8 adults and £5 concessions. Tickets will be available to ONE per Season Ticket Holder (subject to availability) until 4pm on Thursday, December 12, on production of cup voucher D. If any tickets remain, they will go on sale to ONE per member (subject to availability) from 10am on Friday, December 13.

## LTFC TICKET OFFICE OPENING HOURS

Monday to Friday: 10am-4pm. Saturday (matchdays): 9am-3pm and 4.45-5.15pm. Saturdays (non matchdays): Subject to change. Please contact ticket office on 416976. For bookings, membership and enquiries, ring the Ticket Office direct on (01582) 416976. Supporters wishing to order by credit card can do so by using the 24-hour credit card hotline on (01582) 30748.

PLEASE NOTE THE TICKET OFFICE IS NOW SITUATED IN THE CLUB SHOP MONDAY TO FRIDAY 10AM TO 4PM, AND ON NON-HOME MATCH SATURDAYS.

## Travelling to...

## Millwall

Address: The Den, Zampa Road, London, SE16 3LN.  
Tel: (0171) 232 1222

Follow City signs from M1/A1, then signs for Shoreditch and Whitechapel. Follow signs Ring Road, Dover, cross over Tower Bridge, 1st exit at roundabout (1 mile) on to A2. From Elephant and Castle take A2 (Old Kent Road) into New Kent Road, and left turn to ground is signposted after approximately two miles.

## Gillingham

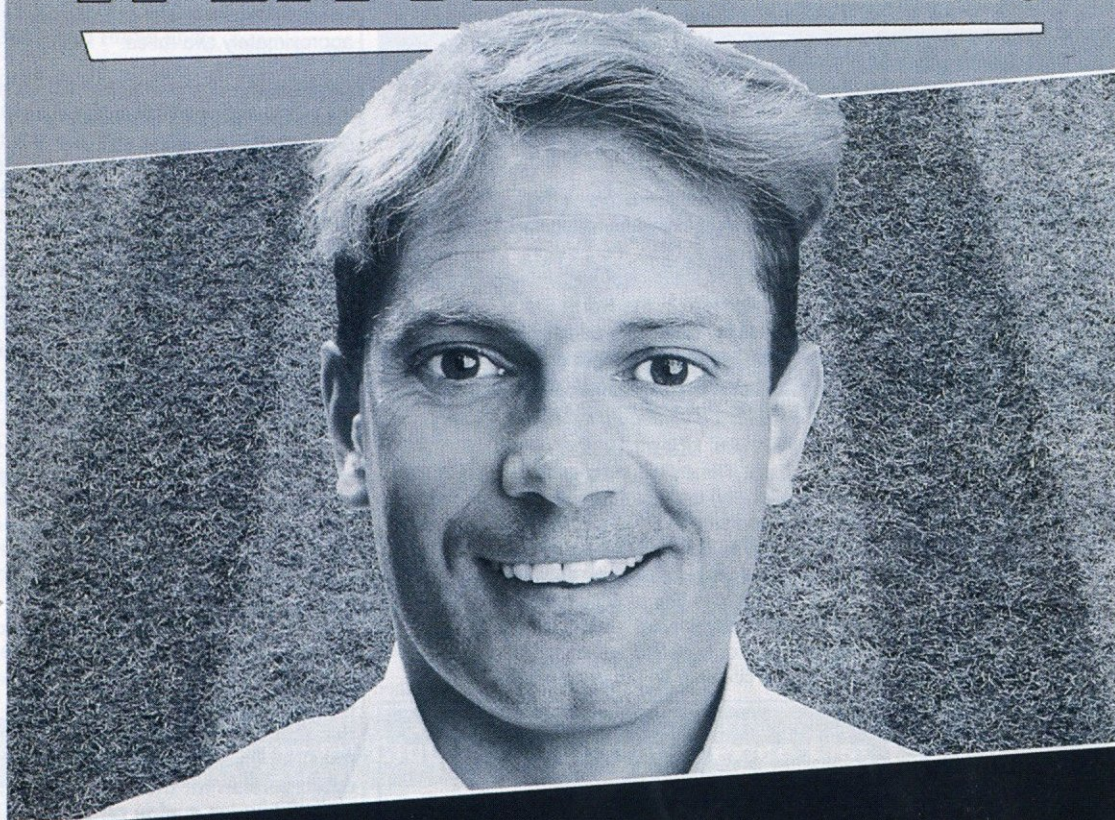
Address: Priestfield Stadium, Gillingham, Kent, ME7 4DD.  
Tel: (01634) 851854

Take M1 south and M25 east, exiting M25 at M2. Exit M2 at junction 4 (s/p Gillingham A278). Left at motorway roundabout, and then straight on, following signs to Gillingham A278 and then Gillingham Town Centre over two roundabouts for 2.6 miles. At 3rd roundabout, turn left (s/p Gillingham, Chatham A2) onto the A2. Drive 0.6 miles, straight over roundabout, then move into right filter, and turn right into Woodlands Road (brown s/p Strand Leisure Park). After 1 mile turn left (just before BP station) into Chicago Avenue and floodlights are directly ahead.

Directions courtesy of FOOTBALL FAN'S GUIDE. Editor's note: This highly acclaimed and well-researched book is now available in the Club Shop. There is an updated version for the 96/97 season, and it includes a wide range of information for the travelling supporter.



EVERY WEEK ON LITTLEWOODS POOLS  
**THOUSANDS OF PEOPLE**  
 WIN ENOUGH TO GIVE THEMSELVES  
**A LITTLE TREAT.**



Just imagine the thrill of walking into a shop, pointing at something and saying "I'll take it." (i.e. a fluffy new rug, a delightful pet hamster, some syrup of figs, or, as in Ray Wilkins' case, a smart new shirt.) With our runners-up prizes, of anything from one pound to hundreds of thousands of pounds, you could be doing just that. In fact, with around eighty thousand prizes every week there's a fair chance it'll be sooner than you think too. Talk about exciting.

Why spoil it winning the jackpot? To play, phone 0800 49 00 00 and either set up a multi-week entry, or arrange for a collector to visit.

**LITTLEWOODS**  
 Get a result

EA CUP SPONSOR <http://www.littlewoods-pools.co.uk>



## Auto Windscreens Shield - First Round **LUTON TOWN v LEYTON ORIENT** Tuesday, December 10, 1996, kick-off 7.45pm

A number of supporters have contacted Luton Town Football Club regarding the ticket prices for the forthcoming Auto Windscreens Shield match, against Leyton Orient, on Tuesday, December 10.

As this is a cup match, the proceeds are divided equally between the two clubs, and thus any price reductions have to be agreed by BOTH clubs.

Bearing in mind the following: a) This game is one of four home matches in a 12-day period; b) The proximity to Christmas, when disposable income is at a premium; and c) The fact that this stage of this competition is not traditionally well supported; we approached Leyton Orient with a view to a substantial price reduction.

However they would only agree to a £3.00 reduction for adults, and £1.50 for juniors and seniors, from our normal league prices.

Full ticket details can be found on page 9 of today's match programme.

LUTON TOWN FOOTBALL CLUB.

## From Russia with love! Fans clock up the miles



LUTON fans have travelled the equivalent of London to Moscow in following their side away from home in November.

The four matches in league and cup meant a total distance of close on 1,600 miles. The supporters had to cope with trips to Plymouth (500-mile round trip from Luton), Torquay (440) - travelling faithful pictured above - Preston (360) and Bournemouth (280). And all this after earlier trips to Bristol (twice), Bury and Stockport.

But November could have been worse..... thank goodness Wrexham was called off!

Supporters are invited to send photos, requests for penpals, or other information for the matchday programme, to: Simon Oxley, LTFC, Kenilworth Stadium, 1 Maple Road, Luton, Beds, LU4 8AW.

**R. J. BLOW &  
 COMPANY**

THE FRIENDLY ACCOUNTANTS

*Book-Keeping  
 Taxation and Wages etc.*

GUILD HOUSE,  
 28 GUILDFORD STREET,  
 LUTON, BEDS, LU1 2NR

Tel: (01582) 38792

Fax: (01582) 423347

FOR THE LATEST NEWS - CLUBCALL 0891 121 123

Calls cost 45p per minute at cheap rate and 50p per minute at all other times





Boreham Wood FC: November 1996:

Back row: l to r: Alan Hamlet, Dave Hatchett, Steve Heffer, Tony Samuels, Barry Fox, Simon Sheppard, Garry Nisbet, Andy Lomas, Dean Samuels, Steve Daly, Nicky Ironton (coach), Terry Harris (coach).

Front row: l to r: Marc Liburd, Andy Prutton, Tony Joyce, Jason Shaw, Terry Robbins, Matthew Howard, Billy Harrigan, Rob Hollingdale.

Photos of Boreham Wood FC: - CLIVE BUTCHINS.

## Introducing Boreham Wood FC.....

BOREHAM Wood Football Club, as it is now known, was formed in 1948 following the amalgamation of Boreham Rovers and Royal Retournez, writes *SIMON OXLEY*.

The club progressed through the Mid-Herts League, Parthenon League and Spartan League, before moving onto the Athenian League. The club made rapid progress in this league and won the Premier Division Championship, by nine points, in 1973/74.

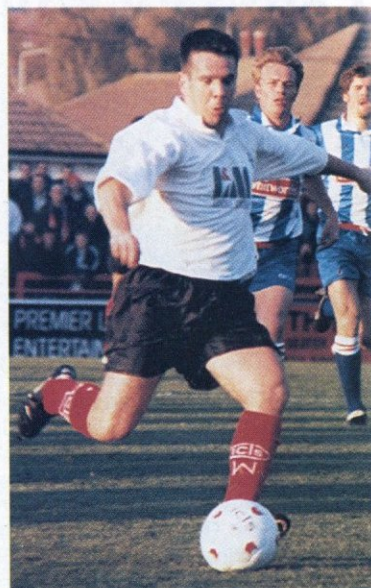
An application was then made to join the Isthmian (currently ICIS) Football League in 1974/75, and in 1976/77 the club won the Division Two championship by 16 points. After five seasons in the Premier Division, Boreham Wood was relegated for the first and only time in the club's history, at the end of the 1981/82 season.

The 1994/95 season was one of the most successful in the club's history. The Division One championship was won by an amazing 22 points, and resulted in promotion back to the Premier Division.

Last season, 1995/96, was another marvellous one, with the club still in contention for the Premier Division championship on the very last day of the league season. However, it finished in a very creditable third place, with the best away record in all divisions. This is the highest placing Boreham Wood has ever achieved, and with GM Vauxhall Conference ground grading already gained, will be pushing for promotion again in 1996/97.

Boreham Wood reached the first round proper of the FA Cup in 1973/74 and again in 1977/78. The club's best performance in the FA Trophy came last season, when they lost 4-3 after extra-time at Chorley, in a third round replay. It was the second successive season that the club had reached the last 16 of the competition.

In the Hertfordshire FA cup competitions, the club has had many successes over the years, winning the Senior Challenge Cup, the Charity Shield, the Junior Cup, the Intermediate Cup and the Charity Cup. The club has also participated in the London FA Senior Cup, and more recently in the London Senior Challenge Cup. In each of the last two seasons, the club has lost on penalties in the final of the ICIS League Full Members Cup.



ABOVE: Striker Terry Robbins pictured in action in the first round match against Rushden and Diamonds, which ended 1-1.

**STEVE DALY** - 26-year-old defender who joined Boreham Wood from Wembley last season. Formerly with Ruislip Manor.

**BARRY FOX** - Experienced defender who has made over 100 first team appearances since joining Wood from Grays Athletic, where he spent many years, having started his career with Millwall.

**MATTHEW HOWARD** - Now in his second spell with Boreham Wood having rejoined them from St Albans just after the start of this season. Has also played for Hayes, having been a junior at Watford and Brentford.

**BILLY HARRIGAN** - Club captain who joined Boreham Wood from Bishop's Stortford in the summer of 1994. Central defender, now 32, who has now made over 100 first team appearances for the club, and was voted Player of the Year in 1995/96.

**DAVE HATCHETT** - 31-year-old utility player who is currently Boreham Wood's longest serving player. Now in his 12th season with the club, having joined from Enfield, making his debut in August 1985. Started the season having played 557 times for Boreham Wood, needing just 19 more to beat the club's all-time record.

**STEVE HEFFER** - Midfielder who joined Boreham Wood from Hendon during the summer of 1994, scoring two goals on his debut away to Abingdon. Previously with West Ham, Southend, Sutton and Grays.

**TONY JOYCE** - Defender who joined the club from Stevenage, scoring on his debut at Newbury. Penalty taker, who netted 12 of his 16 goals last season from the spot.

**MARC LIBURD** - Started his career as a youth player at Watford, and at the end of the 1995/96 season had scored 38 goals in 147 first team appearances for Boreham Wood.

**ROB HOLLINGDALE** - Signed from Wembley earlier this season for £2,500.

**GARRY NISBET** - Centre-half who joined Boreham Wood from Collier Row during the summer of 1994.

**ANDY PRUTTON** - Midfielder who joined the club from Harrow Borough in the summer of 1995. Began his career with Wormley Rovers, before moving on to Cheshunt and Dartford.

**TONY SAMUELS** - Experienced striker, known as 'Junior' who scored on his debut in 1994, and hasn't stopped since. Bagged 23 in 42 appearances that season, 22 in 55 last season, and so far in the current campaign has netted 12 goals in 23 matches. Had trials with Stoke City.

**DEAN SAMUELS** - Younger brother of Tony, who has previously played for Tottenham, Watford, Southend, Leyton and Sutton.

**JASON SHAW** - Midfielder who began his career at West Ham, and has also played for Redbridge Forest, Dartford and Harrow Borough. Joined Boreham Wood in 1994.

**SIMON SHEPPARD** - Goalkeeper who joined Boreham Wood earlier this season. Began his career with Watford, and made 18 Division One appearances for Reading last season, including the 3-1 win over Luton at Elm Park in September.

**ANDY LOMAS** - Experienced goalkeeper who has played for Eaton Bray, Arlesey, Baldock, Barnet, Chesham, Stevenage and Rushden.

**TERRY ROBBINS** - Experienced striker, now 31, who joined the club from Barnet in the summer. Semi-professional international, who has played at Tottenham, Gillingham, Maidstone, Crawley and Welling, before moving to Barnet. Leading scorer so far this season with 15 goals in 24 appearances.



ABOVE: Jason Shaw



ABOVE: Tony 'Junior' Samuels (right) makes a break for Boreham Wood.



## For the Hatters and for 'Wood.....

One of a family of nine children, BRIAN STEIN was brought up in Cape Town and came to this country at the age of eight, after his father had been persecuted for his anti-apartheid views.

Settling in North London, Brian, and it seems like all his brothers, became well known in footballing circles and he first turned out at senior level for Sudbury Court where he once notched 70 goals in a season.

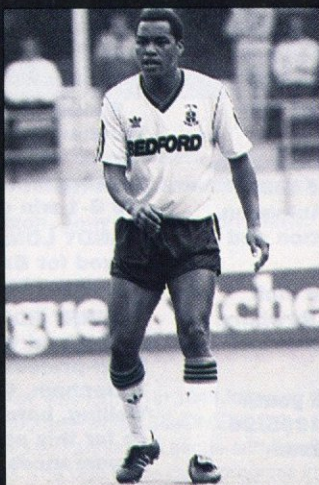
Edgware Town was the next stop where he was spotted by then Luton coach David Pleat, who invited him to Kenilworth Road.

The rest, as they say, is history. A few days after joining the Town he was making his debut in a League Cup second replay against Manchester City, and went on to make a total of 493 first team appearances, in two spells, scoring 151 goals.

His first departure came, controversially, after the Littlewoods Cup final match against Arsenal in 1988 - a game which saw him score twice - and the second after our relegation from the old Division One in 1992.

In between his two spells at Kenilworth Road he played for Caen and Annecy in France, and since his second departure he has turned out for several local teams including St Albans, Boreham Wood - where he top-scored last season - and latterly Baldock Town, where he is now player-manager.

He won just one England cap, in 1984 against France. - ROGER WASH.



ABOVE: Andy Prutton

RIGHT: Keeper Simon Sheppard played against the Hatters last season for Reading.



## MEET THE MANAGER

BOB MAKIN was appointed team manager of Boreham Wood during the summer of 1993, and is now in his fourth season at the club.

He was a very successful non-league player with Barking, Dagenham, Dartford, Chelmsford, Leytonstone, Ilford and Redbridge Forest.

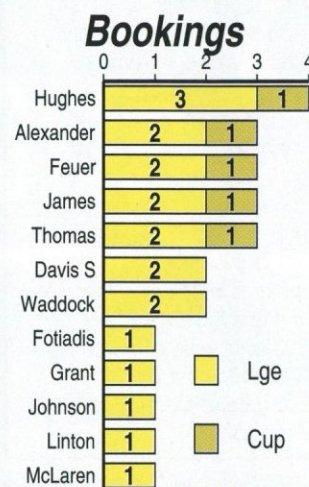
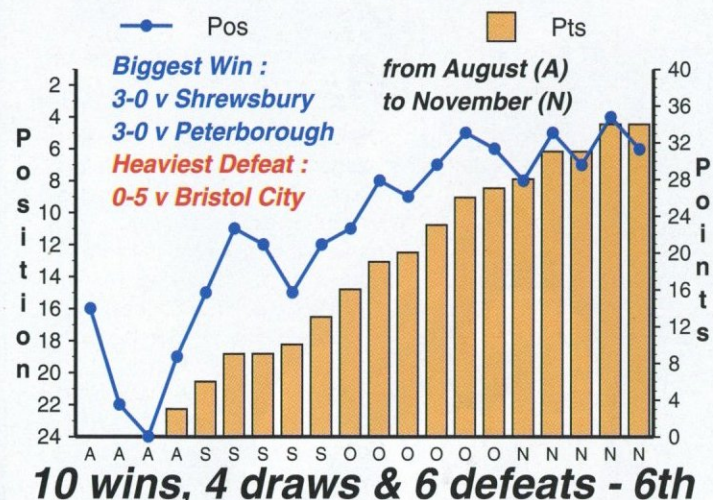
Whilst at Dartford, he twice reached the fourth round of the FA Cup.

He then had spells as player/manager with Barking, Dartford and Hendon, and was named ICIS League Division One Manager of the Season in 1994/95, when Boreham Wood won the championship.

ALAN CARRINGTON is the assistant manager, having also joined the club in 1993. He spent most of his playing days at Hayes.

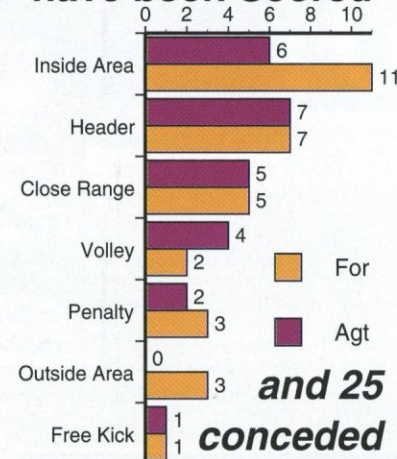
Club coach is NICK IRONTON, who joined the club this summer. Nick had two spells at Boreham Wood as a player, and is a former England semi-professional international.

DAVE DICKENS is the club's physio, having been at the club for a number of seasons.

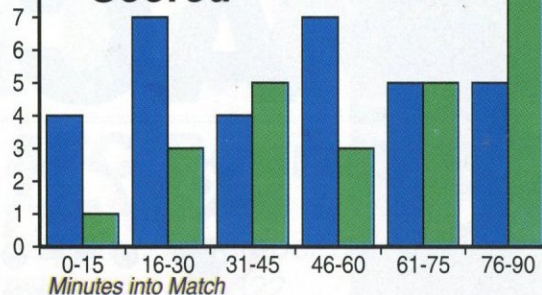


Red Cards: League - Thomas, Thorpe Cup - Waddock

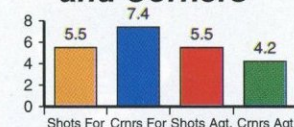
## How 32 Goals have been Scored



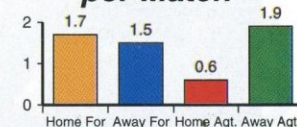
## When Goals have been Scored



## Average Shots and Corners



## Average Goals per Match

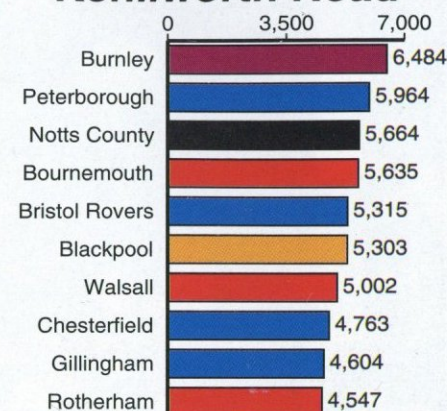


GRAPHICS BY: Football Information Services.

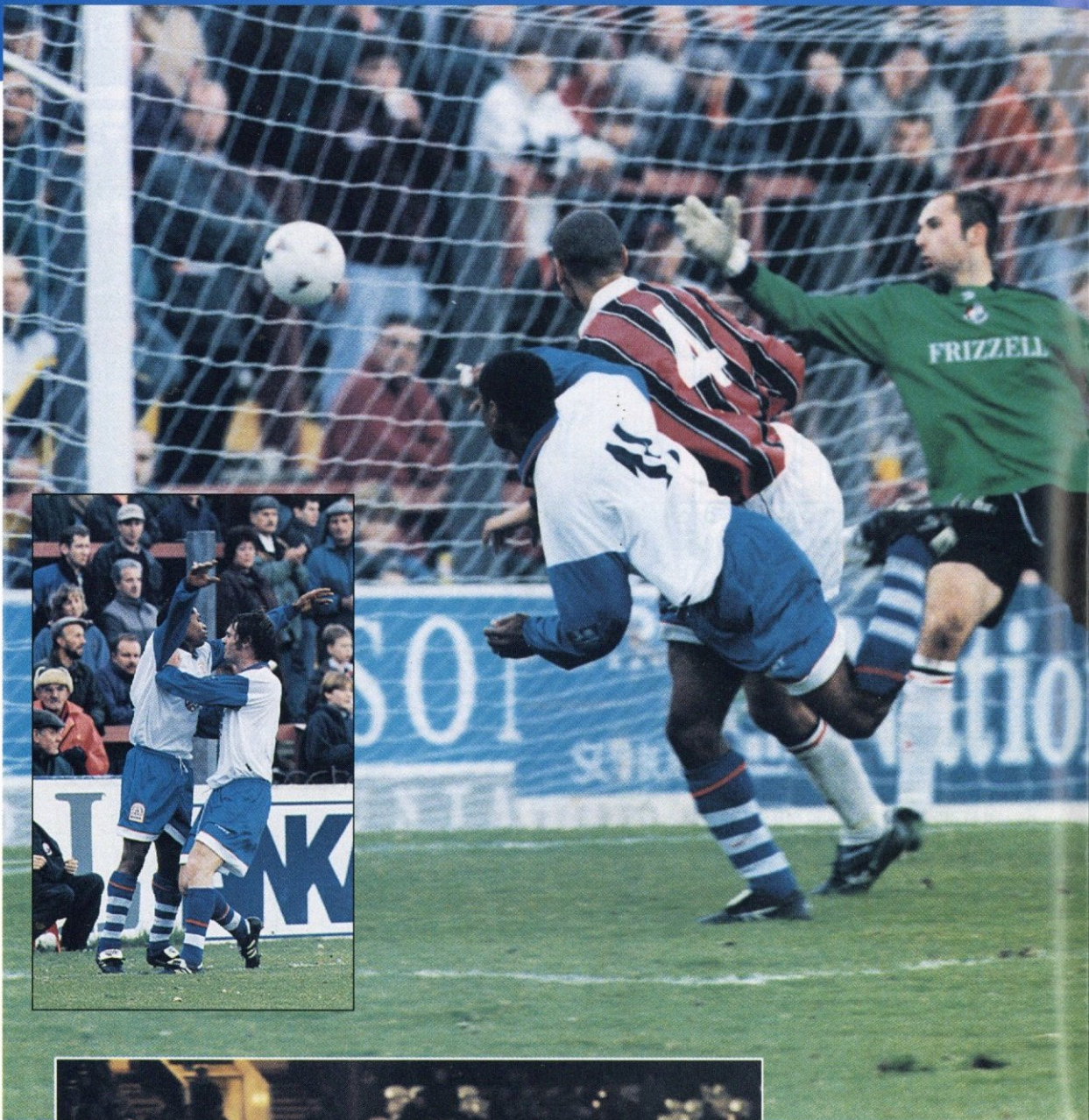
Luton Town stats from 96/97 season. (Due to printing deadlines, Tuesday night's match against York City is not included).

See pages 46 and 47 for up-to-date Luton stats, plus the current Division Two table.

## Attendances at Kenilworth Road







Julian James equalises for the Hatters with a left-foot shot from the edge of the penalty area.

Dwight Marshall heads Luton in front just before half-time, and (inset) celebrates with Graham Alexander.

Penalty? Dwight Marshall attempts to get on the end of Bontcho Guentchev's injury-time cross.

Mitchell Thomas finds himself outnumbered by the Bournemouth defence.

# ACTION STATIONS

**AFC Bournemouth 3 Luton Town 2**

(Robinson 2, Cox)

(James, Marshall)

Saturday, November 30, 1996 - Nationwide League Division Two

Attendance: 4,322

Pictures by Andy Handley





# It's.. TRIVIA TIME

© Metro Marketing (UK) Ltd 1996

## TRUE or FALSE?

1. Dixie Dean scored over 400 goals for Everton.

2. Bradford Park Avenue were replaced by Cambridge United.

3. Leeds City used to play at Elland Road before Leeds United.

4. The Neville's are the first brothers to play for England since two of the Wallace brothers.

## ? QUICK QUIZ ?

1. What was the score when Italy played Wales last February?
2. In which country do clubs called Taurus Taurage, Kaunas and Musha Ukmerge play?
3. In which city can you watch League football in Europe and Asia?
4. How much did Blackburn pay Dundee United for Billy McKinlay?
5. Which club finished bottom of the Football League in 1994/95?
6. Who was the West German goalkeeper in the 1966 World Cup?

## WHO'S TROPHY CABINET?

Which club has lifted the following trophies?

FA Cup:  
1923, 1926, 1929, 1958

Sherpa Van Trophy:  
1989

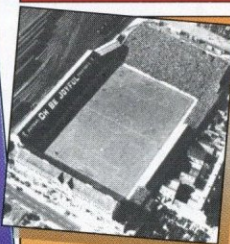
Division 2 Championship:  
1908/09, 1977/78

Division 3 Championship:  
1972/73

## IN WHICH YEAR DID...?

Arsenal win the League, Blackpool win the FA Cup, Rangers win the Scottish League and Cup, Walthamstow hold Manchester United to a draw in the FA Cup, Everton 'keeper Ted Sagar retire after 24 years at the club and England lose 3-6 to Hungary?

**ALL THESE EVENTS TOOK PLACE IN THE SAME YEAR**

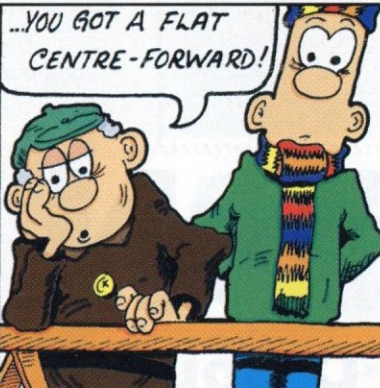


## SPOT THE GROUND

The wooden West Stand used to be showered with sparks from passing locomotives. It was used as an RAF training ground during the Second World War. Was at it's fullest during the 1940's and '50's. The railway has now been replaced by roads and car parks. The picture is over 60 years old. The ground can be seen from the local tourist attraction.

## 'Norm & Ec'

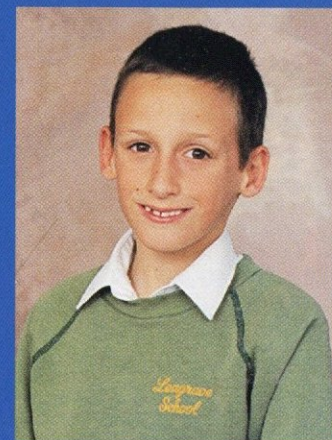
by Norman Hood



Answers  
QUICK QUIZ: 1. 3-0 to Italy; 2. Lithuania; 3. Istanbul (Turkey); 4. £1.75million; 5. Exeter City; 6. Hans Tilkowski.  
WHO'S TROPHY CABINET?: Bolton Wanderers  
TRUE OR FALSE?: 1. False, he only scored 349. 2. True; 3. True; 4. False, since the Chartons.  
IN WHICH YEAR: 1955.  
SPOT THE GROUND: Bloomfield Road, Blackpool



## Today's mascot



This afternoon's Junior Hatters mascot is 10-year-old **CARL LEWIS**, who attends Leagrave Junior School. His hobbies are football and art, and his favourite Luton Town player is Kim Grant.

**LOOK OUT FOR THE NEW LUTON TOWN CALENDAR FOR 1997, AVAILABLE IN THE CLUB SHOP FOR £4.99**

## JUNIOR HATTERS NEWS

## Book now for the Junior Hatters' Christmas party!

TIME is running out for you to reserve your place at the Junior Hatters Christmas party, which will take place on Monday, December 16, from 7 to 9pm.

It will be held at the Four Horseshoes Function Room, in Park Street, Luton, and the Luton players will be attending. Tickets are priced at £3, which includes refreshments and a present, and can be obtained from the ticket office.

Don't forget it's the last Saturday Club before Christmas when we entertain Crewe on Saturday, December 14. Last Saturday, we were joined by our visitors from Bristol Rovers.

For those of you who haven't attended the Saturday Club, you don't know what you're missing! The Saturday Club is fully supervised, begins at 12 noon, at Dallow Road, Luton. We play football and other games for fun, and then have sausage and chips for lunch, so all you need to bring is suitable footwear and a drink. After lunch it's a short walk to the ground and to the family room in the Kenilworth Stand, and we watch the game from the Kenilworth End. At the end of the match your parents can collect you from the Family Room. Five hours of fun costs just £3.50 for Junior Hatter season ticket holders and £6.50 for Junior Hatters - but please book by 4pm the Friday before the match.

We try to organise trips to away matches whenever possible, and thanks to everyone who came with us down to Bournemouth on Saturday. No more away trips are planned until after Christmas, but watch this space for details in the New Year.



**BEN MORGAN** was our Junior Hatters mascot for last Saturday's trip to Bournemouth. He is pictured (above) with the team captains and match officials prior to kick-off, and (left) with Dwight Marshall.



# OVER THE BAR!

Drink a toast to the Hatters in the following pubs...



## THE BOATER

Traditional fayre  
Real ales, jazz nights  
& quiz nights

121 Icknield Way,  
Luton  
Tele: (1582) 575191

## Monty's Bar

'Live music  
every Thursday'

23 Hastings Street, Luton  
Tel: 01582 486683

## THE RED LION Breachwood Green Hitchin, Herts

Fine traditional ales  
Bar snacks & buffets  
(Parties catered for)

Regular traditional jazz and live  
music evenings  
Phone for details:  
(01438) 833123

Richard  
and Karen  
welcome  
you to



Hotel accommodation, good  
food and fine selection of cask  
ales & lagers.  
Kings Walden Rd, Offley.  
01462 768281

## THE BREWERY TAP

22 Park Street, Luton  
(01582) 31797  
Disco on Thurs, Fri,  
Sat and Sun nights



## THE SOMERSET TAVERN

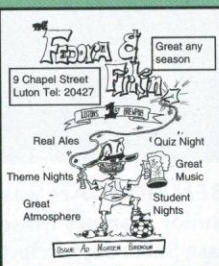
### Berni

Good food and fine selection  
of cask ales.

Quiz nights and karaoke.  
Crawley Grn Rd, Luton.  
Tele: 01582 29912.



6 West Street, Dunstable  
Jim and Joy Morris  
Tele: (01582) 661035



Carol and John Brennan  
welcome you to  
**THE FARMER'S BOY**  
Common Rd, Kensworth

Real ales (CAMRA 'Good  
Beer Guide')

Traditional Sunday lunches  
£4.75 per person  
(01582) 872207

## Kim and Chris welcome you to THE WHEATSHEAF

Traditional country pub serving  
snacks and real ales.

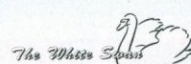
Large garden, children  
welcome.

15 High Street, Flitwick.  
Tel: (01525) 712574.

## THE BRIDGE TAVERN

Disco every Friday and Saturday  
with DJ Cozza.  
Pool knockout competitions  
every Wednesday.  
Big screen TV.  
Good selection of flavoured  
bottled 'shots' available.

95 Guildford Street, Luton.  
Tel: (01582) 30868.

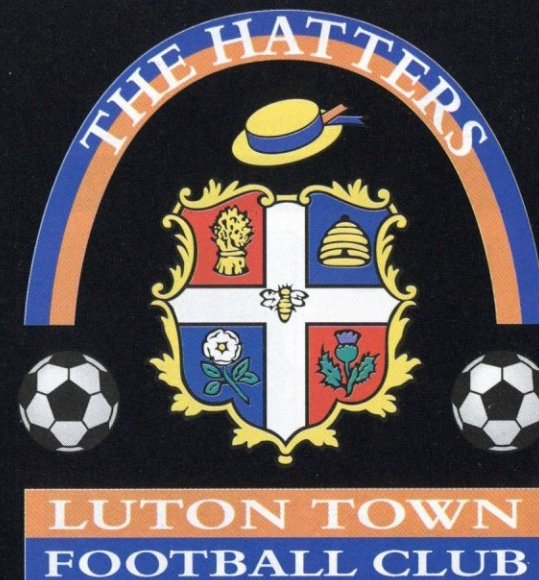


93 High Street  
South, Dunstable

The only place to eat in  
Dunstable  
Tele: (01582) 667833  
Fax: (01582) 475552



**Cork  
& Bull**  
  
FREE HOUSE  
Air conditioning and waitress  
service. Daily fresh home  
cooked specials  
4 CUMBERLAND STREET,  
LUTON. (01582) 29586



**Official Supplier to  
Luton Town FC**



'Over the Bar' Part Two is on page 44.....



## 4 | HOME NEWS

Minister urges investigation, reports David Hencke

## MP 'did not reveal interest' in stadium

**A** FORMER aide of John Major, Sir Graham Bright, is in the centre of a parliamentary row over allegations that he intervened with ministers to discredit Luton Town Football Club's plans for a £50 million stadium.

A minister has urged David Kohler, chairman of the club, to report the Luton South MP to Sir Gordon Downey, the Parliamentary Commissioner for Standards, "with all speed" for "irregularities" which appear to breach parliamentary rules.

The row is over rival plans for a stadium to replace the cramped ground in Kenilworth Road — now the subject of a public inquiry which reconvenes tomorrow. Mr Kohler, also a property developer, has proposed an innovative indoor 20,000-seater stadium — the Kohlerdome — with a movable grass pitch which can "hover" out of the stadium. The process, believed to be a world first, has been patented.

With the grass temporarily removed the centre can be used for concerts, exhibitions, and athletics. The £50 million development with Whitbread also involves hotels, restaurants and bars.

A rival £20 million scheme for a conventional stadium with a supermarket has attracted the interest of Safeway, which pays Sir Graham £8,000 a year as a parliamentary consultant.

Luton borough council gave the go-ahead for the Koh-

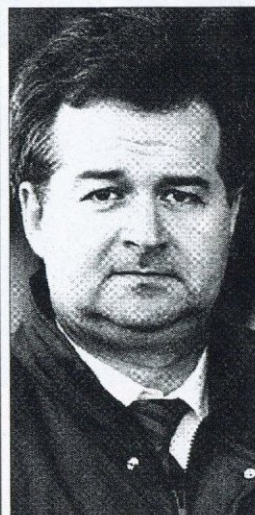
lerdome, which received more than 6,000 letters of support from townspeople, but Sir Graham pressed John Gummer, Environment Secretary, and Sir George Young, Transport Secretary, to call in the plans and force a public inquiry. The rival company, Wyncote, has been able to use the inquiry to re-open the case for its development.

The holding of the inquiry has led to the Highways Agency releasing confidential letters between Sir Graham, Sir George, and John Watts, the roads minister. In a letter Sir Graham attacks Mr Kohler's scheme, claiming his company is applying to "deregulate" a motorway link road to the M1, so it can build an entrance road to the site, without the agency's approval. The road between the south of the town and the M1 at present cannot be used for any other purpose than joining the motorway, so the minister would have to change the rules to allow access.

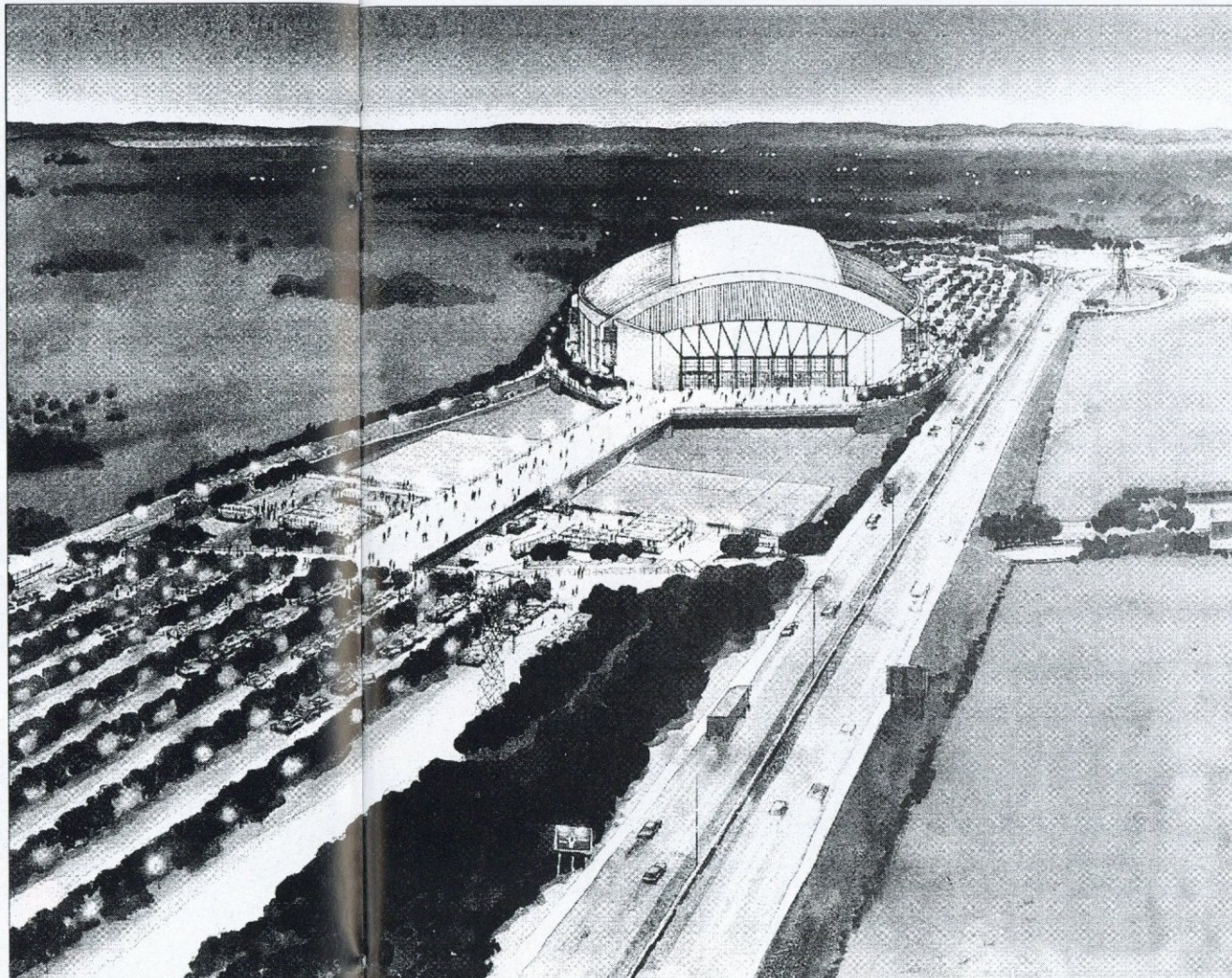
Sir Graham wrote: "I hope this is not a move to try to start a development by the back door. I would vehemently oppose such a move to deregulate this road, and I feel that nothing should be done or considered until the full planning application has been considered by the inspector and a decision made."

Mr Watts acceded to the MP's request.

According to Mr Kohler, Sir Graham's complaint is inaccurate. His company had no intention of seeking deregula-



Sir Graham Bright, MP for Luton South (top left), David Kohler, chairman of Luton Town FC, and an impression of the "Kohlerdome" stadium he wants to build for the club



tion of the road, and even if it had, it would have still required permission from the agency.

Sir Graham's letter also made no mention, as is required under the rules introduced after Lord Nolan's inquiry into public standards, that he was paid for parliamentary work by Safeway, which had an interest in the

rival scheme. Disclosure of the letter led to a furious telephone call between Nathan Kohler, David's father, who is also backing the scheme, and Sir Graham.

In an affidavit Mr Kohler senior says: "I told him in no uncertain manner that without all or any of the facts, he had written this letter to try and influence the decision of

the minister before the enquiry had even started, and that I objected strongly to his backdoor accusations."

He then complained to Michael Jackson, his local MP and financial secretary to the Treasury, warning him of Sir Graham's secret agenda. In a letter, Mr Jackson told Mr Kohler that his son should urge the case should be examined

by Sir Gordon. The Guardian showed the documents and letters to Sir Graham, who was for a long time John Major's parliamentary private secretary, to get his view on the matter.

He said: "I asked for a public inquiry because of protests from thousands of people living in the villages around Luton who objected to the

scheme and the traffic it would bring.

"These letters you have got should never have been released by the Highways Agency to the inquiry."

Shown a letter revealing Safeway's interest in the rival scheme, he replied: "This is news to me. I have not seen this letter."

Asked why the company

which pays him would keep from him its plans for developments in his constituency, he replied: "The work I do for them is for another department. They don't tell me about their development plans, even in my own town."

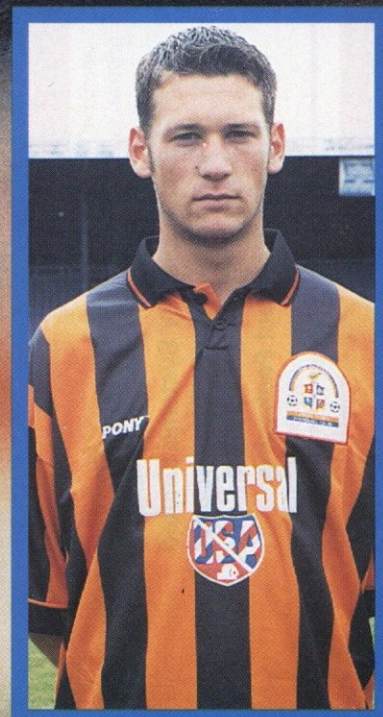
He added that any decision was up to the inspector, and he would support that decision.

THE public inquiry into the proposed 'Kohlerdome' resumed at Luton Town Hall on Tuesday, and is likely to sit for a further week to discuss environmental issues arising from the plans.

The article (left) is reproduced from Monday's Guardian newspaper, and relates to Luton Town's proposals for a new stadium at junction 10 of the M1 motorway.



**PAUL  
McLAREN**



**AUTOGRAPH**



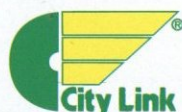
# EXECUTIVE MEMBERS

## KENILWORTH SUITE

TSI (UK) Ltd  
Anachem Ltd  
Fisher Frozen Foods Ltd  
F & T Goodwin Ltd  
Handscombe Financial Services Ltd  
R W Harvey & Son  
Wilton Contract and Vehicle Rental  
Information Design Associates  
Mr Malcolm Eade  
Mr Roger Eade  
Arrow Business Systems Limited  
J Sapsworth Ltd

Dr D Siegler  
Neahurst Ltd  
Mr P Dimery  
Mr P Doyle  
Grosvenor Casino  
Churchman Thacker  
Good Fennemore  
Mr R Banks  
Ludlow Group  
Holmes Commercial  
Regal Litho Ltd  
James McNaughton Paper Merchants Ltd

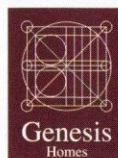
## EXECUTIVE BOX HOLDERS



*Murtagh Demolition*



**DBF**  
**Crosswinds Ltd**  
COMPUTER AND BUSINESS STATIONERY



**SKF**



Cope Brothers (Printers) Limited

**Graham**

**Luton News**

**Herald & Post**

**Bargad (Electrical) Ltd.**  
and N.E.D



*Stephens*  
*- Wheeler* SOLICITORS

## CLUB 82

C P Contracts  
C P Contracts Flooring  
Mr S Goodman  
Mr S Gildray  
Nordic Supplies  
Mr F W Pearce  
Shorey's Travel

Chris and Kim Clarke - The Wheatsheaf,  
Flitwick

Space Display Systems Limited  
The Home Counties Newspaper Group  
J and P Hygiene Supplies  
Luton Contract Packaging

## INJURY UPDATE

DAVID Oldfield has resumed full training this week after his hamstring injury, but with Wednesday night's reserve game at Ipswich having been postponed, it probably won't be until Monday that he gets a chance for any competitive action.

David has been working hard, but the leg is still proving a bit sore, and as I mentioned on Tuesday, it is always difficult to return after a hamstring injury, as we have to be sure that the muscle has completely healed so as not to inflict more serious damage on weakened tissue.

Andrew Fotiadis has also suffered with a hamstring problem, and has also picked up a thigh injury. He trained on Wednesday, so the reserve game at Ipswich would probably have been too soon for him, and at the time of writing it is unclear whether he will figure at Hitchin on Monday.

Gary Waddock also trained on Wednesday, as he recovers from the groin strain that has kept him out of the last three games. At the time of writing he could be in contention today, but Tuesday is more likely.

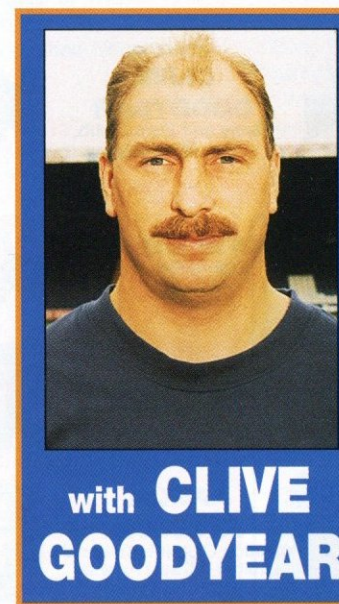
Stuart Douglas is another front player who has suffered hamstring trouble, and this week he visited the specialist sports injury Bimal Clinic in London, which David and Andrew also attended, for a thorough examination.

Paul McLaren returned on Tuesday after his stomach bug, but Marvin Johnson suffered a shin injury in a heavy tackle against York, and has been receiving treatment in the build up to this afternoon's game.

News of our long-term injuries, and Richard Harvey continues to make excellent progress after his knee injury. To be honest his recovery has been quicker than expected, and he should resume ball work shortly.

It has been good to see Trevor Peake up and about again, and back at the club, after his knee operation.

Trevor is off his crutches, and will start gradual work on strengthening the knee area shortly.



with **CLIVE**  
**GOODYEAR**

In the youth team, defender Ian Jones resumed training this week after an ankle injury.



LEFT:  
David  
Oldfield is  
back in  
training  
after his  
hamstring  
injury.

## LUTON TOWN v WATFORD

Nationwide League Division Two

will now be played on

**SUNDAY, JANUARY 26, 1997**

Kick-off 1pm

This is due to live TV coverage on Sky Sports  
(NB: Fixture will be postponed if either side are  
involved in the FA Cup fourth round)

## Luton Roadstone

Quality products -  
Quick turnaround &  
Friendly service for  
collects and delivery of:

Macadams, Asphalts,  
Type 1, Colourtex,  
Leisuretex, Versatex

30-31 Cosgrove Way, Luton,  
Beds LU1 1XL  
Tel: 01582 26663

## Loyal Luton Supporters Club

THE Loyal Luton Supporters Club will be holding their 1996 Christmas Party on Saturday, December 14 (after the Crewe home game), starting at 8pm at the Kingsway Arms in Luton.

The evening will be attended by players and officials from the football club, and as well as a disco, there will also be a comedian.

Tickets are available priced £5 from committee members, at the Kingsway Arms - the home of the Loyal Luton Supporters Club - where highlights of previous matches/seasons are shown on a big screen before and after every home game.





**KIM GRANT**  
Regal Litho



**WAYNE TURNER**  
Danny and Elsie Clubb,  
from Blackpool



**JULIAN JAMES**  
Shorey's Travel



**LENNIE LAWRENCE**  
201 Hertfordshire and  
Beds Yeomanry



**TONY THOPE**  
Bedfordshire Rural  
Communities Charity



**RICHARD HARVEY**  
Paul Deason



**MITCHELL THOMAS**  
J and P Hygiene Supplies



**DES LINTON**  
Simkins Solicitors of  
Baldock and Sandy



**IAN FEUER**  
Grosvenor Casino



**DAVID OLDFIELD**  
Luton Town Supporters  
Club



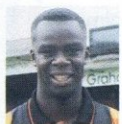
**MATTHEW UPSON**  
Ian Smith, from Ampthill



**JOHN TAYLOR**  
Mick Garbutt  
Virgin Records



**BEN CHENERY**  
Pete and Mandy Carney



**MARVIN JOHNSON**  
Capital Golf



**CERI HUGHES**  
Les and Sue Miller



**CLIVE GOODYEAR**  
Danny and Elsie Clubb,  
from Blackpool



**DAVID KOHLER**  
Critical Research



**PAUL SHOWLER**  
Graham Group plc



**AARON SKELTON**  
Vacation Club International  
Limited - Travel Agents  
0181 780 5885



**JAMIE WOODSFORD**  
Worldwide Hatters on the  
Super Highway (WHOSH)



**BONTCHO GUENTCHEV**  
The Bobbers Travel Club



**SEAN EVERS**  
David Forman -  
West Malaysian Branch  
of the Luton Town  
Supporters Club



**PAUL McLAREN**  
Danny and Elsie Clubb,  
from Blackpool



**KELVIN DAVIS**  
Space Display Systems  
Ltd



**DWIGHT MARSHALL**  
Milton Keynes Branch of the  
Luton Town Supporters Club



**TREVOR PEAKE**  
Bennetts Gate Bakery of  
Hemel Hempstead



**GRAHAM ALEXANDER**  
Mad As A Hatter



**GARY WADDOCK**  
Mad As A Hatter



**DARREN PATTERSON**  
Rob Stringer - EPIC  
Records



**ANDREW FOTIADIS**  
2 Print



**STEVE DAVIS**  
Loyal Luton Supporters  
Club



**STUART DOUGLAS**  
Richard Culley and  
Pete Carney



## CHRISTMAS HOLIDAY COACHING COURSES

with Football in the Community Officer JEFF VETERE

WE are now planning ahead for the Christmas holiday period, and the courses shown are the first to be confirmed.

The Football in the Community department continue to be involved with coaching sessions at local schools, and can organise tours of the LTFC ground. If your school would like to get involved, please get in touch.

For all details of coaching courses, and community events, please contact Football in the Community Officer Jeff Vetere, on (01582) 411622.

The following are the first of our Christmas courses:

Venue: Goldington Middle School, Haylands Way, BEDFORD (in conjunction with Samba Soccer).

Dates: Monday, December 23 and Thursday, December 24.

Times: 10am to 1pm

Cost: £14

Other information: Trainers required as both sessions are indoors.

Venue: Harpenden Sports Centre, Rothamsted Park, HARPENDEN.

Dates: Monday, December 30 and Tuesday, December 31.

Times: 2pm to 5pm (Mon) and 10am to 1pm (Tues).

Cost: £20 (includes free adult and junior ticket for Luton Town v Wrexham on Saturday, January 18, 1997).

Other information: Trainers required as both sessions will be held indoors.

Venue: MK Sports Club, Woughton-on-the-Green, MILTON KEYNES.

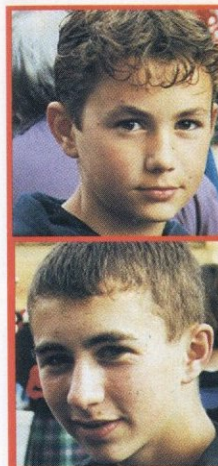
Dates: Thursday, January 2 and Friday, January 3, 1997.

Times: 10am to 1pm.

Cost: £18 (includes free adult and junior ticket for Luton Town v Wrexham on Saturday, January 18, 1997).

Other information: Astro turf boots or trainers will be required.

Details of further courses will be available shortly.



This afternoon we welcome two Commercial Mascots to the game - GILES (top left) and LIAM (bottom left) DOWNES.

Giles, 13, and Liam, 16, both attend Aylesbury Grammar School, and come to Luton Town matches with their father or grandad.

Giles' hobbies are golf, cricket and football, and his favourite Luton player is Ian Feuer.

Liam's hobbies are cricket, shooting, football and playing the guitar, and his favourite Town player is Tony Thorpe.

### Bar facilities now available for supporters on matchdays

Eric Morecambe Lounge (season ticket holders only, passes to be shown): the bar will be open from 12 noon to 2.45pm on Saturday matchdays, and at midweek games from 6 to 7.30pm. Rolls and hot pies will also be available to buy, and entry to this bar is via Maple Road bridge.

Nick Owen Lounge (season ticket holders only, passes to be shown): the bar will be open from 1.30 to 2.45pm and 4.45 to 7pm on Saturdays, and from 6.30 to 7.30pm, and from 9.30 to 11pm at midweek games. Rolls and hot pies are available to buy, and entry is via the door opposite the iron staircase at the rear of the main stand.

The Hatters Bar, under the Kenilworth Stand (members over 18): this bar will be open from 1.30 to 2.45pm on Saturdays, and from 6.30 to 7.30pm at midweek games. Drinks must be consumed in the licensed area which is marked by the wide yellow line.

**YOKOHAMA Serious Rubber**

AT A PRICE YOU CAN AFFORD

FINA

WARSTEINER

YOKOHAMA

TSW ALLOY WHEELS

A510 AVS A509

**BMW & MERCEDES**  
SERVICING AND REPAIRS

OFFICIAL BOSCH SERVICE AGENT

**R.M. FENSOME & CO**  
15 KELVIN CLOSE, LUTON, BEDS. FAX: (01582) 405108

AA APPROVED

BOSCH SERVICE

TEL: (01582) 22705



# RESERVES AND YOUTH ROUND-UP



Wed Aug 28	WEST HAM (LC)	lost 3-0
Thur Sep 5	WIMBLEDON	lost 2-1
Wed Sep 18	Portsmouth	won 2-0
Thu Sep 26	BRISTOL CITY	won 2-1
Thu Oct 3	Arsenal (LC)	won 1-0
Mon Oct 7	Swindon Town	lost 1-0
Mon Oct 21	WEST HAM UTD	won 2-1
Wed Nov 6	TOTTENHAM	won 2-1
Mon Nov 18	NORWICH C (LC)	won 3-0
Mon Dec 9	OXFORD UNITED	7pm
Tue Dec 17	Crystal Palace	2pm
Mon Jan 6	SWANSEA CITY	7pm
Wed Jan 15	Bristol Rovers	7.30pm
Mon Jan 20	CARDIFF CITY	7pm
Wed Feb 5	Ipswich Town	7.30pm
Mon-Feb 10	BRIGHTON	7pm
Thu Feb 27	Arsenal	2pm
Wed Mar 5	Charlton Athletic	2pm
Wed Mar 12	BOURNEMOUTH	2pm
Wed Mar 19	Southampton	7.30pm
Wed Mar 26	WATFORD	2pm
Wed Apr 9	Norwich City	7.30pm
Wed Apr 16	CHELSEA	2pm
Tue Apr 22	Millwall	2pm
Mon Apr 28	Queens Park Rgrs	7pm
TBA	Ipswich Town (LC)	

Games in CAPITALS denotes home fixture.  
Home matches played at Kenilworth Road will now kick-off at 2pm. Home matches will be played at Hitchin Town FC from November 18 to February 10 inclusive, and will kick-off at 7pm.  
LC - Avon Insurance Combination League Cup.

WEDNESDAY night's reserve team game at Ipswich Town, in the Combination League Cup, was postponed due to a waterlogged pitch at Portman Road.

The Hatters had been hoping to have David Oldfield, and possibly Andrew Fotiadis, resuming after injury.

The next reserve game is on Monday, December 9, at home against Oxford United, which is a league fixture. This will be the second game to be played at Hitchin's Top Field ground, and kick-off is 7pm.

After Monday's game, there is one remaining reserve team fixture before Christmas, with a trip to Crystal Palace on Tuesday, December 17.

The youth team maintained top spot in Division Two of the South East Counties League, with last Saturday's 2-2 draw at home to Brighton.

Goals from Andrew Barr and Terry Sweeney gave the Hatters a 2-0 lead, but the south coast side hit back to equalise.

Team: Webb, Lawes, Fraser, Spring, Doherty, Boyce, Clarke (Scarlett), George, Barr, Cox, Sweeney.

Subs not used: McIndoe, Jerry.

Monday's FA Youth Cup second round tie at Oxford United, ended in a 1-1 draw at the Manor Ground.

Liam George gave Luton the lead, with Oxford equalising after half-time.

Team: Webb, Lawes (Clarke), McIndoe (Scarlett), Spring, Boyce, Upson, Cox, George, Barr, Fraser, Sweeney.

Sub not used: Doherty.

The replay will be at Kenilworth Road on Thursday, December 19, kick-off 7.30pm, with admission £3 for adults, and £1.50 for juniors and seniors.

## AVON INSURANCE COMBINATION

	P	W	D	L	F	A	Pts
Wimbledon	7	5	1	1	21	12	16
Tottenham	7	5	0	2	22	9	15
Ipswich	7	4	2	1	13	4	14
Swindon	7	4	1	2	16	10	13
Swansea	7	4	1	2	13	10	13
LUTON TOWN	6	4	0	2	9	6	12
Bournemouth	6	4	0	2	14	12	12
Portsmouth	8	4	0	4	9	10	12
Arsenal	6	3	2	1	13	5	11
QPR	7	3	2	2	13	8	11
Chelsea	6	3	2	1	12	8	11
Bristol City	7	3	1	3	14	12	10
Cardiff City	8	2	4	2	7	10	10
Brighton	7	2	2	3	17	19	8
Oxford Utd	7	2	2	3	14	19	8
Millwall	7	2	1	4	14	15	7
Watford	6	2	1	3	9	15	7
West Ham	7	1	3	3	7	8	6
Norwich City	7	1	3	3	12	16	6
Southampton	5	1	1	3	8	10	4
C Palace	6	1	1	4	3	14	4
Bristol R	7	0	2	6	4	19	2
Charlton	4	0	0	4	3	16	0

League table up to and including 20.11.96

## AVON INSURANCE COMBINATION 1996/97 APPS & SCORERS (18.11.96)

	APPS	G		APPS	G
Kelvin DAVIS	7		Des LINTON	2	
Sean EVERS	8	1	Kim GRANT	1	
Ben CHENERY	8		Dwight MARSHALL	(1)	
Paul McLAREN	9	1	Jimmy COX	(1)	
Gary SIMPSON	2				
Chris WILLMOTT	8 (1)				
Bontcho GUENTCHEV	3				
Tony THORPE	3				
John TAYLOR	4	1			
Stuart DOUGLAS	6	1			
Robert KEAN	9	1			
Jamie WOODSFORD	1 (1)	2			
Andre SCARLETT	1 (2)				
Matthew UPSON	5	2			
Steve AUGUSTINE	(3)				
Nathan ABBEY	2				
Trevor PEAKE	2				
Darren PATTERSON	5				
Paul SHOWLER	3				
Aaron SKELTON	5	1			
Liam GEORGE	4 (1)	3			
Andrew BARR	(2)				
Matthew SPRING	(1)				
Terry SWEENEY	1 (1)				

### League Cup Group 3

	P	W	D	L	F	A	PTS
West Ham	3	2	0	1	6	3	6
Arsenal	3	2	0	1	4	1	6
LUTON	3	2	0	1	4	3	6
Norwich	1	0	0	1	0	3	0
Ipswich	2	0	0	2	1	5	0

The youth team were due to visit Brentford, in the league, today.

On Tuesday evening they resume their Eastern Junior Cup campaign with a trip to Royston.



MATTHEW Upson

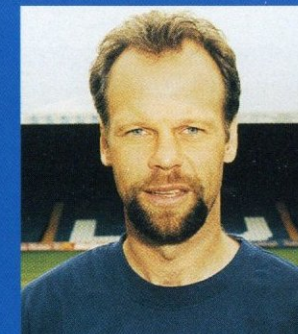


ANDREW Fotiadis

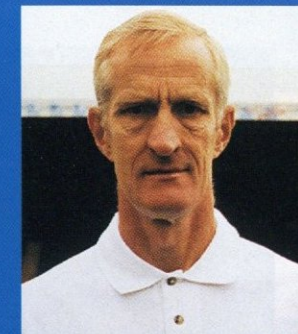
## SOUTH EAST COUNTIES DIV TWO

	P	W	D	L	F	A	Pts
LUTON TOWN	14	9	3	2	30	12	21
Crystal Palace	13	8	4	1	32	13	20
Southampton	12	8	0	4	25	11	16
Tottenham	15	6	4	5	20	13	16
Oxford	13	6	4	3	23	19	16
Swindon	15	5	5	5	26	21	15
Wycombe	15	6	3	6	18	17	15
Brighton	14	6	3	5	19	25	15
Bournemouth	12	6	2	4	22	21	14
Bristol C	13	5	4	4	22	22	14
Bristol R	13	6	0	7	29	32	12
Colchester	12	4	3	5	18	20	11
Wimbledon	13	3	3	7	13	19	9
Reading	14	4	1	9	18	38	9
Brentford	13	3	2	8	20	27	8
Barnet	15	2	1	12	13	38	5

League table as at November 30, 1996



with **TREVOR PEAKE**



and **JOHN MOORE**

## South East Counties League, FA Youth Cup, Southern Jnr Floodlit Cup, and Eastern Junior Cup

Sat Aug 17	Bristol Rovers	won 4-1	Mon Dec 2	Oxford Utd (FAYC2)	drew 1-1
Sat Aug 24	READING	won 7-0	Sat Dec 7	Brentford	
Tue Aug 27	Bournemouth (SJFC)	drew 1-1	Tue Dec 10	Royston (EJC)	
Sat Aug 31	Colchester	lost 3-2	Sat Dec 14	BRISTOL CITY	11am
Tue Sep 3	B'MOUTH (SJFC)	won 3-1	Thur Dec 19	OXFORD UTD (FAYC2)	
Sat Sep 7	SOUTHAMPTON	won 1-0	Sat Dec 21	BRISTOL ROVERS	11am
Sat Sep 14	Cambridge U (LC1)	won 2-0	Sat Jan 4	Bristol City	
Tue Sep 17	Wolves (SJFC)	lost 2-1	Sat Jan 11	COLCHESTER UTD	11am
Sat Sep 21	CRYSTAL PALACE	lost 1-0	Sat Jan 18	Southampton	
Sat Sep 28	Tottenham	won 2-0	Sat Jan 25	Crystal Palace	
Sat Oct 5	OXFORD UTD	drew 1-1	Sat Feb 1	Reading	
Sat Oct 12	Swindon Town	drew 2-2	Sat Feb 8	TOTTENHAM	11am
Wed Oct 16	Rushden & D (EJC)	won 3-2	Sat Feb 15	Oxford United	
Sat Oct 19	Colchester (LC2)	lost 3-2	Sat Mar 1	Wimbledon	
Sat Oct 26	WIMBLEDON	won 2-0	Sat Mar 8	WYCOMBE W	11am
Sat Nov 2	Wycombe W	won 1-0	Sat Mar 15	BOURNEMOUTH	11am
Sat Nov 9	BARNET	won 2-1	Sat Mar 22	Barnet	
Tue Nov 12	Hereford U (FAYC1)	won 3-1	Sat Apr 5	Brighton	
Sat Nov 16	Bournemouth	won 2-0	Sat Apr 12	BRENTFORD	11am
Sat Nov 23	SWINDON TOWN	won 2-1			
Sat Nov 30	BRIGHTON	drew 2-2			

HOME matches in CAPITALS. Home league matches to be played at Luton Rugby Club.

## YOUTH TEAM 1996/97 LEAGUE AND CUP APPEARANCES & SCORERS

	LGE APPS	G	CUP APPS	G	Up to and including Monday, December 2, 1996.
Daniel TATE	11				
Gary DOHERTY	13	3	4 (1)		
Ian JONES	6		4		
Matthew UPSON	4		5		
Steve AUGUSTINE	8	3	5	3	
Matthew SPRING	13 (1)		8	2	
Jimmy COX	11 (1)	1	5 (2)	1	
Liam GEORGE	12 (1)	8	7	3	
Andre SCARLETT	7 (6)		3 (2)		
Andrew BARR	13 (1)	8	7	1	
Andrew SMITH	4 (2)	3	4	2	
Russell LAWES	9 (1)		6 (1)		
Mark HILLIARD	1 (3)		1	1	
Richard CLARKE	5 (3)		5 (2)	1	
Terry SWEENEY	9	4	6	1	
Nick WEBB	3		1		
Emerson BOYCE	8 (1)		3		
Stuart FRASER	8		4 (1)		
Michael MCINDOE	7		3		
M JERRY	(3)		1		
D McKOY	1				
J AYRES	1				

LUTON Town FC require landladies on a permanent and/or part-time basis for our YTS players.

We are ideally looking for families, in Luton, with an interest in football, who have room available for one of our youngsters, either on a permanent (seven days a week) basis, or on a temporary basis (for example in school holidays).

Anyone interested should contact Youth Development Officer Paul Lowe on (01582) 411622.





**Caught.**  
Ball watching!

The official ball supplier to:



Rephotographs by Sentybox Tel: 01895 251220



82-86 Luton  
Arndale Centre.  
Tel: (01582)  
20592

*We stock a wide selection of sports supports  
and injury treatments*

**To advertise  
in the LTFC Matchday  
Programme contact the  
Commercial Department on  
01582 411622**

**SAINSBURY'S**

**serving Luton since 1926**

stores at:  
Dunstable Road, Luton. Tel 01582 422622  
Quantock Rise, Bramingham Park, Luton.  
Tel 01582 573919  
Luton Road, Dunstable. Tel 01582 477082

CARPETS SUPPLIED & FITTED

*Martin Ayres Carpets Ltd.*

SHOWROOM AT:  
614 Hitchin Road, Stopsley Village, Luton, Beds.  
Telephone: (01582) 454184 (Day) 24 Hr Answer Phone



**call now  
01582 456958**

or visit  
12/14 Park Square,  
Luton

**The Link**

**For the widest  
range of  
Mobile Phones,  
Faxes, Pagers  
and Telephones.**

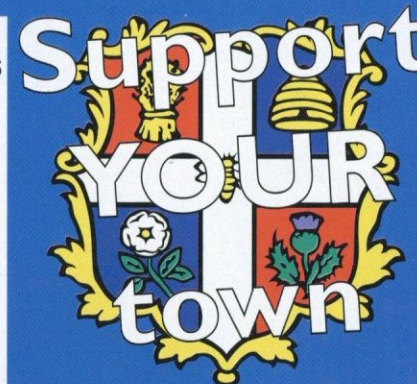
Tel: 01582 487222  
Fax: 01582 876155

**To advertise  
in the LTFC  
Matchday  
Programme  
contact the  
Commercial  
Department on  
01582 411622**



CB SECURITY SERVICES

**CB SECURITY  
SERVICES  
4 Gordon Street  
Luton, Beds.  
LU1 2QP.  
Tel: 01582 410058**



**THE  
HAIRDRESSING  
COMPANY**

THE  
HAIRDRESSING  
COMPANY

7 Chapel Street  
Luton  
Bedfordshire  
Tel: 01582 29422

17 New Bedford Rd.  
Luton  
Bedfordshire  
Tel: 01582 454106

## Trust us to help football

The Football Trust is helping the game at all levels - from providing kit for school teams, pitches and changing rooms for grass roots football, safety and improvement work throughout the game right up to providing vital assistance to help League clubs complete the essential task of redeveloping their grounds in line with the Taylor Report.

Over the last 20 years the Trust has received and distributed £250m from Littlewoods, Vernons and Zetters Pools and Littlewoods Spot the Ball competition for the benefit of football.

Up and down the country, clubs are building new grounds and stands, installing seating, and providing safe and comfortable facilities for their spectators to enjoy. Every club depends on the support of the FOOTBALL TRUST and the success of the pools companies. Both are crucial for football's future.



**THE FOOTBALL TRUST**  
Helping the game



**LITTLEWOODS VERNONS ZETTERS**  
Making sure football wins  
the Pools each week

THE FOOTBALL TRUST, WALKDEN HOUSE, 10 MELTON STREET, LONDON NW1 2EB

**BEST for PRICE** Top of the league for  
building materials  
**BEST for CHOICE** **gibbs & gandy**  
**BEST for DELIVERY** 226 Dallow Road  
Tel: 01582 21233

**STORAGE**

MENSWEAR  
5 & 7 CHAPEL STREET, LUTON, BEDS.  
TEL: 01582 450412

FOR THE LATEST NEWS - **CLUBCALL 0891 121 123**

Calls cost 45p per minute at cheap rate and 50p per minute at all other times



## Those were the days

FOLLOWING our FA Cup third round thrashing of Scarborough in 1938 we had to wait 25 years before coming up against non-league opposition again in the competition.

After our relegation to the old Division Three in 1963 we had to play in the first round of the FA Cup for the first time since the War.

Our opponents were Bridgwater of the Western League, and on November 16 we travelled down to Somerset on a wet, miserable day on a hiding to nothing.

The West Country side put the Luton defence under a great deal of pressure, but a fluke goal from Gordon Turner, when he tried a speculative long shot which the goalkeeper palmed into the net, gave us a first half lead. Superior fitness eventually told and two goals from Tom McKechnie in the last half hour gave us a flattering 3-0 win.

Two years later we were drawn away at Romford, then a powerful Southern League outfit, in the first round and a good many Luton supporters made the short trip to the old Brooklands ground.

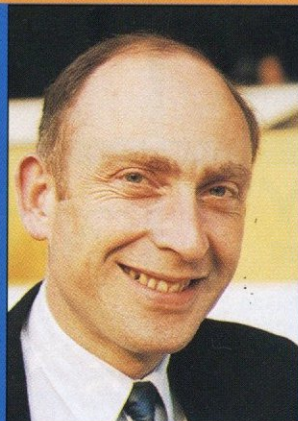
The game was fairly even until 30 minutes from the end when Tony Read hammered in a free-kick which was going hopelessly wide but took a deflection off a Romford defender into the net.

We looked to be keeping our lucky record against non-league opposition going, but ten minutes later Romford equalised when Tom Barnett scored from a seemingly offside position.

A crowd of 11,061 turned up at Kenilworth Road on a cold night for the replay, but in a hard game a single header from John O'Rourke took us through to the second round where we had to travel to Corby.

Corby remains a milestone in my days supporting Luton, for it was the first time I was allowed to travel to an away game on my own! My abiding memory is of a match played on a muddy pitch on a murky day made worse by floodlights that were typical of not only non-league sides at the time.

Corby were enjoying their first ever season in the Southern League Premier Division, and included ex-Hatters Alan McBain and Bob Riley in their side.



by **ROGER WASH**

They took the lead in the 17th minute through George Jagger, but the Town eventually clawed their way

back and equalised after 62 minutes when Jim Gibson stabbed the ball home from close range.

Back came the 'Steelmen' and when Maurice Goodall scored with ten minutes to go a cup shock was on the cards. Rather fortunately we managed to draw level just before the end when Ray Whittaker converted a penalty which had been mysteriously awarded by the referee for an infringement that only he saw.

A crowd of 13,284 were present for the replay, which did not include me as I had caught a cold at the first game and my mother made me stay in bed! "If you're not well enough for school....."

As it turned out, my absence was a blessing in disguise as the Town suffered a humiliating, albeit deserved, defeat against a side that chased and harried throughout. The Town were content to throw

predictable long balls into the box after Goodall had given Corby a 35th minute lead but never looked likely to save the match.

Another two years passed before we were drawn out of the hat against non-league opposition.

This time we had to travel to Isthmian League side Oxford City, but on the day of the game, with the supporters actually on the coaches in Oak Road, it was announced that a snow covered pitch had not been passed fit by the referee.

The Luton officials had been happy to use the Oxford floodlights for the second half of an afternoon game, but refused to play there in the evening. Oxford, realising that a midweek afternoon kick-off would not be a money spinner reluctantly agreed to switch the tie to Kenilworth Road, where the game was played on the following Thursday evening.

A crowd of 13,394 saw the Town win 16 corners in a one-sided first-half, but a mixture of poor finishing and inspired goalkeeping by amateur international John Shippey kept the game scoreless at the interval.

As so often happens, the team applying all the pressure concedes a soft goal, with the Town going



LEFT: Matt Tees goes close at Hillingdon in 1969.

one down early in the second period to a John Woodley effort. A 30-yard free kick from Bruce Rioch on the hour finally put us level, and we then scored what turned out to be the winner five minutes later, when hero turned villain Shippey dropped the ball, with Ian Buxton stabbing home.

At the final whistle, the Oxford players received a deserved standing ovation from the Town supporters.

We did not have to wait long for non-league opposition again, as the first round draw the following season paired us with Ware at Kenilworth Road. A crowd of 10,952 watched with increasing impatience as the players huffed and puffed through a scoreless first half, before George Potter broke the deadlock after 58 minutes.

Substitute Keith Allen then entered the fray, and within three minutes had laid on the Town's second goal for Alan Slough. He then went goal crazy himself, netting three times in ten minutes to become the first substitute to score a hat-trick in league or cup football. Ware scored a consolation with three minutes to go, but Slough completed an emphatic 6-1 scoreline in the final seconds.

Our final, and arguably most embarrassing, clash with a non-league side came 27 years ago when we had to travel to Hillingdon for a second round tie. - the last time we were in the second round!

Hillingdon were top of the Southern League at the time, but we were pushing for promotion to the old Division Two and boasted such players as Malcolm MacDonald, Matt Tees and Chris Nicholl in the side.

A record crowd of 9,330 gathered at the Leas Stadium to see Tees give us an early lead with a towering header, but the home side gradually fought back as the Town surprisingly sat on their advantage.

The Southern League outfit, who had gone over 50 games unbeaten at home, levelled the score through Eddie Reeve just before half-time, and then had the cheek to go-ahead after 54 minutes when substitute Gary Townsend netted.

The Town tried to fight back but Hillingdon, ably led by player-manager Jim Langley who was way past 40, managed to hold on for a famous victory. We had now gone the same way as Hillingdon's opponents in the first round, Wimbledon!

## 5 YEARS AGO

7/12/91: Eventual champions Leeds United visited Kenilworth Road and put on a powerful display in winning 2-0. This defeat cemented our position at the bottom of the table.

## 10 YEARS AGO

6/12/86: Although both Brian and Mark Stein were on the scoresheet, we went down 4-2 at Oxford. This setback pushed us down to seventh place in Division One.

## 15 YEARS AGO

5/12/81: In an entertaining game at Shrewsbury, goals from Steve White and Mal Donaghy earned us a point in a 2-2 draw. Goalkeeper Alan Judge was making his first appearance of the season for the Town.

## 20 YEARS AGO

11/12/76: A carpet of snow at Burnden Park ensured that our game against Bolton Wanderers did not go ahead, and left the players kicking their heels.





↑  
Stuart Douglas in action for the Hatters during the second-half, the home side having changed shirts at half-time.

← Graham Alexander sees his first-half shot deflected wide.

Ian Feuer made some important early saves at Plainmoor in the first round of this season's FA Cup.

→ Skipper Gary Waddock battles for possession against the third division side.



# ACTION STATIONS

**Torquay United 0 Luton Town 1**  
(Hughes)

Saturday, November 16, 1996 - FA Cup (sponsored by Littlewoods) 1st rd  
Attendance: 3,450  
Pictures by Andy Handley





THE recent wintry weather caused disruption to a number of Nationwide League fixtures, and the Football League have once again outlined their early warning procedure for the inspection of pitches.

In an effort to prevent unnecessary inconvenience to supporters, League clubs are instructed to liaise closely to ascertain the travelling arrangements of visiting supporters.

Home clubs are also asked to contact match referees for travel details and any plans to stay overnight in order that they can be reached at short notice.

Clubs can also request referees to travel the day before the match if an early pitch inspection is necessary.

In the event that the match referee is unable to travel early, the Football League would call in a local official to advise them on the condition of the pitch.

Regardless of weather conditions prevailing at the time, referees are required to report at the home club during the months of November, December, January and February at least two hours before the advertised kick-off time.

THE Luton Town Supporters Club are holding a Quiz Night on Monday, December 9, in the Eric Morecambe Lounge, at Kenilworth Road. Admission is £2 for members, and £3 for non-members.

## League give children Wembley incentive

FOR the second season in succession, the Football League are giving thousands of schoolchildren across the country the opportunity to fulfil one of their dreams - to play on the hallowed turf of Wembley Stadium!

The Football League have announced that they will be organising the Auto Windscreens Schools Shield once again, and presenting secondary school football teams with the chance to play beneath the twin-towers before a major domestic showpiece event.

The Auto Windscreens Schools Shield, which will run from December to May, will be played on a six-a-side format with representatives of secondary schools in the Under-13 age group (Year 8) playing-off locally for the right to represent their local Nationwide Football League club.

There will then be separate competitions for the three divisions of the League which will culminate with the Divisional Finals of the competition being played prior to the corresponding Nationwide Football League Play-Off Final at Wembley Stadium on

Saturday 24, Sunday 25 and Monday 26 May, 1997.

Football League secretary, David Dent, commented: "So many schoolboys dream of actually playing on that glorious surface at Wembley Stadium and we are about to make that dream become a reality for a number of lucky individuals.

"I am delighted that together with the competition's backers Auto Windscreens and our colleagues from the English Schools' Football Association and the Community Programme in Professional Football, we are able to make this possible for the youngsters who follow and participate in the national game."

**OUR Division Two counterparts Burnley have come top in a nationwide survey to find the best pies at football grounds.**

The survey was carried out by monthly magazine 'Total Football', and Hatters fans will get a chance to test the findings on March 29.

Lancashire is obviously the place to go for pies, as Bury collected the runners-up prize, with Rochdale fourth!

## Win tickets for your Junior team

It's congratulations to the BUSHMEAD WANDERERS UNDER 10s, who are the second winners of our Junior Team of the Month, and will be our guests at a forthcoming home match.

The team have only been together for a few months, but have made outstanding progress in the Chiltern Youth League.

They produce their own programme for matches, and above all enjoy their football, with a strict code of conduct for players and spectators alike!

The Loyal Luton Supporters Club are once again sponsoring the Young Team of the Month Award.

Having received a £200 grant from NatWest Bank as part of the bank's Community Action Scheme, and through monies raised through the summer, the supporters, in conjunction with Luton Town FC, have again funded the award. The award is run on a monthly self-nomination basis, and is open to all teams, boys and girls under the age of 16. Winners receive 15 tickets (13 children and 2 adults) to a chosen Luton home match.

Anyone wanting to nominate their local youth, school, cubs or girls team, should send a letter to Simon Oxley at Luton Town Football Club, briefly explaining why they think they deserve to win one of the monthly awards. We have already received a number of nominations. If your team wasn't selected this time, they might be next month.

All remaining nominations will be considered throughout the rest of the season.



**TicketLine** 0645 10 10 10  
The exclusive ticket booking service for fans of Endleigh League First Division clubs  
24 HOURS A DAY, 7 DAYS A WEEK  
ALL CALLS CHARGED AT LOCAL RATE

## Cup cash windfall for Nationwide quartet

FOUR more clubs from the Nationwide League will receive £60,000 each following Sky Television's confirmation of matches to be screened live from the second round of the FA Cup.

Sky Sports' viewers were able to watch the all-Devon clash at Home Park between second division Plymouth Argyle and third division Exeter City yesterday evening.

Meanwhile, another all-Nationwide League encounter will be shown tonight at 6pm, as Cardiff City, under the new management of Russell Osman, entertain Gillingham at Ninian Park.

### FA Cup second round draw:

#### Northern section:

Walsall v Burnley  
Blackpool v Hednesford  
Chesterfield v Scarborough  
Hull v Crewe  
Wrexham v Scunthorpe  
Mansfield v Stockport  
Notts County v Rochdale  
Carlisle v Darlington  
Chester v Boston Utd  
Preston v York

## F.A. CUP



## LITTLEWOODS

### Southern section:

Leyton Orient v Stevenage  
Watford v Ashford Town  
Cambridge Utd v Woking  
Sudbury Town v Brentford  
LUTON TOWN v Boreham Wood  
Enfield v Peterborough  
Plymouth v Exeter  
Barnet v Wycombe  
Cardiff v Gillingham  
Bristol City v St Albans

Ties to be played on December 6 and 7. The draw for the third round will take place on Monday, December 8, at 10.15pm - live on BBC2 and Radio 5.

## Blackpool's Fred reveals his scouting secrets for success

SECOND division Blackpool's super scout, Fred O'Donoghue, has been involved in unearthing talented young footballers across the length and breadth of the country for so long that he could probably write a book about it.

And that's exactly what 69-year-old Fred has done in a new publication which is available from the Seaside's Bloomfield Road club shop and in all good bookshops.

During his long scouting career, Fred has given many young men the opportunity to make a living out of professional football including the likes of Jason Wilcox, Franz Carr and current Preston starlet Kevin Kilbane.

Over the years, Fred's talent spotting

ability has been used by Liverpool, Arsenal, Rochdale, Blackburn Rovers, Preston and now Blackpool - although he freely admits that he allowed Kevin Keegan and Paul Mariner to slip through his net during their days with Scunthorpe and Plymouth respectively.

'Scouting for Glory', priced £9.99 and with a montage of footballing personalities who Fred has come across during his days on the cover, is all topped off with a number of glowing testimonies, including a foreword by Alex Ferguson.

Meanwhile, Premiership leaders Arsenal have swooped on Bloomfield Road for their latest signing..... assistant groundsman Paul Burgess, aged just 18, has joined the Highbury groundstaff!

Forthcoming matches in Nationwide Division Two, plus cup dates:

Monday, December 9

Auto Windscreens Shield - Rd 1

Northern Section:

Chesterfield v Preston

Tuesday, December 10

Auto Windscreens Shield - Rd 1

Northern Section:

Scarborough v Notts C

Chesterfield v Preston

Carlisle Utd v Rochdale

Doncaster v Stockport

Bury v Darlington

Hartlepool v Burnley

Rotherham v Blackpool

Hull City v Chester City

Southern Section:

Bristol R v Brentford

Cambridge v Colchester

Brighton v Fulham

Hereford Utd v Fulham

Gillingham v Cardiff

LUTON v Leyton Orient

Swansea v Wycombe

Plymouth v B'mouth

Friday, December 13

Nationwide League Div Two

Preston NE v Blackpool

Saturday, December 14

Nationwide League Div Two

Bournemouth v Millwall

Burnley v Brentford

Gillingham v Bury

LUTON TOWN v Crewe

Notts C v Rotherham

Plymouth v Shrewsbury

Stockport v Peterborough

Walsall v Watford

Wycombe v Chesterfield

York v Wrexham

Sunday, December 15

Nationwide League Div Two

Bristol City v Bristol Rovers

Wednesday, December 18

Nationwide League Div Two

Millwall v LUTON TOWN

Friday, December 20

Nationwide League Div Two

Crewe Alex v Notts County

Peterborough v Burnley

Saturday, December 21

Nationwide League Div Two

Blackpool v York City

Brentford v Preston NE

Bristol R v Wycombe W

Bury v Stockport C

Chesterfield v Bournemouth

Rotherham v Plymouth

Shrewsbury T v Walsall

Watford v Gillingham

Wrexham v Bristol City



LOOK OUT FOR OUR MERCHANDISE CATALOGUE AVAILABLE TODAY.....

## OPENING TIMES

**MONDAY TO FRIDAY**  
10am to 4pm

**EVENING MATCHDAYS**  
10am to 10pm

**SATURDAYS - MATCHDAYS**  
10am-3pm & 4.45-5.15pm  
- non matchdays 9am  
until coaches leave for  
away game

## LTFC KIT PRICES 1996/97



**LEFT: Luton Town 'Third' Shirts**

SB (22-24), B (26-28),  
LB (30-32) - £29.99  
Youths - £34.99  
S (34-36), M (38-40),  
L (42-44)  
XL (46-48), XXL (50+)  
- £38.99

**Luton Town 'Third' Shorts**  
SB, B, LB, Yths - £15.99  
S, M, L, XL - £19.99

**Luton Town 'Third' Socks**  
B, LB - £5.99  
Mens - £7.99

**RIGHT: Monster scarf - £12.50**



**LEFT: Bench coat - B, LB - £49.99**  
- XS, S, M, L, XL - £59.99

**RIGHT: Luton Town baseball caps - £8.50 each.**



**LEFT: College style jacket - grey with navy sleeves - fully lined. M, L, XL £55.00**



**LEFT: Bronx hats - navy and black £4.99**

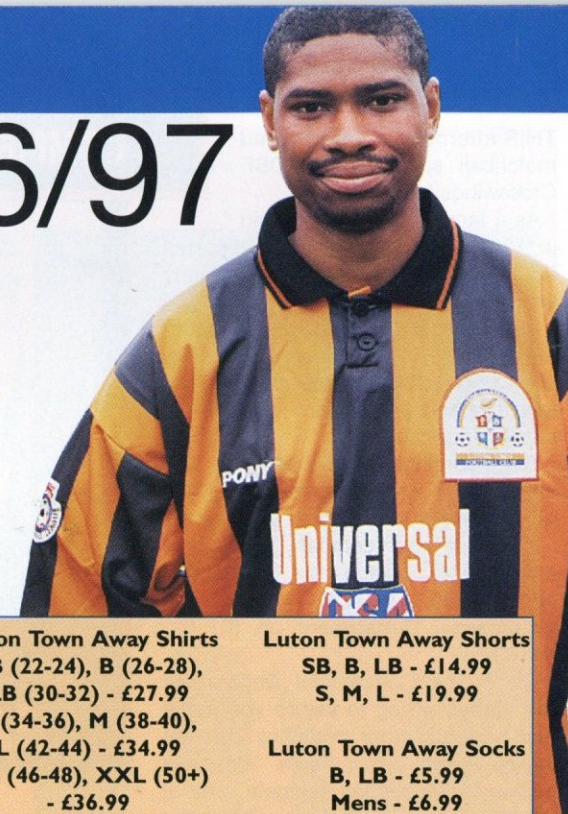


**ABOVE: Luton Town FC scarves - £5.75 each**

**Luton Town Away Shirts**  
SB (22-24), B (26-28),  
LB (30-32) - £27.99  
S (34-36), M (38-40),  
L (42-44) - £34.99  
XL (46-48), XXL (50+)  
- £36.99

**Luton Town Away Shorts**  
SB, B, LB - £14.99  
S, M, L - £19.99

**Luton Town Away Socks**  
B, LB - £5.99  
Mens - £6.99



**LEFT: Luton Town Home Shirts**  
SB (22-24), B (26-28),  
LB (30-32) - £27.99

S (34-36), M (38-40),  
L (42-44) - £34.99  
XL (46-48), XXL (50+)  
- £36.99

**Luton Town Home Shorts**  
SB, B, LB - £14.99  
S, M, L - £19.99

**Luton Town Home Socks**  
B, LB - £5.99  
Mens - £6.99

# HATTERS SHOP

**enquiries**  
**01582**  
**411622**

FOR THE LATEST NEWS - **CLUBCALL 0891 121 123**

Calls cost 45p per minute at cheap rate and 50p per minute at all other times



THIS afternoon's match and matchball sponsors are DBF Crosswinds Ltd.

As a family business founded in 1963, the company has supported Luton Town Football Club over many years.

As a major supplier of computer stationery, pre-printed forms, continuous cheques and all types of labels, they serve a large number of national companies.

The continuing success of the company is a clear indication of the quality service provided by all the staff. If you or your company would like details of match or matchball sponsorship, please contact the Commercial Department on (01582) 411622.

We in the Commercial Department are always willing to talk to you about how you and your company can get involved with Luton Town. We have packages to suit all budgets, and a variety of ways in which your company can get involved.

Luton Town can cater for everything from business breakfasts, lunches or dinners to birthday, anniversary and wedding celebrations.

We can help to plan events by either clients visiting the club or by making a private visit to the clients own premises.

## COMMERCIAL NEWS



with **KATHY LEATHER**

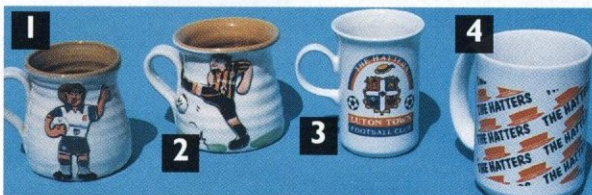
We have a number of function suites available, from our boardroom, which is an exclusive setting for senior

management meetings, to our adjacent suites which can cater for up to 100 or more delegates for conferences and seminars.

Our catering operation, which prides itself on a personal service, can provide quality refreshments to complement any occasion. For full details, or to arrange a visit to have a look round the facilities on offer, please contact the Commercial Department on Luton (01582) 411622.

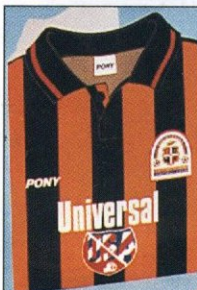
As you will see from the notice on the facing page, we opened a club shop at the Asda store in Wigmore Lane, Luton, on Friday, December 6. This retail outlet will trade on the same days, and open the same hours, as Asda.

This afternoon's Cable Tel kids are: Daniel Wellbeloved, Ben Chapman, Jack Chapman, Graeme Halls, Susanna Halls, Nicola Halls, Ryan Barton, Andrew Jackson, James Morgan, Craig Ross and Danny McMahon.



AVAILABLE IN THE CLUB SHOP:

1. Cartoon mug - home - £5.50.
2. Cartoon mug - away - £5.50
3. Sheraton mug with crest - £3.50
4. Hatters mug 3/4 pint - £4.25



LEFT: Send a greetings card to a loved one, signed by their favourite LTFC player! Cost per signed card is £2.00, and cheques (to LTFC) should be sent to: Kathy Leather, Greeting Card Offer, Luton Town FC, 1 Maple Road, Luton, Beds, LU4 8AW.



## Antony's Tailor

OF LONDON

THE MOST  
ESTABLISHED  
AND RELIABLE  
TAILORS IN  
LUTON

DRESS HIRE  
LADIES AND GENTS  
BESPOKE TAILORING

12 DUNSTABLE ROAD, LUTON,  
BEDS OPPOSITE MAIN POST OFFICE  
TEL: (01582) 424687



## HATTERS SHOP EXTRA.....

**LUTON TOWN UMBRELLA**  
Top quality, fully guaranteed - £35.00



Limited edition print of Kenilworth Road now available for £49.00 from the Club Shop. NB: Cheques should be made payable to Kevin James. Postage and packing is £4, or £11 for outside the UK.



THERE IS NOW A LUTON TOWN FC CLUB SHOP AT THE ASDA STORE IN WIGMORE LANE, LUTON. This retail outlet will trade on the same days, and open the same hours, as Asda.

## WINDOWS, DOORS & CONSERVATORIES

IN UPVC, ALUMINIUM OR TIMBER

- Over 20 Years Experience
- Friendly, No Pressure Advice Without Obligation
- No Deposit
- Payment On Completion & Satisfaction

For Personal Attention Call

**BARRY BOLTON**

ON

TEL: (01582) 484600  
(01908) 240094 (01525) 854008

Unit 3, 57 Dudley Street, Luton

*Becoming  
Bigger by  
Being  
Better!*

DISCOUNTS FOR  
PENSIONERS AND  
THE RETIRED

CHRISTMAS IS  
COMING!

WHY NOT TAKE  
A LOOK AT THE  
MANY NEW  
ITEMS NOW IN  
STOCK AT THE  
CLUB SHOP IN  
KENILWORTH  
ROAD?



# OVER THE BAR!

Drink a toast to the Hatters in the following pubs...



## THE BISCOT MILL

Live jazz every Monday,  
plus big plate value meals  
Biscot Road, Luton. (01582) 572363



Home of Dunstable Darts  
League, monthly quizzes,  
lounge and large games  
area.  
Wide selection of real ales  
and lagers available.  
Prop: Andy Duncan  
(01582) 667617

## KINGSWAY ARMS

Kingsway, Luton  
(01582) 584581

Home of the Loyal Luton  
Supporters Club.  
Luton videos on matchdays,  
new members welcome.  
Wide selection of real ales and  
lagers available. Large car park.  
Prop: Ian Robinson

## THE LILLEY ARMS

Food for all occasions,  
fine ales, accommodation,  
beautiful gardens  
with farm animals.  
Coach parties welcome, advance  
warning please!  
West Street, Lilley  
Tel: 01462 768371  
"It's worth passing a few pubs for."



Live music and good  
food

115 Castle Street  
Luton  
Tel: 01582 414061

## THE BEDFORDSHIRE YEOMAN

Just a two-minute walk from  
the ground  
Food available on matchdays  
Supporters welcome

214 Dallow Road, Luton  
(01582) 30469

Kevin and Hayley welcome  
all supporters to  
**THE CENTURION**  
Poynters Road,

For a great atmosphere and live  
music on Saturday nites!  
Coming soon..... "Jesters"  
01582 661721

**THIS  
COULD BE  
YOUR  
PUB!**

Contact (01582)  
411622 to advertise.



**THE CHEQUERS**  
Park Road, Westoning  
(off J12, M1)

For all live TV games  
(01525 713125)



You'll find an authentic Irish  
welcome together with superb  
ales, great Guinness and a  
warm, friendly atmosphere.  
Don't miss the opportunity to  
experience the 'only Irish pub'

1 Castle St, Luton. 29826

**THIS  
COULD BE  
YOUR  
PUB!**

Contact (01582)  
411622 to advertise.



**THE WHEELWRIGHT  
ARMS**  
34 Guildford Street, Luton.  
Tel: 01582 20023.

Bed and breakfast.  
Fine selection of cask ales and  
lagers.



**THE** live music venue  
Food available seven days  
a week.  
"The original and best"

106 Church Street, Luton  
(01582) 400005



We can win three points today.....  
**YOU** could win up to £2,000 in  
cash in the **LTFC Golden Gamble!**

Each ticket costs just £1, with half  
the money collected going to the  
winning ticket holder, in our  
half-time draw made on the pitch.



**PLUS** win £25,000 in our Premier Instant ticket on sale at  
half-time..... Money from these tickets helps **YOUR** club, and  
supports charities for children with special needs

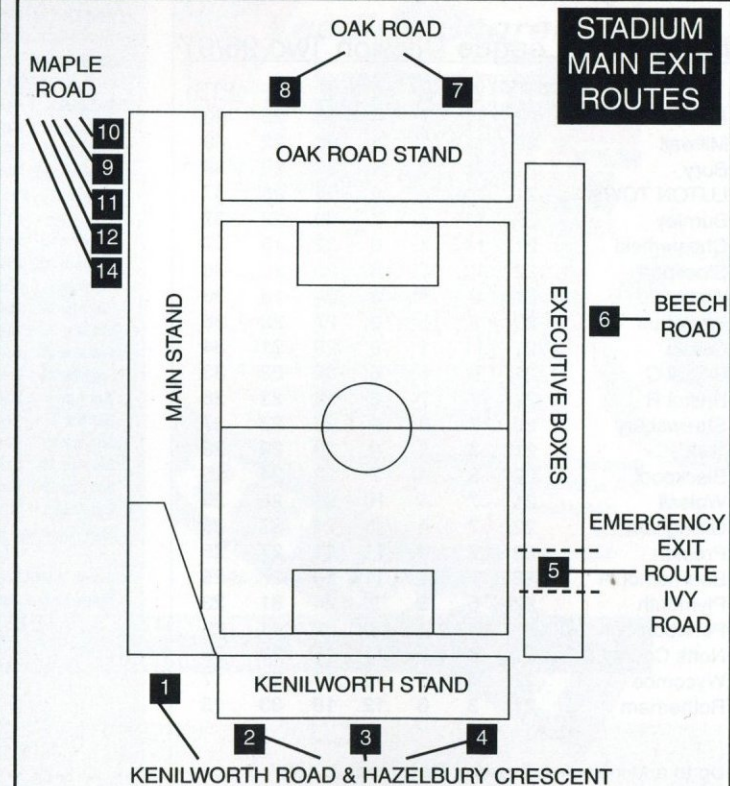
## LTFC EVACUATION PROCEDURE

IN the event of any emergencies at Luton  
Town Football Club, the emergency services  
and the club have agreed on an evacuation  
policy which is designed to:

- Ensure the safe and controlled  
evacuation of the ground.
- Ensure the dispersal of the crowd from  
the area to allow the emergency services to  
carry out their tasks.

IN the event on an evacuation of all or part  
of the stadium, you will receive instructions  
over the public address system on how you  
should leave the stadium. Stewards will  
direct you to the nearest exit. It may be that  
your normal exit route will not be available.  
On leaving the stadium, you will find some  
roads closed to pedestrian traffic, to enable  
swift and unobstructed arrival of the  
emergency services.

Please leave the area of the ground as  
quickly as possible by the route directed.  
Your co-operation will be most appreciated.  
**GEOFF LOVELL, Safety Manager.**



FOR THE LATEST NEWS - **CLUBCALL 0891 121 123**

Calls cost 45p per minute at cheap rate and 50p per minute at all other times

To advertise in the matchday programme contact the Commercial Department on (01582) 411622



## LUTON TOWN 1996/97

PLAYER (figure in bracket = sub app.)	LEAGUE APPS	LEAGUE GOALS	CUP APPS	CUP GOALS
Ian FEUER	21		7	
Julian JAMES	21	1	7	1
Mitchell THOMAS	21	2	6	
Gary WADDOCK	18		6	
Darren PATTERSON	3		(1)	
Marvin JOHNSON	19		7	
Bontcho GUENTCHEV	9 (9)	1	4 (2)	
Graham ALEXANDER	20 (1)		7	
David OLDFIELD	12 (1)	2	5	2
Kim GRANT	8 (6)	2	4	2
Tony THORPE	15 (2)	11	3 (1)	2
Andrew FOTIADIS	5 (4)	1	(2)	
Des LINTON	(2)		1	
Steve DAVIS	19 (1)	4	7	
Ceri HUGHES	19	2	7	2
Paul SHOWLER	12 (2)	5	4 (1)	
Matthew UPSON	(1)			
Stuart DOUGLAS	2 (7)		1 (1)	
Paul McLAREN	2 (5)		(1)	
Aaron SKELTON	2 (1)		1	
Dwight MARSHALL	3 (1)	3	(1)	

Own goal 1

## Nationwide League Division Two 96/97

	P	W	D	L	F	A	PTS
Brentford	22	11	7	4	35	23	40
Millwall	22	11	7	4	32	22	40
Bury	21	11	6	4	33	20	39
LUTON TOWN	21	11	4	6	34	25	37
Burnley	22	11	4	7	30	22	37
Chesterfield	21	11	4	6	22	16	37
Stockport	22	10	6	6	29	25	36
Watford	21	9	9	3	24	18	36
Wrexham	20	9	8	3	27	22	35
Crewe	21	11	1	9	29	21	34
Bristol C	21	9	6	6	36	23	33
Bristol R	22	7	7	8	22	23	28
Shrewsbury	22	7	6	9	26	33	27
York	21	7	5	9	23	29	26
Blackpool	22	5	10	7	22	24	25
Walsall	21	7	4	10	21	25	25
Gillingham	22	7	4	11	21	27	25
Preston	22	7	4	11	21	27	25
Bournemouth	22	7	4	11	20	27	25
Plymouth	22	5	8	9	24	31	23
Peterborough	22	4	8	10	32	41	20
Notts County	21	5	5	11	15	23	20
Wycombe	22	4	5	13	17	33	17
Rotherham	21	3	6	12	18	33	15

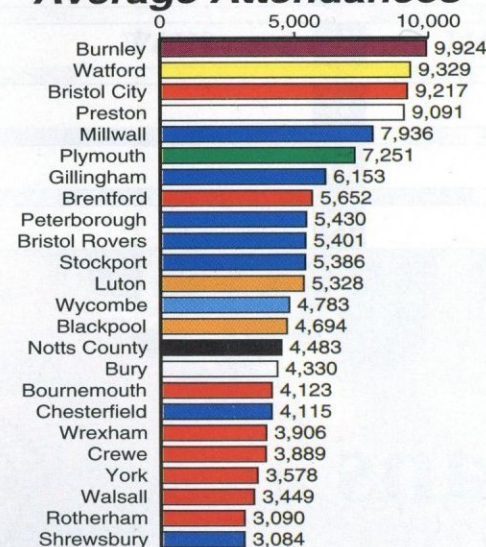
Up to and including Tuesday, December 3, 1996

DATE	OPPONENTS	F-A	ATT	POS
Sat Aug 17	BURNLEY	1-2	6,484	-
Tue Aug 20	BRISTOL ROVERS CCC1 (1)	3-0	2,643	-
Sat Aug 24	Brentford	2-3	5,404	22
Tue Aug 27	Bristol City	0-5	7,028	24
Sat Aug 31	ROTHERHAM	1-0	4,547	19
Wed Sep 4	Bristol Rovers CCC2 (2)	1-2	2,320	-
Sat Sep 7	Wycombe Wanderers	1-0	6,471	15
Tue Sep 10	GILLINGHAM	2-1	4,604	11
Sat Sep 14	CHESTERFIELD	0-1	4,763	12
Tue Sep 17	DERBY COUNTY CCC2 (1)	1-0	4,459	-
Sat Sep 21	Bury	0-0	3,588	15
Wed Sep 25	Derby County CCC2 (2)	2-2	13,569	-
Sat Sep 28	BLACKPOOL	1-0	5,303	12
Sat Oct 5	WALSALL	3-1	5,002	11
Sat Oct 12	Shrewsbury Town	3-0	3,357	8
Tue Oct 15	Stockport County	1-1	5,352	9
Sat Oct 19	PETERBOROUGH UTD	3-0	5,964	7
Tue Oct 22	Wimbledon CCC3	1-1	5,043	-
Sat Oct 26	BOURNEMOUTH	2-0	5,635	5
Tue Oct 29	Watford	1-1	14,109	6
Sat Nov 2	Plymouth Argyle	3-3	7,134	8
Sat Nov 9	NOTTS COUNTY	2-0	5,664	5
Tue Nov 12	WIMBLEDON CCC3R	1-2	8,076	-
Sat Nov 16	Torquay Utd FAC1	1-0	3,450	-
Tue Nov 19	Preston North End	2-3	7,004	7
Sat Nov 23	BRISTOL ROVERS	2-1	5,315	4
Sat Nov 30	Bournemouth	2-3	4,322	6
Tue Dec 3	YORK CITY	2-0	4,401	4
Sat Dec 7	BOREHAM WOOD FAC2			
Tue Dec 10	LEYTON ORIENT AWS1			
Sat Dec 14	CREWE ALEXANDRA			
Wed Dec 18	Millwall			
Thu Dec 26	Gillingham (12 noon)			
Sat Dec 28	WYCOMBE WANDERERS			
Wed Jan 1	BURY			
Sat Jan 4	Chesterfield			
Sat Jan 11	Blackpool			
Sat Jan 18	WREXHAM			
Sun Jan 26	WATFORD (1pm) (subject to neither side being in FA Cup 4)			
Sat Feb 1	Notts County			
Sat Feb 8	PLYMOUTH ARGYLE			
Sat Feb 15	Bristol Rovers			
Sat Feb 22	PRESTON NORTH END			
Sat Mar 1	York City			
Sat Mar 8	MILLWALL			
Sat Mar 15	Crewe Alexandra			
Sat Mar 22	BRENTFORD			
Sat Mar 29	Burnley			
Tue Apr 1	BRISTOL CITY			
Sat Apr 5	Rotherham United			
Sat Apr 12	Walsall			
Sat Apr 19	SHREWSBURY TOWN			
Sat Apr 26	Peterborough Utd			
Sat May 3	STOCKPORT COUNTY			
TBA	Wrexham			

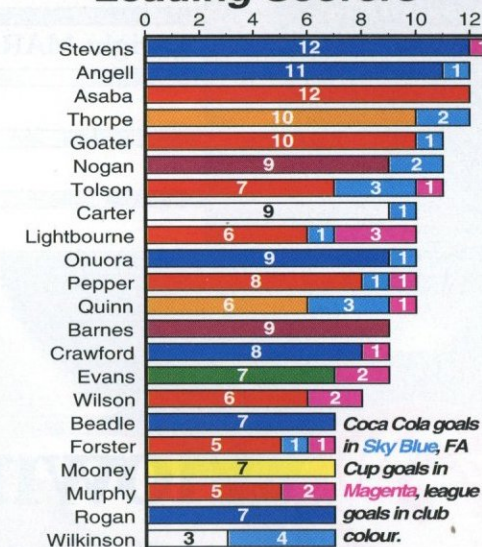
Game in BOLD denotes home match. Name in CAPITALS denotes goalscorer.  
Name in (brackets) denotes player substituted or substitute used.

GK	2	3	4	5	6	7	8	9	10	11	12	13	14
Feuer	James	Thomas	Waddock	(Patterson)	Johnson	Guentchev	Alexander	(Oldfield)	(Grant)	THORPE	(Fotiadis)	(Linton)	(S.Davis)
Feuer	(James)	Thomas	Waddock	S.Davis	(Johnson)	Hughes	Alexander	OLDFIELD	GRANT	(THORPE)	(Patterson)	(Guentchev)	(Showler)
Feuer	James	Thomas	Waddock	S.Davis	Patterson	HUGHES	Alexander	Oldfield	(Grant)	THORPE	Linton	(Guentchev)	Showler
Feuer	James	Thomas	Waddock	S.Davis	Patterson	Hughes	(Showler)	(Oldfield)	(Grant)	Thorpe	(Alexander)	(Guentchev)	(Fotiadis)
Feuer	(James)	THOMAS	Waddock	S.Davis	Johnson	Hughes	Alexander	(Oldfield)	(Grant)	Showler	(Thorpe)	(Guentchev)	(Upson)
Feuer	James	Thomas	Linton	S.Davis	Johnson	Hughes	Alexander	OLDFIELD	Guentchev	(Showler)	Thorpe	(Fotiadis)	McLaren
Feuer	James	Thomas	Waddock	S.Davis	Johnson	Hughes	Alexander	OLDFIELD	(Fotiadis)	Guentchev	(Thorpe)	Showler	McLaren
Feuer	James	Thomas	Waddock	S.Davis	Johnson	Hughes	Alexander	OLDFIELD	(Fotiadis)	GUENTCHEV	(Grant)	Showler	McLaren
Feuer	James	Thomas	Waddock	S.Davis	Johnson	Hughes	Alexander	Oldfield	(Fotiadis)	Guentchev	Showler	(Fotiadis)	McLaren
Feuer	James	Thomas	Waddock	S.Davis	Johnson	Hughes	Alexander	Oldfield	GRANT	Guentchev	Patterson	Showler	(THORPE)
Feuer	James	Thomas	Waddock	S.Davis	Johnson	Thorpe	Alexander	(Oldfield)	(GRANT)	Guentchev	Showler	(Fotiadis)	(Douglas)
Feuer	James	Thomas	Waddock	S.Davis	Johnson	(Hughes)	Alexander	THORPE	(FOTIADIS)(Guentchev)	(SHOWLER)(McLaren)	(Guentchev)	(McLaren)	(Douglas)
Feuer	(James)	THOMAS	Waddock	S.Davis	Johnson	Hughes	Alexander	(Thorpe)	GRANT	SHOWLER	(Guentchev)	(McLaren)	(Douglas)
Feuer	James	Thomas	Waddock	S.DAVIS	Johnson	Hughes	Alexander	(Thorpe)	Grant	Showler	Guentchev	McLaren	(Oldfield)
Feuer	James	Thomas	Waddock	S.DAVIS	Johnson	(Hughes)	Alexander	(Oldfield)	(Thorpe)	SHOWLER 2	(Guentchev)(McLaren)	(Fotiadis)	Skelton
Feuer	James	Thomas	Waddock	S.Davis	Johnson	HUGHES	Alexander	Oldfield	Thorpe	Showler	Guentchev	McLaren	(Douglas)
Feuer	James	Thomas	Waddock	Skelton	Johnson	Hughes	(Alexander)	(Oldfield)	THORPE 2	(Showler)	(Guentchev)(McLaren)	(Douglas)	
Feuer	James	Thomas	Waddock	S.Davis	Johnson	Hughes	Alexander	(Oldfield)	Thorpe	SHOWLER	Guentchev	McLaren	(Douglas)
Feuer	James	Thomas	Waddock	S.Davis	Johnson	Hughes	Alexander	(Douglas)	THORPE 3	(Showler)	(Guentchev)	McLaren	(Grant)
Feuer	James	Thomas	Waddock	S.Davis	Johnson	HUGHES	Alexander	Grant	(THORPE)	Guentchev	Marshall	McLaren	(Douglas)
Feuer	James	Thomas	Waddock	S.Davis	Johnson	Hughes	Alexander	(Grant)	(Thorpe)	(Showler)	(Guentchev)(McLaren)	(Grant)	(Douglas)
Feuer	James	Skelton	Waddock	S.Davis	Johnson	HUGHES	Alexander	(Douglas)	Guentchev	Showler	Patterson	McLaren	(Marshall)
Feuer	James	Thomas	(Waddock)	S.DAVIS 2	Johnson	Hughes	Alexander	(Douglas)	(Guentchev)	Showler	(Skelton)	(McLaren)	(Marshall)
Feuer	James	Thomas	McLaren	S.Davis	Johnson	Hughes	Alexander	(Showler)	THORPE(MARSHALL)	(Guentchev)	(Grant)	Skelton	
Feuer	JAMES	Thomas	(Skelton)	S.Davis	Johnson	Hughes	Alexander	(Showler)	(Thorpe)	MARSHALL	(Guentchev)	(Grant)	(Linton)
Feuer	James	Thomas	McLaren	S.Davis	Johnson	Hughes	Alexander	Showler	THORPE(MARSHALL)	Guentchev	(Grant)	Linton	

## Average Attendances



## Leading Scorers



Division Two stats from 96/97 - by FOOTBALL INFORMATION SERVICES  
(Due to printing deadlines, midweek matches not included).



Today's referee is

**BARRY  
KNIGHT**

from Orpington,  
in Kent.

Mr Knight, a Chartered  
Surveyor, refereed our  
home match earlier this  
season against Walsall.

2

**LUTON TOWN**

Manager: Lennie Lawrence

V

**BOREHAM WOOD**

Manager: Bob Makin

1

Ian FEUER

1

Simon SHEPPARD

Julian JAMES

2

Steve DALY

Mitchell THOMAS

3

Tony JOYCE

Paul McLAREN

4

Matthew HOWARD

Steve DAVIS

5

Garry NISBET

Marvin JOHNSON

6

Billy HARRIGAN

Ceri HUGHES

7

Andy PRUTTON

Graham ALEXANDER

8

Steve HEFFER

Paul SHOWLER

9

Terry ROBBINS

Tony THORPE

10

Tony SAMUELS

Dwight MARSHALL 2

11

Jason SHAW

12

13

14

**SEE PAGE 39 FOR  
FULL SECOND ROUND  
DRAW DETAILS**

If a replay is required for  
today's game, it will take place  
at Boreham Wood FC on  
Tuesday, December 17, kick-off  
7.30pm. This would be an  
ALL-TICKET match.

The next game at Kenilworth  
Road is this Tuesday, December  
10, kick-off 7.45pm, when we  
entertain Leyton Orient in the  
first round of the Auto  
Windscreens Shield.

See page 9 for all ticket details.



**Plowmans** of Luton

**Motorbodies** of Luton

AND  
LUTON  
TOWN

THE  
PERFECT  
MATCH

**You'll do a great deal better with us!**

Plowmans, 15 Hitchin Road, Luton. Tel: 454666

Open 7 Days

Motorbodies, Memorial Road, Leagrave, Luton. Tel: 567500