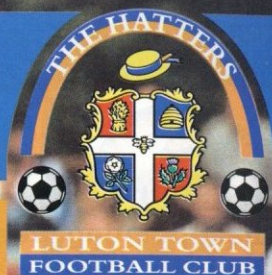
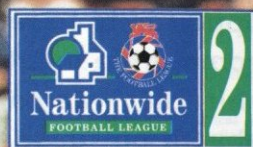


# LUTON

**Town Football Club**



**MEET THE  
VISITORS  
p12-15**



**MATCH  
SPONSORS**  
**John Eastaff  
(Builders  
Merchants) Ltd**

**LENNIE  
LAWRENCE  
ON TODAY'S  
GAME - p2&3**



**Sponsors of  
Luton Town F.C.**

**Look out for your FREE  
Merchandise Catalogue**

**OFFICIAL MATCHDAY  
PROGRAMME  
£1.50**

**v ROTHERHAM UNITED**

**Saturday, August 31st, 1996,  
Kick-off 3pm.**



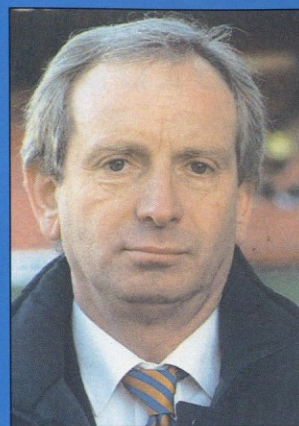
## From the manager's chair

AFTER the most disappointing week in my time at Luton Town Football Club, today's game against Rotherham - to whose supporters, players and officials we extend a warm welcome - represents a chance for us to kickstart our season and an opportunity to restore some pride in a Luton shirt that was palpably absent on Tuesday night in particular.

Much has been said and written about our last two away performances.

Saturday's performance at Brentford can best be summed up by the old phrase "defeat snatched from the jaws of victory".

Tuesday at Bristol City was quite simply a re-run of the away game against Grimsby in the third round of the FA Cup last January, with the simple addition of Bristol City substituting their three



with **LENNIE LAWRENCE**

liveliest players before the end of the game.

Following the Grimsby debacle last January we managed to put together a good run of results and we must hope to do the same again this time.

As I have said to the players, I find it impossible to believe that the same group of players, with the same coaching and management, can go from one of the best defensive units I have worked with in my first three months here, to the defensive shambles we saw against

Brentford and Bristol City.

Infact I refuse to believe it, because I know that it is possible to reform that defensive stability within the team, and that is the foundation of any team's success.

Defenders have put themselves under pressure, made mistakes which causes a lack of confidence, which causes more mistakes, and so on.

Decisions made under pressure are often wrong ones, and the task must be to get back to basics and get the defensive unit thinking clearly and together. That may give us the foundation to build upon.

Obviously one or two changes need to be made, but I find it hard to believe that I can loan players from first division clubs, or young players from Premier League clubs, that are necessarily any better than our current squad



ABOVE: Celebrations for Tony Thorpe after his penalty gave Luton a 1-0 half-time lead at Brentford. (Picture: ANDY HANDLEY).

of players. However, that is an alternative we are pursuing, although the loan of players in our current situation is not as easy as might be imagined.

I have apologised to fans who travelled to Bristol on Tuesday for their wasted journey, and have equally promised changes in personnel for today's game.

That may be difficult for the reasons outlined above, plus injuries to one or two young players that might be ready to go into the team.

We have many young players at this club and in my

opinion the great majority are not ready for the step into the first team at this stage.

If we can pull ourselves together quickly, all things are still possible. But it requires self-discipline, a togetherness of purpose, and a massive physical effort starting with today's game against Rotherham.

Hopefully we can provide some entertainment and the right result, and hopefully you the fans can continue to show the extraordinary patience and tolerance that you have so far displayed.



Luton Town Football Club  
Kenilworth Road Stadium,  
1, Maple Road,  
Luton, Beds LU4 8AW.

Tel: (01582) 411622  
Fax: (01582) 405070  
Ticket Office: (01582) 416976  
Clubcall: 0891 121 123

**Chairman and Managing Director:**  
David Kohler BSc (Hons)  
ARICS

**Directors:**  
C.S. Bassett, C.T.F. Green,  
N.S. Terry

**Vice Presidents:**  
R.L. Banks, D. Ludlow,  
C. Bygraves, R. Safranek,  
P. Ireton, J. Sapsworth.

**Club Secretary:**  
Cherry Newbery

**Manager:**  
Lennie Lawrence

**First-Team Coach:**  
Wayne Turner

**Player Coach/Reserves:**  
Trevor Peake

**Youth Team Coach:**  
John Moore

**Physiotherapist:**  
Clive Goodyear

**Consultant Physio:**  
John Sheridan

**Youth Development Officer:**  
Paul Lowe

**Scouting:**  
Les Shannan

**Community Football Officer:**  
Jeff Vetere

**Company Secretary and Financial Controller:**  
Bob Bird

**Commercial Manager:**  
Kathy Leather

**Safety Manager:**  
Geoff Lovell

**Catering Manager:**  
Peter Saul

**Medical Officer:**  
Dr Bill Berry

**Club Dentist:**  
A. Chris BDS (Syd)

**Press Officer/P.R.O.:**  
Simon Oxley



THE World's original league football competition emerged from last weekend's opening series of Nationwide Football League matches in buoyant mood with attendances already soaring past last season's levels - a season which saw an unprecedented tenth annual rise in gates for the professional game.

A league spokesman said: "It would have been difficult for the partnerships between The Football League, Nationwide and Sky Television to have got off to a better start to what promises to be a golden era for the Nationwide Football League, with the first weekend's attendances showing a 5.2% increase on last season's corresponding figures.

"Well over a quarter of a million people turned out to watch action in the three divisions of the Nationwide Football League - more spectators than any other professional football competition in Britain."

The average attendances were:  
Division One 13,293 (+10.1%);  
Division Two 6,172 (+5.8%);  
Division Three 3,577 (-10.6%).

In total, 276,503 people watched Football League games, a match average of 7,681 (+5.2%).

## Football League gates boom on opening day



ABOVE: Tony Thorpe takes on the Burnley defence during the Hatters' opening match of the season at Kenilworth Road.

### SAFETY NOTE

The Chairman and Directors of Luton Town Football Club undertake to ensure as far as humanly possible that all activities that take place at the Kenilworth Stadium are conducted in such a way that, as far as is reasonably practicable, the safety of everybody at the stadium is assured.

It is the policy of the Chairman and Directors to ensure that the conditions set out in the General Safety Certificate, issued under Safety at Sports Ground Act 1975 are fully complied with. It is the club's policy to provide at any activity sufficient and competent staff and management systems to ensure as far as humanly possible, for the safe admission, accommodation, and exiting of spectators attending the stadium. These systems will be subject to continual monitoring, testing and updating where necessary.

In the interests of public safety, the safety authority (Beds County Council) have imposed a NO SMOKING restriction in and beneath our main stand. Your co-operation is appreciated.

Follow the Hatters home and away....  
See page 9 for ticket information for all our forthcoming matches, together with travel details for the trips to Bristol Rovers and Wycombe Wanderers.....


### LUTON TOWN FC MATCHDAY PROGRAMME

Editor: Simon Oxley  
Tel: 01582 411622  
Fax: 01582 405070

Pictures: Andy Handley

Design and Print:  
McLeod Warner, Luton.  
Tel: 01582 38389  
Paper supplied by:

James McNaughton, Dunstable



# Universal Salvage Auctions

OVER **200** REPAIRABLE/STOLEN AND RECOVERED VEHICLES ON SALE AT EACH AUCTION

## WEEKLY AUCTIONS

**TUESDAYS**  
**CORBY**

**MITCHELL ROAD**  
**PHOENIX PARKWAY**  
**CORBY NN17 5AF**  
**01536 202333**

FOR DETAILS OF VEHICLES AT THE NEXT AUCTION FAX 0336 418116. CALLS CHARGED AT 49p PER MIN PEAK AND 39p PER MIN AT OTHER TIMES. AVAILABLE FROM 12 NOON ON THE DAY PRECEDING THE AUCTION.

**WEDNESDAYS**  
**REDBOURN**

**DUNSTABLE Rd (J9 M1)**  
**REDBOURN**  
**HERTS AL3 7PX**  
**01582 792690**

FOR DETAILS OF VEHICLES AT THE NEXT AUCTION FAX 0336 418115. CALLS CHARGED AT 49p PER MIN PEAK AND 39p PER MIN AT OTHER TIMES. AVAILABLE FROM 12 NOON ON THE DAY PRECEDING THE AUCTION.

**WEDNESDAYS FORTNIGHTLY**  
**DENNY**

**STONEWOOD**  
**DENNY**  
**STIRLINGSHIRE FK6 5HS**  
**01324 825566**

FOR DETAILS OF VEHICLES AT THE NEXT AUCTION FAX 0336 418118. CALLS CHARGED AT 49p PER MIN PEAK AND 39p PER MIN AT OTHER TIMES. AVAILABLE FROM 12 NOON ON THE DAY PRECEDING THE AUCTION.

**THURSDAYS**  
**WESTBURY**

**QUARTERMASTER Rd**  
**WEST WILTS TRADING ESTATE**  
**WESTBURY, WILTS BA13 4JA**  
**01373 858976**

FOR DETAILS OF VEHICLES AT THE NEXT AUCTION FAX 0336 418116. CALLS CHARGED AT 49p PER MIN PEAK AND 39p PER MIN AT OTHER TIMES. AVAILABLE FROM 12 NOON ON THE DAY PRECEDING THE AUCTION.

**FRIDAYS**  
**SANDTOFT**

**SANDTOFT IND. EST.**  
**SANDTOFT Rd, BELTON**  
**Nr DONCASTER DN9 1PN**  
**01427 873777**

FOR DETAILS OF VEHICLES AT THE NEXT AUCTION FAX 0336 418115. CALLS CHARGED AT 49p PER MIN PEAK AND 39p PER MIN AT OTHER TIMES. AVAILABLE FROM 12 NOON ON THE DAY PRECEDING THE AUCTION.



**NO  
DEPOSIT**

AND

**3  
YEARS  
INTEREST  
FREE CREDIT**

**AVAILABLE ON  
HUNDREDS OF SUITES**

the  
**FURNITURE SHOP**  
FOR SERVICE, STYLE, VALUE



Up to **£300**  
**TRADE IN**  
This is a limited offer.

**DUNSTABLE**  
22 BEDFORD SQUARE, HOUGHTON REGIS  
**01 582 867531**

OPEN MON - SAT 9-5.30pm SUN 10-4pm  
OTHER BRANCHES: CORBY 01 536 400445, BEDFORD 01 234 742030,  
LEIGHTON BUZZARD 01 525 378619, WATFORD 01 923 230845  
MILTON KEYNES 01908 520094



Subject to status. Licensed Credit Broker. Written details on request.

# LEADING THE LINE

by Club Captain  
**STEVE DAVIS**



**LEFT: Skipper Steve Davis was voted the Man-of-the-Match in the Coca-Cola Cup tie against Bristol Rovers. He is pictured receiving his Coca-Cola Mountain Bike from Hatters' Financial Controller Bob Bird.**

## MARTIN SMITH COMMERCIAL MOTORS

**USED COMMERCIAL VEHICLE  
SALES & SERVICE**

Always a large selection of quality late  
used commercial vehicles on display

199 & 207 Leagrave Road,  
Luton, LU3 1JD,  
Bedfordshire.

Telephone: (01582) 574455/505854  
Fax: (01582) 490858



**THE MAD HATTERS  
CLUB LTD  
LUTON'S NO.1  
MEMBERS CLUB**



**Two floors of music  
- Soul, Swing, Lovers Rock  
- House, Garage**

**OPEN MONDAY TO SUNDAY  
11am to 3am**

**VIP Lounge - Top Floor**

**Find us at  
Cheapside**

**Phone: 01582 411894  
Membership Available**

**YOKOHAMA Serious Rubber**

**AT A PRICE YOU CAN AFFORD**

**PROFESSIONAL PERFORMANCE TYRES**

**TSW ALLOY WHEELS**

**BMW & MERCEDES  
SERVICING AND REPAIRS**

**OFFICIAL BOSCH SERVICE AGENT**

**R.M. FENSOME & CO**  
15 KELVIN CLOSE, LUTON, BEDS. FAX: (01582) 405108  
**TEL: (01582) 22705**

**AA APPROVED**

**BOSCH SERVICE**

**YOKOHAMA**

**A510 AVS A509**

**THIS afternoon it is essential that we return to winning ways, and start to do ourselves justice in this league.**

After the disappointment of the opening day defeat by Burnley, we bounced back with a good cup win against Bristol Rovers.

We now must be confident of progressing to the second round stage, where we could land a tie against a Premiership club which could give everyone a further boost.

However, before we start thinking about cup competitions, we have to start winning league points.

The defeats at Brentford and Bristol City were obviously very disappointing for all concerned, and the players recognise that performances have not been good enough.

The teams relegated, ourselves, Watford and Millwall, have not found life easy in Division Two, and we are certainly under no illusions as to the task ahead.

As I mentioned in my notes prior to the game against Burnley, there are places in this league where you have to knuckle down to just get a result.

Many of our players have experience of playing in this league, so we know the standards required. The manager has made it clear that changes will have to be made, and it is up to us to respond in a professional manner.



## Switch for reserve fixture

THE Reserve team started their season on Wednesday, with a home fixture against West Ham, but next week's home match against Wimbledon will now be played on Thursday, September 5, kick-off 2pm.

The match against Wimbledon is the first in the Avon Insurance Combination League, the game against West Ham having been a League Cup tie, and we have had to reshuffle the fixtures due to our trip to Bristol on Wednesday, and the need to stage a youth team game here on Tuesday.

The youth team match is a replay in the Southern Junior Floodlit Cup, after this week's 1-1 draw at Bournemouth.

The replay will kick-off at 7.30pm on Tuesday, September 3, and admission will be £2 for adults and £1 for juniors and senior citizens.

## From the secretary's chair



with **CHERRY NEWBERY**

A reminder as well that the game in Bristol on Wednesday is ALL-TICKET. Details can be found in the ticket office round-up on the facing page.

This afternoon at Football League grounds across the country, Nationwide are officially launching their sponsorship of the League.

Various promotional items from the Nationwide Building

Society will be available around the ground, such as hats and balloons etc, and we join with the Football League in thanking Nationwide for their generous support, and wish them a happy association with the competition.

A reminder that we are still looking for Executive Stewards to work here on matchdays, and anyone interested should contact me, in writing, here at the club.

There are also vacancies for car park stewards. Again, please contact me, in writing, at the club.

We have a few Car Park spaces available for this season. These are available at £75, which guarantees you a space at every home match. Please telephone me if you are interested.

## Bobbers Travel Club - Coach Travel Price List 1995/6

Date	Destination	Adult	Child/OAP	Depart Cranfield	Depart Luton
Wed Sept 4	Bristol Rovers	£9.50	£7.50	2pm	3pm
Sat Sept 7	Wycombe	£5.50	£4.50	11am	12 noon
Sat Sept 21	Bury	£11.00	£9.00	8.30am	9.30am
Tue Oct 1	Wrexham	£10.00	£8.00	1.30pm	2.30pm

Coaches from Cranfield pick-up additionally at the following places: Marston Moretaine, Ampthill, Flitwick, Westoning and opposite the Luton Gateway Hotel. All coaches then depart from the junction of Hazelbury Crescent and Kenilworth Road.

To book: 1) From the ticket kiosk in the Kenilworth Road turnstiles. See BTC travel club co-ordinator Paul Deason before any Saturday 1st team home match between 2.15 and 2.45pm. (No bookings taken at midweek matches). 2) On the return journey from the previous away game. 3) Telephone Paul Deason on Bedford 01234 750996.

## Bristol Rovers v Luton Town

COCA-COLA CUP 1st round, 2nd leg  
Wednesday, September 4, 1996, kick-off 7.30pm, at Bristol RUFC.

This is an ALL-TICKET match for Luton supporters. No tickets will be available on the night of the match. Tickets are limited to ONE per season ticket holder or member (subject to availability). Terracing only, priced at £8.00 for adults and £4.00 for juniors/senior citizens. Tickets will be on sale until 4pm on Tuesday, September 3.

## Wycombe Wanderers v Luton Town

NATIONWIDE LEAGUE DIVISION TWO  
Saturday, September 7, 1996, kick-off 3pm

This is an ALL-TICKET match for Luton supporters, and NO tickets will be available on the day of the match.

Seats only: Main Stand tickets - £12 (no concessions in this stand). Amersham and Wycombe College Stand - £10 adults, £5 juniors and senior citizens.

Tickets will be on sale until 4pm on Friday, September 6.

Family Stand tickets are available by contacting Wycombe Wanderers FC direct, where bookings are taken by credit card. Telephone 01494 441118 during normal office hours, Monday to Friday. Prices are £10 adults and £5 juniors.

(The ticket office will be open on Saturday, September 7, between 10am and 12 noon for the sale of other match tickets).

## Luton Town v Gillingham

NATIONWIDE LEAGUE DIVISION TWO  
Tuesday, September 10, 1996, kick-off 7.45pm

Tickets for this match are now on sale at normal league prices. Normal guesting facilities apply.

## Luton Town v Chesterfield

NATIONWIDE LEAGUE DIVISION TWO  
Saturday, September 14, 1996, kick-off 3pm

Tickets for this match are now on sale at the discounted prices. Normal guesting facilities apply.

## Bury v Luton Town

NATIONWIDE LEAGUE DIVISION TWO  
Saturday, September 21, 1996, kick-off 3pm

Pay on the day only at Bury, terracing £9.00 (no concessions).

An unsegregated family section in the Main Stand is available for families to use. Prices are £11 for one adult and one child (under 15), with additional children £3 and Senior Citizens £5. Please note this is a Family Area ONLY, and any supporter using foul or abusive language will be ejected without a refund. (The LTFC ticket office will be open from 9 to 11am for the sale of other match tickets).

## LTFC TICKET OFFICE OPENING HOURS

Monday to Friday: 10am-4pm. Saturday (matchdays): 9am-3pm and 4.45-5.15pm. Saturdays (non matchdays): Subject to change. Please contact ticket office on 416976. For bookings, membership and enquiries, ring the Ticket Office direct on (01582) 416976. Supporters wishing to order by credit card can do so by using the 24-hour credit card hotline on (01582) 30748.

PLEASE NOTE THE TICKET OFFICE IS NOW SITUATED IN THE CLUB SHOP, MONDAY TO FRIDAY 10AM TO 4PM, AND ON NON-HOME MATCH SATURDAYS.

## Travelling to...

### Bristol Rovers

Address: The Memorial Ground, Bristol, BS7 0AQ.  
Tel: (0117) 986 9999

Take M1, M25 and M4, exiting M4 at M32. Exit M32 at junction 2, then turn right into Muller Road (signposted Horfield). At 5th set of traffic lights turn left (Downend Road), then take 2nd right for the Alton Road entrance to ground. Although please note there is no parking in Alton Road. Alternatively at 6th set of traffic lights turn left into Filton Avenue. Entrance to ground is second left.

### Wycombe Wanderers

Address: Adams Park, Hillbottom Road, Sands, High Wycombe, Bucks, HP12 4HJ.  
Tel: (01494) 472100

Exit M40 and junction 4 (s/p A404 Wycombe, Marlow). At motorway roundabout, follow signs to Aylesbury A4010, picking up first signs to Wycombe Wanderers FC. Straight over three roundabouts and down a long hill - a total of 2.3 miles. At first of two mini-roundabouts, turn left into Lane End Road. At next roundabout, after 0.5 miles, turn right (s/p Industrial Estate) into Hillbottom Road. After the game, follow the yellow AA signs which direct traffic back to the M40, avoiding the town centre and some of the worst jams.

Directions courtesy of FOOTBALL FAN'S GUIDE. Editor's note: This highly acclaimed and well-researched book will shortly be available in the Club Shop. There is an up-dated version for the 96/97 season, and it includes a wide range of information for the travelling supporter.



What if  
the wedding of a close  
relative coincided with the  
divisional play-off final?

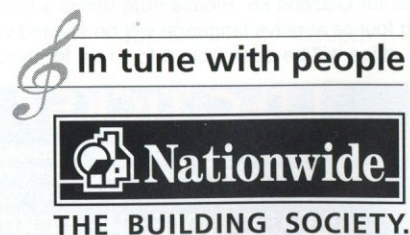


## Nationwide Banking :

You've followed your team the length and breadth of the country and witnessed their incredible climb to third place and the chance to go up a division. Then out of the blue your sister announces that her wedding is at three o'clock that Saturday. You'd have to spend hundreds on the mother of all floral displays to compensate for your absence from the ceremony. In such unfortunate circumstances it's good to know that your banking facility will allow an automatic £250 overdraft with no setup or monthly fees other than the interest. To find out more about Nationwide's FlexAccount just give us a call. All the best for the season!

Call free on: **0800 30 20 10** quoting ref: FB018

or visit our football site on  
<http://www.nationwide.co.uk>



You must be 16 or over to apply for a FlexAccount. Overdrafts, Payment Cards and cheque guarantee cards are only available to those 18 or over. The opening of a FlexAccount, the provision of a cheque book and the provision of a credit facility are subject to appraisal of an applicant's financial standing. The automatic overdraft of £250 is available for customers with a Payment Card. Written quotations for credit facilities are available from: Nationwide Building Society, Nationwide House, Pipers Way, Swindon, SN38 1NW. Nationwide is a member of the Building Societies Ombudsman Scheme, and subscribes to the Code of Banking Practice. Please note that for various legal, regulatory and customer service requirements your call will be recorded.



ABOVE: Hatters supporter Les Miller (left) was our club runner in April's London Marathon, and raised £800 for the Luton and South Beds Hospice. He is pictured above, handing over a cheque to Appeal manager Roger Sharp. Mr Sharp has also extended his thanks to all supporters who donated to the collection held at last season's game against Watford, when £436.35 was raised.

RIGHT: Kevin Odell, and his two-year-old son Luke, from Wellingborough, are pictured on holiday in Australia.



Supporters are invited to send photographs, requests for penpals, or other information for inclusion in the LTFC matchday programme, to: Simon Oxley, Luton Town Football Club, Kenilworth Stadium, 1 Maple Road, Luton, Beds, LU4 8AW.



# CHEERS!



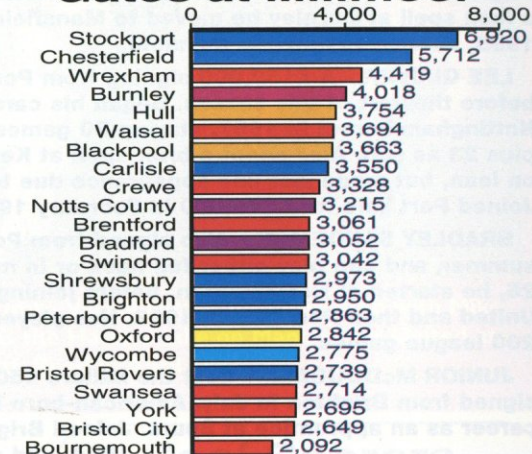
## Bar facilities are now available for supporters on matchdays!

**Eric Morecambe Lounge (season ticket holders only, passes to be shown):** the bar will be open from 12 noon to 2.45pm on Saturday matchdays, and at midweek games from 6 to 7.30pm. Rolls and hot pies will also be available to buy, and entry to this bar is via Maple Road bridge.

**Nick Owen Lounge (season ticket holders only, passes to be shown):** the bar will be open from 1.30 to 2.45pm and 4.45 to 7pm on Saturdays, and from 6.30 to 7.30pm, and from 9.30 to 11pm at midweek games. Rolls and hot pies are available to buy, and entry is via the door opposite the iron staircase at the rear of the main stand.

**The Hatters Bar, under the Kenilworth Stand (members over 18):** this bar will be open from 1.30 to 2.45pm on Saturdays, and from 6.30 to 7.30pm at midweek games. Drinks must be consumed in the licensed area which is marked by the wide yellow line.







**STEVE FARRELLY** - 34-year-old goalkeeper who joined Rotherham from Vauxhall Conference side Macclesfield for £20,000 in July 1995.

**TREVOR BERRY** - Joined Rotherham after a loan spell from Aston Villa. Spent most of last season playing wide, but has also filled a midfield role.

**STEVE CHERRY** - 36-year-old goalkeeper signed from Watford. Vastly experienced, with over 500 games played for a variety of clubs including Plymouth, Walsall, Notts County and Derby.

**JIM DOBBIN** - Summer signing from Grimsby Town. Experienced midfielder who began his career with Celtic. Joined Doncaster Rovers in 1984, moving to Barnsley two years later. Grimsby paid £200,000 for his signature in 1991.

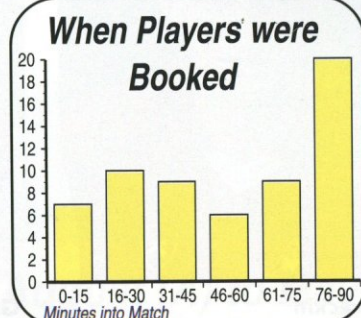
**NATHAN PEEL** - Lancashire born, and started his career at Preston North End. Joined Sheffield United for £50,000 in 1991, and then moved to Burnley for £80,000 in September 1993. Had a loan spell with the Millers before signing in June this year.

**STEVE SLAWSON** - 24-year-old summer signing who began his career in his home town with Notts County. After a loan spell at Burnley he moved to Mansfield Town in 1995, before his move to Millmoor.

**LEE GLOVER** - A £150,000 signing from Port Vale just before the start of this season. Began his career with Nottingham Forest in 1987, playing 80 games for them, plus 23 as sub. Also spent a brief spell at Kenilworth Road on loan, but made just one appearance due to injury. Joined Port Vale for £200,000 in February 1994.

**BRADLEY SANDEMAN** - Also signed from Port Vale in the summer, and can play either full back or in midfield. Now 26, he started at Northampton, before joining Maidstone United and then Port Vale in 1992. Has played a total of 200 league games.

**JUNIOR McDOUGALD** - Cost the Millers £50,000 when he signed from Brighton in July. American-born he began his career as an apprentice at Spurs. Joined Brighton in May 1994, and still only 21, he finished as leading goalscorer at the Goldstone Ground last term.



## MEET THE MANAGERS

Former Nottingham Forest duo **ARCHIE GEMMILL** and **JOHN MCGOVERN** are the joint managers at Millmoor, having taken the helm in September 1994.

Archie Gemmill won 43 caps for Scotland, scoring a memorable goal in the 1978 World Cup Finals against Holland, during a playing career which also included a successful spell at Derby.

John McGovern also played for Derby, and had a short spell at Leeds.

They have had to reshuffle their side during the summer months, following the departure of striker Shaun Goater to Bristol City, and young goalkeeper Matt Clarke to Sheffield Wednesday.

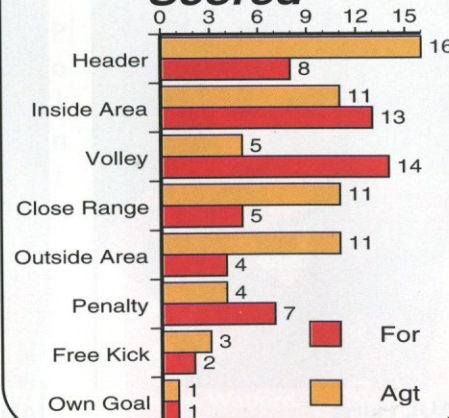


LEFT: John McGovern



RIGHT: Archie Gemmill

### How Goals were Scored



## A Hatter and a Miller.....

Paddington-born **IMRE VARADI** was plying his trade just up the road from here at non-league Letchworth, when he was snapped up by ex-Town boss Harry Haslam and taken to Sheffield United in April 1978.

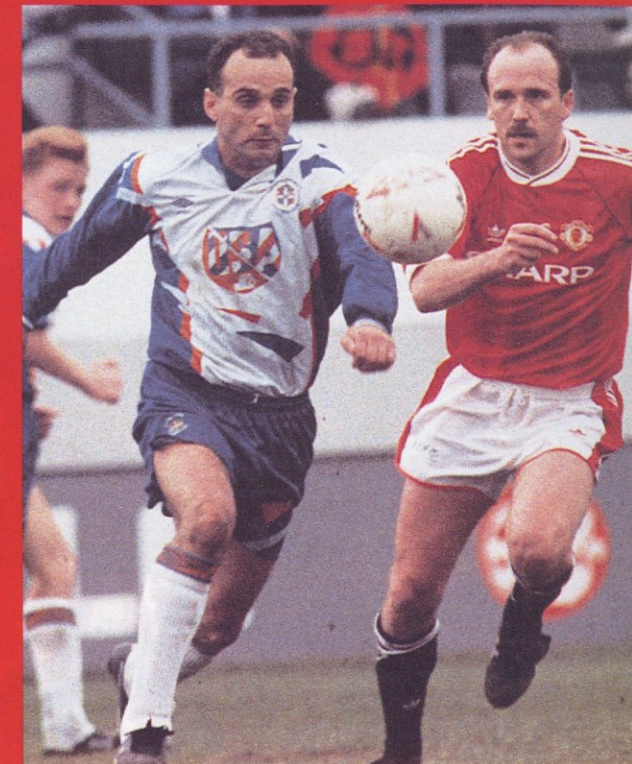
After only 10 games for the Bramall Lane side, Everton paid out £80,000 for him but after only a handful of outings at Goodison an even bigger fee took him to Newcastle in August 1981.

He enjoyed some success in the North-East, scoring 39 goals in 81 league games spread over two seasons, before Sheffield Wednesday secured him for £150,000 where he showed no let-up in his goalscoring abilities.

The final big money transfer came in July 1985 when he joined West Brom, but after a fairly torrid time at the Hawthorns he moved in quick succession to Manchester City, Sheffield Wednesday and Leeds, before coming on loan to Kenilworth Road in April 1992.

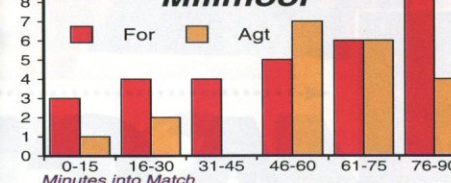
Scoring on his debut for the Town in a 2-1 home win over Wimbledon, it was hoped that his goals would help keep us in Division One, but after a further, barren, five games he was allowed back to Elland Road.

He was given a free transfer to Rotherham in March 1993, where he rediscovered his goalscoring form and was the leading marksman for the Millers in 1993/94 before eventually being freed a year later. - ROGER WASH.



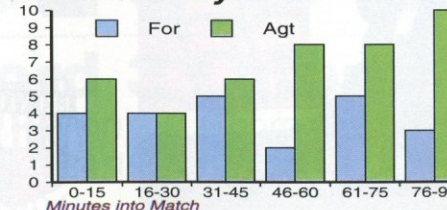
ABOVE: Imre Varadi battles for possession with Mike Phelan, as the Hatters take on Manchester United at Kenilworth Road in April 1992.

### When Goals went in at Millmoor

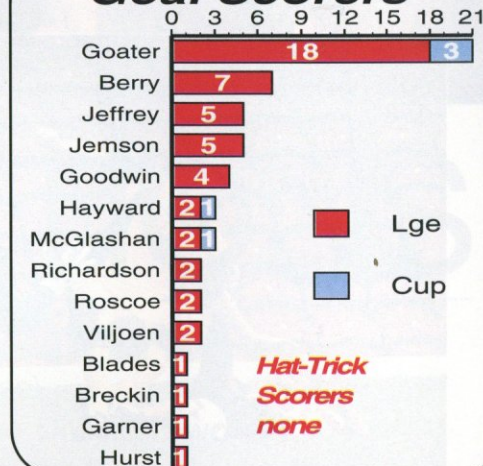


**GRAPHICS BY:** Football Information Services. Rotherham stats from 95/96 season.

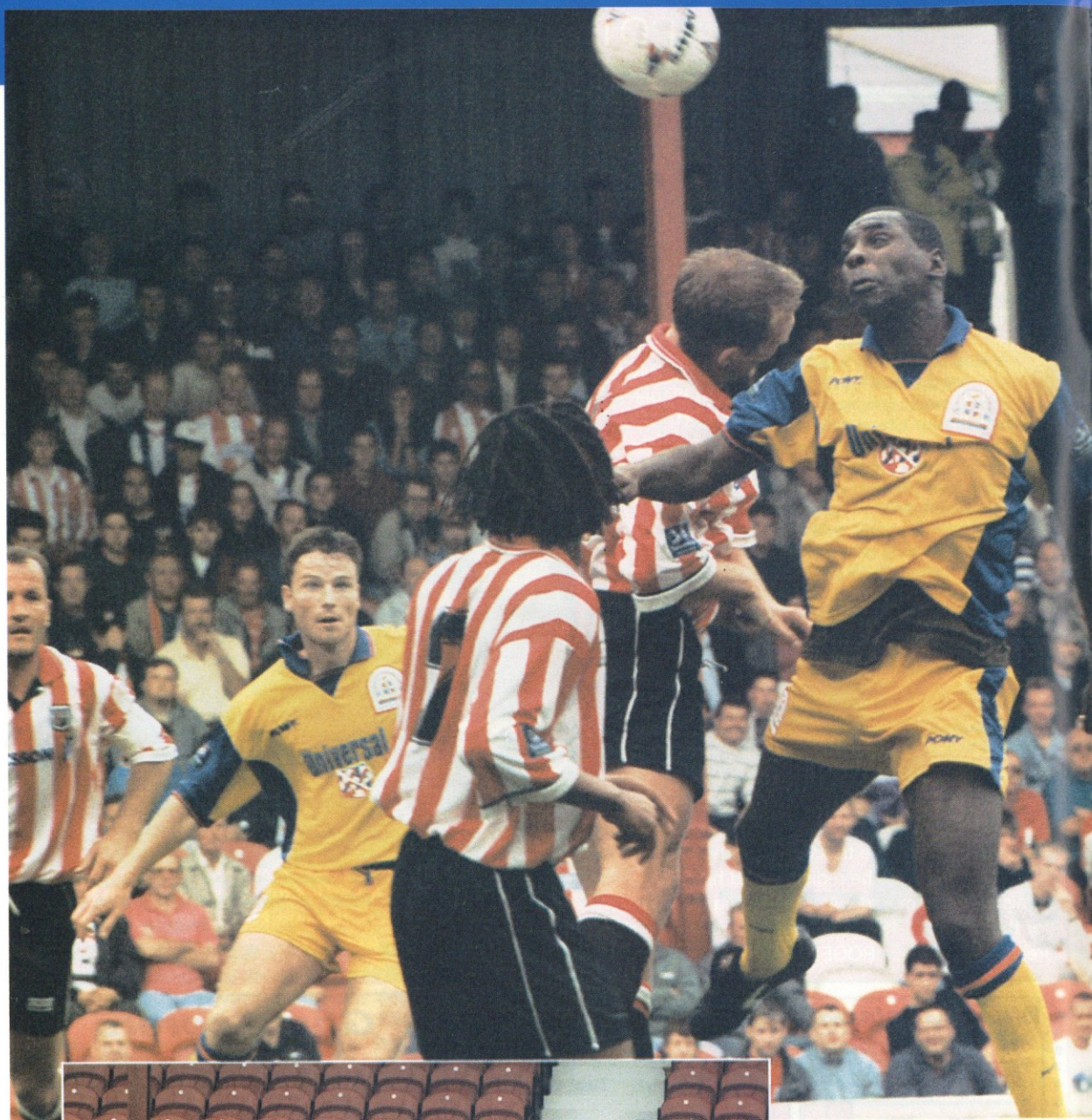
### .. and away from home



### Goal Scorers







Kim Grant with a second-half chance for the Hatters at Griffin Park.

Mitchell Thomas joins the attack against Brentford, along with skipper Steve Davis.

This foul on David Oldfield gave Tony Thorpe the chance to put Luton in front.

Ceri Hughes returned to league action at Brentford, and put the Hatters in front.



# ACTION STATIONS



## Brentford 3 Luton Town 2

(Asaba, Bates, Taylor)

(Thorpe pen, Hughes)

Saturday, August 24, 1996 - Nationwide League Division Two

Attendance: 5,404

Pictures by Andy Handley



# It's.. TRIVIA TIME

© Metro Marketing (UK) Ltd 1996

## TRUE or FALSE?

1. In 1986, Kenny Dalglish became the first ever player-manager in the First Division.

3. Franz Beckenbauer is the only player to lift the European Cup and World Cup in the same year.

2. Stoke City met Bury FIVE times in the 1954-55 FA Cup.

4. Huddersfield Town were the first team to be runners-up in both League and Cup in the same year.

## ? QUICK QUIZ?

- Which team won five out of the first seven FA Cup Finals?
- Who knocked Everton out of the 95/96 European Cup Winners Cup?
- Who won the Scottish League Cup in 1994/95?
- For which club did Paul Merson make his League debut?
- About which footballer was the book 'The Gentle Giant'?
- Which African side lost 2-8 to Brazil in March 1996?

## IN WHICH YEAR DID...?

Arsenal win the League, Manchester City win the FA Cup, Rangers win the Scottish League and Scottish Cup, former Arsenal manager Herbert Chapman pass away, Italy win the World Cup on home soil, and, 19 year old Manchester City goalkeeper, Frank Swift, faint in the Cup final?

ALL THESE EVENTS TOOK PLACE IN THE SAME YEAR

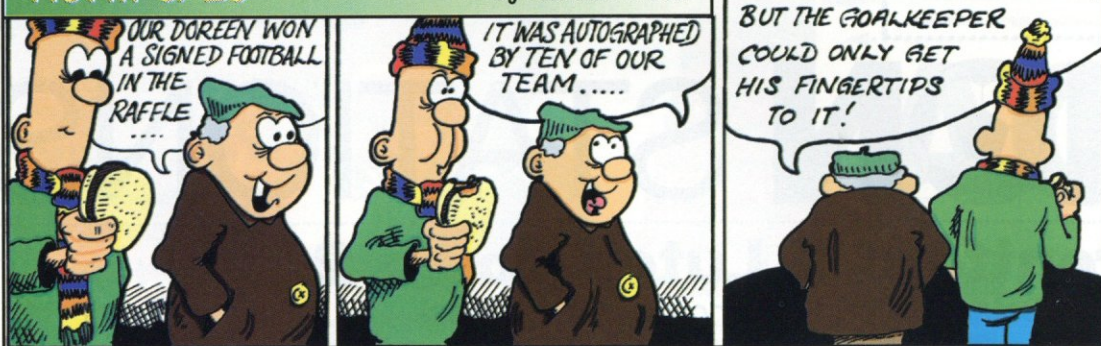


## SPOT THE GROUND

Originally called St. Clements playing field, was used for football between 1900-03 then for rugby until 1907. The ground was bought by the club in 1914 but League football wasn't played there until 1921. The roof of the main stand blew off in December 1921, was damaged by fire in 1954, and collapsed under snow in 1966. Now hosts Third Division football.

## 'Norm & Ec'

by Norman Hood



Answers

QUICK QUIZ: 1. The Wanderers; 2. Feyenoord; 3. Raith Rovers; 4. Brentford; 5. John Charles; 6. Ghana.  
TRUE OR FALSE: 1. False; it was Newcastle's Andy Cunningham in 1931; 2. True; 3. True; 4. True.  
IN WHICH YEAR: 1934  
SPOT THE GROUND: Spotland, Rochdale.

## WHO'S TROPHY CABINET?

Which club has lifted the following trophies?

League Cup:  
1972

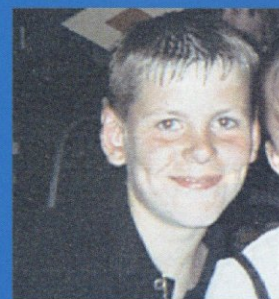
Division 2 Championship:  
1932/33, 1962/63,  
1992/93

Division 3N Championship:  
1926/27

Autoglass Trophy:  
1992



## Today's mascot



Today's Junior Hatters mascot is 12-year-old DAVID GARWOOD. He attends Ashton Middle School, and his hobbies also include rugby, basketball and running. David plays football for Dunstable Colts, and his favourite Luton Town player is Dwight Marshall.

Look out for our wide range of kids leisurewear in the Club Shop, or pick up one of our new LTFC Merchandise Catalogues for a full list of items

## JUNIOR HATTERS NEWS

## Saturday Club starts up again in September....

THE Saturday Club starts up again on Saturday, September 14, when we are at home to Chesterfield. Bookings are now being taken for this match at the Club Shop.

We are unable to re-open the Saturday Club any earlier due to the school being closed for the summer holidays. So apologies for any inconvenience, but the Family Room will be open for this afternoon's game at 2pm and at half-time.

For those of you who haven't attended the Saturday Club, you don't know what you're missing! The Saturday Club is fully supervised, begins at 12 noon, at Dallow Road, Luton. We play football and other games for fun, and then have sausage and chips for lunch, so all you need to bring is suitable footwear and a drink.

After lunch it's a short walk to the ground and to the family room in the Kenilworth Stand, and we watch the game from the Kenilworth End. At the end of the match your parents can collect you from the Family Room. Five hours of fun costs just £3.50 for Junior Hatter season ticket holders and £6.50 for Junior Hatters - but please book by 4pm the Friday before the match.

Thanks to everyone who came on the trip to Brentford last Saturday, when we were hosted by the Junior Bees.

This coming Saturday we are going to the match at Wycombe, and will be involved in a penalty shoot-out at half-time.

Prices for the trip are £12 for adults and £10 for juniors, which includes your coach fare and match ticket. Places are limited, and bookings should be made at the ticket office, in the Club Shop. (Please note: Children under 13 must be accompanied by an adult on this trip).

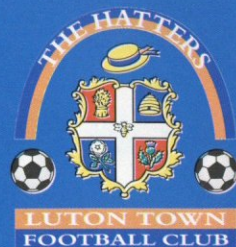


ABOVE: Louis O'Neill (centre) was our Junior Hatters mascot against Burnley, and Ross Calcutt (right) was our Commercial Mascot. They are pictured with the team captains and match officials prior to kick-off.



# OVER THE BAR!

Drink a toast to the Hatters in the following pubs...



## THE BEDFORDSHIRE YEOMAN

Just a two-minute walk from the ground  
Food available on matchdays  
Supporters welcome

214 Dallow Road, Luton  
(01582) 30469



The only place to eat in Dunstable  
Tele: (01582) 667833  
Fax: (01582) 475552

## THE RED LION Breachwood Green Hitchin, Herts

Fine traditional ales  
Bar snacks & buffets  
(Parties catered for)

Regular traditional jazz and live music evenings  
Phone for details:  
(01438) 833123

Carol and John Brennan welcome you to  
**THE FARMERS BOY**  
Common Rd, Kensworth

Real ales (CAMRA 'Good Beer Guide')

Traditional Sunday lunches  
£4.75 per person  
(01582) 872207



**THE CHEQUERS**  
Park Road, Westoning  
(off J12, M1)

For all live TV games  
(01525 713125)

## THE SOMERSET TAVERN

**Berni**

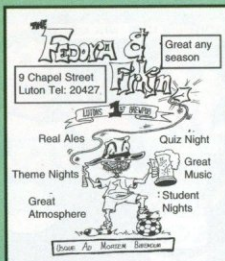
Good food and fine selection of cask ales.  
Quiz nights and karaoke.  
Crawley Grn Rd, Luton.  
Tele: 01582 29912.

**THE BREWERY TAP**  
22 Park Street, Luton  
(01582) 31797

Disco on Thurs, Fri, Sat  
and Sun nights



**WHITBREAD**  
CHILTERN INNS



## THE LILLEY ARMS

Food for all occasions,  
fine ales, accommodation,  
beautiful gardens  
with farm animals.  
Coach parties welcome,  
advance warning please!

West Street, Lilley  
Tele: 01462 768371  
"It's worth passing a few pubs for."

## THE BOATER

Traditional fayre  
Real ales, jazz nights &  
quiz nights

121 Icknield Way, Luton  
Tele: (1582) 575191

**The Plume**



**of Feathers**  
Dunstable

Jim and Joy Morris  
Tele: (01582) 661035

Kim and Chris welcome you to  
**THE WHEATSHEAF**

Traditional country pub  
serving snacks and real ales.  
Large garden, children welcome

15 High Street, Flitwick  
Tele: (01525) 712574

Richard and Karen welcome you to



Hotel accommodation, good food and fine selection of cask ales & lagers.  
Kings Walden Rd, Offley  
01462 768281



**Official Supplier to**  
**Luton Town FC**



'Over the Bar' Part Two is on page 44.....





ABOVE: Paul Showler in action for the Hatters in the Julian James Benefit Match against West Ham.

## Nationwide League hits the worldwide net

THE Football League, Nationwide and New Media Factory have completed the Nationwide Football League's new internet service - developing the concept into a fully working site within the space of four weeks.

This new worldwide service will allow supporters of Nationwide Football League clubs across the globe to access up-to-date results and match reports for every game throughout the three divisions, together with the latest fixture news and league tables.

Every one of the 72 Nationwide Football League clubs will have their own designated page, together with a full overview service of the world's original league football competition which will include statistics and an opportunity for fans to get on-line and share their opinions on this new internet service.

The web address for the site is <http://www.nationwide.co.uk/>

# Bobby dazzler!

MIDFIELDER Paul Showler has joined Luton Town, with a permanent move from Bradford City agreed last week.

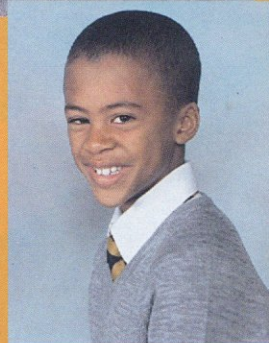
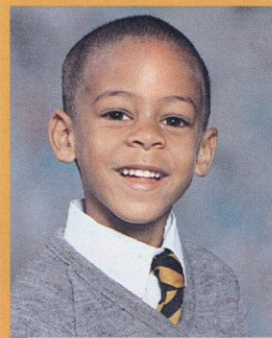
Showler, 29, made his debut as a substitute in last week's Coca-Cola Cup win over Bristol Rovers, and made his full league debut in the defeat at Bristol City on Tuesday.

Town manager Lennie Lawrence knows the former policeman well, from his days as manager of Bradford, and the Yorkshire club agreed a fee of £50,000 with their ex-manager for a player who was out of contract and looking to move on.

Showler played for the Hatters in a number of the pre-season matches, and scored against Norwich, and the manager has made no secret of his desire for left-sided players at the club.

"Richard Harvey's injury made that need even greater," Mr Lawrence told ClubCall, "and Paul is a good player with experience in this division.

## Commercial Mascots



THIS afternoon's Commercial Mascots are brothers Scott and Lee Robinson from Dunstable.

Scott (left) is seven-years-old, and attends Ardley Hill School. He plays football for the school team, his hobbies also include karate, and his favourite Town player is Tony Thorpe.

Lee (below left) is 10-years-old, and attends Priory School. His hobbies also include swimming; like his brother he plays for the school team; and his favourite player is Ian Feuer.

## Ex-PC Showler winging in to 'nick' some goals

"We need someone who can cross from the left, and get the odd goal or two, and Paul Showler fits the bill. He is a traditional winger, no Steve McManaman, but capable of doing a useful job for us."

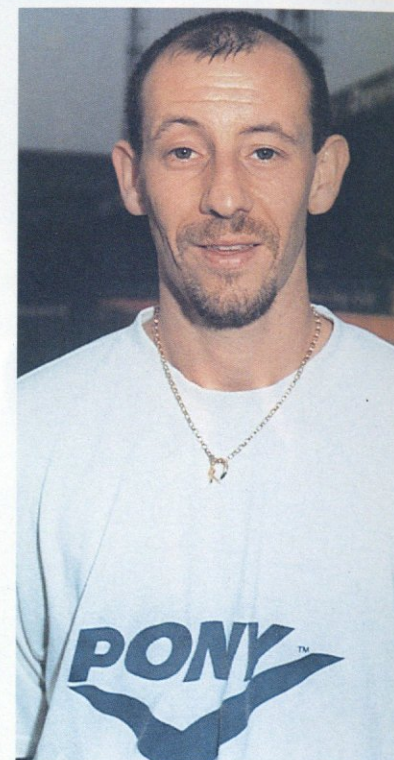
Doncaster-born Showler started his league career with Barnet, scoring 12 times in 71 appearances.

He had played a key role as Barry Fry's side progressed from the Conference, despite still working in

Leeds as a police constable.

He scored 15 times in 88 appearances for Bradford, and finished last season as their joint second top scorer, with eight, as the Valley Parade side won promotion to Division One via the end-of-season play-offs.

He also scored a goal in each leg of Bradford's defeat of Nottingham Forest in last season's Coca-Cola Cup.



## Pete's got it framed!

AWARD-winning rock journalist Pete Frame has gone back to his roots and his first love by producing a 'Football Family Tree' featuring the Hatters in the 1950s.

For those not familiar with Pete's tried and tested formula, which he has been using for his 'Rock Family Tree' series, each season is reviewed with appearances and goalscorers being laid out in tree format.

Head and shoulders photographs of some of Pete's favourites from that era are shown including his first hero Bernard Moore, who came to Kenilworth Road in early 1951 from Hastings United.

"I've interviewed everyone in the pop field from Paul McCartney to Ray Charles to Led Zeppelin to Mick Jagger to Paul Simon, but to talk to Bernard Moore! That was something!" said Pete during a break from writing yet another BBC2 documentary.

Only a limited number of these large, incredibly well produced, posters have been printed and they are available direct from Pete at Yeoman Cottage, Church Street, North Marston, Buckingham, MK18 3PH, priced at £10 to include postage and packing.

For those supporters who hold fond memories of the 1950s, and younger fans with an interest in the club's history, these black and white posters are a must and look great 'framed'....Sorry Pete, no pun intended! - ROGER WASH.

R. J. BLOW &  
C O M P A N Y

THE FRIENDLY ACCOUNTANTS

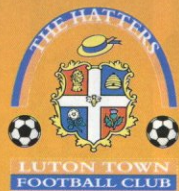
Book-Keeping  
Taxation and Wages etc.

GUILD HOUSE,  
28 GUILDFORD STREET,  
LUTON, BEDS, LU1 2NR

Tel: (01582) 38792  
Fax: (01582) 423347



**KIM  
GRANT**



**AUTOGRAPH**

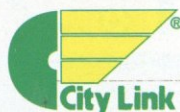


## KENILWORTH SUITE

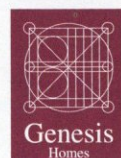
TSI (UK) Ltd  
Anachem Ltd  
Fisher Frozen Foods Ltd  
F & T Goodwin Ltd  
Handscombe Financial Services Ltd  
R W Harvey & Son  
Wilton Contract and Vehicle Rental  
Information Design Associates  
Mr Malcolm Eade  
Mr Roger Eade  
Arrow Business Systems Limited

J Sapsworth Ltd  
Dr D Siegler  
Neahurst Ltd  
Mr P Dimery  
Mr P Doyle  
Grosvenor Casino  
Churchman Thacker  
Good Fennemore  
Mr R Banks  
Ludlow Group

## EXECUTIVE BOX HOLDERS



*Mustagh Demolition*



Cope Brothers (Printers) Limited



**Herald & Post**

Mr P Urycz

## CLUB 82

C P Contracts  
C P Contracts Flooring  
Nordic Supplies  
Mr F W Pearce  
Shorey's Travel

Chris and Kim Clarke - The Wheatsheaf,  
Flitwick

Space Display Systems Limited  
The Home Counties Newspaper Group  
J and P Hygiene Supplies  
Luton Contract Packaging

## Marvin fit for Rother return!

MARVIN Johnson should be fit to resume this afternoon after being carried off in last week's Coca-Cola Cup tie against Bristol Rovers.

Initially that night we feared Marvin had suffered a broken leg, but fortunately it was just bruising to the shin and a twisted medial knee ligament.

He missed the games at Brentford and Bristol City, but at the time of writing we are hopeful he will be available against Rotherham.

Dwight Marshall continues to improve on a daily basis, and in the next few weeks he can hopefully resume ball work.

Richard Harvey was due to have an operation on Thursday to reconstruct the cruciate ligament in his right knee, following the injury he suffered during the pre-season game against West Ham.

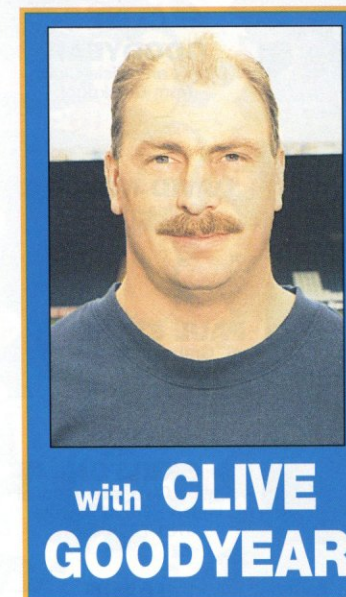
He has damaged the medial knee ligament in his right leg, and there is damage to the cruciate.

It will not be quite the same operation that he had on his left knee some seasons ago, but Richard knows what to expect, and importantly knows that a full recovery can be made.

Obviously he faces several months of hard work after the operation and we wish him well.



ABOVE: Marvin Johnson is stretchered off during the second-half of our win against Bristol Rovers, but the injury was not as bad as first feared.



with **CLIVE GOODYEAR**

Aaron Skelton is still receiving treatment for an ankle injury, but hopefully he will resume training next week.

Supporters who travelled to Brentford would have seen Julian James require treatment after a foul in the first half, but he only suffered bruising to his shin.



ABOVE: Julian James receives treatment at Brentford on Saturday.



# KIT SPONSORS



**KIM GRANT**  
Luton Town Supporters Club



**WAYNE TURNER**  
Danny and Elsie Clubb, from Blackpool



**JULIAN JAMES**  
Shorey's Travel



**LENNIE LAWRENCE**  
201 Hertfordshire and Beds Yeomanry



**TONY THOPE**  
Bedfordshire Rural Communities Charity



**RICHARD HARVEY**



**MITCHELL THOMAS**



**DES LINTON**  
Simkins Solicitors of Baldock and Sandy



**IAN FEUER**  
Grosvenor Casino



**DAVID OLDFIELD**  
Luton Town Supporters Club



**MATTHEW UPSON**



**JOHN TAYLOR**  
Kate and Phil Shaw



**GARY SIMPSON**  
Richard Culley and Pete Carney



**MARVIN JOHNSON**  
Capital Golf



**CERI HUGHES**  
Les and Sue Miller



**CLIVE GOODYEAR**  
Danny and Elsie Clubb, from Blackpool



**DAVID KOHLER**  
Critical Research



**PAUL SHOWLER**  
Graham Group plc



**AARON SKELTON**  
Vacation Club International Limited - Travel Agents  
0181 780 5885



**JAMIE WOODSFORD**  
Worldwide Hatters on the Super Highway (WHOSH)



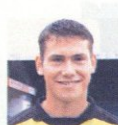
**BONTCHO GUENTCHEV**  
The Bobbers Travel Club



**SEAN EVERS**



**PAUL McLAREN**  
Danny and Elsie Clubb, from Blackpool



**KELVIN DAVIS**  
Space Display Systems Ltd



**DWIGHT MARSHALL**  
Milton Keynes Branch of the Luton Town Supporters Club



**TREVOR PEAKE**  
Bennetts Gate Bakery of Hemel Hempstead



**GRAHAM ALEXANDER**  
Mad As A Hatter



**GARY WADDOCK**  
Mad As A Hatter



**DARREN PATTERSON**  
Rob Stringer - EPIC Records



**ANDREW FOTIADIS**



**STEVE DAVIS**  
Loyal Luton Supporters Club



**STUART DOUGLAS**



**BEN CHENERY**

ABOVE: The Luton directors, players and staff are pictured above at the pre-season photocall. Supporters can purchase team photographs at the Club Shop; either the above, or the first-team squad picture featured in the programme v Burnley two weeks ago.





# RESERVES AND YOUTH ROUND-UP



THE Town's reserve side opened their season on Wednesday at Kenilworth Road, losing 3-0 to West Ham in the Avon Insurance Combination League Cup.

The Hammers fielded three internationals, with veteran goalkeeper Peter Shilton joined by Romanians Florin Raducioiu and Ilie Dumitrescu.

Former Hatters defender Tim Breacker, and ex-West Ham skipper Steve Potts were also in the side.

Raducioiu scored a goal either side of half-time, with Frank Lampard Jnr adding number three.

For Luton, John Taylor saw a second-half shot saved by Shilton, with Taylor then hitting the bar from the rebound.

Team: Davis, Evers, Chenery, McLaren, Simpson, Willmott, Guentchev, Thorpe, Taylor, Douglas, Kean.

Subs: Woodsford, Upson, Scarlett.

Next week's reserve team game at home to Wimbledon has now been put back 24 hours to Thursday, September 5, kick-off 2pm at Kenilworth Road.

The Town's youth team have started their South East Counties League season with 11 goals in

their opening two matches.

On August 17, they won 4-1 at Bristol Rovers, with goals from Gary Doherty, Steve Augustine, Liam George and Andrew Barr.

Team: Tate, Doherty, Jones, Upson, Augustine, Spring, Cox (Lawes), George, Scarlett, Barr, Smith (Hillyard). Sub not used: Ayres.

Then last Saturday, the youth team won 7-0 at home to Reading, a game played at Luton Rugby Club, after leading 5-0 at half-time.

Liam George was again on target, with two, with the other goals coming from Jimmy Cox, Andrew Barr, Steve Augustine, Terry Sweeney and Andrew Smith.

Team: Tate, Clarke, Lawes, Spring, Doherty, Jones, Cox, George, Barr (Smith), Augustine (Scarlett), Sweeney (Hillyard).

On Tuesday evening the youth team drew 1-1 at Bournemouth in the Southern Junior Floodlit Cup, with a goal from Andrew Smith.

The replay is on Tuesday, September 3, here at Kenilworth Road, kick-off 7.30pm.

The youth team travel to Rushden and Diamonds in the Eastern Junior Cup, on Wednesday, October 16, kick-off 7.30pm.



MATTHEW Upson



SEAN Evers



STUART Douglas



with  
**TREVOR  
PEAKE**



and  
**JOHN  
MOORE**

## South East Counties League, FA Youth Cup, Southern Jnr Floodlit Cup, and Eastern Junior Cup

Sat Aug 17 Bristol Rovers	won 4-1	Sat Dec 14 BRISTOL CITY	11am
Sat Aug 24 READING	won 7-0	Sat Dec 21 BRISTOL ROVERS	11am
Tue Aug 27 Bournemouth (SJFC) drew 1-1		Sat Jan 4 Bristol City	
Sat Aug 31 Colchester		Sat Jan 11 COLCHESTER UTD	11am
Tue Sep 3 BOURNEMOUTH (SJFC) 7.30		Sat Jan 18 Southampton	
Sat Sep 7 SOUTHAMPTON	11am	Sat Jan 25 Crystal Palace	
Sat Sep 14 Cambridge U (LC1)		Sat Feb 1 Reading	
Sat Sep 21 CRYSTAL PALACE	11am	Sat Feb 8 TOTTENHAM	11am
Sat Sep 28 Tottenham		Sat Feb 15 Oxford United	
Sat Oct 5 OXFORD UTD	11am	Sat Feb 22 SWINDON TOWN	11am
Sat Oct 12 Swindon Town		Sat Mar 1 Wimbledon	
Wed Oct 16 Rushden & D (EJC) 7.30pm		Sat Mar 8 WYCOMBE W	11am
Sat Oct 19 LC2		Sat Mar 15 BOURNEMOUTH	11am
Sat Oct 26 WIMBLEDON	11am	Sat Mar 22 Barnet	
Sat Nov 2 Wycombe W		Sat Apr 5 Brighton	
Sat Nov 9 BARNET	11am	Sat Apr 12 BRENTFORD	11am
Sat Nov 16 Bournemouth			
Sat Nov 23 LC3			
Sat Nov 30 BRIGHTON	11am		
Sat Dec 7 Brentford			

HOME matches in CAPITALS. Home league matches to be played at Luton Rugby Club.

**Look out for our new  
LTFC MERCHANDISE  
CATALOGUE  
which is available around  
the ground today.....**

Wed Aug 28 WEST HAM (LC)	lost 3-0
Thur Sep 5 WIMBLEDON	2pm
Wed Sep 18 Portsmouth	7pm
Wed Sep 25 BRISTOL CITY	2pm
Thu Oct 3 Arsenal (LC)	2pm
Mon Oct 7 Swindon Town	2pm
Wed Oct 23 WEST HAM UTD	2pm
Wed Nov 6 TOTTENHAM	2pm
Wed Nov 13 Charlton Athletic	2pm
Mon Nov 18 NORWICH CITY (LC)	7pm
Wed Dec 4 Ipswich Town (LC)	7.30pm
Mon Dec 9 OXFORD UNITED	7pm
Tue Dec 17 Crystal Palace	2pm
Mon Jan 6 SWANSEA CITY	7pm
Wed Jan 15 Bristol Rovers	7.30pm
Mon Jan 20 CARDIFF CITY	7pm
Wed Feb 5 Ipswich Town	7.30pm
Mon Feb 10 BRIGHTON	7pm
Thu Feb 27 Arsenal	2pm
Wed Mar 12 BOURNEMOUTH	2pm
Wed Mar 19 Southampton	7.30pm
Wed Mar 26 WATFORD	2pm
Wed Apr 9 Norwich City	7.30pm
Wed Apr 16 CHELSEA	2pm
Tue Apr 22 Millwall	2pm
Mon Apr 28 Queens Park Rgrs	7pm

Games in CAPITALS denotes home fixture.

Home matches played at Kenilworth Road will now kick-off at 2pm. Home matches will be played at Hitchin Town FC from November 18 to February 10 inclusive, and will kick-off at 7pm.

LC - Avon Insurance Combination League Cup.



JOHN Taylor



ROBERT Kean





Rephotographs by SentryBox Tel: 01895 251220

**Caught.**  
Ball watching!

The official ball supplier to:



WANDER TO WYCOMBE.....

Anyone wishing to attend the forthcoming league match at Wycombe Wanderers in style, should contact Tim Arnold at Wycombe Wanderers FC on (01494) 472100. They are offering a comprehensive package including an official car parking space, a guided tour of Adams Park, a four course waitress served meal, a premium seat in the Main Stand, refreshments at half-time and the use of the Players' Bar after the game. The package costs £40 +VAT per person.

## SAINSBURY'S

serving Luton since 1926

stores at:

Dunstable Road, Luton. Tel 01582 422622

Quantock Rise, Bramingham Park, Luton.

Tel 01582 573919

Luton Road, Dunstable. Tel 01582 477082

CARPETS SUPPLIED & FITTED

*Martin Ayres Carpets Ltd.*

SHOWROOM AT:

614 Hitchin Road, Stopsley Village, Luton, Beds.

Telephone: (01582) 454184 (Day) 24 Hr Answer Phone



call now  
**01582 456958**

or visit  
12/14 Park Square,  
Luton

### The Link

For the widest  
range of  
Mobile Phones,  
Faxes, Pagers  
and Telephones.

Tel: 01582 487222  
Fax: 01582 876155

**To advertise  
in the LTFC  
Matchday  
Programme  
contact the  
Commercial  
Department on  
01582 411622**



CB SECURITY SERVICES

CB SECURITY  
SERVICES  
4 Gordon Street  
Luton, Beds.  
LU1 2QP.  
Tel: 01582 410058



**HAIRDRESSING  
C.O.M.P.A.N.Y.**

THE  
HAIRDRESSING  
COMPANY

7 Chapel Street  
Luton  
Bedfordshire  
Tel: 01582 29422

17 New Bedford Rd.  
Luton  
Bedfordshire  
Tel: 01582 454106

## Trust us to help football

The Football Trust is helping the game at all levels - from providing kit for school teams, pitches and changing rooms for grass roots football, safety and improvement work throughout the game right up to providing vital assistance to help League clubs complete the essential task of redeveloping their grounds in line with the Taylor Report.

Over the last 20 years the Trust has received and distributed £250m from Littlewoods, Vernons and Zettors Pools and Littlewoods Spot the Ball competition for the benefit of football.

Up and down the country, clubs are building new grounds and stands, installing seating, and providing safe and comfortable facilities for their spectators to enjoy. Every club depends on the support of the FOOTBALL TRUST and the success of the pools companies. Both are crucial for football's future.



THE FOOTBALL TRUST  
Helping the game



LITTLEWOODS VERNONS ZETTERS  
Making sure football wins  
the Pools each week

THE FOOTBALL TRUST, WALKDEN HOUSE, 10 MELTON STREET, LONDON NW1 2EB

**BEST for PRICE** Top of the league for  
building materials  
**BEST for CHOICE** gibbs & gandy  
**BEST for DELIVERY** 226 Dallow Road  
Tel: 01582 21233

# STORAGE

MENSWEAR  
5 & 7 CHAPEL STREET, LUTON, BEDS.  
TEL: 01582 450412



## Those were the days

WE welcome Rotherham to Kenilworth Road this afternoon after an absence of 15 seasons.

Our paths split at the end of the 1981/82 campaign with our promotion to the old Division One, but it could quite easily have been the Millers who joined us in the top flight rather than Norwich or Watford. But more of that later.....

Our first league games against Rotherham took place in Division Two in 1951/52 following the Millers' promotion as champions of Division Three North the previous year.

Such was the momentum that promotion gives a side, that our visitors to Kenilworth Road on November 24, 1951 were standing proudly at the top of the table with the Town just below.

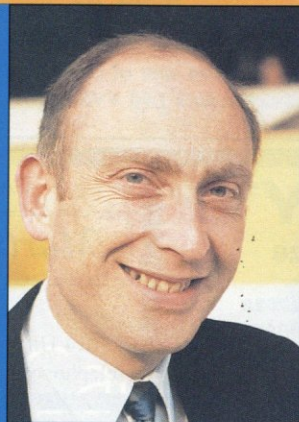
We were still basking in the glory of a 5-3 home thrashing of a star-studded Sheffield Wednesday side in the previous home game.

A record crowd for the fixture of 23,565 turned up to see a hard fought 1-1 draw with Jack Taylor on the mark for the Town. By the time of the return, the Rotherham bubble had burst and we returned from Millmoor with both points following a solitary Bert Mitchell strike.

The Town achieved the double in 1952/53 with Gordon Turner adding to his growing reputation with both goals in a 2-1 home win, with Jesse Pye hitting two against his home town club in a 3-1 victory at Millmoor.

In the 1954/55 season both sides were neck and neck for promotion throughout the campaign with the Town finally winning out, pipping the Millers on goal average. We lost 2-0 at Millmoor in an early season game, but gained full revenge in winning there 5-1 in the FA Cup, and following it up with a 4-0 home victory with Turner again scoring twice.

Our paths crossed again following our relegation in 1960 but this time it was the Town's turn to be on the receiving end of a thrashing, when we crashed 5-2 at Millmoor to a Rotherham side that had not won for two months. The only consolation for the Luton supporters



by **ROGER WASH**

was that Turner, inevitably, scored both Town goals. Following our further relegation in 1963, five seasons passed before the two teams were to meet again in Division Three.

When we clashed in August 1968, there was a considerable amount of media interest with the Town in unstoppable form following promotion, with Rotherham newly relegated and unbeaten in the new season under Tommy Docherty. It was meant to be a severe test but the sun-soaked crowd of 14,163 was treated to a vintage Town display with Bruce Rioch hammering home two of his speciality left-foot rocket shots in the first 15 minutes.

Rotherham's Johnny Quinn narrowed the lead shortly afterwards, only for Brian Lewis to restore the two-goal advantage before half-time. The second-half goal avalanche failed to materialise but we were well worth the two points that increased our lead at

the top of the table.

In the return game in March 1969, the players and supporters had to fight through snow, mist and rain to reach Millmoor, but on a bog of a pitch the points were shared after a good attacking game which could have gone either way.

Almost identical goals from Graham French and Brian Lewis were sandwiched between two fine Rotherham efforts, with both teams leaving at the end to a standing ovation.

With our promotion to Division Two in 1970 it was to be 11 years before we were to meet again following Rotherham's elevation in 1981.

When the teams came up against each other in October 1981 at Kenilworth Road, we were sitting pretty at the top of the table, and were getting to the stage where we were almost unbeatable at home.

Most teams were content to soak up the pressure and attack on the break, but Rotherham tried the opposite which made for an absorbing contest and a 0-0 scoreline at half-time with both sides missing good chances.



LEFT: Max Dougan stands guard as Tony Read safely gathers the ball from Rotherham's Dave Watson (August 1968).

The breakthrough came after 49 minutes, when Steve White squeezed home the ball following a cross from Ricky Hill only for Rotherham to equalise six minutes later from old Town player Rodney Fern.

Two goals in a minute, from Mal Donaghy and Brian Stein, just after the hour gave the scoreline a slightly flattering look but it was a good test for the Town's defence and proved that we were equally adept at both ends of the field.

The final game in the series was also the most dramatic. The Town were as good as promoted when the teams met at Millmoor in April 1982, but the Millers were going for a late bid themselves and a win would have pushed them up to fourth place in the table.

The 'Match of the Day' cameras were present to see if Emlyn Hughes' side could beat David Pleat's champions elect, but it was the Town that gained the advantage when Lil Fuccillo hit home a low shot after

12 minutes. Rotherham stormed back through Ronnie Moore and ex-Town striker John Seasman either side of half-time, and with Tony Towner rampaging down the wing the Hatters were on the end of one of their biggest tests of the season.

A third goal from the Millers would have killed the game, but it was left to fullback Richard Money to save the day with a 25-yard cracker to equalise, and pay back some of the transfer fee we had handed over to Liverpool shortly before.

With the game petering out, a shot from Rotherham's Billy McEwan hit Luton defender Clive Goodyear on the elbow, and to everyone's amazement the referee awarded a penalty.

It was left to Alan Judge, deputising for the injured Jake Findlay, to save the day when he dived to save Gerry Gow's spot-kick and consign Emlyn Hughes and his side to another season in Division Two.

## 5 YEARS AGO

31/8/91: After four games without a goal, Phil Gray opened our account for the season. Unfortunately we went down 4-1 at Chelsea in a game that saw us plunge to the bottom of Division One.

## 10 YEARS AGO

30/8/86: Although we remained unbeaten after three games, we should have seen off Newcastle at Kenilworth Road, but allowed the opposition to escape with a point following a 0-0 draw.

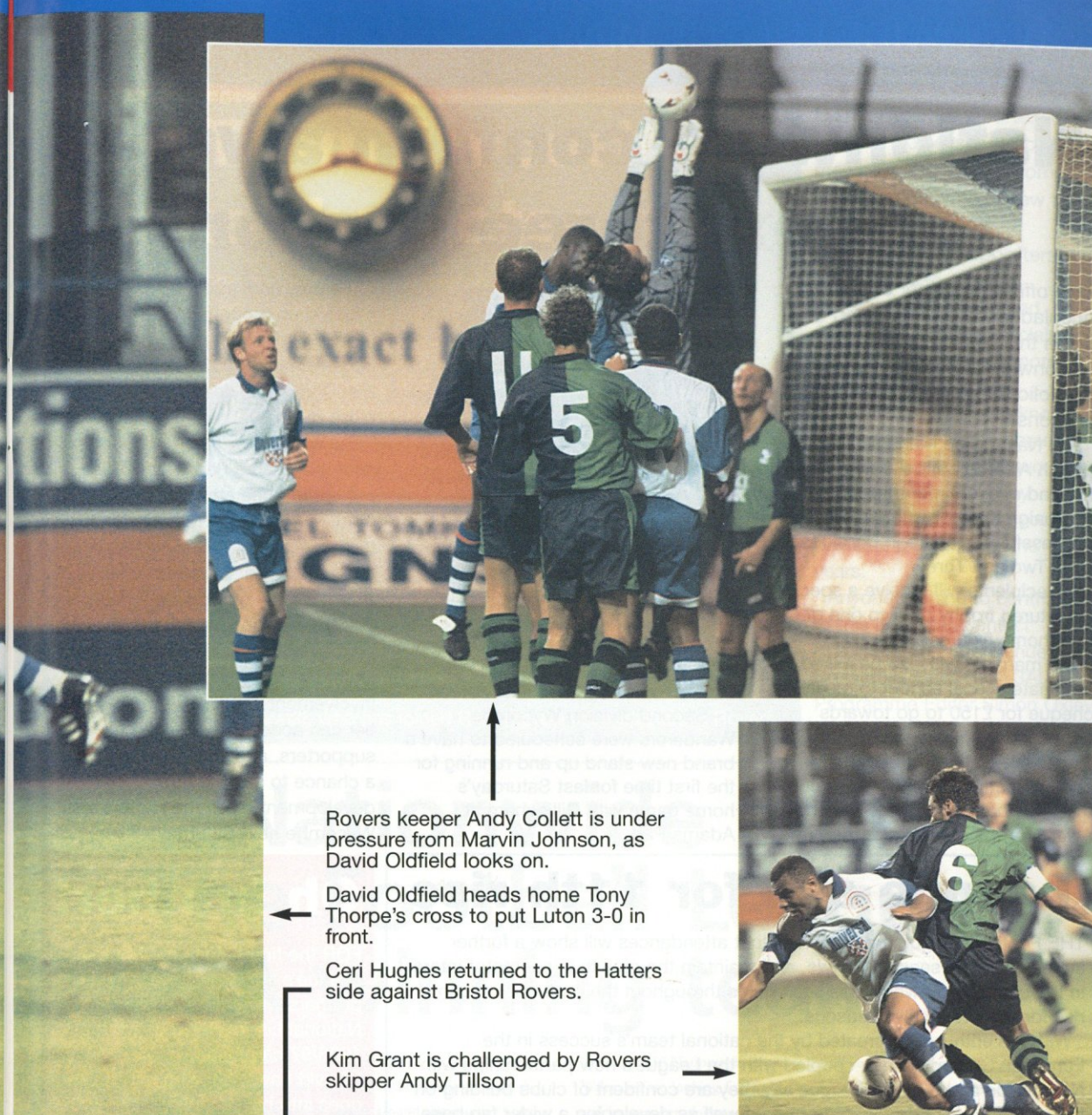
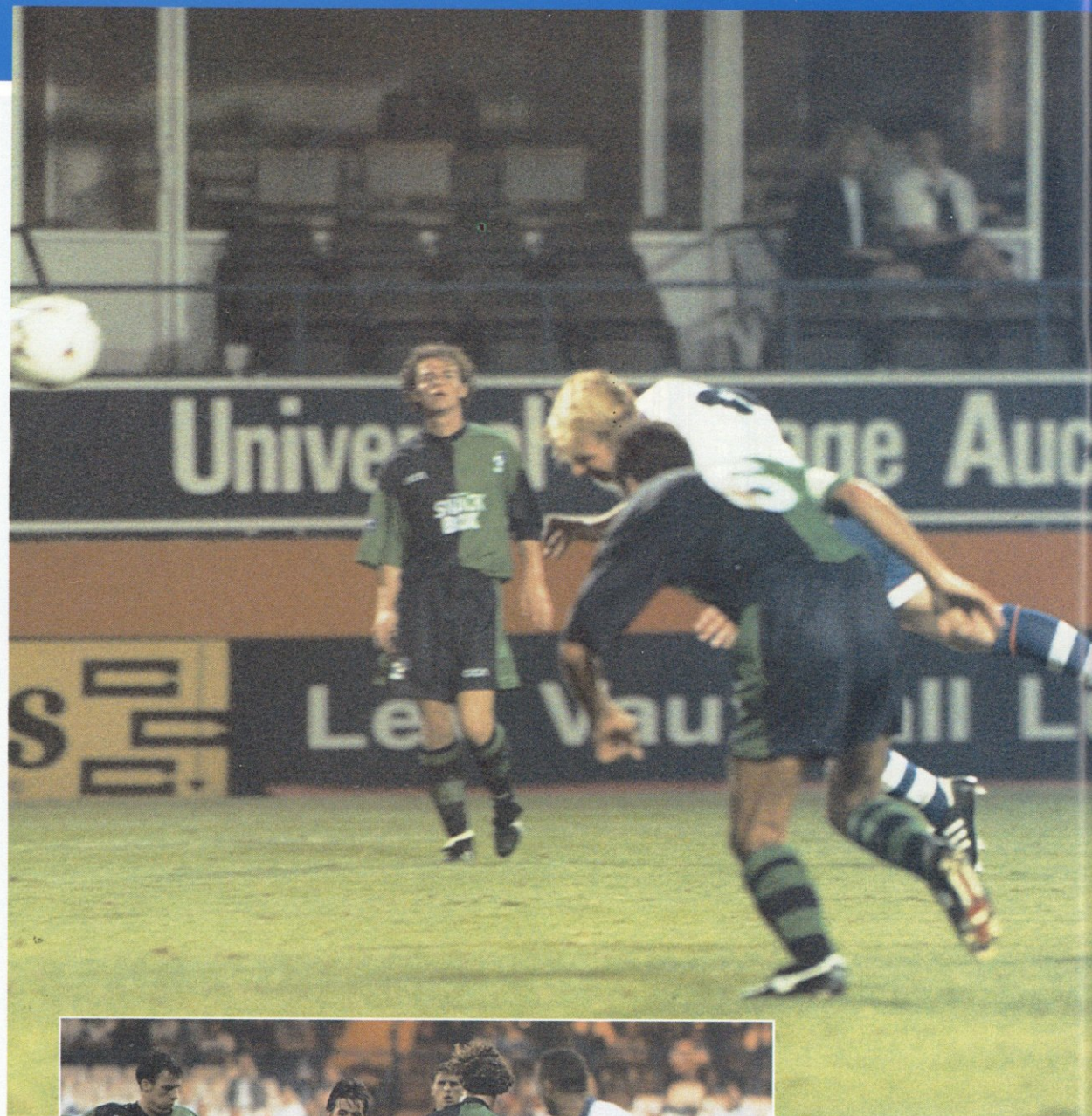
## 15 YEARS AGO

5/9/81: It was three wins in a row following our 2-1 victory at Bolton, where goals from Brian Stein and Mark Aizlewood secured the points in front of a crowd of 6,911.

## 20 YEARS AGO

4/9/76: With Alan West and Ron Futchter back in the side following their return after a summer in the USA, we expected more than a 1-1 home draw with Nottingham Forest. Colin Barrett put through his own net for the Town, much to the delight of the crowd of 11,231.





Rovers keeper Andy Collett is under pressure from Marvin Johnson, as David Oldfield looks on.

David Oldfield heads home Tony Thorpe's cross to put Luton 3-0 in front.

Ceri Hughes returned to the Hatters side against Bristol Rovers.

Kim Grant is challenged by Rovers skipper Andy Tillson



# ACTION STATIONS

**Luton Town 3 Bristol Rovers 0**

(Thorpe pen, Grant, Oldfield)

Tuesday, August 20, 1996 - Coca-Cola Cup, 1st round, 1st leg

Attendance: 2,643

Pictures by Andy Handley





# Nationwide confirm awards for next three seasons

THE official Manager of the Month accolades will be presented once again this season to form part of Nationwide's impressive awards portfolio for the next three seasons.

The Nationwide Manager of the Month Awards will be announced at the end of every month during the campaign to recognise the most successful managers in Divisions One, Two and Three.

All recipients will receive a specially sculptured trophy prior to one of their home fixtures.

The manager will also be asked to nominate a local school to receive a cheque for £150 to go towards sports kit or equipment.

At all live Nationwide Football League matches on Sky Television there will be a Man of the Match Award for the game's star performer,

who will collect a specially commissioned trophy and will also be given a £100 cheque to donate towards sporting provisions at a local school.

Sky have been forced to reschedule their live matches as, due to international call-ups, last night's Division One match between West Brom and Sheffield United was postponed.

Instead the cameras moved down into Division Two for the match between early leaders Plymouth and Preston.

Tomorrow's match is from Division One, with QPR at home to Bolton, kick-off 3pm.

Second division Wycombe Wanderers were scheduled to have a brand new stand up and running for the first time for last Saturday's home game with Gillingham at Adams Park.

The new construction, which is situated on the former Woodlands terrace section of the ground, will house almost 5,000 seats and takes the 'Choirboys' seating capacity close to 6,500.

The whole new stand project has cost the Adams Park club £1.8 million and has attracted backing from The Football Trust for £1 million.

The upper tier in the Woodlands Stand will accommodate 2,842 Wanderers' fans, whilst a further 360 spaces will be available at the executive box level for corporate involvement with the club. The lower tier can accommodate 1,738 seated supporters, and Town fans will have a chance to see the new development when the Hatters visit Wycombe next Saturday.

## League aim for 11th rise

THE Football League are optimistic that attendances will show a further increase on last season's levels, and maintain the growth in spectator interest in the competition which has seen gates throughout the professional game rise for 10 consecutive seasons.

With the enthusiasm created by the national team's success in the European Championship, coupled with the League's new partnerships with Nationwide and Sky, the League say they are confident of clubs building on their customary bedrock of support as well as developing a wider fan base for the future. Last season's attendance figures, showed a rise of 750,000 spectators on the previous season.

DIVISION	AGGREGATE	GAMES	AVERAGE	% +/-
One	6,566,349	552	11,896	+8.6%
Two	2,843,652	552	5,152	-6.4%
Three	1,965,308	552	3,560	+5.4%
TOTALS	11,375,309	1,656	6,869	+1.1%

## Oh brother!

FOR the first time in the Football League's 108-year history, two brothers will feature on the National List of Referees for the 1996/97 campaign.

David Laws, 38, who this season goes into his second year on the League's elite list, is joined by his 34-year-old brother, Graham, who will be experiencing life as the man in the middle in the World's original league football competition for the first time this season.

A police officer, from Whitley Bay, Graham's first appointment was the opening day fixture in Division Three of the Nationwide Football League, between Wigan and Northampton.

 **TicketLine** 0645 10 10 10  
The exclusive ticket booking service for fans of Endleigh League First Division clubs  
24 HOURS A DAY, 7 DAYS A WEEK  
ALL CALLS CHARGED AT LOCAL RATE

# Ex-Town favourites take the hotseats!

IN our first matchday programme of this season, we highlighted a number of former Luton players who had moved on to pastures new during the summer months.

But there are also an increasing number of former Kenilworth Road favourites who are in the managerial hotseat up and down the country.

With Bruce Rioch's departure from Arsenal, Sheffield Wednesday's David Pleat is the only Luton 'representative' in the Premiership, but there are EIGHT ex-Hatters currently managing clubs in the Football League.

In Division One, the Tyke trio of Barnsley, Bradford and Huddersfield have Danny Wilson, Chris Kamara and Brian Horton in charge.

In Division Two, Barry Fry has now taken over at Peterborough, with Chris Nicholl in charge at Walsall.

In Division Three, Mervyn Day, once on loan at Kenilworth Road, is Director of Coaching at Carlisle, with Andy King at Mansfield. The latest addition to the list came on the opening day of the new season, when Kerry Dixon was installed as player/manager at Doncaster Rovers, moving to Yorkshire from Watford.

NB: In the list of ex-Town players on the move in the summer, we failed to mention striker Mike Newell, who has joined Birmingham from Blackburn Rovers.

LUTON Town supporter Kristina Howells is collecting memoirs and stories from Hatters fans, with a view to writing a book 'for supporters, by supporters'.

She has also collated memoirs from former and current players and officials, but would like to hear more from fans of all ages.

Kristina would like to know your best and worst moments following Luton; your favourite and least favourite away grounds and why; and your favourite players over the years.

Anyone wishing to contribute to this book can contact Kristina at 70 First Avenue, Dunstable, Beds, LU6 3AL, or Programme Editor Simon Oxley at LTFC.

# Nationwide and The Football League – A winning team –

Nationwide Building Society is delighted to be sponsoring The Football League and is proud to be associated with the national game. Millions of people around the country enjoy League games, with an increasing number of families attending matches.

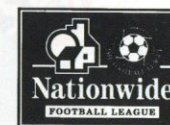
Similarly, Nationwide has a relationship with many households in the UK – around one in four. It looks after the financial needs of over seven million people and is the UK's largest building society intending to remain customer owned, committed to putting customers first.

Nationwide is an organisation with strong roots in the community and we are always looking for new ways to promote awareness of the benefits we can offer and to strengthen relationships with customers even further. With 72 league

clubs and 630 Nationwide branches throughout England and Wales, we are looking forward to working with The League and its member clubs to support community initiatives and forge even closer links with local people. Wherever you find a football team you'll find a Nationwide team.

Nationwide's philosophy is to be "in tune with people", and we believe that the help we can give in investing in football's future will further demonstrate this and underline our general commitment to meeting customers' needs.

We would like to take this opportunity to wish your club a successful season.





LOOK OUT FOR OUR NEW MERCHANDISE CATALOGUE AVAILABLE TODAY.....

## OPENING TIMES

**MONDAY TO FRIDAY**  
10am to 4pm

**EVENING MATCHDAYS**  
10am to 10pm

**SATURDAYS - MATCHDAYS**  
10am-3pm & 4.45-5.15pm  
- non matchdays 9am  
until coaches leave for  
away game



**Luton Town Home Shirts**  
SB (22-24), B (26-28),  
LB (30-32) - £27.99

S (34-36), M (38-40),  
L (42-44) - £34.99

XL (46-48), XXL (50+)  
- £36.99

**Luton Town Home Shorts**  
SB, B, LB - £14.99  
S, M, L - £19.99

**Luton Town Home Socks**  
B, LB - £5.99  
Mens - £6.99

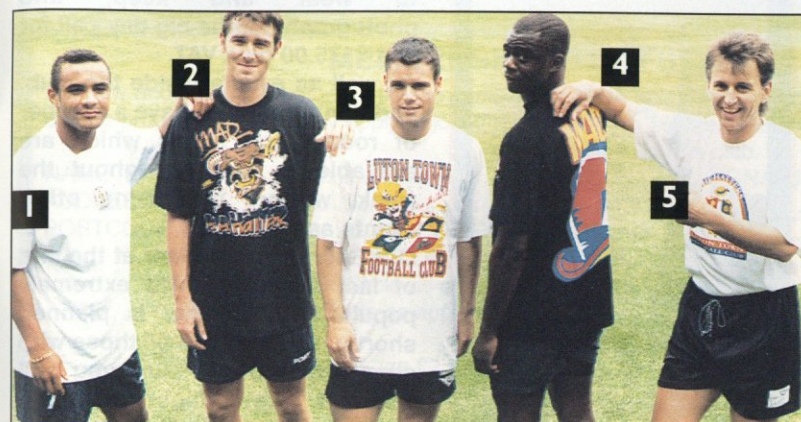
### Luton Town 'Third' Shirts

SB (22-24), B (26-28),  
LB (30-32) - £29.99  
Youths - £34.99  
S (34-36), M (38-40),  
L (42-44)  
XL (46-48), XXL (50+)  
- £38.99

**Luton Town 'Third' Shorts**  
SB, B, LB, Yths - £15.99  
S, M, L, XL - £19.99

**Luton Town 'Third' Socks**  
B, LB - £5.99  
Mens - £7.99

## LTFC KIT PRICES 1996/97



### ABOVE

1. Embroidered crest T-shirt (grey and black)  
- M, L, XL - £11.99
2. Breakout design T-shirt, bulldog or bull, (grey and black)  
- S, M, L, XL - £15.99
3. 'Mad as a Hatter' T-shirt - S, M, L, XL - £11.99
4. Pony 'Mad Hatter' T-shirt - M, L, XL - £18.00
5. Crest T-shirt - L, XL - £10.00



### LEFT

Send a greetings card to a loved one, signed by their favourite LTFC player! Cost per signed card is £2.00, and cheques (to LTFC) should be sent to: Kathy Leather, Greeting Card Offer, Luton Town FC, 1 Maple Road, Luton, Beds, LU4 8AW.



**Luton Town Away Shirts**  
SB (22-24), B (26-28),  
LB (30-32) - £27.99

S (34-36), M (38-40),  
L (42-44) - £34.99

XL (46-48), XXL (50+)  
- £36.99

**Luton Town Away Shorts**  
SB, B, LB - £14.99  
S, M, L - £19.99

**Luton Town Away Socks**  
B, LB - £5.99  
Mens - £6.99

# HATTERS SHOP

enquiries  
01582  
411622

FOR THE LATEST NEWS - CLUBCALL 0891 121 123



## DON'T FORGET YOUR GOLDEN GAMBLE TICKET!

A WARM welcome to this afternoon's match sponsors **JOHN EASTAFF (BUILDERS MERCHANTS) LTD.**

They are suppliers of heavy side building materials to trade and DIY.

They also operate a plant hire service for mini diggers, compressors, mixers, breakers, pumps, vibration plates and dumpers. They can be contacted at the Elstow Storage Depot, Kempston Hardwick, in Bedford.

If you or your company would like details of match or matchball sponsorship, please contact the Commercial Department on (01582) 411622.

We have been busy in the Commercial Department over the summer, and are always willing to talk to you about how you and your company can get involved with Luton Town.

We have packages to suit all budgets, and a variety of ways in which your company can get involved.

As well as the Junior Hatters mascot, we also have opportunities to become a Commercial Mascot, which can be a special day out for all the family as

## COMMERCIAL NEWS



with **KATHY LEATHER**

your son or daughter runs out with the team.

The package includes three seats in the Directors Balcony, a three course meal, a kit to wear and keep, and photographs of the big day - all for just £175.00 plus VAT.

As well as events inside the club, and don't forget we have a number of rooms and suites which are available to hire throughout the week, we are organising other events as well.

Our Sportsman's Dinner at the end of last season proved extremely popular, and another is planned shortly. Thank you to all those who attended, and I'm sure you will agree it was a most enjoyable evening.

We have organised a Luton Town Golf Day, date to be confirmed, at the South Beds Golf Club.

Join Luton Town players and staff for 36 holes of golf, with a break for lunch, followed by a presentation dinner at one of the county's premier golf courses. The cost is £60 per person (+VAT), and for more details of this and other promotions please contact the Commercial Department on (01582) 411622.

**Antony's Tailor**  
OF LONDON

THE MOST ESTABLISHED AND RELIABLE TAILORS IN LUTON

DRESS HIRE  
LADIES AND GENTS  
BESPOKE TAILORING

12 DUNSTABLE ROAD, LUTON,  
BEDS OPPOSITE MAIN POST OFFICE  
TEL: (01582) 424687



FOURTEEN-year-old Ross Calcutt was our Commercial Mascot for the opening game of the season against Burnley. He is pictured above, with the Town players, after the match. For details about how your son or daughter can be a Commercial Mascot, please see above.

## LUTON TOWN SUPPORTERS CLUB

The Luton Town Supporters Club was formed in 1988, and now boasts a membership across the country and across the globe! Membership benefits include regular newsletters, opportunities to meet the players and club officials, and a chance to vote in the end-of-season Player of the Year awards.

The Club has close working links with Luton Town FC, and liaises on many issues, including the Kohlerdome project. The Supporters Club President is TV's Nick Owen, with Luton News Sports Editor Brian Swain the Vice-President. The Committee look forward to your support in the coming season, and ask you to complete the form below if you are interested in joining.

### MEMBERSHIP FORM SEASON 1996/97

For new and existing members - please complete in block letters (photocopies are acceptable if you do not wish to cut the programme). I hereby apply to join the LTSC for the 1996/97 season, and in doing so agree to abide by the rules laid down by the club.

NAME (Mr/Mrs/Miss) ..... SIGNATURE .....

ADDRESS .....

POSTCODE ..... TELEPHONE (Home) ..... (Business) .....

DATE OF BIRTH .....

NEW MEMBERS (Circle as appropriate) Adult £5.00 Child/OAP £4.00 (Children = Under 16)

RENEWALS (Circle as appropriate) Adult £5.00 Child/OAP £4.00 (Children = Under 16)

Metal LTSC Lapel Badge £2.00 ..... (please indicate number required)

Existing Supporters Club number .....

Please forward a crossed cheque or postal order for the appropriate amount. Cheques made payable to Luton Town Supporters Club. Members who have previously completed a Bank Mandate need not send a cheque. Return completed application forms to: Luton Town Supporters Club (Membership 002), c/o Luton Town Football Club, Ticket Office, Kenilworth Road, Luton, Beds, LU1 1DH, or visit the LTSC Kiosk in Kenilworth Road Turnstiles on 1st team matchdays only.

A SPECIAL NOTE FOR ALL SUPPORTERS JOINING BEFORE CHRISTMAS '96

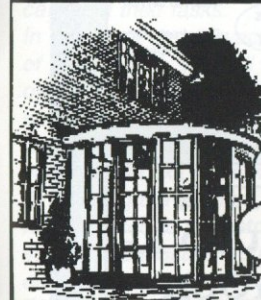
You will have your names forwarded to a GRAND PRIZE DRAW to win a FREE ticket to the Football Club's end-of-season Kit/Shirt Sponsorship Presentation Evening, or a prize to the same value!

### CAN YOU PREDICT THE SCORES?

The Luton Town Supporters Club are organising a Predict The Score competition, for Town matches from October 1 to the end of the season. Points are scored as follows: Three points for correct result and score, one point for correct result only, with a bonus point for a correct result and score involving four or more goals. Entry is free to members of the Supporters Club, and competition forms can be

obtained from the Supporters' Kiosk, or by writing to the Supporters Club, c/o Ticket Office. All forms must be returned by Saturday, September 28. The winner will receive a voucher for £50 for the Club Shop, and there are also runners-up prizes of £15 and £10.

### WINDOWS, DOORS & CONSERVATORIES



IN UPVC, ALUMINIUM OR TIMBER

- Over 20 Years Experience
- Friendly, No Pressure Advice Without Obligation
- No Deposit
- Payment On Completion & Satisfaction

For Personal Attention Call

**BARRY BOLTON**

ON

TEL: (01582) 484600

(01908) 240094 (01525) 854008

Unit 3, 57 Dudley Street, Luton

*Becoming Bigger by Being Better!*

DISCOUNTS FOR PENSIONERS AND THE RETIRED



# OVER THE BAR!

Drink a toast to the Hatters in the following pubs...



LUTON TOWN  
FOOTBALL CLUB

**Hungry Horse**  
QUALITY · VALUE · SERVICE  
**THE BISCOT MILL**  
Live jazz every Monday,  
plus big plate value meals  
Biscot Road, Luton. (01582) 572363

Kevin and Hayley  
welcome all supporters  
to  
**THE CENTURION**  
Poynters Road, for a great  
atmosphere and live music  
on Saturday nites!  
Coming soon..... "Jesters"  
01582 661721

**Henry Tudor**  
199 High St South, Dunstable  
Home of Dunstable Darts  
League, monthly quizzes,  
lounge and large games  
area.  
Wide selection of real  
ales and lagers available.  
Prop: Andy Duncan  
(01582) 667617

**EDDIE'S BAR**  
106 Church Street, Luton. Tel: (01582) 400005  
**THE** live music venue  
Food available seven days  
a week.  
"The original and best"  
106 Church Street, Luton  
(01582) 400005

**OSCAR'S**  
LUTON  
Live music and good  
food  
115 Castle Street  
Luton  
Tel: 01582 414061

**KINGSWAY ARMS**  
Kingsway, Luton  
(01582) 584581

Home of the Loyal Luton  
Supporters Club.  
Luton videos on matchdays, new  
members welcome.  
Wide selection of real ales and  
lagers available. Large car park.  
Prop: Ian Robinson

**THIS  
COULD BE  
YOUR  
PUB!**  
Contact (01582)  
411622 to advertise.

**Monty's  
Bar**  
'Live music  
every Thursday'  
23 Hastings Street, Luton  
Tel: 01582 486683

**scruffy  
murphy's**  
You'll find an authentic Irish  
welcome together with superb  
ales, great Guinness and a  
warm, friendly atmosphere.  
Don't miss the opportunity to  
experience the 'only Irish pub'  
1 Castle St, Luton. 29826

**THE BRIDGE  
TAVERN**  
Disco every Friday and Saturday  
with DJ Cozza.  
Pool KO competitions every  
Wednesday.  
Big screen TV.  
Good selection of flavoured  
bottled 'Shots' available.  
95 Guildford Street, Luton.  
Tel: 01582 30868.

**THIS  
COULD BE  
YOUR  
PUB!**  
Contact (01582)  
411622 to advertise.

**Cork  
& Bull**  
FREE HOUSE  
Air conditioning and  
waitress service  
Daily fresh home  
cooked specials  
4 CUMBERLAND  
STREET, LUTON  
(01582) 29586

We can win three points today... YOU could WIN up to £2,000 in CASH in the LTFC Golden Gamble!



PLUS £25,000 in our Premier Instant ticket on sale at half-time..... Money from these tickets helps YOUR club, and supports charities for children with special needs

**PREMIER  
INSTANT**  
SOCIETY  
Match 3 like amounts  
to win that amount  
**Win up to  
£25,000**  
VOID IF  
REMOVED  
KIDS  
FOOTBALL  
SUPPORTING CHILDREN  
WITH SPECIAL NEEDS

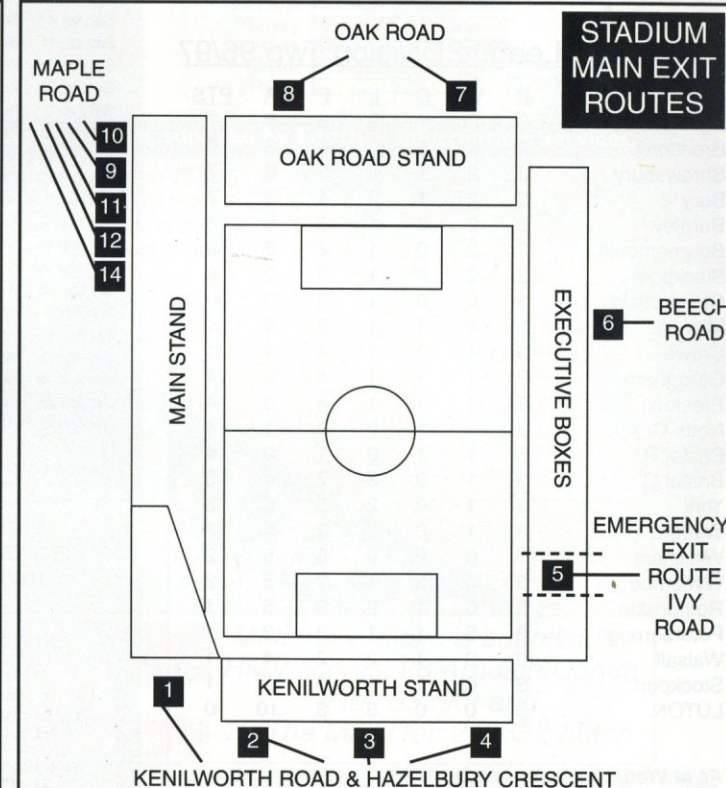
## LTFC EVACUATION PROCEDURE

IN the event of any emergencies at Luton Town Football Club, the emergency services and the club have agreed on an evacuation policy which is designed to:

- Ensure the safe and controlled evacuation of the ground.
- Ensure the dispersal of the crowd from the area to allow the emergency services to carry out their tasks.

In the event on an evacuation of all or part of the stadium, you will receive instructions over the public address system on how you should leave the stadium. Stewards will direct you to the nearest exit. It may be that your normal exit route will not be available. On leaving the stadium, you will find some roads closed to pedestrian traffic, to enable swift and unobstructed arrival of the emergency services.

Please leave the area of the ground as quickly as possible by the route directed. Your co-operation will be most appreciated.  
GEOFF LOVELL, Safety Manager.





# TEAMStatistics

## 1996-97

### LUTON TOWN 1996/97

PLAYER (figure in bracket = sub app.)	LEAGUE APPS	LEAGUE GOALS	CUP APPS	CUP GOALS
Ian FEUER	3		1	
Julian JAMES	3		1	
Mitchell THOMAS	3		1	
Gary WADDOCK	3		1	
Darren PATTERSON	3		(1)	
Marvin JOHNSON	1		1	
Bontcho GUENTCHEV	1 (2)		(1)	
Graham ALEXANDER	2 (1)		1	
David OLDFIELD	3		1	1
Kim GRANT	3		1	1
Tony THORPE	3	2	1	1
Andrew FOTIADIS	(2)			
Des LINTON	(1)			
Steve DAVIS	2 (1)		1	
Ceri HUGHES	2	1	1	
Paul SHOWLER	1		(1)	

### Nationwide League Division Two 96/97

	P	W	D	L	F	A	PTS
Plymouth	3	2	1	0	8	5	7
Brentford	3	2	1	0	6	3	7
Shrewsbury	3	2	1	0	6	3	7
Bury	3	2	1	0	4	2	7
Burnley	3	2	0	1	5	5	6
Bournemouth	3	2	0	1	4	3	6
Blackpool	3	2	0	1	3	2	6
Chesterfield	3	2	0	1	3	2	6
Millwall	3	1	1	1	5	4	4
Crewe	3	1	1	1	4	4	4
Gillingham	3	1	1	1	4	5	4
Preston	3	1	1	1	3	3	4
Notts C	3	1	1	0	2	1	4
Bristol R	3	1	1	0	1	0	4
Bristol C	3	1	0	2	7	4	3
York	3	1	0	2	5	6	3
Watford	3	1	0	2	2	5	3
Wrexham	3	0	2	0	5	5	2
Wycombe	3	0	2	1	2	3	2
Rotherham	3	0	1	2	3	5	1
Peterborough	3	0	1	1	2	3	1
Walsall	3	0	1	2	2	4	1
Stockport	3	0	1	2	0	2	1
LUTON	3	0	0	3	3	10	0

As at Wednesday, August 28, 1996

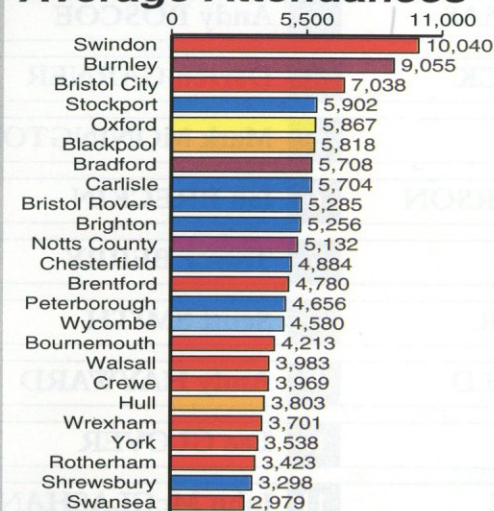
### DATE OPPONENTS F-A ATT POS

Sat Aug 17	BURNLEY	1-2	6,484	-
Tue Aug 20	BRISTOL ROVERS CCC1 (1)	3-0	2,643	-
Sat Aug 24	Brentford	2-3	5,404	22
Tue Aug 27	Bristol City	0-5	7,028	24
Sat Aug 31	ROTHERHAM			
Wed Sep 4	Bristol Rovers CCC1 (2)			
Sat Sep 7	Wycombe Wanderers			
Tue Sep 10	GILLINGHAM			
Sat Sep 14	CHESTERFIELD			
Sat Sep 21	Bury			
Sat Sep 28	BLACKPOOL			
Tue Oct 1	Wrexham			
Sat Oct 5	WALSALL			
Sat Oct 12	Shrewsbury Town			
Tue Oct 15	Stockport County			
Sat Oct 19	PETERBOROUGH UTD			
Sat Oct 26	BOURNEMOUTH			
Tue Oct 29	Watford			
Sat Nov 2	Plymouth Argyle			
Sat Nov 9	NOTTS COUNTY			
Sat Nov 16	FA Cup Rd 1			
Tue Nov 19	Preston North End			
Sat Nov 23	BRISTOL ROVERS			
Sat Nov 30	Bournemouth			
Tue Dec 3	YORK CITY			
Sat Dec 7	FA Cup Rd 2			
Sat Dec 14	CREWE ALEXANDRA			
Wed Dec 18	Millwall			
Thu Dec 26	Gillingham			
Sat Dec 28	WYCOMBE WANDERERS			
Wed Jan 1	BURY			
Sat Jan 4	Chesterfield			
Sat Jan 11	Blackpool			
Sat Jan 18	WREXHAM			
Sat Jan 25	WATFORD			
Sat Feb 1	Notts County			
Sat Feb 8	PLYMOUTH ARGYLE			
Sat Feb 15	Bristol Rovers			
Sat Feb 22	PRESTON NORTH END			
Sat Mar 1	York City			
Sat Mar 8	MILLWALL			
Sat Mar 15	Crewe Alexandra			
Sat Mar 22	BRENTFORD			
Sat Mar 29	Burnley			
Tue Apr 1	BRISTOL CITY			
Sat Apr 5	Rotherham United			
Sat Apr 12	Walsall			
Sat Apr 19	SHREWSBURY TOWN			
Sat Apr 26	Peterborough Utd			
Sat May 3	STOCKPORT COUNTY			

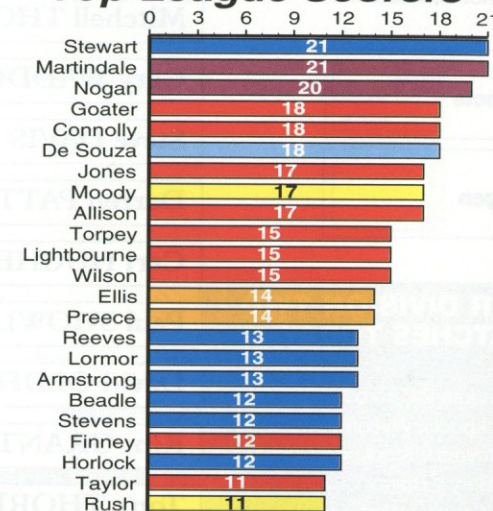
Game in BOLD denotes home match. Name in CAPITALS denotes goalscorer. Name in (brackets) denotes player substituted or substitute used.

GK	2	3	4	5	6	7	8	9	10	11	12	13	14
Feuer	James	Thomas	Waddock	(Patterson)	Johnson	Guentchev	Alexander	(Oldfield)	(Grant)	THORPE	(Fotiadis)	(Linton)	(S.Davis)
Feuer	(James)	Thomas	Waddock	S.Davis	(Johnson)	Hughes	Alexander	OLDFIELD	GRANT	(THORPE)	(Patterson)	(Guentchev)	(Showler)
Feuer	James	Thomas	Waddock	S.Davis	Patterson	HUGHES	Alexander	Oldfield	(Grant)	THORPE	Linton	(Guentchev)	Showler
Feuer	James	Thomas	Waddock	S.Davis	Patterson	Hughes	(Showler)	(Oldfield)	(Grant)	Thorpe	(Alexander)	(Guentchev)	(Fotiadis)

### Average Attendances



### Top League Scorers



Final Division Two statistics for 95/96 season, supplied by Football Information Services.



Matchday music is supplied by  
HMV Stores, 98 Arndale Centre  
(Tel: 35290) and  
73 The Mall (Tel: 21368), Luton.



**TODAY'S  
OFFICIALS**

# TEAM CHECK

**Today's referee is****MIKE BAILEY**  
from Cambridge.

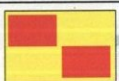
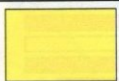
Mr Bailey, a BT manager, joined the Football League list in 1986. He refereed last season's home game against Leicester.

**LUTON TOWN**

Manager: Lennie Lawrence

**ROTHERHAM**Managers: Archie Gemmill  
and John McGovern

Ian FEUER	1	Steve CHERRY
Julian JAMES	2	Bradley SANDEMAN
Mitchell THOMAS	3	Andy ROSCOE
Gary WADDOCK	4	Darren GARNER
Steve DAVIS	5	Mark MONINGTON
Darren PATTERSON	6	Ian BRECKIN
Ceri HUGHES	7	Trevor BERRY
Paul SHOWLER	8	Scott SMITH
David OLDFIELD	9	Andy HAYWARD
Kim GRANT	10	Lee GLOVER
Tony THORPE	11	John McGLASHAN
	12	
	13	
	14	

**CJ Francis****SC Gagen****OTHER DIVISION TWO  
MATCHES TODAY**

Bournemouth v Peterborough Utd  
Blackpool v Wycombe W  
Bristol Rovers v Stockport County  
Bury v Bristol City  
Crewe v Watford  
Gillingham v Chesterfield  
Millwall v Burnley  
Notts County v York City  
Shrewsbury Town v Brentford  
Walsall v Wrexham  
(Played Friday night:  
Plymouth Argyle v Preston NE)



**Plowmans** of Luton  
**Motorbodies** of Luton

**AND  
LUTON  
TOWN****THE  
PERFECT  
MATCH****You'll do a great deal better with us!**

Open 7 Days    Plowmans, 15 Hitchin Road, Luton. Tel: 454666  
Motorbodies, Memorial Road, Leagrave, Luton. Tel: 567500