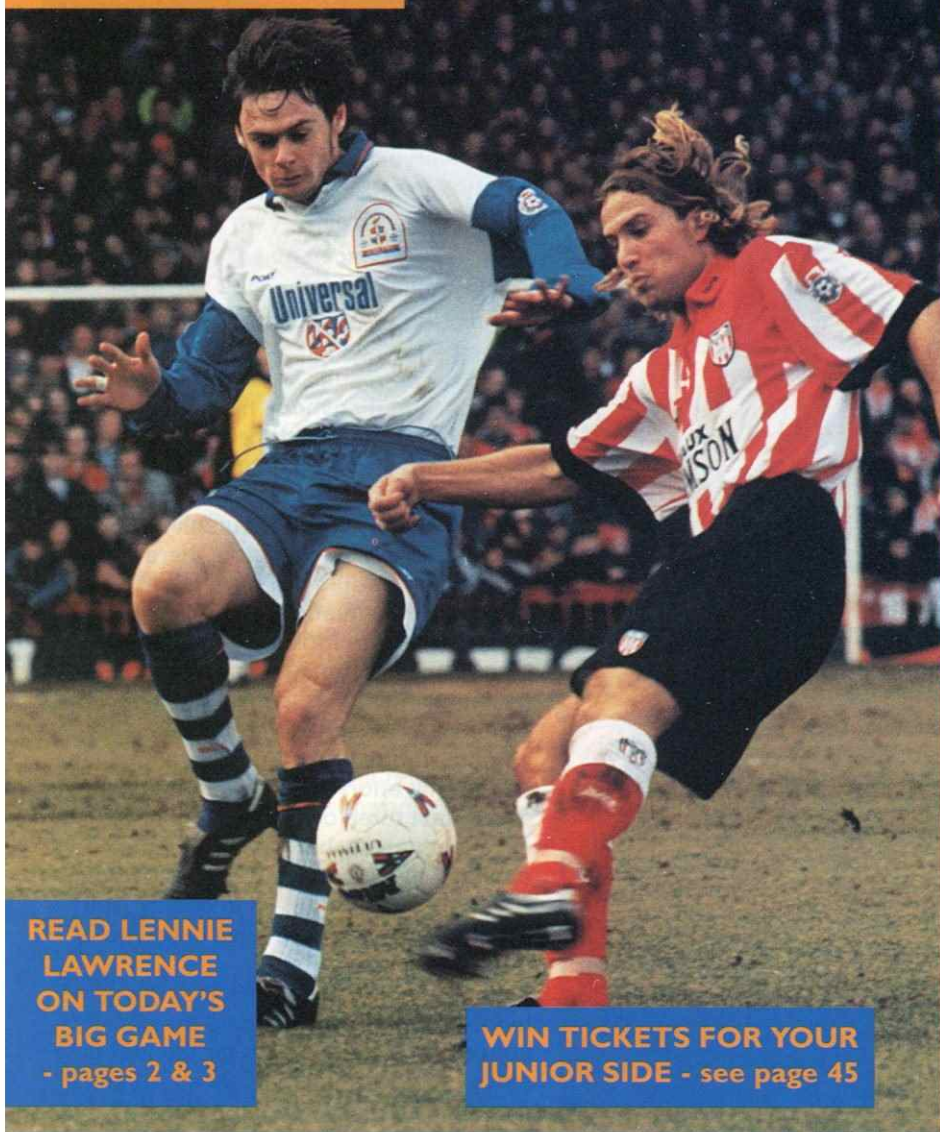


# v CRYSTAL PALACE

**TREVOR PEAKE BREAKS  
HATTERS RECORD - p39**



**READ LENNIE  
LAWRENCE  
ON TODAY'S  
BIG GAME  
- pages 2 & 3**

**WIN TICKETS FOR YOUR  
JUNIOR SIDE - see page 45**



**LUTON TOWN  
FOOTBALL CLUB**

# LUTON TOWN

**SATURDAY, MARCH 2, 1996, 3PM**

**MATCH SPONSORS**  
Loyal Luton Supporters Club

**MATCHBALL SPONSOR**  
Forward Motor Services



**Sponsors of  
Luton Town F.C.**

**Official matchday programme £1.50**





## WE MUST RECAPTURE OUR FORM AND SPIRIT AGAINST PALACE

TUESDAY'S result against Reading was a disappointment to everyone connected with Luton Town Football Club and our second defeat in a row, which means that this home game with Crystal Palace has taken on great significance and will be as important as the Southend home game back in January after our 7-1 hammering at Grimsby.

The two recent defeats have to be put in perspective in the run of results over the last two months, and if anybody had said to me or to any other person at the club on December 21 that on February 28 we would have gained a further 18 points from 10 games, and got ourselves back in the fight to avoid relegation, there is nobody who would not have readily accepted the situation.

So two defeats in 10 games is nothing to be ashamed of, but just as the winning became a habit so the losing can become a habit and it needs to stop today.

The performance on Tuesday contained the normal effort and commitment needed, and in fact three or four players had excellent games, but having dominated the opening 30 minutes, and gone a goal up, with a bit more fortune and quality with our finishing we could have been two or three goals up.

We allowed Reading back into the game before half-time and we paid the penalty conceding a headed goal for the first time since I took over (own goals apart) and in a manner that has become foreign to us in recent weeks.

In the second half Reading gradually got on top and we always felt it would need a second goal to secure any sort of result.

That was not forthcoming and indeed did not look likely in the second half, and once again through a sequence of errors we conceded a sloppy second goal.

There was no disgrace in the



Luton Town Football Club  
Kenilworth Road Stadium,  
1, Maple Road,  
Luton, Beds LU4 8AW.  
Tel: (01582) 411622  
Fax: (01582) 405070  
Ticket Office: (01582) 416976  
Clubcall: 0891 121 123

**Chairman and Managing Director:**  
David Kohler Bsc (Hons)  
ARICS

**Directors:**  
C.S. Bassett,  
C.T.F. Green,  
N.S. Terry

**Vice Presidents:**  
R.L. Banks,  
C. Bygraves,  
R. Safranek,  
D. Ludlow, P. Ireton,  
J. Sapsworth.

**Club Secretary:**  
Cherry Newbery

**Manager:**  
Lennie Lawrence

**First-Team Coach:**  
Wayne Turner

**Player Coach/Reserves:**  
Trevor Peake

**Youth Team Coach:**  
John Moore

**Physiotherapist:**  
Clive Goodyear

**Consultant Physio:**  
John Sheridan

**Youth Development Officer:**  
Paul Lowe

**Scouting:**  
Les Shannon

**Community Football Officer:**  
Jeff Vetere

**Company Secretary and Financial Controller:**  
Bob Bird

**Commercial Manager:**  
Kathy Leather

**Safety Manager:**  
Geoff Lovell

**Catering Manager:**  
Peter Saul

**Medical Officer:**  
Dr Bill Berry

**Club Dentist:**  
A. Chris BDS (Syd)

**Press Officer/P.R.O.**  
Simon Oxley

**RIGHT: Vidar Riseth goes in search of an equaliser against Reading on Tuesday night.**



performance bearing in mind the injuries and changes enforced on us by those injuries and a suspension, but there can be no escaping the fact that the performance was not good enough after the first half hour.

Accordingly there will be changes made today. One or two players will return and hopefully that will help us towards a result this afternoon.

When you are in a promotion or relegation situation there are certain games at certain times when a result is really needed.

Southend at home was the most significant game for us in my time here at the club, followed by the home game against Sheffield United. The first one we needed to win, and in the second it was just as important not to lose.

This is the third game, and we must bounce back from these last two defeats, must avoid slipping back into the bottom three, and it is a game we must not lose.

This afternoon then, we extend a warm welcome to Crystal Palace, their players, officials and supporters.

There have been changes to

the playing staff at Selhurst Park, but they have many useful players and still might have a chance of the play-offs.

A personal welcome to their manager Dave Bassett who is a close friend of mine, and having wished him well when he took the job, I hope his good fortune continues..... after five 'o' clock today.

On the injury front, Ceri Hughes is both injured and suspended this afternoon, with Darren Patterson and Marvin Johnson both doubtful at the time of writing with groin and hamstring injuries respectively.

Dwight Marshall's injury has been widely reported, and once again we wish him well for a speedy recovery, and I'm sure he will be back to his best next season.

We are looking at the possibility of getting a player on loan, but they must be better than we have or, if they are of similar ability, have different qualities.

There may be some movement in that direction next week.

Finally, I have been asked to remind you that we have a bucket collection around the ground this afternoon, in aid of the NSPCC.



## AROUND THE TOWN



**ABOVE:** Julian James challenges Reading keeper Borislov Mihailov.

**RIGHT:** Graham Alexander faces a two-match ban.



## Yorkshire trip gets go-ahead after Terriers' cup defeat

LUTON Town's trip to Huddersfield next Saturday goes ahead after the Yorkshire side went out of the FA Cup at Wimbledon on Wednesday night, writes **SIMON OXLEY**.

Had Huddersfield won through to the sixth round, their tie against Chelsea would have taken place next Saturday, March 9, with the league game against the Hatters postponed to a later date.

But now Lennie Lawrence's side travel north to face the side currently fourth in the Division One table. (See page 9 for ticket information and travel details).

- Midfielder Graham Alexander will be suspended for two matches following his booking at Sunderland last week.

Graham will miss the game at Huddersfield next week and either the home match against Port Vale or, if that is postponed, the trip to Crystal Palace.

- Ceri Hughes starts a two-match suspension today, and will also miss the game at Huddersfield.

- A goal 12 minutes from time gave Reading all three points in Tuesday's night's Division One match at Kenilworth Road.

Luton opened the scoring after five minutes when Bontcho Guentchev netted from the penalty spot, his ninth goal of the season, after the Bulgarian had himself been fouled by Reading's Jeff Hopkins.

John Taylor hit the post midway through the half, but in first-half stoppage time Reading equalised when Martyn Booty headed home.

Hatters substitute Scott Oakes saw one shot saved by Reading's Bulgarian international keeper Bobby Mihailov, and was then denied by Andy Bernal's tackle.

But the visitors went in front after 78 minutes, with Stuart Lovell's goal securing a 2-1 win.

See pages 16 and 17 for action pictures from Tuesday night's game.

**FRONT COVER:** Sunderland's Michael Gray under pressure from Graham Alexander during the Hatters' 1-0 defeat at Roker Park last Saturday.  
Picture: **ANDY HANDLEY**.

*Luton Town FC Matchday Programme*  
Editor: Simon Oxley. Tel: 01582 411622  
Pictures: Andy Handley  
Design and print: McLeod Warner, Luton.  
Tel: 01582 38389  
Paper supplied by: James McNaughton,  
Dunstable



# Where have all the damaged cars gone?



## Universal Salvage Auctions



# Telephone 01234 766500



**NO  
DEPOSIT**  
AND

**3  
YEARS**  
INTEREST  
FREE CREDIT

AVAILABLE ON  
HUNDREDS OF SUITES

the  
**FURNITURE SHOP**  
FOR SERVICE, STYLE, VALUE



Up to **£300**  
**TRADE IN**  
This is a limited offer.

**DUNSTABLE**  
22 BEDFORD SQUARE, HOUGHTON REGIS  
**01 582 867531**

OPEN MON - SAT 9-5.30pm SUN 10-4pm  
OTHER BRANCHES: CORBY 01 536 400445, BEDFORD 01 234 742030,  
LEIGHTON BUZZARD 01 525 378619, WATFORD 01 923 230845  
MILTON KEYNES 01908 520094



Subject to status. Licensed Credit Broker. Written details on request.

**DAILY  
STAR**

**Best for  
Sport**

## LEADING THE LINE

by Club Captain STEVE DAVIS



LEFT: Des Linton was recalled to the side against Reading on Tuesday.

TUESDAY night's result was a big disappointment to everyone, and it was especially frustrating to watch from the sidelines.

Hopefully I will be back in the team this afternoon after a two-match suspension which probably couldn't have come at a worse time bearing in mind all the injuries we have suffered.

As I mentioned in my notes on Tuesday, I always look forward to playing at Roker Park in my home town so to miss that game was especially disappointing.

I thought the team battled well there, and but for some excellent saves from Shay Given in the closing minutes we could have left with a point.

The disappointment on the journey home was made worse of course by Dwight's injury.

Nobody likes to see a fellow player, especially a team-mate, get injured, and especially when it's such a serious injury which will rule him out for the rest of the season. Some of the lads have already been to see him in hospital this week, and we all wish him a speedy recovery.

But we have a large squad, and now it is up to the rest of the players to show what they can do.

That starts this afternoon against Crystal Palace, who have had a good run of late under new manager Dave Bassett.

Of course this is the first time that we have played Palace this season, but we know what they are capable of, and they have quality players in all areas.

They are starting to look seriously at the play-offs, but our task is clear.

Three points to end this temporary halt in our recent improvement. Two defeats have set us back, but we have shown that we can put a run together, and need to do that once again.



GARY Waddock has been captaining the Hatters in Steve Davis' absence, and is pictured with Sunderland skipper Kevin Ball, during last Saturday's game at Roker Park.

Keep up-to-date with all the news from Kenilworth Road on  
**LUTON TOWN CLUBCALL 0891 121 123**

Steve Davis



## FROM THE SECRETARY'S CHAIR with Cherry Newbery



THE on-going fixture chaos continues to involve Luton Town, with several of our forthcoming opponents involved in rearranged FA Cup and Anglo-Italian Cup games.

The match at Port Vale on Tuesday, March 5, has been postponed because Port Vale will now be playing the second leg of their 'English' Anglo-Italian Cup Final against West Brom.

Port Vale's position has been complicated by their FA Cup run, which has also involved a number of replays.

At the time of writing we were trying to organise a new date, and I will also remind you that if Port Vale reach the final at Wembley, then our home game against them on March 16 will also be postponed.

Huddersfield were due to play their FA Cup fifth round replay against Wimbledon at Selhurst Park on Wednesday evening.

If Huddersfield progressed to the sixth round, then our trip to Yorkshire on March 9 will be

postponed. Listen out for PA announcements on this subject this afternoon.

I appreciate there is relatively short notice for many of these postponements, but we will do our best to keep you informed of any new dates via the local newspapers, radio stations and on our own ClubCall service.

Reserve team games are now back at Kenilworth Road until further notice, and there are still several Avon Insurance Combination games to be rearranged.

IT is with regret that we inform supporters of the death of Mr Connew, from Linslade, a season ticket holder at Kenilworth Road for many years, who collapsed in the main stand during Tuesday night's game against Reading.

All at Luton Town express their sincere condolences to Mr Connew's family at this sad time.

Come on you Hatters, we need you to get behind LES MILLER, our club runner for the Flora London Marathon's Football Challenge on April 21.

He has taken part in four races during February as part of his training schedule, starting the month with a half marathon at Watford.

The following week he took part in the Bedford half marathon, and has since moved up in distance with an 18 mile race at Stamford and a 20 mile race at Bury St Edmunds, which involved getting up at 6am last Sunday after a Saturday trip to Roker Park!

Les will be lining up on the startline with runners from 100 other football clubs from the FA Carling Premiership, Endsleigh and Scottish Premier leagues to tackle the 26.2 mile course.

He is raising funds for the Luton and South Beds Hospice, and anyone who would like to sponsor him can either see Les, or contact Simon Oxley at Luton Town Football Club.

*If you are a Milton Keynes-based Hatters fan who finds difficulty in travelling to home games then the Bletchley Hatters Club could be the answer to your problems.*

*They can offer coach travel to all Luton Town home matches from various pick-up points in Bletchley, Bow Brickhill, Woburn Sands and Aspley Guise.*

*For further information, and bookings, please telephone Milton Keynes 377750.*

### Bobbers Travel Club - Coach Travel Price List 1995/96

Date	Destination	Adult	Child/OAP	Cranfield	Luton
TBA	Port Vale	£8.00	£6.50	2.30pm	3.30pm
Sat Mar 9	Huddersfield Town	£10.00	£8.00	8.45am	9.45am
Tue Mar 19	Crystal Palace	£5.50	£4.50	3.30pm	4.30pm
Sat Mar 23	Sheffield United	£9.50	£7.50	9.30am	10.30am

Please note: Coaches from Cranfield also pick-up in Marston Moretaine, Stewartby, Amptthill, Flitwick, Westoning, and opposite the Luton Gateway Hotel, before departing from the junction of Hazelbury Crescent and Kenilworth Road.

You can book a place on the coaches in a number of ways:

- 1) From the ticket kiosk in the Kenilworth Road turnstiles. See Paul Deason before any Saturday first-team home match between 2.15 and 2.45pm. (No bookings taken at midweek matches).
- 2) On the return journey from the previous away game.
- 3) Telephone Paul Deason on Bedford (01234) 750996



## LUTON TOWN TICKET OFFICE NEWS

### Port Vale v Luton Town

#### ENDSLEIGH LEAGUE DIVISION ONE

Tuesday, March 5, 1996, kick-off 7.45pm

**THIS GAME HAS NOW BEEN POSTPONED DUE TO PORT VALE'S ANGLO-ITALIAN CUP COMMITMENTS. A NEW DATE WILL BE ANNOUNCED SHORTLY.**

### Huddersfield Town v Luton Town

#### ENDSLEIGH LEAGUE DIVISION ONE

Saturday, March 9, 1996, kick-off 3pm

**PLEASE NOTE: This fixture may be re-arranged due to Huddersfield's involvement in the FA Cup.**

Pay on the day only at Huddersfield. Seats only for Luton supporters, priced at £9 for adults and £5 for juniors and senior citizens. (The Kenilworth Road ticket office will be open on Saturday, March 9, from 9 to 10.30am for the sale of other match tickets).

### Luton Town v Port Vale

#### ENDSLEIGH LEAGUE DIVISION ONE

Saturday, March 16, 1996, kick-off 3pm

**PLEASE NOTE: This fixture may be re-arranged due to Port Vale's involvement in the Anglo-Italian Cup.**

Tickets for this match are now on sale at the discounted price. Normal guesting facilities apply.

### Crystal Palace v Luton Town

#### ENDSLEIGH LEAGUE DIVISION ONE

Tuesday, March 19, 1996, kick-off 7.45pm

Pay on the night only at Crystal Palace, at the Away Ticket Office which is situated next to the away turnstiles. Seats only for Luton supporters, priced at £14 for adults and £5 for juniors/seniors.

Tickets already purchased for the previous dates of 26.12.95 or 27.1.96 are valid for the re-arranged game. You can however claim a full refund by returning the tickets to the place of purchase by Monday, March 18, 1996.

### Sheffield United v Luton Town

#### ENDSLEIGH LEAGUE DIVISION ONE

Saturday, March 23, 1996, kick-off 3pm

Seats only, priced at £12 for adults and £6 for juniors/seniors and students\*. Tickets are available from the ticket office until 4pm on Friday, March 22, and also on the day at Sheffield.

\*Students must purchase their tickets before the day of the match as there will be NO student concessions on the day at Sheffield.

\*Students will only be admitted through the turnstiles on production of their Student Pass.

### TICKET OFFICE OPENING HOURS

Monday to Friday: 10am-4pm. Saturday (matchdays): 9am-3pm and 4.45-5.15pm

Saturdays (non matchdays): Subject to change. Please contact ticket office on 416976

For bookings, membership and enquiries, ring the Ticket Office direct on (01582) 416976. Supporters wishing to order by credit card can do so by using the 24-hour credit card hotline on (01582) 30748

### Travelling to...

#### Huddersfield Town

Address: The Alfred McAlpine Stadium, Leeds Road, Huddersfield, Hd1 6PX.  
Tel: (01484) 420335

Take M1 north and exit at junction 38 (Huddersfield A637), keeping on the A637 for 6.3 miles, over two roundabouts to the Grangemoor Roundabout. Follow signs to Huddersfield A642 onto the A642. At lights after 3.3 miles, by Jet Station, turn right (H'field A629, M62). After 1.7 miles, after passing through several sets of lights, turn right (by church on LHS, Leeds A62) into St Andrews Road (if you miss turning, stadium is well signposted from next roundabout). Past The Aspley pub on the LHS and after 0.5 miles turn right (in front of Ford Cowie) to the away parking.

An alternative route is to continue on the M1 to the M62, and exit the M62 at junction 25 for Huddersfield. Then follow signs A644 and A62.

#### Crystal Palace

Address: Selhurst Park Stadium, London, SE25 6PU.  
Tel: (0181) 653 1000

Take M1/A1 to North Circular (A406) to Chiswick, Take South Circular (A205) to Wandsworth, take A3 to A214 and follow signs to Streatham to A23. Turn left on to B273 (1 mile) follow to end and turn left into High Street and into Whitehorse Lane. From south, exit M25 at junction 7, and follow M23 Croydon signs. Then A23, A235 and Selhurst A223.

Directions courtesy of AA.



# MOTOR & HOME INSURANCE

WE'VE ALREADY  
HUNTED DOWN  
THE LOWEST  
PREMIUMS



PUT US TO  
THE TEST PHONE  
**NOW!**

**01908 675866**

648/652 Silbury Blvd, Milton Keynes



**Endsleigh**



LUTON TOWN FOOTBALL CLUB

## WORLDWIDE HATTERS

### LUTON TOWN FAN FILE



Name: **SAM TIDY**  
Age: 20  
Area I live: *Norwich.*  
The first time I saw Luton play: *At home to Liverpool in 1984, when unfortunately we lost 1-0.*  
Best Luton player I have seen: *Mick Harford for his grit and determination, and Ricky Hill for his flair.*  
If I had unlimited funds, which player would I buy for Luton, and why: *Alan Shearer and Robbie Fowler - world class players.*  
Best game ever seen: *Beating Arsenal in the 1988 Littlewoods Cup Final.*  
My favourite away ground, and why: *Ayresome Park, Middlesbrough, after that memorable day last season. The friendliest fans and stewards I've ever met.*  
One new football law I'd introduce: *Sin bin, and moving free-kicks 10 yards further on for back-chat as in rugby.*  
What I like about Kenilworth Road: *The memories, and the friendliness.*  
And dislike: *The loss of terracing has affected the atmosphere, and the fact you've stopped 'Bring Me Sunshine'.*

Would you like to appear here? If so, simply copy out the questions, complete your answers and enclose a passport style photo, and send to: Fanfile, c/o Programme Editor, LTFC.



**HATTERS fans Lisa Coyne and Gary Causer, from Bromsgrove, Worcestershire, claim to have the secret behind Luton's recent good run..... their recently acquired mascot, Spikey Monkey!**

**SIXTEEN-year-old Martin Papazov, from Bulgaria, is looking for penpals who support Luton Town.**

Martin's favourite player is **Bontcho Guentchev**, and he has followed Bontcho's fortunes since he played for Martin's hometown club **Etar FC**.

Now Martin follows the Hatters, and can be contacted at: **St. F Simidov No3A ap 9, V Turnovo 5000, Bulgaria.**

**A KEEN Tranmere Rovers supporter seeks programmes for any first/reserve/youth team games plus cuppies, testimonials and friendlies home and away (in good condition) played between Luton and Tranmere between 1960/61 and the present day. Will pay reasonable prices. Please write, enclosing full list of items available for sale to: Miss A Carrington, 31 Highfield Crescent, Rock Ferry, Birkenhead, Merseyside, L42 2DP.**

**A SOCCER fan in Zimbabwe is looking for penpals, and has written to Luton Town asking for our assistance.**

Sixteen-year-old **Nomore Chizaza** watches English soccer regularly on television, and his other hobbies include chess, table tennis, swimming and cooking.

Nomore can be contacted at:

**Mutasa School, PO Box 60, Watsomba, Zimbabwe.**

**A SOCCER fan in Ghana is looking for penpals.**

Tony Yeboah's success at Leeds has raised the profile of the English game in the African country.

**Jonas Ackah** is 16 years old, and can be contacted at: **c/o Ferro Fabrick Ltd, PO Box 303, Tema, Ghana.**

**If you would like to be featured in the Luton Town matchday programme, send your picture to Simon Oxley, Luton Town FC, Kenilworth Stadium, 1 Maple Road, Luton, Beds, LU4 8AW.**





# CRYSTAL PALACE 1995/96

## Spotlight on today's visitors

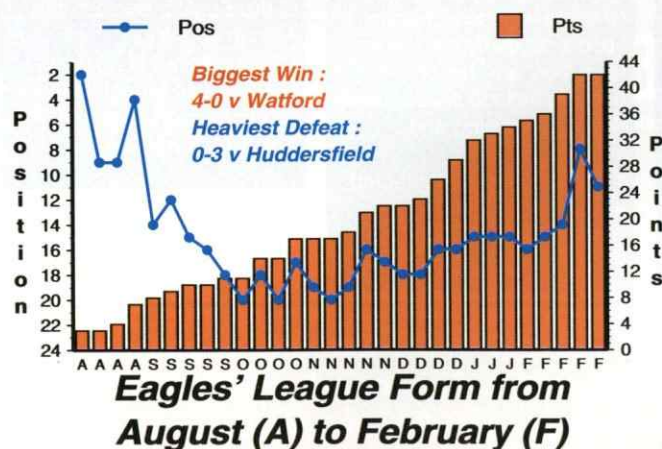


Back row: l to r: Danny Boxall, Bjorn Enqvist, Rory Ginty, Jason Harris, Robert Quinn, Paul Sparrow.

Third row: Richard Shaw (now Coventry), George Ndah, Brian Launder, Andy Roberts, Jimmy Glass, Damian Matthew, Marc Edworthy, Jamie Vincent.

Second row: Brian Sparrow, Peter McClean (physio), Simon Rodger, Ian Cox, David Hopkin, Steve Taylor, Nigel Martyn, Rhys Wilmot, Bruce Dyer, Anthony Scully, Gareth Davies, Vic Bettonelli (kit manager), Steve Kember (reserve team manager).

Front row: Darren Patterson (now Luton), Dean Gordon, Ray Houghton, Ray Lewington (first team coach), Steve Coppell (Technical Director), Peter Nicholas (first team coach), Iain Dowie (now West Ham), Darren Pitcher, Chris Coleman (now Blackburn).





**DAVID HOPKIN** - Scottish Under-21 midfielder who became Palace's fifth close season signing when he joined the Eagles from Chelsea in mid-July for a £750,000 fee. Started his career with Morton before moving to Stamford Bridge.

**RAY HOUGHTON** - Signed from Aston Villa on transfer deadline day last season for a £300,000 fee. Formerly with West Ham, Fulham, Oxford and Liverpool, he has a host of domestic honours including two League Championship medals, two FA Cup winners' medals and a League Cup winners' medal. Born in Glasgow he has gained over 65 full caps for the Republic of Ireland.

**BRIAN LAUNDERS** - Dublin-born forward who has been a regular scorer in the reserve and youth teams, and who made his first team debut last season against Chelsea.

**LEON MCKENZIE** - Aged just 17 he scored on his first team debut in a Coca-Cola Cup tie against Southend, and has recently signed a three-year professional contract. Son of former European boxing champion Clinton McKenzie.

**NIGEL MARTYN** - Despite Palace's relegation last season, he kept no less than 19 clean sheets in the league and cup. Became Britain's first £1 million goalkeeper when he signed from Bristol Rovers in 1989, and has been capped by England on three occasions.

**DAMIAN MATTHEW** - Former England Under-21 international who joined Palace from Chelsea. Was on loan at Luton whilst at Stamford Bridge, and is currently on loan at Bristol Rovers.

**GEORGE NDAH** - England youth international who made his league debut at Anfield in November 1992. Scored the extra-time winner against Watford in last season's FA Cup run, and has this season been on loan at Bournemouth.

**ANDY ROBERTS** - Joined Palace from Millwall in July, for £2.25 million, in a deal which also saw Ricky Newman move to the New Den. England Under-21 international who skippered David Pleat's Endsleigh XI in Italy last season.

**DARREN PITCHER** - Product of the National School of Excellence at Lilleshall, he joined Palace from Charlton in July 1994, and netted a memorable 35-yard goal in the FA Cup win at Wolves last term.

**SIMON RODGER** - A regular in 1993/94, he missed most of last season with a serious back injury.

**ANTHONY SCULLY** - Regular member of the Republic of Ireland's Under-21 squad, who joined Palace from Irish side Cherry Orchard.

**PAUL SPARROW** - Central defender who progressed through the Palace youth ranks, and made his first team debut following Richard Shaw's transfer to Coventry in November 1995.

**GARETH TAYLOR** - Started his career as a trainee with Southampton, before moving to Bristol Rovers. Joined Palace for £1.6 million in September 1995, and has formed a good striking partnership with Dougie Freedman.

**STEVE TAYLOR** - Striker signed from non-league Bromsgrove for £90,000 in June 1995, after looking set for a move to Kenilworth Road.

**JAMIE VINCENT** - Left-back or midfielder who signed a two-year contract in May 1995.

**RHYS WILMOT** - Goalkeeper signed from Grimsby for £80,000 at the start of last season. Started his career at Arsenal, and has also played for Hereford, Orient, Swansea and Plymouth.

## Meet the Manager



**DAVE BASSETT** arrived at Selhurst Park in 1996, just weeks after parting company with Sheffield United where he had been in charge since January 1988.

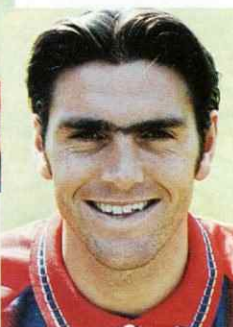
He led the Blades through two promotions to the Premiership, and to an FA Cup semi-final, but parted company with the club before Christmas by mutual consent.

Previously, he was manager at Wimbledon from 1981-87, and at Watford from 1987-88.

Former Manchester United winger and England international **STEVE COPPELL** is Technical Director at Selhurst Park, with **RAY LEWINGTON** remaining as first team coach.



**LEFT: Gareth Davies**



**RIGHT: Marc Edworthy**

## A Hatter and an Eagle.....

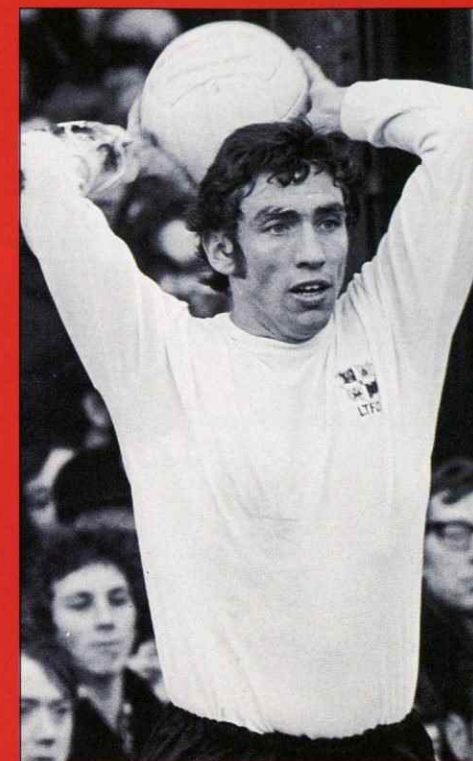
London-born **ROGER HOY** joined his boyhood favourites Tottenham Hotspur from school, and signed on as a professional for the White Hart Lane club in May 1964, as an 18-year-old.

He made his league debut two years later as a central defender, but was never given an extended run in the side after Spurs signed Mike England, and he was allowed to join Crystal Palace in September 1968.

In his first season at Selhurst Park, Hoy helped Palace win promotion to Division One and he then helped them narrowly avoid going straight back down in 1969/70, before being enticed to Kenilworth Road by Alec Stock, just as the Town were about to embark on their first campaign in Division Two for seven years.

Roger Hoy made 32 league appearances for the Town in his one season here and is remembered for the part he played in a strong Luton side that narrowly failed to gain further promotion. He is also remembered for his 'robust' style!

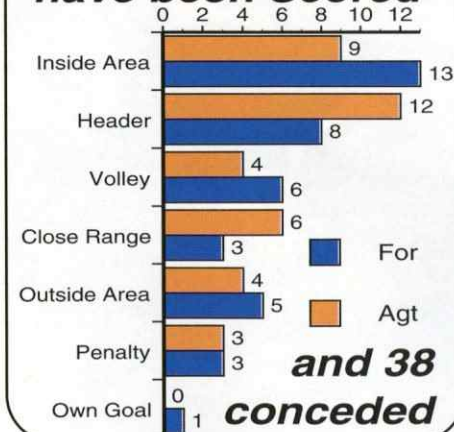
He was surprisingly transferred to Cardiff for £25,000 in August 1971 where a serious knee injury cut his appearances to only 16 in almost three years, before he made his final move, to non-league Bath City.



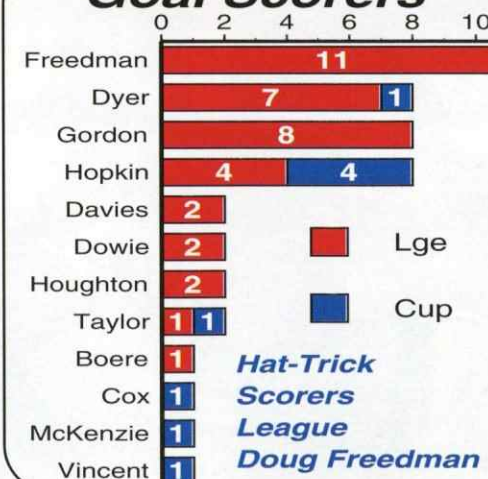
That was in 1974, and at the same time he was successfully suing Cardiff for wrongful dismissal after the club had cancelled his contract on medical grounds.

Following his spell at Twerton Park, Roger and his family headed for Australia, where he still lives. - **ROGER WASH.**

## How 39 Goals have been Scored

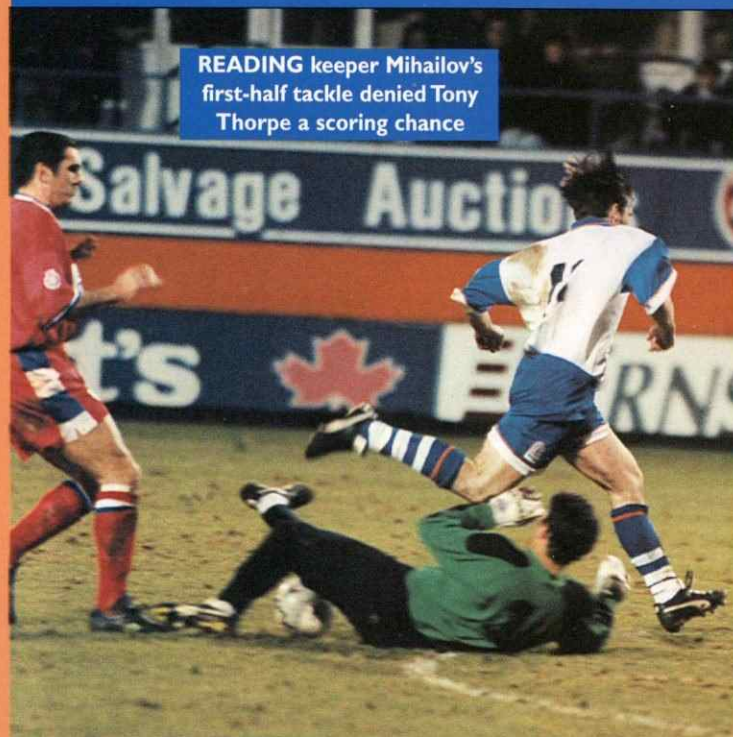


## Goal Scorers



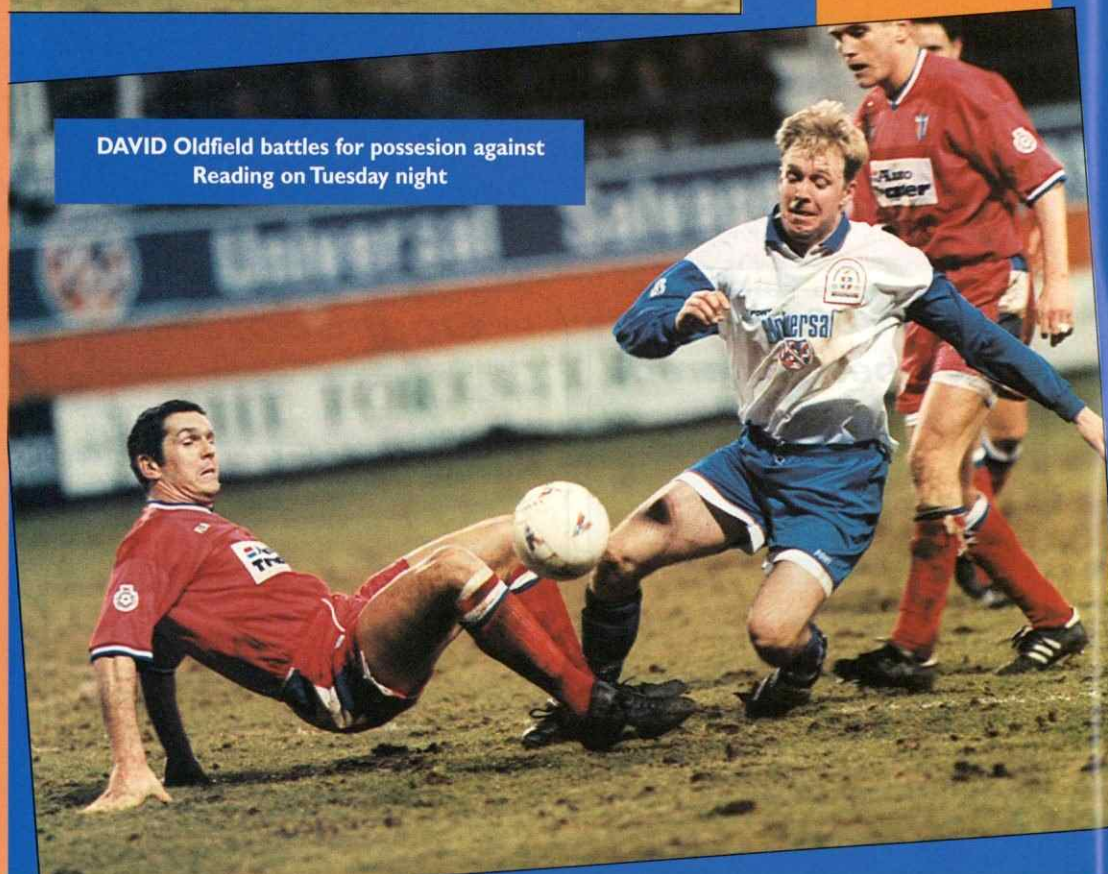


## LUTON TOWN v READING



READING keeper Mihailov's first-half tackle denied Tony Thorpe a scoring chance

From
Kenilworth Road
Date
February 27, 1996
Result
Luton Town 1 (Guentchev pen)
Reading 2 (Booty, Lovell)
Attendance: 6,683
Pictures by ANDY HANDLEY



DAVID Oldfield battles for possession against Reading on Tuesday night

ANDY Bernal's second-half tackle denied Scott Oakes the opportunity to put Luton back in front



READING keeper Mihailov is beaten by Bontcho Guentchev's early penalty, after the Bulgarian was fouled by Jeff Hopkins (INSET)





# The Total Football Brand..



**Mitre Mitre Mitre**



## Football wins with Littlewoods and the Football Trust every Saturday

Littlewoods Pools pay out millions to winners every week and together with Littlewoods Spot the Ball put over £30 million back into football every year through the Football Trust.

Football also receives £8 million a year for the use of fixtures on coupons and Littlewoods, the game's biggest benefactor, is the first sponsor of the FA Cup.

The Football Trust is helping the game at all levels. Clubs are building new grounds, stands, seating and roofing.

The support of the Football Trust and the success of Littlewoods is vital for football's future. When you enter Littlewoods new easy to enter coupon, offering the best odds of a jackpot win, you are helping the Football Trust to assist your Club to develop its facilities, comfort and safety.



**LITTLEWOODS**  
£MILLIONS MUST BE WON EVERY WEEK



**LOOK out for our Junior Hatters mascot Happy Harry during this evening's game.**

**Happy Harry badges are now available in the Club Shop, priced at £2.50.**

## HARRY OF THE HATTERS

### BOOK NOW FOR TRIPS TO SHEFFIELD AND CHARLTON

WELCOME to all the Junior Hatters, and welcome to this afternoon's game.

Don't forget the Saturday Club is for Junior Hatters on home matchdays, meeting at Dallow Road Junior School at 12 noon, and resumes today as we entertain Crystal Palace. The cost is £6.50, which includes your match ticket, (£3.50 for season ticket holders), lunch and supervised activities, with a visit from a Town player.

Parents can pick up their children from inside the Family Room after the game. Please bring trainers and a drink.

Places at the Saturday Club can be booked at the Club Shop, and we would ask you to book in advance so we can cater for the right number.

We are now taking bookings for trips to the matches at Sheffield United on Saturday, March 23, and to Charlton on Good Friday, April 5. Each trip will cost £10 for adults, and £8 for Junior Hatters - prices include match ticket.

Please book early at the Club Shop, as places are limited. Bookings can be made either in person or by phone on 01582 411622, but please note that we are unable to take bookings on a home matchday between 12 noon and 3pm.

All other Junior Hatters enquiries should be made to the Ticket Office on 01582 416976.

### MATCH DAY MASCOTS



**Name:** Danny Stevens  
**Age:** 13  
**School:** Leon County Secondary School, Bletchley  
**Other hobbies:** Swimming  
**Favourite Luton player:** Scott Oakes  
**Local team that you play for:** MK Boys FC  
**Attends matches with:** My Step Dad



**ABOVE:** Carl Bates was our mascot at Sunderland, and is pictured above at the pre-match photocall.



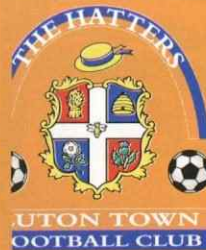
**LEFT:** Our mascot against Reading on Tuesday night was Paul Hegley. He is pictured with Kelvin Davis and Ian Feuer.

**FOR ALL DETAILS ABOUT THE JUNIOR HATTERS  
PLEASE CONTACT THE TICKET OFFICE ON (01582) 416976**



# OVER THE BAR!

Drink a toast to the Hatters in the following pubs...



## THE BEDFORDSHIRE YEOMAN

Supporters welcome, just a two-minute walk from the ground

Food available on matchdays

214 Dallow Road, Luton  
(01582) 30469



The only place to eat in Dunstable  
Tele: (01582) 667833  
Fax: (01582) 475552



## Cork & Bull

FREE HOUSE

Air conditioning and waitress service

Daily fresh home cooked specials

4 CUMBERLAND STREET, LUTON  
(01582) 29586

## WHITE HART HOTEL

Home cooked food available all day and evening.

Amphill's premier music venue, with live music every Friday and Saturday (Rock, Irish and English folk)

Dunstable Street, Amphill  
(01525) 402158

## HIBBERT ARMS

Carol and all her staff wish the Hatters the best of luck for 95/96

35 Hibbert Street, Luton  
(01582) 20387

## THE DUKE OF CLARENCE

Upper George Street,  
Luton  
Tele: (01582) 30263

Ten minutes walk from the ground. Food available.  
Open 11am to 11pm.

## THE DUKE OF CLARENCE

Upper George Street,  
Luton  
Tele: (01582) 30263

Ten minutes walk from the ground. Food available.  
Open 11am to 11pm.

## LEICESTER ARMS

Football supporters and coaches welcome

Hot and cold food

Large function room available free of charge

531 Dunstable Rd, Luton  
(off junction 11, M1)

## THE LILLEY ARMS

Food for all occasions, fine ales, accommodation, beautiful gardens with farm animals. Coach parties welcome, advance warning please!

West Street, Lilley  
Tele: 01462 768371

"It's worth passing a few pubs for."

## THE BOATER

Traditional fayre  
Real ales, jazz nights & quiz nights

121 Icknield Way, Luton  
Tele: (1582) 575191



Jim and Joy Morris  
Tele: (01582) 661035

## THE WHEAT SHEAF

Traditional country pub serving snacks and real ales. Large garden, children welcome

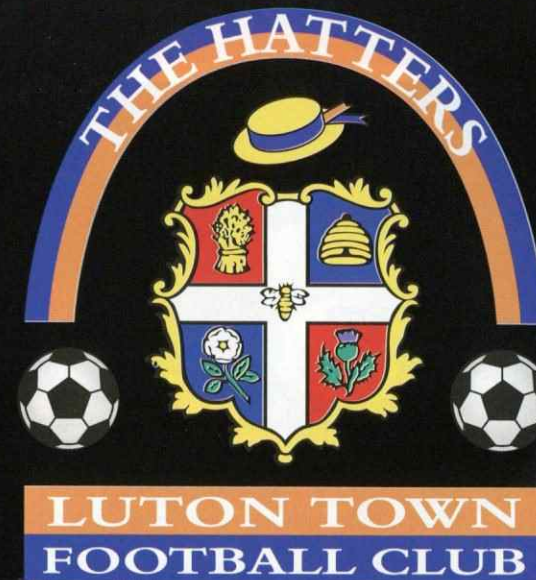
15 High Street, Flitwick  
Tele: (01525) 712574

## THE ENGINE AND TENDER

Recently refurbished with patio, and childrens room. Bar meals served Mon to Fri 12-2pm

Tele: (01525) 403319

To advertise in this section, telephone the Commercial Department on (01582) 411622



Official Supplier to  
Luton Town FC





# REUNION DATE WITH THE PALACE FOR DEFENDER DARREN



**DARREN**  
Patterson in  
action against  
Wolves in  
December at  
Kenilworth Road,  
one of his first full  
appearances for  
the Hatters since  
arriving from  
Crystal Palace in  
the summer.

HATTERS defender Darren Patterson hopes to return to the starting line-up this afternoon, bidding to put one over his old club, and finally overcome the injury jinx that has hampered his first seven months at Kenilworth Road, writes **SIMON OXLEY**.

Darren signed for the Hatters in August from Palace for £150,000, a fee which could rise to over £200,000 based on appearances.

But an achilles injury ruled him out of the first two months of the season, and kept him out of Northern Ireland's final European Championship qualifying matches.

"It has been frustrating to say the least," admitted Darren this week. "The longest I was ever out at Palace

was about three weeks, but after passing the medical here I wasn't really fit until Christmas.

"Then we all went down with the flu, I got it twice, and then just as I was starting to build a good partnership with Steve Davis in the centre of defence, I suffered the groin strain which kept me out at Sunderland and also meant I missed Tuesday's game against Reading.

"When you've been out for a long time you are prone to getting these niggling injuries, and although I was desperate to play on Tuesday because it was such an important game, it was felt that we couldn't take the risk.

"Hopefully I'll be able to resume against Palace, and it will be good to see them again, although there are one or two new faces since I left."

**LEFT:**The scene at Selhurst Park on Boxing Day, Luton's originally scheduled first meeting with Crystal Palace this season.

Sadly the frost intervened, and the game was also postponed on January 27. Hopefully we will be at Selhurst Park on Tuesday, March 19.

Pictured: Wayne Turner, Lennie Lawrence and Steve Coppell on Boxing Day.



There certainly are, and especially in defence, where last season's back four, who despite relegation had one of the best defensive records in the Premiership, has been dismantled.

Chris Coleman (to Blackburn) and Richard Shaw (to Coventry) have made million pound moves back to the top flight, although Nigel Martyn and Dean Gordon remain.

"Nigel is an excellent keeper, and Dean Gordon is having another good season," said Darren.

"Also, we will have to watch for George Ndah, and after their win over Birmingham on Tuesday, Palace will be in excellent spirits and they are pushing for a play-off place.

"I enjoyed my time there and made some very good friends.

"We had a great cup run last season, but losing in the semi-final to Manchester United was devastating."

If that was the low point, then Darren's time at Selhurst Park, following his £250,000 move from Wigan in 1992, also provided the high point of an international debut for Northern Ireland.

"That was in 1994 at the Foxboro Stadium near Boston, in a tournament just prior to the World Cup," recalls Darren.

"Northern Ireland were playing Columbia, who had beaten Argentina 5-0 about three weeks before, and were a lot of people's tip for the World Cup.

"I came on as a substitute, and although we lost 2-0 it was a great experience to play against the likes of Asprilla and Valderrama."

Darren went on to claim a regular place at right-back, although his injury earlier this season halted that run of appearances.

"The Northern Ireland manager Bryan Hamilton kept in touch which was nice, and that helped a lot because I'm not a very good patient, as our physio Clive Goodyear will tell you!" he added.

"But I want to re-establish myself in the international team, and of course here at Kenilworth Road.

"There is still plenty more in the tank, and I have a lot to prove to people."

So first comes the battle against relegation, and then Darren aims to be a part of Hamilton's team that will aim to qualify for the next World Cup.

They are in a tough group though, with Germany, Portugal, Ukraine, Albania and Armenia, and with only the top team certain to go through - although the runners-up are given an opportunity to progress.

**Keep up-to-date with all the  
news from Kenilworth Road  
LUTON TOWN CLUBCALL  
0891 121 123**



**ABOVE:** Darren and Mitchell Thomas have been important players in the back four during Luton's recent good run. They are pictured in action in the 3-2 home win over Grimsby Town at Kenilworth Road.

**R. J. BLOW &  
C O M P A N Y**

*THE FRIENDLY ACCOUNTANTS*

**Book-Keeping  
Taxation and Wages etc.**

STIRLING HOUSE,  
30 GUILDFORD STREET,  
LUTON, BEDS LU1 2NR

Tel: (01582) 38792

Fax: (01582) 423347



*Julian James*





## KENILWORTH SUITE

ABB Flexible Automation Ltd  
 Anachem Ltd  
 Corporate Coaching  
 Fisher Frozen Foods Ltd  
 F & T Goodwin Ltd  
 Handscombe Financial Services Ltd  
 R W Harvey & Son  
 Origination  
 Regal Litho  
 Steadfast Properties Plc  
 Wilton Contract and Vehicle Rental  
 TT (UK) Ltd (GRUNDOMAT)  
 Mr C Purcell - South East Security

Russell Press  
 Information Design Associates  
 Mr Malcolm Eade  
 Mr Roger Eade  
 Mr P Laycock  
 Arrow Business Systems Limited  
 J Sapsworth Ltd  
 Dr D Siegler  
 Critical Research Ltd  
 EMP Plc

## CLUB 82

Bervale Mead Insurance Brokers  
 C P Contracts  
 C P Contracts Flooring  
 J S B Business Forms  
 Luton Cleaning Company  
 Nordic Supplies  
 Mr F W Pearce

Shorey's Travel  
 Chris and Kim Clarke - The Wheatsheaf,  
 Flitwick  
 Space Display Systems Limited  
 The Home Counties Newspaper Group

## EXECUTIVE BOX HOLDERS



Murtagh Demolition



Rowdell Developments



THE PAPER PROFESSIONALS

JAMES McNAUGHTON PAPER MERCHANTS LIMITED

INJURY UPDATE.....  
with LTFC physio Clive Goodyear

I PROMISE never to write how quiet it's been in the treatment room again!

It has been more like an episode of Casualty in recent days.

Of course our major cause for concern has been **Dwight Marshall** who has suffered a fractured fibula, breaking the bone just above his left ankle, and damaging ankle ligaments.

Dwight was due out of hospital at the end of the week, but will be in plaster for six weeks, and we now have to aim for the start of next season as far as he is concerned.

**Darren Patterson** missed the games against Sunderland and Reading with a groin strain suffered against Derby, and could be fit to resume today.

At Sunderland we also suffered a number of other injuries, with **Richard Harvey**, **Marvin Johnson** and **Ceri Hughes** all requiring treatment.

Richard Harvey suffered a bruised foot, but should be fit to face Crystal Palace, with Marvin suffering with a



ABOVE: Dwight Marshall is stretchered off at Sunderland last Saturday, and is now out for the rest of the season.

hamstring problem again.

He could be fit today, but there is always a danger with these injuries that more serious damage could occur.

Ceri Hughes suffered with a back problem, but we will be able to take advantage of his suspension to carry out a scan to determine the extent of the injury.

Against Reading, **Tony Thorpe** suffered a 'dead' leg

just before half-time, with **Bontcho Guentchev** receiving a bruised calf. Both though should be fit today.

Also receiving treatment are Aaron Skelton (knee), Robert Sharpe (knee), Ian Jones (knee), Stuart Douglas (stomach), Andrew Barr (achilles) and Matthew Upson (knee). We may have to build an extension to the treatment room!



CERI Hughes



MARVIN Johnson



RICHARD Harvey



# KIT SPONSORS

**GARY WADDOCK**

is sponsored by

**Mad As A Hatter -  
the Luton Town fanzine**



**RICHARD HARVEY**  
Shorey's Travel

**TONY THORPE**  
Bedfordshire Rural  
Communities Charity

**CERI HUGHES**  
Les and Sue Miller

**TREVOR PEAKE**  
Bennetts Gate Bakery of  
Hemel Hempstead

**MARVIN JOHNSON**  
Graham Group PLC

**CLIVE GOODYEAR**

**LENNIE LAWRENCE**  
201 Hertfordshire and Beds Yeomanry

**BEN CHENERY**

**JOHN TAYLOR**  
Kate and Phil Shaw

**SCOTT OAKES**  
Chris and Kim Clarke  
The Wheatsheaf, Flitwick

**GARY WADDOCK**  
Mad As A Hatter - Luton Town fanzine

**JOHNNY VILSTRUP**  
Paul Deason

**DARREN PATTERSON**  
Rob Stringer - EPIC Records

**AARON SKELTON**  
Vacation Club International Limited  
Travel Agents

**VIDAR RISETH**  
Keith Brooksbank, from Liverpool

**JAMIE WOODSFORD**  
Worldwide Hatters on the  
Super Highway (WHOSH)

**STEVE DAVIS**  
Loyal Luton Supporters Club

**BONTCHO GUENTCHEV**  
The Bobbers Travel Club  
Committee and Members

**IAN FEUER**  
Grosvenor Casino

**DAVID OLDFIELD**  
Luton Town Supporters Club

**MITCHELL THOMAS**  
Storage Menswear,  
Chapel Street, Luton

**DES LINTON**  
Simkins Solicitors of  
Baldock and Sandy

**WAYNE TURNER**  
Danny and Elsie Clubb, from Blackpool

**KELVIN DAVIS**  
Space Display Systems Ltd

**JULIAN JAMES**  
Shorey's Travel

**TONY THORPE**  
Bedfordshire Rural  
Communities Charity

**CERI HUGHES**  
Les and Sue Miller

**TREVOR PEAKE**  
Bennetts Gate Bakery of  
Hemel Hempstead

**MARVIN JOHNSON**  
Graham Group PLC

**CLIVE GOODYEAR**

**LENNIE LAWRENCE**  
201 Hertfordshire and Beds Yeomanry

**JOHN TAYLOR**  
Kate and Phil Shaw

## Luton Town Football Club in the Community



### LEARNING THROUGH FOOTBALL

HALFWAY through the 1995/96 academic year, approximately 750 Bedfordshire schoolchildren have so far enjoyed a day at Kenilworth Road, becoming involved in the 'Learning through Football' project currently sponsored by the Daily Star, writes scheme co-ordinator MAURICE DAWSON.

The 'Learning through Football' project has proved very popular with schools throughout the county. Every available Tuesday and Thursday up to the Easter holiday has been booked by other schools, but there are many vacancies right through the summer term, and consequently it is hoped that no schools wishing to become involved need be disappointed.

All enquiries should be made by letter or telephone to Maurice at 27 Pegsdon Close, Luton, LU3 2LG, telephone (01582) 654145.

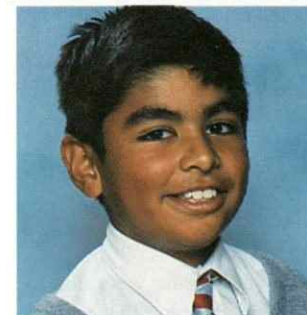
We aim to provide all children who visit

Kenilworth Road with an enjoyable and educational day, during which they will learn the history of the club from its formation in 1885, tackle mathematical assignments relating to football, and write about their experiences.

The 'lessons' are interspersed with visits to many parts of the club not normally seen by visitors, whereby children discover just what makes a football club tick.

A BIG thank-you to everyone who has attended the Half-Term coaching courses which, despite the weather, have proved popular, with schools from across the region hosting one and two-day sessions.

We will shortly be announcing details of our Easter Holiday courses, so look out for those dates and venues in forthcoming programmes.



BILLY Loi



KEVIN Hare

AT half-time in the game against Southend, we introduced the Luton Town FC Penalty Challenge as part of your half-time entertainment - a competition organised in conjunction with The Windowcraft Chiltern Youth Football League.

The clubs in the competition, which covers the age groups of Under 10, Under 11 and Under 12, have held their own penalty shoot-outs to select their champion to represent them here at Kenilworth Road.

The penalty competition will resume at half-time today, with the Under 11 competition.

Representing Kensworth Juniors is Billy Loi, and he's up against Kevin Hare from AFC Houghton.

Please give the youngsters a cheer!



ABOVE: The Under 10 Penalty Challenge participants (Matthew Lindgreen, David Cremin and Jason Kelly) are pictured at the half-time shoot-out against Millwall.

For details of community events, or for details about a coaching course at your school, contact: Jeff Vetere, Football in the Community, LTFC, Kenilworth Road Stadium, 1 Maple Road, Luton, Beds, LU4 8AW, or telephone on (01582) 411622.





Mon Aug 14	Swindon Town (A)	drew 1-1
Wed Aug 23	Tottenham H (H)	drew 3-3
Tue Aug 29	Portsmouth (A)	drew 1-1
Wed Sep 6	QPR (H)	lost 3-1
Mon Sep 11	Watford (H)	drew 0-0
Wed Sep 20	Crystal Palace (H)	lost 1-0
Tue Sep 26	West Ham Utd (A)	lost 2-1
Mon Oct 2	Stotfold (A) (BPC)	won 3-2
Wed Oct 4	Bristol City (H)	won 2-0
Wed Oct 11	Brighton (A)	lost 3-1
Wed Oct 18	Charlton Ath (H)	won 6-2
Wed Oct 25	Ipswich Town (A)	won 1-0
Wed Nov 1	Wimbledon (A)	lost 2-1
Wed Nov 8	Norwich City (H)	lost 2-1
Wed Nov 15	Oxford Utd (A)	lost 3-2
Wed Nov 22	Southampton (H)	won 1-0
Tue Nov 28	Arsenal (H)	lost 4-0
Wed Dec 6	Bristol Rovers (H)	won 4-1
Mon Dec 11	Chelsea (A)	drew 0-0
Mon Dec 18	Barton (A) BPC	lost 2-1
Wed Jan 3	Portsmouth (H)	won 2-0
Thur Jan 11	QPR (A)	lost 2-1
Tue Jan 16	Watford (A)	won 1-0
Sat Feb 3	Tottenham (A)	lost 2-0
Wed Feb 14	Brighton (H)	won 2-0
Wed Feb 21	Charlton Ath (A)	lost 2-0
Wed Mar 6	Wimbledon (H)	7.30
Wed Mar 13	Norwich City (A)	7.30
Wed Mar 20	Oxford Utd (H)	7.30
Sat Mar 23	Millwall (H)	2pm
Wed Mar 27	Southampton (A)	7.30
Wed Apr 3	Arsenal (A)	3pm
Wed Apr 10	Bristol Rovers (A)	7.30
Wed Apr 17	Chelsea (H)	7.30
Mon Apr 22	Millwall (A)	7pm
Wed May 1	Swindon Town (H)	7.30
Tue May 7	West Ham (H)	7.30

TBA Crystal Palace (A)  
Bristol City (A)  
Ipswich Town (H)

All home matches to be played at Kenilworth Road until the end of November. From Wednesday, December 6, matches to be played at Hitchin Town FC until March.

# RESERVES & YOUTH ROUND-UP

## WITH TREVOR PEAKE AND JOHN MOORE

THE Town's Reserve team are due back in action on Wednesday, at Kenilworth Road, kick-off 7.30pm against Wimbledon.

Their game last Saturday at home to Ipswich was postponed due to a waterlogged pitch, thus preventing Scott Oakes from playing his first full game after a back injury.

Oakes was due to play to



SCOTT Oakes

### Avon Insurance Combination Apps and Goalscorers (21/2/96)

Apps	G	Apps	G
Barber	7	Fitzpatrick	1
Chenery	18 (4)	Douglas	7 (4)
G Johnson	10	Evers	7 (3)
James	9	Taylor	2
Greene	8	Power	6 (5)
Skelton	12 (1)	Alexander	4
Linton	13	Augustine	1 (2)
McLaren	13	Willmott	1 (3)
Issott	3 (6)	Oldfield	9
Jones	10 (4)	Fotiadis	2
Matthews	3	Sharpe	1
Woolgar	1 (2)	Simpson	12 (2)
K Davis	15	Jay Thomas	1 (1)
Peake	9	Kean	1 (3)
Woodford	18 (1)	Guentchev	8
Hughes	2	Allen	1
Thorpe	9 (1)	Turner	1
M Thomas	8	Sweeney	(1)
Waddock	7	Patterson	2
Codner	2	Vilstrup	8
Boskovic	1	Abbey	1
Barr	(1)	Riseth	4 (1)
Smith	(1)	Harvey	3
Jason Thomas	1	Marshall	1

gain match fitness ahead of Tuesday's first team home game against Reading.

Also set to line up for the Hatters against Ipswich was striker Jason Thomas, on trial from Birmingham, who had played in the 2-0 defeat at Charlton the previous midweek.

The Youth team did play last weekend however, winning 2-0 at Brentford in the South East Counties League.

Sean Evers and Steve Augustine were the Luton scorers.

Team: Webb, Lawes, Sweeney, Evers, Doherty, Upson, Cox, Spring (Barr), Douglas, Cornwall (Augustine), Smith.

Sub not used: Boyce.

The youth team were due to entertain Brighton this morning.



### South East Counties League, FA Youth Cup, Southern Jnr Floodlit Cup, and Eastern Junior Cup

Sat Aug 12	Crystal Palace (H)	lost 5-2	Thur Oct 26	C'bridge C (FAYC)(A)	9-1	Sat Feb 10	Bristol City (A)	won 2-0
Sat Aug 19	Swindon Town (A)	won 3-1	Sat Oct 28	C Palace (LC2)(A)	lost 4-1	Sat Feb 17	Wimbledon (H)	won 3-2
Sat Aug 26	Colchester U (H)	won 2-0	Sat Nov 4	Barnet (H)	lost 2-1	Mon Feb 19	Oxford United (A)	lost 4-1
Mon Aug 28	Coventry (SJFC) (A)	1-1	Sat Nov 11	Reading (A)	won 4-0	Sat Feb 24	Brentford (A)	won 2-0
Thur Aug 31	Coventry (SJFC) (H)	0-3	Wed Nov 15	Kettering(EJC)(A)	won 11-3	Sat Mar 2	Brighton & Hove Albion(H)	
Sat Sep 2	Wycombe W (A)	lost 1-0	Sat Nov 18	Southampton (A)	lost 3-1	Sat Mar 9	Barnet (A)	
Sat Sep 9	Oxford United (H)	drew 2-2	Sat Nov 25	Leicester C (FAYC)(A)	2-1	Sat Mar 16	Reading (H)	
Sat Sep 16	C'bridge (LC1) (H)	won 5-0	Sat Dec 2	Tottenham H (H)	drew 2-2	Sat Mar 23	Southampton (H)	
Sat Sep 23	Bournemouth (A)	won 4-0	Sat Dec 9	Bristol Rovers (A)	won 1-0	Tue Mar 26	Cambridge C (EJC) (H)	
Sat Sep 30	Bristol City (H)	won 3-2	Sat Dec 16	Bristol Rovers (H)	won 1-0	Sat Mar 30	Tottenham Hotspur (A)	
Tue Oct 3	B'tham/S (EJC)(A)	won 6-0	Sat Jan 6	Swindon Town (H)	won 3-1	Sat Apr 13	Crystal Palace (A)	
Sat Oct 7	Wimbledon (A)	lost 2-0	Tue Jan 9	L'pool (FAYC) (A)	lost 5-0	Sat Apr 27	Brighton (A)	
Sat Oct 14	Brentford (H)	won 4-1	Sat Jan 13	Colchester U (A)	drew 1-1	Sat May 4	Bournemouth (H)	
Sat Oct 21	C Palace (LC2) (H)	1-1	Sat Jan 20	Wycombe W (H)	lost 3-1			Home matches played at Luton RUFC.

### Youth Team League & Cup Appearances and Goalscorers

	Lge apps	Lge goals	Cup apps	Cup goals	
Abbey	12		7		
Turner	15 (1)	1	7 (2)		
Sharpe	14		9		
Sweeney	18 (3)		7 (1)	1	
Jones	11 (1)		1 (3)		
Willmott	17 (2)	5	8	2	
Augustine	16 (3)	7	6 (2)	2	
Evers	15 (1)	2	8		
Douglas	13 (3)	5	6 (2)	6	
Barr	11 (5)	8	2 (3)	6	
Kean	15 (1)	1	7 (3)	1	
Lawrence	(2)		1		
Fotiadis	12 (3)	7	9	5	
Webb	10		3		
Upson	18 (1)		6 (1)		
Smith	12 (8)	3	8 (1)	3	
George	10 (3)	1	3 (3)	9	
Thomas	10 (2)		4 (4)		
Doherty	1 (1)		3	1	
Spring	3 (2)		4		

Statistics up to and including Saturday, February 24.

#### Also played

Lawes - 3 league app + 1 cup app  
Ryan - 1 league app  
Cox - 4 league app + 1 sub, 1 goal  
Provencial - 2 league sub  
Bryson - 1 league app + 1 sub  
Boyce - 1 league app  
Peterkin - 1 sub app  
Cornwall - 1 league app + 1 sub app

### South East Counties League Div Two (up to and including 17.2.96)

	P	W	D	L	F	A	Pt
Crystal P	20	16	3	1	60	18	35
LUTON T	20	11	3	6	40	27	25
Wycombe	22	11	3	8	36	35	25
Bourn'mouth	20	10	4	6	36	33	24
Southampton	21	10	2	9	38	20	22
Oxford	19	10	2	7	37	27	22
Brentford	22	9	4	9	29	34	22
Wimbledon	18	10	1	7	37	24	21
Barnet	22	7	7	8	30	29	21
Tottenham	20	7	7	6	36	36	21
Brighton	19	9	2	8	26	28	20
Bristol City	21	5	6	10	28	36	16
Bristol R	21	5	5	11	27	37	15
Swindon	20	5	5	10	24	36	15
Reading	21	6	3	12	23	56	15
Colchester	22	2	5	15	21	52	9

## Part-time Telephone Sales

Luton Town FC are looking to recruit a mature, reliable and enthusiastic person to help establish and promote sales for their business and conference facilities.

The ideal candidate must possess a high level of self-confidence, be articulate, and have a pleasant personality. You will be expected to work on your own initiative after a short training programme.

Hours of work: 10am to 3pm - Monday to Friday  
Rate of pay: £100 per week, plus commission

Interested? Please write, enclosing CV, to: Peter Saul, Catering Manager, Luton Town FC, 1 Maple Road, Luton, Beds, LU4 8AW.



# ST ANDREW'S DAY

..... on Saturday, April 13, 1996!

Join us for Birmingham City v Luton Town on Saturday, April 13, 1996, on an executive coach trip to Birmingham for the big game.

**FOR JUST £65 PER PERSON (plus VAT)**

Champagne reception on coach..... Access to the Wiseman Suite before and after the game..... Three-course pre-match meal..... Executive seats in the Main Stand..... Complimentary match programme..... for details contact the Commercial Department on (01582) 411622.

## MARTIN SMITH COMMERCIAL MOTORS

USED COMMERCIAL VEHICLE  
SALES & SERVICE

Always a large selection of quality late  
used commercial vehicles on display

199 & 207 Legrave Road,  
Luton, LU3 1JD,  
Bedfordshire.

Telephone: (01582) 574455/505854  
Fax: (01582) 490858

### Do Your Offices need **More Space**

**APEX**  
Office Design • Space Planning

### Are Your Offices Comfortable, Efficient and Safe?

**APEX**  
Posture Seating • Ergonomic Workstations

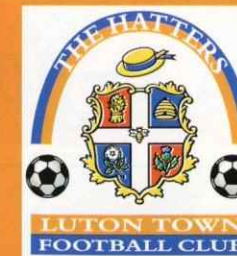
### Are You Thinking Of Improving Your Offices?

**APEX**  
Ceilings • Partitions • Lighting and carpets

For all your office furnishing needs call:

**APEX**  
**OFFICE FURNITURE & INTERIORS**  
579 Dunstable Road, Luton LU4 8QW.  
**Tel: 01582 492 434**  
showrooms just 100 metres from M1 Junction 11

# MEET THE MANAGER!



Luton Town manager  
**LENNIE LAWRENCE** will be  
the guest speaker at a meeting  
of the Luton Town Supporters'  
Club on Monday,  
March 18, at  
7.30pm, in the Eric  
Morecambe  
Lounge.  
(New members  
welcome to join on  
the night).



### SAFETY NOTE

The Chairman and Directors of Luton Town Football Club undertake to ensure as far as humanly possible that all activities that take place at the Kenilworth Stadium are conducted in such a way that, as far as is reasonably practicable, the safety of everyone working at or attending that stadium is assured.

The club's primary responsibility through the Safety Officer, Officials, Staff and Stewards will be to ensure the reasonable safety of those attending the stadium.

In the interests of public safety, the safety authority (Beds County Council) have imposed a NO SMOKING restriction in and beneath our main stand. Your co-operation is appreciated.

Action pictures featured in the matchday programme are available at the special price of just £2 per print! Write to Simon Oxley, at the club, giving a brief description of the picture (programme and page number etc), and enclosing a cheque/ postal order made payable to Luton Town Football Club.

Ring Clubcall on 0891 121 123



# Six-goal clash in championship season



**ABOVE:** Raddy Antic fires in a free-kick against Palace in the 1-0 home victory.

THE Town got off to a great start in their championship season of 1981/82 winning their first three games at a canter to become early leaders.

After a couple of home setbacks all became right again with the thumping of old enemies Watford at Kenilworth Road, and the team began to have that unbeatable look about it.

The 'swagger' was typified in the 6-0 win over Grimsby at Kenilworth Road in mid-October followed by an easy 2-0 victory at Wrexham (where we had never won before) setting us up for a home game against Crystal Palace when we hoped to consolidate our position at the top.

Our starting line-up had remained virtually unchanged for the first dozen games of the campaign and we started confidently against a Palace side that was struggling at the wrong end of the table.

Setting out their stall early however, Palace had obviously come for a point and filtered back in defence at the first sign of danger.

When you have already lost six of your games by 1-0 at that stage in the season, playing a defensive game is dangerous and, as if to prove a point, after David Moss put the Town in front from the penalty spot after 30 minutes that was the way the score was going to stay.

The penalty, earned when Steve Lovell fouled Steve White in the area, came at the end of a period of Town pressure which had seen Brian Stein go close on two occasions but, try as they might, they could not increase the lead as Palace continued to defend in depth.

The crowd of 11,712 went home reasonably happy with the Town's performance realising that teams were going to come to Kenilworth Road and play defensively and hope for a breakaway at the other end. Palace had only one shot on target and that came from substitute David Price in the last minute.

The only low spot that afternoon was an injury to centre-half Mike Saxby who limped off after 70 minutes. Little did we know at the time that the knee injury, caused by an innocuous turn in the penalty area, would effectively end his football career.

By the time of the return, the following March, the Town were going through a mini-crisis having gone three games without a win including our first defeat for four months.

We were however, still top of the table while Palace were still down at the wrong end although they were heartened by a win at Chelsea the previous week.

This time negative thoughts went out of the window straight from the kick-off with both

teams attacking with a will, and Palace opened the scoring after eight minutes when Neil Smillie was left free at the far post to meet a long cross.

The lead was short lived though, when Raddy Antic curled in a shot from the edge of the box four minutes later, only for Kevin Mabbutt, who had made his Palace debut at Luton earlier in the season, giving the advantage back to the Eagles by scoring right from the restart, reacting first to a long ball over the top.

Back came the Town and a minute later a strong run from White took him into the box where he was upended by Paul Hinshelwood. Moss duly dispatched his tenth penalty of the season to level the scores.

We eventually went ahead for the first time shortly before the interval when, following good work from Antic and Ricky Hill, Stein was left with a free header at the far post. On the run of play we just about deserved to be ahead.

Palace started the second period in determined fashion and it was the Town's turn to defend in depth although the Eagles rarely looked like getting through to test Jake Findlay in the Luton goal.

An inspired substitution by Palace manager Steve Kember changed the game when he introduced winger Vince Hilaire, who was later to have a spell at Kenilworth Road, into the fray with 20 minutes remaining, and it was his trickery that set up the equaliser with Smillie hammering home his second goal of the game.

The final whistle went with the Town on the attack but the 3-3 scoreline was a fair one and both teams went off to a standing ovation in complete contrast to the reaction following the negative clash between the two sides the previous October.

To finish on a happy note, the Town went the rest of the season unbeaten and walked away with the Championship!

Luton: (first game): Findlay, Stephens, Donaghy, Goodyear, Saxby (Antic), Hill, Horton, Fuccillo, Stein, White, Moss.

(second game): Findlay, Stephens, Goodyear, Donaghy, Turner, Hill, Antic, Horton, Stein, White, Moss.

Crystal Palace: (first game): Barron, Bason, Cannon, Gilbert, Lovell, Galliers, Murphy, Smillie, Brooks (Price), Mabbutt, Langley.

(second game): Barron, Hinshelwood, Wicks, Gilbert, Boulter, Murphy, Giles, Smillie, Cannon, Langley (Hilaire), Mabbutt.



by ROGER WASH

## 5 YEARS AGO

5/3/91: After two straight victories it was back to losing ways with a 3-0 defeat at Manchester City with all the goals coming in the first-half.

## 10 YEARS AGO

1/3/86: A perfect first-half header from Mick Harford was enough to earn us all three points against Sheffield Wednesday at Kenilworth Road. This win meant we were safe from relegation; unheard of for this time in the season since our return to the top division four years before!

## 15 YEARS AGO

7/3/81: With Raddy Antic back in the side in a sweeper role the Town went to promotion chasing Notts County, and returned with all three points.

## 20 YEARS AGO

2/3/76: Another single goal victory, this time over Southampton at Kenilworth Road. The Luton goalscorer was Jimmy Husband, in front of a crowd of 13,737, with the win pushing us up to sixth position in Division Two.



# MARSHALL INJURY AGONY AS HATTERS LOSE UNBEATEN RECORD



LEFT: Bontcho Guentchev on the defensive at Roker Park.

BELOW: John Taylor and Sunderland skipper Kevin Ball.

INSET: Three minutes to go, and Taylor can't believe that Shay Given has saved his late volley.



LEFT: Sunderland keeper Shay Given saves from Dwight Marshall (left) after six minutes, and Andy Melville (6) clears.



ABOVE: Dariusz Kubicki tests Bontcho's ankle guards.

RIGHT: Vidar Riseth had a chance to equalise for the Hatters in injury-time.



SUNDERLAND 1  
(James og)

LUTON TOWN 0

at Roker Park,  
February 24, 1996

(Pictures: ANDY HANDLEY)



ABOVE: Tony Thorpe takes evasive action.

**YOKOHAMA**

**Serious Rubber**

**PROFESSIONAL TYRES  
AT A PRICE YOU CAN AFFORD**

**A510 AVS A509**

**TSW**

**ALLOY WHEELS**

**BMW & MERCEDES  
SERVICING AND REPAIRS**

**OFFICIAL BOSCH SERVICE AGENT**

**R.M. FENSOME & CO**

15 KELVIN CLOSE, LUTON, BEDS. FAX: (01582) 405108

**TEL: ( )  
22705**



## Transfer deadline day approaches....

THE deadline for Endsleigh Insurance League clubs to register new players for the current campaign arrives later this month at 5pm on Thursday, March 28.

Players registered after this date will only be eligible to play in matches under the jurisdiction of The Football League for which permission is granted by the League's board of directors.

The Board only allows such players to appear in matches which do not have a bearing on promotion or relegation issues. Featuring in any of the League's three knockout competitions would also be excluded.

The Football League will also be advising all clubs to ensure that they have a sufficient number of goalkeepers registered prior to the deadline, as dispensation will not be given to clubs to sign and play goalkeepers after this date.

Transfer deadline day 1995 was a busy one at Kenilworth Road, with John Taylor signing from Bradford, Kerry Dixon leaving for Millwall, and goalkeeper Martyn Margetson joining on loan from Manchester City.

### Midweek matches in Division One:

#### Tuesday, March 5

Birmingham City v Wolverhampton Wanderers  
Charlton Athletic v Southend United  
Crystal Palace v Grimsby Town  
Watford v Derby County

#### Also Tuesday, March 5

Anglo-Italian Cup - English Final (Second Leg)  
Port Vale v West Brom

## Sunday date for Anglo Italian final

THE Football League have this week confirmed that this season's Anglo-Italian Cup Final will take place at Wembley Stadium on Sunday, March 17, with a kick-off time of 1.30pm.

Genoa have already qualified from the Italian section, after a 5-0 aggregate victory over Serie B counterparts Cesena, and the English representatives will be either West Brom or Port Vale.

The two Division One sides shared a 0-0 draw at the Hawthorns last Saturday, and play their second leg on Tuesday, which has meant the postponement of Luton's trip to Vale Park.

A reminder to Luton fans that if Port Vale reach the Wembley final it will mean the postponement of the Hatters' home league game against John Rudge's side on March 16.

## Peake confirmed as Luton's oldest ever League player!

WHEN Trevor Peake took the field for the Hatters against Reading on Tuesday evening, he furthered his record as Luton's oldest ever player in the Football League.

Peake celebrated his 39th birthday on February 10, making him 39 years and 17 days on Tuesday, passing the previously published record of 39 years 11 days held by former player/manager Dally Duncan when he lined up against Spurs on October 25, 1947.

It was thought that a new record had been set on

Tuesday.... but that's not the case!

Trevor Peake had in fact been the record holder since February last year, because further research by Luton Town's club historian Roger Wash revealed that Duncan was in fact born on October 14, 1909, making him 38 years and 11 days when he played against Tottenham.

So Trevor broke Dally Duncan's record when he played for Luton in the 2-2 draw at Bristol City last season.

However he still has a little way to go until he becomes Luton's oldest ever player.

Bob Hawkes, who was born on October 18, 1880, made his final appearance for Luton on April 26, 1920, aged 39 years and 191 days. That was when the Town played in the Southern League.



ABOVE: Trevor Peake in action for the Hatters against Reading.

## Greene back after Colchester loan spell

REPUBLIC of Ireland Under-21 international David Greene has returned to Kenilworth Road after a three-month loan spell at third division Colchester United, helping the Layer Road side's bid for promotion.

Town manager Lennie Lawrence ruled out a permanent deal, but said that David could be loaned out again before the end of the season.

David joined the Hatters from school in August 1991, and made his first-team debut at Grimsby Town in March 1993.

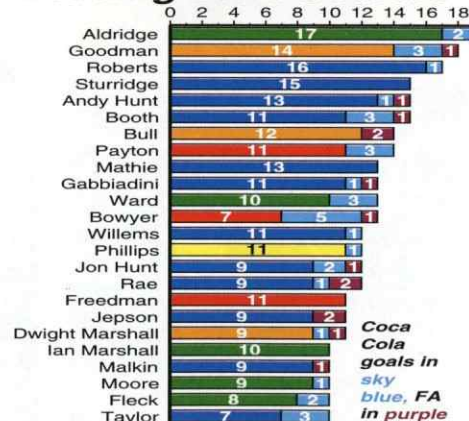
He appeared in the 1994 FA Cup campaign, deputising for skipper Trevor Peake in the 0-0 quarter-final draw at West Ham, and was a regular for the Eire Under-21 last term, captaining the Irish youngsters against England, at Newcastle.



### Average Attendances



### Leading Div 1 Scorers



**TicketLine** 0645 10 10 10  
The exclusive ticket booking service for fans of Endsleigh League First Division clubs  
24 HOURS A DAY, 7 DAYS A WEEK  
ALL CALLS CHARGED AT LOCAL RATE

## Forthcoming live ITV coverage

THE following Endsleigh League Division One games have been confirmed for live ITV coverage:

### Sunday, March 3, 1996

Grimsby Town v Sunderland - 3pm on Yorkshire and Tyne-Tees.  
Ipswich Town v Leicester City - 3pm

on Anglia and Central.

Oldham Athletic v Tranmere Rovers - 3pm on Granada.

### Good Friday, April 5, 1996

Charlton Athletic v LUTON TOWN - 2.15pm on Carlton.



# HATTERS SHOP

## LTFC KIT PRICES 1995/96

RIGHT: LTFC 'Sideline' tracksuits are now available

Sizes: SB, B and LB - £39.99  
S - £49.99

Grey bronx hat - £4.99

INSET: LTFC 'Diamond' Scarf - £5.75

LTFC bronx hat navy with crest - £6.99



LEFT: Premier sweat tops, as worn by the LTFC squad

B, LB - £29.99  
S, M, L, XL - £34.99

Luton Town Home/Away Shirts  
SB (22-24), B (26-28),  
LB (30-32) - £27.99

S (34-36), M (38-40),  
L (42-44) - £34.99

XL (46-48), XXL (50+) - £36.99

Luton Town Home/Away Shorts  
SB, B, LB - £14.99  
S, M, L - £19.99

Luton Town Home/Away Socks  
B, LB - £5.99  
Mens - £6.99

Luton Town Home/Away  
GK Jersey  
SB, B, LB - £29.99  
S, M, L, XL, XXL - £39.99

'Premier Sweat Top  
B, LB - £29.99  
S, M, L, XL - £34.99

Jog Pants  
LB - £21.99  
S, M, L, XL - £24.99

NEW..... range of sports bags  
£13.50 - £19.00

Premier tracksuit (as pictured below)  
SB, B, LB - £59.99; S, M, L, XL - £69.99



### ALSO NOW IN STOCK

LTFC 1995/96 full colour player pictures,  
each individually signed.....£1.20  
LTFC 1995/96 full colour team poster.....£3.00

## OPENING TIMES

Monday to Friday  
10am to 4pm

Evening matchdays  
10am to 10pm

Saturdays - matchdays  
9am-3pm & 4.45-5.15pm

Saturdays - non matchdays - subject to change, please contact Club Shop

## Enquiries

# 01582 411622





## COMMERCIAL CORNER with Kathy Leather

### A warm welcome to Kenilworth Road to this evening's match and matchball sponsors



THIS afternoon we welcome Commercial Mascot Dominic Batchelor to Kenilworth Road.

Dominic was 11 on Monday, and attends Alban Middle School in Great Barford.

He plays in goal for Potton Colts and his school team, and his favourite Luton player is Ian Feuer.

Dominic attends Town matches with his Dad, and Uncle Alan.

THIS afternoon we welcome match sponsors the LOYAL LUTON SUPPORTERS CLUB, and matchball sponsors FORWARD MOTOR SERVICES.

The Loyal Luton Supporters Club are very active in their backing of the Hatters.

They support and promote our Junior Team of the Month Award (see page 45) and are regular match sponsors.

The club have also formed a team playing in the South Beds Sunday League, and anyone wishing to join the Loyal Luton Supporters should go along to the Eric Morecambe Lounge before home games.

Today's matchball sponsors are Forward Motor Services, of Dallow Road, Luton.

The company have recently celebrated their 21st anniversary in providing a personal service to motorists.

Being a main dealer for the new Skoda, now influenced by Volkswagen, they have seen their sales rise dramatically as these

much changed cars have become more readily accepted by the motoring public.

The recent launches of the Felicia and Felicia Estate have been a resounding success, so why not call into the Dallow Road showroom and see for yourself!

- We have a limited number of 5, 8 and 14-seat Executive Boxes available for the forthcoming home games against Port Vale, Stoke and Barnsley.

Prices range from £60 plus VAT per head, to include a three-course meal, to £50 plus VAT per head, to include buffet. There is also a complimentary bar facility.

For more details please contact the Commercial Department on (01582) 411622.

- We are also able to confirm details of our Luton Town Sportsmen's Dinner, which will be held at the Strathmore Hotel, Luton, on Monday, May 20.

Our guest speaker is Kevin Connelly, one of the country's leading after-dinner entertainers,

and Luton Town players and management will also be in attendance.

Tickets are £35 (+VAT), and can be obtained from the Commercial Department.

**L**UTON Town can cater for everything from business breakfasts, lunches or dinners to birthday/ anniversary celebrations and wedding breakfasts.

We can help to plan events by either clients visiting the club or by making a private visit to the clients own premises.

We have a number of function suites available, from our boardroom, which is an exclusive setting for senior management meetings, to our adjacent suites which can cater for up to 100 or more delegates for conferences and seminars.

Our catering operation, which prides itself on a personal service, can provide quality refreshments to complement any occasion.



**LEFT:** Anachem were joint match sponsors against Reading on Tuesday. Des Linton, Johnny Vilstrup, Gary Waddock, David Oldfield and Mitchell Thomas do the after-match honours.



**RIGHT:** Executive Box facilities are available at forthcoming home games. See page 42 (left) for details.

# Antony's Tailor

OF LONDON

THE MOST  
ESTABLISHED  
AND RELIABLE  
TAILORS IN  
LUTON

DRESS HIRE  
LADIES AND GENTS  
BESPOKE TAILORING

12 DUNSTABLE ROAD, LUTON,  
BEDS OPPOSITE MAIN POST OFFICE  
TEL: (01582) 424687



# ARROW

LUTON • STEVENAGE • MILTON KEYNES

*Your single source solution  
for ALL your office needs...  
and more...*

- FREE Next Day Delivery
- Guaranteed Low Prices
- FREE Surveys, Planning and Office Furniture Installation
- Large Office Furniture Showroom
- Trained Personal Representatives
- Special Requirements Department
- Top Quality, ISO 9002 Supplier

*At ARROW we have set our targets high:  
our complete and efficient service is  
unmatched, our value for money, unbeatable -  
making your peace of mind unquestionable!*

**Arrow meeting your targets**

**CALL: 01582 415995**

# SUPPORT THE HATTERS

**But Join The Gunners -  
and be paid!**

**Come and see what  
your local Territorial  
Army Unit does**

Phone (01582) 572032

201 Battery RA (V)  
TA Centre  
Marsh Road  
Leagrave  
Luton LU3 2RX.



*We can win three points today...*



Golden Gamble tickets are on sale around the ground, and cost just £1.

The winning ticket will be drawn on the pitch at half-time, with the winner receiving a cash prize.

LEFT: Tuesday night's winner collects his cash prize.

*YOU could WIN up to £2,000 in CASH in the LTFC Golden Gamble!*

**PREMIER INSTANT**

Match 3 like amounts to win that amount

**Win up to £25,000**

VOID IF REMOVED

FOOTBALL SUPPORTING CHILDREN WITH SPECIAL NEEDS

*PLUS £25,000 in our Premier Instant ticket on sale at half-time..... Money from these tickets helps YOUR club, and supports charities for children with special needs*



**LTFC Sportsmens Dinner**

**Monday, May 20, 1996**

**at the Strathmore Hotel, Luton**

**Guest speaker - Kevin Connelly**

**LTFC Players and Management attending**

**Tickets - £35.00 per person (+VAT)**

**For details contact the Commercial Department on (01582) 411622**

## WIN TICKETS FOR YOUR JUNIOR TEAM

Our February Team of the Month Winners are STOPSLEY JUNIOR SCHOOL.

They have been nominated by parent Mrs J.P. Bierton, who writes:

*"The school started playing football competitively two years ago, and because there are not enough boys in the year six to make a full team, they have had to include boys from the lower years.*

*"They won their first outdoor match last autumn and did manage to reach the quarter finals of the indoor six-a-side tournament last November, in which they played their socks off.*

*"Regular after school training is now under way again following the Christmas break.*

*"They are all very keen lads and to be awarded the Team of the Month would boost their confidence for this their last year together before the older lads go on to High School."*

We look forward to welcoming the youngsters to Kenilworth Road, for a forthcoming home league game.

This is the second award made so far

this season. At the home game against Millwall, our January winners ACD Hornets were guests of the club.

The Loyal Luton Supporters Club have once again teamed up with LutonTown to offer junior teams in the area the chance to watch a Hatters home match absolutely free.

The fans have successfully applied for a grant from the National Westminster Bank, as part of the bank's community programme, and, supported by the Football Club, wish to donate tickets for youngsters in the area to try and attract new supporters to Kenilworth Road.

The winning team will be selected from nominations, and is not just aimed at the teams at the top of the leagues.

Managers or parents should write to the club telling them why their team should be the Team of the Month. It may be that you recorded a first win, or only lost narrowly to the top side in your league.

Nominations should be sent to: Junior Team Award, c/o Simon Oxley, LTFC, Kenilworth Stadium, 1 Maple Road, Luton, Beds.

### LTFC EVACUATION PROCEDURE

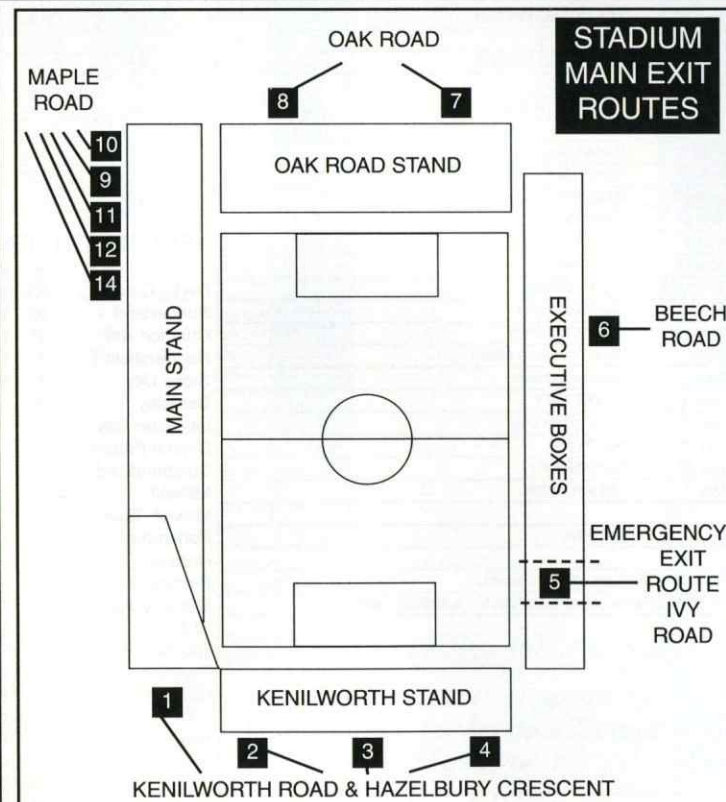
IN the event of any emergencies at Luton Town Football Club, the emergency services and the club have agreed on an evacuation policy which is designed to:

- Ensure the safe and controlled evacuation of the ground.
- Ensure the dispersal of the crowd from the area to allow the emergency services to carry out their tasks.

In the event on an evacuation of all or part of the stadium, you will receive instructions over the public address system on how you should leave the stadium. Stewards will direct you to the nearest exit. It may be that your normal exit route will not be available.

On leaving the stadium, you will find some roads closed to pedestrian traffic, to enable swift and unobstructed arrival of the emergency services. Please leave the area of the ground as quickly as possible by the route directed. Your co-operation will be most appreciated.

GEOFF LOVELL,  
Safety Manager.





# TEAM STATISTICS 1995-96

Date	Opponents	F-A	Att	Pos	1	2	3	4
Sun Aug 13	NORWICH CITY	1-3	7,848	-	K.Davis	Thomas	M.Johnson	Waddock
Tue Aug 15	BOURNEMOUTH CCC 1 (1)	1-1	2,728	-	Sommer	Thomas	M.Johnson	S.Davis
Sat Aug 19	Southend United	1-0	4,630	17	Sommer	James	M.Johnson	S.Davis
Tue Aug 22	Bournemouth CCC1 (2)	1-2	4,884	-	Sommer	James	M.JOHNSON	S.Davis
Sat Aug 26	LEICESTER CITY	1-1	7,612	16	Sommer	(James)	M.Johnson	S.Davis
Tue Aug 29	Grimsby Town	0-0	4,289	11	K.Davis	James	M.Johnson	S.Davis
Sat Sep 2	DERBY COUNTY	1-2	6,427	17	K.Davis	James	M.Johnson	S.Davis
Tue Sep 5	PERUGIA AIC	1-4	2,352	-	K.Davis	James	Skelton	S.Davis
Sat Sep 9	Reading	1-3	8,550	20	K.Davis	James	M.Johnson	S.Davis
Wed Sep 13	Millwall	0-1	7,076	22	Feuer	Peake	(M.Johnson)	S.Davis
Sat Sep 16	SUNDERLAND	0-2	6,955	23	Feuer	Peake	James	S.Davis
Sat Sep 23	Wolverhampton Wanderers	0-0	23,659	24	Feuer	Peake	M.Johnson	S.Davis
Sat Sep 30	PORTSMOUTH	3-1	7,795	23	Feuer	Peake	M.Johnson	S.DAVIS
Sat Oct 7	Tranmere Rovers	0-1	6,680	24	Feuer	Peake	M.Johnson	S.Davis
Wed Oct 11	Genoa AIC	0-4	3,759	-	K.Davis	(James)	M.Johnson	S.Davis
Sat Oct 14	WEST BROMWICH ALBION	1-2	8,042	24	Feuer	(Peake)	M.Johnson	S.Davis
Sun Oct 22	Ipswich Town	1-0	9,123	21	Feuer	Peake	M.Johnson	S.Davis
Sun Oct 29	CHARLTON ATHLETIC	0-1	6,270	22	Feuer	Peake	M.Johnson	S.Davis
Sat Nov 4	Stoke City	0-5	9,382	24	Feuer	Peake	G.Johnson	S.Davis
Wed Nov 8	Cesena AIC	1-2	461	-	K.Davis	(Patterson)	Upson	S.Davis
Sat Nov 11	OLDHAM ATHLETIC	1-1	6,047	23	Feuer	Peake	M.Johnson	S.Davis
Sat Nov 18	BIRMINGHAM CITY	0-0	7,920	23	Feuer	Peake	M.Johnson	James
Tue Nov 21	Watford	1-1	10,042	23	Feuer	Peake	M.Johnson	(S.DAVIS)
Sat Nov 25	Barnsley	0-1	6,437	23	Feuer	Peake	M.Johnson	Patterson
Sat Dec 2	TRANMERE ROVERS	3-2	6,025	23	Feuer	Alexander	M.Johnson	Waddock
Sun Dec 10	WOLVERHAMPTON W	2-3	6,997	24	K.Davis	Patterson	M.Johnson	Waddock
Wed Dec 13	ANCONA AIC	5-0	2,091	-	K.Davis	Patterson	M.Johnson	S.Davis
Sat Dec 16	Portsmouth	0-4	7,012	24	Feuer	Patterson	M.Johnson	S.Davis
Sat Dec 23	HUDDERSFIELD TOWN	2-2	7,076	24	Feuer	Patterson	Thomas	Waddock
Sat Jan 6	Grimsby Town FA3	1-7	5,387	-	Feuer	Patterson	Thomas	Waddock
Sat Jan 13	SOUTHEND UNITED	3-1	6,566	24	Feuer	James	Thomas	Waddock
Sat Jan 20	Norwich City	1-0	12,474	23	Feuer	James	Thomas	Waddock
Wed Jan 31	SHEFFIELD UNITED	1-0	6,995	21	Feuer	Patterson	Thomas	Waddock
Sat Feb 3	Leicester City	1-1	14,821	21	Feuer	Patterson	Thomas	Waddock
Sat Feb 10	GRIMSBY TOWN	3-2	7,158	20	Feuer	James	Thomas	Waddock
Sat Feb 17	MILLWALL	1-0	7,308	19	Feuer	James	Thomas	Waddock
Wed Feb 21	Derby County	1-1	14,825	17	Feuer	James	Thomas	Waddock
Sat Feb 24	Sunderland	0-1	16,693	19	Feuer	James	Thomas	Waddock
Tue Feb 27	READING	1-2	6,683	20	Feuer	James	Thomas	(Waddock)
Sat Mar 2	CRYSTAL PALACE							
Sat Mar 9	Huddersfield Town							
Sat Mar 16	PORT VALE							
Tue Mar 19	Crystal Palace							
Sat Mar 23	Sheffield United							
Sat Mar 30	IPSWICH TOWN							
Tue Apr 2	West Bromwich Albion							
Fri Apr 5	Charlton Athletic							
Tue Apr 9	STOKE CITY							
Sat Apr 13	Birmingham City							
Sat Apr 20	WATFORD							
Sat Apr 27	BARNSELY							
Sat May 4	Oldham Athletic							
TBA	Port Vale							

Name in CAPITALS denotes goalscorer.  
In (brackets) denotes player substituted or substitute used.

## ENDSLEIGH LEAGUE DIVISION ONE

	P	W	D	L	F	A	PTS
Derby County	33	16	12	5	52	35	60
Sunderland	32	14	12	6	37	25	54
Charlton Ath	31	13	13	5	45	33	52
Huddersfield T	31	13	10	8	43	34	49
Stoke City	31	13	10	8	43	34	49
Barnsley	32	12	11	9	43	46	47
Leicester City	32	11	13	8	47	43	46
Crystal Palace	31	11	12	8	42	40	45
Southend Utd	32	12	8	12	35	41	44
Millwall	34	11	11	12	34	44	44
Ipswich Town	30	11	10	9	53	44	43
Portsmouth	33	10	10	13	52	53	40
Norwich City	33	10	10	13	43	42	40
Birmingham City	30	10	10	10	40	41	40
Grimsby Town	30	9	12	9	35	37	39
Wolves	31	9	11	11	42	42	38
Tranmere Rovers	31	9	10	12	40	37	37
Reading	31	8	13	10	36	40	37
Oldham Athletic	30	8	12	10	38	33	36
LUTON TOWN	32	9	9	14	31	44	36
Sheffield Utd	34	8	11	15	40	50	35
West Brom	31	10	5	16	37	50	35
Port Vale	29	7	11	11	34	41	32
Watford	30	5	10	15	32	45	25

Table up to and including Wednesday, Feb 28, 1996.

5	6	7	8	9	10	11	12	13 or GK	14
Hughes	Peake	Alexander	Oldfield	(Thorpe)	GUENTCHEV	Harvey	S.Davis	Sommer	(Taylor)
Hughes	Oldfield	Alexander	(MARSHALL)	Taylor	Guentchev	Harvey	Waddock	Peake	(Thorpe)
Hughes	Oldfield	(Alexander)	(Marshall)	Taylor	(Guentchev)	Harvey	(Waddock)	(THORPE)	(Thomas)
Waddock	(Oldfield)	Alexander	Marshall	(Taylor)	Guentchev	(Harvey)	(Matthews)	(Thorpe)	(Thomas)
HUGHES	(Oldfield)	Linton	Marshall	(Taylor)	G.Johnson	Harvey	(Guentchev)	(Thorpe)	(Peake)
Alexander	(Oldfield)	(Linton)	Guentchev	(Marshall)	G.Johnson	Harvey	(Taylor)	(Woodford)	(Peake)
(Alexander)	(Oldfield)	MARSHALL	(Guentchev)	Taylor	G.Johnson	Harvey	(Woodford)	(Thorpe)	(Peake)
Evers	(Thorpe)	Linton	(GUENTCHEV)	(Oldfield)	Hughes	Harvey	(Marshall)	(Waddock)	(W'ford)
Waddock	Alexander	(Linton)	MARSHALL	Oldfield	G.Johnson	Harvey	Evers	Peake	(Gu'chev)
Waddock	Vilstrup	Linton	Marshall	Oldfield	Guentchev	Harvey	G.Johnson	Evers	(James)
(Waddock)	Vilstrup	(Linton)	Marshall	Oldfield	Hughes	Harvey	Greene	(Taylor)	(Gu'chev)
Hughes	(Vilstrup)	Alexander	Marshall	(Taylor)	Guentchev	Harvey	(Waddock)	James	(Oldfield)
Hughes	(Vilstrup)	(Alexander)	MARSHALL	Taylor	GUENTCHEV	Harvey	(Waddock)	(James)	Oldfield
Waddock	McLaren	Alexander	Marshall	Oakes	(Guentchev)	Harvey	(Oldfield)	James	G.Johns'n
McLaren	Vilstrup	Linton	Oakes	(Oldfield)	(Guentchev)	Harvey	(Thorpe)	(Alexander)	(W'ford)
Waddock	Hughes	Alexander	Marshall	Oldfield	Woodford	HARVEY	Guentchev	(James)	McLaren
Hughes	(Vilstrup)	Alexander	(Oakes)	OLDFIELD	(Marshall)	Harvey	(Waddock)	(G.Johnson)	(Gu'chev)
(Hughes)	(Waddock)	(Alexander)	Oakes	Oldfield	Marshall	Harvey	(Linton)	(Riseth)	(Gu'chev)
Hughes	(Vilstrup)	Alexander	Oakes	Riseth	Marshall	Harvey	(Oldfield)	James	McLaren
McLaren	Vilstrup	Alexander	(Oakes)	Riseth	MARSHALL	Harvey	Chenery	(Douglas)	(Simpson)
Hughes	(McLaren)	Alexander	(Oakes)	Riseth	DOUGLAS	Harvey	(Patterson)	James	(Oldfield)
Hughes	(McLaren)	Alexander	Oakes	Riseth	(Marshall)	Harvey	(Douglas)	(Thorpe)	Oldfield
Hughes	McLaren	(James)	Oakes	Riseth	(Marshall)	Harvey	(Douglas)	(Thorpe)	(Patterson)
Hughes	(McLaren)	James	Oakes	(Riseth)	(Marshall)	Harvey	(Douglas)	(Thorpe)	(Alex'der)
Hughes	McLAREN	James	Oakes	Thorpe	MARSHALL 2	Harvey	Guentchev	Riseth	Chenery
(Hughes)	(McLaren)	S.Davis	OAKES	Thorpe	MARSHALL	Harvey	(Guentchev)	(Taylor)	Alex'der
Waddock	(McLaren)	(Linton)	OAKES	TAYLOR	MARSHALL	(Harvey)	(THORPE)	(GUENTCHEV)	(Thomas)
Waddock	McLaren	(Alexander)	Oakes	Taylor	Marshall	(Harvey)	(Thorpe)	K.Davis	(Thomas)
S.Davis	M.Johnson	(McLaren)	Oakes	(Taylor)	MARSHALL	(Thorpe)	(OLDFIELD)	(Guentchev)	(Harvey)
James	M.Johnson	(Guentchev)	Oakes	Oldfield	(McLaren)	MARSHALL	Harvey	(Thorpe)	(Alex'der)
S.Davis	M.Johnson	GUENTCHEV	(OAKES 2)	(Taylor)	Alexander	Thorpe	(Oldfield)	Riseth	(Harvey)
S.Davis	M.Johnson	GUENTCHEV	(Oakes)	Taylor	Alexander	Harvey	(Oldfield)	Thorpe	Patterson
S.Davis	(M.Johnson)	GUENTCHEV	(Oakes)	Taylor	Alexander	(Thorpe)	(Oldfield)	(Harvey)	(Hughes)
S.Davis	(Oldfield)	THORPE	(Hughes)	(Taylor)	Alexander	Harvey	(Linton)	(Riseth)	(Marshall)
S.Davis	Patterson	GUENTCHEV	Hughes	(Taylor)	ALEXANDER	(Thorpe)	(Oldfield)	(MARSHALL)	Harvey
S.Davis	Patterson	(Guentchev)	Hughes	(Taylor)	(Alexander)	Thorpe	(Oldfield)	(Harvey)	(Marshall)
S.Davis	Patterson	(MARSHALL)	Hughes	Oldfield	Alexander	(Thorpe)	(Guentchev)	M.Johnson	(Riseth)
Oldfield	M.Johnson	Guentchev	(Hughes)	(Marshall)	Alexander	(Harvey)	(Thorpe)	(Taylor)	(Riseth)
Peake	Linton	GUENTCHEV	Oldfield	(Taylor)	Alexander	(Thorpe)	(Riseth)	(Vilstrup)	(Oakes)

## LUTON TOWN FC League and Cup Appearances 1995/96

PLAYER (figure in bracket = sub app.)	LEAGUE APPS	LEAGUE GOALS	CUP APPS	CUP GOALS	PLAYER (figure in bracket = sub app.)	LEAGUE APPS	LEAGUE GOALS	CUP APPS	CUP GOALS
Kelvin DAVIS	5		4		Rob MATTHEWS			(1)	
Mitchell THOMAS	11 (2)		2 (2)		Des LINTON	6 (2)		3	
Marvin JOHNSON	25		5	1	Gavin JOHNSON	5 (1)			
Gary WADDOCK	20 (4)		3 (1)		Jamie WOODSFORD	1 (2)		(2)	
Ceri HUGHES	21 (1)	1	2		Aaron SKELTON			1	
Trevor PEAKE	15 (3)				Sean EVERS			1	
Graham ALEXANDER	25 (1)	1	3 (2)		Ian FEUER	25		1	
David OLDFIELD	15 (10)	2	5		Johnny VILSTRUP	6 (1)		2	
Tony THORPE	11 (8)	3	2 (4)	1	Paul McLAREN	9	1	4	
Bontcho GUENTCHEV	15 (8)	7	5 (1)	2	Scott OAKES	15 (1)	3	4	1
Richard HARVEY	25 (4)	1	6		Vidar RISETH	5 (5)		1	
John TAYLOR	14 (5)		3	1	Darren PATTERSON	9 (2)		3	
Juergen SOMMER	2		2		Matthew UPSON			1	
Steve DAVIS	26	2	6		Stuart DOUGLAS	2 (2)	1	(1)	
Dwight MARSHALL	23 (3)	9	5 (1)	4	Gary SIMPSON			(1)	
Julian JAMES	17 (3)		4						



Matchday music is supplied by  
HMV Stores, 98 Arndale Centre  
(Tel: 35290) and  
73 The Mall (Tel: 21368), Luton.





## TODAY'S OFFICIALS

Today's referee is

**JOHN KIRKBY, from  
Sheffield.**

Mr Kirkby, a Senior Business Administrator with Bass Taverns, refereed the home game against Charlton at Kenilworth Road in October.



CT Finch



TP  
Howes

## WEEKEND MATCHES IN DIVISION ONE

Birmingham City v Sheffield Utd  
Derby County v Huddersfield Town  
Millwall v Wolverhampton W  
Portsmouth v Charlton Athletic  
Reading v Watford  
Southend Utd v Norwich City  
Stoke City v Barnsley  
West Brom v Port Vale  
Grimsby Town v Sunderland (Sun)  
Ipswich Town v Leicester City (Sun)  
Oldham Ath v Tranmere R (Sun)

## TEAM CHECK

### LUTON TOWN

Manager: Lennie Lawrence

**Ian FEUER**

**Julian JAMES**

**Mitchell THOMAS**

**Gary WADDOCK**

**Trevor PEAKE**

**Des LINTON**

**Bontcho GUENTCHEV**

**David OLDFIELD**

**John TAYLOR**

**Graham ALEXANDER**

**Tony THORPE**

### CRYSTAL PALACE

Manager: Dave Bassett

**1 Nigel MARTYN**

**2 Marc EDWORTHY**

**3 Dean GORDON**

**4 Andy ROBERTS**

**5 Gareth DAVIES**

**6 David HOPKIN**

**7 Leif ANDERSEN**

**8 Ray HOUGHTON**

**9 Dougie FREEDMAN**

**10 George NDAH**

**11 Bruce DYER**

**12**

**13**

**14**



***Plowmans  
of  
Luton***

**AND  
LUTON  
TOWN**

**—  
THE  
PERFECT  
MATCH**

***You'll do a great deal better with us!***

**Open 7 Days**

**Vauxhall Main Dealers, 15 Hitchin Road, Luton.**

**Tel: 454666**