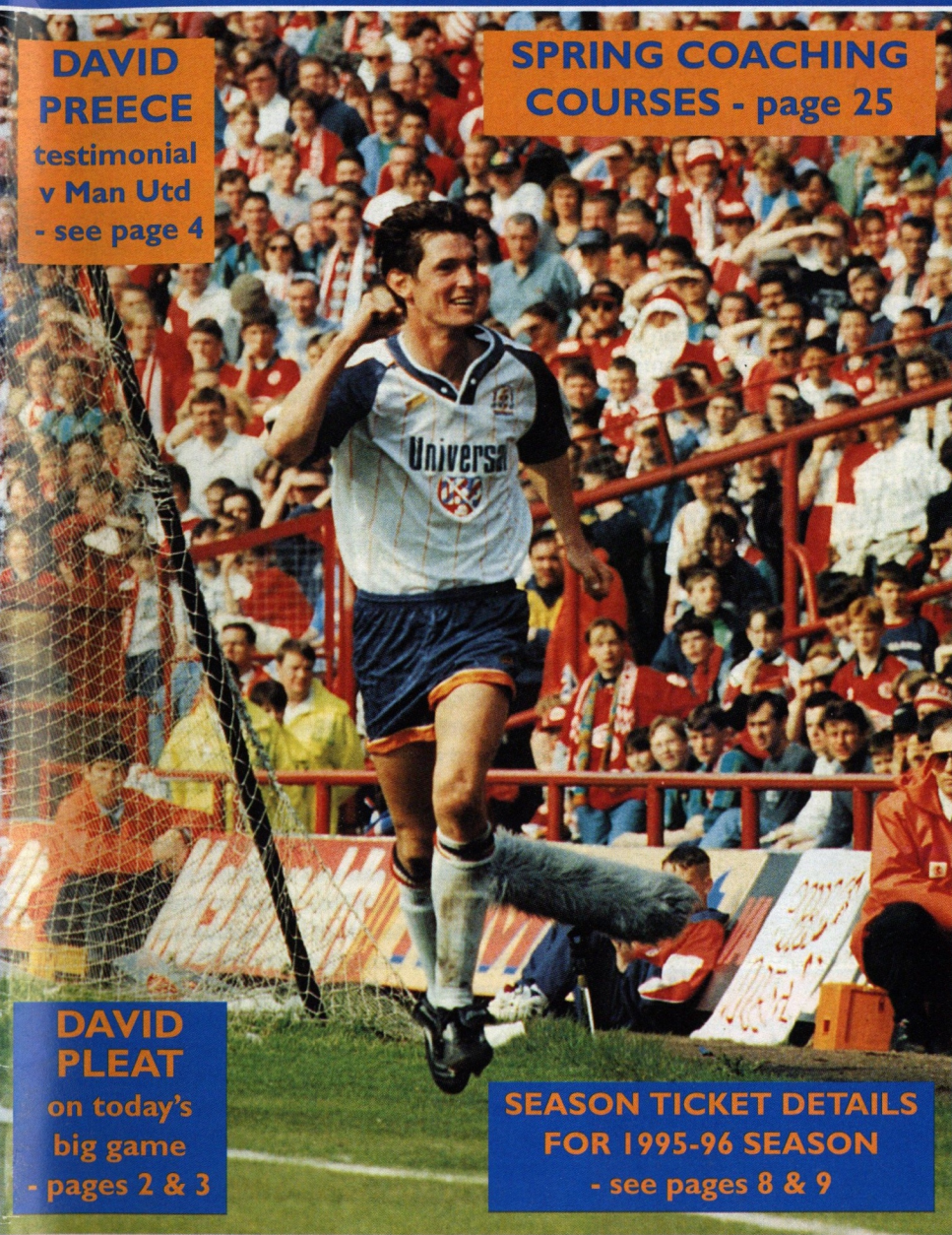


v STOKE CITY

**DAVID
PREECE**

testimonial
v Man Utd
- see page 4

**SPRING COACHING
COURSES - page 25**



**DAVID
PLEAT**

on today's
big game
- pages 2 & 3

**SEASON TICKET DETAILS
FOR 1995-96 SEASON
- see pages 8 & 9**

SUNDAY, MAY 7, 1995, 3^{PM}

MATCH SPONSORS

The Whitbread Beer Company
JJ Kelly and Sons Ltd

MATCHBALL SPONSORS

The Station Hotel, Woburn



Sponsors of
Luton Town F.C.



**LUTON TOWN
FOOTBALL CLUB**

LUTON TOWN

Official matchday programme £1.50



PLEAT'S PERSPECTIVE

A WARM WELCOME TO THIS SEASON'S FINALE

A WARM welcome to all supporters who have come on this Sunday afternoon to bid farewell to the 1994/95 season.

We welcome our visitors and hope that we can manage a win after three disappointing one-goal defeats and finish the season on a good note. It has been a season of some highs and some lows, but for once with several weeks to go we achieved the important target figure to escape nerve-wrecking last few games.

Whatever the outcome this afternoon it has been a fascinating season and everyone looks forward to the new season on August 12, and I hoping to announce shortly an attractive home pre-season friendly.

The most irritating part of the season was the sway from the outstanding away form prior to January to the difficulties of getting

results since that time on our travels.

Conversely, at home we started badly when teams such as Burnley and Bristol City came to defend and snatched goals on the break, and then we improved our form here considerably after Christmas and it was finally Reading who lowered our colours.

We should not forget that we have achieved our position this year despite the departure of the tremendously promising John Hartson to Arsenal, and Kerry Dixon who held the fort in the centre-forward position for two seasons.

Like every club we suffered injuries, and the loss of Ceri Hughes, Des Linton and several other important players for different periods of the season was disappointing.

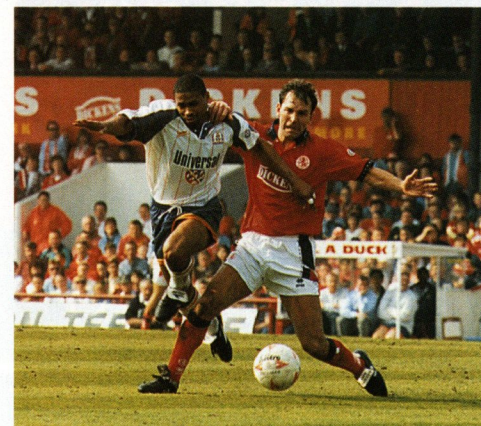
However, ten players managed to top 30 appearances, and I would like to say a special word of praise to our captain Trevor Peake who, after many years in the game, will achieve an ever-present record if he plays this afternoon. It's a fine achievement for a great professional who has been a most influential person in our dressing room as we have attempted to stabilise the club following the demotion from the top division three seasons ago.

Like David Preece and Gary Waddock, at times there is no substitute for experience, but the younger element in the club must realise that only consistent performances will eventually attract the attention of the biggest clubs.

I have a difficult summer ahead of me with contract positions at this club, but I don't intend to sweat - indeed I hope the players up and down the country will be sweating more than the managers. The wage demands and the club's losses outside of the Premiership don't add up and some sense must come into the game.

We must look forward, there is the possibility of a new stadium, and more important-

.....LISTEN TO THE MANAGER'S VERDICT ON TODAY'S BIG GAME ON LUTON TOWN CLUBCALL 0891 121 123



BORO player-manager Bryan Robson fouls Dwight Marshall, providing the free-kick from which Luton equalised.

ly the club has to seek good training facilities. The staff have worked conscientiously throughout this year. But it is the youth of the club that is, and will always be, the backbone of our efforts. With impossible purse strings we can only help and develop talent. It sometimes is very upsetting to see home developed players - the likes of Parker, Breacker, Pembroke, Black, Jackson and Hartson - who have come here from school ply their trade elsewhere. But it is a fact of life and one that we fully accept.

One of the most sincere and hardest working people to whom we will be making a presentation on the pitch today is Mr George Rogers. For 50 years he has worked loyally at the football club. He has worked through the youth teams, in administration, and in the kit room, as a vital aid to all the youth coaches. I hope he will be roundly applauded, although he may seem a shade embarrassed, when his services are recognised. Well done George!

The rest of the backbone this season has been first class. Paul Lowe's helpers at this level have included Aaron Tighe, Colin Cardines and Colwyn Rowe. We have appreciated their work. Also Ken Hoffman, who like George Rogers, has worked tirelessly for many, many years, scouting for and helping the youth set-up. Thank-you too to all the landlady's who look after our young apprentices and triallists; the many scouts; Ian

Campbell who organises our referees; and Dave Wollaston from the Luton Schools FA for their continued support and co-operation. The efforts at the roots have been splendid.

My coaching and medical staff have worked solidly throughout the season, accepting the conditions of their jobs and working accordingly.

The players have had their ups and down, with memorable games here against Middlesbrough, Southampton and Wolves, and away at Sheffield United, Wolves and Bolton.

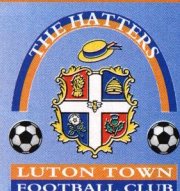
It seems we have reserved our better performances for the better teams, and congratulations to Middlesbrough whose ambition has been backed by financial support.

Finally, and apologies for not thanking everyone individually who has worked so hard for the club this season, I would like to pay special tribute to our away support which has been splendid this season, particularly the Bobbers Travel Club and all the many individuals who follow, praise and complain, but realise that the club means something special to them. That is why we must protect its future and make sure we realise that without a football team you don't need a stadium.

The police have asked me to remind you that the players will go to the centre-circle after the game and acknowledge the crowd. Please remain in your seats, as any movement on to the field can lead to unnecessary troubles.

I hope you enjoy a restful summer - play-offs at the end of May, England playing in June, possibilities of the Inter-Toto Cup, and the Copa America on TV!

See you next season,



Luton Town Football Club
Kenilworth Road Stadium,
1, Maple Road,
Luton, Beds LU4 8AW.
Tel: (01582) 411622
Fax: (01582) 405070
Ticket Office: (01582) 416976
Clubcall: 0891 121 123

Chairman and Managing Director:
David Kohler Bsc (Hons)
ARICS

Directors:
C.S. Bassett, C.T.F. Green,
N.S. Terry

Vice Presidents:
R.L. Banks, P. Collins,
C. Bygraves, R. Safranek,
D. Ludlow, P. Ireton.

Secretary:
Cherry Newbery

Manager:
David Pleat

Coaches:
John Moore, Wayne Turner,
Terry Westley

Physiotherapist:
Clive Goodyear

Consultant Physio:
John Sheridan

Youth Development Officer:
Paul Lowe

Scouting:
Les Shannon

Community Football Officer:
Colwyn Rowe

Financial Administrator:
Bob Bird

Commercial Manager:
Kathy Leather

Safety Manager:
Geoff Lovell

Catering Manager:
Peter Saul

Medical Officer:
Dr Bill Berry

Club Dentist:
A. Chris BDS (Syd)

HONOURS

Littlewoods Cup winners 1987-88

FA Cup finalists 1958-59

Littlewoods Cup finalists

1988-89

Simod Cup finalists 1987-88

Champions - Division Three (S) 1936-37

Champions - Division Four 1967-68

Champions - Division Two 1981-82

David Pleat

DAVID PREECE TESTIMONIAL

RIGHT: David Preece prepares to shoot during the recent match at Charlton, when the Hatters went down 1-0.



Giggs, Cole and Sharpe at Kenilworth Road!

MANCHESTER United are coming to Kenilworth Road to play in a testimonial match for long-serving midfielder David Preece.

The game is set to take place on Monday, May 22, kick-off 7.45pm at Kenilworth Road, providing there is no replay in the FA Cup Final.

United play Everton at Wembley on May 20, and if that game goes to a replay, the testimonial will be rescheduled for Sunday, May 28, kick-off 3pm.

Alex Ferguson is set to send a strong United side to Kenilworth Road, under the charge of former Town manager Jim Ryan - now a coach at Old Trafford, including Ryan Giggs, Andy Cole and Lee Sharpe.

The Luton Town team will include Brian Stein, Mick Harford, Steve Foster and Mal Donaghy, playing alongside current Hatters stars.

"It has taken a long time to sort out, but I am pleased and honoured that the best club in the country are coming to Kenilworth Road," said David.

"Hopefully Luton fans will turn out to support the occasion, and I hope I have given them something in return by bringing Manchester United here."

THIS IS AN ALL-TICKET MATCH. Due to the anticipated demand for tickets, season ticket holders of Luton Town will be able to claim up to TWO tickets each by sending in voucher L from their season ticket book, together with a cheque payable to David Preece Benefit, and a stamped addressed envelope, to: Ticket Office, LTFC, Kenilworth Road, Luton, Beds, LU1 1DH by May 10 at the latest.

NB Postal applications only for priority booking for season ticket holders.

Members will be able to claim two tickets per member (subject to availability) from May 12, either in person (cash or cheques) or by post enclosing a stamped addressed envelope.

Prices are:	Adult	Junior/S.C.
Main stand A-E	£13.50	£6.50
F	£10.00	£5.00
G	£7.00	£4.50
Enclosure C-G	£10.00	£5.00
A,B,H and J	£7.00	£4.50
Kenilworth seating		
(Upper and Lower)	£10.00	£5.00
New Stand	£13.50	£6.50

FRONT COVER: John Taylor's second-half goal halted the Middlesbrough celebrations at Ayresome Park last Sunday, but the home side hit back with John Hendrie's second giving them a 2-1 win.

Luton Town FC Matchday Programme
Editor: Simon Oxley. Tele: 0582 411622
Pictures: Andy Handley
Design and print:
McLeod Warner, Luton. Tele: 0582 38389



Universal Salvage Auctions

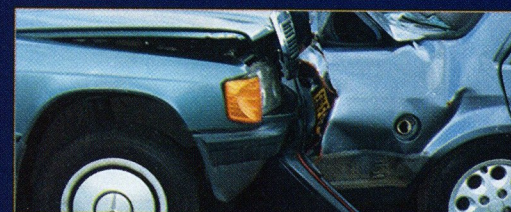
SELL OVER **1000**
REPAIRABLE/BREAKERS/STOLEN
AND RECOVERED VEHICLES AT
WEEKLY AUCTIONS

CORBY - NORTHANTS

DENNY - SCOTLAND

SANDTOFT - S.YORKS

WESTBURY - WILTS



Your nearest auction is
every Wednesday
at...

**DUNSTABLE ROAD
REDBOURN, HERTS**

For further
information
01234 766500



The best service on a plate.

As one of the largest independent vehicle rental companies in the U.K., you can always expect a little extra from Kenning.

AN EXTENSIVE RANGE OF:

- CARS, VANS & TRUCKS.
- FULLY INCLUSIVE RATES WITH UNLIMITED MILEAGE.
- 24 HOUR NATIONAL HOTLINE HELPLINE.
- AA/RAC COVER.

KENNING

CAR AND VAN RENTAL

LUTON 0582 455333

24-34 Crawley Road.



- ◆ **HOURLY SPORTS NEWS**
- ◆ **FRIDAY SPORTS PREVIEW**
(7pm)
- ◆ **SATURDAY SPORTSOUND**
(2pm-6pm)
- ◆ **MIDWEEK MATCH COVERAGE** (7.05pm - 10pm)

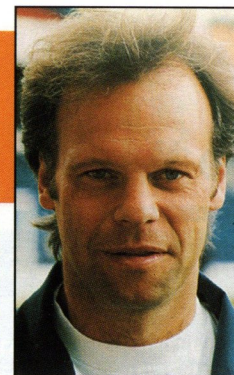
NEWS, SPORT & MUSIC
for BEDS, HERTS & BUCKS

▶ 103.8 FM STEREO ▶ 630 kHz AM



LEADING THE LINE

by TREVOR PEAKE



LEFT: Town fans were part of an historic occasion at Ayresome Park last Sunday.

IS it really that long ago that I was welcoming you to Kenilworth Road for the opening game of the season against West Brom?

Now I'm looking back over the past nine months as we reach the conclusion of another campaign.

Today's game will be a personal highlight for me because, if selected, it will mean an ever-present record for yours truly for the first time in my career.

I have had luck with injuries this season, and while I pride myself on my disciplinary record, centre-halves haven't missed out very often on suspensions in the current clampdown.

Recent bookings have pushed me close to the one-match ban mark, but it will be very pleasing to play in every game especially at this 'late' stage in a long and varied career.

It would be nice to finish the season with a win as well, as I feel we have gone off the boil in recent weeks.

Since my last notes we have gained a battling draw at Sunderland, lost at home to Reading, and gone down away at Charlton and Middlesbrough.

The matches against Reading and Charlton

were especially disappointing, and looking back at the latter it was certainly a game we should have had sewn up by half-time.

At Middlesbrough I thought we acquitted ourselves well against perhaps the strongest side, in physical terms, in the division, and at the time of writing they look set to claim the one automatic place in the Premiership.

It was nice to be a part of history, playing in the final game at Ayresome Park, but we couldn't spoil the party. Whilst congratulating Boro on their likely promotion, we can thus take great heart from our 5-1 win over them in October - one of the highlights of the season.

Other highlights include our wins at Wolves and Watford, and the draw at Bolton.

Those results give us a feeling of what might have been, but there is plenty to build on from this campaign and I'm looking forward to being a part of the 1995-96 season.

Thank you for your support throughout 1994-95, and especially for voting me the Supporters' Player of the Year, a tremendous honour.

Have a good summer..... see you in August!

Luton Town FC are delighted to link up with LEGAL AND GENERAL, to offer a full and comprehensive financial service to supporters of the club. Anyone interested in receiving Legal and General's expert financial and insurance advice should contact:

Warren Miskin or Barry Shaw on 081 882 0249, quoting reference LU1.

Trevor Peake



LUTON TOWN SEASON TICKET AND MATCH TICKET PRICES FOR SEASON 1995/96

Membership Season 1995-96

RENEWAL MADE EASY - Existing members wishing to renew need fill in NO forms. Simply return your membership card for the 1994/95 season together with your remittance for £2, payable to Luton Town FC, together with a SAE by August 1. We will do the rest!

Those supporters who wish to become members and take advantage of discounted match tickets should apply direct to the Ticket Office on (01582) 416976.

Junior Hatters

Available to all supporters under the age of 16. Membership of the Junior Hatters costs only £2 and includes your Luton Town membership.

Special Discount to Junior Hatters - Any child under the age of 11 can purchase a season ticket at the special price of £30 for Block A of the Kenilworth Lower tier seating. All applications must be made by August 1. Availability is limited - so apply early by telephoning the ticket office on 01582 416976.

Match Tickets Season 1995/96

	Purchased at least 14 days before match	Purchased less than 14 days before match
Main Stand A-E		
Adults	£14.50	£15.50
Juniors/Concessions	£7.50	£8.00
Block F		
Adults	£11.50	£12.50
Juniors/Concessions	£5.50	£6.00
Block G		
Adults	£7.50	£8.00
Juniors/Concessions	£5.00	£5.50
Main Stand Enclosure C-G		
Adults	£11.50	£12.50
Juniors/Concessions	£5.50	£6.00
Restricted view Blocks A, B, H & J		
Adults	£7.50	£8.00
Juniors/Concessions	£5.00	£5.50
Kenilworth Upper Tier		
Adults	£11.50	£12.50
Juniors/Concessions	£5.50	£6.00
Kenilworth Lower Tier		
Adults	£11.50	£12.50
Juniors/Concessions	£5.50	£6.00
New Stand		
Adults	£14.50	£15.50
Juniors/Concessions	£7.50	£8.00

Programme Subscription 1995/96

THE club will again be running its programme subscription service next season. The cost will be: Home £33, Away £29, Home and Away £55. Subscription guarantees you all first-team league and cup programmes.

If you wish to subscribe, please forward your cheque/ postal order, made payable to Luton Town Football Club, to: Simon Oxley, Programme Subscriptions, Luton Town FC, 1 Maple Road, Luton, Beds, LU4 8AW.

LOOK OUT FOR A SPECIAL NEW SEASON TICKET INSTALLMENT PLAN (organised by league sponsors Endsleigh Insurance, for season tickets purchased by June 30, 1995).

INFORMATION WILL BE FORWARDED WITH RENEWAL DETAILS TO EXISTING SEASON TICKET HOLDERS. OTHER SUPPORTERS CAN OBTAIN DETAILS FROM THE TICKET OFFICE ON (01582) 416976

Season Ticket Prices 1995/96

	Before 30/6/95 includes 20% discount	After 30/6/95 includes 10% discount	Match day x 23
Main Stand A-E			
Adults	£266	£293	£333
Juniors/Concessions	£139	£153	£173
Block F			
Adults	£207	£228	£265
Juniors/Concessions	£99	£109	£127
Block G			
Adults	£139	£153	£173
Juniors/Concessions	£89	£98	£115
Main Stand Enclosure C-G			
Adults	£207	£228	£265
Juniors/Concessions	£99	£109	£127
Restricted View Blocks A, B, H & J			
Adults	£139	£153	£173
Juniors/Concessions	£89	£98	£115
Kenilworth Upper Tier			
Adults	£207	£228	£265
Juniors/Concessions	£99	£109	£127
Kenilworth Lower Tier			
Adults	£207	£228	£265
Juniors/Concessions	£99	£109	£127
New Stand			
Adults	£266	£293	£333
Juniors/Concessions	£139	£153	£173

BENEFITS FOR SEASON TICKET HOLDERS

- Guaranteed place at all home first-team matches
- Priority purchase for all cup matches
- 10% discount on full-priced merchandise in Club Shop
- Season ticket holders renewing need fill in NO forms - simply return old season ticket book, together with remittance or installment form. We will do the rest.
- Season ticket selling schedule... see right

Ticket Office opening hours

Monday to Friday: 10am to 4pm
Saturday: 10am to 1pm

May 9 to 22: David Preece Testimonial sales

May 23 to 29: Closed

May 30 to June 30: Season ticket renewals and sales

July 3 to 8: Exchange week (for season ticket holders wishing to move)

From July 10: Normal business



MOTOR INSURANCE

Endsleigh ensure you insure for less

We ensure you save money

Our continuing investment in new technology is enhancing our competitiveness even further. Our service is faster and more efficient and the savings we make through a leaner operation are passed directly on to you.

We ensure you save time

You can phone or call in whichever you prefer, the result is the same. Instant accessibility to our national computer and the convenience of being able to deal with people that care about your needs. 1995 will see our ability to issue full annual policies and certificates on the spot. No form filling, no fuss, no temporary cover notes, no delays, no anxiety.

We ensure a personal service

Our retail chain of some 140 Insurance Centres is the public face of Endsleigh; approachable, professional and helpful. We handle every aspect of insurance, from adjustments, renewals and claims ourselves.

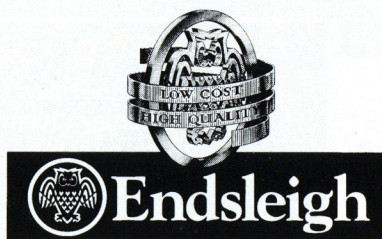
We ensure you get the best cover

With one call from you, our computer can immediately select the very best rate from over 45 schemes unavailable elsewhere and created in association with 35 of the industry's most dynamic insurance companies. The result is fast, effective unbeatable cover, enhanced still further by added benefits.

Please ensure that you phone for a quotation

648/652 Silbury Boulevard, Milton Keynes

01908 675866



ARNDALE EXHIBITION BOOSTS SUPPORT FOR NEW STADIUM



LEFT: Town chairman David Kohler explains the Kohlerdome project during last week's exhibition at the Arndale Centre

LUTON Town Football Club's plans for a new stadium have been supported by Luton North MP John Carlisle.

The club has received a letter written by Mr Carlisle, dated April 26, 1995, in which he states: "I am firmly in support of the relocation of the Luton Town Football Club to the land by junction 10 of the M1 motorway."

Mr Carlisle added that he will support any plans to move the club from its present Kenilworth Road site.

Meanwhile, the club has continued to gather support from the Luton public, with over 10,000 signatures now supporting the planning application.

The plans were on display in Luton's Arndale Shopping Centre last week, and Town chairman David Kohler said he was very encouraged at the response.

"The vast majority of people of Luton seem to be in favour of the scheme, judging by the reactions we received," said Mr Kohler.

"Many people had questions and queries about the application and we were able to answer them in as much detail as possible.

"Of course there were those against the stadium, but with any development such as this there is bound to be opposition.

"On this occasion though, there seem to be almost 100 per cent in favour."

TOWN chairman David Kohler has criticised the FAST (Fight Against Stadium Transfer) campaigners for distributing "misleading information" to homes in the town.

The FAST leaflets, delivered in the south Luton area, claim that development plans include a shopping complex on land by junction 10 of the M1 motorway.

But Mr Kohler pointed out: "The application submitted by The Kohlerdome Corporation and Whitbread Plc does not contain plans for a shopping complex.

"As members of the public were able to see at our Arndale Centre exhibition, there is an area marked for retail - a Luton Town shop.

"I would hardly describe that as a shopping complex. Our application is based upon leisure, and we are well aware that local and central government are opposed to large-scale out-of-town retail developments.

"The FAST campaigners are entitled to their opinions, and to express them as we have done, but they should check their facts first and not distribute misleading information like this."

The thousands of letters signed will be forwarded to the Luton Borough Council, and to Luton South MP Graham Bright, with the council's planning committee due to consider the application in July.

The planning committee received an interim report last week, and also agreed to call a public meeting when council officers will be available to answer questions from the public.

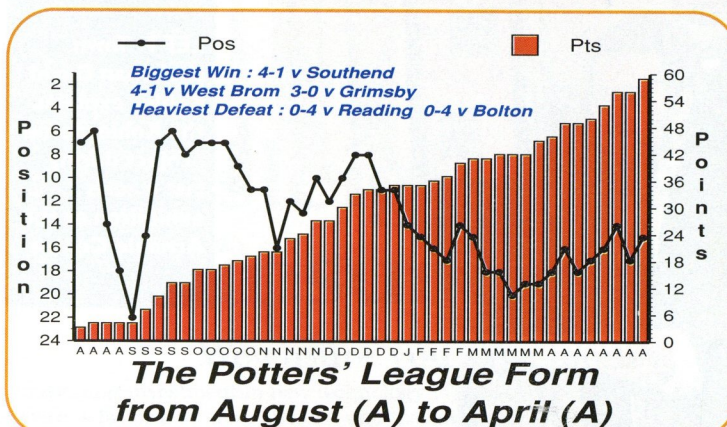
If any supporters have not yet signed the letters backing the scheme, they are once again being distributed around the ground this afternoon.

**Keep up-to-date with all the news from Kenilworth Road on
LUTON TOWN CLUBCALL 0891 121 123**

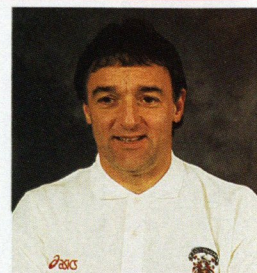
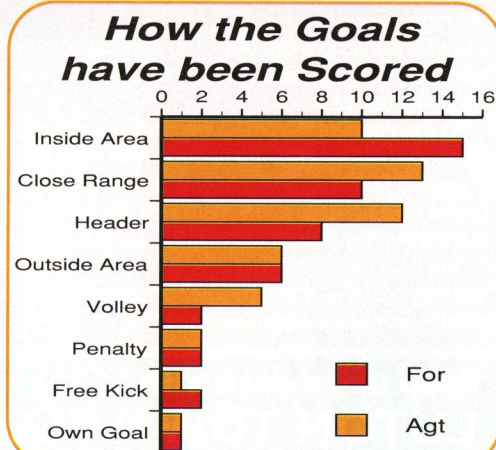
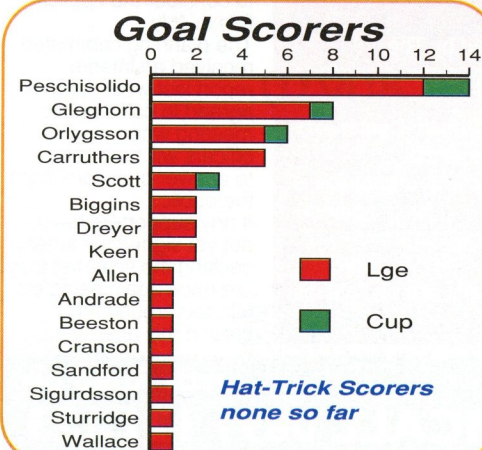


STOKE CITY 1994/95

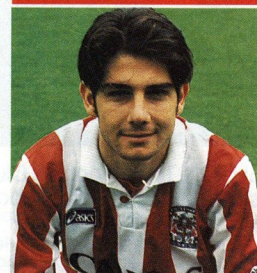
SPOTLIGHT ON TODAY'S VISITORS



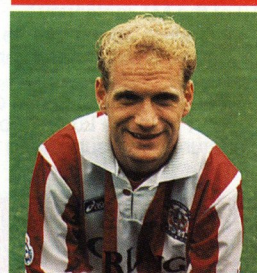
PAUL Telfer fires a shot past John Dreyer during Luton's 2-1 win at Stoke in October, when Dwight Marshall and David Preece were on the scoresheet.



LOU Macari



PAUL Peschisolido



TODDY Orlygsson

VISITORS ON PARADE

SIMON STURRIDGE - Striker who scored 30 goals in 150 appearances for Birmingham before Lou Macari paid £75,000 to bring him to the Victoria Ground at the start of last season.

WAYNE BIGGINS - Currently suspended after returning to the Victoria Ground from a loan spell at Kenilworth Road.

PAUL PESCHISOLIDO - Canadian international who arrived at Stoke from Birmingham in the summer.

CARL MUGGLETON - Goalkeeper who started at Leicester. Joined Stoke from Glasgow Celtic for £150,000 last summer.

RON SINCLAIR - Much travelled goalkeeper who lists Nottingham Forest, Leeds and Bristol City amongst his clubs. Joined Stoke for £25,000 from the latter.

CARL BEESTON - Joined Stoke as an apprentice, but has been dogged by serious injury over recent seasons.

KEITH DOWNING - Midfield player signed just before the start of the season from Birmingham. Previously with Notts County and Wolves.

KEVIN KEEN - Became manager Lou Macari's record signing when he was bought for £300,000 from Wolves in October. Formerly with West Ham.

JUSTIN WHITTLE and **GARY HOULT** - Both agreed 18-month contracts in October 1994 after being released by Celtic. Had been bought out of the army by Lou Macari.

KEITH SCOTT - Former Wycombe and Swindon striker who joined City in December for £300,000.

PAUL ALLEN - Former Spurs midfielder who is currently on loan at Stoke from Southampton.

JOHN GAYLE - Played under Lou Macari at Birmingham, and signed for Stoke from Burnley for £70,000 in January.

MARK PRUDHOE - Goalkeeper who joined Stoke from Darlington for £120,000 in the summer of 1993.

IAN CLARKSON - Another ex-Birmingham player who arrived at the Victoria Ground for £40,000 early last season.

IAN CRANSON - Former England Under-21 international who started his career with Ipswich, before moving to Sheffield Wednesday. Stoke's record signing when he joined for £480,000 in 1989.

LEE SANDFORD - Former England youth international, who signed from Portsmouth for £140,000 in December 1989.

TODDY ORLYGSSON - Icelandic international who joined Stoke after a spell with Nottingham Forest.

NIGEL GLEGHORN - Another member of Macari's Leyland DAF Cup winning squad at Birmingham. Formerly with Ipswich and Manchester City.

RAY WALLACE - Signed from Leeds on a free transfer at the start of this season.

MARTIN CARRUTHERS - Scored Stoke's goal in the 2-1 home defeat by Luton earlier this season.

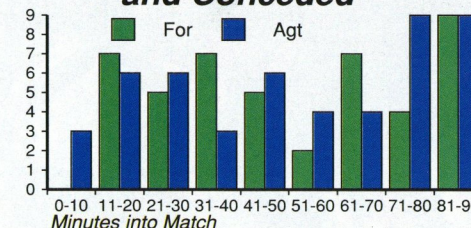
GRAHAM POTTER - Young defender who moved to Stoke from Birmingham in exchange for Kenny Lowe.

VINCE OVERSON - Formerly with Burnley and Birmingham, and now a regular in the centre of the Stoke defence.

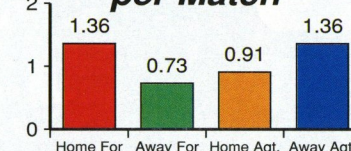
JOHN DREYER - Former Luton skipper who was sent off in October's match, and is currently on loan at Bolton.

JOHN BUTLER - Made over 250 appearances for Wigan before a £75,000 move to Stoke.

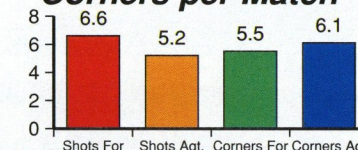
When Stoke have Scored and Conceded



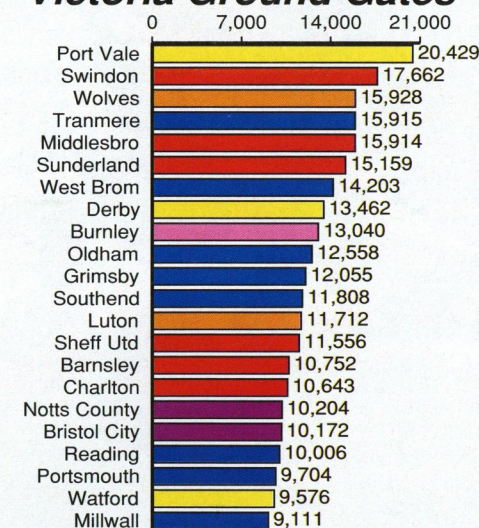
Average Goals per Match



Average Shots and Corners per Match

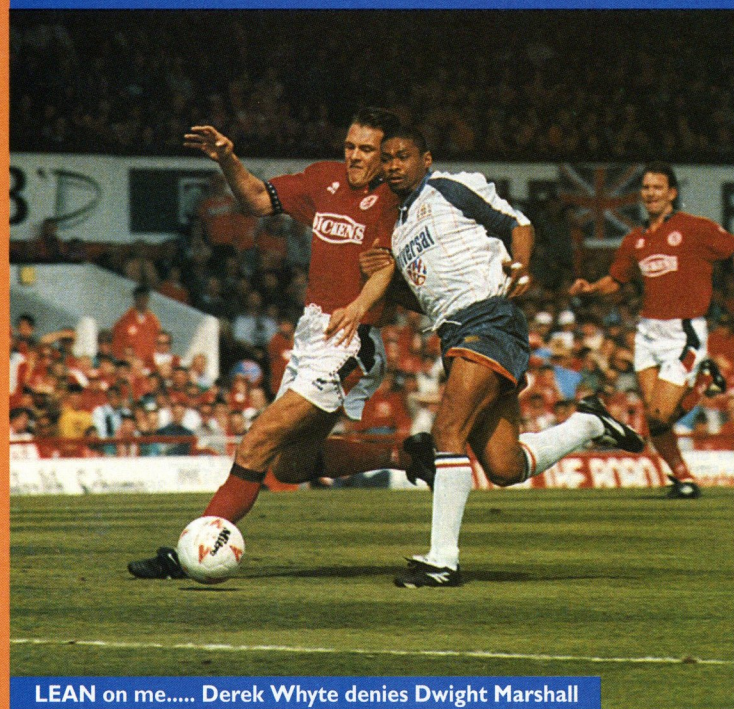


Victoria Ground Gates



Graphics by FOOTBALL INFORMATION SERVICES. (Wednesday's match not included).

MIDDLESBROUGH v LUTON T

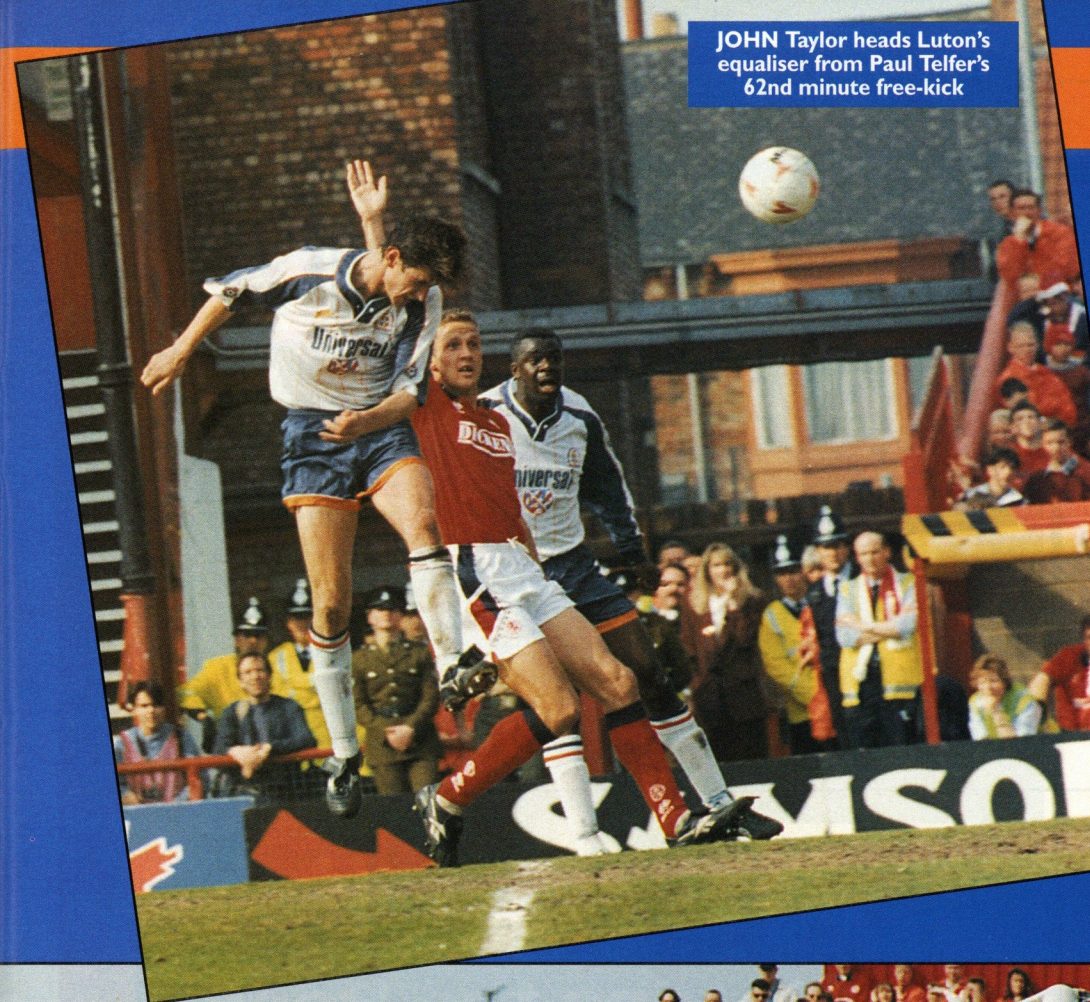


LEAN on me..... Derek Whyte denies Dwight Marshall

From
Ayresome Park
Date
April 30, 1995
Result
Middlesbro 2
(Hendrie 2)
Luton T 1
(Taylor)
Attendance 23,903
Pictures by
ANDY HANDLEY



MARSHALL again looks to break through the Middlesbrough defence at Ayresome Park last Sunday



JOHN Taylor heads Luton's equaliser from Paul Telfer's 62nd minute free-kick



TAYLOR celebrates as Boro appeal for offside

S U P P L I E D B Y



MITRE SPORTS INTERNATIONAL LTD.
BIRKBY, HUDDERSFIELD, HD1 5AJ. TEL: 0484 537488. FAX: 0484 530042

A GENESCO Company
G

Football wins the Pools every Saturday



Every time you enter Littlewoods, Vernons and Zettlers Pools or Littlewoods Spot the Ball you are helping the game at all levels. The Football Trust administers funds from the Pools, helping clubs to improve safety and comfort.

The Trust receives some £37 million every year, all of it coming directly or indirectly from Littlewoods, Vernons and Zettlers Pools and Littlewoods Spot the Ball.



LITTLEWOODS VERNONS ZETTERS
Making sure football wins the Pools each week



THE FOOTBALL TRUST
Helping the game

THE FOOTBALL TRUST, WALKDEN HOUSE, 10 MELTON STREET, LONDON NW1 2EB

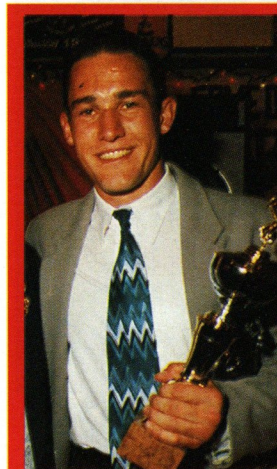
Football also receives £8 million a year for the use of fixtures on coupons and Littlewoods, the game's biggest benefactor, is the first sponsor of the FA Cup.

Up and down the country, clubs are building new grounds, stands, seating and roofing. All depend on the support of the Football Trust and on the success of the football pools.



HARRY OF THE HATTERS

TELFER VOTED YOUR PLAYER OF THE YEAR



MIDFIELDER Paul Telfer is pictured (above) with his trophy after being voted the Junior Hatters Player of the Year at the recent Supporters Club Presentation Evening.

Paul has played in every Luton match this season, and before today's game had scored nine goals.

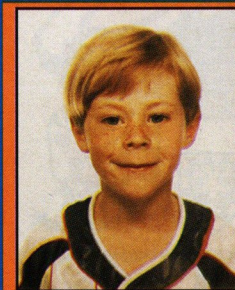
Trevor Peake was Player of the Year, Marvin Johnson Players' Player of the Year, and Kelvin Davis Young Player of the Year.



MEMBERSHIP of the Junior Hatters is available to young and "old".

For our older members there's the opportunity to be a match mascot, as at Charlton (above), while seven-month-old Robin Williamson (left) is one of our youngest members.

MATCH DAY MASCOT



Name:
Joe Bradbury
Date of birth: 23/7/88
School attended:
Maulden School
Favourite Town player: Trevor Peake
Local football team that you play for:
Maulden Lower School



SUPPORTER for 29 years Yvonne Dodds, from Woburn Sands, has doubled her chances of having a son playing for the Hatters by having twins. Who knows, James Michael and Luke John (pictured above) may follow in the footsteps of the Futchers!

LOOK OUT FOR NEWS OF NEXT SEASON'S JUNIOR HATTERS IN THE LOCAL PRESS OVER THE SUMMER MONTHS.....

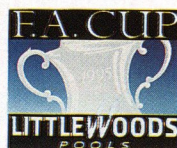
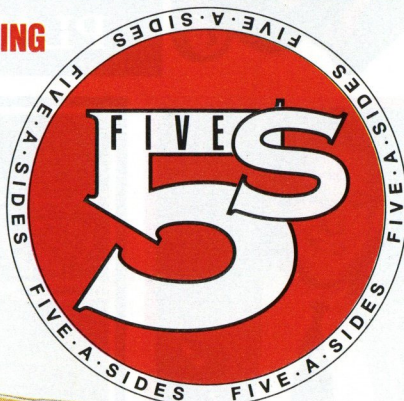


Evening Standard

SEE 15 LONDON DERBIES LIVE IN ONE EVENING
SEE LONDON'S TOP TEAMS IN ACTION

MONDAY 15 MAY 1995

W WEMBLEY ARENA



SHOOT
90 minutes



ARSENAL F.C.



BARNET F.C.



BRENTFORD F.C.



CHARLTON ATHLETIC F.C.



CHELSEA F.C.



CRYSTAL PALACE F.C.



FULHAM F.C.



LEYTON ORIENT F.C.



LUTON TOWN F.C.



MILLWALL F.C.



QUEENS PARK RANGERS F.C.



TOTTENHAM HOTSPUR F.C.



WATFORD F.C.



WEST HAM UNITED F.C.



WIMBLEDON F.C.



WYCOMBE WANDERERS F.C.

TICKETS:

£12.00 • £15.00 • £20.00 • £22.00

BOOK NOW AT PARTICIPATING CLUB TICKET OFFICES
OR CALL WEMBLEY BOX OFFICE 0181•900•1234

TICKETMASTER

0171 344 4444

AVAILABLE IN LONDON AND
THROUGHOUT THE SOUTH EAST AT
HMV & TOWER RECORDS STORES

95.8 CAPITAL FM



1548AM
CAPITAL
LONDON

AROUND THE TOWN



A SPECIAL welcome this afternoon to 14-year-old Luton fan Richard Buczynski, from York. Richard is pictured above with David Pleat on his last visit to Kenilworth Road in December, when he watched the match against Sheffield United. Richard attended the game with his father, who sadly died in February. We extend our sympathies to Richard and his family, and hope he enjoys today's game. His favourite player is Scott Oakes, and Richard is an occasional goalkeeper for his school team in Malton, North Yorkshire.

"TREVOR Peake" was on the scoresheet as the Luton fanzine Mad As A Hatter went down 4-2 to their Watford counterparts Clap Your Hands, Stamp Your Feet on Good Friday.

Explanation....The fanzine XI borrowed a set of kit from the club, with last season's shirts bearing the squad numbers and names of Town players.

LUTON Town are hosting the final of the Beds Senior Cup tomorrow, Monday, May 8, kick-off 2.30pm at Kenilworth Road.

The final is between Diadora League side Bedford Town, and South Midlands League side Toddington Rovers.

Admission is £2 for adults, and 50p for juniors/OAPs.

Under the provisions of the Gaming Act 1968 a new licence has been granted to Grosvenor Clubs Ltd, consequently

THE NEW SERGEANT YORKE CASINO IN LUTON IS NOW OPEN

American Roulette, Blackjack,
Dice, Punto Banco, Casino Stud Poker, Super Pan 9,
Card Room (Poker, Kalooki, Mah Jong)

Restaurant and Lounge Bar
Free Parking

Open Daily 2pm to 4am

Lifetime Membership Just £10

Applications must be made in person on the premises 48 hours prior to membership being granted. Apply at reception during opening hours.

Sergeant Yorke Casino, Dunstable House, 50 Dunstable Road, Luton LU1 1EE Telephone (01582) 414166

Luton Town FC Players of the Year 1994/95



Supporters' Player of the Year

TREVOR PEAKE

Players' Player of the Year

MARVIN JOHNSON

Young Player of the Year

KELVIN DAVIS



KENILWORTH SUITE

ABB Flexible Automation Ltd
Anachem Ltd
Mr G. Chamberlain
Corporate Coaching
Ken & Judi Craven
Fisher Frozen Foods Ltd
F & T Goodwin Ltd
Grosvenor Contracts
Handscombe Financial Services Ltd
R.W. Harvey & Son

R. Yates
Origination
Radley Shaw
Regal Litho
Steadfast Properties PLC
Wilton Contract and Vehicle Rental
Complete Contracts Ltd
The Home Counties Newspaper Group
Frank and Audrey Ludlow

CLUB 82

Bervale Mead Insurance Brokers
C.P. Contracts
J.S.B. Business Forms
Luton Cleaning Company
Nordic Supplies
Mr F.W. Pearce
The Unimec Group of Companies
Shorey Travel

TJ Aldridge Builders
Chris and Kim Clarke - The Wheatsheaf,
Flitwick
Space Display Systems
Techno Sign Ltd
Mr D.R. Kenningham
Carol and Stuart Kendall - The Blackbirds,
Flitwick

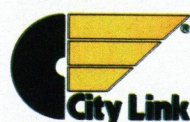
INDIVIDUAL BOX HOLDERS

Mr Alan Garner

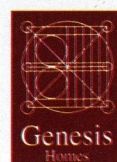
Mr Malcolm Eade

Mr Roger Eade

EXECUTIVE BOX HOLDERS



Murtagh Demolition



Cope Brothers (Printers) Limited



GET IN GEAR AT THE HATTERS SHOP....



SALE
CHILDRENS
TOPS (left)
£11.95 and
£14.95

PLUS large
selection of
T-shirts from
£9.99

LTFC
1994/95
FULL
COLOUR
TEAM
POSTER
NOW
ONLY £3



WE HAVE A VARIETY OF CAR PENNANTS
AND STICKERS AVAILABLE, PLUS THE
LTFC WOBLER - prices range from £2 to £3.50

LTFC kit prices 1994/95

HOME/AWAY SHIRTS

22-24	£23.99
26-28	£23.99
30-32	£23.99
34-36	£28.99
38-40	£28.99
42-44	£30.99
46-48	£30.99

GOALKEEPER SHIRTS

- Grey/green

22-24	£29.99
26-28	£29.99
30-32	£29.99
34-36	£34.99
38-40	£34.99

HOME/AWAY SHORTS

22-24	£12.99
26-28	£12.99
30-32	£15.99
34-36	£15.99

SOCKS HOME/AWAY

Boys	£5.99
Youths	£5.99
Mens	£5.99

OPENING HOURS: Enquiries (0582) 411622

Monday to Friday - 10am to 4pm

(Evening matchdays 10am to 10pm)

Saturdays - matchdays 9am to 5pm

-non matchdays 9am until coaches leave for away game

Hatters Shop

KIT SPONSORS

JAMIE WOODSFORD

is sponsored by
**Worldwide Hatters
on the Super
Highway (WHOSH)**



RICHARD HARVEY
Shorey Travel

DWIGHT MARSHALL
Milton Keynes Branch of the
Luton Town Supporters Club

FRED BARBER
Royal Air Force Careers
Information Office, Bedford

DAVID PREECE
Ken and Judi Craven

TONY ADCOCK
Chris and Kim Clarke
The Wheatsheaf, Flitwick

DAVID GREENE
O'Shea's Public House,
Castle Street, Luton

TONY THORPE
Bedfordshire Rural
Communities Charity

JULIAN JAMES
Shorey Travel

PAUL TELFER
Convoy Installations Ltd

KELVIN DAVIS
McLeod Warner

MITCHELL THOMAS
Sam Hill

DES LINTON
Simkins Solicitors of
Baldock and Sandy

JOHN MOORE
Les and Sue Miller

CERI HUGHES
Les and Sue Miller

CLIVE GOODYEAR
Mad As A Hatter
- The Luton Town fanzine

MARTIN WILLIAMS
Anchor Insurance Brokers
Milton Keynes

SCOTT OAKES
Legal and General Assurance

JUERGEN SOMMER
Paul Deason

AARON SKELTON
Club Skyway of London
Travel Agents

JAMIE WOODSFORD
Worldwide Hatters on the
Super Highway (WHOSH)

TREVOR PEAKE
Bennetts Gate Bakery of
Hemel Hempstead

MARVIN JOHNSON
Graham Group PLC

DAVID PLEAT
Bobbys Travel Club,
Committee and Members

KERRY DIXON
The Loyal Luton Supporters Club

JOHN TAYLOR
Kate and Phil Shaw

GARY WADDOCK
Mad As A Hatter
- The Luton Town fanzine

ROB MATTHEWS
The Unimec Group of Companies

LTFC in the Community

with the club's 'Football in the Community' officer
COLWYN ROWE - (01582) 411622



COACHING COURSES - SPRING 1995

THREE DAY COACHING CLINICS

- Coaching Clinics are a Luton Town Football Club 'Football in the Community' activity
- They offer children a well organised coaching programme supervised by experienced, qualified Football Association coaches. The programme includes:
- Technique coaching, designed to help boys and girls enjoy and improve their football whilst encouraging good attitudes and behaviour
- Small-sided game medals, and best attitude awards
- Certificate for every participant
- AND THERE'S THE OPPORTUNITY TO WIN A FAMILY HOLIDAY WORTH £500 WITH HAVEN HOLIDAYS

WHO CAN TAKE PART? - All boys and girls between 5 and 14 years old, regardless of their footballing ability

A KEMPSTON - Robert Bruce Middle School,
Hillgrounds, Bedford Road
Dates - Sat 27th, Sun 28th and Mon 29th May
1995. 10am to 2pm.....£24.00

B LUTON - Stopsley High School, St Thomas
Road
Dates - Sat 27th, Sun 28th and Mon 29th May
1995. 10am to 2pm.....£24.00

C LEIGHTON BUZZARD - Brooklands Middle
School, Brooklands Drive
Dates - Sat 27th, Sun 28th and Mon 29th May
1995. 10am to 2pm.....£24.00

D DUNSTABLE - Streetfield Middle School,
Dunstable Road, Caddington
Dates - Tue 30th, Wed 31st May & Thur 1st June
1995. 10am to 2pm.....£24.00

E BIGGLESWADE - Edward Peake Middle
School, Potton Road
Dates - Tue 30th, Wed 31st May & Thur 1st June
1995. 10am to 2pm.....£24.00

F MILTON KEYNES - Water Hall County
Combined, Melfort Drive, Bletchley
Dates - Tue 30th, Wed 31st May & Thur 1st June
1995. 10am to 2pm.....£24.00

G BEDFORD - Goldington Middle School,
Haylands Way
Dates - Fri 2nd, Sat 3rd and Sun 4th June 1995.
10am to 2pm.....£24.00

H LUTON - Electrolux Sports Ground, Ely Way, off
Oakley Road
Dates - Fri 2nd, Sat 3rd and Sun 4th June 1995.
10am to 2pm.....£24.00

J FLITWICK - Woodland Middle School, Malham
Close
Dates - Tue 30th, Wed 31st May & Thur 1st June
1995. 10am to 2pm.....£24.00

K BARTON - Arnold Middle School, Hexton Road
Dates - Fri 2nd, Sat 3rd and Sun 4th June 1995.
10am to 2pm.....£24.00

SPECIALIST GOALKEEPING COURSE

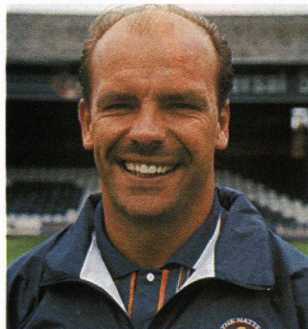
GK LUTON - Electrolux Sports Ground, Ely Way, off Oakley Road
Dates - Mon Fri 2nd, Sat 3rd and Sun 4th June 1995. 10am to 2pm.....£30.00

CLUB TOURS

GROUPS ONLY - Tour of ground to include changing rooms, through the tunnel to the pitch etc, plus
burger and chips + drink.

School holidays only, with group sizes of approximately 20.....£5 per person

For application details, contact Colwyn Rowe at: Football in the
Community, LTFC, Kenilworth Road Stadium, 1 Maple Road, Luton,
Beds, LU4 8AW, or telephone on (01582) 411622.



Wed Aug 17	WATFORD	2-0
Wed Aug 24	QPR	2-1
Wed Aug 31	Charlton Athletic	1-3
Wed Sep 7	IPSWICH	2-2
Wed Sep 14	Bristol Rovers	1-3
Wed Sep 21	OXFORD	2-1
Wed Sep 28	PORTSMOUTH	1-0
Wed Oct 5	Tottenham	0-2
Wed Oct 12	Oxford	1-0
Wed Oct 19	NORWICH	3-5
Wed Oct 26	BRISTOL ROVERS	2-2
Mon Oct 31	Swindon	2-1
Tue Nov 8	Watford	0-1
Wed Nov 16	WIMBLEDON	2-4
Mon Nov 21	Portsmouth	3-0
Wed Nov 30	SWINDON	2-2
Wed Dec 7	Norwich City	0-2
Wed Dec 14	TOTTENHAM	1-2
Wed Dec 21	Southampton	1-3
Tue Jan 10	West Ham	0-1
Wed Jan 25	CRYSTAL PALACE	2-1
Mon Feb 6	ARSENAL	1-3
Tue Feb 14	Crystal Palace	3-1
Thu Feb 23	BRISTOL CITY	4-1
Sat Feb 25	Arsenal	1-4
Fri Mar 10	SOUTHAMPTON	0-2
Wed Mar 15	Wimbledon	1-1
Wed Mar 22	MILLWALL	3-1
Mon Mar 27	Brighton	0-1
Wed Mar 29	Ipswich Town	0-2
Wed Apr 5	BRIGHTON	2-2
Mon Apr 10	Millwall	3-2
Thur Apr 13	CHARLTON	0-3
Tue Apr 18	CHELSEA	1-1
Sat Apr 22	WEST HAM	3-2
Tue Apr 25	Queens Park Rgrs	0-0
Thur May 4	Bristol City	
Tue May 9	Chelsea 2pm	

BOLD type denotes home game.
(Luton score first).

RESERVES AND YOUTH

WITH WAYNE TURNER AND TERRY WESTLEY

THE Town's Reserve side have enjoyed mixed fortunes in a busy finish to the season, with Tony Thorpe among the goals.

At home to Charlton on April 13, the Hatters conceded two first-half goals and eventually went down 3-0 as the visitors overcame twice having to reorganise with players stretched or injured.

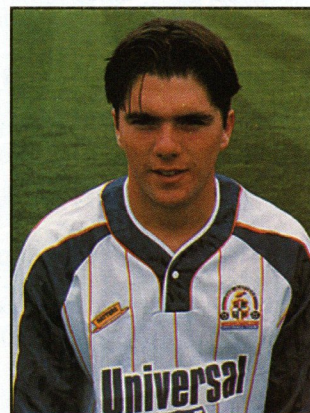
Team: Sommer, Chenery, Rioch, McLaren, Greene, Simpson, Douglas, Power, Williams, Woodsford, Thorpe.

Subs: Willmott, Evers, Abbey (gk).

At home to Chelsea on April 18, Thorpe hit the bar after just five minutes, but did put the Hatters in front on 43 minutes converting a Jamie Woodsford cross.

They had more chances after the break, but Chelsea equalised on 61 minutes through David Hopkin. Both sides had chances to win the game, with Thorpe and Woodsford going close for the home side, whilst Robert Fleck missed the Blues' best opening.

Team: Sommer, Chenery,



TONY Thorpe

Thomas, McLaren, Greene, Skelton, Williams, Linton, Thorpe, Woodsford, Matthews.

Subs: Simpson, Rioch, Abbey (gk).

There was more London opposition at Kenilworth Road on April 22, with the visit of West Ham who went 2-0 in front after just 10 minutes.

But Thorpe and Des Linton levelled before half-time, with Thorpe bagging the winner midway through the second half to take his reserve tally for the season to 13.

Team: Margetson, Willmott, Rioch, McLaren, Simpson, Skelton, Williams, Linton, Thorpe, Woodsford, Okenla.

Subs: Power, Issott, Abbey (gk).

The Reserves travelled to Combination leaders QPR on April 25, and came away with a very creditable 0-0 draw, with chances for both sides.

Woodsford was sent off in the closing minutes for his second bookable offence.

Team: Margetson, Chenery, Thomas, McLaren, Simpson, Skelton, Williams, Linton, Thorpe, Woodsford, Harvey.

Subs: Rioch, Power, Abbey (gk).

Wayne Turner's side were due to play their rearranged game at Bristol City on Thursday, before completing their Combination fixtures at Chelsea on Tuesday.

The Youth team rounded off their South East Counties League season with a 2-0 defeat at Crystal Palace last Saturday - victory giving Palace the title.

Team: Abbey, Turner, Sharpe, Evers, Thomas,

South East Counties League, FA Youth Cup and Southern Junior Floodlit Cup

Sat Aug 13	CRYSTAL PALACE	4-2	Sun Oct 23	Saffron Walden (EJC)	2-3	Sat Feb 4	Southampton	1-1
Sat Aug 20	Wycombe Wanderers	5-0	Sat Oct 29	WIMBLEDON	2-4	Sat Feb 11	OXFORD UNITED	3-1
Sat Aug 27	BRIGHTON	2-3	Sat Nov 5	Brentford	1-3	Sat Feb 18	Bristol Rovers	0-0
Thu Sep 1	Coventry (SJFC Pre)	2-2	Mon Nov 7	STAINES TOWN (FAYC1)	5-0	Sat Feb 25	Colchester United	2-1
Mon Sep 5	Coventry (SJFC Pre)	1-2	Sat Nov 12	BRISTOL CITY	1-2	Sat Mar 4	Wimbledon	1-2
Sat Sep 10	Reading	4-0	Sat Nov 19	Swindon Town	0-1	Sat Mar 11	BRENTFORD	2-2
Sat Sep 17	NORWICH (LC1)	2-0	Mon Nov 28	Wycombe (FAYC2)	0-1	Sat Mar 18	Bristol City	0-3
Sat Sep 24	SOUTHAMPTON	0-2	Sat Dec 3	BOURNEMOUTH	0-1	Sat Mar 25	SWINDON TOWN	0-3
Sat Oct 1	Oxford United	0-3	Sat Dec 10	Tottenham	2-0	Sat Apr 1	Bournemouth	2-4
Sat Oct 8	BRISTOL ROVERS	2-1	Sat Dec 17	TOTTENHAM	2-3	Sat Apr 8	Brighton	0-2
Sat Oct 15	COLCHESTER	7-0	Sat Jan 7	WYCOMBE WANDERERS	5-0	Sat Apr 29	Crystal Palace	0-2
Sat Oct 22	Colchester (LC2)	0-1	Sat Jan 28	READING	1-1			

HOME matches denoted in bold.

Willmott, Keane, Power, Douglas, Issott, Smith.

Subs: Barr, Augustine.

Coach Terry Westley admitted the league form had been a little disappointing but his squad has suffered from successful individual performances, in that the likes of Ben Chenery, Paul McLaren, Jamie Woodsford and now Kelvin Davis have often featured in first team line-ups and squads.

"When David Pleat and I looked at the squad at the start of the season we felt it was the strongest in the four years I have been here," said Terry.

"From as early as the third game of the season, you could probably count on one hand the number of games that Woodsford, Davis, McLaren and Chenery have played in the youth team together, and we haven't often trained together as they have been elevated into the reserve and first team squads.

"So we have relied on the first years and next year's boys. But I can assure supporters who look at the league status and think that's disappointing, that it's a lot brighter than the table

shows."

The first team appearances of those players is the real plus point, coupled with the success of John Hartson who was playing regularly for the youth team only last season.

"Hartson's departure gave Woodsford his chance to move up, and he has almost missed his second year of youth football, and is close to a first-team place," said Terry.

"The manager had no hesitation in bringing Ben Chenery in against Bristol Rovers in the cup for a tough away game, and



JAMIE Woodsford

now we have Kelvin Davis who has shown great determination to stay in the first team."

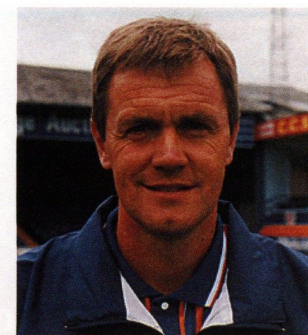
Looking ahead to next season, Terry is hopeful that the current crop of first years can improve after a solid grounding in the South East Counties League this time around.

"I wouldn't expect as many of the first years from this season to move up as quickly, but that could mean better league results because they will stay together as a group," he said.

"Of the new arrivals, centre-back Matthew Upson is one to watch, and Ian Jones has already played for Wales at schoolboy level, and all the boys have experienced youth team football this season.

"In the juniors Paul Lowe is bringing a lot of players through, and our Community courses had nearly 1,000 youngsters attending over Easter.

"All the teams play the same Luton style, and we are indebted to the likes of Chris Ellis, George Rogers, Ken Hoffman, Doug Everitt, all team coaches, helpers and scouts for their hard work in youth football."



£ £

To advertise in the
Luton Town matchday
programme contact the
Commercial Department
on (01582) 411622

Fox sent off in eight-goal thriller



ABOVE: Despite being fouled, Paul Walsh goes on to score, only to see his effort disallowed by the referee.
(Roger Wash would like to hear from any Luton supporters who can loan photographs featuring match action pre-1970. He can be contacted via the Programme Editor).

FOLLOWING the Town's promotion from Division Two as runaway champions in 1982 it was a confident side that took to the field for the first game back in the top flight for seven years.

In front of a White Hart Lane crowd of 39,180 we were rocked back when Gary Mabbutt, making his debut for the FA Cup holders, scored an early goal and when Micky Hazard put Spurs two-up, Luton supporters were thinking that perhaps there was a bigger chasm between the top two divisions than we had previously thought.

To the players' credit however, they fought back, and when Brian Stein knocked in the equaliser in the second half it was Spurs who were rocking, and for a time I thought that we might have gone on for a famous victory.

An eventual draw was seen as a fair result, but it was back to the drawing board three days later when West Ham, the first visitors to Kenilworth Road, returned to London with all points after a 2-0 victory and a demonstration of how to punish defensive mistakes and take chances.

Notts County were then beaten 5-3 at Kenilworth Road in a roller-coaster game that could have fin-

ished eight-all, before a 4-1 defeat at Aston Villa undid all the good work the previous Saturday and ably demonstrated the defensive frailties that were beginning to show, and once more sowed seeds of doubt as to our prospects for the remainder of the season.

Our next game was at Anfield against league champions Liverpool, and in another amazing performance we felt hard done by at only coming away with a point after a 3-3 draw.

I remember driving away from Merseyside basking in the thought that we had given Liverpool the fright of their lives, but then drifting into the depths of despair when it was realised that we had fallen into 18th position as a result of the two dropped points!

All was right with my world the following week when a poor Brighton side was seen off 5-0 at Kenilworth Road, with Brian Stein netting a hat-trick and current Town coach Wayne Turner scoring with an overhead kick to send us back into the top half of the table.

With all these goals flying in at both ends at Luton matches, the television companies had begun to take an interest and the cameras were once again present when the Town visited the Victoria Ground, Stoke, in our next game - played on a sunny day

(they were all sunny days that Autumn) at the end of September.

The Potters were riding high in fourth place, and a best-of-the-season crowd of 18,475 turned up to see if they could improve on that position while we were hoping for the long overdue first away win back in the top flight.

No one was to be disappointed, but there were no signs of the fireworks to come when Stoke took the lead after 10 minutes with George Berry getting on the end of a well rehearsed corner kick routine.

Paul Walsh netted the equaliser shortly afterwards with a 30-yard special, only for Berry to put the home side ahead once again after another corner caused panic in the Luton defence.

The match was now bubbling, but referee Gilbert Napthine then decided to create a bit of controversy by sending off Stoke goalkeeper Peter Fox and refusing to play the advantage which would have led to a Luton equaliser.

Walsh was bearing down on goal, and Fox charged out of his area and handled in an attempt to prevent a certain leveller. Walsh won the tussle and netted, but the referee pulled play back, sent off Fox, and awarded a free kick that was well saved by replacement goalkeeper Paul Bracewell.

Brian Stein did eventually equalise for the Town just before half-time to set up a finely poised second period, which saw Bracewell replaced by Derek Parkin in the Potters goal.

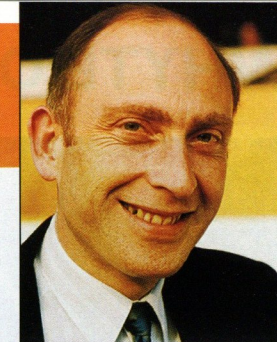
It was just as well that Bracewell was taken out of goal as he headed his side into the lead once more, after 50 minutes, only for Stein to level shortly afterwards.

With the Stoke rearguard reeling, defender Mal Donaghy finally put the Town into the lead for the first time with a rare goal shortly after the hour. But Stoke fought back bravely, and Brendan O'Callaghan brought the score to an incredible 4-4 with seven minutes left to play.

The match still had one final twist, for with the final seconds ticking away Stoke's 10 men were caught stretched, and Stein was tripped from behind when he looked likely to score.

From the resulting penalty the normally reliable Moss hit the post and the final chance of taking all three points was gone.

In retrospect Stoke deserved their point for their fighting display with only 10 men, and if we had won then we would not have needed to endure the drama of the final showdown of the season at Maine Road, Manchester. But that is another story!



by ROGER WASH

5 YEARS AGO

5/5/90: A famous 3-2 win at Derby to secure a Division One place against all the odds. Kingsley Black, with two, and Tim Breacker were on target in front of a crowd of 17,044, which included 5,000 from Luton.

10 YEARS AGO

6/5/85: A Brian Stein goal at Aston Villa more or less confirmed our First Division future for another season. A crowd of 14,130 watched our 1-0 win which pushed us up to 13th position.

15 YEARS AGO

3/5/80: Bob Hatton signed off his Luton career with a two-goal burst at Newcastle in a 2-2 draw. The Town had finished in sixth position in Division Two after topping the table for a large part of the season.

20 YEARS AGO

May 1975: The season had ended at the end of April with Tottenham's unlikely 4-2 home win over Leeds confirming the Town's relegation from Division One.

Stoke: Fox, Parkin, Watson, Berry, Hampton, Bracewell, Maguire, McIlroy, Chamberlain, O'Callaghan, Thomas (McAughtrie).

Luton: Judge, Stephens, Goodyear, Donaghy, Money, Hill, Horton, Turner, Stein, Walsh (Antic) Moss.

WHYTE ON TIME! NO HAPPY VALLEY FOR HATTERS



LEFT: Paul Telfer is outnumbered by the Charlton defence during Luton's 1-0 defeat at The Valley



RIGHT: Scott Oakes closes in on the Charlton goal during the first-half at The Valley



LEFT: Rob Matthews is fouled by Colin Walsh and Steve Brown, a challenge which resulted in a yellow card for Walsh. Brown was later sent off.



LEFT: John Taylor attacks the left flank of Charlton's defence, with Scott Oakes in support

CHARLTON ATH 1
(Whyte)

LUTON TOWN 0

at The Valley,
April 22, 1995

Pictures by
ANDY HANDLEY



ABOVE: David Greene (right) returned to the Town side at The Valley



ABOVE: David Preece looks for an opening

Action pictures featured in the Luton Town matchday programme are available at the special introductory price of just £2 per print!

Write to Simon Oxley, at the club, giving a brief description of the picture (programme and page number etc), and enclosing a cheque/ postal order made payable to Luton Town Football Club.

VIEWROUND SPORT - LISTENING TO YOU LUTON TOWN FC... FANS SURVEY RESULTS

An Indoor Stadium for Luton near Junction 10 of the M1

The plans for a new 20,000 all-seater multi-purpose stadium near Junction 10 of the M1 have been backed by Town fans.

In our latest survey of supporters, following the home game against Reading, the plans were given the thumbs up by 91% of fans who felt the planning application should be 'definitely' supported by the council.

A further 5% said the council should 'probably' support the application. Fewer than one in twenty (3%) felt the council should not offer support.

Fans were also asked for their views about the location of any new National Stadium.

One in three would like to see any new stadium located at Birmingham (31%), with one in four (24%) mentioning London, and a further 24% mentioning other Midland locations.

One in ten felt it should be kept at Wembley.

Expectations - England in the European Championship, and Luton Town next season

One in five (19%) fans feel that England should reach the European Championship final, with one in eight believing that the team will in fact win the Championship.

WE are delighted to pass on thanks to Town fans who made the trip to Middlesbrough last Sunday for their "conduct and co-operation" at Ayresome Park.

In a letter to Kenilworth Road this week, Middlesbrough FC's Operations Manager Terry Tasker wrote: "As you are aware, in order to satisfy ticket demands for home supporters it was necessary to alter stadium arrangements for visiting fans by providing shared facilities in our family enclosure. It is recognised that this may have caused some inconvenience and reduced access to ground facilities and for this I wish to apologise.

"However, my main reason for writing is to express our gratitude to your fans for their understanding and acceptance of their situation on the day and for their good humoured participation in this emotional event.

"Their exemplary conduct and co-operation was a credit to themselves and Luton Town Football Club."



LEFT:
Second place for Trevor Peake in the vote for man-of-the-match against Reading.

As far as Luton is concerned, 78% of fans expect Luton to finish in the top 10 of Division One next season, with one in two believing the team will make the play-offs, or even gain promotion (4%).

Only 1 in 100 fear relegation (1%) or a relegation battle.

Luton v Reading

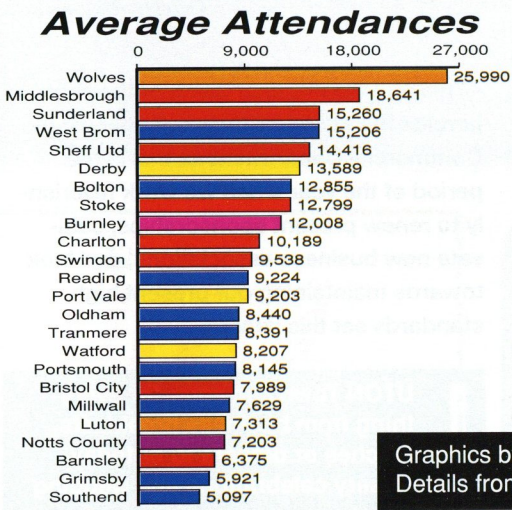
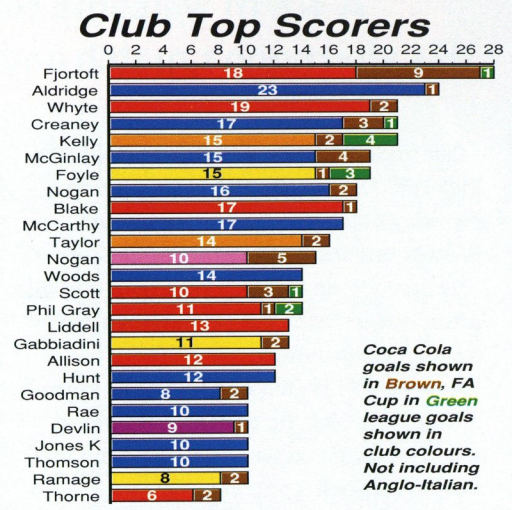
The match scored only 5 out of 10 for excitement, with Luton's performance also scoring 5 out of 10.

The choice for Luton player of the match was Kelvin Davis (23%), followed by Trevor Peake (20%), Paul Telfer (10%) and John Taylor (10%). The referee was given a 6 out of 10 score, while Reading skipper Adrian Williams was adjudged to be their best player.

Of those not happy with the referee (34%) the most common complaints were inconsistency (15%) and the fact that he was seen to be too lenient - mentioned by 8% of fans.

TicketLine 0645 10 10 10
24 HOURS A DAY, 7 DAYS A WEEK
ALL CALLS CHARGED AT LOCAL RATE

The exclusive ticket booking service for fans of Endsleigh League First Division clubs



ENDSLEIGH LEAGUE DIVISION ONE

	P	W	D	L	F	A	PTS
Middlesbro	45	23	12	10	66	39	81
Bolton W	45	21	13	11	66	44	76
Reading	45	22	10	13	56	43	76
Wolves	45	21	12	12	76	60	75
Tranmere R	45	22	9	14	66	57	75
Barnsley	45	20	12	13	62	49	72
Watford	45	18	13	14	50	45	67
Derby	45	18	12	15	65	49	66
Sheff Utd	45	16	17	12	71	54	65
Grimsby T	45	17	14	14	61	53	65
Millwall	45	16	13	16	59	59	61
Oldham Ath	45	16	12	17	59	59	60
Stoke City	45	15	15	15	47	51	60
Charlton A	45	16	11	18	57	64	59
Southend U	45	17	8	20	51	72	59
LUTON T	45	15	13	17	59	61	58
Port Vale	45	15	12	18	57	63	57
Portsmouth	45	15	12	18	52	62	57
West Brom	45	16	9	20	49	55	57
Sunderland	45	12	17	16	39	43	53
Swindon T	45	12	11	22	53	72	47
Burnley	45	11	12	22	48	73	45
Bristol C	45	11	11	23	41	62	44
Notts Cty	45	9	12	24	44	65	39

(Table up to, and including, Wednesday, May 3.
Match played yesterday: Sheffield Utd v Grimsby T)

Graphics by FOOTBALL INFORMATION SERVICES.
Details from midweek matches are not included.

LUTON TOWN FC..... LISTENING TO YOU!

Critical Research Ltd

Crown Life House
41-43 Alma Street Luton LU1 2PL
Tel: 0582 480588 Fax: 0582 485015

LUTON TOWN CLUBCALL

0891 121 123

Calls cost 39p a minute cheap rate and 49p at all other times.

Match reports and commentary..... Interviews with manager David Pleat and the Hatters players

..... Match and ticket information



COMMERCIAL CORNER with Kathy Leather

A warm welcome to Kenilworth Road to this afternoon's match and matchball sponsors

A WARM welcome to this afternoon's match sponsors THE WHITBREAD BEER COMPANY and JJ KELLY AND SONS LTD, and matchball sponsors THE STATION HOTEL, WOBURN.

THE WHITBREAD BEER COMPANY has had a long association with both Luton and Luton Town FC, with their head office now located in Capability Green.

They are proud to continue their relationship by jointly sponsoring today's game.

The Whitbread Beer Company have been supplying fine ales and lager for many years, and say they are already looking forward to a great season in 1995/96.

Luton-based construction firm JJ KELLY AND SONS LTD have been in the town for 30 years.

The company are regular contractors for the likes of Beazer Homes and Barretts, and are also regular supporters of Luton Town Football Club.

Our matchball sponsorship by THE STATION HOTEL, WOBURN, is very much a birthday celebration for owner Kevin Brewer and friend Dougie Watson.

Both are keen Luton supporters, and this afternoon's match falls in between their respective birthdays.

Kevin's wife Hlelen and two sons Warren and Dominic will be at the game, along with Dougie's son who is making the trip from Liverpool.

We trust they will have a very enjoyable family day out.

This afternoon's final game of the season heralds the start of a busy summer for the Commercial Department as this is the period of the year when we work feverishly to renew present sponsorships, cultivate new business associations, and look towards maintaining our present high standards set this season.

I would like to take this opportunity to thank all our sponsors who have supported us this season, and we look forward to seeing you again when the new campaign gets underway in August.

If you would like details of sponsorship and executive packages, please contact the Commercial Department on (01582) 411622.



ABOVE: Sergeant Yorke Casino sponsored our matchball for the game against Reading. General Manager Paul Armitage is pictured at the after-match presentation with Town players Marvin Johnson and Trevor Peake.

Antony's Tailor

OF LONDON

THE MOST ESTABLISHED AND RELIABLE TAILORS IN LUTON

DRESS HIRE
LADIES AND GENTS
BESPOKE TAILORING

12 DUNSTABLE ROAD, LUTON,
BEDS OPPOSITE MAIN POST OFFICE
TEL: (0582) 424687

LUTON Town can cater for everything from business breakfasts, lunches or dinners to birthday/ anniversary celebrations and wedding breakfasts.

We can help to plan events by either clients visiting the club or by making a private visit to the clients own premises.

We have a number of function suites available, from our boardroom, which is an exclusive setting for senior management meetings, to our adjacent suites which can cater for up to 100 or more delegates for conferences and seminars.

Our catering operation, which prides itself on a personal service, can provide quality refreshments to complement any occasion.

OFFICE OF
ELECTRICITY
REGULATION

IS YOUR ELECTRICITY SUPPLIER PLAYING THE GAME?

The Office of Electricity Regulation

- PROTECTS THE INTERESTS OF ELECTRICITY CUSTOMERS
- HELPS AND ADVISES ON DISPUTES WITH EASTERN ELECTRICITY

At home:
4th Floor, Waveney House, Handford Road,
Ipswich, Suffolk IP1 2BJ.
Telephone 01473 216101 Fax 01473 215838

And away:
The phone book or your electricity bill shows your nearest office.

SUPPORT THE HATTERS

But Join The Gunners - and be paid!

Come and see what your local Territorial Army Unit does

Phone (01582) 572032

201 Battery RA (V)
TA Centre
Marsh Road
Leagrave
Luton LU3 2RX.

TEAM STATISTICS 1994-95..... see page 35 for Division One table

Date	Opponents	F-A	Att	Pos	1	2	3	5	6	7	8	9	10	11	12	14	GK
Sat Aug 13	WEST BROMWICH ALBION	1-1	8,640	-	Sommer	James	Johnson	Greene	Peake	Telfer	OAKES	Dixon	Preece	(Houghton)	(Marshall)	(Linton)	Barber
Tue Aug 16	FULHAM CCC 1 (1)	1-1	3,287	-	Sommer	James	Johnson	Greene	Peake	Telfer	OAKES	Dixon	Preece	(Houghton)	(Marshall)	(Linton)	Barber
Sat Aug 20	Derby County	0-0	13,060	14	Sommer	James	Johnson	Greene	Peake	Telfer	Marshall	Dixon	Preece	Hughes	Skelton	Houghton	Barber
Tue Aug 23	Fulham CCC 1 (2)	1-1	5,134	-	Sommer	James	Johnson	Greene	Peake	Telfer	Marshall	Dixon	Preece	Hughes	(Oakes)	(Skelton)	Barber
Sat Aug 27	SOUTHEND	2-2	5,918	16	Sommer	(James)	Johnson	Greene	Peake	Telfer	(Marshall)	HARTSON	Preece	HUGHES	(Thomas)	(Dixon)	Barber
Tue Aug 30	Tranmere Rovers	2-4	5,480	20	Sommer	James	Johnson	Greene	Peake	Telfer	Oakes	HARTSON	Preece	HUGHES	Thomas	(Marshall)	Barber
Sat Sep 3	Port Vale	1-0	8,541	15	Sommer	(James)	Johnson	Greene	Peake	Telfer	MARSHALL	Dixon	(Preece)	Oakes	(Thomas)	(Woodsford)	Barber
Sat Sep 10	BURNLEY	0-1	6,911	18	Sommer	James	Johnson	(Greene)	Peake	Telfer	Marshall	Hartson	Preece	Oakes	(Thomas)	(Dixon)	Barber
Tue Sep 13	BOLTON WANDERERS	0-3	5,764	20	Sommer	James	Johnson	(Thomas)	Peake	Telfer	Oakes	Dixon	Preece	(Hartson)	(Linton)	(Marshall)	Barber
Sat Sep 17	Watford	4-2	8,880	16	Sommer	James	Johnson	Thomas	Peake	Telfer	OAKES	DIXON	Preece	Marshall	Hartson	Linton	Barber
Sat Sep 24	Millwall	0-0	7,150	16	Sommer	James	Johnson	Thomas	Peake	Telfer	Oakes	(Dixon)	Preece	Marshall	(Hartson)	Skelton	Barber
Sat Oct 1	BRISTOL CITY	0-1	6,633	20	Sommer	James	Johnson	(Thomas)	Peake	Telfer	Oakes	(Dixon)	Preece	Marshall	(Hartson)	(Hughes)	Barber
Sun Oct 9	Stoke City	2-1	11,712	18	Sommer	James	Johnson	Thomas	Peake	Telfer	Hughes	Hartson	(PREECE)	MARSHALL	(Oakes)	Williams	Barber
Sat Oct 15	MIDDLESBROUGH	5-1	8,412	11	Sommer	James	Johnson	Thomas	Peake	Telfer	Hughes	HARTSON	(PREECE)	MARSHALL 2	(Oakes)	Dixon	Barber
Sat Oct 22	Sheffield United	3-1	13,317	7	Sommer	JAMES	Johnson	Thomas	Peake	Telfer	Hughes	DIXON	(Preece)	Marshall	(Oakes)	Thorpe	Barber
Sat Oct 29	BARNSELY	0-1	7,212	10	Sommer	James	Johnson	Thomas	Peake	Telfer	Hughes	Hartson	Preece	(Marshall)	(Oakes)	(Dixon)	Barber
Tue Nov 1	GRIMSBY TOWN	1-2	5,839	13	Sommer	James	Johnson	Thomas	Peake	Telfer	(Hughes)	Hartson	Preece	Marshall	(OAKES)	Dixon	Barber
Sat Nov 5	Wolverhampton Wanderers	3-2	26,749	8	Sommer	James	Johnson	Thomas	Peake	Telfer	Oakes	(DIXON)	PREECE	MARSHALL	(Hartson)	Thorpe	Barber
Sat Nov 12	Oldham Athletic	0-0	7,907	8	Sommer	James	Johnson	Thomas	Peake	Telfer	Oakes	Dixon	Preece	(Marshall)	(Hartson)	Thorpe	Barber
Sat Nov 19	PORTSMOUTH	2-0	8,214	8	Sommer	James	Johnson	Thomas	Peake	Telfer	Oakes	DIXON	PREECE	(Marshall)	(Thorpe)	Hartson	Barber
Sat Nov 26	Swindon Town	2-1	9,455	5	Sommer	James	Johnson	Thomas	Peake	Telfer	OAKES	(DIXON)	Preece	Linton	Woodsford	(Hartson)	Barber
Sat Dec 3	SHEFFIELD UNITED	3-6	8,516	8	Sommer	James	JOHNSON	Thomas	Peake	Telfer	Oakes	Dixon	(Preece)	(Linton)	(HARTSON)	(Marshall)	Barber
Sun Dec 11	DERBY COUNTY	0-0	6,400	9	Sommer	James	Johnson	Thomas	Peake	Telfer	Oakes	(Dixon)	Preece	(Allen)	(Hartson)	(Marshall)	Barber
Sun Dec 18	West Bromwich Albion	0-1	14,392	12	Sommer	(James)	Johnson	Thomas	Peake	Telfer	Oakes	Dixon	Preece	Marshall	(Hartson)	Skelton	Barber
Mon Dec 26	Reading	0-0	11,623	12	Sommer	James	Johnson	Thomas	Peake	Telfer	(Allen)	(Dixon)	Preece	Marshall	(Hartson)	(Oakes)	Davis
Tue Dec 27	SUNDERLAND	3-0	8,953	9	Sommer	James	Johnson	Thomas	Peake	Telfer	OAKES 2	HARTSON	(Preece)	(Marshall)	(Skelton)	(Williams)	Davis
Sat Dec 31	Notts County	1-0	6,249	8	Sommer	James	Johnson	Thomas	Peake	Telfer	Oakes	Hartson	Preece	(Marshall)	Skelton	(Adcock)	Davis
Mon Jan 2	CHARLTON ATHLETIC	0-1	7,642	8	Sommer	(James)	Johnson	Thomas	Peake	Telfer	Oakes	Hartson	Allen	Marshall	Skelton	(Adcock)	Davis
Sat Jan 7	BRISTOL ROVERS FAC 3	1-1	7,571	-	Sommer	James	Johnson	Thomas	Peake	Telfer	Oakes	HARTSON	Preece	(Marshall)	Williams	(Adcock)	Davis
Sat Jan 14	Barnsley	1-3	4,808	11	Sommer	James	Johnson	Thomas	Peake	Telfer	Oakes	DIXON	(Harvey)	Marshall	(Skelton)	Woodsford	Davis
Wed Jan 18	Bristol Rovers FA3	1-0	8,213	-	Sommer	Oakes	Johnson	Thomas	Peake	Telfer	Chenery	Dixon	Preece	MARSHALL	Skelton	Woodsford	Davis
Sat Jan 28	SOUTHAMPTON FAC 4	1-1	9,938	-	Sommer	Oakes	Johnson	Thomas	Peake	Telfer	BIGGINS	(Dixon)	Preece	Marshall	Skelton	(Williams)	Davis
Sat Feb 4	OLDHAM ATHLETIC	2-1	6,903	10	Sommer	James	Johnson	Thomas	Peake	Telfer	Oakes	(Dixon)	Biggins	MARSHALL 2	(Thorpe)	Harvey	Davis
Wed Feb 8	Southampton FAC4	0-6	15,075	-	Sommer	(James)	Johnson	Thomas	Peake	Telfer	Oakes	(Biggins)	Preece	Marshall	(Thorpe)	(Dixon)	Davis
Sat Feb 11	Grimsby Town	0-5	4,615	10	Sommer	James	Johnson	Thomas	Peake	Preece	Oakes	(Dixon)	(Biggins)	Marshall	(Telfer)	(Woodsford)	Davis
Sat Feb 18	SWINDON TOWN	3-0	6,595	10	Sommer	James	Johnson	Thomas	Peake	Telfer	Oakes	(Biggins)	Preece	(MARSHALL 2)	(Dixon)	(Woodsford)	Davis
Tue Feb 21	Portsmouth	2-3	7,363	10	Sommer	JAMES	Johnson	Thomas	Peake	Telfer	(Oakes)	Dixon	Preece	Marshall	(Harvey)	(Woodsford)	Davis
Sat Feb 25	Bristol City	2-2	7,939	10	Sommer	James	Johnson	Thomas	Peake	Telfer	OAKES 2	Dixon	(Preece)	Marshall	Biggins	(Williams)	Davis
Sat Mar 4	MILLWALL	1-1	6,864	10	Sommer	James	Johnson	Thomas	Peake	Telfer	Oakes	(Biggins)	Preece	MARSHALL	(Dixon)	(Matthews)	Davis
Tue Mar 7	PORT VALE	2-1	5,947	9	Sommer	James	Johnson	Thomas	Peake	Telfer	Oakes	(Biggins)	Preece	Marshall	(DIXON)	(Matthews)	Davis
Sat Mar 11	Southend United	0-3	4,558	11	Sommer	James	Johnson	Thomas	Peake	Telfer	Oakes	(Dixon)	Matthews	Marshall	(Biggins)	Harvey	Davis
Sat Mar 18	TRANMERE ROVERS	2-0	6,660	10	Sommer	JAMES	Johnson	Thomas	Peake	Telfer	Oakes	(BIGGINS)	Preece	Marshall	Dixon	(Matthews)	Davis
Tue Mar 21	Burnley	1-2	9,551	11	Sommer	James	Johnson	Thomas	Peake	Telfer	Matthews	Dixon	(Preece)	MARSHALL	(Harvey)	(Woodsford)	Davis
Sun Mar 26	WATFORD	1-1	7,984	11	Davis	James	Johnson	Harvey	Peake	Telfer	(Matthews)	Taylor	Preece	Marshall	(Thorpe)	Adcock	Marg'son
Tue Apr 4	WOLVERHAMPTON W	3-3	9,651	12	Davis	James	Johnson	Harvey	Peake	Telfer	Oakes	TAYLOR	Preece	(Marshall)	Matthews	(Woodsford)	Sommer
Sat Apr 8	NOTTS COUNTY	2-0	6,482	12	Davis	(James)	Johnson	Harvey	Peake	Telfer	OAKES	Taylor	Preece	(Marshall)	(Matthews)	(Linton)	Sommer
Tue Apr 11	Bolton Wanderers	0-0	13,619	11	Davis	(James)	Johnson	Harvey	Peake	Telfer	Oakes	Taylor	Preece	(Matthews)	(Marshall)	(Linton)	Sommer
Sat Apr 15	Sunderland	1-1	17,292	11	Davis	(Linton)	Johnson	Harvey	Peake	Telfer	Oakes	TAYLOR	Preece	(Matthews)	(Greene)	(Marshall)	Sommer
Mon Apr 17	READING	0-1	8,717	11	Davis	(James)	Johnson	Harvey	Peake	Telfer	Oakes	Taylor	Preece	Marshall	(Matthews)	(Linton)	Sommer
Sat Apr 22	Charlton Athletic	0-1	10,867	12	Davis	Greene	Johnson	Thomas	Peake	Telfer	Oakes	Taylor	Preece	(Matthews)	(Marshall)	(Harvey)	Sommer
Sun Apr 30	Middlesbrough	1-2	23,903	16	Davis	Linton	Johnson	Harvey	Peake	Telfer	(Oakes)	TAYLOR	Preece	Marshall	(Thorpe)	Thomas	Marg'son
Sun May 7	STOKE CITY																

CCC = Coca-Cola Cup
FAC = FA Cup

I AM wishing to dispose of my late father's programme collection, consisting of several hundred Luton items from the late 1960s to the present day. Please send a large SAE for a complete list to: David Frost, c/o 47 College Road, Alsager, Stoke on Trent, ST7 2SS.



Matchday music is supplied by
HMV Stores, 98 Arndale Centre
(Tel: 35290) and
73 The Mall (Tel: 21368), Luton.

PLAYER (figure in bracket = sub app.)	LEAGUE APPS	LEAGUE GOALS	CUP APPS	CUP GOALS	PLAYER (Figure in bracket = sub app.)	LEAGUE APPS	LEAGUE GOALS	CUP APPS	CUP GOALS
Juergen SOMMER	37	-	6	-	John HARTSON	11 (9)	5	1	1
Julian JAMES	42	3	4	-	Gary WADDOCK	39	-	4	-
Marvin JOHNSON	45	1	6	-	Jamie WOODSFORD	(6)	-	-	-
Aaron SKELTON	3 (2)	-	(1)	-	Tony THORPE	(4)	-	(1)	-
David GREENE	7 (1)	-	2	-	Paul ALLEN	4	-	-	-
Trevor PEAKE	45	-	6	-	Martin WILLIAMS	(2)	-	(1)	-
Paul TELFER	44 (1)	9	6	-	Tony ADCOCK	(2)	-	(1)	-
Scott OAKES	36 (6)	9	5 (1)	1	Richard HARVEY	8 (3)	-	-	-
Kerry DIXON	23 (5)	7	4 (1)	-	Ben CHENERY	-	-	1	-
David PREECE	41	4	6	-	Wayne BIGGINS	6 (1)	1	2	1
Scott HOUGHTON	1	-	1	-	Rob MATTHEWS	6 (5)	-	-	-
Dwight MARSHALL	36 (8)	11	5 (1)	2	Kelvin DAVIS	8	-	-	-
Des LINTON	5 (5)	-	1 (1)	-	John TAYLOR	8	3	-	-
Ceri HUGHES	8 (1)	2	2	-					
Mitchell THOMAS	32 (2)	-	4	-	Own goal		4		



TODAY'S OFFICIALS

Today's referee is

GRAHAM POOLEY, from
Bishop Stortford, Herts.

Mr Pooley refereed our game against West Brom on the opening day of the season, and he has since taken charge of the home matches against Tranmere Rovers and Wolves.



M.J. Perry



A.
Schneider

TODAY'S OTHER DIV ONE MATCHES

Bolton Wanderers v Burnley

Millwall v Bristol City

Port Vale v Notts County

Portsmouth v Oldham Athletic

Reading v Charlton Athletic

Southend United v Barnsley

Sunderland v West Brom

Tranmere Rovers v Middlesbrough

Watford v Derby County

Wolves v Swindon Town

TEAM CHECK

LUTON TOWN

Manager: David Pleat

Kelvin DAVIS

Des LINTON

Marvin JOHNSON

Gary WADDOCK

Richard HARVEY

Trevor PEAKE

Paul TELFER

Scott OAKES

John TAYLOR

David PREECE

Dwight MARSHALL

STOKE CITY

Manager: Lou Macari

1 Ron SINCLAIR

2 John BUTLER

3 Larus SIGURDSSON

4 Ian CRANSON

5 Vince OVERSON

6 Toddy ORLYGSSON

7 Ray WALLACE

8 Kevin KEEN

9 Paul PESCHISOLDO

10 Kevin SCOTT

11 Nigel GLEGHORN

12

14

GK



Plowmans
of
Luton

AND
LUTON
TOWN

—
THE
PERFECT
MATCH

You'll do a great deal better with us!

Open 7 Days

Vauxhall Main Dealers, 15 Hitchin Road, Luton.

Tel: 454666