

ENDSLEIGH INSURANCE LEAGUE DIVISION ONE

v READING

**A VERY HAPPY EASTER
TO ALL SUPPORTERS**



**DAVID
PLEAT**

on today's
big game
- pages 2 & 3

**PROFILE OF TODAY'S
DIVISION ONE VISITORS**

- see pages 11 to 13 for full details

MONDAY, APRIL 17, 1995, 3PM

MATCH SPONSORS

Bervale Mead Insurance Brokers

F & T Goodwin Limited

MATCHBALL SPONSORS

Sergeant Yorke Casino



Sponsors of
Luton Town F.C.



**LUTON TOWN
FOOTBALL CLUB**

LUTON TOWN

Official matchday programme £1.50



PLEAT'S PERSPECTIVE

GREAT DELIGHT IN OUR BOLTON PERFORMANCE

A WARM welcome to Reading FC promoted last season and the proud surprise package of this season's competition. I am delighted that Jimmy Quinn, a player I signed (for Leicester City) and Mick Gooding have kept the show on the road since Mark McGhee defected to Leicester.

The staff have built up a very competent footballing side who have regained the confidence to play with composure as opposed to huffing and puffing with hit and miss direct tactics.

These notes are written prior to the Sunderland away game, and it will be fascinating to see how many supporters were able to afford another long trip away-day. At Bolton, the support was magnificent and

we gained great delight in playing comfortably and attractively in a good football match.

Not one of the top group of teams has been able to get the double over us this season.

If we could have taken 20 per cent of our scoring opportunities at Bolton, we would have severely dented their championship hopes and embarrassed their goals against column.

To be fair to our hosts it was their fourth game in 10 days and fatigue could be a handicap to them as they strive for top spot.

The scouts were out in force. Management from Glasgow Rangers, Blackburn, Liverpool, Coventry, Middlesbrough, Tranmere and Oldham were all weighing up the abilities of the likes of McAteer and Stubbs.

Stubbs was outstanding, but lucky to stay on the field after receiving an early yellow card but then only a lecture when he held John Taylor back.

I was pleased with John Taylor's contribution as the lone striker in his first away game. It is not an easy role to play.

We have to break from midfield with good passing, and in this respect the trio in the centre of Oakes, Waddock and Preece had their fair share of forward movement. I am sure the scouts went away having enjoyed the game.

There will few games as good as the 3-3 Wolves game, which was titanic compared to the rather easy, on reflection, but insipid win against Notts County. One always tends to be a little bit selfish and greedy, but we should have easily doubled our two goal tally.

Many supporters will be aware of a new fair play incentive which the Football League have initiated. It is a splendid con-

.....LISTEN TO THE MANAGER'S VERDICT ON TODAY'S BIG GAME ON LUTON TOWN CLUBCALL 0891 121 123



SUBSTITUTE Dwight Marshall attempts to make a late breakthrough at Bolton.

cept which we support 100 per cent, but they have made a cruel mistake with their allocation of the points system.

Fair play should be for just that, and the teams with the least cautions and sending offs should win the day.

However, they have coupled the discipline with goals scored, so that a team like Sheffield United with a poor disciplinary record finds itself in the running for the award because they have scored a good number of goals.

Around this time we are inundated with clubs, leagues and organisations requesting players and management to attend fetes, galas, presentations and dinners. It is not humanly possible to satisfy even a tiny proportion of requests.

We cope with as many as we possibly can, but one has to remember that come the end of May and June the players often have their break at some sunshine spot, or spend time back home with their families.

We apologise to the many, many clubs who have written to us, but I hope they will understand that it is easier to provide players during the winter months than in the summer.

Just to remind you of a few dates for your

diary... Our last home game with Stoke is on Sunday, May 7..... our Youth team go to France to play in the Lyon Tournament in June, a trip which we are delighted to say has been sponsored by Murtagh Demolition, and they will be our welcome guests..... Our new YTS boys start on July 5..... Training will probably start around July 12..... The new season starts on August 12, and I am hoping to announce an attractive home friendly for August 7.

Touch wood the only suspensions gathered in the last two weeks have both been in the reserves, in preventing goalscoring opportunities..... Ben Chenery cannot be considered for the Charlton Athletic away game, and Juergen Sommer will miss the Middlesbrough trip.

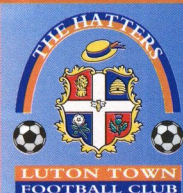
Martyn Margetson will continue on loan with us for the moment and we are all hoping that Fred Barber will be with us today, for the first time since coming out of hospital after his bad shoulder injury.

John Dreyer was a surprise sub for Bolton against us last Tuesday evening..... Could be an introduction this afternoon for a further two younger players, so please give them your full support.

Since losing to Charlton Athletic on January 2, we have turned our home form around but misfired away from Luton. We must be determined this afternoon and against Stoke to finish on a high note.

If the plans for the future come to fruition then I am sure the players here under contract will reap the benefits.

Enjoy the game.



Luton Town Football Club
Kenilworth Road Stadium,
1, Maple Road,
Luton, Beds LU4 8AW.
Tel: (01582) 411622
Fax: (01582) 405070
Ticket Office: (01582) 416976
Clubcall: 0891 121 123

Chairman and Managing Director:
David Kohler Bsc (Hons)
ARICS

Directors:
C.S. Bassett, C.T.F. Green,
N.S. Terry

Vice Presidents:
R.L. Banks, P. Collins
C. Bygraves, R. Safranek,
D. Ludlow, P. Ireton.

Secretary:
Cherry Newbery

Manager:
David Pleat

Coaches:
John Moore, Wayne Turner,
Terry Westley

Physiotherapist:
Clive Goodyear

Consultant Physio:
John Sheridan

Youth Development Officer:
Paul Lowe

Scouting:
Les Shannon

Community Football Officer:
Colwyn Rowe

Financial Administrator:
Bob Bird

Commercial Manager:
Kathy Leather

Safety Manager:
Geoff Lovell

Catering Manager:
Peter Saul

Medical Officer:
Dr Bill Berry

Club Dentist:
A. Chris BDS (Syd)

HONOURS

Littlewoods Cup winners 1987-88

FA Cup finalists 1958-59

Littlewoods Cup finalists 1988-89

Simod Cup finalists 1987-88

Champions - Division Three (S) 1936-37

Champions - Division Four 1967-68

Champions - Division Two 1981-82

3

DIVISION ONE NEWS

Fair play incentive for league clubs

A FOOTBALL Association initiative aimed at rewarding attractive play and discouraging misconduct on the field will carry a £30,000 incentive for clubs across the three divisions of The Football League this season.

Introduced last year, the FA Fair Play Awards scheme has now been expanded to include the 70 teams who make up The Football League.

The FA Fair Play Awards incorporate the principle of a fair play league - reflecting the conduct of players - and combine this with the goalscoring aspect of a team's performance.

This system mirrors the current arrangements in operation in The Football League, where goals scored are used to separate teams level on points in the table.

Points will be awarded on a debit and credit basis, with the awards going to the club in each division who finishes with the highest credit balance.

The divisional winners each collect £10,000, with sides being awarded two points for goals scored at home, four points for goals scored away, but losing one point for each player booked, and two points for each player sent off.

FA Chief Executive Graham Kelly said: "The game would be nothing without a determined will to play within the rules.

"Winning is important and very much what football is all about, but playing with pride and dignity is the real spirit of the game.

"We must all strive to keep the game clean, because a clean game is a healthy game."

Only regular Endsleigh League matches will be taken into consideration, to ensure that clubs' playing records are based on an equal number of games.

As at the end of March, the Hatters were lying fourth out of the Division One clubs, with 152 points from goals scored, and only 37 deducted from just 35 league bookings and one sending off. Wolves, Sheffield United and Bolton were the top three.

OVER £2.6 million was generated in gate receipts from the Coca-Cola Cup Final between Bolton and Liverpool, with each club banking around £650,000.

It was a new record for takings at a Football League event. The match also attracted a peak TV audience of 9.5 million people, with a 44% share of the available audience.

HERTFORDSHIRE'S 4x4 CENTRE

The finest selection of quality 4 x 4 vehicles

RANGE ROVER

(L) VOGUE 3.9SE. 18,000 miles f.s.h.	£27,500
(K) VOGUE 4.2LSE. Ardennes, 18,000 miles, f.s.h.	£25,750
(H) VOGUE SE. Ardennes/Grey hide, f.s.h.	£17,250
(H) VOGUE SE. Westminster grey, 47,000 miles, f.s.h.	£16,750
(E) VOGUE Auto, White, grey int., low miles, cherished car.	£9,250

LANDROVER DISCOVERY

(K) V815 Auto 5-door. Cardiga, 1 owner, FSH	£16,950
(K) V81 S Cat. 5 door. Artic, 1 owner, 10,000 miles, f.s.h.	£16,795
(K) TDi 5-door. Aegean Blue, 1 owner, FSH	£15,950
(H) TDi 5 door. White, 7 seats, bull bar, alloys and electrics	£13,750

TOYOTA

(K) TRACKER 2.4 TDi LWB. Met Blue/silver, 22,000 miles, fsh.	£15,950
--	---------

DAIHATSU

(K) FOURTRAK TDX. Green/silver, 24,000 miles, f.s.h.	£12,795
(K) SPORTRAK ELXi. Electric blue/silver, 22,000 miles, FSH.	£9,850

SUZUKI

(L) J1X DAKAR Hard Top, White, 1 owner, 15K f.s.h.	£10,750
(L) QJLX SEI. Grey, 15,000 miles, one owner, f.s.h.	£10,695
(K) LONG WHEEL BASE SEI 16 valve. Mica red, f.s.h.	£10,695

01462 440844

Willian Road, Hitchin, Herts

OPEN 7 DAYS A WEEK

FRONT COVER: David Preece, Scott Oakes and Dwight Marshall celebrate Oakes' successful penalty which gave the Hatters a 2-0 win over Notts County at Kenilworth Road last Saturday. There's more action on pages 32 and 33.

Luton Town FC Matchday Programme
Editor: Simon Oxley. Tele: 0582 411622
Pictures: Andy Handley
Design and print:
McLeod Warner, Luton. Tele: 0582 38389



TicketLine

The exclusive ticket booking service for fans of Endsleigh League First Division clubs

0645 10 10 10

24 HOURS A DAY, 7 DAYS A WEEK

ALL CALLS CHARGED AT LOCAL RATE



Universal Salvage Auctions

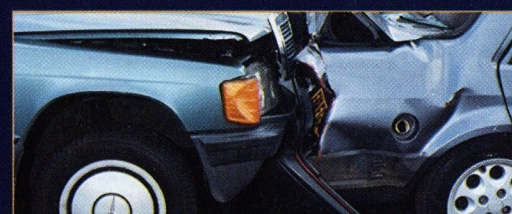
SELL OVER 1000 REPAIRABLE/BREAKERS/STOLEN AND RECOVERED VEHICLES AT WEEKLY AUCTIONS

CORBY - NORTHANTS

DENNY - SCOTLAND

SANDTOFT - S.YORKS

WESTBURY - WILTS



Your nearest auction is every Wednesday at...

DUNSTABLE ROAD REDBOURN, HERTS

For further information
01234 766500



The best service on a plate.

As one of the largest independent vehicle rental companies in the U.K., you can always expect a little extra from Kenning.

AN EXTENSIVE RANGE OF:

- CARS, VANS & TRUCKS.
- FULLY INCLUSIVE RATES WITH UNLIMITED MILEAGE.
- 24 HOUR NATIONAL HOTLINE HELPLINE.
- AA/RAC COVER.

KENNING

CAR AND VAN RENTAL

LUTON 0582 455333

24-34 Crawley Road.



- ◆ **HOURLY SPORTS NEWS**
- ◆ **FRIDAY SPORTS PREVIEW** (7pm)
- ◆ **SATURDAY SPORTSOUND** (2pm-6pm)
- ◆ **MIDWEEK MATCH COVERAGE** (7.05pm - 10pm)

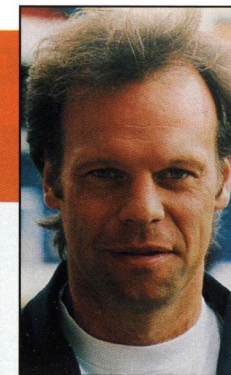
NEWS, SPORT & MUSIC
for BEDS, HERTS & BUCKS

▶ 103.8 FM STEREO ▶ 630 kHz AM



LEADING THE LINE

by TREVOR PEAKE



MARVIN Johnson (right) joins the attack at Bolton with John Taylor looking on, as Wanderers' Alan Stubbs clears for the home side.

I AM writing these notes in the aftermath of our battling performance at Bolton, which was one of the most pleasing results we have had for a long time.

That may sound a bit negative as it was 0-0, but Bolton, albeit in the middle of a hectic finish to the season, have demonstrated many times in this campaign what they are capable of and we all saw their attacking capabilities when they won here in September.

I must admit it was an anxious finish, and when Alan Thompson's header glanced the post late on it looked to be spinning back into the net, but we had deserved a point and the clean sheet was a bonus for the defence.

The lads in front of us also played their part in what was a fine team performance to combat their runners from midfield and two fine wide players. Bolton still look a good bet for the championship though, and it will be interesting to compare them with Middlesbrough when we go to Ayresome Park in a couple of weeks time.

These games are very good experience for our younger players, and gives us all something to play for in our mid-table position. After the shaky start to the season I'm sure we would

have settled for that.

It gives us the chance to look at new players, try one or two ideas out, and we know there is stiff competition for places.

David Greene and Paul McLaren are knocking on the door as far as the defence is concerned, but I'm hoping to see the season through for what would be the first time in my career.

Hopefully all went well at Sunderland on Saturday, and we managed to keep Phil Gray and company quiet. On the subject of former team-mates, and returning to Bolton, it was nice to see John Dreyer at Burnden Park where he may get the opportunity of some first-team football on loan from Stoke, after a tough time at the Victoria Ground.

Now today we welcome Reading, and will hope to continue our good home form. We continued the good run which has built up since New Year with the 2-0 win over Notts County, but now face a side needing points for another reason.

Hopefully we can put a spanner in Reading's works as we did to Bolton. Then it's on the road again, before the last game here against Stoke.

We look forward to seeing you then for hopefully a rousing finale.

Luton Town FC are delighted to link up with LEGAL AND GENERAL, to offer a full and comprehensive financial service to supporters of the club.

Anyone interested in receiving Legal and General's expert financial and insurance advice should contact:

Warren Miskin or Barry Shaw on 081 882 0249, quoting reference LU1.

Trevor Peake

AROUND THE TOWN



ABOVE: Town chairman David Kohler hands out tickets for this afternoon's game to fans who made the long trip north to Bolton.

Reward for Town's travelling faithful

LUTON'S travelling fans received a surprise present from Town chairman David Kohler at last Tuesday's match at Bolton.

Mr Kohler, and fellow directors Chris Green and Cliff Bassett, handed out free tickets to this afternoon's game against Reading to all the fans who had made the long journey to Burnden Park.

"I think they all appreciated the gesture, and we certainly appreciate their support," said Mr Kohler.

"It can be a tiring and expensive business following a team

around the country, and we have had some long trips in the final weeks of the season, with midweek matches at Burnley and Bolton."

THE Loyal Luton Supporters Club are holding their presentation evening on Sunday, May 7, (following the final game of the season against Stoke City), at Mick Harford's Rumours club, from 7pm onwards.

Tickets cost £5, and are available from Kevin Lennon or Tom Shanley. The Loyal Luton Supporters Club meet in the Hatters Bar before and after home matches.

Fans' presentation evening

THE Luton Town Supporters Club are holding their annual Player of the Year presentation evening on Sunday, April 23, at the Kent Athletic Club, Tenby Drive, Luton, from 8pm.

Tickets are £4 each, for members and non-members, and as in past years Town players and staff will be present.

Tickets are available from the LTSC Kiosk in Kenilworth Road before and after any first team home game, or by contacting Adrian Shotbolt (01582) 604079 or Karen Marshall (01525) 385461.

Boro clash is all-ticket for Town fans



DWIGHT Marshall scored twice in our 5-1 win over Boro in October.

LUTON Town will be a part of history when they play at Middlesbrough later this month.

It will be the last Football League fixture to be played at Ayresome Park (subject to play-offs), and the game has been switched to Sunday, April 30, from Saturday, April 29.

The game is to be televised live in the North-East on Tyne-Tees, while the local police were also keen for the high-profile fixture to be switched to Sunday.

Middlesbrough are moving to a new ground in the summer and are aiming to christen it in the Premiership.

Against the Hatters they will also be keen to avenge October's 5-1 hammering at Kenilworth Road.

The match at Ayresome Park is all-ticket for Town fans, and only a limited number of tickets are available.

See page 9 (right) for full details.



LUTON TOWN TICKET OFFICE NEWS

Charlton Athletic v Luton Town

ENDSLEIGH INSURANCE DIVISION ONE

Saturday, April 22, 1995, kick-off 3pm

Pay on the day only at Charlton. Seating only: £10 for adults and £5 for juniors and senior citizens. (The ticket office will be open from 10-11.30am for the sale of other match tickets).

Middlesbrough v Luton Town

ENDSLEIGH INSURANCE DIVISION ONE

Sunday, April 30, 1995, kick-off 3pm

Please note change of date for this fixture.

This match is an ALL TICKET match for Luton supporters, with no tickets available on the day at Middlesbrough.

Luton have been allocated a limited amount of tickets, seats only, priced at £11 for adults and £7 for juniors and senior citizens.

Tickets can be purchased, one per member (subject to availability) until Friday, April 28 at 4pm. (The ticket office will be open on Saturday, April 29, from 9 to 11am for the sale of other match tickets).

Luton Town v Stoke City

ENDSLEIGH INSURANCE DIVISION ONE

Sunday, May 7, 1995, kick-off 3pm

Please note change of date for this fixture.

Tickets for this match are now on sale at the discounted price. Normal guesting facilities apply.

Ticket Office opening hours

Monday to Friday: 10am to 4pm

Saturday (match days): 9am to 3pm and 4.45 to 5.15pm

Saturdays (non match days): Subject to change. Please contact the ticket office

For bookings, membership and enquiries, ring the Ticket Office direct on (0582) 416976. Supporters wishing to order by credit card can do so by using the 24-hour Credit Card Hotline on (0582) 30748.

Travelling to...

Charlton Athletic

Address:

The Valley, Floyd Road, Charlton, London, SE7 8BL. Tel: (081) 293 4567.

Follow City signs from A1/M1, then signs for Shoreditch and Whitechapel to A13. Follow Tilbury signs and use Blackwall Tunnel to A102M. Branch left after one mile and turn left at T-junction into A206. Turn right half a mile into Charlton Church Lane, then left into Flod Road.

Middlesbrough

Address:

Ayresome Park, Middlesbrough, Cleveland, TS1 4PB. Tel: (0642) 819659.

Take M1 north, M18 to join A1, or take A1 north. From A1 take A19 to junction with A1130 to join A66 (1 mile), 4th exit at roundabout (1 mile) into Heywood Street, and then left into Ayresome Street at end.

Directions courtesy of Automobile Association

The Bobbers Travel Club

organise coach trips to Luton away matches.

To book a place on the coaches, which pick up from a variety of points in Luton and Mid Beds, visit the club's ticket kiosk in the Kenilworth Road turnstiles, and see Travel Co-ordinator Paul Deason before any Saturday first-team home match between 2.15 and 2.45pm.

You can also telephone Paul on Bedford (0234) 750996 - after 6pm.



READING 1994/95

SPOTLIGHT ON TODAY'S VISITORS

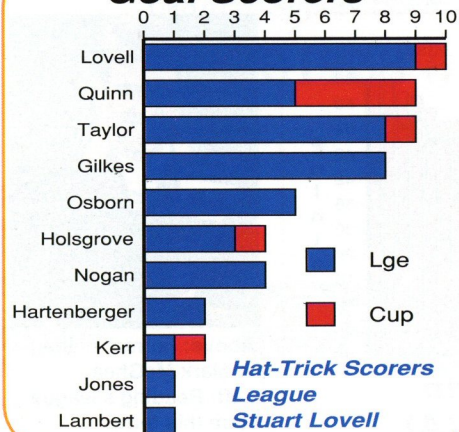


Back row: l to r: Phil Holder (coach), Mick Murphy, Jeff Hopkins, Stuart Lovell, Uwe Hartenberger, Michael Thorp, Scott Taylor, Paul Turner (physio).

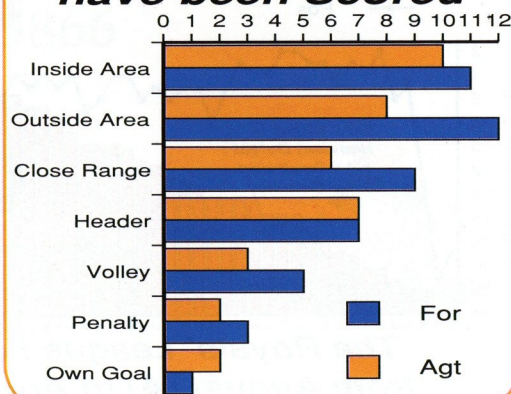
Middle row: Jimmy Quinn (joint manager), Simon Osborn, Andy Bernal, Phil Parkinson, Shaka Hislop, Simon Sheppard, Michael Gilkes, Keith McPherson, Paul Holsgrove, Mick Gooding (joint manager).

Front row: Lea Barkus, Lee Nogan, Dylan Kerr, Dariusz Wdowczyk, Adrian Williams (club captain), James Lambert, Tom Jones, Alan Carey.

Goal Scorers



How the Goals have been Scored



VISITORS ON PARADE

SHAKA HISLOP - Born in London, but brought up in Trinidad, and spotted playing for Howard University in Washington, USA. Made his Reading debut in September 1992, and was an ever-present in last season's championship team.

SIMON SHEPPARD - Signed on a free transfer from Watford in September 1994. Former England schoolboy and youth international.

ANDY BERNAL - Australian international currently in his second spell in English football after playing for Ipswich in the late 1980s. Signed for the Royals in July 1994 after five years with Sydney Olympic.

JEFF HOPKINS - Welsh international defender who joined Reading as a free agent from Crystal Palace after a brief spell with Bristol Rovers at the end of the 1991-92 season.

DYLAN KERR - Born in Malta, this skilful, attacking left-back was a £75,000 signing from Leeds in July 1993. Joined Leeds from South African club Arcadia Shepherds in 1988 and was understudy to Tony Dorigo. Voted Reading player of the year in May 1994.

KEITH MCPHERSON - Former West Ham and Northampton defender who moved to Elm Park at the start of the 1990-91 season.

RAY RANSON - Formerly with Manchester City, Birmingham and Newcastle, playing with ex-Reading boss Mark McGhee at the latter.

DARIUSZ WDOWCZYK - Polish defender who has captained his country. Joined Reading from Glasgow Celtic.

ADRIAN WILLIAMS - Reading-born centre-back or midfielder who has made the breakthrough into international football with Wales - his father being Welsh. Trained by a number of Premiership clubs, but signed two-year contract with Reading last summer.

LEA BARKUS - Injuries have put the brakes on the progress of the young midfielder who made his debut in March 1992.

DAVID BASS - Another to come through the youth ranks at Elm Park.

PAUL HOLSGROVE - Joined Reading on a free transfer from Millwall in August 1994. Had played with Heracles in Holland before his move to the Den, which followed a spell at Luton for whom he made two appearances.

TOM JONES - Moved to Elm Park in July 1992 in a part-exchange deal which took Reading striker Craig Maskell to neighbours Swindon Town. Formerly with Chelsea and Aberdeen.

SIMON OSBORN - A £90,000 buy from Crystal Palace in August 1994, having made his senior debut aged just 17.

PHIL PARKINSON - Arrived from Bury in July 1992 for £37,500, after starting his career at Southampton.

SCOTT TAYLOR - Joined Reading from school, and can play in midfield or at full back.

ALAN CAREY - Highly-rated young striker, raised in the Republic of Ireland.

MICHAEL GILKES - Reading's matchwinner in the 1988 Simod Cup Final against Luton, and one of the fastest men in the league.

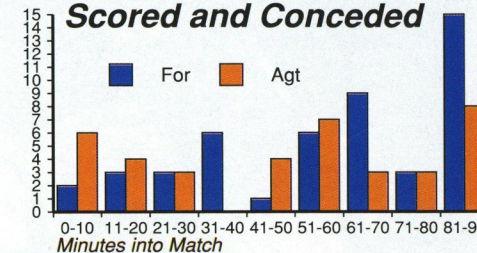
UWE HARTENBERGER - German striker who joined Reading from Bayer Uerdingen in September 1993 for £100,000.

JAMES LAMBERT - Skilful youngster who trained with French giants Monaco after a successful introduction to senior football.

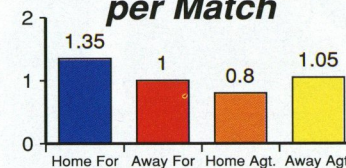
STUART LOVELL - Australian born, but brought up in the Reading area, and has struck up a fruitful partnership with Jimmy Quinn.

LEE NOGAN - Former Oxford and Watford striker who arrived at Elm Park in the New Year.

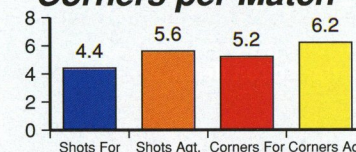
When Reading have Scored and Conceded



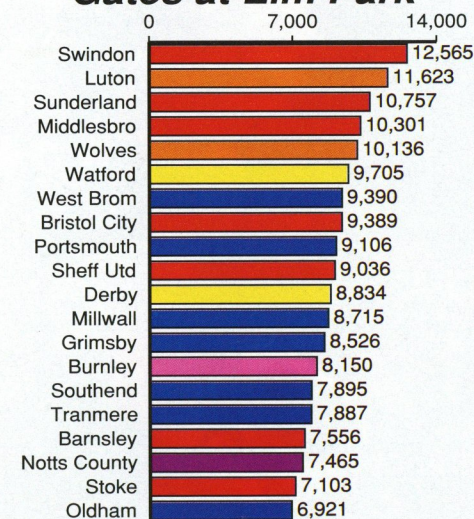
Average Goals per Match



Average Shots and Corners per Match

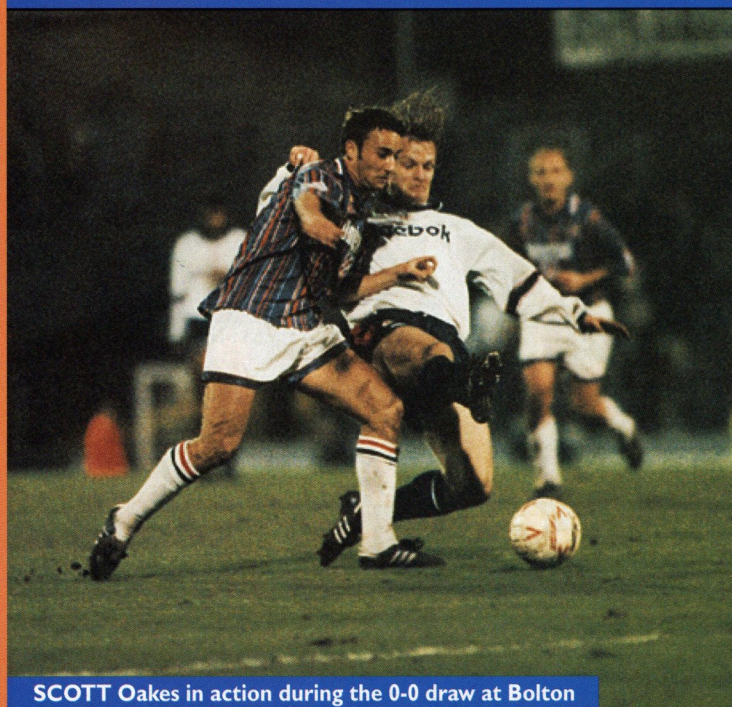


Gates at Elm Park



Graphics by FOOTBALL INFORMATION SERVICES. (Saturday's match not included).

BOLTON W v LUTON TOWN



SCOTT Oakes in action during the 0-0 draw at Bolton

From
Burnden Park

Date
April 11, 1995

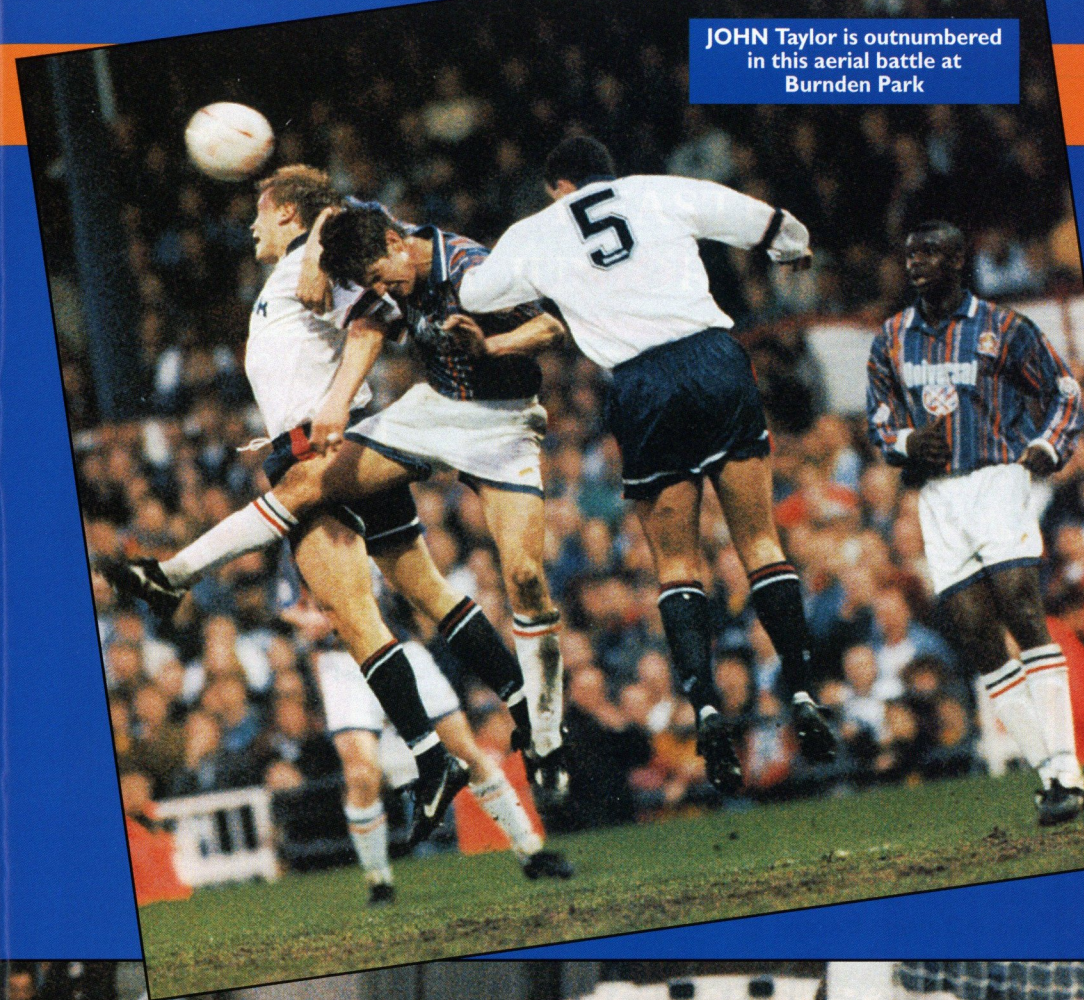
Result
Bolton
Wanderers 0
Luton Town 0

Attendance 13,619

Pictures by
ANDY HANDLEY



PAUL Telfer's progress is halted by the Bolton defence



JOHN Taylor is outnumbered in this aerial battle at Burnden Park



ROB Matthews fires in a cross during the first half

S U P P L I E D B Y



MITRE SPORTS INTERNATIONAL LTD.
BIRKBY, HUDDERSFIELD, HD1 5AJ. TEL: 0484 537488. FAX: 0484 530042

A GENESCO Company
G

Football wins the Pools every Saturday



Every time you enter Littlewoods, Vernons and Zettlers Pools or Littlewoods Spot the Ball you are helping the game at all levels. The Football Trust administers funds from the Pools, helping clubs to improve safety and comfort.

The Trust receives some £37 million every year, all of it coming directly or indirectly from Littlewoods, Vernons and Zettlers Pools and Littlewoods Spot the Ball.



LITTLEWOODS VERNONS ZETTERS
Making sure football wins the Pools each week



THE FOOTBALL TRUST
Helping the game

THE FOOTBALL TRUST, WALKDEN HOUSE, 10 MELTON STREET, LONDON NW1 2EB

Football also receives £8 million a year for the use of fixtures on coupons and Littlewoods, the game's biggest benefactor, is the first sponsor of the FA Cup.

Up and down the country, clubs are building new grounds, stands, seating and roofing. All depend on the support of the Football Trust and on the success of the football pools.



HARRY OF THE HATTERS

HAPPY EASTER TO ALL JUNIOR HATTERS

WE are planning a day trip to Thorpe Park for Junior Hatters and their families on Sunday, June 11, 1995.

It promises to be a great day out, with lots to do, and a chance to see all your Luton Town friends as we look forward to the new season.

The special price for this trip will be £11 for under 14s and £15 for over 14s - this price includes return coach fare from Luton and entrance to Thorpe Park, where there is a wide choice of rides for all ages.

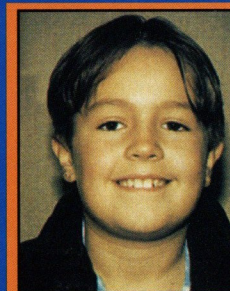
The coach will depart from the forecourt outside the Ticket Office in Kenilworth Road at 9am and meet back at the coach to depart Thorpe Park at 4.30pm. We should be back at Kenilworth Road for approximately 6pm.

If you have any queries regarding this trip, please contact the Ticket Office on Luton 416976.

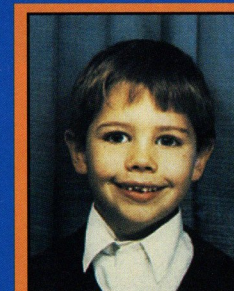


OUR Junior Hatters mascot for the match against Notts County, Steven Holmes, is pictured above with the team captains and match officials prior to kick-off, and left with Town players Des Linton and Julian James.

WELCOME TO TODAY'S MATCH DAY MASCOTS



Name:
John Carver
Date of birth: 29/4/85
School attended:
Woodlands Preparatory School, Brentwood
Local football team that you play for:
Attends Saturday football club, but not yet in team



Name:
James Burrige
Date of birth: 11/7/88
School attended:
Woodlands Preparatory School, Brentwood
Local football team that you play for:
Attends Saturday football club, but not yet in team

DON'T FORGET..... OUR FINAL GAME OF THE SEASON IS AGAINST STOKE CITY ON SUNDAY, MAY 7, 3PM

NOTTS County keeper Steve Cherry foils John Taylor and Dwight Marshall during Luton's 2-0 win over the Division's bottom club.
Picture: ANDY HANDLEY.



FANS BACK STADIUM PLAN



THOUSANDS of supporters signed letters backing the plans for a new stadium by junction 10 of the M1, before and after the game against Notts County.

LUTON Town fans have backed the plans to relocate the club to a multi-purpose indoor stadium, with moveable grass pitch, on a site by junction 10 of the M1 motorway.

Thousands of supporters signed letters to Luton Borough Council's planning department, and to Luton South MP Sir Graham Bright, whose constituency includes the junction 10 site.

More letters will be available to sign today, and Town chairman David Kohler says the fans have a major part to play.

"I have been very encouraged with the response thus far, and was delighted at the number of letters signed by fans," said Mr Kohler.

"Support from the public is vital if this scheme is to succeed, and I think people have realised what an excellent facility this would be, not only for Luton Town, but for the town of Luton."

The plans for the Kohlerdome are available for viewing at the club, and will be on display at Luton's Arndale Centre from next Monday.



KEMPSTON Colts Under 12s are the third winners of the club's Team of the Month Award - run in conjunction with the Loyal Luton Supporters Club.

And the team (pictured above) were our guests at the recent Division One match against Notts County. We will be making our final award in the next two weeks, with the winners receiving tickets for the final game of the season against Stoke City.

**Keep up-to-date with all the news from Kenilworth Road on
LUTON TOWN CLUBCALL 0891 121 123**

AUTOGRAPH

Tony Adcock



KENILWORTH SUITE

ABB Flexible Automation Ltd
Anachem Ltd
Mr G. Chamberlain
Corporate Coaching
Ken & Judi Craven
Fisher Frozen Foods Ltd
F & T Goodwin Ltd
Grosvenor Contracts
Handscombe Financial Services Ltd
R.W. Harvey & Son

R. Yates
Origination
Radley Shaw
Regal Litho
Steadfast Properties PLC
Wilton Contract and Vehicle Rental
Complete Contracts Ltd
The Home Counties Newspaper Group
Frank and Audrey Ludlow

CLUB 82

Bervale Mead Insurance Brokers
C.P. Contracts
J.S.B. Business Forms
Luton Cleaning Company
Nordic Supplies
Mr F.W. Pearce
The Unimec Group of Companies
Shorey Travel

TJ Aldridge Builders
Chris and Kim Clarke - The Wheatsheaf,
Flitwick
Space Display Systems
Techno Sign Ltd
Mr D.R. Kenningham
Carol and Stuart Kendall - The Blackbirds,
Flitwick

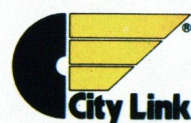
INDIVIDUAL BOX HOLDERS

Mr Alan Garner

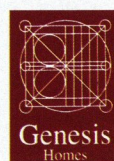
Mr Malcolm Eade

Mr Roger Eade

EXECUTIVE BOX HOLDERS



Murtagh Demolition



Cope Brothers (Printers) Limited



GET IN GEAR AT THE HATTERS SHOP....



NEW
range of
casual shirts

Prices from
£21 to £25

plus
- double-sided
colour motif
Mad As A Hatter
T-shirts (left)
£15.99



Navy or royal blue duffel bags - £10.99; LTFC footballs £9;
LTFC alarm clocks - £11; Bronx hat with crest (royal blue) £6.99;
Bronx hat (navy blue) - £4.99; LTFC pennant - £4.99

LTFC kit prices 1994/95

HOME/AWAY SHIRTS

22-24	£23.99
26-28	£23.99
30-32	£23.99
34-36	£28.99
38-40	£28.99
42-44	£30.99
46-48	£30.99

GOALKEEPER SHIRTS

- Grey/green

22-24	£29.99
26-28	£29.99
30-32	£29.99
34-36	£34.99
38-40	£34.99

HOME/AWAY SHORTS

22-24	£12.99
26-28	£12.99
30-32	£15.99
34-36	£15.99

SOCKS HOME/AWAY

Boys	£5.99
Youths	£5.99
Mens	£5.99

OPENING HOURS: Enquiries (0582) 411622

Monday to Friday - 10am to 4pm

(Evening matchdays 10am to 10pm)

Saturdays - matchdays 9am to 5pm

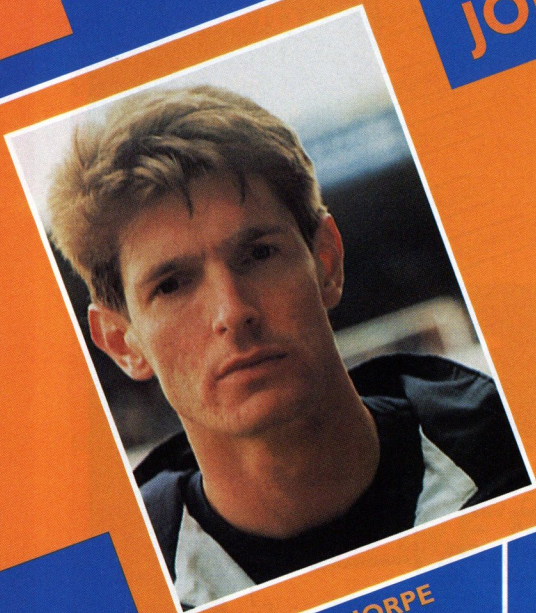
-non matchdays 9am until coaches leave for away game

Hatters Shop

KIT SPONSORS

JOHN TAYLOR

is sponsored by
Kate and Phil Shaw



RICHARD HARVEY
Shorey Travel

DWIGHT MARSHALL
Milton Keynes Branch of the
Luton Town Supporters Club

FRED BARBER
Royal Air Force Careers
Information Office, Bedford

DAVID PREECE
Ken and Judi Craven

TONY ADCOCK
Chris and Kim Clarke
The Wheatsheaf, Flitwick

DAVID GREENE
O'Shea's Public House,
Castle Street, Luton

TONY THORPE
Bedfordshire Rural
Communities Charity

JULIAN JAMES
Shorey Travel

PAUL TELFER
Convoy Installations Ltd

KELVIN DAVIS
McLeod Warner

MITCHELL THOMAS
Sam Hill

DES LINTON
Simkins Solicitors of
Baldock and Sandy

JOHN MOORE
Les and Sue Miller

CERI HUGHES
Les and Sue Miller

CLIVE GOODYEAR
Mad As A Hatter
- The Luton Town fanzine

MARTIN WILLIAMS
Anchor Insurance Brokers
Milton Keynes

SCOTT OAKES
Legal and General Assurance

JUERGEN SOMMER
Paul Deason

AARON SKELTON
Club Skyway of London
Travel Agents

JAMIE WOODSFORD
Worldwide Hatters on the
Super Highway (WHOSH)

TREVOR PEAKE
Bennetts Gate Bakery of
Hemel Hempstead

MARVIN JOHNSON
Graham Group PLC

DAVID PLEAT
Bobbies Travel Club,
Committee and Members

KERRY DIXON
The Loyal Luton Supporters Club

JOHN TAYLOR
Kate and Phil Shaw

GARY WADDOCK
Mad As A Hatter
- The Luton Town fanzine

ROB MATTHEWS
The Unimec Group of Companies

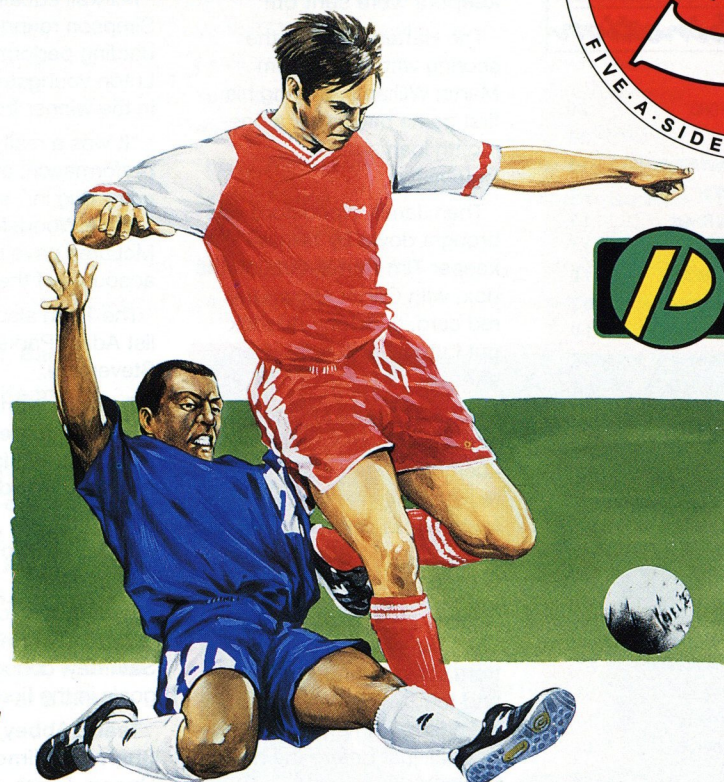
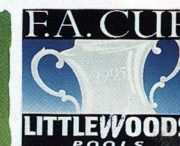
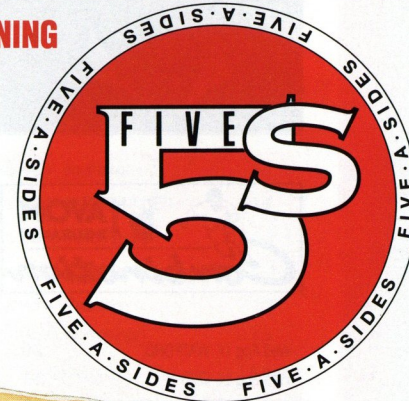


P R E S E N T S Evening Standard

SEE 15 LONDON DERBIES LIVE IN ONE EVENING
SEE LONDON'S TOP TEAMS IN ACTION

MONDAY 15 MAY 1995

WEMBLEY ARENA



ARSENAL F.C.



BARNET F.C.



BRENTFORD F.C.



CHARLTON ATHLETIC F.C.



CHELSEA F.C.



CRYSTAL PALACE F.C.



FULHAM F.C.



LEYTON ORIENT F.C.



LUOTOWN F.C.



MILLWALL F.C.



QUEENS PARK RANGERS F.C.



TOTTENHAM HOTSPUR F.C.



WATFORD F.C.



WEST HAM UNITED F.C.



WIMBLEDON F.C.



WYCOMBE WANDERERS F.C.

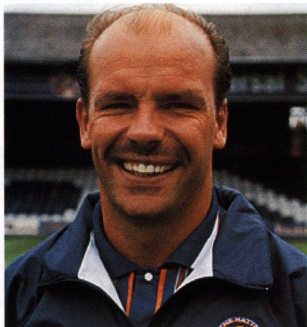
TICKETMASTER
0171 344 4444
AVAILABLE IN LONDON AND
THROUGHOUT THE SOUTH EAST AT
HMV & TOWER RECORDS STORES

TICKETS:
£12.00 • £15.00 • £20.00 • £22.00

BOOK NOW AT PARTICIPATING CLUB TICKET OFFICES
OR CALL WEMBLEY BOX OFFICE 0181•900•1234



1548 AM
CAPITAL
SOL
LONDON



Wed Aug 17	WATFORD	2-0
Wed Aug 24	QPR	2-1
Wed Aug 31	Charlton Athletic	1-3
Wed Sep 7	IPSWICH	2-2
Wed Sep 14	Bristol Rovers	1-3
Wed Sep 21	OXFORD	2-1
Wed Sep 28	PORTSMOUTH	1-0
Wed Oct 5	Tottenham	0-2
Wed Oct 12	Oxford	1-0
Wed Oct 19	NORWICH	3-5
Wed Oct 26	BRISTOL ROVERS	2-2
Mon Oct 31	Swindon	2-1
Tue Nov 8	Watford	0-1
Wed Nov 16	WIMBLEDON	2-4
Mon Nov 21	Portsmouth	3-0
Wed Nov 30	SWINDON	2-2
Wed Dec 7	Norwich City	0-2
Wed Dec 14	TOTTENHAM	1-2
Wed Dec 21	Southampton	1-3
Tue Jan 10	West Ham	0-1
Wed Jan 25	CRYSTAL PALACE	2-1
Mon Feb 6	ARSENAL	1-3
Tue Feb 14	Crystal Palace	3-1
Thu Feb 23	BRISTOL CITY	4-1
Sat Feb 25	Arsenal	1-4
Fri Mar 10	SOUTHAMPTON	0-2
Wed Mar 15	Wimbledon	1-1
Wed Mar 22	MILLWALL	3-1
Mon Mar 27	Brighton	0-1
Wed Mar 29	Ipswich Town	0-2
Wed Apr 5	BRIGHTON	2-2
Mon Apr 10	Millwall	3-2
Thur Apr 13	CHARLTON	
Tue Apr 18	CHELSEA 2pm	
Sat Apr 22	WEST HAM 2pm	
Tue Apr 25	Queens Park Rgrs 7pm	
Thur May 4	Bristol City 7.30pm	
Tue May 9	Chelsea 7pm	

BOLD type denotes home game.
(Luton score first).

RESERVES AND YOUTH

WITH WAYNE TURNER AND TERRY WESTLEY

THE Town's Reserve side won 3-2 at Millwall in last Monday's Avon Insurance Combination, in a five-goal thriller in which both goalkeepers were sent off!

The Hatters opened the scoring with a goal from Martin Williams, playing his first game back after a one-month loan spell at Colchester.

Then Jamie Woodsford was brought down by Millwall keeper Tim Carter, outside the box, with Carter shown the red card, and Tony Adcock put Luton 2-0 in front soon after.

But just a minute before half-time, Town keeper Juergen Sommer also received his marching orders, for handball outside the area, and with Greg Rioch making way, sub keeper Nathaniel Abbey came on.

Millwall pulled a goal back from the resulting free-kick, and the Town's problems increased with an injury to Adcock just before the half-time whistle.

So Wayne Turner's side started the second half down to 10 men, and with 22-year-old Williams their oldest player.

Millwall equalised, but Gary Simpson rounded off a fine battling performance from the Luton youngsters by heading in the winner from a corner.

"It was a really satisfying performance, and the lads really dug in," said Wayne. "Jamie Woodsford and Paul McLaren gave really good accounts of themselves."

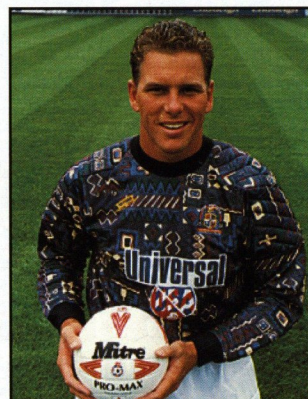
The Town also included trialist Adam Parker from Stevenage.

Team: Sommer, Chenery, Rioch, McLaren, Greene, Simpson, Williams, Parker, Adcock, Woodsford, Thorpe.

Subs: Willmott, Douglas, Abbey (gk).

The Town's youth team went down 2-0 at Brighton on Saturday, conceding both goals in the first 10 minutes.

Team: Abbey, Turner, Sharpe, Willmott, Thomas, Upson, Evers, Power,



JUERGEN Sommer



MARTIN Williams

South East Counties League, FA Youth Cup and Southern Junior Floodlit Cup

Sat Aug 13	CRYSTAL PALACE	4-2	Sun Oct 23	Saffron Walden (EJC)	2-3	Sat Feb 4	Southampton	1-1
Sat Aug 20	Wycombe Wanderers	5-0	Sat Oct 29	WIMBLEDON	2-4	Sat Feb 11	OXFORD UNITED	3-1
Sat Aug 27	BRIGHTON	2-3	Sat Nov 5	Brentford	1-3	Sat Feb 18	Bristol Rovers	0-0
Thu Sep 1	Coventry (SJFC Pre)	2-2	Mon Nov 7	STAINES TOWN (FAYC1)	5-0	Sat Feb 25	Colchester United	2-1
Mon Sep 5	Coventry (SJFC Pre)	1-2	Sat Nov 12	BRISTOL CITY	1-2	Sat Mar 4	Wimbledon	1-2
Sat Sep 10	Reading	4-0	Sat Nov 19	Swindon Town	0-1	Sat Mar 11	BRENTFORD	2-2
Sat Sep 17	NORWICH (LC1)	2-0	Mon Nov 28	Wycombe (FAYC2)	0-1	Sat Mar 18	Bristol City	0-3
Sat Sep 24	SOUTHAMPTON	0-2	Sat Dec 3	BOURNEMOUTH	0-1	Sat Mar 25	SWINDON TOWN	0-3
Sat Oct 1	Oxford United	0-3	Sat Dec 10	Tottenham	2-0	Sat Apr 1	Bournemouth	2-4
Sat Oct 8	BRISTOL ROVERS	2-1	Sat Dec 17	TOTTENHAM	2-3	Sat Apr 8	Brighton	0-2
Sat Oct 15	COLCHESTER	7-0	Sat Jan 7	WYCOMBE WANDERERS	5-0	Sat Apr 29	Crystal Palace	
Sat Oct 22	Colchester (LC2)	0-1	Sat Jan 28	READING	1-1		HOME matches denoted in bold.	

Douglas, Issott, Barr.

Subs: Webb, Keane.

THE final of the Bedfordshire Senior Cup is to be played at Kenilworth Road on Bank Holiday Monday, May 8.

Bedford Town take on Toddington Rovers, with the final kicking off at 2.30pm.



THIS happy group of youngsters from Leverstock Green cheered on the Hatters against Notts County, after attending a Saturday morning coaching course organised by Community Officer Colwyn Rowe on the morning of the match.

Colwyn and his staff are busy enjoying a hectic Easter period with courses across the region for boys and girls of all ages.



Rael Brook

**CASH IN WITH THE
GOLDEN GAMBLE**



A photograph showing three people standing in front of a football stadium. On the left, a man in a dark suit and striped tie holds a ticket. In the center, an older man in a dark jacket holds a fan of cash. On the right, a woman with curly blonde hair, wearing a white jacket and an orange scarf, also holds a fan of cash. They are standing next to a wooden box. The background shows a football pitch and stadium seating.

Last Saturday, one lucky spectator went home with £860 cash after winning the Luton Town FC Golden Gamble!

Somebody here today will win another bumper prize..... and all for a £1 stake!

NEXT Sunday, April 23, Northampton Town's Sixfields Stadium hosts a charity match between a TNT Express XI and the Arsenal Ex-Professional and Celebrity XI.

The proceeds will go to the CARE charity, as part of the Footballs for Rwanda appeal, with a number of ex-Town players taking part including Alan Garner, Paul Price and Ken Goodeve.

The Arsenal side will have a number of well-known faces from stage and screen, alongside former Highbury favourites.

The event starts at 12 midday, with the main match kicking off at 2.30pm. Tickets are £4 for adults, £10 for a family ticket, £2 for disabled and Under 14s, while children under 3 go free. For ticket details contact the Box Office on (01604) 588338.

Thousands of people could
be reading about you
and/or your company at
every Hatters home game
at Kenilworth Road!
To advertise in the
Luton Town matchday
programme contact
Sam Walsh on
(01582) 411622

on LUTON TOWN CLUBCALL
0891 121 123



"THERE has been lots of instability there this season, but players will have the realisation that contracts are coming to an end and if there's any milk and honey there it's going to evaporate quickly if they find down a league." **DAVID PLEAT**

league." **DAVID PLEAT**
on the visit of Notts County to Kenilworth
Road.

"WE have to be proactive, and we can't hope that other people will sort out our destiny for us."

We have brought all the things that I have been talking about for the last two to three years together into one concept, that is fundable and can provide a future for Luton that everyone wishes it to have." **DAVID KOHLER talking about the launch of the Kohlerdome project.**

"NOTTS County came here desperately needing three points, but we felt that if we played as we did against Wolves we would win, and that's how it started.

"Paul Telfer is playing well, and is getting in the right place at the right time."

"We still needed some good saves from Kelvin before that penalty. The gaffer had faith in me, and I think everyone was relieved when it went in."

"We should have had a hatful in the end, and

The Chairman and Directors of Luton Town Football Club undertake to ensure as far as humanly possible that all activities that take place at the Kenilworth Stadium are conducted in such a way that, as far as is reasonably practicable, the safety of everyone working at or attending that stadium is assured.

The club's primary responsibility through the Safety Officer, Officials, Staff and Stewards will be to ensure the reasonable safety of those attending the stadium.

In the interests of public safety, the safety authority (Beds County Council) have imposed a NO SMOKING restriction in and beneath our main stand. Your co-operation is appreciated.

while promotion is proably out of the window we have to keep doing our best for every other team in the division." **SCOTT OAKES after the 2-0 win over Notts County.**

"I ACCUSED them a little bit of flippancy in finishing, but certainly it was game where we might have had three or four extra goals.

"Notts never really got going so I felt all round we were comfortable, yet at the same time young Davis had three or four vital saves to make.

"I want to see other youngsters given a chance like Paul McLaren, Skelton if fit, and I'd love to see Hughes, but we might only change a shade, and in some ways of course we have new faces in John Taylor, Richard Harvey after a long injury, and Kelvin.

"My neighbour thinks I should have given David Greene a game by now, but if I have a young keeper in Kelvin Davis I want as mature a pair in front of him as possible, and Peake and Johnson have won their spurs in that area this season."

DAVID PLEAT on selection issues as the season draws to a close.

**R. J. BLOW &
C O M P A N Y**

THE FRIENDLY ACCOUNTANTS

*Book-Keeping
Taxation and Wages etc.*

STIRLING HOUSE,
30 GUILDFORD STREET,
LUTON, BEDS LU1 2NR

Tel: (0582) 38792
Fax: (0582) 423347

Mac puts the Town back on course



TERRY Branston watches in delight as the ball flies into the net from the boot of Viv Busby during the 5-0 home win over Reading in 1970.

AFTER being leaders of Division Three for most of Autumn 1969, the Town's promotion push took a bit of a dive over Christmas when we lost four games in a row including our first home defeats since April 1968.

A 5-1 defeat at Shrewsbury during this period was probably the low point of the season, but the 2-0 reversal at home to Plymouth, in front of the Match Of The Day cameras, was difficult to swallow especially as we had waited for a long time to be the main feature match.

Although we came out of this terrible run with a 3-1 win at Bury, followed by a 4-0 home thumping of Doncaster, only one point was picked up from the next three away games and by the time of our visit to Reading on March 11, our chances of promotion to Division Two were looking slim as we had been pushed back to fifth position.

Reading were going through a purple patch and had not lost for 15 games in a run going back to the previous November, and sat in fourth position. Manager Jack Mansell, who had just picked up the Manager Of The Month award, had carried out a clearout at Elm Park during the close season, with the result that only Dennis Allen was left

of the regular side from the previous campaign.

Such was the interest in the game, especially from a Reading point of view, that a crowd of 18,783 turned up, which has not been bettered in the league at Elm Park since. The attendance would have been even higher were it not for the atrocious weather that saw the pitch quickly turn into a quagmire. Luckily I stood under cover!

The game kicked off with Reading fielding only 10 men, as goalkeeper Steve Death had been held up in the traffic, but stand-in Dennis Butler did not have chance to save a shot before being replaced by the breathless latecomer.

Most of the early play belonged to the Town who boasted physically bigger and stronger players more suited to the conditions, and Malcolm MacDonald was unlucky with a header that cannoned off the bar.

Gradually, however, Reading came more into it with their close passing style, and Luton fullback Fred Jardine was forced to head off the line from Dick Habbin with goalkeeper Sandy Davie out of position.

The second half continued to be an absorbing contrast of styles, with Reading winning the cor-

ner count quite considerably, but the Town looking more dangerous on the break with their powerful front runners MacDonald and Matt Tees.

It was these two players that eventually turned the game into the Town's favour when, with only 20 seconds remaining, Tees hammered a long ball down the middle to MacDonald who ploughed through the mud, fighting off his marker, before skipping past Death to plant the ball into an empty net. The promotion bandwagon was rolling again.

The return game was played two weeks later, over Easter, and by this time the league positions had been reversed with the Town also having games in hand over the leaders.

Rotherham had been seen off 2-1 at Kenilworth Road the previous day when league debuts had been given to goalkeeper Alan Starling and forward Viv Busby, and it was decided to retain these two for the visit of Reading.

A crowd of 14,401 was present to see an even first half that was punctuated by a goal from MacDonald after 11 minutes, when he played a wall pass with Busby before slamming the ball past Death.

The second period was only a minute old, however, when MacDonald doubled his tally after running 50 yards with the ball before hitting the ball home with typical power.

The inevitable hat-trick came shortly afterwards when MacDonald scored from close range, and he then set up Busby on the hour for a simple tap for his first Luton goal.

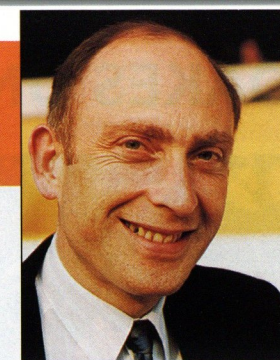
The scoreline was extended to 5-0 just before the end when winger Mike Harrison finished off a smart move thereby pushing the Town up to second place in the table, a position they kept until the end of the season.

First game: Luton: Davie, Ryan, Jardine, Slough, Branston, Moore, Collins, MacDonald, Tees, Keen, French (Allen).

Reading: Death, Dixon, Butler, B Wagstaff, Allen, Sharpe, Cumming, Chappell, Habbin, T Wagstaff, Williams.

Second game: Luton: Starling, Ryan, Bannister, Slough, Branston, Moore, Collins, Busby, MacDonald, Keen, Harrison.

Reading: Death, Morgan, Butler, B Wagstaff, Allen, Sharpe, Harley, Bell, Habbin, T Wagstaff, Williams.



by ROGER WASH

5 YEARS AGO

16/4/90: A disastrous 3-0 defeat at Nottingham Forest, with all the goals coming in the second half, seemed to have sealed the Town's fate at the bottom of Division One. Little did we know!

10 YEARS AGO

16/4/85: After the disappointment of the FA Cup semi-final defeat against Everton the previous Saturday, the Town bounced back with a 3-1 home win over Norwich after being behind at the interval.

15 YEARS AGO

19/4/80: In a game of many missed chances from both sides, the Town went down 1-0 at Birmingham in front of a crowd of 23,662. This defeat finally put paid to our hopes of promotion from Division Two.

20 YEARS AGO

19/4/75: Another game of missed chances at St Andrews but this time the Town came away 4-1 winners over Birmingham, to preserve some hope of staying in Division One.

Those were the days

OAKES ON THE SPOT TO SEAL COUNTY'S FATE



A SECOND-HALF foul on Dwight Marshall (left) gave Scott Oakes the opportunity to end the Town's penalty jinx at the Kenilworth Road end this season.



WATCHED by referee Mick Pierce, Scott Oakes slots his penalty past Steve Cherry in the Notts County goal.



JOY, and relief, for Oakes as his penalty extends the Town's lead to 2-0 to seal the points.



JOHN Taylor is tackled by Notts County defender Michael Johnson during the 2-0 win last Saturday.

LUTON TOWN 2
(Telfer, Oakes pen)

NOTTS COUNTY 0

at Kenilworth Road,
April 8, 1995

Pictures by
ANDY HANDLEY



ABOVE: Scott Oakes was clean through late in the game, but Steve Cherry saved.



DAVID Preece is sent tumbling by Notts County striker Devon White.

Action pictures featured in the Luton Town matchday programme are available at the special introductory price of just £2 per print!

Write to Simon Oxley, at the club, giving a brief description of the picture (programme and page number etc), and enclosing a cheque/ postal order made payable to Luton Town Football Club.

VIEWSROUND SPORT - LISTENING TO YOU LUTON TOWN FC... FANS SURVEY RESULTS

LUTON V WOLVES

Not surprisingly the recent 3-3 draw with Wolves scored highly with fans, who gave it a rating of nearly nine out of ten in our Supporters' Survey.

Luton's performance (8.49) was seen to be much better than Wolves' (6.74) despite the result.

The game was seen to be extremely exciting (8.92) and very good 'Value for Money' (8.71).

The highlights of the game were the goals, in particular the third Luton goal (43%) scored by John Taylor, and the second from Paul Telfer (39%).

The overwhelming supporters choice for player of the match was new signing John Taylor (60%), with Telfer second (24%). Wolves substitute David Kelly (60%) was the overwhelming favourite as the opposition's top player.

The performance of the Referee was judged to be generally good, with eight out of ten fans (79%) satisfied with him and his team.

The referee, Graham Pooley, scored 6.61 out of ten, with only 8% of fans commenting on his playing "well over" the 90 minutes.

About half (48%) of supporters quizzed used the toilets at the ground, and 40% spent money at the refreshment stalls or in the shop, spending on average £2.27 each.

In general, satisfaction with the ground is reasonably good, with three quarters of fans (71%) claiming to be satisfied.

The Auto Windscreens Shield

Overall 53% of fans feel that a competition like this for teams from the lower divisions is a "very good idea". And most (63%) feel the the final should definitely be held at Wembley.

The Play-Offs

Fans are very divided over the play-off system, with 50% feeling it is better than the old style promotion of the top teams..... but 47% disagree.

Crowd Racism

We asked fans if they felt crowd racism is a growing problem in English football, with 40%

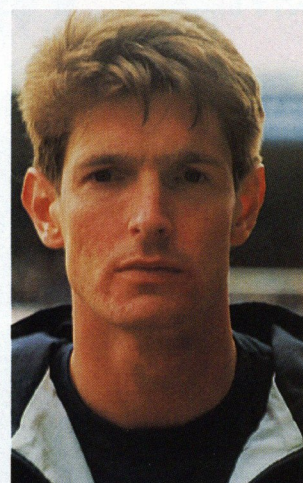


PAUL Telfer
scored
Luton's first
two goals
against
Wolves

saying this was the case, out of which one in seven believed this was 'definitely' so.

Concerns in football

We also asked our regular questions about supporters concerns in football, and the top three continuing concerns are: Inconsistency of officials 84%, Size of transfer fees 79% and sleaze/corruption in the game 71%.



JOHN Taylor
was voted
man of the
match by fans
against
Wolves

LUTON TOWN FC..... LISTENING TO YOU!



Critical Research Ltd

Crown Life House
41-43 Alma Street Tel: 0582 480588
Luton LU1 2PL Fax: 0582 485015



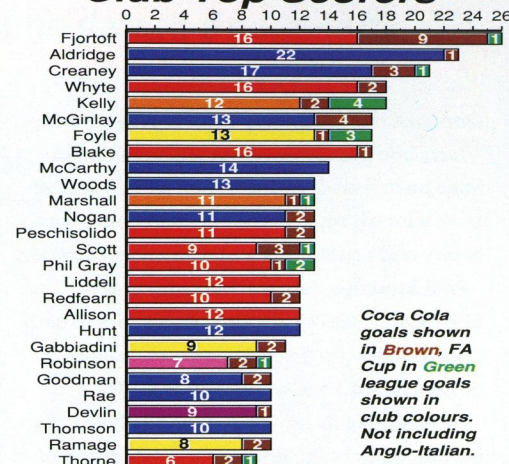
TicketLine

The exclusive ticket booking service for fans of Endsleigh League First Division clubs

0645 10 10 10

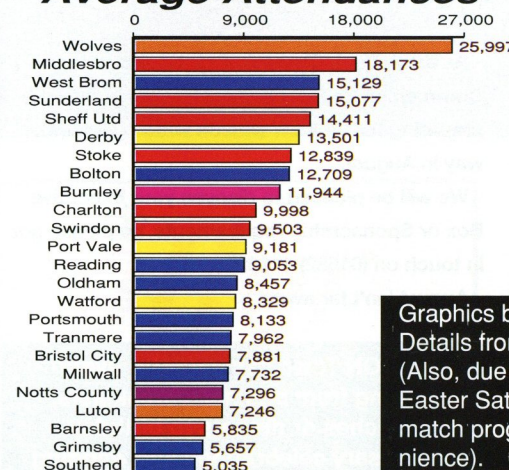
24 HOURS A DAY, 7 DAYS A WEEK
ALL CALLS CHARGED AT LOCAL RATE

Club Top Scorers



Coca Cola goals shown in Brown, FA Cup in Green league goals shown in club colours. Not including Anglo-Italian.

Average Attendances



Graphics by FOOTBALL INFORMATION SERVICES. Details from midweek matches are not included. (Also, due to Easter printing deadlines, details from the Easter Saturday matches are not included in today's match programme. We apologise for any inconvenience).

ENDSLEIGH LEAGUE DIVISION ONE

	P	W	D	L	F	A	PTS
Middlesbro	41	22	9	10	61	35	75
Bolton W	40	20	12	8	62	37	72
Tranmere R	40	21	8	11	63	44	71
Wolves	39	20	8	11	65	49	68
Reading	41	19	9	13	48	38	66
Barnsley	39	18	9	12	57	45	63
Sheff Utd	41	16	14	11	64	46	62
Derby	40	17	10	13	55	41	61
Grimsby T	41	15	13	13	58	52	58
Watford	40	15	13	12	45	42	58
LUTON T	41	15	12	14	57	56	57
Millwall	41	15	12	14	55	54	57
Oldham A	40	14	11	15	53	54	53
Charlton A	40	14	10	16	51	57	52
Southend U	41	14	8	19	45	68	50
West Brom	41	14	8	19	42	53	50
Port Vale	41	13	10	18	51	59	49
Stoke C	39	12	13	14	39	45	49
Portsmouth	41	12	12	17	46	59	48
Sunderland	41	11	15	15	36	40	48
Swindon T	40	11	10	19	48	66	43
Burnley	41	10	11	20	43	68	41
Bristol C	41	10	11	20	38	57	41
Notts Cty	40	8	10	22	42	59	34

(Table up to, and including, Tuesday, April 11)

LUTON TOWN CLUBCALL

0891 121 123

Calls cost 39p a minute cheap rate and 49p at all other times.

Match reports and commentary..... Interviews with manager David Pleat and the Hatters players

..... Match and ticket information



COMMERCIAL CORNER with Kathy Leather

A warm welcome to Kenilworth Road to this afternoon's match and matchball sponsors

THIS afternoon we welcome match sponsors **BERVALE MEAD INSURANCE BROKERS**, and **F & T GOODWIN LIMITED**, and matchball sponsors **SERGEANT YORKE**.

BERVALE MEAD INSURANCE BROKERS LIMITED are one of the largest privately owned Commercial Insurance and Independent Financial Services Brokers in the northern home counties.

The company specialises in complete Portfolio Management, designing a unique programme to embrace every aspect of a client's Insurance and Financial Services needs.

Bervale Mead also have a number of specialist schemes and infact are the largest broker in the country in respect of Forestry Insurance.

Today the staff of **F & T GOODWIN LIMITED**, road surfacing contractors, are pleased to be sponsoring the match, but in particular are here to celebrate the retirement of a much respected member of staff.

Don Bundy has been with the firm since 1972 and his wise and conscientious approach to

work and life has always been greatly valued.

Terry and Wendy Goodwin are delighted to have been associated with Don and June over such a long period, and wish them both many happy and healthy years of enjoyment together.

Paul Armitage, General Manager of the **SERGEANT YORKE CASINO** in Luton is already co-sponsoring our scoreboard and is keen to develop close links with Luton Town FC.

He has recently moved to Luton to help organise the major refurbishment and expansion of the Grosvenor Club's flagship casino in the town.

As the season draws to a close, the Commercial Department are already busy preparing for the new season which gets under-way in August.

We will be pleased to discuss your Executive Box or Sponsorship requirements, so please get in touch on (01582) 411622.

August isn't far away!

LUTON Town can cater for everything from business breakfasts, lunches or dinners to birthday/ anniversary celebrations and wedding breakfasts.

We can help to plan events by either clients visiting the club or by making a private visit to the clients own premises.

We have a number of function suites available, from our boardroom, which is an exclusive setting for senior management meetings, to our adjacent suites which can cater for up to 100 or more delegates for conferences and seminars.

Our catering operation, which prides itself on a personal service, can provide quality refreshments to complement any occasion.



ABOVE: Luton Someries Rotary Club were our match sponsors against Notts County, and Commercial Manager Kathy Leather makes the after match presentation, assisted by members of the first-team squad.



LEFT: Midfielder David Preece was the sponsors' man-of-the-match

Antony's Tailor

OF LONDON

THE MOST
ESTABLISHED
AND RELIABLE
TAILORS IN
LUTON

DRESS HIRE
LADIES AND GENTS
BESPOKE TAILORING



12 DUNSTABLE ROAD, LUTON,
BEDS OPPOSITE MAIN POST OFFICE
TEL: (0582) 424687

offer
OFFICE OF
ELECTRICITY
REGULATION

**IS YOUR ELECTRICITY
SUPPLIER PLAYING
THE GAME?**

The Office of Electricity Regulation

- PROTECTS THE INTERESTS OF ELECTRICITY CUSTOMERS
- HELPS AND ADVISES ON DISPUTES WITH EASTERN ELECTRICITY

At home:

4th Floor, Waveney House, Handford Road,
Ipswich, Suffolk IP1 2BJ.
Telephone 01473 216101 Fax 01473 215838

And away:

The phone book or your electricity bill shows your nearest office.

SUPPORT THE HATTERS

**But Join The Gunners -
and be paid!**

**Come and see what
your local Territorial
Army Unit does**

Phone (01582) 572032

201 Battery RA (V)
TA Centre
Marsh Road
Leagrave
Luton LU3 2RX.

TEAM STATISTICS 1994-95..... see page 35 for Division One table

Date	Opponents	F-A	Att	Pos	1	2	3	4	5	6	7	8	9	10	11	12	14	GK
Sat Aug 13	WEST BROMWICH ALBION	1-1	8,640	-	Sommer	James	Johnson	(Skelton)	Greene	Peake	Telfer	OAKES	Dixon	Preece	(Houghton)	(Marshall)	(Linton)	Barber
Tue Aug 16	FULHAM CCC 1 (1)	1-1	3,287	-	Sommer	James	Johnson	(Houghton)	Greene	Peake	Telfer	OAKES	Dixon	Preece	(Houghton)	(Marshall)	(Linton)	Barber
Sat Aug 20	Derby County	0-0	13,060	14	Sommer	James	Johnson	(Linton)	Greene	Peake	Telfer	Marshall	Dixon	Preece	Hughes	Skelton	Houghton	Barber
Tue Aug 23	Fulham CCC 1 (2)	1-1	5,134	-	Sommer	James	Johnson	(Linton)	(Greene)	Peake	Telfer	MARSHALL	Dixon	Preece	Hughes	(Oakes)	(Skelton)	Barber
Sat Aug 27	SOUTHEND	2-2	5,918	16	Sommer	(James)	Johnson	Oakes	Greene	Peake	Telfer	(Marshall)	HARTSON	Preece	HUGHES	(Thomas)	(Dixon)	Barber
Tue Aug 30	Tranmere Rovers	2-4	5,480	20	Sommer	James	Johnson	(Skelton)	Greene	Peake	Telfer	Oakes	HARTSON	Preece	HUGHES	Thomas	(Marshall)	Barber
Sat Sep 3	Port Vale	1-0	8,541	15	Sommer	(James)	Johnson	Skelton	Greene	Peake	Telfer	MARSHALL	Dixon	(Preece)	Oakes	(Thomas)	(Woodsford)	Barber
Sat Sep 10	BURNLEY	0-1	6,911	18	Sommer	James	Johnson	(Waddock)	(Greene)	Peake	Telfer	Marshall	Hartson	Preece	Oakes	(Thomas)	(Dixon)	Barber
Tue Sep 13	BOLTON WANDERERS	0-3	5,764	20	Sommer	James	Johnson	Waddock	(Thomas)	Peake	Telfer	Oakes	Dixon	Preece	(Hartson)	(Linton)	(Marshall)	Barber
Sat Sep 17	Watford	4-2	8,880	16	Sommer	James	Johnson	Waddock	Thomas	Peake	TELFER 2	OAKES	DIXON	Preece	Marshall	Hartson	Linton	Barber
Sat Sep 24	Millwall	0-0	7,150	16	Sommer	James	Johnson	Waddock	Thomas	Peake	Telfer	Oakes	(Dixon)	Preece	Marshall	(Hartson)	Skelton	Barber
Sat Oct 1	BRISTOL CITY	0-1	6,633	20	Sommer	James	Johnson	Waddock	(Thomas)	Peake	Telfer	Oakes	(Dixon)	Preece	Marshall	(Hartson)	(Hughes)	Barber
Sun Oct 9	Stoke City	2-1	11,712	18	Sommer	James	Johnson	Waddock	Thomas	Peake	Telfer	Hughes	Hartson	(PREECE)	MARSHALL	(Oakes)	Williams	Barber
Sat Oct 15	MIDDLESBROUGH	5-1	8,412	11	Sommer	James	Johnson	Waddock	Thomas	Peake	Telfer	Hughes	HARTSON	(PREECE)	MARSHALL 2	(Oakes)	Dixon	Barber
Sat Oct 22	Sheffield United	3-1	13,317	7	Sommer	JAMES	Johnson	Waddock	Thomas	Peake	Telfer	Hughes	DIXON	(Preece)	Marshall	(Oakes)	Thorpe	Barber
Sat Oct 29	BARNLEY	0-1	7,212	10	Sommer	James	Johnson	(Waddock)	Thomas	Peake	Telfer	Hughes	Hartson	Preece	(Marshall)	(Oakes)	(Dixon)	Barber
Tue Nov 1	GRIMSBY TOWN	1-2	5,839	13	Sommer	James	Johnson	Waddock	Thomas	Peake	Telfer	(Hughes)	Hartson	Preece	Marshall	(OAKES)	Dixon	Barber
Sat Nov 5	Wolverhampton Wanderers	3-2	26,749	8	Sommer	James	Johnson	Waddock	Thomas	Peake	Telfer	Oakes	(DIXON)	PREECE	MARSHALL	(Hartson)	Thorpe	Barber
Sat Nov 12	Oldham Athletic	0-0	7,907	8	Sommer	James	Johnson	Waddock	Thomas	Peake	Telfer	Oakes	Dixon	Preece	(Marshall)	(Hartson)	Thorpe	Barber
Sat Nov 19	PORTSMOUTH	2-0	8,214	8	Sommer	James	Johnson	Waddock	Thomas	Peake	Telfer	Oakes	DIXON	PREECE	(Marshall)	(Thorpe)	Hartson	Barber
Sat Nov 26	Swindon Town	2-1	9,455	5	Sommer	James	Johnson	Waddock	Thomas	Peake	Telfer	OAKES	(DIXON)	Preece	Linton	Woodsford	(Hartson)	Barber
Sat Dec 3	SHEFFIELD UNITED	3-6	8,516	8	Sommer	James	JOHNSON	Waddock	Thomas	Peake	Telfer	Oakes	Dixon	(Preece)	(Linton)	(HARTSON)	(Marshall)	Barber
Sun Dec 11	DERBY COUNTY	0-0	6,400	9	Sommer	James	Johnson	Waddock	Thomas	Peake	Telfer	Oakes	(Dixon)	Preece	(Allen)	(Hartson)	(Marshall)	Barber
Sun Dec 18	West Bromwich Albion	0-1	14,392	12	Sommer	(James)	Johnson	Allen	Thomas	Peake	Telfer	Oakes	Dixon	Preece	Marshall	(Hartson)	Skelton	Barber
Mon Dec 26	Reading	0-0	11,623	12	Sommer	James	Johnson	Waddock	Thomas	Peake	Telfer	(Allen)	(Dixon)	Preece	Marshall	(Hartson)	(Oakes)	Davis
Tue Dec 27	SUNDERLAND	3-0	8,953	9	Sommer	James	Johnson	Waddock	Thomas	Peake	Telfer	OAKES 2	HARTSON	(Preece)	(Marshall)	(Skelton)	(Williams)	Davis
Sat Dec 31	Notts County	1-0	6,249	8	Sommer	James	Johnson	Waddock	Thomas	Peake	TELFER	Oakes	Hartson	Preece	(Marshall)	Skelton	(Adcock)	Davis
Mon Jan 2	CHARLTON ATHLETIC	0-1	7,642	8	Sommer	(James)	Johnson	Waddock	Thomas	Peake	Telfer	Oakes	Hartson	Allen	Marshall	Skelton	(Adcock)	Davis
Sat Jan 7	BRISTOL ROVERS FAC 3	1-1	7,571	-	Sommer	James	Johnson	Waddock	Thomas	Peake	Telfer	Oakes	HARTSON	Preece	(Marshall)	Williams	(Adcock)	Davis
Sat Jan 14	Barnsley	1-3	4,808	11	Sommer	James	Johnson	Waddock	Thomas	Peake	Telfer	Oakes	DIXON	(Harvey)	Marshall	(Skelton)	Woodsford	Davis
Wed Jan 18	Bristol Rovers FA3	1-0	8,213	-	Sommer	Oakes	Johnson	Waddock	Thomas	Peake	Telfer	Chenery	Dixon	Preece	MARSHALL	Skelton	Woodsford	Davis
Sat Jan 28	SOUTHAMPTON FAC 4	1-1	9,938	-	Sommer	Oakes	Johnson	Waddock	Thomas	Peake	Telfer	BIGGINS	(Dixon)	Preece	Marshall	Skelton	(Williams)	Davis
Sat Feb 4	OLDHAM ATHLETIC	2-1	6,903	10	Sommer	James	Johnson	Waddock	Thomas	Peake	Telfer	Oakes	(Dixon)	Biggins	MARSHALL 2	(Thorpe)	Harvey	Davis
Wed Feb 8	Southampton FAC4	0-6	15,075	-	Sommer	(James)	Johnson	Waddock	Thomas	Peake	Telfer	Oakes	(Biggins)	Preece	Marshall	(Thorpe)	(Dixon)	Davis
Sat Feb 11	Grimsby Town	0-5	4,615	10	Sommer	James	Johnson	Waddock	Thomas	Peake	Preece	Oakes	(Dixon)	(Biggins)	Marshall	(Telfer)	(Woodsford)	Davis
Sat Feb 18	SWINDON TOWN	3-0	6,595	10	Sommer	James	Johnson	Waddock	Thomas	Peake	Telfer	Oakes	(Biggins)	Preece	(MARSHALL 2)	(Dixon)	(Woodsford)	Davis
Tue Feb 21	Portsmouth	2-3	7,363	10	Sommer	JAMES	Johnson	(Waddock)	Thomas	Peake	TELFER	(Oakes)	Dixon	Preece	Marshall	(Harvey)	(Woodsford)	Davis
Sat Feb 25	Bristol City	2-2	7,939	10	Sommer	James	Johnson	Waddock	Thomas	Peake	Telfer	OAKES 2	Dixon	(Preece)	Marshall	Biggins	(Williams)	Davis
Sat Mar 4	MILLWALL	1-1	6,864	10	Sommer	James	Johnson	(Waddock)	Thomas	Peake	Telfer	Oakes	(Biggins)	Preece	MARSHALL	(Dixon)	(Matthews)	Davis
Tue Mar 7	PORT VALE	2-1	5,947	9	Sommer	James	Johnson	(Waddock)	Thomas	Peake	TELFER	Oakes	(Biggins)	Preece	Marshall	(DIXON)	(Matthews)	Davis
Sat Mar 11	Southend United	0-3	4,558	11	Sommer	James	Johnson	Waddock	Thomas	Peake	Telfer	Oakes	(Dixon)	Matthews	Marshall	(Biggins)	Harvey	Davis
Sat Mar 18	TRANMERE ROVERS	2-0	6,660	10	Sommer	JAMES	Johnson	Waddock	Thomas	Peake	Telfer	Oakes	(BIGGINS)	Preece	Marshall	Dixon	(Matthews)	Davis
Tue Mar 21	Burnley	1-2	9,551	11	Sommer	James	Johnson	Waddock	(Thomas)	Peake	Telfer	Matthews	Dixon	(Preece)	MARSHALL	(Harvey)	(Woodsford)	Davis
Sun Mar 26	WATFORD	1-1	7,984	11	Davis	James	Johnson	Waddock	Harvey	Peake	TELFER	(Matthews)	Taylor	Preece	Marshall	(Thorpe)	Adcock	Marg'son
Tue Apr 4	WOLVERHAMPTON W	3-3	9,651	12	Davis	James	Johnson	Waddock	Harvey	Peake	TELFER 2	Oakes	TAYLOR	Preece	(Marshall)	Matthews	(Woodsford)	Sommer
Sat Apr 8	NOTTS COUNTY	2-0	6,482	12	Davis	(James)	Johnson	Waddock	Harvey	Peake	TELFER	OAKES	Taylor	Preece	(Marshall)	(Matthews)	(Linton)	Sommer
Tue Apr 11	Bolton Wanderers	0-0	13,619	11	Davis	(James)	Johnson	Waddock	Harvey	Peake	Telfer	Oakes	Taylor	Preece	(Matthews)	(Marshall)	(Linton)	Sommer
Sat Apr 15	Sunderland																	
Mon Apr 17	READING																	
Sat Apr 22	Charlton Athletic																	
Sun Apr 30	Middlesbrough																	
Sun May 7	STOKE CITY																	
Sat May 20	FAC Final																	

CCC = Coca-Cola Cup
FAC = FA Cup



Matchday music is supplied by
HMV Stores, 98 Arndale Centre
(Tel: 35290) and
73 The Mall (Tel: 21368), Luton.

LUTON TOWN 1994/95

PLAYER (figure in bracket = sub app.)	LEAGUE APPS	LEAGUE GOALS	CUP APPS	CUP GOALS	PLAYER (Figure in bracket = sub app.)	LEAGUE APPS	LEAGUE GOALS	CUP APPS	CUP GOALS
Juergen SOMMER	37	-	6	-	John HARTSON	11 (9)	5	1	1
Julian JAMES	41	3	4	-	Gary WADDOCK	35	-	4	-
Marvin JOHNSON	41	1	6	-	Jamie WOODSFORD	(6)	-	-	-
Aaron SKELTON	3 (2)	-	(1)	-	Tony THORPE	(3)	-	(1)	-
David GREENE	6	-	2	-	Paul ALLEN	4	-	-	-
Trevor PEAKE	41	-	6	-	Martin WILLIAMS	(2)	-	(1)	-
Paul TELFER	40 (1)	9	6	-	Tony ADCOCK	(2)	-	(1)	-
Scott OAKES	32 (6)	9	5 (1)	1	Richard HARVEY	5 (2)	-	-	-
Kerry DIXON	23 (5)	7	4 (1)	-	Ben CHENERY	-	-	1	-
David PREECE	37	4	6	-	Wayne BIGGINS	6 (1)	1	2	1
Scott HOUGHTON	1	-	1	-	Rob MATTHEWS	4 (4)	-	-	-
Dwight MARSHALL	34 (6)	11	5 (1)	2	Kelvin DAVIS	4	-	-	-
Des LINTON	3 (4)	-	1 (1)	-	John TAYLOR	4	1	-	-
Ceri HUGHES	8 (1)	2	2	-					
Mitchell THOMAS	31 (2)	-	4	-	Own goal		4		

TODAY'S OFFICIALS

Today's referee is

JOHN KIRKBY, from
Sheffield.

Mr Kirkby, a Senior Business Administrator with Bass Taverns, is making his third visit to Kenilworth Road this season, after refereeing the matches against Portsmouth and Swindon Town.

M.A. Hair

T.J.
Pollard

TEAM CHECK

LUTON TOWN

Manager: David Pleat

READING

Managers: Jimmy Quinn
and Mick Gooding

Kelvin DAVIS	1	Shaka HISLOP
Julian JAMES	2	Andy BERNAL
Marvin JOHNSON	3	Dylan KERR
Gary WADDOCK	4	Dariusz WDOWCZYK
Richard HARVEY	5	Keith McPHERSON
Trevor PEAKE	6	Paul HOLSGROVE
Paul TELFER	7	Michael GILKES
Scott OAKES	8	Simon OSBORN
John TAYLOR	9	Lee NOGAN
David PREECE	10	Uwe HARTENBERGER
Dwight MARSHALL	11	Scott TAYLOR
	12	
	14	
	GK	

TODAY'S OTHER DIV ONE MATCHES

Bolton Wanderers v Sunderland
Bristol City v West Brom
Derby County v Tranmere Rovers
Grimsby Town v Barnsley
Middlesbrough v Sheffield Utd
Port Vale v Burnley
Portsmouth v Watford
Swindon Town v Stoke City
Wolves v Oldham Athletic
Southend Utd v Charlton Ath (Tue)
Millwall v Notts County (Wed)



Plowmans
of
Luton

AND
LUTON
TOWN
—
THE
PERFECT
MATCH

You'll do a great deal better with us!

Open 7 Days

Vauxhall Main Dealers, 15 Hitchin Road, Luton.

Tel: 454666