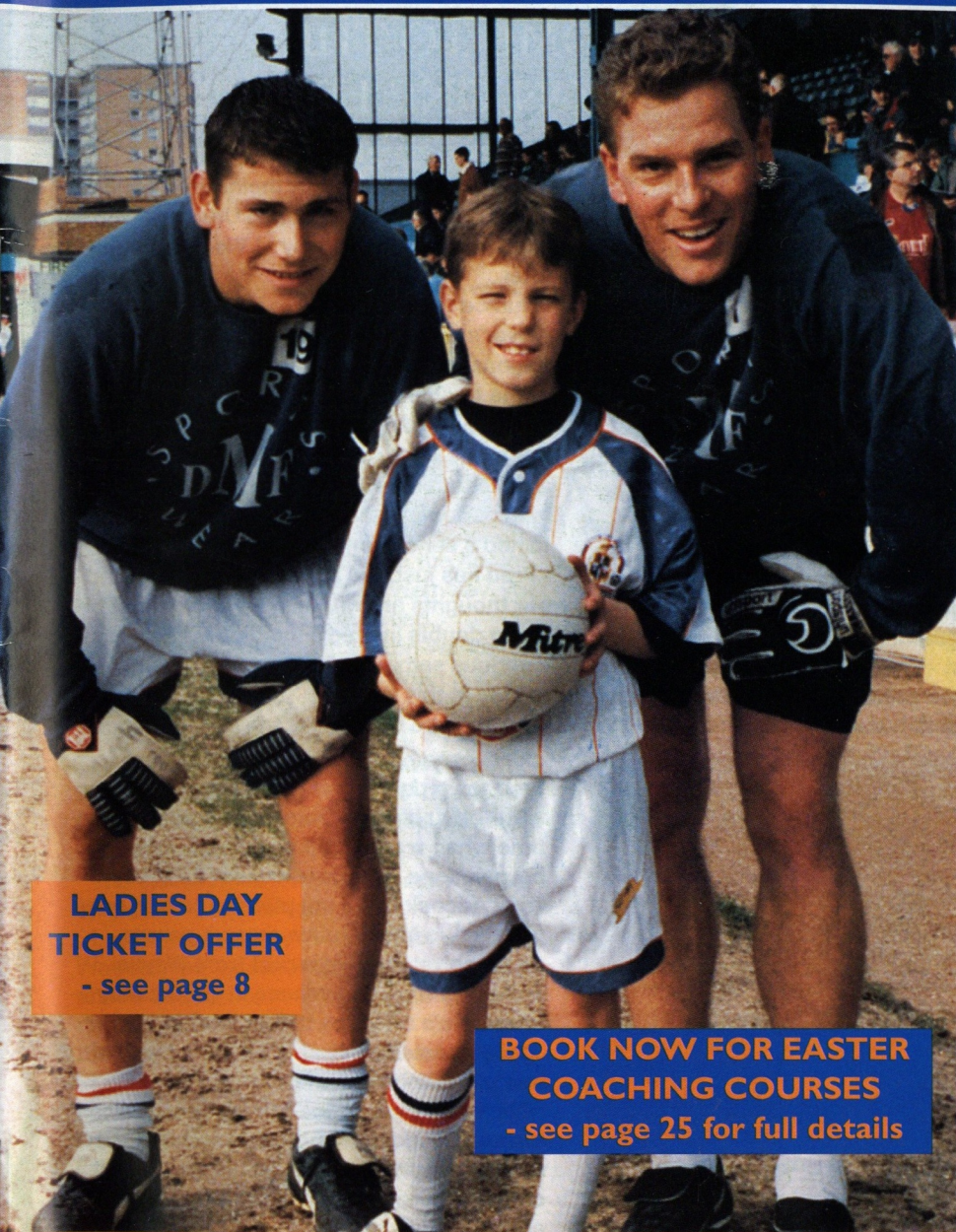


# v TRANMERE ROVERS



LUTON TOWN  
FOOTBALL CLUB



**LADIES DAY  
TICKET OFFER**  
- see page 8

**BOOK NOW FOR EASTER  
COACHING COURSES**  
- see page 25 for full details

**SATURDAY, MARCH 18, 1995, 3PM**

**MATCH SPONSORS**

The Loyal Luton Supporters Club

**MATCHBALL SPONSORS**

CP Contracts



Sponsors of  
Luton Town F.C.

Official matchday programme £1.50

LUTON TOWN





## PLEAT'S PERSPECTIVE

### WELCOME TO THE DIVISION ONE LEADERS

EVERYONE was very disappointed with last week's scoreline at Southend. It was a major disappointment in view of the fact that I felt we needed three consecutive wins quickly to stand any chance of gaining a play-off place.

It was one of those games where we desperately needed the first goal, because Southend had had a poor run but had been lifted by an away result at Oldham.

Obviously Juergen Sommer has come in for some criticism, and like a dedicated professional he is more than aware when he makes an error.

No top goalkeeper ever reached the heights without making mistakes along the way.

The United States Soccer Federation have been chasing me all this week regarding

Juergen's availability for their attractive game next Saturday against Uruguay, who incidentally come to play at Wembley soon after.

Suffice to say that I have rarely stood in a player's way who has the chance of international recognition, and it would be unfair of me to change that policy now.

We have younger players knocking at the door, including Kelvin Davis who has been a patient understudy since Fred Barber's loan period at Peterborough, when he sustained a serious injury.

Fred has just had a second operation and our thoughts are with him, as there must be some doubts in Fred's mind now after such a serious setback whether he can continue to play at this level.

We shall be monitoring the circumstances closely and hope that we will be seeing Fred towards the end of the season.

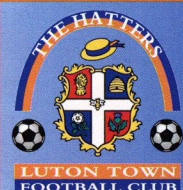
Our other signing from Peterborough, at a time when we thought we were getting a bargain for a combined cost of £25,000, Tony Adcock has, I am pleased to say, now played two consecutive reserve games, and received a good report from Wayne Turner for his performance in Wednesday afternoon's 1-1 draw at Wimbledon.

Tony scored our goal, after Mick Harford had put Wimbledon in front!

The transfer deadline is next Thursday, March 23, and no doubt there will be the normal scramble for players in the pursuit of last minute strengthening at hopefully advantageous prices.

At this moment there is a possibility that we might have further negotiations with a club to take a player before next Thursday, which would give a nine-game settling in period.

Congratulations are due to Endsleigh League clubs Bolton and Notts County, County, despite a difficult season, fly the



Luton Town Football Club  
Kenilworth Road Stadium,  
1, Maple Road,  
Luton, Beds LU4 8AW.  
Tel: (01582) 411622  
Fax: (01582) 405070  
Ticket Office: (01582) 416976  
Clubcall: 0891 121 123

**Chairman and  
Managing Director:**  
David Kohler BSc (Hons)  
ARICS

**Directors:**  
C.S. Bassett, C.T.F. Green,  
N.S. Terry

**Vice Presidents:**  
R.L. Banks, P. Collins,  
C. Bygraves, R. Safranek,  
D. Ludlow, P. Ireton.

**Secretary:**  
Cherry Newbery

**Manager:**  
David Pleat

**Coaches:**  
John Moore, Wayne Turner,  
Terry Westley

**Physiotherapist:**  
Clive Goodyear

**Consultant Physio:**  
John Sheridan

**Youth Development Officer:**  
Paul Lowe

**Scouting:**  
Les Shannon

**Community Football Officer:**  
Colwyn Rowe

**Financial Administrator:**  
Bob Bird

**Commercial Manager:**  
Kathy Leather

**Safety Manager:**  
Geoff Lovell

**Catering Manager:**  
Peter Saul

**Medical Officer:**  
Dr Bill Berry

**Club Dentist:**  
A. Chris BDS (Syd)

.....LISTEN TO THE MANAGER'S VERDICT ON TODAY'S  
BIG GAME ON LUTON TOWN CLUBCALL 0891 121 123

Finally we extend a warm welcome to our visitors today Tranmere Rovers. Top of the league has to be earned.

Their manager John King is one of the nicest and shrewdest of managers. He doesn't sign players that often, but when he does they have pedigree and quality.

Gary Stevens has played for England, Glasgow Rangers and Everton; Liam O'Brien for the Republic of Ireland, Manchester United and Newcastle United; John Aldridge for the Republic of Ireland, Liverpool and Real Sociedad; and Pat Nevin for Scotland, Chelsea and Everton.

There is no question that if you can get quality it helps bring on the younger element of the club.

We have tried to do something similar, and at the moment Tranmere Rovers have one or two younger players making rapid strides who will be in their side this afternoon.

It must have been heart-breaking last year for Tranmere to get pegged back in the League Cup semi-final after leading by two goals to nil in the first leg, and that says even more about their efforts this time around.

We will have to be at our very best today and have the breaks to succeed that we did not receive last Saturday at Southend.

I am hoping that our sharp, attacking players are back in the mood to test Eric Nixon. It will be one of the hardest tests of the season and I hope we will measure up and edge our way closer to the play-off positions, knowing full well that only a consecutive run of wins will give us a chance of being in the shake up.

Enjoy the game.

#### NEW signing Rob Matthews tests the Southend defence at Roots Hall last Saturday.

flag tomorrow for our league in the Anglo-Italian Final against Ascoli at Wembley. We sincerely hope they can succeed.

Also congratulations to Bolton Wanderers who once again have shown great stickability and fighting spirit by advancing to a League Cup Final place against Liverpool.

I am sure that everyone connected with the Endsleigh League clubs will be rooting for Bolton Wanderers to beat their far more illustrious north-west neighbours.

The current jockeying for places for play-off positions is still wideopen.

Looking at today's fixture list for example, Watford, Derby and Reading, who are all above us at present, appear to have quite difficult fixtures, and there is no question that the run-in is going to be most exciting.

I was pleased to see Paul Fletcher, our ex-centre back, getting into management with Darlington and we wish him well..... I would like to thank Paul Fairclough, the Stevenage manager, for kindly lending us some videos of the Conference League to help us assess players..... Bolton Wanderers are welcome guests this afternoon prior to their visit to Millwall tomorrow..... Andy King's Mansfield have had a remarkable goalscoring run, and it's all the more credit to Andy who lost coach Colin Harvey to Oldham around three months ago.

## HONOURS

Littlewoods Cup winners 1987-88

FA Cup finalists 1958-59

Littlewoods Cup finalists

1988-89

Simod Cup finalists 1987-88

Champions - Division Three (S) 1936-37

Champions - Division Four 1967-68

Champions - Division Two 1981-82



## AROUND THE TOWN



ABOVE: Scott Oakes in action in the recent home game against Millwall

## Oakes 'new' contract a boost for Hatters

MIDFIELDER Scott Oakes has signed a one-year extension to his contract, to the delight of manager David Pleat.

Scott joined Luton in October 1991, along with Des Linton, and made his debut for the Hatters at Norwich later that month.

His performances for the Hatters in last season's FA Cup run attracted much interest, and the England Under-21 international was Luton's leading scorer last term with 13, including that memorable hat-trick in the sixth round replay win over West

Ham, at Kenilworth Road.

So far this season he has been on target nine times, having played in a variety of positions.

"He has been in a more central role of late, and has played quite attractively, giving us some imagination and subtlety going forward," commented David Pleat.

"He can score goals, and he has that pace to open things up.

"We have brought him on steadily, as we do with all our young players, and of course I'm very pleased that he has extended his contract."

## Loan spells for Town duo



MARTIN Williams



JAMIE Campbell

MARTIN Williams and Jamie Campbell have joined Colchester and Cambridge respectively on one-month loans.

Both made their debuts last Saturday; Williams for Colchester in the 3-1 defeat at Hartlepool, and Campbell for Cambridge in their last-minute 2-1 defeat by Oxford.

It's Jamie Campbell's second loan outing of the season, after his earlier spell at Mansfield.

Luton Town FC Matchday Programme

Editor: Simon Oxley.

Tele: 0582 411622

Pictures: Andy Handley

Design and print:

McLeod Warner, Luton.

Tele: 0582 38389

**FRONT COVER:** Goalkeepers Kelvin Davis and Juergen Sommer are pictured with our mascot for last Saturday's game at Southend, David Bibby. Details of today's mascot can be found on page 17.

IT is with regret that we inform supporters of the death of Town fan Mrs Beryl Rudd, 74, from Baldock.

Mrs Rudd passed away last month after a short illness. She and her family have supported the Hatters for 30 years, and regularly travelled to away matches on the supporters' coach.

Sincere condolences from all at Luton Town to her husband Albert and son Haydn.



# Universal Salvage Auctions

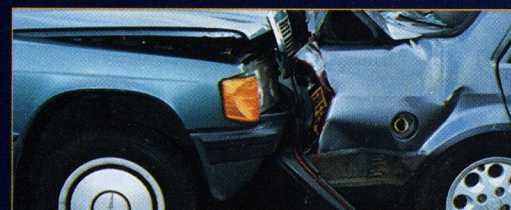
## SELL OVER 1000 REPAIRABLE/BREAKERS/STOLEN AND RECOVERED VEHICLES AT WEEKLY AUCTIONS

CORBY - NORTHANTS

DENNY - SCOTLAND

SANDTOFT - S.YORKS

WESTBURY - WILTS



Your nearest auction is every Wednesday at...

## DUNSTABLE ROAD REDBOURN, HERTS

For further information  
01234 766500





## The best service on a plate.

As one of the largest independent vehicle rental companies in the U.K., you can always expect a little extra from Kenning.

AN EXTENSIVE RANGE OF:

- CARS, VANS & TRUCKS.
- FULLY INCLUSIVE RATES WITH UNLIMITED MILEAGE.
- 24 HOUR NATIONAL HOTLINE HELPLINE.
- AA/RAC COVER.

**KENNING**

CAR AND VAN RENTAL

**LUTON 0582 455333**

24-34 Crawley Road.



- ◆ **HOURLY SPORTS NEWS**
- ◆ **FRIDAY SPORTS PREVIEW**  
(7pm)
- ◆ **SATURDAY SPORTSOUND**  
(2pm-6pm)
- ◆ **MIDWEEK MATCH COVERAGE** (7.05pm - 10pm)

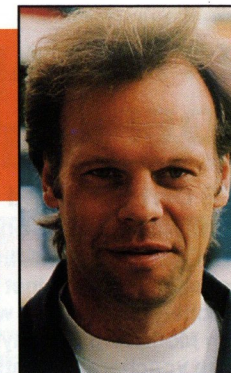
NEWS, SPORT & MUSIC  
for BEDS, HERTS & BUCKS

▶ 103.8 FM STEREO ▶ 630 kHz AM



## LEADING THE LINE

by TREVOR PEAKE



LEFT: Kerry Dixon is outnumbered by the Southend defence during last week's 3-0 defeat.

THE visit of the league leaders can be just the inspiration we need after last Saturday's disappointment at Southend.

Tranmere have maintained good form throughout the season, and now appear to be peaking at just the right time.

As ever, John Aldridge has been among the goals, but it is to their credit that he missed a lengthy spell of matches and still the results kept coming.

I read that they held the official opening of the redeveloped Prenton Park last week, and so promotion would round off a memorable year for them.

It looks like being quite a battle at the top of the Division One table, but Tranmere have every chance, as cup exploits could take a toll on Bolton and Wolves.

We too can have a big say in the promotion race, and we must also not yet write ourselves out of the play-off picture.

Starting today, we have games here against the leading contenders such as Tranmere, Wolves and Reading, with trips to Bolton and Middlesbrough to come.

Victories would shoot us up the table, but we will be looking for a considerable improvement

on the showing at Roots Hall last week.

We were up against a Southend side lifted by a first victory of 1995 in their previous game, but we all felt that we didn't do ourselves justice.

A belated welcome to Rob Matthews who has joined us from Notts County, and who impressed very much in the win against Port Vale.

Rob's role in Luton's recent history has been well documented, but professionals have a job to do, and on that occasion he did it.

Ironically, he may soon be in a position to halt County's bid for survival, as they visit here on April 8.

These things happen in football. When we were relegated from the top flight it was between us and my previous club Coventry.

But let's concentrate on the job today against Tranmere. They beat us 4-2 early in the season, and won here on their last visit, so it's time to redress the balance.

Thank you for your continued support - there was an excellent following at Southend last week - and hopefully we can continue the recent good home run and aim to finish the season on a high.

Luton Town FC are delighted to link up with LEGAL AND GENERAL, to offer a full and comprehensive financial service to supporters of the club. Anyone interested in receiving Legal and General's expert financial and insurance advice should contact:

Warren Miskin or Barry Shaw on 081 882 0249, quoting reference LU1.

Trevor Peake



## LTFC LADIES DAY OFFER AT 'DERBY' CLASH

IT'S Derby Day and Ladies Day all rolled into one at Kenilworth Road on Sunday, March 26.

The Hatters are holding a special Ladies Day promotion at the local derby against Watford, handing out free ticket vouchers to all ladies who attend the match - to coincide with Mothering Sunday!

The vouchers will entitle each lady to a free ticket for one of Luton's remaining home league games this season - providing the voucher is presented before the day of their chosen match.

The club have run a number of successful ticket promotions this season, for Junior Hatters, Students and Season Ticket Holders, and are keen to further enhance the family atmosphere at Kenilworth Road.



LUTON Town chairman  
David Kohler

The invite comes from Chairman David Kohler and his fellow directors, and Mr Kohler commented: "We want to attract even more families to come and watch Luton Town, and the game against Watford is one of our most eagerly anticipated matches of the season. If the ladies come along on March 26, they can come again as our guests, free of charge!"

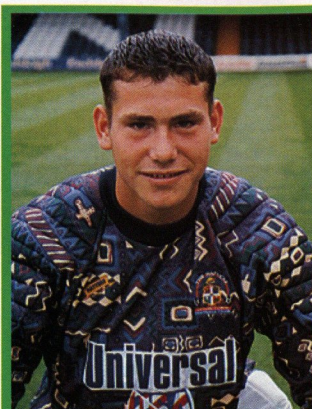
### Don't forget..... LUTON TOWN v WATFORD

has been switched from  
Saturday, March 25 to  
Sunday, March 26, kick-off 2.55pm,  
and will be shown live on ITV.

### LUTON TOWN v WOLVERHAMPTON W

- this game will now be played on Tuesday, April 4, at Kenilworth Road, kick-off 7.45pm

If you entered the ground with a ticket for January's postponed game, you can get a replacement from the ticket office. If you are still holding a ticket, you can use it for the rearranged game or claim a refund up to 24 hours before the rearranged match.



KELVIN Davis

### Sunday switch for Stoke finale

LUTON'S final game of the league season, at home to Stoke City, has been switched from Saturday, May 6, to Sunday, May 7, kick-off 3pm.

The entire Division One programme has been put back 24 hours so that all clubs kick-off at the same time, regardless of television requirements.

The Hatters played at Stoke on the final day of last season, also a Sunday, drawing 2-2 with goalkeeper Kelvin Davis making his debut.

### Final forces Bolton change

DUE to Bolton Wanderers' reaching the Coca-Cola Cup Final, at Wembley on April 2, our trip to Burnden Park on April 1 has been postponed.

The game will now be played on Tuesday, April 11, kick-off 7.30pm.



## LUTON TOWN TICKET OFFICE NEWS

### Travelling to...

#### Burnley

##### Address:

Turf Moor, Brunshaw Road,  
Burnley, Lancs, BB10 4BX.  
Tel: (0282) 27777.

Take M1 north and then M6 north, exiting M6 at junction 31. Take the Blackburn bypass and A679 into town centre, and then take third exit from roundabout into Yorkshire Street. Follow over crossroads into Brunshaw Road for ground.

Directions courtesy of  
Automobile Association

**The Bobbers Travel Club**  
organise coach trips to  
Luton away matches.

To book a place on the coaches, which pick up from a variety of points in Luton and Mid Beds, visit the club's ticket kiosk in the Kenilworth Road turnstiles, and see Travel Co-ordinator Paul Deason before any Saturday first-team home match between 2.15 and 2.45pm.

You can also telephone Paul on Bedford (0234) 750996 - after 6pm.

### Burnley v Luton Town

#### ENDSLEIGH INSURANCE LEAGUE DIVISION ONE

Tuesday, March 21, 1995, kick-off 7.30pm

Pay on the night only at Burnley. Prices are: Covered Seats £9.50 (no concessions); Covered Terracing £7.50 (adults) and £4 (senior citizens and juniors).

### Luton Town v Watford

#### ENDSLEIGH INSURANCE LEAGUE DIVISION ONE

Sunday, March 26, 1995, kick-off 2.55pm

(Please note the change of date, due to TV coverage).  
Tickets for this match are now on sale at normal league prices.  
Normal guesting facilities apply.

### Luton Town v Wolverhampton W

#### ENDSLEIGH INSURANCE LEAGUE DIVISION ONE

Tuesday, April 4, 1995, kick-off 7.45pm

Tickets for this match are on sale at normal league prices.  
Normal guesting facilities apply.

If you are still holding a ticket for this match, you can use it for the rearranged date or claim a refund up to 24 hours before the match. If you entered the ground with a ticket on Saturday, January 21, 1995, you need to get a replacement from the ticket office.

### Luton Town v Notts County

#### ENDSLEIGH INSURANCE LEAGUE DIVISION ONE

Saturday, April 8, 1995, kick-off 3pm

Tickets for this match are now on sale at the discounted price. Normal guesting facilities apply.

### Ticket Office opening hours

Monday to Friday: 10am to 4pm

Saturday (match days): 9am to 3pm and 4.45 to 5.15pm

Saturdays (non match days): Subject to change. Please  
contact the ticket office

For bookings, membership and enquiries, ring the Ticket Office direct on (0582) 416976. Supporters wishing to order by credit card can do so by using the 24-hour Credit Card Hotline on (0582) 30748.

Please note that the ticket  
office **WILL** be open on  
Saturday, April 1,  
from 9am to 11am,  
despite the postponement  
of the match at Bolton.





MOTOR INSURANCE

# Endsleigh ensure you insure for less

## We ensure you save money

Our continuing investment in new technology is enhancing our competitiveness even further. Our service is faster and more efficient and the savings we make through a leaner operation are passed directly on to you.

## We ensure you save time

You can phone or call in whichever you prefer, the result is the same. Instant accessibility to our national computer and the convenience of being able to deal with people that care about your needs. 1995 will see our ability to issue full annual policies and certificates on the spot. No form filling, no fuss, no temporary cover notes, no delays, no anxiety.

## We ensure a personal service

Our retail chain of some 140 Insurance Centres is the public face of Endsleigh; approachable, professional and helpful. We handle every aspect of insurance, from adjustments, renewals and claims ourselves.

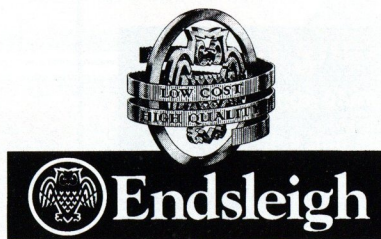
## We ensure you get the best cover

With one call from you, our computer can immediately select the very best rate from over 45 schemes unavailable elsewhere and created in association with 35 of the industry's most dynamic insurance companies. The result is fast, effective unbeatable cover, enhanced still further by added benefits.

## Please ensure that you phone for a quotation

648/652 Silbury Boulevard, Milton Keynes

01908 675866



## ON THE OTHER SIDE

# KING BIDS TO CROWN SEASON WITH PREMIERSHIP PLACE

TRANMERE manager John King is bidding to crown his eight year reign at Prenton Park with a place in the top flight.

King has already won two promotions and the Leyland Daf Trophy with Rovers, and last season took his team to the Coca-Cola Cup semi-final and their second consecutive play-off.

Now he is on the brink of the Premiership after Rovers opened up a three-point lead at the top of Division One with last Saturday's 2-0 win over Grimsby.

Middlesbrough, Wolves and Bolton may have games in hand but they must all travel to Birkenhead in the next few weeks, and Tranmere have lost only one league match at home this season.

They have overcome the loss of defenders Steve Vickers and Ian Nolan, to Middlesbrough and Sheffield Wednesday respectively, to bring more young talent to the fore to combine with the experience of the likes of John Aldridge, Pat Nevin and Liam O'Brien.

This season has also heralded the start of a new era at Tranmere, with Frank Corfe stepping into Peter Johnson's shoes as Chairman, the latter having departed to Everton.

And last Saturday, prior to the defeat of Grimsby, the club held the official opening of the new-look 17,000 capacity all-seater Prenton Park, following a £3 million re-development.

It's a far cry from the formation of the club, as Belmont FC, in 1884, when most of the players were members of the local Wesleyan Chapel, and the average age of the team was under 15. The name was changed to Tranmere Rovers in 1885, and, according to legend, the decision was taken in Saintys Cocoa Rooms at the rear of Birkenhead Market.

The club rose steadily through the early 1900s,

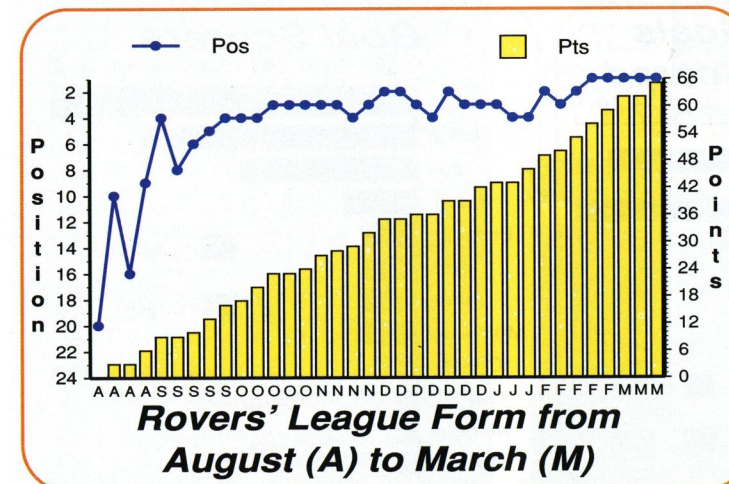
RIGHT:  
Republic of  
Ireland  
striker  
John  
Aldridge



and joined the new Third Division (North) playing their first season in 1921. In 1938, Tranmere Rovers were promoted to the Second Division, but were immediately relegated having their worst ever season, winning only six games.

They remained in Division Three until 1961, when they were relegated to Division Four, and although they spent all bar one of the seasons from 1967-79 in the Third, problems reached a peak in the 1980s.

They were re-elected in 1981, and by 1982 only a 'Save The Rovers' campaign and a £200,000 council loan saved the club from folding. Peter Johnson's takeover in 1987 created real stability, and now the club for whom the great 'Dixie' Dean made his league debut in 1924, are on the verge of Premiership football.



ABOVE: Rovers manager John King

LEFT: Tranmere's league form this term





# TRANMERE ROVERS 1994/95

## SPOTLIGHT ON TODAY'S VISITORS

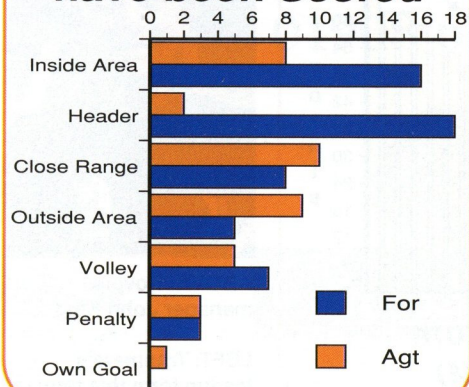


Back row, l to r: Kenny Jones (trainer), Warwick Rimmer (Youth Development Officer), Alan Morgan, Dave Higgins, Dave Rogers, Dave Challinor, Gary Jones, Graham Branch, John McGreal, Ged Brannan, Shaun Garnett, Kenny Irons, John Morrissey, Les Parry (physio), Ray Mathias (reserve team coach).

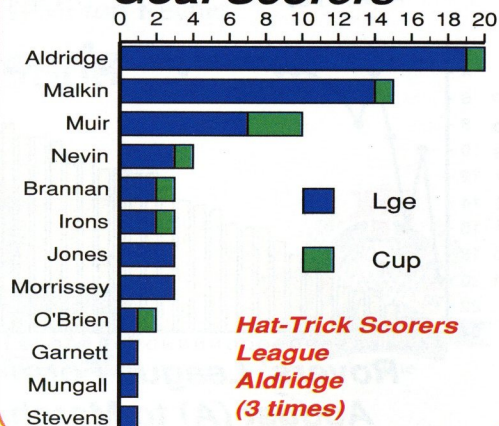
Middle row: Harry McNally (Chief Scout), Norman Wilson (Secretary), Ian Moore, Gavin Allen, Chris Malkin, Martin Jones, Eric Nixon, Danny Coyne, Mick Edwards, Jonathan Kenworthy, Ian Nolan, Ronnie Moore (coach), Frank Corfe (chairman).

Front row: Mark Proctor, Tony Thomas, Ian Muir, Steve Mungall, John King (manager), John Aldridge, Phil Johnson, Liam O'Brien, Pat Nevin.

### How the Goals have been Scored



### Goal Scorers



**Hat-Trick Scorers**  
League  
Aldridge  
(3 times)

## VISITORS ON PARADE

**ERIC NIXON** - Goalkeeper who was Rovers' record buy in July 1988 when he signed from Manchester City for £60,000, and has played a vital role in the club's rise through the divisions.

**DANNY COYNE** - Fine prospect in goal, who has already represented Wales at school-boy, youth and Under 21 level.

**TONY THOMAS** - Made his league debut in 1988/89 at just 17-years-old, and can play anywhere in defence or midfield. Scorer of Tranmere's fastest ever goal versus Southend in 1991, recorded at 7.7 seconds after kick-off.

**STEVE MUNGALL** - Rovers longest serving current player, who has chalked up almost 600 appearances since signing from Motherwell in 1979.

**GARY STEVENS** - Former England right-back capped 46 times by his country. Signed from Glasgow Rangers for £350,000 in October 1994, having won championship and cup honours both north and south of the border.

**GED BRANNAN** - Defender/midfielder who is a product of the club's youth scheme. Gets forward well, and scored 11 times last season.

**DAVE HIGGINS** - Defender who is in his second spell at Prenton Park having drifted into non-league football for five years.

**DAVE CHALLINOR** - Signed in the summer of 1994 from local non-league side Bromborough Pool. England Under-19 international.

**JOHN MCGREAL** - Young central defender now in his fifth season as a full professional.

**SHAUN GARNETT** - Defender who has progressed through Tranmere's youth scheme.

**ALAN MORGAN** - Welsh youth international, capped at Under 15, 16 and 18.

**LIAM O'BRIEN** - Signed from Newcastle for £250,000 in January 1994, having been unable to gain a regular place at St James' Park. Started his career with Manchester United, and has been capped by Eire.

**MARK PROCTOR** - Signed from Middlesbrough on a free transfer in July 1993, after spells with Nottingham Forest, Sheffield Wednesday and Sunderland.

**KENNY IRONS** - Energetic midfielder, and another product of the Prenton Park youth scheme.

**JOHN MORRISSEY** - Former England youth international who returned to Merseyside for £8,000 from Wolves in October 1985.

**PAT NEVIN** - Became Rovers' record signing when he joined the club from Everton in August 1992 for £300,000. Current Scottish international who started with Clyde before a move to Chelsea. Left Stamford Bridge for Everton for £925,000 in 1988.

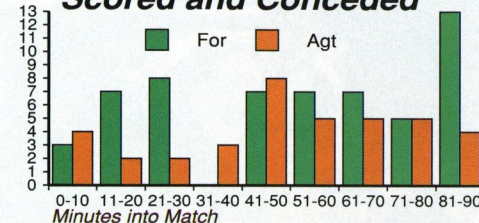
**GRAHAM BRANCH** - Forward who signed from non-league Heswall in May 1991.

**GARY JONES** - Former trainee who last season was converted from central defender to free-scoring centre-forward with 20 reserve team goals.

**CHRIS MALKIN** - Gave up his job in the International Division of Barclays Bank in 1989 to concentrate on football. His goal in the 1991 Play-Off Final booked Rovers a second division berth at the expense of Bolton.

**IAN MUIR** - Up to the start of this season,

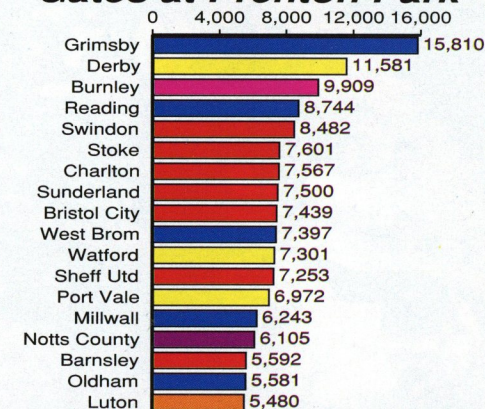
### When Tranmere have Scored and Conceded



RIGHT:  
Scottish  
international  
Pat Nevin



### Gates at Prenton Park



Graphics by Football Information Services

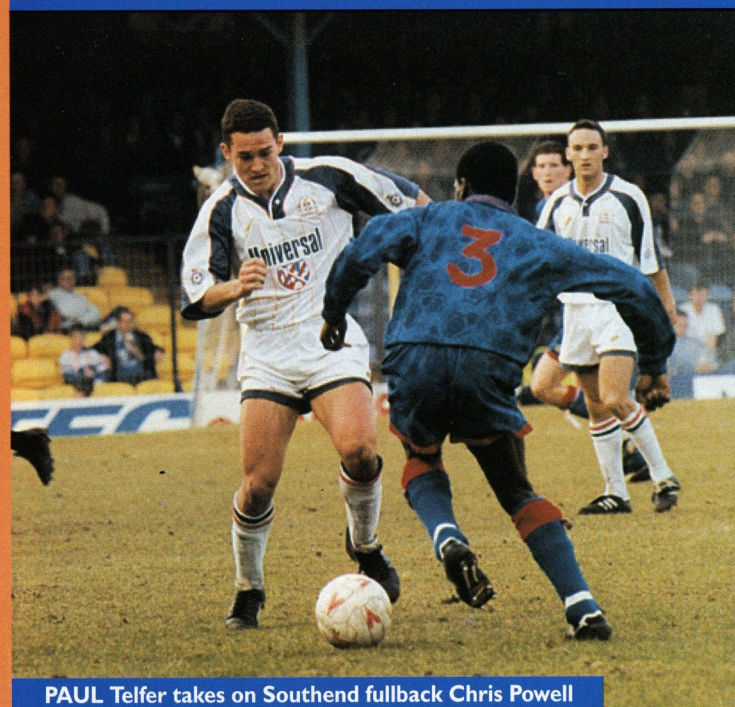
had scored 170 goals for Rovers to become their leading marksman of all time. Formerly with QPR, Swindon, Burnley and Birmingham.

**JOHN ALDRIDGE** - Joined Rovers from Real Sociedad for a then club record £250,000 in June 1991 - money very well spent! A prolific scorer with Newport, Oxford, Liverpool and Sociedad, has also played for Eire in two World Cups and a European Championship.

**JON KENWORTHY** - Highly regarded Welsh Under 21 international.

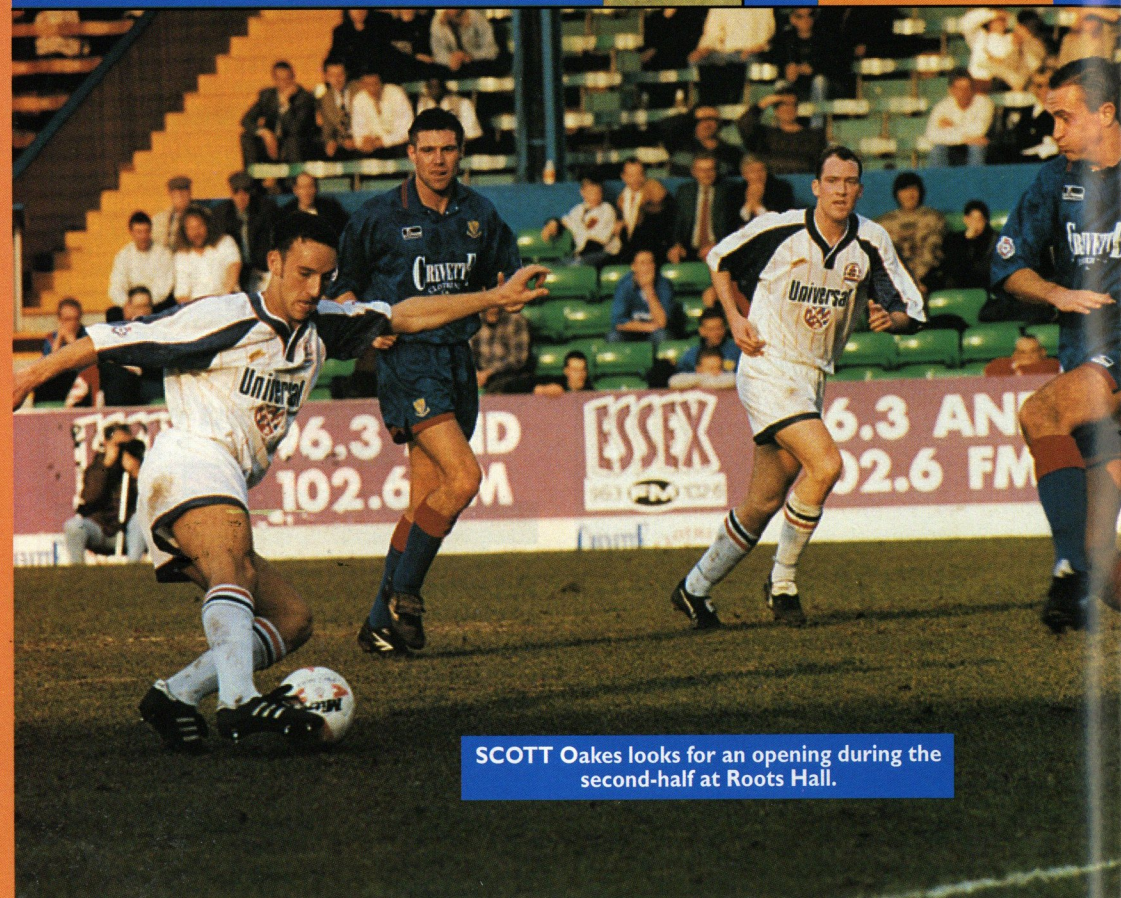


# SOUTHEND UTD v LUTON TOWN

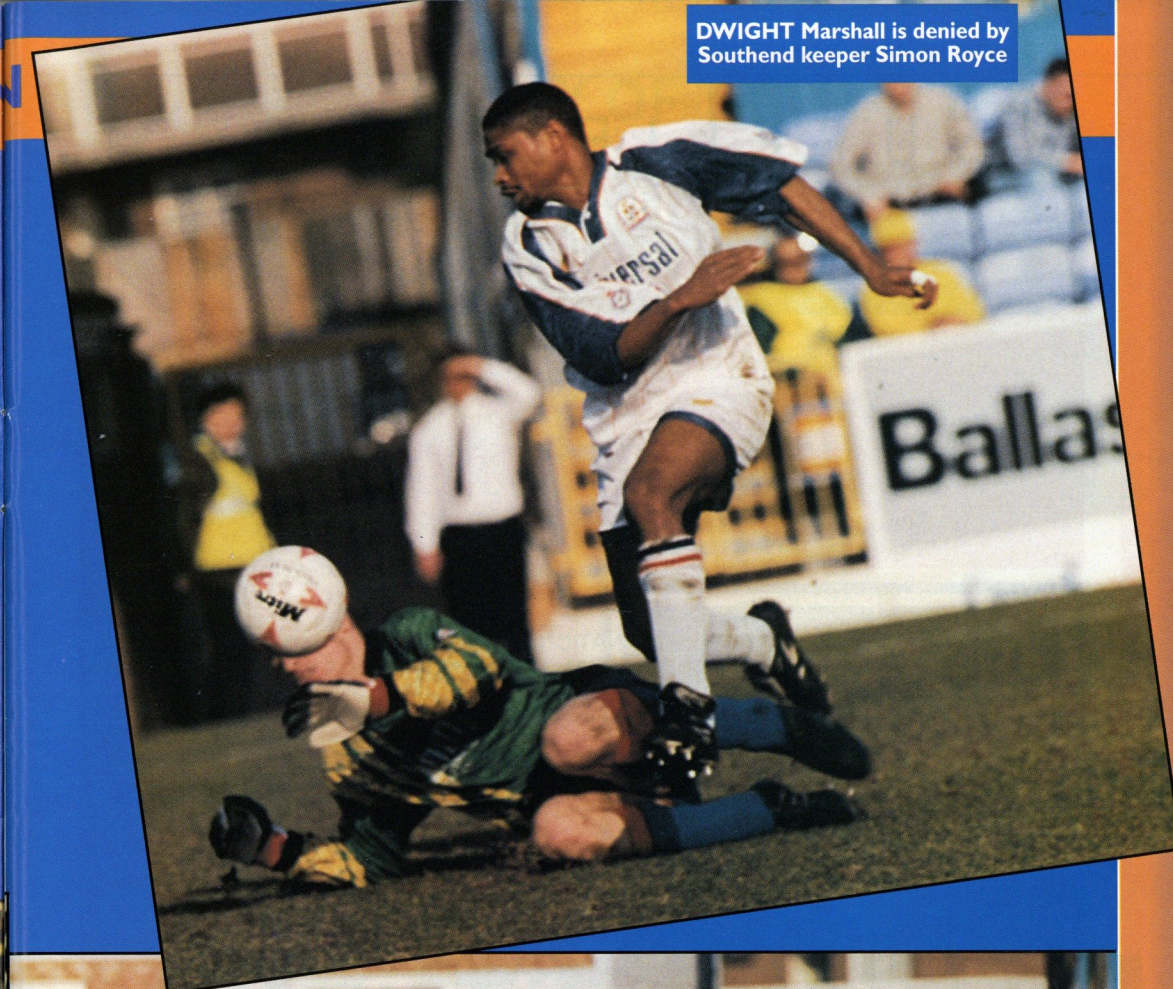


PAUL Telfer takes on Southend fullback Chris Powell

From
Roots Hall
Date
March 11, 1995
Result
Southend Utd 3 (Jones, Thomson, Dublin)
Luton Town 0
Attendance 4,558
Pictures by ANDY HANDLEY



SCOTT Oakes looks for an opening during the second-half at Roots Hall.



DWIGHT Marshall is denied by Southend keeper Simon Royce



DWIGHT Marshall makes space for a shot, but this effort, late in the first-half, went just over the bar.



S U P P L I E D   B Y



MITRE SPORTS INTERNATIONAL LTD.  
BIRKBY, HUDDERSFIELD, HD1 5AJ. TEL: 0484 537488. FAX: 0484 530042

A GENESCO Company  


## Football wins the Pools every Saturday



Every time you enter Littlewoods, Vernons and Zetters Pools or Littlewoods Spot the Ball you are helping the game at all levels. The Football Trust administers funds from the Pools, helping clubs to improve safety and comfort.

The Trust receives some £37 million every year, all of it coming directly or indirectly from Littlewoods, Vernons and Zetters Pools and Littlewoods Spot the Ball.

Football also receives £8 million a year for the use of fixtures on coupons and Littlewoods, the game's biggest benefactor, is the first sponsor of the FA Cup.

Up and down the country, clubs are building new grounds, stands, seating and roofing. All depend on the support of the Football Trust and on the success of the football pools.



**LITTLEWOODS VERNONS ZETTERS**  
*Making sure football wins the Pools each week*



**THE FOOTBALL TRUST**  
*Helping the game*

THE FOOTBALL TRUST, WALKDEN HOUSE, 10 MELTON STREET, LONDON NW1 2EB



## HARRY OF THE HATTERS

### JUNIOR HATTERS OFF TO THORPE PARK!

WE are planning a day trip to Thorpe Park for Junior Hatters and their families on Sunday, June 11, 1995.

It promises to be a great day out, with lots to do, and a chance to see all your Luton Town friends as we look forward to the new season.

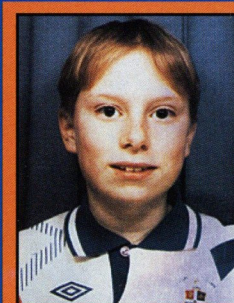
The special price for this trip will be £11 for under 14s and £15 for over 14s - this price includes return coach fare from Luton and entrance to Thorpe Park, where there is a wide choice of rides for all ages.

The coach will depart from the forecourt outside the Ticket Office in Kenilworth Road at 9am and meet back at the coach to depart Thorpe Park at 4.30pm. We should be back at Kenilworth Road for approximately 6pm.

Booking details are as follows: A £5 non-returnable deposit per person must be paid by Saturday, April 8. The outstanding balance must be paid in full by Saturday, May 6. We regret that as this is a family trip, we are unable to accept bookings from unaccompanied juniors. Spaces are limited, so please book early to avoid disappointment!

If you have any queries regarding this trip, please contact the Ticket Office on Luton 416976.

### MATCH DAY MASCOT



**Name:**

Daniel Sunderland

**Date of birth:** 28/7/82

**School attended:**

Brewers Hill, Dunstable

**Other hobbies:**

Athletics

**Local team you play for:**

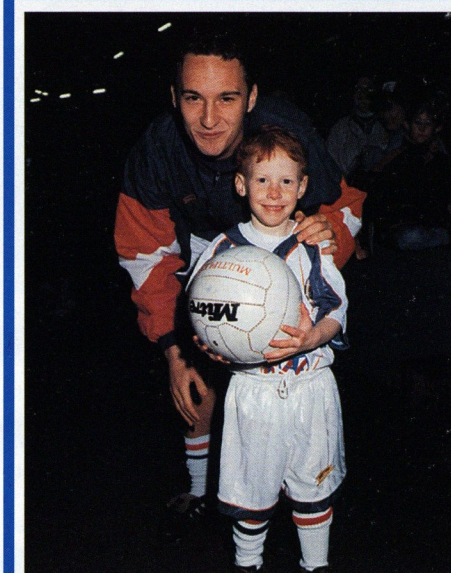
Gliders FC

**Favourite Luton Town player:**

David Preece

**Who accompanies you to Luton matches:**

My dad.



**MICHAEL Davey** was our Junior Hatters mascot for the home game against Port Vale.

Michael is pictured above, with his favourite player Scott Oakes.

### HOW SWEET!

Belgian Chocolate footballs in presentation box with LTFC crest

Were £4..... now just £3

Ideal present for Easter or Mothers' Day

**THERE'S A SPECIAL TICKET OFFER FOR ALL LADIES WHO ATTEND NEXT SUNDAY'S GAME AGAINST WATFORD - TO COINCIDE WITH MOTHERING SUNDAY!**

**SEE PAGE 8 OF TODAY'S MATCH PROGRAMME FOR FULL DETAILS.....**



THIS foul on Dwight Marshall resulted in a booking for Southend's Andy Edwards, just before half-time at Roots Hall. Picture: ANDY HANDLEY.



## MATTHEWS MAKES HIS MARK



NEW signing Rob Matthews has made a bright start to his Luton Town career, with an influential role in the Hatters' second-half performance to secure victory over Port Vale.

Only a fine save from Vale keeper Paul Musselwhite denied Matthews a goal, but Kerry Dixon was on hand to net the rebound for what proved to be the decisive score.

Matthews had made his debut for the Hatters, also as a substitute, in the previous Saturday's 1-1 draw with Millwall, and played his first full game in last week's defeat at Southend.

The 24-year-old signed from Notts County for £80,000, as new County boss Howard Kendall reshuffled the pack in a bid to escape relegation.

Although transfer-listed, Rob admitted the move had come as a surprise, but is looking forward to a fresh start.

"I came back from injury last season and struggled a bit for fitness, but felt much better at the start of the current campaign," he said.

"But with the various changes of management I didn't get a good run of games together."

He appeared as a second-half substitute when the Hatters visited Meadow Lane on New Year's Eve, but of course his most famous, or perhaps infamous, match against Luton was in May 1992 when his two goals sent David Pleat's side down on the final day of the season.

"It was a good day for me on my first full start for County," recalled Rob, "and I was playing for a

**NEW signing Rob Matthews signs autographs before the 1-1 draw against Millwall, when he made his Luton debut.**

contract so I couldn't have asked for much more on the day."

He was then 21, so it was a comparatively late start in the professional game after studying for a Geography degree at Loughborough University, during which time he represented the British Universities.

"Nothing really happened when I was at school regarding clubs coming in for me, so I decided to go to university," said Rob. "After all, when that was finished I was still only 21 and I have the qualifications to fall back on."

He certainly has no regrets about turning professional, and after that two-goal start took his career record to 13 goals in 40 games for County, including four in seven matches for Kendall.

His departure prompted several angry letters to the Nottingham Sports Argus, and he may yet have a say in County's Division One future as they visit Kenilworth Road on April 8.

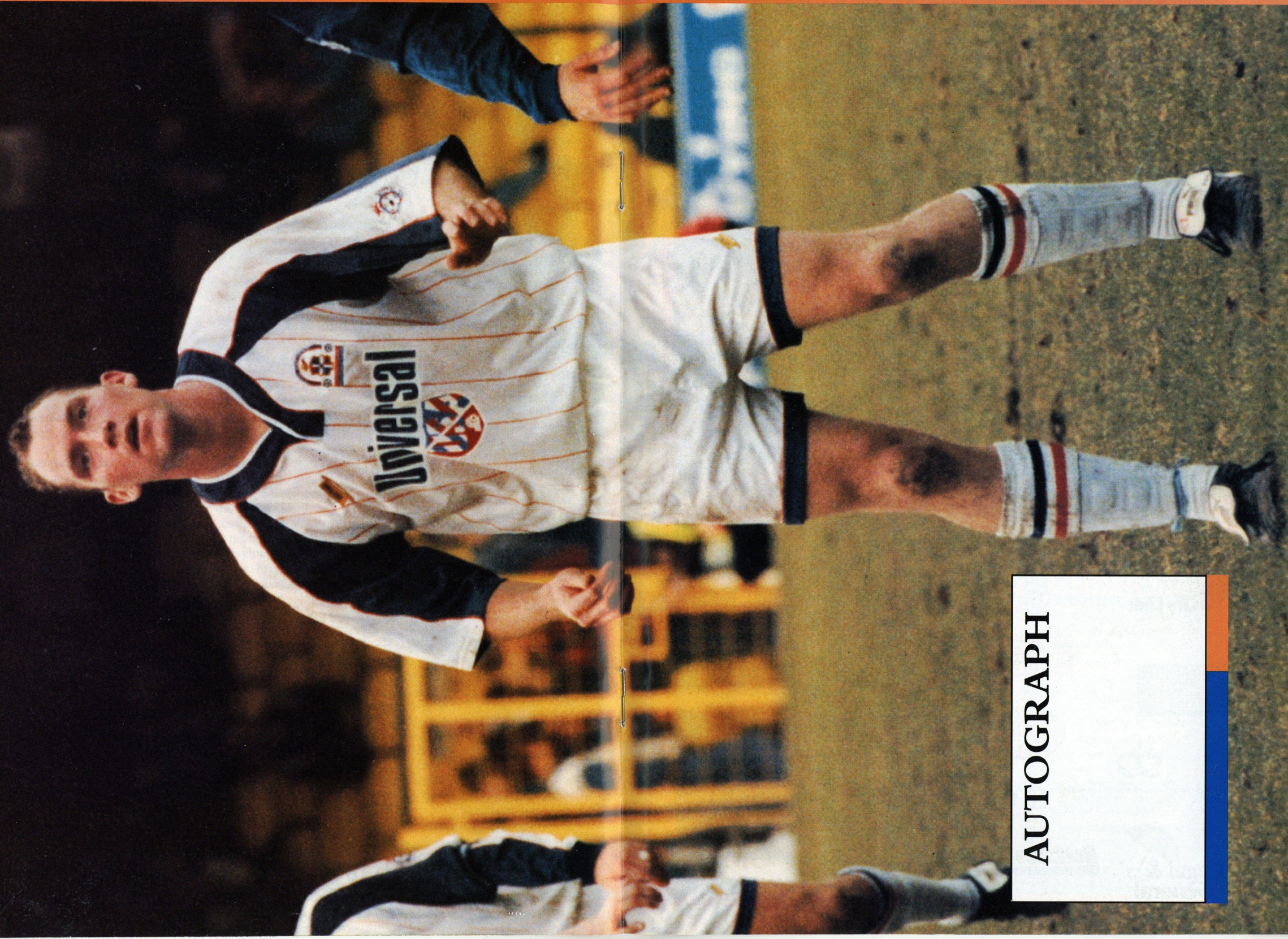
David Pleat is happy with his new signing however, and says Rob has "all sorts of potential".

Mr Pleat added: "When he receives the ball he really goes at defences, and defenders don't like that. It's up to Rob whether he realises that potential, and he was certainly influential against Port Vale, and I am pleased with his introduction."

Keep up-to-date with all the news from Kenilworth Road on  
**LUTON TOWN CLUBCALL 0891 121 123**



AUTOGRAPH



*Rob Matthews*



## KENILWORTH SUITE

ABB Flexible Automation Ltd  
Anachem Ltd  
Mr G. Chamberlain  
Corporate Coaching  
Ken & Judi Craven  
Fisher Frozen Foods Ltd  
F & T Goodwin Ltd  
Grosvenor Contracts  
Handscombe Financial Services Ltd  
R.W. Harvey & Son

R. Yates  
Origination  
Radley Shaw  
Regal Litho  
Steadfast Properties PLC  
Wilton Contract and Vehicle Rental  
Complete Contracts Ltd  
The Home Counties Newspaper Group  
Frank and Audrey Ludlow

## CLUB 82

Bervale Mead Insurance Brokers  
C.P. Contracts  
J.S.B. Business Forms  
Luton Cleaning Company  
Nordic Supplies  
Mr F.W. Pearce  
The Unimec Group of Companies  
Shorely Travel

TJ Aldridge Builders  
Chris and Kim Clarke - The Wheatsheaf,  
Flitwick  
Space Display Systems  
Techno Sign Ltd  
Mr D.R. Kenningham  
Carol and Stuart Kendall - The Blackbirds,  
Flitwick

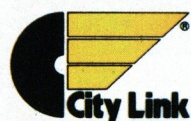
## INDIVIDUAL BOX HOLDERS

Mr Alan Garner

Mr Malcolm Eade

Mr Roger Eade

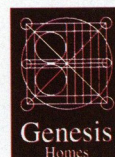
## EXECUTIVE BOX HOLDERS



Murtagh Demolition



VAUXHALL



Cope Brothers (Printers) Limited



## GET IN GEAR AT THE HATTERS SHOP....



FROM left: Padded baseball jacket (S, M, L and XL) - £45.00; Luton Town FC tracksuit top (various sizes); Full length navy managers coats, with full Luton Town crest (S, M, L, XL, and XXL) - £65.00; Three-quarter length navy coaching jackets with full Luton Town crest (S, M, L, and XL) - £50.00; Navy and royal bomber jacket, with full Luton Town crest. Childrens sizes 28 and 32 - £32.00. Adult sizes (S, M, L and XL) - £35.00.



## KIT OUT THE KIDS FOR UNDER £20

there's a wide range of sale items at the club shop featuring recent LTFC shirts, shorts and socks - pop in a buy a bargain!

## LTFC kit prices 1994/95

### HOME/AWAY SHIRTS

22-24 .....	£23.99
26-28 .....	£23.99
30-32 .....	£23.99
34-36 .....	£28.99
38-40 .....	£28.99
42-44 .....	£30.99
46-48 .....	£30.99

### GOALKEEPER SHIRTS

- Grey/green

22-24 .....	£29.99
26-28 .....	£29.99
30-32 .....	£29.99
34-36 .....	£34.99
38-40 .....	£34.99

### HOME/AWAY SHORTS

22-24 .....	£12.99
26-28 .....	£12.99
30-32 .....	£15.99
34-36 .....	£15.99

### SOCKS HOME/AWAY

Boys .....	£5.99
Youths .....	£5.99
Mens .....	£5.99

OPENING HOURS: Enquiries (0582) 411622

Monday to Friday - 10am to 4pm

(Evening matchdays 10am to 10pm)

Saturdays - matchdays 9am to 5pm

-non matchdays 9am until coaches leave for away game

Hatters Shop



# KIT SPONSORS

CLIVE GOODYEAR

is sponsored by

Mad As A Hatter  
- The Luton Town  
fanzine



**RICHARD HARVEY**  
Shorey Travel

**DWIGHT MARSHALL**  
Milton Keynes Branch of the  
Luton Town Supporters Club

**FRED BARBER**  
Royal Air Force Careers  
Information Office, Bedford

**DAVID PREECE**  
Ken and Judi Craven

**TONY ADCOCK**  
Chris and Kim Clarke  
The Wheatsheaf, Flitwick

**DAVID GREENE**  
O'Shea's Public House,  
Castle Street, Luton

**TONY THORPE**  
Bedfordshire Rural  
Communities Charity

**JULIAN JAMES**  
Shorey Travel

**PAUL TELFER**  
Convoy Installations Ltd

**KELVIN DAVIS**  
McLeod Warner

**MITCHELL THOMAS**  
Sam Hill

**DES LINTON**  
Simkins Solicitors of  
Baldock and Sandy

**JOHN MOORE**  
Les and Sue Miller

**CERI HUGHES**  
Les and Sue Miller

**CLIVE GOODYEAR**  
Mad As A Hatter  
- The Luton Town fanzine

**MARTIN WILLIAMS**  
Anchor Insurance Brokers  
Milton Keynes

**SCOTT OAKES**  
Legal and General Assurance

**JUERGEN SOMMER**  
Paul Deason

**AARON SKELTON**  
Club Skyway of London  
Travel Agents

**JAMIE WOODSFORD**  
Worldwide Hatters on the  
Super Highway (WHOSH)

**TREVOR PEAKE**  
Bennetts Gate Bakery of  
Hemel Hempstead

**MARVIN JOHNSON**  
Graham Group PLC

**DAVID PLEAT**  
Bobbys Travel Club,  
Committee and Members

**KERRY DIXON**  
The Loyal Luton Supporters Club

**To be decided**  
Kate and Phil Shaw

**GARY WADDOCK**  
Mad As A Hatter  
- The Luton Town fanzine

**ROB MATTHEWS**  
The Unimec Group of Companies

## LTFC in the Community

with the club's 'Football in the Community' officer  
**COLWYN ROWE - (01582) 411622**



### COACHING COURSES - EASTER 1995

#### THREE DAY COACHING CLINICS

- Coaching Clinics are a Luton Town Football Club 'Football in the Community' activity
- They offer children a well organised coaching programme supervised by experienced, qualified Football Association coaches. The programme includes:
- Technique coaching, designed to help boys and girls enjoy and improve their football whilst encouraging good attitudes and behaviour
- Small-sided game medals, and best attitude awards
- Certificate for every participant, plus the opportunity to come to a game free of charge, if accompanied by an adult
- Opportunity to meet LTFC players

WHO CAN TAKE PART? - All boys and girls between 5 and 14 years old, regardless of their footballing ability

- |   |   |
|---|---|
| <b>A BEDFORD</b> - Goldington Middle School,<br>Haylands Way<br>Dates - Sun 9th, Mon 10th & Tues 11th April 1995.<br>10am to 2pm.....£24.00                       | <b>F KEMPSTON</b> - Robert Bruce Middle School,<br>Hillgrounds, Bedford Road<br>Dates - Wed 12th, Thurs 13th & Fri 14th April<br>1995. 10am to 2pm.....£24.00 |
| <b>B LUTON</b> - St Joseph's Junior School, Gardenia<br>Avenue<br>Dates - Sun 9th, Mon 10th & Tues 11th April 1995.<br>10am to 2pm.....£24.00                     | <b>G FLITWICK</b> - Woodland Middle School, Malham<br>Close<br>Dates - Mon 17th, Tues 18th & Wed 19th April<br>1995. 10am to 2pm.....£24.00                   |
| <b>C LEIGHTON BUZZARD</b> - Brooklands Middle<br>School, Brooklands Drive<br>Dates - Mon 10th, Tues 11th & Wed 12th April<br>1995. 10am to 2pm.....£24.00         | <b>H BARTON</b> - Arnold Middle School, Hexton Road<br>Dates - Mon 17th, Tues 18th & Wed 19th April<br>1995. 10am to 2pm.....£24.00                           |
| <b>D DUNSTABLE</b> - Streetfield Middle School,<br>Dunstable Road, Caddington<br>Dates - Wed 12th, Thurs 13th & Fri 14th April<br>1995. 10am to 2pm.....£24.00    | <b>J BIGGLESWADE</b> - Holmemead Middle School,<br>Mead End<br>Dates - Thurs 20th, Fri 21st & Sat 22nd April 1995.<br>10am to 2pm.....£24.00                  |
| <b>E MILTON KEYNES</b> - Water Hall County<br>Combined, Melfort Drive, Bletchley<br>Dates - Wed 12th, Thurs 13th & Fri 14th April<br>1995. 10am to 2pm.....£24.00 | <b>K LUTON</b> - Stopsley High School, St Thomas<br>Road<br>Dates - Thurs 20th, Fri 21st & Sat 22nd April 1995.<br>10am to 2pm.....£24.00                     |

#### SPECIALIST GOALKEEPING COURSE

**GK LUTON** - Electrolux Sports Ground, Ely Way, off Oakley Road  
Dates - Mon 17th, Tues 18th & Wed 19th April 1995. 10am to 2pm.....£30.00

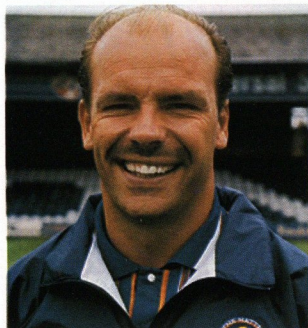
#### ADULT COACHING COURSE

**ACC LUTON** - Electrolux Sports Ground, Ely Way, off Oakley Road  
Dates - Sat 15th April 1995, from 9.30am to 2.30pm.....£10.00

This course is aimed at Junior/Senior football managers/coaches and FA Preliminary Award Coaches, and will provide basic prelim. refresher coaching through to advanced coaching. Programme of events will be: Organisation, technique coaching, small sided games, phase of play and 11 v 11.

For application details, contact Colwyn Rowe at: Football in the Community, LTFC, Kenilworth Road Stadium, 1 Maple Road, Luton, Beds, LU4 8AW, or telephone on (01582) 411622.





Wed Aug 17	WATFORD	2-0
Wed Aug 24	QPR	2-1
Wed Aug 31	Charlton Athletic	1-3
Wed Sep 7	IPSWICH	2-2
Wed Sep 14	Bristol Rovers	1-3
Wed Sep 21	OXFORD	2-1
Wed Sep 28	PORTSMOUTH	1-0
Wed Oct 5	Tottenham	0-2
Wed Oct 12	Oxford	1-0
Wed Oct 19	NORWICH	3-5
Wed Oct 26	BRISTOL ROVERS	2-2
Mon Oct 31	Swindon	2-1
Tue Nov 8	Watford	0-1
Wed Nov 16	WIMBLEDON	2-4
Mon Nov 21	Portsmouth	3-0
Wed Nov 30	SWINDON	2-2
Wed Dec 7	Norwich City	0-2
Wed Dec 14	TOTTENHAM	1-2
Wed Dec 21	Southampton	1-3
Tue Jan 10	West Ham	0-1
Wed Jan 25	CRYSTAL PALACE	2-1
Mon Feb 6	ARSENAL	1-3
Tue Feb 14	Crystal Palace	3-1
Thu Feb 23	BRISTOL CITY	4-1
Sat Feb 25	Arsenal	1-4
Fri Mar 10	SOUTHAMPTON	0-2
Wed Mar 15	Wimbledon	
Wed Mar 22	MILLWALL 2pm	
Mon Mar 27	Brighton 7.15pm	
Wed Mar 29	Ipswich Town 7.30pm	
Wed Apr 5	BRIGHTON 2pm	
Mon Apr 10	Millwall 2pm	
Thur Apr 13	CHARLTON 2pm	
Wed Apr 19	CHELSEA 2pm	
Sat Apr 22	WEST HAM 2pm	
Tue Apr 25	Queens Park Rgrs 7pm	
Thur May 4	Bristol City 7.30pm	
Mon May 8	Chelsea 7pm	

BOLD type denotes home game.  
(Luton score first).

# RESERVES AND YOUTH

WITH WAYNE TURNER AND TERRY WESTLEY

LUTON'S Reserves returned to action at home to Southampton last Friday, but went down 2-0.

Kelvin Davis made an early save from Craig Maskell, but Dave Beasant was the busier of the two keepers in the first half, saving from Richard Harvey and Jamie Woodsford, with Matthew Woolgar shooting wide.

But the Saints took the lead just before half-time through Paul McDonald, with the same player missing a great chance just after the break.

Beasant saved well from Tony Adcock's long range effort on 70 minutes, before the visitors sealed the game when David Hughes blasted in from 25 yards out, 15 minutes from time.

For the Hatters it was Adcock's first game since his fractured cheekbone injury, while for Southampton, Ronnie Ekelund was making a comeback after injury.

**Team: Davis, Willmott, Harvey, Woolgar, Greene, McLaren, Douglas, Power, Adcock, Woodsford, Thorpe.**



TONY Adcock

**Subs: Simpson, Chenery, Abbey (gk).**

A number of reserve team games in the Avon Insurance Combination have been rescheduled, both home and away.

Please see list (left) for details. All home matches will now be played at Kenilworth Road.

The Youth team went down 2-1 to South East Counties leaders Wimbledon on March 4, with Chris Willmott the Luton scorer.

**Team: Abbey, Turner, Palmer, Willmott, Thomas, Upson, Evers, Power, Douglas, Fotiadis, Keane.**

**Sub: Sharpe.**

**The next home game in the Avon Insurance Combination is on Wednesday, March 22, at Kenilworth Road, when the Town's reserve side entertain Millwall. Kick-off is 2pm.**



JAMIE Woodsford

## South East Counties League, FA Youth Cup and Southern Junior Floodlit Cup

Sat Aug 13	CRYSTAL PALACE	4-2	Sun Oct 23	Saffron Walden (EJC)	2-3	Sat Jan 14	Brighton (Postponed)	
Sat Aug 20	Wycombe Wanderers	5-0	Sat Oct 29	WIMBLEDON	2-4	Sat Jan 28	READING	1-1
Sat Aug 27	BRIGHTON	2-3	Sat Nov 5	Brentford	1-3	Sat Feb 4	Southampton	1-1
Thu Sep 1	Coventry (SJFC Pre)	2-2	Mon Nov 7	STAINES TOWN (FAYC1)	5-0	Sat Feb 11	OXFORD UNITED	3-1
Mon Sep 5	Coventry (SJFC Pre)	1-2	Sat Nov 12	BRISTOL CITY	1-2	Sat Feb 18	Bristol Rovers	0-0
Sat Sep 10	Reading	4-0	Sat Nov 19	Swindon Town	0-1	Sat Feb 25	Colchester United	2-1
Sat Sep 17	NORWICH (LC1)	2-0	Mon Nov 28	Wycombe (FAYC2)	0-1	Sat Mar 4	Wimbledon	1-2
Sat Sep 24	SOUTHAMPTON	0-2	Sat Dec 3	BOURNEMOUTH	0-1	Sat Mar 11	BRENTFORD	2-2
Sat Oct 1	Oxford United	0-3	Sat Dec 10	Tottenham	2-0	Sat Mar 18	Bristol City	
Sat Oct 8	BRISTOL ROVERS	2-1	Sat Dec 17	TOTTENHAM	2-3	Sat Mar 25	SWINDON TOWN	
Sat Oct 15	COLCHESTER	7-0	Sat Dec 31	Crystal Palace (Postponed)		Sat Apr 1	Bournemouth	
Sat Oct 22	Colchester (LC2)	0-1	Sat Jan 7	WYCOMBE WANDERERS	5-0		HOME matches denoted in bold.	

But Terry Westley's side hit back for a point in last Saturday's 2-2 draw at home to Brentford.

The Town youngsters trailed 2-0 at half-time, but levelled with goals from Ben Chenery and Sam Turner.

**Team: Abbey, Turner, Palmer, Chenery, Thomas, Upson, Keane, Power, McLaren, Fotiadis, Smith.**

**Subs: Evers, Sharpe.**



CHRIS Willmott

## Fotiadis and Co are undone by the Dutch!

YOUTH team striker Andrew Fotiadis is the latest Luton youngster to win international honours this season, writes Gavin Willacy.

Seventeen-year-old Andrew added to his seven England Under 15 caps with two appearances for the England Schools Under 18s last month.

Having made a short substitute appearance in last month's defeat in France, he started his first full game for the Under 18s when they took on the professionals of Holland.

Even though Andrew is a year younger than the rest of his teammates, his speed and agility up front impressed the 4,000 crowd in Gouda, and with England leading 1-0 with 20 minutes left, he thought he was on a winner.

"We should have beaten the Dutch even though they were the better side," recalled Andrew.

"We were nearly home and dry, but we scored an own goal and

then they went ahead a minute later.

"But we were much better than we were in France, probably because we changed our tactics."

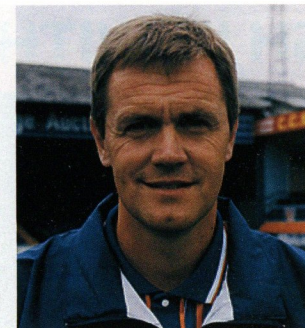
England eventually went down 3-1, undone by Holland's Ajax contingent, two of whom have already featured in the Champions' League!

But Andrew has enjoyed the games and is confident that England can win their last three matches.

"We are definitely looking to beat Wales, Switzerland and the Republic, even though the Swiss will all be professionals.

"It's been great to play at this level again, and it's vital experience for me," added Andrew, who hopes to further his Luton career once he has finished his A levels at Hitchin Boys School.

Watch out for Andrew in action live on Sky Sports on March 27 v Wales, March 31 v Switzerland, and April 10 v Republic of Ireland.





## CASH IN WITH OUR GOLDEN GAMBLE



WHY not have a Golden Gamble? Our new matchday fundraiser is proving a big success.

Tickets are on sale around the ground, and the more tickets sold, the bigger the prize!

Half of the cash raised from the ticket sales will be won by one lucky spectator in the half-time draw. Tickets cost just £1, so why not take a Golden Gamble.....

Pictured left: The lucky winner at the game against Port Vale collects his cash, from Commercial Manager Kathy Leather, and Lotteries Manager Jim Hugill.

## Wanderers are Junior winners!

BUSHMEAD Wanderers B Under 13 FC are the second winners of the club's Team of the Month Award, run in conjunction with the Loyal Luton Supporters Club.

And the team are our guests at Kenilworth Road for this afternoon's game.

The fans have successfully applied for a grant from the National Westminster Bank, as part of the bank's community programme, and, supported by the Football Club, wish to donate tickets for youngsters in the area to try and attract new supporters to Kenilworth Road.

The Bushmead side have not won a match, but team manager William Aitken says that the youngsters need reward for their hard work and enthusiasm in turning up for training every Friday throughout the wet, freezing winter.

Managers or parents should write in telling us why your team should be the Team of the Month. It may be that you are unbeaten, have won a trophy, or that you recorded a first win, or only lost narrowly to the top side in your league.

Nominations should be sent in to: Junior Team Award, c/o Simon Oxley, LTFC, Kenilworth Road Stadium, 1 Maple Road, Luton, Beds, LU4 8AW.

## Hatters discuss MK stadium site

LUTON Town Football Club have confirmed that discussions have taken place regarding a possible move to Milton Keynes.

Hatters chairman David Kohler has held informal talks with Milton Keynes Borough Council, and the Commission for New Towns, on the possibility of developing a multi-purpose stadium in the new city which could provide a new home for Luton Town Football Club.

Mr Kohler has already revealed plans for a multi-purpose indoor stadium, with moveable grass pitch, and the club

have made no secret of their desire to develop land in Luton, by junction 10 of the M1.

But Mr Kohler pointed out: "Of course we want the club to stay in Luton, but we are running out of alternatives and time.

"If a site cannot be found in the town, then I owe it to supporters, shareholders and staff to make sure that the club survives, and if that means moving out of town then so be it.

"Milton Keynes has a number of factors in its favour, and I have been very encouraged by the interest shown by the Borough Council and CNT."

*Thousands of people could be reading about you and/or your company at every Hatters home game at Kenilworth Road! To advertise in the Luton Town matchday programme contact Sam Walsh on (01582) 411622*

## THEY SAID IT!

on LUTON TOWN CLUBCALL  
**0891 121 123**



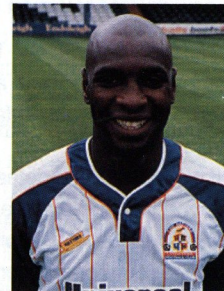
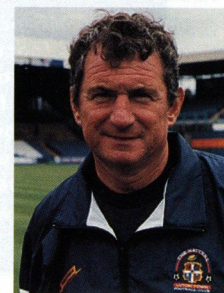
"WE have had a number of enquiries regarding loan deals, after circulating a list of players.

"In Richard Harvey and David Greene's case we will hold fire, because we have three defenders who are close to missing a game through suspension, but Jamie Campbell and Martin Williams have opportunities to go.

"We will monitor their progress, and they know very clearly what their futures may be if they don't do well." - **DAVID PLEAT** speaking about the loan opportunities available to players on the fringe of the first team squad.

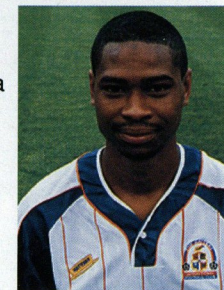
"AFTER a hard earned victory against Port Vale it was very disappointing to lose 3-0 and we didn't make our territorial advantage pay.

"There was a mix-up at the back for their first goal, a mis-hit for the second, but they took their chances. We have to bounce back now, and we have something to prove against Tranmere.



"But we have shown we are capable of beating the top sides." - **MITCHELL THOMAS** speaking after last Saturday's defeat at Southend.

"WE came here for three points, and I had a few chances which didn't come off today. They caught us on the break somewhat, but found the target." - **DWIGHT MARSHALL** on the reverse at Roots Hall.



"THIS is a nominal fee, around £80,000. The bigger fish are going to have to wait. Maybe the clubs that employ these bigger fish will have to fry until the deadline, because we're not going to go in at unrealistic prices." - **DAVID PLEAT** after the signing of Rob Matthews.

**R. J. BLOW &  
C O M P A N Y**

*THE FRIENDLY ACCOUNTANTS*

**Book-Keeping  
Taxation and Wages etc.**

STIRLING HOUSE,  
30 GUILDFORD STREET,  
LUTON, BEDS LU1 2NR

**Tel: (0582) 38792  
Fax: (0582) 423347**

### SAFETY NOTE

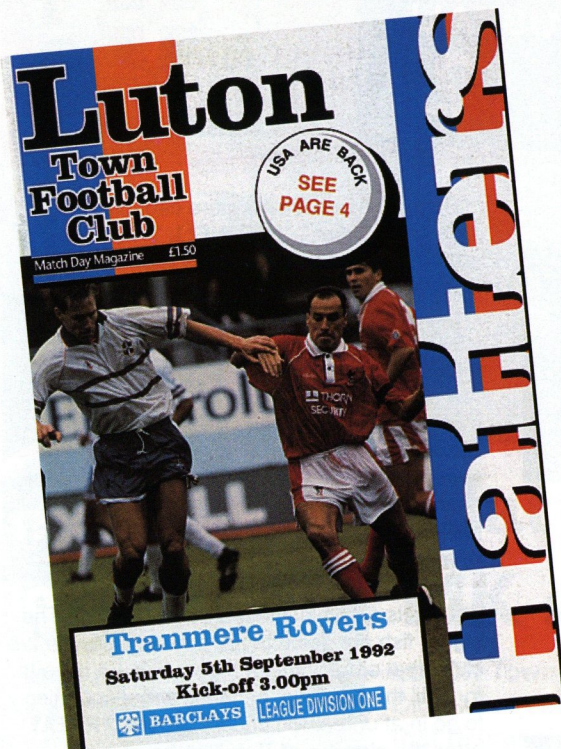
The Chairman and Directors of Luton Town Football Club undertake to ensure as far as humanly possible that all activities that take place at the Kenilworth Stadium are conducted in such a way that, as far as is reasonably practicable, the safety of everyone working at or attending that stadium is assured.

The club's primary responsibility through the Safety Officer, Officials, Staff and Stewards will be to ensure the reasonable safety of those attending the stadium.

In the interests of public safety, the safety authority (Beds County Council) have imposed a NO SMOKING restriction in and beneath our main stand. Your co-operation is appreciated.



# Three-goal burst kick-starts season



THE programme for today's featured game in our 'Those Were The Days' feature, from September 1992 when the Hatters and Tranmere shared six goals at Kenilworth Road.

FOLLOWING relegation from Division One in 1992, Luton Town supporters were, quite rightly, left with an empty feeling after ten years at the top, but as the new season approached fresh optimism filled the air as it always does.

Although it was regarded as a foregone conclusion when Mark Pembroke was transferred to Derby that summer, it was still generally reckoned that we had a bright string of youngsters coming through and, mixed with the experienced heads of David Preece, Trevor Peake and Mick Harford, a return to the top flight at the first time of asking was not beyond the realms of possibility.

Unfortunately on the eve of the new season terrace favourite Harford was transferred to Chelsea, and it was immediately apparent that we were going to struggle to score goals, even though Steve Claridge had been signed from Cambridge in an attempt to plug the gap.

The first game of the new season took us to Leicester where Jamie Campbell scored his first senior goal for the club, but we still came away with nothing after conceding a goal in the 93rd

minute to go down 2-1 - bringing back frightening comparisons to several away games in the previous campaign when defeat was snatched from the jaws of victory.

If we thought that defeat was bad enough then the opening home game left us shaking our heads in disbelief. Despite relegation the previous year our home record had not been too bad, and if we could beat the likes of Arsenal, Chelsea and Aston Villa then Bristol City, our first visitors, should not be a problem.

How wrong could we be, as an Andy Cole inspired City side played the classic away game and ripped the Town defence to shreds with quick breakaways which eventually earned them a 3-0 victory.

Although the defence shored itself up the following week in a 0-0 draw at Charlton, we still did not look like scoring and the situation was beginning to look bleak even though we were still in August!

A midweek 2-2 defeat at Newcastle then followed, which left us with four games played and only one point and one goal to show for our troubles, together with a place at the foot of the table.

It was no surprise therefore, when only 6,801

turned up at Kenilworth Road for the first visit of Tranmere to these parts since 1970. Rovers had, on their travels, started off the season with a defeat at Sunderland and then contrived to lose 4-0 at Blackpool in the Coca-Cola Cup after leading 3-0 from the first leg. These results could be seen as a smokescreen however, taking into account the Town's start to the campaign.

As it turned out the young Luton side started like worldbeaters and for the first 20 minutes ran rings around the Tranmere defence and did everything but score in a display that had rarely been bettered over the years.

The opening goal that the play fully deserved came after 21 minutes when Claridge deflected a Phil Gray shot into the net with his chest. Having made the breakthrough it now seemed to be a case of sitting back while we amassed a cricket score, but a slip from John Dreyer six minutes later allowed that wily old campaigner John Aldridge a sniff at goal, and he made no mistake for the equaliser.

The match was turned on its head two minutes later when a through ball from Neil McNab was rifled home by Ian Muir to put the visitors in front completely against the run of play.

Despite these setbacks the Town fought back gamely and drew level after 34 minutes when Des Linton rounded off a move involving Scott Oakes, Jason Rees and Claridge for his first Luton goal only for Pat Nevin to restore the advantage for Tranmere just before half-time.

The second half belonged to the Town who, quite rightly, felt aggrieved that the scoreline was false, and after attacking with a will eventually levelled again when Oakes knocked in a pass from Gray with 20 minutes to go.

That was the end of the scoring but it was a case of two points dropped as David Pleat reflected at the end of the game.

"We played our best football for a long time in the first half hour, and when we went one up I was certain we were going to win," said the manager.

"Unfortunately some of the young boys are good on the ball but not so good off it."

Although it was a disappointing result at least we had got back to the goal standard and were off the bottom of the table. It could only get better!

Luton: Petterson, Linton, Salton, Peake, Dreyer,



by ROGER WASH

## 5 YEARS AGO

17/3/90: A penalty from Danny Wilson secured a point in a 1-1 home draw with Manchester City. The relegation dogfight was watched by a crowd of 9,765.

## 10 YEARS AGO

16/3/85: Mick Harford scored a second half equaliser at Sheffield Wednesday to earn the Town's first away point for three months.

## 15 YEARS AGO

22/3/80: A thrilling fightback at QPR with the Town two-down at half-time but eventually taking a point in a 2-2 draw. The Luton goalscorers were Brian Stein and Ricky Hill in front of the television cameras.

## 20 YEARS AGO

22/3/75: A famous victory over reigning champions and European Cup finalists, mighty Leeds United, at Kenilworth Road, in front of a crowd of 23,048. John Aston and Peter Anderson scored for the Town in the opening minutes, and we held on for an eventual 2-1 win.

Rees, James, Oakes, Preece, Claridge, Gray (Campbell).

Tranmere: Nixon, Brannan, Vickers, Garnett, Nolan, Morrissey, McNab, Irons, Nevin, Aldridge, Muir.

Those were the days



## MUD-U-LIKE! HATTERS CLAIM VICTORY OVER VALE



LEFT: Scott Oakes gets the better of two Vale defenders as Wayne Biggins (9) looks on.

**LUTON TOWN 2**  
(Telfer, Dixon)

**PORT VALE 1**  
(Porter)

Tuesday, March 7, 1995,  
at Kenilworth Road.

Pictures by  
**ANDY HANDLEY**



ABOVE: Mitchell Thomas flies into action with Vale's Robin Van Der Laan.



LEFT: David Preece wins the tackle and Mitchell Thomas gives chase.



LEFT: Paul Telfer is congratulated by Rob Matthews after opening the scoring for the Hatters just after half-time.



ABOVE: Kerry Dixon (12) and Dwight Marshall pounce for Luton's second, after Vale keeper Paul Musselwhite had saved from Rob Matthews.



ABOVE: Scott Oakes again troubles the Port Vale defence.

Action pictures featured in the Luton Town matchday programme are available at the special introductory price of just £2 per print!

Write to Simon Oxley, at the club, giving a brief description of the picture (programme and page number etc), and enclosing a cheque/ postal order made payable to Luton Town Football Club.



# VIEWSROUND SPORT - LISTENING TO YOU LUTON TOWN FC... FANS SURVEY RESULTS

BRYAN Robson's Middlesbrough are the choice of Luton Town fans to get promotion from Division One this season.

'Boro in the Premiership' was one of the results from the telephone poll carried out after the 1-1 draw against Millwall, when 130 fans were quizzed about the game and general issues in football.

The two teams with the most votes for promotion were Middlesbrough (74%) and Wolves (41%).

One in three (31%) think Bolton will go up and current leaders Tranmere were the choice of one in five (20%). Few (2%) believe Luton Town will in fact be promoted!

Manchester United are the slight favourites for the Premier League title (50%) with Blackburn a close second (46%) - the race is seen as very much a two-team tussle.

## Transfer Irregularities

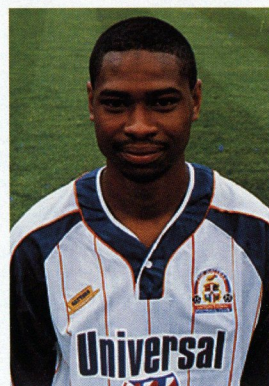
Fans were asked about their concerns following recent news of transfer irregularities and financial dealings in the game.

The majority (69%) are concerned about these revelations, and many (two out of three) think that such behaviour is likely to have an adverse affect on business sponsorship and promotion of the game.

## Luton v Millwall

We asked supporters to score the game, in terms of excitement, performance and value for money. The average scores (out of 10) were: Excitement 5.46; Luton's Performance 5.60; Millwall's Performance 5.69; and Overall Value For Money 6.53.

**DWIGHT Marshall was again voted man-of-the-match against Swindon.**



The highlight of the game was, predictably, the Luton goal (86%).

Once again, for the third home match survey, the overwhelming supporters choice for Luton player of the match was Dwight Marshall, with Scott Oakes second.

Kasey Keller the Millwall keeper was narrowly voted Millwall's top player (30%) ahead of captain Alex Rae (23%).

Top Luton players - Marshall (57%), Oakes (14%) and Peake (11%).

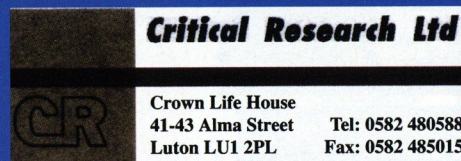
The performance of the Referee, John Lloyd from Wrexham, was judged to be very poor, almost 9 out of 10 fans (87%) were dissatisfied with him. The referee's score (out of 10) was 3.43.

Of those unhappy with the referee's performance (87%), the main reasons for this were the 'bad fouls missed' (47%), the fact that he was seen to be too lenient (42%), 'inconsistencies' (38%), and not letting the game flow (17%).

## LUTON TOWN FC..... LISTENING TO YOU!

Thank you to all supporters who have taken part in our unique Football Supporters Panel, where views have been canvassed over the telephone by Luton-based Critical Research Ltd.

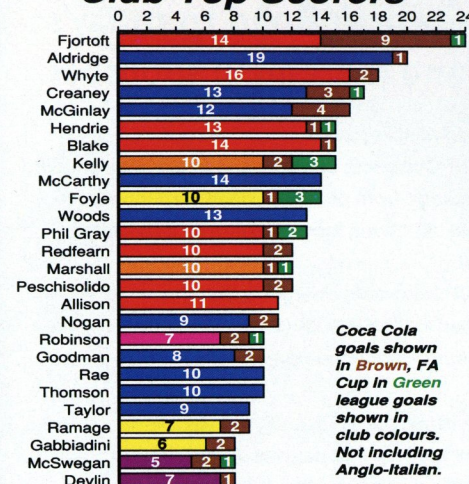
The surveys are proving very valuable in gauging opinions on all aspects of football. Supporters will be contacted tomorrow for their views of today's game, and the recent home match against Port Vale.



**TicketLine**  
The exclusive ticket booking service for fans of Endsleigh League First Division clubs

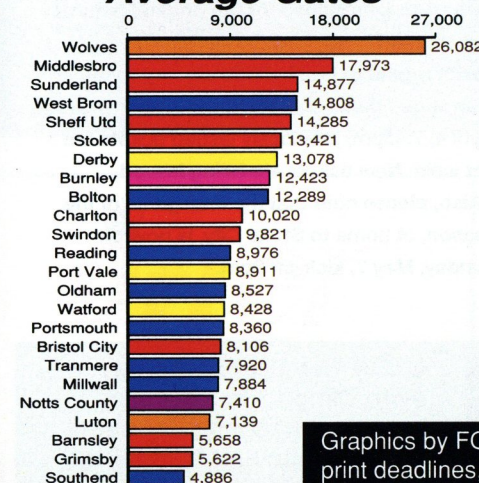
**0645 10 10 10**  
24 HOURS A DAY, 7 DAYS A WEEK  
ALL CALLS CHARGED AT LOCAL RATE

## Club Top Scorers



Coca Cola goals shown in Brown, FA Cup in Green league goals shown in club colours. Not including Anglo-Italian.

## Average Gates



## ENDSLEIGH LEAGUE DIVISION ONE

	P	W	D	L	F	A	PTS
Tranmere R	36	19	8	9	57	38	65
Middlesbro	34	18	8	8	49	27	62
Bolton W	34	17	9	8	57	35	60
Wolves	33	18	5	10	58	43	59
Sheff Utd	35	15	12	9	60	41	57
Reading	36	16	8	12	41	35	56
Barnsley	33	15	7	11	46	39	52
Watford	34	13	11	10	38	35	50
Grimsby T	36	12	13	11	51	46	49
Derby C	34	13	10	11	41	35	49
LUTON T	35	13	9	13	48	50	48
Millwall	34	12	12	10	45	41	48
Charlton A	34	12	9	13	46	49	45
Oldham A	34	11	10	13	46	47	43
Port Vale	33	11	9	13	41	44	42
Southend U	36	12	6	18	37	63	42
Sunderland	35	9	15	11	33	33	42
Stoke City	32	10	11	11	32	36	41
West Brom	35	11	8	16	32	44	41
Portsmouth	35	10	10	15	38	50	40
Bristol City	36	10	8	18	35	51	38
Swindon T	33	8	10	15	38	55	34
Notts Cty	35	8	8	19	38	50	32
Burnley	33	7	10	16	32	52	31

(Table up to and including Sunday, March 12).

Graphics by FOOTBALL INFORMATION SERVICES. Due to print deadlines, details from midweek matches are not included.

## LUTON TOWN CLUBCALL

**0891 121 123**

Calls cost 39p a minute cheap rate and 49p at all other times.

Match reports and commentary..... Interviews with manager David Pleat and the Hatters players  
..... Match and ticket information





## COMMERCIAL CORNER with Kathy Leather

### A warm welcome to Kenilworth Road to today's match and matchball sponsors

**WELCOME** to today's match and matchball sponsors, and we thank them for their valued support:

Today's match sponsors are the **LOYAL LUTON SUPPORTERS CLUB**, who are very active in their backing of the Hatters.

You can read about their backing of our Junior Team of the Month Scheme on page 28 of today's match programme.

The club have also just formed a team playing in the South Beds Sunday League, run coaches to big away matches, and also hold functions throughout the year, including a Players Presentation Night.

Anyone wishing to join the Loyal Luton Supporters should go along to the Hatters Club before home games. Life membership costs just £5.

This afternoon's matchball sponsors are **CP CONTRACTS**. The Ampthill-based company are dedicated to providing a quality package of building refurbishment and general building works to both domestic and commercial cus-

tomers alike, throughout the country.

CP Contracts specialise in offering a complete package from planning stage through to the final handover, incorporating all associated trades.

CP Contracts operate to the nationally recognised BS5750/ISO9002 quality procedures, to ensure all their customers of a first class job.

A reminder to Executive Suite members and box holders that next weekend's game against Watford is being played on Sunday, March 26, kick-off 2.55pm, and as far as the latter are concerned, tickets issued for the original Saturday remain valid.

With regard to box holders coming to the rearranged game against Wolves, now Tuesday, April 4, 7.45pm, previously issued tickets are not valid. New tickets are being issued.

Also, please note that the final game of the season, at home to Stoke City, is now on Sunday, May 7, kick-off 3pm.

### Support the Hatters with a Golden Gamble!

**YOU** could walk away from this afternoon's game with a fantastic cash prize by taking part in our new Golden Gamble.

Tickets, priced just £1, will be on sale around the ground prior to the match, with half the money raised being awarded as first prize in the half-time draw.

A large number of supporters have had a Golden Gamble at the last two home games, so why not try **YOUR** luck today....



**ABOVE:** Luton Rotary Club were the match sponsors for our recent home game against Port Vale. Pictured making the after-match presentations are Town players Paul Telfer, Trevor Peake, Kerry Dixon and David Preece, with Commercial Manager Kathy Leather.

## Antony's Tailor

OF LONDON

THE MOST  
ESTABLISHED  
AND RELIABLE  
TAILORS IN  
LUTON

DRESS HIRE  
LADIES AND GENTS  
BESPOKE TAILORING



12 DUNSTABLE ROAD, LUTON,  
BEDS OPPOSITE MAIN POST OFFICE  
TEL: (0582) 424687

**L**UTON Town can cater for everything from business breakfasts, lunches or dinners to birthday/ anniversary celebrations and wedding breakfasts.

We can help to plan events by either clients visiting the club or by making a private visit to the clients own premises.

We have a number of function suites available, from our boardroom, which is an exclusive setting for senior management meetings, to our adjacent suites which can cater for up to 100 or more delegates for conferences and seminars.

Our catering operation, which prides itself on a personal service, can provide quality refreshments to complement any occasion.



### IS YOUR ELECTRICITY SUPPLIER PLAYING THE GAME?

#### The Office of Electricity Regulation

- PROTECTS THE INTERESTS OF ELECTRICITY CUSTOMERS
- HELPS AND ADVISES ON DISPUTES WITH EASTERN ELECTRICITY

**At home:**  
4th Floor, Waveney House, Handford Road,  
Ipswich, Suffolk IP1 2BJ.  
Telephone 01473 216101 Fax 01473 215838

**And away:**  
The phone book or your electricity bill shows your nearest office.

## SUPPORT THE HATTERS

But Join The Gunners -  
*and be paid!*

Come and see what  
your local Territorial  
Army Unit does

Phone (01582) 572032

201 Battery RA (V)  
TA Centre  
Marsh Road  
Leagrave  
Luton LU3 2RX.



# TEAM STATISTICS 1994-95..... see page 35 for Division One table and statistics

Date	Opponents	F-A	Att	Pos	1	2	3	4	5	6	7	8	9	10	11	12	14	GK
Sat Aug 13	WEST BROMWICH ALBION	1-1	8,640	-	Sommer	James	Johnson	(Skelton)	Greene	Peake	Telfer	OAKES	Dixon	Preece	(Houghton)	(Marshall)	(Linton)	Barber
Tue Aug 16	FULHAM CCC 1 (1)	1-1	3,287	-	Sommer	James	Johnson	(Hughes)	Greene	Peake	Telfer	OAKES	Dixon	Preece	(Houghton)	(Marshall)	(Linton)	Barber
Sat Aug 20	Derby County	0-0	13,060	14	Sommer	James	Johnson	Linton	Greene	Peake	Telfer	Marshall	Dixon	Preece	Hughes	Skelton	Houghton	Barber
Tue Aug 23	Fulham CCC 1 (2)	1-1	5,134	-	Sommer	James	Johnson	(Linton)	(Greene)	Peake	Telfer	MARSHALL	Dixon	Preece	Hughes	(Oakes)	(Skelton)	Barber
Sat Aug 27	SOUTHEND	2-2	5,918	16	Sommer	(James)	Johnson	Oakes	Greene	Peake	Telfer	(Marshall)	HARTSON	Preece	HUGHES	(Thomas)	(Dixon)	Barber
Tue Aug 30	Tranmere Rovers	2-4	5,480	20	Sommer	James	Johnson	(Skelton)	Greene	Peake	Telfer	Oakes	HARTSON	Preece	HUGHES	Thomas	(Marshall)	Barber
Sat Sep 3	Port Vale	1-0	8,541	15	Sommer	(James)	Johnson	Skelton	Greene	Peake	Telfer	MARSHALL	Dixon	(Preece)	Oakes	(Thomas)	(Woodsford)	Barber
Sat Sep 10	BURNLEY	0-1	6,911	18	Sommer	James	Johnson	(Waddock)	(Greene)	Peake	Telfer	Marshall	Hartson	Preece	Oakes	(Thomas)	(Dixon)	Barber
Tue Sep 13	BOLTON WANDERERS	0-3	5,764	20	Sommer	James	Johnson	(Waddock)	(Thomas)	Peake	Telfer	Oakes	Dixon	Preece	(Hartson)	(Linton)	(Marshall)	Barber
Sat Sep 17	Watford	4-2	8,880	16	Sommer	James	Johnson	Waddock	Thomas	Peake	TELFER 2	OAKES	DIXON	Preece	Marshall	Hartson	Linton	Barber
Sat Sep 24	Millwall	0-0	7,150	16	Sommer	James	Johnson	Waddock	Thomas	Peake	Telfer	Oakes	(Dixon)	Preece	Marshall	(Hartson)	Skelton	Barber
Sat Oct 1	BRISTOL CITY	0-1	6,633	20	Sommer	James	Johnson	Waddock	(Thomas)	Peake	Telfer	Oakes	(Dixon)	Preece	Marshall	(Hartson)	(Hughes)	Barber
Sun Oct 9	Stoke City	2-1	11,712	18	Sommer	James	Johnson	Waddock	Thomas	Peake	Telfer	Hughes	Hartson	(PREECE)	MARSHALL	(Oakes)	Williams	Barber
Sat Oct 15	MIDDLESBROUGH	5-1	8,412	11	Sommer	James	Johnson	Waddock	Thomas	Peake	Telfer	Hughes	HARTSON	(PREECE)	MARSHALL 2	(Oakes)	Dixon	Barber
Sat Oct 22	Sheffield United	3-1	13,317	7	Sommer	JAMES	Johnson	Waddock	Thomas	Peake	Telfer	Hughes	DIXON	(Preece)	Marshall	(Oakes)	Thorpe	Barber
Sat Oct 29	BARNSELEY	0-1	7,212	10	Sommer	James	Johnson	(Waddock)	Thomas	Peake	Telfer	Hughes	Hartson	Preece	(Marshall)	(Oakes)	(Dixon)	Barber
Tue Nov 1	GRIMSBY TOWN	1-2	5,839	13	Sommer	James	Johnson	Waddock	Thomas	Peake	Telfer	(Hughes)	Hartson	Preece	Marshall	(OAKES)	Dixon	Barber
Sat Nov 5	Wolverhampton Wanderers	3-2	26,749	8	Sommer	James	Johnson	Waddock	Thomas	Peake	Telfer	Oakes	(DIXON)	PREECE	MARSHALL	(Hartson)	Thorpe	Barber
Sat Nov 12	Oldham Athletic	0-0	7,907	8	Sommer	James	Johnson	Waddock	Thomas	Peake	Telfer	Oakes	Dixon	Preece	(Marshall)	(Hartson)	Thorpe	Barber
Sat Nov 19	PORTSMOUTH	2-0	8,214	8	Sommer	James	Johnson	Waddock	Thomas	Peake	Telfer	Oakes	DIXON	PREECE	(Marshall)	(Thorpe)	Hartson	Barber
Sat Nov 26	Swindon Town	2-1	9,455	5	Sommer	James	Johnson	Waddock	Thomas	Peake	Telfer	OAKES	(DIXON)	Preece	Linton	Woodsford	(Hartson)	Barber
Sat Dec 3	SHEFFIELD UNITED	3-6	8,516	8	Sommer	James	JOHNSON	Waddock	Thomas	Peake	Telfer	Oakes	Dixon	(Preece)	(Linton)	(HARTSON)	(Marshall)	Barber
Sun Dec 11	DERBY COUNTY	0-0	6,400	9	Sommer	James	Johnson	Waddock	Thomas	Peake	Telfer	Oakes	(Dixon)	Preece	(Allen)	(Hartson)	(Marshall)	Barber
Sun Dec 18	West Bromwich Albion	0-1	14,392	12	Sommer	(James)	Johnson	Allen	Thomas	Peake	Telfer	(Allen)	(Dixon)	Preece	Marshall	(Hartson)	(Oakes)	Davis
Mon Dec 26	Reading	0-0	11,623	12	Sommer	James	Johnson	Waddock	Thomas	Peake	Telfer	OAKES 2	HARTSON	(Preece)	(Marshall)	(Skelton)	(Williams)	Davis
Tue Dec 27	SUNDERLAND	3-0	8,953	9	Sommer	James	Johnson	Waddock	Thomas	Peake	Telfer	OAKES 2	HARTSON	(Preece)	(Marshall)	(Skelton)	(Williams)	Davis
Sat Dec 31	Notts County	1-0	6,249	8	Sommer	James	Johnson	Waddock	Thomas	Peake	TELFER	Oakes	Hartson	Preece	(Marshall)	Skelton	(Adcock)	Davis
Mon Jan 2	CHARLTON ATHLETIC	0-1	7,642	8	Sommer	(James)	Johnson	Waddock	Thomas	Peake	Telfer	Oakes	Hartson	Allen	Marshall	Skelton	(Adcock)	Davis
Sat Jan 7	BRISTOL ROVERS FAC 3	1-1	7,571	-	Sommer	James	Johnson	Waddock	Thomas	Peake	Telfer	Oakes	HARTSON	Preece	(Marshall)	Williams	(Adcock)	Davis
Sat Jan 14	Barnsley	1-3	4,808	11	Sommer	James	Johnson	Waddock	Thomas	Peake	Telfer	Oakes	DIXON	(Harvey)	Marshall	(Skelton)	Woodsford	Davis
Wed Jan 18	Bristol Rovers FA3	1-0	8,213	-	Sommer	Oakes	Johnson	Waddock	Thomas	Peake	Telfer	Chenery	Dixon	Preece	MARSHALL	Skelton	Woodsford	Davis
Sat Jan 28	SOUTHAMPTON FAC 4	1-1	9,938	-	Sommer	Oakes	Johnson	Waddock	Thomas	Peake	Telfer	Oakes	(Dixon)	Biggins	MARSHALL 2	(Thorpe)	Harvey	Davis
Sat Feb 4	OLDHAM ATHLETIC	2-1	6,903	10	Sommer	James	Johnson	Waddock	Thomas	Peake	Telfer	Oakes	(Biggins)	Preece	Marshall	(Thorpe)	(Dixon)	Davis
Wed Feb 8	Southampton FAC4	0-6	15,075	-	Sommer	(James)	Johnson	Waddock	Thomas	Peake	Telfer	Oakes	(Biggins)	Preece	Marshall	(Thorpe)	(Dixon)	Davis
Sat Feb 11	Grimsby Town	0-5	4,615	10	Sommer	James	Johnson	Waddock	Thomas	Peake	Preece	Oakes	(Dixon)	(Biggins)	Marshall	(Telfer)	(Woodsford)	Davis
Sat Feb 18	SWINDON TOWN	3-0	6,595	10	Sommer	James	Johnson	Waddock	Thomas	Peake	Telfer	Oakes	(Biggins)	Preece	(MARSHALL 2)	(Dixon)	(Woodsford)	Davis
Tue Feb 21	Portsmouth	2-3	7,363	10	Sommer	JAMES	Johnson	(Waddock)	Thomas	Peake	TELFER	(Oakes)	Dixon	Preece	Marshall	(Harvey)	(Woodsford)	Davis
Sat Feb 25	Bristol City	2-2	7,939	10	Sommer	James	Johnson	Waddock	Thomas	Peake	Telfer	OAKES 2	Dixon	(Preece)	Marshall	Biggins	(Williams)	Davis
Sat Mar 4	MILLWALL	1-1	6,864	10	Sommer	James	Johnson	(Waddock)	Thomas	Peake	Telfer	Oakes	(Biggins)	Preece	MARSHALL	(Dixon)	(Matthews)	Davis
Tue Mar 7	PORT VALE	2-1	5,947	9	Sommer	James	Johnson	(Waddock)	Thomas	Peake	TELFER	Oakes	(Biggins)	Preece	Marshall	(DIXON)	(Matthews)	Davis
Sat Mar 11	Southend United	0-3	4,558	11	Sommer	James	Johnson	Waddock	Thomas	Peake	Telfer	Oakes	(Dixon)	Matthews	Marshall	(Biggins)	Harvey	Davis
Sat Mar 18	TRANMERE ROVERS																	
Tue Mar 21	Burnley																	
Sun Mar 26	WATFORD																	
Sun Apr 2	CCC Final																	
Tue Apr 4	WOLVERHAMPTON W																	
Sat Apr 8	NOTTS COUNTY																	
Tue Apr 11	Bolton Wanderers																	
Sat Apr 15	Sunderland																	
Mon Apr 17	READING																	
Sat Apr 22	Charlton Athletic																	
Sat Apr 29	Middlesbrough																	
Sun May 7	STOKE CITY																	
Sat May 20	FAC Final																	

CCC = Coca-Cola Cup  
FAC = FA Cup

## LUTON TOWN 1994/95

PLAYER (figure in bracket = sub app.)	LEAGUE APPS	LEAGUE GOALS	CUP APPS	CUP GOALS	PLAYER (Figure in bracket = sub app.)	LEAGUE APPS	LEAGUE GOALS	CUP APPS	CUP GOALS
Juergen SOMMER	35	-	6	-	John HARTSON	11 (9)	5	1	1
Julian JAMES	35	2	4	-	Gary WADDOCK	29	-	4	-
Marvin JOHNSON	35	1	6	-	Jamie WOODSFORD	(4)	-	-	-
Aaron SKELTON	3 (2)	-	(1)	-	Tony THORPE	(2)	-	(1)	-
David GREENE	6	-	2	-	Paul ALLEN	4	-	-	-
Trevor PEAKE	35	-	6	-	Martin WILLIAMS	(2)	-	(1)	-
Paul TELFER	34 (1)	5	6	-	Tony ADCOCK	(2)	-	(1)	-
Scott OAKES	28 (6)	8	5 (1)	1	Richard HARVEY	1 (1)	-	-	-
Kerry DIXON	22 (5)	7	4 (1)	-	Ben CHENERY	-	-	1	-
David PREECE	31	4	6	-	Wayne BIGGINS	5 (1)	-	2	1
Scott HOUGHTON	1	-	1	-	Rob MATTHEWS	1 (2)	-	-	-
Dwight MARSHALL	29 (5)	10	5 (1)	2					
Des LINTON	3 (2)	-	1 (1)	-	Own goal		4		
Ceri HUGHES	8 (1)	2	2	-					
Mitchell THOMAS	29 (2)	-	4	-					



Matchday music is supplied by  
HMV Stores, 98 Arndale Centre  
(Tel: 35290) and  
73 The Mall (Tel: 21368), Luton.





## TODAY'S OFFICIALS

Today's referee is

**GRAHAM POOLEY**, from  
Bishop Stortford, Herts.

On his last visit to Kenilworth Road, Mr Pooley, a security guard, was forced to postpone the game against Wolves because of heavy rain.



CT Finch



JW Pettit

## TODAY'S OTHER DIV I MATCHES

Barnsley v Port Vale

Bristol City v Burnley

Middlesbrough v Derby County

Portsmouth v Southend Utd

Sheffield Utd v Charlton Ath

Stoke City v Reading

Wolves v Watford

Grimsby T v Sunderland (Sun)

Millwall v Bolton W (Sun)

West Brom v Swindon T (Sun)

# TEAM CHECK

## LUTON TOWN

Manager: David Pleat

Juergen SOMMER

Julian JAMES

Marvin JOHNSON

Gary WADDOCK

Mitchell THOMAS

Trevor PEAKE

Paul TELFER

Scott OAKES

Kerry DIXON

Rob MATTHEWS

Dwight MARSHALL

## TRANMERE ROVERS

Manager: John King

1 Eric NIXON

2 Gary STEVENS

3 Ged BRANNAN

4 John McGREAL

5 Shaun GARNETT

6 Liam O'BRIEN

7 John MORRISSEY

8 John ALDRIDGE

9 Chris MALKIN

10 Kenny IRONS

11 Pat NEVIN

12

14

GK



*Plowmans*  
of  
*Luton*

AND  
LUTON  
TOWN

—  
THE  
PERFECT  
MATCH

*You'll do a great deal better with us!*

Open 7 Days

Vauxhall Main Dealers, 15 Hitchin Road, Luton.

Tel: 454666