

ENDSLEIGH INSURANCE LEAGUE DIVISION ONE

v PORT VALE



**LUTON TOWN
FOOTBALL CLUB**

LUTON TOWN



NEW

coats/jackets
now in the
Hatters Shop
- see p23

TUESDAY, MARCH 7, 1995, 7.45PM

MATCH SPONSORS

The Rotary Club of Luton

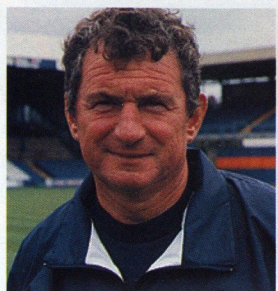
MATCHBALL SPONSORS

The Luton News and Luton Leader Newspapers



Sponsors of
Luton Town F.C.

Official matchday programme £1.50



PLEAT'S PERSPECTIVE

MILLWALL DRAW NO GOOD TO EITHER SIDE

A WARM welcome to all our friends from Port Vale, particularly to their manager John Rudge, one of the longest serving one-club managers in the league.

They have made excellent strides recently, and only last Saturday got a splendid away point at Sheffield United. They will be difficult opposition, but we are fully capable if we play to our optimum of gaining a result.

A few thank you's I feel are in order. Firstly to all the Millwall supporters last Saturday, who belied any thoughts or suggestions that they could give us a problem on the anniversary of the rather sad night many years ago in the FA Cup. Their team played very competitively on the field, and although Kasey Keller kept them in the game with several important saves, I thought their play in the second half merited some return.

It was very disappointing to concede the goal in the way we did - there was a possibility of off-side - but I have to say they battled back well

after we played some spirited and inventive football in the first half.

My comments after the game I think were absolutely correct. A draw was no good to either side. With the teams in the current play-off positions winning, then the chances of Millwall or ourselves overhauling them must come with taking full advantage when we play them, particularly in home games.

I would like to say some further thanks you's. We appreciated the pleasant letter we had from the organisers of the Ten Pin Bowl-In at the Megabowl in Bedford. Our players are always under pressure to go to events, and sometimes they do not get the thanks they deserve.

Also, Tony Adcock attended a function for the Mid Beds Sports Council on Thursday night, and despite getting caught in a blizzard had a very enjoyable evening at which his presence was appreciated.

Thanks also to the Loyal Luton Supporters, who were kind enough to give me such a nice birthday present the day after we allowed John Hartson to leave for Arsenal.

Thank you to Cliff Bassett whose company Universal Salvage sponsor the Luton Town column in the Herald and Post. Once again, we are handing over cheques to charities, where all the money is provided by Cliff's company. In our times of tight budgeting before the Hartson sale, it was Cliff's support that kept this club going.

I would also like to thank all the supporters who did so well on Saturday morning in helping to clear the snow and once again give us a good playing surface.

A warm welcome to Rob Matthews from Notts County. Like Dwight Marshall, who has now scored 12 goals, Rob has an eye for goal and has come into football at a late stage.

As a 21-year-old he scored two goals which defeated our lingering Premiership hopes at Notts County, and since then he has had a career interrupted by all sorts of injuries, and has never been able to get a consistent run together.

All we can do is give him the chance to resurrect his career, and then it is down to his mental strength and his capacity to learn. We wish him

.....LISTEN TO THE MANAGER'S VERDICT ON TODAY'S BIG GAME ON LUTON TOWN CLUBCALL 0891 121 123



DWIGHT Marshall celebrates Saturday's opening goal against Millwall.

every success at the club.

I would also like to say well done to our two youth players Chris Willmott and Stuart Douglas, who were both playing for the FA Under 17 side at Bisham Abbey yesterday afternoon against the Independent Schools. It says much for their attitude that Chris was involved as an over-age player on Sunday, when we played Wimbledon at two age levels at the Electrolux ground, and he had also played the previous day for the youth team in the South East Counties League.

In our recent game against Bristol City, I was very badly misquoted after the game in a local paper, and I have been absolutely delighted that after Joe Jordan's original phone call I have been able to trace and give him an actual recording of my comments at the press conference. I have long campaigned for both managers to go together to press conferences afterwards.

It is the modern trend for the Sports Editors to want some controversial thoughts and quotes, particularly after an ordinary game where they may have decided that the action did not merit too much discussion.

I have always been very wary about criticising or even discussing the other team's play, other than to praise. But I did have a chance at Bristol to suggest the merits of a team of officials working in unison for a period of games.

Now for a few of my Vision Express observations..... A welcome visitor last Saturday was Paul Elliott, our ex-player now doing some radio commentary and still keeping his links with this area..... The word from Millwall is that Ron Howard, who I brought here from Cambridge several years ago, and who did an excellent job, may be retiring from a full-time position at the end of the season..... Trevor Hartley's brother-in-

law Bobby Howe was a welcome guest at last Saturday's game on behalf of the USA Federation. Bobby is in charge of the USA Under21 s, and he was probably casting an eye over the two keepers..... Another guest last Saturday was Thomas Moller and friends, over from Norway where we have a flourishing Supporters Club..... The players enjoyed a two-day break last week in Bournemouth, where they played golf, swam, and generally had a welcome rest from the rigours of the muddy grounds..... Did a spot on Alan Green's Radio Five programme last Friday, and met presenter Bill Hamilton who was refereeing at Shillington the following day..... Highly impressed with Watford's new stadium, it is a credit to them..... Interesting transfer to Sheffield United of Kingsley Black on loan. Only two weeks ago I saw Kingsley play in a reserve team game, and it seems his Forest days may be limited..... Mark Pembroke was back in Derby colours after a couple of months out with injury, but no such luck for Matthew Jackson, now looking out of the Everton reckoning..... Thank you to all those who attended the 'Bootroom' forum last Thursday at the club. It was a fascinating evening, and hopefully the forerunner of many more..... Juergen Sommer has been notified that he will be the first selection against Uruguay on March 25, and we will be keeping in touch with the US Federation, and will decide later whether we will be prepared to allow him to leave for that game..... Nice to have a release from the football field; was speaking to the local Rotary Clubs last night, and the club have arranged a Sportsman's Evening shortly.

There is much to play for this season. Players have between now and the end of the season to make a strong case for their claims for next season positions, and justify contract discussions.

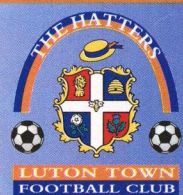
We still have everything to play, and a good run can race you up the table several places.

It is to our disappointment that we have led in the each of the last three games, and scored in all of them, but lack of concentration and the odd mistake has cost us dearly.

I am pleased though with our discipline this season, and we currently have the best record in the division. Now that is something to be quietly pleased with!

Of course I would swap that for a place in the play-offs, but if we can get our game together between now and the end of the season that is also possible.

Enjoy the game,



Luton Town Football Club
Kenilworth Road Stadium,
1, Maple Road,
Luton, Beds LU4 8AW.
Tel: (01582) 411622
Fax: (01582) 405070
Ticket Office: (01582) 416976
Clubcall: 0891 121 123

Chairman and Managing Director:
David Kohler BSc (Hons)
ARICS

Directors:
C.S. Bassett, C.T.F. Green,
N.S. Terry

Vice Presidents:
R.L. Banks, P.Collins,
C. Bygraves, R. Safranek,
D. Ludlow, P. Ireton.

Secretary:
Cherry Newbery

Manager:
David Pleat

Coaches:
John Moore, Wayne Turner,
Terry Westley

Physiotherapist:
Clive Goodyear

Consultant Physio:
John Sheridan

Youth Development Officer:
Paul Lowe

Scouting:
Les Shannon

Community Football Officer:
Colwyn Rowe

Financial Administrator:
Bob Bird

Commercial Manager:
Kathy Leather

Safety Manager:
Geoff Lovell

Catering Manager:
Peter Saul

Medical Officer:
Dr Bill Berry

Club Dentist:
A. Chris BDS (Syd)

HONOURS

Littlewoods Cup winners 1987-88

FA Cup finalists 1958-59

Littlewoods Cup finalists 1988-89

Simod Cup finalists 1987-88

Champions - Division Three (S) 1936-37

Champions - Division Four 1967-68

Champions - Division Two 1981-82

David Pleat

AROUND THE TOWN



LEFT: Dwight Marshall scored his 12th goal of the season against Millwall, but was thwarted by Lions' keeper Kasey Keller in his efforts to net a second-half winner.



Matthews debut in Millwall draw

DAVID Pleat completed the £80,000 signing of 24-year-old striker Rob Matthews from Notts County, in time for him to make his debut against Millwall in Saturday's 1-1 draw.

Matthews was a 79th minute substitute for Gary Waddock as the Hatters were frustrated by a fine display from Kasey Keller in the Millwall goal.

Dwight Marshall had

given Luton the lead after 33 minutes, with Dave Mitchell equalising after the break.

The arrival of Matthews gives the manager further options up front.

Three years ago, Matthews scored twice in a 2-1 win for County over the Hatters on the final day of the season - a result that relegated David Pleat's side from the old Division One.

ABOVE: Hatters' new signing Rob Matthews gets to grips with Millwall during Saturday's 1-1 draw.

Five-a-side ticket details

TICKETS are now on sale for the Evening Standard Five-A-Side Championship, at the Wembley Arena, on Monday, May 15.

Tickets are available for season ticket holders and members from the Kenilworth Road ticket office priced at £12, £15, £20 and £22 - no concessions.

You can also get tickets from the Wembley Box Office on 0181 900 1234, from Ticketmaster on 0171

344 4444, or in person from all Virgin Megastores.

Luton have drawn Watford in the opening round of the competition.

The full 16-team line-up is: West Ham v QPR, Charlton v Chelsea, Arsenal v Barnet, Luton v Watford, Fulham v Millwall, Wimbledon v Tottenham, Wycombe v Brentford, Crystal Palace v Leyton Orient.

FRONT COVER: David Preece evades the Bristol City defence. More action on pages 14 and 15.

Luton Town FC Matchday Programme
Editor: Simon Oxley.
Tele: 0582 411622
Pictures: Andy Handley
Design and print:
McLeod Warner, Luton.
Tele: 0582 38389



Universal Salvage Auctions

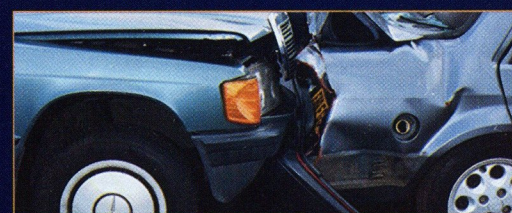
SELL OVER 1000 REPAIRABLE/BREAKERS/STOLEN AND RECOVERED VEHICLES AT WEEKLY AUCTIONS

CORBY - NORTHANTS

DENNY - SCOTLAND

SANDTOFT - S.YORKS

WESTBURY - WILTS



Your nearest auction is every Wednesday at...

DUNSTABLE ROAD REDBOURN, HERTS

For further information
01234 766500



The best service on a plate.

As one of the largest independent vehicle rental companies in the U.K., you can always expect a little extra from Kenning.

AN EXTENSIVE RANGE OF:

- CARS, VANS & TRUCKS.
- FULLY INCLUSIVE RATES WITH UNLIMITED MILEAGE.
- 24 HOUR NATIONAL HOTLINE HELPLINE.
- AA/RAC COVER.

KENNING

CAR AND VAN RENTAL

LUTON 0582 455333

24-34 Crawley Road.



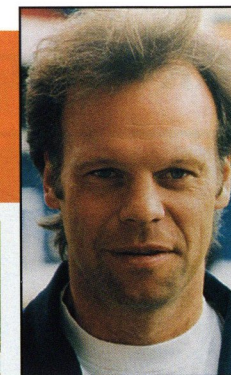
- ◆ **HOURLY SPORTS NEWS**
- ◆ **FRIDAY SPORTS PREVIEW (7pm)**
- ◆ **SATURDAY SPORTSOUND (2pm-6pm)**
- ◆ **MIDWEEK MATCH COVERAGE (7.05pm - 10pm)**

NEWS, SPORT & MUSIC
for BEDS, HERTS & BUCKS

► 103.8 FM STEREO ► 630 kHz AM

LEADING THE LINE

by TREVOR PEAKE



LEFT: Trevor lines up with the mascots, match officials and Bristol City captain Brian Tinnion, before the 2-2 draw at Ashton Gate.

THE first-team squad enjoyed a few days off last week with a mini-break in Bournemouth, in a bid to recharge batteries for the final two months of the season.

Sea air hasn't been that great a recipe for success so far this season, but it was a good break and the players certainly enjoyed it.

Like many of you I'm sure, we sat through Wednesday night's television coverage of Southampton v Spurs enthralled.

Southampton could have been 5-0 up just after half-time, as they were in the last round, but managed only two and then got a dose of their own medicine.

I suppose it goes to show that you can play well and still get a hiding!

We must now concentrate our minds on league action, and what will be a busy end of season. Despite only a brief cup run and a relatively kind winter we always seem to have plenty of fixtures in the final weeks.

The fixture computer has already given us a midweek trip to Burnley, and if Bolton win their League Cup semi-final then our match on April 1 will be delayed, and another midweek trip to the north-west beckons.

These though can be important games for us if we can start another good run.

Assuming a good result against Millwall last Saturday, we must also look for three points this evening against Port Vale.

It seems a long time ago since that wet September afternoon, but our first win of the season was achieved at Vale Park, when Dwight Marshall's goal proved decisive.

They have a steady record though, and some talented players, two of whom we know quite well. Lee Glover and Mark Burke both played here on loan in recent seasons.

Our midweek home record hasn't been good in the current campaign, as we have gone down to Bolton, Grimsby and Charlton.

Judging by the great cup nights last year we should revel in the atmosphere of a night game, and hopefully that will be the case tonight.

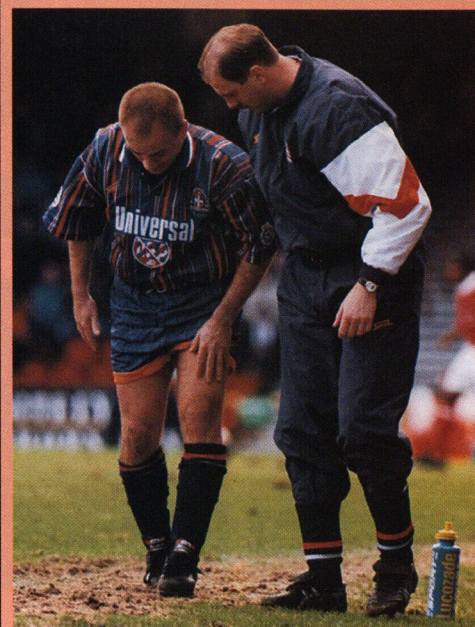
There is still plenty to play for, and let's hope for a good win. Thank you for your continued support, and we look forward to seeing you at Southend on Saturday.

Luton Town FC are delighted to link up with **LEGAL AND GENERAL**, to offer a full and comprehensive financial service to supporters of the club. Anyone interested in receiving Legal and General's expert financial and insurance advice should contact:

Warren Miskin or Barry Shaw on 081 882 0249, quoting reference LU1.

Trevor Peake

AROUND THE TOWN



**ARE
YOU IN
PAIN?

LET US EASE
THE STRAIN...**

Physiotherapy appointments are now available at the club,
with Luton Town physio Clive Goodyear.
£16 per session (+VAT) - (£15 +VAT for season ticket holders)
Contact (0582) 411622 to make an appointment

LUTON TOWN v WATFORD

This game has been switched from
**Saturday, March 25 to
Sunday, March 26, kick-off 2.55pm,
and will be shown live on ITV.**

BOTH Coca-Cola Cup semi-final second legs will be played tomorrow night, after falling foul of the weather two weeks ago.

ITV will show live coverage of the Crystal Palace v Liverpool clash (8pm) from Selhurst Park.

The game at Burnden Park, featuring First Division rivals Bolton Wanderers and Swindon Town, will kick-off at 7.30pm.

Liverpool and Swindon lead 1-0 and 2-1 respectively from the first leg matches.

LUTON TOWN v WOLVERHAMPTON W

- this game will now be played on Tuesday, April 4, at
Kenilworth Road, kick-off 7.45pm

If you entered the ground with a ticket for January's postponed game, you can get a replacement from the ticket office. If you are still holding a ticket, you can use it for the rearranged game or claim a refund up to 24 hours before the rearranged match.



LUTON TOWN TICKET OFFICE NEWS

Southend United v Luton Town

**ENDSLEIGH INSURANCE
LEAGUE DIVISION ONE**

Saturday, March 11, 1995, kick-off 3pm

Pay on the day only at Southend. Tickets (seats only) are
£9 - no concessions. Seats are in the Northbank end,
entrance via Fairfax Drive.

(The Kenilworth Road ticket office will be open from 10am
to 12 noon for the sale of other match tickets).

Luton Town v Tranmere Rovers

**ENDSLEIGH INSURANCE
LEAGUE DIVISION ONE**

Saturday, March 18, 1995, kick-off 3pm

Tickets for this match are now on sale.
Normal guesting facilities apply.

Burnley v Luton Town

**ENDSLEIGH INSURANCE
LEAGUE DIVISION ONE**

Tuesday, March 21, 1995, kick-off 7.30pm

Pay on the night only at Burnley. Prices are: Covered Seats
£9.50 (no concessions); Covered Terracing £7.50 (adults) and
£4 (senior citizens and juniors).

Luton Town v Watford

**ENDSLEIGH INSURANCE
LEAGUE DIVISION ONE**

Sunday, March 26, 1995, kick-off 2.55pm

(Please note the change of date, due to TV coverage).
Tickets for this match are now on sale at the discounted price.
Normal guesting facilities apply.

Ticket Office opening hours

Monday to Friday: 10am to 4pm

Saturday (match days): 9am to 3pm and 4.45 to 5.15pm

**Saturdays (non match days): Subject to change. Please
contact the ticket office**

For bookings, membership and enquiries, ring the Ticket Office direct on
(0582) 416976. Supporters wishing to order by credit card can do so by using
the 24-hour Credit Card Hotline on (0582) 30748.

Travelling to...

Southend United

Address:
Roots Hall, Victoria Avenue,
Southend, SS2 6NQ.
Tel: (0702) 340707.

Take M1 south and M25
east, and then A127 into
Southend (exit from M25 is
before Dartford Tunnel). At
roundabout take third exit
into Victoria Avenue for
ground.

Burnley

Address:
Turf Moor, Brunshaw Road,
Burnley, Lancs, BB10 4BX.
Tel: (0282) 27777.

Take M1 north and then M6
north, exiting M6 at junction
31. Take the Blackburn
bypass and A679 into town
centre, and then take third
exit from roundabout into
Yorkshire Street. Follow over
crossroads into Brunshaw
Road for ground.

Directions courtesy of
Automobile Association

The Bobbers Travel Club
organise coach trips to
Luton away matches.

To book a place on the
coaches, which pick up
from a variety of points in
Luton and Mid Beds, visit
the club's ticket kiosk in the
Kenilworth Road turnstiles,
and see Travel Co-ordinator
Paul Deason before any
Saturday first-team home
match between 2.15 and
2.45pm.

You can also telephone Paul
on Bedford (0234) 750996 -
after 6pm.



MOTOR INSURANCE

Endsleigh ensure you insure for less

We ensure you save money

Our continuing investment in new technology is enhancing our competitiveness even further. Our service is faster and more efficient and the savings we make through a leaner operation are passed directly on to you.

We ensure you save time

You can phone or call in whichever you prefer, the result is the same. Instant accessibility to our national computer and the convenience of being able to deal with people that care about your needs. 1995 will see our ability to issue full annual policies and certificates on the spot. No form filling, no fuss, no temporary cover notes, no delays, no anxiety.

We ensure a personal service

Our retail chain of some 140 Insurance Centres is the public face of Endsleigh; approachable, professional and helpful. We handle every aspect of insurance, from adjustments, renewals and claims ourselves.

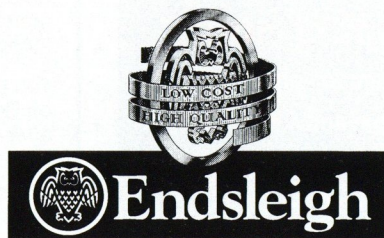
We ensure you get the best cover

With one call from you, our computer can immediately select the very best rate from over 45 schemes unavailable elsewhere and created in association with 35 of the industry's most dynamic insurance companies. The result is fast, effective unbeatable cover, enhanced still further by added benefits.

Please ensure that you phone for a quotation

648/652 Silbury Boulevard, Milton Keynes

01908 675866



ON THE OTHER SIDE

VALE SEARCH FOR FIRST WIN AT KENILWORTH ROAD

PORT Vale visit Kenilworth Road this evening looking for their first win in what will be their eighth visit.

Five of their seven visits have ended in defeat, and you can read about the 1966 reversal in greater details on pages 30 and 31 of today's match programme.

Their one success in Luton territory occurred at Dunstable Road in November 1898, when Evans was the lone goalscorer.

This evening, John Rudge's side will also be looking to avenge September's 1-0 defeat by the Hatters at Vale Park, when Dwight Marshall's second-half goal gave Luton their first win of the season.

Vale were due to play at Sheffield United on Saturday, with their previous game being a 4-2 home defeat by Wolves last weekend. On that occasion they were on the receiving end of a hat-trick from Dutchman John de Wolf, with the Vale goals coming from Tony Naylor and Kevin Kent.

Vale's own Dutchman Robin Van Der Laan was full of praise for his countryman, whom he used to watch on the terraces at Rotterdam.

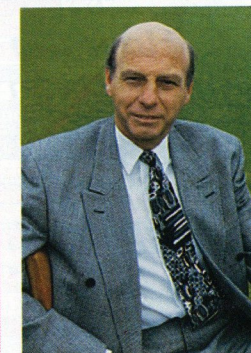
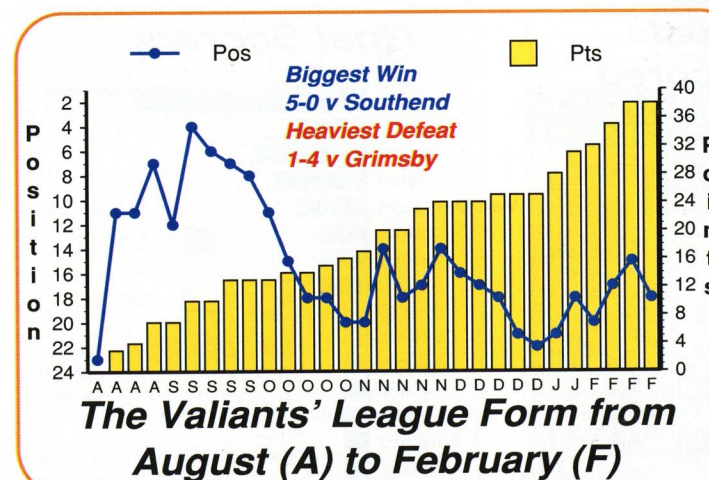
"He has great leadership and stands out from the rest," said Van Der Laan. "He's good in the air too and, on that performance, he can certainly score goals."

next month as Graham Taylor's promotion chasers come to Kenilworth Road, but it's the other end of the table that concerns Rudge's team.

Before Saturday's games, they were just three points above the relegation zone, but have games in hand on the majority of sides around them.

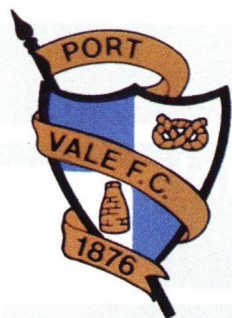


ABOVE: Kerry Dixon loses out during Luton's 1-0 win at Vale Park in September. There's more action from that meeting between the two sides on page 33 of today's match programme.



ABOVE:Vale boss John Rudge

LEFT: Port Vale's league form this term



PORT VALE 1994/95

SPOTLIGHT ON TODAY'S VISITORS

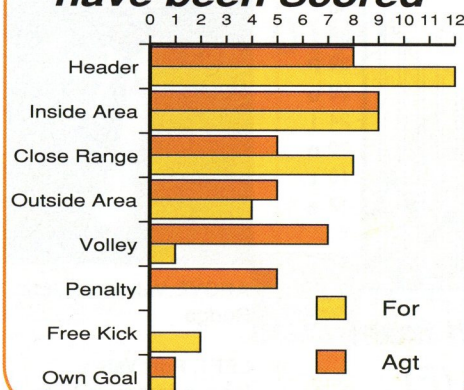


Back row: left to right: Joe Allon, Dean Glover (captain), Peter Billing, Stuart Talbot, Paul Musselwhite, Gareth Griffiths, Arjen van Heusden, Robin van der Laan, Neil Aspin, John Morris, Martin Foyle.

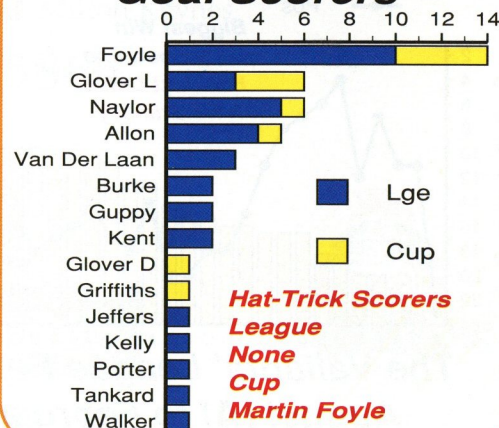
Middle row: Bill Dearden (first team coach), Stan Nicholls (kit man), Lee Glover, Wayne Corden, Oliver Heald, Paul Kerr, John Jeffers, Allen Tankard, Jim Joyce (physio), Ian Miller (youth team coach).

Front row: Kevin Kent, Ray Walker, Bradley Sandeman, John Rudge (manager), Andy Porter, Dean Stokes, Tony Naylor.

How the Goals have been Scored



Goal Scorers



Hat-Trick Scorers
League
None
Cup
Martin Foyle

VISITORS ON PARADE

PAUL MUSSELWHITE - Goalkeeper who was ever-present member of last season's promotion winning team, taking his total of consecutive appearances to over 100.

ARJEN VAN HEUSDEN - Dutch goalkeeper who was signed during the close season from Noordwyk for £4,500.

NEIL ASPIN - Defender who normally operates at right-back. Began his career with Leeds United, playing in the top division at the age of 16 and helping them to the FA Cup semi-finals in 1987, before moving to Vale Park for £140,000 in July 1989.

GARETH GRIFFITHS - Central defender who cost just £1,000 from Rhyl in January 1993.

DEAN GLOVER - Central defender and captain, who started his career with Aston Villa before moving to Middlesbrough. Joined Vale for a then club record £200,000 in February 1989.

DEAN STOKES - Strong-tackling left-sided defender who cost a small fee from non-league Halesowen Town in January 1993.

BRADLEY SANDEMAN - Began his career with his home town team Northampton, and joined Vale on a free transfer from Maidstone in July 1992.

PETER BILLING - Joined Vale on loan from Coventry in February 1993, with the move eventually becoming permanent.

ALLEN TANKARD - Fullback who cost £87,000 from Wigan in July 1993. Lost his place through injury last season, but returned for the promotion run-in.

JOHN MORRIS - Defender who turned pro in July 1994, having represented Wales at Under 15 level.

KEVIN KENT - Born in Stoke, but didn't arrive at Vale Park until March 1991, in exchange for £80,000 plus Gary Ford going to Mansfield Town.

RAY WALKER - Former England youth international, and long serving influential midfielder for Vale. Started his career with Aston Villa, but has proved a bargain for the £12,000 Vale paid for his services in 1986.

ROBIN VAN DER LAAN - Strong running midfield player who joined the Vale for £80,000 from the now defunct Dutch side Wageningen in February 1991.

CRAIG LAWTON - Signed on a free transfer from Manchester United in July 1994 on a monthly contract as he bids to prove his fitness after a double hernia operation.

ANDY PORTER - Released as a schoolboy by Manchester City, and joined Vale in 1985.

JOHN JEFFERS - Left-sided attacking player who signed for Vale from Liverpool.

WAYNE CORDEN - Left winger who turned professional in July 1994.

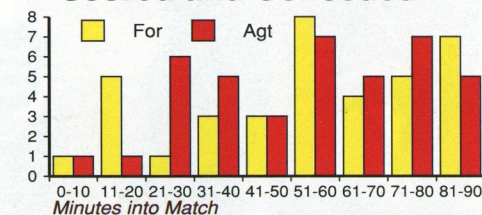
MARTIN FOYLE - The club's record signing who cost £375,000 from Oxford United in June 1991, after starting his career with Southampton. Top scorer last season with 21 goals.

OLIVER HEALD - Canadian striker who earned a full-time contract after 12 goals for the reserves last season.

JOE ALLON - Experienced striker formerly with Newcastle, Swansea, Hartlepool, Chelsea and Brentford, before joining Vale in March 1994.

LEE GLOVER - Signed from Nottingham Forest for £200,000 in July 1994. Once on loan

When Port Vale have Scored and Conceded

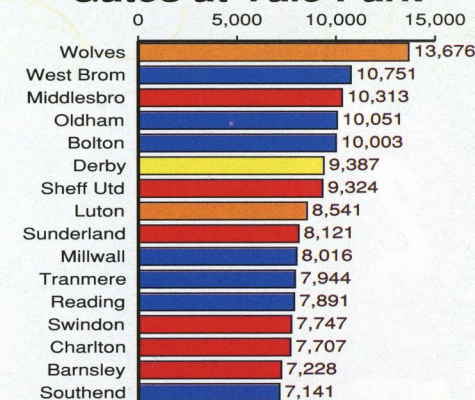


TONY Naylor



DEAN Glover

Gates at Vale Park



Graphics by Football Information Services
 (Stats do not include Saturday's matches)

at Luton, and is a former Scotland youth and Under 21 international.

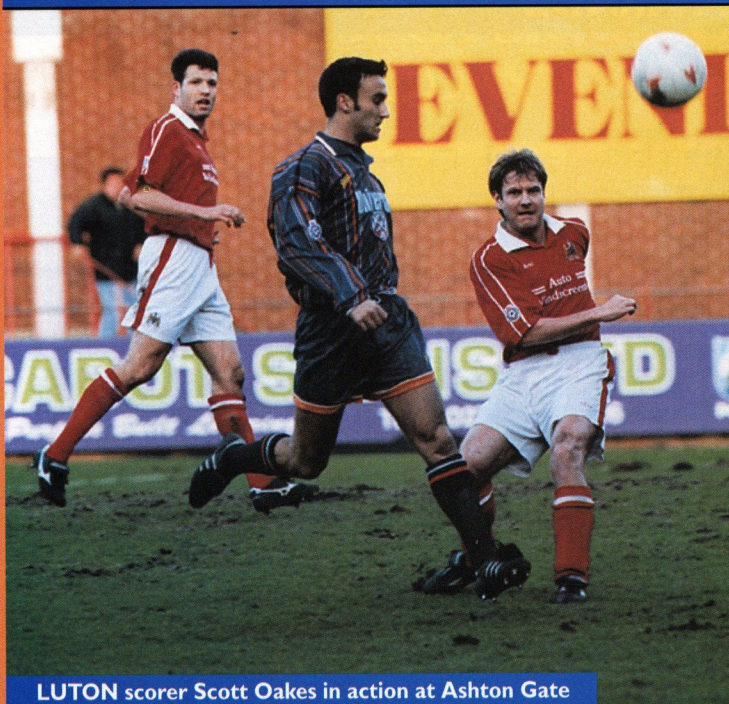
TONY NAYLOR - Striker who signed from Crewe in July 1994 for £150,000, after looking poised to join the Hatters.

MARK BURKE - Was on loan at Luton last season, but joined Vale on a free transfer from Wolves in August 1994. Formerly with Aston Villa and Middlesbrough.

STUART TALBOT - Midfielder who was snapped up after impressing in a pre-season friendly against the Vale for Moor Green.

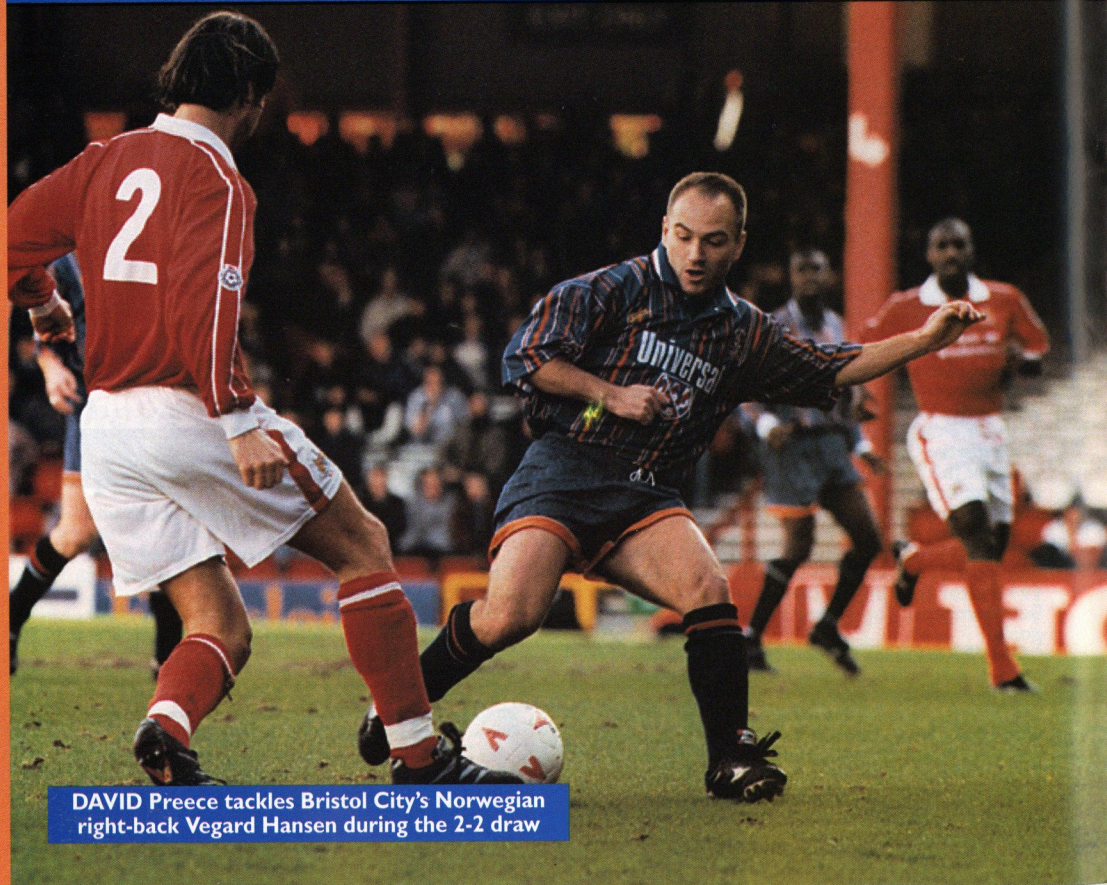
STEVE GUPPY - Joined Vale from Newcastle United for £225,000 in November 1994, having signed for Kevin Keegan from Wycombe Wanderers.

BRISTOL CITY v LUTON TOWN



LUTON scorer Scott Oakes in action at Ashton Gate

From
Ashton Gate
Date
February 25, 1995
Result
Bristol City 2 (Owers, Bent) Luton Town 2 (Oakes 2)
Attendance 7,939
Pictures by ANDY HANDLEY



DAVID Preece tackles Bristol City's Norwegian right-back Vegard Hansen during the 2-2 draw



JULIAN JAMES is up to support the Town attack



KERRY Dixon is denied by City defenders Richard Dryden (4) and Matt Bryant (5), as keeper Keith Welch looks on

S U P P L I E D B Y



MITRE SPORTS INTERNATIONAL LTD.
BIRKBY, HUDDERSFIELD, HD1 5AJ. TEL: 0484 537488. FAX: 0484 530042

A GENESCO Company



Football wins the Pools every Saturday



Every time you enter Littlewoods, Vernons and Zettors Pools or Littlewoods Spot the Ball you are helping the game at all levels. The Football Trust administers funds from the Pools, helping clubs to improve safety and comfort.

The Trust receives some £37 million every year, all of it coming directly or indirectly from Littlewoods, Vernons and Zettors Pools and Littlewoods Spot the Ball.



LITTLEWOODS VERNONS ZETTERS
Making sure football wins the Pools each week



THE FOOTBALL TRUST
Helping the game

THE FOOTBALL TRUST, WALKDEN HOUSE, 10 MELTON STREET, LONDON NW1 2EB

Football also receives £8 million a year for the use of fixtures on coupons and Littlewoods, the game's biggest benefactor, is the first sponsor of the FA Cup.

Up and down the country, clubs are building new grounds, stands, seating and roofing. All depend on the support of the Football Trust and on the success of the football pools.



HARRY OF THE HATTERS

JUNIOR HATTERS OFF TO THORPE PARK!

WE are planning a day trip to Thorpe Park for Junior Hatters and their families on Sunday, June 11, 1995.

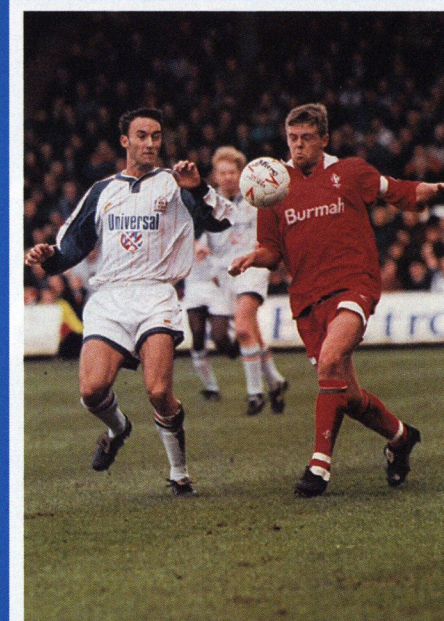
It promises to be a great day out, with lots to do, and a chance to see all your Luton Town friends as we look forward to the new season.

The special price for this trip will be £11 for under 14s and £15 for over 14s - this price includes return coach fare from Luton and entrance to Thorpe Park, where there is a wide choice of rides for all ages.

The coach will depart from the forecourt outside the Ticket Office in Kenilworth Road at 9am and meet back at the coach to depart Thorpe Park at 4.30pm. We should be back at Kenilworth Road for approximately 6pm.

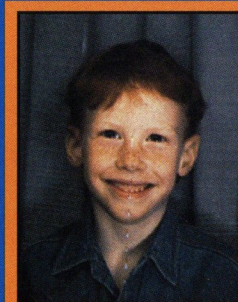
Booking details are as follows: A £5 non-returnable deposit per person must be paid by Saturday, April 8. The outstanding balance must be paid in full by Saturday, May 6. We regret that as this is a family trip, we are unable to accept bookings from unaccompanied juniors. Spaces are limited, so please book early to avoid disappointment!

If you have any queries regarding this trip, please contact the Ticket Office on Luton 416976.



TODAY'S Junior Hatters mascot is Michael Davey (left), whose favourite player is Scott Oakes (above).

MATCH DAY MASCOT



Name:

Michael Davey

Date of birth: 16/10/89

School attended:

Giffard Park, Milton

Keynes

Hobbies: Football

Favourite Luton Town

player: Scott Oakes

Who accompanies you

to Luton matches:

Mum and Jim.

HOW SWEET!

Belgian Chocolate footballs in presentation box with LTFC crest

Were £4..... now just £3

Ideal present for Easter!

DON'T FORGET..... LUTON TOWN'S MATCH AGAINST WATFORD HAS NOW BEEN SWITCHED TO SUNDAY, MARCH 26..... THAT'S MOTHERS DAY!
THE NEXT HOME GAME IS AGAINST TRANMERE ON SATURDAY, MARCH 18



MITCHELL Thomas tackles Junior Bent during the 2-2 draw with Bristol City at Ashton Gate. Picture: ANDY HANDLEY.

AROUND THE TOWN



Kerry's Bridge benefit

HATTERS striker Kerry Dixon has a benefit match at his former club Chelsea later this month.

A Chelsea XI will play a Tottenham Hotspur XI at Stamford Bridge, on Monday, March 27, kick-off 7.45pm.

General ticket prices range from £10 (£5 children and OAPs) to £15, whilst there are also a number of sponsorship and hospitality packages available.

These include sponsorship of the match itself, and an opportunity to play in the Chelsea XI.

There's also the chance to take part in the pre-match Six-A-Side match, and a half-time penalty competition against a leading Premiership goalkeeper.

Tickets are available from the Chelsea box office on 071 385 5545, and for other enquiries please telephone Gary on 0582 561554 or Phil on 0727 855330.



ABOVE: Martin Williams takes on Bristol City left-back Stuart Munro, after coming on as a second-half substitute at Ashton Gate.

WINGER Martin Williams is looking to earn an extended run in the first team after making a rare substitute appearance at Bristol City last Saturday.

Williams was a second-half replacement for David Preece, in what was only his second league outing this term.

But he may get his wish with a loan spell elsewhere to gain first-team experience, as manager David Pleat looks to lend out

several of his reserve team players.

Born in Luton, Martin Williams joined the Hatters after a spell in the youth ranks at Leicester, making his first-team debut in March 1992 at Southampton, before a loan spell in Finland.

He scored a memorable goal in the 2-0 win over eventually promoted West Ham in April 1993, but last season was disrupted for him by a series of injuries.

A DATE for your diary: The Football Programme Directory are holding their 21st International Football Programme Fair, at the Hotel Russell, Russell Square, London WC1, on Saturday, June 3, 1995, from 11am to 4.15pm.

Keep up-to-date with all the news from Kenilworth Road on
LUTON TOWN CLUBCALL 0891 121 123

Martin Williams

AUTOGRAPH



KENILWORTH SUITE

ABB Flexible Automation Ltd
Anachem Ltd
Mr G. Chamberlain
Corporate Coaching
Ken & Judi Craven
Fisher Frozen Foods Ltd
F & T Goodwin Ltd
Grosvenor Contracts
Handsombe Financial Services Ltd
R.W. Harvey & Son

R. Yates
Origination
Radley Shaw
Regal Litho
Steadfast Properties PLC
Wilton Contract and Vehicle Rental
Complete Contracts Ltd
The Home Counties Newspaper Group
Frank and Audrey Ludlow

CLUB 82

Bervale Mead Insurance Brokers
C.P. Contracts
J.S.B. Business Forms
Luton Cleaning Company
Nordic Supplies
Mr F.W. Pearce
The Unimec Group of Companies
Shorey Travel

TJ Aldridge Builders
Chris and Kim Clarke - The Wheatsheaf,
Flitwick
Space Display Systems
Techno Sign Ltd
Mr D.R. Kenningham
Carol and Stuart Kendall - The Blackbirds,
Flitwick

INDIVIDUAL BOX HOLDERS

Mr Alan Garner

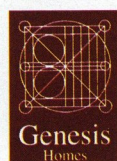
Mr Malcolm Eade

Mr Roger Eade

EXECUTIVE BOX HOLDERS



Murtagh Demolition



Cope Brothers (Printers) Limited



GET IN GEAR AT THE HATTERS SHOP....



FROM left: Padded baseball jacket (S, M, L and XL) - £45.00; Luton Town FC tracksuit top (various sizes); Full length navy managers coats, with full Luton Town crest (S, M, L, XL, and XXL) - £65.00; Three-quarter length navy coaching jackets with full Luton Town crest (S, M, L, and XL) - £50.00; Navy and royal bomber jacket, with full Luton Town crest. Childrens sizes 28 and 32 - £32.00. Adult sizes (S, M, L and XL) - £35.00.



KIT OUT THE KIDS FOR UNDER £20

there's a wide range of sale items at the club shop featuring recent LTFC shirts, shorts and socks - pop in a buy a bargain!

LTFC kit prices 1994/95

HOME/AWAY SHIRTS

22-24	£23.99
26-28	£23.99
30-32	£23.99
34-36	£28.99
38-40	£28.99
42-44	£30.99
46-48	£30.99

GOALKEEPER SHIRTS

- Grey/green	
22-24	£29.99
26-28	£29.99
30-32	£29.99
34-36	£34.99
38-40	£34.99

HOME/AWAY SHORTS

22-24	£12.99
26-28	£12.99
30-32	£15.99
34-36	£15.99

SOCKS HOME/AWAY

Boys	£5.99
Youths	£5.99
Mens	£5.99

OPENING HOURS: Enquiries (0582) 411622

Monday to Friday - 10am to 4pm

(Evening matchdays 10am to 10pm)

Saturdays - matchdays 9am to 5pm

-non matchdays 9am until coaches leave for away game

Hatters Shop

KIT SPONSORS

CERI HUGHES

is sponsored by
Les and Sue Miller

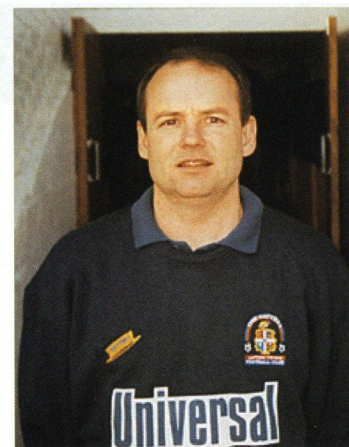


RICHARD HARVEY Shorey Travel	TONY THORPE Bedfordshire Rural Communities Charity	CERI HUGHES Les and Sue Miller	TREVOR PEAKE Bennetts Gate Bakery of Hemel Hempstead
DWIGHT MARSHALL Milton Keynes Branch of the Luton Town Supporters Club	JULIAN JAMES Shorey Travel	CLIVE GOODYEAR Mad As A Hatter - The Luton Town fanzine	MARVIN JOHNSON Graham Group PLC
FRED BARBER Royal Air Force Careers Information Office, Bedford	PAUL TELFER Convoy Installations Ltd	MARTIN WILLIAMS Anchor Insurance Brokers Milton Keynes	DAVID PLEAT Bobbars Travel Club, Committee and Members
DAVID PREECE Ken and Judi Craven	KELVIN DAVIS McLeod Warner	SCOTT OAKES Legal and General Assurance	KERRY DIXON The Loyal Luton Supporters Club
TONY ADCOCK Chris and Kim Clarke The Wheatseaf, Flitwick	MITCHELL THOMAS Sam Hill	JUERGEN SOMMER Paul Deason	To be decided Kate and Phil Shaw
DAVID GREENE O'Shea's Public House, Castle Street, Luton	DES LINTON Simkins Solicitors of Baldock and Sandy	AARON SKELTON Club Skyway of London Travel Agents	GARY WADDOCK Mad As A Hatter - The Luton Town fanzine
	JOHN MOORE Les and Sue Miller	JAMIE WOODSFORD Worldwide Hatters on the Super Highway (WHOSH)	

To sponsor a player's kit please contact the Commercial Department on Luton 411622

LTFC in the Community

with the club's new 'Football in the Community' officer
COLWYN ROWE - (0582) 411622



COLWYN Rowe would like to hear from any qualified FA coach wishing to work on Luton Town's 'Football in the Community' programme. You can phone Colwyn at the club, or write to him c/o LTFC, Kenilworth Road Stadium, 1 Maple Road, Luton, enclosing a CV.

OVER 600 youngsters took part in the February half-term courses, and another packed programme is planned for Easter.

Football in the Community Officer Colwyn Rowe said there had been a tremendous response, and has urged people to book early when the next course details are announced.

"I was very pleased with the numbers attending, and everyone enjoyed themselves which is our main objective," said Colwyn.

"Schools in the region have been very helpful, and the youngsters have certainly enjoyed meeting the Luton Town players who have come along to help."

Matthew Woolgar, Martin Williams, Jamie Campbell, Des Linton, Tony Adcock, Ceri Hughes, Kelvin Davis,

David Greene and Tony Thorpe were among the Hatters stars taking part, as the courses took place in Bedford, Leighton Buzzard, Dunstable Flitwick, Luton, Shefford and Milton Keynes.

And the 60 youngsters on the goalkeeping course had the extra bonus of a visit from former England keeper Peter Bonetti, who is a regular instructor for the Town's senior keepers.

More courses are planned for the Easter holidays, with the majority being three-day courses. There will also be a course for adults, aimed at junior managers, senior managers, preliminary and full badge holders.

We will be announcing full details in the matchday programme and the local press as soon as the courses are finalised.



CORPORATE CARS...

can supply your company with

- ★ Executive chauffeur driven air conditioned cars
- ★ Uniformed chauffeurs - in car telephone
- ★ All chauffeurs are members of the Institute of Advanced Motorists
- ★ All cars are BMW 1994 models

**FOR ALL YOUR CORPORATE TRANSFERS
CONTACT THE EXPERTS**
(over 30 years transport experience)

**CORPORATE CARS
ADELAIDE HOUSE
31 CARDIFF ROAD
LUTON, BEDS LU1 1PP**

Phone 01525 715872

Fax 01525 713020

People to Places in Style ...

R. J. BLOW & C O M P A N Y

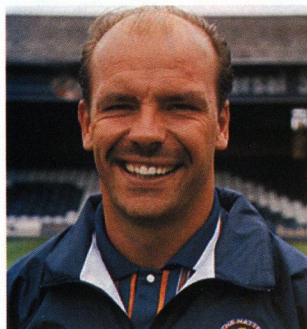
THE FRIENDLY ACCOUNTANTS

**RJ Blow ad
Book-Keeping
Taxation and Wages etc.**

STIRLING HOUSE,
30 GUILDFORD STREET,
LUTON, BEDS LU1 2NR

Tel: (0582) 38792

Fax: (0582) 423347



Wed Aug 17	WATFORD	2-0
Wed Aug 24	QPR	2-1
Wed Aug 31	Charlton Athletic	1-3
Wed Sep 7	IPSWICH	2-2
Wed Sep 14	Bristol Rovers	1-3
Wed Sep 21	OXFORD	2-1
Wed Sep 28	PORTSMOUTH	1-0
Wed Oct 5	Tottenham	0-2
Wed Oct 12	Oxford	1-0
Wed Oct 19	NORWICH	3-5
Wed Oct 26	BRISTOL ROVERS	2-2
Mon Oct 31	Swindon	2-1
Tue Nov 8	Watford	0-1
Wed Nov 16	WIMBLEDON	2-4
Mon Nov 21	Portsmouth	3-0
Wed Nov 30	SWINDON	2-2
Wed Dec 7	Norwich City	0-2
Wed Dec 14	TOTTENHAM	1-2
Wed Dec 21	Southampton	1-3
Tue Jan 10	West Ham	0-1
Wed Jan 25	CRYSTAL PALACE	2-1
Mon Feb 6	ARSENAL	1-3
Tue Feb 14	Crystal Palace	3-1
Thu Feb 23	BRISTOL CITY	4-1
Sat Feb 25	Arsenal	1-4
Mon Feb 27	Brighton postponed	
Wed Mar 8	SOUTHAMPTON 2pm	
Wed Mar 15	Wimbledon 2pm	
Wed Mar 22	MILLWALL 2pm	
Wed Mar 29	Ipswich Town 7.30pm	
Wed Apr 5	BRIGHTON 2pm	
Mon Apr 10	Millwall 2pm	
Wed Apr 19	CHELSEA 2pm	
Sat Apr 22	WFSH HAM 2pm	
Tue Apr 25	Queens Park Rangers 7pm	
Mon May 8	Chelsea 7pm	
TBA	Bristol City	
TBA	CHARLTON	

BOLD type denotes home game.
(Luton score first).

RESERVES AND YOUTH

WITH WAYNE TURNER AND TERRY WESTLEY

IN David Pleat's programme notes on Saturday, we announced the names of seven boys offered places on the YTS scheme for the start of next season.

They are: Steve Augustine - a forward from Middlesex; Andrew Barr - a forward from Leighton Buzzard; Liam George - the only local boy, who has been plagued by injury for 12 months, and faces an operation on his knee; Ian Jones - who played for Wales schoolboys last year, and comes recommended by Cyril Beech our Welsh scout; Terry Sweeney - a young midfield player from Plymouth; Matthew Upson - a left-sided midfield player from Diss; and Nicholas Webb - a goalkeeper from Stevenage.

It may only be March, but already the club are thinking ahead in months and years, and as youth team coach Terry Westley explains there is a set procedure to follow.

"By March the 1st you have to give associated schoolboys who are with your club, by recorded delivery, a decision

on whether you will be offering them a two-year apprenticeship, or releasing them," said Terry.

"Seven letters have gone out and they are the lucky ones, and unfortunately we have had to turn away a number of boys who have been with us a number of years which is the really disappointing part.

"There is a mix of players who have been with the club through the junior sides from Under 11, and others who for one reason or another haven't got on at other clubs, and we have picked up late."

As you can see from the list the potential new arrivals are from a wide area, with Cyril Beech, who has sent the town Pembroke, Nogan, Hughes and Hartson in the past, hopefully coming up trumps again.

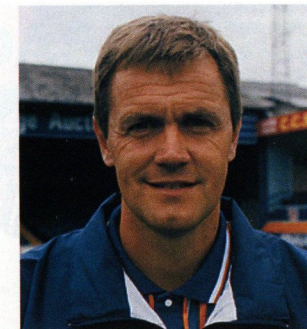
"Cyril has sent us Ian Jones, a centre-back who is a Welsh

The next reserve team game is on Wednesday, March 8, when Luton entertain Southampton, kick-off 2pm. See local press for details.



WILL the new YTS arrivals follow in John Hartson's footsteps

?



South East Counties League, FA Youth Cup and Southern Junior Floodlit Cup

Sat Aug 13	CRYSTAL PALACE	4-2	Sun Oct 23	Saffron Walden (EJC)	2-3	Sat Jan 14	Brighton (Postponed)	
Sat Aug 20	Wycombe Wanderers	5-0	Sat Oct 29	WIMBLEDON	2-4	Sat Jan 28	READING	1-1
Sat Aug 27	BRIGHTON	2-3	Sat Nov 5	Brentford	1-3	Sat Feb 4	Southampton	1-1
Thu Sep 1	Coventry (SJFC Pre)	2-2	Mon Nov 7	STAINES TOWN (FAYC1)	5-0	Sat Feb 11	OXFORD UNITED	3-1
Mon Sep 5	Coventry (SJFC Pre)	1-2	Sat Nov 12	BRISTOL CITY	1-2	Sat Feb 18	Bristol Rovers	0-0
Sat Sep 10	Reading	4-0	Sat Nov 19	Swindon Town	0-1	Sat Feb 25	Colchester United	2-1
Sat Sep 17	NORWICH (LC1)	2-0	Mon Nov 28	Wycombe (FAYC2)	0-1	Sat Mar 4	Wimbledon	
Sat Sep 24	SOUTHAMPTON	0-2	Sat Dec 3	BOURNEMOUTH	0-1	Sat Mar 11	BRENTFORD	
Sat Oct 1	Oxford United	0-3	Sat Dec 10	Tottenham	2-0	Sat Mar 18	Bristol City	
Sat Oct 8	BRISTOL ROVERS	2-1	Sat Dec 17	TOTTENHAM	2-3	Sat Mar 25	SWINDON TOWN	
Sat Oct 15	COLCHESTER	7-0	Sat Dec 31	Crystal Palace (Postponed)		Sat Apr 1	Bournemouth	
Sat Oct 22	Colchester (LC2)	0-1	Sat Jan 7	WYCOMBE WANDERERS	5-0		HOME matches denoted in bold.	

Under 15 and Under 16 international," said Terry, "and although he hasn't yet played for the youth team because of international commitments, he has impressed us, and he was told some time ago he would get an apprenticeship.

"Locally there is Liam George, who is an interesting signing. He was playing at the end of the season in a school match at Electrolux as an Under 13, and although we knew all the players in the schools finals it was a lovely night so I went along to the game.

"I saw this boy up front control the ball and volley it into the top corner, and I thought he must be at the Centre of Excellence.

"But it turned out that he wasn't, because he had just started playing again after a broken leg.

"He has done very well in the Under 15 and Under 16 sides, but unfortunately he has suffered injuries in both knees and is now waiting for another operation.

"But he should be fit to start the season and we have stuck by him, and are pleased he is coming to the club."

The club now wait for replies from the youngsters, and there could be an eighth place up for grabs. Terry and the coaches will hold trial matches to look at players recommended to them by other clubs who couldn't fit them into their intake.

This system has produced many, many players for Luton over the years, and this season perhaps more than any has

shown what a lifeline the juniors can provide, with the sale of 19-year-old John Hartson for £2.5 million.

"That was a huge sum of money, which obviously the club needs," said Terry. "And as well as the financial aspect, we are expected to produce players for the first team very quickly. Four players currently qualified for the youth team have figured in first-team squads this season - Davis, McLaren, Chenery and Woodsford."

**Luton Town Supporters Club
invite you to**

MEET THE MANAGER

**David Pleat will be the guest speaker at the
Supporters Club meeting
on Thursday, March 9, from 7.45pm
in the Hatters Bar, Maple Road.**

**Admission is £2 (members), but new
members are welcome to join on the night.**

HATTERS BACKING 'ONE NATION'



ABOVE: Town chairman David Kohler (left) pictured at the official launch of the One Nation scheme, with representatives from Luton Council, the One Nation Association, and sponsors, the Raj restaurant.

LUTON Town has helped to set up a multi-racial soccer scheme for the town's youngsters, using sport to promote harmony between all ethnic groups.

Hatters chairman David Kohler is supporting the project, which was officially launched recently.

It is being organised by the One Nation Sports and Leisure Association, based at the Bury Park Community Centre.

The project was launched at Norton Road Junior School, where boys and girls received coaching on the day from Colwyn Rowe, the Town's Community Officer, and at the end of the day the youngsters were presented with special certificates.

Later, at the Raj restaurant in Marsh Road, a £1,500 cheque from the restaurant management was presented to One Nation. The Institute of Sports Sponsorship matched this with funding arranged by Luton Council under the Sportsmatch scheme.

Eventually, it is hoped One Nation will run two soccer teams and there will be a number of soccer clinics. The aim is to train as many youngsters as possible to play football.

Bush-whacked but the Wanderers are winners!

BUSHMEAD Wanderers B Under 13 FC are the second winners of the club's Team of the Month Award, run in conjunction with the Loyal Luton Supporters Club.

The fans have successfully applied for a grant from the National Westminster Bank, as part of the bank's community programme, and, supported by the Football Club, wish to donate tickets for youngsters in the area to try and attract new supporters to Kenilworth Road.

The Bushmead side have not won a match, but team manager William Aitken says that the youngsters deserve reward for their hard work and enthusiasm in turning up for training every Friday throughout the wet, freezing winter.

Managers or parents should write in telling us why your team should be the Team of the Month. It may be that you are unbeaten, have won a trophy, or that you recorded a first win, or only lost narrowly to the top side in your league.

Nominations should be sent in to: Junior Team Award, c/o Simon Oxley, LTFC, Kenilworth Road Stadium, 1 Maple Road, Luton, Beds, LU4 8AW.

The February winners receive tickets for the home game against Tranmere on March 16.

LOOKING TO BETTER LAST SEASON'S MARK

Two-goal hero SCOTT OAKES reflects on the 2-2 draw against Bristol City..... as told to CLUBCALL 0891 121 123



Q: Two cracking goals but in the end not enough to secure victory.

A: No, that was definitely two points thrown away as far as we were concerned, but credit to Bristol City for their fightback.

Of course I was pleased to score, and especially the first one which I caught really well. I got the ball from Gary Waddock, went forward a few yards and as they backed off a bit I just hit it.

It certainly swerved a lot which deceived the keeper; maybe the wind caught it!

Q: Looking at the pitch, it obviously was very heavy, and did that take too much of a toll on the players late on?

A: It was like running up against an escalator, but we were still disappointed. We couldn't believe their first goal wasn't given offside, but the second was down to us.

On the plus side we had to play a slightly different game at Bristol because of the conditions. That was going very well, we had to battle and we did, and we were very pleased at half-time espe-

cially after Juergen's penalty save.

Q: Your position has also changed, a more central role, and one which seems to give you more freedom.

A: I'm enjoying playing in the middle alongside Gary Waddock and that is working well. It's no secret that I like to go forward, and with Dwight up front as well we certainly have plenty of pace on attack.

Q: And more goals to come?

A: I certainly hope so. It was 13 last year, and now I've notched up nine so far this season. I'm certainly hoping to better that 13 mark.



Did you know that you can sponsor a Luton Town game at Kenilworth Road, and entertain clients, friends or family?

You could also sponsor the matchball, or hire an executive box for the afternoon/evening

And facilities are also available on non-matchdays for business and conference use

For more details contact Kathy Leather or Sam Walsh on (0582) 411622

SAFETY NOTE

The Chairman and Directors of Luton Town Football Club undertake to ensure as far as humanly possible that all activities that take place at the Kenilworth Stadium are conducted in such a way that, as far as is reasonably practicable, the safety of everyone working at or attending that stadium is assured.

The club's primary responsibility through the Safety Officer, Officials, Staff and Stewards will be to ensure the reasonable safety of those attending the stadium.

In the interests of public safety, the safety authority (Beds County Council) have imposed a NO SMOKING restriction in and beneath our main stand. Your co-operation is appreciated.

Thousands of people could be reading about you and/or your company at every Hatters home game! To advertise in the Luton Town matchday programme contact Sam Walsh on (01582) 411622

Vale suffer Saturday night fever



LEFT: Luton's
goalscoring
goalkeeper Tony
Read

WE have not often crossed paths in the past with Port Vale, and tonight's game will be only our ninth meeting in Luton. Of the previous eight, by far the most exciting took place shortly before the end of 1965/66 when the Town were making a bold attempt to climb out of Division Four at the first time of asking.

Relegated to the basement at the end of the previous season we had pushed our way up to the promotion places on the back of a good home record and the goalscoring feats of a young striker, signed on a free transfer from Chelsea, John O'Rourke.

With five games left to play, O'Rourke had scored 29 times in 36 outings, including four hat-tricks, and was being watched with envy by a good many clubs from the top three divisions. He was the fulcrum of a free scoring forward line that was to hit the back of the net 90 times by the end of a campaign that promised so much but ended, eventually, in disappointment.

In a bid to be different, the Town decided

to play the home game against Port Vale on the Saturday evening of May 14, a couple of hours after the end of the Cup Final. Probably mindful of the number of people who emerge from an afternoon in front of the television and fill the local parks with a heaving mass of bodies trying to emulate the players they had just seen in action, the Board obviously thought a real live game would pull in the crowds.

As it turned out, 12,054, the second highest crowd of the season, were present to vindicate the Directors' optimism and, with appetites whetted by an afternoon of Everton v Sheffield Wednesday, they settled down to a further helping of good football.

The Town were sitting in sixth position but had at least three games in hand on most of the clubs above them. The fixture backlog had increased the previous Wednesday when, two goals ahead in an away game at Chester, the heavy rain that had been falling since the start, turned into a downpour leaving the referee little option but to abandon the match.

Still smarting from this disappointment,

the Town players set about Port Vale with a will and tore great holes in their defence right from the start. After only seven minutes we were two up with goals from Gordon Riddick and Ray Whittaker, and after 18 minutes we had doubled the score with O'Rourke netting twice in the space of 60 seconds.

Vale player-manager Jackie Mudie switched his young wing-halves James and Boulton to inside forward, and pulled back old hands Poole and Miles in an attempt to stem the flow. But Riddick headed his second and Luton's fifth after 23 minutes.

With the knowledge that a hard game faced them on the following Monday evening at Halifax, the players were not inclined to take risks after having attained such an impregnable position, with the result that the rest of the game was a bit of an anti-climax.

In the second period what little Vale had to offer up front was easily dealt with by Luton goalkeeper Tony Read, who was making only his second appearance of the season between the sticks after 27 outings wearing the number eight shirt - during which time he added 12 goals to the cause!

The game ended with O'Rourke shooting straight at Vale keeper Sharratt from the penalty spot, thus denying himself hat-trick number five of the season, but the crowd went home happy having witnessed Everton 3 Sheffield Wednesday 2 on the television, and Luton 5 Port Vale 0 in the flesh.

Luton: Read: Thomson, Slough, Riddick, Woods, Moore, French, Reid, O'Rourke, Rioch, Whittaker.

Port Vale: Sharratt, Ritchie, Sproson, James, Alcock, Boulton, Donald, Johnson, Mudie, Miles, Rowland.



by ROGER WASH

5 YEARS AGO

7/3/90: In the first win for four months, the Town overcame Coventry 3-2 at Kenilworth Road with Iain Dowie scoring the winner in the closing minutes.

10 YEARS AGO

9/3/85: In an FA Cup fifth round second replay at Kenilworth Road, the Town finally overcame Watford with Wayne Turner scoring the only goal of the game on his birthday!

15 YEARS AGO

8/3/80: A second half equaliser from Bob Hatton secured a point in a 1-1 draw at Preston. The result pushed us back up to second place in Division Two.

20 YEARS AGO

8/3/75: On a quagmire pitch the Town put on a terrible display in losing 3-1 at home to Coventry. John Aston scored the Luton consolation in a game which should have seen the Sky Blues net ten!

Those were the days

HATTERS FANS WORLDWIDE!



CONTINUING our series of Luton Town fans pictured in various locations around the world, we come a little closer to home this week. After Tenerife, Chicago, Rome and Sydney, Simon Pitts has sent in a picture of himself on a wet night in Falkirk, Scotland.

He was on holiday with his parents, and the trip coincided with the Hatters' tour

of Scotland where he attended all three pre-season games.

Simon has also asked us to print an appeal for a match programme he requires - the Luton v West Ham programme from the 1992/93 season.

You can contact Simon c/o Programme Editor, LTFC.

A NUMBER of former Luton Town players have been involved in transfer deals in the last week.

David Oldfield has moved to Millwall on loan from Leicester, and was due to play here on Saturday, while Kingsley Black has joined Sheffield United on a month's loan from Nottingham Forest - with a view to a permanent deal.

And two former Town players have joined Division One Burnley.

Welsh striker Kurt Nogan, who scored for Luton on his debut at Liverpool, has moved to Turf Moor for £300,000 from Brighton, where he will be joined by Steve Thompson, a £200,000 signing from Leicester. Thompson left Luton for Leicester, in the deal that saw Scott Oakes and Des Linton arrive at Kenilworth Road.

League launch the groundsman awards

WILKINSON Sword will sponsor this year's **Groundsman of the Year Awards** as part of their ongoing relationship with the Football League.

The awards are presented each year to recognise the tremendous efforts made by the many unsung heroes on the groundstaff at professional clubs.

Nominations will again be sought from both clubs and referees regarding the best surfaces encountered during the course of the season but, in a new departure, the judges will also

consider fully the resources available to groundsman and actual construction of pitches, before making their final decisions.

The awards are open to clubs in all three divisions of the Endsleigh League, together with those in the Premiership.

Wilkinson Sword, of course, already sponsor the 'Protector Award' which was introduced this season to recognise the goalkeeper with the best record in the Endsleigh league for each month during the campaign.

LAST TIME WE MET.....



LEFT: Julian James fires in a shot during the Hatters' 1-0 win at Vale Park in September.

PORT VALE 0

LUTON TOWN 1
(Marshall)

Saturday, September 3, 1994,
at Vale Park.

Pictures by
ANDY HANDLEY



ABOVE: Dwight Marshall scored the winner for the Hatters in the second half.



ABOVE: Vale keeper Paul Musselwhite under pressure during the first-half.

Action pictures featured in the Luton Town matchday programme are available at the special introductory price of just £2 per print!

Write to Simon Oxley, at the club, giving a brief description of the picture (programme and page number etc), and enclosing a cheque/ postal order made payable to Luton Town Football Club.



TicketLine

The exclusive ticket booking service for fans of Endisleigh League First Division clubs

0645 10 10 10

24 HOURS A DAY, 7 DAYS A WEEK

ALL CALLS CHARGED AT LOCAL RATE

THERE are many 'ground-hoppers' who can lay claim to have visited every league stadium in the country, but there aren't many who can boast to have completed this achievement following the fortunes of just one team.

One such supporter is Blackpool Football Club's official statistician Roger Harrison, whose recent visit to second division Cambridge United's Abbey Stadium last weekend completed his trek around all 92 professional football grounds watching the Seaside. Blackpool's flirtation with all four professional divisions in the country over the last 25 years has enabled Mr Harrison to achieve this rare feat.

THE appeal of playing at Wembley, which has been offered to fans of all Football League club through the Endsleigh Supporters' Challenge, has spread beyond these shores as evidenced by an application received last week at Lytham St Annes.

Writing from Bulawayo in Zimbabwe, Mlungisi Masuku declared his availability to play for the Charlton Athletic team in the competition. Unfortunately for Mr Masuku, his entry form was received after the representation for each club had been decided.



MATCHDAY catering staff **Donna Faux** and **Rachel Owen** certainly know their onions when it comes to the Duke of Edinburgh's Award Scheme.

Donna has successfully gained her bronze award, while **Rachel** gained gold in work experience as she works towards the bronze award.


Both girls attend Stopsley High School.

LUTON TOWN FC..... LISTENING TO YOU!

Thank you to all supporters who have taken part in our unique Football Supporters Panel, where views have been canvassed over the telephone by Luton-based Critical Research Ltd.

The surveys are proving very valuable in gauging opinions on all aspects of football, and you may have seen early results published in previous match programmes.

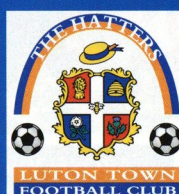




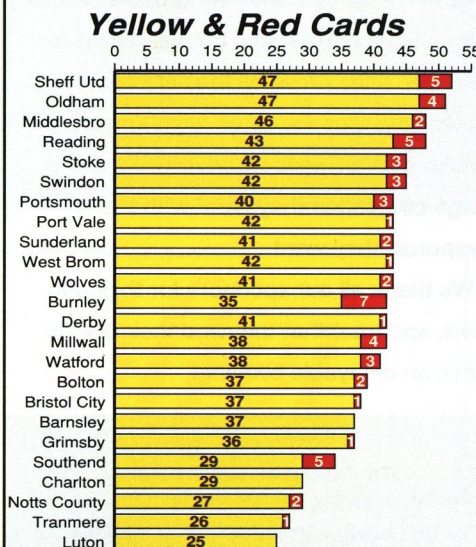
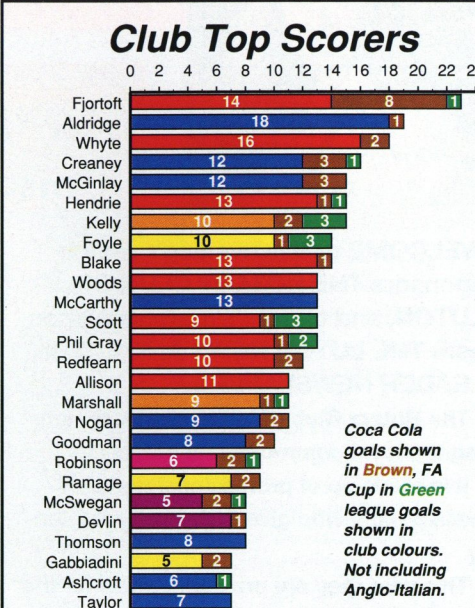
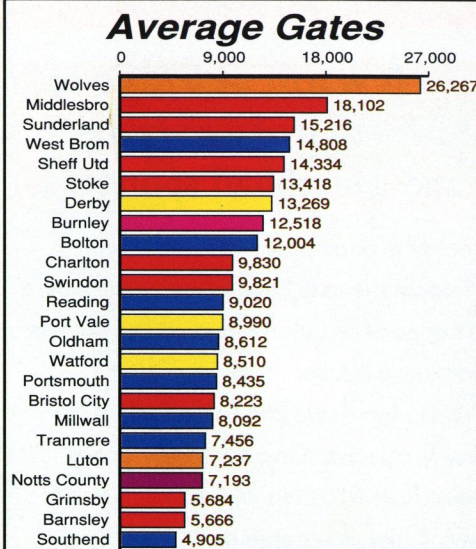
Critical Research Ltd

Crown Life House
41-43 Alma Street
Luton LU1 2PL

Tel: 0582 480588
Fax: 0582 485015



ENDSLEIGH LEAGUE DIVISION ONE STATS



LUTON TOWN CLUBCALL

0891 121 123

Calls cost 39p a minute cheap rate and 49p at all other times.

Money from YOUR calls helps support YOUR club



COMMERCIAL CORNER with Kathy Leather

A warm welcome to Kenilworth Road to today's match and matchball sponsors

WELCOME to this evening's match sponsors **THE ROTARY CLUB OF LUTON**, and tonight's matchball sponsors **THE LUTON NEWS AND LUTON LEADER NEWSPAPERS**.

The Rotary Club of Luton has been serving the local community for 65 years.

It is made up of professional and business people who give their time voluntarily.

This year they are providing a van for the Luton Day Centre for the Homeless, and many other local charities and individuals in need.

The club have two chalets which can be booked for respite holidays, and organise an activity weekend for young people.

Luton Town have always been pleased to support these activities. A bucket collection made each year helps the Mayor's Christmas Appeal, and this year it raised £564.44 at the home game against Derby

County in December.

Tonight the club have agreed a collection to support the Luton Signpost Projects for Homeless Adults.

The Luton News and Luton Leader are your local newspapers, with the Luton News now 103 years old, and the Leader having just celebrated its third birthday.

Both are going from strength to strength. The unique partnership between paid-for and free titles provides the very best local news coverage for Luton and Dunstable, whilst also giving local advertisers the large circulation they need with the response they want.

We thank all our sponsors for their support, and trust that they and their guests have an enjoyable evening.

Antony's Tailor

OF LONDON

THE MOST
ESTABLISHED
AND RELIABLE
TAILORS IN
LUTON

DRESS MAKE
LADIES AND GENTS
BESPOKE TAILORING



12 DUNSTABLE ROAD, LUTON,
BEDS OPPOSITE MAIN POST OFFICE
TEL: (0582) 424687

LUTON Town can cater for everything from business breakfasts, lunches or dinners to birthday/ anniversary celebrations and wedding breakfasts.

We can help to plan events by either clients visiting the club or by making a private visit to the clients own premises.

We have a number of function suites available, from our boardroom, which is an exclusive setting for senior management meetings, to our adjacent suites which can cater for up to 100 or more delegates for conferences and seminars.

Our catering operation, which prides itself on a personal service, can provide quality refreshments to complement any occasion.



SATURDAY'S game against Millwall was sponsored by Bedfordshire TEC.

Pictured above: Hatters players Mitchell Thomas, Dwight Marshall, Scott Oakes, Trevor Peake, David Preece and Marvin Johnson make the after-match presentations.

Support the Hatters with a Golden Gamble!

YOU could walk away from this afternoon's game with a fantastic cash prize by taking part in our new Golden Gamble.

Tickets, priced just £1, will be on sale around the ground prior to the match, with half the money raised being awarded as first prize in the half-time draw.

A large number of supporters have had a Golden Gamble at the last two home games, so why not try **YOUR** luck today.....



IS YOUR ELECTRICITY SUPPLIER PLAYING THE GAME?

The Office of Electricity Regulation

- PROTECTS THE INTERESTS OF ELECTRICITY CUSTOMERS
- HELPS AND ADVISES ON DISPUTES WITH EASTERN ELECTRICITY

At home:

4th Floor, Waveney House, Handford Road,
Ipswich, Suffolk IP1 2BJ.
Telephone 01473 216101 Fax 01473 215838

And away:

The phone book or your electricity bill shows your nearest office.

SUPPORT THE HATTERS

But Join The Gunners - and be paid!

Come and see what your local Territorial Army Unit does

Phone (01582) 572032

201 Battery RA (V)
TA Centre
Marsh Road
Leagrave
Luton LU3 2RX.

TEAM STATISTICS 1994-95

Date	Opponents	F-A	Att	Pos	1	2	3	4	5	6	7	8	9	10	11	12	14	GK
Sat Aug 13	WEST BROMWICH ALBION	1-1	8,640	-	Sommer	James	Johnson	(Skelton)	Greene	Peake	Telfer	OAKES	Dixon	Preece	(Houghton)	(Marshall)	(Linton)	Barber
Tue Aug 16	FULHAM CCC 1 (1)	1-1	3,287	-	Sommer	James	Johnson	(Houghton)	Greene	Peake	Telfer	OAKES	Dixon	Preece	(Houghton)	(Marshall)	(Linton)	Barber
Sat Aug 20	Derby County	0-0	13,060	14	Sommer	James	Johnson	(Linton)	Greene	Peake	Telfer	Marshall	Dixon	Preece	Hughes	Skelton	Houghton	Barber
Tue Aug 23	Fulham CCC 1 (2)	1-1	5,134	-	Sommer	James	Johnson	(Linton)	(Greene)	Peake	Telfer	MARSHALL	Dixon	Preece	Hughes	(Oakes)	(Skelton)	Barber
Sat Aug 27	SOUTHEND	2-2	5,918	16	Sommer	(James)	Johnson	Oakes	Greene	Peake	Telfer	(Marshall)	HARTSON	Preece	HUGHES	(Thomas)	(Dixon)	Barber
Tue Aug 30	Tranmere Rovers	2-4	5,480	20	Sommer	James	Johnson	(Skelton)	Greene	Peake	Telfer	Oakes	HARTSON	Preece	HUGHES	Thomas	(Marshall)	Barber
Sat Sep 3	Port Vale	1-0	8,541	15	Sommer	(James)	Johnson	Skelton	Greene	Peake	Telfer	MARSHALL	Dixon	(Preece)	Oakes	(Thomas)	(Woodsford)	Barber
Sat Sep 10	BURNLEY	0-1	6,911	18	Sommer	James	Johnson	(Waddock)	(Greene)	Peake	Telfer	Marshall	Hartson	Preece	Oakes	(Thomas)	(Dixon)	Barber
Tue Sep 13	BOLTON WANDERERS	0-3	5,764	20	Sommer	James	Johnson	(Waddock)	(Thomas)	Peake	Telfer	Oakes	Dixon	Preece	(Hartson)	(Linton)	(Marshall)	Barber
Sat Sep 17	Watford	4-2	8,880	16	Sommer	James	Johnson	(Waddock)	Thomas	Peake	TELFER 2	OAKES	DIXON	Preece	Marshall	Hartson	Linton	Barber
Sat Sep 24	Millwall	0-0	7,150	16	Sommer	James	Johnson	(Waddock)	Thomas	Peake	Telfer	Oakes	(Dixon)	Preece	Marshall	(Hartson)	Skelton	Barber
Sat Oct 1	BRISTOL CITY	0-1	6,633	20	Sommer	James	Johnson	(Waddock)	(Thomas)	Peake	Telfer	Oakes	(Dixon)	Preece	Marshall	(Hartson)	(Hughes)	Barber
Sun Oct 9	Stoke City	2-1	11,712	18	Sommer	James	Johnson	(Waddock)	Thomas	Peake	Telfer	Hughes	Hartson	(PREECE)	MARSHALL	(Oakes)	Williams	Barber
Sat Oct 15	MIDDLESBROUGH	5-1	8,412	11	Sommer	James	Johnson	(Waddock)	Thomas	Peake	Telfer	Hughes	HARTSON	(PREECE)	MARSHALL 2	(Oakes)	Dixon	Barber
Sat Oct 22	Sheffield United	3-1	13,317	7	Sommer	JAMES	Johnson	(Waddock)	Thomas	Peake	Telfer	Hughes	DIXON	(Preece)	Marshall	(Oakes)	Thorpe	Barber
Sat Oct 29	BARNSELEY	0-1	7,212	10	Sommer	James	Johnson	(Waddock)	Thomas	Peake	Telfer	Hughes	Hartson	Preece	(Marshall)	(Oakes)	(Dixon)	Barber
Tue Nov 1	GRIMSBY TOWN	1-2	5,839	13	Sommer	James	Johnson	(Waddock)	Thomas	Peake	Telfer	(Hughes)	Hartson	Preece	Marshall	(OAKES)	Dixon	Barber
Sat Nov 5	Wolverhampton Wanderers	3-2	26,749	8	Sommer	James	Johnson	(Waddock)	Thomas	Peake	Telfer	Oakes	(DIXON)	PREECE	MARSHALL	(Hartson)	Thorpe	Barber
Sat Nov 12	Oldham Athletic	0-0	7,907	8	Sommer	James	Johnson	(Waddock)	Thomas	Peake	Telfer	Oakes	Dixon	Preece	(Marshall)	(Hartson)	Thorpe	Barber
Sat Nov 19	PORTSMOUTH	2-0	8,214	8	Sommer	James	Johnson	(Waddock)	Thomas	Peake	Telfer	Oakes	DIXON	PREECE	(Marshall)	(Thorpe)	Hartson	Barber
Sat Nov 26	Swindon Town	2-1	9,455	5	Sommer	James	Johnson	(Waddock)	Thomas	Peake	Telfer	OAKES	(DIXON)	Preece	Linton	Woodsford	(Hartson)	Barber
Sat Dec 3	SHEFFIELD UNITED	3-6	8,516	8	Sommer	James	JOHNSON	(Waddock)	Thomas	Peake	Telfer	Oakes	Dixon	(Preece)	(Linton)	(HARTSON)	(Marshall)	Barber
Sun Dec 11	DERBY COUNTY	0-0	6,400	9	Sommer	James	Johnson	(Waddock)	Thomas	Peake	Telfer	Oakes	(Dixon)	Preece	(Allen)	(Hartson)	(Marshall)	Barber
Sun Dec 18	West Bromwich Albion	0-1	14,392	12	Sommer	(James)	Johnson	(Waddock)	Thomas	Peake	Telfer	Oakes	Dixon	Preece	Marshall	(Hartson)	Skelton	Barber
Mon Dec 26	Reading	0-0	11,623	12	Sommer	James	Johnson	(Waddock)	Thomas	Peake	Telfer	(Allen)	(Dixon)	Preece	Marshall	(Hartson)	(Oakes)	Davis
Tue Dec 27	SUNDERLAND	3-0	8,953	9	Sommer	James	Johnson	(Waddock)	Thomas	Peake	Telfer	OAKES 2	HARTSON	(Preece)	(Marshall)	(Skelton)	(Williams)	Davis
Sat Dec 31	Notts County	1-0	6,249	8	Sommer	James	Johnson	(Waddock)	Thomas	Peake	TELFER	Oakes	Hartson	Preece	(Marshall)	Skelton	(Adcock)	Davis
Mon Jan 2	CHARLTON ATHLETIC	0-1	7,642	8	Sommer	(James)	Johnson	(Waddock)	Thomas	Peake	Telfer	Oakes	Hartson	Allen	Marshall	Skelton	(Adcock)	Davis
Sat Jan 7	BRISTOL ROVERS FAC 3	1-1	7,571	-	Sommer	James	Johnson	(Waddock)	Thomas	Peake	Telfer	Oakes	HARTSON	Preece	(Marshall)	Williams	(Adcock)	Davis
Sat Jan 14	Barnsley	1-3	4,808	11	Sommer	James	Johnson	(Waddock)	Thomas	Peake	Telfer	Oakes	DIXON	(Harvey)	Marshall	(Skelton)	Woodsford	Davis
Wed Jan 18	Bristol Rovers FAC3	1-0	8,213	-	Sommer	Oakes	Johnson	(Waddock)	Thomas	Peake	Telfer	Chenery	Dixon	Preece	MARSHALL	Skelton	Woodsford	Davis
Sat Jan 28	SOUTHAMPTON FAC 4	1-1	9,938	-	Sommer	Oakes	Johnson	(Waddock)	Thomas	Peake	Telfer	BIGGINS	(Dixon)	Preece	Marshall	Skelton	(Williams)	Davis
Sat Feb 4	OLDHAM ATHLETIC	2-1	6,903	10	Sommer	James	Johnson	(Waddock)	Thomas	Peake	Telfer	Oakes	(Dixon)	Biggins	MARSHALL 2	(Thorpe)	Harvey	Davis
Wed Feb 8	Southampton FAC4	0-6	15,075	-	Sommer	(James)	Johnson	(Waddock)	Thomas	Peake	Telfer	Oakes	(Biggins)	Preece	Marshall	(Thorpe)	(Dixon)	Davis
Sat Feb 11	Grimsby Town	0-5	4,615	10	Sommer	James	Johnson	(Waddock)	Thomas	Peake	Preece	Oakes	(Dixon)	(Biggins)	Marshall	(Telfer)	(Woodsford)	Davis
Sat Feb 18	SWINDON TOWN	3-0	6,595	10	Sommer	James	Johnson	(Waddock)	Thomas	Peake	Telfer	Oakes	(Biggins)	Preece	(MARSHALL 2)	(Dixon)	(Woodsford)	Davis
Tue Feb 21	Portsmouth	2-3	7,363	10	Sommer	JAMES	Johnson	(Waddock)	Thomas	Peake	TELFER	(Oakes)	Dixon	Preece	Marshall	(Harvey)	(Woodsford)	Davis
Sat Feb 25	Bristol City	2-2	7,939	10	Sommer	James	Johnson	(Waddock)	Thomas	Peake	Telfer	OAKES 2	Dixon	(Preece)	Marshall	Biggins	(Williams)	Davis
Sat Mar 4	MILLWALL	1-1	6,864	10	Sommer	James	Johnson	(Waddock)	Thomas	Peake	Telfer	Oakes	(Biggins)	Preece	MARSHALL	(Dixon)	(Matthews)	Davis
Tue Mar 7	PORT VALE																	
Sat Mar 11	Southend United																	
Sat Mar 18	TRANMERE ROVERS																	
Tue Mar 21	Burnley																	
Sun Mar 26	WATFORD																	
Sat Apr 1	Bolton Wanderers																	
Sun Apr 2	CCC Final																	
Tue Apr 4	WOLVERHAMPTON W																	
Sat Apr 8	NOTTS COUNTY																	
Sat Apr 15	Sunderland																	
Mon Apr 17	READING																	
Sat Apr 22	Charlton Athletic																	
Sat Apr 29	Middlesbrough																	
Sat May 6	STOKE CITY																	
Sat May 20	FAC Final																	

CCC = Coca-Cola Cup
FAC = FA Cup

LUTON TOWN 1994/95

PLAYER (figure in bracket = sub app.)	LEAGUE APPS	LEAGUE GOALS	CUP APPS	CUP GOALS
Juergen SOMMER	33	-	6	-
Julian JAMES	33	2	4	-
Marvin JOHNSON	33	1	6	-
Aaron SKELTON	3 (2)	-	(1)	-
David GREENE	6	-	2	-
Trevor PEAKE	33	-	6	-
Paul TELFER	32 (1)	4	6	-
Scott OAKES	26 (6)	8	5 (1)	1
Kerry DIXON	21 (4)	6	4 (1)	-
David PREECE	30	4	6	-
Scott HOUGHTON	1	-	1	-
Dwight MARSHALL	27 (5)	10	5 (1)	2
Des LINTON	3 (2)	-	1 (1)	-
Ceri HUGHES	8 (1)	2	2	-
Mitchell THOMAS	27 (2)	-	4	-
John HARTSON	11 (9)	5	1	1
Gary WADDOCK	27	-	4	-
Jamie WOODSFORD	(4)	-	-	-
Tony THORPE	(2)	-	(1)	-
Paul ALLEN	4	-	-	-
Martin WILLIAMS	(2)	-	(1)	-
Tony ADCOCK	(2)	-	(1)	-
Richard HARVEY	1 (1)	-	-	-
Ben CHENERY	-	-	1	-
Wayne BIGGINS	4	-	2	1
Rob MATTHEWS	(1)	-	-	-
Own goal		4		

ENDSLEIGH LEAGUE DIVISION ONE

	P	W	D	L	F	A	PTS
Tranmere R	34	18	8	8	55	36	62
Middlesbro	32	17	8	7	47	26	59
Bolton W	33	16	9	8	56	35	57
Wolves	32	17	5	10	57	43	56
Reading	34	16	8	10	41	30	56
Sheff Utd	34	14	12	8	57	39	54
Grimsby T	34	12	13	9	51	43	49
Watford	32	12	11	9	36	33	47
Barnsley	31	13	7	11	41	39	46
LUTON T	33	12	9	12	46	46	45
Millwall	32	11	12	9	41	38	45
Oldham Ath	32	11	10	11	45	43	43
Derby C	32	11	10	11	37	33	43
Charlton Ath	32	11	9	12	44	47	42
Stoke City	31	10	11	10	32	35	41
Portsmouth	33	10	10	13	37	47	40
Port Vale	31	10	9	12	38	41	39
Sunderland	33	8	15	10	32	32	39
West Brom	34	10	8	16	30	43	38
Southend U	34	10	6	18	32	63	36
Bristol City	34	9	8	17	32	48	35
Swindon T	32	8	10	14	38	53	34
Notts County	34	7	8	19	36	49	29
Burnley	31	6	10	15	30	49	28

(Table up to and including Sunday, March 5).



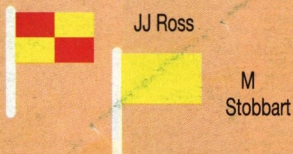
Matchday music is supplied by
HMV Stores, 98 Arndale Centre
(Tel: 35290) and
73 The Mall (Tel: 21368), Luton.



TODAY'S OFFICIALS

Today's referee is
PETER FOAKES,
from Clacton.

Mr Foakes, a schoolteacher,
joined the league list in 1987.
He has already refereed this
season's home games against
Bristol City and Sheffield United.



OTHER MIDWEEK DIV I MATCHES

Barnsley v Burnley
Bristol City v Charlton Athletic
Grimsby Town v Derby County
Middlesbrough v Watford
Oldham Ath v Southend Utd
Sheffield Utd v Tranmere R
Millwall v Reading (Wed)
Portsmouth v West Brom (Wed)
Wolves v Sunderland (Wed)

TEAM CHECK

LUTON TOWN

Manager: David Pleat

Juergen SOMMER
Julian JAMES
Marvin JOHNSON
Gary WADDOCK
Mitchell THOMAS
Trevor PEAKE
Paul TELFER
Scott OAKES
Wayne BIGGINS
David PREECE
Dwight MARSHALL

PORT VALE

Manager: John Rudge

1 Paul MUSSELWHITE
2 Bradley SANDEMAN
3 Allen TANKARD
4 Andy PORTER
5 Neil ASPIN
6 Kevin SCOTT
7 Steve GUPPY
8 Robin VAN DER LAAN
9 Martin FOYLE
10 Tony NAYLOR
11 Ray WALKER
12
14
GK



Plowmans
of
Luton

AND
LUTON
TOWN
—
THE
PERFECT
MATCH

You'll do a great deal better with us!

Open 7 Days

Vauxhall Main Dealers, 15 Hitchin Road, Luton.

Tel: 454666