

ENDSLEIGH INSURANCE LEAGUE DIVISION ONE

v MILLWALL



**LUTON TOWN
FOOTBALL CLUB**



NEW
coats/jackets
now in the
Hatters Shop
- see p23

DAVID PLEAT

gives his views on pages 2 and 3,
and welcomes new YTS trainees

SATURDAY, MARCH 4, 1995, 3PM

MATCH SPONSORS

Bedfordshire TEC

MATCHBALL SPONSORS

G Owen Ceramic Tiling



Sponsors of
Luton Town F.C.

Official matchday programme £1.50

LUTON TOWN



PLEAT'S PERSPECTIVE

WE CAN MAKE A RUN UP THE LEAGUE TABLE

A WARM welcome to everyone back at Kenilworth Road this afternoon. Now into the final lap of the season we still are confident that we can make a determined run up the table. After this afternoon's game with Millwall we meet Port Vale on Tuesday night, and if we play at our best we are capable of two wins.

After the splendid result against Swindon, when Dwight Marshall took his goal chances so competently, we continued in scoring vein at both Portsmouth and Bristol. It seems somewhat surprising that having scored seven goals in a week our points tally only amounted to four. But it was disappointing defending at the death on a 'pig of a pitch' at Ashton Gate that left us in that position. The general approach to playing on a sticky, muddy surface was excellent - the players were convinced that they needed to forget the intricate passing and get the ball forward much

quicker, and at times bypass the midfield. I was pleasantly surprised how well we adapted to this, and felt that the 2-0 lead was deserved but we are mindful of the fact that Juergen Sommer made such a fine penalty save.

Unfortunately the headed goal that put Bristol back in the game was confirmed afterwards, with the benefit of hindsight, as being 'miles' offside. No-one likes to berate officials, and I feel that the linesman made a genuine mistake. However, I did make a comment afterwards about the neutrality of officials. This is not to suggest that one could not have an outstanding linesman from Luton here today, but it would not be seen to be fair if a disputed decision occurred.

I hope that in time, the idea of teams of officials will be accepted by the Football League. When there is so much money being spent on the periphery of the game, I do not feel it is too much to suggest that the referee should have a spell where he works with the same two linesmen - all three coming from the same area.

On reflection, the Portsmouth result was even more disappointing because when Julian James scored a splendid volley to secure the lead with 15 minutes to go, we looked odds-on for victory as we were playing some smooth football. Unfortunately a defensive mistake led to Preki racing through the middle and equalising, and then once again we had to endure a penalty decision that went against us.

It is now water under the bridge, and our record makes interesting reading, a perfect equilibrium. Won 12, drawn eight, lost 12, for 45, against 45. Goals are a priceless commodity, and I am pleased that this season the team have shared the goals around, although looking at our record we do not have one prolific scorer. There is no question that the performances have improved since the beginning of the season, but we also know that we find it a little bit difficult to play on sticky grounds with our passing style, and I'm sure our opponents Millwall will agree that after the euphoria of cup performances there sometimes, as was proved last season after our cup run, is a period when the players find it difficult to adjust after a major disappointment.

.....LISTEN TO THE MANAGER'S VERDICT ON TODAY'S BIG GAME ON LUTON TOWN CLUBCALL 0891 121 123



WAYNE Biggins keeps Swindon player-manager Steve McMahon at bay during our "splendid" 3-0 win.

With 14 games to play, and some very attractive games at Luton including fixtures against Tranmere, Reading, Wolves and of course Watford, we have it within our own hands to progress up the table.

Unfortunately I have not been able to make moves in the transfer market with the monies that the board have put aside from the sale of John Hartson. Some clubs are wildly optimistic, and unreflective of the current financial state within the game when they request crazy figures for their players. I am waiting to get the right men at the right prices, and if it means being patient then so be it.

Our treatment room is still relatively quiet with Hughes, Linton and Adcock all in training now, and waiting to take part in reserve fixtures. In last week's reserve game, Ben Chenery, who has just signed professional forms along with Jamie Woodsford, received a very nasty injury from a foul of which the Bristol City player involved should have been ashamed. It gives me no pleasure to say that the man should have been dismissed from the field for making a wild, late tackle which could have finished Chenery's career.

There was some irony last week with the Football League asking for the managers of the clubs to vote for a Groundsman of the Year. Some of the pitches recently have been much, much worse than any artificial pitch ever was. The heavy rain of this winter has caused headaches for groundsman, and we are now in the position where many clubs are playing their reserve fixtures at minor grounds. There is even

a suggestion that our groundsman Richard Bird might even get on the voting slip of some clubs - after all those years of resentment to our artificial pitch it seems somewhat ironic that at last, compared with others in our division, we have a surface that is flat and reasonably well grassed.

The final date for notifying schoolboys of our intentions regarding the YTS scheme has now passed, and several youngsters who have trained consistently for two or three years at the club may have been disappointed. We hope that we are able to help them get fixed up at other clubs, and we have now invited seven youngsters to join our staff at the beginning of next season.

They are: Steve Augustine - a forward from Middlesex; Andrew Barr - a forward from Leighton Buzzard; Liam George - the only local boy, who has been plagued by injury for 12 months, and faces an operation on his knee; Ian Jones - who played for Wales schoolboys last year, and comes recommended by Cyril Beech our Welsh scout; Terry Sweeney - a young midfielder player from Plymouth; Matthew Upson - a left-sided midfielder player from Diss; and Nicholas Webb - a goalkeeper from Stevenage.

Hopefully all these boys will agree to join us when they leave school this summer. Our club, like our visitors today, has relied heavily on attracting young players and bringing them through the ranks, giving them a platform to produce their abilities at first-team level. We are very proud of our record in this sphere, which has kept the club alive at first-team level, and has provided valuable transfer assets like Jackson, Black, Pembridge and Hartson.

Millwall of course have also made some marvellous sales, and in their ranks today could well be five very talented young players - Andy Roberts, Ben Thatcher and Mark Beard (who all travelled with the Football League party to Italy), Mark Kennedy (a lively forward from Southern Ireland) and Dave Savage (a forward also with Irish connections). It is to their credit that despite the costs of a new stadium and the difficulties of low crowds, Millwall are not only surviving but have caused problems for Premiership sides in cup ties this season.

Everything points to a good game, and let us hope that whoever wins deserves it, and that unlike our last two games the final result hasn't been affected by controversy.

Enjoy the afternoon's entertainment.



Luton Town Football Club
Kenilworth Road Stadium,
1, Maple Road,
Luton, Beds LU4 8AW.
Tel: (01582) 411622
Fax: (01582) 405070
Ticket Office: (01582) 416976
Clubcall: 0891 121 123

Chairman and Managing Director:
David Kohler BSc (Hons)
ARICS

Directors:
C.S. Bassett, C.T.F. Green,
N.S. Terry

Vice Presidents:
R.L. Banks, P.Collins
C. Bygraves, R. Safranek,
D. Ludlow, P. Ireton.

Secretary:
Cherry Newbery

Manager:
David Pleat

Coaches:
John Moore, Wayne Turner,
Terry Westley

Physiotherapist:
Clive Goodyear

Consultant Physio:
John Sheridan

Youth Development Officer:
Paul Lowe

Scouting:
Les Shannon

Community Football Officer:
Colwyn Rowe

Financial Administrator:
Bob Bird

Commercial Manager:
Kathy Leather

Safety Manager:
Geoff Lovell

Catering Manager:
Peter Saul

Medical Officer:
Dr Bill Berry

Club Dentist:
A. Chris BDS (Syd)

HONOURS

Littlewoods Cup winners 1987-88

FA Cup finalists 1958-59

Littlewoods Cup finalists 1988-89

Simod Cup finalists 1987-88

Champions - Division Three (S) 1936-37

Champions - Division Four 1967-68

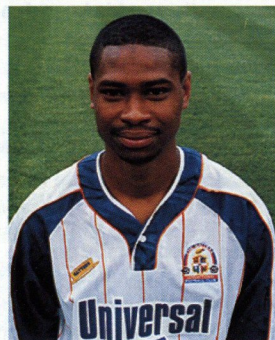
Champions - Division Two 1981-82

David Pleat

AROUND THE TOWN



NO looking back for Town striker Dwight Marshall, who has taken his tally of goals this season to 11.



New Marshall makes his mark on the Town

DWIGHT Marshall followed his two goals against Oldham, with two against Swindon as the Town bounced back from away defeats at Southampton and Grimsby.

"When you go away and let in 11 goals in two games you definitely feel it, but the main thing is that if you can come back it shows that you are a good professional," said Dwight.

Manager David Pleat was away scouting and missed the 3-0 win over Swindon, and the players are well aware that he is looking for new arrivals.

"After the sale of John Hartson,

everyone knows the club has some money to spend," said Dwight. "David Pleat is a very shrewd manager, and you know that if he is bringing in new players you have to keep on your toes because competition could be just around the corner.

"We had a little bit of luck with the first goal against Swindon, but I was pleased with the two second half goals, and I think we were well worth the win.

"Wayne Biggins provided a great cross and then Paul Telfer flicked the ball on from a corner, and I hope this scoring run can continue."

GERMAN striker Carsten Jancker has spent the last week on trial with Luton.

The 20-year-old centre-forward, from Cologne, played in the reserve team games against Bristol City and Arsenal, but after collecting an injury in the first game could only manage 45 minutes at Highbury.

See pages 26 and 27 of today's programme for full details of the reserve and youth teams.

Luton Town FC Matchday Programme
Editor: Simon Oxley.
Tele: 0582 411622
Pictures: Andy Handley
Design and print:
McLeod Warner, Luton.
Tele: 0582 38389

Five-a-side ticket details

TICKETS are now on sale for the Evening Standard Five-A-Side Championship, at the Wembley Arena, on Monday, May 15.

Tickets are available for season ticket holders and members from the Kenilworth Road ticket office priced at £12, £15, £20 and £22 - no concessions.

You can also get tickets from the Wembley Box Office on 0181 900 1234, from Ticketmaster on 0171

344 4444, or in person from all Virgin Megastores.

Luton have drawn Watford in the opening round of the competition.

The full 16-team line-up is: West Ham v QPR, Charlton v Chelsea, Arsenal v Barnet, Luton v Watford, Fulham v Millwall, Wimbledon v Tottenham, Wycombe v Brentford, Crystal Palace v Leyton Orient.

FRONT COVER: Dwight Marshall challenges for the ball during the 3-2 defeat at Portsmouth last Tuesday.



Universal Salvage Auctions

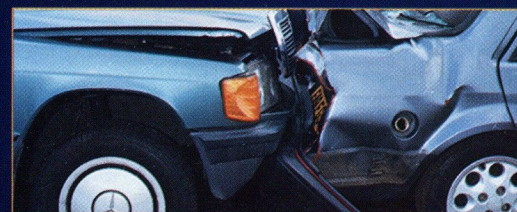
SELL OVER **1000**
REPAIRABLE/BREAKERS/STOLEN
AND RECOVERED VEHICLES AT
WEEKLY AUCTIONS

CORBY - NORTHANTS

DENNY - SCOTLAND

SANDTOFT - S.YORKS

WESTBURY - WILTS



Your nearest auction is every Wednesday at...

**DUNSTABLE ROAD
REDBOURN, HERTS**

For further information
01234 766500



The best service on a plate.

As one of the largest independent vehicle rental companies in the U.K., you can always expect a little extra from Kenning.

AN EXTENSIVE RANGE OF:

- CARS, VANS & TRUCKS.
- FULLY INCLUSIVE RATES WITH UNLIMITED MILEAGE.
- 24 HOUR NATIONAL HOTLINE HELPLINE.
- AA/RAC COVER.

KENNING

CAR AND VAN RENTAL

LUTON 0582 455333

24-34 Crawley Road.



- ◆ **HOURLY SPORTS NEWS**
- ◆ **FRIDAY SPORTS PREVIEW (7pm)**
- ◆ **SATURDAY SPORTSOUND (2pm-6pm)**
- ◆ **MIDWEEK MATCH COVERAGE (7.05pm - 10pm)**

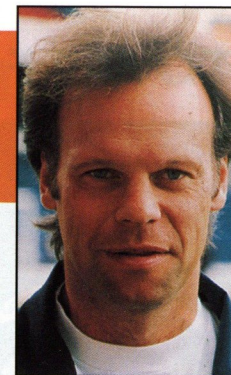
NEWS, SPORT & MUSIC
for BEDS, HERTS & BUCKS

▶ 103.8 FM STEREO ▶ 630 kHz AM



LEADING THE LINE

by TREVOR PEAKE



MITCHELL Thomas and David Preece pictured against Swindon, during the 3-0 win at Kenilworth Road



TODAY, and against Port Vale on Tuesday, we need to continue the good home form which has accounted for Oldham and Swindon in our previous two games here.

Things seemed to have turned full circle from earlier in the season when we were relying on our away form as home points passed us by.

Certainly we have seen some improvements from the defeats at Southampton and Grimsby, but we were more than disappointed to return from Fratton Park and Ashton Gate with just a point.

On both occasions we should have had all three. Against Portsmouth, with the wind at our backs, we made a good start, limited them to one chance and had much the better of the first half.

It was disappointing to then concede an early goal in the second period from a set-piece, because in the light of recent games we had paid particular attention to set-pieces in a bid to keep the opposition out.

Having then regained the lead we rather gifted them a second equaliser, with the winner coming from the penalty spot.

Those of you who weren't there may have seen the incident on television, and while I wasn't sure whether it was inside or outside the box I was quite sure it wasn't a penalty.

I spoke to Preki afterwards, and he admitted it was his own player that had brought him down. Still, these things happen, and we have to appreciate that referees do have to make split-second decisions.

We were all determined to make up for that defeat at Bristol, and at 2-0 in front looked likely to do so. The players felt that Gary Owers was offside when he pulled the first one back, but there were no excuses for allowing them a second.

The journeys back on the bus haven't always seemed that long this season, but the M4 seemed to last forever last Saturday.

Today is a fresh challenge, against a Millwall side who have proved their quality this season with cup wins over Arsenal and Chelsea.

But like all in Division One, their priority is to get into the Premiership, and with several players out they battled well for a draw against Middlesbrough on Sunday.

Mick McCarthy is a respected manager, and I know David Pleat is a great admirer of many of his young players. They have also added former Luton player David Oldfield to their ranks, on loan from Leicester.

Thank-you for your continued support. Let's hope we can continue this good recent home form, and then look to overcome recent travel sickness!

Luton Town FC are delighted to link up with **LEGAL AND GENERAL**, to offer a full and comprehensive financial service to supporters of the club.

Anyone interested in receiving Legal and General's expert financial and insurance advice should contact:

Warren Miskin or Barry Shaw on 081 882 0249, quoting reference LU1.

Trevor Peake

TOWN FALL IN SEMI SHOOT-OUT



DAVID Greene - opened the scoring at Potton.



JAMIE Campbell - equaliser and missed penalty.

LUTON Town bowed out of the Beds Premier Cup with a dramatic semi-final defeat at Potton..... on penalties!

The game had been halted after just 25 minutes when the floodlights failed, and when play resumed half an hour later the scoreline remained at 0-0 until half-time.

The Hatters took the lead on the hour mark with a goal from David Greene, only for Potton to reply with a brace. A free-kick from Jamie Campbell levelled the scores, and Gary Simpson had what would have been a late winner ruled out for offside.

The scores remained level through 30 minutes of extra-time, but Potton won 2-0 on penalties as the Hatters quartet of Matthew Woolgar, Martin Williams, Paul McLaren and Campbell all failed to score.

Potton now face Barton Rovers, over two legs, in the final. Luton coach Wayne Turner had been looking forward to facing Barton - his three brothers, Danny, Gary and Steve, are currently in the Sharpshoe Road side!

YOUTH team striker Gary Issott is recovering from a cartilage operation, and should be back in action in about three weeks time.

At the time of writing, Gary is the leading scorer at Luton Town with 14 goals - 13 for the youth team, and one for the reserves.

LUTON Town have received a very positive response to the plans for an indoor stadium with moveable grass pitch, from English football's governing bodies.

The Football Association, the Football League, and the FA Premier League, have all given their support, in principle, to the proposals.

Hatters chairman David Kohler, who has personally presented the plans to all three bodies, said he was very encouraged with the feedback he has received.

"Football was played indoors, on natural grass, at the 1994 World Cup Finals in the USA," said Mr Kohler, "and there is no reason why we can't do the same in England."

"The relocation of Luton Town is a very long process, but this is another hurdle that has been overcome, and I will do everything in my power to make sure that the dream of a new stadium in the town becomes reality."

LUTON TOWN v WATFORD

This game has been switched from
Saturday, March 25 to
Sunday, March 26, kick-off 2.55pm,
and will be shown live on ITV.

LUTON TOWN v WOLVERHAMPTON W

- this game will now be played on Tuesday, April 4, at
Kenilworth Road, kick-off 7.45pm

If you entered the ground with a ticket for January's postponed game, you can get a replacement from the ticket office. If you are still holding a ticket, you can use it for the rearranged game or claim a refund up to 24 hours before the rearranged match.



LUTON TOWN TICKET OFFICE NEWS

Luton Town v Port Vale

ENDSLEIGH INSURANCE LEAGUE DIVISION ONE

Tuesday, March 7, 1995, kick-off 7.45pm

Tickets for this match are now on sale.
Normal guesting facilities apply.

Southend United v Luton Town

ENDSLEIGH INSURANCE LEAGUE DIVISION ONE

Saturday, March 11, 1995, kick-off 3pm

Pay on the day only at Southend. Tickets (seats only) are
£9 - no concessions. Seats are in the Northbank end,
entrance via Fairfax Drive.

(The Kenilworth Road ticket office will be open from 10am
to 12 noon for the sale of other match tickets).

Luton Town v Tranmere Rovers

ENDSLEIGH INSURANCE LEAGUE DIVISION ONE

Saturday, March 18, 1995, kick-off 3pm

Tickets for this match are now on sale at the discounted
price. Normal guesting facilities apply.

Burnley v Luton Town

ENDSLEIGH INSURANCE LEAGUE DIVISION ONE

Tuesday, March 21, 1995, kick-off 7.30pm

Pay on the night only at Burnley. Prices are: Covered Seats
£9.50 (no concessions); Covered Terracing £7.50 (adults) and
£4 (senior citizens and juniors).

Ticket Office opening hours

Monday to Friday: 10am to 4pm

Saturday (match days): 9am to 3pm and 4.45 to 5.15pm

Saturdays (non match days): Subject to change. Please
contact the ticket office

For bookings, membership and enquiries, ring the Ticket Office direct on
(0582) 416976. Supporters wishing to order by credit card can do so by using
the 24-hour Credit Card Hotline on (0582) 30748.

Travelling to...

Southend United

Address:
Roots Hall, Victoria Avenue,
Southend, SS2 6NQ.
Tel: (0702) 340707.

Take M1 south and M25
east, and then A127 into
Southend (exit from M25 is
before Dartford Tunnel). At
roundabout take third exit
into Victoria Avenue for
ground.

Burnley

Address:
Turf Moor, Brunshaw Road,
Burnley, Lancs, BB10 4BX.
Tel: (0282) 27777.

Take M1 north and then M6
north, exiting M6 at junction
31. Take the Blackburn
bypass and A679 into town
centre, and then take third
exit from roundabout into
Yorkshire Street. Follow over
crossroads into Brunshaw
Road for ground.

Directions courtesy of
Automobile Association

The Bobbers Travel Club
organise coach trips to
Luton away matches.

To book a place on the
coaches, which pick up
from a variety of points in
Luton and Mid Beds, visit
the club's ticket kiosk in the
Kenilworth Road turnstiles,
and see Travel Co-ordinator
Paul Deason before any
Saturday first-team home
match between 2.15 and
2.45pm.

You can also telephone Paul
on Bedford (0234) 750996 -
after 6pm.



MOTOR INSURANCE

Endsleigh ensure you insure for less

We ensure you save money

Our continuing investment in new technology is enhancing our competitiveness even further. Our service is faster and more efficient and the savings we make through a leaner operation are passed directly on to you.

We ensure you save time

You can phone or call in whichever you prefer, the result is the same. Instant accessibility to our national computer and the convenience of being able to deal with people that care about your needs. 1995 will see our ability to issue full annual policies and certificates on the spot. No form filling, no fuss, no temporary cover notes, no delays, no anxiety.

We ensure a personal service

Our retail chain of some 140 Insurance Centres is the public face of Endsleigh; approachable, professional and helpful. We handle every aspect of insurance, from adjustments, renewals and claims ourselves.

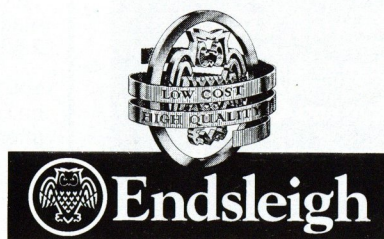
We ensure you get the best cover

With one call from you, our computer can immediately select the very best rate from over 45 schemes unavailable elsewhere and created in association with 35 of the industry's most dynamic insurance companies. The result is fast, effective unbeatable cover, enhanced still further by added benefits.

Please ensure that you phone for a quotation

648/652 Silbury Boulevard, Milton Keynes

01908 675866



ON THE OTHER SIDE

INJURIES HIT LIONS' BID FOR A PLAY-OFF PLACE

MILLWALL manager Mick McCarthy is battling against a large injury list as his side look to recapture the form that gave them FA Cup wins over Arsenal and Chelsea to move towards a play-off place.

His patched-up team battled bravely to hold promotion challenging Middlesbrough to a goalless draw at The Den last Sunday, but the manager admitted to TV viewers after the game that it had not been a classic.

"It was a really scrappy game," admitted McCarthy. "It's amazing because we have been exceptional in some this season but you can't expect it to be like that every week."

"We have 17 games left and not long to play them in, but we can compete with any side in this division."

Following a long and distinguished playing career in England, Scotland and France, McCarthy received his first managerial appointment in April 1992 after a brief spell as caretaker.

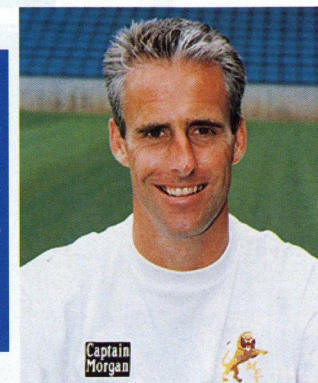
He impressed many observers during his first full season in charge by the quality of football produced by his Millwall side, and has forged an excellent team spirit at The New Den.

As a player, McCarthy reached the pinnacle, captaining the Republic of Ireland to the quarter-finals of the World Cup in 1990.

His assistant is the former Welsh international central defender Ian Evans, who made his name at Crystal Palace under Malcolm Allison and Terry Venables.

He appeared in the FA Cup semi-finals in 1976, and captained Palace's promotion winning side from Division Three the following year.

FORMER
Republic of
Ireland
international,
and now
manager of
Millwall, Mick
McCarthy.



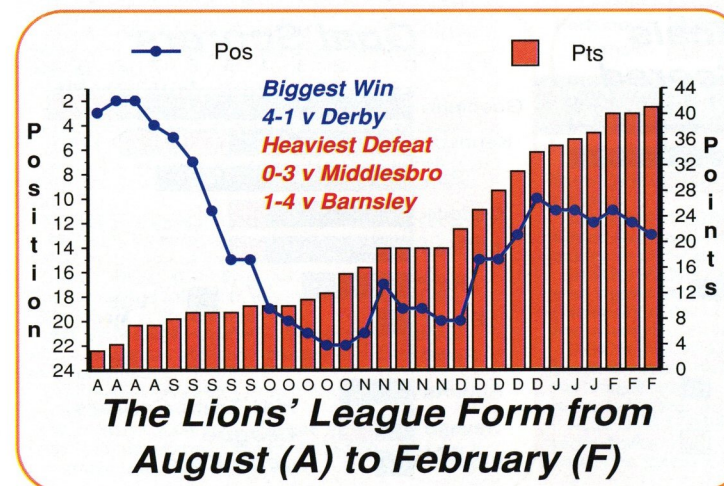
Over the past two seasons, matches between Luton and Millwall have given the two goalkeepers, Juergen Sommer and Kasey Keller, a chance to renew their friendly rivalry.

Juergen edged Kasey out of the reckoning for a place in the USA World Cup squad last summer, and played against England at Wembley.

But the Millwall keeper is quick to point out they are still the best of friends.

"We talk on the phone pretty regularly, and Juergen gave me plenty of good advice and encouragement when I came over here," said Kasey. "Missing out of the World Cup was disappointing, but there was never any question of me falling out with Juergen over it. It was the selectors' decision."

The two keepers will of course have a major say in today's outcome, and what odds a draw? Four of our last five meetings have ended all-square.



ABOVE: Striker Dave Mitchell

LEFT: Millwall's league form this term



MILLWALL 1994/95

SPOTLIGHT ON TODAY'S VISITORS

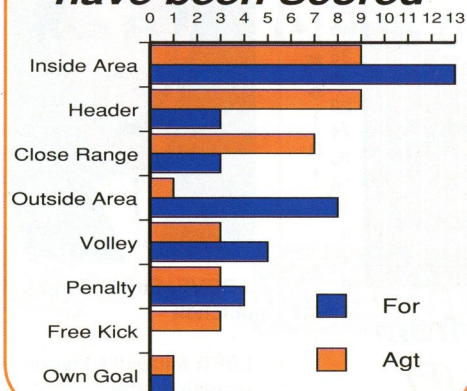


Back row, left to right: John Kerr, Mark Kennedy, Dave Mitchell, Jon Goodman, Greg Berry, Tony McCarthy, Kenny Cunningham, Clive Allen.

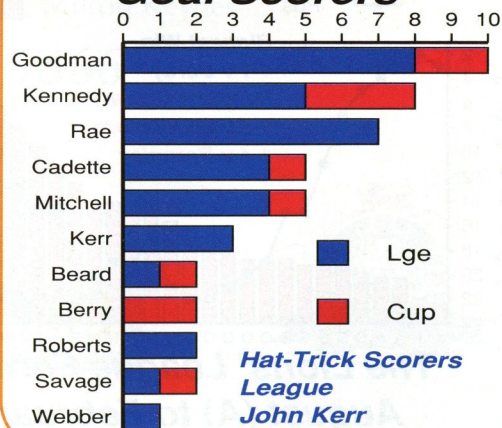
Middle row: Keith Johnstone (physio), Ken Barry (kit manager), Keith Stevens, Pat Van Den Hauwe, Kasey Keller, Tim Carter, Richard Huxford, Dave Savage, Ian McDonald (coach), Peter Melville (physio).

Front row: Andy May, Andy Roberts, Mark Beard, Alex Rae, Ian Evans (first team coach), Mick McCarthy (manager), Phil Barber, Jermaine Wright, Ian Dawes, Ben Thatcher.

How the Goals have been Scored



Goal Scorers



VISITORS ON PARADE

CLIVE ALLEN - Much travelled striker who joined Millwall, his seventh London club, on transfer deadline day in March 1994. Scored 49 goals for David Pleat's Spurs side in 1986/87.

PHIL BARBER - Joined from Crystal Palace in 1991, and began his Palace career as a striker before converting to the left side of midfield.

MARK BEARD - A product of Millwall's successful youth development system, and is a tough tackling right-back.

GREG BERRY - Deadline day signing from Wimbledon in March for £200,000, he scored on his full debut against Luton.

TIM CARTER - Initially spent three months on loan from Hartlepool last season as cover for Kasey Keller, before joining Millwall on a free transfer.

DANNY CHAPMAN - Has been with the club since the age of 14, and made his debut in last season's friendly against Swedish side Gothenburg.

KENNY CUNNINGHAM - Has played across the back four for Millwall, with caps for the Republic of Ireland at Under 21 and B level.

IAN DAWES - First choice left-back who was plagued by injuries last season. Joined the Lions in 1988 for £150,000 after collecting a League Cup runners-up medal with QPR.

KASEY KELLER - Highly-rated American keeper who just missed out on a place in the 1994 World Cup squad.

MARK KENNEDY - Became Millwall's fourth youngest debutant when he appeared as a substitute against Charlton at the age of 16 years 344 days in April 1993.

JOHN KERR - Canadian born, of Scottish parents, and an American international. Scored the first ever goal at The New Den.

ANDY MAY - Injury restricted him to one game last season. Formerly with Manchester City where he played alongside Lions boss Mick McCarthy.

GAVIN MAGUIRE - Broke his ankle whilst on loan at Scarborough last season. Formerly with QPR.

TONY MCCARTHY - Joined Millwall from Irish club Shelbourne in June 1992, having been voted Irish Young Player of the Year.

DAVE MITCHELL - Much-travelled striker, signed from Turkish club Altay Spor Kuluba, and has also played for Cologne, Rangers, Feyenoord, Chelsea, Newcastle and Swindon, and has represented Australia in World Cup qualifying matches.

BRUCE MURRAY - The third of Millwall's trio of American players, Bruce has won 91 caps for his country and scored on his Millwall debut at Stoke last season.

ALEX RAE - Former Scottish Under-21 international who was Millwall's top scorer last season with 13 goals.

ANDY ROBERTS - Captained David Pleat's League Under-21 side in Italy last month, and has played for the Lions in both defence and midfield.

DAVE SAVAGE - Summer signing from Irish club Longford Town after impressing as a trialist in Millwall's Reserve side towards the end of last season.

KEITH STEVENS - Centre-half currently second in Millwall's all-time appearance list, who made his debut at the age of 16 in 1981.

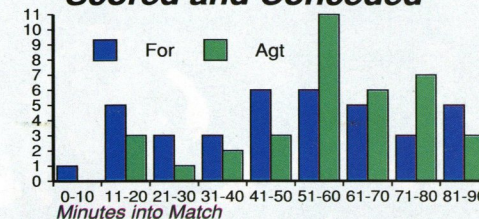
BEN THATCHER - England youth international, and high-rated left back, who is a product of the FA's School of Excellence.

PAT VAN DEN HAUWE - Welsh international who won league and cup honours with Everton and Tottenham.

ETIENNE VERVEER - Dutch midfielder who joined the club in 1991.

RICHARD CADETTE - Signed for Millwall from Falkirk in November 1994 for £125,000 following a successful loan spell at the Den.

When Millwall have Scored and Conceded

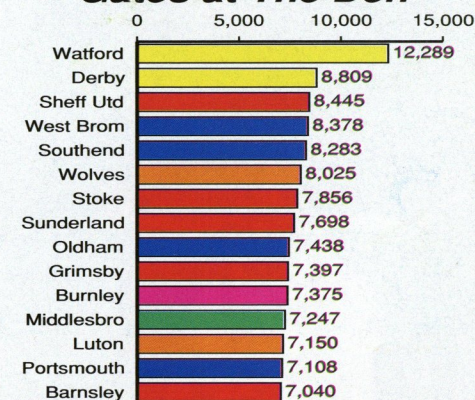


MARK Beard



ANDY Roberts

Gates at The Den



Graphics by Football Information Services
(Stats do not include Millwall v Swindon 1/3/95)

TONY WITTER - Joined the Lions for £70,000 from QPR in December 1994, again after a period on loan.

DAMIAN WEBBER - Central defender who signed from non-league Bognor Regis for a nominal fee in October 1994.

JASON VAN BLERK - Australian international who signed for £300,000 from Go Ahead Eagles (Holland) at the start of this season, although he had a lengthy wait for a work permit.

JASON BECKFORD - Cleaned Mick McCarthy's boots as an apprentice at Manchester City, and has since played for Birmingham and Stoke, the latter releasing him earlier this season.

ALISTAIR EDWARDS - Australian international striker, who made his Millwall debut at Sheffield United in January.

PORTSMOUTH v LUTON TOWN



JUMP to it! Luton scorer Paul Telfer at Fratton Park

From

Fratton Park

Date

February 21, 1995

Result

Portsmouth 3
(McLoughlin, Preki,
Creaney pen)
Luton Town 2
(Telfer, James)

Attendance 7,363

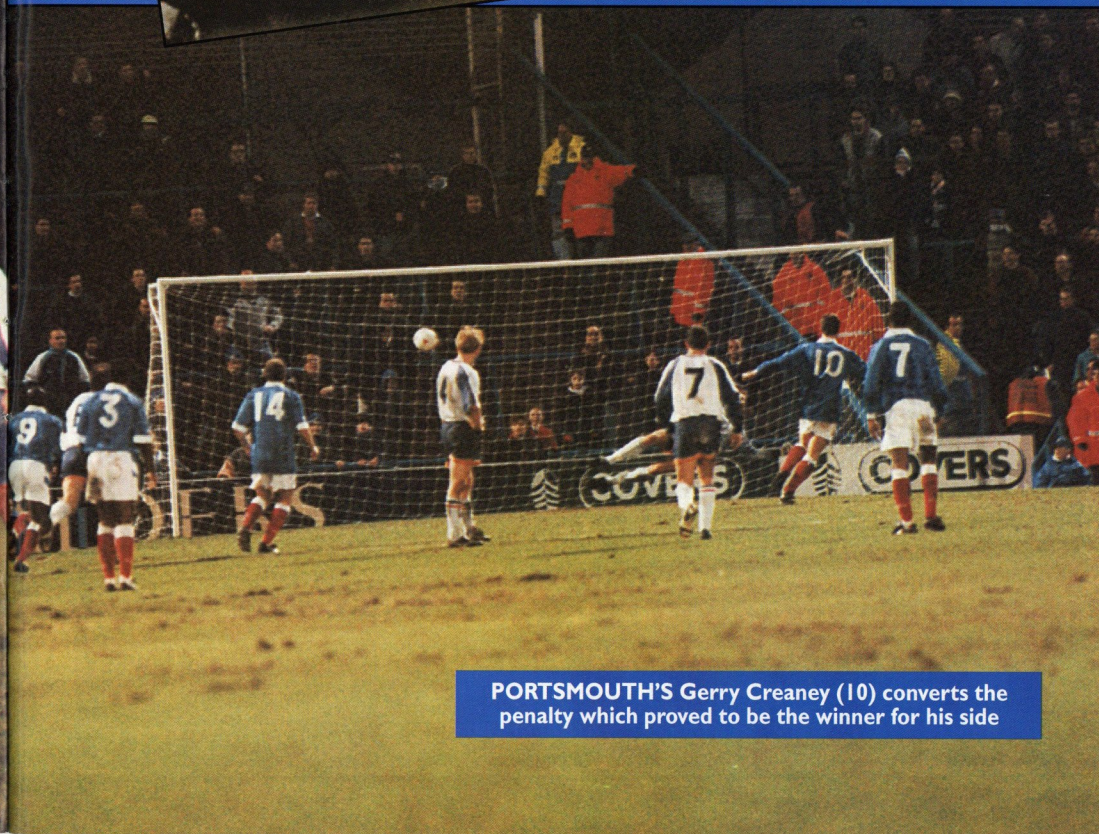
Pictures by
ANDY HANDLEY



TOWN striker Kerry Dixon takes evasive action against Portsmouth, during the 3-2 defeat



LUTON substitute Jamie Woodsford (left) challenges for the ball against Pompey



PORTSMOUTH'S Gerry Creaney (10) converts the penalty which proved to be the winner for his side

S U P P L I E D B Y



MITRE SPORTS INTERNATIONAL LTD.
BIRKBY, HUDDERSFIELD, HD1 5AJ. TEL: 0484 537488. FAX: 0484 530042

A GENESCO Company
G

Football wins the Pools every Saturday



Every time you enter Littlewoods, Vernons and Zettlers Pools or Littlewoods Spot the Ball you are helping the game at all levels. The Football Trust administers funds from the Pools, helping clubs to improve safety and comfort.

The Trust receives some £37 million every year, all of it coming directly or indirectly from Littlewoods, Vernons and Zettlers Pools and Littlewoods Spot the Ball.

Football also receives £8 million a year for the use of fixtures on coupons and Littlewoods, the game's biggest benefactor, is the first sponsor of the FA Cup.

Up and down the country, clubs are building new grounds, stands, seating and roofing. All depend on the support of the Football Trust and on the success of the football pools.



LITTLEWOODS VERNONS ZETTERS
Making sure football wins the Pools each week



THE FOOTBALL TRUST
Helping the game

THE FOOTBALL TRUST, WALKDEN HOUSE, 10 MELTON STREET, LONDON NW1 2EB



HARRY OF THE HATTERS

JUNIOR HATTERS OFF TO THORPE PARK!

WE are planning a day trip to Thorpe Park for Junior Hatters and their families on Sunday, June 11, 1995.

It promises to be a great day out, with lots to do, and a chance to see all your Luton Town friends as we look forward to the new season.

The special price for this trip will be £11 for under 14s, and £15 for over 14s - this price includes return coach fare from Luton and entrance to Thorpe Park, where there is a wide choice of rides for all ages. The coach will depart from the forecourt outside the Ticket Office in Kenilworth Road at 9am, and meet back at the coach to depart Thorpe Park at 4.30pm.

We should be back at Kenilworth Road for approximately 6pm.

Booking details are as follows: A £5 non-returnable deposit per person must be paid by Saturday, April 8.

The outstanding balance must be paid in full by Saturday, May 6. We regret that as this is a family trip, we are unable to accept bookings from unaccompanied juniors.

Spaces are limited, so please book early to avoid disappointment!

If you have any queries regarding this trip, please contact the Ticket Office on Luton 416976.



NATASHA White was our Junior Hatters mascot against Swindon. She is pictured above with her favourite player **Kerry Dixon**.

MATCH DAY MASCOT



Name:

Thomas Lusby

Date of birth: 23/3/82

School attended:

Robert Bruce Middle, Bedford

Other hobbies: Model railways

Local team you play for: Kempston Rural Juniors

Favourite Luton Town player: Dwight Marshall

Who accompanies you to Luton matches: My dad.

HOW SWEET!

Belgian Chocolate footballs in presentation box with LTFC crest

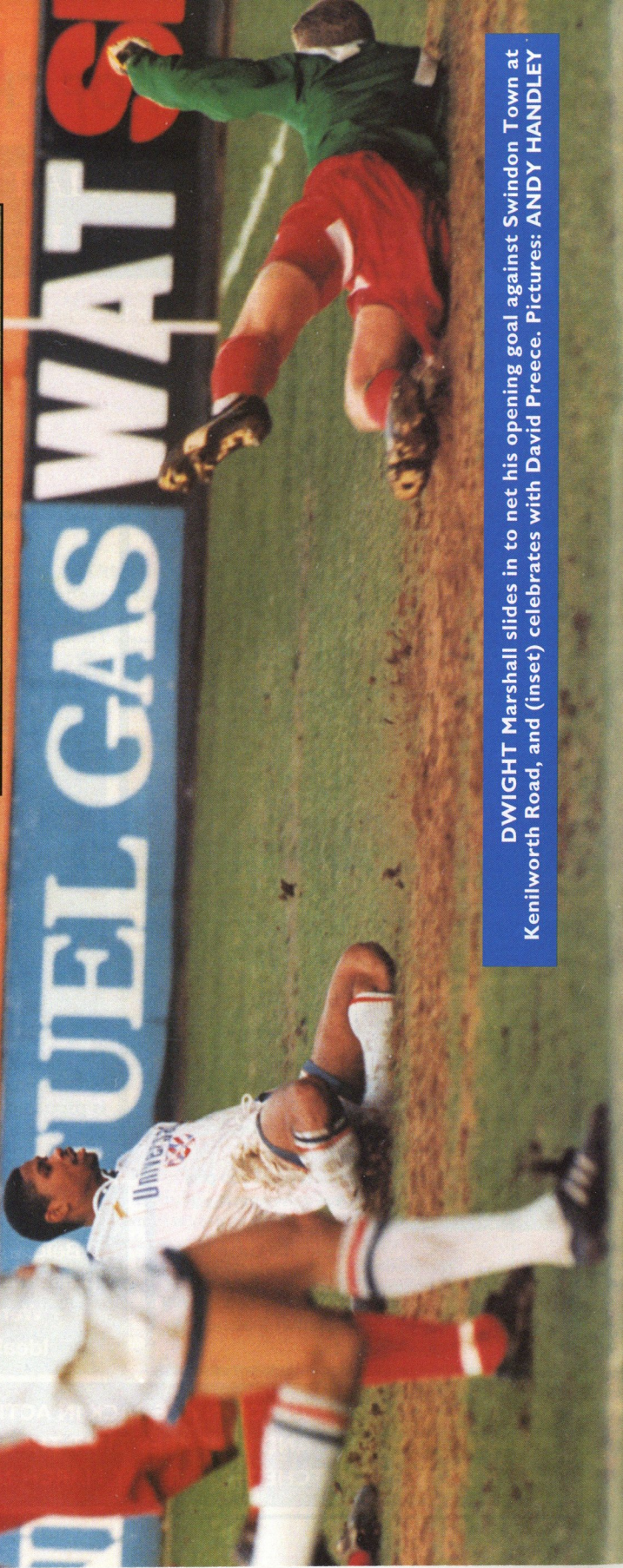
Were £4..... now just £3

Ideal present for Easter!

DON'T FORGET..... LUTON TOWN ARE BACK IN ACTION ON TUESDAY NIGHT AT HOME TO PORT VALE, AND REMEMBER THAT THE MATCH AGAINST WATFORD HAS NOW BEEN SWITCHED TO SUNDAY, MARCH 26..... THAT'S MOTHERS DAY!



DWIGHT Marshall slides in to net his opening goal against Swindon Town at Kenilworth Road, and (inset) celebrates with David Preece. Pictures: ANDY HANDLEY



JAMIE PUTS THE PRESSURE ON



Kerry's Bridge benefit

HATTERS striker Kerry Dixon has a benefit match at his former club Chelsea later this month.

A Chelsea XI will play a Tottenham Hotspur XI at Stamford Bridge, on Monday, March 27, kick-off 7.45pm.

General ticket prices range from £10 (£5 children and OAPs) to £15, whilst there are also a number of sponsorship and hospitality packages available.

These include sponsorship of the match itself, and an opportunity to play in the Chelsea XI.

There's also the chance to take part in the pre-match Six-A-Side match, and a half-time penalty competition against a leading Premiership goalkeeper.

Tickets are available from the Chelsea box office on 071 385 5545, and for other enquiries please telephone Gary on 0582 561554 or Phil on 0727 855330.



ABOVE: Jamie Woodsford battles for possession after coming on as a substitute at Portsmouth.

YOUTH team starlet Jamie Woodsford is keeping the pressure on the current strikers in the Town first-team with some lively displays for the reserves.

The 18-year-old, Ipswich-born striker, made his first-team debut as a substitute in the 1-0 win at Port Vale in September, and has more recently made substitute appearances against Grimsby, Swindon and Portsmouth.

A full debut may not be far away after goals in the Avon Insurance Combination, as he bagged two in the 4-1 win

over Bristol City - a team performance that the watching David Pleat described as one of the best of the season.

Already a regular scorer in youth team football, Jamie has recently signed professional terms with the Hatters.

Earlier this season, he was included in the England Under-18 squad, and made his debut as a substitute in the 0-0 draw with Latvia in November.

A DATE for your diary: The Football Programme Directory are holding their 21st International Football Programme Fair, at the Hotel Russell, Russell Square, London WC1, on Saturday, June 3, 1995, from 11am to 4.15pm.

Keep up-to-date with all the news from Kenilworth Road on
LUTON TOWN CLUBCALL 0891 121 123

Jamie Woodford



AUTOGRAPH

KENILWORTH SUITE

ABB Flexible Automation Ltd
Anachem Ltd
Mr G. Chamberlain
Corporate Coaching
Ken & Judi Craven
Fisher Frozen Foods Ltd
F & T Goodwin Ltd
Grosvenor Contracts
Handsombe Financial Services Ltd
R.W. Harvey & Son

R. Yates
Origination
Radley Shaw
Regal Litho
Steadfast Properties PLC
Wilton Contract and Vehicle Rental
Complete Contracts Ltd
The Home Counties Newspaper Group
Frank and Audrey Ludlow

CLUB 82

Bervale Mead Insurance Brokers
C.P. Contracts
J.S.B. Business Forms
Luton Cleaning Company
Nordic Supplies
Mr F.W. Pearce
The Unimec Group of Companies
Shorey Travel

TJ Aldridge Builders
Chris and Kim Clarke - The Wheatsheaf,
Flitwick
Space Display Systems
Techno Sign Ltd
Mr D.R. Kenningham
Carol and Stuart Kendall - The Blackbirds,
Flitwick

INDIVIDUAL BOX HOLDERS

Mr Alan Garner

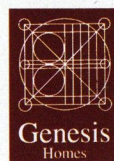
Mr Malcolm Eade

Mr Roger Eade

EXECUTIVE BOX HOLDERS



Murtagh Demolition



Cope Brothers (Printers) Limited



GET IN GEAR AT THE HATTERS SHOP....



FROM left: Padded baseball jacket (S, M, L and XL) - £45.00; Luton Town FC tracksuit top (various sizes); Full length navy managers coats, with full Luton Town crest (S, M, L, XL, and XXL) - £65.00; Three-quarter length navy coaching jackets with full Luton Town crest (S, M, L, and XL) - £50.00; Navy and royal bomber jacket, with full Luton Town crest. Childrens sizes 28 and 32 - £32.00. Adult sizes (S, M, L and XL) - £35.00.



KIT OUT THE KIDS FOR UNDER £20

there's a wide range of sale items at the club shop featuring recent LTFC shirts, shorts and socks - pop in a buy a bargain!

LTFC kit prices 1994/95

HOME/AWAY SHIRTS

22-24	£23.99
26-28	£23.99
30-32	£23.99
34-36	£28.99
38-40	£28.99
42-44	£30.99
46-48	£30.99

GOALKEEPER SHIRTS

- Grey/green	
22-24 £29.99
26-28 £29.99
30-32 £29.99
34-36 £34.99
38-40 £34.99

HOME/AWAY SHORTS

22-24	£12.99
26-28	£12.99
30-32	£15.99
34-36	£15.99

SOCKS HOME/AWAY

Boys	£5.99
Youths	£5.99
Mens	£5.99

OPENING HOURS: Enquiries (0582) 411622

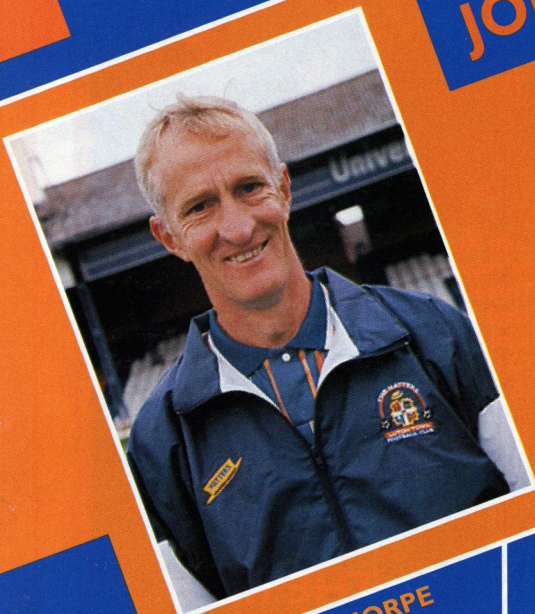
Monday to Friday - 10am to 4pm
(Evening matchdays 10am to 10pm)
Saturdays - matchdays 9am to 5pm
-non matchdays 9am until coaches leave for away game

Hatters Shop

KIT SPONSORS

JOHN MOORE

is sponsored by
Les and Sue Miller



RICHARD HARVEY
Shorey Travel

DWIGHT MARSHALL
Milton Keynes Branch of the
Luton Town Supporters Club

FRED BARBER
Royal Air Force Careers
Information Office, Bedford

DAVID PREECE
Ken and Judi Craven

TONY ADCOCK
Chris and Kim Clarke
The Wheatsheaf, Flitwick

DAVID GREENE
O'Shea's Public House,
Castle Street, Luton

TONY THORPE
Bedfordshire Rural
Communities Charity

JULIAN JAMES
Shorey Travel

PAUL TELFER
Convoy Installations Ltd

KELVIN DAVIS
McLeod Warner

MITCHELL THOMAS
Sam Hill

DES LINTON
Simkins Solicitors of
Baldock and Sandy

JOHN MOORE
Les and Sue Miller

CERI HUGHES
Les and Sue Miller

CLIVE GOODYEAR
Mad As A Hatter
- The Luton Town fanzine

MARTIN WILLIAMS
Anchor Insurance Brokers
Milton Keynes

SCOTT OAKES
Legal and General Assurance

JUERGEN SOMMER
Paul Deason

AARON SKELTON
Club Skyway of London
Travel Agents

JAMIE WOODSFORD
Worldwide Hatters on the
Super Highway (WHOSH)

TREVOR PEAKE
Bennetts Gate Bakery of
Hemel Hempstead

MARVIN JOHNSON
Graham Group PLC

DAVID PLEAT
Bobbies Travel Club,
Committee and Members

KERRY DIXON
The Loyal Luton Supporters Club

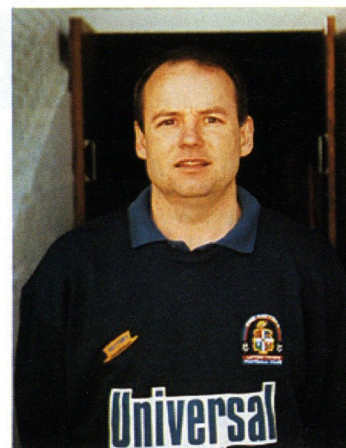
To be decided
Kate and Phil Shaw

GARY WADDOCK
Mad As A Hatter
- The Luton Town fanzine

To sponsor a player's
kit please contact the
Commercial
Department on
Luton 411622

LTFC in the Community

with the club's new 'Football in the Community' officer
COLWYN ROWE - (0582) 411622



COLWYN Rowe would like to hear from any qualified FA coach wishing to work on Luton Town's 'Football in the Community' programme. You can phone Colwyn at the club, or write to him c/o LTFC, Kenilworth Road Stadium, 1 Maple Road, Luton, enclosing a CV.

OVER 600 youngsters took part in the February half-term courses, and another packed programme is planned for Easter.

Football in the Community Officer Colwyn Rowe said there had been a tremendous response, and has urged people to book early when the next course details are announced.

"I was very pleased with the numbers attending, and everyone enjoyed themselves which is our main objective," said Colwyn.

"Schools in the region have been very helpful, and the youngsters have certainly enjoyed meeting the Luton Town players who have come along to help."

Matthew Woolgar, Martin Williams, Jamie Campbell, Des Linton, Tony Adcock, Ceri Hughes, Kelvin Davis,

David Greene and Tony Thorpe were among the Hatters stars taking part, as the courses took place in Bedford, Leighton Buzzard, Dunstable, Flitwick, Luton, Shefford and Milton Keynes.

And the 60 youngsters on the goalkeeping course had the extra bonus of a visit from former England keeper Peter Bonetti, who is a regular instructor for the Town's senior keepers.

More courses are planned for the Easter holidays, with the majority being three-day courses. There will also be a course for adults, aimed at junior managers, senior managers, preliminary and full badge holders.

We will be announcing full details in the matchday programme and the local press as soon as the courses are finalised.



CORPORATE CARS...

can supply your company with

- ★ Executive chauffeur driven air conditioned cars
- ★ Uniformed chauffeurs - in car telephone
- ★ All chauffeurs are members of the Institute of Advanced Motorists
- ★ All cars are BMW 1994 models

**FOR ALL YOUR CORPORATE TRANSFERS
CONTACT THE EXPERTS**
(over 30 years transport experience)

**CORPORATE CARS
ADELAIDE HOUSE
31 CARDIFF ROAD
LUTON, BEDS LU1 1PP**

Phone 01525 715872

Fax 01525 713020

People to Places in Style...

**R. J. BLOW &
C O M P A N Y**

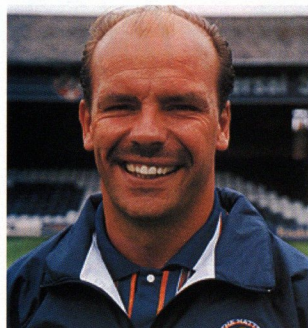
THE FRIENDLY ACCOUNTANTS

**Book-Keeping
Taxation and Wages etc.**

STIRLING HOUSE,
30 GUILDFORD STREET,
LUTON, BEDS LU1 2NR

Tel: (0582) 38792

Fax: (0582) 423347



Wed Aug 17	WATFORD	2-0
Wed Aug 24	QPR	2-1
Wed Aug 31	Charlton Athletic	1-3
Wed Sep 7	IPSWICH	2-2
Wed Sep 14	Bristol Rovers	1-3
Wed Sep 21	OXFORD	2-1
Wed Sep 28	PORTSMOUTH	1-0
Wed Oct 5	Tottenham	0-2
Wed Oct 12	Oxford	1-0
Wed Oct 19	NORWICH	3-5
Wed Oct 26	BRISTOL ROVERS	2-2
Mon Oct 31	Swindon	2-1
Tue Nov 8	Watford	0-1
Wed Nov 16	WIMBLEDON	2-4
Mon Nov 21	Portsmouth	3-0
Wed Nov 30	SWINDON	2-2
Wed Dec 7	Norwich City	0-2
Wed Dec 14	TOTTENHAM	1-2
Wed Dec 21	Southampton	1-3
Tue Jan 10	West Ham	0-1
Wed Jan 25	CRYSTAL PALACE	2-1
Mon Feb 6	ARSENAL	1-3
Tue Feb 14	Crystal Palace	3-1
Thu Feb 23	BRISTOL CITY	4-1
Sat Feb 25	Arsenal	1-4
Mon Feb 27	Brighton postponed	
Wed Mar 8	SOUTHAMPTON 2pm	
Wed Mar 15	Wimbledon 2pm	
Wed Mar 22	MILLWALL 2pm	
Wed Mar 29	Ipswich Town 7.30pm	
Wed Apr 5	BRIGHTON 2pm	
Mon Apr 10	Millwall 2pm	
Wed Apr 19	CHELSEA 2pm	
Sat Apr 22	WEST HAM 2pm	
Tue Apr 25	Queens Park Rgrs 7pm	
Mon May 8	Chelsea 7pm	
TBA	Bristol City	
TBA	CHARLTON	

BOLD type denotes home game.
(Luton score first).

RESERVES AND YOUTH

WITH WAYNE TURNER AND TERRY WESTLEY

THE Town's reserve side scored impressive wins over Crystal Palace and Bristol City, before losing 4-1 at Highbury to Arsenal last Saturday.

They won 3-1 at Crystal Palace with goals from Richard Harvey, Jamie Woodsford and Tony Thorpe.

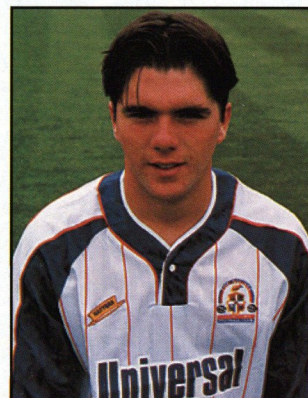
David Greene impressed at the centre of defence, playing against ex-Hatter Iain Dowie, with 16-year-old Nathaniel Abbey giving an inspired display in the Town goal.

Team: Abbey, Chenery, Harvey, Skelton, Greene, Campbell, Williams, Power, Dixon, Woodsford, Thorpe.

Subs: Douglas, McLaren.

Wayne Turner's side had their match against Bristol City switched to Kenilworth Road from Hitchin, and responded with an excellent 4-1 win.

German striker Carsten Jancker, on trial with the Hatters, played up front, and was involved in the 13th minute move which saw Tony Thorpe convert Jamie Woodsford's cross.



TONY Thorpe

Woodsford then headed in a Martin Williams cross a minute later, with City keeper Phil Kite then saving well from Jancker and Richard Harvey.

The latter resulted in a corner, from which David Greene was fouled, and Thorpe converted the penalty to put Luton 3-0 up at half-time.

Jancker hit the bar soon after the break, but on 52 minutes Woodsford converted another Williams cross to make it 4-0.

Bristol pulled one back soon after, but the only worry for Luton was a heavy tackle on Ben Chenery which saw the young fullback stretched off.

Fortunately there was no break, but a bad gash required stitches. Martin Humphreys, a triallist from Scotland, switched to right-back from centre-half.

Team: Davis, Chenery,

The next reserve team game is on Wednesday, March 8, when Luton entertain Southampton, kick-off 2pm. See local press for details.



JAMIE Woodsford

South East Counties League, FA Youth Cup and Southern Junior Floodlit Cup

Sat Aug 13	CRYSTAL PALACE	4-2	Sun Oct 23	Saffron Walden (EJC)	2-3	Sat Jan 14	Brighton (Postponed)	
Sat Aug 20	Wycombe Wanderers	5-0	Sat Oct 29	WIMBLEDON	2-4	Sat Jan 28	READING	1-1
Sat Aug 27	BRIGHTON	2-3	Sat Nov 5	Brentford	1-3	Sat Feb 4	Southampton	1-1
Thu Sep 1	Coventry (SJFC Pre)	2-2	Mon Nov 7	STAINES TOWN (FAYC1)	5-0	Sat Feb 11	OXFORD UNITED	3-1
Mon Sep 5	Coventry (SJFC Pre)	1-2	Sat Nov 12	BRISTOL CITY	1-2	Sat Feb 18	Bristol Rovers	0-0
Sat Sep 10	Reading	4-0	Sat Nov 19	Swindon Town	0-1	Sat Feb 25	Colchester United	2-1
Sat Sep 17	NORWICH (LC1)	2-0	Mon Nov 28	Wycombe (FAYC2)	0-1	Sat Mar 4	Wimbledon	
Sat Sep 24	SOUTHAMPTON	0-2	Sat Dec 3	BOURNEMOUTH	0-1	Sat Mar 11	BRENTFORD	
Sat Oct 1	Oxford United	0-3	Sat Dec 10	Tottenham	2-0	Sat Mar 18	Bristol City	
Sat Oct 8	BRISTOL ROVERS	2-1	Sat Dec 17	TOTTENHAM	2-3	Sat Mar 25	SWINDON TOWN	
Sat Oct 15	COLCHESTER	7-0	Sat Dec 31	Crystal Palace (Postponed)		Sat Apr 1	Bournemouth	
Sat Oct 22	Colchester (LC2)	0-1	Sat Jan 7	WYCOMBE WANDERERS	5-0		HOME matches denoted in bold.	

Harvey, McLaren, Greene, Humphreys, Williams, Campbell, Jancker, Woodsford, Thorpe.

Subs: Power, Woolgar, Abbey.

At Arsenal on Saturday, a Matthew Woolgar goal brought the Town level at 1-1, but the home side then bagged three further goals to run out comfortable winners.

Team: Abbey, Willmott, Harvey, Skelton, Greene, Campbell, Power, Jancker, Woolgar, Thorpe, Douglas.



RICHARD Harvey

Subs: Fotiadis, Palmer.

The reserve team game at Brighton on Monday was postponed.

The youth team drew 0-0 at Bristol Rovers on February 18, in the South East Counties League.

Team: Abbey, Turner, Palmer, McLaren, Sweeney, Willmott, Keane, Evers, Fotiadis, Douglas, Sharpe.

Subs: Barr, Power.

But the youth side won 2-1 at Colchester last weekend,

despite fielding six Under-16 players, due to the first and reserve team games the same day.

Andrew Barr and Jonathan Clarke were the Luton scorers, with coach Terry Westley describing the victory as one of the most pleasing results of the season.

Team: Webb, Turner, Sharpe, Sweeney, Thomas, Upson, Augustine, Evers, Best, Barr, Keane.

Sub: Clarke.

Luton Town Supporters Club
invite you to

MEET THE MANAGER

David Pleat will be the guest speaker at the
Supporters Club meeting
on Thursday, March 9, from 7.45pm
in the Hatters Bar, Maple Road.

Admission is £2 (members), but new
members are welcome to join on the night.

TODDINGTON CLAIM TEAM PRIZE



ABOVE: Toddington Under 11s cheered the Hatters to a 3-0 win over Swindon, as they collected the January Team of the Month prize.

TODDINGTON Under 11s enjoyed their afternoon out as guests of Luton Town, at the Hatters' recent home game against Swindon.

The Toddington team were the first winners of the club's Team of the Month Award, run in conjunction with the Loyal Luton Supporters Club.

The fans have successfully applied for a grant from the National Westminster Bank, as part of the bank's community programme, and, supported by the Football Club, wish to donate tickets for youngsters in the area to try and attract new supporters to Kenilworth Road.

Managers or parents should write in telling us why your team should be the Team of the Month. It may be that you recorded a first win, or only lost narrowly to the top side in your league.

Nominations should be sent in to: Junior Team Award, c/o Simon Oxley, LTFC, Kenilworth Road Stadium, 1 Maple Road, Luton, Beds, LU4 8AW.

The next award, for February, will be announced in the match programme at Tuesday's home game against Port Vale, with the winning team receiving tickets for the home game against Tranmere on March 16.

Cash in with our Golden Gamble



WHY not have a Golden Gamble? Our new match-day fundraiser is proving a big success.

Tickets are on sale around the ground, and the more tickets sold, the bigger the prize!

Half of the cash raised from the ticket sales will be won by one lucky

spectator in the half-time draw. Tickets cost just £1, so why not take a Golden Gamble.....

Pictured above: Lucky Swindon draw winner Jim Kelly collects his cash, from Commercial Manager Kathy Leather, and Town director Chris Green and his wife Sue.

Thousands of people could be reading about you and/or your company at every Hatters home game! To advertise in the Luton Town matchday programme contact Sam Walsh on (01582) 411622

Advertisement

Designed by: Kim Mason (Stopsley High School)
Winning entry of Prospects competition run by Bedfordshire TEC



NVQ

is the qualification you will be looking FOR IN the FUTURE

Call now for more details!

FREEPHONE
0800 393021

Bedfordshire TEC 2 Railton Road, Woburn Road Industrial Estate, Kempston, Bedford MK42 7PN TEL: 01234 843100 FAX 01234 843211



SAFETY NOTE

The Chairman and Directors of Luton Town Football Club undertake to ensure as far as humanly possible that all activities that take place at the Kenilworth Stadium are conducted in such a way that, as far as is reasonably practicable, the safety of everyone working at or attending that stadium is assured.

The club's primary responsibility through the Safety Officer, Officials, Staff and Stewards will be to ensure the reasonable safety of those attending the stadium.

In the interests of public safety, the safety authority (Beds County Council) have imposed a NO SMOKING restriction in and beneath our main stand. Your co-operation is appreciated.

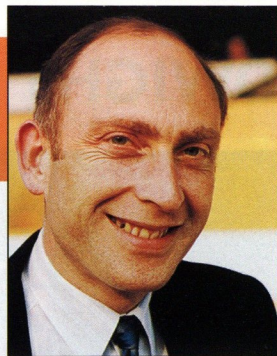
LUTON TOWN
CLUBCALL

0891 121 123

Calls cost 39p a minute cheap rate and
49p at all other times.

Money from YOUR calls
helps support YOUR club

French back to tame the Lions



RIGHT: Graham French made a welcome return to Kenilworth Road, scoring against Millwall in December 1972.



AFTER the resignation of Alec Stock in the summer of 1972, the Luton directors decided to promote from within and appointed Harry Haslam to the managers post.

Haslam lost no time in attempting to boost the squad and signed Rodney Fern from Leicester for £50,000 and then went back to one of his old clubs, Manchester United, and came back with clever winger John Aston. Both were looked upon as more than adequate replacements for Don Givens who had joined QPR in a £40,000 deal.

Fern was remembered by Luton supporters for his man-of-the-match performance for Leicester at Kenilworth Road in a 3-1 win for the Foxes a year earlier, while Aston came with the pedigree of playing alongside Best, Law and Charlton at Old Trafford, as well as being the proud possessor of a European Cup winners medal.

The signing that really caught the imagination of the fans, however, came early in the new season when it was announced that Graham French was to be given another chance following his release from prison.

French had been the idol of the crowd before he was given a three-year sentence for a shooting incident outside a local pub in

1970, and we all felt that an amazing talent had pressed the self-destruct button one time too many. It was to the credit of the club that it was seen fit to invite him back to Kenilworth Road to prove his fitness, but such was the feeling for his talent that it seemed the only proper thing to do.

Although keeping himself active while in prison, French still found it difficult to achieve full match fitness and it was not until just before Christmas that he was seen as ready to return to first team duty.

The team had done quite well without him and, but for a poor home record, would have been challenging for top spot in Division Two rather than operating on the fringes of the promotion positions.

Away games had been won with ease at places like Aston Villa, Sunderland and Nottingham Forest, while teams at the other end of the table had returned from Kenilworth Road with two points rather too frequently for manager Haslam's liking.

New signing from Derby, Barry Butlin, made his Luton debut in the home game with QPR on December 9, 1972, but the loss through injury during that game of Alan Slough and John Faulkner meant a reshuffle of the pack

for the home game against Millwall the following week, and French made a welcome return.

The Lions, who had narrowly missed out on promotion the previous season, had a strong following in the crowd of 11,550, and they saw their side defending in depth in the opening period, and such was the domination of the Town that Luton goalkeeper Keith Barber did not have a direct shot to save in the first half.

French tormented the opposition mercilessly and was obviously responding to the encouragement of the crowd, aided and abetted by Butlin who was leading the Millwall defence a merry dance.

The opening goal came after five minutes when Millwall keeper Bryan King fumbled a shot from Peter Anderson and allowed the ball to run free to the alert Butlin who made no mistake from close range.

Luton were so much on top that it seemed only a matter of time before the score was increased, but a combination of desperate defending and wayward finishing saw the teams go in at the interval with the scoreline unchanged.

Shortly after the break came the moment we had all been waiting for, when French ran through from midfield with the ball, drew King from his goal, and then expertly shot past him into the empty net. Three years of pent up emotion meant that this goal was greeted by one of the biggest cheers ever heard at Kenilworth Road and even French was seen to smile!

That unfortunately was the end of the fairytale as Millwall suddenly began to look dangerous and almost immediately got back into the game when Derek Possee headed home with the Luton defence sleeping.

The storm was weathered and it took a good stop from King to keep out Anderson, but with the game in the balance Luton defender Alan Garner allowed Doug Alder through. He was then unceremoniously upended in the box by Barber, with Gordon Bolland equalising from the resultant spot-kick.

That was the final telling action in the game, but the disappointment of a dropped home

by ROGER WASH

5 YEARS AGO

3/3/90: Kingsley Black scored the Luton consolation goal in a 4-1 defeat at Manchester City, which was not as one-sided as the scoreline suggests.

10 YEARS AGO

2/3/85: First-half goals from Mick Harford and Ricky Hill secured a 2-1 home win over Sunderland in front of a crowd of 8,019. This was the Town's first league win since Boxing Day.

15 YEARS AGO

1/3/80: A crowd of 20,040 turned up at Kenilworth Road to see rivals for promotion, West Ham, force a 1-1 draw. Ricky Hill was the Luton scorer.

20 YEARS AGO

1/3/75: The Town were unlucky in going down 2-1 at QPR in a Division One fixture. Adrian Alston, in his first game for three months, was the Luton goalscorer.

point was tempered with the thought that 'FRENCHIE WAS BACK'.

Luton: Barber, Shanks, Thomson, Anderson, Garner, John Ryan, Jim Ryan, French, Butlin, Halom, Aston.

Millwall: King, Bolland, Cripps, Dorney, Kitchener, Burnett, Brown, Possee, Wood, Dunphy, Alder.

DWIGHT AT THE DOUBLE TO SEE OFF SWINDON!



LEFT: Excuse me! Scott Oakes is kept at arms length by the Swindon Town defence.



RIGHT: Scott Oakes' penalty just after half-time beats Swindon keeper Nicky Hammond, but hits the post!



LEFT: Wayne Biggins challenges for possession against Swindon. Biggins is now in his second month on-loan at Kenilworth Road from Stoke City.



LEFT: Dwight Marshall is on the end of Wayne Biggins' cross to put Luton 2-0 in front.

LUTON TOWN 3
(Horlock og, Marshall 2)

SWINDON TOWN 0

Saturday, February 18, 1995,
at Kenilworth Road.

Pictures by
ANDY HANDLEY



ABOVE: More joy for Dwight as he nets his second to make it 3-0 to the Hatters.



ABOVE: Celebrations for messrs Marshall and James. Not so Swindon!

Action pictures featured in the Luton Town matchday programme are available at the special introductory price of just £2 per print!

Write to Simon Oxley, at the club, giving a brief description of the picture (programme and page number etc), and enclosing a cheque/ postal order made payable to Luton Town Football Club.

VIEWSROUND SPORT - LISTENING TO YOU LUTON TOWN FC... FANS SURVEY RESULTS

LUTON Town fans have given their backing to England staging the 1996 European Championships despite the recent troubles at the Ireland v England game.

This overwhelming view was stated in the latest of our Fans Surveys, which was carried out after the recent home game against Swindon.

Over 130 supporters were quizzed about the match itself, and various other football topics, and thanks to everyone who took the time to answer.

Troubles at the Ireland v England game

We asked if, as a result of the hooliganism in Dublin, England should still hold the European Championships.

93% of supporters felt they should continue, and more than three-quarters (81%) of fans thought that a national supporters membership card scheme should be introduced, whereby fans could only get in to watch games - in England or abroad - if they had a valid card.

Concerns in football today

We asked questions about supporters concerns regarding hooliganism and the effect that such concerns have on attendance at matches.

Our first Viewsround Sport Study which we conducted on the day after the Oldham game (February 5, 1995) found that at that time (before the hooliganism at Stamford Bridge and Ireland) less than half (44%) of fans claimed that hooliganism at football was of concern to them.

In just two weeks we have seen this figure increase to 56%.

Overall 25% of fans claim to be 'Very Concerned' about hooliganism with a further 31% 'Quite Concerned'. Over one third claim that concerns over hooliganism stops people bringing along children to matches (35%) or bringing their partners (16%). 35% say that it has 'No Effect' on them.

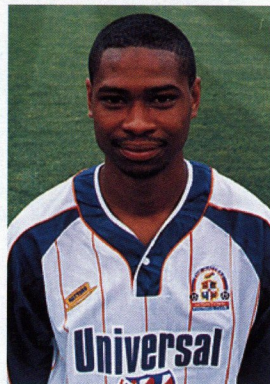
The Match

The game against Swindon scored 6.97 out of ten for excitement, with Luton's performance given an average of 7.28.

Swindon's performance was rated at 5.40, with 'Value for Money' measuring 7.72.

The highlights of the game were the Luton goals, particularly the second and third goals,

DWIGHT Marshall was again voted man-of-the-match for his two goals against Swindon.



with most fans (66%) claiming the second goal, Dwight Marshall's first, was the most notable highlight of an exciting match.

The overwhelming supporters choice for Luton player of the match was Dwight Marshall, with Scott Oakes second.

The top three were: Dwight Marshall 69%, Scott Oakes 26%, Wayne Biggins 10%.

Swindon player-manager Steve McMahon was adjudged their player of the match.

The performance of the referee John Kirkby was judged to be generally poor, and less than half (39%) of fans were satisfied with him. Of those unhappy (61%), the main reasons were 'inconsistencies' and disallowing a Luton goal.

The Programme

Six out of ten fans claimed to buy a programme, and over two thirds (70%) thought it was good value for money.

The Ground

Two thirds of supporters quizzed used the toilets at the ground, and over half (53%) spent money at the refreshment stalls or in the shop. 75% of fans claim to be satisfied with the ground.

End of Season

With two months of the season to go, supporters were asked what they felt would be a 'good' end of season position for the Hatters in Division One.

Top/Play off place 47%, Top half 98%, Avoid relegation 0%.

The telephone survey for this afternoon's game will be carried out tomorrow.



Critical Research Ltd

Crown Life House
41-43 Alma Street Tel: 0582 480588
Luton LU1 2PL Fax: 0582 485015



TicketLine 0645 10 10 10
The exclusive ticket booking service for fans of Endsleigh League First Division clubs
24 HOURS A DAY, 7 DAYS A WEEK
ALL CALLS CHARGED AT LOCAL RATE

Our record is good but we won't get complacent

MUCH has been said and written following the incidents of the last few months which threaten to drag the game back to the bad old days.

Whilst I agree something has to be done to prevent the yob element, as I call them, from dragging football down, I do not believe things are as bad as some would have us believe.

A lot of work has been done in the past 10 years to eradicate trouble in and around the grounds, none more so than at Luton where we do not have a problem.

The club and the local police work closely together to try and ensure your safety and good order in and around the ground.

This working together is not something that just happens on matchdays. It is a process that starts with the publication of the fixture list and continues right through the season.

The planning prior to fixtures is the key to maintaining good order. This could not be achieved without the close liaison between the club and the police.

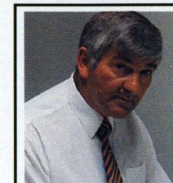
There are also other elements which contribute to our good record over the past 10 years. We have a membership scheme for our own supporters, and complete segregation of away supporters who must buy their tickets at their club before they travel.

This gives us a good idea of numbers attending and together with the intelligence the police provide, an idea of the measures we need to put into being.

The use of Closed Circuit Television is another important aid to preventing and detecting trouble. It can and will be used in court if need be.

The firm enforcement of ground regulations is also a key element in maintaining order and safety in the ground, particularly those sections which deal with spectator behaviour.

We have an agreed policy on dealing with supporters who run onto the pitch. It will certainly mean ejection from the ground and it could also result in an appearance at court. This policy has been held up by the Football Licensing



In the light of the recent disturbances in Dublin, Luton Town's Safety Manager GEOFF LOVELL reviews our club's crowd control policy

Authority as a model to other clubs.

The language used by supporters is also causing some concern. Following several complaints from supporters, stewards are being briefed to crack down where the language goes beyond that which is acceptable.

If any supporters are unhappy with the language being used by those around them, then please feel free to contact me at the club and I will ensure your concerns are monitored, and if necessary dealt with.

It is up to us all to set an example to the younger generation who are our future supporters.

Although we would all like to see no arrests at Luton we have to be realistic as there will always be one or two hotheads who go a little too far. Having said this I believe the figures at Luton are encouraging.

In 1992/93 there were 20 arrests, in 1993/94 18, and currently this year 11. When you consider the number of games each year, and the number of people who come through the turnstiles, then we are not doing too badly.

The majority of these arrests relate to people on the pitch, mainly from the visiting section. And any person who is convicted of an offence at our, or any other, ground could be banned from this club. We have used this sanction once in the past two years.

Whilst these figures are encouraging we must not get complacent, and we are always looking at improving our methods, systems and the training we give our stewards.

And in conclusion, I would wish to compliment you the supporters for the excellent standards you have set both home and away over the past few seasons.

LUTON TOWN CLUBCALL 0891 121 123

News, views and interviews from Kenilworth Road - 24 hours a day!



COMMERCIAL CORNER

with Kathy Leather

A warm welcome to Kenilworth Road to today's match and matchball sponsors

A WARM welcome to today's match sponsors who are BEDFORDSHIRE TEC (Bedfordshire Training and Enterprise Council) who are based at the Woburn Road Industrial Estate in Kempston, Bedford.

They are promoting their Prospects careers scheme, a new way of helping you gain skills and qualifications which are obtained in the workplace. This gives you the opportunity to gain real training in the career you want.

And you won't just be training, you will be gaining experience in the work you want and you will be getting paid. You will also be given the opportunity to work towards nationally recognised qualifications (NVQs).

NVQs prove to an employer that you can do a particular job to agreed standards and that you have the relevant skills the employer needs.

Everyone in year 11 can register for Prospects. The registration forms are simple to fill in and you can get a form from either your school careers teacher or the Guidance Service. Once you fill in the form, you will receive your

Prospects card. Then if you decide to leave school your Guidance Officer will help you to identify opportunities that are open to you in your chosen career.

When you go to the organisation who is putting your training together you can use your Prospects card to pay for the training you want - whether you are in work or not. Your card will have your name, a unique identification and expiry date printed on it. Don't worry, this is not a loan, you will not have to pay back any money, so you can not get into debt.

For additional advice or information call the Freephone on 0800 393021 and speak to a member of the Bedfordshire TEC prospects team.

Today's matchball sponsors are G OWEN CERAMIC TILING. They were established in Luton in 1983, offering a supply and fixing service to major new housebuilders.

G Owen is now involved with a new retiling outlet which has just opened in Stapleford Road, Luton, called Sun Ceramics.

LUTON Town can cater for everything from business breakfasts, lunches or dinners to birthday/ anniversary celebrations and wedding breakfasts.

We can help to plan events by either clients visiting the club or by making a private visit to the clients own premises.

We have a number of function suites available, from our boardroom, which is an exclusive setting for senior management meetings, to our adjacent suites which can cater for up to 100 or more delegates for conferences and seminars.

Our catering operation, which prides itself on a personal service, can provide quality refreshments to complement any occasion.



Pictured above is our matchball sponsor for the recent home game against Swindon, Sam Hill of Grosvenor Contracts, with one of the day's mascots James Rich, and Town players Julian James, Trevor Peake, Tony Adcock, Dwight Marshall, Marvin Johnson, Paul Telfer, Mitchell Thomas and Gary Waddock.

Support the Hatters with a Golden Gamble!

YOU could walk away from this afternoon's game with a fantastic cash prize by taking part in our new Golden Gamble.

Tickets, priced just £1, will be on sale around the ground prior to the match, with half the money raised being awarded as first prize in the half-time draw.

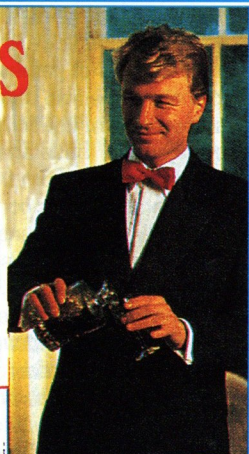
A large number of supporters have had a Golden Gamble at the last two home games, so why not try **YOUR** luck today.....

Antony's Tailor

OF LONDON

THE MOST
ESTABLISHED
AND RELIABLE
TAILORS IN
LUTON

DRESS HIRE
LADIES AND GENTS
BESPOKE TAILORING



12 DUNSTABLE ROAD, LUTON,
BEDS OPPOSITE MAIN POST OFFICE
TEL: (0582) 424687

offer

OFFICE OF
ELECTRICITY
REGULATION

IS YOUR ELECTRICITY SUPPLIER PLAYING THE GAME?

The Office of Electricity Regulation

- PROTECTS THE INTERESTS OF ELECTRICITY CUSTOMERS
- HELPS AND ADVISES ON DISPUTES WITH EASTERN ELECTRICITY

At home:

4th Floor, Waveney House, Handford Road,
Ipswich, Suffolk IP1 2BJ.
Telephone 01473 216101 Fax 01473 215838

And away:

The phone book or your electricity bill shows your nearest office.

SUPPORT THE HATTERS

But Join The Gunners -
and be paid!

Come and see what
your local Territorial
Army Unit does

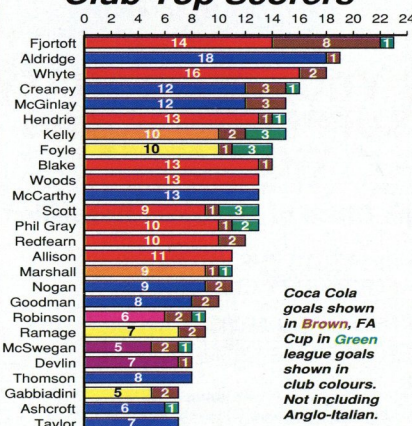
Phone (01582) 572032

201 Battery RA (V)
TA Centre
Marsh Road
Leagrave
Luton LU3 2RX.

TEAM STATISTICS 1994-95

Date	Opponents	F-A	Att	Pos	1	2	3	4	5	6	7	8	9	10	11	12	14	GK
Sat Aug 13	WEST BROMWICH ALBION	1-1	8,640	-	Sommer	James	Johnson	(Skelton)	Greene	Peake	Telfer	OAKES	Dixon	Preece	(Houghton)	(Marshall)	(Linton)	Barber
Tue Aug 16	FULHAM CCC 1 (1)	1-1	3,287	-	Sommer	James	Johnson	(Houghton)	Greene	Peake	Telfer	OAKES	Dixon	Preece	(Houghton)	(Marshall)	(Linton)	Barber
Sat Aug 20	Derby County	0-0	13,060	14	Sommer	James	Johnson	(Linton)	Greene	Peake	Telfer	Marshall	Dixon	Preece	Hughes	Skelton	Houghton	Barber
Tue Aug 23	Fulham CCC 1 (2)	1-1	5,134	-	Sommer	James	Johnson	(Linton)	(Greene)	Peake	Telfer	MARSHALL	Dixon	Preece	Hughes	(Oakes)	(Skelton)	Barber
Sat Aug 27	SOUTHEND	2-2	5,918	16	Sommer	(James)	Johnson	Oakes	Greene	Peake	Telfer	(Marshall)	HARTSON	Preece	HUGHES	(Thomas)	(Dixon)	Barber
Tue Aug 30	Tranmere Rovers	2-4	5,480	20	Sommer	James	Johnson	(Skelton)	Greene	Peake	Telfer	Oakes	HARTSON	Preece	HUGHES	Thomas	(Marshall)	Barber
Sat Sep 3	Port Vale	1-0	8,541	15	Sommer	(James)	Johnson	Skelton	Greene	Peake	Telfer	MARSHALL	Dixon	(Preece)	Oakes	(Thomas)	(Woodsford)	Barber
Sat Sep 10	BURNLEY	0-1	6,911	18	Sommer	James	Johnson	(Waddock)	(Greene)	Peake	Telfer	Marshall	Hartson	Preece	Oakes	(Thomas)	(Dixon)	Barber
Tue Sep 13	BOLTON WANDERERS	0-3	5,764	20	Sommer	James	Johnson	Waddock	(Thomas)	Peake	Telfer	Oakes	Dixon	Preece	(Hartson)	(Linton)	(Marshall)	Barber
Sat Sep 17	Watford	4-2	8,880	16	Sommer	James	Johnson	Waddock	Thomas	Peake	TELFER 2	OAKES	DIXON	Preece	Marshall	Hartson	Linton	Barber
Sat Sep 24	Millwall	0-0	7,150	16	Sommer	James	Johnson	Waddock	Thomas	Peake	Telfer	Oakes	(Dixon)	Preece	Marshall	(Hartson)	Skelton	Barber
Sat Oct 1	BRISTOL CITY	0-1	6,633	20	Sommer	James	Johnson	Waddock	(Thomas)	Peake	Telfer	Oakes	(Dixon)	Preece	Marshall	(Hartson)	(Hughes)	Barber
Sun Oct 9	Stoke City	2-1	11,712	18	Sommer	James	Johnson	Waddock	Thomas	Peake	Telfer	Hughes	Hartson	(PREECE)	MARSHALL	(Oakes)	Williams	Barber
Sat Oct 15	MIDDLESBROUGH	5-1	8,412	11	Sommer	James	Johnson	Waddock	Thomas	Peake	Telfer	Hughes	HARTSON	(PREECE)	MARSHALL 2	(Oakes)	Dixon	Barber
Sat Oct 22	Sheffield United	3-1	13,317	7	Sommer	JAMES	Johnson	Waddock	Thomas	Peake	Telfer	Hughes	DIXON	(Preece)	Marshall	(Oakes)	Thorpe	Barber
Sat Oct 29	BARNLEY	0-1	7,212	10	Sommer	James	Johnson	(Waddock)	Thomas	Peake	Telfer	Hughes	Hartson	Preece	(Marshall)	(Oakes)	(Dixon)	Barber
Tue Nov 1	GRIMSBY TOWN	1-2	5,839	13	Sommer	James	Johnson	Waddock	Thomas	Peake	Telfer	(Hughes)	Hartson	Preece	Marshall	(OAKES)	Dixon	Barber
Sat Nov 5	Wolverhampton Wanderers	3-2	26,749	8	Sommer	James	Johnson	Waddock	Thomas	Peake	Telfer	Oakes	(DIXON)	PREECE	MARSHALL	(Hartson)	Thorpe	Barber
Sat Nov 12	Oldham Athletic	0-0	7,907	8	Sommer	James	Johnson	Waddock	Thomas	Peake	Telfer	Oakes	Dixon	Preece	(Marshall)	(Hartson)	Thorpe	Barber
Sat Nov 19	PORTSMOUTH	2-0	8,214	8	Sommer	James	Johnson	Waddock	Thomas	Peake	Telfer	Oakes	DIXON	PREECE	(Marshall)	(Thorpe)	Hartson	Barber
Sat Nov 26	Swindon Town	2-1	9,455	5	Sommer	James	Johnson	Waddock	Thomas	Peake	Telfer	OAKES	(DIXON)	Preece	Linton	Woodsford	(Hartson)	Barber
Sat Dec 3	SHEFFIELD UNITED	3-6	8,516	8	Sommer	James	JOHNSON	Waddock	Thomas	Peake	Telfer	Oakes	Dixon	(Preece)	(Linton)	(HARTSON)	(Marshall)	Barber
Sun Dec 11	DERBY COUNTY	0-0	6,400	9	Sommer	James	Johnson	Waddock	Thomas	Peake	Telfer	Oakes	(Dixon)	Preece	(Allen)	(Hartson)	(Marshall)	Barber
Sun Dec 18	West Bromwich Albion	0-1	14,392	12	Sommer	(James)	Johnson	Allen	Thomas	Peake	Telfer	Oakes	Dixon	Preece	Marshall	(Hartson)	Skelton	Barber
Mon Dec 26	Reading	0-0	11,623	12	Sommer	James	Johnson	Waddock	Thomas	Peake	Telfer	(Allen)	(Dixon)	Preece	Marshall	(Hartson)	(Oakes)	Davis
Tue Dec 27	SUNDERLAND	3-0	8,953	9	Sommer	James	Johnson	Waddock	Thomas	Peake	Telfer	OAKES 2	HARTSON	(Preece)	(Marshall)	(Skelton)	(Williams)	Davis
Sat Dec 31	Notts County	1-0	6,249	8	Sommer	James	Johnson	Waddock	Thomas	Peake	TELFER	Oakes	Hartson	Preece	(Marshall)	Skelton	(Adcock)	Davis
Mon Jan 2	CHARLTON ATHLETIC	0-1	7,642	8	Sommer	(James)	Johnson	Waddock	Thomas	Peake	Telfer	Oakes	Hartson	Allen	Marshall	Skelton	(Adcock)	Davis
Sat Jan 7	BRISTOL ROVERS FAC 3	1-1	7,571	-	Sommer	James	Johnson	Waddock	Thomas	Peake	Telfer	Oakes	HARTSON	Preece	(Marshall)	Williams	(Adcock)	Davis
Sat Jan 14	Barnsley	1-3	4,808	11	Sommer	James	Johnson	Waddock	Thomas	Peake	Telfer	Oakes	DIXON	(Harvey)	Marshall	(Skelton)	Woodsford	Davis
Wed Jan 18	Bristol Rovers FA3	1-0	8,213	-	Sommer	Oakes	Johnson	Waddock	Thomas	Peake	Telfer	Chenery	Dixon	Preece	MARSHALL	Skelton	Woodsford	Davis
Sat Jan 28	SOUTHAMPTON FAC 4	1-1	9,938	-	Sommer	Oakes	Johnson	Waddock	Thomas	Peake	Telfer	BIGGINS	(Dixon)	Preece	Marshall	Skelton	(Williams)	Davis
Sat Feb 4	OLDHAM ATHLETIC	2-1	6,903	10	Sommer	James	Johnson	Waddock	Thomas	Peake	Telfer	Oakes	(Dixon)	Biggins	MARSHALL 2	(Thorpe)	Harvey	Davis
Wed Feb 8	Southampton FAC4	0-6	15,075	-	Sommer	(James)	Johnson	Waddock	Thomas	Peake	Telfer	Oakes	(Biggins)	Preece	Marshall	(Thorpe)	(Dixon)	Davis
Sat Feb 11	Grimsby Town	0-5	4,615	10	Sommer	James	Johnson	Waddock	Thomas	Peake	Preece	Oakes	(Dixon)	(Biggins)	Marshall	(Telfer)	(Woodsford)	Davis
Sat Feb 18	SWINDON TOWN	3-0	6,595	10	Sommer	James	Johnson	Waddock	Thomas	Peake	Telfer	Oakes	(Biggins)	Preece	(MARSHALL 2)	(Dixon)	(Woodsford)	Davis
Tue Feb 21	Portsmouth	2-3	7,363	10	Sommer	JAMES	Johnson	(Waddock)	Thomas	Peake	TELFER	(Oakes)	Dixon	Preece	Marshall	(Harvey)	(Woodsford)	Davis
Sat Feb 25	Bristol City	2-2	7,939	10	Sommer	James	Johnson	Waddock	Thomas	Peake	Telfer	OAKES 2	Dixon	(Preece)	Marshall	Biggins	(Williams)	Davis
Sat Mar 4	MILLWALL																	
Tue Mar 7	PORT VALE																	
Sat Mar 11	Southend United																	
Sat Mar 18	TRANMERE ROVERS																	
Tue Mar 21	Burnley																	
Sun Mar 26	WATFORD																	
Sat Apr 1	Bolton Wanderers																	
Sun Apr 2	CCC Final																	
Tue Apr 4	WOLVERHAMPTON W																	
Sat Apr 8	NOTTS COUNTY																	
Sat Apr 15	Sunderland																	
Mon Apr 17	READING																	
Sat Apr 22	Charlton Athletic																	
Sat Apr 29	Middlesbrough																	
Sat May 6	STOKE CITY																	
Sat May 20	FAC Final																	

Club Top Scorers



LUTON TOWN 1994/95

PLAYER (figure in bracket = sub app.)	LEAGUE APPS	LEAGUE GOALS	CUP APPS	CUP GOALS
Juergen SOMMER	32	-	6	-
Julian JAMES	32	2	4	-
Marvin JOHNSON	32	1	6	-
Aaron SKELTON	3 (2)	-	(1)	-
David GREENE	6	-	2	-
Trevor PEAKE	32	-	6	-
Paul TELFER	31 (1)	4	6	-
Scott OAKES	25 (6)	8	5 (1)	1
Kerry DIXON	21 (3)	6	4 (1)	-
David PREECE	29	4	6	-
Scott HOUGHTON	1	-	1	-
Dwight MARSHALL	26 (5)	9	5 (1)	2
Des LINTON	3 (2)	-	1 (1)	-
Ceri HUGHES	8 (1)	2	2	-
Mitchell THOMAS	26 (2)	-	4	-
John HARTSON	11 (9)	5	1	1
Gary WADDOCK	26	-	4	-
Jamie WOODSFORD	(4)	-	-	-
Tony THORPE	(2)	-	(1)	-
Paul ALLEN	4	-	-	-
Martin WILLIAMS	(2)	-	(1)	-
Tony ADCOCK	(2)	-	(1)	-
Richard HARVEY	1 (1)	-	-	-
Ben CHENERY	-	-	1	-
Wayne BIGGINS	3	-	2	1

Own goal

4

ENDSLEIGH LEAGUE DIVISION ONE

	P	W	D	L	F	A	PTS
Tranmere R	33	17	8	8	54	36	59
Middlesbro	31	16	8	7	44	26	56
Bolton W	32	15	9	8	53	35	54
Sheff Utd	33	14	11	8	56	38	53
Wolves	31	16	5	10	56	43	53
Reading	33	15	8	10	37	29	53
Grimsby T	33	12	12	9	50	42	48
Watford	31	12	11	8	35	29	47
Barnsley	31	13	7	11	41	39	46
LUTON T	32	12	8	12	45	45	44
Oldham A	32	11	10	11	45	43	43
Derby C	31	11	9	11	37	33	42
Millwall	30	10	11	9	37	36	41
Portsmouth	32	10	10	12	37	46	40
Stoke City	30	10	10	10	32	35	40
Charlton Ath	31	10	9	12	43	47	39
Sunderland	32	8	15	9	32	31	39
Port Vale	30	10	8	12	37	40	38
West Brom	33	10	7	16	29	42	37
Southend U	33	10	6	17	32	60	36
Bristol City	33	9	8	16	32	45	35
Swindon T	30	8	9	13	36	49	33
Notts County	33	7	8	18	36	48	29
Burnley	30	6	9	15	29	48	27

(Table does not include Wednesday night's game - Millwall v Swindon Town).



Matchday music is supplied by
HMV Stores, 98 Arndale Centre
(Tel: 35290) and
73 The Mall (Tel: 21368), Luton.



TODAY'S OFFICIALS

Today's referee is
JOHN LLOYD from
Wrexham.

Mr Lloyd, a Local Government
Officer, played for Wrexham in
the mid-1960s, and is a FIFA
referee.



R Kirk

JD
Wesson

TODAY'S OTHER DIV I MATCHES

Barnsley v Oldham Athletic
Bolton W v Southend United
Burnley v West Brom
Charlton Ath v Notts County
Grimsby Town v Swindon Town
Middlesbrough v Bristol City
Reading v Watford
Sheffield United v Port Vale
Stoke City v Derby County
Sunderland v Tranmere R (Sun)
Wolves v Portsmouth (Sun)

TEAM CHECK

LUTON TOWN

Manager: David Pleat

Juergen SOMMER
Julian JAMES
Marvin JOHNSON
Gary WADDOCK
Mitchell THOMAS
Trevor PEAKE
Paul TELFER
Scott OAKES
Kerry DIXON
David PREECE
Dwight MARSHALL

MILLWALL

Manager: Mick McCarthy

1 Kasey KELLER
2 Mark BEARD
3 Ben THATCHER
4 Andy ROBERTS
5 Tony WITTER
6 Damian WEBBER
7 Dave SAVAGE
8 Alex RAE
9 David OLDFIELD
10 Jason BECKFORD
11 Jason VAN BLERK
12
14
GK



Plowmans
of
Luton

AND
LUTON
TOWN
—
THE
PERFECT
MATCH

You'll do a great deal better with us!

Open 7 Days

Vauxhall Main Dealers, 15 Hitchin Road, Luton.

Tel: 454666