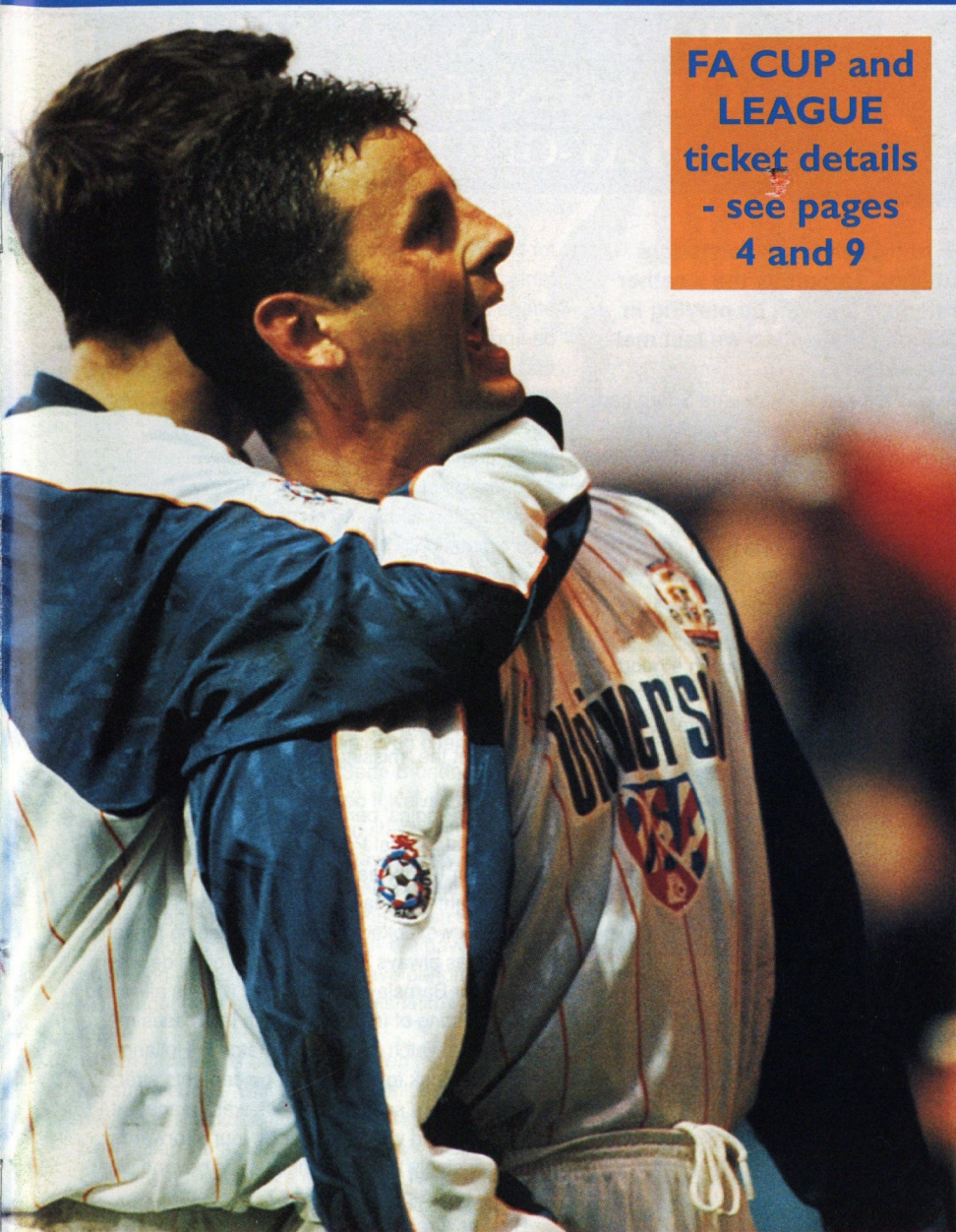


ENDSLEIGH INSURANCE LEAGUE DIVISION ONE

v OLDHAM ATHLETIC



**FA CUP and
LEAGUE**
ticket details
- see pages
4 and 9



LUTON TOWN

SATURDAY, FEBRUARY 4, 1995, 3PM

MATCH SPONSORS

The Luton & Dunstable Leader

MATCHBALL SPONSORS

Ronald Edward Poulton

Official matchday programme £1.00



Sponsors of
Luton Town F.C.



PLEAT'S PERSPECTIVE

HOME WINS CAN SEE US CHALLENGE FOR A PLAY-OFF PLACE

WELCOME to this afternoon's visitors Oldham Athletic. Hopefully the weather will have relented and will be playing in better conditions than when we last met on 12th November.

That game was the first that Graeme Sharp had control over the team and after the drawn game was given the responsibility of taking over from Joe Royle.

Oldham have made good progress since that time and both sides will realise the significance of this afternoon's result. It is really galling that we have such a poor home record compared with our impressive away form. We are confident however, that a couple of home wins can put us in a good position to challenge for a play off place.

Last Saturday's cup tie was a fine advertisement

for cohesive and progressive football. Most importantly the supporters of both sides appreciated the efforts and it was rare but pleasing for both sides to be applauded off the field. After the sadness, confusion and publicity of the Cantona sending off, it is vital that everyone takes the game seriously, but does not allow the passion to get out of hand.

We can feel confident when we travel on Wednesday of a cup success. We respected Southampton and some of their players added to their reputations. They played football throughout the game and their goal was brilliantly taken. It was so important that we showed the spirit to fight back and all our players put in an effort deserving of winning at the first attempt. We will be having a chat about the penalty kick responsibilities and hope that should we be given a spot kick shortly, we will get the "missing" sequence out of our systems.

Wayne Biggins' performance in the reserves' win against Crystal Palace at Hitchin persuaded me to alter the formation slightly for the cup tie. With Dwight Marshall showing good pace on the right flank we looked a threat when going forward. Wayne has always been a thorn in our side when playing for Barnsley or Stoke, but it is his all-round understanding of front play which impresses me.

I went to watch a midweek match in Holland recently to look for possible replacements after John Hartson's sale. No moves were made but I was impressed with a couple of young forwards, but surprisingly their current value is beyond what we may be prepared to pay.

Rest assured that we are looking closely at making moves before the transfer deadline, so we can add some strength to our squad. Fortunately injured players Des Linton and Ceri Hughes could be with us within the month but the unlucky two-some from Peterborough Fred Barber and Tony Adcock will have to wait longer. The absence of Fred Barber has pushed Kelvin Davis on to the first team bench - a move I would have contem-

.....LISTEN TO THE MANAGER'S VERDICT ON TODAY'S BIG GAME ON LUTON TOWN CLUBCALL 0891 121 123



KERRY Dixon fires wide in last Saturday's FA Cup fourth round clash against his previous club Southampton.

plated anyway to give him valued experience. Kelvin is likely to be coming to Italy with the football league side which I have been given charge of for the game against the Italian Serie B under 21's side. I would be very surprised if Kelvin, provided he continues working hard and stays with his feet firmly on the ground, doesn't have a very good career in the game. At the other end of the scale, we have agreed to release young Welsh defender Andrew Jukes from his contract. We have several promising young players who have performed well in the right back position. We wish him well in the future.

Ben Chenery is one of those who took a debut in his stride and he was more than unlucky not to play against Southampton on his 18th birthday. Now Julian James has completed his suspension, Ben may have to wait a little longer for further opportunities, but I am sure they will come along.

The AGM has been and gone and maybe this year we should have less difficulties balancing the books, after the sale of John Hartson. I have accepted an invitation to talk to the Luton Town Supporters Club on 9th March and I will be more than happy on that occasion to talk about the present and the future.

It has been a busy time for meetings recently. Unfortunately I could not make the North Beds

Referees Association invite to Kempston last Monday evening. Terry Westley deputised and I am sure he left the officials with much to think about. I have already stated that I have been less than happy with some of the officious officialing in the Avon Insurance reserve league and I have collated a broad view of other managers ideas, whose teams play in this league, to improve the referee/ manager/ player liaison. I hope to be able to enjoy the hospitality of the North Beds Referees Association shortly.

Let us hope that the extra support that was attracted to the cup tie last week remains with us. The players all remarked how much more noise the extra crowd generated.

We all need motivation and it is our hope that we can have a cup run, plus some improved league form and we will once again be running out to full houses at Kenilworth Road.

Enjoy the game and remember the importance of good sportsmanship.



Luton Town Football Club
Kenilworth Road Stadium,
1, Maple Road,
Luton, Beds LU4 8AW.
Tel: (0582) 411622
Fax: (0582) 405070
Ticket Office: (0582) 416976

Chairman and Managing Director:
David Kohler BSc (Hons)
ARICS

Directors:
C.S. Bassett, C.T.F. Green,
N.S. Terry

Vice Presidents:
R.L. Banks, P.Collins,
C. Bygraves, R. Safranek,
D. Ludlow, P. Ireton.

Secretary:
Cherry Newbery

Manager:
David Pleat

Coaches:
John Moore, Wayne Turner,
Terry Westley

Physiotherapist:
Clive Goodyear

Consultant Physio:
John Sheridan

Youth Development Officer:
Paul Lowe

Scouting:
Les Shannon

Community Football Officer:
Colwyn Rowe

Financial Administrator:
Bob Bird

Commercial Manager:
Kathy Leather

Safety Manager:
Geoff Lovell

Catering Manager:
Peter Saul

Medical Officer:
Dr Bill Berry

Club Dentist:
A. Chris BDS (Syd)

HONOURS

Littlewoods Cup winners 1987-88

FA Cup finalists 1958-59

Littlewoods Cup finalists 1988-89

Simod Cup finalists 1987-88

Champions - Division Three (S) 1936-37

Champions - Division Four 1967-68

Champions - Division Two 1981-82

David Pleat

AROUND THE TOWN



IF Luton win at Southampton in Wednesday's FA Cup fourth round replay, the Fifth Round ticket details would be as follows:

TOTTENHAM HOTSPUR v LUTON TOWN

Saturday, February 18, 1995, kick-off 3pm, at White Hart Lane.

Tickets for Luton fans will be in the Lower Tier of the South Stand, with seats priced at £15 (no concessions).

Season Ticket Holders - can claim from Thursday, February 9 to Monday, February 13 inclusive, and are guaranteed one ticket each on production of voucher C, either personally or by post. (Please note postal applications must bear a post mark of Saturday, February 11, latest). No telephone bookings will be taken.

Members - can claim one ticket (subject to availability) from Tuesday, February 14, to Friday, February 17 inclusive, either personally on production of their membership card, or by post enclosing the membership card. We regret we cannot accept any requests for tickets without the production of the membership card.

Season Ticket Holders/Members guests - in the event that any guest tickets become available, an announcement would be made by the club on Thursday, February 16.

Ticket office opening hours:

Thursday February 9 - 10am to 7pm - Season ticket holders only

Friday February 10 - 10am to 7pm - Season ticket holders only

Saturday February 11 - 9am to 4pm - Season ticket holders only

Sunday February 12 - 10am to 4pm - Season ticket holders only

Monday February 13 - 10am to 7pm - Season ticket holders only

Tuesday February 14 - 10am to 7pm - Members

Wednesday February 15 - 10am to 7pm - Members

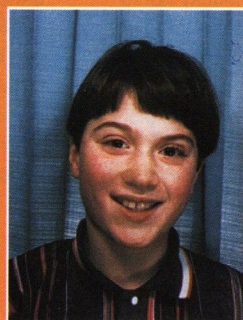
Thursday February 16 - 10am to 7pm - Members

Friday February 17 10am to 7pm - Members

LUTON'S trip to Portsmouth next month has been brought forward 24 hours, from Wednesday, February 22, to Tuesday, February 21, kick-off 7.45pm. This is to avoid a clash with live TV coverage of the Coca-Cola Cup semi-final on the Wednesday evening.

Luton Town FC Matchday Programme
Editor: Simon Oxley.
Tele: 01582 411622
Pictures: Andy Handley
Design and print:
McLeod Warner, Luton.
Tele: 01582 38389

MATCH DAY MASCOT



Name: Ryan Smiley
Date of Birth: 17/9/83
School attended: St Josephs Junior School
Other hobbies: Football / Running / Swimming / Music
Favourite Luton Town player: Dwight Marshall
Who accompanies you to Luton Town matches: My dad.



Universal Salvage Auctions

SELL OVER **1000**
REPAIRABLE/BREAKERS/STOLEN
AND RECOVERED VEHICLES AT
WEEKLY AUCTIONS

CORBY - NORTHANTS

DENNY - SCOTLAND

SANDTOFT - S.YORKS

WESTBURY - WILTS



Your nearest auction is every Wednesday at...

**DUNSTABLE ROAD
REDBOURN, HERTS**

For further information
01234 766500



The best service on a plate.

As one of the largest independent vehicle rental companies in the U.K., you can always expect a little extra from Kenning.

AN EXTENSIVE RANGE OF:

- CARS, VANS & TRUCKS.
- FULLY INCLUSIVE RATES WITH UNLIMITED MILEAGE.
- 24 HOUR NATIONAL HOTLINE HELPLINE.
- AA/RAC COVER.

KENNING

CAR AND VAN RENTAL

LUTON 0582 455333

24-34 Crawley Road.



THREE
COUNTIES RADIO

- ◆ **HOURLY SPORTS NEWS**
- ◆ **FRIDAY SPORTS PREVIEW**
(7pm)
- ◆ **SATURDAY SPORTSOUND**
(2pm-6pm)
- ◆ **MIDWEEK MATCH
COVERAGE (7.05pm - 10pm)**

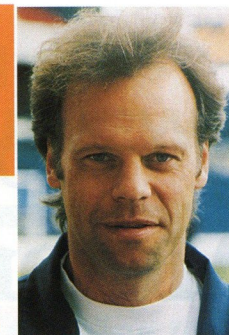
NEWS, SPORT & MUSIC
for BEDS, HERTS & BUCKS

► 103.8 FM STEREO ► 630 kHz AM



LEADING THE LINE

by TREVOR PEAKE



LEFT: Scott Oakes takes on the Southampton defence during last week's cup tie.

TODAY we must put all thoughts of the FA Cup out of our minds and concentrate on earning vital league points.

After the busy Christmas and New Year period we have played just once in the league, the defeat at Barnsley, and once again look set to have a busy list of fixtures ahead in the spring - even without a lengthy cup run.

It only takes a couple of postponements to create congestion when you have 46 league games to play, and it will be a test of our resources.

Hopefully though we are becoming equipped to deal with that, as injuries are beginning to clear. Also the manager has talked about new arrivals which always serves as a boost, and keeps everyone on their toes.

Wayne Biggins certainly made his mark last week, with a goal which I thought was the least we deserved against Southampton.

After so much pressure, and the penalty disappointment, it looked as though it might not be our day. But we persevered

well, with some tremendous vocal support I might add, and Wayne's goal was just reward.

Now we can look forward with confidence to Wednesday's replay, and then hopefully the chance to take on Tottenham at White Hart Lane.

Having said that it was time to put the FA Cup to the back of our minds, perhaps that is easier said than done!

Of course we must concentrate on the league, but we can draw upon some aspects of the cup to help us.

The determination, good football and tremendous atmosphere around the ground certainly rubbed off from cup to league last season, and must do so again if we are to challenge for a play-off place.

Oldham, after a brave display at Leeds in the cup last week, are hoping to return to the Premiership at the first attempt.

Since we were there in November, Graeme Sharp has been appointed manager, and having played against him a number of times, I can vouch for his will to win and the enthusiasm he generates.

Luton Town FC are delighted to link up with LEGAL AND GENERAL, to offer a full and comprehensive financial service to supporters of the club.

Anyone interested in receiving Legal and General's expert financial and insurance advice should contact:

Warren Miskin or Barry Shaw on 081 882 0249, quoting reference LU1.

For low cost
Motor Insurance...
...we're in a League
of our own



PHONE NOW ON



Endsleigh

Tel: 0908 675866

648/652 Silbury Blvd., Milton Keynes



matchday

The official magazine of the Endsleigh Insurance League

SPECIAL SUPPORTERS SUBSCRIPTION OFFER!
14 ISSUES FOR THE PRICE OF 12!!!

For Divisions One, Two and Three and football at its very best, read *Matchday* magazine. Packed with action, news and comment it is essential reading from Sunderland to Swindon, Swansea to Southend. Take out a subscription today. Contact Ian Allan Publishing, Select Subscriptions Ltd, Northbridge Road, Berkhamsted, Herts HP4 1ST. Tel: 0442 876661 or Fax: 0442 872279. Please make cheques for £26.40 payable to Ian Allan Publishing. Access/Visa accepted

matchday FOR FULL COVERAGE OF THE
ENDSLEIGH INSURANCE LEAGUE



LUTON TOWN TICKET OFFICE NEWS

Grimsby Town v Luton Town

**ENDSLEIGH INSURANCE
LEAGUE DIVISION ONE**

Saturday, February 11, 1995, kick-off 3pm

Pay on the day only at Grimsby. Seats are £11 (no concessions), with standing £8 (no concessions). (Ticket office open from 9 to 11am for the sale of other match tickets)

Luton Town v Swindon Town

**ENDSLEIGH INSURANCE
LEAGUE DIVISION ONE**

Saturday, February 18, 1995, kick-off 3pm

Tickets for this match are now on sale at the discounted price. Normal gisting facilities apply.

(Please note this match is subject to the result of the FA Cup fourth round replay against Southampton).

Portsmouth v Luton Town

**ENDSLEIGH INSURANCE
LEAGUE DIVISION ONE**

Tuesday, February 21, 1995, kick-off 7.45pm

Seating priced at £13 (adults) and £9 (seniors and juniors) available from the ticket office until Monday, February 20 at 4pm. Also available at Portsmouth - but no concessions.

Terracing - £8 (no concessions) - pay on night only.

PLEASE NOTE CHANGE OF DATE FOR THIS FIXTURE

Bristol City v Luton Town

**ENDSLEIGH INSURANCE
LEAGUE DIVISION ONE**

Saturday, February 25, 1995, kick-off 3pm

Pay on the day only at Bristol. Seats are £8.50 adults and £5 juniors. Seats in covered end - entrance via Winterstoke Road car park. (Ticket office open from 9 to 11am for the sale of other match tickets)

Ticket Office opening hours

Monday to Friday: 10am to 4pm

Saturday (match days): 9am to 3pm and 4.45 to 5.15pm

Saturdays (non match days): Subject to change. Please contact ticket office

For bookings, membership and enquiries, ring the Ticket Office direct on (0582) 416976. Supporters wishing to order by credit card can do so by using the 24-hour Credit Card Hotline on (0582) 30748.

Travelling to...

Grimsby Town

Address:

Blundell Park,
Cleethorpes, DN35 7PY.
Tel: (0472) 697111.

Take M1 north, M18,
M180 and A180
following signs to
Grimsby/Cleethorpes.

A180 ends at round-
about (third in short dis-
tance after crossing
docks). Take second exit
from roundabout over
railway flyover into
Cleethorpe Road
(A1098) and continue
into Grimsby Road. After
second stretch of dual
carriageway, ground is
half-a-mile on left.

Directions courtesy of
Automobile Association

**The Bobbers Travel
Club** organise coach
trips to Luton away
matches.

To book a place on the
coaches, which pick up
from a variety of points
in Luton and Mid Beds,
visit the club's ticket
kiosk in the Kenilworth
Road turnstiles, and see
Travel Co-ordinator Paul
Deason before any
Saturday first-team
home match between
2.15 and 2.45pm.

You can also telephone
Paul on Bedford (0234)
750996 - after 6pm.

Home and Away



OLDHAM ATHLETIC 1994/95

SPOTLIGHT ON TODAY'S VISITORS

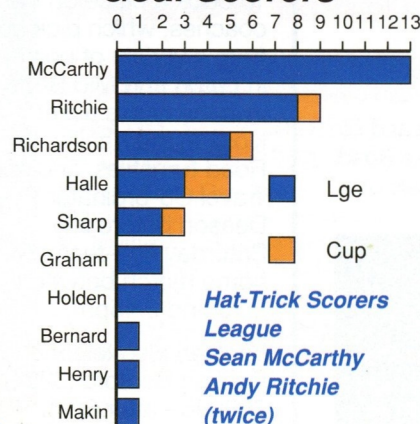


Back row: (left to right): Paul Rickers, John Eyre, Richard Jobson, Jon Hallworth, Ian Olney, Paul Gerrard, Gunnar Halle, Chris Makin, Neil Pointon.

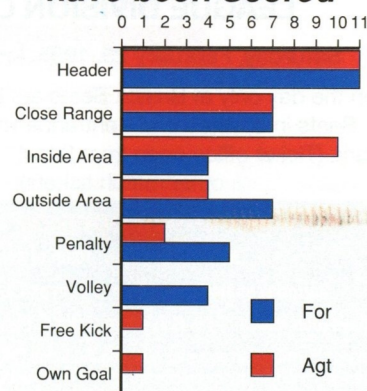
Middle row: (left to right): Bill Urmson (youth team coach), Mark Brennan, Richard Graham, Paul Bernard, Ronnie Evans (kit manager), Andy Holden (reserve team coach), Jim Cassell (chief scout), Darren Beckford, Nicky Banger, Billy Kenny, Colin Harvey (coach).

Front row (left to right): Lee Richardson, Rick Holden, Sean McCarthy, Nick Henry, Graeme Sharp (manager), Steve Redmond, Craig Fleming, Andy Ritchie, Andy Barlow.

Goal Scorers



How the Goals have been Scored



VISITORS ON PARADE

PAUL GERRARD - Goalkeeper who came through the junior ranks at Boundary Park. England Under-21 international.

JON HALLWORTH - Goalkeeper who signed from Ipswich for £125,000 in February 1989, and has since made over 250 appearances for the Latics.

ANDY BARLOW - Currently in his testimonial season at Boundary Park, and has played over 300 first team games for the club.

GUNNAR HALLE - Norwegian international, who has just signed a new three-year contract with Oldham.

RICHARD JOBSON - Highly-rated central defender now in the £2 million bracket. Has been selected for the full England squad on numerous occasions without ever winning a full cap.

CRAIG FLEMING - Signed from Halifax for £150,000.

BILLY KENNY - Signed for the Latics in the summer of 1994 from Everton.

RICHARD GRAHAM - Midfielder who has come through the junior ranks, making his debut against Manchester United last season.

NICK HENRY - Hardworking midfielder who was ruled out with injury for much of last season.

IAN OLNEY - Record signing who cost £700,000 from Aston Villa at the start of the 92/93 season.

LEE RICHARDSON - Signed in the summer for £325,000 from Aberdeen.

GRAEME SHARP - Appointed player-manager after Joe Royle's departure to Everton in November 1994.

ANDY RITCHIE - Started his career with Manchester United, scoring a hat-trick against Leeds on his debut. Moved to Elland Road, before returning back over the Pennines to Boundary Park.

PAUL BERNARD - Scottish Under-21 international and another success for the Latics youth policy.

NEIL POINTON - Experienced defender who joined Oldham for £400,000 in August 1992, after spells at Everton and Manchester City.

STEVE REDMOND - England international at all levels of youth soccer. Joined Oldham from Manchester City for £400,000 in August 1992.

DARREN BECKFORD - £300,000 buy from Norwich in March 1993.

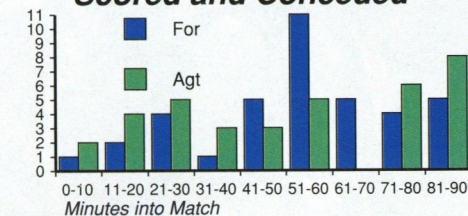
MARK BRENNAN - The ex Middlesbrough and Ipswich player joined Oldham for £100,000 from Manchester City.

CHRIS MAKIN - England Under-21 international, who gained league experience at Wigan on loan, before breaking into the Latics first team.

RICK HOLDEN - Now in his second spell with the Latics, after a 14-month stay at Manchester City. Oldham sold him to City for £900,000, and bought him back for £360,000.

SEAN MCCARTHY - 27-year-old striker signed from Bradford City in December 1993, for £450,000.

When Oldham have Scored and Conceded

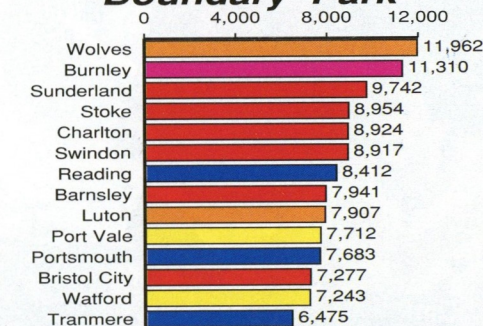


PAUL Gerrard



RICHARD Jobson

Attendances at Boundary Park



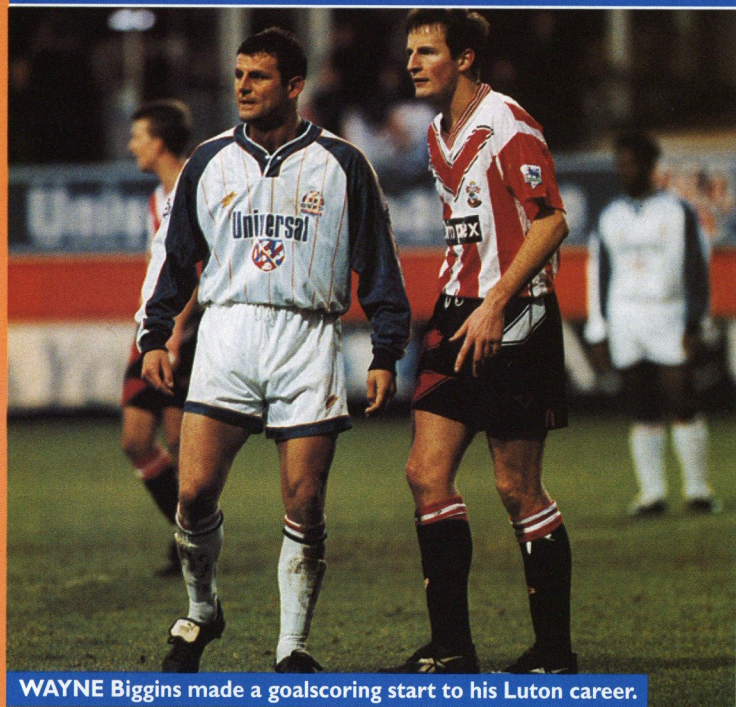
Average : 8,604 Div 1 : 10,693

Graphics by Football Information Services

JOHN EYRE - Highly-rated young centre-forward who ended the 1993/94 season as top scorer in Athletic's reserve team.

PAUL RICKERS - Made an impact in pre-season matches, and is earmarked for a place in the Latics first-team.

LUTON TOWN v SOUTHAMPTON



WAYNE Biggins made a goalscoring start to his Luton career.

From

Kenilworth Road

Date

January 28, 1995

Result

Luton Town 1

(Biggins)

Southampton 1

(Shipperley)

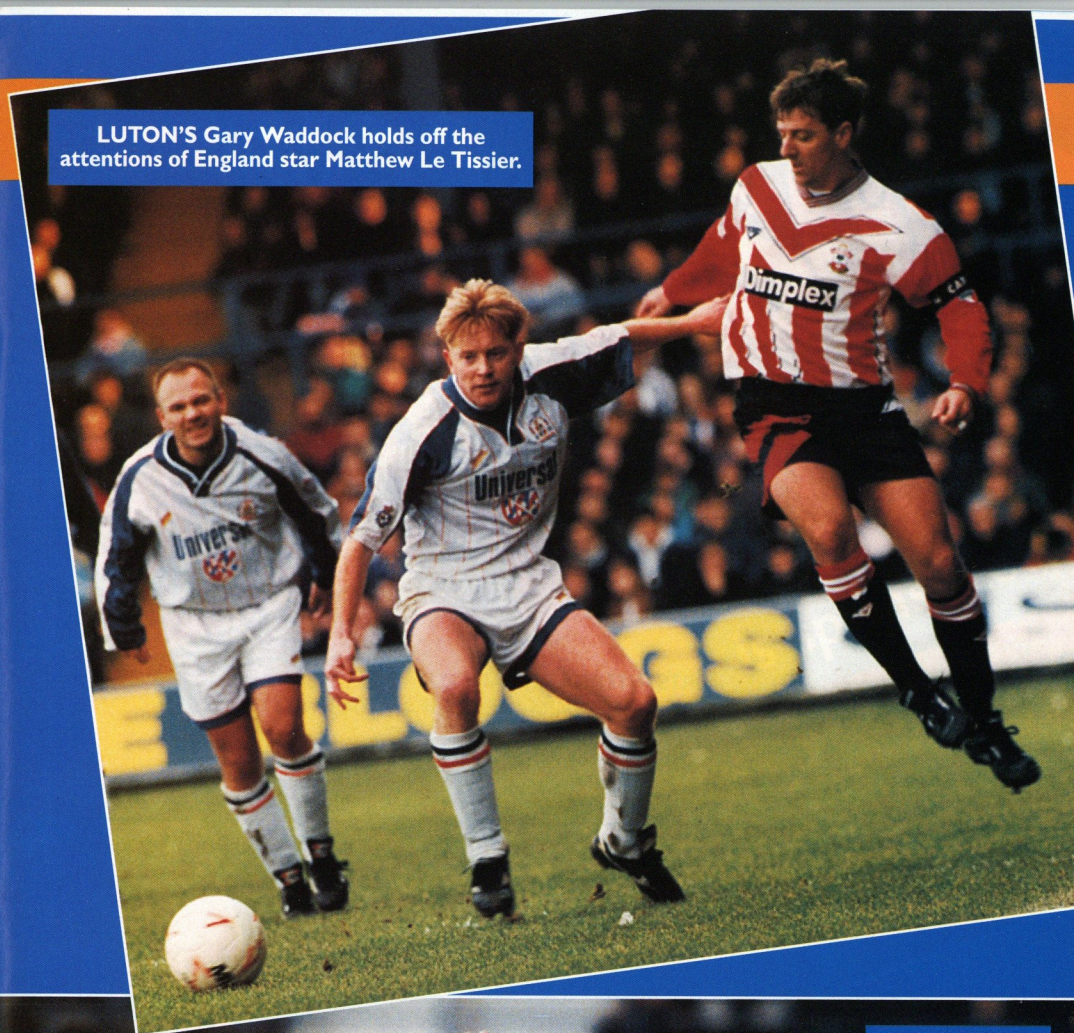
Attendance 9,938

Pictures by
ANDY HANDLEY



PAUL Telfer in high-flying action against the Saints.

LUTON'S Gary Waddock holds off the attentions of England star Matthew Le Tissier.



DWIGHT Marshall skips away from the Southampton defence to set another Town attack in motion.



S U P P L I E D B Y



MITRE SPORTS INTERNATIONAL LTD.
BIRKBY, HUDDERSFIELD, HD1 5AJ. TEL: 0484 537488. FAX: 0484 530042

A GENESCO Company
G

Football wins the Pools every Saturday



Every time you enter Littlewoods, Vernons and Zettlers Pools or Littlewoods Spot the Ball you are helping the game at all levels. The Football Trust administers funds from the Pools, helping clubs to improve safety and comfort.

The Trust receives some £37 million every year, all of it coming directly or indirectly from Littlewoods, Vernons and Zettlers Pools and Littlewoods Spot the Ball.



LITTLEWOODS VERNONS ZETTERS
Making sure football wins the Pools each week



THE FOOTBALL TRUST
Helping the game

THE FOOTBALL TRUST, WALKDEN HOUSE, 10 MELTON STREET, LONDON NW1 2EB

Football also receives £8 million a year for the use of fixtures on coupons and Littlewoods, the game's biggest benefactor, is the first sponsor of the FA Cup.

Up and down the country, clubs are building new grounds, stands, seating and roofing. All depend on the support of the Football Trust and on the success of the football pools.

KIT SPONSORS

AARON SKELTON

is sponsored by
Club Skyway of London Travel Agents



RICHARD HARVEY
Shorey Travel

DWIGHT MARSHALL
Milton Keynes Branch of the Luton Town Supporters Club

FRED BARBER
Royal Air Force Careers Information Office, Bedford

DAVID PREECE
Ken and Judi Craven

TONY ADCOCK
Chris and Kim Clarke The Wheatsheaf, Flitwick

DAVID GREENE
O'Shea's Public House, Castle Street, Luton

TONY THORPE
Bedfordshire Rural Communities Charity

JULIAN JAMES
Shorey Travel

PAUL TELFER
Convoy Installations Ltd

KELVIN DAVIS
McLeod Warner

MITCHELL THOMAS
Sam Hill

DES LINTON
Simkins Solicitors of Baldock and Sandy

CERI HUGHES
Les and Sue Miller

CLIVE GOODYEAR
Mad As A Hatter - The Luton Town fanzine

MARTIN WILLIAMS
Anchor Insurance Brokers Milton Keynes

SCOTT OAKES
Legal and General Assurance

JUERGEN SOMMER
Paul Deason

AARON SKELTON
Club Skyway of London Travel Agents

TREVOR PEAKE
Bennetts Gate Bakery of Hemel Hempstead

MARVIN JOHNSON
Graham Group PLC

DAVID PLEAT
Bobbers Travel Club, Committee and Members

KERRY DIXON
The Loyal Luton Supporters Club

To be decided
Kate and Phil Shaw

GARY WADDOCK
Mad As A Hatter - The Luton Town fanzine

To sponsor a player's kit please contact the Commercial Department on Luton 411622

KENILWORTH SUITE

ABB Flexible Automation Ltd
Anachem Ltd
Mr G. Chamberlain
Ken & Judi Craven
Fisher Frozen Foods Ltd
F & T Goodwin Ltd
Grosvenor Contracts
Handscombe Financial Services Ltd
R.W. Harvey & Son

R. Yates
Origination
Radley Shaw
Regal Litho
Steadfast Properties PLC
Wilton Contract and Vehicle Rental
Complete Contracts Ltd
The Home Counties Newspaper Group
Frank and Audrey Ludlow

CLUB 82

Bervale Mead Insurance Brokers
C.P. Contracts
J.S.B. Business Forms
Luton Cleaning Company
Nordic Supplies
Mr F.W. Pearce
The Unimec Group of Companies
Shorey Travel

TJ Aldridge Builders
Chris and Kim Clarke - The Wheatsheaf,
Flitwick
Space Display Systems
Techno Sign Ltd
Mr D.R. Kenningham
Carol and Stuart Kendall - The Blackbirds,
Flitwick

INDIVIDUAL BOX HOLDERS

Mr Alan Garner

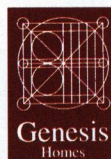
Mr Malcolm Eade

Mr Roger Eade

EXECUTIVE BOX HOLDERS



Murtagh Demolition



Cope Brothers (Printers) Limited



LTFC in the Community

with the club's new 'Football in the Community' officer
COLWYN ROWE - (0582) 411622



HATTERS FEBRUARY HALF-TERM COMMUNITY PROGRAMME 1995

Course A BEDFORD - Goldington Middle School, Haylands Way, on Sat Feb 18 and Sun Feb 19 1995, from 10am to 2pm, for boys and girls 5-14yrs, cost £16.

Course B LEIGHTON BUZZARD - Brooklands Middle School, Brooklands Drive, on Mon Feb 20 and Tues Feb 21 1995, from 10am to 2pm, for boys and girls 5-14yrs, cost £16.

Course C DUNSTABLE - Streetfield Middle School, Dunstable Road, Caddington, on Wed Feb 22 1995, from 10am to 2pm, for boys and girls 5-14yrs, cost £10.

Course D FLITWICK - Woodland Middle School, Malham Close, on Thurs Feb 23 1995, from 10am to 2pm, for boys and girls 5-14yrs, cost £10.

Course E LUTON - Lea Manor High School, Northwell Drive, on Wed Feb 22 1995, from 10am to 2pm, for boys and girls 5-14yrs, cost £10.

Course F SHEFFORD - Mini-Soccer Centre - Ideal for Beginners - at Robert Bloomfield School, Bloomfield Drive, starts Sun Feb 12 1995, for five consecutive Sunday mornings, from 10am to 11am, for boys and girls 5-11yrs, cost £11.

Course G MILTON KEYNES - Water Hall County Combined, Melfort Drive, Bletchley, on Thurs Feb 23 and Fri Feb 24 1995, from 10am to 2pm, for boys and girls 5-14yrs, cost £16.

Specialist Goalkeeping Course GK LUTON - Electrolux Sports Ground, Ely Way, off Oakley Road, on Mon Feb 20 and Tues Feb 21 1995, from 10am to 2pm, for boys and girls 8-14yrs, cost £20. Guest appearances by Luton Town goalkeepers.

All half-term courses include free match ticket

The one and two-day coaching clinics offer children a well organised coaching programme supervised by experienced, qualified Football Association coaches, with a programme designed to suit all boys and girls regardless of their footballing ability. (Staff coaches are under no liability for any loss, injury or damage whatsoever, caused throughout the course).

LUTON TOWN FOOTBALL CLUB - IN THE COMMUNITY

APPLICATION FORM

Please reserve a place on course ____ (write course letter here)

NAME: _____

AGE: _____ DATE OF BIRTH: _____

ADDRESS: _____

POSTCODE: _____

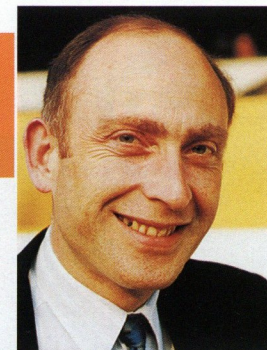
TELEPHONE NUMBER: _____

SIGNATURE OF PARENT/GUARDIAN: _____

To reserve a place, please return completed application form and cheque for full amount, made payable to "Luton Town Football Club", together with a stamped, self-addressed envelope, to: Colwyn Rowe, Community Football Officer, LTFC, Kenilworth Stadium, 1 Maple Road, Luton, Beds, LU4 8AW. You will be sent a letter of confirmation.

Colwyn Rowe would like to hear from any qualified FA coach wishing to work on Luton Town's 'Football in the Community' programme. You can phone Colwyn at the club, or write to him c/o LTFC, Kenilworth Road Stadium, 1 Maple Road, Luton, enclosing a CV.

Summer changes bewilder Oldham



by ROGER WASH

5 YEARS AGO

14/2/90 - After a three-week lay-off the Town were back in action and came back from Wimbledon with three points following a 2-1 victory. Kurt Nogan and Iain Dowie were the Luton scorers for the first away win of the season.

10 YEARS AGO

2/2/85 - Following the mid-season foray into the transfer market we now looked a strong unit again, and were a shade unfortunate to allow Tottenham to escape with a point from a 2-2 draw at Kenilworth Road. Emeka Nwajobi and Brian Stein were on target for the Town in front of a crowd of 17,511.

15 YEARS AGO

2/2/80 - Goals from Mike Saxby and Bob Hatton enabled the Town to come from behind and secure a 2-1 home win over Notts County. A crowd of 9,007 saw the Hatters maintain third position in Division Two.

20 YEARS AGO

8/2/75 - A fine strike from Ron Futchner earned both points in a 1-0 win over Newcastle at Kenilworth Road in front of a crowd of 18,019. This win finally lifted us off the bottom of Division One.

Donaghy, Turner, Aizlewood, Hill, Fuccillo, Stein, Hatton, Moss.

Oldham: McDonnell, Wood, Edwards, Blair, Holt, Hurst, Gardner, Taylor, Young, Halom, Chapman.

picking up Donaghy for a bargain £15,000.

"This man will play for his country for many years to come," predicted Pleat.

After fullback Kirk Stephens was picked up from one of David Pleat's old clubs, Nuneaton, for £5,000, a centre-half to replace the transferred Faulkner was seen to be the final piece of the jigsaw.

Pleat had his eye on Peterborough's Chris Turner, but he also knew that Norwich were interested. Without further ado he skipped across the Atlantic to talk to Turner, who was turning out for New England Teamen, and clinched the deal that would bring him to Kenilworth Road for £100,000.

Pleat now believed he had a squad to take on the best in the division, but the acid test would come when the league season started.

Oldham were the visitors to Kenilworth Road on the opening day of the campaign, and a bemused crowd of 8,043 turned up to see if they could recognise anyone as no fewer than seven players were making their first appearance in the league in Luton colours, a record apart from the opening game of the first post-war season.

At half-time that day we were wondering if the money had been spent wisely, as the Latics had taken the lead through Ian Wood early on and were comfortably in control. What was said at the interval we can only surmise, however, as just 15 seconds after the restart Hatton latched onto a long ball from Turner to level the score and then Moss put the Town in front a minute later.

This amazing turnaround drained the Latics enthusiasm and a further three-goal salvo midway through the half killed the game.

Firstly Brian Stein netted from close in after a shot came back off the post, followed by a Lil Fuccillo penalty, and then Moss hammering in a long cross from Donaghy.

Bob Hatton headed his second and Luton's sixth in the final minute. An amazing game and an amazing scoreline. At half-time did we ever doubt David Pleat's expertise in the transfer market? No, not us!

Luton: Aleksic, Stephens, Sherlock,



THE players take the applause of the crowd on the opening day of the 1978/79 season. From left to right: David Moss, Mark Aizlewood, Bob Hatton, Mal Donaghy, Steve Sherlock, Lil Fuccillo, Kirk Stephens, Brian Stein, Ricky Hill, Godfrey Ingram, Chris Turner.

WHEN David Pleat was elevated to the manager's chair in the early part of 1978 it soon became obvious to him that a complete squad change would be required if there was to be a realistic tilt at the Second Division title.

Out, more or less straightaway, went centre-half John Faulkner who joined Memphis in the North American Soccer League - teaming up with ex-Town star Jimmy Husband. With the money raised, Pleat signed Terry Hayes from Linfield for £15,000 and, more importantly, from under the noses of a host of First Division scout, 18-year-old Mark Aizlewood from Newport.

The real fun however came in the close season, when England Under-21 international Paul Futchner was reluctantly sold to Manchester City for £350,000, a record fee for both sides. Pleat now had some money to wheel and deal in the transfer market.

Firstly the Town entered into a battle with Stoke City over the signature of highly-rated Swindon winger David Moss, with the result that the bid had to be increased from £90,000 to £110,000 to enable Pleat to get his man. At the same time, highly-rated junior players

John Lucas and Steve Sherlock were signed from Manchester United and Manchester City respectively, with again Pleat winning out after seeing off the competition.

Additional forward strength was now a priority and names such as Steve Finnieston of Chelsea and John Duncan of Tottenham were bandied about, but it was to Blackpool's Bob Hatton that Pleat eventually turned. Hatton had seen his side relegated to Division Three and wanted a higher grade of football as well as a move of house back to the Midlands.

David Pleat was able to satisfy both demands and paid out £50,000 for the services of this proven goalscorer after the offer of Ron Futchner in part exchange fell through. Futchner, who was spending the summer in the States with Minnesota Kicks, did not want to drop a division and by waiting realised a dream by joining his brother at Maine Road in a £75,000 deal.

Next on the list was Mal Donaghy of Larne, who was being chased by a host of clubs including QPR, Wolves and Celtic. Larne manager Dave Halliday knew that he had a jewel on his hands and so Pleat waited until his counterpart was on holiday before approaching the Northern Irish club's directors and



COMMERCIAL CORNER with Kathy Leather

A warm welcome to Kenilworth Road to today's match and matchball sponsors

TODAY'S match sponsor is the LUTON AND DUNSTABLE LEADER, your local newspaper, as part of its third birthday celebrations.

Following in the tradition of its 103-year-old sister paper, the Luton News, the Leader has gone from strength to strength.

The unique partnership with the established paid-for Luton News and Dunstable Gazette, provides the very best local news coverage for the town, whilst also giving local advertisers the large circulation they need with the response that they want.

Look under your matchday seat to see if you have won a voucher for a FREE motorbox to sell your car, worth £20.00!!!

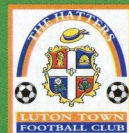
Our matchball sponsor today is MR RONALD EDWARD POULTON. Luton born and bred, Ron left school to join the motor trade. He saw service in Burma during his five years in the army.

While working for J.W. Greens Brewery, Ron was secretary of their football club and played for the team

from 1950-1960, retiring from Whitbreads in 1981.

A supporter of Luton Town since 1948, Ron has been a season ticket holder for the past fourteen years.

We would also like to thank SGC Scaffolding for being one of our joint match sponsors for last week's FA Cup fourth round game against Southampton - arrangements for which were made after the programme print deadline for that match.



LUTON TOWN FC
.....Listening to YOU!

LUTON Town Football Club are to pioneer a unique Football Supporters Panel, where we ask the views of YOU the fans.

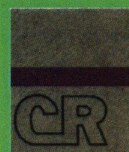
Luton Town are genuinely concerned to listen to the views of their supporters, and together with Critical Research Ltd, a Luton-based, independent professional market research company, we are planning to regularly canvass the views of Town fans.

Starting this weekend, following the home game against Oldham Athletic (and for a five-match trial period) a sample of members will be telephoned on Sunday by Critical Research's trained interviewers to get their views on all aspects of the previous day's game, Luton Town Football Club, and the football world in general.

You might be asked about the best players, the ground or facilities. And if there's any other issue you want to raise, please don't hesitate to do so.

The results of these interviews will be compiled to give a unique cross-section of what you the supporters want to see at Kenilworth Road, and a summary of the results will be forwarded to the club, and published in future match programmes.

Each interview will take less than 10 minutes, so if you get the call please tell us what you think..... We're listening.



Critical Research Ltd

Crown Life House
41-43 Alma Street Tel: 0582 480588
Luton LU1 2PL Fax: 0582 485015

Pictured above are our Match Ball Sponsors for last Saturdays game against Southampton, Keith Harvey and son Richard who are regular sponsors of the club.



◀ Mr Phil Branton managing director of Anachem, Match Sponsor for last Saturdays Cup Game with Southampton being presented with a certificate to mark the occasion by Dwight Marshall assisted by Bruce Grobbelaar and our commercial manager Kathy Leather.

**Antony's
Tailor**

OF LONDON

THE MOST
ESTABLISHED
AND RELIABLE
TAILORS IN
LUTON

DRESS HIRE
LADIES AND GENTS
BESPOKE TAILORING



12 DUNSTABLE ROAD, LUTON,
BEDS OPPOSITE MAIN POST OFFICE
TEL: (0582) 424687

offer
OFFICE OF
ELECTRICITY
REGULATION

**IS YOUR ELECTRICITY
SUPPLIER PLAYING
THE GAME?**

The Office of Electricity Regulation

- PROTECTS THE INTERESTS OF ELECTRICITY CUSTOMERS
- HELPS AND ADVISES ON DISPUTES WITH EASTERN ELECTRICITY

At home:

4th Floor, Waveney House, Handford Road,
Ipswich, Suffolk IP1 2BJ.
Telephone 01473 216101 Fax 01473 215838

And away:

The phone book or your electricity bill shows your nearest office.

**SUPPORT
THE HATTERS**

But Join The Gunners -
and be paid!

Come and see what
your local Territorial
Army Unit does

Phone (01582) 572032

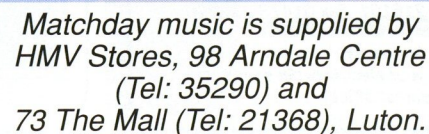
201 Battery RA (V)
TA Centre
Marsh Road
Leagrave
Luton LU3 2RX.

Luton Town Statistics

CCC = Coca-Cola Cup
FAC = FA Cup)

Own goal

(Table up to and including Tuesday, January 31).





TODAY'S OFFICIALS

Today's referee is

PAUL VANES, from Warley,
in the West Midlands.

Mr Vanes has refereed at
various levels for 23 years, and
joined the Football League list
in 1984.



CJ Francis

RJ Zipfel

OTHER DIVISION ONE MATCHES

Bolton Wanderers v Wolves

Bristol City v Barnsley

Burnley v Swindon Town

Derby County v Sheff Utd

Middlesbrough v Reading

Millwall v Grimsby Town

Southend United v Watford

Stoke City v Portsmouth

Sunderland v Port Vale

Tranmere Rovers v Notts Co

Playing Sunday:

West Brom v Charlton Athletic

TEAM CHECK

LUTON TOWN

Manager: David Pleat

Juergen SOMMER

Julian JAMES

Marvin JOHNSON

Gary WADDOCK

Mitchell THOMAS

Trevor PEAKE

Paul TELFER

Scott OAKES

Kerry DIXON

David PREECE

Dwight MARSHALL

1 Paul GERRARD

2 Chris MAKIN

3 Neil POINTON

4 Nick HENRY

5 Richard GRAHAM

6 Steve REDMOND

7 Gunnar HALLE

8 Nicky BANGER

9 Andy RITCHIE

10 Lee RICHARDSON

11 Mark BRENNAN

12

14

GK

OLDHAM ATHLETIC

Manager: Graeme Sharp



Plowmans
of
Luton

AND
LUTON
TOWN

—
THE
PERFECT
MATCH

You'll do a great deal better with us!

Open 7 Days

Vauxhall Main Dealers, 15 Hitchin Road, Luton.

Tel: 454666