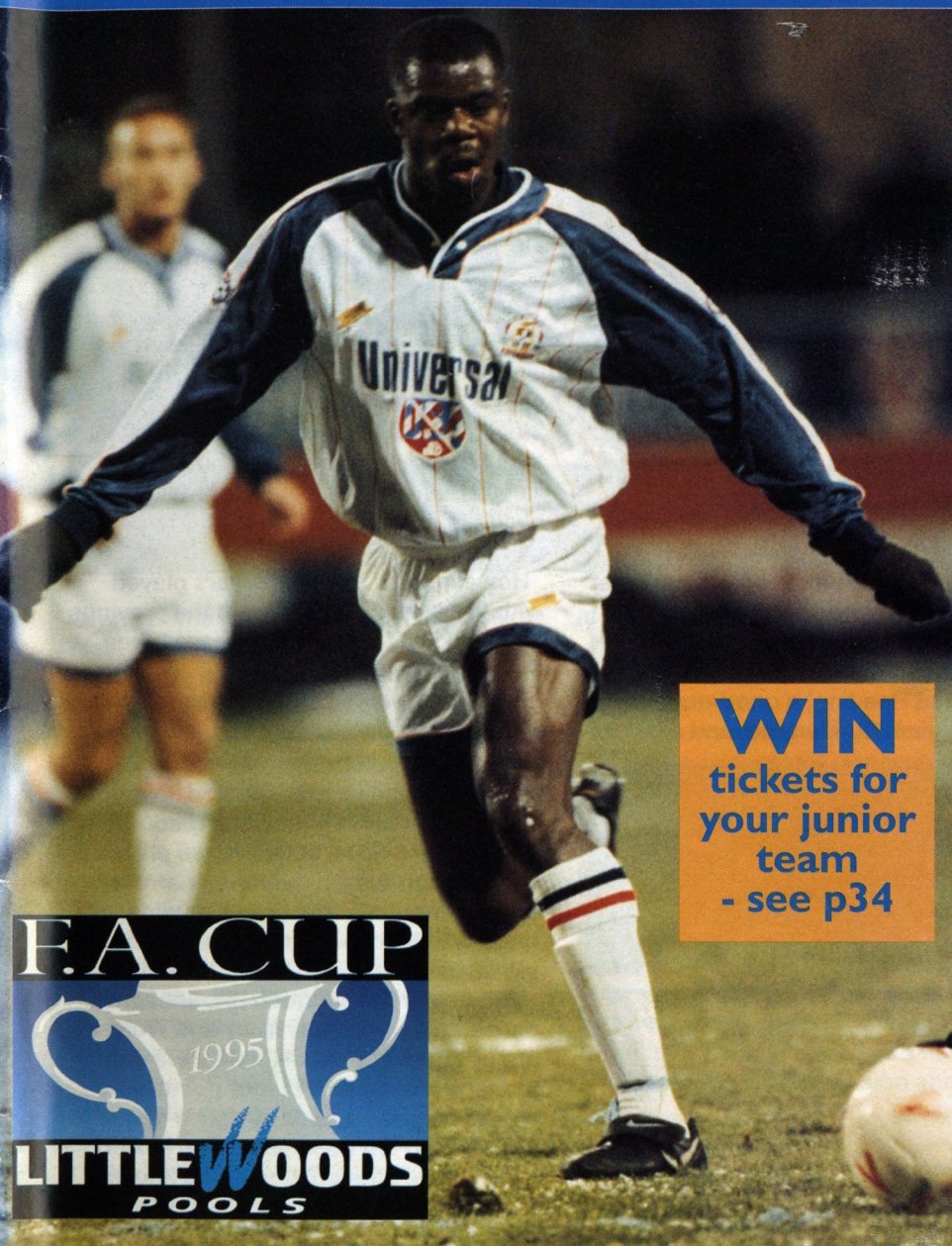


FOOTBALL ASSOCIATION CHALLENGE CUP
(SPONSORED BY LITTLEWOODS POOLS) THIRD ROUND

v BRISTOL ROVERS



**LUTON TOWN
FOOTBALL CLUB**



WIN
tickets for
your junior
team
- see p34



SATURDAY, JANUARY 7, 1995, 3PM



Sponsors of
Luton Town F.C.

MATCH SPONSORS

Members of the
Bristol Rovers Presidents Club

MATCHBALL SPONSORS

GP Quorenton Ductwork

Official matchday programme £1.50

LUTON TOWN



PLEAT'S PERSPECTIVE

THE CUP IS ABOUT THE PASSION AND THE GLORY

THIS afternoon's game has a exciting flavour. We welcome the supporters, officials and players of Bristol Rovers, currently one of the most successful club sides in the country.

We are fully aware of their record this season and respect their performances. Only a good performance where we make and take chances will be good enough this afternoon.

It was an anti-climax to return here last Monday and disappoint everyone.

Our efforts in the previous three home games had been fruitful with a solid performance at Reading, a good performance against Sunderland, and a below-

par display at Notts County which netted the points.

Charlton's early goal sustained their efforts and as the game progressed we lacked the creativity to manoeuvre the scoring chances.

It is to be hoped that David Preece will take his regular spot today, but it does illustrate that when our main passing player is missing we find it hard to compensate.

However, had several players played with the same vibrance as in the previous games, I still feel we would have taken the points off Charlton.

Every time we look at the table now we sigh and say, "if only we had gained more home points".

It is an unnecessary question. Every team can point to points escaped.

We have to make sure that we progress well enough to turn the home narrow disappointments into draws or wins, and quite simply try and retain the outstanding away form.

Either way the situation this season is delicately poised. Barnsley and Wolves are our next opponents, and if we can manage a minimum of four points we will be back on course to cause those in current play-off positions some anxiety.

The cup is different. Everyone knows the effect that last year's trip to Wembley produced.

It increased support; it gave confidence for the league matches; and several of the younger element had to produce on the big occasion.

In last year's run several younger players did magnificent fill-in jobs on different occasions. Tony Thorpe at Newcastle; Jamie Campbell in the fol-

.....LISTEN TO THE MANAGER'S VERDICT ON TODAY'S BIG GAME ON LUTON TOWN CLUBCALL 0891 121 123



THE Hatters were without the influential David Preece (above left) against Charlton, but were pleased to see Tony Adcock make his home debut, as a second-half substitute.

lowing home game; and David Greene at West Ham.

And more established younger players like Paul Telfer, Scott Oakes and Ceri Hughes showed their worth.

Competition now appears a little stronger. Hopefully Kerry Dixon will soon be fit to challenge for the striker's spot, and with Tony Adcock getting fitter we are more confident in the scoring positions.

In defence, Julian James, who has defended exceptionally well this season now faces a two-game suspension, and we have to hope that Des Linton will have recovered from his groin strain to challenge for a defensive place.

Generally speaking our disciplinary record at senior level has been good, and I have been impressed with recent standards of refereeing.

Although the FA Cup is now sponsored by Littlewoods Pools, and the FA Cup draw is tragically no longer at 12.30pm on Mondays, some traditions still remain.

No doubt the semi-finals will still be attracted to Wembley, but there is no occasion like Cup Final day in May.

Last season although confident we could beat Chelsea, our players mis-

judged the mystique of Wembley.

It is a unique place and should be kept for the final regardless of financial considerations.

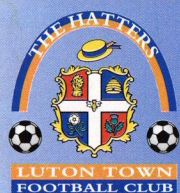
May seems a long way off but there will be hundreds of professionals today who will be inspired by the thought of the 'twin towers'.

It is hard to believe that this competition began in earnest last August, and some non-league teams playing this afternoon have already battled through several fixtures.

We must believe, with your support, we can have a run again.

Don't go quiet, we need you behind us. The cup is about the passion and the glory.

Enjoy the game.



Luton Town Football Club
Kenilworth Road Stadium,
1, Maple Road,
Luton, Beds LU4 8AW.
Tel: (0582) 411622
Fax: (0582) 405070
Ticket Office: (0582) 416976

**Chairman and
Managing Director:**
David Kohler Bsc (Hons)
ARICS

Directors:
C.S. Bassett, C.T.F. Green,
N.S. Terry

Vice Presidents:
R.L. Banks,
C. Bygraves, P. Collins,
R. Safranek,
D. Ludlow, P. Ireton.

Secretary:
John Smylie

Manager:
David Pleat

Coaches:
John Moore, Wayne Turner,
Terry Westley

Physiotherapist:
Clive Goodyear

Consultant Physio:
John Sheridan

Youth Development Officer:
Paul Lowe

Scouting:
Les Shannon

Community Football Officer:
Colwyn Rowe

Financial Administrator:
Bob Bird

Ticket Office Manager:
Cherry Newbery

Commercial Manager:
Kathy Leather

Medical Officer:
Dr Bill Berry

Club Dentist:
A. Chris BDS (Syd)

HONOURS

Littlewoods Cup winners 1987-88

FA Cup finalists 1958-59

Littlewoods Cup finalists 1988-89

Simod Cup finalists 1987-88

Champions - Division Three (S) 1936-37

Champions - Division Four 1967-68

Champions - Division Two 1981-82

David Pleat

TALK OF THE TOWN



ONE player who finally saw his luck change in 1994, albeit on the final day of the year, was Tony Adcock (pictured above).

Tony finally made his Luton Town debut on New Year's Eve, coming on as a substitute at Notts County, replacing Dwight Marshall after 70 minutes.

The former Peterborough striker arrived at Kenilworth Road in the summer, but has suffered with knee and back injuries.

Tony was close to scoring with an overhead kick at Meadow Lane, and then appeared again as a second half sub, against Charlton on Monday.

"Tony has been very unlucky with injuries," said David Pleat, "but his return gives us another option up front."

Luton Town FC Matchday Programme

Editor: Simon Oxley.

Tele: 0582 411622

Pictures: Andy Handley

Design and print:

McLeod Warner, Luton.

Tele: 0582 38389



HE'S not just shouldering responsibility for leading the Luton Town forward line! John Hartson is pictured with his 10-week-old nephew James, in a Christmas picture sent in to the club by his dad.

Will James be a centre-forward too? No doubt super-scout Cyril Beech will have his name pencilled in as one to watch!

Early cup reunion for ex-skipper Gary

AFTER home defeats this season by Burnley, Bolton, Bristol City and Barnsley, there might have been mixed feelings at Kenilworth Road when Bristol Rovers were drawn out of the bag to face the Hatters this afternoon!

But one player who was delighted with the draw was midfielder Gary Waddock, as it gives him a chance of an early reunion with the club where he spent two seasons prior to his autumn move to Luton.

"It will be nice to see the lads

again, but for the 90 minutes on the field it's down to business," he said.

"I have been looking forward to the game for some time, but it will be very difficult for us because Rovers' league form is excellent at present.

"Marcus Stewart is scoring a lot of goals, and Andy Tillson and Justin Channing have played at the highest level for QPR.

"John Ward has a very well organised side, and as ever they will have an excellent away support behind them.

"But I know the lads here want another taste of the cup success they enjoyed last season.

"It was a tremendous run, and I think the whole country realised what a tremendous achievement it was."

Gary, a former Bristol Rovers captain, spent two years at Twerton Park under Dennis Rofo, Malcolm Allison and John Ward, but FA Cup success was limited.

They went out to Aston Villa after a replay two seasons ago, with an early exit at the hands of Wycombe last term.



Universal Salvage Auctions

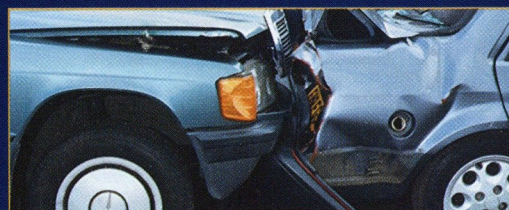
SELL OVER 1000 REPAIRABLE/BREAKERS/STOLEN AND RECOVERED VEHICLES AT WEEKLY AUCTIONS

CORBY - NORTHANTS

DENNY - SCOTLAND

SANDTOFT - S.YORKS

WESTBURY - WILTS



Your nearest auction is every Wednesday at...

DUNSTABLE ROAD REDBOURN, HERTS

For further information
01234 766500



The best service on a plate.

As one of the largest independent vehicle rental companies in the U.K., you can always expect a little extra from Kenning.

AN EXTENSIVE RANGE OF:

- CARS, VANS & TRUCKS.
- FULLY INCLUSIVE RATES WITH UNLIMITED MILEAGE.
- 24 HOUR NATIONAL HOTLINE HELPLINE.
- AA/RAC COVER.

KENNING

CAR AND VAN RENTAL

LUTON 0582 455333

24-34 Crawley Road.



- ◆ **HOURLY SPORTS NEWS**
- ◆ **FRIDAY SPORTS PREVIEW**
(7pm)
- ◆ **SATURDAY SPORTSOUND**
(2pm-6pm)
- ◆ **MIDWEEK MATCH COVERAGE** (7.05pm - 10pm)

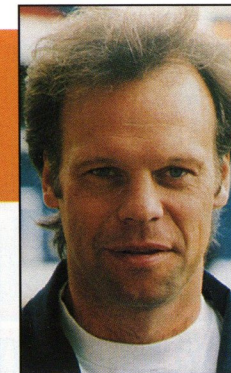
NEWS, SPORT & MUSIC
for BEDS, HERTS & BUCKS

▶ 103.8 FM STEREO ▶ 630 kHz AM



LEADING THE LINE

by **TREVOR PEAKE**



LEFT: We were all pleased to see Tony Adcock make his debut for Luton as a substitute at Notts County.



MONDAY'S defeat by Charlton came as a big disappointment to everyone, especially after the encouraging form of the previous three games over Christmas and the New Year.

We were certainly looking forward to the game against Charlton, after securing another three points away from home at Notts County on Saturday.

We weren't at our best, but still managed to win which was a good sign in some ways. I suppose we were expected to win, given our away form and the fact that County are propping up the division, but West Brom, and now Charlton, have shown us that there is no great divide between teams on the fringe of the play-off places, and teams on the fringe of the relegation battle.

I took some stick in the dressing room for my second half excursion down the right wing, and as I explained in a BBC radio interview after the game, it was probably the furthest I had been upfield since junior football!

So we entered Monday night's game with every confidence, and I must compliment the hard work of all the groundstaff in making sure the pitch was fit to play.

Conditions were difficult, but as we said the previous week against Sunderland, it was the same for both sides.

We started well, but they hit us with a good goal, and then defended very solidly.

Now we have a break from league action today, and I know everyone in the team is looking forward to another good cup run.

Last season's excitements are still fresh in the memory, and a good run in the cup can also be the platform for league success.

I know Gary Waddock is looking forward to playing his former side, and he has fitted in very well at Kenilworth Road.

He has been able to tell us plenty about Bristol Rovers, and we are well aware of what a capable side they are, with only three defeats in the league this season.

They will have over 2,000 fans cheering them on this afternoon, so it's up to us to get a good start and impose ourselves on the game. Hopefully we can book a place in tomorrow afternoon's draw, and look to embark on another successful cup run.

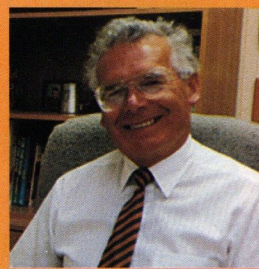
The FA Cup will always be a special part of my football memories, with two Wembley appearances, the 1987 final for Coventry, and of course last season for Luton.

But the cup can always provide a shock, as I found out with Coventry at Sutton, and as Newcastle and West Ham found out last term.

Thank you for your continued support, and we will do our best to return to winnings ways this afternoon.

Luton Town FC are delighted to link up with **LEGAL AND GENERAL**, to offer a full and comprehensive financial service to supporters of the club. Anyone interested in receiving Legal and General's expert financial and insurance advice should contact:

Warren Miskin or Barry Shaw on 081 882 0249, quoting reference LU1.



ON THE INSIDE

with John Smylie

I HAVE received a number of complaints from supporters attending matches with young children, concerned at the foul and abusive language of the people sitting next to and around them.

Obviously this is also of great concern to the club, and if this happens to you, please alert the nearest steward, so that the club can take appropriate action as soon as possible.

And in the meantime I would remind supporters that under the ground regulations fans can be ejected for using foul and abusive language.

Meanwhile on a happier note, we have received a letter of thanks from Central

Television's Controller of Sport, Gary Newbon, thanking everyone at the club for their hospitality at the recent televised game against Derby County.

We had representatives from three ITV stations at Kenilworth Road for that fixture, and we do our best to make sure that supporters are not inconvenienced by the presence of the various camera crews.

On the subject of the media, we have responded to fans' requests in allocating specific areas around the ground for press photographers to avoid obstructing the view in the front sections of the Main Stand.

SUPPORTERS, players and officials will have to wait until tomorrow afternoon for news of the FA Cup fourth round draw, which will be broadcast live on BBC's Match of the Day, at approximately 4.50pm, following coverage of the third round clash between Newcastle and Blackburn.

The draw will also be live on BBC Radio Five.

Should we progress to the fourth round, supporters will be informed as soon as possible of match and ticket details.

FOLLOWING our 5-1 win at Kempston last month, we will visit Potton in the semi-finals of the Beds Premier Cup.

The date for this game has now been fixed, and will be played at Potton on Monday, February 20, kick-off 7.30pm. In the other semi-final, Leighton Town entertain Barton Rovers.



ARE YOU IN PAIN?

Let us ease the strain...

Physiotherapy appointments are now available at the club, with Luton Town physio Clive Goodyear.

£16 per session (+VAT) - (£15 + VAT for season ticket holders)

Contact (0582) 411622 to make an appointment.



LUTON TOWN TICKET OFFICE NEWS

with CHERRY NEWBERY

Luton Town v Bristol Rovers

FA CUP THIRD ROUND IF IT'S A DRAW TODAY....

In the event of a draw, the replay will be at Twerton Park, Bath, the home of Bristol Rovers, on Wednesday, January 18, kick-off 8pm.

Terracing only available for adult supporters priced at £7 (no concessions) - pay on the night only.

Family enclosure: Available to one adult plus one child or senior citizen, price £6 adults, £4 seniors, £1 per child.

Directions: Take the M1 and M25 to the M4, exiting at the A36 to Bath city centre. Follow the Pulteney Road, then turn right into Claverton Street and along Lower Bristol Road (A36). Turn left under railway (1.5 miles) into Twerton High Street, and the ground is on the left

Barnsley v Luton Town

ENDSLEIGH INSURANCE LEAGUE DIVISION ONE

Saturday, January 14, 1995, kick-off 3pm

Seats only available for Luton supporters, priced at £10 (no concessions). It's pay on the day only at Barnsley. (The Kenilworth Road ticket office will be open from 9.30 to 11am on Saturday morning, for the sale of other match tickets).

Luton Town v Wolverhampton W

ENDSLEIGH INSURANCE LEAGUE DIVISION ONE

Saturday, January 21, 1995, kick-off 3pm

Tickets for this match are now on sale at the discounted price. Normal guesting facilities apply.

Ticket Office opening hours

Monday to Friday: 10am to 4pm

Saturday (match days): 9am to 3pm and 4.45 to 5.15pm

Saturdays (non match days): Subject to change. Please contact the ticket office

For bookings, membership and enquiries, ring the Ticket Office direct on (0582) 416976. Supporters wishing to order by credit card can do so by using the 24-hour Credit Card Hotline on (0582) 30748.

Travelling to...

Barnsley

Address:

Oakwell, Grove Street, Barnsley, S71 1ET..

Tel: (0226) 295353.

Take M1 north and exit at junction 37. Follow signs 'Football Traffic' to the ground, which is approximately 2 miles from the motorway.

Directions courtesy of Automobile Association

The Bobbers Travel Club organise coach trips to Luton away matches.

To book a place on the coaches, which pick up from a variety of points in Luton and Mid Beds, visit the club's ticket kiosk in the Kenilworth Road turnstiles, and see Travel Co-ordinator Paul Deason before any Saturday first-team home match between 2.15 and 2.45pm.

You can also telephone Paul on Bedford (0234) 750996 - after 6pm.



THE BIGGEST DRAW OF ALL.

LITTLEWOODS

For coupons phone free 0800 800 000.

Football's greatest supporter after the fans.

ON THE OTHER SIDE

'BLACK ARABS' BID FOR RETURN TO BRISTOL

THE Bristol Rovers club was formed, as the Black Arabs, in 1883 and are the oldest of Bristol's two professional clubs. To reflect their origins of East Bristol the club had by 1898 changed its name from the Black Arabs to Eastville Rovers, Bristol Eastville Rovers and finally Bristol Rovers.

They joined the Southern League in 1899, and the newly created Third Division of the Football League in 1920.

Rovers remained in the Third Division South until winning promotion in 1952/53. Their two other promotion seasons from the Third Division have been the 1973/74 and 1989/90 seasons, with the two Second Division relegation seasons occurring during 1961/62 and 1980/81 seasons.

In 65 seasons of Football League membership, Bristol Rovers have spent 18 seasons as a Second Division club and 47 in the Third Division, the club never having competed in the Fourth Division.

After two seasons in the old Division Two, followed by one season (1992/93) in the new First Division, the club suffered relegation once again.

In cup football, Rovers have twice reached the quarter-finals of both the FA Cup and League Cup, without ever reaching a semi-final.

In 1950/51 they lost a FA Cup quarter-final replay at Eastville to the eventual cup winners Newcastle United, whilst in 1957/58 Fulham defeated them in the FA Cup quarter-finals at Craven Cottage.

Wembley was reached for the only occasion in the club's history during the 1989/90 season, when Rovers lost 2-1 to Tranmere in the Leyland DAF Final. The 1989/90 season, under the leadership of manager Gerry Francis, saw a number of other club records, with Rovers' highest points total (93), most away wins (11) and fewest defeats (5).

Famous names who have played in the blue and white quarters of Bristol Rovers include Wally Hammond, later to become one of England's finest

Right: Rovers star
Marcus Stewart



batsmen, former England international Larry Lloyd, and current Tottenham skipper Gary Mabbutt. Nigel Martyn became Britain's first million pound goalkeeper when he was transferred from Rovers to Crystal Palace in November 1989.

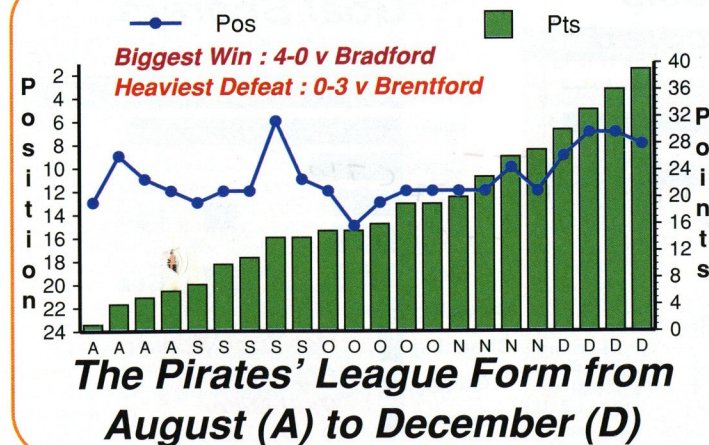
But Bristol Rovers' main problem throughout their history has been their home ground.

In 1940 they were forced for financial reasons to sell their 'home' at Eastville to the Bristol Greyhound Company. In 1986 the level of their rent forced Bristol Rovers to leave Eastville and start a ground-sharing agreement with non-league Bath City, 15 miles away from Bristol.

The club have worked extremely hard to find a new site in Bristol, but a planning application for a ground in Mangotsfield was turned down. An area in Severnside, near the second Severn Bridge, was being considered for the new ground, but following numerous meetings with Bristol City Council new problems have arisen.

Negotiations continue, and there is still hope, whilst on the field John Ward's side have made an excellent start to the this season's league campaign. Ward started his playing career with Lincoln, and played alongside Mick Harford amongst others, before a move to Watford in July 1979.

He later became Graham Taylor's assistant at Vicarage Road, and then joined Taylor at Aston Villa. When Taylor left to manage England, Ward combined his Villa coaching duties with the job of England Under-21 manager, and arrived at Bristol Rovers in March 1993, after a spell at York.



Above: Rovers
manager John Ward.

Left: Bristol's league
form this term.



BRISTOL ROVERS 1994/95

SPOTLIGHT ON TODAY'S VISITORS



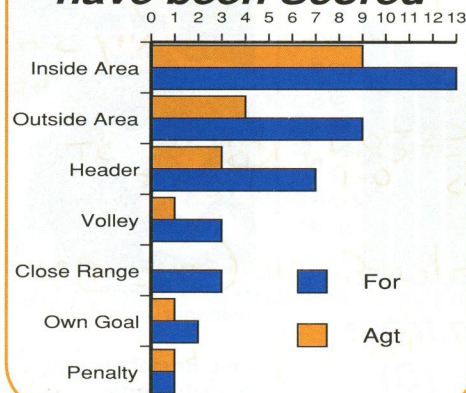
Front, left to right: Lee Archer, Paul Tovey, Andy Gurney, Mike Davis, Martin Paul, Worrell Sterling, Martin Hayfield.

Second row: Ray Kendall (kit manager), Dennis Booth (assistant manager), Vernon Stoke (director), Denis Dunford (chairman), John Ward (manager), Geoff Dunford (vice chairman), Ron Craig (director), Bob Andrews (director), Steve Cross (reserve team manager), Tony Gill (director of Centre of Excellence).

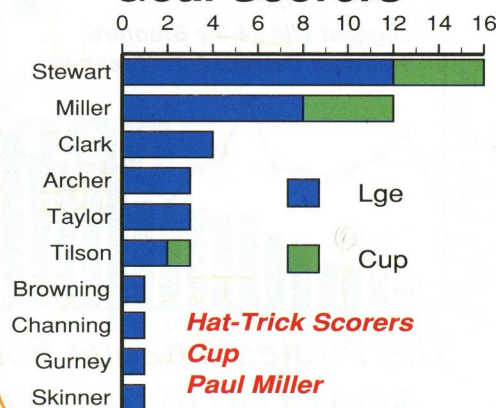
Third row: Roy Dolling (youth development officer), Ian Alexander, Justin Channing, Gary Waddock (now Luton), Marcus Law, Brian Parkin, Paul Hardyman, Dave Pritchard, Marcus Stewart, Keith James (physio).

Back row: Ian Wright, Billy Clark, Andy Tillson, Ian McLean, Gareth Taylor, Marcus Browning, Tom White, Lee Maddison.

How the Goals have been Scored



Goal Scorers



Hat-Trick Scorers
Cup
Paul Miller

VISITORS ON PARADE

LEE ARCHER - Former youth trainee who established himself in the first team last season.

LEE MADDISON - Fullback who made his debut in January 1992, but suffered a series of injuries. Last season saw a full recovery and a regular place in the first team.

ANDREW GURNEY - Utility defender or midfielder, who made his debut towards the end of the 1993-94 season.

GARETH TAYLOR - Third season with Rovers after spending two seasons at Southampton, prior to a spell as an associate schoolboy with Stoke. Missed most of the 1993/94 season with a serious knee injury.

PAUL HARDYMAN - Paul joined Rovers in August 1992 from Sunderland for a then club record fee of £160,000. Won two England Under-21 caps whilst at Portsmouth, before moving to Roker Park in July 1989.

MARCUS BROWNING - Has been with Rovers since he was a schoolboy, and was a regular scorer at youth and reserve team level. Was given his chance in the first team by caretaker coach Malcolm Allison, and is now a regular in John Ward's side.

MARCUS STEWART - Former England schoolboy international, who has been included in the England Under-21 squad on a number of occasions. Regular goalscorer who is catching the eye of the Premier scouts.

BILLY CLARK - Defender who joined Rovers in 1988, and completed a century of appearances in 1992/93.

BRIAN PARKIN - Goalkeeper who arrived at Rovers in the deal that took Nigel Martyn to Crystal Palace. Has now made over 200 appearances for the club.

PAUL MILLER - Striker who made his debut at the start of this season, following his transfer from Wimbledon. Joined the Dons as a schoolboy in 1982, and made a total of 80 league appearances for them.

ANDY TILLSON - Rovers record signing, after joining the club from QPR in November 1992 for £375,000. Formerly with Peterborough, Kettering and Grimsby.

JUSTIN SKINNER - Midfielder who joined Rovers in August 1991 for £130,000 from Fulham.

PAUL TOVEY - Gritty midfielder who joined as a professional in July 1992 following two successful seasons in the youth team.

DAVID PRITCHARD - Formerly with West Brom and Telford, before joining Rovers in February 1994.

IAN McLEAN - Scottish-born defender who grew up in Canada, playing for Winnipeg, Seattle and Portland. Came to England in 1993 and joined Rovers after trials at Millwall.

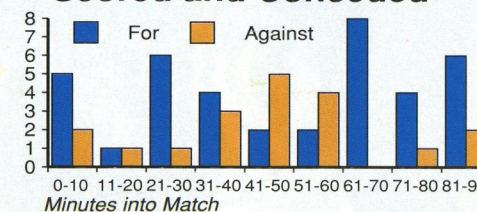
IAN WRIGHT - Signed from Stoke in October 1993, following a loan spell with Rovers. Key defender likely to be ruled out with an ankle injury today.

TOM WHITE - Central defender who came through the YTS ranks and was offered professional contract in July 1994.

MARCUS LAW - Young goalkeeper who signed professional in July 1994. Understudy to Parkin following the release of Gavin Kelly to Scarborough.

MATTHEW HAYFIELD - On Chelsea's

When Rovers have Scored and Conceded

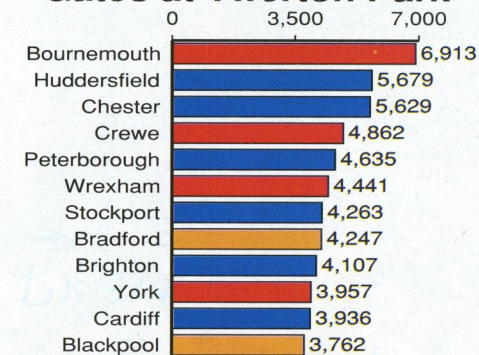


DAVE Pritchard



GARETH Taylor

Gates at Twerton Park



Graphics by Football Information Services

books as a schoolboy, but was born in Bristol and signed professional contract in July 1994.

JUSTIN CHANNING - Midfielder who was on loan from QPR for two months before signing for £275,000 in January 1993. Won England caps at youth and Under 21 level.

MIKE DAVIS - Striker signed from non-league Yate Town in April 1993 for £7,500. Regular scorer last season in the Football Combination.

WORRELL STERLING - Lively winger, formerly with Watford and Peterborough, and joined Rovers from Posh in July 1993 for £140,000, a fee decided by a league tribunal.

MARTIN PAUL - Striker who joined Rovers in July 1991, and was upgraded to the professional ranks in June 1993.

NOTTS COUNTY v LUTON TOWN



MARVIN Johnson battles for possession at Meadow Lane

From

Meadow Lane

Date

December 31, 1994

Result

Notts County 0

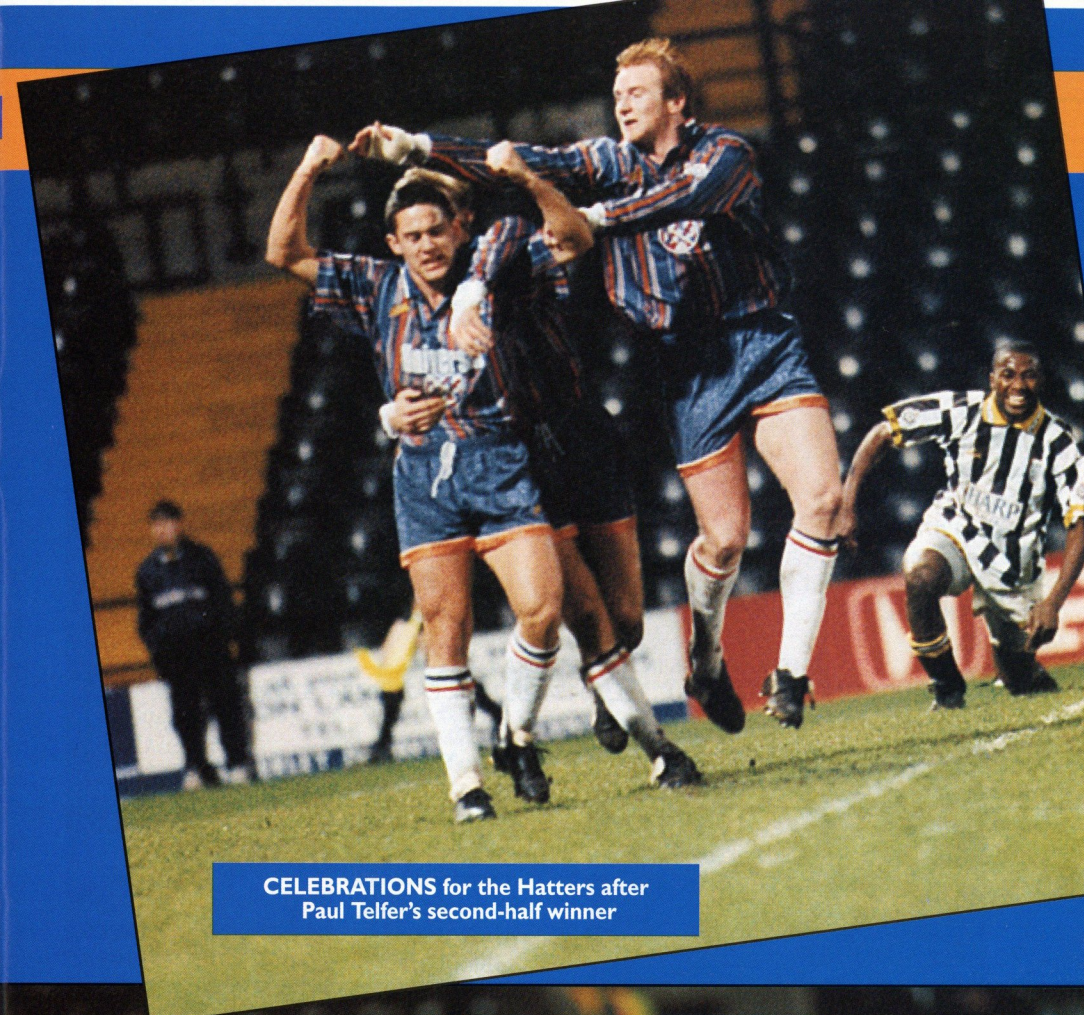
Luton Town 1
(Telfer)

Attendance 6,249

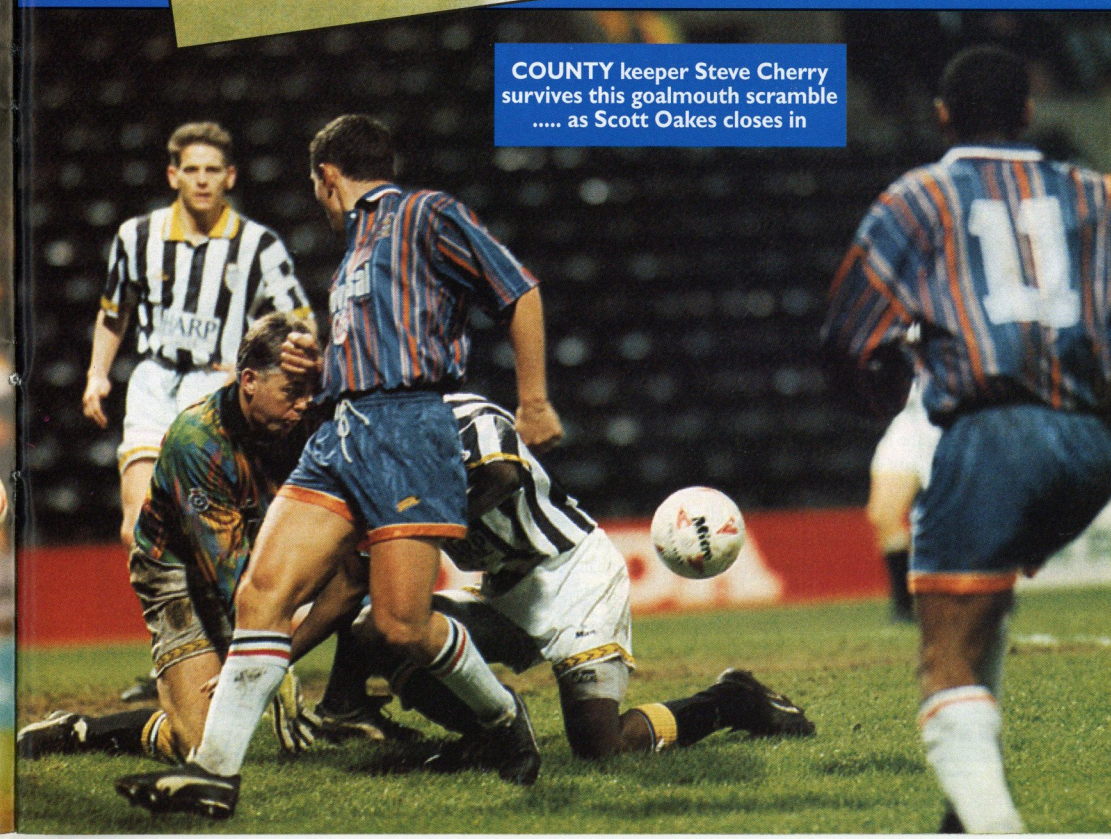
Pictures by
ANDY HANDLEY



JOHN Hartson fires in a shot during
Luton's 1-0 win at Notts County
on New Year's Eve



CELEBRATIONS for the Hatters after
Paul Telfer's second-half winner



COUNTY keeper Steve Cherry
survives this goalmouth scramble
..... as Scott Oakes closes in

S U P P L I E D B Y



MITRE SPORTS INTERNATIONAL LTD.
BIRKBY, HUDDERSFIELD, HD1 5AJ. TEL: 0484 537488. FAX: 0484 530042

A GENESCO Company
G

Football wins the Pools every Saturday



Every time you enter Littlewoods, Vernons and Zettors Pools or Littlewoods Spot the Ball you are helping the game at all levels. The Football Trust administers funds from the Pools, helping clubs to improve safety and comfort.

The Trust receives some £37 million every year, all of it coming directly or indirectly from Littlewoods, Vernons and Zettors Pools and Littlewoods Spot the Ball.

Football also receives £8 million a year for the use of fixtures on coupons and Littlewoods, the game's biggest benefactor, is the first sponsor of the FA Cup.

Up and down the country, clubs are building new grounds, stands, seating and roofing. All depend on the support of the Football Trust and on the success of the football pools.



LITTLEWOODS VERNONS ZETTERS
Making sure football wins the Pools each week



THE FOOTBALL TRUST
Helping the game

THE FOOTBALL TRUST, WALKDEN HOUSE, 10 MELTON STREET, LONDON NW1 2EB



HARRY OF THE HATTERS

HAPPY NEW YEAR TO ALL JUNIOR HATTERS

BEST wishes for the New Year to all Junior Hatters, and we look forward to seeing you all at the Saturday Club when that starts up again before our match against Wolves on January 21.

If you haven't been to the Saturday Club yet, why not come along and join the fun.

There's football, a hot lunch and a ticket for the game.

Bookings can be made at the ticket office, before the day of the game, on (0582) 416976.

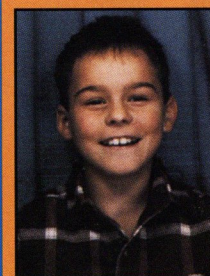


LEFT: Our mascot at Notts County was Paul Newbery. He is pictured with the two captains, the match officials, and the Notts County mascot.

RIGHT: Our mascot against Charlton was Stephen Charleson. He is pictured with Town midfielder Gary Waddock.



MATCH DAY MASCOT



Name:

Aaron Quorenton

Date of birth:

12/11/85

School attended:

Bramingham Primary

Other hobbies:

Karate

Favourite Luton

player: David Preece

Who accompanies

you to Luton match-

es: My dad.

ALL Junior Hatters can claim a £1 discount when they play Lazer Quest at Park Square, Luton, on production of their Junior Hatters membership card

LOOK OUT FOR SPECIAL COMPETITIONS AND PRIZES IN OUR NEW PRE-MATCH AND HALF-TIME ENTERTAINMENTS, HOSTED BY CHILTERN RADIO DJ PAUL BURRELL

DWIGHT Marshall loses out in this aerial battle during Monday's defeat by Charlton, as Marvin Johnson looks on.

Picture: ANDY HANDLEY

CENTRE SPOT



ABOVE: John Hartson had a splashing time on his recall to the side against Sunderland.

It's Harts of goal-d!

TEENAGE striker John Hartson returned to Luton's first-team with a goal against Sunderland, and more rave reviews.

Kerry Dixon's hamstring injury, suffered in the 0-0 draw at Reading, gave the young Welshman a chance to re-establish himself in the starting eleven, and he was pleased to be part of a winning team.

"It was a great win over Sunderland, after a good point at Reading the day before," said John. "We had to go for the win against Sunderland to keep up in the top ten, and strangely enough a lot of the lads were saying that they felt better against Sunderland having played the day before.

"It took a bit of time to get used to the conditions, but Scott grabbed a couple of goals and then I scored just after half-time, but it was also nice to keep a clean sheet again."

John's goal early in the second period sealed the win, as he converted an excellent cross from Mitchell Thomas.

"It was a good move down the left-hand side," recalled John, "and the ball was played to Mitchell who knocked it in first time. I got in front of Andy Melville, and I don't think Alec Chamberlain really fancied coming off his line to go for it, and I met it cleanly and it flew in the top corner."

John's return to the side came just days after a £1 million offer from Southampton was turned down by the club, which speaks volumes for the potential of the Welsh Under-21 striker.

"The boss called me in and had a chat, telling me what was going on," said John, "and I told him all I wanted to do was just play football and get back in the first team."

That chance was hastened by Dixon's injury, with David Pleat planning changes anyway during the hectic Christmas schedule.

"It was bad luck for Kerry," said John, "but it gives me a chance, so I'll have to keep scoring."

Keep up-to-date with all the news from Kenilworth Road on
LUTON TOWN CLUBCALL 0891 121 123

John Hartson

AUTOGRAPH



KENILWORTH SUITE

ABB Robotics Ltd
Anachem Ltd
Mr G. Chamberlain
Ken & Judi Craven
Fisher Frozen Foods Ltd
F & T Goodwin Ltd
Grosvenor Contracts
Handsombe Financial Services Ltd
R.W. Harvey & Son

R. Yates
Origination
Radley Shaw
Regal Litho
Steadfast Properties PLC
Wilton Contract and Vehicle Rental
Complete Contracts Ltd
The Home Counties Newspaper Group

CLUB 82

Bervale Mead Insurance Brokers
C.P. Contracts
J.S.B. Business Forms
Luton Cleaning Company
Nordic Supplies
Mr F.W. Pearce
The Unimec Group of Companies
Shorey Travel

TJ Aldridge Builders
Chris and Kim Clarke - The Wheatsheaf,
Flitwick
Space Display Systems
Techno Sign Ltd
Mr D.R. Kenningham
Carol and Stuart Kendall - The Blackbirds,
Flitwick

INDIVIDUAL BOX HOLDERS

Mr Alan Garner

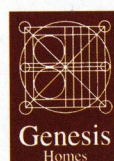
Mr Malcolm Eade

Mr Roger Eade

EXECUTIVE BOX HOLDERS



Murtagh Demolition



Cope Brothers (Printers) Limited



Luton Town footballs.....
Special price..... £8 each!

Adult sweatshirts -
Quarter 'rugby style'
shirts..... £22.99

Adult sweatshirts - Navy
with hooped sleeves.....
£22.99

Childrens 'American
style' baseball
cardigan..... £19.99
special offer

LTFC kit prices 1994/95



HOME/AWAY SHIRTS

22-24 £23.99
26-28 £23.99
30-32 £23.99
34-36 £28.99
38-40 £28.99
42-44 £30.99
46-48 £30.99

HOME/AWAY SHORTS

22-24 £12.99
26-28 £12.99
30-32 £15.99
34-36 £15.99

GOALKEEPER SHIRTS

- Grey/green
22-24 £29.99
26-28 £29.99
30-32 £29.99
34-36 £34.99
38-40 £34.99

SOCKS
HOME/AWAY
Boys £5.99
Youths £5.99
Mens £5.99

Hatters Shop Sale

Plastic mugs.....were £2.50.....now £2
Plastic 'glass'..... was £2.50.....now £2

Bottle opener/ keyring.....was £1.60 now
£1

Reversible car pennant.....was £3.99.....
now £2.50

Joe Payne limited edition T-shirt..... was
£19.99.....now £10.99

Boxed cufflinks.....were £5.....now £4

Mens 'old style' blue socks.....were £5.99
.....now £2

Wristbands.....were £1.50.....now £1.25
Headbands.....were £1.50.....Now £1.25

'Old style' crest penwas 65pnow
30p

Ladies knickers (black, red or white).....
were £2.99.....now £2.49

HATTERS SHOP OPENING HOURS: Enquiries (0582) 411622

Monday to Friday - 10am to 4pm

(Evening matchdays 10am to 10pm)

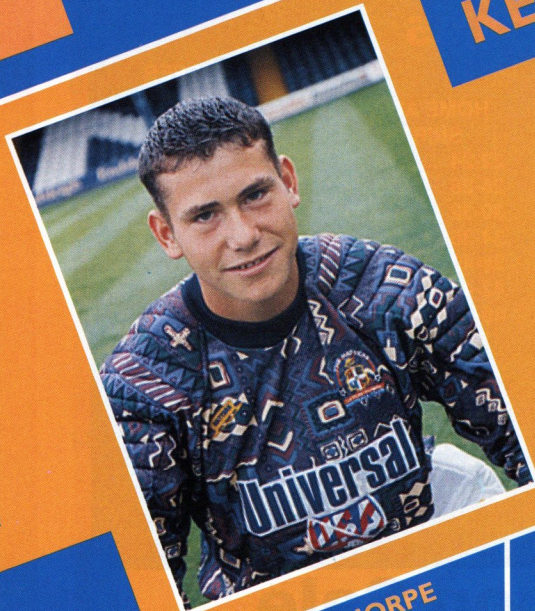
Saturdays - matchdays 9am to 5pm

-non matchdays 9am until coaches leave for away game

KIT SPONSORS

KELVIN DAVIS

is sponsored by
McLeod Warner



RICHARD HARVEY
Shorey Travel

DWIGHT MARSHALL
Milton Keynes Branch of the
Luton Town Supporters Club

FRED BARBER
Royal Air Force Careers
Information Office, Bedford

DAVID PREECE
Ken and Judi Craven

TONY ADCOCK
Chris and Kim Clarke
The Wheatsheaf, Flitwick

DAVID GREENE
O'Shea's Public House,
Castle Street, Luton

TONY THORPE
Bedfordshire Rural
Communities Charity

JULIAN JAMES
Shorey Travel

PAUL TELFER
Convoy Installations Ltd

KELVIN DAVIS
McLeod Warner

MITCHELL THOMAS
Sam Hill

DES LINTON
Simkins Solicitors of
Baldock and Sandy

CERI HUGHES
Les and Sue Miller

CLIVE GOODYEAR

MARTIN WILLIAMS
Anchor Insurance Brokers
Milton Keynes

SCOTT OAKES
Legal and General Assurance

JUERGEN SOMMER
Paul Deason

AARON SKELTON
Club Skyway of London
Travel Agents

TREVOR PEAKE
Bennetts Gate Bakery of
Hemel Hempstead

MARVIN JOHNSON
Graham Group PLC

DAVID PLEAT
Bobbys Travel Club,
Committee and Members

KERRY DIXON
The Loyal Luton Supporters Club

JOHN HARTSON
Kate and Phil Shaw

JOHN MOORE

To sponsor a player's kit
please contact the
Commercial Department
on
Luton 411622

LTFC in the Community

with the club's new 'Football in the Community' officer
COLWYN ROWE - (0582) 411622



PAUL Telfer (left) and Juergen Sommer attended the Christmas Coaching Course in Flitwick.

OUR Community Programme is under way now, with the Christmas holiday courses proving a huge success.

Courses at Robert Bloomfield Middle School, Shefford; Woodland Middle School, Flitwick; and Brooklands Middle School, Leighton Buzzard; were attended by a total of over 300 children.

There are plenty more courses coming up, with plans drawn up for the February half-term, so look out for our Luton Town leaflets at your school, and book early to avoid disappointment.

If your school would like to host a course then give Colwyn Rowe a ring on (0582) 411622.

The soccer courses are aimed at boys and girls, and will combine training and technique with enjoyment of the game, all supervised by qualified FA coaches, with Luton players lending a hand, when available.

LUTON TOWN SOCCER CLINICS (FOR BOYS AND GIRLS)

FARLEY JUNIOR SCHOOL

- Saturday, January 14, 1995, from 10am to 12 noon

ST JOSEPH'S R.C. JUNIOR SCHOOL

- Saturday, January 21, 1995, from 10am to 12 noon

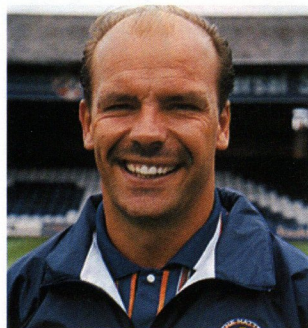
- Luton Town coach
- Technique coaching
- Fun, games etc
- Certificates for all participants, plus free home match ticket

All participants will need suitable football kit to include trainers.

Cost for the course - £5.00

For details contact Colwyn Rowe on (0582) 411622.

Colwyn Rowe would like to hear from any qualified FA coach wishing to work on Luton Town's 'Football in the Community' programme. You can phone Colwyn at the club, or write to him c/o LTFC, Kenilworth Road Stadium, 1 Maple Road, Luton, enclosing a CV.



Wed Aug 17	WATFORD	2-0
Wed Aug 24	QPR	2-1
Wed Aug 31	Charlton Athletic	1-3
Wed Sep 7	IPSWICH	2-2
Wed Sep 14	Bristol Rovers	1-3
Wed Sep 21	OXFORD	2-1
Wed Sep 28	PORTSMOUTH	1-0
Wed Oct 5	Tottenham	0-2
Wed Oct 12	Oxford	1-0
Wed Oct 19	NORWICH	3-5
Wed Oct 26	BRISTOL ROVERS	2-2
Mon Oct 31	Swindon	2-1
Tue Nov 8	Watford	0-1
Wed Nov 16	WIMBLEDON	2-4
Mon Nov 21	Portsmouth	3-0
Wed Nov 30	SWINDON	2-2
Wed Dec 7	Norwich City	0-2
Wed Dec 14	TOTTENHAM	1-2
Wed Dec 21	Southampton	1-3
Wed Jan 4	Brighton	postponed
Tue Jan 10	West Ham 7pm	
Mon Jan 16	Bristol City 7.30pm	
Wed Jan 18	WEST HAM 2pm	
Wed Jan 25	CRYSTAL PALACE 2pm	
Wed Feb 1	CHARLTON 2pm	
Wed Feb 8	ARSENAL 2pm	
Tue Feb 14	Crystal Palace 2pm	
Thu Feb 23	BRISTOL CITY 2pm	
Sat Feb 25	Arsenal 3pm	
Wed Mar 8	SOUTHAMPTON 2pm	
Wed Mar 15	Wimbledon 2pm	
Wed Mar 22	MILLWALL 2pm	
Wed Mar 29	Ipswich Town 7.30pm	
Wed Apr 5	BRIGHTON 2pm	
Mon Apr 10	Millwall 2pm	
Wed Apr 19	CHELSEA 2pm	
Tue Apr 25	Queens Park Rgrs 7pm	
Mon May 8	Chelsea 7pm	

BOLD type denotes home game. October to February inclusive to be played at Hitchin Town FC. (Luton score first).

RESERVES AND YOUTH

WITH WAYNE TURNER AND TERRY WESTLEY

THE Reserve team's match on Wednesday night at Brighton was postponed, so they return to action at West Ham on Tuesday, January 10, kick-off 7pm.

In their final game before Christmas, they went down 3-1 at Southampton, with Jamie Woodsford netting the Town goal.

Team: Davis, Chenery, Harvey, Skelton, Greene, Simpson, Power, Woolgar, Adcock, Woodsford, Williams.

Subs: McLaren, Issott, Abbey (gk).

The youth team were scheduled to return to South East Counties action last Saturday, but the match at Crystal Palace was called off due to a water-logged pitch.

So they were bidding to start 1995 with three points this morning at home to Wycombe, and also aiming for revenge for the 1-0 defeat at the Buckinghamshire side which ended Luton's interest in the FA Youth Cup.



JAMIE Woodsford

With no games over the Christmas period, **writes Simon Oxley**, it's been a time for reflection for youth team coach Terry Westley as he surveys another talented crop of Luton youngsters.

"We have had a break in terms of matches, but the lads have been busy with matchday duties for the first team," said Terry.

"And, we had Paul McLaren, Jamie Woodsford and Kelvin Davis in the squad that travelled to Notts County on New Year's Eve.

"These three have formed the backbone of our youth side, and together with Ben Chenery are players that most youth team managers in the country would like in their squad."

But Terry admits that results have been disappointing, none more so than that FA Youth Cup exit at Wycombe.

"You may not get your players available every Saturday, week-in and week-out," he pointed out, "so the league results are



PAUL McLaren

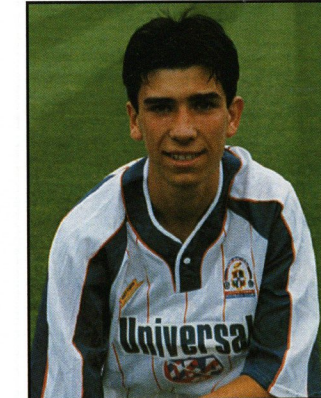
sometimes insignificant because you could be using schoolboys to have a look at them, but everyone is available for the FA Youth Cup, and I honestly thought that we had the right players in the right areas to go very close in that competition.

"But that's what the game is like. We had beaten Wycombe 5-0 in the league, and so the cup result was even more of a letdown.

"But you soldier on, and before you know where you are there are players in the first team squad, and there's another match to think about."

The early chance of a place in league football is something Luton can offer to prospective players, with Davis and McLaren making their league debuts at Stoke last season, and Woodsford appearing as a substitute at Port Vale this term.

"It's excellent for our Youth Development Officer Paul Lowe and our scouts when they go after talented young players to



BEN Chenery

say to the parents look, we've had two players (Woodsford and Danny Power) playing international football, another (Davis) on loan at a league club, and recent youth team players like Aaron Skelton, David Greene and John Hartson involved regularly in the first team."

So how are the Hatters competing in the race to sign up the next John Hartson?

"It's a very hard market which is getting more fierce than ever," admitted Terry.

"The age goes down all the time, and we can have a boy now at this club on a School of Excellence form at 10 years of age.

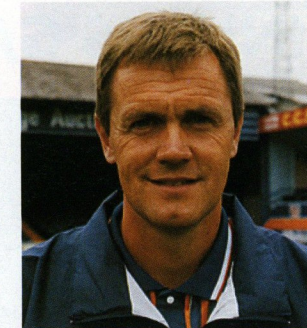
"Once they've signed that form you can sign them on year after year up until they are 16, but if Tottenham and Arsenal get them at age 10 or 11 you have virtually lost the player.

"If you look at the sides we have out on a Sunday morning at junior levels, we do compete with the best teams.

"But at the end of every year there are only one or two boys who will make it.

"You hope that after five years of that system, there's enough for David Pleat to come and pick from."

Please note that all reserve team home matches in October, November, December, January and February will be played at Hitchin Town FC.



South East Counties League and Southern Junior Floodlit Cup

Sat Aug 13	CRYSTAL PALACE	4-2
Sat Aug 20	Wycombe Wanderers	5-0
Sat Aug 27	BRIGHTON	2-3
Thu Sep 1	Coventry (SJFC Pre)	2-2
Mon Sep 5	Coventry (SJFC Pre)	1-2
Sat Sep 10	Reading	4-0
Sat Sep 17	NORWICH (LC1)	2-0
Sat Sep 24	SOUTHAMPTON	0-2
Sat Oct 1	Oxford United	0-3
Sat Oct 8	BRISTOL ROVERS	2-1
Sat Oct 15	COLCHESTER	7-0
Sat Oct 22	Colchester (LC2)	0-1
Sun Oct 23	Saffron Walden (EJC)	2-3
Sat Oct 29	WIMBLEDON	2-4
Sat Nov 5	Brentford	1-3
Mon Nov 7	STAINES TOWN (FAYC1)	5-0
Sat Nov 12	BRISTOL CITY	1-2
Sat Nov 19	Swindon Town	0-1
Mon Nov 28	Wycombe (FAYC2)	0-1
Sat Dec 3	BOURNEMOUTH	0-1
Sat Dec 10	Tottenham	2-0
Sat Dec 17	TOTTENHAM	2-3
Sat Dec 31	Crystal Palace (Postponed)	
Sat Jan 7	WYCOMBE WANDERERS	
Sat Jan 14	Brighton	
Sat Jan 28	READING	
Sat Feb 4	Southampton	
Sat Feb 11	OXFORD UNITED	
Sat Feb 18	Bristol Rovers	
Sat Feb 25	COLCHESTER UNITED	
Sat Mar 4	Wimbledon	
Sat Mar 11	BRENTFORD	
Sat Mar 18	Bristol City	
Sat Mar 25	SWINDON TOWN	
Sat Apr 1	Bournemouth	

HOME matches denoted in bold.

WINNERS GALORE IN THE XMAS DRAW



DES Linton and Tony Adcock pulled out the winning tickets in the 1994 Luton Town Christmas Draw, organised by our Lotteries Manager Jim Hugill (left).

THANK-YOU to everyone who bought a ticket in the 1994 Luton Town Christmas Draw. The winning tickets were drawn at half-time in the match against Sunderland, and the full list of prizewinners follows:

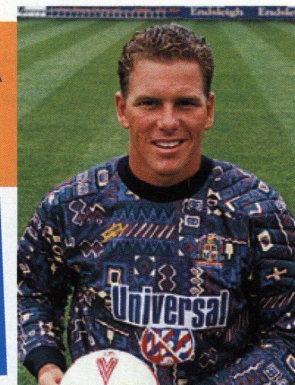
012645 Skyline Holiday - S Williams, Houghton Regis.
099842 £200 - E Collis, Heath and Reach.
020925 £100 - R Brighten, Wellingborough.

098474 £50 - A Gascoyne, Wootton.
088434 £25 - N Clements, Kingston.
048358 £25 - R Robinson, Westoning.
026662 Xmas Hamper - Mrs Byott, Hemel Hempstead. 025970 Xmas Hamper - Darren Collins, Chawston.
076846 Xmas Hamper - J Goodship, Ampthill.
020783 Large Cuddly Toy - Pc Bidgood, Dunstable Police.
£10 shopping vouchers - 046472 VJ Clarke, St Marys, Devon. 020779 J Carlton, Leicester. 103711 G Bedingfield, Welwyn Garden City.
012728 DH Clegg, Flitwick.
£5 shopping vouchers - 094511 W

Goodson, Bury St Edmonds. 023406 Coulburns, Dunstable. 024139 D Gardiner, Dunstable. 059224 AL Devlin, Dunstable. 017866 R Bryant, Leighton Buzzard. 066911 Mr Barnes, Potters Bar. 092697 AF White, Stevenage.
Cuddly Toys - 074576 E Kori, Leighton Buzzard. 092134 J Whalley, Luton. 079206 The Chequers, Westoning. 025687 J Moore, LTFC.
Bottles of wine - 086365 D Proctor, Luton. 033137 F Denton, Luton. 073986 PJ Reader, Luton. 019213 B Hearn, Leighton Buzzard.

DEFEAT A BLOW AFTER 'CLEAN SHEET' BONUS

Luton goalkeeper JUERGEN SOMMER reflects on the Christmas and New Year matches.... as told to CLUBCALL 0891 121 123



Q: The result against Charlton must have been a very disappointing end to what promised to be a very good Christmas campaign.

A: Yes, we had the makings of a very good run, with three consecutive clean sheets, and some very good results away, we were looking for a good home result to take into the cup match this weekend.

But the 1-0 defeat was certainly a setback and we will be working hard this week to put it right.

Q: Plenty of effort but no reward at the end of it, and perhaps the final ball was missing.

A: Yes, we certainly missed David Preece to put those quality balls into the box, and I thought we threw away some chances, and didn't get that good final ball in which we have become used to with Preece.

Q: The conditions were difficult against Charlton. What was the view in the dressing room?

A: We heard initially that the game was on, and then that it might possibly be off, but it was hard in some places and soft in others, and very difficult to judge the flow of the ball at times.

It held us back a little bit, but they had to play under the same conditions so it's no

excuse.

Q: To be fair to Charlton, they did score a good goal.

A: Yes it was well set up, a good low cross across the face of the box which left the striker with an easy tap in.

Q: But after the break, it was your saves that kept us in the game.

A: I was a bit lucky, just got my body behind the ball, but we win and lose as a team, so my performance is not relevant really unless we win the match. To get three points is the main concern at the end of the day.

Q: But over the Christmas period, you must have been pleased with a good run of clean sheets.

A: Yes, it's been very pleasing, and the back four and myself have been communicating very well. Trevor, Julian, Mitchell and Marvin have all contributed very well, and there's no way I can take all the credit because in most of the games I haven't had a lot of work to do.

We have worked hard for each other, but will have to work even harder in the New Year to get back up the table.

Q: This weekend it's the FA Cup, which must bring back some very happy memories for you.

A: Very much so, and I'm sure everyone enjoyed it last year. It would be nice to do the same this season. We have much the same side, with some good additions, and everyone is looking forward to the game.

SAFETY NOTE

The Chairman and Directors of Luton Town Football Club undertake to ensure as far as humanly possible that all activities that take place at the Kenilworth Stadium are conducted in such a way that, as far as is reasonably practicable, the safety of everyone working at or attending that stadium is assured.

The club's primary responsibility through the Safety Officer, Officials, Staff and Stewards will be to ensure the reasonable safety of those attending the stadium.

In the interests of public safety, the safety authority (Beds County Council) have imposed a NO SMOKING restriction in and beneath our main stand. Your co-operation is appreciated.

LUTON TOWN FOOTBALL CLUB



OFFICIAL MATCH VIDEO

CATCH ALL THE ACTION ...AGAIN... AND AGAIN!

Match videos available, for just £11.99, to buy/order, include:

Season 1993/94:

Luton 2 Newcastle 0
Luton 4 Portsmouth 1
Luton 2 Sunderland 1
Luton 2 Grimsby 1
Luton 2 Derby County 1
Luton 3 Oxford United 0
Luton 2 Peterborough 0

This season:

Watford 2 Luton 4
Luton 5 Middlesbrough 1
Swindon 1 Luton 2

Remember.... Luton Town's next home game is on Saturday, January 21, when Wolverhampton Wanderers are the visitors to Kenilworth Road, kick-off 3pm.

For full ticket information both home and away, see page 9 of today's match programme!

Cup clashes with the Pirates



ABOVE: Bristol Rovers goalkeeper Hoyle goes for the ball during the fourth round tie at Kenilworth Road in 1951. Willie Davie (10) and George Stobbart (9) wait for a slip-up.

WE welcome Bristol Rovers for our fifth clash in the FA Cup competition and with previous results in the Pirates favour by three games to one, we have some catching up to do, although we can always say that we won the last one!

The first cup meeting between the sides took place at Dunstable Road on January 5, 1901, when both teams were in the Southern League.

Rovers, who were to achieve a league double over the Town that season, had no trouble in winning through 2-0 with goals from Jones and Boucher. It was a major disappointment at the time, as Luton supporters had high hopes of a good cup run that season after dispatching Civil Service 9-1, QPR 3-0 and Kings Lynn 4-1 in previous rounds.

We had to wait a long time for the chance of revenge and it was 50 years before the teams were drawn out of the bag together again. In 1950/51 we had beaten reigning league champions Portsmouth 2-0 at Kenilworth Road in

round three, with the reward a home draw with Rovers.

Just as we raised ourselves in the game against Pompey, then so did third division Rovers in the clash with us and, despite an early goal from Charlie Watkins, they came back to win 2-1 through opportunist efforts from George Petherbridge in front of a packed crowd of 26,856.

Whereas the Town were favourites to proceed in the first two meetings this was certainly not the case when we travelled to Eastville for a round two game in January 1967. We were languishing near the bottom of Division Four at the time, without an away win to our credit that season, while Rovers were riding high in Division Three.

We had earned the right to face Rovers by beating Exeter after a replay in round one, and after a couple of good home performances over Christmas, coupled with the signing of ex-England international Derek Kevan, we were on a roll.

It is worth recalling that, after picking up our second away point of the season at Halifax just before Christmas, an optimistic Town supporter wrote to "Soccer Star" pointing out instances in the past where teams had come from nowhere to win promotion!

Anyway, I was fired with enough enthusiasm to join a surprisingly large crowd of Luton supporters at Eastville, and watched in amazement as the Town went into an early 2-0 lead that was held with ease until half-time.

The previous week, Rovers had lost their experienced goalkeeper, Bernard Hall, following a clash with former Town favourite John O'Rourke, then with Middlesbrough, and debutant goalkeeper Larry Taylor, nerves jangling, had stood rooted to the spot as Kevan scored the all important goals.

You can probably guess what came next! Rovers attacked with a vengeance in the second half, and stormed back to eventually take the game 3-2, with the winner coming five minutes from the end.

"It was an astonishing result," said manager Allan Brown through clenched teeth afterwards. David Pleat, who was in the side that day, said much the same recently!

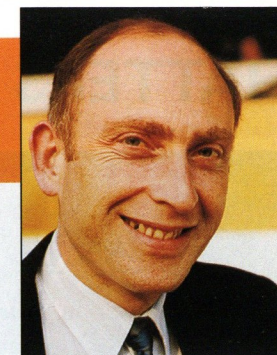
Our most recent pairing took place in January 1986 in a fourth round tie at Kenilworth Road, where the Town finally put paid to the jinx by winning at a canter 4-0. We were in seventh position in Division One at the time, while Rovers were in Division Three.

Whereas the Pirates were missing three first choice defenders, we welcomed back David Preece after injury, with Mick Harford also returning to the side only 18 days after surgery on his knee.

In truth we were pretty much unbeatable at home at the time, and had the measure of the new artificial pitch, and any player who was not comfortable on the ball was always going to struggle.

Mick Harford opened the scoring with a header after 22 minutes, with Ricky Hill extending the lead with a solo effort six minutes later.

The only real chance that fell to Rovers was an effort from Trevor Morgan just after half-time, which was well saved by Les Sealey in



by ROGER WASH

5 YEARS AGO

5/1/90: The Town went out of the cup at the first time of asking in a disastrous 4-1 defeat at Brighton - Terry Mancini's only game in charge. Danny Wilson scored the Luton consolation.

10 YEARS AGO

4/1/85: A last-gasp goal from skipper Steve Foster earned the Town the chance of a replay in a 1-1 home draw with Stoke, in front of a frozen crowd of 7,270.

15 YEARS AGO

5/1/80: Third division Swindon came to Kenilworth Road and were well worth their 2-0 win and put paid to the Town's dreams of Wembley for another year.

20 YEARS AGO

4/1/75: A wonder strike from veteran Howard Kendall earned Birmingham City a 1-0 win at Kenilworth Road in a third round cup tie, before a crowd of 17,543.

the Luton goal. But it was mostly one way traffic with further goals coming our way from Marc North and Tim Parkin, the latter turning a Brian Stein cross into his own net shortly before the end.

The Town went on to reach the sixth round that season, before going out to a Gary Lineker effort in a replay at Everton.

Those were the days

HATTERS ARE FROZEN OUT BY STUBBORN VALIANTS



LEFT: Mitchell Thomas makes a break for the Hatters against Charlton.



LEFT: On-loan midfielder Paul Allen attempts to find a way through the Charlton defence.

RIGHT: John Hartson challenges Charlton centre-half Phil Chapple



LEFT: Hartson denied again by Alan McLeary's tackle.

LUTON TOWN 0 CHARLTON ATHLETIC 1

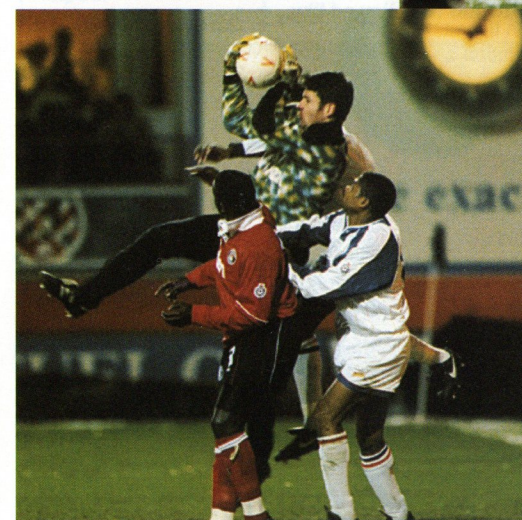
Monday, January 2, 1995,
at Kenilworth Road.

Attendance: 7,642

Pictures by
ANDY HANDLEY



ABOVE: Luton substitute Tony Adcock, on his home debut, takes on Phil Chapple.



ABOVE: Another catch for Charlton keeper Mike Salmon.

Action pictures featured in the Luton Town matchday programme are available at the special introductory price of just £2 per print!

Write to Simon Oxley, at the club, giving a brief description of the picture (programme and page number etc), and enclosing a cheque/ postal order made payable to Luton Town Football Club.

Nominate a Junior team of the month! Win tickets for the **WHOLE** team.....

THE Loyal Luton Supporters Club have teamed up with Luton Town to offer junior teams in the area the chance to watch a Hatters home match absolutely free.

The fans have successfully applied for a grant from the National Westminster Bank, as part of the bank's community programme, and, supported by the Football Club, wish to donate tickets for youngsters in the area to try and attract new supporters to Kenilworth Road.

The tickets will take the form of a monthly award, starting with January 1995, which will enable the winning team, and their manager, to watch the next Hatters home game the following month.

The winning team will be selected from YOUR nominations, and is not just aimed at

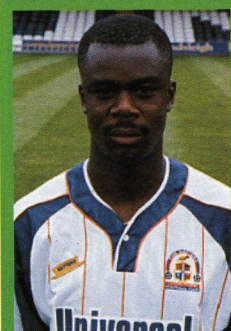
the teams at the top of the leagues.

Managers or parents should write in telling us why your team should be the Team of the Month. It may be that you recorded a first win, or only lost narrowly to the top side in your league.

Supporting the scheme, Luton Town director Chris Green said: "This is a marvellous gesture by the Loyal Luton Supporters, and we are delighted to back their idea to attract new fans to Kenilworth Road."

Nominations should be sent in, by the end of the month please, to: Junior Team Award (January), c/o Simon Oxley, LTFC, Kenilworth Road Stadium, 1 Maple Road, Luton, Beds, LU4 8AW.

Look out for a presentation on the pitch this afternoon to launch the new award!



MARVIN Johnson (above) and Dwight Marshall handed over the awards at the pre-Christmas Luton Swimming Club presentation evening, earning a big vote-of-thanks from club chairman Phil Ingram.

"They made quite an impression and were a credit to your club," said Mr Ingram.

Supporters chance to PLAY at Wembley

THE Football League is to continue the hugely successful Endsleigh Supporters' Challenge for a second successive season.

It's a unique competition in English football which actually offers the fans themselves their own chance to experience the thrill of playing on the hallowed Wembley turf.

The League, together with the Football Supporters' Association and National Federation of Football Supporters' Clubs, have teamed up again with Endsleigh, with the Challenge a key element of the 'Football League 2000' initiative - a campaign launched last season to bring clubs and their fans closer together to ensure the continuation of a healthy and viable Football League well into the next century.

The Endsleigh Supporters'

Challenge will consist of a six-a-side competition featuring supporters' teams from each of the 70 sides in the Endsleigh League.

The supporters line-ups will be selected from a random draw of the applications received from each club and managed by their Football in the Community Officer.

Teams will compete in regional heats, before the final Wembley qualifying event at Birmingham's NEC in April.

The two most successful sides will then play at Wembley as a curtain-raiser to next May's end-of-season divisional Play-off Finals.

Entry details can be found on the Endsleigh advertisement in all league programmes until the end of January.

CHEERS

Look out for more
thirst-quenching offers
for supporters in the
Hatters and Century Bars



TicketLine

0645 10 10 10
24 HOURS A DAY, 7 DAYS A WEEK
The exclusive ticket booking service for fans of Endsleigh League First Division clubs
ALL CALLS CHARGED AT LOCAL RATE

A MILTON Keynes youngster is well on the way to raising £5,000 for St John Ambulance, by visiting all 92 Premier and Football League grounds.

James Aylott, 11, from Downs Barn in the new city, has so far visited 40 clubs and travelled over 4,000 miles in his bid to buy a replacement ambulance for the Central Milton Keynes Division.

And included in his collection of balls, shirts, tickets and programmes, is a football signed by the Luton Town squad which will be included in his giant raffle at the end of the season.

James' father Dave said: "The response from all the clubs has been phenomenal, and we want to thank everyone who has helped."

A New Year message from.....



LUTON TOWN SUPPORTERS CLUB

c/o Luton Town Football & Athletic Co. Limited
Kenilworth Road Stadium, 1, Maple Road, Luton, Beds. LU4 8AW.

Dear Supporter,

This is a re-introduction to Luton Town Supporters Club, originally set up in 1988, and aimed at providing supporters with a link to the Football Club, regular meetings, a quarterly newsletter and a chance to attend the Player-of-the-Year presentation.

New members additionally receive a membership card and metal pin badge.

For the New Year, plans are in hand for monthly meetings in the Hatters lounge, with David Preece, currently enjoying one of his most successful seasons in his testimonial year, pencilled in as first 'guest'.

The newsletter has also been expanded to include match reports, articles on the football club, competitions and much more.

And for a limited period, new applications, and those renewing, will be valid not only for the

remaining part of the 1994/5 season, but also for 1996/7.

(If anyone has recently applied or written to us and we have not replied, please contact us again as we have had postage problems, and apologise for any inconvenience).

To apply for/renew membership, the fees are: New members - £7 adults, £5 juniors and OAPs. Renewals - £5 adults, £4 juniors and OAPs, and please state your existing Supporters Club number if renewing.

Send your name, address, post-code, date of birth, daytime and evening telephone numbers, together with a cheque or postal order payable to L.T.S.C. to:

Luton Town Supporters Club Memberships (0001), c/o LTFC Ticket Office, Kenilworth Road, Luton, Beds, LU4 8AW, or return to the Supporters Club kiosk after any game.

LUTON TOWN CLUBCALL

0891 121 123

For all the news updated live from Kenilworth Road.
Match commentary... Reports... Interviews with
manager David Pleat and all the Hatters players...
plus ticket information and fixture details.

Calls cost 39p a minute cheap rate and 49p at all other times.

Money from YOUR calls helps support YOUR club



COMMERCIAL CORNER with Kathy Leather

A warm welcome to Kenilworth Road to today's match and matchball sponsors



OUR half-time entertainment against Charlton included the Regional Final of the Daily Express Penalty Competition, the eventual final of which is at Wembley. Pictured above, with Football in the Community Officer Colwyn Rowe, and youth team goalkeeper Nathaniel Abbey, are finalists Andrew Burgess (home kit) and Andrew Ruck (away). Andrew Burgess was the winner.

A WARM welcome to today's match sponsors who are members of the Bristol Rovers Presidents Club.

Over the years, there has been a close relationship between this club and Luton Town, and I know they are looking forward to renewing old friendships this afternoon.

Our matchball sponsors are GP Quorenton Ductwork, who were established in the early 1980s, and are based in Barton-Le-Clay.

They manufacture and install heating and ventilation

ductwork, and carry out all sizes of contract ranging from small ventilation systems to a large building complex, and list Selfridges, Harrods, J Sainsbury and Tesco, amongst others, to whom they have supplied ductwork.

Best wishes for the New Year to all our sponsors and their guests this afternoon.



OUR matchball sponsor against Sunderland, Mr Roger Bannister of Russell Press, pictured with his son, is presented with the matchball by Luton Town skipper Trevor Peake, Julian James, and Commercial Manager Kathy Leather.

Antony's Tailor

OF LONDON

THE MOST
ESTABLISHED
AND RELIABLE
TAILORS IN
LUTON

DRESS HIRE
LADIES AND GENTS
BESPOKE TAILORING



12 DUNSTABLE ROAD, LUTON,
BEDS OPPOSITE MAIN POST OFFICE
TEL: (0582) 424687

LUTON Town can cater for everything from business breakfasts, lunches or dinners to birthday/ anniversary celebrations and wedding breakfasts.

We can help to plan events by either clients visiting the club or by making a private visit to the clients own premises.

We have a number of function suites available, from our boardroom, which is an exclusive setting for senior management meetings, to our adjacent suites which can cater for up to 100 or more delegates for conferences and seminars.

Our catering operation, which prides itself on a personal service, can provide quality refreshments to complement any occasion.



IS YOUR ELECTRICITY SUPPLIER PLAYING THE GAME?

The Office of Electricity Regulation

- PROTECTS THE INTERESTS OF ELECTRICITY CUSTOMERS
- HELPS AND ADVISES ON DISPUTES WITH EASTERN ELECTRICITY

At home:

4th Floor, Waveney House, Handford Road,
Ipswich, Suffolk IP1 2BJ.
Telephone 01473 216101 Fax 01473 215838

And away:

The phone book or your electricity bill shows your nearest office.

R. J. BLOW & C O M P A N Y

THE FRIENDLY ACCOUNTANTS

*Book-Keeping
Taxation and Wages etc.*

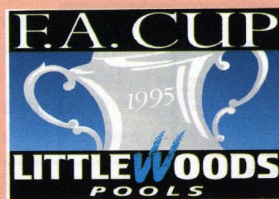
STIRLING HOUSE,
30 GUILDFORD STREET,
LUTON, BEDS LU1 2NR

Tel: (0582) 38792
Fax: (0582) 423347

TEAM STATISTICS 1994-95

Date	Opponents	F-A	Att	Pos	1	2	3
Sat Aug 13	WEST BROMWICH ALBION	1-1	8,640	-	Sommer	James	Johnson
Tue Aug 16	FULHAM CCC 1 (1)	1-1	3,287	-	Sommer	James	Johnson
Sat Aug 20	Derby County	0-0	13,060	14	Sommer	James	Johnson
Tue Aug 23	Fulham CCC 1 (2)	1-1	5,134	-	Sommer	James	Johnson
Sat Aug 27	SOUTHEND	2-2	5,918	16	Sommer	(James)	Johnson
Tue Aug 30	Tranmere Rovers	2-4	5,480	20	Sommer	James	Johnson
Sat Sep 3	Port Vale	1-0	8,541	15	Sommer	(James)	Johnson
Sat Sep 10	BURNLEY	0-1	6,911	18	Sommer	James	Johnson
Tue Sep 13	BOLTON WANDERERS	0-3	5,764	20	Sommer	James	Johnson
Sat Sep 17	Watford	4-2	8,880	16	Sommer	James	Johnson
Sat Sep 24	Millwall	0-0	7,150	16	Sommer	James	Johnson
Sat Oct 1	BRISTOL CITY	0-1	6,633	20	Sommer	James	Johnson
Sun Oct 9	Stoke City	2-1	11,712	18	Sommer	James	Johnson
Sat Oct 15	MIDDLESBROUGH	5-1	8,412	11	Sommer	James	Johnson
Sat Oct 22	Sheffield United	3-1	13,317	7	Sommer	JAMES	Johnson
Sat Oct 29	BARNLEY	0-1	7,212	10	Sommer	James	Johnson
Tue Nov 1	GRIMSBY TOWN	1-2	5,839	13	Sommer	James	Johnson
Sat Nov 5	Wolverhampton Wanderers	3-2	26,749	8	Sommer	James	Johnson
Sat Nov 12	Oldham Athletic	0-0	7,907	8	Sommer	James	Johnson
Sat Nov 19	PORTSMOUTH	2-0	8,214	8	Sommer	James	Johnson
Sat Nov 26	Swindon Town	2-1	9,455	5	Sommer	James	Johnson
Sat Dec 3	SHEFFIELD UNITED	3-6	8,516	8	Sommer	James	JOHNSON
Sun Dec 11	DERBY COUNTY	0-0	6,400	9	Sommer	James	Johnson
Sun Dec 18	West Bromwich Albion	0-1	14,392	12	Sommer	(James)	Johnson
Mon Dec 26	Reading	0-0	11,623	12	Sommer	James	Johnson
Tue Dec 27	SUNDERLAND	3-0	8,953	9	Sommer	James	Johnson
Sat Dec 31	Notts County	1-0	6,249	8	Sommer	James	Johnson
Mon Jan 2	CHARLTON ATHLETIC	0-1	7,642	8	Sommer	(James)	Johnson
Sat Jan 7	BRISTOL ROVERS FAC 3						
Sat Jan 14	Barnsley						
Sat Jan 21	WOLVERHAMPTON WANDERERS						
Sat Jan 28	FAC 4						
Sat Feb 4	OLDHAM ATHLETIC						
Sat Feb 11	Grimsby Town						
Sat Feb 18	SWINDON TOWN (FAC5)						
Wed Feb 22	Portsmouth						
Sat Feb 25	Bristol City						
Sat Mar 4	MILLWALL						
Tue Mar 7	PORT VALE						
Sat Mar 11	Southend United (FAC6)						
Sat Mar 18	TRANMERE ROVERS						
Tue Mar 21	Burnley						
Sat Mar 25	WATFORD						
Sat Apr 1	Bolton Wanderers						
Sun Apr 2	CCC Final						
Sat Apr 8	NOTTS COUNTY (FAC S/F)						
Sat Apr 15	Sunderland						
Mon Apr 17	READING						
Sat Apr 22	Charlton Athletic						
Sat Apr 29	Middlesbrough						
Sat May 6	STOKE CITY						
Sat May 20	FAC Final						

CCC = Coca-Cola Cup
FAC = FA Cup



Other FA Cup third round ties

Playing today:
Aylesbury v QPR (at QPR)
Barnsley v Aston Villa
Birmingham C v Liverpool
Bristol City v Stoke City
Bury v Tranmere Rovers
Cambridge Utd v Burnley
Chelsea v Charlton Ath
Coventry v West Brom
Everton v Derby County
Gillingham v Sheffield Wed
Grimsby Town v Norwich C
Leicester City v Enfield
Mansfield Town v Wolves
Millwall v Arsenal
Nottingham F v Plymouth A
Portsmouth v Bolton W
Reading v Oldham Ath

Scarborough v Watford
Southampton v Southend U
Sunderland v Carlisle Utd
Swansea C v Middlesbrough
Swindon Town v Marlow
Tottenham H v Altrincham
Walsall v Leeds United
Wimbledon v Colchester U
Wrexham v Ipswich Town
Wycombe W v West Ham

Playing tomorrow:
Crystal Palace v Lincoln C
Newcastle U v Blackburn R
Notts County v Manchester C

Playing Monday:
Sheffield Utd v Man Utd

	5	6	7	8	9	10	11	12	14	GK
(Skelton)	Greene	Peake	Telfer	OAKES	Dixon	Preece	(Houghton)	(Marshall)	(Linton)	Barber
(Houghton)	Greene	Peake	Telfer	OAKES	Dixon	Preece	(Houghton)	(Marshall)	(Linton)	Barber
(Linton)	Greene	Peake	Telfer	Marshall	Dixon	Preece	Hughes	Skelton	Houghton	Barber
(Linton)	(Greene)	Peake	Telfer	MARSHALL	Dixon	Preece	Hughes	(Oakes)	(Skelton)	Barber
Oakes	Greene	Peake	Telfer	(Marshall)	HARTSON	Preece	HUGHES	(Thomas)	(Dixon)	Barber
(Skelton)	Greene	Peake	Telfer	Oakes	HARTSON	Preece	HUGHES	Thomas	(Marshall)	Barber
(Skelton)	Greene	Peake	Telfer	MARSHALL	Dixon	(Preece)	Oakes	(Thomas)	(Woodsford)	Barber
(Woodsford)	(Greene)	Peake	Telfer	Marshall	Hartson	Preece	Oakes	(Thomas)	(Dixon)	Barber
(Woodsford)	(Thomas)	Peake	Telfer	Oakes	Dixon	Preece	(Hartson)	(Linton)	(Marshall)	Barber
(Woodsford)	Thomas	Peake	TELFER 2	OAKES	DIXON	Preece	Marshall	Hartson	Linton	Barber
(Woodsford)	Thomas	Peake	Telfer	Oakes	(Dixon)	Preece	Marshall	(Hartson)	Skelton	Barber
(Woodsford)	(Thomas)	Peake	Telfer	Oakes	(Dixon)	Preece	Marshall	(Hartson)	(Hughes)	Barber
(Woodsford)	Thomas	Peake	Telfer	Hughes	Hartson	(PREECE)	MARSHALL	(Oakes)	Williams	Barber
(Woodsford)	Thomas	Peake	Telfer	Hughes	HARTSON	(PREECE)	MARSHALL 2	(Oakes)	Dixon	Barber
(Woodsford)	Thomas	Peake	Telfer	Hughes	DIXON	(Preece)	Marshall	(Oakes)	Thorpe	Barber
(Woodsford)	Thomas	Peake	Telfer	Hughes	Hartson	Preece	(Marshall)	(Oakes)	(Dixon)	Barber
(Woodsford)	Thomas	Peake	Telfer	(Hughes)	Hartson	Preece	Marshall	(OAKES)	Dixon	Barber
(Woodsford)	Thomas	Peake	Telfer	Oakes	(DIXON)	PREECE	MARSHALL	(Hartson)	Thorpe	Barber
(Woodsford)	Thomas	Peake	Telfer	Oakes	Dixon	Preece	(Marshall)	(Hartson)	Thorpe	Barber
(Woodsford)	Thomas	Peake	Telfer	OAKES	DIXON	PREECE	(Marshall)	(Thorpe)	Hartson	Barber
(Woodsford)	Thomas	Peake	Telfer	OAKES	(DIXON)	Preece	Linton	Woodsford	(Hartson)	Barber
(Woodsford)	Thomas	Peake	Telfer	Oakes	Dixon	(Preece)	(Linton)	(HARTSON)	(Marshall)	Barber
(Woodsford)	Thomas	Peake	Telfer	Oakes	(Dixon)	Preece	(Allen)	(Hartson)	(Marshall)	Barber
(Woodsford)	Thomas	Peake	Telfer	Oakes	Dixon	Preece	Marshall	(Hartson)	Skelton	Barber
(Woodsford)	Thomas	Peake	Telfer	(Allen)	(Dixon)	Preece	Marshall	(Hartson)	(Oakes)	Davis
(Woodsford)	Thomas	Peake	Telfer	OAKES 2	HARTSON	(Preece)	(Marshall)	(Skelton)	(Williams)	Davis
(Woodsford)	Thomas	Peake	TELFER	Oakes	Hartson	Preece	(Marshall)	Skelton	(Adcock)	Davis
(Woodsford)	Thomas	Peake	Telfer	Oakes	Hartson	Allen	Marshall	Skelton	(Adcock)	Davis

LUTON TOWN 1994/95

PLAYER (figure in bracket = sub app.)	LEAGUE APPS	LEAGUE GOALS	CUP APPS	CUP GOALS
Juergen SOMMER	26	-	2	-
Julian JAMES	26	1	2	-
Marvin JOHNSON	26	1	2	-
Aaron SKELTON	3 (1)	-	(1)	-
David GREENE	6	-	2	-
Trevor PEAKE	26	-	2	-
Paul TELFER	26	3	2	-
Scott OAKES	19 (6)	6	1 (1)	1
Kerry DIXON	16 (2)	5	2	-
David PREECE	25	4	2	-
Scott HOUGHTON	1	-	1	-
Dwight MARSHALL	20 (5)	5	1 (1)	1
Des LINTON	3 (2)	-	1 (1)	-
Ceri HUGHES	8 (1)	2	2	-
Mitchell THOMAS	20 (2)	-	-	-
John HARTSON	11 (9)	5	-	-
Gary WADDOCK	20	-	-	-
Jamie WOODSFORD	(1)	-	-	-
Tony THORPE	(1)	-	-	-
Paul ALLEN	4	-	-	-
Martin WILLIAMS	(1)	-	-	-
Tony ADCOCK	(2)	-	-	-
Own goal		3		

ENDSLEIGH LEAGUE DIVISION ONE

	P	W	D	L	F	A	PTS
Middlesbro	25	14	6	5	39	22	48
Wolves	26	13	5	8	47	34	44
Tranmere R	26	12	7	7	40	28	43
Bolton W	26	12	7	7	39	29	43
Sheff Utd	26	11	8	7	42	28	41
Reading	26	11	8	7	31	24	41
Barnsley	25	11	5	9	29	30	38
LUTON T	26	10	7	9	35	31	37
Watford	26	9	10	7	28	28	37
Oldham A	25	10	6	9	36	32	36
Millwall	25	9	8	8	32	30	35
Stoke C	25	9	8	8	28	29	35
Southend U	26	10	5	11	27	42	35
Grimsby T	25	8	10	7	35	35	34
Charlton A	25	8	9	8	37	36	33
Derby C	25	8	9	8	26	24	33
West Brom	26	8	7	11	23	33	31
Sunderland	25	6	12	7	26	25	30
Portsmouth	26	7	8	11	28	38	29
Burnley	23	6	9	8	26	31	27
Swindon T	25	6	8	11	32	41	26
Port Vale	24	6	7	11	28	34	25
Bristol C	26	6	5	15	20	36	23
Notts County	25	4	6	15	22	36	18

(Table up to and including Monday, January 2).



Matchday music is supplied by
HMV Stores, 98 Arndale Centre
(Tel: 35290) and
73 The Mall (Tel: 21368), Luton.



TODAY'S OFFICIALS

Today's referee is
PAUL REJER, from Tipton,
in the West Midlands.

Mr Rejer is a sales manager,
and was a linesman at last
season's FA Cup Final between
Manchester United and
Chelsea.



S.J. French



R.L.
Saunders

IF IT'S A DRAW.....

If today's game ends in a draw, the
replay will be at Twerton Park, Bath,
the home of Bristol Rovers, on
Wednesday, January 18, 8pm.

(Ticket details on page 9).

The draw for the FA Cup fourth
round will be made on BBC 1's
Match of the Day, and on BBC
Radio Five, at 4.50pm tomorrow
afternoon, following the Newcastle
United v Blackburn Rovers game.

TEAM CHECK

LUTON TOWN

Manager: David Pleat

Juergen SOMMER

Julian JAMES

Marvin JOHNSON

Gary WADDOCK

Mitchell THOMAS

Trevor PEAKE

Paul TELFER

Scott OAKES

John HARTSON

David PREECE

Dwight MARSHALL

BRISTOL ROVERS

Manager: John Ward

1 Brian PARKIN

2 Dave PRITCHARD

3 Andy GURNEY

4 Marcus BROWNING

5 Billy CLARK

6 Andy TILLSON

7 Worrell STERLING

8 Paul MILLER

9 Marcus STEWART

10 Justin SKINNER

11 Lee ARCHER

12

14

GK



Plowmans
of
Luton

AND
LUTON
TOWN

—
THE
PERFECT
MATCH

You'll do a great deal better with us!

Open 7 Days

Vauxhall Main Dealers, 15 Hitchin Road, Luton.

Tel: 454666