

ENDSLEIGH INSURANCE LEAGUE DIVISION ONE

v CHARLTON ATHLETIC



**LUTON TOWN
FOOTBALL CLUB**



MONDAY, JANUARY 2, 1995, 7.45PM



Sponsors of
Luton Town F.C.

Official matchday programme £1

LUTON TOWN



PLEAT'S PERSPECTIVE

IT IS NOT IMPOSSIBLE TO PLAY TWICE IN TWO DAYS

A WARM welcome to all supporters who have come here this evening to watch our first home game of 1995.

It was unfortunate that the London police authorities insisted that Charlton's home fixture with Millwall was played on Sunday afternoon, giving them a second successive day of football. We have put the kick-off back to this evening, but are aware that Charlton would have preferred a day's break.

We can understand that, but in the current financial climate it is important that we maximise our gate. Nevertheless we extend a most hospitable welcome to all directors, supporters and players of our South London friends.

There is not one club in the country who can claim to have achieved what Charlton have done over the last few years. To go back to their original home from an almost desperate position, and reclaim and build a most marvellous stadium is a credit to everyone connected with the club, and in my view completely reduces the

achievements of some high-profile big-spending clubs in comparison. They have recently picked up successive wins and I know that their management team were watching the mud frolics here against Sunderland. It will be a good test of our progress if we manage to succeed this evening.

I have rarely seen such rubbish written about the difficulties that professionals in the so-called Premiership experienced last weekend. It is not impossible for players to play two games in two days, and this was shown when we had to survive the very heavy conditions against Sunderland. Indeed, our older players, Trevor Peake and David Preece, felt better for the run out the previous day!

There is no question that the holiday fixtures are the most looked forward to in the calendar by most supporters, and this is borne out by the high attendances all over the country last weekend, and hopefully it will be repeated this New Year's weekend.

It seems there is a tendency at the moment to knock certain parts of our game. The one most vulnerable spot of course is the officiating. But I would like to say how impressed I have been, in three successive games, when we have lost, drawn and won, with the refereeing of Mr Brandwood, Mr Singh and Mr Holbrook. All refereed in their own way, but I felt that all three were competent, made decisions clearly, and never allowed a player to take advantage. Full marks to them.

It is in stark contrast unfortunately to the rather heavy-handed and officious refereeing that we are seeing in reserve games in the Avon Insurance Combination at the moment. I am rather concerned about this, as the officials, naturally hoping to get on the Football League list, and in front of the assessors, are refereeing most strictly and with little common sense, and most importantly failing to understand when a tackle is genuinely mis-timed.

It was suggested that in the last game against Sunderland, Scott Oakes and John Hartson were taking the places of two injured players. This was not so, as both Oakes and Hartson finished the game against Reading and both were fully in my plans to play the second game of the holiday programme before we took the field at Reading.



SPLASHING time, wish you were here! Scott Oakes celebrates his two goals against Sunderland

The pleasing thing about the away fixture at Reading was not only the splendid support, almost 2,000 Luton supporters who braved some poor weather, but the excellent, united defending of our team.

I thought we were more than competent, and it has helped Juergen to really re-establish his confidence after the 'mickey-mouse' 6-3 Sheffield United affair. Prior to our trip to Notts County we have had three clean sheets in four games, and players breed confidence from solid defending.

The second fixture gave us further pleasure, partly because of the crowd on an abysmal day, and secondly because of the way our players adapted to a more straightforward style, which was needed under the conditions. There was less intricate passing, and we were pleased that John Hartson, starting the game for the first time in several weeks, managed to take the weight to good effect up front.

I thought the result was fully deserved, and was a little bit disappointed with Mick Buxton's comment made privately to the press that he felt the game should not have been played. He never made any comment either to the referee or to me prior to the game, and I am quite sure that had Sunderland been leading 2-0 at half-time he would not have had thoughts of excusing his players by giving them an 'out' regarding the conditions.

It is sometimes interesting to look at other manager's programme notes. The Sheffield United programme after the 6-3 result was sent to me, and I understand Dave Bassett's semi-cynicism, but I feel it is unnecessary. We can also play direct football, as we played against Sunderland, but we have proved we can play another way to.

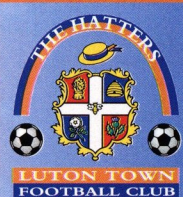
It has been a very busy week with several trialists coming from junior football to show their paces. Last Wednesday morning, we were joined by four players

currently playing non-league football for a two-day stay. This included a game against an Arsenal team at London Colney on Thursday.

Our injury situation is improving. We are still without Ceri Hughes and Des Linton, whilst Tony Thorpe is troubled by a sore back. Paul Alen also has some muscle spasms which precluded him from being considered for the Sunderland game, as with Kerry Dixon who has a hamstring strain. It is important, as we face the turn with 34 points, that we have as many fit players as possible for the difficult games ahead.

Next Saturday is one of the most important fixtures of our season. Bristol Rovers have proved one of the most successful sides in the first half of the season having lost only three matches. It is a most impressive performance, and is only bettered by Birmingham City and Carlisle in all the leagues - a truly marvellous achievement. We shall all have to be on our toes on Saturday, and I am hoping that our public will turn out in force. We all remember the value and importance of the players growing up through last year's cup run. The experience was vital, and although we were all disappointed by the semi-final result and performance at Wembley, what we know for sure is that those 'big game' experiences helped develop the mentality and progress of the younger element on which our club thrives.

Enjoy the game today. Hopefully it is the start of a new exciting year for us, and we value your support more than ever, and hope that we can continue to have full houses as we did for the enthralling Sunderland fixture.



Luton Town Football Club
Kenilworth Road Stadium,
1, Maple Road,
Luton, Beds LU4 8AW.
Tel: (0582) 411622
Fax: (0582) 405070
Ticket Office: (0582) 416976

Chairman and Managing Director:
David Kohler Bsc (Hons)
ARICS

Directors:
C.S. Bassett, C.T.F. Green,
N.S. Terry

Vice Presidents:
R.L. Banks,
C. Bygraves, P. Collins,
R. Safranek,
D. Ludlow, P. Ireton.

Secretary:
John Smylie

Manager:
David Pleat

Coaches:
John Moore, Wayne Turner,
Terry Westley

Physiotherapist:
Clive Goodyear

Consultant Physio:
John Sheridan

Youth Development Officer:
Paul Lowe

Scouting:
Les Shannon

Community Football Officer:
Colwyn Rowe

Financial Administrator:
Bob Bird

Ticket Office Manager:
Cherry Newbery

Commercial Manager:
Kathy Leather

Medical Officer:
Dr Bill Berry

Club Dentist:
A. Chris BDS (Syd)

HONOURS

Littlewoods Cup winners 1987-88

FA Cup finalists 1958-59

Littlewoods Cup finalist 1988-89

Simod Cup finalists 1987-88

Champions - Division Three (S) 1936-37

Champions - Division Four 1967-68

Champions - Division Two 1981-82

David Pleat

TALK OF THE TOWN

WELSH international Ceri Hughes hopes to make his comeback in the reserves later this month, following the knee injury which has kept him out of action since the beginning of November.

"Ceri has been working very hard in the gym, after what was another real knockback with injury," said David Pleat.

Goalkeeper Fred Barber has returned to Peterborough for a month on loan, and went straight into their first team for their Christmas matches against Oxford and Wrexham.

The Reserve side went down 3-1 at Southampton, on Wednesday, December 21, with Jamie Woodsford scoring the Town goal.

Team: Davis, Chenery, Harvey, Skelton, Greene,



CERI Hughes

Simpson, Power, Woolgar, Adcock, Woodsford, Williams.

Subs: McLaren, Issott, Abbey. The Reserves are back in action on Wednesday, January 4, away to Brighton.

We hope to announce the date of our Beds Premier Cup semi-final as soon as possi-

ble. Following our 5-1 quarter-final win at Kempston Rovers, Luton have been drawn away to Potton in the last four.

The tie is due to be played by February 14.

Apologies if today's kick-off time has caused any inconvenience. The decision to kick-off at 7.45pm was reached as a compromise with Charlton, after the Metropolitan Police ordered their home match with Millwall to be switched from Saturday to yesterday, Sunday, at 12 noon.

We were keen to play Charlton this afternoon, whilst the Londoners understandably wanted to switch to Tuesday evening. Thus the compromise of Monday evening was reached.

Thank-you for your co-operation.

SAFETY NOTE

The Chairman and Directors of Luton Town Football Club undertake to ensure as far as humanly possible that all activities that take place at the Kenilworth Stadium are conducted in such a way that, as far as is reasonably practicable, the safety of everyone working at or attending that stadium is assured.

The club's primary responsibility through the Safety Officer, Officials, Staff and Stewards will be to ensure the reasonable safety of those attending the stadium.

In the interests of public safety, the safety authority (Beds County Council) have imposed a NO SMOKING restriction in and beneath our main stand. Your co-operation is appreciated.

Luton Town FC Matchday Programme

Editor: Simon Oxley.

Tele: 0582 411622

Pictures: Andy Handley

Design and print:

McLeod Warner, Luton.

Tele: 0582 38389

LUTON TOWN CLUBCALL

0891 121
123

For all the news updated live from
Kenilworth Road. Match commentary...
Reports... Interviews with
manager David Pleat and all the Hatters
players... plus ticket information and
fixture details.

Calls cost 39p a minute cheap rate and 49p at all other times.



TicketLine 0645 10 10 10

The exclusive ticket booking service for fans
of Endsleigh League First Division clubs

24 HOURS A DAY, 7 DAYS A WEEK

ALL CALLS CHARGED AT LOCAL RATE



Universal Salvage Auctions

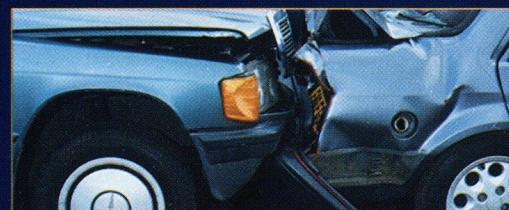
SELL OVER 1000 REPAIRABLE/BREAKERS/STOLEN AND RECOVERED VEHICLES AT WEEKLY AUCTIONS

CORBY - NORTHANTS

DENNY - SCOTLAND

SANDTOFT - S.YORKS

WESTBURY - WILTS



Your nearest auction is
every Wednesday
at...

**DUNSTABLE ROAD
REDBOURN, HERTS**

For further
information
01234 766500



The best service on a plate.

As one of the largest independent vehicle rental companies in the U.K., you can always expect a little extra from Kenning.

AN EXTENSIVE RANGE OF:

- CARS, VANS & TRUCKS.
- FULLY INCLUSIVE RATES WITH UNLIMITED MILEAGE.
- 24 HOUR NATIONAL HOTLINE HELPLINE.
- AA/RAC COVER.

KENNING

CAR AND VAN RENTAL

LUTON 0582 455333

24-34 Crawley Road.



- ◆ **HOURLY SPORTS NEWS**
- ◆ **FRIDAY SPORTS PREVIEW** (7pm)
- ◆ **SATURDAY SPORTSOUND** (2pm-6pm)
- ◆ **MIDWEEK MATCH COVERAGE** (7.05pm - 10pm)

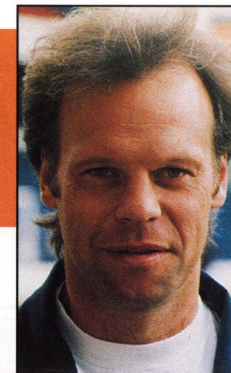
NEWS, SPORT & MUSIC
for BEDS, HERTS & BUCKS

▶ 103.8 FM STEREO ▶ 630 kHz AM



LEADING THE LINE

by **TREVOR PEAKE**



LEFT: Dwight Marshall causes problems for the Sunderland defence last Tuesday.

HAPPY New Year to everyone, and I hope we can make 1995 just as memorable as 1994. We are certainly well poised for an exciting second half of the season, after two good results at Christmas lifted us back into the chasing pack.

The draw at Reading was a valuable point, when you take into consideration that Reading had beaten Wolves 4-2 in their previous home game. I thought we defended well and looked dangerous on the break, especially in the second half, when Shaka Hislop was probably the busier of the two goalkeepers.

A draw was probably a fair result, and I would like to take this opportunity on behalf of the team to thank you the supporters for your tremendous turnout at Elm Park.

There were nearly 2,000 Luton fans in the 12,000 strong crowd, and it was a marvellous gesture bearing in mind we have four games packed into seven days over Christmas and New Year.

The game at Reading certainly put everyone in a good frame of mind for the visit of Sunderland the following day, when I felt we got to grips with the conditions very well.

It was certainly a day when errors were likely given the conditions, but we coped well, and once again looked fairly solid at the back. Up

front Scott Oakes converted two early chances and that set us on our way. I was certainly happy to play, the conditions were the same for both sides, and I think it would have been very unfair on the large following who had travelled south from Sunderland, as well as everyone else, had the game been called off.

Now we look forward to 1995, starting with tonight's visit of Charlton. Then on Saturday we start another FA Cup campaign, with memories still fresh of that great run last season. For much of the time in those matches we were the underdogs, but it will be different on Saturday.

Bristol Rovers are having a good run in Division Two, but after defeat at the hands of Fulham in the League Cup we are determined to make 'seniority' tell.

First though it's league business to round off a busy holiday week, during which time the destiny of Division One does not appear to have become much clearer.

Middlesbrough have done well, but they need only look to Wolves to see how quickly problems can arise. We are well and truly in the chasing pack, and will be looking, with your support, to further cement our position there this evening.

Luton Town FC are delighted to link up with LEGAL AND GENERAL, to offer a full and comprehensive financial service to supporters of the club. Anyone interested in receiving Legal and General's expert financial and insurance advice should contact:

Warren Miskin or Barry Shaw on 081 882 0249, quoting reference LU1.

Trevor Peake

S U P P L I E D B Y



MITRE SPORTS INTERNATIONAL LTD.
BIRKBY, HUDDERSFIELD, HD1 5AJ. TEL: 0484 537488. FAX: 0484 530042

A GENESCO Company
G

Football wins the Pools every Saturday



Every time you enter Littlewoods, Vernons and Zettters Pools or Littlewoods Spot the Ball you are helping the game at all levels. The Football Trust administers funds from the Pools, helping clubs to improve safety and comfort.

The Trust receives some £37 million every year, all of it coming directly or indirectly from Littlewoods, Vernons and Zettters Pools and Littlewoods Spot the Ball.

Football also receives £8 million a year for the use of fixtures on coupons and Littlewoods, the game's biggest benefactor, is the first sponsor of the FA Cup.

Up and down the country, clubs are building new grounds, stands, seating and roofing. All depend on the support of the Football Trust and on the success of the football pools.

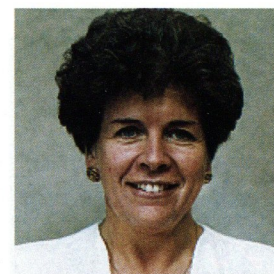


LITTLEWOODS VERNONS ZETTERS
Making sure football wins the Pools each week



THE FOOTBALL TRUST
Helping the game

THE FOOTBALL TRUST, WALKDEN HOUSE, 10 MELTON STREET, LONDON NW1 2EB



LUTON TOWN TICKET OFFICE NEWS

with **CHERRY NEWBERY**

Luton Town v Bristol Rovers

FA CUP THIRD ROUND

Saturday, January 7, 1995, kick-off 3pm

Guesting - Normal guesting facilities apply and these are available now.

Pricing - Normal league prices apply.

IF IT'S A DRAW....

In the event of a draw, the replay will be at Twerton Park, Bath, the home of Bristol Rovers, on Wednesday, January 18, kick-off 8pm.

Terracing only available for adult supporters priced at £7 (no concessions) - pay on the night only.

Family enclosure: Available to one adult plus one child or senior citizen, price £6 adults, £4 seniors, £1 per child.

Barnsley v Luton Town

ENDSLEIGH INSURANCE LEAGUE DIVISION ONE

Saturday, January 14, 1995, kick-off 3pm

Seats only available for Luton supporters, priced at £10 (no concessions). It's pay on the day only at Barnsley.

Luton Town v Wolverhampton W

ENDSLEIGH INSURANCE LEAGUE DIVISION ONE

Saturday, January 21, 1995, kick-off 3pm

Tickets for this match are now on sale at the discounted price. Normal guesting facilities apply.

Ticket Office opening hours

Monday to Friday: 10am to 4pm

Saturday (match days): 9am to 3pm and 4.45 to 5.15pm

Saturdays (non match days): Subject to change. Please contact the ticket office

For bookings, membership and enquiries, ring the Ticket Office direct on (0582) 416976. Supporters wishing to order by credit card can do so by using the 24-hour Credit Card Hotline on (0582) 30748.

Travelling to...

Barnsley

Address:

Oakwell, Grove Street,
Barnsley, S71 1ET..
Tel: (0226) 295353.

Take M1 north and exit at junction 37. Follow signs 'Football Traffic' to the ground, which is approximately 2 miles from the motorway.

Directions courtesy of
Automobile Association

ENDSLEIGH GIVE YOU THE CHANCE TO PLAY AT WEMBLEY

Ever dreamt of playing at Wembley Stadium? Well now's your opportunity to tread the hallowed turf where World Champions have been crowned, FA Cup legends created and League Cup winners honoured. And don't forget that in just eighteen months time, Wembley will also stage the Final of the 1996 European Championships!

The Football League and the major supporters' organisations have joined forces, and with the backing of Endsleigh Insurance, have created an opportunity to turn the dream into reality for supporters of Endsleigh League clubs.

To have a chance of appearing at the most famous football stadium in the world, simply fill in an application form for the Endsleigh Supporters' Challenge and send it to The Football League by 31st January 1995.

Applications are invited from all male* fans over the age of seventeen (as at 1/1/95) to

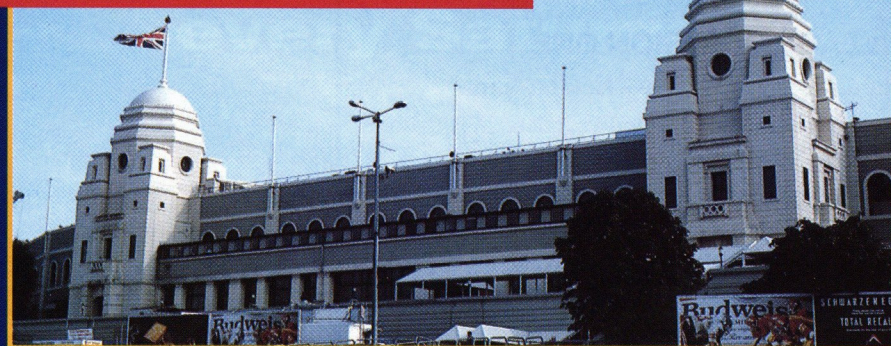
Endsleigh Supporters CHALLENGE

participate in the six-a-side competition which will feature supporters' teams from each of the seventy sides in the Endsleigh League. The supporters line-ups will be selected from a random draw of the applications received from each club.

If your side can get through the initial divisional heats, it's on to the National Indoor Arena in Birmingham for the final Wembley qualifying stage in April. The best two teams from each division then take the 'Road to Wembley' for the biggest game of their lives which will be played before the end of season Play-Off Finals.

Full copies of the competition rules can be obtained from The Football League. Further copies of the application form are available from your club.

DO YOU WANT TO PLAY AT WEMBLEY?



* FA Rule 37 prevents mixed football over the age of 11

THE ENDSEIGH INSURANCE LEAGUE SUPPORTERS' CHALLENGE APPLICATION FORM

Please return completed application forms to be received by 31st January 1995 to:

SUPPORTERS' CHALLENGE, COMMUNITY AFFAIRS DEPT. THE FOOTBALL LEAGUE, LYTHAM ST ANNES, LANCASHIRE FY8 1JG.

☐ No acknowledgement will be made but please tick this box if you do not wish to receive details of other offers from The Football League

Name: Date of Birth:

Address:

Postcode: Tel No:

Club Supported:

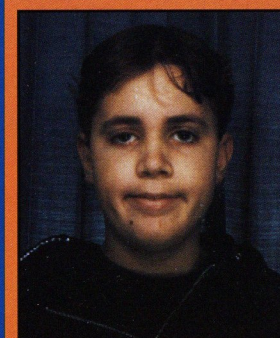
HATS OFF TO OUR JUNIOR MASCOTS!



PICTURED above and right, our mascots at Reading and at home to Sunderland line up with Town skipper Trevor Peake, the opposition skipper, and the match officials.



TODAY'S MATCH DAY MASCOT



Name:

Stephen Charleson

Date of birth: 13/8/82

School attended: Furze Down, Winslow

Other hobbies: Fishing and video games

Favourite Luton player:

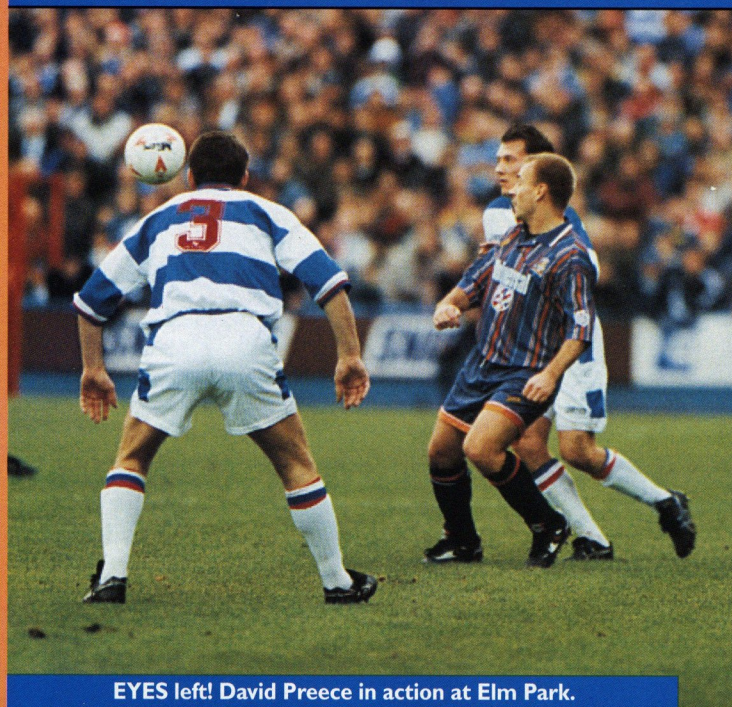
Marvin Johnson

Who accompanies you to Luton matches: My dad.

ALL Junior Hatters can claim a £1 discount when they play Lazer Quest at Park Square, Luton, on production of their Junior Hatters membership card

LOOK OUT FOR SPECIAL COMPETITIONS AND PRIZES IN OUR NEW PRE-MATCH AND HALF-TIME ENTERTAINMENTS, HOSTED BY CHILTERN RADIO DJ PAUL BURRELL

READING v LUTON TOWN



EYES left! David Preece in action at Elm Park.

From

Elm Park

Date

December 26, 1994

Result

Reading 0

Luton Town 0

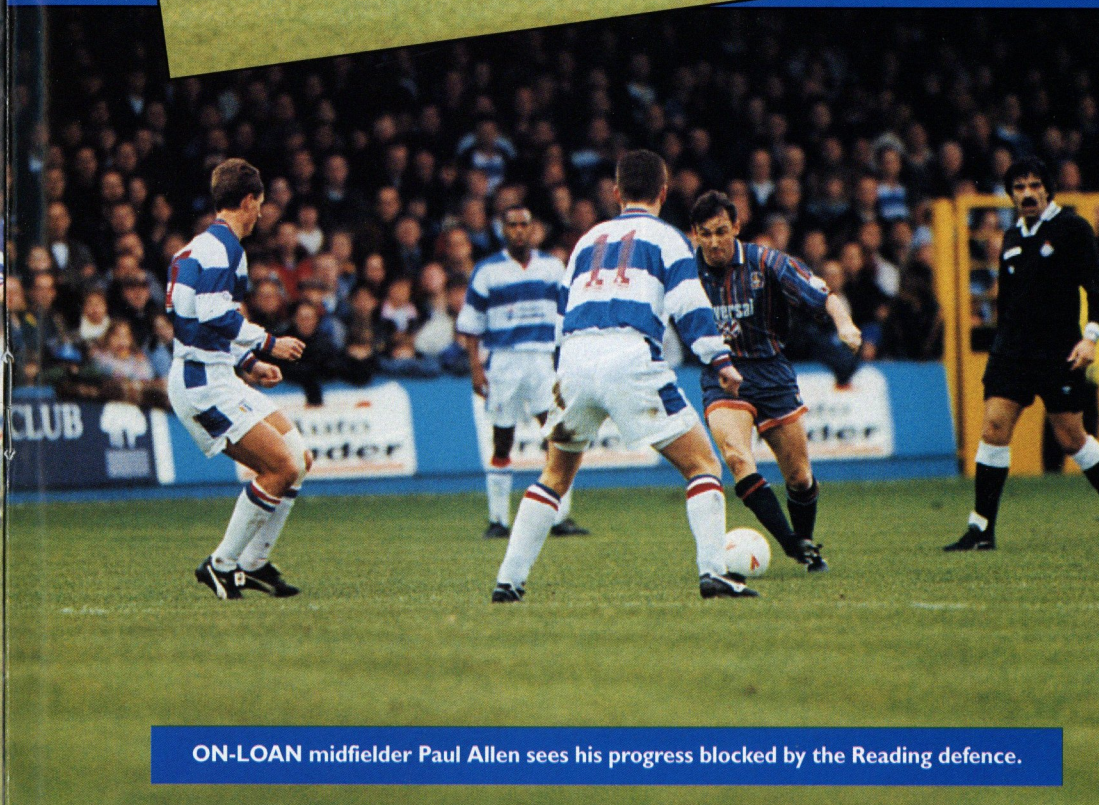
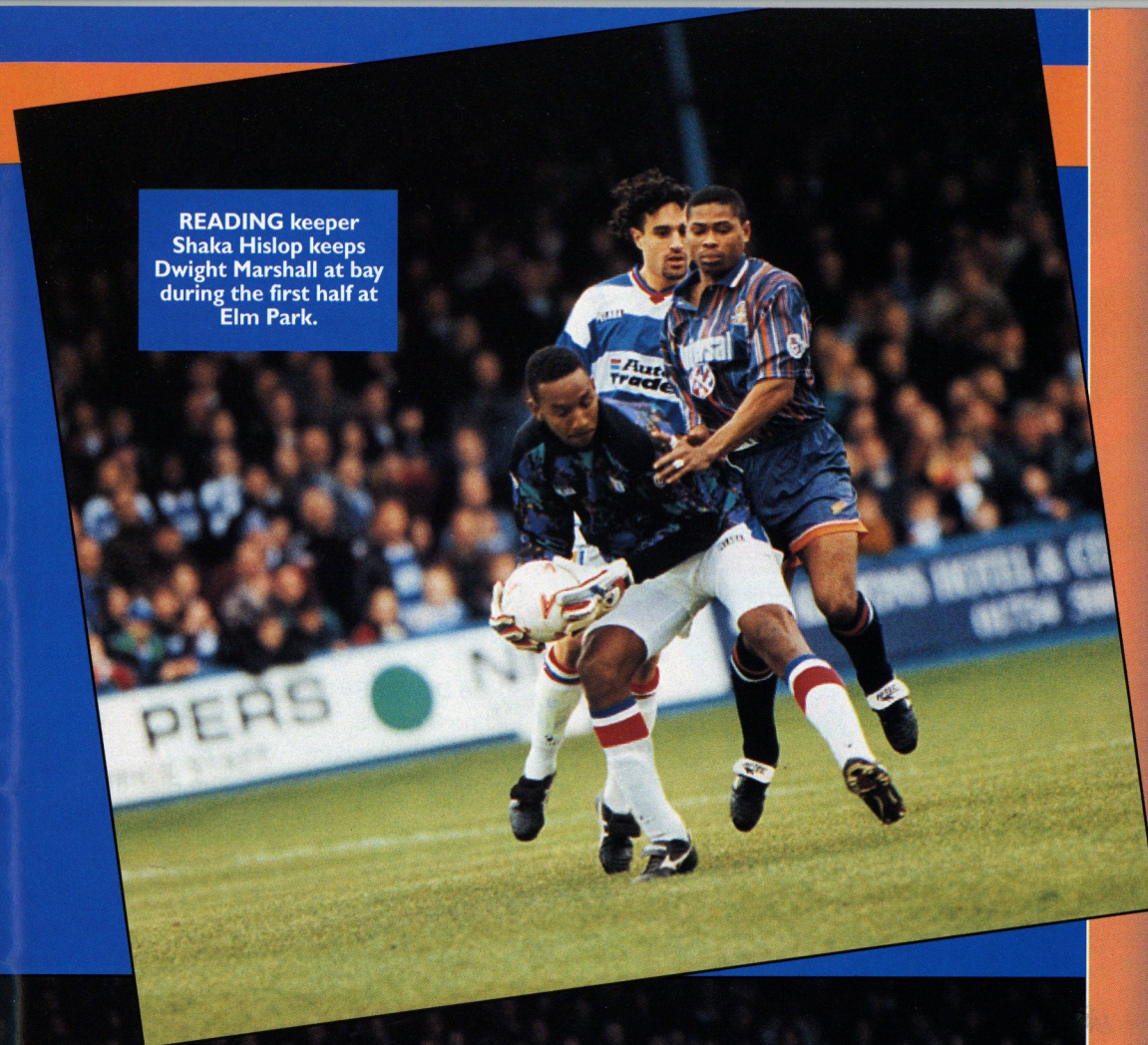
Attendance 11,623

Pictures by
ANDY HANDLEY



DWIGHT Marshall takes on the Reading defence during the 0-0 draw on Boxing Day.

READING keeper
Shaka Hislop keeps
Dwight Marshall at bay
during the first half at
Elm Park.



ON-LOAN midfielder Paul Allen sees his progress blocked by the Reading defence.

KENILWORTH SUITE

ABB Robotics Ltd
Anachem Ltd
Mr G. Chamberlain
Ken & Judi Craven
Fisher Frozen Foods Ltd
F & T Goodwin Ltd
Grosvenor Contracts
Handsombe Financial Services Ltd
R.W. Harvey & Son

R. Yates
Origination
Radley Shaw
Regal Litho
Steadfast Properties PLC
Wilton Contract and Vehicle Rental
Complete Contracts Ltd
The Home Counties Newspaper Group

CLUB 82

Bervale Mead Insurance Brokers
C.P. Contracts
J.S.B. Business Forms
Luton Cleaning Company
Nordic Supplies
Mr F.W. Pearce
The Unimec Group of Companies
Shorey Travel

TJ Aldridge Builders
Chris and Kim Clarke - The Wheatsheaf, Flitwick
Space Display Systems
Techno Sign Ltd
Mr D.R. Kenningham
Carol and Stuart Kendall - The Blackbirds, Flitwick

INDIVIDUAL BOX HOLDERS

Mr Alan Garner

Mr Malcolm Eade

Mr Roger Eade

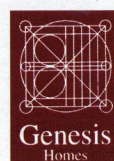
EXECUTIVE BOX HOLDERS



Murtagh Demolition



VAUXHALL



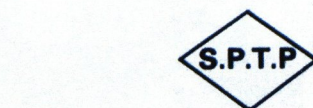
EDS



British Gas Eastern



Cope Brothers (Printers) Limited



DBF Crosswinds Ltd
COMPUTER AND BUSINESS STATIONERY



Electrolux



Graham

KIT SPONSORS

TREVOR PEAKE

is sponsored by

Bennetts Gate
Bakery of
Hemel Hempstead



RICHARD HARVEY
Shorey Travel

DWIGHT MARSHALL
Milton Keynes Branch of the
Luton Town Supporters Club

FRED BARBER
Royal Air Force Careers
Information Office, Bedford

DAVID PREECE
Ken and Judi Craven

TONY ADCOCK
Chris and Kim Clarke
The Wheatsheaf, Flitwick

DAVID GREENE
O'Shea's Public House,
Castle Street, Luton

TONY THORPE
Bedfordshire Rural
Communities Charity

JULIAN JAMES
Shorey Travel

PAUL TELFER
Convoy Installations Ltd

KELVIN DAVIS
McLeod Warner

MITCHELL THOMAS
Sam Hill

DES LINTON
Simkins Solicitors of
Baldock and Sandy

CERI HUGHES
Les and Sue Miller

CLIVE GOODYEAR

MARTIN WILLIAMS
Anchor Insurance Brokers
Milton Keynes

SCOTT OAKES
Legal and General Assurance

JUERGEN SOMMER
Paul Deason

AARON SKELTON
Club Skyway of London
Travel Agents

TREVOR PEAKE
Bennetts Gate Bakery of
Hemel Hempstead

MARVIN JOHNSON
Graham Group PLC

DAVID PLEAT
Bobbars Travel Club,
Committee and Members

KERRY DIXON
The Loyal Luton Supporters Club

JOHN HARTSON
Kate and Phil Shaw

JOHN MOORE

To sponsor a player's kit
please contact the
Commercial Department
on
Luton 411622



CHARLTON ATHLETIC 1994/95

SPOTLIGHT ON TODAY'S VISITORS



Left to right: Back row: Scott McGleish, Steve Brown, Richard Rufus, Mike Ammann, Mike Salmon, Andy Petterson, Carl Leaburn, Dean Chandler, Danny Mills.

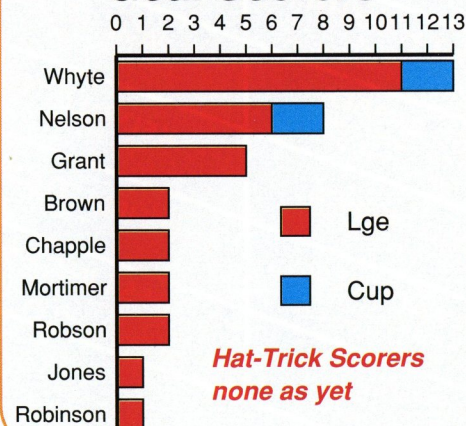
Middle row: Jimmy Hendry (physio), Lee Bowyer, Shaun Newton, Mickey Bennett, Paul Sturgess, Phil Chapple, Kim Grant, David Whyte, Mark Robson, Paul Linger, Neil Banfield (youth development officer).

Front row: Paul Mortimer, Alan Pardew, Garry Nelson, Alan McLeary, Keith Peacock (reserve team coach), Steve Gritt (player/manager), Alan Curbishley (player/manager), Stuart Balmer, Colin Walsh, Peter Garland, John Robinson.

How the Goals have been Scored



Goal Scorers



VISITORS ON PARADE

MIKE AMMANN - American 'B' team national goalkeeper, who signed a two-year contract with Charlton in July.

STUART BALMER - Equally at home at either fullback or central defence, and was Player of the Year in 1992/93.

MICKY BENNETT - Returned to Charlton last season after spells with Wimbledon and Brentford. Has recovered from a serious knee injury in December 1988 to resurrect his career.

STEVE BROWN - Made the right back spot his own last season, and another who has battled back from a serious knee injury.

PHIL CHAPPLE - Signed for £100,000 from Cambridge United in August 1993, and scored on his Charlton debut against Birmingham City.

PETER GARLAND - Joined for a small fee from Newcastle in December 1992, after becoming Kevin Keegan's first signing at St James Park, from Tottenham.

KIM GRANT - Ghanian-born forward who established himself in the first team last season.

KEITH JONES - Joined Charlton in September 1994 for £150,000 from Southend United where he was captain. Previously played for Brentford and Chelsea.

CARL LEABURN - Leading goalscorer last season with 16, and was the club's Player of the Year.

PAUL LINGER - Prolific scorer in youth team football, looking to break into the first team this season.

SCOTT MCGLEISH - Joined Charlton in the summer from non-league Edgware Town after scoring 41 goals for them in the Diadora League last season.

ALAN MCLEARY - Defender signed from Millwall at the start of last season and was made club captain. Spent 13 years at the Den before moving to the Valley.

DANNY MILLS - Winger who broke into the first team last season.

PAUL MORTIMER - Back at Charlton for a second spell as part of the transfer deal that took Darren Pitcher to Crystal Palace in the summer. Former England Under-21 international.

GARRY NELSON - Finished last season with 15 goals, and has played over 500 league games in a career which has also taken in spells at Swindon, Plymouth and Brighton.

SHAUN NEWTON - Made his debut as a 17-year-old two seasons ago, and is another successful product of the club's youth policy.

ALAN PARDEW - Scored 11 goals last season from midfield, and is also the club's penalty taker.

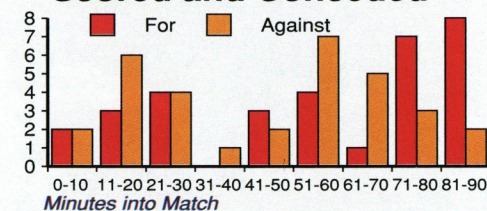
ANDY PETTERSON - Australian goalkeeper signed from Luton in the summer for £35,000, after 14 first team appearances for the Hatters.

JOHN ROBINSON - Plagued by injuries after a £75,000 move from Brighton in September 1992.

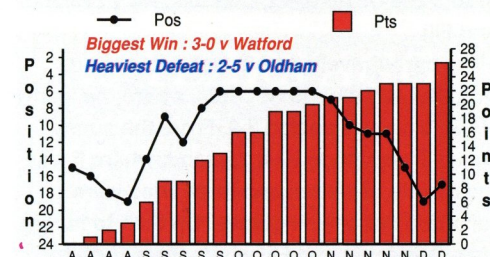
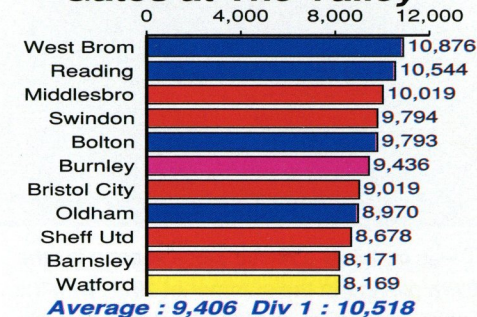
MARK ROBSON - Signed from West Ham in November 1993. Formerly with Spurs.

MIKE SALMON - Goalkeeper who signed from Wrexham for £100,000 in 1989, who

When Charlton have Scored and Conceded



Gates at The Valley



The Valiants' League Form from August (A) to December (D)

Graphics by Football Information Services.
(Statistics do not include Christmas matches).

started his career with Blackburn. Also played for Chester, Stockport and Bolton.

PAUL STURGESS - With the departure of Scott Minto to Chelsea, has a great chance to make the left back spot his own this season.

COLIN WALSH - Experienced player who has been a great servant to the club since moving from Nottingham Forest for £125,000 in September 1986. Scored the winning goal against Portsmouth on the club's return to the Valley in December 1992.

DAVID WHYTE - Joined Charlton, along with Paul Mortimer, from Crystal Palace during the summer as part of the deal that took Darren Pitcher to Selhurst Park.

Husband's four goal haul



LEFT: Danny Wilson, pictured against Millwall, scored Luton's goal against Everton 'Five years ago' (see right). The 2-1 defeat was the last game in charge for manager Ray Harford.

PS: Can you recognise the current Luton player also pictured, in action for Millwall?

IT was certainly a hectic close season for the Town players in the summer of 1977, with the squad embarking on a 33,000-mile round trip to tour the USA, New Caledonia, New Zealand and Fiji.

The party travelled from Heathrow to Los Angeles and then to St Louis, where the local NASL side was beaten 3-2. From the sunny States it was on to New Zealand, where it was the middle of winter, and three wins were recorded out of four games. On then to humid New Caledonia and Fiji where three further games were played and won.

It was a tired party that eventually arrived back on these shores after what must have been one of the longest tours in football history, and after very little respite it was back to pre-season training ready for another determined tilt at the Second Division title.

Pre-season training was hindered by the absence of three first-team players, Paul Price, Alan West and Ron Futcher, who were all enjoying a summer playing in the USA and who were not due back until the English season had started.

Futcher had in fact been 'transferred' for quite a large fee to Minnesota Kicks, and his return has always remained a mystery to me!

Only Phil Boersma, a £35,000 signing from Middlesbrough, was added to the squad and it was a severely depleted team that entertained Arsenal in a prestige pre-season friendly at Kenilworth Road. The game attracted a reasonable crowd of 6,300 many of whom had turned up to see the debut of Pat Jennings in the Arsenal goal, and they were pleasantly surprised by a fighting Town performance that earned the players a well deserved draw.

Orient were the visitors to Kenilworth Road for the first league game of the season, and with Futcher, Price and West still absent, Graham Jones, Tim Smith and David Carr were drafted into the side. A crowd of 8,061 turned up to see the strange line-up, and although the record books show that the Town won 1-0 courtesy of a second half goal from fullback Steve Buckley, the scoreline was rather unfair on Orient who had their chances to take both points.

With West and Price back in this country and included in the squad for the following week's trip to Oldham, the team had a more familiar look about it. But if the Town were lucky against Orient, fortune evened itself out very quickly as the 1-0 defeat was an injustice

and, to add insult to injury, Paul Futcher was ordered off for a foul.

Ron Futcher was next to return and a full strength Luton side went to First Division Wolves for a League Cup tie and came back having secured a fine 3-1 win with goals from Jim Husband, Boersma and substitute Carr.

It was therefore a confident Luton side that was to welcome Charlton to Kenilworth Road in the next league game. Gary Heale was called up for his debut in place of the injured Boersma and the crowd of 9,061 settled down to watch a first half that gave no real hint of the fireworks to come.

After dominating the opening period the Town took the lead after 20 minutes when Husband scored following a well-worked free-kick routine and, ten minutes later, Buckley, who was fast earning a goalscoring reputation, was on hand to fire home an unstoppable shot to put the Town two-up.

From the way that the first half had gone the Luton supporters were obviously hoping for another couple of goals to secure a sound victory but the second period saw the Town attack in unstoppable form, leaving Charlton goalkeeper Jeff Wood shell-shocked and the Valiants defence all over the place.

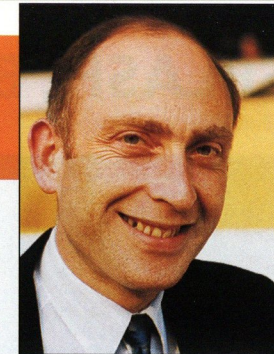
For the record, Ricky Hill put the Town three-up on the hour with a long shot and Husband scoring a fourth soon after working his way through the Charlton defence. Heale then made it a memorable debut by heading home number five before Husband made it a personal tally of four when scoring from a penalty that trickled over the line and heading in a John Faulkner cross.

Charlton scored a consolation in the final minute when Mike Flanagan beat Luton goalkeeper Milija Aleksic from the spot.

Luton manager Harry Haslam was obviously happy with the biggest win for 20 years not so much for the goals but for the manner in which it was achieved. Husband was given the match ball as, in the words of Haslam, "he has had it all afternoon so he might as well keep it".

Charlton coach Harry Cripps vowed: "It will never happen again."

Luton: Aleksic, Price, Buckley, Fuccillo,



by ROGER WASH

5 YEARS AGO

1/1/90: The Town went down 2-1 at Everton in front of a crowd of 21,743, with Danny Wilson scoring the Luton goal from the spot. Paul Gray made his full Luton debut in this game, while Jason Rees came on as sub, for his first appearance.

10 YEARS AGO

1/1/85: Same venue, same score-line with the only difference being Mick Harford scoring the Luton goal, and the crowd 10,000 higher!

15 YEARS AGO

1/1/80: An incredible 3-3 home draw with Chelsea played on an ice rink before an appreciative crowd of 19,717. New signing Steve White came on as substitute for his Luton debut.

20 YEARS AGO

28/12/74: Ron Futcher kept up his goalscoring record by netting all the Luton goals in a 3-2 home win over Wolves in front of a crowd of 19,642. This was the Town's third win in a row and pushed them off the bottom of the Division One table.

Faulkner, P Futcher, Husband, Hill, R Futcher, West, Heale.

Charlton: Wood, Curtis (Gritt), Warman, Campbell, Berry, Tydeman, Powell, Burman, Flanagan, Peacock, McAuley.

Those were the days

SPLASH, BANG, WALLOP... SUNDERLAND GET A S-OAKING!



LUTON 3
(Oakes 2, Hartson)

SUNDERLAND 0

at Kenilworth Road,
December 27, 1994

Pictures by
ANDY HANDLEY

KERRY Dixon's hamstring injury gave John Hartson the chance to start the game against Sunderland, and he responded with a typically robust display, crowned by his goal (above) just five minutes after half-time.



SCOTT Oakes gave Luton the perfect start against Sunderland, with two goals inside four minutes midway through the first-half. Scott is pictured above, cracking in his first goal.

Antony's Tailor

OF LONDON

THE MOST
ESTABLISHED
AND RELIABLE
TAILORS IN
LUTON

DRESS HIRE
LADIES AND GENTS
BESPOKE TAILORING

12 DUNSTABLE ROAD, LUTON,
BEDS OPPOSITE MAIN POST OFFICE
TEL: (0582) 424687

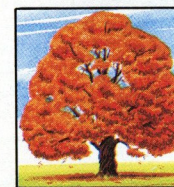
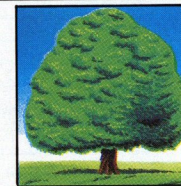
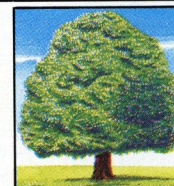


LUTON Town can cater for everything from business breakfasts, lunches or dinners to birthday/ anniversary celebrations and wedding breakfasts.

We can help to plan events by either clients visiting the club or by making a private visit to the clients own premises.

We have a number of function suites available, from our boardroom, which is an exclusive setting for senior management meetings, to our adjacent suites which can cater for up to 100 or more delegates for conferences and seminars.

Our catering operation, which prides itself on a personal service, can provide quality refreshments to complement any occasion.



AT HFC BANK, YOU'LL DISCOVER THE MOST CIVILISED PEOPLE IN THE FINANCIAL JUNGLE.

IF YOU REQUIRE ANY ADDITIONAL INFORMATION CALL OR VISIT YOUR
LOCAL BRANCH MANAGER: DAVID BLUMSOM, HFC BANK PLC,
15/17 UPPER GEORGE STREET, LUTON, BEDFORDSHIRE, LU1 2RD.

TELEPHONE: 0582 459797

HFC
BANK

All loans subject to status. A written quotation of our credit terms is available on request. HFC Bank plc. Registered office: North Street, Winkfield, Windsor, Berkshire SL4 4TD. Registered in England No. 1117305.

R. J. BLOW &
C O M P A N Y

THE FRIENDLY ACCOUNTANTS

Book-Keeping,
Taxation and Wages etc.

*

STIRLING HOUSE,
30 GUILDFORD STREET,
LUTON, BEDS LU1 2NR

*

Tel: (0582) 38792
Fax: (0582) 423347

TEAM STATISTICS 1994-95

Date	Opponents	F-A	Att	Pos	1	2	3	4	5	6	7	8	9	10	11	12	14	GK
Sat Aug 13	WEST BROMWICH ALBION	1-1	8,640	-	Sommer	James	Johnson	(Skelton)	Greene	Peake	Telfer	OAKES	Dixon	Preece	(Houghton)	(Marshall)	(Linton)	Barber
Tue Aug 16	FULHAM CCC 1 (1)	1-1	3,287	-	Sommer	James	Johnson	(Hughes)	Greene	Peake	Telfer	OAKES	Dixon	Preece	(Houghton)	(Marshall)	(Linton)	Barber
Sat Aug 20	Derby County	0-0	13,060	14	Sommer	James	Johnson	Linton	Greene	Peake	Telfer	Marshall	Dixon	Preece	Hughes	Skelton	Houghton	Barber
Tue Aug 23	Fulham CCC 1 (2)	1-1	5,134	-	Sommer	James	Johnson	(Linton)	(Greene)	Peake	Telfer	MARSHALL	Dixon	Preece	Hughes	(Oakes)	(Skelton)	Barber
Sat Aug 27	SOUTHEND	2-2	5,918	16	Sommer	(James)	Johnson	Oakes	Greene	Peake	Telfer	(Marshall)	HARTSON	Preece	HUGHES	(Thomas)	(Dixon)	Barber
Tue Aug 30	Tranmere Rovers	2-4	5,480	20	Sommer	James	Johnson	(Skelton)	Greene	Peake	Telfer	Oakes	HARTSON	Preece	HUGHES	Thomas	(Marshall)	Barber
Sat Sep 3	Port Vale	1-0	8,541	15	Sommer	(James)	Johnson	Skelton	Greene	Peake	Telfer	MARSHALL	Dixon	(Preece)	Oakes	(Thomas)	(Woodsford)	Barber
Sat Sep 10	BURNLEY	0-1	6,911	18	Sommer	James	Johnson	(Waddock)	(Greene)	Peake	Telfer	Marshall	Hartson	Preece	Oakes	(Thomas)	(Dixon)	Barber
Tue Sep 13	BOLTON WANDERERS	0-3	5,764	20	Sommer	James	Johnson	Waddock	(Thomas)	Peake	Telfer	Oakes	Dixon	Preece	(Hartson)	(Linton)	(Marshall)	Barber
Sat Sep 17	Watford	4-2	8,880	16	Sommer	James	Johnson	Waddock	Thomas	Peake	TELFER 2	OAKES	DIXON	Preece	Marshall	Hartson	Linton	Barber
Sat Sep 24	Millwall	0-0	7,150	16	Sommer	James	Johnson	Waddock	Thomas	Peake	Telfer	Oakes	(Dixon)	Preece	Marshall	(Hartson)	Skelton	Barber
Sat Oct 1	BRISTOL CITY	0-1	6,633	20	Sommer	James	Johnson	Waddock	(Thomas)	Peake	Telfer	Oakes	(Dixon)	Preece	Marshall	(Hartson)	(Hughes)	Barber
Sun Oct 9	Stoke City	2-1	11,712	18	Sommer	James	Johnson	Waddock	Thomas	Peake	Telfer	Hughes	Hartson	(PREECE)	MARSHALL	(Oakes)	Williams	Barber
Sat Oct 15	MIDDLESBROUGH	5-1	8,412	11	Sommer	James	Johnson	Waddock	Thomas	Peake	Telfer	Hughes	HARTSON	(PREECE)	MARSHALL 2	(Oakes)	Dixon	Barber
Sat Oct 22	Sheffield United	3-1	13,317	7	Sommer	JAMES	Johnson	Waddock	Thomas	Peake	Telfer	Hughes	DIXON	(Preece)	Marshall	(Oakes)	Thorpe	Barber
Sat Oct 29	BARNSELY	0-1	7,212	10	Sommer	James	Johnson	(Waddock)	Thomas	Peake	Telfer	Hughes	Hartson	Preece	(Marshall)	(Oakes)	(Dixon)	Barber
Tue Nov 1	GRIMSBY TOWN	1-2	5,839	13	Sommer	James	Johnson	Waddock	Thomas	Peake	Telfer	(Hughes)	Hartson	Preece	Marshall	(OAKES)	Dixon	Barber
Sat Nov 5	Wolverhampton Wanderers	3-2	26,749	8	Sommer	James	Johnson	Waddock	Thomas	Peake	Telfer	Oakes	(DIXON)	PREECE	MARSHALL	(Hartson)	Thorpe	Barber
Sat Nov 12	Oldham Athletic	0-0	7,907	8	Sommer	James	Johnson	Waddock	Thomas	Peake	Telfer	Oakes	Dixon	Preece	(Marshall)	(Hartson)	Thorpe	Barber
Sat Nov 19	PORTSMOUTH	2-0	8,214	8	Sommer	James	Johnson	Waddock	Thomas	Peake	Telfer	Oakes	DIXON	PREECE	(Marshall)	(Thorpe)	Hartson	Barber
Sat Nov 26	Swindon Town	2-1	9,455	5	Sommer	James	Johnson	Waddock	Thomas	Peake	Telfer	OAKES	(DIXON)	Preece	Linton	Woodsford	(Hartson)	Barber
Sat Dec 3	SHEFFIELD UNITED	3-6	8,516	8	Sommer	James	JOHNSON	Waddock	Thomas	Peake	Telfer	Oakes	Dixon	(Preece)	(Linton)	(HARTSON)	(Marshall)	Barber
Sun Dec 11	DERBY COUNTY	0-0	6,400	9	Sommer	James	Johnson	Waddock	Thomas	Peake	Telfer	Oakes	(Dixon)	Preece	(Allen)	(Hartson)	(Marshall)	Barber
Sun Dec 18	West Bromwich Albion	0-1	14,392	12	Sommer	(James)	Johnson	Allen	Thomas	Peake	Telfer	Oakes	Dixon	Preece	Marshall	(Hartson)	Skelton	Barber
Mon Dec 26	Reading	0-0	11,623	12	Sommer	James	Johnson	Waddock	Thomas	Peake	Telfer	(Allen)	(Dixon)	Preece	Marshall	(Hartson)	(Oakes)	Davis
Tue Dec 27	SUNDERLAND	3-0	8,953	9	Sommer	James	Johnson	Waddock	Thomas	Peake	Telfer	OAKES 2	HARTSON	(Preece)	(Marshall)	(Skelton)	(Williams)	Davis
Sat Dec 31	Notts County																	
Mon Jan 2	CHARLTON ATHLETIC																	
Sat Jan 7	BRISTOL ROVERS FAC 3																	
Sat Jan 14	Barnsley																	
Sat Jan 21	WOLVERHAMPTON WANDERERS																	
Sat Jan 28	FAC 4																	
Sat Feb 4	OLDHAM ATHLETIC																	
Sat Feb 11	Grimsby Town																	
Sat Feb 18	SWINDON TOWN (FAC5)																	
Wed Feb 22	Portsmouth																	
Sat Feb 25	Bristol City																	
Sat Mar 4	MILLWALL																	
Tue Mar 7	PORT VALE																	
Sat Mar 11	Southend United (FAC6)																	
Sat Mar 18	TRANMERE ROVERS																	
Tue Mar 21	Burnley																	
Sat Mar 25	WATFORD																	
Sat Apr 1	Bolton Wanderers																	
Sun Apr 2	CCC Final																	
Sat Apr 8	NOTTS COUNTY (FAC S/F)																	
Sat Apr 15	Sunderland																	
Mon Apr 17	READING																	
Sat Apr 22	Charlton Athletic																	
Sat Apr 29	Middlesbrough																	
Sat May 6	STOKE CITY																	
Sat May 20	FAC Final																	

LUTON TOWN 1994/95

PLAYER (figure in bracket = sub app.)	LEAGUE APPS	LEAGUE GOALS	CUP APPS	CUP GOALS
Juergen SOMMER	24	-	2	-
Julian JAMES	24	1	2	-
Marvin JOHNSON	24	1	2	-
Aaron SKELTON	3 (1)	-	(1)	-
David GREENE	6	-	2	-
Trevor PEAKE	24	-	2	-
Paul TELFER	24	2	2	-
Scott OAKES	17 (6)	6	1 (1)	1
Kerry DIXON	16 (2)	5	2	-
David PREECE	24	4	2	-
Scott HOUGHTON	1	-	1	-
Dwight MARSHALL	18 (5)	5	1 (1)	1
Des LINTON	3 (2)	-	1 (1)	-
Ceri HUGHES	8 (1)	2	2	-
Mitchell THOMAS	18 (2)	-	-	-
John HARTSON	9 (9)	5	-	-
Gary WADDOCK	18	-	-	-
Jamie WOODSFORD	(1)	-	-	-
Tony THORPE	(1)	-	-	-
Paul ALLEN	3	-	-	-
Martin WILLIAMS	(1)	-	-	-
Own goal		3		

Because of New Year printing deadlines, this evening's programme has been reduced to 24 pages, and £1 in price, and we have been unable to include statistics from Saturday's games in Division One. We apologise for any inconvenience.



Matchday music is supplied by
 HMV Stores, 98 Arndale Centre
 (Tel: 35290) and
 73 The Mall (Tel: 21368), Luton.



TODAY'S OFFICIALS

Today's referee is

PAUL ALCOCK,
from Redhill, Surrey.

Mr Alcock, a shopping centre manager, joined the Football League list in 1988/89. He refereed our game at home to Grimsby in November.



DN Campbell



KA
Woolmer

OTHER DIVISION ONE MATCHES

Bolton Wanderers v Reading

Bristol City v Watford

Derby County v West Brom

Grimsby Town v Notts County

Middlesbrough v Barnsley

Portsmouth v Burnley

Southend Utd v Tranmere R

Swindon Town v Sunderland

Wolverhampton W v Sheffield U

Millwall v Oldham Athletic (Tue)

Port Vale v Stoke City (Tue)

TEAM CHECK

LUTON TOWN

Manager: David Pleat

Juergen SOMMER

Julian JAMES

Marvin JOHNSON

Gary WADDOCK

Mitchell THOMAS

Trevor PEAKE

Paul TELFER

Scott OAKES

John HARTSON

David PREECE

Dwight MARSHALL

CHARLTON ATHLETIC

Managers: Alan Curbishley
and Steve Gritt

1 Mike SALMON

2 Steve BROWN

3 Paul STURGESS

4 Paul MORTIMER

5 Richard RUFUS

6 Alan McLEARY

7 Mark ROBSON

8 Colin WALSH

9 Carl LEABURN

10 Stuart BALMER

11 David WHYTE

12

14

GK



Plowmans
of
Luton

AND
LUTON
TOWN

—
THE
PERFECT
MATCH

You'll do a great deal better with us!

Open 7 Days

Vauxhall Main Dealers, 15 Hitchin Road, Luton.

Tel: 454666