

ENDSLEIGH INSURANCE LEAGUE DIVISION ONE

**v SUNDERLAND**



**LUTON TOWN  
FOOTBALL CLUB**



**HAPPY NEW YEAR to all supporters from the Chairman,  
Directors, Players and Staff at Luton Town Football Club**

**TUESDAY, DECEMBER 27, 1994, 3PM**

**MATCH SPONSORS**

**Anachem**

**MATCHBALL SPONSORS**

**Russell Press**



**Sponsors of  
Luton Town F.C.**

**Official matchday programme £1.50**

**LUTON TOWN**





## PLEAT'S PERSPECTIVE

### THE LEAGUE COMPETITION IS STILL WIDE OPEN

**A VERY warm welcome to today's game, and we trust that you have enjoyed a restful Christmas. Let us hope that today's game is worthy of the festive occasion.**

It must be a little disappointing for supporters of our visitors today to have such a long journey for a Bank Holiday fixture. It is strange the way the computer this season has caused upsets with either consecutive home or away games, and long distance holiday travel.

However, that does not make our welcome to them any less warm, and we give a firm greeting to all their supporters, officials and players - particularly to Mick Buxton, who scouted for us a while in the 1980s, inbetween managerial appointments, and also particularly to Trevor Hartley, who coached very shrewdly here for a number of successful years, before accompanying me to Tottenham. Trevor has now settled in his role in the north-east and I know they could not be in more capable hands in terms of organisation and good ideas.



Luton Town Football Club  
Kenilworth Road Stadium,  
1, Maple Road,  
Luton, Beds LU4 8AW.  
Tel: (0582) 411622  
Fax: (0582) 405070  
Ticket Office: (0582) 416976

**Chairman and Managing Director:**  
David Kohler BSc (Hons)  
ARICS

**Directors:**  
C.S. Bassett, C.T.F. Green,  
N.S. Terry

**Vice Presidents:**  
R.L. Banks,  
C. Bygraves, P. Collins,  
R. Safranek,  
D. Ludlow, P. Ireton.

**Secretary:**  
John Smylie

**Manager:**  
David Pleat

**Coaches:**  
John Moore, Wayne Turner,  
Terry Westley

**Physiotherapist:**  
Clive Goodyear

**Consultant Physio:**  
John Sheridan

**Youth Development Officer:**  
Paul Lowe

**Scouting:**  
Les Shannon

**Community Football Officer:**  
Colwyn Rowe

**Financial Administrator:**  
Bob Bird

**Ticket Office Manager:**  
Cherry Newbery

**Commercial Manager:**  
Kathy Leather

**Medical Officer:**  
Dr Bill Berry

**Club Dentist:**  
A. Chris BDS (Syd)

Sunderland have done exceptionally well on their travels, but like ourselves have stuttered at home. The lynchpin of their side during the last two seasons has been our Irish buy from Tottenham, Phil Gray, who has proved a goalscorer both with us and with the visitors. Philip is a lively character, and it was to our disappointment that our finances forced his sale when Philip's 'monster' agent became a little unsettled!

Last Sunday's game at West Bromwich Albion was a true mixture. I felt that our tempo in the first half was not quick enough, even though we had the lion's share of possession. Alan Buckley's side retreated and allowed us to play in front of them, and we were unable to get the numerical advantage in attacking positions to make goal chances.

At half-time the message was simple, we had to get the ball wider earlier and play much quicker, and try and force a mistake in Albion's back four who sat quite deep. In the end it was not to be, but I felt that the commitment and effort in the second half was tremendous, our supporters appreciated that, and we appreciated their support.

We were very disappointed to come away not adding to our impressive away record, but I'm sure that Albion will be a difficult side to beat for the remainder of this season at The Hawthorns.

The league competition is still wide open, and it was an even bigger disappointment to fail at West Brom in view of the previous day's results. It seems that all the lower clubs across the blanket won, and the upper clubs, in what is the tightest league of all, failed to progress.

With this being our last game at home in 1994, I want to once again remind all our followers how much we have appreciated their support in what has been an eventful year. Undoubtedly progress has been made; sadly we did not make the Wembley final, but hopefully we will not have that last-minute scrap and heart problems of trying to win on the last day to avoid a drop.

When the television cameras came to our last home game with Derby, where once again despite having more shots and corners than the opposition we failed to score (at West Brom the tallies were even greater, but the only thing that counts is the final scoreline), the chief commen-



**LEFT: Over here!**  
Kerry Dixon poised at the near post during last Sunday's game at West Brom.

tator, that lovely man Brian Moore was disappointed that my Vision Express one-liners were not included in the programme. So here goes.

Juan Andrades, who came from Oviedo in Spain and had a week with us, and scored a good goal, has returned and for the moment we are not proceeding.... Sad to learn of the death of popular scout Joe Vine, who for many years scouted for Blackburn Rovers and Newcastle.... We have been invited to compete in the Evening Standard Five-A-Side tournament, at Wembley Arena on May 15, and we are likely to accept.... Ceri Hughes is hoping to get a couple of reserve games under his belt in January.... Andrew Jukes' loan spell at Wealdstone has ended.... Juan Campbell scored for Mansfield in a 4-2 win over local rivals Chesterfield, and we are waiting to see if Mansfield wish to make the move permanent.... Sad to say the recent standard of officiating in the Avon Insurance Combination League has disappointed me, and I was not surprised to hear that Ray Wilkins, on his debut for QPR Reserves was booked, and David Bardsley was sent off, really quite unnecessary.... This week we have a young trailist, a left-sided midfielder from a Midlands non-league club, training with the squad, and hopefully the good reports will be justified.... Enjoyed a Christmas lunch at the BBC recording a football review of 1994 which was due for broadcast on Christmas Eve.... Reminiscing at Albion, John Evans, their secretary, was my appointment at Nuneaton, when I was manager several years

ago, and I persuaded him to leave his teaching post.... Shared stories also with Alan Buckley, who also comes from Nottingham, and like myself played in schoolboy football there before going on to Nottingham Forest.... Colin Murphy, the man that brought Collymore to Southend and set them on their feet, who was our assistant here, is considering a move to manage Shelbourne in southern Ireland.... Special thanks to Hitchin for their continued co-operation on reserve team games.... Our players and staff enjoyed a pleasant Christmas night out, and thanks go to our directors for making that possible.... ITV kindly sent me a film of the Reading v Wolves game for us to watch before yesterday's encounter at Elm Park, hope we learned some lessons.... Raddy Antic sends his regards to all his fans over here, and his team are currently mid-table in the Spanish first division.... Alan West, our fine ex-inside forward (those were the days) is still playing regularly for the Christians in Sport team.... John Hartson scored a fine goal in a very volatile atmosphere at the Vetch Field, his home town.... Interesting to see Martin O'Neill stay at Wycombe after recent approaches, can he take them through all the divisions?

Enjoy today's game, and we look forward to seeing you again when we entertain Charlton on Monday.

# HONOURS

Littlewoods Cup winners 1987-88

FA Cup finalists 1958-59

Littlewoods Cup finalists

1988-89

Simod Cup finalists 1987-88

Champions - Division Three (S) 1936-37

Champions - Division Four 1967-68

Champions - Division Two 1981-82

David Pleat



## TALK OF THE TOWN



TOWN striker John Hartson grabbed a vital equaliser to keep Wales' European Under-21 Championship hopes alive, after a 1-1 draw with Bulgaria in Swansea on December 13.

The 19-year-old became the first player to score against Bulgaria in the competition as he netted from an acute angle in the 68th minute.

The Hatters star was then close to a winner just minutes later, as his header went narrowly wide.

Vladimir Ionkov had put the group leaders ahead against the run of play in the 60th minute, and the visitors had Marian Hristov sent off eight minutes from time.

But Hartson was delighted to net a goal, especially as the game was being played in his home town, and with manager David Pleat in attendance.



ABOVE: Juan Andrade in action for the Town's reserve side in the Football Combination match against Spurs, at Hitchin FC.

Picture: Herald and Post

## Signor's not signing!

SPANISH midfielder Juan Andrade has completed a week's trial at Kenilworth Road, but David Pleat has decided against a loan deal for the remainder of the season.

The 28-year-old, from Oviedo, played for the Town's reserve side at Hitchin against Tottenham, and scored after just

16 minutes in the 2-1 defeat.

The match at Top Field came just three days after he had appeared as a substitute for Oviedo in the Spanish First Division, against Real Madrid, at the Bernabeu stadium.

Oviedo are managed by former Town player Raddy Antic, who alerted the Hatters to the midfielder's availability.

Luton Town FC Matchday Programme

Editor: Simon Oxley.

Tele: 0582 411622

Pictures: Andy Handley

Design and print:

McLeod Warner, Luton.

Tele: 0582 38389

LUTON Town players have made their usual pre-Christmas visits to local hospitals, to hand out gifts to children. Richard Harvey and Aaron Skelton were at the Lister Hospital, Stevenage, with Fred Barber and Tony Adcock visiting Milton Keynes General. Trevor Peake, David Greene and Mitchell Thomas went to the Luton and Dunstable Hospital.



# Universal Salvage Auctions

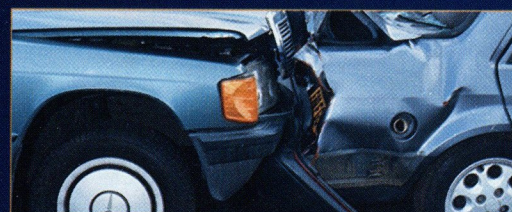
## SELL OVER **1000** REPAIRABLE/BREAKERS/STOLEN AND RECOVERED VEHICLES AT WEEKLY AUCTIONS

**CORBY - NORTHANTS**

**DENNY - SCOTLAND**

**SANDTOFT - S.YORKS**

**WESTBURY - WILTS**



Your nearest auction is every Wednesday at...

**DUNSTABLE ROAD REDBOURN, HERTS**

For further information  
01234 766500





## The best service on a plate.

As one of the largest independent vehicle rental companies in the U.K., you can always expect a little extra from Kenning.

AN EXTENSIVE RANGE OF:

- CARS, VANS & TRUCKS.
- FULLY INCLUSIVE RATES WITH UNLIMITED MILEAGE.
- 24 HOUR NATIONAL HOTLINE HELPLINE.
- AA/RAC COVER.

**KENNING**

CAR AND VAN RENTAL

**LUTON 0582 455333**

24-34 Crawley Road.



- ◆ **HOURLY SPORTS NEWS**
- ◆ **FRIDAY SPORTS PREVIEW (7pm)**
- ◆ **SATURDAY SPORTSOUND (2pm-6pm)**
- ◆ **MIDWEEK MATCH COVERAGE (7.05pm - 10pm)**

NEWS, SPORT & MUSIC  
for BEDS, HERTS & BUCKS

▶ 103.8 FM STEREO ▶ 630 kHz AM



## FROM THE SECRETARY'S CHAIR

with JOHN SMYLIE

A REMINDER to supporters that our next home game, against Charlton Athletic on Monday, January 2, kicks-off at 7.45pm.

A number of you have enquired why we are kicking-off in the evening on a Bank Holiday. This decision was reached as a compromise with Charlton, after the Metropolitan Police ordered their home match with Millwall to be switched from Saturday, December 31, to Sunday, January 1, with a 12 noon kick-off.

We were keen to play against Charlton on Monday afternoon, whilst they wanted a Tuesday evening kick-off after being switched to Sunday against Millwall. Thus a compromise of Monday evening was reached.

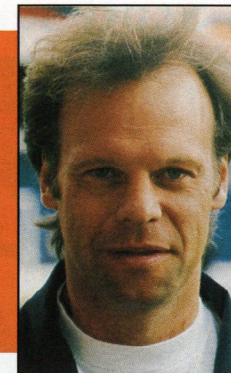
Following our victory over Kempston Rovers (see page 8), we will visit Potton in the semi-final of the Beds Premier Cup.

The tie is due to be played by February 14, and we will inform supporters of the exact date as soon as possible. Potton won 4-0 at Dunstable OB in their quarter-final.

In the other semi-final, Leighton Town entertain Barton Rovers.

## LEADING THE LINE

by TREVOR PEAKE



AFTER last Sunday's defeat at West Brom, home games take on extra significance.

The away form has been excellent, but we can't rely on it solely, and even though there was not too much wrong with the performance I think everyone realises the importance of securing home wins.

We have been well-placed for much of the season, but such is the nature of this division that a good Christmas period is essential not only to keep in touch with the top, but to keep away from the bottom.

We have a tough Christmas programme, and have followed a strict schedule to make sure we are at our best for these matches.

We trained as normal through the week, and again on Christmas Eve, with a light session on Christmas Day evening to prepare for yesterday's game at Reading.

It's training as normal for the rest of this week to prepare for the game at Notts County on Saturday, with sessions on Sunday and Monday ahead of the match against Charlton.

The schedule of four

games in just over a week is much busier than in recent seasons, and it will be interesting to see how players and fans respond.

Playing football over the Christmas period is something that I have become used to over the years, but it is a great test of our resources.

Sunderland will feel they still have every chance in this division, and are sure to be backed by a passionate following this afternoon.

On the field they are a determined side, and Phil Gray will prove a handful to any defence.

Looking ahead to Saturday, we must not underestimate Notts County despite their position in the table.

As West Brom proved, a determined effort can bring results, and there is no great divide between sides in Division One.

We aim to produce a fine finale to a memorable year. Looking back, I hope supporters have enjoyed the last 12 months, and I think it would be fair to say there have been a lot more ups than downs.

Thanks for your support in 1994, and best wishes to everyone for 1995.

*Luton Town FC are delighted to link up with LEGAL AND GENERAL, to offer a full and comprehensive financial service to supporters of the club. Anyone interested in receiving Legal and General's expert financial and insurance advice should contact:*

**Warren Miskin or Barry Shaw on 081 882 0249, quoting reference LU1.**

Trevor Peake



## Scott serves up birthday surprise.....



HATTERS fan Miranda Emery received a birthday surprise after our game against Derby, when Scott Oakes visited her, and her family and friends watching in one of our Executive Boxes, to present a Luton Town shirt.



TONY Adcock

### Five-star Hatters into Premier Cup semis

LUTON moved into the semi-finals of the Beds Premier Cup with a 5-1 second round win at Kempston Rovers.

After a goalless first half, the Hatters swept aside their United Counties League opposition with goals from Tony Adcock, Matthew

Woolgar, Gary Issott (penalty), Ben Chenery and Martin Williams.

Team: Abbey, Willmott, Palmer, Woolgar, Greene, Simpson, Williams, Power, Adcock, Issott, Harvey.

Subs: Douglas, Chenery, Davis (gk).



MARTIN Williams



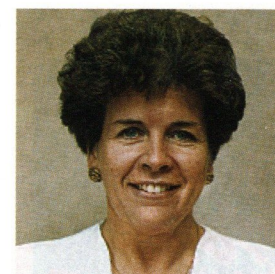
# ARE YOU IN PAIN?

## Let us ease the strain...

Physiotherapy appointments are now available at the club, with Luton Town physio Clive Goodyear.

£16 per session (+VAT) - (£15 + VAT for season ticket holders)

Contact (0582) 411622 to make an appointment.



## LUTON TOWN TICKET OFFICE NEWS

with CHERRY NEWBERRY

### Notts County v Luton Town

#### ENDSLEIGH INSURANCE LEAGUE DIVISION ONE

Saturday, December 31, 1994, kick-off 3pm

Unreserved seating only available for Luton supporters. Adults £12 and juniors/ senior citizens £6. Pay on the day only at Notts County, using turnstiles 32-44. (The Kenilworth Road ticket office will be open from 10 to 11.30am).

### Luton Town v Charlton Athletic

#### ENDSLEIGH INSURANCE LEAGUE DIVISION ONE

Monday, January 2, 1995, kick-off 7.45pm

Tickets for this match are now on sale. Normal guesting facilities apply.

### Luton Town v Bristol Rovers

#### FA CUP THIRD ROUND

Saturday, January 7, 1995, kick-off 3pm

**Guesting** - Normal guesting facilities apply and these are available now.

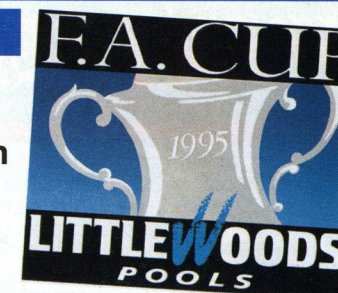
**Pricing** - Normal league prices apply.

#### IF IT'S A DRAW....

In the event of a draw, the replay will be at Twerton Park, Bath, the home of Bristol Rovers, on Wednesday, January 18, kick-off 8pm.

Terracing only available for adult supporters priced at £7 (no concessions) - pay on the night only.

Family enclosure: Available to one adult plus one child or senior citizen, price £6 adults, £4 seniors, £1 per child.



### Ticket Office hours over Christmas/New Year

Tuesday, December 27 - 9am to kick-off, with cup tickets on sale after the match only.

Wednesday, December 28, to Friday, December 30 - 10am to 4pm.

Saturday, December 31 - 10am to 11.30am.

For bookings, membership and enquiries, ring the Ticket Office direct on (0582) 416976. Supporters wishing to order by credit card can do so by using the 24-hour Credit Card Hotline on (0582) 30748.



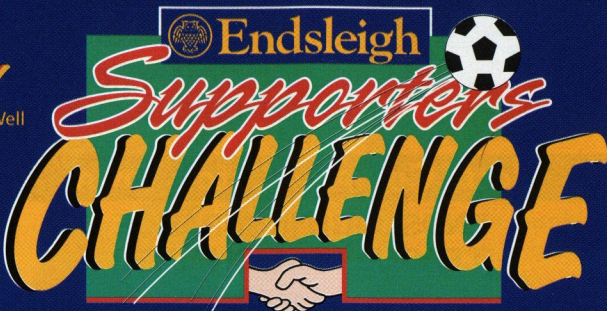
## ENDSLEIGH GIVE YOU THE CHANCE TO PLAY AT WEMBLEY

Ever dreamt of playing at Wembley Stadium? Well now's your opportunity to tread the hallowed turf where World Champions have been crowned, FA Cup legends created and League Cup winners honoured. And don't forget that in just eighteen months time, Wembley will also stage the Final of the 1996 European Championships!

The Football League and the major supporters' organisations have joined forces, and with the backing of Endsleigh Insurance, have created an opportunity to turn the dream into reality for supporters of Endsleigh League clubs.

To have a chance of appearing at the most famous football stadium in the world, simply fill in an application form for the Endsleigh Supporters' Challenge and send it to The Football League by 31st January 1995.

Applications are invited from all male\* fans over the age of seventeen (as at 1/1/95) to



participate in the six-a-side competition which will feature supporters' teams from each of the seventy sides in the Endsleigh League. The supporters line-ups will be selected from a random draw of the applications received from each club.

If your side can get through the initial divisional heats, it's on to the National Indoor Arena in Birmingham for the final Wembley qualifying stage in April. The best two teams from each division then take the 'Road to Wembley' for the biggest game of their lives which will be played before the end of season Play-Off Finals.

Full copies of the competition rules can be obtained from The Football League. Further copies of the application form are available from your club.

# DO YOU WANT TO PLAY AT WEMBLEY?



\* FA Rule 37 prevents mixed football over the age of 11

### THE ENDSLEIGH INSURANCE LEAGUE SUPPORTERS' CHALLENGE APPLICATION FORM

Please return completed application forms to be received by 31st January 1995 to:

**SUPPORTERS' CHALLENGE, COMMUNITY AFFAIRS DEPT. THE FOOTBALL LEAGUE, LYTHAM ST ANNES, LANCASHIRE FY8 1JG.**

Name: ..... Date of Birth: .....

Address: .....

Postcode: ..... Tel No: .....

Club Supported: .....

☐ No acknowledgement will be made but please tick this box if you do not wish to receive details of other offers from The Football League

## ON THE OTHER SIDE

### EX-TOWN TRIO HELP BUXTON'S PREMIER PUSH

LAST season, following the sacking of Terry Butcher, Mick Buxton was handed the task of steering Sunderland back to the top flight to join great rivals Newcastle in the Premiership.

Raised on Wearside, Mick watched Sunderland regularly in the 1950s and turned out at fullback for Burnley and Halifax in a playing career cut short by injury.

He achieved success on a shoestring budget as manager of Huddersfield and Scunthorpe, was then assistant to Peter Withe at Wimbledon, and was brought into the England coaching set up.

He joined Sunderland as reserve team coach in 1993, before taking full charge after Butcher's departure, a move which heralded the arrival of Trevor Hartley at Roker Park.

Trevor is fondly remembered at Kenilworth Road, and indeed still lives in Bedfordshire, having worked with David Pleat during the Town manager's first stint in charge here.

He was also Mr Pleat's first-team coach at Tottenham and is one of the most respected coaches in the game.

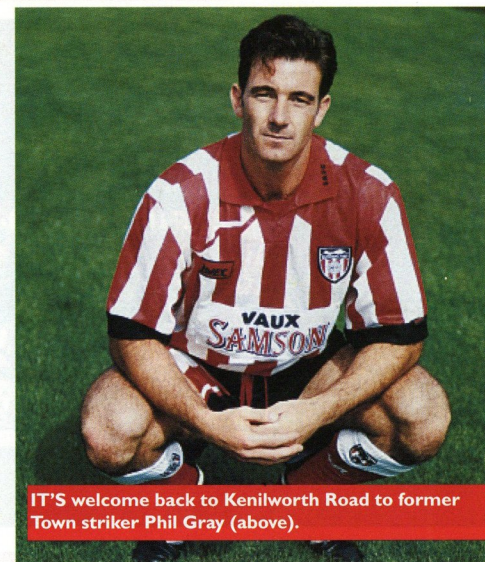
He played for West Ham and Bournemouth, has been Director of Coaching in Singapore, national coach in Malaysia, and helped to run the England Under-21 side.

Trevor's arrival at Roker completed a hat-trick of former Hatters, with Alec Chamberlain and Phil Gray on the playing staff.

Alec Chamberlain was signed from Luton in the summer of 1993, and was a league ever-present for Sunderland last term until the final three games. He also kept 19 clean sheets, the highest number by a Sunderland keeper for almost 30 years.

A very popular player at Kenilworth Road, Alec is a former Luton Player of the Year, and has also enjoyed spells at Colchester, Tranmere, Ipswich, Everton and Chelsea.

Like Alec, Phil Gray needs no introduction to



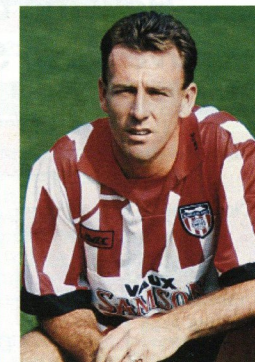
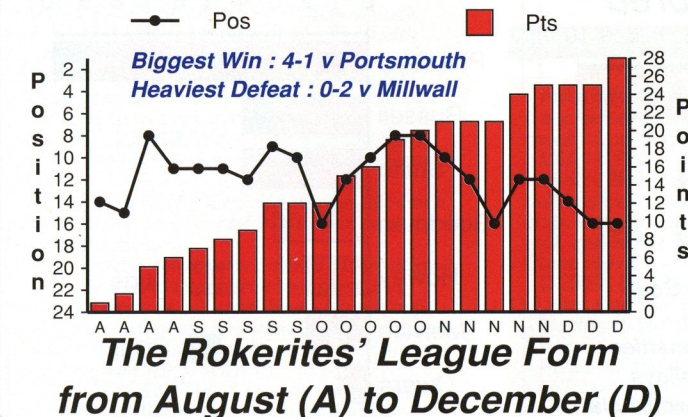
IT'S welcome back to Kenilworth Road to former Town striker Phil Gray (above).

Town fans, having top-scored for the Hatters with 20 goals before an £800,000 move to Roker.

He began his career with Spurs, and played on loan at Fulham and Barnsley, and was Sunderland's top scorer last season with 17.

The Northern Ireland international has again found the net in the current campaign, but has recently lost striking partner Don Goodman - a £1 million departure to Wolves.

Sunderland were in action at home to Bolton yesterday, before the long trip south to Kenilworth Road, but have enjoyed success on their travels with wins at Portsmouth (4-1), Reading (2-0), Stoke (1-0) and West Brom (3-1).



Above: Sunderland skipper Kevin Ball.

Left: The Roker side's league form this term.





# SUNDERLAND 1994/95

## SPOTLIGHT ON TODAY'S VISITORS

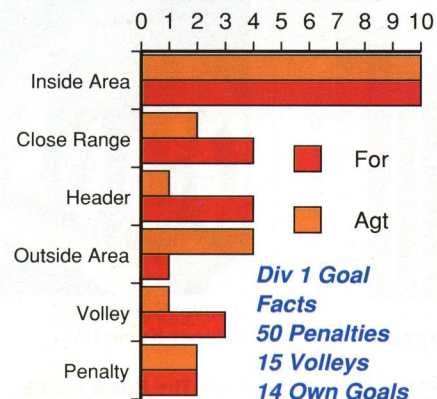


From left to right: Back row: Martin Smith, Gary Bennett, Gordon Armstrong, Ian Sampson, Richard Ord, Andy Melville, Lee Howey, Gary Owers.

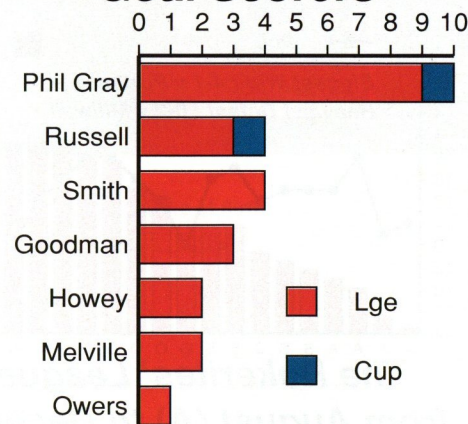
Middle row: Jimmy Montgomery, Ian Ross, Derek Ferguson, Don Goodman (now Wolves), John Kay, Anthony Smith, Sean Musgrave, Alec Chamberlain, Tony Norman, David Preece, Sean Cunningham, Michael Gray, David Rush, Phil Gray, Mick Buxton (manager), Steve Smelt.

Front row: George Herd, Gudni Helgason, Mark Angel, Chris Lawless, Ian Rodgeron, Dariusz Kubicki, Kevin Ball, Craig Russell, Brian Atkinson, Martin Gray, Phillip Brumwell, John Waldoock, Stephen Brodie, Trevor Hartley.

### How the Goals have been Scored



### Goal Scorers



## VISITORS ON PARADE

**TONY NORMAN** - Welsh international keeper who joined Sunderland in December 1988, after over 500 appearances for Hull City. The 36-year-old regained his first-team place at the end of last season.

**JOHN KAY** - Popular right-back who joined the club for £20,000 in 1987, after beginning with Arsenal for whom he made his debut in Pat Jennings' 1,000th game.

**DARIUSZ KUBICKI** - Polish international fullback, who joined Sunderland in July 1994, from Aston Villa, for £100,000.

**GARY BENNETT** - Long serving defender who, at the start of the season, was ranked eighth in the list of all-time appearances for Sunderland.

**RICHARD ORD** - England Under-21 international who operated mainly at left-back last season.

**IAN SAMPSON** - Central defender signed from non-league Goole Town.

**KEVIN BALL** - Club captain, formerly with Portsmouth, whose versatility has meant appearances in midfield and across the back four.

**GARY OWERS** - Midfield regular since his debut in August 1987, but missed the latter part of last season through injury. Married to international ice skater Joanne Conway.

**GORDON ARMSTRONG** - Began this season with a testimonial against Bobby Robson's FC Porto, and has been a fixture in the Sunderland midfield for a decade. Was just four short of 400 appearances at the start of the season.

**BRIAN ATKINSON** - England Under-21 international, and determined midfielder.

**SHAUN CUNNINGTON** - Signed from Grimsby for £600,000, but was plagued by injuries last season.

**STEPHEN BRODIE** - Small, nippy striker who made his debut last season.

**CRAIG RUSSELL** - A mascot for Sunderland against Liverpool on his tenth birthday, Craig became a first team player as a 17-year-old, and was a revelation last season averaging a goal every three league games.

**MARTIN SMITH** - Midfielder, and former England Under-17 player, who made a scoring debut in October 93.

**IAN RODGERSON** - Desperately unlucky with injuries last year, following a £140,000 transfer from Birmingham.

**ANDY MELVILLE** - Welsh international bought from Oxford for £800,000 including Aston Rogan in part exchange.

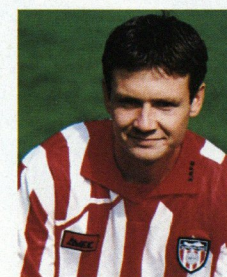
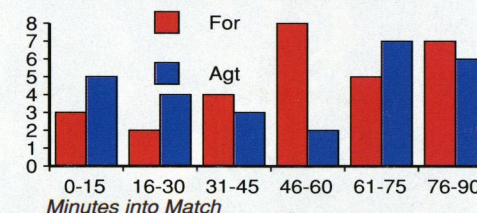
**SHAUN MUSGRAVE** - Young goalkeeper, third choice behind Chamberlain and Norman last term.

**MICHAEL GRAY** - Can operate at left-back or in midfield, and scored in the first minute of his home debut.

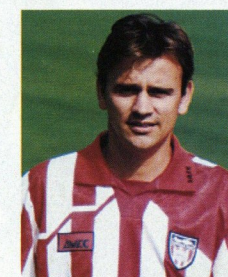
**PHIL GRAY** - Northern Ireland international, who started his career with Spurs, but made his name as a Luton Town player, top-scoring with 20 goals two seasons ago. Moved to Roker for £800,000 and was Sunderland's top scorer last term with 17.

**ANTHONY SMITH** - Local born defender who made his first-team debut in October 1990.

### When Sunderland have Scored and Conceded

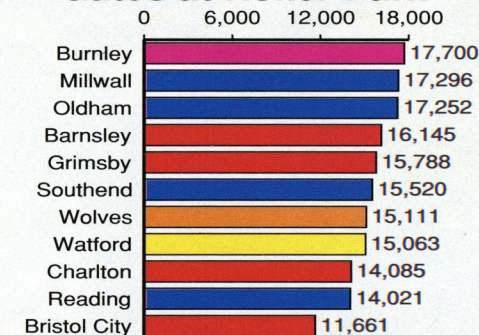


CRAIG Russell



DARIUSZ Kubicki

### Gates at Roker Park



Average : 15,422 Div 1 : 10,518

Graphics by Football Information Services

**MARTIN GRAY** - Played in a variety of positions last season, and one of Sunderland's most improved players.

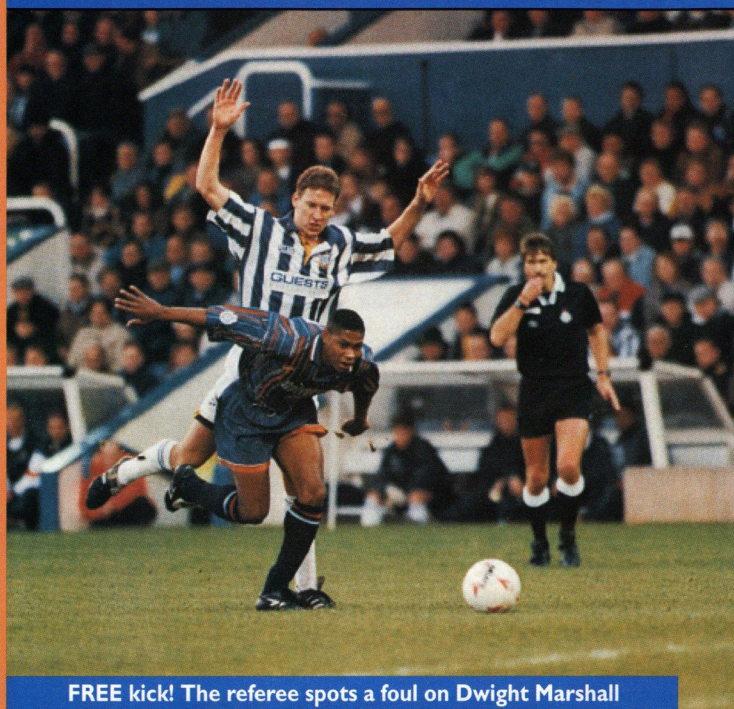
**LEE HOWEY** - Began his career with Ipswich, but after a spell in non-league football has battled back to join his hometown club. Can play at centre-forward or centre-half, and is the brother of Newcastle defender Steve Howey.

**DEREK FERGUSON** - Scottish international who signed from Hearts in the summer of 1993 for £750,000. Formerly with Glasgow Rangers.

**ALEC CHAMBERLAIN** - Former Luton goalkeeper who was always a popular player at Kenilworth Road, over four seasons in the number one shirt.



## WEST BROM v LUTON TOWN



FREE kick! The referee spots a foul on Dwight Marshall

From

The Hawthorns

Date

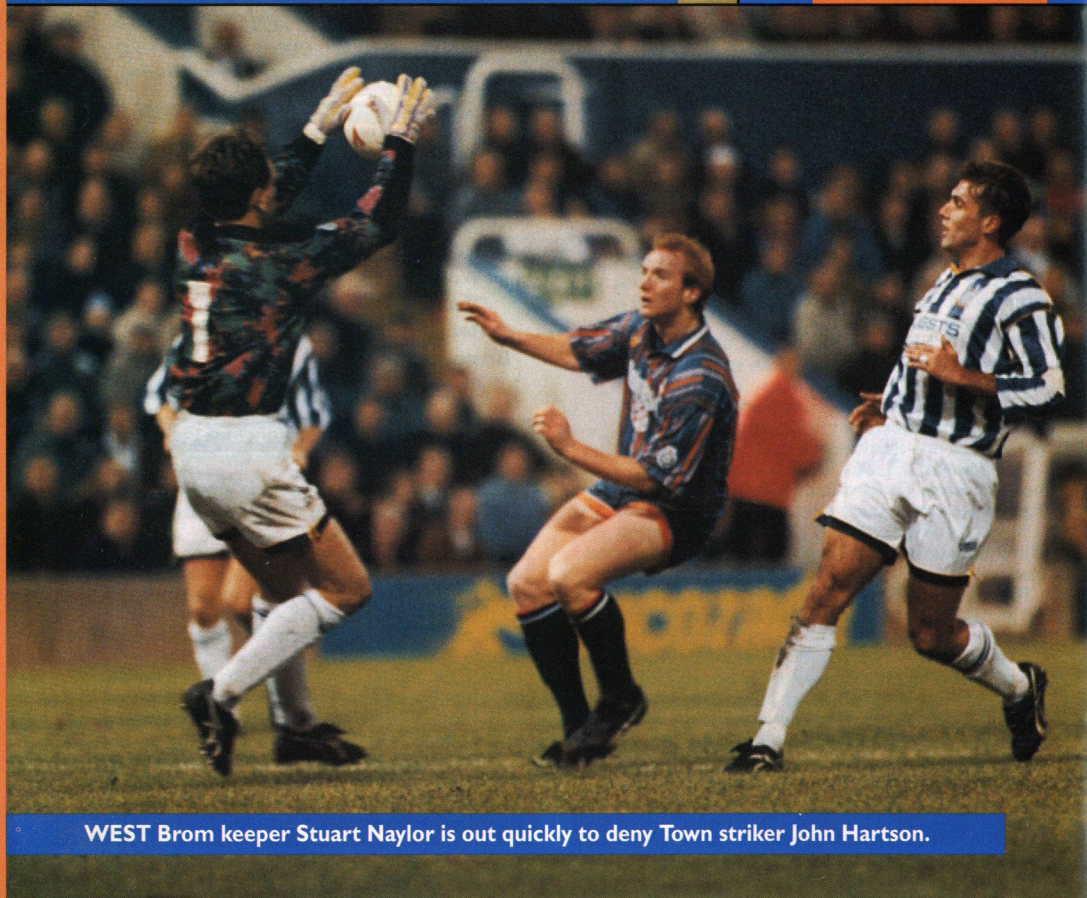
December 18, 1994

Result

West Brom 1  
(Donovan)  
Luton Town 0

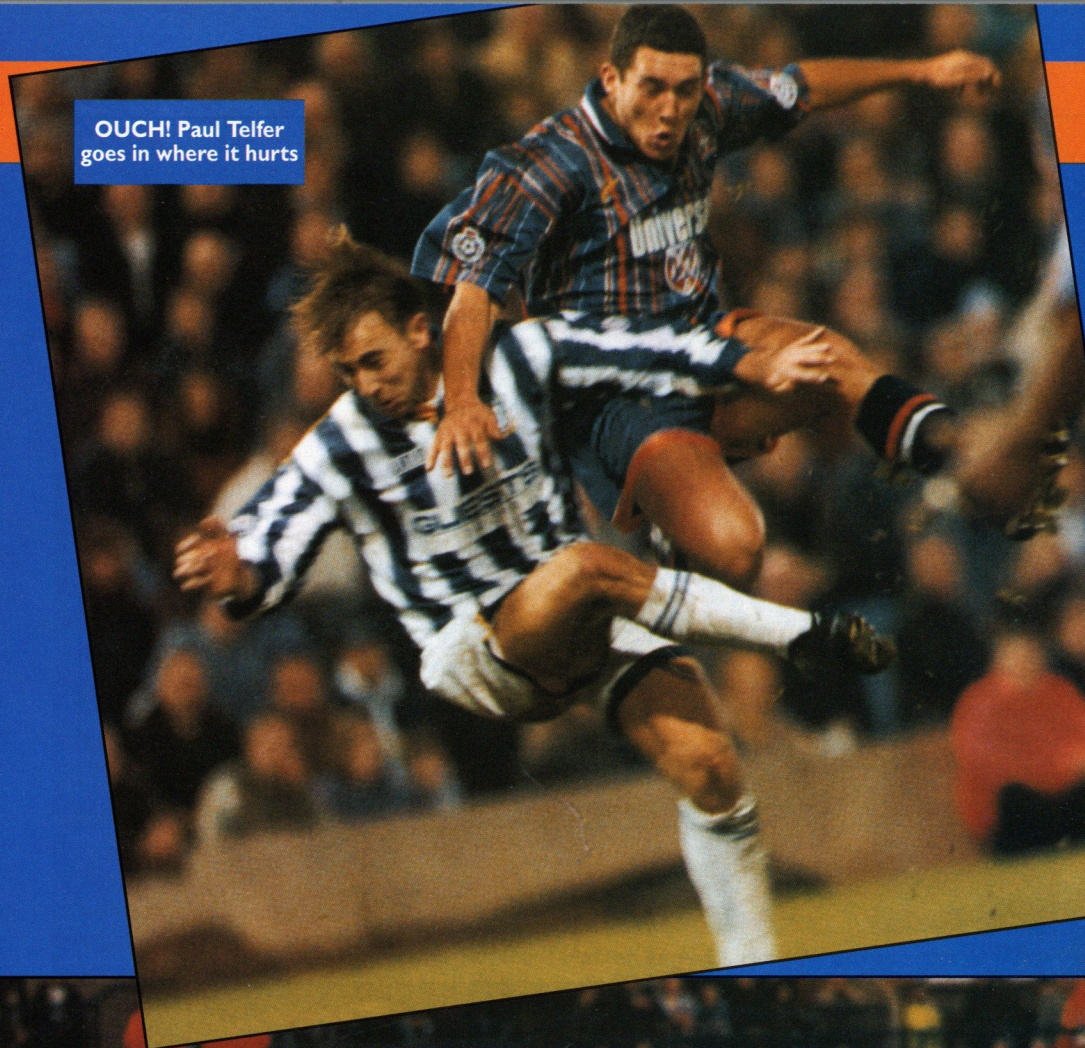
Attendance 14,392

Pictures by  
**ANDY HANDLEY**

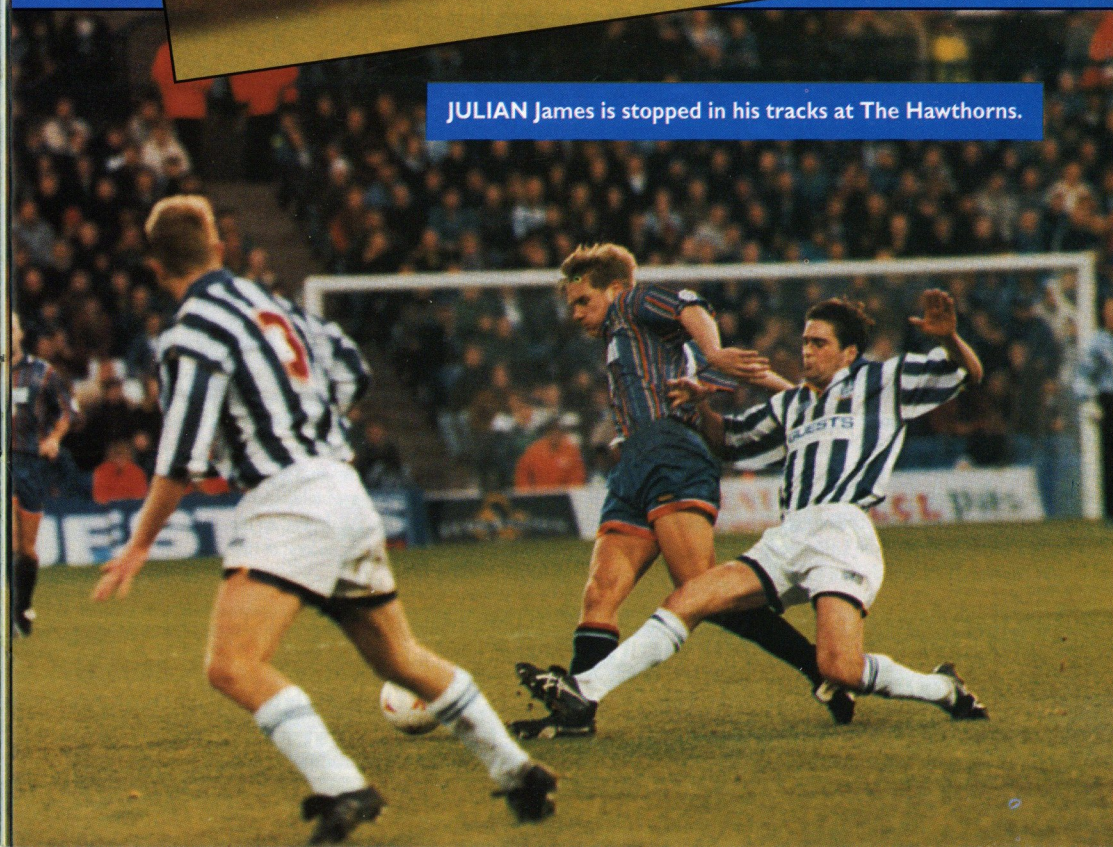


WEST Brom keeper Stuart Naylor is out quickly to deny Town striker John Hartson.

OUCH! Paul Telfer goes in where it hurts



JULIAN James is stopped in his tracks at The Hawthorns.





S U P P L I E D   B Y



MITRE SPORTS INTERNATIONAL LTD.  
BIRKBY, HUDDERSFIELD, HD1 5AJ. TEL: 0484 537488. FAX: 0484 530042

A GENESCO Company

## Football wins the Pools every Saturday



Every time you enter Littlewoods, Vernons and Zettlers Pools or Littlewoods Spot the Ball you are helping the game at all levels. The Football Trust administers funds from the Pools, helping clubs to improve safety and comfort.

The Trust receives some £37 million every year, all of it coming directly or indirectly from Littlewoods, Vernons and Zettlers Pools and Littlewoods Spot the Ball.

Football also receives £8 million a year for the use of fixtures on coupons and Littlewoods, the game's biggest benefactor, is the first sponsor of the FA Cup.

Up and down the country, clubs are building new grounds, stands, seating and roofing. All depend on the support of the Football Trust and on the success of the football pools.



**LITTLEWOODS VERNONS ZETTERS**  
*Making sure football wins the Pools each week*



**THE FOOTBALL TRUST**  
*Helping the game*

THE FOOTBALL TRUST, WALKDEN HOUSE, 10 MELTON STREET, LONDON NW1 2EB



# HARRY OF THE HATTERS

## HAPPY NEW YEAR TO ALL JUNIOR HATTERS

BEST wishes for the New Year to all Junior Hatters, and we look forward to seeing you all at the Saturday Club when that starts up again, before the home game against Wolves in January.

If you haven't been to the Saturday Club yet, why not come along and join the fun.

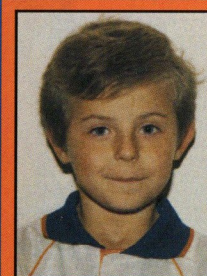
There's football, a hot lunch and a ticket for the game.

Bookings can be made at the ticket office, before the day of the game, on (0582) 416976.

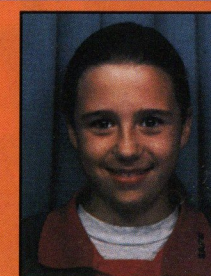


**JUNIOR Hatter Tony Clarke** was our mascot at West Bromwich Albion. He is pictured above, just prior to kick-off, with the team captains and match officials.

### MATCH DAY MASCOTS



**Name:** Adam Peck  
**Date of birth:** 21/5/87  
**School attended:** Stopsley Junior School  
**Other hobbies:** Swimming, cricket and computers  
**Favourite Luton player:** David Preece  
**Who accompanies you to Luton matches:** My mum and dad.



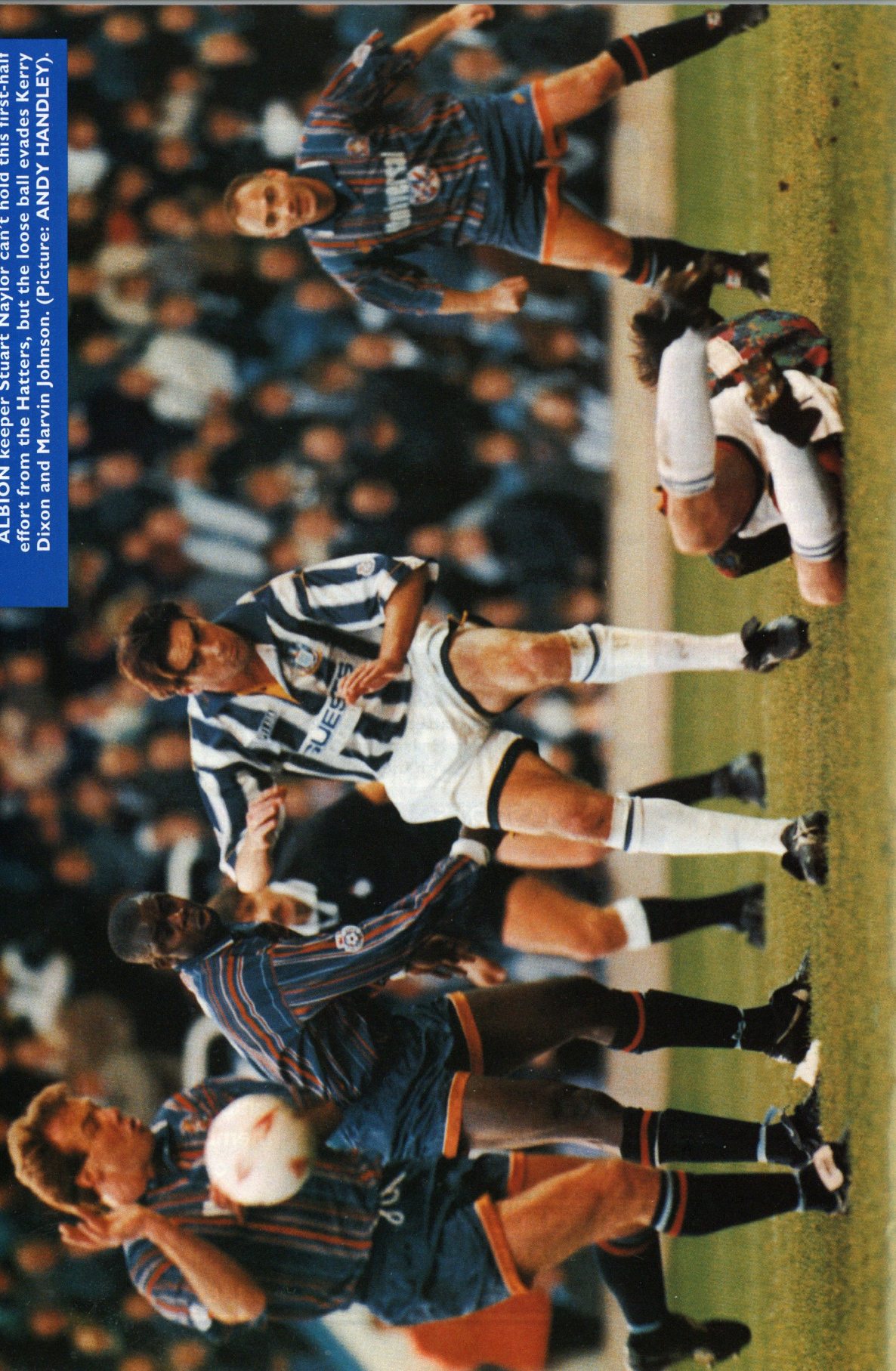
We are also pleased to welcome Rachel Garbutt (above), aged 11, who is today's Sunderland mascot.

**ALL Junior Hatters can claim a £1 discount when they play Lazer Quest at Park Square, Luton, on production of their Junior Hatters membership card**

**LOOK OUT FOR SPECIAL COMPETITIONS AND PRIZES IN OUR NEW PRE-MATCH AND HALF-TIME ENTERTAINMENTS, HOSTED BY CHILTERN RADIO DJ PAUL BURRELL**



ALBION keeper Stuart Naylor can't hold this first-half effort from the Hatters, but the loose ball evades Kerry Dixon and Marvin Johnson. (Picture: ANDY HANDLEY).



## CENTRE SPOT



ABOVE: A difference of opinion for Paul, with Derby skipper Paul Williams, during the 0-0 draw at Kenilworth Road.

## Pleat welcomes arrival of 'spot-on' Saint Paul

AFTER arriving on a month's loan from Southampton, Paul Allen went straight into the Luton Town side for the televised draw with Derby County.

The 32-year-old started his career with West Ham United, where he became the youngest player ever to appear in the FA Cup Final as the Hammers beat Arsenal 1-0 in 1980.

Trevor Brooking scored the West Ham winner, but few will forget the opportunity Paul had to mark a memorable day with a goal, only to be denied by Willie Young's foul, a challenge that sparked the still vigorous 'professional foul' debate.

Paul moved onto to Tottenham and over 300 appearances, including many under the management of David Pleat, in particular another Cup Final, alongside Mitchell Thomas, against Coventry in 1987.

He moved to Southampton at the start of last season in a £500,000 deal, but has been

unable to command a regular first-team place at The Dell this term.

"Paul is a spot-on professional," said Mr Pleat. "He has a good, bright attitude, and will be an asset to our club."

"He has played outstandingly well when I've seen him in the Southampton first-team this season, but at the moment because of the way they are playing to accommodate Dowie, Ekelund and LeTissier, Paul has lost his place and we need someone who is capable and experienced."

"We are approaching a very congested period, and to bring in Paul Allen is a very good signing for our club."

The Saint was delighted to become a Hatter, and has fitted in well.

"I have many happy memories of playing under David Pleat, and when I heard Luton were interested in taking me on loan, I was delighted to come," said Paul. "They are good, lively squad here."

Keep up-to-date with all the news from Kenilworth Road on  
**LUTON TOWN CLUBCALL 0891 121 123**

Paul Allen



**AUTOGRAPH**



*Paul Allen*



## KENILWORTH SUITE

ABB Robotics Ltd  
Anachem Ltd  
Mr G. Chamberlain  
Ken & Judi Craven  
Fisher Frozen Foods Ltd  
F & T Goodwin Ltd  
Grosvenor Contracts  
Handscombe Financial Services Ltd  
R.W. Harvey & Son

R. Yates  
Origination  
Radley Shaw  
Regal Litho  
Steadfast Properties PLC  
Wilton Contract and Vehicle Rental  
Complete Contracts Ltd  
The Home Counties Newspaper Group

## CLUB 82

Bervale Mead Insurance Brokers  
C.P. Contracts  
J.S.B. Business Forms  
Luton Cleaning Company  
Nordic Supplies  
Mr F.W. Pearce  
The Unimec Group of Companies  
Shorey Travel

TJ Aldridge Builders  
Chris and Kim Clarke - The Wheatsheaf,  
Flitwick  
Space Display Systems  
Techno Sign Ltd  
Mr D.R. Kenningham  
Carol and Stuart Kendall - The Blackbirds,  
Flitwick

## INDIVIDUAL BOX HOLDERS

Mr Alan Garner

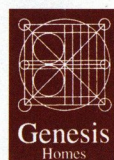
Mr Malcolm Eade

Mr Roger Eade

## EXECUTIVE BOX HOLDERS



Murtagh Demolition



Cope Brothers (Printers) Limited



Luton Town footballs.....  
Special price..... £8 each!

Adult sweatshirts -  
Quarter 'rugby style'  
shirts..... £22.99

Adult sweatshirts - Navy  
with hooped sleeves.....  
£22.99

Childrens 'American  
style' baseball  
cardigan..... £19.99  
special offer

## LTFC kit prices 1994/95

### HOME/AWAY SHIRTS

22-24 ..... £23.99  
26-28 ..... £23.99  
30-32 ..... £23.99  
34-36 ..... £28.99  
38-40 ..... £28.99  
42-44 ..... £30.99  
46-48 ..... £30.99

### HOME/AWAY SHORTS

22-24 ..... £12.99  
26-28 ..... £12.99  
30-32 ..... £15.99  
34-36 ..... £15.99

### GOALKEEPER SHIRTS

- Grey/green

22-24 ..... £29.99  
26-28 ..... £29.99  
30-32 ..... £29.99  
34-36 ..... £34.99  
38-40 ..... £34.99

### SOCKS HOME/AWAY

Boys ..... £5.99  
Youths ..... £5.99  
Mens ..... £5.99

HATTERS SHOP OPENING HOURS: Enquiries (0582) 411622

Monday to Friday - 10am to 4pm

(Evening matchdays 10am to 10pm)

Saturdays - matchdays 9am to 5pm

-non matchdays 9am until coaches leave for away game



# KIT SPONSORS

DAVID GREENE

is sponsored by  
**O'Shea's Public  
House,**  
Castle Street, Luton



**TONY THORPE**  
Bedfordshire Rural  
Communities Charity

**JULIAN JAMES**  
Shorey Travel

**PAUL TELFER**  
Convoy Installations Ltd

**KELVIN DAVIS**  
McLeod Warner

**MITCHELL THOMAS**  
Sam Hill

**DES LINTON**  
Simkins Solicitors of  
Baldock and Sandy

**CERI HUGHES**  
Les and Sue Miller

**CLIVE GOODYEAR**

**MARTIN WILLIAMS**  
Anchor Insurance Brokers  
Milton Keynes

**SCOTT OAKES**  
Legal and General Assurance

**JUERGEN SOMMER**  
Paul Deason

**AARON SKELTON**  
Club Skyway of London  
Travel Agents

**TREVOR PEAKE**  
Bennetts Gate Bakery of  
Hemel Hempstead

**MARVIN JOHNSON**  
Graham Group PLC

**DAVID PLEAT**  
Bobbars Travel Club,  
Committee and Members

**KERRY DIXON**  
The Loyal Luton Supporters Club

**JOHN HARTSON**  
Kate and Phil Shaw

**JOHN MOORE**

To sponsor a player's kit  
please contact the  
Commercial Department  
on  
Luton 411622

**RICHARD HARVEY**  
Shorey Travel

**DWIGHT MARSHALL**  
Milton Keynes Branch of the  
Luton Town Supporters Club

**FRED BARBER**  
Royal Air Force Careers  
Information Office, Bedford

**DAVID PREECE**  
Ken and Judi Craven

**TONY ADCOCK**  
Chris and Kim Clarke  
The Wheatsheaf, Flitwick

**DAVID GREENE**  
O'Shea's Public House,  
Castle Street, Luton

## LTFC in the Community

with the club's new 'Football in the Community' officer  
**COLWYN ROWE - (0582) 411622**



OUR Community Programme is under-  
way now, with a number of successful  
courses already completed in local  
schools.

There are plenty more coming up, so  
look out for our Luton Town leaflets at  
your school, and book early to avoid  
disappointment.

If your school would like to host a  
course then give Colwyn Rowe a ring  
on (0582) 411622.

The soccer courses are aimed at boys  
and girls, and will combine training and  
technique with enjoyment of the game,  
all supervised by qualified FA coaches,  
with Luton players lending a hand,  
when available.

### HATTERS CHRISTMAS COMMUNITY PROGRAMME 1994

**Course E** SHEFFORD - Robert Bloomfield Middle School, Bloomfield Drive, on Wed Dec 28, from 10am to 3pm, for boys and girls 5-14yrs, cost £10.

**Course F** FLITWICK - Woodland Middle School, Malham Close, on Thurs Dec 29 and Fri Dec 30, from 10am to 2pm, for boys and girls 5-14yrs, cost £15.

**Course G** LEIGHTON BUZZARD - Brooklands Middle School, Brooklands Drive, on Mon Jan 2 and Tues Jan 3, 1995, from 10am to 2pm, for boys and girls 5-14yrs, cost £15.

#### All Christmas courses include free match ticket

The one and two-day coaching clinics offer children a well organised coaching programme supervised by experienced, qualified Football Association coaches, with a programme designed to suit all boys and girls regardless of their footballing ability.

(Staff coaches are under no liability for any loss, injury or damage whatsoever, caused throughout the course).

### LUTON TOWN FOOTBALL CLUB - IN THE COMMUNITY APPLICATION FORM

Please reserve a place on course \_\_\_\_ (write course letter here)

NAME: \_\_\_\_\_

AGE: \_\_\_\_\_ DATE OF BIRTH: \_\_\_\_\_

ADDRESS: \_\_\_\_\_

POSTCODE: \_\_\_\_\_

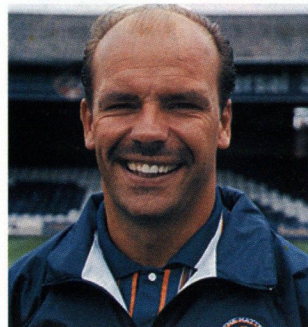
TELEPHONE NUMBER: \_\_\_\_\_

SIGNATURE OF PARENT/GUARDIAN: \_\_\_\_\_

To reserve a place, please return completed application form and cheque for full amount, made payable to "Luton Town Football Club", together with a stamped, self-addressed envelope, to:  
Colwyn Rowe, Community Football Officer, LTFC, Kenilworth Stadium, 1 Maple Road, Luton, Beds,  
LU4 8AW. You will be sent a letter of confirmation.

Colwyn Rowe would like to hear from any qualified FA coach wishing to work on Luton Town's 'Football in the Community' programme. You can phone Colwyn at the club, or write to him c/o LTFC, Kenilworth Road Stadium, 1 Maple Road, Luton, enclosing a CV.





Wed Aug 17	WATFORD	2-0
Wed Aug 24	QPR	2-1
Wed Aug 31	Charlton Athletic	1-3
Wed Sep 7	IPSWICH	2-2
Wed Sep 14	Bristol Rovers	1-3
Wed Sep 21	OXFORD	2-1
Wed Sep 28	PORTSMOUTH	1-0
Wed Oct 5	Tottenham	0-2
Wed Oct 12	Oxford	1-0
Wed Oct 19	NORWICH	3-5
Wed Oct 26	BRISTOL ROVERS	2-2
Mon Oct 31	Swindon	2-1
Tue Nov 8	Wattford	0-1
Wed Nov 16	WIMBLEDON	2-4
Mon Nov 21	Portsmouth	3-0
Wed Nov 30	SWINDON	2-2
Wed Dec 7	Norwich City	0-2
Wed Dec 14	TOTTENHAM	1-2
Wed Dec 21	Southampton 7.30pm	
Wed Jan 4	Brighton 7.15pm	
Tue Jan 10	West Ham 7pm	
Mon Jan 16	Bristol City 7.30pm	
Wed Jan 18	WEST HAM 2pm	
Wed Jan 25	CRYSTAL PALACE 2pm	
Wed Feb 1	CHARLTON 2pm	
Wed Feb 8	ARSENAL 2pm	
Tue Feb 14	Crystal Palace 2pm	
Thu Feb 23	BRISTOL CITY 2pm	
Sat Feb 25	Arsenal 3pm	
Wed Mar 8	SOUTHAMPTON 2pm	
Wed Mar 15	Wimbledon 2pm	
Wed Mar 22	MILLWALL 2pm	
Wed Mar 29	Ipswich Town 7.30pm	
Wed Apr 5	BRIGHTON 2pm	
Mon Apr 10	Millwall 2pm	
Wed Apr 19	CHELSEA 2pm	
Tue Apr 25	Queens Park Rgrs 7pm	
Mon May 8	Chelsea 7pm	

BOLD type denotes home game. October to February inclusive to be played at Hitchin Town FC. (Luton score first).

# RESERVES AND YOUTH

## WITH WAYNE TURNER AND TERRY WESTLEY

THE Town's Reserve side have gone down at Norwich, and lost to a late Tottenham goal in their latest Avon Insurance Combination matches.

They lost 2-0 to Norwich at Carrow Road, and had Tony Thorpe sent off, with Tony Adcock suffering a recurrence of his back injury.

**Team: Barber, Chenery, Harvey, Skelton, Greene, Simpson, Williams, Woolgar, Adcock, Woodsford, Thorpe.**

**Subs: Palmer, Power, Davis (gk).**

Against Spurs, at Hitchin on December 14, the Town took a 16th minute lead when Juan Andrades, on trial from Spanish first division side Oviedo, cracked in a left-foot shot from the edge of the area.

Fred Barber made a fine save to keep the Hatters in front on 67 minutes, but two minutes later Stuart Nethercott netted following a disputed corner.

John Hartson, playing less than 24 hours after his Wales

Under-21 appearance, was close to a Town winner, but in the final minute John Hendry scored from close range to give Spurs the points.

With eight minutes to go Luton's David Greene had been sent off for his second bookable offence, and there were also yellow cards for Ben Chenery, Richard Harvey and Martin Williams, and Spurs trio Jason Cundy, Darren Caskey and Danny Hill.

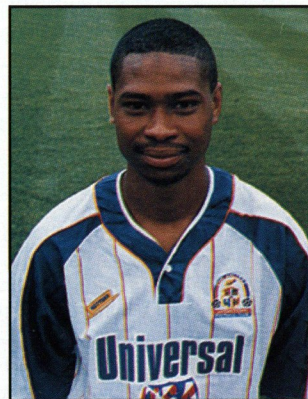
**Team: Barber, Chenery, Harvey, Waddock, Greene, Skelton, Williams, Allen, Hartson, Marshall, Andrades.**

**Subs: Woolgar, Issott, Abbey (gk).**

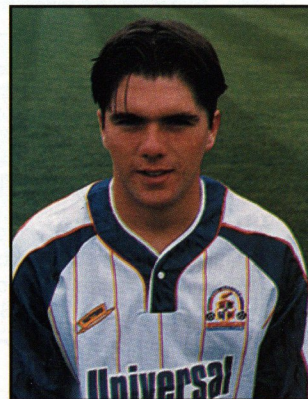
The youth team returned to winning ways with a 2-0 win over Tottenham, at Mill Hill, on December 10.

Stuart Douglas and Gary Issott scored the goals, as the Hatters pulled off a fine win despite being without Jamie Woodsford and Paul McLaren.

**Team: Davis, Willmott, Palmer, Upson, Thomas,**



Dwight Marshall



Tony Thorpe



DWIGHT Marshall congratulates Juan Andrades after the Spaniard's goal for the Reserves against Tottenham. (Pic: Herald and Post).

**Chenery, Evers, Power, Douglas, Issott, Kean.**

**Subs: Turner, Fotiadis.**

The return South East Counties fixture was played at Luton Rugby Club on December 17, with Spurs winning 3-2.

Luton's scorers were Chris Willmott and Gary Issott.

**Team: Davis, Turner, Willmott, Upson, Thomas, Chenery, Power, Douglas, Kean, Issott, Palmer.**

**Subs: Evers, Augustine.**



Chris Willmott

Please note that all reserve team home matches in October, November, December, January and February will be played at Hitchin Town FC.



## South East Counties League and Southern Junior Floodlit Cup

Sat Aug 13	CRYSTAL PALACE	4-2
Sat Aug 20	Wycombe Wanderers	5-0
Sat Aug 27	BRIGHTON	2-3
Thu Sep 1	Coventry (SJFC Pre)	2-2
Mon Sep 5	Coventry (SJFC Pre)	1-2
Sat Sep 10	Reading	4-0
Sat Sep 17	NORWICH (LC1)	2-0
Sat Sep 24	SOUTHAMPTON	0-2
Sat Oct 1	Oxford United	0-3
Sat Oct 8	BRISTOL ROVERS	2-1
Sat Oct 15	COLCHESTER	7-0
Sat Oct 22	Colchester (LC2)	0-1
Sun Oct 23	Saffron Walden (EJC)	2-3
Sat Oct 29	WIMBLEDON	2-4
Sat Nov 5	Brentford	1-3
Mon Nov 7	STAINES TOWN (FAYC1)	5-0
Sat Nov 12	BRISTOL CITY	1-2
Sat Nov 19	Swindon Town	0-1
Mon Nov 28	Wycombe (FAYC2)	0-1
Sat Dec 3	BOURNEMOUTH	0-1
Sat Dec 10	Tottenham	2-0
Sat Dec 17	TOTTENHAM	2-3
Sat Dec 31	Crystal Palace	
Sat Jan 7	WYCOMBE WANDERERS	
Sat Jan 14	Brighton	
Sat Jan 28	READING	
Sat Feb 4	Southampton	
Sat Feb 11	OXFORD UNITED	
Sat Feb 18	Bristol Rovers	
Sat Feb 25	COLCHESTER UNITED	
Sat Mar 4	Wimbledon	
Sat Mar 11	BRENTFORD	
Sat Mar 18	Bristol City	
Sat Mar 25	SWINDON TOWN	
Sat Apr 1	Bournemouth	
HOME matches denoted in bold.		



# 138 GOALS FOR £10.99

## LUTON TOWN

The official video of the 1993/94 season



Featuring every goal from the league and cup campaigns

Relive the dramatic 93/94 season as the Hatters head for Wembley.

Videos available now at the Hatters Shop.

Match videos also available from this season, to buy/order, including:

Watford 2 Luton 4, Luton 5 Midd'bro 1, Wolves 2 Luton 3

## WEST HAM, WEMBLEY, WATFORD & WOLVES



LUTON TOWN  
FOOTBALL CLUB

Programme Editor **SIMON OXLEY**  
looks back at the highlights of 1994

WEST Ham, Wembley, Watford and Wolves..... Wow, what a year it was.

Twelve months at Kenilworth Road are seldom uneventful, and 1994 provided so many on-the-field highlights I can only offer a personal point of view.

**Match Of The Year** has a number of contenders based on venue and occasion, and therefore of course the Wembley semi-final and the 1-1 draw at Newcastle are to the fore. Wembley as 'a day out' was enjoyed by most, while St James' Park, for the few allowed in, is a wonderful place to silence!

But for 90 minutes of sheer excitement my vote would go to the FA Cup sixth round replay against West Ham.

Martin Allen struck first for West Ham; Scott Oakes then put Luton 2-1 in front; Ian Bishop made it 2-2; and then Oakes completed that glorious hat-trick; a truly memorable night.

That result takes some beating for **Performance Of The Year**, but the 2-0 victory over Newcastle and the 4-1 win over Portsmouth in the snow also stand out from last season.

In the current campaign there have been excellent performances at Watford and Wolves, but my Performance vote would go to the 5-1 victory over Middlesbrough at Kenilworth Road.

The **Best Performance Against** is a difficult one, but Chelsea were good value for their

semi-final victory, and recently Sheffield United showed a keen eye in front of goal!

But albeit a second-half performance, Bolton's 3-0 win here in September gets the nod.

**Best Goal Against** is again split between seasons. In the last campaign Gary Coatsworth's strike to open the scoring at Leicester was a memorable goal, while West Brom's Bob Taylor netted a fine solo goal in the last match here last season.

This season Dave Gilbert curled in a wonderful free-kick for Grimsby, but the winner for me was Ricky Otto's equaliser for Southend in the 2-2 draw at Kenilworth Road in August.

His volley showed why Birmingham have just paid nearly £1 million for his services.

Now speaking of things spectacular, the final category is for **Luton's Goal Of The Year**, or should it be Scott Oakes' Goal Of The Year?

Both of Paul Telfer's goals at Watford are worthy of mention, one a fine individual effort, the other the result of great teamwork.

(Telfer's third round winner against Southend is also in the latter category).

But Scott Oakes has provided many contenders. The third goal against the Hammers, the first at Cardiff, and the stunning volley to open the second-half at Stoke on the final day of last season.

However, the winner on January 22, saw not just the goal of 1994, but probably the best Luton goal since 1894! Luton 2 Derby 1..... need I say more.

### SAFETY NOTE

The Chairman and Directors of Luton Town Football Club undertake to ensure as far as humanly possible that all activities that take place at the Kenilworth Stadium are conducted in such a way that, as far as is reasonably practicable, the safety of everyone working at or attending that stadium is assured.

The club's primary responsibility through the Safety Officer, Officials, Staff and Stewards will be to ensure the reasonable safety of those attending the stadium.

In the interests of public safety, the safety authority (Beds County Council) have imposed a NO SMOKING restriction in and beneath our main stand. Your co-operation is appreciated.

**Remember.... Luton Town's next home game is on Monday, January 2, when Charlton Athletic visit Kenilworth Road, kick-off 7.45pm.**

**Then on Saturday, January 7, Bristol Rovers visit in the third round of the FA Cup, kick-off 3pm.**

**For full ticket information both home and away, see page 9 of today's match programme!**

That was the year that was



# Sunderland hit for six...seven...eight!



**ABOVE:** Sunderland's Charlie Hurley shields the ball from the onrushing John Kilgannon and Gordon Turner, in a game played at Kenilworth Road in August 1960.

**WHEN** the Town won promotion to Division One for the first time in 1955, manager Dally Duncan proclaimed that he would not be making any summer signings and would instead rely on the players who had earned the elevation. Luton supporters were not so sure!

They need not have worried however, as the players made a steady start to the season losing only one of their first five games, beating highly fancied Preston and Tottenham at Kenilworth Road along the way, as well as winning 1-0 at Everton.

The national press really began to sit up and take notice of this small club from Bedfordshire, when FA Cup holders Newcastle were seen off at Kenilworth Road, closely followed by Stanley Matthews' Blackpool.

When Wolves were hammered 5-1 before a record Luton league crowd of 27,911, with Billy Wright given the runaround, the Town pushed up to ninth position and the players

were beginning to believe that a realistic tilt at the title was a distinct possibility.

The biggest test of these 'upstarts' was surely to be when the Division One leaders Sunderland came to Kenilworth Road on November 19, and another large crowd of 25,802, which included most of Fleet Street, gathered to see if the bubble would burst.

Sunderland at that stage had never been outside the first division and boasted an expensive side which included Wales captain Ray Daniel, England's Len Shackleton, and mercurial winger Billy Bingham, who was later to play for the Town. They had also achieved a run of six games without defeat!

Considering what was to happen, the first half hour passed without a goal being scored, although it took a brilliant save from Town goalkeeper Ron Baynham to keep out a wicked shot from Shackleton.

The breakthrough came in the 31st minute when Sunderland keeper Willie Fraser pulled down Mike Cullen from behind, and the ever-reliable Gordon Turner scored from the spot.

That was to prove the turning point as, before the half-time whistle was blown, the Town were 4-0 up. Firstly Cullen, normally a goal provider rather than a scorer, hit home a 25-yard shot followed by close range efforts from Jim Adam and Bob Morton.

The Wearsiders had no answer to the rampant Luton forward line and their square defence was cut to ribbons as short through passes on the ground more often than not created danger.

The second period opened quietly before Daniel had a mad spell when firstly he failed to find his goalkeeper with a back pass and Morton nipped in, and then he handled a corner for Turner to increase the lead once again from the spot.

Sunderland hit back with a goal from Ted Purdon, before Cullen netted from an acute angle, with Morton completing the Luton goal tally ten minutes from the end, running 40 yards with the ball before beating Fraser to complete his first hat-trick.

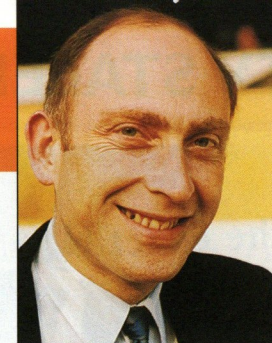
Purdon hit home a consolation in the final minute, following a rare lapse of concentration in the Luton defence.

For a short time afterwards the Town were the most talked about team in the country, and the newspaper reports spoke about "The most attractive team in the land" and "The slaughter of Sunderland had to be seen to be believed" as well as "Never was there a humiliation like this".

Spare a thought for poor Willie Fraser who, apart from letting in eight in 1955/56, conceded six the following season, and seven in 1957/58. He did make one more appearance at Kenilworth Road, in the colours of Nottingham Forest, shortly before the 1959 Cup Final, and picked the ball out of the net five times! One for the record books?

Luton: Baynham, Dunne, Aherne, Pemberton, Owen, Shanks, Cullen, Turner, Morton, Cummins, Adam.

Sunderland: Fraser, Hedley, McDonald, Anderson, Daniel, Aitken, Bingham, Fleming, Purdon, Chisholm, Shackleton.



by **ROGER WASH**

## 5 YEARS AGO

26/12/89: Mick Harford made a welcome return to the team, coming on as a substitute during the 1-1 home draw with Nottingham Forest for his first appearance of the season. Richard Cooke scored the Luton goal.

## 10 YEARS AGO

26/12/84: Goals from Ray Daniel and Brian Stein secured a 2-0 win at Kenilworth Road over Coventry.

This win, only the fifth of the season, pushed the Town out of the relegation positions.

## 15 YEARS AGO

26/12/79: The famous 1-0 victory at Watford, with fullback Kirk Stephens scoring the winner in the final minute, in front of a crowd of 20,227.

## 20 YEARS AGO

26/12/74: Top versus bottom with the Town going to Ipswich and pinching a win with a goal in the last minute. The Luton goalscorer was Ron Fletcher, on his full debut.



## TV STALEMATE AS SUTTON DENYS THE HATTERS



LEFT: David Preece saw this early header saved by Steve Sutton in the Derby County goal, one of several fine saves by the former Luton keeper.



RIGHT: High-flying Paul Telfer heads the Hatters forward against Derby.



LEFT: New arrival Paul Allen takes a tumble after a tackle from Derby skipper Paul Williams.



LEFT: Julian James' second half header went just wide of the Derby goal.

**LUTON TOWN 0  
DERBY COUNTY 0**

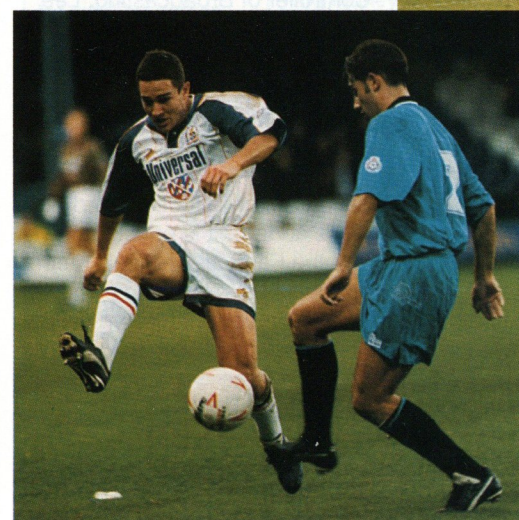
Sunday, December 11, 1994,  
at Kenilworth Road.

Attendance: 6,400.

Pictures by  
**ANDY HANDLEY**



ABOVE: Kerry Dixon evades Steve Sutton's challenge but couldn't find the target.



ABOVE: Paul Telfer takes on Derby defender Jason Kavanagh in the 0-0 draw.

Action pictures featured in the Luton Town matchday programme are available at the special introductory price of just £2 per print!

Write to Simon Oxley, at the club, giving a brief description of the picture (programme and page number etc), and enclosing a cheque/ postal order made payable to Luton Town Football Club.



## ENDSLEIGH AWARD FOR PREECE



DAVID Preece was the Endsleigh man-of-the-match against Derby, and collected the award from an exiled Hatters fan now working for the company who sponsor the Football League.

Geoff Holt (pictured left with David), was born in Dunstable, but now works at the Endsleigh head office in Cheltenham.

"Our man due to present the award had to cry off, and it didn't take me long to volunteer for the job," Geoff told the Luton News. "It was a real thrill to be involved."

ONE of the most comprehensive guides on stadium safety management and the training of club stewards will be published by The Football League in the New Year.

The new guide builds on the success of the original training document issued by the League three years ago, which set the standards expected throughout the football industry in the United Kingdom.

It has been produced as a joint venture with the Football Association and Premier League, after close consultation with the Football Licensing Authority and Football Safety Officers' Association.

## TV ratings success for Endsleigh Extra

AFTER just four months on air, the ratings success of the new Endsleigh League Extra football highlights programme has earned a move to a new, earlier, time slot.

From the New Year, the weekly magazine show will be broadcast at 12.40am across the ten ITV regions currently taking the programme.

The 40-minute production, which provides extensive coverage of the whole league, has proved a hit with fans, regularly drawing 40% of the available audience share.

In its 17-week run the goals action and magazine-style format

of the Endsleigh League Extra has proved popular in Scotland and Northern Ireland, as well as England and Wales, with over 1,600 goals being featured since the beginning of the season.

The Football League's Controller of Broadcasting, Lee Walker, commented: "We always knew that we had an outstanding product, and the programme style complements the regular live action of the league on the ITV network."

Programme Director David Moss added: "It is encouraging that the Football League's member clubs have been so positive, and it is important that we build on this successful start."

# CHEERS

Look out for more thirst-quenching offers for supporters in the Hatters and Century Bars



# TicketLine 0645 10 10 10

The exclusive ticket booking service for fans of Endsleigh League First Division clubs

24 HOURS A DAY, 7 DAYS A WEEK  
ALL CALLS CHARGED AT LOCAL RATE

THE Football League and the FA Premiership have linked up for the second successive season with BBC Radio Five Live to once again provide football fans with up-to-the-minute reports on matches that have been affected by the weather.

Radio Five Live will provide up-date bulletins every half-hour from 6.30am on any games that have been postponed or are threatened by bad weather, with the service aimed at saving supporters a wasted or unnecessary journey.

Details of any Luton matches affected will also be broadcast locally on BBC Three Counties and Chiltern Radio, and on the Luton Town Clubcall service on 0891 121 123, if and when the winter weather sets in.



LEFT: Ken Ferris on his visit to Kenilworth Road is presented with a Luton Town pennant by Trevor Peake, David Greene, David Preece and Kerry Dixon.

## Ken's record mission

KEN Ferris is a man with a mission. He is hoping to chalk up a new world record by visiting all 92 Premier and Endsleigh League grounds (and Berwick Rangers) in less than 243 days.

That's how long it took Edward Wood of Derby, the current record holder, to accomplish the feat in the 1991/92 season.

The prize is a place in the Guinness Book of Records. But, more importantly, Ken will be raising money through sponsorship for five charities: Imperial Cancer

Research, The Down's Syndrome Association, The National Society for the Prevention of Cruelty to Children, and the Great Ormond Street and Brompton Hospital appeals.

"I thought of the idea on a train journey to Stoke to visit a friend," said Ken.

"As the London to Manchester train passed by the floodlights belonging to the grounds of Birmingham City and Wolves I began to wonder what it would be like to visit every club in the country. Now I'm about to find out."

## LUTON TOWN CLUBCALL

# 0891 121 123

For all the news updated live from Kenilworth Road.  
Match commentary... Reports... Interviews with manager David Pleat and all the Hatters players...  
plus ticket information and fixture details.

*Calls cost 39p a minute cheap rate and 49p at all other times.*

Money from YOUR calls helps support YOUR club





## COMMERCIAL CORNER with Kathy Leather

### A warm welcome to today's match and matchball sponsors

THIS afternoon we welcome match sponsors ANACHEM, and matchball sponsors RUSSELL PRESS.

Match sponsors ANACHEM supply laboratory equipment to pharmaceutical, biotechnology and university research.

Established 25 years ago, Anachem employ 105 staff at their Luton-based headquarters.

This will be the fourth successive year Anachem have sponsored the Sunderland match inviting customers from the North-Eastern pharmaceutical companies of Glaxo, Searle, Sanofi Winthrop and Westlakes Research.

It is expected they will enjoy the hospitality of Luton Town, hopefully watch a good game, and then drown their sorrows!

Today's matchball sponsors are RUSSELL PRESS, litho printers and stationers of Ampthill, Bedfordshire.

Proprietor Roger Bannister and his son Steven are keen supporters of Luton Town.

They are accompanied today by their guests Mr Roger Davies and family. Mr Davies is the proprietor of Information Design Associates whose clients include many multi-national companies.

As this is the last home game of 1994, we would like to thank all our sponsors for their support over the past year.

We look forward to working with you in 1995, and wish you all a happy and prosperous New Year.

### Antony's Tailor

OF LONDON

**THE MOST ESTABLISHED AND RELIABLE TAILORS IN LUTON**

DRESS HIRE  
LADIES AND GENTS  
BESPOKE TAILORING

12 DUNSTABLE ROAD, LUTON,  
BEDS OPPOSITE MAIN POST OFFICE  
TEL: (0582) 424687

**L**UTON Town can cater for everything from business breakfasts, lunches or dinners to birthday/ anniversary celebrations and wedding breakfasts.

We can help to plan events by either clients visiting the club or by making a private visit to the clients own premises.

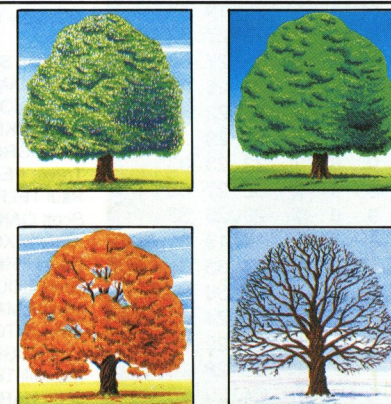
We have a number of function suites available, from our boardroom, which is an exclusive setting for senior management meetings, to our adjacent suites which can cater for up to 100 or more delegates for conferences and seminars.

Our catering operation, which prides itself on a personal service, can provide quality refreshments to complement any occasion.



**ABOVE:** Enjoy the game from the comfort of an executive box, with a meal before kick-off.

**RIGHT:** Frederick Motson, son of TV commentator John Motson, was Derby County's mascot in our recent game here. The Motsons are pictured with Luton mascot Ross Devereux.



**AT HFC BANK, YOU'LL DISCOVER THE MOST CIVILISED PEOPLE IN THE FINANCIAL JUNGLE.**

IF YOU REQUIRE ANY ADDITIONAL INFORMATION CALL OR VISIT YOUR LOCAL BRANCH MANAGER: DAVID BLUMSON, HFC BANK PLC, 15/17 UPPER GEORGE STREET, LUTON, BEDFORDSHIRE, LU1 2RD.

**TELEPHONE: 0582 459797**



All loans subject to status. A written quotation of our credit terms is available on request. HFC Bank plc. Registered office: North Street, Winkfield, Windsor, Berkshire SL4 4TD. Registered in England No. 1117305.

**R. J. BLOW &  
C O M P A N Y**

*THE FRIENDLY ACCOUNTANTS*

*Book-Keeping,  
Taxation and Wages etc.*



STIRLING HOUSE,  
30 GUILDFORD STREET,  
LUTON, BEDS LU1 2NR



Tel: (0582) 38792  
Fax: (0582) 423347



# TEAM STATISTICS 1994-95

Date	Opponents	F-A	Att	Pos	1	2	3	4	5	6	7	8	9	10	11	12	14	GK
Sat Aug 13	WEST BROMWICH ALBION	1-1	8,640	-	Sommer	James	Johnson	(Skelton)	Greene	Peake	Telfer	OAKES	Dixon	Preece	(Houghton)	(Marshall)	(Linton)	Barber
Tue Aug 16	FULHAM CCC 1 (1)	1-1	3,287	-	Sommer	James	Johnson	(Hughes)	Greene	Peake	Telfer	OAKES	Dixon	Preece	(Houghton)	(Marshall)	(Linton)	Barber
Sat Aug 20	Derby County	0-0	13,060	14	Sommer	James	Johnson	(Linton)	Greene	Peake	Telfer	Marshall	Dixon	Preece	Hughes	Skelton	Houghton	Barber
Tue Aug 23	Fulham CCC 1 (2)	1-1	5,134	-	Sommer	James	Johnson	(Linton)	(Greene)	Peake	Telfer	MARSHALL	Dixon	Preece	Hughes	(Oakes)	(Skelton)	Barber
Sat Aug 27	SOUTHEND	2-2	5,918	16	Sommer	(James)	Johnson	Oakes	Greene	Peake	Telfer	(Marshall)	HARTSON	Preece	HUGHES	(Thomas)	(Dixon)	Barber
Tue Aug 30	Tranmere Rovers	2-4	5,480	20	Sommer	James	Johnson	(Skelton)	Greene	Peake	Telfer	Oakes	HARTSON	Preece	HUGHES	Thomas	(Marshall)	Barber
Sat Sep 3	Port Vale	1-0	8,541	15	Sommer	(James)	Johnson	Skelton	Greene	Peake	Telfer	MARSHALL	Dixon	(Preece)	Oakes	(Thomas)	(Woodsford)	Barber
Sat Sep 10	BURNLEY	0-1	6,911	18	Sommer	James	Johnson	(Waddock)	(Greene)	Peake	Telfer	Marshall	Hartson	Preece	Oakes	(Thomas)	(Dixon)	Barber
Tue Sep 13	BOLTON WANDERERS	0-3	5,764	20	Sommer	James	Johnson	Waddock	(Thomas)	Peake	Telfer	Oakes	Dixon	Preece	(Hartson)	(Linton)	(Marshall)	Barber
Sat Sep 17	Watford	4-2	8,880	16	Sommer	James	Johnson	Waddock	Thomas	Peake	TELFER 2	OAKES	DIXON	Preece	Marshall	Hartson	Linton	Barber
Sat Sep 24	Millwall	0-0	7,150	16	Sommer	James	Johnson	Waddock	Thomas	Peake	Telfer	Oakes	(Dixon)	Preece	Marshall	(Hartson)	Skelton	Barber
Sat Oct 1	BRISTOL CITY	0-1	6,633	20	Sommer	James	Johnson	Waddock	(Thomas)	Peake	Telfer	Oakes	(Dixon)	Preece	Marshall	(Hartson)	(Hughes)	Barber
Sun Oct 9	Stoke City	2-1	11,712	18	Sommer	James	Johnson	Waddock	Thomas	Peake	Telfer	Hughes	Hartson	(PREECE)	MARSHALL	(Oakes)	Williams	Barber
Sat Oct 15	MIDDLESBROUGH	5-1	8,412	11	Sommer	James	Johnson	Waddock	Thomas	Peake	Telfer	Hughes	HARTSON	(PREECE)	MARSHALL 2	(Oakes)	Dixon	Barber
Sat Oct 22	Sheffield United	3-1	13,317	7	Sommer	JAMES	Johnson	Waddock	Thomas	Peake	Telfer	Hughes	DIXON	(Preece)	Marshall	(Oakes)	Thorpe	Barber
Sat Oct 29	BARNSELY	0-1	7,212	10	Sommer	James	Johnson	(Waddock)	Thomas	Peake	Telfer	Hughes	Hartson	Preece	(Marshall)	(Oakes)	(Dixon)	Barber
Tue Nov 1	GRIMSBY TOWN	1-2	5,839	13	Sommer	James	Johnson	Waddock	Thomas	Peake	Telfer	(Hughes)	Hartson	Preece	Marshall	(OAKES)	Dixon	Barber
Sat Nov 5	Wolverhampton Wanderers	3-2	26,749	8	Sommer	James	Johnson	Waddock	Thomas	Peake	Telfer	Oakes	(DIXON)	PREECE	MARSHALL	(Hartson)	Thorpe	Barber
Sat Nov 12	Oldham Athletic	0-0	7,907	8	Sommer	James	Johnson	Waddock	Thomas	Peake	Telfer	Oakes	Dixon	Preece	(Marshall)	(Hartson)	Thorpe	Barber
Sat Nov 19	PORTSMOUTH	2-0	8,214	8	Sommer	James	Johnson	Waddock	Thomas	Peake	Telfer	Oakes	DIXON	PREECE	(Marshall)	(Thorpe)	Hartson	Barber
Sat Nov 26	Swindon Town	2-1	9,455	5	Sommer	James	Johnson	Waddock	Thomas	Peake	Telfer	OAKES	(DIXON)	Preece	Linton	Woodsford	(Hartson)	Barber
Sat Dec 3	SHEFFIELD UNITED	3-6	8,516	8	Sommer	James	JOHNSON	Waddock	Thomas	Peake	Telfer	Oakes	Dixon	(Preece)	(Linton)	(HARTSON)	(Marshall)	Barber
Sun Dec 11	DERBY COUNTY	0-0	6,400	9	Sommer	James	Johnson	Waddock	Thomas	Peake	Telfer	Oakes	(Dixon)	Preece	(Allen)	(Hartson)	(Marshall)	Barber
Sun Dec 18	West Bromwich Albion	0-1	14,392	12	Sommer	(James)	Johnson	Waddock	Thomas	Peake	Telfer	Oakes	Dixon	Preece	Marshall	(Hartson)	Skelton	Barber

Mon Dec 26	Reading
Tue Dec 27	SUNDERLAND
Sat Dec 31	Notts County
Mon Jan 2	CHARLTON ATHLETIC
Sat Jan 7	BRISTOL ROVERS FAC 3
Sat Jan 14	Barnsley
Sat Jan 21	WOLVERHAMPTON WANDERERS
Sat Jan 28	FAC 4
Sat Feb 4	OLDHAM ATHLETIC
Sat Feb 11	Grimsby Town
Sat Feb 18	SWINDON TOWN (FAC5)
Wed Feb 22	Portsmouth
Sat Feb 25	Bristol City
Sat Mar 4	MILLWALL
Tue Mar 7	PORT VALE
Sat Mar 11	Southend United (FAC6)
Sat Mar 18	TRANMERE ROVERS
Tue Mar 21	Burnley
Sat Mar 25	WATFORD
Sat Apr 1	Bolton Wanderers
Sun Apr 2	CCC Final
Sat Apr 8	NOTTS COUNTY (FAC S/F)
Sat Apr 15	Sunderland
Mon Apr 17	READING
Sat Apr 22	Charlton Athletic
Sat Apr 29	Middlesbrough
Sat May 6	STOKE CITY
Sat May 20	FAC Final

CCC = Coca-Cola Cup  
FAC = FA Cup)

## ENDSLEIGH LEAGUE DIVISION ONE

	P	W	D	L	F	A	PTS
Middlesbro	22	13	4	5	35	19	43
Wolves	22	11	4	7	39	27	37
Bolton	22	10	6	6	36	27	36
Tranmere R	22	10	6	6	35	26	36
Reading	22	10	6	6	28	22	36
Barnsley	22	10	5	7	24	23	35
Sheff Utd	22	9	6	7	33	23	33
Grimsby	22	8	9	5	32	27	33
Stoke	22	9	6	7	26	25	33
Derby C	22	8	7	7	23	19	31
Southend U	22	9	4	9	23	33	31
LUTON	22	8	6	8	31	30	30
Watford	22	7	9	6	22	24	30
Oldham	22	8	5	9	28	29	29
Millwall	22	7	7	8	28	28	28
Sunderland	22	6	10	6	24	20	28
Charlton	21	6	8	7	32	32	26
Port Vale	22	6	7	9	26	29	25
Swindon	22	6	6	10	30	37	24
Burnley	21	5	9	7	21	28	24
West Brom	22	6	6	10	19	30	24
Portsmouth	22	5	8	9	22	33	23
Bristol C	22	5	4	13	17	32	19
Notts County	22	4	6	12	21	32	18

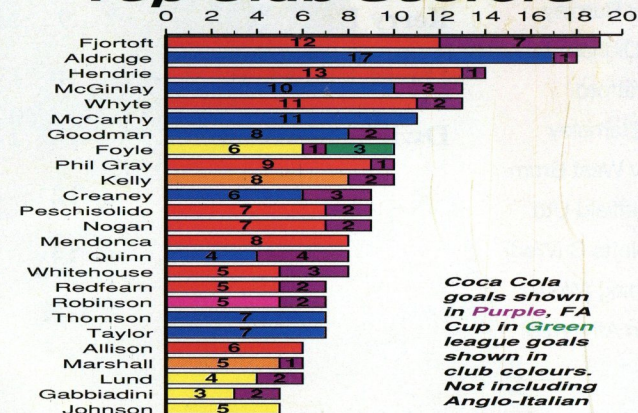
Matchday music is supplied by  
HMV Stores, 98 Arndale Centre  
(Tel: 35290) and  
73 The Mall (Tel: 21368), Luton.

## LUTON TOWN 1994/95

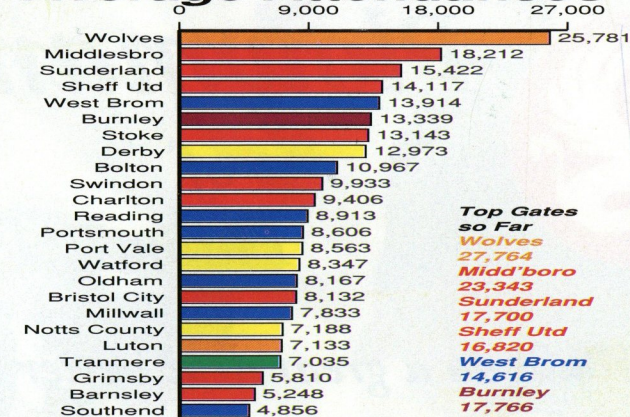
PLAYER (figure in bracket = sub app.)	LEAGUE APPS	LEAGUE GOALS	CUP APPS	CUP GOALS
Juergen SOMMER	22	-	2	-
Julian JAMES	22	1	2	-
Marvin JOHNSON	22	1	2	-
Aaron SKELTON	3	-	(1)	-
David GREENE	6	-	2	-
Trevor PEAKE	22	-	2	-
Paul TELFER	22	2	2	-
Scott OAKES	16 (5)	4	1 (1)	1
Kerry DIXON	15 (2)	5	2	-
David PREECE	22	4	2	-
Scott HOUGHTON	1	-	1	-
Dwight MARSHALL	16 (5)	5	1 (1)	1
Des LINTON	3 (2)	-	1 (1)	-
Ceri HUGHES	8 (1)	2	2	-
Mitchell THOMAS	16 (2)	-	-	-
John HARTSON	8 (8)	4	-	-
Gary WADDOCK	16	-	-	-
Jamie WOODSFORD	(1)	-	-	-
Tony THORPE	(1)	-	-	-
Paul ALLEN	2	-	-	-
Own goal		3		

Because of Christmas printing deadlines, we have been unable to include statistics from yesterday's games in Division One. We apologise for any inconvenience.

## Top Club Scorers



## Average Attendances



Top Gates so Far  
Wolves 27,764  
Midd'boro 23,343  
Sunderland 17,700  
Sheff Utd 16,820  
West Brom 14,616  
Burnley 17,766





## TODAY'S OFFICIALS

Today's referee is  
**JOHN HOLBROOK**,  
from Ludlow.

Mr Holbrook, a bank clerk, has  
visited all 92 league grounds.  
He joined the league referees'  
list in 1993.



TJ Pollard

CJ  
Rogers

## OTHER DIVISION ONE MATCHES

Bolton Wanderers v Tranmere R  
Bristol City v Stoke City  
Derby County v Burnley  
Grimsby Town v Oldham Ath  
Millwall v Watford  
Portsmouth v Barnsley  
Southend United v West Brom  
Swindon T v Sheffield Utd  
Middlesbrough v Notts C (Wed)  
Port Vale v Reading (Wed)  
Wolves v Charlton Ath (Wed)

## TEAM CHECK

### LUTON TOWN

Manager: David Pleat

Juergen SOMMER  
Julian JAMES  
Marvin JOHNSON  
Gary WADDOCK  
Mitchell THOMAS  
Trevor PEAKE  
Paul TELFER  
Scott OAKES  
Kerry DIXON  
David PREECE  
Dwight MARSHALL

### SUNDERLAND

Manager: Mick Buxton

1 Alec CHAMBERLAIN  
2 Gary OWERS  
3 Gary BENNETT  
4 Andy MELVILLE  
5 Dariusz KUBICKI  
6 Kevin BALL  
7 Derek FERGUSON  
8 Gordon ARMSTRONG  
9 Martin SMITH  
10 Craig RUSSELL  
11 Lee HOWEY  
12  
14  
GK



*Plowmans*  
of  
*Luton*

AND  
LUTON  
TOWN

—  
THE  
PERFECT  
MATCH

*You'll do a great deal better with us!*

Open 7 Days

Vauxhall Main Dealers, 15 Hitchin Road, Luton.

Tel: 454666