

LUTON TOWN F.C.

v DERBY COUNTY



**SATURDAY,
JANUARY 22, 1994
KICK-OFF 3.00PM**

Today's match is sponsored by
Luton Leader and Luton News



**Sponsors of
Luton Town F.C.**

ENDSLEIGH INSURANCE LEAGUE DIVISION ONE

It's goals that win games



ON THE BALL WITH DAVID PLEAT

Welcome to the players, officials and supporters of Derby County. Welcome back to Kenilworth Road to all our supporters for the first time in 1994, and a warm welcome to our match sponsors today, Home Counties Newspapers.

Derby are making a determined run to put themselves in the promotion frame. When we met them at Derby, Roy McFarland had just begun his task of reviving their fortunes, having taken over from Arthur Cox, who is now well on the road to good health after his back problems.

In that game at the Baseball Ground, our goalkeeper Juergen Sommer proved he was human when he dropped a deep cross, enabling Kitson to give Derby a vital lead.

We finished up 2-1 losers, but we believe we have progressed since then. Craig Short, their £2.3 million signing from Notts County, will be unavailable this afternoon. We hope this proves to be a good omen for ourselves because we have been wary of his success rate on set plays. However, Derby have much more talent, including big signings Gary Charles, Darren Wassall, Martin Kuhl, Paul Kitson, Marco Gabbiadini and 'our own' Mark Pembridge.

It is an impressive group and it is our job to boost our own confidence further with a win.

We made the trip to Notts County last Saturday with some trepidation. We had not played a competitive game for 15 days and we were unsure whether the midweek trip to Derry would prove beneficial.

For sure, the Irish were hospitable, but they were tough opposition. The game gave me the opportunity to give full games to Kelvin Davis and forward Tony Thorpe. The conditions were favourable, but on Saturday we had to come back to a sticky surface.

It is to our credit at Notts County that we

moved the ball around well and always played optimistically. Justice was done with Kerry Dixon's two goals.

The game was excellently refereed, as both managers agreed, by Mr Burns of Scarbrough who was a late replacement for Keiren Barratt, who had refereed County's home game with Sutton United a week earlier in the FA Cup.

During the match we did, however, obtain one booking and, naturally, I am angered and

"WITH PAUL DICKOV'S RETURN TO ARSENAL, THE CHALLENGE FOR FRONT POSITIONS IS WIDE OPEN"

disappointed with Ceri Hughes who, it now seems, will miss two vital games. We will only be successful when we all play the full 90 minutes with discipline, whatever the frenetic circumstances or the provocation we sometimes have to cope with.

With Paul Dickov's return to Arsenal, the challenge for front positions is wide open. I am hoping that from among the probables making challenges, someone within the club will emerge with clear credentials.

It may mean a small foray into the transfer market if we can raise some finance. Goals win games and although we understand we cannot buy ready-made proven young talent



David Preece battles against the elements, and two Southend defenders, during our 1-0 FA Cup win on Tuesday night.

Picture by Josh Levy, Apex Photography.

like our opposition today, our aim is to unearth a prospect who may need more time to develop.

Our young midfielder Aaron Skelton is at Lillleshall this week, hoping for the all-clear. He has not played since last March...Darren Salton is still telling his poor jokes around the dressing room and progressing slowly...Jason Rees is in his last week of a month's loan at Mansfield...Richard Harvey is ahead of schedule with recovery from his serious knee injury...Timo Liekowski, the assistant coach to the USA national squad, met me at Millwall last week to discuss Juergen Sommer's progress at length...Prior to the cancelled Southend match, the players spent a relaxing time swimming and working out at Henlow Grange...My weekly charity column

in the Herald, supported by the generosity of Universal Salvage Auctions, has now raised a further £400, which will shortly be presented to a charity of our choice...the club has looked into the feasibility of a pitch cover, in the light of two recently postponed matches.

Let us hope that we can look back on 1994's league fixtures at Kenilworth Road with pride come next December.

It would be nice to get a good start this afternoon.

Enjoy the game.

Mr Blobby comes to Town!



PARTY TIME AT KENILWORTH ROAD

Blobby's main sponsor: Special Events Security Services

With 1994 proclaimed as the 'Year of the Family', looking after our young fans remains a top priority at Luton Town Football Club. A number of events are planned for the younger generation of Hatters' supporters at Kenilworth Road, beginning this afternoon with the arrival of Mr Blobby!

BBC Television's popular personality and number one pop star will be entertaining the crowd before today's game and again at half-time. And 50 lucky prize-winners have been invited to meet the nation's latest star at a special 'Blobby Party' after the game.

Also invited to this party as guests of the club are 150 under-privileged children from Bedfordshire Social Services. Many of them will be visiting Kenilworth Road for the first time, and the club aims to make it a very special day out for them. Luton Town Chairman David Kohler, emphasises the point. "Our aim is to make the occasion one these children will remember," he said. "If we see happy faces this afternoon, it will have been very worthwhile indeed."

These sentiments are echoed by Richard Fountain, Commissioning Manager for Children's Services in South Bedfordshire, who will lead the party when they visit the club today. "The excitement already generated has been overwhelming, and many of them just keep talking and talking about Mr Blobby and the party," he said.

"January 22 will be a high spot of the New Year for them and I am sure Mr Blobby will put big smiles on all their faces. Visiting Luton Town will also be a new experience for them so, hopefully, they will enjoy their time at the club and will want to come again."

The lucky 50 prizewinners who will also be

looking forward to the party after today's game were drawn from a hat by members of the Town staff. To enter the draw, all the youngsters had to do was buy a match ticket for the game before 5 pm on Tuesday evening. Season ticket holders were entered automatically.

1994 aims to be an exciting year for young supporters of the Hatters, as Mr Kohler points out: "Children are our future generation of supporters and an attraction like Blobby will, hopefully make them want to return to Kenilworth Road again."

Mr Blobby is the new star of BBC Television's 'Noel's House Party'. Watched by 13.5 million viewers, the programme is a live show with a difference - a non-stop mixture of games, stunts and celebrity appearances.

However, from October 1992, a new figure emerged from its ranks to take centre stage - Mr Blobby, that bouncy, clumsy, pink personality was born.

Unwittingly part of Noel's famous "Gotchas", celebrities were invited to appear on the fictitious Mr Blobby Show only to find themselves well and truly upstaged by their host as he ruins every take.

In his short career, Blobby has caught out a number of stars including Will Carling, Garth Crooks and Valerie Singleton; has appeared on Grandstand; and has had a number one record.

Today, Mr Blobby is coming to Kenilworth Road!

We thank the following companies for their support today

Hallmark Cars Limited, British Gas PLC, Plowmans Garage, Aegis Alarms, Crystal Security Print Limited, ESP Security Print, Davroy Limited, Collings Communications, Ivor Holmes Limited, Williams and Richardson (Contractors) Limited, National Westminster Bank PLC, Connell Wilson, Malcolm Varle Limited - Catering Disposables, Meads Bakery, Dairy Crest Dairies, J Sainsbury PLC - Bury Park, Tesco Stores Limited, Whitbread Breweries Limited, Luton Cleaning Company, Pizza Hut UK, Luton Leisure and Amenities, Ernst and Young Accountants.



Universal Salvage Auctions

WHEN IT COMES TO

MOTOR SALVAGE AUCTIONS

WE ARE THE LEAGUE LEADERS



WEEKLY AUCTIONS AT

CORBY · REDBOURN · SANDTOFT · WESTBURY

TELEPHONE: 0582 792690 · FOR DETAILS

DUNSTABLE ROAD · REDBOURN · HERTS · AL3 7PX



Spare a thought for our groundsmen

ON THE INSIDE BY JOHN SMYLIE



Kenilworth Road Stadium,
1, Maple Road, Luton, Beds
LU4 8AW.
Tel: (0582) 411622
Fax: (0582) 405070.
Clubcall: 0891 12 11 23 (48p
per min peak, 36p off peak)

President: E.S. Pearson

**Chairman and
Managing Director:**
D.A. Kohler, Bsc. (Hons) ARICS

Directors: P. Collins, N. Terry,
C. Bassett, C. Green

Vice Presidents: R.L. Banks,
C. Bygraves, R. Safranek,
J. Hudson, D. Ludlow,
P. Ireton.

Secretary: John Smylie

Manager: David Pleat

Coaches: John Moore,
Wayne Turner, Terry Westley

Physiotherapist: Andy McDade

Youth Development Officer:
Paul Lowe

Scouting: Les Shannon

Medical Officer: Dr Bill Berry

Club Dentist: A. Chris BDS (Syd)

■ The wet and frosty weather conditions over the past three or four months have not made the task of groundsmen Richard Bird and Robert Scott easy. Apart from the Kenilworth Road pitch, there are also the training grounds to attend to: Luton Rugby Club, where our youth team play their South East Counties home fixtures on Saturday mornings, and the Electrolux training ground, where on Sunday mornings U15 and U16 matches are played.

■ To help ease the problem here at Kenilworth Road, a decision was taken to try and find an alternative venue where we could play some of our Neville Ovenden Football Combination fixtures, thus reducing over the next two months, the number of games being played on the pitch. Locally this was not easy as both Dunstable Town and Leighton Town, where we have previously played reserve games, have similar problems as ourselves with their pitches and could not, unfortunately, accommodate us.

■ However, we have been fortunate in that Borehamwood Football Club have offered us the use of their ground for three of our reserve games, these being on Tuesday last (the fixture with Bristol Rovers) and then on Wednesday 2nd February versus Ipswich Town and Wednesday 16th February versus Chelsea. Kick-off time for these matches is 2.00pm.

I would like to record our thanks to the Borehamwood Chairman for his assistance and co-operation in making available to us the use of the ground.

■ It was interesting to see on television last Saturday the pitch at Wolverhampton Wanderers. Last season this was recognised as being one of the best in Division One. Viewing it on Saturday, little grass was visible down the centre of the pitch. It was almost completely covered in sand. It is therefore pleasing that ours still has a considerable covering of grass albeit we have, due to excess water or frost, had two League and one Cup match postponed. The new date for our postponed League match with Wolverhampton Wanderers will be Tuesday 22nd March, kick-off 7.45pm.

■ In the event we were not victorious on Tuesday with our cup match versus Southend United we will attempt to re-arrange our League match with Millwall for either Saturday 29th January or the evening of Tuesday 8th February. Once a decision has been taken, the date will be available on the Clubcall line and local press.

■ The Football Combination postponed match versus Swindon Town on the 8th December has been re-arranged for April 18th and the Tottenham Hotspur match on the 22nd December is now arranged for April 23rd.

Honours

Littlewoods Cup winners 1987-88
FA Cup finalists 1958-59
Littlewoods Cup finalists 1988-89
Simod Cup finalists 1987-88
Champions - Division Three (S) 1936-37
Champions - Division Four 1967-68
Champions - Division Two 1981-82

Editorial : Collings Communications,
PR and Media Consultants, Hitchin, Herts.
Tel: 0462 441068 Fax: 0462 441069

Design and print: McLeod Warner Limited, Luton. Tel: 0582 38389

SAFETY NOTE

The Chairman and Directors of Luton Town Football Club undertake to ensure as far as humanly possible that all activities that take place at the Kenilworth Stadium are conducted in such a way that, as far as is reasonably practicable, the safety of everyone working at or attending the stadium is assured.

The club's primary responsibility through the Safety Officer, Officials, Staff and Stewards will be to ensure the reasonable safety of those attending the stadium.

Spirit and determination in abundance

CAPTAIN'S COLUMN BY TREVOR PEAKE



On the league front, it has been a good month for us with our unbeaten run now stretching to five matches. Today's game will give us a better indication of how well we are doing.

Matches against Derby County are always tough and we only need to look at our form against them at home last season to see that the balance needs re-addressing. County seem to be re-vitalised under Roy McFarland as all their players try that bit harder to impress the new man in charge.

These notes are written before our cup match with Southend United but, hopefully, we are now looking forward to a money-spinning trip to Newcastle United. With the cup matches aside, our recent form in the league has been very good and it has given us a confidence boost as we enter

a new year. What has been most pleasing is the fact that four of these games have been away from Kenilworth Road, where we have shown grit and determination to take the points.

Hopefully, the recent imbalance of away to home games will work to our advantage later in the season when we should have more games at Kenilworth Road.

It was good to see Kerry Dixon back on the scoresheet during our much-deserved 2-1 win at Notts County last Saturday. His two goals have taken him up to seven in the league for the season. Every team needs someone to be hitting the target on a regular basis, so we are hoping Kerry's vein of goals continues for the rest of the season. However, we know he is only going to score if the chances are created for him...

Looking back at last Saturday's game, we had more efforts, more corners and more territory, therefore we fully deserved the three points. That grit and determination I have spoken about was particularly evident in the second-half when we fell for a sucker-punch in the 70th minute, but rallied to score two late goals. In the past, it was us that would have crumbled as the game came to a close, but it shows how far we have come in the past 12 months.



Kerry Dixon - leading the Town's scoring charts.

Enjoy the game



The Station with
More Winning Ways

The Hot FM

LUTON BUS
Providing a comprehensive network of local bus services throughout the region.
CUT TRAVEL COSTS WITH BUS BOND
☎ Luton 404074

MOT TESTING
Classes 4,5,&7
☎ Luton 400040 extn 225

LDT PRINT
Just the ticket...&
STATIONERY...BROCHURES...
PRICE LISTS...LEAFLETS...
BUSINESS CARDS...ETC.
☎ Watford (0923) 894994

CHILTERN european
Day excursions, tours & charter
UK & Europe
Mini buses, standard buses & executive coaches
☎ LUTON 476000

757 Luton to London
By coach for as little as
£5 RETURN
Commuter & Leisure journeys
☎ Luton 404074
LUTON & DISTRICT

AVIS RENT A CAR
We try harder
☎ Luton 454040

LUTON & DISTRICT
GROUP OF COMPANIES
for all seasons
More than just a bus company
☎ LUTON 400040



LUTON & DISTRICT
service and enterprise. . .

Race for First Division honours promises tight finish

1

NEWS ON ONE

As Manchester United streak away in the Premiership and Reading go clear in Division Two, our league provides a much closer contest. Leonard Spall reviews some of the happenings as the top.

Nottingham Forest boss Frank Clark has warned rivals that: "There is not a better team than us in the First Division." And his judgement was vindicated when Forest stole three points from Tranmere Rovers last weekend, making it into the top six for the first time since September.

Clark took over at the City Ground last summer and inherited the traumas Brian Clough had left in his wake, but the former Leyton Orient managing director has always remained optimistic. "The situation was a hell of a sight worse than a lot of people realised," he explained. "There was a major rebuilding job to be done but I was always confident we would get ourselves into a position for an immediate return to the Premiership."

After their 2-1 victory at Twerton Park, Clark could not have been more accurate in his assessment of the Division. "It is tight at the top, but we have put ourselves in a challenging position." In fact, there are at least 10 teams in positions to challenge with only six points separating first and tenth place.

At the top, after stealing three points in Forest fashion, are Leicester City, thanks to their superior scoring rate over Crystal Palace and Millwall. All three teams have 46 points but the Foxes, after snatching a 2-1 win over Charlton, have scored on average a goal-a-game, making them the Division's top scorers.

Millwall, also in the promotion pack, beat Bolton 1-0 at home, but manager Mick McCarthy claimed: "Palace are the team to beat for promotion because of their 'keeper and good back-four. Forest and Derby both have quality players and are capable of going up. So are we, I hope." With only two automatic promotion places, the chase will run to the final Saturday, but McCarthy should not dismiss Wolves from his prediction.

The men from Molineux beat Crystal Palace for the second time in seven days, with Kevin Keen and Andy Thompson securing the league points after they had previously dumped the Eagles out of the FA Cup. "So much for my manager of the month award," moaned Palace boss Alan Smith, but he seems to be looking in the right direction, signing Liverpool's England international Paul Stewart on loan to ease his worries.

Wolves have also looked to the transfer market for assistance, signing ex-Manchester United starlet Darren Ferguson and former Huddersfield midfielder Chris Marsden, for a combined total of £500,000 last week. Wolves were in eighth place after beating Palace, but their greatest asset remains home-grown Steve Bull, the league's top scorer with 13.

With the intensity of competition at the top, and the excitement provided by performances like Paul Furlong's hat-trick in Watford's 5-2 win over Birmingham, it is not surprising that attendances are well up on last season. The cumulative total for the season so far is 500,000 more than at this point last term with the average crowd up to 11,538.

SOCCAQUIZ

Test your soccer knowledge and guesswork and see how many questions you can get right out of ten.

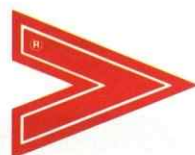
- Who won the 1974 World Cup? (A) Brazil (B) W Germany (C) Italy
- Club that plays in red (A) Aberdeen (B) Herford (C) OPR
- Welch Field is home to... (A) Wrexham (B) Swansea (C) Coventry City
- He scored 9 in an FA Cup game (A) McDougall (B) Greaves (C) Law
- Graham Taylor was their manager (A) Watford (B) Everton (C) Sheffield W
- Most goals by a player in a match in Britain (A) 9 (B) 11 (C) 13
- PSV Eindhoven are... (A) Belgian (B) German (C) Dutch
- A club once known as Riverside (A) Liverpool (B) Cardiff City (C) Celtic
- The minimum length of a pitch is... (A) 75 yards (B) 100 yards (C) 125 yards
- Who are the "Warriors"? (A) Stenhousemuir (B) Wolves (C) Partick Thistle

Your score is

Your friend's score is

	A	B	C
1			
2			
3			
4			
5			
6			
7			
8			
9			
10			


S U P P L I E D B Y



Mitre[®]
absolute performance[™]

MITRE SPORTS INTERNATIONAL LTD.
BIRKBY, HUDDERSFIELD, HD1 5AJ. TEL: 0484 537488. FAX: 0484 530042

A GENESCO Company

**MCLEOD
WARNER
LIMITED**

*digital
artwork,
origination
&
print*

16 Rothesay Rd,
Luton, Beds
LU1 1QX
0582 38389

Fans' Forum



PHOENIX FOOTBALL PROGRAMME SEARCH

Let Dave Simmons track down the missing programmes you need to complete your collection. Established in 1992, Dave has the contacts to trace programmes back to 1930 and in some cases, before then.

Ring Dave now on (0254) 852533 and he will give you more details on the service he offers. You are under no obligation to purchase. Once the programme you want has been located at the most reasonable price, you can decide whether to buy.

Over the last 18 months, since establishing the company, Dave has successfully located over 3,000 programmes, including a copy of the England v Wales international at Blackburn in 1924.

This service is mail order only.

CALLING FELLOW HATTERS

Dear Sir,

Firstly, I would like to know if there are any single, female Luton Town supporters, aged between 20 and 30, who would be interested in meeting myself, a fellow Town fan, aged 27?

I would also like to know if there is anybody in the Hitchin/Luton area who would be interested in sharing petrol/car costs for Town away games. I regularly attend away games and have supported the Hatters through good and bad.

Please write to: Leslie Elliott, 67 Balmoral Road, Hitchin, Herts SG5 1XQ.

BIRTHDAY BOX A GREAT IDEA

Dear Sir,

I would like to thank everyone at the club (especially the catering ladies) for such a great day out. We all thoroughly enjoyed ourselves in our Birthday Box for the game against Stoke.

It is a great way for youngsters to spend their birthday and we would recommend the idea to anyone.

Before I sign off I would just like to say how sad and angry I was to see on television the damage done to the club's premises the other week. I cannot understand what pleasure anyone could get from this sort of behaviour or what they hope to achieve.

Yours sincerely, Carol Stenning, 27 Ermine Close, Royston, Herts, SG8 5EE.

Ed's note: If you would like further information on our birthday boxes, please contact the Commercial Department on (0582) 411622.

MORE INTEREST IN PROGRAMMES

Dear Sir,

I have recently issued a 32-page football programme catalogue, covering the Midlands area, which contains a good selection of Luton Town programmes, both home and away.

The catalogue also contains a good selection of finals, semis, international and non-league football. Copies can be obtained by writing to the address below. Please include a first-class stamp to cover postage.

Barry Neighbour, 'The Beehive', 23 High Street, Little Sandhurst, Camberley, Surrey GU17 8LJ.

THE RED LION MILTON BRYAN



A TRADITIONAL ENGLISH PUB WITH AN EMPHASIS ON
EXCELLENT HOME-MADE FOOD.

OUR EXTENSIVE MENU RANGES FROM POTATO SKINS,
SOUP, HOT 'N' SPICY PRAWNS, THROUGH TO STEAK,
MUSHROOM AND GUINNESS PIE, FISHERMAN'S
CRUSTY PIE, LASAGNE AND OUR EXCELLENT
CUMBRIAN HIGH TEA.

A SPECIAL BOARD IS ALWAYS AVAILABLE WITH DISHES
FOR THE MORE ADVENTUROUS OFFERING PORK
FILLETS, VENISON AND THE EXCELLENT 16OZ T-BONE STEAK.

OUR BEERS ARE ALL TRADITIONAL HAND-PULLED
ALES AND ARE ONLY £1.00 BETWEEN 6.00PM AND
7.00PM MONDAY-SATURDAY.

WE ARE ALSO AVAILABLE FOR WEDDINGS, PARTIES
AND GARDEN BARBEQUES. TELEPHONE FOR RESERVA-
TIONS OR EVEN BETTER, JUST DROP IN, YOU MIGHT
EVEN BUMP INTO A LUTON TOWN PLAYER. WE ARE
ONLY FIVE MINUTES FROM M1, JUNCTION 12
BETWEEN TODDINGTON AND WOBURN.

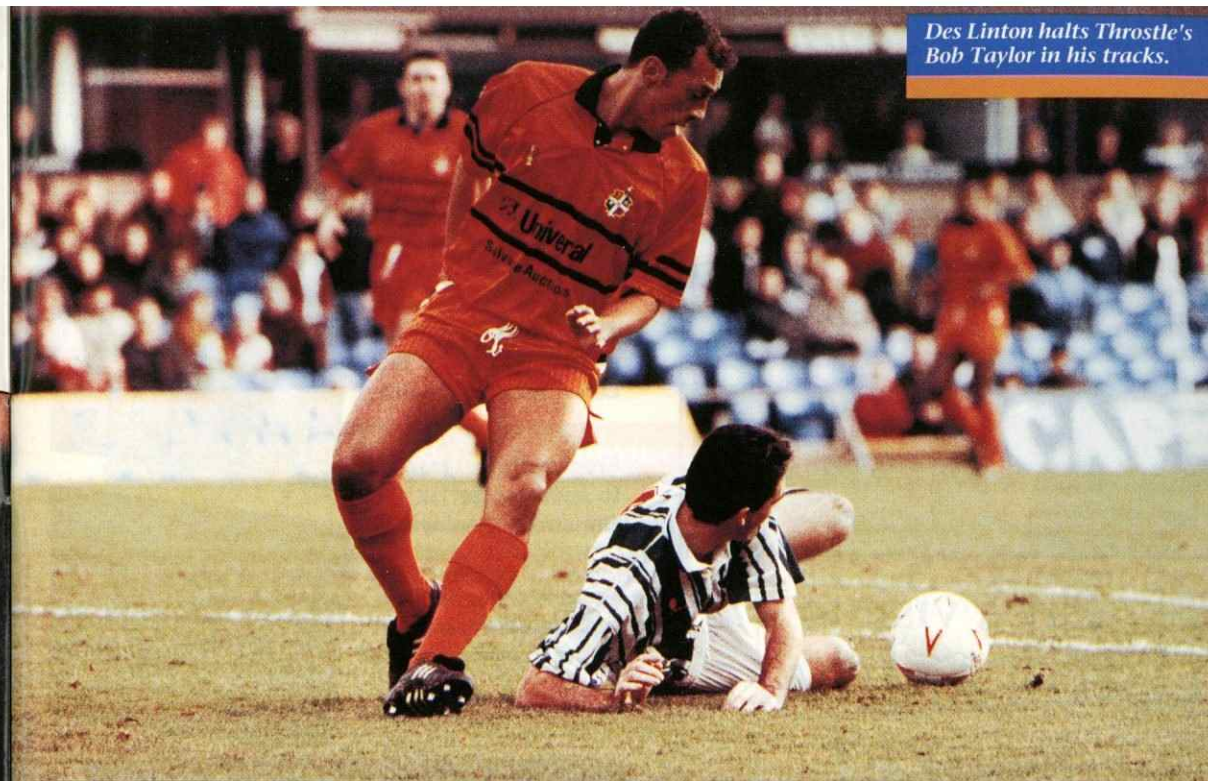
BRING THIS ADVERT ANY MONDAY EVENING AND
RECEIVE 10 PER CENT OFF YOUR FOOD BILL.

Action Replay

From: The Hawthorns
Date: January 1, 1994
WEST BROMWICH ALBION 1
(Mellon)
LUTON TOWN 1
(Preece)
Attendance: 15,138

PICTURES BY NIGEL LITTLE

Julian James has made a welcome return to the fold in recent weeks. Read more on his comeback on page 28 of today's match day magazine.



Des Linton halts Throstle's Bob Taylor in his tracks.



Scott Houghton makes advances into the Albion penalty box.

**FOR GREAT BARGAINS
ALL YEAR ROUND**



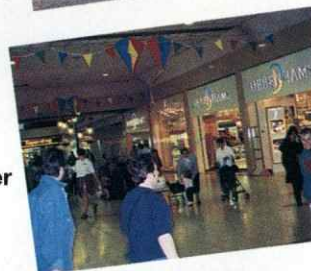
Pay a visit to
**LUTON ARNDALE
MARKET**

A Centre for all Seasons

**Whatever the Season
there's always
something new at the
Luton Arndale Centre.**

**From the latest fashions
to spectacular
Christmas displays.**

**From lively school
holiday entertainment
to the massive summer
sales.**



Luton Arndale Centre

Providing you with so much more



**Special 10% reduction off local rates for all
of our fellow supporters of Luton Town FC**

AN EXTENSIVE RANGE OF:

- CARS, VANS & TRUCKS.
- FULLY INCLUSIVE RATES WITH UNLIMITED MILEAGE.
- 24 HOUR NATIONAL HOTLINE HELPLINE.
- AA/RAC COVER.

KENNING

CAR AND VAN RENTAL

LUTON 0582 455333

24-34 Crawley Road.

Ticket Office news update



BY CHERRY NEWBERY

Newcastle United v Luton Town

F.A. CUP FOURTH ROUND

Saturday, January 29, 1994 - Kick-off 3.00 pm

This match is all ticket for Luton Town supporters. Terracing only is priced at £9.00 (no concessions). Season ticket holders may claim one ticket each on production of Cup Voucher 26 until 5.00 pm on Monday, January 24. Members may claim one ticket each on production of their membership card from Tuesday 25th at 10.00 am until Friday 28th.

Both are subject to availability - no tickets are available on the day of the match.

Luton Town v Oxford United

ENDSLEIGH INSURANCE LEAGUE DIVISION ONE

Saturday, February 5, 1994 - Kick-off 3.00 pm

Tickets for this match are now on sale. Normal guesting facilities apply for this match.

Leicester City v Luton Town

ENDSLEIGH INSURANCE LEAGUE DIVISION ONE

Saturday, February 12, 1994 - Kick-off 3.00 pm

Seats cost £10.00 (no concessions). Seating tickets are available from the Ticket Office in Kenilworth Road until 5.00 pm on Friday, February 11 and also on the day at Filbert Street.

Bristol City v Luton Town

ENDSLEIGH INSURANCE LEAGUE DIVISION ONE

Saturday, February 19, 1994 - Kick-off 3.00 pm

Terracing only is available for Luton supporters, priced £6.50 (no concessions). Pay on the day at turnstiles 51-57 in Ashton Road.

Ticket Office Hours

Monday - Friday 10 am - 5 pm.

Non-match Saturdays 10 am - supporters' travel coach leaves.

Match Saturdays 9 am - kick-off, after the match 4.45 pm - 5.15 pm.

For bookings, membership and enquiries, ring the Ticket Office on (0582) 416976. Supporters wishing to order by credit card can do so by using the 24-hour Credit Card Hotline on (0582) 30748.

Travelling to...

Leicester City

Address: City Stadium,
Filbert Street, Leicester LE2 7FL.
Telephone: (0533) 555000.

Take the M1 north to junction 2, then follow signs Leicester A46. In 0.6 mile at roundabout, take 2nd exit (signs City Centre). In 2.3 miles at crossroads turn right (unclassified) into Upperton Road. In 0.6 mile turn right (one-way) into Burnmoore Street then right into Filbert Street for ground.

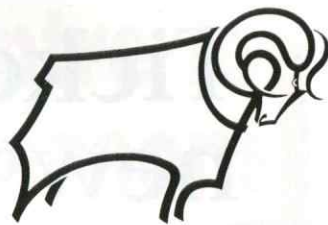
Bristol City

Address: Ashton Gate,
Bristol BS3 2EJ.
Telephone: (0272) 632812.

Take the M1 south (signposted London) to junction 6a. Branch left (signs Heathrow) to join M25 to junction 15. Branch left (signs The West), then keep right to join the M4 to junction 19. Branch left again (signs Bristol) to join the M32. In Bristol follow signs Taunton (A38) to leave by Hotwell Road A4 then join A3029 (signposted South West). In 1.8 miles branch left (signs Taunton) into Winterstoke Road. Shortly turn left into Marsh Road and at the end bear right into Ashton Road.

Directions courtesy of the
Automobile Association.

Spotlight on today's visitors



DERBY COUNTY F.C. 1993-94

■ It has been highly-publicised that Derby County have spent around £12 million on players during the past three seasons and have since struggled to live up to the high expectations placed on them. This fact, ultimately, cost manager Arthur Cox his job earlier in the season. However, as Premiership champions Manchester United have proved, success does not come overnight.

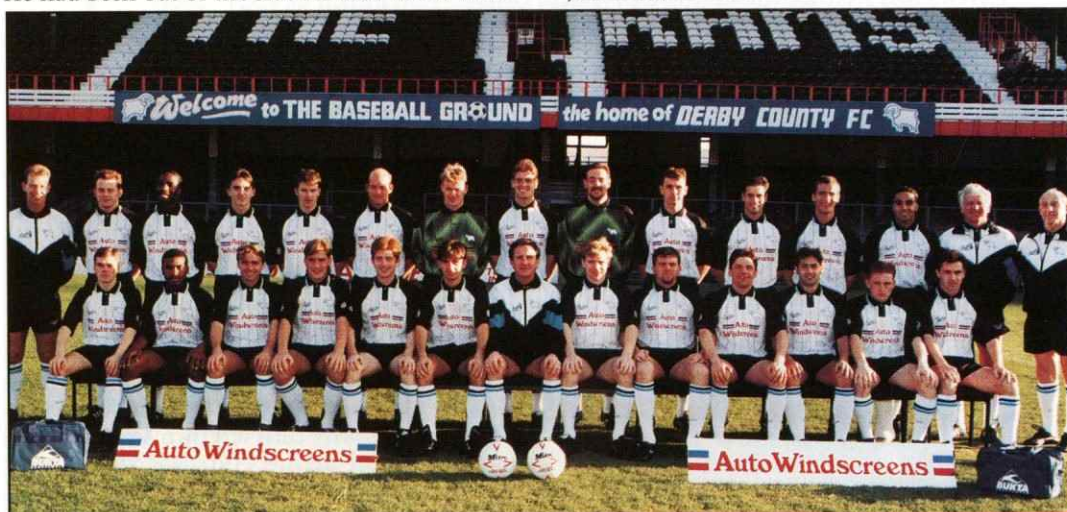
■ Now under the managerial leadership of former Rams' favourite Roy McFarland, Derby County do appear to be making a realistic and concerted push for at least a play-off place this season. Recent results suggest that the jigsaw is finally coming into place at the soon to be departed Baseball Ground, and the Rams' faithful are hoping that their new multi-million pound stadium will have a realistic chance of hosting the top clubs in England when complete.

■ At the time of writing, Derby lie in seventh place in the Endsleigh Division One table, although they sit only one win away from a place in the top three. The return to the side of striker Paul Kitson has also helped their cause. He had been out of the side for four weeks with

a back injury, and the man who caused the Hatters so many problems last season is raring to go again. "I am fully fit now and desperate to get back into the swing of things," he said. "I have been frustrated sitting on the sidelines for so long so I can now let that frustration out. I want to help the side continue their climb up the table and get back on the score-sheet once again."

■ Derby County F.C. were formed in 1884 by members of the Derbyshire County Cricket Club. Football was booming in the area at the time and it was thought that a football club would help boost finances for the summer game. To begin with, they sported the cricket club's colours of amber, chocolate and pale blue, and went into the game at the top, immediately entering the F.A. Cup.

■ The Rams' most successful period came in the 1970's when they won the Division One championship in 1972 and 1975. They have also won the Division Two crown on four occasions and the Division Three (N) title in 1957. The Rams, who were knocked out of the FA Cup this season in round three, have won the cup just once, in 1946.



Back row (left to right): Billy McEwan (coach), Lee Carsley, Paul Williams, Mark Stallard, Shane Nicholson, Richard Gouloze, Martin Taylor, Craig Short, Steve Sutton, Michael Forsyth, John Harkes, Darren Wassall, Gary Charles, Alan Durban (chief scout), Gordon Guthrie (physiotherapist).
Front row (left to right): Martyn Chalk, Dean Sturridge, Paul Simpson, Craig Ramage, Tommy Johnson, Paul Kitson, Roy McFarland (manager), Marco Gabbiadini, Martin Kuhl, Steve Hayward, Jason Kavanagh, Mark Pembridge, Mel Sage.

VISITORS ON PARADE

MARTIN TAYLOR (goalkeeper) - Martin started his career with non-league Mile Oak Rovers before joining the Rams in 1986. During his time at the Baseball Ground, he has been understudy to Peter Shilton and Steve Sutton, but has now made the number one spot his own. Martin has also served Carlisle and Scunthorpe on loan.

GARY CHARLES (defender) - Right-back Gary joined Derby during the summer from Midlands rivals Nottingham Forest. A full England international with two caps, he joined Forest in 1987 from their youth ranks, and made his debut the following year.

JASON KAVANAGH (defender) - Likely to replace Craig Short, who is suspended this afternoon, Jason is a former FA School of Excellence pupil at Lilleshall. He joined Derby from Birmingham City for £25,000 in 1990 and has also represented England at under-21 level.

DARREN WASSALL (defender) - Another player with Nottingham Forest connections, Darren made the short trip from the County Ground in 1992 for £600,000. He only made 17 full league appearances at Forest, although was tipped to succeed the departing Des Walker. While out of the Reds' side, Darren had spent loan periods at Hereford and Bury.

MICHAEL FORSYTH (defender) - Michael has been a regular in the County defence for the past five seasons. A former England youth, under-21 and 'B' international, he started his career at West Bromwich Albion before joining the Rams for £20,000 in 1986.

MARK PEMBRIDGE (midfield) - Former Town regular, Mark joined Derby for £1.25 million in June 1992. A former Hatters trainee, he gained Wales schoolboy, youth, under-21 and full caps during his time at Kenilworth Road, and his form since his departure has maintained his position in the full international squad.

JOHN HARKES (midfield) - A World Cup hopeful with the USA national team, John came to prominence

in 1990 following his £70,000 arrival at Sheffield Wednesday from the U.S.S.F. He joined Derby for £750,000 during the summer after appearing in both League and FA Cup finals last season.

MARTIN KUHL (midfield) - Martin started his career with Birmingham City, making his debut in 1983. He spent four full seasons at St Andrews before joining Sheffield United and later Watford. In 1988 he signed for Portsmouth, leading the club to an FA Cup semi-final appearance in 1992, before joining Derby for £700,000 mid-way through last season.

PAUL SIMPSON (midfield) - Paul was signed from Oxford United for £500,000 in February 1992. He made his league debut for Manchester City in 1984 at the age of 16 and went on to enjoy four more seasons at Maine Road. Paul is an England under-21 international.

PAUL KITSON (forward) - Derby paid Leicester City £1.3 million for Paul's services in March 1992. An England under-21 international, he finished last season as the Rams' top-scorer with a total of 24 goals in all competitions.

MARCO GABBIADINI (forward) - Derby's leading goalscorer this season, Marco started his career at York City, but rose to prominence with Sunderland where he was top scorer for four consecutive seasons. He joined Crystal Palace for £1.8 million in 1991 but failed to establish himself at Selhurst Park, prompting a move to Derby for £1 million in October 1992.

TOMMY JOHNSON (forward) - Former England under-21 international, Tommy started his career with Notts County and made over 100 league appearances for the club, scoring almost 50 league goals. He signed for Derby in March 1992 for £1.3 million.

CRAIG RAMAGE (forward) - Local boy Craig made his debut for the Rams in 1989 as a striker and made 15 appearances in his first season with the club. He has failed to command a regular first-team place and has served Wigan Athletic on loan.

MEET THE BOSS



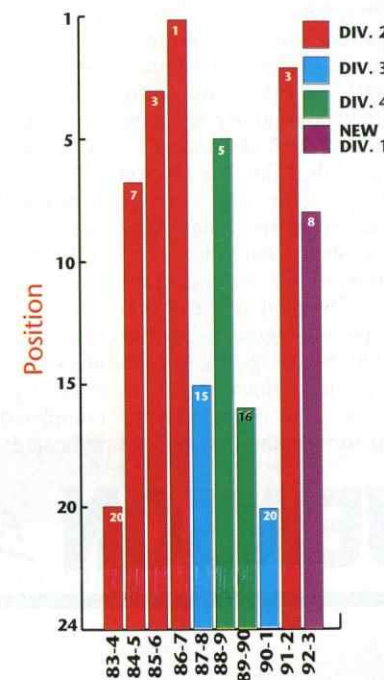
Roy McFarland started his career with Tranmere Rovers, before Brian Clough signed him for £24,000 in 1967. He formed an excellent partnership with Dave Mackay, helping the Rams to the Second Division title in 1969.

He made his England debut against Malta in 1971 and was an inspirational captain when Derby won their first League championship the following season.

However, it was not all 'highs' for the Liverpool-born centre-half: He played in the England side which failed to beat Poland in the 1974 World Cup qualifiers and missed almost all of Derby's 1974-75 championship season through injury.

His first managerial steps were taken at Bradford City in 1981, where he was appointed player-manager, but soon returned to the Baseball Ground as assistant manager. He had enjoyed that post as Arthur Cox's assistant until earlier this season when he finally took the reins as manager following the resignation of Cox.

10 YEAR RECORD

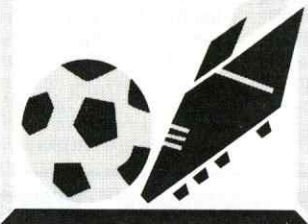


THE JEWSON FAMILY AWARDS



**Your chance to win
£7,500 in prizes.**

JEWSON
FAMILY
FOOTBALL



THE Football League and Jewson, Britain's largest supplier of timber and building materials, are offering you the chance to win £7,500's worth of prizes by voting for your favourite family football club.

Not only will you be giving yourself a chance to win, you could also be helping your club to a share in the £45,000 Jewson Family Football Excellence Awards payout.

The fifteen clubs in each division of the Endsleigh Insurance Football League, collecting the most votes in proportion to their average home gate, will go before the judging panel for the top Jewson Excellence Awards category.

The judges will be looking at all aspects of the club's family football work including facilities, community relations and standards of promotion.

If your club is doing a Jewson good job for the family football supporter, then why not give them your vote.

The reward for the top clubs in each Division is a £10,000 cash payout with a further £15,000 bonus going to the leading club nationally.

If you're 21 or over and your voting form is the first correct

entry drawn you could win a fabulous Crosby Dream Kitchen worth over £5,000. If you're under 21 there are prizes of £100's worth of Puma leisure clothing for the first four correct entries and all correctly completed voting forms will go forward into the draw to win five prizes of a VIP trip for two to the 1994 Coca Cola Cup Final.

To enter just name your favourite family football club, answer the quiz questions correctly, and send your completed form to the address indicated.

VOTING FORM

Please complete in BLOCK CAPITALS

My favourite family football club is:

Division _____

Your full name: Mr/Mrs/Miss/Ms (delete where applicable) _____

Date of birth _____

Address _____

Postcode _____

Telephone: home _____ work _____

Answer these questions:

At which grounds do the following Football League clubs play?

Middlesbrough _____

Fulham _____

Chesterfield _____

Voting closes on February 1, 1994

Prize winners will be notified by first class post on March 1, 1994

The name of the winning clubs will be announced on April 21, 1994

Please return this form to: The Jewson Family Football Awards, c/o The Sponsorship Workshop, 5 The Forum, Rockingham Drive, Linford Wood, Milton Keynes MK14 6LY, Telephone: 0908 670087

Please put a cross in this box if you do not wish to receive information about Jewson, or the Jewson Family Football Initiative. ☐

No correspondence will be entered into and the judges' decision is final.

JEWSON

FAMILY

FOOTBALL



LUTON TOWN HATTERS SHOP

FOR ALL THE FAMILY

LUTON TOWN REPLICA KITS AND TRACKSUITS NOW IN STOCK

T-SHIRTS

S. M. L. XL.....9.99

ALL-OVER PRINT T-SHIRT

L. XL.....14.99

CHILDRENS T-SHIRT

3/4 5/6 7/8 YEARS.....6.99

SHIRTS

22"/24" 26"/28" 30"/32".....£24.99

34"/36" 38"/40" 42"/44".....£29.99

GOAL-KEEPER SHIRTS

22"/24" 26"/28" 30"/32".....£24.99

SMALL/MEDIUM/LARGE/XL.....£29.99

SHORTS

24"/28".....£14.99

30"/38".....£15.99

SOCKS

JUNIOR.....£3.99

SENIOR.....£4.99

D.M.F. SWEATSHIRT

M. L. XL.....24.99

PROMO JACKET

30/32.....49.99

S. M. L. XL.....59.99

SHELL SUITS

26"/28" 30"/32".....£49.99

SMALL/MEDIUM/LARGE/XL.....£59.99

SCARVES

PRINTED SCARF.....£3.99

JACQUARD SCARF.....£5.99

HATS

WOOLLEN SKI HAT.....£3.99

BRONX HAT.....£5.99

SOUVENIRS

MONEY BOXES.....£3.99

TEAM MUGS.....£2.35

TEAM PENNANTS

MEDIUM.....£3.50

LARGE.....£4.99

CAR TEAM MINI KITS.....£3.99

PROGRAMME BINDER.....£8.99

TEAM FOOTBALL.....£12.99

SEW-ON BADGE.....£1.50

BLAZER BADGE.....£4.99

ENAMEL BADGE.....FROM £1.99

KEY RINGS.....1.99

LIGHTERS.....1.99

PENS.....99P

PENCILS.....50P

BUGS.....75P

RUBBERS.....75P

WALLETS.....4.99

CLOCKS.....10.99

RULERS.....1.50

LUTON V BARNSELY VIDEO.....9.99

(NO COMMENTARY)

NEW IN

LTFC POLO SHIRTS

MED/LARGE/XL

ASSORTED COLOURS.....£17.99

Shirt Printing Service now available

Take advantage of our mail order facility

KENILWORTH SHOP OPENING TIMES

WEEKDAYS 11AM - 5PM

SATURDAY MATCH DAYS 10.30AM - 3PM AND 4.45 - 5.30PM

OTHER SATURDAYS 10AM - 1PM

ACCESS AND VISA WELCOME

**TELEPHONE AND CREDIT CARD HOTLINE
0582 450004**

Luton Town

Manager: David Pleat

Colours: White/Blue Shirts,
Blue/White Shorts



Official ball sponsor

Derby County

Manager: Roy McFarland

Colours: Pale Blue, White and Black Striped Shirts,
Pale Blue Shorts

THE
SPORTS
SHOP

LUTON

LEISURE DANCE
& ALL TYPES OF
SPORTS WEAR

ALWAYS IN STOCK

SKI-WEAR NOW AVAILABLE
ALSO LARGE RANGE
OF SKI-WEAR HIRE

4 Nursery Parade, Marsh Rd,
Leagrave, Luton LU3 2QP
Tel: 0582 571322

Luton Cleaning
company

quality service for over 25 years
and still the only number
you'll ever need

0582
413330

complete package to
commerce & industry

Local Authority and
Health Authority contractors



Juergen
Sommer



Des
Linton



Trevor
Peake



John
Dreyer



Mitchell
Thomas



Paul
Telfer



Alan
Harper



David
Preece



Ceri
Hughes



Kerry
Dixon



John
Hartson

SUBS



Scott
Houghton



Scott
Oakes



Andy
Petterson



Martin
Taylor



Gary
Charles



Jason
Kavanagh



Darren
Wassall



Mike
Forsyth



John
Harkes



Mark
Pembroke



Martin
Kuhl



Tommy
Johnson



Marco
Gabbiadini



Paul
Kitson

SUBS



Steve
Sutton



Craig
Ramage



Paul
Simpson

REFEREE:

M.D. Reed
(West Heath, Birmingham)

LINESMEN:

M.D. Dearing (red trim)
R. Kirk (red/yellow trim)

FOURTH OFFICIAL:

M.C. Cracknell

OOH AH
Cavity Wall have you got

CAVITY WALL

Save your energy with

British Gas
Eastern

CAVITY WALL

INSULATION SERVICE

For details contact

CHILTERN DISTRICT
Tel: (0582) 481810



The Red Lion
Teddington Road
Milton Bryan
Nr. Woburn
Bedfordshire
Tel: 0525 210044



Plowmans AND LUTON TOWN – THE PERFECT MATCH

of
Luton

You'll do a great deal better with us!

Vauxhall Main dealers, 15 Hitchin Road, Luton.

Tel: 454666

EXECUTIVE MEMBERS

KENILWORTH SUITE

Anachem Ltd
Mr G. Chamberlain
Fisher Frozen Foods Ltd
F & T Goodwin Ltd
Grosvenor Contracts
Handscombe Financial Services Ltd
R.W. Harvey & Son
M. J. Foods
Origination
Radley Shaw
Regal Litho
Steadfast Properties PLC
Wilton Contract and Vehicle Rental

CLUB 82

T.J. Aldridge Builders
Bevengrace Ltd
Bervale Meade Insurance Brokers
C.P. Contracts
J.S.B. Business Forms
Luton Cleaning Company
Nordic Supplies
Mr F.W. Pearce
Mr J. Peters
Shorey Travel
Space Display Systems
Techno Sign Ltd

INDIVIDUAL BOX HOLDERS

Mr Alan Garner
Mr Malcolm Eade
Mr Roger Eade

EXECUTIVE BOXHOLDERS

British Gas
Eastern



Electrolux



JUNIOR HATTERS

Today I would like to extend a warm welcome not only to all the players, officials and supporters of Derby County, but to a very special guest from Noel Edmonds' House Party.....Mr Blobby!

After a rather inactive period for all our players, let's hope for a good game of football today to celebrate our first home match of 1994.

At the start of the season we promised we would bring certain special offers to all our members. With that in mind, Pizza Hut Dunstable are making every Junior Hatter a member of their 'Children's Club', which entitles you and

your family to special discounts. To be part of this special offer, all you have to do is show your membership card.

Pizza Hut Dunstable will also have, every Wednesday, family nights. The first will be on Wednesday, February 2 when you can meet some of our first-team players as well!

Regards, Harry.

MATCH DAY MASCOT



Name: James Stevens
Date of Birth: 27.6.83
School attended: Woodlands Middle School, Flitwick
Hobbies: Football
Favourite Luton player: Scott Oakes

Local team you play for: Under-12 6-a-side carnival team

Who accompanies you to Luton matches: My mum
SPONSORED BY LUTON AND DUNSTABLE PIZZA HUT



JUNIOR HATTERS TRAVEL

Travel arrangements for the away games at Leicester City and Bristol City are as follows:

12.2.94 Leicester City - depart Kenilworth Road forecourt: 12.30 pm

Arrive home approximately 6.30 pm

19.2.94 Bristol City - depart Kenilworth Road forecourt: 11.30 am

Arrive home approximately 7.30 pm

The price for all matches this season has been fixed at £5.00 for Junior Hatters and £8.00 for accompanying adults (price includes tickets for the match). Booking and payment can be made via the Ticket Office up to four days prior to the match.

JUNIOR HATTERS' BIRTHDAYS THIS MONTH

January 22 - January 31: David Church, Mark Dowling, Hitesh Patel, Simon Ale, Kevin sigley, Kelly Foster, Sean McGuinness, Marc Goodey, Marc Fonseca, Kevin Leaning, Lee Holland, Amanda Goode, Gordon Richardson, James Burgess, Marek Andel, Matthew Kilham, Robert Willmore, Robert Bishop, Kevin Robins, Andrew Varty, Paul Hulatt, Simon Johnson, Robert Taylor, Christopher Johnson, Mark Biggs, Barry Cook, Jamie Greer, Alexandra Hedley, Christopher Askew, Graham Wells, Luke Donnelly, Mark Pearson, Harish Bagoban, Luke Stone, Dean Boyle, George Kennedy.

Helping the most important people in football



Football is much more than a game of 90 minutes. Every day clubs throughout Britain are providing recreational and sporting opportunities for their local communities.

Much of this has been achieved with the help of the Football Trust. As part of its commitment to Football, The Trust has granted £4M to set up the National Football and Community Development Scheme.

Bringing club and community together, Trust-backed initiatives have provided a variety of local amenities, including:

- Artificial pitches for local teams
- Coaching for youngsters
- Support for women's football
- Facilities for people with disabilities

The Football Trust is helping the game at all levels.



THE FOOTBALL TRUST
Helping the game



Recent league encounters sway the Rams' way

The corresponding league encounter against Derby County at Kenilworth Road did not make good reading for the Town. Although Marvin Johnson (top left) scored the first league goal of his Luton Town career, the Hatters were defeated 3-1 thanks to two goals from Paul Kitson and a single strike from Tommy Johnson. The entertainment value was high for the Town's biggest home gate of the season so far (8,848), although Town manager David Pleat felt the final scoreline did not justify how well the Town had played. "We worked hard but didn't get the breaks," he said. "We worked to get in the box but just could not get the decisive touch."

Town fans need not reminding about the FA Cup scoreline between the two sides at Kenilworth Road last season, although we later went to the Baseball Ground to give a good account of ourselves in a 1-1 draw. The last league meeting between the two clubs also took place at Derby, in October, when John Hartson (bottom left) and Paul Dickov, making his debut on loan from Arsenal, formed an inexperienced, yet determined attacking force. Kitson and Johnson again came back to haunt the Hatters as the Rams took a two-goal lead. Martin Williams scored the Town's consolation on the stroke of full-time. Although disappointed with the result, Dickov had enjoyed his first taste of life with the Hatters. "It was a tough baptism for me, but I enjoyed it. I thought we were in with a chance until their second went in," he said.





828 AM
Chiltern Radio

SUPergOLD

for the greatest Hits of All Time
and Unrivalled Daily Sports News!

SUPergOLD 828 AM

in Herts, Beds & Bucks

Half-term report: part two...

RESERVES AND YOUTH BY WAYNE TURNER AND TERRY WESTLEY



In the second part of their look back at the season so far, Wayne and Terry bring us up to date with their respective teams and, as we discover, the two sides have had differing fortunes during the past three months.

FORTUNES TAKE A DOWNWARD TURN

After an impressive opening three months to the season which saw Wayne Turner's reserve side hit the top of the Neville Ovenden Football Combination table, a 4-2 home defeat by Watford set the Hatters' second string on a worrying slide.

They then lost their next two games, at Southampton (1-3) and Queens Park Rangers (1-3) but worse was to follow. The side went a further seven games without a win, scoring only three goals in the process but, as Wayne states, there was a very good reason for the dramatic change in fortune.

"The Waford game proved to be the turning point in what, until then, had been an excellent start to the season for us," he said. "Due to a number of factors, we became unbalanced and that unsettled our whole pattern of play. It was very disappointing after the rapid, impressive strides we had made up until that point."

The disruption of the defence proved to be the main problem which faced Wayne. In certain games he could only use one recognised defender which, inevitably, led to major problems.

"The balance went when Des Linton was called up for first-team duty and Richard Philp and David Greene were sidelined with long-term injuries," he stated. "Greg Rioch also left us for a loan spell with Barnet and that completely wiped out our back-four. Even goalkeeper Andy



David Greene



Greg Rioch

Petterson missed a couple of matches with an injury.

"I remember when we were defeated 4-0 at Oxford, we had to play John Hartson at centre-half who, in all fairness, had trouble in that position. And rightly so. He is a centre-forward! In that game we also had to bring in schoolboy Jay Thomas because our youth team were on cup duty. His performance that day, however, was one of the highlights of that indifferent period.

"We had to draft a number of youth team players in during this period and despite them all coming away with great credit, they could not compensate players who had been regulars for over a year."

The long awaited victory finally came with a 1-0 win at non-league Stotfold in the Beds Premier Cup at the beginning of December. This was followed up with an excellent 3-2 at Arsenal eight days later, a result which made the side the top scorers in the Neville Ovenden Division One table. Wayne states that the result against the Gunners is one of the most impressive since he has been at the club.

"Richard Philp and Greg Rioch returned to the side and looked settled and we also had John

Dreyer in the team to give us extra steel. We played excellent football with crisp one-touch play and all our players came out of the game with credit.

"When you consider the size of Arsenal's

squad compared to ours, we were a credit to our club. They had nine players who had played in the Premiership this season and we more than matched them for skill and determination.

"Hopefully we can continue that form as

YOUTH TEAM GO FROM STRENGTH TO STRENGTH

Despite the disappointment of elimination from the FA Youth Cup first round by Derby County, Terry Westley's youth side has, since November, taken the South East Counties League Division Two by storm. As we enter 1994, the young Hatters proudly sit at the top of the league table.

The team's impressive performances against the Rams - finally losing 1-0 at Kenilworth Road after two replays - has clearly given all the lads an enormous lift, as Terry explains. "We again showed in that final game against Derby that, on our day, we are more than a match for the strongest teams in the country.

"The boost those Derby results gave us has rubbed off in our league displays and we have continued to progress during the past eight weeks or so. We went from a team which was third from bottom in the table, to a team which is, at the time of writing, two points clear at the top.

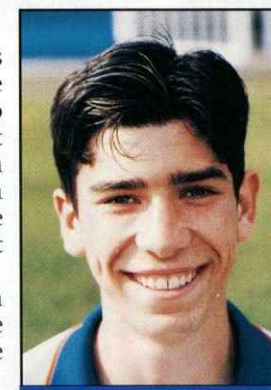
"We have a settled side, which has helped us, and goals have been scored from all areas of the pitch."

Results during this period have included wins against Swindon (2-0), Bristol Rovers (1-0) and Reading (2-1) but the game which gave Terry most satisfaction was the 2-1 win at Crystal Palace shortly before Christmas.

"That game was our most impressive in the league during the past couple of months," he stated. "Everyone played very well against a much-fancied Palace team who were then second in the table. Another factor which gave me tremendous satisfaction was that we had seven first-year apprentices in the team, which is a very high proportion by any club's standards."



Kelvin Davis



Ben Chenery



Paul McLaren

And the form of these first-year trainees has been the highlight of the season so far for Terry. The lead at the top of the table is a great bonus, but the progression of these young lads has been very satisfying for our youth team coach.

"The fact that so many of my boys will be eligible to play again for me next season is very exciting," continued Terry. "I will look forward to seeing the likes of Kelvin Davis, Paul McLaren, Ben Chenery, Danny Power, Jamie Woodsford and Chris Willmott continue their progression forward into, hopefully, reserve and first-team football. I must point out to them though that what they have got now isn't enough, and they have got a long way to go before they make it in professional football. But they all know that at Luton Town, they have a great opportunity in front of them to make it in the game."

So what is Terry hoping for in 1994? League success, Cup success or both? No, it is much more important than that. "As I have stated before my main aim is to progress my players into the reserve and first-teams," he pointed out. "We have got to keep the 'conveyor belt' of talent going.

"Leagues and Cups are very nice bonuses and are the icing on the cake for the coaching staff. The form, though, of our players in recent weeks does suggest that we might be close to the title come May. I am looking for our boys to remain solid in defence, creative and strong in midfield and potent in attack.

"We are progressing well and are very much looking forward to 1994."

Consistency is the key, says Julian



PLAYER INTERVIEW

Julian James has only recently returned to first-team action since breaking his hand against Bristol City in October. He has, however, been able to assess the Hatters' performances from the touchline and on the bench, and he states that consistency is all that is needed to help the cause.

It has been a frustrating time for Julian James. Three metal pins in a hand injury stopped him from playing totally. Although he admits he is not the best of spectators, from what he has witnessed recently, he believes the Hatters can climb the table this season.

"From what I have seen so far, we are better than most of the teams in the lower regions of the table," he said. "I was lucky enough to watch the big wins against Stoke City and Barnsley and in those games we showed that we can beat anyone on our day. The goals flowed and we looked solid throughout the team.

"Fortunately, I have been able to ease myself back into contention during the Christmas period, a spell which saw us unbeaten in five games. If we can maintain that level of consistency from now until the end of the season, there is no reason, in a very tight Division, why we cannot push ourselves into play-off contention."

Julian did not expect to be out of action for as long as he had been. Indeed, he thought his injury was just a dislocation and that he would be back playing for the Town the following week. "I remember falling heavily just after City had scored," he recalled. "At first I thought I had just dislocated my thumb and I tried to put it back into place. I carried on playing and later looked up my arm and realised something was wrong. After the game I saw Andy (McDade) and our doctor, and was sent to Stoke Mandeville Hospital."

Julian had, in fact, fractured his hand and required two operations which involved the

insertion of pins. Although, after the operation, he could run, he could not continue playing while the pins were in. He spent seven weeks on the sidelines unable, even, to twiddle his thumbs.

"All I could do at first was stamina work like jogging and leg weights which was frustrating," he added. "It wasn't until late November that I could step up my training programme and start playing again. I made my comeback in the reserve side against Crystal Palace and returned to the first team frame against Peterborough United on Boxing Day."

He has since made fleeting appearances from the subs' bench, and played against Notts County as he rediscovers the form which earned him the Town captaincy last season. He has set himself high goals for the remainder of the season and is confident of fulfilling his ambitions.

"I must now make a determined push for a regular place in the side. I was playing pretty well before my injury and I think I had a consistent year prior to the injury. I want to find that form again.

"If the results continue to go well, then I won't find it plain sailing to get into the team. But I like a battle and would much rather try to re-claim my place in a team which is winning, than one which is losing."



Win at home, draw away: Promotion form!

BACK TRACKING BY ROGER WASH



The Town started off the 1981-82 season with a bang, winning three games on the trot by early October. Despite a couple of uncharacteristic home defeats, they were sitting pretty at the top of Division Two.

At the end of that month, in the 1-0 home victory over Crystal Palace, the Town lost influential central defender Mike Saxby with a seemingly minor knee injury. We did not know at the time that Saxby would need major surgery and would never pull on a Luton shirt again.

The next game was also at home, this time against Derby County, and Clive Goodyear was drafted into the side to replace Saxby after previously only making a handful of appearances. A crowd of 10,784 turned up to see whether the Luton defence would remain as solid as it had done previously and in an open game, it was the Town who took the lead. David Moss, who had hurt himself earlier when he kicked the corner flag, capitalised on some brilliant control and skill by Ricky Hill, to score in the 37th minute.

Derby, who had lost midfielder Tony Reid after only ten minutes with a knee injury, missed an easy chance of equalising two minutes later when John Clayton blasted over the bar, but it was the Town who finished the first period the stronger side.

Despite the open play, direct shots at goal were rarities, but Goodyear produced a beauty in the 65th minute, putting the Town two-up with a 20-yard drive. This good work was undone, however, when Derby substitute Keith Osgood had yards of space to poke home a goal at the far post ten minutes later.

Within a minute, the Town had regained their two-goal advantage when Mal Donaghy rose at the far post to head in a corner by Moss. Derby's second goal, in the 88th minute from Clayton, came too late other than to cause a few hearts to flutter amongst the Town supporters.

After the game Luton manager, David

Pleat, was not overpleased and stated: "We'll have to play better than that to stay at the top of the table." Meanwhile, Derby boss Colin Addison had no complaints at being beaten, saying that he was most impressed by Luton and thought that we would get promotion after suffering near misses in the previous two seasons.

By the time of the return, on March 27, the Town were still leading the table, but had drawn five of their last six away games and in our eyes, were beginning to falter. The home games, however, were still being won and when we look back it can be seen that we were showing true promotion form.

A crowd of 15,836 was present at the Baseball Ground, partly to watch the table-toppers who were parading their new signing Richard Money, but more likely to see the second-coming of their old favourite Charlie George.

As it turned out, the Town took no chances and almost strolled through the game to come away with a point in a 0-0 draw. If the



Mike Saxby - A premature end to a fine Town career.

side had been a shade more adventurous, the extra two points would have been there for the taking as we were far superior in every department on the field, with Derby showing considerable respect for the Town's reputation.

The only blackspot to this performance was that the two points dropped enabled Watford, who had played two games more than the Town, to have a brief taste of leading the division.

With eight of their remaining 12 matches due to take place at Kenilworth Road, the Town eventually won the Championship at a canter and actually finished up with a couple of away wins. Although it only seems like yesterday, that promotion-winning season was 12 years ago!

Line Ups: First game - Luton - Findlay, Stephens, Goodyear, Donaghy, Aizlewood, Hill, Horton, Fuccillo, Stein, White, Moss.

Derby - Jones, Coop, S Powell, Sheridan, Buckley, B Powell, Reid (Osgood), Hector, Wilson, Clayton, Emson.

Second game - Luton - Findlay, Stephens, Goodyear, Donaghy, Money, Hill, Horton, Turner, Stein, White, Moss.

Derby - Banovic, Barton, Sheridan, McAlle, Buckley, Skivington, Attley, Emson, George, Wilson, Swindlehurst.



It happened five years ago
21/1/89 - A first-half goal from Roy Wegerle earned the Town a 1-0 home win against Everton and pushed us up to 13th spot in Division One.



It happened ten years ago
21/1/84 - After four straight defeats, the Town came away from Molineux with a win after beating Wolves 2-1. The Luton goalscorers were Garry Parker and Paul Walsh.



It happened 15 years ago
27/1/79 - This was billed as FA Cup day but as the Town had been knocked out in the third round by York City, the team was left at home twiddling its thumbs.



It happened 20 years ago
27/1/74 - Two goals from Jim Ryan, with one from the penalty spot, secured a point in a 2-2 home draw with Nottingham Forest. This game marked the debut of centre-half Steve Litt.

PREVIOUS ENCOUNTERS

	P	W	D	L	F	A
Home	13	9	1	3	23	13
Away	14	3	4	7	12	23
Total	27	12	5	10	35	36

HOW MUCH DO YOU KNOW ABOUT LUTON TOWN



Who was the Derby goalkeeper who played for Luton Town a couple of years ago?

Who scored a vital own goal for the Town against Derby on the last day of the season in May 1991?

Who managed Derby County and later joined the staff of Luton Town?



For the full Match Report, read —

Brian Swain's SPORTSVIEW
IN THE Luton News AND DUNSTABLE GAZETTE
5 pages of Sport Every Wednesday



Luton Town F.C.

KIT SPONSORS

RICHARD HARVEY
Shorey Travel

JASON REES
Wilton Contract and
Vehicle Rental

CERI HUGHES
Cornish Newsagents
Leighton Buzzard

SCOTT OAKES
McLeod Warner Limited

JOHN DREYER
Milton Keynes Branch of
the Luton Town Supporters Club

CERI HUGHES

JUERGEN SOMMER
Joe McGraa
Milton Keynes

ANDY PETTERSON
Royal Air Force Careers
Dunstable Road, Luton
Tel: (0582) 24805

JAMIE CAMPBELL
Calum Goundry
Wat... Signs...

DAVID PREECE
Ken and Judi Craven
Bedford

TREVOR PEAKE
Bennetts Gate Bakery
of Hemel Hempstead

ALAN HARPER
Bobbars Travel Club,
Committee and Members

MARVIN JOHNSON
Augustus Barnett
Wine Merchants Ltd
19 Chiltern Avenue, Bedford

DAVID GREENE
Handscombe Financial Services Ltd

is sponsored by
Cornish Newsagents
Leighton Buzzard

DAVID PLEAT
A-Top Management Services Ltd
Property Letting Service

SCOTT HOUGHTON
Bedfordshire Rural
Communities Charity

GEOFF AUNGER
Paul Deason

KERRY DIXON
Luton Town Supporters Club

JULIAN JAMES
Shorey Travel

MITCHELL THOMAS
Clive Garret
and Ade Danes

ANDY McDADE
Les & Sue Miller

JOHN HARTSON
Katy and Phil Shaw

PAUL TELFER
Convoy Installations Ltd

DES LINTON
Simkins Solicitors of
Baldock and Sandy

MARTIN WILLIAMS
Anchor Insurance Brokers
Milton Keynes

JOHN MOORE
Oliver Goundry
Wat... Signs...

On behalf of the club, the commercial department would like to thank all our sponsors for their support this season.

It's an exciting time off the field at Kenilworth Road



COMMUNITY MATTERS WITH GARY HOOPER

1994 promises to be an exciting time for our Football in the Community scheme. On the field we have gone from strength to strength this season, and that has been mirrored by our off-the-field community projects.

* Firstly, our Saturday Club continues to be a major hit among our Junior Hatters members. From 11.30 am to 5.00 pm on home match Saturdays, Junior Hatters can enjoy playing 5-a-side football, snooker, table tennis, video games, lunch and tickets to the match. The club is fully supervised and the cost is only £5.00 or £3.00 if you are a season ticket holder. All bookings can be made via the Ticket Office during normal office hours.

* Remember to look at page 34 of today's match day magazine to enter the Endsleigh Insurance League Supporters' challenge. Applications are invited from all male supporters over the age of 17 to enter the biggest and most ambitious 6-a-side competition ever staged in this country. The finalists will play on Wembley's hallowed turf prior to the Spring Bank Holiday Weekend of the 28th, 29th and 30th May 1994.

* On Friday, at a reception at the club, we were pleased to announce that Sportsmatch had donated £5,000 to help fund our community projects at Kenilworth Road. Graham Bright MP, Gavin Bisdee of Sportsmatch and Ray Mulford of Kenning Car and Van Rental (co-sponsors of the LTFC Community programme) were present, along with

myself, to accept this very generous donation. We are also pleased to announce that British Gas will be sponsoring our Learning Through Football scheme, but more details will follow in due course.

* Finally, but probably most importantly, I am looking for sponsors to help fund our Luton Town FC/Whizzkids project. Whizzkids are a registered charity whose purpose is to provide mobility aids, usually sports or powered wheelchairs, for physically disabled children, whatever their disability.

We are hoping to raise £3,000 by the end of March and we need as much help as possible. The project is operating in liaison

with Pizza Hut UK and anyone who purchases a 'Captain Scarlet' or 'Spectron' special meal from their local branches, will be donating money to the project via Pizza Hut.

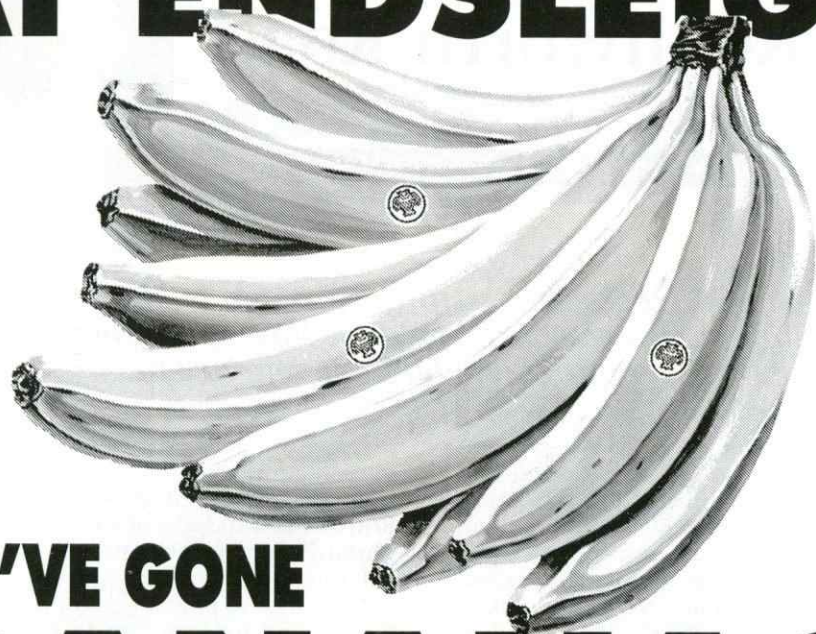
Sponsorship, however, is vital so if you can help out or require information on any of the above items, please contact Gary Hooper on (0582) 411622 or write to him c/o Luton Town FC, Kenilworth Road Stadium, 1 Maple Road, Luton, Beds LU4 1AW.



Junior Hatters members take time out from a fun day out at our Saturday Club.



AT ENDSLEIGH



WE'VE GONE BANANAS!

**MASSIVE
RATE REDUCTIONS
ON MOTOR INSURANCE**

"New advanced computer systems and many new schemes mean lower motor premiums from Endsleigh"

0908 675866

648/652 Silbury Blvd., Milton Keynes



Endsleigh

**PUT US
TO THE TEST-
ASK FOR A QUOTE
NOW!**



Can you do better than John Motson?



AROUND THE TOWN

COMPETITION FOR KIDS

How would you like to be on your way to Wembley for the Coca Cola Cup final next March, with the chance of commentating from the BBC's famous box?

We have been informed that's just what Garth Crooks is offering three lucky winners of the BBC Radio 5 'Young Commentator of the Year' competition. The competition was launched on 'Go!', which Garth presents every Saturday between 11 am and 12 noon on Radio 5. The awards are divided into three age groups: 10's and under, 11-13 and 14-16. All you have to do is send in a five minute audio cassette of your commentary on a football match of your choice - it can be live or one shown on television. Entries will be judged by a star panel and should be sent to: Go!, BBC Radio 5, Young Commentator of the Year Competition, BBC Broadcasting House, London W1A 1AA. But hurry, entries should be received by January 31, 1994.

NOT SO MERRY IN DERRY

Without a competitive game since January 1, the Town's first-team travelled to Derry City for a friendly on January 11. Unfortunately the side lost 1-0, but manager David Pleat was pleased just to be playing again. "Some of our players needed a good, physical workout after a prolonged spell without a game," he said. "It also gave me a chance

to look at some of the players on the fringes of our side and I was pleased with the contribution of Tony Thorpe, Jamie Campbell and Kelvin Davis in goal."

Team: Davis, Linton, Peake, Dreyer (preece), Thomas, Telfer (Hartson), Hughes, James, Campbell (Oakes), Thorpe, Dixon.

INJURY UPDATE

There is good news for youngster Aaron Skelton, who has been missing since the start of the season with a ruptured thigh: he is due to start playing again at the end of the month. David Greene and Marvin Johnson have also stepped up their progress and are due run-outs in our reserve side, when the pitches dry out!

POSTPONEMENT CAUSES DISAPPOINTMENT FOR JUERGEN

USA '94 assistant manager Timo Liekowski was recently in this country to check the form of Town keeper Juergen Sommer and Millwall's number one Kasey Keller. However, due to the postponement of our game with Southend United in January 8, he missed seeing our 6ft 5" New Yorker in action. "It was disappointing for Juergen," said David Pleat. "But we hope the door is not closed for him to make it into the USA World Cup squad."

BOBBERS TRAVEL CLUB

Coaches for the trip to Leicester City will cost adults £6.00 and children/OAP's £5.00. Departure time from Cranfield is 10.30 am and 11.30 am from Luton, with the normal pick-up points en route.

Bookings can be made by popping into the Bobbers Club kiosk in Kenilworth Road before any Saturday first-team match; on the return journey from the previous away match; or by calling Paul Deason on (0234) 750996.

CERI'S NEW CONTRACT



Town midfielder Ceri Hughes, who has been enjoying a resurgence in form this season, is likely to be rewarded with an extended contract, which will run for the next three-and-a-half years. Our 22-year-old Wales international has enjoyed a number of memorable performances and has scored some spectacular goals this term.

Sponsorship continues into a new year

NEWS OF THE WORLD

Today's Matchball sponsor

COMMERCIAL FOCUS

As you can see elsewhere on this page and from the number of kit sponsors we have on page 32, sponsorship at our club remains essential. However, as we enter a new year, new sponsors are always welcome. For more information, contact the Commercial Department on (0582) 411622.

Today in executive boxes four and five we welcome Cope Brothers (Printers) Limited. They are here today in full force, supporting Luton Town FC, like they have done for the past 20-odd years as fans and printers.

Cope Brothers started as a small concern in Dunstable, but have grown and have served many great names during this time, some of whom are with them today. They would like to wish Luton Town the very best for today's match and for the future.

For further information, call Cope

Brothers on (0582) 37415, fax (0582) 402608.

Along with Cope Brothers, we have Luton and District (Box 21) and J Sapsworth, glazing and decorating (Box 17) enjoying an executive afternoon with us at Kenilworth Road. Also, in our ever-popular Birthday Boxes, we have C Rogers and D Robilliard.

To all the aforementioned names, we wish you a very enjoyable time with us at Kenilworth Road and we look forward to seeing you back again very soon.

**Antony's
Tailor**

OF LONDON

THE MOST
ESTABLISHED
AND RELIABLE
TAILORS IN
LUTON

DRESS HIRE
LADIES AND GENTS
BESPOKE TAILORING

12 DUNSTABLE ROAD, LUTON,
BEDS OPPOSITE MAIN POST OFFICE
TEL: (0582) 424687



**Hamlet
MatchScratchH**

A chance to win
a gallon of whisky
or a free Hamlet cigar.

Get your Hamlet
MatchScratchH card
from promotional staff today.

Christmas Draw 1993

FIRST PRIZE £500,
no: 107320 P. Adams.

SECOND PRIZE £250,
no: 37648 M. O'Dell.

THIRD PRIZE £100,
no: 60764 Mr Taylor
and no: 96542 Mrs S. Edwards.

FOURTH PRIZE £50,
no: 40252 Mrs C Stevens
and no: 27715 L.D. Miller.

FIFTH PRIZE £25,
no: 63606 K. Roberts,
no: 51215 K. Stephens,
no: 39799 T. Goodwin,
no: 02817 G. Skelton,
no: 104897 A.J. Nunn,
no: 37773 D. Wilman.

For fuller details, please contact the
Lotteries Department on
(0582) 411622.

Match Sponsor

THE LUTON LEADER is the monster success of local newspaper publishing.

Launched two years ago today, its bright and breezy mixture of local news, features and advertising has made it a very welcome visitor to over 72,000 homes in Luton and a further 21,000 in Dunstable.

It's the perfect complement to the area's top local paid-for newspapers, the long-established experts in news and sport: the Luton News and Dunstable Gazette.

Silver Shield
AUTOMOTIVE GLAZING

24 HOUR REPLACEMENT SERVICE
DIRECT INSURANCE BILLING
LAMINATED GLASS REPAIRS

0800 88 0800
LUTON 414235



AT HFC BANK, YOU'LL DISCOVER THE MOST
CIVILISED PEOPLE IN THE FINANCIAL JUNGLE.

IF YOU REQUIRE ANY ADDITIONAL INFORMATION CALL OR VISIT YOUR
LOCAL BRANCH MANAGER: DAVID BLUMSOM, HFC BANK PLC,
15/17 UPPER GEORGE STREET, LUTON, BEDFORDSHIRE, LU1 2RD.

TELEPHONE: 0582 459797

HFC
BANK

All loans subject to status. A written quotation of our credit terms is available
on request. HFC Bank plc. Registered office: North Street, Winkfield,
Windsor, Berkshire SL4 4TD. Registered in England No. 1117305.

**R. J. BLOW &
C O M P A N Y**

THE FRIENDLY ACCOUNTANTS

Book-Keeping,
Taxation and Wages etc.

*

STIRLING HOUSE,
30 GUILDFORD STREET,
LUTON, BEDS LU1 2NR

*

Tel: (0582) 38792
Fax: (0582) 423347

Aug 14	Watford	2-1	9,149	-	Pos	Att	F-A
Aug 17	Cambridge United (CCC1/1)	0-1	4,065	-			
Aug 21	Portsmouth	0-1	12,248	16			
Aug 24	Cambridge United (CCC1/2)	0-1	3,861	-			
Aug 28	Nottingham Forest	1-2	9,788	22			
Aug 31	Watford (A/C)	1-2	2,854	-			
Sep 7	Southern United (A/C)	1-1	1,823	-			
Sep 11	Bolton Wanderers	0-2	7,199	24			
Sep 14	Tranmere Rovers	1-4	5,871	24			
Sep 18	Middlesbrough	0-0	12,487	23			
Sep 25	Birmingham City	1-1	11,081	23			
Oct 2	Barnsley	5-0	6,201	21			
Oct 5	Bristol City	0-2	5,956	21			
Oct 9	Derby County	1-2	15,885	24			
Oct 16	Notts County	1-0	6,366	21			
Oct 20	Sunderland	0-2	13,760	23			
Oct 23	Oxford United	1-0	5,161	19			
Oct 30	Leicester City	0-2	8,813	21			
Nov 2	Crystal Palace	2-3	10,925	21			
Nov 7	Charlton Athletic	1-0	6,327	18			
Nov 13	Southern United	1-2	5,367	18			
Nov 27	Stoke City	6-2	7,384	16			
Dec 4	Charlton Athletic	0-1	7,121	17			
Dec 11	Tranmere Rovers	0-1	7,075	19			
Dec 19	Watford	2-2	7,367	21			
Dec 27	Peterborough United	0-0	9,522	20			
Dec 29	Grimsby Town	2-1	7,234	18			
Jan 1	West Bromwich Albion	1-1	16,138	19			
Jan 15	Notts County	2-1	6,389	17			
Jan 18	Southern United (FAC3)	1-0	7,953	-			
Jan 22	Derby County						
Feb 5	Oxford City						
Feb 12	Leicester City						
Feb 19	Bristol City						
Feb 22	Portsmouth 7.45 pm						
Feb 26	Sunderland						
Mar 5	Nottingham Forest						
Mar 12	Middlesbrough						
Mar 15	Bolton Wanderers 7.30 pm						
Mar 19	Birmingham City						
Mar 22	Wolverhampton Wanderers 7.45pm						
Mar 26	Barnsley						
Mar 30	Millwall 7.45 pm						
Apr 2	Peterborough United						
Apr 4	Grimsby Town						
Apr 9	West Bromwich Albion						
Apr 16	Crystal Palace						
Apr 23	Wolverhampton Wanderers						
Apr 30	Southern United						
May 7	Stoke City						
T.B.A.	Millwall						

This Weekend's Other Endsleigh Division One Action

Birmingham City v Sunderland
Bolton Wanderers v Tranmere Rovers
Bristol City v Notts County
Charlton Athletic v Barnsley
Crystal Palace v Leicester City
Middlesbrough v Watford
Nottingham Forest v Wolves
Portsmouth v Peterborough United
Southend United v Grimsby Town
Stoke City v Oxford United
West Bromwich Albion v Millwall

THE MAN IN THE MIDDLE

MIKE REED

(West Heath, Birmingham)

A financial consultant, Mike is married with two children. He commenced refereeing in 1973 and progressed via the West Midlands League to the full League list in 1985. He lists his hobbies as gardening, photography and most other sports.

Endsleigh Insurance League Division One Table 1993-94

P	W	D	L	F	A	Pts	Av. Att	Leading League Goalscorers
Leicester City	26	13	7	6	43	30	46	Speedie 11, Thompson 6
Crystal Palace	25	14	4	7	43	29	46	Armstrong 13, Salako 6, Southgate 6
Millwall	26	13	7	6	37	28	46	Rae 9, Goodman 4, Kennedy 4
Tranmere Rovers	27	13	6	8	38	31	45	Aldridge 9, Brannan 7, Nevin 7
Charlton Athletic	26	13	6	7	33	24	45	Nelson 8, Leaburn 5
Nottingham Forest	25	12	7	6	41	30	43	Collymore 13, three on three goals
Derby County	25	13	3	9	41	37	42	Gabbiadini 11, Pembroke 8
Wolverhampton W	26	10	11	5	41	27	41	Bull 13, Kelly 9
Stoke City	26	12	5	9	36	38	41	Orygsson 6, Regis 5
Southend United	27	12	4	11	43	37	40	Otto 9, Mooney 5, Jones 5
Bristol City	27	10	8	9	30	31	38	Allison 10, Baird 5
Portsmouth	26	9	10	7	31	32	37	Durnin 6, Walsh 5
Bolton Wanderers	27	9	9	9	34	31	36	McGinlay 9, Thompson 5
Sunderland	26	11	3	12	29	34	36	Gray 8, Goodman 5
Notts County	26	10	3	13	36	47	33	McSwegan 8, Draper 8, Lund 6
Middlesbrough	25	8	9	8	33	27	33	Moore 7, Hendrie 7, Wilkinson 5
LUTON TOWN	25	8	5	12	30	33	29	Dixon 7, Hughes 4
Watford	26	7	6	13	39	52	27	Furlong 12, Porter 7
Grimsby Town	25	5	12	8	29	29	27	Mendonca 10, Groves 4, Childs 4
Birmingham City	27	7	6	14	29	43	27	Peschisolido 8, Saville 5
West Bromwich Albion	26	6	7	13	37	44	25	Taylor 11, Hunt 10
Oxford United	27	6	7	14	31	49	25	Cusack 5, Magilton 5, Dyer 4
Barnsley	26	6	7	13	30	43	25	Redfeam 9, five on three goals
Peterborough United	24	4	8	12	20	31	20	Adcock 5, Philliskirk 4

(up to and including 16.1.94)

Luton Town F.C. Appearances and Goalscorers 1993-94

League	Apps	Gls	Coca-Cola Cup	Apps	Gls	AI Cup	Apps	Gls	FA Cup	Apps	Gls
Geoff Auger	3	1	-	-	-	-	-	-	-	-	-
Ian Benjamin	2(1)	1	2	-	-	-	-	-	-	-	-
Janie Campbell	3(7)	1	1	-	-	-	-	-	-	-	-
Paul Dickov	8(7)	1	-	-	-	-	-	-	-	-	-
Kerry Dixon	16(1)	5	-	-	-	2	1	1	-	-	-
John Dreyer	22	1	2	-	-	2	1	1	-	-	-
David Greene	-	-	-	-	-	-	-	-	-	-	-
Alan Harper	20	1	-	-	-	-	-	-	-	-	-
John Hartson	10(5)	3	-	-	-	2	-	-	-	-	-
Scott Houghton	6(6)	1	1(1)	-	-	2	-	-	-	-	-
Cert Hughes	24	4	2	-	-	2	-	-	-	-	-
Julian James	8(4)	1	2	-	-	1	-	-	-	-	-
Marvin Johnson	16	2	-	-	-	2	-	-	-	-	-
Des Linton	16(1)	-	-	-	-	1	-	-	-	-	-
Scott Oakes	18(3)	3	1(1)	-	-	-	-	-	-	-	-
Trevor Peake	25	2	-	-	-	2	-	-	-	-	-
Andy Petterson	-	-	-	-	-	-	-	-	-	-	-
David Preece	11	2	2	-	-	2	1	1	-	-	-
Jason Rees	7(1)	1	-	-	-	-	-	-	-	-	-
Juergen Sommer	25	-	2	-	-	2	-	-	-	-	-
Paul Telfer	23(1)	3	1	-	-	1	-	-	-	-	-
Tony Thorpe	-	-	-	-	-	-	-	-	-	-	-
Mitchell Thomas	8	-	-	-	-	-	-	-	-	-	-
Martin Williams	4(8)	1	1	-	-	1(1)	-	-	-	-	-
Matthew Woolgar	-	-	-	-	-	-	-	-	-	-	-



Matchday music
is supplied by
HMV Stores,
Arndale Centre,
Luton.



John Oliver

Read his report on the big match
every week in *Sunday in Luton*



David Pleat

Speaks his mind every Thursday
in the *Herald & Post*

Herald & Post

Sunday in Luton

the winning team

BEARD BROS LTD

**Supporting the less-abled of
Bedfordshire, Hertfordshire and
Buckinghamshire.
with Luton Town F.C.**

*Difficulty getting there...
Don't miss the match.*



Free Home
Demonstrations or
visit our
showrooms
in Bedford or
Watford.
The largest
selection in
the south
of England.

Beard Bros. Ltd

Watford (0923) 250922

Bedford (0234) 266666