

LUTON TOWN F.C. v SOUTHEND UNITED



FA CUP THIRD ROUND
TUESDAY, JANUARY 18, 1994
KICK-OFF 7.45PM

Today's match is sponsored by
John Eastaff (Builders Merchants) Limited
Progressive Printing (UK) Ltd



Sponsors of
Luton Town F.C.

A fair Cup draw brings a chance to progress

ON THE BALL WITH DAVID PLEAT



This afternoon's game has a special flavour. The F.A. Cup always brings eager anticipation. A home draw against a club currently playing very well in our own league is as fair a draw as we could hope for.

The postponement of the Millwall game last Tuesday dampened everyone's enthusiasm but we hope that the promise of the Cup has revived our spirits. The pitch was in a terrible state. The persistent rain from 1.00pm to 3.30pm was too intense. Mr Bodenham, the referee would have been forced to abandon had he started.

I saw Southend at Notts County on Monday during a "busman's holiday" taking in Mansfield v Chesterfield and Coventry v Swindon. Southend were by far the most effective team going forward with the ball of those I saw. They have much quality to admire and our players know that only their very best efforts today will see us through.

I write these notes anticipating a phone call from Arsenal which would confirm the exclusion of Paul Dickov for this afternoon's game even though his loan does not run out until Tuesday. Away from home we have been experimenting with our line up and as a consequence Paul has not played regularly but we have appreciated his contribution. I am also currently talking to West Ham regarding Mitchell Thomas's future and I am hopeful we will be able to take him back into the fold.

The wet Christmas weather really affected preparations at all levels. Just prior to Christmas we had to cancel a Combination game with Spurs but fortunately rearranged a valuable game privately. David Greene and

Marvin Johnson, two of our recent casualties have been training and now desperately need match practice. Regarding the Christmas games; I was annoyed yet delighted with the Grimsby performance and result; pleased with our attitude and performance at Peterborough; and slightly disappointed with the performance, but relatively pleased with the result, at West Bromwich. I was heartened by the travelling support and your appreciation of our efforts.

**"THE POSTPONEMENT
DAMPENED EVERYONE'S
ENTHUSIASM BUT
WE HOPE THAT THE
PROMISE OF THE CUP
HAS REVIVED
OUR SPIRITS"**

Over the Christmas period we derived some obscure pleasure from receiving only two bookings from three difficult away games. It was not surprising that the referees involved are regular officiators at Premiership games. There is no question in my mind that clubs in the Endsleigh League are receiving greater punishments than the clubs under the "Sky" microscope in the Premier. I also



John Hartson slips the ball past two defenders during our 2-1 win against Grimsby Town on December 29.

feel that the Endsleigh League should come into line and allow managers and coaches to use a tactical area. It is most frustrating to be admonished by an irate linesman for merely getting off one's seat.

Back to this afternoon and no-one under estimates our task. Southend have had a traumatic 18 months. It has been unfairly recorded that my ex-colleague Barry Fry rescued them from the threat of relegation. It was the inspired Stan Collymore signing, made midway through last season, that not only

saved Southend, but put them in their most healthy position ever to go and purchase players.

Enjoy this afternoon's game. May the best team win and, whoever goes through, may they get a "plum" in the next round.

PLEASE NOTE

With this FA Cup third round tie originally scheduled for January 8, much of this match day magazine was produced and printed for that date. We therefore apologise for any factual inaccuracies which may now be evident.

Home pride at the family club



THE LTFC VAUXHALL SCHOOL OF EXCELLENCE

It may be fashionable in some quarters to worry about the quality and the structure of football in England, particularly at schoolboy and youth level, but the development of young players is not a problem here at Kenilworth Road.

Thanks to the development of our three successful Vauxhall Schools of Excellence in Luton, Milton Keynes and Stevenage, the first team squad has welcomed a series of young graduates from the scheme generously sponsored by our friends at Vauxhall Motors.

Jamie Campbell, David Greene, John Hartson, Richard Harvey, Ceri Hughes, Julian James, Marvin Johnson, Richard Philp, Jason Rees, Neil Ryan, Darren Salton, Aaron Skelton, Paul Telfer, Martin Williams and Matthew Woolgar are just a few of the players to have progressed after some experience of the Town's coaching structure for younger players.

In the cases of our Welsh and Scottish connections — Hughes and Rees, Salton and Telfer — the opportunities came during their school holidays. The others arrived via their local Vauxhall Schools, set up to provide centres of excellence for talented boys in the 11 to 14 age groups.

"I would say that about 95 per cent of all the boys we take on as trainees now have come through the Vauxhall School of Excellence scheme," said Youth Development Officer, Paul Lowe, who has supervised the development of our 'home pride' policy.

"And of the other five per cent, I think they all came in on their school holidays. It is a pretty impressive record of achievement now when you look at the players coming through to the senior squad."

The Vauxhall School of Excellence scheme has ensured that the Town have been able to attract and develop talented prospects at an early age, as Paul explained. "We have about 14 players at Milton Keynes in the 11-13 age group," he said.

"I take the coaching sessions for them and we



concentrate on skills, passing, dribbling, receiving and turning, generally comfort with the ball. We have about 30 players in the 11 to 14 age group at Luton where we work with three coaches — myself, Terry Westley and Gary Hooper.

"At Stevenage, we have another 15 in the Vauxhall School in the 11-13 age range and I am assisted in the coaching by Colin Cardines."

The Vauxhall Schools are very popular with young players looking for a chance to make a breakthrough in football and the standards are high. At Luton, where the coaching takes place at Lealands High School, the group breaks down into about 10 players to each coach for work on particular skills.

"This skill work is most important in the development of players," said Paul. "It is what we are really about. Although we run teams at under-14, under-15 and under-16 levels, playing on Sunday mornings against other professional clubs' age group teams, it is not the results we look for.

"It is the development of players.

We play against Spurs, Arsenal, QPR, Watford, Chelsea and so on and the games are always close and competitive."

Boys taken into the Vauxhall Schools are usually introduced by school-teachers, scouts or keen parents and begin with a four or five week trial period. The centres hold a one-hour Vauxhall School of Excellence session each week and boys are encouraged to live within easy reach.

"Stevenage is excellent for this," said Paul. "The John Henry Newman Leisure Centre is so close to the A1 (M) that we can attract boys from as far afield as Peterborough or Waltham Cross. It makes life much easier for them, but we are very keen not to miss out on any exceptional local boys too."



Universal Salvage Auctions

WHEN IT COMES TO

MOTOR SALVAGE AUCTIONS

WE ARE THE LEAGUE LEADERS



WEEKLY AUCTIONS AT

CORBY · REDBOURN · SANDTOFT · WESTBURY

TELEPHONE: 0582 792690 · FOR DETAILS

DUNSTABLE ROAD · REDBOURN · HERTS · AL3 7PX



Spare a thought for those on the sidelines

ON THE INSIDE BY JOHN SMYLIE



Kenilworth Road Stadium,
1, Maple Road, Luton, Beds
LU4 8AW.
Tel: (0582) 411622
Fax: (0582) 405070.
Clubcall: 0891 12 11 23 (48p
per min peak, 36p off peak)

President: E.S. Pearson

**Chairman and
Managing Director:**
D.A. Kohler, Bsc. (Hons) ARICS

Directors: P. Collins, N. Terry,
C. Bassett, C. Green

Vice Presidents: R.L. Banks,
C. Bygraves, R. Safranek,
J. Hudson, D. Ludlow,
P. Ireton.

Secretary: John Smylie

Manager: David Pleat

Coaches: John Moore,
Wayne Turner, Terry Westley

Physiotherapist: Andy McDade

Youth Development Officer:
Paul Lowe

Scouting: Les Shannon

Medical Officer: Dr Bill Berry

Club Dentist: A. Chris BDS (Syd)

■ The ultimate dream of all players competing in today's FA Challenge Cup third round is to reach the final and appear in front of the Twin Towers at Wembley Stadium. For many players, however, who are recovering from long term injuries, their dreams and ambitions are just to get fit and be able to resume playing once more.

■ Town defender Richard Harvey is one such player. An exploratory operation in June was carried out to ascertain the problem with his knee. It was felt that if his thigh muscles could be built up, a major operation could be avoided. Alas, although the muscles did become strong, the extent of damage and the fact that the knee had given way twice it was decided he should see the country's top knee specialist Mr Dandy.

■ Mr Dandy has successfully performed surgery on a number of sporting people including, in February last year, Alan Shearer and, more recently, Niall Quinn. Richard's problem was found to be anterior cruciate ligament rupture and on October 11 last year, he was operated on. The surgery was a reconstruction using the mid third patellar tendon to replace the cruciate.

■ A year ago, this would have meant six weeks in plaster and then a brace. Not so today as within 24 hours of his operation, Richard was walking with the aid of crutches and within a week without crutches. His rehabilitation programme is progressing well and he is hoping to be kicking a ball and riding a bicycle this week, then by March to be running. It is hoped he will commence playing again in the next pre-season friendly matches.

■ Richard attends the club seven days a week for treatment and each afternoon is spent swimming. (He says he feels as though he has grown a set of gills.) He admits it is devastating, lonely and very tedious. The time however has been made a little easier by having fellow colleagues Darren Salton and Aaron Skelton for company.

■ Responsible for Richard's rehabilitation each day is the Town's physiotherapist Andy McDade, assisted by Clive Goodyear. Andy has nothing but praise for Richard. He said: "He is an ideal patient, fully co-operative and responsive to all he is asked to do."

■ Richard would like to wish all supporters a good 1994. A personal wish is for the club to do well and climb up to the top of the league. Success gives the incentive and encouragement to work even harder. His one concern is how quickly fans can forget you when you're not playing and in the team.



Honours

Littlewoods Cup winners 1987-88
FA Cup finalists 1958-59
Littlewoods Cup finalists 1988-89
Simod Cup finalists 1987-88
Champions - Division Three (S) 1936-37
Champions - Division Four 1967-68
Champions - Division Two 1981-82

Editorial: Collings Communications,
PR and Media Consultants, Hitchin, Herts.
Tel: 0462 441068 Fax: 0462 441069

Design and print: McLeod Warner Limited, Luton. Tel: 0582 38389

SAFETY NOTE

The Chairman and Directors of Luton Town Football Club undertake to ensure as far as humanly possible that all activities that take place at the Kenilworth Stadium are conducted in such a way that, as far as is reasonably practicable, the safety of everyone working at or attending the stadium is assured.

The club's primary responsibility through the Safety Officer, Officials, Staff and Stewards will be to ensure the reasonable safety of those attending the stadium.

An ideal opportunity to progress

CAPTAIN'S COLUMN BY TREVOR PEAKE



The FA Cup has a special magic which generates interest at every club involved in the third round. We all dream of reaching the final at Wembley, but there are not many who make it.

I was one of the lucky ones, reaching the final with Coventry in 1987. We beat a Tottenham side which contained Mitchell Thomas and you can read more about that experience on page 28 of today's match day magazine. I have been pulling Mitchell's leg about the game during the run up to today's match, but we both agree that you can't beat the feeling of walking out in front of 100,000 fans on a hot summer's day.

We have a great opportunity of progressing today. Southend have started to rock after the



Mitchell Thomas - subject to a little leg pulling!

departure of Barry Fry. It is a shame to see after their great start, but we know that, backed by home support, we have a definite chance of making it into the hat for round four.

It has been a hectic couple of weeks for the side and, to be honest, we have not had much of a chance to prepare for one of the biggest games of the season. I would like to take this opportunity to thank those loyal fans who have followed us over the festive period, particularly those Hatters who made the trips to Peterborough and West Bromwich Albion. Your support is greatly appreciated.

A good win this afternoon will build up our confidence as we approach a very difficult period of the season. After our trip to Notts County next week we face two home ties against Derby and Oxford, games which we will hope to take maximum points from. I cannot emphasise enough how important back-to-back victories are in such a very tight league this season.

Keep cheering and see you in round four!

(Signature)
Enjoy the game



The Station with
More Winning Ways

The Hot FM

LUTON BUS
Providing a comprehensive network of local bus services throughout the region.
CUT TRAVEL COSTS WITH BUS BOND
☎ Luton 404074

MOT TESTING
Classes 4,5,&7
☎ Luton 400040 extn 225

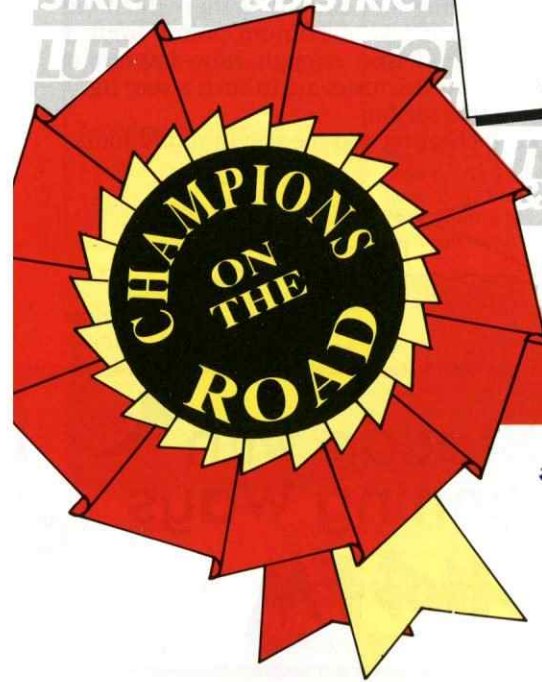
LDT PRINT
Just the ticket...& STATIONERY...BROCHURES... PRICE LISTS...LEAFLETS... BUSINESS CARDS...ETC.
☎ Watford (0923) 894994

CHILTERN european
Day excursions, tours & charter UK & Europe
Mini buses, standard buses & executive coaches
☎ LUTON 476000

757 Luton to London
By coach for as little as **£5 RETURN**
Commuter & Leisure journeys
☎ Luton 404074
LUTON & DISTRICT

AVIS RENT A CAR
We try harder
☎ Luton 454040

LUTON & DISTRICT
GROUP OF COMPANIES
for all seasons
More than just a bus company
☎ LUTON 400040



LUTON & DISTRICT

service and enterprise. . .

Cup winners' statistics stacked against our teams

1

NEWS ON ONE

It has been 13 years since a team outside the top-flight won the FA Cup. English football's most prestigious prize has stayed firmly within the grasp of the top teams for most of its history. Leonard Spall takes a retrospective look back at the success stories from our Division.

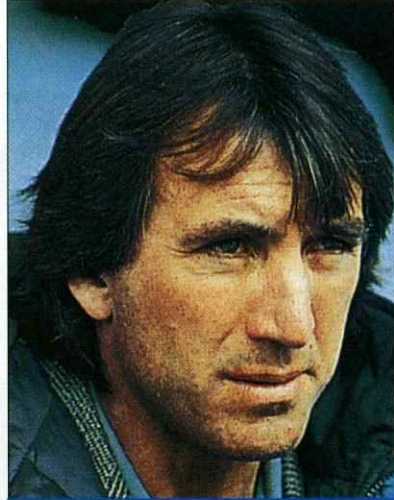
Today's game is one of only three all-First Division games which came out of the hat this season, and it would be interesting to see what odds are placed on the Hatters or the Shrimpers actually reaching the Twin Towers. West Ham were the last team to defy the odds and represent our division, when they won the 1980 final against much-fancied Arsenal.

The Hammers held on to an early goal against a Gunners side which included the likes of Liam Brady and Pat Jennings. Brady is now manager at Brighton and Jennings has faded from the football spotlight, but a number of players from the winning side are still around for this year's competition: Billy Bonds has moved up to manager the Hammers, Alvin Martin is still a stalwart at the heart of their defence, Paul Allen, the youngest player to appear in a final in 1980, is tackling tenaciously down at The Dell and Trevor Brooking has found football to be a pundit's paradise.

West Ham's manager at the time, John Lyall, said at the time: "This is what football management is all about - I am really chuffed." - Hardly profound, but Lyall's managerial predecessor in taking the trophy to Division Two, Lawrie McMenemy at Southampton, sparked hope for teams in our predicament when he said: "This sort of thing is not supposed to happen to teams like ours - But now it has. The smaller teams can over-

come the giants."

Southampton won the FA Cup by beating Manchester United 1-0 in 1976 - they had started the tournament as 100-1 outsiders. This was the first time the Saints had reached the final for 74 years, the success of Second Division sides always being a 'David and Goliath' affair. Sunderland are the only other team outside of the top-flight to lift the F.A. Cup in post-war years but the '70's, it seems, were ripe for upsets.

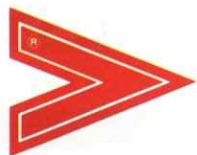


Billy Bonds will be hoping his Hammers side can reach the same heights as those achieved in 1980.

Sunderland, who coincidentally reached the final as a Second Division side in 1992, broke a 42-year duck for Second Division teams by beating Leeds in 1973, and Southampton were the side from that rung of the ladder to reach the final in four years. If the '70's proved to be fertile for upsets, the '80's proved the exact opposite and the '90's still have a long way to go before conclusion.

This season there has been a great deal of expectancy within the First Division and a lot of money spent. Not all 'big spenders' can win promotion but some might attain the excuse of a prolonged Cup run. Nottingham Forest may succeed where Brian Clough never did, a re-built Molineux may see Wolves fill a space in a cob-webbed trophy cabinet and Crystal Palace may soar to the Wembley heights as they did in 1990. At 4.40 this afternoon we will have a better indication of things to come...

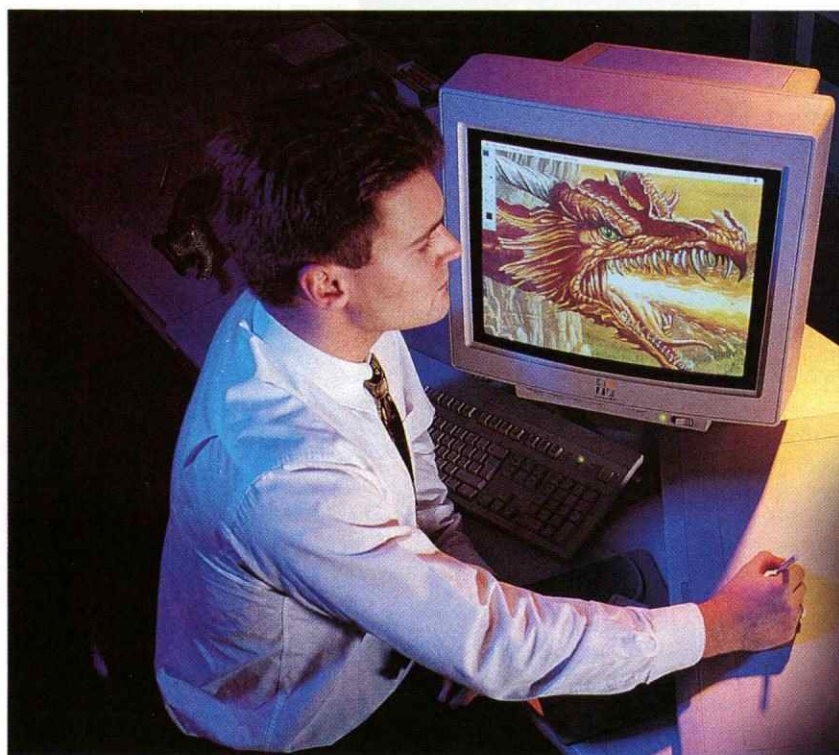
S U P P L I E D B Y



Mitre
absolute performance

MITRE SPORTS INTERNATIONAL LTD.
BIRKBY, HUDDERSFIELD, HD1 5AJ. TEL: 0484 537488. FAX: 0484 530042

A GENESCO Company

**McLEOD
WARNER
LIMITED**

digital
artwork,
origination
&
print

16 Rothesay Rd,
Luton, Beds
LU1 1QX
0582 38389

Fans' Forum



A MESSAGE FROM AMERICA

Dear Sir,

Having just returned to the United States after living and working in the Luton area, I must admit that one of things that I miss most about England is the overwhelming access to football - including the ability to go to Kenilworth Road and cheer on Luton Town.

As a newcomer to the Luton Town scene (my first game was August's Luton v Watford encounter), I quickly became a fan who looked forward to rooting for the Hatters each week. The last game I saw - v Charlton - was an extremely exciting match which, unfortunately, did not turn in our favour.

I wish Luton Town great success and believe that the best is yet to come from this season's promising Hatters!

Jennifer Ciardelli, 28 South Bay Circle,
Colchester, Vermont 05446, USA.

PROGRAMMES FOR SALE

Dear Sir,

I have a large number of Luton programmes for sale. If there are any interested supporters, please send your wants list to the address below:

Mr N.C. Albane, 4 Jacobs Close, Potton, Sandy,
Beds SG19 2SG.

THANKS BOYS

Dear Sir,

I would like to thank the club for sending two players to the opening of my exhibition, at Milton Keynes, 'The Homes of Football'.

Marvin Johnson and David Greene looked just the part and were very friendly and good mannered. Moreover they seemed genuinely interested in the show of pictures.

The appearance of the players made the evening extra special - thank you Luton Town.

As a point of interest, the following day - the public opening saw an attendance of 650, some of which were clothed in Luton scarves!

Stuart Clarke, Football Trust photographer, High Croft, Cumwhinton, Carlisle, Cumbria CA4 8DJ.

ALL-TIME HATTERS TEAM

Dear Sir,

Looking at the players we have had at Kenilworth Road during the past ten years, I have put together a team which I believe would be more than a match for any team in the Premiership at

the moment: 1 Juergen Sommer, 2 Tim Breacker, 3 Mitchell Thomas, 4 David Preece, 5 Steve Foster, 6 Mal Donaghy, 7 Ricky Hill, 8 Roy Wegerle, 9 Mick Harford, 10 Lars Elstrup, 11 Kingsley Black. Subs: 12 Brian Stein, 14 Alan Harper, 16 Andy Dibble.

I have included Juergen in the line-up because he has played very well this season. If it wasn't for him at Charlton recently, we would have been thrashed.

The team was more impressive against Tranmere Rovers. I could not believe the final scoreline. We were all over them. But if we play like that for the rest of the season, we should do well.

Dale Williams, 18 Nevis Grove, Bletchley,
Milton Keynes, MK2 3NY.

THE RED LION MILTON BRYAN



A TRADITIONAL ENGLISH PUB WITH AN EMPHASIS ON
EXCELLENT HOME-MADE FOOD.

OUR EXTENSIVE MENU RANGES FROM POTATO SKINS,
SOUP, HOT 'N' SPICY PRAWNS, THROUGH TO STEAK,
MUSHROOM AND GUINNESS PIE, FISHERMAN'S
CRUSTY PIE, LASAGNE AND OUR EXCELLENT
CUMBRIAN HIGH TEA.

A SPECIAL BOARD IS ALWAYS AVAILABLE WITH DISHES
FOR THE MORE ADVENTUROUS OFFERING PORK
FILLET, VENISON AND THE EXCELLENT 16OZ T-BONE STEAK.

OUR BEERS ARE ALL TRADITIONAL HAND-PULLED
ALES AND ARE ONLY £1.00 BETWEEN 6.00PM AND
7.00PM MONDAY-SATURDAY.

WE ARE ALSO AVAILABLE FOR WEDDINGS, PARTIES
AND GARDEN BARBEQUES. TELEPHONE FOR RESERVA-
TIONS OR EVEN BETTER, JUST DROP IN, YOU MIGHT
EVEN BUMP INTO A LUTON TOWN PLAYER. WE ARE
ONLY FIVE MINUTES FROM M1, JUNCTION 12
BETWEEN TODDINGTON AND WOBURN.

BRING THIS ADVERT ANY MONDAY EVENING AND
RECEIVE 10 PER CENT OFF YOUR FOOD BILL.

Action Replay

From: Vicarage Road
Date: December 19, 1993
WATFORD 2
(Dyer 2)
LUTON TOWN 2
(Preece, Dreyer (pen))

PICTURES BY JOHN WOOD, HERALD & POST

Scott Houghton breaks away from the Watford defence to set up the Town's equalising goal.



David Preece turns away in celebration after netting the Town's opener in the 47th minute.

Scott Oakes gets the better of Hornets' Alan McCarthy in the first-half.



**FOR GREAT BARGAINS
ALL YEAR ROUND**



Pay a visit to
**LUTON ARNDALE
MARKET**

A Centre for all Seasons

Whatever the Season
there's always
something new at the
Luton Arndale Centre.

From the latest fashions
to spectacular
Christmas displays.

From lively school
holiday entertainment
to the massive summer
sales.



Luton Arndale Centre

Providing you with so much more



**Special 10% reduction off local rates for all
of our fellow supporters of Luton Town FC**

AN EXTENSIVE RANGE OF:

- CARS, VANS & TRUCKS.
- FULLY INCLUSIVE RATES WITH UNLIMITED MILEAGE.
- 24 HOUR NATIONAL HOTLINE HELPLINE.
- AA/RAC COVER.

KENNING

CAR AND VAN RENTAL

LUTON 0582 455333

24-34 Crawley Road.

Ticket Office news update



BY CHERRY NEWBERY

In the event of a replay the match details would be:

Southend United v Luton Town

F.A. CUP THIRD ROUND REPLAY

Wednesday, January 19, 1994 - Kick-off 7.45 pm
Seats priced at £10.00 (no concessions) would be on sale from the Ticket Office in Kenilworth Road until Saturday, January 15 and also on the night at Southend.

Standing priced at £7.50 (no concessions) pay on the night at the turnstile only.

Notts County v Luton Town

ENDSLEIGH INSURANCE LEAGUE DIVISION ONE

Saturday, January 15, 1994 - Kick-off 3.00 pm

Luton supporters have been allocated the Kop Stand for this match, seating only, pay at the turnstile on the day of the match.

Price £10.00 (no concessions).

Luton Town v Derby County

ENDSLEIGH INSURANCE LEAGUE DIVISION ONE

Saturday, January 22, 1994 - Kick-off 3.00 pm

Tickets for this match are now on sale. Normal league prices and guesting facilities apply for this match.

Luton Town v Oxford United

ENDSLEIGH INSURANCE LEAGUE DIVISION ONE

Saturday, February 5, 1994 - Kick-off 3.00 pm

Tickets for this match are now on sale at the discounted price. Normal guesting facilities apply for this match.

Ticket Office Hours

Monday - Friday 10 am - 5 pm.

Non-match Saturdays 10 am - supporters' travel coach leaves.

Match Saturdays 9 am - kick-off, after the match 4.45 pm - 5.15 pm.

For bookings, membership and enquiries, ring the Ticket Office on (0582) 416976. Supporters wishing to order by credit card can do so by using the 24-hour Credit Card Hotline on (0582) 30748.

Travelling to...

Southend United

(In the event of a replay).

Address: Roots Hall, Victoria Avenue, Southend-On-Sea, SS2 6NQ.

Telephone: (0702) 340707.

Follow signs St Albans (A505). In 1.3 miles roundabout, take second exit (A1081) and at roundabout take the second exit to join motorway M1 spur. Take the M1 south to junction 6a. Branch left to join the M25 (signs Harlow M11) to junction 29. Follow signs Southend to join A127. In 19.3 miles at roundabout, take third exit into Victoria Avenue then right into West Street (B1015). Take next turning right, into Roots Hall, for ground.

Notts County

Address: County Ground, Meadow Lane, Nottingham NG2 3HU. Telephone: (0602) 861155.

Join the M1 north to junction 24. Follow signs Nottingham South (A453). In 7.6 miles branch left (signs Grantham A52) then at roundabout take 1st exit B679. At mini-roundabout follow signs West Bridgford and at traffic signals turn left (signs Nottingham) onto the A60. Cross the Trent Bridge and in 0.5 mile turn right into Cattle Market Road (A6011), then bear right into County Road for ground.

Directions courtesy of the Automobile Association.

Spotlight on today's visitors



SOUTHEND UNITED F.C. 1993-94

■ Following an opening four months to the season which saw the Shrimpers hit the heights of Division One, the Blues players, staff and supporters were gearing themselves towards a definite Premiership promotion challenge. Manager Barry Fry, who joined the club last Spring from Barnet had, during the pre-season period, assembled a team of players - mainly from the lower divisions - which he believed had the skill and determination to go all the way.

■ A fair number had come to the club via his Barnet connections and his ability to motivate the team had almost immediate results. A 4-1 victory at promotion rivals Millwall in August made heads turn throughout the league. Fry had converted a side which faced relegation in the face the previous season, to a well-drilled outfit which would not look out of place in the top flight.

■ The Shrimpers highest league placing this season (third) came after a 0-0 home draw with Leicester City at the beginning of December. However, the achievement was tarnished when Fry announced his interest in the vacant job at Birmingham City. Much to the disgust of the Southend faithful, Fry departed to St Andrews within a week, leaving a huge void at a shell-shocked Roots Hall.

■ Without his leadership, results have been inconsistent. Despite the appointment of former Blues' favourite Peter Taylor, a crushing 5-1 home defeat by West Bromwich Albion was followed up with a 2-0 defeat at Nottingham Forest and, at the time of writing the side have won only two games.

■ An FA Cup run will be a welcome diversion for the side and could kick-start their season back into gear. Leading goalscorer Ricky Otto is certainly not down-hearted and believes that the side can repeat their earlier form. "Just because Barry's left, it doesn't mean we can't carry on the good work he started," he insists. "There is no reason at all why we shouldn't be at the top of the table come May."

■ Success has been limited for United since their formation, although they won the Division Four title in 1980-81. The club was founded in 1906, taking the spotlight from leading club Southend Athletic who wanted to remain an amateur concern. Bob Jack was appointed secretary/manager and the club immediately joined the Southern League before gaining League status in 1920.



(left to right): Andy Sussex, Andy Edwards, Michael Gonzague, Brett Angell, Paul Sansome, Simon Royce, Michael Bodley, David Howell, Patrick Scully, Graham Bressington.
Middle row (left to right): Ed Stein (now Birmingham City), John Gowens, Chris Powell, Gary Poole, Steve Tilson, Jamie Southon, Christian Hyslop, Barry Fry (now Birmingham City), John Cornwell, Gary Jones, Tommy Mooney, Craig Davidson, Mark Hall, Alan Raw, Danny Greaves.
Front row (left to right): Neil Rowbury, Andy Ansah, Derek Payne, Keith Jones, Vic Jobson (chairman), Ricky Otto, Jonathan Hunt, Jae Martin, Adam Locke.

VISITORS ON PARADE

PAUL SANSOME (goalkeeper) - Paul started his career with Millwall and went on to make nearly 200 appearances for the south London club. He joined Southend in 1987 and last season signed a three-year contract with the club.

GARY POOLE (defender) - Southend's record signing, Gary joined the Blues from Plymouth Argyle during the pre-season period. He started his career with Barry Fry at Barnet, and has established himself as a first-team regular at right-back this season.

ANDY EDWARDS (defender) - Andy is a former trainee at Roots Hall. He earned a regular place in the team last season after spending two years in the reserves. A versatile performer, he can play at either centre-half or right-back.

CHRIS POWELL (defender) - Southend's Player of the Year last season, Chris started his career with Crystal Palace in 1989. After making only fleeting appearances for the Eagles, he joined the Blues. Chris immediately made his mark at Roots Hall and has been a regular at left-back for the Shrimpers ever since.

GRAHAM BRESSINGTON (defender) - A close-season signing from Lincoln City, Graham joined the Blues for £50,000. He was initially bought as a utility player, but has found a niche in recent weeks at centre-half.

KEITH JONES (midfield) - Keith joined Southend from Brentford for £175,000 last year. He started his career at Chelsea in 1983 but never really established himself as a first-team regular, prompting his departure to Brentford in 1987. The fans' favourite, Keith is the Shrimpers' club captain.

JONATHAN HUNT (midfield) - A former Barnet man, Jonathan joined Southend earlier this season. He

can play in a variety of positions from full-back to attack, but has featured regularly in midfield this term.

DEREK PAYNE (midfield) - Another player to arrive from Underhill, Derek has added bite to the centre of midfield. He has shown maturity in the side this season, in only his second year in League football.

RICKY OTTO (midfield) - Southend's leading scorer this season, Ricky joined the Blues for a bargain £100,000 during the summer from Leyton Orient. He made his Football League debut with the O's in 1991 and quickly became a regular in the side and on the score charts.

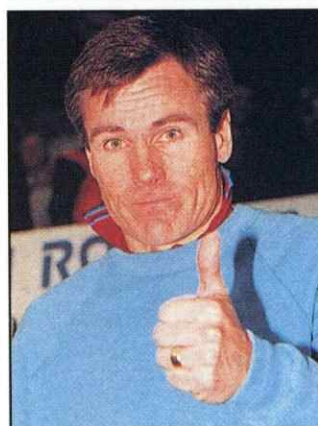
TOMMY MOONEY (forward) - Signed from Scarborough for £100,000 in the close season, Tommy started his career with Aston Villa. Unable to break into their side, he joined Boro on a free transfer in 1990, where he established himself as a goalpoacher in the lower leagues.

BRETT ANGELL (forward) - Brett started his Football League career with Stockport County, making his debut as a 20-year-old in 1988. Two years later he joined Southend and has become one of the most prolific scorers at the club. He missed much of last season through injury.

JASON LEE (forward) - A £175,000 signing from Lincoln City, Jason made an immediate impact on his Southend debut this season by scoring one, making one and earning the ITV Man of the Match award when the Shrimpers beat Millwall 4-1. Jason's career started with Charlton Athletic before he moved to Lincoln in 1991.

GARY JONES (forward) - Signed from Boston United in June, Gary had previously played league football with Doncaster Rovers. He caught the eye of former boss Barry Fry by netting 27 goals for Boston last season.

MEET THE BOSS

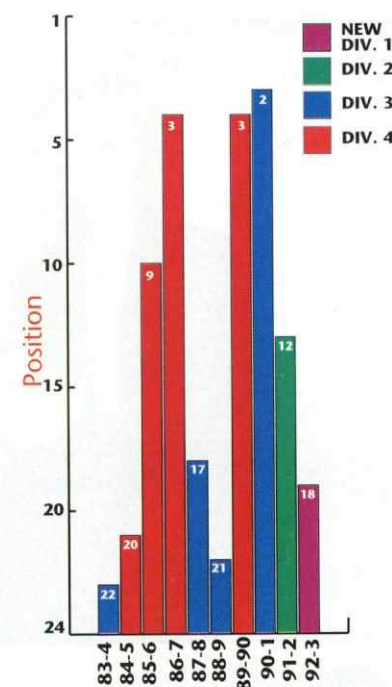


Peter Taylor became Southend manager after the controversial departure of Barry Fry last month. He admits that, after a spell out of the game at league level, the appointment came as a shock. "The call came out of the blue," he said. "But Southend are the only team I would come into League management for."

Peter, born in Southend in 1953, started his career at Roots Hall in 1970. He spent three seasons with the Shrimpers before he made a big money move to Crystal Palace. Thirty-three goals and 122 appearances later he was on his way to White Hart Lane where his continued success in front of goal earned him a place in the full England side. Peter's career wound down at Leyton Orient and he also had spells at a number of non-league clubs around the south-east.

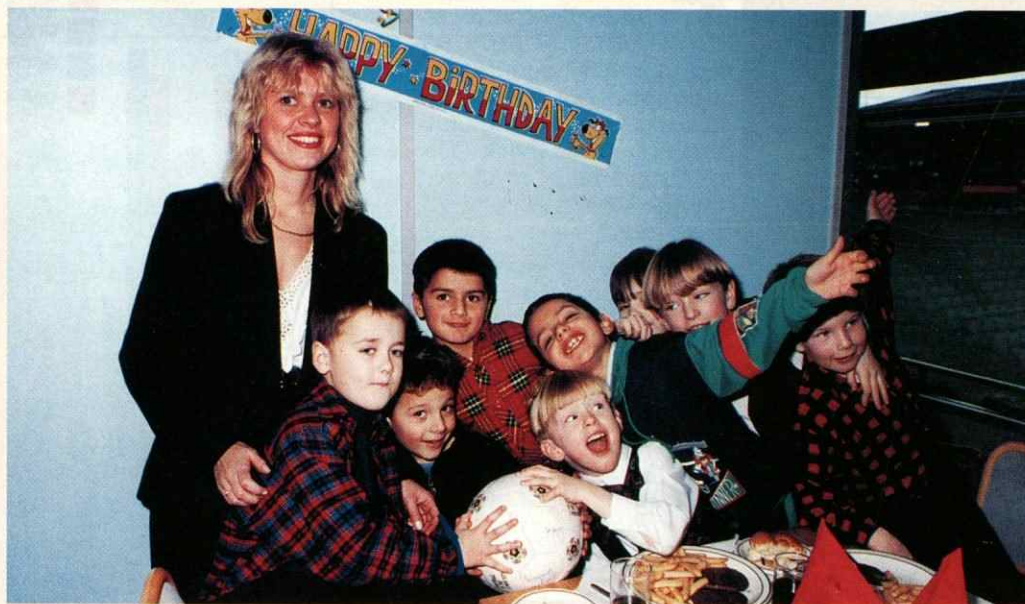
Prior to his appointment by Vic Jobson last month, Peter had been in charge at Diadora Premier League side Hendon.

10 YEAR RECORD





Can you supply a witty caption for this picture taken one lunch time after training at Kenilworth Road. The three best entries will receive two tickets each for one of our executive boxes at a future home game. Send your caption, together with your name, address and telephone number to: Caption Competition, c/o Commercial Department, Luton Town F.C., 1 Maple Road, Luton, Beds LU4 8AW. The closing date for entry is 15.1.94.



Our Junior Hatters Birthday Box is proving a great success, as you can see from the smiling faces in the photograph above. If you would like further details, please contact the Commercial Department on (0582) 411622.

LUTON TOWN HATTERS SHOP

FOR ALL THE FAMILY

LUTON TOWN REPLICA KITS AND TRACKSUITS NOW IN STOCK

T-SHIRTS

S. M. L. XL£9.99

ALL-OVER PRINT T-SHIRT

L. XL£14.99

CHILDRENS T-SHIRT

3/4 5/6 7/8 YEARS£6.99

SHIRTS

22"/24" 26"/28" 30"/32"£24.99

34"/36" 38"/40" 42"/44"£29.99

GOAL-KEEPER SHIRTS

22"/24" 26"/28" 30"/32"£24.99

SMALL/MEDIUM/LARGE/XL£29.99

SHORTS

24"/28"£14.99

30"/38"£15.99

SOCKS

JUNIOR£3.99

SENIOR£4.99

D.M.F. SWEATSHIRT

M. L. XL£24.99

PROMO JACKET

30/32£49.99

S. M. L. XL£59.99

SHELL SUITS

26"/28" 30"/32"£49.99

SMALL/MEDIUM/LARGE/XL£59.99

SCARVES

PRINTED SCARF£3.99

JACQUARD SCARF£5.99

HATS

WOOLLEN SKI HAT£3.99

BRONX HAT£5.99

SOUVENIRS

MONEY BOXES£3.99

TEAM MUGS£2.35

TEAM PENNANTS

MEDIUM£3.50

LARGE£4.99

CAR TEAM MINI KITS£3.99

PROGRAMME BINDER£8.99

TEAM FOOTBALL£12.99

SEW-ON BADGE£1.50

BLAZER BADGE£4.99

ENAMEL BADGEFROM £1.99

KEY RINGS1.99

LIGHTERS1.99

PENS99P

PENCILS50P

BUGS75P

RUBBERS75P

WALLETS4.99

CLOCKS10.99

RULERS1.50

LUTON V BARNSELY VIDEO9.99

(NO COMMENTARY)

NEW IN

LTFC POLO SHIRTS

MED/LARGE/XL

ASSORTED COLOURS£17.99

*Shirt Printing Service now available
Take advantage of our mail order facility*

KENILWORTH SHOP OPENING TIMES

WEEKDAYS 11AM - 5PM

SATURDAY MATCH DAYS 10.30AM - 3PM AND 4.45 - 5.30PM

OTHER SATURDAYS 10AM - 1PM

ACCESS AND VISA WELCOME

**TELEPHONE AND CREDIT CARD HOTLINE
0582 450004**

Luton Town

Manager: David Pleat

Colours: White/Blue Shirts,
Blue/White Shorts



Official ball sponsor

Southend United

Manager: Peter Taylor

Colours: Yellow Shirts,
Yellow Shorts

THE SPORTS SHOP
LUTON

LEISURE DANCE & ALL TYPES OF SPORTS WEAR
ALWAYS IN STOCK
SKI-WEAR NOW AVAILABLE
ALSO LARGE RANGE OF SKI-WEAR HIRE
4 Nursery Parade, Marsh Rd,
Leagrave, Luton LU3 2QP
Tel: 0582 571322

Luton Cleaning company

quality service for over 25 years
and still the only number
you'll ever need

0582 413330

complete package to
commerce & industry

Local Authority and
Health Authority contractors



Juergen Sommer



Des Linton



Trevor Peake



John Dreyer



Mitchell Thomas



Paul Telfer



David Preece



Alan Harper



Ceri Hughes



Kerry Dixon



John Hartson

SUBS



Scott Oakes



Scott Houghton



Andy Petterson



Paul Sansome



Gary Poole



Andy Edwards



Graham Bressington



Chris Powell



Jonathan Hunt



Derek Payne



Keith Jones



Ricky Otto



Tommy Mooney



Brett Angell

SUBS



Simon Royce



Jason Lee



Gary Jones

REFEREE:

M.C. Bailey
(Impington, Cambridge)

LINESMEN:

S. Clingo (yellow trim)
M.L. Short (red/yellow trim)

FOURTH OFFICIAL:

S.J. Gadsten

OOH AH

Cavity Wall have you got

CAVITY WALL

Save your energy with

British Gas
Eastern

CAVITY WALL

INSULATION SERVICE

For details contact

CHILTERN DISTRICT

Tel: (0582) 481810



The Red Lion
Toddington Road
Milton Bryan
Nr. Woburn
Bedfordshire
Tel: 0525 210044

Plowmans AND LUTON TOWN – THE PERFECT MATCH

**of
Luton**

You'll do a great deal better with us!

Vauxhall Main dealers, 15 Hitchin Road, Luton.

Tel: 454666



EXECUTIVE MEMBERS

KENILWORTH SUITE

Anachem Ltd
Mr G. Chamberlain
Fisher Frozen Foods Ltd
F & T Goodwin Ltd
Grosvenor Contracts
Handscombe Financial Services Ltd
R.W. Harvey & Son
M. J. Foods
Origination
Radley Shaw
Regal Litho
Steadfast Properties PLC
Wilton Contract and Vehicle Rental

CLUB 82

T.J. Aldridge Builders
Bevengrace Ltd
Bervale Meade Insurance Brokers
C.P. Contracts
J.S.B. Business Forms
Luton Cleaning Company
Nordic Supplies
Mr F.W. Pearce
Mr J. Peters
Shorey Travel
Space Display Systems
Techno Sign Ltd

INDIVIDUAL BOX HOLDERS

Mr Alan Garner
Mr Malcolm Eade
Mr Roger Eade

EXECUTIVE BOXHOLDERS

British Gas
Eastern

Electrolux

EDS SCICON

S.P.T.P.

DBF Crosswinds Ltd
COMPUTER AND BUSINESS STATIONERY

ESTD 1742
WHITBREAD

Genesis
Homes

SKF

Graham

McCANN
HOMES

MCLEOD
WARNER
LIMITED

97.6
828
Chiltern
Radio

VAUXHALL

GRINDORF
1962-93
31st Anniversary

HARRY OF THE HATTERS



JUNIOR HATTERS

Today I would like to welcome all the players and supporters from Southend United for what, we all hope, will be an enjoyable FA Cup third round match.

The Cup always has a somewhat magical feel about it when both players and supporters dream of reaching Wembley. Trevor Peake and Mitchell Thomas are two players currently with the Hatters who have experienced the feeling of walking up the Wembley tunnel in an FA Cup final. At this early stage of the competition, the final is only a dream, but anything can happen...

In view of the occasion, we are going to see who the sport's geniuses are among you with our special FA Cup quiz. The winners will receive prizes from our sponsors Pizza Hut, Cannon Cinemas and Laser Quest.

1. Who scored Arsenal's winning goal in last season's FA Cup final replay?
2. What was the final score in that game?

3. Who was the opposition?
4. Who scored the Town's goals in our FA Cup third round victory against Bristol City last season?
5. Who won the first ever FA Cup final?
6. Who were their opponents?
7. And what was the score?
8. Which club has won the Cup the most times?
9. Trevor Peake won an FA Cup winners' medal, when Coventry beat Tottenham 3-2 after extra time, but in what year did the Sky Blues triumph?
10. Who scored an own goal in that match?

Send your entries to: Junior Hatters FA Cup Competition, Luton Town FC, 1 Maple Road, Luton, Beds LU4 8AW. Closing date for entries is: January 29, 1994.

MATCH DAY MASCOT



Name: Robert Baron
Date of Birth: 17.1.83
School attended:
Alameda Middle School, Ampthill
Favourite Luton player: Scott Oakes
Hobbies: Football, archery, computer games and drawing
Who accompanies you to Luton matches: My dad, brother and sometimes my mum

SPONSORED BY LUTON AND DUNSTABLE PIZZA HUT



JUNIOR HATTERS TRAVEL

Travel arrangements for the away games at Notts County and Leicester are as follows:

15.1.94 Notts County - depart Kenilworth Road forecourt: 10.00 am

Arrive home approximately 7.00 pm

12.2.94 Leicester City - depart Kenilworth Road forecourt: 12.30 pm

Arrive home approximately 6.30 pm

The price for all matches this season has been fixed at £5.00 for Junior Hatters and £8.00 for accompanying adults (price includes tickets for the match). Booking and payment to be made via the Ticket Office up to four days prior to the match.

JUNIOR HATTERS' BIRTHDAYS THIS MONTH

January 8 - 21: Samuel Bosworth, Jennifer McMellon, Michael Curnhill, Shaun McBrearty, John Rich, Joe Duilnitt, David Taylor, Lee Strapp, Connor Kelly, Glen Taylor, Mark Hartley, Matthew Parsfield, John Taylor, Robert Baron, Simon Shaw, Jools Fenlon, David Rogers, Ian Thomson, Gary Ansell-Carter, Ricky Brookes, Gareth Davies, David Garrett, Charlene Neild, Adam Fountain, Steven Finan, Robert Edmonds, Paul Gudgeon, Marco Cerone, Shane Jay, Adrian Green, Douglas Warren, Christopher Hawkins, Paul Walker, Ian Cleghorn, Nirmah Herh, Nina Day, Simon Templeman, Emma Humpries, Edward Harris, Jennifer Thornhill, Michael Kirby, David Weinman, James Clements, Jenny Nicholson, Tariq Khan, Kevin Woods, Daniel Foskett, David Church.

Helping the most important people in football

Football is much more than a game of 90 minutes. Every day clubs throughout Britain are providing recreational and sporting opportunities for their local communities.

Much of this has been achieved with the help of the Football Trust. As part of its commitment to Football, The Trust has granted £4M to set up the National Football and Community Development Scheme.

Bringing club and community together, Trust-backed initiatives have provided a variety of local amenities, including:

- Artificial pitches for local teams
- Coaching for youngsters
- Support for women's football
- Facilities for people with disabilities

The Football Trust is helping the game at all levels.



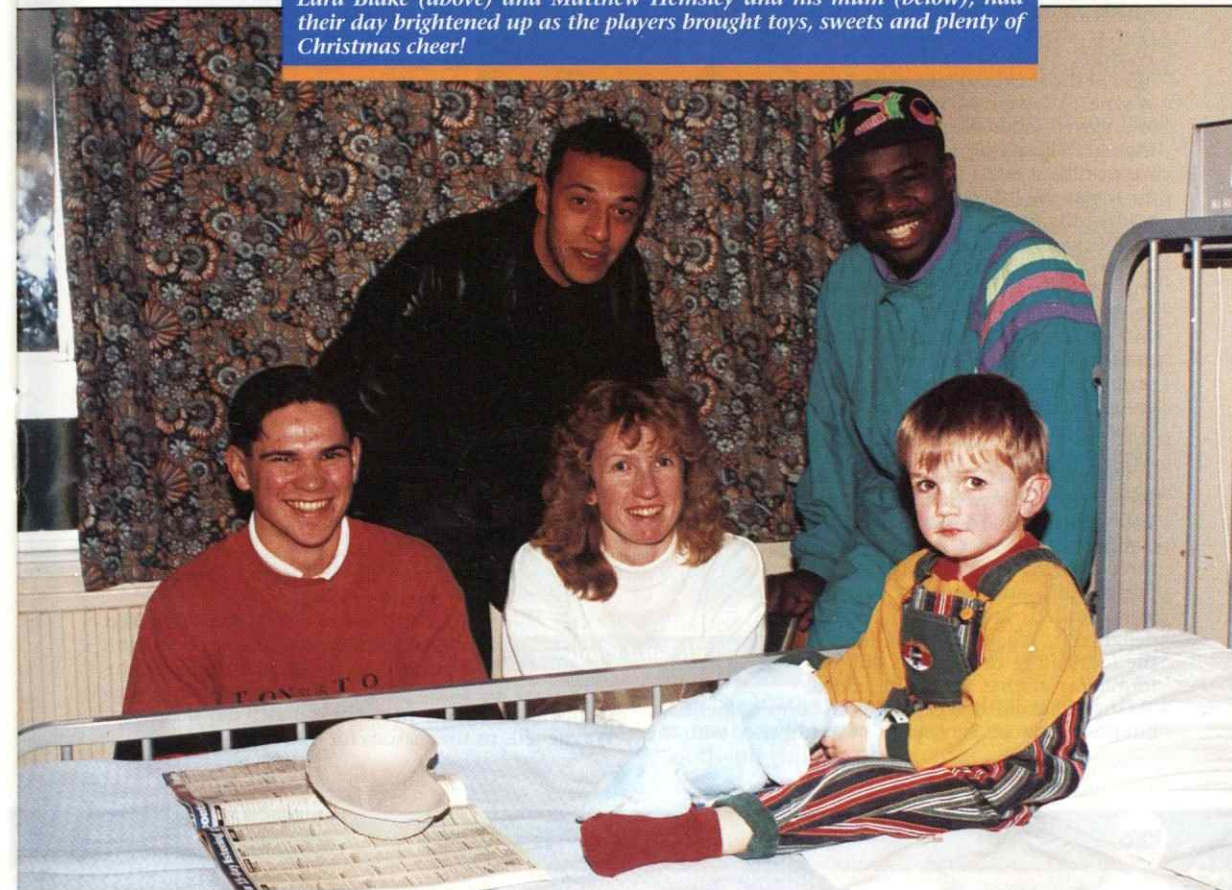
THE FOOTBALL TRUST
Helping the game



COPYRIGHT ALLSPORTS REPORT



On Wednesday, December 22, members of the Town's first-team squad visited the Luton and Dunstable childrens' ward. Anouska Walker and Lara Blake (above) and Matthew Hemsley and his mum (below), had their day brightened up as the players brought toys, sweets and plenty of Christmas cheer!





828 AM
Chiltern Radio
SUPERGOLD

*for the greatest Hits of All Time
and Unrivalled Daily Sports News!*

SUPERGOLD 828 AM
in Herts, Beds & Bucks

Half-term report: part one...



RESERVES AND YOUTH BY WAYNE TURNER AND TERRY WESTLEY

In this, the first of a two-part series, Wayne and Terry give their thoughts on the season so far with their respective teams, as we reach the half-way point in the footballing calendar.

RESERVES MAKE RIPPLES

Wayne Turner's reserve side set the Football Combination Division One table alight at the start of the season with a run which saw them take maximum points from their first three matches, scoring 13 goals in the process. An opening day 4-1 win against West Ham United was followed up with a 4-2 success over Queens Park Rangers, but the game which stands out in Wayne's memory was the 5-1 drubbing of rivals Watford. "That has to be the highlight of the season so far for me," said Wayne. "We were 4-0 up at half-time and played some exciting, confident football. Those opening three games were brilliant and I think the reason for it was the balance we had in the team at the time."

"We had a settled back four of Des Linton, Richard Philp, David Greene and Greg Rioch. Andy Petterson was performing magnificently in goal and Geoff Aunger came on ship as a triallist and scored seven goals in seven games. Once the goals started going in, that gave us a confidence boost, and the results snowballed from there on."

Despite two defeats in late September by Norwich City (2-3) and Tottenham (1-2), the Hatters hit the top of the table with another run of three straight wins against Oxford, Portsmouth and Swindon. Luton were leaders and it left Wayne delighted. "We left ripples around the footballing circuit with our performances at that time," he added.

"Many clubs did not expect us to be in contention, but there we were. Personally, I was surprised with the



Andy Petterson



Richard Philp

way the youngsters coped in those early games but not surprised to be top of the league. We were playing some really good football and most players were on top of their game."

As inevitably happens at reserve team level, it is almost impossible to keep an unchanged side from one week to the next. Players coming to and from the first-team is a regular occurrence and youth team players are also thrust into contention when there are injury problems. This disruption happened to Wayne's side in October, but it is a fact he has come to live with and accept.

"That is part and parcel of the job," he said. "When you have first-team and youth team players in the same side, you have to find the right balance. What we don't and won't accept is first-team players who are not interested because 'it's only a reserve match'. Luckily we have not had that problem so far, and the players know that I won't accept that kind of behaviour."

With such an excellent record in the early weeks of the season, it is difficult for Wayne to pick players out for special mention, but he admits he has been pleased with the consistency of his defence.

"Petterson, Philp, Greene and Jamie Campbell have all done well for me," he admits. "But you cannot really have players who perform consistently well at this level, because if they have a couple of good games, they find themselves in the first team squad and out of my side anyway."

A 4-2 defeat at Watford signalled the end of their rise to the top and the reserves have since failed to reach the same peaks, in terms of both performance and position. In our next match day magazine, Wayne tells us the reasons for this.

YOUTH TEAM RECOVER AFTER HESITANT START

The season started in stark contrast to the reserves, for Terry Westley's youth team. Two 1-1 draws and a defeat at Reading left the side languishing in the lower reaches of the South East Counties League Division Two. There was, however, good reason for this indifferent form as Terry was quick to point out.

"We have a far greater percentage of first-year apprentices in our team this season than second-year boys," he stated. "It was obvious, therefore, that these boys were going to take time to find their feet at this level. Another major blow for us was losing youth team captain Andrew Jukes with a recurring back injury. He had to have an operation which will sideline him for the rest of the season."

Although the results looked bad on paper, Terry knew from an early stage that the league this season would be a close-run thing. Wimbledon, who were last season's champions, were experiencing similar difficulties to the young Hatters.

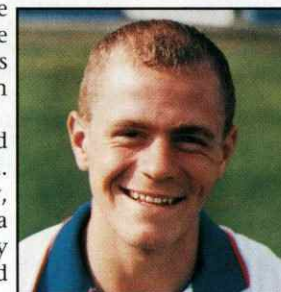
"There was no need to panic because you only had to look at Wimbledon, who have a strong side. Last season they won the league by losing just four matches. This season they have already lost that amount of games but are still top of the table. Teams at the bottom have been beating teams from the top, and that has been good for everyone."

Once the youngsters had settled down, the results started to turn. Their first victory, coincidentally, came at home to Wimbledon, a result which pleased Terry immensely. "The boys worked extremely hard that day and I was proud of each and every one of them. It showed the potential and exciting talent we have in the side and the result gave us all a nice confidence boost."

Another high point in those early weeks was a first-team debut for Matthew Woolgar. He came on as a substitute in the Town's Anglo-Italian Cup game against Southend in September. But he is just one of a number of youngsters who have made their mark since the start of the season.



The 1993-94 Youth Team



Matthew Woolgar

"Matthew has done very well this season and has led the team, being a second year apprentice. But also Paul McLaren, Jamie Woodsford, Kelvin Davis, Danny Power, Jamie Woodsford and Ben Chenery have all pushed themselves into the reserves, despite most of them being only 17 years of age."

"They know they all still have a long way to go before they make it in the game, but we will give them all the encouragement they need to make it into the first-team."

Producing first-team players of the future is the bottom line for Terry. If he achieves that goal

with some of his players, he has done very well. If he can obtain results on a weekly basis, then that is a bonus.

On the League front, a 3-1 win over previously unbeaten First Division West Ham United was the turning point in their season, and a tactical move had a big part to play in proceedings. Terry

recalls that memorable October night: "I put Woolgar and Power in midfield and had Lee Campbell playing off of the front two. It worked really well and we have stuck by the formation ever since. It is always nice to beat the 'big clubs' and to beat a previously unbeaten team made it all the more satisfying."

The Hatters carried their cup form through to the F.A. Youth Cup, first round, where they were drawn at home to Derby County. Currently the strongest youth side in the Midlands, the young Hatters acquitted themselves very well against a team packed with second-year boys. "We battled hard and showed real commitment," added Terry. "We earned the right to force the game to a replay and that game has to be the highlight to the opening three months of the season. We matched them in every department and even

had chances to seal the game up. But we were satisfied with the result, but realised that we had it all to do in the replay."

Fortunes have since taken an upturn and Terry has been pleased with the progress of his players, some who have established themselves as fairly regular members of the reserve team. Find out how the battling youngsters fared against Derby in our next match day magazine, against Southend United, on Saturday.

Trevor ponders the unpredictability of the Cup



PLAYER INTERVIEW

Glory and humiliation are rarely such distinguished bedmates as they become this afternoon with the third round of the FA Cup bringing together the Davids and Goliaths of the English game.

Nothing is so glorious as a great cup triumph, especially at Wembley, in the world's oldest football competition. And nothing is so humiliating as an early exit for a team of rich and celebrated international stars at the hands of plumbers and postmen on a tree-lined mid-winter mudheap.

Trevor Peake, who will – injuries permitting – captain the Town this afternoon, should therefore be excused if he climbed out of bed backwards this morning, tied a knot in his socks and added a series of other new good luck charms to his regular Saturday afternoon superstitions. Trevor, after all, has seen it all before.

Back in 1987, he was at Wembley with Coventry City for that stirring 3-2 victory over Tottenham Hotspur (a match, interestingly, in which Mitchell Thomas played along with both the current Chelsea and Tottenham managers, Glenn Hoddle and Osvaldo Ardiles). A season later, Coventry were dumped out of the competition by Watford, following a single-goal home defeat, and in 1989, dare we mention it, came the day when the Sky Blues all turned puce.

It came on January 7, 1989, and the scoreline read...Sutton United 2 Coventry City 1. It was an experience Trevor and his team-mates of that day hoped they never endure again. But on January 6, 1990, came this...Northampton Town 1 Coventry City 0. For manager John Sillett, it was the end of the glory era at Highfield Road. The tabloids ran riot.

"I can still remember it," confessed Trevor recently (a few days, actually, before embarking on the Christmas and New Year league programme). "Northampton and Sutton are the sort of things you don't forget easily. I have seen both sides of the coin and looking back to 1987, the final was a great day. A one-off day. Something special in a player's career. Our manager David Pleat was in charge of Spurs at the time and it was a lovely, clean and open game.

"I think it must have been a good game to watch. We were the underdogs and we had been

lucky to avoid Spurs in the semi-finals. In the final, both sides were keen to attack and neither had strong tacklers playing to break the game up. So, it was open and there were plenty of mistakes too."

With so much experience, Trevor has a seasoned view of what is required for success in the FA Cup. "You need a bit of luck. Actually, you need a lot of luck," he said. "You need good draws and you need to play well on the day and play for the full 90 minutes. When you look back at the records, I am sure virtually all the successful cup sides have had to scrap for late equalisers, win replays in extra time and rely on last minute goals.

"I remember when Luton reached the semi-finals in 1985 and went out to Everton at Villa Park. One late goal for Everton, then extra time and their winner came five minutes from time. You have got to keep working for everything and believe things will go your way."

Trevor believes he and the Town are due a cup run again. "I have only once been past the fourth round and that was in 1987," he said. "So, I would really like to do it again this year. I can see no reason why not, so long as we are not drawn to visit Old Trafford — and we have avoided that so far!

"From what we have seen in our league, we should be capable of beating anyone on our day. I know Southend will be pushing very hard and may also be relieved to be playing in the cup instead of the league. But we have a lot of belief in our own strength and ability, and we are at home too. It should be a very good game."



Will the trend continue this afternoon?

BACK TRACKING BY ROGER WASH



Until last season, we had not met Southend in any competition since 1967 but now, suddenly, we seem to be playing them almost every week! Today's game will be our fifth meeting in a little over 12 months and we still have a home League match to go.

In the FA Cup we have been drawn out of the hat together on three previous occasions, and have always progressed to the next round, although we were extremely lucky to do so in our first ever clash.

On 5th December 1908 we were drawn at home to Southend in the fifth qualifying

round and an early goal from Joe Johnson seemed to have set us on our way.

Southend fought back, however, to equalise and came close several times to snatching a winner.

In the replay at the old Roots Hall,

Southend, who were playing in their first season in Southern League Division One, were outplayed and the Town won with ease, 4-2.

The Luton goalscorers, in front of a crowd of 5,500 were Norman Brown, Fred Haycock and local boy Herbert Moody with two.

These exertions turned out to be a waste of time as in the first round prop-

er, the Town were beaten 2-1 at Kenilworth Road by old adversaries Millwall.

We had to wait 20 years for our next FA Cup meeting and on 24th November 1928, we came out of the hat first again.

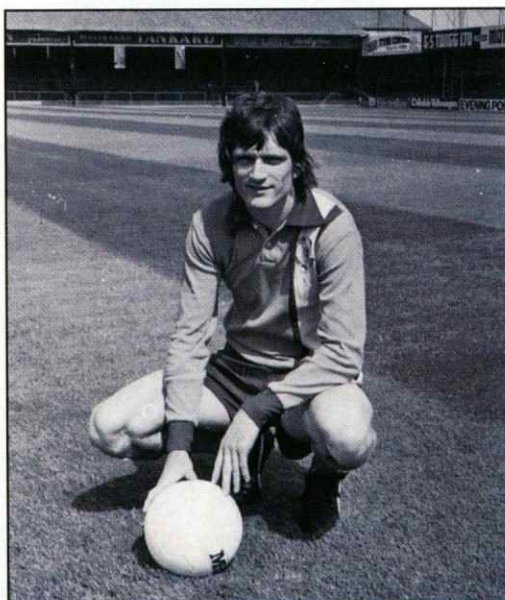
This time we needed no second bite, winning convincingly 5-1 with Andy Rennie scoring four to send the crowd of 12,489 home happy.

In the next round we saw off Fulham after a replay, but went out at Crystal Palace in round three, again after a replay.

The last of the trilogy took place in more recent times when, on 14th November 1964, we were paired together in the first round at Kenilworth Road.

The Town were going through a terrible time in the league and had gone 16 games without a win.

Ron Baynham, the only survivor from the 1959 Cup Final still in the side, was recalled after an absence of three games and set about thwarting the Southend



Jim Ryan saved the day for the Hatters in the FA Cup competition of 1974.

1959 Cup Final still in the side, was recalled after an absence of three games and set about thwarting the Southend

forward-line single-handed, pulling off save after save even though semi-concussed following a first-half collision.

When Baynham was beaten, a goal-bound shot was cleared off the line by Alan McBain and the woodwork kept out an effort from Southend dangerman John McKinven.

The only goal of the game came after 30 minutes when, after the ball was half cleared from a corner, left-half John Bramwell took a swing from 25 yards and his miss-hit shot completely deceived the unsighted Ian McKechnie in the Southend goal.

In the final minutes the Southend forwards laid siege on the Luton goal, but the resolute Baynham kept out everything and just before the whistle sounded for a much relieved crowd, John Reid had the chance to give the scoreline an unrealistic look. On a breakaway he brought out a tremendous save from McKechnie who had spent most of the game as a virtual bystander.

The Town saw off Gillingham at home in the next round but fell to Sunderland, again at Kenilworth Road, in Round Three.



5 It happened five years ago 7/1/89 - We went out of the FA Cup at the first hurdle, going down 3-2 at Millwall. Kingsley Black and Danny Wilson were on target for the Town.



10 It happened ten years ago 7/1/84 - Our third round tie with rivals Watford went to a replay after a 2-2 draw. All the goals came in the first-half.



15 It happened 15 years ago 9/1/79 - The Town's delayed third round game ended in defeat at York, 2-0, in front of a crowd of 6,700.



20 It happened 20 years ago 5/1/74 - A late equaliser from Jim Ryan saved the day for the Town in a difficult third round tie at Port Vale. The replay was won 4-2 the following Wednesday afternoon.

PREVIOUS ENCOUNTERS

| | CUP COMPETITION | | | | | |
|-------|-----------------|---|---|---|----|---|
| | P | W | D | L | F | A |
| Home | 3 | 2 | 1 | 0 | 7 | 2 |
| Away | 1 | 1 | 0 | 0 | 4 | 2 |
| Total | 4 | 3 | 1 | 0 | 11 | 4 |

HOW MUCH DO YOU KNOW ABOUT LUTON TOWN



Who was the 'Tea Man' whose playing career led to Southend via, among other places, Luton?



Who was Southend's skipper when they last came to Kenilworth Road to play a league match?



Who is the connection between Luton, Southend, Mick Harford and Trevor Peake?

For the full Match Report, read —

Brian Swain's **SPORTSVIEW**
AND **DUNSTABLE GAZETTE**
IN THE **Luton News**
3 pages of Sport Every Wednesday



Luton Town F.C. KIT SPONSORS

RICHARD HARVEY
Shorey Travel

JASON REES
Wilton Contract and
Vehicle Rental

CERI HUGHES
Cornish Newsagents
Leighton Buzzard

SCOTT OAKES
McLeod Warner Limited

JOHN DREYER
Milton Keynes Branch of
the Luton Town Supporters Club

RICHARD HARVEY

JUERGEN SOMMER
Joe McGraa
Milton Keynes

ANDY PETTERSON
Royal Air Force Careers
Dunstable Road, Luton
Tel: (0582) 24805

JAMIE CAMPBELL
Calum Goundry
Wat... Signs...

DAVID PREECE
Ken and Judi Craven
Bedford

TREVOR PEAKE
Bennetts Gate Bakery
of Hemel Hempstead

ALAN HARPER
Bobbys Travel Club,
Committee and Members

MARVIN JOHNSON
Augustus Barnett
Wine Merchants Ltd
19 Chiltern Avenue, Bedford

DAVID GREENE
Handscombe Financial Services Ltd

DAVID PLEAT
A-Top Management Services Ltd
Property Letting Service

SCOTT HOUGHTON
Bedfordshire Rural
Communities Charity

KERRY DIXON
Luton Town Supporters Club

JULIAN JAMES
Shorey Travel

PAUL DICKOV
Clive Garret
and Ade Danes

ANDY McDADE
Les & Sue Miller

JOHN HARTSON
Katy and Phil Shaw

PAUL TELFER
Convoy Installations Ltd

DES LINTON
Simkins Solicitors of
Baldoock and Sandy

MARTIN WILLIAMS
Anchor Insurance Brokers
Milton Keynes

JOHN MOORE
Oliver Goundry
Wat... Signs...



is sponsored by
Shorey Travel

On behalf of the club, the commercial department would like
to thank all our sponsors for their support this season.

The day I drowned the Pompey chimes

WHERE ARE THEY NOW? - BY ROGER WASH

Today we continue the remi-
niscences of Seamus Dunne,
our Eire International
full-back of the 1950's.

"During my time at Luton, in the days before substitutes, I was regarded as the emergency goalkeeper, and I was instrumental in relegating Portsmouth from Division One in 1959," said Seamus from his home on the outskirts of Dublin. "In the game at Kenilworth Road at the end of the season, Portsmouth had to win to avoid the drop, and with the game finely balanced, Ron Baynham pulled down a Pompey forward in the box, something for which he would have been sent off today. He was injured in the challenge and had to go off, and so it was left to me to face the penalty."

He added: "The penalty taker was Peter Harris who was deadly from the spot, so I just decided to dive to the right and hope for the best. The ball cannoned off my body and went out for a corner and we went on to win 3-1 against a demoralised side.

"To add insult to injury, in the game at Fratton Park earlier in the season, Portsmouth winger Jackie Henderson cut inside me to shoot home a great goal. Ron Baynham called the referee over and pointed to a split in the side netting which he maintained the ball had passed through. The ref disallowed the goal, much to the annoyance of the crowd, and we went on to take a point in the 2-2 draw. I still remain convinced that the goal should have stood!"

Although Seamus' biggest regret at Luton was failing to get a place in the side that carried the Town to Wembley in 1959, it also rankles that he never managed to score a League goal in 300 appearances.

After the Town were relegated to Division Two in 1960, the side began to split up and Seamus played his last game in a 4-1 defeat at Bristol Rovers in February 1961. He then went to non-league Yiewsley, managed by Jackie Milburn, for three years and then took over as player/manager at Dunstable while working at Vauxhall Motors in the engineering section.

The chance of an assisted move back to Ireland to work at a chemical plant was too good to turn down, despite the wrench of leaving his adopted town, and so in 1970 he said farewell to these shores and settled in Bray. He took early retirement last year and still keeps



Seamus Dunne, seventh from the right, lines up before the Town's friendly match at Barcelona in 1956.

himself fit by playing golf, swimming and walking.

Despite the distance, he regularly visits Luton to see his sister, who lives in Limbury, and keeps in touch with his old friends, particularly Terry Kelly.

He ended: "I look back on my Luton days with affection, especially the promotion season, the games in Division One which led to me playing for my country 16 times and the pioneering foreign tours the club used to organise."

Seamus is attempting to arrange a reunion of 'the Boys of 55' sometime in the summer, and, no doubt, the talk will turn to own goals and penalty saves!

THE JEWSON FAMILY AWARDS



**Your chance to win
£7,500 in prizes.**

THE Football League and Jewson, Britain's largest supplier of timber and building materials, are offering you the chance to win £7,500's worth of prizes by voting for your favourite family football club.

Not only will you be giving yourself a chance to win, you could also be helping your club to a share in the £45,000 Jewson Family Football Excellence Awards payout.

The fifteen clubs in each division of the Endsleigh Insurance Football League, collecting the most votes in proportion to their average home gate, will go before the judging panel for the top Jewson Excellence Awards category.

The judges will be looking at all aspects of the club's family football work including facilities, community relations and standards of promotion.

If your club is doing a Jewson good job for the family football supporter, then why not give them your vote.

The reward for the top clubs in each Division is a £10,000 cash payout with a further £15,000 bonus going to the leading club nationally.

If you're 21 or over and your voting form is the first correct

**JEWSON
FAMILY
FOOTBALL**



entry drawn you could win a fabulous Crosby Dream Kitchen worth over £5,000. If you're under 21 there are prizes of £100's worth of Puma leisure clothing for the first four correct entries and all correctly completed voting forms will go forward into the draw to win five prizes of a VIP trip for two to the 1994 Coca Cola Cup Final.

To enter just name your favourite family football club, answer the quiz questions correctly, and send your completed form to the address indicated.

VOTING FORM

Please complete in BLOCK CAPITALS

My favourite family football club is:

Division

Your full name: Mr/Mrs/Miss/Ms (delete where applicable)

Date of birth

Address

Postcode

Telephone: home work

Answer these questions:

At which grounds do the following Football League clubs play?

Middlesbrough

Fulham

Chesterfield

Voting closes on February 1, 1994

Prize winners will be notified by first class post on March 1, 1994

The name of the winning clubs will be announced on April 21, 1994

Please return this form to: The Jewson Family Football Awards, c/o The Sponsorship Workshop, 5 The Forum, Rockingham Drive, Linford Wood, Milton Keynes MK14 6LY, Telephone: 0908 670087

Please put a cross in this box if you do not wish to receive information about Jewson, or the Jewson Family Football Initiative.

No correspondence will be entered into and the judges' decision is final.

JEWSON FAMILY FOOTBALL



Injury problems start to ease



AROUND THE TOWN

OFF THE COUCH

The opening half of 1993-94 season saw physio Andy McDade working overtime as a number of players succumbed to long-term injuries. Aaron Skelton, Richard Harvey and, more recently, David Preece, Julian James, Marvin Johnson and David Greene have all undergone either the surgeon's knife or Andy's specialist treatment as the long process of rehabilitation begins in earnest. 1994 appears to be a turning point for most of these players at a critical stage of the season when points are at a premium.

"Aaron has recently spent a second period at Lilleshall after rupturing his thigh during the summer," said manager David Pleat. "We hope to have him back in full training by February and, hopefully, back in contention as the season reaches its climax.

"David is also making good progress after his ankle ligament damage and should be back playing early in the New Year."

Richard Harvey's plight is explained elsewhere in today's match day magazine and David Preece has, over the Christmas period, shown he is back to his best. For Julian James, and Marvin Johnson, their goals are almost achieved.

James, who has recovered from a badly broken hand and Johnson (hamstring trouble), could both be back for today's match. "With such a busy schedule at the moment, I could find myself in contention despite only just a couple of reserve team matches."

SOUTHEND REPLAY REMINDER

In the event of a draw this afternoon, a replay would take place at Roots Hall, Southend on Wednesday, January 19, kick-off 7.45 pm. For ticket prices, see page 15 of today's match day magazine.

FOURTH ROUND DRAW

The draw for the fourth round of the FA Cup takes place tomorrow (Sunday) on Sky Sports, following the live game.

DIXON'S HOPES SCUPPERED

Any hopes Kerry Dixon had of appearing for the Republic of Ireland side in this year's World Cup finals appear to be dashed. It was thought that Kerry had only made appearances for England in friendly matches, therefore being eligible to play due to his father Mike being Irish. However, the books show that he did make a competitive appearance, as a second-half substitute, against Poland in the 1986 World Cup finals.

STOKE CITY ON TAPE

Tapes of our emphatic 6-2 victory against Stoke City are now available from the Club Shop, priced £9.99 (without commentary). Tapes are also available of our match with

Barnsley, again priced only £9.99 (no commentary).

COMMUNITY UPDATE

If you are interested in the club's Learning Through Football Scheme, Emergency First Aid Scheme, Schools visits or the Junior Hatters Saturday Club, please contact the Hatters' Community Liaison Officer, Gary Hooper, on (0582) 411622 for further details.

BLETCHLEY HATTERS CLUB

For coach travel to all Luton Town home matches from various pick-up points in Bletchley, Bow Brickhill, Woburn Sands and Aspley Guise, please telephone (0908) 377750.

BOBBERS TRAVEL CLUB

Coaches for the trip to Notts County on January 15 will cost adults £6.50 and children/OAP's £5.20. Departure time from Cranfield is 10.30 am and 11.30 am from Luton, with the normal pick-up points en route.

Bookings can be made by popping into the Bobbers Club kiosk in Kenilworth Road before any Saturday first-team match; on the previous away match; or by calling Paul Deason on (0234) 750996.

Cup game attracts a host of sponsors

COMMERCIAL FOCUS WITH PETER COLLINS

Today marks the start of the road to Wembley and we welcome again Southend United who have already played at Kenilworth Road in an Anglo-Italian Cup match which ended in a 1-1 draw.

Since that encounter, they have produced a number of good results in that competition and, in fact, have reached the semi-final stages against Notts County.

Interestingly, last season we were drawn at home in the third round of the FA Cup to Bristol City, a side who we also played at home in the Anglo Italian Competition, so here's hoping history repeats itself this afternoon!

Executive Box 5

In Box 5 we have Marcus Townsend who is celebrating his 10th birthday with family and friends.

**Antony's
Tailor**

OF LONDON

THE MOST
ESTABLISHED
AND RELIABLE
TAILORS IN
LUTON

DRESS HIRE
LADIES AND GENTS
BESPOKE TAILORING

12 DUNSTABLE ROAD, LUTON,
BEDS OPPOSITE MAIN POST OFFICE

TEL: (0582) 424687



Vicky Seal, a guest of Beard Bros. and young Malcolm Berry discuss tactics with John Moore, prior to our game with Grimsby Town last month.

Silver Shield
AUTOMOTIVE GLAZING

24 HOUR REPLACEMENT SERVICE
DIRECT INSURANCE BILLING
LAMINATED GLASS REPAIRS

0800 88 0800
LUTON 414235

Match Sponsors

We have joint match sponsors for today's game and they are:-

Luton Cleaning Company who have been serving local commerce and industry for over 25 years and their aim is to continue their expansion in years to come.

John Eastaff (Builders Merchants) Limited are suppliers of heavy side building materials to trade and for D.I.Y. They also operate a plant hire service for mini diggers, compressors, mixers, breakers, pumps, vibration plates and dumpers.

They can be contacted at Elstow Storage Depot, Kempston Hardwick, Bedford. Telephone (0234) 740834.

Progressive Printing (UK) Limited are a British company formed to develop and produce printing matter. They have a long-term growth plan to serve clients nationwide from their Essex-based factory in Leigh-on-Sea. Telephone: (0702) 520050.

Match Ball Sponsor

Convoy Installations was founded in 1979 by Mr P. Doyle and Mr A. Gallagher who are both loyal supporters. The company was set up to design, fabricate and install Structural and Plant Steelwork and is now a major contractor both locally and nationally for the supply of Plant Steelwork of the Manufacturing Industry and Structural Steelwork, Architectural Metalwork and Cladding to the Construction Industry.

progressive
PRINTING (UK) LIMITED

A Winning
Team
Producing
Premier
Printed
Products.



For Good Results Contact:

progressive
PRINTING (UK) LIMITED

Units 5-8 Rutherford Close, Eastwood Industrial Estate,
Leigh-on-Sea, Essex SS9 5LQ
Tel: (0702) 520050 Fax: (0702) 420273



AT HFC BANK, YOU'LL DISCOVER THE MOST
CIVILISED PEOPLE IN THE FINANCIAL JUNGLE.

IF YOU REQUIRE ANY ADDITIONAL INFORMATION CALL OR VISIT YOUR
LOCAL BRANCH MANAGER: DAVID BLUMSON, HFC BANK PLC,
15/17 UPPER GEORGE STREET, LUTON, BEDFORDSHIRE, LU1 2RD.

TELEPHONE: 0582 459797

HFC
BANK

All loans subject to status. A written quotation of our credit terms is available
on request. HFC Bank plc. Registered office: North Street, Winkfield,
Windsor, Berkshire SL4 4TD. Registered in England No. 1117305.

**R. J. BLOW &
COMPANY**

THE FRIENDLY ACCOUNTANTS

Book-Keeping,
Taxation and Wages etc.



STIRLING HOUSE,
30 GUILDFORD STREET,
LUTON, BEDS LU1 2NR



Tel: (0582) 38792
Fax: (0582) 423347

| | | | | | | | | | | | | | |
|--------|------------|-----------|--------|----------|----------|------------|----------|-----------|------------|------------|------------|------------|------------|
| Sommer | Williams | Johnson | James | Peake | Dreyer | TELFER | Oakes | Prece | (Rees) | DIXON | Campbell | (Houghton) | (Peterson) |
| | James | Johnson | Oakes | Peake | Dreyer | (Rees) | Prece | Teller | Hughes | Benjamin | (Houghton) | Campbell | |
| | James | Johnson | Peake | Dreyer | Teller | Hughes | Prece | (Oakes) | (Williams) | Dixon | (Houghton) | (Benjamin) | |
| | (Williams) | Johnson | James | Peake | Dreyer | Benjamin | Prece | Hughes | (Campbell) | Houghton | (Oakes) | (Peterson) | |
| | James | Peake | Dreyer | Dreyer | (Teller) | Prece | HUGHES | Houghton | (Dixon) | Dixon | (Williams) | (Peterson) | |
| | Johnson | Johnson | Peake | Johnson | Williams | Hughes | Prece | Houghton | DIXON | (Hartson) | (Greene) | (Wonglar) | |
| | (James) | Peake | Dreyer | Johnson | Teller | Hughes | Prece | Houghton | Dixon | (Oakes) | (Williams) | (Williams) | |
| | Sommer | Teller | Dreyer | Johnson | (Rees) | Hughes | Prece | Harper | Oakes | BENJAMIN | (Williams) | Hartson | |
| | Sommer | Teller | Dreyer | Johnson | (Rees) | Hughes | Prece | Harper | Oakes | (Benjamin) | (James) | (Hartson) | |
| | Sommer | Johnson | Peake | Dreyer | TELFER | Oakes | Hughes | Prece | Hughes | Hartson | (Williams) | Campbell | |
| Sommer | (Williams) | Johnson | JAMES | Peake | Dreyer | Teller | OAKES 2 | (Hughes) | HARTSON | Harper | (Linton) | (HOUGHTON) | |
| | Williams | Johnson | James | Peake | Dreyer | Teller | (Oakes) | Hughes | Hartson | Dickov | (Williams) | Campbell | |
| | Johnson | Johnson | Peake | Dreyer | Teller | (Oakes) | Hughes | Hartson | (Harper) | Dickov | (WILLIAMS) | (Peterson) | |
| | Linton | Johnson | Peake | Dreyer | Teller | Oakes | Hughes | (Hartson) | Harper | (DICKOV) | (Williams) | (Peterson) | |
| | Linton | Johnson | Peake | Dreyer | Teller | Oakes | Hughes | (Hartson) | Rees | Dickov | (Williams) | (Peterson) | |
| | Sommer | (Johnson) | Peake | Dreyer | Teller | HUGHES | (Dixon) | Houghton | Harper | Dickov | (Oakes) | (Campbell) | |
| | Linton | (Johnson) | Peake | Dreyer | Teller | Hughes | Oakes | Hartson | (Harper) | Dickov | (Dixon) | (Houghton) | |
| | Johnson | Peake | Dreyer | Teller | HUGHES | (Linton) | (Oakes) | Harper | Dixon | AUNGER | (Campbell) | (Peterson) | |
| | Linton | Johnson | Peake | Dreyer | TELFER | (Oakes) | Hughes | Dixon | Harper | (Aunger) | (Williams) | (Dickov) | |
| | Sommer | Peake | Dreyer | (Hughes) | Linton | DIXON | Houghton | (Harper) | Aunger | Thomas | (Dickov) | (Campbell) | |
| Sommer | Linton | Thomas | Peake | Campbell | OAKES | HUGHES | Harper | Rees | DIXON 3 | Dickov | (HARTSON) | Davis | |
| | Peake | Thomas | Peake | Campbell | Oakes | Hughes | Harper | (Rees) | Dixon | (Dickov) | (Teller) | (Peterson) | |
| | Linton | Thomas | Peake | Campbell | Oakes | Prece | HUGHES | Harper | Dixon | (Dickov) | (Hartson) | (Peterson) | |
| | Sommer | Linton | Peake | Dreyer | (Teller) | (Oakes) | Prece | Hughes | Harper | Dixon | (Dickov) | (Houghton) | |
| | Sommer | Linton | Peake | Dreyer | Houghton | Teller | Hughes | Harper | Prece | Dixon | (James) | (Peterson) | |
| | Sommer | Thomas | Peake | Dreyer | Teller | (Oakes) | Hughes | Harper | (Hartson) | Dixon | (James) | (Peterson) | |
| | Linton | Thomas | Peake | Dreyer | Teller | (Houghton) | Prece | Hughes | Harper | Dixon | (Dickov) | (Peterson) | |
| | Sommer | Linton | Peake | Dreyer | Teller | (Houghton) | Prece | Hughes | Harper | Dixon | (Dickov) | (Peterson) | |
| | Sommer | Linton | Peake | Dreyer | Teller | (Houghton) | Prece | Hughes | Harper | Dixon | (Dickov) | (Peterson) | |
| | Sommer | Linton | Peake | Dreyer | Teller | (Houghton) | Prece | Hughes | Harper | Dixon | (Dickov) | (Peterson) | |

THE MAN IN THE MIDDLE

MICHAEL BAILEY
(Impington, Cambridge)

Endsleigh Insurance League Division One Table 1993-94

Luton Town F.C. Appearances and Goalscorers 1993-94

**Matchday music
is supplied by
HMV Stores,
Arndale Centre,
Luton.**



Read his report on the big match **every week** in Sunday in Luton

the winning team

David P. Ford
*Speaks his mind every Thursday
in the Herald & Post*

BEARD BROS LTD

Supporting the less-abled of
Bedfordshire, Hertfordshire and
Buckinghamshire.
with Luton Town F.C.

*Difficulty getting there...
Don't miss the match.*



Free Home
Demonstrations or
visit our
showrooms
in Bedford or
Watford.
The largest
selection in
the south
of England.

Beard Bros. Ltd

Watford (0923) 250922

Bedford (0234) 266666