

# VALLEY REVIEW



Official shirt  
sponsors



*Charlton*

Endsleigh  
Insurance League  
**DIVISION ONE**

**Saturday 4th  
December 1993**

*Kick off 3.00pm*

**CHARLTON  
ATHLETIC  
V  
LUTON  
TOWN**

OFFICIAL MATCHDAY  
MAGAZINE OF  
CHARLTON ATHLETIC FC

TODAY'S MATCH IS SPONSORED BY **MOWLEM CONSTRUCTION plc**

**Price £1.30**



# THE NO. 1 PC

# AND THE NO. 1 FC

A TEAM FOR SUCCESS

Viglen are proud to sponsor Charlton Athletic F.C.



Viglen Limited, Viglen House, Alperton Lane, Alperton, Middlesex HA0 1DX. Telephone: 081 758 7000 Fax 081 758 7080

## PROUD OF ACHIEVEMENTS SINCE WE RETURNED TO THE VALLEY

Today I would like to welcome the directors, management, players and supporters of Luton Town Football Club on what is the first anniversary of our return to The Valley. It doesn't seem a year ago when we returned to our own ground with that memorable match and one goal victory over Portsmouth. And a similar result today to that of last season will go down well and will be what we all need to celebrate our anniversary.

Everybody connected with Charlton Athletic Football Club – directors, supporters and players alike – should be congratulated and very proud of what has been achieved in the last 12 months. We go into today's match top of the League, the new east stand is taking shape, and the club as a whole is probably stronger than it has ever been. The underlying current is very strong, the directors have worked very hard to get the finances straight so that we can compete on and off the field, and the players have worked very hard as well so that we can compete on the field. You, the supporters have backed us to the hilt since we returned and as a result we have played mainly in front of full houses in nearly every game. It has been a success story from which we can all take credit.

It was obviously a big disappointment missing out on playing on Saturday up at Middlesbrough and it seems strange that it was the only match in the whole of the Football League or Premiership that was called off. I am sure that it had nothing to do with the fact that Middlesbrough had a number of

injury problems, that they have had a bad run of late, or that it was Lennie's old team that were going up to play him. If games are going to be that easy to call off then matches will be postponed every week for one reason or another. We were particularly looking forward to the match, especially after our 5-1 victory over Notts County in our last home game and our 1-0 success at Peterborough. Those two results were

exactly what we needed after losing to Derby and Luton.

Our blank weekend enabled the clubs behind us to make up ground but at least they have got one of their games in hand out of the way. Only Leicester City and Crystal Palace now have a match in hand on us, and they meet each other at Filbert Street, next week.

Looking at this League, Steve and myself feel that if we can pick up results consistently we will be in with a shout by May, but take nothing for granted! Most

teams in this division at present are capable of beating anybody else and after Luton's 6-2 win over Stoke City last Saturday, I can assure you we certainly won't be complacent.

We would like to welcome Mark Robson to the club following his move from West Ham United. He has lots of qualities and I am sure that he will be a valuable addition to our squad in our push for promotion.

His arrival gives us more options and more competition in all areas of the field and we are fortunate that at present the squad is very versatile with a number of players being able to appear in different positions if the need arises. This certainly adds to the competition for places.

Finally we would like to thank Dennis Bailey for his efforts whilst he was with us on a months loan. Rangers manager Gerry Francis wanted to recall Dennis to Loftus Road and I hope he enjoyed his stay with us and wish him every success for the future.

*"It has been a success story from which we can all take credit"*



The management is produced in association with

MUNICH 72  
TROPHIES  
071-231 7095

STEVE & ALAN DRIVE *Mondeo* FROM LAIDLAW



*Charlton*

THE  
MANAGEMENT

With  
Alan Curbishley



# MARK SIGNS

We would like to offer a belated welcome to winger Mark Robson, who has joined us from West Ham United. Mark signed in time to play at Peterborough, and he impressed the large travelling contingent in the 25 minutes he played as substitute for Colin Walsh.

Newham born Mark began his career with Exeter City, but moved to Tottenham, where he played only eight League games, whilst being loaned to Reading, Watford, Plymouth and back to Exeter. He moved to West Ham on a free transfer and helped them into the Premiership earlier this year. He played in all but two games of the Hammers promotion campaign last season, scoring eight goals.

"I am delighted to join Charlton and I hope I can help them gain promotion," he said.

Mark's transfer could cost the club a total of £125,000, depending on the number of games he plays.

New signing Mark Robson



## POSH SUCCESS

Following hot on the heels of rare wins at Grimsby and Barnsley this season, the teams away success continued with that 1-0 win over Peterborough at London Road, our first away win over Posh since an FA Cup success in the 1928/29 season. Since United entered the League in 1960, we have only been there on two occasions in the League, drawing both games 1-1, and

twice in the League Cup, losing both times.

The win at Peterborough followed just a week after our 5-1 win over Notts County, which was the first five goal salvo since we beat Manchester City 5-0 in the old First Division at Selhurst Park in December 1986. The last five goal performance at The Valley was that extraordinary game against Barnsley in March 1985, when we came from 3-0 down to beat Barnsley 5-3.



Vicki Gee from Endsleigh's Maidstone branch presents Steve and Alan with their champagne for winning the October Manager of the Month award - their fourth award in three seasons.

## FA CUP DRAW

Today is second round day in the FA Cup. The draw for the third round will take place on BBC1 Match of the Day, this evening at around 11pm. The matches will take place over the weekend of Saturday, January 8th.

## LANDMARKS

Alan McLeary was due to make his 400th career appearance last Saturday at Middlesbrough, but the postponement of that game has delayed that landmark by one week until today, ironically, eleven years to the day that he made his senior debut for Millwall against Lincoln in a Third Division game.

The Notts County match three weeks ago was also Carl Leaburn's 200th game for the club, which he fittingly marked with our first goal in the 5-1 win.

## DENNIS GOES BACK

Striker Dennis Bailey has returned to Queens Park Rangers after his months loan with us. We would have liked to have kept Dennis for another month but Gerry Francis wanted him to return to Loftus Road. We would like to thank Dennis for his efforts whilst a Charlton player.

# NOTICEBOARD

## XMAS CARD

Steve Gritt's daughter Hayley will again be selling her Christmas card in the VIP lounge at today's game. All proceeds from the card, which is priced at 30p, go towards the British Brain and Spine Foundation.

## KENT VISIT

A group of 50 children, staff and parents from Upbury Manor School in Gillingham are our guests this afternoon. The visit is a result of a collaboration between Medway CASC member Cliff Baugh, and PE head Paul Newman, along with Charlton community officer Jason Morgan

## WORLD CUP KEVIN

Former Charlton midfield player Kevin Smith is bound for the 1994 World Cup after becoming an American citizen in the summer. Smith left England some eight years

ago, and now plays for Dallas Sidekicks in the MISL. He made his USA debut against Cayman Islands a fortnight ago.

## TRAVEL NEWS

Coach to Birmingham £8  
departs Charlton 9.30.  
Well Hall 9.45  
Bexleyheath 10.00  
Coach to Southend £5, Forest £8  
departs at above times.

## OBITUARIES

We sadly have to report the death of two Charlton supporters, William Irvine and David Sadler. Lifelong supporter Mr Irvine died suddenly eight days ago - our sympathies go to widow Margaret and family

Mr Sadler died tragically of a stroke at just 48 years of age, following a heart by-pass operation. His presence at The Valley will be sorely missed.

## ON ROUTE...

The Charlton players were already on their way north for last Saturday's match against Middlesbrough when news of the postponement was relayed to them on the team bus.

A pitch inspection took place at 3pm on Friday afternoon but the team left around 1pm and had reached the outskirts of Cambridge

when news that the game was off was officially confirmed. It meant Phil Chapple and John Vaughan had a short trip home and the team coach turned round and made its way back to the training ground.

It meant the players had a rare weekend off and did not have to report for training until Monday. It was ironic that the game at Ayresome Park was the

only League match postponed in the country at a time when Charlton had a fully fit squad to choose from and the players and management were looking forward to the game after the two good results against Notts County and Peterborough

This match obviously will have to be rearranged for sometime early next year.

## AWARD FOR GARRY

Congratulations to our popular striker Garry Nelson who has been named as the *London Evening Standard*

Footballer of the Month for November. He received his award of a bronze statue of a footballer and a bottle of

champagne at the training ground earlier this week from football reporter Michael Hart.

In the last month Garry scored five goals to take his seasons tally to eight, equalling his total in the whole of last season, and it is an

honour well deserved.

"I am obviously delighted to have won the award", he said, "but I could not have done it without the help of the other players. It has been a team effort which is one of our strengths at Charlton and why we are doing well at the moment".

# ECHOES ACROSS THE VALLEY

By  
Peter Burrowes  
and Steve Dixon

## VALLEY REVIEW

Editor:  
STEVE DIXON  
Press Officer  
PETER BURROWES  
Contributors  
JOHN FARRELL,  
ALAN HONEY,  
PAUL CLAYTON,  
GRAHAM HODGSON

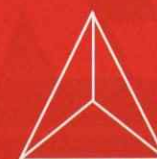
All photographs by Tom Morris unless stated.

Designed by  
IMAGE DIRECTORS LTD  
Typeset by  
R&D GRAPHICS LTD  
Printed by  
SPORTS & LEISURE PRINT LTD.

The opinions in this magazine are not necessarily those of Charlton Athletic F.C. No part of this magazine to be reproduced without permission from Charlton Athletic Football Company (1984) Ltd.

Front cover picture:  
Shaun Newton in action  
at Kenilworth Road a  
month ago.

This page is produced in  
association with



PRISMCOLOUR  
Printers and Designers  
081-317 0168

TODAY'S MATCHBALL SPONSOR - HYDROFRESH

CHARLTON ATHLETIC - SPONSORED BY VIGLEN



# THE BIG MATCH...

CHARLTON ATHLETIC FOOTBALL



Brian Mills, Tony Thompson and Tony Rossiter of Laidlaw (Kent) Ltd hand over the keys of two new Mondeos to Steve and Alan. This is part of a sponsorship deal linking Laidlaw and Charlton Athletic for the next two years.

...or you could say the perfect match, Laidlaw and Charlton Athletic.

Laidlaw are part of the Quicks Group of Companies and Ford main dealers to boot! Laidlaw's teams, based in Welling and Bexley, are perfectly kitted out to provide a complete and comprehensive service for your new or used Ford.

Need a new car, a service, spares or accessories? Shoot into our showrooms and we'll tackle your problem.

We even provide substitutes with our Hire Car Service.



DRIVE

Mondeo Beauty with Inner Strength

## SPECIAL OFFER

Christmas special offer for Charlton fans - buy a new or used car before 31st December and we will give you a free Ford cellular phone, including free connection, free line rental, and itemised billing for two months. Total package worth over £300 retail. Connection must be before 31st December.

### KIM GRANT

Our postbag in the last fortnight has been swamped with letters relating to the criticism of Kim Grant at our last home League game against Notts County. There simply isn't room to print each letter that we received on the subject so here are a selection of your comments.

Kim plans to reply individually to all the letters he has received, but he would like to thank everyone who has written to him expressing support.



Dear Sidelines.

To be a Charlton supporter is something that I have always been proud of, but at the Notts County game, I was disappointed to witness the abuse by a section of our crowd directed at one player, and then at another.

What do they think they are achieving? Do they think they are helping the players or the team?

When I think of what we have achieved, on and off the field, it hurts me to listen to these comments, and I found myself shaking my head in dis-

belief, as the abuse continued, even after our third goal.

All players suffer a loss of form at some time, but we can help them through the bad patch, and cheer our team into the Premier League.

Terry Carrigan, Brockley

Dear Sidelines.

As a Charlton supporter for 5 years, I have never experienced the abuse that Kim Grant received at the Notts County match.

I just hope that he can forget what happened that day and carry on with his football. Perhaps then, those so called fans will remember his goals, instead of his misses

Peter Bishenden, West Wickham

Dear Sidelines.

Charlton fans must have short memories, because when Kim Grant was scoring goals last season he was the best thing since sliced bread.

Surely if a player is not playing well, the fans should be encouraging him to do better. Hopefully the Charlton fans will now get behind him

Gary Nicholls, Streatham

Dear Sidelines.

The people that criticised Kim Grant cannot be real Charlton fans, otherwise they would get behind each and every one of the team, particularly when a

player is going through a bad patch.

Let's really get behind our team and cheer them to promotion!

Suzy Stevens, Dartford

Dear Sidelines.

When the club next decide to snub the fans after a game because their criticism of a player, who by all accounts, is having a stinker, they should remember whose money and dedication enabled that young man to be playing at The Valley in the first place.

No one forced him to put his skills on public display. Part and parcel of the game is that out of 7,000 people, some may not like what you are serving up, and at some stage in his career he had to run the gauntlet of the fans.

Frank Harris, Erith

Dear Sidelines.

When your team trounces their opponents 5-1, shouldn't you be happy and not disgusted?

Well, I felt disgusted after witnessing the abuse of Kim Grant, the like of which I have never seen in ten years as a Charlton fan

I'm sure Kim would admit it was far from his best performance, and I believe he should expect criticism like all players but the abuse was unforgivable.

I was a shocked at some of the treatment, that I'll always remember the score for the wrong reasons. It should also be remembered that Charlton's strength is as a team, so do those responsible really think that they are helping the team's cause?

Reed Cavanagh, Eltham

We need more letters for this page! Write to Sidelines, c/o, The Valley Review, Charlton Athletic FC, Floyd Road, London SE7 8BL, or fax on 081-293 1213.

### RACIAL ABUSE

All spectators should note that anyone found guilty of racial abuse or foul language will be arrested and banned from the ground.

All records played at The Valley are supplied by TW Records of Bexleyheath, Plumstead and Erith (10% discount to Charlton fans - except singles).

This page is produced in association with

Meridian

SPORTS AND SOCIAL CLUB

081-856 1923

MOVING MAGAZINE SECOND EDITION - ON SALE NOW



# Inside Write



Club chairman Roger Alwen reflects on a memorable twelve months in the history of Charlton Athletic FC

## ONE YEAR ON!

I cannot believe that a year has passed since that memorable day last December when we eventually returned to The Valley and defeated Portsmouth with what has become an almost legendary goal from Colin Walsh.

So much has happened in the last twelve months, and so much progress has been made. I vividly remember that tarmac was still being laid on the morning of the Portsmouth game. We were told not to panic, but despite the fact that we did, it all turned out all right by 3 o'clock. We have moved on since that point, The Valley is slowly, but surely beginning to resemble the stadium that we know and

hope it can be. The development of the East Stand is progressing to schedule in spite of the adverse weather conditions, and it should be open for the beginning of April next year.

### PERMANENT

However, I am confident that we have not overlooked other areas of the ground, and we are making improvements all over The Valley. It has been our aim to

make permanent as many of the temporary facilities as possible, in the swiftest fashion, and we have been very fortunate to have the services of our regular gang of ground-staff, who have worked tirelessly throughout the year. We want to have a stadium where our supporters want to arrive at least an hour before the kick-off, which would solve our present problem of people arriving late and missing the start of the game.

On the playing front, the team have had a marvellous season to date, and great credit is due to Steve, Alan, the players, and all the backroom staff. Wouldn't it be magnificent if we could cap our first full season back at The Valley by winning promotion to the Premier League?!

Another important development to have taken place this year was the election of the club's first VIP director on to the board, and Steve Clarke's involvement has, in my opinion, only strengthened the relationship that exists at Charlton between club and supporters. I am also pleased to welcome our new shirt sponsors, Viglen, and I hope they have a long and happy association with the

club. Their involvement in the club is yet another indication of the progress we are making.

The recent decision by the shareholders to convert their loans to the club into equity has laid a solid foundation for the club to move forward, and I must pay tribute to three people who have contributed so much to help the progress of the club - Richard Murray, Martin Simons and Mike Stevens.

### STABLE

As I am sure everyone is by now aware, we plan to have a share issue. The prospectus will be available shortly and I hope that as many of you as possible will give it your support, the board considers that such an issue is in the best interests of the club.

In closing, may I wish all our supporters a very merry Christmas and a happy New Year - let's hope that 1994 is as exciting for Charlton as the last year has been. I am sure that with your continued support, our club can only grow stronger.

Roger Alwen  
Chairman  
Charlton Athletic

# STOKE SWITCH

The date and time of this fixture has been changed. It will now be played on 29th December 1993, kick-off 7.45pm. Tickets

are on sale now.

Remember next week's game against Portsmouth will be on Sunday, kicking-off at 3pm.

## PISA

Admission prices for this game have been reduced. The North/West Stand Blocks A and F - tickets are £6 adults, £2 juniors/seniors, £3 students/young members/UB40's.

West Stand Blocks B and E are £8 adults, £2 juniors/seniors, £4 students/young members/UB40's.

TICKETS ARE AVAILABLE NOW.

### ARRIVE EARLY

The recent game against Ascoli created a few problems for us. Some 2,000 supporters arrived after 7.30pm all of whom needed to purchase tickets prior to going through the turnstiles. With the number of windows/

stiles open it was impossible to get all these people in on time. The communication between the club and the supporters that night was not good and I apologise for this. However, with the present system of ticket purchase prior to going through a turnstile, it is

going to take longer to get into The Valley. Also, with an average of 91% attendance for League games supporters MUST arrive earlier to ensure they take their seats prior to kick-off. We in turn will ensure every possible window/turnstile is open but it is then over to you.

### WHAT'S IN A NAME

I was reading the official FA magazine the other day, and was amused by an article about team names. You thought Sheffield Wednesday

was odd how about some of these which have been adopted by various Sunday teams: (1) Real Ale Madrid (2) Imaginary Madrid (3) A3 Milan (4) Inter the Valley (a group of CAFC

supporters) (5) Norfolk Enchance (6) Borussia Munchenflapjack (7) JCB Eindhoven (8) The Old Fallopian (9) AVD Bacon Sandwich (10) PSV Hangover.

## SEASON TICKETS

Why not buy your loved one a season ticket for Christmas. Season tickets starting from the Stoke City game on 29th December 1993 are available now prices are as follows:

**WEST STAND BLOCKS A, F AND G, NORTH/SOUTH STANDS**  
Adult £105  
Senior (age 60 and over) £53  
Young person (age 16 or 17) £53  
Junior Red (age 15 or below) £43

**WEST STAND BLOCKS B AND E**  
Adult £124  
Senior (age 60 and over) £62  
Young person (age 16 or 17) £62  
Junior Red (age 15 or below) £53

**WEST STAND BLOCK D SEAT AND LOUNGE**  
Adult (no concessions) £183

Please contact the main box office for an application form.



Charlton Athletic Football Company (1984) Ltd  
The Valley, Floyd Road  
Charlton SE7 8BL  
Tel: 081-293 4567  
Fax: 081-293 5143

Charlton Athletic FC Training Ground  
Sparrows Lane,  
New Eltham, London SE9 2JR  
Tel: 081-859 8888  
Fax: 081-294 2095

CLUBCALL 0891 12 11 46  
TICKET OFFICE 081 293 4567  
TICKET OFFICE FAX 081 293 5143  
MARKETING FAX 081 293 1213  
CLUB SHOP HOTLINE 081-305 1289  
COMMUNITY OFFICE 081-850 2866

Chairman  
ROGER ALWEN

Joint  
Deputy Chairmen  
RICHARD A. MURRAY  
MARTIN A. SIMONS

Directors  
STEPHEN CLARKE  
RICHARD COLLINS  
MICHAEL STEVENS  
DEREK UFTON

### Staff Roll Call

Player-Managers  
STEVE GRITT AND ALAN CURBISHLEY  
Reserve Team Coach

KEITH PEACOCK

Youth Team Coach

JOHN CARTWRIGHT

Youth Development

NEIL BANFIELD

Physiotherapist

JIMMY HENDRY

General Manager

JONATHAN FULLER

Club Secretary

CHRIS PARKES

Assistant Secretary

ANN FRANKLIN

Marketing Manager

STEVE DIXON

Retail/Lottery Manager

CHRIS TUGWELL

Stadium Manager

ROY KING

Community Officer

JASON MORGAN



## Secretary Speaking

with Chris Parkes

CONFERENCE FACILITIES AT THE VALLEY - CALL LARA DAVIES ON 081-293 4567

CHARLTON ATHLETIC DRIVE LAIDLAW FORD



**Minto sets up  
night to remember**

**ADDICKS  
IN A FIZZ**



**Best  
for all  
sport**

**Kentish Times**

31 Pier Road, Erith DA8 1TA (0322 335741)  
44 Harmer Street, Gravesend DA12 2AY (0474 363363)

**We've got the  
Jewson lot nationwide.**

FIND US IN YOUR LOCAL YELLOW PAGES.



## LUTON TOWN 1

### CHARLTON ATHLETIC 0

Charlton suffered a second successive defeat at Luton in front of the ITV cameras, thanks to a first-half header from Paul Telfer.

In a poor game, Charlton's best opportunities came early - Carl Leaburn just failed to connect with a John Robinson cross from the left, and a well struck volley from Garry Nelson came back off the crossbar with Jurgen Sommer beaten.

But once Telfer had headed Marvin Johnson's cross out of Mike Salmon's reach, Charlton were always chasing the game, and although the Addicks had the monopoly on possession, they were unable to grab an equaliser, and Luton hung of defiantly for the three points.

Charlton: Salmon, Balmer, Minto, Newton (sub: Bailey), Chapple, McLeary, Robinson (sub: Grant), Pitcher, Leaburn, Nelson, Walsh. Sub: (not used) Vaughan.

## ANCONA 1

### CHARLTON ATHLETIC 1

Charlton's second trip to Italy this season produced a first ever European goal and a first point in this season's Anglo-Italian Cup, in front of 200 Charlton fans who had again given the team great support.

In a game that Charlton dominated, particularly in the first-half, it was Ancona who took an unlikely lead, just after half-time. Stuart Balmer slipped, having just received the ball from Mike Salmon, and allowed Turchi to cross for Carruzzo to score.

But Carl Leaburn was introduced as a 56th minute substitute and made an almost immediate impression, heading just wide with his first touch, and a few minutes later, he exchanged passes with Paul Linger on the edge of the area before slotting the equaliser past Ancona keeper Andrea Armellini.

Charlton: Salmon, Brown (sub: Linger), Minto, Garland, Chapple, Balmer, Grant, Pitcher, Bailey, Nelson (sub: Leaburn), Walsh.

## CHARLTON ATHLETIC 0 ASCOLI 3

Charlton's Anglo ambitions were exposed by an Ascoli side who played some neat, precise football at The Valley to score three times.

Menolascina opened the scoring after seven minutes with a shot which Salmon

## CHARLTON ATHLETIC 5 NOTTS COUNTY 1

Despite falling behind to an early goal, Charlton returned to the top of the table with a resounding win over Notts County, hitting five at The Valley for the first time since 1985. Mike Salmon allowed a daisy cutter from Tony Agana to slip through his fingers, but atoned for his error with a fine save from Gary Lund. However County could have been further in front after a fine Paul Devlin drive hit the post.

The Addicks got back into the game with a bizarre goal, when Steve Cherry failed to hold a Peter Garland drive and Carl Leaburn followed up to knock in the rebound. However, his shot was blocked on the line by the referee, but Carl was able to bundle both ball and ref over the line for the equaliser!

The second-half was all one way traffic, as the Addicks went ahead almost immediately after the break. A typically direct run from Peter Garland set up a chance for Garry Nelson to tuck away our second, and Nelson was again on hand to slot the ball past Cherry after Pitcher and Leaburn had combined to set up the chance.

Substitute Shaun Newton thundered a fourth from 25 yards, and Colin Walsh sauntered through County's demoralised defence with three minutes remaining to make it five.

Charlton: Salmon, Balmer, Minto, Garland, Chapple, McLeary, Grant (sub: Newton), Pitcher, Leaburn, Nelson, Walsh. Subs: (not used), Bailey, Vaughan.



Two goal Garry Nelson celebrates his first against Notts County



Colin Walsh scores our fifth against County

could only parry into the net, and German centre-forward Bierhoff drove a second just before the break.

With seven minutes of the second-half played, the game was over as Argentinian World Cup finalist Troglio chipped a fine free-kick over the Charlton wall.

The Addicks staged a late rally, but it failed to produce a goal, with Dennis Bailey's

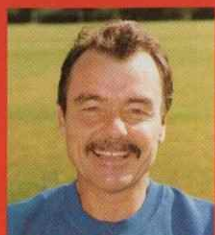
header the best chance, but perhaps the most encouraging performance was from substitute Danny Mills, who showed a willingness to take players on in his 34 minute spell.

Charlton: Salmon, Newton, Sturges, Garland, Balmer, McLeary, Grant (sub: Linger), Pitcher, Leaburn, Bailey, Walsh (sub: Mills).

**BIRMINGHAM V CHARLTON - LIVE ON CHARLTON CLUBCALL**

This page is sponsored by  
**A1 PRESTIGE  
SHIPPING SERVICES**  
081-462 0292





Keith Peacock

### FOOTBALL COMBINATION FIXTURES 1993/94

Wed 18 Aug	Southampton	H	0-1
Wed 25 Aug	Wimbledon	H	2-1
Wed 8 Sept	Swindon	A	0-2
Wed 15 Sept	Tottenham H.	H	0-1
Wed 22 Sept	Portsmouth	A	0-2
Wed 29 Sept	Watford	H	0-1
Thurs 14 Oct	Oxford United	A	1-2
Tue 19 Oct	QPR	A	2-0
Fri 29 Oct	Norwich	A	1-2
Fri 5 Nov	Wimbledon	A	2-2
Wed 10 Nov	Norwich	H	2-1
Wed 8 Dec	Oxford	H	7-30
Mon 13 Dec	Bristol City	A	7-30
Wed 15 Dec	Tottenham H.	A	2-00
Wed 22 Dec	Portsmouth	H	7-30
Wed 29 Dec	Crystal Palace	H	7-30
Wed 5 Jan	Swindon	H	7-30
Wed 12 Jan	Bristol Rovers	A	7-30
Wed 19 Jan	Millwall	H	7-30
Wed 26 Jan	Brighton & H.A.	A	7-15
Wed 2 Feb	Bristol Rovers	H	7-30
Wed 9 Feb	Ipswich	A	7-30
Wed 16 Feb	Brighton & H.A.	H	7-30
Mon 21 Feb	Chelsea	A	7-00
Wed 2 Mar	Ipswich	H	7-30
Sat 5 Mar	Southampton	A	3-00
Mon 14 Mar	Millwall	A	2-00
Wed 23 Mar	Chelsea	H	7-30
Mon 28 Mar	Luton	H	7-30
Wed 6 Apr	Arsenal	H	7-30
Tue 12 Apr	Arsenal	A	2-00
Wed 20 Apr	Bristol City	H	7-30
Tue 26 Apr	Crystal Palace	A	7-30
Thurs 28 Apr	Q.P.R.	H	7-30
Wed 4 May	Luton	A	2-00
TBA	West Ham	A	7-30
	West Ham	H	
	Watford	A	

### NEVILLE OVENDEN FOOTBALL COMBINATION

UP TO AND INCLUDING 27.11.93

#### DIVISION ONE

	P	W	D	L	F	A	PTS
SOUTHAMPTON	16	8	5	3	28	24	29
CHELSEA	14	8	4	2	24	12	28
TOTTENHAM	16	8	3	5	34	20	27
NORWICH CITY	15	6	5	4	27	23	23
IPSWICH TOWN	15	7	2	6	27	28	23
SWINDON TOWN	13	7	1	5	18	15	22
LUTON TOWN	15	6	3	6	33	29	21
BRISTOL ROVERS	16	5	6	5	22	25	21
WEST HAM UTD.	13	5	5	3	21	15	20
MILLWALL	13	5	3	5	23	19	18
ARSENAL	14	5	3	6	25	26	18
OXFORD UTD.	15	5	3	7	27	29	18
PORTSMOUTH	16	4	6	6	17	21	18
Q.P.R.	12	5	2	5	18	18	17
CRYSTAL PALACE	13	4	4	5	15	16	16
BRIGHTON & H.A.	13	3	6	4	14	13	15
BRISTOL CITY	14	4	3	7	15	34	15
WIMBLEDON	13	2	7	4	17	22	13
CHARLTON A.	11	3	1	7	10	15	10
WATFORD	13	2	4	7	19	30	10

## ALL FIT BUT NOWHERE TO GO . . .

The good news for all those supporters who like watching the reserves is that for the first time this season I have had a fully fit squad to choose from with Bob Bolder the only current long-term injury, but the bad news is that we have not been able to play any matches with our last three games all being postponed.

The home match with West Ham United was called off because of snow and a frozen surface at The Valley, and it was a similar story for the Kent Senior Cup match away at Canterbury City. This was re-arranged for Wednesday of this week when hopefully we were able to play a strong side for our first appearance in the competition for many years. On Monday we were due to have played Watford at Vicarage Road in a Football Combination game but this was called off on Monday morning because of a flu epidemic amongst the Watford players. Both the West Ham game and the Watford match have to be re-arranged.

Alan Pardew has been



Alan Pardew

training for a couple of weeks and just needs some match action to get back to full fitness and Steve Brown who had five stitches in a cut knee out in Italy is also fit. Both were hoping to play in the Canterbury game along with Kim Grant and Shaun Newton who have not been in first team action for a couple of weeks.

The break from playing has given me the opportunity to give players individual coaching on the training field and it is good to see Paul Gorman hitting the back of the net again in training games. Hopefully he will soon be scoring again in matches to add to the two

penalties he recently converted for us. Confidence is a most important factor for a professional player but is an elusive commodity. When they have it, everything comes very easy and they expect to score and play well and invariably do, but without it the game seems so fast and scoring a goal becomes almost impossible, and just to play well is a problem in itself. My job is obviously to help players who are low in confidence to regain it as quickly as possible.

Our next home reserve match is on Wednesday when we entertain Oxford United kick-off 7.30pm and hopefully we can play as well as we did in the victory over Norwich City in our last home game which now seems a long while ago at the beginning of November.

Today is the anniversary of our return home to The Valley a year ago so lets hope the first team can get a similar result as they did on that never to be forgotten day last December.

## COLTS SLIP TO ANOTHER DEFEAT. . .

The colts are finding it hard going at the moment in the South East Counties League and are next to bottom of the table. They went down to another defeat on Saturday away to Portsmouth in a re-arranged match, brought forward from later in the season. This was their fourth successive League defeat.

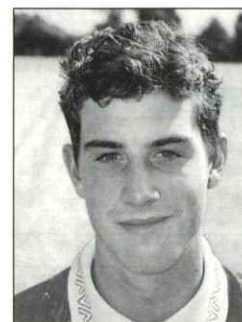
The Charlton lads don't have any trouble scoring goals but it is conceding them that is the problem, as Saturday's 2-3 scoreline shows.

Once again bad defensive errors cost the team dearly and although they did well to fight back from a two goal deficit, in just 10 minutes. They missed the chance of the winner and then conceded a late goal to lose the game.

The team played some good football on a difficult surface and there were some encouraging performances but overall

the team, is unable to cope when under pressure. Our goals came from Neil Chadwick and an opponents own goal.

Team: Lawson; Chandler, Rufus (sub: Notley), Larkin, Garnish, Magliore; Bowyer, Edwards, Jackson, Dowson (sub: Oakey), Chadwick.



Neil Chadwick - on target against Portsmouth and Tottenham

This morning the colts were at home to Chelsea in a South East Counties League game and next Saturday play the reverse fixture away to Chelsea.

In their previous two South East Counties League

matches the colts lost 3-1 at home to Tottenham and 4-2 away to Cambridge United.

Team v Tottenham: Atherton; Bowyer, Colman; Chandler, Stuart, Jackson; Notley, Rufus, Garnish, Dowson, Chadwick. Subs: Magliore and Oakey. Scorer: Chadwick.

Team v Cambridge: Lawson; Chandler, Oakey; Larkin, Stuart, Magliore; Bowyer, Notley, Jackson, Morris (sub: Rufus), Chadwick.

Sub: (not used) Colman.

Scorer: Bowyer 2.

The Sunday side gained an excellent 3-2 victory away to Millwall on Sunday with goals from Blain, Burt and Tindall. Two 15-year-olds were included in the side.

Lee; Watkins, Walsh; Colman, Brown, Ponsford; Blain, Tindall, Burt, Cordwell, Burridge. Subs: Way and Craggy.

Tomorrow Sunday, the team are at home to Dartford Nomads in a Kent Youth League match.



John Cartwright

### SOUTH EAST COUNTIES LEAGUE DIVISION ONE FIXTURES 1993/94

Sat 14 Aug	Gillingham	2-0
Sat 21 Aug	Ipswich Town	2-3
Sat 28 Aug	Arsenal	2-5
Tue 31 Aug	Bristol City	0-3
SFL Cup first round		
Sat 4 Sep	QPR	1-9
Sat 11 Sep	Leyton Orient	3-1
Sat 18 Sep	Luton Town	1-3
SECL Cup first round		
Sat 25 Sep	Millwall	3-6
Sat 9 Oct	Portsmouth	3-2
Sat 16 Oct	QPR	3-4
Sat 23 Oct	Norwich	1-5
Sat 30 Oct	West Ham Utd.	0-5
Wed 3 Nov	Reading FAYC	2-2
Mon 8 Nov	Reading (FAYC replay)	2-3
Sat 6 Nov	Fulham	2-3
Sat 13 Nov	Tottenham H.	1-3
Sat 20 Nov	Cambridge Utd.	2-4
Sat 27 Nov	Portsmouth	2-3
Sat 4 Dec	Chelsea (H)	
Sat 11 Dec	Chelsea (A)	
Sat 18 Dec	Norwich (A)	
Sat 1 Jan	Gillingham (H)	
Sat 8 Jan	Ipswich Town (A)	
Sat 15 Jan	Arsenal (A)	
Sat 22 Jan	Southend Utd. (A)	
Sat 29 Jan	Leyton Orient (A)	
Sat 5 Feb	Millwall (A)	
Sat 12 Feb	Watford (H)	
Sat 26 Feb	Southend Utd. (H)	
Sat 5 Mar	West Ham Utd. (H)	
Sat 12 Mar	Fulham (H)	
Sat 19 Mar	Tottenham H. (A)	
Sat 26 Mar	Cambridge Utd. (H)	
TBA	Watford	

### SOUTH EAST COUNTIES LEAGUE

	P	W	D	L	F	A	PTS
ARSENAL	12	8	3	1	35	14	19
Q.P.R.	11	9	0	2	44	23	18
CHELSEA	12	8	2	2	25	12	18
TOTTENHAM	13	8	1	4	44	23	17
IPSWICH TOWN	13	8	1	4	32	21	17
WEST HAM UTD.	11	7	2	2	29	12	16
MILLWALL	12	8	0	4	39	27	16
FULHAM	13	7	0	6	18	26	14
WATFORD	12	5	0	7	24	29	10
SOUTHEND UTD.	13	5	0	8	17	29	10
NORWICH CITY	11	4	0	7	19	23	8
CAMBRIDGE UTD.	13	3	2	8	23	35	8
GILLINGHAM	13	3	2	8	14	27	8
PORTSMOUTH	13	3	2	8	23	38	8
CHARLTON A.	13	3	0	10	25	50	6
LEYTON ORIENT	11	1	1	9	7	29	3

# RESERVES

ISOSTAR - OFFICIAL SUPPLIER OF SPORTS DRINKS TO CHARLTON ATHLETIC

# & YOUTH

CHARLTON YOUTH CLOTHED BY ACC - 081-983 1684



# MUNICH 72 TROPHIES AND ENGRAVING SERVICES

241 SOUTHWARK PARK ROAD, BERMONDSEY, LONDON SE16  
Telephone: 071-231 7095

- \* Trophies, cups, medals, tankards, silverware, giftware, corporate awards etc
- \* Large selection of catalogues to choose from
- \* Clubs, leagues and societies our speciality
- \* Trophies designed to suit all pockets
- \* Engraving on the premises (same day service on certain items)
- \* Cheapest around – any quotes beaten
- \* 20% discount to Valley Gold members

OFFICIAL SUPPLIERS OF TROPHIES  
AND MAN OF THE MATCH AWARDS  
TO CHARLTON ATHLETIC FC

CALL 071-231 7095  
FAX 071-231 7094

# R & B Star

(Electrical Wholesalers) Ltd.

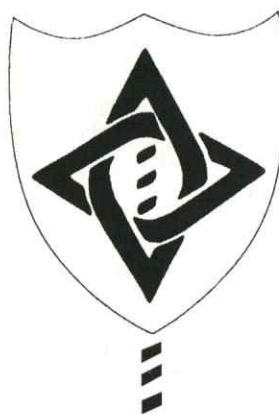
All trade sales of  
commercial, industrial  
and installation materials

14 Kennet Rd  
Crayford  
Kent  
DA1 4SD

Unit 13  
Thurston Ind. Est.  
Jerrard Street  
Lewisham, SE13

Tel: 0322 555125

Tel: 081 852 9868



Call for the latest  
Cash Sales catalogue

# CHRISTMAS BONUS

Today sees the launch of CASC's latest venture into the world of publishing, the reprinted version of Anthony Bristowe's 1951 history of the club.

I'm delighted that this project has finally come to fruition and at just £3.50 feel sure that many of you will find it a useful stocking filler for Christmas.

The book first appeared as a 120-page soft-back, issued by the defunct Convoys Publications, and as far as possible I've tried to respect the integrity of the original.



However, in the interests of economy two chapters of quaintly presented statistics – all of which are available elsewhere – have been omitted and the remaining text condensed to 68 A5 pages.

From today, Bristowe will be available from the CASC cabin next to the club shop at all first-team and reserve games until Christmas, and first-team games thereafter. It should be in local bookshops soon, as well.

We're also selling all three Charlton fanzines, and both *Remember*, *Remember* and *Voice of The Valley* should have new issues out today. Back numbers are available.

Then there are copies of the programme from Medway CASC's sportsman's dinner (50p) and a video of the event for around £8.50. Further details from Mick Everett on 0634 850234.

We've got the few remaining copies of my own book *Battle for The Valley*, at a bargain £5 a piece (£1.50 extra if ordered by post), and also Tom Morris' superb panoramic view of The Valley and its surrounds, taken from behind the East Terrace.

The latter, which can be seen in some editions of this week's *Mercury* and also the

new VOTV, comes as a 7" by 10" colour print, mounted, captioned and framed in red. The final size is 11" by 14".

These pictures, exclusive to CASC, are available by prior arrangement only and anyone wishing to collect one at the Portsmouth game must let us know by telephone on or before Tuesday evening. Call 081-304 1593 to make arrangements.

Alternatively, you can order by post. Write to CASC, PO Box 387, London SE9 6EH, enclosing a cheque for £19.95, plus £5 carriage where applicable, payable to Tom Morris. Please note that it will not be possible to process postal orders before the Portsmouth game unless you also alert us by phone within the deadline.

And to ensure pre-Christmas delivery we must have your order by Tuesday, December 14th.

## EVERYBODY OUT

It was a very busy evening for CASC on Thursday last week, with no less than three branch meetings taking place at once.

Chairman Steve Clarke and I were at Gravesend, where Martin Simons topped the bill and was in his usual informative and entertaining form. Gravesend branch is now firmly established and will be staging a number of events in the near future.

The most imminent is their participation in an inter-branch five-a-side competition at Dartford on Sunday, December 6th. It's hoped that all five Kent branches will be represented.

On Saturday, January 22nd, Gravesend are staging a fund-raising disco in the town. Tickets, price £2.50, can be obtained from the CASC cabin on any matchday or ordered through Cyril Dyatt on 0474 358951.

Looking further ahead, we are presently without a League fixture on Saturday, February 19th. We hope to be engaged in FA Cup fifth round action, but failing that the branches will be using the day to promote the club locally.

Gravesend intend to have a presence in the Anglesea shopping centre and we'll give you more details nearer the time.

Elsewhere last Thursday, Keith Peacock was the star attraction at Medway and Derek Upton celebrity guest at Maidstone.

We'd like to thank all three

visitors for giving their time and effort to the cause. Rest assured it is much appreciated.

Further afield, Steve and I recently spent an enjoyable couple of hours with East Sussex branch. Their coach to the Notts County game was a resounding success and they are back again today.

George Noble (0424) 444158 is still looking for fans in Tonbridge who may wish to join the East Sussex coach en-route, and Mick Everett (0634 850234) is looking for a local organiser for a branch in the town. Come on, Tonbridge! You're letting the side down.

Canterbury ask me to point out that they are spreading their bounds even wider, with Faversham, Thanet and even Deal and Dover represented. Call Trevor Gardiner on 0227 728374.

In next week's programme, we'll have news of a South Essex branch, based in Southend.

Finally, Dave Walker is trying to make contact with any Charlton fans based in Ireland. Write to him at 7 Willow Park, Maugeraboy, Co Sligo, Eire.

## TV TIMES

Following the successful trip to see Paul Daniels' Magic Show (perhaps they should have persuaded him to make Ian St John disappear!), social secretary Marilyn Rooke has arranged more studio visits.

Shows include a celebrity panel game, Home Truths, introduced by Radio 1's Steve Wright, on 16th or 30th January; Today's The Day, a topical news quiz presented by Martyn Lewis on Sunday, December 19th (1.45pm); and So Haunt Me, a spiritual comedy focusing on the disruption caused by an interfering ghost, on 28th January.

All bookings need to be made as soon as possible in order that tickets can be reserved.

There's also the possibility of a block booking for Gary Glitter's Christmas Show on 15/16th December.

Call Marilyn on 081-855 6179 for details and booking of all the above.

## PERFECT START

A word of thanks is in order to Steve Perfect, who climbed out of bed around 6am last Saturday to tour the CASC coach pick-ups in case anyone hadn't heard the Middlesbrough game was off.

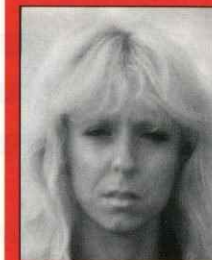
That's commitment for you. And, yes, he found three people waiting!

Rick Everett  
(Secretary, CASC)

## SUPPORTERS CLUB



## FAN FOCUS



Name: Lyn Watts  
Age: 33 on Thursday!  
Address: Grove Park Road, Mattingham, SE9  
Occupation: Wages supervisor  
Years supported Charlton: 20  
Number of grounds visited: 42  
Favourite player – past: Nicky Johns – he amused me with his wiggles! before taking goal kicks!  
Favourite player – present: Garry Nelson  
Most memorable Charlton goal: Carl Leaburn at Southend last season  
Most memorable Charlton match: 3-1 win at Newcastle – October 1990. It was a good result, and great fun on the plane!  
Player you would most like to sign for the club: Tony Daley  
Favourite away ground: Notts County's Meadow Lane – since it's refurbishment  
Most memorable moment at a Charlton game: Being Van Den Houved whilst celebrating Carl's goal at Southend last season. I got no apologies and had to drive a car full of drunks home whilst semi-conscious  
Most treasured Charlton possession: Signed Back to The Valley dinner programme  
All time Charlton team: The current squad  
Favourite other team: Lincoln City  
What features would improve the programme: A 'Guess the players' legs' competition

If you want to appear in Fan Focus – please call Lara Davies on 081-293 4567.

VALLEYCALL 0891 12 15 94

Calls cost 36p per min. (cheap rate); 48p per min all other times)



# "HEAT SCORES ON SERVICE EVERY TIME"

says Paul Walsh.



Make the right connection next time you need electric space and water heating. The Heat Electric Advisory Team can supply and install everything you require with the minimum of fuss from start to finish. Phone 071 725 3018 for details of your nearest installer and you'll be on to a local winning team.

## SIGN HERE!



Our new shirt sponsorship with computer firm Viglen got off to a flying start at our last home game. The Notts County match was the first game that the Viglen directors had attended at the Valley and they were taken on a brief tour of the ground, and

had a look in the dressing rooms before the game.

The team then produced the first five goal performance at The Valley since 1985 to set the seal on a memorable afternoon, which will hopefully be the first of many enjoyable visits to The

Valley for the Viglen directors and staff.

Viglen sales director Ray Davis chose the winning Valley Gold numbers at half-time, and they also selected Garry Nelson as their Man of the Match. Ray is pictured signing the two year sponsorship agreement with Charlton chairman Roger Alwen.

If you're looking to buy a personal computer, Viglen will offer a discount to all Charlton members. Call the Viglen sales line on 081 758 7000 for the special deals on offer. Discounts are available on the full Viglen range of high performance 486 based Contender, Genie and Dossier notebooks.

Ring for your brochure, and don't forget to quote your membership number.

## WELCOME

Our match sponsors this afternoon are Mowlem Construction plc, who as everyone now knows, are building our new East Stand, the steelwork for which has begun to appear on the terrace.

Mowlems are hosting parties from RT James, and Reeds, and we hope they have a memorable day here at The Valley, checking up on their handiwork!

Our matchball sponsors this afternoon are Hydrofresh, from Gravesend in Kent. This is their first venture into sponsorship with Charlton, and we'd like to wish Ray Clarke and his guests an enjoyable day, and three points into the bargain!

## NEW YEAR - NEW DEAL!

In the New Year, the arrangements for the matchday restaurant here at The Valley will be changing. We plan to operate a carvery meal, as opposed to the present silver service menu, which will be considerably cheaper, and hopefully more attractive to our fans. There will be more information on the new arrangements in the next couple of weeks.

## 17 DAYS TO GO!

With just 17 shopping days to go to Christmas, it's time to stock up on Valley Gold vouchers and save plenty of money on your Christmas gift items. The list of stores who offer discounts to Valley Gold members includes Alders of Bromley, Boots, BHS, Comet, Halfords, Iceland, Index, Littlewoods, Mothercare, Next, TW Records, Salisburys, Superdrug, Woolworths and B&Q, not forgetting our own Valley Shop.

To reserve your vouchers, simply call Sue Davies on 081 293 4567, but remember to phone to make sure we have enough in stock of your choice of voucher. As of next Sunday, we hope to open a Valley Gold kiosk on Harvey Gardens, where members can come and pick up vouchers, and maintain their payments on a matchday.

## COOMES KIOSK

As West Stand patrons will probably have noticed by now, our bookmakers Coomes have opened up a new kiosk behind the stand, therefore opening up the betting service to everyone in that area.

The service in the hospitality suite has proved so successful that we have decided to extend it to the ground areas, and plans are also in hand for a betting area in the new club shop behind the North Stand.



With  
**Steve Dixon**  
**VALLEY GOLD**  
**PRIZE WINNERS**

### Week 217

First prize £500  
No 1482 John Carter  
of Swanley

Consolation prize winners  
No 1980 Ronald Akass  
No 86 Thomas Still  
No 1329 Joanne Harrod  
No 1659 Douglas McBride  
No 1143 Graham Tucker

### Week 218

First prize £500  
No 1101 Robert Mead  
of Wiltshire

Consolation prize winners  
No 686 Mr T. Adams  
No 197 David Huggins  
No 1282 Colin White  
No 235 Janice Boorman  
No 1498 Mr K. Clayton

**MUNICH 72 - OFFICIAL SUPPLIER OF TROPHIES TO CHARLTON ATHLETIC**

MARKETING



# WORLD AIDS DAY Time to Act



Throughout the world the number of people affected by HIV and AIDS continues to rise. Now that we know how the virus is spread, we also know how to stop it - now is the time to act.



*Charlton*

93/94



A product of the School of Football at Lillieshall, Darren Pitcher is Charlton's longest serving player, having been on our books since the age of 15. Now 24, Darren is a 170 senior forward with his credit, FA Youth Cup captain in his form of his midfield which he has effortlessly moved into the right-back position. Darren senior debut was in the League Cup against Northampton but had to wait until August 1994 for his next chance into the first team. He stayed the night before the right-back position. Darren's makes his debut as well as a forward role in the field and he has also been upon at left half, centre-half. Perhaps consistent in the press, Darren is team's per scoring two spot this season.

**Record to date:**  
Appearances: 170(3)  
Goals: 10  
Squad number: 16



*Player Profile*

**DARREN  
PITCHER**





## OUR THANKS TO THE THEIR HELP IN PRODU

Craig Baxter  
Stacy Mitchell  
Nicola Jago  
Daniel Waterman  
Nikita Mitchell  
Scott Minto  
Peter Garland  
Shaun Newton  
Matthew Tugwell  
Luke Tugwell

**YOUR CLUB SHOP STAFF ARE:**  
Chris Tugwell *Retail M*  
Belinda Amis *Senior I*  
Lucy Hooper  
Sandra Merrick

**CLUB SHOP OPENING TIMES**  
Monday to Friday  
Saturday  
Saturday matchdays at

## SOME USEFUL TELEPHONE NUMBERS

### LOCAL

#### Genito-Urinary Medicine

Confidential HIV and STD Counselling  
Appointments 081 312 6056  
Health Advisers 081 312 6051

#### Health Promotion Service

For ordering leaflets/posters etc 081 859 8209  
For other information and advice 081 859 6372

#### Social Services HIV Unit

Advice on services, benefits, support  
groups for people living with HIV etc 081 854 5229

#### Beresford Project

Help and advice about drugs 081 854 9518

#### Needle Exchange Helpline

(Freephone) 0800 44 77 55

### NATIONAL

#### National AIDS Helpline

(Freephone) 0800 567 123

Greenwich Health Promotion Service is supporting the 1993/4 Mayor's Charity Appeal which this year will benefit three organisations who are doing work around HIV and AIDS. A proportion of the fund will directly benefit people living with HIV. Cheques should be made payable to "Mayor's Charity Appeal" and sent to: Mayor's Office, Room 23, Town Hall, Wellington Street, Woolwich, London, SE18 6PW. Further information on the Appeal contact 081 312 5048.

## Greenwich Health Promotion Service

**Club Shop Hotline**  
**081-305 1289**

**Community Office**  
**081-850 2866**



A product of the FA School of Excellence at Lilleshall, Darren Pitcher is one of Charlton's longest serving players, having been on our books since the age of 15.

Now 24, with over 170 senior matches to his credit, the former FA Youth Cup final captain is in the best form of his career in his midfield role, to which he has switched effortlessly after breaking into the first team at right-back.

Darren made his senior debut in a League Cup tie at Northampton in 1988, but had to wait until August 1990 for his next chance. He came into the side at the start of the season, and stayed there making the right-back position his own.

Darren's versatility makes him a vital member of the squad - as well as his preferred roles in midfield and right-back, he has also been called upon at left-back and centre-half.

Perhaps the most consistent performer in the present squad, Darren is also the team's penalty taker, scoring twice from the spot this season.

**Record to date:**  
**Appearances: 170(3)**  
**Goals: 10**  
**Squad number: 16**



**DARREN  
PITCHER**



## SIGNED AND SEALED!

Anything the men can do, the ladies can do as well, and that includes signing a shirt sponsor!

Public service Union UNISON have agreed to become Charlton Ladies shirt sponsors, and the girls will wear the distinctive UNISON logo on both their home and away shirts, starting with tomorrow's game.

With the money from the new deal, the Charlton Ladies will be able to obtain a new set of home and away kit, as the shirts they are presently wearing were donated by the club last season, and they still sport the Woolwich logo.

The girls plan to wear

the same red at home and white away as the first team, and there will still be some money available for training kit and pitches.

Unison's Geoff Martin said, "Unison is the largest union in the UK, with 1.4 million members, of which over 900,000 are women, so it makes sense to get involved with a sport growing as fast as women's football. And as the Charlton Ladies are doing so well at present, they were an obvious choice."

As well as all that, the Charlton Ladies advanced to the next round of the Kent County Cup with an extra time victory over Second Division Sittingbourne, after being 1-0 down.

### Ladies draw Leasowe

Charlton Ladies have drawn National Premier League side Leasowe Pacific in the Fourth Round of the Womens FA Cup. It's the first time that the Charlton team has reached this stage of the competition and the match against former winners Leasowe, from Merseyside, represents their biggest ever test. It's been an exciting couple of weeks for the girls – the narrow 1-0 away win over Lambeth in the last round, thanks to Judith Dartnell's first-half winner was followed by the Fourth Round draw, and news of their new sponsorship deal with public service union UNISON.

With fifteen minutes to go, the girls were still a goal behind, but Clair Shevlin struck to take the match into extra time, and Judith Dartnell's 19th of the season in the first period of extra time put the girls in front. Shevlin added a third in the second period of extra time to put Charlton safely into the next round.

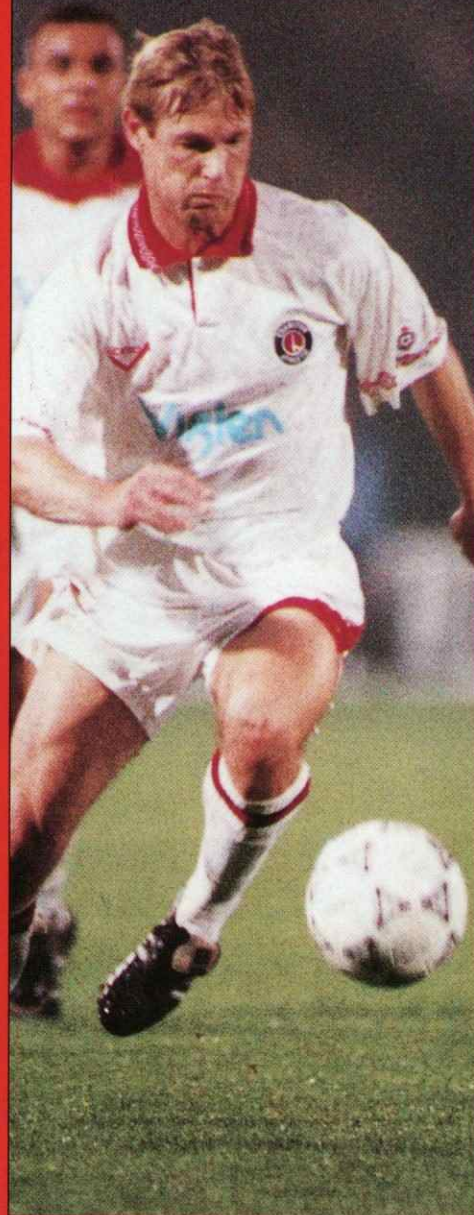
The Womens FA Cup tie against Leasowe Pacific will be held at the training ground tomorrow, kicking-off at 1.30pm. Spectators are welcome.

### LEAGUE TABLE (up to 14.11.93)

	Pld	W	Pts	GD
Crystal Palace	6	6	12	+42
Whitehawk	6	6	12	+38
<b>Charlton</b>	<b>5</b>	<b>5</b>	<b>10</b>	<b>+25</b>
Shoreham	8	4	9	+10
Epsom and Ewell	7	3	7	0
Teyham Gunners	7	3	6	-9
Farnborough	5	2	4	-1
Corematch	6	2	4	-3
Isle of Wight	7	1	2	-33
Hassocks Reserves	7	0	0	-47

Sponsored by **UNISON**

Garry Nelson's complete away kit is sponsored by Trendy Shoes, from the Riverdale Centre in Lewisham. His home shirt and socks are sponsored by Leisa Williams, and boots by Cyril Dyatt.



# HOME

# KIT

# AWAY

## SPONSORS

	<b>SAM APPIAH</b>	SOCKS: PETER & TRACEY JAMES
COMPLETE KIT: MEDWAY CASC 0634 850234	<b>STUART BALMER</b>	SHIRT: GREG BONE. SOCKS: JON PAUL SAMUELS
SHIRT: YVONNE CRICK. SOCKS: TED HOWARD. BOOTS: TONY & CLAIRE BLANDEN	<b>BOB BOLDER</b>	SOCKS: TED HOWARD
COMPLETE KIT: GRAHAM EDEN	<b>STEVE BROWN</b>	SOCKS: ANGELA & FRANCIS EVANS
COMPLETE KIT: MOUNT MASCAL STABLES 081-300 3947	<b>PHIL CHAPPLE</b>	SOCKS: ANNA SEARLE AND LAURA COOK
SHIRT, SHORTS, SOCKS, BOOTS: CLIVE R. TRACKSUIT: SUE & ANDY COLE	<b>PETER GARLAND</b>	SHIRT: MARTIN ROBERTS. SHORTS: REMEMBER REMEMBER FANZINE. SOCKS: SASHA & GEMMA. BOOTS: ATHLETICO CHARLTON QUIZ TEAM
COMPLETE KIT: HAYES AND WEST WICKHAM SUPPORTERS GROUP	<b>PAUL GORMAN</b>	SOCKS: REMEMBER REMEMBER, BOOTS: GREG BONE. SHORTS: ANGELA & FRANCIS EVANS
COMPLETE KIT: TC'S HEALTH CLUB 0322 331110	<b>KIM GRANT</b>	SOCKS: SID GLEESON
COMPLETE KIT: MIKE WOODHOUSE	<b>CARL LEABURN</b>	COMPLETE KIT: MIKE WOODHOUSE
SHORTS: SIMON/TONY	<b>PAUL LINGER</b>	SOCKS: SID GLEESON
COMPLETE KIT: REGULAR CLEANING SERVICES 081-690 4488	<b>ALAN McLEARY</b>	COMPLETE KIT: REGULAR CLEANING SERVICES 081-690 4488
SHIRT & SHORTS: ROSEMARY HUTTON, DUNCAN & ALEC. BOOTS, SOCKS: KEITH FERRIS	<b>DANNY MILLS</b>	SOCKS: BOB DELLER
SHIRT, SHORTS, BOOTS: THE SHRUBSHALL FAMILY,	<b>SCOTT MINTO</b>	SHIRT: DAMIAN TITE, SHORTS: STEVE BROWNHILL. SOCKS: NATALIE CLOUT. BOOTS: LISA IMPEY
SHIRT, SOCKS: LEISA WILLIAMS. BOOTS: CYRIL DYATT	<b>GARRY NELSON</b>	COMPLETE KIT: TRENDY SHOES (LEWISHAM)
SHIRT, SHORTS, SOCKS: ALISON AUDSLEY. BOOTS: BRYAN NEWTON	<b>SHAUN NEWTON</b>	COMPLETE KIT: GEOFF, MARTIN & BEN WILLIAMS
COMPLETE KIT: THE UNO CLUB	<b>ALAN PARDEW</b>	COMPLETE KIT: JOHN MARTIN
SHORTS: SANDRA YOUNG. SHIRT: DAVID RAMZAN. SOCKS: ALAN CHAPMAN	<b>DARREN PITCHER</b>	SHIRT: PAUL SEAGROVE AND DARREN HOPSON. SHORTS: JAYNE DAVIES. SOCKS: HAYLEY CLOUT. TRAINERS: NICKY JARRETT
COMPLETE KIT: PAM BANKS & SYD WRIGHT	<b>LINVOY PRIMUS</b>	SOCKS: PETER & TRACEY JAMES. TRACKSUIT: SID GLEESON
SHORTS: JEAN & TONY STEDMAN. SHIRT: EMMA, JOHN, JASON & SHAUN. SOCKS: TIM EDWINS	<b>JOHN ROBINSON</b>	SOCKS: REMEMBER REMEMBER. SHIRT: LUCAS DOWNEY
COMPLETE KIT: STEVE BAILEY	<b>MARK ROBSON</b>	
COMPLETE KIT: JOHN WINDOW & KEVIN LUFF	<b>MIKE SALMON</b>	SOCKS: JAMES & BEN SEARLE
COMPLETE KIT: EWEN McLEOD	<b>PAUL STURGESS</b>	SHORTS: DICK JOHNSON. TRACKSUIT: SID GLEESON. SHIRT, SOCKS, BOOTS. TRAINERS: ANNA MARIE PARKES
COMPLETE KIT: JILL HUMPHREYS	<b>JOHN VAUGHAN</b>	COMPLETE KIT: JILL HUMPHREYS
COMPLETE KIT: QUEEN ANNE PUBLIC HOUSE - 0622 753023	<b>COLIN WALSH</b>	SHIRT: KENT RELIANCE BUILDING SOCIETY. SHORTS, SOCKS: VAL HOLMES
COMPLETE KIT: EILEEN MALYAN, ROY ATTERBURY, ADIE WRIGHT	<b>STEVE GRITT</b>	SHIRT: RACHEL KLEINMAN. SOCKS: EDWARD CATFLAP
COMPLETE KIT: SUE JEFFERYS	<b>ALAN CURBISHLEY</b>	COMPLETE KIT: PAM BANKS & SYD WRIGHT
COMPLETE KIT: RICHARD AYERS OF TOUCHLINE PROMOTIONS	<b>KEITH PEACOCK</b>	COMPLETE KIT: JOHN MARTIN
	<b>JOHN CARTWRIGHT</b>	SOCKS: RICHIE RICH

**CBS SECURITIES – SUPPLIER OF MOBILE COMMUNICATIONS TO CHARLTON ATHLETIC**



# HOME INSURANCE

A WISE MOVE TO SAVE YOU  
MONEY



## SIMPLER League

It has never been simpler to move to Endsleigh for Home Contents or Buildings insurance. Just a few simple questions and no need to calculate the value of your contents or buildings.

## CHEAPER

You could save up to £50 on your buildings cover alone – compared to Building Society premiums – and benefit from a whole range of valuable extra benefits – absolutely FREE.

## BETTER

Our Homestyle policy provides the widest possible protection at the lowest cost, ensuring that you have sufficient cover to replace all of your valuables at today's costs.

To save money on your Home & Contents Insurance contact us for a free quote:

**Tel: 0622 677700**

12 King Street, Maidstone, Kent

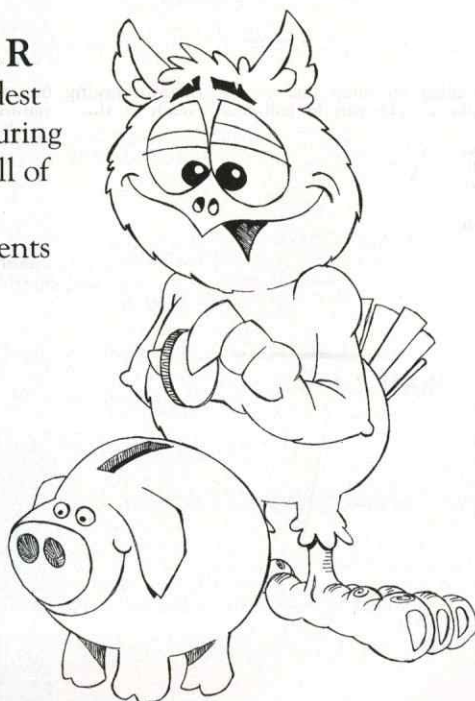
Contact – Vicki Gee

**Tel: 0227 452467**

University of Kent, Canterbury



**Endsleigh**  
In a league of our own.



## WHERE ARE THEY NOW?

I write in response to the "Where Are They Now?" spot on Junior Reds. I have three grandsons who have been mascots over the years.

**Glenn Jones** – now 19-years-old – mascot v Cambridge United 21.1.84, which we won 5-2. The toss took place in the dressing room due to a frozen pitch. Glenn now runs his own 7-a-side team in Peterborough and is a student at the local



Glenn, Terry and Scott Jones pictured recently.

college. He is a Charlton member.

**Terry Jones** – now 17-years-old – mascot v West Ham FA Cup 3rd Round 5.1.86. The first mascot to be featured on live FAC football. He was also mascot v Cambridge 23.11.91. Terry is now a motor mechanic and a Charlton member.

**Scott Jones** – now 13-years-old – mascot v Plymouth 3.11.90 and v Cambridge 23.11.91. He is a pupil at Bushfield School, Peterborough, is a Junior Red plus VIP member and season ticket holder. Scott also attends all away matches with either Junior Reds or his uncle Tony.

They all enjoy watching CAFC, as do other members of the Jones/Samuels families, every one of which are Junior Reds, VIPs,

## ISOSTAR PLAYER OF THE MONTH

We've received your votes for the Isostar Player of the Month for August and September. Phil Chapple was your choice, and he will receive his trophy today from Junior Red Simon Coughlan from Essex.

We now need your selection for the October/November award. Send your votes to Jackie at the training ground.

## PENALTY COMPETITION PANTO FULLY-BOOKED

Calling all those that would like to take part in half-time penalty competitions against our visitors. If you are between the ages of 10 and 16, you are eligible to represent Junior Reds in these regular contests that take place on The Valley pitch. Please call in at the matchday office today if you are interested. Alternatively, telephone Ian Marsh to register your name as a member of the JR penalty team.

## HOME & AWAY

We were due to entertain the Junior Hatters at New Eltham this morning and we trust that our good friends from Kenilworth Road are having an enjoyable day. Next away trips are to Birmingham City on 18th December, Southend on 27th December, while we visit Nottingham Forest on New Year's Day. Departure

times are 8.00am for both Birmingham and Forest and the short journey to Roots Hall means a later start time of 9.00am. Morning football is scheduled for all but Southend and the fare (including match ticket) is £10.

Please book at the matchday office, or telephone **Ian Marsh**, Family Coordinator, on 081-461 4025.

season ticket holders or members. The three boys were all founder members of Junior Reds.

All of the lads had souvenir photographs taken to mark their special days and – as you can imagine – these take pride of place in a display on the wall.

P.F. Samuels (Mrs)  
Grandmother

Many thanks for writing to us Mrs. Samuels, it is great to hear of the terrific support given to CAFC by your joint families. It is particularly satisfying that our flag is kept flying so high in your part of the country.

## SPOTLIGHT ON A Junior Red



Name: William Russell

Date of birth: 21/2/84

School: Brampton Primary School, Bexleyheath, Kent

Do you represent your school at any sport(s)? No

What started your interest in Charlton? Dad

Favourite Charlton player:

Scott Minto

Favourite other ground: Wembley

Favourite other team:

Welling United

Which club's playing strip do you most admire? Arsenal (away)

Which player would you like to sign for Charlton? Robert Lee

Favourite TV and radio

programmes: The Simpsons

Sports that you enjoy playing:

Tennis and Football

Other sports that you enjoy

watching (live or on TV)? Athletics

Ambition on leaving school:

Pro tennis player.

If you would like to be featured in Spotlight, please collect a form from the matchday office.

## JUNIOR REDS



TODAY'S MASCOT



Our mascot this afternoon is eight-year-old Ryan Hayes from Garland Road in Plumstead.

He attends Timbercroft Junior School and plays Sunday football for Samuel Montagu, who were runners-up in last seasons Colts Cup Final.

His favourite player, appropriately, is Peter Garland.

This page is produced in association with



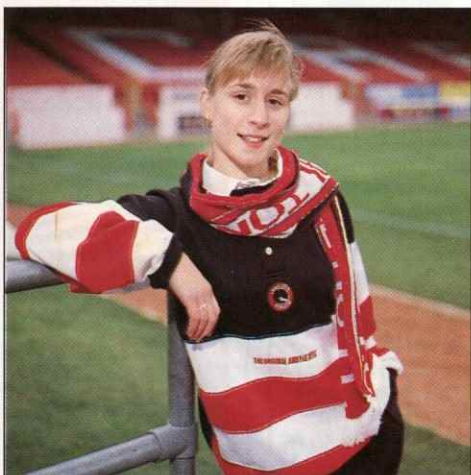
**Kent Reliance**  
BUILDING SOCIETY  
0634 848944

**NEXT HOME MATCH – SUNDAY 12TH DECEMBER V PORTSMOUTH (3PM)**



# CHRISTMAS GIFT ITEMS

NOW IN STOCK IN THE CLUB SHOP



**NEW MAIL ORDER  
CATALOGUE**  
NOW AVAILABLE

## SPONSORS AND ADVERTISERS

Thanks to the following for their support of the club this season

### Match sponsors

Golden Wonder	Mowlem
Laidlaw	Tim Collins
Image Directors	Regular Cleaning Services
Bryen Langley	Dave Fuller
Hambledon Group	Mercury Group
Venton Underwriting	Furnitubes

### Matchball sponsors

Harrison Ingram	London Power Tools
Marstan Press	County Perry Insurance
Janash Menswear	MCI Communications
Alvid New Homes	Laidlaw
Barmond Steel	Mowlem
Star Inn, Plumstead	Swallow Hotel
Greg Bone	Charlie Turner
Image Directors	Munich 72 Trophies
Hydrofresh	Graham Eden

### Programme sponsors

Absolutely Productions	Netto Foodstores
Future Zone	Bernard Wickham
Clark Whitehill	Fielder Technical Services
Cliff Cobbin & Gary Hannant	

### Pitch perimeter advertisers

Swantex	E Coomes Bookmakers
Goldrange Group	Taggart Associates
S.J. Oliver Solicitors	Pegasus Scaffolding
Army Careers	O'Rourke Construction
Information Office	Crown Trade Paints
Alltype Roofing	CBS Securities
Ruxley Manor Garden	R & B Star
Centre	SOS Construction
Laidlaw	Kingsway Furniture
H.E.A.T.	Bryen Langley
Mercury Group	John Humphreys
Sports and Leisure Print	Bookmakers
Rawlins Transport	Keir
Barbee Ceramics	Seating Contracts
Kent Today	Kent Reliance Building
Sun Life of Canada	Society
Scorpion Dry Lager	Touchline Promotions
Browns of Blackheath	Road Runners
Isostar	Drains Direct
Browns Motor Works	

## ANNIVERSARY CELEBRATIONS

What greater way of celebrating the first anniversary of the Community Schemes football courses, than giving every one of the children on both football courses a 'Back to the Valley' Charlton Shirt. The 120 children at the Sparrows Lane venue and the 55 on the Erith course all received their shirts on the Friday morning. This was only the second time we have run a course in Bexley and what a great week we had - made better by the appearance of Stuart Balmer and skipper Alan McLeary on Friday afternoon to present everybody with certificates, posters and two free tickets for the game against Oxford United. All the children at the training ground had the opportunity to take part in a photo shot with the players.

In the 15 months I have been with the club we have run a grand total of 20 coaching courses. Almost 2,000 children have attended, with venues ranging from the Charlton Athletic training ground to as far down as Dover.

Long may it continue!

### MATCHDAY COACHING

Two hours of coaching from noon until 2pm takes place at the Rathmore Youth Centre in Charlton. Also included are two



Stuart Balmer and Alan McLeary with the Erith children

complimentary tickets for the home game that afternoon, and a free matchday programme, all for just £15.

Call me to book a place. Group bookings are welcome. After coaching sessions children can use the Junior Reds Family room which is located at Charlton Liberal Club in Charlton Church Lane.

### SPORTS INJURY CLINIC

The clinic is still running on Monday and Wednesday's between 4-6. Top quality treatment for injuries will be carried out by the club physiotherapist for just £15 per session. A special rate of £100 for ten sessions is available for use by local clubs.



A team group from the training ground

### GRAND TOURS

If you're interested in seeing behind the scenes at Charlton Athletic, we have just started ground tours between 4-4.30pm every Thursday. If interested please give me a call or get further information from Lara Davies on 081-293 4567



*For the Community*



With  
Jason Morgan

This page is produced in  
association with  
**G.P. TURNER & CO LTD**  
Insurance Brokers  
071-488 4020



# The Minster Carriage Company



CHAUFFEUR DRIVEN  
ROLLS ROYCE LIMOUSINES ETC

FOR WEDDINGS AND  
SPECIAL OCCASIONS AND  
ALL TYPES OF  
COMPANY BUSINESS

FOR PERSONAL QUOTATION RING  
**081-300 2534**

MINSTER HOUSE,  
HARLAND AVENUE, SIDCUP

## An Army career offers you a sporting chance.

Sport is an important part of the Army way of life because it's a good way of building up your fitness, confidence and team spirit.

So with the Army, you'll get the chance to take part in just about every sporting and adventure activity you can name - including squash, sailing, mountaineering, rock climbing, canoeing and skiing.

But that's not all the Army offers. There are 150 trades and skills to apply for, starting pay is good and there are opportunities for travel.

So why not join the team?

You'll find out all you want to know from . .

**Army Careers Information Office**  
9 Lee Road Blackheath London SE3 9RQ

Telephone: 081-852 1464

YOUR HOSTS  
PHILIP & MAUREEN MARRON

### "THE PILOT INN" GREENWICH

would like to give a warm welcome to all Charlton supporters. "The Pilot" is a real ale house, serving excellent home cooked food and traditional Sunday lunches.

Accommodation B/B  
**Tel: 081-858 5910**

### ALSO

### "THE VALLEY"

Elliscombe Road, Charlton, the home of the Charlton supporter would like to extend a warm welcome to all. Excellent bar food served before and after matches.

**GOOD LUCK  
CHARLTON FOR 93-94**



## BIRMINGHAM BOSS LOSES HIS JOB

Birmingham City manager Terry Cooper is the latest manager to lose his job after another poor performance from his side. Last weekend saw them slump 3-0 at home to Tranmere Rovers, their fourth successive League defeat.



Terry Cooper - the latest managerial casualty

Cooper had crisis talks with owner David Sullivan but refused to quit at first, but then decided to leave on Monday. Mr Sullivan, owner of the *Sunday Sport* newspaper, has pumped a lot of money into Birmingham City to strengthen the team, so far without much success, and he will be looking for an improvement in results going into the New Year. Former England boss Graham Taylor was offered the job, but turned it down.

### SLUMP

Another manager to lose his job was Sunderland's Terry Butcher who went out of Roker Park after his side suffered five successive defeats, and that turned into six on Saturday when Mick Buxton, given the job until the end of the season, could not stop the slump at home to Nottingham Forest despite a spirited performance from the team. Buxton has plenty of experience in the game having been manager of Huddersfield Town and Scunthorpe United but he will need all his know-how to get Sunderland out of the bottom three.

Butcher left disappointed that he could not bring success to the North East and commented: "I was probably too soft and too nice to be a successful manager." Sunderland chairman Bob Murray also

quit the hot seat after sacking Butcher, but stays on as a director.

With Charlton's week-end game against Middlesbrough surprisingly called off because of a frozen pitch, the only game in England to fall foul of the weather, the chasing pack were able to make inroads into Charlton's four point lead at the top, and reduce it to one with victories for Tranmere, Southend, Crystal Palace and Millwall, a draw for Leicester, but there were defeats for Derby and Portsmouth.

So Charlton go into today's encounter with Luton Town at The Valley nine points better off than at the same stage last season, with the least games lost, and the best defensive record of any team.

Luton gained an amazing 6-2 victory at home to Stoke City last week after being two goals down, with veteran striker Kerry Dixon scoring a hat-trick, a result which pushed David Pleat's team just below halfway in the table.

Probably the best result of last weekend was Southend's 3-1 success at the Baseball Ground against Derby County, and the Shrimpers have now been beaten only once in their last eight games, ironically at Leicester, who they play at Roots Hall tomorrow.

Crystal Palace played their fourth successive away League game at Vicarage Road on Sunday, and ran out comfortable 3-1 winners with Paul Williams again on the scoresheet, and they are in Sunday action again this week when they entertain Notts County, who have gone 29 away League matches without a victory, but are keeping afloat as a result of their home form.

Millwall, beaten only twice in 15 League matches, have pushed themselves up into a play-off spot and visit fast improving Oxford United



Oxford's former Charlton defender Matt Elliott

at the Manor Ground where new boy Matt Elliott, who started his professional career with Charlton, has been on the scoresheet a couple of times.

One of the divisions other form sides Bristol City, take on Middlesbrough at Ashton Gate where manager Russell Osman has survived a boardroom power struggle. Just two defeats in 13 has taken them to the fringe of the promotion race and they are a very difficult side to beat, especially on their own ground.

### SURPRISE

Barnsley made a surprise transfer swoop signing former Hull and Middlesbrough striker Andy Payton from Celtic with Wayne Biggins moving in the opposite direction, and they will be looking for him to get plenty of goals starting hopefully today away at Grimsby.

Portsmouth will be hoping to take advantage of Sunderland's woes when the teams meet at Fratton Park, and Pompey are anxious to get three points after an unexpected hiccup at West Bromwich Albion last week when they crashed 4-1, their first defeat in 13 League games.

Wolves, who blew a two goal lead at Leicester to draw 2-2 have a televised match at home to Derby tomorrow, whilst Tranmere could have gone top last night, if as expected, they beat bottom of the table Peterborough at Prenton Park.

## FIRST SIGHT

with  
Peter Burrowes



### Today's Games

#### F.A. CARLING PREMIERSHIP

COVENTRY CITY v ARSENAL  
EVERTON v SOUTHAMPTON  
IPSWICH TOWN v OLDHAM ATHLETIC  
LEEDS UNITED v MANCHESTER CITY  
MANCHESTER UNITED v NORWICH CITY  
Q.P.R. v ASTON VILLA  
SHEFFIELD WED v LIVERPOOL  
SWINDON TOWN v SHEFFIELD UNITED  
TOTTENHAM v NEWCASTLE LTD  
WIMBLEDON v WEST HAM UTD

#### ENDSLEIGH DIVISION ONE

BOLTON v WEST BROMWICH  
BRISTOL CITY v MIDDLESBROUGH  
GRIMSBY TOWN v BARNLEY  
NOTTAM FOREST v BIRMINGHAM CITY  
OXFORD UNITED v MILLWALL  
PORTSMOUTH v SUNDERLAND  
STOKE CITY v WATFORD  
WOLVES v DERBY COUNTY

#### F.A. CUP

##### SECOND ROUND

BOURNEMOUTH v NUNEATON  
BRENTFORD v CARDIFF  
CRAWLEY v BARNET  
KIDDERMINSTER v WOKING  
LEYTON ORIENT v EXETER  
PLYMOUTH v GILLINGHAM  
WYCOMBE v CAMBRIDGE  
YEovil v BROMSGROVE

This page is produced in  
association with  
**TINKLIN SPRINGALL**  
Solicitors of Bromley  
and Beckenham  
081-650 7222

**LAILAW FORD OFFER DISCOUNTS TO ALL CHARLTON MEMBERS**



**ALL CONNECTIONS  
GUARANTEED!!**

**NEW MOTOROLA  
£99 + VAT  
(standard tariff)**



CONNECTION to all tariffs

Suppliers to Charlton Athletic Football Club

**SECOND HAND PHONES  
BOUGHT FOR CASH**

10% discount on production of this ad to all  
Charlton supporters



58 London Road, Dartford, Kent  
Tel: 0322 222200  
Fax: 0322 223385



**BEXLEY COLLEGE**

TOWER ROAD BELVEDERE DA17 6AJ

**Whatever your Goal . . .**

EDUCATION . . TRAINING . . FULL-TIME  
. . PART-TIME . . DAY RELEASE . .  
VOCATIONAL . . ACADEMIC or  
PROFESSIONAL QUALIFICATIONS in:  
Building, Crafts, Business, Computing,  
Electronics, Health & Care, Travel &  
Leisure, Secretarial – and much more!

**Join the Winning Team**

Call for details: **0322 443221**

ADULT LEARNERS WELCOME

Bexley College will positively  
seek to meet and satisfy the  
educational, training and  
social aspirations of all the  
people of Bexley.

An associate College of



the  
UNIVERSITY  
of  
GREENWICH

## Football's biggest fan is its £36m supporter



By next August, standing will be a thing of the past at many of our football grounds as clubs meet the Taylor requirements.

Clubs who choose to retain some standing must make sure that terracing is safe – for many, an expensive commitment.

The Football Trust has an annual income of over £36m – virtually all from the pools companies, Littlewoods, Vernons and Zetters.

Implementing Taylor is a huge undertaking and every club counts on THE FOOTBALL TRUST to help to see the job through.



**THE FOOTBALL TRUST**  
*Helping the game*

Walkden House, 10 Melton Street, London NW1 2EJ



## ADDICKS ACTION with Tom Morris

Top: Carl Leaburn is crowded out by Peterborough pair John McGlashen and Steve Welsh.

Bottom: Kim Grant takes on an Ancona defender in the Anglo-Italian Cup.

**CHARLTON ATHLETIC – SPONSORED BY VIGLEN**

This page is sponsored by

**VALLEY CARS**  
081-853 3303  
081-317 7771  
081-858 5550



## The new East Stand



### John Mowlem Construction plc

are proud to have been entrusted with  
the design and construction of  
**Charlton's new 6000 seater East Stand**

**John Mowlem Construction plc**  
Tilbury Freeport, Essex RM18 7EF  
Telephone 0375 850840  
Facsimile 0375 856954



4 is for . . . **Tony LANGE**, our former goalkeeper. Tony was born in West Ham in December 1964 but his family subsequently moved south of the Thames and he was educated at Kemnal Manor School at Footscray.

He came to The Valley as an apprentice in June 1981, and signed as a professional on his eighteenth birthday in December 1982. His first team opportunities were rare but he eventually made his League debut on his nineteenth birthday in December 1983 at Fulham. Johns had injured his shoulder in training and Tony stepped in to keep a clean sheet in our 1-0 win, our first away win for a year.

Tony held his place for six matches, four of them ending in victories, before Johns returned from injury to reclaim his place. Tony had to wait nearly a year for his next chance against Carlisle in November 1984 but the following month he took over from Johns on merit following two heavy defeats. Tony replaced Johns for the Boxing Day fixture at Crystal Palace but disaster struck the young keeper when he broke his ankle and had to be replaced in goal by Steve Gritt.

Tony recovered to play a small but significant part in our promotion season of 1985/86. Nicky Johns was injured at a crucial time during the promotion run-in and Tony stepped in to play four matches around Easter 1986, starting with the 1-0 victory over eventual champions Norwich City.

During August 1985, Tony had spent a period on loan at Aldershot and it was they who stepped in to sign him in July 1986 on free transfer. He became their regular keeper and in his first season there The Shots won promotion via the play-

offs to Division Three. He stayed with Aldershot for three seasons, clocking up 163 appearances, before Wolves invested £150,000 to take the talented custodian to Molineux in July 1989.

Tony again found himself cast in the role of understudy, first to Mark Kendall and then Mike Stowell. In fact, his three year career at Wolves brought only ten first team outings plus loan spells at Aldershot and Torquay.

In August 1992, Tony left Molineux to sign for



Tony Lange

neighbours West Bromwich Albion. Stuart Naylor was in possession of the number one jersey for much of last season but eventually Tony got his chance and held his position for the last three months of the season as Albion battled through to the Second Division play-offs. When Albion reached Wembley for the final showdown with Port Vale, Tony was between the posts to share in the glory of their 3-0 victory. A sweet moment for a very talented, and patient, goalkeeper.

is for . . . **Fred LUCAS** our midfielder of the Fifties and Sixties. Fred was born at Slade Green in September 1933 and represented Kent Schools at both cricket and

football. He played for Slade Green and joined Charlton as an amateur in January 1949 and three years later joined our professional staff. Two years National Service followed which delayed his debut until April 1956 when he played at inside-right at Burnley in a First Division fixture.

He had to wait until the following season for his next outing. It was at Old Trafford and Fred scored his first League goal in our 2-4 defeat at the hands of United. That season culminated in our relegation to the Second Division but Fred Lucas had come to stay. He remained a regular and consistent performer over the next six seasons as we strove, unsuccessfully, to return to the 'big time'. Equally at home at wing-half, Fred also notched his fair share of goals, 1958/59 being his best in this respect when he netted ten times.

In September 1962, he broke his collar bone in a match against Rotherham at The Valley. Typically he recovered and regained his first team spot later in the season to add his experience to an ultimately successful relegation battle. It proved to be his last full season in SE7 for in October 1963 Crystal Palace paid £2,500 for his services. In his first season there, he helped them win promotion from the old Third Division as runners-up to Coventry City in 1964.

That proved to be his footballing swansong as Palace released him in December 1964 and he left the game with a League career of 201 matches and 29 goals.

Fred has worked for Readymix for many years but has kept up his sporting activities, becoming a fine golfer. He is a well known figure at many local courses.

JF

## Flashback

### 5 YEARS AGO

Lennie Lawrence's side visited Old Trafford and suffered a 3-0 defeat. It was former Charlton player Ralph Milne who put United ahead, courtesy of a deflection, David Campbell twice went close for Charlton before United scored two further goals in the second-half to sink the injury hit visitors. Lawrence said after the game, "Our players didn't disgrace themselves, I had too many players sitting in the stand, who were needed on the pitch. I was down to 12 men with First Division experience, everyone else was suspended or injured."

Luton drew 0-0 at home to Newcastle.

### 10 YEARS AGO

Two Kevin Smith penalties were enough to beat Middlesbrough at The Valley in an unconvincing performance. Midfield man Smith had become the first Charlton player to score twice from the spot in the same match since his namesake Norman Smith 48 years before. Just after half-time, Smith scored the first of his penalties when Carl Harris was brought down, and netted the second when the 'Boro keeper fouled Steve Downman.

Luton lost 4-2 at home to Coventry. Trevor Aylott and Stuart Pearce (og) scoring for Luton.

### 20 YEARS AGO

Charlton paraded new signing Eamonn Dunphy against Port Vale at The Valley, and the Eire international was immediately made club captain by manager Theo Foley. The match was a dull affair until out of the blue, Arthur Horsfield headed in Keith Peacock's cross on the hour, to put The Addicks ahead. Suddenly the game came alive, with another Horsfield header hitting the bar before Horsfield put Charlton further in front when he headed in Colin Powell's cross. Powell himself missed a good chance near the end, but Charlton finished 2-0 winners.

Luton lost at home 2-0 to West Bromwich Albion.

PC

# ADDICKS A-Z

**CHARLTON CLUBCALL 0891 12 11 46** Calls cost 36p per min. (cheap rate); 48p per min all other times)

Addicks Archives produced in association with

**FURNITUBES**



# LUTON'S FUTURE IN THE MELTING POT...

Luton Town's 6-2 victory over Stoke City at Kenilworth Road last Saturday took even their experienced manager David Pleat by surprise, especially as his team had been two goals behind before they blasted the men from the Potteries in convincing style.

"We sometimes score one goal, occasionally two, but rarely three, and almost never more than three," said Pleat "so Christmas must have come early for us", said the delighted Hatters boss. In fact apart from the 5-0 win over Barnsley it is only the second time this season that Luton have in fact scored more than two goals in a League game.

"I have been trying to get the players to pass the ball and we did this well on Saturday," said Pleat "I was very pleased with the blend in the team - nice mixture of young and not so young."

21-year-old Jamie Campbell was thrust into the central defensive position for the first time ever in a League game in place of the suspended John Dreyer and he

acquitted himself well, whilst the not so young, bringing much needed experience to the team, are skipper Trevor Peake at 35 and Kerry Dixon at 32 who came good with three goals. "That is more than the team normally score, so I was delighted for Kerry," said Pleat.

Paul Telfer, who scored the only goal of the game to give Luton victory over Charlton in a recent televised match at Kenilworth Road, missed Saturday's game because of a muscle spasm in his back but he could be fit today. Mitchell Thomas, on loan from West Ham United, is back in his old surroundings having started his career at Luton, and he too is adding his experience to the side.

After their usual shaky start to the season Luton are slowly climbing away

from the relegation zone and Pleat, one of the most experienced and knowledgeable managers in the League is as usual going about his business in his singularly independent way, without worrying too much about Luton's off the field problems, which seem to have been a daily feature of his tenure at Kenilworth Road.

The club is currently up for sale with chairman and owner David Kohler, who has taken a fair deal of criticism over recent seasons, currently locked in talks with a consortium interested in taking over. They are fronted by the former Fulham and Millwall striker John Mitchell, who is currently vice chairman of St Albans and lives in

the area.

Luton will be hoping for everybody's sake that a decision on the club's future is taken one way or the other in the near future because they need to be back on a stable footing if they are to once again challenge for a place back in the big time of football in the Premiership.

Peter Burrowes



Luton manager David Pleat

## INTRODUCING THE HATTERS

Disregard the League table, Charlton are playing Luton. Our form over the years against the Hatters has never been impressive, indicated by our 1-0 defeat at Kenilworth Road last month, and the one point gained from two games last season. In fact, our overall record against Luton is fairly poor, with only 18

victories from 57 games.

It will be another tough game today, against a side battling for points at the wrong end of the League, but one in which David Pleat has instilled considerable belief and spirit.

His is a young squad, but one with a handful of highly experienced professionals who have had to

help the youngsters through some difficult spells, and that was never more evident than in last week's resounding victory over Stoke City, when the Hatters came from 2-0 down to win 6-2. However, Pleat will be forced to make changes from the side that beat Stoke, and also the team that defeated us at Kenilworth Road a month ago. John Dreyer is suspended, and Paul Telfer, who was the matchwinner against us, is injured. There has been no place recently for Geoff Auger, and Scott Houghton, who was on loan at The Valley last

season, has also struggled to pin down a regular slot in the team.

One player for whom that isn't a problem is American born keeper Juergen Sommer who has played every game for Luton so far this season. The 24-year-old had loan experience with Brighton and Torquay, but had not made a senior appearance for the Hatters until this season. He has been keeping out Australian Andy Petterson, who was in goal at Upton Park last year when we drew 0-0. He made one loan appearance for Ipswich, but was kept

out by Alec Chamberlain for much of last season.

Luton have plenty of experience at the back, none more so than Trevor Peake, club skipper and Theo Foley's choice as ITV Man of the Match. A much travelled central defender, Peake began his career at Lincoln City, where he played alongside George Shipley and Steve Thompson before moving to Coventry where he won an FA Cup medal in 1987. He cost Luton £100,000, and was voted joint Player of the Year last season.

Luton will be missing former Oxford defender John Dreyer, who is suspended today, so Jamie Campbell could be pressed into service as an emergency centre-back. Usually a forward, Campbell is a former Luton trainee.

Mitchell Thomas is currently back at Kenilworth Road on loan, having left Luton to join Spurs and then West Ham. He will fill a full-back role, as will Des

Linton, who joined the Hatters as part of the deal that took Steve Thompson to Leicester.

Also moving south to Kenilworth Road in that deal was Scott Oakes, an England under 21 international of whom much is expected in the future. He will probably play in midfield, alongside another experienced player, Alan Harper.

Once of Liverpool, and Sheffield Wednesday, Harper made his name in two spells at Goodison Park, in which time he was part of the all conquering Everton side of the mid-eighties. Now he lends his considerable experience to Luton's rise up the First Division.

Expect Welsh under 21 international Ceri Hughes to start in midfield. Hughes is now back in the side after a long absence through injury, and the quartet should be completed by Jason Rees, another under 21 for Wales.

Paul Telfer, who scored

against us a month ago, is struggling through injury, and there could also be a place on the bench for Tony Thorpe, the former Leicester player, who scored consistently for Town reserves last season.

Up-front, ex-Arsenal striker Paul Dickov will be partnered by former England striker Kerry Dixon, who scored a hat-trick against Stoke last week. Dixon began his career with Reading, but moved to Chelsea where he scored 147 League goals, and was rewarded with eight England caps. A move to Southampton was unsuccessful, so Dixon joined Luton on loan, and the move to his home town club recently became permanent.

Also likely to be included in the 14 today is John Hartson, the former youth and reserve player, but there will be no place for much travelled striker Ian Benjamin.

Steve Dixon



LUTON TOWN SQUAD 1993/94

Back row (left to right): Tony Thorpe, Jamie Campbell, Juergen Sommer, Andy Petterson, Des Linton, Paul Telfer. Middle row (left to right): John Moore (First Team coach), Andy McDade (Physio), Scott Oakes, Ceri Hughes, Marvin Johnson, David Greene, John Dreyer, Julian James, Terry Westley (Youth Team coach), Wayne Turner (Reserve Team coach). Front row (left to right): Jason Rees, Ian Benjamin, Trevor Peake (Captain), David Pleat (Manager), David Preece, Martin Williams, Richard Harvey.



## VALLEY VISITORS

### LUTON TOWN

#### FORM GUIDE 1993/94

- 14.8 Watford (H) won 2-1 (Telfer, Dixon)
- 17.8 Cambridge (A) lost 0-1
- 21.8 Portsmouth (A) lost 0-1
- 24.8 Cambridge (H) lost 0-1
- 28.8 Forest (H) lost 1-2 (Hartson)
- 11.9 Bolton (H) lost 0-2
- 14.9 Tranmere (H) lost 1-4 (Benjamin)
- 18.9 Middlesbrough (A) drew 0-0
- 25.9 Birmingham (A) drew 1-1 (Telfer)
- 2.10 Barnsley (H) won 5-0 (James, Oakes (2), Houghton, Hartson)
- 5.10 Bristol City (H) lost 0-2
- 9.10 Derby County (A) lost 1-2 (Williams)
- 16.10 Notts County (H) won 1-0 (Dickov)
- 20.10 Sunderland (A) lost 0-2
- 23.10 Oxford (A) won 1-0 (Hughes)
- 30.10 Leicester (H) lost 0-2
- 2.11 Palace (A) lost 2-3 (Hughes, Auger)
- 7.11 Charlton (H) won 1-0 (Telfer)
- 13.11 Southend (A) lost 1-2 (Dixon)
- 27.11 Stoke (H) won 6-2 (Dixon (3), Hartson, Oakes, Hughes)



# FOOTBALL LEAGUE DIVISION ONE

up to and including 1.12.93

Pos	Team	Home				Goals				Away				Goals	
		P	W	D	L	F	A	W	D	L	F	A	Pts	Gls	
1	CHARLTON ATH	18	6	2	1	16	5	4	3	2	8	9	35	(31)	
2	TRANMERE ROVERS	19	7	1	1	21	9	3	3	4	10	12	34	(24)	
3	CRYSTAL PALACE	17	6	2	0	17	5	4	1	4	17	14	33	(34)	
4	SOUTHEND UTD	18	5	2	1	17	6	5	1	4	17	16	33	(34)	
5	LEICESTER CITY	17	5	2	1	18	9	4	1	4	9	8	30	(27)	
6	MILLWALL	19	6	3	1	18	10	2	3	4	7	15	30	(25)	
7	DERBY COUNTY	18	7	0	2	21	13	2	2	5	8	17	29	(29)	
8	BRISTOL CITY	19	5	2	2	14	8	3	3	4	11	13	29	(25)	
9	PORTSMOUTH	18	5	2	1	14	8	2	5	3	13	19	28	(27)	
10	STOKE CITY	18	5	0	3	11	9	3	3	4	16	22	27	(27)	
11	NOTT'M FOREST	18	3	3	2	13	12	4	2	4	15	13	26	(28)	
12	WOLVES	18	3	5	1	15	9	2	4	3	14	12	24	(29)	
13	MIDDLESBROUGH	17	3	3	3	13	8	3	2	3	12	12	23	(25)	
14	BOLTON	18	4	2	2	13	9	2	3	5	11	16	23	(24)	
15	NOTTS COUNTY	18	7	1	1	18	8	0	1	8	6	22	23	(24)	
16	LUTON TOWN	18	5	0	4	16	11	1	2	6	7	15	20	(23)	
17	GRIMSBY TOWN	18	2	5	1	9	4	2	3	5	13	17	20	(22)	
18	BIRMINGHAM CITY	18	4	3	4	13	16	1	2	4	6	11	20	(19)	
19	WEST BROM	17	5	3	2	23	16	0	1	6	5	14	19	(28)	
20	OXFORD UTD	18	4	2	2	15	11	1	2	7	9	22	19	(24)	
21	WATFORD	17	4	3	3	16	16	1	1	5	8	17	19	(24)	
22	SUNDERLAND	18	5	1	4	15	11	0	1	7	3	19	17	(18)	
23	BARNLEY	19	1	2	7	9	19	3	2	4	14	18	16	(23)	
24	PETERBOROUGH UTD	17	3	4	3	12	10	0	2	5	3	14	15	(15)	

## ROLL CALL

ROLL CALL		1993/94						CAREER	
		LEAGUE APPEARANCES	LEAGUE GOALS	ALL CUP APPEARANCES	ALL CUP GOALS	TOTAL APPEARANCES	TOTAL GOALS	CHARLTON APPEARANCES	CHARLTON GOALS
1	STUART BALMER	10(2)	0	7	1	17(2)	1	100(12)	3
2	BOB BOLDER	0	0	0	0	0	0	296	0
3	ALAN CURBISHLEY	0(1)	0	0	0	0(1)	0	91(7)	6
4	PETER GARLAND	10	1	4(1)	1	14(1)	2	26(4)	3
5	PAUL GORMAN	2(3)	0	0(1)	0	2(4)	0	15(20)	8
6	KIM GRANT	7(5)	0	6(1)	1	13(6)	1	36(29)	6
7	STEVE GRITT	0	0	0	0	0	0	385(50)	26
8	CARL LEABURN	14	2	6(1)	4	20(1)	6	161(41)	30
9	PAUL LINGER	0(5)	0	0	0	0(5)	0	0(7)	0
10	ALAN MCLEARY	17	0	5	0	22	0	22	0
11	SCOTT MINTO	18	1	3	0	21	1	164(11)	8
12	GARRY NELSON	16(1)	8	5	0	21(1)	8	112(6)	22
14	SHAUN NEWTON	10(6)	2	4(1)	0	14(7)	2	16(7)	2
15	ALAN PARDEW	4	1	4(1)	0	8(1)	1	67(3)	14
16	DARREN PITCHER	18	2	7	0	25	2	170(3)	10
17	LINVY PRIMUS	0	0	0(1)	0	0(1)	0	4(2)	0
18	JOHN ROBINSON	17	0	2(1)	0	19(1)	0	37(1)	2
19	MIKE SALMON	17	0	7	0	24	0	52	0
20	PAUL STURGESS	0(2)	0	4	0	4(2)	0	5(5)	0
21	COLIN WALSH	17	3	4	1	21	4	221(10)	28
22	JOHN VAUGHAN	1	0	0(1)	0	1(1)	0	7(1)	0
23	PHIL CHAPPLE	18	3	6	0	24	3	24	3
24	STEVE BROWN	1(1)	0	1	0	2(1)	0	2(2)	0
25	DANNY MILLS	0	0	0(2)	0	0(2)	0	0(2)	0
26	DENNIS BAILEY	0(4)	0	2	0	2(4)	0	2(4)	0
28	MARK ROBSON	0(1)	0	0	0	0(1)	0	0(1)	0

# STATISTICS

Date	Opponents	F-A	Crowd
Sat 14 Aug	Birmingham City	1-0	7,788
Tues 17 Aug	Portsmouth	2-1	15,701
Sat 21 Aug	Sunderland	0-4	17,647
Tue 24 Aug	Tranmere Rovers	3-1	6,639
Sat 28 Aug	Bolton Wanderers	3-0	7,531
Wed 1 Sep	Millwall (A/C)	2-2	4,003
Sat 4 Sep	Watford	2-2	6,925
Tue 7 Sep	Crystal Palace (A/C)	4-1	3,868
Sat 11 Sep	Millwall	0-0	8,344
Sat 18 Sep	Bristol City	0-0	6,484
Tue 21 Sep	Crystal Palace (CCC2,1)	1-3	9,615
Sun 26 Sep	Crystal Palace	0-0	7,903
Sat 2 Oct	Wolverhampton W.	1-1	16,907
Tue 5 Oct	Crystal Palace (CCC2,2)	0-1	5,224
Sat 9 Oct	Barnsley	1-0	5,186
Tue 12 Oct	Brescia (A/C)	0-2	1,164
Sat 16 Oct	Leicester City	2-1	8,254
Sat 23 Oct	Grimsby Town	1-0	5,118
Sat 30 Oct	Oxford Utd	1-0	7,811
Tue 2 Nov	Derby County	1-2	8,123
Sun 7 Nov	Luton Town	0-1	6,327
Tue 9 Nov	Ancona (A/C)	1-1	1,000
Sat 13 Nov	Notts County	5-1	7,078
Tue 16 Nov	Ascoli (A/C)	0-3	3,597
Sat 20 Nov	Peterborough Utd	1-0	6,273
Sat 4 Dec	Luton Town	H	
Sun 12 Dec	Portsmouth	H	
Sat 18 Dec	Birmingham City	A	
Wed 22 Dec	Pisa (A/C)	H	
Mon 27 Dec	Southend Utd	A	
Wed 29 Dec	Stoke City	H	
Sat 1 Jan	Nottingham Forest	A	
Mon 3 Jan	West Bromwich A.	H	
Sat 8 Jan	F.A. Cup Round 3		
Sat 15 Jan	Leicester City	A	
Sat 22 Jan	Barnsley	H	
Sat 29 Jan	F.A. Cup Round 4		
Sat 5 Feb	Grimsby Town	H	
Sat 12 Feb	Oxford Utd	A	
Fri 18 Feb	Tranmere Rovers	A	
Tue 22 Feb	Sunderland	H	
Sat 26 Feb	Watford	H	
Sat 5 Mar	Bolton Wanderers	A	
Sat 12 Mar	Bristol City FAC Round 6	H	
Wed 16 Mar	Millwall	A	
Sat 19 Mar	Crystal Palace	A	
Sat 26 Mar	Wolverhampton W.	H	
Sun 27 Mar	Coca Cola Cup Final		
Wed 30 Mar	West Bromwich A.	A	
Sat 2 Apr	Southend Utd	H	
Mon 4 Apr	Stoke City	A	
Sat 9 Apr	Nottingham Forest FAC S-F	H	
Sat 16 Apr	Derby County	A	
Sat 23 Apr	Peterborough Utd	H	
Sat 30 Apr	Notts County	A	
Sat 7 May	Middlesbrough	H	
Sat 14 May	FA Cup Final		
To be arranged	Middlesbrough	A	

Key to statistics: Goalscorers in Bold \* - player substituted p - penalty



Salmon	Balmer(*A)	Minto	Garland	Chapple <sup>1</sup>	McLeary	Robinson	Pitcher	Leaburn	Gorman(*B)	Walsh	Nelson(*B)	Newton(*A)	Vaughan
Salmon	Pitcher	Minto	Garland	Chapple	McLeary	Robinson	Newton	Leaburn	Nelson <sup>1</sup>	Walsh <sup>1</sup>	Gorman	Curbishley <sup>*</sup>	Lawson
Salmon	Pitcher	Minto	Garland	Chapple	McLeary	Robinson	Newton	Leaburn	Nelson <sup>*</sup>	Walsh	Gorman <sup>*</sup>	Curbishley	Vaughan
Salmon	Pitcher	Minto(*B)	Garland <sup>1</sup>	Chapple	McLeary	Robinson	Newton	Leaburn	Nelson <sup>1</sup>	Walsh <sup>1</sup> (A)	Sturgess(*B)	Grant(*A)	Vaughan
Salmon	Balmer	Sturgess	Pardey(*B)	Chapple	McLeary	Robinson	Pitcher	Leaburn <sup>1</sup>	Nelson(*A)	Grant <sup>1</sup>	Garland(*B)	Newton(*A)	Vaughan
Salmon	Pitcher	Minto <sup>1</sup>	Garland	Chapple	McLeary	Robinson	Newton	Leaburn	Nelson <sup>1</sup>	Walsh	Balmer <sup>*</sup>	Grant	Vaughan
Salmon	Pitcher	Sturgess	Garland <sup>1</sup>	Chapple	Balmer <sup>1</sup>	Grant	Pardey	Leaburn <sup>1</sup>	Nelson(*A)	Walsh <sup>1</sup>	Gorman(*B)	Primus(*B)	Vaughan
Salmon	Pitcher	Minto	Garland	Chapple	McLeary	Robinson	Newton	Leaburn	Nelson	Walsh	Grant <sup>*</sup>	Sturgess	Vaughan
Salmon	Pitcher	Minto	Garland <sup>*</sup>	Chapple	McLeary	Robinson	Newton	Gorman	Grant	Walsh	Balmer <sup>*</sup>	Pardey	Vaughan
Salmon	Balmer	Minto	Garland(*A)	Chapple	McLeary	Pitcher	Newton(*B)	Leaburn <sup>1</sup>	Grant	Walsh	Robinson(*A)	Pardey(*B)	Vaughan
Salmon	Balmer	Minto	Pardey	Chapple	McLeary	Robinson(*B)	Pitcher	Grant	Nelson(*A)	Walsh	Newton(*B)	Gorman(*A)	Vaughan
Salmon	Balmer(*A)	Minto	Pardey	Chapple <sup>1</sup>	McLeary	Robinson	Pitcher	Leaburn	Nelson	Walsh(*B)	Grant(*B)	Newton(*A)	Vaughan
Salmon	Balmer	Minto	Pardey	Chapple	McLeary	Robinson	Pitcher	Leaburn	Nelson	Newton <sup>*</sup>	Grant <sup>*</sup>	Sturgess	Vaughan
Salmon	Balmer	Minto	Pardey(*B)	Chapple	McLeary	Robinson	Pitcher	Leaburn	Nelson	Newton	Grant <sup>*</sup>	Linger	Vaughan
Salmon(*A)	Balmer	Sturgess	Pardey	Chapple	McLeary	Newton	Pitcher	Leaburn	Nelson(*B)	Grant	Mills(*B)	Vaughan(*A)	
Vaughan	Pitcher(*B)	Minto	Pardey(*A)	Chapple <sup>1</sup>	McLeary	Robinson	Grant	Leaburn	Nelson	Walsh(*B)	Brown(*A)	Linger(*B)	Lawson
Salmon	Brown	Minto	Newton <sup>*</sup>	Chapple	Balmer	Robinson	Pitcher	Grant <sup>1</sup>	Nelson	Walsh	Sturgess	Linger <sup>*</sup>	Vaughan
Salmon	Balmer	Minto	Grant	Chapple	McLeary(*B)	Robinson(*A)	Pitcher	Leaburn	Nelson <sup>1</sup>	Walsh	Newton(*A)	Bailey(*B)	Vaughan
Salmon	Balmer	Minto	Grant(*A)	Chapple	McLeary	Robinson	Pitcher	Leaburn(*B)	Nelson <sup>1</sup>	Walsh	Newton(*A)	Bailey(*B)	Vaughan
Salmon	Balmer	Minto	Newton(*A)	Chapple	McLeary	Robinson(*B)	Pitcher	Leaburn	Nelson	Walsh	Grant(*B)	Bailey(*A)	Vaughan
Salmon	Brown(*A)	Minto	Garland	Chapple	Balmer	Grant	Pitcher	Bailey	Nelson(*B)	Walsh	Leaburn(*B)	Linger(*A)	
Salmon	Balmer	Minto	Garland(*B)	Chapple	McLeary	Grant(*A)	Pitcher	Leaburn <sup>1</sup>	Nelson <sup>2</sup>	Walsh <sup>1</sup>	Bailey(*B)	Newton(*A)	Vaughan
Salmon	Newton	Sturgess	Garland	Balmer	McLeary	Grant	Pitcher	Leaburn	Bailey	Walsh	Linger	Mills	
Salmon	Balmer	Minto	Garland	Chapple	McLeary	Robinson	Pitcher	Leaburn	Nelson <sup>1</sup>	Walsh <sup>*</sup>	Bailey	Robson <sup>*</sup>	Vaughan



## RAY SMALL OPTOMETRISTS

EYE EXAMINATION  
SPECTACLES AND  
CONTACT LENSES  
TEL: 081 293 94 93  
213 Charlton Rd. SE7



## CHARLTON GOLF DAY

The first Charlton Athletic golf day was held at Edenbridge on 17th November and both players and supporters had an enjoyable day. The winners of the event (pictured) were Theo Foley, Steve Brown, Christine Edgar and Diane Kelly, which was the only foursome to include ladies, so what went wrong lads!?

If you are interested in joining the society or participating in future days, please give Steve Dixon a call at The Valley on 081-293 4567 for further details.





# MATCH FACTS

## CHARLTON ATHLETIC

Managers: Steve Gritt & Alan Curbishley  
Colours: Red shirts, white shorts



## LUTON TOWN

Manager: David Pleat  
Colours: white shirts, blue shorts

19	MIKE SALMON	13	JUERGEN SOMMER
1	STUART BALMER	19	DES LINTON
11	SCOTT MINTO	30	MITCHELL THOMAS
4	PETER GARLAND	27	ALAN HARPER
23	PHIL CHAPPLE	5	TREVOR PEAKE
10	ALAN McLEARY	17	JAMIE CAMPBELL
18	JOHN ROBINSON	18	JASON REES
16	DARREN PITCHER	8	SCOTT OAKES
8	CARL LEABURN	22	KERRY DIXON
12	GARRY NELSON	29	PAUL DICKOV
21	COLIN WALSH	12	CERI HUGHES
14	SHAUN NEWTON	28	TONY THORPE
27	MARK ROBSON	14	JOHN HARTSON
22	JOHN VAUGHAN	1	ANDY PETTERSON



Today's Mitro matchball  
is sponsored by

**HYDROFRESH**  
(0474) 356540

## MATCH OFFICIALS

### REFEREE

PETER JONES (Leicestershire)

This afternoon's referee took up the whistle in 1975, progressing to the League in 1988. A BT account executive with two children, he is also chairman of the Loughborough Referees Society, and a keen golfer.

### LINESMEN

Red & Yellow flag  
MR D.R. CRICK (Surrey)

Yellow flag  
MR M. STOBART (Surrey)

Reserve Official  
MR D. CLEEVE (Surrey)

### Next Home Match

PORTSMOUTH

Sunday 12th  
December 1993  
Kick Off 3.00pm

# isostar

THE OFFICIAL SPORTS DRINK  
OF CHARLTON ATHLETIC

Today's match sponsor  
**John Mowlem Construction plc**  
are proud to have been entrusted with  
the design and construction of  
**Charlton's new 6000 seater East Stand**



John Mowlem Construction plc  
Tilbury Freeport, Essex RM18 7EF  
Telephone: 0375 850840  
Facsimile 0375 856954

**CHARLTON ATHLETIC CLUBCALL 0891 12 11 46**

Calls cost 36p per min. (cheap rate);  
48p per min at all other times

Match Facts  
is sponsored  
by



**RAWLINS TRANSPORT**  
**081-293 4248**