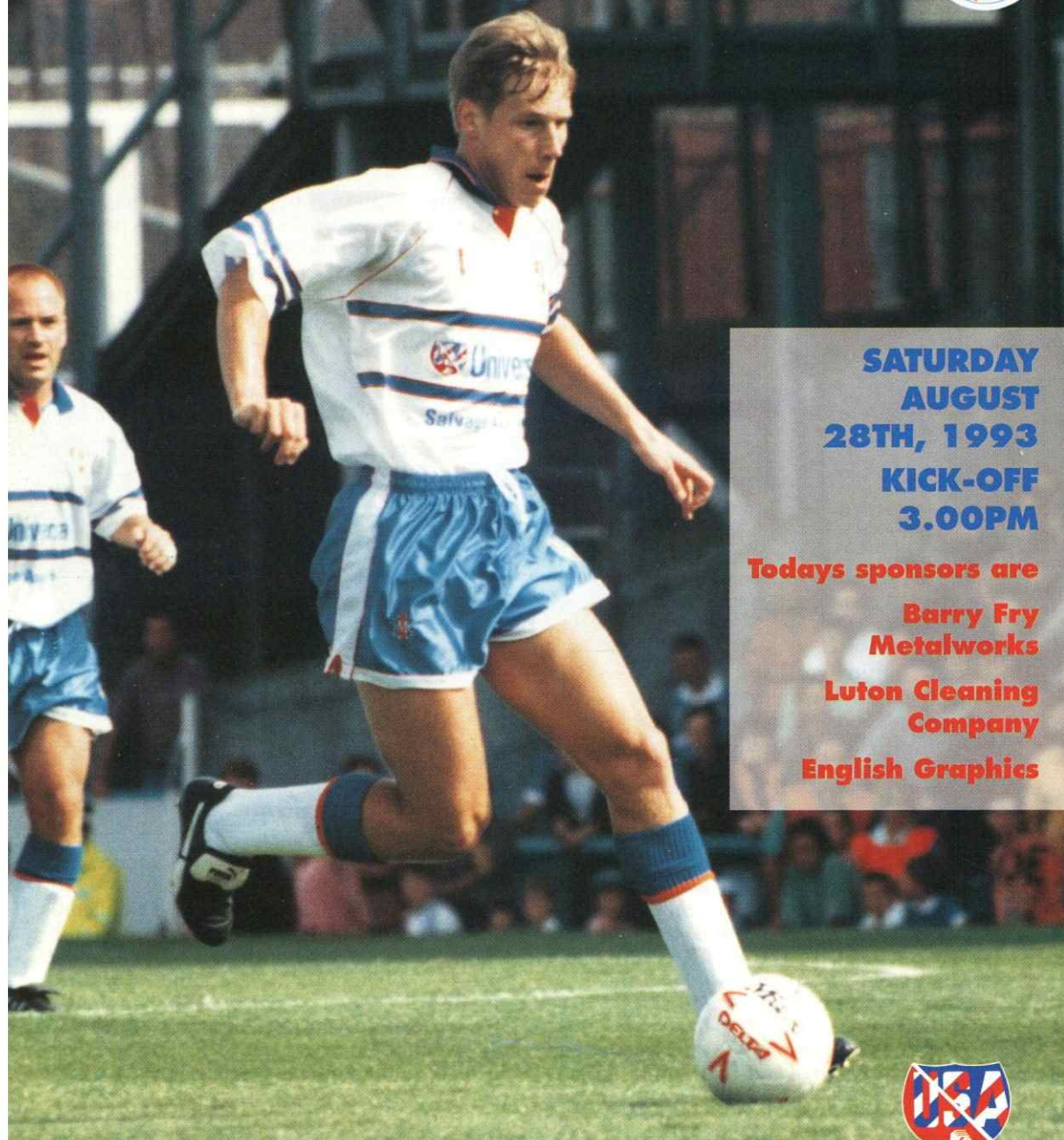


LUTON TOWN F.C. v NOTTM. FOREST



**SATURDAY
AUGUST
28TH, 1993
KICK-OFF
3.00PM**

Todays sponsors are

**Barry Fry
Metalworks**

**Luton Cleaning
Company**

English Graphics

ENDSLEIGH INSURANCE LEAGUE DIVISION ONE



**Sponsors of
Luton Town F.C.**

Proud of producing our own players

ON THE BALL WITH DAVID PLEAT



Welcome to today's visitors Nottingham Forest - their directors, supporters and players. I recall some great Forest-Luton games in the past.

No one will ever forget the 1959/60 final and the quality of Forest's football. Then came the Littlewoods final, after we had defeated Arsenal the year before. Our second last encounter with Forest was drawn; sadly by a goal well into injury time by the England player Des Walker. If the quality of football shown today is anything similar to previous games it will be a game to remember. Forest were the pre-season favourites with Derby for promotion.

Last Saturday's trip to Portsmouth was a difficult one, I felt early on as though Mr Poll, the referee, had been reading Jim Smith's programme notes; Jim had been recalling recent officiating of Portsmouth games, sighting a penalty at Oxford and a Leicester offside goal which took them to Wembley at last season's end.

After only a few minutes an impossible back pass interpretation by John Dreyer was penalised and could have lead to a goal. We started brightly, but after 15 minutes Portsmouth took over the game with Paul Walsh in electric form. I could not help recalling that I once sold him, to solve a crisis, for £750,000 to Liverpool plus a £100,000 credit note! Portsmouth's goal just before half-time was a body-blow and should have been prevented.

Our substitution at half-time added an attacking alternative and the second half was quite even. I was pleased with Juergen

Sommer's handling in his second league game and the defensive determination to prevent clear cut opportunities for the home team. It was ironic that in the last ten minutes of the game, Jim Smith, having sacrificed Walsh and McLoughlin, two of his best players, in order to keep the lead, nearly lost the points. Paul Telfer, Kerry Dixon and Scott Houghton all had chances to bring home a point.

A quite remarkable statistic of our team was

"A QUITE REMARKABLE STATISTIC OF OUR TEAM AT POMPEY WAS THAT WE HAD SEVEN PLAYERS WHO HAVE COME THROUGH OUR SYSTEM"

that we had seven players at Pompey who have come through our system and two who have been on schoolboy forms: Dixon and Houghton. This is something to be quite proud of and yet we know partly it is a result of the circumstances. Sommer, James, Johnson, Telfer, Hughes, Williams and Petterson all took their first professional steps at Luton. Only four players Oakes, Peake, Dreyer and Preece cost a transfer fee - unusual.

The previous Wednesday I saw an exciting



Scott Houghton beats his man at Portsmouth last Saturday.

Derby v Forest game where most of the players had been bought on the transfer market. These included two wingers in opposition: Kingsley Black and Mark Pembridge. Both were sold by Luton for more than one million each - unusual.

I do not support the thoughts of Q.P.R. Manager, Gerry Francis. He is advocating a block on transfers during the season. I believe the transfer system should be retained throughout the playing period. What I would like to see secured is an agreement where clubs are not hounded by players during existing contracts, as recently has happened at Spurs with Sheringham and Ruddock.

Once a contract is signed it should be hon-

oured until the expiry of the agreement and should only be revised at the clubs wish if the player agrees. Players today, with the advice of the P.F.A. and agents, are pushing salaries beyond clubs' means. If they are not careful, they will kill the game they love and are well paid for playing.

Enjoy the game.

Hartson aims for first team glory

PLAYER INTERVIEW



1 993 has been a whirlwind year for Town centre-forward John Hartson. The 18-year-old from Swansea started last season as a second-year apprentice in the Town's youth team, but now he is on the verge of playing for the first-team.

Hartson caught the eye with a string of impressive performances last season in both the Hatters' youth and reserve team sides, scoring a total of 38 goals in 49 games. Although this season is his first full season as a professional, Hartson is confident he can now step up to make an impact in the first-team.

"I featured regularly in the pre-season tour of Scotland, so I must be in with a chance," he said. "The second-half of last season helped me, because I was playing in the reserves against men instead of against boys in the youth team. I now feel I can start to match them strength for strength, but I am still growing and I will get stronger."

With the Town's former leading attacker, Philip Gray, now plying his trade in the north-east with Sunderland, Hartson has the opportunity to bed down a regular place in the side. He is gaining experience all the time and has benefited from the advice of the more senior figures in the Hatters' side.

"It definitely helps to have the likes of David Preece, Kerry Dixon and Trevor Peake in the team," he continued. "They help me whenever they can and are always encouraging me to do well. Kerry in particular has helped, because he has the experience of being a top-class striker with a proven track record."

John is the latest Hatter to emerge from the South Wales district and has followed in the footsteps of Mark Pembridge, Ceri Hughes and Jason Rees. One man responsible for their arrival is the

Town's Welsh scout Cyril Beech. John was spotted by Beech playing for his local side Winchwen in Swansea and once he had arrived at Kenilworth Road, the raw youngster was determined to make it as a professional.

"Playing football is all I have ever wanted to do," stated John. "Once Cyril had sent me to Luton I knew I could make it. I suppose I was under pressure in a way because of the other Welsh lads from my district who had made it at the club, but I have tried not to let anything like that get in the way of what I am trying to do."

"Andrew Jukes, who is currently the youth team centre-back, also came to Luton from South Wales, and it will be interesting to see if he can also make the grade."

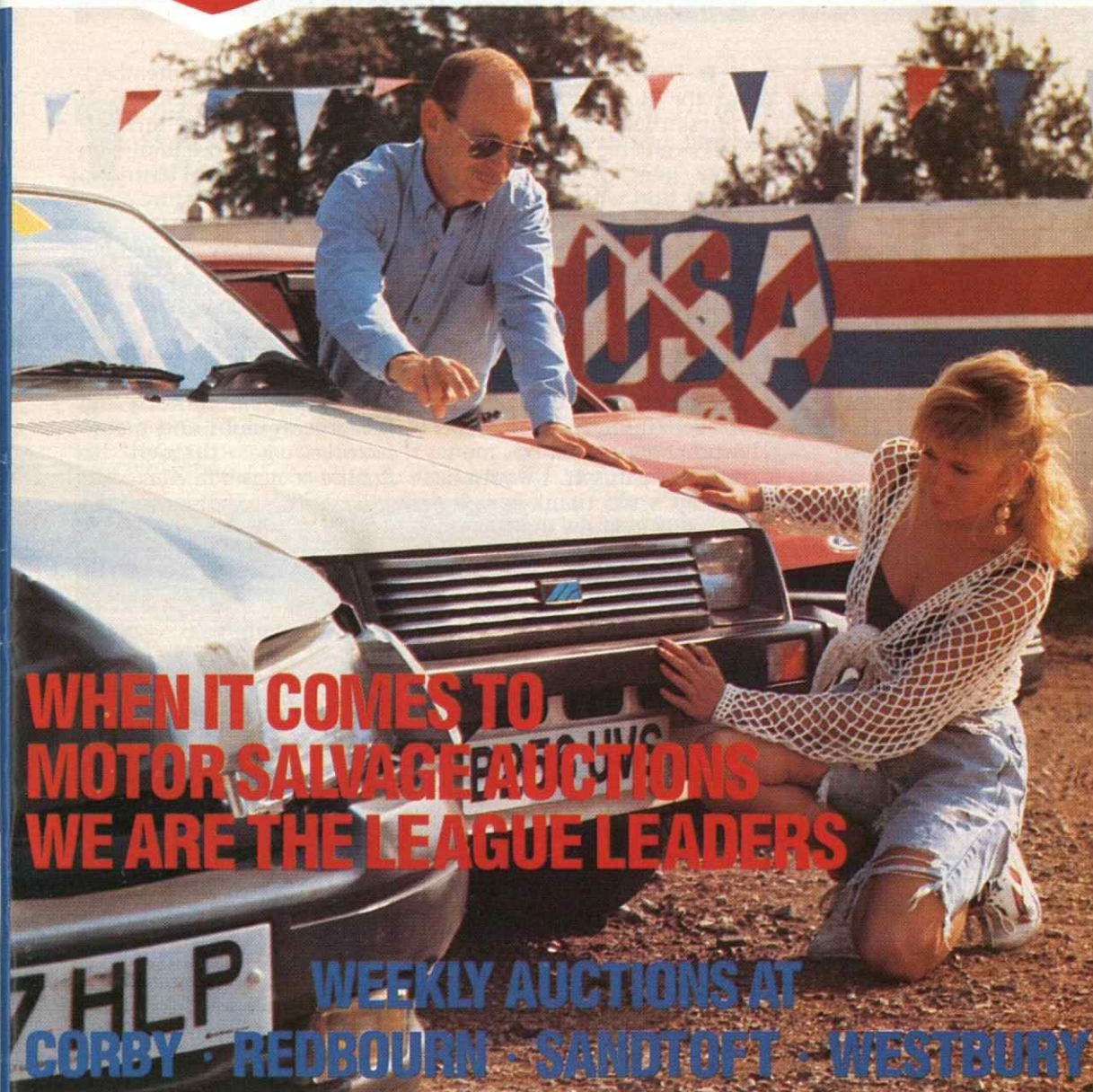
John's progress has been further enhanced by Wales under-18 recognition. He featured in matches against Holland and Israel and, after playing both games in Wales, states that the experience was the proudest of his footballing life to date.

"The first game against Israel was at Ninian Park and with my family and friends all watching I felt so proud. Standing for the national anthem gave me a real buzz and it is something I would like to experience regularly."

"If I establish myself for Luton this season, playing for the under-21 side has to be a realistic aim and then I can push for the full side. That is my dream."



Universal Salvage Auctions



WHEN IT COMES TO MOTOR SALVAGE AUCTIONS WE ARE THE LEAGUE LEADERS

WEEKLY AUCTIONS AT CORBY · REDBOURN · SANDTOFT · WESTBURY

TELEPHONE: 0582 792690 · FOR DETAILS

DUNSTABLE ROAD · REDBOURN · HERTS · AL3 7PX



Bobbers donation is gratefully received



ON THE INSIDE BY JOHN SMYLIE

Kenilworth Road Stadium,
1, Maple Road, Luton, Beds
LU4 8AW.
Tel: (0582) 411622
Fax: (0582) 405070.
Clubcall: 0891 12 11 23 (48p
per min peak, 36p off peak)

President: E.S. Pearson

**Chairman and
Managing Director:**
D.A. Kohler, Bsc. (Hons) ARICS

Directors: P. Collins, N. Terry

Vice Presidents: R.L. Banks,
C. Bygraves, R. Safranek,
J. Hudson, D. Ludlow.

Secretary: John Smylie

Manager: David Pleat

Coaches: John Moore,
Wayne Turner, Terry Westley

Physiotherapist: Andy McDade

Youth Development Officer:
Paul Lowe

Scouting: Les Shannon

Commercial Manager:
Andy King

Medical Officer: Dr Bill Berry

Club Dentist: A. Chris BDS (Syd)

■ Thanks to the generosity of the Bobbers Travel Club, physiotherapist Andy McDade has been able to secure a valuable item of equipment to assist him with the treatment of injured players. It is a Continental Plinth (remedial/treatment table) and costs £749.00. Before this afternoon's kick-off, a cheque for this amount will be presented on the pitch to Andy by representatives of the Bobbers Travel Club. To all members who have donated money towards this gift, I would like to say a big thank-you. It is pleasing to know that we have a group of dedicated supporters who have the club's interest at heart and regularly contribute funds.

■ Following a request by Norwich City who are playing a UEFA cup tie at Carrow Road on Wednesday September 15, we have agreed to defer our reserve team home fixture, scheduled for that afternoon, to the following afternoon

(Thursday 16th September). The kick-off time remains at 2.00pm. I would remind all supporters that no admission charge is made for entry to any reserve team fixture.

■ On Monday, September 6, commencing at 6.55pm on BBC2, a new series of 'Standing Room Only' is being transmitted. The first programme is devoted largely to the replica kit industry and the process clubs and manufacturers go through to finalise a new kit. Our shirt will be an integral part of the feature as it is one of the few that has not been changed this season.

■ The club receive many letters from boys in Africa seeking information on the Hatters and their players. One recently received is from a 15-year-old who is anxious to correspond with a boy or girl of similar age, in order to keep up to date with our results and fixtures. If anyone is interested, the name and address is: Justin Nyaths, 277 10th Street, Makokaba, PO Mzi Kazi, Bulawayo, Zimbabwe.

■ All supporters are advised that the club offices will be closed on Bank Holiday Monday next, 30th August.

Honours

Littlewoods Cup winners 1987-88
FA Cup finalists 1958-59
Littlewoods Cup finalists 1988-89
Simod Cup finalists 1987-88
Champions - Division Three (S) 1936-37
Champions - Division Four 1967-68
Champions - Division Two 1981-82

Editorial : Collings Communications,
PR and Media Consultants, Hitchin, Herts.
Tel: 0462 441068 Fax: 0462 441069

Design and print: McLeod Warner Limited, Luton. Tel: 0582 38389

Potential points towards an improved season



CAPTAIN'S COLUMN BY TREVOR PEAKE

Today's game against Forest is bound to be a tough test for our side, but the football purists will be guaranteed an enjoyable afternoon.

Despite the shock of relegation from the Premier League last season, Nottingham Forest have made their intentions clear already this season, and we will face a stern test to stop them from cruising to the top of the table in the same fashion as Newcastle United last season.

Despite our narrow defeat at Portsmouth last Saturday, we showed enough potential, particularly in the second half, to suggest that



Jason Rees, watched by Ian Benjamin, directs a header goalwards at Cambridge United on August 17.

we will have a much-improved season. Players are still settling in after the summer break and I am sure it will take a few weeks for us to hit our true form, but already I have been pleased with Juergen Sommer's displays after a bruising introduction to First Division football. He had a magnificent afternoon at Fratton Park last weekend and I am sure the performance will have given him a great confidence boost.

We were unhappy not to come home with a draw from Pompey, but we have a chance to improve the situation this afternoon.

At this stage of the season, we have just as much chance as anyone else to make an impression on the league table because the results tend to follow no particular pattern. Just look at Sunderland, 5-0 losers at Derby County on the opening day of the season but 4-0 winners against Charlton Athletic, who themselves had previously won two games out of two.



The Station with
More Winning Ways

The Hot FM

**LUTON
&DISTRICT**

We operate buses in most parts of
the Home Counties.
For further information about your
local services please telephone your
nearest bus station or garage.

**LUTON
&DISTRICT**

Luton - Dunstable - Aylesbury - Leighton
Buzzard - Slough - Chilterns - Lee & District -
Red Rover - Stevenage - Hitchin - Hemel
Hempstead - Watford

Middlesbrough looking for a swift return

1

NEWS ON ONE

Lennie Lawrence, the manager who took Middlesbrough into the top flight in 1991-92, is hoping to repeat that feat this season. Whilst passing Newcastle on their way out of the Premier League, Middlesbrough lost their claim as the North East's top club and they are eager to regain it.

As one of the critics' tips for promotion, they have not disappointed so far. After two games they had claimed maximum points. A difficult opening fixture away to Notts County saw them take three points in an exciting 3-2 win and three goals and three points resulted in their second game, at home to Derby County.

Middlesbrough were in confident mood after goals from Alan Kernaghan, John Hendrie and Paul Wilkinson left them the only side in the division with a 100 per cent record. Charlton, the only other team to have taken maximum points from their first two games, lost their record on Saturday at Sunderland. The Addicks had beaten Birmingham and Portsmouth before their good start was wrecked by a four goal defeat at Roker Park.

Sunderland romped home, with all four goals coming in a 19-minute spell in the second-half. Charlton co-manager Steve Gritt said afterwards: "Before the first goal we controlled affairs, but it's that old failing of not sticking the ball in the net. I was not happy with the way we disintegrated."

Nottingham Forest managed to do what Charlton couldn't and scored five goals at home to Grimsby. Frank Clark's new team may not have a 100 per cent record but they are unbeaten, despite letting in four goals in two games.

Their first victory enthralled a 23,000 crowd in a 5-3 win over Grimsby, although Forest fans will not be pleased to see the defensive frailties of last season persisting. Clark admitted: "We lack strength in depth," and last week added David Phillips from Norwich to his squad, with a warning that he may not have finished buying.

Millwall, who have recently spent £15 million on their new all-seater stadium, have definitely finished buying. Having lost their star defender Colin Cooper to Forest

pre-season they have been left looking only a shadow of last season's promotion contenders. In their showpiece opening league fixture at the 'New Den', Millwall were trounced 4-1 by Barry Fry's Southend, a game aptly summed up by manager Mick McCarthy as: "The worst performance I have seen since I took over as Millwall manager."

Crystal Palace have also disappointed so far, with South London football facing a torrid time. Palace gained one point from their first two games, and failed to net on both occasions. A draw with Tranmere and a loss at Bristol City left them second from bottom, with Watford the only team still to get off the mark after two games.

With four players sent-off on the second Saturday of the season, late challenges and elbowing incidents are becoming increasingly frequent. Managers, it seems, are turning a blind eye. Crystal Palace's Bobby Bowry was sent off at Bristol for an elbowing incident and Palace manager Alan Smith commented: "It was an innocuous challenge and deserved no more than a caution." The recipient Gary Shelton was taken to hospital for an x-ray on a suspected broken cheekbone.



ANSWER TO SOCCER QUIZ NO.1/93: 1B, 2C, 3A, 4B, 5C, 6B, 7B, 8A, 9C, 10B.

S U P P L I E D B Y



MITRE SPORTS INTERNATIONAL LTD.
BIRKBY, HUDDERSFIELD, HD1 5AJ. TEL: 0484 537488. FAX: 0484 530042

A GENESCO Company



Fans' Forum



PENNANT HELPS OUT LOCAL SIDE

Dear Sir,

Just a quick note to say thank-you to Luton Town for the donation of a signed pennant for our presentation evening.

The whole evening was a success and along with a signed Watford ball, a signed Barnet shirt, a signed Graham Taylor photograph and two England tickets, we managed to raise nearly £120.

This money has helped us in our bid to meet Herts County League requirements of having our pitch railed for this season, therefore retaining our senior status.

Mr G.Hopkins, BAC F.C., British Aerospace Sports & Social Club, Bragbury End, Stevenage, Herts.

A CREDIT TO OUR CLUB

Dear Sir,

Just a few lines to thank the club for allowing Wayne Turner to bring Justin Gentle, Richard Harvey and Ian Benjamin to present prizes to the children on our Summer Coaching Course.

The presence of professional footballers adds a touch of glamour to the day for the boys and Wayne and the lads were a credit to Luton Town F.C.

My sincerest thanks on behalf of all the parents and our coaching staff and I hope that our clubs can continue the excellent relationship we have.

Phillip Wallace, Chairman, Borehamwood F.C., Broughinge Road, Borehamwood, Herts WD6 5AL.

MCLEOD
WARNER
LIMITED

digital
artwork,
origination
&
print

16 Rothesay Rd,
Luton, Beds
LU1 1QX
Tel: (0582) 38389
Fax (0582) 423597



AT HFC BANK, YOU'LL DISCOVER THE MOST
CIVILISED PEOPLE IN THE FINANCIAL JUNGLE.

IF YOU REQUIRE ANY ADDITIONAL INFORMATION CALL OR VISIT YOUR
LOCAL BRANCH MANAGER: DAVID BLUMSOM, HFC BANK PLC,
15/17 UPPER GEORGE STREET, LUTON, BEDFORDSHIRE, LU1 2RD.

TELEPHONE: 0582 459797



All loans subject to status. A written quotation of our credit terms is available
on request. HFC Bank plc. Registered office: North Street, Winkfield,
Windsor, Berkshire SL4 4TD. Registered in England No. 1117305.

R. J. BLOW &
C O M P A N Y

THE FRIENDLY ACCOUNTANTS

Book-Keeping,
Taxation and Wages etc.



STIRLING HOUSE,
30 GUILDFORD STREET,
LUTON, BEDS LU1 2NR



Tel: (0582) 38792
Fax: (0582) 42347

Action Replay

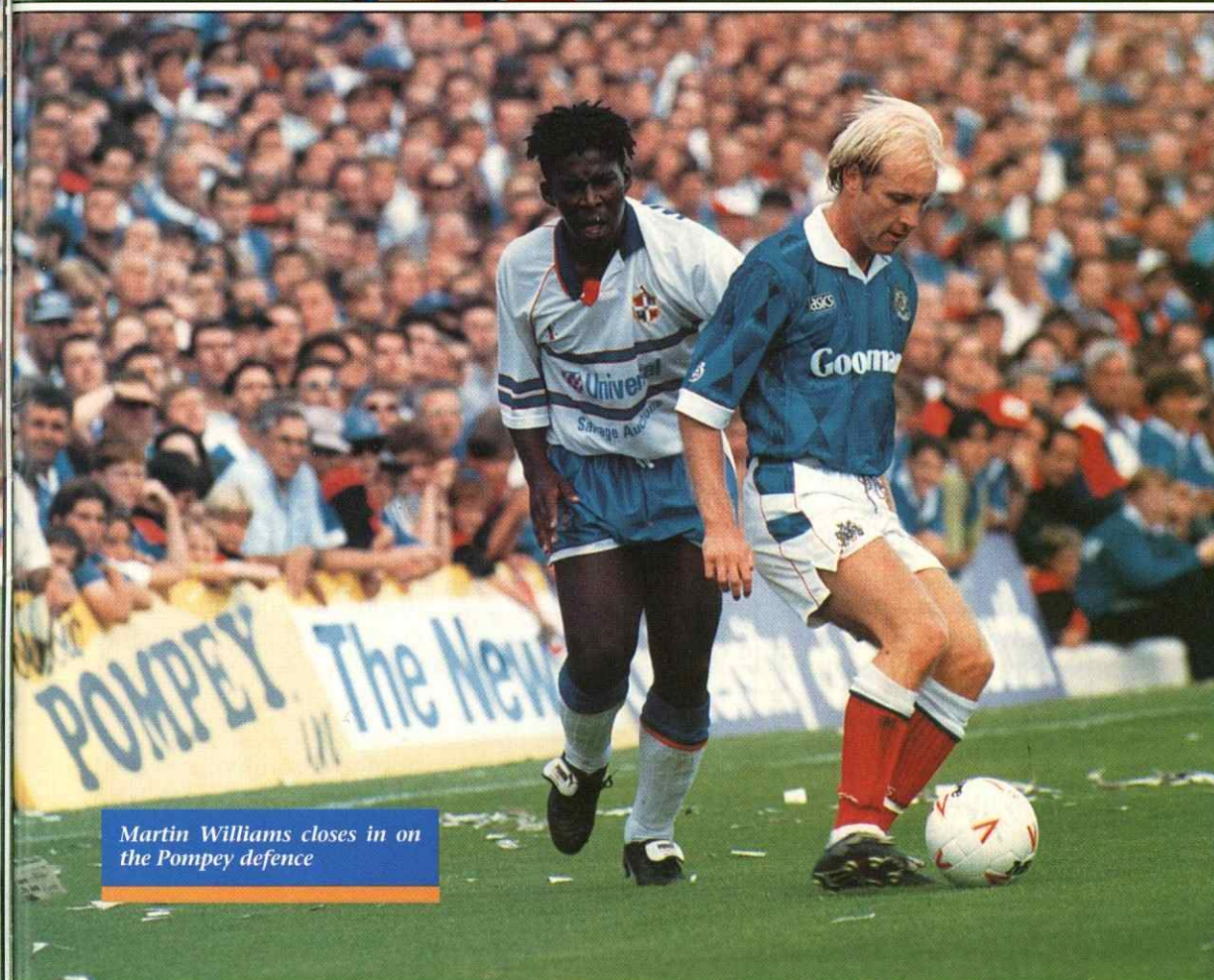
From: Fratton Park
Date: August 21, 1993
PORTSMOUTH 1
(Hall)
LUTON TOWN 0
Attendance: 12,248

PICTURES BY JOHN WOOD, HERALD & POST

Kerry Dixon reaches for possession as Andy Awford looks on.



Scott Houghton fires in a shot



Martin Williams closes in on the Pompey defence

Petterson makes history



AROUND THE TOWN

Goalkeeper Juergen Sommer's eight stitches, sustained in a clash with Watford forward Ken Charlery on the opening day of the season, meant that Andy Petterson made club history as the first sub goalkeeper to play for the Town in a Football League match. Juergen, however, recovered sufficiently from his debut incident to perform confidently against Cambridge United three days later.

KERRY WITHHELD BUT HE'S READY FOR LEAGUE ACTION

Some supporters may have been disappointed not to see Kerry Dixon feature in our two Coca Cola Cup ties against Cambridge United, but he was rested to prevent him being cup-tied for his club Southampton. Kerry is currently half-way through another month's loan spell at Kenilworth Road.

"The decision not to cup-tie him was as much mine as Southampton's," said David Pleat. "I didn't want to push asking for

permission to play him because Ian Branfoot has been very fair regarding Kerry's loan spell with us."

SOCCER COURSE PLAYERS RECRUITED

Following one of the Hatters' successful soccer courses, run by youth development officer Paul Lowe, two players have been invited to join the club's Centre of Excellence.

Darren Sutherland (11), who hails from Luton, and Darren Howe (12) from Kensworth, now attend training sessions on Monday nights at the Electrolux Training Ground.

Paul will be holding the latest in his series of soccer courses on Monday nights throughout September. For further information, call him on (0582) 411622.

ASSOCIATE SCHOOLBOY SIGNINGS

Andrew Barr and Liam George have both joined

the club as associate schoolboy signings. Andrew, a 14-year-old from Leighton Buzzard has trained with the club for four years while Lutonian Liam, who is also 14, has only recently started training with the club after twice breaking his leg.

BOBBERS TRAVEL CLUB

Coaches for the trip to Sunderland next Saturday will depart from Cranfield at 7.30 am and from Luton at 8.30 am with the normal pick-up points en-route. The price for adults is £13.50 and for children/OAP's £11.00.

NEW KIT ANNOUNCED

Mark Shane Couch, winner of our design-a-kit competition, is pictured with David Pleat after our game with Watford on August 14. His winning design was selected by fellow Town supporters and will be used as the Town's third strip for the forthcoming season.

Ticket Office news update



BY CHERRY NEWBERY

Watford v Luton Town

ANGLO ITALIAN CUP, QUALIFYING ROUND

Tuesday, August 31, 1993 - Kick-off 7.45 pm

Seating is priced at £10 in the South West Stand, Section K. Standing is £6 in the Rookery End, South West Stand. Pay on the turnstile only on the night of the match for both seating and standing.

Sunderland v Luton Town

ENDSLEIGH INSURANCE LEAGUE DIVISION ONE

Saturday, September 4, 1993 - Kick-off 3.00 pm

Standing only is available to Luton supporters for this match, price £8.00 (no concessions). Pay on the day at the turnstile only.

Use turnstiles 14 and 15 on the Roker South Terrace.

Luton Town v Southend United

ANGLO ITALIAN CUP, QUALIFYING ROUND

Tuesday, September 7, 1993 - Kick-off 7.45 pm

Tickets for this match are now on sale at normal league prices. Normal guesting facilities apply.

Luton Town v Bolton Wanderers

ENDSLEIGH INSURANCE LEAGUE DIVISION ONE

Saturday, September 11, 1993 - Kick-off 3.00 pm

Tickets are now on sale at discounted prices. Normal guesting facilities apply.

Ticket Office Hours

Monday - Friday 10 am - 5 pm.

Non-match Saturdays 10am - 1 pm.

Match Saturdays 9am - kick off, after the match 4.45 pm - 5.15 pm.

For bookings, membership and enquiries, ring the Ticket Office on (0582) 416976. Supporters wishing to order by credit card can do so by using the 24-hour Credit Card Hotline on (0582) 30748.

Travelling to...

Watford

Address: Vicarage Road, Watford, Herts WD1 8ER.

Telephone: 0923 30933.

Take the M1 south to junction 6, then to Watford on the A405, A41 and A411. Take the A412 (signs Slough) and turn left into Harwoods Road. Turn left at the end for Vicarage Road.

Sunderland

Address: Roker Park Ground, Sunderland, Tyne & Wear SR6 9SW.

Follow signs Dunstable (A505) A5065. In 3.9 miles at roundabout take third exit (signs motorway M1). At next roundabout take 1st exit (signs The North) to join M1 to junction 32. Follow signs The North, Doncaster to join M18 to junction 2. Follow signs The North to join A1(M). 7.9 miles farther forward, leave motorway to join A1 (Scotch Corner). In 1.8 miles join A1(M) again. In 24.6 miles leave motorway (signs Sunderland) & at roundabout take the third exit A690 (East Harrington). At roundabout take second exit and follow signs South Shields (A1018) to cross Wearmouth Bridge. In 0.4 mile, turn right into Roker Avenue, left into Gladstone Street, then right into Roker Baths Street for ground.

Spotlight on today's visitors



NOTTINGHAM FOREST F.C. 1993-94

■ Nottingham Forest visit Kenilworth Road this afternoon in determined mood and ready to bounce back into the top flight at the first attempt.

■ Injuries to key players Stuart Pearce and Neil Webb, plus the lack of firepower in attack, all contributed to Forest's demise in the inaugural Premier League last season. However, a change of personnel has given the Forest faithful renewed optimism for the current campaign.

■ The retirement of enigmatic manager Brian Clough, plus the departure of his son to Liverpool and Roy Keane to Manchester United, have given new boss Frank Clark the chance to re-build in his own way. His major coup of the summer was the contract renewal of club skipper Stuart Pearce, whose influence was sadly missing in his absence last season.

■ Mr Clark has bolstered his attack by signing the potentially explosive goalscoring talents of Stan Collymore from Southend United, and Gary Bull from Barnet. Des Lyttle has also been brought in to strengthen the defence, so it

appears that Mr Clark is now close to completing his jigsaw to mount a serious championship challenge.

■ Following a 1-1 draw at Southend, a game Forest should have won, and a 1-1 draw in a frenetic derby game against Derby County, they took maximum points against Grimsby Town last Saturday. The 5-3 victory had a 'Luton Town connection' with goalscorers Kingsley Black, Lee Glover and Paul Fletcher all having performed for the Town in the past.

■ Nottingham Forest was formed in 1865 and the club became known as Forest Football Club. The game which first drew founders together was 'shinney', a form of hockey. They played their first Football League match on September 3, 1892 against Everton in Division Two. The game ended in a 2-2 draw.

■ The club won the Division One championship in 1978; the Division Two title in 1907 and 1922; the Third Division crown in 1951; the FA Cup in 1898 and 1959 and the League Cup in 1978, '79, '89 and '90.



Back row (left to right): Gary Crosby, Ray McKinnon, Lee Glover, Steve Chettle, Neil Webb, Scot Gemmill, Colin Cooper, Steve Stone.

Middle row (left to right): Archie Gemmill (coach), Liam O'Kane (coach), Vance Warner, Carl Lasiter, Andrew Marriott, Robert Rosario, Mark Crossley, Brett Williams, Kingsley Black, Graham Lyas (physio), Pete Edwards (coach).

Front row (left to right): Gary Bull, Brian Laws, Stan Collymore, Frank Clark (manager), Alan Hill (assistant manager), Stuart Pearce, Ian Woan, Des Lyttle.

VISITORS ON PARADE

MARK CROSSLEY (goalkeeper) - The big Yorkshireman, who established himself as Forest's first-choice in recent years, signed a new four-year contract midway through last season. Towards the end of last term he was forced onto the substitutes' bench by some impressive displays from Andrew Marriott. One of only two goalkeepers to save a penalty in an F.A. Cup final.

DES LYTTLE (defender) - Swansea City's 'Player of the Year' last season, Des is one of the new era started by Frank Clark. The £375,000 summer signing represents a great turnaround from being released for nothing by Leicester a couple of years ago.

COLIN COOPER (defender) - Colin is happy in any position across the back-four, and is another of Clark's 'new boys'. The ex-Millwall captain was signed for £1.5 million in the close season and is a former England under-21 international who played for Middlesbrough in his native North East before moving to The Den.

CARL TILER (defender) - One of Forest's few success stories last season. Following Des Walker's departure, the former England under-21 international and £1.5 million signing from Barnsley found himself with extra responsibility at the heart of the defence and responded magnificently.

STUART PEARCE (defender) - The England captain quashed speculation over his future this summer by signing a new four-year contract. Stuart suffered a groin injury which required surgery and ruined the second-half of his season, but is now fully recovered. Stuart is a firm favourite with England and Forest fans.

BRIAN LAWS (defence) - The oldest member of the first-team squad at the City Ground, he has been a great servant since his £120,000 move from Middlesbrough five years ago.

STEVE STONE (midfield) - After being on the first-team fringe for a while, the young midfielder got his

big chance last season. He made his full debut against Middlesbrough in February and grabbed the winning goal. His no-nonsense approach has earned him the fans' respect.

NEIL WEBB (midfield) - Returned from Manchester United for his second spell at the City Ground at the end of 1992. Shortly afterwards he suffered an achilles tendon injury and missed the last 16 games of the season. Neil is a full England international with 26 appearances under his belt.

IAN WOAN (midfield) - A bargain £80,000 buy from Runcorn in 1990, he has earned himself the reputation as one of the brightest wingers around. The 25-year-old was signed by Forest whilst studying to become a chartered surveyor after he had slipped through the net at Manchester City as a teenager.

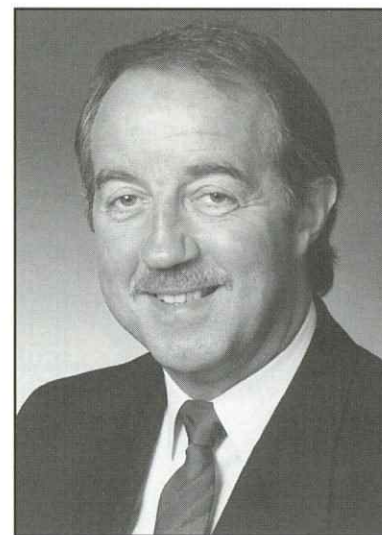
KINGSLEY BLACK (midfield) - The former Hatter moved to the City Ground for £1.5 million in August 1991 and plays mostly on the left. Kingsley shot to prominence when Luton won the Littlewoods Cup in 1988 and went on to make 27 appearances for Northern Ireland after spurning the England set-up.

LEE GLOVER (forward) - The former Scotland under-21 international stepped into the first-team last term on numerous occasions. The Kettering-born 23-year-old faces tough competition up front again this season.

ROBERT ROSARIO (forward) - The 6' 3" striker was signed by Brian Clough last March from Coventry City for £400,000. More a goal-maker than goal-taker, Robert started his league career with Norwich City where he made more than 120 league appearances and won four under-21 caps with England.

STAN COLLYMORE (forward) - Another of Frank Clark's new signings, Stan was bought from Southend for £2 million, but with the figure rising with the number of goals he scores, and, if he gains England recognition. Stan has been suffering with tonsillitis.

MEET THE BOSS

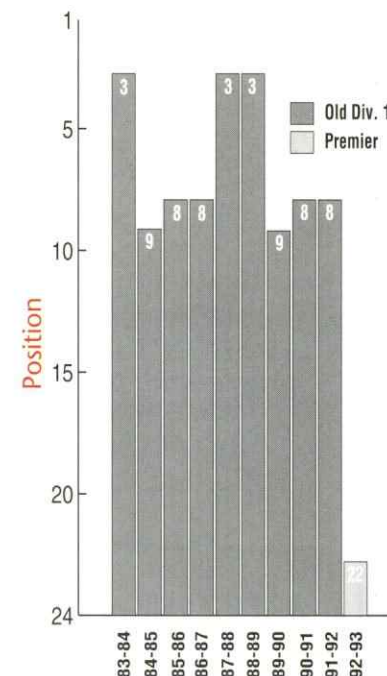


Franks Clark returned to the scene of his most successful playing days when he was named as Brian Clough's successor at the back end of last season.

The highly popular Georgie spent four years at the City Ground as a player, accumulating a League Championship medal, two League Cup winners tankards and a European Cup winners medal.

Clark finished his playing career at Forest and had a spell at Sunderland as assistant manager, then he became the reserve team coach back at Forest before settling down at Brisbane Road, as manager first and then as managing director.

10 YEAR RECORD



FREE MEMBERSHIP OF THE LTFC TRAVEL CLUB

LTFC has teamed up with Worlds End Travel Ltd to offer all supporters membership of this new Club absolutely FREE!
Members will be entitled to:

- **FREE TRAVEL INSURANCE** with every package holiday booked
- **COMMISSION FREE** currency exchange with International Currency Exchange at London Luton Airport
- **SPECIAL OFFERS** on worldwide holidays and travel
- **LATE AVAILABILITY OFFERS** - last minute flight and holiday bargains

FREE ENTRY TO GRAND DRAW

Everyone booking through the Travel Club will automatically be entered into a Grand Draw to be one of our special guests at the Crystal Palace game on 16th April 1994. The winners will enjoy

DRINKS AND A MEAL

MEET THE PLAYERS

BEHIND THE SCENES TOUR OF KENILWORTH ROAD

SO DON'T DELAY - return the application form in today's programme now to qualify for your FREE membership and a chance to win this terrific day out.

For extra forms or more information call 0582 26454

or

**visit the SKYLINE TRAVEL SHOP
at London Luton Airport open 7 days a week.**

LUTON TOWN HATTERS SHOP

FOR ALL THE FAMILY

LUTON TOWN REPLICA KITS AND TRACKSUITS NOW IN STOCK

SHIRTS

22"/24" 26"/28" 30"/32"£24.99
34"/36" 38"/40" 42"/44"£29.99

GOAL-KEEPER SHIRTS

22"/24" 26"/28" 30"/32"£24.99
LARGE/XL£29.99

SHORTS

24"/28"£14.99
30"/38"£15.99

SOCKS

JUNIOR£3.99
SENIOR£4.99

SHELL SUITS

22"/24" 26"/28" 30"/32"£49.99
LARGE/XL£59.99

SCARVES

PRINTED SCARF£3.99
JAQUARD SCARF£5.99

HATS/CAPS

WOOLLEN SKI HAT£3.99
BASEBALL CAP£4.99
BRONX HAT£5.99

SOUVENIRS

MONEY BOXES£3.99
TEAM MUGS£2.35
TEAM PENNANTS
MEDIUM£3.50
LARGE£4.99
CAR TEAM MINI KITS£3.99
TEAM ALARM CLOCK£9.99
PROGRAMME BINDER£8.50
TEAM FOOTBALL£12.99
SEW-ON BADGE£1.50
BLAZER BADGE£4.99
ENAMEL BADGEFROM £1.99

NEW IN

LTFC POLO SHIRTS
MED/LARGE/XL
ASSORTED COLOURS£17.99



*Take advantage of our mail
order facility*

KENILWORTH SHOP OPENING TIMES

WEEKDAYS

11AM - 5PM

SATURDAY MATCH DAYS

**10.30AM - 3PM
AND 4.45 - 5.30PM**

OTHER SATURDAYS

10AM - 1PM

**ACCESS AND VISA
WELCOME**

**TELEPHONE AND CREDIT CARD HOTLINE
0582 450004**

Luton Town

Manager: David Pleat

Colours: White/Blue Shirts,
Blue/White Shorts



Official ball sponsor

Nottingham Forest

Manager: Frank Clark

Colours: Red Shirts
White Shorts

SQUAD

1. Andy Petterson
2. Martin Williams
3. Marvin Johnson
4. Julian James
5. Trevor Peake
6. John Dreyer
7. Paul Telfer
8. Scott Oakes
9. Ian Benjamin
10. David Preece
11. Richard Harvey
12. Ceri Hughes
13. Juergen Sommer
16. David Greene
17. Jamie Campbell
18. Jason Rees
19. Des Linton
20. Aaron Skelton
22. Kerry Dixon
26. Scott Houghton

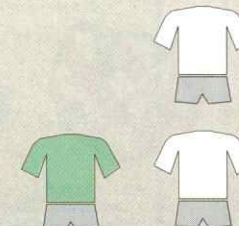
SUBS



SQUAD

1. Mark Crossley
2. Des Lyttle
3. Stuart Pearce
4. Colin Cooper
5. Steve Chettle
6. Steve Stone
7. Kingsley Black
8. Neil Webb
9. Robert Rosario
10. Lee Glover
11. Ian Woan
12. Lee Harvey
14. David Phillips
15. Andrew Marriott

SUBS



REFEREE:

G.F. Willard
(Worthing, West Sussex)

LINESMEN:

F.L. Gragen (yellow flag) M.A.
Hair (red/yellow flag)

FOURTH OFFICIAL:

R. Crowhurst



Plowmans AND LUTON TOWN – THE PERFECT MATCH

*of
Luton*

You'll do a great deal better with us!

Vauxhall Main dealers, 15 Hitchin Road, Luton.

Tel: 454666

EXECUTIVE MEMBERS

KENILWORTH SUITE

Anachem Ltd
Mr G. Chamberlain
Fisher Frozen Foods Ltd
F & T Goodwin Ltd
Grosvenor Contracts
Handscombe Financial Services Ltd
R.W. Harvey & Son
Holmes Commercial
Origination
Radley Shaw
Regal Litho
Wilton Contract and Vehicle Rental

CLUB 82

T.J. Aldridge Builders
Bevengrace Ltd
Bervale Meade Insurance Brokers
C.P. Contracts
J.S.B. Business Forms
Luton Cleaning Company
Nordic Supplies
Mr F.W. Pearce
Mr J. Peters
Shorey Travel
Space Display Systems
Techno Sign Ltd

INDIVIDUAL BOX HOLDERS

Mr Alan Garner
Mr Malcolm Eade
Mr Roger Eade
Mr R. J. & J. R. Pinney

EXECUTIVE BOXHOLDERS



HARRY OF THE HATTERS



JUNIOR HATTERS

Welcome Junior Hatters to this afternoon's game against Nottingham Forest. Let's hope we can gain another three points as we aim to work our way up the league table. This afternoon I am sure you will join me in welcoming back Hatters 'old-boy' Kingsley Black to Kenilworth Road. Kingsley was a great servant of our club and it will be good to see him again.

As part of the commitment to our junior supporters this year we will, from time to time, provide 'give aways'. Against Watford on the opening day of the season, we handed out Junior Hatters scarves, so let's hope we see them all flying high this afternoon.

The Saturday Club started very well against the Hornets and everybody who attended

thoroughly enjoyed themselves. Remember, the Saturday Club will be open before every Town home match and will incorporate coaching, lunch, snooker, table-tennis, video games plus a ticket to the match. The cost of this is £7.00, or £4.00 if you are a season-ticket holder (bookings can be made via the Ticket Office during Normal office hours).

MATCH DAY MASCOT



Name: Thomas Higgins
Date of Birth: 2.1.87
School: Bushmead
Local football team: Beavers
Favourite Luton player:
David Preece
Hobbies: Football
How long a Junior Hatter:
Three years

Companion at Luton Town matches: My dad

SPONSORED BY LUTON AND DUNSTABLE PIZZA HUT



JUNIOR HATTERS TRAVEL

Travel arrangements for the away game against Sunderland is as follows:

4.9.93 Sunderland - depart Kenilworth Road forecourt: 9.00 am
Arrive home approximately: 10.00 pm
The price for all matches this season has been fixed at £5 for Junior Hatters and £8 for accompanying adults (price includes ticket to match). Booking and payment to be made via the Ticket Office up to four days prior to match.

JUNIOR HATTERS' BIRTHDAYS THIS MONTH

BIRTHDAYS AUGUST 22-31: David Bostock, Mark Lockey, Mark Radford, Gavin Coleman, Christopher Merrick, Nathan Odell, Nicholas Pinner, David Wright, Michael Ellington, Scott Winch, Andrew Wade, James Vines, Dean Coyle, Jennifer Oddy, Timothy Walden, Michael Arain, Heather Scott, Daniel Gourd, Tom Underhill, Steven Dove, Kevin Davis. **HAPPY BIRTHDAY TO ALL OF YOU!**

Helping the most important people in football



Football is much more than a game of 90 minutes. Every day clubs throughout Britain are providing recreational and sporting opportunities for their local communities.

Much of this has been achieved with the help of the Football Trust. As part of its commitment to Football, The Trust has granted £4M to set up the National Football and Community Development Scheme.

Bringing club and community together, Trust-backed initiatives have provided a variety of local amenities, including:

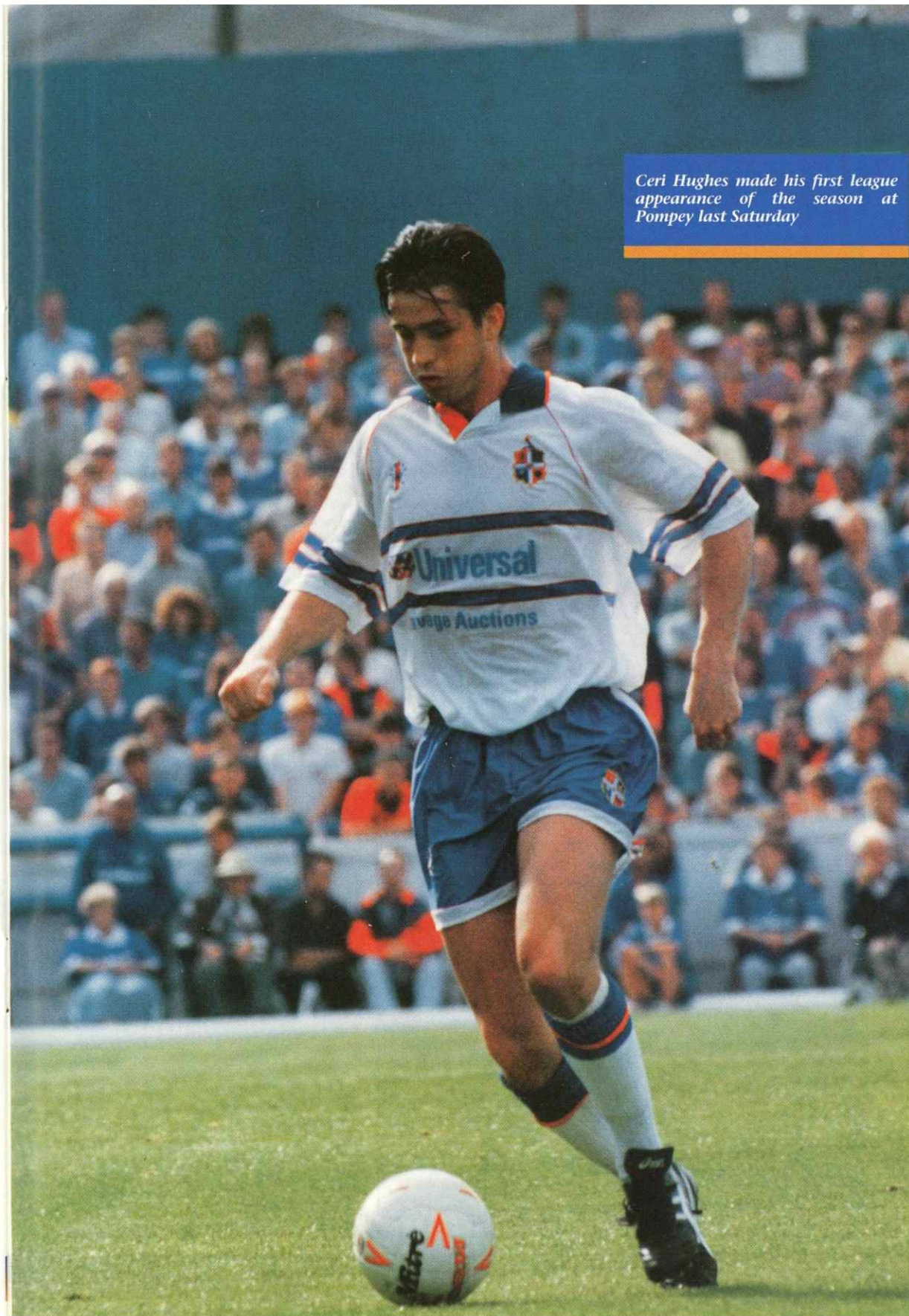
- Artificial pitches for local teams
- Coaching for youngsters
- Support for women's football
- Facilities for people with disabilities

The Football Trust is helping the game at all levels.



THE FOOTBALL TRUST
Helping the game

Ceri Hughes made his first league appearance of the season at Pompey last Saturday





828 AM
Chiltern Radio
SUPERGOLD

*for the greatest Hits of All Time
and Unrivalled Daily Sports News!*

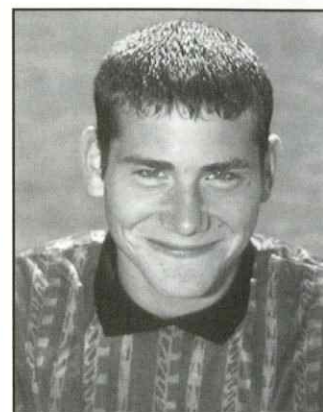
SUPERGOLD 828 AM
in Herts, Beds & Bucks

Fine start by both our sides

RESERVE AND YOUTH BY TERRY WESTLEY AND WAYNE TURNER



Davis penalty save keeps record intact



The Town's youth team remained unbeaten with a 1-1 draw with Crystal Palace last Saturday. The Hatters had Kelvin Davis to thank, with a fine penalty save in the first-half. "The decision to award the penalty was a dubious one," said Terry Westley. "But we showed tremendous effort throughout the game and I am pleased with our start."

Reserves - Appearances and Goalscorers 1992-93

	Combination LEAGUE App	Goals	County CUP App	Goals
Benjamin	-(1)	1		
Campbell	1	-		
Dixon	1	1		
Gentle	1	1		
Greene	1	-		
Hartson	1	-		
Houghton	1	-		
Hughes	1	1		
Jukes	-(1)	-		
Linton	1	-		
Pettersson	1	-		
Philp	1	-		
Rioch	1	-		

Youth Team Appearances and Goalscorers 1992-93

	S.E.C.L.		S.J.F.C.		S.E.C.L.C.		F.A.Y.C		E.J.C.	
	App	Gls	App	Gls	App	Gls	App	Gls	App	Gls
Butler	1	1	-	-	-	-	-	-	-	-
Campbell	1	-	-	-	-	-	-	-	-	-
Chenery	1	-	-	-	-	-	-	-	-	-
Davis	1	-	-	-	-	-	-	-	-	-
Gibb	1	-	-	-	-	-	-	-	-	-
Goodridge	-(1)	-	-	-	-	-	-	-	-	-
Issott	-(1)	-	-	-	-	-	-	-	-	-
Jukes	1	-	-	-	-	-	-	-	-	-
McLaren	1	-	-	-	-	-	-	-	-	-
Palmer	1	-	-	-	-	-	-	-	-	-
Power	1	-	-	-	-	-	-	-	-	-
Woodsford	1	-	-	-	-	-	-	-	-	-
Woolgar	1	-	-	-	-	-	-	-	-	-

Neville Ovenden Football Combination 1992/93 League Table

	P	W	D	L	F	A	Pts
Millwall	38	21	10	7	71	42	73
Chelsea	38	20	11	7	78	49	71
Q.P.R.	38	19	11	8	70	46	88
Crystal Palace	38	18	12	8	66	44	86
Southampton	38	18	10	10	56	39	64
Tottenham Hotspur	38	16	15	7	75	38	63
Oxford United	38	16	12	10	58	57	60
Watford	38	15	12	11	62	61	57
Wimbledon	38	15	10	13	60	43	55
Ipswich Town	38	16	7	15	58	62	55
Arsenal	38	12	15	11	57	46	51
Charlton Athletic	38	14	6	18	48	57	48
LUTON TOWN	38	13	9	16	53	64	48
West Ham United	38	13	6	19	56	59	45
Norwich City	38	11	12	15	68	78	45
Swindon Town	38	10	12	16	53	60	42
Bristol City	38	8	12	18	39	60	36
Portsmouth	38	8	10	20	43	73	34
Brighton & Hove Albion	38	9	7	22	38	81	34
Fulham	38	5	7	26	28	76	22

Neville Ovenden Football Combination Fixtures Season 1993/94

Wed 18 Aug	West Ham United	Fri 17 Dec	Norwich City
Wed 25 Aug	Queens Park Rangers	Wed 22 Dec	Tottenham Hotspur
Wed 1 Sept	Watford	Wed 5 Dec	Wimbledon
Wed 8 Sept	Wimbledon	Wed 12 Dec	Ipswich Town
Wed 15 Sept	Norwich City	Wed 19 Jan	Bristol Rovers
Wed 22 Sept	Tottenham Hotspur	Mon 24 Jan	Chelsea
Wed 29 Sept	Oxford United	Wed 2 Feb	Ipswich Town
Wed 6 Oct	Portsmouth	Wed 9 Feb	Brighton & Hove Albion
Wed 13 Oct	Swindon Town	Wed 16 Feb	Chelsea
Wed 20 Oct	Watford	Mon 21 Feb	Millwall
Wed 27 Oct	Southampton	Wed 2 Mar	Brighton & Hove Albion
Tue 2 Nov	Queens Park Rangers	Tue 8 Mar	West Ham United
Wed 10 Nov	Southampton	Wed 16 Mar	Bristol Rovers
Wed 17 Nov	Arsenal	Wed 23 Mar	Millwall
Wed 24 Nov	Portsmouth	Mon 28 Mar	Charlton Athletic
Mon 29 Nov	Oxford United	Tue 5 Apr	Crystal Palace
Fri 3 Dec	Crystal Palace	Tue 12 Apr	Bristol City
Wed 8 Dec	Swindon Town	Mon 2 May	Bristol City
Tue 14 Dec	Arsenal	Wed 4 May	Charlton Athletic

Match Reports

**Luton Town 4
West Ham United 1**
Neville Ovenden Football Combination,
Wednesday, August 18, 1993.

The Town's reserve team made an impressive start to their league campaign with a crushing 4-1 victory over West Ham United. The Hatters were in control from the first whistle and took their chances to set up a comfortable win. "I was very pleased with our start to the season," said coach Wayne Turner. "What I found particularly satisfying was the fact that all the work we had been practising, both as a team and individually, came off on the day. We now have a squad fired up to have a good season."

Team: Pettersson, Linton, Rioch, Hughes 1, Philp, Greene, Houghton, Campbell, Dixon 1, Hartson, Gentle 1. Subs: Benjamin 1, Jukes.

Swindon Town 1 Luton Town 1
South East Counties
League Division Two,
Saturday, August 14, 1993.

Our youth team also made a competent start to the season at Swindon. Despite going a goal down in the first-half, the young Hatters battled back and could have taken maximum points. "The goal we conceded was due to a lack of communication between our defenders," said coach Terry Westley. "To the lads credit, they fought back well though, and as the game progressed we looked the more likely to win. Overall, it was a pleasing opening game."

Team: Davis, Jukes, Palmer, Woolgar, Chenery, McLaren, Power, Woodsford, Campbell, Butler 1, Gibb. Subs: Issott, Goodridge.

South East Counties League Division Two 1992/93

	P	W	D	L	F	A	Pts
Wimbledon	26	19	3	4	67	26	41
Bristol City	26	16	2	8	55	35	34
Brentford	26	12	8	6	39	26	32
LUTON TOWN	26	14	1	11	57	47	29
Brighton & H.A.	26	11	6	9	48	49	28
AFC Bournemouth	26	11	6	9	37	39	28
Tottenham Hotspur	26	11	5	10	48	50	27
Southampton	26	8	9	9	28	31	25
Crystal Palace	26	10	4	12	38	33	24
Oxford United	26	8	4	14	48	52	20
Swindon Town	26	7	6	13	29	45	20
Bristol Rovers	26	6	7	13	36	57	19
Colchester United	26	9	1	16	24	47	19
Reading	26	6	6	14	35	52	18

South East Counties League Division Two Fixtures Season 1992/93

Sat 14 Aug	Swindon Town	1-1	Sat 1 Jan	Reading
Sat 21 Aug	Crystal Palace	1-1	Sat 8 Jan	Wimbledon
Sat 28 Aug	Reading		Sat 15 Jan	Tottenham Hotspur
Sat 4 Sept	Wimbledon		Sat 22 Jan	Brighton & Hove Albion
Sat 11 Sept	Tottenham Hotspur		Sat 29 Jan	Oxford United
Sat 18 Sept	Charlton Athletic (SECLC1)		Sat 5 Feb	Bristol City
Sat 25 Sept	Brighton & Hove Albion		Sat 12 Feb	Brentford
Sat 2 Oct	Oxford United		Sat 19 Feb	Bournemouth
Sat 9 Oct	Bristol City		Sat 26 Feb	Southampton
Sat 16 Oct	Brentford		Sat 5 Mar	Colchester United
Sat 30 Oct	Bournemouth			
Sat 6 Nov	Southampton			
Sat 13 Nov	Colchester United			
Sat 20 Nov	Bristol Rovers			
Sat 4 Dec	Bristol Rovers			
Sat 11 Dec	Swindon Town			
Sat 18 Dec	Crystal Palace			

Benjamin aiming for an improved season



PLAYER INTERVIEW WITH IAN BENJAMIN

Town striker Ian Benjamin made a dream start to his Hatters career last season when he scored a flying header which sent the Hatters on their way to a 2-0 victory against Watford. His season appeared to be ascending to great heights.

His transfer from Southend United last November followed a run of eight goals in 12 games for the Shrimpers, and he was looking to form an impressive partnership with Philip Gray. However, as Benjamin explains: "Football is full of ups and downs."

He suffered a loss of form and failed to net again for the hatters before finding himself with a prolonged spell in the reserves. A neck injury further halted his progress and he was sidelined for the second half of 1992/93 campaign.

"It all looked to be going so well after the Watford game last season," stated Ian. "I felt I could really make an impression as the season went on and I settled in. That header was one of the best I have ever scored and the fans seemed to take to me straight away."

"Things went drastically downhill for me after that, which goes to show how unpredictable football is."

Much-travelled Ian, whose career has taken in the likes of Sheffield United, West Bromwich Albion and Notts County, is desperate to discard 1992-93 and look ahead with renewed optimism.

He faces stiff competition from the likes of Kerry Dixon, John Hartson and Martin Williams but believes that a centre-forward place is up for grabs this season and wants to make sure that it is his number nine shirt making the team each week.

"A regular first-team place has to be my aim," continued Ian. "My view when I came here was to score goals, but as yet I have been unable to achieve that. Hopefully that will all change this season, but I need a run in the

side. That gives you confidence, which is something a striker thrives on."

Benjamin was given a chance in the first team against Cambridge in the Coca-Cola Cup match against Cambridge and thought he played "reasonably well". He also came on as substitute at Portsmouth last Saturday.

"I am still a little bit short of full fitness," he said. "But I am fairly pleased with the way things are progressing. I scored a goal in the reserves against West Ham last week, although things were made easy by having a 3-1 lead when I came on."

"It is still very early in the season and I do not like to make predictions," continued Ian. "I have set my sights on the first-team and that is where they will stay. There will always be competition from other players, you learn to live with that."

"As for the team, they will have gained confidence from beating Watford. Confidence is very important in football and with a few more wins under our belts who knows? There are some very capable players at the club and with a bit of luck on our side we could do well."

Ian Benjamin



Five star performance earns victory at last

BACK TRACKING BY ROGER WASH

By the 1986/87 season Nottingham Forest were fast becoming one of our 'bogey' sides as in our previous eight league meetings, following our promotion to Division One.

With the new manager John Moore in charge, the team had started the season in reasonable style, although with Mick Harford missing through long-term injury, goals were in short supply.

All this suddenly changed on October 25 when the current champions and F.A. Cup holders Liverpool were hammered 4-1 at Kenilworth Road. Harford's understudy, Mike Newell, a previous season signing by David Pleat, weighed in with a hat-trick against the side he supported as a boy.

On a day when everything went right, Newell, so often the whipping boy of the crowd because of unfavourable comparisons to Harford, was suddenly elevated to superstar status.

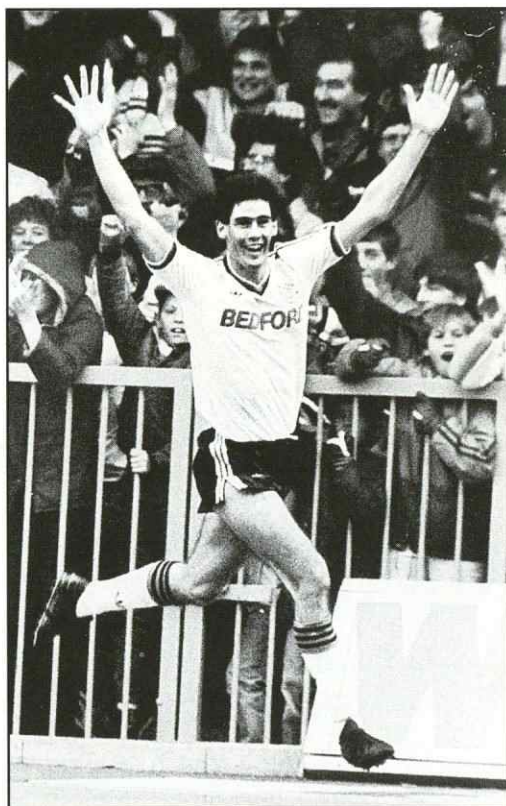
This win pushed the Town up to tenth spot which changed to seventh when QPR were seen off the following week, courtesy of a bizarre own-goal from Rangers' Warren Neil. In the next game, our first league visit to Plough Lane, Wimbledon, a first ever goal from Mark Stein separated the sides and set up a fascinating clash with Forest who were level top, and the next to visit Kenilworth Road.

A crowd of 11,097 turned up to see the game get off to a sensational start with Stein netting after only 35 seconds, latching on to a flicked header from Newell, beating Des Walker for pace before forcing the ball home.

The Town went two up in the eighth minute when Stein was the sharpest to react to a Newell header that came off the bar and with the crowd still not properly settled, skipper Steve Foster made it three by getting on

the end of a Peter Nicholas corner in the 16th minute.

To their credit, Forest refused to lie down and reduced the arrears on the half-hour when Ian Bowyer took advantage of a rare slip by Foster to slip the ball home.



Mike Newell helped the Town charge up the table in 1986-87, we had recorded only one victory and had yet to win at Kenilworth Road.



Forest manager Brian Clough obviously spoke strongly to his players at half-time with the result that the Reds attacked the Town with a vengeance as the second-half got underway. With the Town midfield depleted, due to the loss of both Ricky Hill and David Preece through injury, it took a few good saves from Les Sealey in the Luton goal to prevent Forest from clawing their way back.

It therefore came as a great relief when Brian Stein, capitalising on some unselfish play from his brother, hit a curling shot from the edge of the box with 20 minutes to go to put the Town in an unassailable 4-1 lead. There was still time for Gary Birtles to notch a late consolation, but by this time the Forest fire was doused.

The heady heights of fourth position in Division One as well as laying to rest the Forest 'bogey' in emphatic style, made me miss the Newmarket turn off the A11 on the way home!

Luton: Sealey, Breacker, Johnson, Nicholas, Foster, Donaghy, Wilson, Stein (B), Newell, Stein (M), Grimes (McDonough).

Forest: Segers, Butterworth, Pearce, Walker, Metgod, Bowyer, Carr, Webb, Clough, Birtles, Mills.

5 It happened five years ago:- 3/9/88 - A 2-2 draw at home to Wimbledon with the goals coming from Kingsley Black and the Dons' Vaughan Ryan.

10 It happened ten years ago:- 31/8/83 - An emphatic 3-0 win at Filbert Street over newly promoted Leicester. Frank Bunn, David Moss and Ricky Hill were on target for the Town.

15 It happened 15 years ago:- 26/8/78 - A 1-0 defeat at Newcastle before a crowd of 24,112. An injury to new signing Kirk Stephens kept him out for over half the season.

20 It happened 20 years ago:- 1/9/73 - An amazing game at Kenilworth Road saw the Town go in at half-time 6-0 ahead of Carlisle. Tom Finney scored twice on his home debut.

PREVIOUS ENCOUNTERS

	P	W	D	L	F	A
Home	26	13	8	5	50	34
Away	26	6	6	14	29	45
Total	52	19	14	19	79	79

HOW MUCH DO YOU KNOW ABOUT LUTON TOWN

- ? Who has been the manager of both the Town and Nottingham Forest?
- ? What's the connection between Luton, Forest and Elton John?
- ? Who on today's Kenilworth Road staff has played for the Town and Forest?

For the full Match Report, read —

Brian Swain's **SPORTSVIEW** IN THE **Luton News** AND **DUNSTABLE GAZETTE**

5 pages of Sport Every Wednesday



Luton Town F.C. KIT SPONSORS

RICHARD HARVEY
Shorey Travel

JASON REES
Wilton Contract and
Vehicle Rental

CERI HUGHES
Cornish Newsagents
Leighton Buzzard

TREVOR PEAKE
Bennetts Gate Bakery
of Hemel Hempstead

JOHN DREYER
Milton Keynes Branch of
the Luton Town Supporters Club

SCOTT OAKES

JUERGEN SOMMER
Joe McGraa
Milton Keynes

ANDY PETTERSON
Royal Air Force Careers
Dunstable Road, Luton
Tel: (0582) 24805

JAMIE CAMPBELL
Calum Goundry
Wat... Signs...

DAVID PREECE
Ken and Judi Craven
Bedford

TREVOR PEAKE
Bennetts Gate Bakery
of Hemel Hempstead

IAN BENJAMIN
Bobbars Travel Club,
Committee and Members

MARVIN JOHNSON
Augustus Barnett
Wine Merchants Ltd
19 Chiltern Avenue, Bedford

DAVID GREENE
Handscombe Financial Services Ltd

DAVID PLEAT
A-Top Management Services Ltd
Property Letting Service

SCOTT HOUGHTON
Bedfordshire Rural
Community Charities

KERRY DIXON
Luton Town Supporters Club

JULIAN JAMES
Shorey Travel

JOHN HARTSON
Katy and Phil Shaw

PAUL TELFER
Convoy Installations Ltd

DES LINTON
Simkins Solicitors of
Baldock and Sandy

MARTIN WILLIAMS
Anchor Insurance Brokers
Milton Keynes

JOHN MOORE
Oliver Goundry
Wat... Signs...

is sponsored by
**McLeod Warner
Limited**

**FOR PRICING, TELEPHONE THE COMMERCIAL DEPARTMENT
0582 411622**

A summer of scandal



SCENE AROUND EUROPE

As Europe's major leagues warm up for the start of another season, we find that, off the pitch, many teams are far from ready to begin the new campaign.

England has prided itself for a long time on its 'clean' image, both on and off of the pitch. However, events this summer have tarnished that once-irrepressible image.

Following the High Court battle between Terry Venables and Alan Sugar, itself a rare internal wrangle, various claims rocked the football public and the media had a 'field day'. Once Venables' injunction application had been rejected, the FA were free to order an inquiry into such financial malpractices and therefore put an end to such a credibility-damaging saga.

The biggest scandal of the summer involved French and European champions Marseille. The French giants could lose all titles won last season if they are found guilty of fixing a league match during the latter half of their 1992-93 league campaign. The match in question was the 1-1 draw with Valenciennes on May 20.

Valenciennes players Christophe Robert and Jacques Glassman claim that they were phoned in their hotel room the day before the match by Marseille midfielder Jean-Jacques Eydelie, who passed the phone to Marseille general manager Jean-Pierre Bernes. It was agreed that Robert would be paid 250,000 francs (£30,000) for Valenciennes to take it easy during the game with the match only days before Marseille's European Cup Final against AC Milan.

Robert and his wife were both arrested and cautioned on corruption charges. A warrant was issued, summoning Bernes to appear before an investigating judge but, before it could be served, he was admitted to hospital suffering from a nervous breakdown.

The question many people are asking is: "When will the saga end?" Like many a French scandal before, it may disappear under the weight of insufficient evidence, although examining magistrate Bernard Befy has promised 'some surprises' in September...

In Germany, scandal has been more political than financial this summer. German clubs have their accounts audited each Spring and are warned that they will lose their licence if their books are not kept in order.

Since re-unification, the East German clubs have continually struggled to straighten their budgets. The latest case has been with Dynamo Dresden and previously Hansa Rostock. However, such was the political pressure to maintain a professional presence in the old East Germany that the rulebook was disregarded.

Bochum, who were relegated at the end of last season, are furious and have threatened legal action, stating that they should be re-instated in the top-flight in Dresden's place. The licensing system has been made a mockery of, tarnishing the Bundesliga's image of fine structuring and good business sense.

One country which has long been regarded as having the opposite image to Germany is Italy. For years, heavy penalties have been the norm for match-fixing and six club presidents

have even had to resign. Perugia are the latest club to be investigated after it was alleged that they tried to buy their way out of Serie C. Riots in the town's city centre followed, and the club are waiting on tender-hooks for the outcome.

Finally, Spain did not last the summer recess without troubles of its own. "Third party bonuses" are not illegal in Spain and therefore outsiders can offer players extra bonuses for winning certain matches. Last year's title decider, in which Tenerife beat Real Madrid 3-2, was surrounded with claims that Tenerife players have been offered such bonuses. Madrid media men immediately pointed the finger at Barcelona, the eventual league champions.

Let the real football begin!



Will Marseille be celebrating a European Cup victory this season?

**FOR GREAT BARGAINS
ALL YEAR ROUND**



Pay a visit to
**LUTON ARNDALE
MARKET**

A Centre for all Seasons

Whatever the Season
there's always
something new at the
Luton Arndale Centre.

From the latest fashions
to spectacular
Christmas displays.

From lively school
holiday entertainment
to the massive summer
sales.



Luton Arndale Centre

Providing you with so much more



The best service on a plate.

As one of the largest independent vehicle rental companies in
the U.K., you can always expect a little extra from Kenning.

AN EXTENSIVE RANGE OF:

- CARS, VANS & TRUCKS.
- FULLY INCLUSIVE RATES WITH
UNLIMITED MILEAGE.
- 24 HOUR NATIONAL HOTLINE HELPLINE.
- AA/RAC COVER.

KENNING

CAR AND VAN RENTAL

LUTON 0582 455333

24-34 Crawley Road.



It's official! – Endsleigh the
company with an unrivalled
reputation in Motor, Home Contents
and Travel Insurance, is the New
Sponsor for the Football League
Championship.

THIS SEASON BEGINS WITH ENDSLEIGH



Talk to us. We're in a league of our own.

Tel: 0908 675866

648/652 Silbury Blvd., Milton Keynes

Kit sponsorship sold, but other packages still remain



COMMERCIAL FOCUS WITH ANDY KING AND PETER COLLINS

We are pleased to announce that the players kit sponsorship package for the season is now sold out. However, we still have various packages available for the rest of the season.

Why not give the commercial Department a ring on Luton 411622 and speak to Andy King or Peter Collins for further information regarding:

- Match ball sponsorship
- Match sponsorship
- Executive Box hire
- Birthday celebrations for children hiring an executive box

A package can be arranged to meet your requirements.



Two lucky Herald & Post readers, who watched our match against Watford in an Executive Box, are pictured with Jason Rees, Trevor Peake and Julian James.

Match Ball Sponsor

Today's match ball sponsor is Barry Fry Metalworks. They are a locally-based company who have been established for 10 years in the heating and lighting industry.

Barry is here with his wife Lynne and two sons Ricky and Billy. In fact, Billy is one of our mascots this afternoon.

We wish them all a very happy day and thank them for their support.

Antony's Tailor

OF LONDON

THE MOST ESTABLISHED AND RELIABLE TAILORS IN LUTON

DRESS HIRE
LADIES AND GENTS
BESPOKE TAILORING

12 DUNSTABLE ROAD, LUTON,
BEDS OPPOSITE MAIN POST OFFICE
TEL: (0582) 424687

Match Sponsors

We have joint-match sponsors for today's game and would like to take this opportunity to welcome them to the club and hope that they have an enjoyable day with us.

Luton Cleaning Company have been serving local commerce and industry for over 25 years and their aim is to continue their expansion in the years to come. They are delighted to be sponsors today and welcome their guests for Nottingham.

English Graphics are suppliers of printing equipment throughout the world and, indeed, supply local companies connected with the club and are pleased to be sponsoring today's match.

LUTON TOWN HOTLINE

TICKET OFFICE:
Bookings and Enquiries 0582 416976.

CREDIT CARD BOOKINGS:
(24 hour service) 0582 30748.

COMMERCIAL DEPARTMENT:
Match sponsorship, Hospitality and Advertising 0582 411622.

CLUB SHOP:
Sportswear and Souvenirs 0582 450004.

CATERING:
Banqueting and Conferences
0582 411526/411622.

PROMOTIONS OFFICE:
Lotteries 0582 411622.

NEWS AND INFORMATION:
Clubcall 0891 12 11 23 (48p per min peak, 36p per min off-peak).

CLUB OFFICE HOURS:
Weekdays 9.00 am - 5.00 pm
Saturdays Match 9.00 am - 4.45 pm
Saturdays Non-match 9.00 am - 12 pm

Silver Shield
AUTOMOTIVE GLAZING

24 HOUR REPLACEMENT SERVICE
DIRECT INSURANCE BILLING
LAMINATED GLASS REPAIRS

0800 88 0800
LUTON 414235

COLLINGS COMMUNICATIONS

For words that work...

Specialists in Editorial
and Public Relations

Roslyn House, Sun Street,
Hitchin, Herts SG5 1AE
Telephone: 0462 441068

OOH AH

Cavity Wall have you got

CAVITY WALL

Save your energy with

British Gas
Eastern

CAVITY WALL

INSULATION SERVICE

For details contact
CHILTERN DISTRICT Tel: (0582) 481810

THE
SPORTS
SHOP
LUTON

LEISURE DANCE & ALL
TYPES OF SPORTS WEAR

ALWAYS IN STOCK

SKI-WEAR NOW AVAILABLE
ALSO LARGE RANGE
OF SKI-WEAR HIRE

4 Nursery Parade, Marsh Rd,
Leagrave, Luton LU3 2QP
Tel: 0582 571322

BEARD BROS LTD

Supporting the less-abled of
Bedfordshire, Hertfordshire and
Buckinghamshire.
with Luton Town F.C.

*Difficulty getting there...
Don't miss the match.*



Free Home
Demonstrations or
visit our
showrooms
in Bedford or
Watford.
The largest
selection in
the south
of England.

Beard Bros. Ltd

Watford (0923) 250922
Bedford (0234) 266666