

Luton

Town Football Club

Match Day Magazine £1.50



Southend United

Saturday 31st October 1992

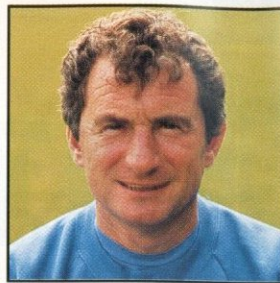
Kick-off 3.00pm



BARCLAYS

LEAGUE DIVISION ONE

Rivalries renewed this afternoon



MANAGER'S VIEWPOINT BY DAVID PLEAT

This afternoon we extend a warm welcome to Southend United Football Club. Like ourselves, they have made an indifferent start to the season. Although it is a cliché, we should all remind ourselves that the English season "is a marathon, not a sprint".

It will be nice to renew rivalry this afternoon with Colin Murphy. He has more than proved his worth in management over the years and has "done his miles". It is testimony to his management that players like Mick Harford, Glen Cockerill and Trevor Peake are still playing top-class football way into their thirties.

His support last year in a difficult season was appreciated, but it would have been wrong to deny him the opportunity to run his own ship. When the books are written regarding our final year in the Premier Division, it should not go unnoticed that Colin was helping me wheel and deal with our contacts which enabled us to sell in a recessionary market Graham Rodger, David Beaumont, Darron McDonough, Sean Farrell and the buying and selling of Steve Thompson.

Last Saturday's support at Peterborough was appreciated in view of the disappointment the previous weekend against Derby. In a strange way, the defeat by Derby taught us a couple of lessons but made our resolve stronger. Against an explosive side, we coped adequately in general play but failed in the two most important areas, defending in our box and scoring at the other end.

At Peterborough, my basic pleasure was seeing Steve Claridge and Phil Gray harness their efforts to positive results. They could not be working harder in training and I am a great believer in the saying that the harder you work, the more lucky you appear to be.

I was also absolutely delighted that Paul Telfer finally came back into our side. The

"AT PETERBOROUGH, MY BASIC PLEASURE WAS SEEING STEVE CLARIDGE AND PHIL GRAY HARNESS THEIR EFFORTS TO POSITIVE RESULTS"

responsibility on his shoulders last year was considerable until his injury, and we welcome him back knowing that the Club's future relies on such players.

Hopefully, last Thursday evening Ceri Hughes took his first steps back to match fitness by playing in the Beds Senior Cup. It is so important that as we have a small squad, we have to have a fit squad. We are hoping that Trevor Peake might have recovered sufficiently to be considered this afternoon. Whilst these programme notes were being penned, there



Darren Salton rises to the challenge against Derby County on October 17.

was a possibility that Damien Matthew may have his loan period concluded.

It has been well recorded that at the moment, the Club is still under some pressure to reorganise, but I have to say that the younger element of the team are more than pleased to accept the platform they have been given. Every time they go over the white line, their pride is at stake and only their very best efforts will do. The young back four that have played the last two games have defended manfully and every game's experience will accelerate their progress.

Julian James has personified that determination, having been given the arm band in the last two games. Julian has been a consis-

tently under-rated player in the past, but there is no question that he is winning admirers within football daily with his positioning and defensive qualities. We are all looking for examples in these difficult times and if young players show leadership qualities, then the Club's future will be safe.

Enjoy the game and get behind the team.

Gary's sense of 'deja-vu'



COMMUNITY MATTERS WITH GARY HOOPER

Met Gary Hooper, our new Community Development Officer and ex-professional for the Club who has returned to Luton in a different position, but, still fired with the same enthusiasm for his home club and his number one sport.

With a sporting background filled with achievement, Gary is the ideal person to promote the benefits of football to all the various areas in our community.

"We aim to bring the game closer to the community by becoming more involved in schools, clubs, educational establishments and the local council and community schemes," said Gary.

Born in Fulham, Gary's parents came to Luton in 1961 and he played for his school, Halyard. He represented Luton Schools and playing on the left-wing, he helped the representative side reach the All England Schools semi-final in 1966, played at the Oxford City ground.

"The whole team was signed by Luton on schoolboy forms," recalls Gary, who went on to play for the youth team and later the reserves.

At the age of 16 Gary signed as an apprentice and two years later became professional.

There followed seasons at Gillingham,

Cambridge United and Belgian team Schlivigen before Gary was offered the chance to play in Australia.

He was at Melbourne initially and later served as player-coach in Bayswater, Western Australia, for nine years.

Returning to England to form a coaching school with ex-Luton man John Ryan, Gary became more and more interested in the relationship between football and the community.

The newly created position at Luton, which involves the endorsement of the PFA and FA, offers Gary the opportunity to deliver and consolidate his wealth of ideas for bringing football nearer to the people in the community.

"We planned a special series of fun-days for half term at Lea Manor Sports Centre which we intend to make available every school holiday in the future," he said.

"And on November 19, also at Lea Manor, we are holding a five-a-side tournament in conjunction with the national drug prevention week. The event will also be supported by the Luton Leisure Services Department. The winners will receive their trophies at the Millwall game on November 21st."

If you would like to play, or are interested in sponsoring this event, please contact Gary on Luton (0582) 411622.

Gary is pictured during his time at Kenilworth Road (front row, second right). If you can name six other Town players in the picture, write in to Gary and the first name drawn will receive two complimentary tickets to a Town match this season.



Universal Salvage Auctions

Welcome to the 'family club'

Children from The Meads Primary School are the latest guests in our community venture.

A party of school children from The Meads Primary School in Luton are welcomed to Kenilworth Road and we hope that they enjoy the game. They are here as guests of our sponsors, Universal Salvage Auctions (USA), the league leaders in motor salvage auctions.

The 40-strong party will visit today with their headmaster Mr Dawson who is himself an avid Luton Town follower. He said: "I have been a season ticket holder at Kenilworth Road for many years, therefore I am delighted to be a guest of the Club today."

"I remember that great day out at Wembley when we reached the FA Cup Final in 1959 and although I left the area shortly afterwards, I have had a season ticket every season since 1973."

Many of the children visiting today also follow the Hatters and it shows when they are at school.

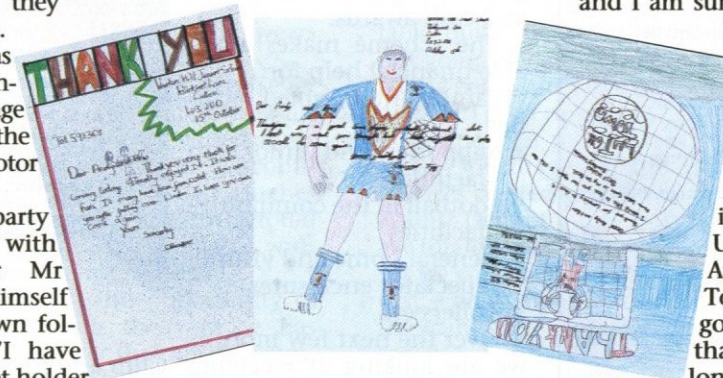
"Yes, some of my pupils like to wear their Luton shirts to school," continued Mr Dawson. "Everyone is looking forward to the game today and I am sure we will all return with happy memories of our day out."

"We are pleased that such a scheme involving the community has been introduced by Universal Salvage Auctions and Luton Town. It is certainly a good idea and I hope that it continues for a long time to come."

The Meads School is the fourth school to be welcomed at the club as part of a

series of community-related projects planned for the season.

If you would like further information on the USA/Luton Town community programme, please contact The Secretary, Luton Town F.C., Kenilworth Road Stadium, 1, Maple Road, Luton, Bedfordshire LU4 8AW.



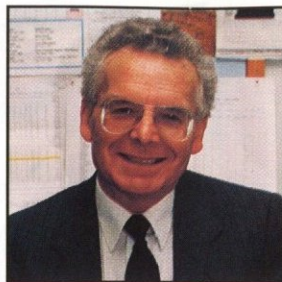
A selection of thank-you letters from the children of Warden Hill Junior School, who were our guests for the match with Derby County.

TELEPHONE: 0234 766500 • FAX: 0234 766200

WOBURN ROAD • WOOTON • BEDS • MK43 9EJ



Details outlined for Jewson programme



ON THE INSIDE BY JOHN SMYLIE

Kenilworth Road Stadium,
1, Maple Road, Luton, Beds
LU4 8AW.
Tel: (0582) 411622
Fax: (0582) 405070.
Clubcall: 0898 12 11 23 (48p
per min peak, 36p off peak)

President: E.S. Pearson

Chairman: R.J. Smith

Managing Director:
D.A. Kohler, Bsc. (Hons) ARICS

Directors: P. Collins,
E.S. Pearson, H. Richardson,
N. Terry

Vice Presidents: R.L. Banks,
C. Bygraves, R. Safranek,
E. Waller, J. Hudson,
D. Ludlow.

Secretary: John Smylie

Manager: David Pleat

Coaches: John Moore,
Wayne Turner, Terry Westley

Physiotherapist: Brian Owen

Youth Development Officer:
Paul Lowe

Scouting: Les Shannon

Commercial Executive:
John Buttle

Commercial Sales: Andy King

Medical Officer: Dr Bill Berry

■ This afternoon we extend a warm welcome to the directors, management, players and supporters of Southend United. Managed by our former assistant manager Colin Murphy, this will be his first visit back at the Club since he joined the 'Shrimpers'.

■ This week I attended a meeting of the Football League which outlined details of a two year extension to the partnership with Jewson for the continuance of their programme of ground improvement grants and cash awards.

The scheme makes available financial help for:

Family and disabled facilities

★ Supporters and junior club facilities

★ Football in the community facilities

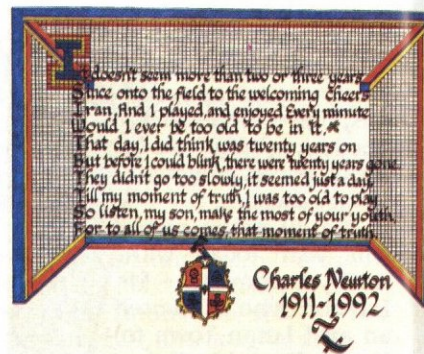
★ General home and visiting spectator enclosures

★ Toilets etc

Over the next few months we are looking at receiving assistance in two areas.

Firstly, the possibility of relocating our disabled supporters to a more sheltered and weather protected area with easier entry and access to toilet facilities. Secondly, a family room where children and parents are able to meet prior to a game, with their own refreshment kiosk and in-house T.V. facility.

■ I recently received from Mrs Lorna Perry of Wheatfield Road, Luton, a poem written by her father Charles Newton. He was a life-long supporter of the



Club and for the past eleven years had spent his retirement in Minehead, Somerset. When you read the words, see how true they are. Your youth time seems an eternity but the older you become the quicker it seems to pass.

Pictured above is the poem and sketch he completed and I felt it would be a fitting memorial to him to have it inserted in the match day programme.

Honours

Littlewoods Cup winners 1987-88
FA Cup finalists 1958-59
Littlewoods Cup finalists 1988-89
Simod Cup finalists 1987-88
Champions - Division Three (S) 1936-37
Champions - Division Four 1967-68
Champions - Division Two 1981-82

Editorial and pictures: Collings Communications/Apex Photography,
PR and Media Consultants Hitchin.
Tel: 0462 441068 Fax: 0462 441069

Design and print: McLeod Warner Limited, Luton. Tel: 0582 38389

Victory at Peterborough gives us new hope



CAPTAIN'S LOG BY TREVOR PEAKE

We go into today's game with Southend United with renewed optimism following last Saturday's fine victory at Peterborough. What we must now aim for is our first win of the season at Kenilworth Road.

The first-half performance at Peterborough was particularly pleasing. We played competitively and remained strong and always looked dangerous on the break.

It was pleasing to see Phil Gray score two good goals. He has had a lean time of late with regards to hitting the target, so hopefully he can now kick-start his season in front of goal and show his class. It will also be interesting to see whether he wears Preecey's shirt again this afternoon!

It was also encouraging to see Paul Telfer back in the side last weekend following his long lay-off through injury. He settled down well and scoring a goal will do his confidence no harm at all. Once Ceri Hughes returns from his ankle injury, we should have a very promising midfield with increased competition for places.

I would like to take this opportunity to praise Julian James for the way he has responded to taking over the captain's armband in my absence. It is never easy being responsible for looking after the team as

well as concentrating on your own performance. Julian has coped very well...I think he should be writing the programme notes at the moment!

We now have two away wins under our belts. We must bury the Kenilworth 'hoodoo' and win at home this afternoon. Remember, at this stage of the season a couple of victories can elevate a side up the table quite dramatically. Today's game is not going to be easy with both sides at the wrong end of the table and desperate for the points to get a run going.

At home in recent weeks, we have not taken advantage of the possession and chances created in front of goal. The game against Derby County was a good example. We totally dominated for the first half-hour, yet we conceded a goal from probably their first serious shot and could not get back in the game. We aim to reverse the situation today.

With regards to my injury problems, I played for the reserves during the week in my first steps back to full fitness I came through the game O.K. so hopefully I will be in contention before too long.



Julian James lines up with mascot Christopher Read before our match with Derby County on October 17.



Phil Gray in action against Derby County on October 17.

Prolific goalscorers the centre of speculation

1

NEWS ON ONE

Millwall maintained their current fine form last Sunday with an impressive 2-0 victory over high-riding Wolverhampton Wanderers at The Den. The Lions are also reported to be interested in signing Sunderland striker John Byrne, a player who Millwall boss Mick McCarthy has the highest regard for.

"John may be a 31-year-old but he is still a class striker," said McCarthy. "The players we have here could learn a lot from him." Millwall are apparently keen on a player exchange deal, but Roker Park boss Malcolm Crosby is holding out for hard cash.

Another striker in great demand at the moment is Portsmouth's Guy Whittingham. The prolific goalscorer hit the first of two Portsmouth goals last Saturday which beat Sunderland at Fratton Park. He has now scored twelve League goals this season which is a good return for a player who only cost Pompey a mere £450 when they bought him out of the Army. He is now valued at £1 million and a price which Pompey midfielder Alan McLoughlin feels is more than justified. He said: "Guy is such a prized asset. He is on a high at the moment and anything that comes his way you expect him to put away."

Cambridge United have parted company with manag-

er John Beck who was sacked last week. Beck had been reported to be interested in the vacant post at Third Division Preston North End before his dismissal, but he says that he was disappointed to leave the Abbey Stadium after the success the Club had enjoyed in recent seasons. "I am tremendously shocked and deeply upset," said Beck. "I was asked to resign but said no. I was told that the decision was taken because I had stated that I was ambitious to manage a big club, but I would not have left the Abbey unless an offer came in from the biggest...which was unlikely."

Birmingham City have taken Aston Villa reserve keeper Les Sealey on loan after a series of heavy defeats. The plan appears to be working with City beating Bristol Rovers 3-1 at St Andrews last week. Blues boss Terry Cooper says he has acquired former Town keeper Sealey with his aggression in mind. "We have got a very quiet team with very few characters, but with Les here and John Gayle now back after injury, the side is buzzing again. It was crazy in our dressing room after a match with Oxford as Les was going absolutely potty!"

SOCCROSSWORD NO 6 by AL

- ACROSS**
- With no "L" decider could be successful (3,3)
 - Miss this and there could be a penalty (3)
 - Fans answer to hooligan charge? (3,2)
 - Singer who puts money on his team? (5)
 - Decay girl's meat at Millmoor (9)
 - Scots who use the high ball a lot? (3,5)
 - Ref might call one between warring teams (5)
 - Iodine on open wound would (5)
 - Match should after ninety minutes (3)
 - Striker may be well by winger (6)
- DOWN**
- Sometimes he wins a penalty (5)
 - Injuries may need them (3)
 - They survive the pace best (7)
 - Players rich to get off it (5)
 - It's done to make ends meet (9)
 - Round a WC nestle Magpies (9)
 - Lots of these needed to sign inside-left (7)
 - No cup if out in the first (5)
 - Shoot at goal but not after a drink (5)
 - What Stan and Matt became (3)



Solutions will appear in our next home programme

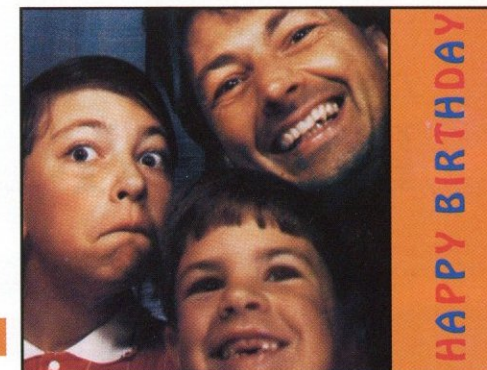
THERE'S ONLY ONE MITRE DELTA...
...ONE MITRE DEL-TA.
THERE'S ONLY
ONE MITRE
DELTA...

mitre
International Excellence

Mitre Sports International Ltd., Bay Hall Works, Birkby, Huddersfield, West Yorkshire HD1 5AJ. T el: (0484) 537488 Fax: (0484) 530042

The Flower Shop
Flowers for all occasions
34 STUART STREET, LUTON BEDS.
Telephone: Luton 422796
"Say it with Flowers"

Fans' forum



Happy 12th birthday to Grant Strong, a loyal Luton supporter!

HAPPY BIRTHDAY GRANT

Dear Sir,

I believe my son Grant deserves a special mention in the 'Hatters' programme. It is his birthday on October 26th, when he will be 12 years of age. He is an avid Luton supporter and as you can see from our address we travel a long way in order to fulfill our family ties.

Grant is a season ticket holder and we travel to as many home and away games as possible. We believe Mr Pleat does an incredible job and we also believe that our team provides excellent entertainment.

Along with my family from St Albans, I have supported the Hatters from the age of 8. I enclose a small photograph of Grant (he's the one pulling a funny face). I think it shows great courage for a young lad to support a team such as Luton especially when you are not from the area. He wears his track-suit and strip with pride amid the Stoke and Port Vale supporters here in the Midlands.

Karen Strong, Little Acorns, 25 Airdale Spinney, Stone, Staffs ST15 8AZ.

THE 92 CLUB

Dear Sir,

The 92 Club was founded in June 1978 with just 39 members and is open to supporters who have visited all 92 grounds in the Football and Premier Leagues.

Membership has steadily increased since its formation and currently stands at just over 800. The aim of the club is to bring together all known qualifiers and to provide formal recognition of this special achievement.

If you know of any Town supporters who have completed or are close to reaching the goal of the 92 Club, more details can be obtained by sending a S.A.E. to The 92 Club, 104 Gilda Crescent, Whitchurch, Bristol BS14 9LD.

SHAMEFUL BEHAVIOUR

Dear Sir,

I was dismayed and somewhat ashamed to be standing amongst the Kenilworth Road crowd as many booed and jeered Mark Pembroke during the recent home match against Derby County.

Mark was a hardworking and influential young player during his time at Luton Town and he should have been given the respect he deserved for that service. Nor did he choose to leave the Club - he was sold for financial reasons.

This is not the first time nor, I am ashamed to say, the last time an ex-Luton player will be heckled in such a way by what I can only describe as a minority of two-faced supporters whose short memories merely underline their ignorance!

Mr M Stefansson, 49 Grovelands Ave, Hitchin, Herts SG4 0QU.



The Station with
More Winning Ways

The Hot FM

ACTION REPLAY

From: London Road

Date: October 24, 1992

PETERBOROUGH UNITED 2
(Cooper, Adcock)

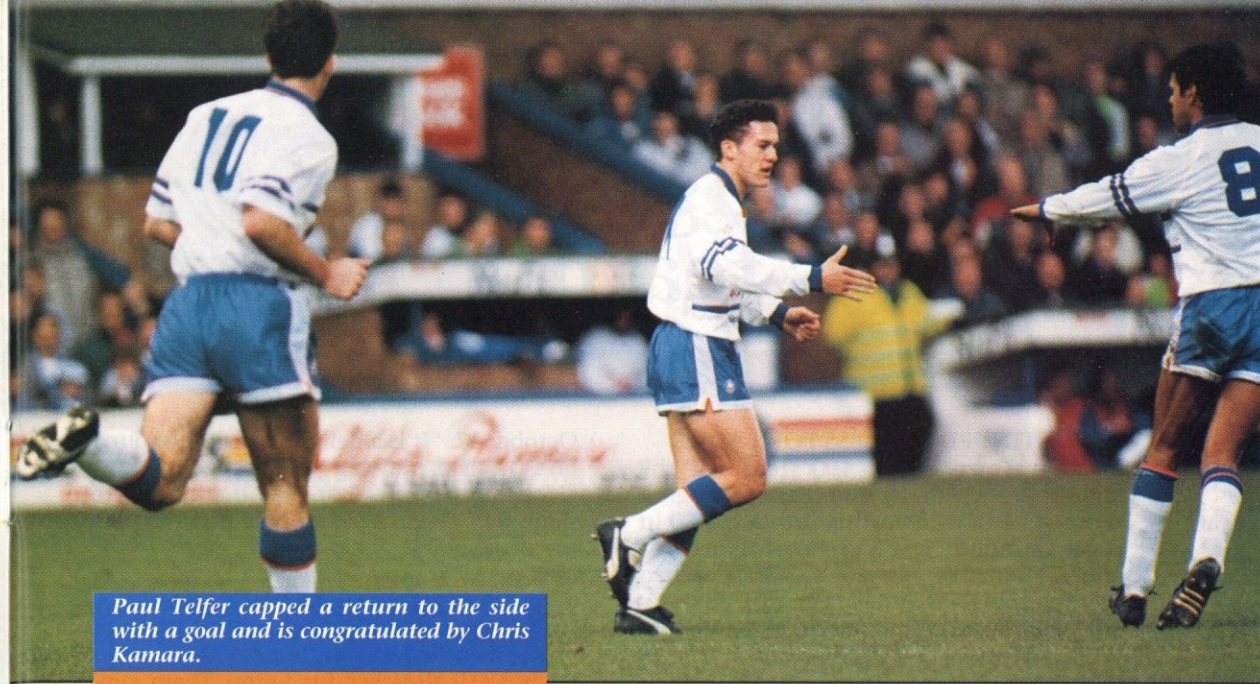
LUTON TOWN 3
(Gray 2, Telfer)

Attendance: 7,125

PICTURES BY JOSH LEVY



Phil Gray, now in the number 10 shirt, is congratulated by Steve Claridge after cleverly lobbing the Town's first goal.

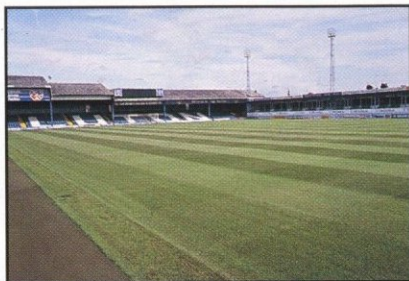


Paul Telfer capped a return to the side with a goal and is congratulated by Chris Kamara.



Steve Claridge shields the ball at London Road.

Record-breaking ladies team



AROUND THE TOWN

CONTINUED SUCCESS FOR LADIES

Luton Town Ladies F.C. recorded the highest ever win in the Eastern Region Women's F.A. by defeating Breydon 17-0 in Great Yarmouth. It was originally billed as a difficult match for our ladies as Breydon had been promoted as Eastern Division champions while Luton had been promoted as Western Division champions.

However, the scoreline was never in question once the game started and a special mention must go to captain Jackie Whittick who netted the fastest-ever recorded hat-trick in just 7 minutes, 50 seconds. Two more from Jackie, four from Tina Lake, two from Linda Woods and Nina Darlow and one each from Diane Oliver, Elaine Clapham, Jane Best and Sandra Leggett completed the score.

The third round of the WFA Cup on November 1 has drawn the Luton Town Ladies at home against Milton Keynes from the National League Division One North. The match takes place at Langford F.C. and the kick-off is at 3.00 pm.

SOCCER COURSES THROUGH THE WINTER

Our weekly Vauxhall/Luton Town soccer courses continue through November and December on Monday and Thursday nights. Each course consists of seven one-hour sessions and costs only £11.50. The coaching programme consists of passing, dribbling, control, turning and shooting and there is also an opportunity to be invited to join the 'Vauxhall' Luton Town Centre of Excellence. For further information, please contact Paul Lowe on (0582) 411622 for an application form.

JULIAN STEPS IN AS SKIPPER

In the absence of injured Trevor Peake, Julian James has taken over the captain's armband since the visit of Derby County on

October 17. "It is a delight and an honour," said Julian after the appointment. "Hopefully I can motivate the team the same way Trevor does and continue to play my own game."

WATFORD TICKET DETAILS

Our live televised match against Watford at Kenilworth Road on Sunday, November 29 is NOT all-ticket for Luton Town supporters. For further information, see page 15 of next week's matchday magazine.

BLETCHLEY HATTERS CLUB

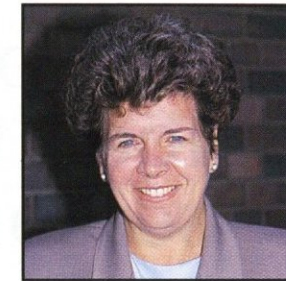
For coach travel to all Luton Town home matches from various pick-up points in Bletchley, Bow Brickhill, Woburn Sands and Aspley Guise, please telephone (0908) 377750 for further information.

Tina leaves in style



Tina Chauhan, from our accounts department, left the club on October 2 to start a new career in Leicester. She left with the best wishes of all the staff and said farewell in style by enjoying a goodbye meal with her friends.

Latest Ticket Office news



BY CHERRY NEWBERY

Cambridge United v Luton Town

BARCLAYS LEAGUE DIVISION ONE

Tuesday, November 3, 1992 - Kick-off 7.45 pm

This is an ALL TICKET match for Luton supporters. All tickets must be purchased from the Ticket Office in Kenilworth Road. There will be none available at Cambridge.

Seats are priced at £10.00 adults, £5.00 juniors/senior citizens. Standing is £7.00 (no concessions).

Tickets are now on general sale to members until noon on Tuesday, November 3.

Luton Town v Grimsby Town

BARCLAYS LEAGUE DIVISION ONE

Saturday, November 7, 1992 - Kick-off 3.00 pm

Tickets for this match are on sale at normal league prices. Normal guesting facilities apply.

Oxford United v Luton Town

BARCLAYS LEAGUE DIVISION ONE

Saturday, November 14, 1992 - Kick-off 3.00 pm

Seats for this match are available from the Ticket Office priced at £9.50 (no concessions) until Thursday, November 12 at 5.00 pm and also on the day at Oxford.

Standing will cost £7.00 (no concessions) and is pay on the day only at the turnstile.

Luton Town v Millwall

BARCLAYS LEAGUE DIVISION ONE

Saturday, November 21, 1992 - Kick-off 3.00 pm

Tickets for this match are now on sale at the discounted price. Normal guesting facilities apply.

Ticket Office Hours

Monday - Friday 10 am - 5 pm. Non-match Saturdays 10 am - 1 pm. Match Saturdays 9 am to kick-off, after the match 4.45 pm - 5.15 pm. For bookings, membership and enquiries, ring the Ticket Office on 0582 416976. Supporters wishing to order by credit card can do so by using the 24 hour Credit Card Hotline on 0582 30748.

Travelling to...

Cambridge United

(Abbey Stadium)
Address: Newmarket Road, Cambridge.
Telephone: (0223) 241237
Take the A10 or the A130 into Cambridge. Then take the A45 to Newmarket Road for Abbey Stadium. There is limited parking at the main entrance and also off-street parking at Coldhams Common for visiting supporters.
Nearest railway: Cambridge

Oxford United (Manor Ground)

Address: London Road, Headington, Oxford OX3 7RS. Telephone: (0865) 61503
From the Oxford ring road, head towards London A40. Take the fourth exit from the roundabout A420 towards Headington. Turn right into Sandfield Road then right into Beech Road for the Manor Ground. There is street parking available.
Nearest railway: Oxford

Bobbers Travel Club

Coaches for the trip to CAMBRIDGE will cost adults £4.80 and children/OAP's £3.80. Coaches will depart from Cranfield at 4.00 pm and Luton at 5.00 pm with the normal pick-up points en route. Coaches for the trip to OXFORD will also cost adults £4.80 and children/OAP's £3.80. Coaches will depart from Cranfield at 11.00 am and Luton at 12.00 noon, again with the normal pick-up points en route. All bookings and further information can be made by telephoning Paul Deason on (0234) 750996. Alternatively, you can book by seeing Paul or any other BTC member at the Ticket Kiosk in Kenilworth Road or on the return journey from the previous match.

Murphy's men look towards last season's success



SOUTHEND UNITED F.C. 1992-93

■ Currently occupying 22nd place in the First Division table, Southend United have not made the start to the season they would have liked and the Roots Hall faithful will be looking for a return to the form which saw the Shrimpers hit the promotion trail last season.

■ United looked a distinct possibility for promotion to the Premier League last term, peaking in second position in January, following a 1-0 victory against Derby County. However, off-the-pitch conflict unsettled the side and with manager David Webb announcing his departure, the club's form took a turn for the worse and they eventually finished 12th in the league – the club's best-ever League finish.

■ This season, under the guidance of former Town coach Colin Murphy, Southend have found it difficult to overcome their poor start in which they lost their opening four league matches, including home defeats against Peterborough (1-0), and Birmingham City (2-0). Back-to-back victories against Leicester City (3-1) and at Bristol City (1-0) helped the cause although defeat at Grimsby Town and a 1-1 draw against Cambridge Utd last Sunday has plunged the Blues into the relegation battle.

■ With last season's leading marksman, Brett Angell, out with a long-term injury, one of the main problems the Blues have faced is a lack of goals. "That is our main

concern at the moment," said coach Bob Houghton. "With Brett out and with Andy Ansah missing recently we have struggled. Nevertheless, we must use the remaining resources we have at the club to turn the situation around. We must be thankful that at the moment we are not conceding too many goals either."

■ Success has been limited for Southend United, although they won the Division Four title in 1980-81. The club was founded in 1906, taking the spotlight from leading club Southend Athletic who wanted to remain an amateur concern. Bob Jack was appointed secretary/manager and the club immediately joined the Southern League before gaining League status in 1920.

SHRIMPERS ON PARADE

PAUL SANSOME (goalkeeper) – Paul started his career with Millwall and went on to make nearly 200 appearances for the South London club. He joined Southend in 1987 and he has recently signed a new three-year contract with the club.

ANDY EDWARDS (defender) – Andy is a former trainee at Roots Hall. He has established himself in the first team at right-back this season after spending the last two years in the reserves.

CHRIS POWELL (defender) – Chris started his career with Crystal Palace in 1989, but after making only brief appearances for the Eagles, joined Southend. He has been a regular at left-back for the Shrimpers for the past season.

PAT SCULLY (defender) – Pat started his career at Arsenal but unable to break into the first team, he was sold to Southend two years ago for £250,000. He has since blossomed at Roots Hall, prompting a call-up to the full Eire international squad.

SPENCER PRIOR (defender) – Spencer is another product of the club's youth team policy. The 20-year-old has already played over 100 games for the club and has formed an impressive partnership with Scully at the heart of the Shrimpers defence.

JOHN CORNWELL (defender/midfielder) – John started his career with local side Leyton Orient in 1982 and became a regular in the O's defence for five years before joining Newcastle United. Two seasons and 30 appearances later he joined Swindon and remained at the County Ground until moving to Southend last season.

KEITH JONES (midfielder) – Keith joined Southend from Brentford for £175,000 last year. He started his career at Chelsea in 1983 but never really established himself as a first team regular, prompting his departure to Brentford in 1987.

ADAM LOCKE (midfielder) – Adam started his career with Crystal Palace but has established himself at Roots Hall in the past year by making over 40 appearances for the club. Adam can also be used as a wing attacker.

DAVID MARTIN (midfielder) – David is another player who started his career in south London – with Millwall in 1980. In 1984 he joined Wimbledon and helped the Dons into Division One. He was transferred to Southend two years later and has since served Colchester United on loan.

ANDY ANSAH (forward) – Andy made his league debut with Brentford in 1989 before moving on to Southend two years later. He has since established himself as a pacey wide-man at Roots Hall and contributes his fair share of goals.

IAN BENJAMIN (forward) – Shrimper's skipper, Ian is leading the scoring charts at Roots Hall this season. Much-travelled, he started his career with Sheffield United in 1979 and has since seen service with West Brom, Notts County, Peterborough, Northampton, Cambridge, Chester and Exeter.

KEVIN O'CALLAGHAN (forward) – Kevin is another player who started his career with Millwall, making his debut in 1979. However, he established himself in the First Division with Ipswich in the mid-eighties and has since served Portsmouth and Millwall again, before joining Southend two seasons ago.

STEVE BROWN (forward) – Steve has progressed through the junior ranks at Roots Hall and is looked upon as a forward for the future. However, his prolific goalscoring record for the reserves has promoted him to first-team duties recently.

MEET THE BOSS



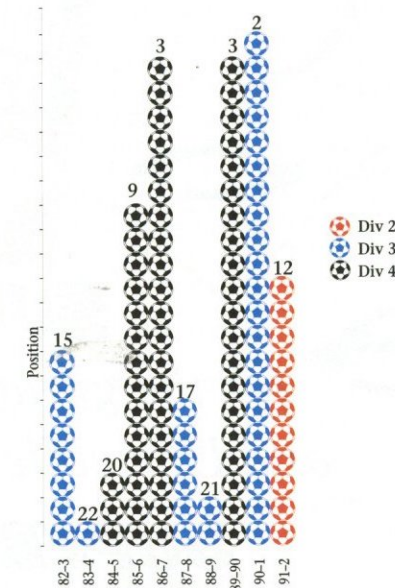
Colin Murphy is a familiar face at Kenilworth Road, serving the Hatters as first-team coach last season.

"Good luck with 'The Murph' – he's as good as gold!" Those were the words penned to the Blues by Leeds manager Howard Wilkinson upon learning that

Colin had joined Southend United as manager.

Mr Murphy's early days at Roots Hall were far from easy following last season's problems, but he soon began to win over the staff and supporters alike with his open, straight forward approach. He has since added Bobby Houghton – the former Malmö boss – to assist him, which has added to his stature. Colin has seen success as a manager with Lincoln City and in Saudi Arabia and he hopes to continue that success at Roots Hall.

Southend United 10 year record



Back row (left to right): Chris Powell, John Cornwell, Pat Scully, Andy Edwards, Paul Sansome, Danny Sains, Spencer Prior, Andy Sussex, Ian Benjamin.
Middle row (left to right): Alan Raw (physio), Steve Tilson, Scott Ashenden, Christian Hyslop, Francisco Cagigao, Simon Royce, Mark Hall, Mel Capleton, Steven Brown, Kevin O'Callaghan, Steven Heffer, Adam Locke, Danny Greaves (coach).
Front row (left to right): Keith Jones, Paul Smith, Bob Houghton (assistant manager), David Martin, Colin Murphy (manager), Brett Angell, Andy Ansah.

Helping the most important people in football

Football is much more than a game of 90 minutes. Every day clubs throughout Britain are providing recreational and sporting opportunities for their local communities.

Much of this has been achieved with the help of the Football Trust. As part of its commitment to Football, The Trust has granted £4M to set up the National Football and Community Development Scheme.

Bringing club and community together, Trust-backed initiatives have provided a variety of local amenities, including:

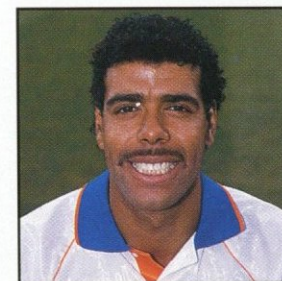
- Artificial pitches for local teams
- Coaching for youngsters
- Support for women's football
- Facilities for people with disabilities

The Football Trust is helping the game at all levels.



THE FOOTBALL TRUST
Helping the game

Meet the real Chris Kamara



THE PERSON BEHIND THE PLAYER

Name: Chris Kamara

Birthplace: Middlesbrough

Date of Birth: 25.12.57

Height: 6ft 1 ins

Weight: 13 stone

Signed from: Leeds United, November 1991

Previous clubs: Portsmouth, Swindon Town, Brentford, Stoke City.

Luton Town debut: v Everton (h), November 2, 1992.

International honours: none

Family: Wife - Anne and two sons - Ben (8) and Jack (5).

Car: Ford Fiesta

Starsign: Capricorn

Top television programmes: I like any programme with a sense of humour and the programmes which immediately spring to mind are Cheers and Only Fools and Horses. **Top television commentator:** No television commentator is particularly brilliant and they all state the obvious too much.

Best recent film/video seen: Silence of the Lambs was very entertaining. Anthony Hopkins and Jodie Foster deserved winning their Oscars for their roles in the film. I also like stand-up comedy videos, particularly Roy 'Chubby' Brown. Anybody who has seen him will know what I mean!

Hobbies: In my time off I enjoy a round a golf, however, I am not saying what my handicap is!

Who did you support as a boy: I have always had a soft spot for Leeds United and always look out for their results. I also followed my local club Middlesbrough.

Favourite away ground and why: It has to be Elland Road. The atmosphere there is great and when I played for the Club I was lucky enough to be a favourite of the fans. **Boots worn:** I have always stuck to wearing Adidas boots because they are comfortable and extremely soft. I find it is best to stick with the same boot instead of chopping and changing each season.

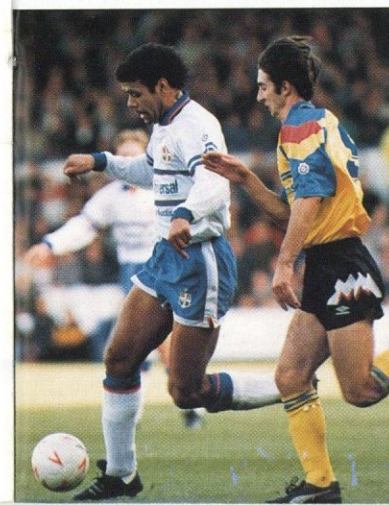
What has been the highlight of your career in football: I was lucky enough to be part of the Leeds United squad which gained promotion into Division One in 1990 and it was great to play a part in putting the club back where it belonged.

Who are your favourite players, both past and present: George Best (past) and Gordon Strachan (present). George was a brilliant individual who could perform skills most people only dream of. Gordon Strachan is proving that even well into your thirties you can still perform at the highest level.

What single piece of advice would you give to any young footballer hoping to make the grade: Remember everything your coach or manager had taught you and then try and apply it when you take the field.

What young Town player do you tip to make the grade in the coming seasons: John Hartson looks very good and has a proven goalscoring record with our youth team. However, we have many good young players coming through.

What are your main ambitions in football: I have fulfilled most of my ambitions. I have been lucky enough to have had a full career and have managed to stay clear of too many serious injuries.



Chiltern Radio 828 AM
SUPERGOLD

*for the greatest Hits of All Time
and Unrivalled Daily Sports News!*

SUPERGOLD 828 AM
in Herts, Beds & Bucks



Autograph

Chris Kamara

EXECUTIVE MEMBERS

KENILWORTH SUITE

Anachem Ltd
Mrs E Bain
Blakey Engineering Company Ltd
CBC Print Ltd
Mr G. Chamberlain
Fisher Frozen Foods Ltd
Flitwick Oil Company Ltd
F & T Goodwin Ltd
Mr D Hales
Handscombe Financial Services Ltd
R.W. Harvey & Son
Holmes Commercial
Mr P Laycock
Seamarks Travel
Wilton Truck Rental Plc

CLUB 82

T.J. Aldridge Builders
Bervale Meade Insurance Brokers
Bevan Grace Ltd
Broad Street Print
J.S.B. Business Forms
Nordic Supplies
Mr F.W. Pearce
Mr J. Peters
E.C.J. Shorey Travel
Space Display Systems
David C. Rutt

INDIVIDUAL BOX HOLDERS

Mr Malcolm Eade
Mr Roger Eade
Mr R. Pinney

EXECUTIVE BOXHOLDERS



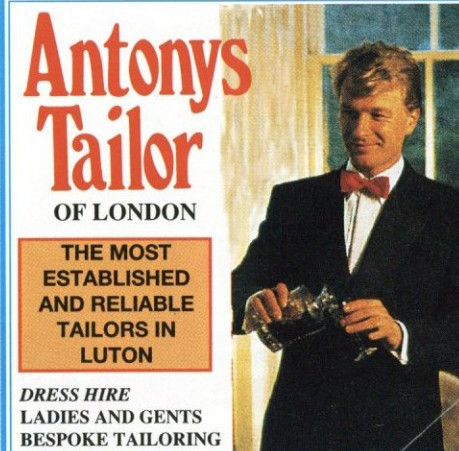
Our 'Spotlight' starts today!

JUNIOR HATTERS WITH RICHARD HARVEY

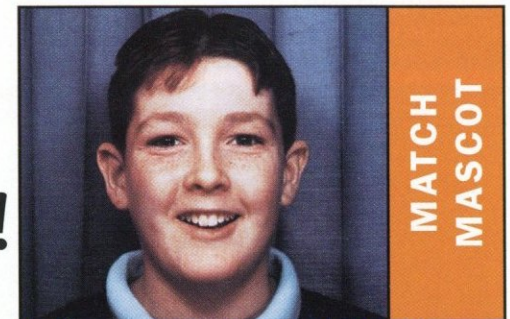
Welcome to this afternoon's game with Southend United and in particular, welcome to the Junior Shrimpers who have been playing football with us this morning. I hope you all had a great time!

On Monday November 9th we will be holding a meeting at the training ground when we will be having a guest speaker talking about football. Please turn up and give your support. It starts at 7pm until 8.30pm. If you are not a Junior Hatter you can join on the night. Ceri Hughes and a few other Luton Town players will be attending the evening.

We are at home next Saturday when our visitors are Grimsby Town, but we are not having an exchange visit with them this season. If you would like to join in some football training please turn up at the Training Ground for 10.30 am. Training will finish at 12.30 pm. This leaves enough time to come



12 DUNSTABLE ROAD, LUTON,
BEDS OPPOSITE MAIN POST OFFICE
TEL: (0582) 424687



MATCH MASCOT

Today's mascot is JONATHON ENGLAND. He is 12 years old and attends Bedford Modern School. Jonathon plays football for Flitwick Eagles and is interested in squash and computer games. His favourite player is Marvin Johnson.

to the game in the afternoon and give the team your support.

On Saturday November 14th we will be running a coach to Oxford United and we will be leaving from the top end of Oak Road at 10 am. A packed lunch is recommended for this trip and the price is £5.00 Juniors, £6.00 Adults.

Today's lucky Junior Hatter membership number is 1090, IAN NAYLOR. Ian has won two complimentary tickets to one of our home games this season. To claim your prize please call into the Oak Road Sports Shop and bring your membership card with you.

JUNIOR HATTER SPOTLIGHT

Membership Number: 1018
Name: DONNA WELLS
Date/Place of birth: 25.11.78 - Luton & Dunstable Hospital
School: Stopsley High
First Luton game: Coventry City (H) on January 1st 1983
Favourite Player: Marvin Johnson
Favourite Ground: Stoke City
Number of League Grounds visited: 25.
Favourite Goal: Wembley winner in 1988 by Brian Stein.
Hobbies: Playing and watching football, Horse Riding, Lace making and making any hand-made things.
What do you like about football: Watching and playing.
What do you dislike about football: Seeing players get injured.
Who accompanies you to Luton: My dad.
Ambition on leaving school: To be successful.



**LUTON
&DISTRICT**

**FAIR FARES FOR
LUTON TOWN F.C.**
*Special half price tickets for
members of Luton Town
on Match Days.*

HOME We offer ½ price travel on all local
bus services operated by Luton &
District.

AWAY Take our 757 express coach, from
Luton to London for a direct route
and frequent friendly service ½ price
for Luton Town Members!

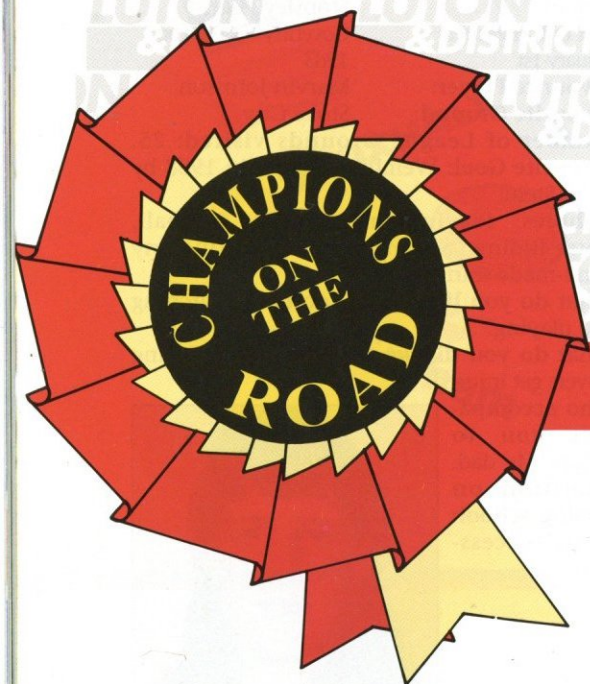
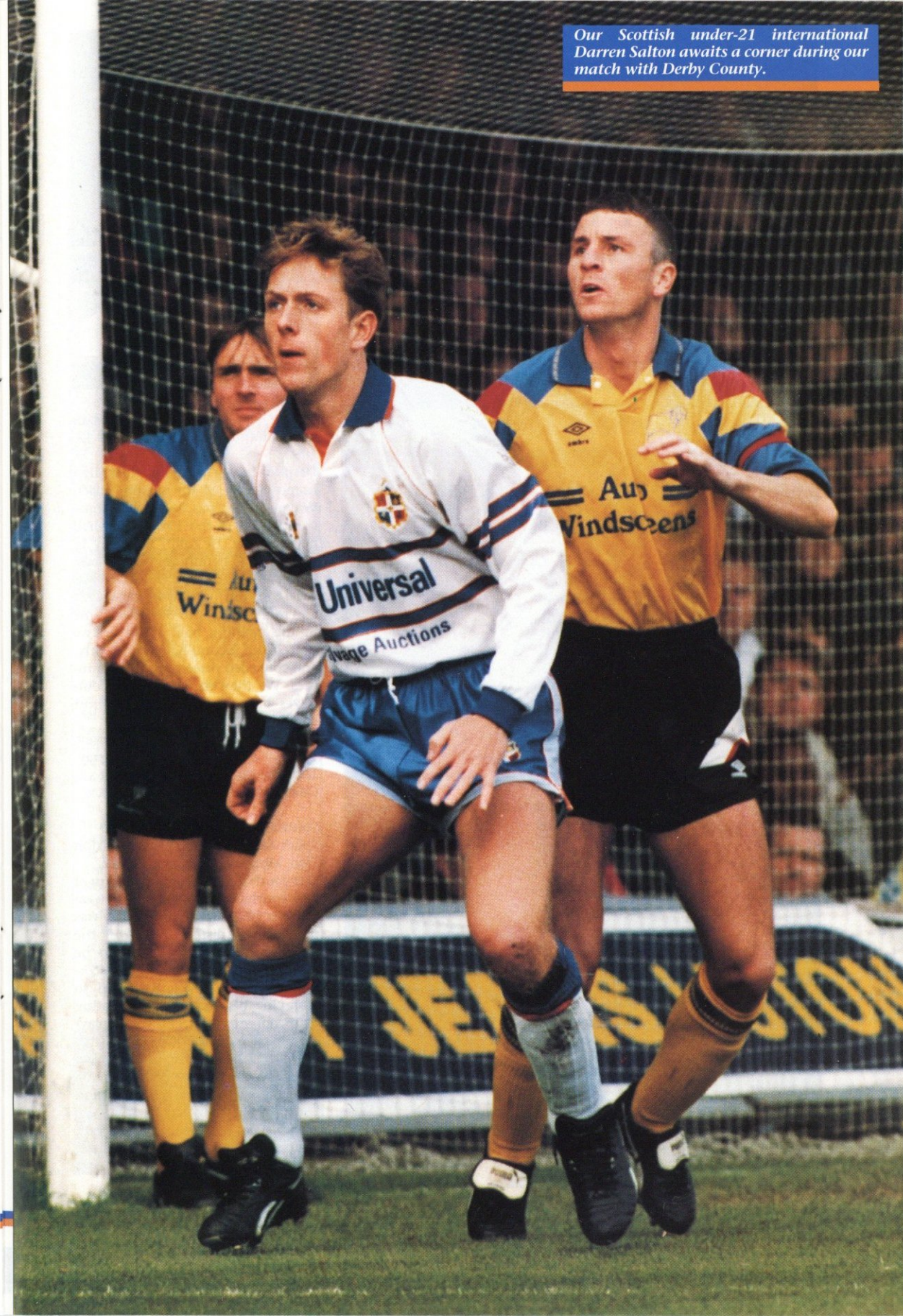
RECESSION BUSTER
£1.00
OFF-PEAK RETURN CONTINUES...
...as Luton & District Transport
plays its part in helping both it's
passengers and the stores of
Luton and Dunstable to beat
the recession.
£1.00 Return Fare valid for journeys
within the Luton & Dunstable area.
Tickets must be purchased from the
driver between 0900-1600 Mondays to
Saturdays. Return Journeys may be
taken anytime on day of issue. Further
reductions for children (up to and includ-
ing 13 years of age) to 75p Mondays-
Fridays and 50p Saturdays and school
holidays (excluding Bank holidays).

We operate buses in most parts of the
Home Counties.
For further information about your local
services please telephone your nearest bus
station or garage.

**LUTON
&DISTRICT**

Luton - Dunstable - Aylesbury - Leighton
Buzzard - Slough - Chilterns - Lee & District -
Red Rover - Stevenage - Hitchin - Hemel
Hempstead - Watford

Our Scottish under-21 international
Darren Salton awaits a corner during our
match with Derby County.



Youth team progress in Eastern Junior Cup

RESERVES AND YOUTH BY TERRY WESTLEY & WAYNE TURNER



Neville Ovenden Football Combination 1992/93 League Table

	P	W	D	L	F	A	Pts
Millwall	9	7	1	1	18	9	22
Chelsea	8	6	1	1	25	12	19
Wimbledon	8	5	2	1	18	9	17
Arsenal	9	5	1	3	20	8	16
Crystal Palace	9	4	3	2	22	14	15
Q.P.R.	9	4	3	2	16	10	15
Southampton	10	4	3	3	14	13	15
Oxford United	9	4	3	2	11	16	15
Tottenham Hotspur	8	4	1	3	18	9	13
Watford	9	3	4	2	15	20	13
West Ham United	9	3	2	4	14	12	11
Brighton & H.A.	9	3	2	4	9	18	11
Ipswich Town	9	3	1	5	11	15	10
Norwich City	8	2	2	4	13	17	8
Fulham	8	2	2	4	7	12	8
Portsmouth	9	2	2	5	12	21	8
Charlton Athletic	8	2	1	5	7	12	7
Bristol City	9	1	3	5	10	17	6
LUTON TOWN	7	1	2	4	8	15	5
Swindon Town	8	1	1	6	8	17	4

Neville Ovenden Football Combination Fixtures Season 1992/93

Mon 17 Aug	Millwall	1-2	Tue 29 Dec	Arsenal
Mon 24 Aug	Fulham	2-1	Mon 4 Jan	Bristol City
Mon 31 Aug	Queens Park Rangers	0-0	Mon 11 Jan	Chelsea
Mon 7 Sept	Crystal Palace	1-4	Mon 18 Jan	Arsenal
Mon 14 Sept	Tottenham Hotspur	1-4	Wed 27 Jan	Ipswich Town
Wed 23 Sept	Wimbledon	Postponed	Mon 1 Feb	Charlton Athletic
Mon 28 Sept	Portsmouth	Postponed	Fri 12 Feb	Norwich City
Wed 7 Oct	Brighton & Hove Albion	1-1	Mon 15 Feb	Fulham
Mon 12 Oct	Oxford United	2-3	Tue 23 Feb	Watford
Tue 20 Oct	Queens Park Rangers	Postponed	Mon 1 Mar	Swindon Town
Mon 26 Oct	Brighton & Hove Albion	1-2	Tue 9 Mar	Oxford United
Thur 29 Oct	Stotfold (BPC)		Mon 15 Mar	Ipswich Town
Wed 4 Nov	Portsmouth		Mon 22 Mar	Watford
Mon 9 Nov	Wimbledon		Mon 29 Mar	Millwall
Wed 18 Nov	Tottenham Hotspur		Mon 5 Apr	Oxford United
Mon 23 Nov	West Ham United		Wed 14 Apr	Southampton
Wed 2 Dec	Bristol City		Mon 19 Apr	Chelsea
Mon 7 Dec	Crystal Palace		Wed 28 Apr	Charlton Athletic
Mon 14 Dec	Southampton		Mon 3 May	West Ham United
Mon 21 Dec	Swindon Town			

Match Report

Luton Town 2 Oxford United 3
Neville Ovenden Football Combination, Monday, October 12, 1992.

Despite failing to gain their first home victory of the season, coach Wayne Turner was able to gain some consolation in the Town's first-half performance. He said: "Our play in the opening 45 minutes was the best I have seen all season. Our shape was good and our passing was excellent and as a result, both our goals came in the opening half. However, we started the second-half very poorly, and conceded three goals in 12 minutes. We then managed to get ourselves back in the game, but just could not score."

Team: Sommer, Matthew, Harvey, Telfer, Philp, Dreyer, Murray, Thorpe, Campbell 1, Wright 1, Oakes. Subs: Williams, Brooks.

Southampton 1 Luton Town 0
South East Counties League Division Two, Monday, October 10, 1992.

Our youth team's poor league form of late continued at Southampton on October 10. Coach Terry Westley was particularly dismayed with the Town's finishing. "We need to be more clinical in our approach to scoring," he said. "We again failed to score in this match after creating many opportunities. Our young players must learn to shoot and head with real purpose. However, I was pleased with Davis our goalkeeper who made his debut. He is only a schoolboy and had an outstanding day."

Team: Davis, Jukes, Rioch, Ryan, Philp, McLaren, Woolgar, Skelton, Hartson, Butler, Campbell. Subs: Brittain, Gibb.

Hartson takes tally to 14



John Hartson, our prolific youth team goalscorer, scored his 14th goal of the season in the Town's 4-2 victory in the Eastern Junior Cup, first round, against Southend United on October 21. Butler, Gibb and Philp completed the scoring for Luton and they now face Royston away in the next round.

South East Counties League Division Two Fixtures Season 1992/93

The remainder of the South East Counties League fixtures will be announced in December.

Sat 15 Aug	Bristol Rovers	8-0
Sat 22 Aug	Reading	4-1
Sat 29 Aug	Colchester United	1-2
Sat 5 Sep	Tottenham Hotspur	2-0
Thu 10 Sept	Chelsea (SJFC 1)	1-1
Sat 12 Sept	AFC Bournemouth	0-2
Sat 19 Sept	Charlton Athletic (SECLC 1)	0-3
Sat 26 Sept	Brentford	0-2
Thu 1 Oct	Chelsea (SJFC 1R)	3-2
Sat 3 Oct	Oxford United	1-2
Sat 10 Oct	Southampton	0-1
Sat 17 Oct	Crystal Palace	0-3
Wed 21 Oct	Southend United (EJC)	4-2
Sat 31 Oct	Wimbledon	
Mon 2 Nov	Port Vale (FAYC)	
Sat 7 Nov	Swindon Town	
Sat 14 Nov	Bristol City	
Sat 21 Nov	Brighton & H.A.	
Sat 5 Dec	Brighton & H.A.	
Sat 12 Dec	Bristol Rovers	
Sat 19 Dec	Reading	
Sat 2 Jan	Colchester United	

CROSSWORD SOLUTIONS No. 5

ACROSS: 5. Chelsea; 6. Win; 8. Weep; 9. Barnet; 10. Heart; 12. Merry; 15. Norman; 17. Hibs; 18. Pep; 19. Swindon.
DOWN: 1. Cheese; 2. Flop; 3. Derby; 4. Dive; 7. Free; 11. Rome; 13. Robson; 14. Snows; 16. Over; 17. Hand.

Youth Team Appearances and Goalscorers 1992-93

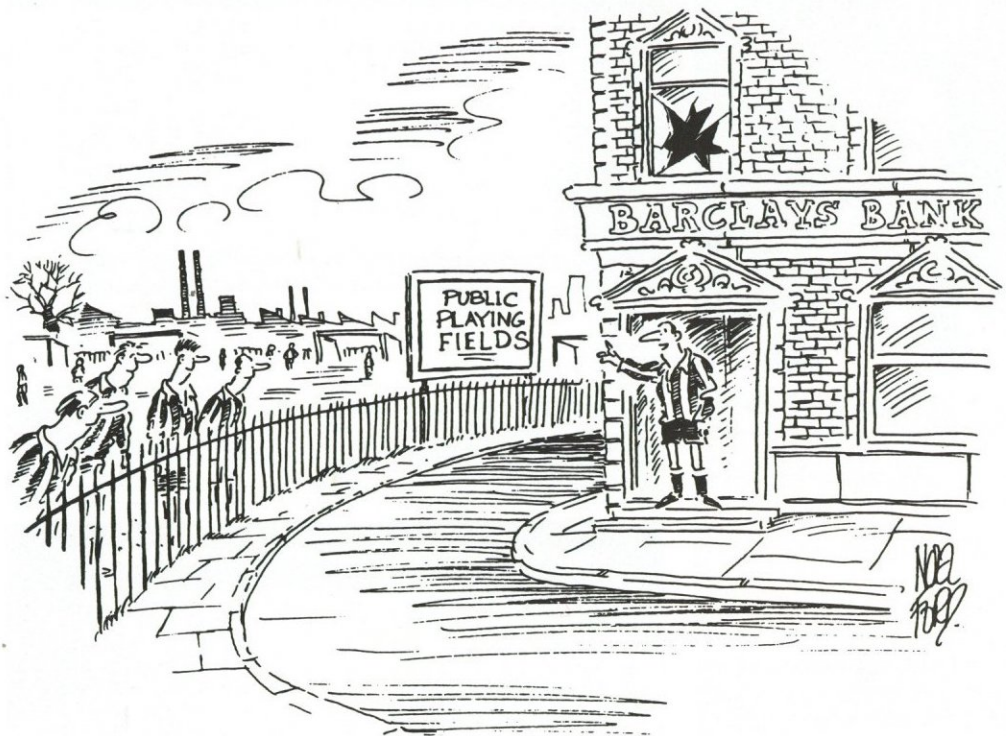
	S.E.C.L.		S.J.F.C.		S.E.C.L.C.		E.J.C.	
	App	Gl	App	Gl	App	Gl	App	Gl
Brittain	5(2)	-	2	-	1	-	-	-
Butler	9	3	2	2	1	-	1	1
Campbell	3(4)	-	-(1)	-	-(1)	-	-(1)	-
Davis	2	-	-	-	-	-	-	-
Draper	2(1)	-	-	-	-	-	-	-
Gibb	-(5)	-	-(1)	-	-	-	1	1
Goodfellow	3(2)	-	1	-	-	-	-	-
Hartson	7	11	2	2	1	-	1	1
Jukes	8	-	2	-	-	-	1	-
Kuntz	5	-	-	-	-(1)	-	1	-
McDonagh	1(1)	-	-	-	-	-	-	-
McLaren	9	-	2	-	1	-	1	-
Norman	-(1)	-	-	-	-	-	-	-
Philp	9	-	2	-	1	-	1	1
Power	-(1)	-	-	-	1	-	-(1)	-
Rioch	9	1	2	-	1	-	1	-
Ryan	5	-	1	-	1	-	1	-
Simpson	3	-	-	-	-	-	-	-
Skelton	8	1	2	-	1	-	1	-
Watkins	2	-	2	-	1	-	-	-
Woodsford	-	-	-(1)	-	-	-	-	-
Woolgar	9	-	2	-	1	-	1	-

South East Counties League Division Two 1992/93


	P	W	D	L	F	A	Pts
Wimbledon	9	7	1	1	23	6	15
Bristol City	9	7	1	1	23	8	15
Brentford	9	5	3	1	18	10	13
AFC Bournemouth	8	4	4	0	13	8	12
Southampton	9	3	3	3	9	12	9
Bristol Rovers	8	3	1	4	15	24	7
LUTON TOWN	9	3	0	6	16	13	6
Crystal Palace	7	3	0	4	13	11	6
Brighton & H.A.	7	2	2	3	16	18	6
Tottenham Hotspur	8	3	0	5	15	20	6
Colchester United	8	3	0	5	10	16	6
Oxford United	8	2	1	5	15	18	5
Swindon Town	8	2	1	5	11	20	5
Reading	7	1	1	5	9	22	3

Reserves - Appearances and Goalscorers 1992-93

	Football Combination		Beds Premier Cup	
	App	Goals	App	Goals
Allpress	4(1)	-	-	-
Brooks	4(3)	2	-	-
Campbell	4	1	-	-
Claridge	1	-	-	-
Dreyer	3	-	-	-
Flain	2	-	-	-
Gillard	3	-	-	-
Greene	5(1)	-	-	-
Harvey	5	-	-	-
Johnson	4	-	-	-
Linton	1	-	-	-
Matthew	2	-	-	-
Murray	3(2)	-	-	-
Nogan	4(1)	-	-	-
Oakes	3	-	-	-
Philp	2	-	-	-
Rees	2	-	-	-
Salton	2	-	-	-
Skelton	-(1)	-	-	-
Sommer	7	-	-	-
Telfer	2	-	-	-
Thorpe	6	4	-	-
Williams	2(2)	-	-	-
Wright	6	1	-	-



'The manager will be delighted to discuss more comprehensive insurance for the club and, yes we CAN have our ball back.'

+++ YOU'RE
BETTER OFF
TALKING TO
 **BARCLAYS**



Phil Gray outpaces the Peterborough defence last Saturday and chips the ball...



...into the back of the net for the Town's first goal in our 3-2 victory.

Newly-found determination makes for a successful season

BACK TRACKING BY ROGER WASH



After the traumas of season 1966/67 when the Town narrowly avoided re-election, the following close season was like a breath of fresh air as Luton supporters found a new spring in their step.

Somehow we knew it was going to be our year, but looking back it was difficult to see why everyone was so sure as the summer signings were hardly 'big name'. Terry Branston came on a free transfer from Northampton and was immediately made skipper, Billy McDerment was signed from Leicester City for £5,000, Rodney Green joined the club from Charlton for £7,000 and two further free transfers, Tommy Hare from Southampton and Mick

Brown from Millwall, completed the number of arrivals.

The first pre-season friendly, at home to Watford, drew a crowd of 5,360 which was better than a lot of the previous year's attendances and the Third Division visitors were lucky to escape with a 1-1 draw. The Town followed this up with a 2-0 home win over Colchester and a 2-0 victory at Southern League Brentwood.

Considering the Town's poor away record the previous season, it came as a mild

surprise when a 1-1 draw was recorded at Wrexham in the first league match. Green side-footed home the equaliser a minute from the end to emphasise the newly-found determination in the side.

Barnsley were seen off at Kenilworth Road the following week, with a 2-2 draw at Swansea maintaining the unbeaten record. However, a 3-0 defeat at Southend brought everyone back to earth even though injuries, a missed penalty and shots against the woodwork were all put forward by 'Chiltern' in the Luton News as adequate excuses.

The Town soon bounced back, however, with a 1-0 home win over Hartlepool, courtesy of a brilliant individual goal from Bruce Rioch, followed by yet another draw in Wales – this time 1-1 at Newport.

Crowds were now on the increase and it was only very wet weather that kept the attendance down to 7,977 as York were beaten 3-1 at Kenilworth Road to maintain the perfect home record. The win was not achieved without scares, however, as York missed a couple of sitters

before Rioch made the game safe just before the end.

With Rodney Green now in hospital recuperating from a cartilage operation sustained at Roots Hall, it was becoming apparent that a replacement was needed, especially as joint leaders Southend were the next visitors to Kenilworth Road.

Harry Lyon of Wigan, Paul Aimson of Bury and Jim Hutchinson of Halifax were all mentioned in dispatches, but it was whilst watching former England international Alan Peacock playing for Leeds reserves at Derby that Luton manager Allan Brown spotted the player who turned out to be the missing link in the Town's quest for promotion.

Ian Buxton signed for Luton in exchange for £11,000 from Derby to make his debut against Southend

but for about the only time that season, he failed to shine as the mad pace and changing direction baffled him.

The biggest crowd for almost two years – 13,332 – roared as John Moore moved up to open the scoring, anticipating a fumble by Southend keeper Trevor Roberts to slam the ball home. The play continued frantically from end to end and it came as little surprise when Jackie Ferguson headed the equaliser mid-way through the second half.

Two minutes later, however, Branston headed the Town back in front and as the Southend fire slowly extinguished, Graham French made the game safe just before the end to push the team up to fifth position and on to the eventual championship.



John Faulkner was on target for the Hatters 20 years ago at Bristol City.

A HATTER AND A SHRIMPER

St Neots-born Chris Turner joined Peterborough United straight from school and eventually made 312 League appearances for 'Posh' before becoming one of David Pleat's first signings in the summer of 1978.

The transfer was convoluted as Turner had spent the summer with New England Tea Men in the USA. But he managed to get back in time to line up for the Town in the opening day thrashing of Oldham at Kenilworth Road alongside six other players making their Luton debut. Although he made 30 appearances for the Town in 1978/79, to good effect, he made it known that the N.A.S.L. was the place to be and returned before the season was out.

He returned to England with Cambridge United before finishing his career at Southend in 1983/84. From there, of course, he has enjoyed success at managerial level and now, full circle, at Peterborough who he guided to promotion last season.

5 It happened five years ago:- 27/10/87 – Mick Harford with two and Micky Weir were on target in a third round Littlewoods Cup tie at Leicester against Coventry. This 'home' game was played at a neutral venue because of the Club's stance on away supporters.

10 It happened ten years ago:- 30/10/82 – Billy Kellock made his full Luton debut as the Town went down 2-0 at home to Nottingham Forest before a crowd of 12,158.

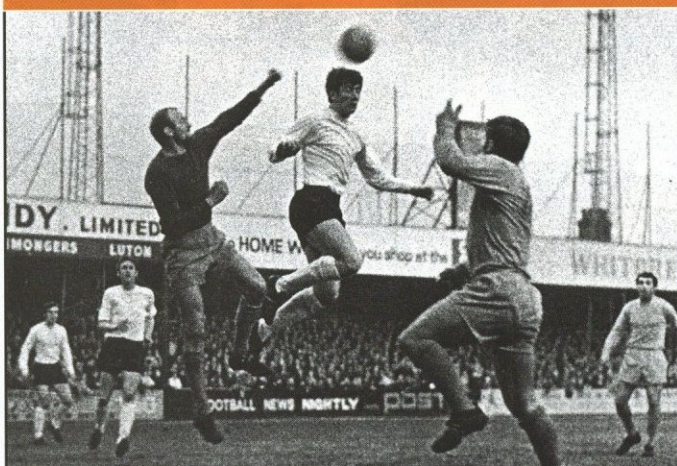
15 It happened 15 years ago:- 29/10/77 – Despite holding a 1-0 interval lead courtesy of a Ron Futch effort, the Town lost 2-1 to high-flying Bolton at Burnden Park.

20 It happened 20 years ago:- 28/10/72 – A rare John Faulkner goal was enough to secure the points at Bristol City. This was the Town's fifth away victory of the season.

PREVIOUS ENCOUNTERS

	P	W	D	L	F	A
Home	21	12	5	4	43	23
Away	21	6	5	10	19	35
Total	42	18	10	14	62	58

Bruce Rioch scored a brilliant goal against Hartlepool in 1967.



Luton Town F.C.

KIT SPONSORS

RICHARD HARVEY
ECJ Shorey Travel

DES LINTON
Simkins Solicitors of
Baldock and Sandy

CERI HUGHES
Mark Varney Investments

STEVE CLARIDGE
Bobbars Travel Club,
Committee and Members

CHRIS KAMARA
Tim Arnold

JAMIE CAMPBELL
Lea Manor School
Luton

TREVOR PEAKE
Bennetts Gate Bakery
of Hemel Hempstead

MARVIN JOHNSON
Cornish Newsagents
Leighton Buzzard

DAVID PLEAT
A-Top Management Services Ltd
Property Letting Service

CHRIS BROOKS

ALEC CHAMBERLAIN
and
DAMIEN MATTHEW

JUERGEN SOMMER

DARREN SALTON
Fastech Scotland

PHIL GRAY
Coloramic Ltd of Sandy

JULIAN JAMES
ECJ Shorey Travel

PAUL TELFER
5 Star Cars and Couriers Ltd

JASON REES
Wilton Vehicle Rental

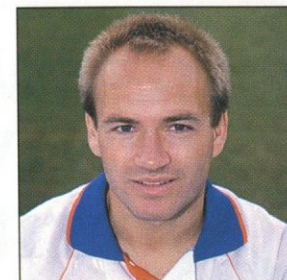
TIM ALLPRESS



FOR PRICING, TELEPHONE THE
COMMERCIAL DEPARTMENT
ON 0582 411622

Luton Town Clubcall 0898 12 11 23

Award gives David a boost



PLAYER INTERVIEW WITH DAVID PREECE

Town midfielder David Preece has been named the most consistent Division One player for the month of September, according to the results of the Line 7 Matchman of the Month awards. The awards are based on the individual player ratings published in Match Magazine's comprehensive Match Facts results service.

David, who receives a scroll in recognition of his performances, shares the award with Notts County midfielder Mark Draper who also gained an average rating of 7.60. The duo beat off the challenge of West Ham's Martin Allen, who despite recording the same average, was placed third with fewer star ratings.

"Obviously I am delighted with the award," said David after hearing the news. "It is nice when neutral observers praise your performances and to come out on top ahead of all the other First Division players certainly gives you a big lift."

The award is testament to David's consistency and never-say-die spirit which has shown through in recent weeks despite some indifferent results. It is also pleasing to see the Town's name come out on top at a time when bigger names and more glamorous clubs are grabbing the headlines in Division One.

"That is another reason why I was surprised to win," said David. "You expect to see players from the likes of Newcastle and West Ham United win the awards and take all the credit because of their League position and exposure, so it is nice to put Luton's name in the spotlight for a change."

"Personally speaking, I have been quite pleased with my performances, however you can never be totally satisfied, particularly at a time when the team are struggling at the wrong end of the table. We must all carry the can for that."

Despite the Club's current lowly position,

David remains optimistic about the season ahead, particularly as our injury crisis appears to be coming to an end.

"We have two very fine prospects in midfield on their way back from lengthy injury lay-offs. Paul Telfer and Ceri Hughes both showed last season that they are more than capable of holding their own in midfield and I am sure that their return will only improve our situation."

"What I must do is to continue with my form of late and also help and encourage these lads back into the side. A couple of wins will put us back on the right track and also give us the confidence to progress."



Get in the Festive Spirit



COMMERCIAL FOCUS BY ANDY KING AND JOHN BUTTLE

Our catering department at the Club can offer very attractive facilities to meet your Christmas entertainment needs. So why not get in touch with either Peter Saul or Steve Bavister on the number below.

Kick Off Your Christmas

And Have a "Ball" at Luton Town

Money today is at the top of the list for most people. Whatever you've got to spend on your Christmas Party we'll sit down together and work out what's right for you.

From Discos, Finger Buffets, Special Party Menus, Christmas Dinners to full A la Carte, we can cater for all budgets.

Call us to arrange a viewing of our Function rooms/Bars and together we'll make sure your '92 party is the best ever'.

Christmas Parties
now being booked



We also cater for:-

- WEDDINGS
- WEDDING BREAKFAST
- BUSINESS BREAKFASTS, LUNCHES & DINNERS
- BIRTHDAY/ANNIVERSARY CELEBRATIONS
- CONFERENCE (UP TO 100 DELEGATES)
- LUNCHTIME & EVENING MEALS

Open to the public
• MATCH NIGHT PARTIES

Tour of the Ground
& Meet the Players
(by arrangement)

Childrens Parties
also catered for

QUIZ NIGHTS!

Your Team v The Luton Town Players
Dare you meet the challenge?

**LUTON TOWN
FOOTBALL CLUB**

Call: (0582) 411622 FOR AVAILABILITY



FACE IN THE CROWD

Are you the face ringed at our match with Peterborough United last Saturday?

If you are, please ring the commercial department on (0582) 411622 to pick up your complimentary ticket for a Town home game this season!



**TODAYS
MATCH
SPONSOR**

progressive
PRINTING · UK · LIMITED



A Winning Team Producing **Premier** Printed Products.

For Good Results Contact:

progressive
PRINTING · UK · LIMITED

Units 5-8 Rutherford Close,
Eastwood Industrial Estate,
Leigh-on-Sea, Essex SS9 5LQ
Tel: (0702) 520050 Fax: (0702) 420273

COMPANY PROFILE

Progressive Printing UK Ltd., a British company formed to develop and produce printed matter. We have a long term growth plan to serve clients nationwide from our Essex based factory.

Our range of products and services cover: Product catalogues, Corporate brochures, Annual Reports, Sales leaflets, Sample folders. to promote and advertise your product of service our range of printed literature can be tailored to meet your individual needs in assisting your company's sales.

With our commitment to customer satisfaction our sales teams objective is to advise and supply technical support when called upon.

Progressive can provide a total integrated solution to meet your company's needs. Our continual progressive approach allows us to keep pace with technical developments and serve you better.



A representative of our match sponsors against Derby County, Check-Out Systems, is pictured with David Kohler after the match.

LUTON TOWN SPORTS SHOP

FOR ALL THE FAMILY

NEW LUTON TOWN HOME AND AWAY KITS NOW IN.

SHIRTS

22"/24", 26"/28"	£23.50
30"/32"	£24.00
34"/36"	£27.00
38"/40"	£28.00
42"	£29.00
44"	£30.00

Take
advantage of
our
mail order
facility



SHORTS

24"/28"	£13.99
30"/38"	£15.99

SOCKS

Boys/Youths	£5.00
Mens	£6.50

ACCESS AND VISA
WELCOME

OAK ROAD AND
KENILWORTH SHOPS
ARE
OPEN WEEKDAYS
AND MATCH DAYS

Telephone (0582) 411622

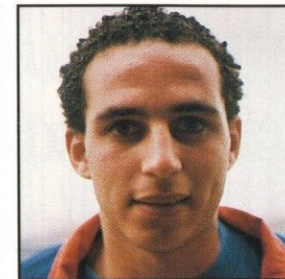
For the full Match
Report, read —

Brian Swain's SPORTSVIEW

IN THE
**Luton
News**

**5 pages
of Sport
Every Wednesday**

Damien grateful for spell at the Town



PLAYER INTERVIEW WITH DAMIEN MATTHEW

Chelsea's England under-21 international Damien Matthew is coming towards the end of his loan spell at Kenilworth Road. He looks back at his time with the Town and also looks forward to resurrecting his career at Stamford Bridge.

"I jumped at the chance to come to Luton on loan," stated Damien. "With such a big squad at Chelsea I have found it difficult to establish myself as a regular in the side. Players with the calibre of Andy Townsend, Dennis Wise and Nigel Spackman are all ahead of me in the pecking order, therefore I have just got to be patient and bide my time. This loan spell can only have helped my situation."

Despite having to drop down a Division, Damien knew he had made the right decision by coming to Kenilworth Road. Not only did he get the chance to play regular first-team football but he could also continue to play a similar style to that which he had become accustomed to.

"Luton have always had the reputation of playing neat and attractive football and that is the way I have been brought up to play. There may be big differences between Luton and Chelsea, but they both play the same way which has helped me settle in."

"Since I arrived here, our results have been disappoint-

ing but I believe we have dominated enough in some games to have won. The match against Derby County was a good example. We had all the play in the first-half but just could not score. Hopefully the luck will change soon and the club will climb up the table where they deserve to be."

Despite an early injury problem, Damien has featured regularly in the Town's starting eleven and he believes he is returning to

Stamford Bridge a better player for his experience here and is grateful to be given the opportunity to play.

"Hopefully regular league football has been a bigger help to me than playing for Chelsea's reserves. I feel sharper and fitter and I am now ready to resume my battle for a first team place at Stamford Bridge. In return, I hope that I have helped Luton Town out in midfield, particularly with the current injury problems here."



	F-A	Att	Pos	1	2	3	4	5	6	7	8	9	10	11	12	14
Aug 15	Leicester City	1-2	17,428	16	Petterson	Linton	James	Kamara	Peake	Dreyer	(Oakes)	Hughes	Gray	Preece	CAMPBELL	Salton
Aug 22	Bristol City	0-3	7,926	22	Petterson	Linton	James	Kamara	Peake	Dreyer	Claridge	Hughes	Gray	Preece	Campbell	(Johnson)
Aug 29	Charlton Athletic	0-0	6,302	21	Petterson	Linton	James	Salton	Peake	Dreyer	Claridge	Hughes	Gray	Preece	Rees	(Oakes)
Sept 2	Newcastle United	0-2	27,054	21	Petterson	Linton	James	Salton	Peake	Dreyer	Claridge	Oakes	Gray	Preece	Rees	(Johnson)
Sept 5	Tranmere Rovers	3-3	6,801	23	Petterson	LINTON	James	Salton	Peake	Dreyer	CLARIDGE	OAKES	Gray	Preece	Rees	(Johnson)
Sept 13	Brentford	2-1	7,310	19	Petterson	Linton	JAMES	Salton	Peake	Johnson	Claridge	Kamara	GRAY	Preece	Rees	(Campbell)
Sept 15	Watford (A/C)	0-0	5,197	-	Petterson	Linton	James	Salton	Peake	Johnson	Claridge	Kamara	Gray	Preece	Rees	(Campbell)
Sept 19	Birmingham City	1-1	8,481	21	Petterson	Linton	James	Salton	Peake	Johnson	CLARIDGE (pen)	Kamara	Gray	Preece	Rees	(Campbell)
Sept 23	Plymouth Argyle (CCC2/1)	2-2	3,702	-	Petterson	Linton	James	Salton	Peake	Johnson	CLARIDGE 2	Kamara	Gray	Preece	Oakes	(Rees)
Sept 26	Notts County	0-0	5,992	21	Petterson	Linton	James	Salton	Matthew	Dreyer	Claridge	Kamara	Gray	Preece	(Rees)	(Campbell)
Sept 29	Bristol City (A/C)	1-1	2,538	-	Petterson	Linton	James	Salton	(Matthew)	Dreyer	CLARIDGE	Kamara	Gray	(Campbell)	Rees	(Oakes)
Oct 3	Portsmouth	1-4	7,954	22	Petterson	Linton	James	Salton	Oakes	DREYER	Claridge	Kamara	Gray	Preece	(Rees)	(Matthew)
Oct 6	Plymouth Argyle (CCC2/2)	2-3	8,946	-	Petterson	Linton	James	Salton	(Peake)	Johnson	CLARIDGE	Kamara	Gray	Preece	Rees	(Dreyer)
Oct 10	Barnsley	0-3	5,261	23	Petterson	(Linton)	James	Salton	Johnson	Dreyer	Claridge	Kamara	Gray	Preece	(Rees)	(Matthew)
Oct 17	Derby County	1-3	8,848	23	Petterson	Linton	James	Salton	JOHNSON	Matthew	Claridge	Kamara	Gray	Preece	(Oakes)	(Campbell)
Oct 24	Peterborough United	3-2	7,125	22	Petterson	Linton	James	Salton	Johnson	Matthew	Claridge	Kamara	(Preece)	GRAY 2	Teller	Greene
Oct 31	Southern United															
Nov 3	Cambridge United															
Nov 7	Grimsby Town															
Nov 14	Oxford United															
Nov 21	Millwall															
Nov 29	Watford															
Dec 5	Bristol Rovers															
Dec 12	Wolverhampton Wanderers															
Dec 19	Sunderland															
Dec 26	Swindon Town (11.30 am)															
Dec 28	West Ham United															
Jan 2	FAC 3															
Jan 9	Birmingham City															
Jan 16	Notts County															
Jan 27	Newcastle United															
Jan 30	Bristol City															
Feb 6	Leicester City															
Feb 10	Brentford															
Feb 13	Tranmere Rovers															
Feb 20	Charlton Athletic															
Feb 27	Barnsley															
Mar 6	Portsmouth															
Mar 10	Oxford United															
Mar 13	Grimsby Town															
Mar 20	Bristol Rovers															
Mar 24	Millwall															
Mar 27	Cambridge United															
Apr 3	Watford															
Apr 7	Wolverhampton Wanderers															
Apr 10	Swindon Town															
Apr 13	West Ham United															
Apr 17	Sunderland															
Apr 24	Derby County															
May 1	Peterborough United															
May 8	Southern United															
May 15	F.A. Cup Final															

AND LUTON TOWN

DIVISION ONE LEADING GOALSCORERS (all competitions)

Whittingham (Portsmouth) 16; Maskell (Swindon), Simpson (Derby) 11; Aldridge (Tranmere), Blissett (Brentford) 11; Furlong (Watford) 10.

TODAY'S OTHER BARCLAYS LEAGUE DIVISION ONE ACTION

Brentford v Bristol City
Bristol Rovers v Millwall
Cambridge United v West Ham United
Charlton Athletic v Birmingham City (Sun)
Grimsby Town v Portsmouth
Leicester City v Newcastle United
Oxford United v Watford
Sunderland v Notts County
Swindon Town v Barnsley
Wolves v Derby County

Luton Town F.C. Appearances and Goalscorers 1992-93

League	Apps	Gls	Coca-Cola Cup	Apps	Gls	AI Cup	Apps	Gls	FA Cup	Apps	Gls
Jamie Campbell	2(6)	1	-	1(1)	-	-	-	-	-	-	-
Steve Claridge	11(1)	2	2	3	2	1	-	-	-	-	-
John Dreyer	8	1	-	1	-	-	-	-	-	-	-
Phil Gray	12	3	2	-	2	-	-	-	-	-	-
Ceri Hughes	3	-	-	-	2	-	-	-	-	-	-
Julian James	12	1	2	-	2	-	-	-	-	-	-
Marvin Johnson	5(1)	1	2	-	1	-	-	-	-	-	-
Chris Kamara	9	-	2	-	2	-	-	-	-	-	-
Des Linton	12	1	2	-	2	-	-	-	-	-	-
Damien Matthew	3(2)	-	-	-	1	-	-	-	-	-	-
Scott Oakes	5(6)	1	1(1)	-	-	-	-	-	-	-	-
Trevor Peake	7	-	2	-	1	-	-	-	-	-	-
Andy Petterson	12	-	2	-	2	-	-	-	-	-	-
David Preece	12	-	2	1	1(1)	-	-	-	-	-	-
Jason Rees	8	-	1(1)	-	2	-	-	-	-	-	-
Darren Salton	10	-	2	-	2	-	-	-	-	-	-
Paul Teller	1	1	-	-	-	-	-	-	-	-	-

Matchday music is supplied by HMV Stores, Arndale Centre, Luton.



VOUCHER NUMBER 6

Barclays League Division One Table

	P	W	D	L	F	A	Pts	Av Att	Leading Goalscorers
Newcastle United	12	11	0	1	25	8	33	29,290	Kelly 5, Peacock 4
Swindon Town	13	7	3	3	27	19	24	8,406	Maskell 10, Taylor 5
West Ham United	12	7	2	3	23	8	23	13,728	C.Allen 5, Morley 5
Wolverhampton W	13	5	7	1	20	11	22	14,725	Bull 5, Mutch 5
Charlton Athletic	13	6	4	3	18	11	22	5,803	Pardew 6
Tranmere Rovers	12	6	3	3	22	12	21	5,578	Aldridge 5, Nevin 4
Leicester City	13	6	3	4	16	15	21	14,696	Davison 5, Gee 4
Millwall	12	5	5	2	19	10	20	7,441	Allen 5
Watford	13	5	3	5	22	24	18	8,124	Furlong 8
Portsmouth	12	5	3	4	20	15	18	11,714	Whittingham 11
Birmingham City	12	5	3	4	11	17	18	9,587	Rowbotham 2, Rennie 2
Bristol City	12	5	2	5	18	25	17	11,538	Cole 3, Dziekanowski 3
Peterborough United	12	5	2	5	16	16	17	8,618	Adcock 5, Sterling 3
Derby County	12	4	3	5	20	18	15	15,352	Simpson 9, Gabbiadini 3
Grimsby Town	12	4	3	5	14	15	15	4,844	Mendonca 3, Rodger 3
Oxford United	12	3	6	3	12	11	15	6,082	Penney 4
Notts County	13	3	4	6	16	27	14	6,771	Smith 3
Cambridge United	13	3	4	6	11	22	13	5,344	Chapple 2, Leadbitter 2
Barnsley	12	3	3	6	13	13	12	6,053	Biggins 5, Pearson 3
Sunderland	12	3	2	7	8	18	11	16,271	Goodman 3, Rush 2
Brentford	12	2	4	6	13	16	10	8,410	Blissett 6, Bennett 2
LUTON TOWN	12	2	4	6	12	24	10	7,791	Gray 3, Claridge 2
Southern United	12	2	4	6	10	15	10	5,134	Benjamin 6, Ansaah 3
Bristol Rovers	13	1	3	9	18	34	6	5,953	Taylor 6, Stewart 5

(up to and including 25.10.92)

THE MAN IN THE MIDDLE:

TERRY HOLBROOK
(WIGHTWICK, STAFFORDSHIRE)

A company general manager, Terry commenced refereeing in 1966 and progressed via the Walsall, Staffordshire, Central and Alliance Leagues to the full League list 1966. Last season's Charity Shield referee between Tottenham and Arsenal, Terry is also a county league tennis player and an occasional squash player.

THE PERFECT MATCH

LUTON TOWN 2

Colours: White/Blue Shirts,
Blue/White shorts

Manager: David Pleat

Andy Petterson
Des Linton
| Julian James
Darren Salton
Marvin Johnson
Damien Matthew
Steve Claridge
Chris Kamara
David Preece
| Phil Gray
Paul Telfer

1
2
3
4
5
6
7
8
9
10
11
12
14

SOUTHEND UNITED 2

Colours: Yellow Shirts,
Yellow Shorts

Manager: Colin Murphy

Paul Sansome
Gary Parkinson
Chris Powell
John Cornwell
Andy Edwards
Spencer Prior
Andy Ansah
David Martin
Adam Locke
Ian Benjamin
Steve Tilson

REFEREE: T.J. Holbrook (Staffordshire)

LINESMEN: S.G. Clingo (yellow trim)
P.A. Elwick (red/yellow trim)

**FOURTH
OFFICIAL:** R.G. Payne



Official kit sponsor



Official ball sponsor

LOCAL HERO



VAUXHALL *Once driven, forever smitten*



VAUXHALL IS BACKED BY THE WORLDWIDE RESOURCES OF GENERAL MOTORS. CAR SHOWN CAVALIER