

THE SUPER POSH

Saturday, 24th
October, 1992.
**BARCLAYS
LEAGUE
DIVISION ONE V**



LUTON TOWN

KICK-OFF 3.00 pm
Season 1992-93

£1.00

THE OFFICIAL MATCHDAY PROGRAMME OF PETERBOROUGH UNITED FC

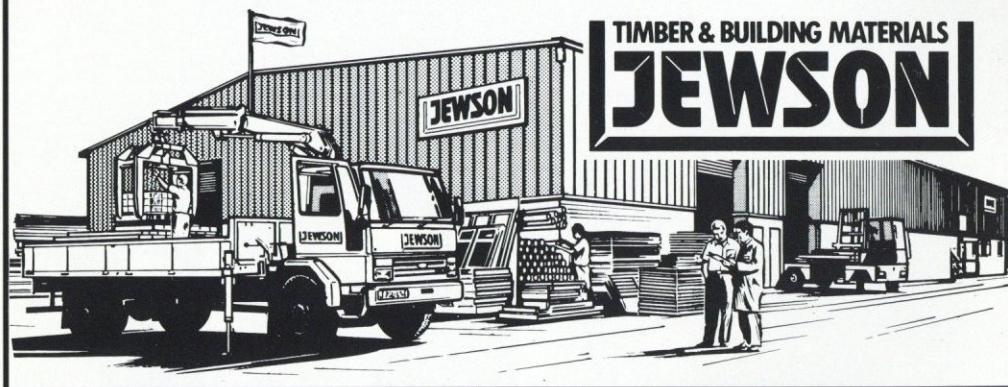


**Thomas
Cook**

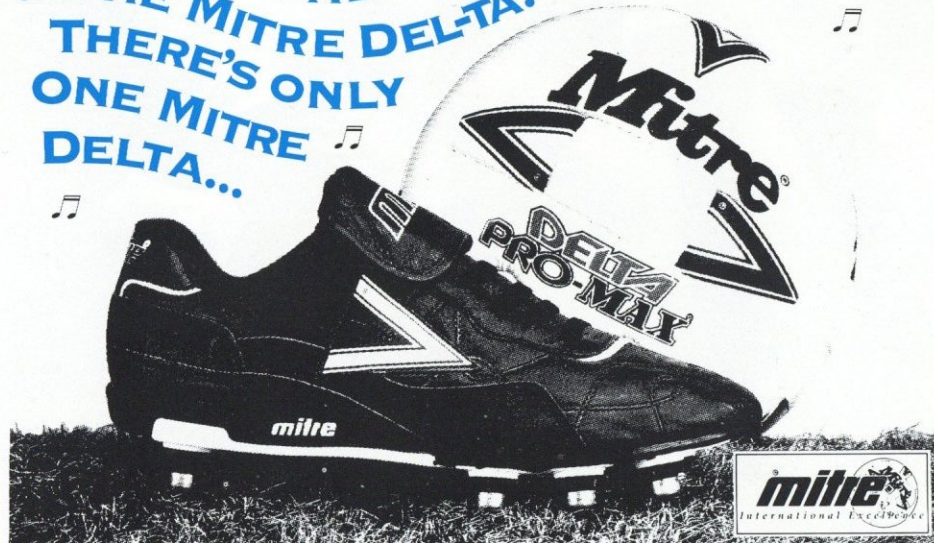
OFFICIAL TEAM SPONSOR

We've got the Jewson lot nationwide.

FIND US IN YOUR LOCAL YELLOW PAGES.



THERE'S ONLY ONE MITRE DELTA...
...ONE MITRE DELTA.
THERE'S ONLY
ONE MITRE
DELTA...



Mitre Sports International Ltd., Bay Hall Works, Birkby, Huddersfield, West Yorkshire HD1 5AJ. Tel: (0484) 537488 Fax: (0484) 530042

TALKING WITH TURNER

READ THIS AND TAKE IT ALL IN!

I'M GOING TO USE TODAY'S programme notes to speak my mind.

I wish to set the record straight over the Ken Charlery transfer and the ludicrous speculation over the sale of this club. I wanted to do this in the Evening Telegraph last Monday but once again they let me down.

So, I'm going to put it right in this programme. First, the chairman, John Devaney. He's come in for some hefty criticism over the sale of Ken Charlery and the ridiculous rumours of a takeover bid, particularly during last Sunday's live game with Leicester.

Unfortunately, he's not a media person and I'm sure he won't mind me saying he's shot himself in the foot a few times since he's been here. But the more they keep hounding the man, the less he'll talk back.

When he first came and bought the club, he had the sort of money to support a club like Posh. But the recession has hit everybody hard, including John Devaney.

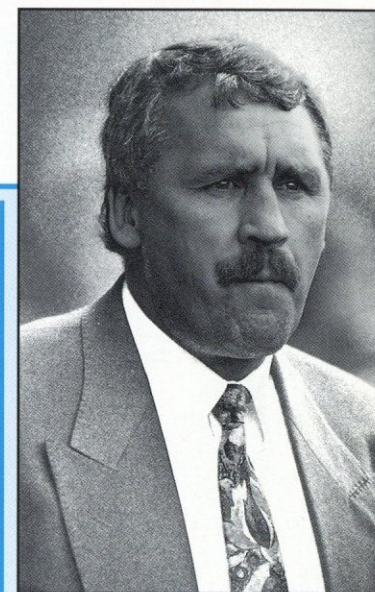
Don't forget also the club lost

£300,000 when our insurance company went bust. He's also had to pay out in excess of £150,000 on all the work on the Glebe Road to make it ready to open for the new season. It didn't come from Football Trust cash because we were not making it all-seater and last season, he bought Tony Adcock and Bobby Barnes out of his own money. People, I'm afraid have short memories.

And despite everything you may have read...I WANTED to keep Ken. I WANTED to keep Dave Robinson and at the same time I WANTED to buy Russell Wilcox and Tony Philliskirk.

But after long discussions, it just wasn't possible. Now either a manager accepts it or resigns. I wanted to say all this last Monday but once again the local paper only printed the bits they think you want to read.

I didn't think the article did either myself or the chairman justice, and if I so wished, I could make the media look so stupid over the Barry Fry takeover story. There is about as much chance of that happening



as Chris Turner going to the moon...got it! You will always get an element who criticise but just remember that Posh is now far healthier financially than other clubs and that in itself is a great achievement.

If the chairman or I left tomorrow, this club would go on. But at the moment there's nobody better to run it than the players, Chris Turner and John Devaney.

Thankyou for your attention.

POSH LINE-UP

Peterborough United F.C. Ltd, London Road Ground Peterborough PE2 8AL
Office: (0733) 63947
Promotions: (0733) 69760
Fax: (0733) 557210
Clubcall: 0898 121654
PRESIDENT: C.W. Swift OBE.
CHAIRMAN: J.F. Devaney.
VICE-CHAIRMAN: M. C. Lewis.
CHIEF EXECUTIVE: M. B. Devaney.
DIRECTORS
FINANCIAL: M. G. Cook FCA.

MANAGING DIRECTOR/SECRETARY: A. V. Blades.
ASSOCIATE DIRECTORS: T. Judson, M. Judson.
DIRECTORS: J.T. Dykes, A. Palkovich, A.M. Devaney, P.J.A. Sagar.
OFFICIALS
MANAGER: C. Turner.
COACH: L. Fucillo.
TEAM PHYSIO: K. Oakes.
HON. MEDICAL ADVISOR: Dr. J.R. Beeton.
HON. DENTAL SURGEON: A. Nicholls.
STADIUM

MANAGER/GROUNDSMAN: D. Poole.
OFFICE MANAGER: Margaret Poole.
SAFETY AND SECURITY OFFICER: D. Cooper.
COMMERCIAL MANAGER: M. Vincent, MBIM.
LOTTERY MANAGER: David Riley.
Phil Butler (Lotteries); Helen Goodhand (Blue Bond); Matthew Hex (Blue Bond).
POSH PROGRAMME
WRITTEN BY: Adrian Curtis (A&C Soccer Press Services)
PHOTOGRAPHERS: Paul

Marriott, EMPICS, Kevin Goodacre, Peter Barnard, Craig Lenihan.
DESIGNED BY: Paul Ewen.
PRINTERS: Staples Printers Kettering Ltd, Kettering, Northants. **TEL:** 0536 83401
COLOUR REPRODUCTION: Scan House Ltd, Kingsthorpe, Northampton. NN2 6EW.
TEL: (0604) 791322/791332.
FAX: (0604) 791330.
● The views expressed in this magazine are not necessarily those of the Editor or Peterborough United FC.

POSH CLUBCALL ☎ 0898 12 16 54 TICKETS CALL 0733 63947

POSH COLOUR ACTION!

THAT'S MINE!
Brentford's Gerry Peyton grabs the ball as Tony Adcock follows up.



King Kenny Charlery forces a flying save from Gerry Peyton in the Brentford goal in what was Kenny's last match for the club he served with distinction.



MATCH ACTION WITH SUPER POSH!

FAREWELL KING KENNY!

Although he didn't realise it at the time, the match against Brentford was to be the last time Wembley hero Ken Charlery would wear the blue shirt of Posh. For many Posh fans, he will always have a special place in our hearts. His two-goal salvo at Wembley last May earned us our place in Division One. We wish him a successful time with his new club Watford.

** Tony Phlliskirk - 'Don't compare me with Kenny!' - See Posh profile on page 13!*



POSH FANS KNOW THE SCORE

They all read the

EVENING
Telegraph



MN POSH FANS Q GLO

There's only one newspaper that previews every POSH match, that gives you a full match report, and gives you news and comment on your team on a daily basis

The Evening Telegraph is your newspaper, keep up to date with POSH in the first division, order your copy from your local newsagent

GOOD LUCK POSH

from



Norwich and Peterborough Building Society

your biggest home supporter

Chief Office: Peterborough Business Park, Lynch Wood, Peterborough PE2 6WZ.

Telephone: Peterborough (0733) 371371.

Member of The Building Societies Association. Member of LINK. Assets exceed £1.25 billion.

POSH NEWS

YOUTH TEAM NEWS!

POSH take on Nottingham Forest on Monday October 26th in the Midland Youth Cup.

The game will be played here at London Road with a 7pm kick-off. Admission charges for the game are £1 (Adults) and 50p (Children/Senior Citizens).

POSH have been drawn away from home in the FA Youth Cup. They will face Norwich City on Tuesday, November 10th at Carrow Road, kick-off 7.30 pm. In the event of a replay, it will be played here at London Road on Wednesday, November 18th with a 7.30 pm kick-off.

The Youth side are currently unbeaten in seven games. Since an opening fixture defeat by Mansfield, they've beaten Northampton, Shrewsbury, Stoke and drawn with Notts County, Wolves, Port Vale, and Walsall.

Posh have switched playing from Saturday to Friday afternoons at Bretton Woods purposely so the progression of youngsters can be monitored by Chris Turner and Lil Fuccillo.

FOLLOW THE POSH!

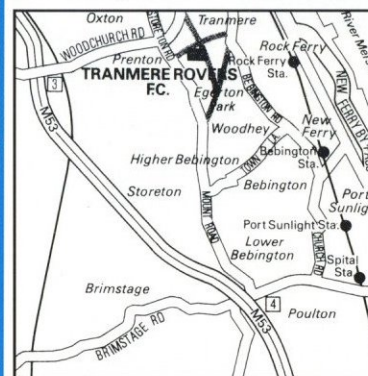
Our next away game is on Friday, October 30th, away to TRANMERE ROVERS.

From North: M53 to Junc. 3. Take first exit from roundabout to A552. Turn right at crossroads into B5151, then left into Prenton Road West for Prenton Park.

From South: M53 to Junc. 4. Take fourth exit from roundabout for B5151. Turn right into Prenton Road West for Prenton Park.

Parking: Large car park at the rear of the stand plus street parking.

Nearest railway station: Hamilton Square. Rock Ferry (one mile). **Buses:** The following bus services pass the ground at regular intervals: 64, 40, 80, 80A.



POSH COACHES

The game against Tranmere is a 7.30 kick-off and coaches depart at 1.30 pm from the ground. Cost of the trip is a more than reasonable £14.95 for the long haul to Merseyside.

MASCOTS

1 TODAY'S mascots include **Lisa Rowlett** of

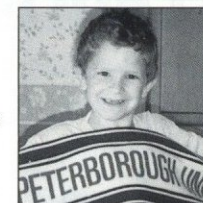
Werrington, Peterborough, aged 9 – she will be ten tomorrow – so happy birthday Lisa! A pupil at Werrington Junior School, her hobbies are Posh and swimming. Her fave Posh star is Mick Halsall.

2 Second mascot is **Matthew Hards** of Orton Waterville, Peterborough. Aged 8, he goes to Kirkstone House School, Baston. His hobbies also include football and cycling and his favourite star in Posh colours is that 'Man in the Mask' – Fred Barber.

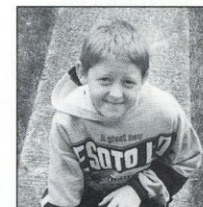
3 Our third mascot of the day is **Lee Forth** of North Bretton, Peterborough. Aged 10, he goes to Middleton Junior School and his hobbies include football and cricket. His favourite man in the blue shirt of the Posh is flying winger Worrell Sterling.



LISA ROWLETT



MATTHEW HARDS



LEE FORTH

PENALTY PRIZE!

WELCOME to our new Penalty Prize competition which is sponsored by Estate Agents Sharman and Quinney and the new-look Evening Telegraph. The schools competing in the competition today are **Warboys Colts** versus **Sawtry Village College** and

Peterborough City Rangers versus **Bretton Woods CS**. The Boys are all under-13 and are keen Posh fans. We wish them all the best of luck today. *Preliminary round results:* St. Peter's School defeated Gunthorpe Harriers 10-7 and Walton School ousted Orton Longueville after a sudden death play-off.

WATFORD

FANS wishing to make the short trip to Watford for the game against Ken Charley's new club at Vicarage Road, can make life a lot easier for themselves by taking advantage of the Posh Supporters coaches. Although it's only just down the A1, let the coach take the strain for this evening encounter on Tuesday, November 3rd. The supporters coaches leave the ground at 4.30 pm and the prices for the journey are more than affordable in this tight recession – just £5.95. Go on, book it now!

CAPTAIN'S CORNER

WITH SKIPPER STEVE WELSH...

WE MUST BE FEARED AGAIN!

IT'S A GREAT HONOUR for me to be skipper of the club.

Even though I'm the third holder of the coveted armband this season, it takes nothing away from the job I've been given.

It seems that ever since I pulled on a Posh shirt for the first time more than a year-and-a-half ago, everything has just got better and better.

Take last Sunday for instance. It was a great game for me and I was fired-up and ready for it well before the kick-off.

Even so it was more than a nice surprise to be given the 'Man of the Match' award.

I felt you could have picked any one of us. We were all magnificent in our own way.

The gaffer has always said there are eleven skippers on the pitch and that showed on Sunday.

I felt it was our best defensive performance away from home this season — but not our best overall performance.

That was against Barnsley when we simply

tore them apart.

Today though, we are back in front of our loyal following and I think it's time that we instilled some of last season's spirit at London Road.

Feared

Last season, teams were afraid of coming to our ground because they knew they were in for a battering.

This season, though it has been a different matter altogether.

Part of the reason for this, I feel, is down to ourselves and our over-anxious approach.

Allied to this is the fact that the teams coming to London Road this season have much more quality. They get their men behind the ball better and keep it longer.

We are still trying to go all-out for the jugular and leaving gaps for these teams to exploit.

If we can consolidate in the first fifteen minutes instead of going hell for leather, then may be we can build on it like



**We must
make London
Road a place
to be feared
again!**

we do away from home.

We seem to be to eager to impress at home and that's the crux of the problem for me.

We must try and make London Road a place to be feared once more.

It's no good continuing to lose at home while our away form is so good.

Even if we get a point, that's something.

Luton haven't had the best of starts and I'm sure nobody would have

bet on them being where they are in the table at the moment.

They don't seem to have been able to get their act going and we are definitely not going to let them start to put it right against us.

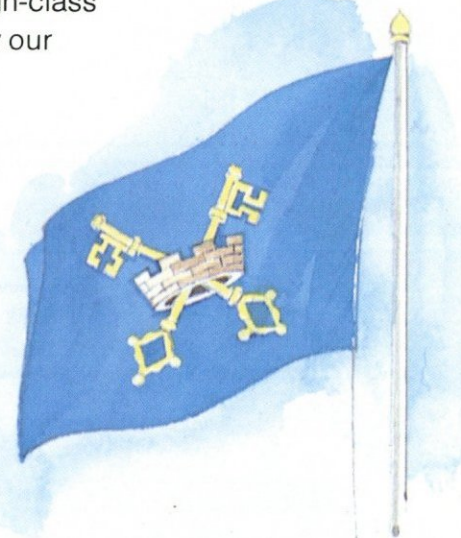
Yours, Steve!

PIC: PAUL MARRIOTT



APV Baker.
**Part of
progressive
Peterborough.**

For 91 years Peterborough has been our world centre for all that's best in machinery for quality bakers and high-class confectioners. Now our reputation for excellence has been enhanced by new state-of-the-art premises at Paston. There the business continues its development of the latest in automated food production — from the miller's flour to the pack on the supermarket shelf. We are proud to be leading the way internationally, and proud to be part of progressive Peterborough.



APV Baker Ltd

Manor Drive, Paston Parkway, Peterborough PE4 7AP
Tel: (0733) 283000. Fax: (0733) 283001

**Well done Posh
in reaching the
First Division!
Best wishes in
1992/93!**



**Pedigree
Petfoods**

for people who care...

makers of

**Pedigree
Chum**

whiskas



© Pedigree Petfoods, Whiskas and Pedigree Chum are Registered Trade Marks. © Copyright Pedigree Petfoods 1992.

FOREMOST FOR ENTERTAINMENT



THE CRESSET

Bretton Centre, Peterborough PE3 8DX

BOX OFFICE: 0733 265705

FORTHCOMING ATTRACTIONS

OCTOBER

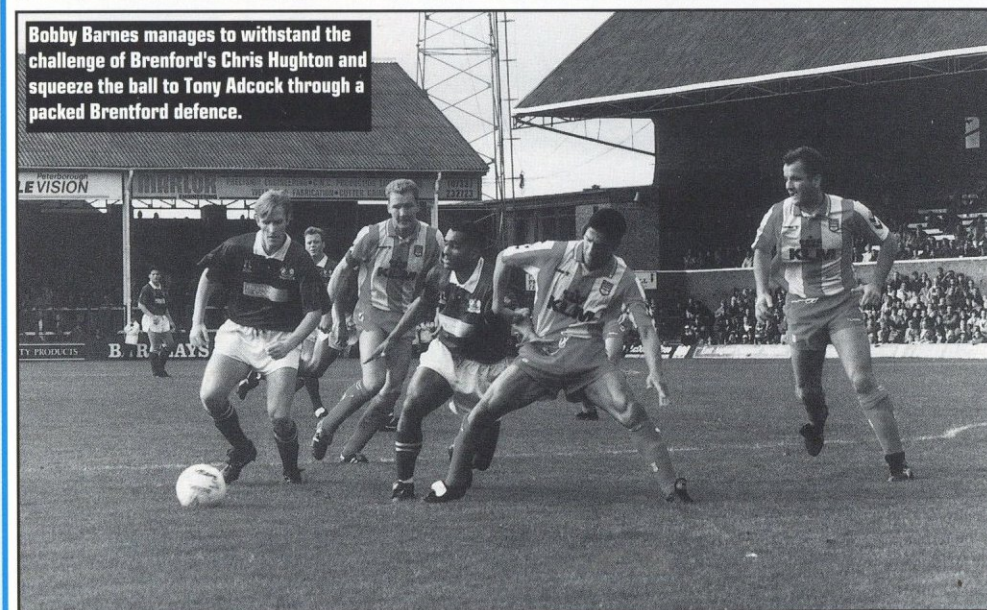
Wed	7	The Saw Doctors	Doors 7.30pm
Thur/Fri	8/9	Jethro in Concert	8pm
Sat	10	Central Band RAF	8pm
Sat	17	The Blues Band	Doors 8pm
Sun	18	Magnum	Doors 7.30pm
Fri	23	Gene Pitney	8pm
Wed	28	Vienna Festival Ballet	7.30pm

ONE ON ONE!



GET OUT OF MY WAY!
POSH skipper Steve Welsh climbs high to put Gerry Peyton under pressure against Brentford.

Bobby Barnes manages to withstand the challenge of Brentford's Chris Hughton and squeeze the ball to Tony Adcock through a packed Brentford defence.



CATCH-UP WITH MORE PICTURE POWER IN THE NEXT PROGRAMME!

Millions of Perkins engines* help keep the world moving day after day.



Right across the globe, major companies trust the world's greatest power in diesel engines.

Perkins is currently the power that millions of people worldwide rely on because of our reputation for always providing quality and reliability.

These high standards have been applied throughout our 5 to 1500 bhp range with engines that have each been

specifically designed to meet the needs of market leaders.

Furthermore, our network of over 4,000 dealers across 160 countries provide unparalleled customer service with Perkins Powerpart™ total after-market support.

And for the future, Perkins' commitment to develop and innovate ensures that we'll be anticipating and satisfying

individual market and legislative needs the world over.

Find out more by phoning our worldwide headquarters on 0733 67474.

After all, there are millions of good reasons to do so.

Perkins
A business of Vortec Corporation.

1932-1992 60 Years of World Leadership.

POSH PROFILE

INTRODUCING... TONY PHILLISKIRK

DEBUT DAY DAZZLER!

NEW SIGNING TONY PHILLISKIRK got his Posh career off to a flying start with a great goal against Leicester and then immediately declared: "Don't compare me with Kenny!"

The former Bolton star made a dream Posh debut in front of live TV cameras just 48 hours after putting pen to paper for Posh.

His first-half strike – a beautifully curled shot from 20 yards – also gave him a hat-trick of debut-day goals.

For Tony has scored on his debut for both his previous two clubs – Preston and Bolton – and that memorable stunner at Filbert Street helped him continue that record.

PRESSURE

Tony was bought as an out-and-out replacement for two-goal Wembley hero Ken Charlery but did he feel under any pressure at having to replace the club skipper and goal machine?

"I didn't have time," he says. "Everything happened so fast, I didn't even think about it."

"I'm definitely a different type of player to Kenny."

"He was sold for £350,000 and I only cost £85,000 so he's supposed to be five-times a better player than me anyway."

"It would be wrong to compare me with Kenny."

I don't think the fans will be that worried as long as I score the goals."

Tony is a proven goalscorer in the lower divisions – rattling in 75 in all competitions in three seasons with Bolton.

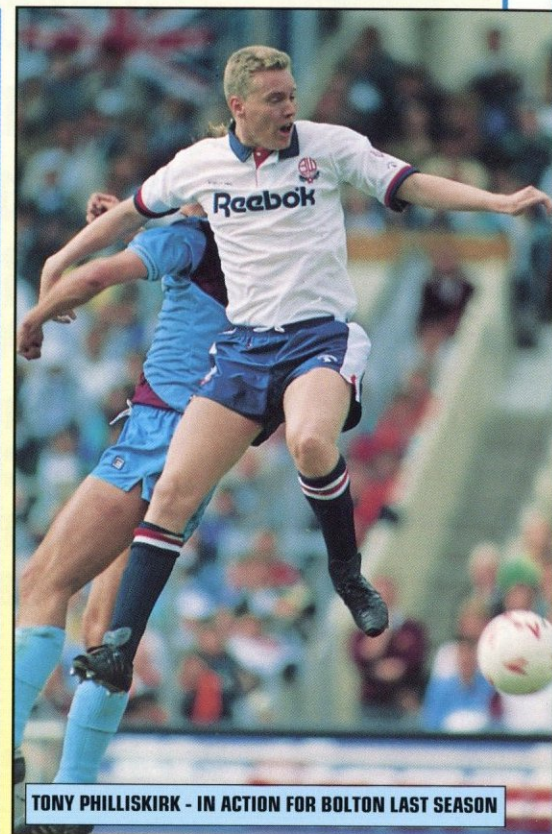
With such a tremendous strike-rate you would have thought the big-clubs would have been forming a queue for his services.

But Tony adds: "Well I was under contract all the time during my stay at Bolton and this is the first opportunity I've had to make a step-up."

"It's nice to get that chance at last."

His great start for Posh also found him feeling the pace slightly in a pulsating clash at Filbert Street in which Leicester were always chasing the game once Tony and Worrell Sterling had struck.

And he admits he found



TONY PHILLISKIRK - IN ACTION FOR BOLTON LAST SEASON

the going tough. "I'm not making excuses it had been a long week. I'd only trained with the lads once and I'd driven up and down the motorway during the week when the deal was off and on. It was all a bit stressful and I started to feel it in the second half."

"But it was nice to start off with a goal and hopefully there will be more to come."

FACT FILE

TONY PHILLISKIRK

Age: 27

Born: Sunderland

DOB: 10/2/65

League apps/goals:

Sheff. Utd 80/20;
Rotherham 6/1 (loan)
Oldham 10/1; Preston
14/6; Bolton 131/49;
Posh 1/1.

WATCH OUT FOR ANOTHER SUPER POSH SPOTLIGHT SPECIAL IN THE NEXT PROGRAMME!

MATCH SPONSORS



**Mr Posh welcomes
you to the new
Peterborough United
Football Club
THURSDAY MARKET
(3pm – 9pm) every Thursday.**

200 stalls to include The Butcher, frozen foods, cakes, biscuits, jeans, Christmas toys, gifts, and decorations, sweatshirts, t-shirts, hardware, electrical goods, shoes, tapes and c.d's, mens and ladies fashions, underwear, hotdogs, potatoes etc.

Car booters welcome!

**Win £25 every Thursday
in the Peterborough United Football Club
Thursday Market Competition**



**THAT NUMBER
0800 32 33 34
PROMOTIONS**

COMMERCIAL CHAT

HOT POSH GOODIES

REPLICA jerseys are now available in FOUR colours. Added to the blue and green tops is a sophisticated RED along with a striking WHITE. Most sizes in stock...so show your true colour today!

● **NEW** in stock are the excellent club t-shirts which feature Posh club logo. They are available from £5.95 upwards.

● **NEW** in stock also are the fabulous Carlsberg type sweatshirts at £14.95. These great sweatshirts have the undeniable slogan - 'Super Posh - Definitely the greatest football club in the world' on the front...we couldn't have said it better.

● **SPECIAL OFFER** POSH ON TOUR t-shirts. Large and extra-large available at just **£7.95** and that represents great value. They have the fun Mr. Posh on the front in footie boots no less and all the fixtures on the reverse. Get one now!

● **NEW! NEW! NEW!**

Padded jackets with built-in hood available now in all sizes at £59.95 - great value.

● **NEW! NEW! NEW!**

Plus fabulous rain jackets again with the popular built-in hood arrangement. This fabulous item of clothing now in the club shop and selling at the superbly affordable price of £34.95. Get one now!

● **WEMBLEY** printed scarves at £3.50 while jacquard scarves are available for £5 plus an assorted range of hats from £3.

● **POSH** mugs are also available in both white and blue. They cost £2.25 and celebrate our promotion.

SHIRTS AND CLOTHING

Replica shirts (22/24 30/32).....£22.50
 Sizes 34-44.....£28.99
 Sizes 46-48.....£29.99
 POSH at Wembley t-shirts (m).....£4.99
 Size (L).....£4.99
 Size (XL).....£4.99
 Size (XXL).....£4.99
 Hooded Tops (32).....£12.50
 Club t-shirts blue or white
 Sizes 26-32.....£5.95
 Sizes 34-44.....£7.95
 Drill tops (L/XL).....£27.95

● **NEW** supplies of the best selling 'Going-Up' video have arrived along with the **WEMBLEY** video. Priced at £14.95 they cover the whole game, plus interviews and celebration of that momentous day.

SCARVES AND HATS

Posh at Wembley.....£4
 Scarves.....£5
 Printed Scarf.....£3.50
 Ski Hats.....£2.50

● **ORDERS** under the value of £25 please add £1.50 for postage and packing. Orders received over the value of £25 are sent out post-free.

● **WE** require payment of goods upon order and provided they are in stock the goods will be dispatched to the customer within 14 days.

● **DON'T** forget to include your name, address and and size (if ordering clothing). It helps us help you get what you want faster.

WITH MICKY VINCENT!

A warm welcome to Today's Match Sponsor **MR. COLIN STONES OF 'THAT NUMBER PROMOTIONS'** and **POSH THURSDAY MARKETS**. We thank you for your support and hope you have an enjoyable day with us. If your company would like to take advantage of our many sponsorship packages, please call me for a detailed brochure on Peterborough 63947 or drop me a line at London Road and I'll send you all the details you need.



CPA SERVICES MAN OF THE MATCH V BRENTFORD – STEVE WELSH



Steve receives his award from Jess Dille of CPA Services after the goalless draw with Brentford at London Road.

MISCELLANEOUS

Bath towels.....£11.50
 Bronze Mr. Posh.....£64.62
 Car stickers.....£1
 Egg Cups.....£1.35
 Metal badges (boot-shaped).....£1.60
 Mugs.....£2.25

WELCOME TO TODAY'S VISITORS...

LUTON TOWN

DAVID PLEAT'S LUTON STRUGGLING TO FIND THEIR FORM IN DIVISION ONE!

JUST ONE WIN IN 11 GAMES HAS left David Pleat's Luton Town floundering close to the foot of the First Division in a season when they were expected to climb back into the Premier.

One of the worst defensive records and poorest strike forces in the Division has been a major factor of their wretched showing this season.

To be fair, Pleat has had to rely on a relatively untried bunch of youngsters after selling most of his prized assets during the Summer.

Like most clubs, Luton are in no position to hold on to their top stars. Mark Pembridge left Kenilworth Road

for Derby in a move which swelled Luton's bank-balance by £1.3 million. Veteran Mick Harford also went to Chelsea with the only real addition coming in the shape of Steve Claridge from nearby Cambridge.

REVIVAL

Luton got little joy against Derby last weekend when they went down 3-1 in front of their home fans.

Boss Pleat knows that he needs to find some cash and spend it on a proven finisher if he is to lift Luton out of their current depression.

A revival is needed and quickly if Luton are to remain in the First

Division and while it is still early days, an alarming gap is beginning to widen between the teams anchored at the bottom and the others in mid-table.

It will take all of David Pleat's vast experience and know-how to achieve it, but he's done it before and there is no reason why he can't do it again.

He kept Luton in the old First Division against all the odds for years, and hopefully it won't be long before they are climbing the table.

But for a club without the resources to go out and buy the big stars, it's going to be a difficult and thankless task. Let's hope their season isn't about to pick-up at our expense.



LUTON TOWN 1992-93 Back row (left to right) Darren Salton, Jamie Campbell, Des Linton, Alec Chamberlain, Marvin Johnson, Juergen Sommer, David Greene, John Dreyer, Chris Kamara. Middle row (left to right) John Moore (Coach), Julian James, Paul Telfer, Tim Allpress, Kurt Nogan*, Richard Harvey, Trevor Peake, Brian Owen (Physio). Front row (left to right) Steve Claridge, Phil Gray, David Pleat (Manager), Ceri Hughes, Jason Rees, Scott Oakes.

* No longer with the club.

MEET THE SQUAD

■ ANDY PETTERSON (Goalkeeper)

Born : 26/9/69. Originally came to Luton on trial from the Australian Institute of Sport. Has had loan spells at Swindon and Ipswich before making his league debut against Leicester on the opening day of this season. He is an Australian youth international.

■ **ALEC CHAMBERLAIN** (Goalkeeper). Born 20/6/64. Signed from Everton for £150,000 in July 1988. Began with Colchester and moved to Goodison in 1987 for £75,000.

■ **JULIAN JAMES** (Defender). Born : 22/3/70. Joined Luton as a trainee and was introduced to the First Division four years ago. An England under-21 international, he spent the early part of last season on loan at Preston before establishing himself at right-back.

■ **RICHARD HARVEY** (Defender). Born 17/4/69. A former England youth international who made his Luton debut as a 17-year-old in 1986. Made the left-back spot his own last season.

■ **TREVOR PEAKE** (Defender). Born 6/5/57. Club captain, Trevor started his career at Lincoln in 1979 before moving on to Coventry in 1983. He enjoyed eight full seasons at Highfield Road, winning an FA Cup Winners' medal in 1987. Cost Luton £100,000 in August 1991.

■ **JOHN DREYER** (Defender). Born 11/6/63. An apprentice with Oxford, but played league soccer with both Torquay and Fulham on loan during 1985/6. Joined Luton in 1988 for £140,000 and has been an ever-present for the past three seasons.

■ DARREN SALTON (Defender).

Born 16/3/72. Made his league debut last season against Leeds. Joined Luton from Salveson Boys Club in Edinburgh and is a Scottish under-21 international.

■ DES LINTON (Defender).

Born 5/9/71. Signed from Leicester in October 1991 along with Scott Oakes as part of the deal which took Steve Thompson to Filbert Street.

■ JASON REES (Midfield).

Born 22/12/69. An ex-trainee who made his debut on New Year's Day 1990 as a sub against Everton. A Wales under-21 international, he's since been capped at 'B' level.

■ CERI HUGHES (Midfield).

Born 26/2/71. Another bright young Luton Welshman who is tipped as having a very bright future. Made his debut against Villa in 1990. A Wales youth and under-21 international who suffered a series of lengthy injuries last term.

■ **SCOTT OAKES** (Midfield) Born 5/8/72. Joined Luton in October 1991 from Leicester along with Des Linton. Made his debut for the 'Hatters' later that month. Made an impressive impact on the right wing last season until injury ruled him out of the final stages.

■ PAUL TELFER (Midfield)

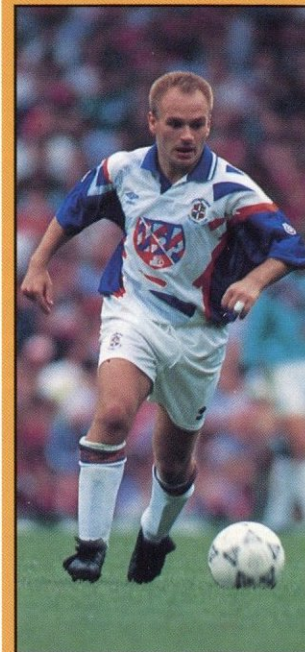
Born. 21/10/71. Paul is a former Luton trainee who made his debut at Everton as substitute towards the end of the 1990/91 season. Injury ruled him out for the last four months of last season but prior to that he'd established himself in the midfield. ➤

MEET THE MANAGER

■ **DAVID PLEAT.** It was at Kenilworth Road that David made a name for himself both as a player and manager. He begun his playing days at Nott'm Forest but played only half-a-dozen games before joining Luton in 1964. In 1967, he was transferred to Shrewsbury and later played for Exeter and POSH, before retiring in 1971. In 1974 he returned to Luton as reserve team coach and was promoted to first team duties three years later. He was finally appointed manager in 1978 and guided the club into Division One four years later. In 1986 he joined Spurs, leading them to an FA Cup Final appearance before moving on to manager Leicester. He re-joined Luton for a third spell in June 1991.



STAR MAN



DAVID PREECE

(MIDFIELD). Born 28/5/63 David made his league debut for Walsall in 1981 and then earned a regular place in the Midland side over the next two years.

So good was his form during that time that Luton invested £150,000 in his signature in 1984.

Today his experience is invaluable to a young Luton side. His midfield artistry and energetic running have been the hallmarks of a career which has brought him two League Cup Final appearances for the 'Hatters' - one of them providing him a winners' medal in the 3-2 win over Arsenal.

The tiny midfielder has also been capped three times for the England 'B' side during his career.

This will be his ninth season with the club and he's already chalked up more than 200 league appearances alone in a distinguished and sometimes overlooked time at Kenilworth Road.

LUTON TOWN FACTS...

■ **JAMIE CAMPBELL** (Forward) Born 21/10/72. Former trainee who turned professional in July 1990. He made his debut in a Zenith Cup tie at Ipswich last season and scored his first senior goal for the club on the opening day this season.

■ **PHILIP GRAY** (Forward). Born 2/10/68. Phil developed in the junior ranks at Spurs, making his debut in 1987. He never really established himself at White Hart Lane, making only brief appearances between loan spells at Barnsley. Joined

Luton for £275,000 in August, 1991.

■ **STEVE CLARIDGE** (Forward). Born 10/4/66. Started his career with his hometown club but was released after seriously breaking his leg. He then joined Fareham Town and later played for Bournemouth, Weymouth, Crystal Palace and Aldershot, before joining Cambridge, in February 1989. He scored 33 goals in three seasons at the Abbey stadium and joined Luton for a tribunal fee of £160,000.

CHRIS KAMARA

Midfield
Born 25/12/57
Much travelled player who joined Luton from Leeds United in October 1991 for his first extended spell in Division 1. He began with Portsmouth in 1975 before joining Swindon two years later. In 1981 he returned to Pompey for a season before joining Brentford. In 1985 he returned to a second spell at Swindon and spent a further three seasons at Stoke before joining Leeds and then Luton.



ROLL OF HONOUR

MANAGER : David Pleat
ADDRESS : Kenilworth Road, Luton, Beds.

CAPACITY : 13,449

PREVIOUS NAME : None.

YEAR FORMED :

1885. Turned Pro : 1890.

NICKNAME : 'Hatters'.

MOST APPEARANCES FOR

CLUB : Bob Morton 550.

MOST CAPPED PLAYER : Mal Donaghy, Northern Ireland 58.

RECORD VICTORY : 12-0 v Bristol Rovers, Division 3 (S), April 13, 1936.

RECORD GOALSCORER :

Gordon Turner 243.

RECORD GOALSCORER

(SEASON) : Joe Payne, 55 Division 3(S), 1937.

HONOURS : Division One - best season 7th, 1986/7; Division 2 - Champions :

1981/2. Runners-up :

1954/55, 1973/74. Division Three Runners-up :

1969/70. Division 4

Champions : 1967/68.

Division 3 (S) Champions :

1936/37. Runners-up :

1935/6. FA Cup Runners-

up : 1959. Football League

Cup - Winners : 1987/88.

Runners-up : 1988/89.

Simod Cup - Runners-up :

1988.

MOST LEAGUE POINTS :

Three points for a win - 88,

Division Two in 1982

Two points for a win - 66,

Div. Four 1968.

RECORD TRANSFER FEE

RECEIVED : £1.5 million

from Nott'm Forest for

Kingsley Black, August,

1991.

RECORD TRANSFER FEE PAID

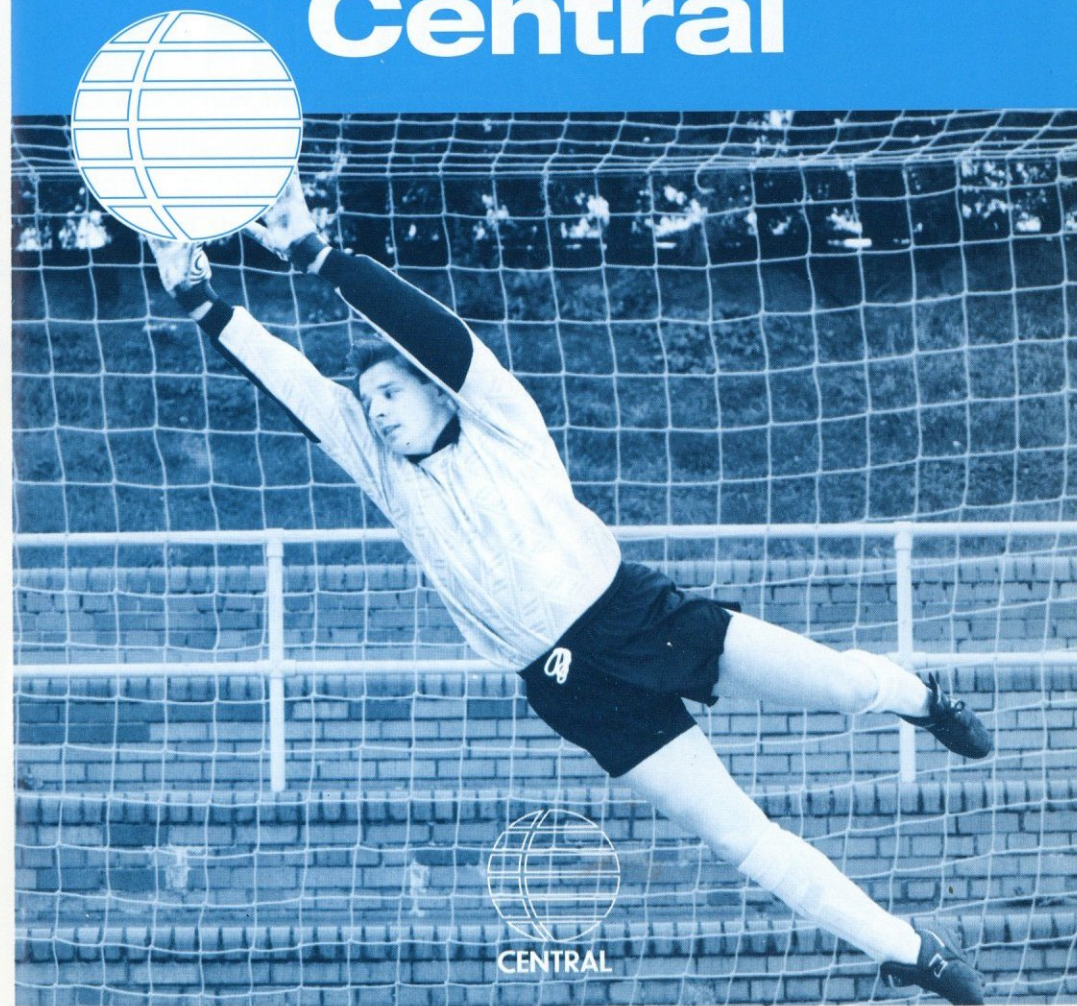
: £850,000 to Odense for

Lars Elstrup, August,

1989.

Catch Sunday's Top League Action

LIVE ON Central



HEREWARD SPORTS



OFFICIAL SUPPLIERS TO PETERBOROUGH UNITED F.C.

East anglia's biggest range of soccer boots, team replica strips, footballs, goalkeeper clothing and accessories.

CLUB DISCOUNTS AVAILABLE!

Specialists of all soccer teamwear and equipment.

Team strips by: Umbro, Prostar, Spall and Hummell.

Sondico  
Mizuno **Reebok**

  
  **FILA**

For the very best in sports footwear, clothing and equipment.

HEREWARD SPORTS LTD,
16 & 17 Hereward Centre, Peterborough PE1 1TB.
Telephone (0733) 63700 or 68383

FOLLOW THE STARS



Posh Windows have been selected to install new windows in the executive boxes.

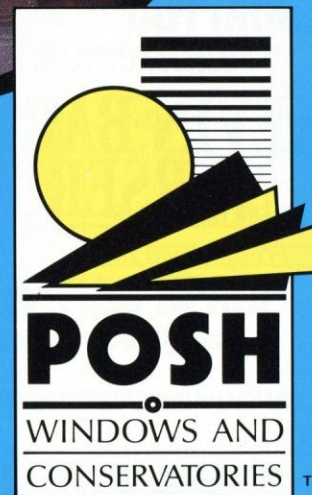
When it comes to replacement windows, doors and conservatories only the best will do for the likes of Steve Welsh, Mick Halsall and Dave Riley.

With insulation values equal to triple glazing, high security locking systems and safety glass fitted as standard, there's no substitute for quality.

B.S. approved products at a price that's right with a full ten year glazing and lifetime guarantee - you'll be over the moon with Posh.

Isn't it time you lived in a Posh house?

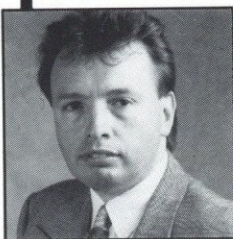
Peterborough • Cambridge • Ipswich • Northampton • Kettering • Colchester • Nottingham



1184 Lincoln Road, Werrington,
Peterborough.

TELEPHONE 0733 322888

OPEN 7 DAYS A WEEK



Sound advice for a secure future.



JON BOULTON
Director

For a personal service and expert advice on all your financial needs.

- ❖ SPECIALIST MORTGAGE SERVICE
- ❖ COST CUTTING
- ❖ COMMERCIAL MORTGAGES
- ❖ CAPITAL RAISING

As with all mortgages your home is at risk if you do not keep up repayments on a mortgage or other loan secured on it.



Monarch Forbes

Corporate Commercial & Personal Financiers **AND PARTNERS** Limited

1184 Lincoln Road, Werrington,
Peterborough PE4 6LA.
Tel: 0733 325999 Fax: 0733 326181

*For all your floral
requirements...*

KEVIN BARKER NURSERIES

*Fresh, dried and silk flowers,
bowls, baskets and bouquets*

Weddings & Funerals

MEMBERS OF TELEFLORIST

Daily delivery service



Eastgate,
Deeping St. James,
Peterborough
PE6 8RB.
Tel: 0778 343307
Fax: 0778 341054

BILL HARVEY'S

SPORTS INJURY CLINIC

Now open daily from 9am to 4pm
plus Saturday and Sunday mornings.

**Bookings by appointment on
Peterborough 896312.**

THE CLINIC IS SITUATED AT THE
LONDON ROAD GROUND NEXT DOOR
TO THE POSH '83 CLUB ENTRANCE.

POSH PUBS

THE ALDERMAN

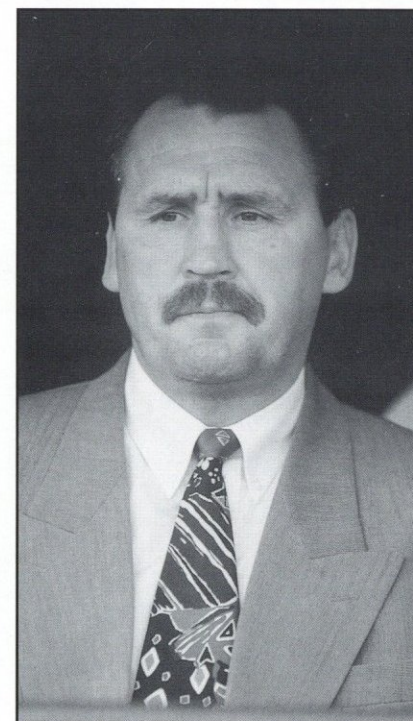
Come and have a drink with us at the
'Posh' pub in Peterborough?
Tel: Theresa on **(0733) 349523**

WAG & BONE

26 London Road, Peterborough.
FREE HOUSE
Tel: **(0733) 66293**

DEEPING STAGE

Book now for
Christmas Dinner
Dances, Birthday
parties and other
special events. Bed &
Breakfast only £22.50
per person.
Tel: **(0778) 343576**



THE CAVENDISH

EASTFIELD ROAD
Your traditional local
pub. Why not pop
down and have a drink
with us?
Tel: **(0733) 68119.**

ROSE AND CROWN

AT OUNDLE
Fine Ales.
Lunches available
seven days a week.
Tel: **(0832) 273284**

SWISS COTTAGE

GROVE STREET
Maggie and John
invite you to try the
best pint of Guinness
in Town.
Tel: **(0733) 68743.**

BOOK THIS SPACE

ADVERTISE YOUR PUB HERE!

This space could be yours by simply calling
David Riley on **(0733) 63947** for details.

BOOK THIS SPACE

ADVERTISE YOUR PUB HERE!

This space could be yours by simply calling
David Riley on **(0733) 63947** for details.

BOOK THIS SPACE

ADVERTISE YOUR PUB HERE!

This space could be yours by simply calling
David Riley on **(0733) 63947** for details.

BOOK THIS SPACE

ADVERTISE YOUR PUB HERE!

This space could be yours by simply calling
David Riley on **(0733) 63947** for details.



A Volkswagen for those who've grown too big for their boot.

Who says you can't take it with you. Not Volkswagen. And not you when you see the miracles they've wrought with their Passat Estate.

Opening the tailgate reminds you of nothing so much as a yawning hippo. With the rear seat up, its boot capacity is 18 cubic feet.

Fold it down and it looks more like the flatbed of a trailer-truck.

60 cubic feet no less.

Opt for the GL or GT16v version and, presto: Two-thirds of the split rear seat fold forward.

So long loads and human cargo can be accommodated at the same time.

Talking of passengers, the Passat

has more interior space than any estate in its class.

More, even, than some so-called bigger cars. Space apart, though, how does it perform out there on the road?

It may be willing but is it eager? Is it sharp on corners?

Sure-footed in the wet? Thrifty around town?

A test drive will leave little room for doubt.

COOK'S
YOUR FAMILY VOLKSWAGEN DEALER

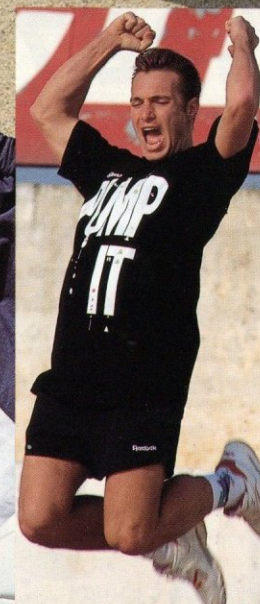
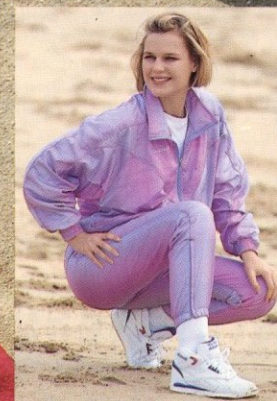
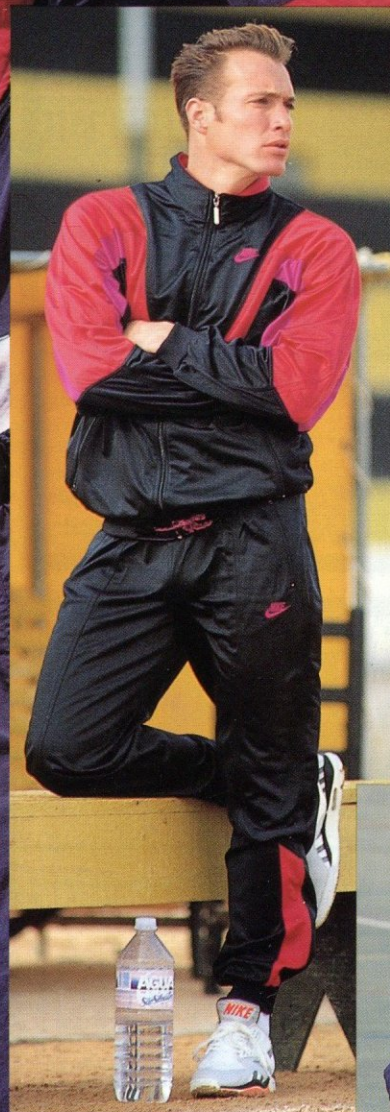
STOREY'S BAR RD.
FENGATE
PETERBOROUGH
PE1 5YS
(0733) 312213
FAX (0733) 349019



LOYAL HOME SUPPORTERS

Freemans

PETERBOROUGH'S OWN MAIL ORDER COMPANY ARE PROUD TO BE ASSOCIATED WITH POSH.



FREEMANS CAN ALSO SUPPORT YOUR OWN HOME TEAM. YOU'LL FIND TOP FASHION AND LEADING SPORTSWEAR FOR THE WHOLE FAMILY. PLUS EVERYTHING FOR THE HOME AND MANY OUTDOOR ITEMS TOO.

PHONE FOR YOUR FREE CATALOGUE TODAY QUOTING REFERENCE X52

0800 900 200

Hereward Radio
102.7 FM

**PLAYS THE BEST MUSIC
POSH PLAY THE BEST FOOTBALL**

Together a Winning Team on
102.7 FM
With gpthe Team that means Business
Greater Peterborough Training & Enterprise Council

**GREAT MUSIC, GREAT SPORT, GREAT TEAM
POSH ON.....**



**THE WORLD'S GREATEST MUSIC STATION BRINGS YOU
THE BEST IN SPORTS COVERAGE!**

With gpthe Team that means Business
Greater Peterborough Training & Enterprise Council

JUNIOR POSH

CATCH-UP with all the latest news and views on the Junior Posh page

JOIN NOW!

MEMBERSHIP of **JUNIOR POSH** is going extremely well but we are sure that many youngsters out there are missing out on the many benefits of being a member which includes reduced admission prices and a chance to be guests of the players. Our first guests at today's match are **CLAIRE DUNCAN** from Whittlesey and **GARY NASH** from Market Deeping. We would like to remind members that tickets should be booked in advance to ensure that they receive our special prices. Failure to do this may result in them being charged the normal half-price for admission to Barclays League matches. Membership is open to anyone born on or after June 1st, 1977.

■ For details and an application form then write to London Road or Kevin Slater, 20 Meadow Rd, Market Deeping, Peterborough. Tel : 0778 347828.

COACHING INFO

DURING the next school holidays on October 26th, the Posh Football and Community Scheme are holding a five-day soccer course at both Bretton Woods School and Gunthorpe Primary School. The courses are for boys and girls aged

between 6-14 years. All applicants will be put through the FA Soccer Star Test by qualified coaches plus an afternoon coaching session taken by some of the Posh stars.

They will also be guaranteed a :

- **FREE** Puma voucher for £5 discount!
- **FREE** Nesfit T-shirt!
- **FREE** Nesfit bottle/can drink and energy bar!
- **FREE** Certificate! **PLUS** £2 deduction for single parents or brothers and sisters on the same course. **ALSO** a £1 deduction for **JUNIOR POSH** members!
- For more info contact me on 891329 or send a SAE to Domenico Genovese, Football and Community Officer, PUFC, London Road.

GOALKEEPING TRIALS

THE Posh Community Scheme in conjunction with the FA Centre of Excellence which runs on a Monday evening are currently holding goalkeeping trials for 10-14 year-olds. Letters have been circulated to the junior clubs of the Junior Alliance. If there are any other goalkeepers outside the league please contact me on 891239. The goalkeepers must represent their schools/rep teams or play for a junior team.

PRIZE DRAW WINNERS!

OUR winners in the second draw are **Mark Palmer** from Deeping St. James and **Rodney Barnes** from Yaxley. The players welcome them to London Road as their guests for today's match.

COMPETITIONS

IN the programmes for the home games with Newcastle and Leicester, we included a picture and asked you to guess the player in order to win a signed ball. Well, out of our 600 members, none of you managed to get the correct answer and so we will now carry the prize forward and give away two balls for the competition which will be featured in the programmes on the 7th, 21st and 29th of November.

If you are a member, make sure that you read the programme and enter. If you don't you could miss out on the chance of winning a super ball signed by all your favourite stars.

NEW VENUE

THE Posh Community Scheme have made links with the Leicestershire schools and are now holding a three-day soccer course at Rhyall School. The course is open for boys or girls aged between six and 14 years. During the three days they will be put through the FA Soccer Star Award test as well as individual coaching.



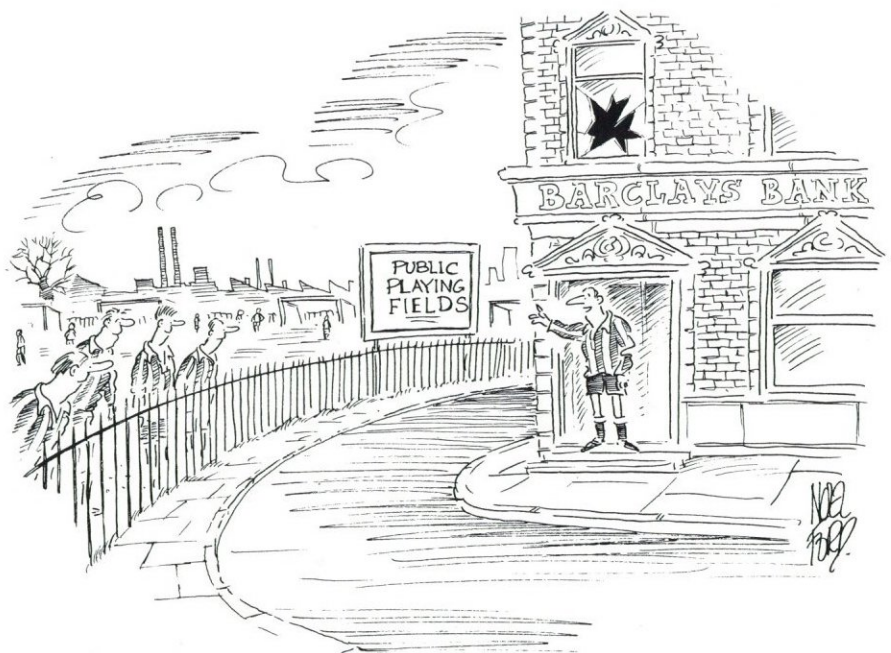
**ROGER
TERRELL & CO.
SOLICITORS**

53 Park Road,
Peterborough PE1 2TH


Tel: (0733) 896789

Whatever your legal requirements - from Private and Family Business to Commercial and Corporate Law - our skills and expertise will meet your needs.

**SOLICITORS TO THE
PLAYERS OF
PETERBOROUGH
UNITED**



*'The manager will be delighted to discuss
more comprehensive insurance for the club and, yes we CAN have our ball back.'*

+++ YOU'RE
BETTER OFF
TALKING TO
 **BARCLAYS**

One in a Million

- Nearly a million packets of Silver Spoon sugar are sold every day.
- Britain's Number One food brand from just one line - There's a complete range as well!
- Silver Spoon sugar is produced from home grown sugar beet - a natural British product of consistent quality.



Naturally the best in sugar



BRITISH SUGAR



*Good Luck Posh!
for 1992/93*

STATS

BARCLAYS LEAGUE DIVISION ONE

	P	W	D	L	F	A	Pts
Newcastle	11	11	0	0	25	7	33
West Ham	11	7	2	2	23	7	23
Wolves	12	5	7	0	20	9	22
Charlton	12	6	3	4	26	21	21
Swindon	12	6	3	3	26	19	21
Tranmere	11	6	3	2	20	9	21
Leicester	12	6	3	3	15	13	21
Millwall	11	4	5	2	17	10	17
POSH	11	5	2	4	14	13	17
Watford	12	4	3	5	19	22	15
Portsmouth	11	4	3	4	18	15	15
Birmingham	11	4	3	4	9	16	15
Bristol City	11	4	2	5	16	24	14
Oxford	11	3	5	3	11	10	14
Derby	11	3	3	5	16	15	12
Notts County	12	3	3	6	15	26	12
Grimsby	11	3	3	5	13	15	12
Cambridge	12	3	3	6	10	21	12
Sunderland	11	3	2	6	8	16	11
Brentford	11	2	4	5	11	13	10
Barnsley	11	2	3	6	10	11	9
Southend	11	2	3	6	9	14	9
Luton	11	1	4	6	9	22	7
Bristol Rovers	12	1	3	8	17	32	6

POSH SQUAD APPEARANCES 92/93

	League Apps	Cup Gls	B. BARNES 17/12/62	11	1	4	-
FRED BARBER	-	-	T. ADCOCK	11	4	3	2
26/8/63	-	-	27/2/63	-	-	-	-
GARY COOPER	6	-	M. EDWARDS	-	-	-	-
20/11/64	-	-	15/6/71	-	-	-	-
NOEL LUKE	8(1)	-	C. WHITE	1(2)	-	(1)	-
28/12/64	-	-	11/12/70	-	-	-	-
MICK HALSALL	8	1	I. BENNETT	11	-	4	-
21/7/61	-	-	10/10/70	-	-	-	-
W. STERLING	11	3	L. HOWARTH	10(1)	-	4	-
8/6/65	-	-	3/1/68	-	-	-	-
KEN CHARLERY	10	3	P. COSTELLO	(4)	-	1(1)	1
28/11/64	-	-	31/10/69	-	-	-	-
STEVE WELSH	11	-	G. INGRAM	(1)	-	(1)	-
19/4/68	-	-	P. SORRELL	(1)	-	1	-
R. ROBINSON	9	-	A. CURTIS	(3)	-	(1)	-
22/10/66	-	-	P. GAVIN	(1)	-	(1)	-
D. ROBINSON	1	-	G. RETALLICK	(1)	-	(1)	-
14/1/65	-	-	N. LIMBER	2	-	-	-
C. WHITE	2(1)	-	T. PHILLISKIRK	1	1	-	-
11/12/70	-	-					
M. EBDON	8(1)	-	*NB DOES NOT INCLUDE ANGLO-ITALIAN CUP				
17/10/70	-	-					
D. BRADSHAW	(1)	-					
19/3/67	-	-					

SOME IMPORTANT DATES TO REMEMBER

Sat, May 29 Poland v England (World Cup)

FIRST TEAM FIXTURES 1992-93

DATE	V	OPPOSITION	F-A	ATT	POS
Sat, Aug 15	H	Derby County	1-0	9,955	-
Tue, Aug 18	H	Barnet (Coca-Cola 1/1)	4-0	2,770	-
Sat, Aug 22	A	Southend Utd	1-0	4,651	6th
Tue, Aug 25	A	Barnet (Coca-Cola 1/2)	2-2	1,789	-
Sat, Aug 29	H	Notts County	1-3	6,670	9th
Tue, Sep 1	H	Tranmere (Anglo-Italian)	0-0	1,954	-
Sat, Sep 5	A	Wolves	3-4	14,532	12th
Sat, Sep 12	H	West Ham Utd	1-3	10,657	17th
Tue, Sep 15	H	Millwall	0-0	5,619	15th
Sat, Sep 19	A	Barnsley	2-1	5,275	9th
Wed, Sep 23	A	Leicester (C-Cola 2/1)	0-2	10,366	-
Sat, Sep 26	H	Newcastle Utd	0-1	14,487	11th
Wed, Sep 30	A	Wolves (A. Ital Cup)	0-2	3,091	-
Sat, Oct 3	A	Grimsby Town	3-1	5,208	10th
Tue, Oct 6	H	Leicester (C-Cola 2/2)	2-1	6,936	-
Sat, Oct 10	H	Brentford	0-0	5,818	13th
Sat, Oct 17	A	Leicester City	2-0	10,952	9th
Sat, Oct 24	H	Luton Town			
Wed, Oct 28		(Coca-Cola Cup 3)			
Fri, Oct 30	A	Tranmere Rovers			
Tue, Nov 3	A	Watford			
Sat, Nov 7	H	Sunderland			
Sat, Nov 14		(FA Cup 1)			
Sat, Nov 21	H	Bristol Rovers			
Sat, Nov 28	H	Swindon Town			
Wed, Dec 2		(Coca-Cola Cup 4)			
Sat, Dec 5	A	Oxford Utd (FA Cup 2)			
Sat, Dec 12	H	Portsmouth			
Sat, Dec 19	A	Bristol City			
Sat, Dec 26	A	Cambridge Utd			
Mon, Dec 28	H	Charlton			
Sat, Jan 2	A	Birmingham (FA Cup 3)			
Wed, Jan 6		(Coca-Cola 5)			
Sat, Jan 9	H	Barnsley			
Sat, Jan 16	A	Newcastle Utd			
Sat, Jan 23		(FA Cup 4)			
Wed, Jan 27	A	Millwall			
Sat, Jan 30	H	Southend Utd			
Sat, Feb 6	A	Derby County			
Wed, Feb 10	A	West Ham Utd (Coca-Cola Cup S/F 1)			
Sat, Feb 13	H	Wolves (FA Cup 5)			
Sat, Feb 20	A	Notts County			
Sat, Feb 27	A	Brentford			
Sat, Mar 6	H	Grimsby (FA Cup 6)			
Tue, Mar 9	H	Birmingham City			
Wed, Mar 10		(Coca-Cola Cup S/F 2)			
Sat, Mar 13	A	Sunderland			
Sat, Mar 20	H	Oxford Utd			
Wed, Mar 24	A	Bristol Rovers			
Sat, Mar 27	H	Watford			
Sat, Apr 3	A	Swindon Town			
Sun, Apr 4		(FA Cup S/F)			
Tue, Apr 6	A	Portsmouth			
Sat, Apr 10	H	Cambridge Utd			
Mon, Apr 12	A	Charlton Athletic			
Sat, Apr 17	H	Bristol City			
Sun, Apr 18		(Coca-Cola Cup Final)			
Sat, Apr 24	H	Leicester City			
Sat, May 1	A	Luton Town			
Sat, May 8	H	Tranmere Rovers			
Sat, May 15		FA Cup Final			

POLICE

POSH fans are urged to report any acts of soccer hooliganism and violence to a confidential hotline number. Call 071 230 5340. All calls treated in the strictest confidence. ● CCTV surveillance equipment is sponsored by the Football Trust.

RESULTS ● ATTENDANCES ● TEAM LINE-UPS ● GOALSCORERS

1	2	3	4	5	6	7	8	9	10	11	12	14
Bennett	Luke	Robinson R*	Cooper	Howarth	Welsh	Sterling	Ebdon	Adcock	Charlery	Barnes	Bradshaw*	Costello
Bennett	Luke	Bradshaw	Cooper	Howarth	Welsh	Sterling	Ebdon	Adcock 2	Charlery	Barnes*	Costello*	White
Bennett	Luke	Robinson R	Cooper	Howarth	Welsh	Sterling	Ebdon	Adcock	Charlery	Barnes	Costello	White
Bennett	Luke	Robinson R	Cooper!	Howarth	Welsh	Sorrell*	Ebdon	Costello+	Charlery	Barnes	White*	Ingram+
Bennett	Luke	Robinson R.	Cooper	Howarth	Welsh	Sterling	Ebdon	Adcock	Charlery	Barnes	Costello	White
Bennett	White	Robinson R.	Halsall	Robinson D	Welsh	Ebdon	Ingram*	Barnes	Costello	Charlery	Adcock	Howarth
Bennett	White*	Robinson R	Halsall	Robinson D	Welsh	Sterling	Ebdon	Adcock	Charlery	Barnes+	Costello+	Howarth*
Bennett	Luke	Robinson R	Halsall	Howarth	Welsh	Sterling	Ebdon	Adcock	Charlery	Barnes*	Costello*	White
Bennett	Luke+	Robinson R	Halsall	Howarth	Welsh	Sterling	Ebdon	Adcock	Charlery	Barnes*	Ingram*	White+
Bennett	White	Robinson R	Halsall	Howarth	Welsh	Sterling	Ebdon	Adcock	Charlery	Barnes	Sorrell	Curtis
Bennett	White	Robinson R	Halsall	Howarth	Welsh	Sterling	Ebdon	Adcock	Charlery	Barnes*	Gavin*	Retallick
Bennett	White*	Robinson R	Halsall	Howarth	Welsh	Sterling	Ebdon	Adcock	Charlery	Barnes+	Gavin+	Luke*
Bennett	Luke	Robinson R	Cooper	Howarth	Welsh	Tomlinson	Ebdon*	Gavin+	Nogan	Curtis	Dunn+	White*
Bennett	Luke	Robinson R	Halsall	Howarth	Welsh	Sterling	Cooper	Adcock	Charlery	Barnes*	Curtis*	White
Bennett	Luke	Robinson R*	Halsall	Howarth	Welsh	Sterling	Cooper	Adcock	Charlery	Barnes+	Curtis+	White*
Bennett	Luke	Limber*	Halsall	Howarth	Welsh	Sterling	Cooper	Adcock	Charlery	Barnes+	Curtis+	White*
Bennett	Luke	Limber*	Halsall	Howarth	Welsh	Sterling	Cooper	Adcock	Philliskirk	Barnes	Ebdon	Retallick*

Helping the most important people in football



Football is more than a game of 90 minutes. Every day clubs throughout Britain are working to provide safer, more comfortable facilities for their supporters.

Much of this has been achieved with the help of the Football Trust.

Last season alone the Trust allocated over half a million pounds to improving safety at Pyramid clubs.

The Trust is now expanding even further its help for clubs outside the Football League.

The Football Trust is supporting the game at all levels.



THE FOOTBALL TRUST
Helping the game

TEAM CHECK

2 PETERBOROUGH V LUTON TOWN 3

Blue shirts, white shorts, blue socks.

White shirts, blue shorts, white socks.

1 IAN BENNETT

Super Benno getting rave reviews

NOEL LUKE

Experienced and talented full-back

NICKY LIMBER

On loan from Manchester City

MICK HALSALL

Inspirational midfielder

LEE HOWARTH

Formed a superb partnership with Captain Welsh

STEVE WELSH

New skipper and highly-rated defender

WORRELL STERLING

Scored his fourth of the season at Leicester last week

GARY COOPER

Talented player back in the side after suspension

TONY ADCOCK

Superb striker with six goals already this season

TONY PHILLISKIRK

Scored on his debut at Leicester last week

BOBBY BARNES

Flying winger with devastating skill

MARCUS EBDON

Looking to win his place back.

DOMINIC IORFA

Speedy Nigerian import

1 ANDY PETTERSON

Australian 'keeper.

2 DES LINTON

Ex-Leicester defender - great prospect.

3 JULIAN JAMES

England under -21 international full-back.

4 DARREN SALTON

Scottish Under-21 international with a big future.

5 MARVIN JOHNSON

Experienced player who scored against Derby last week

6 DAMIEN MATTHEW

Youngster on loan from Chelsea

7 STEVE CLARIDGE

Ex-Cambridge goalpoacher.

8 CHRIS KAMARA

Much-travelled player signed from Leeds.

9 PHIL GRAY 2

Former Spurs starlet.

10 DAVID PREECE

Experienced midfielder now in his 9th season.

11 SCOTT OAKES PAUL TELFER 1

Talented youngster.

12 JAMIE CAMPBELL

Former trainee and a great prospect.

14 RICHARD HARVEY

Former England youth international.

OFFICIALS: REFEREE - Mr. Paul Danson, Leicester.

LINESMEN: Mr. Alan N. Butler, Nottingham, Notts and Mr. L.L. Watson, Coventry, Warks.

TODAY'S MATCH BALL SPONSOR

R.L. WHITEHEAD OPTICIANS

1 BLUNTS LANE, WHITTLESEY. TEL : 205466

TODAY'S MATCH SPONSOR :

'THAT NUMBER PROMOTIONS'

**Thomas
Cook**

Thomas Cook, the world's largest travel organisation, are proud to be the new team sponsor of Chris Turner's Peterborough United.

PETERBOROUGH UTD AND THOMAS COOK - THE PERFECT TEAM!