

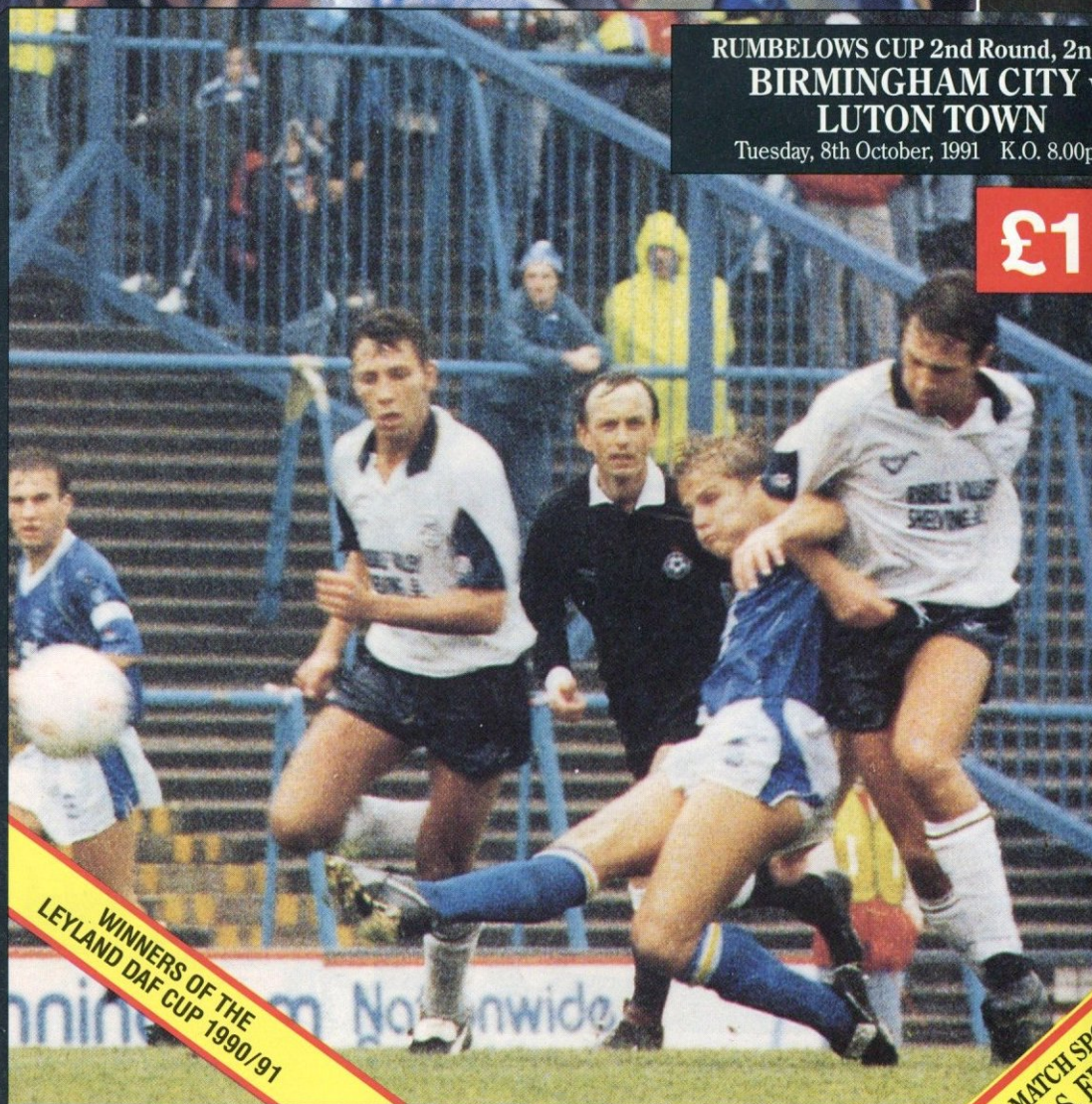


BLUES NEWS

THE ONLY OFFICIAL MATCHDAY MAGAZINE

RUMBELOWS CUP 2nd Round, 2nd Leg
**BIRMINGHAM CITY v.
LUTON TOWN**
Tuesday, 8th October, 1991 K.O. 8.00p.m.

£1



WINNERS OF THE
LEYLAND DAF CUP 1990/91

TODAY'S MATCH SPONSOR
**ROY S. ELY
TRANSPORT
LTD.**

Whilst the footballing world in general will probably be heaving a huge sigh of relief now that the wrangling over the proposed Premier League has been settled, there is little room for complacency and a great deal of room for concern over the way in which the whole business was conducted.

The agreement could only be reached if the clubs not involved in the Premier League supported the removal of The League's 'three year' rule, which said that 'No Club shall terminate its membership of the League unless it shall have given a minimum of three full seasons' prior written notice of its intention to do so'. This was of course the major stumbling block to the starting up of the Premier League, since not only would it have taken three years to start the new system, but Clubs would have to have gambled on still being eligible for the premier League three years on, or on the possibility of being eligible.

Clearly the main aim of the Football Association was therefore the removal of this rule. What is worrying was the way in which, like a spoilt child who holds his breath to get his own way, the Football Association held the League to ransom to get their own way by threatening to pull the plug on the current football season. Worse still, the F.A. had no qualms about ruining home countries' chances in the European Championships next season, when supposedly, one of the benefits of the Premier League is to give more support to our national sides.

That's not to suggest that the 'three year rule' was removed in response to this threat. In the end, it appears that the Football

League has managed to secure a reasonable deal for the clubs remaining under its umbrella, indeed it is difficult to see what differences there will be next season. But what will the next threat be when the Football Association want another change to provide financial benefits for the Premier League Clubs? The actions of the past few weeks must serve as a warning for the future of the game.

Like it or not, at least for the moment agreement has been reached. The Football League have secured an annual payment of £2 million from the F.A. for the next five years, and a net contribution from gate receipts by the Premier League Clubs. Furthermore, the League has retained the income derived from the current agreement with the Pool Promoters' Association, which expires in 1996. Financially, then, the remaining League Clubs will benefit to some degree.

So what difference has it all made? Promotion and relegation will still take place between the Premier League and the Football League; The F.A. appears for the time being to have backed down on the ludicrous stipulation that all Premier League Clubs must have big grounds, so the right teams will play in the Premier League next season; Premier League Clubs will continue to participate in the Football League Cup; and the Premier League Clubs will no doubt receive huge television fees and compensation for loss of gate receipts when they appear on T.V. All sounds familiar doesn't?

TOM BURROWS

We've got the Jewson lot at over 200 branches nationwide.

FIND US IN YOUR LOCAL YELLOW PAGES.



BIRMINGHAM CITY FOOTBALL CLUB Plc

ST. ANDREWS GROUND,
BIRMINGHAM B9 4NH
Office: 021 772 0101/1116/2689
Commercial: 021 766 5927
Fax: 021 766 7866
Shop and souvenirs: 021 766 8274

Directors

S. KUMAR, B.A. (Hons.) (Chairman)
R. KUMAR B.Sc. (Vice-Chairman)
B. KUMAR M.A., B.Sc.
J.F. WISEMAN

Team Manager
TERRY COOPER

Secretary
STUART BRAILEY

General Manager/Chief Scout
BILL COLDWELL

First Team Coach
IAN ATKINS

Youth Team Coach
BRIAN CASWELL

Physiotherapist
ROY JOHNSON

Head of Marketing
JOAN HILL

Business Development Manager
DAVID TEAGUE

Accounts Office Manager
MARIAN WILMOTT

Head Groundsman
BRIAN HARRIS

Shop Manager
NIGEL BAKER

Honorary Medical Officer
DR. D. N. WATSON M.B. Ch.B.

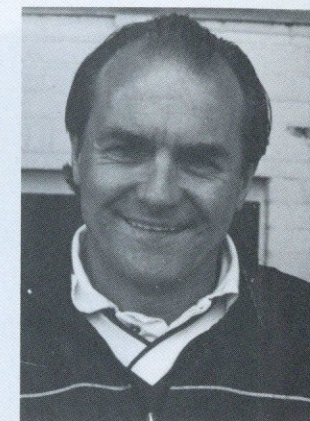
Programme Editor
DAVID TEAGUE

The Birmingham City Matchday Magazine is designed and printed on behalf of the Club by Panbourne Press Ltd
(A Member of the WACE Group PLC)
145 Sterte Road, Poole, Dorset BH15 2AF.
Telephone: (0202) 675396, 669882/3. Fax: (0202) 670010
The views expressed in this magazine are not necessarily those of the Football Club unless stated.
© Copyright

FROM THE BENCH

Good evening everybody.

Tonight we continue our Rumbelows Cup campaign by welcoming Luton Town to St. Andrews. Despite our good result at Kenilworth Road, we must not make the mistake of believing that the hard part of this tie is now over. If anything, tonight's match will be harder than the first leg at Luton, despite the fact that we don't have to score to win the tie. Luton are a First Division side with quality players who are capable of winning matches, and despite their disappointing away form, League standings count for nothing in the Cup competitions. Luton have an excellent recent record in this competition and they will be trying very hard to beat us tonight.



Nevertheless tonight gives our players a good opportunity to play against First Division opposition, which will enable us to measure the progress made since Ian and I took over. Luton are the first side from the First Division to visit St. Andrews since Wimbledon in the F.A. Cup in January 1989, and I hope that we have a good crowd to back us as we attempt to reach the third round for the first time since 1986.

As these notes were written before last Saturday's visit to Shrewsbury, I can't comment on our League position going into tonight's match. I was pleased with the performance and the result against Preston which was played in very difficult conditions, and against a solid defensive system. Despite taking control from an early stage, we let Preston back into the game before two pieces of individual magic won us the points. Against a five-man defence patience is a key factor, as is the ability to take whatever chances come along. Both of these factors will also be needed tonight. As we have shown against both Chester and Preston in recent weeks, patience and the determination to grind down opposition defences are both important to our style of play.

On a personal note, I am delighted with the progress that Paul Tait has made. He is currently building up his strength in the Reserves, and should be in contention within a couple more weeks. When he and John Gayle are again available for selection, the resulting competition for places can only be good for the Club.

Enjoy tonight's game.

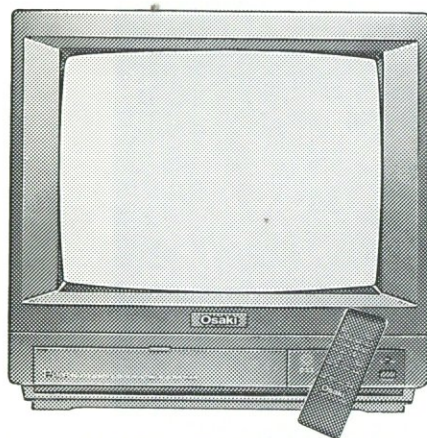
TERRY COOPER 3



Main Picture: Blues' new kit is as popular amongst opposing players as it is amongst our fans, as **NIGEL GLEGHORN** struggles to hang on to his against Chester.
Inset Top: Blues players celebrate **TREVOR MATTHEWSON'S** opening goal against Preston.
Inset Bottom: It's 'legs 11' in this tussle in the Preston defence.

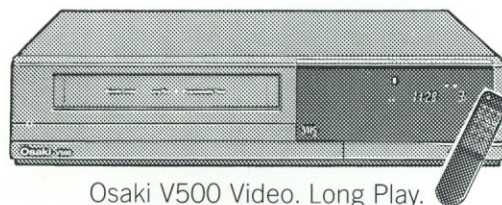
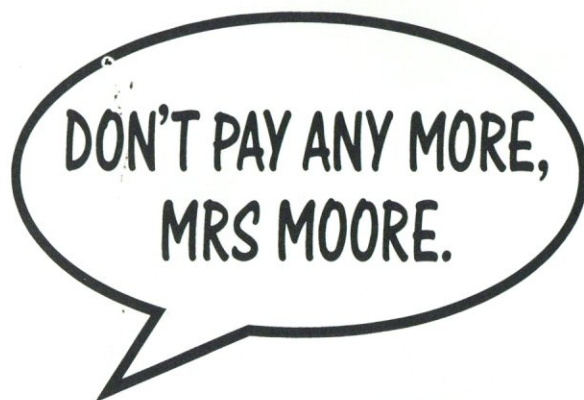


YOU'LL ALWAYS SCORE AT THESE PRICES



Osaki P146R Portable Colour Television
Fully Remote Control, 32 Channel.
On Screen Display

ONLY £159.99



Osaki V500 Video. Long Play.
Remote Control. 8 Event/1 Year Timer

ONLY £199.99



Osaki RR401 Radio Cassette
AM/FM Stereo Radio. Auto Stop
Cassette. Battery & Mains Operation.

ONLY £24.99

The nearest Rumbelows to this ground is Birmingham, 124 New Street, Birmingham B2 4JH
Branch Manager: Imran Mirza. Tel: 021 643 3664



INSIDE ST. ANDREWS **BLUES** NEWS

A Message from General Manager BILL COLDWELL

After our evening of excitement at Luton less than two weeks ago we now arrive at our 90 minutes of judgement. The players were desperately disappointed to concede a late goal at Kenilworth Road after twice holding the lead, however to obtain a draw away from home against First Division opposition is indeed a fine achievement.

Unfortunately, our performance was somewhat dampened at the end of last week by the news that our recently appointed secretary Stuart Brailey was admitted to hospital to undergo an operation. I have rarely known a football administrator create such an impact at a club in such a short space of time and I am sure that all 'Blues' fans will join the staff at St. Andrews and myself in wishing Stuart a speedy recovery, indeed, a result tonight would be just the tonic that Stuart would wish.

Further to reports elsewhere in this programme I hope that 'Blues Society Members' will turn out in great numbers to attend the Sports Forum at the Tower Ballroom on Thursday 17th October when we will announce a new project which will be of great importance to the future of the 'Blues'. 'T.C.' and 'Atko' will be on the panel and all the players will be in attendance, and as admission will be by ticket only, be sure to obtain your ticket as soon as possible.

Enjoy the game this evening and remember that your encouragement is vital in this important cup tie.

Yours,

BILL COLDWELL

An Introduction to Accounts Officer Manageress MARIAN WILMOTT

In a sport which is becoming more and more business-orientated, the role of the Accounts Department is an increasingly important and underestimated one. Marian Wilmott joined the Blues in December last year to install the systems in the Accounts department that would allow the club to keep pace with this changing environment. It was certainly a challenge, but Marian was ready for it. 'I'd been in accounts since leaving school, apart from bringing up my family and then spending 4½ years in nursing, and I felt I was ready to run my own department and move into management'.

Nine months later, Marian feels that the enormous amount of hard work and long hours put into her task is beginning to have some effect. 'We have a new computer system which will make the everyday task of book-keeping easier to keep up to date, and I feel that the department is now beginning to function as I would like it'.

Brought up in South Yardley, Marian is married to Chris, with two daughters and a grand-daughter, Natasha, who is just 9 months old. A keep fit fanatic, Marian enjoys badminton, running, swimming and reading. What about football? 'I enjoy the game - but after nine months working for The Blues, I've only seen one match'! Wembley, of course.



BIRMINGHAM CITY
*** CLUBCALL**

0898 121 188

24 HOURS A DAY

INTERVIEWS



SUPERCALL



RESULTS - NEWS

UPDATED DAILY

MATCH REPORT LINE 0898 12 15 70

Due to the recent V.A.T. increase, calls now cost 36p per minute cheap rate and 48p per minute at all other times.
BT Supercall, 1-9 Downham Road, London N1 5AA * Clubcall is a service mark of British Telecommunications plc.

VISIT OUR SOCCER SHOP . . .

With our Exclusive range
of OFFICIAL SOUVENIRS
and LEISUREWEAR



SPECIAL 1/2 PRICE WEMBLEY SOUVENIR OFFER (WHILST STOCKS LAST!!)

OVER £40
COMMEMORATIVE
WEMBLEY SOUVENIRS
FOR
JUST **£20**

SPECIAL PACKAGE INCLUDES:

Printed Scarf	Worth £2.99
Wembley Winners 'T' Shirt	Worth £5.99
Limited Edition Numbered Commemorative Tankard	Worth £9.99
Limited Edition Numbered Commemorative Winners Plate	Worth £13.99
Wembley Coffee Mug	Worth £2.50
Official Leyland DAF Cup Final Programme	Worth £2.50
Wembley to Wembley Souvenir Brochure	Worth £3.00

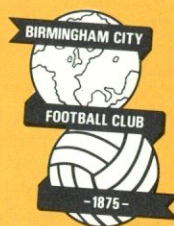
NEW LINES NOW IN STOCK

TEAM SHELL SUITS Top Quality - S, M, L, XL £49.99 ★ REPLICA TEAM SHORTS Childs £10.99 Adults £11.99
REPLICA TEAM SOCKS ★ COTTON DRILL TRAINING TOPS £24.99 ★ TEAM TRAINING FLEECEWEAR Various
styles from £24.99 ★ NEW AWAY KIT REPLICA JERSEYS (as worn at Shrewsbury) AVAILABLE AROUND MID-
NOVEMBER ★ SMALL SIZE HOME REPLICA JERSEYS ALSO AVAILABLE MID-NOVEMBER

NEW LINES CONSTANTLY ARRIVING DAILY

The shop is open 6 days a week, and is well worth a regular visit. Opening times:-
10a.m.-6p.m. Monday to Friday - 10a.m.-1p.m. Saturday (away match) - 10a.m.-3p.m., 4.30p.m.-5.30p.m. Saturday (home match)
10a.m.-8p.m., 9.30p.m.-10p.m. Midweek (home match)

B.C.F.C. CLUB SHOP, 26 Cattell Road, Small Heath, Birmingham. Tel: 021-766 8274



ST. ANDREWS NEWS - ROUND UP

Welcome to tonight's second leg match, of course the score at the moment is 2-2. If the scores are still level after 90 minutes this evening, an extra half-hour will be played. If the scores are then still level, away goals will count double. Only if the score tonight after extra time is 2-2 will penalties be necessary.

available from the main office right up until kick-off time, but don't leave it too late as we can't guarantee to serve you before the match starts. For other matchday enquiries please ask the gateman for clearance. The office area becomes very congested leading up to kick-off time. Please collect your membership cards early to avoid disappointment.

The Club would like to express it's sincerest good wishes to the family and friends of a young Blues fan Graham Merrick who died late last year. Graham was a very keen footballer, who played for Carrow Colts in Redditch, and had a trial with Walsall. Tragically, Graham was just 17 when he died playing football at this college. He had worked part-time at a local company who insured all it's employees, and as a final gesture of support for The Blues, Graham left half of £1,200 to Birmingham City. Whilst such loyalty can never be repaid, we at Birmingham City hope that Graham would have approved of our decision to make him a Lifetime Honorary Patron of our Youth Development Policy, by which young men such as Graham can make their way into the Professional Game.

If you are applying for your membership cards by post, please don't send original documents as we cannot be held responsible if these are lost in the post. Protect yourselves by sending photocopies of driving licenses or birth certificates. Also please remember to send a S.A.E. if you wish us to post your card to you - otherwise you can collect it from the office.

Found on the editors desk this week was a copy of the second issue of "Blues-Info", which is the official publication of the Birmingham City F.C. Supporters Club of Norway. Now I must admit that I couldn't understand much of it, but it appeared to be very topical, and at least the photo-captions were in English!

The Club would like to extend its deepest sympathy to Lottery Manager Mark Hulme and his family, following the death of Mark's father at the end of September.

All of us at Blues would like to wish Mark Duckworth a very speedy recovery after a very serious illness. Mark as you will know works with Nigel in the Club Shop and is a Blues fanatic. We are missing you Mark (Nigel in particular) so keep right on and get back her soon.

The accounts department here at St. Andrews would like to say a big thank you to Supporters Club Chairman Linda Goodman, who has kindly donated a coin weighing machine. This will save long hours and much frustration and is much appreciated.

ARRESTED
The Club wish to thank the Police, under-cover detectives and supporters for their assistance in catching certain match-day staff who had been stealing funds from the Club. Needless to say, the security has been considerably tightened.

Would supporters please note that no membership cards will be issued after 1.00p.m. on a Saturday matchday or 6.00p.m. on a midweek matchday. Family Stand passes will be

BIRMINGHAM CITY FOOTBALL CLUB

Present

A BLUES SOCIETY OPEN EVENING

on

Thursday, October 17th, 1991 at 7.00p.m.

at

The Tower Banqueting Suite
Reservoir Road, Edgbaston

Featuring *An Open Forum, with Terry Cooper,
Ian Atkins, Ian Clarkson, and Guests*

Plus *Meet The Blues Players, One-To-One!!*

Plus *The Presentation of a Major New Initiative
for Blues Society Members, of vital
importance to the future of Birmingham
City Football Club*

**Admission just £1, by ticket only. Strictly limited tickets
available from the Club Shop and the Main Office, NOW!!**

REMEMBER: If you are are a Season Ticket Holder, Part-season Ticket
Holder, Terrace or Ordinary Membership Card Holder,
Family Stand Pass Holder, or an F Paddock or Main Stand
Member, you are a Blues Society Member and are entitled
to attend this open evening.

3rd DIMENSION

**BLUES
NEWS**

RUMBELOWS LEAGUE CUP ROUND UP.

It will be a big night for many Third Division clubs this and tomorrow evening as they try to achieve the unexpected.

Blues of course welcome First Division Luton Town to St. Andrews with the score at 2-2 from the first leg at Kenilworth Road. The atmosphere tonight should be fantastic, and thoughts go back to our Leyland Daf ties here with Cambridge and Brentford last season. Who knows what lies ahead should we get through? . . . Liverpool, Tottenham . . .

Well, maybe not. Liverpool were 'held' to a 2-2 draw by Stoke City in the first leg at Anfield, and from the television coverage Stoke looked impressive. With their tremendous support, The Victoria Ground will not be a pleasant place for the mighty Merseysiders, and an 'upset' could result.

Swansea also are in the 'mission impossible' stakes as they travel to White Hart Lane to play Tottenham, holding a 1-0 advantage from the first leg at the Vetch Field. Gilligan's 88th minute strike from this match could be enough to sink Spurs, if they can hold on . . .

Probably the best performance, although not as glamorous, was Peterborough's 2-1 first leg win away to First Division Wimbledon. A goal down after 24 minutes, Posh came back swiftly through Charlery on 27 minutes, and Stirling after 31 minutes to take the lead. The score remained, giving Peterborough a tremendous opportunity to progress further.

Another Division Three success came at Griffin Park, where Brentford smashed Second Division Brighton 4-1, goals coming from Godfrey, Cadette and Holdsworth (2). The Seagulls now have a tough task at the Goldstone Ground.

Two other performances of positive note were from Bournemouth, who gained a 1-1 draw away to Second Division leaders Middlesbrough, and Hartlepool, who also drew 1-1 at home to Crystal Palace.

On the hopeless task front, Shrewsbury take on Wolves at Gay Meadow 6-1 down, following their first leg drubbing at Molineux, and Torquay must climb an even steeper mountain trailing 7-1 against Oldham.

Although these notes were penned prior to Saturday's matches, we can look back to Albion's second League defeat of the season last week, when they went down 2-0 to Preston at windswept Deepdale.

After a goalless first half, Preston took the lead when Mick Flynn flicked on a long clearance for Gary Swann to score. The home side increased their lead in the 69th minute when full back Steve Senior grabbed his first of the season. Albion keeper Stuart Naylor had kept his side in the game with a string of fine saves prior to half-time.

Albion's disappointing evening saw a winning run end at four matches, and Don Goodman did not play after injuring himself during the pre-kick-off warm up. This would have been his second match since returning from injury

It was a sad night for Third Division Swansea last week, crashing out of the European Cup Winners Cup against French side Monaco. The Welsh Cup Winners were forced to field a 'rookie' side because of the UEFA four player foreigner rule, and were soon in trouble against Monaco. Goals from Weah (2) Fofana, Barros, Passi (2), a Mark Harris own goal and Djorkaeff gave the French side an 8-0 victory, 10-1 on aggregate.

★ ★ ★

Following Blue's unveiling of the smart new 'away' strip, I did wonder what colours would be worn against Shrewsbury last Saturday. With the Shrews returning I believe to their Blue and Yellow stripes, Blue's 'home' and 'away' colours could both clash. Maybe a chance for the designers to shine again! . . . or then again we could play in 'skins' . . . ?

★ ★ ★

Finally, well done to the third division which is the only one of the four divisions to show an increase in gate figures over the corresponding weeks of last season. The First Division average is down 4.9% at 22,522 spectators per game, the second division down 14.1% at 10,108 spectators per game, and the fourth division down 1.0% at 3,197 per game. Holding the fort (but only just) is the Third Division where a total of 484,559 spectators had watched the 95 matches played up to the 27th September, an average of 5,101 per game, 0.7% up on last year at the same time.

ANDREW THOMAS

OVER 200 WEEKLY WINNERS
ALMOST FIFTY CHANCES DAILY

SUPPORT 'THE BLUES' WITH

THE PENNY LOTTERY

Prize Money of over

£2000 Every Week PLUS

SUPER DREAM HOLIDAYS
in USA, HONG KONG, EGYPT, JAMAICA

REMEMBER!

You've Got To Be In It, To Win It

"Sign up for The Blues"



(0530) 63529

WIN TV's - Hi-Fi's - MICROWAVES + WEEKEND BREAKS
FRANCE - SPAIN - IRELAND - SCOTLAND



KIT SPONSORS

- ★ RECEIVE A SHIRT AUTOGRAPHED BY YOUR PLAYER
- ★ YOUR PLAYER AVAILABLE FOR PROMOTIONAL APPEARANCES
- ★ ALL FOR ONLY £250 + VAT

TERRY COOPER <i>Craig Jennings for Chapter 22 Management</i>	IAN ATKINS <i>Mr Cartwright of Cartwright & Lewis</i>	LOUIE DONOWA	IAN CLARKSON <i>Linda Goodman</i>	MARK COOPER <i>Linda Goodman</i>	MATTHEW FOX
JOHN FRAIN	SEAN FRANCIS	JOHN GAYLE <i>J's Textile Merchants</i>	NIGEL GLEGHORN <i>"Paul" Sponsored by Clark & Co.</i>	PAUL MARDON	MARTIN HICKS
ERIC HOGAN	DAVID FOY	TREVOR MATTHEWSON	DEAN PEER	IAN RODGERSON <i>Mr. Ash Ash Motors 772 1981</i>	MARK RUTHERFORD
SIMON STURRIDGE <i>Colorvision Erdington & Northfield</i>	PAUL TAIT	MARTIN THOMAS	DEAN WILLIAMS		

On This Day

OCTOBER 8th

An historical oracle of matches played on Since then though, it's been a struggle on this day, with only 5 wins and 1 draw from the 15 other matches played on October 8th.

99 years ago today, Blues beat Crewe 6-0 in our first season in the Football League. Since then though, it's been a struggle on this day, with only 5 wins and 1 draw from the 15 other matches played on October 8th.

1892-3 Division 2 - BLUES 6 Crewe Alexandra 0. Blues: Charsley, Short, Speller, Ollis, Jenkins, Devey, Hallam, Walton, Mobley, Wheldon, Hands. Scorers: Walton, Wheldon, Hallam, Devey, Mobley, Hands. Attendance: 2,500

1898-9 Division 2 - Grimsby Town 2 BLUES 0. Scorers: Field, Beer. Attendance: 14,000

1904-5 Division 1 - BLUES 2 Middlesbrough 1. Scorers: Jones. Attendance: 14,000

1910-11 Division 2 - BLUES 1 Stockport City 2. Attendance: 40,000

1921-2 Division 1 - BLUES 0 Huddersfield Town 2. Blues: Tremelling, Smith, Barton, Liddell, Coxford, Leslie, Bloxham, Harris, Bradford, Briggs.

1927-8 Division 1 - Sheffield Wednesday 2 BLUES 3. Blues: Tremelling, Smith, Barton, Liddell, Coxford, Leslie, Bloxham, Harris, Bradford, Briggs. Scorers: Briggs (2), Bradford. Attendance: 19,974

1932-3 Division 1 - BLUES 2 Sheffield Wednesday 1. Scorers: Thorogood, Grosvenor. Attendance: 14,999

1938-9 Division 1 - BLUES 0 Bolton Wanderers 2. Attendance: 25,000

1949-50 Division 1 - BLUES 0 Portsmouth 3. Blues: Merrick, Trigg, Green, Harris, McDonnell, Badham, Berry, Brennan, Dailey, Capel, Ferris. Attendance: 38,000

1955-6 Division 1 - BLUES 1 Sunderland 2 (og). Attendance: 38,000

1960-1 Division 1 - West Ham United 4 BLUES 3. Scorers: Rudd, Hellawell 2. Attendance: 15,120

1966-7 Division 2 - Ipswich Town 3 BLUES 2. Scorers: Thomson, Vouden. Attendance: 28,238

1968-9 Division 2 - BLUES 2 Cardiff City 0. Scorers: Greenhoff, Vincent. Attendance: 12,476

1969-70 Division 2 - Oxford United 2 BLUES 0. Blues: Montgomery, Calderwood, Pendrey, Page, Howard.

1977-8 Division 1 - BLUES 1 Coventry City 1. Blues: Emmanuel, Jones. Scorers: Francis. Attendance: 27,414

1988-9 Division 2 - Bournemouth 0 BLUES 1. Blues: Thomas, Ranson, Frain, Atkins, Overson, Want, Connolly, Francis, Bertschin, Hibbitt, Emmanuel, Jones. Scorers: Frain. Attendance: 6,186



RESERVES AND YOUTH

Saturday, 28th September, 1991
Midland Purity Youth League
BLUES 2 v. LINCOLN CITY 0

This was a comfortable win by the Youth side which included several first year players. Blues were in control throughout and the result was never in doubt once Graham Potter had scored a spectacular goal following a run from the half-way line and a low shot into the corner of the goal. The second was scored by David Aston, who cut in towards goal from the right wing, and drew the Lincoln goalkeeper before slipping the ball in at the near post.

Blues: Shevlin, Bignott, Potter, Robinson, Morley, Wratten, Fowkes, Aston, Wall, O'Connor, Powell, Adams, Jones.

Tuesday, 1st October, 1991
Southern Junior Floodlit Cup First Round
BLUES 3 v. LUTON TOWN 2

Following a bright opening during which Blues should have had three or four goals, the home side were made to struggle until a late burst booked our passage into the second round. Blues scored first, half-way through the first half through Higgins, who lobbed the Luton keeper following a pass from Adams. But then Blues lost their way and allowed Luton to take control, and the visitors scored just before half-time, and then again midway through the second half. Blues got back into the game following a dubious penalty decision, which despite the spot-kick being missed, spurred a late revival which saw two goals in the last five minutes through Paul Jones, and Steve Robinson who scored with a 25-yard shot two minutes from time.

This was a pleasing result, but Blues were rather fortunate to win a game in which the lads deserve credit for sticking to their task.

Blues: Shevlin, Bignott, Halford, Taylor, Potter, Fowkes, Robinson, Adams, Powell, Higgins, Jones, Green, Aston.

★ Blues Youth play at home to either Aldershot or Leyton Orient in the next round.

Wednesday, 2nd October, 1991
Midland Senior League
LINCOLN CITY 3 v. BLUES 1

After Blues 'keeper Richard Williams had been carried off after 15 minutes with damaged knee ligaments, this was always going to be a struggle for Blues against Lincoln's First

Team, playing as punishment for their heavy defeat at Hereford the previous weekend. Foley Okenla took over in goal with the score already 1-0, but Blues were three down before Brian Gray salvaged some pride. Nevertheless, Blues created several chances after the goal and could have returned with at least a point.

The match was good experience for a very young side containing several Y.T.S. lads who are now being blooded into the team. Coach Ian Atkins was pleased with the response he got from the youngsters, many of whom are enjoying their first taste of Reserve Team football.

Blues: Williams, Peer, Brown, Larkins, Green, Devrey, Foye, Hogan, Tait, Gray, Okenla, Jones, Adams.

★ ★ ★

NEXT MATCHES:

Wednesday, 9th October - 2.00p.m.
Reserves v Northampton Town - St. Andrews
Saturday, 12th October - 10.45a.m.
Youths v Northampton Town - Earlswood

★ ★ ★

The Youth Team have made an excellent start in the Midland Floodlit Youth League, with 4 wins and 1 draw from the five matches played so far. Latest result was a 1-1 draw with Wolverhampton Wanderers last week.

★ ★ ★

The Second Part in our series on the Y.T.S. players sees Brian Caswell looking at the full-back positions.

At right-back the Club has Marcus Bignott, and Louie Baker. Marcus, from Birmingham, is the captain of the Youth side largely because of his enthusiasm and dedication which rubs off onto the other players. Marcus can also play in midfield, and is a very consistent player. Louie Baker is a first year player, also from Birmingham, and Brian sees him as a player to look out for in the future, with good feet, attacking instincts, and great versatility.

Competing for the left-back position are Graham Potter and Andy Green. Graham is a first year from Solihull, tall and strong with a good left foot, Graham is always keen to get forward. Andy hails from Coventry, and he has played quite a few games for the Reserves, indeed at one stage last season he was on the fringe of the First Team. Andy is a strong tackler, but needs to develop his attacking flair.

YOU SUPPLY THE TALENT MITRE
SUPPLY THE REST!



mitre
FOOTBALL



MITRE ARE THE SOLE MANUFACTURER & SUPPLIER TO THE ENGLISH FOOTBALL LEAGUE OF THE EXCLUSIVE DELTA DESIGN OFFICIAL MATCH BALL.



COMMUNITY

Birmingham City Football Club Community Strategy Season 1991/92

PART 3 MATCHDAY ACTIVITIES

RECIPROCAL VISITS

Our Junior Blues Club encourages as many reciprocal visits as possible. These involve a half-time 6-a-side match, refreshments in the family room, and both groups then watch the match together. This is very important in eliminating the confrontational element in supporting ones team.

SCHOOL VISITS ON MATCHDAYS

Following a series of school visits by the various club schemes, all pupils plus their parents are invited to a First Team game at St. Andrews, free of charge.

BALLBOYS/GIRLS

These are selected on a match by match basis from the members of the Junior Blues.

PRE-MATCH ENTERTAINMENT

Wherever possible we seek to provide suitable pre-match entertainment. We are really looking for local youth bands or majorette groups who would be willing to perform for 'exposure' purposes.

CHARITABLE COLLECTIONS

This season, we will allocate six matches at which organisations can make charitable collections. We hope to involve the Birmingham Children's Hospice, the Samaritans, Christian Aid, and the St. John's Ambulance Brigade.

RESTAURANT AND HOSPITALITY SUITES

We have a full range of facilities available to satisfy companies seeking facilities for corporate entertainment, and supporters requiring executive facilities. We hope this will strengthen the link between the club and the business community.

FROM THE COMMUNITY OFFICER

In my last piece I mentioned some forthcoming Soccer Schools coming-up during the half-term holidays. I've now sorted out the arrangements for the courses, and the details are:

VENUES:

- ★ Greswold Junior School & Dorridge Junior School (Solihull).

DATES:

- ★ Monday 28th October to Friday 1st November.

TIMES:

- ★ 10.30a.m. - 3.00p.m. (daily).

COST:

- ★ £25.00.

AGE:

- ★ Boys & Girls between the ages of 8-12.

CONTENT:

- ★ 5 days coaching with qualified coaches.
- ★ 2 Complimentary tickets (1 adult/1 child) for the Birmingham City v Torquay United game (Saturday, 2nd November).
- ★ A visit by players of B.C.F.C., for a photo and autograph session.
- ★ A ground tour, including videos.
- ★ A T-Shirt.
- ★ Games & Fun Sessions.

There will be a limit to the number of places available, so if you want your child to attend, please BOOK EARLY!! Could you also specify which course he/she will be attending.

To pay for the course, could you send a cheque to:

Derek Clydesdale
B.C.F.C. Football in the Community
St. Andrews Ground
Birmingham B9 4NH

and make the cheque payable to B.C.F.C. Football in the Community.

As part of our birthday treat scheme, I would like to wish a happy birthday to **KIERON BEARD**, who is celebrating his 8th birthday. He will be receiving a signed ball and card from his favourite player at tonight's game. If you want your child involved in the birthday treat scheme, it will cost £25.00 and you receive a family ticket (2 adults/2 children) for any home League game, a signed football and card, and a presentation by his/her favourite player.

During the course of the coming months I will be throwing ideas around and seeing if there is any response from interested parties. At the moment, I would be interested to know if there would be any

BLUES

mileage in trying to start a Over-35's League, or even if I could organise a 1-day tournament for people over the age of 35. If you've got any views on the matter, give me a call on 021-766 6180.

Hope you enjoy tonights game, and till next time.

Derek Clydesdale

☆ ☆ ☆

JUNIOR BLUES

Good evening everyone and welcome to all the supporters of Luton Town.

The JB's maintained their unbeaten record at home this season when beating John Gayle's, Kings Heath Concorde 2-0, at our last home game against Preston North End. Indeed we have only been beaten once since the beginning of last season and teams are eagerly queing-up to try and end our record. Well done lads.

Well done to the JB's who took part in the penalty competition with the animals from the Wildlife Trust, despite the wet conditions, everybody enjoyed themselves.

Congratulations to Andrew Dempsey who won a colour television for having the autographed Terry Cooper programme at the Chester City game.

CHRISTMAS PARTY

We are holding a Christmas Party for JB Members on Sunday, 22nd December in the 'D' Club commencing at 4.30p.m. Tickets are free, but sadly will be limited. Don't worry parents, you won't miss out. We are arranging a buffet in the Gold Club for yourselves and at about 6.00p.m. there will be a disco for all in the 'D' Club. The price for parents is yet to be confirmed but read this column for more details.

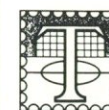
Tonight we have great pleasure in welcoming Mr. David Money from Coventry City who joins us to see the workings of the Family Stand and the JB set-up with a view to starting a similar scheme at Highfield Road. We are delighted to be able to entertain you.

AWAY TRIP - HUDDERSFIELD TOWN

We are running a trip to Huddersfield Town on Saturday, 9th November at a cost of £8 per head. Further details will follow in the next programme.

Finally, membership is growing rapidly and should anyone require more details, please telephone me on 472-4700.

Rita Greenaway



he Football Trust has been created to help football at all levels and especially to meet the requirements of Lord Justice Taylor's Final Report.



nnual income is expected to exceed £32 Million - £20 Million as a result of the reduction in Pool Betting Duty and the continuing contribution of over £12 Million annually from the Spotting-the-Ball competition organised by Littlewoods, Vernons & Zettters.



THE FOOTBALL TRUST
Helping the game

LUTON TOWN F.C. - A BRIEF HISTORY

1885: Luton Town Football Club formed by the amalgamation of Wanderers and Excelsior, the two major clubs in the town at the time. The club's first ground is the Excelsior's in Dallow Road and the club's first colours are pink and navy blue.

1890: Luton Town become arguably the first club in Southern England to turn professional by paying top players their expenses and seven years later, in 1897, become a limited company joining the Football League for the first time.

1900: The club return to the Southern League after an expensive and painful education amongst the Second Division clubs and in 1905 move to Kenilworth Road.

1920: After the war the club returned to the Football League and played in Division Three. One year later, the club joined Division Three (South).

1936: Joe Payne scored 10 goals in one match against Bristol Rovers to establish a club and national record never likely to be equalled. One year later, Payne hit 55 goals in a season as the Town won promotion to Division Two.

1959: Luton Town played Nottingham Forest in the F.A. Cup Final at Wembley, losing 2-1.

1960: A poor season ends with relegation from the First Division to the Second and from the Second to the Third Division. In 1965 the slump ends when the Town fall to the Fourth Division.

1968: The revival began with a championship triumph at the end of a successful Fourth Division campaign. Two years later, the club win promotion to Division Two again.

1974: After a spell of uncertainty, the club bounces back into Division One although they were again relegated the following season.

1982: After another insecure spell, particularly financially, the club gain promotion to Division One after a title-winning season under David Pleat.

1988: Established as a First Division club, the Town win their first major honour as they defeat Arsenal 3-2 in the Littlewoods Cup Final at Wembley in 1988.

1989: Back to Wembley in 1989 to defend the trophy, but this time defeated by Nottingham Forest.

LUTON TOWN F.C. - PEN-PICTURES 1991-92

ALEC CHAMBERLAIN (goalkeeper) - Alec was signed from Everton for £150,000 in July 1988 and took over in the Luton goal towards the end of the following season. He started his career at Ipswich but failed to make the grade at Portman Road. He made his break in League football at Colchester following a transfer in 1982. Everton signed him for £75,000 in 1987 as cover but, after a loan spell with Tranmere, he moved on to Kenilworth Road.

MATTHEW JACKSON (defender) - Matthew joined Luton as a schoolboy and signed professional terms last year. He got his big break in League football this season for The Hatters, coming on as substitute at Arsenal. He has remained in the side ever since.

JOHN DREYER (defender) - John was an apprentice with Oxford but played League football for both Torquay and Fulham, whilst on loan, during season 1985-86 before getting his chance in the Oxford side the following season. Luton signed him for £140,000 in 1988 and was Club Captain last season.

DAVID BEAUMONT (defender) - David was signed from Dundee United for £150,000 in January 1989. He spent much of his early time at Kenilworth Road on the injured list, but won a place at centre-back last season and opened the current campaign at right back. He joined Dundee United from school, making his debut in 1984.

TREVOR PEAKE (defender) - Trevor was signed from Coventry for £100,000 in August and was immediately made Club

Captain. He started his career playing non-League football for Nuneaton Borough before stepping up to League soccer with Lincoln in 1979. He moved on to Coventry in 1983 and was a member of their F.A. Cup winning side of 1987.

RICHARD HARVEY (defender) - Richard is a former England Youth International who made his debut as a 17 year old in 1986. He has since established himself in the First Team squad and has been a fairly regular member of the side for the past three seasons.

GRAHAM RODGER (defender) - Graham started his footballing career at Wolves but only made one appearance in their League eleven. After moving to Coventry in 1985 he played four times for the England Under 21 side and made an appearance at Wembley in 1987. Luton signed him during the summer of 1989 and this season has been forming a partnership with Trevor Peake at the centre of defence.

PAUL HOLSGROVE (defender) - Paul was signed from Wokingham for £25,000 last January and almost immediately made his debut against QPR. He then went back into the Reserves until being called into the squad last month at Wimbledon.

DARRON McDONOUGH (midfield) - Darron completed his apprenticeship with Oldham Athletic and played over 200 First Team games for The Latics before moving to Luton for £85,000 in 1986. He has been a regular now in the Luton midfield for the past five seasons and can also play in defence when needed.

MARK PEMBRIDGE (midfield) - Mark is a former Luton Town trainee who made his League debut at Wimbledon on New Year's Day. Almost immediately he gained a regular First Team place which was rewarded with Wales B and Under 21 caps. This term he has been instrumental at the heart of midfield and won his first full cap against Brazil last month.

PAUL TELFER (midfield) - 19 year old Paul is another product of the club's successful youth training scheme. He made one appearance as substitute last season, but has been given an extended run-out in the First Team this term.

DAVID PREECE (midfield) - David made his League debut playing for Walsall in 1981, winning a regular place two years later. Luton signed him for £150,000 in 1984 and he has remained in the First Team ever since. David has played in two Littlewoods Cup Finals and has been capped three times at England B level.

CERI HUGHES (midfield) - Recently returned from a long injury lay-off, Ceri established himself at the heart of the Luton midfield last season, making 17 appearances before serious ligament injuries ruled him out. Signed from apprentice in 1989, Ceri has represented Wales at Youth, Under 21 and Full levels.

STEVE THOMPSON (midfield) - Steve was signed from Bolton for £180,000 last month. He joined Bolton as an apprentice and, after making his League debut in 1982, he made over 350 senior appearances for The Wanderers, scoring over 50 goals.

BRIAN STEIN (forward) - Brian returned to Kenilworth Road this summer on a free transfer after spending the last three years in France, playing for First Division Caen and later Annecy in Division Two. He made his League debut for The Hatters in 1977 and was leading goalscorer for two seasons, prompting an England call-up. His last game was in the 1988 Littlewoods Cup Final where he scored two goals against Arsenal.

MICK HARFORD (forward) - Another player who has returned for his second spell at Kenilworth Road, Mick was signed from Derby last month for £325,000. He started his career at Lincoln in 1977 before joining Newcastle in 1980. After a brief spell at Bristol City, he established himself as a class striker at Birmingham, prompting Luton to sign him in 1986. Two years later he was off-loaded to Derby County for £1,000,000.

SEAN FARRELL (forward) - Sean completed his apprenticeship with The Hatters but made his League debut on loan to Colchester United during season 1987-88. He started the season in attack but has only recently returned from a loan spell with Northampton Town.

PHILIP GRAY (forward) - Philip developed in the Junior teams

LUTON TOWN



at Tottenham, making his debut in 1987. He never really established himself at White Hart Lane, making only brief appearances, and spent a loan period at Barnsley two seasons ago. He joined Luton for £275,000 shortly before the start of the season.

KURT NOGAN (forward) - Kurt is a former trainee who turned professional in 1989. A prolific goalscorer in the Reserves, he made his First Team debut in January 1990. This season has seen him return to the First Team set-up, making valuable contributions from the substitute's bench.

MEET THE MANAGER



DAVID PLEAT (Manager)

It was at Luton that David made a name for himself both as a player and manager. He had begun his playing days at Nottingham Forest but played only half a dozen First Team games before joining Luton in 1964. In 1967 he was transferred to Shrewsbury, and he later played for Exeter and Peterborough before retiring in 1971.

In 1974 he returned to Luton as Reserve Team Coach and was promoted to First Team duties as

Coach three years later. He was finally appointed Manager in 1978 and guided Luton into Division One four years later. In 1986 Mr. Pleat joined Tottenham Hotspur, guiding them to an F.A. Cup Final appearance before moving on to manage Leicester City in December 1987. He remained at Filbert Street until January 1991 and returned for his third spell at Luton during the summer.

LUTON TOWN AND THE FOOTBALL LEAGUE CUP -

A season by season record

Complete Record:

Played 94 Won 43 Drawn 22 Lost 29 For 148 Against 126

	1	2	3	4	QF	SF	F
1960-61							
1961-62							
1962-63	BYE						
1963-64	BYE						
1964-65	BYE						
1965-66							
1966-67							
1967-68							
1968-69							
1969-70							
1970-71							
1971-72	BYE						
1972-73	BYE						
1973-74	BYE						
1974-75	BYE						
1975-76	BYE						
1976-77	BYE						
1977-78	BYE						
1978-79	BYE						
1979-80							
1980-81	BYE						
1981-82	BYE						
1982-83	BYE						
1983-84	BYE						
1984-85	BYE						
1985-86	BYE						
1986-87	DISQUALIFIED						
1987-88	BYE						Winners
1988-89	BYE						Runners-Up
1989-90	BYE						
1990-91	BYE						

With thanks to ROGER WASH

FORM BOOK...

Last season The Hatters dined with relegation for the third successive year, following three steady seasons in the mid-eighties.

Over the last three seasons, Luton have won just seven matches away from home in total, and scored just 49 goals in 57 matches.

Only eleven points were picked up away from Kenilworth Road last season, with wins at Southampton (2-1), Norwich City (3-1) and Aston Villa (2-1), supplemented by two draws, at Nottingham Forest (2-2) and Chelsea (3-3). With a home record of 7 wins, 5 draws and 7 defeats, Luton escaped the drop by just three points.

This season has seen no marked improvement as yet, with away form once again a major problem. In six games up to the time of going to press (Luton played at Villa Park on Saturday), Luton had managed just one goal, but conceded nineteen. Home form has been more promising, with two wins and two draws from five matches played.

A full list of results to date:

Home		Away
Liverpool	0-0	West Ham United 0-0
Southampton	2-1	Coventry City 0-5
Oldham Athletic	2-1	Arsenal 0-2
Queens Park Rangers	0-1	Chelsea 1-4
Notts County	1-1	Wimbledon 0-3
		Manchester United 0-5

Full League Record (correct to 4/10/91)

P 2811 W 1093 D 695 L 1023 F 4420 A 4138 Pts 3029

US AND THEM...

Blues have met Luton on exactly 50 occasions in League and Cup football up to date, and we have an excellent record against The Hatters, having won half of those matches (including the first 11 League meetings) and lost only 11 times.

BLUES v. LUTON IN THE LEAGUE...

	H	A	H	A
1897-98	Div. 2 4-2 2-1		1956-57	Div. 1 3-0 0-0
1898-99	Div. 2 9-0 3-2		1957-58	Div. 1 1-1 0-3
1899-1900	Div. 2 3-0 2-1		1958-59	Div. 1 0-1 1-0
1946-47	Div. 2 1-0 3-1		1959-60	Div. 1 1-1 1-1
1947-48	Div. 2 2-1 1-0		1970-71	Div. 2 1-1 2-3
1950-51	Div. 2 3-0 1-1		1971-72	Div. 2 1-0 0-0
1965-66	Div. 2 3-1 4-2		1974-75	Div. 1 1-4 3-1
1952-53	Div. 2 2-2 1-0		1979-80	Div. 2 1-0 3-2
1953-54	Div. 2 5-1 0-2		1982-83	Div. 1 2-3 1-3
1954-55	Div. 2 2-1 0-1		1983-84	Div. 1 1-1 1-1
1955-56	Div. 1 0-0 1-0		1985-86	Div. 1 0-2 0-2

TOTAL SUMMARY OF LEAGUE MEETINGS...

	P	W	D	L	F	A
Home	22	12	6	4	46	22
Away	22	11	5	6	30	27
	44	23	11	10	76	49

F.A. CUP MEETINGS...

1920/21 Round 1 Luton Town 2 BLUES 1

Blues: Tremelling, Womack, Jones, Roulson, McClure, Barton, Burkinshaw, Crosbie, Bradford, Hampton, Whitehouse.
Scorer: Barton Attendance: 12,700

1974/75 Round 3 Luton Town 0 BLUES 1

Blues: Latchford, Page, Styles, Kendall, Gallagher, Pendrey, Hendrie, Taylor, Burns, Hatton, Calderwood.
Scorer: Kendall Attendance: 17,543

LEAGUE CUP MEETINGS...

1972/73 Round 2 BLUES 1 Luton Town 1

(Latchford) Attendance: 20,962

Replay Luton Town 1 BLUES 1 a.e.t.

(Campbell) Attendance: 13,806

2nd Replay (at Northampton)

BLUES 1 Luton Town 0

(Francis) Attendance: 11,451

COUNTY GARAGES
THE NAME YOU CAN TRUST

Buy a Quality Used Car from County Garages...



and we'll keep you right on to the end of the road



Over 250 quality hand
picked used cars always
on display for you to
select from. Each car undergoes
an intensive check and full service
to make sure that the cars we sell
will give our customers many, many
miles of trouble free motoring, but if



by any chance a problem may occur
you have the peace of mind of our
12 months parts & labour warranty
which is included with every car
sold. Cash, Part-exchange or
Finance* our friendly and
expert staff will only be to
glad to help you.



OFFICIAL SPONSORS OF **BIRMINGHAM CITY F.C.**
COUNTY GARAGES



NEW ROVER CARS . SERVICE PARTS:-

BRADFORD ROAD, CASTLE BROMWICH. TEL: 021-749 2000

QUALITY USED CAR CENTRES AT

CASTLE BROMWICH THE GREEN, BRADFORD ROAD. TELEPHONE: 021-749 2000
SHARD END BUCKLANDS END LANE. TELEPHONE: 021-749 5555
ALUM ROCK ALUM ROCK ROAD. TELEPHONE: 021-327 3266

*Subject to status, written details on request

FIRST TEAM FILE

YOUR CUT OUT & KEEP GUIDE TO ALL THIS SEASON'S MATCHES



Saturday, 21st September, 1991

Barclays League Division 3

HARTLEPOOL UNITED 1 v. BLUES 0

Blues: Thomas, Clarkson, Frain, Donowa, Hicks,
Mardon, Rodger, Cooper, Peer, Gleghorn, Sturridge.
Subs: Gray, Atkins.

Hartlepool: Hodge, Nobbs, McKinnon, Tinkler,
MacPhail, Bennyworth, Rush, Olsson, Baker, Honour,
Dalton.; **Subs:** Gabbiadini, McCreery.

Scorers:

Hartlepool - Baker 2

Weather: Very windy and cold.

Attendance: 4,643. **Blues contingent:** 1,100

Referee: T. Fitzharris

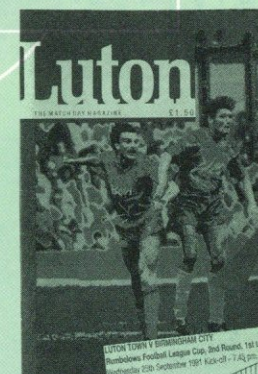
What the papers said . . .

"Blues' unbeaten record fell at Hartlepool with Terry Cooper's boys looking a pale shadow of the team that has stormed to the top of the Third Division. They fell behind after just two minutes to Paul Baker's looping header and but for a late burst didn't look like recovering. The home side outbustled Blues in a scrappy game destroyed by a strong wind".

Colin Tattum, Sports Argus

"Plucky Pool regained their winning ways after three games without a victory - and what an occasion to do it. Fallen giants Birmingham arrived at the Vic for the first time in their 116 year history with a proud unbeaten record and an army of supporters to cheer them on. The goal stunned City and they never really found their feet after that early shock. In the dying minutes Rob McKinnon made a vital tackle to deny Donowa and Hodge did well to block a long-range effort by Dean Peer. But had either found the net, Pool's biggest crowd of the season would have witnessed a travesty of justice".

Martin Neal, Hartlepool Mail



Wednesday, 25th September, 1991

Rumbelows Cup Second Round, First Leg

LUTON TOWN 2 v. BLUES 2

Blues: Thomas, Clarkson, Matthewson, Donowa, Hicks,
Mardon, Rodger, Frain, Peer, Gleghorn, Sturridge.
Subs: Atkins, Okenla.

Luton: Chamberlain, Jackson, Dreyer, Telfer, Rodger,
Beaumont, Preece, Stein (Nogan 72), Gray (Salton 84),
Pembridge, Thompson.

Scorers:

Blues - Rodger 3, Gleghorn 59.

Luton Town - Gray 48, Nogan 83.

Weather: Fresh and breezy.

Attendance: 6,315. **Blues contingent:** 1,980

Referee: R. Pawley

What the papers said . . .

"Blues have the sniff of an upset in their nostrils after their gritty if not wholly convincing performance at Kenilworth Road. But if they had kept their concentration, they would have virtually packed away Luton's Cup dreams already. Twice they let the lead slip to goals which, against Third Division sides, would probably have had manager Terry Cooper seething. But in the context of this encounter, Cooper was delighted with the result as Blues were on the back foot for the majority of the 90 minutes".

Colin Tattum, Evening Mail

"Both managers agreed that the Rumbelows Cup-tie is nicely poised, with the first leg at Kenilworth Road showing that either side is capable of going through to the third round. Birmingham looked quick in attack with Ian Rodger and Nigel Gleghorn dangerous on the flanks. Birmingham's other major asset was a crowd - they were the first visiting club this season to all but fill the 2,000 seats at the Oak Road end, and their non-stop backing put the home crowd to shame".

Brian Swain, Luton News



COMMERCIAL

TONIGHT'S MATCH SPONSORS

**Roy S. Ely
Transport Ltd**

GENERAL HAULAGE

**Reg. Office:
129 ASTON CHURCH ROAD,
BIRMINGHAM B7 5RQ**

**Telephone: 021-327 1711/1283
Fax: 021-328 7707**

*Local and Long Distance
R.H.A.*

Good evening and welcome.

As promised in the last programme I will explain more about our super sponsorship packages. I start this off with our Hospitality Boxes.

These are extremely popular, either for

the season or on a match by match basis.

When you hire an Executive Box for the season you can actually use it for day time meetings if required. You can see listed on the next page the advantages of hiring one of B.C.F.C.'s Executive Boxes.

EXECUTIVE BOXES

Executive Box Package: £3,500-£4,500

- ★ Box available throughout season, during the week as well as on matchdays
- ★ 8 armchair seats, television with video screening of match, fridge
- ★ Waitress service for fast foods
- ★ Buffet available with prior notice given
- ★ All drinks to be sold through the Club
- ★ Mentions in programme
- ★ Bar facility in V.I.P. Lounge with players and families, open from 12 noon and throughout the match
- ★ Half-time tea, coffee and soup available in V.I.P. Lounge
- ★ 2 car parking spaces
- + Box Hire Match by Match: £300 + VAT

Please call the Commercial Line,
speak to Joan or myself on **766 5927**
TOM ROSS JNR.

A Message from Joan Hill, Head of Marketing.

Hi, a very warm welcome to everyone here at St. Andrews. I have spent quite a hectic week getting out and about in the Solihull area. I would like to thank LANDROVER especially Les Woodhall for his warm hospitality when Carol McNeal and I arrived during Les's hurried lunch hour. It was great to see the enthusiasm Les and many of his fellow workforce have for the Blues. With this in mind I am delighted to organise various competitions for Blues supporters at LANDROVER together with the odd visit at lunch time in the staff canteen with Terry Cooper and a couple of players to sign autographs. I'm hoping this is the start of a community link up with the

Blues, which is so important for the future.

I'll be happy to call in and see your company over the next few weeks. Just give me a call if you have Blues supporters wanting to meet their favourite players. Who knows, perhaps you can persuade your boss to work in the community with the Birmingham City F.C.

I look forward to hearing from you – call me on **766 5927**.

Bye for now.

JOAN

★ ★ ★

BOARDROOM PACKAGE DIRECTOR FOR A DAY! For 9 'Directors'

- ★ Executive car-park facility
- ★ Champagne reception
- ★ Pre-match Executive Luncheon with Director/Manager
- ★ Directors Box seats
- ★ Half/Full time boardroom facility
- ★ Meet the Manager
- ★ Match-day magazine

Total cost **£550 + VAT**

Book now with General Manager Bill Coldwell 753 0004
or Carol McNeil 772 0101/2689/1116

CORNER

MARK ONE **SCORE** **EVERY TIME** **AGAINST** **THE** **OPPOSITION.**

MARK *'Dress for less'* **= ONE**

**MARK ONE WISH BIRMINGHAM CITY EVERY
SUCCESS THIS SEASON**

TERRACE TALK

**BLUES
NEWS**

Whilst the 2-2 draw at Luton was a great result, this tie is far from over and Blues will clearly need to be at their best to go into the draw for the next round. As a Third Division side playing a First Division team it's been suggested that we have nothing to lose and all the pressure is on Luton. This is an argument though that I totally disagree with. Firstly, we want a place in the next round and the chance of a meeting with one of the top clubs, or failing that, the Villa. Secondly, the undoubted financial benefits that such a tie would bring, could ultimately release funds for Terry Cooper to enter the transfer market. This in turn would surely help our promotion bid. So, tonight is extremely important and the players should be in no doubt of what we supporters expect of them. The support at Luton was quite magnificent and with hopefully an above average gate tonight, it would be nice to see our support rewarded.

Best news of the week is the remarkable progress being made by Paul Tait. There are very few players around with as much natural ability as Paul and all supporters will wish him well for the future. It's been a difficult year for him but I'm sure he has the character and determination to make an impact in the First Team again. His inclusion will help our promotion push and

he clearly deserves a change of luck over the next few months.

Whilst these notes are being written before the Shrewsbury game (and when did we last beat them?) the team continues to challenge at the top of the table, though it must be said that some of the performances have not necessarily matched the results. Therefore, if we are to be considered as serious promotion candidates, a great deal more consistency needs to be added to our play. However, it's early days yet and Terry Cooper is clearly on the right lines. With John Gayle still to return, I'm sure all Blues fans would have settled for this start and if only we can persuade a few more of the missing supporters to return, who knows what we may yet achieve?

Finally, a word of praise for our programme editor David Teague. Over the years Blues always had one of the better programmes, but sadly as our playing fortunes declined, so did the programme. Consequently the standard over recent seasons has been extremely poor. Nevertheless, a start was made last season and this has been carried on by David, so we now have a programme that does the Club justice and most importantly of all, provides value for money.

IVOR CRIGMAN

WHERE ARE THEY NOW?

**BIRMINGHAM
CITY
WHO'S WHO
1875 - 1991**

(by Tony Matthews & Roger Baker)

... to be published in October 1991 by

SPORTS LEISURE CONCEPTS - Price: £6.95

This new book will feature over 750 players, all of whom have served Birmingham City F.C. at first team level in major competitions since the club was formed in 1875.

And YOU can have your name included in this publication alongside all-time greats like Joe Bradford, Harry Hibbs, Trevor Francis, Gil Merrick, Malcolm Page, Frank Worthington and many, many others by simply subscribing to this unique book.

If you wish to subscribe please fill in the form below and return same to the publishers: Sports Leisure Concepts, Portersfield Road, Cradley Heath, Warley, West Midlands, B64 7BX, with correct remittance of £7.50 (to include postage and packing) as soon as possible to ensure your NAME is printed on the appropriate page which will be reserved for subscribers.

I wish to subscribe to copies of the Birmingham City Who's Who.....
I enclose a cheque / postal order to the value of £..... to include postage & packing.

Signed

(BLOCK LETTERS PLEASE)



PLAYER PROFILE

SIMON STURRIDGE

Studge's career at Blues literally began with a bang – for the popular and charismatic Brummie made his First Team debut against Portsmouth on Bonfire Night, 1988. Since then Simon has been a regular fixture in the Blues side, a fairy-tale story for the local from Newton who was spotted by accident playing at St. Andrews for the district team. "John Bond was watching the game and came over to me afterwards and told me to sign Y.T.S. terms for The Blues – who was I to argue?"

Whilst he remembers that first game largely because of the speed at which the game was played – after Youth and Reserve Team football, the Second Division was an entirely new experience – Simon remembers his first goal, against Shrewsbury in just his fourth full appearance, for an entirely different reason. "Colin Robinson tried to claim it was his goal, but no way was I giving my first senior goal away!". Simon scored twice more that year, and added another 10 in all competitions last year, a season which saw a change in position for the latter period. "Yes, it was unusual to play in midfield, but it was good experience and another string to my bow". This season, Studge is back up front, and loving every minute of it. "The beauty of the system that we play now is that the players with natural flair are given a much freer role. Already this season Nigel (Gleghorn) and Ian (Rodgers) have five goals apiece, and with my four, we're making

more opportunities and scoring more goals as a result".

No goal stands out more in Simon's mind than the opener at Wembley, a day which he will never forget. It took some getting used to the idea that the lad who used to come to St. Andrews because his brother Michael was on the playing staff, was playing at Wembley, but so full of confidence is Simon, that he holds aspirations of playing for England. Having won three Barclays Young Eagle awards, none would dispute his enormous potential, but do such awards put pressure on young shoulders? "Not at all, the awards are there to be won, and it is a great honour to feel that a Third Division player is receiving recognition when there are so many good young players in the Midlands".

Simon has no illusions about his popularity amongst Blues fans. "The support for the Club, especially away from home, is a tremendous boost to the players. But I'm not concerned that they might turn on me if I fail to deliver – I've never doubted my ability as a crowd-pleaser – the type of player that the fans love to watch".

Despite holding a new two-year contract signed during the close season, ("and I'm not on superstar wages like some would have you believe") the development of Simon Sturridge is being watched with interest by a great many in the footballing world.

COLORVISION KIT SPONSORS OF SIMON STURRIDGE

Telephone: 021-384 7490 to Blues Supporters

★ ONLY £569.00 ★

0% NO DEPOSIT

10 equal payments of £56.90

Interest Free Credit

Total Credit Price £569.00

ORDER NOW

Credit Cards Welcome

Order from: High Street, Erdington, Birmingham

Or call in at our showroom (next to T.S.B.)



CANNON E60

8 x 200m lightweight macro lens flash light

Free Carry Case

12 months full nationwide guarantee

24hr DESPATCH – ORDER NOW

ASK FOR JOHN

YOU COULD BE THE LUCKY WINNER OF A MIDI HI-FI SYSTEM

Courtesy of Colorvision of Erdington

If Blues' Manager Terry Cooper has signed the space below, you have won this super prize. Simply take the programme to a Club Steward, and we will present the Midi Hi-Fi to you on the pitch at half time.



Autograph



TICKETS AND TRAVEL

Saturday, 12th October, 1991
Kick-off 3.00p.m.
BARCLAYS LEAGUE DIVISION 3

BLUES v. STOCKPORT COUNTY

Normal admission prices apply.

Saturday, 19th October, 1991
Kick-off 3.00p.m.
BARCLAYS LEAGUE DIVISION 3

BLUES v. WIGAN ATHLETIC

Normal admission prices apply.

Saturday, 26th October, 1991 Kick-off 3.00p.m.
BARCLAYS LEAGUE DIVISION 3

BLUES at WEST BROMWICH ALBION

The Hawthorns, Halford Lane, West Bromwich B71 4LF.

THIS IS AN ALL-TICKET MATCH

Tickets go on sale to Season Ticket Holders on Thursday 10th October from the Club Shop in Cattell Road, from 10.00a.m.

Stand tickets on sale to Seat Season Ticket Holders only - £8
Terrace tickets on sale to any Season Ticket Holder - £6

Tickets will be on sale to Season Ticket Holders only on Thursday 10th, and Friday 11th October from the Club Shop, and Saturday 12th October after the Stockport match from the ticket office.

Due to the huge demand anticipated, tickets will be limited to 1 per Season Ticket Holder.

Remaining tickets will go on sale to Blues Society Members on Monday 14th October at 10.00a.m. at the Club shop

MAKE A DAY OF IT AT BIRMINGHAM CITY

Be a part of The Blues push for promotion by pledging your support for our matchday packages

MATCH SPONSORSHIP - Just £950 + VAT

Package Includes:

12 Gold Club Day Memberships

3-Course Luncheon before the game

Your choice of Man-of-the-Match, with presentation

Advertising of your company in programme, Evening Mail and on Buzz FM

MATCHBALL SPONSORSHIP - Only £300 + VAT

To Include:

2 Gold Club Day Memberships ★ Presentation of the ball on the pitch

3-Course Meals before the game

MASCOT SPONSORSHIP - Just £85 + VAT

Treat your youngster for the day

Package Includes: A complete playing strip

Family Stand Tickets ★ Meet the players and photographs

Blues Matchday Packages - Something for every company, large or small

For further details contact Joan Hill on 021-766 5927

SUPPORTERS CLUB NEWS

You will have noticed in last Saturday's programme that the tunnel in Emmeline Street leading to the Supporters Club will be opened 1½ hours prior to kick-off i.e. 1.30p.m. Saturday games and 6.30p.m. evening matches. As the bar opens ½ hour earlier than these times then I would like to advise members that entrance to the Supporters Club can be gained during that ½ hour only via the rear door using the passage from St. Andrews Road. Please note this passage will be manned and *current Membership Cards* must be shown.

On Saturday Members are asked to vote on certain proposals being made in respect of the Committee, so I would ask all members who have paid this season's subscription to pick up a voting form from Linda at the St. Andrews Club that day. Votes must be in by 6 o'clock on October 12th.

All members who haven't renewed will have their cards removed until fee's paid and be subject to the signing fee of 50p per match.

SOCCER NEWS

Hi, good evening everyone.

Since my last notes we have played 3 competitive games against Hartlepool, Preston and Shrewsbury Town.

After our long trip to Hartlepool, when we got delayed by traffic, we recorded a disappointing result losing 8-1 in windy conditions with our consolation goal being scored by S. Bartholomew in the second half.

This result ended our unbeaten run but the lads bounced back last week with a 1-1 draw against Preston. Their equaliser coming through a deflection with about 5 minutes to go after Tony Worrell had given us the lead with a fine solo effort and left foot shot.

These notes have been written before our short trip to Shrewsbury and I'll let you know how the team fared on Saturday.

We now have a good squad of enthusiastic

lads, so should progress in coming weeks.

Finally we'd like to thank David Teague for all his help on match days when we entertain visiting teams.

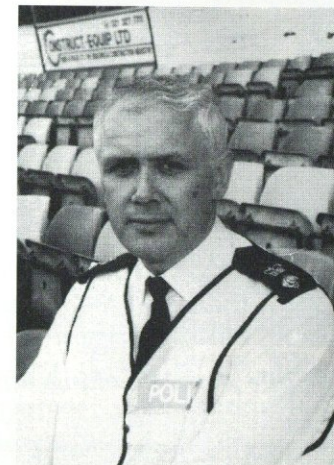
Enjoy tonight's game.

Malcolm.

POLICE REPORT FAREWELL

At short notice I am taking up a new position at Police Headquarters. Hopefully, everyone will have seen improvements during the last year or so. I believe that the corporate efforts made by the Police, the Club and the Advisory Group have created important foundations for the future.

I wish the Club and the fans success for tonight's game and coming seasons.



DAVID GREENE
Chief Superintendent

On behalf of Birmingham City I should very much like to wish Chief Superintendent Green every good wish as he takes over his new position. David has, during his association with Blues, worked very hard to promote the Club's interests, and to improve not only the actual

BLUES NEWS

policing of the ground, but also the image of the police. The superb arrest and ejection figures achieved last season are in no short measure a testimony to the way in which David has approached policing methods. We are all sorry that David will no longer be involved at the Club, and wish him every success for in his future position.

Samesh Kumar.

HALF-TIME SCORECHECK

- A AFC Bournemouth v. Middlesbrough
- B Bolton Wanderers v. Nottingham Forest
- C Chester City v. Manchester City
- D Crystal Palace v. Hartlepool United
- E Peterborough United v. Wimbledon
- F Sheffield United v. Wigan Athletic
- G Shrewsbury Town v. Wolverhampton Wanderers
- H Arsenal v. Leicester City
- I Barnsley v. Blackpool
- J Bristol City v. Bristol Rovers
- K Ipswich Town v. Derby County
- L Leeds United v. Scunthorpe United
- M Notts County v. Port Vale
- N Rochdale v. Coventry City
- O Swindon Town v. Millwall
- P Tranmere Rovers v. Chelsea
- Q Watford v. Everton

1991 WORLD MARTIAL ARTS EXTRAVAGANZA MARTIAL ARTS PUT BEST FOOT FORWARD IN SPECTACULAR STYLE!

There'll be kicks aplenty, but not a ball in sight, when the world's greatest martial arts experts take to the mats at the NEC on November 23rd. Champions from around the world will be competing in a sport that's as fast and furious as soccer.

If you've never seen the flying fists and feet of the finest martial arts fighters, here's your chance to see the best of the best in action. As if that wasn't enough, the Extravaganza, which Stuart Promotions plan to make an annual event, will feature demonstrations and special appearances by some of the greatest names in the martial arts world. Topping the bill is that lethal lady dragon, 'China O'Brien' herself, Cynthia Rothrock. Cyndy is managed in Europe by a Brum-based company, BeyMark International, and is flying in especially to appear at the Extravaganza. A unique aspect of the show is a boxer versus kickboxer bout, with Leon Spinks, the man that defeated Ali, taking on Joe Lewis, former sparring partner to Bruce Lee. Will Spink's fists 'n' guts match Lewis's feet 'n' fists? You'll have to be there to find out. Also on the card are Bill Wallace, who beat the stuffing out of superstar Jackie Chan in 'The Protector', 'Bloodfist' star Don Wilson and 'Big Trouble in Little China's' Peter Kwong. If you only go to one martial arts event in your lifetime, make it this one! (and you'll realise that Vinny Jones isn't that tough after all . . .).

Booking forms available from Club Office.

PLUS: If Simon Sturridge has signed the advert on the back on your programme you have won 2 tickets to the show. Just bring your programme to the club offices.

BIRMINGHAM CITY FOOTBALL CLUB

Not Just For Football!!

With Christmas just around the corner isn't it time you started to think about booking your office party?

Why not sample the unique atmosphere of St. Andrews, where we can cater for your every need, in relaxed and informal surroundings.

It's never too early to book for your Christmas functions – just don't leave it too late!



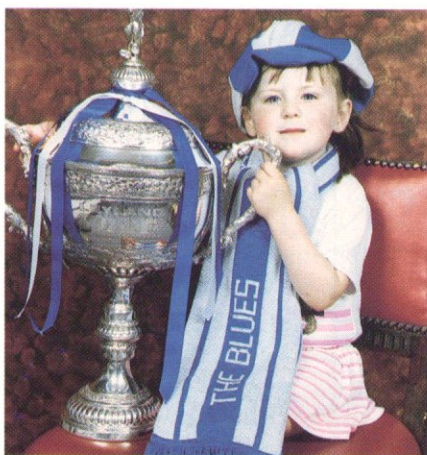
Plus, The Blues' Club provides an excellent location for all your:

- ★ Business meetings
- ★ Conferences
- ★ Wedding receptions
- ★ Office parties
- ★ Children's parties

A large variety of rooms are available to suit any size of party, from 2-200. Full catering and ample parking available.

REMEMBER – While you are looking, others are booking!
Phone Carol McNeill on 021-772 0101/2689 now!

With Christmas just around the corner, why not treat a loved one the Birmingham City way!



Have your picture taken with the Leyland DAF Cup, like 3½ year old Laura Dolan of Sheldon. For just £25 you can take as many pictures as you like and create a memory that will last a lifetime!



Signed copies of these spectacular full colour souvenirs of Wembley are available to order, at just £25 each including frame.

**WHAT A
CHRISTMAS
PRESENT!**



To arrange a sitting or place an order, just ring the Programme Department on 021-772 1245.

ACTION GALLERY

BLUES NEWS



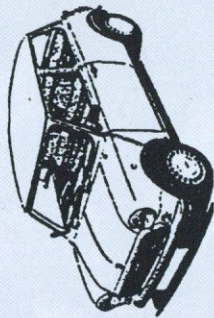
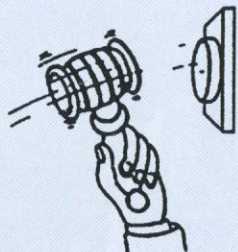
BLUES v PRESTON
NIGEL GLEGHORN in aerial combat.

DATE	OPPONENTS	Res	Pos	Att
Aug 17	Bury	3-2	-	9,033
21	Exeter (L.C. 10) (K.O. 7.30p.m.)	1-0	-	4,071
24	Fulham	1-0	3	4,762
27	Exeter (K.O. 8.00p.m.)	4-0	-	6,177
31	Darlington	1-0	1	8,768
Sept 7	Hull City	2-1	1	4,801
14	Reading	2-1	1	6,649
17	Peterborough United	1-1	1	9,408
21	Exeter City	3-2	1	8,154
24	Luton Town (L.C. 20)	2-2	2	6,313
25	Luton Town (L.C. 20)	2-2	2	6,313
Oct 8	Preston North End	5-1	2	8,760
12	Shrewsbury Town			
15	Luton Town (L.C. 22)			
19	Stockport County			
26	Wigan Athletic			
28	West Bromwich Albion			
Nov 2	League Cup 3			
5	Reading			
9	Reading			
16	F.A. Cup 1			
23	Exeter City			
30	Bradford City			
Dec 4	League Cup 4			
7	F.A. Cup 2			
14	A.F.C. Bourne			
20	Fulham			
28	Darlington			
Jan 4	Bury			
11	Stockport County (F.A. Cup 3)			
18	Leiston Orient			
25	Swansea			
31	Bolton Wanderers (F.A. Cup 4)			
Feb 8	Wigan Athletic			
12	Bradford City			
19	League Cup S.F. (1)			
26	F.C. Bourne			
Mar 3	Stockport County			
10	Swansea City			
17	League Cup S.F. (2)			
24	Bolton Wanderers (F.A. Cup 6)			
31	Brentford			
Apr 7	Torquay United			
14	Huddersfield Town			
21	Exeter City			
28	Peterborough United			
May 5	Reading			
12	Exeter City			
19	League Cup Final			
26	Hardwood United			
31	Preston North End			
May 2	Shrewsbury Town			
9	Stockport County			
	F.A. Cup Final			

Copyright of the Football League
and not to be
reproduced without permission

KEY
Goalkeeper - Bold Caps
Player Substituted - **
Substitute Player - *

BIRMINGHAM CAR AUCTIONS (1986) LTD



*Auctions on Tuesdays &
Thursdays at 6.30 p.m.
Saturday 12 noon*

Approx. 500 vehicles a week

302-312 Moseley Road, Highgate, Birmingham
B12 0BS

Telephone: 021-446 4000 Telex: 336133

Midland Entertainments
10 Park View Road, Four Oaks,
Sutton Coldfield B74 4PP
Telephone: 021-353-7812

Presents a

VIP AFTERNOON

Saturday, 26th October
WEST BROMWICH ALBION v. BLUES

Your afternoon begins with a 12 o'clock arrival at the **St. Andrews 'D' Club** where you will be greeted with a Bucks Fizz, followed by a 3 Course Lunch with entertainment from a local comedian. After lunch you will be transported by **Luxury Coach** to the Hawthorns where you will take your seat in the stand for the main event **West Bromwich Albion v Blues**. After the match you will be transported back to **St. Andrews** where you can have a drink in the 'D' Club at your leisure.

Fully Inclusive Price £38.00
subject to availability

**Please book early to avoid
disappointments**
Telephone: 021-353 7812

ON DUTY TODAY

BIRMINGHAM CITY ³

- MARTIN THOMAS
- IAN CLARKSON
- TREVOR MATTHEWSON
- LOUIE DONOWA
- MARTIN HICKS
- PAUL MARDON
- IAN RODGERSON
- JOHN FRAIN
- MARK COOPER
- NIGEL GLEGHORN
- SIMON STURRIDGE
-
-



Manager: Terry Cooper
Colours: Royal Blue Shirts
& White Shorts

LUTON TOWN ²

- ALEC CHAMBERLAIN
- MATTHEW JACKSON
- JOHN DREYER
- PAUL TELFER
- GRAHAM RODGER
- TREVOR PEAKE
- DAVID PREECE
- PHILIP GRAY ²
- MICK HARFORD
- MARK PEMBRIDGE
- STEVE THOMPSON
-
-



Manager: David Pleat
Colours: Orange Shirts
Orange Shorts

MEET THE OFFICIALS

REFEREE

W. K. BURGE

40 years old and from Tonypany, Mid-Glamorgan, Mr. Burge is an Executive Officer in the Civil Service. Married with three sons, Mr. Burge commenced refereeing in 1969 and is now in his sixth year as a League referee, and is also on the F.I.F.A./U.E.F.A. Referee's List. Last season Mr. Burge refereed the Northern Ireland v Poland International and the Welsh Cup Final. His interests include watching Rugby Union and cricket, and also music and films.

☆ ☆ ☆

LINESMEN

Mr. M. E. ALEXANDER - Wotton-under-Edge (Red Trim)

Mr. M. CARRINGTON - Loughborough (Yellow Trim)

☆ ☆ ☆

4th OFFICIAL

P. H. CHARNOCK.

MITRE
MATCHBALL SPONSOR



M. I.
PAINTING

TONIGHT'S MASCOT

RICHARD EVANS

Richard is 4 years old and attends St. Peters Church Nursery School.

His favourite player is John Gayle.

NEXT GAME AT ST. ANDREWS

Barclays League Division Three

BIRMINGHAM v. STOCKPORT COUNTY

Saturday, 12th October, 1991. Kick-off 3.00p.m.

Stuart Promotions present
**A WORLD MARTIAL ARTS
 EXTRAVAGANZA**



Leon Spinks



Joe Lewis



Bill Wallace



Don Wilson



Peter Kwong



AT
**NEC
 ARENA**
 BIRMINGHAM

(Near to Birmingham Airport)

ON
SATURDAY 23rd NOVEMBER 1991
 STARTS AT 11.30 a.m.
 ('till late)



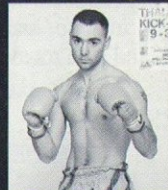
Kash Gill



Ronnie Green



Arthur O'Loughlin



Ronny Flas

PLUS: The World's Finest Traditional And Freestyle Martial Artists

CREDIT CARD HOTLINE

021 780 4133

TICKETS ALSO AVAILABLE FROM:

ODEON NEW STREET
 BIRMINGHAM
TICKET SHOP
 CITY ARCADE, BIRMINGHAM
CENTRAL LIBRARY
 BIRMINGHAM