



BARCLAYS

LEAGUE DIVISION ONE

SATURDAY AUGUST 31

KICK-OFF 3.00 pm

LUTON TOWN

INSIDE THIS WEEK:

- *Welcome, Vinny!*
- *Spurs pictures — pages 3, 10, 11*
- *'Bobby' Stuart sits it out*
- *Luton Profile — Mark Pembridge*
- *Salute to Barnet*



SPONSORED BY



Commodore

BUSINESS MACHINES

TODAY'S MATCH SPONSOR



OFFICIAL MATCHDAY
MAGAZINE £1.30



CHELSEA FOOTBALL & ATHLETIC CO. LTD
Stamford Bridge Grounds
Fulham Road, London
SW6 1HS
Main Switchboard: 071-385 5545
Credit Card Bookings: 071-386 7799
Chelsea Lottery: 071-386 5557
Premiere Lotto: 071-386 5557
Clubcall: 0898-121159
Ticket News: 0898-121011

President
G M Thomson
Vice Presidents
Nigel Fenner-Fownes
Steve Franklin
Joe Hemani
Jim Kane
Nigel Kempner
Board of Directors
Ken Bates
Colin Hutchinson
(Managing)
Yvonne Todd
Stanley Tollman
Match Secretary
Keith Lacy
Management
Ian Porterfield
Gwyn Williams
Stan Ternent
Eddie Niedzwiecki
Bob Ward
Dave Collyer
Commercial Manager
John Shaw
Premiere Lotto/Lottery
Eddie Barnett
Box Office
Janet Rainbow
Members' Club
Pippa Robinson
Chelsea Matchday Magazine Team
Publisher: Chelsea F.C.
Editorial: Hayters
Pictures: Action Images
Design & Print:
J. B. Shears & Sons Ltd, Basingstoke
Distributor: Harry Hitchcock Ltd

©All editorial material in this programme is the copyright of Chelsea Football Club and may not be reproduced without permission. The views of individual contributors do not necessarily reflect the views of the Club.

0898 CALLS COST 34P/MIN CHEAP,
45P/MIN OTHER TIMES

IAN PORTERFIELD



WHAT an exciting game against Notts County! From the spectators' point of view, it had everything in incident and excitement and left everyone with plenty to talk about.

It was an important game for us, as we tried to continue the good work against Tottenham. Everyone wanted to do so well, but sometimes that determination is channelled in the wrong way and we got off to a bad start.

It is an old cliché but it's true — goals change games.

County had two shots in the first half — one went in, one was saved. The way they played, with five at the back, made it very difficult for us to get back into the game yet I felt we lacked the sufficient urgency at that stage.

Their second goal was the result of a bad mistake and, at this level, mistakes get punished.

When Andy Myers and Joe Allon came on, in the double substitution, we regained that bit of spark and bite in our play.

Paul Elliott brought us back into the game with his second goal of the season. Paul is finding his feet very quickly and that was another important goal from him. With a bit of luck, Paul could have combined with Joe Allon for a winner with a late heading chance.

Joe and Andy Myers played a significant role as substitutes

in turning the game around. Joe played for the Reserves the night before and scored twice against Charlton — he is contributing well. He will be the first to admit, however, that he needs more games to get to full match fitness.

Andy made a smashing contribution. He showed aggression, a will to succeed and helped turn the game. And, as far as I am concerned, Andy was innocent of the comments made against him.

I can assure you all that we have a strict disciplinary code at Chelsea and when players are out on the field representing the club they must do things in the correct and proper manner.

Obviously, I was delighted that we came back into the game but once we were level we should have pushed for more. And the sending-off of County's Paul Harding soon afterwards seemed to make us edgy and we stopped doing the things that had been causing them problems.

Luck was with us, however, when County's Dave Regis hit a post after a weak back pass from Tom Boyd had presented him with an excellent opportunity.

Overall, I was encouraged by the way we kept going at two goals down. Some teams would accept their fate at that stage but we have shown our resolve in both our home games this season, though we may not like having to do so.

Now we must stop giving goals away. We may have scored seven but we have also conceded an average of two-a-game and that must change if we are to be successful.

VINNY JONES joined us from Sheffield United on Thursday for a £575,000 fee.

We have worked hard as a team but needed more leadership quality on the field. Many players can lead by example but Vinny is also a great motivator.

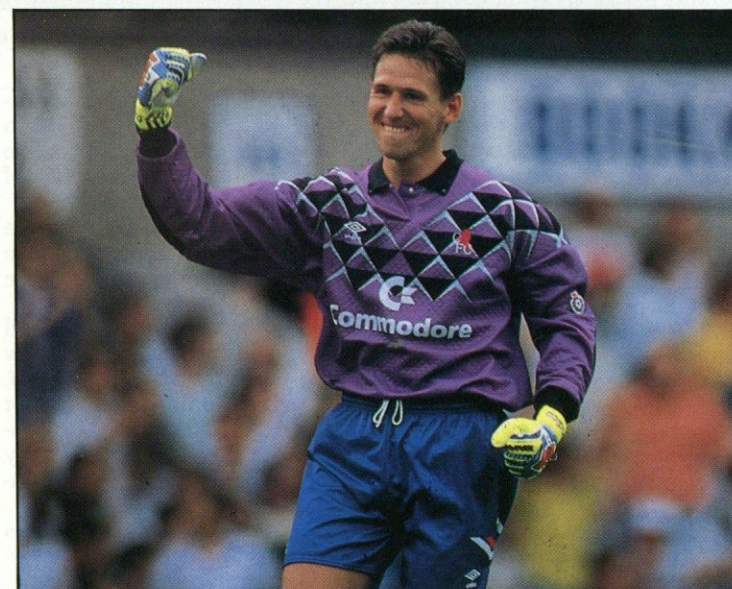
He has been very successful at his other clubs in recent years and I am sure his attitude will rub off here.

Vinny is another good addition to our squad and will add a certain grit to our midfield, starting today against Luton who provide us with a different test.

I have known Luton's manager David Pleat for many years and he has always been an advocate of good, attractive football.

David did well in his first spell as manager of Luton and I am sure he is relishing the challenge of a second stint in charge. We will have to be in the right frame of mind and make sure we apply ourselves in the right way today.

I am looking for the necessary urgency over 90 minutes, which will help us produce the sort of consistent results we require and I am confident we will get it.



KEVIN HITCHCOCK celebrates Chelsea's 3-1 win at White Hart Lane, where he deputised in goal for the injured Dave Beasant.

CONTENTS

	page
On the Inside with Neil Barnett	4&5
Ken Bates	7
Home and Away Ticket News	8
All Our Yesterdays	9
Playback — Chelsea v Spurs	10&11
Colin Hutchinson	13
Welcome to Luton	14 - 17
Star Points from Joe Allon	19
Star View	20&21
Star Survey	22
What Happened To . . .	23
Graham Stuart latest	24
On My Birthday — Alan Dickens	25
Playback — Chelsea v Oldham	26&27
Profile — Mark Pembridge	28&29
Kit Sponsors	30
Fan File, Junior Fanfile, Quiz Time	31
Notebook	33
Reserves — with Eddie Niedzwiecki	34
Youths — with Dave Collyer	35
Barnet's crazy start	37
Results, Fixtures, Statistics, Officials, Mascot	38&39
Today's teams	40

FRONT COVER:

KEVIN WILSON, who has played in all four games and scored against Tottenham.

ON THE INSIDE

WITH NEIL BARNETT

VINNY SWOOP

VINNY JONES has moved back to London to win medals.

That is the message from our new midfielder, who signed from Sheffield United for £575,000 late on Thursday.

"It is time for Chelsea to start battling, get some results and win something," said Vinny.

"Chelsea are a sleeping giant and it is time they were woken up. I have been away from London for two years and it is a relief to be back."

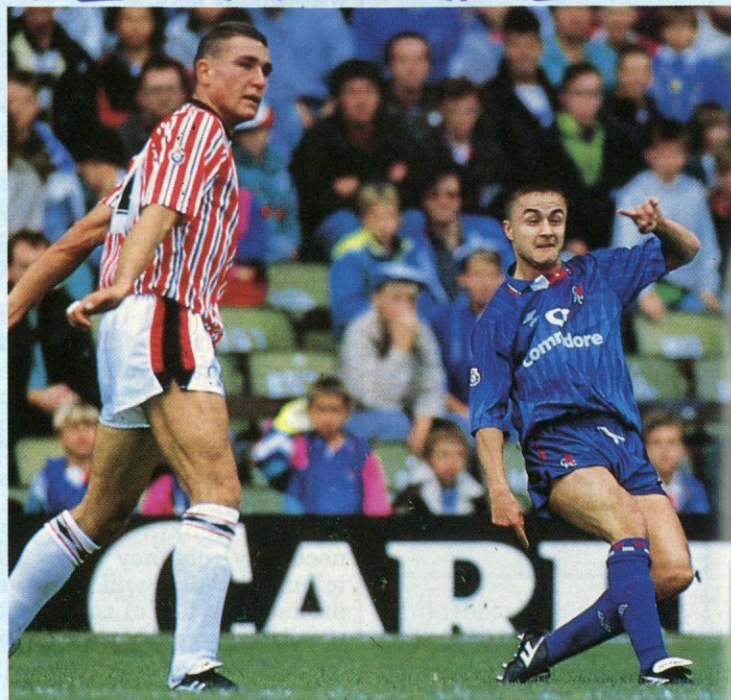
Vinny teams up with ex-Wimbledon 1988 FA Cup-winning colleagues Dennis Wise and Dave Beasant and this becomes the fourth former club captain to run out behind Andy Townsend — Beasant, Paul Elliott and Tommy Boyd have all filled that role. See September's **ON THE INSIDE** — Vinny loves his Mum!"

HAND OF GARY

ANDY TOWNSEND is due to make his 50th appearance in a first-team shirt today. Did you notice his appeal at Tottenham last Saturday when Gary Lineker's diving header brought about Kevin Hitchcock's first save?

The reason was that it was **not** a header.

"The ball was coming straight to me," explains Andy, "and I was all set to head it away when Gary dives in and it comes off his outstretched fist. I couldn't believe it. I turned round and Hitch had saved it as I appealed."



Vinny Jones and Dennis Wise were rivals in the Chelsea-Sheffield United game last September. Now they're partners again.

"I don't know if the ref saw it or not, but he shouted: 'Play on!' as Hitch held it, so maybe he did."

"I told Gary he was a crafty... no, you can't print what I told him, as he got up, and he just smiled."

In the press box no-one spotted it. It was hard to detect on television, and only really clear on the replay. Even so, the commentators did not spot it. And for Blues fans at the far end of the ground it was impossible to spot. Only Andy's appeal gave it away.

LISTEN IN

HEAR skipper Andy Townsend on Clubcall on Monday respond-

ing to today's game, looking forward to Sheffield United on Tuesday, and reflecting as he always does on the meaning of life.

Tonight and tomorrow there will be dressing room response from the players making the headlines.

On Wednesday Ian Porterfield will give his pre-match interview from the final training session, and in the evening if you are not travelling you can hear me provide live commentary throughout. I promise to be biased but just.

It is 0898 121159, and all calls are 36p off-peak and 48p the remaining time.

HERE'S my second and final instalment of where Chelsea's officials and playing staff spent their summer holidays — with their thoughts...

ANDY TOWNSEND

Played in America with Ireland, went on a one-week coaching trip to Ireland, then went to Marbella and Portugal with Mark Bowen (Norwich). Mark Wright (Liverpool) and Trevor Putney (Watford) where things that not even you can print happened.

ALAN DICKENS

Dominican Republic for a couple of weeks. Quite cheap compared to other Caribbean islands. Then driving in North and South Devon for a week, staying in country houses, bed and breakfasts. A great time.

DAMIAN MATTHEW

Two weeks in Ibiza, and I met one of my heroes, Mick Jones of Big Audio Dynamite at the opening night of Amnesia, a top club there. My mates were working there all summer. That's how I got in.

DAVID LEE Grand Canary. Two weeks with my mates. Five of us had an excellent time. Weather good, night life excellent.

CRAIG BURLEY Ibiza for a week with my girlfriend. Good hotels, good weather and clean.

GRAEME LE SAUX See Ken Monkou's summer in last Wednesday's **ON THE INSIDE** and August's **Onside**. I also did a bit of sailing in Gosport.

ANDY MYERS No holiday, no time. All my friends went off as pre-season training started. I just kept myself fit.

KERRY DIXON Two weeks on mainland Greece, Varkiza I think it's called, with Michelle and the kids, and our friends Phil, who comes to Chelsea with Ginny, and their

Coaching, sailing, sunning... and job hunting!



DAMIAN MATTHEW... Met a music hero in Ibiza.

EDDIE NIEDZWIECKI

I never went anywhere. For six weeks I was out of work and waiting for developments. You wouldn't count a weekend in Wales as a holiday, would you?

BOB WARD I went to a world congress on Science and Football in Eindhoven, Holland, and saw the PSV medical set-up. Then to America, to Chicago and New Orleans, for a physios' congress and to see the physiologists' labs and see their progress on sports nutrition and fitness. They are doing lots of research and have the best possible background for players. Then to southern France with the family, to Bordeaux. Then I ran out of time.

DAVE COLLYER A week in Portugal, and I was very lucky because it coincided with the second phase of the World Youth Cup. The Missus wasn't pleased but I watched all the games on telly. It was unintentional, but I really enjoyed it.

two boys. Then two weeks in Blackpool. A last-minute trip, good time but not good weather.

KEVIN WILSON One week in Portugal after the birth of baby Jade. She was just six weeks. She was better over there in the heat than she had been over here.

JOE ALLON I went to Magaluf in Majorca with the Hartlepool lads, the promotion side, where we had a footballers you-know-what up. A great time. But that was it for my summer holidays because I spent the rest of the time looking for a job.

GWYN WILLIAMS A week's holiday in Pathos, Cyprus, and trips to Scotland, Italy, Germany and Spain looking for players. I saw one or two but I'm not telling you who.

STAN TERNENT I went to Majorca, where I go every year, with my wife. We got to the north where we love it and there is a marvellous golf course, Pollensa.

PICK-UP COMMODORE PORTABLES AT INCREDIBLE PRICES

C286-LT 20Mb

£1,099

excluding VAT

A stylish and compact Notebook PC.

80C286 Processor, 1Mb RAM, 20Mb HD,

1.44Mb Floppy Drive, Backlit LCD Screen,

Full-function keyboard

Also includes DOS 4.01, carry case and AC mains adaptor

C386SX-LT 20Mb

£1,599

excluding VAT

Total portability for today's business professional.

80386SX Processor, 1Mb RAM, Fast 20Mb HD,

1.44Mb Floppy Drive, Backlit LCD Screen,

Full-function keyboard

Also includes DOS 4.01, carry case and AC mains adaptor

C386SX-LT 40Mb

£1,699

excluding VAT

A high performance portable with the power of a desktop.

80386SX Processor, 1Mb RAM, Fast 40Mb HD,

1.44Mb Floppy Drive, Backlit LCD Screen,

Full-function keyboard

Also includes DOS 4.01, carry case and AC mains adaptor

TOTAL PORTABILITY AND POWER FROM COMMODORE

Please send me details of Commodore's nearest dealer stockist.
Also available at Allders/Dixons/Wildings and all good computer outlets.

Name _____

Position _____

Company _____

Address _____

Postcode _____ Telephone _____


Commodore

Send to:
Commodore Business Machines (UK) Ltd, FREEPOST 1359
Commodore House, The Switchback, Gardner Road
Maidenhead, Berks SL6 7YA.
OR 'PHONE 0628 779560

Ken Bates

AS you arrive today, take a few minutes to look at the old Chelsea offices in all their glory, clad in that beautiful ivy.

We are saying goodbye on Monday when they are demolished to improve the access to and from the East Stand, the final part of our 1991 renovations.

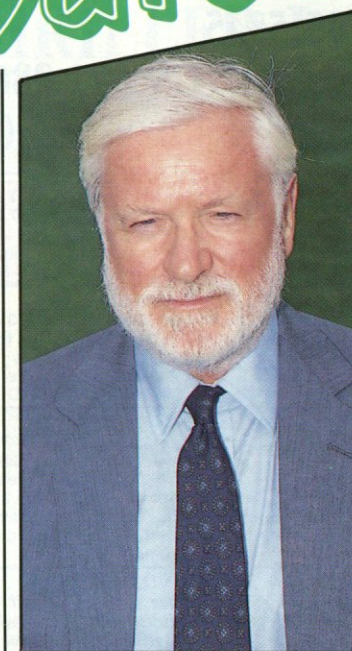
Just a few more seats, some cleaning and proper numbering, then we can get down to steadily painting the East Stand during the season.

THERE was a somewhat dramatic story in the Sunday Express that we intended to follow the Luton example and ban away fans! Hardly an accurate reflection of the situation.

The fact is that while we rebuild the Shed into a new modern stand, our Shed supporters will have to be rehoused at the North End. However, when the Shed is built and our supporters return to that ancestral home, then we will build the North Stand for the benefit of the away supporters.

Our boast will be that at Stamford Bridge away supporters will enjoy the same facilities as their hosts.

ALL this later, of course. First we need to buy the ground. Well, the latest move on that



front is that on June 17 last Cabra conceded in the High Court that we DID validly exercise our option on August 23 1988, and the price is now to be determined by an Aribator, Mr William Wells, a chartered surveyor at the height of his profession.

I cannot comment on the expected value because Mr Wells specifically forbade both sides from making any further speculation. However, I can say that he will decide quite dispassionately on the facts placed before him, and the media hype engendered by Cabra Marler over the past few years is totally irrelevant.

The present timetable suggests that the value will be announced in October/November and we will then

have to put up or shut up! We are quietly confident.

MEANWHILE, our myriad High Court actions continue, but we have collected £121,000 in costs from Cabra after winning the last action. Mind you, we had to threaten them with a winding-up order before we got the money! The action continues against Cabra and their directors over the fact that SB have now guaranteed Cabra's debts to the bank (currently £25m) and hocked The Bridge as security. Something dodgy to me about that one, but we'll get it all out in the open before long.

THANK YOU for all those letters I received about Gordon Durie and how he was going to get all the goals during our stuffing last week! It never pays to make forecasts, lads — that's why I never do!

FINALLY, a tribute to the late Bill Edwards. Bill was our electrician and in the nearly ten years I've been at the Club I doubt if we spoke more than three or four times a year outside the Club social functions.

He was that kind of worker. If we had an electrical crisis, we rarely heard about it. You'd see him in the distance with a pair of pliers, some fuses or a length of cable, and life went.

My definition of friendship is if you can be with someone in a room for two hours, never exchange a word, and miss them when they leave.

We feel lonely at Stamford Bridge.

KEEP OFF THE TRACK AND PITCH

HOME & AWAY Ticket News

ENQUIRIES 071-385 5545

CREDIT CARD BOOKINGS 071-386 7799

24-HOUR TICKET NEWS 0898 121011



SHEFFIELD UNITED (AWAY)
Tuesday September 3rd Kick Off 7.30 pm
NOT all ticket

Seats: £11.50 on general sale on the night. Terrace: £6 pay at turnstiles on the night.
Travel: Train ex St Pancras — Fare £18. Members only. Members use voucher E38.



WEST HAM (AWAY)
Saturday September 7th Kick Off 3.00 pm
ALL ticket — NO tickets on sale on the day.

Seat: £12, £11. Terrace: £7. Any remaining seat tickets on sale today, members only, voucher E39.
Travel: Chelsea will NOT be organising travel to West Ham.
Nearest tube station Upton Park on the District Line.



LEEDS UNITED (HOME)
Saturday September 14th Kick Off 3.00 pm
ALL ticket — NO tickets on sale on the day. Category 'A' prices.
Seat: Tickets now on sale. Terrace: Tickets now on general sale. Members concession ended August 28th.
Members & non-members now pay £9 Terrace price. West Stand Members' Enclosure: £7 (Adults), £5 (Juv/OAP) now on sale. No transfer from Shed for this match. Use Britannia entrance.
Voucher E04 to be produced when buying member tickets
Programme £1.30.



ASTON VILLA (HOME)
Wednesday September 18th Kick Off 7.30 pm
Category 'B' prices — NOT all ticket

Members use voucher E05 for buying Family Section & Lower Tier tickets. Programme £1.30.



Q.P.R. (AWAY)
Saturday September 21st Kick Off 3.00 pm
NOT all ticket

Seat: £13. On sale to members after the Leeds match. Any remaining seats on general sale on the day.
Terrace: £8. Pay at turnstiles on the day.
Travel: Chelsea will NOT be organising travel to QPR. Nearest tube station White City on the Central Line. Member use voucher E40.



TRANMERE (HOME)
Wednesday September 25th Kick Off 7.30 pm
Rumbelows League Cup 2nd Rd., 1st Leg.
Category 'C' prices — NOT all ticket

Season ticket holders use voucher S/T E22. Members produce members voucher E22 when buying Family Section & Lower Tier tickets. Programme — 32 pages — £1.00.



EVERTON (HOME)
Saturday September 28th Kick Off 3.00 pm
Category 'B' prices — NOT all ticket

Members use voucher E06 for buying Family Section and Lower Tier tickets. Programme £1.30.

TODAY IS THE LAST DAY FOR BUYING 91/92 SEASON TICKETS

Stamford Bridge Admission Prices

	'C'	'B'	'A'		'C'	'B'	'A'
Shed (Non-members)	£7	£7	£9	East, Upper Tier	£12	£15	£20
Shed (Adult members)	£6	£6	£6	East, Middle	£15	£20	£25
Shed (Juv/OAP members)	£4	£4	£4	East, Lower members only	£10	£10	£10
West Stand members' enclosure	£7	£7	£7	East, Family section			
West Stand	£10	£12	£15	(members only)	£10*	£10*	£10*

*One Juv/one Adult. Additional Juv £3. Additional Adult £10. Ratio one Juv/one Adult.

8

YELLOW PAINTED GANGWAYS MUST BE

All our yesterdays

WHAT A THRILLER LAST SEASON!

IN terms of excitement, there have been few contests between Chelsea and Luton that were as exciting as last season's meeting at Stamford Bridge.

Chelsea found themselves 3-0 down in 23 minutes to goals from Lars Elstrup, Sean Farrell and Kingsley Black.

Graeme Le Saux pulled a goal back in the 31st minute and was then sent off before Graham Stuart made it 3-2 in the 55th minute.

Luton were by now in tatters and Chelsea were awarded a penalty in the 67th minute. Alex Chamberlain saved Dennis Wise's spot kick but the England star followed up to knock in the rebound.

* * * *

CHELSEA and Luton fought out another exciting 3-3 draw on New Year's Day, 1980, when both teams were seeking promotion from the Second Division.

As it transpired, both missed out; Chelsea finished fourth and Luton sixth.

But when the teams met at Kenilworth Road on a crisp January 1 morning, they were lying second and third on the same number of points.

Luton were ahead 2-1 at half-time but had to settle for a share of the points thanks to a spirited Blues' comeback. Mal Donaghy, Mike Saxby and David Moss



GRAEME LE SAUX turns away from scoring Chelsea's first goal against Luton last April.

were on target for the Hatters, Mike Fillery, Ian Britton and Clive Walker responding for Chelsea.

A few days later, Colin Lee became the first six-figure signing of the new decade when he moved to Chelsea from Tottenham for £200,000.

* * * *

LUTON were glad to see the back of Chelsea after the 1956-57 season. The sides met twice in the First Division and Chelsea recorded two emphatic wins, 4-1 at home and 4-0 away.

Tony Nicholas scored twice in the resounding home win while James Lewis and Ron Tindall shared the goals at Kenilworth Road.

AND ON THIS DAY 66 YEARS AGO...

THE first time Chelsea played a competitive match on August 31, was at the beginning of the 1925-26 season when they met Nottingham Forest in a Second Division

game. Scotsman Bob Turnbull, signed from Charlton the previous season to solve Chelsea's goal crisis, scored twice in a thrilling 5-1 win.

He went on to find the net 30 times in the League and FA Cup. Andrew Wilson, another Scot, also scored a couple, and George Stone snatched the other.

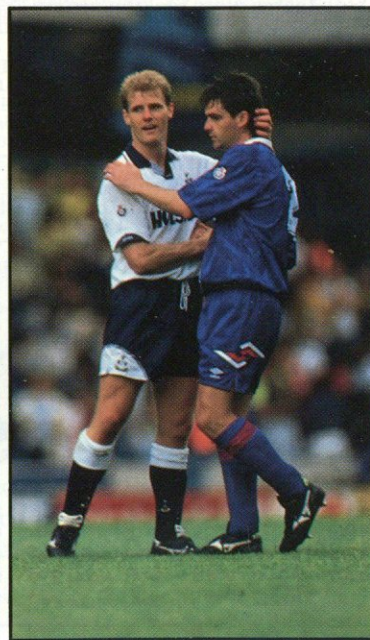
KEPT CLEAR AT ALL TIMES

9



Playback

ANOTHER Chelsea triumph at White Hart Lane last Saturday. Right: Kevin Wilson celebrates his goal in our 3-1 victory. Above: Graeme Le Saux tangles with Nayim; Below: Andy Townsend, who scored Chelsea's third, with Pat Van den Hauwe; and Steve Clarke comes up against old Blue, £2.2m Gordon Durie.



Win, lose or draw, we always look good.



**This season Chelsea will once again
be kitted out by Umbro International.**

Colin Hutchinson's Bridge View

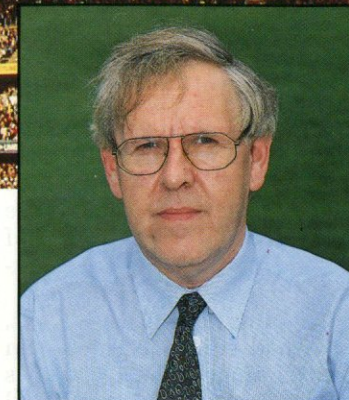
APPARENTLY Hartlepool United valued Joe Allon's 20 minute substitute appearances against Wimbledon at £450,000! Put another way, £22,500 a minute or nearly £½m for scoring the equaliser. What you might say a golden goal!

Even in a money-mad summer — £50m of transfer deals — for Hartlepool to ask for £550,000 and then hoist the asking price to £1m after Allon made his Blues debut was totally barmy. The whole episode with Hartlepool chairman Garry Gibson has left a bitter taste.

The fee should never have had to be decided by a Tribunal. Before Joe signed for Chelsea we had agreed a fee with Mr Gibson, £100,000 plus three further sums of £50,000 after 20, 40 and 60 games — to give Hartlepool a potential package of £250,000. Sadly Garry Gibson did not keep his word. Instead he got greedy. To reverse his phrase he tried to rape a 1st Division Club.

When we signed Andy Townsend from Norwich the deal was agreed by telephone. When Kevin McAllister moved to Falkirk recently the transfer was negotiated over the phone. The difference was that we dealt with people whose word was their bond.

We have no complaints with the Tribunal other than by going back on his word Gibson got the 'guaranteed' figure up from £100,000 to £200,000 for the ruling was £200,000 plus a further £100,000 after 25 games plus ⅓ of the profit to Hartlepool on any future transfer of Joe Allon.



Instead of launching a tirade against Chelsea Mr Gibson would have been better reflecting about what he achieved by breaking his word.

Hartlepool tried to make a mockery of the Tribunal system. They submitted the £550,000 valuation and then hours before the hearing demanded £1m.

Seemingly the £550,000 was based on Paul Wilkinson's move from Watford to Hartlepool and the £1m was conjured up because Darren Beckford went from Port Vale to Norwich for £925,000.

Joe was desperate for another chance in the First Division. That's why he rejected a better basic offer from Port Vale. At £100,000 going up to £250,000 linked to appearances (what we agreed with Hartlepool) we believe it was worth the gamble. His personal contract is geared to rewards if he makes it in the 1st Division. His enthusiasm (as those who watched him against Wimbledon will confirm) is infectious but he is the first to admit that for his valuation, at this stage, to be compared with Beckford and Wilkinson is crazy. Paul Wilkinson has played 109 games (30 goals) in the 1st Division, and 160 (60 goals) in Division 2. Darren Beckford has

made 85 (39 goals) 2nd Division appearances and 82 (29 goals) in Division 3. Joe arrived at Stamford Bridge with all his experience, apart from 9 appearances for Newcastle, in the 4th Division.

Tribunals are not universally popular, but overall they arbitrate in a reasonable manner (valuations are often about opinions!). Their function is made easier when clubs pluck figures out of the air.

It is ironic that at a time when Luton Town have lifted their controversial ban on away supporters, other clubs will seriously have to consider, for totally different reasons, prohibiting visiting fans.

So far clubs have not had to start reducing terrace numbers at the rate of 20% per annum as advocated in the Taylor Report. Next season the F.L.A. could insist on this in readiness for all-seater by the start of 1994/95. In many cases capacities will reduce quite dramatically and clubs will be faced with the dilemma of not being able to accommodate all their own supporters.

Here at Chelsea we will have to temporarily exclude visiting fans for 2/3 seasons while redevelopment is going on. Within the 40,000 all-seater Bridge of the future will be segregated accommodation for 10,000 'away' supporters. To generate real match atmosphere you need two sets of fans.

Welcome to LUTON

BY JOHN PRICE



NO-ONE can dispute that Luton are doing their utmost to turn back the clock. David Pleat, grass, visiting fans and Brian Stein are being welcomed back to the Bedfordshire club who have become famous for their Houdini-style escape acts.

Luton have saved themselves from relegation on the final day of the season for the past two years and their start to this campaign — two points from four games — suggests another season of struggle.

Pleat, 46, was the manager who built the modern Luton.

During his eight-year spell at Kenilworth road from 1978-86, he fashioned a Luton side which won promotion to the First Division playing some of the most attractive and attacking football in the country.

That was in 1982. Now Pleat, who had stints at Tottenham and Leicester before his managerial career turned full circle with a return to Luton, is charged with making sure they stay in next season's Premier League.

The Luton of 1991 is completely different from the team which Pleat left. His immediate aim was to add some much

needed experience to a talented, if relatively young, squad and he did just that by recruiting Luton folk-hero **Brian Stein** and, only a week ago, Coventry's **Trevor Peake**.

Pleat has little money to spend and **Philip Gray**, plucked from Spurs' reserves for £275,000, represents his third — and most expensive — signing to date.

Belfast-born striker Gray, 22, made his debut against Everton in May 1987, but was limited to nine League appearances for Spurs before his transfer.

One of Luton's greatest servants, Stein, 33, rejoined the



Back Row L to R: Colin Murphy (Assistant Manager), Darron McDonough, Paul Holsgrove, Sean Farrell, John Dreyer, Alec Chamberlain, John Moore (Coach), Andy Petterson, Graham Rodger, David Beaumont, Marvin Johnson, Brian Owen (Physio). Front Row: Brian Stein, Kurt Nogan, Jason Rees, Richard Harvey, David Pleat (Manager), Ceri Hughes, Kingsley Black, Mark Pembridge, David Preece.

club after a three-year sabbatical with Caen, of France, where he teamed up with former Arsenal midfielder Graham Rix.

He cost Luton a bargain £5,000 from non-League Edgeware Town in October 1977 and over the next 11 years scored 129 League goals for the club.

Stein was also the hero of the 1988 Littlewoods Cup Final, scoring twice in the 3-2 win over Arsenal to give Luton the first major honour in their history.

Also in contention for a role up front is **Sean Farrell** who starts a three-match ban on September 4 after being sent off in the 5-0 defeat at Coventry earlier this month. Aged 22, he made a successful return to the Luton side last season after a 15-month absence through a knee injury.

Luton have yet to open their goalscoring account this season and so their strikers will be hoping for a rich supply of chances from **Kingsley Black** and **Mark Pembridge**, arguably the club's most creative players.

Black has been coveted by a number of top club's, including Nottingham Forest, in recent seasons. Still only 21, he burst on to the scene with a starring role in Luton's 1988 Littlewoods Cup triumph and, within weeks, he was drafted into the Northern Ireland side. He has now won 16 caps.

Pembridge, 20, made great strides after his debut against West Ham in the ZDS Cup last December and his fine form was rewarded with recognition by Wales at 'B' and Under-21 level.

Darron McDonough and **David Preece** have filled the central midfield positions this season.

The strong-tackling McDonough, 28, cost £85,000 from Oldham in September 1986, while England 'B' international Preece, 28, is currently the longest-serving member on the Luton playing

side having joined for £150,000 from Walsall in December 1984.

The defence has been bolstered by the addition of **Trevor Peake** who cost £100,000 from Coventry and went straight into the side against Arsenal on Tuesday and replaced **John Dreyer** as club captain.

Peake, 34, started at Lincoln and was a member of the Sky Blues 1987 FA Cup winning side against Tottenham.

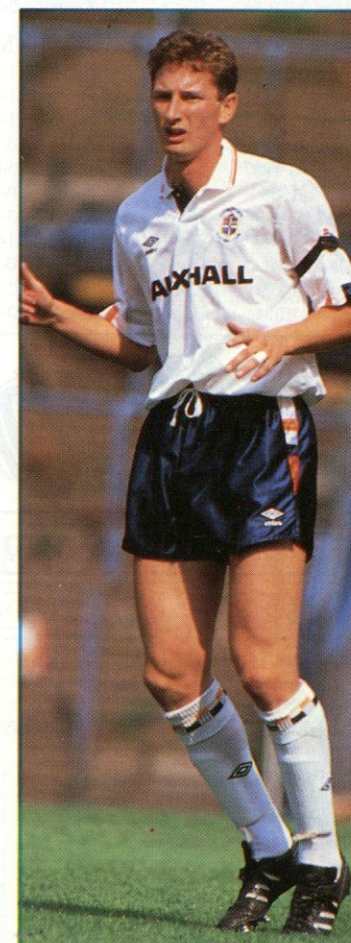
He was partnered by 24-year-old **Graham Rodger**, who returned to action in February after a 15-month absence through an ankle ligament injury suffered in only his second game for the club, following a £150,000 transfer from Coventry in July 1989.

An ever-present last season, Dreyer, 28, was moved from central defence to left-back to accommodate the inclusion of Peake — originally with Oxford and had loan spells at Torquay and Fulham before joining Luton for £140,000 in July 1988.

Dave Beaumont, a former Scottish Under-21 international, has been switched from central defence to right-back this season. Aged 27, he cost £150,000 from Dundee United in January 1989.

Further defensive options are provided by 19-year-old **Matthew Jackson**, who made his senior debut when coming on as substitute at Highbury and **Richard Harvey**, 22, a former England Youth International.

Alec Chamberlain, 27, joined from Everton for £150,000 in July 1988 and has proved a dependable goalkeeper since succeeding Les Sealey, now at Aston Villa. He could not break into the Everton team because of the brilliance of Neville Southall, but played more than 200 games for Colchester, his first club.



DAVE BEAUMONT

AND THEIR FANS



JOHN DREYER

PLAYED FOR BOTH

Among the players who have played for both clubs:

	Chelsea	
	Apps	Goals
Trevor Aylott	32	2
George Barber	294	1
Hugh Billington	90	32
Alan Birchenall	96	28
George Dodd	31	9
Tony Godden	38	—
Michael Harrison	64	9
Billy Hughes	105	—
Derek Kevan	7	1
Peter Nicholas	93	2
Leslie Odell	103	7
John O'Rourke	1	—
Joe Payne	47	23
Frank Pearson	30	18
George Pearson	215	35
William Porter	2	—
Jimmy Thompson	42	34
Roy Wegerle	28	4
Arthur Wileman	14	5

PREVIOUS RESULTS AGAINST LUTON TOWN

League	Home	P	W	D	L	F	A
	Away	18	9	5	4	33	21
		18	5	6	7	23	27
	Total	36	14	11	11	56	48
FA Cup		3	1	1	1	5	3
League Cup		1	0	1*	0	1	1
Total		40	15	13	12	62	52

* tie lost 1-4 on penalties

FIRST LEAGUE MEETING

		FA	Att.	Goalscorers
Mar 30 1956	Div 1	Away 2-2	24,261	P. Sillett, Dicks

RECENT MEETINGS

Sep 7 1985	Div 1	Away 1-1	10,720	Dixon
Jan 11 1986	Div 1	Home 1-0	21,102	Speedie
Sep 6 1986	Div 1	Home 1-3	13,040	Dixon
Jan 3 1987	Div 1	Away 0-1	10,956	
Aug 29 1987	Div 1	Home 3-0	16,075	Dixon, Nevin Coady
Jan 1 1988	Div 1	Away 0-3	8,018	
Dec 30 1989	Div 1	Away 3-0	10,068	K. Wilson 2, Dixon
Apr 7 1990	Div 1	Home 1-0	15,221	Durie
Dec 29 1990	Div 1	Away 0-2	11,050	
Feb 18 1991	ZDSC3	Home 1-1*	3,849	Stuart
Apr 6 1991	Div 1	Home 3-3	12,603	Le Saux, Stuart, Wise

All about...

RESULTS AND GOAL POWER

Date	Opponents	Res	Scorers
Aug 17	West Ham (A)	0-0	
Aug 21	Coventry (A)	0-5	
Aug 24	Liverpool (H)	0-0	
Aug 27	Arsenal (A)	0-2	

Score at:		MINS	HT	60	MINS	FT
1990-91		15		60	75	
Tottenham	0-0	0-0	0-0	0-0	0-0	0-0
Chelsea	1-0	3-0	3-1	3-2	3-3	3-3
Wimbledon	0-0	0-0	0-0	0-0	0-0	0-1
Sunderland	0-0	0-1	1-1	1-1	1-2	1-2
Everton	0-0	0-0	0-0	0-1	0-1	0-1
Derby	0-0	0-0	1-0	2-0	2-0	2-0
1991-92						
West Ham	0-0	0-0	0-0	0-0	0-0	0-0
Coventry	0-1	0-1	0-3	0-3	0-5	0-5
Liverpool	0-0	0-0	0-0	0-0	0-0	0-0
Arsenal	0-0	0-1	0-1	0-2	0-2	0-2

Goals scored between mins:						
0-15	16-30	31-45	46-60	61-75	76-90	
1	2	2	1	0	0	

Goals conceded between mins:						
0-15	16-30	31-45	46-60	61-75	76-90	
1	2	3	3	4	1	

ROLL OF HONOUR

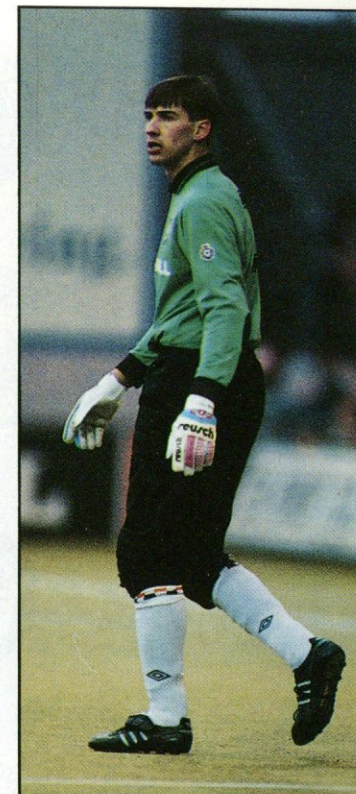
FOOTBALL LEAGUE: Division 2 — Champions 1981-82. Runners-up 1954-55, 1973-74.
Division 3 — Runners-up 1969-70.
Division 3 (S) — Champions 1936-37. Runners-up 1935-36.
Division 4 — Champions 1967-68.
FA CUP: Runners-up 1959.
FOOTBALL LEAGUE CUP: Winners 1987-88. Runners-up 1988-89.
SIMOD CUP: Runners-up 1988.

MANAGERS

Charlie Green 1901-28, George Thomson 1925, John McCartney 1927-29, George Kay 1929-31, Harold Wightman 1931-35, Ted Liddell 1936-38, Neil McBain 1938-39, George Martin 1939-47.
Dally Duncan 1947-58, Syd Owen 1959-60, Sam Bartram 1960-62, Bill Harvey 1962-64, George Martin 1965-66, Allan Brown 1966-68, Alec Stock 1968-72.
Harry Haslam 1972-78, David Pleat 1978-86, John Moore 1986-87, Ray Harford 1987-89, Jim Ryan 1989-.

DID YOU KNOW?

1. Luton have avoided relegation in each of the past three seasons only by winning their final match of the season. In 1989/90 they had to win their last three games to miss the drop.
2. When Luton played a goalless draw at West Ham on the opening day of this new season, it was the first time they had kept a clean sheet in 46 away matches dating back to September 1989.
3. The only Luton player to hit a hat-trick in the First Division over the past three seasons was Lars Elstrup, who scored all the goals in Luton's 3-1 win at Norwich in September last year.
4. The Luton record that is never likely to be beaten — Joe Payne scored 10 times against Bristol Rovers in a Third Division (South) game in 1936.
5. Payne cornered another club record when he scored 58 goals in 1936/37 — 55 in the League, plus three in the FA Cup.
6. Luton's record aggregate scorer was Gordon Turner, who scored 265 in all competitions — 243 League, 18 FA Cup and 4 League Cup.
7. Highest scorer currently on Luton's books is Brian Stein, who scored 152 goals during his first spell with the club. He returned to Luton this summer.
8. Luton's appearances record is held by Bob Morton who played 495 League games, 48 FA Cup ties and seven League Cup ties to make a grand total of 550.
9. The oldest player to appear in Luton's first-time was Dally Duncan who was 39 years and 11 days of age when he played his final game in 1948.
10. The Hatters were the first club to drop all the way from the First to the Fourth Division and, later, regain their place at the top.

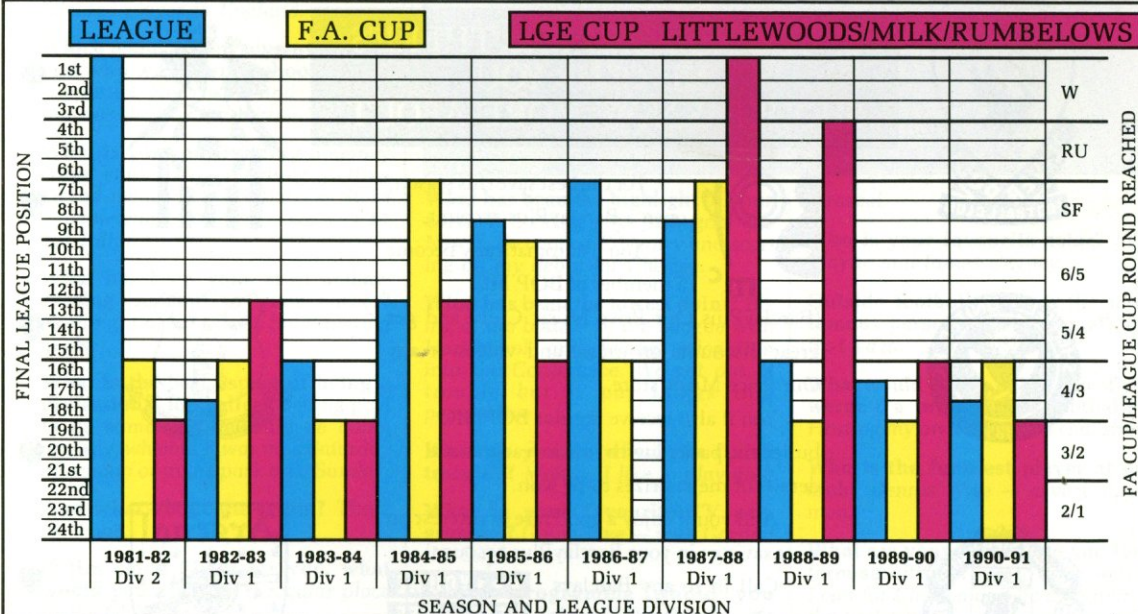


ALEC CHAMBERLAIN

LUTON TOWN



TEN-YEAR RECORD





IF YOU'RE AGED 11-16, THERE'S ONE CLUB YOU SHOULD KNOW MORE ABOUT.



For the best save this season, open a BarclayPlus account.

You'll automatically become a member of BOP MC

(BarclayPlus Our Price Music Club) and get great discounts on music and videos at any Our Price Music store.

You'll also receive regular BOP MC bulletins, packed with music features and details of mega prizes to be won.

And you'll enjoy a good rate of interest on your savings in your BarclayPlus account.

Call in to any Barclays branch to pick up a BarclayPlus leaflet.

It could be a right result.



JOE ALLON

STAR POINTS

Full Name: Joseph Allon
Born: 24.11.66, Gateshead
Car: Cabriolet/Cortizone Injection
House: Temporarily staying in an hotel
Hobbies: Golf (13 handicap)

What is the best match you have ever seen or played in? I saw Newcastle clinch promotion in 1984 when they beat Brighton 3-1. Keegan, Beardsley and Waddle scored in front of a packed St James' Park crowd.

Which current footballer do you most admire? Gazza — he handles the pressure so well and is the most talented player in England.

Which team did you support as a kid and who was your boyhood idol? I supported Newcastle and Malcolm Macdonald was my hero.

What is your outstanding memory from your League debut? Getting kicked about by George Barry of Stoke — a towering centre half — we won 2-1 but I didn't score.

What has been your most embarrassing moment of your career? Nothing major — but I hate missing goals.

What is the best aspect of being a professional footballer? Getting paid to do something I would be doing anyway, whether it was on a Saturday afternoon or in the park on a Sunday.

And what about the worst? There isn't one.

If Jim could Fix It for you, what would you ask? For a regular place in the Chelsea side.



What has been the highlight of your career? Scoring my first goal for Newcastle against Coventry and scoring on my debut for Chelsea.

What has been the lowest point? Being at the bottom of the League with Hartlepool and facing relegation into the Conference. We got out of trouble but it put things into perspective.

What do you do when you finish training? Mainly, I like to play golf.

What is your favourite TV programme? Going Live — with Gordon the Gopher.

Which programme would you switch off? Sons and Daughters — it's

a rascal.

Who is your favourite actor? John Wayne and James Cagney.

Outside football, who is the most famous person you have met? Ian Botham.

What would you be doing now if you weren't a professional footballer? Hosting my own television chat show.

Who is the funniest player at our club? Dennis Wise — a very funny man.

What are your immediate and long term ambitions? Just to do as well as I can for Chelsea and be a regular in the first team.

Joe off to a cracking start!

JOE ALLON

STAR VIEW

LET'S get one thing straight — Chelsea have not signed the new Paul Gascoigne.

Joe Allon and Gazza are good friends, they used to play together and even sound similar and it would be a downright lie to call Joe shy but the similarities end there.

Besides, Joe does not go around with his tongue half-way down his face and has a sane hairstyle. Plus, he is a goalscorer.

Joe joins us from Hartlepool, having cracked 35 goals last season to help them win promotion into the Third Division. But his career started, with Gascoigne, near his Gateshead birthplace, at Newcastle United.

"I grew up with Paul (Gascoigne) at Newcastle," says Joe. "From the age of 13 we were playing in the same teams — right from the schoolboys through to the first team.

"Obviously we still keep in touch, especially now that I'm in London. He is a tremendous player and a tremendous character."

But as Joe rightly implies, Chelsea fans are not so interested in whether Geordie Joe enjoys a laugh with Gazza — they want to know whether he can score goals for The Blues.

And the answer seems to be yes. Joe banged in goals left, right and centre during his trial period at Chelsea's Harlington training ground and continued in the same vein during his first full matches.

He scored four goals in his first two

INTERVIEW BY NICK CALLOW

outings for the reserves and he wasn't totally match fit! Above all, he is dying to play for Chelsea.

On the eve of our opening game against Wimbledon, Joe was not considering a place in the starting line-up but came 5.00 on Saturday, Geordie Joe was a debut goal hero.

Within 15 minutes of entering the fray, Joe converted the equalising goal and ran to The Shed with unashamed joy:

"What a start! Even Gazza would have been proud of that one," said Joe, who is under no illusion that the future holds some hard work at the training ground before he is established.

"This is a great opportunity for me, at a massive club. Does this compare to Newcastle? Too right, Chelsea are one of the biggest clubs in the game.

"I had a taste of the First Division at Newcastle but then I had to drop down the divisions. Now I intend to take every opportunity to prove myself again at the highest level.

"I'm only 24 and I had never given up hope of playing at the top again. I played about nine games for Newcastle as a teenager and scored a couple of goals so I have a good idea of what is required — now it is a case of buckling down and working hard."

He has done just that and scored two goals for the Reserves in the 6-0

win over Charlton and equalised again as sub against Notts County on Wednesday night.

Hartlepool chairman Garry Gibson obviously felt that Joe could supply the goods by asking for over £500,000.

Chelsea manager Ian Porterfield hopes he has unearthed a true gem.

Says Ian: "Joe is a hungry fighter and loves to score goals — he might surprise a few people. He has scored a lot in the Fourth Division so we decided to take a chance on him."

Joe knows that he must work hard if he is to achieve the regular first-team status he so desires. "I'm taking every day as it comes and trying to make an impression on the manager," says Joe.

"It is so encouraging when you look around the club and see a dressing room crammed with full internationals. They are a tremendous bunch of lads and have made me feel very welcome and being around them can only make me a better player.

"I want to learn from them and I can't see any reason why I shouldn't."

Joe has already made quite an impression at the training ground. Skipper Andy Townsend even shouted for him to be awarded a nine out of ten — and that was just for his defending.

It is a big jump from Fourth to First Division football but in Joe Allon Chelsea have found a man more than willing to make that leap. He is a confident player, with time and goals on his side.





JOE ALLON

STAR SURVEY

Height: 5ft 11in.
Weight: 12st.

FENCE WARNING

DURING the close season, the perimeter fencing in front of the West Stand was removed. All members and spectators using this area must realise the penalties for encroaching on the track or pitch.

Any person encroaching, other than in an emergency, will be ejected and lose all membership privileges. If there is a massed invasion, this area will be closed permanently. You know the penalties — so be warned! The Club will carry out the above action with no exceptions whatsoever should the need arise.

Ejection from the ground will mean confiscation by the Club of season ticket and/or membership card without compensation.

PREVIOUS CLUBS: Newcastle, Swansea City, Hartlepool United

SIGNED FROM: Hartlepool United in August, 1991 for a tribunal fee of £200,000, plus a further £100,000 after 25 first-team games and a third of any profit if transferred by Chelsea

CHELSEA DEBUT: League Division One v Wimbledon (H) as substitute, 17.8.91, and scored

PREVIOUS RECORD:

		League		FA Cup		Lge Cup		* Misc	
		Aps	Gls	Aps	Gls	Aps	Gls	Aps	Gls
Newcastle	1984/85	1	—	—	—	—	—	—	—
	1985/86	3	1	—	—	—	—	—	—
	1986/87	5	1	—	—	1	—	—	—
Swansea	1987/88	26(6)	11	2	—	2	—	2	1
	1988/89	1(1)	—	—	—	—	—	—	—
Hartlepool	1988/89	21	4	3(1)	2	—	—	2	—
	1989/90	45	17	1	—	1	—	2	—
	1990/91	46	28	2	3	4	2	3	2
Total		148(7)	62	8(1)	5	8	2	9	3

*Sherpa Van Trophy, etc.

CHELSEA CAREER APPEARANCES AND GOALSCORERS

Season	League		FA Cup		Lge Cup		F.M. Cup		Total	
	A+sub	G	A+sub	G	A+sub	G	A+sub	G	A+sub	G
1991-92	0+3	2	—	—	—	—	—	—	0+3	2

WHAT HAPPENED TO

By ALBERT SEWELL

IN his nine seasons as Chelsea's right or left-back, from 1953 to 1961, Peter Sillett played 288 first-team games, earned a Champions' medal and was capped by England. But those of us who were of his era remember him best for the penalty he blasted home against Wolves for the two points that virtually clinched the Championship on Easter Saturday 1955.

That was one of 34 goals he scored for the club, nearly all of them free-kicks or from the spot. Now 58 and living at Ashford, in Kent, he is the same amiable fellow he was in his days at Stamford Bridge, and recalls his time here with a photographic memory and a lot of laughs:

"That day against Wolves, even the Prime Minister remembers it. As a boy fan, he was among the 75,000 packed in, and when Billy Wright fisted Seamus O'Connell's shot over the bar, only two people in the place thought it wasn't a penalty. The referee and me. We were both unsighted.

"Everyone else was going potty, and after the lads had persuaded him to speak to the linesman, he pointed to the spot. Like him, I'd thought it was a goal-kick — and I almost wished it had been as I placed the ball and the stadium went dead quiet.

"On the walk-up, I remember one Wolves player calling to Williams, the 'keeper: 'He'll put it to your right, Bert.' Another shouted: 'He hits 'em to the left, Bert.' Then little Johnny Hancocks piped up: 'He'll stick it in the bloody net, Bert!'

"And I did. I used to like to place them from the spot, but I gave that one everything, and nearly broke the net."

It cost £13,000 to bring Peter to Chelsea. He was serving in the RAF at the time, and his club, Southampton, suddenly needed money to pay the Tax man. Selling young Sillett was the solution: "They told me five First Division managers were coming to talk to me in 48 hours — from Newcastle, Sunderland, Sheffield Wednesday, Portsmouth and Arsenal.

"I saw them all, but transfers were new to me and I didn't know what to do. Then Ted Drake turned up out of the blue from Chelsea, and it was all over in five minutes. He did the deal with Mother.

"The only thing I got out of it was being allowed to keep my boots. For the remaining six months I was in the Royal Air Force, all I could earn from Chelsea was £1 a week. The rules said so. Ted promised his old club that Chelsea would pay an extra £1,000 for each of my first three caps, if I played for England, and he got unlucky over that — I played just the three times."

That was the start of Peter's time with Chelsea, and the deal included younger brother John coming here from Southampton, too. The finish was a broken leg sustained away to Aston Villa in the third match of 1961-62.

A year later, Peter moved on for three seasons with Southern League Guildford City, where he earned more than he had ever done in the maximum-wage days with Chelsea.

He followed that with nine years as manager of Ashford, and then he served Hereford United as chief

PETER SILLETT ?



ONE SIGNING WAS TWO: When PETER SILLETT (right) joined Chelsea from Southampton, part of the deal was that younger brother John came, too.

scout for brother John (who has gone back to Hereford this season).

"We have always been close, and are still great pals," says Peter. "But I missed out on the biggest day of John's career in football — when he took Coventry City to their F.A. Cup success in 1987.

"All the family were at Wembley except me. I was taken into hospital the day before the Final, and it was nearly all up with me — peritonitis. No-one let on to John how ill I was until the day after Coventry won the Cup.

"It was a year before I could work again. But that's all in the past, and I'm now in my fourth season with Hastings Town. I'm fitter than ever I was as a player — in those days, I was 14st... there's about 19st. of me now!

"I shall always remember Chelsea for the best days of my time in football, with great crowds and a wonderful atmosphere. When I was out injured, I'd pull a cap down over my eyes and go and stand among the fans to catch the humour."

Stress fracture keeps 'Bobby' fretting on the sidelines

By STEPHEN DAVIES

CHELSEA striker Graham Stuart will be happy if he never watches another video.

Graham, an England Under-21 star, has had to sit out the start of the season with his left leg in a fibre-glass plaster as he waits for a stress fracture to heal.

Much of his time is taken up with watching video films — but Graham is not a patient patient!

"I try to get down to the club as much as possible," he says, "just to feel part of the set-up."

"There were mixed feelings before the first match against Wimbledon. Everyone was pleased that the season was starting and when the team came out and the roar began I really wanted to be out there."

It could be a two-month wait for the player who scored six times last season including one in Arsenal's on-

ly League defeat of the campaign.

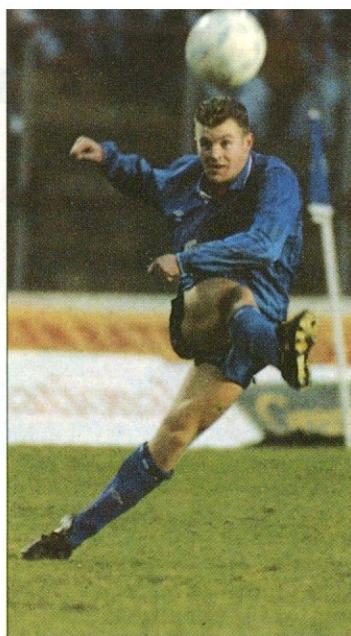
"I probably made matters worse by playing with the fracture last year," he says. "But I did not know there was anything seriously wrong."

"Towards the end of the season I was playing in some pain so I was sent to Charing Cross Hospital and an X-ray revealed the fracture."

"I was told to rest the leg for the whole of the holidays. I managed to get a week away, though. I joined Jason Cundy out in Agios Nikolaos in Crete."

"I also went running a couple of times but that did it no good and I figure, even being optimistic, that I will be out for another couple of months."

That's a body-blow to a young star who came on by leaps and bounds last season with some impressive performances in his 27 appearances,



GRAHAM "BOBBY" STUART can't wait to get back into action.

during which he scored six goals. Let's hope he'll soon be back with more this season.

GRANGE FARM and CHELSEA FOOTBALL CLUB both have something new to celebrate



Grange Farm and Chelsea Football Club both have something to celebrate.

CFC on completing the development of their East Stand. The first step towards the superb all seater stadium.

Grange Farm on their 10th Anniversary of producing top quality pure & natural dairy produce on the farm, using only the finest ingredients.

To satisfy the increasing demands for our quality Ice cream & Sorbets they are now available in individual portions. Why not come along and try some at our kiosk in the superb new East Stand Concourse.



FRESH DAIRY PRODUCE
Grange Farm, Amersham Road,
Beaconsfield, Bucks. HP9 2UG
Tel: (04946) 6199 Fax: 0494 670919



NEWS

Scotland Yard becomes involved in a puma hunt around Crondall, Hampshire. The hunting party is led by Mr W. Davidson, a Canadian lion hunter. The lion's tracks are as big as a man's hand and Mr. Davidson says: "They are cat prints without a doubt and a pretty big cat at that."

* * *

Malaysia enters into a state of emergency as Indonesian parachute troops land at Jahore.

* * *

The world's deepest-diving submarine, the USS Aluminaut, is launched at Croton, Connecticut. The sub is designed to descend to a depth of three miles.

* * *

The Forth Road Bridge is completed.

SPORT

Swimming — T. Mann, of Virginia, breaks world 100 metres backstroke record in one minute flat.

HAPPY birthday to ALAN DICKENS, who was born on September 3, 1964, in Plaistow, London. This is what was happening on that day, 27 years ago ...



American Leonore Modell, 14, from Sacramento, California, becomes the youngest person to swim the Channel — Cap Griz Nez to Dover. Time: 15 hours 30 mins.

Cricket — Sir Frank Worrell's West Indies XI lead an England XI by 107 runs with five second-innings wickets left.

Boxing — Sugar Ray Robinson, former world middleweight champion, is outpointed by British champion Mick Leahy at Paisley Ice Rink.

WHAT WERE CHELSEA DOING?

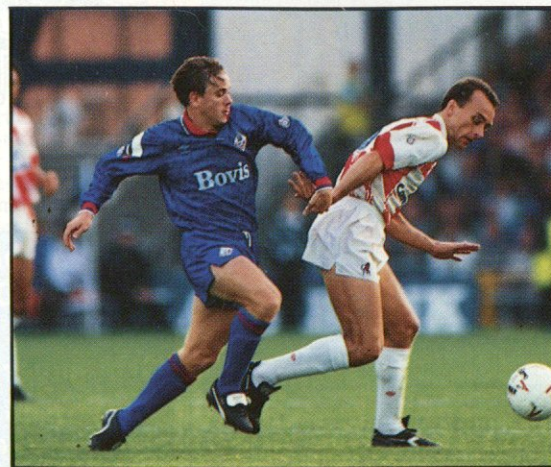
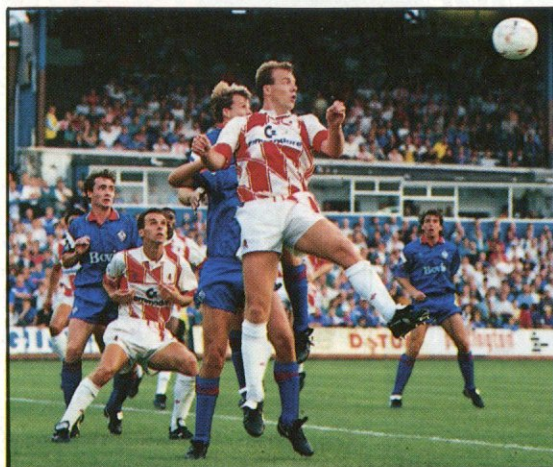
Preparing for the September 5 match at Leicester. Result: 1-1. Team: Bonetti; Shellito, McCreadie, Hollins, Hinton, R. Harris, Murray, Bridge, Graham, Venables, Knox.

OTHER FOOTBALLERS WHOSE BIRTHDAYS FALL ON AUGUST 29

Paul Atkin, York (1970)
Gareth Southgate, Crystal Palace (1961)
David Walter, Plymouth (1961)

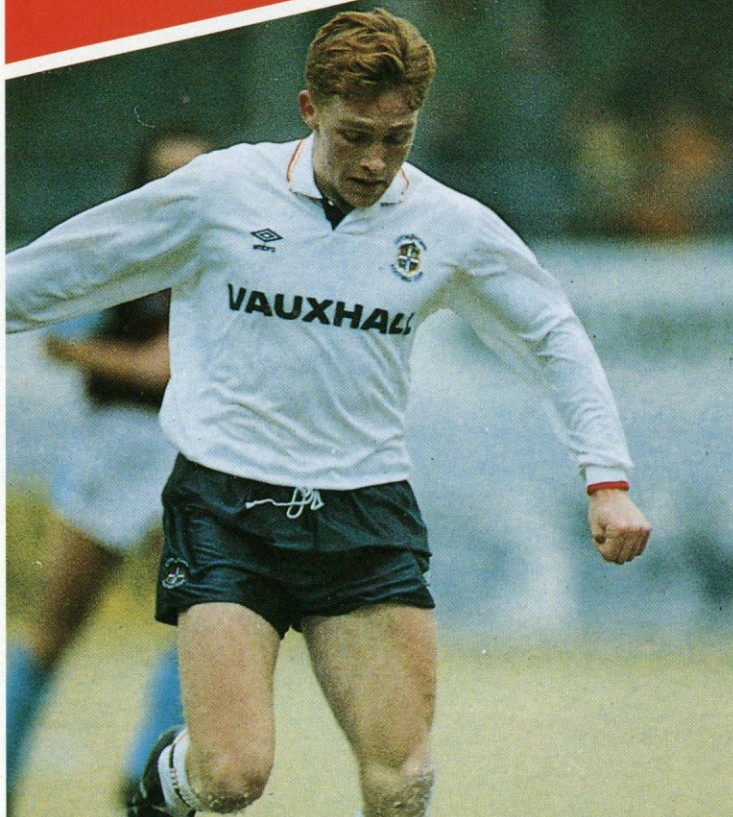
Playback

RIGHT: Kevin Wilson is challenged by Oldham's high-flying Earl Barrett in the 3-0 midweek defeat at Oldham.
BELOW: Kerry Dixon outjumps Richard Jobson; Alan Dickens outstrips Nick Henry; and (bottom picture) Graeme Le Saux fires past Gunnar Halle.



MARK PEMBRIDGE

Luton Town



DAVID PLEAT, a disciple of good football and flair, inherited the player of his dreams on his re-appointment as Luton manager in June.

David returned to Kenilworth Road after a five-year absence and was delighted to discover Welsh tennager Mark Pembridge in his ranks.

Mark, not 20 until February, has been talked about in glowing terms at Luton and is on the verge of an international breakthrough with Wales.

Luton are once again early favourites for relegation after three consecutive escape acts on the last

day of the season. But the classy midfielder has triggered the enthusiasm of their long-suffering supporters.

Mark made his League debut at Wimbledon on New Year's Day and did not miss a match for the rest of the season. His skill and verve became a feature of Luton's play as they battled against relegation.

Wales manager Terry Yorath picked him for the B international against England in Swansea after only three League games in February. He managed to catch the eye even though he played out of position at left-back.

David Pleat has managed some of

BY MARK DEMUTH

the best midfielders in the League in recent years. He gave Glenn Hoddle and Ossie Ardiles a free rein in the exciting Spurs side that went close in the Championship, FA Cup and Littlewoods Cup five seasons ago.

He cultivated the talent of Leeds and Scottish midfielder Gary McAllister at Leicester City and built a team around the silky skills of Ricky Hill in his first stint as Luton manager.

David had no hesitation in singing the praises of his latest midfield star when Luton reported back for pre-season training.

"I have already spotted a jewel. I'm quite sure that Mark Pembridge is a gem," he said.

David will use Mark as an integral part of his team as Luton attempt to prove the critics wrong once again. With money in short supply, David knows the need to capitalise on young talent.

"I would be telling lies if I said we faced anything other than a struggle this season, but the youth and naivety of the team presents a terrific challenge," he says.

"I think Mark will be a fine player for Wales. He has a lovely career ahead. He has a steady, strong attitude and two good feet, which is unusual."

Mark played in an unfamiliar role on the right side of midfield in the goalless draw with West Ham on the opening day of the season. He favours the left, but still managed to come closest to breaking the deadlock with a 25-yard drive that hit the crossbar.

He emerged from the Arsenal game on Tuesday night with a bruised face after a clash with Anders Limpar.

Mark is pushing hard for a place in Yorath's European Championship squad. Wales have high hopes of qualifying for next year's finals at the expense of Germany, but they may come too soon for the Luton youngster.

His best chance of international glory should be in the qualifiers for the 1994 World Cup finals in America which start next season.



1 Shirt £80 • 2 Shorts £50
3 Socks £25 • 4 Boots £65 • 5 Track Suit £35
6 Training Kit £45 ★ Full Kit - £300

Kit Sponsors

DAVE BEASANT

★ Powerday Ltd 071-280 5501
Powerday Skip Hire Ltd 081-960 3694
Powerday Plant Hire Ltd 081-969 9785

STEVE CLARKE

★ Ian Guyter & Company, Solicitors
Edinburgh House, 40 Great Portland Street,
London W1N 5AH. Tel: 071-637 0358/9
Fax: 071-255 1293

ALAN DICKENS

★ Severn Valley Sports & Activity
Courses for children.
Tel: 0453 842892

KERRY DIXON

★ Freeman Pollard Solicitors
13 Radnor Walk, Chelsea
London SW3 4BP

IAN PORTERFIELD

★ Robert Tchenguiz

PAUL ELLIOTT

★ Brian Mills
Booth White



GARETH HALL

★ Linda Khalastchi

GRAEME LE SAUX

★ The Cool Air Company
First in air conditioning
Tel: 081-942 0541

KENNETH MONKOU

★ Tony Khalastchi

JOE ALLON

★ Kristian Holy

JASON CUNDY

★ Miles Smith Plc
071-253 3434

ANDY TOWNSEND

2, 3 Gary Davison
1 Hugh Gemmill, Paul Gemmill,
Danny Hann
6 Martin Sheridan

KEVIN WILSON

★ Peter Khalastchi

DENNIS WISE

★ Thomas Birkert

TOM BOYD

★ Sandoms - Solicitors
226 Rye Lane, Peckham,
London SW3 4BP
Tel: 071-639 7631

CRAIG BURLEY

★ David Holland

ANDY MYERS

★ Maggie Holy

EDDIE NEWTON

★ Ticket News & Prize Line
0898 12 10 11

FRANK SINCLAIR

★ South Australian
CFC Supporters Club

DAVID LEE

★ J. B. Shears & Sons Ltd
Printers for CFC

DAMIAN MATTHEW

★ Beta Catering

GRAHAM STUART

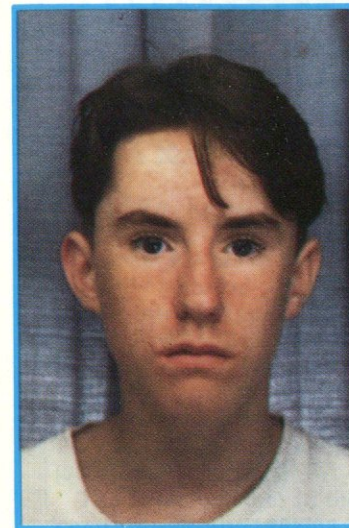
★ Sports Management - specialists
in sports events advertising
051-530 1100

KEVIN HITCHCOCK

★ Clubcall 0898 12 11 59

ERLAND JOHNSON

★ Chelsea Lottery 071-386 5557



JUNIOR FanFile

KEVIN McMANUS
Woodford Green, Essex

DATE OF BIRTH: May 19, 1976

WHICH SCHOOL DO YOU

ATTEND?: Trinity Catholic High

FAVOURITE CHELSEA PLAYER:

Andy Townsend

FAVOURITE SPORTS

PERSONALITY: Frank Bruno

FAVOURITE OTHER TEAM:

Cowdenbeath

MOST MEMORABLE CHELSEA

MATCH: 4-2 defeat of Liverpool, May 4, 1991

MOST MEMORABLE CHELSEA

GOAL: Tony Dorigo against Manchester City (away) March, 1989. We won 3-2

MOST TREASURED CHELSEA

POSSESSION: Autographs

FAVOURITE HOBBIES: Football and badminton

WHICH PLAYER WOULD YOU MOST LIKE TO SIGN FOR

CHELSEA?: Des Walker of Nottingham Forest

QUIZ TIME

THE first letters of the answers to the following soccer questions reveal the name of a Luton star. Can you identify him?

- 1 Beat West Ham in the 1923 "White Horse" FA Cup Final at Wembley (6)
- 2 Relegated to Division Four last May (9)
- 3 Christian name of Manchester City defender *** Brightwell (3)
- 4 Country Tony Dorigo hails from (9)
- 5 Joe Allon and "Gazza" played together there (9)
- 6 Current Footballer Writers' Footballer of the Year (8)
- 7 Finished one place above Chelsea last season on goal difference (9)
- 8 Surname of Wimbledon player who signed for £775,000 shortly before season began (5)
- 9 Big Jack's Republic (7)
- 10 City with a double First (10)

1										
2										
3										
4										
5										
6										
7										
8										
9										
10										

FanFile

ALAN BALMER
Balham, SW12

OCCUPATION: Financial adviser

HOW LONG SUPPORTING

CHELSEA: 24 years

FAVOURITE CHELSEA PLAYER

(PRESENT): Andy Townsend

FAVOURITE PLAYER (PAST): John Bumstead

FAVOURITE OTHER TEAM:
Scotland

BEST CHELSEA GOAL I'VE SEEN:

Pat Nevin's free kick, lob and follow-through in the League Cup run in the late Eighties

GROUND IMPROVEMENTS I'D

MAKE: Ground closer to pitch; home fans allowed in all four sides of the ground again

FEATURE I'D MOST LIKE TO SEE IN THE PROGRAMME:

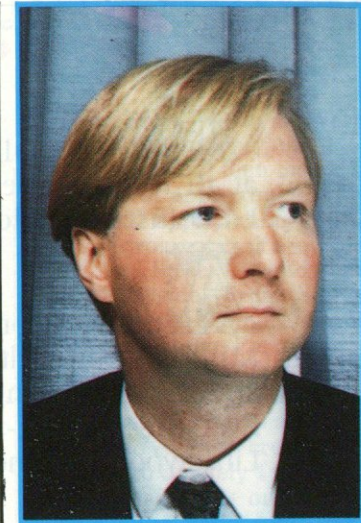
Celebrity fan

FAVOURITE ALL-TIME CHELSEA

TEAM: Bonetti; McCreadie, Monkou, Webb, Harris, Townsend, Bumstead, Wilkins, Speedie, Osgood, Cooke

FAVOURITE SPORTS

PERSONALITY: Mike Tyson





The Football Trust has been created to help football at all levels and especially to meet the requirements of Lord Justice Taylor's Final Report.



Annual income is expected to exceed £32 Million – £20 Million as a result of the reduction in Pool Betting Duty and the continuing contribution of over £12 Million annually from the Spotting-the-Ball competition organised by Littlewoods, Vernons & Zetters.



THE FOOTBALL TRUST
Helping the game

No Substitute!



There's no atmosphere like Wembley. And there's no substitute for being there and seeing your team win the cup.

But there's no better way to relive the event than in Nicam Digital Stereo,* a feature of both the VHR 7700 video and the CBP 2872 FST television shown here. And together they'll make you feel you're really there. Over and over again.

So when the best performance requires the best quality insist on Sanyo. Once again, there's really no substitute...

*Subject to regional availability of Nicam Digital Stereo broadcasts.

Official suppliers of audio visual equipment to Chelsea Football Club.

SANYO

RUMBELOWS CUP — IT'S CHELSEA v TRANMERE

CHELSEA have been drawn against Second Division Tranmere Rovers in the two-leg second round of the Rumbelows League Cup.

The first leg is at Stamford Bridge on Wednesday, September 25 (kick-off 7.30pm) and the second leg at Prenton Park on Tuesday, October 8 (7.30pm).

The two clubs met in the second round in 1982/83 and Chelsea won 3-1 at home and 2-1 away.

CAN YOU HELP?

Do you know the whereabouts of former Chelsea stars whom Albert Sewell would like to include in his "What Happened to...?" series? (Page 23).

Players like Reg Williams, John Dempsey, Keith Weller, Gary Locke, Micky Droy and Steve Finnieston.

If you can help, please send details in writing to: Chelsea Matchday Magazine, c/o Hayters, 4-5 Gough Square, London EC4A 3DE.

NOTEBOOK

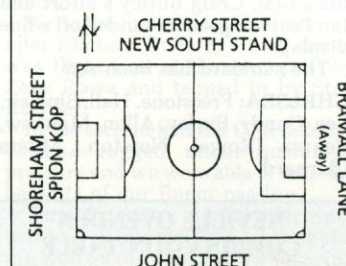
... AND WEST HAM

SUPPORTERS TRAVEL INFO

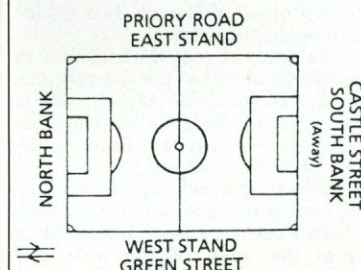
If you are travelling to:

SHEFFIELD UNITED...

Routes: From North: Exit M1 junction 34 following signs to Sheffield (A6109), turn left 3½ miles and take 4th exit at roundabout into Sheaf Street. Take 5th exit at 2nd roundabout into St. Mary's Road (for Bakewell), turn left ½ mile into Bramall Lane; **From South & East:** Exit M1 junctions 31 or 33 and take A57 to roundabout, take 3rd exit into Sheaf Street (then as North); **From West:** Take A57 into Sheffield and take 4th exit at roundabout into Upper Hanover Street at 2nd roundabout take 3rd exit into Bramall Lane.



Routes: From North & West: Take North Circular (A406), to A124 (East Ham) then on Bark-ing Road for approximately 1½ miles until approaching traffic lights at crossroads. Turn right into Green Street, ground is on right-hand side; **From South:** Take Blackwall Tunnel and A13 to Canning Town. Follow signs for East Ham (A124). After 1¼ miles turn left into Green Street; **From East:** Take A13 and turn right on to A117 at crossroads. After approximately 1 mile turn left at cross roads onto A124. Turn right (¾ mile) into Green Street.



COMING UP FROM PORTSMOUTH?

WOULD anyone living in the Portsmouth area who is interested in sharing the cost of petrol to home games, please contact "Jezz" on Fareham (0329) 283608.



£12.99

The Official Story of the 1990/91 Season

MEMORABLE!

- * 90 minutes of top class football.
- * Enjoy the action, the stunning goals and the unfolding drama of the 1990/91 season.
- * A must for true Chelsea fans.

TELSTAR

KEEP ONSIDE EVERY MONTH

33

Reserve team coach EDDIE NIEDZWIECKI

RESERVE

MILLWALL 2, CHELSEA 2

OUR standards slightly dropped against Millwall in a game which was played on an extremely warm afternoon. The temperature was well into the 80s and may have had an effect the game.

We might have earned a better result but had to play for the last 25 minutes with only ten men, following the dismissal of Darren Barnard for two bookable offences.

That said, we took the lead after 15 minutes and looked the stronger side at that stage. Andy Myers made a strong run on the left, hit a good cross into the box and Ian Pearce side-footed home from six yards.

Millwall showed great determination and soon equalised. From a half-cleared corner, a shot came back in from the edge of the area and deflected off Damian Matthew, giving goalkeeper Roger Freestone no chance of stopping it.

We regained the lead when Ian Pearce turned provider for Andy Myers. Ian beat their central defender and crossed for Andy, who finished well from 12 yards out.

That left us well placed at half-time but, unfortunately, we lost Ian Pearce through a back injury five minutes after the break. That was unlucky for Ian who had a good game up to then.

Millwall pulled level when we were pushing up, playing the offside trap. A scramble followed and Roger was just beaten to the ball as it was toe-poked in to make it 2-2.

Overall, this was not a bad Chelsea performance, in what were tiring conditions. And it gave us a chance to give Welsh trialist Nigel Nicholas a run-out. Nigel played against us pre-season, for Aberystwyth.

We have gained four points from two away games, which represents a solid start. Again we managed to keep the ball on the ground and play some good passing football.

While a key role of the reserves is to provide players for the first team, it is also important that we have winning habits throughout the club and

that means we will be out to retain the Combination title.

CHELSEA: Freestone, Burley, Lee, Johnsen, Nicholas (Davies), Barnard, Matthew, Dickens, Myers, Newton, Pearce (Rowe).

CHARLTON 0, CHELSEA 6

I WAS delighted with this performance and the attitude throughout the side was of the highest standard.

The six goals were all clinically finished but the outstanding one, if it is possible to pick one out, was the sixth — Eddie Newton's second.

Eddie played a one-two with Craig Burley on the edge of our box. The ball was played to Ian Pearce, just inside our half, and Eddie continued his run. Ian slipped a defender and he side-stepped the closing defender, cut inside and scored from 15 yards.

It was a goal of outstanding quality and, added to Joe Allon's two, Eddie's first, Craig Burley's effort and Ian Pearce's goal, it rounded off a fine display.

The standard has been set!

CHELSEA: Freestone, Hall, Sinclair, Lee, Cundy, Burley, Allon, Matthew, Pearce (Rowe), Newton, Myers (Barnard).

NEVILLE OVENDEN COMBINATION TABLE (Up to and including Aug. 24th)

	P	W	D	L	F	A	Pts.
Arsenal	3	2	0	1	7	3	6
Fulham	2	2	0	0	4	1	6
Southampton	3	2	0	1	5	4	6
CHELSEA	2	1	1	0	4	2	4
Oxford	2	1	1	0	3	1	4
Wimbledon	2	1	1	0	6	5	4
Norwich	1	1	0	0	5	1	3
Tottenham	2	1	0	1	5	2	3
Brighton	2	1	0	1	5	4	3
Luton	1	1	0	0	2	1	3
Swindon	1	1	0	0	2	1	3
Ipswich	1	0	1	0	4	4	1
Millwall	2	0	1	1	2	5	1
Crystal Palace	2	0	1	1	2	6	1
Charlton	1	0	0	1	1	2	0
Q.P.R.	1	0	0	1	1	2	0
Watford	1	0	0	1	0	2	0
Portsmouth	1	0	0	1	1	4	0
West Ham	2	0	0	2	0	3	0
Reading	2	0	0	2	1	7	0

NEVILLE OVENDEN COMBINATION FIXTURES

			F A
Aug 13	Watford	A	2-0
19	Millwall	A	2-2
27	Charlton	A	6-0
Sept 2	Oxford	H	
7	Tottenham	A	
19	Fulham	A	
23	Portsmouth	H	
Oct 1	Charlton	H	
7	Q.P.R.	H	
12	Portsmouth	A	
16	Brighton	A	
22	Norwich	H	
28	Luton	A	
Nov 5	Ipswich	H	
9	Southampton	A	
15	Norwich	A	
19	Reading	A	
26	Tottenham	H	
Dec 5	Millwall	H	
10	Arsenal	H	
18	Oxford	A	
Jan 4	West Ham	A	
7	Swindon	H	
15	Ipswich	A	
21	Wimbledon	H	
28	Brighton	H	
Feb 3	Crystal Palace	A	
11	Fulham	H	
19	Wimbledon	A	
25	Southampton	H	
Mar 3	Watford	H	
11	Arsenal	A	
17	Crystal Palace	H	
23	Q.P.R.	A	
31	Luton	H	
Apr 15	Swindon	A	
21	West Ham	H	
28	Reading	H	

MIDDLESEX SENIOR CHARITY CUP

First and Second Rounds: Bye.
Round Three to be played by December 12.

RESERVE TEAM GOALSCORERS 1991-92

(Up to and including
Monday August 27th)

	League	MSCC
ALLON	4	—
BURLEY	1	—
MYERS	1	—
NEWTON	2	—
PEARCE	2	—



Youth team coach DAVE COLLYER

& YOUTH

ZEKE STARS AS WE HIT QPR WITH FOUR GOALS

QPR 0, CHELSEA 4

AFTER scoring just once in our opening match of the season against Southend, despite dominating the game for long periods, the youth team pleased me with their superiority and were rewarded with four goals at QPR.

Overall, it was an excellent team performance against a well-organised QPR side who battled hard and made it difficult for us, especially in the opening 45 minutes.

QPR's defence pushed up in an attempt to squeeze us out. However our controlled football meant that our second successive win was rarely in doubt.

We went into the interval one up after Michael Duberry's long throw was flicked on at the near post by Zeke Rowe and tapped in by Stan Bowder.

In the second half the QPR defence became ragged under sustained pressure and we were able to reap the benefits of our fluent passing.

Terry Skiverton and Bowder were involved in our second goal, combining well on the wing before squaring the ball across the face of goal where Rowe was waiting to apply the finishing touch.

Rowe would have had another a few minutes later had his goalbound header not been handled on the line. But from the resulting penalty Craig Norman made no mistake with a firmly struck shot.

And 20 minutes from time we scored our fourth and best goal of the day, with a move that started in our own area.

Goalkeeper Nick Colgan, who has had two competent games, with a quick, accurate, throw set Jerry Davies off along the right flank.

Midfielder Davies got behind the defence before crossing for John McLennan to score, after he had made a fine run from midfield.

SOUTH EAST COUNTIES DIVISION ONE FIXTURES

			F A
Aug 17	Southend Utd	H	1-0
20	Q.P.R.	H	4-0
31	Fulham	H	
Sept 7	Cambridge	H	
14	Norwich	H	
28	Portsmouth	A	
Oct 5	Watford	H	
12	West Ham Utd	H	
19	Arsenal	A	
Nov 2	Tottenham	A	
9	Gillingham	A	
16	Ipswich	A	
23	Millwall	A	
Dec 7	Leyton Orient	A	
14	Charlton	A	
21	Southend	A	
Jan 4	Q.P.R.	A	
11	Fulham	A	
18	Cambridge	A	
25	Norwich	A	
Feb 1	Portsmouth	H	
8	Watford	A	
15	West Ham Utd	A	
22	Arsenal	H	
29	Tottenham	H	
Mar 7	Gillingham	H	
14	Ipswich	H	
21	Millwall	H	
28	Leyton Orient	H	
Apr 4	Charlton	H	

F.A. YOUTH CUP

Chelsea have a bye in the First Round
Second Round to be played by December 7

SOUTHERN JUNIOR FLOODLIT CUP

Sep 5 (1) Swindon A

S.E. COUNTIES LEAGUE CUP

Sep 21 (1) Charlton H

YOUTH TEAM GOALSCORERS 1991-92

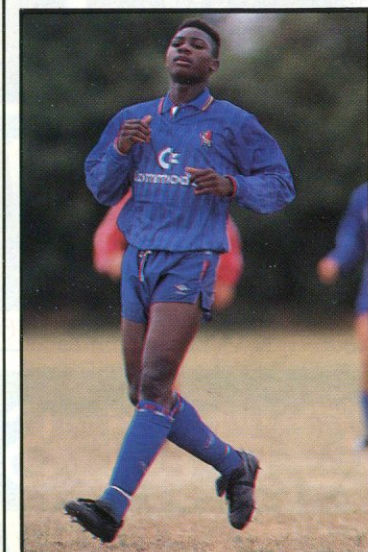
(Up to and including
Tuesday August 20th)

	League	Cups
BOWDER	1	—
McLENNAN	1	—
NORMAN	1 (pen)	—
ROWE	1	—
SHIPPERLEY	1	—



The fact that we have yet to concede a goal is promising and although these are early days, confidence is high and we are looking forward to a successful season.

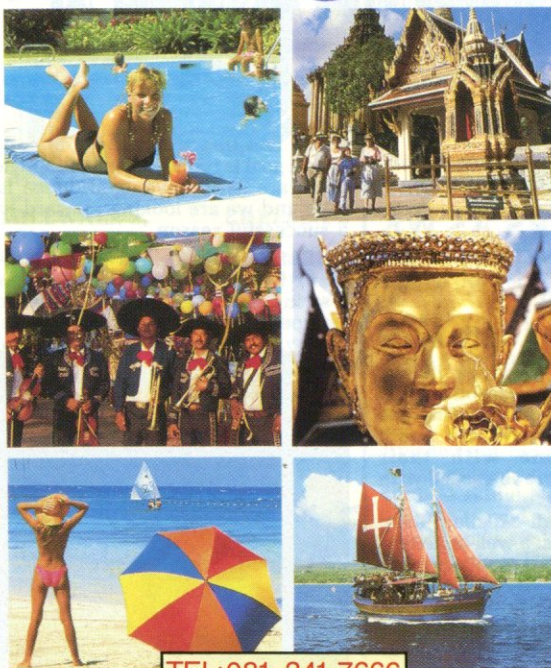
CHELSEA: Colgan, Skiverton, Norman, Duberry, Martin, McLennan (Fewings), Bowder (Metcalfe), Davies, Shipperley, Rowe, Parsons.



ZEKE ROWE: Scored once and played a part in two more goals against QPR.

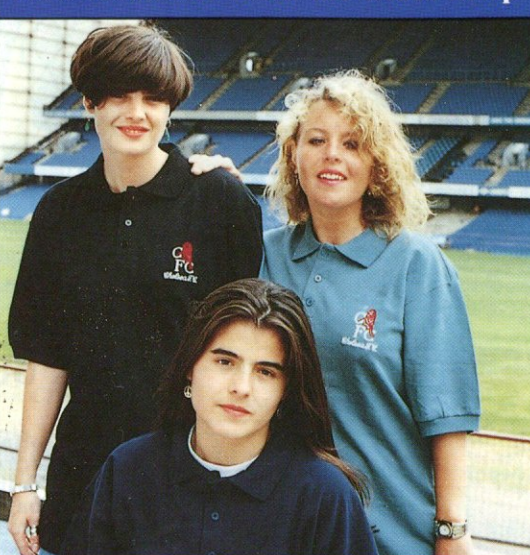
SOUTH EAST COUNTIES LEAGUE DIVISION ONE FINAL TABLE 1990/91

	P	W	D	L	F	A	Pts
Arsenal	30	24	4	2	84	30	52
Tottenham	30	20	7	3	82	36	47
West Ham	30	20	5	5	82	43	45
Gillingham	30	15	6	9	59	50	36
Leyton Orient	30	12	8	10	52	42	32
Millwall	30	13	6	11	50	49	32
Watford	30	12	6	12	53	35	30
Norwich	30	10	8	12	48	44	28
CHELSEA	30	11	5	14	47	49	27
Charlton	30	9	9	12	52	62	27
QPR	30	10	6	14	39	53	26
Fulham	30	8	8	14	31	47	24
Southend	30	9	6	15	38	61	24
Portsmouth	30	6	7	17	36	56	19
Ipswich	30	7	4	19	40	78	18
Cambridge	30	4	5	21	41	99	13



TEL: 081-341 7666

Now Available from the Blues Shop



Polo shirts £14.99 sizes: Med, Lge, XLge
other colours available: white, red, royal

Credit card Hotlines

071-381 6172 or 071-385 4913

CHELSEA

CLUBCALL

24 HOURS A DAY INTERVIEWS

RESULTS-NEW UPDATED DAILY

ON
0898 121 159

PLUS
TICKET NEWS
PRIZE & PROMOTION
LINE

0898 121 011

Calls cost 34p/minute cheap; 45p/minute other times.
Clubcall, Harrow HA2 7JW

Chelsea F.C. with
AGM // Caterers Ltd.

OFFERS YOU AT THE BRIDGE
AN EXTENSIVE RANGE OF
CATERING FOR BUSINESS
AND SOCIAL EVENTS

- Wedding Receptions
- Company Exhibitions and Seminars
- Conference and Room Hire facilities
- Private dinner parties, dances or discos
- Birthdays, Celebrations, Anniversaries
- Catering – Buffets to Banquets – 20 to 200 people
- Excellent on-site car parking facilities

AGM // Caterers Ltd.
Winning business at Chelsea

For Enquiries and Bookings please phone
now on: –

071-385 8776

FOOTBALL'S brightest newcomers, Barnet, have breathed fresh air into the Football League, sharing in 21 goals in their two opening home games.

The fact that they won neither of them, losing 7-4 to Crewe and drawing 5-5 with Brentford, has done little to wipe the smile from the face of their genial manager Barry Fry and 'ticket broking' chairman, Stan Flashman.

But there must have been a few eyebrows raised in shock horror at Mansfield last Saturday — they won 2-1.

Fry, who was wired to a heart monitor for the Crewe game, must have been close to seizure, for he admits that he is more relaxed in the drama of a goal feast.

"I would rather draw 5-5 than win 1-0, but I'll have to drop those strikers, they're not defending well enough!" he said after the Brentford game.

In fact, the only moment Fry looked anxious on the night of the 5-5 draw was an hour after the final whistle. His wife Kirstine had suddenly gone into labour with their fourth child and Fry sprinted off to be at the birth of his new daughter.

Barnet have arrived in the League with what is predominantly a part-time staff but Fry concedes that changes will have to be made if they are to achieve his target for their first big-time season. Fry is currently

Bravo, Barnet!

BANG-BANG START TO THE LEAGUE

operating with a staff of only nine full-time players.

He said: "I now realise that we have to go full-time if we are to seriously challenge in the League. We have to look to spend our money — we owe it to ourselves and the fans."

"Seven of the 13 players on duty against Brentford were part-timers and it showed. Fortunately, we are one of the few clubs in the black, having brought in £1.3 million from transfers over the past two years or so."

Fry must convince chairman Stan Flashman of the wisdom of his plan — and faces a financial struggle, asking players to give up the security of regular jobs to take the plunge with the Fourth Division newcomers.

"Take our centre half Dave Howell," said Fry. "He is 32 and has a good job at the BBC. We couldn't afford to make him an offer that would take him away from there."

Fry will give the players who brought League football to Barnet

the chance to prove themselves, but he will not stand for second best.

He said: "I'll consider the season a failure, if we don't make the play-offs. We've been attacking one promotion place for five years — now we have seven. I'll be very disappointed if we don't make one of them."

That is the sort of spirit and determination that have made Fry and Flashman one of the game's most successful partnerships. They have seen Wimbledon make it to First Division football from their non-League status — now they want Barnet to achieve the same.

The events at Underhill can only be good for football. In Gary Bull and Mark Carter they have two clinical goalscorers to lead a team of committed, attacking players.

Underhill may not be a top League ground — there is just one seated terrace and the pitch makes Yeovil's old ground look flat — but the entertainment is out of the top drawer. Who knows, in a few years we may be welcoming Barnet as serious First Division newcomers.

TODAY'S OTHER DIV. 1 MATCHES

Arsenal v Manchester City
Coventry City v Wimbledon
Crystal Palace v Sheffield Utd
Liverpool v Everton
Manchester Utd v Leeds
Norwich v Tottenham
Nottingham Forest v Oldham
Sheffield Wed v Q.P.R.
Southampton v Aston Villa
West Ham v Notts County

Premiere LOTTO

SUPER CASH PRIZES

WEEKLY DRAW ★ £1,000 CASH JACKPOT ★ FABULOUS HOLIDAYS ★ £1 A WEEK
TO ENTER... FURTHER DETAILS FROM EDDIE BARNETT ON 071-386 5557

Save the Bridge Society. Registered under 1976 Lotteries Act with the Hammersmith & Fulham Borough Council. (Number 631) **PROMOTOR EDDIE BARNETT**



HAVE YOU GOT YOUR LEEDS UNITED TICKET?

37

DATE	OPPONENTS	V	RES	ATT.	POS.	1	2	3	4	5	6	7	8	9	10	11	12	14
Sat Aug 17	Wimbledon	H	2-2	22,574	—	—	—	—	—	—	—	—	—	—	—	—	—	—
Wed Aug 21	Oldham Athletic	A	0-3	14,997	—	Beasant	Clarke	Boyd	Townsend	Elliot 1	Monkou	Le Saux	Hall	Dixon	Wilson	Wise	Dickens(8)	Allon 1(10)
Sat Aug 24	Tottenham Hotspur	A	3-1	34,645	12	Hitchcock	Clarke	Boyd	Townsend	Elliot 1	Johnsen	Le Saux	Dickens	Dixon	Wilson	Wise	Wilson(8)	Allon(10)
Wed Aug 28	Notts County	H	2-2	15,847	11	Hitchcock	Clarke	Boyd	Townsend	Elliot 1	Johnsen	Le Saux	Dickens	Dixon	Wilson	Wise	Myers	Allon
Sat Aug 31	Luton Town	H	—	—	—	—	—	—	—	—	—	—	—	—	—	—	—	Myers(7)
Tue Sep 3	Sheffield United	A	—	—	—	—	—	—	—	—	—	—	—	—	—	—	—	—
Sat Sep 7	West Ham United	A	—	—	—	—	—	—	—	—	—	—	—	—	—	—	—	—
Sat Sep 14	Leeds United	H	—	—	—	—	—	—	—	—	—	—	—	—	—	—	—	—
Wed Sep 18	Aston Villa	H	—	—	—	—	—	—	—	—	—	—	—	—	—	—	—	—
Sat Sep 21	Queens Park Rangers	A	—	—	—	—	—	—	—	—	—	—	—	—	—	—	—	—
Sat Sep 28	Everton	H	—	—	—	—	—	—	—	—	—	—	—	—	—	—	—	—
Sat Oct 5	Arsenal	A	—	—	—	—	—	—	—	—	—	—	—	—	—	—	—	—
Sat Oct 19	Liverpool	H	—	—	—	—	—	—	—	—	—	—	—	—	—	—	—	—
Sat Oct 26	Crystal Palace	A	—	—	—	—	—	—	—	—	—	—	—	—	—	—	—	—
Sat Nov 2	Coventry City	A	—	—	—	—	—	—	—	—	—	—	—	—	—	—	—	—
Sat Nov 16	Norwich City	H	—	—	—	—	—	—	—	—	—	—	—	—	—	—	—	—
Sat Nov 23	Southampton	A	—	—	—	—	—	—	—	—	—	—	—	—	—	—	—	—
Sat Nov 30	Nottingham Forest	H	—	—	—	—	—	—	—	—	—	—	—	—	—	—	—	—
Sat Dec 7	Sheffield Wednesday	A	—	—	—	—	—	—	—	—	—	—	—	—	—	—	—	—
Sat Dec 14	Manchester United	H	—	—	—	—	—	—	—	—	—	—	—	—	—	—	—	—
Sat Dec 21	Oldham Athletic	H	—	—	—	—	—	—	—	—	—	—	—	—	—	—	—	—
Thu Dec 26	Notts County	A	—	—	—	—	—	—	—	—	—	—	—	—	—	—	—	—
Sat Dec 28	Luton Town	A	—	—	—	—	—	—	—	—	—	—	—	—	—	—	—	—
Wed Jan 1	Manchester City	H	—	—	—	—	—	—	—	—	—	—	—	—	—	—	—	—
Sat Jan 11	Tottenham Hotspur	H	—	—	—	—	—	—	—	—	—	—	—	—	—	—	—	—
Sat Jan 18	Wimbledon	A	—	—	—	—	—	—	—	—	—	—	—	—	—	—	—	—
Sat Jan 25	Liverpool	A	—	—	—	—	—	—	—	—	—	—	—	—	—	—	—	—
Sat Feb 8	Crystal Palace	H	—	—	—	—	—	—	—	—	—	—	—	—	—	—	—	—
Sat Feb 15	Southampton	H	—	—	—	—	—	—	—	—	—	—	—	—	—	—	—	—
Sat Feb 22	Nottingham Forest	A	—	—	—	—	—	—	—	—	—	—	—	—	—	—	—	—
Sat Feb 29	Sheffield Wednesday	H	—	—	—	—	—	—	—	—	—	—	—	—	—	—	—	—
Sat Mar 7	Manchester United	A	—	—	—	—	—	—	—	—	—	—	—	—	—	—	—	—
Wed Mar 11	Norwich City	A	—	—	—	—	—	—	—	—	—	—	—	—	—	—	—	—
Sat Mar 14	Coventry City	H	—	—	—	—	—	—	—	—	—	—	—	—	—	—	—	—
Sat Mar 21	Sheffield United	H	—	—	—	—	—	—	—	—	—	—	—	—	—	—	—	—
Sat Mar 28	Manchester City	A	—	—	—	—	—	—	—	—	—	—	—	—	—	—	—	—
Sat Apr 4	West Ham United	H	—	—	—	—	—	—	—	—	—	—	—	—	—	—	—	—
Sat Apr 11	Leeds United	A	—	—	—	—	—	—	—	—	—	—	—	—	—	—	—	—
Sat Apr 18	Queens Park Rangers	H	—	—	—	—	—	—	—	—	—	—	—	—	—	—	—	—
Mon Apr 20	Aston Villa	A	—	—	—	—	—	—	—	—	—	—	—	—	—	—	—	—
Sat Apr 25	Arsenal	H	—	—	—	—	—	—	—	—	—	—	—	—	—	—	—	—
Sat May 2	Everton	A	—	—	—	—	—	—	—	—	—	—	—	—	—	—	—	—
RUMBLELIPS LEAGUE CUP																		
Wed Sep 25	(2-1L) Tranmere Rovers	H	—	—	—	—	—	—	—	—	—	—	—	—	—	—	—	—
Tue Oct 8	(2-2L) Tranmere Rovers	A	—	—	—	—	—	—	—	—	—	—	—	—	—	—	—	—
ZENITH DATA SYSTEMS CUP																		
Wed Oct 23	(2) Oxford Utd/Swindon Town	H	—	—	—	—	—	—	—	—	—	—	—	—	—	—	—	—

KEY: () player substituted † own goal * after extra time

STATISTICS '91 STATISTICS '92 STATISTICS

FIRST TEAM APPEARANCES & GOALSCORERS

(Up to + including Sat Aug 28)	(Age)	1991-92		Chelsea Career (Including apps as sub)	
		League	Cups (FAC, ELC, ZMSC)	League	Total (Lge, FAC, ELC, FMC, Gls)
ALLON (24)	0+3	2	—	3	2
BEASANT (32)	2	—	—	97	—
BOYD (25)	4	—	—	4	—
BURLEY (19)	—	—	—	1	—
CLARKE (28)	4	—	—	136	5
CUNDY (21)	—	—	—	29	1
DICKENS (26)	3+1	—	—	42	1
DIXON (30)	4	1	—	304	143
ELLIOTT (27)	4	2	—	4	2
FREESTONE (23)	—	—	—	42	—
HALL (22)	1	—	—	74	1
HITCHCOCK (28)	2	—	—	16	—
JOHNSON (24)	2	—	—	26	—
LEE (21)	—	—	—	71	6
LE SAUX (22)	4	—	—	40	5
MATTHEW (20)	—	—	—	10	—
MONKOU (26)	2	—	—	65	2
MYERS (17)	0+1	—	—	4	—
PEARCE (17)	—	—	—	1	—
SINCLAIR (19)	1	—	—	5	—
STUART (20)	—	—	—	21	5
TOWNSEND (28)	4	1	—	38	3
WILSON (30)	3+1	1	—	134	40
WISE (24)	4	—	—	37	10
OPPONENT O. G.	—	—	—	—	13

Quiz Answers

FIND THE STAR: (See Page 31).

Brian Stein. 1. Bolton, 2. Rotherham, 3. Ian, 4. Australia, 5. Newcastle, 6. Strachan, 7. Tottenham, 8. Earle, 9. Ireland, 10. Nottingham.

WRAPPED IN PLASTIC

FOR ALL THE LATEST CHART
RELEASES, CD'S, CASSETTES
& VIDEOS

218 Fulham Road
Chelsea SW10

(across from St Stephens Hospital)

071-351 4496

*10% of all sales to CFC Members will
be donated to Chelsea FC to assist with
the Youth Scheme. Membership cards
must be shown.

ADVANCE SEAT BOOKINGS

Postal Applications: Can be made at any time but for security reasons tickets will not be sent out until one month before the game. Please enclose a.s.e. and make payment by postal order — cheques can take up to 21 days to process.

Personal Applications: Box Office hours are 9.30 a.m. to 4.30 p.m. weekdays. Tickets can be purchased in person four weeks in advance.

Family Section: This special area of the East Stand is available to Club Members only and for each adult there must be at least one junior. One juv/one Adult £10; each additional Adult £10; each additional juv/OAP £3. Postal and personal applications should enclose/produce the appropriate home match voucher. Home match vouchers are also required when applying for tickets for members only East Stand Lower Tier. On match days Family Section tickets are not sold during the last hour before kick-off.

Credit Card Seat Booking: Can be made on the Credit Card Booking line 071-386 7799. Next home match only unless advertised differently. No Credit Card Bookings on match day. This facility is not available for the Family Section and members East Stand Lower Tier because of necessity to pro-

duce vouchers when purchasing tickets. Credit cards will be accepted for these members seat sections by post provided the relevant match voucher is enclosed. Telephone bookings are subject to a 50p a ticket administration charge. No extra charge for personal callers. 071-386 7799 is for Credit Card Bookings only.

Away match tickets: No tickets for away games will be on general sale and will only be sold to season ticket holders and club members. Arrangements will be included on the Box Office page and on 0898 121011.

IT PAYS TO BE A CHELSEA CLUB MEMBER! Application forms available from Box Office and main office.

GENERAL INFORMATION

On match days tickets are sold in strict numerical order. Our staff are unable to search out specific seats, if purchasers require particular seats they must purchase from the Box Office during the week or by post.

If wishing to pay by cheque at the Box Office please note we only accept cheques £20 and over and these must be supported by a banker's card. Visiting supporters are prohibited in the East and West stands.

The West stand ticket office is open on match days from 12.00 noon (5.30 p.m. evening matches).

Chelsea club members producing membership cards and using the members' gate at the Bovril entrance can obtain admission to the Shed terraces for £6.

West stand members' enclosure admission is £7 (£6 entrance via the members' gate at the Bovril entrance plus £1 transfer to the enclosure).

The Chelsea Members', Junior and OAP terrace entrance is also at the Bovril entrance, admission £4 but membership cards must be shown.

Spot checks will be carried out in the Chelsea members' section and anybody not in possession of a valid membership card will be ejected from the ground. Details of any all-ticket matches and the arrangements will be published in advance.

BARCLAYS LEAGUE DIVISION ONE (Up to and including Aug. 28)

TOP SCORERS AND LEAGUE ATTENDANCES

Man. Utd	P	Home			A	Away			Pts	Leading Scorers	Average	Best
		W	D	L		W	D	L				
Man. Utd	4	2	0	0	3	0	1	0	10	Four on 1	44,178	46,278
Man. City	4	2	0	0	5	3	1	0	10	White 3, Brennan 2	32,675	37,322
Coventry	4	2	0	1	8	2	0	1	7	Four on 2	13,566	18,013
Leeds	3	1	0	2	1	0	0	4	7	Speed 2, Strachan 2	29,858	30,260
Liverpool	4	2	0	0	3	1	0	1	7	Four on 1	35,771	38,841
Nottm. For	4	1	0	1	3	4	1	0	6	Clough 2, five on 1	24,220	24,422
Norwich	4	0	2	0	2	2	1	0	4	Fleck 2, Newman 2	15,878	16,380
Tottenham	3	0	0	1	3	2	0	0	6	Lineker 4, Durie 2	34,645	34,645
Aston Villa	4	1	0	1	3	2	1	0	4	Daley 2, Staunton 2	34,839	39,995
West Ham	4	1	0	3	1	0	1	1	3	Small 2, two on 1	24,362	25,079
CHELSEA	4	0	2	0	4	4	1	0	5	Allon 2, Elliott 2	19,210	22,574
Oldham	4	1	0	0	5	2	0	0	4	Barrett 2, Marshall 2	14,272	14,997
Wimbledon	3	1	0	0	2	0	0	1	4	Earle 3, Fashanu 3	10,081	10,081
Everton	4	1	0	3	1	0	0	2	4	Ward 2, two on 1	33,642	36,085
Sheffield Wed	3	1	0	1	4	4	0	1	4	Hirst 2, Wilson 2	32,719	36,749
Arsenal	4	1	0	3	1	0	0	2	6	Merson 2, Smith 2	31,999	38,099
Notts. Co.	4	1	0	1	1	4	0	1	4	Three on 1	15,328	21,044
Crystal Palace	2	1	0	0	3	2	0	0	2	Bright 2, three on 1	16,340	16,340
Southampton	4	0	0	2	2	1	3	0	1	Shearer 2, two on 1	17,222	18,581
Q.P.R.	4	0	1	1	1	3	0	1	2	Bailey 1, Wegerle 1	10,059	10,726
Sheffield Utd	4	0	1	1	1	3	0	1	3	Four on 1	19,746	21,463
Luton	4	0	1	0	0	0	0	1	2	No scorers	11,132	11,132

MATCH OFFICIALS

MICHAEL PIERCE, 40, has been refereeing since 1967 and was appointed to the referees' list two years ago. He is married with two children and works as an electrician in his home town of Portsmouth. He is a fan of all sports but puts cricket at the top of the list.



CHELSEA v LUTON



Blue Shirts and Shorts

KEVIN HITCHCOCK

6ft 1in goalkeeper has deputised for the injured Dave Beasant in last two games.

STEVE CLARKE

Scottish international who was 28 on Thursday (Aug 29).

TOM BOYD

Has played in all four games this season since £800,000 summer move from Motherwell.

ANDY TOWNSEND

Chelsea captain, making his 50th appearance for the club today.

PAUL ELLIOTT

Scored his second goal in four games for Chelsea, against Notts County in midweek.

ERLAND JOHNSEN

Norwegian international defender formerly with Bayern Munich.

GRAEME LE SAUX

On target against Luton in last season's 3-3 draw at the Bridge.

VINNY JONES

Chelsea's new £575,000 signing from Sheffield United.

KERRY DIXON

Luton-born striker. Chelsea's joint top scorer last season with 15 goals.

KEVIN WILSON

Northern Ireland international striker previously with Derby and Ipswich.

DENNIS WISE

Winger capped five times by England last season. Age 24.

White Shirts and Shorts

1 ALEC CHAMBERLAIN

Ever-present goalkeeper for the past two seasons.

2 DAVID BEAUMONT

Dundee-born right-back and former Scottish Under-21 cap.

3 JOHN DREYER

Replaced by Trevor Peake as club captain against Arsenal in midweek.

4 DARRON McDONOUGH

Belgium-born midfielder, cost £85,000 from Oldham in September 1986.

5 GRAHAM RODGER

24-year-old former Coventry defender.

6 TREVOR PEAKE

New Luton skipper moved from Coventry last week for £100,000.

7 PHILIP GRAY

Signed earlier this month from Tottenham in £275,000 transfer.

8 DAVID PREECE

England 'B' international, approaching his 190th League game for Luton.

9 BRIAN STEIN

Striker, 33, now in second spell at Luton following a summer move from French club Caen.

10 MARK PEMBRIDGE

Former Luton youth product and Welsh 'B' international midfielder.

11 KINGSLEY BLACK

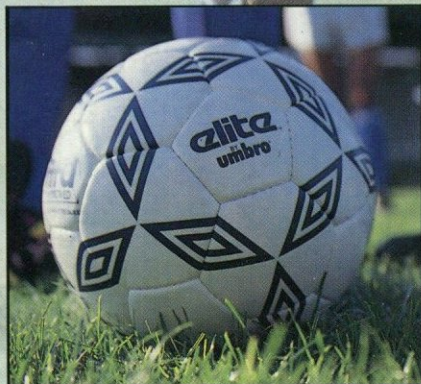
The club's second top scorer with nine goals last season.

12

14

REFEREE:
MICHAEL PIERCE

LINESMEN:
R. Tye (red), J. Wiffen (yellow)



Matchball Sponsor



BOOTH WHITE FOR INSOLVENCY PROBLEMS
Telephone: 071-537 3300