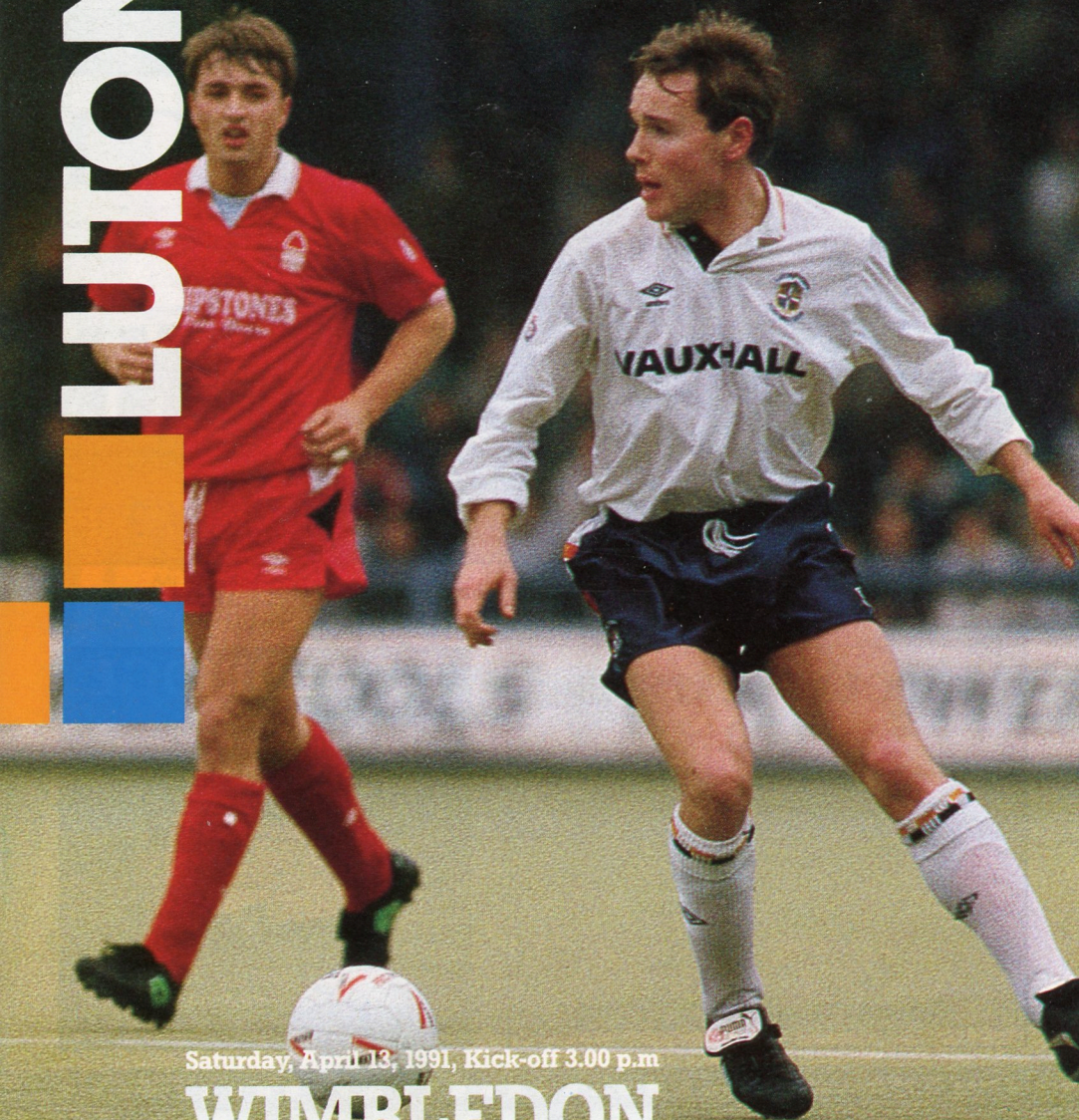


TOWN

OFFICIAL PROGRAMME £1.20

NOT



Saturday, April 13, 1991, Kick-off 3.00 p.m.

WIMBLEDON

BARCLAYS FOOTBALL LEAGUE DIVISION ONE

This match is sponsored by: London Luton Airport.

I N T H E

F R A M E



● **Blocked again:** Sean Farrell lets fly during the 0-0 draw against Tottenham.

APOLLO SYSTEMS LTD.

0582 34928 - 481102

- ★ Electrical Installations
- ★ Industrial and Commercial
- ★ Maintenance ★ Fire Alarms
- ★ C.C.T.V. Installations
- ★ Suspended Ceilings
- ★ Office Partitions & Screens
- ★ Fireproof Curtain Walls

39B SHAFTESBURY RD, LUTON

T.J. ALDRIDGE

Builders

302 Selbourne Rd. Luton

Tel: (0582) 505412-3



Roofing Specialists - General Building Repairs -
Brickwork - Plumbing - Painting & Decorating -
Carpentry - Electrical



● **Out of luck:** Mark Pembridge (top) fires wide during the Easter Monday clash with Spurs while Marvin Johnson (below) is thwarted by Erik Thorstvedt.

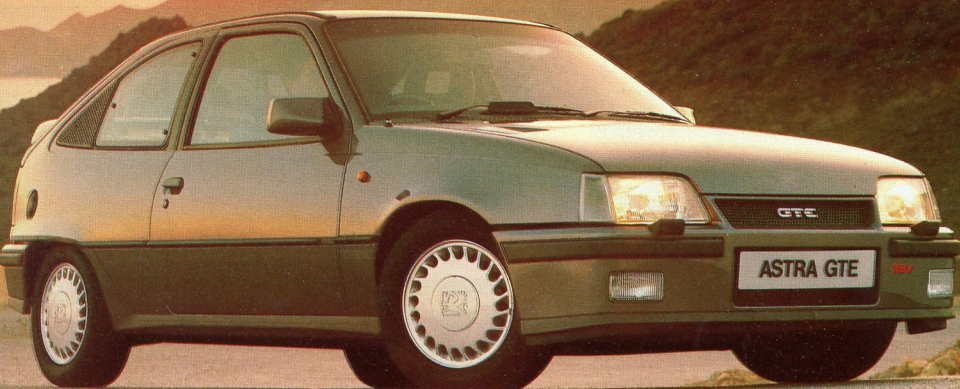


O C C E R L I

N E 08 39 664466

44p per min Peak
33p per min off Peak

STRIKING PERFORMER,
WORKS HARD, PLAYS WELL.



VAUXHALL Once driven, forever smitten



VAUXHALL IS BACKED BY THE WORLDWIDE RESOURCES OF GENERAL MOTORS. CAR SHOWN ASTRA GTE.



Kenilworth Road Stadium
1 Maple Road, Luton, Beds LU4 8AW

PRESIDENT

E.S. Pearson

CHAIRMAN

Peter Nelkin

DEPUTY CHAIRMAN

Roger Smith

DIRECTORS

C.J. Hudson, D.A. Kohler, H. Richardson,
E.S. Pearson.

GENERAL MANAGER/SECRETARY

Bill Tomlins

TEAM MANAGER

Jim Ryan

VICE PRESIDENTS

R.L. Banks, C. Bygraves, I.E. Holmes, R. Larkinson,
R. Saffranek, E. Waller

COMMERCIAL MANAGER

Wendy Grzybowska

ASSISTANT SECRETARY

John Smylie

HONOURS

LITTLEWOODS CUP WINNERS 1987/88

FA CUP FINALISTS - 1988-89

LITTLEWOODS CUP FINALISTS - 1988-89

SIMOD CUP FINALISTS - 1987-88

CHAMPIONS - DIVISION 3(S) 1936-37

CHAMPIONS - DIVISION 4 1967-68

CHAMPIONS - DIVISION 2 1981-82

LUTON TOWN HOTLINE

Match Tickets, Match Enquiries, Membership:

Ring - Cherry Newbery, Ticket Manager

Luton (0582) 411622/30748

Credit Card Hotline - 0839 664466, 72hrs prior to match

Advertising and Match Sponsorship:

Ring - Wendy Grzybowska, Commercial Manager

Luton (0582) 411622

Stadium Hire/Special Events: Ring - Barbara Maclean,

Luton (0582) 411622

Umbro Sportswear/Souvenirs, Junior Hatters:

Ring - Bev Tyler,

Sales Supervisor Luton (0582) 411622

Banqueting Function Facilities: Ring - Peter Saul

Catering Manager Luton 411526

Promotions Office: Lotteries - Ring John Cornall,

Development Executive Luton (0582) 411622

Soccerline: Ring - 0839 664 466 (44p per min peak)

(33p off peak)

Club Office hours:

8.45 am - 5 pm Luton (0582) 411622 Fax: (0582) 405070

Edited by: Robert Alexander Associates

PR and Media Consultants, Hitchin.

Pictures by: Apex Photography, Milton Keynes

JIM RYAN

Those of you who were at Stamford Bridge last Saturday will know that we really should have won after leading 3-0 and striking particularly well on the break against a strong wind in the first half. What you may not have realised is that we were badly hit by injuries during the game and, in fact, were carrying several injured players in the second half. As a result, as I write, we have not seen Graham Rodger, Mark Pembridge, Sean Farrell or David Beaumont in full training this week. All have heavy knocks and Dave Galley has had a busy week in the treatment room. This is part and parcel of the game, of course, and with our very young side it is just another aspect of their "baptism by fire".

I believe the experience will stand them in good stead in the future. Their applications this season has been excellent as they have had to learn about the First Division in very difficult circumstances. I felt we were unfortunate not to win several times in recent weeks, particularly in home matches we have dominated. By coincidence, I note that at this time last year we were in a similar position after our captain missed a penalty in a fixture against a London club. Then, as now, our final game of the season was against Derby and, finally, one of the teams which went down was an unexpected one who suffered a poor late run and came....from Sheffield.

Jim Ryan

Mailbag & Supporters News

Want to air your views?

Please write to: The Editor, c/o Luton Town FC., Kenilworth Road Stadium, 1 Maple Road, Luton, Beds. LU4 8AW.

17th INTERNATIONAL PROGRAMME FAIR

Dear Sir

We are pleased to advise you that once again THE FOOTBALL PROGRAMME DIRECTORY are organising the above event. The interest shown in the hobby has in no small way been due to the encouragement and publicity given to the Fair by the many Football League and Non-League Clubs.

I repeat the full details about the 17th International Football Programme Fair which is being held at the Hotel Russell, Russell Square, London W.C.1., (2 minutes walk from Russell Square Underground Station, Piccadilly Line). Admission is 50p in advance or £1.00, on the day. The Fair opens at 11am until 3.45pm, on Saturday 1st June. Advance tickets available from The Editor, the FPD, 66 Southend Road, Wickford, Essex, SS11 8EN, at 50p each plus s.a.e. please. Light refreshments, plus a Carvery will be available with bar facilities at 11.30am. Thousands of programmes, books, badges etc., will be available from some of the leading dealers from the U.K. Admission for collectors under 15 will only be 50p.

I thank you in anticipation of your co-operation.

With kind regards
Yours sincerely
The Editor, David Stacey
'The Beeches'
66, Southend Road
Wickford
Essex SS11 8EN

Dear Sir
BBC2 is showing a documentary at 7.30pm on Thursday 11th April about

the changing face of football. Reporter Antonia Higgs has visited several clubs to see how they are facing up to the challenge of providing all-seater stadia as a result of the Taylor Report into the Hillsborough disaster.

She's asked fans how they feel about the end of the terraces and club chairman about their attempts to rebuild grounds or build new ones and asks whether this country could host the next World Cup after America.

Any mention would be very much appreciated.

Yours faithfully
Sandy Smith
Producer, First Sight
BBC Elstree Centre
Claredon Road
Borehamwood
Hertfordshire WD6 1JF

THANKS IAIN

Dear Sir

As a Luton Town supporter I am writing on the day Iain Dowie (my favourite player) was forced to move. I would just like to thank Iain for keeping us up last season and I love you. Very best wishes for the future. I hope you are as appreciated with the West Ham supporters as you are here at Luton. You've been a great player and you are, I am sure, loved by every Luton supporter. I wish you every happiness in the world. Thankyou for being a great and constant player for Luton. Please don't sell anymore of our best players, Luton. Lets hope we can keep the top players at the club.

All the best for the future Iain.

Yours faithfully
Julie Deamer
6 Troon Close
Bedford
Beds MK41 8AY

FAN FILE

No 20: STEVE TOYER



Job:- Mature student.

1st home game:-
v Southport, 1966-67, 0-0.

1st away game:-
v Watford, 1970-71, 1-0.

Favourite player (Past),
Malcolm Macdonald.
(Present), Lars Elstrup.

Best goal last season:-
Tim Breacker v Derby.

Best goal ever:-
Raddy Antic at Manchester City.

How many league grounds visited:- 61.

Most memorable match:-
Littlewoods Cup final 1988.

All-time Luton team:-
Davie, Stephens, Buckley, Anderson, Foster, Donaghy, Hill, B. Stein, Macdonald, Rioch, Moss, Subs: Lewis and Slough.

EXECUTIVE MEMBERS

ABB ROBOTICS
AC COMMUNICATIONS (UK) LTD
ANACHEM LTD
MR. T. BAILEY
MRS. E. BAIN
MR. R. BANKS
BERVALE MEAD
INSURANCE BROKERS
BEVANGRACE
W.J. BILLINGTON
BLAKE ENGINEERING
MR. J. BOYLAN
BROAD STREET PRINT
MR. R. BROOKS
CAMPBELL FROZEN FOODS
CAPITAL METALWORK
CHAMBERLAIN FURNISHINGS
CHILTERN RADIO
CLARENDON HATS
CRANE & STAPLES SOLICITORS
MR. T. COATES
MR. B. COLE
COMPLETE CONTRACTS
CONVOY INSTALLATIONS
MR. P. COOPER

DISCOUNT KING TYRE & EXHAUST CENTRE
DUPONT (UK)
FENNEMORES SOLICITORS
FILMERGRAPHIC PRESS
FLITWICK OIL COMPANY
MR. E. FOUNTAIN
F & T GOODWIN
V.G. GREEN & SON
MR. D. HALES
HANDSCOMBE FINANCIAL SERVICE
HANS-JURGEN (IMPORTERS)
R.W. HARVEY & SON
B. HICKS & COMPANY
HOLMES COMMERCIAL PROPERTY
HUMBERGROVE INSURANCE
JOHN LAING CONSTRUCTION
J.S.B. BUSINESS FORMS
J.M. KEENAN
KREMLIN SPRAY PAINTING EQUIPMENT
MR. P. LAYCOCK
MARK JAMES SALVAGE
MILCUTT ENGINEERING
NBM CARPENTRY & BUILDING SERVICES
MR. N. OWEN

MR. J. PATTINSON
MR. M. PATTINSON
PAUL MOORE DECORATORS
F.W. PEARCE BUILDERS
MR. S. PEARSON
PREMIER BODYSHOP
DR. D.A. RUBIN
MR. D.C. RUTT
MRS. J. SHERIDAN
E.C.J. SHOREY TRAVEL
SPACE DISPLAY SYSTEMS
SWIFTS OF LUTON
TILDAE INVESTMENTS
TOOLING SERVICE
TWIGDEN HOMES
W.S. TYREMASTERS
VAUXHALL MOTORS
WILTON TRUCKS

SOCCKERLINE

0839 664466

44p per min Peak

33p per min off Peak

EXECUTIVE BOX HOLDERS

J. SAPSWORTH LTD

GLAZING REPAIRS - GLASS SUPPLIES

DECORATING SPECIALISTS

92 MARSH ROAD, LUTON, BEDS.

☎ GLAZING & 24 hr EMERGENCY SERVICE 0582 573025

DECORATING 0582 597505

FAX 0582 492025

Fair Fares for

Luton Town

F.C.

**SPECIAL
HALF PRICE
TICKETS
FOR
MEMBERS OF
LUTON TOWN**

HOME GAMES

We offer 1/2 price travel
on all local bus services
operated by Luton & District
(25 August 1990 –
May 1991)

AWAY GAMES IN LONDON

Take our 757 express
coach from Luton to
London for a direct route
and frequent, friendly
service 1/2 price for
Luton Town members!



**LUTON
& DISTRICT**

**LUTON-DUNSTABLE-AYLESBURY-LEIGHTON BUZZARD-SLOUGH-AMERSHAM-HIGH WYCOMBE-LEE & DISTRICT
STEVENAGE-HITCHIN-HEMEL HEMPSTEAD-WATFORD**

HOW TO GET THERE

**Everton v Luton Town
Saturday, May 4th, 1991
Goodison Park,
Liverpool L4 4EL**

Take the M1 north to junction 19, take the M6 to the M62. Then take the M62 to the A5068 into Queen's Drive. After three miles turn left on the A580 into Walton Hall Avenue for ground.

Parking is available on a site at the corner of Prior Avenue.

Nearest Railway: Liverpool Lime Street (B/R).

BOBBERS TRAVEL CLUB

Coach travel tickets, membership forms and price lists are available in the following ways:

1. After any home match from the entrance to the Bobbers Club in Oak Road (5 – 5.30pm or 9.45 – 10.15pm).
2. By telephoning Paul Deason on Bedford (0234) 750996 (evenings only).

Fares for the trip to EVERTON will be £9.50 for adults and £7.50 for juniors/Senior Citizens with coaches departing from Cranfield at 8.30am and from Luton at 9.30am.

DID YOU KNOW

Lars Elstrup's scoring rate for Luton is one of the best in the country. His opener at Chelsea last Saturday was not only his 17th goal of the season, but also his 26th for the Town in 54 starting appearances since arriving from Denmark in 1989. That means a strike rate of 48 per cent, a remarkable record in the hurly burly of modern soccer.

GOOD LUCK, RADDY

We send best wishes to Spain where our former 'libero' Radomir Antic has taken over as chief coach at Real Madrid following the resignation of Alfredo di Stefano.

LUTON TOWN SUPPORTERS CLUB



First of all, on behalf of all members of the Supporters Club, may I extend a warm welcome to Ray Harford and his 'Crazy Gang' from Plough Lane. The Wombles have quite a good record at Kenilworth Road, but, hopefully, their trip today to Bedfordshire will prove to be pointless.

We were all pleased last Thursday when a sellout was reported for the meeting of the Supporters Club at which Luton Town FC chairman Peter Nelkin was our guest speaker. He came to the meeting together with fellow-directors David Kohler and Henry Richardson. Enough has already been written about the various matters raised and we are sure Mr Nelkin now realises the depth of feeling for the Hatters held by the club's supporters.

We hope, of course, that the same depth of feeling is shown in support of our club at our Presentation Evening and Children's Fun Day scheduled for Sunday May 5 and Monday May 6 respectively. Details and tickets for both events can be obtained from our kiosk behind the Main Stand after this afternoon's match. There will also be a quiz night on April 18.

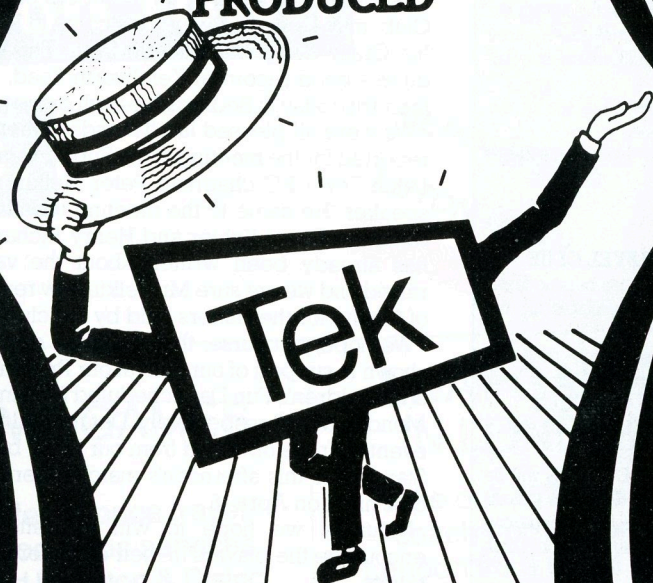
Naturally we hope to win this afternoon. Please, encourage the players in their quest for three more vital points.

Yours in sport, Tom Hunt, Press Officer, Luton Town Supporters Club.



• **Taking control:** David Preece is on the ball at Chelsea with Richard Harvey in support.

**DID YOU
KNOW THAT
LUTON
PRODUCED**



BRITAIN'S LEADING POWER TOOL SPECIALISTS

For a fully comprehensive stock of tools and accessories, expert advice, service and repairs, no one can beat Tek Power Tools for quality, professional attention and value for money.

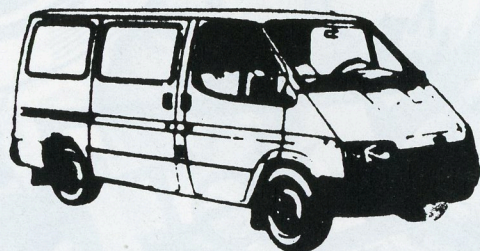
**Why not take advantage of the fact that
your local power tool specialists are also
Britain's best?**

Tek Power Tools Ltd, Manor Road, Luton LU1 3HY
Telephone (0582) 417123 Telex 826109 Fax (0582) 454202



•Kingsley Black takes the ball on his chest during our Easter Monday meeting with Tottenham.

MARTIN SMITH MOTORS



THE LARGEST SELECTION OF
USED COMMERCIAL VEHICLES
ON DISPLAY

● FINANCE FACILITIES ● PART EXCHANGE WELCOME
LATE USED COMMERCIAL VEHICLES BOUGHT FOR CASH

**MARTIN SMITH
COMMERCIAL MOTORS LTD**
199 Leagrave Road, Luton (0582) 574455



BOX OFFICE UPDATE

BARCLAYS LEAGUE DIVISION ONE

Luton Town v Sunderland
Saturday, 20 April, 1991
Kick-off 3pm

Tickets for this fixture are available from the Ticket Office in Kenilworth Road. Normal league prices and guesting regulations will apply.

Everton v Luton Town
Saturday, May 4, 1991
Kick-off 3pm

Tickets for this fixture are available from the Ticket Office in Kenilworth Road. Unreserved seats priced at £7.50 (no concessions) and also on the day at Goodison Park. Standing accommodation at £5 (no concessions) will also be available on the turnstiles on the day.

Luton Town v Derby County
Saturday, May 11, 1991
Kick-off 3pm

Tickets for this final fixture of the Barclays League Division One season will be available from the Ticket Office from Saturday April 27. Normal league prices and guesting regulations will apply.

COMING SOON AT KENILWORTH ROAD
THE LUTON MUSICAL PAGEANT 1991
Saturday, May 4, 1991, 7.00pm
Hundreds of musicians from Britain's leading bands in an unforgettable evening of magnificent colour and pageantry.
Ticket priced from £3 to £15 (with concessions) available from the Ticket Office.

PLEASE GIVE
THE TEAM
YOUR VOCAL
SUPPORT TODAY

FORTHCOMING FIXTURES
AT KENILWORTH ROAD
Ovenden Papers Football Combination
April 16, 1991
Kick-off 2pm
Luton Town v Norwich City

**CALL
SOCCERLINE
ON**

0839 664466

44p per min Peak
33p per min off Peak

For all the latest news and
views from Luton Town



by BILL TOMLINS

THE TOWN

'PREMIER' LEAGUE ARE JUST ANOTHER

FAZZA'S FIRST!



• Lars Elstrup and Sean Farrell celebrate at Stamford Bridge where both scored - Fazza's goal being his first in League football.

Good afternoon and welcome to Wimbledon and, in particular, to Ray Harford who revisits Kenilworth Road today as the Dons manager and Terry Mancini. It will be nice to see Ray back, having worked closely with him at the club for several years.

This week we have been engulfed in football by the story of the Football Association's proposals for another 'Super League' in the form of their planned Premier League. I hope everyone will forgive me, but I am under the impression that we already have a Premier League - it is called the First Division of the Football League.

Real issue

Not having had the opportunity to study in detail the proposals put forward and discussed at Lancaster Gate this week, I can only react in general and personal terms, but it strikes me that this latest suggestion is little more than a smokescreen to hide the real issue at stake: television money.

I do not believe there is a real power struggle between the Football Association and the Football League. In my view, the FA have simply taken advantage of an opportunity to offer the major big city clubs a chance to control their own commercial and television

income away from the shared responsibilities of the Football League structure.

In the present Football League system the big clubs are restrained by the voting arrangements of a set-up which spreads power through the Second Division clubs and, on a more limited basis, the rest of the league.

Television

What they want is the freedom and power to control their own commercial business including all the television income themselves, and the FA scheme appears to offer this possibility while at the same time satisfying the England manager's desire for a squad of players which plays fewer league games.

I must say I can fully understand why the big clubs want autonomy, given that they invest heavily in their grounds, facilities and teams and I cannot argue against that. But I do think they would do well to remember how valuable the rest of the league is as a breeding ground for the players they purchase regularly in the transfer market.

Would there have been an Ian Rush at Liverpool if there had been no Chester? Or a David Preece here at Luton, without Walsall? I have to agree with Gordon Taylor who said these

PROPOSALS TV SMOKESCREEN

proposals could have very serious repercussions for the future of football as we know it.

As I understand it, the proposed Premier Division would, initially, be based on performance and later on merit as it is reduced to 18 clubs with such criteria as stadia, facilities and financial stability taken into consideration. Given the need to meet all the UEFA guidelines and the Taylor requirements, these are sensible proposals.

It might however change the complexion of the Premier Division dramatically in future years if the remainder of the Football League, left behind by the new creation, chose to prevent their players' registrations from being transferred to the new competition or agreed not to enter the FA Cup.

Not being a crystal ball-gazer, I cannot predict the future, but it is clear that something will eventually arise from all these proposals in one form or

another. We can only hope that it is in the best interests of the game and, hopefully, our own club. We have shown in the last nine years that Luton Town can compete with the best in the best division.

New deals

Finally, since my last notes, there have been several items of news. Marvin Johnson, who was sent off for two cautionable offences against Tottenham, will miss our home fixture against Sunderland during his one-match suspension. His two 'bookings' were effectively cancelled out by his dismissal, so preventing any longer ban.

Alec Chamberlain, Mark Pembridge and Ken Gillard have all resigned for the club with new contracts, as I wrote in our last home programme, and talks are continuing with John Dreyer and Lars Elstrup about new deals to keep them at Kenilworth Road. Ian Scott and Richard Cooke, have both been released.

CAPTAIN'S DIARY



JOHN DREYER

TREBLE SPECIAL

After last week's exploits at Stamford Bridge, we are hoping to make up for some of our recent slip-ups today against Wimbledon.

There are no real excuses for letting a victory slip away when you are leading 3-0 and we are feeling very keen to regain those lost points.

We picked up a lot of knocks at Chelsea and had no assistance from some of the decisions made, but matches are won and lost by the team and not the referee.

I hope all our fans can understand this - and I also hope you all support the Supporters Club Presentation night late this season on the May Bank holiday weekend. And don't forget to vote and support the lads today. You are all part of the team effort.

CUP FINAL HOCKEY ACTION...



Last time?: Action from last weekend's Nationwide Anglia hockey final between Hounslow (dark shirts) and Havant. With the removal of our magic carpet on May 12, it may be the last hockey seen at our ground.

• Trevor Brooking showed he still has plenty of skill and style when he turned out for the English Press against the Irish Press on the afternoon of the European championship qualifier at Wembley.



FIRST TEAM ACTION

Chelsea 3 Luton Town 3

Three up in 23 minutes, the Town ended up hanging on for a point against a 10-man team after some extraordinary refereeing decisions and a disputed penalty, for an unknown offence, had turned things Chelsea's way. Goals by Lars Elstrup, Sean Farrell and Kingsley Black put the Town 3-0 ahead, but Graeme Le Saux pulled one back on the half hour, seven minutes before being sent off for elbowing Graham Rodger, and Chelsea went on to score again in the second half through Graham Stuart and Dennis Wise. The last goal came after Alec Chamberlain, excellent throughout, had saved Wise's spot-kick, but the winger followed up to net from the rebound.

Chelsea: Beasant, Hall, Sinclair, Townsend, Cundy, Lee, Le Saux, Dickens, Stuart, Matthew (Myers 75), Wise.

Luton Town: Chamberlain, Johnson, Harvey, Beaumont, Rodger, Dreyer, Elstrup, Preece, Farrell (Nogan 32), Pemble (James 50), Black.

Referee: T. Holbrook (Wolverhampton).

Attendance: 12,603.



•Six-goal thriller: Lars Elstrup was at the centre of all the action at Chelsea as our action pictures by Josh Levy show. Lars is pictured (top left) going through to score the opening goal and (above and left) colliding with Dave Beasant to set up our second for Sean Farrell. Kurt Nogan is pictured trying to find a way through.



828 AM
Chiltern Radio

SUPERGOLD

*for the Greatest Hits of All Time
and Unrivalled Daily Sports News!*

SUPERGOLD 828 AM
in Herts. Beds & Bucks



High Power Pressure Washers:
Sales, Hire, Service Repairs,
Spares, Maintenance Contracts.

SPECIALISTS IN SALES & SERVICING OF
PRESSURE WASHERS
(Most makes repaired)

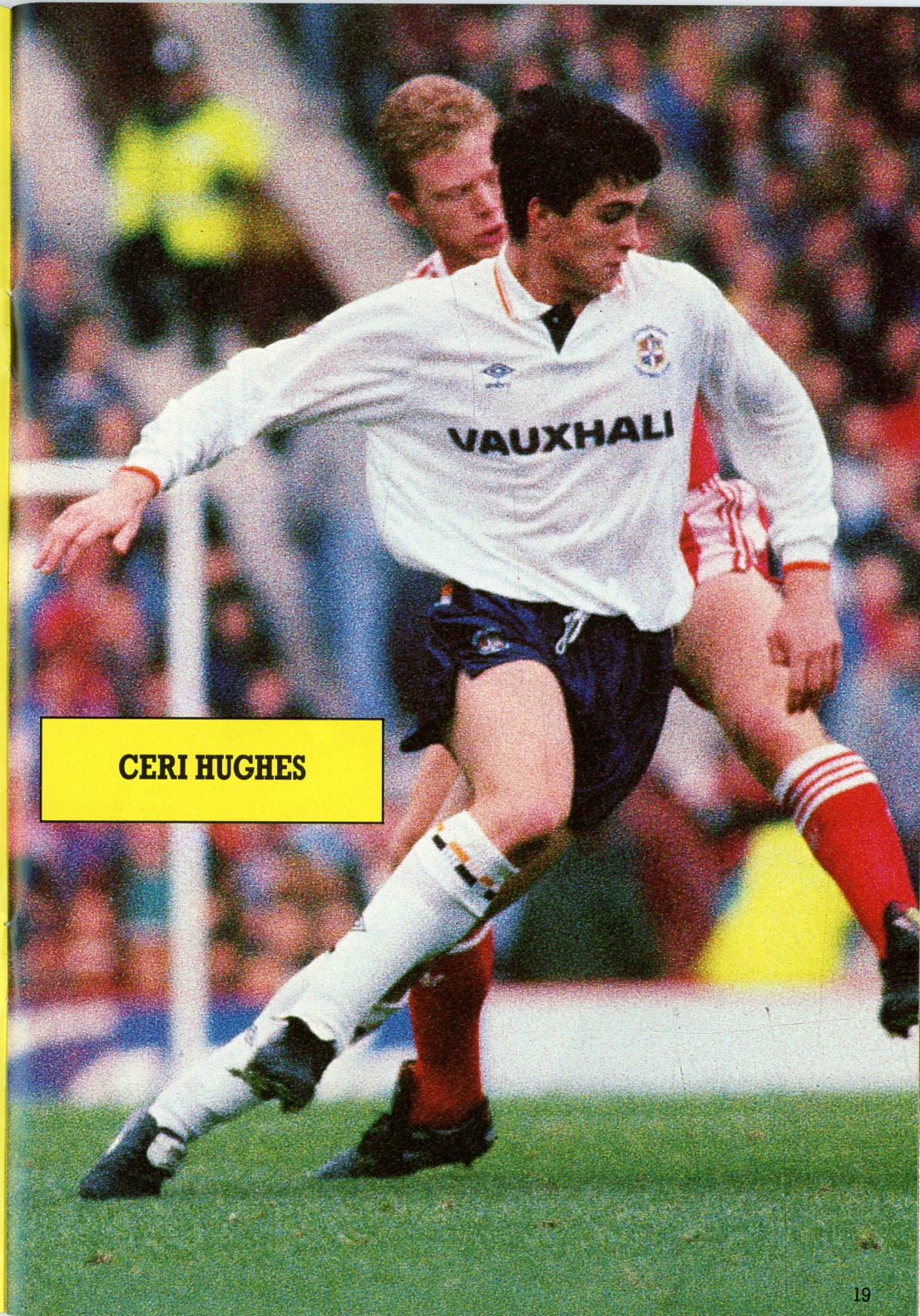
Main distributor for 'Warwick'



JR Power Cleaning

11 Sunbeam Rd., Woburn Rd. Ind. Est., Kempston,
Bedford MK42 7BZ. Fax: (0234) 840110

0234 840838



CERI HUGHES



PLAYER PROFILE

CERI HUGHES

Name: Ceri Hughes.

Born: Rhondda, Wales.

Date: February 26, 1971.

Height: 5ft 10in.

Weight: Nearly 13 stone!

Married: Might as well be....

Who would you most like to meet and why?:

Michelle Pfeiffer - she is so sexy.

How many O levels did you get?: Two left/right feet.

What are your hobbies?: Hunting.

Who are your favourite pop stars?:

New Order, Jean Michel.

What is your favourite ground and why?:

Kenilworth Road. Next thing to Wembley.

Who is your most difficult opponent and why?:

Dave Galley.

Who is your favourite other player and why?:

Ricky Hill - so much ability.

Have you got a nick-name at Luton?: Shadwell.

What is your idea of relaxation?: Relaxing at the Red Lion. Bidwell Hill. Good food.

LUTON TOWN SPORTS SHOP FOR ALL THE FAMILY



Luton Town Umbro Replica kits in all sizes; Luton Town Umbro Tracksuits in all sizes
Tracksuit tops in shell with matching pants; Rugby Shirts, Leisure Shirts
Childrens Tracksuits boys and girls; Shell pants in mens and ladies
Luton Town ties in Navy and Gray; Hooded tops, V Neck Jumpers, Scarves
Sports Bags and Boot Bags, Pens; Coffee Mugs, Ski and Bobble Hats
Bath Towel, Wall Clock and Alarm Clock; Luton Town Official Handbook.

**LOOK OUT FOR OUR SPRING SELECTION
TO ARRIVE SHORTLY.**

**SEE OUR SELECTION ON DISPLAY IN THE OAK ROAD SPORTS SHOP
OR TAKE ADVANTAGE OF OUR MAIL ORDER FACILITY**

Tel (0582) 411622

Access and Visa welcome

SOCCERLINE 0839 664466 44p per min Peak
33p per min off Peak



BARCLAYS

Junior Hatters



**With
JASON
REES**

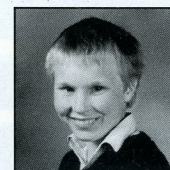
- Today we give Wimbledon and Ray Harford a warm welcome to Kenilworth Road. Wimbledon are in a stable position in the League and lost at home to Leeds last week so we will have to make sure that we are on the right side of three points today.
- I hope you all had a good time last week at Chelsea. It was a good game – at least you saw six goals. It was a pity that we did not come away with all three points after taking a three-goal lead.
- Today, I am going to give you all the details for the Junior Hatters summer day out. We are going to the American Adventure Theme Park near Derby.
- The date is Sunday, June 30th. The price is £11.00 – this includes your coach fare and entry to the Theme Park and all the rides are free.
- As the Price is at a discount, a deposit of £5.00 is required with all bookings. There are new rides for the year featuring the Canyon Trip.
- You can also brave the Missile Rapids Coaster or go on the Runaway Train.
- You can also go to the Screen 2001 Movie Drome, have a ride on the Mississippi Paddle Boat or Helter Skelter, Astro Slide, Carousel – and lots lots more.
- There is a Junior playland for the very young as well as a wild west show.
- The coach will leave from the top end of Kenilworth Road at 9am. You can take a packed lunch or there are catering facilities.
- Please book early as we have to book the coaches. You can book at the Oak Road Sports Shop.

MASCOT

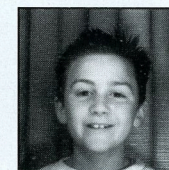


Thomas Shanley

ESCORTS



Kevin Cooper



Paul Sapsed



Duncan Sieling



Steven Perry

WELL DONE IAN KIDD

Today's lucky Junior Hatters membership number is 290758 – IAN KIDD. He wins two free tickets to one of our home games.

To claim your prize Ian, call in to the Oak Road Sports Shop and bring your membership card with you.

Next week we entertain Sunderland. This could be an interesting game as they are second from bottom and we are third. It will be a game that we must win to stay in the First Division so come along and give us your support.

BARCLAYS JUNIOR HATTERS COMPETITION ANSWERS TO MATCH NO.19

POINTS

A1 Luton **A2** Tranmere Rovers
QUESTIONS FOR MATCH NO.20

Q1 Our record League win was against Bristol Rovers can you give me the score? 3
Q2 Who plays at Fir Park? 2

Return date, Friday, April 19th, 1991.

Name Address
Tel D.O.B. MEM. NO.

Answers Match 20: 1) 2)

Please return slip to the Oak Road Sports Shop, Luton, by the closing date.



BY WENDY GRZYBOWSKA

AIRPORT GUESTS FLYING IN FOR TODAY'S BIG GAME

Today we are joined by guests of London Luton Airport, sponsors of this afternoon's game against Wimbledon, who have taken the opportunity to thank their colleagues from the travel industry for their continued support in promotion of our town's famous airport.

Special guests here will also include employees from all sections of the airport itself, who entered a prize draw last year for tickets for the Town's fixture against Chelsea way back in December.

The response was so overwhelming that LLA decided to extend the prize draw to more than one match to give everyone the chance to see the team in action. Now, we hope everyone has an enjoyable day out here at Kenilworth Road this afternoon.

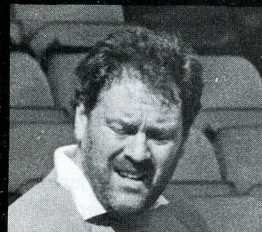
We would also like to welcome John Murtagh and Mat Fisher of Murtagh Demolition who are enjoying the

facilities of our executive boxes today.

Our Burton's promotion week was very successful. Congratulations go to Mr Richard Tiley who won the match forecast competition and will enjoy a special VIP day out for himself and his family at our Sunderland fixture on April 20.

Congratulations also go to Diane Copplestone, who won the 'spot the ball' competition and who will be receiving an autographed football in due course and Tim Rayner, N. Gatward, James Mellor, Joanne Coleman, Mrs Walsh, Mrs Pullen, David Young, P. Wright, Mrs Carmen, Mr M. Serrd, Mrs Stevens, Mr J. Hartwell, Stephen Edler, G. Walters, Steve Jenner, Darren A. Ahmed, C. Quelch, Mark Reid and S. Palp who each receive two free tickets for this afternoon's match.

GRUMPY GOALIE!



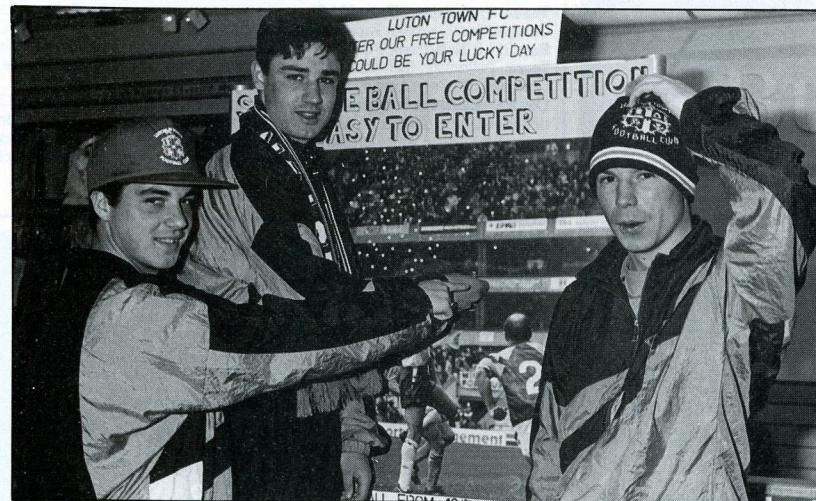
• **Not so happy:** TV-AM's Sports presenter Geoff Clarke played in goal for the English Press against the Irish - and did not look too happy!

SEAN GIVES JODY A HELPING HAND



• **Striking performance:** Sean Farrell gives Jody Cutler, 12, a helping hand at Burton's.

TOWN TRIO SHOW THE WAY AT BURTON'S



• **Spotting the ball:** Kevin Shanley, Tim Allpress and Sean Farrell joined in the fun during our successful promotional week at Burton's.

Today's MATCH SPONSOR

CHOOSING THE BEST AIRPORT TO FLY FROM IS ALWAYS A CLOSE THING

- Extensive programme to well established holiday destinations in addition to a number of scheduled service routes.
- 45 minutes by train from Central London.
- Easy access via motorway networks.
- Inexpensive car parking.
- For full details contact your local Luton Adviser Travel Agent today.

**LONDON
LUTON
AIRPORT**

Close to you



George Ley John Moore

MATCH DIGEST

Fixture: Southampton

Venue: Southampton Date: 30.3.91

Competition: Ovenden Papers Football Combination

Result: 1-0 Half-Time: 1-0

Team: Petterson, Richards, Gillard, Williams, Salton, Allpress, McGonagle, Telfer, Crawshaw, Tigher, Cormley Subs: Campbell, Cooper

Coach's comment: In a game of few chances, Southampton got the vital goal 1 minute before half-time. After a brilliant save by our goalkeeper the rebound broke kindly for them to fire home. Although we totally dominated the second half, nothing broke for us in front of goal. Ended the game very disappointed with not having made more of the few chances that came our way.

OVENDEN PAPERS FOOTBALL COMBINATION
SEASON 1990-91

	P	W	D	L	F	A	Pts
Tottenham Hotspur	31	20	3	8	59	35	63
Chelsea	30	19	4	7	72	35	61
Wimbledon	30	18	7	5	52	25	61
Crystal Palace	29	16	8	5	64	34	55
Arsenal	32	16	8	8	56	44	56
Portsmouth	31	15	8	8	59	37	53
Southampton	32	15	7	10	52	45	52
Luton Town	31	12	7	12	54	43	43
Norwich City	31	11	10	10	47	44	43
Millwall	32	11	9	12	59	53	42
QPR	31	11	7	13	52	54	40
Ipswich Town	34	11	7	16	38	51	40
Oxford Utd	32	11	5	16	51	49	38
West Ham United	29	11	4	14	47	52	37
Swindon Town	30	9	7	14	45	51	34
Charlton Athletic	29	9	6	14	42	51	33
Brighton & Hove Albion	31	9	6	16	37	52	33
Fulham	30	9	4	17	33	59	31
Watford	30	6	8	16	35	71	28
Reading	31	4	5	22	21	70	17

up to and including 5.4.91

RESERVES - APPEARANCES & GOALSCORERS

Football Combination							
	Apps	Gl's		Apps	Gl's		
ALLPRESS	20(1)	-	MCDONOUGH	3	-		
ARMSTRONG	1	-	MCGONAGLE	15(4)	6		
BEAUMONT	3	-	NOGAN	13	9		
BROWN	12(4)	8	PEMBRIDGE	17	4		
CAMPBELL	1(2)	-	PETTERSON	28	-		
COOKE	20(2)	2	REES	7	1		
COOPER	3(1)	-	RICHARDS	11(10)	-		
CRAWSHAW	12(5)	1	RODGER	8	2		
DOWIE	1	-	RUTHERFORD	-	(1)		
FARRELL	8(2)	7	SALTON	18(1)	-		
GILLARD	23(2)	-	SHANLEY	13(3)	1		
GORMLEY	1	-	TELFER	16(2)	4		
GRAY	16(7)	7	TIGHE	10	-		
HARVEY	1	-	WATKISS	3	-		
HOLSCROVE	8(1)	-	WILLIAMS	7(1)	-		
JACKSON	14(7)	-					
JAMES	8	-					
JOHNSON	8	-					

Bedfordshire Premier Cup: Appearances - Allpress 1(1), Brown 1, Campbell 1, Cooper -(1), Crawshaw -(1), Farrell 1, Gillard 2, Gray 1, Jackson 1, James 1, McGonagle 2, Nolan 1, Pembridge 1(1), Petterson 1, Richards 2, Scott 2, Shanley 2, Telfer 1, Watkiss 1. Goals - Brown 1, Farrell 1, James 1, Nolan 1.

MATCH DIGEST

Fixture: Bristol Rovers

Venue: Kenilworth Road

Date: 23.3.91

Competition: South East Counties League

Result: 2-0 Half-Time: 0-0

Scorers: Lawford, Campbell

Team: Hancock, Rogers, Cooper, Sutton, Green, Campbell, Elliot, Thompson, Rutherford, Newman, Lawford. Subs: Gormley, Murray

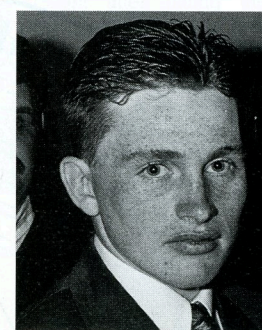
Coach's comment: It was good for the boys to win against a side that has given them a hard time in the early part of the season. The Team is on a roll!

SOUTH EAST COUNTIES LEAGUE
Division 2

	P	W	D	L	F	A	Pts
Wimbledon	23	18	5	-	66	17	41
Oxford United	24	14	6	4	55	37	34
Crystal Palace	24	15	3	6	69	43	33
Bristol Rovers	24	13	4	7	50	35	30
Southampton	24	12	5	7	56	38	29
Aldershot	25	12	3	10	50	48	27
Reading	24	8	7	9	40	47	23
A.F.C. Bournemouth	20	9	3	8	44	44	21
Tottenham Hotspur	26	6	9	11	46	52	21
Brighton & Hove Albion	25	6	9	10	35	43	21
Colchester United	21	8	4	9	29	32	20
Luton Town	28	8	4	16	52	65	20
Swindon	22	5	6	11	31	55	16
Bristol City	22	5	5	12	48	63	15
Brentford	23	4	7	12	32	49	15
Maidstone United	25	6	2	17	35	70	14

YOUTH TEAM - APPEARANCES & GOALSCORERS

SEC League				S.J.E.C				SEC League Cup			
	Apps	Gl's		Apps	Gl's			Apps	Gl's		
BRITTAIN	8	-		1	-			1	-		
CAMPBELL	26	5		1	-			1	-		
CAREY	-(1)	-		-	-			-	-		
COOPER	22	6		1	-			1	-		
DIBLEY	1(1)	-		-(1)	-			-	-		
ELLIOTT	13(8)	-		-(1)	-			1	-		
GREEN	20	-		-	-			-	-		
GORMLEY	16(2)	4		1	-			1	-		
HANCOCK	21	-		1	-			1	-		
HOLTAM	22(1)	3		1	-			-	-		
LAWFORD	21(3)	5		1	-			1	1		
McDOWELL	-(1)	-		-	-			-	-		
MOORE	-(1)	-		-	-			-	-		
MURRAY	9(13)	-		1	-			-(1)	-		
NEWMAN	15(9)	6		-	-			-(1)	-		
NOLAN	4(2)	-		-	-			-	-		
ODONNELL	3	-		-	-			-	-		
PHILIPS	3	-		-	-			1	-		
ROGERS	17(2)	2		-	-			-	-		
RUTHERFORD	24(3)	9		1	-			1	-		
SKELTON	-(1)	-		-	-			-	-		
STANDALOF	6	-		-	-			-	-		
SUTTON	21(2)	4		1	-			1	-		
THOMPSON	27	5		1	-			1	-		



Mark Pembridge.

SOUTH EAST COUNTIES LEAGUE
Division Two

Date	Opponents	Result
1990/91		F-A
Aug 25	Bristol City	1-2
Sept 1	Maidstone United	5-0
Sept 8	Swindon Town	2-3
Sept 10	Birmingham(SJFC)	0-2
Sept 15	Oxford United (LCI)	1-3
Sept 22	Bournemouth	4-2
Sept 29	Aldershot	0-3
Oct 6	Oxford United	2-5
Oct 13	Brentford	2-3
Oct 20	Brighton	0-0
Oct 27	Crystal Palace	1-3
Nov 3	Tottenham Hotspur	4-2
Nov 10	Reading	1-1
Nov 17	Colchester	6-2
Nov 24	Bristol Rovers	2-1
Nov 27	Watford (FAYC2)	0-1
Dec 1	Southampton	1-2
Dec 8	Wimbledon	0-6
Dec 15	Southampton	3-2
Dec 22	Brighton	0-2

1991		
Jan 5	Bristol City	4-1
Jan 12	Maidstone United	1-2
Jan 19	Swindon Town	2-2
Jan 26	Bournemouth	4-2
Feb 2	Aldershot	1-4
Feb 16	Brentford	0-4
Feb 23	Crystal Palace	2-3
Mar 2	Tottenham Hotspur	2-0
Mar 9	Reading	1-3
Mar 16	Colchester	2-2
Mar 23	Bristol Rovers	2-0
Apr 13	Wimbledon	

LC - League Cup

SJFC - Southern Junior Floodlit Cup

FAYC - FA Youth Cup

OVENDEN PAPERS FOOTBALL COMBINATION

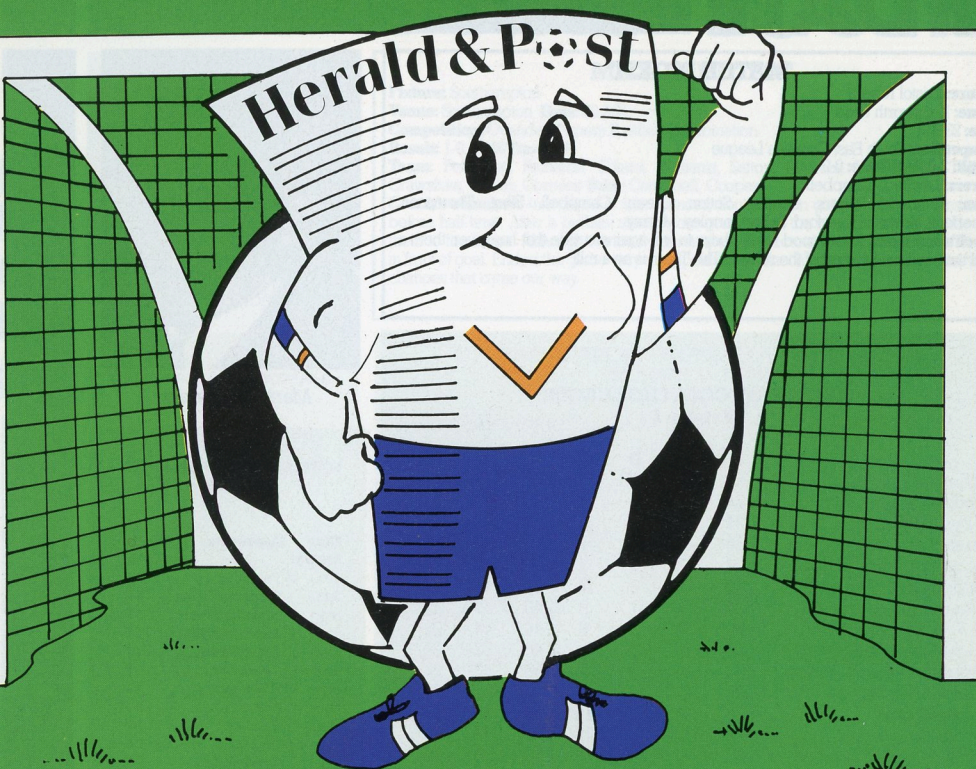
Date	Opponents	Result
1990/91		F-A
Aug 29	Fulham	3-0
Sept 1	Southampton	3-2
Sept 11	Chelsea	4-5
Sept 15	Watford	3-2
Sept 25	Charlton Athletic	3-3
Sept 29	West Ham United	1-0
Oct 3	Leighton (BPC1)	3-1
Oct 6	Wimbledon	0-1
Oct 10	Brighton & Hove Albion	1-2
Oct 13	Reading	3-0
Oct 20	Chelsea	1-2
Oct 27	Portsmouth	2-1
Nov 3	Crystal Palace	0-0
Nov 10	Millwall	1-5
Nov 20	QPR	2-2
Nov 28	Swindon Town	4-0
Dec 1	Oxford United	2-0
Dec 4	Dunstable (BPC2)	1-2
Dec 12	Reading	3-1
Dec 15	Wimbledon	0-1
Dec 22	Charlton Athletic	3-1
Jan 5	Tottenham Hotspur	0-0

1991		
Jan 18	Norwich City	0-0
Jan 22	Portsmouth	0-2
Jan 30	QPR	3-4
Feb 4	Oxford United	0-1
Feb 16	Fulham	0-1
Feb 23	Tottenham Hotspur	1-2
Mar 5	Watford	2-2
Mar 9	Swindon Town	6-0
Mar 20	Crystal Palace	2-2
Mar 23	Ipswich Town	1-0
Mar 30	Southampton	1-0
Apr 8	Millwall	0-1
Apr 16	Norwich	
Apr 20	Ipswich Town	
Apr 23	Arsenal	
May 2	West Ham United	
May 4	Brighton & Hove Albion	

BPC - Bedfordshire Premier Cup

TRA Arsenal (A)

JOIN THE WINNING TEAM



Herald & Post Line-up

**READ THE NEWS AND VIEWS EACH WEEK IN
ALL OF THE EDITIONS**

The Best for News and Sport Tel: LUTON 38981
The Best for Advertising Tel: LUTON 401234

Britain's Free Newspaper
THE Herald & Post



• Sean Farrell wheels away with delight after hitting the Town's second at Chelsea last weekend.

And coming here next...

SUNDERLAND



...Saturday, April 20, 1991, kick-off 3 p.m.

Fellow relegation strugglers, Sunderland are the next visitors to Kenilworth Road for a vital Barclays League match on April 20th.

Sunderland fans could scarcely believe their luck when they heard last summer that the club would be promoted to the First Division in place of Swindon. Sunderland had lost 0-1 to Swindon in the promotion play-offs at Wembley last May, but shortly after, Swindon lost their place after pleading guilty to contravention of League rules.

But barely two years after leaving Division Three, they have found life hard at the top. They have won just one away League match 2-0 at Sheffield United and crashed 0-6 at Derby in the Rumbelows Cup. Manager Denis Smith made two pre-season signings, paying Middlesbrough £300,000 for Peter Davenport and £350,000 for Portsmouth centre-back Kevin Ball. With players such as Davenport and Marco Gabbiadini in their side, they are always capable of scoring goals.

The game at Kenilworth Road is vital to both sides. The victors could quite possibly ensure their First Division status and send the other side into Division Two. Make sure you come on April 20th to give the Town extra vocal support and help them in their bid to remain a Division One club.

FAROE ISLES 1, AUSTRIA 0.

EUROPEAN CHAMPIONSHIPS 1990

USA 1, ENGLAND 0.

WORLD CUP FINALS 1950

WEST GERMANY 1 ALGERIA 2

WORLD CUP FINALS 1982

Arbroath 36, Bon Accord 0.

SCOTTISH CUP 1885

ARGENTINA...0 CAMEROON...1

WORLD CUP FINALS 1990

BANGOR 2 - NAPOLI 0

EUROPEAN CUP WINNERS CUP 1963

**FOR MORE PREDICTABLE RESULTS
SAVE WITH BARCLAYS.**

Shock upsets might be interesting in football, but when it comes to your hard earned cash you want a dead cert.

For a real result from your savings why not talk to Barclays?

We have a wide range of savings schemes, to suit your individual needs, no matter how large or small the amount you have to save. From youngsters with £1, to premium rate saving accounts like Capital Advantage, when you have £10,000 or more to invest.

Just ask at your local branch for details or phone our information line – free of charge – on 0800 400 100.

You can't go wrong with Barclays behind you.



TAKE YOUR PIC!



• Kingsley Black was in the thick of the action at Stamford Bridge where (top) he was foiled in a crazy goalmouth scramble and (bottom) he scored the Town's third goal.



• Sean Farrell sets up Kinglsey Black for the Town's third goal at Chelsea last Weekend.

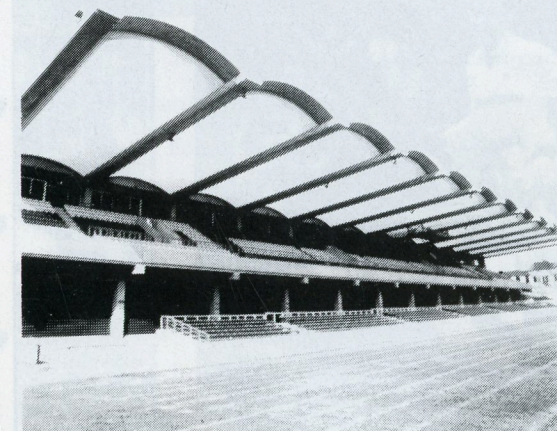


HELPING THE GAME

The Football Trust 1990 has been created to help the game at all levels and to assist clubs meet the requirements of Lord Justice Taylor's Final Report.

Safety and comfort for all spectators is the primary objective and substantial funds have been made available for the provision of seating at Football League grounds. At the same time the Trust's commitment to family and community initiatives will continue with the provision of more family enclosures, better toilet facilities, covered accommodation, artificial pitches for local use and the development of women's and junior football particularly through community programmes, plus a wide range of policing and crowd control measures.

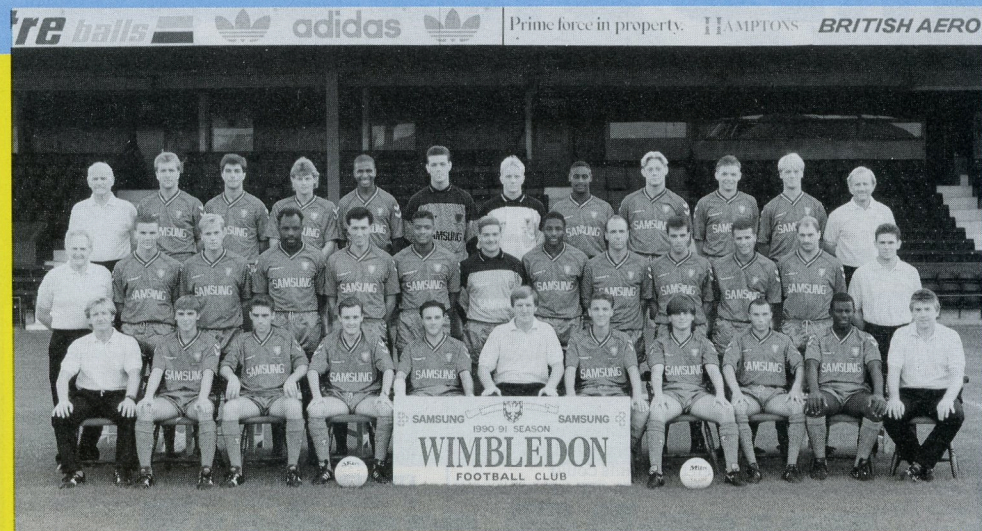
Each year The Trust expects to receive £20 million from the reduction in Pool Betting Duty plus the £10 million continuing contribution from the Spotting-the-Ball competition organised by Littlewoods, Vernons and Zettlers. This money will be invested in projects which benefit football throughout the United Kingdom.



A fine new stand - one of the many initiatives supported by Trust funds.

WELCOME TO...

WIMBLEDON



Back Row (l to r) Ron Stuart (Chief Scout), Detzi Krusynski, Scott Fitzgerald, Steve Cotterill, Carlton Fairweather, Neil Sullivan, David Hudson, Roger Joseph, Aidan Newhouse, Brian McAllister, Warren Barton, Roger Smith (Youth Development Officer). Middle Row (l to r) Syd Neal (Kit Manager), Dean Blackwell, John Scales, John Gayle, Lawrie Sanchez, Steve Anthrobus, Hans Segers, John Fashanu, Alan Cork, Paul Miller, Keith Curle, Clive Goodyear, Steve Allen (Physiotherapist). Front Row (l to r) Terry Burton (Youth Team Manager), David Cooper, Gerald Dobbs, Paul McGee, Terry Gibson, Ray Harford (Caretaker Manager), Matthew Pearson, Vaughan Ryan, Terry Phelan, Mickey Bennett, Joe Kinnear (Reserve Team Manager).

This afternoon we welcome the players and officials of Wimbledon to Kenilworth Road for today's Barclays League Division One match, writes *Luke Nicol*.

This season, Wimbledon have achieved exactly what we have come to expect from them. Following a very poor start, the Dons were being written off as relegation material. They failed to win any of their opening seven games at Plough Lane. Yet, in their usual unobtrusive manner, Wimbledon started picking up valuable points which now sees them placed sixth in the First Division and with striker John Fashanu the Division's leading scorer with 16 goals at the time of writing.

The Plough Lane faithful have, of course, become accustomed to being written off. Every year following their promotion to Division One the critics have doomed them to relegation. Yet, during this time, the Dons have won the FA Cup and have nearly always finished in the top ten. The club received a huge blow last summer with the shock resignation of manager Bobby Gould and the departure of two key players, midfielder Denis Wise to Chelsea and centre-back Eric Young to Crystal Palace. Former Town boss Ray Harford has successfully taken over

from Gould and has made three signings since his arrival, Maidstone's Warren Barton, Aidan Newhouse from Chester and more recently, Barnet forward Andy Clarke. The departure of key players at the end of each season tends to spur on the Dons' to succeed, and this season they are looking to achieve their highest position in Division One.

Wimbledon were for 75 years among the top amateur clubs in London. They were formed in 1889 and under the name Wimbledon Old Centrals played on Wimbledon Common until moving to Plough Lane in 1912. As a successful south London club, they were able to attract gates of up to 10,000 during the 1930's. They turned semi-professional in 1964, a year after beating Sutton United in the Amateur Cup final at Wembley. Once a limited company, they became candidates for League membership. They achieved this in 1977. By 1984 the club had reached the Second Division and two years later were promoted to the First Division. Incredibly this was only their ninth season in the Football League. The fairytale story continued with the FA Cup triumph in 1988, beating Liverpool 1-0 at Wembley, thanks to a Lawrie Sanchez header.

OFF THE RECORD

A LOOK BACK AT APRIL 1968

After a 2-2 draw at Notts County over Easter 1968 the Town were six points clear at the top of Division Four but for those of us who had yet to sample any success in our Luton Town supporting years nails were still being chewed down to the quick, *writes club statistician Roger Wash*.

On the following Saturday two coaches instead of the normal one were run by the Bobbers Club, Destination Halifax, to see if the final two points could be won to ensure promotion to the "high life" of Division Three.

Before the start the Halifax chairman asked if the Town players would do a lap of honour if they won but in typical fashion Luton manager Allan Brown replied "Lets win it first". And win it they did!

With eleven minutes left of a dour game dominated by defences winger Graham French was upended in the edge of the box and from the resultant free kick Bruce Rioch hammered in a special to secure the all important victory which clinched promotion and left the Town with only one point required for the Championship.

By sheer coincidence the next game at Kenilworth Road was against second placed Crewe and a best of the season crowd of 18,904 turned up on the evening of 24th April to see one of the memorable games in recent history.

LAST FOUR MEETINGS AT KENILWORTH ROAD

1989/90	23/9/89	Luton 1 (Wegerle) Wimbledon 1 Att: 8,449
1988/89	3/9/88	Luton 2 (Black, O.G.) Wimbledon 2 Att: 8,067
1987/88	17/10/87	Luton 2 (Stein, Wilson) Wimbledon 0 Att: 7,018
1986/87	4/4/87	Luton 0 Wimbledon 0 Att: 9,729

* Roger Wash is our official club statistician.

Anyone with inquiries or comments please write to him
c/o The Editor, Luton Town F.C., Kenilworth Road Stadium.

IT HAPPENED.....

FIVE YEARS AGO (12/4/86) A Mike Newell goal secured a point in a 1-1 home draw against Tottenham watched by a crowd of 13,141.

TEN YEARS AGO (11/4/81) A fine 3-0 home win over QPR. The goalscorers included Raddy Antic with his first for the Town.

FIFTEEN YEARS AGO (16/4/76) A 2-2 draw at Chelsea with Jimmy Husband scoring one and missing six!

TWENTY YEARS AGO (12/4/71) A crowd of 24,405 turned up at Kenilworth Road to watch a 3-1 home defeat to Leicester. This reversal completed a miserable Easter and ended the Towns' promotion hopes.

The Town set about Crewe without mercy and after John Moore opened the floodgates in the eighth minute a further three goals went in before half time.

The "Evening Post" reported "I don't think any team - and I mean any team - in the land would have beaten Luton in last night's mood. Anyone who was at Kenilworth Road last night will ever forget the occasion".

At the end of the game skipper Terry Branston was carried shoulder high by his teammates on a lap of honour and amidst all the din manager Brown was heard to say "Now we want to break the points record. We want 67 - then I'll be satisfied".

With 64 points already in the bag and three games to play it looked a distinct possibility that Brown would get his wish but in the penultimate home game - against Bradford City - disaster struck with the away side inflicting the Towns first defeat since mid-January and the first at Kenilworth Road for over a year.

"Anti-climax" and "after the Lord Mayors Show" were the headlines in the newspapers the following morning but City deserved their win to keep alive their own promotion aspirations.



• Bruce Rioch, the hotshot at Halifax, is pictured taking a tumble against Northampton in October 1968.

Luton News

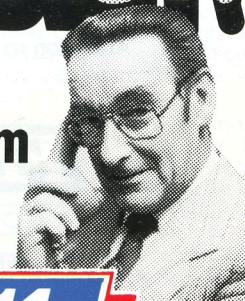
TOWN & COUNTRY • Mid and South Beds

DUNSTABLE GAZETTE

1st AND BEST!

All the LUTON
TOWN NEWS from
BRIAN SWAIN

The 'Man in the know'



WEDNESDAYS 14p

**BBC RADIO
BEDFORDSHIRE**



Simply The Best!

◆ SATURDAY SPORTSOUND 2-6PM ◆
◆ DAILY SPORTS DESKS ◆
◆ MID-WEEK MATCH COVERAGE ◆

103.8FM & 630kHz AM
S T E R E O

ROADS

BUILDINGS

ASPHALT

Attention to detail, quality and personal contact are still our biggest advantages.

FITZPATRICK

A CONCERN FOR CONSTRUCTION

FITZPATRICK CONTRACTORS LTD

Hertford Road

Hoddesdon, Herts EN11 9BX

Tel. No. 0992 445757 Fax. No. 0992 446882 Tlx. No. 8954170

FOR THE RECORD

Continuing our 'football diary' to keep you up to date with the domestic and global game:

Mar 21: Terry Yorath is sacked as manager of third division Swansea City.

Coventry sign QPR defender Kenny Sansom for £100,000.

Manchester City sign Bury defender Andy Hill for £200,000.

Everton reach the ZDC final beating Leeds Utd 3-1 at Goodison Park (6-4 on agg). They now meet Crystal Palace at Wembley.

Mar 22: Norwich striker Robert Rosario joins Coventry City for £500,000.

Manchester United are drawn against Legia Warsaw in the European Cup Winners Cup semi-final.

Mar 23: The Town drop into the bottom three with a 4-1 defeat at Manchester Utd.

Liverpool return to the top of Division One following a 7-1 victory at Derby.

Mar 24: Mark Hughes is announced P.F.A. Player of the Year, while Manchester United teammate Lee Sharpe is named Young Player of the Year.

Mar 25: Brighton sign Romanian World Cup defender Stefan Iovan from Steau Bucharest for £60,000.

Former Celtic manager David Hay is appointed manager of St. Mirren.

Mar 26: Jim Smith quits as manager of Newcastle United.

In the European Under-21 Championships, England beat Republic of Ireland 3-0 with goals from Alan Shearer, Rod Wallace and Jason Cundy, while Scotland beat Bulgaria 1-0.

Millwall sign Middlesbrough's Paul Kerr for £100,000.

Maidstone's Steve Butler joins Watford for £150,000.

FOCUS ON WIMBLEDON

Hans Segers (goalkeeper): Signed from Nottingham Forest for £125,000 in 1988, Hans started his career in his native Holland, playing for PSV Eindhoven. He originally joined Forest on loan in 1985 before making the £125,000 move permanent. When he was out of the Forest side, Hans served Dunfermline and Stoke City on loan.

Roger Joseph (defender): Roger established himself in the Dons' defence two seasons ago following his £150,000 transfer from Brentford during the summer of 1988. Brentford signed him from non-league Southall, and he made his League debut for the Bees in 1985.

Gary Elkins (defender): A recent introduction to the Wimbledon line-up, Gary started his career at Fulham, making his League debut v Middlesbrough in 1984. After seven full seasons at Craven Cottage he signed for Wimbledon and has recently provided cover for Terry Phelan at left-back.

Keith Curle (defender): Club captain, Keith started his career with Bristol Rovers but moved on to Torquay United in 1983. After only a few weeks, he was transferred to Bristol City. He continued his progression through the lower Division via Reading before moving to Wimbledon in a £500,000 deal in 1988.

Dean Blackwell (defender): A former Wimbledon trainee, Dean has made fast progress this season. He made three appearances last season, all as substitute, but quickly established himself in the side this term. Dean also won his first England Under-21 cap earlier this season.

Warren Barton (midfield): Signed from Maidstone for £300,000 last summer, Warren was one of the players signed by Maidstone after they had achieved Football League status in 1989. Although a right back during his time at Watling Street, he has played a commanding role in midfield this season.

Lawrie Sanchez (midfield): A Northern Ireland international, Laurie started his career at Reading, making his debut v Wimbledon in 1977. He joined the Dons in 1984 and will be remembered for his winning goal in the 1988 FA Cup final v Liverpool.

John Scales (midfield): John started the season in defence but later moved forward. He started his career at Leeds United but made his League debut shortly after joining Bristol Rovers in 1985. Wimbledon signed him for £70,000 in 1987 and he can now look back on over 100 League appearances or the Dons.

John Fashanu (forward): Currently Division One's top scorer with 15 League goals, John started his career at Cambridge before moving to Norwich City, where he made his League debut in 1981. He established himself as a prolific goalscorer during his time at Lincoln and later Millwall, prompting Wimbledon to sign him for £120,000 in 1987.

Andy Clarke (forward): Andy made a name for himself following his prolific goalscoring form for non-league Barnet. He joined Wimbledon for £350,000 last month.

Terry Gibson (forward): Terry started his career at Tottenham but came into his own after switching to Coventry in 1983. He was top-scorer for three successive seasons before signing for Manchester Utd for £600,000. That move was not a great success so he was happy to join Wimbledon in 1988.



FIRST TEAM

UPDATE

1990-91 SEASON

Luton Town

F-A Att Pos

1

2

3

4

5

6

7

8

9

10

11

12

14

Aug 25 Crystal Palace

1-1 9,583 - Chamberlain

Aug 29 Arsenal

1-2 32,723 - Chamberlain

Sept 1 Southampton

2-1 14,878 8 Chamberlain

Sept 4 Manchester United

0-1 12,576 11 Chamberlain

Sept 8 Leeds United

1-0 10,185 7 Chamberlain

Sept 15 Queens Park Rangers

1-6 10,186 11 Chamberlain

Sept 22 Coventry City

1-0 8,336 7 Chamberlain

Sept 25 Bradford City (RLC21)

1-1 5,120 - Chamberlain

Sept 29 Norwich City

3-1 12,794 6 Chamberlain

Oct 10 Bradford City (RLC22)

1-1 6,180 - Chamberlain

Oct 20 Sunderland

0-2 20,005 8 Chamberlain

Oct 27 Everton

1-1 10,047 7 Chamberlain

Nov 3 Derby County

1-2 15,008 8 Chamberlain

Nov 10 Liverpool

0-4 35,207 13 Chamberlain

Nov 17 Manchester City (FAC1)

2-2 9,564 12 Chamberlain

Nov 24 Aston Villa

2-0 10,071 9 Chamberlain

Dec 1 Nottingham Forest

2-2 16,498 10 Chamberlain

Dec 8 Arsenal (FAC2)

1-1 12,506 11 Chamberlain

Dec 16 Crystal Palace

0-1 15,195 12 Chamberlain

Dec 19 West Ham (ZDSC2)

5-1 5,759 12 Chamberlain

Dec 22 Tottenham Hotspur

1-2 27,007 12 Chamberlain

Dec 26 Sheffield United (KO 11.30am)

0-1 10,004 12 Chamberlain

Dec 29 Chelsea

2-0 11,050 12 Chamberlain

Jan 1 Wimbledon

0-2 4,521 14 Chamberlain

Jan 5 Sheffield United (FAC3)

3-1 13,948 14 Chamberlain

Jan 12 Southampton

3-4 9,021 15 Chamberlain

Jan 19 Leeds United

1-2 27,010 16 Chamberlain

Jan 26 West Ham (FAC4)

1-1 12,087 16 Chamberlain

Jan 30 West Ham (FAC4R)

0-5 25,659 16 Chamberlain

Feb 2 Queens Park Rangers

1-2 8,479 16 Chamberlain

Feb 18 Chelsea (ZDSC QF)

1-1* 3,849 16 Chamberlain

Feb 23 Liverpool

3-1 12,032 15 Chamberlain

Feb 26 Crystal Palace (ZDSC ASF)

1-3 7,170 15 Chamberlain

Mar 2 Nottingham Forest

1-0 9,577 14 Chamberlain

Mar 5 Manchester City

0-3 20,404 14 Chamberlain

Mar 9 Aston Villa (FAC6)

2-1 20,587 13 Chamberlain

Mar 13 Coventry City

1-2 9,521 13 Chamberlain

Mar 16 Norwich City

0-1 8,604 14 Chamberlain

Mar 23 Manchester United

1-4 41,752 18 Chamberlain

Mar 30 Sheffield United

1-2 18,487 18 Chamberlain

Apr 1 Tottenham Hotspur (ko 3pm)

0-0 11,322 18 Chamberlain

Apr 6 Chelsea

3-3 12,603 18 Chamberlain

Apr 13 Wimbledon (FACSF)

Apr 20 Sunderland

Apr 21 League Cup Final

May 4 Everton

May 11 Derby County

May 18 FA Cup Final

Breacker

James

McDonough

Beaumont

Dreyer

Elstrup

Preece

Dowie¹

(Hughes)

Black

[Rees]

Harvey

Breacker

(James)

McDonough

Beaumont

Dreyer

Elstrup¹

Preece

Dowie

Hughes

(Black)

[Rees]

[Harvey]

Breacker

James

(McDonough)

Beaumont

Dreyer

Elstrup²

Preece

Dowie

Hughes

(Rees)

[Harvey]

[Nogan]

Breacker

(Harvey)

(James)

Beaumont

Dreyer

Elstrup

Preece

Dowie

Hughes

(Preece)

(Black¹)

[Johnson]

Breacker

James

Rees

Beaumont

Dreyer

Elstrup

Dowie

Hughes

(Dowie)

Hughes¹

Black

[Nogan]

Breacker

James

(Rees)

Beaumont

Dreyer

Elstrup

Preece

Dowie

Hughes

(Elstrup)

Preece

Dowie¹

Breacker

Harvey

Rees

Beaumont

Dreyer

(Elstrup)

Preece

Dowie

Hughes

(Elstrup)

Preece

Dowie

Breacker

Harvey

Williams

Beaumont

Dreyer

Elstrup³

Preece

Dowie

Hughes

(Black¹)

(Rees)

[Nogan]

Breacker

James

Harvey

Williams

Beaumont

Dreyer

Elstrup

Preece

Dowie

Hughes

(Black¹)

(Rees)

[Nogan]

Breacker

Harvey

Williams

Beaumont

Dreyer

Elstrup

Preece

Dowie

Hughes

(Black¹)

(Rees)

[Nogan]

Breacker

Harvey

Williams

Beaumont

Dreyer

Elstrup

Preece

Dowie

Hughes

(Black¹)

(Rees)

[Nogan]

Breacker

Harvey

Williams

Beaumont

Dreyer

Elstrup

Preece

Dowie

Hughes

(Black¹)

(Rees)

[Nogan]

Breacker

Harvey

Williams

Beaumont

Dreyer

Elstrup

Preece

Dowie

Hughes

(Black¹)

(Rees)

[Nogan]

Breacker

Harvey

Williams

Beaumont

Dreyer

Elstrup

Preece

Dowie

Hughes

(Black¹)

(Rees)

[Nogan]

Breacker

Harvey

Williams

Beaumont

Dreyer

Elstrup

Preece

Dowie

Hughes

(Black¹)

(Rees)

[Nogan]

Breacker

Harvey

Williams

Beaumont

Dreyer

Elstrup

Preece

Dowie

Hughes</

STAR PERFORMER



VAUXHALL *Once driven, forever smitten*



VAUXHALL IS BACKED BY THE WORLDWIDE RESOURCES OF GENERAL MOTORS. CAR SHOWN CALIBRA 16V.

VAUXHALL TEAM CHECK.

LUTON TOWN

Team Manager: Jim Ryan

White Shirts, Navy Shorts

- 1 Alec Chamberlain
- 2 Marvin Johnson
- 3 Richard Harvey
- 4 David Beaumont
- 5 Graham Rodger
- 6 John Dreyer
- 7 Lars Elstrup
- 8 David Preece
- 9 Sean Farrell
- 10 Mark Pembridge
- 11 Kingsley Black
- Subs



umbro

Official Kit Sponsors



**Official Ball
Sponsors**

WIMBLEDON

Team Manager: Ray Harford

Red Shirts, Red Shorts.

- 1 Hans Segers
- 2 Roger Joseph
- 3 Gary Elkins
- 4 Warren Barton
- 5 Dean Blackwell
- 6 Keith Curle
- 7 Mickey Bennett
- 8 Lawrie Sanchez
- 9 John Fashanu
- 10 Alan Cork
- 11 John Scales
- Subs

Referee: Neil Midgley (Bolton, Lancs) Linesmen: P.J. Griggs (red trim) M.G. Wright (yellow trim).

Designed and printed by Abacus Press, Berkhamsted, Herts.